

# THE MIDLAND REPORTER

AND GAZETTE-EXAMINER

VOLUME XXX

MIDLAND, TEXAS, FRIDAY, JULY 30, 1926

NUMBER 44

## MAINTENANCE OF NEW ROAD DELAYED

### LACK OF FUNDS PREVENT TAKING OVER MIDLAND-GARDEN CITY ROAD

Lack of funds may delay state maintenance of the Midland-Garden City Highway, according to latest developments, as indicated in a letter from State Highway Commissioner John Cage to the Midland Chamber of Commerce. Mr. Cage holds out the hope of state maintenance beginning January or July first 1927. This is a disappointment to the county commissioners court and the Chamber of Commerce, as the Co. was assured maintenance would start July 1 of this year. However, it is pointed out that no blame can be laid to any department, as the work can not be done without funds.

I was sorry that I did not get to spend more time with you on my way to Pecos this week. It had been my intention to drop by and meet with you on my way out there. However, I was delayed at Big Spring and was not able to reach your town until late in the afternoon, and as I had promised Mr. Webb that I would spend the night with him at Odessa I had to hurry on.

"I have discussed with Mr. Webb the matter of the requested designation of a highway from Midland to Garden City to Sterling, and for your information I wish to state that this designation meets with my personal approval, and I have recommended to the Highway Commission that it be taken over for maintenance after it is placed in proper condition either the first of January or first of July, 1927.

"Mr. Love, State Highway Engineer, has this under consideration as to the advisability of taking over any more mileage of highways for maintenance for the coming year. Feeling that we should be careful to not encumber the present system with more mileage than we are financially able to maintain, this brings to my mind again the question of the gasoline tax, which I have discussed very frequently with the senators and representatives. Although I believe they will give us a raise in the tax, which I believe is a very important necessity, we must be careful not to take action on these matters until we are in a position to properly finance their maintenance.

"I wish to thank you for your courtesies and for the information given me while in your section of the state, and I hope to be with you again before many weeks.

"It would please me to hear from you at any time you have any recommendations to make or whenever we can serve you in any manner."

## New Brunswick Now On Display

The first Brunswick Panatropie in Midland was put on display at the Midland Hardware Tuesday. The machine reproduces the sound electrically and is a great improvement over the old mechanical process. One man a block away, said he heard the machine and thought an orchestra was playing in town.

The Panatropie now on hand has already been sold according to Manager McCormick of the Hardware Co. Mr. McCormick in pointing out the advantages of the new Brunswick said that with the Panatropie vibrations up to 21000 could be reached whereas with the mechanical machines only 200 could be reproduced.

The machine, run by electricity, has three radio tubes which carry the sound. Mr. McCormick said one of the tubes was not the right type but a new one will be in soon. A free demonstration of the newest type of music box will be given in the near future.

## County Agent Has "Canning Phamplet"

County Agent J. B. Snider has received a large supply of pamphlets on how to can fruits and vegetables. These are for free distribution to any woman who wants one. They may be had by calling at the office of the county agent. The booklets contain the latest information as compiled by the United States Department of Agriculture.

## STATEMENT MADE ON POTASH TESTS

### EXPECT EXPLORATION IN TERRITORY ADJACENT TO MIDLAND

Potash tests to be made under the recent Federal appropriation will probably not be made in Midland County but likely will be made in the Midland territory, a letter from the U. S. Department of the Interior to the Midland Chamber of Commerce declares.

The letter which came in reply to several communications from Midland to Washington officials urging as logical headquarters for potash development follows:

"In reply to your letter of July 5: "Consideration is being given to the area in the vicinity of Midland, as well as other localities in Texas and New Mexico from which important potash indications have been obtained, in the location of sites for potash tests. With the limited funds available, however, the Geological Survey will recommend the location of such tests in areas that are considered most favorable for the discovery of commercial deposits of potash. It is not probable that tests will be located in Midland County in the near future."

## Allen Building Being Altered

Extensive repairs are being made on the H. B. Allen building on Main Street directly across from the Barrett building. The old flooring has been torn out and contractors are now engaged in filling the floor up to the level of the street after which a cement topping will be applied.

Other repairs on the building are being made. Part of the roof was torn off by the recent storm and this will be fixed.

Mr. Allen, who is in Sweetwater, has not yet announced who will occupy the building after it is re-modeled.

## Hankla Says Syrup Mill Is Assured

Midland is assured a syrup mill according to an announcement made this week by J. J. Hankla. Mr. Hankla will immediately start work on a mill on his place about two miles out of town. He will order his equipment soon and in all probability the plant will be running in about thirty days.

Some time ago a campaign was inaugurated to enlist the promise of farmers to plant a specified number of acres of cane. More than a hundred acres was promised and Mr. Hankla decided to build the mill.

The cane will yield from 50 to 200 gallons per acre according to County Agent J. B. Snider. The cane is first carried to the mill and the juice pressed out. Then the juice is cooked on an evaporator and sealed in containers.

Mr. Hankla is an old hand at the game which practically insures the success of the enterprise. Several years ago he operated a mill in east Texas.

The new industry is one of several which has started here recently. The syrup mill is due to grow by leaps and bounds. More cane will be planted every year now that the certainty of the mill is assured.

## Former Midland Girl Marries

Miss Elizabeth Lynch, formerly of Midland, but who has been living with her mother, Mrs. Ada Lynch, in Ft. Worth for several years, was married on July 10th to Mr. Chester Earl Priest of Fort Worth.

The wedding was held in Dallas, the Rev. A. C. Parker officiating. Mr. and Mrs. Morris Parker were attendants in the wedding.

## Rev. Spellmann Still In Smiley

In a letter received by M. C. Ulmer the first of this week, from Rev. L. U. Spellmann who is holding a meeting in Smiley, the Methodist pastor advised that he would not be back for the approaching Sunday in August, or August 28th.

He reports a successful meeting.



## DAN MOODY VOTE IS MAJORITY OVER ALL

### RETURNS NOT ALL IN, BUT LOOKS LIKE NO RUN-OFF SCHEDULED

Late reports in yesterday's Sweetwater Reporter recorded a total vote of 802,428 in the Governor's race, with Dan Moody holding a majority of 2,816 over all opponents.

This is probably the greatest upset of political dope that has been seen in Texas in years. Even the most ardent Moody supporters believed that Ferguson would be in the runoff, and many of them would not have been surprised to see Moody in second place.

The recording of the back-country vote failed to build up a lead for Ferguson, whereas Moody's gain steadily increased.

In the above count, 250 of the 252 counties had turned in reports, with 188 complete.

Ferguson has stated that she would withdraw from the race, and has called a special session of the legislature and states that she will resign not later than November 1st. Investigation of various departments is to come up in the special session, she states.

## Business College Opens At Pecos

Pecos now has a college. Reeves College was formerly opened July 26 with Mr. Charles Findlay genius of the new institution. At present only commercial courses such as stenography, bookkeeping, and typewriting will be given.

In September the whole school will be opened. Geology, law, english, and other subjects will be offered. This is the first venture at having a college in Pecos.

## Midland Band Is Getting In Shape

The Midland Band held its first rehearsal last Tuesday night after about a month of preparation. Only a few pieces were attempted and Director Dunagan expressed himself well pleased with the progress the boys are making.

There are now twenty eight members in the band and more are coming in. The instrumentation is fairly complete except for the trombone section. More "slidin' trumpets (as they are called) are needed.

The band will probably be in good enough shape to render a few numbers next Trades Day.

## Lord Is Growing Fine Watermelons

I. F. Lord is growing some fine watermelons again this year, and is just beginning to market them. He "feasted" The Reporter force yesterday evening and got an O. K. from all present. Holt Jowell and Paul T. Vickers also attended the party.

Mr. Lord grew some real melons last year, irrigating them, and this year's crop is from those seed.

Tuesday of this week several truck loads of Weatherford Watermelons were being sold on the streets.

Jim Flanigan left Thursday afternoon for Toyah.

Ernest Wicker is now employed by the Western Union Telegraph Co.

## Humble To Issue New Road Maps

Highway maps published for several years by the Humble Oil and Refining Company which have failed to give Midland proper display on the map plates are to be changed, according to a letter received by the local chamber of commerce. This failure to properly exploit Midland was through no fault of the Humble Co., but due to failure to supply them with the needed information.

Their letter follows: "I thank you for yours of the 21st which we are forwarding to the Publishers, Rand-McNally & Company so that the changes mentioned by you can be embodied in the new maps.

"Co-operation such as you and the other Secretaries of Chambers of Commerce in the State are rendering will enable us to keep our "Highways of Texas" up to date, which is very essential if the booklet is to continue to be of value to the touring public.

"As soon as a supply of these books are received we will be very glad to send some of them to you."

## Paul Daniel Brown Died In Eastland

Paul Daniel Brown, eldest son of Mr. and Mrs. Paul Brown of Eastland, passed away Tuesday as a result of an appendicitis attack. The funeral was held on Wednesday, and was attended by Z. T. Brown, Mr. and Mrs. H. B. Dorsey, Mrs. Jelks, Mr. and Mrs. N. W. Ellis of Midland.

The little fellow was well known in Midland, this being the former home of the Browns and he having visited here often. The news of his death came as a great shock to many people in Midland.

## Colorado Golfers Win At Big Spring

Midland golfers carried off third place in a four-city meet held at Big Spring last Sunday. Colorado was first, Big Spring second, and Lamesa fourth.

Ellis Cowden with an eighty nine for the eighteen was low man for Midland. O. B. Holt, Jr. nine strokes behind was next.

The Big Spring links is very soft and drives stop almost dead with little or no roll at all. This accounts for the high score of most of the local players.

The Midland team was Cowden, Holt, Moran, Ellis, Johnson, Glass, and Rowe and C. Cowden.

Sunday the locals invade Ft. Stockton for a match.

Qualifying rounds are now being played of eighteen holes.

Cowden qualified by making a 35 and 43. The 35 is probably the best a local golfer has ever made.

## Midland C. of C. Always On The Job

Ludwig & Ludwig, drum manufacturers of Chicago, appreciated hearing about the advantages offered at Midland, they indicate in the following letter:

"Thank you for the personal interest and attention you took in supply us with the information in your letter of the twelfth. Of the many letters we have received from Commercial Clubs all over the country yours is one of the half dozen who took advantage of the opportunity to tell us about your community. "To us this is a sign of aggressiveness."

## Dr. Ryan's Office Is Well Equipped

Dr. W. E. Ryan, who has recently completed the installation of his equipment in his office at the Llano has a well selected set of instruments.

His equipment consists of some of the most modern that is being used in the larger hospitals today, and although his is on a smaller scale he believes he will be able to care for any emergencies.

Dr. and Mrs. Ryan declare that they are well pleased with Midland and the reception that has been accorded them here.

Hazel Lucile Van Huss of Garden City Kansas arrived Tuesday for a months visit with her aunt, Mrs. Ed Dozier.

## BIG VOTE IS POLLED HERE LAST SATURDAY

### INCREASED POPULATION IS SHOWN IN POLL OF 958 VOTES

Almost 1,000 votes were cast in Midland County last Saturday, being strong evidence of the increase in population during the past two years.

In the Governor's race, the three leading candidates ran very close together in Midland County, Moody leading with 340 votes, Ferguson coming second with 314 and Davidson being third with 294.

The total votes polled for each candidate are published elsewhere in this issue, being the complete returns for Midland County.

The defeat of Judge Charles Gibbs for the office of Associate Justice of the Court of Civil Appeals went against the majority of Midland voters, as the Midland candidate ran a strong race against the El Paso political machine.

Judge Charles L. Klapproth was elected to the office of District Judge defeating his opponent, B. Frank Haag by a vote of 2321 to 1454, although one box in Andrews County and all of Winkler County had not been heard from yesterday afternoon.

M. R. Hill won the race for County Judge over W. H. Spaulding, the vote being 626 to 327.

A. C. Francis, sheriff; Ed Dozier, tax assessor; Mrs. Mary L. Quinn, county treasurer; were re-elected with out opposition. Henry Russell was elected district attorney, with no opponent. C. W. Tate was elected county attorney without opposition, and W. L. Dean was re-elected constable of precinct No. 1.

The closest race was between C. B. Dunagan and Jim Shelburne, the latter winning the race for county clerk by ten votes.

The only run off in county candidates will be between Lon Roberts and A. B. Cole for public weigher, they having received first and second places respectively, eliminating Ellis Howell and Clem Daughtry.

Millard Eidson was elected commissioner of precinct No. 1, L. M. Estes No. 2 was re-elected justice of the peace for precinct No. 1, defeating the youngest candidate, Jim Flanigan Jr. by a vote of 486 to 335.

W. L. Graves was elected county democratic chairman, with Joe Youngblood committeeman for precinct No. 1, Harry McClintic No. 2, Herd McKiff No. 3, and Boice Eidson No. 4.

## Baker To Market

A. P. Baker left last Sunday for Eastern markets to buy fall and winter goods for the West Texas Dry Goods Co. He was joined by buyers from Colorado and Sweetwater, and the party will visit Chicago, St. Louis, Baltimore, New York and other buying places.

## I. C. C. Again Refuses M. & N. W. Jurisdiction

The third effort of the Texas and Pacific Railway Co. to get a favorable decision from the Interstate Commerce Commission on junking the Midland and Northwestern has failed, according to a report received by the Midland Chamber of Commerce from the I. C. C.

The last petition was denied by a general session of the I. C. C. It was for certain findings. The other two petitions for permission to dismantle the M. & N. W. were denied and the I. C. C. refused to assume jurisdiction.

Ernest May, assistant attorney general, now has a suit pending in the 53rd District Court of Travis County to compel re-operation of this line.

Mrs. F. C. Stubbe who has been visiting here for the last three weeks returned to Fort Worth Saturday evening in company with her husband, F. C. Stubbe. The latter intends to return to Midland about August 15.

Clarence Scharbauer is here for a short time from Colorado Springs on business. He will return for Mrs. Scharbauer and their son. They will come home by auto.

County Agent J. B. Snider left Friday for College Station to attend a state meeting of the county farm agents.

## VICKERS ATTENDED SECRETARIES MEET

### MIDLAND PEOPLE APPEARED ON T. C. E. A. PROGRAM AT LUBBOCK

Secretary and Mrs. Paul T. Vickers returned Wednesday from Lubbock after attending the Commercial Executives Association which convened there. Mr. Vickers addressed the association on "The Relation of the Secretary to the Press." He also presided at a discussion for an absent member.

Mrs. Vickers was on the program three times, once for a reading at breakfast given in honor of visiting women and twice for original stunt speeches.

According to information which leaked out in spite of Mr. Vickers he made a presentation speech at the organization of Halitosis Club, International. The local secretary would not state who was elected to office in the organization. Take your choice.

West Texas was the best represented section of the state at the Lubbock convention according to Mr. Vickers.

## Funeral Of Jim Lee Held Monday

A large number of friends gathered at the B. W. Lee residence last Monday, at three o'clock, to attend the funeral of Jim Lee, whose death occurred at his home in South Dakota on July 21. Rev. S. C. Guthrie officiating at the funeral service.

Mr. Lee had not lived in Midland for a number of years, but his old friends were here from all parts of this country to pay their last respects. The deceased was well known and revered during the early days of Midland, when the few families here were knitted more closely together.

He is remembered by many cattlemen as one of the premier men on the range and on the trail. All who came in contact with him were his friends.

His widow and four children survive, also his parents, Mr. and Mrs. B. W. Lee, four brothers and six sisters.

## Hangman's House

Hangman's House is a nice piece of love fiction by Donn Byrne. The author is an Irishman, although there are many references which indicate a familiarity with America. A little bit of old Ireland herself is infused in the story. The never failing charm of the Irish meadows and great trees is always present.

A dreamer of nature has written a dream book in which imagination not too securely fettered has been allowed to wander into delightful pastoral scenes.

Connaught O'Brien and young Dermot of Dermotstown are the central figures of the romance.

The book abounds in quaint sayings and quotations which the average reader is hard put to follow.

Hangman's House is probably Byrne's best achievement to date. The book will be in the Midland library Saturday.

## Democratic Convention Held Here

At a meeting of Democrats in Precinct convention at the Court house Saturday, 24 1926, the following delegates to the county convention were elected: W. L. Graves, Jno. A. Haley, G. H. Lumpkin, I. W. Towers, J. G. Hall, B. F. Stanley, S. E. Greenhill, and T. A. Fannin.

The County Convention convenes Saturday, 31st, at the Court House to elect delegates to the State Convention.

W. L. Graves, Chairman,  
T. A. Fannin, Secretary.

Mrs. Eliza B. Rutledge, who has been visiting her daughter, Mrs. T. Paul Barron, returned to Big Spring last Sunday with Mrs. W. F. Farenkamp and daughter, going to her home in Roswell this week.

Manager Smith of the Walter Engine Manufactory of Austin is here to superintend operations of the new drilling engine Tipps in making. The engine is being used by Brandon and McCamey on one of their wells in Ector County.

The  
**Greatest  
 BUICK**  
 Ever Built  
 Soon On Display  
**City Garage**  
 R. D. SCRUGGS, Prop.

**CRYSTAL CAFE**

Across Street East of  
 Post Office

Try our **COFFEE** for  
 your Morning's Morn-  
 ing.

It's Made Right!

**Tom Flood**  
 Proprietor

**Warns Against Leaf  
 Worm Outbreak Here**

Midland County farmers have the best chance at a bumper cotton crop of any one in the country. There are just a few things that could happen to cut the crop short, and the most dreaded, perhaps, are the leaf worm and hail.

Nothing can stop the hail, although farmers in many localities protect themselves with insurance.

However, the leaf worm can be stopped, and County Agent Snider warns against an outbreak here. He says that if farmers will watch, that the first crop of worms will be in a small section of the field. Immediate poisoning with calcium arsenate poison would prevent spreading.

If these worms are not poisoned quickly, the second worm crop comes on in about two weeks and covers a wide stretch of country. Then if it is not checked, the third worm crop is likely to get the whole cotton patch before the farmer knows it.

Midland farmers who are on the lookout will have a good chance to prevent an outbreak.

Our Want-Ads Get Results

**They Used to Joke About  
 "Chicken Feed"**

But now it has come to be a substantial source of income on the well managed farm, this poultry money.

And properly so. Any man with two hundred hens can earn a supporting income and keep out of debt. We know because some of them are our customers. You can too!—Need any help?

**Midland National Bank**  
 "There Is No Substitute For Safety"

**Texas Vs. California**

In a recent issue of the Los Angeles Times, Texas was severely ridiculed as a possible competitor to California.

The Manufacturers Record of Baltimore replied with some very illuminating information and said in part:

"Texans do not have to turn to California or to Florida for any illustration of potentialities. They do not have to imitate either California or Florida; they do not have to contrast their mountain peaks which rise in one case to over 9,000 feet, with others but a little lower, with the mountains of California. They rejoice in their great rivers rising in the high mountains and rushing for hundreds of miles through beautiful regions, in many places as fertile as the valley of Nile. They do not have to form their conclusions about the citrus industry in the state in comparison with California; they know that Texas can raise oranges and grapefruit which are as much superior to California's as a delicious, juicy apple is superior to the Dead Sea Apples, which crumble into dust. Many other farm products are as superior to those of California as a juicy orange is superior to sawdust, even that when sawdust is surrounded by the bright color of California's tasteless oranges.

"Texans know that their state leads the nation in the value of agricultural output, and yet that the ground has scarcely been scratched in comparison with its area and its possibilities. They know that Texas has one of the great lignite fields of the world and that this lignite will soon be turning the wheels that create electric power for transmission over a wide area, giving cheap power to thousands of manufacturing enterprises. They know that Texas is one of the worlds great oil centers; that it has a marvelous variety of granites and marbles and minerals too numerous to mention. They know that its climate is so charming that even people from such places, for instance, San Antonio regard the summer climate of that region as preferable to the heat of much of New England. They know too, that what has been done in agricultural and industrial development \$261,157,000 last year, Texas export, only the beginning of a growth which make Texas one of the wonder regions of the world.

"To talk about Texas and California in the same breath, except to show the immense superiority of Texas as only indicates how little the Los Angeles Times knows about one of the most richly endowed regions on the face of the earth. And that region is Texas. Why, even in foreign commerce it is worth nothing that the export trade of one city in Texas Galveston—surpasses by \$66,500,000 the entire export trade of the Pacific coast.

"If the editor of the Los Angeles Times really wants to have his mental vision broadened, his mind stimulated to an unwonted degree, let him leave California for a few days and travel over Texas. When ever the people of Texas, with their great resources and advantages about which to boast, turn loose in boasting and in publicity work one half so strongly as the people of California have done for the last forty or fifty years, there will be seen a growth in population and in wealth which will put to shame anything and everything that Los Angeles and all of California have ever done."

We wish every man, woman and child in Texas could read this message and realize the great future of our beloved Lone Star State and work together to conserve our financial resources for the development of our wonderful opportunities.

**Scruggs Gone After  
 New Model Buicks**

The new model Buicks will be on display in Midland for the first time Saturday, July 31 according to R. D. Scruggs, local dealer. Mr. Scruggs with several others went to El Paso this week to secure the new cars. Some have already been sold.

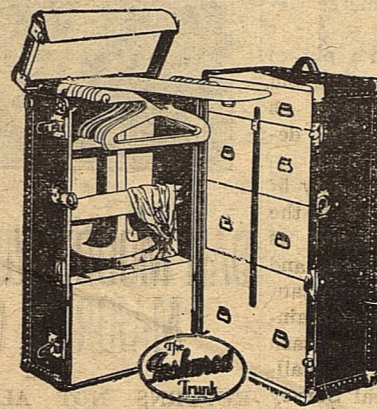
The new Buick embodies all the best features of automobiles of today, Mr. Scruggs said. A new vibrationless motor, a silent transmission, a new counterpoised crankshaft and thermostat cooling radiator are new additions to the Buick. Customers have choice of sixteen different models.

During the past year Mr. Scruggs sold forty six Buicks which entitled him to a substantial bonus. This is a larger amount than any other dealer in the state for the same sized town. The Buick fiscal year is just starting and Mr. Scruggs hopes to excel his old record the coming 12 months.

R. V. Hyatt and family and Miss Elsie Wolcott returned last Sunday from a two weeks vacation in New Mexico. They visited all the principal cities, spending several days at Ruidoso.

**Vacation  
 Time**

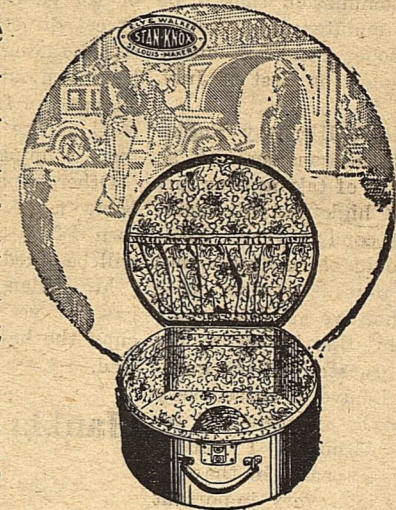
Is rapidly coming to a close and it is time to prepare for the coming school term and to think of the much needed things for the college girl or boy and this store is ready to help you as well as save you money.



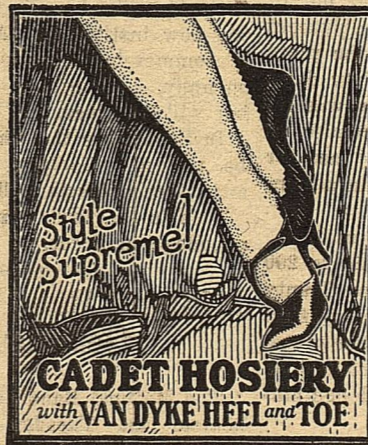
This is the famous insured Wardrobe Trunk and one that each girl and boy should have to withstand four hard years of College Life. The distinctive features of this trunk are: It carries a \$500 policy on the life of the purchaser as well as being insured against destruction for a period of one year with no additional charge. It has trolley fixtures heavily nickled plated

following board, laundry bag, electric iron holder, shoe box, ironing board and dust curtain, veneered hangers, five drawers, locking device and gilt lining. This trunk is economical in the preservation of clothes as well as in service, and is a real value at .....\$42.50

A Beautiful Hat Box in a blue polychrome finish and something useful as well as ornamental to any well dressed girl containing a carrying compartment in the lid as well as box for toilet accessories, lined in pretty blue brocade, priced at \$12.75.



Pullman bag to match the above, two locks at .....\$12.75



We have just received a large shipment of Cadet Chiffon Hose with the Van Dyke Heel, having a 3 and one half inch lisle top in the pretty beige, toast, grain, atmosphere and woodland rose shades, priced at the pair \$1.95

Our stock of Wayne Knit all silk chiffon hose is also complete at the pair \$1.95

In the service weight department the wonderful Kayser hose with the pointex heel still predominates, at the pair \$1.50

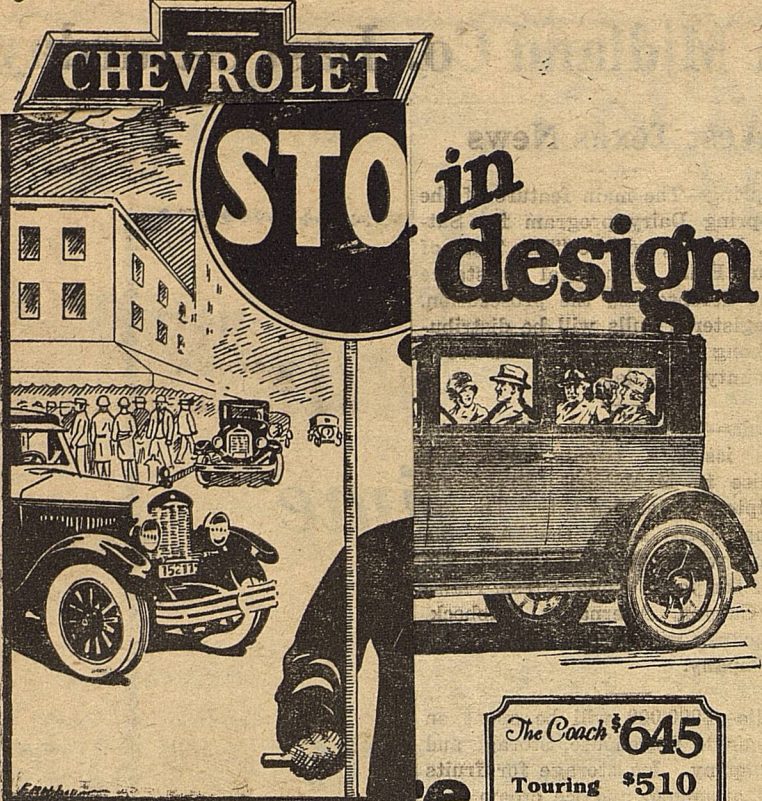
Do not fail to overlook our Minnehaha Arrowhead Hosiery in all popular shades, and carrying an unconditional guarantee, at the pair .....95c

Every Express Brings Us Something New, and we invite you to see these new styles and goods. We have received several new Hats, dresses, coats, shoes, shirts, young men and boys suits and have priced them reasonable.

Do not forget that our Mr. Wadley is in the Eastern Markets buying and promises you the most complete and exquisite lines of merchandise for Fall shown anywhere in West Texas.

**Wadley-Wilson Co.**  
 ONE PRICE—THE LOWEST—FOR CASH ONLY  
 MIDLAND, TEXAS

for Economical Transportation



**SPECIAL**

**Blue and Grey**  
**Ripe Olive**  
**Veribest P**  
**Churches'**  
**Pearl Mea**

The Coach	\$645
Touring	\$510
Roadster	510
Coupe	645
Sedan	735
Landau	765
1/2-Ton Truck (Chassis Only)	395
1-Ton Truck (Chassis Only)	550

All Prices F.O.B. Flint, Mich.  
Small Down Payment. Convenient Terms

**FOR CO.**  
**LOW COST**  
**Simply Wild**

"Who's the stranger, mother dear? He knows us! Ain't he queer?"  
"Hush my own! Don't talk so wild That's your father, dearest child."  
"He's my father? No such thing! Father died, you know last spring."  
"Father didn't die, you dub! Father joined a golfing club. But they closed the club, so he Had no place to go, you see! No place left for him to roam— That's why he is coming home. Kiss him—he won't bite you child. All them golfing guys look wild."  
—Ex.

**JNO. T. CROSS**  
Real Estate  
Mineral Properties  
Bought—Sold—Exchanged  
**ODESSA & MIDLAND**

**L. H. GASKINS & CO.**  
Architects  
All kinds of work solicited  
**COLORADO, TEXAS**

**Marland Pipe Line**  
**Man Locates Here**

J. D. Bodkin, purchasing agent of the Marland Pipe Line department arrived in Midland about two weeks ago, and is now located here. His family joined him last week end, coming from their former home in Tulsa.

**Will Put In New Land Here Soon**

A. B. Wilson and T. E. Bizzell went to Colorado the first of the week and came back with the good news that two men there are going to put in as much as 1200 acres on three sections they recently bought here. Two of the sections were formerly owned by Leon Bryant and the other was the Polo farm.  
The Midland men stated that cotton here has much better fruit on it than that of the counties east, that the stalks are big there but not so well loaded with bolls.

If Its Job Printing, We Can Do It

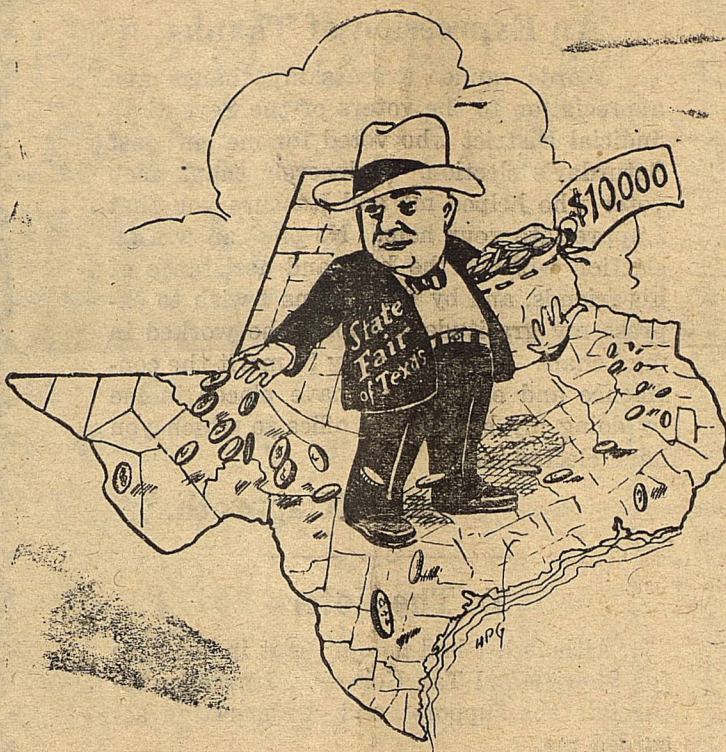
**Meet Your Friends**  
**At**  
**THE ELITE**

On the warmest days you will find the Elite like an oasis—Cool—Clean and Pleasant. And those Drinks! Say, they are made just right.

**Elite Confectionery**  
**W. S. Hill and Sons**

Curb Service A Specialty

**The Sower**



This is the way the cartoonist visualizes the news that The State Fair of Texas is offering special premiums totaling \$10,000 over a five-year period, for agricultural improvement in Texas. The premiums will be awarded in a contest between county exhibits, beginning with the fortieth annual State Fair, Oct. 9-24 next, and ending with the exposition of 1930.

**STATE FAIR OF 1926 TO CHRONICLE FORTY YEARS OF PROGRESS**

Great Educational Institution Instructs in Every Line of Human Endeavor.

Nearly half a century of Progress and development in Texas and the Southwest will be chronicled through the fortieth annual State Fair of Texas to be held at Dallas, Oct. 9 to Oct. 24, 1926.

Premiums and awards to be offered at the 1926 exposition encompass departments significant of every activity carried on throughout the magnificent reaches of the great Lone Star State.

Forty years ago—in 1886—the State Fair of Texas came into being. Every year since, under the direction of a group of far-sighted patriots, earnestly loyal Texas business men, it has been demonstrated to hundreds of thousands of visitors, by means of comprehensive physical displays, the adaptability, productivity and efficiency of Texas and the Southwest.

Great Educational Institution. Educational in the broadest sense and co-operating with other Texas educational institutions—notably the Agricultural and Mechanical College—the State Fair of Texas runs the whole gamut of instruction to those who would find out, from agriculture—in which it is the ranking state—through the list, including cattle raising, dairying, general livestock production, manufacturing and exports, progress in the fine arts, the latest developments in implements and machinery of every description, port facilities, poultry production, mineral resources and mining development, progress in engineering and various classes of construction—every enterprise in which the human mind is interested.

Operated with no thought save that which will come through development of Texas and the Southwest, the State Fair of Texas is entirely unselfish in its aims. With physical properties and equipment, including permanent buildings, valued at more than \$3,500,000, the home of the State Fair is the 157-acre Fair Park tract, owned by the City of Dallas and maintained as a public park the year 'round.

They asked Thomas Aloysius McSweeney, who hailed from old Grand Saline, what he thought of the Fair, after he'd visited there, and Thomas replied: "It's sure keen."  
It might be said that the State Fair of Texas is now fair, fat and forty. The fortieth annual exposition will be held at Dallas Oct. 9-24 next.

**Dinner-Horn**

When James Stephen Hogg, former governor of Texas, was a "one-galloon" lad on a Wood county farm, he was summoned to his dinner by a dulcet blast from an old-fashioned cow-horn.  
J. F. Reeves of Mincoola, long-time and consistent booster of Wood county's agricultural possibilities, has the horn, which he cherishes as an historic relic of Hogg and of early days in Texas.  
When the big Agricultural Day dinner is given at the State Fair of Texas this year, the diners will be summoned to the banquet just as Hogg was when a boy. A veteran bugler of the Civil War is said to be practicing a letter-day mess call on the homely instrument, and this is to be a signal for the guests at the dinner to "come and get it."

Fred Girdley returned from Dallas Sunday.

**ELLIS COUNTY PLANS BIG STATE FAIR SHOW**

Plans for the comprehensive agricultural exhibit to be made at the State Fair of Texas, Dallas, Oct. 9-24, by Ellis county, anticipate contributions to the general exhibit by every community in the county.

W. B. Sims of Ennis has been named as general chairman of the Ellis County Exhibit committee, and has announced an executive committee composed of C. H. Pigg, Waxahachie; W. M. Love, county agent; J. L. F. Castellaw of Ennis, secretary of the Ellis County Fair, and Hanks Davis of Waxahachie. A publicity committee with a personnel of a dozen prominent men, and an exhibit committee numbering more than twenty, have also been named. The publicity body will be on hand at the Ellis county exhibit all the while, to give information, either verbal or written, to all who may inquire.

**STATE MANUFACTURERS TO MEET AT STATE FAIR**

Announcement is made by G. M. Knebel of San Antonio, vice president and general manager of the Texas State Manufacturers Association that the annual meeting of the association, that was to have been held at Houston the latter part of May, will now take place during the State Fair of Texas, at Dallas, Oct. 9-24 next. The session will be incident to the holding of the Texas Industrial Exposition during the State Fair. All officials and managers of Texas industries will be invited and there will be addresses by prominent industrial leaders. The exposition will run for eighteen days. On one day alone, in 1925, 150,000 people visited and studied the displays maintained throughout the exposition.

**WHO SAID FARM RELIEF? NOT TEXAS FARMERS!**

Texas farmers, as a rule, aren't much concerned by all this "holler" about "farm relief."  
That man who gets out and hits the ball, most generally, doesn't need any relief—he works out his own salvation.  
At the State Fair of Texas, every year, there's a complete demonstration and proof in the manner in which Texas farmers accomplish this, through the attractive, edifying, instructive county agricultural exhibits, and there's more of them this year, Oct. 9-24, than ever before.

**OLDHAM COUNTY AGENT BUSY ON FAIR EXHIBIT**

Harmon Benton, Oldham county agricultural agent, isn't letting any grass grow under his feet, in anticipation of Oldham county's agricultural exhibit at the State Fair of Texas, Oct. 9-24. As early as June 1 Mr. Oldham was active in selecting various small grains which will go into the exhibit, and he is confident that Oldham county's showing will be up in the first rank when the scoring records are made.

**CLEBURNE CHAMBER AFTER JOHNSON COUNTY EXHIBIT**

Johnson county and Cleburne, through the Cleburne Chamber of Commerce, aren't going to overlook their opportunity for showing the diversified agricultural abilities of their section at the State Fair of Texas, Oct. 9-24 this year. The Cleburne Chamber, early in June, issued a call for samples of the oat and wheat crop of Johnson county to be brought in, in connection with preparations for the State Fair exhibit. It is declared that the oats and wheat crops in Johnson county this year are better than for some time, and the belief is strong that first place for these grains could easily be taken.

Dodge Hammett was here the first of the week from Odessa.

**You Lose Money When You Say "Give Me a Quart of Oil"**

You not only lose money but you are actually inviting motor trouble when you merely say "Give me a quart of oil."

The wise motorist insists on a high grade oil that will properly lubricate the motor.

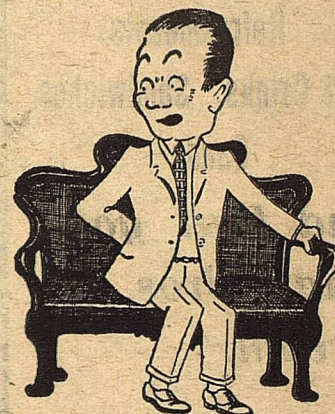
When you buy oil make it plain that you want AMALIE, the old reliable made from 100 per cent Pure Pennsylvania Crude.

**Nobles Motor Company**  
**Amalie Oil**

100 Per Cent Pure Pennsylvania

**BEST PICTURES**

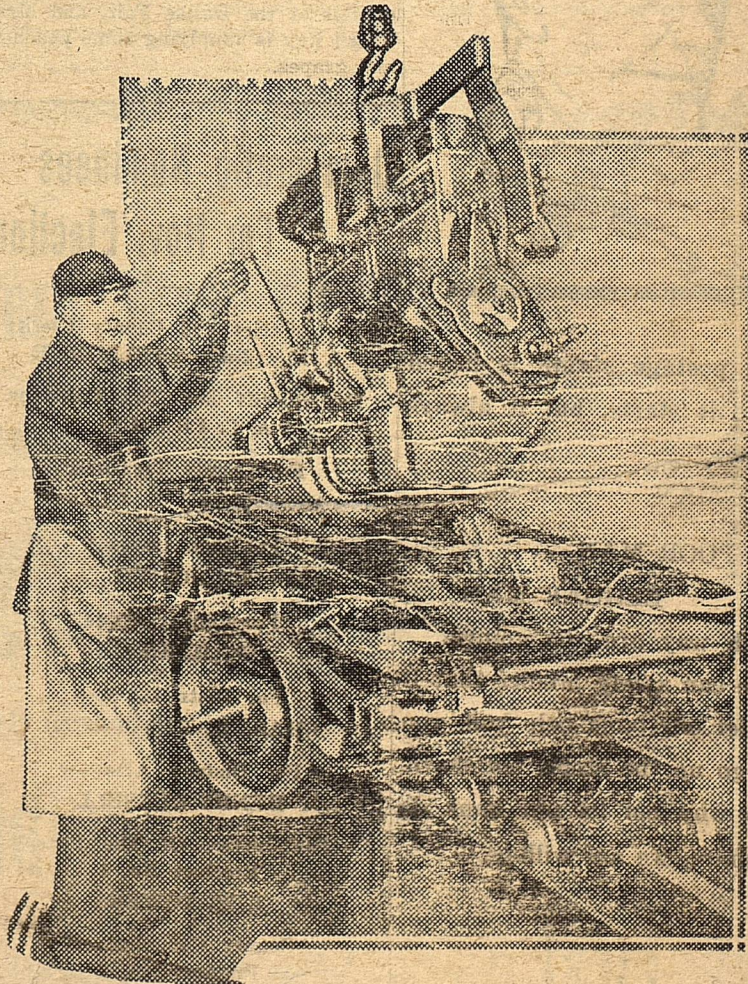
- Saturday, July 31  
**FIGHTING HEARTS**  
Comedy
  - Monday, August 2 2  
**JOANNA**  
And the Comedy  
Buster Brown's Hunting Party
  - Tuesday, August 3  
**DESERT GOLD**  
A Zane Grey Story
  - Wednesday August 4  
**Rudolph Valentino In COBA**
  - Thursday, August 5  
**SALLIE OF THE SAWDUST**
  - Friday, August 6  
**Reginald Denny In California Straight Ahead ANDY GUMP COMEDY**
  - Saturday, August 7  
**HIGH AND HANDSOME**
- AT THE  
**IDLEHOUR THEATER**



In bygone days, the haircloth sofa was considered the smartest thing in the parlor. We moderns know that smartness is more apt to follow the use of comfortable and snugly furniture. Same thing with shirts—you can't be uncomfortable and look smart. Our hearts were filled with joy when we first saw the shirts we're now showing; so, too, will yours be when you see them. And one of the chief charms is that they are surprisingly reasonable in cost. Look them over; if you don't like them don't buy them—but you will.

**WADLEY-WILSON CO.**  
Midland, Texas

**Dropping Engine To Chassis**



A BUICK valve-in-head engine is being added to the chassis in the picture above. Previous to this step in assembly, the chassis started as a bare frame. Body brackets and running board brackets were riveted on, axles, torque tube, cantilever springs, etc. were fastened in place by automatic tools, as the chassis moved slowly forward along the assembly line on an endless conveyor.  
The engine is fastened to the frame at three points. This type of suspension, with the single, automatically lubricated universal joint, takes up

stresses and torsional twists and delivers the power directly to the rear wheels. Here the torque tube comes into play, taking the strain of driving away from the rear springs so that the engine is in effect pulling the car along.  
As the car moves forward after receiving the engine, other important parts are added. The wheels are placed on the axles and the four-wheel brakes adjusted. The radiator is put into place and connected. The front fenders, mud guards and running boards are fastened to the chassis.

THE MIDLAND REPORTER PRINTERS AND PUBLISHERS

Official Newspaper and Advertising Medium for Midland and the Surrounding Territory

T. PAUL BARRON, Editor-Owner

Entered at the Post Office at Midland, Texas, as Second Class Matter.

SUBSCRIPTION IN ADVANCE ONE YEAR \$2.00 SIX MONTHS \$1.00 Advertising Rates Upon Application.

The Reporter strives to be clean and fair in the dissemination of news. Any errors will be cheerfully corrected. Suggestions or criticisms are welcome.

SAVE with SAFETY at your Rexall DRUG STORE Eat and Drink with the crowd Make Shopping a Pleasure by stopping at the CITY DRUG STORE for Refreshments Cold Drinks, Sandwiches Candy and that good Shaw Bros. Ice Cream. CITY DRUG STORE The Rexall Store

Chiropractic Adjustments, Phone 164

Who's Who TODAY



"A postage stamp is licked before it starts, but it always finishes."

RICH MAN

POOR MAN

BEGGAR MAN

Which way are you going?

We can safely predict that if

you let our bank help you, you

will go up the steps, not down.

So why not let our bank do

its share, we are willing.

First National Bank

"The Bank of Personal Service"

For Over 36 Years

Capital and Surplus \$200,000

SIGNS OF PROSPERITY

Hotels are full in Midland every night. Cafes report the best business they have ever had here. Merchants say that business has held up better than usual at this time of the year.

Property in Midland is changing hands, some going to new people and some to local people who believe in Midland's future.

All of these things point to prosperity. Come to Midland!

FERGUSON IS RIGHT

One of the regular maxims seen in Jim Ferguson's "Forum" is "Agin High Rents."

We believe Ferguson is right. Midland people are going to lose some good prospective citizens is rents are held too high. The demand for houses here is great but people will not pay just any price to get a house.

Let's keep the prices down and welcome the new people.

Cotton Contest Plots Measured

Plots of the local contestants in the "More cotton per acre" were measured Tuesday, according to County agent J. B. Snider.

The personnel of the committee was: Audie Francis, Ellis Howell, J. M. Moss, Elmer Bizzell, John Waddell, J. D. Glass, and J. B. Wilkinson.

The contest committee of the Dallas News, sponsor of the contest, has asked that all plots be measured by August 1st.

Chiropractic Adjustments, Phone 164

Fitzhugh Ray, with his wife and child, are visiting his grand-parents Mr and Mrs. J. B. Rhea this week.

Miss Willie McCormick left Sunday for a few days visit with relatives in Brady.

Mrs. A. B. Wilson is supplying some fine peaches for the Midland County exhibit at the Dallas Fair, and Mrs. Virgil Ray is supplying some peaches and grapes.

Democratic Nominees For Nov. Election

For District and County Clerk: J. M. (Jim) SHELBURNE

For Sheriff and Tax Collector: A. C. FRANCIS

For County Treasurer: MRS. MARY L. QUINN

For Tax Assessor: ED DOZIER

For County Judge: M. R. HILL

For District Judge: CHAS. L. KLAPPROTH

For District Attorney: HENRY RUSSELL

For Justice Of The Peace Precinct No. 1: I. W. TOWERS

County Commissioner Precinct No. 2: A. B. COLLIER

For County Commissioner Precinct No. 4: HOLLY E. ROBERTS

For Public Weigher Precinct No. 1: A. B. COLE

LON ROBERTS

(For August 23 Run-Off)

An Expression of Thanks

Words cannot express my thanks and appreciation to the voters of the Seventieth Judicial District who voted for me in last Saturday's election. I sincerely thank each voter who helped me and I assure you that I appreciate your help.

Chas. L. Klapproth.

To The Voters

Although I had no opponent in the race for Sheriff and Tax Collector, I greatly appreciate the support and co-operation accorded me.

It is my aim to carry out the duties of the office to the very best of my ability.

A. C. Francis

Card of Thanks

I wish to thank the people of Midland County for their expression of confidence in me by electing me to the office of Co. Judge.

Your best interests will be looked after to the best of my ability.

M. R. Hill

My Friends Did It

By staying by me through the campaign my friends succeeded in electing me to the office of County and District Clerk.

I greatly appreciate your support and will carry out the duties of the office to the best of my ability.

Jim Shelburne

Card of Thanks

I take this method of expressing my thanks to the voters of Midland County by electing me to the office of County Treasurer, without opposition.

It is my desire to continue to look after the business to the best of my ability.

Mary L. Quinn

To The Voters

My friends have again elected me to the office of Justice of the Peace, Precinct No. 1, by a substantial majority.

I appreciate this expression of confidence and will continue to do my duty at all times.

I. W. Towers

Card of Thanks

In electing me to the office of Tax Assessor for the second term, without opposition, I feel that the voters have expressed their confidence in me, and I will endeavor to fill the office more creditably than ever.

I thank you all for your loyal support.

Ed Dozier

Thanks For Your Support

I wish to thank the people of Midland County for the valuable support which has put me in the run-off for Public Weigher.

Your continued support will be greatly appreciated, and I promise to do my full duty if elected.

A-B Cole

To The Voters

I thank each voter for helping me to get in the run-off for Public Weigher. If elected to the office I will do my level best at all times, and I will appreciate your support.

Lon Roberts

Here Is The Vote As It Stood In Midland Co. Last Saturday

West Texas News

Big Spring—The main feature of the Big Spring Dairy program for Saturday, July 31, will be "The Trial of a Scrub Bull", with legal assistance for the defense and the prosecution.

Floydada—The Floydada City Council has issued a twenty year gas franchise to McMahan, Broadwell, and Tipton, Oklahoma City. The gas is being piped from the Amarillo field and will be ready for use by the first of the year.

Amarillo—\$200,000 will be spent on the Amarillo Warehouse, Storage and Ice Company. Ice storage for fruits will be arranged, and ice cream factory built, and the ice manufacturing capacity increased to serve 200,000 people.

Panhandle—The road bond issue for \$1,000,000 carried in the recent election in Carson County. The State will add \$1,500,000 and eighty six miles of concrete highway will be built in the county, placing it first among Plains County Highway.

Mineral Wells—General contract for the new Crazy Hotel has been awarded and work begun on the construction. It will be seven and eight stories in height and its several wings and will be equipped with a roof garden, motion picture plant, and all other modern conveniences.

Olney—Thirty new members have been added to the local chamber of commerce, after a campaign by Karl Goodman, membership secretary of the West Texas organization and Merle Gruver, secretary of the Olney commercial club.

Wichita Falls—Plans are being made for the erection of a new municipal auditorium to care for the needs of the half dozen conventions which are scheduled for Wichita Falls next year, among them the West Texas Chamber of Commerce Convention to be held in the spring.

Sweetwater—This city has recently voted a \$225,000 bond issue for school purposes. \$175,000 will be used for the erection of a new high school building, and the remainder for improvements on the ward schools.

Slaton—Actual work on the new paving program for this city has been begun. Machinery for the work has been in use for two weeks.

Tahoka—Tahoka is to have an abundance of water. Wells which have recently been drilled will supply the city with not less than 144,000 gallons per day.

Claude—Vocational work for boys will be added to the curriculum of the Claude High School next session. The total number of affiliated units in the school this year is twenty-one and one half.

Clarendon—Dr. R. E. I. Morgan of Oklahoma has been elected to the presidency of Clarendon College to succeed Doctor Slover, president emeritus, who has held the chair for 19 years and has sponsored many worthwhile improvements in the College.

Junior B. Y. P. U.

President in charge Song. Song No. 36 Prayer. Memory work drill. Song. Business and records. Sword Drill II—Group in charge Subject—The power of little things Introduction—Leader Big Little Words—Mary E. Randolph. Big Little Hearts A thoughtfulness—Ruth Fernandes. Politeness—Ray Irwin. Truthfulness—Helen Foster Thoroughness—Laura Shelborne. Thankfulness—Annie Fay Dunagan. Leaders Ten Minutes. Closing song and prayer.

Mrs. and Mrs. J. R. Jones, who have spent the greater part of the summer in Amity, Arkansas, returned in their car Wednesday. Mrs. Jones' nephew, Herman Deaton, came back with them and may locate here.

on

to prepare for much needed store is ready

mous insured and one that should have to ard years of he distinctive rnk are: It licy on the life as well as be- st destruction e year with no e. It has trolly icked plated

holder, shoe eered hangers, ng. This trunk s as well as in \$42.50

STATE REPRESENTATIVE

Henry Webb 943

Associate Justice Civil Appeals

Chas. Gibbs 690

A. M. Walthall 230

DISTRICT JUDGE

C. L. Klapproth 665

B. F. Haag 276

DIST. ATTY.

Henry Russell 952

COUNTY JUDGE

M. R. Hill 626

W. H. Spaulding 327

COUNTY ATTY

C. W. Tate 950

SHERIFF

A. C. Francis 955

CO. AND DIST. CLERK

C. B. Dunagan 471

J. M. Shelburne 481

TAX ASSESSOR

Ed Dozier 980

COUNTY TREAS.

Mary L. Quinn 958

COMMISSIONERS

PRE. 1 Millard Eidson 822

PRE. 2 L. M. Estes 69

D. L. Hutt 9

PRE.3 S. R. Preston 15

PRE. 4 Holly Roberts 18

J. M. Caldwell, Jr. 9

PUBLIC WEAHER

W. E. Howell 133

Clem Daughtry 118

A. B. Cole 241

Lon Roberts 326

JUSTICE OF THE PEACE

J. M. Flanigan 385

I. W. Towers 486

CONSTABLE

W. A. Dean 824

COUNTY CHAIRMAN

W. L. Graves 946

PRE. COMMITTEEMEN

PRE. 1 Joe Youngblood 832

PRE. 2 Harry McClintic 68

PRE. 3 Herd Midkiff 28

PRE. 4 Boice Eidson 26

Card of Thanks

We desire to thank our many friends for their tender sympathy and help during our bereavement. There is no consolation like the kindness of our friends.

Mrs. Jim Lee and family, B. W. Lee and family.

Mr. and Mrs. John Dunagan made a trip to Pecos Tuesday.

**STOP**

**PAYING THE OTHER FELLOWS BILL!**

**THINK IT OVER!**

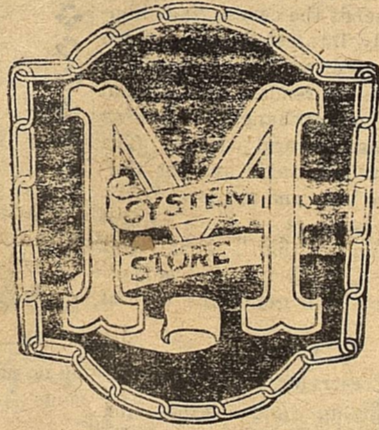
The fellow who is—GOOD PAY,—  
PAYS the—DEAD BEATS—  
grocery BILL. 'M' SYSTEM  
SAVES FOR THE NATION—  
By direct quantity buying—no lost  
accounts—no collectors—no book-  
keepers—no clerks—plus low oper-  
ating cost. A trip thru the turn-  
stiles will convince you.

— SPECIALS FOR SATURDAY —

Blue and Gold Coffee	3 pound can - 1 lb sugar free	\$1.57
Ripe Olives	9 oz can per can	37c
Veribest Pork and Beans	No. 2 can per can	8c
Churches' Grape Juice	pint bottles	27c
Pearl Meal	5 pound sacks	17c



**"M" SYSTEM**



"SAVES FOR THE NATION"

**CLASSIFIED ADS**

WANTED—To buy Poultry and Second Hand Sacks. Terry Elkin Phone 113 49-1f

S. J. MCKENDLES, Midland, Texas. Any time—Any where.—Well Drill-er. 3mo pd 33-1f

Light house keeping rooms to rent. J. H. WILHITE, Phone 261. 33-1f

FOR SALE or trade—for real estate tractor and plow. Also want a list of real estate if you have anything to sell list it with. H. A. Jesse. 35-1f

POLAND CHINA BOAR—For the benefit of the public, I am standing a registered Poland China Boar. Charge \$5 or one of the pigs. Ike Stoveall. 39-1f

STOCK NOTICE  
Dont be pestered with Stray Stock Phone 67 or 342 and Pound Man will come get them.  
J. M. GILMORE, City Secretary. 33-1f

FOR RENT—Four Room house unfurnished, 2 blocks S. E. of Depot. Barn, Garage, lot with water and trough. Garden. See R. E. Crowley Midland, Texas 43-2tp

FOR SALE—Cheap 80 acres land 2 1/2 miles N. W. Midland. If sold soon will give this years rent. Write owner T. B. Holliday, 401 Kansas Ave. Abilene, Texas. 43-2tp

FOR TRADE—For a small improved farm near Midland, Texas. C. M. S. 1217 Mulberry St., Abilene, Texas 43-1f

ROOMS FOR RENT—Furnished either for light house keeping or bed rooms. Close in. Roy E. Johnson at Llano Barber Shop, phone 171. 44-1f

FOR SALE—Good close in residence. Well improved place. J. H. Wilhite Phone 261. 44-1f

FOUND—GIRLS small red hat. Owner call at Reporter office and pay 25c for this ad. 44 1f

FOR RENT—Eight room house completely furnished. All modern conveniences. Also for sale one milk cow. See W. H. Spaulding or phone 372. 44-1f

THE STATE OF TEXAS,  
To the Sheriff or any Constable of Midland County—Greeting:

You are hereby commanded to summon C. F. Kres by making publication of this citation once in each week for four successive weeks previous to the return day hereof, in some newspaper published in your county, if there be a newspaper published therein, but if not, then in any newspaper published in the 70th Judicial District; but if there be no newspaper published in said Judicial District, then in a newspaper published in the nearest District to said 70th Judicial District, to appear at the next regular term of the District Court of Midland Co., to be holden at the Courthouse thereof, in Midland, Texas, on the First Monday in September A. D. 1926, the same being the 6th day of September A. D. 1926, then and there to answer a petition filed in said court on the 29th day of July A. D. 1926 in a suit numbered on the docket of said court No. 1921, wherein M. E. Kres is Plaintiff, and C. F. Kres is Defendant, and said petition alleging that plaintiff and defendant were lawfully married in Midland, Texas, on or about the 7th day of October, 1920, and that they continued to live together as wife and husband until on or about the 2nd day of December, 1921, when defendant left plaintiff for the oil field called Brock near Ardmore, Oklahoma. That defendant wrote plaintiff on the 17th day of April, 1922 and since which date plaintiff has never heard of defendant. That plaintiff has done all she could to locate defendant and has been unable to find him. That defendant left plaintiff with the intention of permanently abandoning plaintiff, and has since the 2nd day of December, 1921 abandoned plaintiff and with the intentions of permanently abandoning plaintiff. That there is no community property existing belonging to plaintiff and defendant nor is there any children belonging to them. Plaintiff prays the court for judgment dissolving the marriage relations existing between plaintiff and defendant and that plaintiff be given a decree of divorce divorcing plaintiff from defendant, for cost of suit and such other relief, special and general in law and in equity that she may be

justly entitled to.  
Herein fail not but have before said Court, at its aforesaid regular term this writ, with your return thereon, showing how you have executed the same.

Given under my hand and the seal of said court, at office in Midland, Texas on this the 29th day of July A. D. 1926. C. B. Dunagan, Clerk District Court Midland Co., Texas. 44-4t

B. L. Moss, of Soso, Mississippi, and his mother visited Mr. and Mrs. J. M. Moss this week

Jack Wilkinson is now working for the Bottling works.

**How Many Automobiles Could Be Sold For Spot Cash**

Suppose the automobile industry, now selling eighty per cent of its output on installment payments, should change its mind and demand cash. Suppose it had demanded cash five years ago. Instead of 20,000,000 we would probably have less than half that number of cars in operation now. Prices of cars would be much higher. A million men now making repairing, washing, painting and storing automobiles would have to be doing something else. Akron would employ only half the number of men making tires; the oil business selling only half its present volume of gasoline, would be gasping for air, and the steel industry would be operating at less than two thirds capacity.

What would there be to do for all the workers now employed in the industries whose expansion was based on the manufacture and operation of ten million automobiles? If you can envision a feasible plan for their useful and profitable employment, you will be the economic Mussolini of North America, for we cannot find any industries needing a million men at the present time.

Economists are worrying about the extension of long time credit for the purchase of what they call consum-

ption goods. Yet automobiles, vacuum sweepers, electric washers, and refrigerators, suites and similar wares continue to be used long after they have been paid for, whereas the food, the gas, the electricity, the coal we consume today usually is not paid for until the first of next month.—August SUNSET.

**The Stray Column**  
By H. B. Dunagan Jr.

The first official bathing beauty contest for men will be staged in Lamesa in the near future according to a news item from a Dawson Co. paper. The contest, sponsored by the Delphian Club, will be divided into two classes—the winner of one to be Mr. Lamesa and the other to be Mr. Dawson County. Lamesa men are eligible only for the first class and the other winner will be some man in Dawson County outside of Lamesa. The first known contest of this type was staged in Shreveport La. recently. Some 6000 people attended. It looks like the day of masculine pulchritude is here. Only last week the Chicago Tribune, in an editorial, was lamenting the fact that in a club house just finished on the North Shore Drive patented powder boxes were found in the mens dressing rooms.

In another part of the paper a local dealer announces his new line of 1927 automobiles. (Capitals) Noiseless transmission, et cetera, are announced as new features. We have Maxim silencers for predatory beasts and now it seems the poor pedestrian is doomed. In England recently a man was actually hailed before court and fined because he abstracted traffic.

Nevertheless, notwithstanding, but the improvements are mighty nice to have.

Miss Clifford Heath, talented young pianist, is back in Midland after spending the long session and part of the summer school at Austin. Miss Heath was accompanist for three months to Lester Brenizer, prominent voice teacher and probably the best vocalist Austin has produced in a long time. Mr. Brenizer is conductor of the St. Davids Church Choir which broadcasts every Sunday morning over KUT, the Texas University radio station. A few Midland people have reported receiving this music. Mr. Brenizer studied for several years in Spain and while there he sent the Longhorn Band some music which the bandmen have used on their state tours.

Miss Heath has been asked by Mr. Brenizer to continue her work with him in the fall. The demands of such a musician as Mr. Brenizer are quite severe and require a high standard musicianship. Miss Heath is to be congratulated on her success.

What has become of the old stand by hymns? Have the churches quit singing them and are they out of the hymnals and song books? "Abide With Me" has in it a touch of the sublime. And there are many others. The six eight and cut time seem to be the prevailing fashion.

Dame Rumor has it that a new brick business building is to be erected before long.

J. J. Hankla is going to install a syrup mill. The enterprise if successful (and all things point to its success because Mr. Hankla is a veteran mill man) will be conducted on a much larger scale next year.

New industries are always welcome. The mill takes its place along with the broom factory and bottling works as one of the newer manufacturing establishments in Midland.

For the benefit of its employees and the townspeople the Big Lake Oil Company has constructed a good golf links free to everyone at Texon. According to local players who have seen the course it is one of the best in this part of west Texas. The oil company is now contemplating the erection of a modern theatre there.

Texon, while still a youngster as the age of towns go, is coming right along as a well built town with solid citizenship.

Sam Ashburn, special correspondent for the San Angelo Standard, was in Midland last week enroute from the big Pecos celebration. Mr. Ashburn was very favorably impressed with the type of Churches Midland has. The First Baptist Church in particular drew his commendation. He was surprised that a town of this size could have such beautiful well constructed buildings.

The Midland Hardware Co. has received one of the new Brunswick Panatropes which reproduce electrically. The sound is much clearer than the ordinary mechanical machine. The new machine will play louder and softer than the old ones. And it is self winding. What more do want?

Theatres in Dallas, San Antonio, and other cities recently put on special numbers using the Panatrope. A vocal record was used with the pit orchestra of the theatre accompanying the record. The number attracted much favorable attention and applause.

Slowly but surely the local golf links is becoming better. Last week green No. 5 was entirely re-built and is now in fine shape.

Now as soon as the course is lengthened, water piped to every hole benches erected to tee boxes, and a club house constructed, nothing will be lacking.

In the meantime who is going to rainbows end?

Worth, arrived yesterday for a visit with Mrs. J. H. Barron and with Mr. and Mrs. B. N. Aycock.

J. V. Stbkes Junior and family made a trip to San Angelo this week.

Spence Jowell and Mrs. Myrl Jowell went to Monahans yesterday to meet Mrs. Spence Howell who has just returned from a trip to Los Angeles with Mrs. S. W. Estes.

Mr. Barden, Louis Truman and Clyde Gartman, of Sanco were business visitors to Midland this week.

Miss Leola Bigham, who has been attending the University of Colorado, at Boulder, returned last week end.

Real estate in the west part of town has been changing hands this week. No announcements have been made yet however.

Quite a crowd collected in front of the Midland Hardware Co. late Thursday to hear the new Brunswick Panatropes.

**The Modern Way To Write**

See the New

**Remington Portable**

On Display At

**The Midland Reporter**

Every Man, Woman and Child Needs A

REMINGTON PORTABLE TYPEWRITER

## The Most Wonderful Book in the World

**M**ORE than nine million Bibles were sold or distributed in 1925.

Would you not love to have companion volumes to help you discover the treasures in that Wonderful Book?

### SWEDENBORG

[1688-1772]

explained the Bible's practical application to daily life; how it describes the life hereafter; what the Bible parables mean when spiritually interpreted.

His theological works—as issued by himself—have been published by the Houghton Mifflin Co. in most modern translation from the original Latin, in the Rotch Edition of 32 volumes.

The first twenty give the spiritual sense of Genesis and Exodus as understood in Heaven; and volumes 26, 27, 28 give likewise the spiritual sense of the Book of Revelation.

Volume 29, Marriage Love, views from the union of the Divine Love and the Divine Wisdom the Law of Sex throughout all creation. It shows the crown and jewel of the Christian Religion, the union of one with one only. Price \$2.00.

Volumes 30, 31, 32, contain a full statement of the True Christian Religion as revealed from Heaven. \$3.00 the set.

The whole 32 volumes in half-morocco at \$125; in buckram, \$40.

The following are the best introductory books to the Revelations of SWEDENBORG. They are in large print, bound in buckram, and contain from 260 to 485 pages.

TITLES	PRICE
<b>HEAVEN AND HELL</b> from things heard and seen	\$1.25
<i>Angelic Wisdom Concerning—</i>	
<b>THE DIVINE PROVIDENCE</b> , which governs the Universe and the Heavens and the Hells, and the least as well as the greatest of all things in creation; and in the everyday life of man.	\$1.25
<b>THE DIVINE LOVE AND WISDOM</b> , the profoundest book and revelation concerning God and His Creation ever written, first published in Latin at Amsterdam 1763; along with this is the "Intercourse Between the Soul and the Body" first published in Latin at London 1769.	\$1.25
Price of all three at one time, including postage	\$2.75

### Who Was Swedenborg?

*Emanuel Swedenborg, the son of a bishop, was the great Swedish scientist, philosopher and theologian, whose vast range caused Emerson to term him the mastodon of scholars. Dr. Parley Cadman recently named him the Universal Genius. Officially connected, by appointment of the King, with the great mining industry of Sweden, he mastered all the sciences of his time, and wrote the most useful books on metallurgy, minerals, geology, astronomy, and the human brain.*

*His life search was for the human soul. How his spiritual senses were opened, after he was 30 years of age, that he might reveal the human soul, the life after death, and the Bible itself, may be read in the above named, uplifting, useful books.*

Send orders or inquiries to

**B. A. WHITTEMORE, Agent**  
135 BOWDOIN STREET, Boston 9, Mass.

Agent's Life of Swedenborg sent postpaid for 10 cents; Heaven and Hell in paper covers for 30 cents; Galli Court on Swedenborg for 10 cents; or all three for 40 cents.

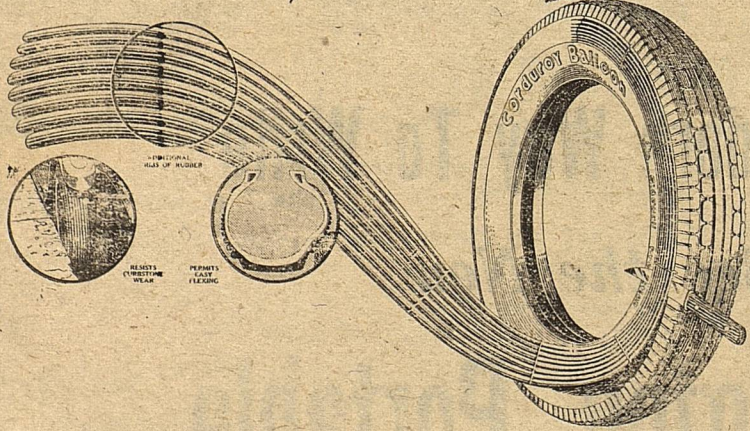
### Neice Of Wm. Young Killed In Accident

William Young left for Houston last Tuesday evening, following receipt of a message from his sister stating that his neice had been killed that morning in an automobile accident. The accident occurred near Cor-

pus Christi, and details were not given. The little girl whose name was Helen Annette Burkett, was only eight years old. The funeral was to have been in Houston, where the Burkett's live.

Clifford Heath returned Sunday from Austin where she has been attending State University.

### The Meaning of Sidewall Protection



Every phase of the Sidewall Protection feature of CORDUROY CORDS is in itself a distinct advantage—more rubber—additional armor against the scuff of curb and grind of rut, and still most flexible a requirement of vital importance in this day of low pressures and balloon tires. The outstanding qualities are visible to the eye, not something claimed to be buried deep in the inner construction.

CORDUROY CORDS are built as good as the best tires and then made better by addition of

**Sidewall Protection**  
Reg. U. S. Pat. Office

**Red Star Filling Station**

### Texas And Texans

Whatever the results were altogether to their liking or not, most Texans are glad that the first primary is over. Political clamor and excitement create restlessness and disturb business. The friction that arises during a heated campaign is the way of community progress. Minds that are absorbed in politics have little time for constructive thought. While the study of politics is important, it should not absorb all other interests. The amount of energy and money spent in a campaign in Texas would go far toward the much needed industrialization of the State. If factory builders could get the crowds and the attention that the campaign orators draw, Texas would soon become the greatest of all manufacturing states.

#### Definite Program Needed

The candidates have drawn large crowds because they each had a definite purpose toward which they worked with all their might. They were able to create enthusiasm because they were themselves full of enthusiasm. They each knew what they wanted and never tired of telling their wants wherever they could get hearers. They had active organizations at work with them. They used every possible method of getting and holding attention. Some places in Texas are making little progress because they have no definite aim toward which they work. They are scattering their energies and are without active organizations. The town or community that undertakes a single definite thing within its reach, organizes to accomplish it and works to bring it about with half the system and effort of a good political campaigner, is certain to get results.

#### A. & M. Short Course

There is hardly a Texan who can't learn something at the annual A. & M. Short Course, which will be held for a week beginning August 2, that will not be worth more than the course will cost. While the course is primarily for farmers and their wives and children, business is so closely related to farming that every business man who attends the course finds himself intensely interested and much benefited. Editors who conduct papers for farm readers find special interest in the exchange of views among the agricultural writers. The railroads give low rates and the College provides beds and meals at nominal cost. I know of no more helpful or pleasant outing than a week spent in attending this agricultural conference. I have been going for several years.

#### Fig Preserving in Texas

Since canning and preserving plants have been built near the fig orchards, fig growing has become a very attractive Texas industry. Several thousand acres are planted in figs in the coast country in Texas, and fig growing is gradually being extended to the interior of the state. Bay City is now constructing a fig preserving plant of sufficient capacity to care for the large crop produced in that section. Figs do well in many parts of Texas, and fig preserves find a ready market.

#### Melon Market Off

The melon market in Texas is badly demoralized. The crop is large not only in Texas but throughout the whole south. As a consequence the markets have been crowded. Unable to secure satisfactory cash prices, growers will have in some places shipped on consignment, and this has caused buyers to quit paying cash. At some points as low as \$6.00 and \$8.00 a ton has been offered. Growing perishable products is hazardous business where marketing is not well managed.

#### Camp Schools Popular

Camp schools in Texas are all crowded to their full capacity this summer, and the summer schools of the cities and towns report larger attendance than ever before. The Texas climate is so ideal for camping that it is small wonder that the camp school idea was so long becoming popular, for it combines pleasurable vacation with profitable instruction. Parents are learning that four months of vacation out of every year is not good for the mind, the body or the morals of the child.

#### Caring For Tourists

The Alpine Avalanche says that a frank tourist recently told the Alpine Chamber of Commerce that he was disappointed in not finding adequate facilities for caring for tourists; that it was poor business to attract visitors to that section unless they could be made comfortable. Sometimes it does a place good to be told unpleasant truths. Those who are comfortable in their snug homes are likely to forget about the discomforts of others. Sensible tourists do not expect to find all the comforts of home in tourists camps or tourists hotels, but when a little or no thought is given them by a place, that place is likely to be avoided in future and talked about to its disadvantage. Alpine is

by no means the only place that needs some frank talks.

#### Roads Wider and Straighter

The Texas Highway Commission, whatever its mistakes may have been, is doing a commendable thing in requiring that in future all the State highways must be wider and straighter. Narrow, crooked roads are a constant menace to life. Wagon trails are not safe for automobile travel.

#### Lime Lighting the Candidates

The Georgetown Sun recently had a column entitled "Limelight on the Candidates". If half that has been said about some of them is true, they need the lime on them much worse than they need light.

### Ruth Inman Wins Life Saver's Badge

Miss Ruth Inman, of Midland, who is attending the Sul Ross College at Alpine this summer, won highest honors in a life saving contest recently, getting a life savers badge.

This is indeed an accomplishment for one who has never lived near a body of water of any size.

In the contest, which lasted for three hours, Miss Inman competed with men as well as women.

for Economical Transportation



## Vacation Time

Is

## Retiring Time

Let us equip your car with

**DAYTON TIRES**

and you will have less tire troubles and more pleasure

**Nobles Motor Co.**

Quality at Low Cost

IN MIDLAND

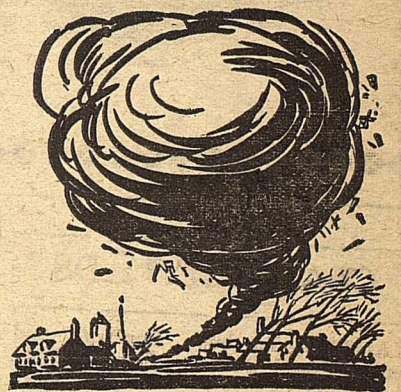
### Not To Select A Potash Center Yet

Midland will be considered if headquarters for potash exploration are needed, according to a letter received from George S. Rice, acting secretary of the Federal Bureau of Mines, by the Midland Chamber of Commerce. In reply to a letter from the Midland organization pointing out Midland's claim as a potash center, the following letter was received:

"In reply to your letter of July 5: 'It is probable that the Bureau of Mines will not need any special headquarters in the Southwest as its work will probably all be done by contract or in cooperation with organized companies drilling for oil or potash. However, if headquarters are needed Midland will certainly be considered. I thank you for calling it to my attention.'

Mrs. M. O. Means and son, Cole, of Valentine, arrived last week for a visit with Mr. and Mrs. E. P. Cowden.

Mr. and Mrs. Stacey Allen returned last Saturday from a pleasant vacation trip in Arizona and New Mexico points. They visited the Grand Canyon and report a fine time.



THEY LAUGHED AT THE INSURANCE AGENT

Cullman, Alabama was another town thought to be immune from tornadoes. Property owners there thought their high elevation protected them.

But a cyclone caused a loss of \$100,000. The same thing can happen to Midland.

Only adequate windstorm insurance can protect a property owner from financial loss. Let this agency of the Hartford Fire Insurance Co. tell you what complete protection for your property will cost.

## Bath Room Fixtures

To be up-to-date, to be convenient, to be Sanitary, your bath room must have modern fixtures.

Let us quote you prices on a complete Plumbing Job

**HOWE & ALLEN**

Licensed and Bonded Plumbers

Phone 232

Midland, Texas

**The Best of Everything  
To Build Anything**

**At  
Burton-Lingo Company**  
39 Years IN Midland  
Phone 5-8

**—PROFESSIONAL CARDS—**

**B. W. FLOYD**  
Land and Livestock  
Cheapest Good Land in Texas  
Office No. 2, Over First National  
Bank.  
PHONE 190

For local and long distance  
hauling, see  
**J. T. BUFFINGTON**  
PHONE 427

**ODESSA ABSTRACT CO.**  
SPARKS AND BARRON  
ODESSA and MIDLAND  
Complete Abstract of Title to  
Ector and Crane counties

**LLANO BARBER SHOP**  
M. D. JOHNSON  
Proprietor  
Courteous Expert Workmen  
Sanitary Specialties  
Beauty Parlor in Balcony  
Phone 273

**B. FRANK HAAG**  
Attorney-at-Law  
Llano Building Midland, Texas

**DR. L. B. PEMBERTON**  
DENTIST  
Suite 210, Llano Hotel  
Office Phone Residence Phone  
402 384

**GEORGE K. STAYTON**  
Attorney-at-Law  
General Civil Practice  
Barstow, Texas

First Class Barber Work  
By Skillful, Courteous Barbers  
—AT—  
**CLAUDE JONES BARBER**  
SHOP  
East Side of Main Street

**C. W. (Dick) TATE**  
Attorney-at-Law  
Room 201-3 Llano Hotel Building  
MIDLAND, TEXAS

I Buy Oil and Gas Leases and  
Royalties exclusively  
**KEMPER KIMBERLIN**  
302 Rust Bldg.  
San Angelo, Texas  
P. O. Box 181  
Telephones: 1699  
343

DON'T forget the good magazines at  
Elite. 35-tf

**DON'T DIE JUST YET**  
from RATTLE-SNAKE BITES, but order a SNAKE  
POISON KIT. Contains both External and Internal  
Antidotes. Blood Pump and Serrator, used in all  
cases of VIPEROUS POISONS. Complete Directions—  
what to do until the DOCTOR comes, or if he fails to  
come. No TOURING, CAMPING, FISHING or other  
PLEASURE TRIP safe without this SAFETY FIRST  
KIT. \$1.50 postpaid or \$1.00 without pump. Write  
today THE SULTANA CO., LOVINGTON, NEW  
MEXICO.

TYPEWRITER EXCHANGE: Royals  
and Coronas for sale or for rent.  
Elite Confectionery. 32-tf

W. E. Umberson of San Antonio  
and R. A. Umberson of Abilene vis-  
ited Smith Umberson last week end,  
also going out to Andrews to see S.  
E. Umberson and family.

**An Exclusive  
Dempster Feature**  
The Dempster No. 11  
Windmill is the only  
Direct Stroke windmill  
on the market that has  
the handy and practical  
annu-oiled feature. Oil  
it only once a year.  
This is only one of the  
many Dempster features  
you should know all  
about. Write us for  
complete description of  
the



**Dempster**  
No. 11 Direct Stroke  
Annu-Oiled  
Windmill

Dempster Mill Bldg. Co.  
Amarillo, Texas

Ball-bearing, self-aligning  
turn table, accurate bal-  
ance, improved regulating  
device.

**"The Mill  
without an equal"**

**Renew Your Health  
by Purification**

Any physician will tell you that  
"Perfect Purification of the System  
is Nature's Foundation of Perfect  
Health." Why not rid yourself of  
chronic ailments that are undermin-  
ing your vitality? Purify your en-  
tire system by taking a thorough  
course of Calotabs,—once or twice a  
week for several weeks—and see how  
Nature rewards you with health.  
Calotabs are the greatest of all  
system purifiers. Get a family pack-  
age, containing full directions. Only  
35 cts. At any drug store. (Adv.)

For Sale By All Drug Stores

Porter Rankin returned last Sun-  
day from a business trip to Fort  
Worth.

Chiropractic Adjustments, Phone 164

**STAR PARASITE REMOVER**  
Given to Fowls in their drinking water or feed will  
rid them of all blood sucking lice, mites, fleas,  
blue bugs, clean them of all intestinal worms and  
parasites. It is also a wonderful poultry tonic,  
blood purifier, health builder, and egg producer.  
It contains lots of sulphur, compounded scientifically with other  
health building ingredients. Known remedies for preventing dis-  
ease. Prevention is cheaper than cure. Keep your flock free  
of insects and intestinal worms and their system in good con-  
dition through the winter and you will get good hatchings and  
strong chicks in the spring. A sure way to keep chickens healthy and  
will save every tickle. Give it to all birds of your flock. Money back if you please.

DROP in at the ELITE and look for  
your favorite magazine or newspa-  
per. They are there. 35-tf

Our Want-Ads Get Results

**Hall's Catarrh  
Medicine** will do what we  
claim for it—  
rid your system of Catarrh or Deafness  
caused by Catarrh.  
Sold by druggists for over 40 years  
E. J. CHENEY & CO., Toledo, Ohio

**Express To Have  
Demurrage Charge**

After August 1 all express which  
is not taken at the end of three days  
will be subject to extra charges each  
day following according to B. J. Voli-  
va, manager of the American Railway  
Express Co.  
This is a new ruling which the ex-  
press company has just promulgated  
according to Mr. Voliva.  
The over-charge rates start on the  
fourth day and vary with the weight  
and number of days.

**Texon Club Too  
Much For Bushers**

The semi-pro Texon players defeat-  
ed the Bushers 7 to 1 Sunday at Tex-  
on. The locals secured seven hits  
off Schmid, recently of Austin, Texas  
Association, but were unable to bunch  
them advantageously. Hill and  
Grammar twirling for Midland  
yielded only ten hits to the hard hit-  
ting oilers.  
Texon scored four in the second  
and three in the seventh but only 3  
of the 7 were earned runs. Bad bob-  
bles by the Bushers let in the others.  
Everets in Center field starred for  
Midland.  
One Busher when asked the reason  
for the defeat said: "Too much \$2500  
a month club for us." He must have  
been right.  
Batteries: Texon, Schmid and El-  
lis; Midland, Hill, Grammar, and  
Cook.  
Tentative arrangements have been  
made for a game with Coahoma soon  
by the manager of the club.

NO. 234  
In the matter of the estate of Mrs.  
A. T. Terry, Deceased.  
In the County Court of Midland Co.  
Texas.  
July Term A. D. 1926

**NOTICE TO SELL REAL ESTATE**  
Notice is hereby given that I,  
Oramae Terry, administratrix of the  
estate of Mrs. A. T. Terry, deceased,  
will, on the third day of August, A.  
D. 1926, same being the first Tues-  
day of said month, at Midland, Mid-  
land County, Texas sell to W. W. Bar-  
ber of Dallas County, Texas, for cash  
the following described tracts and  
parcels of land belonging to said es-  
tate, to-wit:  
Sections 21, 22, 23, and 24, in  
Block A-28, and section 4, Block A-29  
Andrews County, Texas.  
The terms on which I will sell said  
above described lands are: \$150  
cash bonus for sections 22, 23, and  
24, in Block A-28, and Section 4,  
Block A-29, and \$200 cash bonus for  
Section 21, Block A-28, all of said  
lands situated in Andrews County,  
Texas.  
Witness my hand the day above  
given.  
Oramae Terry,  
Administratrix of the estate of Mrs.  
A. T. Terry, Deceased. 42-3t

STATE OF TEXAS.  
COUNTY OF MIDLAND  
TO THE SHERIFF OR ANY CON-  
STABLE OF MIDLAND COUNTY,  
GREETING:

You are hereby commanded to  
summon W. B. Warren, by making  
publication of this citation once in  
each week for four consecutive weeks,  
previous to the return day hereof, in  
some newspaper published in this  
County, if there be a newspaper pub-  
lished therein, but if not, then in the  
nearest County where a Newspaper  
is published to appear at the next  
regular term of the District Court  
of Midland County, to be holden at  
the Court House thereof in Midland,  
Texas, on the first Monday in Sep-  
tember 1926, the same being the 6th  
day of September 1926, then and  
there to answer a petition filed in  
said Court on the 3rd day of July A.  
D. 1926, in a suit numbered on the  
docket of said court Number 1820,  
wherein R. L. Porter is Plaintiff and  
W. B. Warren is defendant. Said peti-  
tion alleging that Plaintiff is the  
winner of the North Half of Section  
20, Block 39, Township 1 South in  
Midland County, Texas. That on May  
5th, 1908, W. B. Warren conveyed  
said land to J. C. Ainsworth, and as  
a part of the consideration four Ven-  
dor's Lien notes were given of even  
date with said deed, one note due  
August 1st, 1908 for \$1000.00, one  
note due August 1st, 1909 for \$911.11  
one note due August 1st, 1910 for  
\$911.11, and one note due August 1st  
1911, for \$911.11. Said last two  
notes numbered two and three, for  
\$911.11 each have been paid off and  
release recorded for same. But that  
the note for \$1000.00 and the note  
No. 1, for \$911.11, although duly  
paid off and discharge no release was  
ever executed for same nor placed on  
record, and thereby constitutes a  
cloud upon plaintiff's title and he  
sues for the removal of same.  
Herein fail not, to bid first day  
of the term thereof, this writ with  
your return thereon, showing how  
you have executed the same.

Witness,  
C. B. Dunagan  
Clerk, of District Court, Midland,  
County.  
Given under my hand and the seal  
of said court in the town Midland,  
Texas, this 3rd day of July A. D.  
1926.  
C. B. Dunagan,  
Clerk of the District Court, Midland  
County.  
Issued this 3rd day of July A.  
D. 1926.  
C. B. Dunagan,  
Clerk District Court, Midland Co. 41-4t



**Firestone  
GUM-  
DIPPED  
BALLOON  
PRICES**

**20% Less Than Year Ago!**

Never before in our history as tire dealers have we been able to offer our customers such wonderful tire "buys" as right now. Due to the great volume of tire business coming direct from car owners throughout the country—the great Firestone factories have been, and are now, working at top speed building Gum-Dipped Tires in tremendous quantities. Manufacturing costs have been lowered—crude rubber prices have been reduced—and the savings passed on to car owners.

**OLDFIELD TIRES**  
At These Reduced Prices

30x3 1/2 Fab. Cl. ....	\$7.80	29 x 4.40 Balloon .	\$11.20
30x3 1/2 Reg. Cl. Cord .	8.95	30 x 4.75 " ..	16.60
30x3 1/2 Ex. Size Cl. Cord .	9.95	29 x 4.95 " ..	16.43
31x4 S. S. Cord .....	15.75	30 x 5.25 " ..	18.15
32x4 1/2 " " .....	23.35	31 x 5.25 " ..	19.05
33x5 " " .....	29.50	32 x 6.00 " ..	24.10

Made in The Great Economical Firestone Factories  
and Carry the Standard Tire Guarantee

Firestone Gum-Dipped Balloon Tires are now 20 per cent less than they were a year ago this time.  
Take advantage of this exceptional opportunity to equip your car—right at the height of the summer season—with these long-mileage Gum-Dipped Tires at our new low prices. Buy your tires from us and you'll be sure of complete satisfaction—with the comfort, safety and long mileage that only Gum-Dipping can give.  
Come in today. Don't take chances with your old tires.

**Western Auto Supply Co.**

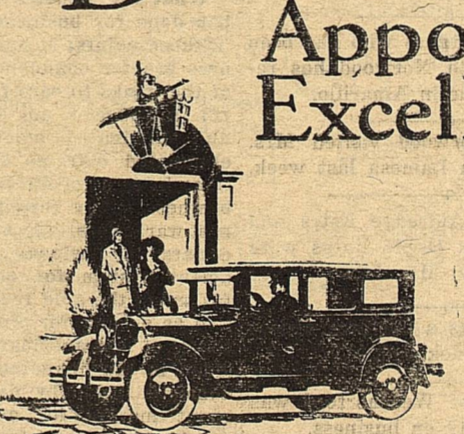
AMERICANS SHOULD PRODUCE THEIR OWN RUBBER... *Harvey Firestone*

Buck (Moon) Myrick returned last Saturday from a vacation in his old home in Hill County. He reports a lot of rain down that way.

D. C. Carter of Panhandle, Texas has moved to Midland and is now in charge of the Repair department of the City Garage.

Mrs. John Hogue and daughter, Margaret Frances, are here from Sweetwater visiting Mrs. Hogue's parents, Mr. and Mrs. Claude Jones.

**DeLuxe Sedan**  
Appointed in  
Excellent Taste



Inspect the APPOINTMENTS of this beautiful car, and the PRICE will impress you as remarkably low.

Body finished in Maxine blue lacquer, black above belt line, with silver gray striping and lustrous black enamel shields and fenders.

Upholstery—silver gray genuine mohair velvet with seat backs and cushions in the latest custom paneling.

Instrument board and window mouldings in rich walnut, hardware in polished nickel, smartly designed for this vehicle.

Natural wood wheels with dagger spoke-stripes. Steel disc wheels, in Maxine blue, optional at no extra cost.

Complete special equipment, including: polished nickel radiator shell and emblem, cowl lamps, cowl ventilator, nickeled front and rear bumpers, heater, automatic windshield cleaner, and many others.

A smart, roomy and dependable closed car that will serve you for years at low cost.

DeLux Sedan	\$1285	Touring Car	\$921
Coupe	\$972	Roadster	\$918

Delivered

**CLARENCE HALE**  
Associate Dealer  
**DODGE BROTHERS**  
MOTOR CARS

# Nothing Like It

There's nothing like a coat of paint for making your home look like a new one. Paint is the best insurance for long life of a building.

Come in and get one of our color charts. A full line for attractive colors for any purpose.

**ROCKWELL BROS. & CO.**  
Sherwin-Williams Paints & Varnishes  
PHONE 48

Clifford Christine Heath  
Announces The  
Opening of Her  
PIANO STUDIO  
Midland September, 1926

Miss Cecil Peyton was here last week end, visiting Mrs. J. V. Stokes Junior.

Mr. and Mrs. Harry Neblett returned Tuesday from an extended visit in Colorado.

Miss Ethel Norwood will leave Sunday for Los Angeles, California. She will be accompanied as far as Douglass, Arizona, by Mrs. Norwood and Miss Ruth where they will visit relatives.

Miss Oramae Terry made a business trip to Lovington, N. M. last week.

Mrs. John Dublin and Mrs. Foy Proctor visited Mrs. Jim Williams in Seagraves last week.

ST. LOUIS Post Dispatch, New York Times, Star Telegram, El Paso Herald, Midland Reporter, and good magazines at the Elite.

Mr. and Mrs. John Dublin and Miss Oramae Terry were in Lamesa Sunday to attend the ball game.

Mrs. Charley Dublin and children of Big Spring visited in Midland last week.

Mrs. Frank Norwood, Misses Rachel Burgess, Ethel and Ruth Norwood, spent last week end at the ranch.

Mrs. E. N. Snodgrass and Miss Marguerite have returned from Austin, where they visited Mr. and Mrs. Pope Snodgrass.

Mr. and Mrs. Millard Eidson and Miss Jewell Barber left Tuesday for their ranch in Mexico.

If Its Job Printing, We Can Do It

Mr. George Buchanan left Tuesday for Houston where he will visit his sister, Mrs. Barton.

**We Can't Afford to pick a loser in the Tire Business.**

**We're Here to Stay**  
And we've got to tie to

**A Sure-Fire Piece of Rubber**

**EVER-READY FILLING STATION**

### 1926 RAINFALL TOTAL IS 13.04 INCHES

January	.52
February	.22
March	1.89
April	4.20
May	1.33
June	3.04
July 22	1.25
July 25	.12
July 26	.47

### S. E. Epworth League

Lessons from Birds and Flowers. Leader—Lillie Mae Norwood. Song—Alta Mae Johnson. Scripture—Matt 6:24-31; Isa 40:6-8. Prayer. Lessons from Birds—Leader. Alta Mae Johnson. Special Music—Piano Solo—Bernice Norwood. Lessons from Flowers, Myrtle Whitmire, Sarah Stanley. Song. Announcement. Benediction.

Mr. John Terry visited Miss Oramae Terry last Sunday.

Miss Rachel Burgess who has been visiting Miss Ruth Norwood has returned to her home in Amarillo.

Miss Ethel Norwood visited Mrs. Elzee Burleson in Lamesa last week.

Mr. and Mrs. Aldredge Estes and Partner, and Mrs. Oscar Yates were here Tuesday from Monahans.

Bob Preston was a business visitor to Midland last week end.

Ben Holyfield of Weatherford was in Midland Monday on business.

J. E. T. Peters, secretary of the Cisco Board of City Development, and Mrs. Peters spent the night here en route from a vacation at El Paso.

Last Sunday's Star-Telegram contained seven Midland articles.

Noreen Haley returned last week from Fort Worth where she has been taking a special course in T. C. U.

The county clerk issued a marriage license to Secundino Perez and Ber-jencia Bailow last week.

Saturday Mr. Benson Jenkins and Miss Lula Armstrong of Big Spring were quietly married by Justice I. W. Towers.

Rev and Mrs. Geo. F. Brown, Fred, and Foster left Monday morning to spend the week at the Piasano encampment in the Davis Mountains.

Fred Pipkin, now playing with the Lamesa baseball team, was here Saturday.

Mrs. G. T. Sandidge, Charles Sandidge, Madison Sandidge, Virginia Hale, and Dora Wall left last week to attend the Piasano.

J. O. Nobles is building an addition to his home in the west part of town.

Dunn Reiger is having some repairs made on his house.

## STRAIGHT TALKS WITH AUNT EMMY ON HOUSEHOLD BUDGETS

"Aunt Emmy," asked Helen, "won't you explain what is meant by a household budget? You said something the other day about budgets, but I don't seem clear in my mind about it."

"A budget is simply a plan," said Aunt Emmy. "You plan what you are going to do with your income. You divide your income systematically so that you can meet your needs. You lay aside a part of your income for rent, other parts for food, clothing, heat, light, telephone, recreation, savings and so on."

"How are you going to know how much you should spend for each thing—on rent for instance, Aunt?" asked Helen.

"Experts have studied the question carefully and have worked out budgets to suit every income. Of course, you can alter these typical budgets slightly to suit your particular needs. For example, the average budget that covers incomes of from \$2,000 to \$10,000 a year divides your income into six parts. Ten per cent for savings, twenty per cent for rent, twenty per cent for food, twenty per cent for what is called betterment and includes education, amusement, entertainment, books, music, sports; fifteen per cent for clothes and fifteen per cent for operating expenses."

"No matter how you change the other items you must not change the savings allowance—except to increase it. A great majority of men who reach sixty are dependent on relatives or charity. If they had saved only ten cents out of every dollar, they would not have been in that plight. There is nothing like money in the savings bank to help you through the emergencies that come in everybody's life. If everybody kept one year's income in the savings bank, much misery would be averted. If you always have enough money to see you through one year, you are pretty safe. Beyond that, it is wise to let your money accumulate until you have enough to buy some good securities. Your banker will advise you about the securities that suit your needs."

"But, Aunt Emmy, suppose you wanted to alter your budget?" inquired Helen. "How would you know how to do it? A young married couple might start on a certain budget and then, when they had children to feed and educate, they might want to change it."

"Well, my dear, if they were in doubt about their financial affairs, they could always consult their banker. That is why it is so good to establish friendly relations with a banker when you start out in life. Any banker will be glad to advise young people about making their money go farther." —A. B. Aymes.

## WHAT THE FEDERAL RESERVE HAS DONE FOR BUSINESS

What the Federal Reserve System has done for business is summed up in these points: It has (1) given business greater confidence in the ability of the banks to care for credit needs; (2) introduced an elastic currency and eliminated money panics; (3) eliminated extreme seasonal fluctuations in rates of interest; (4) brought business safely through the war and post-war crises; (5) saved millions of dollars to business through its efficient system for check collection; (6) made the gold reserve more effective as a basis for credit extension in times of extraordinary demand; (7) aided in the financing of foreign and domestic trade by developing a discount market for acceptances; (8) provided a means for handling huge financial operations of the government without interference with business; (9) aided in the re-establishment of the gold standard abroad; (10) given us an experienced banking organization which will assist us in meeting the future exigencies of business at home and abroad with courage and confidence.

## BANKERS EDUCATIONAL FOUNDATION TRUSTEES

John H. Puelicher, former president of the American Bankers Association, has been named chairman of the board of trustees of the American Bankers Association Educational Foundation for which \$500,000 has been pledged by the bankers to provide for scholarships and research in economics in colleges throughout the country. The other trustees are Leonard P. Ayers, Vice-President Cleveland Trust Company; Stephen I. Miller, Educational Director American Institute of Banking; Lewis E. Pierson, Chairman Irving Bank-Columbia Trust Company, New York; George E. Roberts, Vice-President National City Bank, New York; Francis H. Sisson, Vice-President Guaranty Trust Company, New York; Evans Woolton, President Fletcher Savings & Trust Company, Indianapolis; W. Espey Albis, Deputy Manager American Bankers Association, Secretary.

The banks of Washington, Ia., believe in giving the pupils of the public schools simple and practical information in regard to banking practices as a matter of education. Talks were made during the year to grade and high school students by representatives of the banks.

## WHY GOVERNMENT PRICE FIXING WON'T WORK

One of the most persistent fallacies is government price-fixing on competitive commodities. There is already government price-fixing in commodities and services where competition plays no part in price determination. These are railway transportation, electricity, gas, telephone and telegraph, and so on. Here government price-fixing is solely to protect the consumer. There are two fatal objections to government price-fixing for agricultural products, which represent the most competitive business in the world. These are, first, that it will not work; second, that it is always done for the consumer as against the producer.

Government price-fixing for agricultural products would work if at the same time the government regulated wages, profits, middlemen's margins, the production of all commodities and the rationing of all consumers. In short, if the population were enlisted in one vast army, directed and rationed, price-fixing would work, but otherwise not. If the price is fixed on the wheat the farmer sells, then he cannot keep on producing wheat if wages or the cost of harvesting machinery rise, or if the cost of other material he buys rises. So the next step would be the fixation of other prices, and yet other prices.

The United States government fixed the price of wheat but once in our history, and then it was to benefit consumers, not producers. The government might, in an emergency, fix some agricultural prices for the purpose of elevating such prices. Such action would inevitably and speedily lead to outcry from city consumers and a consequent reversal of policy. Indeed, the consumers, not the producers, are most likely to demand and secure food price regulation by government authorities. The farmer, therefore, who favors any form of governmental price-fixing is working against his own interests. He is putting his head into a noose.—James E. Boyle, Professor of Rural Economics, Cornell University, in the Banker-Farmer.

## STRAIGHT TALKS WITH AUNT EMMY

### On Fifteen Per Cent Bonds

Mrs. Norris beamed as she greeted Aunt Emmy and exclaimed, "Now I know all my financial worries are over! I wanted to tell you right away."

"What have you bought this time?" Aunt Emmy demanded suspiciously.

"Well, I haven't paid the money over yet, but I have found the loveliest investment where my money will be perfectly safe and will earn a nice income for me right away," Mrs. Norris said. "I'm going to buy bonds, good safe bonds, that will pay me fifteen per cent interest."

"Wait a minute, you'll have to go some, Maud Norris, to tell me about 'good safe bonds' that pay fifteen per cent!" Aunt Emmy broke in.

"They are safe,—the man said so and this booklet says so too!" "Do you know what a bond is?" asked Aunt Emmy.

"No, but it's awfully safe. I'm sure of that," Mrs. Norris said. "Everybody knows that bonds are safe."

"My dear, some bonds are safe and some are not. When you buy a bond you simply lend your money to the company putting out the bonds. Bond issues are secured generally by the company mortgaging or pledging some of its property. In other words, it offers a certain asset as security that it will return your money to you on the date the bond matures. It agrees to pay you a certain sum each year for the use of your money, usually something between five and eight per cent. No company can afford to pay too much for its money—and as to fifteen per cent bonds—why it would be very unusual for a company to be able to earn enough to enable it to pay fifteen per cent for the privilege of using other people's money,—moreover, if it is good enough to borrow money at all it can borrow it more cheaply than that!"

"Oh dear!" wailed Mrs. Norris, "then a bond isn't a good safe investment."

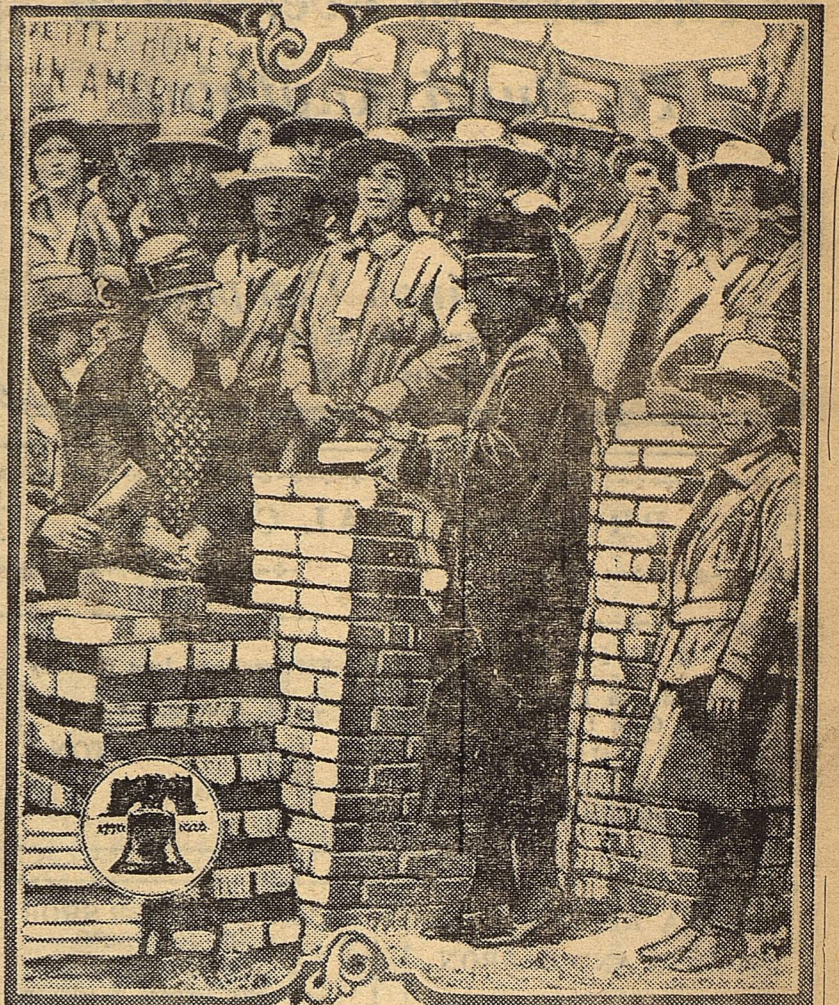
"Don't jump at conclusions so fast!" said Aunt Emmy. "I did not say that. A bond is as safe as a church if the company that issues it is financially sound, has a high credit rating and is making money. Before you buy bonds assure yourself that the company behind them is above reproach."

"But the man who told me about these fifteen per cent bonds was so earnest—I felt sure I could believe him."

"Don't turn over my money to him until you have some advice on the bonds from your bank," admonished Aunt Emmy. "Then, if you find out that the bonds are questionable you will escape another bad investment." —A. B. Aymes.

Mason County, Michigan, bankers are pushing hard to replace scrub stock with pure-bred cattle. The plan as outlined by the county agent is to purchase young pure-bred sires and place them wherever a farmer is found who is willing to co-operate in the proposition. The bankers will advance the purchase price and take a note for one year without interest. The idea is to make it as easy as possible for the farmers to procure thoroughbred.

## MRS. HOOVER TURNS BRICKLAYER



Mrs. Herbert Hoover, wife of the Secretary of Commerce in President Coolidge's cabinet, is shown laying the cornerstone for the model home being erected by Better Homes in America organization at the Sesqui-Centennial International Exposition, in Philadelphia, June 1 to December 1 to celebrate 150 years of American Independence. Opposite Mrs. Hoover stands Mrs. Vance McCormick of Harrisburg. The Girl Scouts grouped around the women will operate the house.

## Affiliation Secured In Home Economics

News was received the first of the week by J. E. Hill, president of the school board, advising him that the Midland High School had secured full affiliation in the home economics department.

Credit for this goes largely to Mrs. Percy Mims, who had charge of the department during the greater part of last year, and to the good work that was done by the students in sewing and cooking.

Their papers were sent to Austin and passed on by the boards governing affiliation of this character, and the work was pronounced satisfactory. This department will have some of the best equipment of any school in this part of the state when the fall term opens in the new building.

MISS ANN WALL  
Teacher of Piano  
Announces the Opening of Her  
Fall Class  
SEPTEMBER 1, 1926  
PHONE 125

## Baby Boy Born

Mr. and Mrs. W. C. Underwood of Garden City are the proud parents of a fine baby boy, according to a message received by Mrs. W. H. Underwood yesterday.

J. M. Speed has been ill for several days.

Mrs. Mollie Ramsey, O. W. Roberts, Eva O'Brien, and Juanita Lee went to Big Spring last night.

Miss Jane Bull of El Paso is here visiting her cousin, Miss Thelma White.

Chiropractic Adjustments, Phone 164

## Catholic Church

Mass on every first and third Sunday of the month.—Hours 8:00 and 10:00.

Everybody welcome. Remember the Catholic Church teaches divine truth with authority. Stands for justice toward all, is the Church principally for the man in the overall.

Rev. S. Kistner, O. M. I.

## Church Of Christ

Bible study each Lord's day at 10 A. M.

Preaching second and fourth Sundays and our summer meetings will be held July 23 to August second.

## CHRISTIAN CHURCH

Social and Workers Council 9:30  
Bible School 9:45  
Communion 10:40  
Read first 13 chapters in Exodus during July.

## Watson School Of Music

Fall term opens September sixth. Piano—Lydie G. Watson, Galloway College, Searcy Ark., Landon's Conservatory, Dallas, Texas, American Conservatory, Chicago, Ill. Violin, Cello, all string and brass, Ned Watson.

A high standard of efficiency maintained. A special advantage to those looking to educational, orchestra or concert work.

Phone 88

Day Phone 32.247 Night Phone 243-131

To Help Make A  
**Hot Day Cold**  
Get your drinks here.

Our Fountain is the last word in Up-to-Date Equipment.  
Cleanliness and Service go hand in hand.

## Taylor's Drug Store

"YOUR DRUGGIST IS YOUR BEST FRIEND"