

Local Temperature

Table with 2 columns: Temperature type (Maximum, Minimum, Rainfall) and values (90, 63, 43).

THE REPORTER-TELEGRAM

THE DAILY TELEGRAM THE DAILY REPORTER (Consolidated March 10, 1929.)

Weather Forecast

WEST TEXAS: Partly cloudy Sunday, thundershowers and cooler in Panhandle.

VOLUME XXXIV.

MIDLAND, TEXAS, SUNDAY, JULY 28, 1929

Number 121

Midland Made A. P. I. Chapter

Leahy, Slayer of Physician, Must Die in Electric Chair

SANITY WAS MAN'S LAST DEFENSE

Contested Verdict Was Expected Saturday

BULLETIN Harry J. Leahy, condemned slayer of Dr. J. A. Ramsey, was found sane by a jury early tonight. He must die in the electric chair, according to wire reports.

Leahy's counsel filed a motion for a new trial immediately after the verdict was given. The counsel claimed the verdict should have been signed by all the jurors instead of the foreman.

(By The Associated Press) GEORGETOWN, Tex., July 27.—After making the charge to the jury, Judge Moore today allowed the state and defense three hours each before the fate of Harry Leahy, being tried for sanity in connection with the death of Dr. J. A. Ramsey, Mathis physician. The case was given to a jury late today.

TESTIMONY COMPLETE GEORGETOWN, July 27.—(UP)—Harry J. Leahy, who by tonight is expected to know whether he will be executed for murder or confined to an insane asylum, listened to attorneys make final arguments today. Testimony was completed and Judge J. D. Moore read the charge to the jury. Court opened today with each side allowed three hours for argument.

Testimony Used Attorney Mack, Huntsville chief defense counsel, dwelt upon testimony of Miss Amanda Davidson of Taylor, saying Leahy must have been insane. A contested verdict was expected late today. D. B. Wood was the first attorney to argue for the state.

BUD RATLIFF OF ODESSA BUYS AN 8-SECTION RANCH

Sale by Mrs. Lee Satterwhite of Odessa of her eight-section ranch known as the Rhodes place to Bud Ratliff has been reported during the last few days. The ranch, consisting of 5200 acres brought the price of \$10 per acre, according to reports in Midland. It is in the heart of the best grazing country near Odessa, lying about 12 miles north of that city, and joins Mr. Ratliff's present headquarters ranch on the west, hence his acquisition of the property gives him one of the best laid out cattle ranches in this part of the country.

More Stations To Be Built In City

Two additional filling stations will be constructed on the west highway inside the city limits of Midland within a few days, according to Charley Nolan of the city hall. The Continental Oil company took out permit for a \$9,000 terra cotta and face brick station last week. This is to be located at 422 West Wall street. Lynn Rutler will start construction on a home, it was given out, also.

Phythm Kings To Play Regularly

Jeff Bentley and his Rhythm Kings will play dances in the Scharbauer hotel Thursday week, and on Thursdays each two weeks afterward, he announced at a dance Thursday night in the ballroom of the hotel. Bentley has a well organized group of musicians and keeps thoroughly abreast of musical times.

Hot Wire Briefs

Minister Wu of China informs that peace negotiations between his country and Russia will be resumed.

Because of the American debt, the French ministry resigned Saturday.

Lieut. Harrold Bromley is awaiting weather conditions to change before making an attempted Tacoma to Tokyo flight.

Col. W. W. Easterwood, Dallas aviation enthusiast, posted \$25,000 for the first airman to reach Dallas on a non-stop flight from Rome.

The Houston monoplane "Billion Dollar City" was forced down Saturday at Folo, but the St. Louis Robin was still on the ground at last reports. The plane rounded out its two-week mark at 7:17 Saturday morning.

LAYMEN OF CITY CHURCHES PLAN BIG TABERNACLE

The laymen's committee, organized in Midland to promote the Rayburn evangelistic campaign, has formulated plans to make the meeting a great contribution to the religious life of the city. W. I. Pratt, chairman of the Midland for Christ movement states that everything necessary for the meeting has been undertaken and that laymen of the four leading churches of the city have joined with the ministers in signing a contract with Mr. Rayburn to carry out the full requirements of the campaign. Everything will be in readiness for the greatest Evangelistic Campaign ever had in the history of Midland. The program includes the building of a great tabernacle seating 2000 persons placed in the center of the city. This will be erected by volunteers in one day. The Rayburn revival will be different to any revival ever held in Midland. The preliminary plans are different, the method of financing the campaign is different and the evangelist is distinctly different to all others in the field of evangelism. James Rayburn is recognized as one of the foremost of American evangelists. He employs methods distinctively his own. He is matter-of-fact, logical and practical. To him religion is carried on in a business-like way and is a part of life without which life would not be complete. He is not sensational and presents the cause of religion to his audience more like a salesman presenting a proposition to his prospect or a lawyer arguing the cold facts of a case to a jury.

Opening of "The Stratford," one of Midland's most attractive English type homes, is announced for next Sunday by Grafa and Garlington, the builders, and the Home Furniture Company, who is furnishing it, for next Sunday, August 4. The new home is located on North G Street, in the west end addition, adjoining the stone residence recently built and sold by Grafa and Garlington to A. W. Stanley. Details of the home and its furnishings will be given in a special advertising section by the contractors, sub-contractors, furniture company, and others, next Sunday. The public will be extended an invitation to visit the home between the hours of 2 and 6 next Sunday afternoon.

New Plants Grown By County Women

Midland women can grow anything in their gardens, says Miss Genavieve Derryberry, home demonstration agent. Her contention has become axiomatic, especially since there has been direct confirmation of her statement. Miss Derryberry has specialized in her suggestions to farmers wives on vegetables which thrive on less water here. Mrs. R. L. Porter has planted tender greens similar to mustard or spinach. This plant has grown to unusual size, and has actually used an extraordinary amount of soil moisture. At Valley View, Mrs. J. R. Tisdale has planted a garden huckleberry, or wonderberry. This grows rapidly and uses little water in its growth. Mrs. W. S. Hudson has in her garden dry weather beans. This plant is similar to the common variety of English pea and is fully as succulent, Mrs. Hudson says, after it has been dried and cooked. It is not used when green.

ALBERT ORECK BACK; BUYS PRATT JEWELRY

Albert Oreck, formerly connected with the Pratt Jewelry company, has returned to Midland after several months in California and Oklahoma, and has bought the company with which he was associated. L. W. White, who has been with the Pratt Jewelry company since it has been here, will be retained in the organization, Oreck announced Saturday. The name of the company will be changed, but Oreck has not decided upon what it will be called.

HOME PRACTICAL TO BE SPONSORED BY NEWSPAPER

Through arrangement with Grafa and Garlington, a decision of the management of The Reporter-Telegram to sponsor the building of a practical home, the size, specifications, type and appointments of which will be practical for the average family, was reached during the past week. The construction of this home, and its subsequent opening to the public, will have for its purpose the encouraging of better homes in Midland, homes which will meet the requirements of the practical family, and which will fit in with the substantial nature of Midland and its citizenship.

Announcement of the location of the home, and of the details of its construction will be made from time to time as arrangements are completed. The home, sponsored by The Reporter-Telegram, will be referred to as The Reporter-Telegram Practical Home; and liberal publicity will acquaint the readers with its practical features until its completion.

PROCTOR MAKES CATTLE DEALS DURING WEEK

Foy Proctor is reported to have sold, within the past week, 150 head of two year old heifers with calves to Bill Bryant for immediate delivery. These are part of the former Proctor and Goodman cattle which were bought by Mr. Proctor individually. The price paid was reported to be \$82.50. Mr. Proctor has also contracted for the calf crop of J. E. Hill, to be delivered in the fall.

OPENING OF "THE STRATFORD" SET FOR NEXT SUNDAY

Opening of "The Stratford," one of Midland's most attractive English type homes, is announced for next Sunday by Grafa and Garlington, the builders, and the Home Furniture Company, who is furnishing it, for next Sunday, August 4. The new home is located on North G Street, in the west end addition, adjoining the stone residence recently built and sold by Grafa and Garlington to A. W. Stanley. Details of the home and its furnishings will be given in a special advertising section by the contractors, sub-contractors, furniture company, and others, next Sunday. The public will be extended an invitation to visit the home between the hours of 2 and 6 next Sunday afternoon.

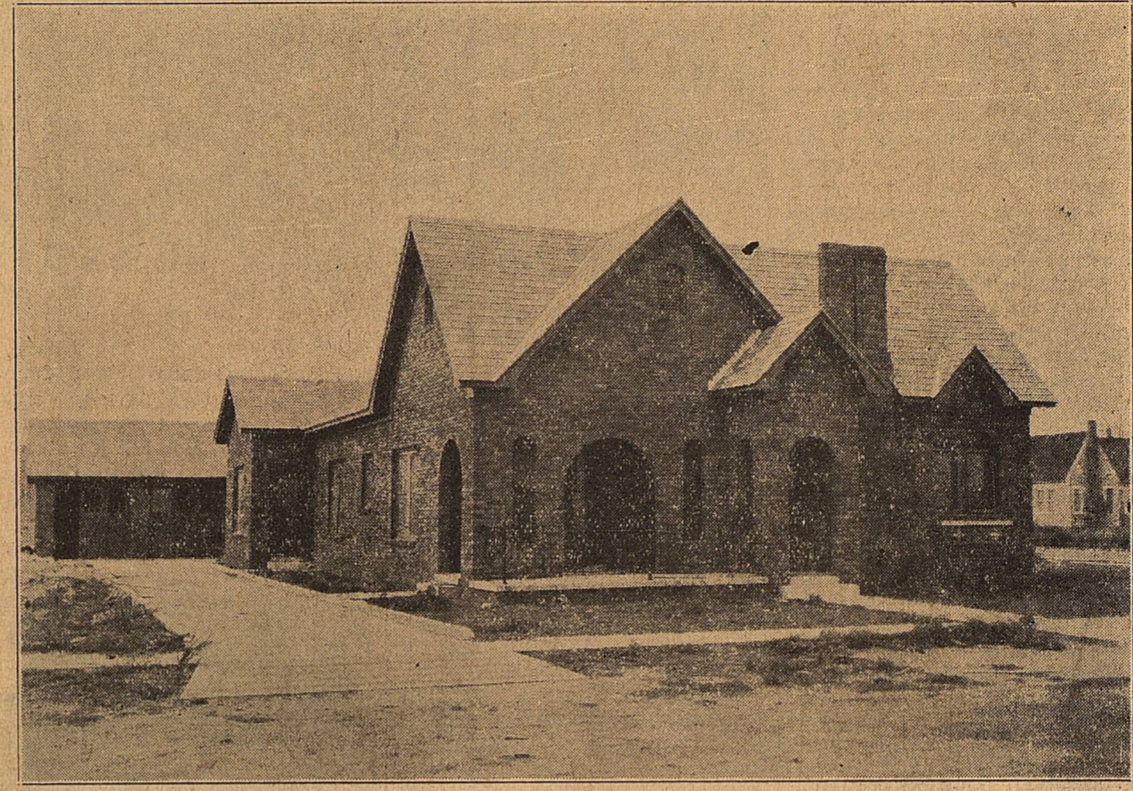
Airplane Adds City To Express List

Abilene and Midland have been added to the list of towns at which pick up and delivery service is provided for air express carried by the T. A. T. Flying Service, Inc., it was announced in Fort Worth last week by Robert J. Smith, general traffic manager of the Southern Air Transport system of which the T. A. T. Flying Service, Inc., is a subsidiary. Others towns at which this service is available are Atlanta, Ga.; Birmingham, Ala.; New Orleans, La.; Houston, Waco, San Antonio, Brownsville, Dallas, Fort Worth and El Paso.

"HUMAN FLY" SCALED BIG BUILDING HERE

Henry D. D. Roland, "human fly," climbed the west wall of the 12-story Petroleum building this afternoon before a record crowd. He climbed up the walls at 3:30 and down the same devious path at 7:30. From various windows of the structure, Roland dropped Reporter-Telegrams and made announcements. The man has achieved a notable record in having scaled 1,504 buildings within 14 years, the highest being that of the L. C. Smith building in Seattle. This building was 42 stories in height.

BEAUTIFUL HOME OF MR. AND MRS. ED COLE



Formal opening to the public of the new home of Mr. and Mrs. Ed Cole, in Belvedere Court, has been arranged by the contractors and those who furnished the home for next Sunday afternoon, August 4. Advertising and publicity in another section of this paper states the opening will be today, but on account of unavoidable delay in certain features of the home at the last minute, it was found advisable to postpone the opening until August 4.

YUCCA THEATRE TO BE OPENED ABOUT AUG. 15

Sacred bulls, Assyrian gods, poly-chrome murals, noted paintings, elaborate rhinestone studded, gold-leaf bordered curtains costing small fortunes, individuality as marked in the modern time as it was in the temples on antiquity—such is the Yucca theatre, Midland's largest playhouse and the Southwest's most modern. The Yucca was closed to public inspection Saturday. Scaffolding is being wrecked, parchment lights bearing three color lights are being installed, the latest photo-sound synchronizing equipment is being readjusted so that loud speakers point to every seat in the auditorium and balcony, and murals and plastic work is being finished.

T. S. Hogan, owner of the building conducted a staff member of The Reporter-Telegram through the big playhouse Saturday, pointing out the authentic cattle scene on the curtain, what appeared to be a glamorous Babylonian night scene on the scrim curtain, bas-reliefs, technical improvements in projection-talkie machines, and other features. "I expect the premiere showing in the house to be on the night of August 15," Hogan said.

Airplane Traffic Disregards Signs Of Midland Street

Chief of Police L. J. Haynes, who this week replaced King Reed, wounded officer, in that office, will probably encounter various complaints and objections—as all police chiefs do—but he will never be accosted with a more egregious request than that which came to him this morning. The secretary of the chamber of commerce, Paul T. Vickers, must have been the original one (years ago) to ask mother for the moon. He observed an airplane sail over the intersection of Wall and Main streets today and pointed out to the chief of police that the machine did not stop as demanded by the sign.

Pratt Leaves for Eastern Markets

W. I. Pratt, manager of the local Hassen store, left this morning for St. Louis, New York, and other eastern points where he will spend several weeks on a market tour for the Hassen stores. Fall stock for the stores will be bought by Mr. Pratt. An inspection trip of the stores has recently been made by Mr. Pratt and on his return he reported that two new stores, one at Hamlin and the other at Ft. Stockton, were being opened. Mrs. Pratt and Miss Jean Patterson of Vancouver, B. C., accompanied Mr. Pratt as far as Stamford for a visit with relatives.

Meeks or Meek? \$1 Found in Orchard

H. H. Meeks finds that being somewhat associated in name with President Meek of the Rotary Club is an advantage. Saturday morning was eventful for Meeks. His mother, Mrs. F. A. Tandy, went into Meeks' orchard and found a \$1 bill under one of the trees. Alternatives which presented themselves were: did someone lose the banknote while poaching, or did someone take what fruit he wanted and leave payment?

Some light was thrown upon the subject when it was discovered that the serial number on the bill indicated that the money had come from a Big Spring bank and it was remembered that "Tanlae" Strange Big Spring Rotary club president, had been over for a visit on Saturday morning. If Strange left the dollar, did he think Meeks was Meek?

Mexican School To Be Ready for New Term in September

Midland's newest construction, the Mexican school, shows the evolution of the public system here to a nice degree. In the past, Mexican children attended a school held in the Catholic church. Rental was paid for uses of the building. Now, however, the Mexican children, 60 of whom have been enrolled, will be enabled to attend a school established for them exclusively. A two-room building, to be built along Spanish lines, is to be put up in block 52, East Midland. Ground plan shows dimensions of 30 by 80 feet. One hundred children are expected to enroll at the opening of the new term, the school board believes. Contract for construction of the building was awarded J. H. Williamson, local contractor, for \$5,100, last week. Other bids submitted follow: R. L. Upuy, \$5,325.00. W. S. Taylor, \$5,440.00. E. W. Britton, \$5,679.00. Nicholson & Blake, \$5,930.00. Anderson & Sundquist, \$5,975.00. F. W. Stonehocker, \$6,026.00. W. A. McCall, \$6,459.50. J. M. Prothro, \$6,580.00.

KNIGHTS TEMPLAR DEGREES WILL BE CONFERRED HERE

Beginning at 2 o'clock Monday afternoon, Midland Commandery will confer the degrees of Red Cross, Malta and the Temple upon seven candidates, it was announced yesterday by officials of the Commandery. Visiting knights from Waxahatchie will assist in the work. A banquet will be held in Hotel Scharbauer at 7:00 in the evening. All visiting knights are invited, and all members of Midland Commandery are requested to attend. All knights are to be in full Templar uniform.

Director Says Lion Orchestra to Grow

If present indications are realized, the Lions club will have an orchestra of 20 pieces by fall, Ned Watson, director, says. Music for 20 pieces has been ordered by the director. Six recruits have been working up special music for concerts to be given periodically here. The Lions will have one of the finest orchestras in the state. C. W. Post has been elected pianist. Post can play orchestral arrangements with consummate skill, the director says. Every member of the orchestra will be a Lion. This provision has been made positive through action of the club. Thomas Inman plays clarinet, Walter Elkin trombone and saxophone, "Doc" Ratliff mandolin and banjo, Fred Middleton and C. L. Starling bass horns, Cliff Maple alto, R. V. Hyatt, baritone, and Ned Watson, director, violin.

Meeks or Meek? \$1 Found in Orchard

H. H. Meeks finds that being somewhat associated in name with President Meek of the Rotary Club is an advantage. Saturday morning was eventful for Meeks. His mother, Mrs. F. A. Tandy, went into Meeks' orchard and found a \$1 bill under one of the trees. Alternatives which presented themselves were: did someone lose the banknote while poaching, or did someone take what fruit he wanted and leave payment?

Some light was thrown upon the subject when it was discovered that the serial number on the bill indicated that the money had come from a Big Spring bank and it was remembered that "Tanlae" Strange Big Spring Rotary club president, had been over for a visit on Saturday morning. If Strange left the dollar, did he think Meeks was Meek?

Mexican School To Be Ready for New Term in September

Midland's newest construction, the Mexican school, shows the evolution of the public system here to a nice degree. In the past, Mexican children attended a school held in the Catholic church. Rental was paid for uses of the building. Now, however, the Mexican children, 60 of whom have been enrolled, will be enabled to attend a school established for them exclusively. A two-room building, to be built along Spanish lines, is to be put up in block 52, East Midland. Ground plan shows dimensions of 30 by 80 feet. One hundred children are expected to enroll at the opening of the new term, the school board believes. Contract for construction of the building was awarded J. H. Williamson, local contractor, for \$5,100, last week. Other bids submitted follow: R. L. Upuy, \$5,325.00. W. S. Taylor, \$5,440.00. E. W. Britton, \$5,679.00. Nicholson & Blake, \$5,930.00. Anderson & Sundquist, \$5,975.00. F. W. Stonehocker, \$6,026.00. W. A. McCall, \$6,459.50. J. M. Prothro, \$6,580.00.

KNIGHTS TEMPLAR DEGREES WILL BE CONFERRED HERE

Beginning at 2 o'clock Monday afternoon, Midland Commandery will confer the degrees of Red Cross, Malta and the Temple upon seven candidates, it was announced yesterday by officials of the Commandery. Visiting knights from Waxahatchie will assist in the work. A banquet will be held in Hotel Scharbauer at 7:00 in the evening. All visiting knights are invited, and all members of Midland Commandery are requested to attend. All knights are to be in full Templar uniform.

Director Says Lion Orchestra to Grow

If present indications are realized, the Lions club will have an orchestra of 20 pieces by fall, Ned Watson, director, says. Music for 20 pieces has been ordered by the director. Six recruits have been working up special music for concerts to be given periodically here. The Lions will have one of the finest orchestras in the state. C. W. Post has been elected pianist. Post can play orchestral arrangements with consummate skill, the director says. Every member of the orchestra will be a Lion. This provision has been made positive through action of the club. Thomas Inman plays clarinet, Walter Elkin trombone and saxophone, "Doc" Ratliff mandolin and banjo, Fred Middleton and C. L. Starling bass horns, Cliff Maple alto, R. V. Hyatt, baritone, and Ned Watson, director, violin.

BULLETIN

King Reed, former chief of police did not rest well Saturday afternoon, reports from the Thomas hospital said. The former officer was shot in the abdomen a week ago this morning in an affray that resulted in J. C. Holcombe, night watchman, falling dead with a bullet through his heart.

FARMERS DRAFT RESOLUTION TO INFLUENCE LAW

Farmers of Midland County passed a resolution Saturday afternoon at a mass meeting in the courthouse urging Dan Moody to sign the pink boll worm bill. The message was sent Saturday by the Midland chamber of commerce. The resolution as proposed by Pat P. Barber also asked the Midland chamber to write Claudé B. Hudspeth, congressman from this district, and the United States Department of Agriculture urging a Federal appropriation for remuneration of the farmers. Among those who discussed the situation were C. M. Stringer, S. O. Golliday, J. M. Franks, Pat Bodine, Pat Barber, W. C. Campbell, and the secretary of the Midland chamber. Mr. Barber urged cooperation in employment of cotton pickers. Mr. Sherman advocated a farmers cooperative pasteurization plant. Mr. Campbell presided at the mass meeting. The Midland secretary declared Midland business men were anxious to assist the farmers in every way, as they realized that the perpetuity of Midland's prosperity depended on the farmer and cattleman. He pointed out that the big building boom in Midland as a result of oil activities had provided farmers with jobs, and had made the market better. The secretary challenged anybody present to show a county in Texas west of Fort Worth that got as much farm publicity as Midland. He pledged aid of the Midland chamber to the farmers.

Midland Man Took Jump With Flier

A Midland man, Fritz Estill, with the Independent Oil and Gas Company, can realize the shock which comes to few men in a lifetime—that of learning of the death of Pythias, while Pythias was still young. Back in the days of the Jenny, the OX-5 and Hiss, those days during the war when a few good flier fought with inadequate equipment for mastery of the air, Estill had a flying mate, Ross Armstrong, a name now associated with the tragedy of a few days ago. It was with Armstrong that Estill planned and executed his first parachute jump. The old bilges known to those men learned in those days that a ship had to be pulled out of a spin (and plenty high, at that) were shared by the two friends. "Ross had never had even a wash-out to his credit," Estill said when questioned. "His was a perfect record, as records go." Just one of those things, the tragedy. Aviators have a way of paying little attention to them—only when the one at the distance is Damon, and the other is Pythias.

Post Returns from Visit to Colorado

C. W. Post, of the West Texas Music company, arrived in Midland Thursday night from a month's vacation in northwest Colorado. He was accompanied home by Mrs. Ed Erikson, who has been visiting for several weeks in Santa Fe and other New Mexico cities, Mrs. Charles A. Van Dorn, and Mrs. Post's brother, Robert E. Post. Post said upon reaching here that crops, rangeland and other vegetation here looks better than in most districts to the westward. Fishing is the only virtue of the points to the west that Midland county does not have, he believes. Robert E. Post, whose home has been Craig, Colo., will remain in Midland as an associate member of the firm of The Texas Music company.

NO SERVICES TODAY

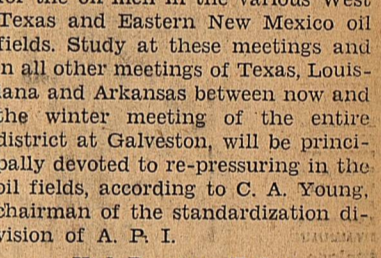
There will be no Sunday service at the Pentacostal Holiness Church, the Reverend O. W. Roberts, pastor, announced Saturday.

FOUR OTHER UNITS ARE FORMED

C. W. Alcorn of City Elected Chairman Of the Body

Five chapters of the production and engineering division of the American Petroleum Institute, Texas, Louisiana, and Arkansas district were created at Midland Saturday at the district meeting. Midland was made the main chapter with the other four as coordinating units. C. W. Alcorn, assistant state manager of the Shell Petroleum Company with offices at Midland, was elected vice president of the Midland A. P. I. chapter and is chairman in charge of the Midland organization and general chairman of the other four chapters. Chapters other than the headquarters body at Midland were established at McAdams, Wink, Big Spring and in the Yates pool. Alcorn was authorized by vote of the group in the meeting Saturday night to appoint vice presidents and secretaries of the McAdams, Wink, Big Spring and Yates chapters. Periodical meetings will be held by the various chapters, which were created as a matter of convenience for the oil men in the various West Texas and Eastern New Mexico oil fields. Study at these meetings and in all other meetings of Texas, Louisiana and Arkansas between now and the winter meeting of the entire district at Galveston, will be principally devoted to re-pressuring in the oil fields, according to C. A. Young, chairman of the standardization division of A. P. I. Had Program Today The program at Midland was mainly a discussion of the various assigned papers, with emphasis on the papers on drilling straight holes, and as presented by W. W. Warner of Amerada and proper care of sucker rods as prepared by E. S. Durward of Shell and ready by J. A. Schutt of Humble. Other papers were given by George L. Klingman of the California Co. on "Oil and Gas Ratios in the Yates Pool," E. N. Van Duzee and E. L. Davenport of Shell presented a paper on "Methods of Waste Water Disposal in Winkler County." An informal discussion was held on "Metallurgy of Drilling Tools." About 75 oil men from the West Texas Permian Basin and Eastern New Mexico attended the meeting. They had a luncheon in Hotel Scharbauer between sessions. A. S. Fields, chairman of the A. P. I. division and C. A. Young were here from Dallas to assist in the meeting, which was presided over by Alcorn. W. W. Scott, chief engineer of Humble and Melbert Schwartz, chief engineer of Rio Bravo were

LAPPER FANNY SAYS



If figures never lie, how tired some girls must get.

NO SERVICES TODAY

There will be no Sunday service at the Pentacostal Holiness Church, the Reverend O. W. Roberts, pastor, announced Saturday.

# THE REPORTER TELEGRAM

Evenings (except Saturday) and Sunday Morning  
116 West Missouri, Midland, Texas

Midland Publishing Company, Publishers

**I. PAUL BARRON** Editor  
**MELVERN J. TAGGART** Business Manager

Entered as second class matter at the postoffice at Midland, Texas, under the Act of March 30, 1879

**Subscription Price**  
Dally, by Carrier or Mail . . . . .  
Per Year . . . . . \$5.00 Per Month . . . . . 50c

**Advertising Rates**  
Display advertising rates on application. Classified rate, 2c per word; minimum charge 25c. Local readers, 10c per line.

Any erroneous reflection upon the character, standing or reputation of any persons, firm or corporation which may occur in the columns of The Reporter-Telegram will be gladly corrected upon being brought to the attention of the firm.

### A QUEER SORT OF JOB

The things men will do to earn a living are sometimes very queer.

In Berlin there died the other day a man who had made a fortune by dealing in circus "freaks."

He scoured Germany, for years, looking for dog-faced boys, bearded women, grotesquely misshapen cripples, three-headed calves, and so on. When he found such a specimen he would take the luckless individual to Berlin, train it, add a few touches that nature overlooked and then contract with a circus for its exhibition.

He was highly successful, and made a great deal of money in this way.

### THE WAY SCIENCE GAMBLES

Science, in some ways, indulges in gambling on a grander scale than any other branch of human endeavor.

There was a total eclipse of the sun in the far east recently. For years in advance, British and German scientists had spent money and effort preparing to make observations of it. They established a base in Siam, establishing themselves there are waited for the day to come.

And then the sky was so cloudy that they were baffled. Not a glimpse of the eclipse did they get. Their time and money were completely wasted. There was nothing to do but go home and wait for the next one.

Who but scientists would gamble so heavily on the chance of good weather?

### THEME SONG IN BILLIE DOVE'S FIEM "CAREERS"

Persons attending the Ritz Theatre this week where Billie Dove is emoting in "Careers" a First National Vitaphone all-talking picture will hear the strains of a beautiful melody played throughout the showing. Not only is it played by the Vitaphone Symphony Orchestra, but also sung by Carmel Myers who has an important role in "Careers". The title of the song is "I Love You, I Hate You." Al Bryan wrote the words and George W. Meyer wrote the music.

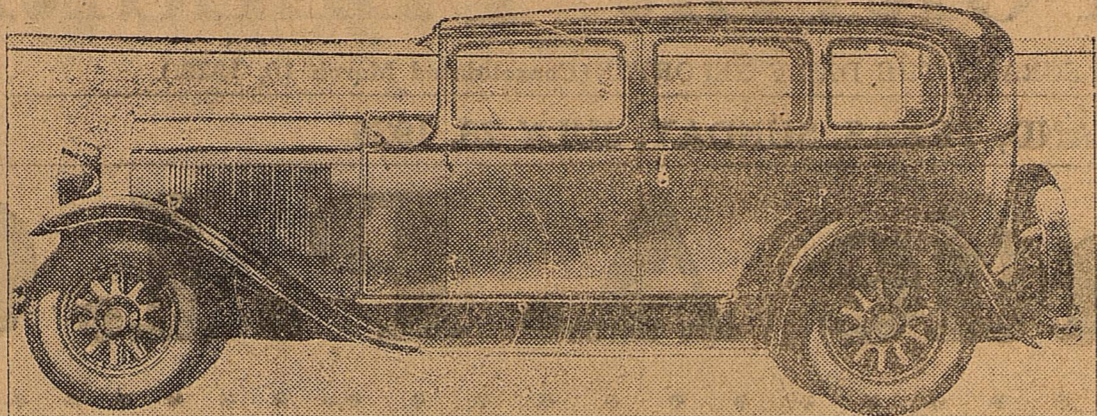
featuring it in their window displays. And almost everybody who sees "Careers" comes out of the theatre whistling or humming the melody.

"Careers" is one of Billie Dove's most successful efforts. Supporting the beautiful star are such sterling players as Noah Beery, Antonio Moreno, Thelma Todd, Robert Frazer, Carmel Myers, Sojin and Andre de Segurola, former Metropolitan Opera star who also sings. John Francis Dillon directed. It is Billie Dove's first all-talking picture.

Miss Dixie Ruth Smith of Snyder is in Midland as the house guest of her school friend Miss Francis Rauff.

Already the song is earning wide popularity. Radio stations are broadcasting it. Music stories are

## MODIFIED BODY ON IMPROVED BUICK



The 1930 Buick, shown in the upper photo, as compared with the 1929 model below it, gives an idea of the change made in the appearance of the car. Note the molding replacing the sudden bulge, and the more sedate effect of the hood.

By ISRAEL KLEIN

Science Editor, NEA Service

FLINT, Mich., July 27.—The new 1930 Buick presents itself today not only modified in appearance but improved mechanically over its predecessor. It is a bigger, more powerful, more comfortable automobile than the Buick of 1929. Yet the prices are to remain about the same.

Although the change in the body is perhaps the feature of most interest to present and prospective Buick owners, the mechanical features have so been improved as to rival the body in interest.

The car has been made longer, broader and lower. The engine's size has been enlarged, and its power therefore increased. Semi-elliptic rear springs replace the former cantilever type and, working with double acting shock absorbers, improve the riding qualities of the automobile.

Braking has undergone a decided improvement with the use of internal expansion Servo brakes that are made proof against squeaking or grabbing. The frame, thanks to the rear semi-elliptic springs and new type of shock absorbers, has been lowered and broadened, thus enabling the builders to lower the entire body two inches. Rubber engine mountings have been improved to provide greater cushioning effect, and the transmission and clutch have been redesigned for the better.

Bulge Is Taken Out

Most marked in the appearance of the new Buick is the replacement of a belt molding for the sudden bulge in the former car. Yet this change has been so designed as to retain a hint of the rounding shape of the 1929 models in a much more graceful effect.

From the front, the radiator shell still has that doubly-rounded effect at the corners, but this is flattened and sobered down to some extent, while the entire radiator itself has been widened and deepened to give the car a more substantial and yet graceful appearance.

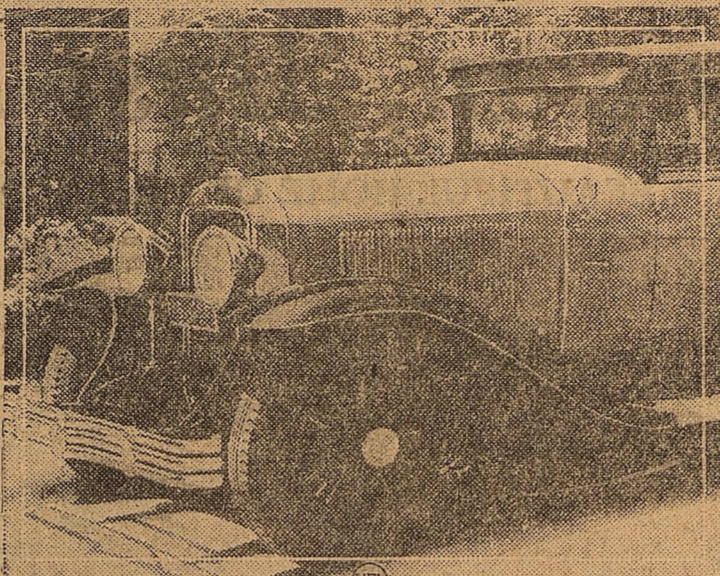
In addition to its appearance, the body has been made more comfortable by means of larger doors, lowered door sills and wider seats. The lowered sills allow deeper and more comfortable seats.

Fourteen Models Shown

The new Buick is being produced in 14 models divided into three series—40, 50 and 60, replacing the 20, 40 and 50 respectively. In each of the models, the engine bore has been increased an eighth of an inch, with a resultant increase of eight per cent in power, the Buick engineers say.

Despite the increased size and power of the engine, however, fuel economy has been improved in the 40 series and has at least been retained in the other models. This, the designers say, is due to a better balance between engine power and car weight and to improved carburetion.

Another help has been the incorporation of double breaker arm dis-



tributors in the 50 and 60 types to insure proper firing of the engine at all speeds and under all conditions.

Fifth Shock Absorber

Among the innovations in the Buick and in fact an innovation in automobile construction, is what may be termed a fifth shock absorber. The device is a double-sprung shackle replacing the regular shackle in front of the frame on the steering gear side.

Without this device, a road shock is carried up through the steering gear to the back of the car and so causes discomfort for driver and passengers. With the fifth shock absorber this is taken up and there is no ill effect on the steering or roadability.

Another innovation in Buick is the seven degree slanting wind-

## BUILDERS



Consult Burton Lingo when you want builders' material, or want figures on any kind of building. We are prepared to serve you.

### Burton-Lingo Company



### Carelessness

#### Causes Fires

When you leave your electric flat iron even for a minute, disconnect the wire, unscrew the plug, play safe! Your home may be sacrificed for just such a little thing as this any day. Insure in this agency of the Hartford Fire Insurance Company, then do everything in your power to prevent a fire. Are you protected with sound insurance?

### SPARKS & BARRON

Insurance and Abstracts  
Phone 79  
Midland, Texas



## A Sincere Handclasp

To the new families who are coming into this community, the First National Bank extends a cordial welcome.

We invite you to make this your banking home.

To those, also, who have enjoyed our friendly, neighborly banking service, we send good wishes for success.

## The FIRST NATIONAL BANK

"The Bank of Personal Service" for Over 39 Years  
Capital and Surplus \$200,000



quette, Buick's new companion car. The stronger frame construction of the Buick is expected to eliminate further any possibility of shaking in front fenders, lamps and radiator, and rattles or squeaks in the body.

Also three-room furnished duplex—private baths. One 3-room unfurnished duplex. Prices Reasonable. See GRAFA-GARLINGTON 105 Wall St. Phone 356

to duplicate this house which we are going to sell this week for \$1500. Better see us quick. GRAFA-GARLINGTON 105 Wall Street Phone 356

### Too Late To Classify

THREE ROOM Apartment. East side of brick duplex. 802 Missouri. Phone 102. 121-tfc.

SMALL HOUSE SOUTH SIDE On 75 ft. lot—will sell \$300 down, rest like rent—See GRAFA-GARLINGTON 105 Wall St.

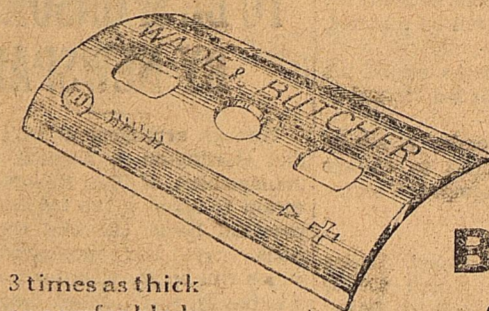
FIVE ROOM STUCCO Practically new. Nice south bed rooms. North front, oak floors. Modern in every respect. \$500 cash will handle. Balance like rent. See GRAFA-GARLINGTON

FOR RENT New 4-room duplex furnished.

OLD HOME For sale to be moved off of business lot—6 rooms in fact—practically new house. Would cost \$5,000

FOR RENT: 3 furnished bedrooms for gentlemen. Call 286J. 117 S. Pecos. 121-3c.

# It's Here, Men



## The Blade You Have Been Waiting For!

3 times as thick as a wafer blade. Curved to fit your razor.

Sharp—Stay Sharp—and Last Longer!

### 10c each

Package of 5—50c  
12 for \$1.00

## WADE & BUTCHER

SPECIAL

### Curved Blades

Package of 5 blades 50c—12 for \$1.00

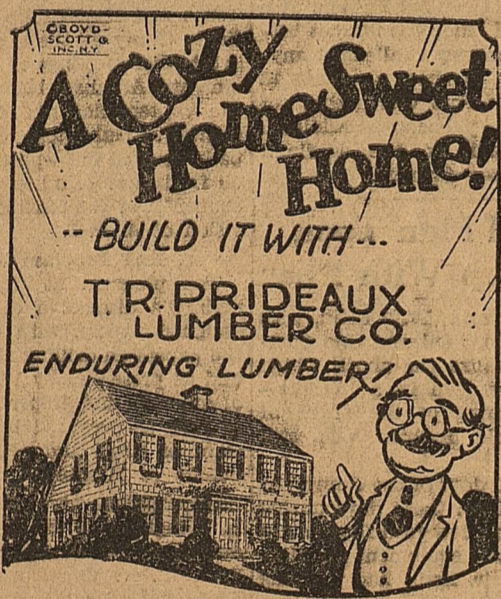
A Product of WADE & BUTCHER

Makers of Fine Sheffield Cutlery, Carvers and Razors for over 200 years

On Sale at

### MIDLAND DRUG COMPANY

L. A. ARRINGTON, Prop.



"Truth endures. Faith endures. Love endures. Courage endures. So does the lumber you'll buy at this yard."

—says Practy Cal.

Phone 498

## T. R. PRIDEAUX Lumber Company

The Place Where It Is Entirely Safe To Trade

## LUMBER

We Sell Lumber from One Stick To a Carload—  
All Kinds of Building Material

WE WILL FURNISH PLANS FOR YOUR HOME.  
FINANCE BUILDING YOUR HOME  
SUPERINTEND BUILDING OF YOUR HOME.

Let us figure with you before you close your contract to build, and we will save you money.

## ANDERSON-SUNDQUIST LBR. CO.

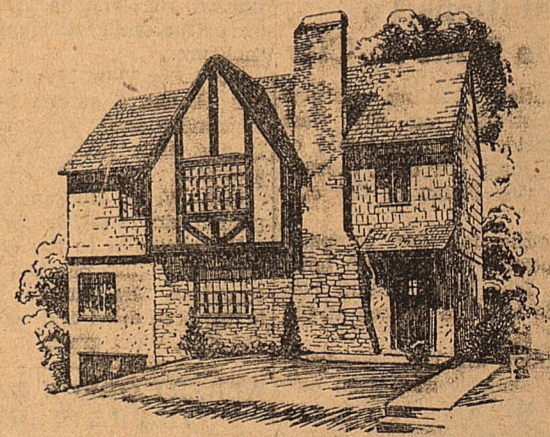
Incorporated

523 Marienfield Street



## Making Midland A City Of Beautiful Homes

Cragin's distinctive homes are the standard of comparison. We will be glad to help you with your building and financing problems.



## Cragin & Son

PHONE 32

CLUBS  
MUSIC  
D R A M A

# WOMEN'S PAGE

CHURCHES  
THEATRES  
FASHIONS

## PIONEER CLUB ENTERTAINED BY SCHARBAUERS AT HOTEL

Holding highest interest in the social activities of the week was the bridge affair given by Mr. and Mrs. Clarence Scharbauer for members of the Pioneer Club and their guests. The setting for the occasion was in the private dining room of Hotel Scharbauer.

Colorful garden flowers afforded a charming touch to the affair while table markers and other appointments were in pink and white.

The hostess souvenired Mrs. John B. Thomas, who held high for lady members; Mr. Allen Tolbert, high for men members; Mrs. Clifford Hill, high among the lady guests; and Mr. Henry Wolcott, high for men guests. Mr. Frank Cowden cut high and was also favored.

At tea time party plates giving emphasis to the chosen colors were passed to Messrs and Mesdames Elliott Cowden, Allen Tolbert, Harry Tolbert, C. M. Goldsmith, O. B. Holt, Jr., J. V. Stokes, Jr., Frank Cowden, H. J. Neblett, Guy Cowden, Ellis Cowden, Joe Youngblood, Homer Rowe, Clyde Cowden, Clifford Hill, Henry Wolcott of Trinidad, Cuba, and Dr. and Mrs. John B. Thomas.

Atty. Sam Barkins of Big Spring visited friends in Midland this week.



### Our sign

on a wiring job is as good as a guarantee that all materials are made by General Electric—that the workmanship is of the finest—and the planning complete. Let us install

**WIRING SYSTEM**  
for lifetime service.  
**BLACK ELECTRIC CO.**  
"Anything Electrical"

## Miss Rankin Honors Sorority Sisters

Honor guests of Miss Nancy Rankin on Friday evening were members of the Mu Eta Sigma sorority. The hostess entertained with a picnic supper at the home of her parents, Mr. and Mrs. Porter Rankin in Belvedere court.

After the supper on the lawn dancing furnished entertainment for the group which included about twelve couples.

## Mrs. Legg Gives Breakfast for Contract Club

Morning hours on Thursday were made gala at the home of Mrs. A. S. Legg for members and guests of the Contract Bridge Club. The hostess entertained with a delightful breakfast and bridge affair.

Members and guests present were Mesdames Robin Willis, S. H. Caspell, Marcus, Dewey Ross; Misses Lois Patterson, Fannie Bess Taylor, Thelma White, and Lula Elkin.



**NEATNESS AND DIGNITY** in dress win respect and ADMIRATION. We are equipped to take care of the needs of both the well dressed man and well dressed lady. Give us a trial.

**C. GEORGE**  
Phone 89  
Dry Cleaning  
"We Know How"

## TURN BACK TO BEAUTY, ADVISES BEAUTIFUL, BLONDE BACLANOVA



Baclanova  
By MABEL DUKE  
For NEA Service

In this day of extreme décolletage in evening gowns, a beautiful back and shoulders are the envy of many women. For while many have smooth pretty complexions, often their backs are not all that could be desired.

Baclanova, the Russian actress, has a lovely back, beautifully formed and with soft, smooth skin.

"I suppose the formation of the back is more or less the act of nature and little can be done to improve a badly formed one," she said. "But stoop shoulders and sway back may be corrected by a little thought. Just remember to straighten up every time you feel yourself slumping. A thin back may be improved by exercise and by rubbing with olive oil."

"The first care of the back comes in the bath. The shoulders and back should be brushed briskly with a flesh brush on a long hand. Three tablespoons of powdered starch added to the bath will impart a delightful velvety softness to the skin. Further, it will whiten it.

"Buttermilk is another beneficial whitener. The pores of the back should be closed as carefully as on the face or neck. An alcohol rub is stimulating to the tissues.

"Powder the back well and there you are!"

## MISS JANE CAMPBELL MARRIED THIS MONTH TO DENVER MAN

Mr. and Mrs. Fred Campbell, of Midland, are announcing the marriage of their daughter, Jane to Mr. Charles O. Arnold of Denver, Colo. The marriage was held on July 5 at Golden, Colorado with Rev. McCormick reading the ceremony in the presence of a few friends.

The bride has made her home in Midland for almost two years and during that time she has been a popular young woman in social activities of Midland. She completed her high school work in the Midland high schools where she was a member of glee club, pep squad, literary society club and other campus organizations. She was recognized also as an accomplished musician having played at several occasions.

During the past few months Mrs. Arnold and her mother have been visiting in the home of her grandparents in Denver where she met Mr. Arnold.

Mr. Arnold is the son of the assistant vice-president of the Denver National Bank and is now a student in the University of Denver. He is also connected with the bank.

At the present time Mr. and Mrs. Arnold are at their home in Denver and will leave within a few weeks on a three-weeks fishing trip in Northern Colorado.

## Novel Exhibition Held At Close of Vacation School

Notebooks, paper flowers, jointed toys, raffia picture frames, flags, match scratchers, waste paper baskets, typewriter tables, and numbers of other articles that have been made by students were on exhibit at the commencement exercises of the Vacation Church School at the Presbyterian church Friday evening. Songs and drills also were on the program.

During the past two weeks the school has been in session under the direction of Miss Katherine Majors of El Paso. More than forty students between the ages of 4 and 14 were enrolled.

## Buick Boosters Meet for Business Session Friday

Members of the Buick Booster Club attended a general business meeting of the club in the salesroom of the Scruggs Motor Company Friday evening.

The chief object of the meeting was for a close study of the new Buicks, which were put on display here yesterday.

Other business transacted was concerning the baseball club which will now hold regular practice. Following the business a short social hour was held for the group.

## Two Leave for Short Course at A. & M. College

Mrs. A. L. Hallman and Miss Genevieve Derryberry left yesterday morning for College Station where they will attend the Farmer's Short course at A. & M. College.

Mrs. Hallman is winner of the dress contest held for Midland county women and is making the trip as a prize given for first place winner by the Midland chamber of commerce.

Following the course Miss Derryberry will continue on her vacation to Sherman and points in Oklahoma returning to Midland in three weeks.

Miss Austin of the Advance Trailer Corporation left yesterday for Lubbock after spending several days here on business.

R. C. Harlan, prominent Rankin business man, was in Midland Saturday transacting business.



U. S. GRANT

"Simple plans, simple words, simple manners—by means of such are great things accomplished."

Condolences without affectation, tributes without ostentation, a ceremonial of serenity and simplicity is desired by many.

**BARROW**  
FUNERAL PARLORS  
Ambulance Service.  
Day Phone Night Phone  
502 560

## Haleys Return From Reunion at At Galveston

Mr. and Mrs. Jno. Haley returned during the past week from Galveston where they held a reunion of the Haley family.

While visitors at the popular summer resort, members of the family enjoyed numbers of social affairs together. They were at Galveston about a week.

Members of the family attending the reunion were Mrs. Chan Mason and baby of Washington, D. C.; Mrs. Myrtle Aycock and children of Breckenridge; Messrs and Mesdames T. I. Harkins, of Houston, Jno. Haley of the Haley ranch near Pyote and Evetts Haley of Canyon.

## PERSONALS

Mr. and Mrs. W. I. Pratt and Billie and their house guest Miss Jean Patterson of Vancouver, B. C. spent Friday in Carlsbad going through the caverns.

Mrs. Effie Sanders of Houston is visiting her mother Mrs. L. T. Rankin for several weeks.

Mr. and Mrs. J. A. Kirkpatrick and daughter of Waco have returned to their home after visiting in Midland a few days.

Mr. and Mrs. Finley Scruggs of McCamey visited in Midland Friday.

Miss Laura Helen Sowell has returned from a visit with relatives and friends in Pecos.

Mr. and Mrs. L. W. Leezer left yesterday morning for San Angelo where they will make their home.

Mr. and Mrs. Chas. Bell returned to their home in El Paso yesterday after visiting the past few weeks in the home of her parents, Mr. and Mrs. John Tolbert and with other relatives.

E. L. Nelson of the T. A. T. airlines left yesterday for his home in Ft. Worth after transacting business in Midland for a few days.

Freddie Addington will arrive in Midland tomorrow to be the house guest of his cousin, Mr. Bill Smith.

Mrs. C. G. McCall left Friday night for Texarkana where she will visit her mother for several days.

Mr. and Mrs. Geo. Ratliff and daughters, Dorothy and Bennie Sue returned Friday from their camp near San Angelo where they spent the last week.

Mrs. Newnie Ellis and children who have been in Dallas returned to Midland yesterday. Mrs. Ellis has recently had a throat operation in Dallas. Mr. Graham Brown of Eastland returned with the Ellis' and will be their guest several days.

Miss Lois Morrow of the County Clerk Office is spending the week-end with her mother in Seminole.

T. W. Walsh of the Mohawk Carpet Company is here for a few days on business from his home in Amsterdam, N. Y.

Mrs. Frank Orson and son Francis have returned from a business trip to Ft. Worth.

Mr. and Mrs. Seth Campbell of Kermit were in Midland shopping Saturday morning. They were en route Ballinger where they will visit relatives.

Mr. and Mrs. W. E. Collier and son of Midland and Mr. W. H. Collier of Venezuela, who has been visiting here, left yesterday for El Paso where they will visit several days.

Mr. and Mrs. Clifton Long will leave within a few days for Louisiana where they will visit relatives during the vacation. They will make the trip by San Antonio.

Henry Rhodes of Odessa was a business visitor in Midland Friday afternoon.

Mrs. N. D. Aliff has gone to El Paso after visiting relatives in Midland for a few days.

Mr. and Mrs. Will Harris and daughter Miss Myrtle are on their vacation in California. They will be gone about three weeks.

B. B. Cheney and F. M. Davis of Wink are spending the weekend in Midland.

Miss Annie Faye Dunagan returned last night from Big Spring where she has been visiting her brother Mr. H. B. Dunagan and family.

Mr. and Mrs. W. P. Masters of Abilene were in Midland Friday. They are now managers of the Hilton Hotel Coffee Shop.

Mrs. Mary Turner returned Friday from Dallas where she has been visiting relatives for the past few weeks.

Mrs. Chas. Edwards and daughter, Miss Jerra, have returned from a ten days visit in Hot Springs, New Mexico.

Mrs. E. P. Cowden and daughter Mrs. M. O. Means of Valentine are returned to Midland from Temple where they have been recently.

Mrs. R. C. Osborne returned to Midland yesterday from Mineral Wells where she has been visiting her mother.

Miss Audrey Harmon who has been the house guest of Dr. and Mrs. A. M. Gantt has returned to her home in Lubbock.

W. I. Pratt returned Friday night from a trip to Alpine, Fort Stockton and other cities south west. He and John Hassen, head of the Hassen Stores, were on business for the company.

W. T. Strange, Big Spring architect, was a business visitor to Midland Saturday.

Mrs. Bob Preston and son are visiting her relatives in Snyder.

Mrs. Carl Covington, who has been ill for several days, is back at her position in the chamber of commerce.

Carl D. Reeves, Studebaker dealer, went to Abilene yesterday on a business trip.

M. F. King, distributor of Chrysler Refinery products here, transacted business in Stanton yesterday.

A. B. Anderson, manager of Wm. Cameron Company, was a business visitor to Big Spring Saturday morning.

George Wallace left yesterday for El Paso on a business trip.



## Personal cleanliness

Every milkster at our dairy must be careful of his personal cleanliness. His hands and clothing must be clean. This cleanliness becomes a habit with us.

**SANITARY JERSEY DAIRY**  
Midland's Best Equipped Dairy  
Phone 9039-F3  
DELIVERY

## RITZ

Cooled With Washed Air  
SUNDAY AND MONDAY ONLY

Broadway's Famous Singing Commediene  
Fannie Brice  
in  
"MY MAN"

Talking - Songs - Music  
Pathe Sound News  
Fables (in sound)  
Organ

TUESDAY  
Billie Dove  
in  
"CAREERS"

100% Talking with  
NOAH BEERY  
THELMA TODD  
ANTONIO MORENO

MR. D. H. STARLING  
MR. B. H. BLAKENEY  
Be our guests today or Monday

## Announcements

**Monday**  
Baptist Women's Missionary Society meets at the home of Mrs. Elliott Cowden at 3:00 with Mesdames E. W. Cowden, H. J. Neblett, Joy Vance and R. M. Barron as co-hostesses. District officers from Big Spring will be present.

**Tuesday**  
The Order of Eastern Star has called a meeting of members to be held at the Masonic Building—8:00. Mrs. Robin Willis entertains members of the Contract Bridge Club at her home with a luncheon—11:00.

**Wednesday**  
Buck Boosters Club will meet for

regular meeting in the salesroom of Scruggs Motor Company—8:00.

Mrs. W. E. Wallace entertains members of the Mid-Week Bridge club at her home—2:30.

Kongienal Kard Klub at the home of Mrs. J. A. Tuttle for bridge games—3:30.

**Thursday**  
Regular bridge party for members of the country club at the club house—3:30.

**HATS - GIFTS - HOSE**  
**THE COME 'N LOOK SHOP**  
117 E. Wall St. Phone 334  
"A Whisper off Main"

## SPECIALS FROM

## Mayes-Young Drug Co.

## BIG AVIATION BOOK FOR BOYS

Every boy who is interested in aviation should read one of these wonderful books of real stories written on Commander Byrd's famous flight to the North Pole. Also Lindbergh's flight to Paris, as well as many other interesting stories.

Special \$1.00 EACH

## FOR THE LITTLE GIRLS

24-inch Dolls, with natural hair. They sleep and they cry. See them in our windows.

## Complete and Up-to-Date LUNCHEONETTE Sandwiches - Plate Lunches

## MONTH END SPECIALS

### LADIES' SILK AND WASH DRESSES

We have reduced the price on all SUMMER DRESSES

Many at **1/2 PRICE AND LOWER**

We must clear our racks of all our Summer Dresses, so that we will have room for new Fall styles that will be coming to our store in just a few days.

Remember there will be 31 real hot days in August and 31 real hot days in September. Now is your chance to fill your summer wardrobe at an extremely low cost.

## SLEEVELESS DRESSES PRINTED CREPES, FLAT CREPES SPORT OUTFITS, GEORGETTES

### New Arrivals

In sleeveless prints. You will have to see them to appreciate them. A full range of sizes. Also a full color assortment. These snappy frocks are the talk of the town. Every one fast color. For Miss or Matron—

TWO FOR  
**\$1.95**

### 10 Dozen

New wash dresses. Just in. All the latest colors. Just the thing for around the house and in the office. These dresses are entirely new stock. Sizes 14 to 50 and at a price you can well afford several. Colors that will stand the tub.

EACH  
**\$1.95**

## HASSEN CO.

W. I. PRATT, Mgr.

Midland, Texas

You will receive a coupon with each record bought at this store, which gives you one chance. Come in today.

Watch this space for new record releases each week.

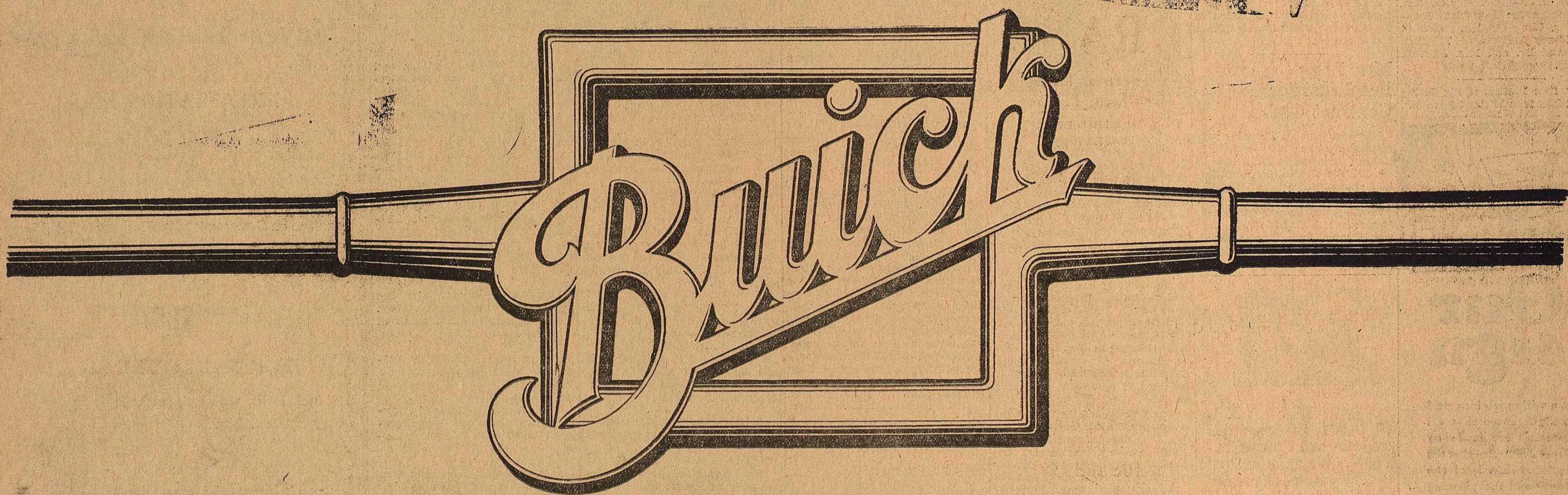
## THIS VICTOR PORTABLE

To Be Given Away by

## The Texas Music Company

OCTOBER 15, 1929

# Today AT BUICK DEALERS



FOR 1930

BE SURE TO SEE

*The Greatest Buick  
of them all*

{ 3 NEW SERIES . . . . . 3 NEW WHEELBASES . . . . . 3 NEW PRICE RANGES }

Scruggs Buick Company

*Authorized  
Sales and Service*

WHEN BETTER AUTOMOBILES ARE BUILT . . . BUICK WILL BUILD THEM

# PACKED STANDS ARE EXPECTED TO GREET COLT-ACE GAME TODAY

## THIRD GAME OF ABILENE SERIES SLATED AT PARK

When the Colts take the field this afternoon against the Aces from Abilene, Midland fans are expected to fill every seat at Cowden park, baseball directors say.

The fact that the league is as tight as the proverbial shoehorn makes every win or loss change up the averages alarmingly.

Midland errors along with the free hitting exhibition gave Abilene the long end of the 13 to 7

score in the first game of the Colts home series Friday. Midland staged a five-run rally in the ninth with Lefty Moore getting a home run. The rally was still six runs short.

Box Score:	
ABILENE	AB H O A
Bellah, 3	5 3 1 0
Allday, 2	5 1 1 3
Anderson, 1	5 0 3 0
Bradbury, c	5 2 2 0
Orr, r	4 1 1 0
Burrows, 1	4 2 1 0
Nebel, m	5 3 4 0
Tasjian, s	4 0 3 3
Shelton, p	5 1 1 1
Totals	42 13 27 7
MIDLAND	AB H O A
Boyd, s	3 1 2 4
Lewis, 3	3 0 2 1

Flowers, m	4	1	1	0
Kallina, 1	4	2	10	0
King, r	3	0	1	0
Cheeves, 1	4	1	0	0
Baker, 2	4	1	4	2
Ratliff, c	2	0	6	0
Moore, p	4	2	1	2
*Stagner	1	1	0	0
Totals	32	9	27	9

\*Batted for Boyd in ninth.  
Abilene.....030 020 062-13  
Midland.....110 000 005-7

Summary:  
Runs, Bellah 2, Allday, Bradbury, Orr, Burrows 2, Nebel 3, Tasjian, Shelton 2, Boyd, King, Cheeves 2, Baker, Ratliff, Moore.

Errors, Anderson, Shelton 2, Boyd, Lewis, Baker, Kallina, Ratliff.

Two-base hits, Nebel, Cheeves, Moore, Kallina.  
Three-base hits, Bellah, Shelton. Home run, Moore.  
Sacrifice hits, Tasjian, Lewis 2, Ratliff.  
Time, 1:55.  
Umpire, Carson.

## MIDLAND SWAMPS ABILENE UNDER EXTRA BASE BLOWS AND BAT PLYING

Midland squared accounts with the Abilene Aces Saturday and hung up another high score record for the League. The game was featured by the appearance of a new pitcher, Govenat who turned in a nice game, and the hitting of another new comer Red Boken who got five hits in six trips to the plate, including a home run and a double. The lanky shortstop played a fast game on the defense featuring in two double plays. Jud Lewis led the way with three home runs with King following with two. Kallina, Moore and Boken bringing the total to eight for the Colts.

Orr hit a home run for the visitors, bringing his total up to thirty-two.

First Inning  
Abilene: Bellah walked. Allday flied out to Flowers. Anderson popped to Cheeves. Bellah went to second when Kallina let Govenats throw get through him, and continued to third on Govenats wild pitch. Bradbury struck out.

Midland: Lewis went out to Orr. Flowers singled through second. King grounded to Allday who had a set up for a double play but muffed the catch and was content with throwing King out at first. Kallina doubled scoring Flowers. Cheeves hit to left and Kallina was thrown out at the plate trying to score.

Second Inning  
Abilene: Orr was hit by a pitched ball. Burrows grounded to Cheeves who tagged Orr but was too late to get Burrows at first. Nebel tripled, to left center scoring Burrows. Tasjian was out Govenats to Kallina, Nebel was held at third. Cromer was out Cheeves to Kallina.

Midland: Moore's grounder took a bad hop into Allday and was safe at first. Stagner walked and Boken was hit by a pitched ball, filling the bases. Govenat grounded to Tasjian who threw wild the plate and all hands were safe. Lewis singled through third base, scoring Stagner and Boken. Flowers singled filling the bases. King hit a home run over the right field wall to get Cromer out of the hole. Kallina walked and Cheeves popped to short. Moore flied out to Anderson in left. Stagner singled Kallina stopping at second. Boken singled, scoring Kallina. Govenat walked, filling the bases. Lewis forced Govenat at second.

Third Inning  
Abilene: Bellah dropped a scratch hit back of Cheeves. Allday flied out to Flowers. Anderson popped to Cheeves. Boken made a fine scoop of Bradbury's grounder and tossed to Cheeves forcing Bellah.

Midland: Flowers struck out. King hit his second home run over the left field wall. Kallina was out to Burrows unassisted. Cheeves grounded to short for the third out.

Fourth Inning  
Abilene: Orr was out to Kallina unassisted. Burrows got a three-base hit to left center when Flowers misjudged his long drive in the wind. Burrows scored on Nebels infield out Cheeves to Kallina. Tasjian got a single off Lewis' glove. Cromer hit a hot one to Kallina who knocked it down and re-

# SPLINTERS

VOL. I. JULY 28th, 1929 NO. 25.

Published in the interests of the People of Midland by Wm. Cameron & Co., Inc. A. B. Anderson, Editor.

Editorial  
If you want to make Midland look better to you than it ever did before, just take a long vacation trip this summer and see a lot of other towns.

FAMED WRITER ADAPTS STAGE PLAY FOR STAR  
From Gloria Swanson to William Haines!  
This is the gamut of the literary endeavor of Forrest Halsey, famous scenarist, who, after adapting many of Gloria Swanson's greatest plays, adapted "A Man's Man," Patrick Kearney's stage hit, for William Haines.

"A Man's Man," directed at the Metro-Goldwyn-Mayer studios by James Cruze, famous director of "The Covered Wagon," comes today to the Grand Theatre as a sound synchronized film. It is a hilarious satire on Hollywood, combined with a tense human love drama. Josephine Dunn plays the heroine and the cast includes Sam Hardy, Mae Busch and others of note.

Americanism  
Earning more and more money and spending it for more gorgeous bathrooms.

admire;  
Our heart with love he fills,  
For on the first of every month,  
He promptly pays his bills.

We saw a kitchen the other day that had been too large. It was rearranged, new cupboards and counters built-in and the clearest little breakfast room you ever saw took up the surplus room. Maybe you can do the same.

We'd hate to be making our entire living selling furnaces this hot weather.

This warm spell is just the time to put in those storm sashes. See us and we will take care of your needs.

Do you like enamel woodwork and furniture? It is very easy to transform a dull room into a charming spot with Minnesota Enamel. We have it.

To know WHAT to do is wisdom; to

know HOW to do it is skill; to DO a thing as it should be done is service.

It is a strain on the disposition when the garage doors stick and you can't get 'em open or shut. Avoid the situation and the strain on your disposition. Buy your garage door hinges here.

Jewish Laundry  
"Izzy," demanded the boss, "was that Mr. Epstein's undershirt?"  
"Naw," snorted Izzy "that was the Katz pajamas."

A million flies on the outside are better than one in the house. How about your screens.

A little tulle, a yard of silk, a little skin as white as milk; a little strap—how dare she breathe? A little cough—"Good evening, Eve!"

You can add the price of a good barn

to the value of your farm any time. The first thing a prospective buyer looks at is improvements. We have some good barn plans that we'd like to have you see.

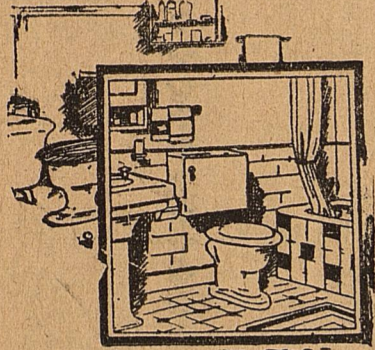
"Preachers make the best husbands," claims one of them. We claim wives make the best husbands.

When you think of building think of Wm. Cameron & Co., Inc., Building Material Dealers

Wm. Cameron & Co.

"Everything to - Build Anything"

Phone No. 433  
Midland, — Texas



## MODERNITY and the BATHROOM

The bathroom is as much a part of the home as any other room. And so modern plumbers have devised innovations that should find their way into every house. Modern motifs in tiling; bowls, tubs, and washstands in soft pastel tones; and new elements of mechanical perfection are now available at prices that add to the appeal. Let Howe & Allen modernize your bathroom.

**Howe & Allen**  
Licensed and Bonded Plumbers  
Phone 232 Midland, Texas

## GRAND

Starting Today William Haines

In His Latest Metro Triumph  
**A MAN'S MAN**

Thrills! Laughs! Love! Action!

Josephine Dunn  
Mae Busch

In the big cast  
James Cruze

Directed  
100% Entertainment  
Don't Miss It!  
News and Comedy

LOOK!  
10c and 25c  
Any Seat

# Studebaker's new DICTATOR SIX

115 INCH WHEELBASE

Larger...smarter...costs less!

**\$995**  
AT THE FACTORY

No Studebaker closed car in history ever sold for so little—or ever offered greater dollar value—than the New Dictator Six, smart companion car to Studebaker's recently announced Dictator Straight Eight! More style—in line, in color, in

fitments! Finer performance! Greater riding, driving ease! Feature after feature that prove its fine-car quality! Read, below, the remarkable value Studebaker's unique One-Profit manufacturing advantage has given you in this great New Dictator Six.

- 115-inch wheelbase.
- Rubber engine mountings and bronze-backed and babbit-faced crankshaft bearings provide maximum life and smoothness.
- Lanchester vibration dampener.
- Oil filter, gasoline filter and crankcase ventilating system insure maximum engine efficiency.
- Fuel pump insures constant, adequate flow of gasoline, regardless of speed or grade.
- Thermostatically controlled cooling system retards flow of water until motor has reached precisely correct temperature for highest operating efficiency.
- Double-drop frame of new compound flange design—far costlier but sturdier, safer and permitting graceful lowness of body lines.

- Hydraulic shock absorbers, front and rear.
- Genuine mohair upholstery.
- Full-vision, full-ventilated bodies of steel over hardwood foundation—the accepted fine car coachcraft.
- One-piece steel core safety steering wheel.
- Adjustable steering wheel and front seat.
- Amplified-action 4-wheel brakes which stop The Dictator in half the distance accepted as standard.
- Tarnish-proof chromium plating over nickel on all exterior brightwork.
- Coincidental lock to ignition and steering assures Dictator owners lowest theft insurance rates.
- The Dictator may be driven 40 miles per hour the day it is delivered—the result of advanced engineering, precision workmanship and careful inspection.

SAVE WITH SAFETY AT THE RECALL STORE

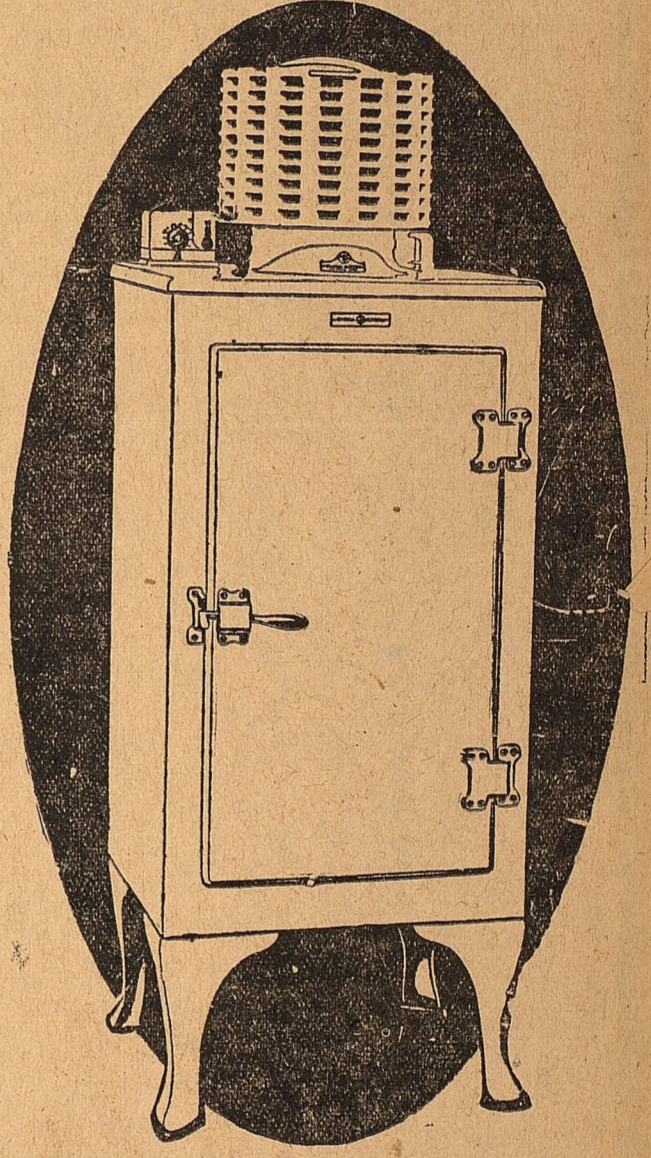
So Cool and Refreshing



When you're feeling hot and irritable come to your Rexall Store for cool, refreshing sodas. They save your thirst and cool you off.  
City Drug Store  
Rexall Store No. 1  
Petroleum Pharmacy  
Rexall Store No. 2  
T. A. Fannin and Son, Owners  
The Rexall Store

SPECIAL  
2 Quart Ice Cream FREEZERS  
98c  
Southern Ice & Utilities Co.

# ALL-STEEL BUILT like a SAFE

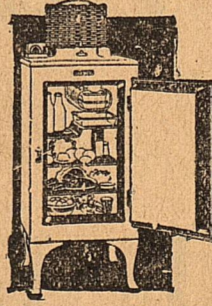


BUT two months ago General Electric announced the first ALL-STEEL refrigerator ever built. Now this outstanding scientific development of the times has been made available in six popular models.

mounted up on top, safe from dust and difficulties. Quietly, economically, it constantly maintains the temperature in the refrigerator at several safe degrees below the danger line of 50. It freezes ice cubes rapidly.

The all-steel refrigerator cannot warp. It is strong—built to last. The doors, fitted by hand at the factory, retain their close fit. The new exterior baked enamel finish, smoothly white, as hard and durable as porcelain, has the added virtue that it does not check or crack.

Yet, notwithstanding these exclusive features, these new models are offered at surprisingly low prices and on our plan of conveniently spaced payments. The small family model, at the factory, is priced at \$215. New all-steel models in six different sizes at our display rooms invite your inspection.



\$215 at the factory with conveniently spaced payments

Coupled with these advantages is the previous perfection of the General Electric mechanism which is permanently self-oiling, hermetically sealed in a steel casing and

Listen in on the General Electric Hour every Saturday, 8 to 9 P.M., Eastern Standard Time, over the N. B. C. network of 42 stations.

## GENERAL ELECTRIC ALL-STEEL REFRIGERATOR

Texas Electric Service Co.

"Your Electric Servant"

A COMPLETE STOCK OF USED CARS WORTH WHILE WE HAVE ALL STYLES AND ALL MAKES  
**ED.S. HUGHES MOTOR CO**

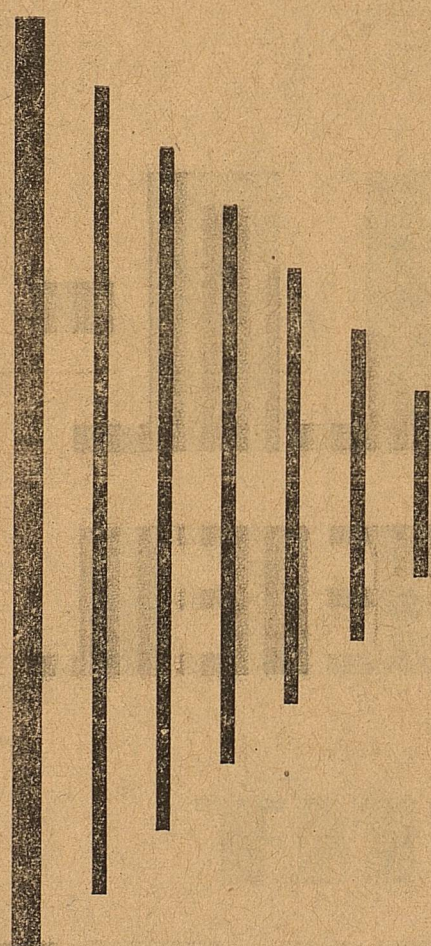
Since 1882  
**Super Service Station**

South of Court House Midland, Texas



# THOSE WHOM YOU OWE

Also Have Bills to Be Met on the 10th



THAT BILL ON YOUR DESK -- IT HAS A TWIN. FOR THE MERCHANT WHO SENT IT HAS ONE OF HIS OWN FROM THE MANUFACTURER ON THE SAME ARTICLE.

BY FAILURE TO PAY HIS BILL THE CONSUMER IS THROWING A MONKEY WRENCH IN THE MACHINERY OF THE WHOLE ECONOMIC PROCESS.

BE FAIR. YOU LIKE TO HAVE OTHERS PAY YOU ON TIME; SO WHY NOT RETURN THE COMPLIMENT?

## PAY as You'd Have Others Pay YOU



### THE RETAIL MERCHANTS' ASSN.

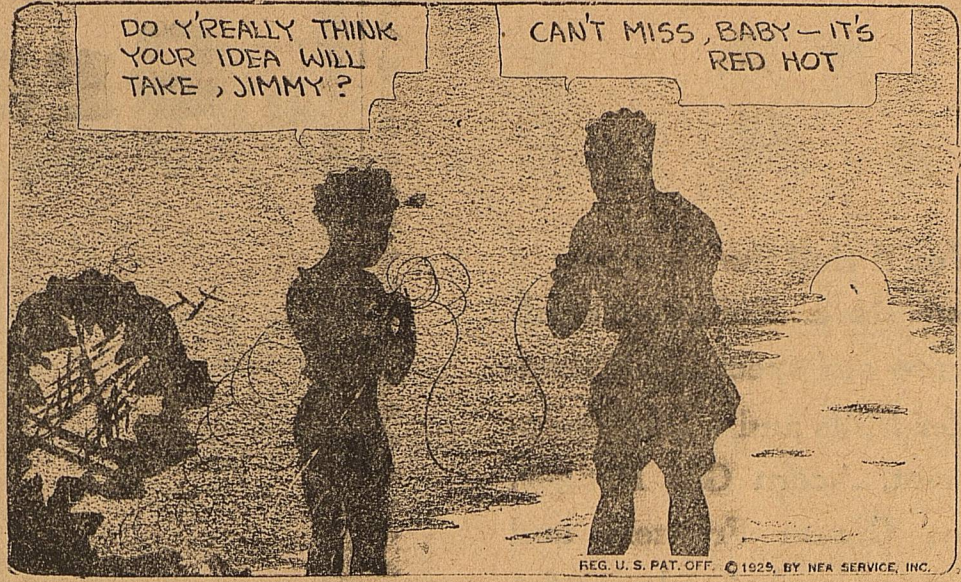
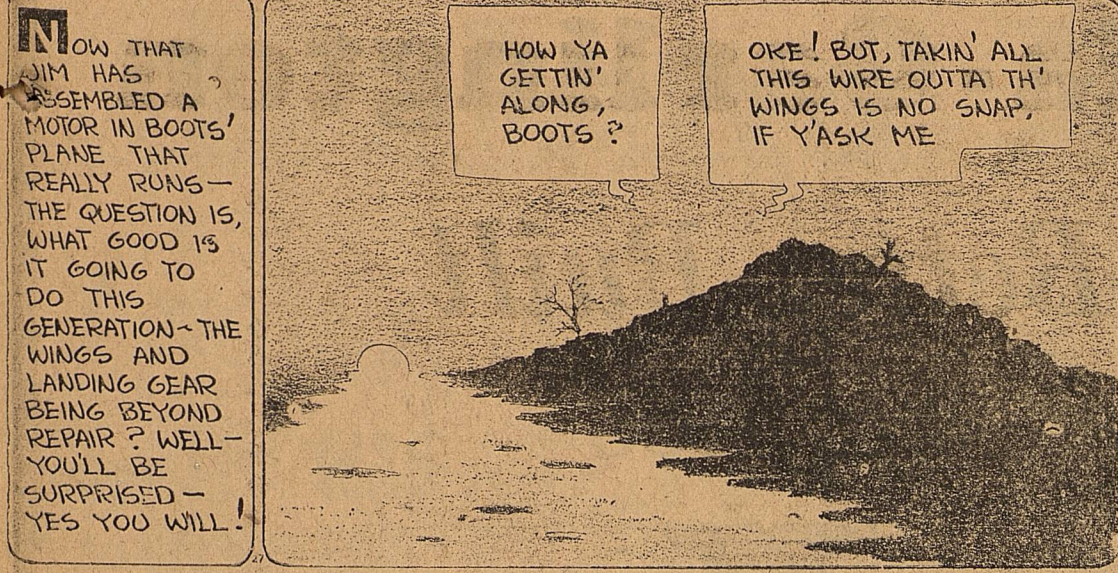
*This Ad Paid For By the Merchants of Midland Who Have Extended You Credit*

# REPORTER-TELEGRAM DAILY COMIC PAGE

## BOOTS AND HER BUDDIES

????

By Martin



## CLASSIFIED

**WATCH THIS SPACE**

FOR SALE: Brand new five room brick veneer, hardwood floors, corner lot, best bargain in town. \$5,000.00 terms.

FOR RENT—Four room apartment in duplex, close in. \$35.00 per month.

**WEST TEXAS LAND CO.**  
206 Petroleum Building  
Phone 808

Ira F. Lord J. M. White

**3 Furnished Apartments**

A LARGE furnished apartment for rent. Cochran Apartments. 513 W. Wall. 120-3p

FOR RENT—Furnished 2-room apartment cheap. Everything modern. 933 S. Weatherford. 120-2p

FURNISHED APARTMENT—Close in. To couple without children. 435 North Main. 121-1c

FOR RENT—Nicely furnished three room apartment in duplex. Private bath. Phone 678J. 121-3p

ONE AND TWO-ROOM furnished apartments. All utilities paid. 1032 North Main. Phone 489J. 120-3p

FOR RENT—Two room furnished apartment, also three rooms unfurnished. Close in, reasonable. Phone 31. 121-3p

FOR RENT—Four room apartment in new duplex. Located in West End. Modern in every respect. Phone 641 W. 119-1c

ONE-ROOM furnished, suitable for couple, also 2-room furnished house. 702 South Colorado. Ira Cole. 117-1c

FOR RENT—Two apartments. Modern. See Mrs. Bud Estes, 202 West Louisiana. 119-1c

FURNISHED APARTMENT. All utilities paid. On first, furnished apartment in duplex. 104 East Ohio 119-3p

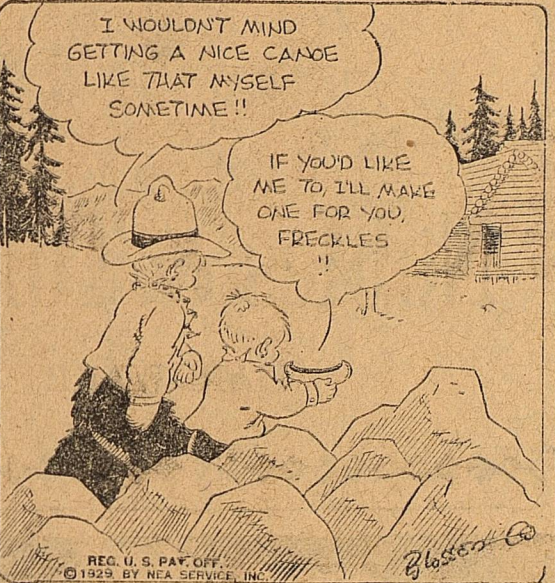
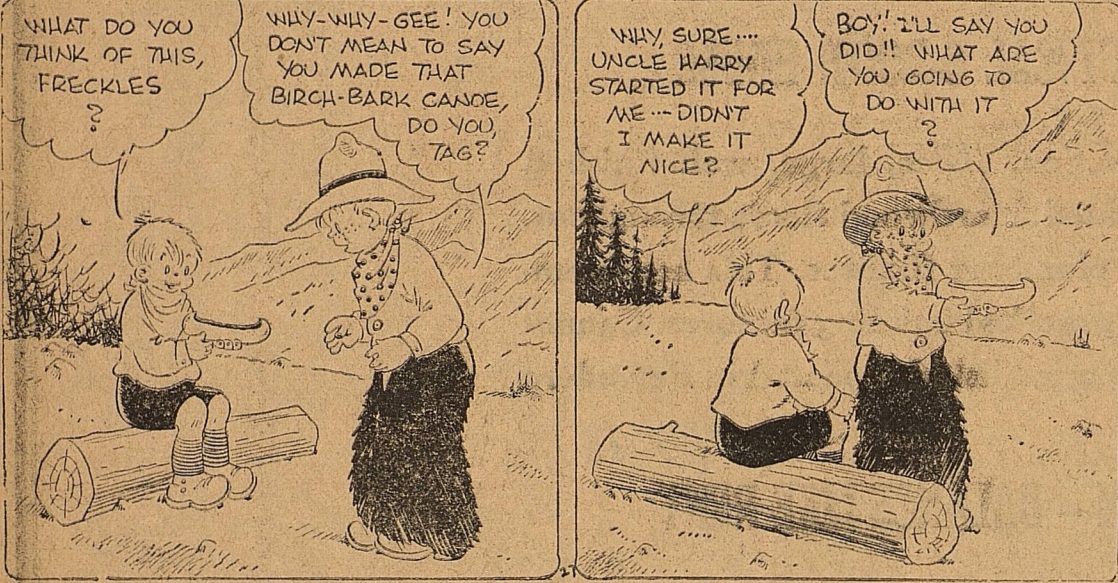
FOR RENT—Three-room furnished apartment. Phone 151. 116-1c

FOR RENT—Three room furnished apartment in a duplex. 310 West Indiana. Phone 658. 114-1c

## FRECKLES AND HIS FRIENDS

A Present for Oscar

By Blosser



FOR RENT—Two room furnished apartment, also three rooms unfurnished. Close in, reasonable. Phone 31. 121-3p

FOR RENT—Four room apartment in new duplex. Located in West End. Modern in every respect. Phone 641 W. 119-1c

ONE-ROOM furnished, suitable for couple, also 2-room furnished house. 702 South Colorado. Ira Cole. 117-1c

FOR RENT—Two apartments. Modern. See Mrs. Bud Estes, 202 West Louisiana. 119-1c

FURNISHED APARTMENT. All utilities paid. On first, furnished apartment in duplex. 104 East Ohio 119-3p

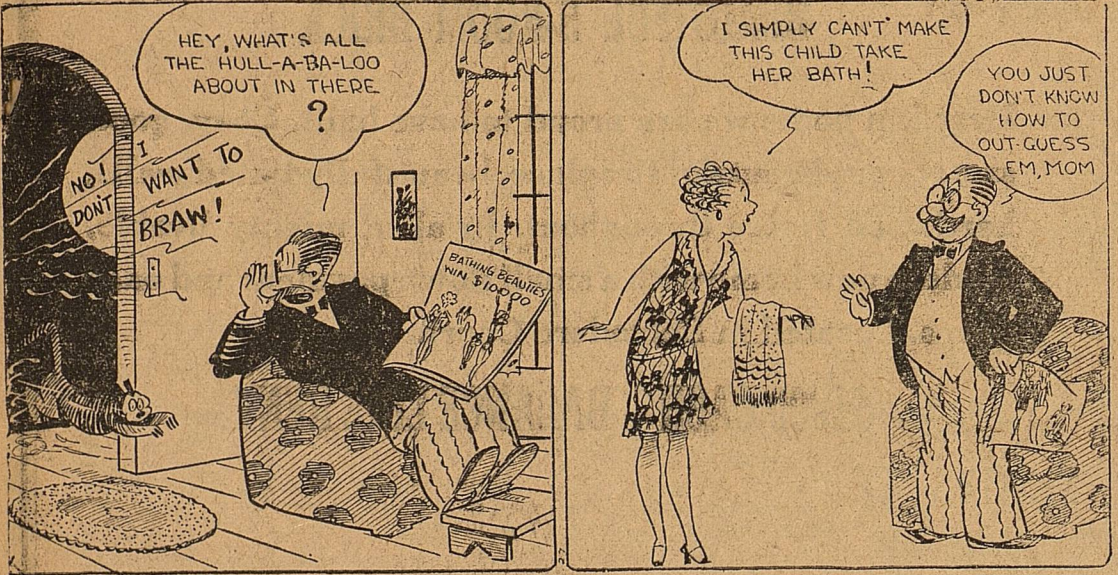
FOR RENT—Three-room furnished apartment. Phone 151. 116-1c

FOR RENT—Three room furnished apartment in a duplex. 310 West Indiana. Phone 658. 114-1c

## MOM'N POP

Diplomacy

By Cowan



FOR RENT—Two room furnished apartment, also three rooms unfurnished. Close in, reasonable. Phone 31. 121-3p

FOR RENT—Four room apartment in new duplex. Located in West End. Modern in every respect. Phone 641 W. 119-1c

ONE-ROOM furnished, suitable for couple, also 2-room furnished house. 702 South Colorado. Ira Cole. 117-1c

FOR RENT—Two apartments. Modern. See Mrs. Bud Estes, 202 West Louisiana. 119-1c

FURNISHED APARTMENT. All utilities paid. On first, furnished apartment in duplex. 104 East Ohio 119-3p

FOR RENT—Three-room furnished apartment. Phone 151. 116-1c

FOR RENT—Three room furnished apartment in a duplex. 310 West Indiana. Phone 658. 114-1c

**4 Unfurnished Apartment**

FOR RENT—To adults only. Nice close in, unfurnished apartment on North Marienfield Street. Phone 70. 121-1c

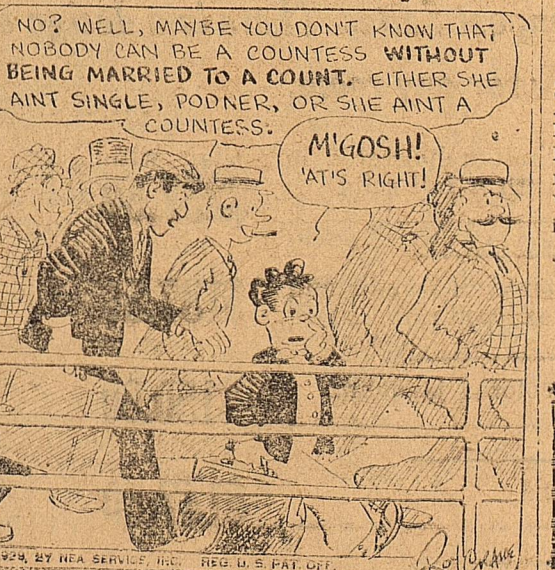
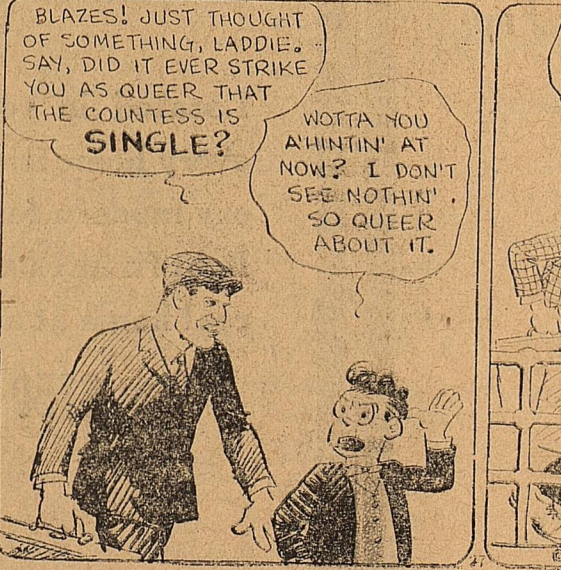
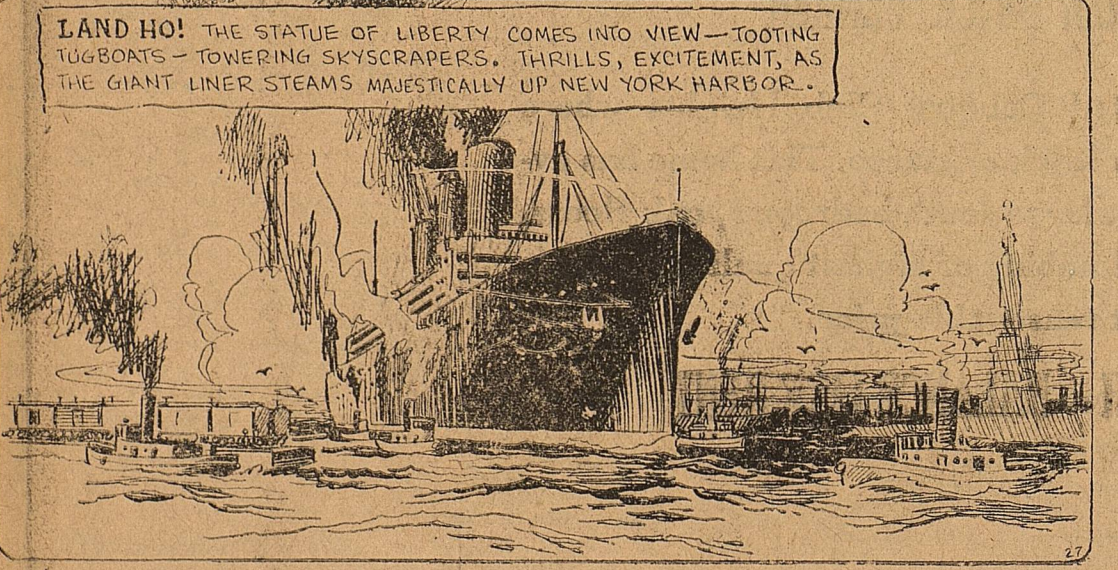
FOR RENT—Unfurnished 3-room modern apartment, private bath, garage. Close in. Attractive for a couple without small children. W. E. Wallace and Son. 119-3c

UNFURNISHED apartment for rent in duplex. Sparks & Barron. Phone 79. 61-1c

## WASH TUBS

Home, Sweet Home

By Crane



FOR RENT—Two room furnished apartment, also three rooms unfurnished. Close in, reasonable. Phone 31. 121-3p

FOR RENT—Four room apartment in new duplex. Located in West End. Modern in every respect. Phone 641 W. 119-1c

ONE-ROOM furnished, suitable for couple, also 2-room furnished house. 702 South Colorado. Ira Cole. 117-1c

FOR RENT—Two apartments. Modern. See Mrs. Bud Estes, 202 West Louisiana. 119-1c

FURNISHED APARTMENT. All utilities paid. On first, furnished apartment in duplex. 104 East Ohio 119-3p

FOR RENT—Three-room furnished apartment. Phone 151. 116-1c

FOR RENT—Three room furnished apartment in a duplex. 310 West Indiana. Phone 658. 114-1c

**4 Unfurnished Apartment**

FOR RENT—To adults only. Nice close in, unfurnished apartment on North Marienfield Street. Phone 70. 121-1c

FOR RENT—Unfurnished 3-room modern apartment, private bath, garage. Close in. Attractive for a couple without small children. W. E. Wallace and Son. 119-3c

UNFURNISHED apartment for rent in duplex. Sparks & Barron. Phone 79. 61-1c

**6 Unfurnished Houses**

FOR RENT: Modern, five-room stucco house unfurnished. Double garage. 624 Colorado Street. See Phil Scharbauer, Hotel Scharbauer. 115-1c

**7 Houses for Sale**

NOTICE

For sale—worth the money—house with two good lots. All conveniences in Cowden addition; will take in light car. Apply D. L. Swain. 115-1c

**8 Real Estate**

LAMESA FARM to trade for Midland property. Three residences, one now on the bottom. Some trade. Very best small farm tracts. Close in, cheap. J. N. Wells, Realtor. 114-1c

**11 Bedrooms**

NICE BEDROOM for rent. Bath with hot water adjoining room. \$35 per month. Call 796W. Apply 409 West Texas Avenue. 120-3c

SOUTH BEDROOM, private entrance, adjoining bath. Gentleman only. 336 N. Main. 96-1c

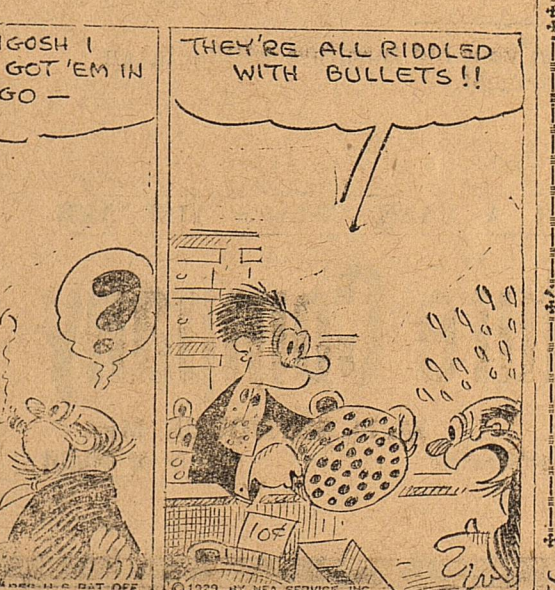
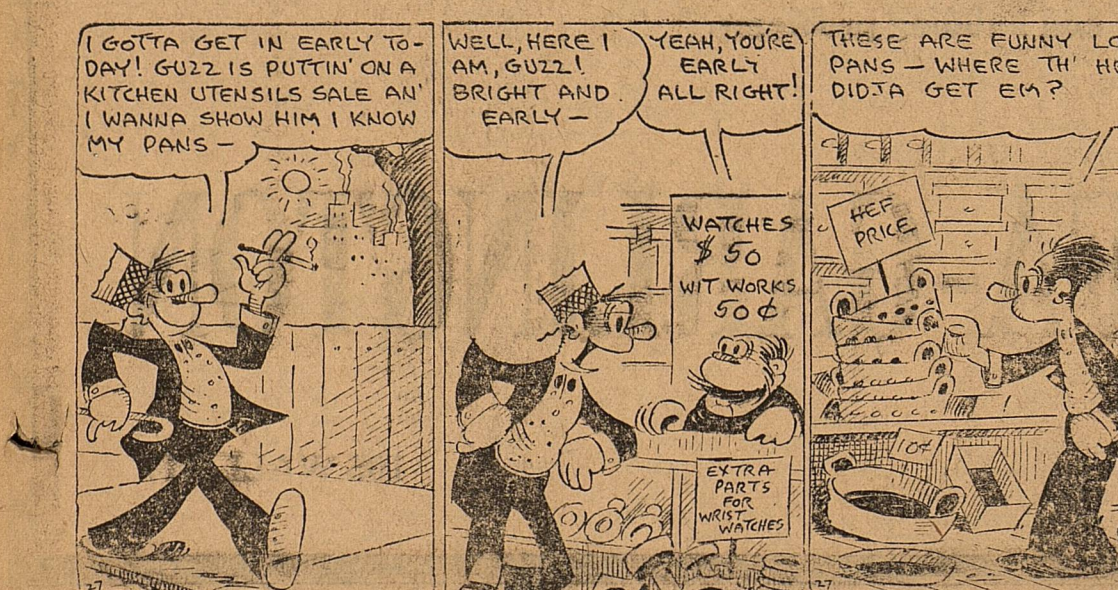
FOR RENT—Bedroom with or without board, near Hogan building. Garage. Phone 263 or call 706 N. Colorado St. 58-1c

FOR RENT—Desirable southeast bedroom, adjoining bath. Close in. Rent reasonable. Phone 230. 119-1c

## SALESMAN SAM

All Shot

By Small



**Business --- Professional**

**DR. MAY OBERLANDER**  
Licensed Chiropractor  
And Scientific Massage  
12 Years' Experience  
Room 314 Scharbauer Hotel

**Dr. L. B. PEMBERTON**  
DENTIST  
Rooms 501-2  
THOMAS BUILDING

**Hyatt, Mims & Crane**  
"Our Service Is Better"  
General Insurance - Loans  
Abstracts - Title Insurance  
First Nat'l Bank Annex  
Phone 24

**A. M. GANTT, M. D.**  
General Medicine and Surgery  
Diagnosis and Consultation  
Office Phone 583 Orson Bldg.  
Residence Phone 564  
Home Address  
1522 West Texas Avenue  
Midland, Texas

Your Patronage Appreciated  
Inquiries Solicited  
T. T. Tested Cows  
**Meissner's Dairy**  
Gustav Meissner, Prop.  
Phone 9038-F3

Your Milk Trade Will Be Appreciated  
**HINES DAIRY**  
T. B. Tested Cows  
H. H. Hines, Prop.  
9908-F2

Subscribe now for The Reporter-Telegram.

**A. P. I. Chapter—**

here from Houston to attend the meeting.

Those who registered at the meeting follow:

G. A. Young, A. P. I. Dallas; W. W. Scott, W. C. Shotts, Rumble Oil & Refining Company, Houston; E. N. Van Duzee, E. L. Davenport, Shell Petroleum Corp., Wink; H. B. Bullington, Kirk-Morrow, Midland; C. C. Kopp, Smith Separator Company, Midland; J. D. Best, Lufkin Foundry & Machinery Company, Odessa; Louis E. Douglas, Wagner Supply, Big Spring; S. H. Casteel, Landreth Production Company, Midland; D. B. Couerville, Gulf Production Company, Odessa; C. N. Mare, T. A. Huber, F. W. Michaux, R. L. Harris, G. C. Olson, Humble Oil & Refining Company, Wink; H. Hardison, George T. Klingaman, T. B. Flood, John Emery Adams, Wm. Simpson, The California Company, Midland; Clyde V. Temple, David Frame, T. S. Seeley, J. W. House, O. E. Young, Humble Oil & Refining Company, McCamey; E. J. Cramer, The California Company, Wink; Wm. V. Vietlin, H. B. Hurley, Continental Oil Company, Big Spring; W. R. Lake, Emsco D. E. Company, Midland; J. R. Brooks, J. H. McDonald, Atlas Supply, Muskogee, Oklahoma; S. H. McQuain, Wefer Engine Company, Ft. Worth; R. L. English, Sun Oil Company, McCamey; R. T. Gimon, M. P. Company, Odessa; W. P. Knight, Longhart Supply Company, Midland; J. A. Starkey, L. Thurman, C. Kesuer, R. S. Christie, Amerada Petroleum Corp., Wink; H. A. Russell, Delmar Oil Company, Midland; A. S. Legg, Texas Electric Service Company, Midland; W. W. Warner, M. B. Stanton, Amerada Pet. Corp., Big Spring; R. B. Sheneby, G. M. Davis, Southern Crude Oil & Producing Company, Wink; A. E. Hunt, Allis, Chambers Company, Big Spring; A. R. Anderson, A. O. Olson, Texas Electric Service Company, Big Spring; Ned W. Beaudreau, Midland; W. A. Scheaffer, Geo. W. Stevens, Shell Petroleum Company, McCamey; C. A. Murdock, N. A. Widmayer, Shell, Big Spring; H. M. McCarty, T. J. Frank, Humble Oil & Refining

Company, McCamey; A. A. Kemnitz, Humble Oil & Refining Company, Big Spring; C. P. Bristol, Midland Refining Company, McCamey; J. E. Friberg, Shell, Midland; R. E. Williams, Shell, Big Spring.

**PREBYTERIAN CHRISTIAN ENDEAVOR**

The following program will be rendered by Group II Sunday at 7:30 with Laurin Blaydes as leader.

1. Soft music—Edyth Sundquist.
  2. Hymn—The Church in the Wildwood.
  3. Prayer—Leader.
  4. Hymn—The church's one foundation.
  5. Questions:
    - (a) What ideals of the church have most helped the nation—Georgia McMullan.
    - (b) How has the church furthered education—Leader.
    - (c) How has it inspired ministry to suffering and want—Mary Katherine Hogsett.
    - (d) How has it influenced business—Lucille McMullan.
- Song—Hear Us, O Father. Benediction.

**THE FIRST BAPTIST CHURCH**  
George F. Brown, aPastor

Sunday Bible school at 9:45. A place for all ages.

The pastor will preach at 11:00 a. m. and at 8:30 p. m.

"Let us Pray" will be the morning theme.

Subject for the evening message will be "The Spiritual Harvest."

The pastor will leave early Monday morning for the Paisano Baptist Encampment.

We most cordially invite a full attendance at all services.

A welcome to all.

**ANNOUNCEMENT**

Meeting of the Order of Eastern Star will be held on Tuesday instead of Monday evening as was previously announced. The meeting is called for the purpose of initiation at 8:00.

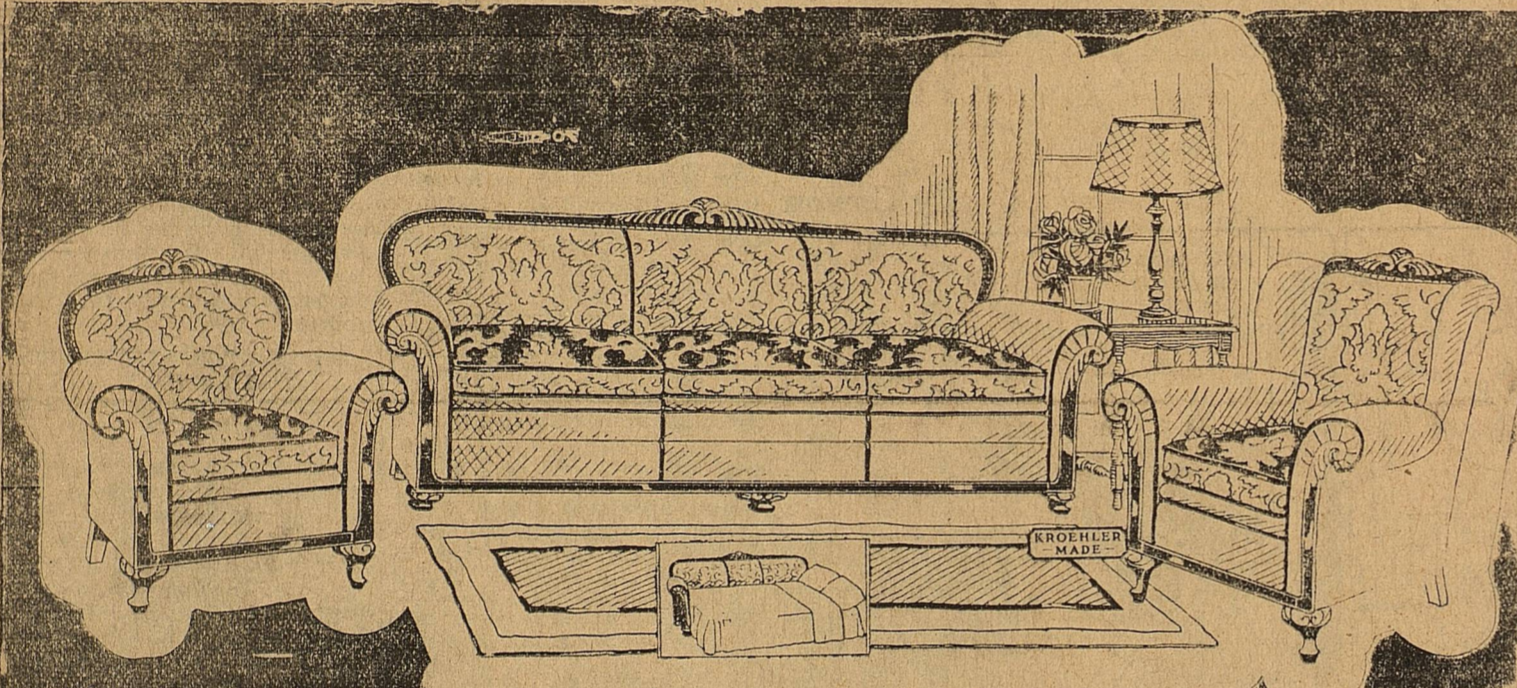
IF YOU NEED

**HARDWARE**

You'll find the very best in our store. Builders hardware our specialty. Dempster Mills and water equipment. Acorn Gas Ranges. Ice Cream Freezers and everything in hardware for the home.

**Nobles & Tolbert**

HARDWARE



**Make An Extra Bedroom Out Of Your Livingroom**

by using one of these attractive Bed Davenport Suites. There is a design and upholstery suitable for any room.

- 2-Piece Bed Davenport living room suit upholstered in mohair with silk Damask reverse cushions, and with a full solid Mahogany exposed rail **\$257.50**
- 2-Piece Bed Davenport Suite upholstered in mohair and with moquette combination with the exposed rail **\$187.50**
- 2-Piece Bed Davenport Suite, multi-colored jacquard upholstery and exposed rail **\$150.00**
- 3-Piece Bed Davenport Suite, jacquard velour upholstery **\$147.50**
- 2-Piece Bed Davenport Suite in plum colored jacquard velour **\$127.50**
- 2-Piece Bed Davenport Suites upholstered in jacquard with guaranteed spring construction **\$105.00**

Convenient terms can be arranged and your old furniture will be taken as part payment.

WE ARE NOT SATISFIED WITH A SALE UNLESS YOU ARE

**Barrow Furniture Company**

NIGHT PHONE 560 M. M. SEYMOUR, Mgr.  
Funeral Directors Ambulance Service Day or Night

*Here Are Three*  
**Grafa-Garlington**  
*Better-Built Homes*



**OUR PRACTICAL 6-ROOM HOUSE**

Native rock construction. Nice, large, well finished rooms, highly decorated. Hardwood floors throughout. Beautiful light and plumbing fixtures. This house embodies all the latest practical building features. Cannot be duplicated at the price listed. Located in Belvedere Court.

**\$2500 CASH -- BALANCE LIKE RENT**

**BEAUTIFUL 5-ROOM BRICK**

Here is a home we are proud to have built. Cozy, good size rooms, beautiful fireplace, beautifully tinted walls, hardwood floors throughout. In all a mighty livable, modern new home with a small down payment and easy terms. Located in Belvedere Court.

**\$1000 CASH -- BALANCE LIKE RENT**

**5-ROOM BRICK VENEER**

Located in restricted Country Club Heights where every home is either brick or stucco. This home has every modern feature, large south bedrooms, oak floors, light fixtures and plumbing of highest quality. In all, a real home at a most reasonable price.

**\$750 CASH -- BALANCE LIKE RENT**

We furnish the lot, build your home, furnish the home to suit your taste, help you with your financing and building problems.

**GRAFA-GARLINGTON**

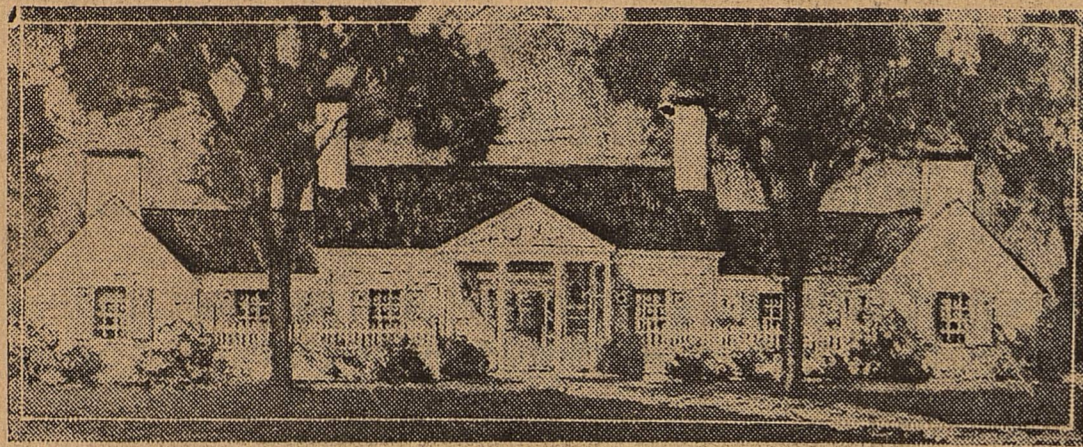
PHONE 356

105 WALL ST.



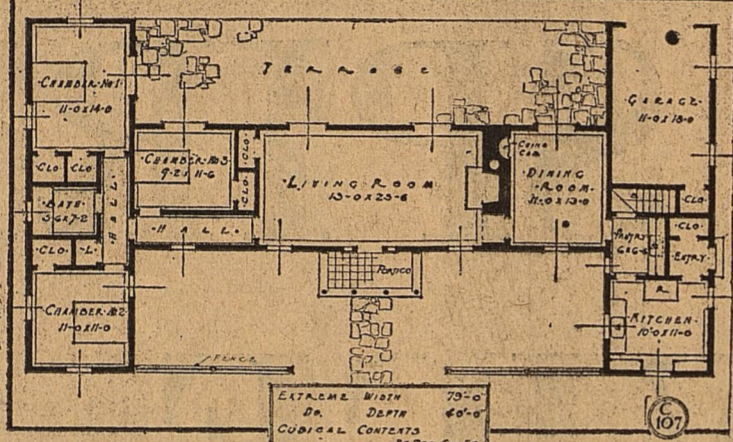
# Beautiful New Home To Open Today

A HOUSE THAT LUMBER BUILT—COLONIAL BUNGALOW



By CORA W. WILSON  
For Nea Service

The majority of houses in America are lumber built. Custom alone is not responsible for this. When lumber is properly used, it successfully meets varying climatic conditions, it is more universally obtainable than any other material, it is suited to nearly every style of architecture, it is economical and it is the material most quickly applied. In addition, the lumber-built house can be enlarged and remodeled at comparatively small expense.



This house pictured here is of wood construction throughout. Colonial in design, it is built of shingles with a shingle roof. The chimneys are of white stucco. Inside, beamed ceilings and rough plastered walls set the stage for the heavy Colonial furniture.

The house pictured here is of wood construction throughout. Colonial in design, it is built of shingles with a shingle roof. The chimneys are of white stucco. Inside, beamed ceilings and rough plastered walls set the stage for the heavy Colonial furniture. Mass weight and a crude vigor of ornament characterize the furnishings throughout the whole house.

**It's Ideal Bungalow**  
The structure is low and long and all the rooms are on one floor, making it an ideal bungalow. There are 79 feet of house, so one must have at least a hundred foot lot to build it on.

There is a living room over twenty-five feet long, with a real Colonial fireplace. From the almost square dining room, one enters the pantry and through swinging doors passes into the kitchen. The kitchen has cross current ventilation and looks out on the front garden. In back of the pantry is the garage.

**Texas Building Off During June**

AUSTIN, Tex., July 27.—The building industry made a very poor showing in June, according to Bernard Nichols, editor of the Texas Business Review, issued monthly by the Bureau of Business Research at the University of Texas.

"While a seasonal decline from May to June is to be expected," Mr. Nichols said, "the decrease this year between the two months of nearly 30 per cent is unusually large. Not only were permits smaller but construction and engineering contracts let declined nearly 50 per cent. It appears that higher interest rates and mounting construction cost have finally exerted a depressing influence on the building industry, for the industry is slowing up over the entire country.

"Building permits in 31 cities of the State reporting to the Bureau of Business Research amounted to \$6,875,000, the smallest dollar value for any month since November, 1926. Nineteen cities show losses, against small gains in the other twelve. Declines were well distributed over the State, indicating that the downward movement is general. In the first half, permits totaled \$64,015,000, compared to \$59,079,000 in the first half of 1928, or a decrease of 7.2 per cent. Houston, with \$18,309,000 in the first six months, lead the list, and San Antonio was second with \$11,212,000. Fort Worth came third with a total of \$6,803,000, and Dallas was fourth with \$5,373,000.

"Engineering and construction projects let in Texas in June, according to the F. W. Dodge Corporation, amounted to \$14,000,000, or a decline of 36 per cent from May and 47 per cent from June, 1928. Contemplated projects at \$32,000,000 represents a decline of 29 per cent from intended construction projects in June a year ago. Under present conditions, it looks as if the building industry is likely to be rather quiet over the next few months.

**Business Man Of Future To Relax**

FORT WORTH, July 27.—A hint of what the future may hold for tired business men who like to spend their leisure hours in the quiet of the country was suggested in a trip made recently by Robert H. Gray, assistant general manager of the Southern Air Transport, Inc., when he flew 250 miles and was in his office here before 8:30 o'clock.

Again Robert H. Gray, flying all in daylight, flew one day this week from Amallo to Fort Worth, a distance of 305 miles, arriving in Fort Worth only a few minutes after the opening of the offices.

**FURNISHINGS OF COLE HOME SUPPLIED BY MIDLAND FIRM**

Complete furnishings for the new Ed Cole home were sold by the Midland Hardware and Furniture Company, and represent one of the largest and most elaborate sales to have been made in Midland.

The furniture itself is of three distinctive and well-known makes, Karpan, Sligh, and Hoosier, making up an attractive combination for the entire home.

Oriental rugs adorn the floors in the living room and dining room.

Furniture in the living room consists of eight handsome pieces, each of different type, but all forming rare harmony in color and type.

In the dining room, along with the handsome dining room suite, a striking wall panel meets the eye of the visitor. Draperies in the two rooms are of rust and blue color, the rust predominating in one and the blue in the other.

Frigidaire is used for refrigeration, and a Detroit Jewel gas range is used in the kitchen.

In the four bed rooms, the family rooms are furnished and draped in hues of peach, orchid and green, respectively, while the guest room is in blue.

White fixtures, as mentioned elsewhere, are used in the bathroom.

The kitchen coloring is of Hollywood green, with a Hoosier cabinet and a breakfast room suite of this color. The porch suite is set off by a large canopy swing.

In the hall of the home, a long Wilton runner is used, while attractive rugs of excellent quality are used in the bed rooms.

**Officials Back From Inspecting Court Houses**

Judge M. R. Hill and commissioners S. R. Preston and Donald Hutt, on their return early this week from a trip of inspecting court houses in various sections of the state, reported that they saw some fine buildings, some of which were ideally constructed and arranged, and some which cost considerably sums of money but which did not seem to be such good investments.

The court houses which would give local commissioners a range to figure on for Midland's needs, in case action is taken toward a bond issue, range in cost from \$125,000 to \$500,000, one of the commissioners stated; and it was his private opinion that one suitable for Midland should cost approximately \$300,000.

They visited Breckenridge, Greenville, Vernon and several other cities while inspecting these court buildings. No official action toward bringing Midland's needs in this respect before the public has been taken.

**UNIVERSITY GETS \$20,000 GAIN IN MONTH'S ROYALTY**

AUSTIN, Tex., July 27.—With probably two or three remittances still to be received, the payments of oil royalties of the University of Texas during the month of July, covering production for June, aggregated \$161,604.99. This was an increase of approximately twenty thousand dollars over the payments for the preceding month. The increase is credited largely to the increase in the price of crude oil. In addition to the production from wells in the Reagan and Crane county fields, considerable gasoline is now being extracted from gas from the deepest producing well in the world, situated upon land owned by the University in Reagan County. The gas from this well passes through a casinghead gasoline plant in the field, and a royalty is obtained by the University on this production. Prospects are also regarded as favorable for the development of two more pools upon University land in Pecos County.

Royalty payments during July were as follows: Humble Oil and Refining Company, \$9,431.81; Prairie Oil and Gas Company, \$10,672.27; Simms Oil Company, \$5,569.90; Warner-Quinlan, \$8,193.21; Magnolia Petroleum Company, \$4,522.22; Atlantic Oil Company, \$5,264.31; Texas Company, \$675.46; Texon Oil and Land Company, \$37,102.53; Big Lake Oil Company, \$64,200.29; Gulf Production Company, \$4,167.66; and the Tidal Oil Company, \$11,802.33.

**PERMITS GRANTED TOTALED \$10,275**

Building permits granted during the past two days made a total of \$10,275, it was learned this morning, both permits having been let to oil distributing concerns.

One for \$9,000 was granted to the Continental Oil Company for a service station at 424 West Wall Street, and a permit for remodeling garages and apartments was let to the Humble Oil and Refining Company, for their property at 602 East Wall. This will cost \$1,275.

The Continental Oil Company recently bought from T. S. Hogan a tract 100 by 140 feet at the Corner of Wall and Marienfield Streets for their modern station. It will be similar to their stations in Texas, New Mexico, Colorado and other states.

**DEAN TO BUILD RAIL ROAD DUMP FOR NEW ROUTE**

W. A. Dean, well known road builder of Midland, is leaving for San Angelo where he has accepted a position as superintendent in building the new railroad dump for the Santa Fe, formerly the Orient, on its new line from San Angelo to Sonora.

Mr. Dean built railroads before he ever built any highways, but his work for the past several years has been along the latter line. He has built roads for the Santa Fe on three previous occasions, and his work with them is well known.

**McCormick May Get Route Data**

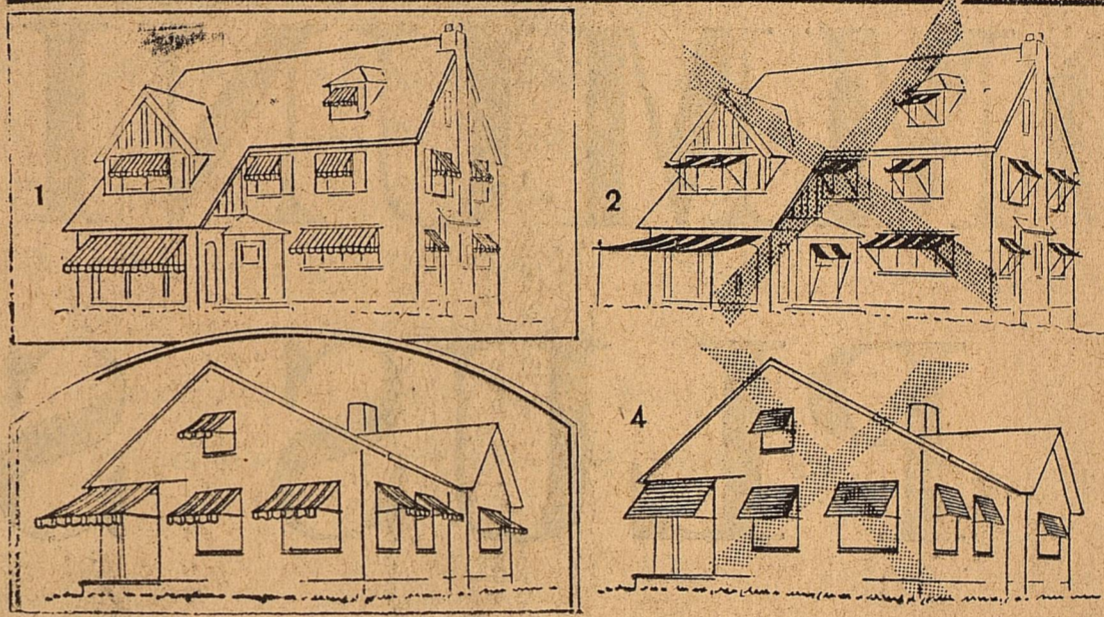
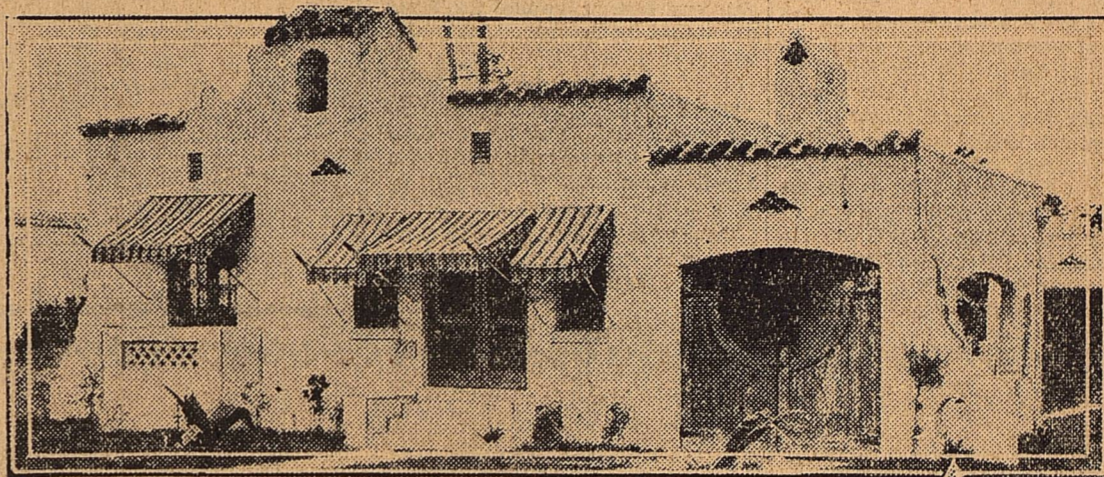
Directors of the Midland Chamber of Commerce Monday night authorized the employment of a special assistant for a week, if necessary, to collect data that may be needed in Midland's protest against efforts of the Texas & Pacific Railway Company to put Midland back into differential rate territory.

**Milk Plant Here Definitely Seen**

A milk pasteurization plant is seen for Midland in the announcement of E. B. Sherman of a meeting of farmers and dairymen at 1:30 Saturday, July 27, in the district courtroom.

Machinery is being used more and more in agriculture. The latest mechanical invention is an appliance which plucks chickens in a few seconds.

**AWNINGS MUST HARMONIZE WITH HOUSES DECORATED**



Awnings fail in their decorative purpose unless they catch the spirit of the house's architecture and harmonize with the color scheme. Flamboyant, striped awnings with spearhead arms are excellent on the Spanish bungalow with bright tiled roof pictured at the top. (1) Awnings with sides are especially good for this English style house, suggesting protection and dignity. (2) Spanish awnings without sides, extended on spearhead arms, are much too festive and frivolous for this dignified house. (3) Novelty striped awnings are informal and simple, therefore good for the bungalow. The scallops lend just the cheerful, lively touch needed. (4) Horizontal stripes and no sides are unsatisfactory for the bungalow because they close up the house, have too sharp lines, are too formal and do not agree with the long, gentle roof lines.

Selecting awnings for one's home is a problem not unlike picking important accessories for one's costumes. Awnings do much the same thing for the sartorial appearance of the home's exterior that hats, scarfs, shoes, and other accessories do for a suit or ensemble. The right ones are decorative and flattering. The wrong ones exaggerate defects.

Four things should be taken into consideration when choosing awnings: the architecture of the house, the main color, the trim, and the grounds around the house. Awnings present the newest and most interesting of these exterior harmony problems. Myriad decorative schemes are made possible by the new awning fabrics flooding the market.

**Colors Are New**  
Some of the new awnings are woven, some hand-blocked, some printed. There are warm, rich, fashionable new colors—glowing tans, greens, oranges, hennas, blues of varying degrees of brightness, reds, yellows, grays. Sometimes five or six colors appear in one design.

Stripes, the old favorite design in awnings, have gone modernistic and varied. They come in multitudinous sizes and combinations. New and very modern designs substitute other geometric or floral designs instead of stripes.

To make the selection of awnings yet more interesting, if difficult, new decorative arms are on the market in the form of spearheads, scrolls, battle axes, and other designs. Brilliantly striped or patterned awnings with spearhead arms are good on Spanish or any other ornate house. On Colonial houses, on the other hand, they seem out of sympathy with the dignity and simplicity of this type. They convey an air of festivity and gaiety not in keeping with the spirit of a Colonial house.

For the dignified house, whether Colonial or Americanized-English, awnings with sides are especially good. They look practical and suggest protection and a certain reticence. Their design and color should be chosen to blend with the house and harmonize with its spirit.

Bungalows, of American design, on the other hand, get their charm by coziness, and an air of friendly invitation. Colors should be bright, warm, but the design should never be too striking. Awnings should coincide with the lines of the roof.

The ultimate awning scheme of any home is a personal matter. Each

house is really a special problem in itself. But there are certain principles of good taste in awnings which are fundamental, since they are based on the appropriateness of certain awnings on certain kinds of houses, of the effect certain awnings have, and what color does.

**Here Are Considerations**  
Before choosing awnings, therefore, it might be advisable to consider them in these ways:

1. Wide stripes suggest nearness, breadth.
2. Narrow stripes suggest conservatism, height, delicacy.
3. Intricate designs suggest gaiety, festivity, liveliness.
4. Simple designs suggest calmness, quietness, dignity, substantiality.
5. Brilliant colors suggest cheer, vigor, informality, hospitality, nearness.
6. Low keyed colors suggest quietness, distance, conservatism, exclusiveness, sophistication, formality.
7. Tan expresses warmth, well-being, comfort.
8. Green expresses vigor, freshness.
9. Orange expresses sunshine, liveliness.
10. Blue expresses serenity, quietness, distinction.
11. Red expresses force, energy, primitiveness.

**COLE HOUSE OPEN TO PUBLIC**

Completion of the new residence of Mr. and Mrs. Ed Cole, on North C Street in Belvedere Court, is an important step in the development of Midland as the location of better homes. Formal opening to which the public is cordially invited, will be held this afternoon.

Mr. Cole, a prominent young cattleman of Midland, has lived with his family at their ranch west of Odessa for the past few years. On deciding to make their home in Midland, they erected one of the most substantial and most attractive residences to have been built during the city's three year home building program.

**Smiley Is Contractor**  
The residence, built of brick and tile, is of modified English type, faced with a manilla blend of Acme brick, and covered with Johns-Manville Asbestos roofing.

The general contractor for the job was A. F. Smiley, who has been erecting buildings of all kinds out of Wm. Cameron Company yards for 17 years.

**A Cameron Job**  
The materials were furnished by the Wm. Cameron Company house at Midland, and A. B. Anderson, local manager, with Mr. Smiley, furnished all of the plans and specifications, and served as supervising architect throughout the job.

The roofing and sheet metal was furnished and installed by the Lydick Roofing Company of Midland. Jack Twilley, who for the past few months has done much of the brick contracting in Midland, handed this contract on the Cole home.

C. D. Adams, Midland's oldest electrical contractor in point of service in this city, did the wiring, supplied the fixtures, and handled all of the electrical work in connection with the building.

The plastering contract was executed by J. T. Harris, the plumbing by Z. J. Cox, and the tile by Ernest McBee.

Trinity Portland Cement and Acme brick were furnished by Wm. Cameron Co. along with all other building materials and hardware.

**Liberal Dimensions**  
The house has dimensions of 41 by 60 feet over all, having a living room, dining room, kitchen, four bed rooms, bath, hall, and closets in each of the bed rooms. There is also a service porch and a basement size 20 by 20 feet.

The double garage and the servant's quarters are of the same construction as the house itself, and of the same architectural type.

The house is of brick and tile construction, being plastered throughout, having a Johns-Manville asbestos roof, with hardwood floors throughout. There is a sub-floor with tar paper between the floors. The walls are 10 feet in height, instead of nine as commonly used.

**Attractive Interior**  
The living room and dining room are trimmed out in clear red gum, while the other rooms are in Arkansas soft pine Trimpak. The walls are stipple finish. The high class hardware and glass knobs were furnished by Wm. Cameron Co. They also furnished, along with all materials in the house, the cement for walks and drives.

Minnesota paints were used throughout, having four coats on the inside work, three coats on flat wall paint on the plastered surfaces.

Ideal Built In Features, sold by Cameron Company, included a kitchen cabinet, with service cabinet and broom cabinet, an ironing board, a medicine cabinet, a vanity cabinet, wall seat, vanity dresser in the bath room, and a linen closet.

The plumbing, all of high class nature, included a built in tub, pedestal lavatory, commode, flat rim sink, automatic gas water heater, gas in every room, built in soap dishes, glass towel bars, glass holders; and the bath room is finished with the floor and wainscoting.

The electrical fixtures in the living and dining room are of the hanging crystal type, with appropriate fixtures in all other rooms, and with base plugs conveniently situated over the house.

**GOODWILL PARTY TO BORDER HAS HIGHWAY MOTIVE**

DALLAS, Tex., July 27.—(UP)—Some fifty persons making up the Dallas delegation of the motorcade with a large number from several other cities along the way which left here Wednesday in the interest of completing the highway from Dallas to the Mexican border have a full program for the rest of the week.

On Wednesday the group stopped at Stephenville for luncheon and stayed overnight at Brownsville. Luncheon was scheduled at San Angelo, Thursday with dinner at McCamey. Fort Stockton was to be the host overnight. An all day meeting was scheduled at Fort Stockton Friday and on Saturday the motorcade will go on to Presidio. After a brief meeting the group will go into Mexico at Ojinaga. Plans were to be made at Fort Stockton to have a highway from Dallas to Presidio designated as an extension of U. S. highway No. 67.

W. B. Larsh, chairman of the Chamber of Commerce Southwest highway committee, predicted this would occur with the highway continued to the Pacific coast at Topolobampo.

The lobster's skeleton is outside its body and its muscles inside the skeleton.

**Belvedere Court Highly Developed**

Belvedere Court, a part of High School Addition, in which the new home of Mr. and Mrs. Ed Cole is located, is one of Midland's most highly developed restricted additions.

Within a few weeks after the addition was opened by its developers, practically all of the lots were sold, and the remainder were then sold in a lump, putting the entire addition in the hands of many owners.

Homes were erected steadily until the area was one of the leading residential sections of Midland.

The John M. Cowen School, or junior high school, was then built at the south side of the high school addition, affording excellent school facilities.

**Circulation Of Daily Is Growing**

With more than 150 new bona fide paid subscribers having been added to the circulation of The Reporter-Telegram during the past 45 days, and without a high pressure campaign having been conducted, the reader interest of the publication continues to be proven.

Efforts are being made to reduce errors in delivery to the minimum, and subscribers will do the paper a favor to call Mrs. Warren, in charge of the circulation department, for any adjustments.

**SHORT COURSE TO GIVE DELEGATES MUCH OF VALUE**

COLLEGE STATION, July 27.—(UP)—More than 5,000 persons from every part of Texas will be engaged in virtually every phase of agricultural thought and activity discussions at the twentieth annual Farmers Short Course to be held at A. & M. College, July 29 to Aug. 3 according to announcement made by H. H. Williamson, vice-director and state agent of the extension service, under the auspices of which the short course is held.

Group sessions for men and boys and women and girls will be held and sectional meetings will be devoted to specialized fields of farming and farm operation. In addition to the special homemaking programs for women and girls, every afternoon for girls and women, sectional meetings will be held every afternoon for detailed attention to such subjects as agronomy, horticulture, poultry raising, dairying, swine and sheep and goat raising.

Central themes to be used during the course are: "The Agricultural Trend," "Dairying in Texas," "Land Utilization and Conservation," "The Cattle Industry." The speakers and leaders list includes experts from many sections.

Nearly 8,900,000 persons have visited the top of Washington Monument.

Thirty-two thousand tons of basu nuts were grown in San Luis, Maranhoe, Brazil, last year.

(Continued on Page 3)

### MIDLAND NORM FOR CITIES ON VITAL PROBLEM

If every city in the state reported its vital statistics registrations as Midland does, the state could be assured of the rating it deserves, Dr. W. E. Ryan, county health officer said this morning when asked if Midland does its part in this important duty.

Chambers of commerce throughout the U. S. are uniting to correct this failure in communities of their respective states. In Midland the matter was first considered when the publicity man of the Texas Commercial Executives Association stated in news letters that Midland compares in every particular with state regulations governing the reporting of vital statistics.

This is a question being propounded every city of the state by the Southwestern Branch of the United States chamber of commerce which asks the cooperation of other civic organizations in creating enough in-

terest in the question so that when a letter is written to the parents regarding birth registration it would be answered immediately. It is hoped to arouse enough public sentiment to force the doctors to file birth certificates as required by law.

In a letter from Jesse T. Nicholas, of the Bureau of Census at Washington, to Joseph F. Leopold, manager of the Southwestern Branch of the U. S. chamber of commerce at Dallas, a copy of which was sent to A. M. Bourland, manager of the West Texas chamber of commerce by Mr. Leopold, it was brought out that there were approximately 2100 deaths of infants in Texas during 1928 where death certificate was filed, but no birth certificate had ever been placed on record. This would indicate a great deal of laxness on the part of the doctors who attend the births of children in this state.

Mr. Nicholas wrote: "We secured through the scholastic census approximately 66,000 names. Of this 66,000 names about 1-3 of them were not registered. This, as you can see, is far below ninety per cent."

Bourland said that it was very important that letters which are going out to parents of the children whose births had not been registered should

be answered, that birth certificates be filled out at once and returned to the Census Bureau.

Since the death registration is much better than the birth registration, practically all the deaths and only two thirds of the births, the infant mortality rate will be reported unfavorably against the business of the state.

### Moody Signs Rural Aid Bill, Vetoes One

AUSTIN, July 27.—(P)—The five million dollar rural aid bill was signed, and the resolution proposing the trip of the legislature to Washington in an effort to obtain the Veterans' Bureau hospital for Texas was vetoed by Governor Moody yesterday.

Three Mexican youths are hiking from Merida, Yucatan, to Buenos Ayres. The estimate it will take a year and a half.

United States investments in Canada during 1928 totaled \$4,120,000,000, or \$198,000,000 more than in 1927.

Most of the bacon eaten in Britain is imported from Denmark.

The Eiffel Tower, in Paris, is 1,000 feet high.

## E. L. McAbee

### TILE CONTRACTOR



610 Petroleum Building

Phone 667

BIG SPRING, TEXAS

## Be Sure To Insure

*Protect Your Home from Fires*

Mr. and Mrs. Ed Cole have taken advantage of the protection insurance offers. It is only good business to protect such a beautiful home. We are proud to carry their insurance.

## Glass & Myrick

GENERAL INSURANCE

105 Wall Street

Phone 505

# COMMUNITY SPIRIT PLUS SERVICE

*A Home Built For Comfort and Beauty--*

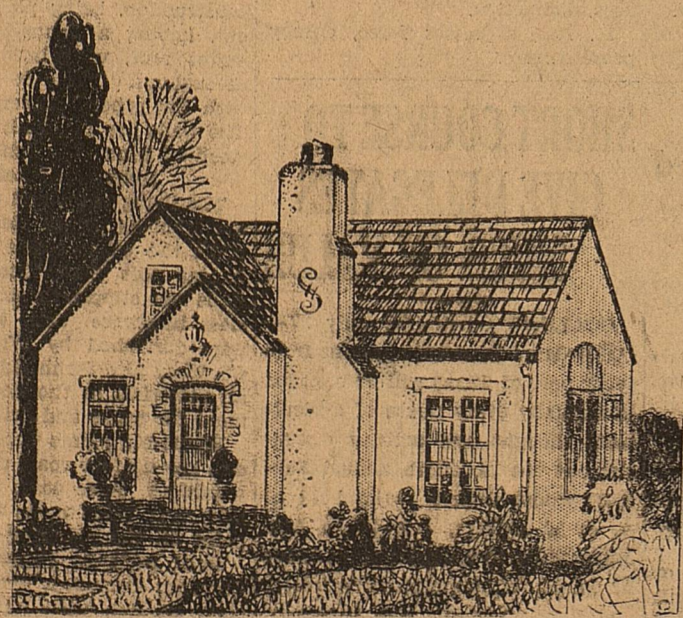
*That's Mr. and Mrs. Ed Cole's New Home*

WE FURNISHED PLANS, SPECIFICATIONS AND ALL THE BUILDING MATERIALS, PAINTS, ETC.

Get Our Prices

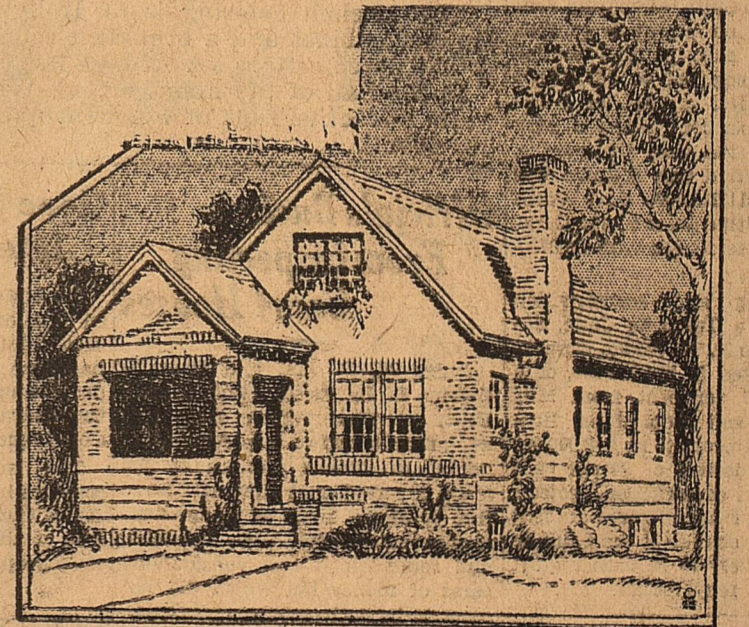
: : :

They Are Right



THERE'S NOTHING TOO LARGE FOR US TO HANDLE

AND NOTHING TOO SMALL TO BE APPRECIATED



# WM. CAMERON & CO., INC.

BUILDING MATERIAL DEALERS

A. B. ANDERSON, Manager

"Just a Little Better Service"

MIDLAND

PHONE 433

### SAT WILL HAVE RADIO STATION AT FORT WORTH

FORT WORTH, July 27.—One of the finest radio stations in the southwest is now under construction between Dallas and Fort Worth, and will be in operation by October 1, according to Silliman Evans, president of Texas Air Transport Broadcast Company, a subsidiary of Southern Air Transport, chief air mail, passenger and express operators of the South. The station, KTAT, will operate on a channel of 1240 kilocycles, 241.8 meters using 1,000 watts power.

Equipment to be installed in Southern Air Transport's official broadcast station is the latest improvement of the Western Electric Company, the one kilowatt transmitter having dual crystal control, insuring clearness, sharpness and strict adherence to the designated wave channel, Mr. Evans said. The power plant which will house the transmitter will be located on the Grapevine Road, on the city limits of Birdville, Texas, some ten miles from downtown Fort Worth and about twenty miles from Dallas, on the Irving highway. Studios of the station will be situated in downtown Fort Worth, the exact location not having been determined at this time.

It is planned to build magnificent studios on the top floor of the new 21 story Aviation Building that will be erected in Fort Worth in the immediate future by Southern Air Transport, a subsidiary of the Aviation Corporation. Until that time, studios will be located in one of the hotels or office buildings of the city.

"KTAT will operate on one of the regional wave channels, and plans to present the most entertaining type of programs possible to obtain, both national chain and local talent. Only the highest class of commercial programs will be accepted by the station management." Arthur W. "Tiny" Stowe, formerly director and chief announcer of KRED, The Times Herald station in the Adolphus Hotel at Dallas, has been named general manager, and took active charge of erection of the station June 1st, when ground was broken. According to Mr. Stowe and consulting engineers of the Western Electric Company, KTAT will have one of the finest and best constructed stations in North America upon completion.

A. P. Barrett, president of Southern Air Transport and the greatest figure in commercial aviation today, has given instructions to the staff to spare no expense in giving to Southwestern listeners the same service that Southern Air Transport and subsidiaries now render in transportation.

Being a regional station, KTAT

will divide time with WJAD, at Waco, Texas. At a meeting of representatives of the stations recently, a division of hours for broadcasting was affected that will place KTAT programs on the air from 6 to 7, 8 to 9, 10 to 11, 12:30 to 2 p. m., 3 to 4 p. m., 5 to 6 p. m., 7 to 8 p. m., 9 to 10 p. m. and 11 to 12 midnight daily.

Charles Muckleroy has been named advertising manager of the station, Mr. Stowe said, and serious consideration is now being given to selection of the best program and studio staff in the southwest. The personnel of the station staff will be announced later.

An unusual feature of the plant near Birdville will be living quarters for the chief engineers and operators. A four-room bungalow is being built for this purpose.

#### FARMERS, RANCHMEN ATTEND SHORT COURSE

SAN ANTONIO, Tex., July 27.—Farmers and ranchmen and their families from 37 south Texas counties have returned to their homes, after an intensive three-day course in modern farming and ranch methods at the seventh annual South Texas Short Course held under the auspices of the Texas A. & M. College extension department at Medina-Hereford ranch near here.

One of the features of the course for the first time was a meat curing demonstration. A hog donated by the ranch was slaughtered, cut and prepared for the farm smoke house, with E. M. Regenbrecht in charge of the demonstration.

Besides the crowded study course arranged for the men on every subject of interest to the rural resident, the women and girls of south Texas received instruction in home making, clothing and cooking.

It was estimated that more than 4,000 people attended the course.

#### BORGER WOMAN ON HUNGER STRIKE WHEN IN JAIL

BORGER, July 27.—(UP)—Mrs. Irene Head, pretty divorcee and beauty parlor operator, held in jail here charged with perjury in connection with her recent successful divorce suit, is to be released today. J. W. Jones says he will post \$1,000 bond for Mrs. Head. He declares that when she was placed in jail, she would not eat nor would she give bond.

Texas' equine population has decreased from 1,170,000 in 1910 to 780,000 in 1929.

In 1928 Texas spent \$65,128,019 on its public schools.

As a Sample of Our

## Efficient Workmanship

WE POINT PROUDLY TO THE NEW  
HOME JUST COMPLETED FOR  
MR. AND MRS. ED COLE

We not only invite you to inspect this  
job, but all others that we have turned  
out in Midland.

### C. D. ADAMS

Electrical Contractor

Midland

Texas

# Congratulations to Mr. and Mrs. Ed Cole

Your new home could well be styled the Home Beautiful, Home Comfort, and Home Different—or any of the other names used for an especially designed home. It possesses all these features but this writer can best describe it as it appears to him in these words: A real home built to live in; correctly designed, substantially built, and containing every modern convenience. It will surely be a thing of beauty and a joy for a long time.

We also congratulate Wm. Cameron and Company who superintended the building.

This house is proud of having been selected to furnish such a residence. This was done with much care to color harmony, comfort and quality.

The draperies are the latest in coloring and design. Karastan Rugs are used in Living and Dining Rooms. The furniture is by Karpen, Sligh and Hoosier.

Royal line of sleeping units is used throughout; the kitchen is equipped with an AP9 Frigidaire built in with compressor installed in the basement. The new pattern in Armstrong embossed Linoleum is used. We proudly submit these furnishings for inspection.

## Midland Hardware & Furniture Co.

Quality Merchandise—Priced Right

### GRAVITY SEWER SYSTEM DEMANDS DEEP DITCHES

Ditching for Midland's sewer extension on Ohio Avenue is being carried to a depth of from 10 to 12 feet in places, and will have to be deepened in some areas to from 18 to 20 feet, in order to get the gravity flow which is the basis of success of the system now under construction.

Much rock is encountered in some areas, it being necessary to use the smaller ditching machine and then to come over the same line with the larger one. In spite of the excessive rock, good time is being made by the Panhandle Construction Company. "We can't pay any attention to the top of the ground in building a gravity system," the company's superintendent says.

### Sterilized Cotton Planted in County?

Midland county farmers will probably have to plant sterilized cotton seed next spring according to the following statement in the Dallas News today:

J. M. Delcurto, chief entomologist of the State Department of Agriculture, left Austin Tuesday for Lamesa and other West Texas points to confer with gin owners relative to the sterilization of cotton seed in the restricted zone in the eradication of the pink bollworm. He will be in West Texas for four days making arrangements for this work during the coming cotton season.

All seed produced in the twenty counties embraced in the West Texas restricted zone is to be sterilized at the gin. Under a recent act of the Legislature, the farmers will be reimbursed for the cost of the sterilization. The cost of sterilization ranges from 75c to \$1 per ton, Commissioner George B. Terrell estimated.

All gins in this area are equipped with apparatus for the sterilization which consists of heating the seed to about 150 degrees Fahrenheit in a steam pipe. This heating kills the worms which hinder the seed.

Dr. Delcurto at this time is making arrangements with the gins for a more complete sterilization for the forthcoming season than of last season, and clarifying the method of the filling of claims by the owners for reimbursement by the State. The Federal Government does not share in the expense of the sterilization.

Special tires, seven and one-half feet in diameter, and 16 inches in cross section, have been made for the world's largest airplane.

### COLE HOUSE—

(Continued from Page 1)

was awarded the contract for the Cole home, and he has given it his personal attention throughout. He is said to have a record of not one dissatisfied customer, and is described as a first class general contractor, with no job too large nor too small.

Wm. Cameron Company, home builders in Texas and Oklahoma for the past 50 years, opened a large, attractive, well constructed and well stocked yard in Midland in October 1927. Their district manager, G. C. Porter, makes his home and business headquarters here.

A. B. Anderson came to Midland as manager in June, 1928. Frank Woodward is assistant manager, Lester Turner is bookkeeper, and D. C. Biggers is yard man.

### MIDLAND ASKS MOODY TO SIGN BOLLWORM BILL

The Midland chamber of commerce today sent a wire to Governor Dan Moody urging that he sign the pink boll worm bill. The message reads: "Ten thousand Midland county people expect you to sign the pink boll worm bill!"

Marvin C. Ulmer, mayor pro tem, also wired the governor urging signature of the bill. The chamber of commerce sent a wire in behalf of Pat Barber and Will Campbell, who form a farmer's pink boll worm committee, requesting that he sign the bill.

Since there is some fear that the governor might veto the bill, the

chamber of commerce urges business and professional men and any who are interested in the welfare of Midland county to send a wire to Governor Moody today asking him to approve this measure.

If full remuneration is given this bill it will mean approximately \$20,000 for Midland farmers.

The pink boll worm bill has been sponsored by chambers of commerce in the pink boll worm territory through Rep. H. E. Webb of Odesa and Rep. Rountree of Lamesa.

### MARFA MAN HERE

J. R. Arnett of Marfa and Ed Newton of Valentine were here this morning, returning to their homes from Abilene. Mr. Arnett had been there to attend the funeral of Mrs. Dr. Rogers, mother of his son-in-law. He reports the Davis Mountain and Big Bend country still somewhat dry, but that the rain season is just now approaching.

## We Are Very Proud

*That we were chosen as contractors for the Brick Work for this beautiful new home just completed for Mr. and Mrs. Ed Cole*

There are many reasons why we were given the brick work, but we wish to especially call your attention to two main ones—

### SERVICE and EFFICIENCY

You are assured of only the most skilled workmen when we are on the job

## Jack Twilley

BRICK CONTRACTOR

Midland

Texas

# We Are as Proud

AS THE OWNERS THEMSELVES OF THE BEAUTIFUL NEW HOME JUST COMPLETED FOR MR. AND MRS. ED COLE . . .



This home is roofed with Johns-Manville Asbestos Shingles, and installed by Lydick Roofing Co.

We also did the Sheet Metal work on this beautiful new home. We point proudly to this home as a sample of our work

## Lydick Roofing Co.

Midland, Texas

Phone 460

WE INVITE YOU TO SEE THE BEAUTIFUL HOME JUST COMPLETED FOR MR AND MRS. ED COLE

*All Painting and Interior Decorating —done by—*

## GENE MOORE

PAINTING CONTRACTOR

BIG SPRING

TEXAS

*I Have Just Finished*

## A Strictly Modern Home

*...for...*

## Mr. and Mrs Ed Cole

BRICK AND TILE CONSTRUCTION ALL BUILT-IN FEATURES

*See Me Before You Build. I Will Build Anything, Large or Small, Any Time, and Any Place!*

## A.F. Smiley

GENERAL CONTRACTOR

Midland, Texas

Phone 433