







FRIDAY AND SATURDAY

FRIDAY AND SATURDAY

JUNE 12TH AND 13TH

JUNE 12TH AND 13TH

# SPECIALS

FOR THE

## WES-TEX FOOD MARKET

MIDLAND

FOOD SUGGESTIONS

TEXAS

### !PRODUCE!

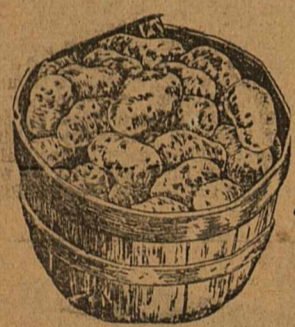
### QUALITY GROCERIES

PLAN OUR VEGETABLE DINNER MENU WITH OUR PRODUCE SELECTIONS. WE HAVE A COMPLETE VARIETY OF FRESH FRUITS AND VEGETABLES, AND WE ARE OFFERING THEM TO YOU IN THEIR BEST CONDITION AT VERY REASONABLE PRICES.

**BUY AND SAVE!**

BUNCH TURNIPS — RADISHES — BEETS — ONIONS — CARROTS — MUSTARD

**VEGETABLES** LARGE BUNCHES EACH **1c**



**New White Potatoes** 10 POUNDS FOR **43c**

FRESH We have 2000 dozen ears of corn for our 6 stores, so we'll have plenty for the weekend

**CORN** DOZEN EARS **10c**



**TOMATOES** These are Texas grown Tomatoes hauled by our own trucks direct from the grower to you. POUND **5c**

BELL PEPPER POUND—	9c	OKRA POUND—	10c
SQUASH POUND—	3c	ONIONS POUND—	3c
CUCUMBERS POUND—	3c	CELERY STALK—	10c

FRESH BLACKEYED **PEAS** Pound **2c**

**Oranges** Dozen **12c**

**Lemons** Giant Size Doz. **25c**

<b>SUGAR</b> PURE CANE 10 POUND CLOTH BAGS <b>51c</b>	<b>Compound</b> ARMOUR'S VEGETOLE 8 POUND CARTON <b>84c</b>
---	---

WE BUY OR SELL SUGAR AND COMPOUND AT THESE PRICES

Powdered SUGAR 3 PKGS. FOR— <b>25c</b>	SALT 2 PKGS. FOR— <b>15c</b>	CRACKERS 2 LB. BOX <b>17c</b>	CATSUP HEINZ 14-OZ. <b>21c</b>
--	------------------------------	-------------------------------	--------------------------------

CAMAY SOAP Bar <b>5c</b>	OXYDOL Small <b>9c</b>	P & G or Crystal White SOAP 6 BARS FOR <b>21c</b>	No. 2 Can SPINACH 3 FOR <b>25c</b>
--------------------------	------------------------	---	------------------------------------

DOG FOOD Sandy's 3 FOR <b>23c</b>	Libby's TOMATO JUICE 3 FOR <b>25c</b>	No. 2 Primrose CORN 2 FOR <b>25c</b>	No. 1 Tall Del Monte FRUITS for COCKTAIL <b>17c</b>	WHEATIES 2 PKGS. FOR <b>25c</b>	OXYDOL Giant Size <b>65c</b>	SOAP Kirk's Hardwater 6 FOR <b>25c</b>	KNOX JELL 4 FOR <b>25c</b>
-----------------------------------	---------------------------------------	--------------------------------------	---	---------------------------------	------------------------------	--	----------------------------

Post Toasties Pkg. <b>10c</b>	No. 2 Can TOMATOES 3 for <b>23c</b>	PORK AND BEANS 16 oz. Can <b>5c</b>	BANNER BUTTER One Pound <b>28c</b>	No. 1 HOMINY Per Can <b>5c</b>	KRAFT'S MALTED MILK <b>37c</b>	No. 1 Del Monte GREEN LIMA BEANS 2 FOR <b>25c</b>
-------------------------------	-------------------------------------	-------------------------------------	------------------------------------	--------------------------------	--------------------------------	---

SOAP CHIPS 5 LB. PACKAGE **27c**

CHIPSO Large Package **22c**

PINTO BEANS 4 LBS. FOR **19c**

GINGER ALE 2 FOR **25c**

BORDEN'S MILK 3 Large or 6 Small **20c**

Del Monte Whole Refuge BEANS No. 2 Can **19c**

No. 2 Can CHERRIES 2 FOR **25c**

No. 2 1/2 Del Monte APRICOTS **24c**

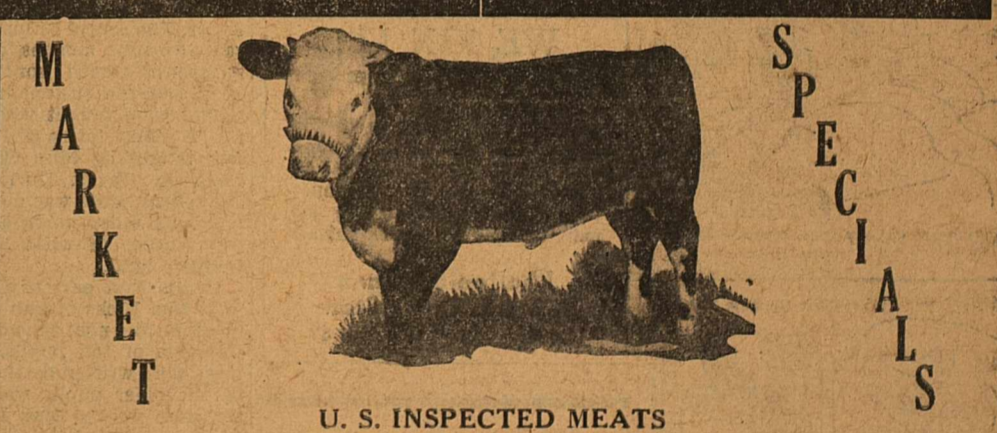
Welch's GRAPE JUICE QUART **39c**

Cut Rite WAX PAPER 3 FOR **25c**

**EGGS** WOODY'S GUARANTEED INFERTILE DOZEN **21c**

Ma Brown JELLY 13 oz. Jar <b>19c</b>	No. 1 Del Monte Asparagus TIPS <b>17c</b>	4 1/2-oz. Del Monte Ripe Olives <b>10c</b>	SYRUP 1/2 Gal. Brer Rabbit <b>38c</b>
--------------------------------------	---	--	---------------------------------------

**COFFEE** FOLGER'S 2 POUND CAN **59c**



MARKET SPECIALS

U. S. INSPECTED MEATS

BACON	Fancy Sliced POUND—	<b>27c</b>
ROAST	Baby Beef Chuck lb.	<b>13c</b>
SALT PORK	lb.	<b>20c</b>
BOLOGNA	Large Size 2 Pounds for	<b>29c</b>
LUNCH MEATS	Assorted POUND	<b>23c</b>
GROUND MEAT	2 lb.	<b>23c</b>
CHEESE	Full Cream POUND	<b>18c</b>
JOWLS	Fine for Boiling LB.	<b>15c</b>
BACON	Armour's Star Sliced LB.	<b>35c</b>

Cleaner Meats, Better Meats — QUICK SERVICE



