

World Championship Centennial Rodeo  
Midland Fair Arena  
June 26-28

VOL. VIII

# Republicans Open Convention Today

## Plug and 'Whoop It Up' for Landon



As evidence of the hustle-bustle in Governor Landon's Cleveland headquarters, as the convention neared, phone operator Mrs. Clyde Latchem, left, is shown plugging her hardest for the Kansan, trying to keep up with the incoming calls.



Miss Cleo Garriott, right, puts her heart into the singing of "O Susanna," as she strains for a high note of the official Landon "battle hymn."

### CITY TENNIS CLUB TOURNAMENT WILL OPEN NEXT FRIDAY

Entries Allowed Only From Residents of Midland

It was announced today that the City Tennis club would hold its annual tournament beginning Friday afternoon and continuing through Sunday afternoon.

### POLITICAL JOBS FORBIDDEN ANY PENSION AIDES

Carpenter Says Men Must Stay Out of Campaigns

AUSTIN, June 9 (AP)—Orville S. Carpenter, director of the Texas old age assistance commission, today threatened dismissal of any commission employee who takes any part in any political campaign this year.

### SPEAKER TO TALK ON "SWIMMING"

Health Program Will Also Include Solos By Mrs. Douglas

"Swimming" will be the subject of the weekly health talk to be broadcast over station KRLH Wednesday morning at 10 o'clock as a part of the Good Health program sponsored by the Midland County Public Health Board.

### GAINES WILDCAT RECOVERS CORES

Fourteen-Foot Section Is Reported to Show No Oil

BY FRANK GARDNER  
A fourteen-foot recovery of cores from 4,674 to 4,689 was obtained in Landreth Production Company No. 1 Kirk, important wildcat test in south central Gaines county. At last reports, the core-hole was being reamed, and intention of operators was to core deeper.

### TO TEMPLE

Mrs. S. R. Preston and Mrs. Ethel Tabb expect to leave today for Temple, where Mrs. Tabb will enter the sanatorium for an appendicitomy.

### NEW TUBB WELL RUNS SECOND ACID "SHOT"

The fifth producer from the deep Permian lime in the Tubb area of western Crane county, Sinclair-Prarie and others No. 1 Tubb, is now standing after running a second acid treatment early today. The well responded to the first acid injection of 2,000 gallons by flowing 116 barrels in 24 hours. The second treatment was with 3,000 gallons, with a 175-barrel oil load before and 40 barrels after. Casing pressure is reported to have risen from 20 to 40 pounds while pumping in the preliminary oil load. The acid went in under 30 pounds vacuum, but pressure later rose to 400 pounds on casing and 460 pounds on tubing. Located in the southeast corner of section 3, block B-27, public school land, the No. 1 Tubb, a unit test, was drilled to a total depth of 4,469 feet. It is two miles northwest of the two large Humble Tubb producers from the same horizon.

### "Rodeo Edition" Copies Will Be Mailed Out Free

All persons desiring to have the Reporter-Telegram circulation department mail special copies of the "rodeo edition" to be printed June 21 are requested to either send or bring in the names immediately. The papers will be mailed free to as many persons as desire it. All that is necessary is just to send or bring in the names of the ones that might be interested in receiving one of the copies.

### Group Leaves After Funeral

A number of out-of-town people who attended the funeral of Lee Haynes Saturday have returned to their homes. Included were: Mr. and Mrs. Travis Haynes of San Angelo; Mr. and Mrs. Joe Baldrige, Don Baldrige, Miss Mary Caroline Haynes of Lubbock; Mr. and Mrs. Charlie Dublin and family, Big Spring; Mr. and Mrs. Dale Campbell and family, Spur; and Mr. and Mrs. Virgil Preston, Coahoma.

## LARGE PARADE TO OPEN CENTENNIAL RODEO IN MIDLAND

### Will Restrict Affair To Ones Mounted On Horses

### INTEREST IS HIGH

#### Enthusiasm Over The Show At Peak In Permian Basin

Opening the first program of the World's Championship Centennial Rodeo here June 26, a parade of mounted horsemen, cowgirl sponsors, cowboys, rodeo contestants, kid riders, horseback riders in general, trick riders, cowboy clowns and others will stage on the streets of Midland, probably going immediately to the Midland fair arena.

Decision was made to restrict the parade to one of mounted horsemen rather than to work up a procession of cars and floats, depicting more directly the western atmosphere of the championship rodeo.

All riders were extended an invitation to be in the parade, with advice to watch the newspaper for definite time and place of starting. It was expected that several hundred riders would participate.

Roy Parks Leonard Proctor, on a trip yesterday to secure additional rodeo live stock, visited newspapers and chambers of commerce and distributed advertising matted at Odessa, Monahans, Grand Falls, Fort Stockton, Alpine, Marfa, Van Horn, Toyah and Pecos. They reported much interest in the show to be held here June 26-27-28, with most of the towns having definite plans for sending cowgirl sponsors as well as large delegations.

## FUNERAL RITES ARE HELD MONDAY FOR CRASH VICTIM

### Interment Services Held for Wilson Keyes Here

Funeral services were held Monday afternoon at the First Baptist church for Wilson Keyes, 35, Midland oil man, killed early Saturday morning when the car in which he was riding collided with another.

Keyes became a resident of Midland in 1923 after finishing his education at Rolla School of Mines where he studied geology. He was associated with several companies in this section before becoming an independent operator. Recently he brought in an oil well which opened a new pool in Winkler county.

Keyes was a member of Pi Kappa Alpha, an active member of the American Association of Petroleum Geologists and of various West Texas oil organizations.

## Robbers Get \$12,000 In Jewelry Hold-Up

### WICHITA, Kan., June 9 (AP)—The Laham Jewelry company was held up and robbed of about \$12,000 in gems and money today by two men.

Asper Laham, proprietor told police that the robbers beat him on the head with the butts of revolvers.

## Group Leaves After Funeral

A number of out-of-town people who attended the funeral of Lee Haynes Saturday have returned to their homes. Included were: Mr. and Mrs. Travis Haynes of San Angelo; Mr. and Mrs. Joe Baldrige, Don Baldrige, Miss Mary Caroline Haynes of Lubbock; Mr. and Mrs. Charlie Dublin and family, Big Spring; Mr. and Mrs. Dale Campbell and family, Spur; and Mr. and Mrs. Virgil Preston, Coahoma.

## 'Flogging Tree'



Held under 50,000 bond in the kidnaping and flogging case of Robert Penlon of Ecorse, Mich., Frederick A. Gulley is shown as he demonstrated to Detroit authorities how victims were tied to this tree and flogged by the Black Legion. The tree is on an abandoned farm 11 miles from Detroit. Gulley said he was forced at gun point to join the legion and had tried vainly to get out.

## THREE APPLICANTS REFUSED PLACES ON STATE BALLOT

### 2 Candidates Failed To Post Filing Fee of \$100

DALLAS, June 9 (AP)—The democratic state executive committee Monday refused three applicants places on the July 25 primary ballot. A list of 35 candidates was approved.

Names of John O. Douglas of Houston, who sought the nomination as attorney general; Jefferson T. Baker of Dallas, candidate for commissioner of agriculture, and B. M. Hatfield of Fort Worth, seeking nomination as governor, were ruled off the ballot.

The committee held Hatfield and Baker had failed to post \$100 filing fees, and Douglass' application arrived too late and was not sworn to as required by law.

Names of William H. McDonald and A. A. Fay Bullock were allowed on the ballot in those forms.

Bullock, candidate for superintendent of public instruction, had the "Pat" inserted by a San Antonio court, and McDonald, seeking nomination as land commissioner, had asked his name be certified as William H. (Bill) McDonald.

W. Gregory Hatcher and Westley Pruitt of Dallas, candidates for land commissioner and comptroller, respectively, were allowed to withdraw their names.

## Tire Covers Bought For Advertising of Centennial Rodeo

Fifty tire covers to advertise the World Championship Centennial Rodeo here June 26, 27, 28 were bought by the chamber of commerce, at a meeting of the board of directors Monday night, to be placed on automobiles of oil scouts and those making trips over the surrounding country. The tire covers will be furnished free for such motorists. They will be received here Wednesday in a special order placed by a local sign shop.

## SOCIALISTS AND COMMUNISTS IN BATTLES TODAY

### Members of Parties Clash In Munition Factories

### MORE QUIT JOBS

#### Fresh Walkout Over Nation Causing Trouble

PARIS, June 9 (AP)—Socialist and Communist strikers fought inside a Valenciennes munition factory today as fresh walkouts broke over France.

A dozen Socialists were reported to have been injured in a clash after Communists refused to accept the labor concessions similar to those won by 1,000,000 employees participating in the 14-day "folded arms" refusal to work.

Most of the 1,000,000 who have been on strike returned to their jobs Monday and today, but many other thousands have walked out, including 150,000 coal miners.

## GIRL, OBJECT OF WIDE SEARCH IN ILLINOIS, FOUND

### Admits Departure to Seek Position In Chicago

CHICAGO, June 9 (AP)—Dorothy Blumenshine, 14-year-old girl, the object of a widespread search Sunday by volunteers who feared she might have been slain, was found today by a Chicago Times reporter.

Missing for nine days, Dorothy, daughter of Dr. Emil Blumenshine, Washington, Illinois, veterinarian, told the newspaper reporter that she came to Chicago on an impulse because she "wanted to go to work."

## ROOSEVELT OFF ON HOP THROUGH STATES IN SOUTH

### President to Visit Centennial On Vacation

WASHINGTON, June 9 (AP)—Clearing his desk of pressing business, President Roosevelt, left the capital by special train at 12:03 a. m. Monday for a week's swing through Arkansas, Texas and Indiana.

Accompanying the president were Senator Caraway of Arkansas; Carl A. Crowley, solicitor for the post office department; Charles A. Jones, general manager of the H.O.L.C.; Brook Hays, democratic national committeeman from Arkansas; Military and naval aides, newsmen, and members of the White House secretariat.

## GROVER HILL HERE

Grover B. Hill of Amarillo was in Midland today, interviewing Midland citizens on behalf of the candidacy of Col. Ernest O. Thompson for reelection to the office of railroad commissioner. Hill is the colonel's campaign manager in this territory.

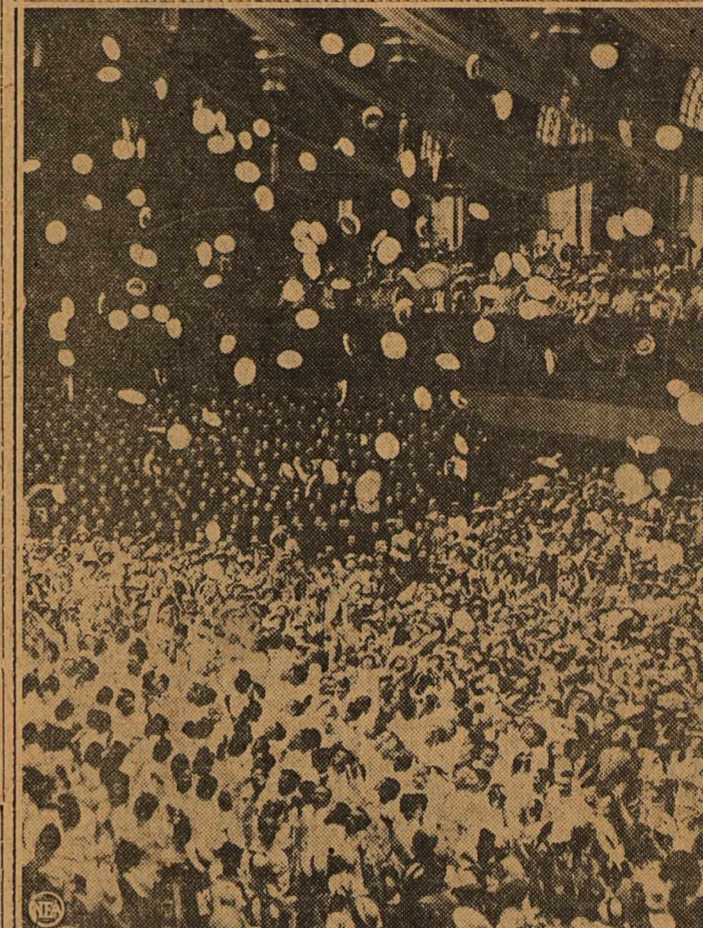
## CONNORS RETURN

Mr. and Mrs. Eddie Connor have returned from Corsicana where they visited Connor's parents. They also attended the Centennial.

## GLAZIERS LEAVE

Mr. and Mrs. Earl Glazier have moved to Corpus Christi.

## Middies Cap the Climax



Distribution of the diplomas at Annapolis Naval Academy created 216 new ensigns and 25 second lieutenants and was the signal for the scene pictured here—the traditional tossing away of their midshipman's caps by the graduating class.

## Doctor Testifies Eskridge Insane

### Defense Attorneys Plan To Rest Soon

HOUSTON, June 9 (AP)—Dr. Titus H. Harris, Galveston, psychiatrist, testified at the murder trial of Rev. Edgar Eskridge today that he believed the preacher was insane when he killed Ed O'Reilly, Orange chief of police May 29, last year.

Harris' statement came after a long hypothetical question. Defense attorneys plan to rest after other medical experts testify.

Mrs. Edgar Eskridge, a slight, blue-eyed woman, came to her two-gum husband's defense at his murder trial today with testimony that the crusading Baptist minister's actions before Police Chief Ed O'Reilly was shot to death at Orange led her to believe his mind was unsound.

Called to bolster the defense's contention Eskridge was temporarily insane when he drove along the streets of Orange May 29, 1935, and killed O'Reilly with a load of buckshot, she told of the "peculiar actions" of her husband.

## NOTED ENGINEER VICTIM OF DEATH

### John Hays Hammond Dies After Prolonged Illness

GLOUCESTER, Mass., June 9 (AP)—John Hays Hammond, Sr., 81, noted mining engineer, died Monday at his home on Freshwater Cove, here, after a long illness.

Hammond, who had come to his estate, Lookout Hill, only last Saturday, had been about as usual to yesterday, apparently feeling well. Late yesterday, his secretary William C. Griffin, found his body.

## TWO SHIPS LAN D

A PB2 and a BT2 landed at Sloan Field this morning. The former was flown by Captain Kenny who was traveling from Fort Bliss to Fort Sill. The latter was piloted by Captain Hart, who came from Kelly Field and returned there via Big Spring. Don Teel, in a Waco, landed at the airport last night.

## GOES TO KENTUCKY

Mrs. A. P. Baker and Mrs. Bill Van Huss and children left this morning for Ruidoso, N. M., where they plan to spend about 10 days.

## COMMITTEES ARE APPOINTED AFTER DELEGATES MEET

### Listlessness Marks Sessions of the First Day

### MEMBERS BUSY

#### Concentrate On How Platform Shall Be Written

CLEVELAND, June 9 (AP)—The Republican national convention, entrusting its worries to committees for the time being, opened today in a listless session devoted only to the organization for the big tasks ahead.

The appointment of committees on platform, credentials and rules comprised the only business during the initial day. A number of seats in the auditorium were vacant as the convention formally opened.

Tonight, when Senator Frederick Steiwer, Oregon, delivers the keynote a different scene is expected. Today supporters of Governor Alf Landon for the presidential nomination held their enthusiasm down while the opposition confined their work to conference room, apparently concentrating on the growing disputes about the platform.

Henry P. Fletcher, national chairman, called the delegates to order and Rev. Albert Joseph Cartney, Washington gave the invocation. Fletcher nominated Senator Steiwer as temporary chairman, which was approved by acclamation. The convention recessed from 12:32 until eight p. m.

Herman Langworthy of Kansas City was selected by Landon leaders as their choice to head the resolutions committee which drafts the platform. Landon supporters decided to push Langworthy for the post after long negotiations with former Senator John Thomas of Idaho had collapsed.

## 6 BLACK LEGION MEMBERS JAILED

### Charged With Abduction Of Steel Worker

DETROIT, June 9 (AP)—Six men were accused of Black Legion night riding activities and ordered held today for trial on charges of "seizing and confining" Ronert, Penland, steel worker who was abducted and "killed" by a group of masked men last October fifth.

## ASYLUM INMATE CAPTURED TODAY

### Nine Prisoners Are Still Free After Dash Sunday

ST. PETERS, Minn., June 9 (AP)—William Lannenfi, seventh of the 16 criminally insane convicts who escaped the St. Peters state asylum Sunday night, was caught today as the hunt for the maniacal ring-leaders was pressed over a broad front. Nine lunatics are still at large.

## Severe Storm Does Damage in Nebraska

LINCOLN, Neb., June 9 (AP)—A vicious rain, hail and wind storm crossed Nebraska today, disrupting communication lines, wrecking trees and damaging crops. No casualties were reported.

## FLAPPER FANNY SAYS



If you pay no heed to others on the fatway, you're in a fair way to get hurt.



# THE REPORTER-TELEGRAM

Evenings (except Saturday) and Sunday Morning  
MIDLAND PUBLISHING COMPANY, PUBLISHERS  
112 West Missouri, Midland, Texas

PAUL BARRON, Publisher  
Entered as second class matter at the postoffice at Midland, Texas, under the Act of March 30, 1879

**Subscription Price**  
Daily, by Carrier or Mail  
Per Year \$5.00  
Per Month .50c

**Advertising Rates**  
Display advertising rates on application. Classified rate, 2¢ per word; minimum charge 25¢. Local readers, 10¢ per line.

Any erroneous reflection upon the character, standing or reputation of any persons, firm or corporation which may occur in the columns of The Reporter-Telegram will be gladly corrected upon being brought to the attention of the firm.

### •A ROAD TO TRAGEDY

The following is taken from the "Doctor's Diary" of the Melbourne "Herald":

Men may cry only very rarely, but they are emotional enough often to get a lump in their throats. Doctors get more hardened than most males, but even they—

This morning an urgent message took me to the home of a young mother, nursing her only child, aged two. A little flow of blood was trickling out of his ear.

"He ran out to the road," said the mother dully. I lifted the little bundle out of her arms—or tried to. "No—no," she said fiercely, "make him better here—with me nursing him. Someone said he was dead, but, of course, he isn't, is he?"

I put the little body on the bed and led her outside. She broke down at last, and burst into an agony of tears, just as her white-faced husband came running in. He wept, too.

I would have been stone if such tragedy had left me unmoved. I left them after a while, but the dad had seemed strangely uneasy. I keep seeing that little lifeless body I picked up this morning.

When Wendy ran to greet me this afternoon as I came in from "rounds" I surprised her, and myself, by the fierce way I picked her up and held her to me for a moment.

"We don't realize what are life's greatest treasures till we lose them."

### Mrs. Goodman One Of Hostesses at Lubbock Affair

Mrs. Jas. H. Goodman of Midland was one of the hostesses when patronesses and sponsors of Sans Souci club at Lubbock entertained with the annual tea dance at the Hilton Hotel in that city Friday afternoon between 5 o'clock and 8.

From an orchestra stand decorated with palms, Ned Bradley's orchestra supplied music for the dancing.

Punch and cookies were served during intermissions from a table decorated with gardenias.

The tea dance was one of the commencement festivities tendered to Texas Technological students during the past weekend, as farewell courtesies of the college year.

Mrs. Goodman formerly lived in Lubbock where she was active in club, civic and social circles. She came to Midland with Mr. Goodman, attorney, less than a year ago.

### Marcellene Howard Has Birthday Party

Mrs. Hurschel Howard entertained at her home, 508 N. Colorado, with a birthday party for her three-year-old daughter, Marcellene, Saturday afternoon from 4 o'clock until 6.

A yellow and white color scheme was carried out in party decorations and the small honoree wore a yellow and white party dress with white accessories.

Gifts were opened and later refreshments were served and balloons were presented as favors to: The honoree, Eddie Juan Darnell, Paul Dale Smith, Frank Alice Roberson, Billie McCumber, Rosalind Leggett, James Mims, Margaret Mims, Kitty Jo Pierce.

Miss Bessie Sue Ratliff is hostess to the Saturday club with an afternoon bridge at her home, 401 North Marfield, Monday afternoon.

Daisies were the favored flowers and tallies bore flower designs.

Mrs. Hugh West received award for high score and Miss Mary Belle Pratt for cut, both presenting the packages to Miss Martha Louise Nobles, bride-elect of the week. The hostess also presented Miss Nobles with a gift.

The invitation list included: Misses Lucile Thomas, Mary Belle Pratt, Martha Louise Nobles, Julia Ann Aycock, Ida Beth Cowden, Mary Maude Sparks, Georgia Goss, Aldine Goss, Mmes. Hugh West, Alf Reese, W. M. Blevins, E. I. Bailey of El Dorado, Ark., Ralph Geister, Borron Kidd, Frank Miller.

The sun is constantly losing weight.

Miss Fannie Bess Taylor presided at the meeting and led the discussion of business. Suggestions for the amendment of the constitution were read and will be voted upon at the next meeting.

Present were: Miss Watson, Misses Betty Wilson, Taylor, Marguerite Bivins, Lucille McMullan, Elma Graves, Dru Lord, Clara Jesse, Eva Batchelor, Lotta Williams, Kathleen Eiland, Mmes. Susie G. Noble and R. L. Mitchell.

Japan opened its first agricultural museum in 1932.

Miss Fannie Bess Taylor presided at the meeting and led the discussion of business. Suggestions for the amendment of the constitution were read and will be voted upon at the next meeting.

Present were: Miss Watson, Misses Betty Wilson, Taylor, Marguerite Bivins, Lucille McMullan, Elma Graves, Dru Lord, Clara Jesse, Eva Batchelor, Lotta Williams, Kathleen Eiland, Mmes. Susie G. Noble and R. L. Mitchell.

Japan opened its first agricultural museum in 1932.

Present were: Miss Watson, Misses Betty Wilson, Taylor, Marguerite Bivins, Lucille McMullan, Elma Graves, Dru Lord, Clara Jesse, Eva Batchelor, Lotta Williams, Kathleen Eiland, Mmes. Susie G. Noble and R. L. Mitchell.

Japan opened its first agricultural museum in 1932.

Present were: Miss Watson, Misses Betty Wilson, Taylor, Marguerite Bivins, Lucille McMullan, Elma Graves, Dru Lord, Clara Jesse, Eva Batchelor, Lotta Williams, Kathleen Eiland, Mmes. Susie G. Noble and R. L. Mitchell.

Japan opened its first agricultural museum in 1932.

Present were: Miss Watson, Misses Betty Wilson, Taylor, Marguerite Bivins, Lucille McMullan, Elma Graves, Dru Lord, Clara Jesse, Eva Batchelor, Lotta Williams, Kathleen Eiland, Mmes. Susie G. Noble and R. L. Mitchell.

Japan opened its first agricultural museum in 1932.

Present were: Miss Watson, Misses Betty Wilson, Taylor, Marguerite Bivins, Lucille McMullan, Elma Graves, Dru Lord, Clara Jesse, Eva Batchelor, Lotta Williams, Kathleen Eiland, Mmes. Susie G. Noble and R. L. Mitchell.

Japan opened its first agricultural museum in 1932.

Present were: Miss Watson, Misses Betty Wilson, Taylor, Marguerite Bivins, Lucille McMullan, Elma Graves, Dru Lord, Clara Jesse, Eva Batchelor, Lotta Williams, Kathleen Eiland, Mmes. Susie G. Noble and R. L. Mitchell.

Japan opened its first agricultural museum in 1932.

Present were: Miss Watson, Misses Betty Wilson, Taylor, Marguerite Bivins, Lucille McMullan, Elma Graves, Dru Lord, Clara Jesse, Eva Batchelor, Lotta Williams, Kathleen Eiland, Mmes. Susie G. Noble and R. L. Mitchell.

Japan opened its first agricultural museum in 1932.

Present were: Miss Watson, Misses Betty Wilson, Taylor, Marguerite Bivins, Lucille McMullan, Elma Graves, Dru Lord, Clara Jesse, Eva Batchelor, Lotta Williams, Kathleen Eiland, Mmes. Susie G. Noble and R. L. Mitchell.

Japan opened its first agricultural museum in 1932.

Present were: Miss Watson, Misses Betty Wilson, Taylor, Marguerite Bivins, Lucille McMullan, Elma Graves, Dru Lord, Clara Jesse, Eva Batchelor, Lotta Williams, Kathleen Eiland, Mmes. Susie G. Noble and R. L. Mitchell.

Japan opened its first agricultural museum in 1932.

Present were: Miss Watson, Misses Betty Wilson, Taylor, Marguerite Bivins, Lucille McMullan, Elma Graves, Dru Lord, Clara Jesse, Eva Batchelor, Lotta Williams, Kathleen Eiland, Mmes. Susie G. Noble and R. L. Mitchell.

Japan opened its first agricultural museum in 1932.

Present were: Miss Watson, Misses Betty Wilson, Taylor, Marguerite Bivins, Lucille McMullan, Elma Graves, Dru Lord, Clara Jesse, Eva Batchelor, Lotta Williams, Kathleen Eiland, Mmes. Susie G. Noble and R. L. Mitchell.

Japan opened its first agricultural museum in 1932.

Present were: Miss Watson, Misses Betty Wilson, Taylor, Marguerite Bivins, Lucille McMullan, Elma Graves, Dru Lord, Clara Jesse, Eva Batchelor, Lotta Williams, Kathleen Eiland, Mmes. Susie G. Noble and R. L. Mitchell.

Japan opened its first agricultural museum in 1932.

Present were: Miss Watson, Misses Betty Wilson, Taylor, Marguerite Bivins, Lucille McMullan, Elma Graves, Dru Lord, Clara Jesse, Eva Batchelor, Lotta Williams, Kathleen Eiland, Mmes. Susie G. Noble and R. L. Mitchell.

Japan opened its first agricultural museum in 1932.

Present were: Miss Watson, Misses Betty Wilson, Taylor, Marguerite Bivins, Lucille McMullan, Elma Graves, Dru Lord, Clara Jesse, Eva Batchelor, Lotta Williams, Kathleen Eiland, Mmes. Susie G. Noble and R. L. Mitchell.

Japan opened its first agricultural museum in 1932.

Present were: Miss Watson, Misses Betty Wilson, Taylor, Marguerite Bivins, Lucille McMullan, Elma Graves, Dru Lord, Clara Jesse, Eva Batchelor, Lotta Williams, Kathleen Eiland, Mmes. Susie G. Noble and R. L. Mitchell.

Japan opened its first agricultural museum in 1932.

Present were: Miss Watson, Misses Betty Wilson, Taylor, Marguerite Bivins, Lucille McMullan, Elma Graves, Dru Lord, Clara Jesse, Eva Batchelor, Lotta Williams, Kathleen Eiland, Mmes. Susie G. Noble and R. L. Mitchell.

Japan opened its first agricultural museum in 1932.

Present were: Miss Watson, Misses Betty Wilson, Taylor, Marguerite Bivins, Lucille McMullan, Elma Graves, Dru Lord, Clara Jesse, Eva Batchelor, Lotta Williams, Kathleen Eiland, Mmes. Susie G. Noble and R. L. Mitchell.

Japan opened its first agricultural museum in 1932.

Present were: Miss Watson, Misses Betty Wilson, Taylor, Marguerite Bivins, Lucille McMullan, Elma Graves, Dru Lord, Clara Jesse, Eva Batchelor, Lotta Williams, Kathleen Eiland, Mmes. Susie G. Noble and R. L. Mitchell.

Japan opened its first agricultural museum in 1932.

### FEMININE FANCIES

Certain trade names and slang expressions make us wonder whether there exists any more a regard for the king's English. Some terms we have noticed lately include: "Sun-Pruf," "Protecta," "filmusical," none of which appeals to us as being either beautiful or musical as words go.

Boys or not the only ones who go in for thrills and spills in their sports. Co-eds of the University of Utah decided that tennis, as usually played, was too slow. They donned roller skates, seized their rackets, and started out to make the game a speedier one. From all accounts they did, not to mention making it positively upsetting.

Men will do strange things for love. It seems quite believable, especially since we read the press dispatch from Belgrade retailing the romantic troubles of Achim Gavrilovich. Achim, a 50-year-old peasant, after the death of his first wife fell in love with another woman. He hadn't the money for a marriage license, but after due cogitation fell upon a plan: He sold the tombstone of his first wife for \$3, in order to finance marriage to a second love.

But—the story got around as such stories do and his fiancée heard. She was so shocked she refused to marry him.

Poor Achim! No doubt he is becoming the cruelest of women! So inconsistent, you know.

A man's suit, they say, contains 74,392 stitches of which some 36,000 are made by hand. We fancy suit-makers wish they could get a bit ahead of time and take some of those fabled stitches that save nine.

Miss Lydia G. Watson presented a paper on "The Business of Being a Club Woman" at the monthly business meeting of the Business and Professional Women's club in the commissioners courtroom Monday evening.

In brief form, the speaker told of the outstanding aims of club work, likening it to the lighthouses on the seashore.

Miss Fannie Bess Taylor presided at the meeting and led the discussion of business. Suggestions for the amendment of the constitution were read and will be voted upon at the next meeting.

Present were: Miss Watson, Misses Betty Wilson, Taylor, Marguerite Bivins, Lucille McMullan, Elma Graves, Dru Lord, Clara Jesse, Eva Batchelor, Lotta Williams, Kathleen Eiland, Mmes. Susie G. Noble and R. L. Mitchell.

Japan opened its first agricultural museum in 1932.

Present were: Miss Watson, Misses Betty Wilson, Taylor, Marguerite Bivins, Lucille McMullan, Elma Graves, Dru Lord, Clara Jesse, Eva Batchelor, Lotta Williams, Kathleen Eiland, Mmes. Susie G. Noble and R. L. Mitchell.

Japan opened its first agricultural museum in 1932.

Present were: Miss Watson, Misses Betty Wilson, Taylor, Marguerite Bivins, Lucille McMullan, Elma Graves, Dru Lord, Clara Jesse, Eva Batchelor, Lotta Williams, Kathleen Eiland, Mmes. Susie G. Noble and R. L. Mitchell.

Japan opened its first agricultural museum in 1932.

Present were: Miss Watson, Misses Betty Wilson, Taylor, Marguerite Bivins, Lucille McMullan, Elma Graves, Dru Lord, Clara Jesse, Eva Batchelor, Lotta Williams, Kathleen Eiland, Mmes. Susie G. Noble and R. L. Mitchell.

Japan opened its first agricultural museum in 1932.

Present were: Miss Watson, Misses Betty Wilson, Taylor, Marguerite Bivins, Lucille McMullan, Elma Graves, Dru Lord, Clara Jesse, Eva Batchelor, Lotta Williams, Kathleen Eiland, Mmes. Susie G. Noble and R. L. Mitchell.

Japan opened its first agricultural museum in 1932.

Present were: Miss Watson, Misses Betty Wilson, Taylor, Marguerite Bivins, Lucille McMullan, Elma Graves, Dru Lord, Clara Jesse, Eva Batchelor, Lotta Williams, Kathleen Eiland, Mmes. Susie G. Noble and R. L. Mitchell.

Japan opened its first agricultural museum in 1932.

Present were: Miss Watson, Misses Betty Wilson, Taylor, Marguerite Bivins, Lucille McMullan, Elma Graves, Dru Lord, Clara Jesse, Eva Batchelor, Lotta Williams, Kathleen Eiland, Mmes. Susie G. Noble and R. L. Mitchell.

Japan opened its first agricultural museum in 1932.

Present were: Miss Watson, Misses Betty Wilson, Taylor, Marguerite Bivins, Lucille McMullan, Elma Graves, Dru Lord, Clara Jesse, Eva Batchelor, Lotta Williams, Kathleen Eiland, Mmes. Susie G. Noble and R. L. Mitchell.

Japan opened its first agricultural museum in 1932.

Present were: Miss Watson, Misses Betty Wilson, Taylor, Marguerite Bivins, Lucille McMullan, Elma Graves, Dru Lord, Clara Jesse, Eva Batchelor, Lotta Williams, Kathleen Eiland, Mmes. Susie G. Noble and R. L. Mitchell.

Japan opened its first agricultural museum in 1932.

Present were: Miss Watson, Misses Betty Wilson, Taylor, Marguerite Bivins, Lucille McMullan, Elma Graves, Dru Lord, Clara Jesse, Eva Batchelor, Lotta Williams, Kathleen Eiland, Mmes. Susie G. Noble and R. L. Mitchell.

Japan opened its first agricultural museum in 1932.

Present were: Miss Watson, Misses Betty Wilson, Taylor, Marguerite Bivins, Lucille McMullan, Elma Graves, Dru Lord, Clara Jesse, Eva Batchelor, Lotta Williams, Kathleen Eiland, Mmes. Susie G. Noble and R. L. Mitchell.

Japan opened its first agricultural museum in 1932.

Present were: Miss Watson, Misses Betty Wilson, Taylor, Marguerite Bivins, Lucille McMullan, Elma Graves, Dru Lord, Clara Jesse, Eva Batchelor, Lotta Williams, Kathleen Eiland, Mmes. Susie G. Noble and R. L. Mitchell.

Japan opened its first agricultural museum in 1932.

Present were: Miss Watson, Misses Betty Wilson, Taylor, Marguerite Bivins, Lucille McMullan, Elma Graves, Dru Lord, Clara Jesse, Eva Batchelor, Lotta Williams, Kathleen Eiland, Mmes. Susie G. Noble and R. L. Mitchell.

Japan opened its first agricultural museum in 1932.

Present were: Miss Watson, Misses Betty Wilson, Taylor, Marguerite Bivins, Lucille McMullan, Elma Graves, Dru Lord, Clara Jesse, Eva Batchelor, Lotta Williams, Kathleen Eiland, Mmes. Susie G. Noble and R. L. Mitchell.

Japan opened its first agricultural museum in 1932.

Present were: Miss Watson, Misses Betty Wilson, Taylor, Marguerite Bivins, Lucille McMullan, Elma Graves, Dru Lord, Clara Jesse, Eva Batchelor, Lotta Williams, Kathleen Eiland, Mmes. Susie G. Noble and R. L. Mitchell.

Japan opened its first agricultural museum in 1932.

Present were: Miss Watson, Misses Betty Wilson, Taylor, Marguerite Bivins, Lucille McMullan, Elma Graves, Dru Lord, Clara Jesse, Eva Batchelor, Lotta Williams, Kathleen Eiland, Mmes. Susie G. Noble and R. L. Mitchell.

Japan opened its first agricultural museum in 1932.

Present were: Miss Watson, Misses Betty Wilson, Taylor, Marguerite Bivins, Lucille McMullan, Elma Graves, Dru Lord, Clara Jesse, Eva Batchelor, Lotta Williams, Kathleen Eiland, Mmes. Susie G. Noble and R. L. Mitchell.

Japan opened its first agricultural museum in 1932.

Present were: Miss Watson, Misses Betty Wilson, Taylor, Marguerite Bivins, Lucille McMullan, Elma Graves, Dru Lord, Clara Jesse, Eva Batchelor, Lotta Williams, Kathleen Eiland, Mmes. Susie G. Noble and R. L. Mitchell.

Japan opened its first agricultural museum in 1932.

Present were: Miss Watson, Misses Betty Wilson, Taylor, Marguerite Bivins, Lucille McMullan, Elma Graves, Dru Lord, Clara Jesse, Eva Batchelor, Lotta Williams, Kathleen Eiland, Mmes. Susie G. Noble and R. L. Mitchell.

Japan opened its first agricultural museum in 1932.

Present were: Miss Watson, Misses Betty Wilson, Taylor, Marguerite Bivins, Lucille McMullan, Elma Graves, Dru Lord, Clara Jesse, Eva Batchelor, Lotta Williams, Kathleen Eiland, Mmes. Susie G. Noble and R. L. Mitchell.

Japan opened its first agricultural museum in 1932.

Present were: Miss Watson, Misses Betty Wilson, Taylor, Marguerite Bivins, Lucille McMullan, Elma Graves, Dru Lord, Clara Jesse, Eva Batchelor, Lotta Williams, Kathleen Eiland, Mmes. Susie G. Noble and R. L. Mitchell.

Japan opened its first agricultural museum in 1932.

Present were: Miss Watson, Misses Betty Wilson, Taylor, Marguerite Bivins, Lucille McMullan, Elma Graves, Dru Lord, Clara Jesse, Eva Batchelor, Lotta Williams, Kathleen Eiland, Mmes. Susie G. Noble and R. L. Mitchell.

Japan opened its first agricultural museum in 1932.

Present were: Miss Watson, Misses Betty Wilson, Taylor, Marguerite Bivins, Lucille McMullan, Elma Graves, Dru Lord, Clara Jesse, Eva Batchelor, Lotta Williams, Kathleen Eiland, Mmes. Susie G. Noble and R. L. Mitchell.

Japan opened its first agricultural museum in 1932.

Present were: Miss Watson, Misses Betty Wilson, Taylor, Marguerite Bivins, Lucille McMullan, Elma Graves, Dru Lord, Clara Jesse, Eva Batchelor, Lotta Williams, Kathleen Eiland, Mmes. Susie G. Noble and R. L. Mitchell.

### Baptist Women Hold Program Meetings

Circles of the Baptist missionary union met for program sessions Monday afternoon.

Mrs. Warren D. Anderson was hostess to the Evangelists circle at her home, 700 West Storey, with Mrs. J. C. Hudman as leader. Mrs. Eula Mahoney brought the devotional and others taking part on the program were Mmes. Herbert King, D. M. Ellis, Blake Chapman, Bill Epley, and W. L. Fickett.

Refreshments were served to those named, to one visitor, Mrs. Troy Eiland, and to the hostess.

Mrs. N. W. Bigham led the program for the Lucille Reagan circle which met with Mrs. Clarence Hale, 707 North Loraine. The devotional was brought by Mrs. Brooks Pemberton, while Mrs. J. V. Hobbs and Mrs. M. D. Cox brought other parts on the program.

Refreshments were served to them and to Mmes. Fred Middleton, S. L. Alexander, Clyde Cowden, H. A. Palmer, John Dunagan, and the hostess.

Mrs. B. C. Girdley led the devotional for the Annie Barron circle which met at the church, with Mrs. George Phillips as leader. On the program were: Mmes. Ray Hyatt, F. H. Lanham and A. W. Wyatt.

Others present were Mrs. A. C. Francis and Mrs. J. M. White.

Refreshments were served to them and to Mmes. Fred Middleton, S. L. Alexander, Clyde Cowden, H. A. Palmer, John Dunagan, and the hostess.

Mrs. B. C. Girdley led the devotional for the Annie Barron circle which met at the church, with Mrs. George Phillips as leader. On the program were: Mmes. Ray Hyatt, F. H. Lanham and A. W. Wyatt.

Others present were Mrs. A. C. Francis and Mrs. J. M. White.

Refreshments were served to them and to Mmes. Fred Middleton, S. L. Alexander, Clyde Cowden, H. A. Palmer, John Dunagan, and the hostess.

Mrs. B. C. Girdley led the devotional for the Annie Barron circle which met at the church, with Mrs. George Phillips as leader. On the program were: Mmes. Ray Hyatt, F. H. Lanham and A. W. Wyatt.

Others present were Mrs. A. C. Francis and Mrs. J. M. White.

Refreshments were served to them and to Mmes. Fred Middleton, S. L. Alexander, Clyde Cowden, H. A. Palmer, John Dunagan, and the hostess.

Mrs. B. C. Girdley led the devotional for the Annie Barron circle which met at the church, with Mrs. George Phillips as leader. On the program were: Mmes. Ray Hyatt, F. H. Lanham and A. W. Wyatt.

Others present were Mrs. A. C. Francis and Mrs. J. M. White.

Refreshments were served to them and to Mmes. Fred Middleton, S. L. Alexander, Clyde Cowden, H. A. Palmer, John Dunagan, and the hostess.

Mrs. B. C. Girdley led the devotional for the Annie Barron circle which met at the church, with Mrs. George Phillips as leader. On the program were: Mmes. Ray Hyatt, F. H. Lanham and A. W. Wyatt.

Others present were Mrs. A. C. Francis and Mrs. J. M. White.

Refreshments were served to them and to Mmes. Fred Middleton, S. L. Alexander, Clyde Cowden, H. A. Palmer, John Dunagan, and the hostess.

Mrs. B. C. Girdley led the devotional for the Annie Barron circle which met at the church, with Mrs. George Phillips as leader. On the program were: Mmes. Ray Hyatt, F. H. Lanham and A. W. Wyatt.

Others present were Mrs. A. C. Francis and Mrs. J. M. White.

Refreshments were served to them and to Mmes. Fred Middleton, S. L. Alexander, Clyde Cowden, H. A. Palmer, John Dunagan, and the hostess.

Mrs. B. C. Girdley led the devotional for the Annie Barron circle which met at the church, with Mrs. George Phillips as leader. On the program were: Mmes. Ray Hyatt, F. H. Lanham and A. W. Wyatt.

Others present were Mrs. A. C. Francis and Mrs. J. M. White.

Refreshments were served to them and to Mmes. Fred Middleton, S. L. Alexander, Clyde Cowden, H. A. Palmer, John Dunagan, and the hostess.

Mrs. B. C. Girdley led the devotional for the Annie Barron circle which met at the church, with Mrs. George Phillips as leader. On the program were: Mmes. Ray Hyatt, F. H. Lanham and A. W. Wyatt.

Others present were Mrs. A. C. Francis and Mrs. J. M. White.

Refreshments were served to them and to Mmes. Fred Middleton, S. L. Alexander, Clyde Cowden, H. A. Palmer, John Dunagan, and the hostess.

Mrs. B. C. Girdley led the devotional for the Annie Barron circle which met at the church, with Mrs. George Phillips as leader. On the program were: Mmes. Ray Hyatt, F. H. Lanham and A. W. Wyatt.

Others present were Mrs. A. C. Francis and Mrs. J. M. White.

Refreshments were served to them and to Mmes. Fred Middleton, S. L. Alexander, Clyde Cowden, H. A. Palmer, John Dunagan, and the hostess.

Mrs. B. C. Girdley led the devotional for the Annie Barron circle which met at the church, with Mrs. George Phillips as leader. On the program were: Mmes. Ray Hyatt, F. H. Lanham and A. W. Wyatt.

Others present were Mrs. A. C. Francis and Mrs. J. M. White.

Refreshments were served to them and to Mmes. Fred Middleton, S. L. Alexander, Clyde Cowden, H. A. Palmer, John Dunagan, and the hostess.

Mrs. B. C. Girdley led the devotional for the Annie Barron circle which met at the church, with Mrs. George Phillips as leader. On the program were: Mmes. Ray Hyatt, F. H. Lanham and A. W. Wyatt.

Others present were Mrs. A. C. Francis and Mrs. J. M. White.

Refreshments were served to them and to Mmes. Fred Middleton, S. L. Alexander, Clyde Cowden, H. A. Palmer, John Dunagan, and the hostess.

Mrs. B. C. Girdley led the devotional for the Annie Barron circle which met at the church, with Mrs. George Phillips as leader. On the program were: Mmes. Ray Hyatt, F. H. Lanham and A. W. Wyatt.

Others present were Mrs. A. C. Francis and Mrs. J. M. White.

Refreshments were served to them and to Mmes. Fred Middleton, S. L. Alexander, Clyde Cowden, H. A. Palmer, John Dunagan, and the hostess.

Mrs. B. C. Girdley led the devotional for the Annie Barron circle which met at the church, with Mrs. George Phillips as leader. On the program were: Mmes. Ray Hyatt, F. H. Lanham and A. W. Wyatt.

Others present were Mrs. A. C. Francis and Mrs. J. M. White.

Refreshments were served to them and to Mmes. Fred Middleton, S. L. Alexander, Clyde Cowden, H. A. Palmer, John Dunagan, and the hostess.

Mrs. B. C. Girdley led the devotional for the Annie Barron circle which met at the church, with Mrs. George Phillips as leader. On the program were: Mmes. Ray Hyatt, F. H. Lanham and A. W. Wyatt.



Vance Brees was paid \$8000 for flying three miles. In testing a plane for the government, he dived from a height of 20,000 feet to 4000 feet.

Insurance Record Set LONDON, (UP)—Insurance world records have been established by the leading British insurance companies and Lloyd's underwriters, who have raised in the open London market nearly \$15,000,000 cover for the Cunard-White Star liner Queen Mary. Less than \$10,000,000 of the \$24,000,000 for which the vessel is insured will be guaranteed by the government.

ROYAL WORLD'S NO. 1 TYPEWRITER West Texas Office Supply Phone 95

Storage PLENTY OF ROOM 115 South Main SHELTON-COLEMAN PAINT & PAPER STORE Phone 43

Dr. L. Waldo Leggett ANNOUNCES REMOVAL OF OFFICES FROM THOMAS BLDG., TO ROOMS 209-210 Petroleum Building Medicine—Surgery and Hospital Connections Phones: Res. 26 Office 126

T. J. INMAN Optometrist Glasses Fitted Correctly A full line of frames and mountings. Broken lenses quickly and accurately replaced. Broken Frames Repaired 104 NORTH MAIN ST.

CLASSIFIED ADVERTISING

RATES AND INFORMATION CASH must accompany all orders for classified ads, with a specified number of days for each to be inserted. CLASSIFIEDS will be accepted until 12 noon on week days and 6 p. m., Saturday for Sunday issues. PROPER classification of advertisements will be done in the office of The Reporter-Telegram. ERRORS appearing in classified ads will be corrected without charge by notice given immediately after the first insertion. RATES: 2¢ a word a day. 4¢ a word two days. 5¢ a word three days. MINIMUM charges: 1 day 25¢. 2 days 50¢. 3 days 60¢. FURTHER information will be given gladly by calling 7 or 8.

8—Poultry

BABY chicks and milk fed fryers for sale; live or dressed. Fresh butter and eggs. Midland Hatchery, Phone 9003F2.

10—Bedrooms

NICE bedroom in private home; garage. 801 West Michigan. 79-3

11—Employment

WANT boy about 15 with bicycle for newspaper route; work only few hours a week. Apply at Reporter-Telegram. 78-3

13—Cards of Thanks

WE ARE grateful to every friend we have for every expression of friendship and sympathy since Lee's death. All we are able to say is that you are real help along life's way and we cannot do without you. Mrs. Ola Dublin Haynes Mrs. J. R. Dublin and family. 79-1

Buddy's FLOWERS PHONE 1083 1200 W. Wall MIDLAND, TEX.

0—Wanted

WILL buy small frame house not too far out. Phone 732. 77-3

2—For Sale

TO OUR members and the public: We are open for business with white and bronze gasoline, lubricating oil and grease. All good grades, also distillate. Located at the old Gleason and Luttrell gin. We will appreciate a part of your trade very much. The Midland Co-operative Marketing Association, Inc. P. P. Barber, Manager. 76-6

FOR SALE: Green Gables Sandwich Shop on West Wall; bargain. Phone 9541. 78-3

3—Furn. Apts.

SMALL two room furnished apartment. 315 North Baird. 79-3

7—Houses for Sale

FOR SALE MY BRICK RESIDENCE At 1202 West Texas Ave. HARRY NEBLETT At Hotel Scharbauer Until Thursday. After that time write me at Stephenville, Texas.

FOR SALE: 5-room brick house; can give possession at once. Mrs. L. A. Denton. 79-3

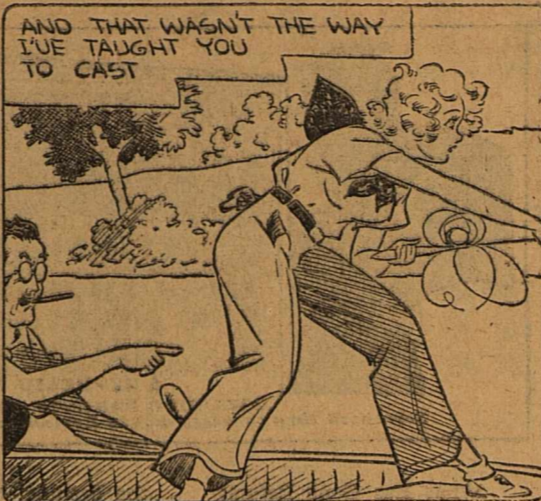
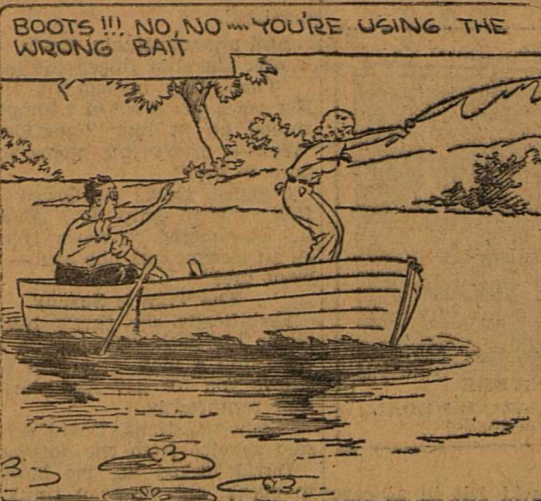
UPHAM FURNITURE COMPANY 615 West Wall Phone 451 New and Used Furniture at Reasonable Prices

POLITICAL ANNOUNCEMENTS

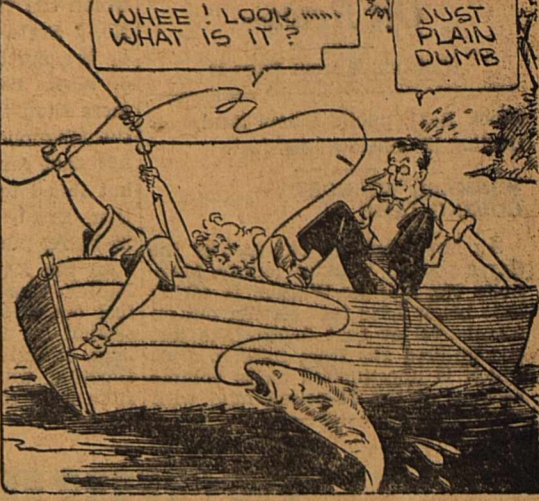
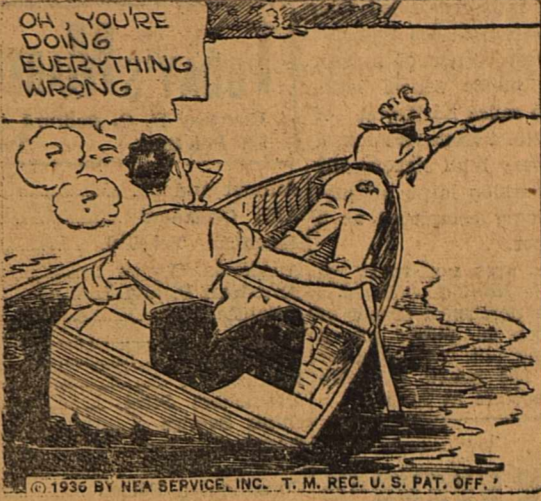
Subject to the action of the Democratic Primary Election July 25, 1936. Advertising rates: For State, District and County Offices, \$15.00; for Precinct Offices, \$7.50. Cash with order. For State Senator: (29th District of Texas) H. L. WINFIELD (Pecos County) ENJAMIN F. BERKELEY (Brewster County.) For State Representative: (88th District) S. M. SWEARINGEN Marfa, Texas For District Attorney: (70th Judicial District) OECIL C. COLLINGS (Re-Election) For District Clerk: NETTIE C. ROMER (Re-Election) MRS. E. E. STEVENS For County Judge: E. H. BARRON (Re-Election) For Sheriff, Tax Assessor and Collector: A. C. FRANCIS (Re-Election) For County Attorney: MERRITT P. HINES For County Clerk: SUSIE G. NOBLE (Re-Election) J. H. FINE

For County Treasurer: LOIS PATTERSON MARY L. QUINN (Re-Election) MRS. JOSEPHINE K. LIGON For Justice of Peace: (Precinct No. 1) J. H. KNOWLES (Re-Election) For Constable: (Precinct No. 1) C. B. PONDER (Re-Election) W. P. (Bud) ESTES For County Commissioner: (Precinct No. 1) J. C. ROBERTS (Re-Election) For County Commissioner: (Precinct No. 2) W. V. JONES B. T. GRAHAM (Re-Election) W. T. BRYANT For County Commissioner: (Precinct No. 3) D. L. HUTT (Re-Election) TYSON MIDKIFF For County Commissioner: (Precinct No. 4) CARL SMITH (Re-Election) R. G. PEACH W. M. STEWART

BOOTS AND HER BUDDIES

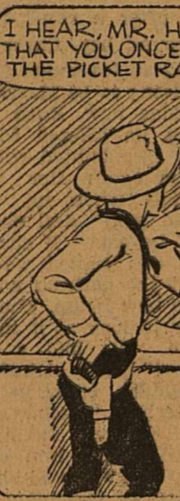


Not Bad

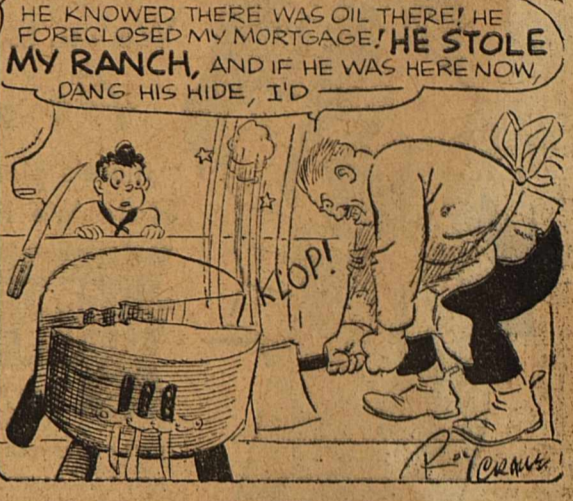
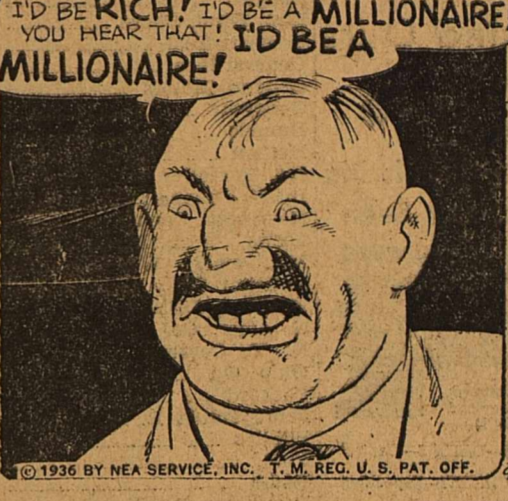


By MARTIN

WASH TUBBS



Hopper Is Still Hopping Mad



By CRANE

ALLEY OOP

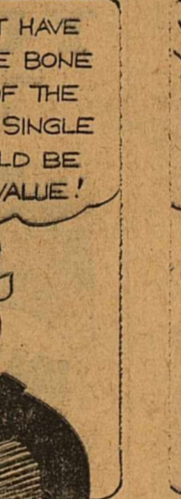
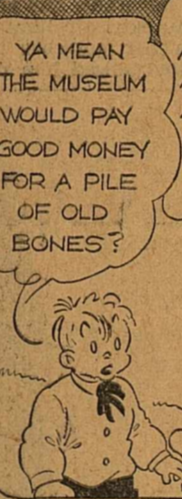


The King Has Ideas



By H'MLIN

SALESMAN SAM



By SMALL

FRECKLES AND HIS FRIENDS



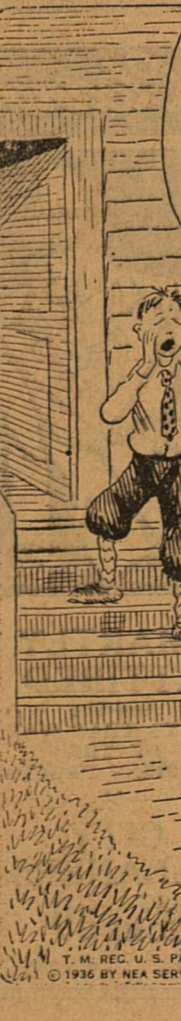
By BLOSSER

OUR BOARDING HOUSE



By HEARN

OUT OUR WAY



By WILLIAMS



Oil News--

(Continued from Page 1)

Block B-21, public school land, is drilling lime below 3,486 feet.

WINKLER WILDCAT CORING LIME

An important wildcat east of the Sayre pool in Winkler county, Magnolia No. 2 State-Walton, is coring lime below 2,646 feet, having put on core-barrel at that depth. The test encountered gas from 2,459 to 2,460 which is unestimated as to volume because of the 11-pound mud with

which the test is being drilled. The No. 2 State-Walton is 330 feet out of the northwest corner of section 5, block B-3, public school land, more than two miles northwest of the Magnolia No. 1 State-Walton, a test that ran very high structurally but failed to develop large production, finally being completed as a 25-barrel pumper.

In the Keyes area northwest of Kermit, Humble No. 3-A Colby, 330 feet out of the northwest corner of section 25, block 26, public school land, is clearing out cavings after shooting with 300 quarts of nitro from 2,813 to bottom at 3,015.

TODAY'S MARKETS

Courtesy H. O. Bedford & Co. 320 Pst. Bldg. Tel. 408

Table listing market prices for various commodities including Armour and Co., Allis Chalmers, American Tel.-Tel., Anaconda Copper, American P. and L., Atlantic, Auburn, A. T. and S. F., Beady, Bethlehem Steel, Cities Service, Chrysler, Comm. Solvent, Consolidated Edison, Continental Oil, Consolidated Oil, Douglas, Elec. Bond, Share, Freepor-Tex., General Elec., General Motors, Goodyear, Humble, Hudson, Int. Harvester, Int. Telephone, Kennicott Copper, Loews, Montgomery Ward, National Dairy, National Distillery, N. Amer. Co., N. Y. Central, Ohio Oil, Packard, Pennsylvania R. R., Phillips, Pure, Radio, Remington Rand, Sears-Roebuck, Shell, Sooty-Vacuum, Southern Pac. R. R., Standard Brands, Standard of Calif., Standard of N. J., Studebaker, Texas Co., Tidewater, T. P. Coal and Oil, T. and P. Land Trust, United Aircraft, United Corp, U. S. Rubber, U. S. Steel, Warner Bros., Western Union, Westinghouse, and TOTAL SALES.

Advertisement for 'GENE STRATTON-PORTER'S THE HARVESTER' featuring Alice Brady, Russell Hardie, Ann Rutherford, Frank Craven, and Cora Sue Collins. It is a Republic Picture awarded Parents Magazine Medal.

What Has Gone Before: David Langston, handsome young farmer of the Lumberlost country in Indiana, has started building a house on his farmstead. This immediately starts village tongues to wagging in speculation over which of the village belles is to be his bride. Although David has no definite plans for matrimony, he is devoted to Ruth Jameson, an orphan who, with her young sister Naomi, lives with Gruffy Moreland on the farm adjacent to his own. However, Mrs. Biddle, society autocrat, determines that David shall marry her daughter, Thelma, and with this end in view persuades Ruth, the penniless rival, to come into her home as a menial. The night of Thelma's twenty-first birthday party, she decides, Ruth will be kept busy in the kitchen!

CHAPTER THREE When Mrs. Biddle visited Miss Sophronia, the village dressmaker who was to make Thelma's party frock, she dropped a careful hint designed to send the elderly spinster flying to the telephone the minute her client had departed. Swiftly, as Mrs. Biddle had foreseen, she spread the news—it was for Thelma Biddle that David Langston was building his house! And in an incredibly brief space of time everyone except Granny and Ruth and Naomi—and David—knew that David was going to marry Thelma Biddle! It was not until the night of Thelma's party that he beheld the closing net in which fate—and Mrs. Biddle—had entangled him. And, being honorable and shy, he saw no way to extricate himself. Thelma, in her gorgeous new frock, had monopolized him during the evening. David felt ill at ease and wondered where Ruth was. Excusing himself to wash his hands in the kitchen, after a candy-pulling contest, he found her, flushed and weary, turning an ice-cream freezer. "David's going to be married!" It was done now, Ruth said quickly, when he offered to help her, and her eyes lighted with joy at seeing him again. Her heart thumped madly when he said: "We've missed you!" And she lied stoutly when he asked if she were happy there. She smiled when he told her about the bathtub now installed in the new house. They had gone together to look at it in Jake Ebbens' store. "We had a lovely time that day!" Ruth sighed. But Mrs. Biddle broke in upon the happy interlude. "Thelma's looking for you," she said, taking David's arm and urging him toward the door. To Ruth she said shortly: "You can pass the ice-cream while the cake's being cut." The cutting of the cake was the big moment of the evening. Previously prompted by her mother, Thelma knew where to cut a piece for David. She smiled secretly when he broke it open and the ring fell out. "David's going to be married!" Mrs. Biddle exclaimed triumphantly. And as he flushed before the knowing gazes and comments, Thelma drew him out onto the porch. "What'll they think inside?" he demurred, as she urged him to sit beside her in the hammock. She smiled archly. "I guess they know you've got things to say to me in private!" "But—I've already wished you a happy birthday!" David wondered if he couldn't somehow slip out and find Ruth. "You're sweet, David!" Slipping her fingers into his pocket, Thelma drew out the ring and tucked it into his hand. "What are you going to do with it?" she asked expectantly. "Give it away I guess. . . It's too small for me." He moved uncomfortably. "Is it too small for me?" Thelma

peristed. And unsuspectingly, David slipped it over the slim finger she held up. "That's my engagement finger!" Her voice was a lit of triumph. She smiled up at him bewilderingly. "Well—aren't you going to propose to me?" Startled, David swallowed painfully. "Why—why—I never—"

"That's the sweetest thing a man ever said to me! I love you for it!" And she kissed him rapturously. "I would want me!"

Ecstatically she threw her arms about his neck. "That's the sweetest thing a man ever said to me! I love you for it!" And she kissed him rapturously. "I would want me!"

Ecstatically she threw her arms about his neck. "That's the sweetest thing a man ever said to me! I love you for it!" And she kissed him rapturously. "I would want me!"

Ecstatically she threw her arms about his neck. "That's the sweetest thing a man ever said to me! I love you for it!" And she kissed him rapturously. "I would want me!"

Ecstatically she threw her arms about his neck. "That's the sweetest thing a man ever said to me! I love you for it!" And she kissed him rapturously. "I would want me!"

Ecstatically she threw her arms about his neck. "That's the sweetest thing a man ever said to me! I love you for it!" And she kissed him rapturously. "I would want me!"

Steady Growth in Museum Collection Denotes Interest

Midland county museum is befriended by old and young alike. That its appeal is general is proven by the diversity in the ages of the donors of last week. James Bryan a youth of Brownfield, Texas, became interested in this collection when he visited here last summer. When he found an Indian artifact in Terry county, he enriched our museum with it. This item is a flint knife sharpened to take flesh from hides of animals.

Mrs. J. H. Barron, who is a pioneer citizen of Midland gave two covers of letter written by her husband, to her. The cancellation of the stamp was done by hand and is star-shaped. One cancellation reads "Midland, Apr. 20, 1885, Tom Green county, Texas" and the other reads "Midland, Apr. 27, 1885, Midland county, Texas." Local philatelists have looked on these with desire. A letter head of the firm of Lerch and Hopkins, Surveyors, Land Agts. and Stock Brokers, shows these partners to have been versatile. They declare they "will pay taxes, purchase and sell land and land certificates; titles examined and perfected; horses and cattle bought and sold." This instrument is dated April 19, 1885.

The old mustache cup and saucer "handed down" to Mrs. Wm. S. Blackman from her grandfather, is a quaint reminder of a day that is past. This china is beautifully decorated with a maritime scene. China lovers keep the exhibits of ceramics growing. A recent addition is a flower holder made by Lenox at Trenton, N. J. This piece is not old but is an example of good American porcelain.

Of interest to stamp collectors are: a first flight cover, Germany to the U. S. airship "Hindenburg," a first flight U. S. to Germany, airship "Hindenburg," lent by Otis A. Kelly, also an airmail cover autographed by Capt. Charles P. Ulm. S. A. Debnam has lent the museum a pair of rackets used by the Alabama Indians in a game called "tolley." These rackets were given to Mr. Debnam by an old chief, in Polk county, Texas. Interesting things about the Alabama Indians: They are the only tribe which never took up arms against the white people and were never placed on a reservation.

The museum has been re-decorated recently and its appearance has been greatly enhanced. Need for additional show cases to house this ever growing collection is keenly felt.

The climb of an airplane is approximately from 400 to 1200 feet a minute.

Sausage King Crowned

KIRKLAND LAKE, Ont. (U.P.)—Alex Woronka, a miner, has been proclaimed "Champion Sausage Eater of Kirkland." He consumed four pounds of sausage and a loaf of bread in half an hour.

Baby Week Proclaimed

REDWOOD CITY, Cal. (U.P.)—Mayor Charles G. Lambert has proclaimed an annual "Baby week" in which every citizen is requested to give special attention to babies "to make us more conscious of our responsibilities in regard to their care, health and training." It is the preparation of citizens for the future, he declares.

Party to Try Scaling Peak

VANCOUVER, B. C. (U.P.)—Another attempt to scale Mount Waddington, highest peak in the Coast range, is to be made by a 12-man expedition in July. The peak has defeated 13 previous expeditions.

CONDITION SAME

The condition of E. S. McLaughlin, seriously injured in a car wreck Saturday, remains practically unchanged today, the attending physician reported.

Advertisement for RITZ COOLEST SPOT IN TOWN. TODAY - TOMORROW. Broadcasts in a Bedlam! A radio riot that made the air hotter than her torch songs! YOU MAY BE NEXT with ANN SOTHERN, LLOYD NOLAN, Douglas Dumbrille. A Columbia Picture.

Advertisement for Plus "Stars of Tomorrow" Sport Thrills News Events.

"VACATION? We're taking Ours At Home - there's plenty in this Big State We Haven't Seen". VISIT THESE INTERESTING CENTENNIAL CELEBRATIONS. (June 8 through July 4, Revised to June 1)

Texans are seeing Texas during CENTENNIAL YEAR!

Centennial year is not only an opportunity for Texas to be host to millions of visitors from other states. It's a year for Texans to travel Texas and know their own state! For real vacation pleasures Texas is unsurpassed anywhere. We have mountains, seashores, missions, foreign atmosphere, pine woods, gay night life in our metropolitan cities, historic places, unexcelled golf and fishing—every attraction you can find anywhere, right here in our own state. Millions of Texans are seeing the big exposition at Dallas, then driving on to various other parts of the state for other equally interesting Centennial Celebrations. The Texas Centennial is state wide. See all of it that time permits. Read the calendar of interesting Centennial events at the right. Write the various chambers of commerce for complete information at cities you are interested in. For a real vacation—Texans, SEE TEXAS!

Doc says, sure I'll give you a real prescription for health and happiness. Let the Laundry help you with housecleaning these hot summer days. The low cost of having the Laundry do your work will surprise you. Our modern Laundry methods save your clothes—save you money and most important of all save your health. PHONE 90 MIDLAND STEAM LAUNDRY

YUCCA Cool and Comfortable LAST DAY

JOE E. BROWN IN "SONS O' GUNS" with Joan Blondell and Beverly Roberts. A Warner Bros. Picture.

ANN HARDING in "THE WITNESS CHAIR" with Walter Abel. A Warner Bros. Picture.

Enjoy your movies in comfort this summer by attending the Ritz or Yucca. Always cool! Always comfortable!

Dry Cleaning SMARTLY ATTIRED And She STAYS THAT WAY BY THE DRI-SHEEN PROCESS -At- CITY CLEANERS JUST PHONE 89

Ceylon is famous for Spices Brazil is famous for Coffee ... but Turkey is famous for Tobacco ... the aromatic Turkish tobacco that adds fragrance and flavor to Chesterfield Cigarettes. It's the right quantity of this Turkish tobacco blended and cross-blended with the best home-grown tobaccos raised in this country that give Chesterfields their mildness and better taste—another reason why Chesterfields Satisfy.