

IT'S DIFFERENT
The Reporter-Telegram brings you daily the local, state, national and international news. Its advertisements keep you abreast of store and shopping news.

THE REPORTER-TELEGRAM

THE DAILY REPORTER (Consolidated March 10, 1929) THE DAILY TELEGRAM
MIDLAND, TEXAS, FRIDAY, MAR. 20, 1936

THE FORECAST
West Texas: Fair tonight and Saturday; rising temperatures Saturday.

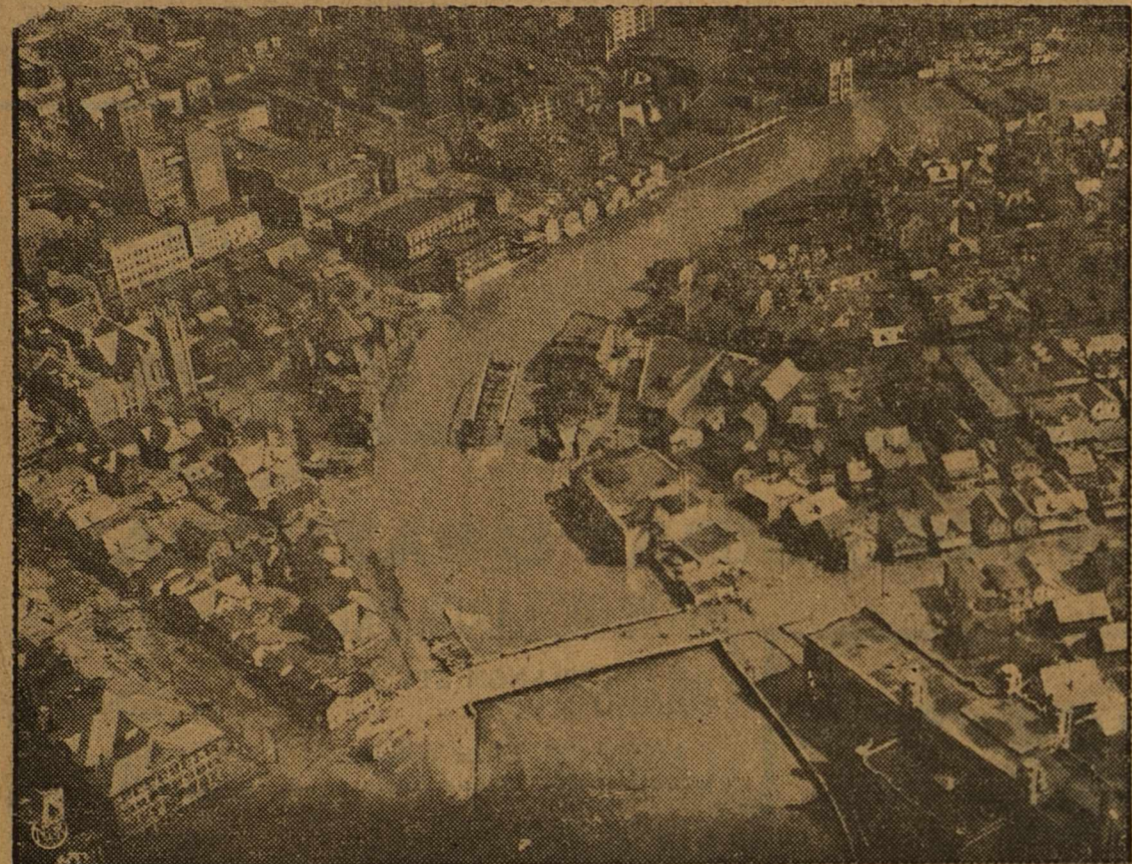
VOL. VIII

Number 10

Third Day of Floods Finds 136 Dead

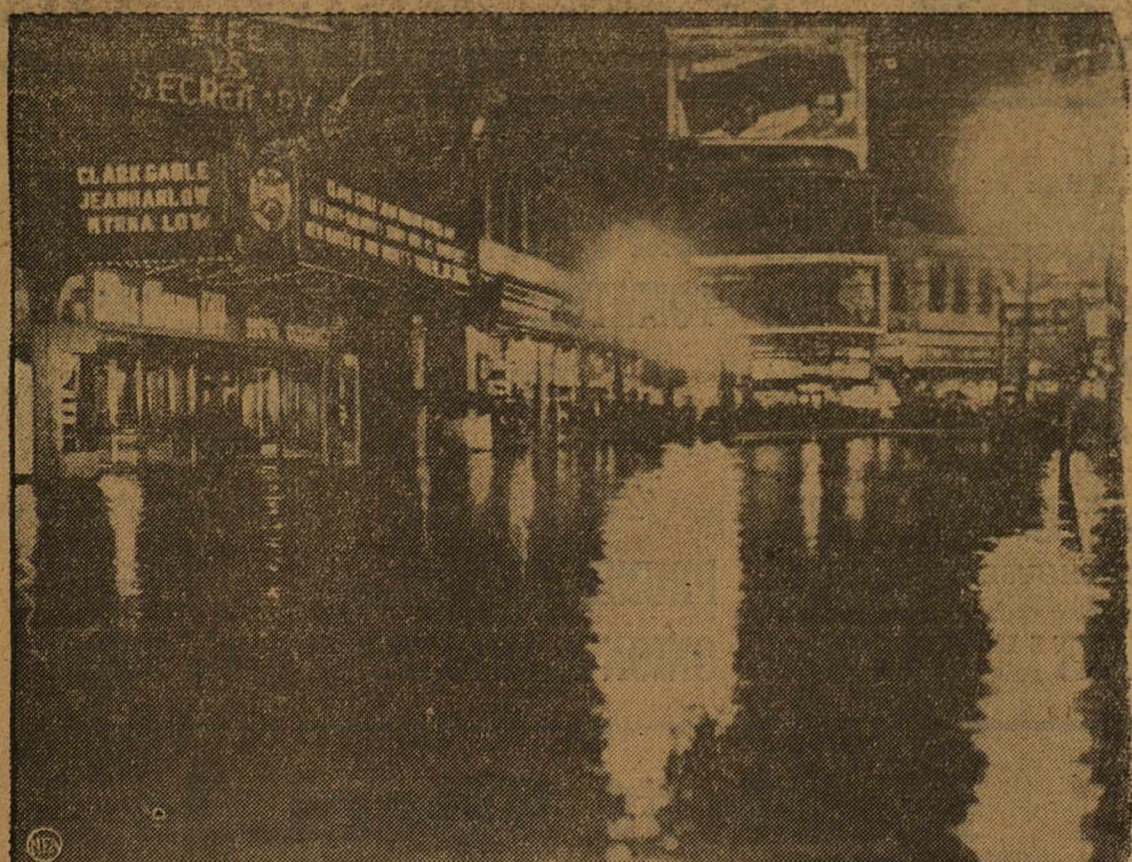
4-Power Pact Formulated to Maintain Security

Raging Waters Tear Bridge From Base



Ravaged by flood, Johnstown, Pa., is shown here during the disaster that spread death and ruin. Near the bottom of the picture the Haines Street bridge is standing firm against the rush of Stony creek, as is the Deibert Street bridge, extreme right rear. But as flood surged through the business district at left, and the residence district at right, the Franklin Street bridge, shown center in the stream, was torn from its foundations.

Business Area of Smoky City Inundated



Water poured into this de luxe movie theater in Pittsburg's downtown area as the flood rose to a depth of 18 feet in some places in the famous "Golden Triangle." Damage in the beautifully decorated theaters and stores was especially heavy. Windows crashed in before the mighty impact of the surging waters. Occasional rowboats passed up and down the lagoons which had been busy streets a few hours before.

11 PERSONS LOSE LIVES IN FIRES, TWO EXPLOSIONS

Six Business Firms Of Texarkana Wrecked

By Associated Press
Two men were killed and four injured in an explosion of a West-coast-Pacific train locomotive at Silver Lake, Nevada, today.
Near Bassett, Arkansas, six persons, including two men, two women and two children were burned to death and a seventh was critically injured when fire destroyed a plantation.
At Texarkana, Texas, three persons were killed when a terrific explosion, followed by fire, wrecked six business firms, causing damages estimated at \$75,000. The jar of the explosion was felt for miles, windows being shaken out and buildings tottering from its effects.

Bulletin

Ralph T. Bucy, county surveyor, ill since Wednesday night, was reported at noon today to be suffering from spinal meningitis. He had been taken to a Lubbock hospital by ambulance this morning, accompanied by Mrs. Bucy and Mrs. W. E. Ryan.
At first suffering from an ear complication, Bucy's condition became worse early today and his spine was lapped to relieve pressure. Prior to that time he had lost consciousness. Reports sent to a local hospital from the Lubbock institution said his condition was grave.

FISHING TRIP OF FDR IS DELAYED

Postpones Departure for 24 Hours to Check on Flood Developments

WASHINGTON, Mar. 20. (AP)—President Roosevelt today postponed for at least another 24 hours his trip to Florida, in order to check flood developments.

"ACE" PENDLETON, NOTED OUTLAW, IS OUT OF JAIL AGAIN

Saws Bars, Escapes in a Daylight Break

ARDMORE, Okla., March 20. (AP)—Asa "Ace" Pendleton, notorious southwestern desperado whose name first was written into police records 24 years ago, was loose again today.
With a 19-year-old WPA worker, Delbert Davis, Pendleton sawed through the bars of an east window in the Carter county jail yesterday afternoon and fled.
Carter county officers captured Davis without a struggle a few blocks away as he crossed a railway track, but there was no trace of the desperado. Davis was held in the fatal clubbing of an aged school teacher.
Only Wednesday Pendleton had told County Attorney Robert W. Richards that he would plead guilty to an armed robbery charge "if I won't get more than ten years." Pendleton had been held in jail (See PENDLETON, page 6)

1936 CROP LOANS WILL BE STARTED HERE SATURDAY

Applications Will Be Received at the Court House

\$200 CASH LIMIT

Only Those Without Credit Are to Be Benefited

Application for emergency crop loans for 1936 will be received at Midland county courthouse by Harold D. Himmel, field supervisor of the emergency crop and feed loan section of the Farm Credit Administration, beginning Saturday morning.
The emergency crop loans will be made only to farmers who cannot obtain credit from any other source, as provided by regulations issued by the governor of the Farm Credit Administration. The money loaned will be limited to the farmer's immediate and actual cash needs for growing his 1936 crops and in no instance may exceed \$200 to one farmer.
Farmers are not eligible for emergency crop loans if they can borrow from an individual, production credit association, bank or other concern. Farmers will also be considered ineligible if they have an application pending with Resettlement Administration, have received assistance from that organization this year or are indebted to the resettlement administration for an unpaid loan.
As in the past, the security for an emergency crop loan will consist of a first lien on the crop financed. Landlord or others having an interest in the crop to be financed will be required to waive their claims in favor of a lien to the Governor of the Farm Credit Administration until the emergency crop loan is repaid.
Checks in payment of approved loans will be issued by the regional emergency crop and feed loan office at Dallas, Texas.

France, Belgium, Britain, Italy Stick Together

To Overhaul League, Broaden Powers Of Body

DRAFT TREATY

Buffer Zone Will Be Established on Borders

LONDON, Mar. 20. (AP)—Great Britain, France, Belgium and Italy today agreed to a virtual military alliance if Adolf Hitler refuses to consider proposals to re-establish the security of Europe.
A plan, as read in the House of Commons, by British foreign secretary Anthony Eden, contemplates an international conference to overhaul the League of Nations and to greatly widen its scope of operations.
Provisions were also made to establish a buffer zone against Germany along the Franco-Belgium border, the zone to be occupied by international troops, including British and Italians, until a new treaty is drafted.
In Rome, General Federico Balbo, undersecretary of war, told the chamber of deputies, in the presence of Mussolini, that Italy is ready to put 1,250,000 soldiers in the field in the event of war. These men are in addition to the army now in Africa.
The British cabinet agreed Thursday night to a four-power proposal for an international security and economic conference to consider Adolf Hitler's peace proposals.
The French cabinet approved a report of the plan submitted by Foreign Minister Pierre-Etienne Flandin, and semi-official sources asserted this meant full approval of the four-power plan formulated in London.
Under the plan, Germany also would be asked to submit the Franco-Soviet mutual assistance pact to the Hague court, which would decide whether the treaty violated the Locarno agreement and thus gave Germany the right to remilitarize the Rhineland.
British quarters disclosed that if the plan were carried out, France had agreed to withdraw her demand for evacuation of German troops in the Rhineland.

Burlesque Beauties Beg Bustles, Bags, But Bar Bassinets

The men of Midland are discovering some of the experiences of the fair sex who participate in style shows. With the ladies it is: "What dress will I look best in?" With the men who are modeling ladies evening dresses in the Men's Burlesque Bathing Revue it is: "Who's got an evening dress I can borrow?" They are scamping hither and yon to find a dress they can squeeze into. Larger sizes are at a premium.
The attic, the basement and the bottom of old trunks are coming in for their share of attention in the search for the oldest and funniest bathing suits to be found. One model to be worn was the very latest thing in 1890, while another was quite the thing in 1900. They are all ridiculously funny. Those worn in 1913 are also to be laughed at, while Howard Hodge will appear quizzical in an ultra modern swimwear ensemble.
The men's burlesque bathing revue will be presented on the stage of the Yucca Theatre Tuesday evening, and is being sponsored by the Midland Lions club as a benefit affair. It will be conducted by the men's burlesque troupe. The men will appear first in ladies evening gowns, parading in all seriousness while the announcement of their sponsoring firm is all comedy and just the reverse of what a formal announcement should be. The second appearance is the beach wear, and this part of the show is strictly comedy. Old style, over size, and ultra modern bathing suits will be the vogue. Doc Bailey is to act as Master of Ceremonies.
Over 40 of the stronger sex of Midland are being sponsored by the Midland Lions club in the contest being selected by popular applause. Prizes will be awarded the winners. It is rumored that two of the winners will be awarded trips in addition to the prizes. One, a trip to Stanton, and another, a trip to the old historic town of Upland, halfway between Midland and Rankin.
On the screen the feature picture will be "Don't Gamble With Love" starring Bruce Cabot and Ann Southern. "The Perfect 30's" will be an appropriate comedy.
All in all, the Lions Club burlesque revue promises to be one of the most laughable shows yet presented in Midland. All models, Lions Club members and otherwise, are requested to meet at the First Christian Church annex next Monday evening at 7:30 o'clock for a brief rehearsal.

Relief Period Is Given Extension

Former Plan Was to Close Shop by April 1

AUSTIN, March 20. (AP)—State relief officials Thursday planned to continue direct aid to unemployed through the spring and possibly until old age pensions were started July 1.
Diminishing demand for relief, coupled with encouraging indications counties were preparing to assume the relief burden, and stringent economies invoked in administration, enabled the relief commission to extend its program from the previous April 1 deadline.
Checks were given 37,532 cases of unworkables during March. Budgets average \$13 in rural areas and \$16 in metropolitan centers. A substantial percentage of relief recipients were of eligible pension age.
Relief distribution reached a peak in Texas when 287,000 cases, or about 1,270,000 persons, were on December, 1934, rolls. Deductions were effected by absorption in industry, transfer to work relief agencies and elimination of persons unworthy of aid.
Adam R. Johnson, state director, estimated absorption by industry was "substantial," nothing that works progress administration jobs had taken only 125,000 cases from the state load.
Continued retrenchment in administrative costs for the close out process and reductions in monthly budgets for unemployed were outlined as means for spreading final state relief funds through the spring.

MIDLAND GROUP ATTENDS REBEKAH ANNUAL MEETING

West Texas Members To Convene Here In August

The forty-second annual Rebekah assembly of Texas I. O. O. F. held at San Angelo, Monday, Tuesday, Wednesday, of this week was attended by a group of Midland people including: Mr. and Mrs. Slim Fuller, Mr. and Mrs. W. E. Johnson, Mr. and Mrs. Henry Thomas, J. B. Keller, Miss Lois Pace, Mrs. Lola Pace, and E. N. Thompson, Mr. and Mrs. J. B. Nell attended the last day of the assembly.
Attendance at the meeting was estimated at 3500 people.
The first morning session was opened at the city auditorium with a program presented by six girls and one boy from the organization's Orphan Home at Corsicana. Talks on Odd-Fellowship were also presented.
Following was a business session of the Rebekah assembly with Mrs. Leola Johnson representing Rebekah Lodge No. 91 at Midland. Another business session was held in the afternoon.
During this time a parade was held by the Canton Big Spring No. 23 and auxiliary of the Patriarchs Militant of the I. O. O. F. Following were the San Angelo High School Band, Rebekahs, and Odd Fellows. The parade was nearly two miles in length.
The marchers went to the City Park to confer the decoration of Ohivalry on eight women. Those from Midland who took part in this ceremony were: Chevaliers E. N. Thompson, W. E. Johnson and Slim Fuller, and Lady Hoaxane Fuller.
The business session Tuesday morning was followed by a joint luncheon for Ladies and Chevaliers at which Brig. General Goo. I. Britton of South Gate, Ky., was present. Officers of the auxiliary were appointed later in the day.
Tuesday night a Centennial jamboree was held on the roof garden of the St. Angelus hotel and a dance at the Crystal ballroom of the Cactus Hotel.
Sessions Wednesday were devoted to business.
The West Texas association of Rebekahs will be held in Midland during the first week in August of this year. From 350 to 500 people are expected to attend the two or three day meeting.

NO SCABIES ARE FOUND IN COUNTY

15,676 Head of Cattle Are Examined by 2 Inspectors

Two men employed by the Livestock Sanitary commission of Texas in the month of February spent their entire time in an effort to eradicate scabies infection, and approximately \$175 was expended by the department in its regular eradication program.
Twenty-six herds, and a total of 15,676 sheep or cattle were inspected with none classed as exposed or infected.
The commission will continue the work in the Midland district in an effort to protect the live stock in the district from imported infection, and affording the necessary scabies certificates demanded by other states on live stock moving from Texas.
The work was conducted under the supervision of Sam Preston, supervisor of scabies eradication work. The salary of one man employed in the Midland district is being paid by the county and is not included in the amount of money expended by the department.

1935 COTTON CROP 10 MILLION BALES

Eclipses Total for 1934 By Nine Hundred Thousand

WASHINGTON, Mar. 20. (AP)—The census bureau today reported the 1935 cotton crop totaled 10,417,237 running bales, counting halves, compared to 9,472,022 in 1934. Texas produced 2,950,117 bales.

200,000 HOMELESS IN 12 STATES OVER EASTERN SECTION

Government Studies Plan to Relieve Stricken

ALLRED ASKS AID

Citizens of State Are Asked to Give to Red Cross

By Associated Press
The third day of unprecedented floods in the Eastern states today found 200,000 homeless, \$300,000,000 in damage and a revised death toll of 136 persons, with many others missing.
The federal government is studying plans to spend \$400,000,000 for the victims and to guard against a repetition of the disastrous floods. Some Massachusetts cities are under military-police protection to prevent vandalism, parts of Springfield, Lawrence, Haverhill being inundated.
Hartford was harassed by a new rise of the Connecticut river and a \$100,000 carpet mill fire. Pittsburgh feared disease as it dug out of the debris. A financial failure faced countless of Johnstown businesses as the city surveyed its wreckage.
Eight to ten feet of water poured through Marietta, Ohio, streets and other cities along the Ohio river mobilized its rescuers for an onslaught on the devastating waters.
Governor Allred of Texas has asked contributions for the Red Cross disaster fund.
In Marietta, hundreds of residents left their home as the crest of the upper Ohio river valley's worst flood in history swept southward. The water there was from four to seven and one-half feet deep in the streets this morning.
Towns along a 150 mile stretch virtually evacuated before the advancing flood. Three hundred were homeless. In Kentucky, 1900 families have started leaving their home.

SCHOOL TEACHER SLAIN BY MOROS

Murderers Fortify Selves In Fortress After Death Is Bared

MANILA, March 20. (AP)—Southern Philippine Island Moros murdered a school teacher and barricaded themselves in an abandoned Moro fortress today in a violent effort to resist compulsory military training for children. The teacher had urged such training.

UNLICENSED DRIVERS Will Be Prosecuted

Unlicensed drivers who pilot automobiles after April 1 will not be warned; they will be haled into court.
State highway patrolmen have been instructed to file complaints against all persons who do not hold operators license as required by state law. The law goes into effect as of April 1.
Less than two-thirds of the anticipated number of drivers licenses required by Midland county drivers have been issued by the tax collector's office.
Thursday, Tax Collector-Assessor A. C. Francis issued an appeal to drivers to secure their licenses now to avoid the last minute rush.
Fines for driving without an operator's license vary from \$13.50 to \$300. The cases may be filed in either justice or county court.

FLAPPER FANNY SAYS:

Restore Million for Shelter Belt Program

WASHINGTON, March 20. (AP)—The Senate appropriations committee today approved the \$197,447,000 agriculture department supply bill and restored \$1,000,000 for continuance of the shelter belt program.

Only Birds can make several pecks out of a pint of chicken feed.

Goldsmith Pool Extension Flows 127 BBLs. in Day

Gas Is Estimated at 10,000,000 in Dunning Well

By FRANK GARDNER
The 24 hour gauge taken on W. H. Dunning and others No. 1 Scharbauer, recent mile and a half north-west extension of the Goldsmith pool in northern Ector county, set the well's potential at 127 barrels flowing through casing. The gas volume is estimated at 10,000,000 cubic feet.
Bottomed at 4175 feet, the No. 1 Scharbauer producer found its main pay from 4153 to 4164. It was shot with 120 quarts of nitroglycerin from 4145 to bottom, the charge breaking a liner set at 4069 to shut off heavy gas. Up until the time it was shut in over a week ago, the well had been estimated capable of 10 to 15 barrels an hour, and the somewhat disappointing performance it showed on potential gauge is probably due to excessive back-pressure.
The Dunning No. 1 Scharbauer is in section 30, block 41, township 1 north, T. & P. survey.
Yokum Well Puts Tubing Tubing is being pulled today from the prospective southeastern Yokum county pool opener, Honolulu and Cascade No. 1-Bennett. It is the intention of operators to swab the well down through casing in order to get a better gauge on its productivity. About 10 barrels has been recovered each hour while swabbing through tubing was in progress. The tubing packer set at about 150 feet off bottom is thought to have collapsed, letting the oil load between casing and tubing mix with the new formation oil.
Now bottomed at 5112 feet, the No. 1 Bennett will probably be drilled deeper as soon as operators are able to determine the results of the 2,000 gallon acid injection run March 17. The oil producing horizon is a two foot porous lime section from 5094 to 5096. The Yokum discovery, farthest north oil well in the West Texas or southeastern New Mexico Permian Basin, is about 11 miles southeast of Plains in section 678, block D, John H. Gibson survey.
The shifting of high winds from the north will permit fishing operations to be resumed today at the closely watched central Gaines county wildcat test, W. T. Walsh and Harry Adams Corp. No. 1 Avenir. A day or so delay resulted from wind blowing gas over the rig engine. Now given a favorable (See OIL NEWS, page 6)

IF Katherine May appears to display a little feminine vanity, who has a better right? She has held down, or rather up, a job as United Airline stewardess for six years, "come May 29," and is speedily approaching her 1,000,000th flying mile. So you can't really blame her for pluming herself a bit, as shown above, just before stepping aboard for another trip on the San Francisco-Salt Lake City run.

Restore Million for Shelter Belt Program

WASHINGTON, March 20. (AP)—The Senate appropriations committee today approved the \$197,447,000 agriculture department supply bill and restored \$1,000,000 for continuance of the shelter belt program.

THE REPORTER-TELEGRAM

Evenings (except Saturday) and Sunday Morning MIDLAND PUBLISHING COMPANY, PUBLISHERS 112 West Missouri, Midland, Texas

T. PAUL BARRON Publisher Entered as second class matter at the postoffice at Midland, Texas, under the Act of March 30, 1919

Subscription Price: Daily, by Carrier or Mail \$5.00 Per Year; Per Month \$50c. Advertising Rates on application. Classified rate, 2¢ per word; minimum charge 25¢. Local readers, 10¢ per line.

Any erroneous reflection upon the character, standing or reputation of any persons, firm or corporation which may occur in the columns of the Reporter-Telegram will be gladly corrected upon being brought to the attention of the firm.

BEHIND THE SCENES

WASHINGTON

By RODNEY DUTCHER Reporter-Telegram Washington Correspondent

WASHINGTON, March 20.—The candidacy of Col. Henry Breckinridge against President Roosevelt in certain state Democratic primaries is causing more puzzlement than excitement—or alarm—in Washington.

Other evidences may turn up later, but thus far no one has been able to discover that there's anybody behind it except Colonel Breckinridge. Neither the Liberty League nor any of the prominent anti-Roosevelt Democrats seem to be linked with the colonel.

The only possible effect of the colonel's bid for delegates would be to measure the length of anti-Roosevelt feeling in the Democratic party in a few states or possibly to poll enough votes to build up the psychology that Roosevelt can be "kicked" and encourage formation of such a third party of "walkers" as the Liberty League leadership has been considering.

Democratic party leaders are not worried that Breckinridge will receive any vote worth talking about

and aren't even taking the precautionary measures they would consider advisable if a more widely known Democrat had entered against the president. But they're speculating a bit.

Breckinridge is a Wall Street lawyer, the friend and intimate adviser of Col. Charles A. Lindbergh. Some time ago Breckinridge sent to Ohio for primary application papers, saying he would be filed in the name of a candidate who hadn't been mentioned yet. The man who filed was Breckinridge, but some

politicians have wondered whether he might not originally have had Lindbergh in mind.

It is considered more likely, however, that Colonel Breckinridge is merely fired with the traditions of an old fighting, conservative Kentucky family, and feels that it is now up to him to carry the torch of protest against New Dealism when others fail.

It was a Col. John Breckinridge who became presidential candidate of a ticket named by slave-state bolters from the Democratic convention of 1860 and who, along with Stephen A. Douglas—candidate of northern Republicans—was defeated by Abraham Lincoln.

Mr. Harris Isn't Awed. Crampton Harris, Birmingham lawyer brought to Washington by Senator Hugo Black of Alabama to defend his lobby committee's right to look at telegrams received by Silas Strawn's law firm in Chicago, wasn't the least bit awed by the prominence of Harris on the limelight which shone upon him.

More than inferentially, he threatened that the Senate committee would defy the district supreme court if it were enjoined. He had a brief which he never tried to file, because, instead of taking the case under consideration, Justice Alfred A. Wheat broke in and gave an injunction against the committee.

Judge Wheat was appointed to the bench by President Hoover and at one time was a special assistant to Attorney General Harry M. Daugherty in the Harding administration.

The brief had its hot spots. Insisting that there was no conflict of interest between the Strawn firm and the Western Union, Harris tried to avoid by a decision of Chief Justice Taney's that the two were "punishable for contempt of court."

"What-a-Man Hoover." The editor of "The Investigator," magazine for G-Men published by the Bureau of Investigation's athletic association, doesn't believe in criticizing his boss, celebrated J. Edgar Hoover, and apparently feels the chief hasn't had enough publicity. The cover of the current issue is entirely a photograph of J. Edgar Hoover.

You read that "In addition to his executive ability, he rightfully bears the grand old name of gentleman . . . all of us are proud to be able to call him 'The Boss'."

Then there's a Hoover speech which "touched off the heart of each man." And reference to a speech at Tulsa which "received wide acclaim throughout the country. We certainly agree that this address was a masterpiece and if you have not read it, you should do so at the first opportunity."

Plus further reference to Hoover's "sheer energy, keen intelligence, and inspiring leadership."

Certain fellows jealous of J. E. H. suggest that the magazine be re-entitled "What a Man!" (Copyright, 1936, NEA Service, Inc.)

Landscape Gardener Tells How To Prune Shrubs Correctly

By Fred W. Westcott, Director of Landscape Gardening Texas State College for Women (CIA)

Many people have the idea that all shrubs should be pruned into formal shapes or rounded up to form a globe shape top. This is entirely wrong. Sometimes closely trimmed hedges or regularly sheared specimens are needed to formal situations but usually ornamental shrubs are allowed to take their natural form and habit without any special pruning save that necessary to maintain good vigor and appearance such as the removal of weak, broken or diseased wood, unsightly flower or fruit clusters and other unnecessary or offending parts.

Again many people think that ornamental shrubs need to be cut back heavily each year like some garden roses and bush fruits. This is a wrong view point. In such gar-

den roses and bush fruits the emphasis is laid only on the development of individual flowers and fruits. In hardy shrub roses and in ornamental shrubs in general the greatest value is placed upon the effect of the plant as a whole. The plant is looked upon more as an individual with definite characteristics of form and foliage as well as flower and fruit. With this larger point of view we can say that if shrubs are maintained normal in health and natural in form they will be satisfactory in flower and in fruit.

We have said that ornamental shrubs require very little pruning and that necessary for good vigor and appearance. The best way to maintain this healthy and natural condition is to practice a method of gradual renewal in addition to the usual removal of weak, injured or unsightly parts. This is done by pruning back a few of the old stems each season and gradually cutting out one or two entirely every year or two, at the same time keeping the rest of the plant thinned out a little to let the light and to encourage new growth either from the base or from low down on the old stems. This treatment affords a natural method of keeping the plant within bounds and maintaining it at a certain size. Shrubs differ in their habit of growth but fundamentally their pruning is the same process. It should be more a process of thinning out than trimming back and it should be performed regularly every year with the realization that "a stitch in time saves time," and that it is easier to prevent an injury or mistake than it is to remedy it afterward.

Some shrubs are more satisfactory than others and herein lies the opportunity for the planter to select the best plants for the place. Of course, it is understood that there should be a reason for the planting of any tree or shrub just the same as there should be a reason for other things that we do. Our planting should be reasonable and serve a purpose and then they will fit into the surroundings and contribute to the attractiveness of the whole place. Much annual butchering of shrubs would be unnecessary, if small planting spaces were planted sensibly with small growing shrubs instead of large ones. In the same way we thoughtlessly plant too near to sidewalks and roads and then the plants grow and become a

nuisance and must be continually cut back and trimmed off. Even if this butchering process is neatly done it is much better for a person to exercise judgment and skill in selecting a suitable plant and in placing it in a proper position than to make the mistake of choosing a coarse growing plant for a small planting space and then have the perennial job of trimming the plant to fit the space.

A British motor truck is equipped with a "pedestrian bumper." It is a large roller in front of the forewheels. The roller revolves backward and shoves the pedestrians who fall in front of the truck to safety.

Sentenced to eight years in a French prison, Regis Rondeau committed suicide by jumping into a boiling caldron of soup when he received a letter saying his wife was going to divorce him.

Many authorities say that an alligator does not reach its full growth until it is between 40 and 60 years old. Its life is said to be between 100 and 200 years.

Good cigaret paper is made of linen with a calcium compound.

Attend the Church of Christ Revival every day this week. (Adv.)

den roses and bush fruits the emphasis is laid only on the development of individual flowers and fruits. In hardy shrub roses and in ornamental shrubs in general the greatest value is placed upon the effect of the plant as a whole. The plant is looked upon more as an individual with definite characteristics of form and foliage as well as flower and fruit. With this larger point of view we can say that if shrubs are maintained normal in health and natural in form they will be satisfactory in flower and in fruit.

We have said that ornamental shrubs require very little pruning and that necessary for good vigor and appearance. The best way to maintain this healthy and natural condition is to practice a method of gradual renewal in addition to the usual removal of weak, injured or unsightly parts. This is done by pruning back a few of the old stems each season and gradually cutting out one or two entirely every year or two, at the same time keeping the rest of the plant thinned out a little to let the light and to encourage new growth either from the base or from low down on the old stems. This treatment affords a natural method of keeping the plant within bounds and maintaining it at a certain size. Shrubs differ in their habit of growth but fundamentally their pruning is the same process. It should be more a process of thinning out than trimming back and it should be performed regularly every year with the realization that "a stitch in time saves time," and that it is easier to prevent an injury or mistake than it is to remedy it afterward.

Some shrubs are more satisfactory than others and herein lies the opportunity for the planter to select the best plants for the place. Of course, it is understood that there should be a reason for the planting of any tree or shrub just the same as there should be a reason for other things that we do. Our planting should be reasonable and serve a purpose and then they will fit into the surroundings and contribute to the attractiveness of the whole place. Much annual butchering of shrubs would be unnecessary, if small planting spaces were planted sensibly with small growing shrubs instead of large ones. In the same way we thoughtlessly plant too near to sidewalks and roads and then the plants grow and become a

nuisance and must be continually cut back and trimmed off. Even if this butchering process is neatly done it is much better for a person to exercise judgment and skill in selecting a suitable plant and in placing it in a proper position than to make the mistake of choosing a coarse growing plant for a small planting space and then have the perennial job of trimming the plant to fit the space.

A British motor truck is equipped with a "pedestrian bumper." It is a large roller in front of the forewheels. The roller revolves backward and shoves the pedestrians who fall in front of the truck to safety.

Sentenced to eight years in a French prison, Regis Rondeau committed suicide by jumping into a boiling caldron of soup when he received a letter saying his wife was going to divorce him.

Many authorities say that an alligator does not reach its full growth until it is between 40 and 60 years old. Its life is said to be between 100 and 200 years.

Good cigaret paper is made of linen with a calcium compound.

Attend the Church of Christ Revival every day this week. (Adv.)

den roses and bush fruits the emphasis is laid only on the development of individual flowers and fruits. In hardy shrub roses and in ornamental shrubs in general the greatest value is placed upon the effect of the plant as a whole. The plant is looked upon more as an individual with definite characteristics of form and foliage as well as flower and fruit. With this larger point of view we can say that if shrubs are maintained normal in health and natural in form they will be satisfactory in flower and in fruit.

We have said that ornamental shrubs require very little pruning and that necessary for good vigor and appearance. The best way to maintain this healthy and natural condition is to practice a method of gradual renewal in addition to the usual removal of weak, injured or unsightly parts. This is done by pruning back a few of the old stems each season and gradually cutting out one or two entirely every year or two, at the same time keeping the rest of the plant thinned out a little to let the light and to encourage new growth either from the base or from low down on the old stems. This treatment affords a natural method of keeping the plant within bounds and maintaining it at a certain size. Shrubs differ in their habit of growth but fundamentally their pruning is the same process. It should be more a process of thinning out than trimming back and it should be performed regularly every year with the realization that "a stitch in time saves time," and that it is easier to prevent an injury or mistake than it is to remedy it afterward.

Some shrubs are more satisfactory than others and herein lies the opportunity for the planter to select the best plants for the place. Of course, it is understood that there should be a reason for the planting of any tree or shrub just the same as there should be a reason for other things that we do. Our planting should be reasonable and serve a purpose and then they will fit into the surroundings and contribute to the attractiveness of the whole place. Much annual butchering of shrubs would be unnecessary, if small planting spaces were planted sensibly with small growing shrubs instead of large ones. In the same way we thoughtlessly plant too near to sidewalks and roads and then the plants grow and become a

nuisance and must be continually cut back and trimmed off. Even if this butchering process is neatly done it is much better for a person to exercise judgment and skill in selecting a suitable plant and in placing it in a proper position than to make the mistake of choosing a coarse growing plant for a small planting space and then have the perennial job of trimming the plant to fit the space.

A British motor truck is equipped with a "pedestrian bumper." It is a large roller in front of the forewheels. The roller revolves backward and shoves the pedestrians who fall in front of the truck to safety.

Sentenced to eight years in a French prison, Regis Rondeau committed suicide by jumping into a boiling caldron of soup when he received a letter saying his wife was going to divorce him.

Many authorities say that an alligator does not reach its full growth until it is between 40 and 60 years old. Its life is said to be between 100 and 200 years.

Good cigaret paper is made of linen with a calcium compound.

Attend the Church of Christ Revival every day this week. (Adv.)



The Town Quack

(Reserves the right to "quack" about everything without taking a stand on anything).

his clothes when he quit."

And then I heard about a woman who cried at a wedding. She remarked that she always feels that way when she goes to a wedding, a funeral, an operation or a fire.

A local doctor tells of a colony of people somewhere up north who have been on a meat diet for several years. And he says it's an established fact that those people are superior in both brain power and physical strength.

If there is anything this country needs to get behind, it's meat consumption, especially beef. The farmers of this county produce a few

hogs and sheep, but most of them are in the same business as our cowmen, producing beef. We need to keep the "eat more beef" slogan uppermost, even when we go to market to buy grub for the family.

Pat Hill, formerly of Ireland, Midland and Fort Worth, but now of Pecos, was a business visitor here yesterday.

Use the Classifieds

Beware Coughs That Hang On

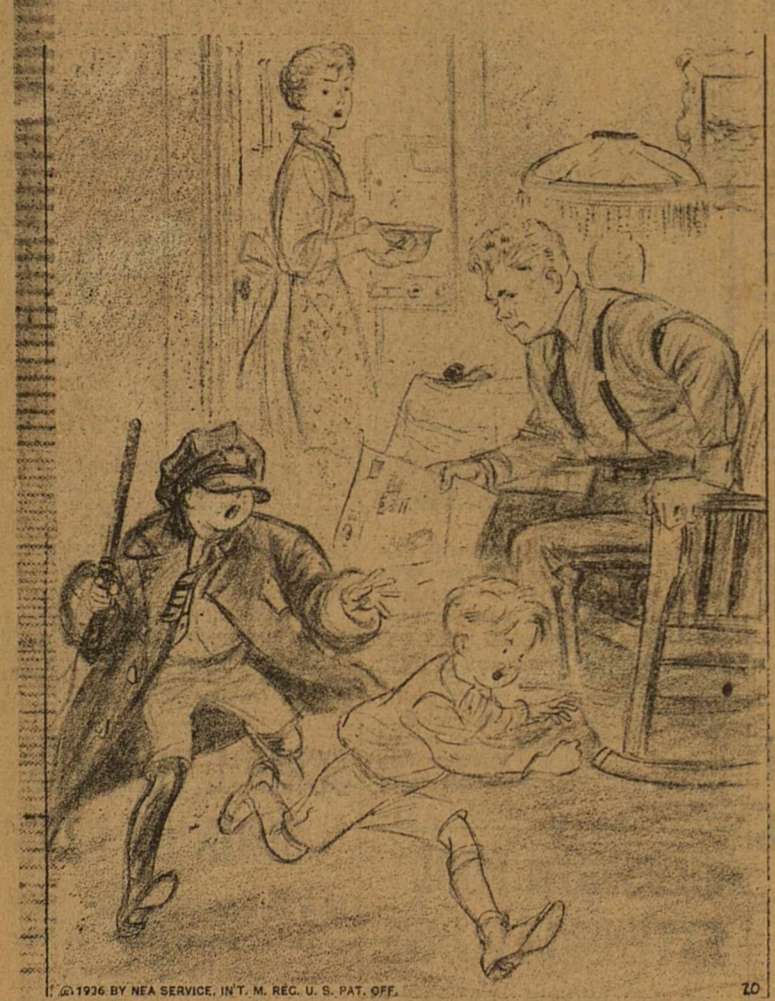
No matter how many medicines you have tried for your cough, chest cold or bronchial irritation, you can get relief now with Creomulsion. Serious trouble may be brewing and you cannot afford to take a chance with anything less than Creomulsion, which goes right to the seat of the trouble to aid nature to soothe and heal the inflamed membranes as the germ-laden phlegm is loosened and expelled. Even if other remedies have failed, don't be discouraged, your druggist is authorized to guarantee Creomulsion and to refund your money if you are not satisfied with results from the very first bottle. Get Creomulsion right now. (Adv.)

Savings That cut a slice off your Budget

SPECIALS FOR FRIDAY & SATURDAY

Table listing various grocery items and prices: OXYDOL, LARGE PKG. 21¢; BEANS RANCH STYLE 3 FOR 25¢; CABBAGE Firm White Heads, LB. 2 1/2¢; COCOANUT 1/4-LB. PKG. 14¢; POTATOES COLORADO WHITE 10 POUNDS 18¢; TOMATO JUICE PHILLIPS 6 CANS 26¢; TOMATO SOUP PHILLIPS CAN 5¢; SUGAR 10 LBS. PURE CANE 46¢; TURNIPS FRESH BULK, LB. 2 1/2¢; CARROTS AND 2 FRESH BEETS 5¢; FRESH SPINACH, LB. 5¢; YELLOW ONIONS, LB. 4¢; POTATOES SWEET-PORTO RICO KILN DRIED, LB. 3¢; PEACHES NILE BRAND NO. 2 1/2 CAN, 2 25¢; CLEANSER LIGHTHOUSE 6 FOR 25¢; BALLOON FLAKES 5-LB. PKG. 34¢; SOAP BLUE BARREL 6 GIANT BARS 23¢; TOMATOES NO. 2 CAN 3 FOR 22¢; FOLGERS COFFEE 1-LB. 28¢, 2 LBS. 55¢, 5 LBS. \$1.34; PRUNES NO. 2 1/2 IN HEAVY SYRUP 15¢; ONION PLANTS White Bermuda 50 to Bunch, 6 FOR 25¢.

Side Glances by Clark



"You kids must learn to pay some attention to your father when he speaks to you."

Star of the Ballet

Word puzzle grid with clues: HORIZONTAL 1, 4, 6 Stage star; 10 Pertaining to air; 11 Imbecile; 13 Measures of cloth; 15 Males; 16 She is an exponent of the dance; 18 Kindled; 19 Deity; 20 Snare; 21 Consumes; 23 Father; 24 Lion; 25 Snaky fish; 27 Portrait statues; 29 Melancholy; 31 Ace; 32 Sanskrit dialect; 33 Away; 35 Three and four; 36 Falsehood; 37 Unit. VERTICAL 14 Acting as star; 16 God of love; 17 Set up a golf ball; 20 Part of plant; 22 Snake; 24 Pertaining to lore; 26 To depart; 28 Beret; 30 Beer; 34 Afternoon meals; 35 Male children; 38 Molted rock; 49 Blamish; 41 Pronoun; 42 Young horse; 43 On the lee; 44 Husband or wife; 45 Guided; 46 Tumor; 48 Bone; 49 Hurray!; 50 By; 52 South Carolina; 54 Before Christ.

Illustration of a woman's face, part of the 'Star of the Ballet' advertisement.

MOVE SAFELY THE ROCKY ROAD WAY Phone 400 FOR THE OLD RELIABLE

DON'T CALL THE DOCTOR IF YOUR TYPEWRITER OR ADDING MACHINE NEEDS REPAIRING JUST PHONE TIFFIN AT 95

QUICK CLOSING OUT SALE All Trees, Evergreens and Shrubs TO BE CLOSED OUT AT Reduced Prices Ideal planting time—Get yours while they last Kerr Nursery Co. Landrum & Tucker, Managers On Colorado Street, West of Court House

Market Specials

Table listing market specials: PHILADELPHIA CREAM CHEESE, PKG. 8¢; ARMOUR'S STAR SLICED BACON, LB. 36¢; HAMS SWIFT'S PREMIUM CURED, HALF OR WHOLE, LB. 27¢; DRIED BEEF, ARMOUR'S STAR, PKG. 10¢; CHUCK ROAST, CHOICE BABY BEEF, LB. 15¢; BACON SWIFT'S PREMIUM SLICED, POUND 36¢; ROLLED ROAST, POUND 17¢; NICE DRESSED HENS, POUND 20¢.

HOKUS POKUS AND MARKET BILL CONNER ELLIS CONNER

Society and Clubs

Entertainment Numbers Will Vary the Modeling of Costumes at Style Show

Various musical numbers, a reading, and a dance will intersperse the modeling of spring costumes at the Style Show to be presented by the Episcopal auxiliary of Trinity chapel in the Hotel Scharbauer Saturday afternoon from 3 o'clock until 5 o'clock.

Morning, sports, tailored, afternoon, and evening gowns will be modeled by representatives of Midland firms. Between showings the following numbers will be presented:

Dance—Miss Georgia Goss.
Piano selections—Miss Frances Gillette.
Vocal solo—Mrs. Geo. Bennett.
Reading—Mrs. Bryan Henderson of Stanton.
Viola solo—Mrs. Tom Sealy.
Mrs. Fred Wilcox will be at the piano during appearance of the models.
Tea will be served following the show.
Guests are requested to be present promptly at 3 o'clock so as not to miss any part of the afternoon's entertainment.
Tickets, at 35 cents each, may be obtained from Mrs. I. E. Daniel, or Mrs. Don Sivalls, or purchased at the door. The public is invited to attend.

CITY CLEANERS
DRI-SHEEN PROCESS
MADE FOR FABRICS

Texas Theme Marks Luncheon Program of Rotary Anns

A patriotic theme was evident in numbers presented at the monthly luncheon of Rotary Anns at the courthouse Thursday noon. Mrs. Percy Mims was in charge of the program.
Roll call was answered with interesting facts in Texas history. Mrs. A. O. Thomas read Bruce

FEMININE FANCIES

BY KATHLEEN EILAND

Isn't the big things that are wicked that are the hardest to avoid doing. It is the multitude of "little sins" each trivial in itself but mounting up to giant dimensions when piled one on the other. Those curious, tempting omissions and commissions that seem to be on the borderline between right and wrong—not exactly right and yet not definitely wrong. Our nomination for heroism goes to the person who can walk warily among them—and continue to be human.

The ideal reporter, we think, is one who can see the paper come off the press and still go right on working—on tomorrow's copy. The human being is strangely constituted. He can work up to the minute of completing a task with undiminished zeal—and be sunk in lassitude and weariness the moment it is finished.

Costs have a strange tendency to increase. We plan a dress and are delighted at how little it will deplete our pocket book. Then we decide we must have some nice trimming, and an additional length of material is needed (and we can't ruin a whole dress for a few cents, of course), and it must be sent to the tailor shop for a pressing. We're always surprised at how much more it costs than the original plan anticipated.

Wonder what influence on eating habits the new doughnut making machine in town will have?

One might reason it out thus: Doughnuts demand coffee. People continue to eat doughnuts and acquire the habit of drinking coffee. Therefore the grocers will sell more coffee. But meanwhile cafes do more coffee selling—and this leads to more cafes and sandwich shops which in turn lead—but this is getting out of hand. Where did we start?

The world must be having an acute attack of hysteria. Else why the prevalence of strange, weird crimes? Nailing a man to a wooden cross and sewing his lips together; admission of boiling the flesh from bones of mured victims; and numerous other horrid items that are noted in papers these days.
Something must be wrong with a race when such things become as frequent in occurrence as they have been the last few months.

But after all, there is a sunny side to things: We aren't going to war—yet; we've had a few sandstorms so far this year; and Spring is here; oh, yes and the new dresses are ever so pretty while hats are perky as ever.

Barton's tribute to Texas.
An explanation of the Centennial contest for relics valued in Texas history was made by Mrs. Alf Reese.
Rotary Anns present were: Mmes. Mims, R. V. Lawrence, R. L. Miller, Fred Middleton, E. H. Barron, W. E. Ryan, S. A. Debnam, Tom Sealy, Alf Reese, A. O. Thomas, Fred Wemple, Joe Pyron, Ralph Barron, L. G. Mackey, Clinton Lackey, H. S. Collings, L. H. Tiffin, Cotter Heitt, and Harvey Fryar.
Mrs. Debnam is a new member.

Use the Classifieds

J. B. COTTEN
FRED H. WOODWARD

Attorneys
Personal Injury
Cases
CRANE, TEXAS

Charm Should Begin at Home Where it Will Yield Bigger Returns Than Anywhere Else

20 col 18 Charm should begin at home. You think you ought to have an audience on which to practice charm? You'll find it in your own home, believes Cyrena Van-Gordon, opera star noted for her extraordinary article of her "Charm Charts" series, she tells how to be a charming hostess to friends and family.

BY CYRENA VAN GORDON
Metropolitan and Chicago Opera Star
Written for NEA Service
There is no place so appropriate for exercising and displaying charm as your own home.

Until you have learned to be a gracious, successful hostess and mistress of a home, you have not mastered the art of being really alluring. An easy, delightful hospitality is I believe, charm's greatest achievement.

Not every person can, of course, dispense hospitality with the largeness of our gracious minister to Denmark, Ruth Bryan Owen. If Mrs. Owen likes you—and her reactions to people are immediate and lasting—she is as apt as not on first meeting to ask you to come to Denmark, and then she will show you the best time you ever had in your life, for her hospitality is like herself, cordial, breezy, exciting.

Elaborate Parties Not Always Best

You know large elaborate parties don't necessarily mean perfect hospitality. A cup of tea with a single friend can be a truly hospitable occasion.

Personally, I prefer small parties as informal as possible. They are, I have found, more generally successful.

I've known people of real talent in some other direction who actually dreaded having anyone but their nearest relatives and friends visit them, not because they might find cigarette burns on the upholstered furniture the next morning, but because they mistrusted their own powers and skill as hostess.

Giving a successful party or simply being hostess to a few friends is a simple matter if the few really rudimentary rules of hospitality are observed.

What makes a successful party? The answer is simply the persons who are there—the host and hostess and the guests. So bring together men and women of kindred interests and you have the first essentials of a highly successful party.

Never invite too many to one party. Restrict the guest list to persons who have interests in common or who, if they have a feud with some other guest, can drop it there for the duration of your party. If they are incapable of such suavity, don't bring them together. Above all, choose your guest list for congeniality.

Congeniality, however, does not always mean similarity. In professional or business interest or even in mode of life, I have found that society dowagers are sometimes more at home with Bohemians of the art world than with some of their own social set. There have been instances where one member of a grand opera board was poison to another. Better make a point of remembering who can sit in the same room with various ones.

Then, and this is just as important as the guest list, keep the atmosphere informal, the refreshments plain but good, distinctive and plentiful. When I entertain, and all opera stars are expected to entertain a great deal, I serve the same kind of food that my grandmother used to serve when I was a child in Hamilton, O.—fried chicken, baked ham, homemade ice cream and cake. City people love it.

Views of Some Famous Hostesses
Lynn Fontanne is one of New



NORMA SHEARER
She applies charm to marriage

York's most successful hostesses as well as one of its most talented actresses. She knows how to bring people together, keep them circulating and interested in one another and

sees to it that no timid soul is left stranded in a corner by himself.

Miss Fontanne's hospitality is part of her phenomenally happy marriage and home-life. Of course, Alfred Lunt, her equally famous actor or husband, should get some credit, too. Nevertheless, their friends never fail to point out, Miss Fontanne's devotion and absorption is her husband and his interests. They won't accept parts in different plays and she often takes a very minor role just so that they can work together.

Norma Shearer is another actress who makes a special point of being charming in her own home and to her own husband. She has never allowed her success on the screen to interfere with the success of her married life. She once left a picture in the middle of its filming because her director-husband was sick and needed a vacation away from Hollywood. She interrupted her career to have babies, too.

"You have to work for success and happiness in marriage just as you have to work for success in anything else," Miss Shearer once said, "I never thought the job was done when the marriage ceremony was over."

Yields Biggest Returns At Home

And certainly, whether you are a great actress or plain Mrs. Suburbia, your husband has as much right to expect you to be charming for his benefit as for the benefit of your friends.

Just because the first blush of wedded bliss is past and you are thoroughly familiar with the gen-

eral trend of one another's thoughts and reactions is no reason for you to be bored. Exert yourself to be charming to your husband and the other members of your own family. Discuss that new book you've been reading or a concert, or lecture you've heard over the radio, or even the crime news in your daily newspaper. Learn to draw out your family on their interests and activities. Be as sympathetic and interested as you are with other people.

In no place, not even on the stage of a great opera house, will charm yield such big returns in increased happiness and delight in living as in your own home. The practice of charm should begin though not end at the hearthstone. And as sure as it does, the world will make a beaten path to your door.

Mrs. Chapple Is Hostess to Party For Mrs. Soper

Honoring Mrs. E. B. Soper who is leaving for Denver late next week, Mrs. Jas. Chapple was hostess at an afternoon bridge party Thursday.

Green and yellow were favored in appointment colors and jonquils were used in the entertaining rooms. Tallies for the four tables of bridge were in spring colors emphasizing green and yellow.

Awards in the afternoon's play went to Mrs. John Shipley for high score, to Mrs. E. H. Ellison for second high, and to Mrs. Dave Googins for high cut. Mrs. Soper was presented with a guest gift from the

hostess.
At the tea hour a plate repeating the color note in its green salad was served to: The honoree, Mmes. F. F. Winger, L. G. Lewis, Simpson, Thos. F. Flood, Googins, J. M. Haygood, Joe Pyron, R. E. Kimsey, Shipley, Don Sivalls, Mitchell, Thomas, Ellison, M. C. Ulmer, Chas. Mix, and the hostess.

Announcements

Saturday
Blen Amigos club members will meet with Mrs. H. W. Mathews at 11:30 a.m. for a luncheon.

The monthly meeting of the CIA Ex-students' association scheduled to be held at the home of Mrs. Percy Mims Saturday has been postponed until Saturday, March 28.

The Episcopal auxiliary will sponsor its first annual style show at the Hotel Scharbauer Saturday afternoon from 3 o'clock until 5 o'clock. Tickets are 35 cents each.

The World's Friendship club will have a party at the Methodist annex Saturday evening at 7:30 o'clock.

Mesquite troop, Girl Scouts, will meet at the Baptist annex Saturday afternoon at 2 o'clock for a regular meeting.

Andrew Jackson was the oldest president of the United States. He lacked only 11 days of being 70 when he left the White House.

WHERE THE WORLD MEETS BROADWAY

There's an old axiom that "sooner or later you'll meet everybody you know on Times Square." It's especially true if you stop at the crossroads of the world. For here you are in the very center of the gay activity which makes Times Square the most fascinating scene in all New York. Is it expensive to stop at the Astor? No, indeed... room rates are as low as \$2.50 a day.

HOTEL ASTOR
TIMES SQUARE · NEW YORK
A World-famous Address at the Crossroads of the World

WIFE READ THIS BEAUTY AD. IT SAYS—SEND YOUR WASH TO THE LAUNDRY!

Maybe expensive creams, and massage, and hours of care can erase lines and freshen complexions—but the best way is NOT TO HAVE lines or "wash day skin". Let us do your laundry—you'll look years younger... feel morning-fresh all day!

Family Finish, per lb.	20¢
Minimum charge	\$1.50
Flat Work, per lb.	8¢
Rough Dry, per lb.	8¢
Minimum charge	50¢
Quilts Laundered	35¢
Double Cotton Blankets	35¢
Single Cotton Blankets	20¢
Double Wool Blankets	50¢
Single Wool Blankets	25¢

SEND US YOUR RUGS! SPECIAL PRICES on Rug Cleaning

9x12 Rug	\$1.00
Sized	
9x12 Rug	\$3.50
Cleaned	

Patrons are always telling us how they appreciate our Soft Water Process.

PHONE 90
MIDLAND STEAM LAUNDRY

WHAT!
With March weather and the usual sandstorms hair and skin become imminent problems.

NOW!
Is the time to check dry, lifeless hair. Have one of our guaranteed permanents. Each and every permanent oil conditioned. Refined clay packs used for your facials.

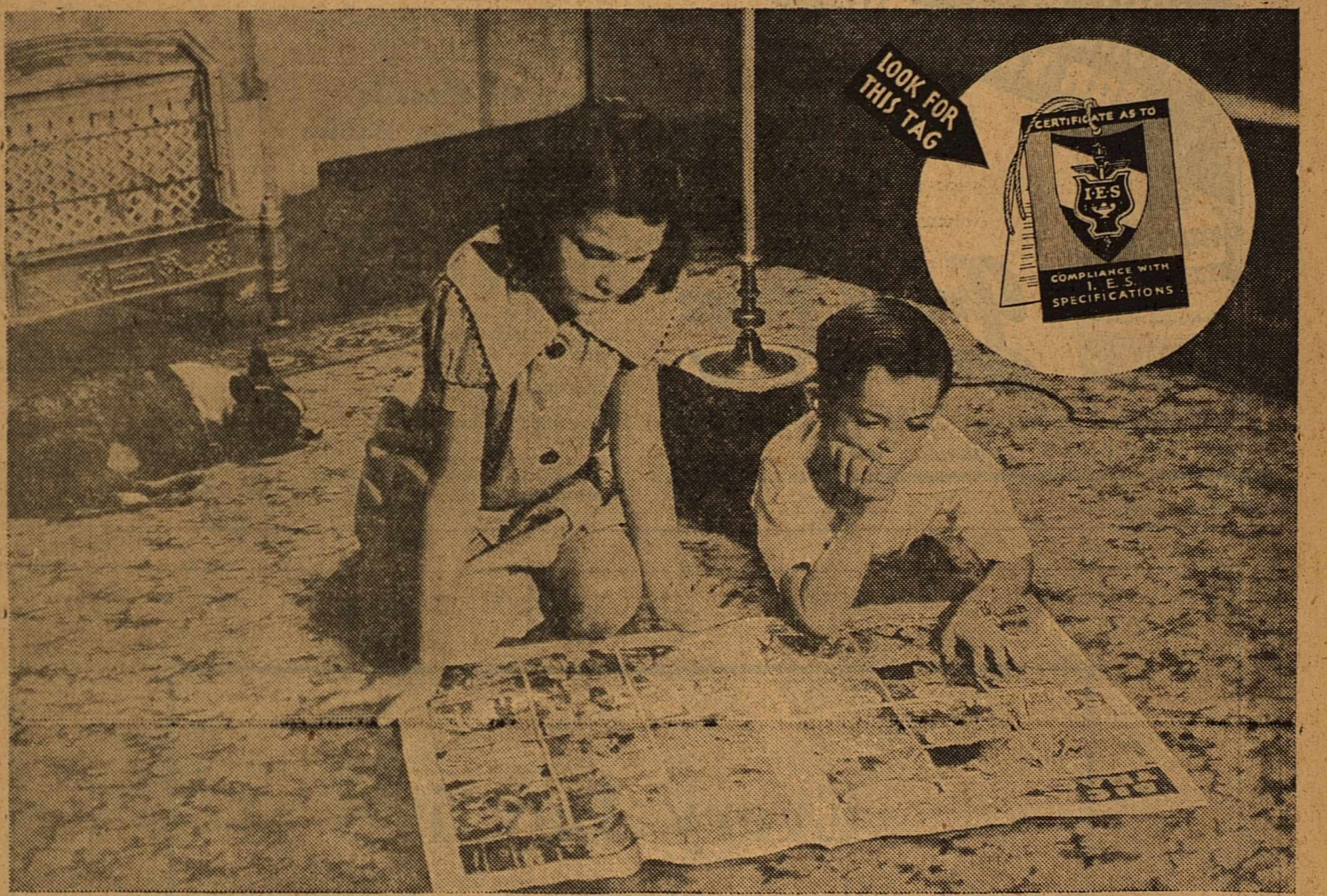
Call:

OUR BEAUTY SHOP
Phone 822—306 North Main

LLANO BEAUTY SHOP
Phone 273—Ground Floor—Llano Hotel Bldg.

PETROLEUM BEAUTY SHOP
Phone 970—Ground Floor—Petroleum Bldg.

E. A. BOCH, Proprietor



A few pennies a day for good light is all it costs to safeguard young eyes

Don't scold your child for reading on the floor, but be sure he has enough light down there so he won't strain his eyes. Put a new Better Sight Lamp by your chair and then both of you will have enough light for Safe Seeing.

A few pennies a day for good light is all it costs to safeguard young eyes. Cheap electric service permits you to have plenty of light for all members of the family and to use electricity both day and night to make your home more comfortable, to make work easier and to protect the health of your family.

Electricity is one of the few items in the average family budget which hasn't increased in price during the last few years. Foods and other household necessities have become more expensive, but the cost of electricity has actually decreased. You can make full use of electric service at a very moderate cost.

Put This Lamp By Your Chair

This Better Sight Lamp will provide better light for reading, either in a chair or on the floor. See the numerous advantages of the new style floor and table lamps at our store.

Lounge Lamps
\$6.45 and up

Penny Wise Says:

"Electricity is one of the cheapest items on the family budget, yet it is something that is used both day and night by every member of the family. The cost of providing ample light to protect eyesight is only a few pennies for a whole evening."

Buy Approved I. E. S. Lamps From Your Dealer or

TEXAS ELECTRIC SERVICE COMPANY
R. L. MILLER, Manager

CHURCHES

CHURCH OF CHRIST
T. H. Bass, Minister

10 a. m.—Sunday morning Bible study. We hope to have the best attendance of the year. May we count on you?

11 a. m.—Morning worship and sermon. Subject, "Types of Christians."

7:45 p. m.—Evening worship and sermon.

3 p. m.—Tuesday afternoon women's Bible class.

7:45 p. m.—Wednesday mid-week Bible study and prayer service.

The revival meeting now in progress will continue over Sunday night and if the interest is sufficient a few nights next week. Evangelist Henry, of Hobbs, N. M. is doing the preaching and he has been bringing some wonderful messages. If you haven't availed yourself of the opportunity of hearing this messenger of the word of God, we shall be glad to have you come. The subject for this evening should be of interest to all. "Quack Doctors, or Physicians of No Value."

The services have been well attended and fine fellowship has been enjoyed by all. Services each day 10 a. m. and 7:45 p. m.

FIRST PRESBYTERIAN CHURCH
W. J. Coleman, Minister
J. L. Kendrick, Sunday school Supt.
Mrs. W. J. Coleman, Minister of Music

9:45 a. m.—Sunday school.
11:00 a. m.—Morning worship. The minister will bring a message on "The Hunted Soul." Texas: Psalms 139:1.
5:00 p. m.—Vesper service and preaching by the pastor.

FIRST BAPTIST CHURCH
Winston F. Borum, Pastor

9:45 a. m.—Sunday school.
11:00 a. m.—Morning worship and preaching by the pastor. Subject, "Chronic Inactivity."
6:30 p. m.—ETU training services.
7:45 p. m.—Evening worship. The pastor will preach on "Love's Longing."

FIRST METHODIST CHURCH
Kenneth C. Minter, Pastor
W. H. Pratt, Sunday school Supt.
Mrs. De Lo Douglas, Choir Director

9:45 a. m.—Sunday school.
11:00 a. m.—Morning worship and preaching by the pastor.
6:00 p. m.—World Friendship club will meet at the church under direction of Mrs. Frank Prothro.
6:30 p. m.—Senior and Hi Leagues meet.
7:45 p. m.—Evening service and

preaching by the pastor.

FIRST CHRISTIAN CHURCH
John E. Pickering, Pastor
H. G. Bedford, Supt. of Bible school
Mrs. Lee Cornelius, Director of Music

9:45 a. m.—Bible school.
10:50 a. m.—Holy Communion.
11:00 a. m.—Worship, Sermon subject: The Christian Church.
4:30 p. m.—Junior Endeavor.
6:30 p. m.—Intermediate Endeavor.
7:30 p. m.—Worship. Sermon by the pastor.
8:30 p. m.—Monday, Rijnhart circle at church.
7:30 p. m.—Wednesday. Services of prayer.
8:00 p. m.—Wednesday. Choir rehearsals.

MEN'S CLASS
Hotel Scharbauer
The Men's class will meet at 9:45 a. m. in the Crystal ballroom. Judge Chas. L. Klapproth, teacher.

ST. GEORGE'S CHURCH
The Rev. Edw. P. Harrison, O. M. I.
Sunday morning mass for English speaking people at 10 o'clock and for Mexicans at 8 o'clock.
Sunday evening services at 7:30 o'clock.
Daily mass will be held at 8 o'clock.

TRINITY CHAPEL
Protestant Episcopal
P. Walter Henchell, Minister in Chg.
E. B. Soper, Supt.

9:45 a. m.—Sunday school.
11:00 a. m.—Lay service.
Holy communion on the third Sunday of each month.

CHRISTIAN SCIENCE CHURCH
Services will be held at 11 o'clock Sunday morning in the private dining room of the Hotel Scharbauer. A cordial welcome to attend is extended to all.

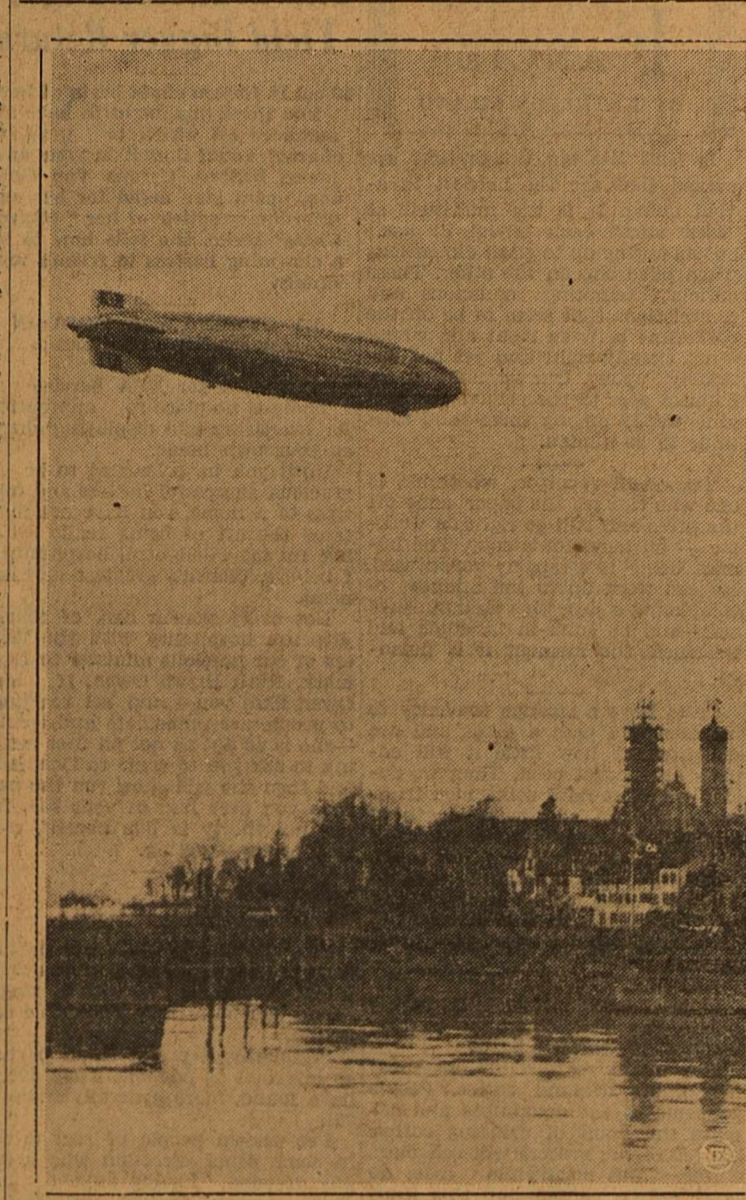
NAOMI CLASS
Hotel Scharbauer
The Naomi (inter-denominational) class for women will meet at 9:45 o'clock in the private dining room of the Hotel Scharbauer. Mrs. J. Howard Hodge is teacher.

New Luxury Liner of Air Challenges Speed Mark of Atlantic Greyhounds

By NEA Service
FRIEDRICHSHAFEN, Germany.—A sky-going trans-Atlantic luxury liner soon will point her blunt nose toward America, threatening to give the world's merchant marine its first serious competition from the air.

For German's stream-lined, palatial LZ-129 is to make the crossing to New York in two to two and one-half days—at least two days faster than the swiftest aquatic passenger vessels. And a regular dirigible express service is contemplated by the Zeppelin company.

Her recent trial flights over Germany pronounced a success, the LZ-29 probably will set out on her maiden trans-oceanic trip to South America late this month, and will fly to the United States sometime in April or May.



The LZ-129 (above) tests out her air merits in a trial flight over Friedrichshafen, Germany.

Local Merchants Regret Completion Of Great Tourist Attraction

The people of Friedrichshafen are sorry that the super-airship is completed. She has been something of a financial Godsend to them. From all over Germany trippers have come for the past two years to view the ship in her various stages of completion. It was given out the other day that so far 1,500,000 visitors have come to see the ship. This has meant good business for the Hotels and restaurants and for the vendors of all kinds of Zeppelin souvenirs.

The ship carries a crew of 35 and has accommodations for 50 paying passengers and ten tons of freight and mails. The rooms for the passengers are built inside the body of the ship and are in two decks, one over the other. There are 25 staterooms with beds for two in each. In some respect the LZ-129 resembles a great ocean liner, because she has two large groups of parlors for the passengers, including two plate glass enclosed promenade decks. Her greatest innovation is a room in which smoking will be allowed.

The middle ring of the ship is 134 feet high. In all she has 15 main rings and 32 auxiliaries. These form up to 16 compartments for gas. The gas bags are so fixed that while at present they will be filled with hydrogen, they can be used for helium gas, if that invaluable non-explosive gas is obtained from the United States government.

The ship is 182 feet long and has a capacity of 7,070,000 cubic feet of gas. Her framework girders are made of duraluminum. As in the Graf Zeppelin, her engines are hung in gondolas outside the body of the ship. But they are easy of access by the engineers, and there is ample room in which to turn around

In case of the necessity of making repairs.

She is driven through the air by four 16-cylinder Diesel engines totalling 4200 horse-power. Her top speed is 84 miles per hour, with a regular cruising speed of 78, and her range, without refueling, has been figured at 8000 miles.

To avoid danger of explosion, the gas bags have been fitted with special safety valves. Another element of safety is that the Diesel engines are run with crude oil as fuel, 130,000 pounds of this are carried on each trip.

Use the Classifieds

Attend the Church of Christ Revival every day this week. (Adv.)

Maxine Sill Makes College Honor Roll

Reports from Gulf College in Gulf Port, Miss., received today, state that Miss Maxine Sill made the honor roll in that college for the first semester. Miss Sill was salutatorian for her class when she was graduated from the Midland high school last May, and has been in Gulf College this entire year.

President Cox of the College wrote at the bottom of her report: "This is one of the highest records ever made at the College."

A world's record belongs to a sow owned by a Worcestershire, Eng., farmer. The sow produced 385 pigs in her 11 years of life; 65 being born in three litters within one year.

Fat All Gone Never Felt So Good Before

It was so simple! I ate what I liked, took no strenuous exercises, did not weaken my body with drastic purgatives—yet day by day I felt myself getting lighter, the fat seemed to slip away. Now I have a lovely, graceful figure—and I never felt better in my life!

That, in brief, is what thousands of women who have reduced the Marmola way might well tell you. Four times a day they take a little tablet containing in exactly the right quantity a world-famous corrective for abnormal obesity.—A corrective prescribed by physicians everywhere and acknowledged to be the most effective known.

Since 1907, more than 20 million packages of Marmola have been purchased. Could any better recommendation be had?

Today—buy a package of Marmola, and start at once. Soon you will experience Marmola's benefits. When you have gone far enough, stop taking Marmola. And you will bless the day you first discovered this marvelous reducing agent!

Marmola is on sale by dealers everywhere—from coast to coast.

Grand Prize Lager Beer

MORE BEER PLEASURE FOR YOUR MONEY

If you doubt it, try a bottle of this sensational beer success that has just the right amount of extra ingredients.

Grand Prize LAGER BEER

Full Bodied - Mellow - Mild - Really Aged!

TEXAS' Famous BEER

Evangels Class Is To Honor Babies

The Evangels Sunday school class will honor babies born in the class during the last two years at the regular meeting at the Baptist parsonage Sunday morning at 9:45 o'clock.

The babies will be in the receiving line.

Songs and readings appropriate to the occasion will feature the program.

England's annual consumption of eggs is 152 per head of population, while Canada consumes 304 per head.

Attend the Church of Christ Revival every day this week. (Adv.)

Every Day is

PAY-DAY!

THERE is a simple, practical formula for making every day pay you a profit. You have it in your hand right now. Just let this newspaper point the way to honest bargains. Put an end to hit-or-miss buying. Plan your purchases.

All through the year, local merchants advertise sales of household needs. This is the month for sundries, like soap, cleansers, brushes, dish-towels and gadgets for the kitchen. Watch the advertisements.

Whenever a household need arises, consult the shopping news that is printed here for your benefit. Buy at the best prices for year-round needs. Put more s-t-r-e-t-c-h in your budgeted dollars.

IT WILL PAY YOU A PROFIT TO PAY ATTENTION TO THE ADS

Only One Hangar Here Big Enough For LZ-129

One of the pride spots of the new ship is the kitchen. It has a big four part oven. Everything in this kitchen is operated by electricity. There are machines for cooling things and for heating things—by electricity.

The power comes from the ship's two 33-kilowatt generators. All of the food cooked for the guests is sent up to the dining room by a swift food elevator. But in case this gets out of order, there is also a metal stairway for the dining room stewards.

About the only big change made from the original plans for the ship was that at the stem it was shortened by two metres. This was done in order that it may fit snugly when it is berthed in the American navy's hangar at Lakehurst, N. J., the only one in the United States big enough to hold her.

Experience With Graf Zeppelin Benefits New Air Giant

The Germans are pinning many hopes upon the LZ-129 because she embodies everything they have learned by long observation of the very successful Graf Zeppelin, which is fairly well-known to Americans living on the Atlantic seaboard. Statistics just arrived from the Luftschiffbau Zeppelin emphasize the fact that the Graf Zeppelin has been the most wonderful sailor of the air ever built by man.

She has made 505 flights in all. The total number of her ocean crossings has been 111, including those she carried out when she flew around the globe. One hundred and three of her ocean crossings have been in the South American service. She made her 50th South American flight November 6 last year; her 100th ocean crossing on September 15, 1935, and her 500th flight on September 22, 1935. Last year the old Zepp flew 3519 hours and 15 minutes and did 220,000 miles. This was done in a total of 82 flights, carrying 1529 passengers and 14 tons of freight and mail. Her record is all the more remarkable in that she has never had a serious accident nor lost the life of a single passenger.

Nearly one-third of the 9,000 streets in Greater Berlin have duplicate names. Misnarek is the name of 30 streets and Wilhelmstrasse the name of 26.

Ford Dealers Announce R&G Cars & Trucks

new automotive quality for the Used Car Buyer

NEVER before has there been assured to used car buyers as definite protection as is now offered by Ford Dealers in R&G cars and trucks.

R&G means RENEWED and GUARANTEED—RENEWED to meet the definite specifications shown on the R&G tag, and GUARANTEED, in writing, by your Ford Dealer.

The R&G specifications cover every important detail. Any car or truck meeting these specifications is an outstanding value. Yet the R&G car or truck of your choice will cost you no more than an ordinary "used car."

Backing these specifications is the written, money-back guarantee of your Ford Dealer.

For extra-thrifty buyers your Ford Dealer has **SQUARE DEAL VALUES**—good used cars and trucks at low prices, protected by a written money-back guarantee.

CARS & TRUCKS RENEWED R&G ALL MAKES MONEY-BACK GUARANTEE

MECHANICAL GUARANTEE

"We agree to correct at our expense any condition in this car or truck which is not in accordance with the above specifications, provided that we are notified by the purchaser of this condition within ten days from this date, and further provided that such condition is not the result of accident, neglect, or abuse of the car or truck after delivery to the customer, and that the car or truck has not been repaired or altered outside of our shop during the guarantee period."

MONEY-BACK GUARANTEE

"We further agree that we will refund such part of the purchase price of the car or truck as has been paid by the purchaser, including any used car or truck applied as part payment or, at our option, the allowance price thereof in cash, thereby canceling the sale if the purchaser so requests; provided that this request is made by the purchaser at or before 11 o'clock on the 15th day after the car or truck is then returned to us in the same condition as when delivered."

(Signed) YOUR FORD DEALER

SOLD ONLY BY AUTHORIZED FORD DEALERS

See Us For R & G Used Cars!

1934 FORD TUDOR SEDAN
6-ply rubber, new motor

1935 FORD COUPE
New motor, tires and wheels

1935 FORD TUDOR SEDAN
New Rubber

1934 FORD TUDOR SEDAN
Good condition

These are only a few of the many nice used cars that we have to be sold under the R & G Plan. You will be surprised to know the unusually low prices we are asking for these cars. We also have a wide selection of many other types and models. Terms to suit you by paying a low down payment and the balance on easy monthly payments through the Universal Credit Co., authorized Ford finance plan. Visit our used car department and make your selection while our stock is complete.

Flynt-Hubbard Motor Co.
Midland, Texas — Phone 64

ROYAL

WORLD'S NO. 1

TYPEWRITER

West Texas Office Supply
Phone 95

THIS CURIOUS WORLD By William Ferguson



The LOOP, WHICH IS THE MOST SHOW OF ALL AIRPLANE STUNTS, IS CONSIDERED BY MOST PILOTS AS THE SIMPLEST TO PERFORM.

A LARGE SUN FLOWER WILL USE TWO BARRELS OF WATER IN GROWING TO MATURITY.

CLASSIFIED ADVERTISING

RATES AND INFORMATION CASH must accompany all orders for classified ads, with a specified number of days for each to be inserted.

WE BUY & SELL CHICKENS EGGS HIDES FURS WOOL MOHAIR SACKS DORAN PRODUCE and FUR CO.

2-For Sale

WILL trade Dodge, farm implements, harness for horse or mule.

7-Houses for Sale

FOR SALE: 6-room stucco apartment; modern; \$500.00 down, balance like paying rent.

Nursery stock for sale on the installment plan; Evergreens, flowering shrubs, fruit and shade trees.

Vacuum Cleaner-Sales & Service

After 12 years of service on cleaners, I recommend the Eureka, because it cleans hair and lint instantly, as well as embedded dirt.

G. Blain Luse

J. P. INMAN Optometrist

Glasses fitted correctly A full line of frames and mountings. Broken lenses quickly and accurately replaced.

Radio Not Working?

Need a Public Address System?

WES-TEX RADIO & SOUND COMPANY PHONE 631J 302 South Weatherford

For Sale WELL ROTTED FERTILIZER SCRUGGS DAIRY Will Deliver PHONE 9000

Buddy's FLOWERS PHONE 1083 1200 W. Wall

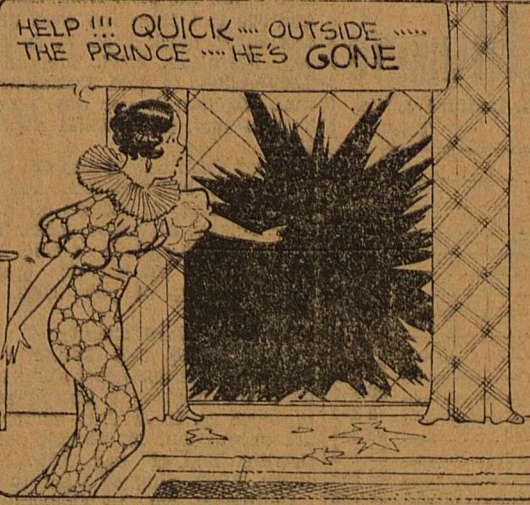
UPHAM FURNITURE COMPANY "The Bargain House of West Texas" Living Room Suites, 2 pieces \$29.75

POLITICAL ANNOUNCEMENTS

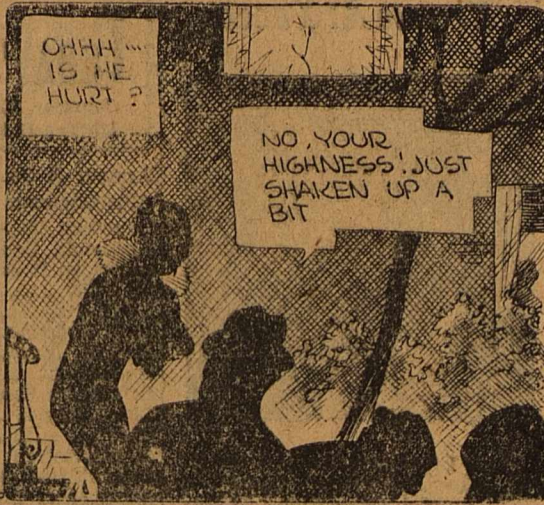
Subject to the action of the Democratic Primary Election July 25, 1936. Advertising rates: For State, District and County Offices, \$15.00; for Precinct Offices, \$7.50.

For County Treasurer: LOIS PATTERSON MARY L. QUINN (Re-Election)

BOOTS AND HER BUDDIES



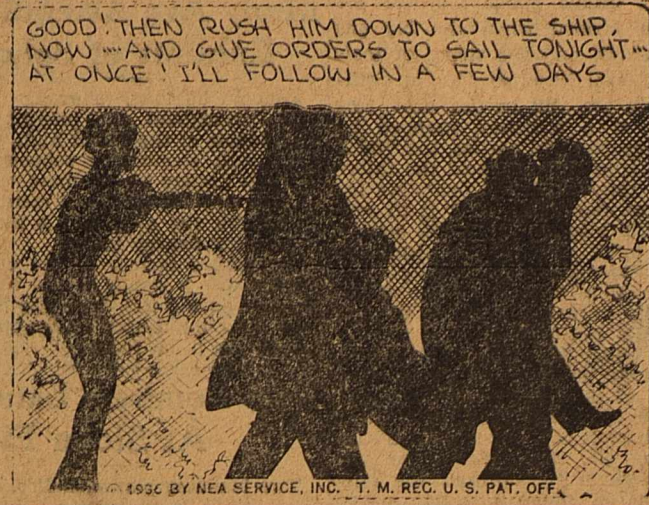
HELP!!! QUICK!!! OUTSIDE!!!! THE PRINCE!!! HE'S GONE



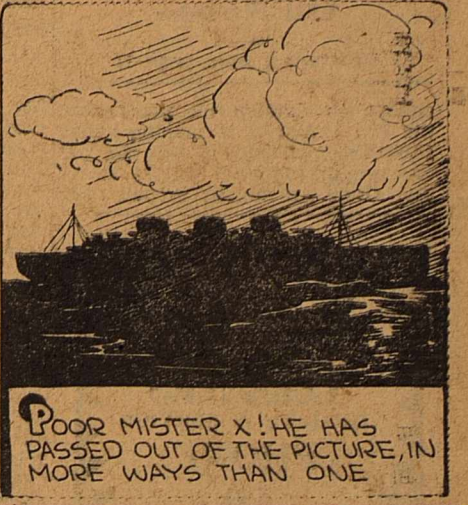
OH!!! IS HE HURT?

NO, YOUR HIGHNESS! JUST SHAKEN UP A BIT

Tough Luck



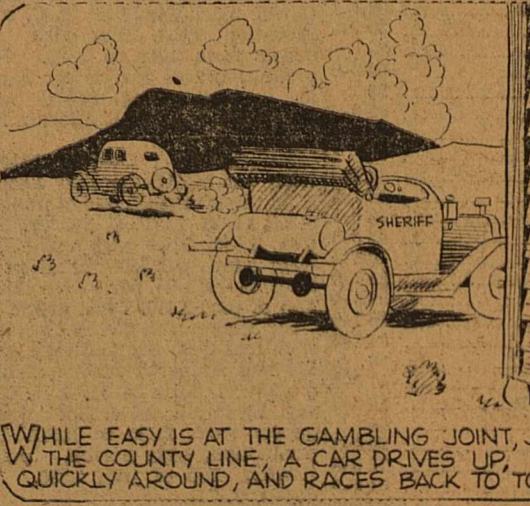
GOOD! THEN RUSH HIM DOWN TO THE SHIP NOW AND GIVE ORDERS TO SAIL TONIGHT AT ONCE! I'LL FOLLOW IN A FEW DAYS



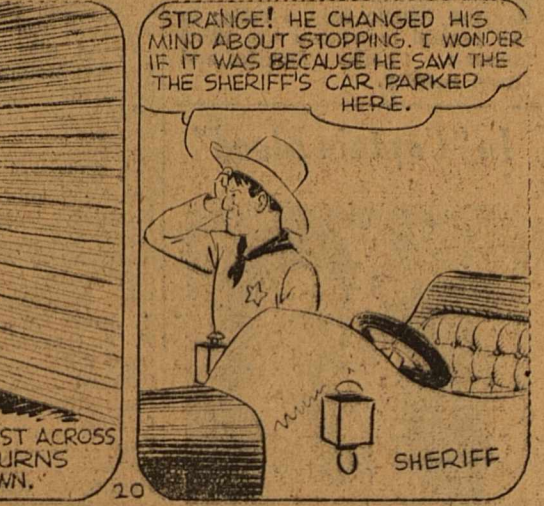
POOR MISTER X! HE HAS PASSED OUT OF THE PICTURE, IN MORE WAYS THAN ONE

By MARTIN

WASH TUBBS

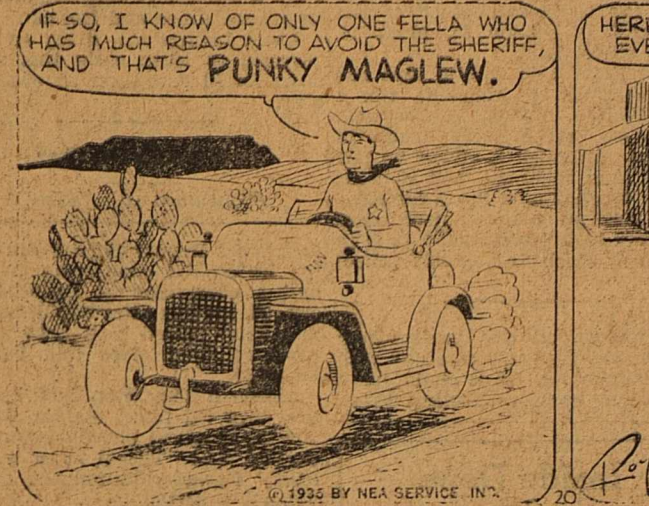


WHILE EASY IS AT THE GAMBLING JOINT, JUST ACROSS THE COUNTY LINE, A CAR DRIVES UP, TURNS QUICKLY AROUND, AND RACES BACK TO TOWN.

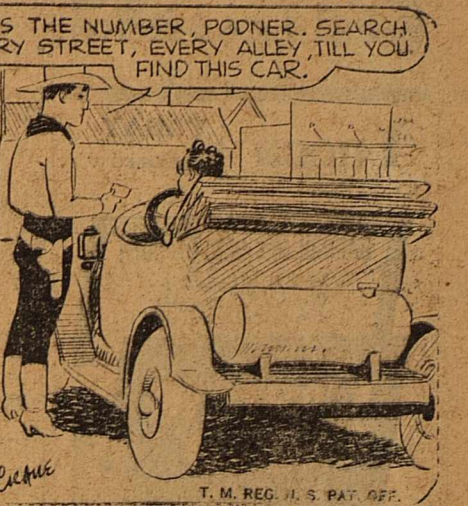


STRANGE! HE CHANGED HIS MIND ABOUT STOPPING. I WONDER IF IT WAS BECAUSE HE SAW THE SHERIFF'S CAR PARKED HERE.

An Assignment



IF SO, I KNOW OF ONLY ONE FELLA WHO HAS MUCH REASON TO AVOID THE SHERIFF, AND THAT'S PUNKY MAGLEW.



HERE'S THE NUMBER, PUDNER. SEARCH EVERY STREET, EVERY ALLEY, TILL YOU FIND THIS CAR.

By CRANE

ALLEY OOP



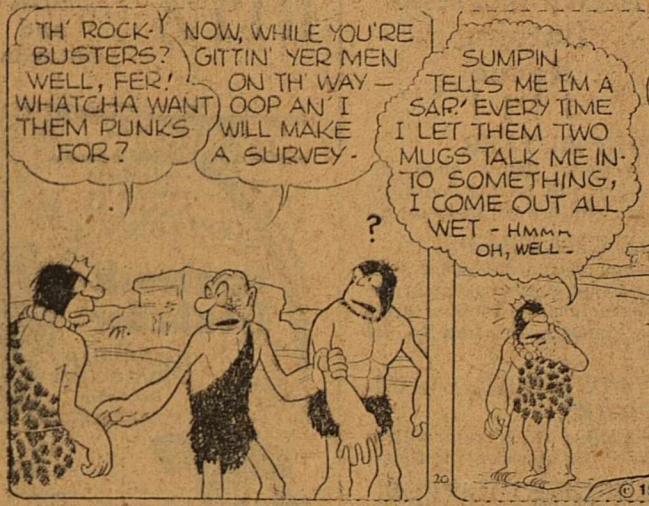
HONEST, GUZ-I'VE DONE ALL I CAN, BUT I CAN'T MAKE DINNY COME AWAY FROM TH' GRAND WIZER'S CAVE... HE MUSTA DONE SUMPIN' AWFULL T'DINNY, T'MAKE HIM ACT LIKE THAT!



WELL-WE GOTTA DO SOMETHING, OR TH' GRAND WIZER'LL BE A GONE GOELIN!

LISTEN, GUZ-I GOTTA PLAN THAT I THINK WILL DO-YOU GIT US ALL TH' ROCK-BUSTIN' MEN IN MOO!

They Have Guz Worried



TH' ROCK-BUSTERS? WELL, FER! ON TH WAY WHATCHA WANT OOP AN I WILL MAKE A SURVEY FOR?

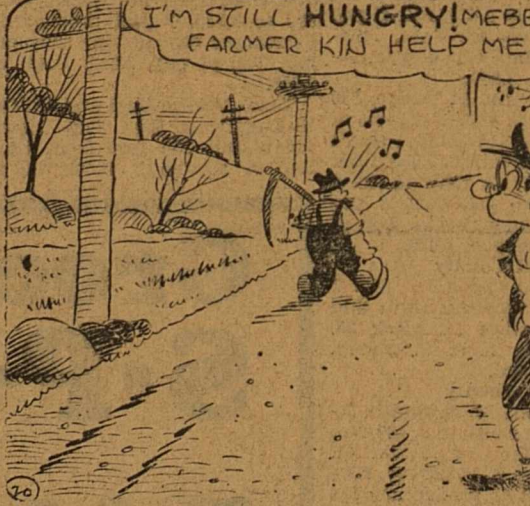
SUMPIN TELLS ME IM A SARY EVERY TIME I LET THEM TWO MUGS TALK ME INTO SOMETHING, I COME OUT ALL WET-HMM-OH, WELL-



WE'DE GONN' UP HERE T'TURN TH' WIZER LOOSE-BUT, DON'T YOU FEAR-WE'LL COOK HIS GOOSE

By HAMLIN

SALESMAN SAM



I'M STILL HUNGRY! MEBBE THAT FARMER KIN HELP ME OUT!



SAY, BUDDY, IS THERE A PLACE NEARBY WHERE I KIN GIT A BITE?

YOU BET! DOWN TH' ROAD AT MISS KRACKER'S ESTATE!



AN' I WOULDN'T BE S'PRISED IF YA GOT A LITTLE NIP ER TWO!

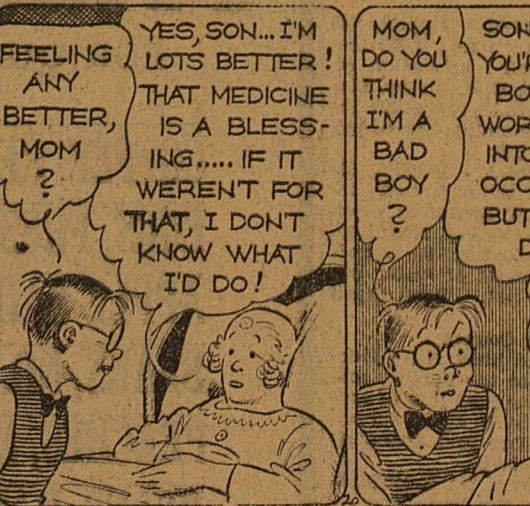
THASS SWELL! ARE YA SURE?



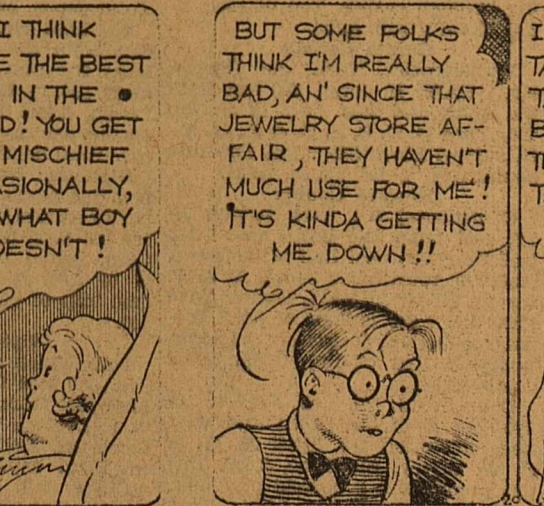
POSITIVE! SHE KEEPS A HULL FLOCK O' BULLDOGS!

By SMAIL

FRECKLES AND HIS FRIENDS

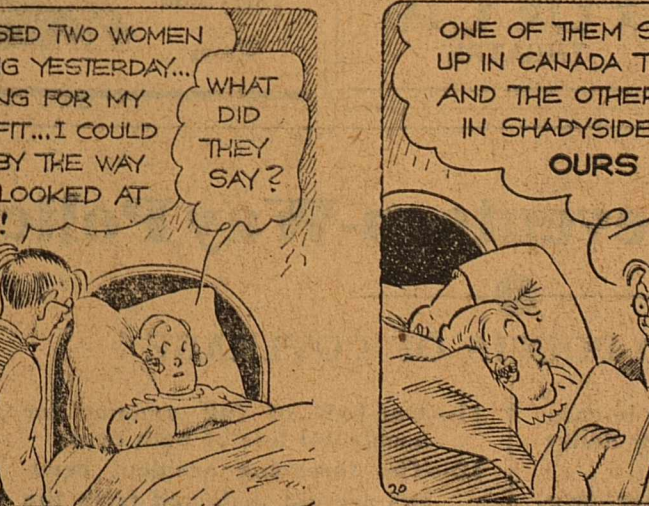


FEELING ANY BETTER, MOM? YES, SON... I'M LOTS BETTER! THAT MEDICINE IS A BLESSING... IF IT WERENT FOR THAT, I DON'T KNOW WHAT I'D DO!



MOM, DO YOU THINK I'M A BAD BOY? SON, I THINK YOU'RE THE BEST BOY IN THE WORLD! YOU GET INTO MISCHIEF OCCASIONALLY, BUT WHAT BOY DOESN'T!

BUT SOME FOLKS THINK I'M REALLY BAD, AN' SINCE THAT JEWELRY STORE AFFAIR, THEY HAVEN'T MUCH USE FOR ME! IT'S KINDA GETTING ME DOWN!!



I PASSED TWO WOMEN TALKING YESTERDAY... TALKING FOR MY BENEFIT... I COULD TELL BY THE WAY THEY LOOKED AT ME!

WHAT DID THEY SAY?



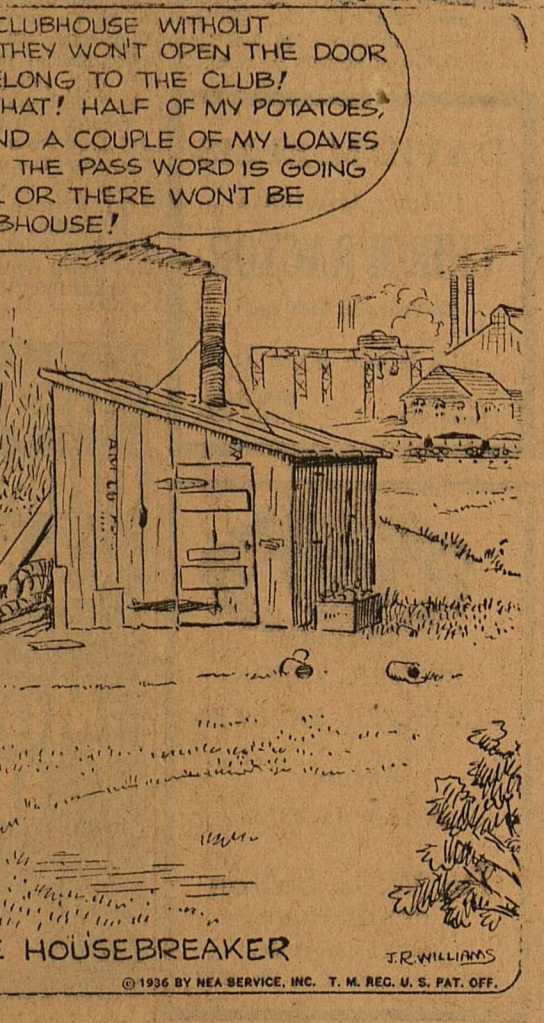
ONE OF THEM SAID: "I UNDERSTAND THAT, UP IN CANADA THE POLICE ARE MOUNTED... AND THE OTHER ONE SAID: "YES, BUT IN SHADYSIDE, WE OUGHT TO HAVE OURS STUFFED!"

By BLOSSER

OUT OUR WAY



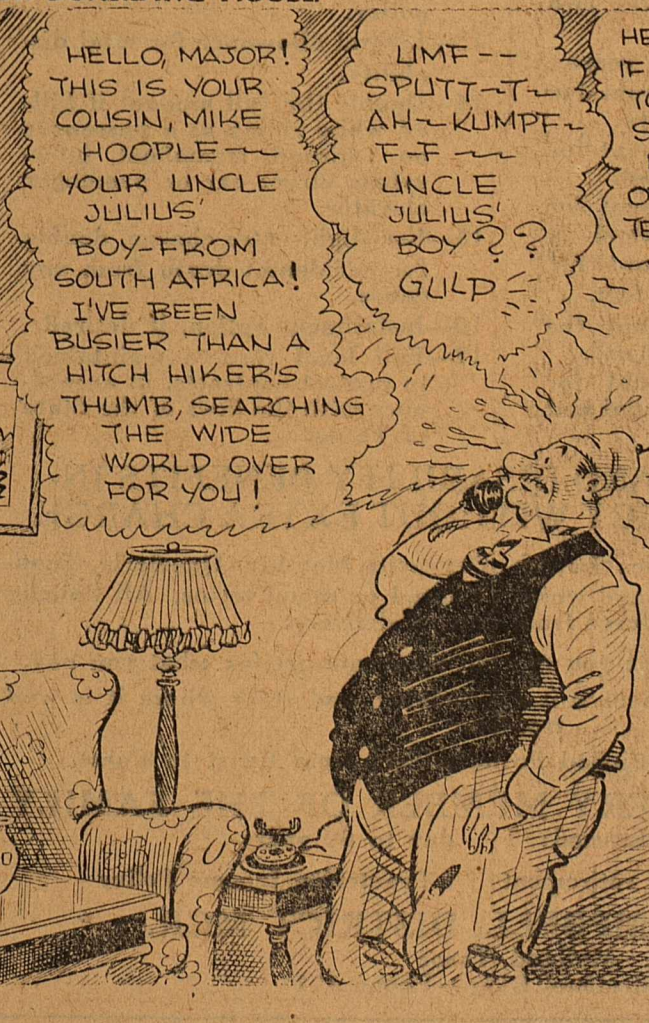
SO I CAN'T GET INTO THE CLUBHOUSE WITHOUT SAYING THE PASSWORD, HUH? THEY WON'T OPEN THE DOOR TO ANYONE WHO DOESN'T BELONG TO THE CLUB! WELL-- WE'LL SEE ABOUT THAT! HALF OF MY POTATOES, ALL OF MY HAMBURGER AND A COUPLE OF MY LOAVES OF BREAD ARE IN THERE. THE PASS WORD IS GOING TO BE OPEN UP-- OR THERE WON'T BE ANY CLUBHOUSE!



THE HOUSEBREAKER

By WILLIAMS

OUR BOARDING HOUSE



HELLO, MAJOR! THIS IS YOUR COUSIN, MIKE HOOPLE YOUR UNCLE JULIUS BOY-FROM SOUTH AFRICA! I'VE BEEN BUSIER THAN A HITCH HIKER'S THUMB, SEARCHING THE WIDE WORLD OVER FOR YOU!

LMF-- SPUTT-T-AH-KUMPF-F-F UNCLE JULIUS BOY?? GULD

HE LOOKS AS IF HE'S GOING TO EXPLODE-SPUTTERING LIKE AN OVERDONE TEA KETTLE!

By ALLERN

WELL, OF ALL PEOPLE!

Oil News--

(Continued from page 1)

Chance to develop oil production, the No. 1 Averitt is making about 12,000,000 cubic feet of wet gas per day originating near bottom at 4,910. Crew was unable to pull tools

CITY CLEANERS QUALITY & SERVICE PHONE 89

Yucca TODAY Tomorrow

DARING! DASHING! DEFIANT! Rebel Pirate Lovel Red. Blooded Romance that Sweeps with Fire and Fury!

CAPTAIN BLOOD with ERROL FLYNN, OLIVIA DE HAVILLAND, ERROL FLYNN, LIONEL ATWILL, BOSS HEDDERLEY

added Metro News Looney Tune

PREVIEW SAT. NIGHT SUNDAY & MONDAY ONLY

It's nifty! It's nutty! It's nautical!

The Musical Wonder Show!

ANYTHING GOES with BING CROSBY, ETHEL MERMAN, CHARLIE RUGGLES

MARCH OF TIME

past a bridge about 250 feet off bottom formed when the big gas was struck, and the string of tools and several hundred feet of drilling line are still in the hole. Located on a structure mapped by many geophysical parties, the Walsh and Adams test has held the interest of most Basin oil operators for the past few months. It is in section 238, block G, W.T.R.R. survey, three miles northwest of Seminole.

Extension Test Drilling A half mile west of the Sayre pool in northern Winkler county, Gulf No. 1-A Daugherty is drilling ahead below 3,260 feet in lime with no change in fluid reported. After a day of inactivity while bottomed at 3,240 early this week, crew bailed out 9 barrels of water and 4 1/2 barrels of oil. Now well below the Sayre producing horizon, the only sizeable oil showing so far logged by the semi-wildcat was in a sand break from 2,925 to 2,930. Location is in the southeast corner of the southwest of section 35, block 74, public school land.

A depth of 3,427 feet in lime has been reached by Magnolia No. 1 State-Walton, wildcat test between the Sayre and Keystone pools in Winkler. Although it missed its pay in the sand zone, the well is being closely watched as it nears the Keystone lime producing horizon since it is very high structurally. It is in section 7, block B-3, public school land.

To remove oil and grease from leather, dab the spots carefully with a soft ammonia, let it stand for a while, and wash with clear water.

Inside Dope on the Men's Burlesk Bathing Revue

JOHN BUTLER —doesn't figure that his bow-legs will be any handicap in his appearance in scanties!

JOE CHAMBERS —has placed his order with a tent and awning company to manufacture an evening dress large enough for him to get into!

BURTON-LINGO LUMBER CO. —looking for a man with a wooden leg to represent them!

GEORGE PHILIPPUS —not worrying about an evening dress or bathing suit —he'll slip them back in stock anyway!

DE LO DOUGLAS —The woman I borrowed my evening dress from doesn't fill it out any better than I do."

JAMES GOODMAN —will probably have to go barefooted unless he can find a shoe stretcher by Tuesday!

L. E. JONES —is sure his bathing average will increase 100% when the ladies see his figure!

It Will Be the Laff-Riot of the Year!

ON THE STAGE Tuesday Night, March 24 YUCCA THEATRE

Many Are Attending Exhibits of Schools

School exhibits, showing work done throughout the present year by students of the junior high, north and south elementary schools, has been on display at the three schools all day and has attracted many visitors from the city, also a number from other nearby towns.

The entire faculty of the Odessa schools was a visitor at the various exhibits during the day. The buildings will remain open until approximately six p. m. today.

Two Bombers Land At Sloan Field

Two bombing planes, B-10's, landed at Sloan Field today on the way from Barksdale Field, La., to Tucson, Ariz. They were commanded by Lieuts. Amee and Dodson. Lieut. Livingstone, flying an A-12, planned to leave early this afternoon for El Paso after an overnight stay.

Pendleton--

(Continued from page 1)

Here since Deputy Sheriff Bill Ratliff halted the swaggering gunman and a companion at Healdton on Jan. 25, the day after Pendleton and two other armed men held up an Ardmore drug store and escaped with \$65. Although Pendleton had boasted to a terrified filling station attendant at Ringland shortly before his capture that "They'll never get me alive," Ratliff captured the outlaw without a battle.

RITZ TODAY and Saturday

HE SINGS HIS WAY TO ROMANCE... and rides to victory in the face of death! GENIE AUTREY The Sagebrush Troubador

SMILEY BURNETTE BARBARA PEPPER Fred Kelley also 2 reel comedy serial

SUN. MON. TUES.

LOVABLE! HUMAN! DELIGHTFUL! Kentucky world famous author in his first starring picture! IRVING COBB EVERYBODY'S OLD MAN with RACHELLE HUDSON

plus Song hit Terrytoon News

Prevue At Yucca



Bing Crosby heads a cast of favorites in "ANYTHING GOES," a jolly, tuneful, entertaining comedy of errors, coming to the Yucca preview Saturday night and Sunday and Monday only. Assisting in the general merriment are Ethel Merman, Charlie Ruggles and Grace Bradley.

In "Captain Blood"



Errol Flynn and Olivia de Havilland have the leading roles in the screen version of Rafael Sabatini's "Captain Blood" showing today and tomorrow at the Yucca Theatre.

POTENTIAL HIKED BY 11,004 BBLs.

Twenty-Two Oil Wells Put on Completed List Last Week

A total of 11,004 barrels daily was added to the West Texas potential last week when 22 producing wells were put on the completed list. Three failures, one gas well and two abandoned locations were also reported. The completions by counties follows:

Andrews County Humble No. 7 J. S. Means, 661 feet from the south and 1,980 feet from the west line of section 2, block A-35, public school land. Elevation, 3,149. Initial production, 5,000,000 cubic feet of gas. Total depth 4,202. Plugged back to 2,675.

Crane County Keys, Cherry and others No. 1 Ed. S. Hughes, J. Prater survey No. 2, 330 feet south and west of the southwest corner of section 86, block X. Elevation, 2,519. Dry and abandoned. Total depth, 2,400 feet.

Ector County Landreth No. 2-C Kloh, 2,200 feet from the north and 440 feet from the west line of section 11, block 43, township 1 south, T. & P. survey. Elevation, 3,702. Shot with 280 quarts from 4,145 to 4,253. Initial production, 635 barrels per day, flowing through casing. Top of pay, 4,230. Total depth, 4,253.

Gaines County Wahlenmeier, York and Harper, No. 1 Dr. E. H. Jones, 660 feet from the south and west lines of section 414, block G, C. C. S. D. & R. G. N. G. survey, Elevation, 3,528. Dry and abandoned. Total depth, 5,224.

Howard County Continental No. A-14 Settles, 2,267 feet from the north and 1,200 feet from the west line of section 6, block 32, township 2 south, T. & P. survey. Elevation, 2,137. Treated with 1,500 and 1,000 gallons of acid. Initial production, 60 barrels per hour, pumping. Top of pay, 2,345. Total depth, 2,393.

Continental No. 3-S Settles, 2,200 feet from the north and west lines of section 159, block 29, W. & N. W. survey. Elevation, 2,656. Initial production, 6 barrels per hour, pumping. Top of pay, 1,224. Total depth, 1,226.

Ennisbrook Oil Corp. No. 9 Texas Land and Mortgage Co., 330 feet from the north and 1,320 feet from the west line of section 4, block 30.

DAVID M. ELLIS Palmer Graduate CHIROPRACTOR 11 Years in Midland 306 North Main St Office Phone 822 Residence Phone 1094

BETTER VISION --GREATER SAFETY-- Reduces Accidents 23% Dr. W. L. Sutton OPHTHOMETRIST 203 Thomas Bldg. Office Ph. 146-Res. Ph. 810J

TODAY'S MARKETS

Courtesy H. O. Bedford & Co. 320 Pet. Bldg. Tel. 408

Table listing market prices for various commodities including Armour & Co., Allis Chalmers, American Tel.-Tel., Anaconda Copper, American P. & L., Atlantic, Auburn, A. T. & S. F., Bendix, Burroughs, Bethlehem Steel, Cities Service, Chrysler, Comm. Solvent, Consolidated Gas, Continental Oil, Consolidated Oil, Douglas, Elec. Bond, Share, Freep. Tex., General Elec., General Motors, Goodyear, Gulf, Humble, Hudson, Int. Harvester, Int. Telephone, Kennicott Copper, Leows, Montgomery Ward, Nat'l Dairy, Nat'l Distillery, N. Amer. Co., N. Y. Central, Ohio Oil, Packard, Pennsylvania R. R., Phillips, Pure, Radio, Remington Rand, Sears-Roebuck, Shell, Socony-Vacuum, Southern Pac. R. R., Standard Brands, Standard of Cal., Standard of N. J., Studebaker, Texas Co., Tidewater, T. P. Coal & Oil, T. & P. Land Trust, United Air Line, United Corp., U. S. Rubber, U. S. Steel, Warner Bros., Western Union, Westinghouse, Total Sales, NY Cotton, Mar., Cotton, May, Chi. Wheat, May, Wheat, July.

township 1 south, T. & P. survey. Elevation, 2,400. Shot with 600 quarts from 2,625 to 2,815. Initial production, 831 barrels per day, flowing through casing. Top of pay, 2,625. Total depth, 2,830.

Sinclair-Prairie No. 31 Dodge, 330 feet from the south and east lines of section 3, block 30, township 1 south, T. & P. survey. Elevation, 2,255. Shot with 700 quarts from 2,465 to 2,820. Initial production, 625 barrels per day, flowing through casing. Top of pay, 2,465. Total depth, 2,820.

Mitchell County Southern Union Gas Co. No. 1 Costin, 330 feet from the south and east lines of section 11, block 28, township 1 south, T. & P. survey. Location abandoned.

Pecos County H. A. Baker No. 1 M. A. Smith, 2,490 feet from the south and 480 feet from the east line of section 41, block 194, G. C. & S. F. survey. Elevation, 2,460. Initial production 154 barrels of oil and 71 barrels of water per day, pumping. Top of pay, 446. Total depth, 449.

Cardinal No. 36-E Tippett, 748 feet from the north and 3,063 feet from the east line of section 40, block 194, G. C. & S. F. survey. Elevation, 2,406. Initial production 154 barrels per day, pumping. Top of pay 457. Total depth, 530.

Stanolind No. 14-A Tippett, 530 feet from the north of the northeast corner of section 41, in section 61, block 194, G. C. & S. F. survey. Elevation, 2,353. Initial production, 99 barrels of oil and 24 barrels of water per day. Top of pay, 363. Total depth 420.

Upton County John Emch and Shell No. 1 Gordon, 660 feet from the north and 1,300 feet from the east line of section 47, block 7, T. C. R. R. survey. Elevation, 2,697. Dry and abandoned. Total depth, 3,740.

Duffey and others No. 8 McClintic, 330 feet from the south and 1,210 feet from the east line of section 206, block F, C. C. S. D. & R. G. N. G. survey. Elevation, 2,725. Shot with 460 quarts from 2,840 to 3,060. Initial production, 168 barrels per day, pumping. Top of pay, 2,840. Total depth, 3,060.

GET THIS CHINA CUP AND SAUCER OF LOVELY CLASSIC DESIGN IN EVERY PACKAGE OF MOTHER'S OATS order today from your grocer

8-E Lane, 330 feet from the north and 990 feet from the west line of section 32, block 1, M. K. & T. survey. Elevation, 2,718. Treated with 2,000 gallons of acid. Initial production, 808 barrels per day, pumping. Top of pay, 2,280. Total depth, 2,296.

Texas Pacific Coal and Oil Co. No. 21-A Lane, 990 feet from the south and east lines of section 5, G. C. & S. F. survey. Elevation, 2,586. Treated with 1,000 gallons of acid. Initial production, 207 barrels per day, pumping. Top of pay, 2,002. Total depth, 2,029.

Ward County Atlantic No. 6-B Bennett, 990 feet from the northeast and 330 feet from the northwest line of section 16, block 34, H. & T. C. survey. Initial production, 132 barrels per day, flowing. Top of pay, 2,550. Total depth, 2,590. Plugged back to 2,425.

California No. 18 Gordon, 1,650 feet from the northwest and 330 feet from the southwest line of section 6, block 34, H. & T. C. survey. Elevation, 2,533. Shot with 300 quarts from 2,300 to 2,525. Initial production 1499 barrels per day flowing through tubing. Top of pay, 2,414. Total depth of California No. 18 2,530.

Empire No. 1 Grimes, 2,310 feet from the northeast and 1,650 feet from the southeast line of section 14, block 34, H. & T. C. survey. Elevation, 2,553. Shot with 280 quarts from 2,340 to 2,530. Initial production, 65 barrels per day, flowing. Top of pay, 2,340. Total depth, 2,530.

Sid Richardson No. 27-B Johnson, 2,310 feet from the southeast and 1,650 feet from the northeast line of section 22, block 34, H. & T. C. survey. Elevation, 2,572. Shot with 340 quarts from 2,350 to 2,573. Initial production, 1,238 barrels per day, flowing. Top of pay, 2,539. Total depth, 2,573.

Winkler County Keys, Cherry and others No. 1 Central State Bank of Abilene, 330 feet from the north and 2,310 feet from the east line of section 25, block 26, public school land. Elevation, 2,870. Shot with 240 quarts from 2,720 to 2,870. Initial production, 595 barrels per day, flowing. Top of pay, 2,821. Total depth, 2,878.

Emperor No. 1 Continental-Halley, 330 feet from the south and 2,310 feet from the west line of section 12, block B-12, public school land. Elevation, 2,764. Shot with 250 quarts from 2,755 to 2,880. Initial production, 65 barrel per day, flowing through tubing. Top of pay, 2,704. Total depth, 2,943.

Magnolia No. 13 Walton, 1,650 feet from the east and 330 feet from the south line of section 1, block 26, public school land. Location temporarily abandoned.

Magnolia No. 15 Walton, 2,310 feet from the north and 330 feet from the west line of section 1, block 26, public school land. Elevation, 2,876. Shot with 170 quarts from 2,820 to 2,935. Initial production, 345 barrels per day, flowing through casing. Top of pay, 2,822. Total depth, 2,943.

Texas Pacific Coal and Oil Co. No. 10 Daugherty, 990 feet from the north and 330 feet from the east line of section 2, block 26, public school land. Elevation, 2,889. Shot with 330 quarts from 2,760 to 2,935. Initial production, 1,098 barrels per day, flowing through casing. Top of pay, 2,808. Total depth, 2,935.

Westbrook No. 1 Halley, 330 feet from the south and east lines of section 12, block B-12, public school land. Elevation, 2,762. Shot with 300 quarts from 2,700 to 2,900. Initial production, 332 barrels per day, flowing through tubing. Top of pay, 2,718. Total depth, 2,924. Plugged back to 2,910.

school land. Elevation, 2,889. Shot with 330 quarts from 2,760 to 2,935. Initial production, 1,098 barrels per day, flowing through casing. Top of pay, 2,808. Total depth, 2,935.

Film, "Magnificent Obsession" Wins High Praise

A special screening of "Magnificent Obsession" dramatized from Lloyd C. Douglas' novel of the same name was presented before a representative group of citizens, mostly women, at the Yucca theatre this morning at 10 o'clock.

The audience, including club-women, professional women, representatives of the churches and similar groups, expressed high praise for the film and many said they would see it again when it is released here preview Saturday night, March 28, and Sunday, Monday, Tuesday following.

The story is a powerful one based on the fundamental concepts of the power of the soul.

BEDFORD IMPROVED H. G. Bedford, ill with pneumonia in a Midland hospital, is reported to be improved today.

BACK FROM AUSTIN

Jas. H. Goodman, Midland attorney, returned Thursday night from a trip to Austin. He returned via Fort Worth where he attended the Stock Show.

The largest endowment foundation in the United States is the Carnegie Foundation of New York with a capital of \$190,860,783. The second largest is the Rockefeller Foundation, with a capital of \$147,373,821.

Eliezer, mentioned in the Bible as the faithful servant of Abraham, was the first "marriage broker" of whom there is any permanent written record. He arranged the marriage of Rebekah and Isaac.

In Siam, monkeys are made to bite coins to see if they are counterfeit.

Chest Colds Yield quicker to the Poultice-Vapor action of VICKS VAPORUB

FEED We Have a Complete Line of Bewley's ANCHOR BRAND FEEDS Chunkets for Range Cattle & Sheep Mixed and Sweet Feeds for Dairy Cows All Chicken Feeds in Mash and Chunk Form MEAL-HULLS-CAKE Get Our Prices Before Buying Williams & Miller Gin B. H. SPAW, Mgr.

Grocery & Market S-P-E-C-I-A-L-S FOR Friday & Saturday FOR QUALITY MERCHANDISE PHONE 562 WE DELIVER COFFEE, RED & GOLD, LB. 19c EGGS, FRESH YARD, DOZEN 15c APPLE SAUCE, MONARCH NO. 2, EACH 13c BEANS, NO. 2 CUT GREEN, 3 FOR 23c PEACHES, NO. 2 1/2 WHITE SWAN, 2 FOR 35c BEANS, RANCH OR MEXICAN STYLE, 3 FOR 23c APPLES, EXTRA FANCY WINESAP, DOZ. 10c PINEAPPLE JUICE, DOLE'S, 3 FOR 23c Market Specials PICNIC HAMS, 6 TO 8-LB. AVERAGE, LB. 22c LEG-O-LAMB, POUND 22c PORK CHOPS, POUND 25c STEW MEAT, RIB, POUND 10c BABY BEEF CHUCK ROAST, POUND 17c LONG HORN CHEESE, POUND 21c BACON, SUGAR CURED, RIND OFF, LB. 33c PHONE 562 M SYSTEM SAVES FOR THE NATION GROCERY & MARKET Corner Loraine and West Texas

The Praetorian Seventeen-Way Policy OPTIONS AND POINTS OF COVERAGE 1-Policy pays full amount in case of death any time after delivery. 2-Paid-Up insurance after two years. 3-Extended insurance after two years. 4-Cash or Loan after two years. 5-One-fourth of full amount for accidental loss of one eye. 6-One-fourth of full amount for accidental loss of one foot. 7-One-fourth of full amount for accidental loss of one hand. 8-One-half of full amount for accidental loss of both feet. 9-One-half of full amount for accidental loss of both hands. 10-One-half of full amount for accidental loss of one hand and one foot. 11-One-half of full amount for accidental loss of both eyes. 12-The foregoing accident benefits are not deducted from the amount of insurance in face of policy. 13-Liberal allowance for total disability. 14-Double the full amount if killed while riding as a passenger on railroad, steamboat, interurban, street car or passenger elevator. 15-For slight extra charge, double for accidental death from any cause. 16-Installment option, if desired. 17-Full legal reserve maintained to protect contracts, in accordance with the laws of the State of Texas. ALL ACCIDENT AND DISABILITY BENEFITS INCLUDED IN POLICY WITHOUT EXTRA CHARGE Up-to-Date Forms of Policies Issued. Payments Monthly, Quarterly, Semi-Annually or Annually. Men and women insured on equal terms. All Policies in full force from date of delivery. Not what you pay for what you get but what you get for what you pay. Business is sensitive, goes where it is appreciated, and stays where it is well treated. Many thousands of Satisfied Policyholders from Coast to Coast. A POLICY FOR EVERY MEMBER OF THE FAMILY Ages Insured: 1 day to 60 years Provide for your retirement a Praetorian Income Policy J. WRAY CAMPBELL, DISTRICT MGR. Midland, Texas 601 Petroleum Bldg.—Phone 111