

Hoffman Denies a Reprieve for Bruno

FARMER ADMITS BOILING OF FLESH OFF BODIES OF 4

Disappearance of East Texas Family Is Cleared Up

NO PROSECUTION

Conviction Is Unlikely As Bodies Can't Be Found

ATHENS, March 12. (P).—The strange disappearance of an entire family was cleared up Wednesday, Sheriff Jess Sweeten claimed, by George Patton's story of the death of Mr. and Mrs. J. W. McGeehee and their two children. Patton, a farmer at whose home the McGeehees lived north of Athens, was held in jail at Tyler and Sheriff Sweeten lodged four murder charges against him. The Sheriff said he and Texas Rangers, after questioning Patton 14 hours, obtained a statement giving Patton's version of the McGeehee family's death in 1932. The statement quoted Patton as saying McGeehee came home drunk and killed his wife and two children. Patton, according to the statement, took a club from McGeehee and killed him with a blow on the head.

Style Maker Dies



Fashion has lost one of her foremost contributors in the death of Jean Patou (above), one of the world's outstanding designers of women's clothes, whose fortnightly articles for NEA Service about the Paris style world have long been a feature of American newspapers. A heart attack proved fatal. He was 49.

ALLEGED 65 FIRMS USED FICTITIOUS NAMES TO RUN OIL

Comptroller's List Is Shown Group at Hearing

PROTECT EXCESS

Intricate System Is Used by Companies in Violations

AUSTIN, March 12. (P).—Testimony that fictitious names were used by East Texas refineries in paying gross production taxes on oil to protect sources of excess crude was introduced today before a special committee of the house of representatives.

ULTIMATUM GIVEN OTHER NATIONS BY GERMANY TODAY

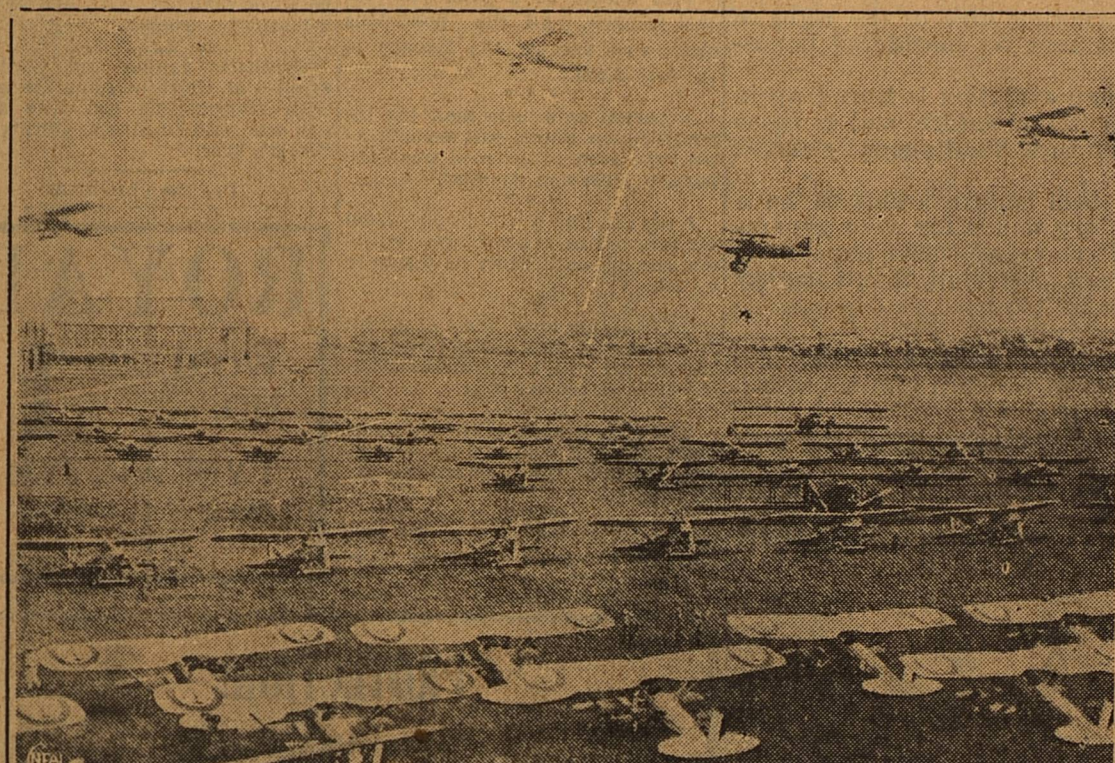
"Isolation" Is Called Step That May Be Taken

FRANCE IS FIRM

Insists Troops Must Be Removed From Rhineland

BERLIN, Mar. 12. (P).—Germany today declared that if any attempt were made demanding the Reich to renounce any of its sovereign rights, Hitler's peace offers must be considered withdrawn. The government declared it would prefer "honorable isolation" rather than live as a nation discriminated against in a community of others.

Air Armada Tuned Up For Rhine Crisis



As troops were rushed to strengthen border garrisons to meet what the Paris government considered Germany's challenge in re-arming the demilitarized Rhineland, French aviators prepared for any emergency that might develop out of the critical situation in Europe. This view of the military airport at Bron, near Lyons, gives an idea of the vast armada ready to take the air, while diplomats lined up other nations as allies in event of hostilities.

TODAY LAST DAY DELAY COULD BE GRANTED LEGALLY

Recalls Statement He Issued After Month

ONE HOPE LEFT

Counsel Asks Jafsie Be Questioned by Governor

TRENTON, Mar. 12. (P).—Governor Hoffman today announced that he has no intention of again granting a stay of execution for Bruno Hauptmann, whose death date has been set for the week of March 30. Today is the last day Hoffman can legally reprieve him.

ROOSEVELT LEADS TALMADGE BY 40 TO 1 IN RETURNS

Preference for F.D.R. Over Governor Indicated

HAMILTON, Ga., March 12. (P).—Harris county voters gave President Roosevelt a 40 to one edge over Governor Talmadge today, on the basis of the presidential preference poll yesterday.

SAYRE POOL GETS MILE EXTENSION OF NORTH LIMITS

Humble 1-D Walton Flows 302 Barrels In 1 1/2 Hours

BY FRANK GARDNER
The extension of the producing area of the Sayre pool a mile north of its present limits looms as a result of the performance of the Humble No. 1-D Walton wildcat which registered flowing production of 302 barrels of oil in 1 1/2 hours following a test on Tuesday.

LOAN CASH TO BE AVAILABLE SOON FOR FARM OWNERS

Conference Decides On Application Ideas

SALT LAKE CITY, March 12.—Western agricultural representatives from 11 states, agreed at a regional conference here Wednesday upon a program for application under the federal soil conservation act, AAA successor.

Agriculture Representatives Agree On Soil Conservation Act Program

WASHINGTON, March 12. (P).—President Roosevelt today assured the Senate agriculture committee that he would make \$13,000,000 available for crop production loans effective March 20, and more funds up to \$30,000,000 as needed.

COMMITTEE VOTES RECORD CASH FOR WAR DEPARTMENT

Include Money for a Standing Army of 165,000

WASHINGTON, Mar. 12. (P).—The Senate appropriations committee today voted the largest peace-time war department fund in the history of the nation, \$600,000,000 including money to maintain the army at full authorized strength of 165,000 men.

ILLNESS FATAL TO BROTHER OF PRATT

HOLC Supervisor Succumbs Early Wednesday Night

H. S. Pratt, about 50, brother of W. I. Pratt of Midland, died early Wednesday night at his home in El Paso, the Midland man leaving immediately for that city upon receipt of the news. A heart attack after illness from asthma caused the death.

MIDLAND ADOPTS RED CROSS PLAN

First Aid Stations Will Be Established on Highway

Robert T. Bridge manager of this district of the Red Cross met with other officials of the organization at the county courthouse here Wednesday morning to see whether this locally would accept the First Aid project of the Red Cross. This provides for the establishment of First Aid stations on the outskirts of cities and the group voted indorsement of the plan.

OIL CO. OFFICIAL KILLED IN WRECK

William McGinley Loses Life 32 Miles South of Carlsbad

CARLSBAD, N. M., March 12. (P).—William McGinley, 50, president of the McGinley Oil Corporation, Fort Worth, Texas, was killed in an automobile accident 32 miles south of here Wednesday.

Rotary Club To Name Officers For Fiscal Year

Committeemen were named at the Rotary club luncheon today to nominate officers and directors for the fiscal year of 36-37 bringing the list of nominees to the first meeting in April. On the group were Percy J. Mims, chairman, J. Luther Tidwell, Clinton Lackey, Cotter Hiatt and J. E. Hill.

Merchants Asked To Participate In The Lion's Burlesque

Solicitations of local merchants for participation in the mirth-provoking men's burlesque bathing revue, to be staged by the Midland Lions club at the Yucca theatre on Tuesday evening, March 24, was started by a Lions club committee yesterday afternoon and is continuing today, the idea of the committee being to solicit every local merchant in order to give each business house of the city an opportunity to sponsor a "lovely model" in the first revue of the Spring season.

Curtis Cook to Ride Matched Race

Curtis Cook, young Midland horse trainer, went to Ackerly yesterday where he will ride the Pendergraft dun mare Saturday in a quarter mile matched race. She has been matched against Baywood, a bay horse owned by P. O. Hughes. The race will be over the fast quarter mile straight-away track at Ackerly.

Ohio Youth Dies in The Electric Chair

COLUMBUS, O., March 12. (P).—Twenty-two-year-old Norman Peacock died in the electric chair at Ohio penitentiary Wednesday night for the murder of a Cincinnati couple from whom he tried to steal a pair of shoes.

EXTENSION MEN HERE

Extension Agents, E. C. Martin and Reppert, of College Station were here Wednesday, holding conferences with County Agricultural Agent S. A. Debnam. Martin is district agent.

FLOOD WATERS IN EAST ARE RISING

Homes, Farms, Highways Are Threatened by Inundations

By Associated Press
Hard rains, melting snow and ice today sent streams of the East and the mid-west to flood levels, inundating highways, farms and threatening homes. Many rivers of New England were at or near flood level. A 12 foot avalanche swept down Crawford notch, New Hampshire, blocking the entrance to the narrow valley in the White mountains. Heavy fog had settled over New York.

REPUBLICANS CAN TAKE SOUTH-KNOX

Chicago Publisher Says Dissatisfaction in States Clear

DALLAS, March 12. (P).—Colonel Frank Knox, presidential candidate on the Republican platform, today told Texans that there was a very good chance for the Republicans to once more crack the "solid South" in the coming presidential election.

U. S. and Nicaragua In Trade Agreement

WASHINGTON, March 12. (P).—The United States today concluded a reciprocal trade agreement with Nicaragua, embracing tariff concessions by both nations.

TO FORT WORTH

Mr. and Mrs. Clarence Scharbauer and son, Clarence Jr., left early today for Fort Worth to attend the opening of the Southwestern Exposition. "Uncle John" Scharbauer, at Hobbs on business, was expected to come through here today, enroute to the show.

SPECIALIST DIES

WASHINGTON, March 12. (P).—Dr. William Holland Wilme, 73, famed eye specialist, died in his home here today.

FLAPPER FANNY SAYS

Lions club members and other local business men are to model evening dresses and bathing suits in the revue. The affair is to be hilariously funny from start to finish with never a dull moment. Dr. J. B. Thomas is among the models already assigned. Imagine the doctor in a form-fitting evening gown. W. F. (Doc) Bailey is to act as master of ceremonies.

Donut Machine Rolls Its Own

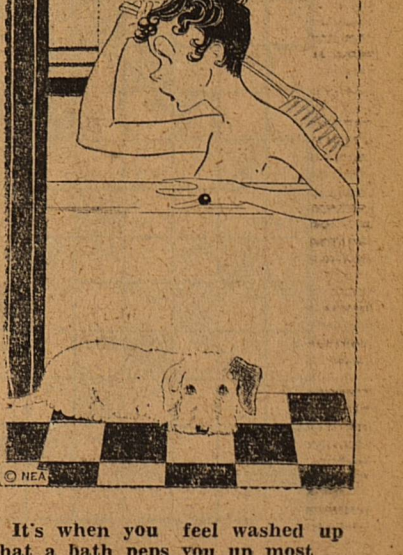
One of the newest "devices" in Midland is the sanitary electric donut machine installed in Hokus Pokus this week. Hundreds of people watch the machine as it turns out the donuts with clock-like precision.

SON BORN TO BAUMGARTENS

Mr. and Mrs. Maurice (Dutch) Baumgarten are the parents of a son born at a Midland hospital Wednesday night. Mother and child are reported doing well today.

GAUGE IN PROGRESS

After injection of 5,000 gallons of acid, Magnolia No. 4 Edwards, interesting inside test in the Waddell pool of northeastern Crane county, is reported to have cleaned itself. (See OIL NEWS, page 6)



It's when you feel washed up that a bath peps you up most.

THE REPORTER-TELEGRAM

Evenings (except Saturday) and Sunday Morning
MIDLAND PUBLISHING COMPANY, PUBLISHERS
112 West Missouri, Midland, Texas

T. PAUL BARRON Publisher
Entered as second class matter at the postoffice at Midland, Texas, under the Act of March 30, 1879.

Subscription Price
Daily, by Carrier or Mail \$5.00
Per Year 50¢
Per Month 50¢
Advertising Rates
Display advertising rates on application. Classified rate, 2¢ per word; minimum charge 25¢. Local readers, 10¢ per line.

Any erroneous reflection upon the character, standing or reputation of any persons, firm or corporation which may occur in the columns of The Reporter-Telegram will be gladly corrected upon being brought to the attention of the firm.

NOTHING IS IMPOSSIBLE

Ivan Pavlov, the great Russian scientist who changed the story of physiology, is dead, but his philosophy and memorable contributions live on.

Said the eminent Pavlov at one time: "The achievements of science in the past century give us the right to affirm that absolutely nothing may be considered impossible."

That is, the trend of human evolution is bound up in man's ability to unfold the secrets of nature, and as these secrets are laid bare the human race simultaneously moves upward.

Equally significant is it that nature seems to have reserved a few great exploratory minds for each generation. There will be other Pavlovs as there have been Faradays, Newtons and Pasteurs. After all, it is a mighty encouraging scheme of things isn't it?

"Joe E. Brown is suffering with tonsilitis." After seeing his last picture, we had meant to warn him about it.

Attend to your income taxes early and avoid the rush of beer barons.

Side Glances by Clark



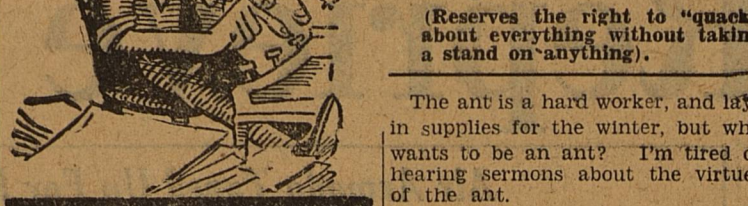
"There ain't a smarter merchant in the city today, than old Max, here."

Aquatic Queens

Word puzzle grid with clues: 1 Family name of two fine swimmers, 6 They are s., 12 Imbecile, 13 To seek to attain, 14 Do not, 15 Sound of sorrow, 16 Musical note, 18 Exclamation, 20 Corpse, 21 Bone, 22 Therefore, 23 Organ of hearing, 25 Half an em., 27 Sailor, 30 To divest, 32 To couple, 33 Female horses, 35 To sketch, 36 Snaky fish, 38 Moist, 39 Lock opener, 40 Father, 42 Label, 44 Evergreen tree, 45 Behold, 46 Wrath, 48 Company of desert travelers, 51 Courtesy title, 52 To contend, 54 Not hollow, 55 Skating in-closure, 56 5280 feet, 58 Bronze, 59 Cavity, 60 They excel in the stroke, 61 Both are makers, VERTICAL, 1 Young goat, 2 Smells, 3 Coal pit, 4 Skillet, 5 Preposition, 6 Scent bags, 7 Exists, 8 Mineral spring, 9 Clay block, 10 To rub out, 11 Thing, 17 Thick shrub, 19 Rowing device, 21 They are likely team material, 22 Ice rain, 24 Jockey, 26 They come from, 27 To piece out, 28 Type standard, 29 Uncooked, 30 To harden, 31 To peep, 34 Feasted, 37 Resin, 39 Kinsfolk, 41 Smell, 43 Aeriform fuel, 44 Fashion, 45 Steamer, 47 Narrative poem, 49 Bay horse, 50 Force, 51 Fodder vat, 53 Deer, 55 Fabulous bird, 57 Sound of inquiry, 59 Pronoun.

Crossword puzzle grid with clues: 1 Family name of two fine swimmers, 6 They are s., 12 Imbecile, 13 To seek to attain, 14 Do not, 15 Sound of sorrow, 16 Musical note, 18 Exclamation, 20 Corpse, 21 Bone, 22 Therefore, 23 Organ of hearing, 25 Half an em., 27 Sailor, 30 To divest, 32 To couple, 33 Female horses, 35 To sketch, 36 Snaky fish, 38 Moist, 39 Lock opener, 40 Father, 42 Label, 44 Evergreen tree, 45 Behold, 46 Wrath, 48 Company of desert travelers, 51 Courtesy title, 52 To contend, 54 Not hollow, 55 Skating in-closure, 56 5280 feet, 58 Bronze, 59 Cavity, 60 They excel in the stroke, 61 Both are makers, VERTICAL, 1 Young goat, 2 Smells, 3 Coal pit, 4 Skillet, 5 Preposition, 6 Scent bags, 7 Exists, 8 Mineral spring, 9 Clay block, 10 To rub out, 11 Thing, 17 Thick shrub, 19 Rowing device, 21 They are likely team material, 22 Ice rain, 24 Jockey, 26 They come from, 27 To piece out, 28 Type standard, 29 Uncooked, 30 To harden, 31 To peep, 34 Feasted, 37 Resin, 39 Kinsfolk, 41 Smell, 43 Aeriform fuel, 44 Fashion, 45 Steamer, 47 Narrative poem, 49 Bay horse, 50 Force, 51 Fodder vat, 53 Deer, 55 Fabulous bird, 57 Sound of inquiry, 59 Pronoun.

The Town Quack



The ant is a hard worker, and lays in supplies for the winter, but who wants to be an ant? I'm tired of hearing sermons about the virtues of the ant.

Tragic: The Scotchman who lighted three matches while hunting for a match he dropped.

Synthetic vanilla and synthetic essence of violet perfume are made with phosphogene gas. The same gas was used in attacks during the World's War.

A parson says one man in his congregation knows just enough about the Bible to get mad when the parson calls him Ananias.

A pig can find a hole leading from his pen, but he is never able to find one coming back when he wants to be fed.

On the other hand, most of us can find plenty of ways to get into trouble, but we have a tough time finding ways to get out of it.

What has become of the old-fashioned husband who told his wife about the good cakes his mother used to make?

He married the woman who tells him about the nice things her father used to buy.

ROYAL WORLD'S NO. 1 TYPEWRITER West Texas Office Supply Phone 95

PROTECTION! Do You Have It on LIFE & PROPERTY? We shall be glad to discuss any phase of insurance with you SPARKS & BARRON Insurance & Abstracts Phone 79—First National Bank Annex

Low Cost Long Distance MOVING also Local Moving & Storage

IT'S A PLEASURE TO MOVE NOW! We have taken the old-fashioned worry about moving and thrown it in the Gulf of Mexico. WE DO ALL THE WORRYING! ALL YOU HAVE TO DO IS TO TELL US WHERE IT IS AND WHERE YOU WANT IT MOVED! J. B. (ROCKY) FORD Agent for Allied Vans, Inc. 1111 West Wall (the Broadway of America) Phone 400—Midland, Texas

WITH SPRING'S New ensembles and soft tone colors in full sway a clear beautiful skin is one of the first steps to complete your beauty aim. A new permanent wave will also give you confidence for perfect poise at all times. Try our new Magic mask and one of our guaranteed permanents from \$2.00 to \$7.50 at OUR BEAUTY SHOP Phone 822—306 North Main Also call for your appointments at either: LLANO BEAUTY SHOP Phone 273—Ground Floor—Llano Hotel Bldg. PETROLEUM BEAUTY SHOP Phone 970—Ground Floor—Petroleum Bldg. E. A. BOCH, Proprietor

Mission to Erect Memorial to WJB DALLAS, Tex. (U.P.)—A memorial will be erected in honor of William Jennings Bryan near Mission, in the Rio Grande Valley as part of the Texas Centennial activities of 1936. The great commoner purchased a large tract of land near Mission in 1910 and spent much of his life there.

W. A. Webb, general manager of the Texas Centennial Exposition, says that special memorial services will be held for Bryan on Nebraska Day at the Exposition. The Governor of Nebraska, R. L. Cochran, and other notables will be invited to attend. The date of Nebraska Day has not been set. A recent communication from Ruth Bryan Owen, daughter of the statesman and present United States minister to Denmark, said that she planned to attend the Exposition before its closing, Nov. 29. Kiss Costs \$50 SUDBURY, Ont. (U.P.)—It cost Christopher Rowles \$35 and costs of \$15, or one month, to kiss Miss Alice Simard. Miss Simard told the court Rowles stopped her.

Savings That cut a slice off your Budget

SPECIALS FOR FRIDAY & SATURDAY

Sugar 10 LBS. PURE CANE 46c 1 SACK LIMIT

Try our delicious Donuts made right before your eyes by our new sanitary Electric Donut Machine Dozen 20c

BAKING POWDER Dairy Maid 25-OZ. CAN 25c (Cup and saucer free with each can) MIXED VEGETABLES No. 2 Can 25c 3 CANS BABO 2 CANS FOR 15c MAXWELL HOUSE COFFEE 1-Lb. 28c 3-Lb. 81c CATSUP 14-oz. Jersey Brand 2 BOTTLES 25c

TURNIPS Loose Purple Tops, LB. 3c BEETS Nice Large Bunches 2 BUNCHES 5c CABBAGE Firm White Heads, LB. 2 1/2c CELERY Large, Crisp and Well Bleached Stalks, EACH 12c LETTUCE Large Size Heads, EACH 5c ORANGES Texas, Unexcelled for Juice Large Size, DOZ. 34c POTATOES COLORADO WHITE 10 POUNDS 18c PRUNES No. 2 1/2 Can, Large & Fresh in Heavy Syrup, Lin-tone Brand 15c CORN No. 2 Standard EACH 8c HEINZ SOUP 2 Small Cans 15c 2 LARGE CANS 23c TOMATO JUICE Phillips 6 CANS 27c TOMATO SOUP Phillips CAN 5c SOAP P & G, Crystal White 6 GIANT BARS 23c PORK & BEANS Phillips Brand CAN 5c SNOWDRIFT 3-LB. PAIL 52c 6-LB. PAIL 97c CHERRIES No. 2 red pitted 2 FOR 25c FLOUR Best Seller, 24 lbs. 86c 48 POUNDS \$1.58

Country Eggs, 2 Doz. 25c

TOMATOES No. 2 Can 3 CANS 22c DOG FOOD Ideal Brand 3 CANS 25c

Fresh Country Butter, lb. 24c

Market Specials NICE DRESSED HENS, POUND 20c ARMOUR'S STAR SLICED BACON, LB. 36c DRIED BEEF, ARMOUR'S STAR, PKG. 16c CHUCK ROAST, CHOICE BABY BEEF, LB. 15c SLICED BACON WILSON'S CORN KING EXTRA LEAN, POUND 35c PHILADELPHIA CREAM CHEESE, PKG. 8c SHANKLESS HAM ENDS, LB. 18c LEG-O-LAMB, LB. 20c HOKUS POKUS AND MARKET BILL CONNER ELLIS CONNER

Society and Clubs

FEMININE FANCIES

BY KATHLEEN EHLAND

Things we've noticed just poking through the stores:

Those clever strapped slippers; Easter rabbits which seem to be growing bigger and bigger; bunnie place cards cut from metalized heavy paper for your Easter parties; also doll-faced flower figures holding the small place card adorned with a

WHEN BLADDER IRRITATION WAKES YOU UP

Strike at the cause. It's nature's way of saying "Danger Ahead!" Make this 25¢ test. Use Buchu leaves, juniper oil, etc., to flush out excess acids and impurities. Works on the bladder similar to castor oil on the bowels. You are bound to feel better after this flushing and you get your regular sleep. Get Buchu, Juniper oil, etc., in little green tablets called Bukets. In four days if not pleased, your druggist will refund your 25¢. City Drug. (Adv.)

wee rabbit; new spring purses in pastel shades to harmonize or add contrast to that new frock every woman is planning for these days; petal-rimmed shallow holders of silver-like metal to go with the baking ware which is destined also for table services; new lamps in simple design of beetleware (though what possible connection it can have with beetles, we can't figure out); cluster of tiny carrots to wear on one's dress or coat (we still think carrots belong in the kitchen, not the parlor.)

There is always a certain thrill in exploration in going through a new store. And a new dry goods company opened its doors to the Midland public Wednesday.

There's another new instrument for the girl who wants to be beautiful to worry over getting for her dressing table. That is an eyelash comb. Yes, indeed, eyelashes must now have their combing while still damp from applying cosmetic in order to separate the small hairs and curl them upward.

Business and professional women of the town who last night started organization of a club inaugurated a movement which the town has

Business Women Open Organization of Club Wednesday

Organization of a Business and Professional Women's club was begun at a meeting in the chamber of commerce office Wednesday evening, under leadership of four members of the Sweetwater club. Twelve women signed for charter membership.

The visitors, Mrs. H. A. Walker, president of the Sweetwater organization, Miss Ethel Harkins, head of the fifth district, Miss George Stiles and Miss Grace Buzzell, made brief talks explaining the aim, projects, and general conduct of a club of this nature.

Miss Elma Graves and Mrs. Virginia Cowan were elected to serve jointly as temporary chairmen. Mrs. Carl Covington, Mrs. Iva M. Noyes, and Miss Fannie Bess Taylor were named by them as a nominating committee. They will report on officers for the club at the next meeting which will be held in the chamber of commerce office Monday evening at 7:30 o'clock.

Those signing up for membership were: Mrs. Susie G. Noble, Miss F. Bess Taylor, Miss Elma Graves, Miss Lydia Watson, Mrs. Virginia Cowan, Miss L. M. Freeman, Mrs. Iva M. Noyes, Mrs. Gertrude Duffield, Mrs. Frances Stallworth, Mrs. A. J. Cooper, Miss Druscilla Lord, Mrs. Sally Covington.

Membership is open to business and professional women who are gainfully employed, with 25 percent of the members permitted to be women not coming under such classification.

needed for several years. Midland has an unusual number of women who would be interested in such a club. Carried out in the proper, alert, spirited way, we see no reason why this town should not have as live an organization as Sweetwater or San Angelo.

A vote of thanks is due the four women who made a second trip from Sweetwater last night in order to assist in the opening movement.

More power to Midland's newest club!

French Cuffs Again Popular
CHICAGO (U.P.)—A contradictory note in the strong tendency of men's shirt styles to extreme informality in the last two seasons is the hint from several big manufacturers showing in the Merchandise Mart that the semi-formal French, or folded, soft cuff will return this season.

In a walnut shell which he threw into the water off the California coast in 1932, A. P. Young put a note asking the finder to inform him how far the nut had traveled. Guests at a party in Southend, Eng., found the nut in 1934.

TRAIN THAT'S SCARF

Among the English designs at New York's Lace Ball, this flattering evening gown of sheer black lace in a delicate shadow pattern was outstanding. Designed by Yda Irvine, it has a camisole bodice and a billowing skirt, decorated with appliqued circles in lighter shades. The fullness at the back of the skirt forms a scarf which can be worn up over the shoulders.



Spring Cleaning SUGGESTION NO. 1

GIVING A PARTY? HOW CAN YOU? WE STARTED HOUSE CLEANING AT THE SAME TIME AND I'M STILL IRONING MY CURTAINS—

I'M ALL THRU—AND MY CURTAINS UP. TELL YOU THE SECRET AT THE PARTY—

WELL JANE WHAT'S THE BIG SECRET—

VERY SIMPLE—I CUT DAYS OF MY SPRING HOUSE CLEANING TIME BY SENDING CURTAINS—GLIPCOVERS AND BLANKETS TO THE LAUNDRY—

BLANKETS LIKE NEW! FAR SOFTER THAN I'VE EVER BEEN ABLE TO GET THEM—

Call Us for Special Rug Cleaning Prices!
PHONE 90
MIDLAND STEAM LAUNDRY

CITY CLEANERS

DRI-SHEEN PROCESS

FOOD FOR FABRIC

Mrs. Payne Hostess To San Souci Club At Spring Party

Employing a spring motif expressed in a color scheme of pink and green, Mrs. L. L. Payne entertained for the San Souci club with an afternoon bridge at her home, 1407 W. Illinois, Wednesday. Pink blossoms and greenery were used in decorations and packages were wrapped in the same colors.

Four tables were appointed for the guests. Among the guests Mrs. L. G. Mackey won high score and Mrs. E. D. Richardson cut high. Awards for club members went to Mrs. Bates Hoffer for high score and to Mrs. Roy Downey for high cut.

Club guests were: Mmes. Mackey, Richardson, Geo. Bennett, M. F. Turner, H. B. Prickett, and J. R. Norris.

At the tea hour, a party plate carried out in pink and green was served to guests and the following club members: Mmes. Jess Cole, R. E. Cowden, Walter Cowden, J. G. Harper, Bates Hoffer, Irvy Watson, Rea Sindorf, Paul Schlosser, Roy Downey, Russell Conklin, and the hostess.

According to reports from scalp specialists of 35 cities, baldness among men has shown a 25 per cent increase in the last few years.

Buddy's FLOWERS

MIDLAND, TEX. PHONE 1083 W. Wall 1200

DAVID M. ELLIS

Palmer Graduate CHIROPRACTOR

11 Years in Midland

306 North Main St

Office Phone 822 Residence Phone 1094

JAMES H. CHAPPLE

M. D.

Eye, Ear, Nose & Throat Specialist

Wishes to Announce Opening of Offices
304 Petroleum Bldg.

Office Hours: 8:30 to 12; 2 to 5
Office 545—Phones—Rec. 758

J. P. INMAN

Optometrist

Glasses fitted correctly

A full line of frames and mountings. Broken lenses quickly and accurately replaced.

Broken frames repaired

104 North Main St.

Fine Arts Club Has 'Texas Day' Program And Elects Officers

"Texas Day" was celebrated by the Fine Arts club with an appropriate program at its meeting with Mrs. Roy Parks, 202 South G street, Wednesday afternoon.

Prin. J. H. Williams of Junior High School presented the principal address on "Texas Under Six Flags."

"Legend of the Rose Window of San Jose" was recounted by Mrs. J. Howard Hodge, following the patriotic theme.

Mrs. Harvey Sloan spoke on the work of the Midland County Public Health Board and on public health work.

Officers for the next two years were elected in the business session. They were: President, Mrs. J. Howard Hodge; first vice-president, Mrs. J. M. Shipley; second vice president, Miss Leona McCormick; corresponding secretary, Mrs. Fred Wilcox; recording secretary, Mrs. A. P. Shirey; historical secretary, Mrs. W. Hamilton; treasurer, Mrs. Fred Fuhrman; reporter, Mrs. Robert Tucker. These officers will take up their duties in the fall of this year for the biennium, 1937-38.

The club chose Mrs. E. H. Ellison as its representative on the Midland County Health Board.

Club guests were: Mrs. John West and Mr. and Mrs. J. H. Williams.

Members present were: Mmes. Elliott Barron, T. Paul Barron, Tom C. Bobo, Harvey Conger, John Cornwall, Alden Donnelly, E. H. Ellison, J. Howard Hodge, Miss Stella Maye, Lanham, Mmes. John M. Shipley, Fred Wilcox, O. A. Thomas, Robt. Tucker, Harvey Sloan, A. P. Shirey, Miss Lydia G. Watson, Mrs. A. N. Hendrickson, and the hostess.

Ancient Romans drank liquids by holding horn-shaped containers above their heads while they reclined on their stomachs. They caught in their mouths the thin stream of liquid which spouted from the little end of the container.

Our Insurance has not been renewed

Keep your Fire Insurance in Good Standing. A CANCELLED policy may mean a heavy loss. The FIRE FIEND never goes on a vacation. Being represented by this RESPONSIBLE LOCAL AGENCY means Insured Losses Paid in Full.

HIMS & CRANE

WE SELL COMPLETE INSURANCE SERVICE BONDS

TELEPHONE 24
1011 W. WALL ST., MIDLAND, TEX.

Announcements

Friday
Lucky Thirteen club will meet with Mrs. H. S. Collings, 609 S Colorado, Friday afternoon at 3:15 o'clock.

Belmont Bible class will meet with Mrs. C. E. Nolan, 1406 S Big Spring, Friday afternoon at 3:30 o'clock.

Saturday
Chaparral troop, Girl Scouts, will meet at the home of Mrs. L. G. Lewis, 714 W Kansas, Saturday morning at 10 o'clock for an examination on First Aid.

Story hour will be held in the children's library at the courthouse Saturday morning from 10 o'clock until 11 with Mrs. J. R. Ashley in charge.

Mesquite troop, Girl Scouts, will meet at the Baptist annex Saturday afternoon at 2 o'clock for a hike. Girls should come appropriately dressed and should bring food for their lunch.

Ontario Wine to Be Taxless
TORONTO, Ont. (U.P.)—The Ontario government will soon remove the existing tax on native wines manufactured in Ontario. Decrease in the price of liquor and beer has made competition increasingly difficult for wineries. The tax now levied brings to the government only \$100,000 annually.

Midweek Club Meets With Mrs. M. D. Self

The Midweek club met with Mrs. M. D. Self, 101 North G street, Wednesday afternoon with no guests present.

Three tables of bridge furnished recreation for the club members with awards going to Mrs. J. B. Leonard for high score and to Mrs. Frank Johnson for high cut.

A salad plate featuring hot dishes was served at tea time to Mmes. J. M. Armstrong, J. R. Ashley, W. L. Brown, Hugh Corrigan, Geo. Farley, Allen Hargrave, Frank Johnson, J. B. Leonard, Don Sivals, M. C. Ulmer, W. E. Wallace, Fred Wright, and the hostess.

Bad Cleaning Often Causes Muddy Skin

By ALICE HART
NEA Service Staff Writer
Clear, healthy looking skin is one of the first requisites of true beauty. Your hair may be lovely, your clothes in the best possible taste, but unless your complexion is flawless, others never will consider you to be a beautiful woman. You know, of course, that adequate rest, proper food and daily exercise make for skin health and charm. Unless you are one of the very, very few women who seem always to look fresh and sparkling, don't let anyone tell you that sleep isn't important. If your skin remains shallow or muddy in spite of your best efforts to clarify it, better see your doctor at once. Meanwhile, don't

Mails Vex Elk Hunter

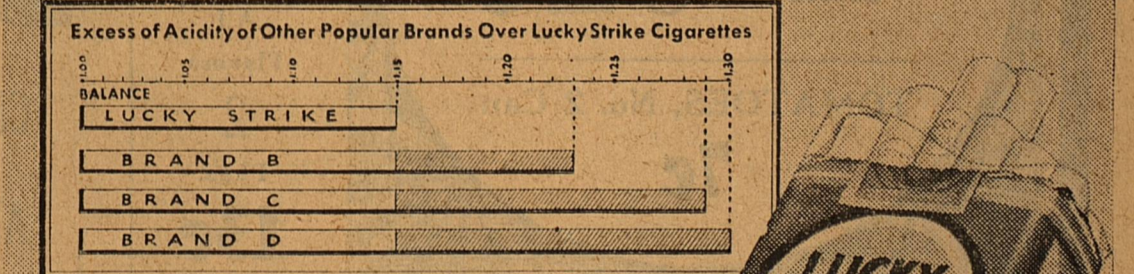
MOSCOW, Idaho. (U.P.)—Clyde Culp suggests that the Idaho State game department post its next letter to him by pony express for prompt delivery. The department mailed him a special permit to hunt elk in Selway Forest last Sept. 9. The letter arrived months later—after the elk season closed.

Charivari Yearly Affair
YOLO, Cal. (U.P.)—Mr. and Mrs. W. T. Moore believe they hold the world's record for being "charivari'd." They were married in 1887 and neighbors have given them a charivari on every anniversary.

Luckies

a light smoke

OF RICH, RIPE-BODIED TOBACCO — "IT'S TOASTED"



PROPER AGING

Tobacco in its natural state is harsh and strong. Though "cured" by the grower before sale, it is unsuited for use without further aging. During this aging period (which ranges in the case of Lucky Strike from 1½ to 3 years) important changes occur. These "Nature" changes result in the partial "smoothing out" of the original harsh qualities of the leaf. Our process of manufacture carries these improvements many steps further—as every Lucky Strike Cigarette exemplifies: A Light Smoke of rich, ripe-bodied tobacco.

LUCKIES ARE LESS ACID!
Recent chemical tests show* that other popular brands have an excess of acidity over Lucky Strike of from 53% to 100%.

*RESULTS VERIFIED BY INDEPENDENT CHEMICAL LABORATORIES AND RESEARCH GROUPS

"IT'S TOASTED" — Your throat protection — against irritation — against cough

WES-TEX FOOD MARKET

FOOD SUGGESTIONS

MIDLAND

(We Reserve the Right to Limit Quantity)

FRI. and SAT., Mar. 13 and 14

TOPS IN TASTE!
 "Breakfast of Champions"
WHEATIES
 WITH MILK OR CREAM, SUGAR AND SOME KIND OF FRUIT

2 PACKAGES 25c

MONEY CANNOT BUY. Better Values

6 BARS 23c

GIANT SIZE
 Quicker Suds
 Easy on the hands
PG
 THE 3-NAPHTHA SOAP

PRUNES
 DRIED
2 Pounds for 11c

Powdered SUGAR
2 Pounds for 17c

TOMATO JUICE
 Campbell's
 14-oz. Can
3 for 25c

Two Schilling Coffees

1 Pound Can 25c

Corn Spuds
 ECHO BRAND
 NO. 2 CAN
 EACH **9c**

Spuds
 No. 1 Colorado
 10 LBS. FOR
18c

PEAS
 Castlehaven
 No. 2 Can
9c

MILK
 BORDEN'S
 ROSE BRAND
3 Large or 6 Small 20c

Look!

BANNER BUTTER
 Pound **36c**

EGGS
 Fresh Country
 Dozen **14c**

String Beans
 No. 2 Can
 EACH **7c**

DESSERT SERVER 25c
 Guaranteed forever; made by Wallace. Send tops from two small or one large package. Ask us for details.

PILLSBURY'S PANCAKE FLOUR
 SMALL PKG.
10c

FLOUR
 POLAR BEAR
6 lbs. 29c 24 lbs. 90c
12 lbs. 57c 48 lbs. \$1.79

Attention

SALAD DRESSING
 El Food
 QTS. 29c
 PTS. 18c
 1/2 PTS. 12c

BLACK-BERRIES
 EAST TEXAS
 No. 2 Can
10c

CHERRIES
 RED SOUR PITTED
 NO. 2 CAN
11c

POTATO CHIPS
 RAINBOW
 REGULAR 10¢ SIZE
2 Pkgs. for 15c

MA BROWN GRAPE JAM
2 Pound Jar 24c

Fresh...
FRUITS and VEGETABLES

ORANGES BANANAS APPLES EA. 1c

ORANGES
 LARGE SIZE
 DOZ.
27c

PORK AND BEANS
 16-OZ. CAN **5c**

PEARS
 BARTLETT
 NO. 2 CAN
2 CANS 25c

COMPOUND
 ARMOUR'S VEGETOLE
8 POUND CARTON 92c

TOMATOES, No. 2 Can 7c

Kellogg's PEP
 Pkg. **10c**

JELLO
 All Flavors
2 Pkgs. 13c

LETTUCE 2 FOR 9c

CELERY, WELL BLEACHED; STALK 10c

APPLES, DELICIOUS; DOZEN 15c

Bulk Cocoanut Pound 16c

GINGER ALE
 Canada Dry
 Bottle **15c**

SUGAR
 PURE CANE—CLOTH BAGS
 10 POUNDS FOR
46c

STEAK Sirloin and Porter House **lb. 23c**

CHEESE Philadelphia Cream **Pkg. 8c**

Today's
MEAT
Specials

ROAST CHOICE BABY BEEF **LB. 15c**

PORK CHOPS **POUND 23c**

BACON SWIFT'S PREMIUM **POUND 37c**

Dates, Locations CMTC Camps Given

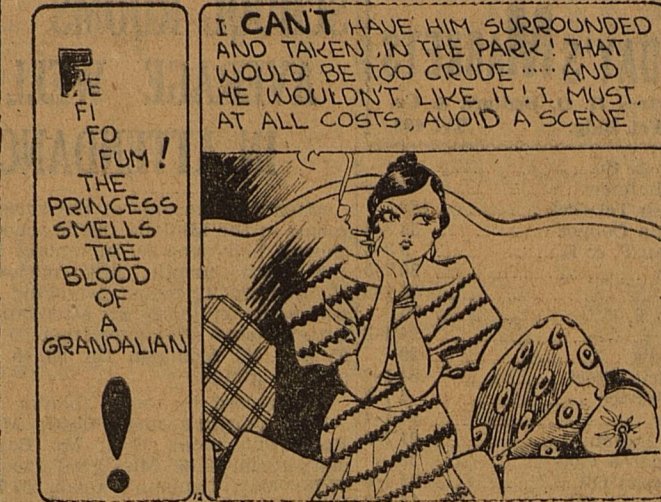
SAN ANTONIO, Tex. (AP)—Dates for summer training camps to be attended by approximately 24,400 trainees in civilian components of the Eight Corps Area have been announced from corps area headquarters at Fort Sam Houston.

Indicted, Loses Postoffice Job



In a case which, in this campaign year is stirring wide interest, Mrs. Anna C. Parsal, above, has been "relieved" by Postmaster General Farley of her job as acting postmistress of Benton Harbor, Mich., after her indictment on a charge of conspiring to solicit political funds in a federal building.

BOOTS AND HER BUDDIES



Front!!!

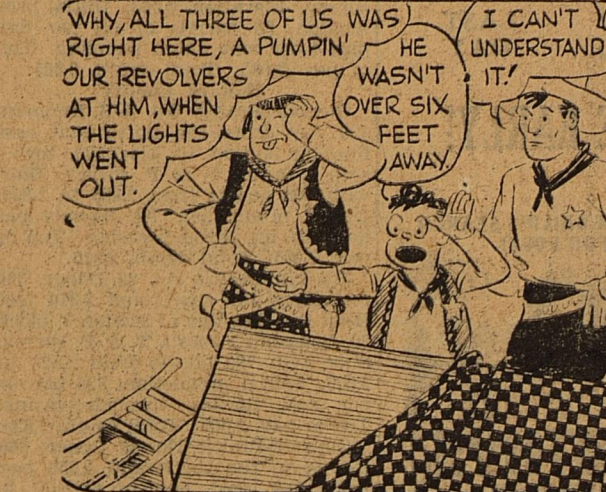


By MARTIN

WASH TUBBS

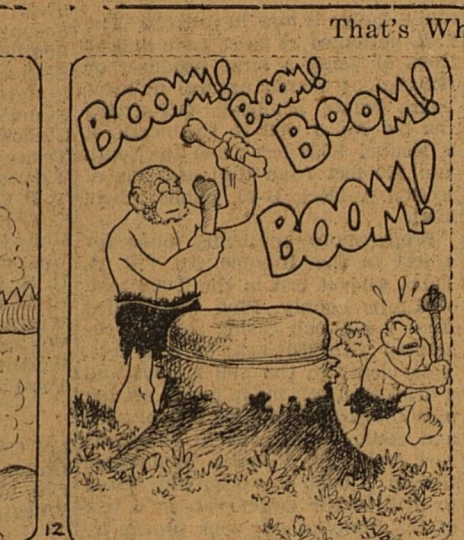
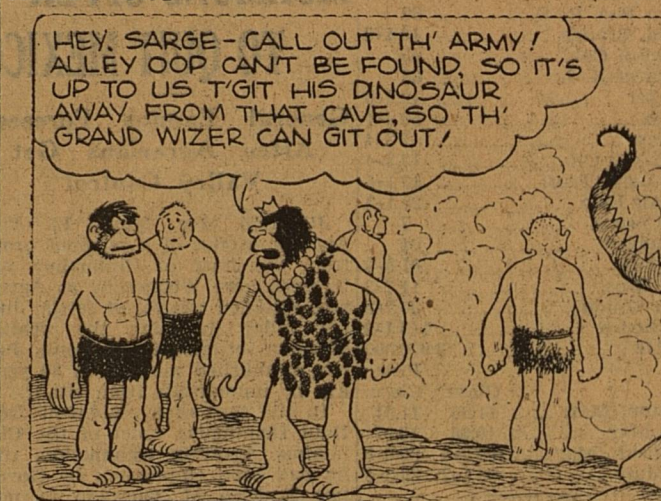


A Mystery

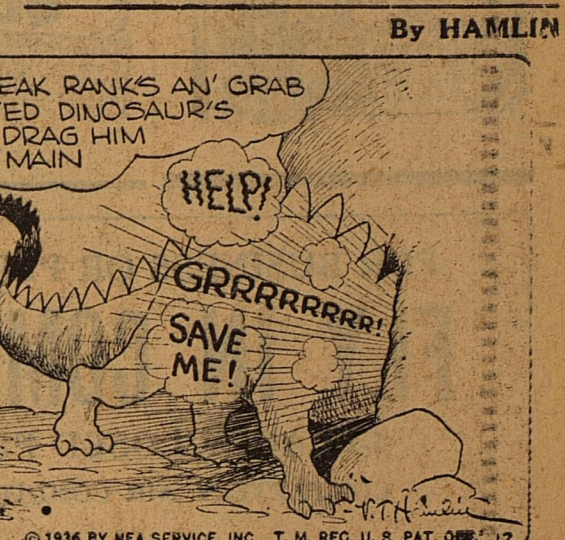
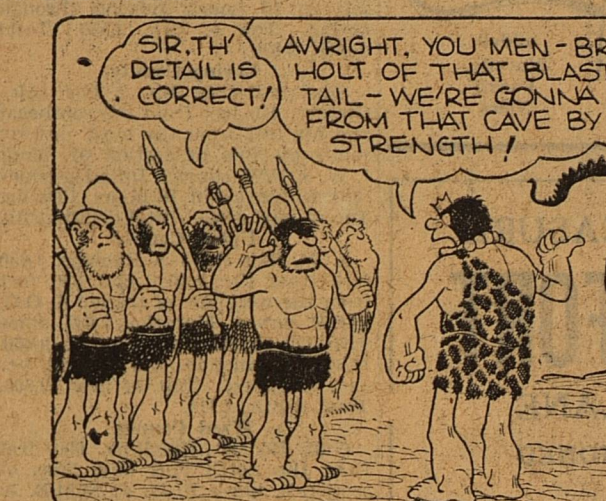


By CRANE

ALLEY OOP

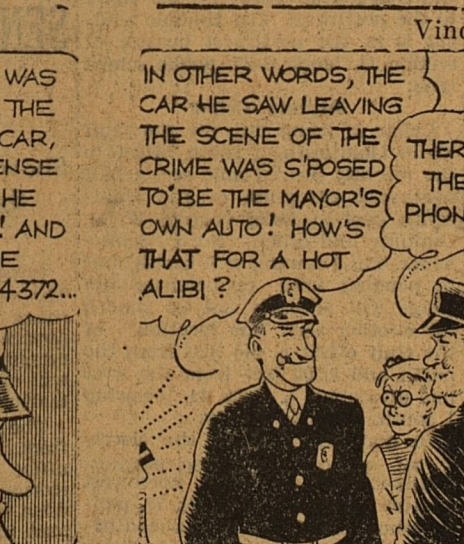


That's What Guz Thinks

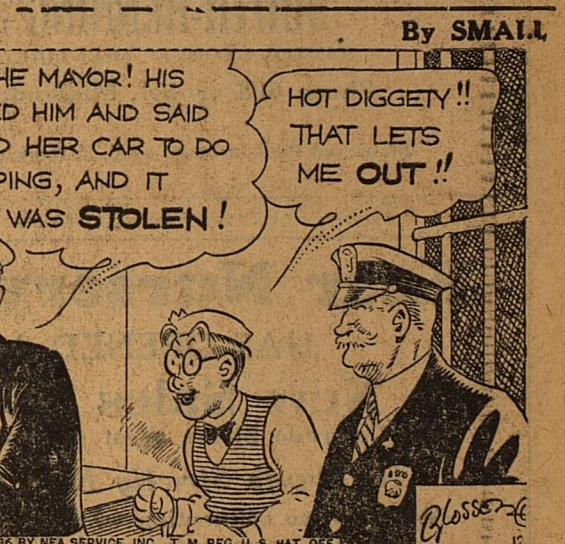


By HAMLIN

FRECKLES AND HIS FRIENDS

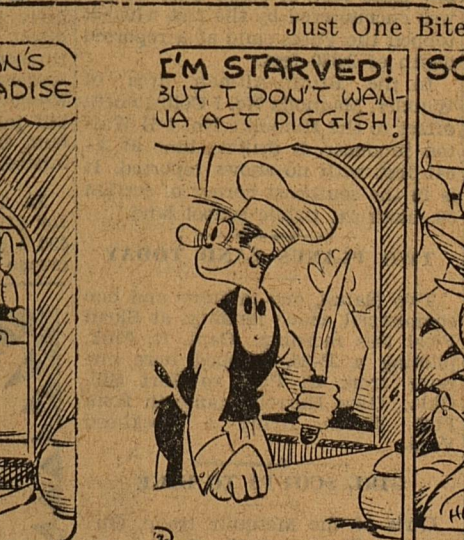
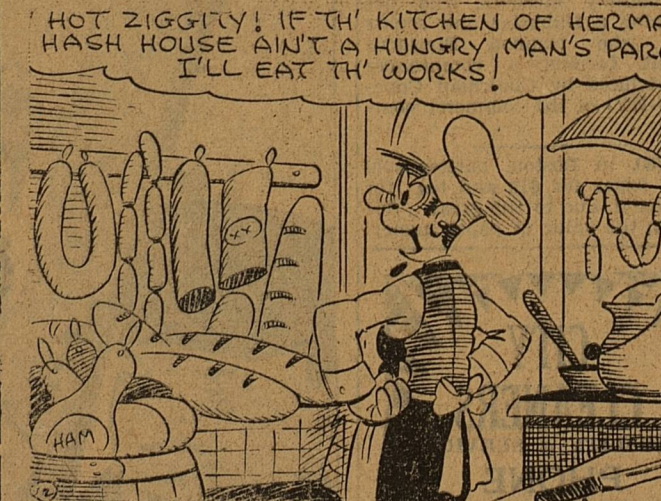


Vindicated

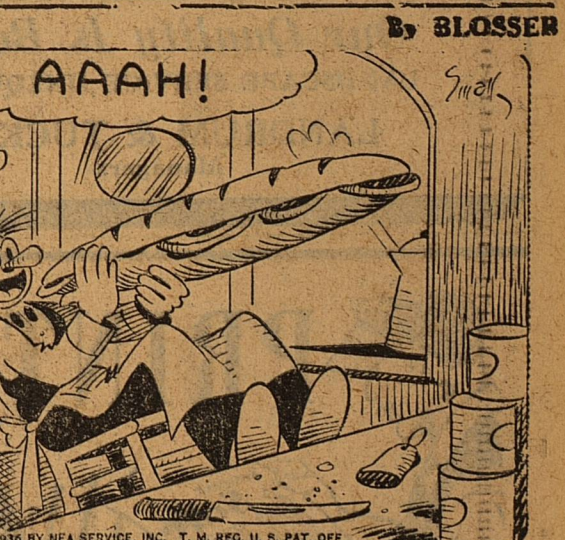
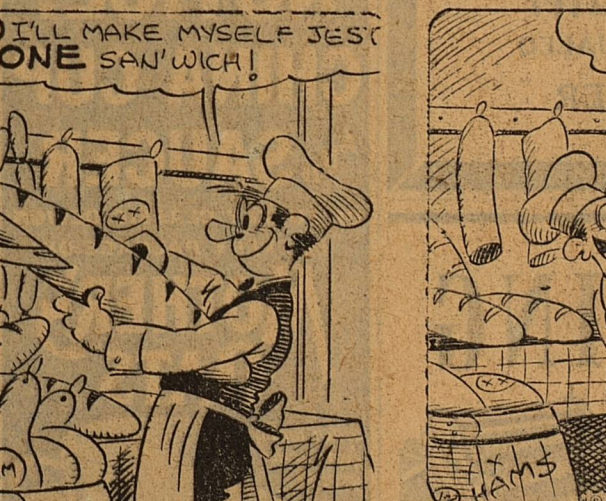


By SMALL

SALESMAN SAM

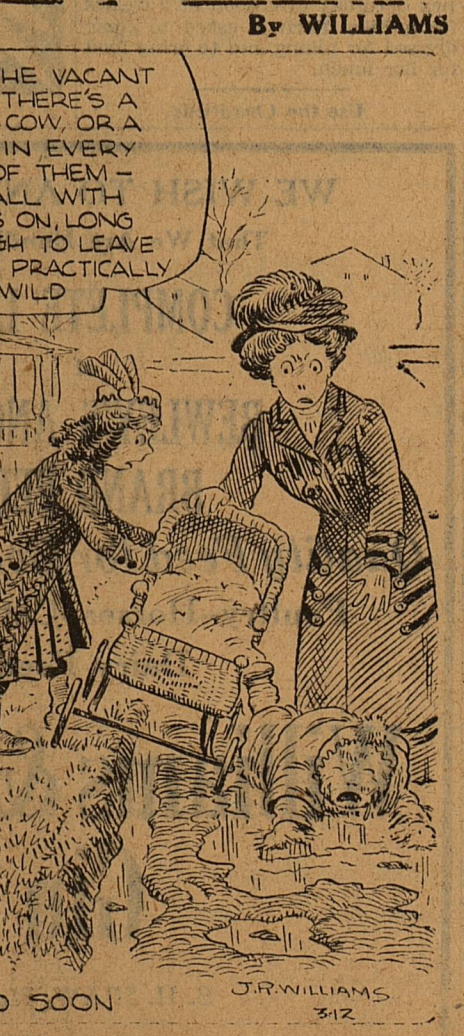
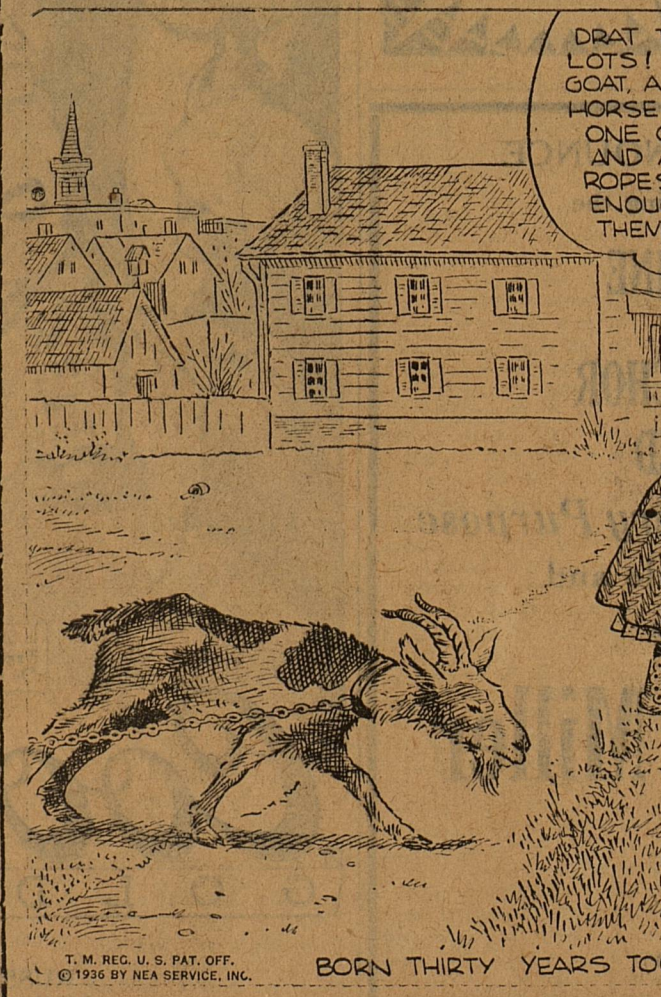


Just One Bite—For a Whale



By BLOSSER

OUT OUR WAY



OUR BOARDING HOUSE



By ALLERN

CLASSIFIED ADVERTISING

RATES AND INFORMATION CASH must accompany all orders for classified ads, with a specified number of days for each to be inserted.

11—Employment WANT two experienced used car salesmen. Frank Adams, phone 784.

0—Wanted WANTED to buy at low cost: Boston Bull or Fox Terrier puppy. Phone 1085, 681 South Main.

15—Miscellaneous PAINTING, PAPERING of the better class; new and better wall papers; prices right—get them, just phone 48. J. C. Porter.

2—For Sale FOR SALE: Bargain in Midland business building, 50x140 ft.; 3 vacancies; 75x140 ft.; rented for \$100.00 month; good corner location. Write or see Cowden Insurance Agency, Big Spring, Texas, 310-12.

Vacuum Cleaner—Sales & Service After 12 years of service on cleaners, I recommend the Eureka, because it cleans hair and lint instantly, as well as embedded dirt.

FOR SALE: 120 bass piano accordion; original cost, \$300.00; will sacrifice for \$100.00; lessons included. Call Dude Vance at K-R-L-H.

G. Blain Luse For Sale WELL ROTTED FERTILIZER SCRUGGS DAIRY Will Deliver PHONE 9000

FOR SALE: One cow, pair mares, one small paint horse. J. E. Wallace, Route 1.

3—Furn. Apts. FOR RENT: Small neatly-furnished apartment. 315 North Baird.

8—Poultry BABY chicks for sale each Monday; best grade, Midland Hatchery, phone 9003-P-2.

10—Bedrooms LARGE double-bedded room; adjoining bathroom; private entrance; two gentlemen preferred. Phone 757J.

UPHAM FURNITURE COMPANY "The Bargain House of West Texas" 9x12 Felt Base Linoleum Rugs .595 Linoleum, 6 ft wide per running ft .35 Bed Room Suite, Walnut Finish 25.00 Garden Hose, 50 ft 2.69

POLITICAL ANNOUNCEMENTS

Subject to the action of the Democratic Primary Election July 25, 1936. Advertising rates: For State, District and County Offices, \$15.00; for Precinct Offices, \$7.50. Cash with order.

Pet dogs must be black or gray in color to satisfy the "smart" women in Paris, and the dogs wear little coats to match their owner's ensemble.

Yucca LAST DAY

COME EARLY!



plus Comedy—"Headliner"
"Treasure Chest"

FRI.-SAT.

MAN HUNT

A sleepy little village re-lives the days of Jessie James!

with Charles "Chic" Sale, Ricardo Costez, Wm. Gargan, Marguerite Churchill

FOR BUSINESS OR PLEASURE FLY IN COMFORT

4-PLACE CLOSED PLANE COMPLETELY AIR CONDITIONED

BOOTH-HENNING Inc.
"LITTLE GEORGE" McENTIRE, PILOT
Phone 608 or 481, Midland, Texas

Plane and Pilot Licensed by U. S. Dept. of Commerce

Kerr Nursery Co.

HAS OPENED A **New Sales Yard**
On Colorado Street West of Court House
All Plants Strictly Kerr Grown
We have no connection whatever with any other nursery sales yard in Midland.
Our Quality Is Better
LANDSCAPE SERVICE UNEQUALED
LANDRUM & TUCKER
Managers

PRINTING

SEE US FOR

- Letter Heads
- Envelopes
- Office Forms of All Kinds
- Direct Mail Pamphlets
- Oil Scout Tickets
- Sales Books
- Handbills
- Admission Tickets
- Engraved Visiting Cards
- Engraved Wedding Announcements
- And Other Forms

COMMERCIAL PRINTING CO.
Phone 7 or 8
The Reporter-Telegram Bldg.

FIFTEEN WELLS, NO FAILURES IN SEVEN COUNTIES

9,360 Barrels Daily Added Last Week

Fifteen producing oil wells completed last week in seven West Texas counties added an aggregate of 9,360 barrels per day to the region's potential. No failures were reported, although two locations were abandoned, both in Crockett county.

RITZ LAST DAY

COME EARLY!

TIMOTHY'S QUEST

A melody, mighty novel of young folks in love—and how folks with golden hearts!

added Novelty Vodvil News

FOR BUSINESS OR PLEASURE FLY IN COMFORT

4-PLACE CLOSED PLANE COMPLETELY AIR CONDITIONED

BOOTH-HENNING Inc.

"LITTLE GEORGE" McENTIRE, PILOT

Phone 608 or 481, Midland, Texas

Plane and Pilot Licensed by U. S. Dept. of Commerce

Kerr Nursery Co.

HAS OPENED A **New Sales Yard**
On Colorado Street West of Court House
All Plants Strictly Kerr Grown
We have no connection whatever with any other nursery sales yard in Midland.
Our Quality Is Better
LANDSCAPE SERVICE UNEQUALED
LANDRUM & TUCKER
Managers

PRINTING

SEE US FOR

- Letter Heads
- Envelopes
- Office Forms of All Kinds
- Direct Mail Pamphlets
- Oil Scout Tickets
- Sales Books
- Handbills
- Admission Tickets
- Engraved Visiting Cards
- Engraved Wedding Announcements
- And Other Forms

COMMERCIAL PRINTING CO.
Phone 7 or 8
The Reporter-Telegram Bldg.

The completions follow:

Crane County
A. H. Flaherty No. 1 Ed Hughes, 2,964 feet north and 330 feet west of the southeast corner of section 4, G.C. & S.F. survey. Elevation, 2,468. Initial production, 319 barrels of oil per day plus 16 per cent T.S. & W. pumping. Top of pay, 2,037. Total depth, 2,076, plugged back to 2,073.

Crockett County
Adams Bros. No. 1 Shannon, 1,640 feet from the south and 630 feet from the west line of section 27, block WX, G.C. & S.F. survey. Location abandoned.

Stanolind and Amerada No. 4
Powell, 2,244 feet from the south and 410 feet from the west line of section 52, block BB, G.C. & S.F. survey. Location abandoned.

Glasscock County
Tribal Oil Co. No. 2 Edwards, 330 feet from the south and 2,290 feet from the west line of section 16, block 33, township 1 south, T. & P. survey. Elevation, 2,588. Initial production, 58 barrels of oil per day plus 4 per cent water, pumping. Top of pay, 2,085. Total depth, 2,285.

Howard County
Sinclair-Prairie No. 4-B Denman, 330 feet from the north and east lines of section 10, block 30, township 1 south, T. & P. survey. Shot with 700 quarts from 2,485 to 2,820. Initial production, 741 barrels per day, flowing through casing. Top of pay, 2,485. Total depth, 2,820.

Sinclair-Prairie No. 29 Dodge, 330 feet from the south and 2,310 feet from the east line of section 3, block 30, township 1 south, T. & P. survey. Shot with 700 quarts from 2,525 to 2,825. Initial production, 525 barrels per day, flowing through casing. Top of pay, 2,505. Total depth, 2,825.

Sinclair-Prairie No. 30 Dodge, 330 feet from the south and 1,650 feet from the west line of section 3, block 30, township 1 south, T. & P. survey. Initial production, 245 barrels in 10 hours, flowing through casing. Top of pay, 2,580. Total depth, 2,836.

Loving County
Sinclair-Prairie No. 2 Fee (McGinley), 410 feet from the southeast and 690 feet from the most easterly southwest line of section 91, block 1, W. & N.W. survey. Initial production, 50 barrels in 16 hours, flowing. Top of pay, 4,245. Total depth, 4,319.

Upton County
J. W. Ellis No. 1-A Robbins, 1,650 feet from the south and 330 feet from the west line of section 4, G.C. & S.F. survey. Elevation, 2,647. Shot with 120 quarts from 2,010 to 2,060. Initial production, 640 barrels per day, pumping. Top of pay, 2,038. Total depth, 2,114.

Ward County
Gulf No. 50 Hutchins, 990 feet from the north and west lines of section 3, block F. G. & M.M. & A. survey. Elevation, 2,664. Shot with 230 quarts from 2,644 to 2,774, 160 quarts from 2,692 to 2,774, and 70 quarts from 2,644 to 2,692. Initial production, 633 barrels per day, flowing through casing. Top of pay, 2,576. Total depth, 2,774.

Winkler County
Amerada No. 2 Walton, 2,310 feet from the north and west lines of section 48, block 26, public school land. Elevation, 2,838. Shot with 440 quarts from 2,778 to 3,066. Initial production, 332 barrels per day, flowing through casing. Top of pay, 2,780. Total depth, 3,066.

Falcon No. 1 McCutcheon, 440 feet from the south and 2,200 feet from the east line of section 15, block B-2, public school land. Elevation, 2,950. Shot with 500 quarts from 3,195 to 3,444. Initial production, 388 barrels in 14 hours, flowing.

Winkler County
Evans-Cowden in the northwest quarter of section 49, block 73, public school land, is drilling ahead below 3,000 feet. A small puff of gas was encountered by the test when it topped the Yates sand at a reported depth of 2,930 feet.

In the Brown-Altman area of Winkler, Magnolia No. 1 Colby, north offset to the Humble's No. 4-B Walton producer, is drilling lime at 3,041 feet with no shows reported. It is in the southeast corner of section 38, block 26, public school land.

NOTICE! CHINA CUP AND SAUCER

OF LOVELY CLASSIC DESIGN IN EVERY PACKAGE OF **MOTHER'S OATS**

Order Today from your grocer

TWO PLANES LAND TODAY

Two planes, one military and one commercial, made landings at Sloan Field this morning. Capt. R. P. Fink, piloting a P-26, stopped here en route from El Paso to Fort Sill, Okla. Glen Harroun came in from Fort Worth, flying a Lockheed Vega.

GIRL SCOUTS TO HIKE

Girls of the Mesquite troop, Girl Scouts, will meet at the Baptist annex Saturday afternoon at 2 o'clock for a hike. Each is asked to come dressed for hiking and to bring food for her lunch.

Use the Classifieds

J. B. COTTEN
FRED H. WOODWARD

Attorneys

Personal Injury Cases

CRANE, TEXAS

BETTER VISION

-GREATER SAFETY-

Reduces Accidents 23%

Dr. W. L. Sutton
OPTOMETRIST
203 Thomas Bldg.
Office Ph. 146-Res. Ph. 810J

through tubing. Top of pay, 3,249. Total depth, 3,464.

Gulf No. 10 Keystone, 2,300 feet from the south and 440 feet from the east line of section 10, block B-3, public school land. Elevation, 2,954. Initial production, 1,282 barrels of oil and 53 barrels of water per day, flowing through casing. Top of pay, 3,295. Total depth, 3,576, plugged back to 3,533.

Mid-Continent No. 7-B Howe, 990 feet from the south and 2,310 feet from the west line of section 12, block 26, public school land. Elevation, 2,872. Shot with 170 quarts from 2,804 to 2,990. Initial production, 1,645 barrels per day, flowing through casing. Top of pay, 2,782. Total depth, 2,990.

Sayre No. 4 Daugherty, 990 feet from the south and 1,650 feet from the east line of section 2, block 26, public school land. Elevation, 2,882. Shot with 140 quarts from 2,800 to 2,980. Initial production, 582 barrels per day, flowing through casing. Top of pay, 2,779. Total depth, 3,013, plugged back to 2,990.

Sayre No. 7-A Howe, 2,310 feet from the south and west lines of section 12, block 26, public school land. Shot with 170 quarts from 2,733 to 2,963. Initial production, 1,527 barrels per day, flowing through casing. Top of pay, 2,800. Total depth, 2,968.

Wilgo and others No. 1-B Campbell, 330 feet from the south and 1,650 feet from the west line of section 18, block B-3, public school land. Initial production, 25 barrels per day, flowing through tubing. Top of pay, 3,260. Total depth, 3,303, plugged back to 3,290.

Oil News--
(Continued from page 1)

and a gauge is now in progress. The well, bottomed at 3,559, gave indications of being a large producer by flowing 254 barrels natural in three hours before acidizing. Off-setting the big No. 3 well to the north, it is located 1,650 feet from the south and 930 feet from the west line of section 2, block B-23, public school land.

Preparations are being made for a test in the Humble No. 1 J. B. Tubb, wildcat test in the Tubb area of Crane county. Plug was drilled from 8 5/8-inch casing set and cemented with 260 sacks at 4,362 feet. Total depth in the well is 4,475 and a drill-stem test made before setting pipe showed about 2,500 feet of mud and some oil present in the hole.

Now trying for Permian production, the No. 1 Tubb was originally slated to drill to the Ordovician in a test of the Simpson pay zone proven by the Gulf's deep discovery four miles to the northwest. The Humble wildcat is in the northwest quarter of section 11, block B-27, public school land.

Digging Celler
Cellar is being dug for the Gulf No. 6 Goldsmith, a south offset to the recently proven mile and a half northwest extension of the Goldsmith pool in Ector county. W. H. Dunning and others' No. 1 Scharbauer. The Dunning well is still shut in pending tank connections and gauge will probably not be started for another day. The location of the Gulf offset is 440 feet from the north and 2,200 feet from the west line of section 4, block 44, township 1 south, T. & P. survey.

In northern Winkler, the closely spaced Evans-Cowden in the northwest quarter of section 49, block 73, public school land, is drilling ahead below 3,000 feet. A small puff of gas was encountered by the test when it topped the Yates sand at a reported depth of 2,930 feet.

In the Brown-Altman area of Winkler, Magnolia No. 1 Colby, north offset to the Humble's No. 4-B Walton producer, is drilling lime at 3,041 feet with no shows reported. It is in the southeast corner of section 38, block 26, public school land.

SENATE DISMISSES MAIL SUBSIDIES

Showdown Approaches on a System of Direct Aid For Shippers

WASHINGTON, March 12. (AP)—The senate threw out \$26,500,000 for ocean mail subsidies Wednesday, apparently forcing a showdown on measures to set up a system of direct aid for the American merchant marine.

The subsidy was eliminated from the \$975,000,000 treasury-post office appropriation bill after a stormy debate when that was done the bill was quickly passed and sent to conference with the house.

The senate's action pointed to an early battle between foes of some direct subsidy measure, who are threatening a filibuster and senate leaders who claimed President Roosevelt favored a compromise bill introduced by Chairman Cope-land (D-NY) of the commerce committee.

In 1920, in Boston, butter sold for \$12, sugar for \$10 and tea for \$80 a pound, due to the great decrease in the value of paper money.

CITY CLEANERS
QUALITY & SERVICE
PHONE 89

WE WISH TO ANNOUNCE
That We Are Handling the **COMPLETE LINE** of **BEWLEY'S ANCHOR BRAND FEED**
Quality Feed for Every Purpose

Poultry--Horses--Cattle and Dairy Feeds

Williams & Miller

GIN

B. H. SPAW, Mgr.

Today's Markets

Courtesy H. O. Bedford & Co. 320 Pet. Bldg. Tel. 408

| | |
|---------------------|-----------|
| Armour & Co. | 6 |
| Allis Chalmers | 44 3-4 |
| American Tel.-Tel. | 169 |
| Anaconda Copper | 33 3-4 |
| American P. & L. | 9 3-8 |
| Atlantic | 30 7-8 |
| Auburn | 48 1-8 |
| A. T. & S. F. | 75 |
| Bendix | 24 1-8 |
| Burroughs | 29 |
| Bethlehem Steel | 47 1-2 |
| Cities Service | 47 1-2 |
| Chrysler | 44 1-4 |
| Knorr Solvent | 21 3-8 |
| Consolidated Gas | 35 |
| Continental Oil | 35 1-8 |
| Consolidated Oil | 14 3-8 |
| Douglas | 68 5-8 |
| Elec. Bond, Share | 18 1-4 |
| General Elec. | 31 1-4 |
| Prepact, Tex. | 38 5-8 |
| General Motors | 60 |
| Goodyear | 26 3-4 |
| Gulf | 91 1-4 |
| Humble | 72 1-2 |
| Hudson | 17 1-4 |
| Int. Harvester | 76 7-8 |
| Int. Telephone | 15 7-8 |
| Kennecott Copper | 10 1-2 |
| Loews | 19 1-2 |
| Montgomery Ward | 39 1-8 |
| Natl. Dairy | 24 3-8 |
| Natl. Distillery | 31 1-8 |
| N. Amer. Co. | 26 |
| N. Y. Central | 34 3-8 |
| Oleo Oil | 16 3-8 |
| Packard | 10 3-4 |
| Pennsylvania R. R. | 33 |
| Phillips | 42 7-8 |
| Pure | 22 5-8 |
| Radio | 12 1-8 |
| Remington Rand | 22 1-4 |
| Sears-Roebuck | 61 7-8 |
| Shell | 17 1-2 |
| Soco-Vacuum | 15 3-4 |
| Southern Pac. R. R. | 32 |
| Standard Brands | 16 1-8 |
| Standard of Cal. | 45 |
| Standard of N. J. | 63 |
| Studebaker | 12 7-8 |
| Texas Co. | 36 3-4 |
| Tidewater | 17 3-4 |
| T. P. Coal & Oil | 12 3-4 |
| T. & P. Land Trust | 13 1-8 |
| United Air Line | 29 1-2 |
| United Corp. | 7 |
| U. S. Rubber | 24 |
| U. S. Steel | 61 5-8 |
| Warner Bros. | 11 7-8 |
| Western Union | 86 1-2 |
| Westinghouse | 113 1-2 |
| Total Sales | 2,920,000 |

Close Close
NY Cotton, Mar. 11.36 11.31
Cotton, May 10.96 10.97
Chil. Wheat, May 100 3-4 99 5-8
Wheat, July 90 1-2 89 3-8

SCHOOL ROOMS AVERAGE WELL IN ATTENDANCE

Attendance records of the various rooms in the Midland public schools showed high records, in reports for the sixth month, just released. There were 21 rooms averaging 95 per cent or more in attendance, fifteen rooms averaging from 90 to 95 and six rooms in the 80 to 90 average group.

The record by rooms follows:

Miss Vaughn's room, 98.85; Miss Rosburg's room, 98.34; Mr. Bear- den's room, 98.16; Miss Ford's room, 97.78; Miss Lanham's room, 97.76; Mrs. Scrogg's room, 96.96; Miss Hefner's room, 96.72; Mr. Freels' room, 96.52; Mrs. Thomas' room, 96.26; Mrs. Tel- bert's room, 96.16; Miss Alverson's room, 96.15; Mr. Fagg's room, 95; Miss Frazer's room, 95.84; Miss Dabney's room, 95.67; Mrs. Williams' room, 95.33; Miss Lunday's room, 95.35; Miss Golladay's room, 95.31; Mrs. Bounds' room, 95.22; Miss Cart- wright's room, 95.06; Mrs. Philip- pus' room, 95.05; Miss Pratt's room, 94.81; Miss Carden's room, 94.60; Miss Miley's room, 94.35; Miss Reast's room, 94.15; Miss Klap- proth's room, 93.30; Miss Lomax's room, 93.29; Miss Martin's room, 93.22; Mrs. Stewart's room, 93.14; Mrs. Donovan's room, 92.66; Miss Rippy's room, 92.33; Miss Meaders' room, 91.99; Miss Latham's room, 91.95; Miss King's room, 91.49; Miss Stout's room, 91.34; Miss Gillett's room, 90.62; six rooms, 80 to 90.

MORMONS OFFER TO QUIT MEXICO

General Exodus Foreseen After Agrarians Get Valley Control

JUAREZ, Mex., March 12. (AP)—Another exodus of a religious group from the state of Chihuahua was foreseen here Wednesday as Agrarians retained control of fertile Juarez valley including the wealthy Mormon settlement of Colonia Juarez, established more than 30 years ago by immigrants from Utah.

In the face of a statement from Raul Dominguez, chief of the Chi- huahua Agrarian commission, that he had been empowered by Govern- or Rodrigo M. Quevado to pur- chase the land seized yesterday, A. L. Pierce, bishop of the church, said he was willing to sell his holdings.

CONSTRUCTION OVER STATE ON INCREASE

AUSTIN, (AP)—Texas cities main- tained a fast pace in construction during January, the University of Texas bureau of business research reported.

Data from 38 chambers of com- merce showed aggregate permits of \$3- 892,286, an increase of five percent over January, 1935. The gain from February was 50 percent.

Fourteen cities reported gains over both comparable periods, in- cluding Amarillo, Beaumont, Big Spring, Brownsville, Corpus Christi, Dallas, Fort Worth, Houston, Jack- sonville, Laredo, Lubbock, Marshall, Paris and Port Arthur.

Mixed tendencies were reported in the cement industry report by the bureau. Production in January was 12 percent below a year ago while shipments were 65 per cent greater. Stocks on hand, Jan. 31 were 16 per cent less.

COUGAR LURKS NEAR SCHOOL

ESTACADA, Ots. (AP)—John Slope, school bus driver, probably saved the lives of Peggy and Earl Goggins when he drove two miles out of his way to take them home. Returning from the children's home he saw a large cougar near the place they would have been, had they walked.

Use the Classifieds

PONTIAC DEALERS TO HOLD CAMPAIGN

West Texas Salesmen Will Meet Here Tonight For Banquet

Pontiac dealers of several West Texas towns will hold a sales cam- paign, in a meeting at Hotel Schar- bauber tonight, with Harry Payne, district manager, El Paso, conduct- ing. Edwards Motor Co. representa- tives will be co-hosts. A banquet will be held along with the meet- ing.

April sales plans will be outlined, with dealers and salesmen here from Midland, Odessa, Crane, Mc- Camey, Iraan, Fort Stockton, Wink and Hobbs.

CONSTRUCTION OVER STATE ON INCREASE

AUSTIN, (AP)—Texas cities main- tained a fast pace in construction during January, the University of Texas bureau of business research reported.

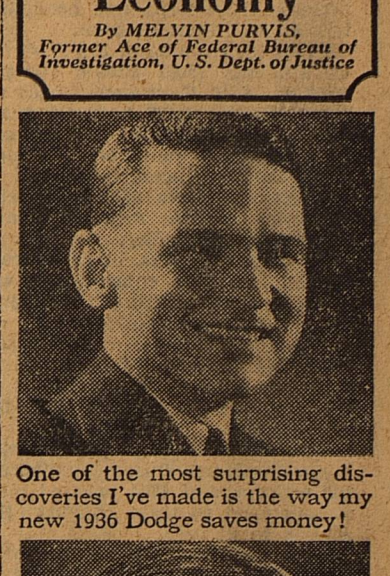
Data from 38 chambers of com- merce showed aggregate permits of \$3- 892,286, an increase of five percent over January, 1935. The gain from February was 50 percent.

Fourteen cities reported gains over both comparable periods, in- cluding Amarillo, Beaumont, Big Spring, Brownsville, Corpus Christi, Dallas, Fort Worth, Houston, Jack- sonville, Laredo, Lubbock, Marshall, Paris and Port Arthur.

Mixed tendencies were reported in the cement industry report by the bureau. Production in January was 12 percent below a year ago while shipments were 65 per cent greater. Stocks on hand, Jan. 31 were 16 per cent less.

Famous G-Man Corners Dodge Economy

By MELVIN PURVIS, Former Ace of Federal Bureau of Investigation, U. S. Dept. of Justice



One of the most surprising dis- coveries I've made is the way my new 1936 Dodge saves money!

It gives me 19 to 20 miles to the gallon of gas consistently in city driving and as high as 22 miles out in the country.

MANY NEVER SUSPECT CAUSE OF BACKACHES

This Old Remedy Often Brings Happy Relief Of Pain

Many sufferers relieve nagging backache quickly, once they discover that the real cause of their trouble may be tired kidneys.

The kidneys are one of Nature's chief ways of taking the acids and waste out of the blood. If they don't pass 2 quarts a day and so get rid of more than 3 pounds of waste matter, your 15 miles of kidney tubes may need flushing.

If you have trouble with frequent bladder passages with scanty amount which often smart and burn, the 15 miles of kidney tubes may need flush- ing out. This danger signal may be the beginning of nagging backache, leg pains, loss of pep and energy, get- ting up nights, swelling, puffiness un- der the eyes and dizziness.

Don't wait for serious trouble. Ask your druggist for DOAN'S PILLS— which have been used successfully for over 40 years by millions of people. They give happy relief and will help flush out the 15 miles of kidney tubes. Get DOAN'S PILLS.

DODGE

NEW LOW FIRST COST \$640

and up, List Prices at Factory, Detroit

And under the new Official Chrysler Motors Commercial Credit Company's "Time Payment Plan," Dodge is now so easy to pay for!

DODGE
Division of Chrysler Corporation

Who Says Coors Beer Isn't a Winter Drink?

It warms the cockles of your heart

At a recent ski meet in the heart of the Rockies, attended by several thousand spec- tators, Coors Export Lager was the beverage choice of the multitude. Standing in the snow with the temperature near zero, the crowd dispelled the cold by consuming more than a thousand stubby bottles of Coors Export Lager. They refuted the fallacy that a good beer is not a cold weather drink. They proved that a bottle of beer is no more chilling than an iced high ball. They reveled in the mellow- ing after-glow of this famous brew. They burst into rollicking highland song as its wholesome stimulation warmed the cockles of their hearts and supplied the energy build- ing carbohydrate and nitrogenous elements to withstand the cold. Coors Export Lager is America's cleanest, purest and best beer. Be partic- ular. Specify by saying: Coors, of Course.

Coors
GENUINE BECK FOR 1936 TRY IT

Coors Export Lager
GOLDEN Double Aged
A Product of ADOLPH COORS COMPANY, GOLDEN, COLO.

RUSSELL DISTRIBUTING CO., Distributors
Midland—San Angelo—Big Spring—Sweetwater