

THE REPORTER-TELEGRAM

THE DAILY REPORTER (Consolidated March 10, 1929) THE DAILY TELEGRAM

MIDLAND, TEXAS, THURSDAY, APRIL 16, 1933

THE FORECAST
West Texas; Partly cloudy,
possibly showers in Southeast
portion tonight, Friday; warm-
er in North Friday.

Number 33

VOL. VIII

Cyclone Damage Estimated at \$25,000

Britains Rushing New Ships to Gibraltar Base

Dictator



Once a lecturer at the University of Nebraska, Karlis Ulmanis above, is Europe's newest dictator, as the "Wadonis"—corresponding to Germany's "Fuehrer"—of Latvia. Returning to Latvia after it split with Russia in 1918, Ulmanis became its first premier. His new office combines the presidency and prime ministry.

NEW CRAFT WILL BE BULWARK FOR THE GRAND FLEET

Italy Demands Right To Conduct Peace Negotiations

FRANCE FEARFUL Hastens to Increase Military Power Of Nation

By Associated Press
The British admiralty is today hurrying 15 new, secret-type anti-submarine craft to Gibraltar as the bulwark of the grand fleet scattered throughout the Mediterranean, as tension and uncertainty mount in Geneva.

Italy demanded the League of Nations allow the Fascists to conduct direct negotiations for peace with Ethiopia, eliminating all league interference.

On the waterfront flying columns composed of 100 trucks, flanked by tanks and protected by planes sped from Dessye toward Addis Ababa, according to Rome. They are expected to reach the capital in three days.

Nervous France, fearing a complete collapse of the league's system of collective security, hastened to increase its military power. Paris, observers said, is afraid the league will break down in the face of Italian defiance, and possibly cause England to abandon France for Germany.

Britain is withholding its decision for sterner sanctions against Italy as foreign secretary Anthony Eden pressed for immediate peace negotiation.

SULPHUR WATER ENCOUNTERED BY GLASSCOCK TEST

Operators Will Run Casing and Drill Deeper

BY FRANK GARDNER

Sulphur water which rose 800 feet in five and a half hours was encountered late yesterday from 2-795 to 2-812 feet in line by Fleetborn Oil Corporation No. 1 Floyd C. Dodson, Glasscock county test and one of the Basin's most interesting wildcat operations.

Operators have decided to carry the well deeper and have ordered 7-inch casing delivered to the rig which they will run to bottom for a shut-off. The test is still well above the deep Roberts pay horizon of the Howard-Glasscock field. Line top in the No. 1 Dodson was called at 2,332, 382 feet above sea level.

Located in the southeast corner of section 13, block 34, township 3 south, T. & P. survey, six miles north of Garden City, the Fleetborn test's high structural position and numerous oil shows have been the spark-plug of a lease play, extending as far southeast as the Sterling county line.

RUNNING CASING
After topping line at 3,905, Standline No. 1-B E. F. Cowden, wildcat extension test a mile and a quarter northwest of the discovery well in Ector county's Foster pool, is running the oil string of casing to bottom at 3,920. Said to be running nearly level with the pool opener, the Standline test is in the northeast corner of section 14, block 43, township 2 south, T. & P. survey.

With tubing and rods run, a pumping test is scheduled to start today in Barnsdall No. 1 Frank Foster, east offset to the Foster pool opener. Cavings from nitro shot have delayed a gauge for more than a week. The offset producer is located 660 feet out of the southwest corner of section 18, block 42, township 2 south, T. & P. survey.

Humble No. 1 Jessie M. Spinks, prospective mile and a half northwest extension of the Means pool in northern Andrews county, is waiting for cement to set around 7-inch casing run to 4,350. Bottomed at 4,521, the well showed oil stains in cores from 4,498 to total depth.

WELL REACTIVIZE
Two-inch tubing is being run in Magnolia No. 1 State-Walton preparatory to acidizing for the second time. The Winkler wildcat developed sulphur water after the first acid injection damaged cement plug at 3,645. The test originally cored into sulphur water near total depth of 3,695. It is now bottomed at plugged-back depth of 3,600, and operators will try to develop production from oil horizons logged in the several hundred feet of hole.

The No. 1 State-Walton is located in section 7, block B-3, public school land, about two miles east of the Sayre pool.

Depth of 3,687 feet in line has been reached by Sinclair-Prarie and others No. 1 Tubb, Crane county upper Permian producer being deepened to the Tubb pay zone about 1,800 feet in the big line. Location (See OIL NEWS, page 6)

KING'S CHILDREN OBJECTS OF PLOT

Belgian Police Arrest Man Who Threatened To Kidnap Two

BRUSSELS, April 16 (AP)—A kidnap threat on the motherless children of King Leopold of Belgium was disclosed today with the arrest at Liege of a former convict.

Police said the suspect confessed writing the king letters threatening to abduct the royal children unless \$12,000 was forthcoming.

The children's mother, Queen Astrid, was killed in a car accident several months ago.

WITNESS REFUSES TO TALK; SENATE HEARING HALTED

Contempt Charges May Be Filed In Case

WASHINGTON, April 16 (AP)—A blunt refusal by a witness to answer questions today abruptly halted the senate lobby committee and raised the possibility of contempt proceedings.

Committee men said they would meet late today to decide whether to cite the witness, Kurt Grunwald, organizer for the Farmers' Independence Council, for contempt. The council is against the AAA. Grunwald refused to tell the committee who had contracted to support the organization.

LAY CORNERSTONE TO NEW BUILDING

Roosevelt Officiates At Ceremonies For The Interior Dept.

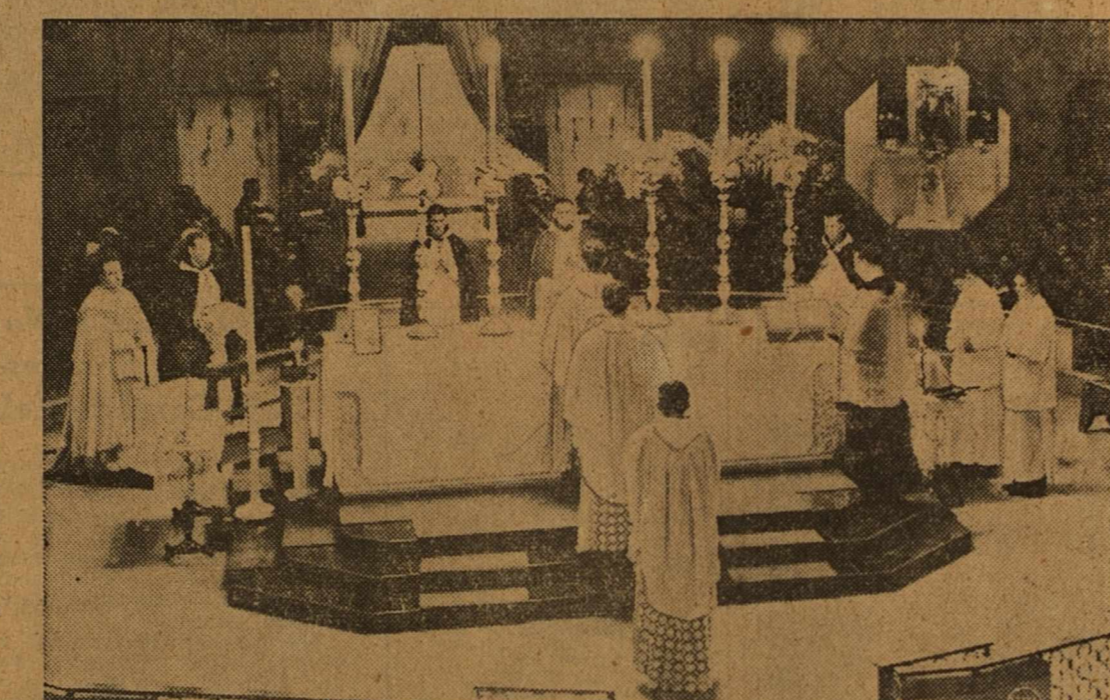
WASHINGTON, April 16 (AP)—President Roosevelt today laid the cornerstone of the new \$12,000,000 interior department building, and pledged renewed federal efforts to conserve the natural resources of the nation.

2 Killed In Madrid Street Fight Today
MADRID, Apr. 16 (AP)—Two persons were killed and at least five were wounded today in an exchange of shots between mourners in a funeral procession and workers on a government building project.

DRILLING CONTRACTOR ILL
A. H. Flaherty, drilling contractor, is ill in a Midland hospital.

District Contestants to Be Here Friday

Easter, in New Coughlin Shrine



Hundreds of Detroiters flocked to Father Charles E. Coughlin's new shrine of the Little Flower, at Royal Oaks, on Easter Sunday morning to view this impressive high mass, sung at the simple main altar of the beautiful edifice. During the solemn ritual commemorating the Resurrection, Father Coughlin is shown at the extreme left. Although not completed, the new building was utilized for the colorful Easter services because of the recent destruction by fire of the old shrine.

\$1,000 Merchants Handicap Race Is Carded for Meet

Business Men Donate Money For Meet Feature

Announcement of a \$1,000 added Merchant's Handicap race, to be run the last day of the Midland Downs May 25-30 meet, was made this morning by Tom Nance, director of racing after Midland business men had contributed that amount of money for the feature.

"The money is paid and in the bank," Nance said, "and we want everybody to know that every cent of it was given by Midland merchants to make the Midland Downs spring meet the best ever staged in Texas, west of Fort Worth."

The race will be over the one-mile course, each horse entered to be assessed \$10 to nominate and \$20 to start, all entrance fees added to the winner's purse. Thus, if ten horses are entered, the \$300 entrance fees will create a total of \$1,300, split \$900 for the winner, \$300 for second money and \$100 for third.

The feature is expected to attract to the Midland meet some of the outstanding horses of the nation. No major track meets are being held in Texas during that period, making it possible to secure for this meet some of the winners which have attracted hundreds of thousands of spectators to Arlington Downs, Houston, and San Antonio and Dallas.

No other small track in Texas is offering a handicap purse of more than \$500, Nance said. Midland merchants, by making this possible, are building a name for Midland Downs which will place it next in importance to the four major events.

The list contributing to \$1,000 purse follows: Hotel Scharbauer, Scharbauer Coffee Shop, E. N. Wood, Wes-Tex Food Market, Midland Hardware Co., Elder Chevrolet Co., Addison Wadley Co., Mackey Motor Co., Hotel Pharmacy, J. C. Smith, Every Ready Auto Service, Ralph Love, Hokus-Pokus Grocery, and Market, Scharbauer Barber Shop, Wilson Dry Goods Co., Texan Club, Inn Savidich Shop, Perry Bros. Inc., Phillips Electric Co., Kyle Sign Service, Scharbauer Cigar Stand, Edwards Motor Co., Liano Barber Shop, Postoffice Cafe, Sinclair Service Station No. 1, Minute Inn Savidich Shop, Fred Girdley-Gulf Agent, H. J. Phillips-Agent Humble Oil & Refining Co., Jack's Gulf Service Station, Gulf Station No. 1, Big Edd's Sandwich Shop, United Dry Goods Co., My Bakery, George Motor Co., M. System Grocery & Market, 555 Body Works.

AGED MIDLAND WOMAN SUCCUMBS
Mrs. Nancy V. Stewart Dies Early This Morning
Mrs. Nancy V. Stewart, 83, resident of Midland for about 30 years, died here early this morning. She had been ill for some time.

The aged woman, who was born at South Boston, Va., is survived by three children, 12 grandchildren and four great-grandchildren.

Children, including two sons and a daughter, are A. L. Stewart of Midland, Mrs. G. W. Trux of Midland, and C. C. Stewart of Cedar Rapids, Iowa.

Funeral services will be held at Ellis Funeral chapel Friday morning at 9 o'clock with Rev. J. E. Pickering of the First Christian Church officiating.

Burial will be in Fairview cemetery.

VISITS DAUGHTER
Mrs. Allen D. Dabney of Eastland is here as the guest of her daughter, Miss Geraldine Dabney, and of Mrs. J. B. Leonard.

REMOVED TO HOME
A. W. Jones, son of Mr. and Mrs. T. D. Jones, was removed from a Midland hospital to his home today. He recently underwent a mastoid operation.

TORNADIC WINDS ARE BLAMED FOR DEATHS OF PAIR

Fishing Boat Sinks, No Trace Found of Bodies

By Associated Press
Two deaths and heavy damage were blamed today on tornadic winds ripping through portions of Texas overnight, bringing hard thunderstorms to parched regions.

Near San Angelo a fishing boat capsized, drowning two occupants in Lake Nasworthy when the wind hit. No trace of the bodies has been found.

Pro Mampama to Wichita Falls 65-mile winds carried the storms in that section. A downpour of two and one-quarter inches of rain was recorded at Abilene. Coleman County reported a violent electrical storm and more than an inch of rain. Rain was general in the Lubbock area.

FIREMEN FIGHT BLAZING GASSER NEAR BEAUMONT

Concussion Is Felt Ten Miles After Well Ignites

BEAUMONT, Apr. 16 (AP)—Firefighters today pumped water and mud substance into the 150-foot flames which were started early this morning when a gasser blew in near here. It was predicted that it would take three days to conquer the flames, which reduced a \$50,000 derrick to a mass of molten metal.

Workers miraculously escaped injury when a spark ignited gas blowing in at terrific pressure. The concussion rocked houses ten miles away.

A crew of Oklahoma well firefighters were rushing to assist in exterminating the blaze.

Mother of Former Midland Man Dead
News of the death of Mrs. Neblett, mother of H. J. Neblett who formerly lived at Midland, was received by friends here today. Cause of her death was not announced. Funeral services will be held Saturday. Mrs. Neblett was the sister of the late Jerry S. Jewell, father of Spence Jewell, Midland and Quay, N. M., cattleman.

STOCK BROKERS HERE
Lucian Voorhees, official of the New Orleans office of E. A. Pearce & Co., stock market brokers, and A. L. Bettinghouse, manager of the Fort Worth office, are here on business with their local correspondents, the H. O. Bedford Co.

Students, Teachers Of Ten Counties To Appear

Approximately 500 students, teachers and visitors are expected to be here tomorrow and Saturday for the Inter-scholastic League district meet events. Schools from 10 West Texas counties, members of the district will send representatives to enter competition in both the indoor and the track and field events.

Contestants will be here from Stanton, Odessa, Crane, McCamey, Rankin, Wink, Kermit, Seminole, Seagraves, Andrews and many rural schools in the district.

The first of the indoor events will be started tomorrow morning at the high school auditorium. Indoor events that will be decided during the two days contests are declamation, debate, extemporaneous speaking, typing, one-act play, ready readers.

Following is a complete list of the Midland contestants in both the indoor and outdoor events:

LITERARY EVENTS
Declamation
Junior Boys' Declamation, Billy Noble.
Junior Girls' Declamation, Joyce Beauchamp.
Senior Boys' Declamation, Jack Walton.
Senior Girls' Declamation, Anna Beth Bedford.
Junior Boys' Grammar School, Wilber Roberts.
Junior Girls' Grammar School, Jane Hill.

Debate
Boys' Debate, Elmer Huff, James Connor.
Girls' Debate, Josephine Ray, La Mone Sindorf.
Extemporaneous Speaking
Boy, Robert Payne.
Typing
Team, B. C. Girdley, Marcelline Wyatt, Joanna Filson, Dorothy Lou Speed.

One-Act Play
Cast, C. A. Goldsmith, Frank Cowden, Milton Johnston, Mary Howe.
Ready Writers
Senior High School, Mary Kinnebrew.
Junior Girls' Grammar School, Dorothy Young.

TRACK AND FIELD EVENTS
Tennis
Boys' Singles, J. B. Thomas.
Boys' Doubles, J. B. Thomas and Joe Norman.
Track
100 Yard Dash, S. Midkiff, J. L. Barber, B. Roberts.
200 Yard Run, E. P. Lawson.
400 Yard Run, T. Bryant, R. Cowan, M. Taylor.
220 Yard Run, S. Midkiff, J. L. Barber, B. Roberts.
1-Mile Run, C. Patterson.
1-Mile Relay, E. P. Lawson, S. Midkiff, R. Cowan, J. L. Barber, T. Bryant.

Field
Pole Vault, E. P. Lawson.
Running Broad Jump, D. Wafford.
Discus Throw, D. Wafford, W. Adams, M. Taylor.
Running High Jump, D. Wafford.
12-Foot Shot, D. Wafford, W. Adams, M. Taylor.
Javelin Throw, D. Wafford, W. Adams, E. P. Lawson.

TENNIS MATCHES FRIDAY TRACK, FIELD SATURDAY
Tennis matches, a part of the Inter-scholastic League district meet here Friday and Saturday will begin at 9:30 in the morning on both the Thomas and the city courts.

At least 12 schools are expected to enter contestants in the matches. Preliminaries in the track and field events will start at ten o'clock Saturday morning, with the final events starting at 1:30 in the afternoon. Fourteen schools have posted entry lists in these events. Besides those mentioned in the tennis entries, Pleasant Valley, Courtney Brown, Seminole, Seagraves, Andrews and Big Lake will also enter.

School officials are hopeful of getting the tennis matches over in one day, leaving Saturday for the indoor and the track and field events. Preliminaries in the track and field events will start at ten o'clock Saturday morning, with the final events starting at 1:30 in the afternoon. Fourteen schools have posted entry lists in these events. Besides those mentioned in the tennis entries, Pleasant Valley, Courtney Brown, Seminole, Seagraves, Andrews and Big Lake will also enter.

G-MEN SOLVE ROBBERY MYSTERY
8 Men Arrested, Charged With Theft of Near Half-Million
WASHINGTON, Apr. 16 (AP)—A partial solution of the mysterious theft of \$500,000 of bonds, taken when a clerk stepped for a moment from his cage in the United States Trust company of New York on December 13, 1934, was claimed Wednesday by the justice department.

J. Edgar Hoover, chief of the federal bureau of investigation, summoned newspapermen to his office to announce that eight men had been arrested and \$310,000 in bonds recovered.

The long search, conducted with the cooperation of police in various states, led G-men from Florida to California, along much of the Atlantic seaboard and even to Nassau in the Bahama Islands, Hoover said.

Geologists Asked To Attend Luncheon At Hotel Tomorrow Noon
All members of the Midland Geological Society are urged to be present at the regular bi-monthly luncheon to be held tomorrow at 12 o'clock noon in the Crystal Ballroom of the Scharbauer Hotel.

Final plans will be discussed for the society's dance which is scheduled for the night of Saturday, May 16.

Accused



Charged with a plot to wreck the L. & N. train of which her husband, 70, was engineer, so she might collect his \$3000 insurance, she was arrested in Pensacola, Fla. Detectives nabbed two Negroes who said they had been paid to pull spikes from the track and held Earl Travis, said to be "the other man."

UPHAM AND PRATT ROTARY DELEGATE VOTERS OF CITY

Elect Thomas, Mims Alternates To Conference

W. R. Upham, president elect, and W. I. Pratt, secretary of the Midland Rotary club were named today as voting delegates of the organization at the conference of the forty first district to be held at Ft. Worth May 3, 4, and 5. Alternates elected were A. O. Thomas and Percy J. Mims.

Today's program was in charge of Thomas, chairman of the Fred Wemple for District Governor committee and of the on-to-Fort Worth committee. Names of officers of all clubs in the district were read, with local club members taking the names of those with whom they were acquainted, letters to be sent in regard to the club's campaign for electing Wemple district governor for the approaching fiscal year.

Fifteen or more local members signified their intention of attending the Fort Worth meeting and an effort will be made to secure at least twenty in the group.

FLAPPER FANNY SAYS:
REG. U. S. PAT. OFF.

FREAK STORM IN EAST PART OF CITY CREATES HAVOC

Buildings Wrecked, Poles Felled By Wind

NONE INJURED

Magnolia Tank Farm Records Heaviest Damage

A freak cyclone zoomed and dipped its way along the east end of Midland last night to do an estimated \$25,000 in damages to property.

The storm struck about 7:30, and the Magnolia tank farm was the first to feel the force of the twister, the roofs being ripped off three 30,000 barrel oil storage tanks. Damage to the tanks was estimated to be between \$10,000 and \$15,000.

Next indications of property damage were registered at the fair grounds. The roof being blown off the pari-mutuel booths and two small ticket booths were hit. One of the booths was lifted from its position near the outer fence, thrown completely over the fence and reduced to shattered timbers.

At the Feeler tourist camp the roofs were torn from some frame cabins and at the Broadway camp one adobe cabin was unroofed. Telephone, power and telegraph lines between the fair grounds and the Alamo courts were down, the poles being twisted into as if by some giant's hand. Some of them were broken off at the ground while others were twisted into in the middle, bearing mute witness today to the strength of the wind.

All electric current in the city was cutoff but emergency action by the company had restored power in 22 minutes. Midland lines were cut in power distributed by the Odessa plant. Linemen today are repairing

Gerald Bloss and Bill Spires today know what fear is. Leaving the fair grounds last night just before the cyclone hit, the two landed in its center as they drove onto the highway. Timbers blown off a small cabin at the Feeler tourist camp were driven against the car with such terrific force that one board went completely through the shatter-proof windshield of the car that Bloss was driving. With dirt and debris obstructing the view and making driving impossible, Bloss was forced to stop the car, and the wind (according to Bloss and Spires) actually blew it out of the danger zone. "I have been in lots of tight spots, but that is the tightest—one I have ever seen," Spires commented.

The lines and replacing poles. The company had nine poles on the ground and three so badly splintered that they will have to be replaced. Three poles of the telephone company were twisted down, all circuits being completely out of order. The Postal Telegraph company had 15 poles down and lines out of order until five o'clock this morning. Linemen working all night to repair damage. The Western Union also suffered heavy damages to its lines.

The Mexican school house, where several tenants of small frame houses in the east end of town had taken refuge, had the roof torn from the building, creating near panic among those gathered inside it.

The storm apparently lost its violence near the Alamo courts after leveling signs and fences a short way to the other side of it and blowing (See STORM, page 6)

WELL DRILLING ON McCLINTIC HOLDING
Ralph Geisler and McClintic Brothers, made a trip to Crane Wednesday. Chas. McClintic reports that Geo. McCamey is drilling an oil well on their land on the east half section 210, block E, in Crane county, the well now being at 991 feet.

McClintic Bros. have leased their Crane county ranch for three years to J. P. Gary of Buffalo Gap. He will run sheep.

Geologists Asked To Attend Luncheon At Hotel Tomorrow Noon
All members of the Midland Geological Society are urged to be present at the regular bi-monthly luncheon to be held tomorrow at 12 o'clock noon in the Crystal Ballroom of the Scharbauer Hotel.

Final plans will be discussed for the society's dance which is scheduled for the night of Saturday, May 16.

Well Drilling on McClintic Holding
Ralph Geisler and McClintic Brothers, made a trip to Crane Wednesday. Chas. McClintic reports that Geo. McCamey is drilling an oil well on their land on the east half section 210, block E, in Crane county, the well now being at 991 feet.

McClintic Bros. have leased their Crane county ranch for three years to J. P. Gary of Buffalo Gap. He will run sheep.

Geologists Asked To Attend Luncheon At Hotel Tomorrow Noon
All members of the Midland Geological Society are urged to be present at the regular bi-monthly luncheon to be held tomorrow at 12 o'clock noon in the Crystal Ballroom of the Scharbauer Hotel.

Final plans will be discussed for the society's dance which is scheduled for the night of Saturday, May 16.

THE REPORTER-TELEGRAM

Evenings (except Saturday) and Sunday Morning MIDLAND PUBLISHING COMPANY, PUBLISHERS 112 West Missouri, Midland, Texas

T. PAUL BARRON Publisher

Entered as second class matter at the postoffice at Midland, Texas, under the Act of March 30, 1879

Subscription Price Daily, by Carrier or Mail \$5.00 Per Year 50c Per Month 50c Advertising Rates Display advertising rates on application. Classified rate, 2c per word; minimum charge 25c. Local readers, 10c per line.

Any erroneous reflection upon the character, standing or reputation of any persons, firm or corporation which may occur in the columns of The Reporter-Telegram will be gladly corrected upon being brought to the attention of the firm.

BEHIND THE SCENES

-IN-

WASHINGTON

By RODNEY DUTCHER Reporter-Telegram Washington Correspondent

WASHINGTON. — The majority and minority opinions of the U. S. Supreme Court in the case of Securities and Exchange Commission and J. Edward Jones were really very spectacular in their implications.

Search the court's history and you'll find no instance where so many observers felt the court had gone leaping over so many fences to enter a field which had nothing to do with the case before it.

Lawyers and laymen here, friends and enemies of the New Deal alike, think the conservative six-man majority deliberately took the occasion to "bawl out" by inference Senator Hugo Black's lobby committee, which has been on the pan for packing at people's telegrams. It referred to "unlawful searches and seizures," "a roving, inquisitorial investigation," and so on.

The court majority's departure from custom in going so far afield is considered by many to be so unusual as to be amazing. Scarcely less astonishing is the opinion of Justice Cardozo, dissenting with Brandeis and Stone, which accuses the majority of giving "immunity to guilt," encouraging "falsehood and evasion," and inviting "the cunning and unscrupulous to gamble with detection."

There's Amusing Angle. The fact that the Securities and Exchange Commission, which had refused to allow Jones to withdraw a registration statement, was object of the majority's lashing charges of arbitrary and unreasonable abuse of power has its amusing as well as its unusual aspects.

Senator George W. Norris of Nebraska, at the hearing on the Mississippi Valley Authority bill: "Do you agree with the opposition and the methods used against the Wheeler-Rayburn bill?"

Hugh S. Magill, head of the American Federation of Investors. "That is like asking me if I have stopped beating my wife?"

Norris: "All right, have you quit beating your wife?"

Wall Street applauded the work of Joe Kennedy as SEC chairman and warmly greeted appointment of his successor, Jim Landis. That's one reason for the common belief here that the court was just letting off steam.

The bitter split between conservative and liberal justices only becomes more intense. Strong fundamental differences of opinion, repeatedly expressed and with increasing acidity, probably do the court's prestige no good.

One begins to hear criticism of Chief Justice Hughes, one of whose traditional jobs is to apply the oil of such instances.

If Hughes had felt like being a good horse trader, he might have persuaded both Sutherland and Cardozo to modify their language in the SEC case.

AAA checks totaling somewhat less than \$5000 were sent to one Allan H. Hoover, San Francisco, for a reduction of sugar production.

AAA employs say the recipient was the son of former President Hoover. It is also reported, thus far without official substantiation, that Herbert Hoover himself is interested in a farming corporation which received beet sugar and wheat benefit checks.

Dodge Processing Taxes. "This isn't a good year in which to fight" is the explanation you get for the administration's failure to date to insist on some processing taxes for farm products in the new tax bill.

Roosevelt asked for such taxes, at lower than previous rates, but a sub-committee of the House Ways and Means Committee threw them overboard.

The chief factor in the abandonment is the extreme unpopularity of processing taxes among city consumers in many areas.

Secretary Wallace is acutely unhappy about it. He feels that it's a grave mistake to abandon the principle of the "farmer's tariff" through which consumers made a direct contribution to maintain farm prices.

The Senate Finance Committee may yet write some processing taxes into the bill. It seems fairly certain that there will be one on sugar, if not on any other commodity.

Vast Big Bend Wilderness May Be Made Into Great International Park

SAN ANGELO, Texas.—The grandeur of the "last frontier" of this nation—the Big Bend of West Texas—a rugged, forbidding, and yet enchanting empire, is expected to be preserved in what may be the largest international park in the world.

This will be the Big Bend National—or International—Park, which contains the Chisos Mountains and the Santa Helena, Mariscal, and Boquillas Canyons, which rival the Grand Canyon of the Colorado and the Painted Desert of Arizona in color and awesome depths.

The state of Texas, launched on a program for a state park in the Big Bend by Everett E. Townsend of Alpine, early-day Texas Ranger, sheriff, and legislator, and others who shared his foresight, already owns much of the 1,500,000 acres (234 square miles) of the park lands on this side of the Rio Grande.

The Mexican government recently has shown increased interest in the proposal to set aside 1,000,000 acres on the south side of the border to make the park a perpetual monument to the amity existing between the United States and Mexico.

Such joint park of more than 4000 square miles would be about a fourth larger than the Yellowstone, this nation's largest national park.

MOUNTAINS SOAR HIGH IN GREAT WILDERNESS

The Chisos Mountains—termed "a geological and biological wonderland"—present the most picturesque scenery in Texas. The bulk of Mt. Emery, second highest peak in the state, rises here to an elevation of 10,000 feet.

Here the Mexican lion, bear, deer and coyote still flourish as they did before Cabeza de Vaca, Spanish explorer, set foot in the Big Bend centuries ago. While the big trees of the Pacific Northwest, pines, spruce and Arizona cypress, grow in profusion in the canyons and on the slopes, there is contrast in the sotol, yucca and other desert plants of the surrounding plateaus.

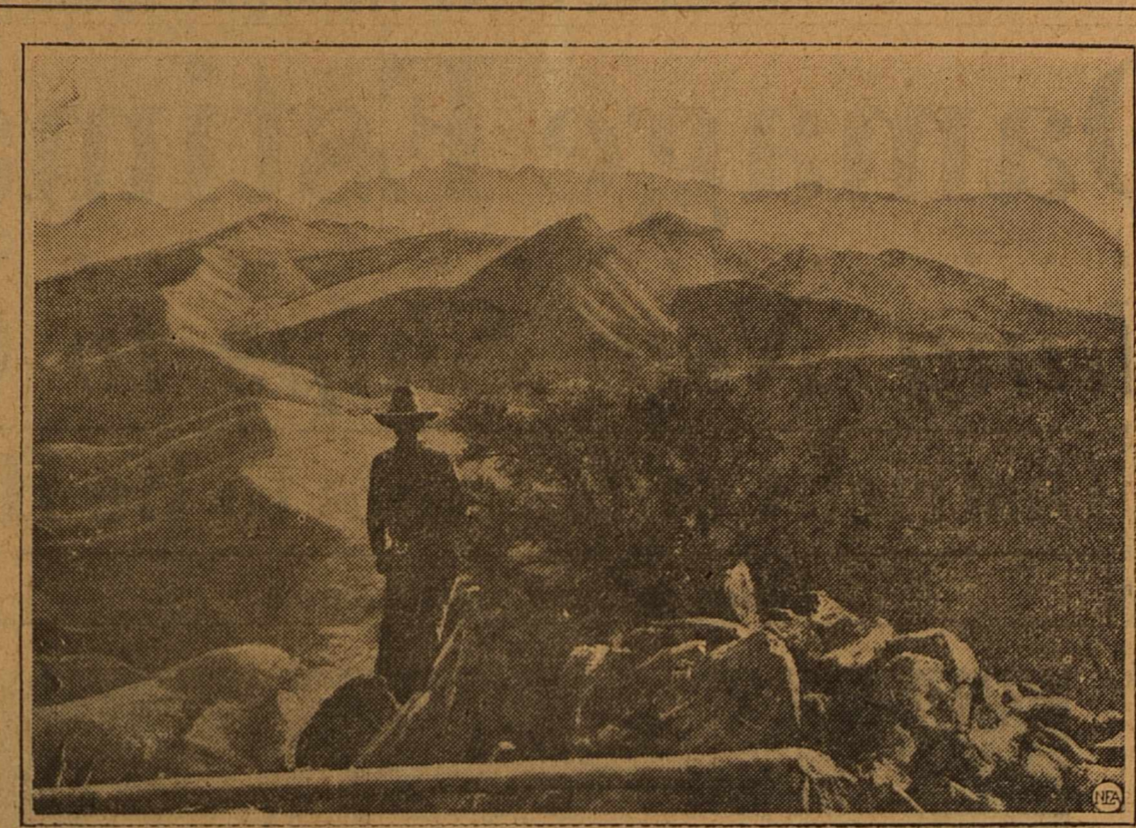
GRAND CANYON RIVALED BY THE SANTA HELENA

The state and federal government, the latter with its CCC boys, have joined Brewster and Presidio counties to open the Big Bend to the tourist. Burro trails have been blasted up the sides of Mt. Emery. Still more extensive improvements are being rushed for this Centennial year.

Texas' rival to Grand Canyon the Santa Helena, is still virtually unexplored. The cliffs rise a sheer 1500 feet above the vicious waters of the Rio Grande, which have claimed the lives of several of the fewer than a dozen explorers who have gone entirely through the 25 mile-long chasm.

Big caves, one of them 200 feet in diameter are seen high up on the unscalable walls. The second canyon, the Mariscal, is considered by many to be the most colorful of the three gorges. It is four miles long; its walls rise straight up 1400 feet from the waters of the Rio del Norte.

DINOSAUR TOOTH FOUND IN ANCIENT CREEK BED Third and most immense of the trio is the Boquillas, or Dead Horse canyon. Its walls sweep up 2000 feet above the Rio Grande and it runs on for scores of miles down river.



Ruggedness is a moderate adjective when applied to the panorama spread before the cowboy as he looks off the south rim of the Chisos mountains at the site of the immense Big Bend International Park, in Texas.



A rare view from the bottom of Santa Helena Canyon in the Big Bend of Texas, with the cliffs rising sheer more than 1500 feet from the turbulent waters of the Rio Grande.

MOUNTAINS GET NAME FROM PHANTOM CHIEF

The Chisos Mountains, get their name from "ghosts" or "phantoms". The range was named for a Comanche chief who was captured by a band of marauding Indians from Mexico. Held prisoner in the Del Carmen for years, he finally escaped back to his tribe's caves. But his people had disappeared.

BASEBALL

Play-By-Play Reports by Ticker Service OF THE National American AND Texas Leagues DAY AND NIGHT GAMES TEXAN CLUB 106 South Main

Land O' Lakes Is No Place For Sneezes Says Carveth Wells

Hay fever sufferers take note. Carveth Wells, popular explorer, author and star of Continental Oil Company's Sunday radio hour, says that hay fever sneezes are as rare as the Dodo bird in the beautiful lake regions of Minnesota, Wisconsin and Michigan.

FREE! about STOMACH TROUBLE

Explains the marvelous Willard Treatment which is bringing amazing relief. Sold on ironical money-back guarantee. PRICELESS INFORMATION—For those suffering from STOMACH OR DUODENAL ULCERS, DUE TO HYPERACIDITY, POOR DIGESTION, ACID DYSPEPSIA, SOUR STOMACH, GASTRITIS, HEARTBURN, CONSTIPATION, BAD BREATH, SLEEPLESSNESS OR HEADACHES, DUE TO EXCESS ACID.

Why Gulf is the Gas for April

"APRIL SHOWERS bring May flowers." And warmer weather, too. That means a brand-new gasoline is shipped to Gulf stations—a gas especially made for April driving.

OUR BEAUTY SHOP

Phone 822—306 North Main LLANO BEAUTY SHOP Phone 273—Ground Floor—Llano Hotel Bldg. PETROLEUM BEAUTY SHOP Phone 970—Ground Floor—Petroleum Bldg. E. A. BOCH, Proprietor

A \$10.00 WAVE GIVEN FOR \$7.50

Manufactured by one of the oldest and most reliable houses known. The steam chamber is so regulated that it is impossible to fail or oversteam any type hair.

Call Mr. Boch at Our Beauty Shop or Mr. Donovan at Llano Beauty Shop for your appointment.

Call Mr. Boch at Our Beauty Shop or Mr. Donovan at Llano Beauty Shop for your appointment.

Call Mr. Boch at Our Beauty Shop or Mr. Donovan at Llano Beauty Shop for your appointment.

Call Mr. Boch at Our Beauty Shop or Mr. Donovan at Llano Beauty Shop for your appointment.

Call Mr. Boch at Our Beauty Shop or Mr. Donovan at Llano Beauty Shop for your appointment.

Call Mr. Boch at Our Beauty Shop or Mr. Donovan at Llano Beauty Shop for your appointment.

Call Mr. Boch at Our Beauty Shop or Mr. Donovan at Llano Beauty Shop for your appointment.

Call Mr. Boch at Our Beauty Shop or Mr. Donovan at Llano Beauty Shop for your appointment.

Call Mr. Boch at Our Beauty Shop or Mr. Donovan at Llano Beauty Shop for your appointment.

Call Mr. Boch at Our Beauty Shop or Mr. Donovan at Llano Beauty Shop for your appointment.

Call Mr. Boch at Our Beauty Shop or Mr. Donovan at Llano Beauty Shop for your appointment.

Call Mr. Boch at Our Beauty Shop or Mr. Donovan at Llano Beauty Shop for your appointment.

The Town Quack



(Reserves the right to "quack" about everything without taking a stand on anything).

This weather forecasting I've attempted this week came back on me last night like a boomerang. The rain may not have been much but the accompanying display was something this country never saw before.

I think I'll just sit back and accept the little shower we had last night as the rain I prophesied to arrive before Thursday evening at 6 o'clock. I believe I promised to write only one paragraph—I didn't say how long a paragraph. This is all a part of it. I've been here quite a while and I have connections with folks who have been here almost since the town was started, and to my certain knowledge this was the first wind of near-cyclone propor-

tions ever to strike Midland. It's like the native sons of California say, this weather is most unusual. But when the telephone or telegraph companies have to route their calls by way of El Paso and Denver to reach Dallas, it's a fact that something has happened. I've heard on the streets the last few days that it was pretty quiet here and that you at a cost of only a few cents a day. Being a liquid—already dissolved—Williams' S.L.K. Formula starts to work almost immediately. Try a bottle under money-back guarantee, and enjoy that good old feeling. On sale at

Coyotes Are Caught On Fishing Tackle

McALLEN, Texas. (AP)—Catching coyotes with fishhooks is a story out of Mexico.

Dr. A. B. Cocker, Elmer Hall and C. V. Yoder of McAllen, motored 75 miles down the Mexican coast from Hatamoro surf fishing. Fish of any kind refused to bite and the fishermen baited their lines with small fish and cast them along the heard howling.

In a short time, the fishermen said, five coyotes were hooked, but as in many good fish stories, the catch got away. The trio said the animals broke their 75-pound test lines.

Play Facilities Surveyed

SAN DIEGO, Calif. (AP)—A thorough survey of recreational facilities in the San Diego area has been undertaken by the United States Forestry Service. Each of the three ranger districts of the area will be classified as to its adaptability for camp grounds, hunting areas and residential tracts, forest officials said.

More than 8000 new varieties of dahlias have been produced within the last 10 years.

BUILD STRENGTH; TONE UP STOMACH

Do you feel run-down, sluggish, without appetite for food or zest for living? Don't suffer another day without trying Williams' S.L.K. Formula, which acts as a mild tonic, stomachic stimulant, a mild laxative and gentle diuretic stimulant for the kidneys. Take just a few doses and see how much better you feel. The first bottle must produce results or money back. Williams' S.L.K. Formula is compounded from the prescription of a former army doctor who used it in private practice many years. Now this valuable time-tested medicine is available to you at a cost of only a few cents a day. Being a liquid—already dissolved—Williams' S.L.K. Formula starts to work almost immediately. Try a bottle under money-back guarantee, and enjoy that good old feeling. On sale at

PALACE DRUGS



Every Child Is Entitled to a Fair Start

What About Your Child? Is He Handicapped? Have His Eyes Examined by Dr. W. L. Sutton OPTOMETRIST 203 Thomas Bldg. Office Ph. 146—Res. Ph. 8103

ROYAL WORLD'S NO. 1 TYPEWRITER West Texas Office Supply Phone 55

DAVID M. ELLIS Palmer Graduate CHIROPRACTOR 11 Years in Midland 306 North Main St. Office Phone 822 Residence Phone 1094

PROTECTION! Do You Have It on LIFE & PROPERTY? We shall be glad to discuss any phase of insurance with you SPARKS & BARRON Insurance & Abstracts Phone 79—First National Bank Annex

LOST: A KEY! —BUT— ANOTHER CAN BE MADE BY CODE WHILE YOU WAIT! CALL ON TIFFIN AT 95

MOVE SAFELY THE ROCKY FORD WAY Phone 400 FOR THE OLD RELIABLE

DR. GREEN Dentist Extractions \$1, except wisdom teeth. Dr. HARTMAN'S Anesthetic for drilling out cavities used. False teeth \$25 to \$100. Special prices for a short time. Teeth that make you look younger. Mostly one day service for out-of-town patients. 10 years experience.—Registered, licensed. Northwestern University of Chicago, Ill., Graduate. Examination Free. Teeth Cleaned—\$1.50 up Gold Crowns & Bridgework—\$7 up Fillings—\$1.50 up First Nat'l Bank Bldg. No Phone—No Appointment Needed

MANY NEVER SUSPECT CAUSE OF BACKACHES This Old Treatment Often Brings Happy Relief Of Pain Many sufferers relieve nagging backache quickly, once they discover that the real cause of their trouble may be tired kidneys. The kidneys are one of Nature's chief ways of taking the acids and waste out of the blood. If they pass 3 pints a day and so get rid of more than 3 pounds of waste matter, your 15 miles of kidney tubes may need flushing. If you have trouble with frequent bladder passages with scanty amount which often smart and burn, the 15 miles of kidney tubes may need flushing out. This danger signal may be the beginning of nagging backache, leg pains, loss of pep and energy, getting up nights, swelling, puffiness under the eyes, headaches and dizziness. Don't wait for serious trouble. Ask your druggist for Doan's Pills—which have been used successfully for over 40 years by millions of people. They give happy relief and will help flush out the 15 miles of kidney tubes. Get Doan's Pills.

Play-By-Play Reports by Ticker Service OF THE National American AND Texas Leagues DAY AND NIGHT GAMES TEXAN CLUB 106 South Main

BASEBALL Play-By-Play Reports by Ticker Service OF THE National American AND Texas Leagues DAY AND NIGHT GAMES TEXAN CLUB 106 South Main

New Kalor Machineless Permanent Manufactured by one of the oldest and most reliable houses known. The steam chamber is so regulated that it is impossible to fail or oversteam any type hair. Call Mr. Boch at Our Beauty Shop or Mr. Donovan at Llano Beauty Shop for your appointment. A \$10.00 WAVE GIVEN FOR \$7.50 OUR BEAUTY SHOP Phone 822—306 North Main LLANO BEAUTY SHOP Phone 273—Ground Floor—Llano Hotel Bldg. PETROLEUM BEAUTY SHOP Phone 970—Ground Floor—Petroleum Bldg. E. A. BOCH, Proprietor

Why Gulf is the Gas for April "APRIL SHOWERS bring May flowers." And warmer weather, too. That means a brand-new gasoline is shipped to Gulf stations—a gas especially made for April driving. For unless gasoline is changed to meet Spring's higher temperatures it can't give the highest mileage. Get That Good Gulf—it's "Kept in Step with the Calendar" so that all of it goes to work, none of it goes to waste. "Kept in Step with the Calendar" THAT GOOD GULF GASOLINE

Society and Clubs

Of the 30,000 students enrolled at the University of Paris, France, during the 1932 session, 2,000 were Americans.

Modern Study Club Entertains with One O'Clock Luncheon at Scharbauer

The Modern Study Club entertained with a one o'clock luncheon at the Hotel Scharbauer Wednesday.

The luncheon table was centered with lavender sweet peas, baby's breath, and fern massed in a crystal bowl. Place cards bore designs of spring flowers carrying out the pink and lavender note. A four-course menu was served.

Variety of subject matter marked the interesting program consisting of three talks by club members.

Mrs. J. M. Haygood, president of the organization, reported on the Sixth district Federated club convention at Abilene which she attended recently as a delegate.

Mrs. John M. Hills gave an attractive descriptive talk relating to her experiences and the sights seen on a trip through the Holy Land. One fact which she brought out was that Jesus was not born in a manger as most people imagine but in a sort of cave over which a chapel has been erected.

The original Passion Play at Oberammergau was the subject of a discussion by Mrs. J. H. Rhoden.

Covers were laid for the following: Mmes. Tom C. Bobo, R. E. Gile, R. Steel Johnston, J. H. Rhoden, J. M. Haygood, S. S. Stinson, Fred Turner, O. L. Wood, H. N. Stamper, John W. Skinner, M. H. Crawford, T. M. Crawford, Pat Riley, three new club members, Mrs. L. W. Leggett, Mrs. R. C. Conklin, and Mrs. John Hills and one guest, Mrs. Daniel, mother of Mrs. Stamper, who is visiting her daughter here.

Use The Classifieds!

\$25.00 Reward
Will be paid by the manufacturer for any Corn GREAT CHRISTOPHER Corn Cure cannot remove. Also removes Warts and Calluses, 35c at Red Cross Pharmacy. (Adv.)

CHEMICALS WITH SERVICE
By that we mean clean iron—no corrosion.

Summer weather means higher temperature of the cooling water and more scale in the engines. Overheating costs money.

Boilers free from scale and corrosion means continuous service. No money spent for upkeep.

We do this for others—let us do it for you.

AMERICAN CHEMICAL COMPANY
Midland, Texas

LET US CLEAN AND PRESS YOUR WINTER GARMENTS AND PUT THEM IN MOTH-PROOF STORAGE BAGS AT NO EXTRA COST.

CITY CLEANERS
DRI-SHEEN PROCESS
Phone 89

Quilts and Blankets CLEANED for SUMMER STORAGE

AT Lowest PRICES

Your most delicate satin or taffeta quilts; your fluffiest woolen blanket, will be gently handled, and thoroughly cleaned by our soft water process.

Family Finish, per lb. 20¢
Minimum charge \$1.50
Flat Work, per lb. 8¢
Rough Dry, per lb. 8¢
Minimum charge 50¢
Quilts Laundered 35¢
Double Cotton Blankets 35¢
Single Cotton Blankets 20¢
Double Wool Blankets 50¢
Single Wool Blankets 25¢

SEND US YOUR RUGS!
SPECIAL PRICES on Rug Cleaning

9x12 Rug Cleaned \$3.50
9x12 Rug Sized \$1.00

Does Bladder Weakness Wake You Up Nights?
Drink lots of boiled or distilled water. You know what hard water does to a tea kettle. Drive out deposits and excess acid. If irritation causes scanty flow, frequent desire burning, backache, or getting up nights. Get a 25c box Bukets, the bladder lax. Made from juniper oil, buchu leaves, etc. Works on the bladder similar to castor oil on the bowels. Get your regular sleep. It's nature's greatest restorative. City Drug Store. (Adv.)

PHONE 90
MIDLAND STEAM LAUNDRY

FEMININE FANCIES

BY KATHLEEN EILAND

It's never safe to say anything, we begin to believe. For years, loyal West Texans have consoled themselves for the unpleasantness of sundry sandstorms by murmuring that they'd rather have sandstorms than floods or cyclones.

Then last night along comes a baby of the species (cyclone, we mean) and proceeds to playfully take off various roofs and lay low numerous poles and do other damage.

We're going to provide ourselves with a boat, if this keeps on, for it will be only a matter of time until the flood has its turn, we dare say.

We hear of all the trials and troubles that pioneer women of West Texas went through back in the frontier days. Most Midland girls will bitterly agree that West Texas women of today have plenty of troubles, too. Consider, for instance, the matter of beauty. How anyone can be beautiful with the sun falling her eyes and blowing her more or less beautiful locks astray and doing its part effectively toward destroying whatever make up she is wearing, is more than we can tell.

We suggest, for the supreme test of whether a man loves a girl, he likes her looks and disposition after a solid week of sandstorms. And that test, by the way, works in both directions.

Wednesday Club Studies National Parks at Program

Developing the topic, "Seeing America First," the Wednesday Club concentrated on the study of national parks at its meeting with Mrs. W. G. Whitehouse, 1505 West College, Wednesday afternoon.

Mrs. Geo. Glass was program leader in the absence of Mrs. O. B. Holt who was unable to attend.

Mrs. H. C. Barnes presented a paper dealing with Sequoia, Grand Canyon and Yosemite National Parks while Mrs. Glass discussed the famous Yellowstone Park.

A brief business session was held. Present were: Mesdames Frank Cowden, Sam Cummings, Barnes, Frank Elkin, Glass, C. M. Goldsmith, Jas. H. Goodman, M. D. Self, W. T. Walsh and the hostess.

New Officers of Robyn Club Preside Wednesday

New officers of the Robyn club presided at the meeting of the club at the Watson studio Wednesday afternoon. Elinor Hedrick, president, and Frances Guffey, secretary, taking up their duties.

Eileen Eiland and Dorothy Fay Lynch were at the attendance card. With the exception of one girl, those presenting the program were all from the seventh grade in school.

The numbers given included: Arpeggio Waltz (Piano)—Krogmann—Elinor Hedrick.

Violin Duet with piano accompaniment—The Gracie, Song by Brahm—Jacqueline Campbell and Ned Watson.

Piano solo—Little Sambo—Bassett—Liza Jane Lawrence.

Clarinet solo—Humoresque—Dvorak—Frances Guffey.

Piano solo—Valse in A Flat—Chopin—Shirley Ruth Jolly.

Mrs. Luther Joplin was a visitor and Betty Jo Joplin received a red star for bringing her mother to the club.

Faculty Members Ask College of Fine Arts

AUSTIN, Texas. (P)—Faculty members at the University of Texas have recommended to the regents establishment of a college of fine arts.

Expenditure of \$57,000 was proposed in a four-year budget submitted by a special committee which drafted recommendations for the new college within the university.

The request approved unanimously by the faculty suggested formation of a college, rather than a school, in order that courses would be open to freshmen as well as upperclassmen. The curriculum would include both professional and cultural courses in music, drama and art.

Several organizations, including the Texas Federation of Women's clubs, recently endorsed the movement for a fine arts college at the university.

The special committee contemplated a fine arts college with various branches for painting, sculpture, music and dramatics. Poetry would be retained in the language departments and dancing in the physical education division.

"Texas needs on the one hand more and better trained practitioners of the fine arts and on the other more widespread knowledge and appreciation of the fine arts," the committee reported. "To give

"Alien Corn" Is Book Reviewed by Miss Nobles

Sidney Howard and his book, "Alien Corn," was the subject of study at the meeting of the Junior Woman's Wednesday club to which Mrs. Nancy Stevens was hostess in a meeting at the Porter Rankin home, Wednesday afternoon.

Taking up first the author, Mrs. Hugh West told of the man and his life.

"Alien Corn," story of the struggle of a girl who in these sharply-competitive modern times is determined to become a great pianist, was then reviewed by Miss Martha Louise Nobles.

The hostess served a salad course at the close of study to the following club members: Miss Julia Ann Aycock, Mrs. W. M. Blevins, Miss Jennie Elkin, Miss Ruby Hodges, Mrs. Frank Miller, Miss Nobles, Miss Mary Belle Pratt, Miss Mary Maude Sparks, Miss Jennie Sue Ratliff, Mrs. Alf Reese, Mrs. West and the hostess.

Midland Artists Re-Organize Club

Midland Artists, the group of painters organized here sometime ago for working together, re-organized their club at a meeting with Mrs. R. M. Barron Tuesday evening.

It was decided to take up the study of Texas artists.

Present at the meeting were: Mmes. F. H. Lanham, John Hix, N. W. Bigham, Ben Golladay, D. B. Snider, John Gossett, Mary S. Ray, Clarence Hale, Steukley.

The club is meeting today in an all-day work session at the home of Mrs. Bigham.

Announcements

Friday
The Belmont Bible class will meet with Mrs. W. C. Attaway, 101 N. Colorado, Friday afternoon at 3:30 o'clock.

Saturday
Story hour will be held in the children's library Saturday morning at 10 o'clock.

North Ward PTA will meet at the school building Friday afternoon at 3 o'clock.

The meeting of the Mesquite Troop, Girl Scouts, scheduled for Saturday has been postponed because of children's day at the carnival.

professional courses only would be absurd; to give cultural courses only would neither satisfy the needs of the state nor meet the actual demand."

Because some members of the faculty believed a college of fine arts was not the university's most important need, appointment of a special committee to consider expansion was favored.

It is possible to give 1000 pints of blood in transfusions during a lifetime without ill effects, according to some prominent New York physicians.

STOMACH SUFFERERS
If you are suffering from indigestion, atonic dyspepsia, sour stomach, gas pains, "raw stomach," inflammation of the intestines (enteritis), gastric acidity and sick headaches, due to excessive acidity, you can't afford to ignore these warning signs. You should try at once the Doctor's Prescription, known as Gasa Tablets. If you allow these conditions to become worse, the acids may eat into the delicate mucous membrane of your stomach and intestine and possibly cause dangerous ulcers. Gasa Tablets soothe the raw, inflamed lining of the "acid stomach" and help convert starchy foods into dextrose, which is so essential to energy of the body, and preservation of health. Take just one or two Gasa Tablets and see how they help your stomach to "tackle a hearty meal." The first bottle must produce results or money back. On sale at

PALACE DRUGS

Centennial Seen As Boon To Boot Makers

COLEMAN. (P)—J. C. Carsey, 75-year-old bootmaker of the Voss community, believes the Texas Centennial will cause thousands of persons who heretofore have worn only shoes to buy boots. Carsey began

work in a boot shop when he was 7 years old but was 18 before he made his first pair. He said he used to make a good many square topped boots but hasn't made a pair in 20 years.

The stars Arcturus and Vega are much brighter than our sun. Vega is 51 times, and Arcturus 112 times as bright.

Night Coughs

Quickly checked without "dosing." Just rub on VICKS VapoRub

Use the Classifieds

GUS GULFSPRAY

HE ALWAYS GETS HIS BUG!
"A DAMSEL IN DISTRESS!"



MOTHS ON THE MARCH AGAIN!



"FEAR NOT, FAIR ONE!"



"AND THAT FOR THE LARVAE!"



Moral: Gulfspray kills moths and moth larvae and it's certain death to flies, mosquitoes, roaches. Stainless. Mild, pleasant odor. 49c pint at neighborhood and department stores and at all Good Gulf Dealers.

Special FREE OFFER
MOTH BAG with every QUART 85¢
GULFSPRAY INSECT KILLER

J. B. COTTEN
Attorney
Personal Injury Cases
General Practice
Crane, Texas
Telephones 13 & 15

Buddy's FLOWERS
MIDLAND, TEX.
1200 W. Wall
PHONE 1083

J. P. INMAN
Optometrist
Glasses fitted correctly
A full line of frames and mountings. Broken lenses quickly and accurately replaced.
Broken frames repaired
104 North Main St.

IM LUCKY

If you injure another person YOU PAY. If someone injures you WHO PAYS? You do, unless you have Personal Accident Insurance—then it's up to your insurance company. You owe it to your family to take out a Personal Accident Policy TODAY.

MIMS & CRANE
COMPLETE INSURANCE SERVICE
BONDS
TELEPHONE 74
111 W. WALL ST., MIDLAND, TEX.

UNIVERSAL APPLIANCE INCORPORATED
122 North Main
Phone 642
Midland, Texas

NOW OFFERS THE full line OF
NORGE
DISTINCTIVE HOME APPLIANCES

- ★ REFRIGERATORS
- ★ RANGES
- ★ WASHERS
- ★ IRONERS

■ We wanted a full line of refrigerators, gas ranges, washers and ironers that we could unhesitatingly recommend to our best friends. Now we have it.

Because of its distinctive Rollator cold-making mechanism, the Norgé refrigerator provides extra years of dependable, economical service. The Norgé gas range has, among many exclusive features, the Concentrator burner—pronounced by experts the most revolutionary development in gas range engineering since the insulated oven.

The Norgé washer has automotively engineered power unit, Feather-Base agitator, exclusive system of "Quietors," safety wringer—many other unusual quality features. The Norgé ironer has table top cabinet, fast and slow speeds, adjustable pressure, automatic heat regulator, many other features that will please you.

Come in. See the complete display of Norgé money-saving appliances. Let us give you the details of our new, easy buying plan. Two or more Norgé appliances may be bought in combination on amazingly low terms.

NORGE

USED CAR SALE

See Us For Late Model Cars

1935 Ford 4-Door Sedan	1934 Ford Tudor Sedan
1934 6-Wheel Pontiac Coupe	1933 DeSoto Coupe
1934 Plymouth Coupe	1933 Ford Tudor
1932 91-Buick Sedan	1931 Buick Coupe
1930 61-Buick Sedan	1930 Buick Coupe

Our Cars Are Clean and Priced to Sell!
GMC 1/2 and 2-ton Trucks on Display
Oldsmobile and Pontiac Sixes and Eights
Cadillac and La Salle
Expert Body & Fender Work
We Repair Any Make of Car
Prices Reasonable—Work Guaranteed

EDWARDS MOTOR COMPANY
123 East Wall—Phone 20
Midland, Texas

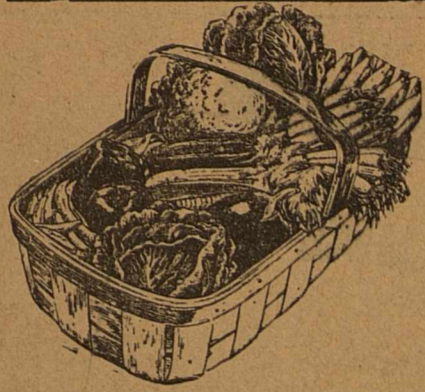
WES-TEX FOOD MARKET

FOOD SUGGESTIONS

MIDLAND

(We Reserve the Right to Limit Quantity)

FRI. and SAT. Apr. 17, 18



GARDEN

FRESH

PRODUCE

GREEN BEANS
ENGLISH PEAS

A vegetable dinner will not be complete without one of these two. The beans are nice and tender and the peas are well filled.

POUND **10c**

Come in and visit our vegetable department. We are proud of it this week because we have a wonderful selection and variety of fresh vegetables.

2 BUNCHES FOR 5c

3 POUNDS FOR 10c

BUNCH VEGETABLES

TURNIPS
CARROTS
BEETS

MUSTARD
RADISH
ONIONS

All of these vegetables are fresh from the Valley. Hauled with our town trucks

ORANGES
LEMONS
BANANAS

CALIFORNIA SUNKIST
California Sun Kist
South American Golden Yellow

Each **1c**

FRESH, CRISP, TENDER
SPINACH

GRAPE FRUIT Marsh Seedless **3 For 10c**



POLAR BEAR
FLOUR



6 POUNDS **29c** 24 POUNDS **94c**
12 POUNDS **53c** 48 POUNDS **\$1.78**

SPECIAL! SPECIAL!
STRAWBERRIES!

2 Pts. 15c



Also fresh baked short cakes to go with these berries

6 Cup Cakes for **15c**

SUGAR

PURE CANE

10 Pound Cloth Bags **46c**

PEAS Castle Haven No. 2 Can	9c
PRESERVES Ma Brown 2 Lb. Jar	39c
STRING BEANS Kuners No. 2 can	12c
HOMINY No. 1 Can	5c
PORK & BEANS No. 16-oz. Can Each	5c
TOMATOES No. 1 Can	5c
PRUNE JUICE Quart Jar	29c
TOMATO JUICE Campbells No. 1 Can	5c
CATSUP 14 oz. jar 2 for	25c
CHERRIES R. S. P. No. 2 Can	11c
SALMON 16 oz. Can	10c

VINEGAR

Quart Bottle **12c**

Pillsbury Pancake FLOUR
4 Pound Package **27c**

PINTO BEANS

4 Pounds for

21c

COFFEE

FOLGERS

1 POUND CAN **29c**

CORN MEAL

20 Pound Sack

53c

SOAP FLAKES Balloon 5 pound pkg.	34c
PINEAPPLE Libbys Crushed No. 1 can, 3 for	25c
SUGAR Powdered or Brown 3 pkgs. for	25c
MARSHMALLOWS One Pound Package	16c
GRAPE JUICE Quart Bottle	25c
SALAD DRESSING El Food Qt. Jar	31c
CORN Echo Tender Sweet No. 2 Can	9c
SOAP Big Ben 6 for	25c
GRAPE JAM Ma Brown 4 pound jar	55c
OLIVES Stuffed 8 oz. jar	16c
PEAS El Food Black Eyed No. 1 can	8c



ALL FLAVORS

2 PKGS

13c

Compound

Mrs. Tucker's OR Armour's Vegetole

8 Pound Carton

92c

ROAST

Choice Baby Beef

POUND

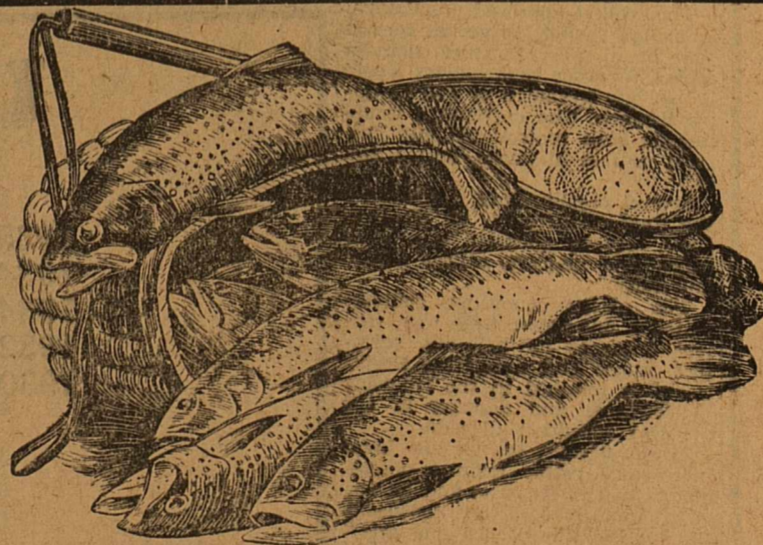
13c

ROUND

STEAK

POUND

22c



FRESH FISH lb. **27c**

BACON

Armours Star

POUND

29c

SPARE RIBS

POUND

18c



THE SOAP OF BEAUTIFUL WOMEN

BAR **5c**

WHEATIES

2 Pkgs. For

25c

Rio Hondo Tomato Festival May 16

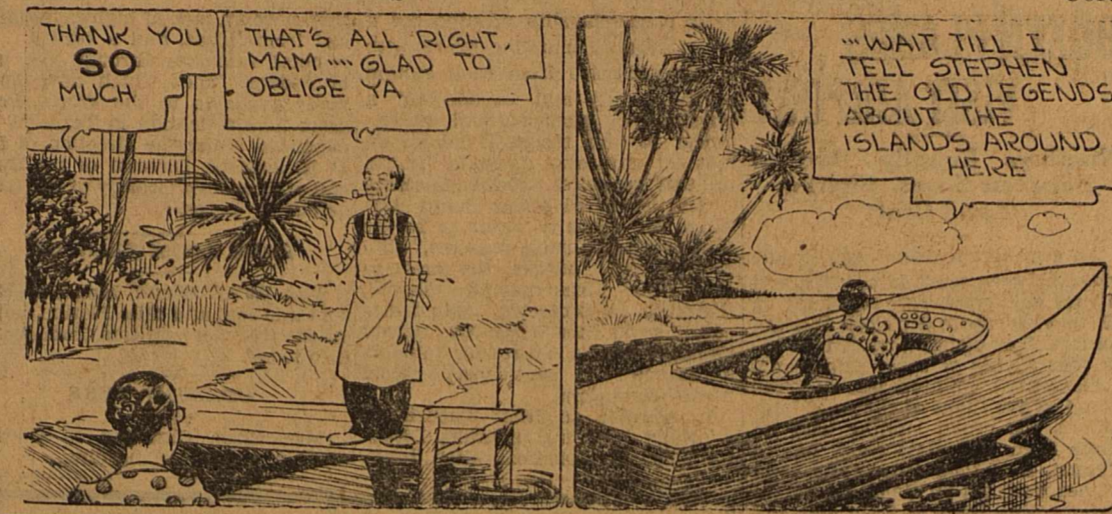
RIO HONDO, Texas (AP)—The lower Rio Grande Valley, which has three crop festivals annually, will turn its attention to the annual Rio Hondo tomato fiesta here May 16 and 17. The others are the citrus fiesta at Mission and the onion fiesta at Raymondville, the latter to be held this month.

Ft. Bliss Soldiers Trade Brograms for Dancing Shoes

EL PASO, Texas (AP)—Soldiers of Fort Bliss in El Paso traded their brograms for "dancing shoes" when the Army Y. M. C. A. began a tap-dancing class. Ball room dancing, recruiting officers announced will be given "those who need it." Dances are given in the gym twice a month.

Use The Classifieds!

BOOTS AND HER BUDDIES



Cora Knows Steve

By MARTIN

CLASSIFIED ADVERTISING

RATES AND INFORMATION

CASH must accompany all orders for classified ads, with a specified number of days for each to be inserted. CLASSIFIEDS will be accepted until 12 noon on week days and 6 p. m., Saturday for Sunday issues. PROPER classification of advertisements will be done in the office of The Reporter-Telegram. ERRORS appearing in classified ads will be corrected without charge by notice given immediately after the first insertion. RATES: 2¢ a word a day. 4¢ a word two days. 5¢ a word three days. MINIMUM charges: 1 day 25¢. 2 days 50¢. 3 days 60¢. FURTHER information will be given gladly by calling 7 or 8.

13—Cards of Thanks

WE are indeed grateful for the many expressions of sympathy shown us during our recent sorrow.—Mrs. Jack Denton, Mrs. Doyle Denton and family.

15—Miscellaneous

PIANO FOR RENT, phone 39. 33-1
NOTICE: Lice and scale are eating arbor vitae and cedars up at cemetery. If interested in having yours sprayed call 884. Work guaranteed. Barron's Tree & Rose Service. 33-1
SHARE expenses to California with two leaving about April 23; references exchanged. Mrs. T. E. Shelton, Crane, Texas. 33-3

1—Lost and Found

LOST: Black cocker spaniel male; reward. Mrs. Charles McCann, 509 West Tennessee. 32-2

LOST: Light gray hat, black band, size 7 1/4 labeled Wadley's, Luther Tidwell. 33-1

2—For Sale

NEW smart Spring dresses; all sizes, styles and colors. The Modern Shop. 32-3

TWO young saddle horses both paints, fancy color, one suitable for children. T. Paul Barron. 33-1

FOR SALE or LEASE

Store meat market; living quarters in store furnished at Ruidosa, N. M.; see—

J. A. Gazaway
Seminole, Texas

2(a)—For Trade

WILL exchange dental work for hauling of fence posts; must have truck; apply Dr. Green, 204 First National Bank Bldg. 29-6

3—Furn. Apts.

THREE room furnished apartment; 112 North Big Spring. 31-3

ONE and two-room apartments; close in, 315 North Baird. 33-3

10—Bedrooms

COOL Bedroom for gentlemen only, 211 West Kansas, telephone 697-W. 33-3

11—Employment

WANT used cars mechanic; must have hand tools. Frank Adams. 31-3

UPHAM FURNITURE COMPANY
"The Bargain House of West Texas,"
Living Room Suites, 2 pieces. \$29.75
SIMMONS Innerspring Mattresses. 17.50
1 day Service on Mattress Renovating
LAWN HOSE, 50 feet. 2.69

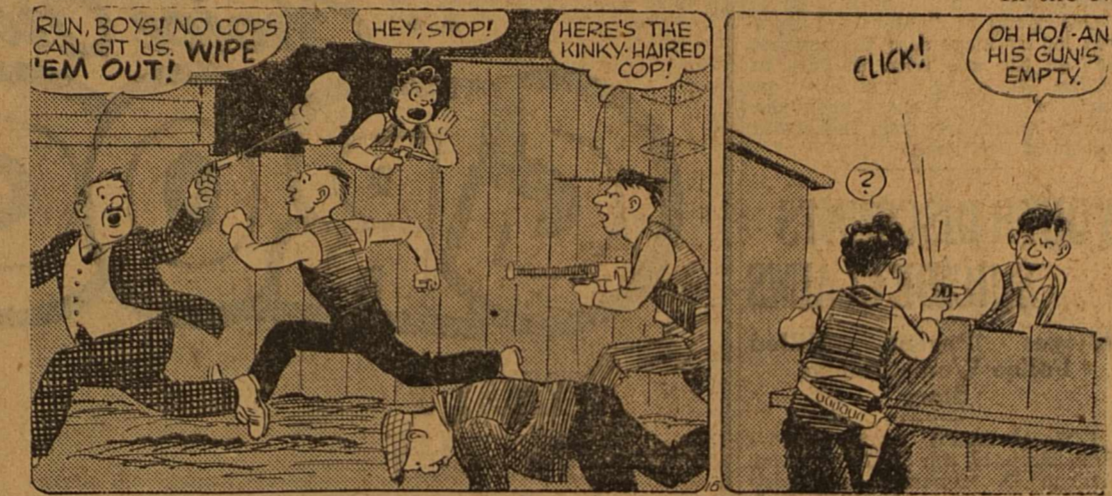
POLITICAL ANNOUNCEMENTS

Subject to the action of the Democratic Primary Election July 25, 1936. Advertising rates: For State, District and County Offices, \$15.00; for Precinct Offices, \$7.50. Cash with order.

For State Senator: (29th District of Texas) H. L. WINFIELD
For District Attorney: (70th Judicial District) CEIL C. COLLINGS (Re-Election)
For District Clerk: NETTIE G. ROMER (Re-Election)
For County Judge: E. H. BARRON (Re-Election)
For Sheriff, Tax Assessor and Collector: A. C. FRANCIS (Re-Election)
For County Attorney: MERRITT F. HINES
For County Clerk: SUSIE G. NOBLE (Re-Election) J. H. FINE

For County Treasurer: LOIS PATTERSON MARY L. QUINN (Re-Election)
For Justice of Peace: MRS. JOSEPHINE K. LIGON (Precinct No. 1) J. H. KNOWLES (Re-Election)
For Constable: (Precinct No. 1) C. B. POWDER (Re-Election) W. P. (Bud) ESTES
For County Commissioner: (Precinct No. 1) J. C. ROBERTS (Re-Election)
For County Commissioner: (Precinct No. 2) W. V. JONES
For County Commissioner: (Precinct No. 3) B. T. GRAHAM (Re-Election) W. T. BRYANT
For County Commissioner: (Precinct No. 4) D. L. HUTT (Re-Election) TYSON MIDKIFF
For County Commissioner: (Precinct No. 4) CARL SMITH (Re-Election)

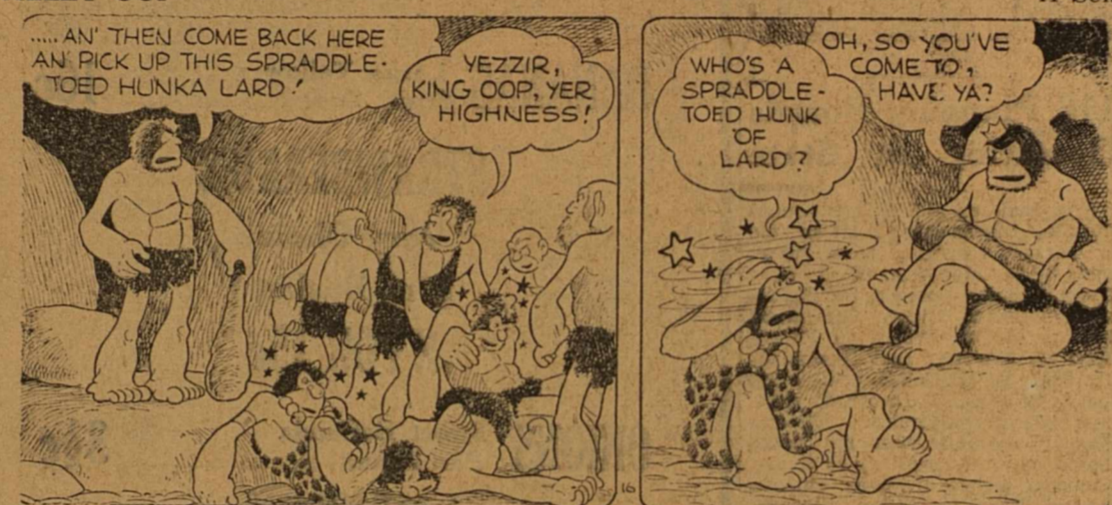
WASH TUBS



In the Neck of Time.

By CRANE

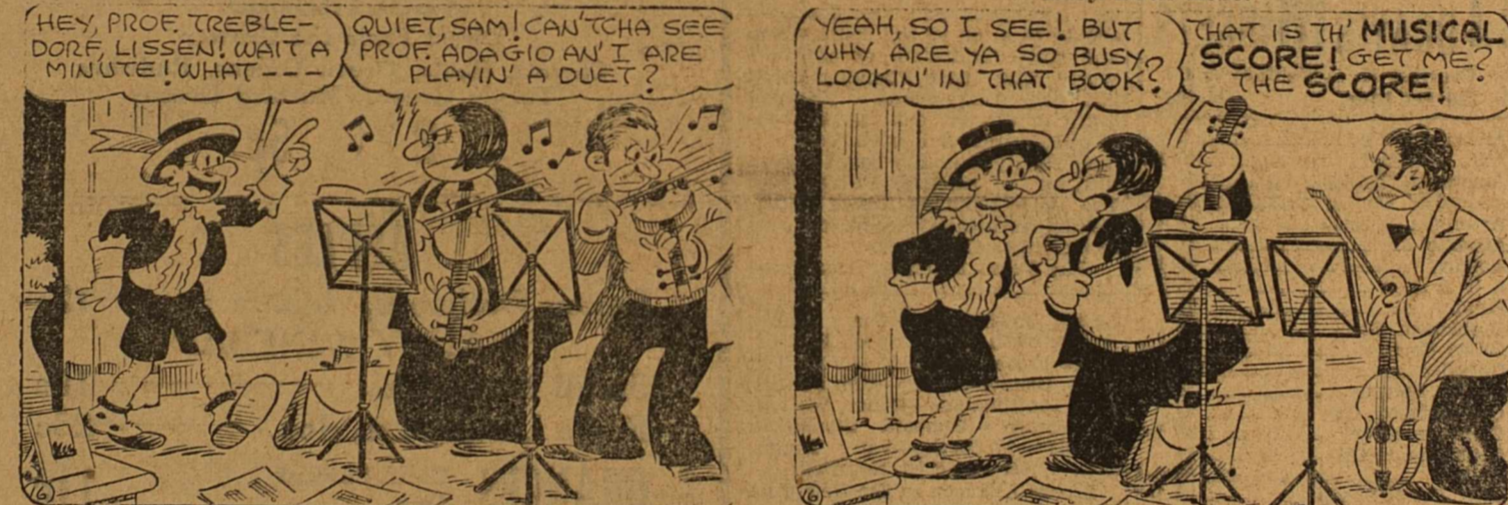
ALLEY OOP



A Sensible Question

By HAMLIN

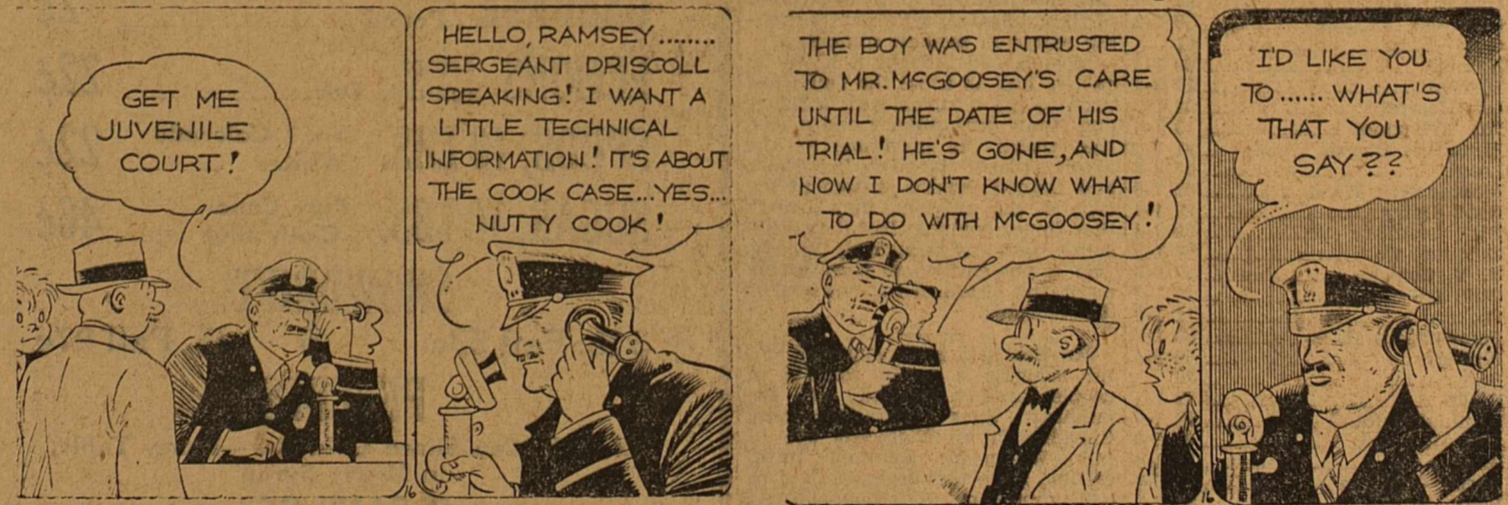
SALESMAN SAM



They Both Lose.

By SMALL

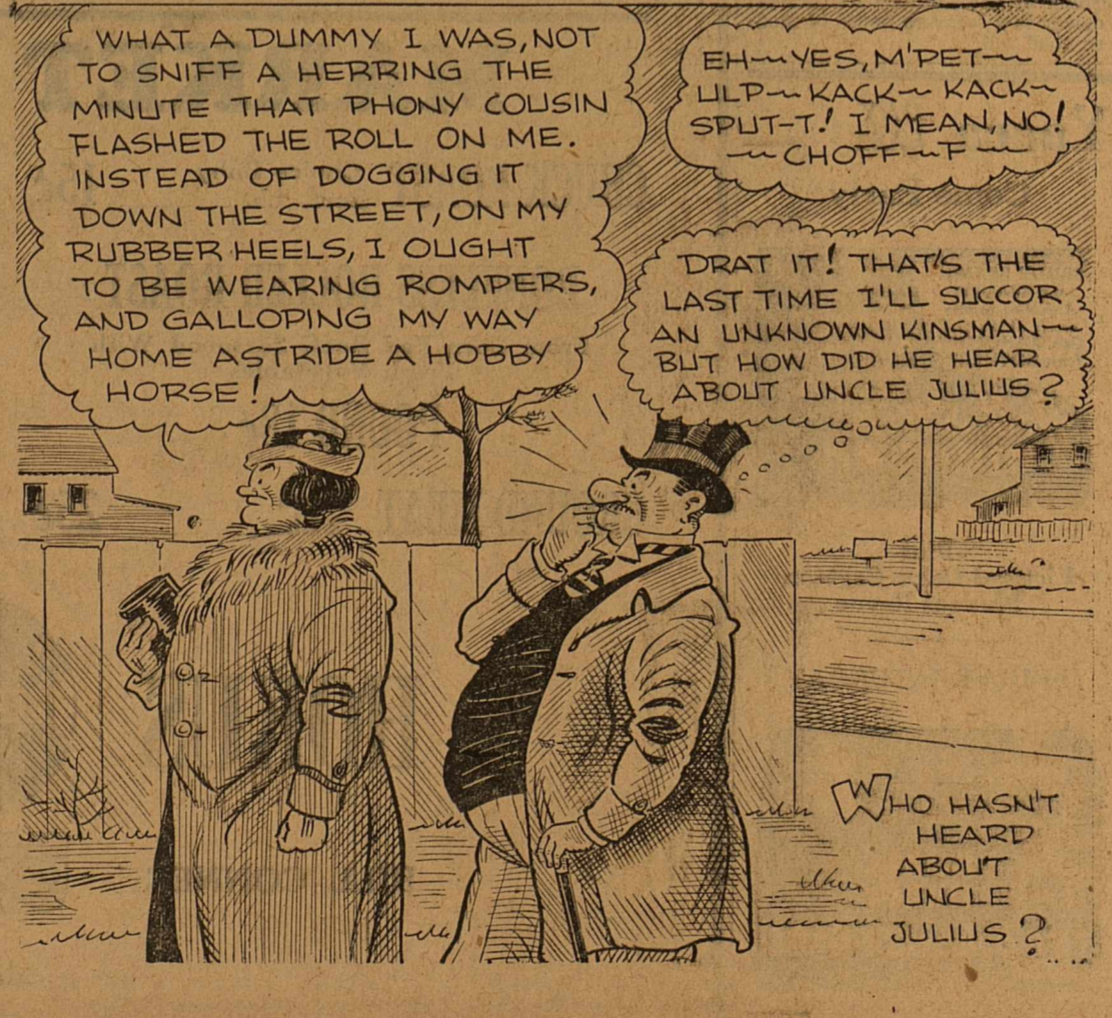
FRECKLES AND HIS FRIENDS



Startling News

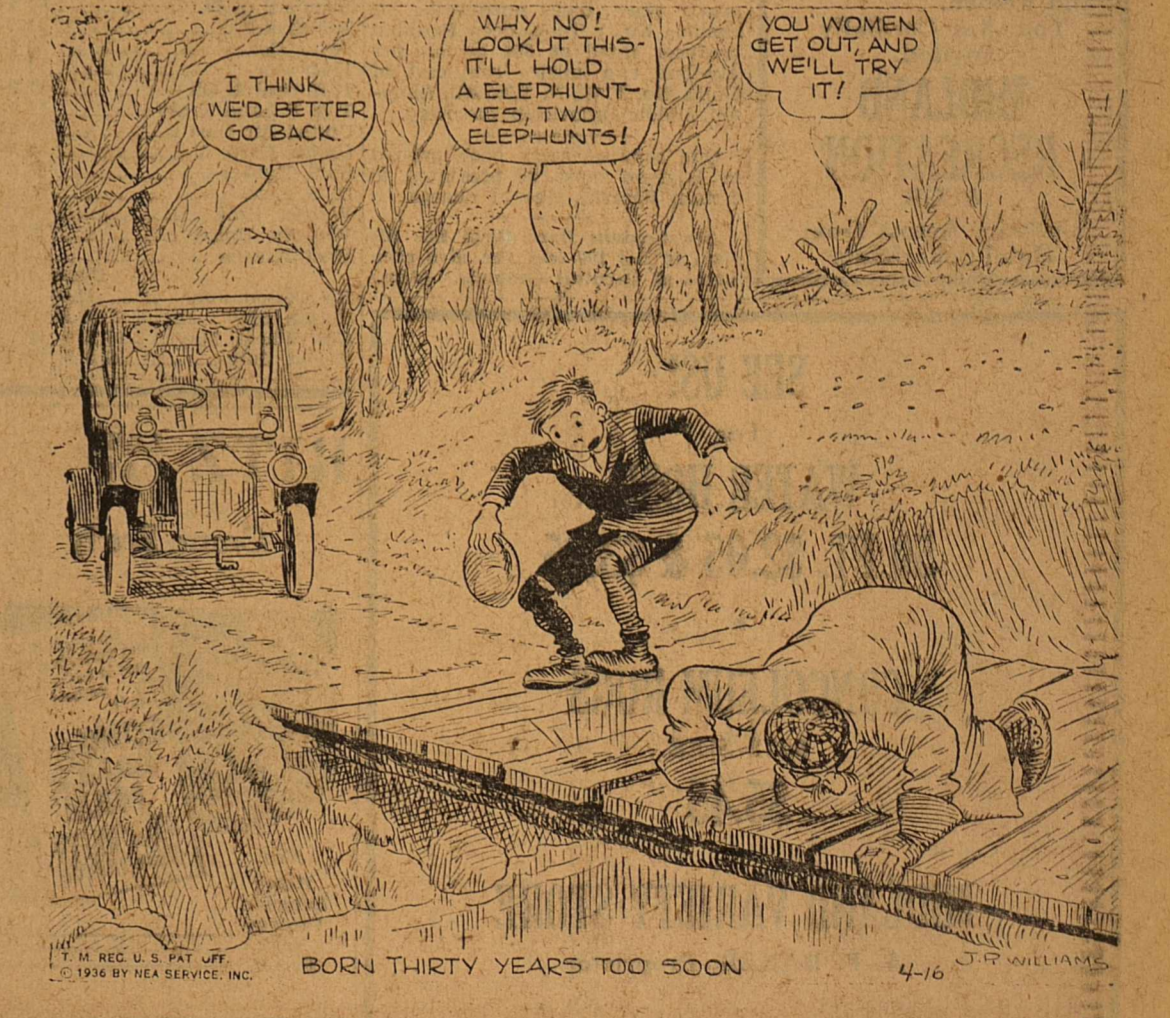
By BLOSSER

OUT OUR WAY



By WILLIAMS

OUR BOARDING HOUSE



By HEARN

20 COMPLETIONS ARE LISTED IN 9 WESTEX COUNTIES 17 Are Producing Total of 9,168 Barrels

BY FRANK GARDNER

Twenty completions were listed last week among nine West Texas counties. Of these, 17 were producing wells adding a total of 9,168 barrels to this region's daily potential, two were abandoned as failures, and one was a location abandoned without being drilled.

The completions listed by counties are as follows:

Andrews County
Tripplehorn No. 2 King, 330 feet from the north and 2,310 feet from the west line of section 11, block A-49, public school land. Elevation, 3,210. Initial production, 287 barrels of oil and 7 barrels of water per day, flowing. Top of pay, 4,370. Total depth, 4,382.

Crane County
Gulf No. 130 McElroy, 934 feet from the south and 387 feet from the west line of section 200, block F. C. C. S. D. & R. G. N. G. survey. Elevation, 2,550 feet. Shot with 300 quarts from 2,725 to 2,931. Initial production, 1,105 barrels per day, flowing. Top of pay, 2,760. Total depth, 2,943.

Winkler County
Barnesdell No. 2-A Brown and Altman, 990 feet from the south and west lines of section 6, block B-5, public school land. Elevation, 2,843. Shot with 200 quarts from 3,068 to 3,144. Initial production, 65 barrels per day, flowing. Top of pay, 3,075. Total depth, 3,171.

Winkler County
Barnesdell No. 2-A Brown and Altman, 990 feet from the south and west lines of section 6, block B-5, public school land. Elevation, 2,843. Shot with 200 quarts from 3,068 to 3,144. Initial production, 65 barrels per day, flowing. Top of pay, 3,075. Total depth, 3,171.

Winkler County
Barnesdell No. 2-A Brown and Altman, 990 feet from the south and west lines of section 6, block B-5, public school land. Elevation, 2,843. Shot with 200 quarts from 3,068 to 3,144. Initial production, 65 barrels per day, flowing. Top of pay, 3,075. Total depth, 3,171.

Winkler County
Barnesdell No. 2-A Brown and Altman, 990 feet from the south and west lines of section 6, block B-5, public school land. Elevation, 2,843. Shot with 200 quarts from 3,068 to 3,144. Initial production, 65 barrels per day, flowing. Top of pay, 3,075. Total depth, 3,171.

Winkler County
Barnesdell No. 2-A Brown and Altman, 990 feet from the south and west lines of section 6, block B-5, public school land. Elevation, 2,843. Shot with 200 quarts from 3,068 to 3,144. Initial production, 65 barrels per day, flowing. Top of pay, 3,075. Total depth, 3,171.

Winkler County
Barnesdell No. 2-A Brown and Altman, 990 feet from the south and west lines of section 6, block B-5, public school land. Elevation, 2,843. Shot with 200 quarts from 3,068 to 3,144. Initial production, 65 barrels per day, flowing. Top of pay, 3,075. Total depth, 3,171.

Winkler County
Barnesdell No. 2-A Brown and Altman, 990 feet from the south and west lines of section 6, block B-5, public school land. Elevation, 2,843. Shot with 200 quarts from 3,068 to 3,144. Initial production, 65 barrels per day, flowing. Top of pay, 3,075. Total depth, 3,171.

Winkler County
Barnesdell No. 2-A Brown and Altman, 990 feet from the south and west lines of section 6, block B-5, public school land. Elevation, 2,843. Shot with 200 quarts from 3,068 to 3,144. Initial production, 65 barrels per day, flowing. Top of pay, 3,075. Total depth, 3,171.

Winkler County
Barnesdell No. 2-A Brown and Altman, 990 feet from the south and west lines of section 6, block B-5, public school land. Elevation, 2,843. Shot with 200 quarts from 3,068 to 3,144. Initial production, 65 barrels per day, flowing. Top of pay, 3,075. Total depth, 3,171.

Winkler County
Barnesdell No. 2-A Brown and Altman, 990 feet from the south and west lines of section 6, block B-5, public school land. Elevation, 2,843. Shot with 200 quarts from 3,068 to 3,144. Initial production, 65 barrels per day, flowing. Top of pay, 3,075. Total depth, 3,171.

Winkler County
Barnesdell No. 2-A Brown and Altman, 990 feet from the south and west lines of section 6, block B-5, public school land. Elevation, 2,843. Shot with 200 quarts from 3,068 to 3,144. Initial production, 65 barrels per day, flowing. Top of pay, 3,075. Total depth, 3,171.

Winkler County
Barnesdell No. 2-A Brown and Altman, 990 feet from the south and west lines of section 6, block B-5, public school land. Elevation, 2,843. Shot with 200 quarts from 3,068 to 3,144. Initial production, 65 barrels per day, flowing. Top of pay, 3,075. Total depth, 3,171.

Winkler County
Barnesdell No. 2-A Brown and Altman, 990 feet from the south and west lines of section 6, block B-5, public school land. Elevation, 2,843. Shot with 200 quarts from 3,068 to 3,144. Initial production, 65 barrels per day, flowing. Top of pay, 3,075. Total depth, 3,171.

Upton County

Black and others No. 3 Lane, 990 feet from the south and 330 feet from the east line of section 36, block 1, M. K. & T. survey. Treated with 2,000 gallons of acid. Initial production, 327 barrels per day, pumping. Top of pay, 2,306. Total depth, 2,339.

Upton County
Cordova-Union Oil Co. No. 1 Fee, 5,956 feet from the west and 2,371 feet from the north line of section 3, block AB, A. E. Baxley survey. Elevation, 2,590. Shot with 150 quarts from 2,062 to 2,176. Treated with 1,000 gallons of acid. Initial production, 72 barrels (70 percent water) per day, pumping. Top of pay, 2,062. Total depth, 2,176. Plugged back to 2,075.

Upton County
Ellis No. 2-A Robbins, 2,310 feet from the south and 330 feet from the west line of section 4, G. C. & S. F. survey. Treated with 1,000 gallons of acid. Initial production, 624 barrels per day, pumping. Top of pay, 2,035. Total depth, 2,080.

Upton County
Peck-Leidecker and Atlantic No. 1 Reynolds (Rio Bravo), 220 feet from the northwest and 300 feet from the southwest line of the west corner of section 12, block 32, H. & T. C. survey. Elevation, 2,438. Dry and abandoned. Total depth, 2,438.

Upton County
Richardson Oils, Inc. No. 29-B Johnson, 2,310 feet from the southeast and southwest lines of section 22, block 34, H. & T. C. survey. Shot with 315 quarts from 2,346 to 2,570. Initial production, 215 barrels per day, flowing. Top of pay, 2,380. Total depth, 2,570.

Upton County
Barnesdell No. 2-A Brown and Altman, 990 feet from the south and west lines of section 6, block B-5, public school land. Elevation, 2,843. Shot with 200 quarts from 3,068 to 3,144. Initial production, 65 barrels per day, flowing. Top of pay, 3,075. Total depth, 3,171.

Upton County
Barnesdell No. 2-A Brown and Altman, 990 feet from the south and west lines of section 6, block B-5, public school land. Elevation, 2,843. Shot with 200 quarts from 3,068 to 3,144. Initial production, 65 barrels per day, flowing. Top of pay, 3,075. Total depth, 3,171.

Upton County
Barnesdell No. 2-A Brown and Altman, 990 feet from the south and west lines of section 6, block B-5, public school land. Elevation, 2,843. Shot with 200 quarts from 3,068 to 3,144. Initial production, 65 barrels per day, flowing. Top of pay, 3,075. Total depth, 3,171.

Upton County
Barnesdell No. 2-A Brown and Altman, 990 feet from the south and west lines of section 6, block B-5, public school land. Elevation, 2,843. Shot with 200 quarts from 3,068 to 3,144. Initial production, 65 barrels per day, flowing. Top of pay, 3,075. Total depth, 3,171.

Upton County
Barnesdell No. 2-A Brown and Altman, 990 feet from the south and west lines of section 6, block B-5, public school land. Elevation, 2,843. Shot with 200 quarts from 3,068 to 3,144. Initial production, 65 barrels per day, flowing. Top of pay, 3,075. Total depth, 3,171.

Upton County
Barnesdell No. 2-A Brown and Altman, 990 feet from the south and west lines of section 6, block B-5, public school land. Elevation, 2,843. Shot with 200 quarts from 3,068 to 3,144. Initial production, 65 barrels per day, flowing. Top of pay, 3,075. Total depth, 3,171.

Upton County
Barnesdell No. 2-A Brown and Altman, 990 feet from the south and west lines of section 6, block B-5, public school land. Elevation, 2,843. Shot with 200 quarts from 3,068 to 3,144. Initial production, 65 barrels per day, flowing. Top of pay, 3,075. Total depth, 3,171.

Upton County
Barnesdell No. 2-A Brown and Altman, 990 feet from the south and west lines of section 6, block B-5, public school land. Elevation, 2,843. Shot with 200 quarts from 3,068 to 3,144. Initial production, 65 barrels per day, flowing. Top of pay, 3,075. Total depth, 3,171.

Upton County
Barnesdell No. 2-A Brown and Altman, 990 feet from the south and west lines of section 6, block B-5, public school land. Elevation, 2,843. Shot with 200 quarts from 3,068 to 3,144. Initial production, 65 barrels per day, flowing. Top of pay, 3,075. Total depth, 3,171.

Upton County
Barnesdell No. 2-A Brown and Altman, 990 feet from the south and west lines of section 6, block B-5, public school land. Elevation, 2,843. Shot with 200 quarts from 3,068 to 3,144. Initial production, 65 barrels per day, flowing. Top of pay, 3,075. Total depth, 3,171.

Upton County
Barnesdell No. 2-A Brown and Altman, 990 feet from the south and west lines of section 6, block B-5, public school land. Elevation, 2,843. Shot with 200 quarts from 3,068 to 3,144. Initial production, 65 barrels per day, flowing. Top of pay, 3,075. Total depth, 3,171.

Upton County
Barnesdell No. 2-A Brown and Altman, 990 feet from the south and west lines of section 6, block B-5, public school land. Elevation, 2,843. Shot with 200 quarts from 3,068 to 3,144. Initial production, 65 barrels per day, flowing. Top of pay, 3,075. Total depth, 3,171.

"End of Summer" Is Captivating Comedy Of Personalities

Editor's Note: The following review of "End of Summer" was written for The Reporter-Telegram by Mrs. E. W. Anguish after reading the play before the Play Readers club Wednesday.

BY MRS. E. W. ANGUISH
"End of Summer" by S. N. Behrman is a delightful comedy in three acts which was produced by the Theatre Guild, Inc., at the Guild Theatre, New York, Feb. 17, 1936.

The action of the play takes place in the living room of Bay Cottage, the summer place of the very wealthy Frothinghams in Northern Maine. The theme of the story is primarily the struggle of lovely young Paula Frothingham and her sweetheart, Will Dexter a young man with editorial ambitions, just out of college, poor and unable to find work—to surmount the barrier which her wealth has placed between them.

Leonie Frothingham, Paula's mother, is an impulsive heart-breaking child like woman in a young and quivering ecstasy of living and anticipation. She lives for love and complicates the lives of her daughter, mother Mrs. Wyler, and husband, Sam Frothingham, with her continuous affairs. At present she is deeply involved with a Russian-Boris Count Mirsky and a Dr. Kenneth Rice who is a debunking psychiatrist from New York after her money.

Humor and pathos are provided as Leonie breaks up her affair with the Count and sends him away so that she may entertain Dr. Rice—the more recent object of her infatuation only to find that he has fallen in love with her daughter. Both she and Paula scorn him after that and he too leaves. In the meanwhile Sam has obtained a divorce and married a charming, sincere woman with whom he is very happy.

Eventually Paula takes matters into her own hands and renouncing her fortune, goes with her young lover to a happier destiny and poor Leonie, declaring that this is the "end of summer" for her, is left at the end with only a poor young friend of Will's, Dennis McCarthy, who persuades her to back him in the publication of a magazine for radical young America even though what he advocates is abolishment of the capitalist system.

The players in the Guild Theatre production were as follows:

Today's Markets

Courtesy H. O. Bedford & Co. 320 Pet. Bldg. Tel. 408

Armour & Co.	5-8
Atlas Chalmers	48 1-2
American Tel-Tel.	167
Anaconda Copper	38 7-8
American P. & L.	11 3-4
Atlantic	31 3-4
Auburn	45 1-2
A. T. & S. F.	82 1-4
Bendix	31
Bethlehem Steel	60 1-4
Cities Service	5 1-4
Chrysler	100 1-4
Comm. Solvent	19 1-8
Consolidated Gas	33
Continental Oil	34 1-2
Consolidated Oil	14
Douglas	63 3-4
East. Bond, Share	22 3-8
Freeport-Tex.	30 1-2
General Elec.	40 3-8
General Motors	68
Goodyear	30 1-2
Gulf	91
Humble	69 1-4
Hudson	17 3-4
Int. Harvester	22 1-4
Int. Telephone	15 7-8
Kennicott Copper	41 1-4
Loews	45 3-8
Montgomery Ward	42 7-8
Nat'l Dairy	23 1-4
Nat'l Distillers	30 3-4
N. Amer. Co.	28 1-8
N. Y. Central	39 7-8
Ohio Oil	14 1-2
Packard	11 1-8
Pennsylvania R. R.	33 1-2
Phillips	46 3-4
Pure	22
Radio	12 1-4
Remington Rand	22 1-4
Sec. Roebuck	66 3-8
Shell	17 1-4
Socony-Vacuum	14 7-8
Southern Pac. R. R.	36 3-8
Standard Brands	16
Standard of Cal.	44 1-4
Standard of N. J.	64 7-8
Studebaker	13 3-8
Texas Co.	38 1-2
Tidewater	17 1-2
T. P. Coal & Oil	11 3-4
T. P. Land Trust	11 1-4
United Air Line	25 3-8
United Corp.	6 7-8
U. S. Rubber	33 1-2
U. S. Steel	69 3-4
Warner Bros.	10 7-8
Western Union	86 5-8
Westinghouse	119 1-2
Close Prev.	
NY Cotton, July	11.06 11.08
Cotton, May	11.38 11.38
Chi. Wheat, May	97 3-8 98 1-4
Wheat, July	89 3-8 90 1-2

DOZEN PLANES VISIT AIRPORT

Numbers Equally Divided Between Scout, Fighter and Land Craft

An even dozen planes, equally divided between scout land strips and fighter land craft, were registered at Sican Field up to 2 o'clock this afternoon. The planes were divided into four flights of three ships each.

Primarily the struggle of lovely young Paula Frothingham and her sweetheart, Will Dexter a young man with editorial ambitions, just out of college, poor and unable to find work—to surmount the barrier which her wealth has placed between them.

YOUTH DISCOUNTS SUICIDE CLAIMS

Alleges Parents Killed Police Won't Believe Story

LOS ANGELES, April 16 (AP)—John Moriarty, son of Dr. and Mrs. William D. Moriarty, who were killed in a bomb explosion in their car, today told newspapermen he believed that his father was murdered, not a suicide. He said that he had proof in a letter. Police discounted the story.

116 Planning Boards Operating In State

"One hundred and sixteen county planning boards have been created in Texas," according to a report made by Director E. A. Wood of the Texas Planning Board to the Southwestern Social Science Association meeting in Fort Worth on Friday, April 10. "We urge that this splendid work be continued until every county in Texas has a county planning board," continued Director Wood. "A county planning board should take an inventory of county resources, people, livestock, climate, streams, lakes, vegetation, minerals, scenery, highways, railways, game and marine life, if any. These should be catalogued, and consideration should be given to the conservation and better utilization of each resource. The Texas Planning Board can help each county planning board in working out the problems of conservation and utilization, and each county planning board can in turn be of material assistance to the Texas Planning Board by furnishing authentic information concerning these resources."

"The Texas Planning Board suggests a membership of nine for a typical county planning board with a representative from each section of the county and, in addition, a physician, a geologist, and an engineer to give technical advice on matters pertaining to public health, mineral resources, and engineering."

"The Texas Planning Board considers the people of Texas to be the State's most valuable resource," Director Wood advised the Association. "Our Texas people should, therefore, be protected against disease. To do this efficiently, county planning boards can render valuable assistance by considering local health conditions."

In addition to other features of a county planning program, Director Wood suggested education, taxation, poverty, lack of highways, damage from floods, and a survey of mineral resources through the use of Federal funds which have been made available to the Works Progress Administration in Texas to be expended under the direction of Dr. E. H. Sellards, Director of the Bureau of Economic Geology of the University of Texas.

Leonie Frothingham—Ina Claire; Dr. Kenneth Rice—Osgood Perkins; Paula Frothingham—Dorris Dudley; Boris, Count Mirsky—Tom Powers; Sam Frothingham—Minor Watson; Will Dexter—Shepherd Strudwick; Dennis McCarthy—Van Helmin; Mrs. Wyler—Mildred Natwick; Brooks Atkinson in the New York Times makes this comment on the play.

Mr. Behrman has spun another one of these tolerant, witty gently probing essays in modern thinking. In style and thought it is wholly captivating. As usual the Guild has risen to the occasion with a fluent and sunny performance and a cast that seems as inevitable as the adroit style of the play. Ina Claire and Osgood Perkins emerge in big type in the program, they deserve that finger pointing. But it is difficult to find any member of the cast who is not entitled to considerable merit and virtue in the newspapers this morning.

Mr. Behrman has a superb talent for bringing a whole roomful of people together naturally and enmeshing their characters and thoughts in an iridescent web of talk—Where Mr. Behrman leaves off and his actors begin most of us will never know. It is impossible to sit before "End of Summer" without admiring the integrity and re-lishing of the author's humor. His comedy is a treasure house of modern good will.

Yucca DAY LAST

Come Early

BRUTE BRAUN and BEAUTY! A smashing comedy drama of the sea! Geo. BANCOFT Ann SOTHERN

Hell Ship MORGAN with VICTOR JORY

Plus Pictorial-Color Cartoon Musical Revue

FRIDAY-SATURDAY
A COUPLE OF GYPSIES
LAUREL HARDY
THE BOHEMIAN GIRL

Cecil Smith Visits Parents At Llano

LLANO, Texas (AP)—Cecil Smith, Texas' famous cowboy polo star, visited his parents, Mr. and Mrs. S. E. Smith, here during the weekend of March 22, before going to New York to sail, April 3, for England for play this summer.

Smith returned recently from Del Rio, Fla., after a successful six week's season at the Gulf Stream Polo Club. Teaming with C. B. Wrightsman, Houston sportsman and capitalist, Billy Reynolds and Bob Bullock, Smith's team did not lose a game. Smith and Wrightsman will play together abroad and are taking a string of 31 ponies.

Another well known Texas poloist, Tom Mather, also will play in England this summer. He sails April 1, having been in California engaged in the West Coast tournaments for the past two months.

PATTERSON BETTER
Tom Patterson, who has been ill in Dallas for several days, is improved, relatives said today.

North America, with about one-twelfth of the world's population, uses about half of the world's supply of lumber.

See Captain Dare Devil Leo Simon in his 100-foot fire dive each night at Carnival Grounds. (Adv.)

HERE FROM STANTON

Mrs. W. W. Eiland, Mrs. Guy Eiland and son, and Miss Florine Jones of Stanton were visitors from Stanton today.

ODESSAN HERE

Mrs. Chas. Christian of Odessa was in town this morning.

Choice Quality GROCERY

FRIDAY & SATURDAY April 17 and 18

Bargains

BANANAS Large Yellow Fruit, Doz.	16c
HERSHEY'S CANDY Half Pound Almond or Milk Chocolate	EACH 15c
ASPIRIN All 10c Sellers For 8c, or 2 for	15c
HOMINY No. 2 1/2 Can	9c
TOMATO JUICE No. 2 Can 3 for	25c
TOMATOES No. 2 can 3 for	21c
CORN No. 2 can 2 for	15c
MIRACLE WHIP Dressing or Spread, Pts.	22c
BLACKBERRIES No. 2 East Texas	10c
RANCH STYLE BEANS, 3 FOR	25c
SPAGHETTI 11 1/2 oz. can Heinz, 2 for	15c
SPINACH No. 2 Can Crawford, 3 for	25c
FOLGERS COFFEE	
1 LB. 28c 2 LBS. 55c 5 LBS. \$1.34	
COFFEE 1-lb. Pecan Valley	19c
RICE 2-Lb. Pkg. Comet	15c
QUICK ADE A Refreshing Drink for Hot Days All Flavors, 10 Glasses to Package	
7 PKGS. 25c	
MARTINI The New Butter Wafer, 10-oz. pkg.	15c
HEINZ KETCHUP 14-oz. Bottle	21c
COUNTRY BUTTER Per Lb.	25c

MARKET SPECIALS

CHUCK ROAST Choice Baby Beef, Lb.	15c
ARMOUR'S STAR SLICED BACON POUND	35c
BONFLESS ROLLED ROAST From Corn Fed Beef, Seasoned With Fresh Vegetables	POUND 18c
BOLOGNA Lb.	16c
GROUND MEAT Fresh 2 Lbs.	25c
We Have A Lot of Jack Ratcliff's SPECIAL MILK FED FRYERS ANY SIZE All Kinds of Fresh Water Fish	

ARTHUR THURNBLAD



FORMER WORLD'S 3-CUSHION BILLIARD CHAMPION WILL APPEAR HERE APRIL 20 7:00 p. m.

In a 2-hour exhibition of billiards, pockets, fancy shots and free instructions to both men and women.

You Are Cordially Invited.

MIDLAND RECREATION CLUB

Upstairs Across from Hotel Scharbauer

SEE US! For WATER HOSE 50 FT. \$2.65 & \$3.25

CONGOLEUM RUGS 9x12 SIZE \$5.45

MIDLAND VARIETY STORE

A. P. BAKER, Proprietor

RITZ LAST DAY

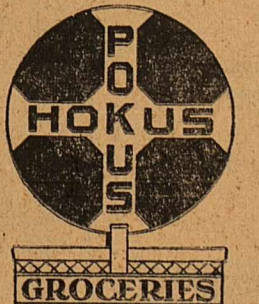
Come Early



SONG and DANCE MAN
He was half of girl act... but got to make way for a partner for life!

Also Harry Langdon Comedy News Events

HOKUS POKUS



BILL CONNER AND MARKET ELLIS CONNER