

OZONA STOCKMAN

Published Every Thursday at Ozona, Crockett County, Texas

W. EVART WHITE Editor and Publisher

Entered at the Post Office at Ozona, Texas, as Second Class Mail Matter Under Act of Congress, March 3rd, 1879

SUBSCRIPTION PRICE One Year \$2.00 Six Months \$1.25 Outside of the State \$2.50

Notices of church entertainments where admission is charged, cards of thanks, resolutions of respect and all matter not news, will be charged for at regular advertising rates.

THURSDAY, AUGUST 18, 1938

SURVIVES THE PURGE

Democrats of Colorado, in their state convention, have practically assured that Senator Alva B. Adams will be their nominee for re-election to the United States senate. They have done this by giving him such a majority that his "100 per cent New Deal" opponent will not get on the ballot in the primary.

San Diego, Calif., claims more people over 70 than any city in the country.

Jap-Russ War—G. O. P. Principles—Medical Trust?



1—Warfare on the Siberian-Manchurian frontier has resulted in bloody encounters between the armies of Japan and Soviet Russia. Soldiers of the Mikado such as these have engaged the Red forces. 2—Formulation of principles for the guidance of the Republican party are discussed at a Chicago meeting of the program committee, of which Dr. Glenn Frank, left, John D. M. Hamilton and Col. Theodore Roosevelt, Jr., are members. 3—Dr. Irvin Abel, president of the American Medical Association, now the target of a U. S. department of justice investigation to determine whether "organized medicine" has violated antitrust laws in opposing co-operative health societies.

MR. O'DANIEL NODS

Some of the 573,000 friends of the Hon. W. Lee O'Daniel, who proved their friendship by their votes, will be disappointed over their favorite's attitude toward a dozen of the runoff campaigns now in effect. Mr. O'Daniel has been pleased to give his blessing to a number of candidates in the runoff. This is a departure from custom but not beyond his privilege.

may have caused him to commit a far reaching political error. On the other hand, it may be that the majority in Texas will assume that his intention was fathered by a motive that does credit to his sincerity.—Dallas News.

WEIGH THE ISSUES

In the spirited contest now in progress for post of Land Commissioner between Bascom Giles of Austin, a long time employee of two of the best commissioners the State has had, and the incumbent, it would be well for Texas voters to keep two things in mind. There is first the fact that this is not an unimportant post but one of vital concern to all Texas, especially to the school children of Texas. The policies of the Commissioner and the degree of care and integrity that he brings to the post means the gain or loss of many hundred thousands of dollars to the school fund in the disposal of mineral rights.

But Mr. O'Daniel is not yet the Governor. To all practical purposes he has been elected, but has taken no oath of office. His responsibility at present is theoretical rather than actual. Because of the fact that he made his campaign on a nonpolitical basis, calling indeed for the abolition of politics and politicians, his present position makes him highly political. He will be charged by some with having established a political machine at the very start of his career.

The luck of the first primary has brought into the runoff against the incumbent Bascom Giles, a comparatively young man and one new to politics. While he has experience in the Land Office, it is impossible to say what sort of commissioner he will make. But on the face of the two year record of the present commissioner, Texas requires a change in Land Office. It is impossible to read the testimony before the legislative committee into the granting of oil leases by Commissioner McDonald

OUT IN FRONT and GOING STRONG! Great 1938 Edition GOOD YEAR G-3 ALL-WEATHER Year after year — for 23 consecutive years—Good-years have outlasted any other make of tire. And... the 1938 edition of this famous "G-3" is winning new friends. Gives longer non-skid wear and maximum blowout and bruise resistance — for 1938 driving needs.

GOODYEAR R-1 Popular with our owners who want quality with economy! As Low As \$6.40 GOODYEAR SPEEDWAY Lowest priced good tire—lifetime guarantee. As Low As \$5.85

FREE TIRE INSPECTION We'll gladly check over your tires—remove small pieces of glass, tacks, etc., before they cause serious trouble. Come in for this free service. No obligation.

North Motor Co. CHEVROLET - OLDSMOBILE Goodyear Tires & Tubes OZONA TEXAS

THE POCKETBOOK OF KNOWLEDGE BY TOPPS

FROM SUN TO SUN... IN 1940 PLANT WORKERS WERE CALLED TO WORK AT SUNRISE ALLOWED 40 MINUTES FOR BREAKFAST AND LUNCH AND WORKED UNTIL 7 P.M. TODAY THE AVERAGE WORK WEEK IN INDUSTRY IS LESS THAN 40 HOURS! INDUSTRIAL RESEARCH HAS FOUND A WAY TO CONVERT WASTE SKIM MILK IN DAIRIES INTO MATERIAL FOR MAKING BUTTONS. THE HEADLIGHT FISH—DEEP SEA CREATURE—HAS A "HEADLIGHT" BETWEEN ITS EYES WHICH CAN BE "SHAPPED ON" WHEN NEEDED TO SEARCH IN DARK WATERS FOR FOOD! TAXES PAID IN 1937 BY ONE INDUSTRY—STEEL—WERE EQUAL TO A YEAR'S PAY FOR 108,000 EMPLOYEES. CUPBOARDS, STOCKED WITH FOOD WE'RE POPULAR ADJUNCTS TO THE WELL-FURNISHED BED-ROOM IN THE 19th CENTURY—(DIDN'T TIME SAVED? CHECK BE BETTER FOR BUYING ONE ANOTHER HUNGARY)

without reaching the conviction that at the best the State was ill served in the methods that he used, methods that have cost the school funds material sums. It is impossible to read the opinion of the Civil Court of Appeals at Beaumont without feeling that the incumbent should not be re-elected. In affirming the judgment of a Polk County District Court in a land vacancy case, Judge W. B. O'Quin declared that "no instance has been called to our attention of so great and clear abuse of official discretion as now threatened by the Land Commissioner."

No Texas voter should decide the issues in this race without a thorough study of the conduct of the office and the determination to demand that it be operated soundly and in the best interests of the State.—Dallas News.

OZONA LODGE NO. 747 A. F. & A. M. Regular meetings first Monday night in each month. Next Meeting, Sept. 5, 1938

POSTED—All lands owned by O-B Trap Co. are posted against woodhauling, trapping, hunting or any form of trespassing. Violators will be prosecuted. O. B. TRAP CO.

REMINGTON RAND ELECTRIC CLOSE-SHAVER \$15.00 NOW \$15.75 COMPLETE WITH LEATHER CASE \$15 WITHOUT CASE Get yours today at Ozona Stockman TODAY we offer you the famous Remington Rand Close-Shaver at a new low price... \$15.75 complete with leather carrying case. Say "good-bye" to blades, soap, lotions and other expensive shaving nuisances. For less than a penny a month for current you can have close, clean shaves... and it doesn't take weeks of "learning how" with this shaver. We have already sold dozens of these Close-Shavers, and men tell us it's the fastest and easiest-to-use dry shaver of them all. THE OZONA STOCKMAN Phone 210

Here's How To Make Yourself Solid With the Newspaper

(According to an Arkansas paper of the Early 90s.) "If you have frequent headaches, dizziness, fainting spells, lame back, accompanied by chills, cramps, bunions, jaundice, fever, chilblains, or epileptic fits, it's a pretty sure sign you are not well, and are liable to die any minute. Hasten to this office and pay your subscription a year in advance, and thus make yourself solid for a good obituary notice." The above may be a slight exaggeration, but the newspaper does always have a kindlier feeling for the man who asks favors, when that man is a subscriber to the paper. And in the same manner, the newspaper raises a big question mark, when a concern which carries paid advertising in another publication, comes to it with a request for a free news story.

Crockett County's Best Advertising Medium Is The Ozona Stockman DEDICATED TO THE SERVICE OF CROCKETT COUNTY

THURSDAY, AUGUST 18, 1938 Behind The S In American B By John Crad New York, Aug. 17— Prices in retail stor... the smallest mon... ring July since Sep... then a downturn be... overed average retai... eight per cent. Rep... country's manufact... continue to indicate... ment. Last week... Telegrams were sent... leading motor pl... em to report for v... tely. Intensive oper... Detroit area are ab... America's export tra... nicely. Business p... ally are bright, exc... rbing decline in fa... t few weeks. In th... ash wheat prices h... about nine cents a bu... cents, rye 10 cents, or... \$1.50 a barrel a... barrel. This means a... purchasing power, w... ed business men... size as an indispens... keeping the wheels... turning... FOREIGN EXCH... pan cables bring r... other impending fi... in France and hint... valuation of the fra... fore, foreign excha... ating subject, but t... ayman it's all Greek... currencies fluctuate... many factors, of cou... confidence in a gov... tical and economic... international trade... role too. Suppose, fo... English importer... bushels of corn in t... cents a bushel. In de... to take his own m... sterling—and bid fr... erican dollars in th... bet. Just as at an at... ding tends to boost... dollars. English pap... will read, "Dollar... American papers at... will read, "Pound... clines." That's one... France, which has... goods than she has... year except two st... had a gradual decli... of its franc. The ex... had to be paid for... other foreign curre... ed with francs... CLOSE SHAVES... whiskers, who use... billion and a quart... every year, accordi... Department of Com... will be interested... the tax collector is... too. One blade in... chased by bewhiske... there must be abou... of them— goes to t... in the form of hid... 45 cents is paid fo...

Behind The Scenes In American Business

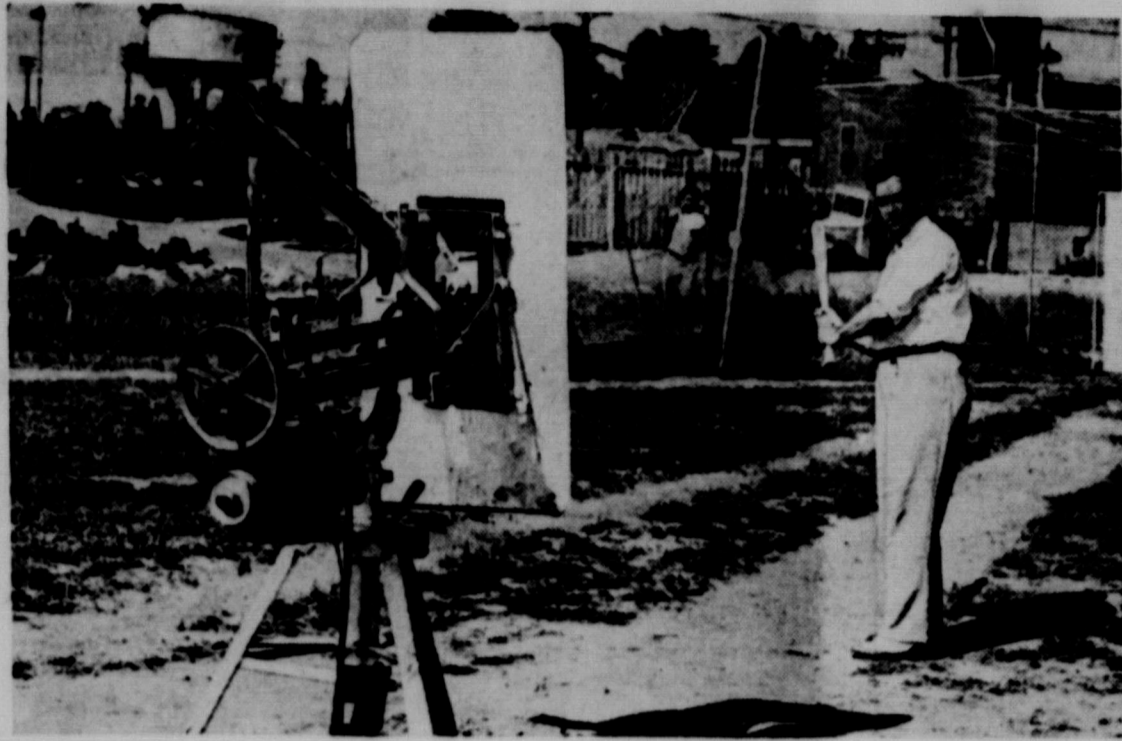
By John Craddock

New York, Aug. 17—BUSINESS Prices in retail stores registered the smallest monthly decline during July since September, 1937 when a downtrend began that has lowered average retail prices nearly eight per cent. Reports from the country's manufacturing plants continue to indicate reviving employment. Last week thousands of telegrams were sent to employees of leading motor plants telling them to report for work immediately. Intensive operations in the Detroit area are about to start. America's export trade is holding up nicely. Business prospects generally are bright, except for a disturbing decline in farm prices the last few weeks. In the last month cash wheat prices have dropped about nine cents a bushel, corn 10 cents, rye 10 cents, oats five cents, pork \$1.50 a barrel and beef \$6 a barrel. This means a loss of rural purchasing power, which enlightens business men today recognize as an indispensable factor in keeping the wheels of industry turning.

FOREIGN EXCHANGE—European cables bring rumors of another impending financial crisis in France and hint at further devaluation of the franc. To bankers, foreign exchange is a fascinating subject, but to the average layman it's all Greek. What makes currencies fluctuate? There are many factors, of course, involving confidence in a government's political and economic stability. But international trade plays a big role too. Suppose, for example, an English importer buys 1,000,000 bushels of corn in the U. S. at 50 cents a bushel. In doing so, he has to take his own money—pounds sterling—and bid for 50,000 American dollars in the money market. Just as at an auction, his bidding tends to boost the "price" of dollars. English papers that night will read, "Dollar rises," while American papers at the same time will read, "Pound sterling declines." That's one reason why France, which has imported more goods than she has exported every year except two since 1920, has had a gradual decline in the value of its franc. The excess of imports had to be paid for in dollars and other foreign currencies purchased with francs.

CLOSE SHAVES—Men with whiskers, who use more than a billion and a quarter razor blades every year, according to the latest Department of Commerce estimate will be interested to know that the tax collector is nicking them, too. One blade in every ten purchased by bewiskered brethren—there must be about forty million of them—goes to the tax collector in the form of hidden taxes. When 43 cents is paid for a package of

Mechanical Pitcher Throws Only Strikes



Byron Moser, a St. Louis banker with mechanical inclinations, tries out the mechanical pitcher he has built. It pitches four balls a minute, each of which is a strike. The speed and height of the ball can be regulated.

blades, more than four cents is taken by taxes, and 37 hidden taxes are included in the price of every package of blades, according to the tax reports of a leading razor blade manufacturer.

THINGS TO WATCH FOR—Milk that will keep sterile and fresh at room temperature for as long as four months; a little hydrogen peroxide and potassium iodide is scientifically "cooked" into the milk, without affecting its taste. . . A surf automobile for use in salvaging stranded ships, catching fish, finding wrecks, harvesting shellfish. . . An acid treatment for opening the sealed "pores" of oil wells, thus obtaining a greater yield of oil. . . An "auto starter facilitator," which automatically jiggles the throttle while the engine is being started.

HEADLINES IN NEW YORK—Agriculture Department forecasts 1938 corn crop at 2,566,221,000 bushels; compares with 1937 crop of 2,644,995,000 bushels; Wallace sees no need for producer referendum on quotas. . . Cotton crop of 11,988,000 bales forecast; 1937 crop was 18,946,000 bales. . . Farm marketing receipts off 12 per cent in first six months of 1938 from like 1937 period. . . U. S. Steel Corp. operating rate drops in July. . . Machine tool orders expected to gain in August. . . Japan again sends gold to U. S.; shipments here total \$352,800,000 since March, 1937. . . Russia and Japan sign border truce. . . New type wheat developed in England; it is rust resistant and able to withstand heavy storms because it grows short. . . Federal Housing Administration operations hit record in July. . . Continuation of business upturn predicted by Con-

sumers' Goods Industries Committee based on reports from key companies in these industries.

Sleeping Potions Habit Forming, Says Health Authority

Austin, Aug. 17— "Thirty-five years ago, a German scientist produced a derivative of barbituric acid possessing hypnotic qualities. For years it was considered as non-habit forming and harmless, and the type of drug was sold freely over the counter without a doctor's prescription. But more recently the medical profession has realized that barbiturates such as allonal, amytol, luminal, vironal, neonal et cetra are far from harmless and definitely habit forming when used indiscriminately," warns Dr. Geo. W. Cox, State Health Officer.

"It is true that these slumber-producing drugs play an important part in certain insomnia conditions, as well as in the promotion of sleep when pain makes it impossible to obtain it otherwise. However, it is one thing to have this type of drug prescribed by a physician and administered under his supervision and quite another to employ it regularly without professional sanction. "It cannot be too strongly stated that the prolonged use of these sleep inducers can produce serious reactions including skin affections, impairment of speech and gait, paralysis of the eye muscles, and in extreme cases have been known to cause death. Plainly, any drug that possesses such possibilities should not be self-administered by the general public. "Moreover, it should be under-

stood that insomnia is a symptom of an underlying condition which may be use to any one of a variety of psychological or mental causes. The absurdity of habitual self-administration of any hypnotic to remove insomnia becomes apparent.

"Consequently, if the temptation arises to use a sleep producing drug on the say-so of a friend, it should be avoided. And if already relying on sleep producing medication, the brakes should be applied at once with the assistance of your family physician," Dr. Cox further advised.

Texas Auto Sales For July Sharply Decline From '37

Austin, Aug. 17—New automobile sales in Texas during July were slightly above those of the preceding month but sharply below those of July last year, according to the University of Texas Bureau of Business Research. Re-

ports to the Bureau from fifteen representative Texas counties show total sales of 3,477 cars, which is 1 per cent above those of June but 41.3 per cent below those of July last year.

Aggregate sales during the first seven months were 34.1 per cent below those of the corresponding

period a year ago. Compared with June the lowest price group made relatively the best showing with an increase of 8.6 per cent, but compared with July last year, and for the year to date, the upper intermediate price group made the best showing.

B & B Barber Shop
Smith Building

Open for Business

Modern - Sanitary Service

COOL COMFORT

Completely Air Conditioned

Your Patronage Appreciated

Sam Beasley Pink Beal

A Vote for

Marvin E. Blackburn, Jr.

of Junction, Texas



Marvin E. Blackburn, Jr.

Is a Vote for

- HONESTY
- EFFICIENCY
- EXPERIENCE
- SINCERITY
- ABILITY

For the Office of

State Representative

86th District

Born and reared in the District; Trained in Texas Schools; Worked on farms, ranches and in law offices to obtain an education.

Employed by Texas House of Representatives for a number of sessions, supervising the Division which handles House Bills and Resolutions; familiar with Legislative Procedure and best way to secure desired legislation; with this advantage is better equipped to serve you.

Stands FOR—Greater ECONOMY in GOVERNMENT; Elimination of USELESS BUREAUS and OVER-LAPPING GOVERNMENTAL AGENCIES and, wherever possible, placing the administration of ALL law in hands of LOCAL OFFICERS; ADEQUATE OLD AGE ASSISTANCE and our other STATE SOCIAL SECURITY ACTS; Raising LOAD LIMIT on TRUCKS and other favorable TRUCK law reforms; Fewer and Simpler GAME and FISH laws; Working with State and Federal Agencies for eradication of BITTER WEED and other noxious plants; Conserving our SOIL and NATURAL RESOURCES; Believes the people LEAST GOVERNED are the BEST GOVERNED.

A Vote You Will Not Regret

(Political Advertisement - Paid for by Crockett County Friends.)

Save as you shave!

REMINGTON RAND ELECTRIC CLOSE-SHAVER

No blades, no soap, no lotions to buy
Costs less than a penny a month to operate

YOUR FIRST COST is practically your last cost when you buy one of the new Remington Rand Close-Shavers. Less than a penny a month for electricity will pay for fast, close shaves that give real shaving satisfaction. Lifetime construction...new precision shearing head...double cutting surface...combing bar that lifts flat hairs...special high speed motor runs on A. C. or D. C. . . year's guarantee of materials and workmanship.

This is in our opinion the finest dry shaver on the market. It delivers close, clean shaves without weeks of "learning how"! \$15.75. Price includes leather zipper case.



RUNS ON AC or DC
\$15.75
WITH LEATHER CASE
\$15.00
WITHOUT CASE

THE OZONA STOCKMAN



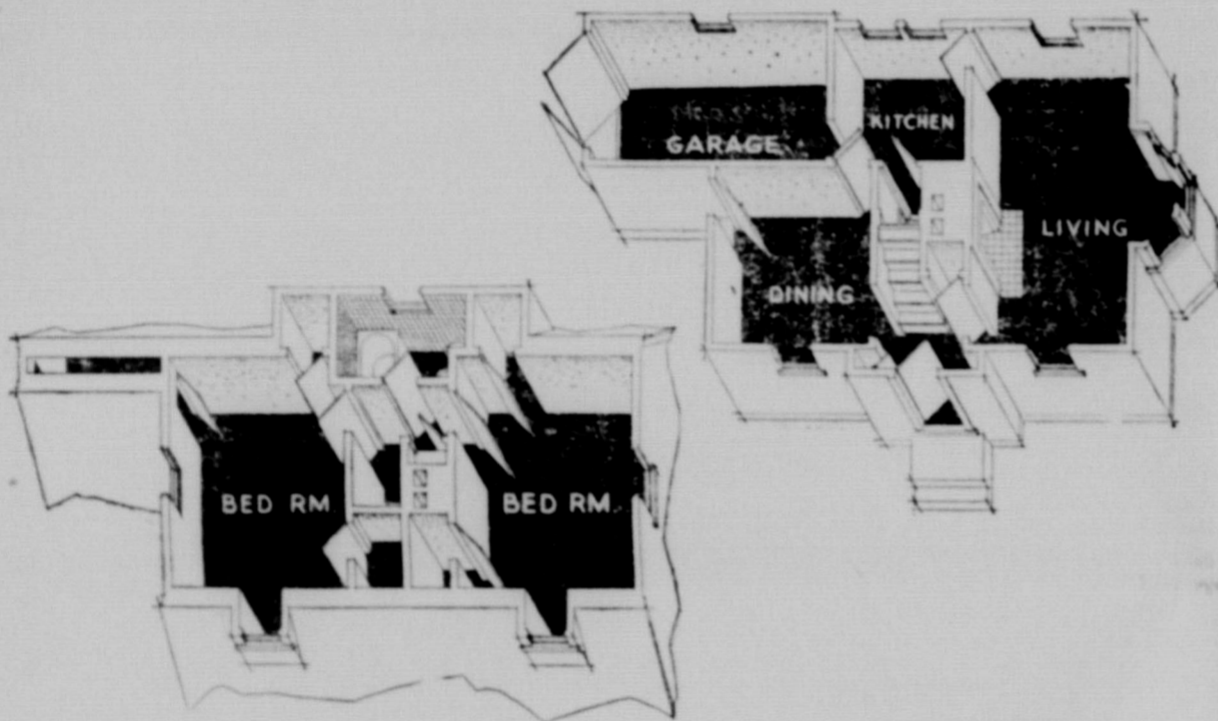
HOME BUILDERS' PAGE

Two-Story House for \$4,500



A two-story dwelling is seldom to be found in the \$5,000-and-under price range, but the home depicted in the above illustration comes within that category. It is situated in Charleston, W. Va., and was valued by appraisers at \$4,500. The house was financed with a mortgage of \$3,600 insured by the Federal Housing Administration.

The home has a neat and symmetrical exterior and an efficient layout on both floors. The presence of a second floor makes for a maximum of privacy.



SEVENTY MILLION TREES FOR SOUTH LANDOWNERS

Farmers and landowners in the South will shortly have available approximately 70 million seedlings for planting on eroded or non-productive farm land, according to Regional Forester Joseph C. Kircher of the U. S. Forest Service. These seedlings range from slash pine to black locust and are being produced by the various state forest services in state-owned nurseries and will be distributed to the public at cost of production.

Increased public interest in re-

forestation accounts for the large step up in nursery stock production, and although this year's growth of seedlings is greatly increased over that of past years, it is felt that the demand will be far greater than the supply. With this in view, forest service officials urge interested landowners to place requirements with the state Foresters as early as possible in order that pre-rated amounts may be decided well in advance of planting time.

Marshall Field was the first to proclaim: "The customer is always right."

COVE LIGHTING SYSTEM AIDS ILLUMINATION

Cove lighting derives its name from the curved molding near the ceiling line in which the lamps are concealed. It reflects light toward the ceiling, which results in an even illumination when properly designed.

In modernization of a household lighting system, cove lighting may be substituted for the old type of central lighting fixture.

INVESTMENT IN HOME PRODUCES DIVIDENDS

A home is viewed by the Federal Housing Administration as a long term investment, a good home pays dividends.

These dividends take the form of: Habitability which provides comfort and convenience; low maintenance which is possible because of sound construction and the employment of good materials; marketability which makes it possible for the owner to realize on his investment if the occasion arises.

A dwelling that complies with the standards and construction requirements of the Federal Housing Administration should pay these dividends.

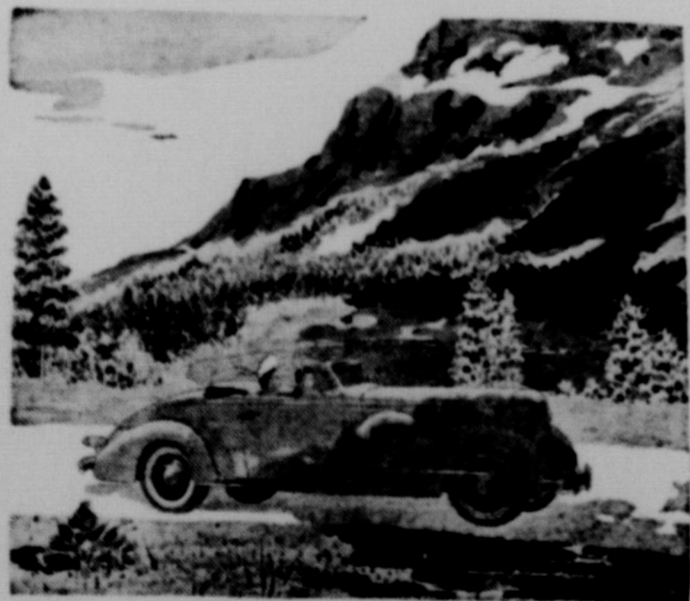
Easy To Interpret
Do Englishmen use American slang?
Some of them do, why?
My daughter is being married in London, and the duke just called me to come across.

Our Work Speaks For Itself

S. L. BUTLER
Building Contractor

Any Job—Large or Small Done Right

INSURANCE



PROTECTION

For Your Vacation Trip. Insure Your Car Against FIRE - THEFT - COLLISION AND PUBLIC LIABILITY

N. W. GRAHAM

Fire - Tornado - Auto Insurance

Phone 91

QUESTIONS AND ANSWERS

Q. What causes mildew on wood work and how can it be eliminated?

A. Mildew on woodwork is due to excessive moisture of the wood itself. Woodwork often absorbs a good deal of moisture if it is not properly back painted. If this is the case in your home the only remedy is to remove the woodwork. Thoroughly dry before painting and back paint with a good protective primer, such as an aluminum paint. The face of the woodwork should also be primed before painting.

Q. Will cutting additional windows in an old house weaken it?

A. Not necessarily. It depends on where the windows are to be placed and what structural members are affected. It is suggested that you consult a reliable builder before attempting this work.

Q. I want to close off the living room from the dining room. Would glass or wood doors be better?

A. If privacy is what you want, then wood doors probably would be better suited. If you want a maximum of light in both rooms at all times, then glass would be the type door to install.

Q. What is a safe thickness for concrete sidewalks?

A. The thickness will vary more or less according to subgrade conditions. All sidewalks should be laid on a level bed of gravel, cinders, or other approved material at least four inches in thickness. The following dimensions will generally be found suitable for sidewalks:

For residential district, four inches; business districts, five inches; sidewalks over which heavy vehicles may be driven, six inches.

Q. Is there any reason why I should paint copper piping in my home?

A. Copper and brass are corrosion resisting and therefore, except for decorative purposes, do not require painting.

Philadelphia had the lowest crime record of any major city in 1937.

Place Your Application For

-: FHA :-

LOANS

With

W. E. White

At The Stockman Office

Build Your Home On Long Terms
Low Interest Rates

Your Home

Is Where You Spend Most of Your Time!



MAKE IT MORE LIVABLE!

Many of us are inclined to overlook the needs of home—to get along with things as they are. Take a careful check-up of its furnishings some day. No doubt there are some pieces that are outmoded, some needed furniture you've been doing without. Modernize it with modern furniture and enjoy your home like you should. We'll help you.

ROBERT MASSIE CO.

San Angelo

Ray Baker, Mgr.
"Everything In Furniture"

Delivery FREE



Time To Be Thinking Of

Fall Repairs

and it is along this line that we want to be of help to you. We have a complete stock of building materials and will be glad to give every assistance possible in planning Fall repairs.

WEST TEXAS LUMBER COMPANY

Serving West Texans

The LIVESTOCK SITUATION
by J. A. McNAUGHTON

Los Angeles Union Stock Yards, Aug. 17.—The largest lamb crop record is being marketed in the United States this year. The early lamb crop has been pretty well marketed and it was from the early marketing districts that the major part of the increased numbers came. While the actual numbers of lambs to be marketed during the balance of 1938 probably will be much greater than in 1937, ideal feed conditions the country over means that a much larger number of fat lambs will go for immediate slaughter during the next 90 days.

A study of lamb production statistics by states shows that Texas, for many years noted as the Nation's greatest cattle state, has also become by far the largest lamb producer. This year's Texas lamb crop is estimated at 4,615,000 head. California is the Nation's second largest lamb producer with 4,520,000 lambs this year, a gain of a half million over 1937. Third in lamb production is Wyoming, with 2,440,000 head, an increase of 371,000 over 1937.

In the thirteen western states, 21,192,000 lambs are estimated for 1938 production. This is 65% of the 32,221,000 lambs produced in the entire United States. Further study of statistics shows that the state of Washington has the highest percentage of lambs raised for total number of ewes with 196% for 1938. Out of a total of 548,000 ewes, Washington produced 581,000 lambs.

The main increase in this year's lamb production was caused by unusually favorable weather and feed conditions, which resulted in a larger percentage of lambs raised. The actual increase in number of ewes in the western states as of January 1, 1938, was only about 1%.

Lamb prices are lower than a year ago, although somewhat higher than earlier in the year. Market observers are not unduly pessimistic concerning the late winter and spring market prospects for fat lambs, as it is felt that most of this year's increased numbers will be out of the way before January 1st. The percentage of fat lambs is higher than normally, and it is doubtful if as many

82-Year-Old Watchman Father of 26th Child



George Boarman, eighty-two-year-old Washington, D. C., watchman, with his twenty-one-year-old wife and their newly born son. Mr. Boarman, who has been married three times, is the father of 25 other children, 11 of whom are living.

lambs will be fed in feedlots as in the 1937-38 winter season.

Seek Establishment Animal Husbandry Program At Sul Ross

Alpine, Aug. 17.—That Sul Ross State College may serve the ranch interests of this section materially better than it ever has, an appropriation will be sought through the Texas Legislature to supply two sections or more of land, a barn, buildings, and other essential equipment. H. W. Morelock, president, announced this week.

It is the contention of sponsors of the appropriation that Sul Ross college should serve some of the needs of the people among whom it is located. The service would be supplementary to that given at A. & M. college and in no wise would detract from the larger state school.

It is planned to stop with problems concerning the sheep and goat and cattle industries. A. J. Bierschwale was installed here as head of the animal husbandry department on a half time basis, but the change sought would put him on a full time position.

Many in the ranch industry here and throughout Texas have indicated they want the department as a service medium, holding they

are entitled to this in a stockman's country.

Ranchmen already have contributed to the department. The members of the Highland Hereford Association and the Texas Sheep & Goat Raisers associations have donated animals and were instrumental in passing resolutions supporting the animal husbandry program at Sul Ross State college.

Quarter Of Million Texans Get Drivers Licenses Since Sept.

Austin, Aug. 17.—State driver's license bureau officials announced today that nearly a quarter-million driving licenses have been issued in Texas since last September.

The new licensing law requires state police to examine the qualifications of applicants before driver's licenses are issued. There were 242,384 drivers tested in the ten months' period.

Chief Ralph L. Buell of the license bureau said at least three per cent of the applications are turned down because of drivers' mental and physical defects. Many are denied licenses because their vehicles are mechanically faulty. Thirteen licenses were suspended in July after drivers were convicted of driving while intoxicated.

Expect Increase In U. Of T. Enrollment

Austin, Aug. 17.—The University of Texas approaches a new biennium with bright prospects for continued growth and development, officials of the institution declared. It is indicated by the large number of inquiries which have come to the university authorities from prospective students that the enrollment for the coming session will exceed the normal average 10 per cent increase. This would mean that more than eleven thousand students would be registered for the session. The summer school enrollment for this year was 6,919 which was well above that of any previous summer terms.

FOR SALE—A bargain in a large sheet iron barn, two stories in height. It is well built and is movable. For further information telephone or see Miss Floy H. Williams at Barnhart. 1tp

BABE'S RIVAL



Threatening to surpass the great Babe Ruth's record of 60 home runs set in 1927, Hank Greenberg, the slugging Detroit Tigers' first baseman, is already well ahead of the pace set by the Babe in the year of his greatest glory. Late August and the month of September will tell the story for Hank.

came through. Of the lot, James Witt, a 180-pound sophomore from Kemp, will probably get first chance at the fullback slot.

Bullet Bill Patterson, voted the most valuable back in the conference last season will be back to guide the destinies of the Bruin eleven. A triple threat, and a passer deluxe, Patterson will carry the chief offensive burdens of the Baylor team.

In another corner will be Elwin Williams, letterman from last year who was finally uncovered as the man to handle the fourth spot in the Bruin backfield.

A galaxy of backfielders will be struggling for the place left by Bubba Gernand of the '37 team. Milton (Crazy Legs) Evans and Malcom Linder, the Floydada flyer lead the way with reserve help coming from Fred Graham, Odell Griffin, Bob Foster, Durham Bivins, Frank Grumble and Ted Lewellen.

The 1938 Schedule

Sept. 24: Southwestern at Waco.
Sept. 30: Oklahoma A. & M. at Wichita Falls.
Oct. 8: Arkansas University at Nov. 19: Southern Methodist at Waco.
Nov. 26: Rice Institute at Houston.

Fayetteville, Ark.

Oct. 15: Centenary College at Waco.

Oct. 22: Texas A. & M. at Waco, (Homecoming).

Oct. 29: Texas Christian University at Fort Worth.

Nov. 5: Texas University at Austin.

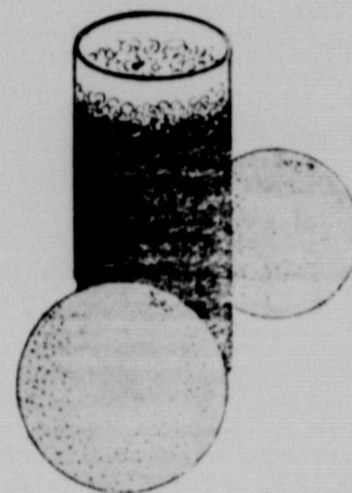
Nov. 11: Loyola of the Pacific at Los Angeles, Calif.

ALSO UNEMPLOYED

The Duke and Duchess of Windsor are reported to be "enjoying a quiet vacation" at Naples. But aren't they on vacation all the time?—Kansas City Times.

Phone your news to the Stockman.

SHIP VIA
ALAMO TRUCK LINE
SAN ANGELO — OZONA
SAN ANTONIO
HOUSTON



Don't Drink And Drive!

But if you DRINK, be sure to drink at our fountain. You can drink at our fountain with SAFETY, because

EVERY GLASS IS STERILIZED AFTER EACH USE

SMITH DRUG CO., Inc.
The Rexall Store

SHEARING

ALL NEW EQUIPMENT
4-DROP MACHINE

Go Anywhere - Anytime

Phone 274

Santiago Vargas

"THANKS, JOHN. THAT MONEY WILL COME IN MIGHTY HANDY"



The telephone often brings extra work that adds to family incomes

People who have a telephone know how useful it is in picking up a little outside work when things are slow around the farm. If there's trucking to be done, or roadwork, or corn shelling, or threshing . . . the man who has a telephone is the one who's easiest to reach. If you haven't a telephone, order one today.

Play Miniature GOLF!



GOLF!

At The

Greenland Golf Course

Open Afternoons--Evenings!

Play this sporty 18-hole Miniature Course. It's fun for old and young alike. Hazardous hazards! Surprisingly accurate greens. Healthy out door exercise.

Clubs, Balls and Score Cards Furnished.
LOW SCORE PRIZES

Ray Boyd and Phil Sheridan, Managers

PRICES—15c Per Round In Day time—20c Nights
Children under 12 years—10 Cents anytime.

New State Police Detail Watches For Overloaded Trucks

Austin, Aug. 10 — Arrests of truck drivers hauling excess loads and otherwise violating registration laws have increased 25 percent since the Department of Public Safety created a special detail of state police for that type of enforcement work last June, according to Captain Homer Garrison, Jr., assistant public safety director.

While the special unit of plainclothesmen was directing attention to load law violators, state patrolmen, relieved of that responsibility, brought about a 14 percent reduction in traffic deaths on Texas highways.

The license and weight inspectors, all veterans in that type of work, lodged 1,562 complaints against commercial vehicle operators in July. Violations of the 7,000 pound load limit law were charged in 1,395 of the cases; 39 were for improper registrations; 14 for failure to have chauffeur licenses; 33 for speeding; and 70 for other motor code offenses according to J. W. Longley, chief inspector of the new division.

Ticket Trouble At Rose Bowl Is Smoothed Out

Pasadena, Cal.—The biggest single thorn has been removed from this city's annual Rose Bowl football game with the announcement that beginning Jan. 1, 1939, the general public at last will be cut in on the tickets.

Kicked around for years after building what was a mere neighborhood attraction into a national spectacle, the general fans will be given a chance at 40 per cent of the tickets. Eighteen thousand of these will be sold across the counter, with applications being turned down.

That was the plan determined on at a joint meeting of the Rose Bowl Committee of the Pacific Coast conference. Both groups were made apprehensive of the public's ire last year when the old system of permitting the western university participating in the game to handle all admissions bogged down completely. University of California at Berkeley was the western school last year, and it took the entire admission list before even a ticket was placed on sale to the public at large.

Thousand Island Bridge Links Canada, U. S.



Workmen close the last span in the huge Thousand Island bridge at Alexandria bay, N. Y., which will be dedicated today in elaborate ceremonies. President Roosevelt and Prime Minister Mackenzie of Canada are among notables invited. The bridge crosses the St. Lawrence river and connects Collins Landing, N. Y., with Ivy Lea, Ont. It consists of five spans.

A block of 5,000 will be reserved for the eastern invader, which only once in history has required greater number.

Crack passenger trains were first called limiteds because of their small number of coaches.

LEGAL NOTICE

SHERIFF'S SALE

THE STATE OF TEXAS
COUNTY OF CROCKETT

By Virtue of a certain Execution issued out of the Honorable District Court of Tom Green County, on the 14th day of June, 1938, by C. W. Barnett, Clerk of said District Court against R. R. Hoover, for the sum of Eleven Hundred Fifty One & 33/100 (\$1151.33) Dollars, together with interest thereon from November 9, 1937, at 6% per annum, and costs of suit in cause No. 10,747A in said Court, styled West Texas Lumber Company versus R. R. Hoover and placed in my hands for service, I, W. S. Willis, a Sheriff of Crockett County, Texas, did on the 27th day of June, 1938, levy on certain Real Estate, situated in Crockett County, described as follows, to-wit:

ABST.	CERT.	SURVEY	BLOCK	GRANTEE	ACRES
4177	1313	25	MM	T. & St. L. Ry. Co.	640
4178	1314	27	MM	"	640
4179	1315	29	MM	"	640
4214	1316 E 1/2	55	MM	"	320
4612	1313 E 1/2	26	MM	W. W. Wilkins	320
5323	1313 W 1/2	26	MM	Brock Hoover	320
5412	1317	58	MM	M. F. Richardson	568
5418	1312	24	MM	Lon Sapp	640
5420	1310	20	MM	"	640
5537	1314 N 1/2	28	MM	W. P. Hoover	320
					5,048

Moulage Casts Aid In Crime Detection

Austin, Aug. 10—Moulage reproductions are destined to have an important part in modern crime detection, state police crime experts said today.

Wax models of faces of unidentified dead persons retain natural features, even to complexion, so that identification may be made at any future date. On display at state police headquarters at Austin are a number of these moulage casts awaiting to be viewed by relatives of missing persons.

A reproduction of the head of a negro found shot to death at Houston was completed today for identification purposes when relatives are located. Laboratory technicians also cast models of hands, fingers, feet and other objects for study in criminal cases.

Soprano: Did you notice how my voice filled the hall last night?
Contralto: Yes, dear, in fact, I noticed several people leaving to make room for it.

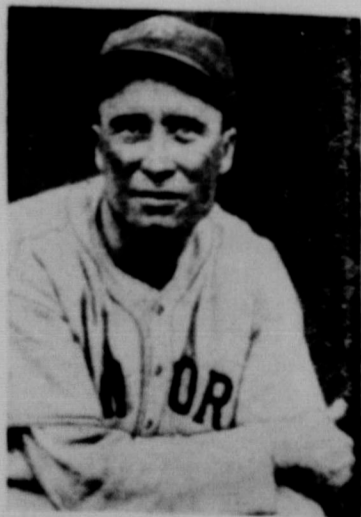
The C. C. C. has planted 267,000,000 trees.

and levied upon as the property of said R. R. Hoover. And on Tuesday, the 6th day of September 1938, at the Court House door of Crockett County, in the town of Ozona, Texas, between the hours of ten A. M. and four P. M. I will sell said property at public vendue for cash, to the highest bidder as the property of said R. E. Hoover by virtue of said levy and said Execution.

And in compliance with law, I give this notice by publication, in the English language, once a week for three consecutive weeks immediately preceding said day of sale in the Ozona Stockman, a newspaper published in Crockett County.

WITNESS my hand this 2nd day of August 1938.
W. S. Willis, Sheriff, Crockett County, Texas. 3tc

RED MENACE



Wally Berger, who came to the Cincinnati Reds from the New York Giants a while ago, has regained the batting form that made him a terror for National league pitchers a year or two ago. His excellent work has contributed to keeping the Reds up among the pennant contenders.

shall take the following Oath or Affirmation:

"I, _____, do solemnly swear (or affirm), that I will faithfully execute the duties of the office of _____ of the State of Texas, and will to the best of my ability preserve, protect, and defend the Constitution and laws of the United States and of this State; and I furthermore solemnly swear (or affirm), that I have not directly nor indirectly paid, offered, or promised to pay, contributed, nor promised to contribute any money, or valuable thing, or promised any public office or employment, as a reward for the giving or withholding a vote at the election at which I was elected. So help me God."

Sec. 2. The foregoing Constitutional Amendment shall be submitted to the electors of this State, qualified to vote on Constitutional Amendments, at an election to be held throughout the State on the first Tuesday after the first Monday in November, 1938, at which election each ballot shall have printed thereon the words:

"FOR the Amendment of Article XVI, Section 1, of the Constitution of the State of Texas, changing the form of the oath of office for members of the Legislature and all officers of the State of Texas."

"AGAINST the Amendment of Article XVI, Section 1, of the Constitution of the State of Texas, changing the form of the oath of office for members of the Legislature and all officers of the State of Texas."

Each voter shall scratch out with pen or pencil the clause which he desires to vote against so as to indicate whether he is voting for or against said proposed Amendment.

Sec. 3. The Governor of this State is hereby directed to issue the necessary proclamation ordering an election in conformity here with to determine whether or not the proposed Constitutional Amendment set forth herein shall be adopted, and the Governor shall

have the same published as required by the Constitution and laws of this State.

Sec. 4. The sum of Five Thousand Dollars (\$5,000), or so much thereof as may be necessary, is hereby appropriated out of any funds in the Treasury not otherwise appropriated, to pay the expense of such publication and election.

The above is a true and correct copy.

EDWARD CLARK
Secretary of State.

Kalamazoo, Mich., is the only American city in the 50,000 class with no public indebtedness.

The average turkey provides servings for 20 people.

Ship Via

Western
Motor Lines

San Angelo To Ozona


We appreciate your Business



Your every act and decision is influenced by your seeing. If you are looking for visual efficiency, comfort and eye care, we invite you to come to see us!

OTIS L. PARRIS

OPTOMETRIST & OPTICIAN
5 W. Beauregard Dial 606



WRITE YOURSELF A TICKET TO EASIER WRITING

ACT QUICKLY—FILL OUT—MAIL

The Ozona Stockman, Ozona, Tex.

Please tell me how I can own a genuine, latest model Royal Portable, complete with free Carrying Case and Instant Typing Chart for only a few cents a day.

Name.....

Street.....

City.....State.....

OR VISIT OUR STORE

OWN A ROYAL FOR ONLY A FEW CENTS A DAY!

FREE HOME TRIAL



FREE CARRYING CASE

YOU'LL WRITE EASIER, FASTER THAN YOU EVER THOUGHT POSSIBLE!

HERE'S WHY! Royals are built for you to make time on—smooth and steady, simple and "easy" of operation—even for the beginner!

You need a Royal Portable! Of course! Typing is today's way to write—in school—later on in business. Not only are you helping yourself to easier writing and higher marks when you get a Royal—but you are acquiring the habit and the ability to think in type—a permanent asset.

And remember—when you buy a Royal Portable you buy *greatest value*—the finest, most up-to-date portable the world's largest company devoted exclusively to the manu-

facture of typewriters knows how to make!

ONLY ROYAL CAN GIVE YOU ALL THESE FEATURES!

Touch Control—matches anyone's touch; Finger Comfort Keys—for fast, sure typing; Automatic Paper Lock; Genuine Office Tabulate—not a toy; Full width Writing Line; Full size Keyboard—makes Royal an excellent practice machine for business (now students); Complete Dust Protection; Every worth-while improvement—many exclusive with Royal!

SENSATIONAL NEW BUY-TRY PLAN... It costs no more to buy a Royal Portable than any other portable—no matter where or how you buy it. Only a few cents a day—that's all it costs for a Royal!

FREE... With every Royal Portable a handsome carrying case is included at no extra cost; also Royal's exclusive Instant Typing Chart which shows you at a glance how to type properly.



ROYAL PORTABLE WITH TOUCH CONTROL

War Relentless On Marijuana Traffic In Texas

State, Federal Narcotic Agents Hunt Down Growing Plants

Austin, Aug. 17.—Marijuana—the hemp plant that destroys the brain tissues of addicts—is being dealt death blows by investigators of the state narcotic bureau and federal agents, according to state police reports.

Captain J. B. Wheatley, head of the state bureau, stated in his report to Col. H. H. Carmichael, state police director, that a large number of marijuana fields have been destroyed by state and local officers since the narcotic law was put into effect last September. The "reefer," he pointed out, has been found flourishing in flower pots, fields, along creek and river banks and other places where moisture is abundant.

During the past ten months 551 charges have been brought against persons trafficking in narcotics in Texas. A large number of these complaints were against marijuana distribution. The largest raid upon a marijuana field was made only last month and several trucks were required in hauling the hemp away from destruction by the officers. Local peace officers and federal agents work closely with state investigators in many of these instances.

Addicts crush the flowers of the marijuana plant and roll the leafy substance into cigarettes which are peddled at prices ranging from ten to fifty cents each, the report continued. The cost fluctuates in various sections of the state, depending upon risks peddlers must take in distributing their product. However, there is such a demand from habitual smokers of the "reefer" that they will make purchases at any cost—as long as the cost is borne by inoffensive citizens.

State narcotic authorities estimate that crime, particularly thefts, drop by as much as fifty per cent when unrelenting raids are made upon dope dens. Captain Wheatley explained that addicts do not hesitate to steal valuable property which they in turn sell at ridiculously low prices. For ex-

Gloucester Fishing Craft Aground on Rocks



Ripped by jagged rocks where she ran aground off Gloucester, Mass., the 100-foot fishing seiner, Uncle Sam, was pronounced a total loss by coast guardsmen after being abandoned by her captain and crew. Nearly 50,000 pounds of fresh mackerel was dumped into the sea to lighten the boat in an effort to save it.

ample, a \$30 automobile tire and wheel has an exchange value of less than one-sixth of its worth during these illegal deals.

"Narcotic law enforcement should be a matter of concern to every citizen," the veteran state officer declared. "It is difficult to gather convicting evidence in many of these violations because all participants are happy after a transaction."

Before the state narcotic bureau was installed as a division of state police Texas had the reputation of being the state in which the destructive hemp was most prevalent. Authorities now claim that it is growing in nearly every state. Much of the supply discovered in Texas was brought in from other states and countries.

Another assignment given this enforcement unit is the registration of drug stores and others that legally sell narcotics. There are 2,666 dealers licensed to sell various narcotics in Texas, excepting of course, marijuana and heroin.

When narcotics such as marijuana, morphine, heroin, and opium are seized by police specimens are sent to the crime laboratory at Austin where analyses are made for court trials. So complete are the investigations that convictions have been obtained in every trial of addicts and ped-

dlers. Penalties range from two to ten years imprisonment along with heavy fines. Convictions are similar in federal courts. Authorities point to a recent trial in a Texas federal court presided over by Federal District Judge T. Whitfield Davidson, in which the leader of an extensive drug distributing syndicate in the Southwest was sentenced to 50 years' imprisonment and assessed a fine of \$50,000.

In his charge to the grand jury Judge Davidson made this statement:

"The illegal dispenser of narcotics is a major criminal. He is worse than the murderer. The murderer brings instant death to his victims. The narcotic vendor slows death and disgrace, for the addict loses pride, honor and integrity; his usefulness is gone and his veracity destroyed."

Captain Wheatley, in his report to Col. Carmichael, pointed out that marijuana is the only narcotic that destroys the brain tissue of its users and usually results in complete and incurable insanity. Smokers of the hemp have been

known to commit horrible crimes against their best friends or families and many of the habitual criminals apprehended by police are found to be addicts who stole and robbed in order to purchase dope. That is why, he concluded in his report, state enforcement officers are using every means available to smash illegal narcotic distributions, particularly of the widespread plant, marijuana.

'Beautiful Texas' To Be Theme For Cowboy Band In Washington

Abilene, Aug. 17.—The Hardin-Simmons University Cowboy Band will give Washington, D. C., a week's opportunity to become familiar with "Beautiful Texas," composed by W. Lee O'Daniel, Democratic nominee for governor, Marion B. McClure, composer-director of the H-SU band, said today.

The Cowboy Band will go to Washington, August 23 to 26, as the official music makers for the Texas delegation to the National

Letter Carriers' Association convention there.

Since it was announced the band would visit the nation's capitol, requests for "Beautiful Texas" have been coming in. Director McClure said.

READ THE ADS - SAVE MONEY

ROBERT MASSIE COMPANY

Superior Ambulance Service
 San Angelo, Texas
 Phone 4444 Day or Night

PRISONER ESCAPES!

Guard Killed By British Officer in Daring Escape from German Prison Camp

HUNTED by all the police in Germany, he found refuge in the heart and home of this lovely little girl of the Berlin streets. . . . Calmly, bravely she faced the police and lied for him—lied for an enemy of her country whom she had known but one short night. . . . Not even the threats of certain death could break her devoted loyalty to him.

You'll be held breathless by this exciting story of escape from a German prison camp. You'll be thrilled and fascinated by this romantic girl who took such desperate chances to hold the only tender, sincere love she had ever known. . . . No wonder the late O. O. McIntyre called it "The most absorbing book I've read in five years."

Because we want you to know Mercury Books we'll send you this one—"Everything Is Thunder," by J. L. Hardy—practically free. We'll supply the book, if you'll pay 10c for postage and handling.

Out of more than 100,000 copies printed we have less than 5,000 left—and they're going fast. Hurry and send a dime for a complete copy of this intensely interesting book of more than 90,000 words. (Sorry—only one to a customer).

Here's my dime. Send me a copy of the Mercury Book "Everything Is Thunder" by J. L. Hardy.

Name _____

Address _____

MERCURY BOOKS, 570 Lexington Ave., New York, N. Y.

Your Wife's Judgment Must Be Good . . .

LOOK AT THE BIRD SHE PICKED OUT TO MARRY!

And don't question her judgment when she says that GAS servants are the most economical and the best. She is never bothered with the idea they will quit just before dinner or ask for more wages when groceries are going higher.

It will be more sensible to help her plan a completely MODERNIZED home with GAS—furnished through Butane Gas system. And help her get the most benefit from such modernization by expanding its uses to

Cooking - Heating - Refrigeration Lighting - Water Heating

Appliances for using Butane Gas really modernize the home.

Electrolux Refrigerators Roper Gas Ranges

And all poular makes Water Heaters

May be bought on easy terms. Don't let winter slip up on you. See us today.

Joe Oberkampff

Furniture - Hardware - Plumbing - Electrolux - Butane Gas



"If you remember when the electric refrigerator first came into general usage, then you know how utterly happy women were over the way it preserved food and provided ice cubes. It simplified kitchen labor. The health problem was greatly solved. But it was only the beginning of the great service Electricity was destined to render. Today every other home served by your West Texas Utilities Company has an electric refrigerator. Every seventh home has an electric range. Over 30,000 have electric irons. Nearly 40,000 have good light, many in isolated communities where power lines were built without hope that they might ever become profitable. This is a service rendered by Your Electric Servant so that you might have BETTER LIVING!"

"And it doesn't cost you much, honest, does it?"

Reddy Kilowatt

West Texas Utilities Company

60 EARTHEN—

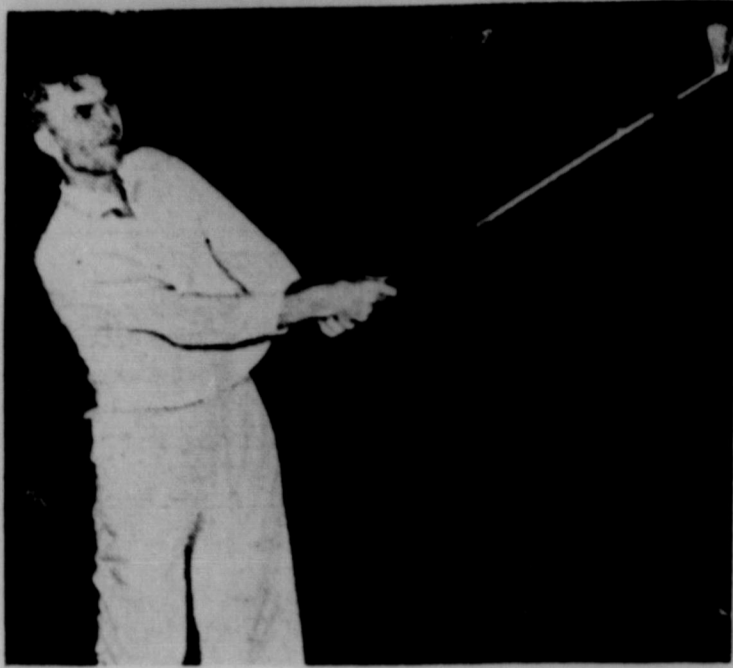
(Continued from Page 1.)

were built on the following ranches: Fleet Coates, 8,132; A. C. Hoover, 14,909; Carl Colwick, 7,676; Claude Becton, 8,764; A. L. Krueger, 7,880; C. E. Davidson, 14,416; Mrs. W. P. Seahorn, 8,059; Dock Friend, 4,755; Ray Willoughby, 12,670; Ed Bean, 13,532; George Murphy, 6,665; D. K. and Frank McMullan, 10,784; and Tom Owens, 4,714. One tank has been constructed on the following: Max Schneemann, 8,923; Bob Owens, 4,848; Bode Owens, 3,803; P. T. Robison, 2,788; Dan Wills, 2,366; Ray Piner, 3,046; Hugh Childress, 4,438; Floyd Henderson, 16,469; O. B. Trap Co., 4,967; T. N. Beauchamp, 4,666; F. F. Friend, 1,108; and J. W. Owens, 3,500.

In addition to the earthen tanks contour ridging and construction of spreader terraces are other water and soil conservation practices that have been popular in this county in this year's program. County Agent Vanzandt reports. To date under the 1938 program, there has been a total of 953.9 miles of ridging outlined, some of which has been completed and some still in progress. This type of ranch improvement practice has been done on the following eight ranches, the figures after each name indicating the number of miles of ridges thrown up: Albert Kay, 93.1; P. T. Robison, 25; Ray Piner, 30; Pleas Childress, 80; Bert Couch, 130; C. E. Davidson, 230; Len Mertz, 233.8; and Jack Holt, 132.

Three miles of spreader terraces have also been built on the P. L. Childress ranch, three miles on the Bert Couch place, six miles on Judge Charles E. Davidsons ranch

Marathon Golfer Wins Farm



J. Smith Ferebee, young Chicago broker who achieved the amazing feat of shooting 144 holes of golf in 15 hours and thereby winning sole title to a \$30,000 Virginia plantation and a number of cash bets. Ferebee played the four 18-hole courses at Olympia Fields twice, averaging under 91 per round. The bet that resulted in the one-man golf marathon was made with Ferebee's partner, another Chicago broker, who was joint owner of the plantation.

and five miles on the Len Mertz ranch.

A tabulation of the prickly pear and cedar eradication work accomplished thus far this year is being compiled by the county agent's office this week.

The extensive tank building, ridging and spreader terrace construction work in this county is being done by the L. P. Reed Construction Co. of Alpine. Mr. Reed operates three big Diesel caterpillar tractors, two of 95 horsepower and one of 65 horsepower.

These powerful machines pull the terracing blades and rooters which move huge quantities of earth in the tank building operations. A crew of twelve men has been stationed here all summer carrying out this program. The big engines consume 5,000 gallons of Diesel fuel monthly and the company's gasoline bill is \$500 a month, operating trucks, pick-up and autos, an official of the concern said. Mr. and Mrs. Reed are making their home here while the work is in progress.

Mrs. Bob Palmer of Brownwood spent a few days here this week visiting her mother, Mrs. Mabel Wakefield.

HOME NEAR COMPLETE

Finishing touches are being put this week on the new residence of Mr. and Mrs. A. W. Jones.

Mrs. Royce Smith of Eldorado was here the first of the week for a visit with Mr. and Mrs. O. W. Smith.

PIANIST-STATSMAN



An excellent character study, made recently, of Ignace Jan Paderewski, genius of the piano and former premier of Poland. The artist, now in his seventy-eighth year, is one of the builders of the new Polish nation.

TWO NEW BARBERS

A. R. Wetsel of Winters and Hollis Long of Sonora have been employed as barbers at the Corner Barber Shop to take chairs vacated by the resignation of Sam Beasley and Pink Beal. "Red" Greer, long associated with the shop, is in charge of the third chair. Mrs. Mabel Wakefield is owner of the shop.

Mr. and Mrs. I. G. Rape and two sons, Marvin and Joe Rape, returned last night from a vacation trip to Galveston and up the Texas coast for a tour through Louisiana. Marvin Rape, who is manager of a drug store in Iraan, left this morning to resume his duties there.

ger of a drug store in Iraan, left this morning to resume his duties there.

CHURCH OF CHRIST

A. C. Nance, Minister
Lord's Day

10:00-10:45 a. m. Bible study, all classes.

10:55-11:55 a. m. Sermon and Communion.

7:45 p. m. Evening Services.

Wednesday
3-4 p. m. Ladies Bible study.

7:45 p. m. General Bible study.

An advertisement is a guarantee of quality.

METHODIST CHURCH

Eugene Slater, Minister
Calendar of Services

Sunday School 9:45 a. m.
Morning Worship 11:00 a. m.
Evening Park Service 8:30 p. m.

FOR RENT—Six room house, unfurnished. Modern. See Mrs. Hatton at Tourist camp.

Mr. and Mrs. Oscar Koet and small daughter returned Sunday from a vacation trip to Staten.

Mrs. Clark Barton and Miss Dorothy Saegert of San Antonio visited relatives here last week.



Visit Us In Our New Home
3 Doors South of Old Location
SAN ANGELO, TEXAS

Phone 5384
Office Hours: 8 a. m. - 6 p. m.
And by Appointment

NOTICE OF REWARD

I am offering
\$500 Reward

for apprehension and conviction of guilty parties to every theft of livestock in Crockett County — except that no officer of Crockett County may claim the reward.

W. S. WILLIS
Sheriff, Crockett County



SAVE ON YOUR FOOD BILL

AT PIGGLY WIGGLY

—: WHERE HOUSEWIVES MEET :—

Specials for Friday & Saturday, Aug. 19-20

<p>LARGE SUNKIST LEMONS Doz. 24c</p> <p>FRESH CALIF. PLUMS 2 Doz. 25c</p> <p>Large Bell Sweet PEPPERS 2 lbs. 15c</p> <p>GREENS MUSTARD Bu. 4c</p> <p>Saxet Soda 2 lb. Box Crackers 18c</p> <p>DEL MONTE Tomato Juice 15c 15 oz. Can, Fancy</p> <p>ROSEDALE Peaches 19c No. 1 Tall, Sliced</p> <p>Lipton's TEA</p> <p>1 LB. - 4 Glasses FREE 89c 1/2 LB. - 2 Glasses FREE 46c 1/4 LB. - 1 Glass FREE 25c</p> <p>Libby's Pears & Apricots 2 for Peaches 15c 8 oz. Cans, Reg. 10c</p> <p>ARKCO BRAND No. 2 Can BEETS Fancy, Whole 9c</p> <p>1c SALE On Blue Package SUPER SUDS</p> <p>ONE 25c Package 22c ONE 10c Package 1c 35c FOR 23c</p> <p>Armour's White Label BACON 29c Fancy Chuck 1b.</p> <p>Beef Roast 17c</p>	<p>Calif. - Reg. 30c Seller Doz. ORANGES 24c</p> <p>2 lbs. OKRA 5c</p> <p>Per lb. CUKES 5c</p> <p>Bunch CARROTS 4c</p> <p>Box Vanilla Wafers 21c Brown's Reg. 25c</p> <p>3 for DEL MONTE Pin'ple Juice 25c 12 oz. Can, Fancy</p> <p>Can GALLON CANS Pineapple 67c Crushed</p> <p>Mail Band from Lid and 50c</p> <p>Get \$3.00 Set W.M. ROGERS SILVER</p> <p>6 LB. CAN \$1.22 3 LB. CAN 62c</p> <p>Libby's Long Spears 2 for Pineapple 25c Tall Cans</p> <p>PKG. TRY SOME CORN KIX 13c New Breakfast Cereal</p> <p>Qt. 2 for BIG VALUE, Sour PICKLES 25c</p> <p>Per lb. Calf Brains 17c</p> <p>Per lb. Calf Liver 19c</p>
--	--

PLENTY DRESSED FRYERS & HENS

Introducing . . .

Mr. A. R. WETSEL Mr. HOLLIS LONG

Master Barbers Now Serving Ozona Patrons at

The Corner Barber Shop

Mrs. Mabel Wakefield, Prop.

These men are splendid workmen and invite the public to give them a trial.

"RED" GREER, long associated with the shop, will continue at the same old stand.

—: Your Patronage Appreciated :—

SET UP FOR EVERYBODY'S SERVICE

• The Humble Company is set up to serve you with the motor fuel and the motor oil your car uses at a price which fits your pocketbook. You have your choice of products—each of superior quality in its price class.

But whatever you buy, whatever you pay for motor fuel and motor oil, the service you receive is the same service cheerfully rendered by Humble station salesmen to one and all. This service has been carefully worked out to make travel by automobile more comfortable. Its chief concern is to be helpful to you, to give your car the care it needs to keep it running right and looking good, to speed you on your way.

The next time you need gasoline or motor oil, look for a Humble sign. Stop for products—and service—second to none. We'll be expecting you!

HUMBLE OIL & REFINING COMPANY

A Texas institution manned by Texans

Out In
Vol. 25.

Opport
Profit
Fe

Abunda
Lamb
In Fav

College S
opportunity t
ranchmen
according t
husbandma
M. College
bases his l
of Agricult
"The las
profitable
bet declar
were busy
largely ab
that the ti
feeding op
er lambs o
The lary
1931 has b
conditions
average th
ern states,
lambs thro
mer has b
mutton ab
on the ma
which play
ing lamb
est price t
Though
large the
and will c
mal. The f
39 will li
lambs a
would indi
improvement
is good, th
"The sp
of feeder
for fat lan
feeds suite
will be pr
Texas this
mandman
"Alfalfa
milo or co
fattening
age plus
meal can
through la
ing a lam
proximate
Practica
phases of
tained fro
agents.

July 1
Of 1
T

First S
1938
14

Austin,
casualty
in spite o
creases in
said today
July recor
While t
of 145 li
months
with 1937
of the saf
that rutil
have snuf
people on
ways sinc
Because
travelers
tions and
ards duri
there was
deaths an
toll fell s
death rate
als pointe
these fata
sary and
had drive
of safety.
Cities a
cident rec
occurred
month. Th
highway
enforcement
and publ

(Contin