



20¢

WEATHER

April 28 84 38  
April 29 84 41  
April 30 83 41

# BAILEY COUNTY JOURNAL

'The Community of Opportunity-Where Water Makes the Difference'

14 Pages Today

Published Every Sunday at Muleshoe, Bailey County, Texas 79347

Sunday, May 1, 1983

## Farmers Get OK On Operating Loan Funds

### Program Gets \$400 Million Boost

With the recent addition of \$400 million in Farmers Home Administration funds to the producers' operating loan program, many area farmers and about an even dozen Bailey County farmers will be able to continue in the farming industry for at least another year.

When the announcement came from the FmHA of the \$71.5 million deficit in farm operating loan money early in April, officials here thought that most of the Bailey County loans had been processed and approved. Many farmers had already received their checks.

Although the newly appropriated \$400 million just set aside to cover the loans will be spread over 17 states, the money will satisfy all operating loan needs in the area and in Bailey County; and, will help to boost local economies by generating business with farm equipment dealers and suppliers.

Henry Taylor, Bailey County FmHA Director told the Journal on Tuesday that about twelve local producers got caught in the initial squeeze. "Their loans had been processed and were in, but no money had been received. With the additional \$400 million, we were able to take care of all of our County farmers who had been put on "hold." Taylor says that all county loans have been processed, but have not been fully completed; that is, the farmers have not yet received their operating funds.

The FmHA director reminded that "on the farm visits" will begin soon, with the checking out of equipment and crops. States that were involved Cont. Page 8, Col. 7

## Mule Putt Golf Course Dedication Held

With a good crowd on hand late Friday evening, a long-awaited dream became a reality. Mule Putt Golf Course opened at 7 p.m. with a ribbon cutting, and

brief comments to go along with the new enterprise.

Sgt. Wayne Holmes, of the Police Department and Vice President of the Muleshoe Youth Activities Committee, originators of the golf course, introduced the Rev. Brock Sanders of the Richland Hills Baptist Church.

Rev. Sanders dedicated the golf course with prayer prior to the ribbon cutting, performed by Muleshoe Mayor Charles Bratcher. Representing Bailey County was Raymond Scott, County Commissioner.

Mayor Bratcher made a brief comment, commending the group who completed the Mule Putt Golf Course, preparing it for the enjoyment of the entire community, kids and adults alike.

R. A. Bradley, member of the Muleshoe Kiwanis Club, was asked to make a comment, and he was presented a trophy by Sgt. Wayne and Joyce Holmes, for the many months of effort he put into completing the golf course.

Bradley commented, "I must share the trophy with the Holmes, who deserve most of the credit for the golf course. Many, many other people also had a part in this, and I am just a little cog in a lot of people who helped to make this a reality."

The new golf course, located just to the east of the Bailey County Coliseum, was nearly four years in construction. Started as a major project by the Muleshoe Youth Activities Committee, the course was worked on only as funds were available to work with without going into debt. Thus, the miniature golf course opened on Friday night debt-free.

Contributions, memorials and fund raising events all Cont. Page 6, Col. 1



IN APPRECIATION--In the foreground, Sgt. Wayne Holmes presented a trophy late Friday to R. A. Bradley, far right, immediately following dedication and ribbon-cutting ceremonies at the Mule Putt Golf Course. Bradley was honored for his hard work in helping to get the miniature golf course ready to open. Also pictured from left are Bob Sanders, president of the Muleshoe Youth Activities, Joyce Holmes, operator of the Mule Putt Golf Course and member of YAC and Raymond Scott, Bailey County Commissioners Court.

### Around Muleshoe

Parents sponsoring the Junior-Senior Prom will meet Tuesday, May 5 at 5 p.m. at the Corral Restaurant.

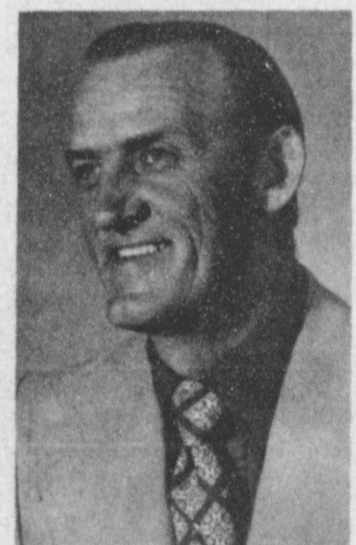
All committee chairmen are urged to attend to report on activities to date.

Only one item is on the agenda for the Muleshoe City Council meeting slated for 8:30 a.m. Tuesday.

It will be consideration of an ordinance making it unlawful to consume an alcoholic beverage or to be in possession of an open container of alcoholic beverage with the intent to consume said alcoholic beverage on certain specific property within the corporate limits of the City of Muleshoe, Texas and other pertinent parts of the ordinance.

On Monday, the major item on the agenda for the Bailey County Commissioners Court will be to consider approval of the Coliseum for Senior Citizens Olympics.

Commissioners will also consider approval of bus fare to Galveston for Tommy Rey, meet with a re-



REV. JIM MOSLEY  
**Crusade Gets Started Here Sunday Night**

A planned "Muleshoe Area Encounter Crusade" gets underway here tonight (Sunday) at the First Baptist Church with the 'Kick-Off Rally.'

Sponsoring the event is the Bailey County Ministerial Alliance, according to Rev. Jimmy Low, president. The minister from the New Covenant Church, said the Ministerial Alliance would like to encourage all persons to attend the Kick-off Rally.

It will begin at 7 p.m. with Rev. Jim Mosley, pastor of First Baptist Church at Ackerly preaching at the opening service. The Crusade Choir will be led by Rev. Brock Sanders of the Richland Hills Baptist Church in Muleshoe. Local church choir members are urged to participate in the Crusade Choir and to meet at the First Baptist Church at 6 p.m. for practice.

Muleshoe Area Encounter Crusade is a joint effort of the churches in Bailey County, explained Rev. Low. Also participating will be area churches and the

Cont. Page 6, Col. 5

### Lazbuddie Jr.

#### High Wins

#### District Track

Lazbuddie Junior High School girls track team placed first place in district competition at Plainview on Monday, April 11. The team won with a total of 139 team points over all, under the guidance of their coach, Craig Terry.

In the 400 meter relay event, Lazbuddie girls placed second. Team members included Janessa Jennings, Traci Elliott, Monica Locke and Cathy Schacher.

Placing first in the 800 meter relay race was Amy McGehee, Traci Elliott, Monica Locke, and Mary Ann Moran.

Second place in the 1600 meter relay was also won by Lazbuddie girls team, with members Kristine Miller, Susan Redwine, Ginger Jesko and Mary Ann Moran competing.

Placing first in the 100 meter dash was Amy McGehee; Cathy Schacher placed second. In the 800 meter run, Susan Redwine placed fourth. Traci Elliott and Janessa Jennings placed third and fifth, respectively in the 100 meter hurdles. In the 400 meter dash, Mary Ann Moran placed second, Ginger Jesko placed third and Kristine Miller placed fifth.

Placing second and fourth in the high jump competition was Cathy Schacher and Ginger Jesko, respectively. In the triple jump, Traci Elliott placed third.

## 'Mule Buck' Promo Slated During June

Shoppers in the Muleshoe are in for "quite a treat" during the month of June. Following a sparsely attended meeting hosted by the Muleshoe Chamber of Commerce and Agriculture last Tuesday night, it was decided to dedicate the entire month of June to "Mule Bucks."

Merchants participating in the Mule Buck promotion are limited to members of the Muleshoe Chamber of Commerce and Agriculture, according to John Gulley, manager. He commented, "Only our members may redeem or cash in the Mule Bucks, and although Mule Bucks may be spent just the same as any dollar bill, the merchants who will be redeeming them for cash at the banks will be members of the CoC."

Earlier this year, the Chamber of Commerce at Clovis conducted a "Bargain Bucks" campaign, and Tim Martin, manager of the Clovis CoC was in Muleshoe Tuesday night to explain how the program worked in Clovis.

Gulley said the entire program is encouraging local persons to shop at home and to spend their money in Muleshoe. The rules are simple: People buy Mule Bucks at the bank for 80% of face value -- for example, for \$20, they will receive \$25 in Mule Bucks, which, in turn, can be spent the same as 25 one dollar bills. A limit of \$250 has been placed on the amount of Mule Bucks which may be purchased by any one person at a time.

Mule Bucks may not be used to pay off items on layaway or cannot be used to pay an existing account. They must be used for new purchases only.

Store clerks will be asked to mark all receipts for merchandise sold for Mule Bucks with the letters "MB." Then, if the customer desires a refund, he must present the receipt, and the refund will be made in Mule Bucks, not regular currency.

Banks will redeem the Mule Bucks for the merchants at 80 cents on the dollar. Gulley explained that this amounts to a 20 percent discount on merchandise purchased with Mule Bucks. "Banks will not redeem Mule Bucks for anyone except participating merchants," Gulley has emphasized. A complete listing of each participating merchant will be printed on the back of each Mule Buck, and by the merchant's own advertising by the various media."

The Muleshoe Chamber of Commerce is asking that

### Registration

### For Primary Grades Set

Tom Jinks announces that Friday, May 6, 1983 from 8:30 a.m. to 3:30 p.m. is Spring Round-Up at Neal B. Dillman Elementary for kindergarten and first grade children for the 1983-84 school year.

Children who will be six years old on or before September 1, 1983, are eligible to register for first grade. Parents should bring the child's birth certificate and record of the child's immunizations (shots) if available.

Immunizations required by the new federal and state guidelines for students five years of age or older enrolled in elementary or secondary schools include (1) Polio - at least three doses of oral polio vaccine are required, provided at least one dose has been received on or after the fourth birthday (2) DPT - at least three doses, provided at least one dose had been received on or after the fourth birthday. Booster doses of DT vaccine are required every ten years. (3) Measles - all students in this group must have received measles vaccine on or after the first birthday, or during the calendar

Cont. Page 8, Col. 5

### MHS Drama Group First 'State Win'

For eight or nine years, Kerry Moore took his drama group to Austin with their play for state competition.

Eight or nine times, he and his group came home with second or third place. But, that all changed late Thursday night, when "The Royal Hunt Of The Sun" was judged to be the number one play in the state.

More than 200 schools started out in competition waiting for the magical trip to state.

Moore had been there, he knew the pitfalls, and the sorrow that can come home with a less than first place. But now, Moore, who has been the head of the drama and speech department at MHS for more than 21 years, also knows the feeling of triumph.

Cast members of the play include Michael Isaac, Jeff Combs, Freddy Vela, David Vela, Scott Ellard, Perry Flowers, David Pruitt, Danny Seales, Chad Williams, Cheyenne Bickel, Kelly Hamblen, Tonda Gunstream, Jimmy Lee, Brenda Flowers and Hector Garcia.

all merchants who are members be sure to part- Cont. Page 6, Col. 2

## District Clerk's Meet Well-Attended Here

On Thursday, April 21, Barbara McCamish, County Clerk and Nelda Merriott, District Clerk hosted a County and District Clerks meeting in Muleshoe. They were assisted by Hazel Gilbreath, former County Clerk of Bailey County. The meeting was held in the Civic Center.

Hon. Gordon H. 'Corky' Green welcomed the group to Muleshoe and gave a brief history of Bailey County and Muleshoe.

The County Commissioners and other county officials came out to meet and greet the group also.

Speakers for the event included: Peggy Culp, Clerk, Court of Appeals, 7th Supreme Judicial District, Amarillo (who spoke on appeals, writs of Habeas Corpus and related matter.)

Rene Henry, from the Office of Bob Bullock, State Comptroller Austin, Texas (who spoke on the Redbook bookkeeping system). Mr. Henry review the Bailey County bookkeeping system while here.

Vi Nieneker, Austin, Texas Judicial Council, Office of Court Administration, Austin, Texas. Ms. Nieneker explained the monthly reports which her office received from the District Clerk, County Clerk, J.P. and City Offices. (The District Clerks report comprises 14 sheets monthly) These reports are only one part of the statistics handled by that office.)

Wayne Atkins of Grand Prairie, a representative of 3-M Corp. Copy Machines. Gave a presentation to the group in regard to micro-fiche and copying machines.

Nelda Merriott, Bailey County District Clerk spoke on the bookkeeping imple-

## Depot Preservation Meeting Scheduled

On May 25, 1983, the Muleshoe Chamber of Commerce and Agriculture testified before a hearing of the Texas Railroad Commission, asking that the depot in Muleshoe not be closed, and that if it should be closed, that the building be preserved because of its historical significance to the community. In the Commission's interim order for the closing of the station, issued January 17, 1983, the Commission reserved its ruling on the request to dismantle the building "pending consummation of requests for preservation of the depots by local citizens."

The Chamber met with officials of the Santa Fe Railroad, and indicated to them that the Chamber was financially unable to take over the building, due to the fact that it must be moved and the grounds leveled. The Muleshoe City Council and the Bailey County Commissioners' Court also indicated that they would be unable to assume responsibility for the depot.

The Chamber will be hosting a meeting of those persons which may be interested in preserving the depot for some community

purpose, to discuss options, financing and strategy for the depot's preservation, in the City Council Chambers of City Hall on Tuesday, May 3, 1983, at 6:00 p.m. All those interested in the depot's preservation are encouraged to attend.

### Local Boxers

#### Win Fights

On April 22 and 23, two young Muleshoe boxers entered boxing competition in the Amateur Boxing Federation fights held in Olton, Texas.

Winning first place in the 95 pound division, after fighting two opponents was Anthony Orozco, 13 year old son of Flora Eliodoro. Orozco's bout was for three rounds and he won by decision of the judges.

Also winning first place was Raymond Martinez, 15 year old son of Mayricial Manula of Muleshoe. Raymond fought in the 125 pound division and fought one regular fight and one exhibition fight for three rounds.

The boys' next step is to enter the West Texas Junior Olympics at Pecos, Texas on May 6 and 7.

## Little League To Sell Canisters

Muleshoe Youth Baseball (Little League) this year is expected to be the best ever. Approximately 230 boys and girls are expected to participate this season. Mrs. Ken Box has been elected President for the coming year. She and a committee composed of Mrs. Randy Bush, Mrs. Robert Montgomery, Mrs. Jim Crawford and Mrs. Max King along with a team mother from each team from each league (minor league, major league and T-ball) will meet on May 5 at 7:00 at 16th and Avenue D Church of Christ to announce that funds are needed for the Muleshoe Youth Baseball program.

Muleshoe Youth Baseball plans to raise this money by taking orders for decorative and useful canisters.

These attractive canisters filled with popcorn, candy, snack mix or trail mix are excellent to have around the house or can be used as gifts.



LOCAL BOXERS WIN--Anthony Orozco and Raymond Martinez both won their recent fights in the Amateur Boxing Federation fights held in Olton, Texas. They will advance to the West Texas Junior Olympics at Pecos on May 6 and 7.



**HAPPY BIRTHDAY**--Minnie Cash celebrated her birthday with a birthday party Thursday afternoon at the Muleshoe Nursing Home, hosted by the Needmore Community Club. Decorators Floral and Nursery provided a corsage for Mrs. Cash. She was born on April 14, 1889.

### Program To Assist Cancer Patients And Families

The American Cancer Society has announced a program designed to help cancer patients understand and adjust to cancer and to become members of their own treatment teams. In addition, the program will be of help to the families of cancer patients by providing information about cancer, treatments, patient reactions, and means by which problems associated with cancer may be reduced.

The program is called "I Can Cope" and sessions will be conducted weekly, commencing Tuesday, May 17th at 7:00 p.m. in the Lubbock General Hospital Cafeteria. The sessions will be of about one and a half hours duration and six sessions will complete the program. It is noted that the program is designed to permit persons to join the group at anytime.

Participation by family members is not required and individual cancer patients may attend the sessions unaccompanied. Persons caring for or closely associated with a patient, will find the information of value.

It is now recognized that medical treatment can be enhanced by the patient's attitude. A positive attitude can result in reducing fears, diminishing anger, and overcoming the stress associated with the diagnosis of cancer. By better understanding oneself, the disease, and the various treatments, a person learns to achieve more control over his or her health. Some of those attending the previous courses have found a new start in life and all attendees have found the course to be of

value in varied ways. The sessions are conducted by local health-care professionals such as physicians, nurses, social workers, dieticians, physical therapists, psychotherapists, psychologists and educators. All of their experience, knowledge and time is given voluntarily.

There are no charges for the "I Can Cope" program.

It is suggested that those persons from surrounding towns may want to pool transportation to Lubbock in order to reduce travel expenses. Also, those persons desiring to have the evening meal at the Lubbock General Hospital Cafeteria may do so between 5:30 and 7:00 p.m.

\*\*\*\*

A lot of worry can be wasted on other people.

## G.T.E. Customers To Get Telephone Calling Cards

Muleshoe telephone customers who make telephone credit card calls when out of town may find a new service designed just for telephone Calling Card calls available in some locations.

The new service, called Calling Card Service (CCS), makes it possible for users to dial their own Calling Card calls and billing number in the telephone net-

work. The automated service has the benefit of convenience and speed, but it also provides customers with cost savings and increased security. Because the function is automated, customer dialed Calling Card calls are less expensive than third number billed calls, although still more costly than direct dialed calls.

To use the service, the customer will dial "0" plus the number being called. A tone or a tone and announcement will ask the customer to enter his/her Calling Card number. Once the number is entered, it is validated through a nationwide data base which contains all the Calling Card numbers. Billing information is recorded automatically and the customer is connected to the called number in a matter of seconds, all without the assistance of an operator.

The fully automated CCS is being made available where equipment that can access the nationwide network is in operation. Only Touch Calling telephones in these locations can access the CCS network.

Customers who use rotary phones in exchanges

with an automated CCS equipment and customers in exchanges where the automated CCS equipment is not yet available can still make Calling Card calls but an operator's assistance will be required. While there is a charge for Calling Card calls, the charge is lower than collect or third number billed calls.

The new automated service is one of the first telephone services to be offered that utilizes a nationwide data base to store and process information. In effect, the cardholders use the telephone to access a computerized network which verifies, almost instantly, all the information necessary to complete and bill the call. In cases of calls from exchanges where the customer cannot dial the information, the operator can access the network and verify the Calling Card. Although operator assistance is required, the customer receives the lower Calling Card rate.

Calling Card holders have more protection from misuse of their cards with the automated service. Since the customer does not need to say the billing number aloud, privacy is ensured, even in public places. In the case of a lost

or stolen card, the card number can be changed quickly, making the card virtually useless to anyone else.

As in the past, there is no charge to obtain a Calling Card. General Telephone customers wanting to apply should contact their telephone company business office.

\*\*\*\*

Progress doesn't flow from excuses.

**ROBERT D. GREEN, INC.**  
2402 West American Blvd.  
MULESHOE, TEXAS 79347

OLDSMOBILE — BUICK — PONTIAC — GMC

**TERRY YELL**  
Sales Representative

Business Phone 806 272-4588  
505 762-2772

Home Phone 806 272-4948

**WOTS Weekly Meeting**

Mary Ann Rameriz, Pam Acklin and Dolores Scott were the hostesses for the Thursday, April 28 WOTS luncheon held at Summit Savings.

Members present were Dolores Scott and Josh, Karen Mason, Mary Ann Rameriz, Ramona Engram of Sudan, Pam Acklin, Glenda Duncan, Alice Phillips, Edna Haynes, Wanda Wiley, Dell Aycock of Sudan, Kay Madry, Pat Cummins of Sudan, Theresa Todd and Jeffrey and Jesse Small, Bertha Wilkener of Sudan, Linda Cogliandra, Rhonda Hugg, Bettie Moore of Earth, Lois Martinec, Kay Moncrief and Tyson, Pat Mudford, Kathy Railsback, Adelia Jones and Rose Crosswhite, Kiley and Deborah.

New members were Moselle Cahorn.

Guests were Myrtle Hass of Amarillo, Jim Foster, Sid Duncan, Cari and Aaron Favara.

Hostesses for the May 5 luncheon will be Karen Mason and Bettie Moore.

For more information on WOTS you may call Alice Phillips at 272-5172 or Lois Martinec at 272-3019.

**Bookkeeping Farm & Small Business**

Start Now And Have Your Records Complete For Income Tax Next Year.

**Doris Wedel**  
272-3332

**BEDDING PLANTS**  
Thousands of Plants On Hand

Flowers Over 200 Varieties	Vegetables Over 50 Varieties	Ground Covers Over 30 Varieties
-------------------------------	---------------------------------	------------------------------------

**OURS ARE BETTER**

- Watered Daily/ Never Drought Stressed
- Screened Daily For Insects & Disease/ We Don't Send Problems Home With YOU
- Fertilized/Guarantees Healthy Roots & Plants

All at prices you can afford

**ROSES**  
Bushes/Climbers

- 2 Gallon Plantable Peat Pots
- Excellent Selection - In Bud & Bloom - \$7.95

Soil Conditioners, Fertilizers, Chemicals

**Texas Certified Nurseryman On Duty**

**DECORATORS**  
Nursery & Floral

Telephone 272-4340 616 South First  
Muleshoe, Texas 79347

*For Mother on her Special Day*

A Carnation Will Be Given The First 25 Ladies To Visit The Store Saturday.

Fry & Cox Will Honor All Mothers With A Special Drawing - 5:30 P.M. - Sat., May 7

For

- ★ Ultra '80' Telephone
- ★ Gro-Tube (With Plants)
- ★ Pair Harvard Cutlery Knives
- ★ GE Hand Mixer

Registration Starts Monday, May 2

Also, Check Our Special Gifts For Mom

SHARP CAROUSEL MICROWAVE \$499 <sup>95</sup>	GENIE GARAGE DOOR OPENER \$179 <sup>99</sup>
FOREMOST MICROWAVE CART \$44 <sup>99</sup>	PRESTO FRY DADDY \$24 <sup>99</sup>
3-PIECE SET CORNING WARE \$9 <sup>88</sup>	SUNBEAM CURLING IRON \$14 <sup>99</sup>

ALL CASE KITCHEN KNIVES & SCISSORS 25% OFF

**Fry & Cox, Inc.**  
401 South First 272-4511

True Value HARDWARE STORES



**SUPERIOR RATING**--Jim Swanner, Muleshoe Nursing Home Administrator, shows a "Superior Rating" plaque which the Muleshoe Nursing Home received recently when the Texas Department of Health made their annual licensing inspection. To receive a superior rating a nursing home must net 105 bonus points. A team from Lubbock (Region 2) made the inspection. This rating has been received by the Muleshoe Nursing Home one other time, approximately five or six years ago. Swanner said "It shows the staff is very interested in doing a good job in the care of the patients. It takes a lot of good work and effort." Swanner has been administrator of the nursing home approximately two years. The home has a total of 52 residents with a waiting list of 40 persons.

**Former Grad Awarded Mortor Board Scholarship**

Texas Tech University freshman Stacey Campbell of Muleshoe and sophomore Larry Paul Heck of Marfa have been named to receive the first Mortar Board Scholarships of the university's Forum Chapter.

The \$300 awards were presented to Campbell and Heck on the basis of high scholastic achievement and campus leadership. The recipients were chosen from among 30 applicants by a screening committee composed of four Mortar Board actives.

Campbell, a political science and Spanish major, is the daughter of Mr. and Mrs. Tim Campbell, 702 W. 20th, Muleshoe. Heck, an electrical engineering major, is the son of Mr. and Mrs. Melvin Heck of Marfa.

Mortar Board is a national scholastic, campus leadership and service society.

Campbell has made the dean's list at Texas Tech

and is a member of freshmen scholastic honorary society Alpha Lambda Delta, Kappa Kappa Gamma sorority and Angel Flight, a social-service organization supporting Air Force Reserve Officers Training Corps.

In addition to making the dean's list, Heck previously has received scholarships from the Mathematics, Music and Electrical Engineering departments. He is a member of the Institute of Electrical and Electronics Engineers, historian for Kappa Kappa Psi national honorary society for band members and performer in the Texas Tech marching band, symphonic band and jazz ensemble.

\*\*\*\*  
Much time is wasted preparing for what doesn't happen.

\*\*\*\*  
Your money won't do much when you are dead. Put it to work now.

**Firefighters Report**



By Wayne Peterson

After some discussion on the subject of a T.V. warning system and means of funds for financing, a motion was made and seconded that the fire department would help in taking donations are possible, pledges for this project. This is in cooperation with the civil defense, Merlyn Neel of Cable T.V. and other concerned citizens. A Wednesday night was decided upon for our part, and which ever section of town given to us.

Department training was practice of pumper operations. J.O. Parker training officer made this a race between the three teams against the clock, which turned out to be a pencil pen clock of H.E. Reeder's, we heard came as a free gift from Fredricks of Hollywood. Assistance Chief Donald Harrison showed up pretending to be crippled so he could sit watch and criticize our efforts. Chief Dunham showed back up just in time to check the outcome and turn on a dirty air conditioner in the meeting room which caused need for adjournment.

During the races, some fireman just weren't satisfied without making it seem more complicated. Larry Rasco tried to see how fast he could tie a knot in a 1 1/2" hose and untie it before the water reached it, maybe he won first at this, for team #1. Either team #3 wanted twice as much water as the others or Brian Rudd needed a bath as two sides of the hydrant were opened for only one hose to hook up.

The three team captains are #1, Les Dunham #2,

**West Plains Medical Center**

ADMITTED

April 25-Freddie Quiragan and Irma Villarreal

April 26-Matellea Gonzales, Karen Wooten, Lona Brown, Tomasa Guyman, Julia Allmand, Susan Kerby and Arland Fyie

April 27-Frank Hawkins, Sylvia Guerra, Lupe Flores and Carmen Guardiola

April 28-Eylemia Torres

DISMISSED

April 25-Paul Gulcher, Wenona Gibson, Myrtle Wells and Eva Maniezo

April 26-Jerra Dudley, Lona Ruthardt and Teresa Franco and baby girl

April 27-Irma Villarreal and Marcus Laney

Wayne Wauson and team #3 Johnny Ziegenfuss. Teams scores are as follows team #1 first run 1.55 min. second run 1.58 min. Team #2 first run 1.09 min. Second run 1.33 min. Team #3 first run 1.22 min. Second run 1.48 min. Teams one and two suffered a 10 second penalty for only Harrison and Reeder knows.

Run one was a race for a block to a hydrant hook up to it, lay 50' of 2" hose with nozzle and pump water, run two was the same but a 2" hose on the left hand side of truck hookup on the right side and run two 1 1/2" hoses with nozzles. This is a practice helpful in the real thing, racing the clock does put a certain amount of pressure on the situation. Remember the Firemans Ball - ask a fireman when and where and a ticket.

**Sudan Boys**

**Track Results**

The Sudan Hornets placed 3rd in the recent Track meet held at South Plains College in the API Track Meet April 15 and 16, when they made 71 points. Anton was first with 104; Ropes second with 83.

Sudan's 1600 relay placed first with 3:29.65 with Happy placing second with 3:33.38 and Amherst 3rd with 3:34.31. The Hornets are Perry Kent, James Clay, Joseph Kessler and Lester King and this group set a new meet record. Lester King placed first in the 200 with 22.6 also setting a new meet record.

The 400 relay team placed first with 44.24. This team consists of James Clay, Joseph Kessler, Randall Damron and Lester King and this group also

set a new meet record. Charlie Fisher placed 7th in the 110 High Hurdles with 17.3 and Brad Byerley placed 6th in the 800 Meter Dash with 2:14. James Clay placed 6th with 11.4 in the 100 Meter Dash and Terry Peck placed 6th in the 1600 meter run with 5:07. Joseph Kessler set a new Sudan School record in the 400 meter dash with 52.1

**Bailey County Journal**

Established March 31, 1963. Published by Muleshoe Publishing Co., Inc. Every Sunday at 308 W. Second, Box 449, Muleshoe, Texas 79347. Second Class Postage paid at Muleshoe, Texas, 79347.

MEMBER 1983  
TEXAS PRESS ASSOCIATION

L.B. Hall President  
James Wink Vice President  
Shirley Farmer News  
Eveline Harro Society  
Crisa Williams Advertising  
Sammy Hall Bookkeeper

Muleshoe Journal and Bailey County Journal  
Bailey and surrounding counties..... 11¢  
Muleshoe Journal and Bailey County Journal  
elsewhere..... 13¢

Advertising rate card on application

and placed second in the meet.

**\$25 SAVINGS**  
--- WITH THIS AD ---

**BRING THIS AD FOR \$25 SAVINGS ON 14K GOLD ARTCARVED H.S. CLASS RINGS**

Now's the time for super savings on your ArtCarved 14K gold class ring. ArtCarved backs each ring with a Full Lifetime Warranty. This offer expires May 31, 1983 and is to be used only for the purchase of 14K gold ArtCarved Class Rings.  
Nothing else feels like real gold.

**ARTCARVED**  
CLASS RINGS INC.

**Lindsey Jewelers**  
202 Main 272-3355

**Anthony's 61st Anniversary Mother's Day Sale**

**Make the Most of her Day with Wonderful Gifts!**



**save 20%**

**Women's Famous Name Sleepwear**

Sleeping beauties can now save 20% off our entire stock of Russell Newman® and O'Bryan® sleepwear! These beautiful styles come in luscious colors, and many have pretty accents. Treat yourself to a dream of a sale! Available in sizes P, S, M, L.

**sale 29.88**

**Junior Calvin Klein Denim Jeans**

Reg. \$42. It's true...29.88 buys a pair of these status denims that fit like no other jean can. They're 100% cotton denim that hugs your curves in all the right places! Available in junior sizes 3-13.



**sale 19.88**

**Women's Fashion Pants**

A great selection of women's fashion pants from famous makers including Levi, Bendover, It em Eyes, and Abvion.



**sale 4.47 to 9.97**

**'Promise' Percale Sheets**

Reg. 7.49 to 15.99. The promise of Spring's beauty gently unfolds on "Promise" percale sheets by Danville™ of Dan River™!



**12.88 everyday!**

**Women's Spring Blouses**

Gather up all your favorite styles of these pretty fashion blouses! Choose from sunny styles and colors in women's sizes 8-18.

**Are You Ready--- For "Ready Bank?"**

**We're Celebrating Our New Arrival--And, Want To Share The Celebration With You-- Our Customer. With Ready Bank, We Can Serve You 24 Hours A Day--Plus Every Time You Use It, Your Name Goes Into A Hopper--You May Win Our Trip For 2 To Las Vegas On July 3--Or Win Extra 'Instant' Cash For A Special Treat!**

**MULESHOE STATE BANK**

101 W. American

MEMBER FDIC

272-4561

321 Main Street

**Anthony's**  
C. R. ANTHONY CO.

Muleshoe, Tx.



RHONDA DUNHAM

## Bridal Shower Honors Miss Rhonda Dunham

The home of Mrs. Frank Ellis was the setting Sunday, April 24, for a bridal shower honoring Miss Rhonda Dunham, bride-elect of Thurman Myers. Guests called between the hours of 3:00 to 4:30 in the afternoon and were greeted by Miss Dunham, her mother, Mrs. Jack Dunham, Mrs. Clayton Myers, mother of the prospective groom, and Mrs. Ellis. Mrs. Donald Harrison registered the guests.

Brass appointments accented the serving table, which featured an ecru runner of cutwork linen and an arrangement of silk spring flowers. The lime punch and thumbprint cookies carried out the bride's chosen colors of sea green and pink. These colors were also featured in her corsage of silk roses. Mrs. Dana Rasco and Miss Sherri Bessire served the guests.

Special guests attending the shower included: Mrs. Vernal King, grandmother of the bride, her sisters, Miss Shelly Dunham of San Angelo and Mrs. Dani Heathington, her aunts, Mrs. Jo Ellen Nichols of Hobbs and Mrs. Billie Graves. Mrs. David Luna of Amarillo, sister of the prospective groom, and

Mrs. C.L. Myers, his sister-in-law, also attended, as well as the mothers of the honored couple.

Hostess gift for the occasion was a 12-place setting of the bride's chosen stainless steel flatware. Assisting in the hospitalities were Mrs. Robert Hooten, Mrs. W.E. Meyers, Mrs. Wayland Ethridge, Mrs. Herman Morrison, Mrs. W.T. Watson, Mrs. M.D. Gunstream, Mrs. Ray Lynk, Mrs. Dale Burden, Mrs. Paul Poyner, Mrs. Bill Harmon, Mrs. Donald Harrison, Mrs. Jim Burgess, Mrs. Marcia Henry, Mrs. Arnold Gross, Mrs. Dan Thorckmorton, Mrs. Ronnie Black, Mrs. Royce Turner, Mrs. Ronnie Holt, Mrs. Howard Watson, and Mrs. Frank Ellis.

### Amanda Garza Crowned Baby Pageant Queen

Amanda Garza, 18 month old daughter of Mr. and Mrs. Juan Garza of Clovis, N.M. formerly of Muleshoe, was crowned queen of the First Annual Baby Pageant and Diaper Derby held recently in Clovis.

Marion Pastermacki, coordinator said "The pageant and derby survived two months of preparation of philosophy, rules and procedures, to make it one of the most successful fund raising events in Clovis."

Danny and Jacki Folk presented the event and the membership of Association for Retarded Citizens of Clovis voted it as the group's project of the year. Amanda is the granddaughter of Mr. and Mrs. Salvador Villarreal and Mr. and Mrs. Noe Anzaldua, all of Muleshoe.



AMANDA GARZA

### Alpha Zeta Pi Reveals Secret Sisters

Alpha Zeta Pi chapter of Beta Sigma Phi met in the home of Pam Shipman. Hostesses for the meeting were Robin McClanahan and Pam Shipman.

The program was presented by Paulette Cuevas. Her presentation was on taxes and their purposes.

Secret sisters were revealed and gifts exchanged. Refreshments served were apple spice cake, tea and soft drinks.

Those present were: Phyllis Woods, Betty Bush, Robin McClanahan, Paula McMeans, Debbie Green, Debbie Nickels, Marilyn Riley, Jan King, Linda Bullock, Pam Shipman, Tammy Black, Tonya Pool, Gina Smith, Annette Bonds, Dani Heathington, Lynece Goodnough, Peggy Pohlmer, Kristi Phelps, Debbie Hutto, Alice Liles, Janeice Williamson and Paulette Cuevas.

Plants potted, dish plants and terrariums: NEEDLEWORK needlepoint, embroidery, crochet, knitting, hooking, quilting and tating: CANNED GOODS fruits and juices, vegetables, preserves, jams and marmalades, jellies and butter and pickles and relishes: BAKED GOODS cakes, pies, breads, yeast: breads, quick: and cookies.

Judging will begin at 10 a.m. and continue until 11 a.m. The arts and crafts fair will be closed to the public until the judging is finished.

A first, second and third place ribbon will be awarded in each of the seven categories. The first place winner in each category will go to Lubbock on May 12.

Mayor Bratcher will give the welcome at 10 a.m. followed by a movie from 10:15 until 11 a.m. Fun time will begin at 11 a.m. and continue until 3 p.m. Games to be played include: shoe kick, balloon bust, funny face and forty-two.

Admission is free to the people of Bailey County along with free refreshments.

## Senior Citizens Olympics, Arts Fair To Be Held Here

The local Senior Citizens Olympics and Arts Fair is scheduled for Saturday, May 7 from 9 a.m. to 3 p.m. at the Bailey County Exhibition Center.

Senior Citizens 60 years and older from Bailey County as well as all interested individuals and groups may enter the olympics.

All crafts, arts and food is to be entered between 9 and 10 a.m. All entries will be marked on the back with a name tag.

The seven divisions to be judged in the arts and crafts fair includes: ARTS oil painting, watercolor, pencil drawing, charcoal, photography and sculpture: ARRANGEMENTS artificial, dried, fresh flowers, fruits and special arrangements: HANDCRAFTS dolls, macrame, decorations, pillows, toys, pictures and glass crafts:

Plants potted, dish plants and terrariums: NEEDLEWORK needlepoint, embroidery, crochet, knitting, hooking, quilting and tating: CANNED GOODS fruits and juices, vegetables, preserves, jams and marmalades, jellies and butter and pickles and relishes: BAKED GOODS cakes, pies, breads, yeast: breads, quick: and cookies.

Judging will begin at 10 a.m. and continue until 11 a.m. The arts and crafts fair will be closed to the public until the judging is finished.

A first, second and third place ribbon will be awarded in each of the seven categories. The first place winner in each category will go to Lubbock on May 12.

Mayor Bratcher will give the welcome at 10 a.m. followed by a movie from 10:15 until 11 a.m. Fun time will begin at 11 a.m. and continue until 3 p.m. Games to be played include: shoe kick, balloon bust, funny face and forty-two.

Admission is free to the people of Bailey County along with free refreshments.

Admission is free to the people of Bailey County along with free refreshments.

Admission is free to the people of Bailey County along with free refreshments.

Admission is free to the people of Bailey County along with free refreshments.

Admission is free to the people of Bailey County along with free refreshments.

Admission is free to the people of Bailey County along with free refreshments.

Admission is free to the people of Bailey County along with free refreshments.

Admission is free to the people of Bailey County along with free refreshments.

Admission is free to the people of Bailey County along with free refreshments.

Admission is free to the people of Bailey County along with free refreshments.

Admission is free to the people of Bailey County along with free refreshments.

Admission is free to the people of Bailey County along with free refreshments.

Admission is free to the people of Bailey County along with free refreshments.

Admission is free to the people of Bailey County along with free refreshments.

Admission is free to the people of Bailey County along with free refreshments.

Admission is free to the people of Bailey County along with free refreshments.

Admission is free to the people of Bailey County along with free refreshments.

Admission is free to the people of Bailey County along with free refreshments.

Admission is free to the people of Bailey County along with free refreshments.

Admission is free to the people of Bailey County along with free refreshments.

Admission is free to the people of Bailey County along with free refreshments.

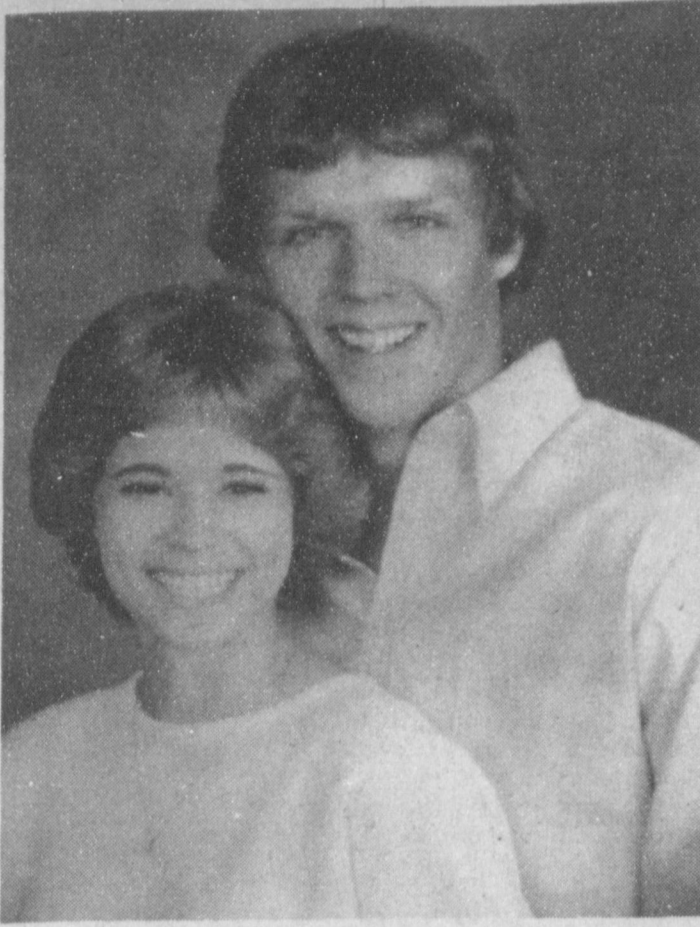
Admission is free to the people of Bailey County along with free refreshments.

Admission is free to the people of Bailey County along with free refreshments.

Admission is free to the people of Bailey County along with free refreshments.

Admission is free to the people of Bailey County along with free refreshments.

Admission is free to the people of Bailey County along with free refreshments.



ENGAGEMENT ANNOUNCED--Mr. and Mrs. Leon Dupler and Mr. and Mrs. Bill Sears of Andrews would like to announce the engagement and approaching marriage of their children, Susan and Scott. A Friday, July 29 wedding at 5 p.m. at the First Baptist Chapel in Andrews is being planned. Miss Dupler will graduate from Andrews High in May 1983. The prospective groom graduated from Andrews in 1982. He is presently attending Odessa College and is employed by Kay Electric. They will both attend UTA at Arlington during the fall semester.



JUNE DATE SET--Mr. and Mrs. Henry Thomason of Austin and Mr. and Mrs. Leon Lewis of Muleshoe wish to announce the engagement and approaching marriage of their children, Vicki Jewel Thomason and Robert Kirk Lewis, both of Seminole. Vows will be exchanged June 18 in the Hyde Park Baptist Church in Austin. Miss Thomason teaches high school biology in Seminole and Lewis is the assistant Gains County Extension Agent.

### TOPS Club Chapter 34

Methodist Hospital suffering from a broken thigh. Mrs. Jones and Mrs. Peeler read articles from a newspaper.

Best loser for the week was Ruth Clements. Rose Sain was first runner up and Evelyn Moore was second runner up.

The meeting was dismissed with the singing of the goodnight song.

TOPS Club chapter Tx. No. 34 met at 6:30 p.m. Thursday, April 21 in the meeting room of Bailey County Electric. Clara Lou Jones, president, called the meeting to order. The TOPS pledge was recited and the fellowship song sung.

Laverne James, weight record, called the roll with 18 members weighing in. One new member, Dorothy Hanes, was welcomed to the club. One visitor, Justine Hanes was also present.

Jewell Peeler presented a new contest. Clara Lou Jones celebrated her birthday. Happy birthday was sung to her and she received a gift from the birthday box.

A card was signed by the members to send to Polly Clark, who is in Lubbock

### BIBLE VERSE

"Let no one despise thy youth, but set the believers an example in speech and conduct, in love, in faith, in purity."

1. To whom was this advice addressed?

2. By whom were these words spoken?

3. Is this advice still pertinent?

### Answers to Bible Verse

1. Timothy, a young preacher.

2. Paul, an old preacher, about to die in Rome.

3. Yes--young people, by pure consecrated living, can change the world today.

A fun and unusual way to shop for Mother's Day . . .

Tuesday, May 3 will be an unforgettable day at Katy's, 115 Main in Earth, Texas.

On display will be Woodworks by Lonnie Wilson of Springlake-Earth, and Original Paintings by Sheryl Engelking of Muleshoe.

10:00 a.m. - 5:00 p.m.  
Refreshments will be served.

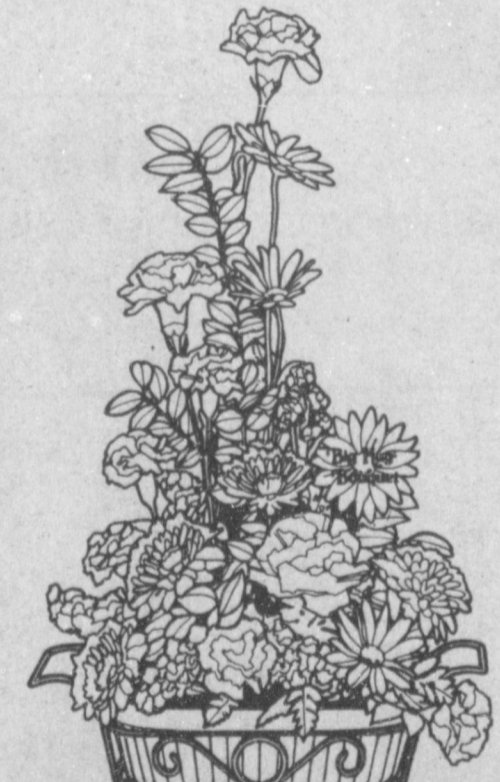
## Remember Mother



NEW SATIN SULTRESS HEAVENLY BODIES FOR MOTHER

Fashioned For fabulous fit and flattery, divine comfort, in Satin Sultress of Antron III Nylon ... with exquisite Nylon and Lycra Spandex Stretch Laces used as an integral part of each design!

110 Main **St. Clair's** 272-4453



For all the years of love.  
Mother's Day is Sunday, May 8.  
Give Mom an FTD® Big Hug® Bouquet.  
In a Pfaltzgraff Stoneware Serving Dish  
with brass-plated carry 'n serve rack.

Decorator's Nursery & Floral | Muleshoe Floral & Gifts  
Send your love with special care.™

COMPUTER SYSTEMS by Micro Mike's, Inc.  
Designed Especially for Farm and Farm Related Businesses  
(Texas A & M Software Available at no Charge)  
**272-4266**  
AMERICAN VALLEY INVESTMENTS

©Registered trademark Florists' Transworld Delivery Association.  
©1983 Florists' Transworld Delivery Association.

## Muleshoe Art Association Schedules Spring Show

The Muleshoe Art Association's 1983 Spring Show is scheduled for Saturday and Sunday, May 7 and 8 at 321 Main (Western Auto Building) here in Muleshoe.

Entries must be hand delivered on Thursday, May 5 between the hours of 1 and 5 p.m. All members of the Muleshoe Art Association are eligible to participate in the exhibit. Any non-member who wishes to join the Association may do so by paying the \$10 membership dues.

Any non-member who does not desire membership may exhibit by paying the entry fee for non-members. Fees will be collected when entries are accepted. Entries must be original and done without supervision. Any works not in good taste will be rejected. Paintings shown should not have been exhibited previously in Muleshoe Art Association Shows.

The exhibit will be open for public viewing on Saturday from 10 a.m. until 5 p.m. and Sunday from 1 until 4 p.m. All paintings must be removed following presentation of awards.

Entry fees for Muleshoe Art Association members is \$3 per entry and non-members entry fees are \$6 per entry. Any artist may submit as many paintings as they desire in each category at the above entry fees. No fee will be refunded. All checks should be made out to the Muleshoe Art Association.

Paintings must be framed and wired for hanging. Watercolors and graphics must be framed under glass. A card should be attached to the back of the painting stating the artist name, address, media and price.

Entries not available for purchase awards must be so labeled. Entries not for sale must be so designated. While reasonable care will be taken with all works submitted, entries will be handled and displayed at the artist's risk. The Association will not be responsible for any damage to the entries and they are asking for no wet paint.

Prizes includes purchase awards: Muleshoe State Bank \$250, First National Bank \$250 and Ray Davis Farm Bureau Insurance \$200.

Merchants awards include: Bobo Insurance Public Opinion award \$15, Art Loft Framing award \$40, Lindsey Jewelry, gift certificate \$15, Williams Brothers Office Supply, supplies award \$10, El Neuvo Leal's Restaurant \$25, Dood's Frame Gallery \$20, Corral Restaurant \$10, Something Special \$25, Anthony's \$10, White's Cashway Grocery \$25, Higginbotham Bartlett, framing award \$25 and Poynor's Whites Auto \$30.

The Muleshoe Art Association will present the following cash prizes and ribbons: Best of Show \$100, Oil Media: oils, acrylic, etc. (framed without glass) first \$75, second \$50 and third \$25; Water Media: watercolor, tempera, etc. (framed under glass) first

\$75, second \$50 and third \$25; Graphics: all drawings, etching, lithographs, silkscreen, woodcuts, etc. (framed under glass) first \$50, second \$30 and third \$20; Pastel (under glass) first \$75, second \$50 and third \$25.

Also Pastel: (under glass) first \$75, second \$50 and third \$25; Oil Media for artists painting five years or less and never having entered a competition: first \$50, second \$30 and third \$20; Watercolor Media or other work (under glass) for artists painting five years or less and never having entered a competition: first \$50, second \$30 and third \$20.

Additional ribbons and citations will be awarded at the discretion of the judge, Lawanda Murfee of Lubbock. Any artist may receive only one cash award other than the Bobo Public Opinion Award or Purchase Awards. However, the artist will be eligible to receive additional Honorable Mention Ribbons as selected by the Juror.

All school students are invited to participate by showing their paintings in all media without entry fee. Ribbons will be presented for first, second and third places as well as honorable mention ribbons. No cash awards will be given.

For additional information you may contact Cara Juan Schuster, exhibit chairman 806/946-3626 or Mildred Williams, president at 806/946-3311.

Parents who feel they cannot afford the \$30-\$40 cost of a new child safety seat may be tempted to search the garage sales and want ads looking for a bargain. "But a used child safety seat that is defective is no bargain," says Dr. Mary Ann Shirer, a health education specialist with the Texas Agricultural Extension Service, Texas A&M University System. Look first for a label stating that the device "meets or exceeds all federal safety standards," says Shirer. A torn harness or padding can be repaired with replacements ordered from the manufacturer. But twisted, bent, or loose metal frames and seat bars mean the seat is unsafe, says Shirer. Parents should ask the owner for the manufacturer's directions and try the seat in their car before making the purchase. adds Shirer.



MR. AND MRS. HAP DANIELL

## Across The Fence

The United States Department of Agriculture this week released new processing recommendations for tomatoes and tomato juice, applesauce, fruit purees and pumpkin.

To prevent food borne illness and the loss of valuable home canned foods, specialists with the Texas Agricultural Extension Service are urging home canners to follow the new USDA guidelines.

The USDA now recommends the following: \*The one-step, cold pack method for canning tomatoes should no longer be used.

\*The hot pack processing time for canning tomatoes should be increased to 35 minutes for pint jars and No. 2 cans, and to 45 minutes for quart jars and No. 2 1/2 cans.

\*The hot-packing processing time for canning tomato juice should be increased to 35 minutes for pint and quart jars, and for No. 2 and 2 1/2 cans.

\*Strained (pureed) pumpkin and winter squash should not be canned at home. Instead, cubed pumpkin and squash may be canned using a processing time of 55 minutes for pint jars and 90 minutes for quart jars.

\*The processing times for applesauce and fruit puree should be increased to 20 minutes for pints, quarts, No. 2 and 2 1/2 cans.

According to Marilyn Haggard, a foods and nutrition specialist with the Extension Service, the

changes in canning recommendations are based on research conducted at land-grant universities and the Eastern Regional Research Center of the USDA.

"The recommendation to more than triple hot-pack processing times for tomatoes was based on research which indicated that shorter times could be insufficient under certain conditions," says Haggard. "Insufficient processing could allow botulism organisms to survive the heat treatment, grow and produce harmful toxins," she explains.

"We consider this especially important since tomatoes are the most popular type of produce for home canning grown by Texas gardeners," states Haggard.

Poor heat penetration through dense foods and the high heat resistance of a particular mold led the USDA to recommend increased processing times for applesauce and fruit purees. They also recommend that strained (pureed) pumpkin and winter squash no longer be canned at home for the same reason.

"Those wishing to have strained (pureed) pumpkin or winter squash ready for making pies or casseroles should consider freezing the puree instead," says Haggard.

"Now is the time to correct Extension bulletin, B-194, 'Home Canning... Fruits and Vegetables,' or other instructions before the canning season begins," she adds.

A winning smile isn't necessarily sincere.

## Maggie Daniell Honored With Welcoming Party

Maggie Daniell was welcomed to the Muleshoe Nursing Home Wednesday morning with a "Welcoming Party" in her honor. Carolyn Wiseman and the young people from the music department of the New Covenant Church provided the entertainment. Marie Bradley and Mrs. Kenneth Johnson provided the refreshments. Residents of the nursing home helped with the serving.

Mrs. Daniell was born March 8, 1905 in Pushmataha, County, Okla. Her parents were Mr. and Mrs. Wick Smith. She was the

third child in a family of 10 children. She had four brothers and five sisters. She grew up in Oklahoma where her father was a farmer.

Mrs. Daniell first came to Muleshoe from Plainview where she worked in a nursing home. She moved here when she married W.M. "Hap" Daniell on March 13, 1951. Daniell was the ginner at the Pay-

master Gin and they made their home here until his retirement in 1968. At that time they moved to Bowie. They returned to Muleshoe to live in April 1980.

Mrs. Daniell is the mother of four children. They are Roy Thompson, Jr. of Ft. Worth, W.E. "Snooks" Thompson of El Paso, Jerry Don Thompson of Lubbock and Norma

Ames of Chandler, Ariz. She has 13 grandchildren and several great grandchildren.

Also four step children that she claims as her own.

They are T.A. Daniell of Farmington, N.M., Curtis Daniell of Overton, Jo Vivian Soape of Fruitvale and Joy Williams of Muleshoe.

It was reported that before she became ill she was a marvelous cook. She enjoyed having a vegetable garden and canning and freezing the vegetables. She was a good seamstress and enjoyed doing everything that goes into making a home. She played the piano and still sings alto.

She is a member of the Community Church of Muleshoe.

## Sudan Firemen's Auxiliary

### Meeting Held

The Firemen's Auxiliary members of the Sudan Fire Department met Monday, April 11 at the fire hall for a short business meeting before going to Lubbock for a program at Lubbock General Hospital.

It was decided to have tea and lemonade again this year at the July celebration.

On May 10 the Auxiliary will be sponsoring a program on Self-Defense for the entire community. A woman officer with the Department of Public Safety of Lubbock, will be giving the program.

Following the meeting, several members and husbands went to Lubbock General Hospital for a program on burns.

A Unique Shop Filled With Everything For The Cook - From Novice to Gourmet

Le Cook GIFTS for Modern Day Moms

Through May 7, 1983

Arkansas Oak

Cutting Boards - 10% Off

All Sizes and Shapes

FOOD PROCESSORS!

- ALSO -

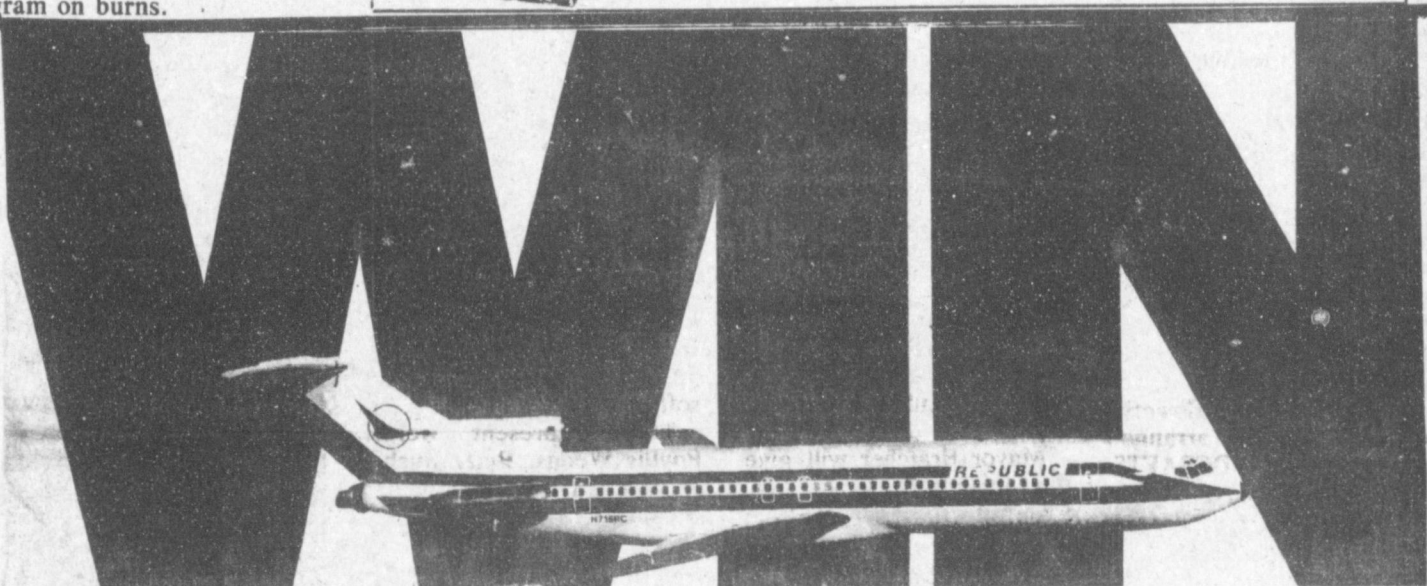
Coffee Pots - Microwaves - And Gadgets Too Numerous To Mention!

Tired of everyday? ... Step up to Gourmet!

The Microwave & More Store

1605 N. PRINCE (By Curtis Mathes)

762-7791



## 4 years of free air travel from Curtis Mathes and Republic Airlines.

**1st Prize**

Free air travel for two for four years to any Republic Airlines destination in the continental United States.

**3rd Prize**

Fifteen prizes of four free tickets from Republic Airlines to Orlando or Los Angeles to visit the dazzling new Walt Disney World™ or the original land of enchantment, Disneyland™.

**2nd Prize**

One trip per year for two for four years to any Republic Airlines destination in the continental United States.

**Details**

1. No purchase required on Sweepstakes.
2. Free Sweepstakes entry form and complete details at your participating Curtis Mathes Home Entertainment Center.
3. Curtis Mathes Travel Giveaway ends June 15, 1983.
4. Void where prohibited by law.

**4th Prize**

One hundred and fifty convenient carry-on Republic Airlines flight bags.

**Four Years**

All Curtis Mathes products are protected by our exclusive Four Year Limited Warranty. Delivery and installation are included on all products. Payment plans are available. See dealer for details.

**Buy from Curtis Mathes and get a Republic Airlines "Buy 1, Get 1 Free" Coupon.**

Buy a selected Curtis Mathes home entertainment product between May 1 and June 15, 1983 and receive from Curtis Mathes a Travel Giveaway Coupon, good for air travel on Republic Airlines... at any fare level. This coupon entitles you to a free roundtrip ticket with the purchase of another roundtrip ticket from Republic. Travel good June 1 through November 15, 1983, excluding certain holiday periods. Quantities are limited.

## Mother's Day Gift Ideas!

SELECT GROUP BLOUSES 30% OFF

ALL SWIM SUITS \$19.95

'TOMBOY' SEPARATES INCLUDING JUMPSUITS-SKIRTS-JACKETS \$9.95

ONE GROUP 100% SILK JACKETS & SKIRTS \$19.95

ONE GROUP MIX & MATCH LINGERIE INCLUDING

1/2 SLIPS 50% OFF 30% OFF

10% OFF STOREWIDE EXCLUDING FRAGRANCES LARGE SELECTION OF JEANS

Lady You-Nique

420 Main Street Clovis, New Mexico



### Cade Robert Hooten

Mr. and Mrs. Gary Hooten of Muleshoe are the proud parents of a son born at 5:54 a.m. Wednesday, April 27 in the Methodist Hospital at Lubbock.

The young man weighed seven pounds and seven ounces and was 20 inches long. He has been named Cade Robert.

Cade Robert has two older sisters, Heather, four and Amy, three years of age.

Grandparents are Mr. and Mrs. Robert Hooten of Muleshoe and Mr. and Mrs. Howard Crenshaw of Snyder.

Great grandparents are Mrs. Mervin Wilterding of Muleshoe, Mrs. Cleo McNabb of Mesa, Ariz. and Mrs. Freddie Crenshaw of Snyder.

## Golf Course

Cont. from Page 1

provided the money used in the construction. Mostly, a lot of hard labor by a lot of people, especially the Holmes, who refused to quit, refused to give up and also worked far beyond "giving out," according to all persons who have watched the construction process during the past four years.

Bailey County gave the land for construction of the golf course to the YAC, and a large number dances for youth, and other events provided funds to start the construction. The lighting system and fence were two of the first major construction projects, along with the water and gas systems.

During this week, the Mule Putt Golf Course will open at 7 p.m. each day except for Sunday, when opening time is 2 p.m. The golf course will be operated by Joyce Holmes.

Bob Sanders, president of the YAC, was also at the opening, along with Muleshoe City Manager Dave Marr, City Council members Ronnie Shafer and Paul Wilbanks, City Police Chief Les Irvin, Deputy Sheriff and Mrs. Jerry Hicks, Deputy Sheriff Hal Bynum, District Clerk Nelda Merriott and other local notables.

The above are some of the people who played the first holes of golf after the ribbon was cut. Also on hand were a large number of persons who had helped in various ways to get the golf course completed, and, of course, a number of children, waiting to play their first game of miniature golf in Muleshoe.

Mrs. Holmes said the 18 holes were provided by the Spudnut Shop, Llano Estacado Civic Club, Connie Gupton, Kiwanis Club, the Wayne Holmes family, Rotary Club, Western Sprinkler, Xi Omicron Xi Sorority, Optimist Club, MJH Student Council, Jennysippers, Muleshoe Roadriders, Jaycee Club, Slaughterhouse Club, Muleshoe Young Homemakers, Alpha Zeta Pi Sorority and the Muleshoe Racket Club.

Some of the persons providing labor, material, and/or labor were Bailey County Commissioners, Bailey County Electric Cooperative, T. L. Timmons, D. O. Burelsmith, Charles Flow-

ers, American Legion, Don McElroy, Magby Ditching Service, Jacque Baker, the State Highway Department, Marcus Lopez and Wayne Coley.

Also Gerry Pierce, Bob Gage, Claude Holmes, Eddie Morris, Glen Morris, Shorty Holmes, Mrs. Eugene Shaw, Mr. and Mrs. R. D. Angeley, Ted Harrison, Bob Palmer, Mr. and Mrs. Jim Young, Betty Hopper, Steve Stevens, W. B. Wagon, Jr., Donald Harrison, Gilbert and Jesse Castorena, Higginbotham - Bartlett, Charles L. Smith, Jr. and Earl Ladd, Jr.

And Linda Murray, Cecil Davis, Merlyn Neel, Muleshoe 4-H Club, American Association of Retired Persons, Kappa Kappa Iota Sorority, Muleshoe Floral and Gifts, Harvey Bass and Brownie Troop 417 'Year of 1977.'

Future plans call for at least two croquet courts at the location, as well as the planting of more trees for future shade.

## Mule Buck...

Cont. from Page 1

icipate in this extensive, promotion for the City of Muleshoe. It is believed that the more merchants who participate, the more money that will be spent in town, instead of going out of town.

Grocery stores will not be participating in the promotion, although both Pay-And-Save and Serv-All Thriftway each pledged \$100 to help offset the printing costs of the Mule Bucks and posters to be displayed in windows of participating merchants.

Bob Donaldson, manager of Pay-And-Save commented during the Tuesday night meeting, "We cannot with all fairness participate, because a big part of the shopper's money is used to purchase food, but both Jerry (Hernandez) and I believe that if the program is conducted, it will bring more people to our stores."

Since merchants who are not members of the CoC will be excluded from the promotion, any merchant, who is not a member, will have time to sign up and become a part of the promotion prior to the May 11 deadline.

## Around Muleshoe

Cont. from Page 1

representative from Audit Services of America and to pay routine bills.

Officers and members of the Muleshoe Elementary P.T.A. have planned for all friends, relatives, and former students of Mrs. Katherine Sanders and Mrs. Edith Henderson to attend a retirement reception held in their honor on Sunday, May 1, 1983, from 2:00 to 4:30 p.m. in the friendship room of the 16th and Avenue D Church of Christ.

The Rotarian's regular "Fish Sale" will be held on Tuesday, May 10 this year, with pre orders being taken ahead of time. Fish may also be purchased at the truck on the day of the sale.

The Lazbuddie Athletic Banquet has been scheduled for Thursday, May 5 beginning at 7:30 p.m. in the Lazbuddie High School Cafeteria. Tickets will be purchased for \$5.50 per plate from any athlete or at the door that night.

Billie Jo Freeman of Crosbyton, District Clerk of Crosby County was a guest in the Sherman Inman home Tuesday night and attended an area meeting of District Clerks held at the Bailey County Civic Center on Wednesday. She is the niece of Sherman Inman.

Lazbuddie Elementary School Principal, Charles Beam has announced that Kindergarten registration for Lazbuddie Schools will be held on May 6, Friday in the Elementary Library from 9 a.m. until 11 a.m. In order to register, a child must be five years of age by the first day of September, 1983. Birth certificates and immunization records must be presented at this time also.

In Concert The Anchor

The Bailey County Farm Bureau will be holding their Board of Directors' meeting on Thursday evening at 8:30, May 5, 1983 in the Bailey County Farm Bureau office.

Members are urged to attend this meeting.

Lazbuddie's First Baptist Church School won the Third Place School Trophy at the Accelerated Christian Education, West Texas Area, State Convention. The First place trophy went to Jesus Chapel School of El Paso, Texas, with Evangel Christian Academy of Plainview, Texas winning the second place trophy. Some 400 students participated in the seven areas of competition.

The Muleshoe High School Athletic Banquet will be held on Tuesday, May 10 in the High School Cafeteria. Serving will begin at 7 p.m. Tickets are available at Latrells, Sam's Sporting Goods, Poyners, Ann's T-Shirts and the School Administration office.

Enrollment for Prenatal classes is now open for the Spring session of May 3, 10, 17, and 24, at Central Plains MHMR Center. Classes will begin Tuesday evening at 7:00 p.m. and conclude at 8:45 p.m. with Sandi Miller, coordinator of special projects, and Charlotte Adams, R.N., as instructors. Cost of the series will be \$25 per couple. Call and register at 296-2726, ext. 79.

There will be a gospel and country western jamboree at the Bailey County Coliseum Saturday, April 30, at 8:00 p.m. Featured will be the Anchor Bros. of Sudan and James Storie and Gentle Country of Muleshoe. Also on the program are groups from area towns and Oklahoma.

In Concert The Anchor

Brothers, a popular gospel music group, will be in concert at the Assembly of God Church in Muleshoe on Sunday, May 1 at 6:30 p.m.

The Richland Hills Baptist Youth will have a bake sale at the Pay and Save Grocery on Saturday, April 30 from 10 a.m. until 3 p.m.

## Crusade...

Cont. from Page 1

meetings will include a series of Crusade meetings for July 31 through August 4.

Rev. Jess Moody, pastor of First Baptist Church of Van Nuys, Calif. and a former Bailey County resident will be the Crusade evangelist and John McKay, of Dallas, and the featured singer of the James Robison Evangelistic Associations team will be leading the Crusade Choir as well as present special music.

## Clerks...

Cont. from Page 1

Denham of Earth. Pam Haney and Lonnie Merriott provided music for dinner. Rhonnie Campbell Mayor County Clerk of Moore County, Chairman of the County Clerks Legislative Committee discussed legislation in the separate session of the County Clerks (afternoon).

Ray Lynn Britt, District Clerk of Lamb County, Chairman of the District Clerks Legislative Committee discussed legislation in the afternoon separation session of the District Clerks.

LaQuitta Polvadore, District Clerk of Randall County, (Canyon) and President of the County and District Clerks Association of Texas addressed the group and reminded everyone of the state-wide county and District Clerks conference which will be held in Amarillo in June.

Rhonnie Campbell Mayer, County Clerk of Moore County, (Dumas) is

also the First Vice-President of the Clerks Association. She will be installed as President in June.

Texas is divided into seven areas with a director elected from each area. Bailey County is a part of Area II and their director is Nelda Merriott. Two area leaders are selected from each area also. Area Two leaders are Evelyn Sursa, County and District Clerk

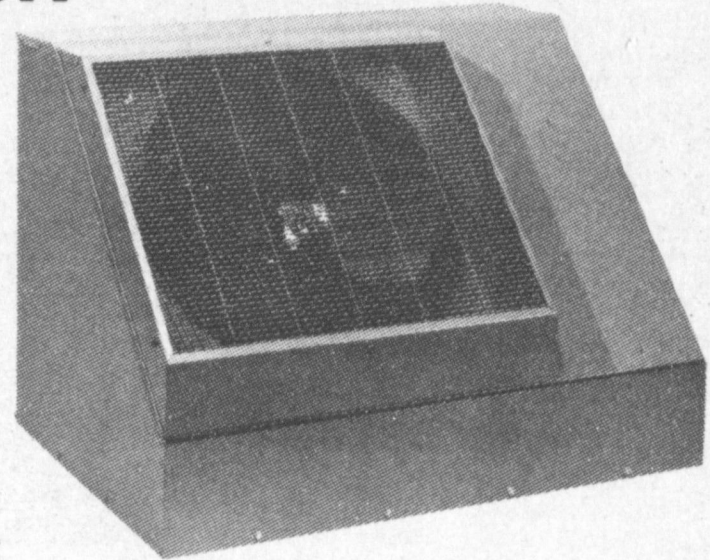
of King County, Guthrie and Helen Haddock, County Clerk of Stephens County, (Breckenridge). Both Evelyn and Helen were present for Thursdays meeting.

Everyone expressed their appreciation for the informative meeting and their enjoyable day in Muleshoe.

Advertising pays in the long run, in large or small business.

Just In Time For  
Mother's Day & Graduation  
Handmade Antique Lace  
Pillows & Other Gift Items  
From Pat Thompson  
Antiques & Junk  
109 S. First 272-5275

## Replace your worn-out air conditioner. Get a new lease on life with Luxaire.



Now is the time to install central air conditioning. We're sharpening our pencil to keep our work crew busy. Adding on or replacing, our quality product, our quality work can bring you the benefit of whole-house air conditioning. We'd like to work for you.

**Bruce Electric**  
Rt. 3, Box 44  
272-5114

**Luxaire**  
TOTAL COMFORT SYSTEMS

## CLOVIS-PORTALES-MULESHOE

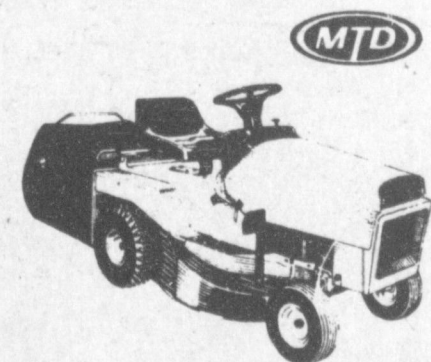
# LAWN CARE SPECIALS

## POWER PACKED LAWN TRACTOR



- Care-free lawn care.**
- Reliable 11 hp Synchronizer engine
  - Convenient electric start with alternator
  - 5 speed in line transaxle
  - Full floating 35" cut
  - Cutting height memory with transport position
  - Adjustable cushioned seat
  - Headlight, with ammeter

See it today  
**\$999**



**Lawn Tractor \$999<sup>00</sup>**

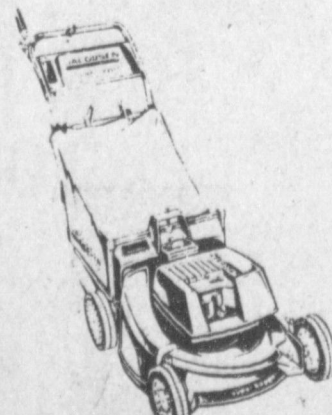
Rear-discharge, 8HP, 26" cut and electric start. Model 133-526.

Rear Bagger



**Electric String Trimmer \$31<sup>50</sup>**

- 10" Cut
- Comfort Cutting Handle
- Fully automatic string advance
- 31/3 lbs.



**Push Mower \$270<sup>50</sup>**

3/2 h.p. engine. Makes keeping a nice lawn easier. Model S 21.

Rear Bagger

**A&M**  
FARM AND RANCH SUPPLY  
OPEN ALL DAY SATURDAY!

Prices Effective thru May 7



**Walker Mower \$199<sup>99</sup>**

21" cut, 3.5 hp engine, Fully baffled deck, 8" "F" tread wheels, deluxe height adjusters, and fixed box style handle. Model 3-21851.

Rear Bagger



**Self-Propelled Push Mower \$179<sup>95</sup>**

Model 3-22451. 22" cut, 3.5 hp engine, fully baffled deck, 8" cog tread wheels, self-propelled (cog drive), deluxe height adjuster, and fixed box style handle.

**Share a smile**  
A professional 8x10 Color Portrait for only **88¢**



All ages welcome - babies, adults and families! Choose from our selection of scenic and color backgrounds. Additional poses and sizes available at reasonable prices. Satisfaction always, or your money cheerfully refunded.

**THESE DAYS ONLY -**  
Thursday, May 5  
Friday, May 6  
Saturday, May 7

Daily: 10:00 A.M. - 6:00 P.M.

Saturday: 10:00 A.M. - 5:00 P.M.

128 Main Street Muleshoe

**PERRYS**

88¢ sitting fee for first subject. \$1.00 sitting fee for each additional subject photographed, separately or together. Minors must be accompanied by a parent.



# MULE'S TALE

Editor: Kacy Henry

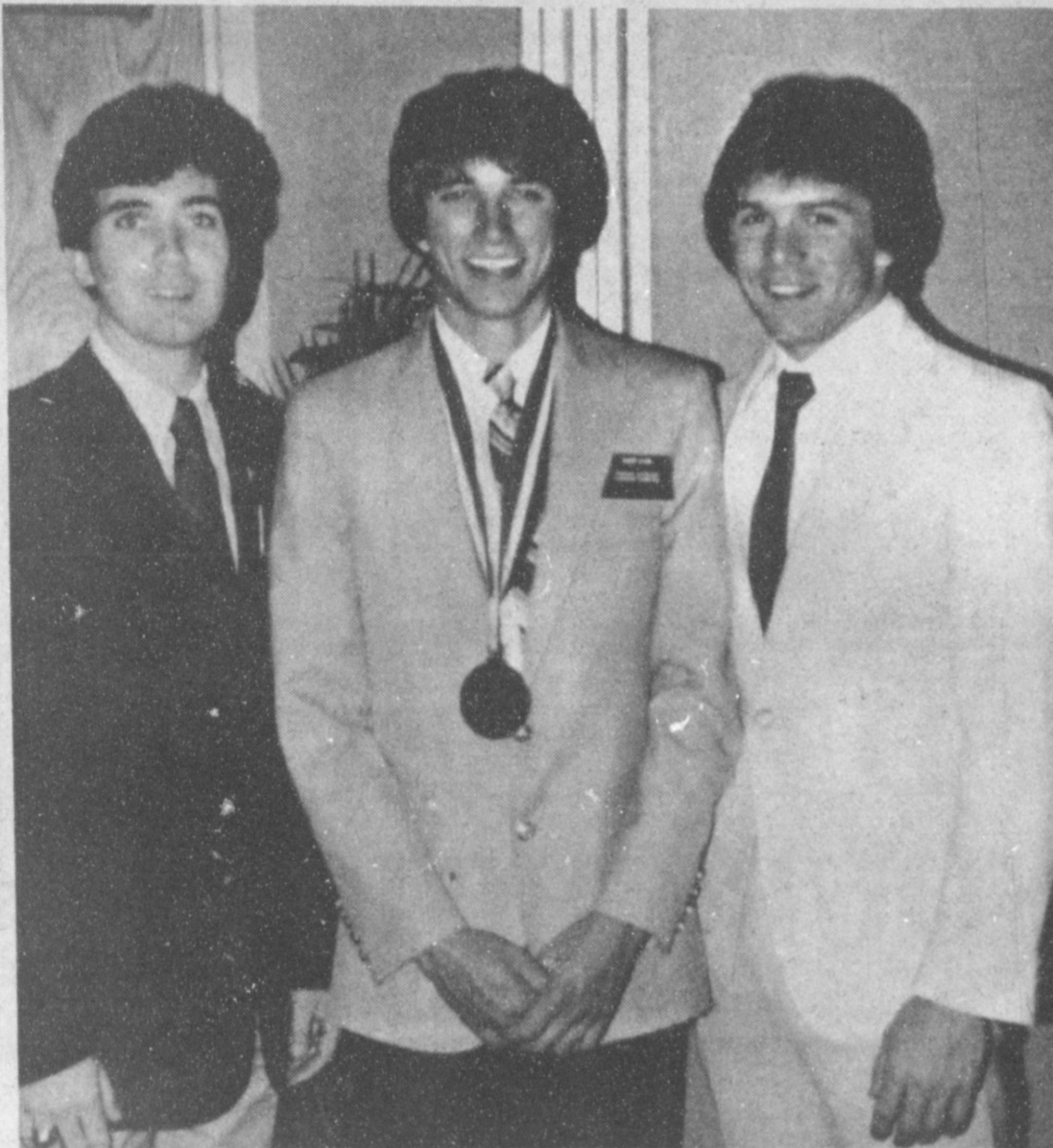
Official Publication of Muleshoe High School Written and Edited by Students of the Muleshoe Schools

Sunday, May 1, 1983



## Muleshoe School Menu

MAY 2-6-1983  
**BREAKFAST MONDAY**  
 Milk  
 Cereal  
 Fruit  
**LUNCH MONDAY**  
 Milk  
 Pochitos  
 Beans  
 Veg. sticks  
 Fruit  
**BREAKFAST TUESDAY**  
 Milk  
 Toast  
 Jelly  
 Fruit  
**LUNCH TUESDAY**  
 Milk  
 Hamburgers  
 Lettuce & Tomato  
 Pickles & Onions  
 Tater Tots  
 Fruit Cobbler  
**BREAKFAST WEDNESDAY**  
 Milk  
 Honey Buns  
 Juice  
**LUNCH WEDNESDAY**  
 Milk  
 Lasagna  
 Cole Slaw  
 Beans  
 Corn Bread  
 Fruit  
**BREAKFAST THURSDAY**  
 Milk  
 Toast  
 Jelly  
 Fruit  
**LUNCH THURSDAY**  
 Milk  
 Corn Dogs  
 Veg. Beef Soup  
 Crackers  
 Cinnamon Rolls  
 Fruit  
**BREAKFAST FRIDAY**  
 Milk  
 Cooked Cereal  
 Toast  
 Fruit  
**LUNCH FRIDAY**  
 Milk  
 Fish  
 Macaroni & Cheese  
 Hot Rolls  
 Fruit Jello  
**COMBO LINE MAY 2-6-1983 MONDAY**  
 Milk  
 Pizza  
 Mixed Vegetables  
 Pickles  
 Fruit  
**TUESDAY**  
 Milk  
 Hamburgers  
 Lettuce & Tomato  
 Pickles & Onions  
 Tater Tots  
 Fruit Cobbler  
**WEDNESDAY**  
 Milk  
 Taco's  
 Beans  
 Salad  
 Cheese  
 Fruit  
**THURSDAY**  
 Milk  
 Burritos  
 Salad  
 Crackers  
 Corn on Cob  
 Fruit  
**FRIDAY**  
 Milk  
 Turkey & Gravy  
 Creamed Potatoes  
 Green Beans  
 Hot Rolls  
 Fruit Jello



Mr. Stephen Johnson, Darin Shaw, Jeff Hamilton

## D.E.C.A. Attends State Meet

Four MHS students representing DECA attended the 37th Annual Career Development Conference at the Astro Village Hotel in Houston, April 21-23. Jimmie Lee and Shawna Kelton won area competition in March which qualified them for state competition. Randall Stevens and Jackie Holmes attended as voting delegates by accumulating DECA points all year for their activities within the club.

Jimmie Lee competed in Advertising Services Series event and won first place, qualifying him for national competition in New Orleans in June. Shawna Kelton competed in Collegiate Display. The students attended workshops on leadership development, fashion and make-up trends,

## Senior Awards Presented

Just for fun this past week, seniors at MHS voted on their fellow classmates for various crazy awards. Dee Kinard and

## Terry Graves Named Feature Artist

During the week of April 10-16, sophomore Art III student Terry Graves was named Feature Artist of the Week, but due to a camera malfunction, the paper was unable to run his picture. At this time the Mule's Tale Staff would like to present Terry Graves and one of his paintings, "Red Fox in the Snow." Congratulations Terry!



TERRY GRAVES

## Calendar Of Events

Monday May 2, 1983 Monitors in High School for Federal Prog. Last Day to purchase an '83 annual.  
 Tuesday May 3, 1983 Annual Signing Party at 10:30 a.m.  
 Wednesday May 4, 1983 Band to Enid Oklahoma, May 4 thru May 7.  
 Thursday May 5, 1983 Girls State Track in Austin, May 5 thru May 7.  
 Friday May 6, 1983 Boys Regional Track in Lubbock.  
 Saturday May 7, 1983 Special Olympics in Lubbock at 10:00 a.m. Boys Regional Track in Lubbock.

Zeke Contreras were elected as "Grouchiest." The "Best Body" in the class belonged to Berna Lopez and to Michael Isaac. Miraculously, Laura Leal and Kevin Grant were said to be "Most Likely To Cut Class." Ginger Morris and Jay Pearson were selected as the "Best Couple." The "Class Clown" award went to Linda Leal and Zeke Contreras. Zeke also had the "Biggest Mouth" along with Janelle Burks. The "Biggest Flirt" awards went to none other than Crista Taylor and Perry Flowers. Crista and Perry also seemed to have the "Biggest Ego." The "Biggest Partiers" were Laura Leal and Eddie Flowers. Last, but not least, are the "Best Legs" winners, Rhonda Dunham and Michael Isaac. Congratulations (?) to these students whose pictures will appear in a new "senior fun" section being introduced in the "Muletrain '83" annual this year!

## Happy Birthday

Sunday, May 1 David Navejar  
 Monday, May 2 Willie Jo Coleman  
 Tuesday, May 3 Becky Castorena, Ronnie Logsdon  
 Wednesday, May 4 Shawna Kelton  
 Friday, May 6 Joni Sudduth, Steve Cavitt, Mrs. Hargis  
 Saturday, May 7 Jay Cage

## Show Shaw Installed As TFTA Secretary

### ★★ FCA To Attend Camp

On Wednesday, April 27, the FCA members had a meeting at Shelly McMeans' house. They enjoyed drinks, popcorn, and cookies before the meeting. Coach Wiseman led the

### Mullettes Set

### Records

Three Mulette tracksters traveled to Odessa to compete in the Regional Track Meet. The three girls tallied 20 points in the meet and broke four records in the process.



MARYLYN LEWIS

Marylyn Lewis placed 3rd in the triple jump with a leap of 37' even, shattering the old school record of 34'6" set by Marylyn herself in 1981. Marylyn placed 4th in the 400 meter dash with a time of 59.33 setting another school re-



JUANITA GARCIA

cord and breaking Lupe Pacheco's time of 60.2 set in 1980. Teena Sismore set a school record in the 1600 meter run, placing 3rd with a time of 5:40.77 and breaking the old school record of 5:42.3 set by Deena Burris in 1981. Juanita Garcia placed 4th while setting a new school record in the 3200 meter run. Her time of 12:49.6 shattered the old time of 14:44.2 set by Janna Wuerlein in 1982.

The Mule's Tale Staff would like to congratulate these girls on their outstanding performances!

## Around The Halls At M.H.S.

The afternoon drivers education class, taught by Coach Ronnie Jones, started Monday April 25th. The class meets in room 2 at MHS at 3:30 p.m. The course costs \$60.00 and will last for two weeks.

Time is running out to purchase a 1983 Muletrain Annual. If students want to attend the annual signing party in the cafeteria on Tuesday, May 3rd during third period, they must buy their annual on or before Monday, May 2nd. After this date no more orders will be taken. Annuals are \$17.00 and \$19.00 for the personalized. See an annual staff member and order today!

program and the FCA's decided to make money to go to FCA camp in June during the summer. The Fellowship of Christian Athletes is going to try to raise the money, and the organization will need \$150 a person to go to the camp. The students will be attending the different churches in Muleshoe to help raise money by giving a short devotional and perhaps by giving a portion of their talent, in hopes that the church members will offer donations to help the FCA members attend their camp. The date for this will be on Sunday May 8th, during the morning workshop service, unless a later date is needed.

At the next meeting new officers will be elected for the FCA organization. Everyone is encouraged to come to the meeting and run for an office. If there are any questions, contact Rhonda Dunham.



TEENA SISEMORE

## Banquet Servers Chosen Here

The junior-senior banquet is getting well underway and the junior committees are each working hard to get their specific jobs done. The servers committee, chaired by Sherri Bessire, is made up of Randall Stevens, Dennis Ruthardt, Jimmie Lee, Sharla Morrison, Dana Splawn, and Brenda Flowers. They have completed their duties of choosing costumes, servers, and the host and hostess for the banquet. Kristi Campbell and Jerry Gleason will be the host and hostess for this year's banquet. Eleven sophomore boys along with 11 soph-

### DECA Tours

### Cannon AFB

On April 18th the DECA club went to Cannon Air Force Base at Clovis. They left MHS at 8:00 that morning. On their arrival they were met by Sgt. Padfield at the main gate and led through the base; The group saw films about the experiences of bomber planes in previous wars. They then went to a plane hanger and watched a crew of men load bombs onto an airplane. (This was a practice drill in case of war). Sgt. Raun joined the group and took them to the recreation hall. There they had refreshments and discussed the advantages of being in the Air Force. They were told of all the career fields available in the Air Force such as: Photography, Data-Processing, Plane Mechanics, Clerical, and Woodworking. The DECA students learned a great deal about the Air Force and they really appreciated the tour.

People who hurry through this life meet death that much earlier.

short-sheeted bed on the right side! Congratulations to Darin Shaw, Jeff Hamilton and Mr. Johnson, and Good Luck Next Year in their duties!

## Honor Students

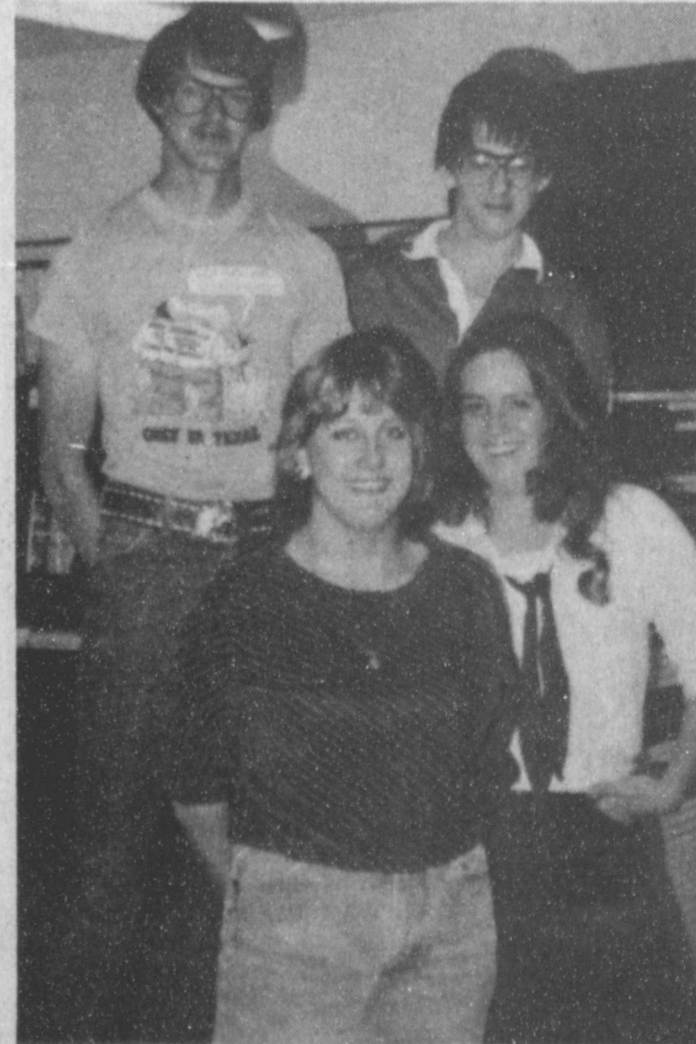
### HONOR ROLL Fifth Six Weeks 1982-83

- SENIORS**  
 Michael Isaac 3.5  
 Tamara Gilliland 3.3  
 Martina Valdez 3.3  
 Sheila VanCleve 3.3  
 Scott Campbell 3.2  
 Kelly Bayless 3.1  
 Kristi Ethridge 3.1  
 Steve Cavitt 3.1  
 Robert Nowlin 3.0  
 Belinda Clayton 3.0  
 Darin Bratcher 3.0  
 Shelli Walker 3.0  
 Denise Wilson 3.0  
 Dana Rasco 3.0  
 Lori Del Toro 3.0  
 Lori Hanks 2.9  
 Martha Flores 2.9  
 Sandra Martinez 2.8  
 Lincoln Snell 2.8  
 Rhonda Dunham 2.7  
 Eva Rejino 2.7  
 Abbye Kennedy 2.7  
 Crista Taylor 2.6  
 Winston Allen 2.6  
 Danny Seales 2.6  
 Kevin Grant 2.5  
 Misti Prater 2.5
- JUNIORS**  
 Randall Stevens 3.4  
 Donna Horn 3.3  
 Kacy Henry 3.2  
 Ronald Briggs 3.1  
 Donna Crenshaw 3.1  
 Brenda Flowers 3.1  
 Tonda Gunstream 3.0  
 Darin Shaw 2.9  
 John David Agee 2.9  
 Keisha Johnson 2.9  
 Kelly Sue Hamblen 2.9  
 Candy Long 2.9  
 Melissa Wagon 2.6  
 Jay Cage 2.8  
 Sherri Kinard 2.8  
 Denna Burris 2.7  
 Jeff Hamilton 2.7  
 Nicki Haigins 2.7  
 Michelle Snell 2.6
- SOPHOMORES**  
 Kristi Campbell 3.4  
 John Isaac 3.4  
 Jodi Cruickshank 2.7  
 Janna Wuerlein 2.7  
 Danny Sanchez 2.6  
 Vana Pruitt 2.5
- FRESHMEN**  
 Jessie Holmes 3.3  
 Zanna Huckaby 2.7  
 Mike Holt 2.7  
 Caice Hendrix 2.6  
 Laurey Grant 2.5  
 Ronnie Logsdon 2.5

### It's?

The reason love is intoxicating is because it's made in the still of the night.

-The Mudhook.



Randall Stevens, Jimmie Lee, Shawna Kelton, Jackie Holmes

# Christian Students Win At A.C.E. Contests

Junior and Senior High School students of the First Baptist Church of Lubbock, recently attended the Accelerated Christian Education, West Texas Area Convention on April 18-21, at Prude Ranch in Ft. Davis, Texas.

The students competed with students of 21 other Christian schools from the West Texas area, including Amarillo, Muleshoe, Plainview, Midland, Odessa, El Paso, San Angelo, Big Spring, and Pharr, Texas.

The areas of competition include music, arts and crafts, photography, platform, needle and thread, academics, and athletics.

Those attending from Lubbock were: Kerry Winders, Shane Smith, Chantelle Hicks, and Tazia Smith. Also Les Barnes, Blane Smith, and Brad Johnson. Sponsors taking the group were Rev. and Mrs. Gary Wilcox, and the school Principal, Larry Zamora.

First place winners in the music competition were: The Instrumental Ensemble of Lubbock's First Baptist Church, composed of Kerry Winders, Shane, Tazia, and Blane Smith, Chantelle Hicks, Les Barnes, and Brad Johnson.

Other winners included: Instrumental Quartet-Kerry Winders, Shane Smith, Chantelle Hicks, and Brad Johnson; Vocal Duet (Mixed)-Kerry Winders, and Chantelle Hicks; Vocal Trio (Male)-Les Barnes, Blane Smith, and Brad Johnson.

Second Place winners in Music were: Miscellaneous Solo-Tazia Smith; Instrumental Trio-Les Barnes, Blane Smith, and Brad Johnson.

Third Place winners in Music were: Instrumental Trio-Kerry Winders, Shane Smith, and Chantelle Hicks; Instrumental Duet-Les Barnes and Blane Smith.

Hicks; Instrumental Duet-Les Barnes and Blane Smith.

The third place overall trophy in Arts and Crafts was captured by three entries from Lubbock.

First Place Winner in Arts and Crafts was Shane Smith.

Second Place Winners were: Kerry Winders and Blane Smith.

First Place Winners in the Needle and Thread Division were: Sportsweat; Chantelle Hicks; and Coordinates; Tazia Smith.

Lubbock First Baptist Church brought home the first place trophy in photography. Those contributing to this honor were First Place Color Shane Smith, Les Barnes, Brad Johnson and Character Portrait: Blane Smith.

Lubbock's One-act plays took 4th and 5th places in the platform competition. Fourth Place: "The Tree" was performed by: Kerry Winders, Chan-

telle Hicks, Shane and Tazia Smith. Fifth Place: "King Me" was performed by: Les Barnes, Blane Smith and Brad Johnson.

In Academics, Shane Smith's Short story, "The Challenge" won 4th Place. In athletics, Shane Smith won 1st Place, setting a new state record in the 800 meter run.

Parents attending the State Convention at Ft. Davis were: Mrs. Royce Barnes, Mrs. Gary Hicks, Mrs. Errol Johnson, Mr. and Mrs. Dud Winders, and Mr. and Mrs. Jerry Smith.

All 1st and 2nd Place winners in each category in the state competition qualify to go to the Accelerated Christian Education International Convention, to be held May 21-27, 1983, in Denton, Texas. A.C.E. schools from all over the world will be traveling to Denton to compete for the international titles in each of these various categories.

## Register...

Cont. from Page 1

month of the first birthday and since January 1, 1968. (4) Rubella - one dose of rubella vaccine (German measles) is required (5) Mumps - one dose of mumps vaccine is required. Required immunizations can be given at physicians' offices or at the Texas Department of Public Health, 306 West 2nd Street.

**KINDERGARTEN**  
Also on May 6, all children who will be five (5) years old on or before September 1, 1983, are eligible to register for kindergarten.

School officials strongly urge parents to register kindergarten children on this date because there will be no registration day at the beginning of school in

the fall.

Children who are now enrolled in kindergarten at Neal B. Dillman Elementary are already enrolled for first grade and will not attend school May 6, so that kindergarten teachers will be available to enroll the new students and talk to parents.

All parents of children who will be five years old on or before September 1, 1983, are encouraged and urged to enroll the children on May 6 so plans can be completed for the fall term of 1983-84.

If you have questions or know of an eligible child, please contact Milton Oyler, principal at Neal B. Dillman Elementary School, telephone 272-4313.

\*\*\*\*  
A little confidence in a person can often produce great results.

## Funds...

Cont. from Page 1

in the loan fund shortage were Alabama, Arkansas, Georgia, Illinois, Louisiana, Mississippi, Montana, New Mexico, North Carolina, North Dakota, Ohio, Oklahoma, South Carolina, Tennessee, Washington, Wyoming and Texas.

Clinton Kennedy, District Director of the FmHA told the Journal recently that news of the original shortage of funds had come to him at a staff conference in Temple. A spokesman for the FmHA stated that "By April 1, the 17 states involved had already spent

the \$652 million allocated for the year ending September 30, 1983 and that another \$71.5 million was needed to finance all outstanding loan obligations.

At any rate, Bailey County farmers can 'rest easy' on their operating loans for this year, according to official reports.

\*\*\*\*  
In spite of all the ads, we haven't found a way to lose ten pounds painlessly.

\*\*\*\*  
A vacation is not going away from your work; it is getting your work out of your mind

# Mixed Drink Tax Up For First Quarter

State Comptroller Bob Bullock Tuesday said collection of the state's 10 percent mixed drink tax during the first quarter of 1983 was up 2.7 percent over the same period last year.

Bullock said the state received \$36.1 million in taxes on the sale of mixed drinks during the first three months of 1983.

Bullock's office is sending checks totaling \$10.5 million to 220 counties and 415 cities as their share of the gross receipts tax on mixed drinks for the first quarter.

The state's general revenue fund will receive the balance--\$25.6 million--of the tax money collected.

Texas cities and counties each receive a 15 percent rebate of the tax collected on mixed drinks sold within their boundaries under the law that legalized the sale of mixed drinks in the state.

The mixed drink tax is collected by the Alcoholic Beverage Commission and city-county rebates are sent out quarterly by the

Comptroller's office. Bullock said the mixed drink tax brought in a total of \$140.2 million during 1982.

## SBA To Hold Briefing

Federal, State and local legislators and their staffs have been invited to attend a briefing conducted by officials of the U.S. Small Business Administration. The briefing will be held on May 6, 1983 in the Ready Room of Southwestern Public Service Company, 1129 Main Street in Lubbock.

The district office staff presentation will focus on the SBA services available and resources offered, according to Philip O'Jibway, district director of the Lubbock SBA office. "Informational materials will be distributed at the meeting which we hope will be beneficial to the legislators or their staff members who attend the briefing," said O'Jibway.

**Ellis Funeral Home**  
Pre-Need Funeral Needs  
Price Is Frozen At Time Of Purchase & Guaranteed  
272-4574 Muleshoe

**24-HOUR PLUMBING SERVICE**  
**LEAL'S PLUMBING**  
272-3588

**The Popular Rug Doctor.**  
Spring Cleaning Carpet Saver.

After a hard winter it's time to freshen up your home, auto, and RV carpets and upholstery with Rug Doctor's steam cleaning action. Superior cleaning in just half the time.

See for yourself and save.

Rent the Rug Doctor at:  
**Fry & Cox, Inc. | Pay & Save**  
401 S. First | 515 W. American

**ATTEND THE CHURCH OF YOUR CHOICE**

**Little Church In The Wildwood**

EMMANUEL BAPTIST CHURCH  
Iglesia Bautista Emmaneul  
107 East Third  
Isaias Cardenas, Pastor

RICHLAND HILLS BAPTIST CHURCH  
17th and West Ave. D  
Brock Sanders, Pastor

SPANISH BAPTIST MISSION  
East Third and Ave. E  
Roy Martinez, Pastor

TRINITY BAPTIST CHURCH  
314 Ave. B  
Don Knight, Pastor

LONGVIEW BAPTIST CHURCH  
Phone 946-3413  
B.C. Stonecipher, Pastor

16TH AND AVE. D CHURCH OF CHRIST  
James Johnson, Minister  
Sunday - 10:30 a.m.  
Evening - 6 p.m.  
Wednesday - 8 p.m.

PROGRESS BAPTIST CHURCH  
Donald G. Proctor, Pastor  
Progress, Texas

NORTHSIDE CHURCH OF CHRIST  
117 E. Birch Street

SPANISH ASSEMBLY OF GOD  
East 6th and Ave. F  
Luis Campos, Pastor

UNITED PENTECOSTAL GOSPEL LIGHTHOUSE CHURCH  
207 E. Ave G.  
George Green, Pastor

MULESHOE BAPTIST CHURCH  
8th and Ave. G  
Bob Dodd, Pastor

FIRST BAPTIST CHURCH  
220 West Ave. E  
J.E. Meeks, Pastor

TEMPLO CALVARIO  
507 S. Main  
Sunday - 10:00 a.m.  
Sunday evening - 7:00 p.m.  
Evangelistic Services  
J.L. Soto, Pastor

FIRST CHRISTIAN CHURCH  
130 W. Ave. G  
Dick Tarr, Pastor  
Sunday School - 10:00 a.m.  
Worship 11:00 a.m.

LATIN AMERICAN METHODIST MISSION  
5th and Ave. D  
R.Q. Chavez, Pastor

THE COMMUNITY CHURCH  
Morton Highway  
H.D. Hunter, Pastor

CALVARY BAPTIST CHURCH  
1733 W. Ave. C  
James Williams, Pastor

PROGRESS SECOND BAPTIST CHURCH  
1st and 3rd Sundays  
Clifford Slay, Pastor

FIRST UNITED METHODIST CHURCH  
507 W. 2nd, Muleshoe  
Bill Kent, Pastor

ST. JOHN LUTHERAN  
Lariat, Texas  
Sunday School - 10:00 a.m.  
Worship Service - 11:00 a.m.  
Herman J. Schelter, Pastor

PRIMITIVE BAPTIST CHURCH  
621 S. First  
Elder Bernard Gowens

MULESHOE CHURCH OF CHRIST  
Clovis Highway  
John A. Boor, Minister

JEHOVAH WITNESS  
Friona Highway  
Boyd Lowery, Pastor

IMMACULATE CONCEPTION CATHOLIC  
Father Patrick Maher  
Northeast of City in Morrison Edition

ST. MATTHEW BAPTIST CHURCH  
Corner of West Boston and W. Birch

M.S. Brown, Pastor

NEW COVENANT CHURCH  
Plainview Highway  
Sunday - 10:00 a.m.  
Wednesday - 7:00 p.m.  
Jimmy Low, Pastor

FIRST ASSEMBLY OF GOD  
521 South First  
Lee R. Rich, Pastor

CHURCH OF THE NAZARENE  
9th and Ave. C  
Jimmie Williams, Pastor



THESE VARIETIES HAVE PROVEN THEMSELVES IN BAILEY COUNTY

- 8493 Outstanding Biotype C and E greenbug resistance. Excellent stalk quality. Developed especially for limited moisture conditions.
- 8222 Outstanding resistance to the new pathotype of downy mildew. Excellent yield potential, standability and disease protection. Hard seeded, high test weight grain.
- 8515 Very high yield potential. Excellent head exertion...easy to combine. Adapted to limited moisture conditions.
- 8501 Proven drought tolerance and yield ability. Hard textured grain with very heavy test weight, fast drydown. Consistent record of outstanding performance.

GENE PAUL JARMAN  
Route 1, Box 84A  
Muleshoe, Texas  
Phone 806/965-2340

**PIONEER**  
BRAND BREAD

<b>Muleshoe Co-op Gins</b>	<b>Fry &amp; Cox</b> 401 S. 1st 272-4511	<b>Dairy Queen</b> Margie Hawkins Manager 272-3412	<b>Bratcher Motor Supply</b> 107 E. Ave. B 272-4288
<b>Robert Green Inc.</b> Your Oldsmobile, GMC, Pontiac, Buick Dealer W.Hwy. 84 272-4588	<b>Muleshoe Publishing Co.</b>	<b>White's Cashway Grocery</b> Where Friends Meet And Prices Talk	<b>American Valley Inc.</b> 272-3565
<b>Farmers Spraying Service</b> 965-2624	<b>Kemp's Discount Furniture</b> 1210 W. Amer. Blvd. 272-5023	<b>Western Drug</b> 114 Main 272-3106	<b>Muleshoe Body Shop</b> 402 N. First 272-4246
<b>Main Street Beauty Salon</b> 272-3448	<b>Bingham &amp; Nieman Realtors</b>	<b>Irrigation Pumps &amp; Power</b> 272-4483	<b>Serv-All Thriftway</b> We're Proud To Give You More.



# AID TO MILLIONS CLASSIFIED ADS



**DEADLINE FOR CLASSIFIED ADS IS TUESDAYS AND FRIDAYS 11:00A.M**

**CLASSIFIED RATES**  
1st Insertion  
Per Word.....\$15  
Minimum Charge...\$2.30  
2nd Insertion  
Per Word.....\$13  
Minimum Charge...\$2.00  
**CARD OF THANKS**  
Per Word.....\$20  
**CLASSIFIED DISPLAY**  
\$1.70...per column inch  
**BLIND AD RATES**  
50% more  
**DEADLINES**  
11 a.m. Tues. for Thurs.  
11 a.m. Fri. for Sun.  
**WE RESERVE THE RIGHT TO CLASSIFY REVISE OR REJECT ANY AD. NOT RESPONSIBLE FOR ANY ERROR AFTER AD HAS RUN ONCE.**

**TO PLACE YOUR WANT ADS**  
CALL 272-4536

**Garage Sale Ads**  
Must Be Pre-Paid.

**AFTER DEADLINE???**  
You can call 272-4536 until 5:30 p.m. on Friday and Tuesday and get your WORD AD in TOO-LATE-TO CLASSIFY in the next issue!!!  
**Tuesday for Thursday and Friday for Sunday**

### 1. PERSONALS

Want to do babysitting in my home. Call 272-3222. 1-30t-tfc

**SISTER SOPHIA**  
Palm reader, spiritual healer, reader advisor. Can help advise in all problems luck, health, happiness, marriage, success, financial. Will help you overcome all your problems. Come, call, or write. 799-9124. Send self addressed, stamped envelope to: 2263 34th St., Lubbock, Tx 79411. 1-12t-24tp

### 3. HELP WANTED

**NEED COOK** at West Plains Medical Center. Apply in person to Ruby Clark in kitchen. 3-18s-4tc

**CRUISE SHIP JOBS!**  
Great income potential. All occupations. For information call: 602-998-0426 Ext. 722. 3-16t-4tp

### 1. PERSONALS

APPLICATIONS ARE now being taken for the following positions: RN 7-3 with rotation to 3-11; RN 7-3 with rotation to 11-7; RN 11-7 shift; LVN 3-11 shift; LVN 11-7 shift; LVN Part-time in physician's office; RN Part-time in hospital; LVN Part-time in hospital. Starting pay: RN's 9.25 to 10.69 per hour. LVN's 6.50 to 7.08 per hour. Contact Trina Wilson RN, Director of Nurses, West Plains Medical Center, Muleshoe, Texas 79347. 806-272-4524 Extension 219. 3-18s-6tc

### 5. APTS. FOR RENT

FOR RENT: 1 bedroom apartment. For information call 272-4754 after 5 p.m. 5-17t-tfc

### 8. REAL ESTATE FOR SALE

**HOUSE FOR SALE:** 2350 sq. ft. 3 bedroom, 2 baths, formal living room, den with fireplace, dining room, kitchen, laundry room with sewing center, basement, double car garage, patio, storage shed, 2 lots. Located 1 1/2 mile east from Earth, Texas on hwy 70. Call (806) 257-3785. 8-14s-tfc

**FOR SALE:** 3 bedroom house, 2 baths, patio, carport. Call after 4 p.m. weekdays 272-4085. 8-14t-tfc

**KREBBS REAL ESTATE**  
If it's Real Estate you want, we have it or can get it.  
-Appraisals-  
Tele. 272-3191-office and residence 8-16s-tfc

**SMALLWOOD REAL ESTATE**  
Phone 272-4838  
P.O. Box 602  
Muleshoe, Texas 79347

3 Bedroom, Brick, 2 bath Living Room, Den, Fireplace, 2 Car Garage Fenced back yard.

3 Bedroom, 2 Bath, Brick, Refrigerated air, Fenced back yard, 1 Car Garage

23,000 sq. feet Brick, 3 Bedrooms, 2 Bath, Living room, Den with fireplace, 2 Car Garage, Nice

Country living, Stucco, 3 Bedroom, 1 & 1/2 bath, Central heat, Refrigerated air, 2 Car Garage, Storm Cellar, Fruit trees, and Grape Vines.

2 Bedroom, Small down payment \$152.00 MO., New Paint.

2 Bedroom, 2 Bath Duplex for rent. 8-14s-stfc

### 1. PERSONALS

**3 BEDROOM HOUSE** for sale; 2 car garage, 2 bath, covered patio, new carpet, nice location, living room, dining room, kitchen with built-ins. \$38,000. 272-3006. 8-17s-8tc

**IDEAL 90' lot** for mobile home or double wide mobile home and 50' lot, 2 and 3 BR houses. 272-4732 days, 272-4827 nights and weekends. 8-10t-tfc

**RICHLAND HILLS, EXCELLENT** Location near Dillman Elementary. 3 bedrooms w/large closets, 2 full baths, living, dining, breakfast area, gameroom, study, utility room. Modern kitchen w/built-in self cleaning oven and microwave. Fireplace. Central air and heat. 5 ceiling fans. Fully carpeted throughout. 3 Car garage w/openers and large workroom. Large covered patio. Fenced yard with automatic sprinkler system. \$79,900.00 firm. Large Assumable 93/4% loan. 272-5464 for information and appointment. 8-15s-tfc

### TOWN and COUNTRY Real Estate

**Elegant 3-2-2 brick** in Country Club Addn. Ref. air, fireplace and all the things you'd want in your dream home.

2400 sq. ft. brick veneer 2 bdrm. two bath fireplace, double garage. Excellent Condition and in best part of Lenau Addition.

3 bedroom 2 bath double carport, modest area, \$29,500.

Richland Hills 3-2-1 immediate possession, \$47,900.

1650 sq. ft. includes 2 br. 1 1/2 bath, 2 - office area. \$32,000. 8-18s-stfc

**PLACE YOUR LISTINGS WHERE THE ACTION IS! CALL US.**  
John W. Smith  
806/272-5335  
223 East Ave. B  
Muleshoe, Tx 79347  
8-15s-stfc

**AMERICAN VALLEY INVESTMENTS REALTORS**

**Homes-**  
LET'S TRADE -- Beautiful 3 Bedroom Home, 1 1/2 Bath, Double Car Garage. Located on 15 Acres West of town. Planted in Alfalfa. Barns, Corrals, Fruit Trees, Lots of Extras. Will trade for home in Muleshoe or Farwell.

**NEW LISTING --** 3 Bedroom, 1 Bath Home. Priced for quick sale.

**BRICK HOME IN MID 50's --** 3 Bedroom, 1 Bath, Single Car Garage. 2 Years Old.

**COUNTRY HOME --** Beautiful Home and Barn at the edge of town located on 32 Acres.

**NEAT AS A PIN --** Extra nice 2 Bedroom, 1 1/2 Bath, 2-Car Garage located close to town on 1/2 Acre.

**GREAT NEIGHBORHOOD --** 3 Bedroom, 1 1/2 Bath, Double Car Garage. Large Bedrooms. Lots of Storage.

**BEAUTIFUL NEW HOME --** 3 Bedroom, 1 1/2 Bath, Double Car Garage. Corner Fireplace in Cathedral Beamed Den.

**-Farms-**  
80 Acres with all-weather runway. Lots of hanger space plus 5,000 sq. ft. office space. Lots of extras. Ideal for spraying service or flying club.

8 Acres at Progress. Good well, Planted to Jose Wheat Grass. Lots of pens, barns, and good house well.

114 Acres near Muleshoe. 6" well sith siderolls. Allotments. Lots of Depreciation.

1 Section. Excellent for stocker cattle operation. 2 Electric Valley Pivots and 6 Sideroll sprinkler systems.

144 Acres. Valley Pivot Sprinkler System. Good Assumable loan. Owner Financing. 272-4266 272-3565

Thursie Reid----272-3142  
Karen Harris----272-5183  
Lucille Harp----272-4693  
Rex Harris - Broker John Craig - Builder

8-17s-tfc

**EXTRA NICE 3-1 1/2-1.** New carpet, paneling through out. Screened in patio. Call 4541 or 5671 after 5:00 p.m. Ask for Debby. 8-13t-tfc

**MUST MOVE SOON - PRICE REDUCED FOR QUICK SALE -** by owner. 3 bedroom, 1 bath home. Located on corner lot, fenced back yard, storm windows, siding and much more. Priced in mid 20's. Assumable 10% loan. Call 272-5193. 522 W 8th. 8-18s-4tptfc

**JIMMIE CRAWFORD REAL ESTATE & INS.**  
1725 W Ave E  
Muleshoe, Texas  
Phone 272-3666

4-2-2 with fireplace in Richland Hills.

3-1 1/2 with carport in Lenau Addition.

3-2-2 with assumable loan in Parkridge Addition.

2-1 with carport on Ave B

3-1 1/4-2 with den and office by High School.

2-2 Trailer House on 5 acres at Progress.

8-17s-stfc

### 9. AUTOMOBILES FOR SALE

1981 DATSUN 200 SX automatic, air, AM-FM stereo cassette, all power assits, 28,000 miles, excellent MPG, \$6,500 after 5 p.m. 272-3028. 9-18s-4tp

FOR SALE: 1979 Lincoln Town Coupe. 1 owner, Extra clean. Earth 257-2113. 9-17s-4tp

FOR SALE: 1978 T-Bird. p/b, p/s, a/c, AM/FM. Good shape, new tires. Phone 272-4483 days, 272-4796 nights. 9-17t-2tc

### 8. REAL ESTATE FOR SALE

**FOR SALE:** 1976 Oldsmobile Regency. Good running condition. Chapman Supply Co. 272-3473. 12s-9-tfc

### 8. REAL ESTATE FOR SALE

**BINGHAM & NIEMAN REALTY**  
116 E. Ave. C  
272-5285\*\*272-5286  
**JUST LISTED -** Lenau Add.-3-1 plus 1 car carport on corner lot, nice earth tone carpets, fenced yard. Let's look today!!!

**PARKRIDGE-3-2-2** Brick, Cent. A&H, built-ins, fireplace, sunken den, & only 4 yrs. old. Buy equity & assume...

**LENAU ADD. - 3-1-1** home, freshly painted interior, new roof, nice patio, fenced yard. PRICED TO SELL!!!

**RICHLAND HILLS - 3-1 1/4-1** Brick, Cent. A&H, fenced yard, close to school, & REASONABLY PRICED!!!

**HIGH SCH. - 3-1 1/4-2** Brick, built-ins, fireplace, beautiful yard & nice insulated storage bldg., plus much more...

**CLAY'S CORNER - 3** bdrm. home on approx. 3.5 acres on HWY. 214!

2-1 home on corner lot, 1 car detached garage, storage bldg. & cellar, PRICE REDUCED FOR QUICK SALE...

**RICHLAND HILLS - 3-1 1/4-1** Brick, built-ins, fireplace, & much more, Reasonably priced!!!

**PRICE REDUCED-3-2-2** home on 1 acre, loads of storage, & located on pavement close to town.

3-2-1 home, completely remodeled in earth tones, bldg. sold Cent. A&H, roof & storm windows, & much more!

**RICHLAND HILLS - 3-1 1/4** Brick, fireplace, fenced yard, very nice, & an excellent location.

**CLOVIS HWY. - PRICE REDUCED-3-1** home and 2-1 home on approx. 4.4 acres, fenced, sprinkler system. Nice little truck or stock farm!!!

**RICHLAND HILLS - 3-1 1/4-1** Brick, Cent. A&H, built-ins, Buy equity & Assume...

**LENAU ADD. - 3-1-1** home on corner lot, work & storage area, utility room, fenced yard, & an ideal garden area!!!

4 Bdrm., 1 bath home on 5.3 acres, 5 hp. sub. pump, irrig. pipe, tractor & equip., & approx. 28'x30' barn...

3-2-2 Brick, Cent. heat, fenced yard, approx. 4 yrs. old, immaculate condition. Only \$43,500!

**RICHLAND HILLS - 3-2-1** Brick, Cent. A&H, built-ins, fenced yard, & only \$47,900...

2 Bdrm., 1 bath home, new roof and carpeting. Priced for quick sale!!!

4-1 1/4-2 home, totally remodeled in earth tones, & only \$39,600...

4 homes (2 bdrm. - 1 bath), excellent rent property. PRICED TO SELL.

**RICHLAND HILLS -** We have nice lots just right for that new home. Reasonable...

We also have a good selection of farms and commercial property listed. Check with us for details on these listings. "WE APPRECIATE YOUR BUSINESS" George and Dianne Nieman

**FOR SALE:** 70 model Mercury. \$600. Good condition good tires. a/c. 272-4939. 9-17s-tfp

1981 YAMAHA 175. Only 300 miles. Priced at \$800. 272-4606. 9-17t-2tc

### 11. FOR SALE OR TRADE

**NO MONEY DOWN,** take over payments on 1982 14x60 completely furnished mobile home. Payments \$249 monthly. 3 months free lot space. Call Johnny Fried 272-4373 after 6. 272-3820. 11-18s-3tc

69 FORD CAMPER SPECIAL, Self contained, fully loaded. Sleeps 6. 927-5423. 15t-9-tfc

**FOR SALE:** 14 week old registered toy poodle, Blonde 272-5384. 15-16t-tfc

### HONEY FOR SALE

Nick Landers  
334 W. Ave. J.  
272-3096

15-5t-tfc

FLORAL Hide-a-bed couch. Gold and Rust. \$125.00 272-4606. 11-17t-2tc

### 12. HOUSEHOLD GOODS

**FOR SALE:** Antique sofa for \$50. Call 272-5371. 12-17t-tfc

**TEN PIECE** Chocolate Brown pit group, 5 ft. coffee table with cabinet, end table with drawer. Very good condition. \$275.00 Call 272-3660 ask for Danny 12-18s-2tc

NICE 30" gold electric stove. \$150. Come by after 5:00 p.m. 409 A 17th. 12-18s-2tp

**BURROWS UPHOLSTERY AND FURNITURE REPAIR**  
209 W. 2nd  
Phone 272-4255  
15-5t-tfc

**WATERBED** for sale. Call 272-4083 or come by 1021 W 3rd. 18s-12-3tc

**UNCLAIMED FURNITURE** at Burrows Upholstery Shop. 2 love seats and one barrel back occasional chair. All new covers. See at 209 W 2nd. 12-18s-3tc

**WE BUY USED FURNITURE AND APPLIANCES**  
CALL 272-3030 HARVEY BASS APPLIANCE  
15-5t-tfc

### 15. MISCELLANEOUS

**MR FARMER!**  
We build Hydraulic Hoses. Muleshoe Auto Parts, 217 N. First. 15-14s-tfc

**FRANK'S REFRIGERATION APPLIANCE & SERVICE PARTS & REPAIR**  
315 W. 3rd. Ph. 272-3822 15-5t-tfc

**GARDENER'S:** Use our Special Plant Food - designed specifically for Special Gardeners. Baker Farm Supply, 1532 West American, 272-4613. 15-12s-tfc

**WANTED:** Used Honey Extractor. 272-4536. tfc

**ALEX'S TIRE SERVICE**  
For service 24 hours a day telephone 272-5012 or Mobile 965-2242. 224 East Fourth Street, Muleshoe, Tx. 79347. 15-5s-stfc

Come by and let Rocky Flores rebuild your alternators, starters and generators. Muleshoe Auto Parts, 217 N. First. 15-14s-tfc

### BACKGROUND ON BUSINESS

GOOD CITIZENSHIP IS GOOD BUSINESS

One of the most successful American companies continues to grow in these tough economic times. One of the reasons, say industry experts, may well be that, to this company, concern for the American public goes hand-in-hand with successful business practices. Because of the company's continuing commitment to

operating methods that are both productive and environmentally acceptable, it has won the South Carolina Mined Land Reclamation first place award for the second year in a row.

The award this year received this year was for environmental activities in W.R. Grace & Co., an international concern with interests in chemicals, natural resources and consumer services. Last year, it had sales of \$6.1 billion and a net income topping \$319.5 billion.

The award the company received this year was for restoring a vermiculite mine located in Enoree, South Carolina, the Construction Products Division's Hanna No. 5 mine. Last year it won the award for reclamation performed at its

Sales at one environmentally-concerned company topped \$6.1 billion last year. The company, which has won the South Carolina Mined Land reclamation first place award for the second year in a row, had a net income last year topping \$319.5 billion.

mation performed at its L.B. Casey vermiculite mine in Enoree. Vermiculite is used in roof insulation and steel fireproofing materials, other insulation applications and as a soil conditioner.

The work this company has done to improve the environment of South Carolina is a good example, many agree, of how public service—and corporate profits—can blend successfully in today's business world.

\*\*\*\*\*  
How many real friends do you think you have?  
\*\*\*\*\*  
Faith in one's self is the foundation of success.  
\*\*\*\*\*

**15. MISCELLANEOUS**

**Antiques and Collectables Show and Sale**  
*Depression and Carnival Glass*

**May 7 10 a.m. - 8 p.m.**  
**May 8 12:00 - 5 p.m.**

Knights of Columbus Hall  
East 21st Street- Clovis, NM

Information:  
Contact Mavis Bricker  
(505) 762-5320

### 16. LIVESTOCK

**HEREFORD**  
Hereford, Texas

**CATTLE COMM. CO.**

coming  
soon

Weekly Cattle Auction  
Arriving in May

HEREFORD CATTLE COMM. CO.

5 miles Southwest of Hereford  
Box 1804 357-2272  
Steve Hodges Mgr.

Card Of Thanks

We, the family of Si Stockard want to thank everyone for the lovely cards, phone calls, visits, flowers, and most of all your love and prayers shown to us during Si's illness while here in Muleshoe and Galveston. Also for all the beautiful flowers, cards, memorials, love, prayers shown to us at his death.

The people of Muleshoe are the greatest in the world. May God bless each and every one of you.

Euleta Stockard,  
Penny & Pam Stockard & Family  
Richard & Rickie Warren & Family

# West Texas C Of C Officers Named

Tom Barnett, Vice President of Neiman-Marcus, Fort Worth, was elected President of the West Texas Chamber of Commerce, Tuesday, April 19, at the 65th Annual Convention held in Kerrville.

Other officers elected were: Joe A. Kloesel, Midland, Chairman of the Board; Robert D. (Bob) Woofner, Fort Worth, President-Elect; C.C. "Buck" Elliott, Abilene, Treasurer; Gary L. Bowling, Fort Worth, Vice President - Finance and Membership; Joye Evetts, Fort Worth, Vice President - Program of Work; Richard Morrow, Fort Stockton, Vice President - Special Events.

District Vice Presidents elected were: District I, Judith Kerr, Amarillo; District II, Kenneth Dist-

phens, San Angelo.

WTCC Directors elected were: James H. Cotter, Albany; J.B. Tabor, Jr., Alpine; Julian Cowden, Alvarado; Bill Sewell, Amarillo; Gerald McCaskill, Andrews; Tom Becking, Ballinger; Sue Johnson, Bedford; Hooper Sanders, John L. Taylor and Winston Wrinkle, Big Spring; David W. Thompson, Borger; John D. Harkey, Brownwood; Sue Miller, Burleson; Lloyd Moss, Cleburne; Ron Bullock, Copperas Cove; R.L. Elliott, Jr. and King Fike, Dalhart; Ronald Simpson, Denver City; Orval E. Allen, Dumas; Bob Moore, Electra; Joe C. Hennig, Eules; Dr. Jon Fleming, Albert S. Komatsu and Kleber C. Miller, Fort Worth; James Kemp, Fredericksburg; Mark Hoelscher, Garden City; T.H. Birdsong III, Gorman; Zack Burkett, Byron L.

Calcote and Joy Shack, Graham; John Helsley, Granbury; Jim Humphreys, Guthrie; Ken Lane, Haskell; Vernon Smith, Henrietta; Dr. Patsy Sharp, Keller; John McCollom, Kerrville; Louie E. Wallace, Kress; Jim Norris, Lamesa; Jim Montgomery, Levelland; Robert L. Hales, Littlefield; Bill E. Collins,

**Hornets Place Second In District Track**

In the District 3-1A boys meet held in Plainview Wednesday, the Sudan Hornets placed second with 98 points. Happy came in first with 118. Other teams in this meet were Lazbuddie 3rd, with 82½; Amherst 4 with 66; Nazareth 5 with 50½; Valley 6th with 44; Silvertown 7th with 38; Estelline 8th with 24; Hedley 9th with 66 and Cotton Center tenth with no points.

The Hornets 1600 relay placed first with 3:33-this team's members are Perry Kent, Joseph Kessler, James Clay and Lester King. Amherst placed 2nd with 3:36.19. Happy was 3rd with 3:36.2.

Joseph Kessler placed 1st in the 400 run with 53.81 and Lester King placed first in the 200 dash with 23:02 while James Clay placed 3rd with 23.96.

In the 1600 run Terry Peck placed 2nd with 5:04.9.

The Hornets placed first in the 400 relay with 44.65. This team consists of James Clay, Randall Dameron, Joseph Kessler and Lester King. Lester also placed 3rd in the High Jump with 5-10. Casey McBroom of Lazbuddie was first with 6-0.

Boys State meet in Austin will be held May 13-15 and the Girls State meet is set for May 6-8.

Roy Holmes and Ben F. Robinson, Lubbock; Marvin Bryant, Menard; Larry Turner, Midland; Karl Richey, Monahans; Larry B. Hall, Muleshoe; Gayle B. Dishong, Garland W. Jordan, Tom McMinn and Dr. Philip Speegle, Odessa; Jim Marcum, Pampa; J.C. McCollough, Panhandle; J. D. Stephens, Pecos; Jack M. Allen and Dr. Zoel G. Allen, Perryton; James V. Crider and Dub Sheets, Plainview; Paul W. Johnson, Jr., Rankin; Honorable Robert Vaughan, Robert Lee; Jimmy Price, Roby; Clyde Jay, Roscoe; Gary L. Stewart, Saginaw; Robert E. Hickson, San Angelo; Jim Schur, Seymour; Jimmy Cahill, Sonora; Jim Shirley, Spearman; James

Elam and Joe France Harrison, Stamford; Ron Hollifield, Sundown; Lavelle Layfield, Sweetwater; Lyle M. Robinson, Tulia; W.H. Terry, Jr., Tuscola; James Strain, Tye; Edward L. Lehman, Jr. and Charles M. Prather, Vernon; Dr. Herbert H. Reynolds, Waco; Richard S. Bowers, White Deer; and Jim McDonald and Jack Redding, Wichita Falls.

Elected Directors-At-Large were: H.A. Bennett, Brownwood; Mike Moucrief, Fort Worth; Glen Churchill, Abilene; Bill Warner, Odessa; Stuart Coleman, Brownwood; W. A. Amburn, Tulia and Doug Boren, Lubbock.



**21% Protein**

**50 Lb. Bag Dog Food**

**\$9.16**

# AUCTION

THE ESTATE OF AUTHOR BOLTON  
518 EAST AUSTIN  
MULESHOE, TEXAS  
SUNDAY, MAY 1, 1983 TIME: 2:00 P.M.

- |                    |                   |                   |                   |                   |                   |                   |                   |                   |                   |
|--------------------|-------------------|-------------------|-------------------|-------------------|-------------------|-------------------|-------------------|-------------------|-------------------|
| 1968 Buick Wildcat | 1971 Ford Mustang | 1972 Oldsmobile   | 1973 Ford Mustang | 1974 Ford Mustang | 1975 Ford Mustang | 1976 Ford Mustang | 1977 Ford Mustang | 1978 Ford Mustang | 1979 Ford Mustang |
| 1980 Ford Mustang  | 1981 Ford Mustang | 1982 Ford Mustang | 1983 Ford Mustang | 1984 Ford Mustang | 1985 Ford Mustang | 1986 Ford Mustang | 1987 Ford Mustang | 1988 Ford Mustang | 1989 Ford Mustang |
- ... (many more items listed) ...

# Form 1040X Used To Amend Tax Return

Left something out of your tax return after you have filed your return, such as a deduction or an income figure? The Internal Revenue Service says you can change your original tax return simply by filing corrected returns on Form 1040X.

The original return can be amended any time during the 3 years following the due date (including extensions) of the original, or 2 years from the time the tax was paid, whichever is later, according to the IRS.

Taxpayers can receive copies of Form 1040X and additional information by calling the IRS Tax Forms-Information number in the local telephone directory under U.S. Government.

# WHO KNOWS

- Name the flower for the month of May.
  - Name the birthstone for May.
  - Who began the fight for "women's suffrage"?
  - What is the national motto of the U.S.?
  - When was the first American sent into Space?
  - Where is the Eisenhower Museum located?
  - Name the 18th president of the U.S.
  - When did World War II end in Europe?
  - In what novel did Robin Hood appear?
  - How many Democratic presidents have there been since 1856?
- Answers to Who Knows
- Lily of the Valley or Hawthorn.
  - Emerald.
  - Susan B. Anthony.
  - "In God We Trust."
  - May 5, 1961.
  - Abilene, Kansas.
  - Ulysses S. Grant.
  - May 8, 1945.
  - Sir Walter Scott's *Ivanhoe*.
  - Six: Wilson, F.D. Roosevelt, Truman, Kennedy, L. Johnson and Carter.

True Value Hardware Stores

**BARGAIN OF THE MONTH**

5-Pc. Pyrex<sup>®</sup> Sculptured Bowl Set  
Includes a 4-qt. bowl and four 16-oz. serving bowls. 844-F

**5.99** While Supplies Last

Quantities Limited

True Value Hardware Stores

**TOOL VALUE OF THE MONTH**

8-In. Cut Hedge Shears  
Steel blades w/pruning notch. Unbreakable handles. 2004

**4.99** While Supplies Last

Quantities Limited

True Value Hardware Stores

**HARDWARE VALUE OF THE MONTH**

turtle wax<sup>®</sup>

2.99 Price Plus Sales Tax -100 Mail In Refund Offer

1.99 Year Final Cost

MINUTE WAX<sup>™</sup>  
Silicone Auto Polish  
Just spray on and wipe off for beautiful silicone protection. T15

While Supplies Last

Quantities Limited

**Fry & Cox, Inc.**

401 S. 1st 272-4511

**BE SURE TO SEE OUR COLORFUL INSERT IN TODAY'S BAILEY COUNTY JOURNAL.** We're Proud To Give You More.



ASSORTED FLAVORS SHURFINE ICE CREAM

**\$1.39**

½ GAL. SQ.CTN.

WITH BONUS BOOKLET 89¢



LAUNDRY DETERGENT

**KING TIDE**

**\$3.29**

84 OZ. BOX

---

SHURFINE ENRICHED ALL PURPOSE

**FLOUR**

**79¢**

5 LB. BAG



DUNCAN HINES ASSORTED LAYER

**CAKE MIXES**

**79¢**

18½ OZ. BOX

---

ALL GRINDS FOLGER'S

**COFFEE**

**\$2.19**

1 LB. CAN



**DR. PEPPER**

NON RETURNABLE BOTTLES 10 OZ.

**\$1.39**

WITH BONUS BOOKLET 89¢



**BRAWNY PAPER TOWELS**

**59¢**

JUMBO ROLL

WITH BONUS BOOKLET 9¢

**TOTAL GROCERY SAVERS**

LUNCHEON MEAT	12 OZ. CAN	<b>\$1.49</b>	CRISCO OIL	48 OZ. BOTTLE	<b>\$1.99</b>
SPAM	12 OZ. CAN	<b>\$1.49</b>	ALPO DOG FOOD	25 LB.	<b>\$6.99</b>
INSTANT TEA	3 OZ. JAR	<b>\$2.29</b>	NABISCO SALTINE	16 OZ. PKG.	<b>89¢</b>
NESTEA	3 OZ. JAR	<b>\$2.29</b>	<b>FRESH DAIRY SPECIALS</b>		
SHURFINE INSTANT TEA	3 OZ. JAR	<b>\$1.79</b>	BORDENS ROUNDS	ICE CREAM	<b>\$1.59</b>
DEL MONTE WHOLE GREEN BEANS	2 16 OZ. CANS	<b>89¢</b>	SHURFINE MEDIUM	EGGS	<b>67¢</b>
DEL MONTE WK/CS GOLD CORN OR EARLY GARDEN	SWEET PEAS	5 17 OZ. CANS	BORDENS	YOGURT	<b>3/\$1.00</b>
DEL MONTE CRU/ CNK/ SLI/ TIDBITS	PINEAPPLE	15½ OZ. CAN	HI-PRO	MILK	<b>\$1.99</b>
HAWAIIAN PUNCH ASSORTED FLAVORS BOXED	DRINKS	3 CT. PKG.			



PURE GRANULATED

**SHURFINE SUGAR**

**\$1.39**

5 LB. BAG

WITH BONUS BOOKLET 89¢

**AI AFFILIATED FOODS INC.**

MEMBER STORE

DOUBLE STAMPS EVERY WEDNESDAY

**SERV-ALL**

**THRIFTWAY**

We're proud to give you more!

PRICES EFFECTIVE MAY 1-7, 1983

WE RESERVE THE RIGHT TO LIMIT QUANTITIES

WE ACCEPT FOOD STAMPS

STORE HOURS:

8:00 A.M. to 8:30 P.M. Mon. thru Sat.

9:00 A.M. to 7:00 P.M. Sun.

401 W. American 272-4739

# Special Olympics Help Athletic Competition



RECEIVING INSTRUCTIONS BEFORE THE GAMES--Spending time with the future contestants, the sponsors of the Special Olympics explained the rules of the game to the members of the Special Olympics teams. Special Olympics provides all-around sports training and athletic competition to a group of special children.

## Most Farmers Plow Too Much

Plowing the back 40 "for the heck of it" or "to get out of the house" is a poor excuse for any field operation today.

In other words, "recreational plowing" is a costly operation that farmers just can't afford any longer. Furthermore, it's bad for the soil.

"More and more farmers are paying closer attention to the number of trips they make over a field each year," points out Dr. Ed Colburn, an agronomist in soil management with the Texas Agricultural Extension Service, Texas A&M University System. "Farmers who used to cultivate their land 12 to 15 times a year are now down to five or six times. And that's still too many, in some

cases."

With the current high cost of fuel, plowing for whatever reason is expensive, emphasizes the agronomist. And with farmers currently fighting for financial survival, it just makes good sense to cut back on field operations.

"Be sure any tillage operation affords some crop benefits that will contribute to higher yields rather than just appearance," says Colburn. "Combine operations where possible so that more is accomplished with each field pass."

Excessive plowing also can lead to soil compaction, which in turn can reduce crop yields due to poor water infiltration, poor root penetration and other problems that rob crops of

their productivity.

With today's large tractors--some weigh more than 10 tons without attached implements--compaction can be a real problem, particularly on wet, coarse-textured soils, notes Colburn.

Paul A. Volker, Federal Reserve Chairman: "The outlook for interest rates is downward, assuming continued progress in keeping inflation down..."

George P. Shultz, Secretary of State, on Caribbean Basin plan: "Because the Caribbean countries are so closely linked to our economy, our sales to them will grow apace with their economies."

burn. Not only do tractor wheels compact the soil, they also produce large clods that break out upon tillage. This leads to additional tillage to break up the clods, leading to further compaction.

Although some compacted soils can be broken up by deep tillage and chiseling, the best way to deal with soil compaction problems is to prevent them in the first place by reducing tillage operations, notes the agronomist.

"Not only will your land be better off with less tillage, but your bank account also will improve," says Colburn.

Why is it there are always so many people who need money?

The Special Olympics oath reads: "Let me win, but if I cannot win, Let me be brave in the attempt."

The old saying "you've gotta have heart" took on a separate, special meaning this past week as the Journal visited with several very special kids from Muleshoe. Excitement is building by the minutes for the upcoming District Special Olympics to be held in Lubbock on May 7. These special youngsters goal is "not to win, but to try - to experience."

With the beginning in 1968 of the special olympics, they have become the largest program of sports training and athletic competition for the handicapped children of the world. Over one million special children and adults participate, including those from in the states and internationally.

In Special Olympics, the goal is not to win, but to try and to experience.

No distance is too small, and no effort goes without recognition for and by these special kids. The original program got its start in 1946 when the Joseph P. Kennedy Foundation was established to seek help for special children.

Muleshoe can boast six very special youngsters who are now in training for the area Special Olympics which will be held on the Lubbock Christian College Campus. These kids have been hard at work for months, trying to perfect their skills in preparation of the area event. They are being taught under the guidance of Vickie Brandon, Joyce Scott and Nancy Kidd, - all truly dedicated women.

For youngsters without a handicap, tossing a ball or

jumping is an easy chore. Not so, for many of these extra "special" kids. It is an accomplishment that many work very hard to master, and for them, doing it right is a super triumph.

Two students from Mary DeShazo are in training: Nadine Gillian and Frank Garcia. Nadine competes in the jumping events and plans to win the frisbee throw. Frank - now - he's something else, firing in a straight softball with a tremendous amount of power behind it. Frank says that he just can't afford to be beat by a girl, but it's really one for all and all for one with these special kids.

Junior High students are Letecia Garcia, Michelle McDonald and Lisa Martinez. The only high school student is Cari Kidd. Cari, more or less, serves as the spokesman for the group, being the older and having a little more experience. Cari says that although she is handicapped, she can see that her problems have made her a stronger, better person. "We're special and we really work hard," Cari says. Cari's Mom is one of the coaches for the special olympics team here.

According to statistics, during the upcoming 1982-83 program year, over 20 thousand athletes will participate in year-round area and state events. Athletes participate in area meets prior to state competition.

On the bottom line of Special Olympics is the provision to provide year round sports training and athletic competition in a variety of well coached Olympic-type sports, not only for mentally retarded children and adults, but for

others who are otherwise handicapped.

Eligible participants are those who have been assessed, evaluated and assigned to programs designed to meet the needs of the mentally retarded. Those engaged in regular junior and senior high school athletics are not eligible; however, competition begins at the age of eight. This does not stop with mental handicaps, but goes on to include physical

handicaps and learning disorders.

We've got a lot to be proud of in these nine youngsters, for whether they have anything else, ever, they will know that they had heart and stamina to compete in events just the same as anyone else. This should serve as inspiration to many others and perhaps as hope to someone who has a like problem.



HELPING HAND--One of the Special Olympics participants was given a helping hand just prior to competition during the Special Olympics here last week.

Summer's Nearly Here  
&  
It's COOKOUT TIME!



1/2 BEEF \$1.19 Lb.

GERMAN SAUSAGE \$2.49 Lb.

FAMILY PACK \$61.99

FREEZER PACK \$31.99

BREAKFAST SAUSAGE 2 Lb. Pkg. \$1.50 Lb.

BULK HAMBURGER \$1.49 Lb.

HAMBURGER PATTIES \$1.59 Lb.

Winkler Meat Co.

491 Main

272-4703

**SHOOK**  
TIRE & SERVICE  
**LEE POLYESTER**

**\$26**

165-13 WHITEWALL FET: 1.50 Exchange

SIZE	SUGGESTED EXCHANGE PRICE	SALE PRICE
P165-13	\$36.95	\$26.00
P195-14	43.95	29.95
P205-14	45.95	32.95
P215-14	47.95	34.95
P215-15	49.95	35.95
P225-15	51.95	36.95
P235-15	55.95	39.95

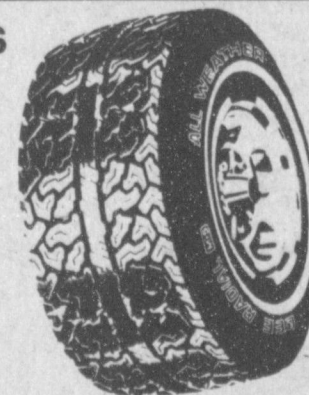
FET: \$1.50-2.79

**LEE ALL WEATHER**

Steel Belted Radials

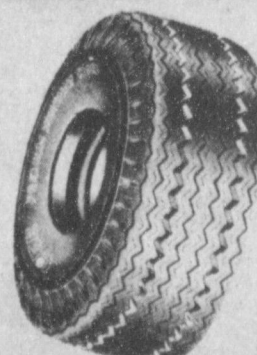
SIZE	SUGGESTED EXCHANGE PRICE	SALE PRICE
P155x13	\$57.95	\$34.00
P185x14	69.95	45.00
P195x14	70.95	46.00
P205x14	75.95	48.00
P215x14	79.95	49.00
P205x15	77.95	49.00
P215x15	82.95	52.00
P225x15	85.95	54.00
P235x15	91.95	57.00

FET: \$1.51-2.90 WHITEWALL



ROCKER Wheels As Low As \$25

**PREMIUM HIGHWAY RIB**



LIGHT TRUCK TIRE \$46.95  
700-15 TL 6 Ply FET: 3.06  
**LEE**

**PEACE OF MIND** Ask about it Complete Road Hazard Protection at Shook.

Prices good thru May 7, 1983

FREE MOUNTING!



301 North First • 272-3420  
Manager: John Robinson

**Battery**  
**24 Month**  
• Group 24  
• 300 Cold cranking amps  
• 45 Amp hours  
• Hard rubber case  
• 42 Plates



**\$29.95**  
Plus exchange battery

**Shocks**  
**Heavy Duty**  
**MONROE**  
• Lifetime Warranty  
• Installation Available



**\$16.99**  
Each

**Brake Service**  
**Front Disc**  
• Turn rotors  
• Pack front bearings  
• Replace front disc pads

**\$59.99**  
Most American Cars

**Alignment**

• Set toe-in  
• Inspect tires  
• Adjust caster and camber



**\$11.99**  
Most American Cars

# Gardening Is Actually Farming

It's time for gardeners to stop gardening and start "farming."

Dr. Sam Cotner, horticulturist with the Texas Agricultural Extension Service, Texas A&M University System, says gardeners are, in reality, "urban agriculturists" and therefore should relate to farming.

Conservative estimates indicate that about half the population of Texas is involved in growing fruits and vegetables at home. These urban agriculturists should look at their "backyard plot" as a small farm, says Cotner, even if it is just several hundred square feet in size or perhaps only a couple of tomato plants growing in a flower bed.

"Urban agriculturists encounter exactly the same problems as do the farmers and ranchers who are feeding our nation," notes Cotner. "The same weather problems, hungry insects, devastating diseases and pesky weeds affect backyard vegetable gardens just as they do commercially grown crops."

These urban agriculturists make exactly the same important decisions as farmers regarding what varieties to plant, planting dates, what and how much fertilizer to apply, when to water and how to cope with numerous production problems.

"Though only about 3

percent of our nation's population is actually involved in production agriculture, it's vitally important that the millions who are growing fruits and vegetables at home relate their food producing efforts to agriculture," Cotner emphasizes. "When these 'gardeners' start considering themselves as 'urban agriculturists,' perhaps they will appreciate our farmers and ranchers more."

Cotner believes that it's important for our population to understand the cost of technology requirements necessary to produce and make available high quality, fresh fruits and vegetables.

## Sandhills Philosopher

Editor's note: The Sandhills Philosopher on his Johnson grass farm on Sandy Acres has some thoughts on a new I.R.S. ruling this week.

Dear editor: Although generally it's better to forget April 15 as soon as you can, there are a couple of announcements by the I.R.S. that caught my attention.

It has ruled that house painters can deduct the cost of overalls as a legitimate business expense because, it said, "they are required as a condition of employment and are not adaptable for general use as ordinary clothing."

This is two-fold news. (1) To farmers and others who like to wear overalls right out in public even though the I.R.S. says overalls aren't adaptable as ordinary clothing. (2) If painters can deduct the cost of their clothes, why can't others?

For example, if overalls are deductible because they're required as a condition of employment, how about pants in a bank? I've never seen a bank that didn't require its male employees to wear pants. And come to think of it, some women are wearing fancy overalls straight out of high-toned department stores. The I.R.S. is fixing to increase the national debt.

The other I.R.S. announcement said it has hooked up a phone system that automatically rings the phone every 30 minutes of anybody who is behind in his taxes. The thing will keep on ringing till the guy pays up or leaves the receiver off or yanks the thing out by the roots.

I'm in favor of everybody's paying his taxes and if that telephone harassment works, fine. But what's going to happen if some guy gets one of those phone systems himself and sets it to ring every 30 minutes at the I.R.S. office asking: How come some big executives with incomes of a million dollars a year get by without paying any income taxes?

Yours faithfully,  
J.A.

## April Oil And Gas Hearing Held

The Railroad Commission today set the Texas oil production rate for May 1983 at the market demand factor of 100 percent for the 75th month in a row and the 131st time since the Commission first went to the ceiling level in April 1972.

Chairman Mack Wallace and Commissioner Jim Nugent directed the continuation of the maximum statewide allowable after receiving and reviewing purchaser nominations for Texas oil in May totaling 2,473,449 barrels per day, an increase of 14,069 barrels daily when compared to April buyer requests. May 1982 nominations totaled 2,452,593 barrels daily.

Next month's permissible rate of output is calculated to average 2,919,818 b/d with actual production estimated at 2.375 million b/d. The maximum allowable applies to all but 10 fields in Texas that are assigned lower legal rates of flow for conservation purposes. Actual production in May 1982 was 2,401,824 barrels daily.

Wallace reported that May 1983 nominations for the purchase of Texas gas totaled 17,251,827 Mcf/d. Gas nominations for April amounted to 18,609,169 Mcf/d. May 1982 gas nominations totaled 23,262,308 Mcf/d.

The next statewide oil and gas hearing will be held Thursday, May 19, at 9 a.m. in Rm. 107 of the Railroad Commission headquarters building at 1124 S. IH 35 in Austin.

## Shop In Store Specials For More Savings

# Mother's Day

ALL GRINDS  
**FOLGER'S COFFEE**  
\$2<sup>19</sup>  
1 LB. CAN

TV SPECIAL  
WHITE/ASSTD. BATHROOM  
**NORTHERN TISSUE**  
89¢  
4 ROLL PKG.

VLASIC KOSHER OR DILL  
**PICKLES**  
\$1<sup>39</sup>  
46 OZ. JAR

KRAFT SPIRAL MAC. & CHEESE  
**DINNERS**  
3 5 1/2 OZ. BOXES \$1<sup>00</sup>

DEL MONTE REG./FR. SLI.  
**GREEN BEANS**  
3<sup>99</sup>¢  
16 OZ. CANS

**SAUCE** DEL MONTE MILD/HOT TABLE 8 OZ. JAR 59¢  
**CHILIES** DEL MONTE DICED GREEN 4 OZ. CANS 89¢  
**SAUCE** DEL MONTE MILD/HOT ENCHILADA 10 OZ. JARS 89¢  
**BEANS** DEL MONTE REFRIED 17 OZ. CANS 89¢  
**SAUCE** WOLF W/BEEF HOT DOG 10 OZ. CANS 69¢  
**PINEAPPLE** DEL MONTE 1 1/2% OZ. IN JUICE CAN SLI./CRU./CHK. 59¢  
**SPINACH** DEL MONTE LEAFY 15 OZ. CANS 89¢  
**PEAS** DEL MONTE EG BLEND SWEET 17 OZ. CANS 89¢  
**SAUCE** DEL MONTE TOMATO 8 OZ. CANS 89¢  
**SAUCE** HUNT'S ASSORTED NATURAL BARBECUE 18 OZ. BTL. 99¢  
**DRESSING** KRAFT LOW CALORIE BACON & TOMATO/CRVY. BACON 8 OZ. 69¢ BTL.  
**PEPPER** SCHILLING BLACK 4 OZ. CAN 89¢  
**COFFEE** FOLGER'S FLAKED 13 OZ. CAN \$1<sup>99</sup>  
**SPAGHETTI** AMERICAN BEAUTY LONG 48 OZ. PKG. \$1<sup>59</sup>  
**COOKIES** SUNSHINE ASSTD. CREAMER 12 OZ. PKG. 69¢

HEALTH & BEAUTY AIDS  
25% OFF LABEL MISS BRECK  
**HAIR SPRAY**  
\$1<sup>59</sup>  
9 OZ. CAN  
SOFT, & DRY AEROSOL A/P  
**DEODORANT**  
\$1<sup>99</sup>  
SUPER BABY POWDER  
4 OZ. CAN  
RIGHT GUARD ORANGE/LIME STICK  
**DEODORANT**  
\$1<sup>59</sup>  
2.5 OZ. BTL.

SHURFINE GRANULATED  
**SUGAR**  
\$1<sup>49</sup>  
5 LB. BAG

DOUBLE STAMPS ON WEDNESDAY & SATURDAY

LAY'S  
**POTATO CHIPS**  
99¢  
REG. \$1<sup>99</sup>

FRESH FROM THE FARM PRODUCE  
TEXAS RUBY RED  
**GRAPE-FRUIT** 5 LB. BAG 99¢  
CALIFORNIA SUNKIST  
**NAVEL ORANGES** LB. 33¢  
STRAIGHT NECK  
**YELLOW SQUASH** LB. 59¢  
CALIFORNIA  
**STRAWBERRIES**  
65¢  
PINT BSKT.

STORE HOURS:  
MON.-SAT. 8:00-9:00  
SUN. 9:00-7:00



**CUSTOM-MADE JEWELRY**  
Your Gold Or Ours  
Jewelry Cleaning Jewelry Repair  
Stone Setting Ring Sizing  
-----  
Hundreds Of Patterns  
To Choose From  
-----  
**MULESHOE PAWN SHOP**  
213 S. 1st 272-5105

# ay Specials

Eva Ashford  
Winner Of Four Books  
Of Stamps

Winners Will Be  
Announced Monday  
Mornings On KMUL  
Coffee Time.

DEL MONTE  
WHOLE KERNEL OR CREAM STYLE  
REG. OR LITE SALT



**CORN**

**2/89¢**

**QUALITY MEAT SPECIALS**  
SHURFRESH BONELESS FULLY COOKED HALF OR



**WHOLE HAMS**

**\$1.99**

LB.

<b>BACON</b> SHURFRESH QUAL. 1 LB. PKG. <b>\$1.69</b>	<b>LIVER</b> SELECTED SLICED 89¢
<b>HAMS</b> LOUIS RICH SMOKED FULLY COOKED 3-4 LB. <b>\$1.69</b>	<b>CATFISH</b> FROZEN FRESH WATER SMALL WHOLE <b>\$1.29</b>
<b>FRANKS</b> LOUIS RICH TURKEY 12 OZ. PKG. <b>89¢</b>	<b>PATTIES</b> ARMOUR PRE-COOKED CHICKEN FRIED BEEF <b>\$1.69</b>

HEAVY GRAIN FED BEEF WHOLE IN THE BAG  
8-12 LB. AVG.

**BEEF BRISKETS**

**\$1.39**

LB.

20" OFF LABEL DETERGENT



**COLD POWER**

**\$2.19**

GIANT BOX

REGULAR SIZE BARS



**CARESS**

**49¢**

EACH

CARNATION NEW BREED DRY

**DOG FOOD**


4 LB. SIZE **\$1.99**

UNSWEETENED

**KOOL-AID**

21 OZ. PKG. **6/95¢**

DEL MONTE



**CATSUP**

**69¢**

14 OZ.

**TV SPECIAL**

ABSORBENT PAPER

**BRAWNY TOWELS**

**59¢**

JUMBO ROLL

STAR KIST  
OR  
CHICKEN OF THE SEA



**TUNA**

**89¢**

6 1/2 OZ. CAN

**FROZEN FOODS & DAIRY**

MORTON



**HONEY BUNS**

9 OZ. PKG. **79¢**

BORDEN'S COTTAGE **CHEESE** 24 OZ. CTN. **\$1.39**

BORDEN'S HI-PRO **MILK** 1/2 GAL. CTN. **99¢**

BORDEN'S ASSORTED FLAVORS **ICE CREAM** 1/2 GAL. RND. CTN. **\$1.59**

**NOVELITIES** BORDEN'S 24 CT. ASSTD. PKG. **\$1.29**

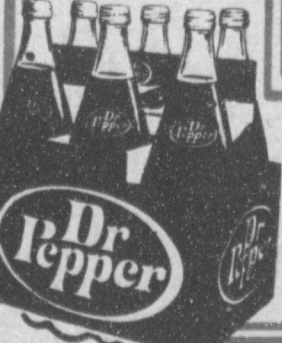
**5 ALIVE** SNOW CROP FRUIT BEVERAGE 64 OZ. CTN. **\$1.49**

**PARKAY** KRAFT SOFT 2-8 OZ. CUPS **79¢**

REG./DIET 32 OZ. PLUS DEP.

**DR. PEPPER**

**\$1.89**



6 BTL. CTN.

## Child Safety Laws Could Save Lives

"In 1981, 68 children under age 4 died as a result of traffic accidents in Texas. Safety leaders across the state are urging mandatory child safety seats to cut down those numbers which represent personal tragedy for all involved," said George R. Gustafson, executive director of the Texas Safety Association.

Mandatory child safety seats was a key recommendation of the Texas Task Force on Traffic Safety, a 17-member group chaired by Colonel James B. Adams, director of the Texas Department of Public Safety.

Legislation mandating child safety devices for children under 4 passed the Texas Senate and is being considered in the House.

"Although there is no doubt that people of all ages will have a better chance of surviving crashes if they are wearing occupant protection devices, restraints for young children are crucial because of anatomical and physiological reasons," Gustafson said.

Dr. Dale Coln, director of the Pediatric Trauma Center of Parkland Memorial Hospital in Dallas, has explained those factors in testimony during this legislative session.

According to Coln: "An unrestrained child in an auto accident is more likely to be seriously injured than an unrestrained adult. Because of his smaller body mass, the unrestrained child is catapulted through the car as an "unguided missile" upon impact. The risk of serious injury is age related, with a disproportionate number of deaths occurring in infants under one year of age."

"The anatomic differences of young children in part explain their predisposition to serious injury. The relatively large head of

a child and the high center of gravity result in a higher percentage of serious head and chest injuries than occur in adults. Muscle mass, which offers some protection in adults, is less well developed in children. The flexibility of the rib cage predisposes a child to greater risk of injury to the chest and upper abdominal organs. The relatively large size of the head, the thin skull, and the less well protected spinal column increase the risk of central nervous system injury," Coln said.

Gustafson pointed out that unrestrained children are not only at great risk during accidents, but also in sudden stops.

"It is easy for parents to assume that a child is safe riding in an adult's arms. Unfortunately, that is not true. The Insurance Institute for Highway Safety reports that an adult's body often becomes a battering ram, crashing the child into the instrument panel and windshield," Gustafson said.

He pointed out that most child safety seats accommodate children up to 40 pounds and 40 inches.

"Legislation now under consideration assumes that many 4-year-olds have reached those limitations, and indeed many have. The important thing, however, is for parents to be guided by their own children's needs. Because the seats are designed to distribute the force of an impact over a large area of the body, a child in a safety seat is better protected than one of the same weight category riding in a safety belt. Parents would be well advised to keep buckling their children into safety seats until they have exceeded the weight and height recommendations of the manufacturer, regardless of the age," Gustafson said.

"Twenty-three states and the District of Columbia have child passenger protection laws; two others have passed legislation which is awaiting their governor's signatures. That means Texas has the opportunity to become the 26th state to ensure safer traveling for its young children," Gustafson said.

### Courthouse News

**WARRANTY DEEDS**  
Jim Berry to Delbert Brown and wife, Verla Brown and Wesley Brown -- A tract of land containing 130 acres, more or less, out of Section 81, Block Z, WD&FW Johnson's Subdivision, in Bailey County, Texas.

E.D. Chitwood, Jr. and wife, Eileen Chitwood to Ron L. Lawlis -- All of the (W/30') of Lot No. (9), and all of Lot No. (10), in Block No. (8), Country Club Addition, to the Town of Muleshoe, Bailey County, Texas.

Raymond Gage and wife, Thelma Gage to Claude E. Sims and wife, Linda E. Sims -- A 2.67 acre rectangular tract of land, being 217.8 feet, more or less, out of section 32, Block 4, WD&FW Johnson's Subdivision No. 2, Bailey County, Texas.

**COUNTY COURT**  
Fabian Ronald Quintana  
DWI 6 months jail \$400 fine.

### NEWS VIEWS

Janet L. Norwood, commissioner of labor statistics:  
"The unemployment rate has to drop two-tenths (of a percent) to be statistically significant."

Sam Nunn, Senator (D-Ga):  
"I think it's time for the president to recognize we've got to have a realistic military strategy that we can fulfill."

\*\*\*\*  
Money, and the amount of it you have, is a relative proposition. Do not set your sights too high and you will get more happiness out of life.

There's a new business team in town.

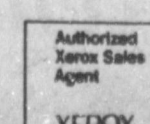
**Quality**

PRINTING & OFFICE SUPPLY and Xerox.



We're pleased to announce that we have been selected as an Authorized Sales Agent for the popular line of Xerox copiers, Memorywriters, and supplies. Our customers are assured of quality service directly from Xerox.

Call for a free demonstration and see just how much a Xerox copier can do for you.



**STORE ADDRESS:**  
**515 W. AMER. BLVD.**  
**272-4406**

PRICES EFFECTIVE MAY 2 THRU MAY 7, 1983  
LIMIT RIGHTS RESERVED

**Save**

D'SERVICE

**Nursing Home News**  
By: Joy Stancell

The Muleshoe Church of Christ came to Sing to the residents Sun. afternoon.

Thursday afternoon Mr. Embry, Mr. Bellar came to play 42 and dominoes with the residents. Mr. E. Kerr's brothers also played.

Mr. Marcus Laney returned to the nursing home after being hospitalized Wed. morning. Welcome back Mr. Laney.

Barbara Case has her son Jim and daughter Merdis here visiting with her this week.

Lena Hawkins and Maud Kersey are among those who visited the nursing home this week.

Marie Engram was visited by Maud Kersey, Sonia Florace, Joyce Turnbow, Jerry Hutton, Lona Embry, Wilma Waddle.

Mr. and Mrs. A.M. Bradley received a letter from their son Sam Bradley Wed.

Ernest Kerr was visited by his brothers last week.

Tues. May 3rd 10:00 the residents will have a May Day sale in the Day Room. They will have a lot of their hand work for sale.

Tues. morning Glenda Duncan came to give the residents a class in painting ceramics. They painted mugs.

Our thanks to Marie Bradley and Jackie Johnson for making refreshments for our welcoming coffee Wed. morning for Maggie Daniell. Thanks too, to our lady residents who helped serve.

Fri. noon the residents attended the AARP luncheon at the Civic Center. We all enjoyed the fellowship, the meal and the entertainment. Res. attending were Lois Ethridge, Effie Smith, Alma Henley, Cordelia Cochran, Ruby Mc-

Camish, Bunnie Hurd. Our thanks to Minnie Singleterry for helping us.

Russ Duncan is still in Methodist Hospital at this time. We are happy to hear that she is getting along real well.

Mildred Ethridge was visited by her sister and niece Wed.

Alma Henley was visited by Cleo and Stanley Wed. afternoon.

Our thanks to Carolyn Wiseman and Young People at the New Covenant Church for entertainment at our welcoming coffee.

Our thanks to Retha Tighe for all the "goodies" she has been bringing to the staff.

Keth Fullers daughter Jean visited her this week. Jean lives in Freeport, Texas.

Mrs. Kemp was visited by Doris and Donald this week.

**VA News**

A copy of the Vietnam Veterans Memorial Directory of Names is now available in the Waco Veterans Administration Regional Office for use by interested persons.

The directory provides the name and location of each Vietnam war casualty -- deceased or still missing -- inscribed on the walls of the Vietnam Veterans' Memorial in Washington, D.C. It also provides additional information about each of those servicemen or servicewomen. The names inscribed on the memorial are those contained in the official Department of Defense list of casualties. Director Jack Coker invites those interested to make use of the directory at the VA Regional Office. Also, a copy of the directory may be purchased from the Vietnam Veterans Memorial Fund, 1110 Vermont Avenue, N.W., Suite 308, Washington, D.C. 20005, for \$14, including postage and handling.

**Lazbuddie School Menu**

**LAZBUDDIE CAFETERIA**  
MAY 2 MAY 6-83  
**LUNCH MONDAY**  
Fish portion/Tarter sauce  
Creamy Macaroni and Cheese  
Blackeye peas  
Fruit  
Corn Bread  
Milk  
**BREAKFAST MONDAY**  
Cereal  
Juice  
Milk

**LUNCH TUESDAY**  
Hamburgers  
French Fries  
Pickles, lettuce, onion  
Pickling-Peanuts  
Milk  
**BREAKFAST TUESDAY**  
Yeast Biscuit  
Honey  
Peanut Butter  
Applesauce  
Milk

**LUNCH WEDNESDAY**  
Chalupas/hot sauce  
Buttered Corn  
Green salad  
Jello and fruit  
Milk  
**BREAKFAST WEDNESDAY**  
Buttered Toast  
Jelly  
Juice  
Milk

**LUNCH THURSDAY**  
Juicy Burgers  
French Fries  
Pickles  
Cookies  
Milk  
**BREAKFAST THURSDAY**  
Yeast Biscuit  
Scrambled eggs  
Juice  
Milk

**LUNCH FRIDAY**  
Spaghetti/Meat sauce  
Peas and Carrots  
Fried Okra  
Corn Bread  
Fruit  
Milk  
**BREAKFAST FRIDAY**  
Pancakes, syrup  
Juice  
Milk

**MOST EXPENSIVE CITY**  
GENEVA, SWITZERLAND -- The dollar's strength has shifted rankings among the world's most expensive cities, but the Nigerian capital Lagos remains the leader in 1983, a survey by Business International Corp. shows.



**LINED UP AND WAITING**--While potential contestants are shown in a line, one young contestant in the Special Olympics shows intense concentration on his activities during the Special Olympics held for Mary DeShazo and Junior High School along with one high school students last week.

The truth hurts people who don't like to face facts.

Expect little and you will spare yourself disappointments.

A hard task is eased by the application of immediate energy.

**Peanut Demand Favor Farmers**

While farmers of most crops are facing a surplus problem that is hurting prices, peanut farmers have the privilege of dealing with a more balanced supply-demand situation.

This, along with lower production costs, points to an improved profit picture for the 1983 peanut crop, says Johnny Feagan, an economist with the Texas Agricultural Extension Service, Texas A&M University System.

While farmers averaged only 24.9 cents per pound for their peanuts in 1982, this year should bring a different story, believes Feagan. Prices should strengthen some due to reduced supplies, and lower seed and fuel costs should enable farmers to realize a greater profit margin.

Farmers will again have a national average support level of \$550 per ton for their 1983 quota peanuts, the same as last year. This assures them at least that price for all peanuts produced under the farm quota poundage program.

Peanut farmers also are assured a national average support level of \$185 per ton for peanuts they produce outside their assigned quota, adds Feagan.

Although peanut acres are expected to be up some 14,000 acres in the U.S. this year, farmers in Texas and Oklahoma plan to plant about 7,000 acres less than in 1982, notes Feagan.

Last year's 1.27 million harvested acres were the lowest in the U.S. since 1933 although yields were at a record 2,703 pounds per acre.

Domestic use of peanuts is continuing to increase, and with peanut supplies already down about 5 percent from last year, another drop in stocks is expected during this marketing year, the economist points out.

The export market for peanuts is still clouded by the strong American dollar abroad and continued recession in Europe.

**PERRYS**

**MAY Super SALE**  
Just in Time for **MOTHER'S DAY**

**THE PROOF IS IN OUR PRICE AND SERVICE.....**

F.C.C. APPROVED WORKS ON ANY PHONE SYSTEM!  
**AIRMATE 4-FEATURES TELEPHONE**  
Features:  
• Dial Tone Rest  
• Last Number Memory Redial  
• Ring Control Switch  
• Mute Button  
**1488 EACH** 30<sup>00</sup> VALUE

**LARGE KITCHEN UTILITY TOWELS**  
ASSORTED COLORFAST CHECKS  
**73<sup>00</sup> EACH**

**STAINLESS STEEL MIXING BOWL SET**  
3 PIECES  
**388 SET**

**ASSORTED COLORS 22-OZ PLASTIC TUMBLERS**  
Polyethylene... Use with Hot or Cold Beverage  
**5 FOR 100**

**"FLEURETTE" STAINLESS STEEL FLATWARE**  
54-PIECE SET  
CROWN ONE  
8 Dinner Forks • 8 Dinner Knives • 8 Salad Forks  
8 Soup Spoons • 16 Teaspoons • 2 Large Serving Spoons  
1 Large Fork • 1 Ladle • 1 Pie Server  
**1988 SET**

**NEW TWIN PACK 409 187**  
A GREAT BUY!!!

**ENTIRE STOCK LAMP SHADES**  
**1 1/2 OFF REGULAR PRICE**

**SAVE ON FABRIC**  
**GINGHAM CHECKS**  
65% POLY 35% COTTON 45" WIDE  
**\$1 47 YD.**

**DAN RIVER**  
Del Rio Sherbert Plaids  
• Poly/Cotton • 45" Wide  
• Top Weight • On Bolts  
Save \$1.02 yard  
**1 97 YD.**

**BURLINGTON KLOPMAN STRIPES - DOBBIES**  
20% COTTON **\$1 47 YD.**  
80% POLY **ULTRA VINO** YD.

**LACE REMNANTS**  
36"-90" WIDE  
WHITE CANDLE **\$1 77 YD.**

**BROADCLOTH Solids**  
• Poly/Cotton  
• 45" Wide  
• Top Weight  
• Flatfold  
• Ideal for quilting & crafts & tops  
• Excellent color selections  
Save 23¢ yard  
**137 YD.**

**FASHION DOTS & PRINTS**  
• Poly/Cotton  
• 45" Wide  
• On Bolts  
• Not Available in all Stores  
**147 YD.**

**JOHN DEERE** **SPRING BONUS SPECIALS**

**DON'T MISS END-OF-MODEL REBATES UP TO \$5,200 ON 40-TO 228-HP JOHN DEERE TRACTORS**

It's human nature to look for the best product at the best price. And now, with the farm economy showing signs of improving, is the ideal time for you to take advantage of special model closeout rebates on 40 Series John Deere tractors.

Cash rebates up to \$5,200 from John Deere (see chart) on top of our best deal. And remember, we're discounting from list prices that date back to 1981 on 40 Series tractors. Between our good deal and John Deere's rebate, you'll never be able to match the savings you can make right now.

Come in for details on the model closeout special offers on 40 Series tractors, including waiver of finance charge to November 1, 1983. Even if you've gone into the PIK program to the maximum this year, you won't want to pass up the bargains we're now offering on 40 Series tractors--because you won't be able to match 'em next year.

And check into special John Deere cash rebates up to \$8,200 on 50 Series 4WD tractors, too. Plus the added attraction of waiver of finance charges to June 1, 1983.\*

Model	Cash Rebate on Purchase	April '83 Cash Rebate in Lieu of Waiver	Maximum Rebate
228-hp 8640	\$3,200	\$2,000	\$5,200
179-hp 8440	3,000	1,600	4,600
180-hp 8840	2,700	1,400	4,100
155-hp 4640	2,300	1,200	3,500
130-hp 4440	1,700	1,000	2,700
110-hp 4240	1,500	900	2,400
90-hp 4040	600	800	1,400
80-hp 2940	1,400	550	1,950
70-hp 2640	900	450	1,350
60-hp 2440	400	400	800
50-hp 2240	100	350	450
40-hp 2040	100	300	400
300-hp 8850	\$8,200	NA	\$8,200
235-hp 8650	6,400	NA	6,400
185-hp 8450	5,700	NA	5,700

(Offer subject to tractor availability)

\*Maximum rebates on 40 Series tractors include a bonus for cash purchase, for financing with John Deere without waiver, or financing where you choose. Availability of John Deere financing subject to approval of credit. These offers may be reduced in value or withdrawn at any time.

**Dent-Rempe**  
1516 W. American **JOHN DEERE** 272-4296