



WEATHER

January 30	59	4
January 31	43	3 .03
February 1	10	0
February 2	16	-1

BAILEY COUNTY JOURNAL

'The Community Of Opportunity-Where Water Makes the Difference'

Vol. 23, No. 5

12 Pages Today

Published Every Sunday at Muleshoe, Bailey County, Texas 79347

Sunday, February 3, 1985

Around Muleshoe

Funeral services for Oma Pearl Murrell, of Earth, are pending with Parsons-Ellis Funeral Home at Earth. She was pronounced dead at her home Friday by Beulah Newton, Justice of the Peace, from Earth.

Toni Eagle, manager of the Muleshoe Chamber of Commerce and Agriculture, said the Women's Self-Defense program with the kubotan, which had been cancelled for Thursday night, has been rescheduled for Thursday, February 28 6-10 p.m. at the civic center.

Women are encouraged to attend this self-defense program. They can obtain more information from the CoFC at 272-4248.

Final sign-up for Muleshoe Youth Basketball will be Monday, February 4, from 7-9 p.m. in the Muleshoe State Bank community room.

If you are unable to attend, you may pick up the sign-up sheets at Muleshoe State Bank or Adrian Photography prior to the Monday night sign-up.

Beth Skipworth from DeShazo Elementary School said a group of third, fourth and fifth grade students from the 'Gifted and Talented' classes at the school will be touring the community on Tuesday afternoons seeking UPC symbols to help obtain an IBM PCjr computer. They will be knocking on your door every Tuesday this month to ask for you UPC symbols from such products as Tide, Orange Crush, Jif Peanut Butter, Bounty Paper Towels, Puff Tissues, and other products. Watch for them!

If they fail to make contact with you, please notify DeShazo School.

The annual meeting of the Bailey County Electric Cooperative Association will be held on Saturday, February 16, at the Muleshoe High School auditorium.

A free luncheon will be served to the cooperative members and their invited guests at 12 noon, prior to the 1 p.m. meeting.

The 18th annual Water Inc. membership meeting is scheduled for February 16, 9:15
Con't Page 6, Col. 5

CoFC Announces New Program

Gerald Reid, president of the Muleshoe Chamber of Commerce and Agriculture, announced a new program to honor outstanding employees of Chamber members.

Beginning February 1, the Chamber requests your nominations each month for an outstanding employee. This person would be someone that you have dealt with at that business, that you feel should be recognized for their outstanding help or assistance at that business.

Every 30 days, a new recipient will be named, with the decision by a Chamber committee, basing their decision on merit of the nominations received.

During the last week of each month, a new selection will be named, and a handsome traveling trophy will be displayed at that business for the next 30 days, with a certificate presented to the "Outstanding Employee."

From the 12 employees selected through the year, there will be an "Outstanding Employee of the Year" named, who will receive the trophy.

Nominations should be on a postcard, giving details of why you think they are deserving of the award. The business must be a member of the Chamber, which can be easily ascertained by looking for their Muleshoe Chamber of Commerce and Agriculture decal displayed in a prominent place in their store.

All nomination must be in by the 25th of the month. Send them to: The Muleshoe Chamber of Commerce and Agriculture, P.O. Box 356, Muleshoe, TX 79347.



JUST LIKE A POSTCARD--This snow-draped bush is representative of the lush vegetation around Muleshoe since Wednesday of last week. Although only about three inches of snow had fallen, it still left pretty pictures.

SPS Commits 'Help' To Solve Drug Use

A community drug problem has stirred the interest of a lot of people in and around Muleshoe, and is expected to continue to be one of the main topics of conversation, as well as positive action, for a long time to come.

However, Southwestern Public Service Company, who has a representative on the CASA (Citizens Against Substance Abuse) committee, has asked to clear up several items from a previous story in The Journal, where incorrect records were cited by a spokesman for an Amarillo security firm.

"Southwestern Public Service Company and its employees are supporting the fight against the (drug) problem," said Bill Crenshaw, public relations

officer from SPS in Amarillo. "We at SPS want a drug free work place and a drug free community."
"Although a drug search at Tolck Plant, near Muleshoe, was conducted, not a single SPS employee was found with drugs, and all employees came out "clean as a whistle," he said.
As construction is continuing on Plant II at the location east of Muleshoe, a lot of companies are involved with their workmen at the site, added the SPS official, along with Mack Wattenburger, project manager, and vice president of Missouri Valley, Inc.
Even though some drugs were found, according to Wattenburger's records, only

Con't Page 6, Col. 2

Local Adult Drug Usage Explained To Lions Club

"Right now, everyone is harping about all the kids using drugs," City Police Lt. Wayne Holmes told the Muleshoe Lions Club on Wednesday. "But, although we have had people overdose and die, not one of the OD's has been under the age of 20 years."

"What we are looking at right now is a second generation of drug users going back several years, we are looking at a lot of older drug users."
"For instance," he added, "most of you realized the chief was late getting here. The reason he was late is because he was handling a man who was 'stoned.' This man was so stoned, he couldn't even remember where he lived, and in fact, the chief first took him to the wrong house."

"The important thing about this is, the man was staggering down the highway, said he was going to Clovis, and this wasn't one of the kids people keep talking about," continued Lt. Holmes, "this man is about 50 years old."

The lieutenant also told the group about another incident occurring recently which involved the same man.
He spoke on 'legal' drugs that so many housewives are hooked on, including many house wives in Muleshoe. "They go to the doctor to get pills for their nerves," said the police officer, "then the next thing you know, they are hooked, and on legal drugs."

He reminded the Lions Club members that when the young people see their parents and parents of their friends 'popping' the legal pills, they tend to think that if it is all right for their parents, it must be all right for them.

"How do you expect them to think?" he asked, "this is their parent, or their parents. They

tend to think that what their parents do is all right, whether
Con't Page 6, Col. 6

Something Special III Scheduled Saturday For All This Area

It's really Something Special!! Something Special III has been planned to be staged in the Sudan High School auditorium on the night of Saturday, February 9 at 7 p.m.

Originated by Kenneth Richards of the Anchor Brothers Band and the Sudan Chamber of Commerce, Something Special fills a double duty each time it is staged.
Richards explains that Something Special is designed to provide 'family entertainment' of the best quality, and the proceeds are used to help various projects in Sudan.

This time, the funds will be used to help pay for Sudan's new fire truck, which cost in excess of \$60,000. The new fire truck was a necessary purchase, as the state fire marshal had determined the older truck at Sudan was inadequate.

Headlining the show will be the Anchor Brothers Band, who will conclude the evening's show, and lead the grand finale. Other entertainment will be the ever-popular Wynon Mayes, a comedienne from Plainview; the Sunlighters, a gospel singing group from Idalou and Douglas Smith, a pianist in the Floyd Cramer style.

Tickets are on sale now at KMUL Radio and are \$4 for adults and \$2 for teenagers. Children under the age of 12 are admitted free. There is also a 10 percent discount for groups of senior citizens who attend.

Cold Wintry Blast Drops Little Snow In Muleshoe

Large Family Lost Everything In Fire

Wednesday night, around 9:30, the Muleshoe Fire Department was called to a house fire one mile north and one and one half miles west of Needmore.

Arriving at the farmhouse on the Jim Pat Claunch farm, firemen found the home to be totally destroyed, but the entire family of 14 people were safe.

According to the firemen, the panel ray heater exploded, and fire immediately engulfed the attic and then the entire home, spurred on by a fairly high wind.

At the time of the fire, it was snowing and blowing, and the temperature had dropped very low.

Late in the week, the Bailey County sheriff's office was serving as a collection point for clothing and household items for the family, which included four men; four women; a 15 year old boy, a 13 year old girl; boys of the age of four, five and six; and six months old baby boy.

Friday afternoon, members of the family, who are currently staying in the gin barracks at Claunch Gin in Bula, came into town to pick up the boxes and sacks of clothing and household items what had been collected to date.

Needed for the family are all household items, dishes, pots and pans, linens, bedding and furniture and appliances and clothing for the younger boys. If you have any items you would contribute, please contact the sheriff's office at 272-4268 or The Journal at 272-4536, or take your items by the sheriff's office.

Vo-Ag Programs Facing Trouble

"Learning to Do, Doing to Learn, Earning to Live, Living to Serve" has been the motto for the Texas Future Farmers of America since the state received the first charter in 1929. From the very beginning, vocational agriculture and the FFA have been looked upon as essential education maintaining a link with the important agriculture economy of the state.

According to Chris Kountz, past president of the Texas Agriculture Teachers Association, "The very existence of these programs is being threatened by Texas Education Agency administrative actions and reformulation of vocational education funding to schools."

"Based on the new funding formula provided by House Bill No. 72 this past summer, a vocational agriculture program will have to maintain an average of 65 students in order to receive adequate funding, and in many schools, depending on the experience of the teacher and local economic factors, the number of students will need to be greater to maintain funding levels. In the rural areas of the Panhandle and South Plains the schools will not be able to pick up the slack caused by the loss of funding. At the very best, the quality of the programs will severely deteriorate."

"Another devastating blow to vocational agriculture has been the proposal to close the area vocational education offices. The offices which are located in Plainview, Big Spring, Houston, Stephenville, Denton, Sulphur Springs, Austin, Waco, Crockett and Corpus Christi provide the necessary coordination and quality control for the vocational programs in the high schools," says Kountz.

"The Occupational Education Specialist (Supervisors) located in the area offices are the important link between local and state activities.
State Rep. Jerry Clark of Buna, a former state FFA president, says the Texas Future Farmers of America program will be severely crip-

pled if the structure of the area occupational specialist is done away with.

FFA members in Texas
Con't Page 6, Col. 1

pled if the structure of the area occupational specialist is done away with.

pled if the structure of the area occupational specialist is done away with.

pled if the structure of the area occupational specialist is done away with.

pled if the structure of the area occupational specialist is done away with.

pled if the structure of the area occupational specialist is done away with.

pled if the structure of the area occupational specialist is done away with.

pled if the structure of the area occupational specialist is done away with.

pled if the structure of the area occupational specialist is done away with.

pled if the structure of the area occupational specialist is done away with.

pled if the structure of the area occupational specialist is done away with.

pled if the structure of the area occupational specialist is done away with.

pled if the structure of the area occupational specialist is done away with.

pled if the structure of the area occupational specialist is done away with.

pled if the structure of the area occupational specialist is done away with.

cold temperatures, and some snow-packed highways behind.

In Bailey County, and surrounding areas, the highways were virtually clear as the high wind kept the snow swept away to the ditches and fields around the highways.

Travel advisories remained in effect for southern and eastern portions of the state, as heavier traffic only packed the snow on the highway, creating additional driving hazards. Snow packed roads were not expected to thaw Saturday due to cold temperature.

In the nation, record low
Con't Page 6, Col. 3

Lions-Rotary To Meet Again In Basketball

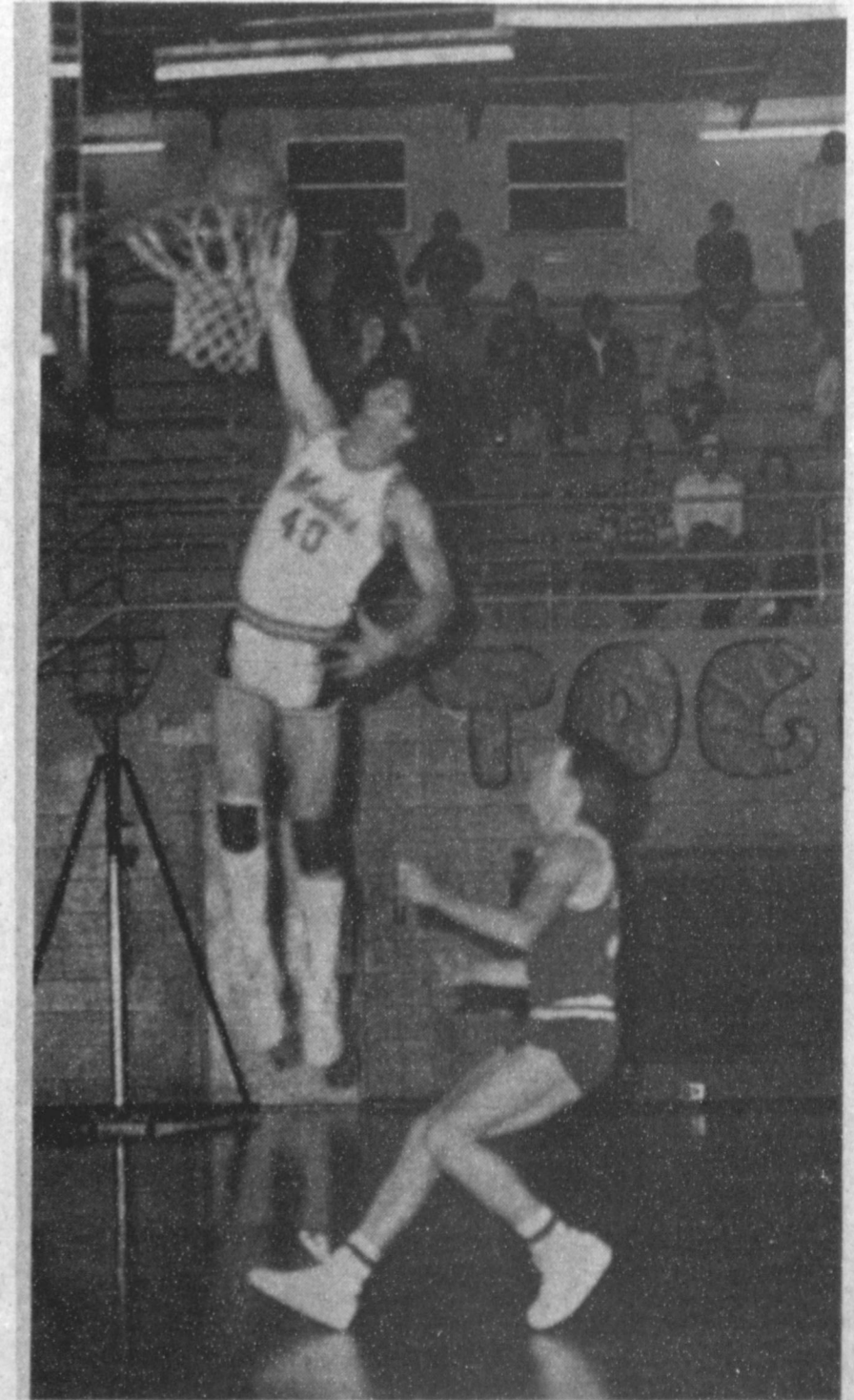
Are you ready for this? Back by popular demand, the fiery Rotary Club will again tackle the indomitable Lions, or is it the other way around?--on the basketball courts.

Scheduled as another benefit for the Muleshoe Chamber of Commerce and Agriculture, the very brave players will take to the gym floor at 7:30 p.m. on Tuesday, February 19.
Bill Liles has been named coach for the Rotary Club team, while Gordon Wilson volunteered? as the coach for the Lions.

Already, in the beginning stages, the two clubs are hurling insults back and forth about each team's ability and stamina. It should prove to be just as good a game as the last time the two teams met, just a little more comfortable in the gymnasium.

Tickets to be given away by the CoFC will be good for a Quasar VCR and will cost \$3 each or two for \$5. The tickets are available from any member of the Lions Club, Rotary or CoFC.

This promises to be another outstanding entertainment feature, as you watch the two clubs battle it out, including the two probable starters, who are expected to again provide the tip-offs for the game. If all goes as expected, the tip-off artists will be Jess Winn for Rotary and Frank Ellis II for the Lions Club.



JUST A L'IL OLE SLAM DUNK--John Isaac, No. 40, takes to the air in a slam-dunk of the basketball last Tuesday night that really set the partisan Muleshoe crowd yelling in the Mules' game against the Dimmitt Bobcats.

Social Security News & Views

Q. I heard that everyone who gets Social Security checks was going to get a statement that showed how much in benefits they got in 1984, but here it is January 20 and I have not gotten mine. What should I do?

A. Forms SSA-1099, Social Security Benefit Statements, are being mailed during all of January. So the best thing for you to do is wait a while longer. If you do not get your statement by February 5, call your Social Security office and they will arrange for you to get one.

Q. I got a Form SSA-1099, Social Security Benefit Statement, in the mail. What am I supposed to do with it?

A. You should use Form SSA-1099 just as you would use any other form 1099 you get from a financial institution when you prepare your Federal income tax return. Keep it with your tax records. Do not return it to Social Security or send it to the Internal Revenue Service.

Q. How can I tell if I owe any income tax on my Social Security benefits?

A. The first thing you should do is fill out IRS Notice 703 that came with Form SSA-1099, Social Security Benefit Statement. The answer you get on that worksheet should tell you if you have to include any Social Security benefits in your taxable income. Then, if you do, ask for a free copy of Publication 915, available at any Social Security or IRS office. That will give you more detailed information.

Q. What happens to the taxes that are collected on Social Security benefits?

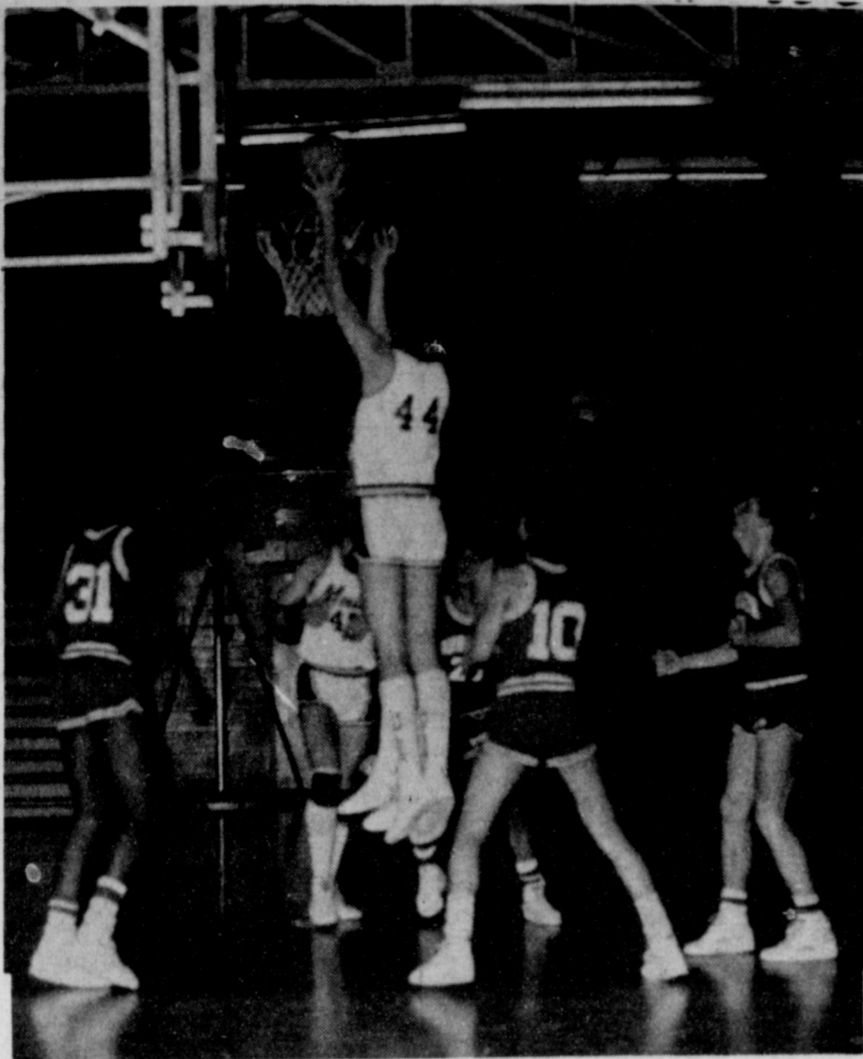
A. Taxes that are paid on Social Security benefits are deposited in the Social Security trust funds and are used to pay benefits and administrative expenses of the program.

Q. I know I do not owe any income tax on my Social Security benefits, but I think the figures on Form SSA-1099, Social Security Benefit Statement, are wrong. What should I do?

A. Since you do not have to use the Form SSA-1099 when you complete your tax return, wait until after April 15 and then call your Social Security office. The people there will look into the matter and make any necessary adjustments.

Q. I know I did not get as much in Social Security as is shown on the Form SSA-1099 I got. Where did the figures come from?

A. The first thing you should do is look at the column "Description of Amounts in Box 3" on your Form SSA-1099. That will show any adjustments that were made in your benefits before your checks were written. If you still need more information call the toll-free number shown, or ask for a copy of Publication 915 at any Social Security of Internal Revenue Service office. That booklet contains a more detailed explanation of the amounts shown on Form SSA-1099.



DONALDSON LEADING SCORER--Rob Donaldson, No. 44, was the leading scorer in the Mule's heart-breaking squeaker to the Dimmitt Bobcats, the 'Cats taking the game in the final two seconds, 58-56.

Q. Early in January I got a Form SSA-1099 in the mail and now I just got another one, but this is marked "Up-dated." Which one should I use?

A. Use the Form SSA-1099 marked "Updated" when you complete your Federal income tax return. It contains more recent information than the first Form SSA-1099 you received.

Q. I'm pretty sure that I am going to have to include part of my Social Security benefits in my taxable income, but I'm also pretty sure that the figures on the Form SSA-1099 I got are wrong. What should I do?

A. The first thing you should do is call the toll-free telephone number shown at the bottom of your Form SSA-1099. This will enable you to start the process of getting a corrected form.

Q. I got two Forms SSA-1099 in the mail. Why did I get two forms?

A. Apparently you get Social Security checks on two different Social Security records. You should combine the net benefit amounts from both forms when you figure whether any of your Social Security benefits are taxable.

Q. My husband and I each got a Form SSA-1099. How should we use them?

A. If you plan to file a joint tax return, combine the net benefit amounts from both Forms SSA-1099 when you figure whether any of your Social Security benefits will be taxable.

Q. I'm a widow and I have not filed a Federal Income tax return for more than 10 years. Now I get this Form SSA-1099 in the mail. What am I supposed to do with it?

A. If you are single and you do not have any other income other than your Social Security benefits, you can disregard Form SSA-1099. If you have any other income, however, fill out the IRS Notice 703 that came with Form SSA-1099. If your answer shows you may owe tax on any Social Security benefits, call the nearest office of the

Internal Revenue Service. The telephone numbers are shown on the back of the IRS Notice 703.

Q. There are parenthesis around the figure shown in Box 5 on my Form SSA-1099. What does that mean?

A. Parenthesis around the figure in Box 5 means that you repaid more benefits than you received in 1984. It is a negative figure. If you are married or received more than one Form SSA-1099, you can use this negative figure to offset a positive figure on another Form SSA-1099.

Q. All my friends got a Form SSA-1099 in the mail, but I got a different form, Form SSA-10425. What am I supposed to do with it and why didn't I get a Form SSA-1099?

A. First, you should use Form SSA-10425 just the same as others use Form SSA-1099. The information on the two forms is the same, except that Form SSA-10425 also includes information about the amount of taxes withheld. You received Form SSA-10425 because taxes were withheld from your benefits. Taxes are withheld for periods when our records show you are not a U.S. citizen and your residence address is outside the U.S. The tax cannot be refunded unless we withheld it by mistake.

Q. During 1984 I had a major illness, and Medicare paid some very large medical bills for me. Will I have to pay income tax on the dollar amounts Medicare paid for my bills?

A. No. Medicare payments on your behalf are not subject to income tax because these are not monthly Social Security benefits paid to you.

Above-ground dump designed by Texas A&M scientist

COLLEGE STATION — A design for above-ground "landfills" for chemical wastes, which could solve the problem of contaminating underground water, has been developed by a Texas A&M University soil and crop scientist.

"The idea is to take a sloping piece of land and make it as impermeable as possible using compacted clay or plastic. A gravel drain is placed on top of the impermeable area, the solidified waste is then mounted on top of the gravel drain and a cap of clay or plastic and soil is then put in place," said the concept's developer Dr. Kirk Brown. "The result would be essentially an above-ground burial mound, one that would not allow the chemicals to seep into the groundwater," he added.

Brown said if sometime in the future the cap is breached and the wastes come out, they can be easily detected.

Nearly 218 million vehicle miles are travelled on Texas highways on an average day.

J.D. (Red) Dunlap Former Muleshoe Resident Dies

Funeral services for J.D. (Red) Dunlap, 48, of Wilcox, Ariz. were held at 3 p.m. Saturday, Feb. 2 in the Church of Christ at Wilcox with John Gammons and Noel Curry officiating.

Services were under the direction of Westlawn Funeral Home of Wilcox.

Graveside services will be conducted Monday, Feb. 4 in Bailey County Memorial Park with the Rev. V.L. Huggins,

pastor of the Trinity Baptist Church, officiating.

Burial will be under the direction of Ellis Funeral Home of Muleshoe. Dunlap died at 3:45 a.m. Thursday at Wilcox.

A native of Dickens County, Tx., Dunlap was born April 29, 1936, and moved to Wilcox in 1967, from Muleshoe. He was a farmer. He married Christine Morrison on Dec. 28, 1956, in Clovis, N.M.

Survivors include his wife, Christine of Wilcox; two sons, Darren Dunlap and Doug Dunlap, both of Wilcox; one daughter, Sheryl Dunlap of Tucson, Ariz.; his mother, Mrs. Pearl Dunlap of Muleshoe.

Dunlap was preceded in death by his father and one daughter.

Keeping Texas roadsides free of trash and litter cost taxpayers some \$22 million last year. Litter pickup costs have risen an average of 17 percent per year during the past five years.

The first construction undertaken by the Texas Highway Department was a 20-mile section of 16-foot wide highway between Falfurrias and Encino in Brooks County. Work began in October 1918 and was completed in June 1920.

18. Legal Notice

NOTICE FOR BIDS

The Bailey County Commissioners Court will receive bids until 10:00 a.m., Monday, February 11, 1985, for the purchase of a new motor grader, a new pickup for the Extension Office, and new Sheriff's car.

The specifications for bidding for each purchase are available in the office of the County Judge of Bailey County, Texas.

Gordon H. Green

County Judge

g18-4s-3tc

15. Misc.

TEXSAT - Satellite antenna dealers needed. No experience required. For information call (800) 272-4503 or (512) 367-4401. 15-4t-4tpts

3. Help Wanted

Professional Salesmen Wanted

Primose Oil Co. is a success proven company (1916) seeking people in Texas who want satisfaction, success, security, and enjoyment selling the finest custom lubricants in America. High weekly commission plus monthly bonuses. Experience in sells, heavy equipment, agriculture or trucking is a plus. You deserve the best so call Bob Buchanan collect 214-241-1100. p3-5t-2tc



1601 S. Ave. D. Portales
2600 Mabry Dr. Clovis
1302 W. American Blvd.

CLOVIS-PORTALES
MULESHOE

**OPEN Mon. thru Sat.
7:30AM - 7:30 PM**

YOUR SALE!
Monday thru Saturday

SALE PRICE

Take an extra
25% OFF!
All our
Yellow Ticket
Merchandise!

25% OFF
all previously
yellow-ticketed
marked-down
merchandise*

*Applies only to yellow ticketed or tagged merchandise. Does not apply to white ticketed merchandise which has not been reduced.

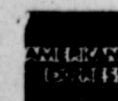
Example of savings for you!



ANTHONY'S

Open 8-6 321 Main Street Muleshoe, Texas

Welcome



EST. 1973

**Appraisals
272-3191**

Congratulations

Dr. Purdy & Terry Hutto



**On The Opening Of Their New
Medical Facilities. We Are Proud To
Have Been A Part Of The Endeavor.**

Stockard Construction

6433 Inverrary Drive Abilene 915-695-6066

Bailey County Journal USPS 040-200
Established March 31, 1963. Published by Muleshoe Publishing Co., Inc. Every Sunday at 304 W. Second, Box 449, Muleshoe, Texas, 79347. Second Class Postage paid at Muleshoe, Texas 79347.

MEMBER 1985
TEXAS PRESS ASSOCIATION

L.B. Hall - President
James Woods - Vice President
Celia Williams - News
Evelene Harris - Society
Holly Millap - Advertising
Lillie Nino - Circulation - Classified
Sammye Hall - Bookkeeper

SUBSCRIPTIONS:
Muleshoe Journal and Bailey County Journal
Bailey and surrounding counties \$11.95
Muleshoe Journal and Bailey County Journal
Elsewhere in Texas \$12.95
Muleshoe Journal and Bailey County Journal
Outside of Texas \$13.95
Yearly by Carrier \$11.50
Advertising rate card on application.

Bridal Shower Honors Miss La Rhonda Franklin

LaRhonda Franklin, bride elect of Rick Hill, was honored with a bridal shower Sunday, Jan. 20 in the community room of the Sudan First National Bank.

The serving table was covered with a white lace cloth over royal blue and accented with a fresh floral arrangement of blue and white carnations and baby's breath.

Cookies, punch and coffee were served from crystal appointments.

Tracey Provenge, sister of the prospective groom, assisted in opening and recording of the gifts.

The honoree was presented a blue silk floral corsage and a vacuum cleaner with attachments.

Special guests included the mothers of the couple, Mrs. Karen Franklin of Littlefield and Mrs. Ann Hill of Sudan; their grandmothers, Mrs. Hazel Armour of Littlefield and Mrs. J.V. Hill of Sudan; her sister, Celita Franklin also of Littlefield; his aunts, Mrs. Marie Allen, Mrs. Lavelle Hill of Littlefield, Mrs. Lynette Burns, Mrs. Geneva Whitten and Mrs. Dorothy Hill, all of Sudan; and cousins, Mary Baker and Dreston and Debbie Hill of Lubbock; Mary Lou Burns, Wanda Hill, Mitzi Glascock, Cindy Legg, Nancy Legg, all of Sudan and Anita Murray of Littlefield.

Hostesses for the occasion included: Mrs. Corley Baker, Mrs. Larry Baker, Mrs. B.A. Beauchamp, Mrs. Carl Burnett, Mrs. Glen Cardwell, Mrs. Bobby Carson, Mrs. Sam DeLaRiva, Mrs. Wayne Doty, Mrs.

Mrs. Doty Named Chairman Of Sudan

Bike-A-Thon

St. Jude Children's Research Hospital has announced the selection of Mrs. Billy Doty as chairman of this year's bike-a-thon, in Sudan. According to Clifford Damstrom, Southwest Regional Director, the cost of treatment, equipment, drugs, and research programs is met primarily by contributions from private individuals through programs such as bike-a-thons.

Damstrom stated that the impact of St. Jude's research work is felt in every community where cancer and other killer diseases strike. Over 10,000 children will be stricken with cancer during this year alone. Next to accidents, cancer is the leading killer of children in the United States.

St. Jude is the world's largest cancer research center in terms of treatment success and is the only institution of its kind dedicated solely to research and the care of children stricken with catastrophic illnesses.

"It is gratifying that every year in towns all across the country, volunteer leaders organize bike-a-thons to benefit St. Jude Children's Research Hospital. This would not be possible without the help and support of dedicated chairman" said Damstrom.

Danny Thomas, founder of St. Jude Children's Research Hospital stated its purpose clearly: "To wipe catastrophic diseases of children from the face of the earth." Those interested in assisting with or participating in the bike-a-thon may obtain more information by contacting Mrs. Doty at Rt. 1, Box 71-B or call 272-2122.

Details of the ride will be announced at a later date.

Noble Dudgeon, Mrs. Louis Fields, Mrs. Doug Gardner, Mrs. Jim Bob Hargrove, Mrs. Halbert Harvey, Mrs. Norman Humphreys, Mrs. Pete Lance, Mrs. Pete Phillips, Mrs. Dwayne Powell, Mrs. El Ray Rasco, Mrs. Darwin Reid, Mrs. George Ritchie, Mrs. Bob Summer, Mrs. Calvin Vernon, Mrs. John Williams, and Mrs. Calvin Wiseman.

Study Club

The GFWC-TFWC Muleshoe Study Club met in the home of Mrs. T.R. White on Thursday, Jan. 24.

Following refreshments of chocolate cake, hot spiced tea and coffee were served, the president, Mrs. Charles Shain, called the meeting to order.

The club creed and Pledge of Allegiance to the American flag were led by Mrs. Betty Jo Carpenter.

Mrs. White called the roll with eight members present: those being, Mrs. Shain, Mrs. Carpenter, Mrs. Wes Glover, Mrs. Barry Lewis, Mrs. Wilma Thompson, Mrs. Rufus Gilbreath and the hostess, Mrs. White.

Mrs. Thompson gave the treasurers report.

Mrs. Gilbreath brought the program for the day on Federation. A question and answer program was given about the Federated Womens Clubs. It was reported that the first club was organized on April 24, 1890. The object of the organization was to have communication and unity of women all over the world. The over all membership today reaches over 10,000,000.

"The time comes once again for the club to ask your help in gathering together some of the articles that can be used at M.D. Anderson Hospital for the patients there and also for the families of these patients. We have had some of our local people there and through sending some of the things needed we can have a part in helping in the future, maybe some that we know and love, or just extending a helping hand to someone we do not know. There will be a list of things that can be used in a following article", said Mrs. Carpenter.

"If you would like, you may bring them to Betty Jo Carpenter at the Muleshoe State Bank or to 202 W. 8th. Street or call 272-4561 from 8 a.m. to 4 p.m. after 5 p.m. call 272-3901. If you cannot bring the articles, we will be glad to pick them up and see that they get to the hospital in Houston" she continued.

Skirt Steak In Demand

Texas industries must compete with Japanese technology an now Texas meat consumers must also compete with Japanese appetites -- for beef skirt steak.

The beef skirt steak now so popular for fajitas used to be thrown away by meat wholesalers or ground into hamburger, says Texas A&M University Agricultural Extension Service nutritionist Mark K. Sweeten.

But prices for skirt steaks have increased from 49 cents a pound in 1976 to between \$1.79 and \$2.79 a pound in 1985. One reason for the price rise is the fajitas craze in Texas and other



ENGAGEMENT ANNOUNCED--Nancy Miller of Clovis, N.M. wishes to announce the engagement and approaching marriage of her daughter, Shae Penna to Linn Fields, son of Betty Caraway of McKinney; and William Fields of Reiti, Italy. The bride elect is a 1978, graduate of Muleshoe High School and attended West Texas State University. She is employed by Estoril Oil Co. in Midland. Fields is a 1977, graduate of Richardson High School, Richardson and a 1981, graduate of Abilene Christian University. He is employed at Paul Heibert Accounting Firm in Midland. The ceremony will be held on Saturday, Feb. 9 at Waterview Church of Christ in Richardson.

Roswell Fine Arts League's Art Show Set

Roswell Fine Arts League's third annual National Art Show will be held April 13-19 at the First United Methodist Church in Roswell, N.M. The show is

open to all artists and students and cash awards and ribbons will be given.

"The Roswell Fine Arts League is a non-profit organization which offers endless boundaries for the starving artist. Membership is not limited to any area or persons. Artists and patrons of the arts are invited to join our progressive group", says a spokesman for the group.

"Each year the national show is growing with leaps and bounds. The show offers the artists of all levels the opportunity to show their works. It is our aim to show off the talent born and bred American style", she continued.

For more information you may call or write: Louise Carroll, 505-623-6585 night or 624-0537, Rt. 1 Box 241 K, Roswell, N.M.; or Louise Harrison 505-356-8354, 117 W. Lime, Portales, N.M.

GOLDEN GLEAMS

Nature encourages no looseness, pardons no errors.
-R.W. Emerson.

Nature will always maintain her rights, and prevail in the end over any abstract reasoning whatsoever.
-David Hume.

Honey-Filled Coffee Cake Is Quick And Easy To Make



Next time friends gather for coffee, serve a new sweet bread that's as fun to eat as it is delicious. Honeycomb Coffee Cake is a cinnamon-flavored pull-apart bread with warm pockets of honey in each tender piece. Since it's made with refrigerated flaky biscuits, the attractive coffee cake can be prepared quickly and easily just minutes before guests arrive.

HONEYCOMB COFFEE CAKE

- | | |
|--|---|
| 1/4 cup firmly packed brown sugar | 1/2 cup graham cracker crumbs or (4 squares) cinnamon or honey graham crackers, crushed |
| 1 teaspoon cinnamon | |
| 1/4 teaspoon ground nutmeg | |
| 1/4 cup margarine or butter, melted | 1/4 cup finely chopped nuts, if desired |
| 1 tablespoon lemon juice | |
| 10-oz. can Hungry Jack refrigerated flaky biscuits | 2 to 4 tablespoons honey |

Heat oven to 400°F. Grease 9 or 8-inch round cake pan. In small bowl, combine brown sugar, cinnamon and nutmeg. In another small bowl, combine melted margarine and lemon juice. Separate dough into 10 biscuits; cut each into 4 pieces. Place biscuit pieces and crushed crackers in a bag; shake to coat. Arrange coated biscuit pieces evenly in prepared pan. With small wooden spoon handle, poke a deep hole in each biscuit piece. Sprinkle brown sugar mixture over biscuit pieces; drizzle with margarine mixture. Sprinkle with nuts, if desired.

Bake at 400°F. for 12 to 18 minutes or until golden brown. Turn onto wire rack; invert onto serving plate. Fill holes with honey. 10 servings.

Sudan News

Evelyn Ritchie

Oleta Reese recently underwent eye surgery and it was reported that she is doing well. Her mother, Mrs. Hattie Dudgeon of Post is here with her.

Jamie Brown was recently released from the hospital and stayed here with her parents for a few days while recuperating.

Allen Beale has to undergo eye surgery Wednesday.

Mandy Carr and Misty Bartley received Showmanship Awards Saturday at the Sudan Livestock Show.

The Sudan Epsilon Delta Chapter of the Delta Kappa Gamma Society International entertained local retired teachers with a tea, on Jan. 21,

1985 at 4:30 p.m. The tea was held at the home of Loretta Reid.

Teachers honored were Maxine Nichols, Elsie Wilson, Mary Tollett and Pam Wiseman.

Other members attending were Susan Baker, Peggy Lowrance, Joyce Carr, George-Ann Rasco, LaDita Vernon, Jackie McAlpin, Loretta Reid and Mary Smith.

COST UP

WASHINGTON -- City government spending on police protection has surpassed educational costs for the first time; and municipalities are paying more of their own expenses than they have in more than a decade, the Census Bureau reported recently.



Hi-Protein
Dog Food

50 lb. Bag **\$9.75**



Fry & Cox, Inc.

401 S. 1st.

Mon - Sat 8:00 - 6:00

272-4511

AAE American Air Filter



14x25 In.
14x20 In.
20x20 In.
20x25 In.
16x25 In.
16x20 In.
15x20 In.

85¢

Furnace Filters help keep your heating system running efficiently, reduce fuel bills. Catch dust, lint. In 8 popular sizes, 1 in. thick.

True Value



39.95

1,500W Fan-Forced Electric Heater features comfort angle to direct heat efficiently. With auto. thermostat, more.

Norelco



2.79

Infra-Red Heat Brooder Lamp
Lamp can be used for general household use/form application. Provide both radiant heat and light giving heat. 250 watt.



Sx2 Corona Kerosene Heater
7300-9100 BTU

69.95

1 Only
Natural Gas
20,000 BTU

Heater 169.00

Unvented w/Safety Pilot

You Are Cordially
Invited To The
Open House

Of The
**Muleshoe Family Medicine
Clinic**

Bruce D. Purdy, M.D.

And

Muleshoe Diagnostic Laboratory

Terry J. Hutto, M.L.T.

701 South First
Muleshoe, Texas

February 3, 1985 1-3 p.m.

parts of the county, she says.

"The demand for beef skirts in Japan has also risen sharply in the last decade, driving up the prices," Sweeten explains. The Japanese buy about 90 percent of America's production of beef skirts, which do not fall under the beef quotas set by Japan on American beef because they are classified as variety cuts.

Sweeten says "inside" beef skirts from the hindquarter and "outside" skirts from the forequarter of the animal are distinguished in the wholesale meat trade. However, at the meat counter the cut is usually labeled simply as "Skirt steak," and most sold in retail stores are inside skirts.

The outside skirt is usually the more palatable of the two cuts, notes the specialist. Research at Texas A&M University indicates that the outside skirts are more tender and have higher overall ratings for flavor and tenderness than the inside beef skirts, she reports.

Given the foreign and domestic demand for this cut of beef, consumers aren't likely to find more outside skirt steak in the supermarkets soon, Sweeten predicts.

She advises compensating for a less tender inside skirt steak by cutting diagonally across the grain of the meat first in one direction and then the other, pounding it to break down the connective tissue.

Marinating the skirt steak in a food acid such as lime juice, lemon juice or vinegar for several hours or overnight also increases the tenderness and enhances the flavor.

There are more than 70 thousand miles of designated highways in the Texas highway system, of which nearly 41 thousand miles are Farm-to-Market Roads.

Meatless Mexican Meals A Good Choice For Lent

During the 40 days between Ash Wednesday (February 20th) and Easter, thousands of Americans will observe Lent by eating meatless meals, particularly on Fridays. They will join the thousands more who have already chosen to abstain from eating meat permanently, for health, religious or other reasons.

"Fortunately, giving up meat for Lent, or forever, does not require a sacrifice of flavor, nor variety," says Anne Lindsay Greer, an expert in Mexican-American cooking and author of *Cuisine of the American Southwest*, winner of the 1983 Tastemaker Award.

"The ingredients and sauces typically found in meatless Mexican dishes, traditionally served in the Southwest, make them a good choice for Lent observers and those who want a tasty vegetarian alternative."

Greer's recipe for "Stacked Cheese Enchiladas" is a good example. "The enchiladas combine ricotta, cheddar and Monterey Jack cheeses with mildly spiced Las Palmas sauces for an authentic Mexican flavor," she said.

Stacked Enchiladas are easier to prepare than the traditional rolled enchiladas, and can be served as a complete meal for lunch or a light dinner. Topped with poached or fried eggs and complemented with sliced avocados and tomatoes, the Stacked Cheese Enchiladas are high in protein and provide essentials from three of the four major food groups--dairy, grain and vegetable.

STACKED CHEESE ENCHILADAS

(Serves 4)

- 1 clove garlic, minced
- 1 small yellow onion, finely chopped
- 1 tablespoon butter
- 1 cup ricotta cheese
- 1 cup cheddar cheese, grated (3 ounces)
- 1 cup Monterey Jack cheese, grated (3 ounces)
- 8 corn tortillas
- 1-7/8 ounce can of Las Palmas Mexican Style Tomato Sauce
- 1-10 ounce can of Las Palmas Enchilada Sauce
- 1/4 cup safflower oil
- Garnish: minced cilantro, 4 fried



LATEST ARRIVALS

Brittany Nicole Martin

Mr. and Mrs. Robert Martin of College Station are the proud parents of a daughter born Jan. 31 at 3:43 a.m.

The young lady has been named Brittany Nicole. When Brittany arrives home she will be welcomed by her sister, Brandy.

Grandparents are Mr. and Mrs. Max Crim and Mr. and Mrs. Earnest D. Martin, all of Muleshoe.

Great grandparents are Mrs. Gladys Ritchey of Amarillo, Mrs. Prudence Martin of Grayford and Mr. and Mrs. B.H. Black of Muleshoe.

Nathaniel Rojas

Nathaniel Rojas was born to Suzette Rojas at 7:20 p.m. Monday, Jan. 28 in West Plains Medical Center.

The young man weighed seven pounds and two ounces.

Grandparents are Mr. and Mrs. Tony Rojas of Muleshoe.

or poached eggs, avocados and tomato slices.

Saute garlic and onion in butter until soft and translucent, about 5 minutes. Do not brown. Combine the ricotta, cheddar, and Monterey Jack cheeses with sauteed onions. Set aside.

Dip tortillas for 2-3 seconds in hot oil, 300 degrees, just to soften and seal. Place between paper towels.

Mix the two Las Palmas sauces. Dip four of the tortillas in the sauce mixture, one at a time, and place on a cookie sheet. Spread each with the cheese mixture. Dip the remaining four tortillas in the sauce and stack them on top of the cheese. Pour a little more sauce on each "stack". Heat uncovered at 350 degrees until the cheese melts, approximately 10 to 15 minutes.

Microwave instructions: "Stack" the ingredients in the same manner on 4 individual serving plates. Microwave each serving for about 30 seconds, or until the cheese melts.

To garnish, top each stack with minced cilantro and a poached or fried egg and ring with avocado and tomato slices. Heat the remaining sauce mixture and serve on the side.

For other authentic Mexican recipes, write: Jay Mainthia, Las Palmas Foods, P.O. Box 698, Ventura California, 93001.

Muleshoe Rebekahs

Initiate Two

New Members

The Rebekah Lodge members met Tuesday, Jan. 22 for a salad supper and to initiate two new members.

Thursie Reid, Noble Grand, called the lodge to order. Adell Tompkins, chaplain, gave the opening prayer and Fern Davis, secretary read the minutes of the previous meeting.

New Rebekah members are Lillian Sims and Terri Snell. Following the business meeting and initiation ceremony lodge was dismissed.

Seventeen members and four visitors from Portales were present.

Members of the Rebekah Lodge also met Tuesday, Jan. 29 for their regular meeting.

Thursie Reid, Noble Grand, called the meeting to order and Adell Tompkins, Chaplain, opened lodge with a prayer, and Fern Davis, secretary, read the minutes of the previous meeting.

Business of the lodge being concluded, Rudy Green, gave the closing prayer.

Refreshments were served to 18 members by hostesses, Opal Talley and Dodie Atkinson.

Harmon Elliott Complex News

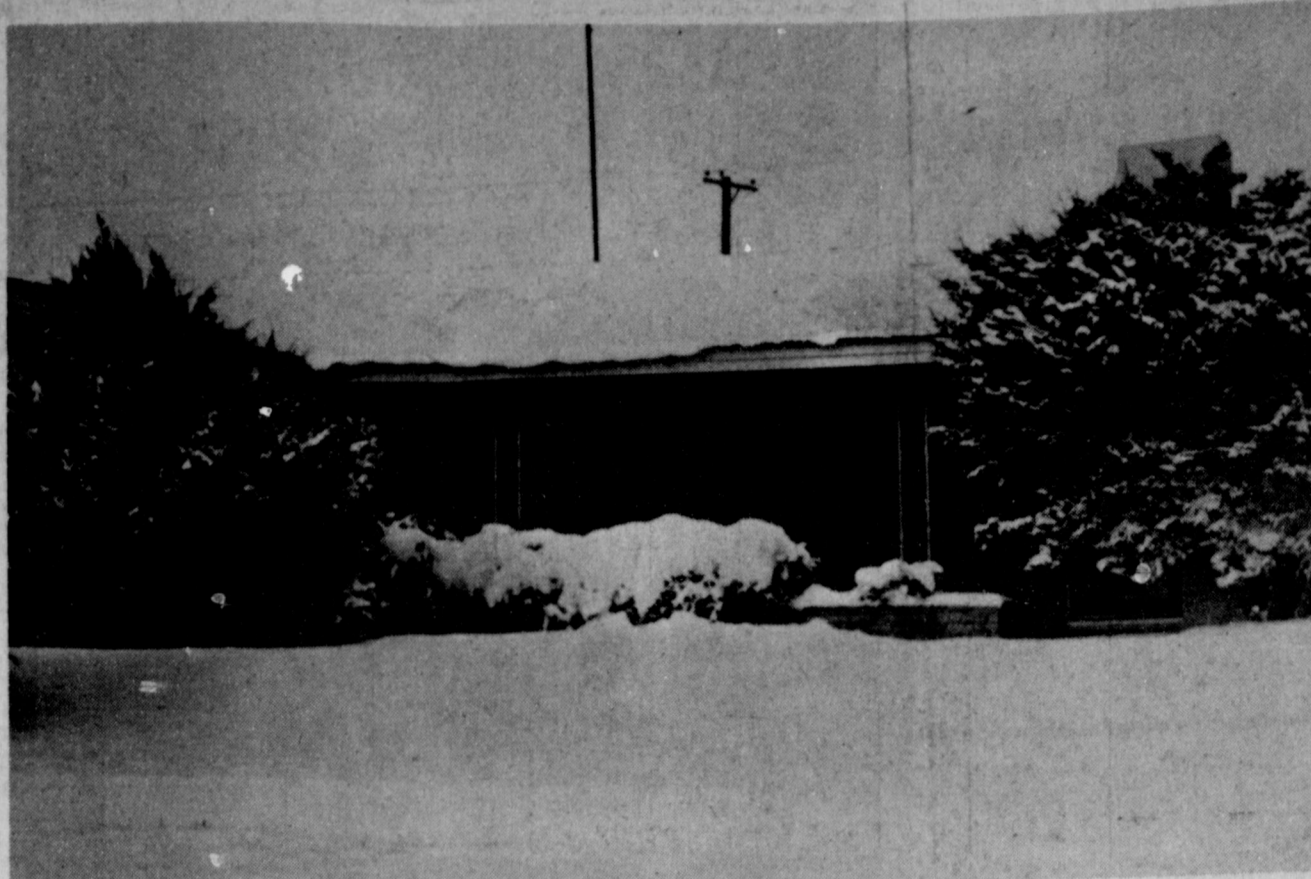
by Ivy Wall

The Senior Citizens were entertained at the Community Center on Wednesday afternoon Jan. 30th from 1 to 3 p.m. by the musical group, Burton and Dorothy Ward of Portales, N.M., Maybe Day and Ruby Willett of Clovis, N.M. and Opal Robison and Klyde and Faye Krebbs of Muleshoe.

Those attending were visitors--Alfred Scott and Mary Jo Archer from Lazbuddie.

From uptown Muleshoe were Oscar and Ruth Tims, Klyde and Faye Krebbs, Opal Robison, Ruth Terrell, Ruby Brantley, Jewel White, Lillie Barnhouse, Florine Upchurch, Myrtle Creamer, Maudé Young, Rhetta Shipp, Jewel Hutchinson, Golda Slaughter, Irene Splawn.

Residents present were Annie Hollier, Julia Hawkins, Hazel



Snow Scenes Around Muleshoe

Americans Eat Less Meat Than Figures Show

"It's misuse of industry figures--not gluttony--that accounts for the seemingly high meat consumption in this country," says a Texas A&M University Agricultural Extension Service nutritionist.

According to Mary K. Sweeten, the animal agriculture industries keep track of how many pounds of "carcass weight" of meat animals are being produced. But carcass weight includes fat and bone that never make it into the supermarket package, she explains.

The number of pounds of meat sold in retail packages is also counted. However, these figures still include fat and bone which are not eaten and do not account for cooking losses.

When you divide either the carcass weight or retail pack figures by the total number of Americans, it's easy to draw the conclusion that we eat a great deal of meat, says Sweeten. Carcass weight per capita figures show that Americans eat about 170 pounds of red meat per year, while the retail pack figure is 139 pounds each year.

Using these types of per capita consumption figures, the authors of many diet books and

plans recommended that we reduce the amount of meat in our diets, she notes.

But when you look at how much cooked meat we eat, the figures are significantly lower, says the nutritionist. Research conducted by the National Livestock and Meat Board shows that Americans eat slightly less than four ounces of cooked red meat per day, for a total of 91 pounds per person each year.

Even this figure assumes that the average American eats fifty percent of the fat remaining on every cut of red meat served, which probably is an overestimate of actual fat consumption, she says.

The four ounces of meat we eat per day represents a total of 327 calories, or 16 percent of a 2,000-calorie diet for the average American, Sweeten reports.

"These figures are just an average," she says. Some individuals are eating more than four ounces of meat per day and some less."

Two, 2-3 ounce portions from the meat group are the recommended amount for a balanced diet, says the nutritionist. Eating more than the recom-

mended amount from any of the major food groups can lead to overweight, so moderation and variety are always necessary, she adds.

"But don't automatically cut back on red meat just because you have heard or read that Americans eat too much meat," she advises. "Instead, weigh the portions of cooked meat you actually eat and draw your own conclusion about whether it's enough for a balanced diet or too much of a good thing."

Senior Spotlight

Shines On

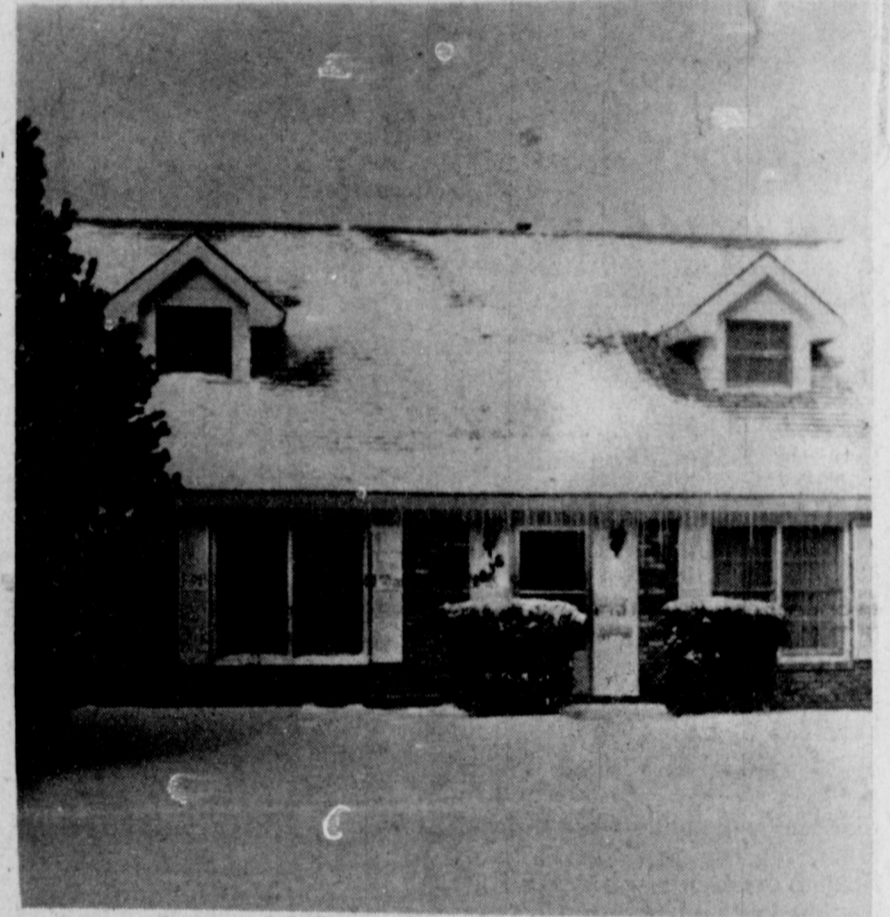
Dewayne Griggs

The senior spotlight shines on Dewayne Griggs this week. Dewayne is the 18 year old son of Mr. and Mrs. Forest Griggs. He was born in Lubbock on May 30, 1965. Dewayne has brown eyes, black hair, and is 5'7". He has two brothers and two sisters.

Dewayne's favorite subjects at SHS are Speech and Home and Family. His favorite teachers are Mrs. Laceywell and Mrs. Pierce. "What's Love Got to do With It", Tina, Turner, and Prince are his favorite song, singer, and group. Blue is Dewayne's favorite color and cheeseburgers are his favorite food. Dewayne's favorite movie is "Conan" and shows are "Miami Vice" and "Webster". Emmanuel Lewis is his favorite actor.

Dewayne's hobbies include drawing, breakdancing, basketball, and mechanics. His favorite season is summer, favorite month is May, and sport is basketball. Dewayne's goal in life is to be a mechanic. He plans to attend T.S.T.I. upon graduation. The most important thing to Dewayne is his son, Myron.

In the late 1800s every able-bodied male was required to work on Texas roads a specified number of days each year. Today, highway construction and maintenance are the responsibility of the State Department of Highways and Public Transportation.



Snow Scenes Around Muleshoe

New Travel Service Comes To Muleshoe

"Glenda Dale has been named a travel consultant with Linn Travel Agency of Lubbock", according to Fred Arthur President of the travel company.

This new position will add many new services to Muleshoe including reservations on airlines, hotels, cruises, theatre reservations in New York, as well as a host of other services all coordinated through Muleshoe.

As a travel consultant Glenda will take care of a great deal of the travel details and get back to local customers verifying their reservations.

Linn Travel consultants are backed by the computer reservations system called SABRE. SABRE analyzes over 495 different airlines serving 4500 destinations in a matter of minutes. This computerized reservations system searches for the best possible connection, determines your lowest fares, and prints your ticket, itinerary, and even your boarding pass on selected airlines.

This system along with five specialized service departments at Linn Travel can help insure travel that is as error free as possible. Linn Travel service departments include an accounting, commercial, sales, quality control, and a delivery department.

Glenda is the wife of Gary Dale of 1813 W. Ave. G. They have a son Mike and daughter Monica. Glenda is a former employee for over 20 years at Muleshoe State bank. Her travel background includes London, the Bahamas, Washington D.C., Hawaii, Las Vegas as well as other travel withing the United States.

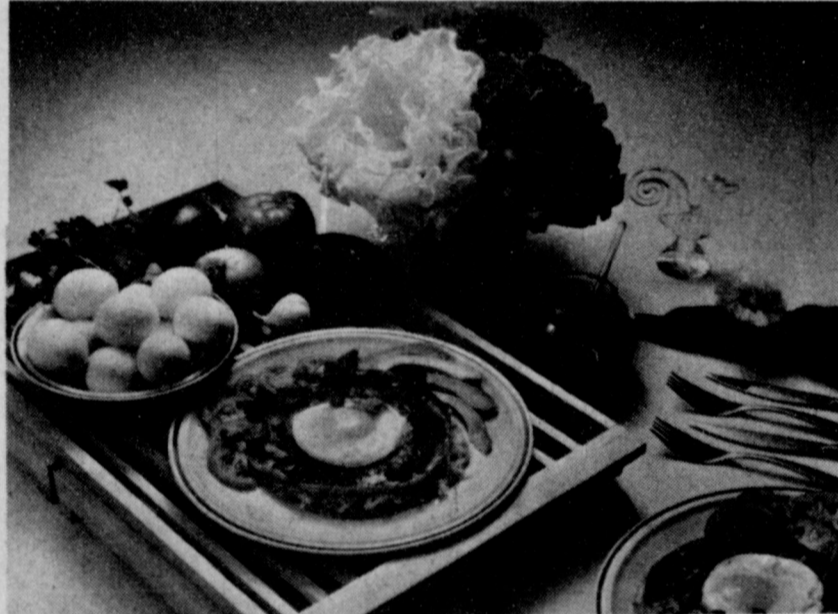
"Glenda will add a new convenience and service to Muleshoe", noted Fred Arthur. He went on to say, "Glenda now has the capabilities to coordinate worldwide travel for groups and individuals in Muleshoe and the surrounding communities."

Linn Travel Agency, Inc.

Phone

(Work)
272-5576

(Home)
272-4003



GIVING UP MEAT FOR LENT?--Serve "Stacked Cheese Enchiladas"--a meatless but flavorful dish spiced with Las Palmas mexican styles sauces, which reduce total preparation time to 15 minutes.

Riddle, Dot Marie Parker, Ell Northcutt, Altha Turner, Rotha Williams, Ivy Wall, Jane Williams, Monroe Vinson, Hifalito Lopez, Myrtle Chambliss, Zeffie Nigh, Mattie Benton, Alpha Townsend, Frank Estrada, Howard Awbrey, Stella Morgan, Winona Spears.

Refreshments of coffee, tea, cookies, candies, cheese & dips were served at the social break

everyone enjoyed themselves. The group plans to come again on Wed. Feb. 27 at 1 p.m.

Hazel Reeder enjoyed visits with her sisters last Wed.--Lucille and Burton Ward from Portales, New Mex., also Raneda Dawson, Muleshoe.

Nature never makes excellent things for mean, or no uses.

Thank You

To The Residents Of Muleshoe

We would like to thank you for the love and understanding you have shown at this time of our loss.

In many ways Muleshoe is much bigger at heart than many larger towns.

May God bless each of you.

Shirley Santiago &
Family

Roy Armstrong &
Family

"Have a
TAX REFUND
coming?"

Ask about our Guarantee

We can't promise everyone a refund, but if you've got one coming, we'll guarantee to find you the biggest refund -- or your return is free.

H&R BLOCK

THE INCOME TAX PEOPLE

Weekdays 9-6

Saturdays 9-5

224 W. 2nd

272-3332



Harmon Elliott

Vo-Ag...

Cont. from Page 1

currently number more than 60,000 in 949 FFA chapters. The area specialists coordinate leadership events, judging contests, workshops, and conventions involving more than three-fourths of the Texas FFA students, added Clark. In addition, the area staff conducts inservice meetings for vocational agriculture teachers and provides technical assistance to schools in developing curriculums and maintaining program standards.

Ronnie Teichelman, Occupational Education Specialist for Texas Education Agency's Area I office in Plainview which serves Muleshoe, Three Way and Lazbuddie high schools, says there are three essentials that must be met if vocational agriculture education is to survive in many Texas schools.

"We've got to get vocational funding channeled back into the small schools. Secondly, the area offices have to be saved. And, finally, the teacher training supplement has to be funded to the colleges and universities.

"Without the teacher training supplement, the universities such as Texas Tech would not be able to sponsor judging contests and teacher improvement workshops."

According to Teichelman, vocational agriculture programs will not be able to maintain the high standards that they are noted for.

"There will only be a shell remaining of the co-curricular activities that provide motivation and education to students."

Vocational agriculture provides the students with job entry level skills in the technical areas of animal science, plant science, soil science, agriculture mechanics, and management along with a strong program in leadership training.

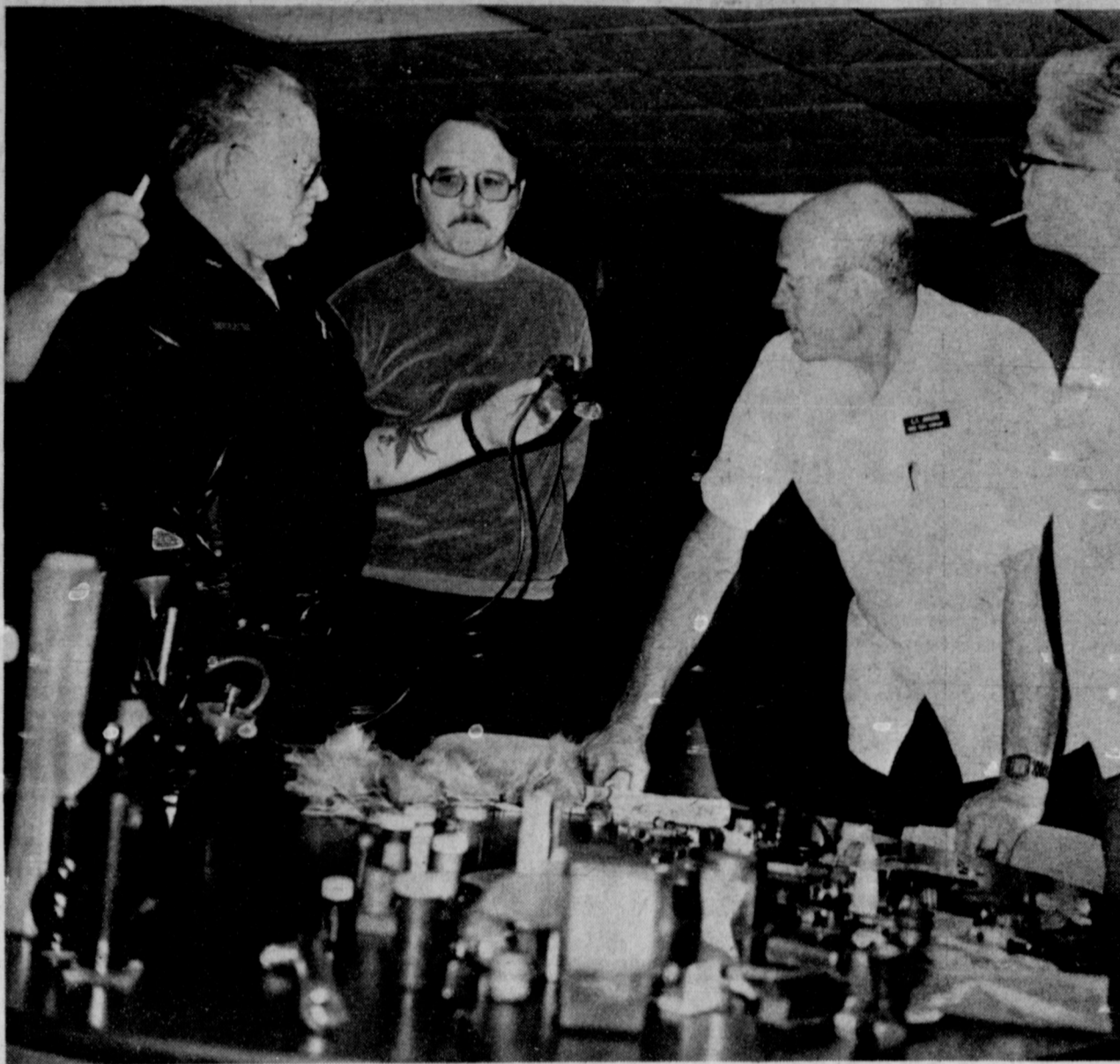
Additionally, in the previous school year, Texas vocational agriculture students earned a net income of over \$24 million from their supervised occupational experience programs.

Vocational Agriculture education in Texas is in trouble, according to all reports. It will take a united effort from the people to preserve what has become a tradition for more than 50 years, say the agriculture teachers over the state.

If you would like to help keep the agriculture education as a top quality part of the educational process, contact: Tom Jinks, Muleshoe ISD; Carl Wheeler or G.T. Dickerson, both Muleshoe vo-ag teachers; Rick Copp, Lazbuddie vo-ag teacher or Kermit Williams, Three Way vo-ag teacher, for more information.

The highest point on the State highway system is at Mount Locke, site of the famed MacDonald Observatory, on Park Road 78.

Texas highway field operations are under the direction of 24 district engineers. Each district includes from 10 to 15 counties and averages about 2,600 miles of highways.



NOW, THIS IS THE WAY IT IS USED--Muleshoe City Police Lt. Wayne Holmes, holding confiscated drug paraphernalia, is showing how the intricate paraphernalia is used. Looking on at the demonstration are second from left, City Police Chief Les Irvin, who is also president of the Muleshoe Lions Club; Lion L.T. Johnson and Lion J.E. McVicker.

SPS...

Cont. from Page 1

one person was terminated the first day of the search conducted by the drug sniffing dogs and although a large number of persons were detained following the drug search on the parking lot at the company. Also, several vehicles were briefly detained during the search and interrogation of drivers, owners, and passengers, but no cars or other vehicles were impounded or confiscated, added Wattenburger.

Also, said Wattenburger, even though there have been deaths during the construction of the two coal-fired electric plants, there is absolutely 'no proof' drugs were involved in any of the deaths, stressed the Missouri Valley vice president and the SPS officials.

Bill Crenshaw added, "SPS, as a company, and its employees are supporting the fight against drugs. We want a drug free work place and a drug free community."

"A search at Tolk plant was conducted by Southwestern Public Service, using the drug sniffing dogs from All State Securities, along with searches at the administrative offices in Amarillo and Herrington Station at Amarillo.

"In each and every instance, our employees were found to be free of all drugs and all came out clean."

Among the construction crews, improvements have been

made, according to Ben Green, SPS manager of Tolk Plant. Some of the major companies other than Missouri Valley, Inc. involved in the construction program at Tolk Plant have included Budwine Electric, Wheelabrator-Frye Co., Gulf Coast Cooling Towers, Young Sales Corp., Santa Fe Railway Co., Byron-DePaul Earth Movers, Lubbock Building Products, Texas Roofing of Lubbock and Turner Construction Co.

Cold...

Cont. from Page 1

temperatures, as much as 65.7 degrees below zero, surprised residents in Utah, Nevada and northwestern Colorado.

Maybelle, Colo. recorded a Friday low of minus-61 degrees breaking a state record established in 1951 and again in 1979 of minus-62 degrees.

At 1 p.m. on Friday, the 23 degree high in San Antonio was one degree colder than Anchorage, Alaska and a frost warning was issued for San Diego County, Calif. according to NWS officials.

Southern states, including Mississippi, Louisiana and Alabama were also having their own troubles, with up to an inch of ice snapping power lines and breaking tree limbs. Many cities in those states were experiencing power outages from the south's ice storm.

According to the National Weather Service, traveler's advisories were issued from southern New Mexico across Texas, Arkansas, and much of Louisiana and Mississippi to Maryland, and said that by Saturday, the latest winter storm would continue all along the eastern coast.

On Friday morning, the warmest place in the state of Colorado was at Grand Junction with a temperature of five below zero.

According to a NWS spokesman, the lowest temperature ever recorded in the continental United States was 70 below zero at Rogers Pass, 30 miles northwest of Helena, Mont. on January 20, 1954.

Letter To The Editor Policy

The Muleshoe Journal and Bailey County Journal welcomes letters to the editor on issues of concern to readers. Such letters must meet certain qualifications in order to be considered for publication.

Letters must bear the writers signature, address and phone number in order that the authorship may be confirmed. Under some circumstances we will delete the name of the writer, if, in our judgement, the request to do so is justified.

Letters should not exceed 250 words and must meet standards of good taste as well as legal guidelines. Letters attacking another person, a church or specific religion will not be published. Comments on issues are encouraged in order to maintain a forum for discussion of public views.

Plans Start For Patriotic Observance

The MISD Patriotic Planning committee, whose members include John Gulley, Tawna Stewart, Bettie Chamberlin, Alice Liles, Howar Watson, Virginia Bowers, Julie Cage and Elizabeth Watson, has announced preliminary plans for the upcoming Patriotic Week scheduled for the week of February 17.

They said each campus will have special events every day of

Muleshoe...

Cont. from Page 1

a.m. at the Holiday Inn Civic Center in Lubbock. Registration for the luncheon and meeting is \$15.

Make your reservation at Water, Inc. Box, 367, Lubbock, TX 79408.

Marine Pfc. Jesse B. Carrion, son of Solomon and Feliz Carrion of Muleshoe, recently reported for duty with 3rd Marine Aircraft Wing, Marine Corps Helicopter Air Station, Tustin, Ca.

A 1982 graduate of Muleshoe High School, he joined the Marine Corps in August, 1984.

The Directors of Bailey County Farm Bureau will meet on Thursday, February 7, at 7 p.m. in the Farm Bureau conference room.

Recent graduates of the H&R Block Income Tax school were Joyce Williams, Linda Burton, Susan Wedel, Winona Hefley, Tracy Derrick and LaNell Henson.

the school week (Monday-Thursday). The highlight of the week will be a community-wide patriotic program featuring the Muleshoe bands and guest speaker Bob Nash.

Everyone has been encouraged to mark their calendars and be in attendance on February 18 at 7 p.m. in the high school auditorium.

Specific events will be outlined as campus plans are finalized.

Lions...

Cont. from Page 1

it is pills, or drinking."


Lt. Holmes explained the different drugs and their reactions on people, and how they can break or 'kick' the habit. Some drugs, such as barbituates will kill the individual if they try to just 'kick the habit' without weaning away slowly.

He also spoke of the complexities in attempting to make cases on drug dealers, and the court system, which very often just 'spansks them on the hand' and turns them right back out to do the same thing over and over again.

He explained how some of the drugs are arriving in Muleshoe, and also talked of the weights and transportation methods of the drugs.

Lt. Holmes concluded his presentation with a question and answer session, and many of the Lions Club members viewed his drug paraphernalia display set up in the meeting room at the coliseum. Lions Club members also took a 'drug' test to check their knowledge of the symptoms and effects of the various drugs.

Guests at the Lions Club meeting other than Lt. Holmes were Bryan Hamilton and Cleta Williams.



160P S. Ave. D. Portales
2600 Mabry Dr. Clovis
1302 W. American Blvd.

CLOVIS-PORTALES
MULESHOE

**OPEN Mon. thru Sat.
7:30AM - 7:30 PM**

Nature resolves everything into its component elements, but annihilates nothing.



GET READY

FOR SPRING!

It's time to sell or buy gardening tools and equipment. Pre-season pool and lawn furniture sales and buys are great in the Classifieds this time of year.

CLASSIFIEDS MAKE SELLING EASIER AND BUYING, A MONEY SAVING EVENT.

CALL CLASSIFIEDS TODAY 272-4536

Muleshoe & Bailey
County Journals

Ellis Funeral Home
Pre-Need Funeral Plans
Supervised By Texas Department Of Banking
Price Frozen At Time Of Purchase

Congratulations
Family Medicine Clinic



We Are Proud We Had A Part In Furnishing The Equipment For This New Facility.

Whittaker General Medical

1616 6th St. Lubbock 747-0208

Vo-Ag...

Cont. from Page 1

currently number more than 60,000 in 949 FFA chapters. The area specialists coordinate leadership events, judging contests, workshops, and conventions involving more than three-fourths of the Texas FFA students, added Clark. In addition, the area staff conducts inservice meetings for vocational agriculture teachers and provides technical assistance to schools in developing curriculums and maintaining program standards.

Ronnie Teichelman, Occupational Education Specialist for Texas Education Agency's Area I office in Plainview which serves Muleshoe, Three Way and Lazbuddie high schools, says there are three essentials that must be met if vocational agriculture education is to survive in many Texas schools.

"We've got to get vocational funding channeled back into the small schools. Secondly, the area offices have to be saved. And, finally, the teacher training supplement has to be funded to the colleges and universities.

"Without the teacher training supplement, the universities such as Texas Tech would not be able to sponsor judging contests and teacher improvement workshops."

According to Teichelman, vocational agriculture programs will not be able to maintain the high standards that they are noted for.

"There will only be a shell remaining of the co-curricular activities that provide motivation and education to students."

Vocational agriculture provides the students with job entry level skills in the technical areas of animal science, plant science, soil science, agriculture mechanics, and management along with a strong program in leadership training.

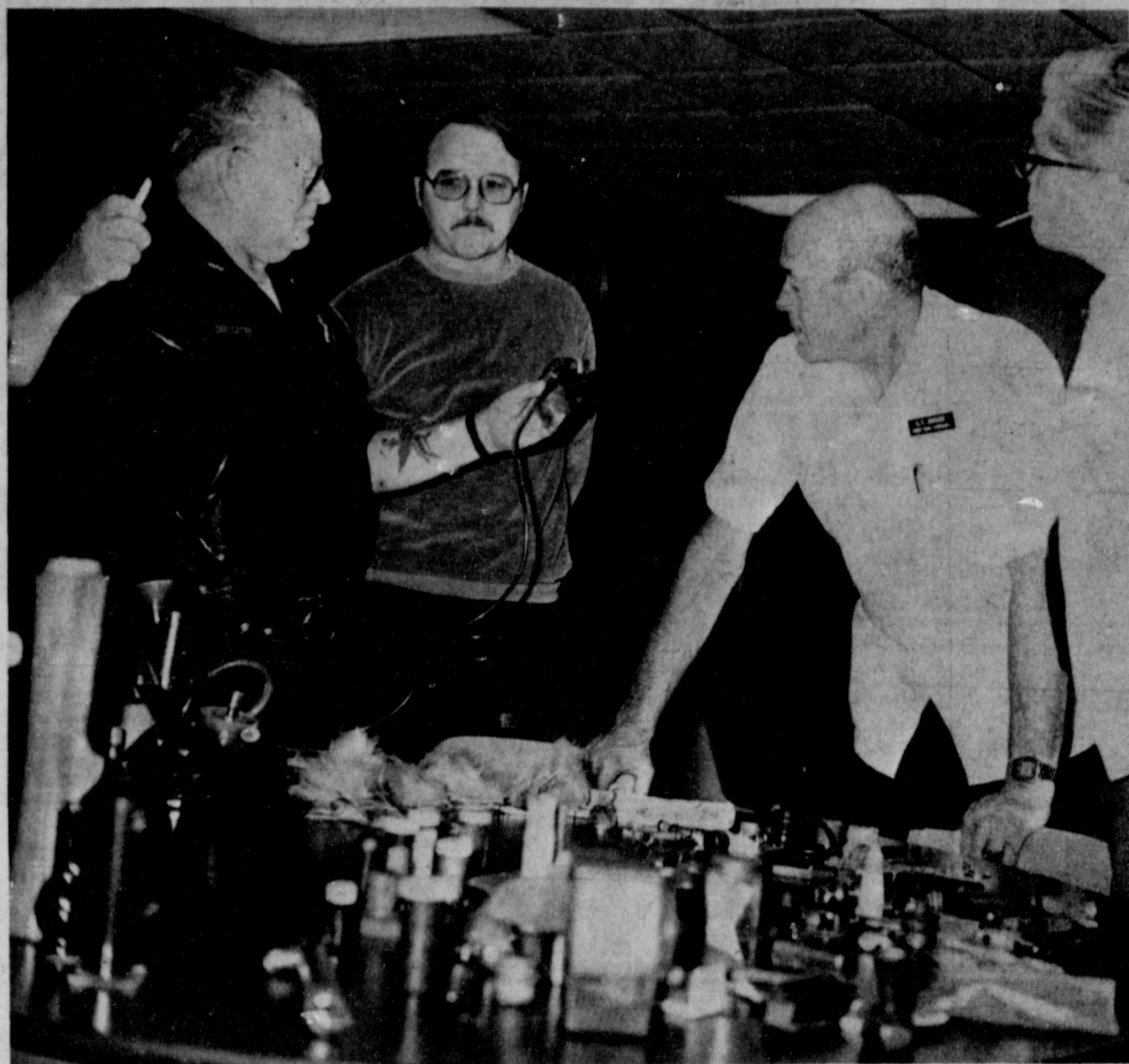
Additionally, in the previous school year, Texas vocational agriculture students earned a net income of over \$24 million from their supervised occupational experience programs.

Vocational Agriculture education in Texas is in trouble, according to all reports. It will take a united effort from the people to preserve what has become a tradition for more than 50 years, say the agriculture teachers over the state.

If you would like to help keep the agriculture education as a top quality part of the educational process, contact: Tom Jinks, Muleshoe ISD; Carl Wheeler or G.T. Dickerson, both Muleshoe vo-ag teachers; Rick Copp, Lazbuddie vo-ag teacher or Kermit Williams, Three Way vo-ag teacher, for more information.

The highest point on the State highway system is at Mount Locke, site of the famed MacDonald Observatory, on Park Road 78.

Texas highway field operations are under the direction of 24 district engineers. Each district includes from 10 to 15 counties and averages about 2,600 miles of highways.



NOW, THIS IS THE WAY IT IS USED--Muleshoe City Police Lt. Wayne Holmes, holding confiscated drug paraphernalia, is showing how the intricate paraphernalia is used. Looking on at the demonstration are second from left, City Police Chief Les Irvin, who is also president of the Muleshoe Lions Club; Lion L.T. Johnson and Lion J.E. McVicker.

SPS...

Cont. from Page 1

one person was terminated the first day of the search conducted by the drug sniffing dogs and although a large number of persons were detained following the drug search on the parking lot at the company. Also, several vehicles were briefly detained during the search and interrogation of drivers, owners, and passengers, but no cars or other vehicles were impounded or confiscated, added Wattenburger.

Also, said Wattenburger, even though there have been deaths during the construction of the two coal-fired electric plants, there is absolutely 'no proof' drugs were involved in any of the deaths, stressed the Missouri Valley vice president and the SPS officials.

Bill Crenshaw added, "SPS, as a company, and its employees are supporting the fight against drugs. We want a drug free work place and a drug free community."

"A search at Tolk plant was conducted by Southwestern Public Service, using the drug sniffing dogs from All State Securities, along with searches at the administrative offices in Amarillo and Herrington Station at Amarillo.

"In each and every instance, our employees were found to be free of all drugs and all came out clean."

Among the construction crews, improvements have been

made, according to Ben Green, SPS manager of Tolk Plant. Some of the major companies other than Missouri Valley, Inc. involved in the construction program at Tolk Plant have included Budwine Electric, Wheelabrator-Frye Co., Gulf Coast Cooling Towers, Young Sales Corp., Santa Fe Railway Co., Byron-DePaul Earth Movers, Lubbock Building Products, Texas Roofing of Lubbock and Turner Construction Co.

Cold...

Cont. from Page 1

temperatures, as much as 65.7 degrees below zero, surprised residents in Utah, Nevada and northwestern Colorado.

Maybelle, Colo. recorded a Friday low of minus-61 degrees breaking a state record established in 1951 and again in 1979 of minus-62 degrees.

At 1 p.m. on Friday, the 23 degree high in San Antonio was one degree colder than Anchorage, Alaska and a frost warning was issued for San Diego County, Calif. according to NWS officials.

Southern states, including Mississippi, Louisiana and Alabama were also having their own troubles, with up to an inch of ice snapping power lines and breaking tree limbs. Many cities in those states were experiencing power outages from the south's ice storm.

According to the National Weather Service, traveler's advisories were issued from southern New Mexico across Texas, Arkansas, and much of Louisiana and Mississippi to Maryland, and said that by Saturday, the latest winter storm would continue all along the eastern coast.

On Friday morning, the warmest place in the state of Colorado was at Grand Junction with a temperature of five below zero.

According to a NWS spokesman, the lowest temperature ever recorded in the continental United States was 70 below zero at Rogers Pass, 30 miles northwest of Helena, Mont. on January 20, 1954.

Letter To The Editor Policy

The Muleshoe Journal and Bailey County Journal welcomes letters to the editor on issues of concern to readers. Such letters must meet certain qualifications in order to be considered for publication.

Letters must bear the writers signature, address and phone number in order that the authorship may be confirmed. Under some circumstances we will delete the name of the writer, if, in our judgement, the request to do so is justified.

Letters should not exceed 250 words and must meet standards of good taste as well as legal guidelines. Letters attacking another person, a church or specific religion will not be published. Comments on issues are encouraged in order to maintain a forum for discussion of public views.

Plans Start For Patriotic Observance

The MISD Patriotic Planning committee, whose members include John Gully, Tawna Stewart, Bettie Chamberlin, Alice Liles, Howard Watson, Virginia Bowers, Julie Cage and Elizabeth Watson, has announced preliminary plans for the upcoming Patriotic Week scheduled for the week of February 17.

They said each campus will have special events every day of

Muleshoe...

Cont. from Page 1

a.m. at the Holiday Inn Civic Center in Lubbock. Registration for the luncheon and meeting is \$15.

Make your reservation at Water, Inc. Box, 367, Lubbock, TX 79408.

Marine Pfc. Jesse B. Carrion, son of Solomon and Feliz Carrion of Muleshoe, recently reported for duty with 3rd Marine Aircraft Wing, Marine Corps Helicopter Air Station, Tustin, Ca.

A 1982 graduate of Muleshoe High School, he joined the Marine Corps in August, 1984.

The Directors of Bailey County Farm Bureau will meet on Thursday, February 7, at 7 p.m. in the Farm Bureau conference room.

Recent graduates of the H&R Block Income Tax school were Joyce Williams, Linda Burton, Susan Wedel, Winona Hefley, Tracy Derrick and LaNell Henson.

the school week (Monday-Thursday). The highlight of the week will be a community-wide patriotic program featuring the Muleshoe bands and guest speaker Bob Nash.

Everyone has been encouraged to mark their calendars and be in attendance on February 18 at 7 p.m. in the high school auditorium.

Specific events will be outlined as campus plans are finalized.

Lions...

Cont. from Page 1


it is pills, or drinking." Lt. Holmes explained the different drugs and their reactions on people, and how they can break or 'kick' the habit. Some drugs, such as barbituates will kill the individual if they try to just 'kick the habit' without weaning away slowly.

He also spoke of the complexities in attempting to make cases on drug dealers, and the court system, which very often just 'spans them on the hand' and turns them right back out to do the same thing over and over again.

He explained how some of the drugs are arriving in Muleshoe, and also talked of the weights and transportation methods of the drugs.

Lt. Holmes concluded his presentation with a question and answer session, and many of the Lions Club members viewed his drug paraphernalia display set up in the meeting room at the coliseum. Lions Club members also took a 'drug' test to check their knowledge of the symptoms and effects of the various drugs.

Guests at the Lions Club meeting other than Lt. Holmes were Bryan Hamilton and Clea Williams.



1601 S. Ave. D. Portales
2600 Mabry Dr. Clovis
1302 W. American Blvd.

CLOVIS-PORTALES
MULESHOE

**OPEN Mon. thru Sat.
7:30AM - 7:30 PM**



GET READY

FOR SPRING!

It's time to sell or buy gardening tools and equipment. Pre-season pool and lawn furniture sales and buys are great in the Classifieds this time of year.

CLASSIFIEDS MAKE SELLING EASIER AND BUYING, A MONEY SAVING EVENT.

CALL CLASSIFIEDS TODAY 272-4536

Muleshoe & Bailey
County Journals

Ellis Funeral Home

Pre-Need Funeral Plans
Supervised By Texas Department Of Banking
Price Frozen At Time Of Purchase

Congratulations
Family Medicine Clinic



We Are Proud We Had A Part In Furnishing The Equipment For This New Facility.

Whittaker General Medical

1616 6th St.
Lubbock
747-0208

CLASSIFIED ADS

DEADLINE FOR CLASSIFIED ADS IS TUESDAYS AND FRIDAYS 12:00 NOON

CLASSIFIED RATES
 1st Insertion Per Word...\$.15
 Minimum Charge...\$2.30
 2nd Insertion Per Word...\$.13
 Minimum Charge...\$2.00
CLASSIFIED DISPLAY \$1.70....
 per column inch
BLIND AD RATES
 50% more
DEADLINES
 12 Noon Tues. for Thursday paper
 12 Noon Fri. for Sunday paper
WE RESERVE THE RIGHT TO CLASSIFY REVERSE OR REJECT ANY AD NOT RESPONSIBLE FOR ANY ERROR AFTER AD HAS RUN ONCE

1. Personals

MARY KAY Cosmetics, Shop now for your Christmas selections, Free gift wrapping, Free Complimentary Facial call Yolanda Bell Beauty Consultant 925-6664, b1-45t-tfc

FARMERS! Tired of high service costs? For on the farm service call Larry Martin 806-272-3684. 1-5s-2tp

JOSIE FLOWERS, licensed cosmetologist and professional consultant for Mary Kay cosmetics. Call 272-3865 for free facials. Have supplies on hand. 1-4t-4tp

NEED ASSISTANCE filling out your insurance forms. For more information call Richelle King 272-4449. k1-50t-tfc

FURNITURE Upholstering & Repairs Burrows Upholstery Shop 209 W. 2nd Phone 272-4255 Home Phone 272-5722. b1-41t-tfc

HOUSE Painting Interior and Exterior Reasonable rates. Call 965-2388 or 965-2128. w1-4t-tfc

EXPERIENCED Bookkeeper seeking full time employment 272-4916. 1-5t-2tp

REDUCE safe & fast with GoBese Tablets & E-Vap "water pills" Damron Drug. 1-5t-10tn

WANT to buy Franciscan "wheat" pottery. Call 272-3063. 1-5t-2tp

LUNSFORD PAINT AND BODY SHOP-Farwell, Tx. Free estimates -everything except hail damage. All work guaranteed. 806-481-3287. 11-4s-2mc

CONCERNED About Someone's Drinking **HELP IS AVAILABLE** through Al-Anon Call 227-2350 or 965-2870 or Call 227-2350 or come to visit Tuesday nights. 8:00 p.m. at 1116 W. American Boulevard, Muleshoe

3. Help Wanted

HELP WANTED for fertilizer business. Experience operating machinery necessary, IE trucks, tractors, sprayers, etc. Apply at Ag-Chem Farm Services, Arch, New Mexico 505-276-8237 or Hub Fertilizer Co., Hub, Texas 806-265-3222. a3-5s-tfc

4. Houses For Rent

SMALL UNFURNISHED house for rent call 272-3107. m4-4s-tfc

HOUSE FOR RENT: 3 bedroom, 6 miles out of city limits. Call 925-6799. r4-4s-2tc

RUIDOSO CHALET: 4 Bedroom for rent by day, weekend, or weekly. Call 505-257-2622 or 915-943-4261. Owner Dr. Albertson. 806-481-3287. a4-49t-tfc

5. Apts. For Rent

FOR RENT: Nice 1 bedroom apartment. Call 965-2188 or 272-4754 after 5:00 p.m. s5-3t-tfc

FOR RENT: Unfurnished 1 bedroom apartment. Excellent condition, refrigerator and cook stove. Call 272-4986. w5-5s-1tc

8. Real Estate For Sale

18 Acres North of Y-L, 3 bedroom home, choice land and water. good place to raise family. \$45,000.00 272-3611 Ranchette 25H1 w8-5s-1tc

LARGE house, 2 large metal buildings between 2 schools, 32 thousand or best offer, call 817-682-7456 or 817-594-6881, after 5 p.m. 8-5s-1tp

FOR SALE by owner, located north of Earth, Texas: 800 acres choice irrigated farm land. Cattle feeding facilities, modern home. For information call 806-257-3396 or 806-257-2016. c8-5s-4tc

160 acres irrigated land, on pavement, quanset barn, house, two wells, good land, 1/2 minerals go. Seller says SELL....Reduced to \$600.00 per acre. 272-3611 F-12 w8-5s-1tc

NEW 2 bedroom home for \$150 per month. Call Shelby 806-763-5319 collect. a8-4s-3tcts

60 Acres, Near Tolk Station, (1) eight inch well, Nice Home 3 bedroom, 2 baths, double garage, corals, barn, shop building. \$72,000 272-3611 F-14 w8-5s-1tc

WILL Rent or sell on a lease purchase option: 3 bedroom house, 272-3759. 8-5t-2tc

320 Acres of New Mexico land, S.W. of Muleshoe, 1/2 minerals Taxes only \$57.00 per year total. You should see it. \$67,500....Try that on for size...272-3611 F-15 w8-5s-1tc

REPOSED MOBILE homes with payments under \$150 per month, used mobile homes for under \$9,000, new mobile homes at reduced prices. Delivery and set up included. Call Shelby at 806-763-5319 collect. a8-4s-3tcts

FOR SALE BY OWNER 2-1-1 on 2 lots. All fenced yard, storage building, fruit trees. \$17,500. Call 965-2320. L8-41s-stfc

FOR SALE Small Acreage within 2 miles of city limits. 20 H.P. Electric Well. Approximately 1300 ft. underground PVC pipe. Assumable Veterans Loan. 272-5183 h8-4s-4tsc

FOR SALE: 1982 14x70 Mobile Home. 3 bedroom, 1 1/2 bath, take up payments. Call 272-3693. d8-5t-2tp

HENRY REALTY
 111 W. Ave. B Muleshoe, Texas 272-4581

320 Acres with large beautiful 3 - Bedroom, 3 bath, 3 car garage, spacious gameroom, central heating and air, underground sprinkler for yard 30' x 50' shop for building. 5 wells. ***

80 ACRES with 6" well and 8" well, under ground pipe owner financing available. 7 miles west of Muleshoe. ***

160 ACRES with 2 wells and 7 tower sprinkler near Lazbuddie. ***

38 Acres West of Muleshoe, 6 Inch Well, Sideroll, All Wheat. ***

One Acre Sites for Home Construction. 3 Miles of Muleshoe on HWY. 3, lots remain. ***
 Completely remodeled 2 Bed room home. Ideal first home, must see to appreciate. Nice location with F.H.A. loan. ***

Apartment complex, mobile home park, vacant land for expansion. Terms available. 8-23t-tfc

JIMMIE CRAWFORD Real Estate & Ins. 1725 W Ave E Muleshoe, Texas Phone 272-3666
 3-1 Brick with tile fence and garden. 1600 Sq. Ft. Real good price-\$39,500. ***

3-1 1/2-2 Brick with carport. Price reduced to \$45,000. ***

3-1 1/2 Brick with storm cellar. Over 1,000 Sq. Ft. \$31,500. ***

2-1-1 with fenced back yd. 930 Sq. Ft. Very clean \$26,000. ***

2 labors dryland west of Enochs. 1/3 minerals. ***

160 acres west of town with 2 wells. Good price. ***

320 acres N.E. of town with 3 wells. Good land. ***

154 acres west of town with 4 wells. All waters. ***

Have Buyers-Need 1Qt. N.W. of Mules. & 1 Qt. around CC to Lazb. ***

For Sale 1/2 Sec. 5 mi. N. of Mules. Priced to sale. ***

40 Acres West of Muleshoe. ***

Texaco Gas Station 6th & Amer. Blvd. Priced to Sell Choice Location ***

158 Acres -West of old Muleshoe Cemetery
 A.V.I.
 Max Crim
 965-2742

KREBBS REAL ESTATE
 1004 W. 6th
 272-3191

* 20 a. grass, close in, terms.
 * 160 a. Red land, Hwy. 84.
 * 5 a. F.O.L.D.
 * Large tract dry land, ideal cattle set up.
 * 35 choice lots. any size-terms.
 * 22 a.-well-corrals
 * Nice 3 BR brick on 2 a.
 * Dr. says sell-160 a. sprinkler, good water.
 * 3-8 a. tracts.

HOME REPAIRS. F.M. Saldana Construction Licensed and bonded plumber. Specialized in cement, carpenter work, remodeling, painting, acoustical ceilings. 272-4955 15-16s-tfc
BRUCE & MATTHEWS Inc. Refrigeration & Electrical Contractor's Heating, Cooling, Appliance Service. 424 N. First. 272-5114. 15-44t-tfc

11. For Sale Or Trade


FOR SALE: Queen size bed with box springs and hollywood frame. Orthotonic. Call 272-3747

FOR SALE: Oak firewood. Call Wayne Copley, 272-3697 or Randle Copley 272-3886. 11-4s-2tsp

15. Misc.

CASH FLOW PRODUCTION WITH ALL RISK CROP INSURANCE

A farmer's guide to financial security. A part of the premium is paid by U.S. Government. Guaranteed pounds. ...All Risk... Makes Sense.



See ROY WHITT.....201 main, Muleshoe, Texas
 Call Office 272-3611....Home 272-3058

BINGHAM & NIEMAN REALTY
 116 E. Ave. C
 272-5285***272-5286

SHOWN BY APPOINTMENT ONLY-COUNTRY CHARM WITH CITY CONVENIENCE--Spacious 4 Bdrm., 2 3/4 Bath, 2 Car Garage Brick Home. Beautifully Landscaped. Approx. 3570 sq. ft. of Lv. area. Dual Cent. A&H units, Cathedral beamed Den with cozy fireplace, large Game Room with portable bar, separate Living, Dining, & Breakfast areas. Nice kitchen with built-ins including BBQ Grill, large Utility Area with pantry & storage. Interior of home is trimmed in pecan wood & paneling & has nice enclosed entry-garden area. Other amenities include thermal windows, large covered patio with gas grill, undrgrd. sprinkler sys., nice workshop with heating & elect., & numerous other extras.

RICHLAND HILLS
 3-1 3/4-1 Brick, Cent. A&H, stove DW, fenced yard. 40' **SOLD**

LUXURY LIVING in this 3-2-2 Custom-built brick, loads of built-ins, wet bar, Jacuzzi, whirlpool, atrium, basement, Cent. A&H, & more....

REDUCED PRICE-3-1 1/2-2 carport, Brick, Cent. A&H, built-ins, gas log fireplace, fenced yard. \$48,000!!!!

COUNTRY CLUB
 3-1 3/4-2 Brick, Cent. A&H, built-ins. \$40's!!!!

3-1 1/2-1 Brick, repainted inside & out, built-in range, gas grill, storage bldg. Low 40's!!!!

3-1 1/2-2 Brick, corner fireplace, built-ins, Cent. heat, nice sunny dining area with built-in planter!!!!

LENAU ADD.
 3-1-1 home on corner lot, Cent. heat, Evap. air, fenced yard \$30's.

3-1 3/4-1 carport, nice carpet, fenced yard, a neat well-kept home. 30's!!!!

ENJOY COUNTRY LIVING-3-1-1 home on 1 acre, close to town, nice workshop-storage bldg. and attached shed. \$30's!!!!

JUST LISTED-3-1-1 home, well insulated, built-ins, nice earthtone carpets & vinyl, fenced yard, storage bldg. & more. Close to School!!!!

3-1 home on 5 **SOLD**, close to Tolk Station, nice h, training arenas, & other bldgs. 1

JUST LISTED-8 Unit Complex (1-3 Bdrm., 4-2 bdrm., & 3-1 bdrm. units), close to schools and hospital. Priced to Sell!!!!

3-1-1 home, corner lot, built-ins, Ccht. A&H, nice carpet. 30's....

WE APPRECIATE YOUR BUSINESS"
 GEORGE NIEMAN, BROKER
 DIANNE NIEMAN, BROKER
 8-40-stfc

J.B. SUDDERTH REALTY INC.
 Drawer 887
 Farwell, TX 79325
 Ph. 806-481-3288

80 acres, 2 wells, 1 electric motor, West of Muleshoe on highway. Owner says Sell!

480 acres irrigated with circle sprinklers, lays good, on highway, West of Muleshoe. Owner says Sell!

Good 320 acres with 2 circles, 2-8 in wells on highway, South East of Lazbuddie. \$975 per acre cash with circle sprinkler included.

160 acres, 8 in well with circle sprinkler, good water area, South East of Oklahoma Lane crossroads.

160 acres, 8 in well and 10 tower zimmatic circle sprinkler near Oklahoma Lane Farm Supply. Excellent financing.

Excellent 171.5 acres. 1-8 in well, 1-6 in well, with electric motors near Lariat.

158 acres irrigated with seven tower valley sprinkler and a nice 3 bedroom, 2 bath brick home on highway near Beck Gin.

277 acres some irrigated, some grass 6 miles north of Bovina. Priced to sell. Owner says sell immediately.

Excellent 640 acres, 6 good 8 inch wells, 3 late model circle sprinklers, located in 200 foot plus water area south of Pleasant Valley Gin.

40 acres irrigated, 1-8 in well, concrete pipe, excellent water area, 5 1/2 mi East of Lariat.

160 acres irrigated, 2-8 in wells, excellent water area, 5 1/2 miles East of Lariat.

665 acres irrigated, 5-8 in wells, 3 houses, 1 barn, and 1 shop. Excellent water area. 5 1/2 miles East of Lariat.

155 acres irrigated with circle sprinkler, excellent water area, North East of Muleshoe

320 acres irrigated, 3-8 in wells, good water area. Lays very good. 4 mi North East of Oklahoma Lane crossroads.

14. Farm Prop. To Rent

FARM FOR LEASE: 5 yr. lease, 400 acres, good farm land, good wells, good yield established and good allotments. Equipment lease must be purchased. Call 806-925-6742 at night. m14-5t-4tc

15. Misc.

DAVIS COMMERCIAL PUMPING SERVICE

Pumping of Cess-pools and Cleaning of Septic tanks; grease pits and mud pits. We now handle Sewage treatment chemicals. Trap Clear - Cuts down on Cleaning grease traps and Sewage lines for Garbage disposables odor free and clean.

Septic Clear-Helps in Maintaining Cess-pools & Septic tanks to Maintain performance. Also for Recreational Vehicles.

Pit Clear-Hog and Cow Confinement Pits, Lagoons, sewage Plants, Grease traps.

Call 272-3467 Elmer Davis or 272-5023 James Kemp or mail a post card with Name & address to Box 71 Muleshoe, Tex. 79347 for information on any of the above.

Chemicals are stocked at James Kemp Discount Furniture 414 West American Blvd. Muleshoe Tex.



Prices Effective thru February 8, 1985

CLOVIS

2600 E. Mabry Dr.
7:30 AM-7:30 PM Mon.-Sat.
12:30-5:00 PM Sunday

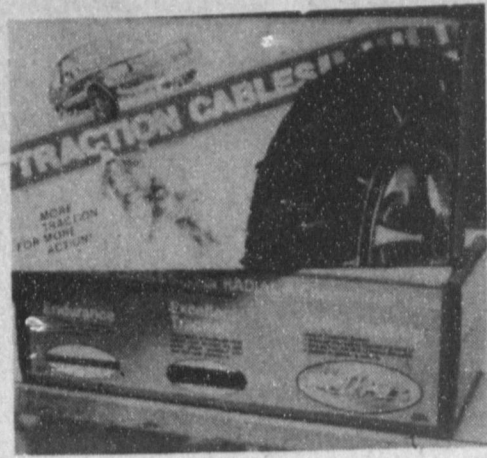
PORTALES

1601 S. Ave. D
7:30 AM-7:30 PM Mon.-Sat.
12:30-5:00 PM Sunday

MULESHOE

1302 W American Blvd.
7:30 AM-7:30 PM Mon.-Sat.
Closed Sunday

OPEN TODAY 12:30 - 5:00 PM

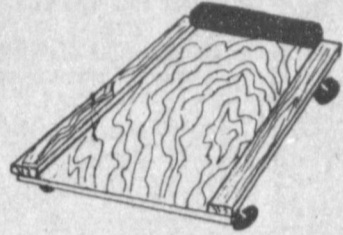


Traction Cables

13" **3478**
Stock No. 1918

Save 10% On All Cables And Tire Chains

Sizes available to fit 13-14-15-16-16.5.



Auto Creeper

799

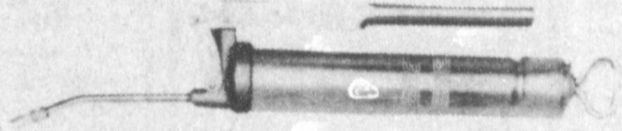
1/2" deck, 2 1/2" rails, bolted on wheels.



Starting Fluid

99¢ 8 Oz.

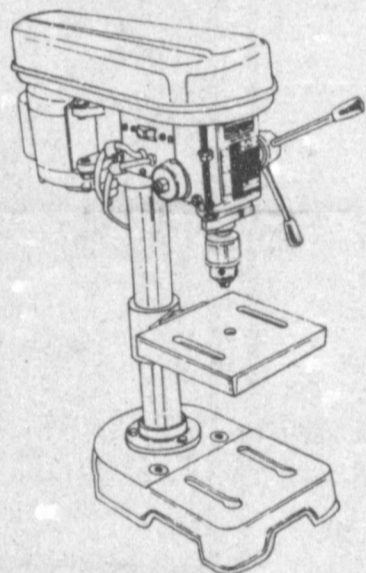
Starts gasoline and diesel engines quickly at less costs.



Lever Operated Grease Gun

Zinc plated first thread body and cap. Positive plunger rod lock. Push button release. Cast iron head.

599

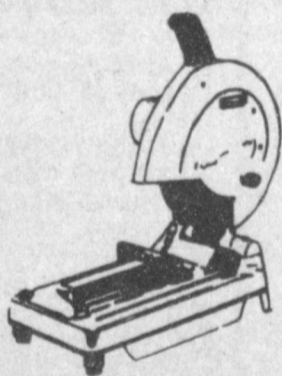


3 Speed Bench Model Drill Press

6999

1/4 hp motor, 3 speeds, 700, 1560 & 3270.

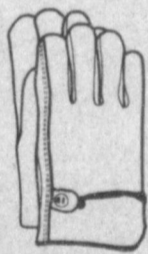
RPM's. No. FTK-6



14" Chop Saw

12999

Permits profession outing of drywall stud bundles in one pass. Quick-locking vise speed up work through fast, easy clamping. No. COS-14.



Carolina Gloves

Grey Split drivers, lined. No. 09296. **488**



30% OFF
Regular Price

Sale Knitting

Save 30% off on all Sale Knitting items in stock. Sweaters, track pants, sweatshirts and more. Stock on hand only. No rain checks.



2 Steel Belts and 2 Body Plies of polyester cord for maximum protection. The deep super aggressive tread delivers pulling power in deep snow or the mud-diast terrain. Whitewall, P-metric sizes.



Power King Radial Steel Belted Traction XTC

Stock No. R2-11 P165/80R13 Reg. 55.44	36.58
Stock No. R2-13 P175/80R13 Reg. 56.37	37.28
Stock No. R2-15 P185/80R13 Reg. 57.23	37.92
Stock No. R2-38 P185/75R14 Reg. 60.08	40.06
Stock No. R2-39 P195/75R14 Reg. 60.60	40.45
Stock No. R2-47 P205/75R14 Reg. 62.69	42.02
Stock No. R2-60 P215/75R14 Reg. 67.61	45.70
Stock No. R2-34 P205/75R15 Reg. 64.56	43.42
Stock No. R2-45 P215/75R15 Reg. 69.87	47.26
Stock No. R2-49 P225/75R15 Reg. 72.36	49.27
Stock No. R2-64 P235/75R15 Reg. 77.27	52.95

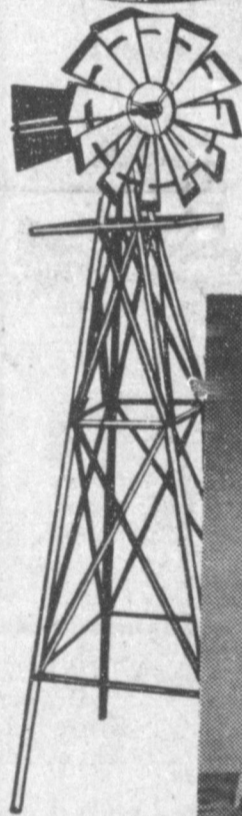
Stock On Hand. No Rain Checks.



Roach Prufe

599

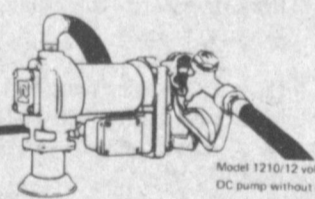
Oderless, nonevaporating, nonstaining and nonflammable.



8' Decorative Windmill

4795

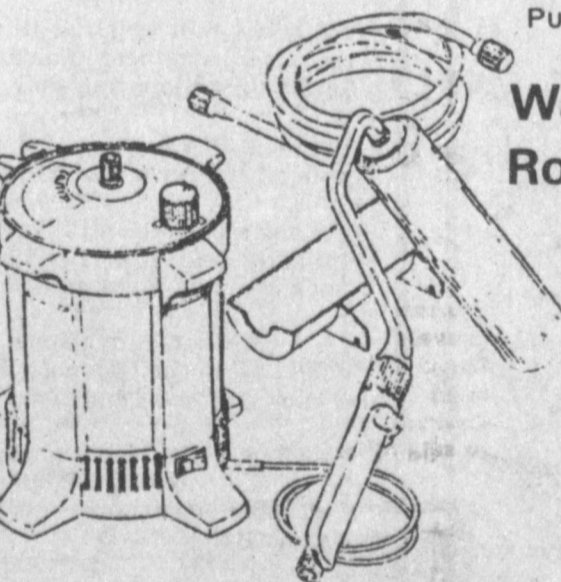
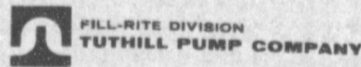
All steel construction. Painted aluminum frame. Rugged trussing. Built to scale. Turn in the slightest breeze. Unassembled.



Miniature Windmill

999
D-13

Only 17" tall. Galvanized steel. Comes unassembled.



Wagner Power Roller Outfit

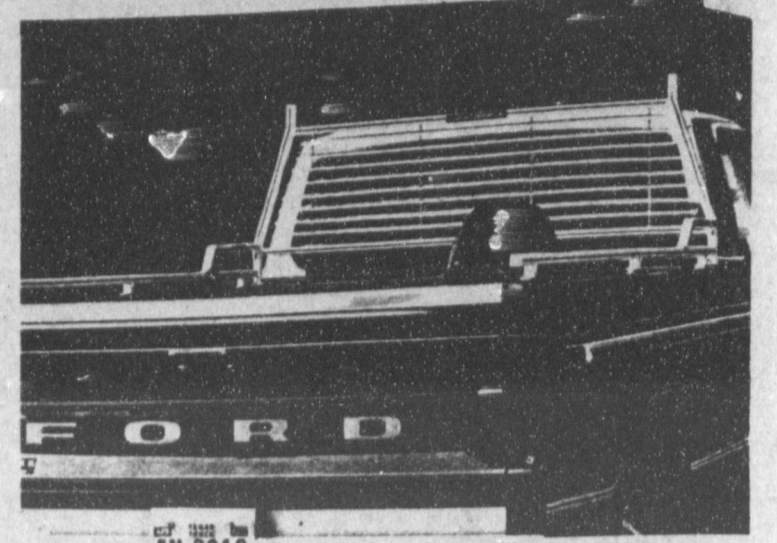
7999

Includes power roller canister, with twist-lock top. 18" vinyl paint hose with fitting to attach, 9" roller unit and more.

shop-vac

Mighty Mini 4999

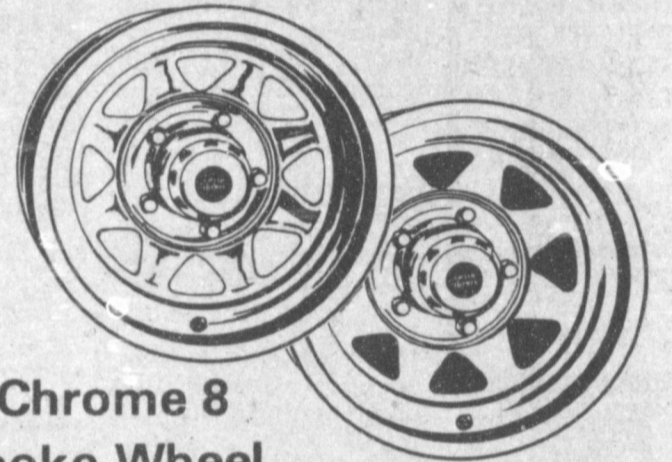
- Lightweight - 6 lbs. w/carry handle.
- 18' cord for large area coverage.
- Large capacity disposable bag.
- Complete w/cleaning attachments.
- 1.0 peak HP motor.
- No. M100



Pick-Up Cool Shade

5999

Cool shade cab-rack with top extensions of 3 1/2" for use of stacking materials such as lumber, pipe, ladders, etc. For GM, Dodge and Ford.



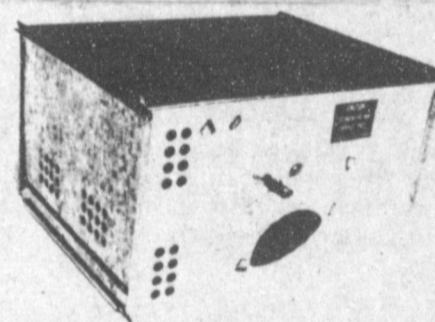
Chrome 8 Spoke Wheel

13596
15x7
Set of 4

Applications for most passenger cars and light trucks in stock.

White 8 Spoke Wheel

8796
15x7
Set of 4



Ketch-All Mousetrap

1088

An automatic mousetrap. The Ketch-All is completely safe, won't harm children or pets. Catches mice alive and unharmed. Easy to release.



Heat Tapes 15% OFF

Regular Price

Features press-to-test thermostat and pilot light. 6 watt per foot, 120 VAC with 2 ft. cold lead and plug.

4'	5.40	18'	7.43
6'	5.67	20'	7.79
8'	5.94	24'	8.37
10'	6.26	30'	9.77
12'	6.66	40'	12.60
16'	7.16	60'	16.83
100'	23.26		



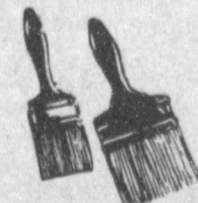
WD-40 129

9 oz. Stops squeaks and helps prevent rust.



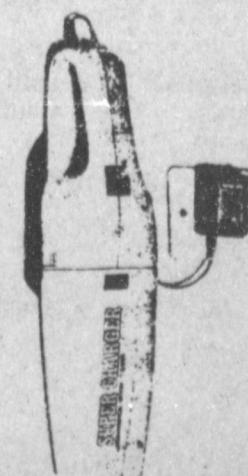
Wheel Barrow Tire 2588

4.80x8 tire, 3/4" wheel, and tube.



2 Piece Brush Set 399

2" Trim Brush 8 4" Wall Brush 100% Polyester.



Super Charger Rechargeable Vacuum Cleaner 1999

Super Charger is the state of the art in rechargeable hand-held vacuum cleaners, and designed for durability, performance, and dependability. Super Charger contains more energy for those daily clean-up jobs.



WEST POINT MULE MASCOTS--Toni Eagle, manager of the Muleshoe Chamber of Commerce and Agriculture, has been in contact with Dr. Robert McCaskill, veterinarian for the West Point Mule Mascots. Dr. McCaskill has indicated a definite interest in visiting Muleshoe in August with the Mule Mascots, riders, and trainers and handlers for the annual Mule Day Festival.

Farm Bureau Group Tours In Hawaii

Mr. and Mrs. Lewis Dale and Mr. and Mrs. Alec Schuster all of Muleshoe, have returned from the 66th annual meeting of the American Farm Bureau at Honolulu, earlier in January. They represented the Bailey County Farm Bureau, and were among the more than 600 county Farm Bureau leaders who qualified for the trip in a Texas Farm Bureau awards program. The program allowed for up to two county Farm Bureau leaders and their spouses to be chosen by their county Farm Bureau Board of Directors to receive an award which helped to defray the cost of the trip.

The Dales and the Schusters attended the AFBF meeting at which 1985 policies were adopted for the AFBF. They heard addresses by AFBF

President Robert Delano, former Environmental Protection Agency director, Williams Ruckelshaus and Peter Grace, whose commission studied ways to reduce federal spending. There were also conferences on national issues, economic services and commodities. Following the convention, they departed for a tour of the islands of Maui and Hawaii,

FmHA Natural Resources Meet Slated

Farmers Home Administration (FmHA) has prepared a draft Natural Resource Management Guide. The Guide is a brief document describing the major environmental standards and review requirements that have been promulgated at the Federal and State levels and

which is known as the "Big Island." They saw the Hawaii Volcanoes National Park, including Kilauea, the Kona Surf, and a macadamian nut farm on the island of Hawaii. They also saw the volcanic crater atop Halekale (House of the Sun), a floral nursery and Lahaina, the former capital of Maui which was a historic old whaling center.

that affect the financing of FmHA activities in Texas. The purpose of the meeting is to discuss the Guide as well as to consider comments and questions from interested parties. Copies of the Guide can be obtained by writing or telephoning the above contact.

The meeting is scheduled for February 7, 1985; at 10:00 a.m.; in the Federal Building, 101 S. Main, Room 134 Temple, Tx 76501.

J. Lynn Futch, FmHA State Director said that any person or organization desiring to present formal comments or remarks during the meeting should contact FmHA in advance, if possible. It will also be possible at the start of the meeting to make arrangements to speak. Time will be available during the meeting to informally present brief, general remarks or pose questions. Additionally, a 30-day period for the submission of written comments will follow the meeting.

ATTENTION
Farmers
Ranchers - Dealers
Ward Bros. Tractor
Annual
Farm Machinery
AUCTION

Will Be Held Feb. 28th
& March 1, 1985.

If You Have Farm Machinery
To Sell, Please Contact Us
Before Feb. 10th, 1985 To
Have It Listed On Sale Bill.
PHONE 505-762-2612 OR
762-1015

Ward Bros. Tractor, Inc.
Clovis, N.M. 88101



I Care

Because We Care,
Let Us Help You.

Come In And Visit With Us
About Our "I CARE" Program.

Muleshoe State Bank
Member F.D.I.C.

101 West American Blvd. 272-4561

Bailey County Journal
'The Community of Opportunity-Where Water Makes The Difference'

Section B
Published Every Sunday At Muleshoe, Bailey County, Texas 79347

West Point Mule Mascots May Visit In Muleshoe

Toni Eagle, manager of the Muleshoe Chamber of Commerce and Agriculture contacted Dr. Bob McCaskill, veterinarian for West Point Military Academy at West Point, N.Y. to inquire about the United States Military Academy Mule Mascots.

On January 28, she received a letter from Dr. McCaskill. The letter was as follows:

"Dear Sir:

"Thank you for your inquiry about the United States Military Academy Mule Mascots. Our 26 year old mule, "Buckshot" will be retiring from active duty in the near future. With her retirement, we will be in need of another mule. Your interest in helping us obtain a new young mule is truly appreciated. We are interested in obtaining a broken, black mule of either sex in the weight range of 1000-1200 pounds.

"With the exception of our early mules, which were U.S. Government property, our mule mascots have been donated by individuals, groups, states, or other sister service academies. There is sufficient interest by other United States Military Academy graduates and friends

in the mule mascots who could be called upon to assist.

"Our Corps of Cadet Mule Riders have participated in state and city Mule Day Activities. They recently were the guests of honor of Bishop, California, Mules Days in May 1984. I am sure that we would be interested in your festivities as well.

"Thank you for your interest in our mule program.

"Sincerely,
/s/ Robert E. McCaskill, DVM
Major, Veterinary Corps
Deputy Commander for
"Veterinary Services"

Mr. Eagle said Dr. McCaskill told her he calls San Antonio 'home,' and has been with West Point for 18 months.

Dr. McCaskill also told her the first time a mule was used as their mascot was at the Army-Navy game in Philadelphia in 1898. It was a white mule that had been 'swiped' off a milk wagon.

Their first official mascot was Mr. Jackson, in 1932. Mr. Jackson was retired in 1951. Other mascots were Poncho, Hannibal I and Hannibal II and Trotter. Trotter was the most famous of the mascots. He was an Army mule and served in

World War II and Korea. He was a "jumper" and won an impressive lineup of trophies and ribbons, according to the veterinarian.

Tentative plans at this time are for the mule mascots to come from West Point for the Mule Day Festival the second weekend in August in Muleshoe. Details will be released as they are worked out, said Mr. Eagle.

WHO KNOWS

1. Which president was born January 30, 1882?
 2. In what war did General John J. Pershing serve?
 3. Who said, "The God who gave us life, gave us liberty at the same time"?
 4. Which U.S. president had the most children?
- Answers to Who Knows**
1. Franklin D. Roosevelt.
 2. World War I.
 3. Thomas Jefferson.
 4. William H. Harrison, six sons and four daughters.

True Value
HARDWARE STORES

TOOL VALUE
OF THE MONTH



3⁹⁹

2-Pc. Locking Plier Set
Includes a 7-in. and a 6-in. plier. Sturdy steel. LP607
QUANTITIES LIMITED

True Value
HARDWARE STORES

BARGAIN
OF THE MONTH



2⁹⁹

3-Pc. Servin' Saver™ Bowl Set
Includes 4, 6 and 12-cup see-through bowls with lids. 8093
QUANTITIES LIMITED

True Value
HARDWARE STORES

HARDWARE
VALUE
OF THE MONTH



10⁸⁸

27-Inch Stepladder
Double-riveted steps, safety non-slip feet. Aluminum. 327
QUANTITIES LIMITED

Fry & Cox, Inc
401 S 1st. 272-4511

PIVOT PRODUCTS

Come In And See Our New P&R Surge Systems

INTRODUCING
auto pro
controller

WITH

- ★ Internal batteries
- ★ Automatic lengthening surge times
- ★ 4 manual time/cycle settings
- ★ LCD constant display
- ★ Tactile keys
- ★ Battery check and low signal
- ★ NOW WITH SOLAR POWER



And Introducing The

basic
box

Simple Accurate
Affordable

With optional internal batteries and solar power

Make your best deal before season begins
To ensure delivery of these pieces before you need them.

We will gladly demonstrate these new products for you.

Several Used Systems Available

6, 7 and 8 inch valves

p&r
surge systems

Pivot Products Distributors, Inc.
Muleshoe 272-5536

West Highway 84

Nursing Home News

by Joy Stancell

Thursday morning the residents had a Devotional in the Dav Room. Lois Ethridge and Blanton Street lead a song. Mr. Peat read scripture out of the Bible. Clara Lou Jones and Zora Mae Bellar played the piano and led some songs.

Ernest Kerr, Lois Ethridge, Cleo Bellar, Edith Bruns, Rosa Holland painted a plaque in craft class Friday morning. They will complete it in this Friday's class.

Rosa Holland's daughter and son-in-law from Ariz. are here visiting Mr. and Mrs. Holland this week.

Lois Ethridge, and Cleo Bellar attended the Sr. Citizens meeting at the Methodist Church Monday. Our thanks to the Sr. Citizens for their hospitality and Lena Ruthardt for taking them.

Sunday morning the members of the Muleshoe Church of Christ brought communion for those who would like to partake.

Earl Peterson came for Bible Study Sunday afternoon. The Muleshoe Church of Christ came for Gospel Singing.

On Monday mornings Lena Hawkins is having a Bible Study with the residents in the Nursing Home Day Room.

Tuesday afternoon the Hospital and Nursing Home Auxiliary came to shampoo and set the ladies hair.

Wednesday morning we had a juice tasting party in the Day Room. We had about six varieties of juice to taste. Most of them we had not tasted before and some of them we hope we never do again. Ruth Hall, Bonnie and Nick came to visit us and show two films. Our special guest and a real sport, was Ruby Lee Kerr.

Dorothy Hanes Played Skip-Bo with Cleo Bellar and Lois Ethridge Wednesday afternoon.

Wednesday afternoon Glenda Jennings came for a Sing-A-Long with the residents. We were so thrilled to have "Demp" Lowry Lewis attend.

Edith Goucher got a new perm Wednesday morning. We sure do like her new hair-do. Edith's friend Annie has been to see her several times this week. It was so nice to see Doc back visiting. He was not able to come for awhile due to illness.

Cleo Bellar, Lois Ethridge and D.J. Gage attended the monthly A.A.R.P. Meeting Friday at the Civic Center. We wish to thank them for their hospitality.

Fred Peat has not been feeling well this week. We really miss seeing him up and about the nursing home.

Feb. 15th at 6:00 p.m. a group of Gospel Singers from Hereford will be coming (if the weather permits) to sing. We have heard they really do a good job. We invite you to come and hear them.

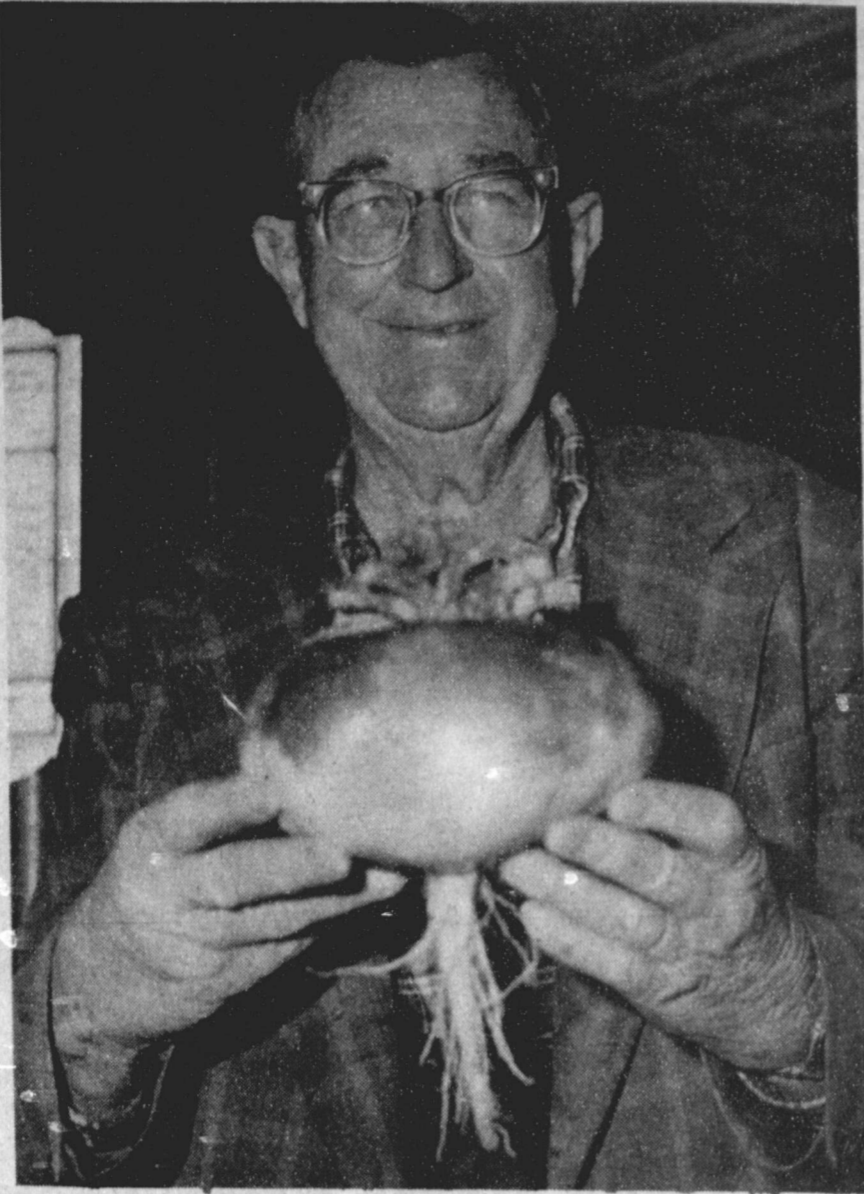
If you need a baby sitter for your Cabbage Patch Doll, Lois Ethridge said she would just love to do it. Wasn't that what you were doing Wed. morning Lois?

Josie Flowers visited Margaret Beard this week.

Effie Jennings was visited by her son Wed.

Mrs. Hollis was visited by Elizabeth Harden, and her brother A.D. McCarty.

Mr. McCormick has visited the nursing home this week.



THAT'S A BIG, BIG TURNIP--The Rev. Gene H. Davis, who lives at 720 East Sixth Street, grew this monstrous size turnip at his home in a garden. It is a 'Purple Top' turnip, and weighs four and a half pounds. The very solid turnip is eight inches across and approximately 20 inches around the edge. It will be making someone a good meal.

Courthouse News

WARRANTY DEEDS

Robert DeLaRosa and wife, Deanna DeLaRosa to Marcelo Rodriguez and wife, Carmen Rodriguez--Lots Numbers (3) and (4), Block Number (1), of the Original Town of Enochs, Bailey County, Texas.

Zed Robinson and wife, Maud B. Robinson to Gary R. Hugg and wife, Rhonda L. Hugg--The Easterly 25 feet of Lot No. 197 and the Westerly 50 feet of Lot No. 198, Richland Hills Addition to the City of Muleshoe, Bailey County, Texas.

COUNTY COURT

Summit Savings Association VS Paula Snell and Dell Snell Judgement

Dianne S. Terry DWI \$250 fine 2 years probation

Lewis M. Snow, Jr. DWI \$250 fine 2 years probation

Raul Cortez Cruz DWI \$250 fine 2 years probation

Octavio Hernandez Possession of Marijuana, under four ounces but over 2 ounces, \$400 fine

Joe Luis Flores DWI \$250 fine 72 hours jail

West Plains Hospital Report

PATIENTS IN WEST PLAINS MEDICAL CENTER

January 29--Rosa Sneed, Elmer Smith, Lealler Lyons, Elias DeLeon, Sammie Ethridge, Roland Dale, J.C. Shanks, Raymond McGehee, Louva Kersey, Jimmy Lee Franko, Suzette Rojas and Baby Boy and Cathy Loflin.

January 30--Rosa Sneed, Elmer Smith, Susan Fancher, Tavino Jaquez, Ramone Villarreal, Elias DeLeon, J.C. Shanks, Raymond McGehee, Louva Kersey, Jimmy Lee Franko, Suzette Rojas and Baby Boy, Minnie Redwine and Cathy Loflin.

January 31--Juanita Lumbraera, Elmer Smith, Rosita Castillo, Tavirino Jaques, Elias DeLeon, J.C. Shanks, Raymond McGehee, Louva Kersey, Jimmy Lee Franko, Cathy Loflin, Amanda Claybrook, Suzette Rojas and Baby Boy and Minnie Redwine.

Letter To The Editor

Journal:

Have you ever drove through a town and immediately became depressed, or never seen anything at all, because nothing really caught your eye?

Stop!! Look at Muleshoe. There is nothing here to catch a persons eye. No shrubs or trees down Main street or American Blvd. Nothing for the children to do. In fact nothing period.

What do the kids do? Drag Main, ride around, go park in the country. Play in the cemetery at night. Buy them DRUGS AND DRINK! Why not, they have nothing else to spend their money on. And Lord knows their nothing to look at.

Please someone give these kids a chance. I am only one little person, unemployed and broke. And nothing I can do but be sick at heart, and watch my children's generation going straight to the bottom.

What is it we don't want to be bothered with a little bowling ally, Indoor movie. A real skating rink where the teenagers would enjoying going to. Us adults, it doesn't really matter we have already been down that road. We've had our fun and we're tired after work to worry much about going out.

Where can Jerry take Jenny? To the mule lot drink maybe old Satan will be there with some drugs, we can get a little of this and a little of that. Lets take some and go out to the edge of town and watch the lights at the feedyard. what a trip!! Now I ask you is that sick or is it sick, but why not have nothing else to do.

Remember old Jacob? Well he went away to collage. All the boys were telling of the things they did while in school. They asked old Jacob why he was so quiet. Didn't he have any fun growing up. Poor old Jacob replied "Well I though we had fun. But listening to you all we didn't have any. All we did was drag main drink and do drugs. I come from a small town called Muleshoe Texas, with a population of 5000. Our folks wouldn't let us go to the nearest town of 30 miles. Said there was to

many drunks on the road, and to many kids over there was on drugs. Oh! if they only knew." Stand back folks and take heed, this the way it is.

Give these kids somethin to be proud to say "HAY MAN" I come from a small town called MULESHOE, TEXAS we had something to do and we

look care of one other. We didn't have a drug problem, and the bootleggers went broke, when we quit buying booze from them.

An for heavens sake--No for the sake of our kids city of Muleshoe tear down those old depressing buildings.

Yours Truly Sharon Baker

Cotton Harvest Now Winds Down

Most of the High Plains 1984 cotton crop was off-the-stalk by the week ending January 25, according to Mack Bennett, Area Director for USDA's Marketing Services Office at Lubbock. Many modules of field stored cotton remain to be ginned. Much of the remaining harvesting and ginning is in southern and western counties, Bennett said.

Many gins in northern and central counties have finished the season or will finish soon.

The Lubbock office classed 148,000 samples during the week ended Thursday, January 24. This brought the season's total to 1,570,000 and compares with 963,000 classed by the same date last year.

The week's predominant grades were grade 52 at 28 percent followed by grade 42 at 23 percent and grade 51 at 21 percent. About 54 percent was reduced one grade because of bark.

Predominant staples were staple 30 at 22 percent, staple 31 was 25 percent and staple 32 was 17 percent. The average was 31.2 thirty-seconds of an inch.

Micronaire 35-49 amounted to 7 percent, 33-34 was 10 percent, 30-32 was 31 percent, 27-29 accounted for 34 percent and 26 or below was 18 percent. The average was 29.

High Volume Instrument breaking strength averaged 25.3 grams per tax at Lubbock during the week ended January 24.

Cotton prices continued to slide lower on the Texas High

Plains. Growers sold mixed lots of mostly grades 42 and 52, staples 30 to 32, mike 30-32 at around 400 to 500 points over 1984 Commodity Credit loan rates. This was about one cent per pound lower than a week earlier.

Gins paid High Plains growers \$88 to \$105 per ton for cottensed, mostly \$90 to \$95.

TTI researchers advise against dodging potholes

It's a big mistake to try to veer around or slow down quickly for potholes, say researchers at Texas A&M University.

"Holes, unlike most highway surface discontinuities, have a greater potential to cause damage at lower vehicle speeds," report Texas Transportation Institute researchers Dick Zimmer and Dr. Don Ivey.

"At common highway speeds, in excess of 40 mph, a hole must be more than 60 inches long and three inches deep to constitute a safety threat to the smallest automobiles," Zimmer said. "On urban streets, with traffic speeds as low as 20 mph, holes must still be more than 30 inches long and more than three inches deep to have the potential of damaging tires and/or rims."

Reacting to a pothole inappropriately -- by extreme cornering or braking -- has the potential for worse consequences, Zimmer said.

Tests showed that the path of a vehicle was not affected when it struck relatively large potholes head-on.

Need Information About Crop Insurance?

Call **Ronnie Holt**

272-3614 Or 965-2842 (Home)



OPEN Mon. thru Sat.
7:30AM - 7:30 PM

"Times Change..."

and so does your



America's farmers and ranchers have changed...and so has their Production Credit Association. PCA people know what it takes to make a farm or ranch operation a success TODAY. That's why PCA offers competitive interest rates and financial analysis.

Cattle drives to computer disc drives, changing with the times makes Production Credit - your First Class, First Choice Ag Lender.

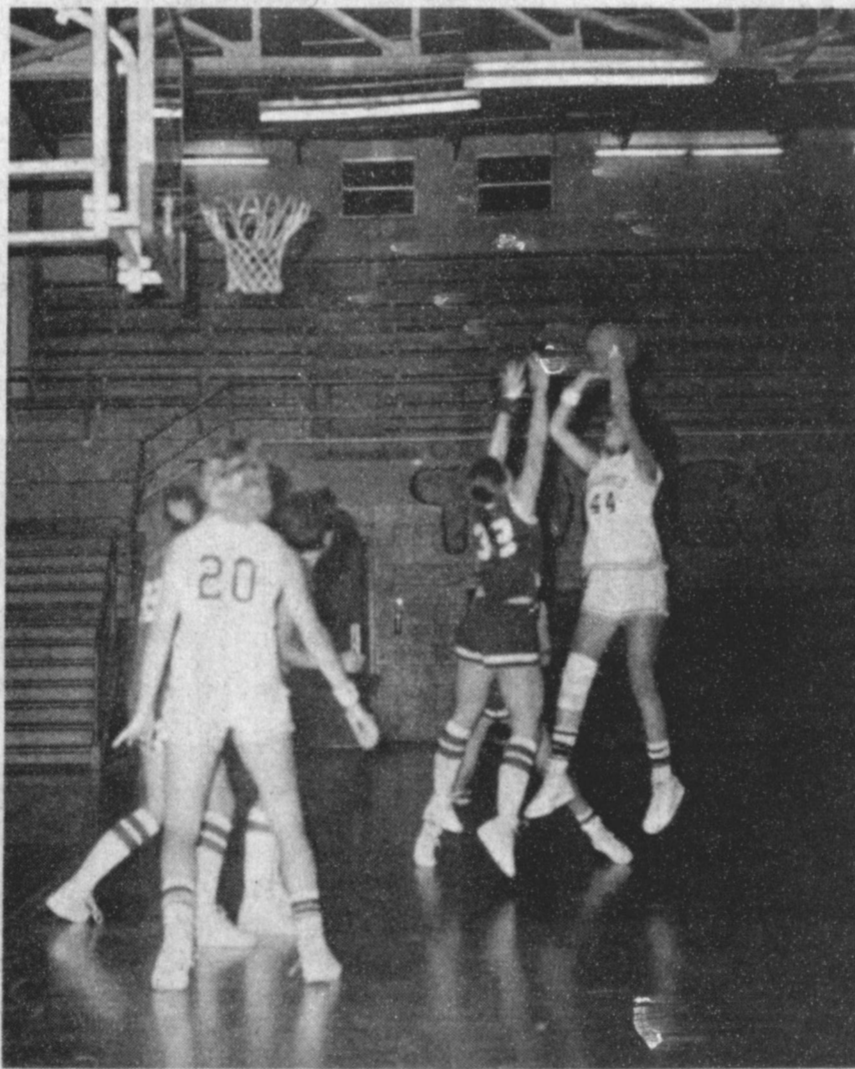
LOANS FOR:
General Expenses
Feeder Cattle
Pasture Cattle
Crop Expenses
Inventory
Receivables
Commodity Hedging

TERM LOANS FOR:
Tractors
Harvest Equipment
Machinery
Vehicles
Sprinklers
Improvements
Real Estate

Agri-Business Loans

Ted Barnhill, Vice-President
Ronda Spies, Ass't Vice-President
Dianne Wiedebush, Office Secretary
SEE OR CALL A LOAN OFFICER AT:

PRODUCTION CREDIT ASSOCIATION
312 W. 2nd Muleshoe, Texas 272-4220



GIRLS IN ACTION--Last Tuesday night, the Mulettes lost to the Dimmitt Bobbies in action in the Watson Junior High School gym. Here, Debbie Isaac goes up for two in the game.

Lease New GMC or Chevrolet

Silverado Suburban



No. 10205 \$361⁰⁶

Dual air, power windows & door locks, all the extras. 48 month closed end lease, plus security deposit & first payment.

Sierra Classic Suburban



No. 50721 \$372⁴²

Dual air, power windows & door lock, all the extras. 48 month closed end lease, plus security deposit & first payment.

Robert D. Green, Inc.

2400 W. American

272-4588



GM QUALITY SERVICE PARTS



Mr. Goodwrench

GENERAL MOTORS CORPORATION

SOUTH PLAINS COLLEGE HOMECOMING HOLIDAY

Win One of Two Trips to Mexican Resort Cities At South Plains College's 1985 Homecoming Monday, February 11, 1985 • Texan Dome • Levelland

*Round-Trip Air Fare, Hotel Accommodations for Two Lubbock to Cancun, Mexico

*Round-Trip Air Fare, Hotel Accommodations for Two Lubbock to Puerto Vallarta, Mexico

Prizes to be given away during halftime of the South Plains College vs. Howard College men's and women's basketball games.

Trips Courtesy of AMERICAN AIRLINES, INTERNATIONAL TOURS OF LEVELLAND, and MEXICAN REPRESENTATIVES, INC.

