

The McLean News

Serving McLean and the Area Since 1903

VOLUME 75 McLEAN, GRAY COUNTY, TEXAS THURSDAY, OCTOBER 19, 1978 PRICE 20¢ NUMBER 42

from the
distaff side
by Linda Haynes

Residents of McLean received little pink slips last week from the city, county, and school district with taxes due for the year. The popular thing to do is gripe about the taxes we pay, and I've certainly been guilty of that.

But it really is a good system, where each person pays a little to benefit everyone. I grew up in Oklahoma, and the first impression I remember having about Texas was the fantastic road system through the state. Now, I love Oklahoma, but Oklahoma's super highways are often not as well maintained as Texas' farm-to-market roads.

And that's just a small part of what our taxes pay for. We get a lot of service from what we pay, but, of course, I'm still going to gripe about having to pay them. That's the American way!

But, if you think taxes are bad here, talk to someone from the north or east part of the country. I visited with a resident of Long Island this summer, and she was amazed to learn that Texans had no state income tax. She said that her home was valued at \$60,000, and that her total property taxes last year were \$7,000! Plus she and her husband had to pay state income tax, too. Now, that is a heavy tax burden. You're probably getting tired of hearing this, but aren't you glad you live here???

No matter what your problems, whether it's taxes or something else, you can always find someone worse off than you are. My mother told me many times when I was little that if all the people would hang their troubles on a clothes line, each person would want his own problems back.

Or maybe an old Persian proverb states it better: "I cried when I had no shoes, until I met a man who had no feet."

Does anyone remember the sign that was posted outside Dumas for many years? It read: "Dumas, with 8,880 nice people and a few old soreheads."

Maybe McLean should think of investing in something like that.

I'm continually amazed at how many terrific people there are in McLean, and when you stop to think about it, there are just a very, very few old soreheads!

Election time is getting nearer and the political campaigns are heating up.

One of the most interesting ones has to be the race between Bill Clements and John Hill. This is the first time in many years that the race between a Democrat and Republican for governor in Texas has stirred any interest. Usually, once the Democratic primary was finished, everyone assumed that the Democratic candidate would be the next governor.

Not so this year. We have been inundated with material from both candidates, but just guessing from what we received I would say that Clements is outpacing Hill (on postage, anyway) by about two to one. I don't claim to have enough political savvy to sway anyone's vote, but I never have voted a straight party ticket, and I don't intend to this year. There are a couple of Republicans running for office this year that I am very impressed with, and I intend to vote for them, but Bill Clements is not one of them.

As far as I am concerned, Clements has concentrated too much of his campaign on personalities, and not enough on issues. John Hill, on the other hand, has a good record in public office.

I have heard Hill speak a few times, and he is a bright, well-educated man who seems to be honest and sincere about his beliefs.

See DISTAFF, Page 2



Tiger Randy Suggs (85) races to rescue ball carrier David Tolleson (20) who was stopped by the powerful Groom defense Friday night. (Staff Photo)

Groom Spoils McLean Homecoming, 42-0

A jubilant Homecoming crowd watched the inexperienced McLean Tiger team hold state-ranked Groom to six points in the first half of the battle of the Tigers Friday night at Duncan field, but after half-time the crowd was stunned

as Groom scored on the kick-off and piled up 36 points in the second half to blank McLean 42-0. The McLean Tigers played a strong first half, holding Groom inside their own ten yard line several times. Groom scored in the first min-

ute of the game when Neil Weiberg stripped Tiger David Tolleson of the ball on the Tigers 20 yard line and raced for a score. Groom's conversion attempt failed, and McLean proceeded to hold the District I-B powerhouse scoreless for the rest of the half.

When Groom came back at half-time, they showed why they are considered a threat to top-ranked Wheeler. Groom back Jigger Britten caught the Tiger's opening kick-off and raced 85 yards for a quick score. From that point on it was all down-hill for the home squad.

Dwain Weller scored on a 32-yard run for Groom later

in the third quarter. Weiberg gave the Tiger's trouble all night long, scored three more times to make the score 42-0 at the end of the game.

Groom hosts top-ranked Wheeler tomorrow night in what is expected to be the I-B showdown.

McLean travels to Booker to face a tough Kiowa team tomorrow night.

STATISTICS

McLean vs. Groom

| Score by quarters: | 1 | 2 | 3 | 4 |
|--------------------|---|---|----|----|
| McLean | 0 | 0 | 0 | 0 |
| Groom | 6 | 0 | 21 | 15 |

See TIGERS, Page 2



FLAME QUEEN - RACHEL GLENN

High School Royalty Crowned At Homecoming

McLean High School has two new members of royalty this week following coronation ceremonies Thursday and Friday night.

Rachel Glenn, a senior, the daughter of Mr. and Mrs. Bob Glenn, was crowned Flame Queen at the Homecoming

bonfire Thursday night. Miss Glenn, the president of McLean High School pep club, was chosen by pep club members for the honor. The Flame Queen is chosen as the member of the pep squad who exhibits the most spirit through the year.

Friday night before the McLean-Groom football game, Robin Smith, daughter of Mr. and Mrs. Harold Smith, was crowned Homecoming Queen. Miss Smith is a senior.

She was chosen by the members. See ROYALTY, Page 2



Homecoming Court - Bottom Row: Donna McAnear, Queen Robin Smith, and Sherry Glass. Top Row: Rhonda Woods and Judy Trew. (Staff Photo)

Hospital Hearing Tonight

A public hearing is scheduled for tonight (Thursday) at 7:30 p.m. in the Gray County Courtroom in Pampa for the public to express its views to the Commissioners Court concerning leasing of the McLean Hospital and Highland General Hospital to American Medical International, Inc. of Houston.

The meeting date was set at a commissioner's meeting Oct. 2 when commissioners authorized County Judge Don Hinton to sign a letter of intent with AMI. Hinton said at that meeting that the county is faced with three possibilities: a bond election for needed repairs and expenses, the creation of a hospital district, or the lease of the hospitals. AMI has agreed to spend approximately \$750,000 to correct the plumbing and other plant deficiencies, and to repay \$483,278 owed by

the hospitals to the federal government in the form of a Hill-Burton loan. These expenditures would give AMI a five-year lease on the two hospitals with the option of leasing the facilities for two more five-year periods. The meeting tonight is the first of two meetings for the public. The second is scheduled for Oct. 30 at 7:30 p.m. in the Gray County Courtroom.

Moore, Tolleson Take Honors

McLean High School Rodeo Club members participated in two rodeos recently, bringing home prizes from both.

On Oct. 8 at the Booker High School Rodeo, Kelly Moore, McLean High Senior, won fourth in pole bending and David Tolleson, McLean High junior, won a first-place buckle in steer wrestling.

On Oct. 15 at the Berger High School Rodeo, Miss Moore brought home a first-place buckle in barrels and a fifth in pole bending, and Tolleson won fourth in steer wrestling.

Don Caswell and Tammy McLain also participated in the Berger rodeo.

The High School Club members will travel to the Slaton High School Rodeo Sunday at the Lubbock Coliseum.

EDITORIAL

Tonight at 7:30 in the Gray County courtroom, a meeting will be held which could affect the health of every citizen in the county.

Gray County Commissioners have called the meeting to get the opinion of the public about leasing Highland General Hospital in Pampa and McLean Hospital to American Medical International, Inc. of Houston.

Every person who lives in the county should be vitally interested in the subject.

The two hospitals in the county have been in trouble for years. Bad publicity, questionable management of Highland General, and rising medical costs, as well as factional bickering have caused the hospitals to lose money most of the time.

But accounting is just like statistics. A good statistician can quote statistics to prove anything, and so there is more than one way to look at the "loss" of the hospitals.

On the ledger sheets the hospital has broken even or lost, but has not shown an over-all profit. But what about the money the hospital pumps into the community? In McLean alone, the hospital has spent \$181,908 since the first of the year for salaries, utilities, groceries, and other expenses.

By the time this money is spent in the community, it has generated from \$500,000 to \$800,000 in business for McLean.

Apart from money, of what benefit has the hospital been to McLean?

We certainly would not have gotten the nursing home approved if we had not had a hospital in the community. Possibly El Paso would not be considering an expansion if the hospital was not here. And what about Marie Foundations?

Would any industry want to move into a community with no hospital care?

Apart from those considerations, the people of McLean have been fortunate to have emergency help just seconds away from their homes. How many of you have a loved one who would not be alive if it weren't for this hospital?

Perhaps that sounds a little dramatic, but as a person who fits that description, I can tell you that I value this hospital as a life-saving, worthwhile institution.

I am not sure that leasing the hospital is the right answer, but I intend to go to this meeting and listen to the facts, and then if the matter comes to a vote, I will at least be informed.

If you are concerned about the hospitals in Gray County, go to the meeting. Listen to the representatives of AMI, question the commissioners. They are sworn public officials who are to "protect the interests of the public." Make your opinions known by telling county commissioner Ted Simmons, by writing letters to this paper for publication, by discussing the issues with your friends and neighbors.

Let's don't all sit around until we wake up one day and find that McLean and maybe even Pampa has no hospital because of lack of funds.

See you at the meeting!

Alanreed Carnival Set October 27

The Alanreed school has set its annual Halloween Carnival for Friday, Oct. 27 from 6 p.m. to 9:30 p.m.

Booths for the carnival include a spook house, ring toss, dart throw, cake walk, and Johnny throw. Bingo will be played.

Alanreed students are selling chances on a black and white television, and a door prize will be given away.

KPDN Plans

Band Broadcast

KPDN in Pampa will broadcast the UIL Marching Contest in Canyon Oct. 24 from 9:54 a.m. until 10:54 a.m. The McLean High School band will perform during that period. Those who wish to hear the band's performance can tune their radio to 1340 to hear the broadcast.



'Twas the last rose of summer... This Yankee Doodle rose, a new hardy variety, was brought to the News office by Mrs. Evan Sitter. The rose had been cut seven days when this photo was taken. (Staff Photo)

GIVE
BLOOD
TODAY!!
3-6 p.m.
METHODIST
CHURCH

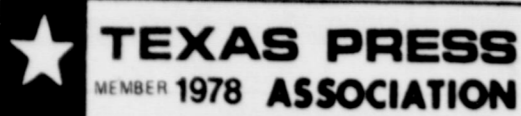
The McLean News

Linda Haynes
Owner and Publisher

Lisa Patman, associate editor
210 North Main P.O. Box H

Published each Thursday at McLean, Gray County, Texas.
Second class postage paid at McLean, Texas 79057.
Subscription rates: \$8.00 per year in Gray County
Outside Gray County \$9.00
Open retail advertising rate: \$1.15
National advertising rate: \$1.64 (806) 779-2447

McLEAN, TEXAS
POPULATION 1183 (1970 census)



DISTAFF

Continued From Page 1

Perhaps the best way to judge a man is to talk to the people who know him and have worked with him before he entered politics. A former student of mine, and a good friend whose judgement I respect, Joyce Beasley, is serving as an assistant attorney general in Hill's office, and she says he is one of the hardest-working, most dedicated people she has met. So, John Hill will get my vote, and I hope you will look behind all the charges and counter-charges that are flying through the air these days, and investigate the two men, and vote! Remember, if you don't vote, you can't grieve.

VFW Convention To Begin Nov. 4

The Veterans of Foreign Wars will have their ninth annual district convention in Pampa Nov. 4 and 5. Registration will begin Saturday at 2 p.m. in the Sportsman's Club in Pampa, followed by a cocktail hour and a dance. On Sunday, the veterans will attend a breakfast and business meetings. The convention will close with a banquet at 1 p.m. Sunday.

Hospital Report

IN THE HOSPITAL THIS WEEK:
Vick Back
Evanella Franke
Cool Griffith
Ruth Kemp
Mary McClellan
Maude Nail
Cecil Nicholas
Pete Rice
C.E. (Buck) Glass
DISMISSED SINCE OCT. 11
Elmer Day
Linda Herndon

McLean Weather

| DATE | HIGH | LOW |
|-------|------------|-----|
| 10/11 | 88 | 60 |
| 10/12 | 90 | 46 |
| 10/13 | NO READING | |
| 10/14 | NO READING | |
| 10/15 | 80 | 39 |
| 10/16 | 72 | 46 |
| 10/17 | 78 | 52 |

The word "cheerful" is said to come from the Latin *carus*, meaning "face."

Yearly Prairie Chicken Season Slated

LUBBOCK -- The annual two-day hunt for the lesser prairie chicken has been set for Oct. 21-22 in twelve Panhandle and South Plains counties and the outlook for chicken hunter success is only "fair."

An extremely cold winter, dry spring conditions on the nesting grounds and heavy rains in some of the prairie chicken country have had an effect on the game birds population. A decrease in the number of male birds was noted this last spring.

Counties open to hunting of the elusive pinnated grouse (prairie chicken) on the South Plains includes: Cochran, Hockley, Terry, and Yoakum and the Panhandle counties include: Collingsworth, Donley, Gray, Hemphill, Lipscomb, Ochiltree, Roberts, and Wheeler.

The daily bag limit of two birds may be bagged from one-half hour before sunrise to sunset. Only shotguns and longbows and arrows will be allowed during the hunt. No special permit will be required of participating hunters other than the normal Texas hunting license requirements.

For several years, successful chicken hunters were required to check their birds through P&WD check stations located at strategic locations within the 12-county area. These check stations furnished the biologists with important information as to sex, weight, location of hunt and other pertinent harvest data needed to properly manage the resource.

Check stations will again be setup in areas frequented by prairie chicken hunters and

the P&WD biologists are asking the hunters to voluntarily check their birds through the station. The checking of birds by the biologists will not be mandatory, but the hunters will realize the importance of the inspection of each bird during the two-day hunt.

The Oct. 21-22 hunt was set to allow a chance for hunters to bag birds starting to utilize the grain fields. A later hunt would have found too many birds using the grain fields and possible, an over-harvest of the game bird would have resulted.

Successful hunters last year preferred the pass shooting opportunities in or near harvested grain fields. A few hunters used their bird dogs to find a kick-up prairie chickens in the large pastures.

Recent rains in the 12-county area have interfered with grain harvest operations and hunters should contact the landowner prior to the two-day hunt for an updated report.

ROYALTY

Continued From Page 1
bers of the football team. Attendants for Miss Smith were senior Sherry Glass, daughter of Mr. and Mrs. Dale Glass; junior Judy Trew, daughter of Mr. and Mrs. Don Trew; sophomore Rhonda Woods, daughter of Dr. and Mrs. David Woods; and freshman Donna McAnear, daughter of J.C. McAnear.

TIGERS

Continued From Page 1

First downs:
McLean - 8
Groom - 16

Yards rushing:
McLean - 101
Groom - 315

Yards passing:
McLean - 12
Groom - 21

Total Yards:
McLean - 113
Groom - 336

Punts:
McLean - 7/35
Groom - 2/38

Passes Attempted:
McLean - 8
Groom - 9

Passes Completed:
McLean - 2
Groom - 2

Passes Intercepted:
McLean - 2
Groom - 1

Penalties:
McLean - 4/50
Groom - 10/120

Scoring Summary:

- G: Neil Wieberg 21 yd. run (Kick failed)
- G: George Britten 85 yd. return (Wieberg Kick)
- G: Dwaan Weller 34 yd. run (Kick failed)
- G: George Britten to Neil Wieberg 16 yd. pass (Weller run)
- G: Neil Wieberg 46 yd. run (White run)
- G: Neil Wieberg 64 yd. run (Wieberg Kick)



seventy-one justices of the peace from across the state of Texas attended a 20-hour Texas Justice of the Peace Training Center seminar Sept. 19-22 in Amarillo. The training center is based at Southwest Texas State University. Among the judges attending were (left to right) Judge Venora Cole, Gray Co., Precinct 2, Place 2; Judge Marjorie Prestidge, Gray Co., Precinct 1; Judge Dorothy B. Patterson, Gray Co., Precinct 5; and Judge G. L. "Nat" Lunsford, Gray Co., Precinct 2, Place 1.

News from your County Agricultural Agent

By JOE VAN ZANDT
Texas A&M University Extension Service

Stocker cattle prices are back up to record levels where many cattle operators got hurt financially several years ago.

The current situation is entirely different than it was in 1973-74 because we are at a different phase in the cattle cycle. The long term future for cattle prices does indeed look strong. Stocker producers are faced with a price roll-back situation but it really is not as bad as it might appear at first.

If we buy a 350 lb. calf for 80 cents and sell him weighing 650 lbs. for 70 cents, there is a 10 cent rollback but percentage wise that is less than buying for 40 and selling for 30. Besides, you are getting 88 cents per lb. of gain today including the rollback as compared to 18 cents for the old price situation. Also you have

\$175 today for expenses and profit as compared to \$55. for earlier production situations.

You ask how do I know that I can get 70 cents when I get ready to sell? If you don't want to gamble, then sell them on the futures market when you buy them. Hedging is not a common practice for stocker operators and it may not work quite as good for you as it might first appear. However, the distant feeder cattle futures have been running in the range of the low 70's for some time now.

Producers that have stalk and wheat fields along with possibly some grass may need to consider the stocker cattle situation. To me, the cattle offer a greater profit potential than trying to harvest \$3.00 wheat next June.

PEACH TREE BORER

QUOTABLE QUOTES

One thing about farmer's relief. It can't last long, for the farmers ain't got much more to be relieved of...
...Will Rogers
I count him braver who overcomes his desires than him who conquers his enemies, for the hardest victory is the victory over self... Aristotle.
Live within your income even if you have to borrow money to do so... Josh Billings.
He who loves not his country can love nothing... Lord Byron
The most acceptable service

to God is doing good to man... Ben Franklin.
Politics: the conduct of public affairs for private advantage... Ambrose Bierce
The man who reads nothing at all is better educated than

the man who reads nothing but newspapers... Thomas Jefferson.
Rum is good in its place, and hell is the place for it... Josh Billings.

COTTAGE OUTLET 911 N. MAIN

NOW OPEN 3 DAYS A WEEK!!!!

THURSDAY THROUGH SATURDAY

9-5

Factory Seconds In Ladies

Undergarments, Sofa and Love Seat, and Many More Useful Items

a good reason to INSURE with US..

CANCER INSURANCE

American Cancer Society spokesmen estimate one out of four Americans will get cancer during their lifetime. Cancer care is costly. Let us talk with you about a policy to cover the cost of medical treatment.

We want the privilege of serving you with all of your insurance needs.

JANE SIMPSON
INSURANCE AGENCY

REPORT OF CONDITION

Consolidating domestic subsidiaries of the
Consolidating domestic and foreign subsidiaries of the

delete whichever caption is inapplicable

American National Bank in McLean of McLean
In the state of Texas at the close of business on September 29, 1978
published in response to call made by Comptroller of the Currency, under title 12, United States Code, Section 161
Charter number 11165 National Bank Region Number 11

NAME OF BANK American National Bank in McLean CHARTER NUMBER 11165
BALANCE SHEET at the close of business on September 29, 1978

| INFORMATION ABOVE LINE NOT TO BE PUBLISHED | Thousands of dollars |
|--|----------------------|
| Statement of Resources and Liabilities | |
| Cash and due from banks | 939 |
| U.S. Treasury securities | 50 |
| Obligations of other U.S. Gov't agencies and corps | 922 |
| Obligations of States and political subdivisions | 537 |
| Other bonds, notes, and debentures | None |
| Federal Reserve stock and corporate stock | 6 |
| Trading account securities | None |
| Federal funds sold and securities purchased under agreements to resell | 250 |
| Loans, Total (excluding unearned income) | 6,176 |
| Less: Reserve for possible loan losses | 64 |
| Loans, Net | 6,112 |
| Direct lease financing | None |
| Bank premises, furniture and fixtures, and other assets representing bank premises | 132 |
| Real estate owned other than bank premises | None |
| Investments in unconsolidated subsidiaries and associated companies | None |
| Customers' liability to this bank on acceptances outstanding | None |
| Other assets | None |
| TOTAL ASSETS | 13,931 |
| Demand deposits of individuals, partnerships, and corps | 1,312 |
| Time and savings deposits of individuals, partnerships, and corps | 1,476 |
| Deposits of United States Government | 11 |
| Deposits of States and political subdivisions | 111 |
| Deposits of foreign govts. and official institutions | None |
| Deposits of commercial banks | None |
| Certified and officers' checks | 12 |
| TOTAL DOMESTIC DEPOSITS | 7,955 |
| Total demand deposits | 3,254 |
| Total time and savings deposits | 4,701 |
| Total deposits in foreign offices | None |
| TOTAL DEPOSITS IN DOMESTIC AND FOREIGN OFFICES | 7,955 |
| Federal funds purchased and securities sold under agreements to repurchase | None |
| Liabilities for borrowed money | 250 |
| Mortgage indebtedness and liability for capitalized leases | None |
| Acceptances executed by or for account of this bank and outstanding | None |
| Other liabilities | None |
| TOTAL LIABILITIES (excluding subordinated notes and debentures) | 205 |
| Subordinated notes and debentures | None |
| Preferred stock, No. shares outstanding, None (par value) | None |
| Common stock a. No. shares authorized 1,000 | 100 |
| b. No. shares outstanding 1,000 (par value) | 100 |
| Surplus | 100 |
| Undivided profits | 526 |
| Reserve for contingencies and other capital reserves | None |
| TOTAL EQUITY CAPITAL | 726 |
| TOTAL LIABILITIES AND EQUITY CAPITAL | 13,931 |
| Average for 30 calendar days ending with report date: | |
| Cash and due from banks | 923 |
| Fed. funds sold and securities purchased under agreements to resell | 510 |
| Total loans | 6,218 |
| Time deposits of \$100,000 or more in domestic offices | 237 |
| Total deposits | 8,179 |
| Fed. funds purchased and securities sold under agreements to repurchase | None |
| Liabilities for borrowed money | 250 |
| TOTAL ASSETS | 9,235 |
| Standby letters of credit (outstanding as of report date) | None |
| Time certificates of deposit in denominations of \$100,000 or more (outstanding as of report date) | 237 |
| Other time deposits in amounts of \$100,000 or more (outstanding as of report date) | None |

I, Roger E. McCracken

V.P./Cashier

of the above-named bank do hereby declare that this Report of Condition is true and correct to the best of my knowledge and belief.

Roger E. McCracken
10-11-78

We, the undersigned directors attest the correctness of this statement of resources and liabilities. We declare that it has been examined by us, and to the best of our knowledge and belief is true and correct.

Directors

COME AND GET IT!

We specialize in old fashioned vittles for people with hearty appetites. You'll like our friendly service.

DIXIE RESTAURANT

OPEN 6 DAYS A WEEK
6 a.m. - 10 p.m.
CLOSED SUNDAYS
Ask for your 10% Courtesy Card.
Owned and Operated by the Middleton Family.

The 53rd Annual Meeting of the PAMPA CHAMBER OF COMMERCE

presents

Jerry Clower

FOR RESERVATIONS WRITE OR TELEPHONE

Pampa Chamber of Commerce

P. O. Box 1342 Phone 689-3241 Pampa, Texas 79065



Thursday October 26, 1978 8:00 p.m. M.K. Brown Memorial Auditorium Pampa, Texas



Tickets \$5.00 each

NO TICKET SALES AT THE DOOR

PAMPA DAILY NEWS NEEDS A RELIABLE PERSON TO DELIVER A NEW SHOPPER PUBLICATION EVERY WEDNESDAY

Contact Pampa News Circulation Dept. 669-2525

John Hill is attacking State Budget waste...

"I've already started my search for waste in the state budget. I want to be ready to tackle overspending the minute I take office as Governor in January. My budget office already is paring down big state agency budget requests, to keep spending within available revenues. We'll have to live within our means, because I'll veto any new taxes."



... because he knows our taxpayers need relief from inflation.

JOHN HILL GOVERNOR

Paid for by John Hill Campaign Fund, Lowell Lebermann, Treasurer, 1036 Brown Bldg. Austin TX 78701 Phone (512) 478-6489

DEATHS

Mrs. Lena Pettit

Mrs. Lena Pettit, 86, died Saturday.

Services were held Sunday at 4 p.m. at the First United Methodist Church with the Rev. James Merrell, pastor, officiating.

Mrs. Pettit was born in Tenaha and moved to McLean from Donley County in 1917. She married J.B. Pettit Feb. 2, 1913 in Lelia Lake. He predeceased her in death in 1941. She was also predeceased in death by her son Buster in 1968.

She was a member of the Methodist Church for over 70 years. She was a member of the United Methodist Church in McLean.

Survivors include a daughter, Mrs. Lavern Carter of McLean; five sisters, Mrs. Blanche Smith and Mrs. Ruby Blackman of Clarendon, Mrs. Eva Feabody of McLean, Mrs. Lela Hammer of Houston, and Mrs. Mellie Childs of Tenaha; one brother, Tom Bogard of Sula; six grandchildren, Mrs. Barbara Trew and Mrs. Mely Ann Rice of McLean; Butch Carter of Pampa; Kenneth Carter of Worth, Sherry Pettit Kreis White Deer, and Gary of Amarillo; and 14 grandchildren.

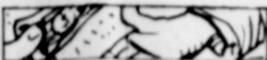
The Di-Gel Difference
... medicine adds to its Antacids.

New Arrivals

Jim and Becky Seaney are the parents of a boy, Will James, born Oct. 10 at Dumas Memorial Hospital. Grandparents are Mr. and Mrs. Cecil Seaney of Follette, and Mrs. Barbara Maddox of Salinas, Calif. Great-grandparents are Mr. and Mrs. R.C. Wilson, Mr. and Mrs. Fred Patterson, and Mr. and Mrs. Buck Henley, all of McLean, Mr. and Mrs. George Seaney, Silverton, and Mr. and Mrs. A.C. Barrett, Quitaque. Great-great-grandmother is Mrs. Alice Dickenson.

Mr. and Mrs. Walt Bailey of McLean are the parents of a boy born Oct. 12 at High Plains Baptist Hospital in Amarillo. He weighed 8 lbs. 14 1/2 oz. and is named Johnathan Ray.

His grandparents are Mr. and Mrs. John Kuhn of Amarillo, and Mr. and Mrs. Lester Bailey of McLean. His great-grandparents are Mrs. Walter Bailey of McLean, and Mr. and Mrs. Henry Bailey of Fort Worth.



People once believed that if their palms itched they would receive money.

Arthritis Sufferers:

WAKE UP WITHOUT ALL THAT STIFFNESS!

New formula for arthritis minor pain is so strong you can take it less often and still wake up in the morning without all the pain's stiffness. Yet so gentle you can take this tablet on an empty stomach. It's called *Arthritis Pain Formula*. Get hours of relief. Ask for *Arthritis Pain Formula*, by the makers of *Anacin* analgesic tablets.



CAROL ALLISON WITH OTHER MEMBERS OF THE LINDBERG WATCH

Allison Returns From Survival School

Carol Allison returned Oct. 9 from Hurricane Island Outward Bound School. Located 12 miles off the Maine Coast on Hurricane Island, at the entrance to Penobscot Bay.

The Outward Bound School is one of six schools in the United States, and 32 throughout the world which teaches survival skills to adults. The school at Hurricane Island lasts from May through October, with ten-day sessions for each group of students. Mrs. Allison participated in an "over 30" women's group, which included ten women and two instructors. Her

group was named the "Lindberg Watch."

The program centered around extensive seamanship and navigation training, sailing expeditions in a 30-foot open pulling boat, rock climbing and rappelling, and a group solo expedition. Mrs. Allison also completed a ropes course which included various rope balancing feats from a high platform, balance beams, rope bridges, and a final leap of 100 feet on a rope pulley.

At the end of the session, Mrs. Allison was tested on solo survival for three days. Equipped with only the barest essential of water and safety gear, she was placed on Egg

Island, one of the many islands that dot Penobscot Bay.

Given only 12 matches and 7' by 10' plastic sheet, three quarts of water, and three emergency signals, she was expected to forage for any food she ate.

She took personal gear on the solo test, and was given a copy of Euell Gibbons book "A Wild Way to Eat" which informs and illustrates all seafood, seashore plants, and inland plants that are edible.

On the last day of the ten-day course, all the students and leaders on Hurricane Island participated in a cross-country marathon run before returning to Rockland to depart for home.

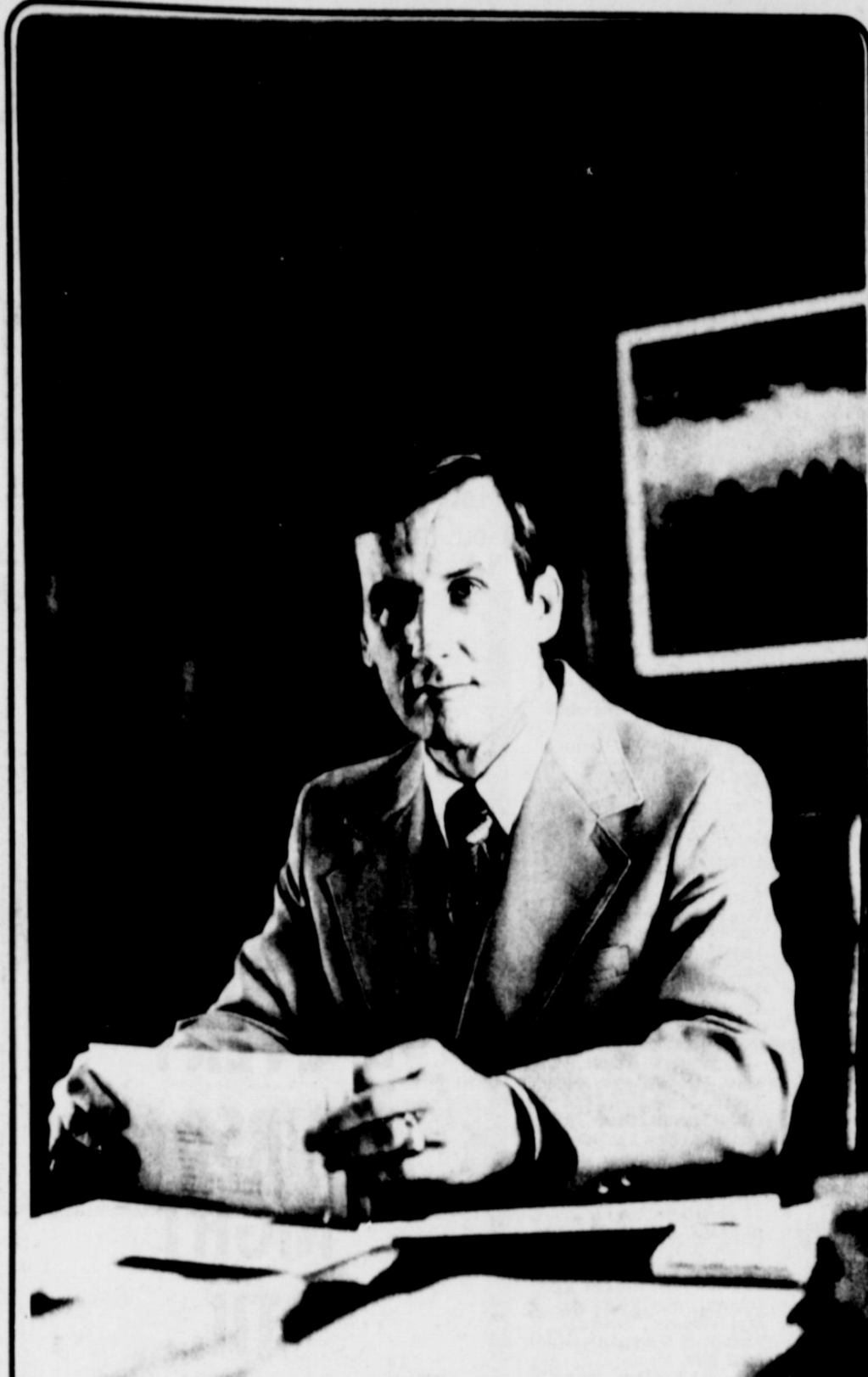
Club Activities

'Christmas Gift Ideas' is the title of a program to be presented next Friday, October 20 at 10 a.m. in the

McLean Senior Center - Young at Heart Club. Mrs. Elaine Houston, Gray County Extension Agent will present the demonstration. She will show Christmas decorations and gift ideas. Everyone is invited to attend.



Pat meaning friend is from the gypsy word for brother.



FOR COUNTY JUDGE Kennedy

This is the most important political contest we have this fall. The race is not for the Presidency, the U. S. Senate or the U. S. Congress. It doesn't involve many thousands of voters or millions of dollars in campaign expenditures. It does involve honest, dignified and capable administration of local government and an outstanding candidate. This race is for Gray County Judge and the candidate is Carl Kennedy.

Carl Kennedy was born and raised in Pampa; was president of the student body in high school, fullback for the Harvesters and a member of the National Honor Society.

Carl Kennedy graduated from Texas Tech, with a degree in Business Administration, was president of the senior class and is listed in Who's Who in American Colleges and Universities.

Carl Kennedy served in the U. S. Air Force and as Captain received the very important experience as Purchasing Officer.

Carl Kennedy has had extensive experience in business and industry as well as administration and has a first hand working knowledge of ranching and farming.

Carl Kennedy married Patricia Reynolds in 1959 and they have 5 children and he is chairman of the board of the Bible Church of Pampa.

When we say this contest is the most important we face we do not diminish the vital choices we will make for national or state offices, but we have to solve our problems at home before we can make any headway in Austin or Washington.

Over the past years Gray County has been fortunate to have many qualified local office holders, representing both major parties. We are able to continue this tradition by having a fine man as a candidate for Gray County Judge.

We have the opportunity to vote FOR rather than AGAINST this Nov. 7th.



"I want to take this opportunity to tell you that I am sincere in my objective to seek the office and serve as Gray County Judge.

"The knowledge I have gained working in business, industry, and agriculture during the past 23 years assure me that I can fulfill the Administrative responsibilities of the County Judge.

My involvement with family and church, business and social associations provide the confidence that I can properly carry out the Judicial responsibilities of the office."

FOR COUNTY JUDGE Kennedy

Paid for by the Kennedy For County Judge Committee, Buz Tarpley, Treasurer. A copy of our report is filed and is available from the County Clerk's office, Gray County Texas.

VOTE FOR

FOSTER WHALEY

A Conservative Democrat With A Positive Attitude For Your Next State Representative



FOSTER WHALEY, A FARMER, RANCHER AND FORMER COUNTY AGENT, HAS THE AGRICULTURAL BACKGROUND AND THE EXPERTISE TO WRITE THE FORMULA FOR TAXING LAND ON ITS PRODUCTIVE VALUE WHEN THIS ISSUE COMES UP IN THE NEXT SESSION OF THE LEGISLATURE. THIS IS THE MOST IMPORTANT LEGISLATION THAT HAS COME BEFORE THE LEGISLATURE IN DECADES. THIS WILL HAVE A PERMANENT EFFECT ON THE POCKET BOOKS OF EVERY LANDOWNER AND ALL THE BUSINESSES IN THE RURAL TOWNS OF THIS LEGISLATIVE DISTRICT.

THE AGRICULTURAL INCOME IN THIS 10 COUNTY LEGISLATIVE DISTRICT IS \$250 MILLION ANNUALLY.

THE AVERAGE ANNUAL AGRICULTURAL INCOME OF GRAY COUNTY IS \$33,302,000.

FOSTER WHALEY HAS THE POSITIVE ATTITUDE AND COOPERATIVE SPIRIT TO INFLUENCE OTHERS IN GETTING THIS LEGISLATION PASSED.

ELECT FOSTER WHALEY YOUR STATE REPRESENTATIVE WHO RECOGNIZES A STATE ISSUE AND CAN DO SOMETHING ABOUT IT...

Birthdays

October 19
Joe Preston
Mr. Muriel Moore
Joe Skipper
Inez Hill
Claude Hendricks

October 21
Keith Goodman
Judith Ann Crow
Mrs. Jay Thompson
Laurie Kay Lacy
Jeannie Kirby

October 22
James Darnell
Donald Knutson

October 23
Mrs. Carlton Patterson
Pierce Gastleberry
Dean Anderson
Eugene Wosham

October 24
Nan (Day) Locher
Edward Lee Brooks
Harlan Pool, Sr.
Kathy Colynn Willis
Janie Winegart

October 25
Mrs. A.J. Wyatt
Durward & Darryel Herndon
Don Trew

BORERS

Continued From Page 2

and the temperature is 55 degrees F. or above. Weeds should be removed from around the base of the tree and the soil leveled one foot from the tree trunk. Place the crystals in a narrow groove encircling the tree about two inches from the tree trunk. Care should be taken to keep any of the crystals from coming in direct contact with the tree. Clean soil should be placed over the crystals so as to form a cone-shaped pile about six inches high around the base of the tree. When putting and compacting the soil around the base of the tree, care should be taken not to put any of the crystals against the tree. During the winter, the peach tree borers that are at the base of the tree will be killed. In late March or early April, the cone-shaped pile of dirt should be removed from the base of the tree. The amount of paradichlorobenzene crystals to be used is determined by the age and size of the tree. In general, one-half ounce of crystals should be used for two to three year old trees, three-fourths ounce for four to five year old trees and one ounce for mature trees.

Where peach tree borers are a problem, the use of this control measure for this pest will greatly lengthen the life of the peach tree. Further information on control of the peach tree borer is contained in MF-999, "Texas Guide for Controlling Insects for Commercial Fruits and Nuts." This publication is available through your County Extension Agent's office.

SWEET POTATOE HARVEST
I planted sweet potatoes this year for the first time; how can I tell when they are ready to be harvested? Sweet potatoes are ready for harvest when the fleshy roots reach the size that you prefer. The only way to determine if the roots have reached the proper size is to dig a few and check them to see if they are as large as you like. Sweet potatoes generally will be ready for harvest in Texas during September and October. This will give a general indication of the time period when the plants should be checked. They should be harvested prior to the first freeze to prevent chilling injury to the roots.



Graham Hill, son of gubernatorial candidate John Hill, was in McLean Oct. 11 with the John Hill Caravan. Hill said area residents had been very receptive to this type of campaign. Graham is talking with American National Bank employee Nelda Kirk. Mrs. Kirk is wearing a construction hard hat presented to all the bank employees by Bill Irwin. The hats, with ANB and each employee's name on the outside, were a joking reminder that the bank is under construction. (Photo by Lisa Patman)

News from Alanreed

By Lena Carter

Mr. and Mrs. Lloyd Fulbright visited their children in Lubbock over the weekend.

Visiting the Hartley Davises were Mrs. Ellen Stapp of Groom, Mr. and Mrs. Ed Reed of San Antonio, Mrs. Reed's daughter Pat and son of Ft. Worth, Mrs. Hattie Terbush, Mrs. Bob Carbin of Groom, and Mrs. J.H. Wetzel of Stinnett.

Mr. and Mrs. P.M. Gibson were in Amarillo on Thursday.

Mrs. Jewel Warner returned home this week after a lengthy stay in Amarillo for surgery and recuperation.

Mrs. Polly Harrison is visiting in Houston with son Robert and family as Mrs. Robert Harrison underwent surgery in a Houston hospital Friday. They are now the parents of a new boy named Adam Wesley. Mother and child are doing fine. He has one brother and one sister.

Mr. and Mrs. Lavern Goldston returned last week from down state where they fished. They brought back pictures of

the great catches.

The site of the old Terbush house was purchased by Emmet Allen and will be the location of his garage. It was cleaned off last week, and will soon be in his new location.

The Alanreed HDA club met Oct. 11 in the home of Lena Carter with 10 members present and four visitors. The meeting was opened by a roll call of "Improvement I've Done Around My Home Lately." Elaine Houston brought a program on Christmas gift suggestions. Refreshments of chocolate cake, fruit salad, punch and coffee were served to Barbara Bode, Anita Bruce, Sue Crisp, Betty Finley, Ruth McLain, Onie Gibson, Mary Davis, Sherry Long, Elaine Houston, Ramona Finley, Brenda McLain, Brett Long, Nell Keese, and the hostess.

Faye Connors and Shirley Armbruster were in Amarillo on Thursday.

Mr. and Mrs. Claude Lester and Virginia Dalton of McLean and Lena Carter visited the Carter orchard Thursday.

Dinner Theatre Presents Comedy

The Frenchy McCormick Dinner Theatre, located in the Hilton Inn, 1-40 and Lakeside is pleased to announce the opening of the delightful contemporary comedy *Love in E Flat*, running Oct. 19 through Nov. 4.

The show concerns a bright young intern, living across the hall from his girlfriend/fiancee. Theirs is a happy "open" relationship with the intern often encouraging said fiancee to date other men while he is away on duty at the hospital, much to her mystification. The mystery ends, however, when the girl discovers her intern has been bright enough to install a listening device or "bug" in her apartment to keep tabs on her extra-curricular activities. She vows revenge and plots to stage a "bugged" conversation in league with her visiting older sister to reveal information to freeze any single man's heart.

Rollingingly funny, this upbeat comedy will be directed by Richard Roberts and features Ron Jackson as the young intern, Renda Love as his hid duped fiancee, and Gloria Graves as the girl sister and partner in revenge.

McLean Briefs

Toune Hathaway brought some of her friends from Ranger Jr. College home to visit her parents, the Britt Hathaways, over the weekend. Visiting with Toune were Louie, Lorina, Cheryl, and Bill, all of whom attend Ranger Jr. College at Ranger. Louie is from New York, and Bill is from Fort Worth.

Visiting Ruth Magee last week were Dianne and Jim Sopjas of Kalamazoo, Mich.

Mr. and Mrs. Jimmy Land of Milpitas, Calif., Mrs. Mildred Land of Atlanta, Ga., and Claude Land of Van Nuys, Calif. visited Beatrice Street last week.

Norman Knight of Detroit, Mich. visited his aunt Opal Allison last week. He also visited with Mr. and Mrs. Jim Allison and Shirley Jones of Amarillo.

Mrs. Opal Allison will leave Sunday for a 14-day Caribbean cruise.

Mrs. Ida Hess had an unexpected visitor at her home Sunday evening. As she was preparing dinner, she opened a cabinet and found a snake curled up in a plate! The snake disappeared, leaving the Hesses wondering if it left the house, or is waiting to surprise them again.

Visiting with Bertha Smith last weekend were Fannie Stewart of Kermit; Leona McMan of Valley Center, Calif.; Mr. and Mrs. Marshall Giesler of Skellytown; Mrs. Margie Reimer of Pampa; Mr. and Mrs. Eddie Reimer and family of Pampa; Fred and Martina Hergenrother of Midwest City, Okla.; Mildred Giesler, Jim Bob and Peggy Jane Adams, all of McLean.

Mike Johnson recently had a battle with a wasp. The wasp won.

McLean residents visiting in the home of Mrs. Inez Smith and attending the funeral services of Carole Nan Burden in Clarendon last Thursday were

Sophia Hutchison, Betty Lowe, Marjorie Jones, and Willie Lamb. Wynema Lamb Corley from Grand Prairie accompanied them.

Johnny Bayless, son of Mr. and Mrs. John Bayless of Borger and grandson of Mrs. Homer Abbott of McLean will be piano accompanist for a violinist and a cellist on a program to be televised at 10 a.m. Oct. 22 in the Camera III series produced by Roger Englander.

The program may be viewed on KFDD-TV, channel 10.

Among the out-of-town relatives and friends attending the funeral of Mrs. Luther Petty on Sept. 23 were:

Mr. Francis L. Petty, Midland; Mr. and Mrs. Herman L. Petty and children, Douglas and Joy, Abilene; Mr. and Mrs. Harold C. Petty and daughter, Penny, Moberly, Missouri; Mr. Gary L. Petty, Columbia, Missouri; Mr. and Mrs. H. M. Billingsley, Amarillo; Mr. and Mrs. Eddie Arnold and Becky, Greenville; Mrs. Nora Loveland, Dallas; Mr. Dan Miller, Abilene; Mr. and Mrs. Vernon L. Kennedy and children, Tina, Rodney, and Ronald, of Canyon; Mrs. Kate Ayers Jones, Clarendon; Mrs. Emma Ayers Shannon; Mrs. Addierene Ayers Mahaffey, Dr. and Mrs. Ernest N. James, Plainview; Mr. and Mrs. Kenneth Tubbs, Dumas; Mr. and Mrs. Leroy Francis, Kress; Mr. and Mrs. Tom Langston, Plainview; Mr. and Mrs. James Wood, Lubbock; Mrs. Clarence Morris, Perryton; Mr. and Mrs. Orville Cunningham, Reid, Okla.; Mrs. H. H. Billingsley, Amarillo; Mrs. Jess Altman, Amarillo; Mr. and Mrs. Charles R. Leonard, Amarillo; Mrs. Bess Anderson, Amarillo; Mrs. Betty Glenn, Amarillo; Mrs. Mary Moore, Amarillo; Mrs. H.L. Nelson, Amarillo; Mrs. Ronny Rogers, Amarillo; Mrs. Hazel Nelson, Amarillo; Mrs. B.E. Johnson, Amarillo; Mrs. Inetta Hyatt, Amarillo; Mr. and Mrs. Joe Turner, Amarillo.

A 236.2-inch refracting telescope, the world's largest, can pick up a flickering candle at 15,000 miles. It's located in Russia's Caucasus Mountains.



FIRST UNITED METHODIST CHURCH in McLean

Sunday School 9:45 a.m.
Worship 10:55 a.m.
UMYF 6:00 p.m.
Evening 7:00 p.m.

Love is not one of the attributes of God, but the sum of them all.

DOWNTOWN PAMPA MERCHANTS ARE NOW OPEN EVERY THURSDAY NIGHT 'TIL 8 O'CLOCK

TEXAS HISTORICAL COMMISSION

Englishmen Make Historical Texas Trip

Three Englishmen walked across Texas in 1585, fifty-two years before the landing at Plymouth Rock. Richard Browne, David Ingram and Richard Twidde were aboard one of Sir John Hawkins' six ships on a trading expedition to the Indies. After a series of slave raids on the African coast, they sold their "black ivory" along the northern shores of South America. Storms, famine, and an attack by the Spanish at the port of Vera Cruz forced Sir

John to put 114 men ashore near Tampico. Most of the men went into the interior of Mexico and were captured by the Spanish. Twenty six of them went north, and of these, only three survived to tell of their ordeal. David Ingram did not live

his account of the trip until 1582. When it was recorded by the Secretary for Queen Elizabeth I. He described cannibal Indians along the Gulf Coast, lush grass at the mouth of the Rio Grande, and sandy

See Englishmen, Page 10

The McLean News Peerless Prognosticator Predicts.....

PERCENTAGE LAST WEEK - 55%
11 won 9 lost
SEASON PERCENTAGE 65%

| | | | |
|----------------|----|--------------|----|
| OKLAHOMA | 28 | Iowa state | 7 |
| SMU | 28 | Houston | 24 |
| Texas | 14 | ARKANSAS | 21 |
| NOTRE DAME | 45 | Air Force | 0 |
| ALABAMA | 35 | Tennessee | 0 |
| Baylor | 14 | TEXAS A&M | 28 |
| Colorado | 10 | NEBRASKA | 21 |
| Kentucky | 14 | LSU | 20 |
| MICHIGAN | 45 | Wisconsin | 7 |
| OHIO STATE | 35 | Iowa | 10 |
| Oklahoma State | 7 | KANSAS | 14 |
| PENN STATE | 27 | Syracuse | 13 |
| TEXAS TECH | 45 | Rice | 14 |
| UCLA | 20 | California | 14 |
| WASHINGTON | 30 | Oregon | 6 |
| PURDUE | 21 | Illinois | 10 |
| TCU | 7 | TULANE | 28 |
| DALLAS | 28 | Philadelphia | 7 |
| WHEELER | 34 | Groom | 7 |
| FLORIDA | 27 | Army | 10 |



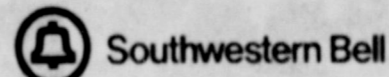
We're Still The Way We Were.

An elegant revival of times past, the Celebrity always adds a touch of warmth to its surroundings. Available in ivory with gold-colored trim or powder blue with silver-colored trim, it's small enough for a bedside table.

And, of course, it's genuine Bell. Which means you're getting top quality and you never have to worry about repairs. Since the working components are owned by the Bell System, we'll fix them anytime there's a problem. Without additional charge.

The Celebrity is now appearing at your nearest PhoneCenter Store, where you can also choose from a variety of other colorful and attractive styles. Or call your local Southwestern Bell business office. Choose a phone that's genuinely you and genuine Bell.

The Celebrity \$16 a month for five months or a one-time charge of \$80. Prices do not include taxes or, if applicable, installation and recurring charges. If necessary hearing aid adapters are available from your telephone company.



THE CHOICE IS YOURS. BE CHOOSEY.

ANNOUNCING!

MOTHER-IN-LAW'S DAY

SUNDAY, OCTOBER 22

SEND HER THE NEW FTD FORGET-ME-NOT BOUQUET!

Sure, it's another day for flowers, but doesn't she deserve it? She'll never forget that you remembered. Just call us or stop in today.

We can send her flowers almost anywhere... the FTD way.

FOR YOUR "OTHER" MOTHER.

\$15.00

LAMB FLOWER SHOP

KELLOGG'S 40% 16 oz. box
BRAN FLAKES 85¢

FOLGERS FLAKES
COFFEE \$2.27

3 lb. can
CRISCO \$1.89

SPRING RIVER SOFT 1 lb. bowl
OLEO 63¢

twin pac
PRINGLES 89¢

LAKE REGION 303 can
CORN 3 for 87¢

WESSON 48 oz.
OIL \$2.09

ARMOUR 24 oz. can
STEW \$1.19

DEL MONTE no. 2 1/2 can
CATSUP 2 for 89¢

home laundry size 10 lb. 14 oz.
TIDE 6¹⁹

NABISCO 15 oz. pkg.
OREOS 89¢

DEL MONTE no. 2 1/2 can.
PEACHES 63¢

12 oz. pkg.
TREET \$1.09

CHARMIN TOILET 4 roll pack
TISSUE 89¢

BORDEN'S CHOCOLATE
MILK quart 59¢

JOB SQUAD PAPER large roll
TOWELS 69¢

IDEAL 15 oz. can
DOG FOOD 4 for \$1

2 liter no-return bottles
Dr. PEPPER 85¢

BETTY CROCKER LAYER
CAKEMIX 69¢

HELMANS 32 oz. jar
MAYONNAISE \$1.39

SUNSHINE 1 lb.
HONEY GRAHAMS 89¢

JIFF
PEANUT BUTTER \$1.09

GRIFFIN STRAWBERRY 18 oz. jar
PRESERVES 79¢

KEEBLER TOWN HOUSE 1 lb.
CRACKERS 89¢

BORDEN'S 1/2 gal.
BUTTERMILK 89¢

SUNSHINE VEINNA FINGER 12 oz. pkg.
COOKIES 69¢

SURFINE PURPLE no. 2 1/2 can
PLUMS 2 for \$1.00

CAMPBELL CHICKEN NOODLE
SOUP 4 FOR 89¢

DEL MONTE WHOLE 303 can
GREEN BEANS 2 FOR 75¢

TANGELOS 10 FOR \$1

no. 2
POTATOES 75

10 lb.

CALIFORNIA GREEN
CABBAGE 9¢

1 lb.

MEDIUM YELLOW
ONIONS 10¢

1 lb.


ALL MEAT
FRANKS 93¢

12 oz.

CORN KING
BACON \$2.79

2 lb.

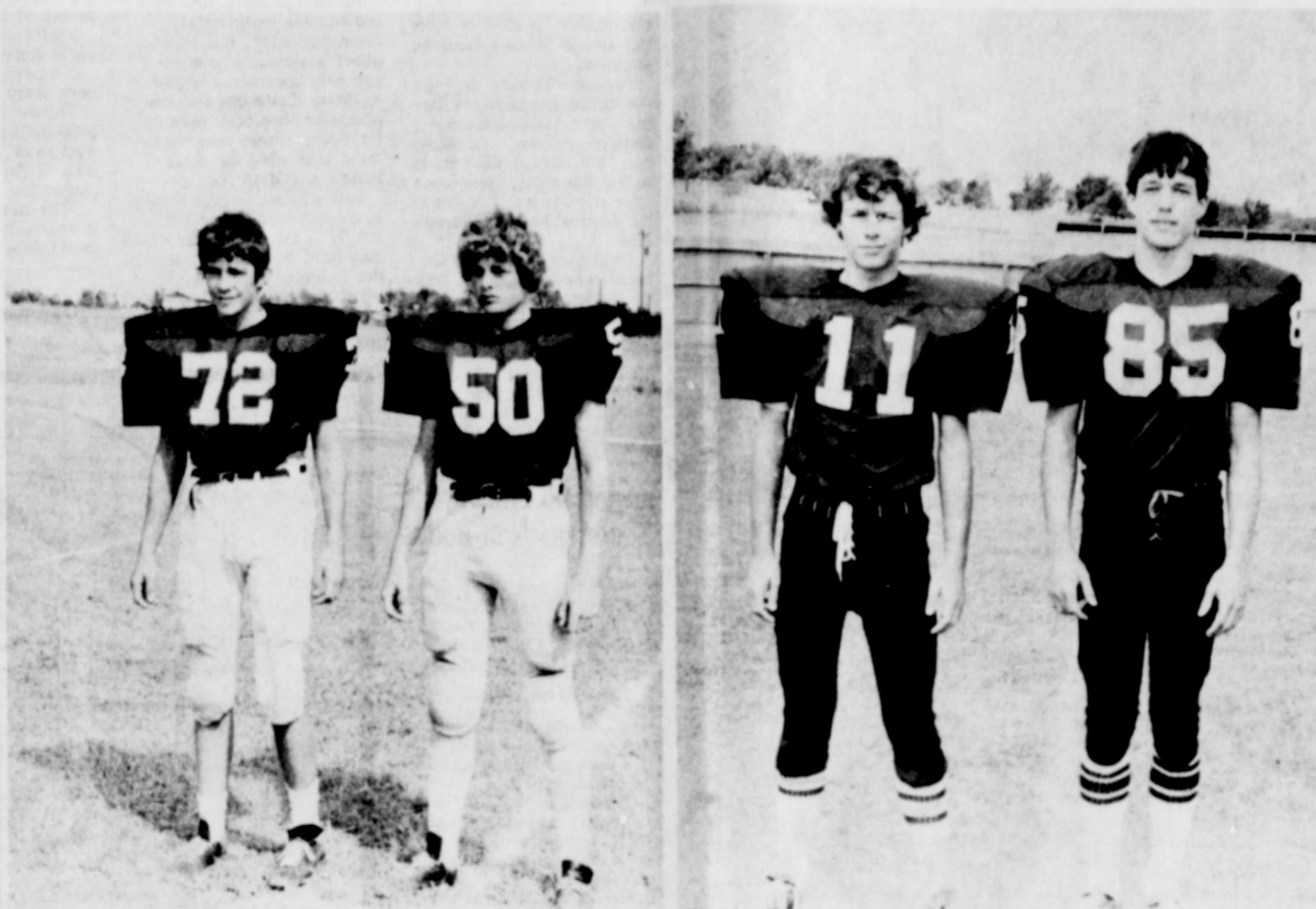
JIMMY DEAN 2 lb.
SAUSAGE \$3.48




SPECIALS GOOD THURSDAY THROUGH SATURDAY OCT. 19-21 '78



MEET THE TIGERS-



Bill Hambright, no. 72, sophomore tackle, 165 lbs.

James Matheney, no. 11, sophomore wing back, 165 lbs.

Dick Bode, no. 50, junior center, 175 lbs.

Randy Suggs, no. 85, junior end, 170 lbs.

THE McLEAN FIGHTING TIGERS VS. BOOKER FRIDAY NIGHT OCT. 20 AT BOOKER 7:30 P.M.

1978 FOOTBALL SCHEDULE

| | | |
|----------|------------------------|-------------------------|
| SEPT. 8 | CHILlicothe..... | McLean 34 Chillicothe 6 |
| SEPT. 15 | SHAMROCK..... | McLean 20 Shamrock 25 |
| SEPT. 22 | SILVERTON..... | McLean 7-Silverton 15 |
| SEPT. 29 | CLAUDE..... | McLean 7-Claude 12 |
| OCT. 6 | OPEN | |
| OCT. 13 | GROOM..... | McLean 0-Groom 42 |
| OCT. 20 | BOOKER..... | THERE..... 7:30 P.M. |
| OCT. 27 | TEXLINE..... | HERE..... 2 P.M. |
| NOV. 3 | MIAMI..... | THERE..... 7:30 P.M. |
| NOV. 10 | WHEELER..... | HERE..... 7:30 P.M. |
| NOV. 17 | FOLLETT..... | THERE..... 7:30 P.M. |

McLEAN CATTLE
COMPANY, INC.

JOE'S SHAMROCK

Mc DONALD'S
GARAGE

CORINNE'S
STYLE SHOP

THE
POT POURRI
SHOP

CAREY DON, CHERYL,
STACIE, AND DONNIE

CITY OF McLEAN

BENTLEY'S
FERTILIZER

ODELL'S CHEVRON

HAMBRIGHT'S
BUILDING SUPPLY

PARSON'S DRUG

AMERICAN
NATIONAL BANK
IN McLEAN

DOCTOR HEREFORD
THE HESSES

BOYD MEADOR
REAL ESTATE

WILLIAMS
APPLIANCES

COWBOY DRIVE IN

GIPSON'S SERVICE
AND SUPPLIES

TERRY'S APPLIANCES

LAMB'S
FLOWER SHOP

WINDOM'S
AUTO SUPPLY

DIXIE RESTARANT

MORGAN'S
LAUNDRY

THE DONUT SHOP
CHUCK AND ESTELLE YARNOLD

McLEAN HARDWARE

JOHNNIE F. MERTEL
BOOT SHOP

COLLEEN AND JOHNNIE F. MERTEL

MULLANAX'S
MENS WEAR

CROSS WINDS
CERAMICS

JANE SIMPSON
AGENCY

STEWART'S TEXACO

HAYNES
TRIANGLE RANCH

BARKER'S REDI-MIX

CASH OIL CO.
DISTRIBUTOR OF
SHAMROCK GASOLINE

CURRY'S
PROCESSING

CONSUMER
SUPPLY CO.
ARTHUR DWYER

J.R. GLASS
OIL CO.

TEXACO SUPPLY
CUSTER AND RUTH LOWARY

WIL-MART

THE
McLEAN NEWS



The Tigers of 1978: Back row, Lyman Ashby, Lee Wilson, Melvin Davis, Jack Back, Coach Leonard Baxter, Superintendent W.A. Cain. Front row: John Biggers, Carl Ashby, Frank Howard, Dwight Upham, Raymond Knipling, S.B. Morse, Houston Hogan, Roy Robinson, Dwight Upham, and John C. Haynes. (Photo Courtesy of Alanreed-McLean Museum)

TIGER RAG



Sponsor - Virginia Holwick
 Editor - Leslie Cunningham
 Assistant Editor - Becky Fish
 Reporters - Steve Ellison
 Cindy Adams, LaDonna

Keeton, Joel Kington,
 Randy Suggs, Brad Melton,
 Tom Eck, Beth Smitherman,
 Mark Bailey, Joe Lamb

FBLA OFFICERS INSTALLED

By Randy Stewart
 Future Business Leaders of America had their installation of officers Tuesday at the Church of Christ annex at 8:00 p.m. Refreshments were served following the installation.

ROBIN SMITH CROWNED QUEEN

By Cindy Adams
 Robin Smith was crowned Homecoming Queen Friday at Duncan Field. The ceremonies began at 7:30 p.m. with the band standing in formation during the presentation of the candidates. The girls arrived on the field on a car driven by Pike Smith. George Terry introduced Robin and her court, Sherry Glass, Judy Trew, Rhonda Woods, and Donna McAnear. Escorting the girls were seniors Steve Ellison, Tom Eck, David Tolleason, Johnny Day, John Curry, Jimmy Carr and Chuck Pierce.

HEALTH CAREERS CONSIDERED

By Joel Kington
 Tuesday Oct. 17 a Health Career Assembly was held at the McLean High School Auditorium. Many careers in the health field were discussed. Information will be sent to students interested in health fields.

Gray County 4-H NEWS

By Layton Barton & Marilyn Tate

There are a lot of ways to participate in 4-H in Gray County. In Texas, many youth enroll in a 4-H club in a school, where they receive a monthly educational program and select a project for independent study. Some youngsters are in special interest groups that study one special subject, such as horsemanship, livestock, electricity or leadership. Other youth are in community clubs that meet in neighborhoods with a local 4-H volunteer leader. They study projects and carry out group activities in community service. Around 50,000 Texas youth viewed the TV series "Mulligan Stew" last year. The program emphasized good nutrition as a means to good health. School enrichment programs on entomology, embryology, dairy science and bicycle safety reaches other children. The expanded food and nutrition educational program also serves thousands of youth. All this means that any interested youth between the ages of 9 and 19 can be a

Study Club Honors Seniors

By Becky Fish
 Seniors were honored with a tea Sunday at the Church of Christ annex by the Pioneer Study Club. Seniors, their parents, and grandparents and teachers were guests at the tea.

Homecoming Bonfire Staged

By R.D. Suggs
 Thursday night after the Jr. High football game against Miami the homecoming bonfire was held. The cheerleaders performed cheers, the Tiger band played several numbers, and the speakers for the night were senior Johnny Day and Coach

New Report Cards Issued

By Beth Smitherman
 McLean High School students received their report cards for the first six weeks Monday. The school system is now using a new type of report cards.

Local Man Attends Meeting

Milton Carpenter, Curtis Schaffer and Wallace Burkes, directors from the Soil and Water Conservation District will be in Corpus Christi Oct. 17-19 to attend the Thirty-Eighth Annual State Meeting of Texas Soil and Water Con-

servation District Directors. Others attending from the Gray County SWCD will be Mrs. Curtis Schaffer, Mrs. Milton Carpenter and Mr. and Mrs. Lee McDonald. The theme of this year's meeting is "Strong Districts - Strong Districts". Approximately 800 are expected to attend. The purpose of the meeting is to review developments effecting conservation programs and to plan future conservation district programs and activities. Bill Clayton, Speaker, Texas House of Representatives is also expected to participate in a portion of the meeting.

MARCHING CLINIC HELD MONDAY

By Diane McAnear
 The McLean High School Tiger Band had a marching clinic Monday at the football field. Mike Trussel of Wheeler held the clinic. Trussel worked to get the band and the flag cars ready for contest which will be held at the West Texas State University stadium in Canyon. Sherry Glass, drum major for the Pride of the Tigers band, was nominated to the All-Senior Band.

BAND MARCHES IN WTSU PARADE

The Pride of the Tigers Marching Band was invited to march in the West Texas State University Homecoming parade Saturday at Canyon. Afterwards they attended a barbecue held in the park. That night they watched the W.T.S.U. Buffaloes battle the Lamar Cardinals.

AG HORSEBACK RIDE CANCELLED

By Joe Creed Lamb
 The scheduled Ag horseback ride set for Saturday has been canceled. Mr. Jarrell Russell, the Ag teacher, and Joe Creed Lamb, president, decided to postpone the ride until spring.

HAVE A BETTER WINTER WITH DRISTAN.
 Today's Dristan Tablets give you more cold relief than Contac or Aspirin alone.
DRISTAN

Hill backs tax relief on ballot November 7

"We've got a great opportunity Nov. 7 to take a significant first step toward tax relief in Texas. I'm urging everyone to vote for the proposed constitutional amendment to give tax relief to our farmers and ranchers, homeowners, and elderly. After this amendment is adopted, I'll be ready to take the lead in the 1979 legislature to follow through on this first step."



JOHN HILL
 GOVERNOR

Paid for by John Hill Campaign Fund, Lowest Lefferman, Treasurer, 1035 Brown Bldg. Austin TX 78701. Phone (512) 478-6488

Federal Tax Deadline Nears

Employers must report on Form 941 Social Security and withheld Federal income taxes for the third quarter of 1978 by Tuesday, Oct. 31. If the quarterly liability (reduced by any deposit during the quarter) is \$200 or more, the unpaid balance must be deposited. Persons who have deposited the entire quarterly tax liability in a Federal Reserve Bank or approved commercial bank have until Nov. 10 to file Form 941, "Employer's Quarterly Federal Tax Return," the Internal Revenue Service said. Employers should use the preaddressed Forms 941 mailed to them by the IRS or obtain copies of the form from the nearest IRS office. IRS Publication 15, "Circular E - Employer's Tax Guide," provides more information and is available free from local IRS offices.

Lovert Memorial

Library Notes

by Lisa Patman

THE BEST PLACE TO BE

By Helen Van Slyke

Helen Van Slyke has written another sentimental, emotional story, this time about a woman who unexpectedly becomes a widow. Sheila Callahan, the main character, has been married for twenty-seven years to the same man when she finds herself a widow. Left without enough money to support herself and her family in the manner to which they have become accustomed, she is forced into a world of which she has little knowledge.

As the story develops, the reader sees her struggle with

the need to earn a living, to cope with an overpossessive son, the hostility of a drop-out daughter, and the disapproval of her own mother. Sheila must learn to overcome loneliness, insecurity, and uncertainty, and she must learn to deal with love. The books reveals Sheila's pain and bewilderment, her fears, and her ultimate solution to the problems that plague her life. "The Best Place To Be" is available at Lovett Memorial Library.

"Happiness is activity." Aristotle



The speed of the earth's spin slows about a second a century.

Dr. M.V. Cobb
 CHIROPRACTOR
 Workmen's Compensation And Auto Injury Claims
 Ph. 256-2133
 310 S. Main
 Shamrock, Texas

Amarillo Library Sells Unused Books

A special sale of 6000 "unused and unused" books will be sponsored by the Friends of the Amarillo Library Nov. 11-12 at 2123 S. Washington, Friends' president Mrs.

R. E. Casperson announced this week. Co-chairmen are George Huffman and Jerry Hollingsworth.

Donated by Brown's House of Books, the assorted titles include many excellent academic paperbacks, according to Huffman. The Friends invite early Christmas shoppers to browse outdoor tables and indoor displays from 8 a.m. to 5 p.m. Saturday, Nov. 11 and from 1 to 5 p.m. Sunday.

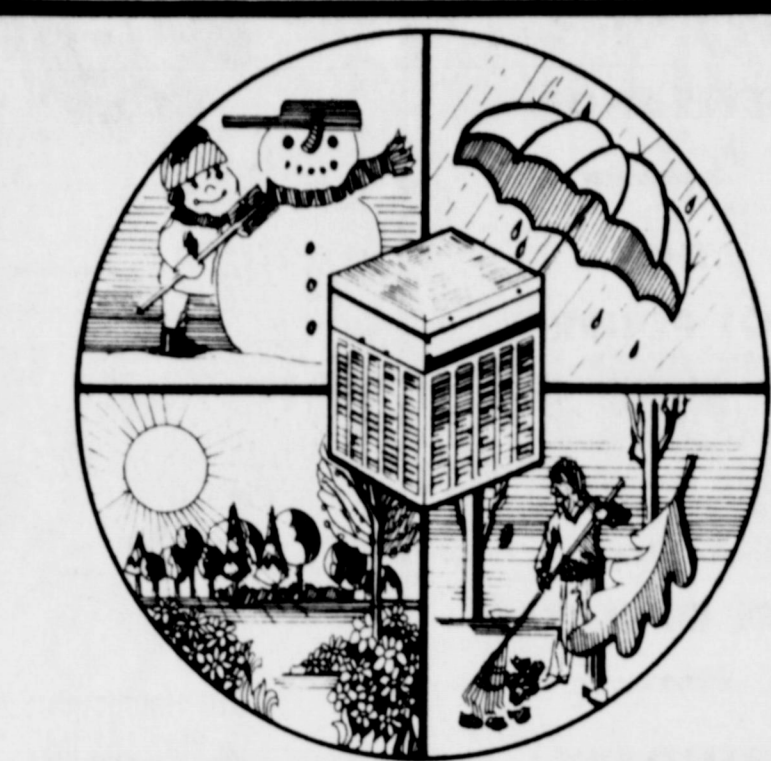
Proceeds from the sale will go toward setting up a permanent trust fund, the interest from this fund to be used to purchase books for the Amarillo library.

Priced at 50% of the list price for the Saturday sale, books will be marked down to 10% for Sunday afternoon.

According to the U.S. Department of Agriculture, one fifth of the money the average American spends at supermarkets goes to non-food items.

Helps Shrink Swelling Of Hemorrhoidal Tissues

caused by inflammation
 Doctors have found a medication that in many cases gives prompt, temporary relief for hours from pain and burning itch in hemorrhoidal tissues, then helps shrink swelling of these tissues caused by inflammation. The name: Preparation H®. No prescription is needed. Preparation H Ointment and suppositories. Use only as directed.



A MACHINE FOR ALL SEASONS



YOUR CONSTANT COMPANION FOR HEATING & COOLING EFFICIENCY

No matter what the weather outside, the heat pump works quietly... efficiently... automatically to keep your family comfortable. Since it pulls much of its heat right out of thin air, the heat pump actually saves energy as it works. In fact, it delivers as much as two units of heat for every one heat unit of electricity it uses. Costs are the lowest of any electric heating/cooling system available. For year 'round heating and cooling efficiency, the heat pump is your constant climate control companion. Call us today for more information.

SPS

SOUTHWESTERN PUBLIC SERVICE

909-3

McLEAN ALL TIME SUPERSTAR FOOTBALL TEAM OFFICIAL BALLOT

| | |
|--|--|
| <p>OFFENSE</p> <p>1. Quarterback _____</p> <p>2. Fullback _____</p> <p>3. Halfbacks _____</p> <p>4. _____</p> <p>5. End _____</p> <p>6. _____</p> <p>7. Tackles _____</p> <p>8. _____</p> <p>9. Guards _____</p> <p>10. _____</p> <p>11. Center _____</p> | <p>DEFENSE</p> <p>1. Ends _____</p> <p>2. _____</p> <p>3. Tackles _____</p> <p>4. _____</p> <p>5. Guards _____</p> <p>6. _____</p> <p>7. Line Backers _____</p> <p>8. _____</p> <p>9. Half Backs _____</p> <p>10. _____</p> <p>11. Safety _____</p> <p>Place Kicker _____</p> <p>Punter _____</p> |
|--|--|

RULES

- Any reader of The McLean News may vote once.
- Each member of a family may vote.
- Any player (living or dead) who played for McLean is eligible. (Tigers of 1978 are not eligible.)
- Balloting will end Dec. 31, 1978.
- All voting must be on official McLean News ballot.
- Ballots may be mailed to McLean News, Box H, McLean, Texas 79057 or brought by the News office at 210 N. Main.

YOUR NAME _____
 ADDRESS _____

"We make our fortunes, and we call them fate."
 Benjamin Disraeli

Classified Ads

CLASSIFIED AD INFORMATION
 Leader Ads 8¢ per word
 (Minimum Charge \$1.50)
 Display Classified \$1.60 per
 column inch, Run \$1.30
 ad of Thanks \$2
 All ads cash, unless customer
 has an established account
 with The McLean News
 Deadline for Want Ads--
 Noon-Tuesday
 PHONE 779-2447

The McLean News cannot
 verify the financial potential
 of these advertisements.
 Readers are advised to ap-
 proach any "business opportu-
 nity" with reasonable cau-
 tion.

For Sale

'64 CHEVROLET PICKUP--
 Call Bill Heasley-779-2129
 40-2p

NEWLY ARRIVED - Halloween
 masks and gag gifts, Pot Pourri,
 41-3c.

FOR SALE: CUT VELVET
 COUCH and love seat. In good
 condition but needs cleaning.
 779-2447. After 6 p.m., call
 779-2318.

SWEET Potatoes for sale.
 See Jack or O.A. Ayres,
 41-4p.

QUALITY Upholstering.
 779-2302. Jones Upholstery,
 40-tfc.

FOR SALE: RED and yellow
 delicious, winesap, and many
 other varieties of apples
 3 1/2 miles south of Alan-
 reed. W.O. Hommel Orch-
 ard
 36-tfc

FOR SALE: 3 BEDROOM
 house, 2 baths. Wood burn-
 ing fire place. Storm cellar.
 2 car garage. 8 ft. fence.
 About 1500 sq. feet living
 area. 5 lots. Ideal location.
 Paved on both sides.

FOR SALE: 2 BEDROOM
 with 4 lots. House in ex-
 cellent condition. Located
 920 N. Wheeler St, for only
 \$8,000. Also 80 acres good
 grass land near Alanreed.
 Boyd Meador
 Real Estate

FOR SALE: 4 Bedroom, 2 bath
 living room, dining room, den
 and 3 car garage - 1 block
 from town. 779-3133, 41-2c.

FOR SALE: Red delicious apples
 from Hondo, N.M., at 517
 Clarendon Street or call 779-
 2705. 41-tfc.

FOR SALE: MESQUITE fire
 wood. Call 779-3100. 39-4p

FOR SALE - 10 HORSE 32"
 riding mower - everything on
 it. Bought this year.
 \$600 - Call 779-2188. 42-2p

3 FAMILY GARAGE sale.
 Antique Dining Room suite,
 good whirlpool dryer, clothes,
 all kinds of items. A good
 used black and white T.V.
 901 N. Waldron. Friday and
 Saturday. 9 a.m. 42-1c

IN ORDER to soon close
 our orchard, the balance of
 our apple crop will go at
 closeout prices. W.O. Hom-
 mel Orchard. 779-3139
 41-1c

GARAGE SALE: 720 East First.
 Large Clothes, miscellaneous.
 Friday and Saturday 9 a.m. -
 5 p.m. 42-1p.

PIANO IN STORAGE -
 Beautiful spinet-concorte
 stored locally. Reported
 like new. Responsible party
 can take at big savings on low
 payment balance. Write
 Joplin Piano, 1516 Val-
 eska, Waco, Texas 76703.
 42-1b

ORGAN IN STORAGE - 1978
 Home Model stored locally.
 Dual Keyboard, Automatic
 Rhythm, Walking Boogie Bass,
 Single Finger Chords, Banjo,
 etc. Responsible party can
 assume low payment balance.
 Call Person-to-person Collect:
 Mr. Roberts, 512-459-8660.
 National Keyboard Inc. Aus-
 tin, TX. 42-2p

Wanted

HELP WANTED - PERSON
 to deliver Pampa News
 shopper every Wednesday,
 approx. \$30 per month.
 Contact Pampa News Circula-
 tion. 669-2825 Collect. 44-3c

LOST: TWO SETS of keys.
 One set on Cook's Chevrolet
 key ring. Two keys on Black
 Stewart's Texaco ring. Call
 The McLean News. 779-2447
 42-tfc

LOST - RING OFFERED -
 Emerald cuff links, yellow
 gold wedding band with 4
 diamonds. 779-2564, 41-2p.

LOST: 1965 Senior ring. Lost
 in gymnasium. Has initials
 LSS engraved inside. Bring
 to McLean News Office and
 get \$5 reward. 40-tfc.

WANTED: Reliable Paint and
 Body man, Pennington's
 Garage. 779-2261. 40-tfc.

WANTED - ROOFING,
 CALL Coy Smith, 779-3137
 36-tfc

RETIRED COUPLE, NO child
 ren or pets would like to rent
 furnished one bedroom house
 or small 2 bedroom. Phone
 779-2675. 39-4p

NEEDED: Reliable Mechanic,
 Good Pay. Good working con-
 ditions and opportunity for
 plenty of work. Pennington's
 Garage. 779-2261. 41-tfc.

"WORM GROWERS NEEDED!"
 MONTHLY INCOME! BUY-
 BACK CONTRACT! MANAGE-
 MENT OPPORTUNITIES!
 "FREE BROCHURE" (CALL
 "OLL-FREE 1-800-448-4511,
 Operator 381), WORMS, BOX
 4169 JACKSON, MS. 39216.
 41-4c.

Service Station dealer wan-
 ted in McLean, Contact
 Bridges Oil Co, Call
 665-1606, 40-2c.

Business

THE STATE OF TEXAS
 COUNTY OF GRAY
 TO ALL QUALIFIED ELEC-
 TORS OF GRAY COUNTY,
 TEXAS, AND TO ALL OT-
 HER PERSONS WHO MAY BE
 INTERESTED:

Cards of Thanks

Thank you for the kindness
 shown to our mother and grand-
 mother during her sickness.
 The family appreciates each
 act of thoughtfulness.
 The family of Lena Pettit.

I would love to thank each
 and every one of you for
 being so good to me while
 I was in the hospital and af-
 ter I came home. May God
 bless each and every one.
 I love you all truly.
 Mrs. Ora Holloway.

Thank you to all my friends
 who sent flowers, cards, and
 visited while I was sick.
 Your thoughtfulness helped.
 Les Darsey.

Notices

The McLean Masonic Lodge
 regular meeting is the 2nd
 Thursday at 7:30. Practice
 nights are 1st and 3rd Tues-
 day at 7:30 p.m. 42-rfc

NOTICE FROM THE TEXAS
 DEPARTMENT OF HEALTH -
 It has been called to my
 attention that there is a
 slight excess of nitrates and
 nitrites in the water supply
 of McLean. This would
 amount to approximately
 four percent in excess of the
 amount considered allowable
 by the Texas State Depart-
 ment of Public Health. Re-
 moval of excess nitrates is a
 very expensive process. I am
 told that a plant necessary
 to remove this small excess
 would cost thousands of dol-
 lars.

Though all the effects of
 nitrates are not known, it
 seems to affect the unborn
 child and the infant more
 than it does other age groups.
 The following recommenda-
 tions are made:

1. The pregnant mother should probably drink bottled water.
2. Infants up to six months of age should be breast fed or should have bottled water to drink and use in powdered milk formulas and would be more convenient.
3. It is known that Vitamin C in the form of citrus or tomato juice counteracts the effects of nitrates and nitrites in drinking water.

H. F. Fabian, M. D.
 City Health Officer
 McLean, Texas 42-1c

Memorial

In Memory of Douglas
 Clawson
 By Nora Clawson
 Dear Douglas
 This date of Oct. 24 you
 were born.
 How you graced our home
 with sunshine.
 How you filled our hearts
 with love.
 You were not well enough
 the war to go or we may not
 have had you these many
 years or so.
 When in your teens your
 first girlfriend you did marry.
 God only knows how you
 loves your wife.
 And this was truly to last
 all the days of your life.
 Your home was blessed with
 a son and daughter.
 You worked untiringly til
 you could provide what you
 thought would put them in
 stride.
 You saw them married and
 in homes of their own.
 Three lovely grandchildren
 graced life.
 Little did we know that
 September morn when you
 went to work such tragedy
 and strife would overtake
 you and leave us all to
 mourn the end results of
 which you had to give your
 life.
 Father, mother, wife, chil-
 dren, and sister here on
 earth are sad and lone.
 But we hope someday to
 meet you in that bright
 and happy home.
 May we ever trust in Jesus
 He who doeth all things
 well
 And at last may He receive us
 in that home with you to
 dwell.
 Goodbye Son.

School Menus

Friday, October 20
 Hamburgers
 Lettuce & Tomatoes
 Pickle & Onion
 French Fries
 Cinnamon Rolls

Monday
 Bar B Q on a B un
 French Fries
 Pickle & Onion
 Banana Pudding

Tuesday
 Turkey & Dressing
 Giblet Gravy
 Mashed Potatoes
 Green Peas
 Fruit Salad

Wednesday
 Chalupas
 Tossed Salad
 Ranch Style Beans
 Chocolate Pudding
 w/ topping & nuts

Thursday
 Fish Portions
 Cole Slaw
 French Fries
 Tarter Sauce
 Bread
 Carrot Cake

Alcohol Facts Noted

COLLEGE STATION -- How
 much do you know about the
 facts and fallacies of alcohol-
 ism? asks Carla Shearer,
 health education specialist
 with the Texas Agricultural
 Extension Service, The Texas
 A&M University System.
 Here's a simple "true" and
 "false" test of common alcohol-
 ism facts and fallacies.

- (1) Most alcoholics are "skid row bums."
- (2) You have to drink more than a pint a day to be considered an alcoholic.
- (3) As long as you stick to beer, you won't become an alcoholic.
- (4) Alcohol is a depressant.
- (5) At least one-half of fatal highway accidents involve drinking.
- (6) Giving a person who is drunk some black coffee will sober him up.

ANSWERS:
 (1) FALSE. Only about
 three to five percent of the
 more than 9,000,000 alcohol-
 ic Americans are "skid row
 bums."

(2) FALSE. Evidence has
 shown that a specific amount
 of alcohol can't be set in
 determining if a person is
 an alcoholic.

Rather than how much a
 person drinks, what seems
 more important is when,
 how and why the person
 drinks.

(3) FALSE. One beer or
 one glass of wine is about
 equal to the average high-
 ball. Beer, just like hard
 liquor, contains the neces-
 sary ingredient of alcohol that
 is needed to become an alco-
 holic.

(4) TRUE. Although of-
 ten considered a stimulant,
 it actually works as a depres-
 sant on the central nervous
 system.

(5) TRUE.
 (6) FALSE. To sober up
 simply takes time. To get
 alcohol out of the system,
 the liver needs time to
 metabolize the alcohol.

Everyone has his own
 "cure" for a hangover--actu-
 ally the only one that works
 is preventive medicine. If
 you don't drink too much,
 you won't get a hangover.


Political Calendar

JUSTICE OF THE PEACE

- PREDICT 5
 Donny Beck Patterson
 GRAY COUNTY TREASURER
 Keasrott
 GRAY COUNTY CLERK
 Wanda Carter
 STATE REPRESENTATIVE
 40TH DISTRICT FIVE DIST.
 Fozar Whaley
 U.S. CONGRESS 11TH DIST.
 Jack Lightower
 224TH DISTRICT WEDGE
 20th Cain
 BRICK CLERK OF GRAY
 COUNTY
 Helen Sprinkle
 GRAY COUNTY JUDGE
 Don Hinton
 Carl Kennedy
 COUNTY COMMISSIONER
 PREDICT 4
 Ted Simmons

"A philosopher is one who
 stubs." Montaigne

**LINES
 by
 LEM
 O'RICKK**



Some fears shown by women are fake,
 As sympathy they are want to take;
 But you'd say it was real,
 If you heard the loud squeal,
 When ones cupboard harbored a snake!!

Ducks Unlimited Slates Banquet

AMARILLO -- Preparations
 for the 9th annual Ducks Un-
 limited banquet have been
 finalized and individuals
 wishing to attend the festive
 affair must purchase a ticket
 early as only 300 are to be
 sold this year.

Tickets may be purchased
 at Billy Fred's gun shop,
 Sportsworld, and Anchor
 Marine," said Ronnie Walk-
 er, secretary of the Amarillo
 chapter of Ducks Unlimited.

The banquet activities
 will start at 6:30 p.m. on
 Oct. 26, 1978, at the Quali-
 ty Inn, 1-40 East in Amar-
 illo," Walker continued.

The ticket will cover
 membership in the nation-
 ally-known organization
 along with the dinner and
 refreshments.

Thousands of dollars are
 raised each year through
 these banquets for the man-
 agement of waterfowl in
 Canada and Old Mexico.
 Since the organization was
 first established in 1937,
 well over 12,000 projects on
 two million acres have rest-

ored drained and cultivated
 lands back into productive
 breeding grounds.

Ducks Unlimited is a non-
 profit organization with mem-
 bers receiving a bi-monthly
 full color wildlife magazine
 and a periodical report on
 prairie habitat conditions
 prepared by the DU.

One of the highlights of
 the Amarillo DU banquet is
 the drawing for over 20 pri-
 zes varying from shotguns to
 paintings and hunting equip-
 ment. Also, numerous door
 prizes will be given away dur-
 ing the banquet.

Anyone wishing to become
 a member of DU and attend
 the Amarillo DU banquet
 to help waterfowl and other
 species of wildlife that use
 the northern breeding grounds
 should contact the three
 Amarillo businesses listed a-
 bove.

Membership in DU and
 other information concerning
 the local organization is
 available by contacting
 Ronnie Walker at 806/572-
 3477.

**NEWS
 Of Education**

Colleges are trying
 to expand opportunities for
 higher education while main-
 taining academic standards.
 A special AASCU task force
 established guidelines for
 more definitive standards of
 academic achievement and
 competencies necessary for
 a degree. Many state colleges
 and universities now are
 studying stricter qualifica-
 tions for awarding baccala-
 ureate degrees.

The McLean News Business Directory

| | | | | | |
|---|--|--|--|---|---|
| <p>Addington's Western Store Complete Line Of Quality Brands Western Wear "Complete Ranch Outfitters" Where Your Search Ends And Hospitality Begins 119 S. Cuyler 669-3161 Pampa, Tex.</p> | <p>Carpet Cleaning Professional Carpet Cleaning Residential & Commercial - Free Estimates - Vernon Steam-Way Carpet Cleaners 779-2574</p> | <p>Blakemore FRESH PROTEIN FED CATFISH "Dressed While You Wait" BLAKEMORE MOTOR CO. BUILDING 400 North Main Shamrock, Texas 79079</p> | <p>Johnnie F. Mertel Boot Shop Tony Lama, Texas, Acme, Justin Leather Goods Shoe Repair phone 779-2161</p> | <p>The McLean News - THE THRIFTY WAY TO ADVERTISE Foshee's TEXACO Your full-service station Earnest & Maurine Foshee Owners 779-2621</p> | <p>THE CATTLEMAN'S FEED SERVICE LOOMIX Since 1905 Liquid Feed Supplement ● Natural Protein ● Highest Energy ● Consumption Control ● Fully Patented Steve Rogers 779-2907 Ted Nelson 820-5650</p> |
| <p>Kirby Sales & Service NEW, USED, REBUILT PARTS & SERVICE FOR POPULAR BRAND 512 S. CUYLER 669-2990</p> | <p>Shamrock Auto Supply Lawnmowers, Delco Batteries, Shock Absorbers 312 N. MAIN 256-2129 SHAMROCK, TEXAS</p> | <p>BARKER REDI-MIX READY-MIX CONCRETE. BACK-HOE SERVICE PH. 779-2703 OR 779-2869</p> | <p>SCOTT'S THE LAWN PEOPLE Scott's Lawn & Garden Fertilizer "It's Guaranteed" Bentley's Fertilizer</p> | <p>Brannon's Decorator & Supplies CUSTOM DRAPERIES RODS GIFTS, CANDLES, SILVER, STATIONARY, COOKWARE 218 N. Main Shamrock, Tex. 256-3682</p> | <p>National Auto Salvage 665-3222 or 665-3962 1 1/2 miles west of Pampa on highway 60 Large selection of used auto parts. We appreciate your business.</p> |
| <p>RIDGWAY CONSTRUCTION CO. Remodeling; Cabinets; Repairs; Painting; Room Additions. PHONE 779-2618</p> | <p>McLean Hardware Complete hardware Line -Dishes-Paint-Tools-Gifts 779-2591</p> | <p>SAFEMARK Safemark Tires & Batteries Bentley's Fertilizer 779-2209</p> | <p>Parson's Rexall Drug Rexall 24-Hour Prescription Service Shower Gifts Cosmetics</p> | <p>THE DONUT SHOP Doughnuts, Cookies, Cakes, Pies, Breads. 779-2212</p> | <p>J.R. GLASS OIL CO. 217 W. 1st 779-2181</p> |
| <p>CONCRETE FINISHER Over ten years experience Specializing in driveways, patios, sidewalks, porches. Call 665-8922 Pampa</p> | <p>PENNINGTON Garage and Car Sales 113 Commerce McLean 779-2535 779-2261</p> | <p>DON MILLER RADIATOR SERVICE "IS OUR BUSINESS" NOT A SIDELINE ● New & Rebuilt Radiators ● Gas Tanks & Heaters Repaired 376-6666 612 S. JEFFERSON AMARILLO, TEXAS</p> | <p>PAMPA CHRYSLER DODGE has a large selection of trucks, pickups, Chryslers, Dodges, Plymouths, Ramchargers, 4 wheel drive pickups, large selection of good used cars and trucks. Pampa Chrysler Dodge, 811 W. Wilks, Pampa, Texas 665-5766. 11-tfc</p> | <p>LAMB FLOWER SHOP 779-2611</p> | <p>LAWN MOWER and AIR COOLED ENGINE REPAIR 619 West First St. Phone 779-2877 PICK-UP AND DELIVERY</p> |
| <p>RITCHEY'S PLUMBING SERVICE COMPLETE PLUMBING REPAIRS CALL ANYTIME I 779-2577</p> | <p>DOZER WORK MOTOR GRADER WORK Pumps, Generators, Guards Food, Fuel, Greasing BRITT HATHAWAY 779-2585</p> | | | | |
| <p>EVERYONE READS The McLean News WANT ADS</p> | <p>BENTLEY'S FEED & FERTILIZER PURINA FEED FOR EVERY NEED Purina SUP-R-LIX LIQUID SUPPLEMENT WE DELIVER 779-2209</p> | | | | |

Texas Budget Buys Listed

COLLEGE STATION -- Budget buys at Texas grocery markets include fryer chickens, large-size eggs and several fruits, Mrs. Gwendolyn Clyatt reports.

Also, look for special prices on sweet potatoes and dairy products, she says.

Mrs. Clyatt is a consumer marketing information specialist with the Texas Agricultural Extension Service, The Texas A&M University System.

This week's price-quality trends are the following:

FRESH FRUITS--Attractive prices appear on bananas, apples, honeydew melons, pears and red grapes. New cranberries will see end-of-month price drops.

Apples by-the-bag have lower prices. Buy apples according to use--Red and Golden Delicious for eating raw, Jonathan and McIntosh for general purpose, and Rome Beauty for baking.

FRESH VEGETABLES--Along with sweet potato specials, look for economical prices on cabbage, carrots, dry yellow onions, squash, potatoes and cooking greens.

Calliflowers--in good supply has moderate prices.

DAIRY--Check for specials on sour cream, yogurt, cheese slices and various natural cheeses.

BEEF--Prices are stable to slightly higher. Best values are chuck roasts and steaks, round steaks, beef liver and ground beef with soy protein.

PORK--Prices remain on the high side. However, look for specials on Boston butt roasts, end chops, rib and loin-end roasts, fresh picnics and liver.



Cub Brock Crockett fights off a Miami Warrior to gain yardage for the Cubs in their game against Miami Thursday night. The game ended in a scoreless tie.



Cub John Jones makes a long run to score for McLean Thursday night. (The touchdown was called back.) (Staff Photo)



"Am I doing it right?" mascot Julianna Crockett asks cheerleader Stacie Smith during Thursday night's Cub game against Miami. (Staff Photo)

Englishmen
Continued From page 4
regions to the north. He told of large "musketas" and of eating a plant full of "pricks" which bore edible red fruit - the prickly pear cactus.
Their journey, which took 11 months and extended from Texas to Nova Scotia, is no less incredible than the east-west journey of Cabeza de Vaca, some 30 years earlier. Historians have given little attention to Ingram's account because in detailing his experiences 14 years later, he confused many things. He placed the African elephants and hippopotamuses in America as well as the South American tree called "Plantine". He also related stories of riches that had apparently been shipboard tales. Yet, he accurately described the coastal prairies of Texas and Louisiana as "stretching as far as can be seen and as broad as a board". He described grain with "ears as big as a man's wrist which made good bread" - Indian corn or maize.
An OFFICIAL TEXAS HISTORICAL MARKER, awarded by the Texas Historical Commission, has been placed on the courthouse square in Kingsville and tells the story of this outstanding achievement.

LOOSE MARBLES

BY LISA PATMAN

Someday I am going to write the greatest disaster movie of all time. It will be called "Lisa Battles The Giant Pimple." The flick will center around my never-ending battle with the awful blemish beast.

These giant blemishes that have plagued me for as long as I can remember are not, as you may have been led to believe, the results of overindulgence in chocolate and greasy foods. Not are they the results of nervous anxiety. They are caused by jealous little elves that live inside my body.

These little creatures like to make my life miserable by filling my otherwise normal complexion with large, obnoxious pimples.

The imp usually can be counted on to do the dastardly deed at the most inopportune time.

When I was a teenager, my face would invariably break out ten minutes before THE big date. Of course at the prom I was the acme of acne.

Later, when it was time to go for my first job interview, you guessed it, there was that horrible giant pimple right in the middle of my forehead.

I had thought that as I passed my teenage years pimpledom would pass. When that didn't happen, I felt sure that my twenties would surely see the last of the blasted

blemishes.

As usual, I was wrong. Those ornery little rascals still lie waiting to mess me up any important function.

Just let my editor send me to represent the newspaper at something, and I can be assured of a perfectly disgusting reflection as I look in the mirror. And for some reason I always get a bad case of blatant blackheads whenever I'm around a tall, slender blonde.

Now that I am older and wiser, I am sure that when I go to that great typewriter in the sky St. Peter will probably give me a golden tube of Clearasil along with my wings.

There is some action you can take when you are plagued by the pimple people. Let's say that you are to go for an important interview and you want to keep the upper hand and make a good impression, but unfortunately, you have a highly visible and thoroughly demoralizing blemish on your face.

Use this old trick that I have perfected.

I walk right in, look my prospective employer straight in the eye, point to the offending blemish and say, "Hello, my name is Lisa Patman, and I have a pimple right here."

You may not get the job, but you certainly will not be forgotten for a long time.

SEVEN GREAT PRINCIPLES

Notice these seven great principles which are supported by the Word of God and are much needed in the world today.

1. **RESPECT FOR GOD'S LAW.** "And hereby we do know him, if we keep his commandments. He that saith, I know him, and keepeth not his commandments, is a liar, and the truth is not in him." (1 John 2:3-4)

2. **RESPECT FOR PARENTS.** "Children, obey your parents in the Lord: for this is right. Honor thy father and mother (which is the first commandment with promise), that it may be well with thee and thou mayest live long on the earth." (Eph. 6:1-3)

3. **RESPECT FOR LIFE.** "Thou shalt not kill" (Ex. 20:13) "Whosoever hateth his brother is a murderer: and ye know that no murderer hath eternal life abiding in him" (1 John 3:15)

4. **RESPECT FOR DIVINE AUTHORITY.** "All authority hath been given unto me in heaven and on earth" said Jesus (Matt. 28:18)

5. **RESPECT FOR THE LAWS OF THE LAND.** "Let every soul be in subjection to the higher powers for there is no power but of God; and the powers that be are ordained of God. Therefore he that resisteth the power, withstandeth the ordinance of God: and they that withstand shall receive to themselves judgment." (Rom. 13:1-2)


6. **RESPECT FOR PROPERTY.** "Thou shalt not steal" (Ex. 20:15). "Let him that stole steal no more; but rather let him labour, working with his hands the things that is good, that he may have whereof to give to him that hath need." (Eph. 4:28)

7. **RESPECT FOR HUMAN DEGENCIES AND THE RIGHTS OF OTHERS.** "For ye brethren, were called for freedom; only use not your freedom for an occasion to the flesh, but through love be servants one to another. For the whole law is fulfilled in one word, even in this: Thou shalt love thy neighbor as thyself." (Gal. 5:13)

CHURCH OF CHRIST
4th & Clarendon
McLean, Texas

WHERE CHRIST IS KING
AND A FRIENDLY WELCOME AWAITS ALL
SUNDAY
Bible classes: 10 a.m.
Worship assembly: 10:50 a.m.
Evening worship assembly: 6 p.m.

WEDNESDAY
Classes for all ages: 8:00p.m.

| | |
|--|--|
| SHURFINE FROZEN ORANGE JUICE 6 OZ. CAN 2 FOR 75¢ | SHURFINE FROZEN WHIPPED TOPPING 9 OZ. 55¢ NON DAIRY |
| SHURFINE PURE VEGETABLE OIL 24 OZ. \$1.09 | |
| SUGAR SHURFINE 5 LB. BAG 99¢ | |
| HANDI-WRAP DOW 200 SQ. FT. BOX 89¢ | |
| DOW ZIPLOC SANDWICH BAGS 50 COUNT 69¢ 100 COUNT 99¢ | SHURFRESH 2 LB. BOX CHEESE SPREAD \$1.89 |
| DOW ZIPLOC STORAGE BAGS GALLON SIZE 20 COUNT 89¢ | WILSON ALL MEAT BOLOGNA 1 LB. \$1.09 |
| DIXIE COUNTRY FLAIR 9 OZ. 80 count COUNT Cold Cups \$1.79 | GOOCH SLICED SLAB BACON BACON 1 LB. \$1.29 RANDOM WEIGHT PKGS. |
| ARMOUR CORNED BEEF Hash 15 OZ. CAN 85¢ |   |
| RANCH STYLE BEANS 23 OZ. CAN 55¢ | |
| CAMPBELL CHICKEN NOODLE SOUP NO. 1 CAN 2 for 49¢ | |
| SHURFINE PANCAKE MIX 2 LB. BOX 69¢ | |
| SHURFRESH CRACKERS 1 LB. BOX 55¢ | |
| SHURFINE CELLO BAG VANILLA WAFERS 10 OZ. PKG. 2 FOR 79¢ | |
| FOLGERS INSTANT COFFEE 10 OZ. \$4.19 | |

Tendercrust Bread

and
Bakery Products
Specials Good
Friday and Saturday



LOWEST EVERYDAY
FOOD PRICES
MARKET

SHURFRESH
MILK
FOR
GOODNESS
SAKE

