



# The McLean News

Price 10c

Serving McLean and the Area Since 1903

VOLUME 71 McLEAN, GRAY COUNTY, TEXAS THURSDAY, OCTOBER 31, 1974 NUMBER 44

## Record Attendance Turns Out For Town Hall Meeting Monday Night

Approximately 400 residents attended a town hall meeting Monday night in the McLean Hospital building.

The meeting, which was held in the Methodist sanctuary, was presided over by hospital board member Jewel Wham, County Judge Calhoun, who attended as the county commissioner. He spoke to the group, hospital administrator Highland General Hospital in Pampa was also present and spoke to the group.

Edge Cain pointed out the McLean Hospital and Pampa General Hospital are county facilities, both operated by a board of managers appointed by commissioners under the hospital law.

The hospital referred to is Wheeler County, which is a county hospital. The HEW is based on the age of nurses.

Thomas M. Tierney, director of Bureau of Health Services, told the McLean hospital a hearing could be held before an administrator. The written request for such action would have to be accompanied by any evidence or arguments to the hospital officials.

A letter from HEW stated the McLean hospital a review of facts by Social Security Administration had determined the McLean hospital no longer met the requirements for participation as a provider of services in the Health Care for the Aged and Disabled Program.

The Top of Texas Cowbelles will meet in Pampa Monday, November 4 at 11:30 a.m. at Furr's Cafeteria.

All members are urged to try and attend.

I-40 is one of the busiest highways across the country. The closing of the McLean Hospital would leave the area between Amarillo and Shamrock, with one hospital at Groom, he added.

Residents spoke freely from the floor asking questions and expressing their feelings. Everyone there agreed that we do need to keep our hospital, and will take any step necessary to keep it. At last report the necessary nurses had been hired. Everyone is asked to please write your letters to your representatives. Their addresses will be printed at the end of this article:

The Honorable Bob Price United States Representative Room 430, Cannon House Office Building Washington, D.C. 20510

The Honorable Lloyd Bentsen United States Senator United States Senate Washington, D.C. 20510

The Honorable John G. Tower United States Senator 142 Russell Office Building Washington, D.C. 20510

## T/Sgt. John Engle Re-enlisted In A. F.

Technical Sergeant John J. Engle, son of Mrs. Norma B. Engle, McLean, has re-enlisted in the U.S. Air Force.

Sergeant Engle, an information technician, is assigned at Elmendorf AFB, Alaska with the 21st Composite Wing.

The sergeant graduated in 1957 from Enid Okla., High School and attended Phillips University and Oklahoma City University.

His wife, Karen, is the daughter of Mrs. Ruth G. White, Aline Oklahoma.

## Cowbelles To Meet Monday at Pampa

The Top of Texas Cowbelles will meet in Pampa Monday, November 4 at 11:30 a.m. at Furr's Cafeteria.

All members are urged to try and attend.

## Pep Rally Nov. 1

By Gail Terry  
Friday, November 1 at 3:30 p.m. at the McLean gymnasium a Homecoming pep rally will be held. Everyone is invited to come and join in the fun.

## HOSPITAL REPORT

ADMITTED  
Flora Humphreys  
Julia Cooper  
Viola Meadors  
Bill Boyd  
Gary Griffin

## General Election To Be Held Tuesday

A General Election will be held in McLean next Tuesday, November 5 at the American Legion Hall. The polls will be open from 7 a.m. until 7 p.m.

Mr. S. A. Cousins will serve as judge over the election in McLean.

This is not a presidential election year, but all across the nation they will be electing congressmen and governors and other state and county officials one week from Tuesday.

Locally, there are no contests between Republicans and Democrats in Gray County.

The G.O.P. threw in the towel at the May primary election and Democrats nominated at that time are now certain of election.

They include District Judge Granger McIlhany, County Judge Don Cain, District Clerk Helen Sprinkle, County Clerk Wanda Carter, County Treasurer Jean Scott, County School Superintendent Rena Belle Anderson, County Surveyor Gene Barber, Justice of Peace, Pet. 1, Margie Prestidge, Justice of Peace, Pet. 2, Place 2, Ed Anderson; County Commissioner, Pet. 2, Don Hinton; County Commissioner, Pet. 4, Ted Simmons and Justice of Peace, Pet. 5, Ernest Beck. They are all Democrats and all home free unless some dark horse springs up somewhere and conducts a lightning-fast write-in campaign.

That leaves the only real local interest centered in the 13th District Congressional race between Republican incumbent Bob Price of Pampa and Democratic State Senator Jack Hightower of Vernon.

State Rep. Phil Cates, representing the 66th District, is another Democrat who has nothing to worry about on Nov. 5. He has no opponent on the Republican ticket and will be elected for a third term.

U.S. Rep. Price, by the way, will be seeking his fifth term as 13th District congressman.

## Trick or Treaters Out Tonight

Drivers are urged to drive very carefully tonight as this is Halloween and a lot of spooks will be out trick and treating.



"It's odd that all the animals except man know that the main thing about life is to enjoy it."

## Conservation Dist. Director Re-elected

Curtis Schaffer was re-elected to a 5 year term as director for Zone I of the Gray County Soil and Water Conservation District. He has served over 20 years as a director of the district.

Schaffer is involved in a stock farm operation northwest of Lake McClellan. He has served as Chairman of the Board of Directors for several years. He has represented the District at many meetings and is presently the District representative on the Resource Conservation and Development Executive Board.

During Mr. Schaffer's term on the Board, the Conservation District has provided technical assistance to Gray County farmers and ranchers, schools, civic groups, Units of Government, municipalities and individuals.

## Basketball Girls To Attend Clinic

The 17th annual Flying Queens Basketball Clinic will begin at 8:15 a.m., Saturday, November 2, at Hutcherson Center on the Wayland Baptist College campus. The Flying Queens are the 1974 AAU and NWIT National Champions.

The program includes special guest speaker George Davidson, assistant coach at Texas Tech University, Lubbock, and successful high school coaches.

Other activities include a floor demonstration by the Queens and a clash between outstanding teams from Greenwood and Ropesville.

The girls basketball teams from McLean and their coach Joel Nelson will attend the clinic.

## Letter To The Editor

Dear Editor,

This letter pertains to McLean High School and their football team. The quitting of the Senior football players compelled me to write this letter. I don't hold anything against them for their actions, they had their reasons. However, this letter doesn't concern those who quit, but rather, the younger players who are now having to play against teams two and three times their size. I know from experience what they are up against. Not only do I respect them for even taking on the job in the first place, but also, even more, for playing through a full game, going all the way, getting badly beat, and then coming right back and going through it again the next week. For this reason, I believe McLean has the toughest team now than they have had in a long while. Maybe not in ability and size, but

## Coronation Planned Tigers Play Claude In Homecoming Game

McLean High School will have its homecoming activities Friday night at Duncan field beginning at 7:00. The band and pep squad will perform a pre-game show while the football queen is being crowned.

The Tiger football team elected the candidates for queen last Thursday. The candidates are Sheri Haynes, senior; Gail Terry, senior; Halcyon Back, junior; and Betty Holmes, junior. The girls will be escorted by their fathers.

Sheri Haynes, daughter of Mr. and Mrs. John M. Haynes has participated in basketball, golf, tennis and track for the past 3 years. She has been named to the all-district and state teams the past two years. Miss Haynes was named to The Superstar Team last year and she will be featured on the cover of the Texas High School Sports Magazine which will be coming out soon.

Gail Terry, daughter of Mr. and Mrs. George Terry, has been a cheerleader for the past 4 years. She's been listed among "Who's Who" in American High Schools. Gail is a guard for the Tigerettes and went to regional in golf the last two years. She also traveled to regional with the volleyball team. She is serving as Student Council secretary this year.

Halcyon Back, daughter of Mrs. Laverne Back is currently serving as Tiger cheerleader and has participated in sports the past three years. She is at starting position at guard for the Tigerettes this year. She was named to the top ten in the Miss McLean Pageant for the past two years. She has also served as FFA sweetheart and FBLA Historian.

Betty Holmes, daughter of Mr. and Mrs. Bill Holmes, is an active member of FBLA and is currently serving as President. She is a member of the Tiger band. She was elected most courteous of her class last year and is active in FHA. She will also be a starting guard for the Tigerette basketball team.

## Consumer Watchwords: Cooking greens add variety to fall menus, and some offer economy.

in character. Furthermore, because of the experience they are gaining now by losing, they are going to be a tough team to beat in the future, given time to grow and mature. Therefore, now more than ever I believe McLean High School and its supporters, have something they can truly be proud of.

Sincerely,  
Steve Trew  
Texas A&M University

The Tigers traveled to Wheeler last weekend to play the Mustangs on their home soil for their fourth district game of the season. The Mustangs, now 3-1 in district play won their homecoming game with a score of 64-0.

Curtis Simpson racked up the 63 of the 71 total rushing yards in eleven attempts, to lead the offense, while Gary Danner was recognized as leading tackler assisting with 10 tackles and stopping 8 Mustangs singlehanded.

Kent Ware accumulated a rushing yards total of 111 yards in 8 carries for the Mustang grid, making a 74 yard touch down in the first period of play to open the scoring. The extra point was executed by Jim Verden.

Tailback, Don Chapman scored next breaking open left end in a 10 yard scramble for the goal. Dale Helton scored a 6 pointer, winding up the 1st quarter with Jim Verden again on the scene he booted both extra points.

Second quarter scoring included a safety for Wheeler and a 4 yard plunge made by Terry Tidwell. The half time score stood at 30-0.

Dale Helton and Don Brown made 3rd quarter tallies on scuttles of 4 and 25 yards respectively. Verden kicked the former additional points and Helton's extra score try failed. David Massick then scored on a 5 yard run off right tackle. Ware ran the pigskin over for the extra points.

Verden scampered 10 yards to capture another six points in the 4th period of play and Don Chapman connected with Ken Elliot in a 22 yard pass for the final score.

The Mustangs fumbled 3 times inside their own 20 yard line, but the Tigers were unable to score on the recoveries.

The Tigers hosts Claude here next Friday for the homecoming game.

## Bonfire To Be Held Tonight

The Bonfire will be held Thursday night, October 31, during which the crowning of the 1974-75 Flame Queen will be crowned.

A car bash will be sponsored by HERO beginning at 7:00 p.m., lasting through the Bonfire.

Federal, state, and local government monthly payrolls for civilian employees have increased 60 per cent in five years from \$6.9 billion in 1968 to \$11 billion in 1973. The total government payroll for civilians is estimated at over \$135 billion.



Some Arabs believe that a heavy downpour can be stopped by quenching a fire with water.

## The Bible Doctrine of Hell

"And these shall go away into everlasting punishment: but the righteous into life eternal." (Matt. 25:41) (continued from last week)

Hell is a place where the tongue will be used for everything vile and evil. James says the tongue "is set on fire of hell." (James 3:6) We have seen at times how much hatred, malice, envy, strife, division, and general evil the tongue can stir up when it is occupied in gossip, slander, backbiting, falsehood, and evil speaking. This is a characteristic of hell, and is the spirit of the devil working in and on men. It is a rare person who had not heard a husband and wife feud, shout, call angry names, and perhaps even curse each other. Those who have engaged in such brawls in families can personally testify that it is a taste of hell, and even the casual onlooker can see the Satanic spirit at work in such cases.

Hell is a place of "outer darkness." (Matt. 25:30) Men fear darkness, and evil men do their evil deeds under cover of darkness. In the earthly order of things, no life can exist without light, for light is essential to the growth of plant life, which provides food for all other life; and the light of the sun is necessary for warmth. And there is intellectual and spiritual darkness, as well as physical darkness. (John 1:6-9; 3:19-21) The "Dark Ages" was a period of ignorance when men were burned as witches, and the light of the Bible was withheld from the spiritual eyes of the people. But all darkness on earth is only a sample of the eternal, outer darkness of hell.

Hell will be everlasting torment--timeless, eternal, never ending torture. Jesus said it was "everlasting fire, prepared for the devil and his angels. . . everlasting punishment." (Matt. 25:41, 46) Jesus said that hell is "where their worm dieth not, and the fire is not quenched." (Mark 9:43-44) Hell is a place where "the smoke of their torment ascendeth up for ever and ever; and they have no rest day nor night." (Rev. 14:11) Along with the devil that deceived them the lost will "be tormented day and night for ever and ever." (Rev. 20:10) Man can endure almost anything if he can see brighter things ahead, but there will be no hope for a future respite in hell--all will be one long dismal, terrible despair.

We can see hell here in the terror of strife, hatred, bitterness, darkness, torment, and other evils, but we can get away from it here. While we live, the gulf is not yet fixed; (cf. Luke 16:26) but one day, at death, the gulf is fixed, and we will spend eternity on whatever side we are found. The choice is up to the individual, so let us avoid hell with every fiber of our being, both on earth and in eternity, by submitting to the will of God. (Matt 7:21-23)

### CHURCH OF CHRIST

J. A. Farber, Evangelist  
4th and Clarendon  
MCLEAN, TEXAS

## RE-ELECT WANDA CARTER



County Clerk  
of Gray County

Qualified and Capable

Your Vote and influence respectively  
solicited and appreciated.

VOTE X For WANDA CARTER

In the General Election on November 5, 1974.

Paid Political Advertisement  
Paid for by Wanda Carter, 422 East 18th St., Pampa, Texas.

### Seniors & Guests Honored at Tea

The Pioneer Study Club of McLean gave the first of a number of a planned Bicentennial programs Saturday, October 19, when they hosted a pioneer tea at the McLean Country Club. Honorees were the 1975 seniors of McLean High School, their mothers, grandmothers, and other friends.

Mrs. John Dwyer, club president, wearing a pioneer dress of blue print trimmed with white lace, welcomed the guests. Mrs. Jim Back, representing the woman's liberation movement of the 1970's registered the visitors at a table covered with an old-fashioned wedding-ring quilt.

Mrs. John Hill, resplendent as Scarlet O'Hara of "Gone with the Wind," wore a rose satin hoop gown with black lace trim. Lace mittens complemented her costume. Mrs. Hill pinned the honorees with white carnation boutonniers and/or corsages, courtesy of Lamb's Flower Shop and Smith's Pot Pourri.

Background piano music was played by Rose Helen Dwyer and Denise Lamb. The serving table was laid with a red, white, and blue patchwork quilt and centered with a white leghorn be-ribboned hat which held a large bouquet of white cosmos and baby breath.

Punch, coffee, tarts, dainty sweet rolls, and old-fashioned cookies were served by Mesdames: Bob McDowell, Randy Hicks, Jesse Coleman, Miro Pakan, Forrest Hupp, Harold Fabian, and Bob Orrick.

Mrs. McDowell wore a pioneer "calico"; Mrs. Hicks, a blue satin with long sleeves and high neckline. Mrs. Orrick's dress was a printed violet, reminiscent of the 1800's, while Mrs. Fabian modeled an unusually beautiful white lawn with pink rosebuds, accented by a white yoke edge with white ruffled lace.

Mrs. Hupp was attractive in a long, dark green pinafore. Mrs. Coleman chose her grandmother's "Sunday-go-to-meetin'" black tafta

blouse and long black gored shirt. Over the blouse she wore her mother's ecru tatted collar pinned at the throat with a cameo brooch.

Mrs. Pakan, attired in a pioneer dress made by her daughter, Mrs. Charles Jones of Pampa, introduced little Wendi McDowell who modeled a white linen dress with blue hand-embroidery and a ribbon sash of the same color. This dress was made by Mrs. Pakan's mother and worn by her daughter when she was five years of age.

Mrs. Ed Patman wore a present day, short, attractive dress, a uniform--she said--for busy mothers.

Mrs. June Woods, wearing a pink print pioneer dress with black rick-rack trim, called attention to the Bicentennial flag on display and explained how McLean's Mayor Sam Haynes was presented this flag at the initial presentation of "Texas" last June in recognition of work done by the Alanreed-McLean Museum in preserving the history of our area.

Girl Scouts: Denise Hamilton, Stacy Smith, Debby Hutchinson, and Kim Sanders presented the colors and let the entire group in the pledge of allegiance.

Mrs. Mike Johnson, wearing a patchwork pinafore, introduced the seniors by reading an original poem about each senior.

Mrs. Clyde Magee, modeling a gold satin gown with gold sleeves and yoke, the latter encircled with a bertha, introduced seventh and

### Young at Heart Have Salad Supper

Mrs. Luther Petty, Reporter The Senior citizens-Young At Heart club met Friday night, October 25 at its usual meeting place.

A salad supper, with all varieties of salads, was served to a crowd of 34 present. After the meal everyone enjoyed playing 42.

The minutes were read and treasurer's report was given, showing some gifts in memorial of friends who have passed away.

Those present were Mr. and Mrs. Frank Reeves, Mr. and Mrs. Dewey Pennington, Mr. and Mrs. Bryan Roby, Mr. and Mrs. Lester Day, Mr. and Mrs. Raymond Smith, Mr. and Mrs. Enloe Crisp, Oscar Tibbets, John Haynes, Mesdames Lena Bailey, Eula Morrow, Vela Corcoran, Bertha Smith, Pearl Stevenson, Betty McCurley, Ada Simmons,

eighth grade students who read their essays on "Patriotism". She presented awards to the following: Debbie Bussi and Karen Daniels (first); Randy Suggs and LaDona Keeton (second); Jonathan and Billy Douglas, Lynn Durham, and Jeanette Brown (third).

With Mrs. Fabian at the piano, mesdames Don Trew, Ed Patman, and John Dwyer sang a Medley of old and favorite songs and closed with the audience joining in to sing "God Bless America."

Ruby Tibbets, Marzie Linn Kate Jones, Beatrice Street, Oma Watson, Elizabeth Kikel, Audie Stewart, Beulah Humphrey, Myrtle McCoy, Ruth Kemp, Minnie Freeman, Siabel Petty and a visitor Cressie Turner Hood of Pampa.

Several new members were received and anyone over age of 55 are invited to come and join. Meeting dates are each 2nd and fourth Friday nights at 7 p.m. in the Carter Smith building.

### Fidellas Class Has Social

The Fidellas Sunday School class met October 17 in the home of Audie Stewart. A devotional was given by Mrs. Stella Gibson.

Refreshments of coffee, spiced tea and jello salad and crackers were served by the hostess to Rev. and Mrs. Herman Bell, Mr. and Mrs. Howard Williams, Mr. and Mrs. Jim Stevens, Mr. and Mrs. Oba Kunkel, Mr. and Mrs. Raymond Smith, Stella Gibson, Eula Morrow, Sallia Pettit, Bertha Smith, Vessie Collier, and the hostess Audie Stewart and Ruby Bell. 42 was enjoyed by all.

**DR. JACK L. ROBERTS**  
OPTOMETRIST  
121 Main Street, Shamrock  
Phone 256-3203  
Tues.: 9-5 Fri.: 2-5

Jack Hightower, the Democratic candidate for U. S. Congressman, 13th District, is a lifelong resident of the Panhandle and Northwest Texas. He understands the problems of this area and the aspirations of its people.

## JACK HIGHTOWER

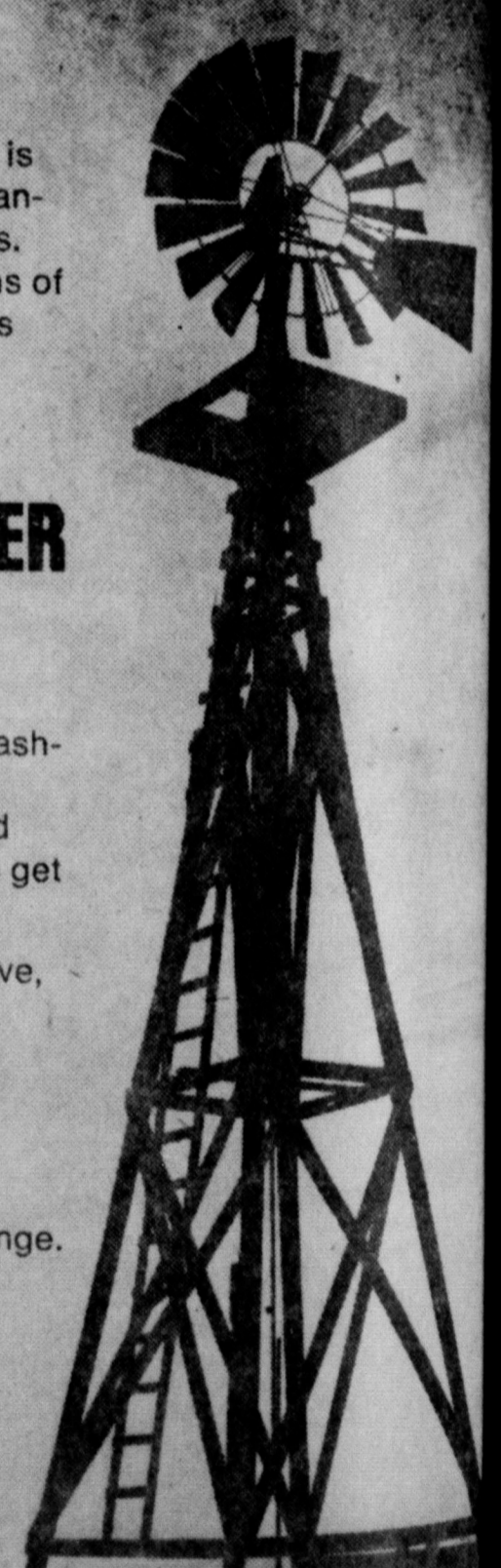
Jack Hightower is qualified to serve as your voice in Washington--qualified by background and experience, and qualified by proven ability to get things done for people.

Jack Hightower offers positive, knowledgeable, dedicated leadership in these times of crisis and controversy in America.

He will be an effective Congressman . . . for a change.

Paid for by HIGHTOWER FOR CONGRESS  
Cleddie Palmer, Chairman, Box 1973, Vernon

**DEMOCRAT FOR CONGRESS**



# TIGER RAG Six Weeks Test

By Cherrie Billingsley  
 It's that time again... yes it's time for six-week tests. Be on the look-out for unidentified MHS students walking around with their noses stuck in geometry, english, history or science books.

## Leaf Collection

By Jerry Rollison  
 Once again the McLean Rodeo Club will be traveling to Tascosa High School Rodeo in Amarillo this weekend. There will be five performances on three nights beginning at 8:00 starting Thursday thru Saturday. Two matinees, one at 8:00 a.m. and one at 2:00 p.m. will be held. Most all the McLean kids will be participating. They are Cindy Sherrod, Delinda Howard, Greg Henley, Dale Steel, Van Horn, Jerry Rollison, Greg Tolleson, and Todd Darsey. We are asking for all the support that can be given. The rodeo is in the fairgrounds coliseum. Come support a winning team.

## Rodeo Club To Go To Amarillo

By Jerry Rollison

Once again the McLean Rodeo Club will be traveling to Tascosa High School Rodeo in Amarillo this weekend. There will be five performances on three nights beginning at 8:00 starting Thursday thru Saturday. Two matinees, one at 8:00 a.m. and one at 2:00 p.m. will be held. Most all the McLean kids will be participating. They are Cindy Sherrod, Delinda Howard, Greg Henley, Dale Steel, Van Horn, Jerry Rollison, Greg Tolleson, and Todd Darsey. We are asking for all the support that can be given. The rodeo is in the fairgrounds coliseum. Come support a winning team.

## Cubs Play Wheeler

By Morse Haynes

The McLean Cubs played the Wheeler Colts on home ground last Thursday night. The Colts came out on top with a 24-6 victory. David Tolleson was the leading rusher for the Cubs. David scored the Cubs only touchdown in the second quarter on a 40 yard run. At the half the score was 12-6. The Colts went on to score two more touchdowns the second half. The Cubs play the Claude Colts at Claude tonight.

## Picture Retakes

By Beth Hambricht

School pictures will be retaken Monday at the Agriculture Building at 8:30 a.m. Anyone who was absent previously or who's pictures were technically faulty will have his picture retaken. Parents of preschool children may bring their children to have pictures made at this time. The cost is \$5.25. Seniors will also choose the frames for their pictures.

## Miami Storms Lakeview

By Halcyon Back

The McLean Tigerettes were hostess to the Miami Warriorettes and the Lakeview Eaglettes, Thursday night at 5:30 at the McLean gym. The Miami varsity beat the Lakeview varsity 63-19. Jenny Greenhouse was the leading scorer for Miami.

The contest following this game between Miami's Jr. High and their 5th and 6th graders and Lakeview's Jr. High and their 5th and 6th graders, both ended up in Miami's favor.

## FFA Teams To Put on Demonstration

By Janet Smith

The Senior Chapter conducting team of the McLean FFA Chapter will put on a Parliamentary demonstration for the Lions Club on Monday, November 4th. The teams consists of Todd Darsey, president; Dave Jefferson, vice president; Jerry Rollison, secretary; Dean Trew, treasurer; Ricky Lowery, Reporter; Keith Martin, sentinel; Jay Dee Fish, advisor. The team is preparing for the district contest to be held November 16th at Clarendon College.

The same team competed last year and won 3rd place in the Top -0-Texas district. The sponsor Mr. McGinty said "the boys said last year that they will win the district contest next year. Next year is here."

## Tigers To Play Claude

By Dean Trew

In their fourth district contest of the year, the McLean Tigers fell to the Wheeler Mustangs last Friday night at Wheeler.

The Tigers held the Mustangs for 7 minutes before a Mustang broke for a 75 yard touchdown.

The Mustangs then scored almost as well as they continued to roll over the Tigers. Leading rusher for the Tiger was Curtis Simpson. Eddie Estes attempted several field goals but didn't make them.

This week the Tigers host the Claude Mustangs at home for homecoming. The cubs will go to Claude for their contest.

## FHA Make Up A Questionnaire

By Betty Holmes

The Future Homemakers of America first year class in McLean High School is making up a questionnaire for the teachers this week. The project is a portion of "Impact", a plan for FHA members to grow as a group in finding ways to benefit the community, school, and club. This particular project is designed to find out about teacher's ideas and promote a better student-teacher relationship. The

## More Excerpts From 'The Tiger Post'

March, 1947

From the Mademoiselle Column (a fashion commentary)

Marnell Ledgerwood was introducing spring last week with a blue and white striped gathered skirt. The blouse had a little black bow tie. Brown and white saddle oxfords with blue socks completed the outfit.

Glenda Joyce Smith looked very nice in an aqua blouse with yellow and rust print of trees and little yellow vases and yellow cactus. A tan skirt, two toned shoes and yellow anklets were the completion.

From "Snooper"  
 Dorothea Back wasn't talking to Luke the Spook Tuesday.

J.C. Willis and Exie Christie seem to be doing all right lately.

What has happened that Scotty McDonald has not been with any girls lately. Has the Pretty Boy lost his touch? lately

What's this about Jack Brooks and Dorothea Back always being together in school? From News and Notes...

Dickie Andrews and Mr. Clyde Magee were guests at the Lions Club. Patty Rippy and La Wanda Shadid furnished the program.

A Poem  
 OUR FAVORITE TEACHER  
 By Gerald Knutson

We have a teacher, kind and sweet,  
 Little white ears and great big feet,  
 Her hair is white, her eyes a star,

When she says jump, we say "how far?"  
 ...She's a teacher, sharp as a tack,

She's none other than Vera Back.  
 April, 1947  
 "Mademoiselle"

Davie Burch was fratched from top to toe in her pink plaid gingham dress with a headband of the same material.

Wanda Rae Allen had on a pretty pink blouse last Friday. "Snooper"

It's too bad LaVetta Gun doesn't know what Johnny Haynes did while she was in Memphis.

Why didn't someone tell us that Chester Golightly could dance?

Billy Bob Sherrod and Lois Thacker were married Saturday at the Thacker home.

Johnny Hutchinson is trying to take Faith away from Bill Willingham.

You know, the worse inflation gets the more we need somebody like Briscoe. He's created a lot of good jobs and he knows how to get things started.



In times like these when the economy is so shaky, I'm going to stay with Governor Briscoe.



It's quite refreshing for me to know that we have a man like Dolph Briscoe... a man who puts integrity before all things....



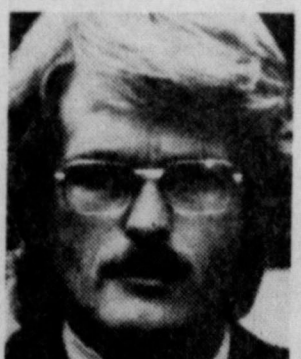
Dolph Briscoe's proved he has the contacts and the know how to bring new business to the State of Texas. We can't afford to lose him at a critical time like this.



We need new jobs and more income in this state and Governor Briscoe is helping us get them.



Briscoe's kept pace without adding new taxes - I voted Republican in 1972, but I'm voting for Briscoe this time.



They all promised no new taxes; Dolph Briscoe kept his promise.



I think Dolph Briscoe is a Governor you can believe in. I'm looking forward to voting for him in November.



# RE-ELECT GOVERNOR BRISCOE



## HE KEPT THE PROMISE

Political advertising. Paid for by the Briscoe '74 Campaign Committee, David A. Dean, Campaign Manager, 1212 Goodalup, Austin Texas. Published by:

The McLean News, McLean, Texas

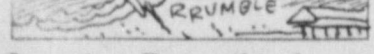
## The McLean News

210 N. Main 779-2447

Published every Thursday at McLean, Gray County, Texas. Second Class Postage paid at McLean, Texas 79057.

Deloris and E. M. Bailey  
 Owner and Publisher

Subscription rates: \$5.50 year in Gray and neighboring counties; \$6.50 per year elsewhere.



In ancient Rome, thunder on the left was considered propitious.

tests will be submitted to the teachers for completion.

Results will be compiled and placed in the Home

Economics room for reference.

VOTE NOVEMBER 5  
 Agriculture is our Most Vital Industry

Re-elect  
**JOHN C. WHITE**  
 Commissioner of Agriculture

• Integrity • Leadership

Pol. Adv. paid by T. P. Flahive, Chmn, John C. White Comm, 221 E. 11th, Austin, Tex. 78701

# STATE CAPITAL Highlights AND Sidelights

by Lyndell Williams  
TEXAS PRESS ASSOCIATION

AUSTIN—Previews of debate expected before the legislature next year on the key objective of revamping public school finance formulas already are being offered in Austin.

A legislative sub-committee last week was told state philosophies of education and funding methods must change if there is to be real equality in learning opportunities.

The same House interim sub-committee on public school finance heard differing opinions on whether the so-called "weighted pupil plan" will help correct inequities.

Dr. Jose Cardenas of Texans for Education Excellence and former superintendent of Edgewood School District, San Antonio, said the present Minimum Foundation Program must be scrapped and the "weighted pupil" plan substituted.

Dr. Lawrence Haskew, University of Texas at Austin education professor, conceded the "weighted pupil" approach may be a small step forward, but he said he could not see it as correcting all inequities.

The plan would place state school aid on the basis of need for various-level programs rather than on average daily attendance. Apparently, it figures in Gov. Dolph Briscoe's proposals for education assistance.

A Texas Advisory Commission on Intergovernmental Relations public finance committee, meanwhile, suggested levying school taxes on a countywide basis as a means of equalizing resources.

Draft of a 35-district survey of school property tax values for the Legislative Property Tax Committee is expected to be available next month for legislative guidance.

**GASOLINE USE CUT**—Texans used a little less gasoline last summer than they did in 1973 but increased natural gas consumption slightly.

A governor's energy office report indicated gasoline sales were down 1.3 per cent in July, but natural gas use was up 2.9 per cent. The re-

port concluded the gas consumption rise was due to hotter weather in June-July 1974.

State agencies managed to decrease their use of both gas and gasoline substantially. Wharton County Junior College cut energy consumption by 29.7 per cent from December through July.

**WELFARE "NOT PENALIZED"**—Texas welfare programs have not been penalized regardless of a report from Washington, State Welfare Commissioner Raymond W. Vowell said.

Vowell said the state agency actually has "saved taxpayers \$1.5 million through highly-successful quality control measures." He termed "misleading" a report from Washington that welfare grants to states had been slashed \$61.7 million in the last half of the year to crackdown on abuse.

The state official said Texas has exceeded federal Health, Education and Welfare agency guidelines, and that "fiscal sanctions established by the feds a year ago lagged years behind Texas efforts to rid its rolls of error in welfare payments." **PAROLEES AIDED**—A group of Houston lawyers are aiding parolees from state prison in their adjustment to life outside penitentiary walls.

They will help find jobs, meet parole requirements and generally assist them in finding their place in society.

The project is financed by Texas Criminal Justice Council.

**COURTS SPEAK**—The State Supreme Court ordered a hearing November 20 on

whether the Railroad Commission has power to apportion in the public interest natural gas of Lo-Vaca Gathering Company to Austin and San Antonio.

In other cases, the high court:

Held Bellaire General Hospital of Houston was responsible for the death of a patient housed in a room without oxygen.

Refused to schedule a hearing on Coastal States Gas Corporation's effort to disqualify an Austin lawyer from a breach of contract suit against the firm on grounds the attorney helped negotiate the contract in question.

The Court of Criminal Appeals reversed a five-year prison sentence assessed a Dallas man in the accidental slaying of his wife.

**AG OPINIONS**—A Commissioners Court lacks authority to call for a referendum at public expense on a proposed dam project, Atty. Gen. John Hill held.

In other recent opinions, Hill concluded:

- It is legal to prescribe different salaries for constables of separate county precincts.

- Residents of a commissioner precinct shifted to another have no vested interest in money assigned their old precinct.

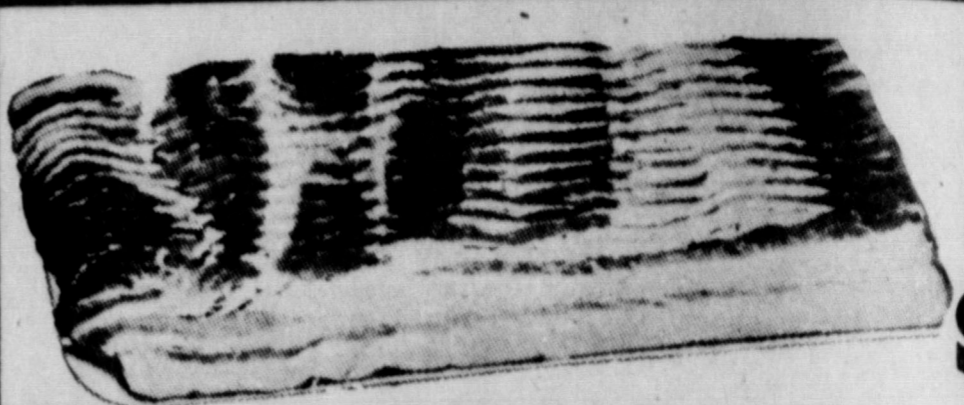
- The Open Records Act does not require the Board of Pardons and Paroles to reveal its files on an inmate to an individual legislator.

- Governmental bodies holding sales tax permits must also furnish a bond or other security to the comptroller when they collect. So must individuals who sell taxable items from facilities on government property.

- A county clerk is not authorized to record an assumed name certificate for a business entity until full information required by law is provided.

- City of Selma budgets are public records.

- A female employee's right to pay for time she was off her state job due to preg-



**BACON** 2 LB. PKG.

KRAFT AMERICAN **CHEESE** SINGLES 12 OZ. PKG.

**PORK CHOPS** END CUT LB.

CUDAHY **BOLOGNA** ALL MEAT LB.

NABISCO CREAM **WAFFER STICKS** 9 OZ. PKG.

OR WHOLE KERNEL 303 SIZE 3 FOR **93¢**




KRAFT **CARAMELS** 28 OZ. PKG.

KEITHS FROZEN **CORN** 10 OZ. PKG. 4 FOR 17


KEITHS FROZEN CHOPPED **BROCCOLI** 10 OZ. PKG. 4 FOR 17

WOLF BRAND **CHILI** NO. 20 8

**Duckett's** FOOD STORES  
McLEAN, TEXAS

Specials Good Friday and Saturday, November 1, 2,

**Blakemore**  
FRESH PROTEIN FED CATFISH



"Dressed While You Wait"  
BLAKEMORE MOTOR CO. BUILDING  
Phone 255-3287  
400 North Main Shamrock, Texas 79079

**WRITE IN MARY DWYER**  
For County Commissioner Precinct 4  
**BALLOT**

<input type="checkbox"/>	DEMOCRATIC PARTY	WRITE-IN
County Commissioner, Precinct 4		Mary Dwyer

**I Want To Work For You!**  
Pol. Adv. Paid for by Mary Dwyer

BETTY CROCKER

# HAMBURGER HELPER

**69¢**

GELATIN ASSORTED

**JELL-O**

6 OZ. SIZE

**3 FOR 89¢**



5 LB. BAG

**89¢**

CAMPFIRE

**MARSHMALLOWS**

1 LB. PKG.

**49¢**

CAMPBELLS

**TOMATO SOUP**

CANS **4 FOR 89¢**



3 OZ. JAR

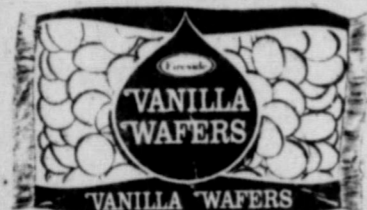
**\$1.29**

KRAFT MACARONI &

**CHEESE DINNERS**

7 1/4 OZ.

**3 FOR \$1**



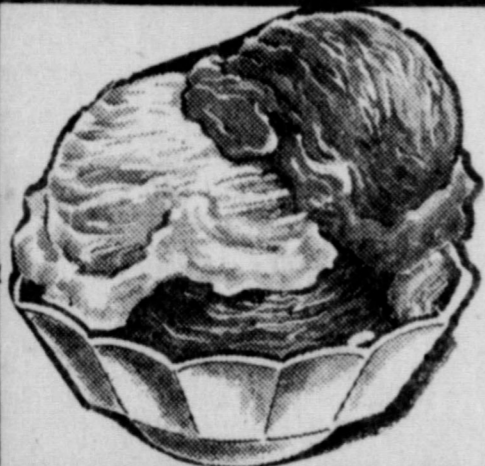
PKG.

**45¢**



1 LB. BOX

**45¢**



BCRDENS  
1/2 GALLON

**\$1.15**



GIANT SIZE

**59¢**



KING SIZE

**\$1.69**



BLEACH  
1/2 GAL.

**55¢**



1 LB. CAN

**\$1.09**

JOB SQUAD

**TOWELS**

SINGLE ROLL

**49¢**

COLORADO RED DELICIOUS

**APPLES**

LB.

**25¢**

**GRAPEFRUIT**

**10 \$1**

FOR

RUSSETS UTILITY

**POTATOES**

20 LB.

**\$1.39**

WE ARE YOUR  
TOP STAMP  
REDEMPTION CENTER



NONE MORE VALUABLE

## FBLA Jubilee Is Big Success

The McLean Chapter of Future Business Leaders under the direction of Mrs. Jan Johnson, sponsor, would like to thank everyone for their cooperation in helping them to make the first McLean Derby Town Jubilee of the season a success. The club added over \$300 to their fund toward transportation to the annual FBLA State Convention scheduled for March in Ft. Worth this year due to the response of local and area people to attend the fine show of talent from as far away as Wisconsin.

The club functions under the motto "Learning Today to Lead Tomorrow." Meetings are held on a monthly basis, the second Monday of each month, unless necessity warrants additional meetings.

The club invites various business leaders in the community to speak to them on subjects concerning methods of preparation for business careers and steps in becoming the best possible businessmen and women to speak at monthly meetings and discuss any questions members might have.

Preparation for the State Convention consumes great amounts of time and hard work as the members submit an FBLA project, usually a mechanical device in some way revealing the ideas FBLA is based on, and scrapbook, a creative and detailed book of the local chapter's activities throughout the year, to judges for competition with other chapters. Individual contests on Spelling, Vocabulary, and Public Speaking are also held. Each chapter also selects a Mr. and Miss FBLA who submit their qualifications and references in the state contest hoping to be accepted as one of the finalists, who receive an interview to determine top honors. Campaign for State Office is also an important portion of the convention.

FBLA is a National Organization extending all over the United States. Winners in the State Convention will attend to the National Convention held this year in Florida.

nancy depends on whether any others would have collected for disability caused by illness during the same period. (The opinion applied to an employee who claimed extended sick leave several months after returning to work).

• Laws don't prevent design of a public facility which may amount to a barrier to a handicapped person unless the design was drawn intentionally for that purpose.

• Names and addresses of Dallas water department customers are subject to disclosure under the Open Records Act.

ELECTION CODE "WORST" — Texas election code is among those most in need of revision, Secretary of State Mark White Jr. told a legislative committee.

He strongly recommended overall recodification in a single bill.

Aransas County Democratic Chairman Lon L. Bonner testified that out-of-date voter registration lists (containing names of dead persons and those who have moved elsewhere) are hampering the selection of juries.

## DOWN MEMORY LANE

10 YEARS AGO

A total of 20 bales of cotton had been ginned by this morning at the McLean Gin.

An official 1.05 inches of rain fell on McLean Saturday giving cattlemen something to smile about but slowing cotton harvesting operations in the area.

20 YEARS AGO

In observance of the 50th anniversary of the founding of the First Baptist Church in McLean, members are planning a homecoming celebration, to be held December 12.

Nancy Tate, daughter of Mr. and Mrs. Orphus Tate of McLean, was named as the outstanding 4-H girl in Gray County at the annual achievement program held in Pampa last Saturday evening.

A daughter, Julie Carol, was born to Mr. and Mrs. Freeman Melton, Jr. in Highland General Hospital at Pampa Monday.

30 YEARS AGO

Miss Bonnie Bell Bailey and Mr. Buddy Sutton were married at Cordell, Okla., Oct. 29, the Methodist pastor officiating in the presence of

members of the immediate family.

W. C. Alexander brings to in one of the most perfect specimens of a big turnip yet seen.

This turnip weighed 5 3/4 pounds.

The seniors this week are turning the spotlight on Johnny Cubine and Donald Dowell two of the outstanding members of the class and football team.

McLean voters strung along with the rest of the state to giving the Roosevelt-Truman Democratic ticket in a large majority over all others in Tuesday's primary.

40 YEARS AGO

Mrs. Leona Calwell of Dalhart is now in charge of Caldwell's Bakery here.

Miss Hazel Kennedy and Mr. Leo Sparks were united in marriage at Sayre, Okla. on Oct. 21, 1934.

The McLean Tigers will meet the Clarendon Broncs on Tiger Field Friday night of this week after a three week rest for the local eleven.

Born Friday, Oct. 26, 1934 to Mr. and Mrs. Jack Barnes of Eldridge and 8 pound girl named Jackie Lee.

## VFW Auxiliary Make Donation To Cancer Research

The people in McLean had a part in making it possible for VFW Auxiliary to Post #8565 to donate to Cancer Aid and Research by supporting their booth at the Harvest Carnival, Saturday October 26. Contributions in the VFW Auxiliary, nationwide, to Cancer Aid and Research reached \$735,864 last year. Almost \$6,500,000 has been contributed in the past 27 years to cancer research and to members stricken with

50 YEARS AGO

Miss Inez Shaw has opened a beauty parlor in Mrs. W. T. Wilson and Son's dry good establishment.

Married, Saturday, October 25th at the Baptist parsonage, Mr. Sam Dougherty of Head and Miss Ada Lee Johnson of McLean.

Sam Hodges, president of the Bundy-Hodges Mercantile Company, has a force of men putting up a new flour warehouse at the rear of their store building.

In the game last Saturday at Miami, the McLean Tiger played a scoreless tie against the Miami Warriors.

cancer. The New Challenge is for \$1,000,000.

Local Auxiliary members are Vera Allen, Freda Bailey, Wanda Bailey, Dorothy Bench, Thelma Blaylock, LaVerne Brooks, Phyllis Collins, Vera Goreoran, Lucille Cullison, Laura Cuppell, Mary Dwyer, Effie Lou Everett, Vergie Everett, Davie Gipson, Viola Glass, Mary Groves, Pat Guill, Louella Dodman, Mayme Hathaway, Wilma Hefner, Ola Henderson, Mary Henley, Leta Mae Hess, Susanna Horn, Bessie Keen, Wanda Lamb, Phoebe McCall, Donna McDougal, Louise Turner, Jane Simpson, Wanda Rae Simpson, Wanda Smith, Monta Jean Smitherman, Jackie Steel, Audie Stewart, Collene Stewart, Virginia Taylor, Mary Terry, Adelle Walker, Irlene Weldon, and Adelle Wood

## Local Girl Scouts Go Camping

Autumn foliage and Indian Summer weather combined to make an Oklahoma camping trip to a memorable experience for some 111 Cadette Girl Scouts and their Leaders in the Quivira Girl Scout Council on October 18th thru the 20th.

The Cadette Fling to Boiling Springs State Park north of Woodward, Okla., was planned by Miss Eva Whitely of Pampa, Cadette Level Leader of the Program Committee, and staff members Miss Celia Fowler, Mrs. Jean Duke and Mrs. Margare Rion.

Troops attended from Borger, Fritch, Wheeler, McLean and Pampa. They arrived at the lodge and cabins

Friday evening and Saturday morning activity was a hike to the Boiling Spring at the park. In the afternoon a tour was made to the Alabaster Caverns, which in addition to the rock formation featured bats in hibernation.

Following a Saturday evening meal of tacos, burritos, and sopapillas, each troop presented skits, some in costume. A song fest was held and snack time featured chips and dips. The Sunday morning church service by Troop #90 of Pampa was the closing event.

The Cadette troop from McLean were accompanied by Mrs. Mary Lou Glass and Miss Evelyn Chamberlain. Cadettes attending from McLean were Rozanna Eck, Jamie Glass, Sheri Glass, Phyllis Marsh, Theresa Rollison, Becky Sanders, Gay Smith and Donna Willis.

## The Old Timer



"The trouble with the world today is that any day begins with the first half hour."

**GET OUT**  
and Vote.  
**TUES. NOV. 5TH**

# Bob Price

is working hard and doing a good job.



## at home

More Jobs and New Industry Helping To Fight Inflation

The economic situation in the 13th Congressional District has been improving each year independent of national trends. The increase of activity is due to an aggressive attitude in encouraging new firms to move into the area and existing industry to expand. The northwest Texas district is now reported to be the fastest growing industrial area in the state and one of the fastest in the country. Let's continue our economic expansion.



## in congress Price's Voting Record Proves Effective in Cutting Government Spending

Bob Price has introduced or cosponsored 48 pieces of legislation that have become public law. He has received the Watchdog of the Treasury award from the National Association of Businessmen for voting to "stem inflation by cutting excessive government spending." He has made the Honor Roll of the American Federation of Small Businessmen and his voting record has earned a 93% rating by the American Conservative Union. He is working hard and honestly representing this area.

## Price is right for Texas.

DO YOUR PART IN PREVENTING THE BIG SPENDERS FROM TAKING OVER CONGRESS. RE-ELECT BOB PRICE NOV. 5.



# Shur Fine CARNIVAL

STOCK UP NOW...SAVE ALL WINTER!

- SHURFINE FANCY **Tomato Juice** 46 OZ. CAN **59¢**
- SHURFINE CUT GREEN SPEARS OF **Asparagus** 14 1/2 OZ. CAN **55¢**
- SHURFINE BEETS **3** 16 OZ. CANS **79¢**
- SHURFINE **Tomato Sauce** **3** 15 OZ. CANS **79¢**
- SHURFINE STRAWBERRY **Preserves** 18 OZ. JAR **79¢**
- SHURFINE **Waffle Syrup** 32 OZ. BTL. **79¢**
- SHURFINE FRESH PAK **Cucumber Chips** 16 OZ. JAR **39¢**
- SHURFINE ALL PURPOSE OR SHURFINE **Detergent** 49 OZ. **79¢**
- SHURFINE COFFEE **Creamer** 11 OZ. JAR **69¢**
- SHURFINE **Pancake Mix** 32 OZ. BOX **59¢**
- SHURFINE MEDIUM GRAIN **Rice** 2 LB. PKG. **69¢**
- SHURFINE STRAINED OR WHOLE MIX & MATCH **Cranberry Sauce** 3 16 OZ. CANS **89¢**
- SHURFINE NATURAL PINK-TEXAS PAK **Grapefruit Juice** 2 46 OZ. CANS **89¢**
- SHURFRESH CRISP **Crackers** 16 OZ. BOX **39¢**
- SHURFINE WHOLE IRISH **Potatoes** 3 16 OZ. CANS **89¢**
- SHURFINE QUALITY **Spinach** 4 15 OZ. CANS **89¢**
- SHURFRESH-REG. QTRS. **Margarine** 2 16 OZ. PKGS. **\$1**
- SHURFRESH HALFMOON LONGHORN **Colby Cheese** 10 OZ. PKG. **79¢**



SHURFINE REG. DRIP-ELEC. PERK **Coffee** 16 OZ. CAN **98¢**

SHURFRESH **BISCUITS** BUTTERMILK OR SWEETMILK 8 OZ. **10 FOR \$1**

SHURFINE **FRUIT COCKTAIL** 16 OZ. CAN **3 FOR \$1**

Shurfine Fresh Shelled **BLACK EYES** 4 15 OZ. CANS **\$1**

SHURFINE ORANGE-FRUIT PUNCH-GRAPE **DRINKS** 3 46 OZ. CANS **\$1**

SHURFINE IN JUICE CRUSHED-CHUNK-SLICED **PINEAPPLE** 3 15 1/4 OZ. CANS **\$1**

SHURFINE QUALITY **DINNERS** 49¢  
 CHILI TOMATO-8 Oz.  
 BEEF NOODLE-7 Oz.  
 CHEESEBURGER-8 Oz.  
 HASH-6 Oz. EA. PKG.

SHURFINE CUT **GREEN BEANS** 16 OZ. CAN **4 FOR \$1**

SHURFINE ENRICHED **FLOUR** 5 LB. BAG **68¢**

SHURFINE **CHUNK TUNA** 2 6 1/2 OZ. CANS **89¢**

SHURFINE Early Harvest **SWEET PEAS** 17 OZ. CAN **3 FOR \$1**

Shurfine 10 - 3/4 Oz. Can **TOMATO SOUP** 6 For **\$1**

Shurfresh 10 Oz. Pkg. **VANILLA WAFFERS** 3 For **\$1**

Shurfine **PORK & BEANS** 16 Oz. 4 For **\$1**

Shurfine **APPLE SAUCE** 16 Oz. 3 For **\$1**

SHURFINE MIXED **VEGETABLES** 3 16 OZ. CANS **79¢**

SHURFINE **EVAPORATED MILK** 14 1/2-OZ. CAN **4 FOR \$1**

SOFLIN **BATHROOM TISSUE** 2 PLY 8 ROLL PKG. **98¢**

Shurfine Mandarin **ORANGES** 11 Oz. Cans 3 For **\$1**

Shurfine Pieces & Stems **MUSHROOMS** 4 Oz. 3 For **\$1**

Shurfine **APPLE BUTTER** 28 Oz. 2 For **\$1**

Shurfine Mac-Cheese **DINNERS** 7 1/2 Oz. 4 For **\$1**

HALVES OR SLICED YELLOW CLING **SHURFINE PEACHES** 2 27 OZ. CANS **88¢**

SHURFINE **FROZEN ORANGE JUICE** 6 OZ. CAN **6 \$1**



FULLY COOKED BONELESS **SHURFRESH HAMS** 3 3 LB. CANS **339** 5 LB. CAN \$5.99

Prices Effective Thru November 9, 1974

SHURFRESH MILK FOR GOODNESS SAKE

**SIMPSON'S** LOWEST EVERYDAY FOOD PRICES MARKET

Tendercrust Bread and Bakery Products SPECIALS GOOD Thru November 9, 1974

# HOMECOMING FRIDAY NIGHT

## McLEAN TIGERS

VS.

## CLAUDE MUSTANGS



### McLEAN TIGERS

NO.	NAME	POS.	CLASS	WT.
10	CURTIS SIMPSON	HB	Fr.	145
11	MARTY DUNIVEN	QB	Jr.	160
22	RONNIE HEASLEY	HB	Sr.	145
35	BOBBY CROCKETT	FB	Sr.	175
44	GARY DANNER	WB	Jr.	165
62	TODD DARSEY	G	Jr.	145
64	SAM TAYLOR	C	Sr.	165
66	DONNIE BENTLEY	G	Sr.	165
71	EDDIE ESTES	T	Sr.	275
74	ROGER BOWEN	T	Sr.	200
75	KIT LONG	T	Sr.	170
87	MORSE HAYNES	E	Jr.	160
88	J. D. FISH	E	Sr.	160
89	KEITH MARTIN	E	Jr.	140

COACHES: RANDY HICKS, JOEL NELSON,  
ROBERT MEARS

COLORS: BLACK & GOLD MASCOT: TIGER

### CLAUDE MUSTANGS

NO.	NAME	POS.	CLASS	WT.
10	WAYNE CAMPBELL	QB	So.	135
12	GEOFF FORBES	QB	So.	150
20	QUIN BAGWELL	B	Sr.	140
21	GEORGE JARAMILLO	B	Jr.	135
23	GENE McBEE	B	So.	115
32	ROBERT TAYLOR	B	Sr.	155
40	TONY STEPHENSON	B	Sr.	160
50	CHARLES GILLISPIE	C	Jr.	190
60	CECIL RICH	G	Jr.	135
61	TOMMY JARAMILLO	G	Sr.	150
62	GARY RAGWELL	G	So.	160
63	CHRIS MORTON	G	So.	150
65	KEVIN HUDSON	G	Sr.	150
70	JOEY BIBLE	T	Sr.	220
71	CHUCK BROWN	T	So.	170
72	DOUG BARRETT	T	Jr.	140
73	JAMIE BIBLE	T	Sr.	270
80	KENNETH DETTEN	E	Jr.	120
81	KEVIN WISDOM	E	Sr.	130
84	JEFF CARTWRIGHT	E	Jr.	150

COACHES: JAMES ANGLIN, JACKIE BURNS  
BILL CROCKETT, JIM KIRKLAND

## FOOTBALL QUEEN CORONATION

at 7:00 P.M.

GAME TIME

7:30 P.M.

THE FOLLOWING TIGER BOOSTING MERCHANTS URGE YOU TO SUPPORT YOUR TEAM BY ATTENDING EACH GAME

CONSUMERS SUPPLY CO.	J. R. GLASS OIL CO. Wholesale and Retail, Phillips 66 Products	McLEAN CAFE	STEWARTS TEXACO Phone 779-2484
MANTOOTH SERVICE STATION	GIPSON SERVICE & SUPPLY Howard Gipson, Owner	CHARLES TEXACO SERVICE Phone 779-2381	JOHNNIE F. MERTEL BOOT SHOP Phone 779-2161
McLEAN HARDWARE CO. Mr. and Mrs. Jewel Meacham	BLAYLOCK'S SERVICE STATION	CITY OF McLEAN	ODIS' ELECTRIC CO.
BENTLEY'S FERTILIZER Phone 779-2209	PARSONS REXALL DRUG Mike Johnson, Owner	TEXACO INC. D. C. Lowary, Consignee	PUCKETT'S FOOD STORE
TERRY'S ELECTRIC 779-2201	WINDOM AUTO SUPPLY E. J. & Doris Windom	BOOST THE TIGERS	THE McLEAN NEWS
AMERICAN NATIONAL BANK In McLEAN, TEXAS — Member FDIC	TED SIMMONS CHEVROLET CO.	CUNNINGHAM GULF "Good Gulf Products"	TIGERS ARE BEST
THE POT-POURRI SHOP Carey Don and Cheryl Smith	CORINNES STYLE SHOP	WILLIAMS APPLIANCE Howard and Lillie Mae Williams	See BOYD MEADOR For All Your Real Estate Needs - 779-2466



# CLASSIFIED \* ADS \*

## CLASSIFIED

**Classified Ad Information**  
 Reader Ads 6c per word  
 (Minimum Charge \$1)  
 Display Classified \$1 per Inch  
 Card of Thanks \$1  
 All ads cash, unless customer has an established account with The McLean News.

**Deadline for Want Ads — 5 p.m. Tuesday**  
**Phone 779-2447**

## FOR SALE

FOR SALE furnished hotel and cafe equipment. Priced right for quick sale, \$8,000. Bill Moore. 29-1f

GRANNY'S COUNTRY STORE Buys and sells antiques, collectables and primitives. 312 E. Highway 66, Shamrock, Texas. 41-4c

FOR SALE - 3 registered white male toy poodles, 6 weeks old. Call 779-2753. 44-1c

FRESH eggs for sale. Call 779-2544. 43-2c

FOR SALE 4 bedroom house, 2 baths, living room, kitchen and den. 1 block from school. \$6500. 874-2504, Clarendon. 44-2c

FOR SALE - Christmas cards and wrappings. Cards by Hallmark and Leaning Tree. Potpourri Shop. 44-1c

FOR SALE 160 acres farm, possession 1st of October, \$145 an acre and 1/4 of royalty. Haskell Smith, 874-2504, Clarendon. 44-2c

FOR SALE - Jewelry, billfolds, purses, clutch pens, Potpourri Shop. 44-1c

FLORENCE gas cook stove for sale. 42 inches, six burners with broiler/cue. 43-3fc

PAMPA CHRYSLER DODGE has large selection of trucks, pickups, Chryslers, Dodges, Plymouths, Ramcharger; 4 wheel drive pickups, large selection of good used cars and trucks. Pampa Chrysler Dodge, 811 W. Wilks, Pampa, Texas, 665-5766. 26-tfc

FOR SALE - Overalls - size 1-2-3-4; Mann Pants - sizes 4-12, Mann Jackets - sizes 4-12. Pot Pourri Shop. 44-1c

Elite Courts for sale. 779-2329. 44 -tfc

## PUBLIC SERVICES

FURNITURE of all kinds repaired and upholstered. D. L. Jones, Rt. 1, McLean, 779-2992. 14-tfc

ERID your home of termites, roaches, carpet beetles, Free inspection. Work guaranteed. Mrs. G.W. Humphries, 779-2743. 4-tfc

REMOVE carpet paths and spots, fluff beaten down nap with Blue Lustre. Rent shampooer \$1. McLean Hardware. 44-1c

## WANTED

WANTED: Woman to clean my house once a week. Good wages. Mrs. Jim Back, Phone 779-2588. 44-2p

SPECIAL: I have a client who wishes to purchase 10 or 15 acres of unimproved land on or near interstate 40; Must have natural gas and electricity available. O. V. Donnell-Realtor 5300 W. 21st, Phone after 7 p.m. 335-1417 Amarillo, Texas 79106 44-tfc

HOUSE PAINTING done by hour or contract. Free estimates. Clean and neat, see Rev. B.G. Hill at 414 N. Gray or call 779-2271 after 4 p.m. 29-1p

WANT to buy Stock trailer. Bob Massey. 43-1c

## News From ALAN REED

By Mrs. P. M. Gibson  
 Mr. and Mrs. H. H. Worsham visited their son's family the Eugene Worshams in Amarillo recently.

The annual Halloween carnival at Alanreed, Saturday, was a success. There were people there from California, Arkansas, Kansas and all over the Panhandle. Robbin Stubbs was crowned harvest queen.

Mr. and Mrs. Hartley Davis attended the wedding of their granddaughter, Diane Mays in Amarillo Friday night.

The David Frizzels of Lone Star visited her parents, the Bill Crisps over the weekend.

Visiting in church Sunday was Mr. and Mrs. Buddy Hill of Gentry, Ark. Also the Gary Bibbes had their new son at church.

Mrs. Al Cooke and her sister Mrs. Mildred Baxter is visiting with their sister, Mrs. Polly Kent at Sudan for the time being.

Betty Simmons was in Amarillo last weekend where she visited with her daughter Sue. She brought her grandson Johnny Mann home with her for a visit.

Mrs. Morris Mason and Mrs. M. B. Trout were in McLean and Alanreed

Allen Mason, son of Mr. and Mrs. Morris Mason is now stationed at White Sands New Mexico for further training, when finished there he will return to Ft. Sill.

Mr. and Mrs. William Bradley were in Lubbock visiting with friends and relatives last Friday night.

Visiting the William Bradleys last Saturday was Mrs. Bradley's mother, Mrs. Ruby Young of Lela.

## PUBLIC NOTICE

CITATION BY PUBLICATION THE STATE OF TEXAS

TO: ALL WHOM IT MAY CONCERN:

GREETINGS:  
 YOU ARE HEREBY COM-MANDED to appear and answer before the Honorable 31st Judicial District Court, Gray County, Texas, at the Courthouse of said County in Pampa, Texas, at or before 10 o'clock a.m. of the Monday next after the expiration of 20 days from the date of service of this citation, then and there to answer the petition of LINDA G. BOWERS, Petitioner, filed in said Court on the 15th day of October, 1974, and said suit being numbered 19,081 on the docket of said Court, and entitled "In The Interest of LUCRETIA DAWN RICHARDSON, a Child", the nature of which suit is a request to Terminate Parent-Child Relationship. Said child was born the 23rd day of May, 1974, in Pampa, Texas.

The Court has authority in this suit to enter any judgment or decree in the child's interest which will be binding upon you, including the termination of the parent child relationship and the appointment of a conservator with authority to consent to the child's adoption. If this citation is not served within ninety days after the date of its issuance, it shall be returned unserved. The officer executing this writ shall promptly serve the same according to requirements of law, and the mandates hereof, and make due return as the law directs. Issued and given under my hand and the seal of said Court at Pampa, Texas, this 16th day of October, 1974.

Helen Sprin  
 HELEN SPRINKLE Clerk,  
 31st Judicial District Court Gray County, Texas,  
 By Carol Jones, Deputy.

# NEWS

## County Agricultural Agent Texas A. & M. College Extension Service

By Foster Whaley  
 A Beef Fiesta is scheduled to be held at the M.K. Brown Memorial Auditorium on Friday, November 15 starting at 9:00 a.m.

Featured speakers include the Honorable Phil Cates, State Representative, Rex McAnelly, Pampa, Mrs. Bonita Laske, National Livestock and meat board, and Frank Orts, meat specialist, Extension Service Texas A&M University, College Station, Texas.

All area residents are invited to attend. A substantial amount of meat will be given away as door prizes.

The program is sponsored by the Family Living committee of the Extension Service.

## WHEAT CONDITIONS

Wheat pasture is becoming very abundant over most of the high plains area of Gray County. Much of the wheat is very rank. You see very few cattle ready to go on to the wheat and at this writing very few cattle are on the wheat.

It appears that many cow-calf people with the lack of stocker calves are unwilling to accept the low prices they are being offered. It seems they are now going through the same with holding cycle that broke so many cattle feeders out of the game. We don't see any immediate relief in the price picture for the next 30 to 60 days. However we feel the price situation will rise sharply on beef by mid winter. Excessive numbers of grass fat cattle could hold price down again by mid 1975.

We are seeing the effect of a severe drought that has run feed prices so high that cattle people feel has become too unprofitable to feed cattle. Thus a liquidation. Because the present per capita consumption of beef is 114 lb. per person, feel the downside on the cattle cycle will be shorter lived than in past cattle cycles.

## MILO HARVEST

Wet weather has slowed the milo harvest. However most of the milo farmers are wishing for a two weeks delay in a frost so their milo can mature. The unusually wet, cloudy weather has been of little benefit in bringing milo to maturity. Those that have cut milo seem to be very disappointed in yields.

## Peach Trees Hit By Peach Borer

One of the most destructive peach pests is the peachtree borer. The larval stage damages the peach tree by burrowing the trunk of the tree near the ground line. Infested trees decline in vigor and may die as a result of the damage inflicted by peachtree borer larvae. Now is the time to protect your peach trees from the peachtree borer damage.

The best way to determine if a peach tree is infested by these borers is to inspect the trunk of the tree at the soil line. When large masses of gum which contain a brown sawdust like material are found, peachtree borers are present. Peach trees should be inspected several times each year to determine if control measures are needed.

These borers can be controlled by an application of paradichlorobenzene crystals (PDB crystals) applied around the base of the tree during the period of October 20 to November 15. The use of PDB crystals in the proper manner will, in most cases, eliminate the infestations. The crystals should be applied when the soil is dry and the temperature is 55° F.

Weeds should be removed from around the base of the tree and the soil leveled one foot from the tree trunk. Place the PDB crystals in a narrow groove encircling the tree about two inches from the tree trunk. Care should be taken to keep any of the crystals from coming in direct contact with the tree. Clean soil should be placed over the crystals so as to form a cone-shaped pile about six to eight inches high around the base of the tree. This soil should be removed from the base of the tree in late March or early April.

The amount of PDB crystals to be used is determined by the age and size of the tree. In general, one-half (1/2) ounce of crystals should be used for two to three year old trees, three fourths (3/4) ounce for four to five year old trees and one (1) ounce for mature trees.

Where peach tree borers are a problem, the use of this control measure for this pest will greatly lengthen the life of the peach tree. Further information on control of the peachtree borer is available at your County Extension Agent's office.

## BIRTHDAYS

- NOVEMBER 1  
Mrs. Geraldine Bryant
- NOVEMBER 2  
Bob Willoughby  
Mary West  
Mattie West  
Kathy Loretta Preston  
Bernita Callahan  
Danny Tate
- NOVEMBER 3  
Keith Watson  
James Smith  
Jerry Goldston  
A.H. Patton  
Lois Gayle Edwards
- NOVEMBER 4  
Donna Pearson  
Linda Pearson  
Ronald Roy Brown
- NOVEMBER 5  
R.O. Pound  
Mrs. Gladys Smulcer  
David Dean Brown
- NOVEMBER 6  
Paul Mertei  
Arthur James Dwyer II
- NOVEMBER 7  
Mrs. Paul Miller  
Linda Evans Ellison  
Carole Boyce



# bob bullock

## democrat / comptroller

Bob Bullock is the overwhelming choice of Texas Democrats for Comptroller. He won the primary election with 76 per cent of the vote. Bob Bullock is a tough-minded, straight-talking lawyer. He was described as "the best Secretary of State that Texas ever had." Bob Bullock knows Texas government from one end to the other. He has proven himself in public service.

**the job — comptroller**  
**the man — bullock.**

Pol. Adv. Paid for by Bob Bullock Campaign Fund, Box 12787, Austin, Tx 78711. Bob Bullock, Campaign Mgr.

## My Neighbors



"Ah, but you're ravishing to-night, m'dear . . . oops . . . no wonder . . . you're not m'dear!"

# 10TH ANNIVERSARY SALE

For Limited Time Prices Reduced on Regular Stock on  
 COATS - DRESSES - LONG DRESSES - PANTS -  
 BLOUSES - SWEATERS & HAND BAGS.

One Group Ladies & Childrens One Small Group  
**HAND BAGS 1/2 PRICE** **GIRLS COATS \$5.00**

Shop Now for Christmas and Save!  
**JEWEL BOX FASHIONS**  
 McLEAN, TEXAS



Sporting trophies won at recent tournaments are two members of the WTSU Speech team. Left to right: Lu Ann Fulcher of Pampa and Joe Sherron of McLean.

### Local Student On WTSU Winning Team

Competing against 29 schools from seven states, the West Texas State University Speech team took top honors at the Texas Tech Invitational Speech Tournament on October 11 and 12. The forensics team compiled 156 points to win the sweepstakes award, edging out the United States Air Force Academy and University of Texas at Austin.

Donna Smith of Odessa won first place in extemporaneous speaking, and received the second place speaking award in Junior Debate, while Jay Kirkman of Amarillo received the third place trophy in that same event. The Smith-Kirkman debate team compiled a 7-1 win-loss record, to advance to the octofinals in Junior Debate.

Marla Rupp and Judy Koenig, both of Amarillo, Sherry Peel of Lubbock and Connie Whitmore of Clovis, N. M., also advanced to octofinals in Junior Debate.

The WTSU team took two awards in persuasive speaking with Bettie Jo Davidson of Midland placing second, and Marla Rupp placing third.

In the oral interpretation division, Melody Brown of Channing and Cloetta Bengel of Canyon were ranked superior through all four rounds.

Also competing at Texas

Tech were Joe Sherron of McLean, Luann Fulcher of Amarillo, Mike Koenig of Canyon and Garrell Forehand of Slaton.

### Offspring of Trapped Pheasants Released in Panhandle

Ringneck pheasants have been slowly expanding their range in the Texas Panhandle over the past few years but not fast enough to suit biologists at the Texas Parks and Wildlife Department.

On October 16, some 125 of the colorful Asian birds were released in Carson and Gray counties.

The release was part of a TP&WD program of accelerating the expansion of pheasant range in the area using the progeny of wild broodstock trapped in the Panhandle. This is the first time for such a release.

During the first part of 1974, 44 adult pheasants were trapped in the Hereford area and transported to the department's Management and Research Station in Tyler.

At the M&R Station the adults produced some 204 young pheasants.

Of this number, 100 10- to 16-week old birds were released Oct. 16 in the grain fields of the Panhandle along with 25 adult hens from the original 44 adults.

The remaining young pheasants and 19 adult cocks will be retained at the M&R Station as broodstock for future production and releases.

Biologists at the station are hopeful for an even greater pheasant production next year to bolster the ringnecks' numbers in the northernmost part of the state.

### HEARD NEWS

Miss Jana Davis of Pampa spent Sunday and Sunday night in the home of her parents, Mr. and Mrs. Ott Davis, Mr. and Mrs. John Bush of Amarillo were Sunday visitors.

Mr. and Mrs. H. S. Rippey of Shamrock visited Mrs. K. S. Rippey last week. Mrs. H. N. Roach returned to her home with them after several days visit with Mrs. Rippey.

Mrs. O. O. Tate visited her sister Mrs. Jessie Cannon in Pampa one day last week.

Mr. and Mrs. A. W. Lankford visited Mr. H. C. Nelson in St. Anthony's Hospital last week. Mr. Nelson had surgery since then and is improving.

Mr. and Mrs. Carl Phillips were Shamrock visitors Saturday.

Mrs. Carl Phillips, Mrs. K. S. Rippey and Mrs. A. W. Lankford were Pampa visitors Friday.

### My Neighbors



"Now catch me in a relaxed mood, off guard."

### THE FAMILY LAWYER

#### Tattletale Bookkeeper

Parker, a businessman, was systematically cheating on his income taxes. One day his conscience-stricken bookkeeper took several incriminating documents out of Parker's safe and handed them over to the Internal Revenue Service.

In short order, Parker was charged with income tax evasion. But in court he insisted that the evidence, having been taken illegally, could not be used against him.

"This clearly falls under the Fourth Amendment," he said, "which forbids unreasonable search and seizure."



However, the court held the evidence admissible and Parker guilty. The court said the constitutional ban applies only to searches by government agents, not by private individuals.

Courts generally agree. They say the Fourth Amendment was designed to protect citizens from prying by the government, nothing more. Although the private searcher may indeed be committing an offense, the evidence that he finds remains acceptable.

The same is true if the evidence is discovered purely by accident.

In another case, a departing guest in a motel left a suitcase in his room. The manager, peeking into the suitcase, noticed some odd-looking checks. These he reported to the police.

Result: the guest was arrested for possessing forged checks. The judge said that even though the manager had no right to look into the suitcase, the evidence he found was nevertheless admissible in court.

But the rule changes when the search, although conducted by a private person, is done at police instigation. Another motel manager told a policeman that he suspected one of his guests of being a drug pusher. Instructed to search the man's room, he did so—and found heroin.

But this time, the evidence was rejected in court because of the police role in the search.

"The search was just as 'official,'" said the court, "as though the officer had acted in person."

### MARKET REPORT

Seafood and meat prices are down, because supplies are up, one expert says.

She's Mrs. Gwendolyn Clyatt, consumer marketing information specialist with the Texas Agricultural Extension Service, the Texas A&M University System.

There's a wide variety of fish in supply—with all varieties of raw and breaded shrimp in excellent supply.

Smaller-size shrimp is particularly well-priced, and many large-sized shrimp are moving into 'good buy' categories.

Frozen fish filets, including flounder, ocean perch and polluck, are other choices.

At meat counters, beef supplies are larger—and prices are more attractive than in the past few weeks.

She also noted that grass-fed beef costs less per pound than grain-fed (heavy) beef.

Call No. 491

Charter No. 14165

National Bank Region No. 11

### REPORT OF CONDITION, CONSOLIDATING DOMESTIC SUBSIDIARIES, OF THE

## American National Bank in McLean

IN THE STATE OF Texas AT THE CLOSE OF BUSINESS ON October 15, 1974  
PUBLISHED IN RESPONSE TO CALL MADE BY COMPTROLLER OF THE CURRENCY, UNDER TITLE 12, UNITED STATES CODE, SECTION 161.

ASSETS		Dollars	Cts.
Cash and due from banks (including \$ 3,060.78 unposted debits)		733,152	10
U.S. Treasury securities		369,256	00
Obligations of other U. S. Government agencies and corporations		375,000	00
Obligations of States and political subdivisions		893,514	67
Other securities (including \$ 6,000.00 corporate stock)		6,000	00
Federal funds sold and securities purchased under agreements to resell		400,000	00
Loans		3,037,387	89
Bank premises, furniture and fixtures, and other assets representing bank premises		33,193	72
<b>TOTAL ASSETS</b>		<b>5,847,504</b>	<b>38</b>
LIABILITIES			
Demand deposits of individuals, partnerships, and corporations		2,338,981	36
Time and savings deposits of individuals, partnerships, and corporations		2,582,319	29
Deposits of United States Government		2,876	42
Deposits of States and political subdivisions		278,294	65
Certified and officers' checks, etc.		8,346	36
<b>TOTAL DEPOSITS</b>		<b>\$ 5,208,818.08</b>	
(a) Total demand deposits		\$ 2,489,998.79	
(b) Total time and savings deposits		\$ 2,718,819.29	
Other liabilities		25,480	56
<b>TOTAL LIABILITIES</b>		<b>5,234,298.64</b>	
RESERVES ON LOANS AND SECURITIES			
Reserve for bad debt losses on loans (set up pursuant to IRS rulings)		46,823	46
Other reserves on loans		5,931	00
<b>TOTAL RESERVES ON LOANS AND SECURITIES</b>		<b>52,754.46</b>	
CAPITAL ACCOUNTS			
Equity capital-total		560,451	2
Common Stock-total par value		100,000	0
No. shares authorized	1,000		
No. shares outstanding			
Surplus		100,000	00
Undivided profits		360,451	28
<b>TOTAL CAPITAL ACCOUNTS</b>		<b>560,451.28</b>	
<b>TOTAL LIABILITIES, RESERVES, AND CAPITAL ACCOUNTS</b>		<b>5,847,504.38</b>	
MEMORANDA			
Average of total deposits for the 15 calendar days ending with call date		5,174,362	24
Average of total loans for the 15 calendar days ending with call date		3,051,448	25

I, Robert B. Parker, Cashier, of the above-named bank do hereby declare that this report of condition is true and correct to the best of my knowledge and belief.

Robert B. Parker

We, the undersigned directors attest the correctness of this report of condition and declare that it has been examined by us and to the best of our knowledge and belief is true and correct.

J.O. Coleman  
Milton Carpenter  
James S. Allison

Directors