

The McLean News

Promoting the Interests of McLean, Southern Gray County and Surrounding Communities

Price 10c

MC LEAN, GRAY COUNTY, TEXAS 79057, THURSDAY OCTOBER 7, 1971

VOLUME 68

NUMBER 39

State Capital News

The State Legislative Redistricting Board, ordered by the Supreme Court to reapportion the House of Representatives as well as the Senate, is in the process of writing its bill under deadline pressure.

Finding of the Court that the Board should take over the unfinished legislative reapportionment task was doubly significant.

Aside from setting a precedent as to responsibility of drawing new district lines, the decision eliminated the necessity of an early special legislative session. This pleased both House Speaker Gus Mutscher and Gov. Preston Smith. Mutscher, under bribery indictment, escaped an early showdown with legislators who want to force him to step down as speaker and replace him with another.

Although speculation was widespread he would hand his duties to a speaker pro tempore announced four days after the Court's decision he had decided to stay on the job, confident he will be found innocent of charges.

Governor Smith applauded the Court decision. He said he wants to wait "as long as possible" to call a special session on budget matters so the legislature will have full advantage of data on available revenue which might curb the tax bill.

Indications are there will be no special session now until June, 1972, after the primary elections.

The five-member Redistricting Board held a hearing Sept. 30 and heard only testimony of big-city residents debating the merits of single-member vs. multi-member (or country-wide) House districts.

Apparently, the Board is divided two-and-two, with Atty. Gen. Crawford Martin undecided on the metropolitan district issue. Whichever way it rules, another lawsuit challenging the decision seems likely.

The Board has only until Oct. 23 to complete its work.

GVERNOR'S RACE WARMS
There is official competition in the governor's race with the entry of Uvalde rancher and banker Dolph Briscoe, Lt. Gov. Ben Barnes announced last June he would run.

Briscoe made clear the stock market scandals (which resulted in three statehouse indictments Sept. 23) will be a major issue in his campaign.

He focused attention on quick passage by the Senate of the same bank deposit insurance bills which figured in the indictments of Mutscher, Rep. Tommy Shannon of Fort Worth and S. Rush McGinty of Austin. And, he maintained, Barnes "helped push them (the bills) through the Senate."

Barnes declined to reply. He said there will be "plenty of time to set the facts straight" within the next seven months before the election.

Briscoe also emphasized need for innovations in mass transportation and further environmental protections.

ETHICS COMMISSION COMPLETES
A new Ethics Commission to police behavior of public officials is now complete, though top state judges have expressed doubt as to its effectiveness.

Three members elected by the Senate are Sen. A. M. Aikin of Paris, Charles Hearing of Austin and Oscar Mauzy of Dallas.

House members elected Rep. John F. Boyle Jr. of Irving, Clyde Haynes Jr. of Vidor and James E. Nugent of Kerrville.

Court of Criminal Appeals Presiding Judge John F. Onion Jr., appointed Rabbi David Jacobson of San Antonio and University of Texas Law Professor John Sutton Jr. of Austin.

Supreme Court Chief Justice Robert W. Calvert earlier designated Baylor Univ. Law Professor Mrs. Margaret Harris Amisler and Houston Attorney Alf Roark.

First Court of Civil Appeals Chief Justice Spurgeon Bell picked Dallas Attorney J. W.

Hassell Jr. and retired Houston newspaperman William H. Gardner, now of Austin, for the Judicial Qualifications Commission.

APPOINTMENTS - Governor Smith named Dr. William L. Anderson of Dallas to the Texas Animal Health Commission for a six-year term.

Lubbock Mayor J. H. Granberry was appointed to the Board of Directors of the Texas Law Enforcement and Youth Development Foundation.

Governor's appointments of the last week include:

Mrs. Eunice M. King of Amarillo (reappointment) and Sister Mary Vincent O'Donnell of San Angelo to the State Board of Nurse Examiners.

AG OPINIONS Texas Air Control Board must keep "confidential information" label on data it collects in investigation of air pollution matters where parties insist, Attorney Gen. Martin has held.

In other recent opinions, Martin concluded:

"In proceedings in eminent domain in Cass County, petitions should be filed with the Fifth district judge, and he will appoint special commissioners, receive awards and enter judgments.

"Deer hunting with dogs is lawful in San Augustine County during open season provided in a 1971 game bill.

"Laws requiring additional water safety equipment on boats and specifying that children 12 or under aboard motorboats must wear life preservers should be enforced.

"Texas Optometry Board may use written exams made available by international associations if they meet state requirements.

"State Comptroller can require proof of authorization for Parks-Wildlife Dept. employees to sign vouchers in reference to deposit, expenditures and investment of department funds in the state treasury.

"Fifty dollar license fee for mobile home manufacturers is no longer required to be paid to Bureau of Labor Statistics.

ROAD EMERGENCY DECLARED
Governor declared a state of emergency in 21 South Texas counties with respect to high way conditions resulting from Hurricanes Fern and Edith winds and rain.

Smith said immediate reconstruction is vital in Aransas, Bee, Brooks, Cameron, Chambers, Duval, Goliad, Hidalgo, Jim Hogg, Jim Wells, Jefferson, Kames, Kleberg, Live Oak, Matagorda, Nueces, Refugio, San Patricio, Starr, Webb and Willacy counties.

QUAIL SEASON EXTENDED
Enlarged Parks and Wildlife Commission voted to extend the closing date of quail season statewide to February 15. Action provided two additional weeks for most counties, but in some areas the season is still two weeks shorter than last year.

At the same meeting, the Commission voted unanimously to reopen the Canadian River bed to free public hunting under an attorney general's ruling of Sept. 16.

SHORT SHORTS
Cities levying local option sales tax will be \$40.1 million (combined) for the last quarter.

"Real" income of Texans rose about 4% from Aug. 1970 to Aug. 1971 in spite of rapid price inflation, University of Texas Bureau of Business Research reports.

Agriculture Commissioners John C. White warned of a pink bollworm infestation in North Central Texas and said it is spreading in North and East Texas as well.

Governor headed a delegation to Mexico City to open the new Texas international trade promotion office there last weekend.

Texas Aeronautics Commission approved 19 grants totaling \$374,812 for airport improvements.

The word salary comes from "salarium" meaning salt money, since Roman soldiers received part of their pay in salt.



C. E. Christian Formerly Of McLean Is Promoted

C. E. "Cricketer" Christian, formerly of McLean, has been elected president of the Dallas General Agents and Managers Association.

The Dallas association with 120 members is the third largest in the nation, ranking only behind New York City and Chicago. Membership is composed of professional life insurance field managers.

Since 1964 Christian has managed the Dallas North branch office of Southwestern Life Insurance Company. He joined Southwestern Life in 1961 and is a former winner of the company's Manager's Achievement Award.

Christian was reared at McLean, graduating from high school here in 1934. After receiving a degree in business administration from McMurry College, he returned here in 1938 as a teacher and athletic coach. He had been an outstanding athlete himself while in high school, serving as captain of both the football and basketball teams.

After three years in the McLean school system, Christian moved to San Benito. He lived later at Kermit, Odessa, and Corpus Christi before moving to Dallas in 1956.

With 23 years experience in the life insurance profession, Christian is a charter member of the national General Agents and Managers Association.

He and his wife, Claudia, live at 6507 Pemberton Dr. in Dallas. They are the parents of two children.

Christian's mother, Mrs. A. B. Christian, resides at 2326 South 19th in Abilene. His father died last month and was buried at McLean.

R. L. McMurtry Funeral Services Held Monday

An early-day cattleman and brother of Mrs. Charlie Carpenter of McLean, R. L. (Boh) McMurtry of Amarillo, died early Saturday morning in Northwest Texas Hospital after an illness of more than three months.

Funeral services were conducted in 11 a. m. Moaday in Schooler-Gordon Colonial Chapel in Amarillo.

Burial was in Llano Cemetery in Amarillo.

Born Jan. 25, 1884 in Denton County, Mr. McMurtry arrived in the Panhandle as a 16-year-old, having headed north from the family ranch in Archer County in 1899.

In March 1926, he married the former Miss Mary Polk of Killeen.

He was a lifetime member of the Southwestern Cattle Raisers Association and 32nd degree Mason.

Survivors other than his sister, Mrs. Charlie Carpenter are his wife, of the home; three daughters, Mrs. Wiley Hicks of Amarillo, Mrs. George Green of Amarillo, and Mrs. Dudley Fowler of Austin; two brothers, Jo McMurtry of Clarendon and Jeff McMurtry of Archer City; six grandchildren and numerous nieces and nephews.

Willie Nicholas and Lee Hinton attended an avon representative meeting at Shamrock, Friday, October 1st.

SCS To Elect New Director Oct. 11

October 11th has been set as the date for the election of the Director for Zone 3 of the Gray County Soil and Water Conservation District. The Director will be elected to serve a five year term beginning immediately following the election.

The convention type election will be held at 8:00 p. m. October 11, in the Lefors Civic Center at Lefors, Texas.

To qualify as a director or voter, a person must own land within the zone for which the Director is being elected and live within Gray County. A landowner and his or her spouse are eligible to vote.

Zone 3 of the Gray County SWCD is located in the east central part of Gray County and includes the town of Lefors, community of Back, the surrounding farm and ranch land.

Milton Carpenter is the incumbent director whose term in office is expiring.

A film on the biological control of greenbugs utilizing black wasp will be presented by C. A. Scott, Aerial Applicator, from Groom, Texas. Also, Mickey Black, District Conservationist with the Soil Conservation Service, will give a progress report on the status of the watershed projects in Gray County.

Funeral Services For McLean Native Held

Funeral services for Billy W. Holcomb, 59, a native of McLean, was held last week in Amarillo.

Mr. Holcomb was a veteran of World War II and was a member of the Church of Christ.

Survivors include his wife, Alpha; two sons, Herbe of Tyler and Robert Joe of Albuquerque, N. M.; a daughter, Mrs. Patricia Norris of Amarillo; three brothers, Roy of Will's Point and C. O. and Willis, both of Sweetwater, seven grandchildren and one great-grandchild.

Band Booster Need Names For Calendar

The Band Boosters Club is compiling birthdays and meeting dates to be printed on a 1972 Community Calendar. This calendar will then be sold by the club as a fund raising project.

In order to truly have a community calendar it should have as many dates entered as possible. There will be no charge for these entry dates on the calendar.

If you have not been contacted and wish to have your birthday or meeting date published on the calendar, please call Bill Parr, Bert Darsey or any other Band Booster members.

The deadline for getting your name or meeting date printed on the calendar will be Oct. 11.

Alice Short Smith, Mrs. R. S. Sanders, Mrs. Luther Petty, Ruby Cook, and John C. Haynes were the McLeaners attending the Old Timers Club meeting in Pampa Friday.

School Observes Fire Prevention Week October 3-9

October 3-9 has been designated Fire Prevention Week in McLean, as well as throughout the nation, and citizens are encouraged to reeducate themselves to the task of helping hold down the nation's annual toll of death and destruction by fire.

As in past years a fire prevention poster contest will be conducted in the elementary grades of the McLean schools.

The posters will be judged on the basis of originality, cost and neatness.

An assembly will be held at 9 a. m. Friday and the winners of the poster contest will be named and prizes awarded.

John Adams was the first U. S. ambassador to England.

TIGERS LOSE TO THE BUCKS

Funds Are Being Canvassed For Service Unit

The McLean service unit of the Salvation Army kicked off their annual campaign for funds Tuesday morning, Oct. 5th at 9 a. m. in the Community Room in the American National Bank in McLean.

Campaign chairman Mrs. Mary Dwyer has several workers named who will help contact the people of McLean to support financially the services of the Salvation Army.

Mrs. Dwyer emphatically pointed out that this is the one and only fund drive by the Salvation Army this year and that there will be no other solicitation made for funds. She also pointed out that funds are needed to help those unfortunate who need help temporarily. There may be a child needing glasses, or dental work done that is not covered under the welfare program. This is where the Salvation Army comes in.

Named to help the campaign are: Boyd Meador, Rev. Bob Brown, Rev. Herman W. Bell, Mrs. Leslie Darsey, Mrs. Bob Sherrod, Mrs. John McCall, Mrs. Butch Bradley, Jimmy Allison and Jim McDonald.

The Fire Department will canvass house to house Thursday night to solicit funds for use by the McLean service unit for McLean people, Mrs. Dwyer asks that all McLean residents generously support this campaign.

If you are not contacted this week and wish to support financially this worthy cause, please send your donations to Rev. Herman W. Bell at the First Baptist Church in McLean

Sgt. Joe R. Roark In Top 15 %

Technical Sergeant Joe R. Roark, son of Mrs. Clyde Roark, Gainesboro, Tenn., has been named one of the top 15% in his Air Force specialty. He will receive a Superior Performance Pay bonus for six months as a result of his selection.

Sergeant Roark, a communications technician, was chosen for his leadership, exemplary conduct, technical skill and duty performance in competition with all other airmen in his grade and specialty.

He is presently serving at Wheeler AFB, Hawaii, with a unit of the Air Force Communications Service.

The sergeant is 1956 graduate of Jackson County High School. His wife, Betty, is the daughter of Mrs. Ester Fenno of Lefors.

Jr. High Cubs Are Downed By Colts

September 30, McLean Junior High Cubs met the Claude Colts at McLean's Duncan Stadium.

In the first half Claude scored 14 points and the Cubs remained zero.

In the second half, Claude remained 14 and McLean remained 0.

Next Thursday, (tonight) October 7, McLean meets Clarendon at Clarendon.

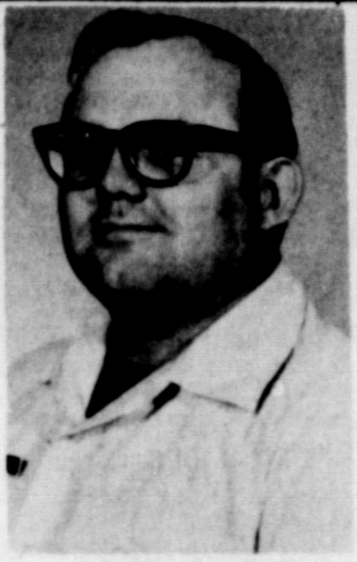
Mrs. Luther Petty went to Shamrock on a business call Tuesday, October 5.

REDUCE SOYBEAN LOSSES

Proper harvesting practices can cut soybean losses by two-thirds and could save producers \$6 or more per acre, says R. J. Hodges, Extension agronomist. Harvest losses generally average three bushels of soybeans per acre. Harvesting should begin when the moisture content of the beans reaches 13 percent. The combine should be in top operating condition and should be checked closely throughout the harvesting operation.

Bank & Post Office To Observe Holidays

The American National Bank and the McLean Postoffice will be closed on Monday, Oct. 12 for Columbus Day and on Monday, Oct. 25 for Veterans Day.



John J. Engle Sgt. John Engle Receives Award

Technical Sergeant John J. Engle, son of Mrs. Norma B. Engle, 105 E. Line, McLean, has been recognized for helping the U. S. Air Force Home Town News Center (HTNC) win the USAF Organizational Excellence Award.

Sergeant Engle is a feature writer with the Center, located at Tinker AFB, Okla.

The HTNC was cited for exceptionally meritorious service for July 1, 1965 to Dec. 31, 1970, during which it produced and distributed more than 13 million news releases about Air Force members to all information media in their home areas throughout the United States, Puerto Rico, Guam and the Virgin Islands.

The Center is one of the first organizations to win the recently created award which honors unique organizations engaged in special Air Force activities.

The citation accompanying the award noted the application of improved management techniques resulting in significant increases in both quality and quantity of releases. These releases contributed to the overall Air Force effort to report the individual accomplishments of its members.

The HTNC was established Nov. 1, 1960, at the direction of the Secretary of the Air Force, recognizing the obligation to keep the Public informed.

Sergeant Engle will wear a special ribbon as a permanent decoration to mark his affiliation with the Center.

The sergeant has completed a tour of duty in Vietnam. A 1957 graduate of Enid High School in Oklahoma, he attended Phillips University in Enid, and Oklahoma City University.

The sergeant's wife, Karen, is the daughter of Mrs. Ruth G. White, Rt. 1, Aline, Okla.

Lions Club to Have Broom Sale - Other Projects Planned

The McLean Lions Club under Boss Lion Jim Hathaway will be sponsoring their annual broom sale October 12. The door to door canvass will be made after 5:30 p. m.; however, local business will be contacted prior to that time.

High Quality brooms and other household wares will be offered for sale for the benefit of the Federation of the Blind and the local Lions club.

Stadium or gymnasium cushions are also being offered for sale at the present time at \$2. each. Lions are also presently finishing preliminary arrangements for a variety show to be held here October 31 which should be a high spot in entertainment for the city this year.

STORING FRESH FRUITS

When you store fresh fruits, Extension foods and nutrition specialists remind homemakers that the temperature and humidity are very important. Poke a few small holes in a plastic bag to provide ventilation and to let out some of the moisture which accumulates.

The Old Timer

"Time for learning is about an hour before your ignorance taught you an expensive lesson."

NEWS

County Agent Texas A. & M. College Extension Service

TRAILER LIGHTING

During the last session of the legislature a far reaching bill was signed into law with reference to lighting and brake requirements of all commercial and farm vehicles. This goes into effect January 1, 1972. It would a pay every owners of trailers of any type to check to see if they will be affected by these regulations. Generally speaking here are the new requirements for farm trailers and trucks. There must be two tail lights effective Jan. 1, 1972. These must be as widely spaced as possible and be at least 14 inches of the ground level and be no higher than 72 inches. There must be a white light over the license plate if a license is required. There must be two red stop lamps on rear-one and each side. There must be two red reflectors mounted on each side. Lamps and/or reflectors may be incorporated.

If a trailer is over eighty inches wide there are other special requirements on side markers and lights.

If your trailer has a gross weight exceeding 4000 lbs. and less than 10,000 your maximum speed is thirty miles per hour if you do not have brakes.

There are many more requirements not mentioned here. I would advise you to check further with weight and measure division of HWY Patrol. This will put a lot of illegal vehicles on the road unless trailer owners fix up their vehicles. In many cases it will cost more to install brakes than the trailer cost you to begin with.

Texas Food and Fiber Abundance Week November 16-20 has been declared State Food and Fiber Abundance week. This will occur just prior to Thanksgiving. A most appropriate time, County Judge Don Cain has been named Chairman of County Activities. In cooperation with the Pampa Chamber of Commerce, Farm organization and other groups and businessmen, a series of activities are planned for Gray County.

Reagan Brown, Texas A&M has been secured as a speaker for November 15 at the Pampa Chamber of Commerce membership luncheon. Reagan is a real fine humorous speaker. We hope to get out the farm people and city people as well. We hope you can make it. There will be special programs at all the service clubs. Many other activities are in the planning stage.

WHEAT PASTURE
We will not miss this year. Thousands of acres were up when the five inches of rain came. There will be abundant pasture and milo stalks. No doubt the stocker calf market will get even stronger.

HOSPITAL NOTES

Yielding Hours 3-4 p.m. - 7:30 p.m. No Morning Visiting Hours Please observe visiting hours

ADMITTED

Ruby Tibben Bill McAllister Sally McAllister

Carey Don Smith Jean Bohlar Olin Stapp Kid McCoy

DISMISSED
Carey Don Smith Olin Stapp Jean Bohlar John Hoffman Lela Aldemon Lora Hoffman

The fourth game of the season was held at White Deer last Friday night. At the end of the third quarter, the Tigers and the Bucks were tied 14-14, but in the last quarter the Bucks went on to score 13 more points to win the game 34-14.

In the first quarter with 1:32 left to play Kim Slagle on the White Deer team made a touchdown with a 2 yard run over the left tackle. The kick was good.

In the second quarter McLean's Ronnie Brown made a 2 yard run over left tackle for a touchdown, with a good kick which made the teams tied with a score of 7-7. With only 0:05 time remaining Ricky Haskins ran 1 yard around left end for another touchdown for White Deer. The kick was good putting White Deer in the lead by 7 points.

Early in the third quarter George Danner made a touchdown for the Tigers with a 2 yard run over right guard. The kick was good. This put McLean in the lead 14-7.

McLean wasn't able to keep the lead long with the Bucks making a 1 yard run for a touchdown with the time clock reading 8:10 with the kick good. This put the two teams tied again 14-14 at the end of the 3rd quarter.

White Deer made two more touchdowns during the fourth quarter. The first one with 7:35 time remaining Kim Slagle ran 2 yards over right tackle. Kick was good. Slagle was able to touchdown again with only three seconds remaining in the game, which made White Deer the victors with the final score of 34-14.

The fans will be pulling for the Tigers this week as they play versus the Groom Tigers at Groom.

STATISTICS
MCLEAN WHITE DEER

1st Downs	16	11			
Yd. Rushing	240	300			
Pass Att.	11	10			
Pass Comp.	1-14	4-73			
Punts Ave.	3-64	2-60			
Kickoff Ret.	70	20			
Penalties	4-40	5-55			
Score by Quarters		total			
McLean	0	7	7	0	14
White Deer	7	7	7	13	34

Jimmy Winegeart Has New Address

Jimmy Winegeart, who is a resident of McLean, is attending school this year near El Paso. It gets lonesome living that far away from your family and friends and he would like to hear from any of his friends in this area.

Jimmy is the son of Mr. and Mrs. Howard Winegeart, who live northeast of McLean.

Jimmy's address is Prude Ranch, Box 1431, Fort Davis, Texas 79734.

The News office received a card this week from Mrs. Leonard Ward, a former resident of McLean. The Ward family lived in McLean while the late Mr. Ward was stationed here with the Highway Patrol. The Wards have bought a house there in Midland where they live and wanted their friends here to have their new address. It is 4015 Roosevelt, Midland, Texas. 79701.

DOWN MEMORY LANE

10 YEARS AGO

Rev. J.L. Carter, formerly of Phoenix, Ariz., has accepted the position as pastor of the McLean Pentecostal Holiness Church and will begin a series of revival services Sunday.

Sidetracked from their quest for a perfect season, the McLean Tigers attempt to hit the comeback trail here Friday night when they entertain the Claude Mustangs in a non-district tilt. The White Deer Bucks handed the Tigers their first defeat of the season last Friday night, 20-6, leaving the locals with a 3-1 record.

Rev. Dan Beltz, pastor of the McLean First Baptist Church, was elected chairman of evangelism at the 48th annual meeting of the North Fork Baptist Association last Thursday in Wheeler.

Mrs. Richard Back suffered a broken arm when she fell in her home last Thursday. She returned to McLean after receiving treatment in Amarillo.

Serving in the Pacific as a member of the ordnance department at the Marine Corps Air Station, Kaneohe Bay is Marine Lance Cpl. Thomas M. Boston of McLean.

20 YEARS AGO

The McLean Tigers will seek their first victory in three starts when they meet the twice-victorious Shamrock Irish in the opening game of the season on Duncan Field.

Carl Money of Alanreed showed the No. 1 gift at the Sears gift show for 4-H Club boys held last Saturday behind the McLean Implement company building.

The Donley County Fair will be held in Clarendon September 21 and 22, H.M. Breedlove, county agent and manager of the fair, has announced.

The McLean Methodist Church is cooperating in the Texas United Evangelistic Mission, C.W. Parmenter, pastor said this week.

A red-hot bunch of Phillips Blackhawks, showing once more the power for which they have become famous, ran through around and under the McLean Tigers last Friday night in the

Blackhawk stadium and wound up on the top end of a lopsided 54-0 score.

30 YEARS AGO

Michigan and California Fords met in a head-on collision on Highway 86, two miles west of Shamrock, Monday morning, injuring seven persons. The crash occurred as one car had passed another on a hill.

A miscellaneous shower was given Wednesday afternoon at the home of Mrs. Paul Ashby, honoring Mrs. J.L. Boyce, who before her recent marriage was Miss Wilda Joyce McMullen.

John W. Cooper and his father who lives at Canyon, made a fishing trip to New Mexico last week and caught 174 fish.

Billy Sims, Shamrock Irish letter man, went out of a light practice scrimmage with a broken collar bone one day last week.

Rev. Vernie Pipes, pastor of the First Baptist Church of Shamrock was reelected moderator of the North Fork Baptist Association.

The McLean Tigers will meet the Phillips Blackhawks under the arcs at Tiger Field Friday night.

40 YEARS AGO

T.W. Gilstrap, local manager of the Southwestern Public Service Co. since July 1, 1929, has been promoted to the Amarillo office of the company as commercial manager, in charge of merchandise and power sales and advertising.

Among those from McLean who won places at the Pampa fair last week were L.O. Floyd, Arthur Howard, Mrs. R.F. Sanders.

Guy Hibler has been added to the employees group at the West Texas State Teachers College in Canyon and will work in the milk department of the college dairy farm.

Rev. W.A. Erwin, minister of the First Presbyterian Church was the principal speaker at the Lions luncheon Tuesday, bringing a message on the constitution of the U.S. as a part of the Lions' observance Constitution Week.

Next Tuesday will be McLean day at the Amarillo fair, and a number of citizens plan to visit the fair on that day.

50 YEARS AGO

The fame of McLean High School seems to have spread to distant parts of the state with surprising quickness, judging from the distances traveled by four students to attend this institution.

Opening the football season in McLean this Friday will be a game with Shamrock Irish. Game time 4:30 p.m. The locals lost two scrim-

mage games of base ball to Hedley on Tuesday and Wednesday, at the Hedley fair.

A novel and highly enjoyable entertainment was given at the school auditorium Friday evening for the teachers.

Cheryl Smith Is Tops Monthly Queen

By Lucille Cullison, reporter
The Derby Town Tops Club met Monday at 8:30 p.m. for their regular meeting in the Fire Hall Building.

Cheryl Smith, co-leader weighed in the members and recorded the weight chart.

Marilyn Mounce, leader then brought the meeting to order and led the members in repeating the Tops Pledge.

Deloris Bailey, Treasurer called the roll with members answering with their weight loss or gain.

The club had a 22 lb. weight loss for the past week and a 5 1/2 lb. gain.

Cheryl Smith is weekly queen with a 8 1/2 lb. loss and received the Fruit Basket. Cheryl was also the monthly queen for the month of Sept. with the most weight loss.

Each member's points on the dish towel contest was recorded.

Members losing weight were allowed to draw a gift from the Treasure Chest.

Those gaining weight must bring a small gift to replenish the chest at the next meeting.

Members present for the meeting were: Marilyn Mounce, Cheryl Smith, Deloris Bailey, Muriel Moore, Nola Crisp, Viola Glass, Lucille Cullison, Evelyn Hunt, Gladys Smith, Mary Lowery, Mary Terry, Ann Smith, Virginia Tate and Irene Williams.

All members please remember your "Secret Pals", a hearty welcome is extended to any new members.

Baptist WMS Have Mission Program

Reported by Mrs. Luther Petty
The Baptist Mission Society met Wednesday morning, Oct. 6th in the parlor of the church with the assistant director, Mrs. Homer Abbott in charge.

Opening prayer was given by the pastor, Rev. Bell.

The Calendar of Prayer was read by Mrs. Abbott with prayer for missionaries having birth days that day, the sick and others by Mrs. Luther Petty.

The subject of the program was "Potential for Missions" assisting Mrs. Abbott were Mrs. Walter C. Miller, Mrs. Boyd Reeves and Mrs. Truitt Stewart. The devotional given was Phil. 2:11.

Those present other than those already mentioned were Mrs. Herman W. Bell and Mrs. George Colebank. The meeting was dismissed with prayer by Mrs. Abbott.

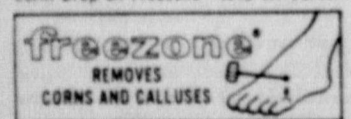
Fidelas S. S. Class Has Salad Supper

The Fidelas Sunday School Class of the First Baptist Church met in the home of Mrs. Vela Corcoran for their September salad supper. A good time was reported by those attending.

Those present were: Rev. and Mrs. Herman W. Bell, Mr. and Mrs. Roy Willingham, Mr. and Mrs. Boyd Reeves, Mr. and Mrs. Glenn Florey, Mrs. Stella Gibson, Bertha Smith, Cuba Collier, Safronia Pettit, Ruby Boyd, Vela Corcoran, Audie Stewart and Vernie Collier.

Mr. and Mrs. S. B. Kiser made a trip last week through Oklahoma, Arkansas, Missouri and Kansas and back home to Texas. They reported seeing some pretty country.

Freezone is for corns that hurt. Absolutely painless. No dangerous cutting, no ugly pads or plasters. In days, Freezone eases the hurt, safely helps ease off the corn. Drop on Freezone—take off corns.



Cuban money is printed in the U.S.



MAJOR RODNEY D. GUNN

Roger D. Gunn Is Attending Air Force School In Alaska

Major Rodney D. Gunn, brother of Mrs. J. H. McCarty of McLean, is attending the U.S. Air Force Command and Staff College at Maxwell, AFB Ala.

Major Gunn is one of more than 600 select government officials and officers from U.S. and allied armed forces enrolled in his class. The curriculum covers advanced military leadership, management and use of aerospace forces.

The 10-month program is part of the Air University's profession education system to prepare for higher command and staff positions.

He has completed a tour of duty in Vietnam. The major was commissioned upon completion of the Air Force Reserve Officers Training Corps program at Texas Technological College where he received his B.S. degree in 1960. He holds the aeronautical rating of a senior pilot.

His wife, Genie, is the daughter of Mr. and Mrs. A. L. Havens of Odessa.

Market Report

Interested in saving money while shopping for the family food supply this week? Then follow these marketing tips, suggests Gwendolyn Clyatt, Extension consumer marketing specialist.

Although specials on beef cuts are rather limited this week, the specialist says best beef values include chuck steaks and roast steaks, ground beef and liver.

Pork supplies are adequate, with good values available on loin end roasts, one-fourth and one-half loins cut into smoked picnics, shoulder steaks, hams and ham portions bacon and frankfurters.

Fryer chicken prices are about the same as last week, with occasional specials featuring whole fryers or cut up fryers. Mrs. Clyatt also suggests special packs of parts.

Turkey prices are also about the same as last week, with more emphasis on the 10-14 pound birds.

Grade A large size eggs continue to offer the best combination for economy and quality for your egg money.

A wide choice of fresh fruits are still available. Seedless grapes, prunes, bananas, plums and avocados are priced low. New crop apples are more plentiful and quality is improving. Red Tokay grapes are also making their appearance. Nectarines, pears, cantaloupes and honeydew melons are worthy of your consideration -- qualitywise and price-wise.

In the vegetable market, carrots are more plentiful than a few weeks back. Several varieties of hard shell squash are now available. Cabbage, mustard, collards, turnip tops, potatoes, green peppers, corn, sweet potatoes, and yellow onions are among the more economical vegetable choices. Eggplant, broccoli and cauliflower of very good quality is moderately priced to help add variety to your menus.



A weekly public service feature from the Texas State Department of Health

Accent on Health

J.E. PEAVY, M.D., Commissioner of Health

The following events selected by the Texas Tourist Development Agency, Box 12008, Austin 78711 are but a few of the many excellent recreational opportunities offered by communities across the state. A more complete listing of Texas events, October 1971-March 1972 may be obtained free of charge from the Texas Highway Department, Travel and Information Division, Box 3064, Austin 78703.

Oct. 1, 2, 7-10, 14-16, 21-23, 28-30 "They Came From Spain," The Coronado story in sound and light, presented in Pioneer Amphitheater in Palo Duro Canyon State Park near Amarillo. Adults \$2.50, Children \$1. Mail ticket orders to Box 268, Canyon 79015.

Oct. 2-31 Winnsboro Autumn Trails Festival. Events, with dates in (), include: queen coronation (2), folk gospel songfest and dinner on the grounds (9, 10), "Big D" to Winnsboro trail ride (12-15), campout, stew and barn dance (16), horseback ride into the "Big Woods" (17), antique car rally (23), sidewalk arts and crafts exhibit (24), Halloween barn dance (30) and pilgrimage to early day homes (31).

Oct. 3, 10, 17, 24, 31 Texas Prison Rodeo, Huntsville. Started as a recreational program for inmates in 1932, the rodeo has become one of the most popular in the state. With a seating capacity of 24,500, excluding the inmate section, the rodeo attendance runs 90,000-100,000 each season. Cowboy inmates and big name stars share the spotlight. Tickets are \$3.50, box seats \$5.50.

Oct. 9-24 State Fair of Texas, Dallas. Highlights include the Texas-Oklahoma football classic (9), and the Pan American Livestock Exposition (9-17). Folders detailing the many scheduled events are available from State Fair of Texas, Box 26010, Dallas 75226.

Oct. 18-23 Fiesta de Amistad, Del Rio. In its 15th year, the international celebration schedules events in Del Rio and across the border in neighboring Ciudad Acuna. Highlights are the Fiesta de Amistad (Get acquainted dinner), a beauty pageant, band concerts, fireworks, Abrazo (good neighbor) ceremony on the International Dam, parade and Grand Baile Ranchero.

Oct. 18-24 Rebel Days, Harlingen. Highlighted by the Confederate Air Force Air Show, Rebel Days this year is expanded to a week's length. Included are a golf tournament, barbecue, dances, parade and contests.

Girls In Action Have Meeting

The Girl's in Action (G.A.) met October 5, 1971 in the basement of the First Baptist Church.

They sang songs and then for their handwork, made tray cards to put on the food trays for patients at the hospital. Refreshments of cokes and cookies were enjoyed by all.

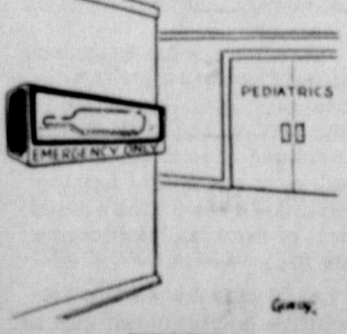
Those attending were: Kerry Burden, Maridale Glass, Sherri Glass, Teresa Cheatham, Robin Smith, Jerec Boyd, Coy Nicholas, Teresa Rollison, Jeanette Hatfield, Carolyn Bailey, Melinda Hunt, and their assistant leader, Miss Debbie Ryan. There were two visitors present, Virginia Burden, and Marilyn Cook.

By Marilyn Cook

Correction On Smith Obituary

In last week's paper an obituary was published for Mrs. Katie Smith. In the survivors it was listed Mrs. Dora Sanders as one of her sisters and it should have read Mrs. Zora Sanders.

My Neighbors



ITCHING LIKE MAD?

Get this doctor's formula! Zemo speedily stops torment of externally caused itching... of eczema, minor skin irritations, non-poisonous insect bites. Desensitizes nerve endings. Kills millions of surface germs. "De-itch" skin with Zemo—Liquid or Ointment.

A quick and simple laboratory technique, called "thin layer chromatography", may soon open doors to effective control of many drug abuse problems.

As a screening aid, thin layer chromatography—or TLC—tests can provide information revealing all the components present in a sample of blood or urine. In the clinical lab, TLC is now being used for the rapid analysis of poisons in the blood or urine samples. But now scientists have been able to adapt the test to detect more than 1,000 different drugs, ranging from pep pills to heroin.

TLC can be useful in screening for possible presence of amphetamines, barbiturates and the opiates can be determined in a TLC test.

What that means to drug abuse control in Texas and across the nation, is very clear. A doctor treating a patient whom he suspects of abusing some drug could send a urine sample to a central laboratory equipped to handle such tests in mass quantities. After receiving the results within three days, the doctor would be better able to deal with his patient's problem.

The Texas State Department of Health may soon be able to offer such resource to doctors across the state. Methods of funding such a program with federal grants are now being studied.

The proposal is unique because a public health agency as an aid to all physicians treating drug abusers, does not now exist in this country.

TLC is regarded by some as an ideal tool for mass screening tests. Drugs are absorbed from the urine on a piece of

sensitized paper. The paper would then be mailed to the state laboratory. After treatment with a series of solvents, discolorations on the paper would tell an experienced lab technician whether drugs have been used and, if so, which drug.

The availability of thin layer chromatography services would be an inducement for more physicians to participate in the care of drug abusers. And, greater numbers of drug users could be reached before their misuse or abuse of drugs became a health problem or a concern to law enforcement agencies.

BIRTHDAYS

- OCTOBER 10
Mrs. F.E. Stewart
Mrs. Minnie Woodrome
Linda Patterson
Renee Chilton
Larry Cunningham
- OCTOBER 11
Mrs. Jesse Coleman
Mrs. Robert Green (Judy)
Mrs. Leslie Darsey
- OCTOBER 12
Vickie Sue Upton
George Burrow
Jay Dee Fish
- OCTOBER 13
Arnold Sharp
Brook Scott Crockett
- OCTOBER 14
James Adams
- OCTOBER 15
Jess Ledbetter,
Jim Stevens
Mrs. Paul Averitt
Michael Simpson
- OCTOBER 16
Mrs. Rose Hall
- OCTOBER 17
Mrs. A.L. Grigsby
Priscilla Dowis
Mrs. O.N. Patterson
Brenda Brown
Jane Bible

Henry Wadsworth Longfellow is the only American whose bust is in Westminster Abbey in England.

Helps Shrink Swelling Of Hemorrhoidal Tissues

caused by inflammation
Doctors have found a medication that in many cases give prompt, temporary relief from pain and burning itch in hemorrhoidal tissues. Then it actually helps shrink swelling of these tissues caused by inflammation. The answer is Preparation H. No prescription is needed for Preparation H. Ointment or suppositories.



"Is this the buried treasure grandpa left us?"
Courtesy of Gray County Soil & Water Conservation

HEAT-N-CLEAN

In the Electric Climate
Put in electric heating and we'll give you an electric dishwasher.

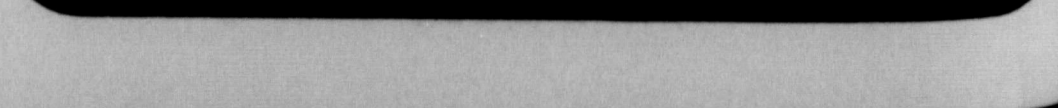


Put clean electric heating in your single family residence and we'll give you an electric dishwasher to clean your dishes. You may choose either a built-in model or the convertible in your choice of colors — Dark Copper, Avocado, Harvest Gold, or White. We'll deliver it to your door and you take care of the installation as you see fit.

To qualify for this "most wanted" appliance, the dishwasher, you need only be a customer of Southwestern Public Service Company and put permanently installed, whole-house electric heating in your present or new home with installation beginning not later than December 1, 1971, when the offer expires.

Call us this week for complete information on the desirability of comfort electric heating. Don't miss out on the opportunity to receive an electric dishwasher free of extra cost!

Enjoy clean living in the electric climate.



Join our S'WONDERFUL Seven DRESS CLUB
Get one dress FREE for every 7 you purchase here.
Jewel Box Fashions
MCLEAN, TEXAS

WED., OCT. 13th
KING SIZE WALLET CREATIVE COLOR PORTRAITS FOR ONLY 8 99¢
NO LIMIT
PHOTO HOURS 9 A.M. TO CLOSING
GET PICTURES MADE OF GRANDPA, GRANDMA, DAD, MOM AND ALL THE LITTLE ONES AT THESE SAME LOW PRICES!
SHUGART COLOR PHOTOS
WILLIAMS APPLIANCE
218 N. MAIN

Announcing
The KIVA Now Has 3 Operators To Better Serve You
Meril Word Lou Ella Hall Kay Hollingsworth
OPEN Tues. thru Sat.
For Appointment Call 9-2371
Kiva L-J Beauty Salon
"Our Specials Are Our Customers"

FOOTBALL SEASON opens

McLEAN TIGERS

NO.	NAME	POS.	CLASS	WT.
10	MARK SMITH	QB	So.	160
11	SKEET LOWERY	QB	So.	141
12	TOMMY DUNIVEN	QB	Sr.	192
13	JOE RILEY	SE	So.	136
14	MIKE GRIFFIN	WB	Sr.	159
15	RONNY BROWN	TB	Sr.	178
16	GEORGE DANNER	FB	Jr.	178
17	BOBBY CROCKETT	FB	Fr.	163
18	GARY GRIFFIN	TB	So.	153
19	RANDY EDDLEMAN	WB	Sr.	130
20	FRED LOWDER	QB-FB	Sr.	140
21	MILTON BEST	C	So.	214
22	STANLEY SIMPSON	C	Jr.	148
23	STEVE TREW	G	Jr.	145
24	TONY HENLEY	G	So.	178
25	GREGORY FABIAN	G	Jr.	164
26	DAVID HAYNES	T	Sr.	190
27	MARK SIMMONS	G	So.	135
28	WESLEY BROWN	T	So.	227
29	RANDY MARTIN	T	Sr.	163
30	JOE SHERROD	T	So.	150
31	TERRY SMITH	C	So.	155
32	MIKE LONG	E	Sr.	142
33	RICKY KENNEDY	E	So.	152
34	LARRY BOYD	E	Sr.	148
35	DENNIS BROOKS	E	So.	152

COACHES: BOB LANGFORD, ALLAN HARMAN, VIRGIL JUDY

CAPTAINS: TOMMY DUNIVEN, MIKE GRIFFIN, DAVID HAYNES

COLORS: BLACK AND GOLD

MASCOT: TIGERS

Football Schedule Of

McLEAN JR. HIGH CUBS

Sept. 9	Lefors	There
Sept. 16	White Deer	There
Sept. 23	Shamrock	There
Sept. 30	Claude	Here
Oct. 7	Clarendon	There
Oct. 14	Silverton	Here
Oct. 21	Wheeler	There
Oct. 28	Memphis	There

Game Time
8:00 P.M.

McLEAN TIGERS

VS.

GROOM TIGERS

GROOM TIGERS

NO.	NAME	POS.	CLASS	WT.
10	TERRY NEPPER	QB	Jr.	162
12	JEM WEST	QB	Jr.	145
18	TROY RITTER	QB	Sr.	128
20	MICKEY HOMER	HB	Sr.	126
22	DOUG HALL	HB	Sr.	130
30	JETT MAJOR	HB	Sr.	128
33	RUSSELL PAIR	HB	Jr.	136
40	JOHN CHOWELL	FB	Sr.	180
44	MIKE OLLINGER	HB	Sr.	175
50	DANNY BRITTEN	C-G	Sr.	160
51	ANTHONY LEDWIG	C	Sr.	155
52	GREG ADCOCK	C-G	Jr.	170
60	BARRY FIELDS	G	Sr.	168
61	KELVIN OLLINGER	G	Jr.	174
63-64	BRENT STEPHENS	G	Sr.	137
70-72	HOWARD BRITTEN	T	Sr.	180
73	RANDY GARMON	T	Jr.	201
74	WESLEY MILLER	T	So.	230
80	LARRY POOL	E	Sr.	140
81	MATT BRITTEN	E	Sr.	165
82-84	NOLAN WIEBERG	E	Sr.	165

COACHES: ROGER ARNOLD, ROGER CRAICHY, KENNETH SWEATT

AT

GROOM
STADIUM

FRIDAY NIGHT
OCTOBER 8



THE McLEAN TIGERS

Sept. 10	Shamrock	Here
Sept. 17	Lefore	Here
Sept. 24	Boys Ranch	There
Oct. 1	White Deer	There
Oct. 8	Groom	There
Oct. 15	Claude*	There
Oct. 22	Silverton*	Here
Oct. 29	Memphis*	Here
Nov. 5	Clarendon*	There
Nov. 12	Wheeler*	Here

* District Games

THE FOLLOWING TIGER BOOSTING MERCHANTS URGE YOU TO SUPPORT YOUR TEAM BY ATTENDING EACH GAME

CONSUMERS SUPPLY CO.	J. R. GLASS OIL CO. Wholesale and Retail, Phillips 66 Products	FAMILY INN Phone 779-2382	GREER'S RESTURANT
MANTOOTH SERVICE STATION	GIPSON SERVICE & SUPPLY Howard Gipson, Owner	CHARLES TEXACO SERVICE 779-8807	JOHNNIE F. MERTEL BOOT SHOP Phone 779-2161
McLEAN HARDWARE CO. Mr. and Mrs. Jewel Meacham	ALBERTA'S HAIR FASHIONS	CITY OF McLEAN	ODIS' ELECTRIC CO.
JANE SIMPSON AGENCY	BOOST THE TIGERS	TEXACO INC. D. C. Lowary, Consignee	WILLIAMS APPLIANCES
TERRY'S ELECTRIC 779-2201	WINDOM AUTO SUPPLY E. J. & Doris Windom	BOOST THE TIGERS	THE McLEAN NEWS
AMERICAN NATIONAL BANK In McLEAN, TEXAS — Member FDIC	TED SIMMONS CHEVROLET CO.	CORINNE'S STYLE SHOP	MORSE TRIANGLE RANCH John M. Haynes
BILLIES BEAUTY SALON & MEN'S APPAREL	TRIANGLE SERVICE STATION	PUCKETT'S FOOD STORE	McLEAN CAFE



Joe Franklin, left, discusses range management with Doug Sellars, right, Range Specialist with the Soil Conservation Service. Joe is planning to install a 4-pasture planned grazing system in the near future.

Planned Grazing Systems Can Greatly Help The Farmers

Deferred rotational or planned grazing systems are becoming more important in the minds of ranchers says Phil Richey, Range Conservationist with the Soil Conservation Service in Pampa. Planned grazing systems can greatly help to make a successful management program which is essential.

Richey goes on to say, there are several ways to set up a grazing system. Usually 2, 3 or 4 pastures every four months. While one pasture is grazed 4 months the other pasture is rested the same period of time. This system is usually superior to yearlong grazing but is probably the least profitable of the three systems mentioned. A 3 pasture system using 1 herd is becoming quite popular. Where the one herd is rotated between three pastures so as to graze each pasture 3 months and rest it 6 months. Also, the grazing and rest period come at different seasons each year. The beauty of this system is that in three

years every pasture receives 24 months rest while running the same amount of cattle that the 3 pastures would run if they were stocked individually on a year long basis. The 4 pasture system using 3 herds probably is the best of all the systems, but requires more fences and labor to carry out. The cattle are split into 3 herds and placed into 3 pastures leaving the fourth pasture vacant. The three stocked pastures are grazed 4 months and then the rested pasture received 1 herd and another pasture is rested. Only 1 herd needs to be moved once every 4 months. Again, each pasture is rested at a different season each year. Each pasture is grazed 12 months and rested 4 months every 16 months.

There are several advantages, Richey continues. Increased net profits of from \$110-\$118, per cow have been reported from ranches and experiment stations. This is due to more utilization of less desirable grasses and increased stocking rates because of range improvement. A bigger calf crop and heavier calves can be expected. You get more beef per acre. Livestock is easier to manage because a rancher has his stock confined to a smaller area. Fresh pastures are available which breaks parasite cycles in cattle and provides fresh grass. More even distribution of livestock is achieved on a pasture. Dry periods are easier to cope with since grasses are more vigorous and there is usually available excess forage.

Arthritis Sufferers:

WAKE UP WITHOUT ALL THAT STIFFNESS!

New formula for arthritis minor pain is so strong you can take it less often and still wake up in the morning without all the pain's stiffness. Yet so gentle you can take this tablet on an empty stomach. It's called *Arthritis Pain Formula*. Get hours of relief. Ask for *Arthritis Pain Formula*, by the makers of *Anacin* analgesic tablets.

be needed but many times a rancher can use existing pastures. Grazing systems are in no way limited to those mentioned here. A most any combination of grazing and rest periods as well as any number of pastures may be tailored into a system. No matter how good a grazing system is, however, it won't compensate for overuse of a pasture. Proper stocking is most important. Weeping lovegrass and other pasture grasses can be used in a grazing system.

Cost-share assistance for such things as brush control, constructing cross fences, pasture and range seeding, ponds, livestock wells and watering facilities to name a few are available through the Great Plains Conservation Program or the Rural Environmental Assistance Program.

A number of ranchers in Gray County have plans for grazing systems, adds Richey. Among these are Harvey Huggins, Bill Gething, Johnson Ranch, Creed Lamb, Joe Franklin and others. Anyone interested in more specific information on planning grazing systems should come by the Soil Conservation Service office, Gray County Courthouse Annex, or Call 665-1751.

Pep Club To Crown Queen At Bonfire Oct. 21

By Cathy Blackwell
McLean High Pep Club, one of the most active groups in the school, has been very busy this year. Many poster parties have been held on Wednesday evenings and Saturday mornings. Practices have been held each week to learn new yells, and to train new members. At each game a great display of enthusiasm and encouragement for the Tigers team has been shown. Each member holds the Tigers in high esteem.

Next Monday a secret ballot will be held to select the Flame Queen. This is a great honor as it goes to the member who has been selected by the club as the best worker for the year. The queen will be announced and crowned at the bonfire Oct. 21 at 8 p.m. The public is invited.

On Oct. 22, Homecoming, 7:30 p.m., preceding the Silverton game, the football queen will be selected and crowned, and all her attendants introduced. The queen is selected by the Tiger team.

News From ALAN REED

Going through McLean one day this week unnoticed was a lone rider on horseback.

Mr. Lloyd Garr left north eastern Canada over four months ago on horse back headed for California. It had been a life long dream of his. Mr. Garr who is 28 years old, had been trying to make 30 miles a day. He spent a night in Shamrock and decided that Alanreed would be his closest destination to 30 miles.

Mrs. Betty Miller, who works at the factory here in McLean, noticed Mr. Garr on the way to her home in Alanreed. Having a great love for horses, she stopped to talk to him, Garr, who had been sleeping in his sleeping bag along the way, spent the evening in the Miller home and kept the Miller family spellbound with his experiences he had had since he left Canada.

Mr. and Mrs. Phillip Gibson were in Pampa Tuesday attending to business.

TREE DISEASE BOOK - The USDA's Forest Service is offering a new book on diseases which attack forest and shade trees. The book, "Diseases of Forest and Shade Trees of the U.S.," features information on the pathology of more than 200 important trees. It can be ordered from the Superintendent of Documents, U.S. Government Printing Office, Washington, D.C. 20402.

WOMEN PAST 21 WITH BLADDER IRRITATION Suffer Many Troubles

After 21, common Kidney or Bladder Irritations affect twice as many women as men and may make you tense and nervous from too frequent, burning or itching urination both day and night. Secondly, you may lose sleep and suffer from Headaches, Backache and feel old, tired, depressed. In such irritation, **CYSTEK** usually brings fast, relaxing comfort by curbing irritating germs in strong, acid urine and by analgesic pain relief. Get **CYSTEK** at drug stores. See how fast it can help you.

LOOSE HAY USE UP

Forage producers throughout Texas are becoming more interested in stacking loose hay, according to Dr. Neal Pratt, agronomist with the Texas Agricultural Extension Service.

Loose stacked hay offers several advantages to forage and livestock producers. And there are also several disadvantages.

Hay can usually be stacked loose with less labor require-

ments and can retain its quality as well as baled hay. However, loose hay is less marketable and has certain feeding limitations over baled hay.

Miss Renee Chilton, daughter of Mr. and Mrs. Johnnie Chilton of Hale Center, and granddaughter of Mr. and Mrs. Josh Chilton was first runner up in the first Miss Hale Center Pageant.

DR. JACK L. ROSE
OPTOMETRIST
121 Main St. Shamrock
Phone 256-3203
Tues. - 9-5 Fri.: 2-5

Get More Spend Less EAT BETTER in the BARGAIN

BETTY CROCKER **LAYER CAKE MIX** 3 FOR \$

PORK CHOPS
CENTER CUT LB. **79¢**
END CUT LB. **59¢**

CRISCO OIL 24 OZ. **65¢**
LOG CABIN SYRUP 36 OZ. **99¢**
LUCKY LEAF CHERRY PIE FILLING NO. 2 CAN **2 FOR 99¢**
SHURFINE Fruit Cocktail 303 CAN **3 FOR 89¢**

SHURFRESH MILK FOR GOODNESS SAKE **BAKE-RITE SHORTENING** 3 LB. CAN **75¢**

DRINK SHURFINE GRAPE, FRUIT PUNCH OR ORANGE 46 OZ. CAN **3 FOR 89¢**

KRAFT SALAD DRESSING **MIRACLE WHIP** QUART **59¢**

Simpson's **Maryland Club Coffee** 1-pound Can **69¢**
Without coupon 85¢
Cash value 1/20¢. Limit one per customer.
COUPON EXPIRES 11-13-71

SHURFINE WHOLE PEELLED **TOMATOES** 303 CAN **4 FOR \$1**
SHURFINE **Pork & Beans** 300 CAN **7 FOR \$1**

TEXAS CELLO BAG **Carrots** 10¢
BULK POUND **TURNIPS** 15¢
CALIFORNIA SUNKIST POUND **Oranges** 19¢

TIDE 5 lb. 4 oz. KING SIZE ONLY **1.35**
GOOD ONLY AT SIMPSON'S WITH THIS COUPON **WITHOUT COUPON \$1.49**
OFFER EXPIRES 10-15-71 LIMIT 1 COUPON PER PURCHASE

SHURFINE **Asparagus** 300 CAN **3 FOR \$1**

Tendercrust Bread and Bakery Products

SOFLIN BATHROOM **TISSUE** 10 ROLL PACK **79¢**

SIMPSON'S LOWEST EVERYDAY FOOD PRICES **MARKET**

Make coffee time Jell-O time.
When you boil water for instant coffee, add an extra cup and make Jell-O.

FALL FABRIC SALE
New Shipment **DACRON DOUBLE KNIT**
60" Wide Machine Wash **\$2.98** yd. \$4.98 Val.
Group No. 2 Values to \$6.98 **\$3.98** yd.
Group No. 3 Values to \$7.98 **\$4.98** yd.
ASSORTED FABRICS 2 Yds. **\$1**
Reg. To \$1.98 - 45" Wide Cottons and Blends Wash and Wear
Large Selection **PEARLS** 60" Strands
Shop—Sew—Save At **SANDS FINE FABRICS**
McCall's, Butterick, Vogue, Simplicity Patterns
PAMPA, TEXAS 600-7900
Shop Downtown For Greater Selections

CLAS
Teleph
Classified
Additional In
(Sa
Minimum pe
Play Class
ads cash
establish
Clean New
FO
FOR RENT-A
and pane
779-2531
PARTMEN
partments.
FO
FOR SALE: E
riene Smi
LL BRICK
ale. No mo
will carry
FOR SALE: A
part, all n
taining sha
ut. J.E. S
2307.
Sani-F
out ge
Sani-Flush
cleaner wipe
down househ
15 seconds
Disinfect
it cleans.
TWO
OE'S
For
SH

CLASSIFIED
Telephone 779-2447

Classified Advertising Rates
First Insertion 5c per word
Additional Insertions 3c per word
(Same Copy)

Maximum per Insertion 50c
Display Classified, per Inch 85c

Ads cash, unless customer has established account with the McLean News.

FOR RENT

FOR RENT - Apartment, carpeted and paneled. Call 779-2768 or 779-2531. Bob Massey, tfc

APARTMENT for rent, Payne Apartments, 779-2601. 38-tfc

FOR SALE

FOR SALE: Folding Bed. \$25. Irene Smith 315 Cedar. 39-1p

ALL BRICK 1 bedroom house for sale. No money down, owner will carry mortgage. 779-8880. 38-4c

FOR SALE - 80 acre farm with some adjoining northeast corner of city. J. E. Moore, 779-2384. 33-tfc

FOR SALE - 64 Model Dodge Dart, all new tires, good running shape. Clean inside and out. J. E. Smith, Phone 779-2307. 37-tfc

Sani-Flush wipes out germs.

Sani-Flush Toilet Bowl Cleaner wipes out common household germs in 15 seconds.

Disinfects
It cleans.

Two Barbers Ready To Serve You

BOB'S & CARL'S BARBER SHOP

For First Class Hair Cuts, Shaves, Shampoos, Tonics and Facials.

FOR SALE - Travelers checks - Safe - Insured if lost, American National Bank in McLean, tfc

CHRISTMAS Lay Away Sale continues at Veral Lynn Gift Shop. 39-4c

HALLMARK greeting cards, notes, stationery at Veral Lynn Gift Shop. 39-4c

MISCELLANEOUS

FURNITURE of all kind repaired, D.L. Jones, Rt. 1, McLean, 779-2992. 38-tfc

SAFE, SOUND, SATISFACTORY Accommodating. Appreciate your business. American National Bank in McLean. Deposits insured by Federal Deposit Insurance Corporation. tfc

CHECKING Accounts - Savings Accounts - All types of Loans Full Service Bank. American National Bank in McLean. tfc

McLEAN LODGES 889, A.F. and A.M. Regular meeting second Thursday each month - 7:30 p.m. All members urged to attend. Practice first and third Tuesday nights each month.

CHECK WITH US for a hospital plan which does not limit room or miscellaneous hospital expenses. Non cancellable. See us for cancer and travel policy. 779-2451. Jane Simpson Agency.

NOW AVAILABLE - Plenty of new large and small Safe Deposit Boxes. Low annual rental rates - \$4.50 to \$6.00 per year. PROTECT YOUR VALUABLES, American National Bank. 38-tfc

CLEAN expensive carpets with the best. Blue Lustre is America's favorite. Rent shampooer \$1. McLean Hardware. 39-1c

HELP WANTED

OIL field pumper for Sunday work to gage tank, check well and flow lines in Alanreed area. Requires about 3 hours each Sunday. Call G.E. Stahl, Amarillo, 376-5449. 38-tfc

CARD OF THANKS

We want to thank every one for the beautiful flowers visits, cards, and the prayers that the preachers and friends offered in Clyde's behalf, for the W.M.U. for the lovely fruit basket.

Mr. & Mrs. Clyde Willis and family.

CAULIFLOWER - Since cauliflower is most abundant from September until January, Extension foods and nutrition specialists remind consumers that now is the time to look for white to cream-white cauliflower with compact solid and clean curds. If jacket leaves are attached, a good green color is a sign of freshness.

MEASURING FLOUR

Don't shake the cup! According to Extension home economists, flour should be spooned lightly into a measuring cup, then leveled off with a spatula.

Study Shows Wisdom Of Preserving Plants

It is easier to preserve wildlife habitat than to restore it once it is gone, according to a study by the Texas Parks and Wildlife Department.

Biologists for the department found that growth of native wildlife food plants from seed is slow and expensive. They made annual observations of approximately 42 plantings of 21 species near Buna.

The plants needed considerable care, protection from grazing and diking to keep the plots open.

Plants that were grazed or under a pine overstory were not worth the effort, according to the biologists.

For deer browse, the best plants were found to be Japanese honeysuckle. Yaupon was next best.

The dwarf liveoak was far superior to any other species tested for acorns.

TODAY'S WORLD



I don't mind telling you, it's a treat to be able to enjoy Monday morning.

CHURCH CONFERENCE - The 26th annual Town and Country Church Conference is slated for October 14-15 at Texas A&M University, says Ken Wolf, Extension economist and conference publicity chairman. Theme for the event is "The Changing Faces in the Pews." About 150 rural ministers from across the state are expected to attend.

Naturalized citizens of the U.S. are entitled to all privileges except that of becoming president.

IT NEVER FAILS



"That's the fourth time you've gone back for more punch, Albert," she said coldly. "Doesn't it embarrass you at all?"

"Why should it?" the young man shrugged. "I keep telling them I'm getting it for you."

Mrs. Mather was going away after a long visit.

"Do you remember what time my train leaves tomorrow?" she asked her son-in-law.

"Sixteen hours, seventeen minutes, and thirty seconds from now, dear Mama."



Tourist: "Good river for fish?"
Fisherman: "It must be. I can't persuade any to come out."

"How did Oscar lose the fingers on his right hand?"
"Put them in the horse's mouth to see how many teeth he had."
"And then what happened?"
"The horse closed his mouth to see how many fingers Oscar had."

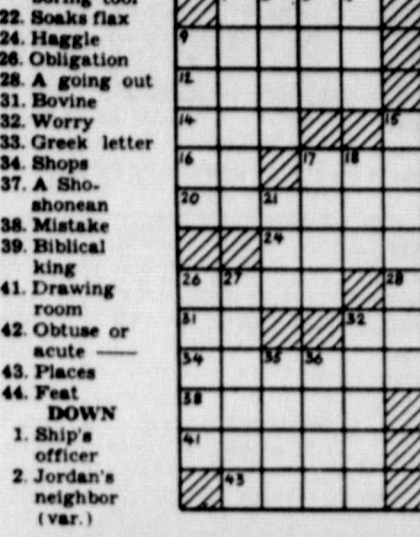
"How far is it to the next filling station?" the driver asked a farmer.
"Nigh onto two miles as the crow flies."
"Well, how far is it if the damned crow has to walk and roll a flat tire?"

Gas and heartburn?

Di-Gel contains a unique anti-gas ingredient, Simethicone. This unique discovery breaks up and removes painful gas-bubbles. Your relief is more complete because Di-Gel takes the acid and the gas out of acid indigestion. Get Di-Gel tablets or liquid today. Product of Plough, Inc.

CROSSWORD

- ACROSS**
1. Bitter vetch
 4. Grain
 5. Hit (colloq.)
 6. Damage
 7. Mideast native
 8. Small lead shot
 9. Core
 11. Appears
 15. Handles
 17. Petty
 18. Equal
 21. Subside
 22. Uprising
 23. Conclude
 24. Boring tool
 25. Haggie
 26. Obligation
 28. A going out
 31. Bovine
 32. Worry
 33. Greek letter
 34. Shops
 37. A shone
 38. Mistake
 39. Biblical king
 41. Drawing room
 42. Obsolete or acute
 43. Places
 44. Feet
- DOWN**
1. Ship's officer
 2. Jordan's neighbor (var.)
 3. Hewing tool
 26. Measures of medicine
 27. Special news editions
 29. Incalculable
 30. A napped fabric
 32. Flowerless plants
 39. Owned
 40. Compass point (abbr.)
 36. Source
 37. Advocate



Benjamin Franklin was the first Postmaster of the U.S.

The McLean News

Established 1904
210 N. Main 779-2447
Published Every Thursday at McLean, Gray County, Texas, 79057.
Second Class Postage paid at McLean.

E.M. Bailey Publisher
Deloris Bailey Editor
Subscription rates: \$4.50 per year in Gray and neighboring counties; \$5.50 per year elsewhere.

Wish I'd Said THAT

The difference between a big wheel and one that is flat depends on how much air is leaked out. — John H. Gilgour, The Tri-County (Mo.) News.

SHINES UP BRIGHT IN MINUTES LASTS UP TO A WEEK

GRIFFIN
WAX SHOE POLISH



It's after hours. Yet most of the windows are bright. Perhaps the cleaning crew is at work, or a few executives catching up on their mail.

Whatever the reason, the lighted windows glow with purpose. The dark windows are blank, austere and forbidding. What difference one flick of a light switch can make!

People are like the windows of this building. Some, radiant with the joy of living, find days full, happy and useful. They are fun to be around. Others, gloomy and sad, find life lonely and meaningless. Their company is tedious.

What makes the difference? Where can you turn if life seems troublesome? You can't flick a switch to change an attitude.

The secret is in your church. Worship and study there, and welcome the living presence of God into your heart and mind. Your whole life will be lighted and your days filled with new happiness.

Sunday	Monday	Tuesday	Wednesday	Thursday	Friday	Saturday
Romans • 15:1-6	II Chronicles • 29:30-33	Psalms • 51:1-13	Psalms • 88:1-12	Isaiah • 58:3-12	Matthew • 17:22-27	Mark • 7:1-13

Scriptures selected by the American Bible Society. Copyright 1971 Keister Advertising Service, Inc., Strasburg, Virginia

CHURCH OF THE NAZARENE
Jerry Tucker of Shamrock, Preaching, Services, Wednesday 6:00 p.m.

FIRST BAPTIST CHURCH
Rev. Herman W. Bell, Pastor
Sunday Services
Sunday School 9:45 a.m.
Worship Service 10:45 a.m.
Training Union 6:30 p.m.
Evening Worship 7:30 p.m.
Wednesday Service 7:45 p.m.

ALANREED FIRST BAPTIST CHURCH
Sunday School 10:00 a.m.
Church Services 11:00 a.m.
Training Union 7:00 p.m.
Church Services 8:00 p.m.
Prayer Meeting Wed 8:00 p.m.
W.M.S. Monday 2:00 p.m.

PREBYTERIAN CHURCH
Matthew L. Bailey
Services will be held each Sunday morning at 11:00 a.m.

CHURCH OF CHRIST
David V. Fultz, Minister
Sunday Services
Bible Study 10:00 a.m.
Morning Service 10:50 a.m.
Evening Service 6:00 p.m.
Wednesday Ladies Bible Study 10:00 P.M.
Midweek Worship 7:00 P.M.

MESSAGE SPONSORED BY THE FOLLOWING

AMERICAN NATIONAL BANK IN McLEAN
Member FDIC

THE McLEAN NEWS

WILLIAMS APPLIANCES

DIXIE MOTEL

McLEAN HARDWARE CO.
Mr. and Mrs. Jewel Moscham

PENTECOSTAL HOLINESS CHURCH
Walter L. Comstock, Pastor
Sunday Services
Sunday School 9:45 a.m.
Worship 11:00 a.m.
Evening Worship 7:00 p.m.
Wednesday Service 7:00 p.m.

HEALD UNITED METHODIST CHURCH
Pastor, Robert W. Brown
Sunday Worship Service 9:30 a.m.

FIRST UNITED METHODIST CHURCH
Pastor, Robert W. Brown
Sunday Services
Church School 9:45 a.m.
Morning Worship 10:55 a.m.
U.M.Y.F. 6:00 p.m.
Evening Worship 7:00 p.m.
Wednesday Choir 7:30 p.m.
YOUR ARE INVITED AND WELCOME TO ALL SERVICES.

If you ever get a lemon:

And it's a telephone from Southwestern Bell, you don't have to bring it in for replacement. If your phone or service ever goes the least bit sour, give us a call.

We'll replace the phone, or repair the trouble as fast as possible. No extra charge. "We may be..."

Southwestern Bell

ASCS NEWS By Evelyn Mason

FEED GRAIN AND WHEAT
We want to remind producers that barley is included in the 1972 Feed Grain program. It was NOT included in the 1971 program. Eligible growers who plan to participate in the 1972 Feed Grain program should take note that an acreage set-aside will be required of between 20 to 35% of a farm's barley base as well as of the corn and grain sorghum base. The exact percentage will not be known until the 1972 Feed Grain Program announcement is made by the U. S. Dept. of Agriculture within the next few weeks.

Inclusion of barley in the 1972 program means that the set-aside payments will be made, as they are made for corn and grain sorghum set-aside acreage. No announcement has yet been made of the payment rate. Barley payment rate will be an equitable ratio with the set-aside payment rates for corn and grain sorghum.

The reminder that barley will be included in the 1972 Feed Grain program is also important because of the substitution provision, Miss Mason said.

Substitution permits a program participant to choose a crop best suited to his farm and market operations and still earn payments and history credit for the crop historically grown on the farm.

Provided set-aside acreage and other program requirements are met, this means farmers with wheat allotments may earn wheat program set-aside payments and retain wheat history and allotment credit by growing soybeans instead of wheat. Likewise, soybeans may be substituted as the producer chooses. He will still earn set-aside payments on his farm's allotment and base crops.

Barley growers who were not in the program in 1971 were also reminded that a set-aside requirement doesn't mean an acreage limitation on any crop.

To illustrate, "suppose a grower has a 500-acre farm with a 100-acre barley base. If he participates in the feed grain program, he will set-aside acreage representative of his cropland in the required amount and maintain it in conserving uses. If the farm has a conserving base, that acreage will also be kept in conserving use. On the rest of the farm, the grower may plant as much barley, or any other crop, except quota crops, as he chooses. He is not limited by his barley base, which is used only to figure his set-aside acreage and set-aside payments.

Full details of the 1972 Feed Grain Set-Aside Program are expected to be received in the Gray County ASCS office in the near future. Farmers will be told as soon as possible of all the details.



"The man who has complete control of his own conduct won't try to control that of others."—Mrs. Gary Hiott, The Pickins (S. C.) Sentinel.

The most frustrating occupation in the world must be an elevator operator. He never gets to hear the end of a good story.—Harold S. May, The Florence (Ala.) Herald.

My Neighbors



"Watch where you're going, can't you, you clumsy bird brain!"

ODIS'
Electric Service
Electrical Needs
For Your

FREE ESTIMATES
Day - Telephone - Night
GR 9-2652 GR 9-2066

Order Windbreak Seedlings Now

Although it's a little early to be thinking about winter and spring winds, now is the time to submit applications for seedlings that will be used for windbreaks.

That word comes from Bill Smith, forestry specialist with the Texas Agricultural Extension Service.

Applications for windbreak seedlings are available from local county Extension offices, or from the Indian Mound Nursery, Box 337, Alto, Texas. "It's important to apply early since orders are processed on a first come, first serve basis. However, seedling shipments won't begin until mid-December."

The seedlings come from the Texas Forest Service's Indian Mound Nursery and are priced at \$2.50 per 100. Pine seedlings for reforestation are also available. The planter must agree that the seedlings will not be used for ornamental purposes, points out the specialist.

Some 16 species of seedlings are presently available. These include baldcypress, black locust, black walnut, catalpa, Chinese elm, cottonwood, eucalyptus, green ash, loblolly pine, shortleaf pine, slash pine, sweetgum, and sycamore.

"Many of the species are widely adapted, but some should be planted only in certain areas of the state," explains Smith. "If you have questions about certain species, direct them to your county Extension agent, the Indian Mound Nursery, or Texas Forest Service officials at Texas A&M University, College Station, or Texas Tech Univ., Lubbock."

Discussing some of the species, the specialist says that the Arizona cypress, for instance, does well in all areas of the state except the Panhandle. The catalpa and Chinese elm are both drought resistant but are susceptible to cotton root rot. The eucalyptus, honeylocust, and bois d'arc are hardy and do well in the drier portions of the state. Cottonwoods perform best on bottomland sites while eucalyptus are suitable only for the Rio Grande Valley. The ponderosa pine is recommended only for areas above the Caprock while the loblolly pine desires areas with an annual rainfall of at least 20 inches.

"Seedlings should be planted immediately upon receipt of

shipment," advises Smith. "Since roots of conifers (evergreens) are easily killed if exposed to air for more than a few minutes, planting should follow a quick pace. Plan seedlings an inch or so deeper than they grew in the nursery bed. Be sure the roots are fully extended in the hole in a vertical manner."

The specialist advises that rows of trees should be spaced wide enough apart to accommodate cultivating equipment. Trees should be planted in a staggered arrangement in different rows to hasten the wind barrier effect. If space does not allow three or four rows of trees, a single row of conifers will produce an acceptable windbreak.

Conifers should always be watered immediately after planting to settle the soil around the roots, adds the specialist. During a dry summer, waterings may be required on a weekly basis. Frequent, shallow cultivations aid survival and boost growth. Pruning should be avoided except to clean up broken or damaged trees.

"By selecting the proper seedlings and planting and caring for them as directed, you can begin to enjoy the benefits of a windbreak in a few

years," says Smith.

Information on social security may be obtained by going by 1541 North Hobart Street, Pampa, or by telephoning 669-3381 (Area code 806). The office is open 8:30 a.m. to 4:45 p.m. Monday through Friday (except national holidays).

A representative is available to explain the provisions of the Social Security Act and answer questions at meetings of farm groups, civic groups, high school or college groups, teacher groups, unions, and other interested organizations. There are no charges for any of these services of the Social Security Administration.

Information on social security may be obtained by going by 1541 North Hobart Street, Pampa, or by telephoning 669-3381 (Area code 806). The office is open 8:30 a.m. to 4:45 p.m. Monday through Friday (except national holidays).

S. S. Information May Be Obtained

Information on social security may be obtained by going by 1541 North Hobart Street, Pampa, or by telephoning 669-3381 (Area code 806). The office is open 8:30 a.m. to 4:45 p.m. Monday through Friday (except national holidays).

A representative is available to explain the provisions of the Social Security Act and answer questions at meetings of farm groups, civic groups, high school or college groups, teacher groups, unions, and other interested organizations. There are no charges for any of these services of the Social Security Administration.

Information on social security may be obtained by going by 1541 North Hobart Street, Pampa, or by telephoning 669-3381 (Area code 806). The office is open 8:30 a.m. to 4:45 p.m. Monday through Friday (except national holidays).

Information on social security may be obtained by going by 1541 North Hobart Street, Pampa, or by telephoning 669-3381 (Area code 806). The office is open 8:30 a.m. to 4:45 p.m. Monday through Friday (except national holidays).

EGG WHITE - Egg white sometimes sticks to the inside of the shell of raw eggs, making it difficult to remove. Basically, this is because the eggs are fresher and the white is thicker.

FRENCH FRIES - If your french fried potatoes are often soggy and greasy,

the frying fat is probably not hot enough, suggest Extension foods and nutrition specialists. The temperature of the fat should be 375-385 degrees F.

PEARS - Don't let pears turn brown! Extension foods and nutrition specialists say to dip cut fresh pears in orange or lemon juice just after cutting. The cut surfaces will then stay creamy-white until served.

Lincoln was assassinated at Ford's theatre while attending a play entitled "Our American Cousin."

FURNITURE CLOSE OUT SALE

We are moving back to Terry's Electric across from the Park. Due to limited space we are selling out all our Furniture inventory at OUR COST and LESS!

Terry's Appliance & Furniture

McLean, Texas

PORK CENTER CUT LB. 69¢
CHOPS END CUT LB. 49¢
SAUSAGE CUDAHY 1 LB. PKG. 39¢

BREAD

MEADS GOOD 'N FRESH 3 1 1/2 LB. LOAFS 89¢

HUNTS PEACHES 2 1/2 SIZE 3 FOR \$1
HUNTS PEARS 303 SIZE 4 \$1
DEL MONTE TOMATOES 303 SIZE 4 FOR \$1
DEL MONTE GOLDEN CREAM STYLE CORN FAMILY STYLE WHITE CREAM STYLE 5 FOR \$1

PLAINS Mellorine 1/2 Gal. Ctn. 39¢
PET 6 TALL CANS \$1

SHORTENING MRS. TUCKERS 3 LB. CAN 69¢

SOFT WEAVE BATHROOM TISSUE 2 ROLL PACK 25¢
CAMELLA JUMBO SIZE TOWELS 3 FOR \$1

PETER PAN PEANUT BUTTER 28 OZ. 99¢
POP RITE POP CORN 2 LB. PKG. 29¢
NABISCO CRACKERS 1 LB. PKG. 39¢
POST RAISIN BRAND 15 OZ. PKG. 45¢
POST GRAPE NUTS 12 OZ. PKG. 39¢

KING SIZE CHEER \$1.19
SPRAY DISINFECTANT LYSOL 14 OZ. \$1.29
MAXWELL INSTANT COFFEE 10 OZ. JAR 1.49

10 LB. GOLD MEDAL FLOUR 1.05
Without Coupon 1.20

FRESH PRODUCE
JONATHONS COLORADO APPLES POUND 19¢
COLORADO CABBAGE POUND 6¢
COLORADO RUSSETS POTATOES 10 LB. BAG 45¢

Duckett's
FOOD STORES
McLEAN, TEXAS
Specials Good Friday and Saturday, October 8, 9, 1971

WE ARE YOUR TOP STAMP REDEMPTION CENTER

NONE MORE VALUABLE

A new year...
Predictions...
These are the new...
* Voters...
time (except...
cutoff 31 d...
election).
good for th...
automatica...
participati...
during that...
registration...
the shortest...
was Octobe...
* Eight...
register an...
vote in loc...
elect elect...
U.S. const...
ment.
* Roving...
station de...
voters any...
ments, uni...
rooms, de...
trial plan...
supermark...
dences.
that "no v...
refuse to...
This is ex...
sharply th...
to round...
Predict...
of five mi...
voters in...
of a mill...
Voters...
in the sta...
county fo...
qualify fo...
participati...
lived in 7...
days but...
fore the 1...
elect presi...
dential ca...
cial resid...
with coun...
APPOINT...
Gov...
ed former...
man of St...
enhip on...
Rights Co...
\$50 a yea...
will succ...
San Ant...
In the...
STATE T...
TREASUR...
prepared...
Supreme...
all artifa...
Spanish g...
off Padre...
years ag...
Texas...
tee was t...
by Brown...
in a long...
the treas...
Gary, in...
recovered...
1967 and...
split with...
mands th...
Meanwh...
learned a...
logist ha...
up a proj...
facts fro...
Spanish...
Iland ne...
COURTS...
preme C...
deal of...
Barrow...
Wamer...
ing chan...
the mov...
In a pi...
released...
ces, th...
* Set...
of a Sa...
court ru...
bolic Be...
maintai...
power r...
censes...
* Uph...
against...
dst who...
could di...
cer.
* Said...
Commla...
ge natu...
by contr...
pipeline...
a chang...
terest...
High P...
effort t...