

Shop the Bargains Offered by McLean Stores on Page 3

The McLean News

8 Pages

Serving the Interests of McLean, Southern Gray County and Surrounding Communities

Price 10c

Vol. 58

McLean, Gray County, Texas, Thursday, February 2, 1961

No. 5



THREE THRILLED BEAUTIES: Rita Brown (center) poses happily after being selected McLean High School beauty queen Monday night. With her are the first runnerup, Ruth Pagan (left), and the second runnerup, Dixie Burroughs. (McLean News Photo)

Just
Between
Us

Rita Brown Wins Beauty Crown

Rita Brown, attractive McLean High School senior, Monday night was picked from a group of 31 coeds to reign as queen of this year's Tumbleweed, MHS annual. Miss Brown, daughter of Mr. and Mrs. Emory D. Brown, was sponsored in the "Galaxy of Beauty" competition by the American National Bank.

First runner up is Ruth Pagan, also a senior and the daughter of Mr. and Mrs. Miro Pagan, and second runner up is Dixie Burroughs a junior and the daughter of Mr. and Mrs. Joe Burroughs. Miss Pagan was sponsored by Marie Foundations, and Miss Burroughs' sponsor was Andrews Equipment Co.

The selections were made by three out-of-town judges during the popular beauty parade sponsored each year by the high school Press Club.

A full page in the Tumbleweed will be devoted to the beauty queen, while each of the runnersup will be featured in a half-page. Dressed in formals, all 31 of the girls paraded onto the decorated stage. From these, 12 were selected; then the field was narrowed to six.

The three choices were announced after each of the six finalists was asked a question by Johnny Stewart, master of ceremonies.

Entertainment during the intermissions included tap-dancing by Gail Fry and Stephanie Riley, daughters of Mr. and Mrs. Ernie Fry and Mr. and Mrs. Jack Riley. (See BEAUTIES, Page 8)

Harlem Stars Will Perform in McLean

The Harlem Stars, popular professional basketball team, will play an independent squad in McLean on Feb. 20, according to Derral Davis, high school coach.

Davis said complete arrangements for the game have not yet been worked out.

However, Davis—a former professional cager himself—and other former outstanding basketball players in the Panhandle will be on the team facing the Stars.

The local coach said that proceeds from the game will be used to purchase high school athletic equipment.

AUDITOR GIVES 1960 COUNTY COST REPORT

Net expenditures of the various Gray County government operating funds totaled \$1,785,786.47 during 1960, not including any transfers, according to the annual report prepared by County Auditor R. C. Wilson.

Wilson released the financial report Monday to District Judge Lewis M. Goodrich and the county commissioners court.

A comparative table showing disbursements for the past five years indicates the steadily rising cost of operating the county government.

In 1966 disbursements from the operating funds amounted to \$1,509,334.10.

Bonds Retired

In a letter of explanation accompanying the report, Wilson reported that during the past year "the balance of 1951 R and B refunding bonds were retired and funds to complete retirement of the 1946 hospital issue are on deposit with our paying agent."

He said that this action "will leave only the 1955 hospital and 1956 road issues on our debt statement. There are scheduled for final payments in 1965 and 1967, respectively.

"The nurses home at Highland General Hospital (Pampa) was completed early in the year with out cost to the county, this being a gift of the Gray-Pampa Foundation.

"Also completed was the Hoover road, last of the project set up in the 1955 road bond issue."

"Slight Decrease"

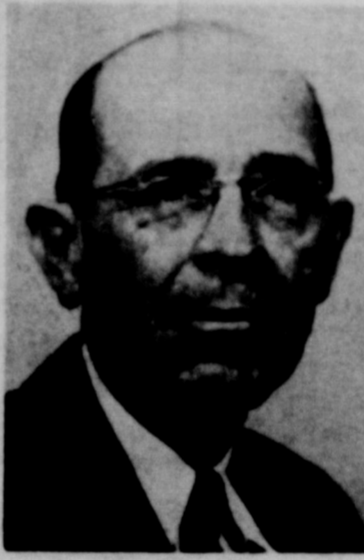
The auditor disclosed that receipts, disbursements and patient days for Highland General Hospital reached new heights in 1960.

However, despite rising costs, Wilson reported that "per diem costs show a slight decrease from the reports of 1958 and 1959."

The auditor's report continued: "Using the dollar as a measuring device and mindful of inflation as well as population and valuation growth, it is interesting to note that from 1950 to 1960 valuations increased 52 per cent, tax rates (See REPORT, Page 8)



FINISHING UP SEASON: These McLean High School Tigers are bringing their 1960-61 season to a rapid close, with only four more games on tap. They are (left to right): Jim Watson, Charles Jones, Joel Meacham, Kenny Willingham, Clyde Windom, Doyal Billingslea, Derrith Welch, Tommy Hill, John Switzer and Donnie Woods. (McLean News Photo)



Ed Lander

Ed Lander Is Honored In Naming of Project

McLean's recently completed federal housing project has been named "Ed Lander Place" in honor of a former mayor of the city.

Members of the McLean Housing Authority voted in a meeting last Friday to name the new 12-unit project for former Mayor Ed Lander and to erect signs at the two sites.

Lander, who now lives at 1425-56 Terrace in Fort Smith, Ark., was mayor of the city at the time the federal government approved the low-rent housing project, and was instrumental in convincing federal officials that there was a need for the units.

He moved to Fort Smith in 1959 after serving as Rock Island agent in McLean for many years. Active in community affairs, Lander was on the city governing board 31 years as mayor or councilman.

\$116,800 Project

Before moving from McLean, Lander was honored at an appreciation dinner and was presented an inscribed plaque commending him for his years of service to the city.

The Ed Lander Place housing project was completed in November at a cost of \$116,800.

It includes 12 housing units in six brick duplexes, containing one, two and three bedrooms.

Rent paid by the occupying families is determined by their income. A reasonable amount of water, gas and electricity is provided without additional charge to the occupants.

Only two units are now vacant, both containing three bedrooms.

License Tag Sales Underway in City

Texas auto license plates for 1961 went on sale here Wednesday, but McLeaneites apparently were in no rush to buy theirs.

Few tags had been sold by the assessor-collector's office in city hall by Wednesday afternoon.

Auto owners were advised to bring along their car title and license receipts when they go to the assessor-collector's office for their new tags.

License - purchasing deadline is March 31. On April 1 a 10 per cent penalty is assessed against late buyers.

Band Boosters Will Air Banquet Plans

The McLean Music Boosters organization will discuss plans for the annual band banquet at their regular meeting at 7 p. m. next Tuesday in the band hall.

Arrangements for the Feb. 18 banquet will be aired during Tuesday's session.

CITY ELECTION RACE ASSURED

The race was on this week for two city alderman positions to be filled in municipal elections this spring, with the filing of the third candidate.

But by Wednesday afternoon only two persons had entered their names for the same number of posts on the board of education.

Dr. H. F. Fabian, McLean physician, filed as a candidate for alderman Tuesday, and incumbent Boyd Meador announced a short time later he would seek re-election.

These filings and that of incumbent Ruell Smith last week assured races for the city commission jobs.

Mayor Unopposed

Mayor John C. Haynes, who also filed last week, was still unopposed Wednesday.

Filing for the school board were W. C. (Flea) Simpson and George M. Orrick. They are candidates for positions now held by J. W. Meacham and Clyde Brown, neither of whom has filed for a new term.

Voters will choose board of education members for three-year terms on April 1, while the city election is scheduled April 4.

Deadline for filing for the board of education positions is March 1 and for the city election March 4.

IYF Pancake Supper Is Next Wednesday

The Intermediate Youth Fellowship of the First Methodist Church will hold a pancake supper on Wednesday at the church.

Serving will be from 5:30 to 7 p. m., and tickets are 60 cents for adults and 40 cents for children.

Proceeds from the event will be used for a department project.

LOCALS PLAY FRIDAY NIGHT

Clarendon comes to McLean Friday night to open the second round of District 2-A basketball action.

The Tigerettes and visiting girls will begin the evening at 7 p. m.

Coch Derral Davis' Tigers suffered an important setback in their bout with Canadian here last Friday. While the 65-50 defeat didn't eliminate the locals from contention for the district title, it dimmed their chances considerably.

The loss was the second for the Bengals in 2-A play. Clarendon administered the first one in a rousing 64-63 battle there.

Tigerettes Lose 39-28

The Tigerettes also went down before Canadian last Friday 39-28.

Playing without the services of high-scoring Jim Watson, McLean, nevertheless, led the visitors thru the first half.

The two quintets were deadlocked 12-all after the first period, then the Tigers jumped into a 24-20 margin at intermission. But a big 23-point third period sent Canadian far out front, and the invaders began the final quartet with a 43-30 lead.

Kenny Willingham tossed in 17 points for McLean before he left the game via the foul route in the third period. Tommy Hill and (See GAMES, Page 8)

Panel Is Selected For P-TA Meeting

A panel discussion will highlight the regular meeting of the McLean P-TA at 4 p. m. next Wednesday in the grade school cafeteria.

Subjects to be discussed are "Time-How It Is Used" and "Reading and Viewing—Good or Bad."

Mrs. Vera Beck will be moderator for the panel, and members of the discussion group will be Sup. Leo Welch, J. B. Roach, Mrs. Harold Fabian and Mrs. Richard Back.

Meeting Tonight

McLean volunteer firemen will hold their regular meeting at 7 p. m. in the fire station, according to Chief Boyd Meade.

Firemen Called To Alfreed Monday

Volunteer firemen answered a call to Alfreed Monday afternoon, but a grass fire had been extinguished by the time they arrived.

Residents became alarmed when a grass fire on the Rock Island Railroad right-of-way threatened to spread, and issued a call for help to battle the flames.

It was the first alarm turned in to the local department in several weeks.

Contest Won By McLean Woman

Mrs. H. D. (Wilma) Banks of McLean has won first prize of \$100 in the Southwest Management Institute essay contest sponsored by the Associated Credit Bureaus of Texas.

Manager of the McLean Retail Merchants Association and Credit Bureau, Mrs. Banks will be presented the award at a buffet Sunday, Feb. 19, during the Southwest Management Institute in Austin.

The prize money will help defray Mrs. Banks' expenses at the institute.

The local woman was informed of her success by Charles T. Lux, executive vice president of the Associated Credit Bureaus of Texas.

Mrs. Ann K. Benningfield of Mathis, dean of the institute, informed (See CONTEST, Page 8)

Snow Estimated At 3 Inches in McLean

It was cold, and it snowed an estimated three inches, but that's the extent of weather information available for McLean this week.

Pete Fulbright, local weather observer, said Wednesday his supply of charts for the weather-recording equipment was exhausted last week, and efforts to get others have so far been unsuccessful.

The mixup occurred when the state Weather Bureau offices were moved to a new location and the regular schedule for sending charts to the local observer was interrupted.

Fulbright said the snow, which fell Friday, melted out to .16 inch of moisture—McLean's total precipitation for the year to date.

At this same time a year ago the city had received 1.76 inch of moisture.



Mrs. Wilma Banks

FACTORY FACTS

MARIE FOUNDATIONS REPORT

No. of Employees	135
Production: Bras	1,534 dozen
Girdles	440 dozen



A. R. Watson



J. E. Cunningham

Officers Elected By Public Service Co.

A. R. Watson was elected president and general manager of Southwestern Public Service Co. at the recent organizational meeting of the company's board of directors. J. E. Cunningham, who has been president of Southwestern Public Service since 1945, was elected vice chairman of the board. Watson was elected a vice president of the company in 1947 and elevated to executive vice president and general manager in 1953. He is also a member of the company's board of directors. Cunningham has held various positions with Southwestern Public Service over a period of 34 years. He has been a director of the company since 1942. Other officers elected by the board are as follows: H. L. Nichols, chairman of the board; Don D. Loden, vice president and secretary; H. O. Hodson, Roy Toik and W. L. Pearson, vice presidents; J. T. Bradley, treasurer and assistant secretary.

Publication Lists Benson's 'Boxscore' For Last 8 Years

The National Farmers Union publication, Washington, Newsletter, laid bare what it called "The Benson Boxscore," as Ezra Taft Benson left his position of secretary of agriculture. The Farmers Union article quotes Benson as saying in his "swan song" before Washington, D. C., Rotarians concerning his eight years in office: "When the history of this period of agriculture is written years hence, this will be revealed as a period of great and lasting progress. "It is doubtful," the Newsletter article continues, "that the farmers of America will soon forget Mr. Benson. For the history books, here is the 'progress' he has made during the past eight years, taken from the latest official figures made available by his own department, the Budget Bureau and the President's Council of Economic Advisors. "The 'Boxscore' with the 1952 figure first, followed by the 1960 figure and the amount of change in each case: Total net income—\$15.3 in 1952, 11.6 billion in 1960, down 24 per cent; net income per farm (current prices)—\$2,829 and \$2,563, down nine per cent; parity ratio—100 per cent; farmers' share of the consumers' dollar—47 per cent and 38 per cent, down 20 per cent. Commodity Credit Corp. losses—\$67.4 million and \$1,133 million, up 17 times; yearly expenditures for the USDA—\$1,242 and \$6,201, up five times; expenditures for stabilizing farm income—\$247 million and \$3,360 million, up 16 times; number of employees in USDA—66,000 and 85,000, up 30 per cent; number of farms in U. S.—5.4 million and 4.5 million, down 16 per cent. Farm population in U. S.—24.3 million and 20.8 million, down 15 per cent; interest paid per acre (index)—\$108 and \$213, up 97 per cent; total farm debt—\$14 billion and \$25.7 billion, up 84 per cent.

Legon Burriss left Sunday for Fallsburg to attend the funeral of his sister, Mrs. Elmo Rood, who died in a Fallsburg hospital after a long illness.

NEWS from YOUR

COUNTY AGRICULTURAL AGENT TEXAS A & M. COLLEGE EXTENSION SERVICE



By FOSTER WHALEY

STOCK SHOW

We are always glad to see 'em get here and to see 'em go. It's a nice place to meet old friends and catch up on your visiting.

Most of the McLean folks made out all right. Max and Sarah Coleman got in the middle of the light-weight class. This was the biggest class in the show.

Severe effort had been done just prior to this. So far first time exhibitors at the Amarillo show I was very proud of them. Fred Brown won first in the light-weight class of Angus with his FFA project.

I don't know the exact placing of Faris Hess and George Saunders' cattle but I'm sure they stood at or near the top as they usually do.

Faris proved very helpful in fitting the Coleman calves for the show. Faris is an artist at this. Guess he has been at it long enough to become pretty good by now.

ARTIFICIAL BREEDING

Speaking of Faris reminds me that he was by the office the other day and spoke of plans to artificially breed quite a number of cows to a prize bull. He has co-ownership with some fellow in Kansas. This is another new technique being used by progressive registered Hereford breeders.

Through this method one bull is adequate for thousands of cows.

BEAR GRASS

Robert Richards, Dial Ranch, with headquarters just west of Back, was by the office last week inquiring about the eradication of bear grass with chemicals.

Ralph Thomas worked very closely with the Little Seminole Ranch west of Lefors. They got near 100 per cent kill using 2,4,5-T mixed with diesel fuel.

I had to write A and M to get the recommended dosage, but Ralph thinks the mix is two gallons of 2,4,5-T per 38 gallons of diesel fuel. The Seminole Ranch used a power sprayer in a pickup with two guys walking alongside with 50-foot hose.

Some of you ranchers might want to try this some time when you are resting.

ECONOMIC OUTLOOK

I have placed at the local bank several copies of the publication called the "Texas Agricultural Progress." This particular issue is called "Outlook for Texas Agriculture." It gives both long-range and 1961 outlook information.

The agricultural economics department at Texas A and M is chiefly responsible for this issue. Here are some topics covered that will be of interest to you: "Beef Cattle Outlook," "Wheat," "Cotton," "Lard Prices," "Social Forces Affecting Agriculture" and "General Outlook for Agriculture."

I found this publication very interesting and I think you will, too. If you want a copy go by the bank and pick up one. They are free. You might want to point out to Mr. Allison the second paragraph under long-time outlook on page

Brucellosis Testing Program Improved

COLLEGE STATION—(Special)—The State-USDA campaign to eradicate brucellosis has received a substantial boost, the U. S. Department of Agriculture reports. Savings of time and labor have been effected through an improvement in the method of pinpointing dairy herds affected with the disease.

This improvement consists of taking the test samples from the milk used in butterfat tests, thus eliminating the need for getting separate samples.

The Texas Agricultural Experiment Station recently published a report of studies conducted to determine the scrub-resistance characteristics of kitchen and bathroom wall-surfacing materials. This publication should prove very interesting reading for anyone planning to build or renovate. A copy of this bulletin, B-962, may be obtained from the Agricultural Information Office, College Station, Texas.

Mrs. V. B. Reagor of Lubbock is visiting in the T. A. Landers home.



McLEAN LODGE 389
A. F. & A. M.

Regular meeting second Thursday each month—7:00 p. m.
All members urged to attend

FIRST RANGE CONSERVATION STAMP READY

The world's first range conservation commemorative postage stamp was issued at the 14th annual meeting of the American Society of Range Management in Salt Lake City, Utah.

All other U. S. Post Offices are to place the colorful stamp on sale Friday, according to Bill Brooks, Soil Conservation Service work unit conservationist in Pampa.

Brooks pointed out that the stamp is the eighth in the conservation series that has included four wildlife stamps and, in the last three years, stamps featured forestry, soil conservation and water conservation.

Symbolized by the new four-cent stamp is the development of range conservation from the pioneer days of the open range to today's scientific management techniques.

It is a split-frame stamp, one part being a reproduction of "Trail Boss," a famous sketch by noted western artist Charles Russell, and the other showing a modern range conservation scene.

Colors are blue, reddish brown and black.

City Man's Brother Receives High Honor

J. D. Petty, brother of Luther Petty of McLean, has been named "Man of the Year" for 1960 in Meridian, Ida.

Petty received a plaque from Meridian's mayor at the annual banquet of the Chamber of Commerce there in January.

He was awarded the honor for his outstanding record of civic and community activities the past several years.

CANADIAN PCA COMPLETES ITS 27TH YEAR OF SERVICE

Twenty-seven years of service to ranchers and farmers in the top of Texas area is being celebrated by the Canadian Production Credit Association.

As the group enters its 28th year of providing short-term credit to people engaged in agriculture and ranching, the Canadian PCA can boast both total assets and 1960 loan volume exceeding \$3,000,000.

The PCA, one of 36 independently owned and operated in Texas, on Jan. 3 observed its 27th anniversary. It was founded on Jan. 3, 1934, during the nation's longest and most severe economic depression and one of the worst and most widespread droughts on record.

Canadian area farmers and ranchers, like others through the agriculture and cattle belt of the Southwest and Midwest, found there was no place they could turn to receive sufficient financial aid to continue operations.

A small group of men met at Canadian to form the organization only a few months after the Farm Credit Act of 1933 was passed by Congress.

Although government capital was provided to furnish loan funds for

Pfc. Thomas Boston Completes Training

JACKSONVILLE, Fla.—(Special) Marine Pfc. Thomas M. Boston of McLean has been graduated from the Aviation Ordnance School at the Naval Air Technical Training Unit, Jacksonville.

Before entering the service in February, 1960, he attended McLean High School.

Mr. and Mrs. Guy Hester and boys were in Happy Sunday to visit his sister, Mrs. J. B. Wise, and her family.

the association, the operation and administration was turned over to a local board of directors.

In 1949, in the Canadian association, as well as in the others that served all of Texas' 54 counties, all federal funds were retired and each PCA became entirely home-owned and operated.

"At the present time the Canadian Production Credit Association has total assets of \$23,508,848," reports Erbin Crowell, general manager of the association. "Local volume for last year amounted to \$3,031,498, and we now have a roll of stockholders that numbers 477."

Crowell, who heads the main office in Canadian, has been on the job since Jan. 1, 1951.

"Our aim is the same now as it was in 1934," he points out, "and that is to provide an adequate and dependable source of credit to farmers and ranchers in the Canadian area."

H. H. Keagy of White Deer is president of the association, an office he has held for 14 years. He has been a director for 17 years.

Other board members are: Wallace N. Hamker of Booker, vice president, and C. B. Henderson of Wheeler, M. H. Smith of Canadian, Hugh F. Parsell of Canadian and M. Lawrence Ellzey of Perryton.

The Canadian PCA is composed of Ochiltree, Lipscomb, Roberts, Hemphill, Gray and Wheeler Counties. Central office is in Canadian with field offices at Pampa and Wheeler. John R. Ball is assistant manager of the Canadian office, Parilee Ellis is assistant treasurer and Elise Krehbiel is stenographer.

The Wheeler field office is managed by James Verden, with Jean DeArment also working there as bookkeeper. Lynn Futch is the manager of the Pampa field office.

Social Security Rate Doesn't Take Jump

The Internal Revenue Service has received hundreds of letters and calls requesting a new tax table to take care of the Social Security increase from 3 to 3.1 per cent.

There is no new table. There has been no increase.

What happened? Internal Revenue included a little yellow mailing slip, Document 5293, with the Employer's Quarterly Tax Form 941 mailed in December.

The little yellow slip told employers (of four or more) that there had been an increase in their federal unemployment tax from 3 to 3.1 per cent for the year 1961. It also told the employers of some changes in Social Security taxes.

A whole lot of taxpayers then the Social Security tax rate had been changed so they asked Internal Revenue for a new Circular E. Circular E is the Employer's Tax Guide which contains tables giving Social Security and withholding taxes.

Of course, there is no new Circular E.

Mrs. Wilson Boyd was in Pampa Tuesday.

SEE YOUR
MOOR-MAN
Representative
For All of Your
Livestock Feed
JAY BOOTHE
Mobeetie, Texas
VI 5-2801

New 3 3/4% interest on U.S. Savings Bonds
The Treasury explains why the new ones you buy and the ones you own now are better than ever

- Q: How does the new 3 3/4% interest rate benefit me?**
- A:** With Series E Bonds, the rate turns \$18.75 into \$25.00 fourteen months faster than the old rate. Your savings increase faster, because your Bonds mature in just 7 years, 9 months. With Series H Bonds, the 10-year maturity period stays the same but more interest is paid you each six months. With both E and H Bonds the new rate works out to 2 1/4% for the first year and a half; then a guaranteed 4% each year to maturity.
- Q: When did the new rate become effective?**
- A:** June 1, 1959.
- Q: Does the new rate change the Bonds I bought before June 1, 1959?**
- A:** All older E and H Bonds pay more now—an extra 1/2% from now on, when held to maturity. The increase takes effect in the first full interest period after June 1.
- Q: Will the Bonds I own automatically earn their new rate?**
- A:** Yes. You don't need to do a thing—just hold on to your Bonds.
- Q: When my E Bonds mature, will they keep on earning interest?**
- A:** Yes. An automatic 10-year extension privilege went into effect along with the new interest rate. This means your E Bonds will automatically keep earning interest after maturity.
- Q: With the new interest rate, should I cash in my old Bonds and buy new ones?**
- A:** No. The automatic 1/2% increase makes it unnecessary—and in almost every case it is to your advantage to retain your present Bonds.
- Q: How are series H Bonds different from series E Bonds?**
- A:** The chief difference is this: You buy H Bonds at full face value and the interest is paid by Treasury

- check every six months for the life of the Bond. You buy E Bonds at 75% of face value and the interest accumulates to maturity. H Bonds provide income for living expenses, while E Bonds build a nest egg for the future. That's why many retired people hold H Bonds and families saving for, say, a child's education, buy E Bonds.
- Q: In what denominations can I buy series E and series H Bonds?**
- A:** E Bonds: \$25 (cost \$18.75), \$50 (cost \$37.50), \$100 (cost \$75.00), \$200 (cost \$150.00), \$500 (cost \$375.00), \$1,000 (cost \$750.00), \$10,000 (cost \$7,500.00). H Bonds: \$500, \$1,000, \$5,000 and \$10,000. They are priced at face value.
- Q: How safe are U.S. Savings Bonds?**
- A:** Savings Bonds are an absolutely riskless way to save. The United States Government guarantees the cash value of your Bonds will not drop, that it can only grow.
- Q: What if my Bonds should be lost, stolen or destroyed?**
- A:** You can't lose. Every Bond purchased is recorded by the Treasury. If anything happens to your Bonds they are replaced—free.
- Q: Where can I buy Bonds?**
- A:** Buy E Bonds at any bank—it takes only a few minutes. Buy them automatically through the Payroll Savings Plan where you work. This Plan means you can have any amount you name automatically deducted every payday. The Bonds you buy by installments are delivered to you automatically, too. Your bank will take your order for H Bonds.
- Q: How do I help strengthen America's peace power when I buy U.S. Savings Bonds?**
- A:** Peace costs money—money for military strength and for science. And money saved by individuals helps keep our economy sound.

YOU SAVE MORE THAN WITH U. S. SAVING BONDS

The McLean News

February BARGAIN DAYS

PRICES SLASHED

Take Advantage of These Bargains SATURDAY, FEB. 4

BUTRUM'S Ladies & Children's Shop SPECIALS — SATURDAY ONLY

Limited Number of Each but Real Bargains if we have your size

ONE - HALF

REGULAR PRICE ON

Ladies and Girls:
Coats and Suits
Dresses
Skirts and Sweaters
Slacks and Blouses

Boys:
Suits
Carcoats
Pants
Shirts

IN McLEAN

These McLean establishments want your business, and they are offering these terrific bargains to acquaint you with the quality merchandise and excellent selection available RIGHT HERE IN McLEAN. Local and area residents are invited to attend the free movies presented each Thursday evening by McLean merchants, then return during regular business hours to do your shopping.

SPECIAL ONE DAY ONLY

One Table
FRUIT OF THE LOOM PRINTS
Reg. 59c yard NOW 39c

FREE — WHILE THEY LAST — FREE

ONE PAIR OF HOSE
WITH EACH \$5.00 PURCHASE

ONE TABLE
Pampered & Bates
COTTONS
Reg. 98c to \$1.29 yd.
FOR ONLY 69c

ONE TABLE
VELVETEENS - WOOLENS
BROCADES - FELT
Reg. \$2.29 - \$3.79 yd.
NOW - - - - \$1.98

MARZEL'S

RED HOT SPECIALS!

DR. WEST'S
"GERM FIGHTER"
TOOTH BRUSHES
Regular 69c
SPECIAL — 39c each
2 for 75c

\$1.98 Value
for \$1.50

15 GILLETTE Super
Blue Blades and Giant
Foamy Shave Cream

REXALL
BUFFERED ASPIRINS
5-Grain 100's
Reg. 98c EACH
\$1.00 buys 2
SAVE 96c

FREE! FREE!
Extra Right Hand
PLAYTEX LIVING GLOVE
With Purchase of
One Pair
\$1.39

MODESS
VEE-FORM SANITARY
NAPKINS — 12's
39c Box — 3 for \$1.00



NEW SHIPMENTS HATS — BAGS — DRESSES

For EASTER

SATURDAY SPECIALS

1/2 PRICE

on

SWEATERS & SKIRTS

CORINNE'S STYLE SHOP

MEN'S KHAKI or GRAY WORK SUITS

Per Suit \$6.49

MEN'S BULKY KNIT SWEATERS

Values to \$8.95 Now \$4.95

BOYS BULKY KNIT SWEATERS

Reg. to \$6.95 Now only \$3.95

MEN'S FANCY LONG-SLEEVE T SHIRTS

Reg. \$3.95 Reduced to \$1.95

MULLANAX MEN'S STORE

REVEREWARE SKILLETS

STAINLESS STEEL

Large size Reg. \$10.95 . . Now \$6.95	Medium size Reg. \$7.75 . . Now \$5.00
---	---

General Electric Skillet Reg. \$21.95 . . Now \$16	Mirromatic Electric Skillet Reg. \$19.95 . . Now \$15
---	--

24-pc. Set Ballerina Ovenproof Dishes Special . . . \$10	Large Picture Window Lamp Special . . . \$7.95
---	---

Fostoria Crystal — Several Patterns China

Frankoma Pottery

Open Stock or in Sets

FREE GIFT WRAPPING!

Buy at CALLAHAN'S

And Save Dial GR 9-2251

WHILE THEY LAST!

1x6 REDWOOD FENCING
Special \$14.00 per 100 ft.

2-METAL SCREEN DOORS
Regular \$23 \$15.00

24x24 WOOD WINDOW SCREENS \$2.95

1-6x3 ALUMINUM WINDOW UNIT \$26.00

ALL WROUGHT IRON COLUMNS 20% OFF



Kelvinator CLOTHES DRYER	Reg. \$199.95	Special \$149.95
-----------------------------	---------------	------------------

Kelvinator ELECTRIC RANGE	279.95	179.95
------------------------------	--------	--------

20% DISCOUNT
ON ALL HEATERS

SUPER KEMTONE	6.95	5.95
---------------	------	------

Two-piece BEDROOM SUITE	139.95	119.95
----------------------------	--------	--------

McLEAN HARDWARE
AND FURNITURE COMPANY

STATE CAPITAL Highlights AND Sidelights by Vern Sanford

AUSTIN—(Special)—A proposal that would take the monkey off the backs of the legislators who campaigned on a no-sales-tax, no-income-tax platform has been made by one of the state Capitol correspondents.

It is the feeling of many persons in Austin as well as over the state that the public is ready for a definite, long-time tax program, whether it be a sales tax, an income tax or the governor's proposed payroll tax.

They are convinced that the state has to take some drastic financing steps. And they are ready to foot the bill. Many legislators realize this fact.

Trouble is that a godly number of them campaigned on a no-sales-tax, no-income-tax platform. Many legislators felt at the time that such was a popular campaign theme; that the public did not want either type of tax; that their resentment to either would be bitter. It is the opinion of a number of the legislators that the people are far ahead of the lawmakers in this type of thinking; that they understand the problem better than the legislators realize, and that they are willing to face the facts.

But the legislators as a whole are hesitant. They are not sure the people are ready. They are fearful that they will get all the blame.

Morehead's proposed referendum would point out the state's need for at least \$100,000,000 a year in new revenue. Each voter would be asked to check which of the three tax proposals he preferred. . . a payroll tax to be paid equally by employer and employee, a general sales tax or an income tax.

Such a referendum would give the voters a voice in the tax program. . . and opportunity to express their own preference in the matter. And at the same time it would lift the problem off the shoulders of the legislators.

As Morehead points out, there are other ways to raise money but informed people generally agree that some variation or combination of the three methods outlined herein is going to be passed by the Legislature. And by April 4 the voters will have heard many sides of all proposals.

OTHER TAX PLANS ADVOCATED—Lawmakers have proposed numerous methods for raising additional tax money.

Rep. W. W. Glass of Jacksonville suggests a constitutional amendment authorizing a one per cent levy on the gross income of all businesses. He estimated it would bring in \$100,000,000 a year.

A 10 per cent tax on the gross receipts of trading stamp firms was suggested by Rep. Henry A. Fletcher of Luling.

A graduated levy on gross income at the wholesale level and on income from personal services—for an estimated \$300,000,000 yearly—was put forward by Rep. Lloyd Guffey of El Campo.

Rep. Marshall O. Bell of San Antonio took the opposite approach by proposing a constitutional amendment that would prohibit either a state income or payroll tax.

Raciest suggestion came from Rep. V. E. (Red) Berry of San Antonio who, as he promised in his campaign, introduced a bill to legalize horse racing and pari-mutuel betting and to levy a tax on the track proceeds.

As bills dropped into the hopper, State Treasurer Jesse James announced that the general revenue fund deficit has risen to \$95,381,122.

SAVINGS SOUGHT—Legislature is also considering proposals aimed at cutting expenses.

Texas Research League, reporting on a study made at the request of the Legislature, made 19 recommendations for reducing the cost of collecting taxes.

Rep. Dick Cory of Victoria has proposed a bill that would set up a commission to study the agencies of the government with a view to eliminating duplication and bringing about maximum economy and efficiency. It has been dubbed the "Little Hoover Commission."

LOAN CONTROLS URGED—Drive to enact loan company regulations got new push when the State Supreme Court made final its ruling that the "certificate plan" for loans is not legal.

Under this plan a borrower had to buy an investment certificate from the loan firm and pay for the certificate as well as pay off the loan.

Atty. Gen. Will Wilson said it is urgent that the Legislature set up a guide by which loan companies can operate legitimately. Several lawmakers have announced plans to sponsor such bills. One would allow for total charges (interest plus other charges of three per cent per month on the unpaid balance of the loan.

SHORT SNORTS

Sen. Jarrad Secret of Temple is back with his proposal for "flexible rating" of automobile insurance rates. It would allow individual companies to set up their own rating plans rather than following uniform rates set by the State Board of Insurance.

George Corse of Graham, who sought unsuccessfully last session to get his own job of county school superintendent abolished, is back for the same purpose. Corse says eliminating the county school superintendent in counties with no county schools would save the state \$711,000.

A bill to allow rural electric cooperatives to continue serving an area after it is annexed by a city has been introduced by Sens. Culp Krueger and Charles Herring in the Senate and by Rep. Alonzo Jamison Jr. in the House.

Texas' 1961 state highway maps full color and packed with information, are off the press. Free copies may be obtained from district highway offices or by writing the Texas Highway Department, P. O. Box 3064, Austin.



Open Letter to Mr. Ike.
Dear Citizen Ike:

We listened to your farewell talk on T. V. Most everyone did, I am sure. We were impressed to the extent that we felt like writing you this letter.

Your sincere and honest approach to every issue has made each of us proud. True, the country seems pretty equally divided on political views, as the last election shows, but we are united in our appreciation for a life dedicated to faithful service for our country.

History may not record your time in the White House as sensational. You may not be written up as among the truly great. But, we think your record is one of which we can all be proud. It has been a time of relative peace. We think that history might well call you the Man Who Sought Peace. Being a military man gave us some fears that your administration might be inclined toward wars. The opposite has been true. You have sought peace with a dedicated spirit.

Honesty in government seems to have prevailed to a great extent during these eight years. Even your political foes have not accused you of dishonesty of purpose. Those you have appointed to help have on the most part given an honest effort to their work. For instance, we have heard a lot of folks disagree with Mr. Benson, but few have called him dishonest in purpose.

You and each member of your family have lived in such a way as to set a good example for all of us to follow. We have heard no whispers or gossip from anyone. This is a remarkable and outstanding thing.

So, to our candidate for the Man Who Sought Peace we send our thanks for an honest, sincere, dedicated, humble eight years of service.

Field Soil Mapping Shows Big Increase

Field soil mapping by surveyors of the U. S. Department of Agriculture's Soil Conservation Service covered more than 50 million acres in fiscal year 1960, an increase of 2 million acres over 1959.

The USDA reported that at near year's end 658 million acres had been mapped in sufficient detail for the soil and water conservation planning of farms and ranches and small watershed projects.

This is about 34 per cent of the total land area of the country and about 53 per cent of the agricultural land in the nation's 2,861 locally governed soil conservation districts.

Dr. Joel M. Gooch
Optometrist
Shamrock, Texas
277 N. Wall Phone 800
Please Phone for Appointments

WALTER ROGERS REPORTS

LOOKING BACK ON THE INAUGURATION

Washington in recent years is the center of plenty of activities in the ordinary and usual trend of events. This is always tremendously increased during an inauguration. This is further tremendously increased by a snow storm during the several days of the inaugural activities.

There are the circumstances under which John Fitzgerald Kennedy was inaugurated.

Thousands upon thousands of people came into Washington to witness the change of administrations, and the inauguration of the newly-elected President of the United States.

They did not anticipate the turn of the elements, and the thousands and thousands who came to town had thousands and thousands of experiences which they will be able to relate for many years to come. Some pleasant, some unpleasant.

We were very happy to have quite a number of visitors from the Panhandle of Texas. Some could not reach the Capitol by car, by foot or by telephone. If we missed seeing someone I am sorry, because we had a wonderful time with all those who got to the office.

About 10 o'clock in the morning on Inauguration Day the police blocked off the streets around the Capitol and the office buildings. Unless you can show some pretty clear authority to get through, you are stranded outside the blockades.

I told all of our folks to be sure to get to the office as early as they could. I got the entire Rogers family up about 6 o'clock and started for the Capitol. The night before, a snow storm had suddenly descended upon Washington, leaving several inches of snow on the streets and several thousand people stranded.

I was in a taxicab just after the storm hit, and it took 55 minutes for us to go a distance of about 25 city blocks. Mary Catherine, our youngest, was on her school bus for 4½ hours coming home from school.

Preparations had been made to clear the streets on the inaugural route, but this took all of the available snow equipment; hence, all other streets had to wait.

On the morning of Inauguration Day, the sun was out but it was bitter cold and the snow was hard-packed and frozen. We had to bring quite a number of things to the office because I had made arrangements to have some coffee, soft drinks, sandwiches and cookies for all of the folks from the Panhandle.

We packed everything in the car, including the clothes that I had to change in order to be properly dressed for the inaugural ceremony. Realizing the possibility of getting stuck in the snow, I did not relish trying to dig out in a morning suit and top hat.

Available food and drink is almost a necessity on Inauguration Day because of the tremendous crowds and the impossibility of getting through the barricades to eating places. We got to the office in due time and set up for business.

Mr. and Mrs. Bob Lindsey from Borger and Dick Kennedy from Clarendon were the first to arrive and then came the Kenneth Kendricks from Stratford, who were followed in short order by Mr. and Mrs. Charlie Gibson, Michael Johnson, Mr. and Mrs. Marion Bruce, Mr. and Mrs. James Smith, John Ketter, Mr. and Mrs. Frank Rapstine, all from Amarillo; Mr. and Mrs. Clayton Cook and their sons, Ronny and Larry, from Vega; Jim McAndrews of Hereford and Mrs. George Oliver of Canyon.

Mr. and Mrs. John Bookout and their children almost didn't make it because of the difficulty in obtaining a taxicab. However, they did get up a few minutes before the inauguration.

A number of others missed getting to the office, including Mr. and Mrs. Asa Willis of Texline, whom we saw later, Mrs. Julia Cooke Smith, Robert Bruce and Dr. and Mrs. George Powers of Amarillo; Mrs. Jack Allen of Perryton and Joe Berg of Panhandle.

There were many others by the office from outside of our district, including Mr. and Mrs. Fred North of Fort Worth, Bill Bailey of Houston, former Congressman and Mrs. John Lyle of Corpus Christi, Texas State Rep. Bill Dungan of McKinney, Mr. and Mrs. Frank Moore of Plainview and a number of others.

The open house was most enjoyable and everyone seemed to have a good time. I had to get dressed up in the morning suit and the top hat and get to the House of

Representatives by 10:45 a. m., as we parade to the presidential platform in a body. Jean and the children and all of the other guests went over a little later.

Susan was to ride on the Texas float in the inaugural parade and the time between the end of the inauguration and her scheduled appearance on the float was so close that Jean left the inauguration before President Kennedy had finished his inaugural address.

She took Susan to the office where she changed into her parade clothes. Then they went to the garage where I had left the car, only to discover that there were no keys. I had them in my pocket on the presidential stand.

This almost created a panic because Susan was overdue. But thanks to the garage attendant and two metropolitan policemen, Mrs. Rogers and Susan made it on time.

After the inauguration we went down and joined the Jimmie Smiths and others at the Willard Hotel to watch the parade. After the parade we made a mad rush for home to change clothes and go to the inaugural ball. That is another story because so many things took place that night that there isn't room even to list them in one news-letter.

It was a great occasion. One fellow was heard to remark that with all the chaos and turmoil, he could understand why these occasions were spaced four years apart.

County Bond Sales Fall Short of Goal

During 1960 citizens of Gray County purchased a total of \$573,673 worth of savings bonds, falling short of the assigned goal.

George B. Cree Jr., chairman of the county bond committee, said the purchases totaled 80.8 per cent of the \$710,000 goal.

Sales in Gray during December were \$41,858. Total bond purchases in Texas the past year were \$152,823,432, or 92.3 per cent of the \$165.5 million goal. December sales of \$13,539,528 were the highest one month's total since last February.

While Gray County was falling short of its assigned goal, some other counties in this area went above theirs. Purchases in Collingsworth were 113.7 per cent of the goal. Lipscomb's was 105.4, Roberts 220.4 and Wheeler 106.1.

There are nearly 30,000 flowering plants in the U. S. Over 3,000 different kinds bloom in California.

The really happy man is the one who can enjoy the scenery when he has to take a detour.—Wall Street Journal

Ed Cooper, extension wildlife specialist, says that the commercial bait business offers Texans an opportunity to make a profit. He warns, however, that this is no "get-rich-quick" operation. A considerable investment in time, labor and capital is necessary for a successful operation.



Need ELECTRICAL WIRING?

Commercial, Residential and Oil Field Wiring

We have a top qualified electrician on duty six days a week.

TERRY'S ELECTRIC

UNDER NEW MANAGEMENT

For FINE FOODS & 5c COFFEE
Come to HARRIS HOUSE
Rosie Lee Daniels, Manager

Services Held For City Woman's Father

Funeral services for Leonard Nicholas Bridges, father of Mrs. Ercy Cubine McLean, were held Jan. 24 in the Knox City Methodist Church.

Mr. Bridges, who was 76, died Jan. 23 at his home in Knox City. He was born in Covington, La., and moved to Roby with his parents at the age of one year. A retired farmer and businessman, he had lived in Knox City since 1917.

Ill health forced his retirement eight years ago. He was a member of the Methodist Church and served on the official church board more than 40 years. He also was active in Masonic work.

In addition to Mrs. Cubine, Mr. Bridges is survived by his wife; three sons, Jim of Anton, Vernon of Knox City and L. N. Jr. of Amarillo; six grandchildren and two great-grandchildren.

Mr. and Mrs. T. E. Crisp accompanied their son and his wife, Mr. and Mrs. Bill Crisp of Lawton, to Phoenix, Ariz., to attend funeral services Wednesday for T. E. Crisp's brother, Dave. They returned home Saturday.

Edwina 12 Takes First in Division

Edwina 12, award-winning Angus owned by George Saunders of McLean, took first place in her division at the Amarillo Fat Stock Show last week.

Edwina 12 and other cattle from the Saunders Ranch were being shown this week at the Southwestern Livestock Exposition in Fort Worth.

The McLean News

Thursday, Feb. 3, 1961 Pg. 4
Mrs. Paul Miller underwent surgery at Highland General Hospital the first of the week.

FINANCIAL STATEMENT, GRAY COUNTY, TEXAS

SUMMARY OF BALANCES, RECEIPTS AND DISBURSEMENTS

December 31, 1960

	Balances 1-1-60	Receipts	Disbursements	Balances 12-31-60
General Salary	\$ 236,332.49	\$ 292,895.03	\$ 286,109.37	\$ 243,118.15
	15,168.93	250,995.63	234,394.83	31,769.73
Jury	4,378.14	5,533.62	3,216.89	6,694.87
CH & J	6,677.40	46,381.54	5,148.65	47,910.29
	262,556.96	595,805.82	528,869.74	329,493.04
R&B	2,713.12	18,310.53	7,829.60	13,194.05
R&B No. 1	45,169.04	54,083.69	95,714.61	3,538.12
R&B No. 2	41,876.23	89,991.94	112,029.70	19,838.47
R&B No. 3	39,673.53	62,137.32	82,159.83	19,651.02
R&B No. 4	34,211.55	51,887.80	71,073.49	15,025.86
FM & LR	32,674.82	150,397.33	3,972.51	179,099.64
Lateral Road	0.00	26,564.63	26,564.63	0.00
	196,318.29	453,373.24	399,344.37	250,347.16
Bond I&S	78,974.68	83,437.28	78,763.75	83,648.21
R&B I&S	18,606.66	1,871.81	20,478.47	0.00
Hospital I&S	69,462.93	64,801.15	71,018.51	63,245.57
	167,044.27	150,110.24	170,260.73	146,893.78
Special Perm. Sch.	20,959.88	659,881.39	674,822.77	6,018.50
	26,791.03	22,241.26	7,408.70	41,623.59
H. G. H.	198,565.38	877,528.69	863,661.73	212,432.34
Social Security	17,815.35	49,495.94	47,298.73	20,012.56
Law Library	42.59	1,895.00	1,926.20	11.39
Bond Hospital	141,233.93	600.00	141,833.93	0.00
	13,132.50	0.00	13,132.50	0.00
	418,540.66	1,611,642.28	1,750,084.56	280,098.38
		2,810,931.58	2,848,559.40	
Less Transfers		852,177.78	852,177.78	
	\$1,044,460.18	\$1,958,753.80	\$1,996,381.62	\$1,006,832.36

Read Series	Date	Interest Rate	Full Issue	Maturity Date	Outstanding
1956	9-15-56	3.00%	\$325,000.00		
		2.70	325,000.00	3-15-58/67	\$455,000.00
Hospital					
46	6-1-46	1.50	360,000.00		
		1.25	140,000.00	2-1-47/61	25,000.00
55	9-1-55	2.25	350,000.00	3-1-56/65	230,000.00
					\$710,000.00
					Total \$710,000.00

Attest: R. C. WILSON County Auditor Gray County, Texas
Signed: WILLIAM J. CRAIG, County Judge Gray County, Texas

Farm Facts

"Farmers must be getting rich," the city housewife too often complains when she goes to pay for her food at the supermarket check-out counter.

The facts are, however, that the farmer's part of her food dollar has actually declined, that an hour's pay will buy more food today than it would a few years ago, that the farmer is caught in a "cost-price" squeeze, and that his net income is much lower than that of the average non-farm person.

Farmers average well below the minimum wages for most workers and still less than average industrial wages. In fact, the farmer's income is about half that of his city brother.

During 1958, the hourly income for farm labor and management was 97 cents, while workers in manufacturing industries received \$2.13 per hour.

Average net income per person of the farm population from all sources was \$1,066. This included \$298 received for work off the farm, the value of products con-

Farmers average well below the minimum wages for most workers and still less than average industrial wages.



sumed on the farm, and the rental value of the farm dwelling. By comparison, the average non-farm person's net income amounted to \$2,066. This is \$1,000 a year more.

The farm person's net income has risen 25.2 per cent from the 1947-49 average, while the non-farm individual's rose by 39.6 per cent.

Mr. and Mrs. Odell Mantooth and Miss Cleo Pope visited with Mr. and Mrs. J. D. Pope in Borger Sunday afternoon.

Mr. and Mrs. Jim Hathaway and Dwight were in Canadian last weekend to visit her sister, Mrs. J. W. Dart.

Roy McCracken and Mr. and Mrs. T. E. Crisp visited Mrs. Ruth Abwater, who is in Highland General Hospital following a heart attack.

Mr. and Mrs. C. M. Mead of Pampa visited in the T. A. Landers home Monday night.

SEVERAL STEPS INVOLVED IN INSTALLATION OF IRRIGATION

By THOMAS E. BARTOSH
Soil Conservation Service

The installation of an irrigation system often involves several steps which should be followed in sequence. These steps usually are water supply, soil profile, climate, water to be grown, methods of irrigation, layout and construction.

The supply of water is very important. The amount of available water must be sufficient to irrigate the entire field. It should also be of good quality so it will not be harmful to the crop and should be at such depth as to make irrigation unfeasible.

The profile of the soil should be known to determine the maximum depth the soil can be cut without seriously affecting the agricultural production. Shallow soils often restrict the design of the system. The entire area of an area may also limit the design. An area often has certain limits on slope to prevent erosion from rainfall or to provide adequate drainage. The crops to be grown will affect the irrigation methods selected. Intensively cultivated crops such as vegetables may justify very expensive leveling costs while that of hay or wheat would warrant a smaller investment.

A topographic survey is made of the field to be leveled. This is usually necessary to determine the irrigation system to be used. The entire field may be leveled or it may be leveled in benches.

Prior to leveling a farm irrigation system must be planned so that the location of the field boundaries, irrigation water-supply system, drains and field roads are known.

Before leveling, the field should be cleared of all trash. The field will be staked, usually at 100-foot intervals, showing the amount to excavate or fill.

The equipment used for land leveling usually consists of a dozer, carry-all, grader and land plane. A carry-all is needed where large amounts of dirt need to be moved over fairly long distances.

Recent planning for land leveling in Gray Soil Conservation District has been done on Paul Bruce's farm north of Alameda. The topography survey has been made, the system has been designed, and construction should get underway shortly.

G. W. Shaffer and Bill Bradley also plan to do land leveling on their farms located on Highway 66. They have irrigated the fields in the past but need land leveling for better water distribution and for more efficient water use.

Howard Hardin returned home last week from a week's visit in the home of his brother, Gordon Hardin, and family in Vernon.

Mr. and Mrs. Otis McClellan and girls visited with Mr. and Mrs. Jack McClellan Sunday.

JUNIORS NEAR SEASON'S END

McLean Junior High cagers today had just two more engagements in their schedule for this season after splitting with Miami in their last outings last Thursday.

Coach E. L. Cline's Cubs and Junior Tigeettes were to enter the Gebeville Tournament today, then they are to invade Canadian next Thursday night in the season finale.

In a low scoring tussle last Thursday in Miami, the Cubs triumphed 16-12, while the young Tigeettes were nosed out 27-24 in the preliminary.

Crockett Scores 5
Eddie Crockett scored five points for the Cubs, who trailed 7-6 at halftime. Jim Parrish had four, Eddy Winston three and Dean Tate and Homer Goldston two apiece.

Sharon Goldston bucketed 17 points in leading the Junior Tigeettes in their lastest fight. Mikki Green had three, while Sandy McDowell and Ann Terry each had two.

The local girls put up a stiff fight before being subdued. They were behind 4-1 after the first quarter, then rallied to trail by only 12-10 at intermission. At the end of three periods Miami was in front 23-12.

Grief can take care of itself, but to get the full value of joy, you must have someone to share it with.—Mark Twain

FORMER CITY MAN SAVES CHILD'S LIFE

A former resident of McLean has been credited with saving the life of an infant in Plainview.

Jerry Austin, former employe of the Cicero Smith Lumber Co. here, used mouth-to-mouth respiration to breathe life back into 13-month-old Jan Wayne Evans.

Austin, father of three children, is a Plainview policeman and a neighbor of Mr. and Mrs. Wayne Evans, parents of the stricken baby.

The infant had stopped breathing when Austin was summoned by the father. After about two minutes of mouth-to-mouth respiration the baby began breathing normally again.

Night radio dispatcher with the Plainview police department, the 28-year-old Austin said the "baby was blue and purple and the parents frantic" when he arrived on the scene.

Austin, who also attends classes at Wayland Baptist College, credited first aid training he received after joining the police department last June with saving the baby's life.

Reed Grogan, who was badly burned last week while thawing a water line with gasoline, is reported to be improving in Shamrock General Hospital.

Railroad Depot Will Become Two Houses

McLean's aged but now unused Rock Island depot will be moved within the next few days to the northwestern portion of the city, according to Bryan Roby.

Roby, of Shamrock, and his son, Tom of McLean, purchased the large structure and plan to convert the depot into two three-bedroom houses.

The elder Roby reported that the building will be cut into two sections before being moved—one 56 feet and the other 42 feet in length.

Mr. and Mrs. R. E. Grigsby and son, Clifton, of Borger visited Mrs. Mildred Grigsby Sunday.

MASTER CLEANERS
EFFICIENT — DEPENDABLE
COURTEOUS SERVICE
at
McLean, Texas
We Give Gunn Bros. Stamps
Free Pickup and Delivery

Save MONEY STOCK YOUR PANTRY

SUGAR Pure Cane 10 lb sack **\$1.05**

SALAD DRESSING **MIRACLE WHIP** 49¢ quart jar

Fresh FRUITS and VEGETABLES

- Cello, pack Tomatoes 19¢
- Pink Grapefruit 5 lb bag 35¢
- Hamlin, Texas Oranges 5 lb bag 39¢
- RED SPUDS 10 lb sack 39¢

Del Monte Whole Green Beans 4 for \$1 (303 size)

Del Monte SPINACH 7 for \$1 (303 size)

Bellmont Mixed Fruits 4 for \$1 (Big 2 1/2 size can)



- End Cut Pork Chops 1 lb 43¢
- Round Steak 1 lb 89¢
- Sirloin Steak 1 lb 83¢
- Bar-B-Q Fryers each 99¢
- Velveeta Cheese 2 lb pkg. 85¢



Spier Apple Juice 25¢ quart bottle

Star Kist Chunk Tuna 29¢ Reg. size can

Folger's Instant Coffee \$1.39 10 oz. jar

SHORTENING FLUFFO 79¢ 3 lb can

BETTY CROCKER CAKE MIX 2 for 75¢ EXCEPT ANGEL FOOD

- KARO SYRUP
- Nabisco Crackers 1 lb pkg. 27¢
- Nabisco Oreo Creme Sandwich 1 lb pkg. 45¢
- NIAGARA STARCH Reg. size pkg. 23¢
- O'CELLO SPONGES

COFFEE 2 lb can \$1.29 (10¢ OFF LABEL)

SPECIALS GOOD FRIDAY, SATURDAY, FEB. 3, 4, 1961
PUCKETT'S
★ GROCERY & MARKET ★

CRISCO 3 lb can 79¢ (OFF LABEL DEAL)

SOCIETY

Women's Valentine Monopoly Challenged



"If the ancient Roman 'Feast of Lupercalia' hadn't undergone a radical change through the years, we'd now be readying a February 14th celebration that the young men of this nation might welcome"—according to Bert Bacharach, columnist, author and authority on abstract information.

"On Lupercalia," according to Bacharach, a student of Roman civilization, "every unmarried woman put her name in a box and, at the height of the celebration, the young Roman bucks drew the girls' names. The one selected by each man became his sweetheart for the next year and gifts and tender messages were exchanged."

"The messages—our Valentine cards—are all that's left of Lupercalia for the man," sadly noted Bacharach. "Valentine's Day has become a one-sided occasion with the gals cleaning up on heart-shaped boxes of candy, flowers and—more often than not—much costlier items. The men have all but been forgotten!"

"Today's Valentine's observation began when the Romans became Christianized. Lupercalia was 'a little too wild for them,' so when the two St. Valentines were martyred on February 14th, the February 15th celebration of Lupercalia was moved up a day, and has come down to us in that form," explained Mr. Bacharach.

"Somewhere along the line," noted Mr. Bacharach darkly, "the women took Valentine's Day over. It would be nice to get this lovely holiday back on the track with a return gift of something masculine and fashionable like a box of cigars, a necktie or even a monogrammed shoehorn."

Missionary Society Has All-Day Session At Baptist Church

The First Baptist Church Women's Missionary Society held an all-day meeting Tuesday in the church.

During the morning session, Mrs. Luther Petty explained the WMU emblem and watchword and the song and colors of the Southern Baptist Convention and Texas convention.

Mrs. Frank Howard presented the enrollment for missions portion of the program.

The meeting opened with the singing of "Christ for the Whole Wide World." Mrs. Homer Abbott presented the history of the WMU, and prayers were by Mrs. George Colebank and Mrs. Abbott.

Following a sack lunch, Mrs. Ola Henderson opened the afternoon session with prayer. Mrs. Doyle Brown was program chairman and Mrs. Oscar Tibbets circle chairman.

Discussion leaders were Mrs. Dan Beltz, YWA; Mrs. Bill Herron, GA; Mrs. Raymond Smith, community missions; Mrs. Joe Taylor, mission study.

Mrs. Taylor led the closing prayer.

Mrs. Abbott presided during the all-day session, attended by 20 women.

Double Sharp Club Meets; Ratings For January Are Given

The Double Sharp Music Club met on Jan. 27 at 4 p. m. in the Boyett studio.

The business meeting was conducted by the president, Keith Watson, with the minutes being read by the secretary, Ann Lovelless.

The repertoire players this month were Dick and Leslie Back, Timothy Banks and Cheri Tarbet, Dick, Leslie and Timothy each played three selections and Cheri played six.

Each of the other pupils present played one number for the group.

Sarah Coleman and Joyce Saunders of the high school club played one selection each.

Brenda Kelley was welcomed into the club as a new member.

The ratings for January were: Superior—Dick Back, Leslie Back, Arthur James Dwyer, Jana Hess, Cheri Tarbet and Keith Watson; excellent—Jerry Don Dwyer, Debra McClellan, Judy Saunders, Vicki Welch and Karen Cunningham; good—Jimmy Baker, Timothy Banks, Kay Greer, Ann Lovelless and Pat Windom.

The hostesses, Mrs. Tarbet and Mrs. Back, served cookies and cakes to the 14 members and 29 guests attending.

Wanda Beth Stapp To Wed James Averett

Mr. and Mrs. O. W. Stapp of Alameda announce the engagement and approaching marriage of their daughter, Wanda Beth, to James Paul Averett, son of Mr. and Mrs. B. R. Averett of Friona.

Wedding vows will be solemnized on Feb. 12 in the home of the bride-elect.

Miss Stapp is a graduate of McLean High School and was formerly employed at Marie Foundations here.

Mr. Averett graduated from Friona High School and is employed by the Santa Fe Railroad.

CARD OF THANKS

We wish to thank all our friends and neighbors for their many acts of kindness shown while I was in the McLean Clinic. The beautiful floral offerings, phone calls, visits, cards and food were all greatly appreciated.

Mrs. Maude Powell and family



1509 Grand — Amarillo, Tex.
DR 4-6185

Commercial & Industrial
STEEL STRUCTURES

Featuring



"UNIFRAME"
"TRUSSLESS WONDER"
Building
Low Cost—Attractive—Versatile

News From ALANREED

By MRS. CECIL CARTER

Mr. and Mrs. Floyd Woodrome and family were to leave Wednesday for Florida where they will spend several months working.

Mr. and Mrs. E. R. Boyd of Pampa visited with the L. H. Earthmans Monday.

Mr. and Mrs. Horace Bullock had as their guests Sunday their daughters, Gale of Pampa and Carolyn of Clarendon, and their families.

Mr. and Mrs. Buddie Hill and Mrs. Dee Hill were in Pampa on business Monday.

Mr. and Mrs. Cletus Fish and family of Pampa spent Sunday here with Mrs. J. D. Fish and Ray.

Mrs. O. W. Stapp and Wanda Beth were in Amarillo on business Monday.

Mrs. Cecil Carter and Mrs. F. L. Dalton were in Pampa Tuesday.

Mr. and Mrs. Truitt Johnson of McLean visited with the O. W. Stapps Sunday.

Mr. and Mrs. Marvin Spracher of Groom visited here at the First Baptist Church Sunday evening.

F. E. Rogers has returned from an extended visit with his son in Arkansas.

Cecil Carter and A. J. Wally of McLean were in Clarendon Tuesday.

Mr. and Mrs. Ernest Foshee and family of Lefors visited Sunday with the John Foshees.

Gale Wally of McLean was a Sunday evening visitor at the Baptist church.

Ray Fort of Pampa spent Sunday with the Lavern Goldstons.

Mrs. F. E. Rogers has returned from working in Amarillo.

Mr. and Mrs. Robert C. Hill and daughter of Borger visited here with the Buddie Hills and Mrs. Dee Hill.

J. C. Oakley of Pampa spent the weekend with his mother, Mrs. Fay Oakley, and the O. W. Stapps.

Visitors in the F. B. Carter home Sunday were Mr. and Mrs. A. J. Wally and family, Mr. and Mrs. F. L. Dalton and family and Mrs. O. K. Lee and children of McLean; Mr. and Mrs. W. C. Carter and family of Skellytown and Mr. and Mrs. Cecil Carter.

Mrs. Albert Yake and son, Albert, are visiting in Dallas and other places in east Texas.

Mr. and Mrs. L. F. Fort and Mike spent Sunday with the E. R. Sherrods.

Combine bran cereal and orange juice; let stand until most of moisture is taken up. Add egg, shortening and orange rind; beat well. Sift together flour, baking powder, soda, salt and sugar, add to first mixture together with prunes, stirring only until combined. Fill greased 8 1/2-inch ring mold about 3/4 full. Bake in moderately hot oven (400° F.) about 25 minutes. Remove from ring mold; let cool.

For icing, combine sugar and milk, stirring until spreading consistency. Spread at once over coffee cake. If desired, sprinkle icing with grated orange rind and decorate with walnut halves. Makes 8-10 servings.

Liberty HD Club Has Regular Meet

The Liberty Home Demonstration Club met on Jan. 19 in the Wallace Rainwater home for their regular meeting.

Attending were Mesdames James Cliett, Earl Eustace, Leslie Gordin, Orphus Tate, Rainwater and one guest, Mrs. Henry Potter.

The next meeting will be in the home of Mrs. Walter Bailey on Feb. 7.

Brock-Roby Wedding Is Held in Nevada

Marriage vows were exchanged by Mrs. Beulah Brock and Bryan Roby on Jan. 21 in the Elko, Nev., Nazarene Church.

Roby is formerly of McLean and now living in Shamrock, and Mrs. Roby resided in Elko at the time of the marriage.

The couple will make their home in Shamrock.

Plentiful Foods Are Listed for Texas

COLLEGE STATION—(Special)—Cabbage pretty well leads the pack of foods expected to be in plentiful supply in February. The winter cabbage crop is moving in volume from an acreage quite a bit larger than a year ago, reports the Texas Agricultural Extension Service.

While cabbage is the feature, six other foods will be available in more-than-normal supply. These are dry onions, rice, canned ripe olives, peanuts and peanut products, cranberry products and small white beans.

The February plentifuls can provide color, nutrition, flavor, variety and economy to family meals or special occasions.

CARD OF THANKS

I would like to take this opportunity to thank the many nice people of McLean and Shamrock for the lovely cards and flowers and the nice visits during my stay in the hospital.

Mrs. Harlon Pool

Mr. and Mrs. Wheeler Carter were in Pampa Monday.

CARD OF THANKS

The perfect gift for the girl who has everything is penicillin.—Mrs. B. Harris, quoted in Reader's Digest



Tourists stopping at a roadside stand that advertised strawberries, were told by the woman in charge that they were sold out but her husband had gone to get some more.

As they debated whether or not to wait, one asked if she was sure the berries would be fresh.

The woman glanced over her shoulder at her husband emerging from the berry patch. "Well," she said blandly, "he's a-runnin', ain't he?"

Our courteous attendants will come "a-runnin'" to wait on you when you drive up to our station—and you can be sure our products are the best to be had.

Chevron Gas Station
ODELL MANTOOTH

ORANGE-PRUNE COFFEE RING



Is anything more fun to eat than a spankin' fresh coffee cake cut in generous wedges and accompanied by cups of steaming, fragrant coffee? It's a refreshment to put cheer into any soul... and especially if the coffee cake is this Orange-Prune Coffee Ring.

It is fruity—little pieces of tart-sweet prunes all through it take care of that. It has a nut-like flavor—the whole bran cereal is responsible for that. Then there's the pungency of orange juice and rind, and the sweetness of a sugar icing. So make it and enjoy it—for morning coffee breaks, for afternoon pick-ups, for late evening snacks. Here are the directions:

1 cup whole bran cereal	1 cup sifted flour
3/4 cup orange juice	1 1/2 teaspoons baking powder
1 egg	1/2 teaspoon baking soda
3/4 cup soft shortening	1/2 teaspoon salt
1 1/2 teaspoons grated orange rind	1/2 cup sugar
1 cup finely cut cooked prunes	

Combine bran cereal and orange juice; let stand until most of moisture is taken up. Add egg, shortening and orange rind; beat well. Sift together flour, baking powder, soda, salt and sugar, add to first mixture together with prunes, stirring only until combined. Fill greased 8 1/2-inch ring mold about 3/4 full. Bake in moderately hot oven (400° F.) about 25 minutes. Remove from ring mold; let cool.

Icing: 1 cup sifted confectioners' sugar | 1-2 tablespoons hot milk or light cream

For icing, combine sugar and milk, stirring until spreading consistency. Spread at once over coffee cake. If desired, sprinkle icing with grated orange rind and decorate with walnut halves. Makes 8-10 servings.

CARD OF THANKS

I sincerely thank everyone for the cards, flowers, calls and visits while I was in the hospital. May God's blessings be on all of you.

J. R. Giesler and family

CARD OF THANKS

Mrs. Harlon Pool returned home Tuesday from Shamrock General Hospital, where she underwent major surgery on Jan. 18.

Mrs. Bertie Crossman of Shamrock accompanied Mrs. Corinne Trimble to market in Amarillo last weekend.

CARD OF THANKS

Mrs. Harlon Pool

Mr. and Mrs. Wheeler Carter were in Pampa Monday.

BIRTHDAYS

Feb. 5—Mrs. Irene Ledbetter, Erey Eugene Hambright, Mrs. Robert West.

Feb. 6—Mrs. H. W. Finley, Mrs. Hester Adams, Othelia Eustace.

Feb. 7—Byrd Guill, Patricia Kay Simpson, Jerry Mounce.

Feb. 8—Billy Felton Webb.

Feb. 9—Mrs. Carl Baker, Owen Rhea.

Feb. 10—Mrs. W. B. Earles, H. V. Ballard.

Feb. 11—James Baker, Mrs. H. W. Brooks.

Mrs. Vernie Immel of Stinnett visited last week with her mother, Mrs. Lona Jones, and grandmother, Mrs. C. G. Nicholson, who accompanied Mrs. Immel home for a short visit.



THE SEAL THAT MEANS PEACE OF MIND

You'll find this symbol— with white letters on red background— on display in our office.

We're proud to display it, because it's your guarantee of dependable insurance. For more than a century, the Capital Stock companies we represent have been the "Standard of Protection" wherever insurance is sold.

Be sure when you insure. Let us survey your insurance needs. We'll be glad to suggest the kind of protection you need for real peace of mind—and we'll place it, of course, only in reliable Capital Stock companies.

JANE SIMPSON Agency
GR 9-2451
McLean, Texas



JANE SIMPSON Agency
GR 9-2451
McLean, Texas

AVAILABLE IN McLEAN

McCULLOCH
CHAIN SAWS — MOTOR SCOOTERS
GARDEN ROTOVATOR
See or Call
MILTON CARPENTER
Telephone GR 9-2985 — McLean, Texas

The most Beautiful Hearts on earth...

FRENCH LACE HEARTS



Filled with PANGBURN'S Milk and Honey Chocolates



BRIDAL SHOWER HERE HONORS MISS MONTA JEAN KENNEDY

The home of Mrs. Evan Sitter was the scene recently for a bridal shower honoring Miss Monta Jean Kennedy, bride-elect of Tony Smitherman of Hart. Miss Kennedy is the daughter of Mr. and Mrs. Paul Kennedy of Hart, formerly of McLean.

The tea table was laid with a silver and white cloth and centered with an arrangement of white chrysanthemums, gladioli and wedding bells. Silver candelabra and a tea service completed the table appointments.

Mrs. C. M. Carpenter presided at the tea table and Mrs. Clyde Magee registered the guests.

Hostesses for the event were Mesdames Sitter, Wheeler Carter, Erey Cubine, Frank Rodgers, Clyde Magee, C. M. Carpenter, Wilson Boyd, D. C. Carpenter and S. A. Cousins.

Out-of-town guests present were Mrs. Paul Kennedy, Mrs. Sanders and Mrs. Jack Smitherman of Hart and Mrs. Sherman White of Pampa. Those attending and sending gifts were Mesdames Spencer Sitter, Bill Foster, Karl Ernst, Don Smith, John Carpenter, Jim Carpenter, Frank Winsett, Charles Finley, J. E. Cooke, Clyde Carpenter, Bill Carpenter, C. P. Callahan, Harvey Hudgins, Kate Everett, Druce Dwyer, Bill McAllister, Ella Cubine, Earl Riley, Harry Overton, W. M. Rhodes.

And Mesdames Rolena Bradley, Ellen Wilson, Alice Wilson, Jesse Coleman, Walter Foster, Ruth Ellen Riley, Earl Moore, Sophia Hutchison, Dee Coleman, Horace Brooks, Neil Quattlebaum, C. C. Bogart, Jack Riley, U. F. Coker, Guy Ford, James Noel, Roel Smith, J. S. Morse.

And Mesdames John C. Haynes, Sammy Haynes, Willie Boyett, J. R. Glass, Gordon Billingslea, Dale Glass, Chris Bjerg, Fred Sligar, Charles Williams, Don Tress, J. W. Moscham, Earl Stubblefield, Amos Page, Guy Besley, Hershel McCarty, Morris Mullanax, George Colebank, Peb Everett, C. S. Rice, Lizzie Miller, Walter Miller, W. R. Ferguson, J. E. Kirby.

And Mesdames Guy Hester, J. L. Andrews, Johnny Haynes, Lucille Gaines, Johnny Jo Hutchison, Miro Palkan, Truitt Johnson, Odessa Gunn, Charles Cousins, Hickman Brown, H. F. Fabian, Jim Back, Clevy Hancock, Don Blair, R. N. McCabe, Paul Mertel, J. L. Hess, Cliff Day, E. J. Windom Jr., Roy Hancock, Clifford Allison, Pearl Johnson, J. A. Brawley, Elizabeth Miller, Charles Cooke, Sinclair Armstrong, Lucille Gething, Jack R. Riley, Johnnie Mertel, Bryan Burrows, D. L. Miller, Jess Kemp, Elizabeth Major, Charles Weaver, Carl Dwyer, Pete Fulbright.

And Mesdames C. H. McCurley, W. E. Kennedy, Farris Hess, Boyd Meador, John E. Dwyer, C. P. Hamilton, Allie Mae Herron, Ed Howard, John B. Rice, T. A. Landers, E. H. Kramer, Jack Bailey, H. W. Finley, W. C. Shull, Alma Turman, R. T. Dickinson, Conald Cunningham, Victor Cliett, Homer Wilson, R. N. Ashby, Leo Bow, Ernest Beck, H. W. Burr, Byrd Guill, Will Bogan, Kid McCoy, Bob Glenn, Earl Eustace, Nola Green, Claude Powell, Bill Rodgers, Gorda Lou Barnett, Jim Dougherty, Milton Carpenter, June Woods, George Orrick, Roy McCracken, Bill Bailey and Corinne Trimble.

And Misses Jewell Cousins, Cleo Puse, Othelia Eustace, Christa Rodgers, Molly Miller, Phyllis Hancock, Marjorie Fowler, Leona Furber, Mary Ann Carter and Gussie Bledsoe.

Musical Dozen Club Hears Its Ratings

The Musical Dozen Club met on Friday, Jan. 27, at 5 p. m. in Mrs. Boyett's studio.

Nancy Jean Dickinson, president, presided over the meeting.

Linda Guill and Marsha Drum each presented a repertoire of six memorized selections.

Playing one selection each for the group were Elaine Baker, Nancy Dickinson, Betty Dilbeck, Martina Giesler, Janice Saunders, Paula Stewart and Eddy Windom.

The ratings for January are announced as follows: Superior—Sarah Coleman, Betty Dilbeck, Marsha Drum, Martina Giesler and Linda Guill; excellent—Elaine Baker and Phyllis Pakan; good—Nancy Dickinson, Kay Hall, Janice Saunders, Joyce Saunders, Sharon Sitter, Paula Stewart and Eddy Windom.

Mrs. Clarence Drum and Mrs. Herbert Guill were hostesses for the 10 members and 10 guests attending.

CARD OF THANKS

I want to thank my friends for the many nice things they did for me while I was in the hospital. For the cards, gifts, visits and prayers, and for the visits and food since I have been home, I am indeed grateful. May God bless all of you.

Mrs. G. W. Humphreys

Dr. Marion N. Roberts
OPTOMETRIST
112 W. Kingsmill
Pampa, Texas
Telephone 4-333

Specials
ON PERMANENTS
Every Tuesday & Wednesday
ALBERTA'S HAIR FASHIONS
Dial GR 9-2658



CLASSIFIED

CLASSIFIED INFORMATION

RATES

— Telephone GR 9-2447 —

Per word, first insertion 3c

Following insertions 1 1/2c

Minimum Charge 50c

Display rate in classified column, per inch 75c

All ads cash with order, unless customer has an established account with The News.

NOTICE—Deadline for classified ads is Tuesday noon.

FOR SALE

For Sale—7 room house with 5 acres land, adjoining city limits.

2 bedroom house with furniture, only \$2750.00.

1 bedroom home with small acreage, adjoining city limits.

New 3 bedroom home with F. H. A. approval; move in cost very low.

2 bedroom home almost new; near schools.

3 bedroom near City Park.

3 bedroom with 2 acres land in west part of town.

4 bedroom with 5 acres land, close in.

3 or 4 stock farms and some good city lots.

Boyd Meador, Realtor
2-4c

For Sale—Child's Wonder bucking horse, like new. Call GR 9-2313. 4-4c

We have new Ambassador Hallmark cards of all kinds. Also bridge tallies and valentines. Callahan's, GR 9-2251. 2-4c

For Sale—10 lots, clear title. Peach, apple and pear trees on property. Jesse E. Smith, GR 9-2304. 2-4p

For Sale—Baled hegar bundles; also Johnson grass hay. 8 miles north of Wellington. Bill Jones. 5-4p

For Sale—Good M & M tractor and John Deere 8-foot one-way. \$300 for both. C. E. Allen, Alarwood, Phone 13A. 5-4c

Piced gulls for sale. Phone GR 9-2362. 5-2p

Two-bedroom house, four years old. Hardwood floors, knotty pine paneling in kitchen, plastic tile in bathroom, plumbed for automatic washer and gas dryer, attached garage and fenced-in backyard. Price: Cash \$6,000. See K. W. Hambright or call GR 9-2396. 5-4c

AVALON THEATRE

DIAL GR 9-2861
McLEAN, TEXAS

Open 6:30 p. m. — Show Time 6:45 p. m.

MATINEE EACH SATURDAY 1:00 p. m.

FRIDAY & SATURDAY

THE ENEMY GENERAL

Van Johnson

SUNDAY, MONDAY & TUESDAY

ALL THE YOUNG MEN

Alan Ladd — Sidney Poitier — James Darren

FOR SALE

FOR SALE
NEW 3-BEDROOM HOUSE
\$9,950—ONLY \$450 DOWN
SEE
JANE SIMPSON AGENCY
TELEPHONE GR 9-2451
31-4c

FOR SALE

Plenty of Good Pit Run
Sand and Gravel
**\$1.00 per Yard at
Bill Jones Gravel Pit**

8 Miles North
Of Wellington
John W. Martin
4-4p

For Sale—Boy's white Continental jacket, size 14. Worn one time. Will sell for half price, \$8.00. Mrs. Howard Williams, GR 9-2198 or GR 9-2351. 1c

FOR RENT

For Rent—Three-room furnished apartment, bills paid. Bobby Jack Massey at GR 9-2280. 1c

Nice furnished house for rent. See or call Mrs. Lucille Gaines, GR 9-2324. 4-4c

For Rent—1 3 room and 1 2 room apartments, private baths. Stella Payne, Phone GR 9-2961. 3-4c

For Rent—Three-room furnished apartment with floor furnace. Telephone GR 9-2398. 1-4c

For Rent—Two 2-bedroom houses. One across from Baptist parsonage and other across from new post office. Glen Curry, GR 9-2134. 4-4c

For Rent—4-room house and bath. Call GR 9-2763. Mrs. T. E. Crisp. 1p—4-4c

TYPEWRITERS AND ADDING MACHINES FOR RENT BY THE DAY, WEEK OR MONTH. TRI-CITY OFFICE MACHINES, McLean branch at The Photo Shop, phone GR 9-2551. 4-4c

For Rent—1 two-bedroom house. See K. W. Hambright or call GR 9-2396. 5-4c

For Rent—Three-room furnished house and basement. Madge Page, Phone GR 9-2512. 5-4c

SALESMEN WANTED

Wanted—Life insurance company representative, man or woman, in McLean area. We will arrange for licensing. Earnings determined by your ability. Write The McLean News, McLean, Texas. 2-4c

WANTED AT ONCE—Rawleigh dealer in Gray County. Write Rawleigh's Dept. TXA-141-3, Memphis, Tenn. 4-2p

The huge national debt our youngsters will inherit should keep them from one indulgence—ancestor worship.—Wall Street Journal

MISCELLANEOUS

Picture frames made to fit. Anything made out of wood. Furniture repaired and finished. Cliff Day's Shop, No. Main St. Phone GR 9-2686. 52-4c

Expert part-time tree trimming. Contact Bob West and Ed Powers, Groom, Texas. 3-3p

Three puppies to be given away. Phone GR 9-2955. 3-3p

Custom dress making and alterations. Marzell's Fabrics and Fashions. Phone GR 9-2831. 5-4c

Board and room for two women, man and wife or single man. Plo. GR 9-2941. 4-3p

Will do saw filing. J. E. Smith, Phone GR 9-2307. 30-4c

Guaranteed watch repair. See Marvin Sublett, jeweler, first door north of McLean Gate. 12-4c

Guaranteed gun repair and custom gun work. All's reambered for 3" shells. Call Dick Everett, GR 9-2941. 4-4c

Insured cattle hauling. Frank Terbusch, Groom. Call Don Mansel in McLean at GR 9-2789. 4-4c

The best to be had in cleaning and pressing. Also alterations of all kinds, including single-breasted coats made from double. Clift Cleaners, Phone GR 9-2771. We give Top Stamps. 1-4c

Commercial carpet and rug cleaning. Free estimates. Call Lee K. (Bud) Steel at GR 9-2560. 2-4c

MATRESSES RENEWED—Herman Childrens Mattress Co. can remake your old mattress into an innerspring, also box springs to match.

Also expert upholsterers of good furniture. Contact Smokey at the City Barber Shop and a salesman will call. 2-4c

Ladies Bible Class Ends Long Recess

Following a 3 1/2-month recess, the Ladies Bible class of the Church of Christ resumed regular meetings Thursday morning, Jan. 26, with Doyle Harris teaching the first six verses in the Book of Romans. The book will be continued until completion, verse by verse.

Following the meeting, coffee was served in the home of Mr. and Mrs. Doyle Harris.

Attending were Meses. O. R. Henry, Alton Finchum, J. B. Martin, C. E. Fenna, Burl Davis, Charles Weese, Jeff Davis, Ralph Carruth, W. G. Hughes, Bill Wall, Jay Wiggins, Kenneth Brown, Ed Brock, James Means, R. T. Jinks, C. B. Hatcher, John Roberts, Ben White, Gordon Robinson, Aubrey Carlton, Earl Lane and 10 children.

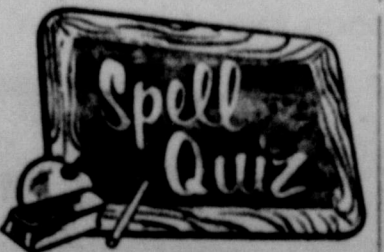
'The Ugly American' Reviewed for Club

Mrs. Gene Fort gave a review of the book "The Ugly American" for the regular meeting of the 20-30 Club in the home of Mrs. Gordon Robinson Tuesday night, Jan. 24.

Mrs. Wayne Sims presided over the business meeting. It was decided to have husbands night on Feb. 3, at which time the club sweetheart will be revealed and awarded a gift.

The club presented a baby gift to its president, Mrs. Sims. Refreshments were served.

Guests were Mrs. Ronald Adams and Mrs. Clara Inel. Members present were Meses. Wayne Sims, E. L. Foshue, Joe Archer, Leonard Cain, Anita Clemmons, J. M. McPherson, Gene Fort, R. E. McDonald, Edward Lehnick, Ray Dickerson and the hostess.



Correct answer is: Prescription

THE LEFORIAN

MRS. CHARLES ROBERTS, Special Correspondent



Charlotte Ann Rosson

MISS ROSSON WINS TITLE

The 1931 Betty Crocker Homemaking of Tomorrow for Lefors High School is Charlotte Ann Rosson, daughter of Mr. and Mrs. Henry E. Rosson.

Having received the highest score in a written examination on homemaking knowledge and attitudes taken by graduating seniors in her school, Miss Rosson becomes a candidate for the state Homemaking of Tomorrow award.

The winner of the state title will be announced in March. Each school Homemaking of Tomorrow will receive an award pin representing the slogan "Home Is Where the Heart Is."

The examination papers of school Homemakers of Tomorrow will be entered in competition to name the girl to receive the state title and awards.

The \$110,000 homemaking education program sponsored by General Mills offers a \$1,500 scholarship to the first-ranking girl in each state and \$500 scholarship to the state's second-ranking participant.

Mrs. Bishop Hosts Regular Meeting Of Lefors HD Club

Mrs. O. O. Bishop was hostess to the Lefors Home Demonstration Club Thursday afternoon in her home.

The meeting was begun on a gay note, as Mrs. Walter Elliott, recreation chairman, had each player draw a bead on various bodies. The artists' conception of promptly putting the two together proved to be entertaining.

The roll call and minutes were given by Mrs. A. J. Rollins, as Mrs. A. M. Dickerson, president, presided.

Mrs. Jeff Davis, finance chairman, appointed Mrs. Walter Morris and Mrs. A. J. Rollins to assist her.

It was decided to have a Mother's Day dinner on May 14.

Mrs. Bishop gave a report on the progress of the park.

Birthday money was given to Mrs. A. J. Rollins.

Mrs. Dickerson was nominated as nominee for district delegate. It was announced that the club is 100 per cent paid up for THDA dues and yearbooks.

It was noted that B. J. Diehl donated \$2 to the club to pay the Civic Center fee for family night.

The program on antiques coincided with the answer of roll call, "Making Something From Something Old."

Mrs. Walter Morris reminded all members to pay their poll tax.

Other members present were Meses. John Lantz, C. W. Teeters, C. C. Wells, Burt Smith, B. J. Diehl, B. J. Leininger, M. L. Rippey, Carl Barber and A. T. Cobb.

Nina Hankins Circle Has Mission Study

The Nina Hankins Circle of the Baptist Women's Missionary Union met Tuesday in the home of Mrs. H. L. Teel for a mission study by the hostess on the book "The Dreamer Cometh."

Mrs. Ira Rogers opened the meeting by reading the prayer calendar and called on Mrs. W. B. Minter to word the prayer for missionaries.

Minutes were read and approved, and reports were given by each chairman. A decision was made to buy a pan for the new kitchen and to take a separate offering to finance it.

Members present were Meses. O. C. Mills, Howard Marler, W. B. Minter, H. E. Teel, Alvin Cates, Odell Cain, A. L. Michael, Frank B. Cooksey, Walter Jackson, W. S. Presley, Ira Rogers, James Lancaster and one visitor, Sue Danley.

Mrs. Presley dismissed. The Blanche Groves and Lottie Moon Circles did not meet since there were five Tuesdays in January. This week the circles combined for Royal Service program at the church building on Jan. 31.

Michael Cline Is Honored on Birthday

Mrs. A. H. Cline entertained a group of children in her home Friday, Jan. 20, with a birthday party for her son, Michael, on his 10th birthday.

After the guests arrived they were led in games by Linda Cline, sister of the honoree, and Linda Montgomery, at which time prizes were given to the winners.

Balloons and crackerjacks were given as favors.

Opening the gifts and lighting the candles on the birthday cake were the highlight of the party, after which the group sang "Happy Birthday to You."

Mrs. Larry Moore assisted Mrs. Cline in serving cake and fruit punch to the guests.

Attending were Jimmie, Larry and Linda Cline, Russell Barnes, David Crotcher, James and Marjorie Heston. Several who were unable to attend sent gifts.

'VICTORY DINNER' HELD BY METHODISTS; GLOVER SPEAKS

James McCarley, formerly of Lefors and now of Amarillo, introduced Art Glover, Amarillo, as "guest speaker" at the "Victory Dinner" held by the Methodist Church in the Civic Center Wednesday night, Jan. 25.

Speaking on ways to defeat communism, Glover stated, "We can defeat communism by our own economic system if we sell to

foreign countries and send dedicated people to help those in need to help themselves. We believe man has a spiritual side that Communists do not believe."

Raymond Jordan was master of ceremonies for the dinner. Bill McGowan, high school music teacher, led the group in singing.

"Space Cadets," a cornet duet, was presented by Anthony McCool and Jerry Fitch, accompanied by J. Weldon Moore at the piano.

Alex Swenn announced the amount of money that had been pledged as a result of the January pledge campaign.

Attending were the Raymond Jordans, Arlie Carpenters, Carl Nunn, H. L. McCarley, W. E. Teel, J. W. Moores, C. H. Gustins, E. L. Taylors Jr., Bill McGowan, J. W. Stubblefields, W. R. Combes, Alex Swenns, Paul Waldens, Jess Graveses, Fred Huestons, Jess Raymond Barnes and children, L. R. Spence, Mary Taylor, Messrs. Anthony McCool, Jerry Fitch, Art Glover, James McCarley, Floyd Chitwood and Eddie Clemmons.

Art and Civic Club Hears Guest Speaker

The Art and Civic Club met in the Civic Center Tuesday night, with Mrs. Alex Swenn as hostess.

One new member, Mrs. Stella Airington, was welcomed.

Paul Walden, guest speaker and science teacher in Lefors High School, was introduced by his wife, Eva, program director.

In his talk he stated, "Science is organized knowledge, which recently has taken a change in the minds of people, brought about by our race to get into the lead in space. It is now necessary for students to learn more science than formerly in the same length of time."

The question he raised was: "Should we require more science and related subjects of students whether they are interested in the science field or not? How can we get more qualified teachers and improve our science program?"

Other members present were Meses. Babe Hall, Alex Swenn, R. H. Barron, C. H. Gustin, G. N. Mounger, Jack Thacker, Paul Walden, L. R. Spence, Ray Jordan, Ray Chastain, Earl Atkinson and Bud Cumberledge.

The next meeting of the club will be in the Civic Center, with Mrs. Floyd Hines as hostess, and Mrs. Earl Atkinson as program leader.

WCS Has Lesson In 'Heritage, Horizons'

Women's Society of Christian Service met in the Methodist Church Tuesday morning for the second lesson in their new book, "Heritage and Horizons," taught by Mrs. J. Weldon Moore.

Mrs. Bill Teel, chairman, presided over the meeting. A rummage sale was planned as soon as weather permits, and a building is available. Family night "Victory Dinner" was planned for Wednesday night to climax a financial campaign.

Attending were Meses. C. F. Phillips, Walter Pflug, Bernard Johnson, Jeff Stubblefield, J. Weldon Moore, L. R. Spence, W. E. Teel, Cleve Johnson and Anna Patton.

Optimist Club Will Meet on Thursdays

The Optimist Club of Lefors has now begun its regular meetings on Thursdays, formerly having met on each Tuesday of the week. The meeting place is now the Civic Center rather than fellowship hall of the Methodist Church.

Ben White, president, reports a very successful meeting last week. The wives of the Optimists were invited for a chili supper, along with other guests, to view a film on "World Map of Communism," furnished by the Southwestern Public Service Co. of Amarillo.

The hour-long film is very informative and an eye-opener concerning the Soviets and what they are trying to do to the world.

Among the visitors were Harry Castle, lieutenant governor, Amarillo; Homer Hollars, Bill Dodd, Bill Jenkins, Gip Gibson, Secrest, Clinton Griffin and He-man Jeeters, all of Pampa; two boys, Gary Smith and Jerry Warner, Lefors, and the following wives: Meses. Jimmy Pennington, Archie Chisum, Calvin Lacy, A. C. Sanders, Ben White, Leonard Cain, Chestene Dunn and Sidney Gilbreath.

Refreshments were served. Approximately 30 Optimists were present.

The farther back you can look, the farther forward you are likely to see.—Winston Churchill, quoted in Management Briefs



"FARM BUREAU WEEK" PROCLAIMED. Gov. Price Daniel is shown signing a proclamation designating Feb. 5-11 as "Farm Bureau Week" in Texas. Looking on are (left to right) J. H. West, Bishop, president of Texas Farm Bureau, and Millard Shivers, Waco, TFB director of organization. Farm Bureau membership enrollment activities will be concentrated during this special week. The Texas Farm Bureau has had a gain in membership eight years in succession and has moved into first place in the South and fourth place in the nation.

BOTTLELESS PIT

The federal budget speaks in terms of billions. But how much is a billion dollars? If a man stood over a big hole in the ground and dropped in a \$20 bill once every minute, day and night, it would take him 95 years to throw a billion dollars into the hole.—UPI

When the Narrows Bridge between Brooklyn and Staten Island is completed it will have the world's longest suspended span—4,200 feet.

Down Memory Lane

10 Years Ago

Mr. and Mrs. Milton Carpenter announce the engagement and approaching marriage of their daughter, Effie Lou, to Richard L. Everett, son of Mr. and Mrs. Peb Everett, also of McLean.

The marriage vows will be repeated Wednesday, Feb. 14.

In a double ring ceremony Friday evening, Jan. 26, at 8 o'clock Bonnie Willis, daughter of Mr. and Mrs. Joe Willis, became the bride of Kenneth Simpson, son of Mr. and Mrs. Jim Simpson.

Rev. Buell Wells, pastor, read the service in the First Baptist Church. An arrangement of white gladioli in tall baskets flanked the altar.

Mrs. Travis Stokes, organist, played a pre-nuptial prelude and the traditional wedding marches. Mrs. Bob Thomas sang "Oh Promise Me" and "Because."

Marnelle Ledgerwood served as maid of honor and Phillip Lisman was the best man. Ushers were Vergal Smith and Frank Simpson. Following a wedding trip to Tucumcari, N. M., the couple will be at home in McLean.

20 Years Ago

According to R. H. Wilson, special agent, census report shows that 2,567 bales of cotton were ginned in Gray County from the crop of 1940 prior to Jan. 16, 1941, as compared with 1,405 bales for the crop of 1939.

The Presbyterian Ladies Missionary Society met Tuesday afternoon with Mrs. Oscar Sullivan, with Mrs. Donald Beall as co-hostess. Mrs. C. V. Hendren had charge of the meeting.

The devotional from Isaiah 25 was given by Mrs. Oscar Goodman.

Mrs. T. A. Massay presided over a short business meeting. Rev. John W. Myrose concluded the book Dangerous Opportunities, following with prayer.

The hostess served refreshments to the following: Mesdames Hendren, Massay, Goodman, John B. Rice, S. L. Humphreys, Boyd Meador, Eva Rogers, E. L. Sitter, Cort Meyers, J. H. Flesher, F. H. Bourland, J. B. Hembree and Mattie Graham, and Rev. Myrose.

Born Jan. 19 to Mr. and Mrs. McCormick of St. Louis, Mo., a 6 pound, 14 ounce girl, named Patricia Ann. Mrs. McCormick is a granddaughter of Mr. and Mrs. C. S. Rice of McLean.

40 Years Ago

The high school boys' basketball team went to Miami Friday afternoon, but on account of car trouble they did not arrive in time to play, so the game was deferred until Saturday morning, and ended in a 19 to 34 score.

The following players participated: Jack Back, Victor Back, Sammie Cubine, Ted Glass and Houston Bogan.

Mrs. Stanfield and daughter, Miss Lorene, gave a shower at their home Wednesday afternoon in honor of Mr. and Mrs. Homer Wilson.

A short program, consisting of music, readings and contests, was rendered, after which the biography of the bride was read by Miss Frankie Mae Upham. The gifts were then presented by Mrs. J. M. Noel.

Refreshments of cake and cocoa were served to the following: Mesdames D. L. Abbott, T. M. Wolfe, R. S. Jordan, R. N. Ashby, W. J. Bridge, C. E. A. Pollard, Jim Back, D. A. Davis, M. L. Moody, T. N. Childress, C. E. Thompson, W. E. Ballard, Walter Foster, C. E. Anderson, F. P. Wilson, J. E. Cubine, Earle Shell, W. W. Wilson, Ira Chambers, Wayland Floyd, Will Haynes, J. M. Noel, J. S. Morse and Homer Wilson; Misses Altha Bridge, Lois Abbott, Ethel McCurdy, Nona Cousins, Opal Davis, Frankie Mae Upham and Gladys Hicks.

JBU

(Continued from Page 1)

smear, you now know why.

And the fact that you readers in town didn't get yours until Friday morning can also be explained by the above.

We hope it doesn't happen again.

—jbu—

If you haven't read this week's "February Bargain Day" ads on Page 3, stop right here and do it!

Now, who says you have to shop out of town?

We'd suggest, though, that you not just read the ads. Go down and take a look at the merchandise offered when the stores open Saturday morning.

CONTEST

(Continued from Page 1)

formed Mrs. Banks that "all of the entries were so good that you should feel proud of winning first place—and we are proud of you."

In her winning entry, Mrs. Banks wrote of the benefits she expects to derive from attending the Management Institute.

SAMPLES OF SOIL TESTED FOR NUTRIENTS

The new soil testing laboratory being operated by the Extension Service in Lubbock is now chemically processing soil samples to determine the plant nutrients that the soil can supply crops to be grown in 1961 and 1962, according to Gray County Agent Foster Whaley.

Each sample is analyzed for reaction (pH), organic matter, available phosphate, available potash, available calcium and soluble salts. Whaley said it should be kept in mind that nitrogen as such cannot be practically determined by a soil test.

Nitrogen fertilizer recommendations are based primarily on the amount of organic matter the soil contains, the crop to be grown along with anticipated yields and the amount and kind of nitrogen carrying fertilizers previously applied.

As stated on the information sheet which must be sent in with soil samples, it is extremely important to avoid sampling in the fertilized bands where phosphate and potash were previously applied.

However, there is no particular hazard involved in sampling areas where nitrogen fertilizers alone have been applied. The soil test does not detect these nitrogen materials.

The nitrogen recommendation given on the lab report is the total amount needed for the particular crop. This makes it very important for the farmer to show on the information sheet the amount of nitrogen already applied to the area concerned.

Soil testing affords the quickest and most reliable method available to Plains farmers for estimating the kind and amount of fertilizer needed for a particular crop.

The fee of \$2 per sample could well be one of the most profitable investments in a farm operation, Whaley pointed out.

Further information on soil testing may be obtained by contacting Whaley, whose office is in Pampa.

BEAUTIES

(Continued from Page 1)

and singing by MHS students Janice Saunders and Gary Kelley.

Sings Own Songs

Kelley, who played the guitar for accompaniment, sang three selections of his own composition—"Homework," "A Kiss" and "Susie Q"—and other popular numbers.

He is the son of Mr. and Mrs. Cecil Kelley, and Miss Saunders' parents are Mr. and Mrs. George Saunders.

In the beauty contest, among the six finalists, in addition to the winners, were Mary Ann Carter, Nancy Hess and Janice Page.

These six and the following were in the top 12:

Pat Vineyard, Judy Wyatt, Donna Graham, Cheryl Girmsley, Nona Ruth Beck and Peggy Sharp.

Other contestants were:

Marilyn Magee, Nina Mangum, Judy Connell, Carolyn Tarr, Sue Adams, Barbara Simpson, Joyce Beasley, Toni Mertel, Chris Rodgers, Phyllis Flowers, Margie Railsback, Janelle Hall, Alta June Watson, Molita Back, Betty Dilbeck, Arlene White, Sue Wright, Emme Grigsby and Patty McIlroy.

REPORT

(Continued from Page 1)

29 per cent and taxes assessed 94 per cent.

"The county rate has been \$1.29 from 1955 to 1960, inclusive, and currently 58 cents of that total represents taxes voted to cover hospital and road bonds and construction and maintenance of roads."

Wilson added that "it is also interesting to note that for each salary dollar paid to employees in 1960 an average of 20 cents of federal taxes were paid for them."

GAMES

(Continued from Page 1)

Clyde Windom, Joel Meacham and Doyal Billingslea, three each, and Dorsey, two.

Jerry Cole led Canadian with 19.

Cindy Gets 9

Cindy Rice scored nine points to set the pace for the Tigerettes, while Janice Page had seven and Judy Wyatt and Helen Smith had six each.

The Tigerettes trailed 10-7 at the end of the first quarter, 23-12 at halftime and 31-19 after three periods.

Only three games remain on the local teams' schedule after Friday. They meet LeFors there next Tuesday, Memphis here on Feb. 10 and Canadian there on Feb. 14.

Law Enforcement Officers Needed;

The Texas Farm and Ranch Safety Council has announced that nominations are now being accepted for three "Rural Heroism Awards." Any heroic act involving personal danger or sacrifice to aid or assist others in time of crisis is eligible for entry, provided the act was performed during 1960. Nominations should be mailed immediately to Heroism Award, Texas Safety Association, 830 Littlefield Building, Austin, Texas.

The U. S. Treasury replaces thousands of savings bonds for people who have had their bonds burned, stolen or destroyed.

Mrs. T. A. Landers was admitted to Highland General Hospital Tuesday after suffering a stroke.

Officers Needed;

"The Texas Department of Public Safety still has an ever-present need for young men who are interested in the field of law enforcement," Maj. Harry Hutchison said this week.

Maj. Hutchison, commander of the department's 60-county Region 5, announced the deadline of Feb. 10, 1961, for applicants who desire to take the next entrance examination.

The next examination to select

I could prove God statistically. Take the human body alone—the chance that all the functions of the individual would just happen is a statistical monstrosity.—George Gallup

Applications Asked

DPS should contact the nearest field office of the Department of Public Safety or the Department's State Headquarters at Box 4087, North Austin Station in Austin.

"Young men between the ages of 21 and 35, and who have the other basic qualifications have an opportunity to receive the best police training in the nation," Maj. Hutchison said.

"Our Training Academy in Austin offers approximately 14 weeks up-to-date methods and procedures of police work. The salary starts when the recruit starts training, and upon graduation from the school all of the proper working tools are furnished each man."

Young men who are interested in becoming patrolmen with the

Mrs. Guy Hester was in Pampa on business Monday.

Spell Quiz

Which of the following is spelled correctly?

Perscription
Prescription
Perskription

(Meaning a direction or rule—as of a medical remedy)

See Classified Page for Correct Answer.

KRAFT

SALAD DRESSING

MIRACLE WHIP

quart

49¢

Here's how to Cut



FOOD BILLS

KRAFT

VELVEETA

CHEESE SPREAD

2 lb box

79¢

nutrition packed MEATS

Pinkney's PICNIC

Shoulders lb **35¢**

Armour's All Meat

Franks cello. pkg. **49¢**

Wright's Family Style

Bacon 2 lb pkg. **\$1⁰⁹**

FRESH! FRESH! FRESH!

FRUITS AND VEGETABLES

California

Tomatoes pound **19¢**

Texas

Carrots cello. bag 2 for **25¢**

California Sunkist

Oranges pound **17¢**

RED

Potatoes 2 lb bag **39¢**

SHORTENING

CRISCO 3 lb can **79¢**

Banquet Apple or Cherry

Frozen Pies 3 for **\$1**

Donald Duck

Orange Juice 46 oz. can **39¢**

Wilson

CHILI 24 oz. can **53¢**

Crackers 2 lb box **49¢**

Household Cleanser

Comet Small size 2 for **27¢** Large can 2 for **37¢**

Austex SPAGHETTI and

Meat Balls 300 can 24 oz. can **25¢ 35¢**

Austex

Chili Beans 3 for **33¢**

Austex BROWN GRAVY and

Sliced Beef 15 oz. can **45¢**

Wilson's Chopped

BIF 12 oz. can **39¢**

Wilson's Luncheon Meat

MOR 12 oz. can **39¢**

SPECIALS GOOD FRIDAY, SATURDAY, FEB. 3, 4, 1961

SHOP COOPER'S

McLEAN, TEXAS

HOME OF SHURFINE MERCHANDISE

We Really Appreciate Your Business and It is Our Aim to Please You. We Strive Every Day to Improve Our Service and Facilities