



W. C. Bowen, officer in charge of Internal Revenue service in Pampa sent us the following story which shows that the size of many families poses a problem to agents answering taxpayers' questions:

One agent asked a taxpayer to also enter the name of his youngest child in the exemption section. "We haven't got around to naming him yet," he was told. "Well," said the agent, "what do you call him?" "We just call him 'Young Punk'."

Although press services and radios called the recent snow storm the worst in fifty years, a lot of folks we know were quite happy about it. Moisture in any form is always welcome up here, according to one of our sources, and the little inconveniences are minor compared to the good that the snow did for the Panhandle. Perhaps the happiest ones of all over the big white blanket of snow were the school students who got an unscheduled holiday and took advantage of it in making ice cream and sleds. Snowmen and snowball fights could be seen almost anywhere you looked the last few days, and sometimes those snowballs found you whether you were looking or not.

City Secretary D. A. Davis showed us some pictures of McLean after the snow of February, 1912. Our most recent snow was just an infant compared to that one. D. A. says that the worst part about it was that he was over here and his overcoat was in Memphis.

"Owen Rhea worked harder than anybody I know to make the Grand Ole Opry benefit show a success here last week," Conald Cunningham said here recently. Conald seems to think we gave him too much credit for a lot of work that Owen did. Anyway the whole bunch did a fine job for the March of Dimes.

### Dr. Joe Suderman To Speak to P-TA On Father's Night

Dr. Joe Suderman will be the featured speaker of the evening when the McLean Parent-Teacher Association has its Father's Night program February 14 at 7:30 in the high school auditorium. Another highlight of this program will be numbers presented by the men's quartet. The quartet is composed of James Massay, George Saunders, Joe Suderman and Leslie Talbert. Mrs. J. D. Coleman and the home economics girls will conduct a nursery while the program is in progress. Mrs. Guy Hester has announced.

### BIRTHDAYS

Feb. 12—Mrs. S. J. Dyer, James Barker Jr., Mrs. J. A. Darnell, Donna Rice, Mabel Ann Lee, Geraldine Florey.  
Feb. 13—Mario Coleman, James McClellan.  
Feb. 14—Mrs. Oba Kunkel, Val Everett Smith, Ruel Smith, Byrd Jones.  
Feb. 15—Mrs. E. L. Minix, Mrs. Georgia Durham, Paul M. Bruce.  
Feb. 16—G. C. Prock, Mabel Back Rives, G. W. Vineyard.  
Feb. 17—Mrs. F. E. Hambright, Mrs. C. L. Woods, E. W. Riley, Mary Ann Smith, Mrs. G. F. Baker, R. N. McMahan, Michael Ernest Patterson.  
Feb. 18—Nancy Dickinson, Joe Crockett, Billy Felton Webb.

### VILLAGE



### GOSSIP (More or Less)

Teen-Town will have a Valentine dance in the American Legion Hall Friday night February 10, at 8 p. m.

# McLean Area Gets Best Snow In Years

## Earl Stubblefield Family Injured In Car Wreck

Mrs. Earl Stubblefield remained in critical condition in North-West Texas Hospital in Amarillo Wednesday from injuries received in a two-car collision on Highway 66 Monday night. Earl and June Stubblefield were reported to be in fair condition as was Decasua Nollez of Memphis, Tenn., driver of the westbound vehicle.

Robert (Bob) and Jerry Stubblefield were not injured seriously and after first aid treatment were released from the hospital Monday night.

Mr. and Mrs. Stubblefield, June, Bob and Jerry were returning to McLean after a trip to Amarillo. June was to be married Saturday to Bryan H. Close of Shamrock.

Mrs. Stubblefield, most seriously injured, received broken ribs and possible internal injuries. Mr. Stubblefield and June each suffered a broken leg. Nollez received neck injuries.

The accident occurred shortly after 8 o'clock Monday night six miles east of Conway.

Texas highway patrolmen gave this report concerning the accident: the car driven by Nollez slid into the path of the Stubblefield car when the driver found his lane partly blocked by snow and applied his brakes.

## JOE H. GREEN SEEKS PCT. 5 J. P. OFFICE

Joe H. Green this week authorized The McLean News to announce his candidacy for election to the office of Justice of the Peace, Precinct 5, subject to the action of the Democratic primary July 28, 1956.

Green was born in Texas and has lived in Gray County for 17 years. He originally came to McLean in 1924, but lived away from here for some time. He has made his home here for the last eight years and lives in the north part of town.

In making his formal announcement, Mr. Green made the following statement:

"To the voters of Precinct 5, I wish to express the desire of your support in the coming election. If elected I promise you that I will fill the office to the best of my ability."

This is the first time that Green has offered himself as a candidate for public office.



R. H. (Rufe) JORDAN seeks fourth term

## RUFE JORDAN ASKS FOR RE-ELECTION

R. H. (Rufe) Jordan has authorized The McLean News to announce his candidacy to the office of Sheriff of Gray County. Mr. Jordan is asking the people for a fourth term.

His statement follows: "In announcing my candidacy for re-election as Sheriff of Gray County, I do so with the thought of giving you the same efficient administration that I have given you in the past. We realize that the business in the office of sheriff has increased considerably in the past five years, especially in the civil work, and we have kept the cost of operation at a minimum compared to the sharp increase in business.

"I have surely enjoyed serving you as sheriff for the past five years and I would like to continue serving the people of Gray County in the same capacity. I, along with the same group of deputies that came into your office with me in 1951, wish to welcome and solicit the support and cooperation of the many people here who have helped us earn for Pampa the reputation of being one of the cleanest areas in Texas. I feel that I am familiar with and understand the problems of the office, and I also have a fine staff of deputies that I am very proud of and we will do our best to give the citizens of Gray County the service, courtesy and protection they deserve.

"Rufe Jordan was born and reared in Gray County, and attended Gray County schools. He finished high school in 1930 and married Miss Viola McAnally in 1933. They have one daughter, Mrs. Ann McMurtry of Silvertown.

"If you are in accord with the policies of impartial law enforcement which have prevailed in the past, I ask your continued support of this program in the future. Thanks in advance for your consideration."

Gordon Wilson returned home Tuesday from Park City, Utah, where he spent two months with his sister and brother-in-law, Mr. and Mrs. Donald Beall.

In 1860, the capital of Missouri was moved to Marshall, Texas.

## 1956 Auto License Tags Now On Sale In McLean

## SERVICES SET TODAY FOR TED STREET

Funeral services for Ted McClellan Street, 65, who died at 4:15 Tuesday, are scheduled to be held at the Church of Christ in McLean at 2:30 today (Thursday) with Harold McClellan officiating. He had been engaged in farming and as a mechanic most of his life.

Mr. Street was born August 28, 1890, in Tennessee and had lived near McLean for 40 years. He died at the home of his sister, Mrs. Raymond Smith, in McLean Tuesday afternoon at 4:15. He had been in poor health for some time.

Survivors are his wife, Beatrice; one sister, Mrs. Smith; two brothers, one granddaughter, and three great-grandchildren.

Claborn Funeral Home is in charge of arrangements and burial will be in Hillcrest Cemetery.

## Glenda Switzer and Earl Moore Named Cage Queen, King

Coach Harold Robinson's McLean Tigers and Tigerettes both scored victories at Shamrock Monday night in make-up games originally scheduled to be played Friday night. The games had been postponed due to heavy snow.

In the girls game the Tigerettes downed the Shamrock sextet 61 to 54.

The Tigers scored 57 points against 52 for the Irish.

In the return engagement played here Tuesday night the Tigerettes came out on the small end of a close score, 55-57.

McLean's Tigers scored a more decisive score Tuesday night than the night before by defeating the Irish 80 to 41.

At the halftime activity Tuesday night the McLean basketball king and queen were announced and presented with gifts.

The Tigerettes chose Harl Moore as the 1955-56 king while the Tigers chose Glenda Switzer to reign as this year's queen.

Gordon Wilson returned home Tuesday from Park City, Utah, where he spent two months with his sister and brother-in-law, Mr. and Mrs. Donald Beall.

In 1860, the capital of Missouri was moved to Marshall, Texas.

## Roy Barker Injured In Oil Field Accident

Roy Barker, local oil driller, was painfully burned Monday morning as he attempted to relight a gas heater on the D'Spain lease about three-fourths mile from Kellerville.

Barker told O. G. Stokely that when he arrived at the lease Monday morning the regular driller had not arrived and that a heater was not burning. As he attempted to light the heater an apparent accumulation of gas flared up, causing painful facial burns to him. He was wearing glasses and they prevented damage to his eyes. He got into his car and drove to the Kellerville store where some salve was applied to his burns and from there he was driven to a Shamrock hospital.

Mr. Stokely visited Barker at the hospital Tuesday and said that although the injury had been painful, it is not expected to be serious. Barker is expected to be released from the hospital in five or six days.

Mrs. Cliff Day was admitted to Highland General Hospital in Pampa on Friday, January 27, for an operation on a broken knee cap. Mrs. Day is much improved and will be discharged from the hospital this week as soon as the stitches are taken out.

Mrs. Cliff Day has been admitted to Highland General Hospital in Pampa on Friday, January 27, for an operation on a broken knee cap. Mrs. Day is much improved and will be discharged from the hospital this week as soon as the stitches are taken out.

Mrs. Cliff Day has been admitted to Highland General Hospital in Pampa on Friday, January 27, for an operation on a broken knee cap. Mrs. Day is much improved and will be discharged from the hospital this week as soon as the stitches are taken out.

Mrs. Cliff Day has been admitted to Highland General Hospital in Pampa on Friday, January 27, for an operation on a broken knee cap. Mrs. Day is much improved and will be discharged from the hospital this week as soon as the stitches are taken out.

Mrs. Cliff Day has been admitted to Highland General Hospital in Pampa on Friday, January 27, for an operation on a broken knee cap. Mrs. Day is much improved and will be discharged from the hospital this week as soon as the stitches are taken out.

Mrs. Cliff Day has been admitted to Highland General Hospital in Pampa on Friday, January 27, for an operation on a broken knee cap. Mrs. Day is much improved and will be discharged from the hospital this week as soon as the stitches are taken out.

Mrs. Cliff Day has been admitted to Highland General Hospital in Pampa on Friday, January 27, for an operation on a broken knee cap. Mrs. Day is much improved and will be discharged from the hospital this week as soon as the stitches are taken out.

Mrs. Cliff Day has been admitted to Highland General Hospital in Pampa on Friday, January 27, for an operation on a broken knee cap. Mrs. Day is much improved and will be discharged from the hospital this week as soon as the stitches are taken out.

Mrs. Cliff Day has been admitted to Highland General Hospital in Pampa on Friday, January 27, for an operation on a broken knee cap. Mrs. Day is much improved and will be discharged from the hospital this week as soon as the stitches are taken out.

Mrs. Cliff Day has been admitted to Highland General Hospital in Pampa on Friday, January 27, for an operation on a broken knee cap. Mrs. Day is much improved and will be discharged from the hospital this week as soon as the stitches are taken out.

Mrs. Cliff Day has been admitted to Highland General Hospital in Pampa on Friday, January 27, for an operation on a broken knee cap. Mrs. Day is much improved and will be discharged from the hospital this week as soon as the stitches are taken out.

Mrs. Cliff Day has been admitted to Highland General Hospital in Pampa on Friday, January 27, for an operation on a broken knee cap. Mrs. Day is much improved and will be discharged from the hospital this week as soon as the stitches are taken out.

Mrs. Cliff Day has been admitted to Highland General Hospital in Pampa on Friday, January 27, for an operation on a broken knee cap. Mrs. Day is much improved and will be discharged from the hospital this week as soon as the stitches are taken out.

Mrs. Cliff Day has been admitted to Highland General Hospital in Pampa on Friday, January 27, for an operation on a broken knee cap. Mrs. Day is much improved and will be discharged from the hospital this week as soon as the stitches are taken out.

Mrs. Cliff Day has been admitted to Highland General Hospital in Pampa on Friday, January 27, for an operation on a broken knee cap. Mrs. Day is much improved and will be discharged from the hospital this week as soon as the stitches are taken out.

Mrs. Cliff Day has been admitted to Highland General Hospital in Pampa on Friday, January 27, for an operation on a broken knee cap. Mrs. Day is much improved and will be discharged from the hospital this week as soon as the stitches are taken out.

Mrs. Cliff Day has been admitted to Highland General Hospital in Pampa on Friday, January 27, for an operation on a broken knee cap. Mrs. Day is much improved and will be discharged from the hospital this week as soon as the stitches are taken out.

Mrs. Cliff Day has been admitted to Highland General Hospital in Pampa on Friday, January 27, for an operation on a broken knee cap. Mrs. Day is much improved and will be discharged from the hospital this week as soon as the stitches are taken out.

Mrs. Cliff Day has been admitted to Highland General Hospital in Pampa on Friday, January 27, for an operation on a broken knee cap. Mrs. Day is much improved and will be discharged from the hospital this week as soon as the stitches are taken out.

Business began to get back on schedule in McLean Tuesday morning as some firms that had been closed since Friday opened their doors to customers for the first time in 72 hours, and the area pulled out of the grip of the heaviest snow storm in several years.

McLean public schools were opened Tuesday morning after being closed Thursday, Friday and Monday, with only 16 pupils absent in high school, Principal Jimmy Payne said.

Few business firms were open here Saturday and even fewer customers showed up to patronize them. Traffic was virtually at a standstill Saturday and Sunday. With traffic halted on Highway 66 west of Groom, all tourist courts and motels were filled and authorities there phoned McLean Saturday afternoon to get local officers to halt traffic here.

The Avalon Theatre opened Monday night after being closed Saturday and Sunday. McLean grocery stores reported the heaviest early week sales ever, since most customers missed the regular week-end sales Friday and Saturday and were stocking up just in case the clearing weather decided to change.

When the snow was at its peak Saturday, most everyone in McLean who got out of their homes at all were either walking, on horseback, or riding tractors. The city maintainers had most of McLean's streets passable by Monday afternoon for cars with chains, although work is continuing to remove the snow not yet melted.

Measurements of from 10 to 17 inches of snow were reported to have fallen at various points within a 15 mile radius of McLean.

Mrs. J. W. Burks, a resident of McLean from 1914 to 1924, died in a Memphis hospital last Wednesday morning at the age of 82.

## Former Resident, Mrs. J. W. Burks, Dies in Memphis

Mrs. J. W. Burks, a resident of McLean from 1914 to 1924, died in a Memphis hospital last Wednesday morning at the age of 82.

Funeral services were held Thursday at 2 p. m. in the First Methodist Church in Memphis with Rev. J. H. Sharp officiating. Interment was in Fairview Cemetery.

Mrs. Burks was a native of Tarrant County, where she was married in 1891. The couple moved to Hall County in 1907. They moved to McLean in 1914 and lived here until 1924. Mrs. Burks had lived in Memphis since the death of her husband. She was also preceded in death by two sons.

She is survived by a daughter, Mrs. Effie McCreath, Memphis; five sons, Dewitt Burks, Amarillo, Lonnie and Clarence Burks, Shamrock, Winfred Burks, Memphis, and Alfred Burks, Tulsa; seven grandchildren and 12 great-grandchildren.

Three persons, two women and one man, were dead Monday after drinking anti-freeze at an Alanreed motel, according to reports from Sheriff Rufe Jordan's office.

Betty Louise Eunice, 24, believed to be from Georgia, died in the motel at 1:30 p. m. Sunday. She was also known as Betty L. McNeil.

Mary Faye Gallagher of Gainesville, Texas, and Charles Gary of Bowling Green, Ky., died between 4 and 5 a. m. Monday in a Groom hospital. Bruce Burkett, sole survivor of the foursome, was placed in Gray County jail at Pampa.

Gary, who talked to Sheriff Jordan Sunday afternoon, gave the following account of happenings just prior to the fatal drinking party: Jordan said Gary told him the four had gotten together in

and Constable J. D. Fish were called. The officers called J. C. Claborn who took Mary Gallagher and Gary to the Groom hospital where they died Monday morning. The body of Betty Louise was brought to McLean and Burkett was lodged in jail at Pampa.

Miss Eunice's body was later sent to Jacksonville Beach, Fla. She is survived by her mother, Mrs. Eva Morris, there.

Miss Gallagher, who would have been 22 Monday, is survived by a brother and sister, W. R. Gallagher of Coffeyville, Kans., and Miss Ann Gallagher of Gainesville. The body was sent to Carrol Funeral Home in Gainesville.

Gary's body was sent to Bowling Green where he is survived by his parents, Mr. and Mrs. Delbert Gary.

## McLean Lions Club Adds Seventeen New Members

### Leads District 2-T1 In Membership Drive

The McLean Lions Club led District 2-T1 in new members in the January drive held throughout the area. District Governor Dub Nelson told the local club at Tuesday's luncheon. McLean Lions added 17 new members during the January drive. Children and Lakeview were second with 12 new members each.

Of the 83 clubs which make up District 2-T1, McLean ranked seventh in attendance with an average of 92% present.

Don Haslam was introduced by Lion Boyd Meador as Cub Lion for the month of February.

A full program was held Tuesday. Program Chairman Amos Page turned the program over to Lion Emory Crockett who presented Ruthie Pagan, Betty Ruth Dilbeck and Douglas Crockett, who gave an entertaining program of accordion and piano music. The youngsters are students of Mrs. Willie Boyett.

Lion Larry Fuller's team will treat the team captained by Lion Amos Page to breakfast at 6:30 Tuesday morning, February 14. Fuller's team brought in only 7 new members during the recent membership drive while Page's team secured 10. The club was divided into two sections during the drive.

Highlight of the meeting was the visit and speech of District Governor W. T. (Dub) Nelson. Lion Boyd Meador introduced Nelson. Nelson installed the new members into the club.

New members added during January include Buck Williams, Jimmie Don Morris, Wayne Moore, E. G. Edwards, J. B. McLeroy, Sammy Haynes, Johnny Haynes, Claud Zevely, Louis Martin Glen Richardson, John Haynes, Arthur Dwyer, Charles Cousins, S. A. Cousins, David Dwight, Rush Turner and James Massay.

The man who wakes up to find himself famous has not been sleeping long—John Newton Baker.

### Hereford Breeders' Show and Sale Set For Pampa Feb. 21, 22

Top o' Texas Hereford Breeders Association has scheduled a show and sale to be held in Pampa, February 21 and 22. F. Jake Hess of McLean is president of the association.

The sale will begin at 1:00 o'clock Wednesday, February 24, featuring 40 choice head, Thirt, bulls and 10 females will be sold.

### Farm Tax Returns Due by February 15

Farmers who passed up the January 15 deadline for filing estimates of 1955 income need to file their final 1955 income tax return by February 15 to avoid penalty, says H. B. Hamill of the Amarillo Internal Revenue office.

For income tax purposes a farmer is one who derives two-thirds or more of his gross income from farming.

### Alton C. Little to Preach at Kellerville

Alton C. Little of Laramie, Wyo., will preach at the Church of Christ in Kellerville Tuesday night, February 14, through Sunday morning, February 19. Services will be held each night at 7 o'clock.

Little is the son-in-law of Mr. and Mrs. Ben Tedder.

### COUNTY DRYS SET MEETING SATURDAY

Rev. O. F. Dingler, associate executive director of Texas Alcohol Narcotic Education, Inc., will spearhead a drive for a dry county at a mass meeting to be held at the First Baptist Church in Pampa next Saturday at 7:30 p. m.

The dry rally is called for the purpose of electing officers and setting up an organization, with the view of a local option election in 1956.

### Myatt Ordained At Abilene Church

Bobby Myatt, son of Mr. and Mrs. C. A. Myatt of McLean, was ordained to the gospel ministry by the Calvary Baptist Church of Abilene January 29.

Myatt was examined by Hollis Yielding, pastor of the Calvary church. Rev. H. B. Terry led in the ordination prayer, and Dr. Clyde Hurst, professor of Bible at Hardin-Simmons University, delivered the message and charge.

Myatt is a senior student at Hardin-Simmons and plans to attend the Golden Gate Seminary in California to continue his study in theology.

He is presently serving as pastor of the Cedar Gap Baptist Church near Abilene.

The word of God will stand a thousand readings; and he who has gone over it most frequently is the surest of finding new wonders there.—James Hamilton.

## Anti-Freeze Drink Kills 3 at Alanreed

Three persons, two women and one man, were dead Monday after drinking anti-freeze at an Alanreed motel, according to reports from Sheriff Rufe Jordan's office.

Betty Louise Eunice, 24, believed to be from Georgia, died in the motel at 1:30 p. m. Sunday. She was also known as Betty L. McNeil.

Mary Faye Gallagher of Gainesville, Texas, and Charles Gary of Bowling Green, Ky., died between 4 and 5 a. m. Monday in a Groom hospital. Bruce Burkett, sole survivor of the foursome, was placed in Gray County jail at Pampa.

Gary, who talked to Sheriff Jordan Sunday afternoon, gave the following account of happenings just prior to the fatal drinking party: Jordan said Gary told him the four had gotten together in

and Constable J. D. Fish were called. The officers called J. C. Claborn who took Mary Gallagher and Gary to the Groom hospital where they died Monday morning. The body of Betty Louise was brought to McLean and Burkett was lodged in jail at Pampa.

Miss Eunice's body was later sent to Jacksonville Beach, Fla. She is survived by her mother, Mrs. Eva Morris, there.

Miss Gallagher, who would have been 22 Monday, is survived by a brother and sister, W. R. Gallagher of Coffeyville, Kans., and Miss Ann Gallagher of Gainesville. The body was sent to Carrol Funeral Home in Gainesville.

Gary's body was sent to Bowling Green where he is survived by his parents, Mr. and Mrs. Delbert Gary.

Wellington, New Zealand, is the southernmost national capital in the world.



# News for Veterans

By Harry I. Boothe

## Questions and Answers on The Korean War GI Bill

Q. Just what is the education and training program of the Korean War Bill?

A. It is a program of furnishing financial aid for schooling and training to eligible veterans who served during the Korean conflict period—between June 27, and January 31, 1955.

Q. Who is eligible for training?

A. A veteran is eligible if he meets all these requirements: (1) a discharge or release from service under conditions other than dishonorable; (2) active military duty any time after June 27, 1950, and before January 31, 1955; and (3) at least 90 days total service, unless discharged sooner for an actual service-connected disability.

Q. Must a veteran have served in Korea to be eligible for training benefits?

A. No. He may have served in the armed forces any place in the world—in the United States or abroad—and not necessarily in Korea.

Q. How much training entitlement does a veteran get?

A. An eligible veteran's maximum period of entitlement is computed on the basis of one and one-half times his length of service between June 27, 1950, and January 31, 1955.

Q. What is the total amount of training a veteran may receive?

A. The maximum is 36 months of training. Since most of the schools are in session nine months out of every year, this usually is enough for a four-year college education.

Q. What about a serviceman who still was on active duty on January 31, 1955. Does his entitlement stop accruing after that date?

A. No. It does not. The law has made an exception for his case. He will continue to build up entitlement, on up to the date of his first discharge or sep-

aration that occurs after January 31, 1955. But he is still limited to 36 months of training.

Q. How does a veteran go about applying for Korea War GI Bill training?

A. He must obtain an application blank which is VA Form 7-1954, and fill it out completely; attach photostatic or certified copies of both sides of his discharge or separation paper (Form DD 214) and send it to the Lubbock regional office, and NOT to Washington, D. C.

Q. What is the next step?

A. If the veteran's application is in order he will receive a Certificate for Education and Training. He then presents this to his school or training establishment, and arranges with the school or establishment to start

his training.

Q. How many times is a veteran allowed to change his program?

A. No more than once, under any circumstances.

Gray County SOIL DISTRICT

## What Becomes of Rainfall

To the average farmer in the Gray County Soil Conservation District the thought might occur, what happens to the yearly rainfall that I receive? How might I prepare my farm to utilize the moisture that falls to a better advantage?

To begin with, suppose we receive 17 inches of rainfall yearly. Of the 17 inches, 5 inches fall in the form of showers and are not effective moisture. 2.2 inches is lost by runoff. 9.8 inches fall in the form of effective rains. Of the effective rains that fall, 6.1 inches moisture is lost by evaporation; 3.7 inches of moisture is available for plant growth.

McLEAN, TEXAS, THURSDAY, FEBRUARY 9, 1956

One of the best things about a very little child is that he never tires you for doing things for him—he is so sure you want to.—Maurice Harspool.

He who receives a benefit should never forget it; he who bestows one should never remember it.—Pierre Charron.

INEZ'S REST HOME  
Nurses on duty 24 hours  
Reasonable Rates  
INEZ SKINNER  
Box 933 Clarendon, Texas  
Phone 10-M

What you do today in regard to conserving your land will be felt in generations to come. "Any nation is just as rich as the soil it depends upon."

Now that the snow and ice has melted and you can get your car out of the garage and drive-ways, we invite you to come down and let us fill it up with our Good Gulf gasoline. You really appreciate your auto more than ever after having to do without it for a few days. It makes good sense that you would want to take care of your car to make it last longer and run better. Regular lubrication is an essential factor to good performance. Good Gulf products have been a consistent leader for years, and you can't buy better today.

We Give Top Stamps  
**WATSON**  
GULF STATION

## Worthwhile Reading...

...for your whole family in the world-famous pages of The Christian Science Monitor. Enjoy Erwin D. Canham's newest stories, penetrating national and international news coverage, how-to-do features, home-making ideas. Every issue brings you helpful easy-to-read articles.

You can get this international daily newspaper from Boston by mail, without extra charge. Use the coupon below to start your subscription.

The Christian Science Monitor  
One, Norway Street  
Boston 15, Mass., U. S. A.  
Please send the Monitor to me for period checked.  
1 year \$16  6 months \$8   
3 months \$4

Name: \_\_\_\_\_  
Address: \_\_\_\_\_  
City: \_\_\_\_\_ State: \_\_\_\_\_ Zip: \_\_\_\_\_

**STRENGTH FOR THESE DAYS**  
The Bible  
Behold, what manner of love the Father hath bestowed upon us, that we should be called the sons of God.—(1 John 3,1.)  
Each of us came into this world filled with the love, the good, of our Heavenly Father. We depart from them through our own wilfulness, selfishness. But even then God continues to love us as His children, ever ready, through our prayers, to forgive and help us.

**Cole's "ALL-PURPOSE" STAND**

FOR TYPING

FOR TV

FOR THE KITCHEN

- Smooth Rolling Casters
- Solid Side Walls
- Fold-Away Leaver

Use it as a typewriter table, "TV" stand or work bench. Has a shelf for books that makes it ideal as a student's desk. Also is mighty handy in the kitchen. Rolls smoothly on four quality casters. Larger and roomier than most tables, it opens up to 39" x 17" and is typewriter desk height. Heavy gauge steel and strong piano hinges. Will last a lifetime.  
Cole gray baked enamel finish.

*The McLean News*



# CARGO OF CANNED GOODS!

Not as Good as You Use—but Better

SHURFINE COFFEE	pound can	83c
LIBBY'S FROZEN STRAWBERRIES	full pound	43c
SHURFINE Halves, Unpeeled Apricots	2 for 303 can	43c
Shurfine Cherries	2 for 303 can	43c
ARROW Brand Pinto Beans	2 lb pkg.	19c
CRISCO	3 lb can	83c
BAKER'S Cocoa	8 oz. 1 lb	33c 65c
HUNT'S Tomato Juice	46 oz.	27c
HUNT'S Tomato Juice	3 for 300 can	29c
Pet Milk	tall can 2 for	25c
COLORED PERK Napkins	2 for	25c
PILLSBURY Cake Mixes	Chocolate, Yellow, White, Orange, Spiced or Brownie Mix	box 33c
SUPREME Crackers	1 lb box	25c
BALLARD or PILLSBURY Biscuits	can	10c
HUNT'S CATSUP	14 oz. bottle	21c
SHURFINE Popcorn	10 oz. can 2 for	33c
Garden Fresh VEGETABLES		
YAMS	Portales Maryland Sweet	1 lb 9c
Potatoes	U. S. No. 1 Russet 10 lb cello. bag	59c
Oranges	Sunkist Navels 2 lbs.	25c
Bananas	Fancy Central America	1 lb 15c
Cabbage	Solid head	1 lb 6c
Finest Quality MEATS		
Bacon	Longhorn Family Style 2 lb pkg.	98c
Chili	Longhorn	1 lb BRICK 39c

Tender Crust Bread at Cooper's - Best Bread in Town!

SPECIALS GOOD FRI., SAT., FEB. 10, 11, 1956

**John COOPER'S FOOD MARKET**  
THE BIGGEST LITTLE STORE IN THE PANHANDLE  
McLEAN, TEXAS PHONE 35



### 'The Road to Denver' Is Avalon Feature Friday and Saturday

The lady emerged from her limousine and entered the glittering Fifth Avenue specialty store. She told the bowing clerk that she wished to order a coat as a birthday present for her dog. "Yes, indeed, ma'am," said the clerk. "What size dog do you have?" "It's on the small side," said the lady haughtily. "I think it would be best if you brought him in," suggested the clerk, "then we could measure him up." "I should say not," said the customer. "It's to be a surprise."

Whether you drive a limousine or just a serviceable, ordinary modern job like most of us, you will do well to use our Chevron products. It's surprising how economical Chevron products are, too. Visit us soon and give them a try.

**Chevron Gas Station**

ODELL MANTOOTH

All the drama, color and action of the west of the 1800's is magnificently brought to the screen in Republic Studios' "The Road to Denver," which shows Friday and Saturday at the Avalon Theatre with John Payne, Mona Freeman, Lee J. Cobb, Ray Middleton, and Skip Homeier in the top roles. Skillfully adapted for the screen by Horace McCoy and Allen Rivkin from Bill Gulick's Saturday Evening Post story, "The Road to Denver," the film tells the story of a conflict between two brothers who vie for the love of the same woman and seek success by different methods. Filmed near St. George, Utah, the breath-takingly beautiful countryside has been strikingly captured in Trucolor by the camera wizardry of Reggie Lanning.

### TAXPAYER SPENDS MORE ON DOG THAN IN-LAW

A taxpayer, called into the district office to explain two of his listed dependents, revealed finally that one was his mother-in-law and the other was his dog. A further check revealed after he had been advised that the animal could not be claimed—that he had spent \$50.00 more on support of the dog than of the mother-in-law.

Artificial optimism alienates more friends than it makes.—F. C. Aspley.

### 'Floating Motel' Appeals To Travelers



Something new for vacationers this year is a modern "floating motel" that is gaining considerable popularity in Florida. After a long day of driving, travelers can pull up to this "cottage afloat" and have a relaxing evening of fishing, swimming or boating. The spacious and comfortable "floating motel" has cooking and sleeping accommodations aboard and is powered by a dependable 40 h.p. Mercury Outboard motor. It's an ideal combination that offers fishing, cruising, swimming and water skiing pleasures to tempt the tired tourist.

### CHURCH CALENDAR

(Churches of this area are invited to run their activity calendars weekly in this column.)

**McLean Methodist Church**  
Each Sunday:  
Church School 9:45 a. m.  
Morning Worship 10:55 a. m.  
Evening Fellowships 6:30 p. m.  
Children, Youth, Adults  
Evening worship 7:00 p. m.  
A cordial invitation is extended to the public, to attend any or all the services. Make plans to attend every Sunday.  
Marvin E. Fisher, Pastor

**First Presbyterian Church**  
Bible School 10 a. m.  
Worship 11 a. m.  
Westminster Fellowship 6 p. m.  
Evening worship 7 p. m.  
Nursery for children  
Ladies Auxiliary 2:30 Tuesday  
The Mission of Our Church:  
To provide the public worship of God; to preach the redeeming love of Christ; to comfort the sorrowing and help the needy; to create the spirit of Christian fellowship; to serve the community, the nation, and a needy world; this is the mission of our church.  
You are invited to all services.  
J. Edwin Kerr, Pastor

**Church of Christ**  
Sunday Services:  
Bible School 10 a. m.  
Preaching 10:50 a. m.  
Communion 11:45 a. m.  
Young People's Classes 5:00 p. m.  
Evening preaching 6:00 p. m.  
Monday Services:  
Men's Training Class 7:00 p. m.  
Wednesday Services:  
Ladies Bible Study 2 p. m.  
Bible classes, all ages, 7:30 p. m.  
We welcome your attendance, investigation, and support. You need the church and the church needs you. "We preach only Christ and Him crucified."—1 Cor. 2:2. "We speak the truth in love."—Eph. 4:15. You are never a stranger but once you come.

Harold D. McColum, Minister

**Church of the Nazarene**  
Sunday Services:  
Sunday School 10 a. m.  
Preaching 11 a. m.  
Evening services 7:30 p. m.  
Wednesday prayer service 7:30 p. m.  
N. F. M. S. every 3rd Wednesday  
Come and Get Your Faith Lifted.  
L. A. Miller, Pastor

**First Baptist Church**  
Sunday:  
Sunday School 10 a. m.  
Worship service 11 a. m.  
Training Union 6:30 p. m.  
Evening worship 7:30 p. m.  
Youth Fellowship following the evening service.  
Tuesday:  
W. M. U. meetings.  
Wednesday:  
Sunday School teachers and officers meet at 7 p. m.  
Prayer meeting and Bible study at 7:30 p. m., followed by choir practice.  
Buell T. Wells, Pastor

**Pentecostal Holiness Church**  
Sunday Services:  
Sunday School 9:45 a. m.  
Morning Worship 11 a. m.  
Youth meeting 6:30 p. m.  
Evening worship 7:30 p. m.  
Mid-week service Wednesday, 7:30 p. m.  
Woman's Auxiliary meets on Thursday, 1 p. m.  
Prayer changes things for soul and body.—1 Thes. 4:23.  
Archie Cooper, Pastor

**Alanreed Baptist Church**  
Sunday:  
Sunday School 10 a. m.  
Morning worship 11 a. m.  
Training Union 7 p. m.  
Evening worship 8 p. m.  
Monday W. M. S. 2 p. m.  
Wednesday:  
Prayer meeting 8 p. m.  
Come and worship with us. Be among those who say, "I was glad

when they said unto me, let us go into the house of the Lord."—Psalms 122:1.

R. M. Cole, Pastor

### Gray County SOIL DISTRICT

In Gray County Soil Conservation District where rainfall is sparse and irregular, windy periods exist, making farming oftentimes hazardous, thereby good conservation practices are needed.

One of the conservation practices is contour tillage. Level contours retard erosion, conserve moisture by permitting the soil to get better penetration. With this same practice, plus maintaining the crop residue on or near the surface, the possibility of wind erosion is reduced. Many farmers practice this to some extent but fail to leave sufficient crop residue on the surface much of the time. The use of chisels and sweeps is ideal for this type of operation.

Land with higher degrees of slope, or irregular slopes, will need a more intensified practice which is terracing. Terraces will control water erosion, also conserve moisture. A little difficulty

in farming is usually experienced at first, but after a year or two they become as common as other practices. However, this additional effort pays off in dollars and cents.

For additional information or technical assistance needed on your farm contact your local board of supervisors, or the Soil Conservation Service, Courthouse, Pampa.

The board of supervisors is in the process of erecting 3x5 foot signs, identifying the district, on all major highways entering the district. You may secure a replica of this sign, 16x24 inches, with your name imprinted thereon at a nominal cost by seeing your supervisor.

The board of supervisors has grass drills, manure spreaders, land leveler, and other implements for your convenience that can be rented at a nominal rate.

**YOUR Rexall PHARMACIST SAYS...**

Take a tip from your dog or cat. They help maintain their health by getting plenty of rest. Of course, they don't have to work, keep house and try to balance a household budget. But if you plan your day more carefully you can get sufficient rest.

And when you are ill bring your prescriptions to us.

**YOUR Rexall PHARMACIST**



# Personal

Mrs. Bill Wilson and daughter, Donna of Dumas visited this week with their parents and grandparents, Mr. and Mrs. Earnest Beck.

J. H. Carpenter of Opelousas, La., is visiting his mother, Mrs. E. L. Minix, in the George Colebank home.

Thomas Trout of Corpus Christi visited from Thursday until Monday in the home of his mother, Mrs. Susie Trout, and family.

Claude Simpkins of Protection, Kans., visited this week in the home of his sister, Mrs. H. A. Longino, and Rev. Longino.

## FEBRUARY CLEARANCE

- \$16.95 DRESSES ..... \$10.95
- \$12.95 DRESSES ..... 8.95
- \$5.98 DRESSES ..... 1.98
- \$6.98 SKIRTS ..... 2.98
- \$4.98 SKIRTS ..... 1.00
- \$6.98 SWEATERS ..... 2.98
- \$3.98 SLIPS ..... 1.98
- 1 Assortment ..... 1.00
- \$2.98 & \$3.98 BLOUSES ..... 1.00
- \$2.98 SHORTIE PAJAMAS ..... 1.00

## Corinne's Style Shop

# Announcing

## The Purchase of the McLEAN LAUNDRY

By John and Peggy Williams

It gives us pleasure to announce that we have purchased the laundry from Mr. and Mrs. Clyde Richardson, effective February 2, 1956.

We are anxious to become acquainted with the people of the McLean area and extend a cordial invitation to each of you to come in soon. We will appreciate the opportunity to serve you.

It gives us pleasure to announce that Tincy Gideon will continue to work with us.

Sincerely,  
JOHN and PEGGY WILLIAMS

## SOMEBODY'S Dream Came True



...And So Can Yours If you're dreaming of a

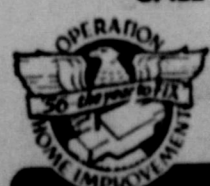
- New Screened Porch
- New Kitchen Cabinets
- Snug New Roof
- Extra Room in the attic
- Play Room in the basement
- New Bath with shower
- Wider Garage

THEN Check THE THINGS YOU NEED!

WE HAVE THE PLANS, "KNOW-HOW" AND MATERIALS PLUS

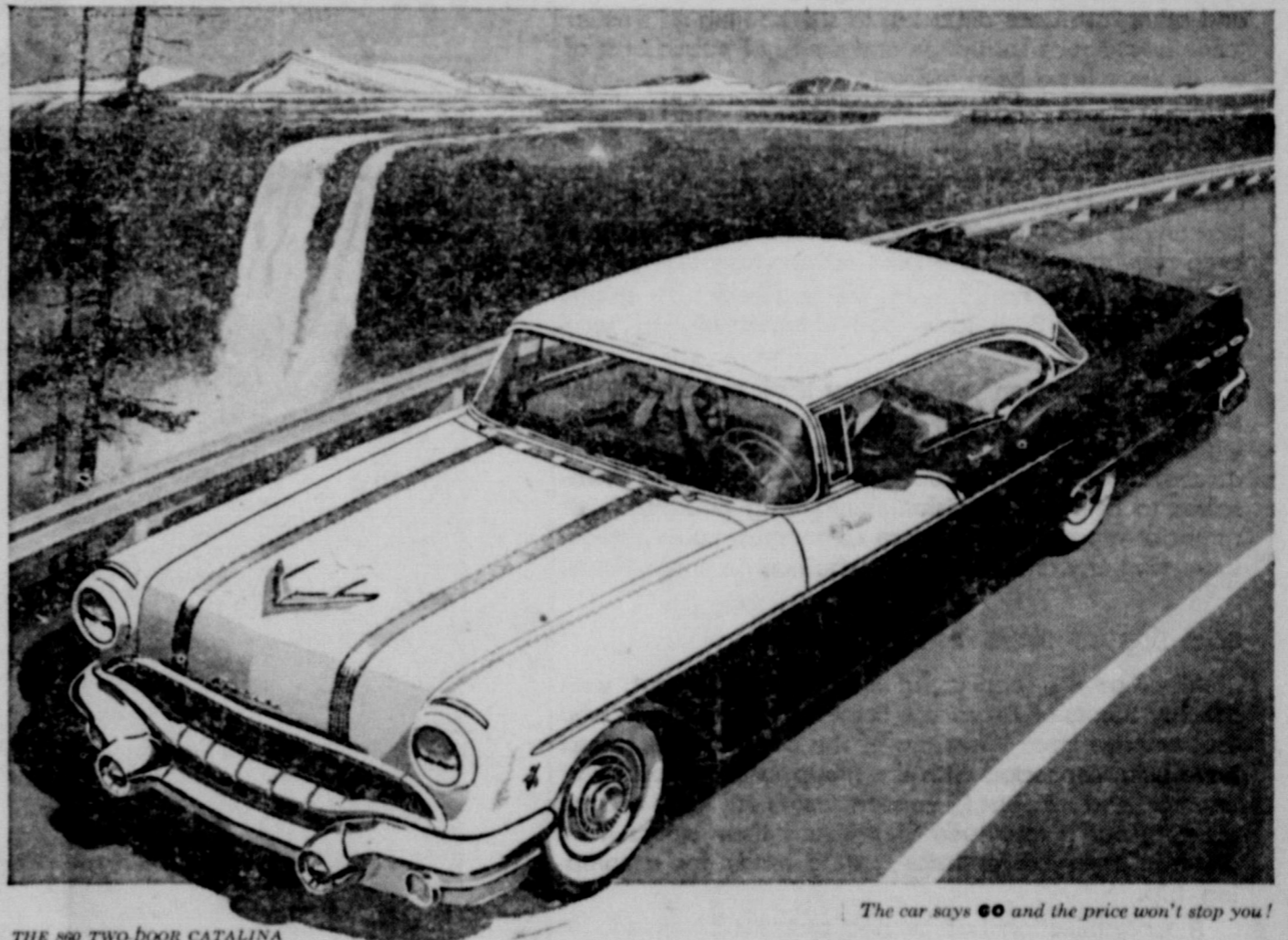
Budget Plan Terms

CALL 0000 FOR FREE ESTIMATES



56 is the year to FIX!

**CICERO SMITH LUMBER COMPANY**



THE \$60 TWO DOOR CATALINA

The car says 60 and the price won't stop you!

## Easy way to break the small car habit!

It's the hardtop buy of the year with the most power and size per dollar of any car in this style.

If you're accustomed to buying in the low-priced-three range, chances are you're paying for Pontiac's size, performance and distinction—but you're not getting it! As a matter of fact, you're not even coming close!

Where else at a price so low can you enjoy possessing the most modern, most advanced power plant

in the industry—the mighty Strato-Streak V-8?

Where else at a price so low can you get the luxury of Pontiac's optional Strato-Flight Hydramatic—America's newest, smoothest automatic transmission?

Where else at a price so low can you find a big 122-inch wheelbase, such luxurious interiors and all the other fine-car features that put you so squarely on even terms with buyers of far costlier cars? Come in and see how easily this heart-lifting Strato-Streak beauty can be yours. Once you do, you'll be out of the small-car class forever!

You can actually buy a big, glamorous Pontiac \$60 for less than you would pay for 44 models of the low-priced three!

# PONTIAC ANDREWS EQUIPMENT CO.

McLean, Texas

# The McLean News

"Serving McLean and Its Trade Territory for Fifty-Two Years"

PUBLISHED EVERY THURSDAY

Bill L. Perkins Editor and Publisher  
Eunice Stratton Shop Foreman

Entered at the post office in McLean, Texas, as second-class matter under Act of March, 1879.

### SUBSCRIPTION RATES

One Year (Gray and surrounding Counties) \$2.00  
One Year (to all other U. S. points) \$2.50

### NOTICE TO PUBLIC

Any erroneous reflection upon the character, standing or reputation of any person, firm or corporation, which may appear in the columns of this paper, will be gladly corrected upon due notice being given to the editor personally at the office at 210 Main St., McLean, Texas. The McLean News does not knowingly accept false or fraudulent advertising of an objectionable nature. Each advertisement in its columns is printed with full confidence in the presentation made. Readers will confer a favor if they will promptly report any failure on the part of the advertiser to make good any misrepresentation in our advertisements.



### IT'S THE PUBLIC'S MONEY!

For many years the Texas Press Association—of which this newspaper, along with a vast majority of all Texas newspapers, is a member—has suggested laws that would require governing bodies of the state, various districts, and municipalities, to open their records to the public.

In many instances, publication of minutes would be required, and in the case of agencies handling public funds, publication of a financial statement would be mandatory.

Some progress has been made in these efforts, but not nearly as much as the importance of the project justifies. There never has been a great deal of opposition to the TPA proposals. But they have been shunted aside for other matters.

Apathy—not opposition—has kept them off the statute books.

Now all Texas is concerned over the numerous, unsavory circumstances that have come to light the past few years. There have been the Duval County revelations; the veterans land investigations; the U. S. Trust and other insurance debacles; to say nothing of smaller local instances of corruption and abuse of public trust of which there have been many.

Men who are in a position to know—such as the Attorney General of Texas—say that none of these things could have gone on for long had there been adequate law governing PUBLIC NOTICE. It is doubtful that any of them would have been attempted, had there been requirements that official actions be made public.

Proper public notice laws will prevent such things in the future. Such laws lead automatically to good government.

This is an election year. If you think public business should be made public, ask each candidate for the legislature how he feels about secrecy in government affairs. Vote for and support men who pledge themselves to help pass legislation requiring publication of financial reports by insurance companies, county treasurers, and any and all persons who handle public funds.

### BOY SCOUTS HAVE A BIRTHDAY

All of us are familiar, at least to some extent, with the Boy Scouts of America. Some of us have boys who are, or have been, members of the organization, others have been connected with the group in one capacity or another, and all of us have seen Scouts scurrying around carrying out a multitude of missions their elders have assigned them, or perhaps getting ready for a camping trip.

The organization has been a source of training, inspiration and fun for quite a while now, for it will observe its 46th birthday in the period from February 6 through February 12.

Scouting knows no restrictions for it provides a program for all boys everywhere. Possessing an inherent appeal for healthy, vigorous, normal American youngsters, as well as outlets for talents of even the handicapped, its successes range from sparsely settled rural areas to the most congested cities.

Boys can always find things to do but if they are below reasonable standards of conduct, youngsters may wind up in trouble. At times like this, Scouting often lends a helping hand to guide youths away from danger.

Today, there are 3,030,000 boys from 8 to 18 years of age who are active in Scouting. Starting out as Cub Scouts, the boys advance to Boy Scouts and finally to Explorer Scouts.

Serving as leaders and "big brothers" are 1,070,000 adult volunteers, who devote many hours to working with the boys, because they want to help them grow into upstanding, useful citizens.

We believe all of our readers will join us in saying "Happy Birthday, Boy Scouts!"

"God has given us two hands—one to receive with and the other to give with. We are not cisterns made for hoarding; we are channels made for sharing."—Billy Graham.

## THE AMERICAN WAY



Ridiculous, to Put It Mildly

40 Years Ago—

### IT HAPPENED HERE

Taken from the Files of Wolfe for County Judge

We are pleased to announce to the public the name of T. M. Wolfe as a candidate for the office of county judge subject to the action of the Democratic primaries in July. Judge Wolfe, as he is familiarly known, served

in this capacity for several terms and that he made a careful and efficient judge has been generally conceded. For the past four years he has been engaged in other work.

He asks the consideration of his candidacy by every voter in the county and earnestly solicits the support and influence of his

many friends promising that if elected, he will use every effort to fill the office in a competent and impartial manner.

**Five Calves in 11 Months**  
Sheriff O. B. Hardin's son, Harry, has a cow that seems to hold the world's record for breeding. Her record is five calves in 11 months and five days. First a pair of twins, then in exactly 11 months and five days, triplets. Four of the calves are still living. One of the last ones died. They all look healthy and if nothing prevents, they will be able to raise the four calves. So far as we ever read, this is a great record for one cow. The young man thinks a great deal of his record breaking cow and is paying particular attention to the calves which, if they live, will be quite a curiosity to behold.

### Public Rest Room

A rest room has been established in Amarillo for the convenience of out of town visitors spending the day in the city. It is located in the Puckett building on Taylor Street, opposite the west front of the court house, and is equipped with everything necessary for the comfort and convenience of guests.

The rest room is under the management of the Federation of Womens Clubs and a matron is in attendance at all times. Visitors to the city, especially ladies and families, are cordially invited to avail themselves of the convenience of this rest room.

### 'Good Morning Miss Dove' Begins Sunday At Avalon Theatre

"Good Morning Miss Dove," Frances Gray Patton's popular novel about a stern schoolmarm in a small New England town, who influenced the lives of a generation of the townspeople, has been translated into a heart-warming motion picture by Twentieth Century Fox. Jennifer Jones stars in the title role with Robert

Stack as her co-star in this CinemaScope deluxe color production which shows at the Avalon Theatre Sunday and Monday.

Producer Samuel G. Engel, Henry Koster, director, and Eleanor Griffin, scenarist, the same trio that recently collaborated on "A Man Called Peter," combined their talents on "Good Morning Miss Dove" and managed to capture a similar appeal in this new screen masterpiece by blending deep emotion, rich color and action into a dramatic structure with strong human interest.

There are smiles and tears aplenty in this screen adaptation of the "Miss Dove" stories that have appeared in magazines at intervals during the last 12 years. The life of Miss Dove, who kept her own passions and compassionate nature hidden under the rather severe exterior she believed necessary for the proper instruction for her pupils, motivates the deeply-moving screen story with a tender sympathy. In one way and another she affects the lives of nearly every living person in the small town.

While no offering can liquidate one's debt of gratitude to God, the fervent heart and willing hand are not unknown to our unrewarded by Him.—Mary Baker Eddy.

McLEAN LIONS CLUB  
1st and 3rd Tuesdays  
12:05 p. m.

McLean Methodist Church  
Visitors Welcome

Dr. Joel M. Gooch

Optometrist

207 N. Wall Phone 800

Shamrock, Texas

Please Phone for Appointments

## AVALON

Thursday:

William Holden, Jennifer Jones

"LOVE IS A MANY SPLENORED THING"  
CinemaScope

Friday, Saturday:

John Payne, Mona Freeman

"ROAD TO DENVER"  
In Tricolor

Sunday, Monday:

Jennifer Jones

"GOOD MORNING MISS DOVE"  
CinemaScope

Wednesday, Thursday:

John Derek, Diana Lynn

"AN ANNAPOLIS STORY"  
In Technicolor

### MODERN FENCE & AWNING CO.

122 North Hobart St. Pampa, Texas

is the distributor of the proven "Dust Stepper" windows manufactured by the Plains Aluminum Industries. Free estimates. Call

OWEN MOORE

Office 4-4431 Home 4-3538

## Packing the biggest power punch in Chevrolet truck history!



### New Chevrolet Task-Force Trucks for '56!

**A short-stroke V8 for every model! Higher powered, higher compression 6's! More power for tight schedules and tough jobs . . . modern power that saves you money every mile!**

You get plenty of "horses" to haul your loads in new Chevrolet Task-Force trucks. Power's been boosted right across the board in modern short-stroke V8's and efficient valve-in-head 6's! There's a V8 for every model, either

standard or as an extra-cost option. And Chevrolet's famous truck 6's have higher than ever compression ratios!

Come on in soon and let us show you all the new advantages you get in these great new Chevrolet trucks for '56!

### Fast Facts About New '56 Task-Force Trucks

HIGH-LEVEL VENTILATION AND CONCEALED SAFETY STEPS!  
A MODERN, SHORT-STROKE V8 FOR EVERY MODEL!  
GREAT NEW FIVE-SPEED SYNCHRO-MESH TRANSMISSION!  
AN AUTOMATIC DRIVE FOR EVERY SERIES!  
MORE POWERFUL VALVE-IN-HEAD SIXES!  
TUBELESS TIRES, STANDARD ON ALL MODELS!  
FRESH, FUNCTIONAL WORK STYLING!

\*V8 standard in L.C.F. models, an extra-cost option in all other models. \*Optional at extra cost in a wide range of models.



**Anything less is an old-fashioned truck!**

## COOKE CHEVROLET CO.

McLEAN, TEXAS

# Society

## Eastern Star Meets Thursday Evening

A regular stated meeting of McLean chapter, Order of the Eastern Star, was conducted last Thursday evening in the Masonic Hall, with Mrs. Louise Dwight, worthy matron, and Clyde Dwight Jr., worthy patron, in charge, according to Mary Webb, publicity chairman.

Men's night was observed and a supper was served in Friendship Hall. During the social hour, games were directed by the men.

The next regular meeting will be held March 1, in Masonic Hall.

## Presbyterian Ladies Meet Here Tuesday

The Presbyterian ladies met at the church Tuesday at 2:30, with Mrs. Claude Powell in charge of the program.

Mrs. Mattie Graham gave the devotional and prayer. "Love Lifted Me" was sung by the members. "Christ, the Way and the Life" was given by Mrs. Snook, and "Power of Silence" by Mrs. E. J. Windom.

Those present were Mesdames Powell, Graham, Snook, Windom, Jess Kemp, J. Edwin Kerr, Burl Glass and Raymond Glass.

Mrs. C. P. Callahan and Mrs. Dusty Rhodes were in Shamrock Tuesday.

Mr. and Mrs. Marvin Grigsby and children of Dumas visited in the home of his mother, Mrs. V. Grigsby.

James Smith of Letors visited Sunday in the home of his parents, Mr. and Mrs. Boyd B. Smith.

Mr. and Mrs. Custer Lowary visited in Lubbock last week in the home of Mr. and Mrs. Roger Powers, and in Artesia, N. M., with Mr. and Mrs. Tom Boyd.

Mr. and Mrs. Frank Kennedy and family of Quail visited with his mother, Mrs. W. E. Kennedy, over the week-end.

## PANHANDLE FISH SPOT GETS LIFT

Renovation of Buffalo Lake, a popular Panhandle fishing spot, will be undertaken this spring, according to the executive secretary of the Game and Fish Commission.

The announcement was made following a conference with four officials of the federal government which created the Randall County lake 15 years ago by damming Tierra Blanca Creek.

It has 25 miles of shoreline, covers about 1,000 acres, and is 25 feet deep at the deepest part. This lake will be treated with

*The McLean News* — McLEAN, TEXAS, THURSDAY, FEBRUARY 9, 1956 — Pg. 5

rotenone in an effort to remove rough fish so that game fish species may be restored in sufficient numbers for the heavy angling traffic.

The executive secretary, announcing the joint project, said more than 75,000 persons fished at Buffalo last year and that thousands more enjoyed boating and water sports.

He said the lake has been described as ideal for bass, bream and channel catfish but that carp, buffalo and other undesirable species have overrun the area.

The executive secretary said Buffalo Lake is surrounded by public land, is served by three roads and is easily accessible. The lake was created originally

by the U. S. Soil Conservation Service and later was taken over by the U. S. Forest Service. Under the joint renovation program, the federal government will furnish the rotenone and the Game and Fish Commission will assign the manpower.

Rotenone is a chemical which, when mixed with water of a lake or stream, temporarily immobilizes fish by paralyzing their breathing apparatus. If returned to fresh water they survive. Thus game fish usually are retrieved from the treated zone and released in fresh water while the rough fish either are salvaged for edible fish or permitted to perish and their carcasses used for fertilizer or some such.

During the fall, Buffalo Lake

has also served as a key waterfowl refuge in the Panhandle. Migrating ducks and geese are attracted to the area and provide substantial sport for hunters over a wide area. The gunners get shots at the game birds as they move to and from feeding grounds. At one time last fall, it was estimated Buffalo housed 750,000 ducks and 50,000 geese.

**CARD OF THANKS**  
May we say thank you from the depth of our hearts to the Fire Department and others who put out the fire in our well house.  
Mr. and Mrs. James Massay

The first power-producing public utility was built in New York City in 1882.

### CARD OF THANKS

We would like to take this method of thanking our friends for the gifts, floral offerings and the many acts of kindness during my recent stay in the hospital. Such kindness and neighborly thoughtfulness can never be forgotten.

Mrs. Jimmy Shelton and family

### Personals

Mrs. Jimmy Shelton is home from the hospital and doing fine.

O. G. Stokely visited Roy Barker in the Shamrock hospital Tuesday.

Little Jimmy Shelton is on the sick list this week with measles.

## SPEAKING OF CARDS

### MICHIGAN

Michigan is a member of the "stops" family of games, so called because the play stops, temporarily or finally, when a card specified to be played next is not available. Simple and fast-moving, it is an ideal "icebreaker" for a social gathering as it accommodates any number of players from three to eight and can be played after the briefest explanation.

There is no pencil and paper scoring; all players are supplied with equal numbers of counters and a player's score is shown by his stock of such tokens (matchsticks will often suffice).

To play the game, you need a regular deck of 52 cards plus four "boodle" cards from another deck: Ace of Hearts, King of Clubs, Queen of Diamonds, and Jack of Spades. These form the layout and are placed face up on the center of the table to form a rectangle.

Before the deal, dealer must place two matchsticks on each card of the layout and every other player must place one on each. One card at a time is dealt beginning with an extra hand or widow to the immediate left of the dealer.

After dealer has inspected his hand, he may discard it face down and pick up the widow in its place. If

he keeps the original hand, he offers the widow for sale at auction to the highest bidder.

Player at dealer's left opens play. He may select any suit but must lead his lowest card of that suit. Cards rank A (high), K, Q, J, etc. Following the lead, the player having the card next higher in sequence in the same suit must play it. Play continues, not in turn, but according to who holds the card next in sequence with the previous card played.

An Ace is a natural "stop"—that is, when played, the sequence is halted and a new sequence begun. Player of the Ace is entitled to make a new lead, if he can make it in a different suit from the previous lead. If not, the right to play passes to the player at his left. Cards as played are not put together in tricks. Each player exposes his played cards in front of himself in one pile.

When a player is able to play the Ace of Hearts, King of Clubs, Queen of Diamonds, or Jack of Spades, he collects all the tokens on the corresponding "boodle" card of the layout. If the tokens on a boodle card are not taken, they remain, increased by following aces, until won.

Objects of play are to collect from the boodle cards and to get rid of one's entire hand. When any player goes out, play ceases, and every other player must pay him one token for every card remaining in his hand.

If you'd like the complete rules for playing this favorite American family game, plus tips on play, send a postcard or letter to Playing Cards, 420 Lexington Avenue, New York 17

### COLE "Posture" CHAIRS

REDUCE OFFICE FATIGUE



- Spring tension back
- All nylon bearings
- Back tilts independently of seat

No. 2810 \$39<sup>95</sup>

Increases efficiency by eliminating fatigue. You can adjust it 4-ways... to fit your body. Molded foam rubber seat, covered with latest Fabri-coated material. Will not stain, crack or peel. Brushed aluminum frame. Solid base equipped with kick plates and top bearing casters. Seat size 16 1/4" x 14 1/4" x 2 3/4".



**"EXECUTIVE" Arm Chair**  
Colorful, impressive, the last word in beauty. Brushed aluminum, satin smooth frame and base. Tilt seat with adjustable tension and adjustable height. Swivel ball-bearing casters. Seat size, 19 1/2" x 17 1/2" x 2 3/4".

### 10 EXCITING COLORS

Granite Gray... Oak Leaf Green... Brown... Saddle Tan... Terra Cotta... Wine... Sapphire Blue and soft pastel shades of Coral... Apple Green... Russet.

No. 2550 \$79<sup>95</sup>

*The McLean News*

**COFFEE** Your Choice pound **91c**

**Biscuits** Your Choice can **10c** | **Cigarettes** All Popular Brands Reg. size carton **\$2.12**



Supreme 2 lb box  
**Salad Wafers 51c**  
Pink Beauty  
Salmon tall can **55c**  
Kuner's 24 oz. jar  
**Sweet Pickles 47c**

Del Monte WHOLE  
Green Beans can **25c**  
Del Monte 303 size  
Spinach 2 cans **29c**  
Del Monte 2 1/2 size  
Peaches can **33c**

### KLEENEX NAPKINS

3 pkgs. **49c**  
All 5c  
3 pkgs. **GUM 10c**

### VEGETABLES FOR VITAMINS

Sunkist 2 pounds **LEMONS 29c**  
Polly Pack 2 pkgs. **CARROTS 25c**  
South Texas **Cabbage 6c**  
Red Delicious School Boy 4 lb bag **Apples 39c**  
Yellow **ONIONS 7c**

**Tomato Juice** Sunny Coast 46 oz. can **19c**

**CATSUP** Del Monte 14 oz. bottle 5 for **\$1.00**

MOTHER'S PRIDE  
**FLOUR** 25 lb. sack **\$1.79**

SPECIALS GOOD FRI., SAT., FEB. 10, 11, 1956

**PUCKETT'S**  
★ GROCERY & MARKET ★

Save \$1.25 on candy stripe denim apron (\$2.25 value) 3 lb **83c**  
ORDER BLANK ON 1 LB OF CAN  
**Spry**

Del Monte Crushed No. 2 can  
**Pineapple 27c**  
Sunshine large cello. bag  
**Hydrox Cookies 35c**



Cudahy Ready to Eat  
Picnic Hams lb **29c**  
Stew Meat lb **19c**  
1 lb roll  
**Sausage lb 23c**



**RATES**  
**CLASSIFIED INFORMATION**  
 Minimum Charge.....50c  
 Per word, first insertion.....3c  
 Following insertions.....1 1/2c  
 Display rate in classified column, per inch.....75c  
 All ads cash with order, unless customer has an established account with The News.  
 — Telephone 47 —

**FOR SALE**  
 For Sale—Love grass hay. See Paul Kennedy or Orville Cunningham. 5-3p  
 For Sale—Complete film developing kit. Call 217W. 1c  
 5-room modern house for rent. Call 76J. 6-tfc  
 For Sale—Fryers, ready to go; fat hens, fresh eggs, and feed sacks. Mrs. Roy McCracken, Phone 1600F3. 49-tfc  
 For Sale—Trash barrels, \$3.00. See Bill Cash. 5-2c  
 For Sale—Hay, alfalfa, cane, sweet sudan. 5 miles north of Alanreed. Drew Word. 1-4p

For Sale—The house we are now living in. See George Terry. Carpets in living room, 1 bedroom and hall. 49-tfc

**MISCELLANEOUS**  
 Sunday Dinner—Baked chicken, shrimp or oysters, either. Howdy Cafe, Sophia Hutchison. 2-tfc

I need listings of ranches, well-watered, that will run 150 cows and calves or more the year around.

All listings appreciated.  
**A. L. CARLTON**  
 Real Estate  
 Friona, Texas

Notice from your Watkins dealer—close out sale on all stock. Prices reduced. L. A. Miller, Phone 157W, McLean. 3-tfc

Will do saw filing. J. E. Smith, Phone 30W. 13-tfc

**FOR RENT**  
 House for rent, furnished or unfurnished. Phone 198J. 2-tfc

For Rent—The J. D. Davenport house. Call or see Mrs. T. E. Crisp, Phone 97W. 52-1p-tfc

For Rent—Four-room modern house. See J. E. Smith or call 30W. 5-tfc

2-room house with bath for rent. See John Mertel. 52-tfc

**POLITICAL ANNOUNCEMENTS**

The McLean News is authorized to announce the following candidates for the office under which their names appear, subject to the action of the Democratic Primary to be held July 28, 1956.

For Representative (87th Dist):  
**GRAINGER McILHANY**  
 (Re-Election)

For Constable, Precinct 5:  
**J. D. FISH**  
 (Re-Election)

For Sheriff of Gray County:  
**R. H. (Rufe) JORDAN**  
 (Re-election)

For Justice of the Peace, Precinct 5:  
**JOE H. GREEN**

**W. C. Bowen Releases Tax Information For Area Farmers**

A large number of farmers are concerned about the self-employment tax law, according to W. C. Bowen, administrative officer in charge of the Pampa office. Amendments to the social security law made farmers subject to self-employment tax during 1955 for the first time. Mr. Bowen has set out the five most common questions asked by farmers and their answers for the information of farmers in the McLean area.

1. Is self-employment optional or mandatory for farmers?  
 No. If the farmer had net

**THINGS TO TALK ABOUT**  
 BY FRANKLIN J. MEINE  
 Editor, American Peoples Encyclopedia

Personal Morgan-Library, New York City, recently acquired the only copy in America of the "Confession Manual" possibly the earliest known printed book, predating the Gutenberg Bible.

The retail sales of toys in this country in 1954 topped the billion dollar mark for the first time in history amounting to \$6 worth of toys for every man, woman, and child.

**PUBLIC CARRIERS SHOWED AN 11 PER CENT DECREASE IN THE LOCAL TRANSIT PASSENGER COUNT IN 1954—ARE THEY LOSING OUT TO PRIVATE AUTOS?**

earnings from self-employment of \$400 or more last year and did not receive any wages subject to the social security taxes on employees, or if such wages were less than \$4,200, he must pay self-employment tax for last year.

2. What form does the farmer need to fill out in order to pay his self-employment tax?

He will use Schedule F listing all farm income and deductions to determine net farm profit or loss. Page 4 of this form is used to figure your self-employment tax. This form needs to be filed along with his income tax return Form 1040.

3. Can a farmer owe self-employment tax and not owe any income tax?

Yes. His net income from farm operations is \$400 or more and the total amount of his exemptions is more than his net income, then he would be required to pay self-employment tax but would owe no income tax.

4. What is the self-employment tax rate for farmers?

If, in the taxable year, he receives no wages subject to social security taxes and his self-employment net earnings from farming for the year are at least \$400 and no more than \$4,200, the entire amount is subject to the 3% rate.

5. Are farm rents, as such, subject to self-employment tax?

No. If the landowner rents his land, receiving a crop share or the proceeds thereof, under the ordinary crop-sharing arrangement, he is considered to be receiving rentals from real estate, and such rentals are excluded from net earnings for self-employment.

To find a career to which you are adapted by nature, and then to work hard at it, is about as near to a formula for success and happiness as the world provides.—Mark Sullivan.

**Baby's Winter Bath Sessions Call For Special Preparations On Mom's Part**



When the mercury hovers around the ice-making point and even indoors the air seems chill and damp, baby's bath routine calls for special preparations. Drafts nowadays need be no problem; they merely call for a strategically-placed screen and most nurseries have one.

Some mothers prefer shifting the baby's bath hour until late afternoon, when the house has had a chance to get thoroughly warmed. Many homes have small electric heaters kept handy to offset heat deficiencies. Or perhaps Mom will use a small enamel tub that can be moved to a warm kitchen for this daily session.

It's a good idea to leave baby in her crib until every single bath item is assembled. Arrange the young one's clean clothes, diapers, her creamy white baby lotion, sterile cotton balls, soap, powder and washcloth in easy range, so the bath ritual can speed along.

Especially in winter you may want an extra receiving blanket spread on the table and a huge absorbent bath towel to wrap Her Highness in as she comes out of the water.

In the chapping weather so prevalent during winter months it's important to do a thorough drying job after the tubbing.

Then pat baby all over with creamy white baby lotion, paying strict attention to all the tiny folds and creases in neck, legs and around the wrists. This soothing and lubricating lotion will help ward off uncomfortable chafes and chapping.

By giving baby regular beauty treatments with baby lotion before and after outings as well as at bath-time, mom gives herself a beauty treatment, too, because the same lotion that keeps baby's skin velvet-textured also proves a beauty bonus for Mom's hands.

**THINGS TO TALK ABOUT**  
 BY FRANKLIN J. MEINE  
 Editor, American Peoples Encyclopedia

THE RATE OF SERIOUS CRIMES IN THIS COUNTRY WAS THE HIGHEST IN HISTORY IN 1954. 3rd THE POLICE KEPT UP. CRIMINAL CAPTURES AND CONVICTIONS ALSO INCREASED.

GOING AS SLOW AS ONE MILE PER HOUR, A MECHANICAL WHEEL SPRING CAN BE LID. HAS REPLACED THE AXLE ASSEMBLY IN THE ARMY.

WORLD OF STEEL! HELP, HELP!

THE UNITED STATES CONSUMED MAKE STEEL IN 1954 (ABOUT 78 MILLION NET TONS) THAN IT PRODUCED, ABOUT 62 MILLION TONS.

**Financial Statement, Gray County, Texas**  
**SUMMARY OF BALANCES, RECEIPTS AND DISBURSEMENTS**

	Balances 1-1-55	Receipts	Disbursements	Balances 12-31-55
General	\$ 27,991.88	167,177.81	168,145.96	27,023.73
Salary	9,792.85	135,140.05	152,092.28	12,840.62
Jury	7,825.28	4,279.71	6,034.00	6,070.99
CH & J	4,333.60	53,018.48	44,603.00	12,749.08
R&B	49,943.61	379,616.05	370,875.24	58,684.42
R&B No. 1	12,912.40	40,854.94	47,440.41	6,326.93
R&B No. 2	407.37	58,572.22	58,001.69	977.90
R&B No. 3	11,368.70	90,095.25	94,477.78	6,986.17
R&B No. 4	2,933.14	51,623.14	54,512.28	44.00
R&B No. 4	7,300.17	44,510.11	48,984.70	2,825.58
FM & LR	98.69	61,902.74	54,491.74	7,509.69
Lateral Rd.	6,551.81	16,358.85	0.00	22,910.66
Bond I&S	41,572.28	363,917.25	357,908.60	47,580.93
R&B I&S	3,249.25	24,487.14	22,770.00	4,966.39
Hospital I&S	5,760.75	20,307.21	17,740.00	8,327.96
Hospital I&S	8,756.74	62,017.64	60,467.66	10,306.72
Special	17,766.74	106,811.99	100,977.66	23,601.07
Perm. School	436,756.33	530,311.54	472,650.23	494,417.64
H. G. H.	7,938.11	41,620.25	45,135.00	4,423.36
H. G. H.	90,815.30	537,386.31	513,421.89	114,779.72
	535,509.74	1,109,318.10	1,031,207.12	613,620.72
		1,959,663.39	1,860,968.62	
Less Transfers		556,175.23	556,175.23	
	644,792.37	1,403,488.16	1,304,793.39	743,487.14
S. S. Fund	13,573.92	19,607.28	19,399.91	13,781.29
Law Library	255.00	1,450.00	1,205.50	499.50
Hospital	0.00	352,500.00	2,448.51	350,044.23

\* Closing balances include U. S. Treasury Notes of \$49,731.25 and \$298,387.50, respectively

**BONDED INDEBTEDNESS, GRAY COUNTY**

R&B Series	Date	Interest Rate	Full Issue	Maturity Date	Outstanding
A	5-15-31	5.50%	\$ 97,000.00	8-1-31/56	6,000.00
B	5-15-31	5.50	150,000.00	3-1-31/58	24,000.00
C	5-15-31	5.50	380,000.00	4-1-31/57	38,000.00
1948	10-1-48	2.50	30,000.00		
		2.25	95,000.00	12-10-49/57	30,000.00
<b>HOSPITAL</b>					
'46	6-1-46	1.50	360,000.00		
		1.25	140,000.00	2-1-47/61	200,000.00
'51 Ref.	2-1-51	1.50	30,000.00		
		1.75	75,000.00	2-1-52/57	40,000.00
'55	9-1-55	2.25	350,000.00	3-1-56/65	350,000.00
					688,000.00
<b>NON-VOTED DEBT</b>					
'51 R&B	8-15-51	3. %	138,500.00	2-15-52/60	83,000.00
					83,000.00
					771,000.00

Attest  
 R. C. WILSON, County Auditor

Signed: BRUCE L. PARKER,  
 County Judge, Gray County, Texas

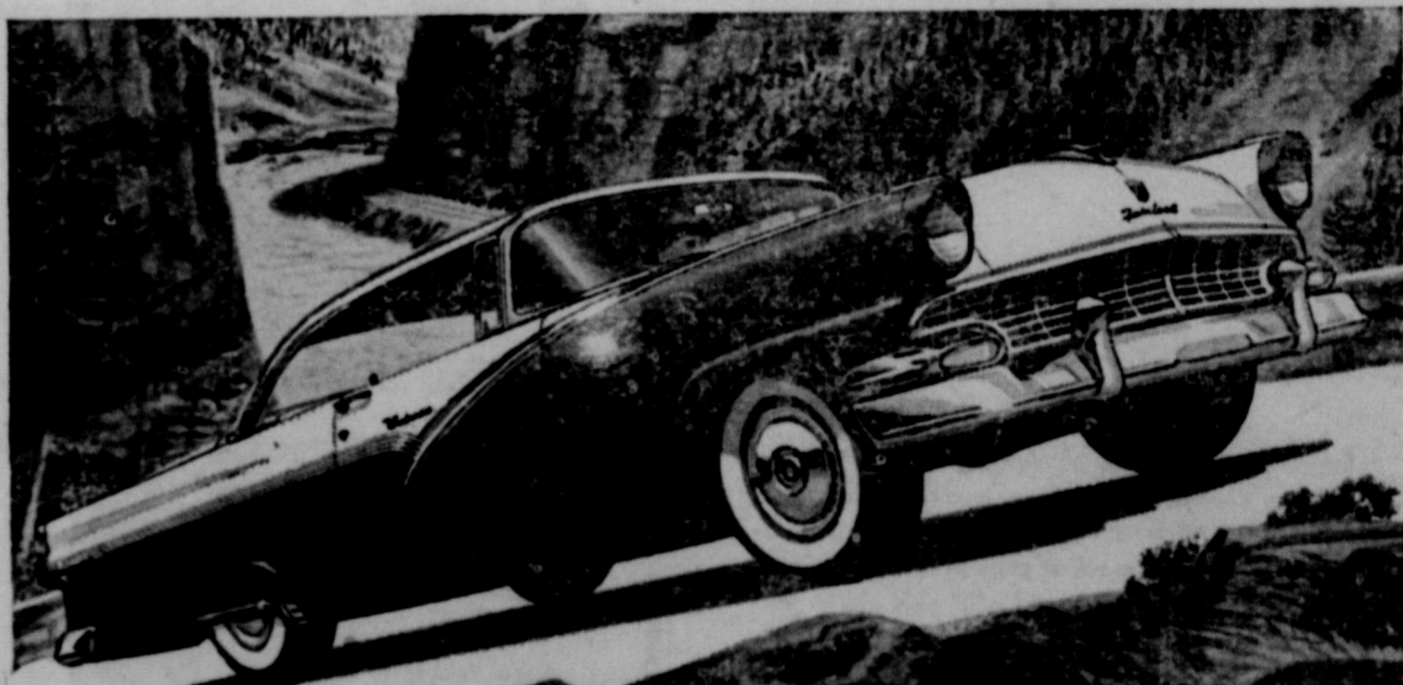
*In the low-price field*  
**Most Power**  
**Lowest Price**  
**Largest Seller**

Ford's Thunderbird V-8 engine (in Fairlane and Station Wagon models) is the biggest, most powerful "8" in the low-price field at no extra cost!

In just about every model, the '56 Ford, equipped as more and more people want it, is the lowest-priced\* car built in America!

Performance has made Ford's V-8 the largest-selling "8" in the world. Latest figures show more people bought Ford V-8's in 1955 than the two other low-priced eights combined!

\*Based on comparison of suggested list prices.



**'56 FORD**

Get the most "GO" for the least Dough during our **FEBRUARY SALES JUBILEE**

Come in for a Test Drive TODAY!

**JOE SMITH MOTOR CO.** Your Friendly Ford Dealer