

The McLean News

Serving the Interests of McLean, Southern Gray County and Surrounding Communities

Price 10c

Vol. 61

McLean, Gray County, Texas, Thursday, December 10 1964

No. 50

1.11 INCHES MORE RAIN IN CITY GAUGES

Total for Year
Measures Highest
Here Since 1961

A steady shower splash- ed down on McLean Wed- nesday night and early this morning to halt once again the harvesting of cotton in this area.

Pete Fulbright, city sup- erintendent, said today that Weather Bureau gauges he maintains measured 1.11 inches of rainfall this morn- ing.

This brings to 20.92 inches the total received so far in McLean this year—the highest since 1961.

22.37 in 1960
20.92 in 1961

In 1960, McLean finished the year with 32.37 inches; in 1961, 31.36; in 1962, 19.60, and in 1963, 54.

McLean got its first measurable snow-fall last Thursday, and this plus the light rain which fell the preceding day brought .08 inch.

Low temperature for the past week was 12 which was recorded on Friday. The high was 57, occurring on Tuesday.

| THE WEATHER | | |
|-------------|------|-----|
| | High | Low |
| Thursday | 23 | 18 |
| Friday | 25 | 12 |
| Saturday | 35 | 14 |
| Sunday | 45 | 24 |
| Monday | 49 | 25 |
| Tuesday | 57 | 28 |
| Wednesday | 55 | 28 |

Factory Employees To Furnish Room

Employees of the Marie Founda- tion factory in McLean have volunteered to furnish a patient room in the new McLean Hospital.

Mayor John C. Haynes said this week that this brings to 17 the number of patient rooms furnished by local individuals, churches, or- ganizations and groups.

Cost for furnishing facilities for each patient has been estimated at \$950.

Work on the hospital is progress- ing rapidly and is expected to be completed this month. The opening date has not been announced.

Bill Robinson, administrator of Highland General Hospital in Pampa, was to have interviewed job applicants for the local hos- pital last Thursday.

But the interviews were post- poned because of inclement weather. Applicants will be notified by Robinson when the new date for interviews is set.

Christmas Trees Are Still on Sale

The Lions Club's annual Christ- mas tree sale is continuing. Lions President Cliff Day said Wednesday.

Day urged residents to buy their trees early for best selection.

The trees are being sold in the building which formerly housed Lowell's Ladies and Children's Shop.

Christmas Holidays To Begin on Dec. 22

Christmas holidays for the Mc- Lean school system will begin at 1 p. m. on Tuesday, Dec. 22, ac- cording to Supt. Jack Riley.

Riley said classes will be re- sumed at 8:25 a. m. on Jan. 4.

Classes are to be dismissed at 1 p. m. next Wednesday for the monthly faculty meeting, the su- perintendent said.

Wins Honorable Mention

Crockett Named To All - State Squad

Dickie Crockett, McLean Tiger fullback and one of the top ground-gainers in the past football season, has won honorable mention on The Fort Worth Star-Telegram's Class A All - State Team.

Crockett, who carried for more than 1,600 yards in the 10 games played by the Tigers, was listed "among the stronger candidates" for the dream team.

The McLean youth earlier had been named to the fullback position on the All-District 2-A Team by unanimous vote of district coaches.

There were no District 2-A players on the Star-Telegram's first team, but three others received honorable mention with Crockett.

Charles Smith, White Deer tack- le; Wayne Barton, Wellington quar- terback, and Ed Kleibrink, White Deer fullback, were listed among players receiving honorable men- tion.

Crockett completed an illustrious career with the McLean Tigers last spring.



Crockett completed an illustrious career with the McLean Tigers last spring.

WINDOM HITS 32 AS TIGERS LOSE TUESDAY

Tigerettes Win 42-40 Here Over Sanford-Fritch

Eddy Windom found the basket here Tuesday night as he scored 32 points in a contest with the Sanford-Fritch Eagles.

But it made no differ- ence, really, for the visitors used a big 24-point fourth period to win by a narrow 49-46.

However, the McLean Tigerettes won over San- ford-Fritch in a close one 42-40.

Windom pitched in 13 field goals and six free throws to rack up his big total.

Starting today, the Tigers are in a three-day tournament at Samnorwood.

Against Sanford-Fritch Tuesday night, the Tigers were tied with the Eagles 9-9 when the first quarter ended, and pulled ahead to a margin of 23-18 at halftime.

Lead After Three After three periods, the Bengals were even farther out in front—37-25.

George Green scored seven points Gary Hester three and Dickie Crockett and Ronnie Hunt two each.

Jan Bailey counted 19 points in leading the Tigerettes over the Eagles. Barbara McCurley added 17 and Sharon Goldston six.

As in the boys game, the girls were deadlocked at 9-all at the close of the first period of play. At the intermission Sanford-Fritch led 15-13, but by the end of the third quarter McLean had fash- ioned a margin of 34-26.

Girls Win Two The Tigerettes won two out of three games in last weekend's Shamrock Tournament, defeating Mobeetie 28-20 and Shamrock 34-30, but falling in the opener last Thursday to Clarendon 57-31.

Some of the local players were shaken up before the game, when the school bus in which they were riding overturned between McLean and Shamrock. icy road conditions were blamed for the accident, in which there were no serious in- juries.

The Tigers lost to Shamrock 63-31 in their first round of tourna- ment action last Friday, but then defeated Lefors 48-32. In their final game of the tournament, the Tigers were blasted 74-49 by Briscoe.

Funeral Friday For R. F. (Shorty) Day

Last rites for R. F. (Shorty) Day of Hereford will be at 2:30 p. m. Friday in the Hereford Methodist Church.

Mr. Day died at 10 p. m. Tues- day of injuries suffered Nov. 27 when he was crushed between a house and a truck.

A former resident of McLean, he was a house mover.

Surviving are his mother, Mrs. Mattie Day McLean; a brother, Elmer Day, McLean; and a sister, Mrs. Bessie Hale, McLean.

Christmas Program Thursday for P-TO

The McLean P-T-O will meet next Thursday at 4 p. m. in the grade school cafeteria.

A Christmas program will be presented by the first, second and third grade students, under the direction of their teachers, Mrs. Cloyce Biles, Mrs. Sinclair Armstrong, Mrs. Norma Jones and Miss Leona Forbes.

The public is invited to attend the program.

Public Meeting Is Set Here Tonight

Every McLean resident is invited and encouraged to attend tonight's public meeting to discuss the possi- bility of a new industry here.

The meeting is scheduled for 7 p. m. in the McLean High School auditorium.

A representative of the company which has shown an interest in locating a plant here will be on hand to discuss the product proposed for manufacture.

The name of the company and the

product are being withheld at this time, since several other communities in the Panhandle already have in- dicated an interest in the industry.

Four members of the city commis- sion met with the president of the company recently, and saw a work- ing model of the product proposed for manufacture here.

The company president will bring the model with him here for demon- stration at tonight's meeting.

RUSH IS ON AT CITY GIN

Cotton Harvest Gains Momentum

Cotton moved from area fields in a near-continuous stream this week, as farmers rushed to complete their harvest before wet weather returns.

As of noon Wednesday, more than 250 bales had been turned out at the McLean Gin, and Manager B. F. Halland said there were 10 to 12 more waiting on the gin yard.

"We're just trying to keep up," Halland commented.

The gin was in operation until after midnight Tuesday, and this is expected to be repeated as long as the good harvesting weather holds.

Through last Friday, a total of 45,000 samples had been classed at the Memphis cotton classing sta- tion. Some 18,000 of these were classed last week.

Attesting to the lateness of the crop this year is the fact that on this date in 1963 the Memphis of- fice had classed 94,000 samples.

The weather and method of har- vesting is telling on the cotton's grade, according to K. E. Voelkel, office manager.

White grades decreased from 40 to 30 per cent and light spotted and spotted grades increased from 60 to 70 per cent. Strict low middling was the predominant grade in the white cotton, with 16 per cent, and middling light spotted prevailed in the colored cotton with 38 per cent.

Staple length ranged from 7/8 to 1 3/32 inches. Predominant length continued to 15/16 with 76 per cent.

Cotton prices the latter part of last week were slightly lower than the week before, and cotton was a little more difficult to sell. Average prices have a micronaire reading of 3.5 to 4.9 were:

Strict low-middling, 15/16, \$27.15 per 100 pounds; middling light spotted 15/16, \$27.85; strict low mid- dling light spotted 15/16, \$26.85.

Funeral Friday For R. F. (Shorty) Day

Last rites for R. F. (Shorty) Day of Hereford will be at 2:30 p. m. Friday in the Hereford Methodist Church.

Mr. Day died at 10 p. m. Tues- day of injuries suffered Nov. 27 when he was crushed between a house and a truck.

A former resident of McLean, he was a house mover.

Surviving are his mother, Mrs. Mattie Day McLean; a brother, Elmer Day, McLean; and a sister, Mrs. Bessie Hale, McLean.

Christmas Program Thursday for P-TO

The McLean P-T-O will meet next Thursday at 4 p. m. in the grade school cafeteria.

A Christmas program will be presented by the first, second and third grade students, under the direction of their teachers, Mrs. Cloyce Biles, Mrs. Sinclair Arm- strong, Mrs. Norma Jones and Miss Leona Forbes.

The public is invited to attend the program.

Funeral Services For Mrs. Major Held Here on Wednesday

Mrs. Elizabeth Major, 82-year-old McLean woman, died at 4:15 p. m. Monday in Coon Memorial Home in Dalhart.

Funeral services were held Wed- nesday afternoon in the First Baptist Church. Rev. Dan Beltz, pas- tor, officiated and was assisted by Rev. J. Edwin Kerr retired min- ister here.

Interment was in Groom Cem- etery under the direction of Lamb Funeral Home.

Mrs. Major had made her home at the Coon Memorial Home for the past two years.

She was born on Oct. 10, 1882, in Osage and moved to McLean from Groom in 1951.

She was married to J. C. Major on July 10, 1899. Mr. Major pre- ceeded his wife in death in 1947.

Mrs. Major was a member of the First Baptist Church here.

Surviving are two daughters, Mrs. Jess Kemp, McLean, and Mrs. Joe Bizub, Kings Beach, Calif.

Pallbearers were Edwin Howard, Shelton Nash, Claude Powell, Jess Finley, J. E. Langham and John B. Rice.

Another Outstanding Jubilee Promised This Saturday Night

The lineup of talent for Satur- day night's regular Derby Town Jubilee promises another outstand- ing show, according to Conald Cunningham, director.

Curtain time will be 7:30 p. m. in the high school auditorium.

Due to perform are many of the regulars and a new face or two.

Jud Henley, brother of Buck Henley of McLean, will appear, Cunningham said. Jud is in the Air Force and only recently re- turned from overseas.

Mr. and Mrs. Cecil Gillespie of Shamrock have accepted an in- vitation to be on the program, as have Jack Haney and his musical group from Borger.

Rogers Special Guest Bill Rogers of Amarillo will be a special guest.

Others performing will be: The Buddies of Shamrock, Becky Durning of Skellytown, Alice and Shirley West of Groom, Bill Henley and Gene Price of Shamrock and Buck Henley, Carl Lee Henley, Cunningham and M. K. Marshall of McLean.

JUNIOR CLASS PLAY TUESDAY

Set for 7:30 In Auditorium

"The Mouse That Roared," this year's McLean High School junior class play, will be presented at 7:30 p. m. next Tuesday in the school auditorium.

Mrs. Jon Ann Dwyer, class spon- sor, is directing the play, which is being presented by arrangement with Dramatist Play Service.

The public is invited to attend. Student director of the production is Martina Gelsler, prompter is Roberta Suttle and usher will be Dora Cunningham.

Members of the cast include: Gloriana, played by Barbara Mc- Curley; Mary, Darrrel Winegart; Jane, Jean Bible; Fran, Martha Brown; Pam, Sue Beck; Ann, Sarah Coleman; Norma, Sharon Goldston; Helen, Joyce Saunders; Page, Janice Barker; Miss Johnson, Margie Pak- an; Miss Wilkins, Frances Caw- field; Mrs. Reimer, Gloria Allen.

And Jill, Lana Grogan; Debbie, Carolyn Willoughby; Mrs. Boscom, Linda Evans; Students, Linda Lis- man, Marilyn Williams; Amanda Dalton and Marie Holloway; Tully Bascom, Jimmy Keen; Count Mout- joy, Gary Hester; David Benter, Ernie Fry; Mr. Beston, Doug Rich- ards; Professor Kokintz, Val Sharp.

And President, Doyle McCurley; General Snippet, Keith Morris; Will Tatum, Kelly McClellan; Tom Mull- igan, Frank Robinson; Soldiers, Jim Stevens, George Green, Phyllis Bench and Robert McCabe.

CLARENDON BOYS, LELA GIRLS WIN ALANREED MEET

Clarendon eighth grade boys and Lela's girls took home the champi- onship trophies from the Alan- reed Invitational Basketball Tourna- ment last weekend.

Clarendon defeated Alanreed 31-24 in the boys finals Saturday, while Lela Edged Samnorwood 29-26 for the girls title.

Alex Rameriz, Alanreed eighth grader, was the outstanding play- er in the boys championship tussle. The youngster scored 21 of his team's 24 points in the game.

Alanreed Supt. George Smith said the tournament was a success despite inclement weather on the opening day last Thursday. A large crowd was on hand for the finals Saturday.

Tournament results by days were:

| THURSDAY | Girls |
|--|-------|
| Lela 32, Alanreed 31; Lefors (See CLARENDON, Page 2) | |

Christmas Program Dec. 21 at Alanreed

The annual Christmas program will be presented on Monday, Dec. 21, in the Alanreed School cafete- rium.

George Smith, superintendent, said the public is invited to attend the program, starting at 7 p. m.

Mrs. Mary Durham is director. Classes will dismiss for the Christmas holidays at 3 p. m. Dec. 22, and will resume on Jan. 4.

Babson's Forecast To Be Published In Dec. 31 News

The McLean News will publish "Babson's Business and Financial Forecast for 1965" on Dec. 31.

We are calling this feature to your attention because 1965 will be a year of many changes.

This Babson Forecast will con- tain predictions covering such im- portant topics as:

Business volume, impact of ex- cise-tax cuts, developing profits squeeze, war or peace in the East, Britain's plight, world-wide credit problems, China on the nuclear march, farm-price prospects, silver coinage crisis and inflation vs. de- flation.

The Babson Forecast holds the best and highest record for annual forecasts on U. S. future business, with the remarkable average of the past years by being 88 per cent correct.

McLean News subscribers are encouraged to read this widely publicized forecast of conditions in 1965.

SITTER SALE BULLS WIN

Evan L. Sitter of McLean made a clean sweep of individual honors for Hereford bulls at the sixth annual Rolling Plains Bull Sale held in Clarendon last week.

Six bulls from the Sitter herd were named grand champion and reserve champion bulls in the show held before the auction.

Clyde Magee of McLean entered the pen of three weaner bull calves which won first place, and George Saunders, also of McLean had the reserve champion in the Angus division.

Hugh Castleberry of Alanreed took reserve championship honors with his bull in the Galloway division.

The grand champion Angus was owned by T. W. McAnear of Clarendon and the grand champion Galloway by H. A. Green.

Sold

A total of 67 bulls were sold at the annual sale—46 Herefords, 11 Angus and 10 Galloways.

Sitter's grand champion Hereford was sold for \$430 to V. W. Bentley of Lela and the reserve champion for \$435 to Mrs. Vera Dickey of Memphis.

Magee's pen of three weaner bull calves were sold to Craig Morris of Clarendon for \$205 per head. Saunders' Angus reserve champ went to Butch Brown of Groom for \$390, and Castleberry's reserve champion Galloway went to G. C. Applewhite of Lockney for \$295.

Has Heart Attack

Creed Lamb, Sr., father of Creed Lamb Jr. of McLean, is in Mem- phis Hospital after suffering a heart attack Tuesday. He was reported to be showing some improvement Wednesday.

FACTORY FACTS

MARIE FOUNDATIONS REPORT

| | |
|---------------------|-------------|
| Number of Employees | 261 |
| Production—Bras | 1,674 dozen |
| Girdles | 1,226 dozen |

NEWS ITEMS FROM ALANREED

By MRS. CECIL CARTER

Mr. and Mrs. F. L. Haberle of Jacksonville, Texas, spent last weekend in the home of the Bob Blacks.



Helping
You Look
Your Best

ALBERTA'S
HAIR FASHIONS
Dial GR 9-2658

SPECIAL ON BERMANENTS
Every
Tuesday & Wednesday

Mr. and Mrs. Cecil Carter were in Pampa on Saturday and visited with the Jerry Carters and little Miss Jerri Ann, who was ill.

Mr. and Mrs. Bill Crisp of Lockney were here on business the last of the week.

Jay Ben McMillen was in Amarillo over the weekend.

Mrs. George Smith attended the All Clubs Home Demonstration Christmas party in Pampa on Dec. 1.

Mr. and Mrs. A. R. Malone of Pampa visited with the Elmer Malone and Curg Hill families over the weekend.

H. H. Worsham entered Groom Hospital Monday for surgery and medical attention.

Mrs. L. T. Goldston and Jerry

were in Amarillo on Monday for a checkup on Jerry's eyes. He had undergone surgery on his eye last week.

J. T. Goldston was in Wellington on Monday.

Visiting with Mrs. Faye Oakley Sunday were Mr. and Mrs. George Oakley and sons of Stratford and Mr. and Mrs. Rutledge of Amarillo.

Mrs. F. L. Dalton and Mrs. O. K. Lee of McLean were here on Tuesday.

The running of the sidewalks for the new school is moving rapidly and is expected to be completed soon.

Mr. and Mrs. Houston Anderson of Perryton visited here last week.

Mrs. Thelma Phillips of Amarillo visited her brother and family, the Marvin Halls, over the weekend.

Marilyn Williams of McLean visited Frances Cawfield Sunday.

Dining with the George Smiths Sunday were Mr. and Mrs. S. T. Greenwood and Howard Jones.

ONE NIGHT ONLY AVALON THEATRE

"ONE MAN'S WAY"

Starring Don Murray & Diana Hyland

THURSDAY, DEC. 17

Bargain Night: Adults 25c, Children 15c

MARZEL'S Fabrics & Fashions

FOR HER CHRISTMAS:

- ★ WHITING & DAVIS JEWELRY
- ★ PHIL-MAID LINGERIE
- ★ CANNON HOSE
- ★ LINENS
- ★ DRESS LENGTHS

FOR HIS CHRISTMAS:

- PLAID INSULAIRE BLANKETS
- HANKIE & KEY CHAINS
- TIE & SOCK SETS

FOR THE WEE ONES:

- ★ BABY DRESSES
- ★ BLANKETS & COMFORTS
- ★ DIAPERS
- ★ SLEEP SETS

DECORATIONS BY
MOLITA'S FLOWERS

CLARENDON

(Continued from Page 1)
eighth grade 39, Groom seventh grade 8; Clarendon eighth 21, Lefors seventh 18; Samnorwood 22, Groom eighth 20.

Boys

Alanreed 34, Lela 14; Lefors eighth 45, Groom seventh 5; Clarendon eighth 32, Lefors seventh 6; Groom eighth 37, Samnorwood 11.

FRIDAY

Girls

Alanreed 37, Groom seventh 19; Groom eighth 35, Lefors seventh 5; Lela 32, Lefors eighth 18; Samnorwood 31, Clarendon eighth 5.

Boys

Lela 17, Groom seventh 10; Samnorwood 20, Lefors seventh 18; Alanreed 39, Lefors eighth 35; Clarendon eighth 25, Groom eighth 24.

SATURDAY

Girls

Groom eighth 38, Alanreed 23 (for fourth place); Lefors eighth 21, Clarendon eighth 11 (for third place); Lela 29, Samnorwood 26 (for championship).

Boys

Lela 23, Samnorwood 15 (for fourth); Groom eighth 40, Lefors eighth 26 (for third); Clarendon eighth 31, Alanreed 24 (for championship).

EFFICIENT — DEPENDABLE
COURTEOUS SERVICE

MASTER CLEANERS

McLean, Texas

We Give Gunn Bros. Stamps
Free Pickup and Delivery
Phone GR 9-2141

2 HOURS OF ENTERTAINMENT AT THE DERBY TOWN JUBILEE

SPONSORED BY THE McLEAN JAYCEES

8:00 P.M.

SATURDAY, DEC. 12

McLEAN HIGH SCHOOL AUDITORIUM

DOOR PRIZE:

AT EVERY JUBILEE

ADMISSION: ADULTS 75c — CHILDREN 35c

For Information Contact: Conald Cunningham

Box 362 — Phone GR9-2913

McLean, Texas

CHRISTMAS BELL RINGERS

at Parsons Rexall Drug



COLOGNES — PERFUME
BATH POWDER

- ★ REVLON
- ★ COTY
- ★ FABERGE
- ★ CHANFEL
- ★ RUBENSTEIN

LADIES REMINGTON

ELECTRIC RAZOR

\$29.95

RONSON TIARA

LADIES SHAVER \$16.95

LADIES & MEN'S

JEWELRY BOXES

\$5.98 and up

TRANSISTOR RADIOS

BULOVA \$15.95 up
CARAVELLE 11.95 up

Meeker BILLFOLDS for Men

From \$3.95 to \$12.50

MEN'S GIFT SETS

Cologne and After-Shave

By

- Max Factor
- Revlon
- Old Spice
- Aqua Velva

ZIPPO LIGHTERS

\$3.50 up

Single Control

ELECTRIC BLANKET

Double size \$14.95

NORELCO SHAVERS

Floating Head \$19.95
Regular Razor 12.95

Sunbeam

PORTABLE MIXER

Reg. \$21.95 now \$16.95

Sunbeam

MIXMASTER

Reg. \$39.95 now \$29.95

Sunbeam 10-Cup

COFFEE MAKER

Reg. \$19.95 now \$14.95

Sunbeam

PARTY GRILL

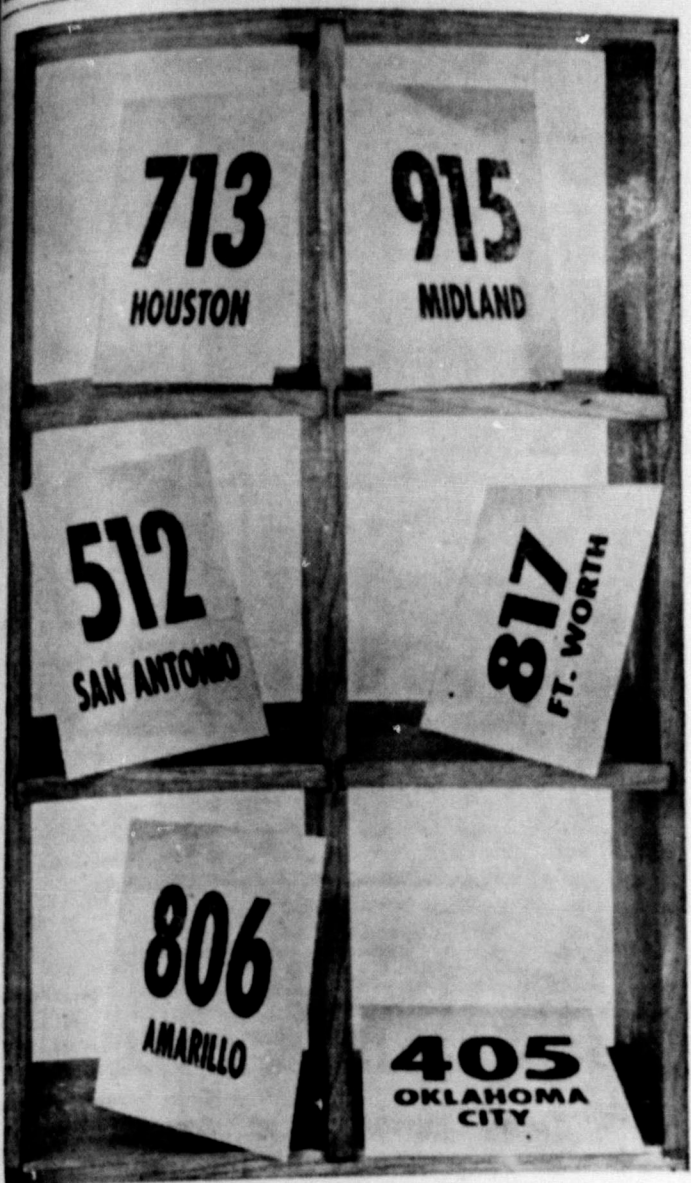
Reg. \$31.95 now \$21.95

| | | |
|---|--|--|
| BARBIE CLOTHES \$1.00 | PAINT BY NUMBER SETS | Wen Mac MODEL AIRPLANE Automatic Power Control \$7.77 |
| Caravelle WATCHES (Division of Bulova Watch Co.) \$10.95 to \$20.95 Year's Guarantee For Men—Women—Children | KEN CLOTHES \$1.19 | FOOTBALLS \$3.98 |
| RECORDS STEREO—HI-FI ALBUMS HIT SINGLES | TONKA TOYS \$2.75 up | MICROSCOPE & LAB SET \$9.98 |
| Autorama RACE SETS 2-Cars \$14.99 | MUSICAL STUFFED TOYS \$1.59 and \$3.39 | ALL KINDS OF GAMES |
| BARBIE—KEN—MIDGE DOLLS \$2.98 | STUFFED ANIMALS \$2.99 to \$8.88 | |

HELP YOUR FAVORITE BOY or GIRL IN OUR REXALL CONTEST

★ BE SURE & VOTE WITH EACH PURCHASE ★
BONUS VOTES ON CERTAIN ITEMS
CONTEST CLOSSES 12 NOON DEC. 23

The longest tunnel in the U. S. is the 9,117-foot Brooklyn-Battery Tube in New York.

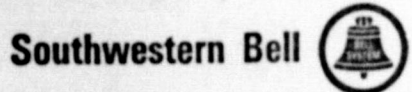


TAKE A NUMBER (we'll find the city)

Give your Long Distance calls a flying start . . . use Area Codes I

When you place a Long Distance call with the operator, give her the Area Code of the city you want, then give her the number you're calling. You'll save yourself precious waiting time on the line. You'll get your call through faster, easier.

Area Codes for most cities are listed in the front section (white pages) of your telephone directory. Or you can get them from the Long Distance operator—any time—and jot them down for future reference.



Mrs. Smith Hostess To Quilting Party

A quilting party was held in the home of Mrs. Raymond Smith on Friday of last week. A pot-luck dinner was served. Two quilts were completed by the ladies.

Those present were Mesdames Nelda Richards of Alanreed, Joe Willis, Homer Sanders, Earl Brooks, Ross Collier, Elbert Lismann, Jesse Roberts, Joe D. Smith, Jesse Ledbetter, R. L. Wright, Leon Waldrop, Edgar Smith, Sam McClellan, Jack McClellan and the hostess.

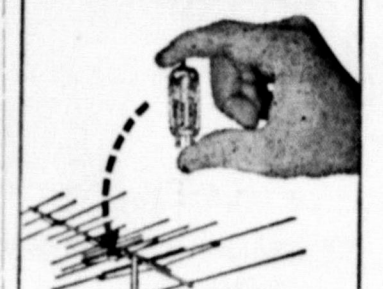
The next meeting will be with Mrs. Brooks.

Lake Superior is the world's largest fresh water lake.

IF YOU

want the best TV reception in town, ask us about the fantastic, new

Winegard POWERTRON



WORLD'S FIRST TV ANTENNA WITH BUILT-IN ELECTRONIC TUBE

Powertron magnifies TV signals. Delivers a minimum of 500% more signal power than any other TV antenna. Clears up weak, jittery channels . . . makes all channels crisp and clear! Most powerful antenna you can own.

3 Gold Awarded Models from \$74.95

TERRY'S ELECTRIC
GR 9-2201
McLEAN, TEXAS

MISCELLANEOUS SHOWER HELD HERE FOR MISS RAILSBACK

Miss Margie Ruth Railsback, bride-elect of Dale Lynn Garner, was honored with a miscellaneous shower on Saturday, Dec. 5, in the parlor of the Methodist Church.

The bride's chosen colors of red and white were carried out. Mrs. Alta June Shaller presided at the bridal table which was laid with a white linen cloth and held an all-white centerpiece with white tapers. Red napkins and red ribbon streamers ensigned with "Margie and Dale Lynn" completed the table decorations. Refreshments of punch, bridal cookies, mints and nuts were served.

Mrs. Sinclair Armstrong was at the guest registry.

Red and white floral arrangements were used on the mantel and the registration table.

The honoree, her mother, Mrs. J. J. Railsback, and the prospective groom's grandmother, Mrs. J. B. Castleberry of Amarillo, were presented with corsages by the hostesses.

Hostesses were Mesdames Sinclair Armstrong, Lucille Gething, Lavern Carter, Mary Ann Rice, Alta June Shaller, Lorena Bailey, Vera Flowers, Mary Tom Riley, Ruth Magee, Geneva Mann, Genella Wilkerson and Misses Donna Graham, Lea Bidwell and Ruby Bidwell.

Attending and sending gifts, other than the hostesses, were

News From HEALD

Mr. and Mrs. Leonard Hutson were visitors in her mother's home near Conway last Sunday.

Mr. and Mrs. O. O. Tate visited their daughter and her family, the Wesley Masters, at Amarillo on Sunday. Their grandson, Wesley Jr., who had been visiting with them, returned to his home.

Mr. and Mrs. A. W. Lankford and Mr. and Mrs. K. S. Rippey visited in Dimmitt and Hereford Monday. Kevin Lankford returned home with them.

Mrs. Buster Cofer visited relatives in California recently.

Mr. and Mrs. H. C. Rippey of Fort Worth and Mr. and Mrs. A. C. Rippey of Electra were weekend visitors in the homes of K. S. Rippey and Mrs. Nida Rippey Green, dinner guests of Mr. and Mrs. K. S. Rippey last Saturday were Mr. and Mrs. H. C. Rippey of Fort Worth, Mr. and Mrs. A. C. Rippey of Electra, Mr. and Mrs. H. C. Rippey and Mrs. Estelle Roach of Shamrock, Mr. and Mrs. A. W. Lankford and Mickey and Mrs. Nida Rippey Green.

Mesdames Chuck Cooke, Frank Rodgers, Callie Haynes, Everett Watson, Sophia Hutchison, J. B. Waldrop, Maggie McPherson, J. M. Hathaway, J. W. Meacham, Doyal Billingsley, Charlie Vineyard, Odessa Gunn, Irven Alderson, Harris King, Bob Black, Howard, R. L. Everett, Pat Bailey, Fred Sligar, Jessie Hardy, Julia Scarborough, Ted Glass, Evan Sitter, George Saunders, J. B. Stewart, Madge Page, Sam Haynes, Peb Everett, Raymond Glass, Vera Back, Johnny Haynes, Ruel Smith, Earl Stubblefield, Margaret Coleman, Victor Clett, James Clett, Bob Bidwell, Forrest Hupp, Molita Greer, Leta Mae Hess, Mary Lou Glass, Grace Windom, Clifford Allison, Willie Boyett, Alma Turman.

And Alice Short Smith, Mildred Greenhouse, Joe Simpson, Pete Fulbright, Marie Reeves, Charles Weaver, Joe Bidwell, K. S. Rippey, Grace Harlan, Milton Carpenter, Bill Simpson, Edgar Bailey, E. S. Carroll, Chris Carroll, Margaret Grogan, Jimmy Shelton, Dorothy Beck, Mary Sitter, Orlieu Howard, Winifred Rice, Carl Dwyer, Mary Wiloughby, Bernard McClellan, Josh Chilton, Grace McCabe, Bill Bailey, Walter Bailey, Earl Eustace, Vita Cooke, Tiney Gideon, Alma Weaver, Guy Saunders, Jean Orrick, Sue Cubine, W. R. Ferguson, Dora Sanders, Mary Powell, Jack Shelton, Nida Rippey Green, Newt Barker, Nola Rippey, Homer Abbott, J. R. Phillips, Peggy King, J. B. Roach, J. L. Hess, Oba Kunkel, Louise Johnson, R. B. Kinard, Maxine Gordin, Annie Reeves, H. W. Harlan Sr., Dick Dickinson, Doris Lands and Ernest Watson.

And Messrs. and Mesdames Boyd Meador, Kid McCoy, Wilson Boyd, E. J. Windom Jr., D. L. Miller, Alvin Teeple, Romain Pugh, C. O. Goodman, J. B. Castleberry, J. D. Fish, Guy Beasley, Jesse Roberts and Ted Raines. And Misses Christa Rodgers, Kay Greer, Joyce Beasley, Lana Grogan, Jeaneene Shelton, Nancy Dickinson, Gussie Bledsoe and Leona Forbes.

COME NOW
AND LET US REASON TOGETHER
(Isa. 1:18)

KELLERVILLE Church of Christ

GR 9-2810

EVANGELISTS: Lee Mays & Tom Waters

DID YOU KNOW?

That only eight souls were saved out of the whole world when the ark was built and the flood came (I Pet. 3:20), and the flood came in upon the ungodly. (II Pet. 2:5)

That in this Christian age, many will enter the wide gate and go the broad way to destruction (Matt. 7:13), but few will find the straight gate and go the narrow way to eternal life. (Matt. 7:14)

That the man we read about in Luke 16:19-31 was pleading for mercy and there wasn't any extended, and that he wasn't asleep for he could remember everything, and he was in torment then, and is in torment now and will be there through eternity, because there was a great gulf that was fixed and couldn't be removed.

That Jesus said that not everyone that said Lord, Lord, would enter Heaven, but the ones that did God's will or commandments. (Matt. 7:21-23)

If You Would Like a Bible Study in Your Home Please Call GR 9-2165, or Write Kellerville Church of Christ, Kellerville, Texas

What to Buy... YOUR FAVORITE GUY

Luxurious "Grand Vino"
SPORT SHIRTS
Sizes S-M-L-XL \$5.95

FINE ROBES
Gray — Red — Brown — Blue
Sizes S-M-L \$6.98
Compare at \$10

100% Cotton Broadcloth
PAJAMAS
Sanforized Wash & Wear \$3.99

Cotton Poplin
ALL WEATHER COAT
Sizes 36-44, reg. and longs \$19.95

Set off His Wardrobe With
FINE QUALITY BELTS
We have complete selection
..... \$1.50 to \$5

PURE SILK TIES
Handsome in all Colors
3 for \$7 or \$2.50 Each

Smart-Looking
LEATHER WALLET
By Tex-Tan \$3.50 to \$7.50

100% Ban-Lon Matched
SHIRT & SOX SET
Red, Green or Tan \$5 per set

INTER-WOVEN SOCKS
Stretch Crusader Magnates
\$1.00 \$1.50 \$1.50

SHIELDS JEWELRY
Tie Tacks Links
\$1.50 to \$2.50 \$2.50 to \$5
Sets
\$2.50 to \$5

"GIFT HINTS" FOR YOUR FAVORITE GAL!

SEAMLESS NYLON
Holiday Boxed
3 Pairs \$2.15

Stockton
CAPRI SETS
Long-Sleeved Shirt, Capri Pants
\$9.96

Charm, Luxury and Beauty
GOWN & PEIGNOR SET
The Perfect Gift \$15

Nylon Tricot
HALF-SLIP & BRIEF SETS
Rose Applique or Lavish Lace \$4.98

Bewitching
SHIRTS AND TOPS
Variety of Material, Styles
\$6.99 Each

TIFFANY ROBES
in Arnel Jersey
Galaxy of tiny pleats \$11.98

Unforgettable Beauty
SIMULATED PEARLS
A Wealth of Styles from \$2

Wonderful Way to Remember
WATCHES by TIMEX
2 Diamond, \$15; Chrome, \$9.95

Beauty Bright
ELECTRIC MAKE-UP
MIRROR
1 Side Magnifies \$11.98

New Design
PLASTIC PEARL BAG
Style to Please Everyone \$3

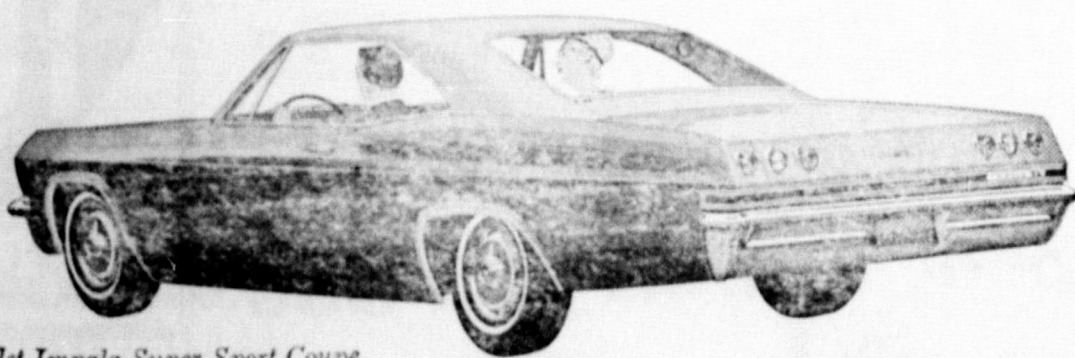
SEE OUR
LARGE SELECTION
OF GIFTS
FOR THE
ENTIRE FAMILY

Dunlap's

CORONADO CENTER — PAMPA

Come look them over! Come try them out!

They're in our showroom now—ready for you to see and drive. So come on in and get the full story on the beautiful new Chevrolets for '65.



'65 Chevrolet Impala Super Sport Coupe

'65 Chevrolet

It's a longer, lower, wider, roomier, quieter, handsomer, swankier kind of Chevrolet. Fact is, just about everything's new right down to the road. And even that'll seem newer. Because now Chevrolet's Jet-smooth ride is smoother than ever. And we're itching to show it off.



New Corvair Corsa Sport Coupe

'65 Corvair

It's a racier looking, quicker steering, flatter cornering, roomier riding kind of Corvair for '65. With a longer, wider new Body by Fisher. And up to 180 hp available in the new Corsas. Where do you find out about this firsthand? Just follow the enthusiasts—to our showroom.

More to see, more to try in the cars more people buy
Choose a new Chevrolet, Chevelle, Chevy II, Corvair or Corvette now at your dealer's

ELLISON MOTOR COMPANY
Highway 66 McLean, Texas GR 9-2497

Agriculture Census Brings Statistics On Farms Up to Date

The 1964 Census of Agriculture, now being conducted by the Bureau of the Census, U. S. Department of Commerce, in Gray County, will bring up to date the farm and ranch statistics last collected in 1959.

Here are a few of the many facts recorded in the 1959 agriculture census for this county:

There were 400 farms and ranches in 1959 compared with 523 in 1954. The average size of farm and ranch was 1,409.3 acres in 1959, compared with 1,071.4 acres in 1954.

\$5.7 Million in Products

The value of products sold by the county's farmers and ranchers in 1959 was \$5,701,649. The value of all crops sold was \$2,378,113. The value of all livestock and livestock products sold was \$3,323,536.

The 1964 national Census of Agriculture is the 18th in a series which began in 1840. Because of the rapid changes American agriculture has been undergoing in recent years, Census Bureau officials regard the current census as one of the most significant ever taken.

They ask every farmer and rancher to cooperate in compiling an accurate record of these changes by filling out the census form he receives in the mail and holding the completed questionnaire until a census taker calls for it.

Carpenter ant queens may live 15 years.

NEWS OF CONSERVATION

Robert Rapstine reports that a diversion he recently completed worked real well during the last rains. Robert plans to carry out a complete conservation plan over the next three years.

Why conserve soil? In 1950 the population of the United States was 151 million people; 1960, 180 million; in 1980 the expected population is 260 million, and 385 million in 2000.

The world population is increasing at this same rate and even

greater in some countries. From the above figures we can see a good reason for controlling erosion on farms and ranches in the U.S.

Soil Fertility—The maintenance or improvement of soil fertility should be considered a major item in any conservation cropping system. Soils that become depleted in nutrients will not produce as they should. A reduction in yield means a reduction in plant residues. A reduction in plant residue

means that the land is more susceptible to erosion.

Each time we remove a crop from the land or lose soil through erosion, part of the soil fertility is lost. A 40 bushel wheat crop contains 50 pounds of nitrogen, 25 pounds of phosphorus and 15 pounds of potassium; four tons of alfalfa contains 180 pounds of nitrogen, 40 pounds of phosphorus, 180 pounds of potassium and 112 pounds of calcium; 120 bushels of grain sorghum contains 100 pounds of potassium, 50 pounds of phosphorus and 30 pounds of potassium.

Mr. and Mrs. A. W. Lankford attended his uncle's funeral at Altus, Okla., last Friday.

BIRTHDAYS

Dec. 13—Mrs. R. N. McCabe, Mickey Allen, Clifford Kimbrell, Melvin Butrum.
Dec. 14—Sheri Lee Haynes.
Dec. 15—Connie Cunningham, Joe Creed Lamb, Perry Marshall Everett, David Woods.
Dec. 16—Troy Wayne West, Johnny Anders, Jackie Mercer.
Dec. 17—Walter Bailey, Buster Sublett, Mrs. Wanda Waldrop.
Dec. 18—Mrs. Ola Henderson.
Dec. 19—Mrs. Johnnie Mertel, Royce Blacher, Reza Moore.

A rabbit can run faster uphill than down because its hind legs are longer than its forelegs.

Beauty for the asking

By Mae Phillips
Beauty Consultant

MERLE NORMAN COSMETICS STUDIO

Phillips LaBonita
Beauty Salon
Pampa, Texas

308 N. West — MO 5-5611

BULLDOZER WORK

- DAMS
- TERRACES
- GENERAL WORK

Contact
LESLIE DARSEY
Phone GR 9-3148
Alanreed, Texas

JACK CAMPBELL
Phone MO 5-5389
Pampa, Texas

Experienced Operators

VITAMIN FORTIFIED FEEDS

- ★ 32% RANGE CUBES
- ★ 21% RANGE CUBES
- ★ 14% CALF CREEP
- ★ 40% PROTEIN BLOCKS

—Also Custom Mixing and Bulk Delivery—
Custom Cattle Feeding, New Modern Pens

CALL US COLLECT FOR PRICES

H & H MILLING CO.

Wheeler, Texas

Phone 2161 — Dick or Jack Hefley

Mrs. Lucille Gaines returned home last week from O'Neill, Neb., where she had visited for three weeks with her daughter and family, Mr. and Mrs. Petie Everett and sons, Perry and Jerry. The Everetts visited here with their parents the last of October and Mrs. Gaines returned to their home with them.

Schizophrenia is a speech disorder in which the person produces meaningless sounds.

MODERN WOODMEN of America

- *Life Insurance
 - *Savings Plans
 - *Retirement Program
- For the Entire Family



EMORY L. ARCHER

202 West Benton
Sayre, Oklahoma
District Manager
Phone WA 8-3286

The McLean News

Thursday, Dec. 10, 1964 Pg.

Mr. and Mrs. Luther Petty, accompanied by Mrs. Lona Jones and June, Janet and Jeri Bible attended the North Fork Association Training Union mobilization program at the First Baptist Church in Shamrock Monday night.



Diner to Waiter—Is it raining outside?
Waiter—Sorry, sir, this isn't my table.

Whether it is information you want—or one of the many services we offer—you can be assured of prompt and courteous attention at our station. We welcome you to test our service and courtesy.

Chevron Gas Station

ODELL MANTOOTH

Stock-up Specials FOR THE HOLIDAY AHEAD

SHOP OUR EVERY DAY LOW PRICES

| | | |
|-------------|-----------------|--------|
| IVORY SOAP | 4 personal bars | 29c |
| | Large bars | 19c |
| SPIC & SPAN | Giant size | 98c |
| DOWNEY | Giant size | 89c |
| SALVO | Giant size | 81c |
| DASH | Jumbo size | \$2.39 |
| ZEST | 2 Bath size | 43c |

STAR KIST TUNA

3 Reg. size Chunk 89c

Specials IN OUR MEAT DEPARTMENT

| | | |
|-----------------------|-----------|-----|
| Pinkney Sun-Ray Bacon | 2 lb pkg. | 86c |
| Wright's Bacon | 1 lb pkg. | 49c |
| Sirloin Steak | pound | 75c |
| T-Bone Steak | pound | 73c |
| Club Steak | pound | 69c |

CRISCO

3 lb can 79c

| | | |
|-------------------------|-------------------------|-----|
| NEW CROP SHELLED PECANS | 12 oz. pkg. | 85c |
| Hershey Dainties | 12 oz. pkg. | 39c |
| Hershey Candies | 10 5c Bar Pack 39c pkg. | 35c |
| Baker's Coconut | can | 19c |
| Scot Towels | Big Roll | 33c |

WE ARE YOUR TOP STAMP REDEMPTION CENTER

NONE MORE VALUABLE

Fresh FRUITS and VEGETABLES

BANANAS

Central American 1 lb 12 1/2c

ORANGES

California Sunkist 1 lb 15c

Gold Medal FLOUR 5 lb sack 53c

Nabisco Premium Saltine Crackers 2 lb pkg. 53c

CHILI Wolf Plain No. 2 can 49c

Del Monte Catsup 14 oz. bottle 2 FOR 35c

KLEENEX 400 count 4 FOR \$1.00

Extra Large Wesson Oil 38 oz. bottle 59c

Heinz Strained Baby Food 10 FOR \$1.00

SUGAR
COFFEE

Imperial Pure Cane 10 lb bag 98c

Folger's 3 lb can \$2.19

SPECIALS GOOD FRIDAY AND SATURDAY, DECEMBER 11, 12, 1964

CRAWFORD'S FURNITURE CHRISTMAS SALE

Acme Reg. \$209.95
SLEEPER
 Brown Sale Price **\$145** w-t

Reg. \$245.95
SLEEPER
 Brown Sale Price **\$169** w-t

Kroehler 2-Piece Reg. \$229.95
LIVING ROOM SUITE
 Brown Nylon Sale Price **\$140** w-t

Kroehler 2-Piece Reg. \$229.95
LIVING ROOM SUITE
 1/2 Price **\$140** w-t

2 Fort Smith Reg. \$79.95
SWIVEL ROCKERS
 Vinyl Sale Price **\$59** w-t

International Beige
SHORT SOFA
 1/2 Price **\$99** w-t

Maxwell Royal Reg. 144.95
CHAIR
 Sage Green Sale Price **\$99** w-t

Maxwell Royal Reg. \$166.95
CHAIR
 Olive Sale Price **\$119** w-t

Maxwell Royal Reg. \$159.95
CHAIR
 Strawberry Design **\$109** w-t

Reg. \$99.95
MR. & MRS. SWIVEL ROCKER & OTTOMAN
 Brown Sale Price **\$69** w-t

Reg. \$89.95
SWIVEL ROCKER CHAIR
 Green Sale Price **\$59** w-t

Kroehler 2-Piece Rose Beige
LIVING ROOM SUITE
 1/2 Price **\$140** w-t

Kroehler 2-Piece Reg. \$299.95
LIVING ROOM SUITE
 Brown Nylon Sale Price **\$150** w-t

Reg. \$69.95 Brown Traditional
SWIVEL ROCKER
 Sale Price **\$39** w-t

Reg. \$69.95 Green Tweed
SWIVEL ROCKER
 Sale Price **\$39** w-t

We Have 2 Reg. \$49.95
PULL-UP CHAIR
 Gold Sale Price **\$34** w-t

Also 2 of These Reg. \$109.95
PULL-UP CHAIR
 Fruitwood Sale Price **\$69** w-t

Kay Reg. \$69.95
PULL-UP CHAIR
 Apricot Sale Price **\$39** w-t

International Reg. \$139.95
CHAIR
 Green & Walnut Sale Price **\$69** w-t

Moore Reg. \$79.95
CHAIR
 Gold & Fruitwood Sale Price **\$40** w-t

Printed Nylon
LOVE SEAT
 1/2 Price **\$85** w-t

Maxwell Royal Reg. \$199.95
CHAIR & OTTOMAN
 Green Sale Price **\$99** w-t

Two of These by Kay Reg. \$64
CHAIR
 Brown Tweed & Green Tweed **\$39** w-t

Maxwell Royal Reg. \$141.95
SWIVEL ROCKER
 Cactus Sale Price **\$89** w-t

Flexsteel Reg. \$199.95
LOVE SEAT
 Print Sale Price **\$99** w-t

Reg. \$199.95
SHORT SOFA
 Tweed Sale Price **\$119** w-t

Traditional
LONG SOFA
 1/2 Price **\$128** w-t

Reg. \$59.95
ROCKER LOVE SEAT
 Maple Finish Sale Price **\$29** w-t

2 Tell City Reg. \$139.95
LOVE SEAT
 Hard Rock Maple Sale Price **\$99** w-t

3 Rolls of 12-foot Reg. \$8.95 Sq. Yd.
100% WOOL CARPET
 Installed With Rubber Pad **\$6** Sq. Yd.

1 Roll 12-Foot Width Reg. \$7.95 Sq. Yd.
TWEED NYLON CARPET
 Installed With Rubber Pad **\$6** Sq. Yd.

1 — 9 x 12 Reg. \$59.95
100% NYLON RUG
 Beige Color With Foam Rubber Back **\$29** w-t

CARPET REMNANTS — 1-3 OFF
 LINOLEUM REMNANTS — 1-3 OFF
 ALL PICTURES 1/2 PRICE

1 GROUP TABLE LAMPS 1/2 PRICE
 SECOND GROUP TABLE LAMPS 1-3 PRICE

5-Piece Fort Smith Maple Reg. \$201.75
DINING ROOM SUITE
 Round Table, 4 Chairs **\$134** w-t

Fort Smith Maple Reg. \$273.75
DINING ROOM SUITE
 Butterfly Table 40" x 62" x 86"
 4 Captain's Chairs **\$183** w-t

RECLINER CHAIRS
 From **\$39** to **\$89**

9-Piece Reg. \$129.95
DINETTE
 Sale Price **\$99** w-t

7-Piece Reg. \$149.95
DINETTE
 Sale Price **\$99** w-t

9-Piece Reg. \$149.95
DINETTE
 Sale Price **\$99** w-t

2 — 3-Drawer Reg. \$34.95
CHEST
 Maple Finish **\$19** w-t

Limed Oak
COFFEE TABLE & END TABLE
 1/2 PRICE

Baldwin-Cummins 2-Piece Reg. \$184.95
WALNUT BEDROOM SUITE
 Double Dresser & Panel Bed **\$125** w-t

Bassett 3-Piece Reg. \$191.95
BEDROOM SUITE
 Sweetheart Bed — Double Dresser & Chest Vista White **\$150** w-t

Little Rock 4-Piece Reg. \$229.95
BEDROOM SUITE
 Double Dresser, Chest Spindle Bed & Night Stand Maple **\$169** w-t

Sealy Comfort King
MATTRESS & BOX SPRING
 Regular Width & King Size Length Set **\$99** w-t

Sealy Comfort King
MATTRESS & BOX SPRING
 Queen Size Over-Width and Over-Length Set **\$119** w-t

1 Set King Size
MATTRESS & SPRING
 Set **\$139** w-t

National Reg. \$59.95
252-COIL MATTRESS
 Sale Price **\$39** w-t

Oklahoma
MATTRESS & BOX SPRING
 Set **\$48**

Sealy
MATTRESS & BOX SPRING
 Set **\$59** w-t

Tell City Reg. \$172
MAPLE CORNER DESK
 Sale Price **\$115**

CRAWFORD FURNITURE

NEW ACCOUNTS WELCOME — WE DELIVER
 PHONE GR 9-2422 McLEAN, TEXAS

CHRISTMAS GIFT GUIDE



Play
Santa...

AND SAVE! Thursday, Friday & Saturday

Do all your Christmas shopping at Gibson's — all items discounted — nothing sold at retail. Here are just a few of the many, many values at Gibson's. Use our convenient lay-away plan. Also ask about our month by month payment plan.

BE SURE TO GET YOUR PRESCRIPTIONS FILLED AT GIBSON'S DISCOUNT PHARMACY

TABLETS FOR COLDS & SINUS
TRIAMINICIN, 24's
\$1.37

GELUSIL, Regular \$1.89
TABLETS, 100's
GDP 97c



HEALTH & BEAUTY AIDS

ESQUIRE Reg. \$2.95
Shoe Shine Kit, GDP \$1.95
Gift Set
Mennens Cream & Deodor. Reg. 3.20
After Shave, GDP \$2.09
GIBSON'S Reg. 39c
Alcohol, 16 Oz., GDP 9c
REG. OR SUPER Reg. 89c
Kotex, 24's GDP . . . 59c
KLEENEX Reg. 49c
Tissues, 600's, GDP . . . 29c
LISTERINE Reg. 2.65
Toothpaste, 1 Lb., 5 for 77c
WOODBURY'S Reg. 1.00
Hand Cream, GDP . . . 29c
SO-SOFT Reg. 1.00
Body Lotion, Pt., GDP 29c
NUTRI-TONIC Reg. 1.59
Shampoo, 1-Lb., GDP . . . 89c
V-O-5 Reg. \$2.35
Hair Spray, 15 Oz., \$1.59

HOUSEWARES

No. Hz-05 Westinghouse Reg. 18.98
Hair Dryer, GDP . . . 8.98
Reg. 12.98
Table Lamp Assortments 4.77
No. AH 11 Westinghouse Reg. 14.97
Radiant Heater, GDP \$7.67
SUNBEAM Reg. 41.98
Waffle Iron, GDP . . . 27.98
SAMSONITE Reg. 29.98
Chairs, GDP 4.67
3 PIECE Reg. 29.98
Luggage Set, GDP . . . \$17.47
7 PIECE Reg. \$19.98
Fire Place Set, GDP \$12.98
Reg. \$3.49
Fire Place Grates, GDP \$2.49
Reg. \$14.98
Bar Stools, GDP . . . \$7.47
Asst. Colors Reg. 1.39
Caddy Carrier, GDP . . . 77c
Reg. \$1.39
Clothes Baskets, GDP . . . 77c

SOFTGOODS

Kapok Reg. 2.29 Assorted Colors Reg. 2.98
PILLOWS, . . . \$1.17 BATH MAT SETS \$2.27
3 Piece Reg. 1.98 Beacon Reg. 2.49
TOWEL SET, . . . \$1.37 CRIB BLANKETS \$1.77
Embroidered Reg. \$1.98 Pair
PILLOW CASES, . \$1.47 HIGH CHAIRS, . \$8.47
MEN'S 2 PIECE
RAIN SUITS, 3.49, GDP \$2.27

All Kinds of Christmas Decorations
At Gibson's Discount Price!

SPORTSMAN
GIFTS FOR THE ARE CHRISTMAS HITS

PFLUEGER SUPREME Reg. \$49.50
CASTING REEL, GDP . . . \$19.97
No. 901 7x7 With Stakes & Poles
WALL TENT, GDP \$8.97
FOR 2 GUNS
GUN RACK, Retail 4.95, GDP \$2.27
SUPER X 22 LONG RIFLE
SHELLS, Reg. 80c, GDP . . . 59c
ALL SPALDING & WILSON
FOOTBALLS 1/2 OFF RETAIL
COLEMAN Reg. 17.95
SINGLE LANTERN, GDP . . . \$8.97
SPALDING RETAIL 34.95
GOLF BAG, GDP \$13.97
WILSON
GOLF CLUBS, 8 Irons, GDP \$39.97

AUTOMOTIVE AND HARDWARE

WHEEL DISCS, Reg. 24.97, GDP, Set \$14.97
ASSORTED SIZES
FURNACE FILTERS, From 39c to 93c
ALL SIZES 6' 9' 12' 15' 20'
EXTENSION CORDS, From 33c to 63c
C-4
BATTERY CHARGER, Reg. 10.47, GDP \$8.47
CHAMPLAIN CMO 20W-30W
MOTOR OIL, Reg. 45c Qt., GDP Qt. 14c
CHAMPLAIN HVI 20W-30W
MOTOR OIL, Reg. 55c Qt., GDP Qt. 18c
DUPONT ZEREX
ANTI FREEZE, Gallon \$1.53
DUPONT TELAR
ANTI FREEZE, Gallon \$1.39

JEWELRY

...the Gift that means more!



LANDAU
CHROME BAROMETER, Retail 14.95, GDP \$7.97
LADY REMINGTON
Shaver, Retail, 19.95, GDP, \$11.97
WALTHAM
MAN'S or LADY'S WATCH, 21 Jewel, Reg. 49.75, \$18.97
LADIES
BILLPAK BILLFOLDS, Leather, Reg. 4.00, GDP . . . \$1.97
LLOYD WITH EARPHONES
10 TRANSISTOR RADIO, Retail 22.50, GDP . . . \$12.97

TOYS

ANDY GARD REG. 1.00
DUMP TRUCKS, GDP 57c
HUBLEY METAL
FARM SET, Reg. \$1.13, GDP 57c
FORD 4,000
TRACTOR, Reg. 2.87, GDP \$1.97
HAIR GROWS
SHELLY DOLL, Reg. 2.17, GDP . . . \$1.77
No. 800
POOL TABLE, Reg. 9.97, GDP . . . \$4.97
MAGNETIC
BASEBALL GAME, Reg. 4.95, GDP \$2.27
BARBIE DREAM HOUSE, Reg. 7.97 \$4.87
JOHNNY REB By REMCO
CANNON, Reg. 3.37, GDP \$1.97
No. 409
COMBAT SQUAD, Reg. 2.37, GDP \$1.67
WIERD-O-HELMETS, Reg. 2.87, GDP \$1.63
E-Z By DEMMER
BAKE OVEN, Reg. \$11.47, GDP . . . \$8.47
GILBERT
CHEMISTRY SET, Reg. 5.97, GDP \$3.97
SUPER K
BASKET BALLS, Reg. 4.97, GDP . . . \$3.17
No. 1355
DOLL CARRIAGE, Reg. 3.37, GDP \$1.97
GUERRILLA
BURP GUN, 2.00, GDP 97c
LIONEL PARTER
WEATHER STATION, Reg. 3.37 GDP \$2.17
WALKING DOLLS, Reg. \$4.17, GDP \$2.87
EDUCATOR BLOCKS, Reg. 2.27 GDP 97c

GIBSON'S DISCOUNT CENTER & PHARMACY

2211 Perryton Parkway

PAMPA, TEXAS

"WHERE YOU BUY THE BEST FOR LESS"

SALE
NOW
IN
PROGRESS

SALE
CONTINUES
THRU
SATURDAY

LOST • RENT • SELL • BUY • HIRE • TRADE
YOU'LL FIND IT IN THE WANT ADS!
 FOUND • SERVICE • EMPLOYMENT • PERSONAL

The McLean News
 Thursday, Dec. 10, 1964 Pg. 7

CLASSIFIED

CLASSIFIED INFORMATION

RATES

— Telephone GR 9-2447 —
 Per word, first insertion 3c
 Following insertions 1 1/2c
 Minimum charge 50c
 Display rate in classified
 column, per inch 75c

All ads cash with order, unless
 customer has an established ac-
 count with The News.

FOR SALE

Barbie Doll clothes. See Mildred
 Wyatt. Call GR 9-2817.

My two-bedroom home, living
 and one bedroom carpeted, 5 lots,
 trees, storage building, good well,
 new pump, low taxes. Ideal for
 elderly couple. Terms: Cash. Mrs.
 Ruby Hill, Amarillo, Texas.

Attention: Doug, Bernard, Gene
 and Clyde — A little bird told us
 just what your wife wants for
 Christmas. Marzel's Fabrics.

\$1.00 Gifts. — Veral Lynn Gift
 Shop. Call GR 9-2317.

LIFETIME TANK COAT. Stops
 all leaks in steel and concrete
 tanks. Prevents rust forever. Fix
 it and forget it. Free sample.
 Virdon Permabilt, 4014 Bowie,
 Amarillo, Texas.

Three lots for sale on corner
 of 5th and Cypress. E. L. Peirce.
 Call GR 9-2324.

Good used refrigerators, \$35.00
 up. Lots of good used TVs, \$40.00
 up. Williams Appliances.

For Sale—1952 four door Ford.
 GR 9-2424.

Gift Items: Linens, towels,
 table cloths. For that next Bridal
 Shower call Marzel's, GR 9-2831.

Dear Santa: I have been a good
 girl. Please bring what I am
 wishing for at Veral Lynn Gift
 Shop. GR 9-2351.

FOR RENT

Four-Room House for rent, fur-
 nished. Inquire at 410 East First, or
 call GR 9-2307.

For Rent—Three-room furnished
 apartment. Call GR 9-2378 after 5
 o'clock. Clov Pope.

For Rent—Large two-bedroom
 house; fenced in yard; double gar-
 age; cellar. George D. Smith, GR
 9-3114.

Furnished house for rent. C. M.
 Corcoran, GR 9-2319.

For Rent—Two-bedroom house.
 Contact Roy McCracken, GR 9-
 2821.

For Rent—Three room apart-
 ment, private bath. Stella Payne,
 GR 9-2601.

Attention: Ernest, Jess, Ross and
 Don — A little bird told us just
 what your wife wants for Christ-
 mas. Marzel's Fabrics.

For Rent—Two 3-room unfurn-
 ished apartments, with garage. Nida
 Rippy Green, GR 9-2053.

For Rent—One 2-bedroom and one
 3-room furnished apartments, bills
 paid, private bath. Bobby Jack
 Massey, GR 9-2200 or McLean Cafe.

For Rent—Furnished House. See
 Wallace Grimsley, GR 9-2387.

HELP WANTED

Person over 25 to supply
RAWLEIGH PRODUCTS

to families in
 Wheeler County

If interested in a good
 income with security for
 the future see

H. C. WILKIE
 1325 Ripley St.
Pampa

or write
RAWLEIGH
 Memphis, Tenn.
 TX L 141 1126

LOST AND FOUND

Found—Pontiac car keys. Claim
 at News Office.

MISCELLANEOUS



**McLEAN LODGE 880, A. F. and
 A. M.** Regular meeting second
 Thursday each month—7:30 p.m. All
 members urged to attend. Practice
 First and Third Wednesday Nights
 Each Month.

Ken and Barbie doll clothes made.
 Order now for Christmas. Call GR
 9-2138.

VELA'S UPHOLSTERY. North
 Main. Call GR 9-2310 for materials
 and estimate. Have sample books.
 Vela Corcoran.

Need your automobile Painted?
 Check with me also for roof paint-
 ing and any other kind of painting.
 Charlie Vineyard, GR 9-2529.

See Me for any type of construct-
 ion. Claude Hinton.

For anything in the Memorial
 One contact Oba Kunkel, GR 9-2823.

Attention: Johnny, Dick, Carl and
 Ed — A little bird told us just
 what your wife wants for Christ-
 mas. Marzel's Fabrics.

Cancer may strike any member
 of your family at any time. We
 have a low premium cancer policy,
 annual premium \$15 per family,
 ages 0-60. No age limit on other
 policies. Representing Mutual of
 Omaha. See Jane Simpson Agency,
 McLean, Phone GR-2431.

Will do saw filing. J. E.
 Smith, Phone GR 9-2307.

Rid your home of termites,
 roaches, carpet beetles. Free in-
 spection, work guaranteed. Phone
 GR 9-4743, G. W. Humphreys.

Fast service on Rubber Stamp
 —any size. The McLean News, GR
 9-2447.

Open Thursday Nights until 8:00
 through Christmas Eve. Come in
 and see our Bettjean line of Coats
 and Suits and Italian Imported
 Knits. Jewel Box Fashions.

The parent's life is the child's
 copy-book.

**30-MINUTE
 WASH CYCLE**

- ★ Free Starch
- ★ Free Soda Ash

WADE'S LAUNDRY
 GR 9-8880

Dr. Marion N. Roberts

Pampa, Texas

OPTOMETRIST

112 W. Kingsmill

Telephone MO 4-3333

The McLean News

McLean, Texas

79057

Published Each Thursday

Post Office Box H Telephone GR 9-2447

JACK B. SHELTON, Owner and Publisher

Entered as Second Class matter at the Post Office in McLean,
 Texas, under the Act of Congress of March 3, 1919.



SUBSCRIPTION RATES

In Gray and surrounding counties, One Year \$3.00
 To all other U. S. points \$3.50
 Any erroneous reflection upon the character of any person or
 firm appearing in these columns will be gladly and promptly
 corrected upon being brought to the attention of the management

**Post Office Expects
 Record Mail Volume
 During Yule Season**

Acting Postmaster Frank Simp-
 son reports that the Post Office De-
 partment is confidently predicting
 that the volume of mail during this
 year's Christmas rush will hit a
 record high.
 "Actually," he says, "it's an easy
 prediction because mail volume
 has been rising at a rate of nearly
 three per cent a year for the past
 several years and this is most
 strongly reflected around the holi-
 day season."

Well over 12 billion pieces of in-
 coming and outgoing mail are ex-
 pected to move through the system
 during December — with about 10
 per cent of the year's mail moving
 in less than three weeks.

The McLean postmaster reports
 that public cooperation is one im-
 portant reason that Post Offices
 around the country are able to
 handle this huge mountain of mail
 in such a short period.

"Without the assistance of the
 public, we'd be in a jam. People
 who shop early and get their cards
 and parcels into the mails early
 make it possible for the holiday
 mail to be delivered on time. Imagine
 what it would be like if we were
 to get all the holiday mails the
 last week before Christmas."

In addition to early mailing, the
 postmaster has several other sug-
 gestions which will help the postal
 employees move this avalanche of
 mail.

First, he recommends using ZIP
 Codes which help handle the mails
 faster because of a new transpor-
 tation and distribution set-up. ZIP
 Code also helps clerks to identify
 receiving Post Offices when ad-
 dresses are hard to read.

During this time of the year, the
 faster mail is processed the bet-

ter chance it has to make con-
 nections with outgoing trains, planes
 and trucks.

Simpson also recommends that
 all parcels be wrapped securely,
 packed tightly and that the address
 be included inside the package as
 well as on the outside. This helps
 assure delivery even if the outer
 wrapping comes loose.

The acting postmaster points out
 that "because ZIP Code on parcels
 usually means a more direct
 routing and less handlings, the
 chance of damage is drastically
 reduced."

Finally, Simpson says that the
 use of the new Christmas stamps
 helps brighten envelopes and pack-
 ages.

There are four postal employees
 working in the McLean Post Of-
 fice to assure a Merry Christmas.

**Cubs, Cubettes To
 Play Here Tonight**

The McLean Junior High Cubs
 and Cubettes play host to White
 Deer tonight in games starting at
 6:30.

They complete their pre-Christ-
 mas holiday action in games with
 Shamrock here next Monday night.

The local teams entered the
 White Deer tournament last week-
 end, but were eliminated from
 contention for the title.

Oscar Tibbets underwent surgery
 the first of the week in Groom
 Hospital. He is reported recover-
 ing satisfactorily.



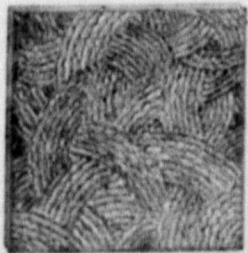
CLIFF H. DAY

710 N. Main — GR 9-2686

- ★ Picture Frames
- ★ Furniture Refinishing
- ★ Furniture Repair Make Anything Out of Lumber

THE DRAMATIC EFFECT OF AN EMBOSSED CEILING CAN BE YOURS WITH THESE 3 NEW

**ARMSTRONG
 CEILINGS**



Pinehurst Embossed Cushiontone



Madras Embossed Cushiontone

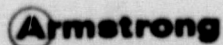


Bristol Embossed Tundra (nonacoustic)

It's easy to add warmth and comfort to any room in your home by installing one of these exquisite new Armstrong Ceilings... and you can do it yourself! If you would like the sound-conditioned comfort of a genuine acous-

tical ceiling, install one of the famous Armstrong Cushiontone® Ceilings. Come in and see these beautiful new ceilings.

Price from **\$19.25** for a 10' x 12' room



CICERO SMITH LUMBER CO.
 Telephone GR 9-2311

NEWS from
 YOUR



COUNTY AGRICULTURAL AGENT
 TEXAS A & M. COLLEGE EXTENSION SERVICE

**By FOSTER WHALEY
 COTTON HARVESTING**

Two hundred twenty-five bales have been ginned to date. Weather has kept most farmers out of the field. Mr. Holland says if we can have pretty weather from now until Christmas we might be able to get done by then.

WHEAT PASTURE

I have been trying to locate some wheat pasture for Ed Howard, but haven't been able to do so yet. The unusually cold weather has set the wheat back. Prospects are not nearly as bright for abundant pasture as they were earlier. If a fellow would just take off and take a run up through the country on top I believe he could still find some pasture.

CLARENDON BULL SALE

I was real proud of the registered bulls that our local breeders had in the Clarendon bull sale. I don't have the figures but I can say without question our local breeders got far above the sale average. Fact is, I thought many of the other bulls in the sale wouldn't have made good steers. With the depression prices on good bulls I can't understand why some breeders don't get their knife sharp.

CATTLE FUTURES

One hundred ninety-one contracts were handled by Chicago Mercantile Exchange on the first day of trading in the futures market on Nov. 30. My personal opinion is that a new era has dawned for the beef cattleman when the future market went into effect on beef cattle. A feeder can execute a perfect hedge if he has an excellent record on his cost of gains. In other words if he can predict what his cost will be per pound on 25 choice finished 1,000-pound steers, he can check the futures market. If the futures market is more than his known break even price he can execute a contract to sell at a given figure.

Here is what the futures market

WINS BLANKET
 Mrs. H. W. Gipson won a blanket this week at the first "Wishing Well" drawing at Veral Lynn Gift Shop.

The next drawing is scheduled for Dec. 12.

**Need ELECTRICAL
 WIRING?**

Commercial, Residential and Oil Field Wiring
 — o —
 We have a top qualified electrician on duty six days a week.

TERRY'S ELECTRIC

**market closed at on the first day
 of trading, Nov. 30: April contract**

on 1,000-pound choice steers, \$23.67 cwt; June, \$24; August, \$24.40, and October, \$24.75. From the above it appears a fellow would be better off to place feeder cattle on feed around April 1, as far as selling price is concerned, than any time earlier. I have a very recent release from our livestock marketing specialist, Mr. Ed Uvacek, Texas A and M. I would be very happy to obtain extra copies of this release for those interested. I believe five or 10 years hence this will have one of the most stabilizing effects on our cattle markets of any one thing. It is a private enterprise matter, we might add. Certainly a dull futures market will be a warning sign to prospective feeders to hold down placements on feed. This in my opinion will be the stabilizing influence that will prevent highs and lows in the cattle market.

A good many people think of the commodity market or the stock market as a gambler's paradise. Nothing could be farther from the truth. The cattle feeder that knows his cost of production can use the futures as a tool to insure him a fair profit. A meat packer that is always worried about a short supply of beef can use this as a tool to insure his supply of beef at a given figure. Thus, while a seller is executing a hedge, a buyer can execute one also. I'd better quit this one. I'm getting confused.

**Mrs. Thomas Speaks
 At WSCS Meeting**

The Methodist WSCS met Dec. 8 in the Fellowship Hall of the church for a birthday luncheon.

The meeting was opened by Mrs. J. L. Andrews with a scripture reading.

Mrs. Lurah Rhodes was in charge of the program.

The devotional was given by Mrs. Walter Foster.

Mrs. David Thomas, wife of the Presbyterian pastor, spoke on "My Experiences of the Last Five Years as a Missionary in China."

Mrs. Andrews gave the benediction.

Hostesses were Mrs. Alice Wilson and Mrs. Earl Eustace.

Those present were Mesdames Cliff Day, Wilson, Callie Haynes, Roy McCracken, Rhodes, Eustace, Carrie Kirby, J. B. Stewart, Jesse Coleman, Evan Sitter, Andrews, Charles E. Cooke, Bessie Hess, Charlie Carpenter, Foster and Thomas.

Cats came to America on the Mayflower.



**Eat Out
 Often at the
 DAIRY MART**

Dial GR 9-2735

CLOSED ON THURSDAY

GIFT IDEAS

From

WILLIAMS APPLIANCES

TELEPHONE GR 9-2351

- | | |
|--------------------------------------|----------------|
| 6-TRANSISTOR RADIOS | \$ 9.95 |
| 8-TRANSISTOR RADIOS | 22.95 |
| TABLE RADIOS | 16.00 |
| CLOCK RADIOS | 22.50 |
| Portable STEREOS from | 69.95 |
| Portable TAPE RECORDERS | 24.95 |
| ELECTRIC BLANKETS | 15.00 |
| 19" PORTABLE TV | 169.95 |
| COLOR TV | 495.00 |

FRIGIDAIRE WASHERS
 Reg. \$269.95 now **\$200**



What kind of a tiger do you want under your hood? (Have you priced a tiger lately?)

If you're handy with a whip and chair, go for the 360-hp GTO. It bites. But then, even the 335-hp GTO bites. If you want a slightly more civilized package (but with lots of GTO muscle), try the Le Mans. You can get it with a six or either of two V-8s. They all have bucket seats, Carpentry. And cost less than some tame cats. So go price a tiger.

**Quick Wide-Track Tigers
 Pontiac Le Mans & GTO**

SEE THE NEW BONNEVILLE, STAR CHEF, GRAND PRIX, CATALINA, LE MANS, GTO AND TEMPEST AT YOUR AUTHORIZED PONTIAC DEALER.

JONES PONTIAC & EQUIPMENT CO.
 WEST HIGHWAY 66
 McLEAN, TEXAS

COTTON

(Continued from Page 1)
tional acreage reserve to take care of minimum farm allotments.
Notices of indicated individual allotments will be mailed to operators of cotton farms in advance of Dec. 15.

If at least two-thirds of the growers voting in the referendum approve quotas for the 1965 upland cotton crop, price support at a level within the range of 65 to 90 per cent of parity will be available to growers who do not exceed the farm's allotment, additional price support in the form of payments will be available to growers who keep their acreage within the farm's "domestic allotment" and marketing quota penalties will apply to any excess cotton produced on a farm.

If more than one-third of the voters oppose quotas for the 1965 crop, the regular allotment program will remain in effect, and price support will be available to growers who do not exceed their acreage allotments at 50 per cent of parity, as provided by law.
All farmers who engaged in the production of upland cotton in 1964 are eligible to vote in the Dec. 15 referendum. Those soil bank farms with a cotton allotment are also eligible to vote.

Public Dance To Follow the Jubilee

There will be a public dance at the Legion Hall Saturday night following the Derby Town Jubilee. On Monday night there will be a meeting of the members of the American Legion at the Legion Hall.

'Tis easier to prevent bad habits than to break them.

'One Man's Way' Is Avalon Feature

One of the most powerful movies ever made, "One Man's Way," will be shown next Thursday at the Avalon Theatre in McLean.

Show time is 7 p.m., and Thursday is "Bargain Night," according to Paul Miller, theatre operator. Adults will be admitted for 25 cents and children for 15 cents.

"One Man's Way" depicts the first 40 years of Dr. Norman Vincent Peale's life.

Dr. Peale became a controversial subject in the early days of his ministry, and has remained so. He knew the trials of the ministry, since he was a "preacher's kid," and he vowed at an early age never to become a minister.

But the call from God was loud and clear, and he has now become one of the nation's most outstanding ministers.

For the teenage group, his approach to romance should be an inspiration.

WATSON'S ENCO SERVICE

Dial GR 9-2641
For Pickup & Delivery
* WASHING
* GREASING
* MUFFLER & TAILPIPE SERVICE

PUT A TIGER IN YOUR TANK!

If We Please You . . . Tell Others
If Not . . . Tell Us



Savings in Sight

Folger's Instant Coffee 6 oz. 89¢ 10 oz. \$1.45

Quality MEAT Value

Wilson's Certified Bacon 2 lb pkg. 98¢

Wilson's Canned Hams 3 lbs. \$2.59

Shurfine Crushed Pineapple No. 2 can 3 FOR 85¢

Shurfine Tidbits or Chunk Pineapple 211 can 2 FOR 43¢

Geisha or Myco Mandarin Oranges 2 FOR 55¢

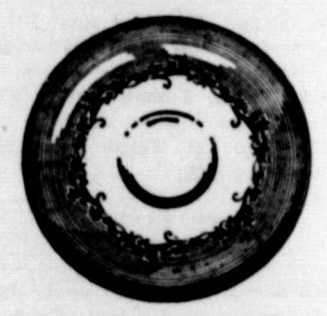
Facial TISSUE 400 count box 33¢

TIDE Giant box 65¢

Shurfine COFFEE 1 lb can 59¢

Shurfine LUNCH MEAT 12 oz. can 35¢

Lifetime Chinaware FREE THIS WEEK SAUCER With Purchase of \$7 or More



Shurfine TUNA Flat can 4 FOR \$1

Ranch Style BEANS 7 FOR \$1

Johnson's FLOOR WAX KLEER 46 oz. can \$1.35



FRUITS and VEGETABLES

Cello. Carrots bag 10c

California Tomatoes lb 25c

York Apples lb 15c

C. A. Bananas 2 lbs. 25c

Shurfine HOMINY 303 can 3 for 29c

Shurfine Whole Irish POTATOES 303 can 2 for 25c

Shurfine KRAUT 303 can 2 for 29c

Shurfine CHILI WITH BEANS 300 can 4 for \$1

BUSINESSMEN:
a vital fact to remember:
9 OUT OF 10
shop the
Yellow Pages

Today, most people use the Yellow Pages directory because it's the easiest, fastest way of buying, renting, leasing, or ordering services.

With so many people using the Yellow Pages on so many occasions, can you take chances of being overlooked? Make your business easy to find by being represented under each product, service, or brand-name you sell.



THE PLACE WHERE BUYERS AND SELLERS GET TOGETHER

SPECIALS GOOD FRIDAY AND SATURDAY, DECEMBER 11, 12, 1964

COOPER'S FOOD MARKET
THE BIGGEST LITTLE STORE IN THE PANHANDLE
WE GIVE CASH, BROS. TRIPLE STAMPS



REYNOLDS ALUMINUM FOIL
12 x 25 Roll 33c
18 x 25 Roll 59c
12 x 75 Roll 75c