

# The Groom News

50¢

Volume 70 Number 25

The Groom News, Carson County, Texas 79039

50¢ Per Copy

Thursday, September 26, 1996

## Groom High School Comes Full Circle To Celebrate 56th Annual Homecoming

It is said that the more things change, the more they stay the same. The reality of this old saying is coming true in Groom this year. History is coming full circle with the culmination of this year's Homecoming celebration.

In the school year of 1940-41, Groom had its very first Homecoming celebration. Groom School was 37 years old. Difficulty in travel being what it was in years past, it had not occurred to them to have one. The whole town was excited by the idea. According to reports from "The Groom News", ex-es from as much as 600 miles away come to the event.

The interesting parallel is that Groom was playing 6-Man football. The town had been moved to the 6-Man category just the year before, and, boy, were they having success!

They had won district the year before and were off to a great start. Some of today's team, you could say, got their start from that team. At least two of today's team had grand fathers that played on that infamous team in 1940. Others may have had relatives.

The Groom Tigers of 1940 ended their second 6-Man season with 20 straight

wins. They received the Amarillo Globe News Trophy for the Championship of the Panhandle. Some of the teams they played were Dodson, Price Memorial College, Medicine Mound, Vega, Adrian, Booker, Alanreed, Divide, and Sparenberg.

Booker was their District Championship game. Divide and Sparenberg must have amounted to what today would have been Area and Regional.

Members of the 1940 team were (according to the 1941 annual) Captains Jack Kuehler, and John Angel, G.C. Whatley, John Townsend, Kenneth Burns, Roy Dale Andrews, Ebey Clark, Troy Whatley, Austin Crowell, Kenneth Black, Art Britten, Glen Watley, Bobbie Collins, Raymond Garlett and Rex Schaffer. "The Groom News" also lists Tim Gibbons and Lightning Smith as reserves for the team. Butch Clark was the team's coach.

Betty Louis Hodges was crowned Groom's first Homecoming Queen. The game was played on "Fireman's Field". (Does anyone know why it was called that?) The field was about in the same place but ran north and south. (An See Homecoming, pg. 3

### COMMUNITY CALENDAR

**PRE-SCHOOL** Screening will be held on September 26 in Panhandle, see the story on page 4 for more details.

**A SPECIAL PROGRAM** will be held on October 10, 1996 at 9:30 A.M. in front of the Mural on Front Street to celebrate the 70th Anniversary of Route 66, "Run To The Heartland."

**JUNIOR HIGH & Junior** Varsity teams will play in Samnorwood vs Chillicothe on Thursday, Sept. 26. Jr. High game begins at 5 p.m.

**GHS TIGERS** will play in Silverton vs. Three-Way on Saturday, Sept. 28 beginning at 2:00 p.m.

**THE FIRST 6 WEEKS TESTS** of the year for Groom School will be given on September 25 and 26.

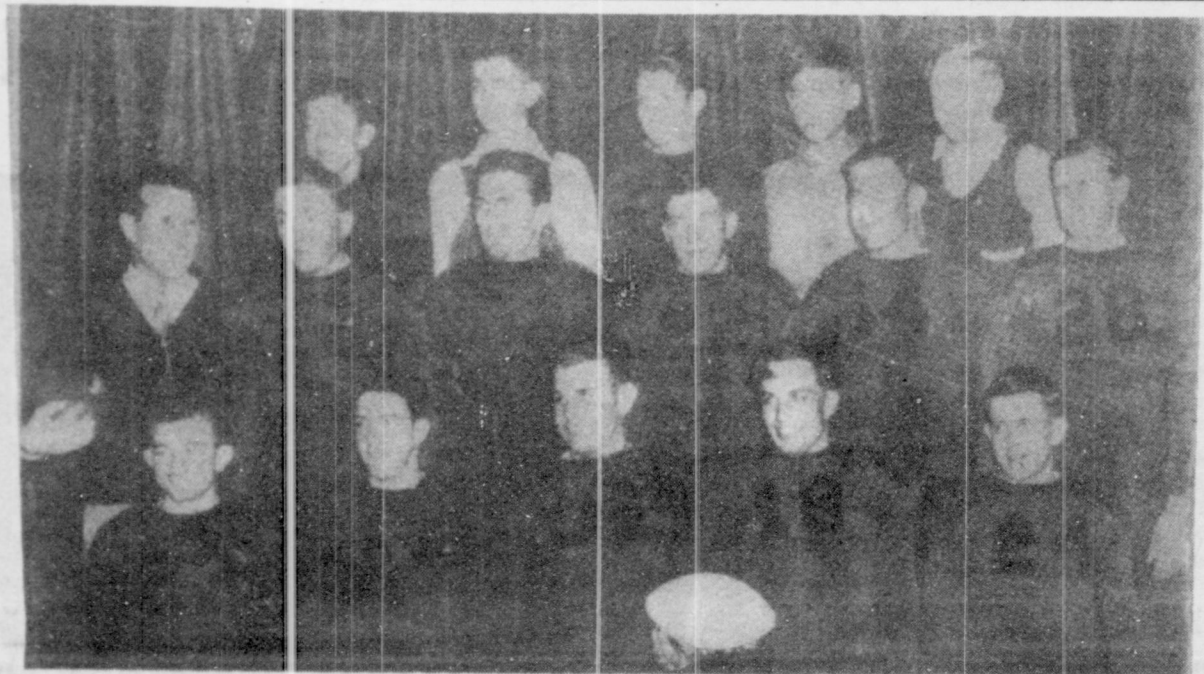
**GROOM LION'S CLUB** is sponsoring an annual turkey shoot beginning at noon on Sept. 29. Participants in the 60/40 shoot should gather at the Groom Legion Hall. For more information, call Kenneth Babcock at 248-7273.

**A.A. (Alcoholics Anonymous)** meets every Tuesday at the Groom Library.

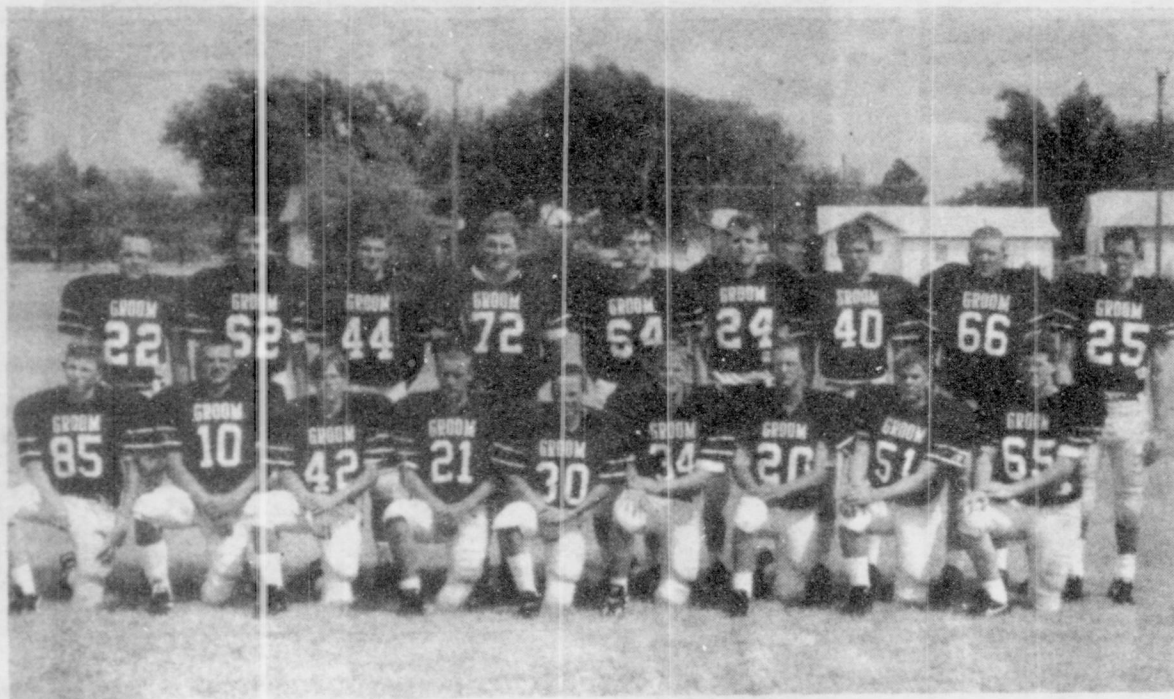
#### TUESDAY PRICES AT ATTEBURY GRAIN CO.

Wheat-\$4.16  
Milo-\$4.92  
Corn-\$5.64

Approx. 1/2" Rain Reported This Week



1940-41 Football team: Top: Art Britten, Glenn Watley, Bobbie Collins, Raymond Garlett, Rex Schaffer. Middle: Coach Butch Clark, Kenneth Black, Austin Crowell, Troy Whatley, Ebey Clark, Roy Dale Andrews. Bottom Row: Kenneth Burns, John Townsend, Captain John Angel, Captain Jack Kuehler, and G. C. Whatley.



1996-97 Football Team: Top: Daniel Treadwell, Wyatt Weinheimer, Trea Kepley, Jason Prather, Sean Crowell, Justin Ritter, Dusty Crump, and Brad Sustaire. Bottom: Dustin Babcock, Josh Evenson, Wade Ritter, Dean Fields, Jamie Shuck, Toby Burgin, Chris Ollinger, and Evan Crowell.

### Groom Tiger's Outscore Chillicothe, 62-50

The Groom Tigers bested the Chillicothe Eagles in an exciting game last week, 62-50.

The Tigers were off to a rocky start as the Eagles returned the opening kick-off 75 yards to score. Their extra point was good. Chillicothe then went for a touchdown on a turn over and the kick was good to bring the score to 16-0.

Toby Burgin broke the

hex with a 65 yard interception return. Justin Ritter managed an 11 yard run for a touch down and also kicked the field goal to bring the score up to 16-14. The Eagles pulled in a 45 yard run and a good kick to end the first quarter 14-24.

Groom came into the 2nd quarter fired up, scoring three times to the Eagles one. Justin Ritter scored twice, a 9 yard run

and a 55 yard pass from Brad Sustaire. The kick was good by Ritter on the first extra point and the pass was good to Evan Crowell from Sustaire on the second.

Toby Burgin scored on a one yard run. Ritter kicked the extra point.

Chillicothe scored one touchdown on a 42 yard run. The 1st half ended with Groom slightly ahead,

32-37.

Groom dominated the 3rd quarter with 3 more touchdowns by Justin Ritter. He had a 25 yard run and two 30 yard runs. He also ran in the extra point on the last touchdown.

The Eagles came back with a 35 yard pass to score ending the 3rd quarter 40-56.


During the 4th quarter See Football, pg. 3



# The Groom News

USPS 230-380  
 Periodicals Postage Paid at Groom, Tx.  
 Carson County, Texas, under the Act of Congress of  
 March 3, 1879  
 Published weekly except Christmas Week  
 Publisher - Phillip J. Miller  
 Managing Editor - Donna A. Burton  
 McLean Editor - Darlis Joiner

Postmaster: please send address changes to  
 P.O. Box 460 Groom, Tx 79039-0460  
 Phone 806-248-7333  
 Carson & Gray County Subscription Rate - \$18.00 Yearly  
 Annual Rate elsewhere in U.S. - \$20.00 Yearly



**MEMBER 1996**

**TEXAS PRESS ASSOCIATION**

## Local Happenings

Groom FFA recently elected Greenhand officers. They are: President, Dustin Babcock; Vice-President, Travis Britten; Secretary, Chris Ollinger; Treasurer, Evan Crowell; Reporter, Josiah Scott; and Sentinel, Justin Homen.

Glynn D and Sybil Harrell and her brother, Barney York of Austin, attended the annual Pioneer Day activities at Panhandle Saturday.

## On The Sick List...

Arnie Kuehler  
 Billie Bivens  
 Bernice Brown  
 Jerry Thornton  
 Orna Schaffer  
 Vernie Watson  
 Jack Spencer

**50 Is Coming!**

## Local Happenings

Bernice Brown broke her wrist in a fall Sunday morning and received treatment in Pampa and was then transferred to St. Anthony's in Amarillo to have the break set. She was dismissed Monday morning.

Michael Lewis recently placed 3rd in Air Rifle at the National Rifle Competition in Chino, California.

Also entering the contest were Jeremy Lewis and Todd Gray. All three boys competed in the Air Rifle category and the .22 rifle category.

Shariene and Howell Lewis chaperoned the trip.

### Groom Birthdays Anniversaries

September 26 - Laverne Thomas, Adam Britten, Kent Watson, Mr. and Mrs. Ronald Fields (A).

September 27 - Yvonne Barker, Justin Collingsworth, Robert Miller, Abdon C. Carrillo.

September 28 - Alice Britten, Mr. and Mrs. R.J. Kempf (A).

September 29 - Stoney Crump, Carole Fields.

September 30 - Louise Conrad, Kay Stephens, Arthur Britten, Betty Black, Ray Morris.

October 1 - Billie Bivens, Doshia Cornett, Heather N. Day.

October 2 - Fay Wortham, Todd Cave.

### Card Of Thanks

The Johnny Lee family wants to extend our gratitude for all the delicious food, beautiful plants and flowers. We feel very fortunate for the many Mass offerings and contributions made in Johnny's behalf.

We were all touched by the concern and support we received from everyone. The sincere thoughtfulness was greatly appreciated by everyone in the family.

Your thoughts and prayers will give us strength to endure the loss of our loved one.

Most Sincerely,  
 Nadine Lee and family

Rip and Joy Snyder visited in McLean on Sunday.

Ray and Gaynelle Pool and Bertha Knight celebrated Gaynelle's birthday Sunday by having lunch at the Golden Corral in Amarillo. The waitresses sang "Happy Birthday" to Gaynelle.

William and Floretta Neal of Amarillo, and Bertha Knight visited in the home of their brother Leslie and Dora Neal in Clarendon last week.

## Sorority To Provide Welcome Baskets

Alpha Mu Xi Sorority is in the process of putting together baskets to welcome new families to Groom.


They recently mailed letters to all the Groom area businesses, churches and people who provide personal services that they could think of.

If you provide a service for Groom residents and didn't get a letter, please call Charlotte Whatley at 248-7963 or Nancy Patterson at 248-7213 to get more information.

The sorority will stuff 20 baskets to start with, so if you can spare some business cards, pens,

coupons, notepads, or anything that would advertise your service, Nancy would be happy to pick those up. Or if you prefer, you may mail your items to Charlotte Whatley at P.O. Box 363, Groom, Texas 79039. If you don't have a business card, etc., please feel free to write your information on an index card. Just remember to include your address and phone number.

Alpha Mu Xi hopes to start stuffing the baskets soon, so please get your advertisement to them as soon as possible.



*Cute as a pixie when you were four; Now you've added thirty-six more! Happy Birthday!*

*Love,  
 Barry, Brenda,  
 Dean, Doug & Mom*

## ATTEBURY GRAIN INC. COW POKES By Ace Reid



"Slim, something tells me we picked the wrong time to proposition our old banker for a new loan!"

"We don't think there is a better place to haul your grain."

Serving You At The Following Locations

Groom - 248-7544  
 Grandview - 669-3961

Lark - 248-7591  
 The Corners - 248-7011

1-800-299-7544

**WE MAKE AG LOANS**

BUCKSHOT

by Barry McWilliams



WHEN IT COMES TIME TO FINANCE THE BUSINESS OF FARMING AND RANCHING WE "DIG RIGHT IN"! Some financial institutions look for excuses why they CAN'T make ag loans... WE'RE PROUD TO BE AG LENDERS!

## STATE NATIONAL BANK

GROOM, TEXAS

MEMBER FDIC



248-7531





C.J. Whatley shows his steer calf at the Tri-State Fair. C.J. is a senior at Groom High School and also shows two heifers.

## Groom Spawns More Tri-State Fair Winners

Marci Babcock won the 4-H Better Bake Show at the Tri-State Fair last week. Marci is the daughter of Mr. and Mrs. Gary Babcock. She was awarded a bread machine as well as her blue ribbon.

Kori Brown took the open Angus Cattle Show by storm. Among the titles she and the Welcome U Farms

brought home are Reserve Grand Champion Heifer, Reserve Grand Champion Bull; Senior Bull Calf Champion; Senior Champion Bull; Sire of Get; Junior Sire of Get; and the pen of 6 award.

Other FFA members competed in the steer show on Saturday.

April Burton won her

class in Saturday's Junior Steer Show. She also placed 2nd in other class with another steer.

C.J. Whatley placed 4th and 5th in his respective classes.

Jason Prather placed 9th in his class.

### Homecoming

aerial photo of the town in 1940 can be seen at the city office). Pep Squad leaders were Rosa Lee James, Gladys Lamb, and Fern Berry, (who happened to be a guy!).

This years celebration marks Groom's 56th Homecoming. Groom Tigers are once again playing 6-Man football and having a winning season. Perhaps history will continue to repeat itself and see that

Groom is on it's way to another District Championship.

### Football

Chillicothe ran in two touchdowns from 22 yards and 16 yards.

Ritter had a 30 yard run. Groom carried the ball 46 times for 404 yards compared to their 34 for 275 yards. The Tigers passed for 55 yards while they passed for 71. Groom had two fumbles to their 6.

It was truly Justin Ritter's night to shine as he had 29 carries for 319 yards and 6 T.D.'s. He also received one 55 yard pass for a T.D., and had 15 tackles to his credit. He kicked a 55 yard punt and returned kickoffs for 11 and 7 yards. He brought home the extra points 4 times, 1 run/pass and 3 kicks.

Toby Burgin also had a night to be proud of, carrying the ball ten times for 52 yards and 1 touchdown. Toby intercepted the ball for 65 yards and a touchdown. He had a fumble recovery and scored on a return. Burgin had to step in as

quarterback along with Josh Evenson when starting quarterback Brad Sustaire pulled a muscle. Daniel Treadwell had 7 carries rushing for 33 yards. He also had six tackles.

Brad Sustaire passed the ball four times for 55 yards and a touchdown. Leo Britten proved again to be a strong force on the defensive line with 13 tackles, 1 fumble recovery and 1 sack.

"The boys put forth a great effort," stated Coach Reid. "They were down by 14 points at one time and they never gave up. That kind of spirit is what makes good teams."

"The blocking was just fabulous. Without that we would never have made a comeback," he added.

Groom faces Three-Way at Silverton on Saturday at 2:00 p.m.

"They have a new coach and a new system," said Reid. "They recently beat a ranked team. It should be a pretty tough game."

## Student Council Prepares For Homecoming

The Groom Student Council is preparing for Homecoming 1996. Businesses are urged to decorate their windows. The following activities have been planned.

**Monday, September 30:**  
• Sidewalk Art Contest, 5:30 - 7:30 p.m., School Parking Lot.

Groups of up to four may purchase plots of equal size for \$8.00 each. There is no limit on the number of plots per group. First prize will be \$15, second \$10, and third \$5. Chalk will be provided.

This contest is not limited to high school students only.

Anyone who wishes may join.

The Student Council will be selling sausage sandwiches and cold beverages.

• Pep Rally, 8:00 P.M.  
• Bonfire, 8:30 P.M.

**Tuesday, October 1:**

Open due to band practice.

**Wednesday, October 2:**  
Elementary Pep Rally, 10:05 A.M., in the Big Gym.

**Thursday, October 3:**  
Homecoming Queen Coronation, 7:30 P.M., Big Gym.

**Friday, October 4:**  
Downtown Pep Rally, 3:05-3:35 P.M., Front of Bank.  
Homecoming Game, 7:30 P.M.

The Homecoming Queen and her court will be presented during halftime of the game escorted by their fathers.

Homecoming Dance, 10:00-12:00, Legion Hall.

The dance is for grades 9-12. Cost is \$5.00 per person.

Out of town guests must be approved by Ms. Addy and must be enrolled in a high school.

Just for all my out of town customers in and around Groom and McLean  
**1-800-842-3866**

## Keyes Pharmacy

928 N. Hobart Pampa  
Merlin Rose, R.Ph

Service You Can Trust

Complete Prescription Service  
Convenient Mailing Service  
Competitive Prices  
Drive Up Window

EMERGENCY 24 HOUR NUMBER  
**669-3559**

## Stop & Shop Convenience Store

Locally Owned and Operated  
Since 1981

Serving our friends in the Groom area with *small town friendliness* and *big city convenience!*

Located at FM 2300 and I-40  
Clean Restrooms, Great Service,  
Texas Lottery Tickets & Delicious Snacks



Fancy Ribbons  
Unique Trinkets  
Decorative Bears  
Glitter Letters  
Music Boxes  
Glitter Hats

Hair Combs  
Spirit Sticks  
Homecoming Mums & Garters  
Ankle Mums  
Wrist Mums  
Hair Bows

For All Schools

We Do Custom Orders In All School Colors

## THE HOBBY SHOP

"The Biggest Little Craft Shop In Texas"

217 N. Cuyler Pampa, Texas 669-6161



FDIC Problems  
or Questions?

**Michael Rouswell, President**

Financial Resolution Systems, Inc.

(Former FDIC Managing Liquidator)

invites you to a **FREE Seminar**

**Saturday, September 28, 1996**

**7:30 p.m. - ???**

**Panhandle Country Club**

INSTRUCTION ON:

•How to complete FDIC Personal Financial Statement/Cash Flow Statement  
•How to prepare a Settlement Offer

DISCUSSION ON:

•What FDIC can do to you  
•What happens if your loan is sold  
•Other topics of interest



HARVEY ELMS  
Owner

## HARVEY'S PRECISION BODY SHOP

806-352-9662

3026 BLACKBURN  
AMARILLO, TEXAS 79109

D & K Glass  
of Pampa, LLC

RESIDENTIAL · COMMERCIAL · AUTO

Chip Repairs  
Shower Doors  
Window Tinting

Emergency Service  
**1-806-665-7170**

800 W. Kingsmill  
Pampa, Texas



## Class Bids Farewell To Chase Holland

A farewell party for Chase Holland was hosted Monday at Russell Conrad's house by Russell and Nicholas Anthony. All members of the 8th grade class attended. While the five boys played a little football and basketball, the eleven girls made a farewell

"video" card. Snacks, provided by class members, were served and a movie was watched. Chase will finish this six weeks, playing one last game as a Groom Cub tonight. He and his parents, Jim and Diane, will be moving to Roscoe, Texas.

### Groom Cubs Football Roster

- # 10 Hugh Weinheimer
- # 12 Nick Anthony
- # 20 Garrett Britten
- # 22 Dwayne Gray
- # 30 Russell Conrad
- # 33 Luke Pavlovsky
- # 40 Chase Holland
- # 44 Cody Bivens
- # 45 Trey Britten
- # 54 Ross Brooks
- # 60 Wyatt Britten
- # 65 Clay Britten
- # 84 Grant Weinheimer

Clip and Save to take to the Games

## Cubs 45 Amarillo Christian School

Groom Junior High Cubs pulverized Amarillo Christian School last week with a final score of 48-0. The game was called at half-time due to the 45 point rule.

Dwayne Gray opened the scoring with a 48 yard run. Nicholas Anthony ran for the extra point to make the score 7-0.

Cody Bivens ran 1 yard to bring the score up to 13-0. Nicholas ran for 7 yards and Hugh Weinheimer made the extra point for the 27-0 score.

Cody Bivens added another T.D. with Hugh Weinheimer again running for the extra point.

Another 2 points were added to the Cubs score when they tackled Amarillo Christians quarterback in Groom's endzone.

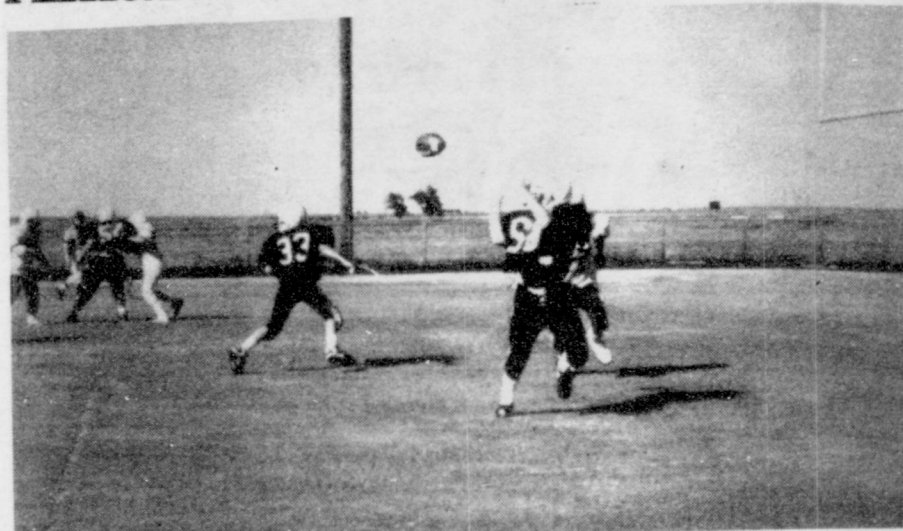
Russell Conrad added a 34 yard run touchdown.

Hugh Weinheimer ran 18 yards for another T.D.

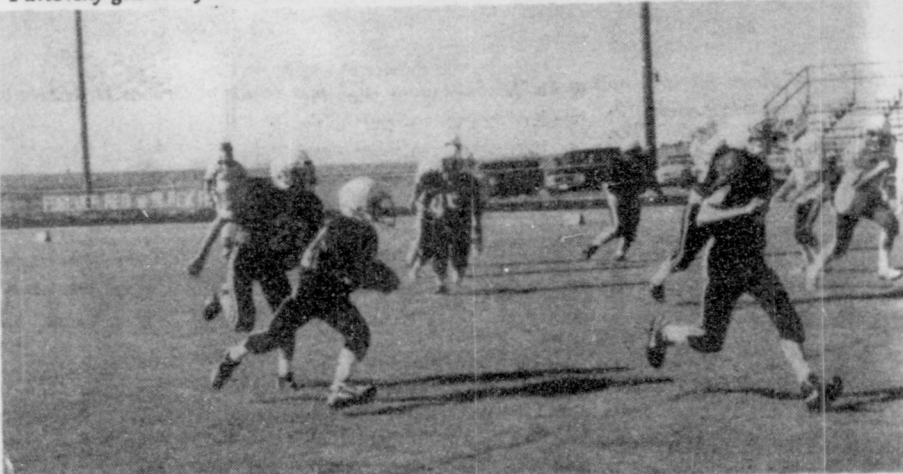
Russell Conrad scored the last touchdown with a 6-yard run.

Garrett Britten passed to Wyatt Britten for the extra point.

"We had excellent line blocking by Chase Holland, Clay Ritter, Trey Britten and Grant Weinheimer," stated Coach Kelm. "Others who played well and contributed to the victory



Wyatt Britten reaches up to catch the pass from Garrett Britten for the extra points. Luke Pavlovsky gets ready to block.



Russell Conrad carries the ball for a T.D. Good support comes from teammates Garrett Britten, Trey Britten, Ross Brooks, and Grant Weinheimer.

were Luke Pavlovsky and Ross Brooks."

The next Junior High game will be Thursday,

September 26 vs Chillicothe at Samnorwood. Gametime is 5:00 p.m. followed by the

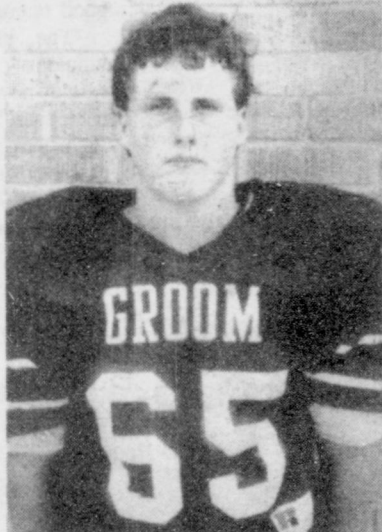
J.V. game against Chillicothe.

# GROOM TIGERS



Toby Burgin- Jr.  
No. 20  
C. Back - R. Back  
Height - 5'9"  
Weight - 160 lbs.

Groom Junior High  
Cubs  
Hugh Weinheimer  
# 10



Evan Crowell - Fr.  
No. 65  
End - Def. End  
Height - 5' 9"  
Weight - 175 lbs.

- Attebury Grain Co., Inc.  
Bivens Automotive  
Blackwell Supply Co.  
Rodney Bohr for CellularOne  
Circle B Meat Company  
City of Groom  
Dairy Queen  
Farmers Equipment  
Friemel Brothers  
Groom Flying Service  
Groom Grocery  
Hops Tire & Fuel Service  
Short Grass Feed Co.  
State National Bank Member FDIC  
Stop N Shop  
The Groom News  
Wieberg Welding

Winning is 99% determination & 1% perspiration!  
Rodney Bohr for CellularOne



- Donna, Blake, & Nichole Barnett  
Jim, Donna, Melody & April Burton  
Mr. & Mrs. Danny Chisum  
Curtis, Dondra, Denai & Collin Downs  
Mr. & Mrs. Ben Ingham  
Donald & Juandell Ritter



Opal Russell of Durant, Oklahoma, her daughter, Bendaline Granger of Durant and another daughter Vivian Gould of Clarksville, Texas visited with Bertha Knight last week and with William and Floretta Neal.

# WIN TIGERS WIN

## Brush & Palette Visit Recovering Member, Get Started On Christmas

By Nita Ramming  
Brush & Palette met for their regular monthly luncheon meeting Monday, September 16, at the Community Center. Everyone came with big plans for getting lots of "painting" done, but mostly it was talking and catching up on the activities of the summer. Junadel, Evelyn, Pat, Dorothy and Nita decided to surprise Billie with a visit before lunch. We really do miss her and the humorous articles she wrote for the paper. We always watched what we said and did for fear of reading about it in the paper.

Pat already has the Christmas spirit and is painting ornaments for her family. She is painting a

welcome mat of Santas - just be sure to step over it when you go see her. Juandel was busy growing mountains and trees. As usual Evelyn was up to her old tricks - trying to keep everyone in line. Nita, of course, was very nice.

Dorothy was hostess. As we were coming in she was headed home to put icing on the cake. Minds were running in the same wave that day. We had two pasta salads and two potato salads. Evelyn always has to be different, she brought a jello salad.

We welcome anyone interested in painting, shirts, wood, canvas or whatever. Come and visit. We have lots of fun.

**KOETTING CONSTRUCTION**  
Mike Koetting  
1-800-286-1023 or 335-1022  
Remodeling - House Leveling  
Brick & Stone Work - New Construction  
Concrete Work  
Free Estimates  
"When Quality Counts"  
Bonded and Insured



All around  
the house.



Contact Your Carson County Allstate Agent:  
**A.J. Weiser & Co.**  
300 Main Panhandle, TX  
537-3543  
For homeowners insurance —  
Being in good hands is the only place to be.

© 1996 Allstate Insurance Company. Not a contract. Subject to local availability and qualifications. Other rates, conditions and exclusions may apply.

# Customer Appreciation Days

September 1-30, 1996

# 40<sup>th</sup> ALLSUP'S

1956-1996 *Always*

<p>"ALL VARIETIES" <b>Doritos</b><sup>®</sup> REG. \$2.09 <b>\$1.49</b></p>	<p>BUY ONE GET ONE FREE! ALLSUP'S <b>Corn Dogs</b> <b>79¢</b></p>	
<p>"ALL VARIETIES" 6 PACK CANS OR 3 LITER <b>\$1.49</b></p>	<p>COMBO MEAL <b>RIB-B-QUE Sandwich</b> <b>Potato Wedges</b> &amp; Tallsup <b>\$1.99</b></p>	
<p>"ALL VARIETIES" ALLSUP'S <b>Ice Cream</b> 1/2 GALLON <b>\$1.59</b></p>	<p>HORMEL <b>Little Sizzlers Sausage</b> 12 OZ. PKG. <b>99¢</b></p>	<p>ALLSUP'S <b>Canadian Bacon,</b> <b>Egg &amp; Biscuit</b> EACH <b>99¢</b></p>
<p>MRS. FRESHLEY'S <b>Cinnamon Rolls</b> 8 CT. PKG. 11.5 OZ. <b>89¢</b></p>	<p>VALLEY FARE <b>Paper Towels</b> JUMBO ROLL 2 FOR <b>\$1.00</b></p>	<p>ALL VARIETIES <b>Snapple Drinks</b> 16 OZ. BTL. <b>69¢</b></p>
<p>SHURFINE GRAVY OR CHUNK <b>Dog Food</b> 20 LB. BAG <b>\$4.69</b></p>	<p>LANCE <b>Cashews &amp; Pistachios</b> 1 1/2 OZ. BAG <b>79¢</b></p>	

## 40<sup>th</sup> ANNIVERSARY SPECIALS!

<p>ALL VARIETIES <b>Sunny Cookies</b> REG. 2 FOR \$1.00 <b>40¢</b> EA</p>	<p>FRITOS, LAY'S OR WAY LAY'S <b>Grab Bags</b> REG. 75¢ <b>40¢</b></p>	<p>VANILLA &amp; VARIETIES <b>Champ Cones</b> REG. 89¢ <b>40¢</b></p>	
<p>You'll find all this and more at your Allsup's store Store # 79 Groom, TX 406 W. Front - Old Hwy. 66</p>	<p>ALLSUP'S <b>Fresh Coffee</b> 12 OZ. CUP <b>40¢</b></p>	<p>OZARKA <b>Spring Water</b> 24 OZ. SPORT CAP BTL. <b>40¢</b></p>	<p>MRS. FRESHLEY'S <b>Honey Buns</b> 3 OZ. PKG. <b>40¢</b></p>

**LOW PRICES,  
GREAT PRODUCTS  
24 HOURS A DAY**

# ALLSUP'S

*Always*

PRICES EFFECTIVE SEPTEMBER 22-28, 1996 OFFER GOOD WHILE SUPPLIES LAST



## Christian Mothers Make Plans For Holiday Bazaar

Christian Mothers met at the home of Mrs. Art Britten on Monday, September 23, at 7 P.M. Hostesses for the evening were Nila Burgin and Monica Howard. Nineteen women were in attendance. Rev. Ray Crosier led the opening prayer and Alice Kuehler presided over the business meeting. Members were informed that Monica Weinheimer had purchased two horseshoe tables for the religion classes. We would like to thank Monica for her generous gift.

Neysa Friemel was nominated as a candidate for DDCW Woman of the Year. Her name will be submitted at the DDCW Convention which will be held on October 18 and 19 at Tulia. Our delegate will be Doris Britten. Anyone wishing to attend the Convention should contact Alice Kuehler. Silent Auction Raffle tickets were distributed to the members. Tickets are \$1 and can be purchased from Alice Kuehler or a Christian Mothers member.

Please contact Alice Kuehler when you make a donation of eye glasses at the State National Bank or to the Lions Club.

The Christian Mothers Holiday Bazaar will be held on Sunday, November 24, from 11 A.M. to 4 P.M. at

St. Mary's Hall. A roast beef dinner will be served from 11 A.M. to 1:30 P.M. Door Prizes will be given away throughout the day with Doris Homer as chairman. The theme of the Holiday Bazaar is Frosty's Winter Wonderland and a Snowman Contest featuring Snowmen of any media is open to the public. There will be a bake sale and craft booths will be on display from area residents. A beautiful ecru round crochet tablecloth made by Louise Conrad will be on display and \$1 chances or 6 tickets for \$5 will be sold by Christian Mothers members. The drawing for the raffle will be held at 4 P.M. on that day.

Alice Kuehler and Rev. Crosier alerted members to be aware of movies that are exposing our children to offensive and dangerous language, pictures, etc. These movies desensitize our young people and members are urged to speak out about this.

The meeting ended with a prayer led by Rev. Crosier. A delicious lunch was served to the members. The next meeting will be held at the home of Wynona Koetting with Debbie Ollinger and Melanie Britten serving as hostesses on October 28 at 7 P.M.

## Obituary

**Lillie Marie Newman CLAUDE** - Lillie Marie Newman, 85, died Sunday, September 22, 1996.

Services were in First Baptist Church with the Rev. John Rose of Claude and Bill Phillips of Amarillo officiating. Burial was in Mobeetie Cemetery at Mobeetie. Arrangements were by Robertson Funeral Directors Inc. of Clarendon.

Mrs. Newman was born in Sallisaw, Oklahoma, and had been a resident of Pampa from 1968 until moving to Claude in 1983. She married Johnnie Newman in 1933 at Sallisaw. He died in 1983.

She was a homemaker and a member of First Baptist Church.

Survivors include a daughter, Sue Ballard of Claude; four sons, Waylan Newman of Lubbock, Kenneth Newman of Memphis, Don Newman of Garland and Jim Newman of Mesquite; a brother, Eddie Pannell of Wheeler; 10 grandchildren; and 22 great-grandchildren.

## Trenton Charles Welcomed To Fields Home

Mr. and Mrs. Scott C. Fields and Taylor Fields of Groom, are pleased to announce the birth of Trenton Charles. He was born on September 5, 1996 at 11:22 a.m. He weighed 9 pounds 7-3/4 ounces and was 21-5/8" long.

The proud grandparents are Bill and Linda Bohr and Bud and Connie Fields of Groom. Great-grandparents are Dean and Donna Burger of Pampa and Nettie Fields of Amarillo.

## Groom Lunch Menu

September 30 - October 4 Monday

Breakfast: Cold cereal, blueberry muffin, juice, milk.

Lunch: Cheeseburgers, french fries, pork & beans, million dollar cookies, milk.

Tuesday

Breakfast: Pancakes, peanut butter, Canadian bacon, juice, milk.

Lunch: Tiger baskets, curly fries, Texas toast, pears, milk.

Wednesday

Breakfast: Breakfast burritos, hash browns, juice, milk.

Lunch: Corn dogs or chef salad, macaroni and cheese, pork & beans, pickle spears, peaches, milk.

Thursday

Breakfast: Biscuits, hash browns, bacon, juice, milk.

Lunch: Chicken breast nuggets, mashed potatoes, green beans, pull apart bread, jello, milk.

Friday

Breakfast: Donuts, cinnamon rolls, juice, milk.

Lunch: Lasagne, fried okra, salad, break sticks, fruit cocktail, milk.



Jr. High Cheerleaders don't have to work very hard to keep spirits high at the Cubs recent game. They are Courtney Sustaire, Skye Brown, Macie Britten, Karri Britten, Candace Bohr and Nicole Barnett.

## Book Covers Provided For District Students

Once again Panhandle Ground Water Conservation District has provided each student in the District with book covers to protect text books. These book covers are designed to make students aware of common water wasting practices and to promote conservation and protection of our water.

Schools receiving the book covers were Miami, Panhandle, Pampa, White Deer, Skellytown, Clarendon, Claude, Groom, McLean, Lefors, Hedley and Grandview-Hopkins. A total of ten thousand book covers were distributed.

## More College Students

West Texas A&M University

Nick Ashford  
Brody Brown  
Amy Brown  
Eric Weinheimer  
Amarillo College  
Bronte Britten  
Southwest Texas University  
Brian Crowell  
Mesa Tech  
New Mexico  
Matt Miller

Visitors in the Glenn D Harrell home Sunday were Bob and Louise Mulkey, Steven and Sara-Allyson Hightower, Robert and Whitney of Panhandle, Barney York of Austin and Jeremy Mulkey.

## How Much Water Is An Acre Foot?

One "acre foot" of water equals...

\* An acre of land covered with one foot of water

\* 325,900 gallons of water

\* Enough water to supply a family of 5 for one year.

## Old Mobeetie Jail Presents "Tasara"

The Old Mobeetie Jail Museum presents an off-site Gallery Theater production by The Witte Museum of San Antonio on October 5, 1996. The one man performance will follow a

chuck wagon dinner served between 1:00 and 2:00 p.m. The free performance is an educational outreach program sponsored by the Jail Museum in conjunction with the Fort Elliott cross country meet.

## How Much Water Is An Inch Of Rain?

One inch of rain falling on a 160 acre field delivers 4,344,680 gallons of water, or 13.3 acrefeet. It would take just over 4 miles of 8,000 gallon capacity railroad tank cars to transport this amount of water, which by the way, would weigh over 18,000 tons.

## Groom Flying Service

Good Service-Reasonable Prices  
Harris & Office Craig  
Howard Howard  
248-7561 248-7420

## B & B Electric Appliance Repair on All Makes & Models

Heating & Air Conditioning  
No Mileage Charges To Groom  
Loyd Bybee - Owner - McLean  
1-800 834-6058 • 779-3252

## Hop's Fuel & Tire Service

Old Route 66 & Broadway

Groom's Only Tire Warehouse  
Over 400 New & Used  
Tires In Stock  
Authorized Interstate  
Battery Dealer  
All Types Of Tire Repair  
Road And Field Service

Phone 248-7919

Howard "Hop" Britten

John B. Wortham

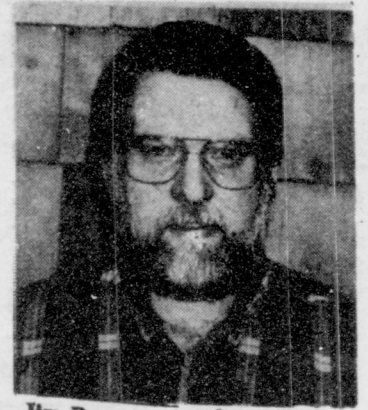
## DEAN'S pharmacy

2217 Perryton Parkway 669-6896

"Looking forward to serving our Groom-McLean customers."

9:00 - 6:30 Monday - Friday  
9:00 - 1:00 Saturday

WELCOME WELFARE RECIPIENTS  
SPECIAL DISCOUNTS TO SENIOR CITIZENS  
ON ALL PERSCRIPTIONS



Jim Pepper

Home 669-9710



NOV 96  
LOVETT MEMORIAL LIBRARY  
BOX 8  
MCLEAN, TX 79057

# The McLean News



Commerce Bank Building No. 5 Thursday September 26, 1996 779-2141

## Storm Causes Damage, Dumps 3 to 7 In. Of Rain



McLean residents were awakened at about 2:00 a.m. on Wednesday, September 18 to thunder and lightning which preceded the downpour of rain and hail. Officially, McLean received 3.20" of rain while individuals reported up to 7" of rain with reports of some hail up to golf ball size.

Numerous barns and outbuildings were reported damaged including the Lion's Club concession stand at the rodeo grounds.

The press box at the football stadium was completely demolished.

Frank Sparling, an MISD employee, was able to jury-rig a press box of sorts in time for Friday night's game. He was able to use the aluminum shell that had previously been used as a wind break for video personnel.

Cecil Gillispie, west of McLean, lost one horse shed which was picked up and went through SPS lines adjacent to the barn.

Electric service was restored to 26 customers about 7:45 a.m.

Jane Herndon of Simpson Insurance Agency reports that some roofs have been totaled. The north and north west part of town are the ones that were damaged more severely.

McLean received another 1.65" of rain the following day, giving a 2-day total of 4.85". The total for the year is 26.11".

## Sam Haynes Nominated For Board

The McLean School Board of Trustees met in regular session September 17 at the school business office to take care of routine business. Following a one-hour executive session to discuss personnel issues,

the board met in open session to accept property tax bids as presented by County Tax Assessor Sammie Morris. The board accepted a deed on Block D/Lots 11-20, and assigned to Gray County a deed on

Block 46, Lots 1-10. The actions were taken to clear some lots on which taxes had been defaulted.

In other action, the board nominated Sam Haynes as their representative to serve on the Gray County

Appraisal District Board. Haynes has served on the board for several years as the representative for the small school districts and entities in the county.

The board approved adding Superintendent John See Board, pg. 10

## Tigers And Cubs Win

By Shanna Dent & Kristi Tidwell

MHS Tiger Rag Staff Both the McLean Junior Varsity and Junior High were victorious against the Silverton Owls Thursday night, but the luck changed when the Varsity Tigers lost to Silverton 32-21 at Duncan Field Friday night.

The Tigers stood scoreless against a tough defensive team until after halftime, when the score stood 12-0. Senior Chad Richards caught a 27 yard

pass from Freshman Brett Montgomery for the Tigers' first six points. The PAT failed. Freshman Aaron Rice pounded through the Owls defense for a 4-yard touchdown run. Rice then turned around and kicked a successful PAT. The score was 26-13 going into the fourth quarter with the Tigers just getting fired up. Junior Chris Flores scampered 1 yard to add 6 additional points to the Tiger score. Rice again

See Game, pg. 10



Enjoying the thrill of victory, Chris Sparling and Coy Tolleson lead the McLean Cubs back to the Field House through the Victory Line after beating Follet, recently. Cheerleaders, pep squad and fans keep spirit high as these boys are well on their way to a winning season.

### REMINISCE

**THE PIONEER STUDY** Club will have their Southwestern Public Service food demonstration on October 3 at 4:15 p.m. at the Devil's Rope Museum.

**UNITED METHODIST** Church will have its annual appreciation dinner for all School personnel Sunday, Sept. 29 at 12:30 p.m.

**ATHLETIC BOOSTERS** will meet Monday, Sept. 30 at 7 p.m. at the High School.

**ON THURS., OCT. 3** the Hall Co. Home Health Service will sponsor a health screening in the Hospitality Room of the Bank of Commerce from 9:00-3:00. Free blood pressure, blood sugar screen and cholesterol screen.

**DEADLINE TO** order mum's is Oct. 4. Contact any member of the Junior Class.

**THERE WILL BE** a flu clinic by the Texas Dept. of Health at the VFW building in McLean from 9 am to 3 pm on Thursday, October 17.

**THE FIRST SIX** Weeks of school will end Sept. 27. Exams will be taken Thurs. the 26th and Fri. the 27th.

**CUBS WILL PLAY** Lefors at home Thurs., Sept. 26 at 6 p.m.

**THE TIGERS WILL** travel to Lefors Friday, Sept. 27. Kick-off at 7:30 p.m.

**MCLEAN J.V. WILL** play Miami at 10 a.m. Saturday, Sept. 28 at McLean.



# McLean Competes At White Deer

By Lorin Hall & Bonnie Hauck  
 Invitational on September 22.  
 Running in the girls Junior High division were Nikki Jo Hefley, Randi Jo Riley, Austin Williams, Nathaniel Roberts, and

Benjamin Ridgley represented the Junior High boys. McLean had one medal brought home in Junior High, and that was a fifth place finish by Benjamin Ridgley. McLean had two Cubs running in the Junior Varsity division, both were medalists. They were Salvador Vega, sixth place, and Patrosino Vega, seventh.

In the Varsity divisions, McLean was represented by three Lady Tigers, Rachel Galley, Rebecca Hembree, and Annie Weaver. "These three young ladies represented McLean well," Coach Ridgley said. The Varsity boys were the only division in which McLean fielded a complete team. Members of the team are Anthony Albus, Walter Handlin, Charles Harris, Chad Richards, Shawn Sanderson, and Erik Vega. The team finished third with 59 points. Individual medals for the McLean boys were Shawn Sanderson third, with a time of 16:25, and Chad Richards sixth, with a time of 17:01.

The next meet will be the Jail House Romp at Old Mobeetie, October 5. The Junior High Girls will run first at 11:00 a.m.

# Hunter Education Class Set For October 7

A course in hunter education has been scheduled for October 7, 8 and 10 from 6 to 10 p.m. in McLean according to Bill Layman, Hunter Education instructor.

Effective September 1, 1993, all hunters born on or after September 2, 1971 must have successfully completed the course to hunt in Texas. However, any individual may take the course on a voluntary basis and is encouraged to attend regardless of requirements, according to Bill Layman.

The course is open to adults and youths and will include instructions in rifles, shotguns, and bow hunting,

handling and safety; outdoor responsibility and ethics; law and regulations; conservation; hunting traditions; wildlife identifications; field care of game; wilderness first aid and survival, Bill Layman added.

Students 12 years of age or older successfully completing the course will be issued a hunter education certificate from the Texas Parks & Wildlife Department. Those less

than 12 years of age will receive a certificate of attendance, but must take the course again for proper certification.

More than 160,000 Texans have already completed the hunter education course which is mandatory in 39 states. For more information, contact Bill Layman at 779-2504 or the Texas Parks and Wildlife Department's Hunter Education section in Austin at 1-800-792-1112.

## The Barking Lot

Now Open

Grand Opening Special

\$5.00 Off Any Service

September 30 - October 4

**MUST BRING THIS AD**

779-BARK

McLean, Texas

## Country Corner Texaco



Gas - Diesel - Deli  
 "The Friendly Place"  
 McLean, Texas



Exit 142  
 779-2391

### Luncheon Special

Thursday

Mexican Food - \$3.49

Friday

Fried Chicken - \$3.49

Sunday

Brisket w/Dessert

\$4.95

Come Eat With Us Free On Your Birthday

## McLean Birthdays & Anniversaries

September 26 - Terry Smith.

September 27 - Billy Bob Adams, Shannon Weir, Francis Luther Petty, Ora Wayne Barker.

September 28 - Buna Gudgel, Loyd Bybee, Jason Myers, Sarah Myers.

September 29 - Chester Jones, Gabe Parson.

September 30 - Dianne Stewart, Tony Acuna, Gwen Stewart, D.J. Basham, Lonnie Knutson.

October 1 - Elaine Pierce, Ruby Back, Ruby Boyd, Leona McPherson.

October 2 - Don Sanders, Ben Reeser.

## The Family of Ruth Hess Magee

Invites you to a

Celebration

in honor of her

80th Birthday

Saturday, October 5, 1996

2:00 - 4:00 p.m.

Barbed Wire Museum

McLean, Texas

*In lieu of a gift, Ruth would enjoy a card with a special memory included*

BEWARE

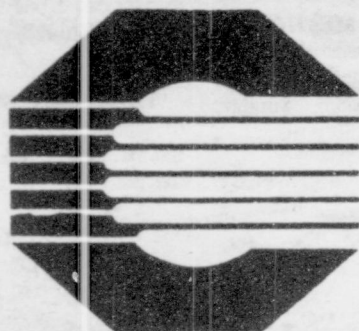


OF WHAT INFORMATION YOU GIVE OUT OVER THE TELEPHONE

THE EASIEST WAY TO PROTECT YOURSELF IS . . .

"DON'T GIVE OUT YOUR CHECKING ACCOUNT NUMBER OVER THE PHONE UNLESS YOU KNOW WHO YOU'RE DEALING WITH"

BANK OF COMMERCE WANTS YOU TO BE AWARE OF THE TELEMARKETING SCAMS. . . SEVERAL McLEAN RESIDENTS HAVE ALREADY BEEN CONTACTED CONSUMERS ARE LOSING MILLIONS OF DOLLARS IN TELEMARKETING SCAMS THAT DEBIT THEIR CHECKING ACCOUNTS WITHOUT AUTHORIZATION. THESE SCAMS USUALLY INVOLVE SALES OF MAGAZINE SUBSCRIPTIONS AND OTHER CONSUMER PRODUCTS



779-2461

A Subsidiary of GrayCo BancShares, Inc.



BANK OF COMMERCE

McLean, Texas



## FAMILY HEALTH CARE CENTER OF McLEAN

Is Open Monday, Wednesday & Friday  
 8:30 am to 4:30 pm

Telephone Monday Through Friday  
 During Business Hours  
 779-2030

*Dr. Adelman, M.D.  
 Internal Medicine  
 Will Be At The Clinic  
 On Mondays  
 Call For More Information*

Prescriptions Are Available  
 The Same Day If Necessary

211 N. Main, McLean, Texas



# Alanreed Residents Have Visitors

By Lena Carter  
Visiting here recently was Frances Corbin of Amarillo and Agnes Wetzel of Groom. They are both local girls and their families are buried here. They were very pleased with conditions of the local cemetery.

Ruth and Brenda McLain were in Amarillo last week for dental attention.

Shirley Armbrister and Nora Dragoo were in Shamrock on Tuesday.

Adelaide Weldon is in Shamrock General Hospital for treatment at this writing.

Nora Dragoo was on the sick list this week and absent from First Baptist Church.

Visiting with Lena Carter on Sunday was Mr. and Mrs. Jerry Carter of Pampa. They were returning home from a chili cookout on McClellan Lake.

Denna Tidwell and Nora Dragoo were in Pampa

Thursday for medical attention for Nora.

The Jimmy Armbristers of McLean and baby were visiting Sunday with Nora Dragoo.

Some of the prettiest spots in town are Nora Dragoo and Lena Carter's fences covered with heavenly blue morning glories. So much beauty for no effort at all. The beautiful manicured yards and the cleanness of the old "Jewel" Warner place with its red, white and blue windmill and white pipe fences just waiting for a lovely new home to come down. The outside entrance to First Baptist Church basement is almost finished and a new flagpole.

Jim Bible will be absent from First Baptist Church this weekend because its his period of prison ministry.

We received about 3 or 4

inches more rain last week but thankfully no hail.

Ruth and Brenda McLain made a trip to Spearman Monday.



McLean College Students Heidi Syfrett attends McMurry University.

## Briefs

Ike Hanes won 5th place in the Tri-State High School Rodeo. Clint McClay won 4th in Ribbon roping with 9.283.

In the Junior Lamb Show at the Tri-State Fair Jessica Fish won 1st in the Class 1 Fine Wool division and 2nd place in the Fine Wool Cross, Class 1. D.J. Basham won 9th place in the Medium Wool, Class 4 division.

In the Junior Heifer Show Angus division, Class 3, 1st place went to Jessica Fish.

In the Senior Division Textile Department, Pat Stubbs took 3rd place in Machine Knitting, suit or dress.

## McLean Lunch Menu

September 30 - October 4

Monday  
Breakfast: Cold cereal, toast, juice, milk.

Lunch: Hamburger stew, grill cheese sandwich, fresh vegetable sticks, chips & dip/crackers, banana pudding, milk.

Tuesday  
Breakfast: Cream beef on toast, fruit, juice, milk.

Lunch: Chicken fajitas/fixings, ranch style beans, salad, crackers, no bake cookies, milk.

Wednesday  
Breakfast: Cereal, toast, juice, milk.

Lunch: Frito Pie, chili, cheese, salad, crackers, applesauce, S'Mores, milk.

Thursday

Breakfast: Cereal, toast, juice, milk.

Lunch: Smoked BBQ sausage, potato salad, coleslaw, carrot cake, Texas toast, milk.

Friday  
Breakfast: Cinnamon rolls, fruit, juice, milk.

Lunch: Hamburgers, seasoned potatoes, lettuce, tomatoes, pickles, onions, jello, milk.

## Haynes Quality Discount Furniture

Sofas • Loveseats • Oversized Chairs • Cocktail Tables  
End Tables • Dinettes • Exquisite Dining Room Sets  
China Cabinets and Hutches • Curios • Recliners  
Beds • Mattresses • Bunkbeds • TVs • Appliances  
and much more!

~ Choose from several major manufacturers ~  
**Better than bargain-basement prices!**  
Call for an appointment today!

Ginger Haynes (806) 779-2217

**James Hefley**  
"The Sound that Sells"  
LICENSED AUCTIONEER BONDED  
COMPLETE AUCTION SERVICE  
806-779-3134  
BOX 42 • McLEAN, TX 79057 • FAX 806-779-2436

# McLEAN



# TIGERS

- Bank of Commerce
- C & H Supply
- Country Corner Texaco
- Hefley Auction Co.
- J de K
- Gerald Johnson Trucking
- Kirk's Auto Supply
- Magee Ranch
- McLean Care Center
- McLean Feedyard, Inc.
- McLean Home Health Agency
- McLean Plumbing  
Doyle Lee, Owner
- Mertel Boot Shop  
Johnnie & Colleen
- Puckett Grocery
- Season's  
Johnnie, Mary Ann & Emma Jean
- Simpson Insurance Agency
- Sparling & Sons Plumbing
- The McLean News

Corner Corner Says  
Go Tigers!  
We're Behind You  
All The Way!

Charlie Carter  
Freshman  
No. 22  
Height - 5'7  
Weight - 169 lbs.



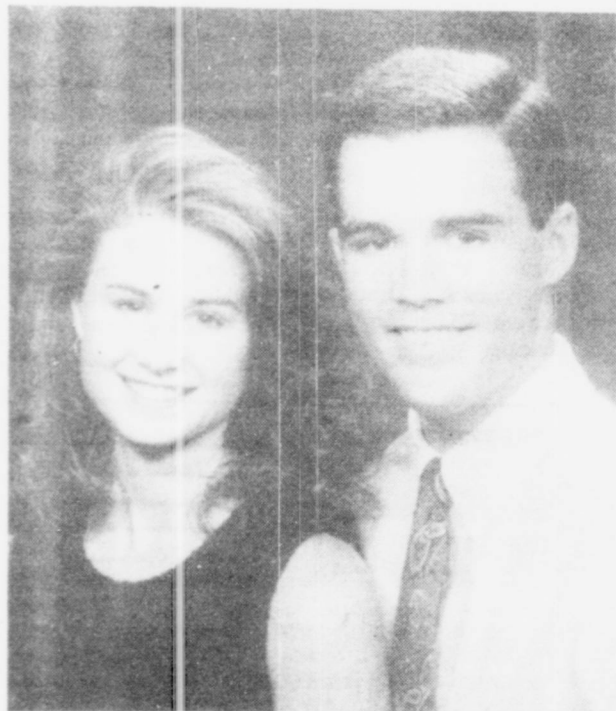
Neil Campbell  
Freshman  
No. 28  
Height - 5'10"  
Weight - 176 lbs.



Anthony Albus  
Junior  
No. 25  
Height - 5'10"  
Weight - 147 lbs.







### Stevens-Johnson To Wed

Sandi Danay Stevens and David Truitt Johnson are pleased to announce their intention to marry. Gary and Jean Stevens of Canyon are parents of the bride-elect. Sandi attended school at Southern Nazarene University in Bethany, Oklahoma. She is currently a senior at West Texas A&M University where she is majoring in Exercise Sports Science.

Jan and Sam Haynes of Pampa and Mike and Cherry Johnson of Vernon are parents of the groom-to-be. David attended South Plains College at Levelland and is presently a senior at Texas Tech University majoring in Pre-Pharmacy Chemistry.

December 21, 1996 will be the date of the ceremony at the First Baptist Church in Canyon, Texas.

### Pioneer Study Club

The Pioneer Study Club met for their September 19th meeting in the conference room of the Lovett Memorial Library. Kristi Crockett presented an interesting and thought provoking program on "The Benefits of Exercise at Any Age."

President Mary Dwyer presided over a business meeting. Minutes were read and approved and a lively discussion was held pertaining to city beautification. Margaret Grogan gave a treasurer's report and collected dues outstanding.

Lezlie Stewart served refreshments of little smokies in a delicious sauce, tortilla chips, dip and ice tea.

Other members present included Bonnie Nell Fabian, Margaret Grogan, Mary Lou Glass, Ruth Magee, Loyce Murray, Martha Parker, Lynn Reeves, Mary Emma

Woods, and Nama Webb. Two guests attending were Donna Reeves and Molly Stewart.

The next meeting will be the Southwestern Public Service representative held at the Devil's Rope Museum on October 3, 1996.

### District FFA Meeting

By Jessi Fish  
McLean FFA Reporter  
Tuesday, September 17, was the beginning of what is going to be a fun-filled year for many new FFA members. Anthony Albus, Jessi Fish, Rebecca Hembree, Scott Glass, D.J. Basham and Mr. Layman traveled to Matador, Texas to the first District FFA meeting for 1996. It was a lot of fun.

The members learned about leadership and communication with others. A speaker from Texas Tech came and spoke about leadership. Then, the members all visited and ate sandwiches from Fresh Country.

### Game

made a successful PAT for McLean. Senior Jason Hooper dislocated his elbow during the third quarter at Friday's game. Hooper will be out for the next 4-6 weeks.

McLean's Junior Varsity held their own against Silverton for a 14-6 victory. Freshman Neil Campbell caught a quick pass from Freshman quarterback Christopher Hauck for the Tigers' first touchdown. Senior Shawn Sanderson trampled down the field to bring the Tigers over the Owls. Junior Anthony Albus took over the quarterback position after Hauck caught a helmet in the chin.

The McLean Cubs kept up their winning streak keeping a record of 3-0 by defeating Silverton 13-7 at Silverton. Eighth grader Gabriel Vega scored the Cubs' first touchdown on a short scamper to the goal. Eighth grader Brad Sawyer

plunged 2 yards for the Cubs. Seventh grader Randy Floyd caught a lofty pass from Eighth grader Ricky Smith for the Cubs PAT. Eighth grader Coy Tolleson was stopped short of another touchdown after a 50 yard sprint in the final seconds.

### Board

Griffin and secretary Margaret Milam to the approved list of users for the cafeteria Tenet program.

End-of-the-year budget adjustments were approved by the board, and all financial reports were accepted.

Attending the meeting were board members Don Dorsey, Bob Glass, Eugene Galley, Jay Dee Fish, Billie Ward, John Holland, and Neal Odom. Also present were John Griffin, superintendent; Dick Crockett, elementary principal; Charles Callum, high school principal; and Pam Crockett, secretary. Visitor was Jacque Riley.

1-10x13 (Wall Photo) 30  
1- 8x10 COLOR  
2- 5x7 PHOTOS  
2- 3x5  
16-King Size  
Wallets  
8-Regular  
Size Wallets

**\$11.99**

99¢ Deposit  
\$11.00 Due At  
Pick up  
Plus Tax

WE USE KODAK PAPER

Order your Christmas Cards now.  
25 for \$15.99

AT  
**Lamb - Ferguson  
Flower & Gift Shop**  
218 N. Main

Date: Friday, Oct. 4  
Hours: 9:30 - 4:30

During this promotion  
you will receive  
4-FREE 3 x 5's  
with each \$11.99 package Purchased

Group Charge  
99¢ per person

**Shugart's  
inc.**

**COLOR  
PHOTOS**

Kodak paper. For a Good Look at the Times  
of Your Life.

**All Types of  
Wood Roofing**

*Insurance Approved  
&  
Insurance Preferred*

**Composition  
Roofing**

*Since 1976*

**BETTER  
BUSINESS  
BUREAU**

**FREE  
ESTIMATES**

**One-Day Service in Most Cases**

**779-2938**

**Empire Roofing Co.**



## The Classifieds

Classified rates are 15¢ per word with a minimum of \$4.00. Thank you notes are \$4.00 up to 20 words. Wedding stories are printed free up to 300 words, no charge for pictures as space permits.

Payment is required at time of placing the ad. Advertisers with established account may be billed on 30 day accounts. An extra charge will be incurred if tear sheets are required.

Errors: Check your ad the first time it comes out. Errors or mistakes that are not corrected after the first printing are the responsibility of the advertiser.

### NOTICE!

The Groom/McLean News does not vouch for the legitimacy of job or money-making opportunities in the classified ads if they have 800 or 900 numbers to call. We suggest you carefully evaluate such offers and not send money to those advertisers unless you are certain you know with whom you are dealing and you know all terms and conditions of the offer.

FOR SALE: '84 Mercury Marquis. 86,000 miles 248-7464. Groom.

IF YOU HAVE a drinking problem or know someone who does call 248-7976 or 248-7927.

**C & H**

WANTED: Grass to lease on a year round basis. Phone 779-2044, Frank Worsham, Alanreed.

**The Groom/McLean News**  
Has Gift Subscriptions  
And Student  
Subscriptions Available  
Call Today

**Rafter J  
Water Well Service**

Aermotor Windmills  
Submersible Pumps  
Repairs & Installation

Jerrell Key 944-5229

### McLean Area CHURCH DIRECTORY

ASSEMBLY OF GOD · 4th & Main  
771-2902/2221

Sunday School all ages 9:45 am  
Worship & Children's Church  
10:45 am, Worship 6:00 pm  
Wed. Bible Study & Youth Service 7 pm

CHURCH OF CHRIST · 4th & Clarendon  
Preacher Pat Andrews 779-2548  
Sunday Bible Class 10 am Worship 10:40 am & 6 pm  
Wed. Bible Class 7:30 pm

FIRST BAPTIST CHURCH · 206 E. 1st Street  
James Martindale  
Sunday School: 9:45 am Worship 11 am & 6 pm  
Bible Study & Prayer Meeting Wed. 7 pm  
779-2175

UNITED METHODIST CHURCH 2nd & Gray  
Pastor Thacker Haynes 779-2049/2337  
Sunday School 9:45 am · Worship 10:50 am & 6 pm  
Sun. Sr High Youth · Alpha Chi 5 pm  
Wednesday: Choir 7:00 pm

HEALD UNITED METHODIST CHURCH  
Sunday - 9:15 am  
Kellerville Road

TRINITY BAPTIST CHURCH 603 Commerce  
Rev. Q.D. Bevell, pastor 779-3207  
Sunday School 9:45 am · Worship 10:45 am  
Sunday Evening Worship 7:00 pm  
Bible Study & Prayer Meeting Wed. 7:00 pm

### MAINKEN DRUG

Shamrock  
Toll Free  
1-800-395-4244  
We're Glad To Mail &  
Deliver For Emergency  
Prescriptions

### Political Calendar

The Groom News is authorized to present the names of the following candidates for office, subject to the Elections to be held on Nov.5. A fee of \$35.00 has been paid by each candidate for listing in this column from now till the run-off election in April if applicable or the final election in November.

Carson County Tax Assessor/Collector Roslyn Watson

Carson County

Commissioner

Precinct 1

Mike Britten

Carson County Sheriff

Loren Brand

District Attorney

100th Judicial District

Randall C. Sims

Gray County Constable

Precinct 4

Frank W. Sparling

Gray County Tax

Assessor/Collector

Sammie Morris

Gray County Sheriff

Don Copeland

Carson County

Attorney

Scott Sherwood

DEMOCRAT

U.S. House of

Representatives

13th Congressional

District

Samuel Brown Silverman

### Kerry's Kreations

Balloon · Cookie  
& Candy Bouquets  
All Occasions &  
Delivery  
248-7255  
102 E 1st  
Groom, Texas

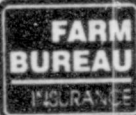
### Babcock Welding

Shop &  
Portable Welding  
248-7273  
Groom, Texas  
Leave Message  
Clint Babcock

### A. J. Newsom Water Well Service

Submersible Pumps  
Aeromotor Windmills

Phone 248-7411



Gray-Roberts County Farm Bureau

### David S. Haynes

Service Agent

AUTO, HOME, FIRE, LIFE, HEALTH,  
ANNUITIES, ESTATE PLANNING

1132 South Hobart  
Pampa, Texas 79065

Office: (806) 665-8451  
Home: (806) 779-2217

### NOW SELLING CROP HAIL INSURANCE



### Brumley Insurance Agency

Johnny Brumley, Agent  
Groom, Texas

Office 248-7550 Home 248-7315

WILL DO ANY kind of farm and ranch fence work. New or repair. Call Luis Salas, 826-3755, Wheeler, Tx.

PART-TIME HELP: 30 hours a week min. Bookkeeping, pump fuel, being able to meet people, phone skills. Cantrell Oil & Gas, McLean.

HOUSE FOR SALE. 1500 sq.ft., 3 bedroom, 2 bath, detached garage, 12 x 24 shop building in McLean. Call 779-2336.

ONE SPOTTED Jackass for sale. No known relatives in the immediate area. 779-2797, McLean.

When you can't  
shop at home...

## SHOP PAMPA

"No Need to hollar 'Calf Rope!'. We make carpet buyin' so easy. Even a drug store cowboy could do it!



### Southwest Tile & Carpet

1621 N. Hobart  
Pampa, Tx  
FREE ESTIMATES  
1-800-371-5038

### NOW OPEN

### Keepsake Korner

unique gifts, crafts & more

"20-40% Off Select Booths"

Pampa Mall  
665-2276



AFTER CHURCH

FELLOWSHIP LUNCHEON ADULT BUFFET ONLY

\$ 3.49

Come Join Us For Lunch

UNDER NEW OWNERSHIP - LANDES ENTERPRISES, INC.  
UNDER NEW MANAGEMENT - DANIEL & JEANNA ZUNIGA  
2545 Perryton Parkway 665-6566



REGIONAL  
EYE  
CENTER

TOLL FREE:

1-800-322-3931

PAMPA: (806) 665-0051

GEORGE R. WALTERS, M.D., P.A.

"No Stitch" Cataract & Laser Surgery  
Excimer Laser - PRK  
Glaucoma & Diabetic Eye Disease  
Optical Shop & Lab

107 West 30th Street

Pampa, Texas 79065

### HAPPY BIRTHDAY

### CAROLE FIELDS

BoB Clements, Inc.

Fine Tailoring · Dry Cleaning · Suit Bar  
1437 N. HOBART

665-5121



A member of the International Fabricare Institute.  
The association of professional drycleaners and laundrers.



# Hillary Hudson And James Stull Exchange Marriage Vows



Hillary Elizabeth Hudson and James Bradley Stull were united in marriage on September 21, 1996 at the Alamo Heights United Methodist Church in San Antonio, Texas.

The bride is the daughter of The Honorable and Mrs. J.E. Blackburn of Houston and Mr. and Mrs. Jim Hudson of Austin, Texas. She is the granddaughter of Leta Mae Hess of McLean. The groom is the son of Mr. and Mrs. Larry D. Stull of San Antonio.

Elizabeth Taylor of Dallas served as the maid of honor. Bridal attendants were Sherri Flynt of Abilene, Shannon Wingo of

Dallas, Christi Stull of San Antonio, Tracy Schlaegel, Arlington and Lisa Garlic, Dallas.

Preston Knight of Dallas was the Best Man. Attending the groom was Stephen Hudson of Temple; Matt Sawyer of Houston; Craig Schultz of Victoria; Jon Fisher of Dallas; and Albert Lasater of Houston.

Guests were seated by Chad Crocker, San Antonio; Nelson Knight, Dallas; Matt Dotin, Houston; and Steve Chiscano, San Antonio.

Morgan Steele was the flower girl.

The bride is a 1990 graduate of Texas A&M and a member of Kappa

Alpha Theta and is employed by Ken Batchelor Cadillac in San Antonio.

The groom is a 1989 graduate of MacArthur High School, San Antonio

and a 1994 graduate of Texas A&M. He is a member of Phi Gamma Delta and currently is engaged in farming in the San Antonio area.

**Simpson Insurance Agency**  
Jane Herndon

106 N. Main • McLean, Texas  
779-2451

We sell Medicare Supplements  
Check With Us For Good  
Real Estate Buys

**GO  
TIGERS**

## McLean Care Center News

Sunday, Pat Andrews, pastor of the Church of Christ came to hold a worship service.

Monday morning Bill Hulse, from Pampa came to cut the men's hair. In the afternoon the following residents played bingo: Annie Eudey, Dick Wheeler, Sylvia McClellan, Truman Goodlett, M.L. Rowan, Teresa Richardson, Lena Bailey, Eula Morrow, Sue Cubine, Betty McCurley, Vernee Bowling, Jessie Watson and Hadda Moore. The volunteer helpers were Betty Lowe, Martha Van Huss, Cliffie Heasley and Avalee Crockett. Bananas were furnished by the Lions club.

Tuesday morning the ladies from the Church of Christ came to give the residents a social. Ladies furnishing and serving refreshments were Avalee Crockett, Cliffie Heasley, Oleta Harris and Gladys Godfrey.

Thursday Inez Trostle was here to style the ladies hair and several ladies had manicures. In the afternoon M.L. Rowan, Dick Wheeler and Teresa Richardson played dominos.

Saturday was the Birthday Party for the month of September. Corsages and boutonnières were furnished by Lamb-Ferguson Flower shop. Loyce Murray came to play the piano. Evelyn Pennington baked and decorated the cake. An angel food cake was furnished by Grace Glenn. Ladies serving were Betty Lowe, Ruby Dorsey, Grace Glen and Peggy Wilson.

"You'll love what you see. . ."

## Jerry's Furniture

Fine Home Furnishings

- Gift Items
- Accessories
- Wallpaper
- Levolor Blinds
- Custom Framing
- Lane
- Restonic
- Charles Schneider
- Riverside
- Standard

213 N. Main Shamrock, Texas 256-5119  
Hours Monday-Friday 9:00-5:30 Saturday 10:00-4:00



### North Forty Steak House & Grill Daily Menu

- |           |                 |
|-----------|-----------------|
| Thursday  | • Baked Chicken |
| Friday    | • Fish          |
| Sunday    | • B.B.Q. Ribs   |
| Monday    | • Steak Fingers |
| Tuesday   | • Mexican Food  |
| Wednesday | • Spaghetti     |
| Thursday  | • Meatloaf      |

I-40 & Hwy 273 - McLean, Texas

806-779-2151

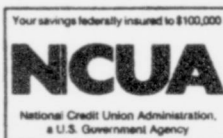


**LEFORS FEDERAL  
CREDIT UNION**

SERVING RESIDENTS LIVING IN THE LEFORS  
AND McLEAN SCHOOL DISTRICTS  
CALL 806-835-2773

SAVINGS AND LOANS

117 E 2nd • P.O. Box 425  
Lefors, Texas 79054



National Credit Union Administration,  
a U.S. Government Agency

**SUBWAY**

Now Has A Drive-Up Window & A  
Fax Number (256-2951) For Your  
CONVENIENCE!

**Midway Truck & Travel**  
I-40 & Hwy 83 Shamrock, Tx

We make it right.™



### Customer Appreciation

Day Bank Parking Lot  
McLean, Texas

Come join us for hamburgers  
and all the trimmings  
FOR MORE INFORMATION:  
CALL C & H SUPPLY AT 779-2209

Thursday,  
Oct 3, 1996,

11:00 a.m. - 1:00 p.m.

### C & H Supply, Inc.

Shamrock 806/256-2124  
McLean 806/779-2209

**PUCKETT'S  
FOOD  
STORE**



McLean, Texas  
779-2661



**BANK OF  
COMMERCE**

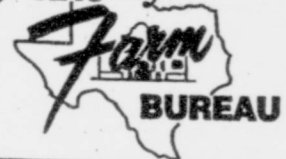
779-2461

A Subsidiary of GrayCo BancShares, Inc.



McLean, Texas

Gray County



McLean  
Lions Club



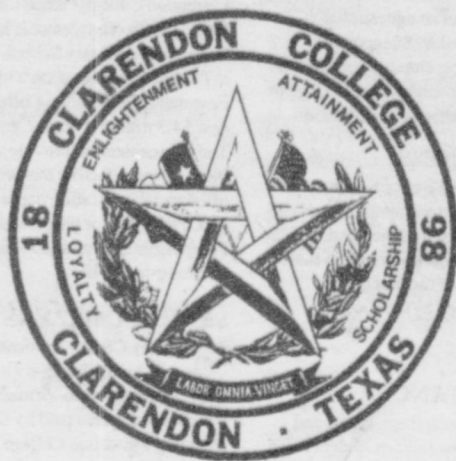


# CLARENDON COLLEGE



*Your Best Bet*

## Fall 1996 Class Schedule



### TABLE OF CONTENTS

Admission Checklist	p 3	CLARENDON	p 4	Drop/Add Policy	p 2	Mission Statement	p 2
Admission Policies	p 3	PAMPA	p 6	Financial Assistance	p 2	Open Records Act	p 2
Calendar	p 2	WELLINGTON	p 7	Financial Information	p 3	Phone /Address/Fax	p 8
Class Schedule...		Classification	p 2	General Information	p 2	Refund Policy	p 3
CHILDRESS	p 6	Continuing Education	p 7	Housing & Meal Plan	p 3	Senior Citizen Policy	p 2
						Transcripts	p 2



## Dear friends:

Please accept my personal encouragement to become a part of the Clarendon College family. If you haven't already finalized your plans for college this fall, please know that we, at Clarendon College, would be very excited to have you as a student.

Clarendon is the oldest higher education institution in the Texas Panhandle, and we're proud of that. Our college will celebrate its 100th birthday in 1998, and we've endured that long for one reason - we genuinely care about our students.

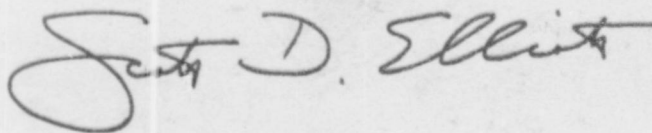
At Clarendon, I promise that you won't become a number in some computer. You won't get lost in the crowd. We feel strongly that the college's small size is one of its greatest strengths. Our students get a lot of individual attention from their teachers and our staff members. We will take a personal interest in your success.

I have two major goals for our students at Clarendon College. First, I want the college to be a place where students can get a first-rate education - a place where each individual can continue to develop to his or her fullest potential. Second, I want our college to be a fun place - a school where people can enjoy a lot of positive interaction.

So, as you look over our fall schedule and read some important things about our college, remember this above all else - students are our only business at Clarendon College. We call Clarendon "The College that Cares," and all of us work very hard to live up to that motto.

I really hope to see you in August!

Sincerely,



Scott D. Elliott, President



## CLARENDON COLLEGE CALENDAR

### Fall 1996

Faculty In-Service Day	August 23
Residence Halls Open	August 25
Freshman Orientation	August 26-27
Cafeteria Opens	August 26
General Registration	August 26-27
Registration for Childress	August 26
Registration for Wellington	August 27
Classes Begin	August 28
Labor Day Holiday (Cafeteria Closed)	September 2
Schedule Changes (Add/Drop)	September 3-6
East Day to Register	September 6
Thanksgiving Holidays (Cafeteria service ends Noon, Nov. 27)	November 28-29
East Day to Drop	December 6
Pre-Registration for Spring 1997	December 3-5
Final Exams	December 11-13
End of Term (Residence Halls close 6 p.m., Food Service ends at Noon)	December 13

## GENERAL INFORMATION

### ACCREDITATION

Clarendon College is approved and accredited by The Commission on Colleges of the Southern Association of Colleges and Schools Toward Associate in Arts, Associate in Science and Associate in Applied Science Degrees; The Texas Higher Education Coordinating Board; The State Board of Vocational Nurse Examiners and appropriate professional accreditation. For a complete listing of affiliations, refer to *The Clarendon College Centennial Edition Catalog*.

### DROP/ADD POLICY

Students desiring to make schedule changes after their initial registration each semester must do so during the designated "Drop and Add" period as scheduled in the calendar of events in both this schedule and the college catalog. Students will be required to pay tuition and fees applicable to any class(es) added to the schedule, as well as a \$5 drop/add fee per schedule change.

A student who drops a course after the first 12 class days of instruction will receive a grade of W. No classes may be dropped after the 14th week of a Fall or Spring term. To drop a class, the student must obtain the written consent of the instructor. Drop forms are available in the Registrar's Office.

### CHILDRESS CENTER

Clarendon College offers academic classes and Licensed Vocational Nursing classes in Childress. Most classes are held at Childress High School.

### CLASSIFICATION INFORMATION

Students enrolled at Clarendon College may be classified in the following ways:

**FRESHMAN**  
0-29 hours earned  
**SOPHOMORE**  
30 or more hours earned  
**FULL-TIME**  
Enrollment in 12 or more hours in a semester  
**PART-TIME**  
Enrollment of less than 12 hours in a semester

### COLLEGE BOOKSTORE

Located in the Bairfield Activity Center, the college bookstore is open during registration periods and at each semester's end for book buy-back. Textbooks are bought back at the Clarendon and Pampa Center only during the final exam week of each semester.

### EQUAL OPPORTUNITY INSTITUTION

Clarendon College offers all of its educational opportunities and extracurricular advantages to students without regard to race, creed, color, national origin, sex, age or handicap, except where sex, age or handicap is a bona fide occupational qualification.

### FINAL EXAMINATIONS

A final examination is required for each course. Final examinations may not be given earlier than the time for which they have been officially scheduled. A final examination schedule is posted a minimum of three weeks in advance of the date of the first exam administered and/or announced by instructors administering the test.

### FINANCIAL ASSISTANCE

Clarendon College offers scholarships, grants and work-study opportunities. Low-interest student loans, such as the Federal Stafford Student Loan, requires a recommendation by the Financial Aid Officer and an application made to the student's lending institution.

To apply for financial assistance, request a free application for Federal Student Aid from Clarendon College. After completing the form, mail to the address listed on the envelope. In 4-6 weeks, a Student Aid Report (SAR) will be sent to you. Submit your SAR and a signed copy of your or your parents' most recent federal income tax return. Financial aid is distributed on an individual basis, with the highest priority being given to students with the greatest financial need.

Scholarship applications are available by contacting the Admissions Office. The deadline for scholarship applications is April 1. Please refer to the college catalog for a complete listing of available scholarships.

### LIBRARY

The library provides opportunities for study, research, recreational reading, listening and viewing educational materials. More than 20,000 books, as well as journals, magazines, microfiche and non-print items are available. Interlibrary loan is available to all patrons. The library is located in the Administration Building.

### MISSION STATEMENT

Clarendon College is a comprehensive community college committed to providing equal access to opportunities that assist in the holistic development of its constituents and community. In pursuit of that mission, the college provides academic transfer programs, workforce education courses, continuing education/community service courses, and diverse cultural enrichment opportunities.

### PAMPA CENTER

Clarendon College Pampa Center was established Dec. 1, 1978. The Center is housed in the former Houston Elementary School, located at 900 N. Frost in Pampa. In conjunction with the Pampa Center Foundation, Clarendon College is planning to open a new \$4.3 million Pampa Center before the year 2000. The new center will provide students with a modern, multi-purpose facility that will enable the college to offer greater education opportunities to its constituents. Plans call for the center to be owned by the Pampa Center Foundation and leased to the college on a long-term basis.

### SENIOR CITIZENS POLICY

Any Donley County residents who are 65 years or older, may audit classes without paying tuition. This does not exempt senior citizens from paying all usual and customary fees paid by all registered students attending Clarendon College. Tuition-exempt students may audit a class on a space available basis. Senior citizens who desire to earn transferable credit for courses must pay all regular tuition and fee changes and meet all admission requirements.

### SERVICEMEMBERS OPPORTUNITY

A member of the Servicemembers Opportunity Colleges (SOC), Clarendon College provides post-secondary education to members of the military throughout the world. Clarendon College recognizes the unique nature of the military lifestyle and is committed to easing the transfer of relevant course credits, providing flexible academic residency requirements and crediting learning from appropriate military training and experiences.

### STUDENT EDUCATION RECORDS

In compliance with the Texas "Open Records" Act and the Buckley Amendment (Public Law 93-579), Clarendon College will consider the following information to be "public or directory information" unless the individual student or employee advises the Dean of Instruction in writing that his/her name should not be included or released as public information:

**Name, Date and Place of Birth, Major and Minor, Current Class Schedule, Number of Hours Enrolled for Current Semester, Classification, Marital Status, Dates of Attendance, Participation in Officially Recognized Activities and Sports, Weights and Heights of Members of Athletic Teams, Degrees and Awards Received, and All Previous Educational Agencies/Institutions Attended.**

### STUDENT LOAD

The recommended regular load of a student is 15-18 credit hours. Any student desiring to take more than 18 credit hours in a Fall or Spring semester must receive written authorization from the Dean of Instruction.

### TRANSCRIPTS

A copy of the student's permanent record (transcript) is available from the Registrar's Office, only by written authorization by the student. Fee is \$2. All financial obligations to the college must be met in full before a transcript will be issued.



**MEREDITH WAINSCOTT**

Iowa Park, Texas

"I had taken classes at a university before attending Clarendon College. I felt like I was shuffled around, especially when it came to scheduling classes and working with an academic adviser. But at CC, it's right the opposite. The faculty and administration know you by your first name and will bend over backwards to help you. They really do care."



# Admission Policies

Clarendon College has an "open door" admissions policy, which means it accepts all applicants who can be expected to benefit from its programs.

As a comprehensive community college, Clarendon College offers many programs designed to meet the needs of students according to their backgrounds and interests. With limited exceptions, a student must be a graduate of an accredited high school or have a GED. Nongraduates who are at least 18 years old may be admitted on individual approval provided if it is determined through assessment that they have the ability to benefit from their program. Any individual admitted by individual approval by the Registrar will automatically be placed on academic probation, and must achieve a minimum grade point average of 2.0 in the first 12 credit hours of coursework to be eligible for continued enrollment.

Applicants for certain workforce programs may be required to submit to personal

interviews, and/or proficiency examinations and/or physical examinations as conditions for eligibility for admission to the respective program.

## Residency

Clarendon College is required by State Law to determine the residency status for tuition purposes of all students. All new students must provide substantiating documentation to affirm their residence and sign an Oath of Residency. Residency is determined either by a student's current address or the address of a parent or legal guardian if the student is being claimed as their dependent for federal income tax purposes. It is the responsibility of the student to register under the correct residence classification.

### 1. In-District Residency

A student who has been a legal resident of the State of Texas and has resided in Donley County six (6) months immediately preceding registration at Clarendon College.

A student who has moved to Texas from another state, but has been a documented

resident of Donley County for the 12 months immediately preceding registration at Clarendon College.

A student who can present to the college a copy of the receipt of payment of Donley County ad valorem taxes for the current or preceding tax year. In case of an independent student, the taxes must have been paid by the student. In the case of a dependent student, the applicant may use the tax receipt of a parent or guardian.

### 2. Out-of-District

A student who is a legal resident of Texas, but who resides outside the Clarendon College District. Students classified as out-of-district will continue to be so during the time they remain in school for consecutive academic years. However, any student who continuously resides in Donley County for a 12-month period without attending school may be reclassified by the Dean of Students as an in-district-student.

### 3. Out-of-State Residency

A student less than 18-years of age or is a dependent and whose family resides in another state or has not resided in Texas for the 12 months immediately preceding registration.



**CASEY ELLIOTT**

Seymour, Texas

"Clarendon College has been a family affair for us - my two brothers and my older sister all attended CC. With the positive family-like atmosphere, I just knew Clarendon College was for me, too."

## Admission Checklist

1. Application for Admission
2. Certificate of Residence
3. Official transcripts from all high schools and colleges previously attended. (Copy of transcripts must be filed with the Registrar's Office at least 10 days prior to registration.)
4. ACT or SAT scores (Unless student is transferring 12 or more hours from another regionally-accredited institution.)
5. Copy of GED certificate, if not a high school graduate

## HOUSING AND MEAL PLAN REQUIREMENT

**COLLEGE HOUSING REQUIREMENT** — All students who are not residents of Donley County unless they are (a) 21 years or older; (b) married; or (c) living with nuclear family members (grandparents, parents and/or siblings) who are Donley County residents are required to live on-campus in the residence halls. Permission to live off campus must be approved by the Dean of Students.

Clarendon College operates four air-conditioned residence halls which will accommodate 218 residents.

**MEAL PLAN REQUIREMENT** — All students living in a residence hall must purchase the college meal plan. Food service is available (on a per meal or meal ticket basis) for students living off campus, and other constituents of the college.

The Clarendon College Cafeteria is open seven days a week during the Fall and Spring semesters. Breakfast, lunch and dinner are available Monday-Friday. Breakfast and lunch are both served on Saturdays, and lunch is the only meal served on Sundays.

Clarendon College's Dining Program offers a variety of food choices, including a buffet style salad bar and special dietary meals. Students are offered unlimited quantities of entrees, salads, vegetables, beverages and desserts. Special order cakes and cookies are also available through CC's Cafeteria.

## REFUND POLICY

Any student officially withdrawing during a semester through written request to the Dean of Students, or is withdrawn by the college because of failure to comply with a condition upon which the enrollment was approved, may receive a refund of all tuition and mandatory fees in accordance with the following schedule:

### FALL AND SPRING SEMESTERS

Prior to the first class day	100%
During the first five class days	80%
During the second five class days	70%
During the third five class days	50%
During the fourth five class days	25%
After the fourth five class days	NONE

**NOTE:** The count of class days begins on the first day that classes are held in the term and thereafter includes each calendar day on which classes are normally taught.

### REFUNDS ARE NOT AUTOMATIC!

A student eligible for any kind of refund should request it at the time of withdrawal or program change by filling out the proper forms. No refund can be made until the third week of classes, so to allow time for all checks to clear the banks. Some refunds may not be made until the end of the semester. Processing of all refunds for the Fall and Spring often requires as much as eight weeks. Refunds to students are reduced by any amount owed to the College. The college reserves the right to make no refunds to students suspended or expelled from the institution.

\*\*Tuition and fees paid directly to the institution by a sponsor, donor or scholarship shall be refunded to be source rather than directly to the student.

## FINANCIAL INFORMATION

### TUITION AND FEES

Tuition and fees include:

In-District	\$16/per credit hour (\$48 minimum)
Out-Of-District	\$18/per credit hour (\$54 minimum)
Out-of-State	\$200 plus \$20 per credit hour (above 11 hours)

### Required Fees - Clarendon Campus

Building Use Fee	\$40
Activity Fee	
(Fall & Spring semesters)	\$65
Library Fee	\$15
Technology Fee	\$2/per credit hour

### Required Fees - Pampa Center

Building Use Fee	\$40
Library Fee	\$15
Off-Campus Fee	\$35/per course
Technology Fee	\$2/per credit hour

### Required Fees - Other Off-Campus Sites

Off Campus Fee	\$50/per course
----------------	-----------------

Students taking courses at more than one campus/center must pay all fees associated with that site, per the above schedules, irrespective of the number of courses being taken at any given site. However, there will be no duplication of fees, i.e., building use fee, library fee.

All tuition, fees, charges for room and board, and other educational costs are due by the final day of general registration in each semester.

For payment of room and board, students may opt for a "payout" plan to be arranged through the Business Office. Students opting for the "payout" plan may elect to pay for their room and board charges on an installment basis, making a mandatory down payment of at least 1/3 of the total charges for their room and board by the final day of general registration, then paying out the balance owed. A **20 percent charge** is assessed on the original balance owed.

### DUE DATES FOR INSTALLMENT PLAN PAYMENTS ON ROOM & BOARD CHARGES

<b>Fall Term</b>	
First Payment*	Last day of General Registration
Second Payment**	October 1
Final Payment**	December 1

\*At least 1/3 of total room & board charges must be remitted as "down" payment.

\*\*If listed due dates fall on a Saturday, Sunday or holiday, the deadline is the next working day for the college.



**SARAH JETT**

Quail, Texas

"It's not easy being a mom, wife and student. Clarendon College provides a great environment for continuing my education. Being affordable and close to home, doesn't hurt either."



# FALL CLASSES

## AUGUST 28-DECEMBER 13, 1996

### CLARENDON

CL#	TIME	DAY	DPT	NBR	SEC	CLASS DESCRIPTION	HRS	INSTRUCTOR	ROOM
1	9:30-10:45	AM TTH	ACCT	2301	01	ACCOUNTING I	3	EWING	201
100	11:00-12:15	AM MW	ACCT	2302	02	ACCOUNTING II	3	EWING	201
300	9:00-9:50	AM F	AGRI	1131	01	AG INDUSTRY	1	HAWKINS	107
400	11:00-11:50	AM F	AGRI	1131	02	AG INDUSTRY	1	HAWKINS	107
500	9:00-9:50	AM MW	AGRI	1307	01	AGRONOMY	3	SCHAEFER	107
LAB	4:00-6:00	W			\$ 15.00	AGRONOMY			207
600	11:00-11:50	AM MW	AGRI	1319	01	ANIMAL SCIENCE	3	HAWKINS	107
LAB	3:00-5:00	W			\$ 25.00	ANIMAL SCIENCE			107
700	8:00-8:50	AM MW	AGRI	1319	02	ANIMAL SCIENCE	3	HAWKINS	107
LAB	1:00-3:00	W			\$ 25.00	ANIMAL SCIENCE			107
800	10:00-10:50	AM MWF	AGRI	1329	01	FOOD TECHNOLOGY	3	HAWKINS	107
900	1:00-1:50	PM MWF	AGRI	1415	01	HORTICULTURE	4	SCHAEFER	106
LAB	4:00-6:00	M			\$ 25.00	HORTICULTURE			107
1000	1:00-2:00	PM M	AGRI	2221	01	LIVESTOCK JUDGING	2	HAWKINS	107
LAB	2:00-5:00	M			\$ 30.00	LIVESTOCK JUDGING			107
1100	9:30-10:45	AM TTH	AGRI	2313	01	LIVESTOCK JUDGING	4	SCHAEFER	107
LAB	4:00-6:00	T			\$ 15.00	ENTOMOLOGY			207
1200	11:00-11:50	AM MWF	AGRI	2317	01	AG ECONOMICS	3	SCHAEFER	102
1300	3:00-6:00	PM M	ARTS	1311	01	DESIGN I	3	SHELLEY	FA101
LAB	-	TBA			\$ 15.00	DESIGN I			FA101
1400	3:00-6:00	PM M	ARTS	1312	01	DESIGN II	3	SHELLEY	FA101
LAB	-	TBA			\$ 15.00	DESIGN II			FA101
1500	6:00-9:00	PM M	ARTS	1316	01	DRAWING I	3	SHELLEY	FA101
LAB	-	TBA			\$ 15.00	DRAWING I			FA101
1600	6:00-9:00	PM M	ARTS	1317	01	DRAWING II	3	SHELLEY	FA101
LAB	-	TBA			\$ 15.00	DRAWING II			FA101
1700	6:00-9:00	PM TH	ARTS	2316	01	INTRO TO OIL PAINT	3	SHELLEY	FA101
LAB	-	TBA			\$ 15.00	INTRO TO OIL PAINT			FA101
1800	6:00-9:00	PM TH	ARTS	2317	01	OIL PAINTING	3	SHELLEY	FA101
LAB	-	TBA			\$ .00	OIL PAINTING			FA101
2300	9:00-9:50	AM MWF	BIOL	1411	01	BOTANY	4	LOWRIE	207
LAB	1:00-4:00	W			\$ 30.00	BOTANY			207
2400	10:00-10:50	AM MWF	BIOL	1413	01	ZOOLOGY	4	LOWRIE	207
LAB	1:00-4:00	M			\$ 30.00	ZOOLOGY			207
2500	11:00-12:15	AM TTH	BIOL	1413	02	ZOOLOGY	4	LOWRIE	207
LAB	1:00-4:00	T			\$ 30.00	ZOOLOGY			207
2600	9:30-10:45	AM TTH	BIOL	2401	01	HUMAN A&P I	4	LOWRIE	207
LAB	1:00-4:00	TH			\$ 30.00	HUMAN A&P I			207
3400	11:00-12:15	AM TTH	BUSI	1301	01	INTRO TO BUSINESS	3	EWING	201
3700	9:00-9:50	AM MWF	CHEM	1411	01	COLLEGE CHEMISTRY I	4	WIGINTON	206
LAB	1:00-4:00	M			\$ 30.00	COLLEGE CHEMISTRY I			206
LAB	4:00-7:00	M			\$ 30.00	COLLEGE CHEMISTRY I			206
LAB	1:00-4:00	W			\$ 30.00	COLLEGE CHEMISTRY I			206
LAB	4:00-7:00	W			\$ 30.00	COLLEGE CHEMISTRY I			206
3800	1:00-2:15	PM TTH	CHEM	1411	02	COLLEGE CHEMISTRY I	4	WIGINTON	102
LAB	4:00-7:00	M			\$ 30.00	COLLEGE CHEMISTRY I			206
LAB	1:00-4:00	M			\$ 30.00	COLLEGE CHEMISTRY I			206
LAB	1:00-4:00	W			\$ 30.00	COLLEGE CHEMISTRY I			206
LAB	4:00-7:00	W			\$ 30.00	COLLEGE CHEMISTRY I			206
3900	9:30-10:45	AM TTH	CHEM	1411	03	COLLEGE CHEMISTRY I	4	WIGINTON	206
LAB	1:00-4:00	W			\$ 30.00	COLLEGE CHEMISTRY I			206
LAB	4:00-7:00	W			\$ 30.00	COLLEGE CHEMISTRY I			206
LAB	1:00-4:00	M			\$ 30.00	COLLEGE CHEMISTRY I			206
LAB	4:00-7:00	M			\$ 30.00	COLLEGE CHEMISTRY I			206
4000	11:00-12:15	AM TTH	CHEM	2423	01	ORGANIC CHEMISTRY I	4	WIGINTON	206
LAB	2:30-5:30	TH			\$ 30.00	ORGANIC CHEMISTRY I			206
4200	8:00-9:15	AM TTH	COSC	1301	01	INTRO TO COMPUTERS	3	EWING	203
LAB	-	TBA			\$ 30.00	INTRO TO COMPUTERS			203
4300	9:30-10:45	AM TTH	COSC	1301	02	INTRO TO COMPUTERS	3	DENNEY	203
LAB	-	TBA			\$ 30.00	INTRO TO COMPUTERS			203
4400	11:00-12:15	AM TTH	COSC	1301	03	INTRO TO COMPUTERS	3	DENNEY	203
LAB	-	TBA			\$ 30.00	INTRO TO COMPUTERS			203
4500	11:00-12:15	AM MW	COSC	1301	04	INTRO TO COMPUTERS	3	DENNEY	203
LAB	-	TBA			\$ 30.00	INTRO TO COMPUTERS			203
4600	6:00-9:00	PM T	COSC	1301	05	INTRO TO COMPUTERS	3	EWING	203
LAB	-	TBA			\$ 30.00	INTRO TO COMPUTERS			203
4700	1:00-2:15	PM TTH	COSC	1301	06	INTRO TO COMPUTERS	3	DENNEY	203
LAB	-	TBA			\$ 30.00	INTRO TO COMPUTERS			203
4800	6:00-9:00	PM W	COSC	1318	01	PROGRAMMING-PASCAL	3	STAFF	203
LAB	-	TBA			\$ 25.00	PROGRAMMING-PASCAL			203
5100	9:00-4:00	AM DAILY	CPMT	1001	01	BASIC MICROCOMPUTERS	12	JACKSON	DTEC
LAB	9:00-4:00	DAILY			\$ 25.00	BASIC MICROCOMPUTERS			DTEC
5200	9:00-4:00	AM DAILY	CPMT	2001	01	MICRO TROUBLESHOOT	12	JACKSON	DTEC
LAB	9:00-4:00	DAILY			\$ 25.00	MICRO TROUBLESHOOT			DTEC
5301	6:00-9:00	PM M	CRJ	1301	01	CRIMINAL JUSTICE	3	JEFFREY	106
5400	1:00-1:50	PM MWF	DRAM	1310	01	INTRO TO THEATER	3	WILSON	STAGE
LAB	-	TBA			\$ 10.00	INTRO TO THEATER			STAGE
5500	2:00-2:50	PM MWF	DRAM	1323	01	THEATER PRACTICE	3	WILSON	STAGE
LAB	-	TBA			\$ 10.00	THEATER PRACTICE			STAGE
5600	11:00-12:15	AM TTH	DRAM	1330	01	STAGECRAFT	3	STEWART	STAGE
LAB	-	TBA			\$ 10.00	STAGECRAFT			STAGE
5700	1:00-2:15	PM TTH	ECON	2301	01	MACROECONOMICS	3	SCHAEFER	107
5900	9:00-4:00	AM DAILY	ELEC	1001	01	DC ELECTRONICS	4	JACKSON	DTEC
LAB	-	TBA			\$ 8.33	DC ELECTRONICS			DTEC
6000	9:00-4:00	AM DAILY	ELEC	1002	01	AC ELECTRONICS	4	JACKSON	DTEC
LAB	-	TBA			\$ 8.33	AC ELECTRONICS			DTEC
6100	9:00-4:00	AM DAILY	ELEC	1003	01	SEMICONDUCTORS I	4	JACKSON	DTEC
LAB	-	TBA			\$ 8.34	SEMICONDUCTORS I			DTEC



ID#	TIME	DAY	DPT	NBR	SEC	CLASS DESCRIPTION	HRS	INSTRUCTOR	ROOM
6200	9:00-4:00 AM	DAILY	ELEC	1004	01	SEMICONDUCTORS II	4	JACKSON	DTEC
LAB	TBA	\$ 8.33				SEMICONDUCTORS II			DTEC
6300	9:00-4:00 AM	DAILY	ELEC	2001	01	DIGITAL FUNDAMENTALS	4	JACKSON	DTEC
LAB	TBA	\$ 8.33				DIGITAL FUNDAMENTALS			DTEC
6400	9:00-4:00 AM	DAILY	ELEC	2002	01	DIGITAL APPLICATIONS	4	JACKSON	DTEC
LAB	TBA	\$ 8.34				DIGITAL APPLICATIONS			DTEC
6800	6:00-9:00 PM	T	ENGL	0308	01	PREPARATORY ENGLISH	3	LAND	104
LAB	TBA	\$ 15.00				PREPARATORY ENGLISH			104
6900	9:00-9:50 AM	MWF	ENGL	1301	01	ENG COMP/RHETORIC I	3	ELLIOTT	105
7000	10:00-10:50 AM	MWF	ENGL	1301	02	ENG COMP/RHETORIC I	3	ELLIOTT	105
7100	11:00-11:50 AM	MWF	ENGL	1301	03	ENG COMP/RHETORIC I	3	SCOGGIN	105
7200	8:00-8:50 AM	MWF	ENGL	1301	04	ENG COMP/RHETORIC I	3	ELLIOTT	105
7300	11:00-12:15 AM	TTH	ENGL	1301	05	ENG COMP/RHETORIC I	3	THOMPSON	104
7400	8:00-9:15 AM	TTH	ENGL	1301	06	ENG COMP/RHETORIC I	3	WILSON	105
7500	9:30-10:45 AM	TTH	ENGL	1302	01	ENG COMP/RHETORIC II	3	THOMPSON	106
7600	10:00-10:50 AM	MWF	ENGL	1302	02	ENG COMP/RHETORIC II	3	WILSON	102
7700	1:00-2:15 PM	MW	ENGL	1302	03	ENG COMP/RHETORIC II	3	SCOGGIN	105
7800	10:00-10:50 AM	MWF	ENGL	2332	01	WORLD LITERATURE I	3	SCOGGIN	104
7900	1:00-2:15 PM	TTH	ENGL	2332	02	WORLD LITERATURE I	3	THOMPSON	105
9400	9:00-4:00 AM	DAILY	EOPA	1001	01	BASIC ORGAN	7	JACKSON	DTEC
LAB	9:00-4:00	DAILY	\$ 12.50			BASIC ORGAN			DTEC
9500	9:00-4:00 AM	DAILY	EOPA	1002	01	BASIC AMPLIFIERS	7	JACKSON	DTEC
LAB	9:00-4:00	DAILY	\$ 12.50			BASIC AMPLIFIERS			DTEC
9600	9:00-4:00 AM	DAILY	EOPA	2001	01	ORGAN ADVANCED	7	JACKSON	DTEC
LAB	9:00-4:00	DAILY	\$ 12.50			ORGAN ADVANCED			DTEC
9700	9:00-4:00 AM	DAILY	EOPA	2002	01	AMPLIFIERS ADVANCED	7	JACKSON	DTEC
LAB	9:00-4:00	DAILY	\$ 12.50			AMPLIFIERS ADVANCED			DTEC
9800	9:00-9:50 AM	MWF	GOVT	2301	01	AMER CONSTITUTION	3	TIBBETS	106
9900	11:00-11:50 AM	MWF	GOVT	2301	02	AMER CONSTITUTION	3	TIBBETS	106
10000	6:00-9:00 PM	TH	GOVT	2301	03	AMER CONSTITUTION	3	TIBBETS	106
11000	8:00-8:50 AM	MWF	HIST	1301	01	U.S. HISTORY TO 1865	3	TAYLOR	103
11100	10:00-10:50 AM	MWF	HIST	1301	02	U.S. HISTORY TO 1865	3	TAYLOR	103
11200	11:00-11:50 AM	MWF	HIST	1301	03	U.S. HISTORY TO 1865	3	TAYLOR	103
11300	9:30-10:45 AM	TTH	HIST	1301	04	U.S. HISTORY TO 1865	3	TAYLOR	103
11400	6:00-9:00 PM	TU	HIST	1301	05	U.S. HISTORY TO 1865	3	TAYLOR	103
11500	11:00-12:15 AM	TTH	HIST	2301	01	TEXAS HISTORY	3	TAYLOR	103
12300	11:00-12:15 AM	TTH	HUMA	1315	01	INTRO TO HUMANITIES	3	STEWART(B)	FA101
12400	9:00-9:50 AM	MWF	HUMA	1315	02	INTRO TO HUMANITIES	3	WILSON	FA102
12500	9:30-10:45 AM	TTH	HUMA	1315	03	INTRO TO HUMANITIES	3	WILSON	FA102
12800	6:00-9:00 PM	W	MATH	0308	01	INTERMEDIATE ALGEBRA	3	PERRYMAN	102
12900	9:00-9:50 AM	MWF	MATH	1314	01	COLLEGE ALGEBRA	3	PERRYMAN	101
13000	9:30-10:45 AM	TTH	MATH	1314	02	COLLEGE ALGEBRA	3	PERRYMAN	101
13100	1:00-2:15 PM	MW	MATH	1314	03	COLLEGE ALGEBRA	3	PERRYMAN	101
13200	11:00-11:50 AM	MWF	MATH	1324	01	FINITE MATHEMATICS	3	PERRYMAN	101
14700	3:00-4:15 PM	MW	MUSI	1131	01	PEP/POP BAND	1	STEWART	STAGE
14800	2:30-3:45 PM	TTH	MUSI	1132	01	JAZZ BAND	1	STEWART	STAGE
14900	12:15-12:50 PM	M-F	MUSI	1151	01	SHOW CHOIR	1	STEWART	STAGE
15000	1:00-2:15 PM	TTH	MUSI	1181	01	INTRO TO PIANO	1	STEWART(B)	FA101
15100	6:00-9:00 PM	T	MUSI	1192	01	INTRO TO GUITAR	1	WILSON	FA102
15200	1:00-2:15 PM	MW	MUSI	1301	01	MUSIC FUNDAMENTALS	3	STEWART	FA101
15300	10:00-10:50 AM	MWF	MUSI	1306	01	MUSIC APPRECIATION	3	STEWART(B)	FA101
15400	9:30-10:45 AM	TTH	MUSI	1308	01	MUSIC LITERATURE I	3	STEWART	FA101
15500	11:00-11:50 AM	MWF	MUSI	1311	01	MUSIC THEORY I	4	STEWART	FA101
LAB	TBA	\$ 10.00				MUSIC THEORY I			FA101
16000	10:00-10:50 AM	MWF	OFAD	1311	01	BEGINNING KEYBOARD	3	DENNEY	203
LAB	TBA	\$ 20.00				BEGINNING KEYBOARD			203
16100	9:00-10:00 AM	MWF	OFAD	2304	01	INFORMATION PROCESS	3	DENNEY	203
LAB	TBA	\$ 20.00				INFORMATION PROCESS			203
16500	11:00-12:15 AM	TTH	PHED	1012	01	TENNIS/VOLLEYBALL	1	ZEHR	GYM
16600	9:00-9:50 AM	MWF	PHED	1013	01	BADMINTON/VOLLEYBALL	1	MONDRAGON	GYM
16700	10:00-10:50 AM	MWF	PHED	1015	01	PHYSICAL FITNESS	1	MONDRAGON	GYM
16800	11:00-11:50 AM	MWF	PHED	1015	02	PHYSICAL FITNESS	1	ZEHR	GYM
16900	1:00-2:50 PM	DAILY	PHED	1016	01	WOMEN'S VARSITY	1	ZEHR	GYM
17000	3:00-4:50 PM	DAILY	PHED	1017	01	MEN'S VARSITY	1	MONDRAGON	GYM
17100	2:20-5:00 PM	TH	PHED	1110	01	LIFETIME PHYSICAL	1	SCHAEFER	107
17200	3:00-6:00 PM	TU	PHED	1261	01	MEN TIMED EVENTS	1	PERRYMAN	ARENA
17300	3:00-6:00 PM	TH	PHED	1271	01	WOMEN TIMED EVENTS	1	PERRYMAN	ARENA
17400	9:30-10:45 AM	TTH	PHED	1301	01	FOUNDATIONS OF PE	3	ZEHR	GYM
17500	10:00-10:50 AM	MWF	PHED	1304	01	PRSNL/COMMUNITY HLTH	3	ZEHR	101
17600	11:00-11:50 AM	MWF	PHED	1308	01	OFFICIATING	3	MONDRAGON	GYM
17700	9:30-10:45 AM	TTH	PHED	1321	01	COACHING BASKETBALL	3	MONDRAGON	GYM
17900	10:00-10:50 AM	MWF	PHYS	1401	01	COLLEGE PHYSICS I	4	WIGINTON	206
LAB	2:30-5:30 T	\$ 30.00				COLLEGE PHYSICS I			206
18000	8:00-4:00 AM	2627	PSYC	0090	01	ORIENTATION	1	CHRISTIE	FA AUD
18100	9:30-10:45 AM	TTH	PSYC	2301	01	GENERAL PSYCHOLOGY	3	DENNEY	104
18200	1:00-2:15 PM	MW	PSYC	2301	02	GENERAL PSYCHOLOGY	3	DENNEY	104
18300	11:00-12:15 AM	TTH	PSYC	2308	01	CHILD PSYCHOLOGY	3	DENNEY	106
19200	9:00-4:00 AM	DAILY	RAFO	1101	01	BEEF CATTLE PROD	3	TUBBS	RFO
LAB	9:00-4:00	DAILY	\$ 10.00			BEEF CATTLE PROD			RFO
19300	9:00-4:00 AM	DAILY	RAFO	1103	01	RANCH FEEDYARD JOBS	3	GAGE	RFO
LAB	9:00-4:00	DAILY	\$ 10.00			RANCH FEEDYARD JOBS			RFO
19400	9:00-4:00 AM	DAILY	RAFO	1107	01	SOIL & WATER CONSER	3	GAGE	RFO
LAB	9:00-4:00	DAILY	\$ 10.00			SOIL & WATER CONSER			RFO
19500	9:00-4:00 AM	DAILY	RAFO	1108	01	RANGE MANAGEMENT	3	TUBBS	RFO
LAB	9:00-4:00	DAILY	\$ 10.00			RANGE MANAGEMENT			RFO
19600	9:00-4:00 AM	DAILY	RAFO	2105	01	ANIMAL HEALTH/REPROD	3	TUBBS	RFO
LAB	9:00-4:00	DAILY	\$ 10.00			ANIMAL HEALTH/REPROD			RFO
19700	9:00-4:00 AM	DAILY	RAFO	2109	01	AG RECORDS AND FIN	3	GAGE	RFO
LAB	9:00-4:00	DAILY	\$ 10.00			AG RECORDS AND FIN			RFO
19800	1:00-3:00 PM	DAILY	RAFO	2220	01	COMPUTERS IN AG	3	EWING	203
LAB	TBA	\$ 10.00				COMPUTERS IN AG			203
19900	3:00-5:00 PM	DAILY	RAFO	2220	02	COMPUTERS IN AG	3	EWING	203
LAB	TBA	\$ 10.00				COMPUTERS IN AG			203
20000	9:00-4:00 AM	DAILY	RATV	1001	01	BASIC RADIO	7	JACKSON	DTEC
LAB	9:00-4:00	DAILY	\$ 12.50			BASIC RADIO			DTEC
20100	9:00-4:00 AM	DAILY	RATV	1002	01	BASIC TV & RECEIVER	7	JACKSON	DTEC
LAB	9:00-4:00	DAILY	\$ 12.50			BASIC TV & RECEIVER			DTEC



ID#	TIME	DAY	DPT	NBR	SEC	CLASS DESCRIPTION	HRS	INSTRUCTOR	ROOM
20200	9:00-4:00 AM	DAILY	RATV	2001	01	COLOR TV	7	JACKSON	DTEC
LAB	9:00-4:00	DAILY	\$ 12.50			COLOR TV			DTEC
20300	9:00-4:00 AM	DAILY	RATV	2002	01	CUSTOMER RELATIONS	7	JACKSON	DTEC
LAB	9:00-4:00	DAILY	\$ 12.50			CUSTOMER RELATIONS			DTEC
20400	6:00-9:00 PM	M	READ	0308	01	EFFECTIVE READING	3	SHARP	104
LAB	-	TBA	\$ 15.00			EFFECTIVE READING			104
20800	1:00-2:15 PM	TTH	SOCI	1301	01	INTRO TO SOCIOLOGY	3	DENNEY	101
20900	11:00-11:50 AM	MWF	SOCI	2301	01	FAMILY IN SOCIETY	3	DENNEY	104
21400	6:00-10:00 PM	W	SPAN	1411	01	BEGINNING SPAN I	4	WILLIAMS	103
LAB	-	TBA	\$ 10.00			BEGINNING SPAN I			103
21500	10:00-10:50 AM	MWF	SPCH	1315	01	PUBLIC SPEAKING	3	CRUMP	FA102
21600	1:00-2:15 PM	MW	SPCH	1315	02	PUBLIC SPEAKING	3	CRUMP	FA102
21700	1:00-2:15 PM	TTH	SPCH	1315	03	PUBLIC SPEAKING	3	CRUMP	FA102
21800	6:00-9:00 PM	M	SPCH	1315	04	PUBLIC SPEAKING	3	CRUMP	FA102
21900	11:00-12:15 AM	TTH	SPCH	1318	01	INTERPERSONAL SPEECH	3	CRUMP	FA102
22000	11:00-11:50 AM	MWF	SPCH	1342	01	VOICE AND DICTION	3	CRUMP	FA102
22500	9:00-4:00 AM	DAILY	VITC	1001	01	BASIC VIDEO RECORD	7	JACKSON	DTEC
LAB	9:00-4:00	DAILY	\$ 12.50			BASIC VIDEO RECORD			DTEC
22600	9:00-4:00 AM	DAILY	VITC	1002	01	BASIC CAMCORDER SYS	7	JACKSON	DTEC
LAB	9:00-4:00	DAILY	\$ 12.50			BASIC CAMCORDER SYS			DTEC
22700	9:00-4:00 AM	DAILY	VITC	2001	01	ADVANCE VIDEO RECORD	7	JACKSON	DTEC
LAB	9:00-4:00	DAILY	\$ 12.50			ADVANCE VIDEO RECORD			DTEC
22800	9:00-4:00 AM	DAILY	VITC	2002	01	ADVANCED CAMCORDER	7	JACKSON	DTEC
LAB	9:00-4:00	DAILY	\$ 12.50			ADVANCED CAMCORDER			DTEC

## CHILDRESS

ID#	TIME	DAY	DPT	NBR	SEC	CLASS DESCRIPTION	HRS	INSTRUCTOR	ROOM
201	6:00-9:00 PM	T	ACCT	2301	01	ACCOUNTING I	3	SWINDEL	CH
3301	6:00-9:00 PM	M	BIOL	1411	01	BOTANY	4	LOWRIE	CH
LAB	-	TBA	\$ 30.00			BOTANY			CH
4900	5:00-9:00 PM	M	COSC	1301	01	INTRO TO COMPUTERS	3	EVANS	CH
LAB	-	TBA	\$ 30.00			INTRO TO COMPUTERS			CH
5300	6:00-9:00 PM	TH	CRIJ	1301	01	CRIMINAL JUSTICE	3	BUCKLEY	CH
5302	6:00-9:00 PM	T	CRIJ	1307	01	CRIME IN AMERICA	3	GRIFFIN	CH
5801	6:00-9:00 PM	M	ECON	2301	01	MACROECONOMICS	3	JONES	CH
8000	6:00-9:00 PM	TBA	ENGL	0308	01	PREPARATORY ENGLISH	3	ANGLIN	CH
LAB	-	TBA	\$ 15.00			PREPARATORY ENGLISH			CH
8100	6:00-9:00 PM	M	ENGL	1301	01	ENG COMP/RHETORIC I	3	SANDERS	CH
10100	6:00-9:00 PM	TH	GOVT	2301	01	AMER CONSTITUTION	3	NIPPERT	CH
11600	6:00-9:00 PM	T	HIST	1301	01	U.S. HISTORY TO 1865	3	CURRIE	CH
12600	6:00-9:00 PM	TH	HUMA	1315	01	INTRO TO HUMANITIES	3	ANGLIN	CH
13500	6:00-9:00 PM	TBA	MATH	0308	01	INTERMEDIATE ALGEBRA	3	ANGLIN	CH
LAB	-	TBA	\$ 15.00			INTERMEDIATE ALGEBRA			CH
13600	6:00-9:00 PM	W	MATH	1314	01	COLLEGE ALGEBRA	3	ANGLIN	CH
14501	6:00-9:00 PM	TH	MATH	1324	01	FINITE MATHEMATICS	3	ANGLIN	CH
18400	6:00-9:00 PM	W	PSYC	2308	01	CHILD PSYCHOLOGY	3	JONES	CH
20500	6:00-9:00 PM	TBA	READ	0308	01	EFFECTIVE READING	3	ANGLIN	CH
LAB	-	TBA	\$ 15.00			EFFECTIVE READING			CH
22100	6:00-9:00 PM	W	SPCH	1315	01	PUBLIC SPEAKING	3	ANGLIN	CH

## PAIPA

ID#	TIME	DAY	DPT	NBR	SEC	CLASS DESCRIPTION	HRS	INSTRUCTOR	ROOM
200	7:00-9:50 PM	T	ACCT	2301	01	ACCOUNTING I	3	HUBBARD	102
2100	6:00-9:00 PM	W	ARTS	1316	01	DRAWING I	3	SHELLEY	15
LAB	-	TBA	\$ 15.00			DRAWING I	TBA		
2200	6:00-9:00 PM	W	ARTS	1317	01	DRAWING II	3	SHELLEY	15
LAB	-	TBA	\$ 15.00			DRAWING II	TBA		
22801	1:00-3:50 PM	W	ARTS	2316	01	INTRO TO OIL PAINT	3	SHELLEY	15
LAB	-	TBA	\$ 15.00			INTRO TO OIL PAINT			
22803	6:00-9:50 PM	W	ARTS	2317	01	OIL PAINTING	3	SHELLEY	15
LAB	-	TBA	\$ .00			OIL PAINTING	TBA		
2800	7:00-9:50 PM	T	BIOL	1322	01	NUTRITION	3	SULLIVAN	TBA
2900	9:00-11:50 AM	M	BIOL	1413	01	ZOOLOGY	4	WINDHORST	1
LAB	9:00-11:50	W	\$ 30.00			ZOOLOGY	1		
3000	4:00-6:50 PM	W	BIOL	2401	01	HUMAN A&P I	4	WINDHORST	1
LAB	7:00-9:50	W	\$ 30.00			HUMAN A&P I	TBA		
3100	4:30-6:50 PM	T	BIOL	2420	01	MICROBIOLOGY	4	LOWRIE	102
LAB	7:00-9:50	T	\$ 30.00			MICROBIOLOGY	103		
22817	7:00-9:50 PM	T	BUSI	1304	01	BS COMMUNICATION	3	CROW	6
22818	1:00-2:30 PM	T/TH	BUSI	1304	02	BS COMMUNICATION	3	MCKNIGHT	1
5000	6:00-9:50 PM	M	COSC	1301	01	INTRO TO COMPUTERS	3	BUCKHAULTS	103
LAB	-	TBA	\$ 30.00			INTRO TO COMPUTERS	103		
22813	6:00-9:50 PM	TH	COSC	1301	02	INTRO TO COMPUTERS	3	REEVE	103
LAB	-	TBA	\$ 30.00			INTRO TO COMPUTERS	103		
5800	7:00-9:50 PM	M	ECON	2301	01	MACROECONOMICS	3	SCHAEFER	TBA
6500	6:00-9:50 PM	M/W	ELEC	1001	01	DC ELECTRONICS	4	FORD	104
6600	6:00-9:50 PM	T/TH	ELEC	1002	01	AC ELECTRONICS	4	STAFF	104
8400	7:00-9:50 PM	M	ENGL	0307	01	DEV WRITING	2	THORNTON	TBA
8500	9:00-10:20 AM	T/TH	ENGL	1301	01	ENG COMP/RHETORIC I	3	SCOGGIN	2
8600	7:00-9:50 PM	T	ENGL	1301	02	ENG COMP/RHETORIC I	3	THOMPSON	2
22805	10:00-10:50 AM	M/W/F	ENGL	1301	03	ENG COMP/RHETORIC I	3	THOMPSON	2
22806	9:00-9:50 AM	M/W/F	ENGL	1302	01	ENG COMP/RHETORIC II	3	THOMPSON	2
22807	7:00-9:50 PM	TH	ENGL	1302	02	ENG COMP/RHETORIC II	3	SCOGGIN	2
22809	11:00-11:50 AM	M/W/F	ENGL	2332	01	WORLD LITERATURE I	3	THOMPSON	2
22808	10:30-11:50 AM	T/TH	ENGL	2332	02	WORLD LITERATURE I	3	SCOGGIN	2
4501	1:30-2:50 PM	T/TH	ENGL	2332	03	WORLD LITERATURE I	3	SCOGGIN	2
22815	1:00-3:50 PM	M	ENGL	2333	01	WORLD LITERATURE II	3	THOMPSON	2
10400	1:00-2:20 PM	T/TH	GOVT	2301	01	AMER CONSTITUTION	3	TIBBETS	3
10600	6:00-8:50 PM	TH	GOVT	2301	03	AMER CONSTITUTION	3	TIBBETS	1
10700	7:00-9:50 PM	M	GOVT	2302	01	TEXAS GOVERNMENT	3	PEET	1
22812	10:30-11:50 AM	T/TH	GOVT	2302	02	TEXAS GOVERNMENT	3	TIBBETS	3
11900	7:00-9:50 PM	TH	HIST	1301	01	U.S. HISTORY TO 1865	3	RAPSTINE	3
12000	7:00-9:50 PM	T	HIST	1301	02	U.S. HISTORY TO 1865	3	RAPSTINE	3
12100	7:00-9:50 PM	W	HIST	1302	01	U.S. HIST TO PRESENT	3	DINSMORE	3
22802	7:00-9:50 PM	T	HIST	1302	02	U.S. HIST TO PRESENT	3	DINSMORE	3
12700	7:00-9:50 PM	M	HUMA	1315	01	INTRO TO HUMANITIES	3	JUENGERMAN	TBA



ID#	TIME	DAY	DPT	NBR	SEC
13900	7:00- 9:50 PM	TH	MATH	0307	02
14000	7:00- 9:50 PM	TH	MATH	0308	01
14100	7:00- 9:50 PM	M	MATH	1314	01
14200	7:00- 9:50 PM	T	MATH	1332	01
22816	12:00- 1:20 PM	M/W	MDT	123	01
15700	7:00- 9:50 PM	T	MUSI	1151	01
22814	7:00- 9:50 PM	TH	MUSI	1311	01
16200	10:30-11:50 AM	T/TH	OFAD	1311	01
LAB	-	TBA	\$ 20.00		
22811	7:00- 9:50 PM	T	OFAD	1311	02
LAB	-	TBA	\$ 20.00		
16300	9:00-10:20 AM	T/TH	OFAD	2304	01
LAB	-	TBA	\$ 20.00		
16400	6:00- 8:50 PM	W	OFAD	2304	02
LAB	-	TBA	\$ 20.00		
17800	6:00- 8:50 PM	TH	PHED	1012	01
LAB	-	TBA	\$ 10.00		
18600	6:00- 7:00 PM	M	PSYC	0090	01
22804	7:00- 9:50 PM	W	PSYC	2301	01
18800	7:00- 9:50 PM	T	PSYC	2301	02
22810	9:00-10:30 AM	T/TH	PSYC	2301	03
18900	7:00- 9:50 PM	TH	PSYC	2308	01
20600	7:00- 9:50 PM	M	READ	0307	01
21100	2:00- 4:50 PM	TH	SOCI	1301	01
22300	7:00- 9:50 PM	TH	SPCH	1315	01
22400	7:00- 9:50 PM	M	SPCH	1318	01

## WELLINGTON

ID#	TIME	DAY	DPT	NBR	SEC
3200	7:00-10:00 PM	W	BIOL	1322	01
3302	7:00-10:00 PM	W	BIOL	1411	01
LAB	-	TBA	\$ 30.00		
3300	7:00-10:00 PM	M	BIOL	2401	01
LAB	-	TBA	\$ 30.00		
22814	7:00-10:00 P.M.	M	COSC	1301	01
LAB	-	TBA	\$ 30.00		
9100	7:00-10:00 PM	TBA	ENGL	0308	01
LAB	-	TBA	\$ 15.00		
			WE		
9300	7:00-10:00 PM	M	ENGL	1301	01
22816	7:00-10:00 PM	TH	ENGL	2332	01
10800	7:00-10:00 PM	TU	GOVT	2301	01
12200	7:00-10:00 PM	TH	HIST	1301	01
12701	7:00-10:00 PM	TU	HUMA	1315	01
14400	7:00-10:00 PM	TBA	MATH	0308	01
LAB	-	TBA	\$ 15.00		
14502	7:00-10:00 PM	W	MATH	1314	01
19000	7:00-10:00 PM	TU	PSYC	2301	01
19100	7:00-10:00 PM	TH	PSYC	2308	01
20700	7:00-10:00 PM	TBA	READ	0308	01
LAB	-	TBA	\$ 15.00		
21101	7:00-10:00 PM	TU	SOCI	1301	01
21102	7:00-10:00 PM	TH	SOCI	1306	01
22401	7:00-10:00 PM	M	SPCH	1315	01

CLASS DESCRIPTION	HRS	INSTRUCTOR	ROOM
BEGINNING ALGEBRA	2	BAKER	14
INTERMEDIATE ALGEBRA	3	MCCULLOUGH	9
COLLEGE ALGEBRA	3	HOWARD	14
MODERN MATH I	3	BAKER	14
MEDICAL TERM. II	3	WINDHORST	1
SHOW CHOIR	1	JUENGERMAN	TBA
MUSIC THEORY I	4	JUENGERMAN	TBA
BEGINNING KEYBOARD	3	JOHNSON	16
BEGINNING KEYBOARD			16
BEGINNING KEYBOARD	3	JOHNSON	16
INFORMATION PROCESS	3	JOHNSON	104
INFORMATION PROCESS			104
INFORMATION PROCESS	3	HAYNES	104
INFORMATION PROCESS			104
TENNIS/VOLLEYBALL	1	HAYNES	GYM
TENNIS/VOLLEYBALL			GYM
ORIENTATION	1	LANE	102
GENERAL PSYCHOLOGY	3	LANDWERTH	TBA
GENERAL PSYCHOLOGY	3	VINSON	TBA
GENERAL PSYCHOLOGY	3	LANDWERTH	TBA
CHILD PSYCHOLOGY	3	VINSON	TBA
DEV READING	2	STAFF	TBA
INTRO TO SOCIOLOGY	3	WILSON	3
PUBLIC SPEAKING	3	WILSON	5
INTERPERSONAL SPEECH	3	LANE	102

CLASS DESCRIPTION	HRS	INSTRUCTOR	ROOM
NUTRITION	3	DARTER	WE
BOTANY	4	NEEDHAM	WE
BOTANY			WE
HUMAN A&P I	4	NEEDHAM	WE
HUMAN A&P I			WE
INTRO TO COMPUTERS	3	SCHMIDT	WE
INTRO TO COMPUTERS			WE
PREPARATORY ENGLISH	3	STAFF	WE
PREPARATORY ENGLISH			WE
ENG COMP/RHETORIC I	3	NORMAN	WE
WORLD LITERATURE I	3	NORMAN	WE
AMER CONSTITUTION	3	DAVIS	WE
U.S. HISTORY TO 1865	3	ROWE	WE
INTRO TO HUMANITIES	3	ROWE	WE
INTERMEDIATE ALGEBRA	3	STAFF	WE
INTERMEDIATE ALGEBRA			WE
COLLEGE ALGEBRA	3	SCHMIDT	WE
GENERAL PSYCHOLOGY	3	KLINK	WE
CHILD PSYCHOLOGY	3	KLINK	WE
EFFECTIVE READING	3	STAFF	WE
EFFECTIVE READING			WE
INTRO TO SOCIOLOGY	3	CARDWELL	WE
SOCIAL ISSUES	3	CARDWELL	WE
PUBLIC SPEAKING	3	ROWE	WE

## CONTINUING EDUCATION

### Basic Photography

Instructor: Christi Ross  
 Begin date: September 17  
 End date: October 15, 1996  
 Meeting dates: Sept. 17, 24,  
 Oct. 1, 8, 15  
 Time: 7-9 p.m.  
 Location: Clarendon College  
 Administration Building  
 Cost: \$15  
 Participants must furnish film  
 and 35 mm camera

### Cardio-Pulmonary Resuscitation (CPR)

Instructor: Ruth Petty  
 Begin date: October 8  
 End date: October 9, 1996  
 Meeting dates: October 8, 9  
 Time: 5-10 p.m.  
 Location: Clarendon College  
 Administration Building  
 Cost: \$15  
 Meets American Red Cross  
 requirements for basic certifi-  
 cation and recertification.

### Computer Skills for Seniors

Instructor: Frank Amon  
 Begin date: October 15  
 End date: October 24, 1996  
 Meeting dates: October 15, 17,  
 22, 24  
 Time: 7-9 p.m.  
 Location: Clarendon College  
 Administration Building  
 Cost: \$15

### Personal Financial Planning

Instructor: Mark Mann  
 Begin date: October 1  
 End date: October 10, 1996  
 Meeting dates: October 1, 3,  
 8, 10  
 Time: 7-9 p.m.  
 Location: Clarendon College  
 Administration Building  
 Cost: \$15

### Aerobics

Instructor: Michelle Schmidt  
 TBA

### Emergency Medical Technician - Basic

Instructor: Staff  
 TBA

### Windows 3.1

Instructor: Pamela Denney  
 Begin date: October 29  
 End date: November 12, 1996  
 Meeting dates: October 29,  
 November 5, 12  
 Time: 6-9:30 p.m.  
 Location: Clarendon College  
 Administration Building  
 Cost: \$15

### Bottom Line Farming

Instructor: Don Williams  
 TBA

Register for any of these classes by calling (806) 874-3571

Clarendon College's 1996 Fall Schedule was produced for distribution to area newspapers and CC campuses.

Editor: Christi Ross, Public Information and Marketing Coordinator  
 Special Thanks to: CC students, administration, faculty and staff;  
 The Clarendon Enterprise and Palo Duro Offset Printing.



# Ask Those Who Know...

Faculty/Student Ratio - 17:1

Average Class Size - 22

*Small classes guarantee that we will know you by name rather than by your Social Security number.*

35 fields of study

*From agriculture and music to education and business, Clarendon College offers courses which are transferrable to four-year universities. We offer a good start whether you're right out of high school or a non-traditional student. With our evening classes, you're able to earn an education while earning a living.*

Workforce education programs in Ranch and Feedlot Management, Electronics Technology, Secretarial Science, Cosmetology and Vocational Nursing  
Enrollment: 400 on-campus and 450 off-campus: Clarendon College Pampa Center, Childress, Wellington, Memphis and Shamrock.

*Small classes at all locations, so you get plenty of one-on-one interaction with faculty.*

Estimated yearly cost including tuition\*, room and board: \$2,684 in-district, \$2,740 out-of-district and \$3,196 out-of-state

(\*Based on 14 credit hours/per semester)

*Shop Around! Compare Clarendon College to Texas A&M, Texas Tech or West Texas A&M University...you'll see that we are an affordable choice.*

70% of students receive financial assistance

County-elected Board of Regents

Athletic Affiliations: National Small College Athletic Association and National Intercollegiate Rodeo Association

Intramural sports, student dances, theatre, musical ensembles and various sporting events.

*Clarendon College's student activities are top notch! There's something for everyone, so get involved! Plus, with the new Bairfield Activity Center, students can relax between and after classes by watching television, playing pool and much more.*

## SIGN UP TODAY FOR FALL 1996 CLASSES

**CLARENDON COLLEGE  
ADMISSIONS OFFICE**

**P.O. BOX 968**

**CLARENDON, TX 79226**

**806.874.3571**

**CLARENDON COLLEGE  
PAMPA CENTER  
ADMISSIONS OFFICE**

**900 N. FROST**

**PAMPA, TX**

**806.665.8801**



**BRANDY THOMAS**

*Wellington, Texas*

"During the Fall and Spring, I take classes on the main campus, because I'm a member of the basketball team. In the summers, I take classes in my hometown. I really like the convenience of the off-campus classes."



**TIM LANDON**

*Clarendon, Texas*

"Being close to home has helped my pocketbook. Clarendon College has been an affordable and smart choice."



**ANGEL HARRIS**

*McLean, Texas*

"I was able to get involved in so many activities and organizations. Last year, I was a cheerleader, student aide and participated in intramurals, and oh yeah, I took 18 hours of classes. Who says there's nothing to do at Clarendon College?"



**DARRYL PERRYMAN**

*Clarendon College Math Dept.  
Chairperson & Instructor  
Clarendon College Alumnus*

"Students at Clarendon College excel because of the personalized instruction. The availability of assistance and the willingness of instructors to help, really makes us stand out from other schools."



**JODY BISHOP**

*Hardin, Montana*

"I had decided to attend Oklahoma State, but I changed my mind after several friends told me how they loved CC. After doing some research, I found nothing but positive comments about CC and its faculty and programs. I definitely made the right choice."



**PAUL MAYER**

*Guymon, Oklahoma*

Clarendon College's Ranch and Feedlot Operations Program has given me the ability and knowledge to successfully run our family ranch.