

# The Groom News

Volume 65, Number 23

The Groom News, Carson County, Texas 79039

35c Per Copy

Thursday, August 1, 1991



## Groom Day '91 - Weekend Full Of Activities

### WE SAW...

Daniel Treadwell working hard at the D.Q. picking up trash and mowing.

Wallace Bichsel explaining how he would need eucalyptin oil to be able to get in Phil Miller's car.

Several local youths attending the White Deer Rodeo and Dance last weekend.

Melvin Wills stopping by The News Office to say son Floyd made the trip to Florida. Floyd has begun basic training.

Donna Watson and kids running a few errands around Groom Monday morning getting ready for Groom Day.

### Election Misleading States Hutsell

\*Constitutional Amendment number one, in the upcoming August 10 election at the county level, has a misleading wording," states Joyce Hutsell of the Groom School system. "It is worded so that the voter will think he is voting for tax relief in the county education district, but a yes vote is actually the yes vote for creating a new taxing entity."

A "no" vote on constitutional amendment number one in the county election would nullify the legislature's attempt to create the twenty new school districts.

"Obviously, Austin thinks bigger is better. They claimed to be trying to achieve equalization, when the end result of the bill could only be termination of small school districts," continues Hutsell, "and what kind of equality is that?"

"Confusion is also caused by forcing a hastily called election for both counties and school districts to be held at the same time. Voters will not have time to study the issues.

"Most elections are called 45 days prior to the election and this election barely had 30 days' call.

"Who would vote against See Confusion, pg. 12

If you're "Proud to Be An American," you'll be proud to be in Groom this weekend for the biggest event of the year. Groom Day '91 is shaping up to be an action packed couple of days.

Beginning on Wednesday

will be the tennis tournament for the elementary kids, followed by Jr. High, High School, and adults through the rest of the weekend.

Friday night will be off to a "running" start with the calcutta and mule race

which will be held north of the legion hall. Grab your friends and neighbors and mosey on over to the football field to watch the younger generation strut their stuff in a track meet.

Now, keep your seats because the excitement is

just beginning. It's Melanie Britten in concert! Motherhood has made the gorgeous songbird sing even sweeter.

Cast your eyes skyward. It's a bird...it's a plane...it's parachuters making a perfect landing, minus the highline wires. (Remember last year?) Take a short break to get a snack at the concession stand. As soon as it's good and dark watch the fireworks brighten the sky over Groom.

Go home and get plenty of rest...Saturday is a very long day!

Just as the sun breaks over the elevators, all eyes turn north as the parade

leads down main street. Parade Marshalls Marion and Bobby Pool report over 30 entries. Kids are reminded to report to the school with their bikes for the decorated bike contest. They also ask everyone to stay with their floats after the parade to be present for the ribbon presentation and pictures.

You're bound to have worked up an appetite by this time. If you happen to be passing by the school you will find Lions, (the two legged kind), serving up the best Texas BBQ you ever put in your mouth for the

small price of \$4 per plate.

After lunch there are many distractions to while away the afternoon. Relax in the shade of the Big Top tent of join in a rousing game of horseshoes. For the spectator, take a stroll across the street and watch the horse cutting or the volleyball games in progress.

For the young or young-at-heart, try out some of the games of skill at the booth tent. Groom Day Committee sponsored booths are Pin-the-Tail-on-the-Donkey, Mini Basketball, sand treasures, Tic Tac Toe, Hammering Fun, and Flag Painting. Christian Mothers will host the Tunnel, confetti eggs, Go Fish, and the ball toss. Lazy Dazys will provide water balloons, hot dogs, and the concession stand at the cutting.

Jr. High cheerleaders will host watermelon by the slice and face painting.

Try your luck at the dunking board sponsored by the high school cheerleaders. The boy scouts will cool you down with a refreshing snocone or try the Sorority's ice cream. The classic clowns promise to entertain you during the parade and later with Balloon sculptors

See Groom Day, pg. 7



### Babcock Crowned All-Star Queen

Karen Babcock, daughter of Kenny and Linda Babcock of Groom, was named the 1991 Six-Man All-Star Queen at the Six-Man Coaches Association All-Star Queens Contest held in Stephenville July 19th and 20th. The contest was held in conjunction with the Six-Man coaches clinic and All-Star football and basketball games.

Karen was one of 28 contestants competing for the title. The girls were presented individually at

half-time of the girls basketball game and the football game and as a group at the boys basketball game. Each contestant was also interviewed individually by the panel of judges. The contestants were judged on beauty, poise, personality, appearance, and inner beauty. Karen was crowned at half-time of the football game. Upon being crowned, she received a bouquet of flowers, a trophy, crown, and a \$500 scholarship to Tarleton State

University.

While in high school, Karen has been active in both basketball and track, was chosen for Who's Who Among American High School Students for two years, is a varsity cheerleader, FHA member and officer, class vice president, yearbook staff

member, UMY vice president, and was selected 2nd Runner-up in the recent Miss Carson County pageant.

### Groom School Board Hires Terry O'Dell As Tiger Football Coach

The Groom School Board met last week in special session. All members were present. Visitors were Donald and Nila Burgin, Brenda Homan, and Sharon Britten.

The board voted unanimously to hire Billy Baker as auditor for the 1990-91 school year.

The board went into executive session to interview two applicants for the open coaching position.

Afterward, the board offered the job to Terry O'Dell.

attended school at Hardin-Simmons in Abilene. He taught school at Woodson ISD in 1978 through 1981. He was voted Coach of the Year in 1981 in the Lake Country Area and was runner-up in the Big Country Area that same year. His football team were District Champs from '78 to '80, reaching the State Semi Finals in 1980. He coached the district

track champs and was district runner-up in

basketball in 1981.

Mr. O'Dell coached last year at Breckenridge. He will be head coach for football in high school and jr. high. He will also coach girls high school basketball and teach American history for eighth and ninth grades.

Mr. O'Dell will be living at 307 Wilkerson. He and his wife have two elementary aged children.

In other business, the board hired La Vonda Barkley for the janitorial vacancy, left open by Jo Ann Maugh.

### Community Calendar

**CLASS 1971** - Will meet at Marcia Conrad's from 6 to 8 p.m. on Sat., Aug. 3.

**FBC VOLLEYBALL TEAM** will practice Thursday at 7:30 at the church.

#### LOCAL GIRL INJURED IN FALL

Toni Moore, daughter of Tammy and Billy Moore, had an accident last week.

While visiting the KOA campground swimming pool at Jericho she fell backward from the top of the slide. She hit the concrete on the left rear of her head.

She was taken to Coronado Hospital at Pampa. After some testing was done, she was taken by ambulance to North West Texas Hospital where she underwent surgery to relieve pressure caused by a subdural hematoma and a fractured skull.

Tammy, her mom, reports that she is now at home and doing very well. The doctors stated that they see no evidence of any kind of permanent damage.

**CLASS OF '76** will meet at Sharlene Lewis' home at 5:30 on Sat., Aug. 3rd for supper.

**ATHLETIC PHYSICALS** for all sports will be Aug. 7 for boys and Aug. 9 for girls at the Groom Health Clinic.

See the new addition to the Groom Day line up on page seven.

#### TUESDAY GRAIN PRICES AT LOCAL ELEVATORS

Cash prices on grain posted at grain elevators serving the Groom area Tuesday afternoon:

Wheat-\$2.43  
Milo-\$3.88  
Corn-\$4.51

# The Groom News

USPS 230-380

Second-class Postage Paid at Groom, Tx.  
Carson County, Texas, under the Act of Congress of  
March 3, 1879.

Published weekly except Christmas Week  
Publisher-Phillip J. Miller  
Editor-Donna Burton

Postmaster: please send address changes to:  
Box 460, Groom, Tx - Phone 806-248-7333

**SUBSCRIPTION RATES;**  
Annual Rate Carson County \$14.00  
Annual Rate elsewhere in the United States \$16.00

**TA** MEMBER 1991  
**TEXAS PRESS ASSOCIATION**

**HI-PRO Feed Dealer**

**Leven's Feed Lot**  
311 E. 7th - Box 656  
Panhandle, TX 79068  
Glen Leven  
806-537-5286

Show Rations  
Range Feeds  
Minerals  
Horse, Cattle  
Sheep, Swine  
Feeds

"PLEASE ALWAYS CALL FIRST"

## Local Happenings

Brianna Bivens fell from a horse Saturday and broke her arm. She is reported to be doing fine. She is the daughter of Bimbo and Paula Bivens of Filer, Id.

Glynn D and Sybil Harrell traveled to Anton, Tx, last weekend for a Harrell family reunion.

James and Barbara Dickerson will arrive in Groom on Friday to be here for Groom Day.

After the parade is over and lunch has been eaten, Nadine Rogers will open the Barn on 2nd Ave. East. Everyone is invited to come by and visit with James and Barbara.

**CARD OF THANKS**  
Our deepest thanks for all the prayers and concerns during the brief illness and subsequent death of Jo Ann's mother. Also we appreciated the food, flowers, and many acts of kindness our friends and neighbors were so kind enough to give.

The Jess Baker family

**THANK YOU**

The Groom Day Committee would like to thank all those who donated their time and effort to the Slow Pitch Tourney. Also our appreciation to all who supported the concession stand and cheered the players on.

**PUBLIC HEARING**

A public hearing will be held August 6, 1991 at City Hall at 8:30 p.m. prior to adoption of proposed budget for 1991-1992. Proposed budget will be available during office hours at city hall for viewing.

Mayor Jimmy Britten

**GROOM BIRTHDAYS ANNIVERSARIES**

August 1 - Mrs. S. Craig Howard, Mr. and Mrs. W. M. Garmon (A), Mr. and Mrs. Don A. Lyles (A), Jack West.

August 2 - Mrs. Billy T. Jones.

August 3 - Sandra Conrad, Mr. and Mrs. Joe David Brown (A).

August 4 - Oran Durham, W. M. Garmon, Mrs. C. J. Merrick, Lindsay Ann Britten.

August 5 - Alfred A. Homer, Mrs. Darrell E. Whatley.

August 6 - Terrell Britten.

August 7 - Mr. and Mrs. O. Page Blackwell (A), Mrs. Ross Nix, Mr. and Mrs. Fines Marchman (A), Mr. and Mrs. Gary Don Davis (A), Brith Nicole Fraser.

Keep up with the hometown news!

Subscribe Now

Name \_\_\_\_\_

Address \_\_\_\_\_

City \_\_\_\_\_

State \_\_\_\_\_ Zip \_\_\_\_\_

\_\_\_ In County - \$14.00

\_\_\_ Out Of County - \$16.00

Groom/McLean News

**Carson County Abstract Co.**

Realtors, Abstractors Titles

222 Main St. 537-3521 Panhandle, Tx

## RGM AG & GRAIN, INC.

Serving The Farmer's

Needs First!

Herbicides and

Custom Application

Full Line Of Chemicals

Yard Spraying  
& Rototilling  
Lawn Fertilizer

**RGM** AG & GRAIN, INC.

248-7551

248-7575

## STATE NATIONAL BANK

GROOM, TEXAS

MEMBER  
**FDIC**



248-7531

Beginning August 5, 1991 we will no longer be open during the noon hour. After a trial basis we realized business was not adequate to continue this.

However, we are ready to serve you at 8:00 a.m. each morning Monday - Friday. Our regular hours are:

8:00 to 12:00

and 1:00 to 3:00

Monday - Friday.

## School District Voters Must Vote At Catholic School

Groom School District voters reside in four counties and need to be reminded to vote in the normal precinct voting place and then to vote in the Groom School District election which will be in the same place as the Carson County polling place.

"Groom I.S.D. voters living in Gray County, Donley County, and Armstrong County are reminded to vote in their county election in their precinct within their county on August 10," says Joyce Hutsell, Business Manager

of the district. "This is the important part of the election, voting yes or no on the creation of the county education district."

"Then, each school district voter will have to come into Groom to the Catholic School to vote in the school district election to decide what tax exemptions to grant to the county education district in case constitutional amendment number one creates the new districts.

"Even this so-called tax relief will be like cutting off the bottom of a blanket and sewing it on the top to make the blanket longer. It

just won't work," concludes Hutsell.

"Our school district voters are accustomed to voting in the administrative offices of the school. Just remember, though, that even though the voting place has changed to the Catholic School, voters must vote in the county election in their county precinct and then in the school district election in Groom.

"Absentee voters are reminded to contact Sue Persons at the Carson County Court House. All Groom I.S.D. voters, regardless of county, will vote absentee through that office.

Hutsell concludes that the district would like to have a large turnout, especially in the county election to determine whether or not Texas voters will create new taxing jurisdictions in the county education districts.

## OBITUARY

**Braeden Thane Bivens**  
Braeden Thane Bivens went to be with Jesus on Friday, July 19, 1991 due to

a stillborn birth at St. Lukes Regional Medical Center, Boise.

He is survived by his parents, Bimbo and Paula Bivens of Filer; one sister, Brianna Bivens, and one brother, Braun Bivens, both of Filer; his maternal grandmother, Nadine Lancaster of Filer; paternal grandparents, Jack and Billie Bivens of Groom, Texas; many aunts, uncles, and cousins who will miss watching Braeden growing and being a part of our earthly family. He was preceded in death by his papa, Thane E. Lancaster, for whom he was named.

Graveside services were conducted Wednesday, July 24, 1991 at Sunset Memorial Park.

Bimbo's mother, Billie Bivens, of Groom, and his sister, Andrea Jennings of Littleton, Co. went to be with the family on Sat. July 20, and returned to their respective homes on Tuesday, the 23rd.

**IRENE (CHICK) HOWARD**

Irene (Chick) Howard, 61, died Wednesday, July 24th at her home in Groom.

Local arrangements are with Minton Chatwell funeral home in Panhandle. Services are pending with Gaudan Funeral Home in Paulina, Iowa.

Having been a Groom resident for 20 years, she is survived by her husband Jack, four brothers and five sisters. They are Marvin Lustfield and Larry Lustfield of La'ce Benton, Minn.; Orbin Lustfield of Balaton, Minn.; Ronald Lustfield of Hydro, OK; Gayle King of Kileen, TX; Loyce Kause of California; Delores Swersen

of Harrisburg, SD; Ellen Jewett of Bakersfield, CA; and Freda Wymer of New Canbria, Mo.



## School Year Could Return To 175 Days

The length of the public school year would revert back to 175 days from 180 under an amendment to the education bill sponsored by state Rep. John Smithee and passed by the Texas House.

The school year was lengthened by five days as part of the education funding bill passed by the Legislature in April. The addition of the five instructional days angered many of the state's parents and teachers because it removed time allotted to teacher training, said Smithee, R-Amarillo, in a news release.

"It is absurd to suggest that if students cannot learn

the subject matter in 175 days, that an additional five days will make a difference," Smithee said. "It only adds extra cost at a time when every dollar is extremely valuable."


The Smithee amendment would allow school districts to restore holidays that had

THE GROOM NEWS-Page 3  
Thursday, August 1, 1991

been removed from the school calendar, such as the Tri-State Fair day. It would reduce anticipated spending

of up to \$20 million a day statewide.

The amendment bill must still clear the Texas Senate.

 **We don't think there is a better place to haul your grain.**

*"We appreciate the opportunity to serve you."*

**ATTEBURY  
GRAIN, INC.**

**PHONE 248-7591  
Groom, Texas**



**BIVENS AUTOMOTIVE**  
24 HOUR WRECKER SERVICE  
HWY 66 & TEXAS  
GROOM, TX 79039  
(806) 248-7471

MARK BIVENS  
(806) 248-7010

JACK BIVENS  
(806) 248-7966

**FORD**

Gene Messer Ford  
2530 S. GEORGIA  
AMARILLO, TEXAS 79109

**Interested In A New  
Vehicle?**

**Let Dinah Help You!**

DINAH HOWARD  
Sales Representative



(806) 353-7471  
TEX WATS 1-800-749-7471  
FAX # (806) 358-7134

## Koetting Construction

Mike Koetting 335-1022

Remodeling - House Levelling - Patio &  
Decks - Concrete Work - Masonry

Free Estimates

"When Quality Counts"

**STOP N SHOP**

248-7977

Groom



TEXACO

**Everyone's Convenience Store**

GROOM DAY SPECIALS

Good thru Sunday 4th

Coors-Coors light-Ex. Gold 12pk--  
7.49

Keystone-Keystone light-Dry 12pk--  
5.99

Busch-Busch light 12pk--5.99

Coke Classic, Diet Coke, Dr.  
Pepper, 7Up- 12pk -- 3.99  
Pepsi-Diet Pepsi 6pks--1.99

**Our Protection Plan  
For Your Securities  
\$2,500,000 to  
\$10,000,000**

Edward D. Jones & Co. provides \$500,000 of protection through the Securities Investor Protection Corporation (SIPC) to all clients with securities held by Jones. We also offer \$2,000,000 of additional coverage for these securities, bringing total protection to \$2,500,000.

What's more, customers with the Edward D. Jones & Co. Full Service Account\* receive further protection in the amount of \$7,500,000 for securities held by Jones, for total coverage of \$10,000,000.

For more information on our protection package or the Edward D. Jones & Co. Full Service Account, call me today.



**RICHARD RUSSELL**  
INVESTMENT REPRESENTATIVE

222 N. CUYLER  
P.O. BOX 717  
PAMPA, TX 79066

Rus. (806) 665-2432 Res. (806) 537-3689

\*A unique financial management account that offers a variety of features, including a money market fund, unlimited check-writing, a VISA debit card and an automatic purchase and sale feature.

**Edward D. Jones & Co.**

Member New York Stock Exchange, Inc. and Securities Investor Protection Corporation

## No Big Surprises With City's 1991 Budget

The City Council will meet next Tuesday, August 6th in regular session and Public Hearing to discuss the proposed 1992 budget.

"There are no real surprises... no big jumps or cuts," stated Pat Ashford, City Secretary. "Most line items had a slight increase due to cost of living."

The general fund is down \$50, while the water works will show an increase of \$470.00. State dues have

increased \$100.00. Postage is one of the larger increases with a jump from \$750.00 to \$1000.00. Repair will increase \$1000.00.

Totals for the budgets are: General \$70,100.00, Water Works \$129,250.00.

Salary increases are not included in these figures, but will be discussed during the hearing.

Revenue is expected to remain about the same as well.

## Group To Meet To Discuss County Redistricting

The Citizen's Advisory Committee on Redistricting, County Commissioners, County Judge, and other interested persons will meet with their legal counsel, Bobbye C. Hill of Daugherty and Associated, P.C. of Amarillo, Texas, to discuss the redistricting process in an open meeting of the Commissioners Court at 10:30 a.m. on August 12, 1991, in the Carson County Courthouse. She will review the law and rules which govern the redistricting process as it applies to the Carson County Commissioners Court, review the current boundaries of Carson County Commissioner's Precincts, and discuss possible alternative plans. Input and recommendations from the committee, commissioners and other interested persons will be welcomed.

Nadine Rogers of Groom and Charlie Rogers of Myrtle Beach, SC, take much pleasure in announcing the birth of their first grandson, Nicholas

Charles Rogers, who was born July 23.

He is the son of Gregory and Kandy Rogers and is welcomed home by big sister Whitney Nicole Rogers,

3 1/2, in Myrtle Beach. Great-grandmothers are Ellen Dickerson of Groom and Marie Rogers of Irving, Tex.

# WHEELER-EVANS ELEVATORS

Groom & Corner North

"We are happy to be of service"

Phones: 248-7262 or 248-7278

Corner 248-7011

Nadine Thornton  
248-7359

Groom, Texas

## Pav's Service

Come see us for your Automotive Needs!

Oil - Batteries

Complete Line Of Tires & Service

Wholesale Deliveries

Retail-Diesel-Unleaded

Monday-Saturday 7:00 a.m.-6:00 p.m.

Now Selling

Crop - Hail

Insurance



Brumley Insurance Agency

Johnny Brumley, Agent

Groom, Texas

Office, 248-7550 Home, 248-7315

Groom Flying Service



Craig Howard

We Now Have

Ground Spraying Equipment

All Types of aerial applications

★★★★★★★★★★★★

Good Service-Reasonable Prices

Harris & Office

Craig

248-7561

248-7420

# Rappin' Recipes

## KID'S COOKING SCHOOL

Kids 7 through 12 years of age invited!

FREE demonstration, recipes and tasting.

Wednesday, August 7

1:00 p.m.

Community Center  
Groom

Presented by:



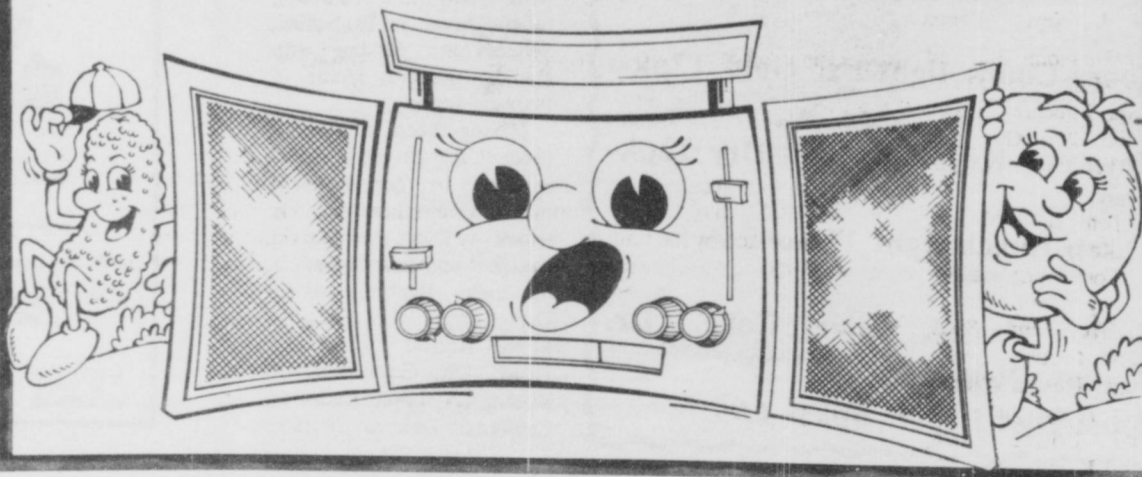
JAN STEVENS  
SPS Home Economist

Electricity — efficient use  
makes for a wise choice!



SOUTHWESTERN PUBLIC SERVICE COMPANY

P1882-7-91-930.1





#### NEW ARRIVAL

Sonny and Bonnie Maugh are pleased to announce the arrival of their new son, Justin Lee. He was born July 26th at 6:14 a.m., weighing in at 7 lbs., 13 ozs. Justin is welcomed home by sister Noel, age 6. Grandparents are Margrete and George Loner in Groom and CoLeen Maugh of Lawrenceville, Ill.

#### NEW ARRIVAL

Mr. and Mrs. Connie Reed of Panhandle would like to announce the arrival of their new granddaughter, Katie Linda Medina. Katie's parents are Enrique and Kaylene Medina of Dickinson, Texas.

She was born on July 23, 1991, weighing in at 6 lbs., 9 oz.

Katie is also welcomed by her other grandmother, Mrs. Martina Sanchez of Eagle Pass, Tx.

#### Britten Family

##### REUNION

On Sunday, July 28, 1991, Josephine Britten of St. Ann's Home in Panhandle met with her family in St. Theresa's Hall there for an all-day reunion.

Those in attendance from out of town included: Gene and Sandi Schaefer, Jenny and Jessica, Charlotte, N.C.; Max Britten, Cortney and Bryan, Kansas City, Ks.; Bret Holder, Kansas City, Mo.; Melvin Britten, Diahanna and Jody Anderson and Hayli Shelby, Duncan, OK; Curtis Crouch, Cody and Jennifer, Perryton; Don and Janice Williams, Lisa, Brad, Chris, and a friend, Tammy, Canyon; Joyce Barclay, T. J. and Kaci, Vega.

Also, from White Deer: James and Erma Britten; Nelson and Teresa Britten, Brad and Tiffany; Linda Paul, Lori and Tyler.

From Pampa: Fr. Gary Sides, Cindy, Kaci, and Stefanie Cooper and Ellen Steele.

Those from Amarillo included: Danny and Sherry Wilhelm, Keith, Katy, and Kara; Jim Babcock; Charles Acker; Judy Bulin and Jennifer; Robin Britten; Wayne and Kathy Stoerner, Kalli and Chad.

From Groom: Fr. Richard J. Neyer; Leona and A. J. Newsom; Bud and Margaret Babcock; Kenny and Linda Babcock, Susan, Karen, and Clint; Gary and Cindy Babcock, Marci and Cody; Ray and Alice Britten; Tony and Wamyth Britten, Karri, Lorri and Shari; Tom and Doris Britten; Jigger and Sandra Britten, Trey and Staci; Denny and Carol Babcock, Buck and Dustin; Bunny York and Andy; and Hop and Jan Britten, Sara, Travis, and Katy.

If we're even this late,  
your next phone bill is on us.



At GTE, our residential repair service is so good, we're willing to guarantee it.

From now on, if we don't have your phone line fixed by the time we promise, we'll give you credit for one full month's local service

charges.\* Even if we're only one minute late.

In order to make a guarantee this good, GTE has invested millions not only in state of the art telecommunications, but also in our people. And we think both are the best in the

business. So if for some reason, our repair

service doesn't measure up, please tell us.

Any of our GTE employees would be more than happy to honor this guarantee.

It only takes about a minute.



THE POWER IS ON

\*This credit covers local phone charges, monthly charges and any additional charges for SmartCall Services, unlisted numbers and extra directory listings.

## Babcock, Weinheimer Mesa Scholarship Recipients

Fifty-five West Texas State University students have been selected to receive Mesa Scholarships for Academic Excellence. The awards, effective for the 1991-92 school year, total \$34,250 and will be made in increments of \$250, \$500, or \$1,000.

Established from funds provided by Mesa Limited Partnership, the scholarships were first awarded in 1987 and are intended to reward and recognize freshmen and continuing undergraduate students who promote and exemplify high academic standards.

A composite score of 23 or higher on the ACT or a combined verbal and math score of 950 or higher on the SAT and a top-quarter class ranking was required of all entering freshmen selected for the scholarships. A minimum grade point average of 3.40 on all college work attempted was required for continuing students.

Each candidate also submitted two letters of reference, a brief essay outlining educational plans, career objectives and personal goals, and a formal application.

Mesa Scholarship recipients from Groom are Susan Babcock and Benjamin Weinheimer.

## Back To School



### ATHLETIC PHYSICALS SCHEDULED

Athletic Physical Exams for all sports are scheduled for Wednesday, August 7 for boys grades 7-12, and for Friday, August 9 for girls grades 7-12, at the Groom Health Clinic.

The following schedule will be used both dates:

Students grades 7-8 - 4 p.m.

Students grades 9-10 - 5 p.m.

Students grades 11-12 - 6 p.m.

Remember, all students must have a physical prior to participation in any UIL sport.

### GROOM ISD REGISTRATION SCHEDULE

Registration for grades K-8

- 9:00 a.m. to 11:00 a.m.;

9th - 8:30 to 9:00 a.m.

10th - 9:15 to 9:45 a.m.

11th - 10:00 to 10:30 a.m.

12th - 10:45 to 11:15 a.m.

New students and Kindergarten students will need to bring their immunization records, birth certificate, and Social Security number.

## REPORT OF CONDITION

Consolidating domestic subsidiaries of the

STATE NATIONAL BANK OF GROOM of GROOM  
Name of Bank City

in the state of Texas, at the close of business on June 30, 1991,  
published in response to call made by Comptroller of the Currency, under title 12, United States Code, Section 161.  
Charter Number 12742 Comptroller of the Currency Southwestern District

### Statement of Resources and Liabilities

#### ASSETS

Thousands of dollars

Cash and balances due from depository institutions:		
Noninterest-bearing balances and currency and coin		712
Interest-bearing balances		100
Securities		3,861
Federal funds sold		400
Securities purchased under agreements to resell		0
Loans and lease financing receivables:		
Loans and leases, net of unearned income	8,874	
LESS: Allowance for loan and lease losses	205	
LESS: Allocated transfer risk reserve	0	
Loans and leases, net of unearned income, allowance, and reserve		8,669
Assets held in trading accounts		0
Premises and fixed assets (including capitalized leases)		77
Other real estate owned		275
Investments in unconsolidated subsidiaries and associated companies		0
Customers' liability to this bank on acceptances outstanding		0
Intangible assets		0
Other assets		357
Total assets		14,451
Losses deferred pursuant to 12 U.S.C. 1823(j)		N/A
Total assets and losses deferred pursuant to 12 U.S.C. 1823(j)		14,451

#### LIABILITIES

Deposits:		
In domestic offices		12,969
Noninterest-bearing	1,425	
Interest-bearing	11,544	
Federal funds purchased		0
Securities sold under agreements to repurchase		0
Demand notes issued to the U.S. Treasury		0
Other borrowed money		0
Mortgage indebtedness and obligations under capitalized leases		0
Bank's liability on acceptances executed and outstanding		0
Subordinated notes and debentures		0
Other liabilities		138
Total liabilities		13,107
Limited-life preferred stock and related surplus		0

#### EQUITY CAPITAL

Perpetual preferred stock and related surplus		0
Common stock		100
Surplus		100
Undivided profits and capital reserves		1,144
LESS: Net unrealized loss on marketable equity securities		0
Total equity capital		1,344
Losses deferred pursuant to 12 U.S.C. 1823(j)		N/A
Total equity capital and losses deferred pursuant to 12 U.S.C. 1823(j)		1,344
Total liabilities, limited-life preferred stock, equity capital and losses deferred pursuant to 12 U.S.C. 1823(j)		14,451

We, the undersigned directors, attest to the correctness of this statement of resources and liabilities. We declare that it has been examined by us, and to the best of our knowledge and belief has been prepared in conformance with the instructions and is true and correct.

I, PAM ASHFORD

Name

VICE PRESIDENT & CASHIER

Title

of the above-named bank do hereby declare that this Report of Condition is true and correct to the best of my knowledge and belief.

*Ronald Kotara*

*Ronan D. Bourge*

*Bobby A. Babcock*

Directors

*Pam Ashford*  
Signature

July 25, 1991

Date

### Public Notice

On April 9, 1991, Southwestern Bell Telephone Company filed an application with the Public Utility Commission of Texas to request that the optional feature "Call Transfer Disconnect" be available to all PLEXAR I customers by including the feature in Southwestern Bell's PLEXAR I tariff. Currently, this optional feature is available only on a customer requested basis.

Call Transfer Disconnect (CTD) is an optional feature that allows PLEXAR I customers the ability to transfer a call to another telephone number within or outside their PLEXAR I system, hang up, and permit the two remaining parties to continue with the call. The PLEXAR I user is then free to place or accept another call. CTD is not intended to be used to avoid toll charges. Therefore, CTD will not be available to PLEXAR I customers subscribing to optional Extended Metropolitan Service or Extended Area Calling Service.

If the company's application is approved, the monthly rate for CTD will be \$4.00 for each PLEXAR I station line. Prior to the June 19, 1991, interim rate approval, Southwestern Bell was billing customers who receive the service \$1.50 for each station line equipped with this feature. In addition, under Southwestern Bell's proposed tariff, every line within the PLEXAR I system must be equipped with this feature. The nonrecurring charge for the additional lines which must be equipped with CTD will be waived for existing CTD customers. The tariffed monthly rate will apply to all existing and future CTD customers.

Persons who wish to intervene or otherwise participate in these proceedings should notify the commission as soon as possible. A request to intervene, participate, or for further information should be mailed to the Public Utility Commission of Texas, 7300 Shoal Creek Boulevard, Suite 400N, Austin, Texas 78757. Further information may also be obtained by calling the Public Utility Commission Consumer Affairs Division at (512) 458-0256, or (512) 458-0221, teletypewriter for the deaf.



Southwestern Bell  
Telephone

### Groom Day

and a dart throw.

For those who feel lucky, try the 4-H Kiss the Pig contest. Vote for the person you want to Kiss the Pig by putting money in their ballot jar. There is also two raffles this year. The Groom Day Committee is offering chances on a \$600.00 free trip to anywhere you want to go. The Girl Scouts of Groom are giving away a \$100 gift certificate good at any store in Westgate Mall. Don't forget the cow pattie bingo contest.

Now if shopping is more your style, don't forget the Arts and Crafts booths at the community center. Local artists will have lots of goodies to choose from.

Don't wear out and don't slow down because the day ain't over yet. Don't forget the big dance at the Legion Hall. The USA trip will be drawn at 10:00 at the dance.

So if you're "Proud to Be an American," come to Groom Day '91 and show it!

Wieberg,  
Welding  
Nathan Wieberg  
Shop-248-7270  
Home-248-7301

**GROOM DAY '91**  
**TRIANGLE RESTAURANT**

11:30 - 1:30 Buffet Breakfast  
All You Can Eat  
Scrambled eggs, Ham and Sausage,  
Biscuits, gravy, and drink  
\$5.00

**DEAN'S pharmacy**

2217 Perryton Parkway 669-6896

**Looking forward  
to serving our  
Groom customers.**

**Ask about our  
mail service**

*Welcome Welfare Recipients  
Special Discounts  
to Senior Citizens on all  
Prescriptions*

Dean Copeland Home 665-2698  
Jim T. Pepper Home 669-9710  
Business 669-6896

## GROOM DAY '91



# Proud To Be An American

Attebury Grain  
Brumley Insurance  
Golden Spread Co-op  
Groom Flying Service  
Holland Feed Yard  
Stop N Shop  
Wheeler Evans  
Wieberg Welding  
RGM Ag & Grain  
State National Bank  
Triangle Restaurant  
Farmers Equipment

**WELCOME!**



From

*Your Home Town Businesses*

*Schedule of Events*  
**Thursday, Aug. 1st**  
Tennis Tournament Begins

**Friday, Aug. 2nd**  
9:30 a.m. - Food Preparation at School Cafeteria  
3:00 p.m. - The Tent Goes Up! (come and watch)  
6:00 p.m. - Calcutta for the Donkey Race (North of Legion Hall)  
7:00 p.m. - Donkey Race  
Concession: sausage sandwiches, ice tea  
8:00 p.m. - Little Kids Track Meet (football field)  
9:00 p.m. - Skydivers  
9:30 p.m. - Music by Melanie Britten  
Concession stand will be open.  
DARK - Fireworks Display

**Saturday, Aug. 3rd**  
9:00 a.m. - Parade Line-up at school  
10:00 a.m. - Parade  
10:30 a.m. - Shuttle Bus from Community Center to school  
10:30 - 4:00 - Craft Booths, Art Show, Veteran's Display at Community Center  
**BARBECUE 11:30 - 1:30**

\$4.00 per plate  
School Cafeteria  
1:00 - 4:00 - Practice field-Tent Booths, Volleyball, Horseshoes, Ranch Horse Cutting  
4:15 - Cow Pattie Bingo - Tree North of Gym  
9:00 p.m. to 1:00 a.m. - Dance at Legion Hall - \$7.00 per person - Clyde Logg Band  
10:00 - Drawing for USA trip

**IT'S DOUBLE VALUE TIME AT DAIRY QUEEN!**

**\$2.99**



**FULL MEAL DEAL™**  
1/4 lb.+ Hungr-Buster, french fries, drink & a small sundae.

**\$1.99**



**FUN BUNCH MUNCH™ KID'S MEAL**

A meal just for kids! Your choice of hot dog, Hungr-Buster® Jr., corny dog or two steak fingers, plus drink, french fries and a DQ treat. And a fun prize!

**ON SALE JULY 29 - AUG. 18, 1991**

**THIS WEEK'S DQ VALUE**

® Reg. U.S. Pat. & Tm. Off. Int. D.Q. Corp. 1991 Reg. U.S. Pat. & Tm. Tx. D.Q. Op. Coun. © Tr. D.Q. Op. Coun. All participating Dairy Queen stores. †Pre-cooked weight.

Prices Effective August 1 - 7, 1991

## GROOM



HOMOGENIZED  
**ALLSUP'S MILK**  
GALLON  
**\$1.89**



ALL FLAVORS  
**OCEAN SPRAY JUICES**  
10 OZ. BTL.  
**59¢**

FAMOUS  
**ALLSUP'S BURRITOS**

**2 FOR 89¢**

COOKED FRESH 24 HRS. A DAY **HOT FOODS MENU** AVAILABLE AT ALL ALLSUP'S LOCATIONS

BARBECUE BEEF SANDWICH	99¢	9 PIECE BOX CHICKEN	\$4.99
BARBECUE PORK RIBS (LB.)	\$3.99	BEEF & CHEESE CHIMICHANGA	\$1.19
BARBECUE WHOLE CHICKEN	\$3.99	(MEAD) CORN DOG	69¢
ALLSUP'S BURRITO	79¢	DELICIOUS HAMBURGER	59¢
BREAKFAST BURRITO	99¢	WILSON HOT LINKS	99¢
BURRITO BEEF & SALSA	\$1.19	SAUSAGE ON A STICK	\$1.59
DELICIOUS CHEESEBURGER	79¢	SAUSAGE & BISCUIT	79¢
CHICKEN FRIED STEAK	\$1.59	SAUSAGE, EGG & BISCUIT	\$1.09
3 COUNT CHICKEN STRIPS	\$1.49	SAUTEYYA SAUSAGE	\$1.09
W/POTATO WEDGES/ CHICKEN (2 PCS) BISCUIT	\$1.99	4 COUNT STEAK FINGERS	\$1.00

CALL-IN ORDERS WELCOME CHECK OUR WEEKLY SPECIALS

TORTILLA CHIPS AND JALAPENO CHEESE SAUCE  
**NACHO PRONTO**  
6 OZ. SIZE  
**\$1.29**



ALL VARIETIES  
HERSHEY CANDY BARS  
**3 FOR \$1**



ALL TYPES  
PEPSI-COLA  
**\$1.89**  
6-pack

CAMPBELL Ramen Noodle Soup  
Microwavable  
2 for \$1.00  
2.19 oz. pkg.

SAUSAGE & BISCUIT ..... EACH **59¢**

SHURFINE FROZEN ORANGE JUICE ..... 16 OZ. CAN **\$1.29**

GARDETTO'S SNAK-ENS ..... 6 OZ. PKG. **99¢**



MARDI GRAS PAPER TOWELS JUMBO ROLL  
**69¢**

**PLAY TODAY**

**Convenient Cash™**

Pick Up Your FREE Instant Win Scratch-Off Game Ticket

Over 325,000 Chances to win CASH, FREE PRODUCTS & FREE FOOD  
Enter Our Second Chance Sweepstakes and

**Cruise The Caribbean**

OR Be one of 9 lucky people who will win



BATHROOM TISSUE  
**ANGEL SOFT**  
4 ROLL PKG.  
**99¢**

**\$1000\*\* WINNER**  
WILLIAM HATCHER, ROSWELL, N.M.

**\$100\*\* WINNERS**  
GABRIEL MENDOZA, FLOYDADA, TX.  
LUPE ZAMBRANO, VERNON, TX.  
MISTY ROSS, LOS LUNAS, N.M.  
THOMAS FRANKLIN, ALBUQUERQUE, N.M.

**GAS FOR A YEAR WINNERS**  
ROCKY SMITH, PADUCAH, TX.  
JESUS MALDONADO, HEREFORD, TX.  
JOY HILL, JAL, N.M.  
SHANNON ROSS, SPRINGTOWN, TX.  
DEL FRED WAUNEKA, GALLUP, N.M.  
LISA CLARDY, QUITAQUE, TX.

7 Day Cruise For Two Can Be Yours (a \$5000 Value) With \$300 Spending Money!

**FREE GAS FOR A YEAR\*!**  
(\*8 Gallons a week for 52 weeks)



# The McLean News

Commerce Bank Building No. 5 Thursday, August 1, 1991 779-2141

## Superintendent Stanley Lamb Reports On School Issues

Confusion reigns in regard to the August 10th election. I have called the Gray County Clerk's office and have received the following information.

If you live in Gray County and reside in the McLean School District, you will vote at the McLean Library. You will have two separate ballots; one for the items on the school issue

and one on the State's Constitutional Amendments.

My recommendations? Of course I have none. Voting is a personal matter. Try to become informed and vote the way that you feel is right - but vote.

If you have questions, you should call the Gray County Clerk, Wanda Carter in Pampa. Her telephone number is 669-8004.

Summer recess for the McLean school students is coming to a close. August is here and that means that the starting of school for 1991-92 is here. Short summer, huh?

Seniors and Juniors will register on August 14th; Seniors from 9 a.m. until noon and Juniors from 1 p.m. until 3.

Sophomores and Freshman will register on August 15th. Sophomores from 9 a.m. until noon and Freshman from 1 p.m. until 3.

Students will report to their scheduled classes for the first regular day of school on Monday, August the 19th.

All school employees will report to their duties on Friday the 16th. This will be an orientation and work day.

I am looking forward to



meeting to students of the McLean Community. I have already met several of you and if the rest of the students are as friendly and nice as those whom I have already met, it's going to be a good school year.

If any of you are around the school before the official opening, drop in for a visit. I'd like to meet you.

Stanley Lamb, Supt.

## What Is The August 10 School Election About Across Texas?

John Hannah, Jr.,  
Secretary of State

During the last session of the Legislature, a school finance bill passed which radically alters the way school property taxes are collected and distributed. The bill created 188 county education districts (CEDs) composed of the school districts in each county. Those county education districts will levy a property tax which will be distributed equally among school districts within the county education district. The election to be held August 10 will enable taxpayers in the county education districts to avail themselves of certain exemptions on their homesteads as well as open up the possibility of taxing certain tangible personal property.

What is on the August 10 ballot?

There will be two elections held that day - a state constitutional amendment election and a school district election (in a

few cities, there will be an additional local election regarding local issues).

The state election involves two constitutional amendments: 1) Proposition 1 to allow certain property tax homestead exemptions and taxation of certain tangible personal property by the county education district; and 2) Proposition 2 which allows the Texas Higher Education Coordinating Board to issue up to \$300 million in general obligation bonds to fund student loans.

The school districts will conduct a local option election on behalf of the county education district concerning issues addressed by Proposition 1. The school ballot will be in three parts: 1) whether to adopt a homestead exemption of 20% of market value; 2) whether to adopt an additional exemption of \$10,000 for the elderly and disabled; and 3) whether to tax non-income producing tangible personal property.

## McCurley Observes 80th Birthday At Reception

Betty McCurley was honored by her children and grandchildren with a reception Sunday, July 21, 1991, to celebrate her 80th birthday in the Fellowship Hall of the United Methodist Church in McLean.

The table was laid with a white lace cloth tied with mauve bows at each corner. A decorated birthday cake in the shape of a large "80" inscribed "Happy Birthday to a Special Lady" was displayed on the serving table with an arrangement of burgundy and mauve carnations and pompons flanked by burgundy tapers. Appointments of crystal and silver completed the decor.

Granddaughters presided at the guest table and register.

Betty Dunn moved with her parents to Foard County, Texas, from Elida, New Mexico. They came by covered wagon and arrived in Margaret, Texas, in October 1927.

Betty attended school in Margaret.

Betty Dunn and C. H. "Hack" McCurley were married October 31, 1929, in Altus, Oklahoma.

They moved to the McLean area in 1930, where they were employed by the O. G. Stokley ranch. In the early 1940's, they moved to a farm two miles east of McLean where they lived for several years. They reared six children, all of whom are graduates of McLean High School.

Betty McCurley worked at the McLean school cafeteria for several years before going to work for Marie Foundations. She retired in 1975.

Hack McCurley died November 24, 1970.

Betty makes her home at 420 Grove in McLean. She is active in the Wesley adult

Bible class and the Susanna group of the United Methodist church. She enjoys visiting her children and grandchildren and has traveled to many different states, as well as Canada, with them.

Sixty-eight guests registered between the hours of two and four in the afternoon.

Members of the family present for the occasion were: Mr. and Mrs. Joe McCurley, Kali and Randi; Mr. and Mrs. Nocona McCurley, Trey, Cole, and Cruise of Marlow, Oklahoma; Reese and Rhetta Tarbet of Arlington, Texas; Mr. and Mrs. Ritchie Tarbet of Nazareth, Texas; Mr. and Mrs. Jack Butt and Brenda; Mr. and Mrs. Ty Bradley and Aaron of Clayton, New Mexico; Mr. and Mrs. Bob Schneider, Brandon, Brett, and Brooke; Mr. and Mrs. Tony Clark, Jared and Travis of Canyon, Texas; Nadine Haseloff of Dumas, Texas; Kay Steward of Amarillo, Texas; Randa Tarbet of Ashland, Kansas; Mr. and Mrs. Marlon Nelson and Charity of Duncan, Oklahoma; Mr. and Mrs. Ricky Tarbet, Kyle and Amber of Luling, Texas; Mr. and Mrs. Vernon Tarbet of Shamrock, Texas; Mr. and Mrs. Billy Jack Bailey and Joetta; and Jewel McCurley, all of McLean.

Two sons, Charles McCurley of Marlow, Oklahoma and Paul McCurley of Yuma, Arizona, were unable to attend.



## Local 4-H Members Compete In Fashion Show

Three members of the 4-Clover 4-H club competed in the District I, "American Made" Fashion Show in Borger, July 23, 1991. District I is made up of nineteen counties in the Texas Panhandle and 147 4-Hers from those counties competed.

Jessica Fish, daughter of Becky and Jay Dee Fish, competed in the Junior Active Playwear Division and placed in the top four.

Moriah McCracken and Erin McCracken, daughters of Roger and Janet McCracken, competed in the Junior Casual Daywear and Senior Tailored

Daywear division. Erin McCracken placed in the top four of her division and will represent District I at the State Fashion Show in Nacogdoches, Texas on August 22-24.

The girls received a ribbon for participation and the top four places in each category received a medal. Erin received a gift certificate from Rheams Jewelry of Borger.

Those from McLean attending the show were: Becky Fish, Roger and Janet McCracken, Kathy Greiner, clothing leader, Jessie Fish, Moriah and Erin McCracken.

REMINDER!

McLEAN COMMUNITY CALENDAR

THERE WILL BE a meeting of all people interested in our Museums at the McLean Museum, Aug. 2, at 5:00 p.m. "Please come."

THE SKILLET WHITE FISH voting boxes for the Aug. 10 election will be at the First State Bank in Clarendon, or by Absent "T" ballot, call Faye Vargas, 874-3436.

What happens if Proposition 1 fails?

If this constitutional amendment fails statewide, the school district election whereby the VOTERS authorize the exemptions will be disregarded. However, the governing body of the CED might adopt these exemptions under existing provisions of the Constitution.

See Election, pg. 11

## MCLEAN BRIEFS

### MCLEAN BIRTHDAYS ANNIVERSARIES

August 1 - Keith Gipson, Wayne Brown, Shaun Sanderson.

August 2 - Debbie Gipson, Sammy Don and Jan Haynes (A).

August 3 - Jim and Maudine Rutherford (A).

August 4 - Bob and Grace Glenn (A).

August 5 - Scott Stubbs, Everett Watson.

August 6 - Leann Webster, Mildred Giesler, Mr. and Mrs. O. O. Tate.

August 7 - Davie Gipson, Ora Holloway, Jim Rutherford.

Visiting J. W. Meacham and Doyle and Nancy Billingsley over the weekend were Donna, Debra, and Shane Vineyard from Glenrose, TX.

Bill Sarpalius, Congressman for 13th district, will be in McLean, Tx, Tuesday, Aug. 13th at 9:00 a.m. at Lovett Memorial Library for Town Hall meeting.

Visiting in the home of Buddy and Bonnie Sutton for several days was their son Danny and family from North Carolina. They also

visited their grandmother, Eula Morrow.

Eula Morrow spent some time in Weatherford, OK, at the home of her son-in-law C. E. Shannon. Her granddaughter Mollie Gardner and son Matthew from San Diego, Calif. were there to visit also.



Visiting Mary Lou and Dale Glass last week was daughter Terri Luna, Michelle and Jennifer from Waxahachie, TX. Also visiting from Skellytown was daughter Sherri Kramer, Rachel and Sandy. Rachel and Sandy stayed over with Mary Lou and Dale.

**MASONIC LODGE  
AWARD PRESENTED**  
Ted Simmons and J. Boyd Smith went to the Top O' Texas Hill Top meeting Saturday afternoon at the Bob Price Ranch.

An 80 year Masonic Award was presented to Emmett Lefors, who has been a member of our Masonic Lodge #889 these last 80 years.

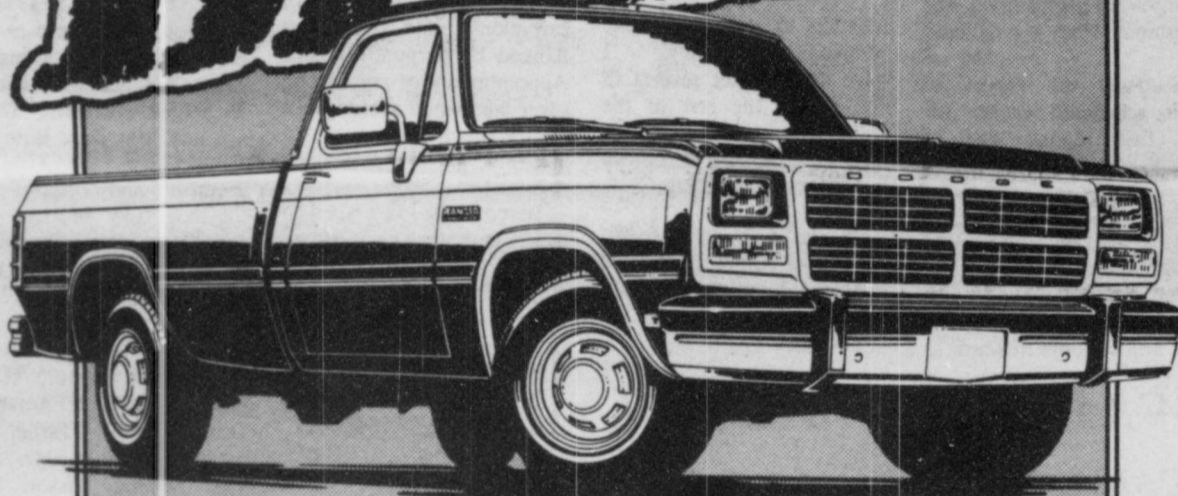
We also had a meal of Bar-B-Que, beans, cole slaw, and the trimmings.

We also did a lot of visiting. There were 125 Masons present.



Coming to a Dealer Near You!

# THE



## THE DODGE CUMMINS TURBO DIESEL PICKUP!

The Dodge Cummins Turbo Diesel pickup is the true heavyweight of diesel pickups. It beats Ford and Chevy diesels in towing, torque and available payload and with enough muscle to tow over 5 tons. Right now, your dealer has a good selection of these monstrous trucks in stock with these features:

- 5.9 Liter 6 Cylinder
- Intercooled Turbocharged Engine\*
- Central Intake Manifold Heater
- 7/100 Engine Warranty†
- Five Tons Of Available Towing
- 400 lbs-ft Torque
- Direct Injection System
- 7/70 Powertrain Warranty†

\*On models built after about 2/6/91. †See these limited warranties and their restrictions at your dealer.

### HURRY IN FOR A MONSTROUS DEAL

#### BURTON DODGE

711 W. HWY 152

826-5588

Wheeler, Tx.

Advantage:  
Dodge.



770

BUCKLE UP...AND PLEASE DRIVE SAFELY.

**Country Corner**

**Texaco**

**SUNDAY SPECIAL:**  
Roast Beef, green beans or corn,  
scalloped potatoes, salad &  
German Chocolate Cake **\$3.99**

"We now have Chef Salads  
made daily."

EXIT 142 McLean 779-2391

**ROBINSON  
MEAT CO.**

**OPEN FOR BUSINESS.**

*Custom Slaughtering & Processing*

Lockers Available

Open Monday thru Friday, 8 a.m. to 5 p.m.

Full Line Of Retail meats

- Choice Rib Eye Steak
- Lean Ground Beef \$1.69
- Sliced Slab Bacon \$1.69
- Pork Sausage \$1.89
- Sausage Patties \$1.98

**FOTO  
TIME**

One Hour Processing  
Enlargements · Picture Frames  
Kodak Lab · Clocks · Gifts  
Fotos & Darkroom  
Supplies

107 N Cuyler  
Pampa

**MCLEAN LODGE**  
No. 889  
AF&AM

Stated Meeting  
2nd Thursday  
Practice Every Monday  
7:30 p.m.

VISITORS WELCOME  
Gene Greer W.M.  
J. Boyd Smith, Secretary

**OASIS SALOON**  
PRESENTS

Clarendon

Call For Details August 3

874-3162 Pool Tourney

"Slip \$5.00 entry fee

On August 4

Down" Chili Cookoff

\$5.00 entry fee

## MCLEAN BRIEFS

### MCLEAN BIRTHDAYS ANNIVERSARIES

August 1 - Keith Gipson, Wayne Brown, Shaun Sanderson.

August 2 - Debbie Gipson, Sammy Don and Jan Haynes (A).

August 3 - Jim and Maudine Rutherford (A).

August 4 - Bob and Grace Glenn (A).

August 5 - Scott Stubbs, Everett Watson.

August 6 - Leann Webster, Mildred Giesler, Mr. and Mrs. O. O. Tate.

August 7 - Davie Gipson, Ora Holloway, Jim Rutherford.

Visiting J. W. Meacham and Doyle and Nancy Billingsley over the weekend were Donna, Debra, and Shane Vineyard from Glenrose, TX.

Bill Sarpalius, Congressman for 13th district, will be in McLean, Tx, Tuesday, Aug. 13th at 9:00 a.m. at Lovett Memorial Library for Town Hall meeting.

Visiting in the home of Buddy and Bonnie Sutton for several days was their son Danny and family from North Carolina. They also

visited their grandmother, Eula Morrow.

Eula Morrow spent some time in Weatherford, OK, at the home of her son-in-law C. E. Shannon. Her granddaughter Mollie Gardner and son Matthew from San Diego, Calif. were there to visit also.



Visiting Mary Lou and Dale Glass last week was daughter Terri Luna, Michelle and Jennifer from Waxahachie, TX. Also visiting from Skellytown was daughter Sherri Kramer, Rachel and Sandy. Rachel and Sandy stayed over with Mary Lou and Dale.

**MASONIC LODGE  
AWARD PRESENTED**  
Ted Simmons and J. Boyd Smith went to the Top O' Texas Hill Top

meeting Saturday afternoon at the Bob Price Ranch.

An 80 year Masonic Award was presented to Emmett Lefors, who has been a member of our Masonic Lodge #889 these last 80 years.

We also had a meal of Bar-B-Que, beans, cole slaw, and the trimmings.

We also did a lot of visiting. There were 125 Masons present.



Coming to a Dealer Near You!



### THE DODGE CUMMINS TURBO DIESEL PICKUP!

The Dodge Cummins Turbo Diesel pickup is the true heavyweight of diesel pickups. It beats Ford and Chevy diesels in towing, torque and available payload and with enough muscle to tow over 5 tons.

Right now, your dealer has a good selection of these monstrous trucks in stock with these features:

- 5.9 Liter 6 Cylinder
- Intercooled Turbocharged Engine\*
- Central Intake Manifold Heater
- 7/100 Engine Warranty†
- Five Tons Of Available Towing
- 400 lbs-ft Torque
- Direct Injection System
- 7/70 Powertrain Warranty†

\*On models built after about 2/6/91. †See these limited warranties and their restrictions at your dealer.

## HURRY IN FOR A MONSTROUS DEAL

**BURTON DODGE**

711 W. HWY 152

826-5588

Wheeler, Tx.

Advantage:  
Dodge.



770

BUCKLE UP...AND PLEASE DRIVE SAFELY.

**Country Corner**

**Texaco**

**SUNDAY SPECIAL:**  
*Roast Beef, green beans or corn,  
scalloped potatoes, salad &  
German Chocolate Cake* **\$3.99**

"We now have Chef Salads  
made daily."

EXIT 142 McLean 779-2391

**ROBINSON  
MEAT CO.**

OPEN FOR BUSINESS.

*Custom Slaughtering & Processing*

*Lockers Available*

Open Monday thru Friday, 8 a.m. to 5 p.m.

Full Line Of Retail meats

Choice Rib Eye Steak  
Lean Ground Beef \$1.69  
Sliced Slab Bacon \$1.69  
Pork Sausage \$1.89  
Sausage Patties \$1.98

**FOTO  
TIME**

One Hour Processing  
Enlargements . Picture Frames  
Kodak Lab . Clocks . Gifts  
Fotos & Darkroom  
Supplies

107 N Cuyler  
Pampa

**MCLEAN LODGE**  
No. 889  
AF&AM

Stated Meeting  
2nd Thursday  
Practice Every Monday  
7:30 p.m.

VISITORS WELCOME  
Gene Greer W.M.  
J. Boyd Smith, Secretary

**OASIS SALOON**  
PRESENTS

Clarendon

Call For Details August 3

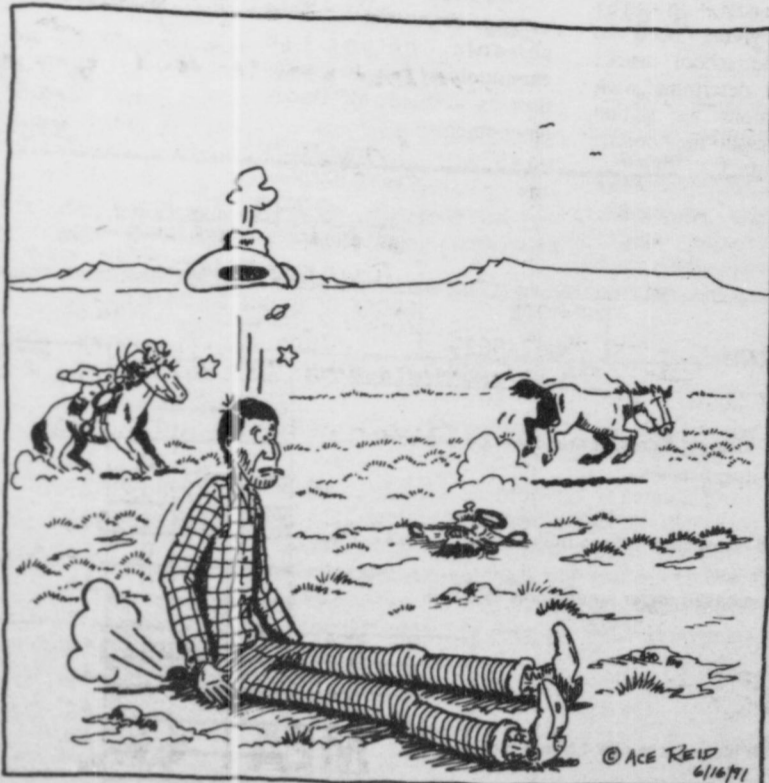
874-3162 Pool Tourney

"Slip \$5.00 entry fee

On August 4

Down" Chili Cookoff

\$5.00 entry fee



"Somebody oughtta git that ol' hoss fer litterin'!"



Tammy Syfrett  
Wins Contest

Ten-month-old Tammy Rene Syfrett won a first place trophy in the MDA Kids Are Cute contest in Amarillo Saturday. Tammy competed against 15 other precious baby girls in the ages of 7-11 month category.

Proud parents are Linda and Jack Syfrett, big sister Heidi and Grandma, Ginger Morella, all of McLean.

**CHEERLEADERS ATTEND DAY CAMP**  
McLean Jr. High Cheerleaders attended Cheerleader's Day Camp on Saturday, July 27th from 8:00 to 5:00 p.m. at West Texas State University.

Those attending were Christina Carter, Jill Hefley, Shelly Holland, and Kristi Tidwell. Mrs. Charlotte Hefley took the girls.

**PUBLIC NOTICE**  
An excess Nitrate intake by an infant under the age of six months may reduce its available oxygen supply and possibly produce "blue baby" symptoms. Parents are advised to find other sources of drinking water, such as bottled water, for their infants under six months of age. All doctors and hospitals in the area have been notified of this situation. The city will offer to provide bottled water of acceptable quality to pregnant women and to infants under six months of age for cooking and drinking purposes.

question will be added together for the county education district as a whole. If the question fails in one district but passes the CED as a whole, it is still adopted by the CED.

Is a vote against Proposition 1 a vote against taxing tangible

personal property by the CED?

Yes, but it is also a vote against voter-authorization for the CED to use homestead exemptions and elderly and disabled exemptions. As stated previously, the CED governing body might adopt these provisions following procedures set up under current law.

**Election**

Does each school district have to approve the three ballot propositions for them to pass?

The results for each

See Election, pg. 14

**NOTICE**

Call **BUTLER LOCKER** for your slaughtering & all processing needs. No kill charge for beef, 23<sup>+</sup> lb. dressed weight. Hogs \$10.00 kill price, 26<sup>+</sup> lb. dressed weight Hickory smoking available. Call anytime.  
**447-5660 447-5447**

**779-2461**  
**McLean, Texas**  
A Subsidiary of GrayCo BancShares, Inc.  
**FDIC**

1-10x13 (Wall Photo) 30  
1- 8x10 COLOR PHOTOS  
2- 5x7  
2- 3x5  
16-King Size Wallets  
8-Regular Size Wallets

**10<sup>99</sup>**  
99¢ Deposit  
\$10.00 Due At Pick up  
Plus Tax

WE USE KODAK PAPER

AT  
**Lamb-Ferguson Flower & Gift Shop**  
218 North Main  
**Wed., Aug. 7**  
9:30 a.m. - 4:30 p.m.

**Shugart's inc.**

GROUP CHARGE 99¢ per person **COLOR PHOTOS**

Kodak paper. For a Good Look at the Times of Your Life. TM

Accredited by the American College of Radiology

**BREAST CANCER DETECTION UNIT AVAILABLE TO AREA WOMEN**

Wednesday, Aug. 7th  
McLean Clinic  
402 N Main Street  
McLean, Texas

A Service of  
**Transamerican Diagnostic Services**  
(Providing Mammography Services for over 5 years)

CALL 779-2401 FOR APPOINTMENT

According to the American Cancer Society, one out of four women in the United States will develop breast cancer sometime in her lifetime. It is currently estimated that over 37,000 women die each year as the result of breast cancer.

Ninety percent of breast cancers are diagnosed by women or their physicians finding a lump in the breast. Women who are diagnosed with a lump large enough to feel have a 50 percent five year survival rate. A woman who is diagnosed as having breast cancer by mammography, before a lump can be felt, has a 97% five year survival rate and a 90% 10 year survival rate.

A mammogram can detect a cancer this small, even before it can be felt.

**Guidelines For Screening Mammography Established by the American Cancer Society.**

- I. 35-40 years of age - One baseline mammogram.
- II. 40-50 years of age - A mammogram every 1-2 years depending on breast type and risk factor.
- III. 50 years of age and over - An annual physical examination and annual mammogram.
- IV. Asymptomatic women under 50 years of age with significant high risk factors should be examined at appropriate intervals. These risk factors include previous breast cancer and family history of cancer.
- V. A symptomatic woman should have a mammogram at any age when she experiences a mass, nipple discharge, skin changes or unexplained breast pain.

A screening mammogram is an x-ray of the breast using extremely low dosages of radiation (usually comparable to dental x-rays) and is designed to find very early cancers.

A female technologist who is highly trained in mammography will perform the examination.

The charge for the screening mammogram is \$65.00. The Unit accepts cash, check, Visa, Mastercard and American Express.

**Now filing Medicare (for you reimbursement)**

**PRIZE MONEY FOR FAIR WINNERS**

The 1991 Amarillo Tri State Fair, scheduled for September 16-21, will award prize money, ribbons, banners and trophies to hundreds of exhibitors who are winners in the various divisions of the fair. Competitive judging will include beef cattle, swine, sheep, goats, poultry, horses, mules, rabbits, art, culinary, textiles, vegetables, and educational exhibits in agriculture and homemaking.

Over \$50,000 in prize money is offered to the exhibitors in the competitive events, according to Lynn Griffin, fair manager. In addition, hundreds of ribbons, banners and trophies will also be awarded to winners. All divisions of the fair are open to the public, with certain restrictions on the youth events. Interested parties may find out more about how to enter these judged events by calling the Tri State Fair office at 806/376-7767 or writing to P.O. Box 31087, Amarillo, Texas 79120.

**ALANREED NEWS**

Vickie Hambricht and daughters of Pampa visited her grandmother here Thursday.

The R. D. McLains and Brenda and Dan McLain and wife returned this week after a long vacation in Oklahoma and Missouri and other states in route to Minnesota to see son Dean and family.

Nora Drago came home on Wed. after a long stay in High Plains Baptist Hospital where she had a double bypass.

Diane Stewart and children of McLean visited her grandmother Nele Keese here last week.

Ruby Dorsy and son Jay were in Amarillo this week for medical attention for Jay.

Visiting at 1st Baptist Church Sunday was Bro. Earl Husted and wife of north of McLean. Bro. Husted brought our Sunday message.

Kaye and Paul Bruce of Pampa spent the weekend here at their grandparents, the Robert Bruces.

The David Crocketts made a trip down state due to a death in the family.

Dena Tedirell and Shirley Armbrister took their mother back to Amarillo for a medical check.

Most of the area received an inch or more rain Sat.

Mrs. Juanta McKee has been hospitalized in Pampa recently.

The Robert Bruces were in Pampa this week to see daughter-in-law Faye hospitalized in Coronado Hospital.

**Confusion**

tax relief? Austin knows that the average voter will vote "yes" on constitutional amendment number one, thinking to be granting exemptions to homesteads,

the handicapped, and the elderly. In reality, the amendment sets up another taxing jurisdiction.

"The voters should reject this creation of school districts and vote "no" on constitutional amendment

number one.

"Then, just in case the amendment passes statewide, voters need to vote in the school district election to determine what tax exemptions we should grant in case the county

education district is forced upon us," concludes Hutsell. "We need to send a clear message to Austin that local schools belong to communities, not to mega-districts created by cloudy amendments."



LEGAL TITLE OF BANK		STATE BANK NO.	
Bank of Commerce PO Box 29 McLean, Texas 79057-0029		2733-28	
		FEDERAL RESERVE DISTRICT NO. 11 13 08442	
CITY		CLOSE OF BUSINESS DATE	
McLean	COUNTY GRAY	STATE Texas	ZIP CODE 79057-0029
		June 30, 1991	
Dollar Amounts in Thousands			
ASSETS		Bil	Mil
1. Cash and balances due from depository institutions:			
a. Noninterest-bearing balances and currency and coin			427
b. Interest-bearing balances			0
2. Securities			3 833
3. Federal funds sold & securities purchased under agreements to resell in domestic offices of the bank & of its Edge & Agreement subsidiaries, & in IBFs:			
a. Federal funds sold			0
b. Securities purchased under agreements to resell			0
4. Loans and lease financing receivables:			
a. Loans and leases, net of unearned income		5 294	
b. LESS: Allowance for loan and lease losses		48	
c. LESS: Allocated transfer risk reserve		0	
d. Loans and leases, net of unearned income, allowance, and reserve (item 4.a minus 4.b and 4.c)			5 246
5. Assets held in trading accounts			0
6. Premises and fixed assets (including capitalized leases)			183
7. Other real estate owned			116
8. Investments in unconsolidated subsidiaries and associated companies			0
9. Customers' liability to this bank on acceptances outstanding			0
10. Intangible assets			16
11. Other assets			236
12. a. Total assets (sum of items 1 through 11)			10 057
b. Loans deferred pursuant to 12 U.S.C. 1823 (j)			0
c. Total assets and losses deferred pursuant to 12 U.S.C. 1823(j) (sum of items 12.a and 12.b)			10 057
LIABILITIES			
13. Deposits:			
a. In domestic offices:			
(1) Noninterest-bearing		1 987	
(2) Interest-bearing		6 939	
b. In foreign offices, Edge and Agreement subsidiaries, and IBFs:			
(1) Noninterest-bearing		0	
(2) Interest-bearing		0	
14. Federal funds purchased and securities sold under agreements to repurchase in domestic offices of the bank & of its Edge & Agreement subsidiaries, & in IBFs:			
a. Federal funds purchased			300
b. Securities sold under agreements to repurchase			0
15. Demand notes issued to the U.S. Treasury			0
16. Other borrowed money			0
17. Mortgage indebtedness and obligations under capitalized leases			0
18. Bank's liability on acceptances executed and outstanding			0
19. Subordinated notes and debentures			0
20. Other liabilities			80
21. Total liabilities (sum of items 13 through 20)			9 306
22. Limited-life preferred stock and related surplus			0
EQUITY CAPITAL			
23. Perpetual preferred stock and related surplus (No. of shares outstanding)		None	0
24. Common stock (No. of shares):			
a. Authorized		25,000	
b. Outstanding		25,000	
25. Surplus (exclude all surplus related to preferred stock)			250
26. a. Undivided profits and capital reserves			550
b. LESS: Net unrealized loss on marketable equity securities			(49)
27. Cumulative foreign currency translation adjustments			0
28. a. Total equity capital (sum of items 23 through 27)			751
b. Losses deferred pursuant to 12 U.S.C. 1823 (j)			0
c. Total equity capital and losses deferred pursuant to 12 U.S.C. 1823 (j) (sum of items 28.a. & 28.b)			751
29. Total liabilities, limited-life preferred stock, equity capital, and losses deferred pursuant to 12 U.S.C. 1823 (j) (sum of items 21, 22, and 28.c)			10 057
MEMORANDA: Amounts outstanding as of Report of Condition date:			
1. a. Standby letters of credit. Total			0
1. b. Amount of Standby letters of credit in memo 1.a. conveyed to others through participations			0

NOTE: This report must be signed by an authorized officer(s) and attested by not less than three directors other than the officer(s) signing the report. I/We, the undersigned officer(s), do hereby declare that this Report of Condition has been prepared in conformance with official instructions and is true and correct to the best of my (our) knowledge and belief.

SIGNATURE OF OFFICER(S) AUTHORIZED TO SIGN REPORT: Roger E. McCracken, Exec. V.P./Cashier  
DATE SIGNED: July 18, 1991  
NAME AND TITLE OF OFFICER(S) AUTHORIZED TO SIGN REPORT: Roger E. McCracken, Exec. V.P./Cashier  
AREA CODE/PHONE NO.: 806-779-2461

We, the undersigned directors, attest the correctness of this Report of Condition and declare that it has been examined by us and to the best of our knowledge and belief and has been prepared in conformance with official instructions and is true and correct.

SIGNATURE OF DIRECTOR: [Signatures of three directors]

(MAKE MARK FOR NOTARY'S SEAL) State of Texas, Sworn to and subscribed before me this 18 day of July 1991, and I hereby certify that I am not an officer or director of this bank. My commission expires 08-31-1992. Signature Notary Public

**MCLEAN CLINIC TO SPONSOR BREAST CANCER DETECTION UNIT**

THE GROOM NEWS-Page 13  
Thursday, August 1, 1991

According to the American Cancer Society, one out of every nine women in the United States will develop breast cancer sometime during her lifetime. Every year over 37,000 women die as a result of breast cancer. means for the early

detection of breast cancer. The program is voluntary and is designed to insure that women receive optimum quality mammographic examinations. The process is done through a peer review evaluation of the facility's staff qualifications,

and quality assurance programs, image quality, and breast dose. The accreditation must be renewed every three years. The accreditation program was instituted because of the concerns of radiologists, other national medical organizations, and the public that qualified

personnel perform and interpret mammograms and that dedicated mammographic equipment be used. The American College of Radiology received an American Cancer Society Control Grant which was used to pilot test the Accreditation Program.

Breast cancer will strike one in 10 American women. The American Cancer Society predicts that about 41,000 women will die of breast cancer this year. As there is no way to prevent the disease, early detection and treatment offer the greatest hope of survival. The American Cancer

Society recommends that women do monthly breast self-exams and have regular physical breast exams by a doctor. It further recommends mammography on the following schedule:

The Breast Cancer Detection Unit will be in McLean, Texas on Wednesday, August 7th. You may call 779-2401 for an appointment.

**Notice of Effective Tax Rate (for use by counties)**

**1991 Property Tax Rates in CARSON COUNTY**

This notice concerns 1991 property tax rates for CARSON COUNTY. It presents information about three tax rates. Last year's tax rate is the actual rate the taxing unit used to determine property taxes last year. This year's effective tax rate would impose the same total taxes as last year if you compare properties taxed in both years. This year's rollback tax rate is the highest tax rate the taxing unit can set before taxpayers can start tax rollback procedures. In each case these rates are found by dividing the total amount of taxes by the tax base (the total value of taxable property) with adjustments as required by state law. The rates are given per \$100 of property value.

	General Fund	Farm to Market/ Flood Control Fund	Special Road/ Bridge Fund
<b>Last year's tax rate:</b>			
Last year's operating taxes	\$ 1,222,677	\$ 186,809	\$ 285,013
Last year's debt taxes	\$ 0	\$ 0	\$ 0
Last year's total taxes	\$ 1,222,677	\$ 186,809	\$ 285,013
Last year's tax base	\$ 554,501,816	\$ 549,439,566	\$ 554,501,816
Last year's total tax rate	\$ .2205 /\$100	\$ .0340 /\$100	\$ .0514 /\$100
<b>This year's effective tax rate:</b>			
Last year's adjusted taxes (after subtracting taxes on lost property)	\$ 1,221,508	\$ 186,569	\$ 284,742
÷ This year's adjusted tax base (after subtracting value of new property)	\$ 567,508,835	\$ 562,523,213	\$ 567,508,835
= This year's effective tax rate for each fund	\$ .21524 /\$100	\$ .03316 /\$100	\$ .05017 /\$100
Total effective tax rate	\$ .2986 /\$100		

(In the first year a county collects the additional sales tax it must insert the following lines unless it made its first adjustment last year.)

- Sales tax adjustment rate	\$ _____ /\$100
= Effective tax rate	\$ _____ /\$100

× 1.03 = maximum rate unless unit publishes notices and holds hearing \$ .3076

<b>This year's rollback tax rate:</b>			
Last year's adjusted operating taxes (after subtracting taxes on lost property)	\$ 1,221,508	\$ 186,569	\$ 284,742
÷ This year's adjusted tax base	\$ 567,508,835	\$ 562,523,213	\$ 567,508,835
= This year's effective operating rate	\$ .21524 /\$100	\$ .03316 /\$100	\$ .05017 /\$100
× 1.08 = this year's maximum operating rate	\$ .23245 /\$100	\$ .03581 /\$100	\$ .05418 /\$100
+ This year's debt rate	\$ 0 /\$100	\$ 0 /\$100	\$ 0 /\$100
= This year's rollback rate for each fund	\$ .23245 /\$100	\$ .03581 /\$100	\$ .05418 /\$100
This year's rollback rate	\$ .3224 /\$100		

**SCHEDULE A: Unencumbered Fund Balances**

The following balances will probably be left in the unit's property tax accounts at the end of the fiscal year. These balances are not encumbered by a corresponding debt obligation.

Type of Property Tax Fund	Balance
GENERAL FUND	910,978
ROAD & BRIDGE	98,182

**SCHEDULE B: 1991 Debt Service NONE**

This notice contains a summary of actual effective and rollback tax rate calculations. You can inspect a copy of the full calculations at Carson County Tax Office

Name of person preparing this notice Roslyn Watson  
Title Tax Assessor-Collector  
Date prepared July 26, 1991

**MCLEAN CARE CENTER NEWS**

Edwin Howard and Onie Pershall are in the Coronado Hospital in Pampa, we wish them both a speedy recovery.

Twenty-five residents attended Sunday school. Our leaders were Mary Frazier, Maebelle Nash, Jenny Stubbs, Oma Treue, Troy Corbin, and Ella Mae Massey, who played the piano for them. In the afternoon, members of the Church of Christ were here for services.

Residents playing bingo Monday were Adelle Walker, Annie Eudey, Dick and Mattie Wheeler, Leon Burch, Mary Helen Boston, Mary Sligar, Teresa Richardson, Kittie Hessey, Clyde Trusty, Eula Morrow, Thelma Hopkins, Monnie Matthews, and Lucy Skipper. Our volunteer helpers were Lorce Barker, Sylvia McClellan, Cliffie Heasley, and Bertha Smith. Bananas were furnished by the Lions club.

Tuesday morning was our Church of Christ Fellowship. Cookies and punch were

served by the following ladies: Dorothy Dwyer, Oleta Harris, Cliffie Heasley, and Catherine Weaver. In the afternoon, Lena Carter and Brenda Maclain were here to assist the following residents in dominoes: Imogene King, Adelle Walker, Leon Burch, Teresa Richardson, and Dick Wheeler.

Residents playing Ring Toss Wednesday were Monnie Matthews, Annie Eudey, Teresa Richardson, Adelle Walker, Mary Shjar, Kittie Hessey, Lucy Skipper, Mattie Wheeler, Thelma Hopkins, Mary Helen Boston, Imogene King, and Ruby King. Lula Sheegog and Leon Burch were our winners for the day. Following Ring Toss, the residents attended their Council Meeting held by President Eula Morrow.

Residents playing "Cannon Ball" Thursday afternoon were Mary Helen Boston, Thelma Hopkins, Lula Sheegog, Mary Shigar, Adelle Walker, Teresa Richardson, Kittie Hessey, Imogene King, Annie Eudey, Leon Burch, Dick Wheeler, Lucille Cullison, Stella Gibson, and Monnie Matthews. Our winners for the games were Lucy Skipper and Mattie Wheeler.

Many thanks to Marie Fennel for furnishing us with some nail polish.

## Election

What items would be taxed as tangible personal property?

Perhaps tangible personal property can best be described by what it is NOT: it is not real property; it is not household

goods, which are exempt from taxation by the Texas Constitution; it is not intangible property, such as stocks or bonds; and it is not income-producing property. The most obvious targets are cars, boats, airplanes, and RVs.


### Where do I vote?

Ballots will most likely be cast on election day at your regular precinct polling station, but check your newspaper to be sure. If joint elections have not been worked out in your area by the schools and the county election officer, it is

possible you may have to vote at two different polling stations.

Absentee voting will continue from now until August 6.

Further questions about this election should be directed to the Secretary of State's Elections Division, 1-800-252-VOTE.



**James Hefley**  
"The Sound that Sells"  
**Auction Co.**

McLean, Tx. 79057      Box 42      (806) 779-3134

**Chamberlain MOTOR COMPANY**

HIGHWAY 287      CLARENDON, TEXAS

BUICK • OLDSMOBILE

PONTIAC • CADILLAC      • GMC TRUCKS

Susan Brown      Clarendon (806) 874-3527  
248-6241      Amarillo 376-9041  
Groom, Texas 79039      Texas WATS (806) 692-4088

**Swanson Construction**

Remodeling-Additions-New  
Home Construction-All Concrete  
Work-Metal & Asphalt  
Roofing-Ceramic Tiling-  
Carports-Cabinets

Call Larry at 779-3101 or 2950



"Big Enough to Serve, Small Enough to Care"

**D & S Micro-Computer Services**  
Specializing in IBM related Software and Hardware

Word Processing - Spreadsheets - Newsletters - Mailing Lists  
Personal and Small Business Financial Software - Personal Taxes  
Computer Consulting - Personal Tutoring

Dan Martin, U.S.N. (Ret.)  
Owner

(806) 779-2552      P.O. Box 66  
I-40 & F.M. 291 South      Alanreed, Texas 79002

## Coronado Hospital Opens Occupational Therapy

Coronado Hospital has opened an Occupational Therapy (OT) department, according to an announcement made this week by Al Chapa, assistant administrator. The Occupational Therapy department will work in conjunction with the Physical Therapy department to provide rehabilitation services to both inpatients and outpatients, Chapa said.

Chapa said that the physical therapy department at Coronado has also been expanded, and now has three full-time licensed physical therapists. "Edwin Donker and Dorien Groenveld have joined PT director Berrie DeLange to complete the department," he said.

Chapa said the new OT department is a contract

unit staffed by HealthFocus, the same company which staffs the physical therapy department. The therapist who is opening the unit is

Pamela Little, OTR, who completed her bachelor's degree in OT at Boston University in 1988. She has completed internships in adolescent/adult psychiatric OT at Oakland, Calif.; pediatrics at Cincinnati, Ohio; early intervention and psychiatric OT at Boston, Mass.

Ms. Little explained that occupational therapy is a profession concerned with individuals of all ages whose lives have been disrupted by physical, developmental,

and/or social deficits. "The patient requires special assistance in learning or relearning skills to enable him to lead an independent, productive, and satisfying life," she said. "Striving to

help the patient achieve optimal independence is the key to occupational therapy," she noted. Ms. Little said that the therapist uses various techniques to evaluate a patient's abilities to function in daily activities. Once the evaluation is done, the therapist devises ways to train the patient in neuromuscular facilitation, muscle strengthening, coordination and dexterity techniques, cognitive and perceptual training, sensory evaluation, range of motion and endurance.

OT can often benefit patients who have neurological impairment, suffer from strokes, arthritis, spinal cord injuries, hand injuries, head injuries, or a variety of pediatric or congenital disorders causing developmental delays or learning disabilities, she said.

"If a patient thinks he can benefit from our services, he should check with his physician. The physician will be able properly to assess the patient's need for

occupational therapy," Ms. Little said.

In conjunction with the OT department and the newly expanded PT department, Coronado Hospital recently opened a five-bed inpatient rehab unit on the second floor of the facility, which will specialize in orthopedic rehabilitation, Chapa said. Frank Vincenti, MD, and orthopedic surgeon in practice in Pampa, is the director of the unit.

Patients referred to this unit will receive therapy-intensive treatment, Chapa said, consisting of three hours of combined therapy each day. Therapies may include occupational therapy, physical therapy, speech therapy, dietary therapy, and social services. The rehab team will also include nurses and physicians to provide complete comprehensive care on the unit.

### TRANSAMERICAN DIAGNOSTIC AREA MAMMOGRAPHY SERVICES

The Mobile Breast Cancer Detection Unit of Odessa, Texas, which services McLean, Texas today received the certification of the American College of Radiology Mammography Accreditation Program.

Mammography is an x-ray examination of the breast, which the American Cancer Society and other medical experts see as the best

According to a spokesman from the Regional Breast Care Center at Women's and Children's Hospital in Odessa, Texas, "The death rate from breast cancer could be drastically reduced if women would have mammograms done before a problem exists." By using modern state of the art X-ray equipment breast cancers can be found when they are about the size of a grain of rice and well before the cancer can be felt. A woman who is diagnosed with breast cancer at this early stage has a 90%-97% survival rate. However, a woman who is not diagnosed until a lump can be felt has approximately a 50% survival rate in five years.

In an effort to find cancers at the earliest possible stage and prevent unnecessary deaths, a mobile breast cancer detection unit will be made available to local women on Wednesday, August 7th.

The mobile unit will be parked at McLean Clinic, 402 N. Main Street, McLean, Texas. Appointments may be made by calling 779-2401.

For more information you may call the Regional Breast Care Center at Women's and Children's Hospital at (915) 334-8888/561-9999.

## NOTICE OF PUBLIC HEARING ON CARSON COUNTY APPRAISAL DISTRICT BUDGET

The Carson County Appraisal District will hold a public hearing on a proposed budget for the 1992 fiscal year.

The public hearing will be held on AUGUST 14, 1991, 9:00 A.M., at 102 Main St., Panhandle, Texas.

A summary of the appraisal district budget follows:

The total amount of the proposed budget is \$206,870.

The total amount of increase over the current year's budget is \$6,070 or approximately 3%.

The number of employees compensated under the proposed budget will be: 4 (full-time equivalent).

The number of employees compensated under the current budget is 4 (full-time equivalent).

The appraisal district is supported solely by payments from the local taxing units served by the appraisal district.

If approved by the appraisal district board of directors at the public hearing, this proposed budget will take effect automatically unless disapproved by the governing bodies of the county, school district, cities, and towns served by the appraisal district. A copy of the proposed budget is available for public inspection in the office of each of those governing bodies.

A copy of the proposed budget is available for public inspection in the office of each of those governing bodies. The proposed budget may also be viewed at the appraisal district office.

CARSON COUNTY APPRAISAL DISTRICT  
102 Main Street - P.O. Box 970  
Panhandle, Texas 79068  
(806) 537-3569



# FIND YOUR WORLD IN THE CLASSIFIEDS

## THE GROOM NEWS THE McLEAN NEWS

All ads cash with order unless customer has an established account with The Groom News or The McLean News. Classified ads are .15 per word with a \$3.00 minimum charge; \$4.00 minimum for ads which require billing.

**THE GROOM SENIOR CITIZENS ASSN.** is interested in hiring someone to cook a noon meal on Tuesdays and Fridays. 248-7509. n

**FOR SALE:** 1980 Mobile Home 14'x 80' on 7 lots, 3 bedroom, 2 baths with factory fireplace, \$5,000. Will sell separate, Mobil Home only \$3,000. Would make a good lake home. Phone 779-2007 or 779-3252. n

**JOHN DEERE TRACTOR** for sale. \$9500.00. Call 248-7915 or see Gary Davis. n

**LOST AMP METER** somewhere on Groom streets. Sears model. Call Bill Dorsey at 248-7562.

**ROBINSON MEAT** formerly Curry Processing open for business. Lockers available. Open Monday through Friday, McLean, Tex. 806-779-2147. n

**FOR SALE:** 1 Drag type brush hog mower. Call 779-2981.

**REGISTERED Pot Belly Piglets** for sale. Born July 6th. Five cute fat piggies with squeal appeal. Easily box trained and very intelligent. Blacks and whites. Ready soon. Call now. Day 806-355-3382 Night 806-622-0042.

**Shamrock Slaughter Plant**  
Custom Slaughtering  
1/2 beef, beef cuts & pork  
Food Stamps Accepted  
Open  
Monday through Friday  
Closed  
Saturday  
Phone 256-3241

**HOUSE FOR SALE** 2 bedroom, 1 bathroom, large fenced backyard, cellar, siding, assumable loan, low equity. 211 W. 3rd, McLean, 779-2822. n

**HOUSE FOR SALE** by sealed bid: Small, 2 bedroom house with some furniture. Located at corner of Gray and Fourth, McLean, Texas. To inspect; contact Carl Dwyer, 806-779-2314. Submit bids to Mary Dwyer, Box 154, McLean, 79057. Mark envelope with "Bid." Terms: Cash. Bids will be opened at noon on August 20, 1991. Any and all bids may be refused...

**THE EX-STUDENT DIRECTORY** is now available. Find them at the Arts and Crafts show on Groom Day. Also available at Brumley Insurance and Stop N Shop for \$7.00 each.

**CALL BUTLER LOCKER** in Wellington for all your custom slaughter and processing needs. Also freezer beef. Call (806) 447-5660. n

**GROOM DAY T-SHIRTS** have arrived. Call or come by. Sandra Britten 248-7226 or 248-7478. Limited supply.

**A. J. Newsom**  
**Water Well**  
**Service**

Submersible Pumps  
Aeromotor Windmills

Phone 248-7411

THE GROOM NEWS-Page 15  
Thursday, August 1, 1991

**WANTED:** Need someone to do house cleaning one day a week. Please call 779-2875.

**FOR RENT:** 2-story, 3 bedroom home. Fresh paint inside and out. 248-7255 701 Martin.

**FOR SALE:** C.B. Base Center With Antennae. Half price. Call 248-7508. .

**CALCOTE ELECTRIC**  
Full Water Well Service. Submersible Pumps. Solar Pumps - Sales & Service. Electrical Wiring. Air Conditioners & Heating Systems. Please Call 779-2652 Office. 779-2084 Home.

**FOR SALE RIPE PEACHES!** Free Stone Peaches are now ready at the Smitherman Farm, Intersection 273 and I-40, McLean, TX. 779-2595.

# PAMPA

## Business Card Register

**PROFESSIONAL SERVICES**  
Federal Income Tax and Estate Returns,  
State Inheritance & Other Tax Reports.  
Individual - Farm & Ranch - Corporate -  
Partnership - Fiduciary.  
Bookkeeping & Payroll Services.  
Please call for an appointment.  
I need your business.  
**Joseph G. Dicky**  
Certified Public Accountant  
420 W. Florida, P.O. Box 1677  
Pampa, Tx 79066-1677  
806-665-2336

If you can't find it  
at home...  
**shop Pampa!**



REGIONAL  
EYE  
CENTER

CALL TOLL FREE  
1-800-322-3931

**GEORGE R. WALTERS, M.D., P.A.**  
Ophthalmology

"One Stitch" Cataract Implant Surgery

(806) 665-0051 107 WEST 30th STREET  
PAMPA, TEXAS 79065

## HAPPY BIRTHDAY

Mrs. Billy T. Jones  
**BoB Clements, Inc.**  
Fine Tailoring, Dry Cleaning, Custom Windows  
1437 N. Hobart 665-5121

A member of the International Fabricare Institute,  
the association of professional drycleaners and laundrers.

**INDUSTRIAL RADIATOR SERVICE**

We Repair All  
Kinds of  
**RADIATORS**

- Plastic •Aluminum
- Copper •Brass

665-0190 or 1-800-762-6381

Automotive - Industrial  
**JOHN & CAROLYN STOKES-OWNERS**  
525 W. Brown  
Hwy 60-Pampa, Tx.  
Open Saturday Mornings  
665-0190  
IF NO ANSWER 665-7896

## WAYNES WESTERN WEAR Inc.

30 to 50% off Summer Wear  
Men's, Ladies', Kids'

Free Wayne's T-shirt with  
Reg. price boots purchase and  
Free picture with Nolan Ryan

Life sized display

1504 N. Hobart 665-2925 Pampa, Texas

Have you thought about  
buying a  
Cellular Phone?  
If you are interested,  
give me a call and I will  
save you money.  
Call 779-2229.

**Pampa  
Travel  
Center, Inc.**

Serving  
Pampa  
Since  
1975

Pampa's Oldest, Locally Owned Full Service Travel Center  
Southwest Airlines Is Now Booking  
For Thanksgiving and Through Dec. 22nd  
665-2394 • 1-800-654-1520  
1617 N. Hobart - Next To Sears

**One Hour Martinizing**  
Bring your cleaning when you shop  
in Pampa.....

Pick it up the same day!!!!

Two locations to serve you-  
1807 N. Hobart-1824 W. Francis



 ASSORTED FLAVORS <b>SHURFINE SODA POP</b> 6 PACK, 12 OZ. CANS <b>98¢</b>	 SHURFINE PORK & BEANS 15.5 OZ. CAN <b>3 99¢</b> FOR	 GRANULATED <b>SHURFINE SUGAR</b> 5 LB. BAG <b>\$1 59</b>	 SHURFINE FROZEN <b>ORANGE JUICE</b> 12 OZ. CAN <b>69¢</b>	 SHURFINE WHITE OR BEIGE <b>BATHROOM TISSUE</b> 4 ROLL PKG. <b>79¢</b>
--	--	--	---	---

- |  |             |        |
|--|-------------|--------|
| SHURFINE LIQUID BLEACH                   | GAL JUG     | 79¢    |
| SHURFINE FRESH PAK ASSORTED DILL PICKLES | 32 OZ. JAR  | \$1 39 |
| SHURFINE SQUEEZE BOTTLE MUSTARD          | 16 OZ. BTL. | 69¢    |
| SHURFINE CAKE/COLORED ICE CREAM CONES    | 12 CT. BOX  | 59¢    |

**ShurFine** **Back to School**

- |   |                |     |
|---|----------------|-----|
| SHURFINE DICED OR WHOLE PEELLED TOMATOES      | 2 16 OZ. CANS  | 99¢ |
| SHURFINE FANCY SWEET PEAS OR MIXED VEGETABLES | 2 16 TO 17 OZ. | 99¢ |
| SHURFINE SQUEEZE TOMATO KETCHUP               | 28 OZ. BTL.    | 99¢ |
| SHURFINE TOMATO SAUCE                         | 5 8 OZ. CANS   | 99¢ |


 SHURFINE SMOOTH OR CRUNCHY PEANUT BUTTER 18 OZ. JAR <b>\$1 69</b>	 SHURFINE SALTINE CRACKERS 16 OZ. BOX <b>59¢</b>	 SHURFINE TOMATO SOUP 10.75 OZ. CANS <b>3 99¢</b> FOR	 SHURFINE DINNER MACARONI & CHEESE 7.25 OZ. BOX <b>6 99¢</b> FOR	 SHURFINE WHITE FACIAL TISSUES 176 CT. BOX <b>59¢</b>
--	---	--	---	---

SHURFINE HICKORY SMOKED SLICED BACON 1 LB. PKG. <b>\$1 59</b>	PILGRIM'S PRIDE CUT UP FRYER <b>59¢</b>	PILGRIM'S PRIDE FRYER THIGHS <b>79¢</b>	PILGRIM'S PRIDE FRYER DRUMSTICKS <b>79¢</b>	U.S.D.A. GRADE A PILGRIM'S PRIDE <b>WHOLE FRYERS</b> <b>49¢</b> LB.
SHURFINE 2 1/2% LB. AVG. TURKEY HAM LB. <b>\$1 79</b>	SHURFINE FULLY COOKED BONELESS 6-8 LB. AVG. <b>WHOLE HAMS</b> <b>\$2 39</b> LB.	SHURFINE ASSTD. THIN SLICED MEATS 2 1/2 OZ. TUB <b>43¢</b>	SHURFINE REGULAR OR HOT WHOLE HOG PORK SAUSAGE 1 LB. ROLL <b>\$1 69</b>	SHURFINE REGULAR OR HOT WHOLE HOG PORK SAUSAGE 2 LB. ROLL <b>\$3 37</b>
SHURFINE MEAT WIENERS 12 OZ. PKG. <b>89¢</b>	SHURFINE MEAT BOLOGNA 12 OZ. PKG. <b>99¢</b>	SHURFINE CHICKEN SALAD 7 1/2 OZ. TUB <b>89¢</b>	SHURFINE HAM SALAD 7 1/2 OZ. TUB <b>99¢</b>	SHURFINE JALAPENO OR PIMENTO CHEESE SPREAD 7 1/2 OZ. PKG. <b>99¢</b>

SHURFINE ASSORTED FLAVORS ICE CREAM 1/2 GAL. SQ. CTN. <b>99¢</b>	SHURFINE QUARTERS MARGARINE 1 LB. BOX <b>3 99¢</b> FOR	ALL PURPOSE RUSSET POTATOES 20 LB. BAG <b>\$1 99</b>	RIPE GOLDEN BANANAS <b>389¢</b> LBS.
SHURFINE ABSTCHRYONG TWIN POPS 8 CT. PKG. <b>69¢</b>	SHURFINE HALF MOON COLBY OR CHEDDAR CHEESE 16 OZ. PKG. <b>\$1 39</b>	JUICY SWEET CANTALOUPE THOMPSON SEEDLESS LB. <b>39¢</b>	GRAPES BARTLETT LB. <b>89¢</b>
SHURFINE REGULAR OR PINK LEMONADE 12 OZ. CAN <b>59¢</b>	SHURFINE REDUCED FAT ASSORTED CHEESE 8 OZ. PKG. <b>\$1 39</b>	PEARS LB. <b>69¢</b>	SQUASH YELLOW OR ZUCCHINI LB. <b>49¢</b>
SHURFINE ASSORTED FROZEN VEGETABLES 16 OZ. BAG <b>99¢</b>	SHURFINE AMERICAN CHEESE SLICES 16 OZ. PKG. <b>\$1 99</b>	GARDEN FRESH BROCCOLI LB. <b>49¢</b>	FRESH YELLOW ONIONS 4 LBS. <b>\$1 00</b>
SHURFINE FROZEN CAULIFLOWER 16 OZ. BAG <b>\$1 19</b>	SHURFINE BREAD STICKS 11 OZ. CAN <b>\$1 29</b>		
SHURFINE WHIPPED TOPPING 8 OZ. TUB <b>69¢</b>	SHURFINE CORN OIL QUARTERS MARGARINE 16 OZ. PKG. <b>69¢</b>		
SHURFINE WHOLE STRAWBERRIES 16 OZ. BAG <b>\$1 39</b>	SHURFINE CINNAMON ROLLS 9.5 OZ. CAN <b>\$1 39</b>		

SHURFINE YEL CLNG HALVS SLICED REG PEACHES 16 OZ. CAN <b>69¢</b>	SHURFINE BARTLETT REG OR LITE PEAR HALVES 16 OZ. CAN <b>69¢</b>	SHURFINE REGULAR OR LIGHT FRUIT COCKTAIL 16 OZ. CAN <b>69¢</b>	SHURFINE GALLON SIZE FOOD STORAGE BAGS 25 CT. BOX <b>79¢</b>	SHURFINE SNAP & SEAL QT. SIZE FREEZER BAGS 20 CT. BOX <b>\$1 59</b>	SHURFINE DRAW STRING TRASH BAGS 10 CT. BOX <b>\$1 99</b>	SHURFINE DRAW STRING TALL KITCHEN BAGS 20 CT. BOX <b>\$1 99</b>	SHURFINE PLASTIC WRAP 100 FT. ROLL <b>79¢</b>	SHURFINE FANCY SLICED SMALL WHOLE BEETS 2 16 OZ. CANS <b>89¢</b>	SHURFINE WITH SNAPS BLACK EYE PEAS 2 15 OZ. CANS <b>89¢</b>	SHURFINE FROSTED FLAKES 15 TO 20 OZ. <b>\$1 99</b>	SHURFINE ASSORTED TOASTER PASTRIES 11 OZ. BOX <b>99¢</b>	SHURFINE ELBO MACARONI/LONG SPAGHETTI 24 OZ. PKG. <b>99¢</b>	SHURFINE ASSORTED SPAGHETTI SAUCE 30 OZ. JAR <b>\$1 39</b>
--	---	--	--	---	--	---	---	--	---	--	--	--	--

*Our Best to you!*



**venture**  
FOODS  
the price fighter

WE RESERVE THE RIGHT TO LIMIT  
PRICES EFFECTIVE JULY 28-AUGUST 3, 1991  
AFFILIATED FOODS INC.

# GROOM GROCERY