

The Groom News

Volume 58, Number 51

The Groom News, Carson County, Texas 79039

25c Per Copy

Thursday, January 30, 1986

Groom Lions Club To Host Claude Lions In Benefit Game Saturday

The Groom Lions Club will host their annual benefit supper and basketball game at the school here on Saturday evening, Feb. 1. The Lions Club holds the activity as their major source of raising funds used to support the Summer Youth program in Groom. The program provides for the baseball program including uniforms, equipment and upkeep. The funds also help keep the swimming pool open through

the summer months.

Students kindergarten through the fifth grades will lead off the basketball game showing their skills at 7:00 p.m. The game between the Groom team and Claude team will begin at 8:00 p.m. The Lions hope to draw a crowd equal to that of last Friday when the Groom and Claude high school teams met with an estimated crowd of 500. Admission for the game is \$2.00 for adults and

\$1.00 for students.

A hamburger supper will begin at 5:30 p.m. and close at 7:00 p.m. grilled hamburgers, chips and drinks will be served for a \$3.00 minimum donation.

Boss Lion Earl Britten extends an invitation to everyone to attend the fund raiser and help the Lions Club in their effort to provide for the youth of the community.



Billie Bivens did her part this week to help the Lions raise funds for the Summer Program. She exchanged her donation with Lion Al Homer for tickets in the raffle.

Persons To Receive Social Security

Benefit Statement

Every person who received or repaid any Social Security benefits during 1985 will receive a Social Security Benefit Statement, Form SSA-1099, during January 1986.

The form will show the amount of Social Security benefits the person received as well as the amount of benefits they repaid during 1985. The form should be used just as any other form 1099 received from a financial institution when the person completes his or her Federal income tax return for 1985.

People who have substantial other income may have to include up to half of their Social Security benefits in their taxable income.

Included with the benefit statement will be IRS Notice 703. This is a worksheet that people can complete to see if any of their Social Security benefits may be subject to Federal income tax.

People who still have questions about the information shown on Form SSA-1099 can call the toll-free telephone number, 1-900-200-1099 shown on the form. People who have questions about tax liability or figuring income tax should call the nearest office of the Internal Revenue Service

Lucky 13 Closes Its Doors, Dairy Queen Now Serving Breakfast

The business community in Groom felt the crunch of the declining economy this week with the official shut down of two businesses. Lucky 13 Center which housed a truck stop, convenience store and restaurant closed its doors on Saturday, Jan. 25. Knorpp Insurance also announced their plans to terminate their operation in Groom and move that office to the parent office in Clarendon.

Lucky 13 was owned and operated by Art and JoAnn Britten since it opened in January of 1982.

Knorpp Insurance opened their offices in Groom full time for the past seven years. Mrs. Doris Homer will continue to be employed with the firm at their Clarendon office and can be reached by using their watts line number 1-800-692-5054.

Even with the closing of the two businesses in Groom, other Groom businesses announced their plans for expansion this week. The local Dairy Queen began serving

breakfast on Tuesday morning. This is an addition, according to local managers Betty Treadwell and Jackie Bichsel, that is being implemented by the company in a few of their stores. The Groom Dairy Queen is one of the first to begin the new breakfast plan.

Biven's Automotive is also announcing plans to remodel their business and conversion of their parts inventory to NAPA. Mrs. Bivens said that the parts room would be remodeled

and the present inventory would all be moved by noon on Friday, Jan. 31. The firm will be closed Feb. 1 through Feb. 15. "We expect to be finished with everything and restocked with NAPA parts by the 15th at which time we plan to hold an open house."

There will be someone at Biven's to accept payments, order parts and do repairs on an emergency basis during the closed time.

"It is our intention and hope that all of this will enable us to serve you better," she concluded.



Nancy Patterson Is Beta Sigma Phi Sweetheart

Nancy Patterson will represent the local Alpha Mu Xi Chapter of Beta Sigma Phi as their sweetheart at the Sweetheart Dance, Feb. 8, at the Legion Hall in Groom. Mrs. Patterson has been a member of the sorority four years. She currently is the treasurer of the sorority and has been an active member serving on various committees.

She is the wife of Randal Patterson, the supervisor for the State Department of

Highways and Public Transportation in Groom. They have two children, Heather, 13, and Rhett, 10.

Nancy teaches a Bible Drill class at the First Baptist Church where she also serves on the Youth Committee. She is also a member of Kountry Kousins Extension homemakers and PTO.

Her hobbies include decorating her home, refinishing old furniture, plants and sewing.

Community Calendar

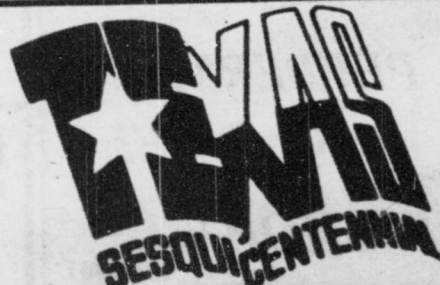
Amarillo College Continuing Education in Computer Concepts (Basic I) beginning Monday, February 17, 1986. Tuition \$43.00/seven weeks.

Amarillo College Continuing Education seven weeks course in Lotos I-II-III, tuition \$43.00, to begin on Tuesday, Feb. 18, 1985, at 7:00 p.m.

The Groom News

The Only Newspaper
in the World
Interested In Groom

248-3311



1836
1986

Tuesday Grain Prices At Local Elevators

Cash prices on grain posted at grain elevators serving the Groom area Tuesday afternoon:

WHEAT \$3.01 bushel
MILO \$3.90 cwt.

The Groom News

USPS 230-380
Entered as second class mail at the Groom Office,
Carson County, Texas, under the Act of Congress of
March 3, 1879.

Published weekly except Christmas Week
By Phil and Ila Miller

Office Phone 806-248-3311 — Groom, Texas 79039

SUBSCRIPTION RATES:
One-year subscription (Carson and adjoining counties) \$10.52
One-year subscription elsewhere in the United States \$12.62.

TA MEMBER 1986
TEXAS PRESS ASSOCIATION

MEMBER
NNA
SINCE 1885
**NATIONAL NEWSPAPER
ASSOCIATION**

Melvin Wills Named Citizen of the Month

Melvin Wills was selected as Optimist of the Month for December in the regular meeting held in Pampa Monday night. Wills was selected for the honor for his service during December in making the Christmas tree sales successful.

Wills has been with the club for two years. The Optimist Boys Club sponsors athletic activities for boys ages 9-12. Wills serves as an umpire during baseball season and is the chief umpire of the American Legion.

Wills son Floyd is also an active member of the organization playing league football and baseball.

Cooper To Head Okla. Dietary Managers Assn.

James Cooper of Woodward, Okla. has been selected president of the Oklahoma Dietary Managers Association. Cooper is the chief dietician at Woodward Hospital and Medical Center. The officers were installed at the meeting held

in the fall. Cooper and other officers of the association are currently making plans for the national convention set for August 17-21 in San Antonio. The Oklahoma and Texas chapters of the Dietary Managers Association will host the convention.

Local Happenings

Mr. and Mrs. Jake Lacy were in Amarillo Sunday helping grandson, Camron Lacy celebrate his sixth birthday. He is the son of Dr. and Mrs. Ronald Lacy.

Rev. Troy P. Sumrall, 78, died December 22 in Mississippi. Among other pastorates in Texas and Mississippi, he was pastor of the First Baptist Church, McLean, in the late 1930's. He was preceded in death by his wife, Ethe. Survivors include four daughters and one son.

Mrs. Allen Knorpp, Mrs. Lucille Case and Mrs. Bethel Robinson attended a bridal shower for Kristi Knorpp Saturday, Jan. 24 in Amarillo. She is the granddaughter of Mrs. Knorpp and Mrs. Case, bride-elect of Jeff Pertle.

Mrs. Lois Rooney of Rantoul, Ill visited her mother Margaret Weller over the weekend. She is attending a two week advance training class in finance and accounting at Sheppard Air Force Base at Wichita Falls, Tex. She returned to Sheppard Air Force Base Sunday to complete her training.

Mrs. Donna Forbes, resource room instructor at Groom Schools and her class have recently completed two field trips. The class attended the Christmas Open House and reception at Rock House Gallery in December and last week viewed "King Solomon's Mines" in Amarillo.

Mr. and Mrs. Leslie Neal of Clarendon and Mr. and Mrs. Kenneth Neal of Dallas visited Mr. and Mrs. A.D. Neal Saturday night in Groom.

Ima Brumley is making her home in Groom, moving to the community from Pampa last Saturday. She resides at 307 Bosen and is the mother of Johnny Brumley.

Jean Morrow and Essie Cooper Knowles returned last Thursday from a visit in Woodward, Okla. with the James Cooper family.

Methodist Women

United Methodist Women met Tuesday afternoon, Jan. 21 at 2:30 p.m. at the church. Mrs. Jerry Moore, president, presided for the business session. Announcement was made Sunday, Jan. 26 is United Methodist Women Day and they would be participating and recognized during the morning worship time.

"Mission at the Crossroads" was the topic of the program with Mrs. Julia McGee as leader. Also taking part were Mrs. Roy Ritter, Mrs. John Eschle and Mrs. Glynn D Harrell.

Mrs. Essie Cooper Knowles served refreshments during the social time. Others present were the Rev. Jerry Moore and Mr. and Mrs. Curtis Schaffer.

Mrs. Ivy Clark has moved recently to Amarillo where she is a resident of the Clairmont Retirement Center in Amarillo. Groom friends can write to her at 4707 Bell, Box 219, Amarillo, TX 79109 and her new phone number is 359-4993.

Groom residents hospitalized this week were Laverne Schuitz in Pampa and Marie Latimer in Amarillo. Bud Brown remains hospitalized in Amarillo.



Custom Slaughtering

**Hogs: Tuesday
Cattle: Thur. & Fri.**

Fill your locker with choice
BEEF and PORK from

Circle B Meat Company

Bill and Leon Bohr, Owners
FM Road 295 at West City Limits
Phone 248-3321 Groom, Texas

**Beta Sigma Phi
Sweetheart
Dance**



**Country Classics Band
Saturday, February 8
9:00 P.M. to 1:00 A.M.**

Groom Legion Hall Set-ups Provided \$10.00 couple \$5.00 single

**Proceeds Benefit
Groom Ambulance Fund**

Country Neighbors

Mrs. H.F. Britten was hostess of Groom Country Neighbors Wednesday afternoon Jan. 22 in her home. A program on Arbor Day was given by Mrs. Glynn D Harrell and games of Skip Bo were played.

Others attending were Mrs. J.E. Lee, Mrs. R.J. Kuehler, Mrs. Evelyn Hubbard, Mrs. W.G. Koetting, Mrs. O.A. Pool, Mrs. R.W. Wills, Mrs. Claude Schaffer and Mrs. Roy Rittr. Mrs. B.F. Patterson will be hostess of the Feb. 26 meeting.

**Try Our Newest
Flavored Popcorn**
Try each of four exciting flavors

**CHEESE PEPPERMINT
CINNAMON CARMEL**

STOP 'N' SHOP

South of the Dairy Queen 248-3801

Working With Your Interest In Mind



**Don't Miss The
Lion's Club
Hamburger Supper
& Basketball Game**

**Feb. 1
5:00 P.M.
School Gym**

Get Out and See Our Future Stars

**Good Luck Journalism Students
Lubbock Tournament Feb. 1**

**P.T.O. Meeting
Feb. 3 7:30 P.M.**



Basketball

Jan 31 - JVB, VG & VB - Lefors - There - 5:15
Feb. 3 - Jr. Hi. - Lefors - There - 5:15
Feb 4 - JVB, VG, & VB - McLean - There - 5:15

State National Bank

248-5511 FDIC Groom, Texas

Fertilizer Spike
Rebuilding & Hardfacing
Kenneth Babcock
248-4804

New Directors Named For Water District No. 3

The Board of Directors of the Panhandle Ground Water Conservation District No. 3 met in regular session Monday, Jan. 20. The board passed the election held on Jan. 18 in Precincts 2, 3, and 4 of the Water District. The board determined that the following directors were duly elected to serve four year terms: Frank Simms of Panhandle, Director for Precinct

No. 2; Raymond C. Blodgett of White Deer, Director for Precinct No. 3; and G.M. Walls, Jr. of Pampa, Director for Precinct No. 4.

The board elected the following officers: John R. Spearman, president; William S. Purvines, vice-president; Raymond C. Blodgett, secretary.

The board amended the rules of the district to include three new requirements. Wells drilled that would be capable of producing 25,000 gallons of water in 24 hours (17.4 gallons per minute) require a permit from the district. Wells with pump column pipe two inches or larger must meet spacing requirements.

Wells drilled must be completed at the surface to protect the water quality and open wells must be capped or plugged to protect the water quality.

The deposit for well permits was changed from \$10 to \$100.

Cutting Irrigation Expenses Topic For Area Farm Meetings

High Plains farmers who are interested in learning more about cutting operation expenses, saving water, increasing profits and reducing soil and water erosion are invited to attend two conservation meetings in February. James L. McDonald, dis-

Groundwater District Researching Need For Low Interest Equipment

The Directors of the Panhandle Groundwater Conservation District No. 3 would like to find out if there is enough interest within the district to warrant a program for low interest loans for agricultural water conservation equipment.

In accordance with Section 15.532, Texas Water Code, the District could apply for funds to make loans for water conservation equipment. These funds may only be used during State fiscal years 1986 and 1987.

Eligible equipment for the loans could include underground pipeline, above ground pipeline, inline flow meters, low energy precision application systems, low pressure sprinkler systems, surge flow valves, soil moisture measurement devices, furrow dikers, implements used in land leveling, minimum tillage implements, implements used to root, plow, grub or spray woody vegetation.

These loans would be at a


rate of approximately 9½ percent, and limited to a maximum of 75 percent of the purchase price for capital items and a maximum of 50 percent of the cost for labor to install equipment purchased with loan funds.

The Water District would write requirements for the borrower to meet before the loan would be approved, as well as a limit on the amount of any one loan, the length of the loan, and the equipment eligible for the loan.

In addition to other requirements placed on the district by the Texas Water Development Board, the Water District would be responsible for up to one half of the remaining balance of any default for a loan made by the Water District.

If you are interested in this program, or would like more information, we ask that you call or write the District Office in White Deer or one of the Directors before February 1.

DEAN'S pharmacy
2217 Perryton Parkway 669-6896
We look forward to serving our Groom area customers.
Ask about our mail service.
Welcomes Welfare Recipients
Special Discounts to Senior Citizens on all Prescriptions.
Dean Copeland Home 665-2698 Business 669-6896 Jim T. Pepper Home 669-9710

Give your IRA a check-up.
Find out if it's working as hard as it can to provide for your retirement.
Are you sure . . . absolutely sure . . . that your present IRA is earning the best possible rate of return?
If you'd like to find out how "healthy" your present IRA program is, please stop by my office for a free, no-obligation IRA Check-Up.
And if you decide to transfer your IRA to a higher-yielding, more flexible, professionally-managed program, I'll show you the three easy steps you'll need to follow to make the change.
It's that simple.
I think the 15 minutes we'll spend together could be the most important investment you'll ever make.
Tom Byrd
(Limited Partner)
665-7137 Mon.-Fri.
317 N. Ballard 8:30-4:30
Pampa, Texas
"Open by appointment Saturdays"
 **Edward D. Jones & Co.**
Member New York Stock Exchange, Inc.
Member Securities Investor Protection Corporation

trict conservationist for the USDA Soil Conservation Service at 1425 Alcock, Pampa, said the first meeting will be held at the Community Center in Pampa on February 6. A second meeting will be held at the Hale County Ag. Center in Plainview on Feb. 13. Both start at 9 a.m.

"The meetings will feature farmers who are using conservation tillage farming systems and irrigation water management," McDonald said. "Several kinds of irrigation and conservation tillage equipment will also be on display."

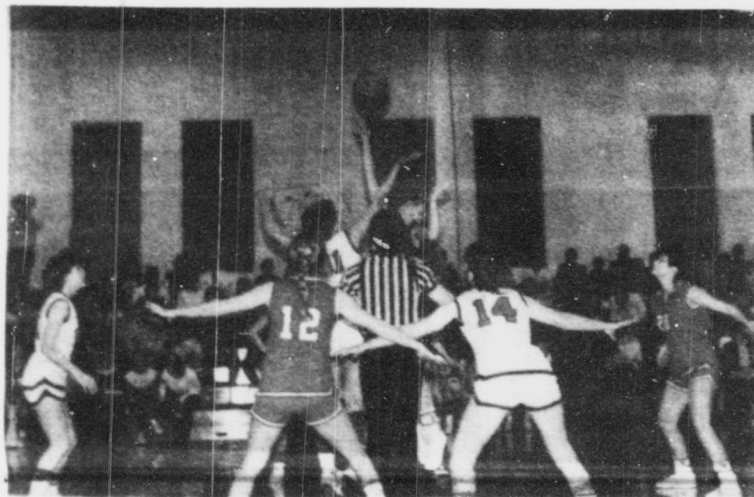
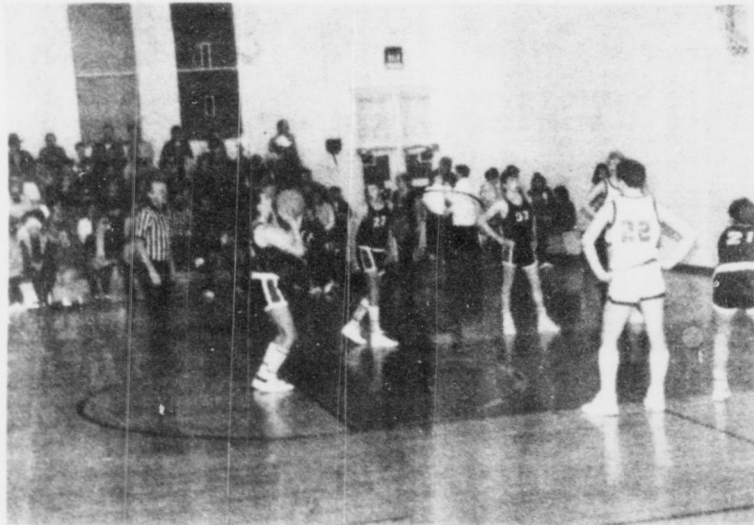
Free lunches will be served by participating chemical and equipment companies. The Gray County Soil and Water Conservation District is also sponsoring a similar field day at the Clyde Carruth Pavilion in Pampa on April 10. More information will be available later.

We don't think there is a better place to haul your grain.
"We appreciate the opportunity to serve you."
WEEKS & BAGWELL GRAIN, Inc.
Bob Byrd, Mgr.
Phone 248-5591
Route 1 Groom

Chamberlain MOTOR COMPANY
HIGHWAY 267 CLARENDON, TEXAS
BUICK • OLDSMOBILE
PONTIAC • CADILLAC • GMC TRUCKS
SUSAN BROWN 248-6241 Groom, Texas 79039
Clarendon (806) 874-3527 Amarillo 376-9041 Texas WATS (800) 692-4088

Wieberg Welding
Field & Shop Welding
Fabrication & Repairs, Heliarc
Wesco Supplier
Nathan Wieberg
248-5721
Shop & Home

EXPERT DRY Cleaning
HELPS YOU LOOK YOUR BEST!
One Hour Martinizing
Bring your cleaning when you shop in Pampa ...
Pick it up the same day!!!
Two locations to serve you
1807 N. Hobart-1824 W. Francis



Claude Teams Advance To Playoffs With Wins Over Groom Teams

Coach Frank Belcher and his team are concentrating on the positive points this week after the team suffered a hard loss to Claude here last Friday night. Leading by 10 points in the final four minutes of a game, Groom had dominated on the scoreboard. Groom fell to Claude 69-68. "I was really proud of the teams play," said Belcher. "If we don't come back and play (the rest of the season) then will have really lost."

Even with the second Claude loss, Groom will remain to have a shot at the playoffs with Phillips, McLean and Lefors left to play. "Our team is playing better than anyone in district at this point," says Belcher.

"We suffered some mental lapses in the last four minutes to play and Claude's Cenee Gunter made some great things happen for her team."

"Both teams suffered on defense as the high score indicated. Robbie Kuehler and Erin Kate had great games. In addition to being the high point players, Kuehler had 10 rebounds with 25 total points and Rini Kate had 8 rebounds with 23 points. Lindy Kotara also played a super game with 9 rebounds and hit free throws in a clutch in the last quarter.

The Tigers also lost to Claude Friday 52-64. The Tigers are now 11-6 standing

third in district. Phillips and Claude, both defeating the Tigers in previous games are the top two contenders. Coach Gary Rambo is happy with the season saying the Tigers have won a tournament and prior to district, the Tigers record stood at 9-3. Three of the Tigers losses were in hard fought battles with only two points scored above them by Vega, Miami and Claude. This is one of the better record years for the Groom boys," said Rambo. "It's been awhile."

Friday night players Jack Britten and Daniel Lambert helped to bring Groom to within four points of Claude in the final quarter, a game in which the Tigers trailed throughout. Ken Ruthardt has added needed depth to the Tigers team when ever he was called upon.

The season, says Rambo, has been a good one inspite of the disappointments in playing close games and yet not making the playoffs.

BASKETBALL SCORES

Junior High Boys

Groom 7th 12, McLean 11, Britten 6

Groom 8th 23, McLean 51, Richard Jenkins 9, Jeff Fields 7

Junior High Girls

Groom 8th 13, McLean 17, Carlene Britten, 6

High School

Varsity

Tigerettes 68, Claude 69, Erin Kate Eschle 25, Robbie Kuehler 23

Tigers 52, Claude 64, Darron Eschle 18, Brent Thornton 15

Junior Varsity

Groom 58, Claude 28, Nick Weinheimer 15, Stoney Crump 15

New Policy Adopted For Food Stamps

The U.S. Department of Agriculture recently notified the Texas Department of Human Services of policy changes regarding food stamp applicants who voluntarily quit their jobs.

Since January 4, 1985, food stamp applicants who voluntarily quit a job within 60 days before they applied for food stamps were ineligible for 90 days from the day they applied.

The new policy changes the period of ineligibility to 90 days from the date the applicant quit rather than the food stamp application date.

Anyone who applied for food stamps on or after Jan. 4, 1985, and was denied because someone in the household quit a job, may be eligible for restored benefits and should contact the local DHS office for information.

Groom Ambulance Service
Box 111
Groom, Texas 79039

DONATIONS—

Mr. and Mrs. W.H. Ollinger

MEMORIALS

For Preston Harden, Mrs. Helen Witt

For Adam West—

The Kelvin Ollinger Family

For Kenneth Anglin—

The Kelvin Ollinger Family

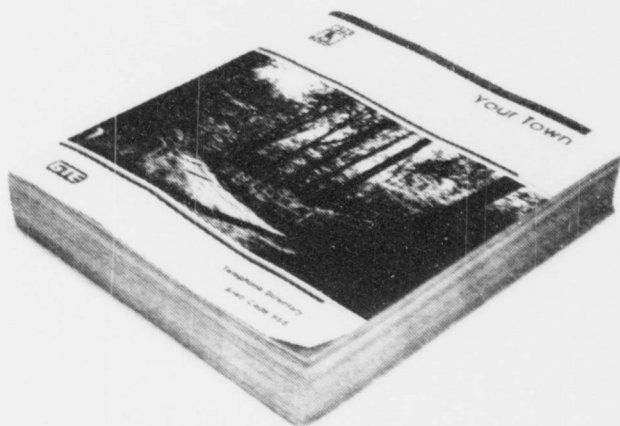
For Mr. and Mrs. Walter Ollinger—The Kelvin Ollinger Family

For Mrs. J.A. Quirk—The Kelvin Ollinger Family

For Thelma Vollmer—

Mrs. Viola Harrell

We're going to rewrite your phone book soon.



Do you want us to make any changes?

Before the presses roll on the new edition of your phone book, take a minute to check.

Make sure you're listed correctly.

Or tell us if you'd like more listings (the kids, a relative, or your spouse, for example).

After all, it's your phone book. When you see your name in print, it ought to be the

way you want to see it.

So, if you want any changes or additions, let us tell you what the charges might be, if any. Just call our business office now.

GARAGE IS OPEN

Mechanic on duty

Full service station.

Service & work.

State inspections.



Blackwell Service Center

Open 7:30 a.m. to 5:00 p.m.

248-2811

Groom Flying Service

Harris Howard



All types of aerial applications

Good Service - Reasonable Prices

Harris & Office
248-4561

Craig
248-6311

The McLean News

Commerce Bank Building No. 3

779-2141



Gray County Candidates Announce For Public Office



"During my term of office, the county has operated in the black, we have been able to reduce the tax rate and have kept taxes down. This has been accomplished by sound financial management, while at the same time, we have been able to upgrade and maintain the county equipment and keep our employees salaries on a competitive level," Carl Kennedy said as he announced he will seek re-election for a third term as Gray County judge on the Republican ticket.

A graduate of Pampa High School, Kennedy graduated from Texas Tech University with a degree in business administration. He served as an officer in the U.S. Air Force and was procurement officer with the Air Material Command at Wright-Patterson Air Force Base.

He also worked for Hughes Aircraft Co. as a contract administrator. Kennedy is a licensed real estate broker and is engaged in farming and ranching.

Elected to the office of Gray County judge, Kennedy was sworn into office on Jan. 1, 1979. As county judge, he presides over the county criminal, civil, probate and juvenile courts and also serves as chairman of the commissioner's court. In addition to judicial duties, he is responsible for numerous administrative duties in Gray County government.

Kennedy and his wife Patricia have five children. The Kennedys are active members of Bible Church of Pampa.

"I want to express my sincere appreciation to the people of Gray County, the county commissioners, all elected officials and employees for their splendid cooperation," Kennedy said. "It is because of this cooperation and the resulting accomplishments that I am encouraged to seek re-election."

"With your continuing support, both now and at election time, I will appreciate the opportunity to serve another four years as the county judge for all of the people of Gray County," he added.



Mary Clark, District Clerk of Gray County, announces her candidacy for re-election subject to the Democratic Primary to be held in May.

Mrs. Clark was elected District Clerk in 1982. Prior to that she served 4½ years as Chief Deputy to Helen Sprinkle.

She is a native Texan and long time resident of Pampa where she attended school. She is a member of the Texas County and District Clerk's Association and the Tri-County Democratic Club.

"I appreciate the opportunity I have had to serve the people of Gray County. If elected, I pledge to continue giving dedicated full time service to carry out the duties of the District Clerk's Office. I appreciate your support in the past and am asking for your continued support."



Lodema Mitchell, chief deputy in the County Treasurer's office for fifteen years, has announced her candidacy for Gray County Treasurer. She is seeking the Democratic nomination. Mrs. Mitchell has lived in Gray County for 45 years.

For a number of years, she assisted her late husband, John C. Mitchell, owner of an Exxon Service Station, with his bookkeeping.

The experience she has gained while working as deputy in the Treasurer's office has provided invaluable training for the job she is seeking.

It is Mrs. Mitchell's hope that the people of Gray County will support her as she dedicates herself to serve the people unselfishly, efficiently and courteously.

Deadlines Announced For Upcoming Area Elections

Individuals interested in filing for offices in the upcoming elections should be aware of the following requirements and deadlines.

Those who intend to run for county-wide positions must file a designation of campaign treasurer with the County Clerk's office in Pampa. A \$600 fee is required for all positions except Justice of the Peace, which requires a \$300 fee, and the County Surveyor, which has a \$50 fee.

Those who run on the Republican ticket must also contact Susan Triplehorn, Chairman of the Gray County Republican Party. She can be reached by calling 665-8525.

Those who intend to run on the Democratic ticket must contact either Wanda Carter,

County Clerk, at 665-2308, or Susie Wilkenson, Chairman of the Gray County Democratic Party. She can be reached at Agape Health Services in the NBC Bank building in Pampa. Her phone number is 669-1021.

The deadline for filing for county-wide positions is Feb. 3, 1986, at 6:00 p.m.

Those interested in filing for the McLean City Council elections can obtain an application at McLean City Hall. No fee is required. The deadline is Feb. 19, 1986.

Those seeking a position on the McLean School Board can pick up an application at the school Business Office. No fee is required. The deadline for filing is March 5, 1986.

The Junior High Boy's and Girl's basketball teams will host Phillips on Feb. 3. Games begin at 6:00 p.m.

The Varsity Boy's and Girl's basketball teams will host Groom on Feb. 4. Games begin at 6:30 p.m.

The Varsity Boys and Girls and the Junior Varsity Boys will host Claude on Feb. 7. Games begin at 5:00 p.m.

The Alanreed Community meeting will be held on Saturday, Feb. 1, beginning at 7:00 p.m. There will be a 42 progressive tournament.

The Lion's Club will meet on Feb. 3 at 6:30 p.m. at the Lion's Club building.

The Alanreed PTO will hold its monthly meeting on Feb. 4 beginning at 7:00 p.m.

Herndon Injured In Phillips Game

Clint Herndon was taken to a hospital in Amarillo on Friday night because of injuries sustained in a basketball game against Phillips.

Herndon was attempting to reach for a rebound when he collided with an opposing player and landed on his neck and left shoulder. As a result of the incident, he suffered a concussion, several lacerations to his scalp and an injury to his left shoulder.

After undergoing several tests during the weekend, he was due to be released from the hospital on Monday.

Flu Epidemic Forces School Closure

Numerous cases of influenza forced McLean schools to close at 1:00 p.m. on Friday afternoon. Dorman Thomas, grade school principal, reported that 40 students from the elementary school and 12 from the high school, were absent on Friday.

At the beginning of this week, the situation had not improved very much. On Monday, 22 kids were absent from grade school and 14 from high school.

Robbery Reported At Shipman Home

A robbery was reported on Monday at 1:20 p.m. at the home of Jimmy and Monica Shipman.

According to Deputy Sheriff Wayne Carter, a van driven by Gary Lynn Benefield, of Granby, Colo., pulled off I-40 and stopped at the Shipman home. He entered the house and took a vase.

Mrs. Shipman was in the utility room in the back of the house. She heard a noise and went to investigate. Benefield was apparently able to leave before being caught, although Mrs. Shipman saw the van pull away.

Local law enforcement officers Jim McDonald and Wayne Carter were called in to investigate.

Benefield, who was accompanied by two hitchhikers, began travelling west on I-40. He was caught approximately three miles west of Lela by the Shamrock Sheriff's Department. He was taken to Pampa jail.

The two hitchhikers, who apparently were not involved in the incident, were not held.

McLean Schools Announce Honor Rolls

This week, McLean High School published honor rolls for both the current six weeks period and for the semester.

Those who maintained an average of 90 and above during the past six weeks were:

Seniors-Melanie Billingsley, Wendy McDowell, Bob Patman, Jim Ridgway and Kristie Thompson.

Juniors-Colleen Orrick, Angie Purcell, Kim Wiginton, Angie Glass and Shawn Crockett.

Sophomores-None.

Freshmen-Karen Williams and Misty Magee.

Those who maintained an average of 80 and above during the past six weeks were:

Seniors-Vickie Armbrister, Amy Barnard, Chet Bohlar, Kristy Putt, Connie Rawlings, Donnie Smith and Lee Ann Tate.

Juniors-Jennifer Brown, Cindy Hembree, Le Milam, Jem Ann Rice and Melody Collins.

Sophomores-Terri Lee, Linda Reid, Angie Reynolds, Carey Richardson and Cindy Thomas.

Freshmen-Dale Barker, Dollie Haynes, Cal Holwick, Geenie Kunce, Tiffany Lopez, Darla McAnear, Denise Meaker, Wendi Smith, Kara Tate, Kyle Woods and Skyla Bryant.

Students who maintained an average of 90 or above for the entire semester were:

Seniors-Wendy McDowell, Bob Patman and Kristie Thompson.

Juniors-Kim Wiginton.

Sophomores-Angie Reynolds.

Freshmen-Dollie Haynes and Darla McAnear.

Those who maintained an average of 80 or above for the semester were:

Seniors-Vickie Armbrister, Melanie Billingsley, Chet Bohlar, Kristy Putt, Connie Rawlings, Jim Ridgway and Lee Ann Tate.

Juniors-Jennifer Brown, Shawn Crockett, Dan Fish, Angie Glass, Cindy Hembree, Le Milam, Colleen Orrick, Angie Purcell, Jem Ann Rice and Melody Collins.

Sophomores-Terri Lee, Greg Littlefield, Marvin Passmore, Linda Reid, Carey Richardson and Cindy Thomas.

Freshmen-Dale Barker, Kim Beaver, Cindy Coleman, Cissy Dalton, Geenie Kunce, Tiffany Lopez, Misty Magee, Shandee Rice, Kara Tate, Karen Williams, Kyle Woods and Skyla Bryant.

The honor roll for Grades 1-8 during the current six weeks were also published.

Those who maintained an average of 90 and above were:

Eighth Grade-Cheri Layfield and Kimberly Orrick.

Seventh Grade-None.

Sixth Grade-David Johnson and Missy Young.

Fifth Grade-Patsy Barker and Holly Hefley.

Fourth Grade-Mindy Magee.

Third Grade-Karen Brass, Jennifer Jones, Penny Lee, and Tonia Webster.

Second Grade-Jamie Barker and Heather Hess.

First Grade-Erin Gibson, Derek Glass, Erin Mongrain, Chad Richards, Tanna Shipman, Shandon Stalls and Kristi Tidwell.

Those who maintained an average of 80 and above were:

Eighth Grade-Stacie Hall, Donald Harris, Tres Hess, Suzie Kunce, Alicia Rey-

nolds, James Wall and Danna Watson.

Seventh Grade-Cash Carpenter, Mickey Gomez, Holly Hauck, J.T. Haynes and Melissa Thompson.

Sixth Grade-Bo Green, Daniel Harris, Chris Littlefield, Destry Magee, Lisa McClellan, Ethan McCracken, Marty Patton, Lee Erin Stubbs, Heidi Syfrett, Amy Williams and Becky Wilson.

Fifth Grade-Peggy Adams, Michael Barker, Rhonda Glass, Lee Hill, Becki McCarty, Vance Rodgers, and Quillian Rutherford.

Fourth Grade-Joetta Bailey, Erin McCracken, Tommy Pennington, Doug Purcell, Tiffany Stump and Nathan Sullins.

Third Grade-Joshua Acuna, Jeremy Crutcher, Matt Hall, Angel Harris, Jennifer Hiser, Holly Thompson and Jason Winegeart.

Second Grade-Jessica Anderson, Michelle Basham, Justin Brown, Seth Brown, Jill Hefley, Shelly Holland and Deana Phillips.

First Grade-William Allgood, Jonathan Bailey and Zack Helton.

MCLEAN LODGE
NO. 889
AF-AM

Stated Meeting
2nd Thursday
Practice Every Thursday
7:30 p.m.

VISITORS WELCOME
Olin J. Weldon, W.M.
J. Boyd Smith, Secretary

Correction

In last week's paper, it was reported that members of Dens 1 and 2 of Boy Scout Pack No. 425 had received Bobcat Patches. This was an

error. Those who received the awards were from Dens 1 and 3.

In addition, two members of Den 3 were omitted from the story. Britten Shipman and Andy Layfield also received patches at the Jan. 7 meeting.

**Students To Attend
County Livestock Show**

Four McLean High School students will be participating in the San Antonio Livestock Show, to be held Feb. 10-14. Jem Ann Rice and Melanie Billingsley will be displaying cross-bred pigs and Lee Ann Tate and Melody Collins will display Hampshires.

Participants who place in each class will receive a ribbon and will get to sell their livestock in premium sales. Grand champions will receive trophies and banners.

The four students will be accompanied by sponsor Emma Jean Tate and by Bill Layman, Agriculture teacher.

**Irrigation Efficiency
Detailed At Recent
High Plains Conference**

Ways to improve irrigation efficiency and curtail production costs, guidelines to determine whether to convert from one system to another, and details regarding state

loans to obtain water conserving equipment were presented to some 200 farmers, ranchers and agribusiness leaders during the annual High Plains Irrigation Conference in Amarillo.

In addition, a panel of farmers related their experiences with surge, low energy precision application systems and moisture sensing devices. Farmers also viewed displays of irrigation equipment by 20 commercial suppliers.

The conference is an annual highlight of the continuing educational effort of the Texas Agricultural Extension Service to help producers make more efficient and effective use of irrigation water, said Paul Gross, district Extension director.

He cited more than two decades of demonstrations on area farms, showing how to improve row watering, merits of surge and low energy precision application (LEPA), ways to reduce tailwater runoff, retain water on the soil, reduce energy consumption and costs, and improve pumping efficiency.

Results of Extension tests on more than 600 wells and pumping systems have been placed on computers to give producers instant access to information applicable to their situations, Gross said.

"For a number of years, we've asked county Extension agents to put out demonstration handbooks" which provide the information gained through these on-farm demonstrations, he said. "Go by your county agent's office and use those demonstration handbooks," he urged.

Improving the efficiency of an irrigation pump engine by one percent cuts fuel costs by five percent, said Don Hardy, head of Don Hardy Race Cars in Floydada. Hardy said he began working with Leon New, Extension irrigation specialist and engineer, in 1981 to find ways to improve pumping engine efficiency.

He noted that truck engines popular in powering irrigation systems were designed to run on 90 octane gasoline, but were being used on natural gas. This requires modifications to improve efficiency, he said. Making the motors last under the heavy stress of pumping requires still other adjustments.

Producers considering improvements to their irrigation systems need to look at more than the cost of the equipment. Other factors include savings of energy, water and labor, as well as uniformity and effectiveness of irrigation.

He cited a study comparing cost effectiveness of converting from furrow to improved furrow, to surge, or the sprinkler; from sprinkler to improved sprinkler or LEPA.

"Every situation is different, depending upon the efficiency you have now," Dr. Steve Amosson said. He said that, as a general rule, the study indicates that going from furrow to improved furrow, or from sprinkler to LEPA would be profitable;

but going all the way from furrow system to LEPA wouldn't be profitable.

LEGAL TITLE OF BANK Bank of Commerce Box 29 McLean, Texas 79057		STATE BANK NO. 2733-28	
CITY McLean		FEDERAL RESERVE DISTRICT NO. 11 13 08442	
COUNTY Gray	STATE Texas	ZIP CODE 79057	CLOSE OF BUSINESS DATE December 31, 1985
Dollar Amounts in Thousands			
ASSETS			
1. Cash and balances due from depository institutions:			
a. Noninterest-bearing balances and currency and coin			
b. Interest-bearing balances			
2. Securities			
3. Federal funds sold and securities purchased under agreements to resell in domestic offices of the bank and of its Edge and Agreement subsidiaries, and in IBFs			
4. Loans and lease financing receivables:			
a. Loans and leases, net of unearned income			
b. LESS: Allowance for loan and lease losses			
c. LESS: Allocated transfer risk reserve			
d. Loans and leases, net of unearned income, allowance, and reserve (item 4.a minus 4.b and 4.c)			
5. Assets held in trading accounts			
6. Premises and fixed assets (including capitalized leases)			
7. Other real estate owned			
8. Investments in unconsolidated subsidiaries and associated companies			
9. Customers' liability to this bank on acceptances outstanding			
10. Intangible assets			
11. Other assets			
12. Total assets (sum of items 1 through 11)			
LIABILITIES			
13. Deposits:			
a. In domestic offices			
(1) Noninterest-bearing			
(2) Interest-bearing			
b. In foreign offices, Edge and Agreement subsidiaries, and IBFs			
(1) Noninterest-bearing			
(2) Interest-bearing			
14. Federal funds purchased and securities sold under agreement to repurchase in domestic offices of the bank and of its Edge and Agreement subsidiaries, and in IBFs			
15. Demand notes issued to the U.S. Treasury			
16. Other borrowed money			
17. Mortgage indebtedness and obligations under capitalized leases			
18. Bank's liability on acceptances executed and outstanding			
19. Notes and debentures subordinated to deposits			
20. Other liabilities			
21. Total liabilities (sum of items 13 through 20)			
22. Limited-life preferred stock			
EQUITY CAPITAL			
23. Perpetual preferred stock (No. of shares outstanding)			
24. Common stock (No. of shares a. Authorized b. Outstanding)			
25. Surplus			
26. Undivided profits and capital reserves			
27. Cumulative foreign currency translation adjustments			
28. Total equity capital (sum of items 23 through 27)			
29. Total liabilities, limited-life preferred stock, and equity capital (sum of items 21, 22, and 28)			
MEMORANDA: Amounts outstanding as of Report Date:			
1.a Standby letters of credit, Total			
1.b Amount of Standby letters of credit in memo 1.a conveyed to others through participations			
NOTE: This report must be signed by an authorized officer(s) and attested by not less than three directors other than the officer(s) signing the report.			
I/We, the undersigned officer(s), do hereby declare that this Report of Condition has been prepared in conformance with official instructions and is true to the best of my knowledge and belief.			
SIGNATURE OF OFFICER(S) AUTHORIZED TO SIGN REPORT <i>Roger E. McCracken VP/Cashier</i>		DATE SIGNED 16 January 1986	
NAME AND TITLE OF OFFICER(S) AUTHORIZED TO SIGN REPORT Roger E. McCracken, Vice President/Cashier		AREA CODE/PHONE NO. 806 779-2461	
We, the undersigned directors, attest the correctness of this Report of Condition and declare that it has been examined by us and to the best of our knowledge and belief has been prepared in conformance with official instructions and is true and correct.			
SIGNATURE OF DIRECTOR <i>Paul Williams</i>		SIGNATURE OF DIRECTOR <i>David Miller</i>	
SIGNATURE OF DIRECTOR <i>Robert King</i>		SIGNATURE OF DIRECTOR <i>Paul Williams</i>	
State of <i>Texas</i>		County of <i>Hale</i>	
Sworn to and subscribed before me this <i>24</i> day of <i>January</i> , 19 <i>86</i>			
and I hereby certify that I am not an officer or director of this bank.			
My commission expires <i>Mar. 10</i> , 19 <i>87</i>		<i>Lisa Caldwell</i> Signature Notary Public	



Long Time McLean Pioneer Evan Sitter Dies

Evan Lester Sitter, son of a pioneer rancher in the Panhandle, died in McLean, Tex., Jan. 21, 1986, concluding a successful life as a rancher, scientist, inventor, churchman and scholar. He was born April 15, 1898, in Union County, Illinois, the third child of George Washington and Nancy Jane Bean Sitter. Evan's parents moved to McLean from Illinois in 1910, his father having bought four sections of land in 1898 in Donley and Collinsworth Counties across

the Salt Fork of the Red River. They were purchased from the RO Ranch cowboys who had staked a claim earlier.

"I was born up North in 1898, and they always said that my dad took one look at me and skeddaddled to Texas where he bought this land," Mr. Sitter said in a 1965 interview. The ranch later became the Bar-Lo Ranch.

When he graduated from McLean High School, his hopes for going to college

had to be set aside, so he studied courses of his choice in the sciences an extra year in McLean High School. He then began his work on the ranch.

After his release from the service in World War I, Evan and Leona Elizabeth Watkins, his childhood sweetheart, whose father's land adjoined the Bar-Lo Ranch, were married September 22, 1918, in Sayre, Oklahoma. On September 22, 1985, they celebrated their 67th anniversary.

They lived the first nine years of marriage on the ranch where their three children were born; Spencer Bell, November 12, 1919, Dorothy Marion, April 30, 1922, and Frances Eleanor, September 29, 1925. In 1927 they moved to McLean. Evan was still involved in the operation of the ranch.

Mr. Sitter was a self-educated man. As early as the 1920's, he conducted successful solar radiation experiments. By invitation, he became a member of the National Academy of Sciences. He and his son, Spencer, proposed the paving of Highway 273 between McLean and Hedley and served on the committee to present to the state in Austin its importance to the Panhandle.

When the ranch was divided at the time of the death of his mother in 1943, Evan worked at improving the grassland and breed of the Hereford cattle, a work his father had begun on 1899. He was a pioneer in cattle artificial insemination, having built an air strip on the ranch for that purpose.

As an amateur architect, he assisted many in planning new homes and remodeling others.

Concerned with the war effort during World War II, Mr. Sitter contributed a number of inventions and patents to the War Department. One of them was acknowledged in correspondence as having directly contributed to the sinking of a German warship in the North Sea.

For several years, Mr. Sitter was on the Board of the Panhandle-Plains Historical Society and a member of the Gray County Historical Survey Committee. He is also listed in the Cowboy Hall of Fame in Oklahoma City.

He was a charter member and president of the Lions Club. He served as president of the McLean School Board for several years and also on the City Council. He was a charter member of the Hillcrest Cemetery Association which has become the Hill-

crest Foundation. Its eventual purpose and goal is to provide perpetual care for the Hillcrest Cemetery. He and Mrs. Sitter have served on the landscape committee since its inception. He wrote the inscription on the memorial plaque honoring our war dead at the entrance to the cemetery:

IN MEMORIAM

Where'er they sleep
in distant clime
or in this friendly hill,
Memories live ever green
in hearts that hold them still.

To those who gave
their lives for freedom
We dedicate this quiet place.

He had a great appreciation for the beautiful—in music, the arts, nature and literature. As a young boy he played the violin for weddings and church services.

He was an avid reader—his life long love for reading and good literature inspired his own writing talents. His personal and business letters through the years are treasured and kept.

Mr. Sitter was a member of the Presbyterian Church, where he served as Elder, Clerk of the Session, treasurer and teacher. (One of his students said he was his greatest influence in becoming a doctor). He was active in civic projects and took an active interest in the young people of the community and helped in youth projects.

When his children, grandchildren and friends were asked for words that best express his life and character, they said humility, integrity, unselfish, kind, gentle, generous, honest, understanding, loving, forgiving, compassionate, non-



perfect gentleman.

Surely his life was patterned from the Bible verse, Micah 6:8, which he found as a boy to be the perfect guide for his life: "And what does the Lord require of you but to do justice, and to love kindness and to walk humbly with your God?"

A private interment service was conducted on Thursday morning, January 23, 1986, at 10:15 at the family plot in Hillcrest Cemetery in McLean. Funeral arrangements were under the direction of Lamb Funeral Home.

Pallbearers were Raymond Guyton, Miro Pagan, George Terry, Bill Thomas, Bob Thompson, and E.J. Windom, Jr. Honorary pallbearers were Joe Burroughs, Ercy Cubine, Orville Cunningham, Sterling Kinney, Verney Love, Julia D. Rice,

Earle Riley and E.J. Windom, Sr.

A Memorial Service was held at 11:00 in the sanctuary of the United Methodist Church in McLean, conducted by the Reverend Dr. William H. Foster, Jr., retired Presbyterian minister from Sherman, Texas, and the Reverend Mr. Billy Wilson, pastor of the McLean United Methodist Church. Mrs. Joyce Haynes played the great hymns of the church as prelude and Old One Hundredth (the Doxology) as postlude.

Surviving Mr. Sitter are his wife, Leona, his son, Spencer B. Sitter of Santa Fe, New Mexico, and daughters, Dorothy Sitter Foster of Sherman, Texas, and Frances Sitter Dennis of Richardson, Texas; nine grandchildren and nineteen great-grandchildren.

Circle A Bookkeeping and Tax Service

Box 163
Alamogordo, Texas 79002
779-2617

Adelaide (Mrs. Olin) Weldon, Accountant

Complete Bookkeeping and Tax Service, Personal or Business. Thirty years experience in all phases, personal, farming and business, oil and gas, etc. Quarterly and annual reports financial statements, income tax returns or whatever you need. We keep up with IRS rules and regulations for your benefit.

For Gifts of fragrance for your special Valentine.



Contact
Linda Sue Meador,
Beauty Consultant
Box 657 McLean 779-2102

McLean Pharmacy

Bob Garis, R.Ph.
McLean, Texas

- Free In-Town Prescription Delivery
- Medicaid Prescriptions Welcome
- Complete Patient and Family Profiles For Tax and Insurance
- Complete Generic Line
- 24-Hour Emergency Prescription Service Honor P.C.S. Cards

779-2525



Emergency Phone
Number 779-2147

Mon-Fri.
8:30 a.m. to 5:30 p.m.

Sat.
8:30 a.m. to Noon



GO McLean Basketball Teams!!!

We are behind you all the way!!!

Hambright Building Supplies
Bank Of Commerce
Bentley's Fertilizer
Carrine's Style Shop
Cowboy Drive Inn
Country Corner Texaco
TJ's Western Wear
J and L Atex

Archer Satellite
Jane Simpson Agency
Lamb Flower Shop
McLean Pharmacy
McLean Vet Clinic
Puckett's Food Store
Potpourri Gift Shop
Richardson Texaco



Girl Scout Cookie Sales In Last Week

This is the last week of the sale of Girl Scout cookies in the McLean area. Janet McCracken reports that sales are going well, with each girl selling an average of about 35 boxes each.

Local members involved in the drive are:

Brownies Troop #6-Jessica Anderson, Michelle Basham, Kris Carter, Erin Gibson, Angel Harris, Pamela Martin, Annel Passmore, Jenni-

fer Pennington, Deana Phillips, Tanya Shipman, Kristie Tidwell and Erin Mongrain.

Junior Troop #7-Joetta Bailey, Melissa Darsey, Robbyn Griffin, Mindy Joe Magee, Erin McCracken, Mandy Mongrain, Elizabeth Gloe, Tiffany Stump and Christy Steward.

Cadette Troop #179-Tamy Passmore and Lori Woodard.

Toll Free Number Set Up For Farmers

The State of Texas recently announced that a toll-free number will provide information to those Texans interested in participating in the new Farm and Ranch Finance Program that has been established to keep alive the tradition of the family farm and ranch. The telephone number is 1-800-292-FARM.

The Farm and Ranch Program, which was approved by voters on Nov. 5, will provide up to \$100,000 in low cost loans to qualified farmers and ranchers for the purchase of 50 acres or more

of land.

Set up like the Veterans Land Program, eligibility requires the applicant to be a Texas resident for at least five years. Also, at least 35% of their gross household income in the previous three years must have come from a farm or ranch and the applicant's net worth must be less than \$250,000. Additional information about the program, which will begin making loans after September, 1986, can be obtained by calling the toll free number given above.



Check with us for all your

Hardware Needs!

GROOM HARDWARE & LUMBER
Groom, Texas

at your

GROOM

**Dairy
Queen**

Now Serving Breakfast

BREAKFAST MENU
6 TO 10 AM

- #1 TWO EGGS ANY STYLE WITH HAM, BACON OR SAUSAGE, GRAVY HASHBROWNS, BISCUIT, JELLY, MARGARINE AND COFFEE \$2.95
- #2 ONE EGG ANY STYLE WITH HAM, BACON OR SAUSAGE, GRAVY, HASHBROWNS, BISCUIT, JELLY, MARGARINE AND COFFEE \$2.65
- #3 COUNTRY BREAKFAST 2 EGGS ANY STYLE WITH HAM, BACON OR SAUSAGE, TWO PANCAKES, HASHBROWNS, SYRUP, MARGARINE AND COFFEE \$3.35
- #4 TWO EGGS ANY STYLE, HASHBROWNS, GRAVY, BISCUIT, JELLY, MARGARINE AND COFFEE \$1.85
- #5 SOS—TOAST, GRAVY, SPICED MEAT AND COFFEE \$1.39
- #6 TWO BISCUITS, BOWL OF GRAVY, JELLY, MARGARINE AND COFFEE \$1.49
- #7 BISCUIT WITH SAUSAGE, HAM OR BACON, GRAVY, JELLY MARGARINE AND COFFEE \$1.79

BISCUIT SPECIALTIES SANDWICHES

- #8 BISCUIT WITH SAUSAGE \$.89
- #9 BISCUIT WITH BACON \$.99
- #10 BISCUIT WITH HAM \$1.49
- #11 BISCUIT WITH EGG \$.69
- #12 BISCUIT WITH SAUSAGE AND EGG \$1.19

CHEESE 25¢ EXTRA

SHORT STACK—TWO PANCAKES, SYRUP, MARGARINE AND COFFEE \$1.29

STACK—THREE PANCAKES, SYRUP, MARGARINE AND COFFEE \$1.49

ORANGE JUICE
SMALL 69¢ LARGE 90¢

GROOM DAIRY QUEEN
PHONE 248 5501
PLEASE ORDER BY NUMBER

Automobile And Truck Registrations Show Decline

New car and truck registrations during the first 11 months of 1985 totaled more than 1.026 million, just 13,000 short of the total registered during all of 1984, according to Gene Fondren, president of the Texas Automobile Dealers Association.

Although there was a slump in November registrations when compared to the same month in 1984, year-to-date new car and truck registrations continued to improve and the registrations for all of 1985 are expected to challenge the record set in 1978 of more than 1.054 million new cars and trucks registered during a 12-month period.

According to the numbers supplied by the R.L. Polk Co., the November decline was uniform when comparing registrations of cars to

trucks and when comparing the registrations of one manufacturer to the others. Fondren said the decline was expected when the three domestic manufacturers ended their incentive programs in early October.

In August, September and part of October, the General Motors Corp., the Ford Motor Co. and the Chrysler Corp. offered reduced-rate financing to move 1985 models. GM offered a 7.7 percent interest rate on selected models. Ford met GM's interest rate but also offered rebates. Chrysler reduced its interest rate to 7.5 percent and offered rebates.

New car registrations in November were 42,260, down 11.6 percent from November 1984. However, new car registrations January through November 1985 were up 6.9 percent from the

same period the preceding year.

New truck registrations in November declined 11.9 percent to 27,551, but year-to-date registrations were up 8.6 percent.

Combined new car and truck registrations in November 1985 were down 9,272 to 69,811. However, the first 11 months of 1985 saw combined new car and truck registrations increase 7.5 percent from 953,820 in 1984 to 1,026,170 in 1985.

While the domestic manufacturers were experiencing a decline in November, the import car registrations continued to improve. Registrations of new import cars last November increased 23 percent over the same month the preceding year and year-to-date registrations climbed 17.7 percent. Of the 31,634 new trucks registered year-

to-date, the truck imports accounted for 13,675 of them.

At the end of the 11-month period, 25.2 percent of the new cars registered in Texas were imports.

McLean Citizens Attend Concert

Members of the Young at Heart Senior Citizen's Club attended a concert sponsored by the Policeman's Association on Saturday night.

Jana Jae and her band "Haywire" were the performers. Jae was the first female fiddler to play with Buck Owens and his band.

Those who attended from McLean were Cliffie Heasley, Onie Gibson, Vela Young, Lena Bailey, Annie Herndon, Mildred Giesler, Loree Barker, Velma Kinard, Venice Wright, Slim Windom, Bertha Smith, Denise Meaker and Lyndia Meaker. The Baptist Church bus, which was donated for the occasion, was driven by Lyndia Meaker.

McLean School Menu Feb. 3-7

Breakfast

Mon.—Pancakes, Bacon, Juice, Milk
Tues.—Hot cereal, Cinnamon toast, Juice, Milk
Wed.—Creamed Beef, Toast, Juice, Milk
Thurs.—Cinnamon Rolls, Juice, Milk
Fri.—Cold cereal, Toast, Juice, Milk

Lunch

Mon.—Hamburgers, French Fries, Pudding, Milk
Tues.—Baked ham, Black-eyed peas, Potato salad, Corn Bread, Applesauce, Milk
Wed.—Sloppy Joes, French Fries, Baked Beans, Cookies, Milk
Thurs.—Mexican Casserole, Green Beans, Salad, Sopillas, Milk
Fri.—Fish portions, Cole slaw, Macaroni and cheese, Tarter Sauce, Bread, Jello with fruit, Milk

You are cordially invited to attend

a Reception

honoring

Mr. and Mrs. George Keeter

Sunday, February 2, 1986

2:00 to 4:00 p.m.

at

Fellowship Hall

First Baptist Church

Groom

No gifts please.

Ground School for Private Pilots begins Feb. 1 Evans Engineering Flight Club

One Time Membership Fee \$100.00
Monthly Dues \$20.00
Cessna 152 \$35/Hr. Grumman Tiger \$50/Hr.
(\$30 Pre-Paid) (\$45 Pre-Paid)
Ground School will be held at Evans Airport
Hangar 1 5/10 miles west of Conway on I-40.
Call 537-5120 for more information

Richardson Texaco

24-Hour Road Service
Full Service Station
Truck & Tractor Flats



119 W. 1st.
McLean TX.

Home-779-3231
Bus.-779-2798

Basketball Scores

VARSITY BOYS

Jan. 21-Claude 57
McLean 22, Martin Gately-10; Mark McCarty and Kirk Anderson-4
Jan. 24-Phillips 63 McLean 25, Donnie Smith-10; Kirk Anderson-8

VARSITY GIRLS

Jan. 21-Claude 53
McLean 33, Melanie Billingsley-17; Jem Ann Rice-6
Jan. 24-Phillips 39 McLean 34, Melanie Billingsley-16; Jem Ann Rice-6

SWANSON Construction

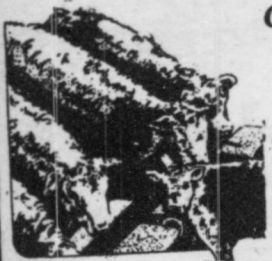


Remodeling Additions
Concrete-Paneling-Roofing

Call Larry at 779-3101 or 779-2950

Bentley's Feed,

Fertilizer, Seed, And Chemical



Complete line of
Purina Feeds

Also Sell Sonic Tires

779-2209

'Now's the time to feed those cows'

Call Jerry Cook

at

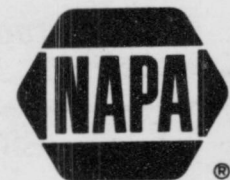
ATLAS
PLUMBING



779-2784

BIVEN'S AUTOMOTIVE

IS CHANGING!



To better serve you, we are remodeling our parts room and stocking it with quality NAPA parts, supplies and accessories.

Because of this we will be closed

February 1 - 15

There will be someone available to accept payments, order parts and do emergency repairs.

Look for our Open House
Coming Soon.

ALBERTO O. SY, JR., M.D.

Cardiology and Internal Medicine

(Heart)

(Diagnostician)

Wishes to Announce the Relocation of his Office to the

PAMPA CARDIOLOGY CLINIC
NORTH-CREST MEDICAL PLAZA SUITE 101
916 N. Crest Road Pampa, Texas

Office Hours by appointment (806) 665-2301

We Welcome New Patients

Texas Become Delinquent February 1

On February 1, most of the unpaid property taxes in Texas become delinquent property taxes.

"It pays to pay property taxes on time," said Ron Patterson, executive director of the State Property Tax Board. "Delinquent taxpayers must pay additional penalty and interest charges, and they run the risk of lawsuits, clouded land titles, and even seizure and sale of their property if they make no effort to pay."

Patterson emphasized that even property owners who do

not receive bills must still pay their property taxes on time or else face additional delinquency charges. "Texas law states that failure to receive a tax bill does not relieve the taxpayer of his responsibility for paying property taxes on time," he explained.

Most taxing units mail tax bills in October or November with a delinquency date of February 1. "If Feb. 1 is drawing near and a taxpayer has not yet received a tax bill," Patterson advised, "he should contact the local

appraisal district or taxing units to find out how much tax he owes and to make sure the correct name and address information is on record."

In most cases, property taxes that remain unpaid on Feb. 1 are considered delinquent. The delinquency date is postponed for tax bills that are mailed after Jan. 10. Special payment plans offered by some taxing units also result in later delinquency dates.

In all cases, the delinquency date will appear on the tax bill. All taxpayers must

be given at least 21 days to pay after their bills are sent before their taxes become delinquent.

By paying before Feb. 1, the taxpayer avoids penalty and interest charges.

Regular penalty charges can go as high as 12 percent, and interest is charged at the rate of one percent per month. "For example," said Patterson, "someone who pays taxes a year late will have to pay the original amount plus an additional 24 percent in penalty and interest."

Taxing units that hire outside attorneys to collect their delinquent taxes can charge an additional 15 percent penalty for attorney's fees.

Tax collectors notify delinquent taxpayers at least once. Many collectors sent additional notices and warning letters. "By responding to these warnings and paying their bills, taxpayers can avoid the expense of a delinquent tax suit and the risk of losing their property to pay the overdue taxes," said Patterson.

State law protects homeowners age 65 and over from tax suits and seizure of their homes. By filing a "tax deferral affidavit" with the appraisal district, an elderly homeowner can postpone paying taxes on his home for as long as he owns the home and lives in it. If the over-65 homeowner has been sued for delinquent taxes, he can suspend the suit by filing a tax deferral affidavit with the court.

The tax deferral only postpones tax payments—it does not cancel them. The taxes, penalties and interest will continue to add up. Once the property changes hands, these taxes become due immediately.

Some tax collectors allow delinquent taxes to be paid in installments. By signing an installment agreement, the delinquent taxpayer is admitting that he owes all the taxes covered by the agreement. However, he cannot be sued for delinquent taxes as long as he makes the installment payments on time and keeps other property taxes

paid up.

The tax collector's last resort is to sue for delinquent tax suit is successful, the court costs are added to the tax

bill. The court will give the taxpayer one final chance to pay before ordering the property seized and auctioned to pay the taxes.

Delinquent taxes cannot be avoided by selling or transferring the property. Taxing units hold a tax lien on each item of taxable property. This tax lien gives them the power to foreclose on the lien and seize the property, even if its ownership changes. "As a result," Patterson explained, "someone who buys real estate can't get a clear title until all the delinquent taxes on the property are paid."

In addition, the law makes each person who owns taxable property on Jan. 1 personally liable for the taxes. The Jan. 1 owner can be sued personally for unpaid taxes even if he has sold or transferred the property.

"Property owners can avoid these extra charges and legal problems by paying their property taxes on time," said Patterson. "If their taxes are overdue, they should contact the tax collector without further delay and make arrangements to pay."

Rep. Buck Buchanan Gives New Phone Listing

State Representative J.W. "Buck" Buchanan would like to notify his constituents in District 88 of the new telephone number in his Capitol office in Austin, Texas.

Rep. Buchanan's new telephone number is: 512-463-0470. The mailing address is P.O. Box 2910, Austin, Texas 78769.

The new Capitol Complex Telephone System was installed to replace the existing Centrex system to provide better service and at less cost than the old system. All agencies having the 475-exchange have been changed to the new 463-exchange.

Groom School Menu
February 3 - February 7
Mon.—Chicken Fried Steak. Breakfast—Cereal and Toast
Tues.—Cheeseburgers Breakfast—Pancakes
Wed.—Chili and Beans Breakfast—Hash Browns and Toast
Thurs.—B-B-Q Chicken Breakfast—Biscuits, Bacon and Gravy
Fri.—Sliced Ham Breakfast—Donuts

LION'S CLUB ANNUAL BENEFIT



Supper & Basketball Game

Saturday, February 1, 1986
8:00 p.m. High School

Adults Admission - \$2.00 - Students \$1.00
Groom Lions -vs.- Claude Lions

Lions Hamburger Supper -
5:30 p.m.-7:00 - Cafeteria

Hamburgers, chips & Drink - \$3.00 Donation

ELEMENTARY BASKETBALL - 7:00 p.m.

Proceeds to help sponsor the
Groom Summer Program

Effective February 1, 1986 we will be closing the Groom office. At that time I will begin working in Clarendon. We appreciate our Groom customers and will continue to offer the best personal service and coverage for your insurance dollar.

We welcome your calls on our watts line # 1-800-692-4054 or call me at home 248-5271 evenings.

Thank you again for the opportunity to be of service now and in the future.

Doris Homer
Knorpp Insurance Agency Co.

Now Open for Business

Kay's Video Rentals

203 W. Railroad St.

(Next to Foshee's Texaco)

Tapes \$2⁵⁰/Day

Video Machines \$5⁰⁰/Day

Mon. - Sat. 1:00 - 6:00 P.M.

New Tapes Arriving Each Week



1/2 Off Most Winter Clothes

All Coats 30-50% Off

Open: 9:00 a.m.-6:00 p.m.

Monday-Saturday
Closed Sundays

Wayne's Western Wear

Wayne Stirling Owner-Operator
1538 N. Hobart 806-665-2925



Prices Effective Thru
Tuesday February 4th
USDA CHOICE
SIRLOIN TIP STEAK.
\$2.59 LB.

Puckett's IGA
We Give TOP Savings Stamps

USDA Choice
Top Sirloin Steak

\$2.59
LB.

USDA Choice Tenderized
ROUND STEAK.....LB. \$2.59
USDA Choice Boneless
RUMP ROAST.....LB. \$1.98
USDA Choice Boneless
PIKES PEAK ROAST.....LB. \$1.88



Wilson's Corn King
BACON..... 2 LB. \$2.98



Corn King or Decker
FRANKS..... 12 Oz. Pkg. 79¢



Corn King
Boneless Certified
WHOLE HAMS... LB. \$1.79

Wilson's
Certified Boneless
HALF HAMS..... LB. \$2.59

Wilson's
Boneless Certified
HONEY HALF HAMS LB. \$2.59

Hilshire's
SMOKED SAUSAGE... LB. \$1.98

Wilson Certified
BOLOGNA..... \$1.59

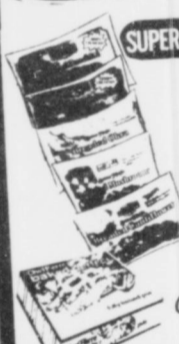
All Meat* All Beef 1 Lb.



Hormel
CHUNK HAM
7 Oz Can 99¢



SUPER FROZEN FOODS BUYS!



Stillwell Crispy
VEGETABLES 8-12 Oz.
Squash*Zucchini*Cauliflower
*Mushrooms*Okra
79¢ Your Choice

Chef Pierre Bake Perfect
Cherry 27 oz. \$1.99



Seneca
APPLE JUICE 6 Oz. 2 FOR 79¢



Van De Kamp Light & Crispy
FISH FILLETS Your Choice
12 Oz. FISH STICKS 1.89
13 1/2 Oz. FISH FILLETS 14 Oz.

Downyflake
WAFFLES..... 59¢
Hot & Buttery*Buttermilk*Homemade 12 Oz.

AS SEEN ON TV
Rainbow
Singles
INDIVIDUALLY WRAPPED
79¢

AS SEEN ON TV
Downyflake
Waffles
HOT & BUTTERY BUTTERMILK
HOMEMADE
59¢

AS SEEN ON TV
GLAD
Trash Can
Liners
99¢

AS SEEN ON TV
Griffin's
Waffle
Syrup
\$1.59

AS SEEN ON TV
Fresh Start
Detergent
\$2.99

7.99
50 Lb
Bag
HAPPY HOUND
Hi-Protein Dog Food

YOUR CHOICE!
SWIFT
Sizzlean
or Roll
Sausage
ASST
SIZZLEAN
(12-OZ.)
\$1.49
EACH ONLY

USDA CHOICE
Boneless
SIRLOIN TIP
ROAST
\$2.49 LB.

AS SEEN ON TV
Gold Medal
Flour
89¢

AS SEEN ON TV
Del Monte
REG. OR NO SALT
Vegetables
CHOOSE FROM CUT OR FRENCH GREEN
BEANS, WHOLE KERNEL OR CREAM
STYLE CORN OR PEAS
39¢

V-8 Juice
6 oz.
6 pkg. \$1.29
can

Kebbler Club
Crackers
1 lb. \$1.39
box

Crisco
3 lb.
\$2.49

Chicken of
the Sea
Tuna
6 1/2 oz. 79¢
can

SUPER GROCERY BUYS!

Better Crocker Layer
CAKE MIXES 18 1/2 Oz. 89¢
Betty Crocker Ready To Serve
CAN FROSTING 16 1/2 Oz. \$1.39
Sunshine Country
PECANS Halves & Pieces - 6 oz. \$1.49
Pantry Pride Dry
PINTO BEANS 2 Lb. Bag. 69¢
Northern Tissue 4 Roll
"NEW" Liquid
BOLD DETERGENT 64 o. \$3.49
PALMOLIVE
LIQUID 35¢ OFF LABEL 22 Oz. \$1.19

SUPER CANNED GOODS BUYS!

Del Monte SPINACH 15 oz. can 49¢
Del Monte
TOMATO SAUCE 8 oz. can. 4 For 88¢
Del Monte PEACHES 16 oz. can. 69¢

SUPER PRODUCE BUYS!

Bananas
4 Lbs. \$1.00
For
South American
Nectarines
69¢ LB

Select
Russet Baking
POTATOES..... 3 Lbs. \$1.00
Super Select
CUCUMBERS..... 3 FOR \$1.00
Large No. 1
BELL PEPPERS..... 3 FOR \$1.00

SUPER DAIRY BUYS!

AS SEEN ON TV
Kraft
Parkay 1 Lb
MARGARINE 59¢
Festival
COTTAGE CHEESE 24 Oz. 98¢
Puckett's Low Fat
MILK Gal. \$1.69

Kellogg's
CORN FLAKES \$1.29
18 Oz Box
Kellogg's
RAISIN BRAN
25 Oz Box \$2.29

2
Liter
Pepsi
Diet Pepsi
Pepsi Free
Mt. Dew
Slice
1.09



Center Briefs

Thomas Nursing Center welcomes a new resident, Durward Martindale from Pampa.

Sunday, Brother Z.A. Myers, of the Assembly of God Church, was here to conduct services.

Residents playing Bingo on Monday were Gladys Smulcer, Inez Fields, Lona Jones, Ruth Kemp, Elsa Stalls, Leon Burch, Kittle Hesse, Annie Eudey, Frank Reeves, Earl Tolleson, Stella Gibson and Alice Dickenson. The Lion's Club furnished bananas for all bingo players. Many thanks to Onie Gibson for all residents. Our helpers were Mildred Giesler Bertha Smith, Onie Gibson, Cliffie Heasley, Marie Reeves and Ruby Boyd.

Tuesday, Mary Davis, Lena Carter and Brenda McLain were here to assist our residents for dominos. Wayne Barker was here to cut the men's hair.

Residents making valentines on Wednesday were Drucie Dwyer, Mabel Weeks, P.L. Ledgerwood, Inez Fields, Annie Eudey, Teresa Richardson, Alice Dickenson, Lula Sheegog, Earl Tolleson, Stella Gibson, Lona Jones, Leon Burch, Lola Graham and Odessa Beeman. We would like to thank Mr. and Mrs. Farris Jake Hess for furnishing fresh baked donuts from their Country Corner Store. The residents have really been enjoying them.

Thursday, several residents played dominos. Our hair dresser, Inez Trossel, was here Thursday and Friday to style the ladies' hair.

Friday afternoon, Martha Parker was here to show her great movies.

Alanreed News

Mr. and Mrs. Hartley Davis spent Sunday in Grooia with Hattie Terbush. She just returned from a long visit with her daughter, Agnes, in Lubbock.

Anita Bruce was in Pampa on Friday to visit the Warner Phillips'. They just became grandparents again with the birth of a girl to their daughter, Deanne, and husband.

The Bob Bruce family visited the Robert Bruce's on Sunday.

Nora Drago returned home from the hospital this week.

Christian Looney is home from the hospital. He had to have his arm broken and reset.

Jim Bruce was here on Sunday to visit Lena Carter and the Robert Bruce's.

Sam Standish, of Perryton, was here to visit his mother on Sunday.

Betty Hill suffered a broken arm in a fall last week.

Robert Bruce made a trip to Lubbock on Thursday.

The Alanreed Homemaker's Club met on Jan. 22 at the home of Lena Carter. The meeting began with a covered dish luncheon, after which Davey Gipson, president, presided over the business meeting. The scripture, Psalms 19:14, was read by Lena Carter. Nell Keese read the minutes. Lena Carter reports that the roll call was something money can't buy and was answered by Anita Bruce, Lena Carter, Mary Davis, Nell Keese, Davey Gipson, Sophia Hutchison and Ruth and Brenda McLain. The program was on "Current Events" and each member took part in a roundtable discussion. The next meeting will be on Feb. 12 at the home of Mary Davis.

Smitherman Tax Service

Monta Smitherman

Bookkeeping Payroll Returns
Tax Returns Quarterly Returns
New Accounts Welcome

1-40 East Phone
Exit 142 McLean, Texas 779-2595
Farm & Ranch Business Personal

New Management

We are pleased to announce that the H & R Block Franchise located at Main Street and Highway .207 in Panhandle, Texas is under new ownership. The new owner is Sue Rodgers and she would like to invite you to come by and get acquainted with her and also give her a chance to get to know you.

Office hours will be from 9 a.m. to 6 p.m., Monday through Saturday. Sue invites you to call her at 537-5245 if you have questions, need advice or just want to visit.

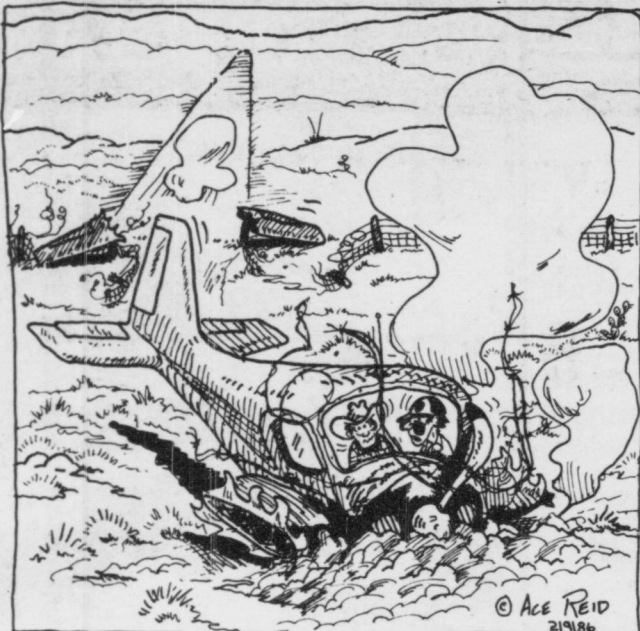
Sue intends to have the office open to serve you starting January 6 with the above hours in effect. Please come by, have a cup of coffee and get to know her. She is very anxious to both meet you and help you with your tax problems.

Thomas Nursing Center, Inc.
"CARE FOR THOSE YOU LOVE"

Ph. 779-2469

Bill Thomas
ADMINISTRATOR

P.O. BOX 280
McLean, Texas



"Wul, we have either got to get stronger fences or longer runways!"



**BANK OF
COMMERCE**

A Subsidiary of GrayCo BancShares, Inc.

779-2461 McLean, Texas



**Don Miller
Radiator Service**

Is Our Business
Not a Sideline
New & Rebuilt Radiators
Gas Tanks & Heaters
Repaired

612 S. Jefferson
Amarillo Texas

376-6666



McLean Hardware
779-2591
115 N. Main
McLean

B & B Electric

Now Servicing
Televisions-Stereos-
Scanners C.B.'s & 2-Way Radios

Rob Mahorney - Technician

10 Years Experience-F.C.C. Licensed

Phone Rob at 779-3252

117 N. Main - McLean, Tx.



Lamb
Flower Shop

Cash & Carry Specials
Every Thursday & Friday

1009 N. Main - Box 370 - Phone 779-2611
McLean, Texas 79057

**Simpson Agency
McLean, Texas**

106 N. Main 779-2451



Buy Your Home Insurance From
An Experienced Agency Who Will
Be Here When You Have A Loss.
See Us For Homeowners Insurance
With Replacement Cost Coverage.

Catfish Dinner

Okra, Hush Puppies,
Lemon or Tarter Sauce, \$2.89
Small Tea or Coffee

Roast Beef Lunch

Brown Gravy,
Potatoes & Roll \$2.89

with Small Tea or Coffee

Red Hot Corn Dogs

Reg. 69¢ each

3/\$1.00

While They Last

Jake & Leta Mae Hess
& the Crew of the
Country Corner Texaco

Exit No. 142 - I-40 McLean, Tx.
Call in order Welcome
779-2391

PRICES EFFECTIVE
JAN. 30
THRU
FEB. 1, 1986



WHILE
SUPPLIES
LAST



DON'T FORGET YOUR SWEETHEARTS
ON VALENTINE'S DAY! REMEMBER THEM
WITH BOXED CANDY FROM ALLSUP'S!

DECKER
MEAT
FRANKS

12 OZ.
PKG. **99¢**



DONATE TO SPECIAL
OLYMPICS BY PURCHASING
DECKER PRODUCTS AT ALLSUP'S

DECKER GOLD
BOLOGNA - SALAMI - P&P LOAF

LUNCH
MEAT

8 OZ.
PKG. **89¢**

FILLED WITH YOUR FAVORITE FOUNTAIN DRINK



ALLSUP

32 OZ.
CUP **49¢**



Assorted Candies

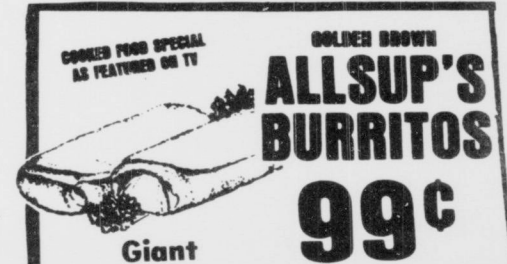
20¢ to 99¢



WE NOW HAVE
A GOOD SELECTION OF
VALENTINE'S
CANDY
SPECIALLY
PRICED
FOR
YOU

ALLSUP'S
MONEY ORDERS

19¢
EACH



COOKED FOOD SPECIAL
AS FEATURED ON TV

GOLDEN BROWN

ALLSUP'S
BURRITOS

99¢

Giant

Valentine Specials

DECKER
1 LB.
PKG. **SLICED
BACON**

\$1.59



Light

Parkay

2 lb. tub

99¢

MOVIE & VCR
RENTALS

The Very Best in
Home Video
Entertainment!



ALLSUP'S
CORN
DOGS

2 FOR 89¢



ALLSUP'S
HOT
CHOCOLATE

CUP **30¢**



BORDEN'S
ORANGE
JUICE

QUART
CTN. **99¢**



BORDEN'S
ICE CREAM
SANDWICH

6 CT.
PKG. **\$1.19**

Snak Pac

Crackers
69¢



Dr. Pepper

\$1.99

6 pk. 12 oz. cans



County Commissioners Discuss Automobile Guideline Use

County Auditor Agnes Carson County Commission-
Bell attended the regular ers Court. Mrs. Bell discuss-
Monday meeting of the ed with commissioners IRS

Gene E. Steed

Announces the re-opening
of his law office for the general
practice of law

18 S.E. 3rd Avenue
Perryton, Texas 79070

Tel: (806) 435-6330
(806) 435-7011

(806) 248-2831 Groom

(Not Board Certified by the
State Bar of Texas as to any
area of legal specialization)

guidelines concerning auto allowance for individuals using their personal autos for county business and also use of autos owned by the county and driven by county employees.

Judge Roselius briefed commissioners concerning meetings he has attended and will attend dealing with the rules and guidelines for care of indigents.

In other action Commissioner Jones discussed his concern for the need of road signs and markers along county roads and the importance of these signs being placed in hazard areas.

Commissioner Britten made the motion to continue funding for the district attorney's assistant in the amount of \$4,183.23 a year, or one-fifth of the salary.

The fire contract with the City of Pampa was discussed with any action being tabled.

The County will contribute \$81 to the National Association of Counties for campaigning efforts to save general revenue sharing money. Carson County at the present time receives approximately \$82,000 a year in revenue sharing money.

The court passed a reso-

lution to support Hansford County in their effort to keep a disposal dump out of their county or any other county in the Panhandle area.

It was also allowed that records of court reporter James Richardson employment by the county in 1950 be sent to the retirement program.

The court adjourned and will hold their next regular meeting on February 10.

Card of Thanks

The family of Mildred Castleberry wishes to express our heartfelt thanks to our many friends and loved ones for the prayers, love, flowers, food, cards, calls and visits during the loss of our precious mother, grandmother and sister.

Perhaps you sent a lovely card,
Or sat quietly in a chair,
Perhaps you sent a floral spray,
If so we saw it there.

Perhaps you spoke the kindest word,
As any friend or loved one could say.

Perhaps you were not there at all,
Just thought of us that day.

Whatever you did to console our hearts,
We thank you whatever the part.
God bless you.

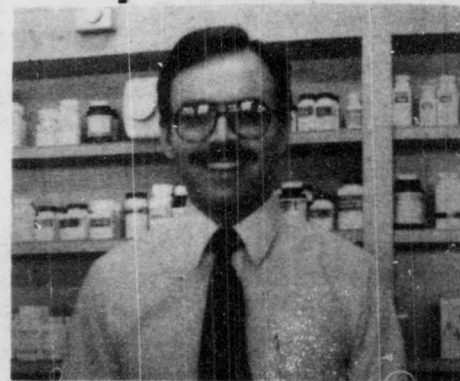
The family of
Mildred Castleberry

Public Notice

The City of Groom will hold a public hearing February 4, 1986, at City Hall, 7:30 p.m. to give the public an

opportunity to voice their input on uses for Revenue Sharing Funds paid to the City of Groom. The fund balance currently stands at \$12,325.18.

Keyes Pharmacy



"SERVICE YOU CAN TRUST"

Complete Prescription Service Mailing Service
Convenient

Competitive Prices
and Drive-Up Window

Merlin Rose

Pharmacist, Owner

EMERGENCY NUMBER 669-3559

24-Hour Emergency Service

928 N. Hobart. 669-6859 Pampa

PRINTING

For all your Printing needs
let The Groom News help you.

★ Envelopes

★ Statements

★ Letterheads

★ Rubber Stamps

★ Business Forms

★ Wedding Invitations

★ Shower Invitations

The Groom News

Call 248-3311

Introducing...



Your New Purina Dealer

We are proud to announce that we have
been appointed dealer for Purina Feeds
in the Carson County area.

We are proud to represent the Purina Checkerboard. It has been a symbol of quality, performance and service for over 80 years.



For all your
Purina Chows
and animal
health needs



AG & GRAIN, INC.

"Serving The Farmers Needs First"

Fertilizer

Grain

Seed

248-2551

Groom

CLASSIFIED SECTION

THE GROOM NEWS
THE McLEAN NEWS

All ads cash with order unless customer has an established account with The News.

RATES
10c per word per insertion
Minimum Ad—\$2.00

Home Baking. Call Anita Thompson, 779-2834.

Handyman's Dream— Great house for newly weds, retiree or rent property. Excellent location with extra lots, owner will finance with small down. Best buy in Groom. Bebe Bralley, 359-4525.

Red's Ditching Service
Dean Matthews, 537-3997 or 537-3653, any size PVC, gas or water lines, septic tanks, lateral lines, sprinkler systems and irrigation supplies.

For all your concrete and backhoe service, call Barker Redi Mix 779-2703 in McLean.

Carpentry & Plumbing
Accoustical Ceilings - Storm Cellars - Garage Additions - Roofing. Call Jim Burton 248-3691, Groom

CALL
Your local used cow dealer for seven day a week, dead stock removal. Phone 335-2372 or 1-800-692-4435.

Medicare Supplement
Insurance and Family & Individual Cancer Insurance. Plans available at Brumley Insurance Agency 248-5561.

Two bedroom apartment for rent, gas and water paid, \$275 per month, plus deposit. Call 806-355-2254.

Stanley Home Products
Contact Mary Britten at 248-2761 in Groom.

Is It True you can buy jeeps for \$44 through the U.S. government? Get the facts today! Call 1-312-742-1142 Ext. 9054.

Two bedroom house for rent, 217 N. Gray in McLean. Contact the Methodist Church office 779-2337, parsonage, 779-2547 or Tony Smitherman, 779-2995.

McLean Athletic Boosters in need of ground beef for concession stand. Any-one wishing to donate may call List Patman at 779-2818 or Emma Jean Tate at 779-2793.

Need LVN, 3-11 shift and also 11-7 at Palo Duro Convalescent Home in Claude, Texas. Contact Sharon Kelly or Linda Britten at 806-226-2201.

For Sale—antique dining table, chairs and buffet. Call 248-6101.

Amway users. Contact Aline Winegeart at 779-2795.

For Sale—1982 Honda 185 ATC. Call after 5:00 p.m. Ask for Larry, 779-3101 or 779-2736, McLean.

Need someone to clean house. Call Gwen Henley at 779-2679 or 779-2461.

House in the country for rent. Call W.H. Ollinger, 248-5241.

Donna Burton's all breed grooming. 248-3691 in Groom.

Will lease 640 acres love grass for 200 cows or 300 yearlings for the winter. 779-2963

Indoor or Outdoor Painting satisfaction guaranteed, free estimates, call David after 6:00 p.m., 248-2361.

25-06 Remington 6-power scope, \$400 or trade for pistol. Call 669-9445 days or 669-3464 nights.

For Sale—Beauty Pageant Dresses. In perfect condition. Only worn once. Cleaned-ready to go: 1-size 11-(runs small) Dusty Mauve; 1-size 9-White with multi-color flowers; 1-size 7-Burgandy with Beige lace trim. \$25.00 each. Call Cindi McDowell at 779-2723 or 779-2461 or come by 717 Walnut after 5:00 p.m.

This week's Specials—
Ladies Corduroys \$10 a pair. Lee's & Wrangler fashion slacks, large rack, \$8.99 a pair. One table of Blue Jeans up to \$30.00, Sale Price, \$11.95 each. Also one table of overalls, \$10.00 each at Vivian's Ready to Wear, Flowers and Gifts in Groom.

Contact Knorpp Insurance Agency, Inc. for insurance needs, the best of both worlds—reduced rates and full line personalized service from an independent agent. Call 1-800-692-4054.

Kent Crutcher
CPA MBA
Texas Commerce Bank
2201 Civic Circle
Suite 604
Amarillo, TX 79109
(806) 359-6298
Income Taxes

Cards Of Thanks

We the family of Evan L. Sitter wish to express to you, our friends, how very grateful we are for you. Your sympathy has been a great comfort to us and we will always cherish the love and caring you have shown to us in so many gracious ways.
Leona E. Sitter
Spencer B. Sitter
Dorothy Sitter Foster
Frances Sitter Dennis

A great big thank you to everyone of the community who made our Superbowl Luncheon a huge success! The money we made goes to sending our youth to retreats and the convention of our diocese in Amarillo which this year will be \$25 per person. We also pay for the lodging and one day ski rentals for those that accumulate needed points throughout the year's activities for the annual ski trip. Your help was greatly appreciated.
St. Mary's CYO

Lamp Shades,
Light Bulbs,
Replacement Glass
House Of Shades
& Lamp Repairs
2613 Wells Ave. Wallis
Village,
Amarillo, TX 79109

GROOM LODGE
No. 1170
A.F. & A.M.
Stated Meeting,
2nd Tuesday
Practice Every Tuesday
7:30 p.m.
VISITORS WELCOME
Oran Durham, W.M.
Cecil Culver, Secretary

A. J. Newsom
Water Well
Service
Submersible Pumps
Aeromotor Windmills
Phone 248-2711

For sale-1979 Ford Thunderbird. \$2500. Call Linda Meador at 779-2102.

Legal Notice

ORDINANCE NO. 219
An ordinance approving an increase in the rates which may be charged by Southwestern Public Service Company in the City of McLean, Texas, and providing for an effective date for such rates.

Introduced and passed by the City Council of the City of McLean, Texas, on First Reading the 20th day of December, 1985; and passed on Second and Final Reading the 14th day of January, 1986.

/s/ G.W. Terry, Mayor

Request For Statement Of Qualifications Engineering Services
The City of McLean has recently been awarded funds under the FY85 Texas Community Development Program. The funds will be used to finance improvements to the city's water system. Engineering services will be required to complete detailed project plans and specifications, assist the city in construction contracting procedures, construction supervision, and interim and final project inspections.

The City of McLean is hereby requesting statements of qualifications from engineering firms interested in performing the above mentioned tasks. The statements are required by February 6, 1986. The selection of an engineering firm will take place after that date. Copies of the Request for Statement of Qualifications package may be obtained from Judy Munden, Panhandle Regional Planning Commission, P.O. Box 9257, Amarillo, Texas 79105, (806) 372-3381.

The final selection of an engineering firm will be made by the city council of the City of McLean.

THE GROOM NEWS—Page 15
Thursday, January 30, 1986

BID NOTICE

The Groom Independent School District proposes to contract for the roofing of the gymnasium and adjacent dressing rooms, being approximately 9,300 square feet of roof, following these minimum specifications:

Base sheets nailed on 18" center; three ply of fiberglass mopped at normal rate of 23 lbs. per square; re-wrap wall with plastic and membrane; flood surface with hot asphalt at approximate rate of

60 lbs. per square; imbed gravel at the rate of 400 lbs. per square into hot asphalt.

Submit Bids To: Groom I.S.D., Post Office Box 550, Groom, Texas 79039, Attention: Board of Trustees Roofing Bid.

Bids will be opened and considered at regular and open meeting of the Board at 7:30 p.m. on the tenth day of February, 1986.

The Board of Trustees reserves the right to reject any and all bids.

HAVE BUYERS!!!

We need listings — small acreages along I-40 and HWY 287. Also, we need your ranch and farmland listings.

Call Martin at 669-9498
or
Irvine at 665-4534.

FIRST LANDMARK REALTORS

1064 N. HOBART, SUITE 100
PAMPA, TEXAS

TELEPHONE
806-665-0733
RES. 806-665-2190

Come to First Landmark, First

AUTO — HOME — LIFE — MEDICAL
ESTATE PLANNING — ANNUITIES
BONDS — CROP HAIL — CANCER

Other
Lines
Of
Insurance



All At
Competitive
RATES

We personally service what we sell.

Brumley Insurance Agency
GROOM, TEXAS

Johnny Brumley, Agent

Office: 248-5561 Home: 248-5561

WHEELER-EVANS ELEVATORS

Groom & Corner North

"We are happy to be of service"

Phones 248-3161 or 248-4771

Corner - 248-2611

Nadine Thornton
248-2211

Phone: 248-3161 or
248-4771

Corner: 248-2611

Groom, Texas

Carson County Abstract Company
REALTORS, ABSTRACTORS OF TITLES
222 Main St. 537-3561
Panhandle, Texas

Pav's Service

Summit & National Tires

Antifreeze

Complete Line Of Tires & Service

Wholesale Deliveries

Retail-Regular-Unleaded

Mon-Sat., 7:00 A.M. to 6:00 P.M.

REPORT OF CONDITION

Consolidating domestic and foreign subsidiaries of the

State National Bank of Groom
Name of Bank City
In the state of Texas, at the close of business on Dec. 31, 1985
published in response to call made by Comptroller of the Currency, under title 12, United States Code, Section 161.
Charter Number 12742 Comptroller of the Currency 11th District

Statement of Resources and Liabilities

		Thousands of dollars
ASSETS	Cash and balances due from depository institutions:	
	Noninterest-bearing balances and currency and coin	959
	Interest-bearing balances	592
	Securities	2,016
	Federal funds sold and securities purchased under agreements to resell in domestic offices of the bank and of its Edge and Agreement subsidiaries, and in IBFs	2,500
	Loans and lease financing receivables:	
	Loans and leases, net of unearned income	7,140
	LESS: Allowance for loan and lease losses	102
	LESS: Allocated transfer risk reserve	-0-
	Loans and leases, net of unearned income, allowance, and reserve	7,038
	Assets held in trading accounts	-0-
	Premises and fixed assets (including capitalized leases)	49
	Other real estate owned	337
	Investments in unconsolidated subsidiaries and associated companies	-0-
Customers' liability to this bank on acceptances outstanding	-0-	
Intangible assets	-0-	
Other assets	302	
Total assets	13,793	
LIABILITIES	Deposits:	
	In domestic offices:	
	Noninterest-bearing	2,105
	Interest-bearing	10,215
	In foreign offices, Edge and Agreement subsidiaries, and IBFs	-0-
	Noninterest-bearing	-0-
	Interest-bearing	-0-
	Federal funds purchased and securities sold under agreements to repurchase in domestic offices of the bank and of its Edge and Agreement subsidiaries, and in IBFs	-0-
	Demand notes issued to the U.S. Treasury	-0-
	Other borrowed money	-0-
	Mortgage indebtedness and obligations under capitalized leases	-0-
	Bank's liability on acceptances executed and outstanding	-0-
	Notes and debentures subordinated to deposits	-0-
	Other liabilities	120
Total liabilities	12,440	
Limited-life preferred stock	-0-	
EQUITY CAPITAL	Perpetual preferred stock	-0-
	Common stock	100
	Surplus	100
	Undivided profits and capital reserves	1,153
	Cumulative foreign currency translation adjustments	-0-
	Total equity capital	1,353
	Total liabilities, limited-life preferred stock, and equity capital	13,793

We, the undersigned directors, attest to the correctness of this statement of resources and liabilities. We declare that it has been examined by us, and to the best of our knowledge and belief has been prepared in conformance with the instructions and is true and correct.

Dean H. Burger
Steve Williams
John A. Howard

Directors

I, Steve Williams Name
Cashier Title

of the above-named bank do hereby declare that this Report of Condition is true and correct to the best of my knowledge and belief.

Steve Williams
Signature
1-9-86
Date

- 2.—Vera Lowrey
- 6.—Ted Britten, Vicki West, John Adam Stephens
- 7.—John Patterson, Mr. and Mrs. Bobby L. Jones (A)
- 8.—Mrs. Tom Wagner, Mrs. C.F. Hermesmeier, Rodney Fraser
- 9.—Jolee Burger
- 10.—Mrs. Billy J. Burgin
- 11.—Troy Ritter
- 12.—C.W. (Skeet) Brown, Mr. and Mrs. Patrick H. Weinheimer (A)
- 13.—Roger Joiner
- 14.—Susan Elaine Babcock, Lynn Y. Britten, Mr. and Mrs. J.S. (Jake) Lacy (A)
- 15.—Billy J. Burgin, Mrs. Frank Hermesmeier, Courtney Burgin
- 16.—Scott Miller, Rickey Shuck
- 17.—Mrs. D.A. (Hap) Watson, Brett Stroope
- 18.—Mrs. Viola Harrell, Martin Hermesmeier, Leon Schaffer, Lloyd D. Littlefield, Sherri Koetting
- 19.—Mrs. L.N. Weller, Brad Sustaire, Kelly Mae Rose
- 20.—Mrs. Amos Britten, Nicklaus Todd Anthony, Mr. and Mrs. David Brown (A)
- 21.—Bronte Britten, Bart Britten, Dean Fields, Mr. and Mrs. Standley (Red) Latta (A)
- 22.—Mrs. M.B. Bolden, Mr. and Mrs. John Adams (A)
- 23.—Gary W. Friemel, Mr. and Mrs. Bobby E. Pool (A)
- 24.—Mrs. Kenneth R. Burger, Robbie Ellington, Lee Barkley
- 25.—Tricia Lynn Fraser, Mrs. N.B. Helton, Mr. and Mrs. A.D. Neal (A)
- 28.—Gary Davis
- 27.—Tracy J. Britten, Mrs. Kenneth W. Babcock, Mrs. Donald Ritter, Howard Britten.
- 28.—C.F. Hermesmeier, Matthew Fields, Mrs. Harris E. Howard, Gary Davis

Now Is Time To Make Scholarship Application

The month of January is a critical time for students to start applying for summer and fall financial aid, according to the director of the largest private scholarship search firm in the country.

Numerous private grants and scholarships, sponsored by corporations, trade and civic groups and private foundations are available this year, according to the director. It has been estimated that one-fourth of all financial aid comes from the private sector and in a number of cases is not based on parents' financial data as much as student activities and interests. A major qualification is a student's selected major with a number of new scholarships available in computer programming, business, law health and communications. The Scholarship Bank provides each student with 65 sources of directly relevant financial aid from a data base of over 25,000 scholarships. The search includes not only major, but geographic desires, age, religion, type of aid sought, and parent's employer, union or military background.