

John C. Haynes 1
Box 400
McLean Texas 79057

The McLean News

Serving McLean and the Area Since 1903

Volume 80 McLean, Gray County, Texas 79057 Thursday, February 3, 1983 Price 25¢ Number 5

from the
distaff side



by Linda Haynes

June Suggs, president of the McLean High School ex-student association, called last week to tell us that the organization is going to try to have the ex-student's reunion this summer. At the last reunion, the group voted to have the reunion every five years, but several exes have complained about the length of time between meetings, so the ex-students are going to try again.

If you would volunteer to help send out cards for your class, please contact June. The cards for several classes are missing, so if you have those, please let her know. Also, if you are an ex-student, and have moved since 1981, or did not get notified of the last reunion, please let her know.

You may write to June at Box 228, McLean, Texas 79057.

Organizing the reunion is a tremendous undertaking, so she will need all the help she can get. Everyone seems to enjoy the visiting and seeing old friends once the day arrives, so volunteer a little of your time to help with this project.

So many people were interested in the Class of 42 feature that we ran the last week of 1982 that our correspondent Zora Billingsley has decided to try to do the same thing for the class of 1943.

If you have the addresses or any information about the following people, please write to Zora at 1003 West 48th, Amarillo, Texas. 79110. The names of the people she needs addresses for are listed below: Helen Fern Allen, Wayne Back, Georgie Lee Barrow, Nova Lee Beesinger, Cora Mae Blocker, Kenneth Bruton, Jean Burr, Billy Carpenter, John Chapman, Bob Corbin, Bobby Sullivan Crisp, Mary Evelyn Foster, Jimmie Lee Glass, Shirley Raye Glass, Mildred Henley, Ruth Humphreys, Troy Isom, Annie Jones, Billie Ruth Jones, Jack Jones, John Kirby, Jewel Lane, Jeweleen Langham, Gayle Montgomery, Norma Lee Myatt, Joan McGrady, Edwin Owen, Joe D. Pegrarn, Bonnie Preston, Sally Sagner, Sybil Weaver, and Ernest West.

School personnel who helped with the class included Carl Chaudoin. See DISTAFF, Page 2

Date	High	Low
1-25-83	41	28
1-26-83	43	29
1-27-83	46	20
1-28-83	52	29
1-29-83	56	33
1-30-83	53	32
1-31-83	32	28

Snow - 1-31-83 - 5 in.
60 moisture

Snow Storm Blankets McLean Monday



THE BLOWING SNOW Monday made the McLean City Park look like a winter wonderland Tuesday, but few braved the bitter winds to view the spectacular sight. [Photo by Linda Haynes]



McLEAN'S DRIFTING SNOW Monday sent several people out with their snow shovels Tuesday. Here, Robert Goldfarb shovels off the walk in front of Goldie's Pizza. [Photo by Linda Haynes]

A driving rain storm changed to snow Monday afternoon, and McLean was blanketed in more than five inches by nightfall. The blowing snow all across the Panhandle forced school closings Tuesday. McLean schools were dismissed for the day, and basketball games with Lefors, set for Tuesday night, were cancelled.

A large number of travellers and truck drivers were stranded in McLean. Officials reported that all motels were full by 8 p.m., and several travellers stayed in private homes Monday night.

Although the thermometer never dropped below 19 degrees Monday night, the heavy winds of 20 to 30 miles an hour made Tuesday seem bitterly cold. An unofficial wind chill meter registered -10 degrees Tuesday morning.

Several businesses in McLean remained closed Tuesday because of the difficulty of travelling about the city.

McLean Man Arraigned

William Canady, 29, of McLean was arraigned Jan. 28 by Justice of the Peace R. C. Parker, and bond set at \$5,000. A fugitive warrant was issued for Canady from Mesa, Arizona, charging him with conspiracy to defraud.

Department of Public Safety troopers John Holland and Ron Shank made the arrest. Following the arraignment, the man was turned over to the Gray County Sheriff's office.

Miss McLean Pageant Set For Feb. 12 At MHS

The annual Miss McLean pageant is set for Feb. 12 at 7 p.m. in the McLean High School auditorium. Twenty-four McLean High school students will vie for the

honor. The winner will be crowned by Missy Billingsley, Miss McLean 1982.

The contestants will be interviewed by out-of-town judges prior to the

contest. Judges will view the girls in both street wear and formal wear.

Dorman Thomas will be the master of ceremonies for the event.

The pageant is sponsored

this year by the staff of the *Tumbleweed*, the MHS yearbook.

Contestants are Jana Harris, Sharla Todd, Roxie Littlefield, Teresa Woods, Candi Carpenter,

Stacie Smith, Anna Jean Lamb, Judy Stewart, Amber Kingston, Patricia Rodgers, Kristie Thompson, Sherry McLain, Karen Wilson, Diane Connors, Melanie Billingsley, Lee Ann Tate,

Wendy Kniffen, Wendy McDowell, Michelle Nobles, Gina Gardner, Eva Anderson, Stefanie Houdyshell, Vicki Armbrister, and Tracie Beck.

Tigers And Tigerettes Host Groom And Phillips Last Week

The McLean Tigers and Tigerettes hosted Groom and Phillips to games Thursday and Friday night. The Groom games were played to make up games which were cancelled last week due to snow. Monday's snow storm forced cancellation of the Monday night junior high games at Miami, and the senior high games Tuesday night with Lefors. At press time no date had been set to make up those games.

In the Groom games, the visiting Tigerettes and the host Tigerettes played an even first half, with that period of play ending with Groom ahead 27 to 25. The third quarter was the turning point in the game as Groom scored 15 points to McLean's 12, and then in the fourth quarter, Groom scored 18 points to McLean's 10. The game ended with Groom winning 60 to 47. Scoring for McLean were Maria Eck with 15 and Sharla Todd with 13. (Complete scoring and rebounding statistics were not available, because of the school being closed Tuesday.)

The boys game was almost a repeat of the girls' game, although McLean stayed close to Groom throughout the second half, ending the third quarter with a one-point lead. However,

Groom managed to cool off the Tigers in the fourth quarter, and the game ended 55 to 50. Scoring for McLean were Randall Wynn with 15, and Martin Gately and Robert Swaner, each with 10.

Friday night, McLean faced two of the best teams in the district when the Phillips Blackhawks came to town. The Tigerettes played an outstanding first half against

the aggressive Phillips team, staying within striking range. The first half ended with Phillips holding a slight edge of 22 to 17. But the pesky third quarter spelled dis-

aster for McLean, as Phillips held the host girls to 2 points, as they racked up a scoring drive of 26 points. The game ended with Phillips winning 73 to 28. Maria Eck

led the scoring with 7 points.

In the boys' game, Phillips led after the first half by a score of 22 to 14, and then won the game 56 to 28. Randall Wynn had 8 points for McLean.

DPS Trooper Investigates Three Wrecks Near McLean

Department of Public Safety trooper John Holland investigated three wrecks last week near McLean. On Jan. 25 at 7:20 a.m. 2/10 miles west of the city on Interstate 40, a 1976 semi-tractor truck, driven by Jerry Donald Ellis of Arnold, Mo., lost directional control on the icy road and jackknifed. It came to rest in the median of the roadway. There were no injuries.

At 2:15 p.m. Jan. 26 at the intersection of I-40 and Cedar St. Gerald Laurence Brugman of Jamestown, N.D., driving a 1982 Buick, was travelling west on I-40 in the right hand land of traffic, turned left in front of a 1982 semi-truck, driven by Kenneth Kloehn of Green Bay, Wisc. There were no

injuries reported in the incident. On Jan. 27 at 2:30 p.m.

3.7 miles north of McLean on Texas highway 273, Ernie Gary Fry of

McLean, driving a 1982 Silverado pickup, left the roadway, and over-steer-

ed to the left. The pickup went across the paved road and turned over one

time and came to rest on its top on the east side of the road. There were no injuries in the incident.

F. Jake Hess Files For Office Of McLean City Mayor For April Election

F. Jake Hess filed last week for the office of mayor, according to city secretary Stella Lee. Incumbent mayor Sam

Haynes has announced that he will not seek re-election.

No one has filed for either of the two seats

open on the City Council. Incumbents to that board, Dale Glass and Charles Milam, have indicated that they would

not file for election. Filing will end March 1 for the election which is set for April 2.

Three seats are open

on the McLean School Board, but no candidates have filed for those offices as of press time Tuesday.

McLean Blood Drive Termed Success Despite Monday's Snow Storm

Despite blowing snow, several McLean residents went to First United Methodist Church Monday afternoon to donate a pint of blood. Although several were turned away for various health reasons, 24 people donated blood. That's four more donors than the last blood drive in

McLean, according to Ida Hess of the McLean Chamber of Commerce which sponsored the

drive. "We appreciate all those who braved the elements to give their

blood," she said. "We all know how important the gift of blood can be, and we're glad that the

people from the Coffee Memorial Blood Bank in Amarillo didn't waste their time in coming down here."

National Women's Tournament Set For Amarillo Mar. 17

The pioneer tournament of women's basketball hits the courts in Amarillo, Texas, March

17-19, sporting a new name: THE CONVERSE NATIONAL WOMEN'S INVITATIONAL TOURN-

AMENT. With the name change today, Amarillo Chamber of Commerce officials also outlined the

formation of the Converse NWIT Radio Broadcast Network. See TOURNAMENT, Page 5

OPINIONS

VIEWS ARE WRITTEN BY LINDA HAYNES UNLESS OTHERWISE NOTED-IF YOU HAVE AN OPINION ON ANY CURRENT SUBJECT WE WELCOME YOUR SIGNED LETTERS.

Waiting For Hitler?

Sunday was the fiftieth anniversary of one of the most horrifying events in history. It was Jan. 30, 1933 when Adolf Hitler was named the chancellor of Germany, and the day marked the beginning of a nightmare for the whole world.

Since historical hindsight is always perfect, it is easy for us to sit in our comfortable world of 1983 and see the mistakes of the German people so long ago. The weak Weimar Republic seemed to be crying for a strong man to take over the reins of a government which was crippled by inflation, corruption, and an economic depression. That, combined with the German's extreme nationalism and reverence for the military, helped bring the monster Hitler to the forefront of the government. His dominance in that country eventually led to the deaths of six million Jews, and the deaths of hundreds of thousands of soldiers in World War II.

But if we accept the fact that those three conditions - extreme patriotism, reverence for the military, and a dominant strongman - led to the excesses of the Nazis, then we must seriously look at our country now.

In Reagan's new budget, he is boosting one of the highest military budgets in history. While our country wallows in an economic depression, the likes of which we have not seen since Hitler's heyday, defense spending will rise from \$208.9 billion to \$238.6 billion next year and \$277.5 billion in 1985. These raises are going to take place in an economy which will see a deficit of \$194 billion by 1985.

Would you call this reverence for the military? If we are honest, I think we must admit that this budget definitely sacrifices too much for our military establishment.

And is there any doubt that we Americans (myself included) think that our country is the best, the most virtuous, the greatest in the world? I certainly think we qualify as being extremely patriotic.

So that leaves one condition to develop in our country - the rise of an extremely powerful, charismatic leader. Is he out there? Is he some minor party functionary, learning the system, working his way through the political system, waiting for the best time to come forward?

Is he helping to promote the high military spending and the lack of concern for the social programs of our government? Is he delightedly watching the staggering economy and the high rate of unemployment?

And, if he is there, will we recognize him when we see him? Or will we be like the German people, and see him as the savior of our pocketbooks?

Only the historians in the year 2033 will be able to answer those questions, but we should be aware of the possibilities, and keep on guard against a false prophet who promises to lead us out of an economic depression if only we sacrifice a few small freedoms.

The world fell for that line in 1933, and that was one time too many.



DISTAFF

Continued From Page 1

superintendent; Wynona Houpe, speech teacher; Darrell Manney, principal; Mrs. W.O. Osborne, history teacher; and Lee Ola Payne, commercial teacher.

I've been spending several hours a week doing research in the old issues of The McLean News, trying to track down the exact dates for the completion of the paving of Route 66 through McLean.

Last week I read through the issues for the year 1931, and as usual, T.A. Lander's papers were so fascinating that I found myself reading stories that were totally unrelated to the highway research.

Looking at an entire year's compilation of papers, I was again impressed with some of the interesting events of the year, and also some of the real tragedies of the time.

One of the most tragic stories concerned a couple by the name of Ayer. Apparently the 40-year-old man and his 36-year-old wife had started on a trip, and had car trouble. When they returned home, they walked into their house in McLean, and the husband lit a match to find the light switch. When he did, the house burst into flames. The woman went out the back door and the man went out the front door, but each thought the other was still in the house. They returned to the burning house to search for each other.

The story said that she was in serious condition, but that he was expected to be all right. The next week's paper, however, carried the story of his death, and stated that the couple had five children. Two weeks later, the paper carried a story of her death.

As I read the sad stories, I couldn't help

wondering about what had happened to the five children. Then in a paper dated a few weeks later, I read that one of their daughters had walked into the home where she was living and found a dishrag burning on the stove. She grabbed the rag and tried to put it out, but caught her dress on fire, and she was severely burned.

I searched the rest of the papers for that year, trying to learn what had happened to the family, but found nothing. I've even asked some old timers if they remembered the incident, but no one seems to recall the story.

The old volumes of paper present such a fascinating slice of life that I find them hard to put down. The same year's papers carried several stories about a contested mayor's election in McLean, stories about the famous Amarillo editor Gene Howe, who came to McLean to pick cotton to pay off a bet, stories about the McLean city band, and, of course, the stories of births, deaths, and weddings.

I was surprised at the number of names I recognized in the old papers, names of people who still live in McLean or whose children still live here.

In looking through those old papers, though, I find it very easy to become nostalgic and to think that life in McLean then was a little slower, a little richer, perhaps a little more fun.

But I wouldn't want to go back to those "good old days." There are enough stories about infant deaths, deaths from pneumonia, death from appendicitis attacks, and other diseases that have been conquered in our world, to make me thankful to live in 1983, in spite of the fact that we are all going so fast that we have almost forgotten how to have fun.



Sage, known for its sweet odor and flavor, is a relative of the mint family.

On Your Payroll

SENATOR BILL SARPALIUS, P.O. Box 12068, Austin, Texas 78711 or P.O. Box 7926, Amarillo, Texas 79101, or call 512/475-3222.
 REPRESENTATIVE FOSTER WHALEY, Texas House of Representatives, P.O. Box 2910, Austin, Texas 78769, or call 1/800-692-1389.
 REPRESENTATIVE JACK HIGHTOWER, 13th District, Room 2348 Rayburn Building, Washington, D.C. 20515.
 SENATOR LLOYD M. BENTSEN, Room 240, Russell Building, Washington, D.C. 20510
 SENATOR JOHN TOWER, Room 142, Russell Building, Washington, D.C. 20510



The House failed to suspend the Constitutional rules which means the first 30 days are reserved for the introduction of bills, the second 30 days are reserved for committees to hear these bills. Unless the Governor declares a bill an emergency, the bill cannot be debated on the floor for at least 60 days. This will mean very little will happen on the floor of the house for at least 60 days. Testimony in the Committees the second 30 days will be lively. Some of the issues: Horse Racing, De-Regulation of Trucking Industry, tinkering with the Home-Steal Law, Drunken Driving Legislation, Educational Issues and many others.

Ohio State Senator John Glenn spoke to the Legislature on Jan. 26. He mentioned a lot of problems we have today on the Federal level but gave few solutions.

Governor Mark White

spoke to a joint session of the House and Senate on Jan. 27. Most of his talk was repeats of his stand on many of the issues raised during his campaign. Significant points included the fact the State was now in debt to the Federal government over \$200 million and paying 10 percent interest on the unemployment compensation fund. The Texas Employment Commission estimates we could be over one billion in debt by the year's end if things do not improve. He is forming a committee to make recommendations on how this can be corrected. The Governor indicated he would play an active role in programs for agriculture - few specifics were mentioned.

In closing, he mentioned the fact the state would have 21 percent more money or four billion dollars to carry out the many items in the State's Budget over the next two years. He said,

LINES
by
LEM
O'RICKK

The snow and the wind and the ice,
Make people do things oh so nice;
Like a pull from a drift,
Or a much needed lift;
To prove friendship's life's greatest spice!

Every week, nine out of 10 adults read at least one newspaper.

PAMPA RAPE CRISIS CENTER
CALL 665-3721
24 hours

COW POKES By Ace Reid

"One day the wife was cleaning house and decided to throw out everything that didn't work."

"Now, I don't want one of them lite beers, I want a strong one!"

"COWPOKES" is brought to you by the friendly folks at the
American National Bank
In McLean

779-2461
201 N. Main
McLean, Texas

The McLean News
USPS 336-260
LINDA HAYNES,
EDITOR AND PUBLISHER
LISA PATMAN, ASSOCIATE EDITOR
201 N. Main P.O. Drawer H
McLean, Texas 79057

TEXAS PRESS ASSOCIATION
AWARD WINNER
1982
McLean, Gray County, Texas
Published each Thursday
(except the last week in December)
Second class postage paid at McLean, Texas 79057
POSTMASTER: Send address changes to:
THE McLEAN NEWS
P.O. DRAWER H
McLEAN, TEXAS 79057

SUBSCRIPTION RATES:
\$12 per year in Gray County
\$14 per year outside Gray County
ADVERTISING RATES:
\$2.00 per column inch National Rate
\$1.85 per column inch Open Retail Rate

McLean, Texas
Population 1183 [1970 Census]

MEMBER 1983
TEXAS PRESS ASSOCIATION

MEMBER 1983
TEXAS PRESS ASSOCIATION

SUBSCRIBE TO
The McLean News

IN-COUNTY RATE \$12 per year
OUTSIDE GRAY COUNTY \$14 per year
SPECIAL 9-MONTH STUDENT RATE \$9

You can subscribe by mail by completing the form below and mailing with your check or money order to:
THE McLEAN NEWS
P.O. DRAWER H
McLEAN, TX. 79057

NAME _____
ADDRESS _____
CITY _____
STATE _____ ZIP CODE _____



MR. AND MRS. CHOCK SMITH

Smiths Mark Anniversary

Mr. and Mrs. Jesse E. Smith celebrated their 45th wedding anniversary Jan. 29. The couple, along with their children and grandchildren, had supper in Pampa and cake back at their home in McLean.

Those present for the celebration were Mrs.

Rosie Lee Smith, Cindy, Lisa and Tommy of Beaver, Okla.; Sherry Gordon of Alva, Okla.; Mr. and Mrs. Bill Kingston, Joel, Jeff and Debbie Hutchison of McLean; Mr. and Mrs. James Smith and Brian of Amarillo; Mr. and Mrs. Keith Teeple, Kari, Todd, and David of Mustang, Okla.

New Arrivals

Mr. and Mrs. Randy Curry of Stroud, Okla. are the parents of a daughter born Jan. 24 at Stroud Municipal Hospital. She weighed 7 lbs. and 11 oz. and was named Hannah Lynn. She has one sister,

Heather, 5. Maternal grandparents are Mr. and Mrs. Ralph Moore of Broken Arrow, Okla. Paternal grandparents are Mr. and Mrs. Glen Curry of McLean. Great-grandparents are Mr. and Mrs. Everett Watson of McLean.

BIRTHDAYS

FEBRUARY 3
Warren Henley
Halcyon Rigdon
FEBRUARY 4
Carlton Patterson
Vicki Sue Conatser
FEBRUARY 5
Mrs. Leroy Williams
Irene Ledbetter
Mrs. Robert West
Lester Alan Lee
FEBRUARY 6
Sharon Bailey

FEBRUARY 7
Jerry Mounce
Mrs. Essie Glenn
FEBRUARY 8
Deloris Bailey
Rodney G. Smith
Tammy Mounce
Michael Christie
Doris Guyton
Tom Milam
FEBRUARY 9
Mrs. Carl Baker
T. L. O'Neal

Loose Marbles

by Lisa Patman

For months now I have been dutifully sending in my sweepstakes entries. So far I have not received my \$100,000 dream house, my \$25,000 cash, nor my "trip of a lifetime," but with the weather being so bad I assume the mails are slow.

In addition, I have not received my "his and her luxury cars," my diamond and ruby bracelet, my "vacation home at the location of my choice," nor my genuine imitation brass-plated bookends, but I feel certain UPS is on the way.

I have, in fact, quite cheerfully taken advantage of the many opportunities offered me, hopeful that with each entry I will receive some prize of which I am totally undeserving.

So it is with great consternation that I sit here staring at my latest contest offering --- a one-week trip for four aboard a yacht in the Virgin Islands.

What could the sweepstakes people of America be thinking of? What right-thinking mother of two would fall for a ploy like that? Do those nuts think I'm going to vie for a chance to be alone and seasick on a boat with my own family? Do they think I have taken leave of my senses?

Surely they don't seriously believe I would want to go on a trip where I couldn't hide the dirty socks under the bed, couldn't go out to eat, and worst of all, couldn't lock myself in my office to get away from it all. I don't believe those sweepstakes guys have all their oars in the water.

On the other hand, maybe the prize is negotiable. Perhaps I could trade it in for a four-week trip for one aboard a dinghy in the nearest stockpond. Now there's a prize worth going for.



In The Kitchen

by Linda Haynes

Finding a new main dish which your family really likes, which is easy to prepare, and which is

relatively inexpensive is always a challenge. The following recipe fits all those categories, and is delicious, too.

McLEAN BRIEFS

Vick Back is a patient at St. Anthony's Hospital in Amarillo. ...

Ralph and Pat Chilton of Hale Center spent Friday night with his grandmother, Mrs. Mae Chilton. Also visiting was Mrs. Fay Tompkins of Plainview. ...

Returning late Saturday night from a seven-day stay in Scottsdale, Arizona were Johnny and Joyce Haynes and Ed and Lisa Patman. The four attended the John Jacobs Golf School to improve their golfing abilities. ...

The EMT class which recently completed an emergency medical technician course in McLean had a potluck dinner at the United Methodist Church here Wednesday night. ...

Fashion Show Planned For March 5

By Donna Brauchi

The 12th Annual National Fibers Fashion Review is being planned for the 1983 Southwest Farm and Ranch Exposition. The fashion contest and show will be held March 5 in Ft. Worth.

The contest is open to any homemaker from Texas, Oklahoma, and New Mexico, who is involved in agricultural production, an agriculture-related business, or is a member of Extension Homemaker Clubs, Young Homemakers, producer associations or auxiliaries or tractor pull clubs.

The Fashion Revue is designed to promote the use of Southwest natural fibers and to emphasize excellence in garment construction and fashion in home sewing. Garments entered in the show must be made of a minimum blend of 50% cotton or 50% wool and/or mohair.

Fashion Review competition will have four divisions: day wear, evening wear, mother and child, and former grand award winners. Prizes will be awarded to first, second, and third place winners in each division. Special awards will be presented to the best cotton, mohair, and wool garments.

For entry blanks, contact the Gray County Extension Office at 669-7429 or write to the office at Star Rt. 2, Box 33, Pampa.

Members of the McLean Church of Christ fed approximately 80 people after worship services Sunday night.

Youth and their sponsors from the Mary Ellen and Harvester Church of Christ in Pampa journeyed to McLean and led the Sunday evening worship hour.

A supper and devotional followed the service. The group also made a visit to group also stopped at the home of Stacie Smith, who was unable to attend the services, due to an illness.

Mexican-style Chicken Kiev
8 chicken breast halves, skinned and bones
1 7/8 oz. can diced green chiles
4 oz. Monterey Jack cheese, cut in 8 stripes
1/2 cup fine dry bread crumbs
1/4 cup grated Parmesan cheese
1 tablespoon chili powder
1/2 tsp salt
1/4 tsp ground cumin
1/4 tsp black pepper
Butter, melted
Tomato Sauce
1 pound chicken pieces to about 1/4 inch thickness. Put about 2 tablespoons chiles and 1 cheese strip in center of each chicken piece. Roll up and tuck ends under. Combine bread crumbs, parmesan cheese, chili powder, salt, cumin, and

pepper. Dip each stuffed chicken in shallow bowl containing 6 tablespoons melted butter and roll in crumb mixture. Place chicken rolls, seam side down in the long baking dish and drizzle with a little melted butter. Cover and chill 4 hours or overnight. Bake uncovered at 400 degrees 20 minutes or until done. Serve with tomato sauce.

Tomato Sauce
1 (1 lb.) can tomato sauce
1/2 tsp. ground cumin
1/3 cup sliced green onions
salt, pepper
hot pepper sauce
Combine tomato sauce, cumin, and green onions in small saucepan. Season to taste with salt, pepper, and hot pepper sauce. Heat well.

ALANREED BRIEFS

Polly Harrison, Lena Carter and Anita Brown attended Homemaker's Council at the courthouse annex Monday and visited at the Hughley Home and with Ruth Carter at Copper Kitchen. ...

The Alanreed Homemaker's Club met Jan. 26 in the home of Polly Harrison with Anita Bruce as hostess. The meeting was a luncheon and birthday party for the January people. Honored were Ann Morris, Lucy Goldston and Polly Harrison. Mrs. Bruce made a pretty decorated cake for the occasion.

After lunch a business session was held presided over by President Anita Bruce. A council report was given by Polly Harrison. Roll call was "What I would do with a 25th hour," and was answered by Anita Bruce, Lena Carter, Lucy Goldston, Onie Gibson, Davie Gipson, Sophia Hutchison, Ann Morris, Nell Keese, Polly Harrison and one guest, Jean Warminski, who gave the program on "Time Savers" which was participated in by all present.

The R.D. McLains were in Pampa last week for funeral services for Ruth's uncle Clyde Dorman. ...

Mr. and Mrs. Lavern Goldston were in Amarillo on Tuesday for medical attention for Mrs. Goldston. ...

Polly Harrison and Lena Carter met with several youngsters at school last week to organize and continue classes in embroidery and crochet. ...

Don't forget our Community Improvement meeting this Saturday night, Feb. 5 at 7 p.m. It will be a covered dish supper. ...

Mrs. Juanita McKee made a trip to Pampa Friday. ...

The R. L. Leeders had daughter Sharon and family of Clarendon visiting during the weekend. ...

The Robert Bruces made a trip to Pampa Friday. Grandson Paul came home with her for the weekend. ...

Bill McKee of Amarillo visited his mother Juanita McKee here Friday. ...

The Frank Worshams were shopping in Pampa last week. ...



LIBRARY NOTES

by Sam Humes

On the Brink of Tomorrow: FRONTIERS OF SCIENCE

National Geographic Society
This new science book by National Geographic Society is an excellent contribution for anyone interested in the fantastic advances made in this subject in the last few years.

If you are in your forties, half of all the world's scientific knowledge had been produced since you left school! We live in a wondrous age of discovery. Its frontiers stretch not over uncharted seas or through trackless jungles, but across the vast reaches of the universe and into the heart of the atom; around our neighbor planets in the solar system; along the shifting fault lines of our own planet earth;

inside the cells of our bodies as they fight disease and reproduce; and within the most complex of instruments, the human brain.

Dramatic photographs in this edition take you to distant galaxies and back to earthbound laboratories large and small.

A colorful tribute to mankind's resourceful ingenuity and boundless curiosity, this book truly reaffirms a remark by Albert Einstein: "The most incomprehensible thing about the world is that it is comprehensible."

You will certainly enjoy "On The Brink of Tomorrow" as it is up to the standard of the National Geographic excellence, and it is now available at Lovett Memorial Library.



IRENE PAKAN

Mrs. Pakan Comes Home From Caribbean Cruise

Mrs. Irene Pakan re-10-day cruise on the Stella Salaris to the Caribbean. She flew to Curacao, Netherlands, Antilles and toured the island by bus. The cruise went to Aruba; Cirstobal, Panama; Balboa; across the Panama Canal to Panama City. They also

toured the San Blas islands, home of the Cunas, who are proficient in the art of "mola" embroidery. The cruise continued to Montego Bay, Jamaica, Georgetown, Grand Cayman, Playa del Carmen, the Yucatan and Cuza-mel, Mexico. The cruise ended at Galveston.

March Wedding Announced

Mr. and Mrs. Dick H. Bode of Alanreed announce the engagement and upcoming marriage of their daughter,

Margie to Randy Braid-foot of Panhandle. The wedding will take place March 12, in the First Baptist Church in Pampa.

FOR YOUR SWEETHEART—
BELINDA SATIN DOLLS, VALENTINE FIGURINES, CARDS AND PARTY GOODS PACKAGED VALENTINES FOR THE KIDS

THE POTPOURRI SHOP
McLean

SAVE NOW ON HOMEOWNERS INSURANCE!

TEXAS HOMEOWNERS INSURANCE RATES HAVE DECREASED SINCE LAST YEAR! CHECK WITH US TO FIND OUT ABOUT THE SAVINGS!

JANE SIMPSON INSURANCE AGENCY

106-A N. Main McLean, Texas 779-2451

Mary Kay COSMETICS

Linda Sue Meador
Beauty Consultant

Box 657 (806) 779-2102
McLean, Texas 79057

"Happiness is Having A Mary Kay Facial"

THIS YEAR SEND \$3

Valentine Greetings \$3

THROUGH

The McLean News

HAPPY VALENTINE'S DAY

To Barbara... I love you more today than yesterday — not as much as tomorrow.

Yours, Steve

To Our Mom And Dad...

Love is... having two wonderful parents like you. Have a happy Valentine's Day!

The Kids

Call 779-2447

DEADLINE MONDAY, FEB. 7

LOVE STRUCK?

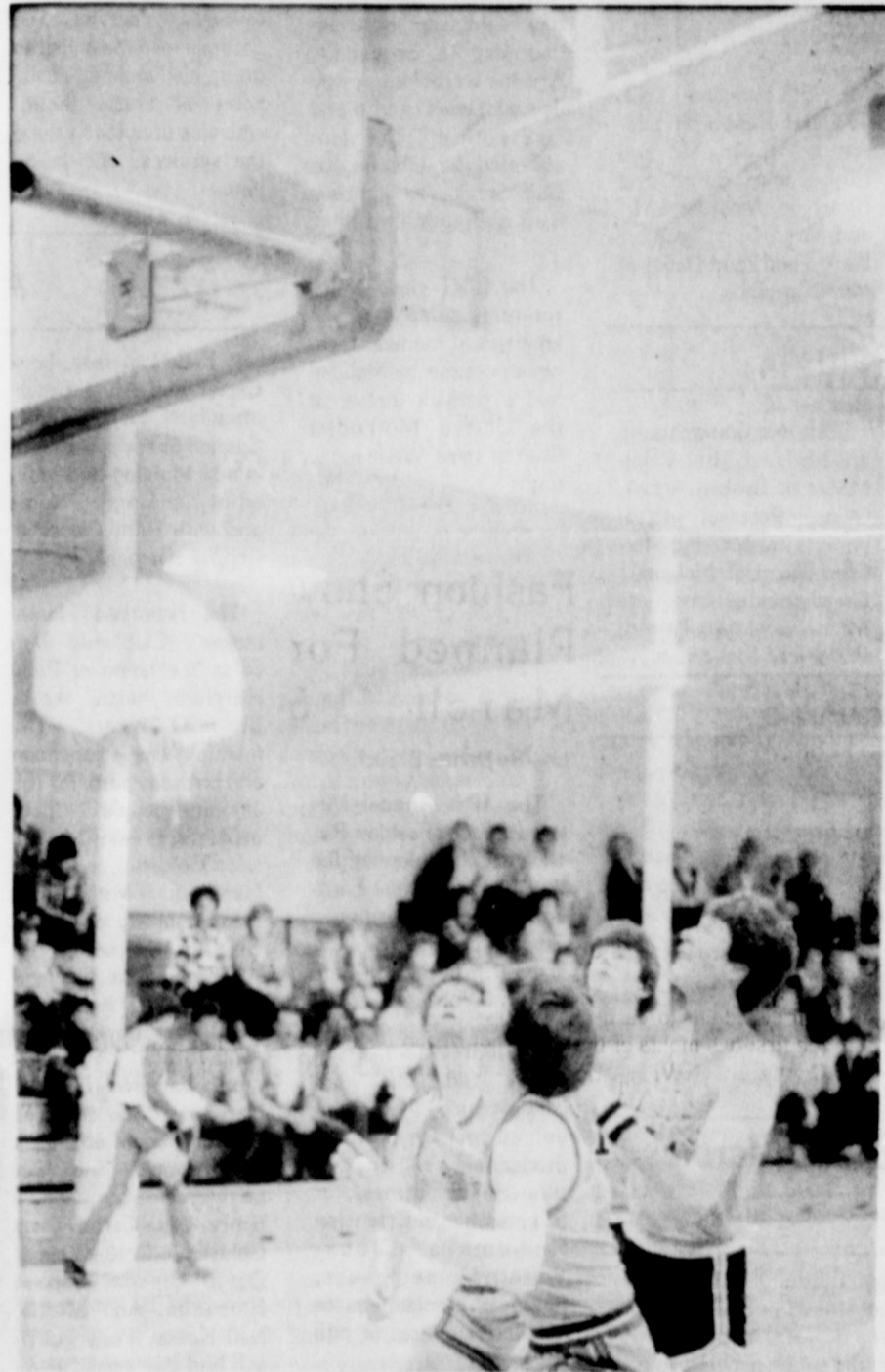
TREAT YOUR SWEETHEART WITH A LOVELY HEART-SHAPED SATIN-COVERED BOX OF PANGBURN'S CHOCOLATES FROM PARSON'S DRUG

117 N. Main McLean, Texas 779-2442

basketball !



HANG ON, MEL! Tigerette Melanie Billingsley ties the ball with this Claude player during a district game last week in McLean. (Photo by Linda Haynes)



TIGERS MARTIN GATELY and DeWayne Adamson watch the ball to see if DeWayne's shot will fall. This action took place during the McLean-Claude game last week. (Photo by Linda Haynes)

JOIN THESE TIGER BOOSTERS IN SUPPORTING THE McLEAN TIGERS BY ATTENDING THE GAMES:

McLean Hardware

**David Brown's
Water Well Service**

Parson's Rexall Drug

Judy's Atex

Corinne's Style Shop

Magee Ranch

Doctor Herefords
F. J. and Leta Mae Hess

**Hambright's
Building Supply**

**Gately's Cafe,
Gas, & Grocery**

Terry's Electric

**McLean Cattle
Company, Inc.**

Ted & Sue Simmons

**B & B Turbine
Engine Service**

Wayne, Sonie, Billy, and Vonda

Curry's Processing

Denworth Line Camp
Johnny & Joyce Haynes

Dairy Queen

McLean Atlas Plumbing
Jerry Don Cook

Foshee's Texaco

**American National Bank
in McLean**

**Hallum's
Backhoe Service**

Martinez Ranch

**Johnnie & Colleen
Mertel Boot Shop**

**Jane Simpson
Insurance Agency**

Thomas Nursing Center

Cowboy Drive In

Bentley's Fertilizer

McLean Variety

L & P. Chevron

**Windom's
Auto Supply**

**Haynes
Triangle Ranch**
Sam & Thacker Haynes

Barker Redi-Mix

McLean Veterinary Clinic

Dixie Restaurant

Jerry Corbin Insurance

Puckett's Grocery

Lamb's Flower Shop

**The Potpourri
Gift Shop**

Jake Hess II Family
Jake, Ida, Tres, Tanner,
and Heather

City of McLean

The McLean News
Linda, Lisa, Sam and Kathy

John Nash Texaco



TIGERETTE MARIA ECK completes a fast-break for a lay-up shot during action at the McLean-Claude game last week in McLean. [Photo by Linda Haynes]

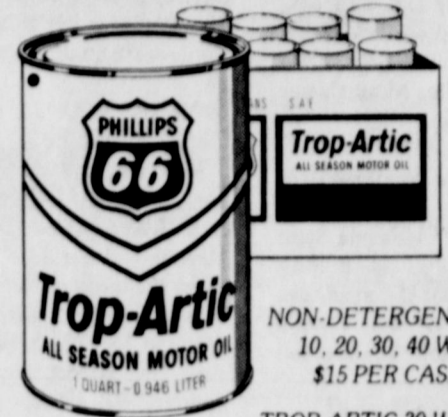


THIS CLAUDE PLAYER [#22] effectively blocks DeWayne Adamson's shot, sending the ball flying over the Tiger's head. [Photo by Linda Haynes]

Even if you're on the right track - you'll get run over if you just sit there.
Arthur Godfrey

No man is justified in doing evil on the ground of expedience.
Theodore Roosevelt

OIL SALE



NON-DETERGENT OIL
10, 20, 30, 40 WT.
\$15 PER CASE

TROP-ARTIC 30 WT
\$21 PER CASE

66-20 OIL
\$18 PER CASE

ATF FLUID-DEXRON II & F
\$18 PER CASE

1-155 HD 40
\$2.50 PER GALLON PLUS BARREL

1-155 NON-DETERGENT 30 WT.
\$2.40 PER GALLON PLUS BARREL

CASH ONLY!

DALE'S 66

217 W. 1st
McLean, Texas
779-2181

TOURNAMENT

Continued From Page 1

made possible by the new principal national sponsor: Converse Inc. Additionally, Chamber of Commerce officials also revealed an expanded game format for the 1983 Converse NWIT to be held in the Amarillo Civic Center coliseum.

"We are proud that a company such as Converse which has championed women in sports since 1923 has chosen to sponsor the oldest tournament in the United States for women's basketball teams," Jack Martin, 1983 Converse NWIT chairman said, during a press conference

in the Chamber of Commerce offices today.

The Chamber of Commerce Sports Committee will continue as a sponsor, according to Martin. As in the past the Chamber of Commerce Converse NWIT subcommittee will administer the tournament.

An additional Golden Spread High School All-Star Championship game will be added to each of the first two nights of the Converse NWIT, Ed Mills, subcommittee member said.

"By expanding the games to three a night we want to spotlight more of the fine high school girls playing basketball on the High Plains," Mills said.

Instead of the traditional East-West game played Saturday of the Converse tournament, the high school girls all-star teams will be divided into four teams based on each school's classification, Mills explained. Thursday night all-star teams chosen from Class 5A schools will play a Class 4A Schools, Friday night, all-star teams made up of girls from a Class 3A school will play an all-star team compiled from Class 2A and 1A schools in the area.

Winners of the Thursday and Friday night matches will compete in the championship game Saturday night.

"Women's basketball has grown by leaps and bounds since we opened the first tournament here in 1969," Martin said.

The Converse NWIT has felt many of the same growing pains experienced by women's athletics in the past decade. What began as a tournament dominated by one of the first schools to offer women's sports (Wayland Baptist University) has grown to include other top schools from throughout the nation. Naming a tournament queen and her royal court has given way to honoring each athlete's playing ability. In 1981, for instance, the first tournament All-Opponent Team was named following the games. Additionally, the tournament selection committee also designates the annual All-Tournament Team.

"We're glad to have given players like Ann Myers (University of California, Los Angeles) and Nancy Lieberman (Old Dominion) a tournament in which to hone their skills," Martin said.

Myers played in the tournament for UCLA in 1976 and 1977, while Lieberman played in 1977 and 1978.

The Converse NWIT champions roster read like a VIP list of top women's collegiate basketball schools. Oregon State, 1982 and 1980 title-holder, tops that list, followed by the University of Georgia, 1981 Converse NWIT Champion. In 1979 it was the University of South Carolina; in 1978, Old Dominion. Other teams in top running positions during recent years include Drake University, the University of California at Berkeley and Illinois State University.

The schools who will play in the 1983 Converse NWIT are the women's basketball teams to watch next season because historically, this tournament has been a nationally important contribution to collegiate women's basketball championships.

SCHOOL MENUS

BREAKFAST

FRIDAY, Feb. 4
Cold Cereal, Toast, Juice, Milk

MONDAY, Feb. 7
Bacon, Toast & Hash Browns, Juice, Milk

TUESDAY, Feb. 8
Hot Cereal, Toast, Juice, Milk

WEDNESDAY, Feb. 9
Creamed Beef on Toast, Juice, Milk

THURSDAY, Feb. 10
Egg McMuffins, Juice, Milk

LUNCH

FRIDAY, Feb. 4
Fried Chicken, Cream Gravy, Mashed Potatoes, English Peas, Hot Rolls W/ Butter & Jelly

MONDAY, Feb. 7
Corn Dogs, Mustard, French Fries, Baked Beans, Fruit

TUESDAY, Feb. 8
Chicken Pot Pie, Macaroni & Cheese, Whipped Jello, Peanut Butter Chewies

WEDNESDAY, Feb. 9
Meatloaf, Spinach, Pinto Beans, Corn Bread

W/Butter, Applesauce

THURSDAY, Feb. 10
Stew W/ Crackers, Sandwiches, Fruit Pudding

Quotable Quotes

I do not believe in the word Fate. It is the refuge of every self-confessed failure.

Andrew Soutar
Big shots are only little shots who keep shooting.
Christopher Morley.

•Boots by Tony Lama
•Guns by Colt, Ruger, Smith & Wesson, Weatherby
•Hats by Bradford and American
•Tack
•Western Apparel the Whole Family

Complete Line Of Quality Brands Western Wear

"Complete Ranch Outfitters"
Where your Search Ends And Hospitality Begins

119 S. Cuyler 669-3161 Pampa, Tx

Let a Local Agent Help Handle Your Claims:

Hospitalization-Cancer
Medicare Supplements-Burial

CALL

Jerry Corbin

Valentine Flowers

CORSAGES, BUD VASES,
GREEN PLANTS, TULIPS, HYACINTHS,
SPRING BOUQUETS, ROSES, POTPOURRI

LAMB FLOWER SHOP

LAMB FLOWER SHOP
McLean, Texas
1009 N. Main 779-2611

GRANDPARENTS:
HERE'S A CHANCE
TO MAKE
YOUR CHILDREN AND
GRANDCHILDREN HAPPY!
A Big Valentine From You

Send Us Your Favorite
picture Of Your Sweetheart
And
We'll Place It In A Heart
Include The Name
And These Will Appear
In
The McLean News
Thursday, Feb. 10

HURRY!!! DEADLINE IS
THURSDAY, FEB. 7!

\$7.50



DOWN MEMORY LANE

10 YEARS AGO...

E. M. Bailey, Ed.
Nelson Dwyer, senior student at Texas Tech University at Lubbock, was listed on the Dean's Honor Roll. Nelson is the son of Mrs. Mary Dwyer of McLean.

LaDona Anderson of McLean, an Education Senior at Oklahoma State University, is among 5,050 OSU students named to the Dean's Honor Roll for the fall semester.

Rev. and Mrs. Herman Bell, Mr. and Mrs. Newt Barker and Mrs. Oma Abbott and Mrs. Luther Petty attended the Top O' Texas Evangelism conference at the Central Baptist Church in Pampa on Monday.

20 YEARS AGO... Jack Shelton, Ed.

John Pakan, son of Mr. and Mrs. Miro Pakan of McLean, has completed the required work for a bachelor of business administration degree at West Texas State College in Canyon. Pakan was graduated from McLean High School in 1957, and received six months military training at Fort Chaffee, Ark., before entering college.

Harold E. Bunch, former principal of McLean High School, was injured Monday morning in an automobile accident near Athens. He is in Henderson County Memorial Hospital at Athens, where his injuries reportedly include a broken ankle, several broken ribs and considerable bruises and abrasions.

Mrs. Janice Carpenter, daughter of Mr. and Mrs. Clyde Magee, received her bachelor of science degree last Saturday from Western Michigan University in Kalamazoo.

Anita Henley of Amarillo visited her parents Mr. and Mrs. Buck Henley during the weekend.

30 YEARS AGO... Lester Campbell, Ed.
When Highway 66 was opened in good style last Friday following Thursday's blowing snow which blocked several spots on the road, an almost solid stream of cars and trucks could be seen travelling east from Amarillo. The line of traffic was extremely heavy Friday night, when the highway had been opened to traffic, and those who saw the line of cars said it was the heaviest they had ever seen on the road. By Saturday morning, the traffic had let up to some extent, however traffic was heavy all day, as the record \$600.00 collected for the March of Dimmes on the streets here Saturday testifies.

Mr. and Mrs. Otto Reimer and family of Pampa were week-end visitors in the home of her parents, Mr. and Mrs. Allen Wilson.

Mr. and Mrs. Roy Brown of Jericho visited Saturday in the home of

Mr. and Mrs. Oba Kunkel.

Mrs. Boyd Reeves underwent an operation Thursday at Highland General Hospital in Pampa.

40 YEARS AGO... T. A. Landers, Ed.

Miss Dorris Nell Wilson, daughter of Mr. and Mrs. Allen Wilson, 1401 Hayden, Amarillo, became the bride of Pvt. E. J. Windom, Jr., son of Mr. and Mrs. E. J. Windom, Sr., of McLean, on January 30, 1943. The single ring ceremony was performed in the home of the officiating minister, Rev. John W. Myrose, pastor of the First Presbyterian Church of McLean. Attendees were Miss Virginia Blakerby of Borger, Robert Gibson and Johnny Windom of McLean.

Mrs. M.H. Kinard and son of Lubbock attended the funeral of their mother and grandmother, Mrs. S.G. Kunkel, Saturday.

Born Thursday, Jan. 28 to Rev. and Mrs. R. L. Franks, at a Shamrock hospital, a boy, weighing 7 pounds and 12 ounces. He has been named Edwin Dale.

Pvt. Wilbur Lee Wilson has been stationed at Sheppard Field.

50 YEARS AGO... T. A. Landers, Ed.
The Lion's Club quartet sang at a number of gatherings this week. In addition to their offering at the regular luncheon of the club Tuesday, they sang at the opening exercises of the adult department of the First Baptist Sunday school, Sunday morning, and appeared on the opening program at the high school Monday morning, also singing for a shut-in Monday afternoon. The quartet is composed of Reep Landers, bass; Evan L. Sitter, baritone; Jesse J. Cobb, second tenor; and T. A. Landers, first tenor. Miss Jewell Shaw is pianist for the quartet.

Fire destroyed the C. M. Jones residence in the northeast part of town Monday night. The house was vacant at the time, and it is not known how the fire started.

The parents and teachers of the Pleasant Mound school district met Tuesday, Jan. 10 to organize a Parent-Teacher Association. The following officers were elected: President - Mrs. S. L. Montgomery, Vice President - Loree Smith, Secretary - Mae Mengers, Program committee - Mesdames L. A. Sachse, I. E. Honey, and C. E. Smith, and Membership committee - Mesdames T. A. Langham, John C. Bible and I. E. Honey.

60 YEARS AGO... T. A. Landers, Ed.
Mesdames J. W. Sherrod and Rosellus of Alanreed visited in the L. F. Wilkins home Tuesday and Wednesday.

The members of the Epworth League of the Methodist church gave a masquerade party at the home of Mr. and Mrs. J. M. Noel last Friday night. A large number of members and their friends were present and all enjoyed themselves.

Frank Hommel of the Alanreed Auto Co., was a pleasant visitor at our office Monday.

Mr. and Mrs. Caleb Smith of Slavonia were shopping in the city Saturday.

Adv. Nearly new stalker

cutting for sale. Might trade for other farm implements. Roby Bros.

No smoking nor drinking and no movies are the strict rules of the Russian Baptist church, a sect here that were originally members of the Greek Orthodox church. The

members of the church, 100 in number, have followed the Baptist service since 1917. They believe that anything which pollutes the body, mind or soul should be disregarded at any sacrifice. To become a member of the church, one must go through a grilling of three hours, and no one is accepted unless he proves to be mentally, spiritually and morally fit. Members who attend the movies are expelled from the

church, and if they indulge in tobacco or use intoxicants, in any form, the "offender" may be brought before the church court for proper action.

70 YEARS AGO... A. G. Richardson, Ed.

While wheat is not an extensive crop in this locality, a number of our progressive farmers have a small acreage planted to it. George Weaver reports that his forty-five acres is as fine as he ever saw. He has been pasturing it since October and says the moisture has been sufficient all along to keep it in good condition. Diversify is what the farmer needs to do to make a financial success, and it might not be amiss to plant more wheat.

A bunch of one-two and four buckle over-shoes just in... Bundy-Hodges Co.

Several people from Alanreed came over on the Kaffir and Milo special Monday returning on the afternoon train.

Farm For Rent - Want to rent my place to reliable man, who can furnish his own team, tools, feed, etc.. Plenty of wood on place... Box 36, McLean.

Homemaker News

by Donna Brauchi
Choosing to become a parent is one of the few irreversible decisions of life. Parenthood further requires a jump into adulthood.

Until very recently, culture and religious pressures made parenthood a foregone conclusion rather than an option. Birth-control information and the value society places on individual development have made it possible for people to exercise their options in parenting based on lifestyle, financial well-being and personal and/or religious values.

Sometimes the responsibility for decision-making can be heavy, especially when the choice of to-be or not-to-be a parent involves another life, responsibility for a dependent person and alteration of current lifestyles.

Three questions to consider prior to parenthood are: (1) Does your decision follow your true values? (2) Have you considered all the alternatives? (3) Are you the one making the final decision?

Teenage Parenthood
Adolescent pregnancy in Texas is being called an epidemic. Gray county statistics would support this viewpoint.

One national survey reports that half of all teenage births are unintended. Fertility among women in general has declined during the last two decades, while fertility among 14-17 year olds has not. The number of babies born to girls 14 and under in Texas has increased nearly 64% since 1967.

There are several major concerns of and for teenage mothers. Seventy-five percent of mothers 17 and younger have no insurance, and even more are not covered for maternity expenses. Inadequate prenatal and medical care usually result when teen-

agers have no insurance. Infants born to teenage mothers are more likely to die, have birth defects, and/or low birth weights. Teenage mothers are more at risk for illness or injury related to birth than older mothers. Mothers under 15 are more likely to die from toxemia than older mothers and are more subject to illness due to nutritional depletion.

Married or single, being a teenage parent has a lot of built-in problems. Teenagers who get pregnant out of carelessness, ignorance or a misinformed belief that a baby provides instant adulthood acceptance and independence are apt to be disappointed.

What Can We Do

Education and understanding seems to be the key to solving the problem. Adolescents need to have access to reliable, accurate information concerning their sexuality. A parent-child relationship where open communication is the pattern is the most successful way to achieve understanding. The Texas Agricultural Extension Service will be sponsoring a training on May 17 in Amarillo. Six persons from Gray county will be trained to conduct seminars and educational opportunities in Gray County. Goals for the training are: (1) Become aware of recent facts and statistics about adolescent sexual activity and

pregnancy. (2) Explore the development of sexual identity in adolescence as an important part of growth toward healthy adulthood; (3) Consider ways of communicating with their own sons and daughters about issues of human development sexuality and decision making during the adolescent years. (4) Identify appropriate roles for parents, schools, churches, and other community agencies in making available necessary information and guidance to parents and young people in their own community.

If you or someone you know would like to be a part of the Gray county team to receive training on teenage sexuality, contact the County Extension office at 669-7429.

4-H Corner

by Joanna Warminski & Jeff Goodwin

Dates
Feb 7 - Lefors 4-H Club meeting - 4 p.m., Lefors High School Homemaker Room

4-H'ers Compete At Top of Texas Warm-up
Gray County 4-H'ers made a good showing at the Top of Texas Warm-Up showing at the Top of Texas Warm-Up held last weekend. In the steer show Saturday, Sheila Romines placed sixth in the medium weight class of Exotic Breeds.

In the lamb show, Penny Morgan placed first in her class of light weight finewool crosses. In the light weight class of medium wool lambs, Cari Furrh placed second, and Matt Maul placed fourth.

In the medium weight class of medium wool lambs, Kandice Winton

placed ninth. In the heavy weight class of medium wool lambs, Donnie Smith placed sixth.

Other 4-H members participating in the lamb show were Cathy Taylor, Willie Cross, Robert Hornback, Keri Cross, Sheila Romines, Dori Kidwell, Tammy Greene, Kevin Fulton, Jamie Fulton, Julia Graham, and Christy George.

In the barrow show Sunday, Julia Graham placed third in the medium weight crosses, fourth in the heavy weight crosses, and fourth in the medium weight hampshires.

In the heavy weight hampshires, Christy George placed fifth. Roy Koontz placed eighth with his light weight Other Pure Breeds.

Penegen
THE ULTIMATE SKIN TREATMENT
Mary Lou Garrison & Oleata Westbrook
Skin Care Consultants
McLean, Texas 79057
(806) 779-2713
(806) 779-2111

FOR YOUR CONVENIENCE THE COWBOY IS NOW OPEN 7 DAYS A WEEK 9 a.m. - 8 p.m. COWBOY DRIVE IN
109 N. Cedar
McLean, Texas 779-2315

The McLean News
DON'T FORGET FEB. 7 IS THE DEADLINE FOR YOUR SWEETHEART'S PICTURE ONLY \$7.50!!!!

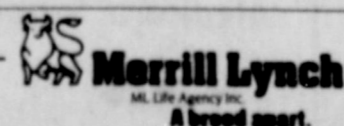
ML LIFE AGENCY INC. INVITES YOU TO AN IMPORTANT FREE SEMINAR.

We invite you to discover a remarkable retirement investment - one that combines the advantages of high interest rates, tax deferral, and the safety of principal under insurance company sponsorship. All three come with an ironclad guarantee. Covering tax-deferred interest rates. No market risk. Return of principal. Even lifetime income, if you choose. At this special seminar you'll learn how annuities work to make your retirement income grow faster. And about their unusual flexibility - while your money accumulates, and after you start receiving payments. If you're concerned about future financial security for yourself and your family, don't miss this seminar. It's free, but reservations are essential. To make yours, mail the coupon or call today.

THE IRONCLAD RETIREMENT PLAN - GUARANTEES YOU THE BEST OF THREE WORLDS.

DATE: Thursday, February 10th TIME: 7:00 p.m.
PLACE: Pioneer West Museum, 201 N. Houston, Shamrock
SPEAKER: Kelly Forehand

Mail to: ML Life Agency Inc., 905 S. Fillmore Suite 100, Amarillo, TX 79101
Or call: Kelly Forehand at 1-800-492-4085
 YES, I plan to attend your free seminar on "ironclad contract" annuities. Please reserve _____ seats for me.
 NO, I cannot attend. Rush me your free booklet.
Name _____
Address _____
City _____ State _____ Zip _____
Business Phone _____ Home Phone _____
Merrill Lynch customers, please write name and office address of your Account Executive _____



LIFE FIRE AUTO LIABILITY CROPS
THANK YOU!
FB
LARRY INGRUM
GRAY COUNTY FARM BUREAU
"Your Insurance Man"
1132 S. Hobart Office Phone 665-2389
Pampa, Texas 79065 Home Phone 665-4183

CLASSIFIED ADS sure to get results

CLASSIFIED RATE
 \$2.00 minimum
 15 cents per word
CARD OF THANKS-\$3
 All ads cash, unless customer has an established account with The McLean News-Deadline for Want Ads-Noon-Tuesday. Phone 779-2447.

The McLean News cannot verify the financial potential of these advertisements. Readers are advised to approach any "business opportunity" with reasonable caution.

FOR SALE

JUST IN TIME for Valentine's Day! Cuddly Stuffed animals, lovely datebooks, photo albums, and checkbook covers to please your special sweetheart on Feb. 14. We have the best at McLean Variety!

REMEMBER YOUR SWEETHEART with flowers from Lamb's. Let us help make this year's Valentine's Day the best ever. Lamb's Flower Shop. 779-2611. 5-1c

RUBBER STAMPS ARE an inexpensive way to bring more efficiency to your business operations. We will design stamps to your specifications. Fast Service. **THE McLEAN NEWS.** 46-tfc

BUILDING SALE: ALL steel I-beam construction. 20 year roof warranty. U.L. listed. Limited tonnage allocated. Call **HERITAGE STEEL** for "Free" literature and price quote today. 1-800-643-5555. 5-1p

WE WILL DESIGN any type of business card to your specifications. Prices begin at \$19.95 for 1,000 business cards. **THE McLEAN NEWS.** 46-tfc

YOU CAN ORDER a rubber stamp for as low as \$2.50. Come by **THE McLEAN NEWS.** 46-tfc

VALENTINE CANDY... We have a new shipment of delicious valentine candy in beautiful gift boxes at McLean Variety.

FOR SALE: MALE purebred miniature dachshund - six weeks old. Call 779-2751.

CASABLANCA CEILING FANS, lamps, lampshades, lighting fixtures, gift items, curio & gun cabinets, lamp parts & bulbs. Unique items for your home! Lights and Sights, 107 N. Cuyler, Downtown Pampa. 665-8341. 3-tfc

FOR SALE: LIKE new Minolta 110 camera with a zoom lens. In excellent condition. When new, sold for more than \$280. You can buy it for \$140. Also small Nikon electronic flash which fits camera. \$40. Come by The McLean News or call 779-2447, or 779-2947 after 5 p.m. 3-tfc

VALENTINE CARDS... We have the complete selection at **McLEAN VARIETY!** Check with us for all sorts of Valentine Gifts for your Sweetheart **McLEAN VARIETY**

WANTED: BABY BED and Accessories. Call 779-2663. 5-1c

FOR SALE: 14 x 40 Trailer House. 1 Bedroom, 1 bath. Call 779-2702. 5-tfc

FOR SALE: 1975 Mercury Montego. \$1200 cash. Call 779-2663. 5-1p

FOUR WHEEL DRIVE 1976 Dodge pickup. Needs repair. This is a real bargain to fix up. Call 779-2447 or after 5 p.m. call 779-2947 or 779-2049. 2-tfc

FOR SALE: OAK Firewood. Delivered & Stacked. \$110. Paul McCurley. Call collect after 6 p.m. 826-3413. 47-9p

FOR RENT

HOUSES FOR RENT or sale. 779-2629. 1-tfc

FOR RENT: 4 Bedroom house - 2 bath - \$250 per month. \$150. deposit. Call 779-2538. 2-tfc

CARD OF THANKS

We would like to say "Thank You" to a very special person for delivering us to and from work, delivering kids to the babysitter, picking up mail for us, running errands, just helping to make sure we're safe and sound. Without your help, Sam, we wouldn't be able to get the paper out. *The Staff*

BABYSITTING

WILL DO BABYSITTING in my home. Evelyn Raines. 317 Gray Street. 4-tfc

HELP WANTED

THOMAS NURSING CENTER is now accepting applications for Nurses Aids - all Shifts... Contact the Director of Nursing in person. 33-tfc

REAL ESTATE FOR SALE

FOR SALE OR Rent: 25 x 60 Building with lots. Contact Don Wilson at 779-3174 after 6 p.m. 4-2c

FOR SALE: 12 x 24 steel portable building with floor and wired. Call 779-3174 after 6. 4-2c

FOR SALE: TWO bedroom house - By Owner 779-2666. 48-tfc

FOR SALE: SOUTH 160 acres of the old Pugh place. 10 miles northeast of McLean. Call 915/381-5699. 3-4c

FOR SALE: 4 bedroom, 2 bath home. \$27,500. Call 779-2538. 46-tfc

JIM ALLISON REALTY
 Farms, Ranches, Residential, Commercial, Oil and Gas

LARGE two bedroom brick on Main - Very Nice
TWO nice two bedroom - Good Locations
 160 Acres - live water, Apple orchard, quail, dove, deer and turkey. BEAUTIFUL!
 COMMERCIAL property. Store, station...
 Alanreed, on I-40
 1976 Nashua two bedroom mobile home 14 x 70 - with all appliances.
 160 Acres Lovegrass on pavement - cross fenced.

779-2461
 779-2649

LOST & FOUND

FOUND: HAND SAW. Call 779-2107 and describe. 3-tfc

FOUND: BIFOCAL GLASSES. Light brown and metal frames. Left at The Potpourri. 5-1p

FOUND: SET of post-office keys. Claim at the McLean News Office. 5-tfc

LOST: ONE BRITTANY Male Bird Dog. (Lost on Ed Howard's Ranch.) White with brown spots. Call collect 214/382-3243. 4-2p

NOTICES

MASONIC LODGE REGULAR MEETING second Thursday, 7:30 p.m. Practice nights First, Third, and Fourth Thursdays at 7:30 p.m.

BUSINESS

Call Jerry Cook at **ATLAS** Plumbing 779-2784 Water-Gas-Sewer

LOWRANCE PLUMBING Fast and reliable service Licensed 24-hour Service Call 779-2563 or 779-2065 Serving McLean and surrounding areas

SMITH'S TAX SERVICE SATURDAYS 9 a.m. - 6 p.m. 303 N. Main across from the library McLean

SADDLE AND BOOT REPAIR HANDMADE SADDLES **McLEAN SADDLE CO.** 111 McCarty St. McLean, Texas 779-2339

SERVICES

AMWAY DISTRIBUTORS. Aline Winegeart. 50-6p

GALLEY'S CARPET CLEANING. Free estimate. 779-2629. 1-tfc

FOR SALE:

Stocker Calves & Yearlings
 Cutting Bulls
 Wheat Grazed Out Cows & Calves
Tommy Turner Cattle Co.
 (806) 995-4006
 (806) 995-2515
 Tulia, Texas



"All right, Simpkins—you've had your fun for the day. Now get back to work!"

FB LIFE AUTO FIRE LIABILITY BLUE CROSS CROP HAIL

LYNDEL ORCUTT AGENT GRAY COUNTY FARM BUREAU

Office 806/665-2389 1132 S. Hobart
 Home 806/665-2681 Pampa, Texas 79065

The McLean News BUSINESS DIRECTORY

<p>DON MILLER RADIATOR SERVICE</p> <p>"Is Our Business" Not a Sideline •New & Rebuilt Radiators •Gas Tanks & Heaters Repaired</p> <p>376-666 612 S. JEFFERSON AMARILLO, TEXAS</p>	<p>Foshee's Texaco</p> <p>Your full-service station Earnest & Maurine Foshee - Owners 779-2621</p> <p>McLEAN NEWS ADS HELP YOUR BUSINESS SALES. 779-2447</p>	<p>WATER WELL SERVICE</p> <p>SUBMERSIBLE PUMP SALES & SERVICE</p> <p>DAVID BROWN</p> <p>806-777-2678 BOX 273 McLEAN, TX 79057</p>	<p>GERMANIA Farm Mutual Insurance</p> <p>REASONABLE SOUND INSURANCE PROTECTION FOR YOUR HOME AND OTHER PROPERTY</p> <p>DON WILSON 779-3174</p>	<p>NATIONAL AUTO SALVAGE</p> <p>665-3222 or 665-3962 1 1/2 miles west of Pampa on Highway 60 Large selection of used auto parts We appreciate your business.</p> <p>CALL 779-2447 AND GET YOUR BUSINESS IN THE McLEAN NEWS BUSINESS DIRECTORY</p>	<p>DIANN DALTON'S Country Cut BEAUTY SHOP</p> <p>779-2413</p> <p>Open Tuesday through Friday and Saturdays until noon 1 mile south of McLean on FM 3143</p>
<p>BARKER REDI-MIX</p> <p>READY-MIX, CONCRETE BACK-HOE SERVICE AND FINISHING WORK</p> <p>PHONE 779-2703 OR 779-2869</p>	<p>McLEAN HARDWARE</p> <p>complete hardware line</p> <p>-DISHES-PAINT-TOOLS-GIFTS-</p> <p>779-2591</p>	<p>GLENN HALLUM BACKHOE SERVICE</p> <p>Commercial or Individual Fully Insured</p> <p>Alanreed, Texas 779-3138</p>	<p>Johnnie F. Mertel Boot Shop</p> <p>Tony Lama, Texas, Acme, Justin Leather Goods Shoe Repair phone 779-2161</p>	<p>Expert DRY CLEANERS</p> <p>BRING YOUR CLEANING WHEN YOU SHOP IN PAMPA PICK IT UP THE SAME DAY!</p> <p>One Hour Martinizing</p> <p>1807 N. HOIARTZ 1824 W. FRANCIS PAMPA</p>	<p>LAMB FLOWER SHOP</p> <p>779-2611 ASK ABOUT OUR REGULAR FRIDAY SPECIALS</p>
<p>Bug Baggers Pest Control Inc.</p> <p>TERMITE SPECIALISTS COMPLETE PEST CONTROL STATE LICENSED IN YOUR TOWN WEEKLY CALL COLLECT 865-0990 CANYON, TX</p>	<p>For all your Purina Feeds:</p> <p>BULK FEED BAG FEED</p> <p>BENTLEYS FERTILIZER</p> <p>301 E. Foster McLean, Texas 779-2209</p>	<p>DALE'S SERVICE STATION</p> <p>PHILLIPS 66 217 W. 1st McLean 779-2181 779-2181</p> <p>READ HERE GIVES YOUR CUSTOMERS EASY ACCESSABILITY TO YOUR BUSINESS 779-2447</p>	<p>CLASSIFIEDS WORK WONDERS!</p> <p>CALL THE McLEAN NEWS 779-2447</p> <p>THE McLEAN NEWS IN COUNTY - \$12 OUT OF COUNTY - \$14 NINE MONTH STUDENT SUBSCRIPTION - \$9</p>	<p>B&B ELECTRIC Parts & Service</p> <p>•ELECTRIC WORK •APPLIANCES •TV ANTENNAS •HEATING AND AIR CONDITIONING</p> <p>PHONE Loyd Bybee 779-2601</p> <p>EMERGENCY 779-2517 2 BLKS NORTH OF I-40 ON PAMPA HWY I WILL APPRECIATE YOUR BUSINESS</p>	

NEWS FROM YOUR COUNTY EXTENSION AGENT

for the home, agriculture, food drying and other uses as screw rods or cables. You may need to consult professional arborists for this type of work.

The recent ice storm caused considerable damage to a lot of trees and shrubs as well as various power lines in parts of the area.

These storm damaged trees should have all of their broken branches removed. Try to reshape the tree at the same time if a lot of branches need to be removed. Broken limbs should be pruned back to a main scaffold branch or the central trunk. Cuts on trees should be made with a sharp saw and made flush to a side branch or to the trunk, making certain that no stubs are left.

Broken trunks, split crotches or cracked limbs often are mended by restoring the damaged part to its original position and holding it there permanently with such

We have an excellent pruning publication - V-1347 Pruning and Training Landscape Plants. If you would like a copy, call or come by the County Extension Office. It contains a lot of useful illustrations.

Solar Seminar

The Solar Seminar which was postponed from last weekend has been rescheduled to February 18 and 19. It will be held at the Texas A&M Research and Extension Center, 6500 Amarillo Blvd., West, Amarillo, Texas.

As before, the Friday program, February 18, will be from 6 p.m. to 10 p.m. The Saturday program from 9 a.m. to Noon. The Saturday pro-

gram will be at a lumber yard in Amarillo.

Participants will learn Solar Energy applications from the home, agriculture, food drying and other uses as well as technical information on construction of solar collectors and storage. A collector will be built at the lumber yard by the participants on Saturday.

Pre-registration of \$15 per person will be required. This will be handled through the Oldham County Extension Office, Box 380, Vega, Texas 79092. Registration will be limited to the first 300 received in the Oldham County Extension office. Checks should be made payable to "Oldham County Program Building Committee."

Estate Planning Seminar

A two-day Estate Planning Seminar will be February 14 and 15 in

Pampa at the Coronado Inn. This is similar to the program held last year. We heard many nice comments about the value of the ideas and tax savings methods discussed.

Dr. Wayne Hayenga will present the program. He is Extension Economist and Project Group Supervisor in Farm Management. In addition, he is an attorney and has an excellent background to assist farmers, ranchers and ag-business people in developing estate plans to save taxes. He will give you several ideas and methods to lower your estate tax burden. The program will start at 9 a.m. and conclude around 4:30 p.m. each day.

The registration fee is \$10 which includes both noon meals, refreshments, and materials,

and can be paid at the door. Pre-registration is needed by February 11. Please call 669-7429 or come by the County Extension Office.

Soil Test Before Top-Dressing Wheat

During the Fall, the dry weather held dryland wheat to very little growth. Producers who had soil tested last August were given instructions to topdress nitrogen if suitable soil moisture was received. The moisture we have received since Thanksgiving is a start towards restoring our soil moisture. Normally, 30 lbs/a of actual nitrogen is suggested as a topdress when there is suitable moisture on drylands.

A soil test is a good guide to estimate available nitrogen contained in your soil whether you plan to cut grain or grow

wheat for grazing. For those planning to cut grain, a ppm of nitrate-nitrogen in your soil will furnish sufficient nitrogen to produce a bushel of wheat.

Nitrogen In Recent Snow-Falls

Producers ask about the amount of nitrogen received from the snow that we have each year. This year, the soluble salts, nitrates and pH was measured in the snow that fell before and after Christmas at Lubbock. The snowfall measured 8 inches and when it melted down, it measured a total of 1.25 inches of water. The soluble salt measurement was about 50 ppm (about normal). The pH of the water melted from the snow was 6.3 which is slightly more acid than rainfall last spring. The

nitrate-nitrogen content was 39 ppm. This translates to a 1.9 lbs/a of applied nitrogen. Producers know that this amount of nitrogen will produce an additional 0.9 bushels of wheat. The yield increase that the snow brought will be due to the water it contained. If yields are to be in-

creased, 2 lbs. of nitrogen is needed for each bushel of wheat.

Educational programs conducted by the Texas Agricultural Extension Service serve people of all ages regardless of socio-economic level, race, color, sex, religion, handicap, or national origin.



**DISCOUNTS
DISCOUNTS
and more
Discounts!**

Puckett's IGA

IGA Cut GREEN BEANS
15 1/2 oz can 3 for 89c

IGA TUNA
6 1/2 oz can 79c

IGA GOLDEN CORN
16 oz can 2 for 75c

IGA SWEET PEAS
16 oz can 2 for 75c

**DelMonte
FRUIT COCKTAIL**

17 oz can
68c



DelMonte PINEAPPLE
15 1/2 oz can 2 for \$1.09

Mile High TOMATOES
16 oz can 2 for 99c

Griffins BLACKEYED PEAS
15 oz can 3 for \$1

Hormel VIENNA SAUSAGE
5 oz can 2 for 98c

**MELLO
YELLO**

16 oz.
throwaway
6 pack
\$1.49



**KLEENEX
Facial Tissues**

125
count
boutique
75c



IGA TOMATO JUICE
46 oz can 89c

IGA PEARS
16 oz can 2 for \$1.09

Hormel CHILI
15 oz can 89c

**Thank You Cherry
PIE FILLING**
21 oz can 89c

COKES

16 oz
throwaway
6 pack
\$1.69



DelMonte CATSUP
32 oz jar \$1.19

Lipton TEA BAGS
24 qt size \$1.39

Shawnee CORNBREAD MIX
4 for 89c

Fiesta HOT CHOCOLATE
12 envelope pack \$1.19

Oreo Double Stuff COOKIES
20 oz pkg \$1.79

King Size TIDE
35c off \$3.59

**Vlasic
SWEET
PICKLES**

22 oz jar
\$1.39



Delsey TOILET TISSUE
4 roll pack 99c


Good Value Soft OLEO
1 lb. 2 for \$1

**California
BROCCOLI**
49c lb.

Borden's CHEEZTWINS
2 lb. box \$1.98

Hi Dry PAPER TOWELS
large roll 59c

**Hormel
SPAM**
12 oz can
\$1.39



Bordens COTTAGE CHEESE
24 oz ctn \$1.39

**California
CAULIFLOWER**
79c ea

**Owens SAUSAGE
and BISCUITS**
12 oz. \$1.89

Bordens Hi Pro MILK
1/2 gallon \$1.29

**Mexico
TOMATOES**
39c lb.

Wilson's FRANKS
12 oz. 98c pkg.


Bordens SHERBET
1/2 gallon \$1.69

Bordens BUTTERMILK
1/2 gallon \$1.29

Texas YAMS
29c lb.


Blade Cut PORK LOIN
\$1.49 lb.

JELLO
3 oz pkg 3 for 89c



**Gold Medal
FLOUR**

5 lb bag
95c



Bordens ICE CREAM
1/2 gallon \$1.69

Bordens PUDDING POPS
\$1.69

**Washington Red
Delicious
APPLES**
10 for \$1

Corn King 1/2 HAMS
\$2.19 lb.

Oscar Mayer 1 lb. FRANKS
\$1.58

**Bordens
FRUIT BARS**
\$1.49

Puckett's IGA

We Give TOP Savings Stamps