

John C. Haynes 1  
Box 400  
McLean Texas 79057

# The McLean News

Serving McLean and the Area Since 1903

Volume 79 McLean, Gray County, Texas 79057 Thursday, April 8, 1982 Price 25c Number 14



Attending a press convention always gives us a new enthusiasm for our work here. The Panhandle of Texas is populated by some of the best newspaper people in the United States. I really don't think the general public appreciates the quality of newspapers around here. One old timer who has been around the Panhandle newspapers for over 40 years, Mary Kate Tripp, now of the Amarillo Globe News, said that even the mediocre papers in the area are better than the good ones several years ago.

At any rate, the discussions were stimulating and interesting, and I think we're ready to face the battles in the News office for another year.

I was somewhat embarrassed when they announced that The McLean News had won the Community Service Award. As chairman of the newspaper contest, I had seen all the other winning entries in other categories, and had had a good time poor-mouthing the fact that we had not won as many awards as in the past. The community service award is judged by the West Texas Chamber, and the winner is kept secret until the awards breakfast, so we were really surprised by the honor.

One big disadvantage to the convention was the delicious food which was served at every meal! Those three days of gourmet food seemed to undo all the hard work of the last few months at Weight Watchers, so it's back to the fish and fresh vegetables for a few more weeks, until I get back in shape. As bad as the scales looked Monday morning, I still don't regret the chicken and mushrooms, the beef roulades, the strawberry and cream crepes...even the Big Mac and shake with which we celebrated at the end of the convention.

However, there is another press convention coming up in June, so I'm going to have to work fast to be ready for it.

One of the speakers at the convention passed out a sheet which contained a list of 30 carefully chosen "buzzwords" which could be put in various combinations to say nothing at all, very impressively. It works like this: take three numbers, one from each column, insert anywhere you want into a letter, a report, or a conversation, and you won't have said anything, and no one will know it.

Date	High	Low
3-30-82	70	43
3-31-82	67	38
4-1-82	73	46
4-2-82	66	49
4-3-82	65	39
4-4-82	84	45
4-5-82	59	38
4-2-82 wind	70-80 mph	



LLOYD HUNT



JOE MAGEE



JIM BARKER



BILL THOMAS



GEORGE TERRY

## New Members Sworn In At School Board Meeting Monday Night

Newly-elected board members Lloyd Hunt and Joe Magee were sworn into office Monday night at the regular meeting of the McLean school board. After the votes in the April 3 election were canvassed and the new members sworn in, the board was reorganized, with Jim Allison re-elected as president, Lloyd Hunt as vice-president, and Darryl Herndon secretary.

In other business, the board hired a coach, all auxiliary personnel, and approved the 1982-83 school calendar. Frank Purcell of Allison, with eight years experience as coach, was hired, subject to assignment. Superintendent Jim Rutherford told the board that he was most impressed with Purcell's work with eye-hand coordination training with elementary students. The board also approved the purchase of about \$1,000 in equipment for an elementary physical education program.

### MHS Sends Seven To UIL Literary Regional Meet At Levelland

McLean High School and McLean Elementary and Junior High schools each placed fourth out of 14 schools at the University Interscholastic League literary meet in Clarendon last week at Clarendon College. MHS will send seven students on to regional competition at Levelland next week.

Qualifying for regional were Allen Patman, first in number sense; Terri Glass, third in newswriting; Kevin Nicholson, third in ready writing; Cindy Glass and Brenda Wilson, first in debate; and Nora Gately and Van Boucher, second in debate. McLean's debate teams were the only ones entered in the contest.

Other winners in the high school competition were Cindy Glass, fourth in features and fourth in headlines; Bryan Smitherman, fifth in number sense; Kevin Nicholson, fifth in newswriting; Terri Glass, fifth in editorials; and Darin Corley, sixth in spelling.

In the junior high division, David Adamson was second in ready-writing. In

the elementary division, Calle Holwick, a fifth grader, was first in fifth and sixth grade poetry reading, and Dollie Haynes, also a fifth grader, was third in fifth and sixth grade spelling.

finish May 13. The calendar includes a Labor Day holiday, a two-day Thanksgiving holiday, a Christmas holiday from Dec. 24 to Jan. 3, a spring break on Mar. 14 and 15, and Easter holiday from April 1 through April 4. Rutherford said the Mar. 14 and 15 will connect with a teacher's workday on Mar. 16, giving the students a three-day break during the time of the stock show. Rutherford said he felt this would give the youngsters a chance to attend the stock show without tremendous amounts of make-up work.

### School's Out Thursday

The McLean schools will dismiss Thursday (today) at 2:30 p.m. and reconvene Thursday, April 15 at the regular time for Easter vacation.

In service days for teachers will be Aug. 16, Sept. 20, Oct. 25, Feb. 21, and Mar. 21. Teacher workdays will be Aug. 17, Mar. 16, and May 14.

High school principal Ron Cummings reported to the board that there were two confirmed cases of hepatitis among the high school students. He said that many students had taken gamma globulin shots to try to keep from catching the disease. Cummings said school officials were not sure where the disease was contracted by the students.

### Track Teams Run In Shamrock Meet Saturday

McLean High School's track teams went to Shamrock Saturday to compete for the last time before the district track meets. The Tigerettes and the junior high girls were scheduled to run at Groom for district

Tuesday, but results of that meet were too late for press time. At the Shamrock meet, the girls' sprint relay team, Leslie Stewart, Maria Eck, Donna McAneer, and Candy Carpenter in the preliminary and Stacy Smith in the finals, placed fifth with a time of 53.7. Miss McAneer was sixth in the hurdles with a time of 17.7.

Attending the meeting were board members Tony Smitherman, Darryl Herndon, Joe Magee, J.C. McAneer, James Hefley, Lloyd Hunt, and Jim Allison; and retiring board member Howard Gipson; Superintendent Rutherford; and principals Ron Cummings and Dorman Thomas.

### Methodists To Present Easter Music

The combined adult and youth choirs of First United Methodist Church will present the cantata "Hosanna" by Joe E. Parks during the Easter worship service Sunday morning. The collection of Easter music and scripture features songs for the adult choir, a children's choir, a youth choir. In preparation for the presentation, Mrs. Ida Hess has conducted the youth choir, and Mrs. Bonnie Fabian has been conducting the adult choirs. Mrs. Fabian will conduct the combined choirs, with Mrs. Joyce Haynes accompanying on the organ, and Bryan Smitherman accompanying on the piano.

### Baptists Plan Revival Week

The McLean First Baptist Church will be the scene of a week-long revival beginning April 11 and ending April 18. The Rev. O.K. Bowen, pastor of First Baptist Church at Memphis, will be the evangelist, and Tim Thornton, minister of music at Coulter Road Baptist Church in Amarillo, will be in charge of the music. The church plans three services daily during the revival. A youth breakfast and devotional is set for 9 a.m. on non-school days and 7 a.m. on school days. A noon luncheon and service is scheduled each day. The evening service will begin at 7:30 p.m.

Church officials said that a number of other activities are planned for the week, including a campfire devotional, volleyball and basketball games, and other types of fellowship. Nursery accommodations will be provided for young children. The public is invited to attend.

Featured soloists will be Shawn Crockett, Tanya Cummings, Dollie Haynes, Ida Hess, Janet Glass, and Linda Haynes. The service will begin at 10:50 a.m.

### The McLean News Wins Community Service Award At Panhandle Press Convention

The McLean News won second place in news photos.

During the business session of the PPA, McLean News editor Linda Haynes was elected president of the association, and Mrs. Patman was re-elected secretary of the group.

The three-day convention included speeches by Jerry Huff, executive director of the Amarillo Globe-News; Paul Buske of Transworld Systems; Dr. Mary Bubliss, staff psychiatrist of the Central Plains Mental Health/Mental Retardation Center in Plainview; Molly Pryor, state director for Sen. John Tower; James Roberts, publisher of the Andrews County News; Larry Todd, public information officer of the Department of Public Safety; and a humorous presentation by the Rev. Dennis Swanberg, pastor of First Baptist Church in Rogers. During the luncheon Saturday, long-time newsmen H.M. Baggerly and Tommy Thompson were honored by the association for their outstanding contribution to journalism. Baggerly was inducted into the Hall of Fame at Texas Tech School of Journalism.

## Light Voter Turnout Determines Winners In School And City Elections Saturday

New faces will be seen on both the McLean City Council and the McLean school board following Saturday's election which saw one incumbent returning to each board, and one incumbent defeated. In the city council race, newcomer Jim Barker led the ticket with 154 votes, followed by incumbent George Terry with 122 votes and Bill Thomas with 105 votes. Thomas barely beat Loyd Bybee who had 104 votes. Incumbent Miro Pakan had 91 votes. The top three vote-getters will sit on the

council. Long-time councilman Boyd Meador did not run for re-election.

On the school board, incumbent Lloyd Hunt led the ticket with 160 votes followed by Joe Magee with 133 votes, to fill the two vacancies on the board. Incumbent Howard Gipson had 81 votes, Ed Patman had 71 votes, Tina Thomas had 24, and Evelyn Pennington had 19 votes.

Bingo passed in Gray County by a large majority. The proposition carried in McLean 129 to 48.

## Alanreed Chooses New Board

Alanreed school district voters chose board members in Saturday's election,

with incumbents Dick Bode and Frank Worsham winning three-year terms. Larry Mayo was chosen for a two-year term, and Sidney Keese won a one-year term.

The voters overwhelmingly approved a proposition to change the number of school board members from seven to five by a vote of 33 to 13.

The bingo proposition also passed at Alanreed 22 to 12.

## Track Teams Run In Shamrock Meet Saturday

McLean High School's track teams went to Shamrock Saturday to compete for the last time before the district track meets. The Tigerettes and the junior high girls were scheduled to run at Groom for district

Tuesday, but results of that meet were too late for press time.

At the Shamrock meet, the girls' sprint relay team, Leslie Stewart, Maria Eck, Donna McAneer, and Candy Carpenter in the preliminary and Stacy Smith in the finals, placed fifth with a time of 53.7. Miss McAneer was sixth in the hurdles with a time of 17.7.

## Methodists To Present Easter Music

The combined adult and youth choirs of First United Methodist Church will present the cantata "Hosanna" by Joe E. Parks during the Easter worship service Sunday morning. The collection of Easter music and scripture features songs for the adult choir, a children's choir, a youth choir. In preparation for the presentation, Mrs. Ida Hess has conducted the youth choir, and Mrs. Bonnie Fabian has been conducting the adult choirs. Mrs. Fabian will conduct the combined choirs, with Mrs. Joyce Haynes accompanying on the organ, and Bryan Smitherman accompanying on the piano.

Featured soloists will be Shawn Crockett, Tanya Cummings, Dollie Haynes, Ida Hess, Janet Glass, and Linda Haynes. The service will begin at 10:50 a.m.

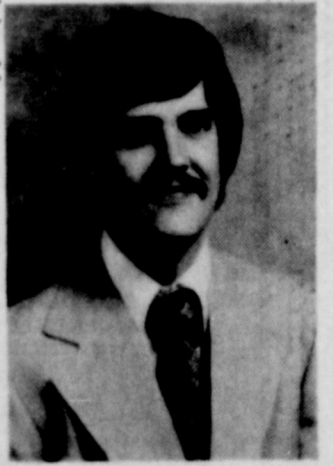
## Baptists Plan Revival Week

The McLean First Baptist Church will be the scene of a week-long revival beginning April 11 and ending April 18. The Rev. O.K. Bowen, pastor of First Baptist Church at Memphis, will be the evangelist, and Tim Thornton, minister of music at Coulter Road Baptist Church in Amarillo, will be in charge of the music. The church plans three services daily during the revival. A youth breakfast and devotional is set for 9 a.m. on non-school days and 7 a.m. on school days. A noon luncheon and service is scheduled each day. The evening service will begin at 7:30 p.m.

Church officials said that a number of other activities are planned for the week, including a campfire devotional, volleyball and basketball games, and other types of fellowship. Nursery accommodations will be provided for young children. The public is invited to attend.



THESE MHS STUDENTS will participate in the regional literary meet in Levelland next week. Pictured from the right are Allen Patman [number sense], Terri Glass [newswriting], Kevin Nicholson [readywriting], Cindy Glass [debate], Van Boucher [debate], and Nora Gately [debate]. Not pictured is Brenda Wilson, who will represent McLean in debate. (Photo by Linda Haynes)



TIM THORNTON



# OPINIONS

VIEWS ARE WRITTEN BY LINDA HAYNES UNLESS OTHERWISE NOTED-IF YOU HAVE AN OPINION ON ANY CURRENT SUBJECT WE WELCOME YOUR SIGNED LETTERS.

## A Matter Of Equity

Monday night the McLean school board wrestled with the knotty problem of hiring a custodian at a decent wage. Now, if you haven't been in public office or if you don't own a business, you may not know that finding a good custodian is one of the toughest jobs around.

The custodian's job is a difficult one. He must have organizational ability and energy. Mechanical ability to handle a variety of tasks is also required.

So in discussing hiring a custodian, the board decided that a man could not support his family on less than \$1200 per month. The custodian was hired at that salary, or \$14,000 per year.

While I agree on the board's action that it would be almost impossible for a man with a large family to support that family on any thing less than \$1200 per month, the irony of that salary came home very clearly to me. You see, the custodian's salary is almost \$4,000 more than the salary of a beginning teacher with a bachelor's degree.

The problem that the McLean school board faces, and that all school boards across the state face, is that the teacher's salaries are determined by a state schedule. If the school pays very much above that schedule, tremendous amounts of money are involved. McLean has more than 20 teachers, but only three custodians. The board can pay the janitors a living wage without bankrupting the school. To pay the beginning teacher (and all other teachers in proportion) enough above the state schedule to put them into the salary range of the custodians would be a tremendous increase in the budget of McLean I.S.D.—an increase that I'm not sure the taxpayers would stand still for.

So our boardmembers are faced with a perplexing dilemma. How does one determine the value of the job that's being done? And where does one draw the line at a liveable wage? Is it fair to assume that while a custodian can't live on \$850 a month, a college-educated teacher can?



## DISTAFF

one will have the remotest idea of what you're talking about, but no one will have the nerve to admit it.

Here are the words.  
Column 1: 0. integrated 1. total 2. systematized 3. parallel 4. functional 5. responsive 6. optional 7. synchronized 8. compatible 9. balanced

Column 2: 0. management 1. organizational 3. monitored 4. reciprocal 4. digital 5. logistical 6. transitional 7. incremental 8. third-generation 9. policy

Column 3: 0. options 1. flexibility 2. capability 3. mobility 4. programming 5. concept 6. time-phase 7. projection 8. hardware 9. contingency

Now all you have to do is think of a three digit number... for example 659. The phrase is "optional logistical contingency." That would look nice in any

government report (or politician's speech) and no one would ever understand what it meant.

Too many times in the last four year this column has been the way for me to say good-bye to a good friend. This week, sadly follows that trend because Saturday Jay Thompson, who lived here for 13 years, died.

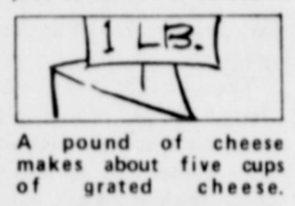
If a person's value can be determined by the number of people it takes to do his job after he's gone, then Jay's worth as a human being was incalculable. When he lived in McLean, he was one of the moving forces behind almost every civic project, and since he's been in Wheeler, he has served four years as the Chamber of Commerce president. Jay was one of

those people who was totally dependable. If you needed a job done, Jay's name always came to mind.

He and Greta were among the first friends I met when I moved to McLean, and through the years, they have grown dearer to me. I never saw Jay Thompson that I didn't get a smile and a hug, and I'm going to miss that. He will be missed by all of us

who came to depend on his good wit, his high humor, his devotion to helping others.

It will take at least 10 good men to take over all his jobs of service to others.



A pound of cheese makes about five cups of grated cheese.

Continued From Page 1

## Senator Lloyd Bentsen Watching Washington



The Armed Forces of the United States should welcome with open arms all of our young people who are willing and able to serve in the military.

However, in the past Pentagon policy has denied military enlistment to a sizable segment of our population—the victims of epilepsy.

In America there are more than two million epilepsy victims. Among them are many very talented people. According to the Epilepsy Foundation of America, for example, such famous people as Alexander the Great, Julius Caesar, St. Paul, Buddha, Napoleon, Socrates, Tchaikovsky and Alfred Nobel are thought to have suffered from epileptic seizures.

Many victims of epilepsy have wanted to serve this country in the military, but Department of Defense policy has flatly denied enlistment to all persons who have had a seizure since they were five years old.

I became aware of this prohibition when a constituent wrote to me asking for help. This Texan had dreamed of a military career since childhood, but because of epilepsy was not even given a chance to prove fitness to serve.

This puzzled me. For many years I have worked with the Epilepsy Foundation on legislation of concern to the group. I was aware of a recommendation made in 1977 by the Commission for the Control of Epilepsy and Its Consequences, created by Congress, that "the secretaries of the branches of the armed forces should examine existing policies and regulations to permit persons with controlled seizures to serve in the armed forces in selected capacities."

I expressed my concern last August in a letter to Secretary of Defense Caspar Weinberger, asking him to look into the situation.

He replied that the Pentagon had not been aware of the 1977 commission recommendation, and that he had ordered a review of the policy.

Early this year, the policy was changed. Now, the Pentagon will review the enlistment of epilepsy victims on a case by case basis. To be eligible, persons wanting to enlist must have been free of seizures for the previous five years and must not have taken any anti-convulsant medication during that period.

Secretary Weinberger should be commended for the prompt and forthright way in which he brought about this policy revision.

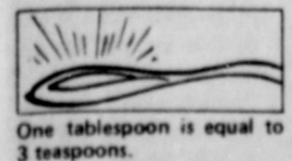
It is an historic decision that I think will strengthen our nation's defense and I am pleased to have played a part in it.

## No connection between fat and heart disease

COLLEGE STATION — Confusing reports about dietary fats, high cholesterol levels and heart disease shouldn't cause unnecessary worry for most Americans as long as they're eating properly, says a professor of biochemistry and biophysics at Texas A&M University.

"Hardly a week goes by that we aren't bombarded by commercials or recommendations from some institute about what we should eat in terms of dietary fats," said Dr. Randall Wood, who with Dr. Raymond Reiser, a Texas A&M professor emeritus, has studied cholesterol in the human body for 10 years.

For most Americans there is no relationship between diet and coronary disease. Wood said, and people react differently to different amounts of fat in their diets. The biochemist pointed to the Texas A&M research which suggests that most people don't react to high levels of fats in their diet.



## LINES by LEM O'RICKK



The dumbest move I have seen-a,  
Has been made by Argentina;  
What a dumb act to pull,  
Challenging old John Bull;  
With an armory much lean-a!

## Senator Bill Sarpalius Reports



### MAKE PRISONERS EARN THEIR WAY

AUSTIN — There are two things that are on everyone's minds right now — money and crime. It would be wonderful if we could reduce crime and save tax money in the process.

That's what two sheriffs from our Senatorial district are doing. Sheriff T.L. Baker of Potter County and Sheriff Travis McPherson of Deaf Smith County have devised a program for many of their jail prisoners that not only saves tax dollars, but it reduces the crime rate and has the added bonus of reducing overcrowding in jails.

These two progressive sheriffs have decided there is no reason that a non-violent offender shouldn't earn his keep — for the jail and for the offender's family. They have set up a program that requires these offenders to work on a regular job during the day, and stay in jail at night.

The sheriffs pick offenders who are not likely to cause trouble and find jobs for them in the community. Then the lawmen charge rent for the jail stay. The rest of the criminal's paycheck goes to the inmate's family, or to a savings fund. Any inmate who enters this program swears off drugs and alcohol for the duration of his sentence. Both sheriffs say escape attempts are absolutely no problem.

The program cuts down on jail overcrowding because the inmates need not be kept in a maximum security confinement. If they wanted to escape, they simply walk off the job. So far, inmates have known a good deal when they saw it, and reported to jail promptly every night. Once they got out of jail for good, they

rarely get into trouble again. We think it's wonderful that these sheriffs are saving their counties money by charging room and board for the jail. Why should a criminal get a free ride at taxpayers' expense?

The true savings in this program are harder to measure, but are real. They include the money the community saves by having a member of that community become productive, often for the first time. They also include the money the community saves by having a jail inmate support his family, a family which otherwise might be on welfare.

One thing we don't want to do is take the element of punishment out of the criminal law, and the work-release program does not do that. Criminals serve their time in this program, and work is more punishment for many of them than sitting in a cell would be. We also want to keep the dangerous criminal out of the community, and this program also accomplishes that goal.

Our prisons and jails are becoming more overcrowded by the minute. The cost of housing those prisoners is astronomical. Sheriff Baker and Sheriff McPherson are to be commended for coming up with truly economical, common-sense answer to some of these problems.

This program in these two Panhandle counties has been so successful that we are looking at it in the Legislature to see if it could work all over the state. We want your opinion of this idea, too. Please write to Senator Bill Sarpalius, P.O. Box 12068, Austin, Texas 78711.

## ON YOUR PAYROLL

SENATOR BILL SARPALIUS, P.O. Box 12068, Austin, Texas 78711 or P.O. Box 7926, Amarillo, Texas 79101, or call 512/475-3222.  
REPRESENTATIVE FOSTER WHEALEY, Texas House of Representatives, P.O. Box 2910, Austin, Texas 78769.  
REPRESENTATIVE JACK HIGHTOWER, 13th District, Room 2348 Rayburn Building, Washington, D.C. 20515.  
SENATOR LLOYD M. BENTSEN, Room 240, Russell Building, Washington, D.C. 20510  
SENATOR JOHN TOWER, Room 142, Russell Building, Washington, D.C. 20510

## CAPITOL UPDATE

John Tower  
U.S. SENATOR for TEXAS  
142 RUSSELL OFFICE BUILDING  
WASHINGTON, D.C. 20510



During the Great Depression, when much of our best farmland literally blew away in the Dust Bowl, Texans realized that soil conservation had to become a priority if the agriculture industry was to remain viable.

In 1935, Texas passed the first law in the United States creating soil conservation districts as government subdivisions. This law became the model for national legislation setting up the Soil Conservation Service and the soil conservation system for the entire nation. Effective soil conservation made U.S. agriculture more productive and more prosperous.

However, in recent years rising demands on productivity, the conversion of cropland to urban use, strains on farm cost-income balances, drought and a new understanding of the costs of soil erosion have made conservation more important than ever.

The most damaging form of erosion is caused by water run-off, which results in the loss each year of more than four billion tons of soil. That is the equivalent of a one-foot-deep slice of soil large enough to cover 2,247,000 acres. Wind erosion takes another billion and a half tons (more than 800,000 acre feet), and gully erosion, about 300 million tons (165,000 acre feet).

This soil loss translates directly into productivity loss. Research in one southern state showed that each inch of eroded topsoil cost the producer approximately five and three-fourths bushels of corn per acre per year.

Loss of soil nutrients is one of the major reasons for these yield losses. One estimate is that each ton of medium-textured topsoil eroded results in loss of 26 pounds of potassium, seven pounds of phosphorous and two pounds of nitrogen.

That farmers understand the dimensions of the problem is illustrated by a recent survey conducted by the U.S. Soil Conservation Service. By an overwhelming majority, farmers said soil conservation should be the highest priority goal for that agency. That may be the obvious function of the Soil Conservation Service, but in recent years soil conservation has taken a back seat to other areas.

Our farmers are better educated and better equipped than ever. They know conservation methods.

Yet a significant number of farmers have failed to use proven methods of conserving their soil. Windbreaks, terraces and conversion of cropland to pasture take cropland out of production. Maneuvering large farm equipment around existing terraces is time-consuming and increases fuel consumption. These short-term reasons for not using every means available to conserve the soil have potentially disastrous long-term consequences.

It is imperative that the Soil Conservation Service and other government agencies do everything that they can to encourage voluntary use of conservation methods. We must continue to direct our agriculture programs toward that end.

We depend on our farmers for food for ourselves and much of the rest of the world, and for much of the prosperity of our national economy. We must look toward the future and ensure that our agriculture industry continues to be the most productive and most prosperous of any nation's in the world.

Our nation has seen once the awful effects of failing to take care of our soil — the terrible Dust Bowl of the 1930s. We must never allow that to happen again.

## The McLean News

USPS 336-260  
LINDA HAYNES,  
EDITOR AND PUBLISHER  
LISA PATMAN, ASSOCIATE EDITOR  
201 N. Main P.O. Drawer H  
McLean, Texas 79057



1981

McLean, Gray County, Texas  
Published each Thursday (except the last week in December)  
Second class postage paid at McLean, Texas 79057  
POSTMASTER: Send address changes to:

THE McLEAN NEWS  
P.O. DRAWER H  
McLEAN, TEXAS 79057

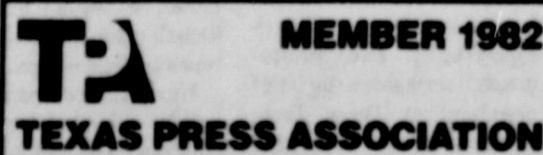
SUBSCRIPTION RATES:  
\$10 per year in Gray County  
\$11 per year outside Gray County  
ADVERTISING RATES:  
\$1.50 Open Retail Rate  
\$1.75 per column inch National Rate

COLUMNISTS:  
Linda Haynes  
Lisa Patman  
Sam Haynes  
ADVERTISING MANAGER:  
Kathy Carter

STRINGERS:  
Lavern Carter, McLean  
Lena Carter, Alanreed  
Helen Akins, Lefors

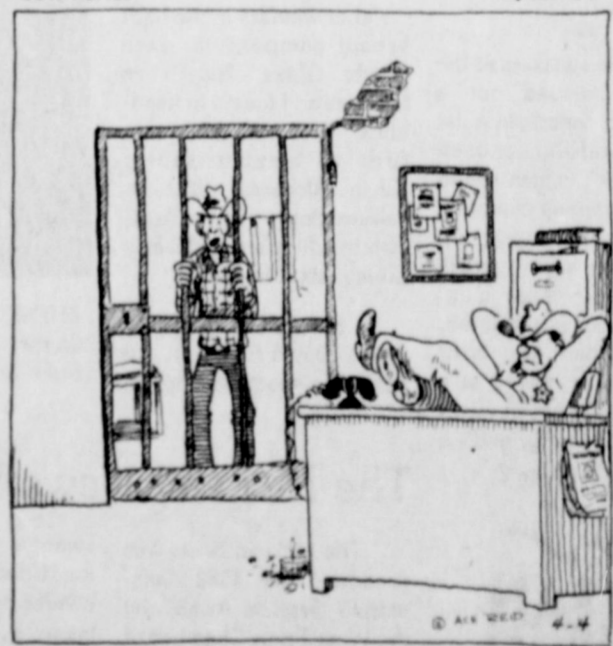
TYPESETTER:  
Connie Dwyer  
CIRCULATION AND PUBLICATION:  
Allen Patman  
Bob Patman

McLean, Texas  
Population 1183 [1970 Census]



### COW POKES

By Ace Reid



"Shore I stole them cattle sheriff, but with interest bein' the way it is, how in the heck could I afford to buy 'em?"

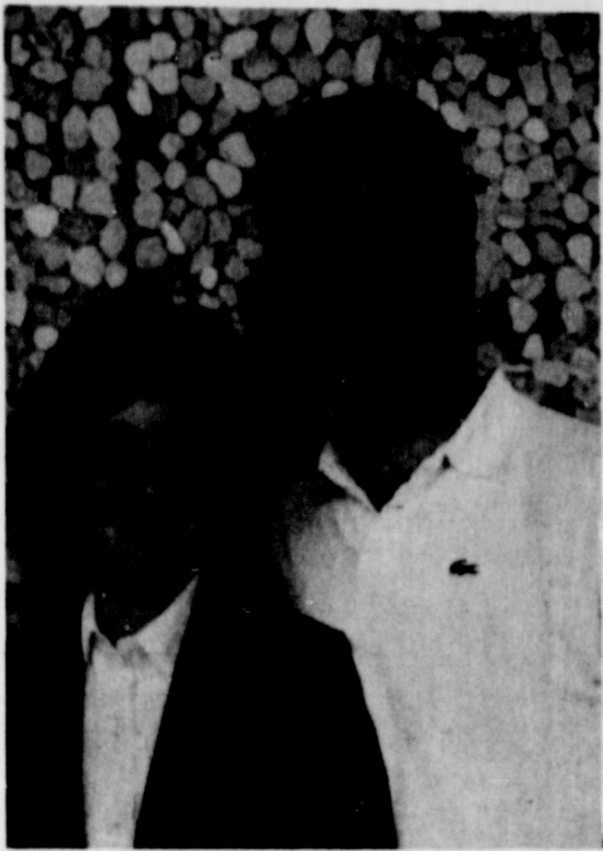
'COWPOKES' is brought to you by the friendly folks at the

## American National Bank in McLean

779-2461  
201 N. Main  
McLean, Texas

member FDIC





MARIDALE GLASS AND SCOTT MILLER

## Maridale Glass, Scott Miller Wedding Date Set May 22

Mr. and Mrs. James Dale Glass are announcing the engagement and approaching marriage of their daughter Maridale, to Scott David Miller, son of Mr. and Mrs. Phillip C. Miller of Maryland.

The couple will be married May 22 at 8 p.m. in McLean's First Baptist Church.

Miss Glass is a graduate of McLean High School and West Texas State University. She is employed by Southwestern Bell in San Antonio.

Miller is a graduate of an El Paso high school, and will graduate from West Texas State University in May.

### In The Kitchen

by Linda Haynes



Whenever anyone in our family travels, they keep a look-out for regional cookbooks for me. A few years ago Sam made a business trip to Salt Lake City, Utah, and returned home with a Mormon cookbook for me. The recipes in the booklet are simple, hearty, fare which the pioneers in the Utah area liked to cook. I hope you enjoy these dishes.

#### HAMBURGER BEAN GOULASH

3 cups (1lb) small dried red beans  
6 cups water  
2 or 3 bay leaves  
2 lbs. ground beef  
1/2 lb. bulk pork sausage  
3 garlic buds, minced  
1 No. 2 1/2 can tomatoes or 3 8 oz. cans tomato sauce  
1 tablespoon chili powder  
2 small chili peppers  
3/4 tsp. curry powder  
1 tablespoon powdered cumin seed (or cominos)  
1 tablespoon salt  
1/4 tsp. Tabasco sauce

Wash and sort chili beans. Put into large kettle with water and bay leaves, and cook until tender. In skillet, brown meat, onions, and garlic and add to drained beans along with remaining ingredients. Simmer together for one hour, then cool and refrigerate. Usually best when reheated. Makes 12 servings.

#### WHOLE WHEAT QUICK BREAD

(Phoebe Elizabeth Cook Hale, who served as hairdresser and assistant to the cook in the royal household of Queen Victoria brought this recipe with her to Mormon country. It was always a delicacy in her home and has been handed down to her children and grandchildren with whom it is still a favorite.)  
1 egg, beaten  
2 cups buttermilk  
3 tablespoons molasses or honey  
1 1/2 tablespoons melted butter  
2 cups whole wheat flour  
1 tsp. soda  
1 tsp. salt  
1 tsp. baking powder  
1/2 cup nuts, if desired  
1/2 cup raisins

Combine eggs, buttermilk, molasses and melted butter, then stir in dry ingredients that have been mixed together. Stir in nuts and raisins, and spoon batter into two greased loaf pans. Bake 400 degrees oven for 1 hour. Cool. Makes 2 loaves.

They speak of my drinking, but never think of my thirst.  
Scottish Proverb

The compliment that helps us on our way is not the one that is shut up in the mind, but the one that is spoken out.  
Mark Twain

## Jay Thompson, Former McLean SPS Manager, Dies Saturday, Services In McLean

James Lilburn "Jay" Thompson, 54, died Saturday at Parkview Hospital in Wheeler. Services were Monday at First Baptist Church in McLean. Officiating were the Rev. Ernie McGaughey, pastor of First United Methodist Church of Wheeler, and Jay Farber of El Reno, Okla., a Church of Christ minister.

### Tennis Teams Play In Meet

McLean's girls' tennis teams participated in the district tennis meet at Pampa last week, but had to forfeit a game for third because of the illness of one of the players. Stefanie Houdyshell, part of the doubles team along with

Nora Gately, became ill and was unable to finish the meet. Stacy Smith took her place for the set, but UIL rules forced the McLean team to forfeit the match.

### Simmons Is New Boss Lion

The McLean Lions Club met in regular session Monday night April 5 at 6:30 p.m. for their annual election of officers.

A good crowd was presided over by Lion Boss Dorman Thomas and the following slate of officers were elected for the coming year: President-Ted Simmons; First vice-president-Ron Cummings; Second vice-president-Carl Dwyer; Third vice-president-Brad Dalton; Secretary-treasurer-Casper Smith; Lion Tamer-Lush Rogers; Tail Twister-Wayne Carter; Directors-R.C. Parker and Jack Syfrett.

A work session was set up to work on the golf course, and a discussion about attendance at the District Convention at Dalhart was held.

### BIRTHDAYS

- APRIL 8  
Wanda Jean Dorsey  
Lana Sue Fry  
Barney Pool  
Boyd Meador  
Larry Mark Richardson  
Melinda Sue Hunt
- APRIL 9  
Ruby Gilbreath  
J.P. Webb  
Gladys Comstock  
Armando Ontes
- APRIL 10  
J.E. Smith  
Douna Thrasher
- APRIL 11  
Joyce Ann West  
David Pool  
Jackie Steel
- APRIL 12  
Martha Ann Skelton  
Matthew Bailey  
Kirk Douglas
- APRIL 13  
Larry D. Gibson  
Steven Craig Howard
- APRIL 14  
Johnny Holman  
Jonathan Douglas

The real title of Whistler's portrait of his mother is "Arrangement in Gray and Black."

2, 1958. He moved to McLean from Borger in 1963, and served as the manager of the Southwestern Public Service office until 1976, when he moved to Wheeler.

### FFA Teams Win At Contest

McLean's Future Farmers of America chapter won a second and a fourth place in the West Texas State University Judging Contest April 3.

In the Top O' Texas District judging at Canyon, McLean placed fourth in livestock judging and second in range and

where he assumed the same post.

He was a member of Wheeler First Baptist Church, Wheeler Lodge AF & AM, and Wheeler Kiwanis Club. He was serving his fourth term as president of the Wheeler Chamber of Commerce. He had been a volunteer worker for several

years with the High Plains Eye Bank. He was a U.S. Army veteran.

Survivors include his wife; two sons, Boyd Lee of McLean and James of Wheeler; two daughters, Roberta Shriver and Patricia Middleton, both of Lubbock; a sister, Betty Humphreys of Hennessey, Okla.; and eight grandchildren.

### Boosters Plan Volleyball Tournament

The Junior Livestock Boosters are sponsoring an all-McLean volleyball tournament April 8, 9, 10 at the McLean gymnasium. Proceeds from the benefit tour-

namment will go to the McLean Junior Livestock Boosters, according to spokesperson Cheryl Smith. No trophies will be given,

and teams will not be charged to enter the tournament, Mrs. Smith said. Ribbons will be given to the winners.

### McLEAN BRIEFS

Vester and Pat Bailey left early Monday morning for Shattuck, Okla., to get medical treatment for Vester.

Mr. and Mrs. T.B. Masterson of Dallas were here for the Milton Carpenter funeral.

Melvin Bailey was at Baylor recently for a medical check-up.

Buck Miller is in the hospital at Shamrock.

Visiting Mr. and Mrs. Jack Bailey Saturday were son Melvin and his family from Pampa.

Mae Chilton was visited recently by Mr. and Mrs. Dwayne Blackshear, from Albuquerque, N.M., and Mr. and Mrs. Johnny Chilton from Hale Center.

Charles Bailey, manager of Southwestern Public Service in Miami, was here for Jay Thompson's funeral.

Bob Patman spent the weekend with his maternal grandparents, Mr. and Mrs. Paul R. Proffitt of Borger.

Mr. and Mrs. Raymond Smith and Betty Smith of Farmington, New Mexico, have been in Corpus Christi fishing. Betty returned to her home last week.

Mr. and Mrs. Wayne Rives of Gaithsburg, Maryland, are visiting Vera Back and J.D., Mrs. June Woods and other friends and relatives this week.

Max Riemer of Seeley Lake, Montana, visited his aunts Martha Van Huss and Margie Jones last Saturday night.

Barbara and Don Trew of Palo Pinto are in McLean this week to finish moving their household goods to their new home. The Trews have purchased a convenience store in Palo Pinto.

Mr. and Mrs. Jimmy Burgin and girls, Melinda, Krista, and Courtney of Groom, visited Mrs. Jim Wheeler and Dick Sunday.

Mr. and Mrs. Johnny Mertel visited Teresa, Gary, and Tarah Phillips at Bedford last weekend.

The City offices will be closed April 9 for Good Friday.

The United Methodist Women met April 6 for a general meeting and covered dish luncheon. "He Lives" was sung by the group to open the program. The prayer was given by Pat Walker.

Mary Powell, Pat Walker, Isabel Cousins, and Grace Glenn gave the program entitled "The Certainties of Easter." The meeting was closed with the hymn "He Arose," and the group giving sentence prayers.

Others attending were Marjorie Jones, Mary Dwyer, Verna Dorsey, Ruth Whaley, Mollie McDowell, Rose Steel and special guest Lacey Lee Steel.

### New Arrival

Mr. and Mrs. Jerry Beaty of Floydada are the parents of a girl, Megan Rebecca, born March 12 in Lubbock. Megan weighed eight pounds, four ounces and was 20 1/2 inches long.

Megan has a sister, April, who is seven years old. Grandparents are Mr. and Mrs. Dorman Thomas of McLean and Mr. and Mrs. J.D. Beaty of Wheeler.

The Pioneer Study Club met Thursday, April 1 in the home of Mary Dwyer with Pat Walker as hostess.

Mrs. Dwyer was in charge of the program and introduced Mrs. Sam Green who related her experiences of living in Saudia Arabia. She illustrated her talk with native clothes and artifacts from that country.

Those present were Fayette Bell Barton, Nancy Billingsley, Mary Dwyer, Bonnie Fabian, Margaret Grogan, Ruth Magee, Martha Parker, Bert Darsey, Jacque Riley, Eleanor McCarty, Mary Crockett, Janet Kennedy, Judy Orrick, Irene Pakan, Mary Emma Woods, Pat Walker, and Sam Green.

### 4-H News

#### METHOD DEMONSTRATIONS

The County contest set for April 4 has been rescheduled for April 18, at 2 p.m. at the Courthouse Annex. This is a great learning experience, and you can choose the topic and area which is an interest to you. It is not too late to begin working on your demonstration if you begin now--there are some contest areas open. To sign up or for further details, call the Extension office--669-7429.

Remember the deadline for naming the new 4-H family magazine is April 1. Therefore, if you have a name suggestion of logo (trademark such as a windmill, etc.) or can create a cover, bring it or mail it to the Extension office by April 1.

### Quotable Quotes

When we are merriest, it is best to leave and drive home.  
Czech Proverb

I like people who refuse to speak until they are ready to speak.  
Lillian Hellman

Happiness is not a horse; you cannot harness it.  
Russian Proverb

To pretend to satisfy one's desires by possession is like using straw to put out a fire.  
Chinese Proverb

Lots of folks confuse bad management with destiny.  
Kin Hubbard

Real richness is in how you spend your money.  
Jacques Lipchitz

Nothing is sadder than the consequences of having worldly standards without worldly means.  
Van Wyck Brooks

The man who cannot read is at no disadvantage to the man who will not read the Bible.  
Anonymous

ELIMINATE THE GUESSTIMATE. CONSULT OUR

**Critical Feasibility**

MARIDALE GLASS HAS CHOSEN HER CHINA, CRYSTAL, FLATWARE AND ASSORTED HOUSEHOLD ITEMS AT

**THE POTPOURRI GIFT SHOP**

[SHOWER TO BE SATURDAY, APRIL 10]

You are cordially invited to attend a reception to meet

**BUDDY TEMPLE**  
Democratic Candidate for Governor

Pampa Country Club Ballroom  
April 13, 1982  
6:00 to 8:00 p.m.

Political Ad Paid by Tri-County Democratic Women's Club, Jimmie Williams, Treasurer.

An air conditioner can improve the performance of your furnace.

### An air conditioner?

A very special air conditioner called the add-on heat pump. It cools in summer and heats in winter. And it works with whatever kind of furnace you have.

The add-on heat pump will improve the performance of your furnace by keeping it off completely during a good portion of the winter. The add-on heat pump can satisfy your home's heating requirements more economically when temperatures are above 30° or so. That's about 80% of our area's normal heating season.

Then, when summer comes, the heat pump becomes a cool pump, efficiently air conditioning the home. So, when you're in the market for air conditioning, look into the add-on heat pump.

Call us to see what your savings could be.



SOUTHWESTERN PUBLIC SERVICE COMPANY

909.3

## REVIVAL

FIRST BAPTIST CHURCH McLean, Texas

APRIL 11-18

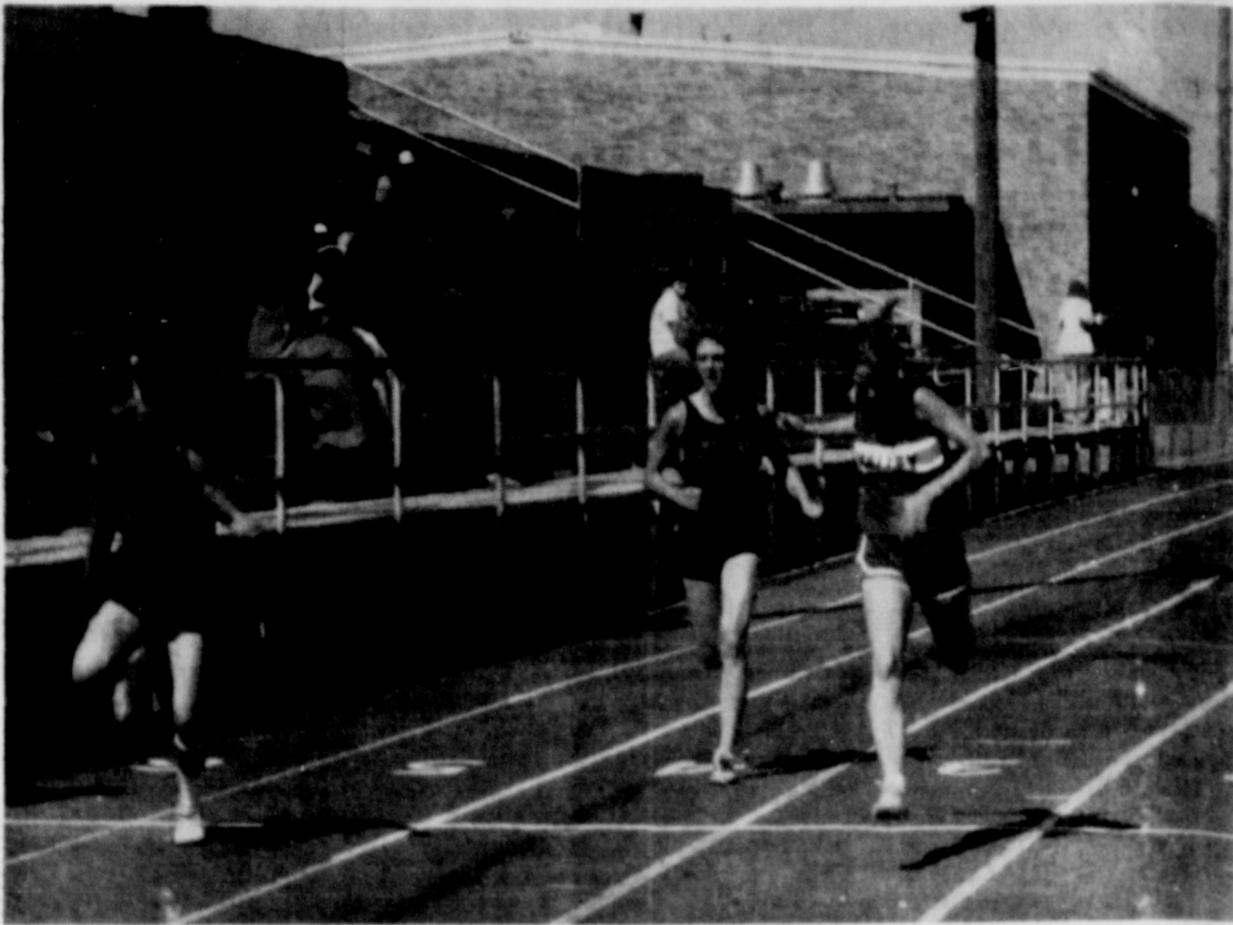
Three Services Daily:  
YOUNG PEOPLE-9:00 a.m. BREAKFAST  
12:00-1:00-NOON LUNCHEON  
7:30 NIGHTLY

O.K. BOWEN, EVANGELIST  
TIM THORNTON, MUSIC

WE INVITE YOU TO ANY OR ALL OF THESE SERVICES IF YOU ARE GOOD YOU DON'T NEED TO COME, BUT IF YOU HAVE A NEED, BRING IT TO GOD IN THESE SERVICES FOR HELP. WE WELCOME YOU. GOD LOVES YOU AND SO DO WE. BUELL WELLS, PASTOR

P.S. Nursery for all Services





MARIA ECK CROSSES the finish line in third place during a preliminary heat of the 100-meter dash at the

Groom district track meet Tuesday. Her time was good enough to qualify her for the finals. [Photo by Kathy Carter]



CUBETTE LEE ANN Tate comes in third in her heat of the 100-meter dash at the junior high division of the

district track meet Tuesday. Results of the finals were too late for presstime. [Photo by Kathy Carter]

**ALANREED BRIEFS**

Visiting the R.B. McLains Sunday were Marshall Tammy, and Isaac and Dale of McLean and Monte Johnson of Amarillo.

Visiting Polly Harrison this week are daughter Jeanie, Brandon, Cheree, and Coriell of Hemphill.

Robert Bruce made a trip to Fort Worth Friday.

The third through eighth grades were in Clarendon Thursday for the U.I.L. contest. They were accompanied by Mrs. Glass and Mrs. Turner.

Visiting the Jack Standish family during the weekend were son Sam and family of Cisco and daughter Sheila and family.

Polly Harrison and Jeanie Cummings and children were in Pampa on Sunday and visited Betty Marshall and others there.

The S.C. Fishes have grandson Tony visiting from California.

Don't forget our community meeting on Saturday, April 10 at seven o'clock. It is a covered dish meeting.

Word has been received here of the death of Asa (Ace) Greenwood, youngest son of the late S.T. Greenwood. Mr. Greenwood died in Houston last week where he has lived for several years. He was born and raised here and attended our school. He has one sister, Mrs. Dan Stinson of Abilene, one brother Burnett of Wichita Falls, and three step-brothers Ned and Harvey Craig of Lubbock and Billie James Craig of Fort Worth.

Bob Adams made a trip to Pampa Monday.

Onie Gibson, Lena Carter, and Anita Bruce visited Monday with Carol Seiler and Blake. Blake came home from the hospital Saturday.

Polly Harrison and Lena Carter attended a workshop on "Sewing in Fashions" given by Donna Brauchi at the courthouse annex in Pampa on Tuesday. After lunch they attended a seminar on low sodium diets given by Mary Sweeten, dietary consultant.

Marie McCracken of Clarendon visited with Polly Harrison Wednesday enroute to her home after a trip to Tulsa to see daughter Pat and family.

Mr. and Mrs. Robert Bruce spent last weekend in Midland with daughter Sandra and granddaughter Nickie.

Mrs. Ed Seiler and Scott were in Amarillo on Saturday to bring home Blake from an Amarillo hospital where he has been so long. Blake is still in a body and leg cast, and will be for some time yet.

Mrs. Bob Adams and Diane Hallum were in Pampa on Saturday.

Mrs. Frank Worsham and

girls were in Pampa Saturday.

Wind did considerable damage last week, upsetting Polly Harrison's windmill, taking part of Putt Rawling's roof and antenna, and some damage to siding done by a porch swing.

Kay Hallum was on the sick list this week.

Visiting the W. H. Davises during the weekend were their daughter Willie Marie and husband of Panhandle.

Mona Lou Finley came home from the Shamrock hospital for a few days, but was due to enter an Amarillo hospital for further tests.

Mrs. Robert Bruce was in Pampa on business Friday.

**LIBRARY NOTES**  
by Sam Haynes

A Solution to the Riddle Dyslexia

Harold N. Levinson, M.D. Dyslexia was first described by two English physicians, Kerr and Morgan, in 1896. Interestingly, the structural cortical hypothesis initially proposed by Morgan is still held in wide esteem, although in slightly modified forms. Despite 80 years of escalating research efforts and mounds of corresponding statistics, there still exists a diagnosis-therapeutic medical void and riddle in which dyslexics can neither be scientifically distinguished from other slow learners nor medically treated.

This book is the outcome of a 15-year-long search for a solution to the puzzle characterizing dyslexia, and is especially needed since the government has mandated equal education for the learning disabled.

Although the data and conceptualizations derived by the author appear to

provide a solution to the dyslexic riddle, he cautions that all solutions are incomplete and that other solutions may exist. It is the author's hope that the reader will utilize the content of the book so as to further expand and modify his conclusions and further educate the public concerning this all-to-common human malfunction.

**HEMBREE SEED COMPANY**

FRUIT TREES in 3 and 5 gallon pots  
GERANIUMS, STRAWBERRIES, ROSE BUSHES, POTTED PLANTS, SEED POTATOES and ONIONS  
HEMBREE SEED CO  
601 E. Railroad  
McLean  
779-2552

**FERTILIZER-GRADE MANURE**

**\$2.85 ton plus 15¢ ton mile spread on the field**

100 TON MINIMUM

**McLEAN CATTLE CO.**  
**779-2405**

**Dr. Brock W. Lovett**  
**CHIROPRACTOR**

Specializing in the examination and treatment of spinal and nervous disorders.

256-2133  
310 South Main  
Shamrock, Texas  
Tuesday & Friday  
9 to 5

**Farmers Reminded To Report Fall-Seeded Crops At Signup, ACS Says**

The Agricultural Stabilization and Conservation Service is currently accepting applications for the feed grain, wheat, upland cotton and rice programs. ASC official Scotty Odom reminds farmers that they can report their wheat, oats, and barley acres when they sign up for the programs and will not have to make a separate visit to the county office. "Some farmers will have seeded spring crops which they can report also," Odom said.

The 1982 acreage production programs offer farmers target price protection, price support loans and use of the grain reserve. To be eligible for these benefits, farmers must agree to reduce their feed grain acres planted for harvest by 10 percent, and their cotton, and wheat acres by 15 percent.

Odom said program sign-up so far has been light, but greater activity is expected during the next few weeks. "Only farmers who sign up by April 16 will be eligible for program benefits."

For wheat program participants, these benefits include a \$4.05-a-bushel target price, a regular loan of \$3.55 a bushel, and a reserve loan of \$4.00 a bushel. Farmers who participate in the feed grain program will receive a target price of \$2.70 per bushel of corn, \$2.60 for sorghum

and barley, and \$1.50 for oats. They will also be eligible for loan rates of \$2.55 per bushel for corn, \$2.42 for sorghum, \$2.08 for barley and \$1.31 for oats. For participating in the upland cotton program, farmers will be eligible for a target price of 71 cents and a loan rate of 57.08 cents a pound.

According to Odom, 1982



Before baking, insert tube-type macaroni in the center of the top of your pie so that juice can bubble out.

wheat and feed grains will be eligible for immediate entry in the farmer-owned grain reserve. Feed grain reserve loan levels per

bushel are \$2.90 for corn, \$2.75 for sorghum, \$2.37 for barley, and \$1.49 for oats. "Farmers who may be undecided about the pro-

grams or who have questions are encouraged to contact our office for more information," the ASCS official said.

**Buddy Temple Will Be In Pampa Tuesday**

Buddy Temple, Democratic candidate for Governor of Texas, will be the guest of honor at a reception at the Pampa Country Club, Tuesday, April 13, from 6 to 8 p.m. The reception, hosted by the Tri-County Democratic Women's Club and other Temple boosters, will give area residents an opportunity to meet Temple, who currently is serving on the Texas Railroad Com-

mission. The public is invited to attend the reception according to Linda Haynes, Gray County Democratic chairman.

Temple, 40, was elected to the Texas Railroad Commission in 1980, after serving eight years as a member of the Texas House of Representatives.

During his tenure in the House, he co-sponsored the

ethics legislation following the Sharpstown scandal, authorized a bill on strip mining, and took a leadership role in public school finance. After the 1979 session, he was named "hardest working committeeman" by Texas Monthly.

"Characters must be kept bright as well as clean," Lord Chesterfield

The McLean Junior Livestock Boosters Association, the exhibitors from the local 4-H and FFA chapters, and the parents would like to say

**THANK YOU**

to our buyers and supporters for your help this year.

Hess & Hefley  
Riley Welding - Pampa

American National Bank  
Bentley Feed and Fertilizer

Gray-Roberts Co. Farm Bureau - Pampa

McLean Cattle Co.  
Cheryl Decorating  
Mr. and Mrs. Joe Magee  
Frances Kennedy

Gladys Smith  
Rafter L Ranch - Miami  
Mr. and Mrs. Bill Graham  
Ida and Leta Mae Hess

Addington's Western Wear - Pampa

Steve and Patti Brass  
Brass R.O. Ranch  
Tate's Welding  
Sammon's Communication - Pampa

Bill Irwin - Amarillo  
Stewarts Gulf Station  
Mr. and Mrs. Ron Cummings

McLean VFW, Post 8565  
Pucketts Grocery  
Mr. and Mrs. Bob Sherrod  
Stahl Petroleum - Amarillo

Celanese - Pampa  
McLean Vet Clinic  
Cowboy Drive In  
Hambrights Building Supply

The McLean News  
City of McLean

City of McLean  
Mr. and Mrs. Roy McMullen





ALTHOUGH FINAL RESULTS in the girls' district track meet at Groom were too late for presstime, we can report that Leslie Stewart, pictured here in the triple jump, qualified for the finals in that event, and in the long jump, and won the high jump. Winners at the district meet will participate in the regional meet at Levelland April 23 and 24. [Photo by Kathy Carter]



TIGERETTE MARIA ECK climbs back into her warm-ups, with assistance from her mother Joyce Eck following Maria's run in the 100-meter preliminaries at the District track meet in Groom Tuesday. [Photo by Kathy Carter]



TIGERETTE DONNA McANEAR [right] is congratulated by Candi Carpenter following Miss McAnear's run in the hurdles at the district track meet in Groom Tuesday. Miss

McAnear had the fastest qualifying time in the preliminaries. Results of the finals were too late for presstime. [Photo by Kathy Carter]

### Gray County Gardening

By Joe VanZandt

#### APRIL LANDSCAPE ACTIVITIES

Prune spring flowering trees and shrubs as soon as they have finished blooming. If you didn't apply fertilizer last month, better consider your needs at this time. A soil test is best because we are seeing a lot of yards that have accumulated high levels of phosphorus.

Be wary of bare-root plant sales offered this month. Make sure plants aren't dry and brittle or have excessive top growth. Be selective as many of these so-called bargains are not bargains at any price.

Cut back old mum plantings to encourage new shoot growth. A light application of a nitrogen type fertilizer may be applied to annuals planted last month. Inspect and repair lawn mower. A sharp mower makes cutting grass easier and the lawn looks better.

Begin disease prevention program on roses and be prepared to continue at 7 to 10 day intervals throughout the growing season. Black spot, rust and powdery mildew are the three chief diseases of roses in the Panhandle. As soon as danger of frost is past, average date is April 15, there is a wide variety of colorful annuals to use in the home landscape. Some of the better annuals now available or soon will be available at local garden centers include: Cockscomb, Periwinkle, Petunia, Zinnia, Marigold, Salvia, Morning Glory, Portulaca, Cosmos, Rudbeckia, Dusty Miller, Nicotiana.

Divide and/or establish groundcover areas of Liriope, Mondo Grass, Adjuca Vinca, Sedum, etc. Replenish mulch on roses and other shrubs. Watch any tender new growth for possible insect damage. Tender new shoots are especially liked by aphids. Plant dahlias after danger of frost is past. Be ready to cover or protect tender young plants from a late frost.

#### APRIL VEGETABLE GARDEN ACTIVITIES

Direct seed cold tolerant early sweet corn after soil temperature rises to 50 degrees F. (10 degrees C.) at 4-inch depth. Plant Irish potato seed pieces after soil temperature reaches 50 degrees-55 degrees F. (12 degrees C.) at the 4-inch depth. Apply Vapam to kill nematodes, weed seeds, harmful fungi, and Bermuda grass rhizomes; follow label instructions strictly and be sure soil temperature is at least 50 degrees to 55 degrees F. at the 6-inch depth before treating.

Obtain or build hot tents or other protective covers for your frost sensitive plants; build windbreaks. Sow celery seed in ready mix peat-lite mix; maintain soil temperature at 70-75 degrees F. day and 60 degrees F. at night; celery must be started in a greenhouse or hotbed where temperature can be closely regulated. Begin to acclimate your early potted tomato, eggplant, and pepper plants by gradually lowering the night temperature to 50-55 degrees F.; do not withhold water; these vegetables cannot be hardened to frost.

Apply black plastic or paper mulch prior to planting heat-loving vegetables, e.g. tomato, squash, cucumber, melons, okra, peppers, eggplant; wait until soil temperature stays over 75 degrees F. to apply organic mulches for they tend to keep the soil from warming. Average last frost for Pampa area is April 15. Set out potted plants of early sweet corn when 4 to 6 inches tall and danger of frost is past; do not disturb the root system. Set early plants of tomato, eggplant, and pepper into garden with protective covers over them; be sure to cut a 2-inch square flap in the cover near top on side facing east to let out hot air during day; use collars to protect stems from cutworms; protect garden with windbreaks.

#### TURF GRASS ASSISTANCE

Our Extension Turf Specialist Dr. Richard Duple will be in Gray County, April 1 from 8:30 a.m. to noon. He will be available for individual conferences relative to lawn and turf problems whether it be for homes, golf courses, or athletic fields. Call the County Extension office-669-7429 to make an appointment with Dr. Duple. He is one of the outstanding turf men in the country and if you have turf grass problems call and take advantage of this opportunity.

#### SPRAYING FRUIT TREES

If you want to produce without Texas fruit worms or rots, you'll have to use pesticides. Peach fruit must be constantly protected from various insects and diseases during its formative stages.

Actually, the first pesticide application should be before the peach or plum tree even shows signs of life in the spring. This is called the dormant stage spray, which consists of a dormant oil spray for scale and a fixed copper such as Kocide 101 for leaf curl.

The following stage (pink bud stage) is when swollen flower buds show pink or white. This usually happens in late February or March but varies with the variety of tree. At this stage, spray with malathion or diazinon in combination with a fungicide such as captan to discourage the peach twig borer and brown rot fungus.

Then comes the petal fall stage when about 75 percent of the blossom petals have fallen. At this stage apply the same insecticides

and fungicides used in the pink bud stage to control stink bugs, lygus bugs, peach twig borer, plum curculio and brown rot. This spray and the ones which follow are important to keep worms out of fruit. You can continue spraying home fruit trees every 10 days to two weeks for additional protection to your developing fruit crop. Generally after petal fall fairly good protection of the fruit crop will be obtained with three to four sprayings.

#### BASICS FOR BEGINNING GARDENERS

If you are a beginner gardener, you need to ask yourself these four questions:

What vegetables does my family like?

What vegetable will grow best in my area of Texas?

How much space do I have for a garden?

How much time can I spend gardening?

There is absolutely no sense growing vegetables in your garden if they are not going to be eaten—that is unless you get your kicks out of giving them to lucky neighbors and good friends. Take time and make a list of those vegetables your family enjoys at the dinner table.

From this list of favorite vegetables, you need to determine which of your family favorites can be grown in this area. Talk to reputable nurserymen, good gardeners, or even myself, and determine which crops grow best. Notice I said best, not just will grow. Almost every vegetable known to mankind plus a few "grow".... but whether or not they will

produce anything to eat is an entirely different matter.

While determining which vegetables to grow in your garden, also keep in mind the size of your garden. You may very well find out when making your list of favorite vegetables that watermelons and cantaloupes rate very high on your families list of favorites, and that they will do extremely well in your area. However, if you are only planting a 10' x 10' garden, you'll only have room for a couple of plants, if even that. A couple of watermelon plants could easily take your entire garden and it's just not worth it. If you are only planning a small garden, concentrate on the "high value" crops from your list, such as tomatoes, peppers, lettuce, green onions, etc.

Lastly, but perhaps most importantly, be realistic about how much time and effort you are willing to spend growing a garden. Even a small garden like a 10' x 10' plot will require a considerable amount of time and effort on your part, or on somebody's part. If you are smart, and want to have a real shot at successfully growing a garden, it's a good idea to make your garden "our" garden. Involve the entire family in growing a garden.

#### POLITICAL CALENDAR

Justice of the Peace  
Precinct 4  
R.C. PARKER

District Judge  
223rd Judicial District  
DON CAIN

District Clerk  
VICKIE WALLS  
MARY CLARK

Gray Co. Treasurer  
JEAN SCOTT

Gray Co. Clerk  
WANDA CARTER

Gray Co. Commissioner  
Precinct 4  
TED SIMMONS

U.S. Representative  
JACK HIGHTOWER

Justice of the Peace  
Precinct 1  
MARGIE PRESTIDGE

Political announcements appearing in this column are subject to the action of the Democratic Primary May 1, 1982.

All announcements must be paid in advance.

#### DEMOCRATIC CANDIDATE FOR DISTRICT CLERK



VICKIE WALLS

I pledge to devote full-time to this very important job. With my experience in county government, I feel that I am qualified to be an efficient district clerk.

Let me work toward a more progressive Gray County.

Pd. Pol. Adv. by Vickie Walls

#### Democratic Candidate MARY CLARK For District Clerk THE ONLY EXPERIENCED CANDIDATE

I feel that my four years of experience as Chief Deputy qualifies me to fulfill the duties of the District Clerk's office and better serve the people of Gray County.



Paid political advertisement paid by Mary Clark

#### SPS Official Promoted To Area Manager

Jonathan D. Krebs has been promoted to area development manager for Southwestern Public Service Company, announced Gary Gibson, director of consumer services.

Krebs had served as area development consultant for SPS since beginning his employment with the Company in 1980. The Company's Area Development Department works closely with communities and government agencies within the Company's service territory to further the economic development of the area.

Krebs is a member of Toastmasters' International.

•Boots by Tony Lama  
•Guns by Colt, Ruger,  
Smith & Wesson, Weatherby  
•Hats by Bradford  
•and American  
•Tack  
•Western Apparel  
the Whole Family

Complete Line  
Of Quality Brands  
Western Wear

"Complete Ranch Outfitters"  
Where your Search Ends  
And Hospitality Begins

119 S. Cuyler 669-3161 Pampa, Tx

**Elect**  
**PAULA BROCK**  
DEMOCRAT  
**For District Clerk**  
GRAY COUNTY

PD. POL. ADV. BY PAULA BROCK, PAMPA, TEXAS 78065



# Pharmacy

256-3272

Monday through Saturday Shamrock, Texas  
Serving Wheeler and Gray Counties with Quality Products  
and Professional Services at Competitive Prices

#### C.O.L.D. MEDICINES

C.O.L.D. stands for Chronic Obstructive Lung Disease... a category of lung conditions including bronchitis and emphysema (no relationship to the common cold). Conditions in the C.O.L.D. category are typically characterized by a narrowing and inflammation of the small airway passages along with an excessive production of mucus in the lungs. An obstruction to the flow of air through the lungs results in a degree of labored breathing and sometimes a restriction in physical activity.

The medicines used in C.O.L.D. include the bronchodilators, the antibiotics, and the steroids. Bronchodilators help relax and expand the openings in small airway passages. Theophylline, terbutaline, isoetharine, isoproterenol, and metaproterenol are bronchodilators. Antibiotics such as ampicillin and tetracycline are particularly beneficial when infection complicates already overburdened lungs... a common occurrence. Steroids such as prednisone and beclomethasone relieve inflammation and improve the body's response to the bronchodilators.

C.O.L.D. medicines are designed to relieve obstruction, control secretions, and control or prevent infection. Ultimately these important drugs improve physical activity.

## WE WANT TO BE YOUR PHARMACIST

Imo Jean Clark, R. Ph.

Jerry Hodge, R. Ph.





Florence Lieske was Bingo winner for the month of March at Thomas Nursing Center. (Photo Courtesy of Thomas Nursing Center)

### Nursing Center News

T.N.C. welcomes a new resident. Beall Robinson from Dallas. ...

T.N.C. extends their deepest sympathy to Oscar and Janie Pitman and family in the great loss of their son in law, Jay Thompson. ...

Sunday, Brother Walker was here to conduct church services for our residents. ...

Monday, the Senior Citizens ladies were here to assist our residents with Bingo, those helping were Bertha Smith, Lori Barker, and Vela Young. ...

Tuesday, our residents worked on their rooster and owl pictures. Our helpers

were Virginia Tolleson and Beta Sigma Phi members Linda Syfrett and Billie Kingston. Ginger Morilla was here to make new floral arrangements for our residents tables. ...

Wednesday, Martha Parker was here to play a Statler Brothers tape for some of our residents. They enjoyed that. ...

Thursday morning some of our residents made stand up bunnies out of Wood's. Nettie Bob Roberts furnished a beautiful cake decorated in spring colors. In the afternoon Mrs. Bonnie Fabian and Mr. J.T. Trew were here to lead in a Sing-A-Long. Our helpers

were Ruth Boucher and Velma Kinard. ...

Our Easter Party will be this coming Saturday at 2:30 all are welcome to attend. The Birthday party for the month of April is scheduled for Thursday, April 15 at 2:30.

### DPS Warning Period Is Up

AUSTIN--The 90 day DPS warning period for the new mandatory liability insurance law expires this week. After midnight Wednesday, March 31, state troopers will begin issuing citations to drivers who fail to show proof of insurance when such information is requested.

The law, which became effective January 1, 1982, requires all drivers to carry minimum liability coverage for bodily injury of \$10,000 per person (\$20,000 for two or more persons) and property damage of \$5,000.

Colonel Jim Adams, DPS director, said the law is encouraging more drivers to obtain the required coverage.

"DPS figures show that during 1981, approximately 73 percent of drivers involved in reportable accidents had the insurance," Adams pointed out. "That number increased to 81 percent for the first two months of this year."

Drivers who fail to carry the required coverage risk being fined from \$75 to \$200 for the first offense and from \$200 to \$1,000 for subsequent violations. In addition, a conviction under the new law will result in the suspension of the violator's driver license and motor vehicle registration unless the violator establishes and maintains proof of financial responsibility for five years from the conviction date.

### THEN and NOW

At one time, women's role was confined to kitchen and kids. It's a picture that has changed greatly in just a few years.

THEN: When modern woman first began setting a tentative foot in the world of commerce, it was often in fields that have been termed "cottage industries." Women tried their hands—and often successfully—at endeavors involving cosmetics, fashion, handicrafts and home products.

NOW: A new publication from the Gulf Oil Corporation called *The Women-Owned Business Directory*, lists more than 1,500 companies nationwide that are owned by women.



### DOWN MEMORY LANE

From the files of The McLean News by Sam Haynes

#### 10 YEARS AGO...

E.M. Bailey, Editor Incumbent aldermen Wilson Boyd and Glenn Curry were re-elected Saturday to the McLean City Council and W.C. Kennedy was chosen to the third open position. In the McLean School Board election, incumbent Howard Gipson received 237 votes and Gerald Tate 225 for the two open positions.

Two McLean youths were hospitalized following a one-car accident Sunday morning on Texas 273 approximately four miles south of Lefors. Dennis Earl Brooks, 16, driver of the 1966 Chevrolet El Camino, was hospitalized at McLean with lacerations of the forehead, neck and left hand. Randall Ailee Eddleman, 17, was taken to Highland General Hospital with lacerations about his face. A blow-out on the right front tire was designated as the cause of the accident.

Miss Alice Hommel of Dallas visited here during the Easter Holidays with her sister, Mrs. W.E. Kennedy and with her niece and husband, Mr. and Mrs. W.R. Cullison. She also visited with her brothers and families, Mr. and Mrs. W.O. Hommel of Alanreed, Mr. and Mrs. Frank Hommel of Clarendon, and with her niece and family, Mr. and Mrs. Ray Howard Miller and sons, David and Michael of Amarillo.

20 YEARS AGO... Jack Shelton, Editor John Evans, Donnie Woods and Joel Meacham have been selected captains of the 1962 McLean High School Tiger football squad. The three, who will be seniors next year, were selected to lead the Tigers at a squad meeting Monday.

McLean Lions made it official Tuesday-Jim Hathaway was elected to serve the local civic organization as president in 1962-63. Elected first vice president was John M. Haynes, while Cliff H. Day and Joe Burroughs were named second and third vice presidents respectively.

Fourteen McLean High School students will enter the district Interscholastic League literary and academic events contests in Clarendon Saturday. Representing McLean will be: Poetry Interpretation-Jakie Hess and Donna Hinton; Prose reading-Alan Keen and Margie Railsback; Ready writing-Joyce Beasley and Linda Tindall; Spelling and plain-writing-Phyllis Flowers and Susan Blackwell; Typewriting-LaVon Watson, Linda Guill, Cathy Hendricks and Clyde Windom; Number sense-Janice Saunders and Elaine Baker.

30 YEARS AGO... Lester Campbell, Editor Mr. and Mrs. Lester Bailey are the parents of a boy born March 19. He weighed 9 pounds and 4 ounces, and has been named Walter Ray.

Mr. and Mrs. George Saunders are the parents of a daughter born March 29 in the Groom hospital. The baby weighed 8 pounds and has been named Judith Marie.

Announcements of the sale of Stewart's Texaco Station to Claude Simmons was made this week. Simmons took over management of the firm Tuesday, and the name will in the future be the Simmons Texaco Station.

40 YEARS AGO... T.A. Landers, Editor No paper available for this date.

50 YEARS AGO... T.A. Landers, Editor Rev. Jno. H. Crow, J.F. Heasley, G.C. Boswell, Witt Springer and N.A. Greer attended a Masonic meeting in Shamrock Tuesday night.

An old fashioned Sunday dinner was enjoyed last Sunday at the home of Mr. and Mrs. W.T. Wilson by Rev. and Mrs. W.A. Erwin, Mr. and Mrs. D.M. Davis, Mr. and Mrs. S.D. Shelburne, Chas. E. Cooke and family, Allen Wilson and family, and Donald Beall and family.

News from Ramsdell... Mr. and Mrs. Ben Brown and children of Enterprise were guests in the W.A. Lankford home Sunday.

Vick Back was in Shamrock Sunday.

Mrs. Florence B. Crabtree, Mrs. Lena J. Stubbs, and Mrs. C. Bjerg of Amarillo were visiting in McLean Wednesday.

60 YEARS AGO... M.L. Moody, Editor J.F. Faulkner, our genial postmaster, went to Amarillo Tuesday to consult a specialist.

D.L. Hall and F.B. Thomas, both prominent citizens of Alanreed, were in the city Thursday, buying goods from McLean merchants and transacting business.

Quite a lot of interest was taken in the trustee election last Saturday. There were 237 votes cast. C.L. Cooke, W.B. Upham, Jr., R. Hindman and J.M. Carpenter were elected.

The largest vote ever polled in a city election in McLean was polled Tuesday, and the officers elected rolled up bigger majorities

than in any previous election. The following were elected: Mayor, T.A. Landers; Marshal-J.B. Womak; Aldermen-C.C. Bogan, Earle Shell, Ross Biggers, W.L. Haynes, and C.J. Cash.

Master Cecil Back entertained his little friends last Sunday with a birthday dinner.

70 YEARS AGO... A.G. Richardson, Editor At the city election held at the Crabtree real estate office Tuesday of this week, the following officers were elected for the ensuing year: Mayor-C.S. Rice; Marshal-A.W. Haynes; Aldermen-T.A. Cooke, J.A. Grundy, A.A. Callahan, J.L. Crabtree and D.B. Veatch.

A hack load of boys spent an enjoyable time Saturday night and Sunday at the Evans ranch, the guests of Walter.

Adv...Stenographer...All kinds of Stenographic work and Typewriting done. Prices reasonable. See Myrtle Meadow-Citizens State Bank Building.

Mrs. Freeman of Ramsdell was here the first of the week for a visit with her parents, Mr. and Mrs. C.A. Cash. She was accompanied home by her two small sisters, Maude and Doll, who will spend some time with her.

Mrs. Price Rogers was among the lady shoppers in town Saturday.

**FLOWERS FOR EASTER**  
Easter Lilies  
Corsages  
Green Plants  
Blooming Plants  
Spring Bouquets  
**LAMB'S FLOWER SHOP**

1009 N. Main  
McLean, Texas  
779-2611

### Country Squire Presents Show

Brightening the stage in the spotlights this spring at Amarillo's Country Squire Dinner Theatre, back under the leadership of Peter Fox, Jr. as president and executive producer, will be the all-family favorite musical "South Pacific."

With a longer than usual schedule of shows, March 31 through May 23, the Rodgers and Hammerstein musical again will bring to audiences the dear-to-the-heart sounds of such songs as "Some Enchanted Evening", "There Is Nothing Like A Dame", and "I'm in Love With A Wonderful Guy."

"South Pacific", set in World War II time is on an island Pacific naval base, is a dramatic blend of love and comedy.

The musical features an outstanding all-star cast. Playing Nellie will be Alex Winslow, who has appeared on theatre stages across the country and is a familiar face from her numerous television commercials. Len Williams has the role of Emile. This marks Williams' first appearance at Country Squire but he has appeared in both musicals and straight-dramatic productions on a variety of stages. Nancy Shelton, who was on stage with Don Ameche in Country Squire's "Girl in the Freudian Slip", plays Moody Mary.

"South Pacific" will be presented Monday through Saturday evenings.

The only president to undergo impeachment proceedings (he was acquitted by one vote), Andrew Johnson was also the first ex-president to serve later in the Senate.

### Loose Marbles

by Lisa Patman

Please give me a break:  
I have a stomach ache,  
My hands are shakin'  
My back is breakin'  
I'm sick, for goodness sake!

I have the Chinese flu.  
Hope you don't get it too.  
But if you should  
I know you would  
Feel rotten as I do.

You'd ache, you'd sob, you'd cry.  
You'd wish that you could die.  
You'd feel real mean,  
Turn shades of green,  
Get hot enough to fry.

And if you are a man  
You'd be cooled with a fan.  
Get catered to,  
Get hot soup too -  
Homemade, out of the pan.

Or if you are a child  
Your mamma won't get tired.  
Just act real sick  
And you can lick  
The punishment you've filed.

With women, it's real neat,  
Cause when they're feeling beat,  
Are really dying  
Laying down crying,  
Men still say "What's to eat?"

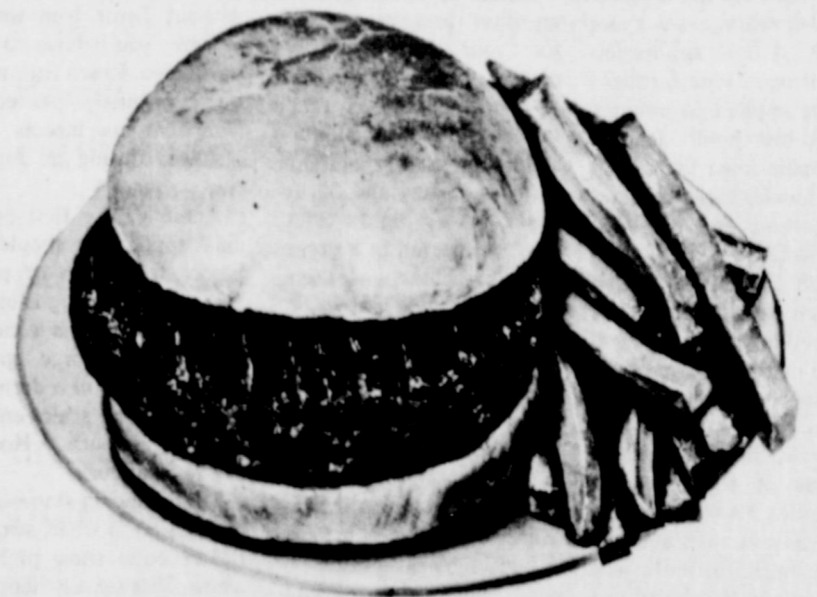
And what woman has never booed,  
When feeling quite owerly flu'ed,  
That sweet little kid  
[Hit him with a lid]  
Who yells, "Hey Ma, where is the food?"

Oh, I don't mean to whine.  
I'm just not feeling fine.  
I'll go to bed,  
Pretend I'm dead,  
And ignore my loved ones [the swine].

Sharon Sites Adams, a 39-year-old California homemaker, became in 1969 the first woman to sail across the Pacific alone.

"Abracadabra" was the magical formula of the Gnostic religious sect of the second century used to invoke the help of benevolent spirits to ward off affliction.

Mmmmmmmmm



### COWBOY DRIVE INN

109 N. Cedar McLean, Texas 779-2315

*The Chicks Are Here!*

Attend Our Big Chick Day



COME SEE OUR  
200 POUND CHICK

10 Free Chicks  
with purchase of  
50-pound bag

PURINA CHICK STARTENA Chick Starter

Bring your own box.

**Robinson Feed & Seed**

113 N. Madden Shamrock, Texas Phone 256-2491  
FAMILY FLOCK HEADQUARTERS

### The Busy Needle

SUPPLIES FOR: NEEDLEPOINT  
COUNTED CROSS STITCH  
KNITTING AND CROCHETING

HIGHWAY 287-SOUTH OF CAUTION LIGHT  
HEDLEY

MONDAY THROUGH FRIDAY 9-5:30  
SATURDAY 9-4

856-4251



# CLASSIFIED ADS sure to get results

**CLASSIFIED RATE**  
\$1.50 minimum  
10 cents per word  
**CARD OF THANKS-\$2.00**  
All ads cash, unless customer has an established account with The McLean News-Deadline for Want Ads-Noon-Tuesday. Phone 779-2447.

The McLean News cannot verify the financial potential of these advertisements. Readers are advised to approach any 'business opportunity' with reasonable caution.

**FOR SALE:** 1968 x T 190 Ac tractor diesel; 1979 Massey Ferguson, Model 126 Square baler, wire tie. All equipment in good shape. Call 779-2930. 46-tfc

**REFRIGERATED AIR CONDITIONER.** Sell or trade for water cooler. 779-2069. 14-1p

**FOR SALE:** 1975 Oldsmobile - 4 door. Call 779-2542 or 779-2239. 8-tfc.

**FOR SALE:** 7/8 Chianina bulls. 2 and 3 years old. Florian blood-line. Call Doyle Littlefield in Clarendon-874-2569. 12-4c

**GIVE THAT SPECIAL friend** a beautiful corsage for Easter Sunday from Lamb's Flowers. 14-1c

**I AM SELLING "Lady Love"** cosmetics by Aloe Vera. Iva McClain. 779-2745. 12-1c

**USED SADDLES.** HAVE 3 good used saddles in stock. New shipment of whips, halters, leads and saddle pads just arrived. McLean Saddle Co. 779-2339. 14-tfc

**THE MOST POPULAR** stuffed toys (Applause) are now at The Potpourri; just in time for Easter. We also have Easter porcelain figures for keepsakes. 14-1c

**HELP MAKE THE Easter** service at your church even more meaningful...Lamb's Flowers will deliver a beautiful Easter lily to your church Sunday. 14-1c

**ROPES: NEW SHIPMENT** just arrived. Calf ropes, heading & healing ropopoly & nylon. McLean Saddle Co. 779-2339. 14-tfc

**FOR RENT**

**FOR RENT:** 3 bedroom, house 12 miles south of McLean. Call collect...Betty Taylor-(806-364-4621). 42-tfc

**THREE ROOM APTS.** Water paid. No pets. 519 W. First across from Cowboy Drive Inn. 7-tfc

**WANTED**

**WANTED: THREE BED-** room house to rent. Would like to begin occupancy in May or June. Can supply references. Will be teaching in McLean. Contact Frank Purcell at 375-2502. 11-4c

**HELP WANTED**

**HELP WANTED: APPLY** at Dairy Queen. 13-3c

**HELP WANTED: STATION** attendant. Male or female. Evening shift. Full-time and part-time. T&M Truck Stop. 257-3830. 13-tfc

**WANTED: NURSES** AIDES, LVN's. Apply in person. See Cathy Bailey at Thomas Nursing Center. 4-tfc

**LOST & FOUND**

**FOUND: A SET** of six keys on a metal ring. One key is a Westlock house key; three keys are for American luggage. Keys were found outside Gipson's game room. They may be claimed at The McLean News office. 14-tfc

**BABYSITTING**

**BABYSITTING IN MY** home. 8:30 a.m. to 4:30 p.m. Call Daphne Littlefield at 779-2792. 14-2c

**CARD OF THANKS**

Thank you all so much for the flowers and gifts that you have so graciously given to us for the recent birth of our new daughter Ollie Amanda. We appreciate your thoughtfulness and kindness. Kermit, Judy, Kathy & Ollie

To those who in many ways contributed to make my birthday a happy one, I want to send a sincere thank you. Your visits, your cards, your phone calls, your gifts, and your contributions to the museum in my honor were (and still are) appreciated. I love all of you for caring. Vera Back

We want to thank our good friends, neighbors, and relatives for the beautiful flowers, donations, cards, and prayers. We especially want to thank the ladies for the good food. It was deeply appreciated during the loss of our loved one. May God bless you all. The Milton Carpenter Family

**BUSINESS**

**NEED CARPENTER** WORK done? Call Leland Myers 779-2734.

**SMITH'S TAX SERVICE** SATURDAYS 9 a.m. - 6 p.m. 303 N. Main across from the library McLean

**INTERIOR & EXTERIOR** HOUSE painting. Quality work, reasonable rates. 779-2349. 9-tfc

**SADDLE AND BOOT REPAIR** Open Until 7 Mondays and Thursdays **McLEAN SADDLE CO.** 111 McCarty St. McLean, Texas 779-2339

Call Jerry Cook at **ATLAS Plumbing** 779-2784 Water-Gas-Sewer

**NEW BREAK THROUGH** in roofing technology...light weight, flexible, yet tough and more durable than conventional method. Perfect for commercial, residential or mobile homes. Free estimate. Call 779-3110.

Jack & Jill's **Diamond Shamrock Station** Tune-up \* Oil Change Tire Repair \* Car/Truck Wash \* Master Charge \* Visa 1-40 East McLean, Texas 779-8888

**REMODELING, ADDI-** TIONS, ROOFING and painting. 779-2206. Larry Christopher. 11-tfc

**TIRED OF SEWING** MACHINE PROBLEMS? See Peggy Dennis or Nancy O'Neal, Bernina Sewing Center, 1312 N. Hobart, Pampa. 665-7147. 42-tfc

**NOTICES**

**MASONIC LODGE** REGULAR MEETING second Thursday, 7:30 p.m. Practice nights First, Third, and Fourth Thursdays at 7:30 p.m.



Only the male nightingale sings.

**SUBSCRIBE TO**  
*The McLean News*

IN-COUNTY RATE-\$10 per year  
OUTSIDE GRAY COUNTY-\$11 per year  
SPECIAL 9-MONTH STUDENT RATE-\$7

You can subscribe by mail by completing the form below and mailing with your check or money order to:

THE McLEAN NEWS  
P.O. BOX H  
McLEAN, TX. 79057

NAME \_\_\_\_\_  
ADDRESS \_\_\_\_\_  
CITY \_\_\_\_\_ STATE \_\_\_\_\_  
ZIP CODE \_\_\_\_\_

Sealed proposals for roadside mowing on State Department of Highways and Public Transportation Right-Of-Way on various Highways in the following counties: Carson and Gray will be received at the State Department of Highways and Public Transportation District Office at 5715 Canyon Drive, P.O. Box 2708, Amarillo, Texas 79105, until 9:00 A.M., April 16, 1982, and then publicly opened and read.

A Pre-Bidder's Conference will be held in the District Office in Amarillo, Texas, at 1:00 P.M., Thursday, April 15, 1982.

Proposals, plans and specifications are available at the office of Robert L. Steeds, Senior Maintenance Engineer, 5715 Canyon Drive, Amarillo, Texas, and at the Maintenance Warehouse Office of Randal L. Patterson, Maintenance Construction Supervisor, located on U.S. Highway 66 in Groom, Texas. Usual rights reserved. 13-2c

**ROAD-SIDE MOWING-** Gray and Roberts Sealed proposals for road-side mowing on State Department of Highways and

Public Transportation Right-of-Way on various Highways in the following Counties: Gray and Roberts, will be received at the State Department of Highways and Public Transportation District Office at 5715 Canyon Drive, P.O. Box 2708, Amarillo, Texas 79105, until 9:00 A.M., April 16, 1982.

A Pre-bidder's Conference will be held in the District Office in Amarillo, Texas, at 1:00 P.M., Thurs-

day, April 15, 1982. Proposals, plans and specifications are available at the office of Robert L. Steeds, Senior Maintenance Engineer, 5715 Canyon Drive, Amarillo, Texas, and at the Maintenance Warehouse Office of Joe W. Duncan, Maintenance Construction Supervisor, located on U.S. 60 in Pampa, Texas. Usual rights reserved. 13-2c

**FOR SALE**

**HESS-ALLISON**

**BUSINESS OPPOR-** TUNITY \$10,000, owner will carry.

**BEAUTIFUL THREE** bedroom, three bath brick home. Large living room and den. Fenced yard in good location.

**2-3 BEDROOM** house. 607 N. Clarendon.

**4 BEDROOM, 2 BATH,** home outside city limits.

**JIM ALLISON REALTY**  
Ida Hess Jim Allison  
779-2641 779-2461  
779-2915 779-2649

**FOR SALE:** 14 x 80' trailer. Three bedroom 1 1/2 bath, furnished or unfurnished. Call Dorothy Middleton at 779-2674. 12-tfc

**MAKE HER EASTER** dress even more beautiful with an Easter corsage delivered by Lamb's Flowers. 14-1c

**MORPA LOVE GRASS** seed...93% germination. \$1.60 per pound; 5 year old Simmental bull. 665-6236 or 845-2102. 13-2p

**HOUSE FOR SALE** or rent: 4 bedrooms, 1 1/2 baths. Call 779-2538. 9-tfc

**FOR SALE:** TWO year-old colts. One registered Appaloosa. Tom Trostle. 14-2p

**4-H'ers Eligible For Grants**

Present and former 4-H members may be eligible for \$5,750 in college scholarship grants if they meet certain requirements.

Five of the grants, valued at \$1,000 each, are primarily for young people planning careers in agriculture, or such related fields as forestry, veterinary medicine or animal science. The other scholarship, valued at \$750, has no limit on choice of study. These scholarships are provided by private sector donors and arranged by the National 4-H Council, a non-profit organization supporting the 4-H program through private resources.

The \$750 scholarship, in memory of Gertrude L. Warren, a pioneer 4-H leader often described as the "Mother of 4-H" is awarded to one present or former 4-H member enrolling this fall at an accredited college, university, technical or trade school. The recipient can major in any recognized field of study and must have been influenced by 4-H in selecting a future career.

A \$1,000 scholarship, donated by Education Foundation of Alpha Gamma Rho, goes to a current 4-H member who will be enrolled as a college freshman this fall. The recipient must be planning to major in agriculture, forestry, veterinary medicine or a closely-related field.

Wayne Feed Division, of Continental Grain Co. donates scholarships to two present or former 4-H members who will be enrolled as college juniors this fall and who plan to major in animal science.

Two former 4-H members, currently enrolled in a college of veterinary medicine, can receive \$1,000 scholarships provided by Champion Valley Farms, Inc.

All scholarship applicants must have completed at least one year of 4-H work. Winners are selected by the Extension Service and will be announced prior to the 61st National 4-H Congress, Nov. 28-Dec. 2, in Chicago, Illinois.

**For all your Purina Feeds:**

**BULK FEED  
BAG FEED  
BENTLEYS FERTILIZER**

301 E. Foster  
McLean, Texas  
779-2209

*The McLean News*  
**BUSINESS DIRECTORY**

<p><b>B &amp; B ELECTRIC</b> Parts &amp; Service •ELECTRIC WORK •APPLIANCES •TV ANTENNAS •HEATING AND •AIR CONDITIONING <b>PHONE</b> <b>Loyd Bybee</b> <b>779-2601</b> EMERGENCY 779-2517 2 BLKS NORTH OF I-40 ON PAMPA HWY I WILL APPRECIATE YOUR BUSINESS</p>	<p><b>BARKER REDI-MIX</b> <b>READY-MIX, CONCRETE</b> <b>BACK-HOE SERVICE</b> <b>AND FINISHING WORK</b> <b>PHONE</b> <b>779-2703 OR 779-2869</b></p>	<p><b>LAMB FLOWER SHOP</b> 779-2611 ASK ABOUT OUR REGULAR FRIDAY SPECIALS</p>
<p><b>Bug Baggers</b> <b>Pest Control Inc.</b> TERMITE SPECIALISTS COMPLETE PEST CONTROL STATE LICENSED IN YOUR TOWN WEEKLY CALL COLLECT 865-0090 CANYON, TX</p>	<p><b>GERMANIA Farm Mutual Insurance</b> REASONABLE SOUND INSURANCE PROTECTION FOR YOUR HOME AND OTHER PROPERTY <b>DON WILSON</b> <b>779-3174</b></p>	<p><b>DON MILLER RADIATOR SERVICE</b> "Is Our Business" Not a Sideline •New &amp; Rebuilt Radiators •Gas Tanks &amp; Heaters Repaired 376-666 612 S. JEFFERSON AMARILLO, TEXAS</p>
<p><b>DIANN DALTON'S Country Cut BEAUTY SHOP</b> <b>779-2413</b> Open Tuesday through Friday and Saturdays until noon 1 mile south of McLean on FM 3143</p>	<p><b>WATER WELL SERVICE</b> SUBMERSIBLE PUMP SALES &amp; SERVICE <b>DAVID BROWN</b> 800-779-2678 BOX 273 MCLEAN, TX 79057</p>	<p><b>DALE'S SERVICE STATION</b> <b>PHILLIPS 66</b> 217 W. 1st McLean 779-2181 <b>779-2181</b></p>
<p><b>NATIONAL AUTO SALVAGE</b> 665-3222 or 665-3962 1 1/2 miles west of Pampa on Highway 60 Large selection of used auto parts We appreciate your business</p>	<p><b>Expert DRY CLEANERS</b> BRING YOUR CLEANING WHEN YOU SHOP IN PAMPA PICK IT UP THE SAME DAY! <b>One Hour Martinizing</b> 1807 N. HOBART, 1824 W. FRANCIS PAMPA</p>	<p><b>Johnnie F. Mertel Boot Shop</b> Tony Lama, Texas, Acmo, Justin Leather Goods Shoe Repair phone 779-2161</p>
<p><b>McLEAN HARDWARE</b> complete hardware line -DISHES-PAINT- -TOOLS-GIFTS- <b>779-2591</b></p>	<p><b>GLENN HALLUM BACKHOE SERVICE</b> Commercial or Individual Fully Insured Alanreed, Texas <b>779-3138</b></p>	<p><b>Foshee's Texaco</b> Your full-service station Earnest &amp; Maurine Foshee Owners 779-2621</p> <p><b>WE NOW HANDLE AMWAY PRODUCTS</b> WAYNE AND KATHY CARTER <b>779-2152</b></p>



**HOMEMAKER NEWS**

Easter time is upon us and what better time than this to focus on nutritious eggs. Of course, we associate eggs with Easter—especially the decorated, hard cooked variety. Eggs are also important if good nutrition is important to you!

**EGGS ARE NUTRITIOUS**  
Eggs are valued as a source of high quality protein iron, vitamin A, and riboflavin. Eggs are also one of the few foods that contain natural Vitamin D. A large egg has about 80 calories, 60 of which comes from the yolk.

**EGG QUALITY**  
The quality of eggs does not affect their nutritive value. There are, however, three consumer quality grades for eggs: U.S. Grade AA, A, and B. The grade is actually a measure of the interior of the egg and

the appearance and condition of the egg shell. U.S. Grade AA eggs have whites that are thick, yolks that are firm and practically free from defects, and clean, unbroken shells.

U.S. Grade A is the quality most often sold in stores. They have whites that are reasonably thick, yolks that are firm, high, and practically free from defects, and clean, unbroken shells.

**EASTER EGG SPECIAL**  
Prepare hard cooked eggs for decorating with eating them later in mind. Remember that very fresh eggs are difficult to peel when hard cooked because air space at the large end of the egg is very small. Buy eggs days ahead so air space can expand.

Decorated hard cooked eggs may be eaten safely if the shell has not been

cracked and if eggs have been kept in a relatively cool place.

**CENTSIBLE MEALS PROGRAM**

Budget meal planning and recipe ideas will be the topic of a program, Tuesday, April 6, at 2 p.m. in the Courthouse Annex meeting room. Becky Harrington, Home Economist for Southwestern Public Service, will present the program. All interested persons are invited to attend.

"Battle of the Bulge" will be the program topic for the new Extension Homemaker club organizational meeting to be held Wednesday, April 14 in the McLean Library at 3 p.m.

The program will focus on the importance of weight control, evaluating diets

and weight control programs, and the Extension Service Diet Plan.

In addition to the program, interested homemakers will make Extension Homemaker Club organizational plans including naming the club, selecting meeting time and place, election of officers, and future program selection.

All interested persons are invited to attend the program and organizational meeting. Educational programs conducted by the Texas Agricultural Extension Service serve people of all ages regardless of socioeconomic level, race, color, sex, religion or national origin.

If you were to ask today's consumer what they would select as their favorite, most comfortable pair of pants, the majority would probably answer loud and clear—blue jeans!

According to a recent telephone survey of 1,000 men and women nationwide: (1) 27% own a pair of designer jeans and 71% of these plan to buy another pair (2) 56% of 18-24 year olds own a pair followed by 32% of 25-34 year olds, 29% of 35-49 year olds, 11% of 50-64 years olds, and 2% of 65 year olds and over; (3) 33% of those with incomes of \$20,000-\$29,999 own status jeans; (4) only 2% said they did not buy jeans with 0% of these in ages 18-34.

Original arts & crafts  
Texaco products and convenience store  
Alanreed




FOR ALL YOUR INSURANCE NEEDS  
SEE YOUR LOCAL INSURANCE AGENCY



JANE SIMPSON  
INSURANCE AGENCY  
779-2451  
106-A N. Main  
McLEAN, TEXAS

**JANE SIMPSON  
INSURANCE AGENCY**

# the Savings Are Yours

WITH OUR ANTI-INFLATION PRICES

Hormel 15 oz can  
**CHILI 98¢**

County Fair Brown & Serve  
**ROLLS 3 - \$1**

Surfine Apple 32 oz jar  
**APPLE JUICE 89¢**

Post 25 oz box  
**RAISIN BRAN \$1.65**

Griffins Strawberry 18 oz jar  
**PRESERVES \$1.29**

Meadow Lake 1 lb soft bowl  
**MARGARINE 59¢**

12 oz cans 6 pack  
**DR. PEPPERS \$1.65**

Keebler 12 oz pkg  
**PECAN SANDIES \$1.09**

Keebler 16 oz pkg  
**CLUB CRACKERS 99¢**

Keebler  
**CINNAMON CRISP 99¢**

Keebler  
**HONEY GRAHAMS 99¢**

reg. pkg.  
**KOOL AID 6 - \$1**

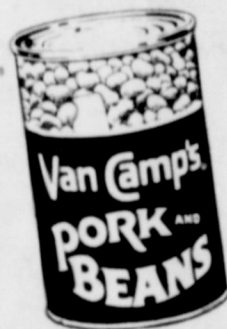


**CHEETOS**  
REGULAR PRICE reg. \$1.19  
**NOW ONLY 89¢**

Mile High Cut 16 oz can  
**GREEN BEANS 3 - 89¢**

Del Monte 15 oz can  
**SPINACH 2 - 98¢**

Del Monte Sweet 17 oz can  
**SWEET PEAS 2 - 85¢**



Van Camp  
**PORK & BEANS**  
15 oz can  
**2 - 83¢**

Shurfine 17 oz can  
**FRUIT COCKTAIL 57¢**

Del Monte 15 oz can  
**PINEAPPLE 2 - \$1.09**

Del Monte 2 1/2 can  
**PEACHES 77¢**



3 oz pkg  
**JELLO 3 - 89¢**

Butter Krust Angel Food  
**CAKES \$1.29**

Thank You Cherry 21 oz can  
**PIE FILLING \$1.19**

Duncan Hines Layer  
**CAKE MIXES 99¢**

Birdseye 8 oz ctn  
**COOL WHIP 79¢**

Stillwell Frozen Apple, Strawberry, Peach, Apricot, or Blackberry  
**COBBLERS \$1.49**

Eagle Brand 12 oz can  
**CONDENSED MILK \$1.19**

Detergent 12 oz  
**IVORY LIQUID 39¢**

Northern 4 roll pkg  
**TOILET TISSUE \$1.09**



Family Size  
**TIDE**  
70¢ OFF  
**\$6.69**



SPECIALS GOOD  
APRIL 9-APRIL 13



Texas  
**ORANGES 3 - \$1**

**BANANAS 3 - \$1**

Leaf  
**LETTUCE 39¢ each**    **CELERY 35¢ stalk**

Mexico  
**BELL PEPPERS 4 - 99¢**

Mexico  
**CUCUMBERS 4 - 99¢**

Longhorn Dry Cured  
**HALF or WHOLE HAMS**

\$1.39  
Corn Kist  
**BACON 2 lb pkg \$2.79**  
Rodeo  
**FRANKS 98¢**