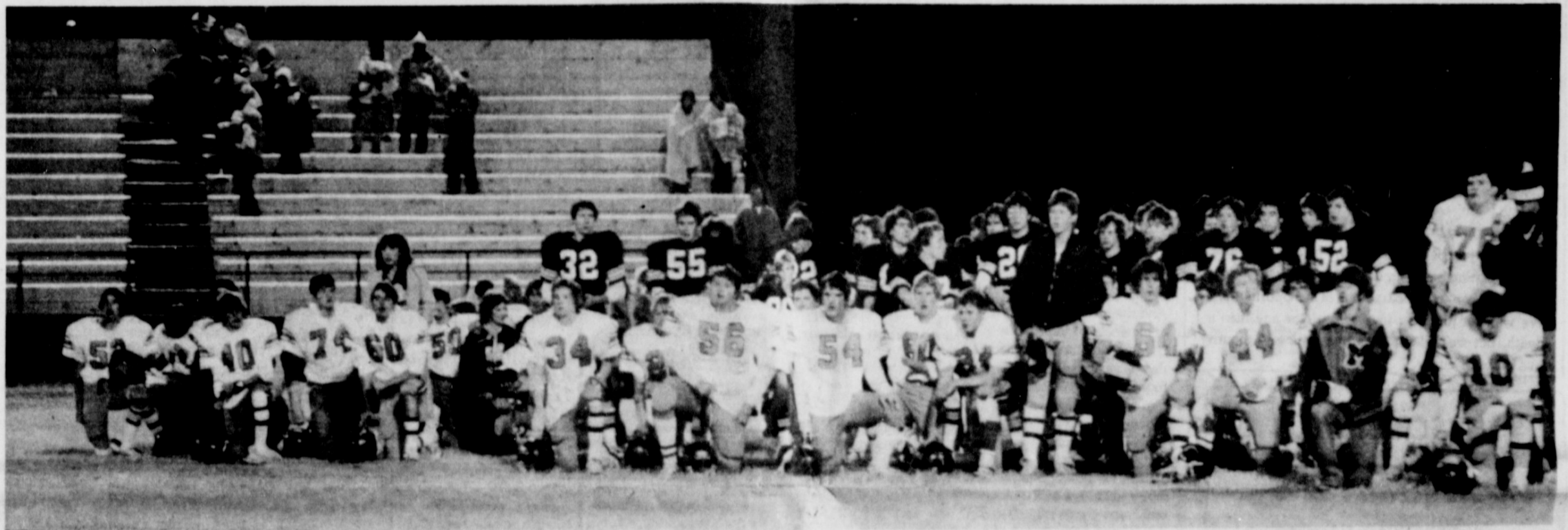


John C. Haynes 1
Box 400
McLean Texas 79057



THE TIGER CHEERLEADERS lead the Tigers onto the field for their final game of the season Friday night in Wheeler. (Photo by Kathy Carter)



THE TIGER TEAM listens as the school song is played at the end of the McLean-Wheeler football

game Friday night in McLean. It was the final game for senior Tigers Brock Crockett, Andy Eck,

Dale Glenn Gipson, David Reid, Frank Todd, and Daniel Via. (Photo by Kathy Carter)

The McLean News

Serving McLean and the Area Since 1903

Volume 79 McLean, Gray County, Texas 79057 Thursday, November 18, 1982 Price 25¢ Number 46



When our family decided to spend the weekend in Lubbock, one of our first concerns was our pets. We left our young puppy confined in the house, but decided to let our old Beagle Andy stay outside. We thought that with the pup in the house, Andy would stick close to home until we returned. We learned several years ago to forget about confining him in a pen. Beagles are notorious for their wandering, and Andy was no exception. He could find

See DISTAFF, Page 2



Date	High	Low
11-9-82	68	53
11-10-82	61	52
11-11-82	64	42
11-12-82	63	32
11-13-82	64	25
11-14-82	44	28
11-15-82	55	21

Precip. 11-10-82 .15

City Council Approves Ordinance

McLean city councilmen Nov. 9 took a final vote on an ordinance prohibiting public consumption of alcohol in the city limits. The ordinance, which passed unanimously, declares that a violation of the decree is a misdemeanor.

The decree makes it unlawful "to consume an alcoholic beverage or to be in possession of an open container of an alcoholic beverage with the public streets, highways, alleys, sidewalks, and parking lots and a designated public park within the corporate limits of the city of McLean, Texas."

Car Receives Minor Damage

A fender-bender Tuesday morning caused some damage to a local woman's car. Frankie Smith, driving a 1975 Chevrolet, pulled away from the curb by the Lovett Memorial Library, and was hit by a passing 1974 Chevrolet, driven by Wanda Bailey. Neither party was injured in the incident, according to investigating trooper Ron Shank.

The ordinance became effective with the Nov. 9 passage.

Also discussed at the regular city council meeting was a proposal by McLean's Young-At-Heart club. The senior citizens' group had requested that the city provide a flat rate of \$50 for all city services provided for the club building, a practice which has been in effect in some area cities, according to a spokesman for the Young-at-Heart club. The proposal was rejected by the council. "Most other cities are not in the gas business," said Mayor Sam Haynes. "It is just not economically possible for us to set a lower rate for any organization at the present time. Our senior citizens certainly have a worthy organization, and we all wish we could help them out by lowering their bill, but we just can't do it."

Councilmen talked at length about the possibility of hiring a city marshal as a law enforcement officer for criminal as well as traffic control. With the recent rash of burglaries in the city, alderman felt that the

need was great for such an officer. Members of the council will study ways of funding the added expense of another city employee.

Some confusion was apparent concerning placement of water lines at Hillcrest Cemetery. Councilman Terry, who said he had requested that additional lines be laid on the north side of the cemetery, asked why the lines had not been installed. Other members remarked that new lines on the east side of the cemetery had been laid. Apparently there was a mixup in directions given for the lines. Alderman Bill Thomas

McLean Lions Plan Jubilee

The McLean Lions Club is sponsoring a Derby Town Jubilee Saturday night in the McLean High School auditorium beginning at 7:30 p.m. Advance tickets are on sale from all Lions Club members.

The Jubilee will feature musical talent from McLean and the surrounding area.

suggested that the cemetery association submit a plan of established water lines, as well as a plan of proposed water lines, so that the matter might be better handled. The motion was unanimously

approved. Also approved was a motion by Jim Barker that the city pay for framing and protective glass for a picture painted by German prisoners of war who were incarcerated in the local pris-

oner of war camp during World War II. The picture, which had been on the wall of the old VFW building, has been moved to the Alanreed-McLean Area Museum. Attending the meeting were Mayor Haynes,

councilmen Thomas, Terry, Barker, Charles Milam, Dale Glass, city superintendent Bob Glenn, city secretary Stella Lee, Jeremy Thomas, Jennifer Pennington, Tommy Pennington, and Lisa Patman.

Tigers Close Season At Wheeler

The McLean Tigers ended the 1982 football season Friday night with a 41-0 defeat at the hands of the Wheeler Mustangs.

Scoring began early in the first quarter as Mustang quarterback Scott Wright ran 61 yards to earn six for Wheeler. Wade Wills' kick was good for the extra point. Two minutes later, and about midway through the first quarter, Wright repeated his action, this time on a 44-yard sprint. Wills was again successful in his extra point kick, bringing first quarter scoring to 14 for the Mustangs.

Early in the second, Mustang running back Mark Moore slipped in from the one to add to the Mustang tally, and Wills toed the ball in for one more. With four minutes left in the first half run-

ning back Toby Collins came back in from the four to mark up six, and Wills proved his aim good again, to bring the final first half score to Wheeler 28, McLean 0.

And while third quarter action spelled no score for either side, the Mustangs regained their momentum at the start of the fourth with a six-yard run by Wright, pulling in another touchdown for Wheeler. Two minutes afterwards Collins slid in from the two yard line for the final Wheeler touchdown. Bill Watson's extra point kick was good enough to bring the final count to Wheeler 41, McLean 0.

Coach Joe Riley commented of the 1982 season, "I'm really proud of the Tigers. We may have been beaten scorewise, but we still have the enthusiasm of a winning

team. And we're all looking forward to the 1983 season. We have a great bunch of leaders

Senior Citizens To Dispense Cheese.

The McLean Senior Citizens will sponsor another cheese giveaway Nov. 22 and 23 at the Senior Citizens Building, 112 E. Main, in McLean. The senior citizens or-

ganization pays all expenses for transporting and distributing the cheese. Recipients may make a donation of 25¢ to help cover the expenses if they wish.

Firemen Go To Two Fires

McLean Volunteer Firemen were called to two fires this week. A grass fire Friday on the Vera Dial Dickey place seven miles north and five miles east of McLean burned a strip of grass more than a mile long and a quarter of a mile wide.

The firemen went to a fire at Lake Sandspur Sunday afternoon where property belonging to Gerald Banard of Pampa burned. The fire apparently started in a storage shed, spread to another shed, and damaged the outside of a mobile home at the site.

OPINIONS

VIEWS ARE WRITTEN BY LINDA HAYNES UNLESS OTHERWISE NOTED-IF YOU HAVE AN OPINION ON ANY CURRENT SUBJECT WE WELCOME YOUR SIGNED LETTERS.

A Dead Monster

By Lynn Brisendine
Brownfield News

The American point of view and custom must be a puzzle to most of the rest of the world. In this country it is considered bad taste to speak ill of the dead. We continue to heap, if not outright praise, then a sort of respect for men who have contributed only to the worries, and even to an extent, to the pains of this country. Thursday the USSR announced the death of its President Breshnev. The media prepared their instant obituaries and showed scenes of the man carrying out some of his duties. We have seen him observing the "kitchen debate", we saw him hugging an American actor, we viewed him toasting Nixon and kissing Carter. He appeared benign...he was not.

This week the world saw one of its authentic monsters die. A man that can well be placed alongside Napoleon, Hitler, and his mentor Stalin as an oppressor of the human race.

He funded the Viet Cong and provided weapons that killed Americans. He squashed the Czech people, he invaded the Afghans and he bullied the Poles. He preached peace and provoked war. His last public statement was a threat to this country.

The above instances of his rule are just the tip of the iceberg. He is responsible for untold numbers of deaths in his own country. To speak against him was rewarded with a firing squad if the offender was lucky, if not it meant hard labor in a slave camp or frozen exile in Siberia.

We also hear people say, "Well, he was bad enough, but we may have been lucky. His successor may be even worse." True, his follower could possibly be as bad, but we have a hard time contemplating anything worse.

We will continue the tradition of our upbringing. We will not jump for joy over this or any man's death, but we will not be a hypocrite and mourn this monster either.



LINES
by
LEM O'RICKK

We hope Russia's leaders won't scoff. If we'd try to call all wars off. Should they refuse peace's cup, I would wish they'd back up To the Grand Canyon Andropov!

DISTAFF

his way out of any con-
traption.

But this time Andy did not stay home. He apparently went to the News office, to church, to the post office, and to the grocery store searching for his family. As he was crossing Interstate 40 sometime late Friday night or early Saturday morning, he was struck and killed.

Daughter Kathy was notified by a friend and with the help of Kelly Humphries who works at Puckett's, she managed to take Andy out to the country for a proper burial.

I think most of the people who knew old Andy were grief-stricken at his death. Many of his friends had observed him dangerously crossing the highway and chastised him for it, but Andy thought that the cars should stop for him. He had many close calls which friends related to me, but I couldn't talk any sense into the independent Andy.

He was one of those pets whose memory will last my lifetime. He was so intelligent, and so stubborn, that he caused a lot of trouble, but somehow I think that he also had a sense of humor. I remember the Easter Sunday when he walked into the sanctuary, made his way to the choir loft, and jumped up on the chancel rail right at my feet! And then I remember the Sunday when Sam was teaching Sunday school in the basement of the Methodist Church. We heard Andy barking, and in a few seconds we realized that he was standing at the window, right by Sam's head, barking at the sound of his master's voice. Old Andy spent many Sunday mornings locked up in the car, because he did love to come to church.

He had an uncanny sense of time, too. He always seemed to know what day of the week it was. On weekday mornings he was always standing by my car door, waiting for his ride to the News office, but he never bothered to wait by the car on Saturday or Sunday. One weekend when we were gone, a friend

reported that Andy came to church at the regular Sunday morning time, and waited at the church doors until late in the afternoon when he finally

gave up and went home. So not only have we lost a beloved member of our family, the Methodist Church lost one of its faithful members.

As the years go by, I'm sure that we will have other pets. Our whole family loves dogs, and our family life would not be complete without one of the pesky creatures around, but never again

will I buy a Beagle. They are too intelligent, too loyal, too human-like to be "owned" by a family. The Beagle thinks he owns the family. And, in Andy's case, that was true. He was a faithful and loyal friend.

Continued From Page 1
I can't think of any better epitaph.

The McLean News will have an early deadline next week. In an effort to get our paper printed and in your hands by Thanksgiving Day, we will print next week on Tuesday, rather than Wednesday. If you have news, photos, or advertisements that you want in the Thanksgiving edition, please bring it in Monday. All copy must be in by Monday at 5 p.m.

Senator Bill Sarpalius Reports



DWI CRACKDOWN BEGINS

AUSTIN - Last Monday we were proud to be able to file the first 3 bills in the Texas Senate for the upcoming 68th Legislature. We feel that these bills deserve such priority as they deal with the subjects of driving while intoxicated, open alcohol containers in motor vehicles, and treatment and rehabilitation of alcoholics. These bills are now referred to as Senate Bills 1, 2, and 3 respectively. As these will require strong support from the public to receive passage, we will summarize them below.

SB 1 - "relating to the offenses of driving while intoxicated and driving under the influence of controlled substance or drug and the insurance consequences of those offenses." We feel this bill, referred to as the Sarpalius DWI Bill, richly deserves its assigned number. This has been an urgent issue that we have been involved with for many months now. Texas needs stronger DWI-related legislation, and we feel that this bill best meets all our state's requirements.

SB 2 - "relating to alcoholic beverages in motor vehicles; providing penalties." It is our and many other concerned Texans' opinion that we need stricter laws pertaining to open containers of alcoholic beverages. We don't feel

the car, or any other motor vehicle, is the place for drinking alcohol. Tougher measures such as this one will do a great deal to cut down on the number of motor vehicle accidents involving alcohol.

SB 3 - "relating to fees for certain licenses for the manufacture, storage, distribution and sale of alcoholic beverages; the creation and administration of an Alcoholic Treatment and Rehabilitation Fund to support community-based treatment and rehabilitation of alcoholics and their families." We feel such a measure is needed to not only protect the public by cutting down on the number of DWIs, but also to help the chronic alcoholics overcome their disease in the best possible way.

There will be many DWI and alcohol-related bills brought before the 68th Texas Legislature. Consequently, the decision as to which ones become law largely rests in public support. Therefore, we want the people of the 31st Senatorial District to help us push these urgently needed measures, SB 1, 2, and 3. We would be happy to provide you with more information on these bills and inform you as to what you can do to help. Please write to Senator Bill Sarpalius, P. O. Box 12068, Austin, Texas 78711.



The first Bank of the United States was chartered by Congress in 1791.

On Your Payroll

SENATOR BILL SARPALIUS, P. O. Box 12068, Austin, Texas 78711 or P. O. Box 7926, Amarillo, Texas 79101, or call 512/475-3222.
REPRESENTATIVE FOSTER WHALEY, Texas House of Representatives, P. O. Box 2910, Austin, Texas 78769.
REPRESENTATIVE JACK HIGHTOWER, 13th District, Room 2348 Rayburn Building, Washington, D.C. 20515.
SENATOR LLOYD M. BENTSEN, Room 240, Russell Building, Washington, D.C. 20510.
SENATOR JOHN TOWER, Room 142, Russell Building, Washington, D.C. 20510.

Letter To The Editor

Dear Linda:
I think it is so nice for you to put the birthdays of the Thomas Nursing Home patients in your newspaper.

I'm just sending a card to Thelma Hopkins, whom I have known for many years, and I hope to watch your paper each week.

With kindest regards to you and yours sincerely,
Yours sincerely,
J. Flanagan



When making overseas hotel reservations, it's a good idea to find if your hotel participates in a program that can cut your phone call costs.

The Active Consumer

Some Helpful Hints For Overseas Travel

If you're planning to travel overseas, you may have the unexpected and unpleasant experience of finding a large added charge on your hotel bill for a short phone call you made back home. The surcharge might be three to five times the cost of the call. That money doesn't go to the foreign telephone administration, or to the Bell System. It goes to the hotel.

Such situations aren't unique today. Telephone surcharges are common practice at hotels around the world. Such charges began as an attempt to recover operational costs of maintaining 24-hour switchboards and multilingual operators. But some hotels have begun billing unsuspecting customers at exorbitant rates. Sometimes those charges can exceed the cost of the hotel room.

To overcome the problem, the American Telephone and Telegraph Company introduced TELEPLAN several years ago. It's a program that assures international travelers of fair and reasonable service charges for calls placed from their hotel rooms. Hotels joining TELEPLAN agree to limit surcharges and AT&T includes these hotels in its TELEPLAN advertising campaigns.

Many hotels in Europe are already a part of TELEPLAN. The Hilton International hotels worldwide are

included as well as Novotel in Germany and Austria.

There are approximately 900 participating hotels in fifty-four countries. The first Far Eastern chain to join is Mandarin International Hotels of Hong Kong, Bangkok, Manila and Jakarta.

It might be a wise idea to check with your travel agent when planning your next trip to be sure that your hotels are part of this budget-wise plan.

For a complete list of participating hotels, write to: Overseas Promotion Coordinator, AT&T Long Lines, Box 397, East Brunswick, NJ 08816.

YOUNG AT HEART CLUB ACTIVITIES

Quilting every Tuesday, with Pot Luck Dinner Everyone Welcome

COME ONE AND ALL TO GAMES

Thursday night and Saturday night and Daily Monday through Friday Don't Miss Our Continuous WHITE ELEPHANT SALE

ALL THIS AND MORE AT McLEAN'S SENIOR CITIZENS BUILDING-112 E. Main

SUBSCRIBE TO

The McLean News

IN-COUNTY RATE \$12 per year
OUTSIDE GRAY COUNTY \$14 per year
SPECIAL 9-MONTH STUDENT RATE \$9

You can subscribe by mail by completing the form below and mailing with your check or money order to:
THE McLEAN NEWS
P. O. DRAWER H
McLEAN, TX. 79057

NAME _____
ADDRESS _____
CITY _____
STATE _____ ZIP CODE _____

The McLean News

USPS 336-260
LINDA HAYNES,
EDITOR AND PUBLISHER
LISA PATMAN, ASSOCIATE EDITOR
201 N. Main P.O. Drawer H
McLean, Texas 79057

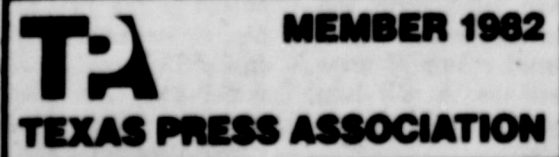


1982

McLean, Gray County, Texas
Published each Thursday
[except the last week in December]
Second class postage paid at McLean, Texas 79057
POSTMASTER: Send address changes to:
THE McLEAN NEWS
P. O. DRAWER H
McLEAN, TEXAS 79057

SUBSCRIPTION RATES:
\$12 per year in Gray County
\$14 per year outside Gray County
ADVERTISING RATES:
\$2.00 per column inch National Rate
\$1.85 per column inch Open Retail Rate

McLean, Texas
Population 1183 [1970 Census]



There are three stages in the useful life of a coconut. Young sprouts provide salad, green nuts yield coconut milk and the mature ones offer solid "meat."



A watermelon is about 92 percent water.

COW POKES By Ace Reid



"Now, I didn't see you stop, I wuz busy readin' yore bumper stickers!"

"COWPOKES" is brought to you by the friendly folks at the American National Bank In McLean

779-2461
201 N. Main
McLean, Texas



McLEAN BRIEFS

The McLean Beta Sigma Phi Sorority met Nov. 11 in the American National Bank Hospitality Room. After the business meeting, Kathy Reynolds gave the program, "Establishing Ourselves." Refreshments were served by Kathy and Jean Smith. A portion of the refreshments served were dishes prepared by 4-H members. Those present were Jean Smith, Kathy Reynolds, Donna Hauck, Billie Kingston, Nancy Billingsley, Linda Syfrett, Linda McAnear, Margaret Milam, Jacque Riley, Jodie Thomas and Jan Layfield.

The Fidelas Sunday School Class of the First Baptist Church, met Friday Nov. 12 for their

monthly social. The devotional was brought by Stella Gibson and Annie Reeves. Pumpkin pie, coffee and tea were served to Relia Ayers, Stella Gibson, Eula Morrow, Edna Taylor, Juanita Smith, Annie Reeves, Essie Glenn, Ruby Boyd, Susie Trout, Thelma Stevens, Ada Simmons, Safronia Pettit, Mildred Geisler, Mary Lou Garrison, teacher Bertha Smith and hostess Edith Bybee.

The Baptist Women met at the Church for their Bible study Nov. 9. Louise Dickinson opened the meeting with a prayer, and the minutes were read and approved. Doris Morgan gave the Bible lesson and Ann

Gardner lead the special prayers. Hostess Thelma Stevens served refreshments to Relia Ayers, Louise Dickinson, Ann Gardner, Stella Gibson, Imogene Kniffen, Wilma Mangum, Pauline Miller, Willie Nicholas, Safronia Pettit, Juanita Smith, Anita Thompson, Ruth Bible and Waldean Cheatham.

The 20th Century Study Club met with co-hostesses LaRue Hambricht and Barbara Hambricht Nov. 11. Safronia Pettit called the meeting to order and Ada Simmons lead the reading of Collect. The roll call, "What I Have To Be Thankful For" was answered by members. LaRue gave the program on Thanksgiving and with Barbara, served refreshments to Safronia Pettit, Ada Simmons, LaVerne Brooks, Nola Crisp, Louise Dickinson, Bertha Smith, Mildred Geisler and Relia Ayers.

High School Auditorium at 7:30. The shotgun which the club has been taking donations on will be given away at that time.

Visiting Annie and Boyd Reeves last week were Mrs. Lois Reeves, of Amarillo; her daughter, Mrs. Kimberly Car-

ter, of Mesquite; and Mrs. Carter's young daughter, Lindsey Denise. Lindsey is Boyd and Annie's first great-granddaughter.

Mr. and Mrs. Sam Haynes and Dollie, and J. T. Haynes went to Lubbock last weekend where they visited their child-

ren, Mr. and Mrs. Ricky Evans, Chris and Jacky and Sally Haynes. Mrs. Haynes and Sally attended a play at Texas Tech Thursday night. The group attended the Texas Tech/SMU football game Saturday afternoon.

Ed Patman was in Kansas last weekend hunting pheasants.

The Ladies Auxiliary of the VFW Johnnie Windom Post #8565 will host a holiday dinner on Dec. 7 at 6 p.m. in the Post home. All Auxiliary and Post members and their

families are urged to attend. Ladies are asked to bring a covered dish.

Mrs. V. C. Lisman is at home on crutches after suffering a badly sprained ankle.

Loose Marbles

by Lisa Patman

Dear Miss Marbles,

I am very worried about my son. For several weeks he has gone around carrying a large brown object which is shaped somewhat like a peanut M&M with pointy ends. Sometimes he hollers "23, 64, 89, hike!" right in the middle of an otherwise normal conversation. Also, he wears knickers on Friday nights. Do you think he needs professional counseling?

Worried Mom

Dear Worried,

Your son has a serious problem indeed. If my deductions are correct he has contracted the dreaded phootbawl disease, an ailment which turns its victims into enormous padded monsters who have a tendency to attack large, grassy fields where they eat turf and get grass stains on their best knee pants. My theory is that their diets are lacking in roughage. Luckily this condition is temporary, and should disappear in mid-November. Should it persist you might consult Dr. Tom Landry, an expert on the subject, as well as the founder of phootbawl anonymous.

Marbles

Dear Miss Marbles,

My son has become a great puzzlement and a constant vexation to me. Having just recovered from a bout with the dreaded phootbawl disease, he now is acting in an equally strange manner. He has begun carrying around a large brown object which looks somewhat like a bloated Milk Dud. Occasionally he yells "Sink it!" when he dunks his doughnut into his milk. He also has begun wearing tiny little short pants in the dead of winter. Do you think he needs professional counseling?

Reworried Mom

Dear Reworried,

Your son seems to be having his share of medical problems, to be sure. This time he seems to have the common winter ailment, Kbasketbawl. This particular disape exhibits such symptoms as overheating (hence the tiny shorts) and running up and down a wooden floor. Victims often have an overwhelming desire to fix plumbing (hence, "sink it!"). This illness has a run of about three months, and is as highly contagious as the dreaded phootbawl. Should the symptoms continue beyond that time, you should call Dr. Wilt Chamberlain, a specialist in the field of Kbasketbawl, and a real trooper who has overcome the disease himself.

Sincerely,
Remarbled

Dear Miss Marbles,

I have a real problem. My son recently came home carrying an object which looks a great deal like a large white gumball. He also was totting a long object which looks a lot like a large brown licorice stick. He screams "Home run!" in his sleep. Do you think I should worry?

Thrice-worried Mom

Dear 3W,

You do have a problem. If your poor innocent son hasn't been totally ruined by your obvious candy fixation, it's a miracle. I suggest you surrender yourself to the Hershey Foundation for the Criminally Sugar Bound, thereby doing your son and me both a favor.

Sincerely,
etc.

New Arrival

Glenn and Jeree Oldham are the parents of a girl, Mary Rachel, born Nov. 12 in Lubbock. She weighed 8 pounds, 7 ounces.

Grandparents are Mr. and Mrs. Delbert Trew, and Mr. and Mrs. Arthur Boyd, all of McLean.

Great-grandparents are Mr. and Mrs. J. T. Trew, Mr. and Mrs. Jim Stevens, and Mrs. Bill Boyd, all of McLean.

He that loves not his wife and children, feeds a lioness at home, and broods a nest of sorrow.

Jeremy Taylor

HAPPY 30th, BOBBIE.



GUESS WHO?

McLean Variety Trim-A-Tree Sale

20% OFF ALL PAPER, BOWS, RIBBONS, AND OTHER DECORATIONS. SPECIAL SAVINGS OFF ONE GROUP OF TREE ORNAMENTS. IF IT'S FOR CHRISTMAS DECORATION, IT'S ON SALE! THURS., FRI., SAT., ONLY

207 N. Main—McLean, Tx.

Alanreed Briefs

Dr. and Mrs. Eddy Finley and Jessica of Stillwater, Okla. visited with his parents and sister, Mr. and Mrs. Jess Finley and Ramona.

The Alanreed Home-maker Club met Nov. 10 in the home of Lena Carter. After a covered dish luncheon, Mary Davis presided. Scripture from Proverbs 27:1-2 was read by Lena Carter.

The roll call "What I'm Thankful For" was answered by Anita Bruce, Lena Carter, Mary Davis, Onie Gibson, Faye Conner and Polly Harrison. A program on "Heritages" was presented by Anita Bruce, and participated in by all. Next meeting will be with Polly Harrison, and will be Donna Brauchi's program.

Sid Keese was in Shamrock Wednesday to get his dad, Leo, out of the Shamrock Hospital.

Betty Finley was hospitalized in Shamrock last week.

Polly Harrison and Lena Carter attended a Cultural Workshop in the County Courthouse Annex in Pampa Thursday. Various Christmas and Thanksgiving items were shown, along with instructions on how to make them.

Mrs. Bert McKee was in Amarillo Friday to see Mr. McKee in St. Anthony's Hospital.

Lucy Goldston returned to her home last week from an Amarillo hospital.

Visiting Polly Harrison Saturday were her sister Barbara and husband of Oklahoma.

In The Kitchen

by Linda Haynes

With Thanksgiving coming next week, it is time to dust off your pumpkin pie recipes for the grand feast. Here are two recipes from *The Gray County Heritage Cook Book* for the traditional dish.

PUMPKIN PIE
Mrs. Elwood Connell
1 Can Pumpkin, warmed
2 cups sugar
2 tsp. vanilla
1 stick oleo
1/2 tsp. cinnamon
Beat 4 eggs; mix all ingredients together; place in pie shell. Bake 45 minutes at 350 degrees.

QUICK PUMPKIN CHIFFON PIE
1 16 oz. can pumpkin
1 can Eagle Brand milk
1 large pkg. vanilla instant pudding
1 1/2 tsp. pumpkin pie spice
1 8 oz. carton Cool Whip
Mix well. Do not cook. Pour into cooked and cooled pie crust.
CRUST:
2 cups flour
2 sticks oleo
1 1/2 cups chopped nuts
Mix and bake in 9 by 13 inch dish or pan at 350 degrees for 20 minutes. Let Cool. Pour in pie filling. Top with whipped cream and chopped nuts.

Birthdays

NOVEMBER 18
Richard Henley
Martha Brown
Marvin Henderson
Waldean Cheatham
NOVEMBER 19
Sherry Ray Glass
Mrs. Dale Glass
Mrs. Essie Howard
Kathy Sulloway
Ray Dwyer
NOVEMBER 20
Dorothy Matthews
NOVEMBER 21
Janice Tidwell

Mike Johnston
NOVEMBER 22
David Crockett
Dean Trew
Keith Morris
Dana Paul Miller
Vickie Lynn Smith
NOVEMBER 23
Norman Gilbreath
A. N. Hardman
Joe Billy Sherrod
NOVEMBER 24
Joe Willis
Sophia Hutchison
Cindy Johnston
Lynn Watson



WATCH FOR YOUR INVITATION TO OUR ANNUAL OPEN HOUSE DEC. 2, 3, and 4 THURSDAY THROUGH SATURDAY LAMB'S FLOWER SHOP

HAPPY 36th BIRTHDAY TO OUR ALANREED BARREL RACER MOM & DAD

BAKE SALE SATURDAY, NOV. 20 9 a.m. - ??? SR. CITIZENS BUILDING sponsored by United Methodist Women



HAPPY 1st, SUGAR DUMPLING

SAVE ★ During Our **Amana** PRE-THANKSGIVING Sale

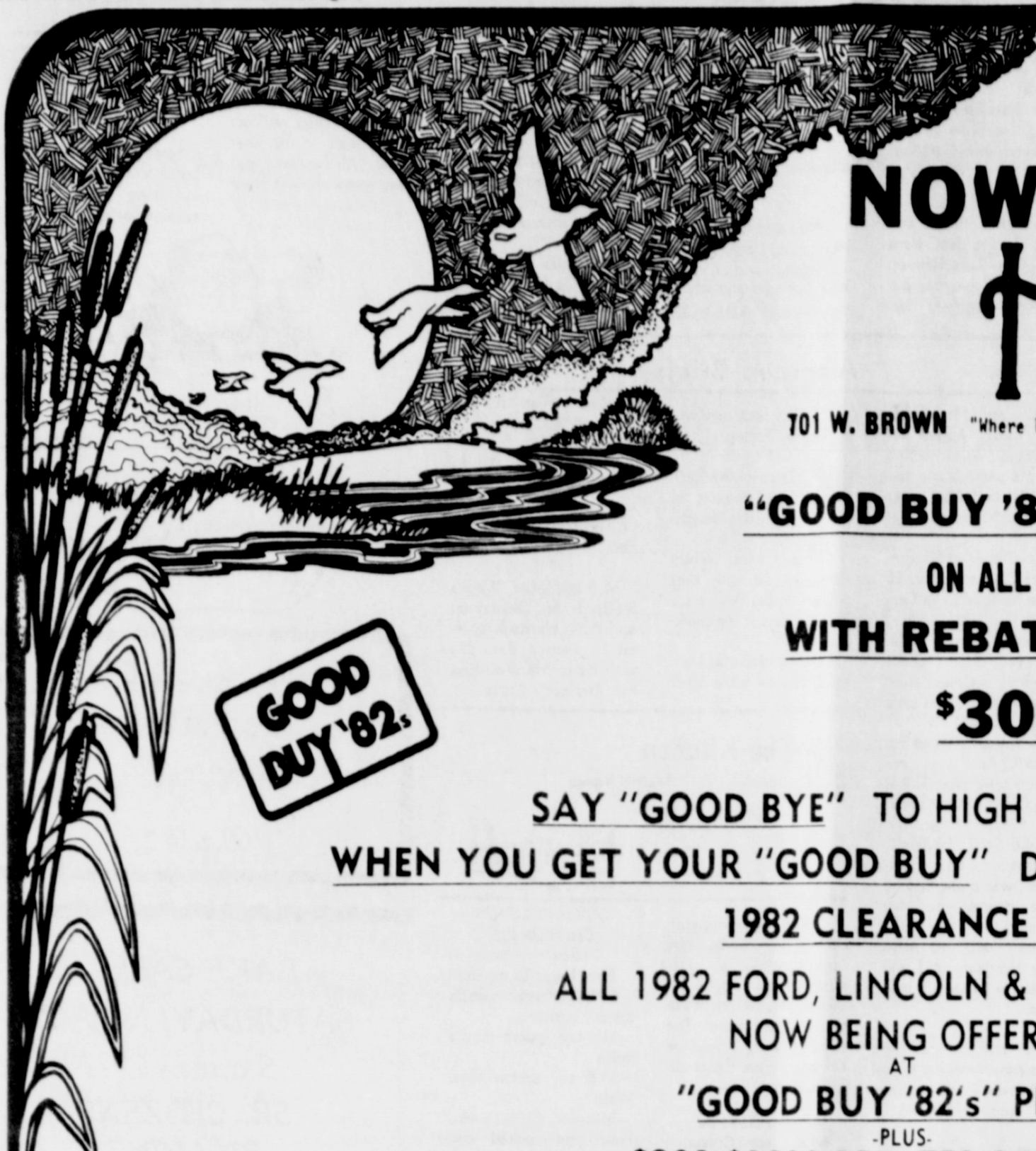
Model RRL-6C \$299



SPECIALIZED SERVICE ON MOST MAJOR BRANDS INCLUDING MAYTAG, KITCHENAID, AMANA, SEARS, G.E., WHIRLPOOL, AND HOTPOINT.

Quality construction. Exclusive features. Exceptional Value. **Radaraange** MICROWAVE OVEN

"Call us for all your appliance needs, both sales and service."
A & M APPLIANCE
BILL ANDERSON AND KERRY ANDERSON
848 W. Foster Pampa, Texas
665-2993 or 665-0463



NOW IS THE TIME

Heritage
Pampa
Ford - Lincoln - Mercury

701 W. BROWN "Where Pride & Service Makes The Difference" PAMPA, TEXAS

"GOOD BUY '82's" CLEARANCE SALE

**ON ALL 1982 TRUCKS AND VANS
WITH REBATES TO YOU WORTH**

\$300 to \$1,000

GOOD BUY '82.

GOOD BUY '82.

SAY "GOOD BYE" TO HIGH CAR PAYMENTS
WHEN YOU GET YOUR "GOOD BUY" DURING HERITAGE'S
1982 CLEARANCE SALE!

ALL 1982 FORD, LINCOLN & MERCURY CARS
NOW BEING OFFERED

AT "GOOD BUY '82's" PRICES

PLUS: \$200-\$1000 REBATES OFFERED ON

—EXP —ESCORTS —LYNX —LN7

PLUS

10.75% FINANCING ON ALL 1982 CARS

GOOD BUY '82.

GOOD BUY '82.

1982 GRANADA CLEARANCE SALE

YOUR CHOICE \$8759

SAVINGS FROM \$900 TO \$1800

TAKE YOUR PICK FROM OUR SHOWROOM FLOOR.

PLUS: AN OPPORTUNITY TO WIN UP TO 100 GALLONS OF GAS FOR YOUR NEW CAR!

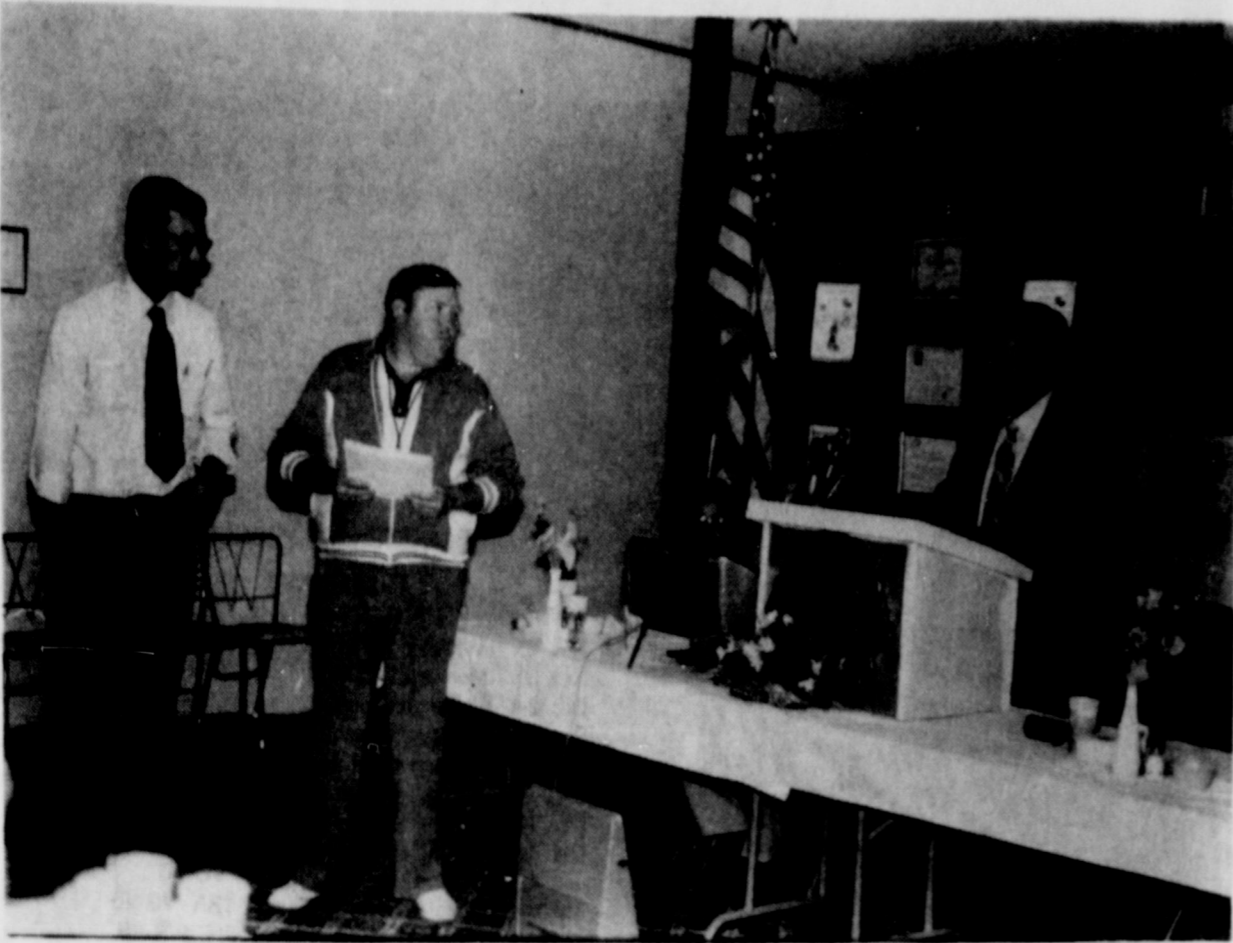
RENTAL CARS ALL 1982, LOW MILEAGE CARS

1976 MARK IV \$3250	1982 CHEVROLET MALIBU CLASSIC 4 DOOR 1,400 MILES \$7950	1981 FAIRMONT FUTURA \$5750	1980 BUICK LESABRE \$5950	1977 FORD LTD Dove Grey \$2750
1982 FORD MUSTANG VANILLA — \$6995	1982 FORD GRANADA WHITE — \$6995	1980 AMERICAN MOTORS EAGLE 4-Wheel Drive \$4950	1982 FORD LTD BLUE — \$7450	1979 MARK V Moon Roof-Black \$8950
1982 FORD GRANADA FAWN — \$6995	1980 CHEVROLET CHEVETTE 4 Door \$3750	1979 FORD LTD Blue \$3995	1979 FORD LTD Dove Grey \$3995	1978 CHEVROLET IMPALA \$2950
1979 CADILLAC ELDORADO Red \$8950	1980 MERCURY MONARCH 4-Door - 9,000 Miles \$5450	DON'T BUY A USED CAR UNTIL YOU CHECK WITH ONE OF OUR SALESMEN!		
1982 FORD 12-PASSENGER VAN VAN-BLUE — \$11,995	1979 FORD LTD Cream \$4995			



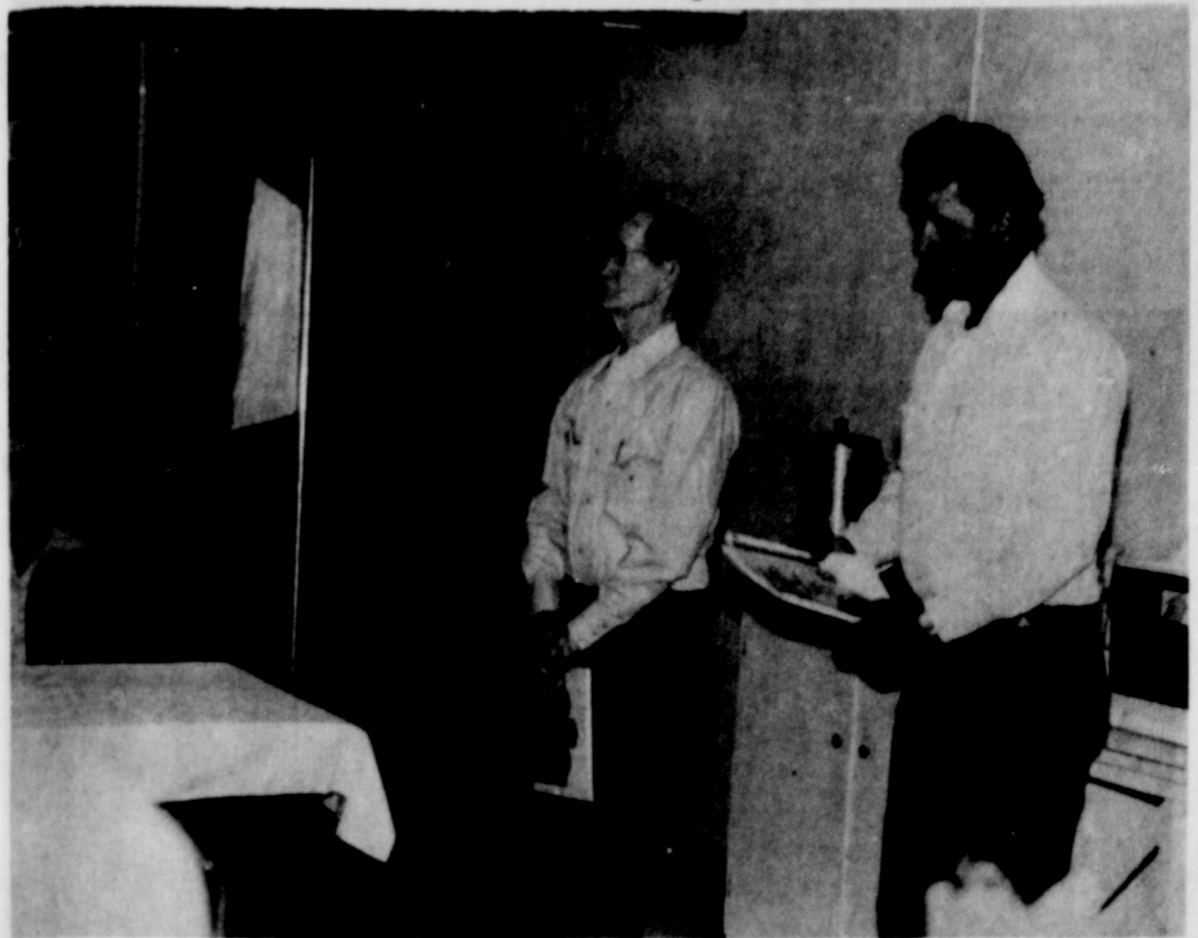
Heritage
Pampa
Ford - Lincoln - Mercury

701 W. BROWN "Where Pride & Service Makes The Difference" PAMPA, TEXAS



NEW LION MEMBER Frank Purcell, second from left, listens with sponsor Ron Cummings, as Lion

District Governor Ed Thames discusses the rules of Lionism. (Photo by Linda Haynes)



NEW LIONS LON Harmon and Cliff Tucker were inducted into the McLean Lions Club Monday

night. (Photo by Linda Haynes)

News From Your Gray County Extension Agent

by Joe VanZandt

Fall Fruit Tree Spraying Controls Diseases

Fall is often the time when fruit tree care is forgotten or neglected, but it's a critical time for

controlling many peach and plum tree diseases to insure a good crop next year.

With the arrival of fall, there's often a tendency

to forget our peach and plum trees that served us so well last summer.

By applying a fungicide now can stop or reduce three of the six

diseases that attack peach and plum trees in Texas. These are peach leaf curl, bacterial leaf spot and bacterial canker. Puckered and distorted

peach tree leaves that were either bright red or light green in diseased areas last spring were due to peach leaf curl fungus. The only time to effectively control this disease is in the fall with a copper-containing fungicide such as Kocide 101.

Bacterial leaf spot and bacterial canker can be partially controlled by fall spraying with a copper fungicide. Bacterial leaf spot affects both fruit and foliage. The infection causes fruit to crack and leaves develop angular spots which drop out. Bacterial canker will kill trees slowly. Infected trees will have gum or wax forming on the trunk and main limbs.

Fall spray in our area is recommended from late October to November 15. Timing of the fall spray is critical for effective control and for avoiding tree damage. Copper is a metal and may cause severe defoliation unless applied correctly.

Spray when 70 percent of the leaves fall off the tree, which of course has already occurred. Spraying too early will cause leaf shed or cause the spray to be ineffective later.

Fall spraying is important to the health and production of fruit trees. There's no other time when 50 percent of peach and plum tree diseases can be controlled with one spray. Firewood Season is Upon Us.

It's that time of year to check out the ole fireplace and inventory the woodpile. However, the proper time to replenish the woodpile was during the hot months of summer. The reason for this is to allow the firewood time to dry and cure for those "easy start" fires. But who really thinks about cutting firewood in hot weather? So we find the chainsaw and head to the woods.

Wood varies considerably in its suitability for use in the fireplace. Some types, such as willow when dry, and some conifers such as pine, burn rapidly and require constant replenishing to have a steady fire. Some woods, such as cedar and mesquite, burn well but may throw sparks from the fireplace which could result in damage to nearby carpeting and rugs. Oak, hickory, pecan, osage-orange and beech

have high heat values.

The amount of heat is not the only consideration when cutting firewood. Oak, hickory, pecan and ash are relatively easy to split. Osage-orange, elm, sycamore and sweetgum are difficult to split.

Once the wood supply is replenished, the following hints should be followed in burning the wood: (1) Do not use a

flammable liquid such as gasoline, oil or charcoal lighter to start a fire. (2) Use several small pieces of kindling and newspaper placed between several logs. (3) Mix green wood with dried wood after the fire is going well to hold the fire longer. (4) Large unsplit pieces will burn longer than split pieces. (5) Keep a screen in front of the fireplace.

Spicy Pumpkin Cake Ideal For Fall Entertaining

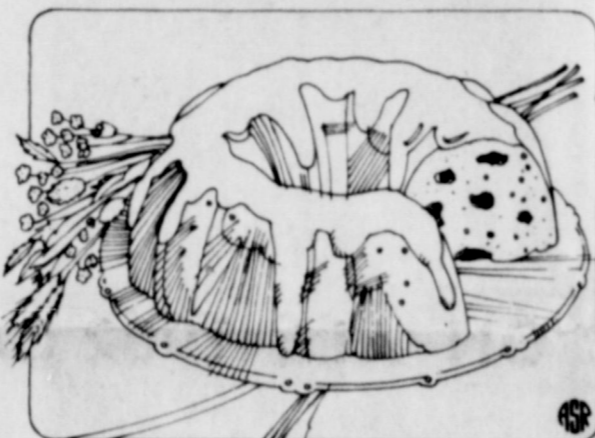
Look to one of autumn's favorite flavors for dessert inspiration next time the party's at your house. Pumpkin Pudding Cake, served warm from the oven with Spicy Orange Sauce is an impressive yet easy-to-prepare spice-scented cake, generously studded with dates and nuts. The luscious texture of this special cake is as moist and tender as your favorite pudding cake recipe.

The unexpected ingredient which provides moist richness in this special dessert is also the basis for the delicate, foamy hot dessert sauce La Creme, the frozen whipped topping with real cream from Kraft, is amazingly versatile. For a dessert sauce, it can be

heated without separating. As a whipped topping for hot coffee beverages it holds up beautifully. With refrigerated desserts it offers make-ahead convenience, and unlike whipped cream, you can even use it on hot desserts without having it melt away quickly. And, there's no last-minute effort in the preparation.

La Creme whipped topping has all the convenience of non-dairy whipped toppings, yet it's made with 54% real dairy ingredients — cream, whole and skim milk — for a fresh, natural taste.

Spruce up your autumn party and family desserts with versatile La Creme whipped topping, for a special meal-time conclusion. A real boon



for small families, it can be thawed and refrozen three or four times without any noticeable quality loss.

- Pumpkin Pudding Cake**
- 1/2 cup Parkay margarine
 - 1-1/3 cups sugar
 - 1 9-oz. container La Creme whipped topping with real cream, thawed
 - 1 cup canned pumpkin
 - 2 eggs
 - 1-2/3 cups flour
 - 1 teaspoon baking soda
 - 1/2 teaspoon salt
 - 1/2 teaspoon cinnamon
 - 1/4 teaspoon baking powder
 - 1/4 teaspoon cloves
 - 1 cup chopped dates
 - 1/2 cup chopped nuts

Beat margarine and sugar until light and fluffy. Blend in 1 cup whipped topping, pumpkin and eggs. Add combined dry ingredients; mix well. Stir in dates and nuts. Pour into greased and floured 10-inch fluted or standard tube pan. Bake at 350°, 1 hour. Cool 10 minutes, remove from pan. Serve warm with:

- Spicy Orange Sauce**
- 2 cups thawed La Creme whipped topping with real cream
 - 1 teaspoon grated orange rind
 - Dash of cinnamon
 - Dash of nutmeg
- Heat whipped topping over low heat, stirring just until melted. Blend in spices. Serve immediately.

"He who rebukes the world is rebuked by the world." Kipling



The Texas Crime Stoppers Advisory Council wants you to know some facts about drunk driving in Texas.

- One half of all traffic accidents involve a driver who has been drinking.

- It is estimated that on any weekday in Texas, 1 out of 50 drivers has been drinking or is drunk. On weekends, this ratio climbs to 1 in 10.

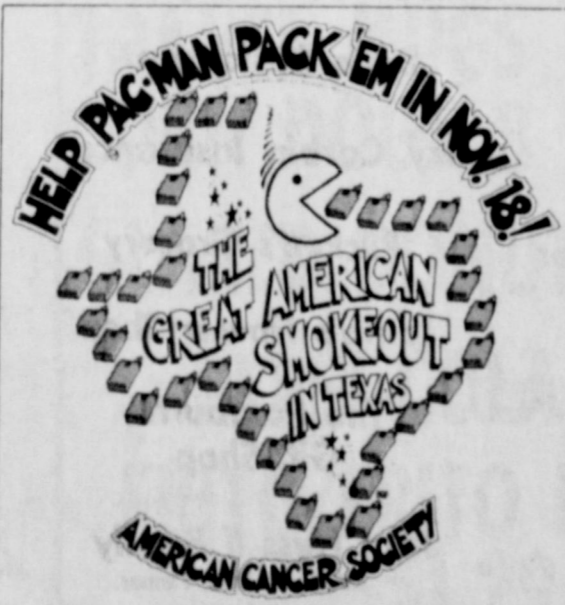
- Last year there were 36,774 reported accidents in Texas that were the result of DWI — more than 100 per day.

- 23% of all traffic deaths in 1981 involved drunk driving. The ten year total of DWI related deaths in Texas is 19,000 — more than the population of many Texas cities.

Texans should be outraged at this senseless destruction by drunk drivers. For too long, society has permitted innocent persons to be killed on our highways, because it is easier to ignore the DWI problem than to face it.

People have been led to believe that DWI is not really a crime, and the drunken driver is not really a criminal, but this is not true.

For the month of November, the Texas Crime Stoppers Advisory Council is focusing its statewide "Crime of the Month" on DWI. No reward is offered. Instead, the Council urges you to support local and statewide efforts to reduce the number of drunk drivers on Texas highways.



Let a Local Agent Help Handle Your Claims:

Hospitalization-Cancer
Medicare Supplements-Burial

CALL
Jerry Corbin 779-2002

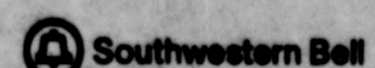


We Want To Let You In On Who To Let In.

That's why every Southwestern Bell employee carries an identification card. The I.D. card shows his or her name, a photograph and an expiration date.

It's your home and your safety, so make sure you're satisfied before you open your door to anyone.

The next time a Bell employee comes, make sure his identification rings true.



... at your service for 100 years.



COWBOY
DRIVE IN

for the best meal in town !!!

109 N. Cedar McLean, Texas 779-2315

BASKETBALL!



1982 McLEAN JUNIOR HIGH CUBS



1982 McLEAN JUNIOR HIGH CUBETTES

BASKETBALL SCHEDULES

HIGH SCHOOL					
DATE	OPPONENT	SITE	TIME	TEAM	
Nov. 23	Wheeler	There	5:00	VG JVB VB	
Nov. 30	Mobeetie	Here	5:30	JVG VG VB	
Dec. 2-4	Wellington Tournie	There	TBA	VG VB	
Dec. 7	Hedley	Here	6:30	VG VB	
Dec. 9-11	Samnorwood Tournie	There	TBA	VG VB	
Dec. 14	Allison	There	5:00	VG JVB VB	
Dec. 17	Lefors	There	5:00	VG JVB VB	
Dec. 16-81	Follett J.V. Tournie	There	TBA	JVG JVB	
Jan. 4	Brisco	Here	6:30	VG VB	
Jan. 6-8	Wheeler Tournie	There	TBA	VG VB	
Jan. 11	*Phillips	There	5:00	VG JVB VB	
Jan. 14	*Lefors	There	5:00	VG JVB VB	
Jan. 18	Estelline	Here	6:30	VB	
Jan. 21	*Groom	Here	5:00	JVG VG VB	
Jan. 25	*Claude	Here	5:00	VG JVB VB	
Jan. 28	*Phillips	Here	5:00	JVG VG VB	
Feb. 1	*Lefors	Here	5:00	VG JVB VB	
Feb. 4	Estelline	There	6:30	VB	
Feb. 8	*Groom	There	5:00	VG JVB VG	
Feb. 11	*Claude	There	5:00	JVG VG VB	

*Denotes District 3-1A Games

JUNIOR HIGH SCHOOL

Nov. 22	Lakeview	Here	6:30	VG VB
Nov. 29	Shamrock	There	5:00	JVG VG VB
Dec. 6	Shamrock	Here	5:00	JVG VG VB
Dec. 9-10	Lefors Tournie	There	TBA	VG VB
Dec. 13	Lakeview	There	6:30	VG VB
Jan. 6	*Claude	Here	6:30	VG VB
Jan. 10	Hedley	There	6:00	VG VB
Jan. 13-15	McLean Tournie	Here	TBA	JVG VG JVB VB
Jan. 17	*Skellytown	There	6:30	VG VB
Jan. 24	*Lefors	Here	5:15	VG JVB VB
Jan. 27-29	Shamrock Tournie	There	TBA	VG VB
Jan. 31	*Miami	There	6:30	VG VB
Feb. 3	*Groom	Here	6:30	VG VB
Feb. 7	*Phillips	Here	5:15	JVG VG VB
Feb. 10	Hedley	Here	6:30	VG VB

*Denotes Top of Texas District games

JVG - JUNIOR VARSITY GIRLS
 VG - VARSITY GIRLS
 JVB - JUNIOR VARSITY BOYS
 VB - VARSITY BOYS

JOIN THESE TIGER BOOSTERS IN SUPPORTING THE McLEAN TIGERS BY ATTENDING THE GAMES:

McLean Hardware

David Brown's
Water Well Service

Parson's Rexall Drug

Judy's Atex

Corinne's Style Shop

Magee Ranch

Doctor Herefords
F. J. and Leta Mae Hess

Hambright's
Building Supply

Gately's Cafe,
Gas, & Grocery

Terry's Electric

McLean Cattle
Company, Inc.

Ted & Sue Simmons

B & B Turbine
Engine Service
Wayne, Sonie, Billy, and Vonda

Curry's Processing

Denworth Line Camp
Johnny & Joyce Haynes

Dairy Queen

McLean Atlas Plumbing
Jerry Don Cook

Foshee's Texaco

American National Bank
in McLean

Hallum's
Backhoe Service

Martinez Ranch

Johnnie & Colleen
Mertel Boot Shop

Jane Simpson
Insurance Agency

Thomas Nursing Center

Cowboy Drive In

Bentley's Fertilizer

McLean Variety

L & P Chevron

Windom's
Auto Supply

Haynes
Triangle Ranch
Sam & Thacker Haynes

Barker Redi-Mix

McLean Veterinary Clinic

Dixie Restaurant

Jerry Corbin Insurance

Puckett's Grocery

Lamb's Flower Shop

The Potpourri
Gift Shop

Jake Hess II Family
Jake, Ida, Tres, Tanner,
and Heather

City of McLean

The McLean News
Linda, Lisa, Sam and Kathy

John Nash Texaco



TIGER BILLY CORLEY clutches the ball as he attempts to gain yardage for the Tigers Friday night at Wheeler. [Photo by Kathy Carter]



TIGERS FRANK TODD [54] and Stephen McNear [84] tackled this Wheeler ball carrier during the

Tiger-Mustang tilt Friday night. Other Tigers shown are Don Bode [68] and Lance Stovall [78]. [Photo by Kathy Carter]



BAND DIRECTOR FRANCIS Adamson directs the band with one hand and beats the drum with the other and still manages to stay wrapped in her blanket. The McLean-Wheeler football game, the last of the season for the Tigers, was also one of the coldest of the year. [Photo by Kathy Carter]



Cleaner Air
With the installation of a high efficiency air cleaner, you'll breathe air that is practically free of pollutants which cause discomfort. Even microscopic airborne particles are removed from the air circulating through your heating/cooling system.



Less Cleaning, Decorating
With a high efficiency air cleaner there will be less dust in the air to settle on places you have to clean or dust. And you won't have to wash the walls or redecorate as often.



Reduced Pollen
People aggravated by pollen in the air will find considerable relief with a non-electronic air cleaner which removes 99 percent of a home's pollen and spores from the air circulated through the unit.

Scientists divide wasps into two groups - social and solitary wasps. Social wasps, such as hornets and yellow jackets, live a community life, while each family of solitary wasps lives by itself.

•Boots by Tony Lama
•Guns by Colt, Ruger,
Smith & Wesson, Weatherby
•Hats by Bradford
•and American
•Tack
•Western Apparel
the Whole Family

Complete Line
Of Quality Brands
Western Wear

"Complete Ranch Outfitters"
Where your Search Ends
And Hospitality Begins

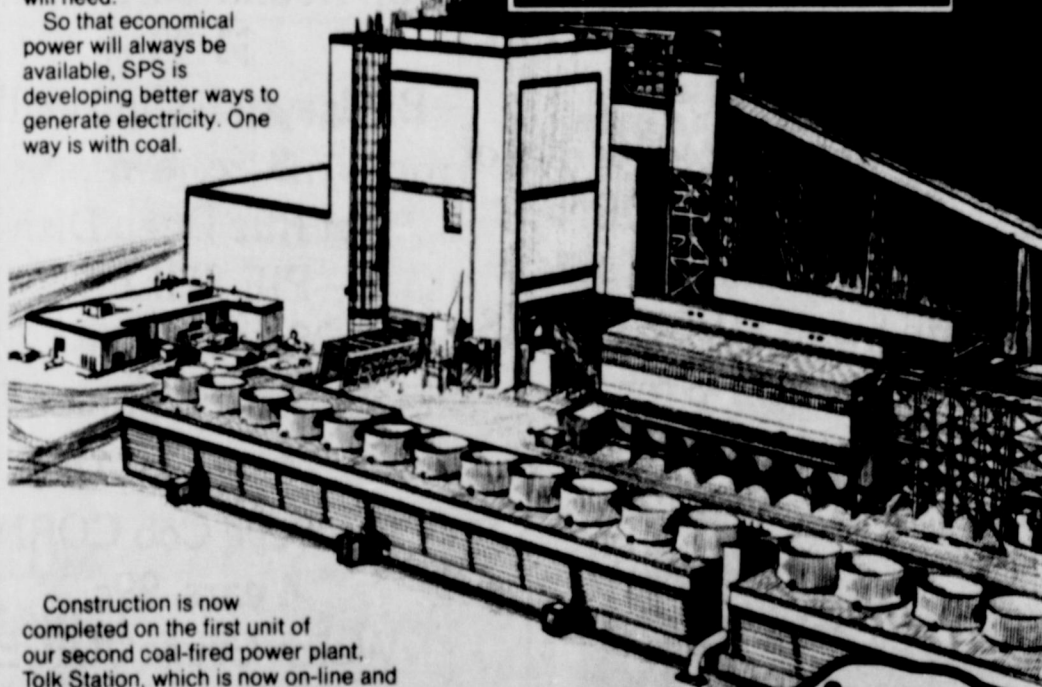
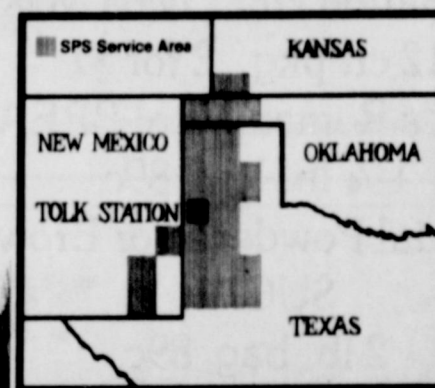
119 S. Cuyler 669-3161 Pampa, Tx

How better energy decisions make the difference

You and Southwestern Public Service Company are partners, making energy decisions that make the difference.

How you manage electricity in your home helps us make our decisions about generating power to meet the electrical requirements of the Southwest. For when you install a High-Efficiency Add-On Heat Pump, you can manage the electricity used for your home's heating and cooling - which helps SPS determine how much power you, and the Southwest, will need.

So that economical power will always be available, SPS is developing better ways to generate electricity. One way is with coal.



Construction is now completed on the first unit of our second coal-fired power plant, Tolk Station, which is now on-line and generating electricity. Harrington Station, SPS's first coal-fired power plant, has been operating since the early 1970's.

As partners we have made energy decisions which have built Tolk Station. We're proud of the new power plant as you will be too. You're invited to the Open House of Tolk Station between Muleshoe and Earth, Texas. Just follow the map and join us Saturday 10 to 4 p.m., November 20, or Sunday 1 to 4 p.m., November 21. Come as you are, dress casually. There will be refreshments and guided tours for the whole family.

HOW TO GET TO TOLK STATION



Come to the OPEN HOUSE
Sat. November 20
10-4 p.m.
Sun. November 21
1-4 p.m.

You and SPS, partners managing electricity, make the difference.



SOUTHWESTERN PUBLIC SERVICE COMPANY

Quotable Quotes

Without doubt machinery has greatly increased the number of well-to-do idlers.

Karl Marx

Every madman thinks all other men mad.

Publius Syrus

The true art of memory is the art of attention.

Samuel Johnson

The bee is more honored than other animals, not because she labors, but because she labors for others.

St. Chrysostom

Men willingly believe what they wish.

Julius Caesar

Providence has given us hope and sleep as a compensation for the many cares of life.

Voltaire

Who knows nothing base, fears nothing known.

Owen Meredith

A wise man knows everything; a shrewd one, everybody.

Anonymous

Worry is the interest you pay when you borrow trouble.

Anonymous

TRAVEL MUGS 99¢ (While Supplies Last)
CORN DOGS 3 for \$1
DOZEN
GLAZED DONUTS \$1.69
6 Pack, 12 oz. cans Reg. \$1.59
PEPSI-COLA \$1.39
FRITO/FRITO LIGHTS \$1.29
WIL-MART MILK \$2.29 GALLON

WIL-MART
FOR PEOPLE ON THE GO

Open 6 a.m. to 11 p.m. 1-40 & Rowe St. McLean, Texas 779-2831



LET'S TALK TURKEY

WE HAVE A LARGE SELECTION OF HOLIDAY POULTRY IN THE STORE. FEATURING ALL SIZES OF BUTTERBALL TURKEYS, STUFFED TURKEYS, SMOKED TURKEYS, SMOKED TURKEY BREAST, BONELESS TURKEY ROAST, TURKEY BREAST, AND BAKING HENS. WE ALSO HAVE HORMEL CURE HAMS, BONELESS WILSON HAMS, BONELESS CUREMASTERS, BONELESS MASTERPIECE HAMS AND LONGHORN OLD FASHIONED DRY CURED HAMS



SHAMROCK, TEXAS

Del Monte Seedless RAISINS
9 oz. bag 79c
Fleishmann YEAST
2 for \$1

Honey Boy Chunk SALMON
16 oz. \$1.39
White Swan CRACKERS
1 lb. 2 for \$1
Ocean Spray Cranberry SAUCE

Win You Cherry Pie FILLING
21 oz. 99c
Stokely PUMPKIN
16 oz. 39c

Nice 'n Soft Bathroom TISSUE
6 Roll \$1.39
Palmolive Liquid Dish DETERGENT
22 oz. 89c
Super Suds Laundry DETERGENT
40 oz. 99c

Gladiola FLOUR
All Purpose 5 lb. 79c
White Swan BLEACH
1 gal. 79c
Hefty Foam PLATES
50 ct. 9 in. \$1.89
Downy Fabric SOFTENER
33 oz. \$1.09
Lysol Aerosol DISINFECTANT

Whole or Jellied 16 oz. 59c
Cascade Automatic Dish DETERGENT
50 oz. \$1.99
Sugary Sam YAMS
29 oz. 79c
Smuckers Grape JELLY
18 oz. 89c
Texsun Pink Grapefruit juice

White Swan PINEAPPLE Sliced, Chunk, Crushed
15 1/4 oz. can 2 for \$1
JELLO Gelatin
Asst. Flvs. 3 oz. 3 for 89c
DREAM WHIP
5.6 oz. \$1.19
Folgers COFFEE
1 lb. All Grinds \$1.99

White Swan White or Golden HOMINY
15 oz. 4 for \$1
White Swan Fruit COCKTAIL
16 oz. 2 for \$1
White Swan Cut GREEN BEANS
16 oz. 3 for \$1

12 oz. Reg. or Scent II \$1.79
Bakers Chocolate Flavor CHIPS
12 oz. 89c
Fisher Raw Spanish PEANUT
12 oz. 99c
Bakers Angel Flake COCONUT
14 oz. 99c

Del Monte Mandarin ORANGES
11 oz. 69c
Early California Medium Ripe Pitted OLIVES
6.5 oz. 89c
Gladiola CORNBREAD MIX
White, Yellow or Mexican
6 oz. 5 for \$1

Crisco All Vegetable SHORTENING
3 lb. \$1.99
(Limit 1 with \$7.50 purchase)
Zee TOWELS
Roll 2 for \$1
MEAT
Smoked PICNICS
6 to 8 lb. average 98c lb.
USDA Choice Arm ROAST
\$1.78 lb.
Lean Ground BEEF
\$1.17 lb.

Carnation Hot Cocoa MIX
12 ct. pkg. 2 for \$1
Mead's Roman Meal BREAD
1 1/4 lb. loaf 89c
Imperial Powdered or Brown SUGAR
2 lb. bag 89c

Nonesuch MINCEMEAT
9 oz. \$1.19

Kraft Marshmallow CREME
7 oz. 59c

Maple River Boneless Whole ham
6-8 pounds \$1.98 lb.

Coffeemate Coffee CREAM
16 oz. \$1.47
White Swan Whole Kernel or Cream Style CORN
17 oz. Cans 3 for \$1
White Swan SWEET PEAS
16 oz. Can 3 for \$1

FROZEN FOOD
Lady Borden's ICE CREAM
1/2 Gal. Round Carton All Flvr \$1.99

Swanson Chicken BROTH
14 1/4 oz. 3 for 89c
Blackbarn Crystal White SYRUP
32 oz. 89c

Wilson Certified Sliced BACON
2 lb. pkg. \$3.98
White Swan Colby or Longhorn CHEESE
8 oz. pkg. 98c

PRODUCE
YAMS
4 pounds \$1
Pascual CELERY
4 for \$1

Birdseye COOL WHIP
8 oz. 69c
Pet Ritz Deep Dish PIE SHELL
2 count 79c
Mrs. Smith's Pumpkin PIES
26 oz. \$1.39

Kraft Macaroni & Cheese DINNER
7 1/4 oz. 3 for \$1

Tyson Chicken LIVERS
8 oz. pkg. 98c
USDA "A" Grade Fresh Dressed Roasting CHICKENS
68c lb.

Ocean Spray CRANBERRIES
12 oz. 69c
BANANAS
4 pounds \$1
Yellow ONIONS
11c lb.

Birdseye Cob CORN
4 ears 99c
Welch Grape JUICE
12 oz. 79c
Morton Pecan PIE
18 oz. \$1.59

Keebler Graham CRACKERS
Pie Shell 6 oz. 69c
Pet MILK
13 oz. 2 for 89c

Jimmy Dean SAUSAGE
Hot, Mild, Reg. or Sage
1 lb. \$2.08, 2 lb. \$4.15
Borden's CHEESTWIN Slice
12 oz. pkg. 98c

Red Delicious APPLES
3 lbs. \$1
Navel ORANGES
49c pound

DAIRY
Borden's Cottage CHEESE
24 oz. \$1.19
Borden's Sour CREAM or DIPS
8 oz. Asst. Flavors 2 for 89c
Borden's EGG NOG
Quart 99c

White Swan Soft MARGARINE
1 lb. Tub 2 for \$1
Borden's Whipping CREAM
8 oz. 39c
Borden's BUTTERMILK
1/2 Gal. 99c

Country Pride Chicken GIZZARDS
98c lb.
Butterball TURKEYS
18 lbs. & up 95c lb.



SENIOR CHEERLEADERS KIM Sanders (left) and Stacy Smith led the cheers for the last football game of the season Friday night. [Photo by Kathy Carter]

Pee Wees Meet Pampa For First Game

The McLean Pee Wee football team played its first game of the season against the Pampa Raiders, the third place team in the Pampa Optimist League. The Saturday afternoon game in Pampa saw the McLean boys, playing their first game, on the short end of the score, 18-0.

The McLean Pee Wees held the Pampa team scoreless through the first quarter. Pampa scored a touchdown in the second quarter, and the fourth, fifth, and sixth grade boys went to the dressing room at halftime with the score 6-0.

The third quarter was scoreless for both teams,

and in the fourth quarter with about five minutes to go, McLean drove down near the goal, but lost the ball on a fumble. The coaches, Pat Washburn and Frank Sparling, wanted all the boys to get a chance to play, so they substituted heavily in the last part of the game. Pampa scored twice more in the last minutes of the game, to end the game at 18-0.

Youngsters playing on the team are Tres Hess, Sid Brass, Kyle Woods, Dale Barker, Calle Holwick, Donald Via, Donald Harris, Jimmy Cummings, Robert Sanderson, Shannon Patton, Michael Acuna, Jonathan Middleton, Bobby Sher-

man, Keith Garrison, Grant Mann, Johnny Mangum, Austin Walker,

and Frank Hickman. Daniel Harris is manager for the team.

Bertha Rogers Dies

Bertha Ann Rogers, 80, died Saturday.

Services were Tuesday in First United Methodist Church with the Rev. Billy Wilson, pastor, officiating.

Mrs. Rogers was born in Springtown. She moved to McLean from Amarillo in 1980. She married L. L. "Lush"

Rogers in 1921 in Clarendon. She was a member of First Presbyterian Church at Bishop, Calif.

Survivors include her husband; a son, Bruce Rogers of Waterbury, Conn.; a sister, Fay Gambill of Bridgeport, a brother John Franklin of Tulsa, Okla.; and a grandson.

"Living well is the best revenge." George Herbert
 "Time is the greatest innovator." Francis Bacon

Tigers Start Basketball Practice This Week

Coach Jerry Cook this week believes the old saying "If it weren't for bad luck, I'd have no luck at all." The McLean Tigers began basketball workouts Saturday morn-

ing, and returning letterman Kevin Nicholson, an all-district player last year, went up for a lay-up and fell to the floor, breaking the small bone in his right leg.

"We're definitely going to miss Kevin for the next four to six weeks," Cook said. "The doctors say that he should be able to play again this season, and we hope to have him back in time for district play."

Boys who are working out on the team are seniors Billy Bybee, Andy Eck, Kevin Nicholson, Daniel Via, and Eddie Westbrook; juniors DeWayne Adamson, Darin Corley, Gregg Mann, Tommy Milam, Darrell Myers, Allen Patman, Scott Stubbs, Robert Swamer, Randall Wynn; sophomores Sammie Houdyshell and Carl Sherman; and freshmen David Adamson, Chet Bohlar, Martin Gately, Jerry Money, Mitch Reynolds, Donnie Smith, Dominic Via, and Mark Detty.

Cook said that he has not definitely picked the varsity team from the 24 boys who came out for the first basketball practice. "We'll choose the varsity and junior varsity teams next week," he said. The Tigers play their first regular game at Wheeler Nov. 23.

TIGERS

Continued From Page 1

next year. With a successful sports program, as well as an intensified

off-season program, we expect to see some terrific results next year."

STATS		
Team	McLean	Wheeler
1st Down	8	19
Yds. Rushing	123	376
Yds. Passing	8	81
ttl. yds. gained	131	457
Pen./ttl.	3/20	3/35
ps. att./comp	3/1	7/4
Pass. inter. by	1	0
punt/avg	6/36	0
fmb/	6	5
fmb/ rec. by	4	4
penetrations	0	7
Quarters		
1	0	14
2	0	14
3	0	0
4	0	13
Total	0	41

DR. ALFRED BOYCE, D.O.
 ANNOUNCES THE OPENING OF HIS PRACTICE
 IN GENERAL MEDICINE AND SURGERY
 AT GROOM OSTEOPATHIC CLINIC
 PHONE 806/248-3511
 201 EAST FIRST
 GROOM, TEXAS
 HOURS: MONDAY-THURSDAY 9 a.m. to 5 p.m.
 FRIDAY 9 a.m. to 2:30 p.m.
 Weekends, emergency 806/248-3581

This Is A Sample Of A McLean News Special
 Christmas Card with Photo
 Price Begins at \$15.00

Merry Christmas
 From
 Chel See TU
 and
 The McLean
 News Staff

The McLean News BUSINESS DIRECTORY

<p>DON MILLER RADIATOR SERVICE</p> <p>"Is Our Business" Not a Sideline •New & Rebuilt Radiators •Gas Tanks & Heaters Repaired</p> <p>376-666 612 S. JEFFERSON AMARILLO, TEXAS</p>	<p>Foshee's Texaco</p> <p>Your full-service station Earnest & Maurine Foshee Owners 779-2621</p> <p>McLEAN NEWS ADS HELP YOUR BUSINESS SALES. 779-2447</p>	<p>WATER WELL SERVICE</p> <p>SUBMERSIBLE PUMP SALES & SERVICE</p> <p>DAVID BROWN</p> <p>806-779-2678 BOX 273</p> <p>MCLEAN, TX 79057</p>	<p>GERMANIA Farm Mutual Insurance</p> <p>REASONABLE SOUND INSURANCE PROTECTION FOR YOUR HOME AND OTHER PROPERTY</p> <p>DON WILSON 779-3174</p>	<p>NATIONAL AUTO SALVAGE</p> <p>665-3222 or 665-3962 1 1/2 miles west of Pampa on Highway 60 Large selection of used auto parts We appreciate your business</p> <p>CALL 779-2447 AND GET YOUR BUSINESS IN THE McLEAN NEWS BUSINESS DIRECTORY</p>	<p>DIANN DALTON'S Country Cut BEAUTY SHOP 779-2413</p> <p>Open Tuesday through Friday and Saturdays until noon</p> <p>1 mile south of McLean on FM 3143</p>
<p>BARKER REDI-MIX</p> <p>READY-MIX, CONCRETE BACK-HOE SERVICE AND FINISHING WORK PHONE 779-2703 OR 779-2869</p>	<p>McLEAN HARDWARE</p> <p>complete hardware line</p> <p>-DISHES-PAINT- -TOOLS-GIFTS-</p> <p>779-2591</p>	<p>GLENN HALLUM BACKHOE SERVICE</p> <p>Commercial or Individual Fully Insured Alanreed, Texas 779-3138</p>	<p>Johnnie F. Mertel Boot Shop</p> <p>Tony Lama, Texas, Acme, Justin Leather Goods Shoe Repair phone 779-2161</p>	<p>Expert DRY CLEANERS</p> <p>BRING YOUR CLEANING WHEN YOU SHOP IN PAMPA PICK IT UP THE SAME DAY!</p> <p>One Hour Martinizing</p> <p>1807 N. HOBART 1824 W. FRANCIS PAMPA</p>	
<p>Bug Baggers Pest Control Inc.</p> <p>TERMITE SPECIALISTS COMPLETE PEST CONTROL STATE LICENSED IN YOUR TOWN WEEKLY CALL COLLECT 85-0090 CANYON, TX</p>	<p>For all your Purina Feeds:</p> <p>BULK FEED BAG FEED</p> <p>BENTLEYS FERTILIZER</p> <p>301 E. Foster McLean, Texas 779-2209</p>	<p>DALE'S SERVICE STATION</p> <p>PHILLIPS 66</p> <p>217 W. 1st McLean 779-2181 779-2181</p> <p>YOUR AD HERE GIVES YOUR CUSTOMERS EASY ACCESSABILITY TO YOUR BUSINESS 779-2447</p>	<p>CLASSIFIEDS WORK WONDERS! CALL THE McLEAN NEWS 779-2447</p> <p>THE McLEAN NEWS IN COUNTY - \$12. OUT OF COUNTY - \$14. NINE MONTH STUDENT SUBSCRIPTION - \$9</p>	<p>B&B ELECTRIC Parts & Service</p> <p>•ELECTRIC WORK •APPLIANCES •TV ANTENNAS •HEATING AND •AIR CONDITIONING</p> <p>PHONE Loyd Bybee 779-2601</p> <p>EMERGENCY 779-2517 2 BLKS NORTH OF 1-40 ON PAMPA HWY I WILL APPRECIATE YOUR BUSINESS</p>	<p>LAMB FLOWER SHOP</p> <p>779-2611 ASK ABOUT OUR REGULAR FRIDAY SPECIALS</p>



MR. AND MRS. Miro Pakan returned recently from a trip to the Hawaiian Islands. They toured

Honolulu, Pearl Harbor, Kauai Island, Hawaii, the Kilauea Volcano, and the famous Akaka Falls in Hilo.

Tigerettes Scrimmage White Deer, Booker

The McLean High Tigerettes got their first taste of basketball action Nov. 2 when they traveled to White Deer to scrimmage both White Deer and Booker. Coach Frank Purcell said that the varsity girls played Booker an even game. "We broke their press and moved the ball well," he said. The girls began to show some fatigue during the scrimmage with White Deer, however. "We decided we needed to do some more conditioning after that scrimmage, but that's what scrimmages are for - to show the strengths and weaknesses of a team," the coach said. "All the girls have improved since we began workouts," he said. "Our type of play will depend on how the girls mature as players as we move through the season. We may not be as strong

early in the season as we would like, but we hope to be playing power ball by the time of the first district game," he said.

The junior varsity girls easily won both their scrimmages, Purcell said.

The first regularly scheduled game for the Tigerettes is Nov. 23 at Wheeler.

The Tigerettes and Tigers were scheduled to play two scrimmages this

week, but University Interscholastic League rules forbid advance

publicity on the games. Results of those scrimmages were too late for presstime.



Noah Webster spent 20 years working on his famous American Dictionary of the English Language.

Cubettes, Cubs Begin Workouts

The 1982 edition of the McLean Cubs and Cubettes began workouts this week in preparation for their 1982-83 season which begins Nov. 22 with a game here against Lakeview. The Cubs are coached by Joe Riley, and the Cubettes are coached by Frank Purcell.

The games begin at 6:30 p.m.

Girls working out for basketball include Cecilia Beniamo, Sheryl Dodds, Teri Lee, Angie Reynolds, Carla Skipper, Linda Reed, Melody Collins, Shawn Crockett,

Tanya Cummings, Angie Glass, Samantha Harris, Cindy Hembree, Lisa Hickman, Le Milam, Colleen Orrick, Angie Purcell, Jem Ann Rice, Dedra Watson, and Kim Wigginton, manager.

Cubs playing basketball include Darren Johnson, Clint Herndon,

Keith Christopher, Bill Watkins, Andrew Harris, Billy Beck, Mark McCarty, Doug Langley, Jim Anderson, Huey Green, Ronny Tidwell, Bobby Tidwell, Davey Ridgway, Stacy Jackson, Jim Bob Adams, Tony Hambricht, Jeff Parker, and Prakash Patel.

BENCHWARMER'S SPORTS TRIVA

Ruth hit 60 homers in a season, Maris hit 61, who was only player to hit 59 in a season?

ANSWER:

In 1921 Babe Ruth hit 59 homers.



DOWN MEMORY LANE

10 YEARS AGO...

E. M. Bailey, Ed. Vickie Parr, daughter of Mr. and Mrs. J. L. Parr, was crowned football queen by Tiger George Danner in pre-game ceremonies at the McLean-Wheeler game last Friday night. The queen's attendants are Regina Lamb, daughter of Mr. and Mrs. Creed Lamb, Debbie Hill, niece of Mr. and Mrs. J. B. Waldrop, and D'Ann Phillips, daughter of Mr. and Mrs. Warner Phillips.

††† Beryl Clinton, Dean of Clarendon College, released this week the names of Jerry Bowerman and Rebekah Orrick as students who have achieved the Dean's Honor Roll at Clarendon College for the first nine weeks of the fall semester for the school year 1972-73.

††† Rev. and Mrs. Herman W. Bell, Mrs. Newt Barker and Mrs. Luther Petty attended the Northfork Association Workers Conference at Eleventh Street Baptist Church in Shamrock Thursday night.

20 YEARS AGO... Jack Shelton, Ed.

J. B. Hembree, former long-time employee of the American National Bank in McLean, died Wednesday in Honey Grove. Mr. Hembree was employed at the bank here from 1933 until 1954 and was vice-president at the time he moved from McLean.

††† City commissioners Tuesday night accepted the re-modeling job at the city hall, and announced that an open house will be held as soon as arrangements are completed. Total cost of the project is \$13,307.63, and the commission approved final payment to Kenneth Hambricht of McLean, contractor on the remodeling.

††† Clifford McDonald, son of Mrs. Louise McDonald, suffered painful but not serious injuries last Friday afternoon when he fell from the back of a moving pick-up truck. Young McDonald, McLean High School freshman, sustained a broken left shoulder and numerous cuts and bruises about the face and head.

Lester Campbell, Ed.

McLean High Schools athletes held their first letterman's club meeting recently, naming new officers to serve during the year. Elected were Wayne Smith, President; Don Crockett, Vice President; Betty Jo Allen, Secretary and Treasurer; and Eddie Reeves, Tiger Tamer.

††† Ross Collie and Arthur Dwyer came home from their deer hunting expedition with the proof. The two men killed two ten-point deer. The McLean pair returned Tuesday from their hunt on the A. C. Hester ranch near Alamogordo, N.M. A six-inch snow fell while they were there.

††† Mr. and Mrs. Jack Bailey and daughter Jan are in Santa Paula, Calif., with Mrs. Bailey's brother, Barton Armstrong, who is critically ill.

††† Mrs. Amos Thacker and Mrs. Bob Sherrod were Amarillo visitors Monday.

40 YEARS AGO... No paper available for this date.

50 YEARS AGO... T. A. Landers, Ed.

Following one of the warmest days of fall, a cold norther struck Monday night, changing to a south wind Wednesday and snow Wednesday night, with Thursday morning clear and warmer.

††† Of five amusement halls in Gray County against which injunctions have been asked, only one had not been restrained by district court order Saturday. The one was at Lefors, and it was to be considered soon. The injunctions order the managers and operators to "desist and refrain from using said room, hall, building and premises or any part thereof as a pool hall or place where pool and billiards or similar games can be played with balls and

cues as said pool hall is defined by the laws of the State of Texas." The temporary injunctions were granted by Judge W. R. Ewing. They affect only use of the buildings as prohibited by state laws.

††† Rev. S. R. Jones was unanimously re-elected pastor of the Church of the Nazarene at a recent meeting of the church.

††† Mrs. Porter of Shamrock visited her daughter, Mrs. Dick Dickinson, last week.

60 YEARS AGO... T. A. Landers, Ed.

F. E. Robinson's new five room residence on North Fifth street was destroyed by fire Monday night. A small boy was filling a gasoline lamp while another boy held a match for a light. Gasoline fumes caught from the match and spread all over the room. Mr. and Mrs. Robinson were away from home and six children, the oldest 16 years of age, were the only occupants of the house at the time. The alarm was spread over town in a few minutes, but nothing could be done toward saving the house or contents.

††† John and Joudon Cobb, who are attending Wayland College at Plainview, won honors in the debating tryout last week. John won first place and Joudon second.

††† The ladies of the Back community met with Miss Mattie Patterson, County Demonstrator, at the home of Mrs. Bud Back Thursday afternoon, and organized a Home Demonstration Club, with the following officers: President - Mrs. C. M. Carpenter; vice president - Mrs. L. L. Morse; secretary - Mrs. Jesse Cobb; treasurer - Mrs. R. H. Corum.

††† Houston Bogan returned Thursday of last

week from Cripple Creek Colo.

††† Adv. Men's leather coats from \$10. to \$12. each... John Mertel

70 YEARS AGO...

A. G. Richardson, Ed. Friday night the jury in the case of Mrs. Emma LeFors versus Dr. V. E. Bruno for \$20,000 damages, alleged to have sustained by the death of Perry LeFors, husband of

the plaintiff, and five children, in 1909, returned a verdict in favor of the defendant. The case was one of the most noted that has ever been held in this county and attracted keenest interest. Mr. LeFors and children were victims of typhoid fever.

††† R. S. Jordan favored the News family with three turnips this week that were whoppers.

Nursing Center News

Thomas Nursing Center extends their deepest sympathy to Lush Rogers and the family of Bea Rogers who passed away Nov. 13. She will be greatly missed.

... Sunday Gib Welsh was here to sing and play his guitar during the noon dinner hour. In the afternoon Brother Allen Green of the Church of Christ was here to conduct services.

... Monday 19 residents played Bingo. Those participating were Buck Henley, Ruby Cook, Ruby Bidwell, Lula Sheegog, Ethel Meador, Leon Burch, Bob Ford, Bill Shaffer, Ohmer and Gladys Smulcer, Kattie Hesse, Alma Fandall, Eva Franke, A. L. Welsh, John Pennington, Hugh Tolleson and Paul Homer. They were assisted by Annie Herndon, Ruby Day, Lena Bailey, Ruby Boyd, Mildred Giesler. Bananas were furnished by the Lions Club.

... Tuesday eleven residents worked on their crafts. Our volunteer helper was Virginia Tolleson.

The record for most goals scored in a soccer career is held by the Brazilian soccer star, Pele. He scored 1,281!

To The Voters Of Gray County

THANK YOU FOR THE CONFIDENCE YOU SHOWED IN ME AT THE POLLS A SPECIAL THANKS TO ALL OF YOU WHO WORKED SO HARD DURING MY CAMPAIGN

MARY CLARK District Clerk, Elect

Pd. Pol. Adv. By Mary Clark, 2408 Rosewood, Pampa, Texas 79065

Dr. Bill Doebele

OPENING OCT. 25

To Practice Chiropractic

Hrs: Mon., Tues., Wed., & Fri.

9 a.m. to noon & 2 p.m. to 5:30 p.m.

Phone 256-2133

310 S. Main Shamrock, Texas

BUSINESS CARDS

JAMES WHITMORE MANAGER

Manchester Tire Sales

Armstrong Carnegie Pirelli Tires
Where Quality Costs Less

PHONE 555-9961

2133 E. MANCHESTER NEW ORLEANS, LA. 71126

Luxury Living

Adults Only

Cherry Chase Apartments

5302 Cherry Chase
Amaro, Colorado 80012
555-6483

Roger Morris, Resident Manager

Bus. 806-555-2148



JOYNER HEATING & AIR CONDITIONING CO.

DANIEL CARRIGER SALES REPRESENTATIVE

8036 RUTHERFORD AVE. LOUISVILLE, KENTUCKY 40208

The McLean News

P.O. DRAWER H
McLEAN, TEXAS 79057
FINE BUSINESS CARDS PRINTED
PHONE 806-779-2447



THESE McLEAN ELEMENTARY students were elected cheerleaders for the Pee Wee football team recently. Pictured are, from the left, Dana Watson, Holly Hauck, Darla McAnear, Tiffany Lopez and Francis Hickman. Not pictured is Kim Orrick, who was absent the day this photo was taken. [Photo by Linda Haynes]

CHRISTMAS BAKE OFF entry form



NAME

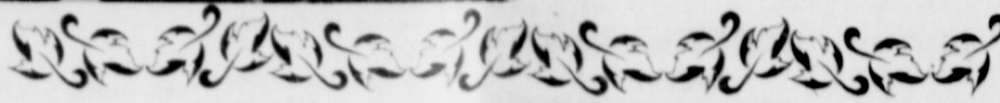
MAILING ADDRESS

CITY STATE ZIP

I understand that to compete in the contest I must prepare the recipe (or recipes) which I have submitted, and bring to the McLean Lions Club, Dec. 11, at 10 a.m. for judging.
DEADLINE FOR ENTRY - Dec. 1
DON'T FORGET TO ENCLOSE RECIPE ON 3x5 CARD

RETURN TO THE McLEAN NEWS
P.O. DRAWER H
McLEAN, TEXAS 79057

Thanksgiving Bargains



SPECIALS GOOD 11-17-82 to 11-27-82

Imperial Powdered & Brown
SUGAR

2 lb. for 89c

Shawnee Cornbread or
Biscuit MIX

4 for 89c

Hershey Chocolate CHIPS

12 oz. \$1.89

Del Monte Pumpkin

16 oz. 53c

Ocean Spray
CRANBERRY SAUCE

15 oz. can 59c

Kuners Fruit COCKTAIL

16 oz. 2 for \$1.09

Del Monte PINEAPPLE

15 oz. 2 for \$1.09

Kraft Miniature

Kellogg's RICE KRISPIES

13 oz. \$1.29

Eagle Brand MILK

14 oz. can \$1.15

Good Value OLEO

1 lb. qt. 39c

Birdseye COOL WHIP

8 oz. 79c

Pet PIE SHELLS

10 oz. 69c

Mrs. Smith Pumpkin PIES

26 oz. \$1.59

True Value Cinnamon ROLLS

9 1/2 oz. can \$1.05

Gilt Edge Whipping CREAM

8 oz. 2 for 89c

Gilt Edge DIPS

2 for 99c

MILNOT Tall Can

2 for 98c

Kraft Miniature
MARSHMALLOWS

10 1/2 55c

Karo SYRUP - Red Lable

32 oz. Jar \$1.69

Irish Acres PECANS

1 lb. bag \$4.39

Good Value OYSTERS

8 oz. can 85c

Swanson's Chicken BROTH

3 for \$1

Campbells Cream of
Mushroom SOUP

3 for \$1

Bakers COCONUT

14 oz. pkg. \$1.29

JELLO

3 oz. pkg. 3 for 89c

Premium CRACKERS

1 lb. Box 89c

Chip-A-Hoy COOKIES

19 oz. pkg. \$1.69

BANANAS

3 lbs. for \$1

Ocean Spray CRANBERRIES

69c ea.

Colorado Russet POTATOES

5 lb. 69c ea.

California CELERY

2 for 49c

Texas YAMS

3 lbs. for 89c

WALNUTS or PECANS

\$1.49 lb.

County Fair
Brown & Serve ROLLS

3 for \$1

Duncan Hines
Layer Cake MIXES

79c

Rio Grande Salad OLIVES

10 oz. Jar \$1.29

Vlasic Sweet PICKLES

22 oz. Jar \$1.39

COKES

12 oz. can-6 pk. \$1.39

Imperial SUGAR

5 lb. Bag \$1.59

Golden Crust FLOUR

5 lb. bag 69c

Del Monte Cut
GREEN BEANS

16 oz. can 2 for 85c

Del Monte Golden CORN

16 oz. can 2 for 85c

Tender White Young
Tom TURKEYS (Large)

49c lb.

TURKEYS

(Large) 49c lb.

T.V. Boneless Whole HAMS

\$2.09 lb.

TV Grade A Baking HENS

59c lb.

Wilson All Meat BOLOGNA

12 oz. pkg \$1.29

Rodeo Beef BOLOGNA

12 oz. pkg. \$1.29

12 oz. pkg. \$1.19

Hormel LITTLE SIZZLERS

12 oz. \$1.49 lb.

12 oz. \$1.49

Korn Kist BACON

2 lb. \$3.09

Turkey FRANKS

12 oz. pkg. \$1.19

Philadelphia Cream CHEESE

8 oz. 89c

Puckett's

We Give TOP Savings Stamps

IGA