

The McLean News

Serving McLean and the Area Since 1903

VOLUME 76 McLEAN, GRAY COUNTY, TEXAS THURSDAY, MARCH 8, 1979 PRICE 20¢ NUMBER 10

from the
distaff side
by Linda Haynes

If you were a member of the class of 1949, 1959, 1969, 1979, 1989, or 1999, we need your help. Last year we ran a feature on the "8" classes preceding the graduation of the class of '78, and we would like to do the same thing this year.

If you would be interested in doing a little research about your classmates, and learning where they are now, let us know. We would like to publish as much information (and a class picture) about each class as we can.

We owe a special apology to Johnny and Cindi Carpenter. Last week, we printed a story about the burning of their home, and we erroneously stated that they had suffered a \$490,000 loss. The loss was \$40,000...a big difference to the figure we published.

It was a very bad error, and we sincerely apologize.

The time for spring sports is here for the students at McLean High School. MHS will again field teams in tennis, golf, and track. If you have a chance to attend any of these events, by all means do so. Track is my favorite sport, even though I've never been to track meets where I didn't either freeze or get a terrific sunburn.

Our young athletes will be out representing our town in fine style, and they deserve your support.

If you have not had a chance to have lunch with the senior citizens at the Young-at-Heart club on Tuesdays or Thursdays, you should go. For \$2.50 you get more food than you can possibly eat, and it is prepared the good "down-home" way.

The club is still trying to raise funds to purchase their building and the twice-weekly luncheons are one way for them to raise money.

Once people try the food, they usually come back every chance they get. If you haven't eaten there, you've missed a real treat.

We have many comments on the historical pictures in the paper each week. If you have an old picture that you think would be of interest to the people who read our paper, we will be glad to use it.

The process we use for putting pictures in the paper does not damage them at all, so we can return your picture to you in good condition.

Have you ever wanted to write for a newspaper? Any budding writers out there who would like to see their name in print?

If you have a good idea for a column (on crafts, hobbies, etc.) come by and talk to us. We pay a nominal fee for material that does not have to be heavily edited and corrected.

We still need your help to make our paper enjoyable to everyone. If you know of some community function that you think we might not know about, call us at 779-2447 during office hours or 779-2947 and tell us. We appreciate your suggestion.

This newspaper started an opinion page a few weeks ago. We had hoped that the page would become a forum for ideas

See DISTAFF, Page 2

Nursing Home Has Grand Opening

By Linda Haynes
McLean News Editor

The opening of the Thomas Nursing Center in McLean Sunday afternoon was the culmination of a dream for a large group of citizens in McLean.

Several interested people began many years ago to investigate the possibility of having a nursing home in McLean, but the group met with countless obstacles.

The first task was to find a company who might be interested in building such a facility in McLean.

Mr. and Mrs. F. Jake Hess contacted the Thomas family in Wellington because everyone in the area said that the Thomases ran one of the finest nursing homes in the Panhandle.

The Thomases, Beatrice and her sons Tommy and Bill, were impressed by the enthusiasm of the people in McLean, and began the long process of finding financing and securing the necessary permits

to build the home. A town meeting was held to see if the people were interested in a nursing home and the response of the community was an overwhelming "Yes!"

When the Thomases secured the necessary financing from the First State Bank in Wellington, they began to look for a site in McLean to build the home.

After several possibilities were discussed, the group decided on the present location, but the land was

owned by the estate of A. B. Woods, a retired farmer who had moved to McLean in 1920. Mr. Woods died in 1950 and his wife died in 1951, and the land was owned by their descendants.

After a great deal of hard work by Woods' granddaughter, Mrs. Jeanne Orrick, all the members of the family signed papers to donate the land to the Thomas Nursing Home for a very small fee.

But the dream was far from realized. McLean mayor, Sam

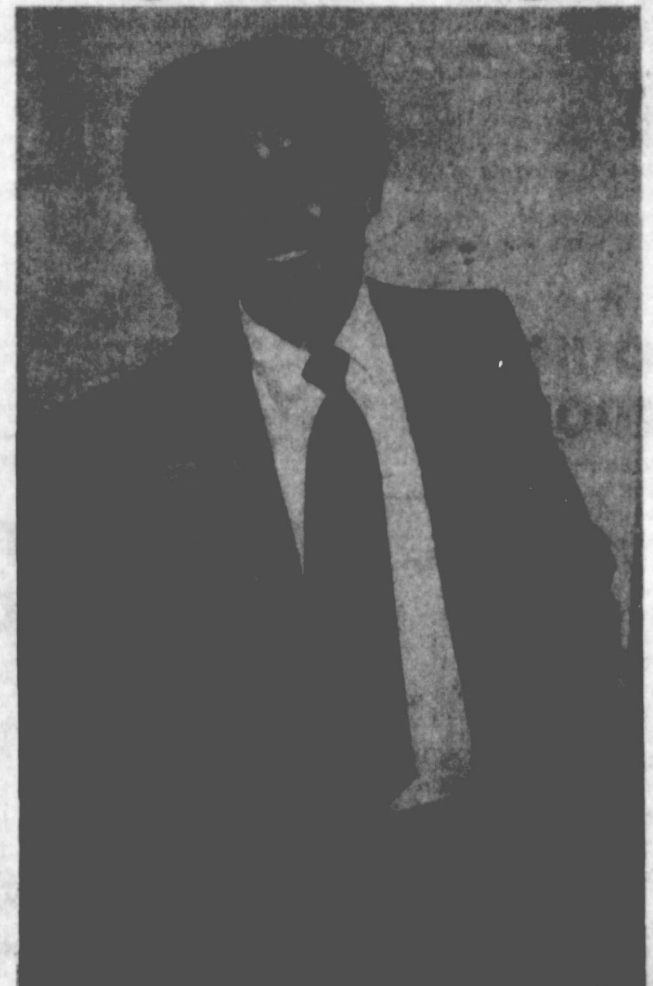
Haynes, Mr. and Mrs. Hess, and the Thomas family had to appear before the Facilities Commission in Austin to plead for the nursing home, and the commission finally granted the certificate of need for the home.

The approval was given in February of 1978, and completion of the home was expected in August of that year, but the Thomases were to face many more difficulties before construction could begin.

After various delays, the worst winter weather in years, the nursing home was finally completed... well, almost.

An inspector from the state decided that the ceiling in the halls and large rooms was not exactly correct, and so, although the home has had its grand opening, the Thomases must wait another four to six weeks before they will be able to accept patients.

But it was appropriate that the opening was held Sunday, March 4, March 4 would have been the 119th birthday of Mrs. Andy Woods, the mother and grandmother of the people who donated the land for the home.



Tommy Thomas, president of the Thomas Nursing Home Corporation, prepares to cut the ribbon to open the Thomas Nursing Home in McLean Sunday. (Staff Photo)



Susie Billingsley displays the trophy she won for showmanship at the McLean Stock Show Saturday. Miss Billingsley also had the Grand Champion steer in the show. (Staff Photo)



Lee Ann Tate displays the ribbon she won for her Grand Champion pig at the McLean Stock Show Saturday. (Staff Photo)

Billingsley, Tate Have Grand Champions

Girls showing livestock took four out of six top places at the McLean Stock Show Saturday at the FFA barn.

Susie Billingsley won grand champion for her heavy-weight steer, and Jem Ann Rice took reserve honors with her heavy-weight steer.

Mark Morris won the showmanship award in the steer category.

Lee Ann Tate won grand champion for her light

weight pig, and Terry Todd won reserve.

Susie Billingsley received the showmanship award.

Placement in the steer classes was as follows: LIGHT WEIGHT, first, Mark Morris; second, Stephen McAnear; third, Candi Carpenter; fourth, Stacie Smith; fifth, Robin Rhode; and sixth, Mark Tate.

MIDDLE WEIGHT, first, Joe Mercer; second, Rhonda Woods; third, Donna McAnear; fourth, Deb Crockett;

and fifth, Elson Rice. HEAVY WEIGHT, first, Susie Billingsley; second, Jem Ann Rice; third, Teresa Woods; fourth, Todd Allison; and fifth, Lance Gabel.

Placement in the pig classes was as follows: LIGHT WEIGHT, first, Lee Ann Tate; second, Mark Tate; third, Mitch Reynolds; fourth, Todd Allison; fifth, Candi Carpenter; and sixth, Greg Gabel.

MIDDLE WEIGHT, first, Spooly Smith; second, Stephen McAnear; third, Deb Crockett;

fourth, Billy Hambricht; fifth, Donna McAnear; sixth, Susie Billingsley; and seventh, Eddy Brooks.

HEAVY WEIGHT, first, Terry Todd; second, Jimmy Skinner; third, Lance Gabel; fourth, Elson Rice; fifth, Charles Patton; sixth, Stephen McAnear; and seventh, Jem Ann Rice.

FFA students and 4-H students will be showing their stock at the Top O' Texas Stock Show in Pampa this weekend.

Town Meeting Scheduled To Discuss Hospital Lease

Doug Lewis, Director of Domestic Development for Hospital Corporation of America (HCA) and Gray County Commissioner Ted Simmons will speak at a town meeting Tuesday, Mar. 13, at 4 p.m. in the McLean Elementary Cafeteria.

The Gray County commissioners court is negotiating with HCA on a proposed \$2.7 million lease package for Highland and McLean county hospitals.

Simmons urged all residents interested in the hospital to attend the meeting and ask questions about the leasing.

"I've lost a lot of sleep about this issue," Simmons said. "I want to be sure McLean has the best health care possible."

According to a proposal Five Candidates File For Board

Five candidates have filed for a seat on the McLean School board, Lloyd Hunt, incumbent, Linden Immel, James Kilham, Thatcher Haynes, and Joe Magee have put their names on the ballot for the two places open on the board.

The last day to file for school board was yesterday (Wednesday). Today (Thursday) is the last day to register to vote and also the last day to submit transfer to be able to vote if you have moved.

Absentee voting in the April 9 election will be Mar. 19 through April 3 at the school business office.

Honor Roll Announced

Dorman Thomas released the names of the students in the elementary and junior high who made the fourth six-week honor roll this week.

Fourth graders were Kathy Davis, Donnie Allen, Shawn Crockett, Tanya Cummings, Diana Davis, Rja Hamley, Colleen Orrick, and Robin Rhode.

Fifth graders were Lee Ann Tate, Melodie Billingsley, Wendy McDowell,

Bob Patman, and Jim Ridgway.

Sixth graders were John Glas, Billie Billingsley, Von Heivick, Paige McDonald, and Patricia Rogers.

Seventh graders were Bryan Smithman, Maria Eck, Jana Harris, Coyle Lee, Kevin McDowell, Allen Patman, and Shelia Todd.

Eighth graders were Billy Bybee, Dale Gipson, Margaret Horn, and Teresa Woods.

made to the court by HCA in November, the corporation would purchase the existing hospital in Pampa, together with all of its assets, or lease the hospital for 30 months during which period HCA would go through the process of gaining government approval. HCA would then design and construct a new hospital in Pampa.

If HCA purchases the hospital, they would pay \$2,872,500, and would assume the obligation for the existing equipment leases. Should the county choose, the agreement would provide the county with a repurchase option of the land and building of Highland General Hospital for \$475,000 when a replacement hospital would be opened for patient

care. According to Simmons, HCA proposes to lease McLean Hospital for 30 months, with an option to renew the lease for another 30 months at the end of that period. Simmons also said that the corporation will attempt to recruit a second full-time physician for the McLean facility.

The commissioners court unanimously agreed Thursday during their regular session to begin negotiations with HCA. HCA is a publicly owned corporation with about 6000 stockholders. The corporation

owns or operates 113 hospitals with more than 15,000 beds, with 12 of those hospitals in Texas.



Judy Trew, Joy Rhine Named Honorable Mention

Judy Trew and Joy Rhine were named honorable mention on the All-District basketball team recently.

Miss Trew and Miss Rhine are both juniors at McLean High School, and members of the MHS Tigresses team.

Named to the first-team all-district were Connie Crowell of Groom, Sherrie Hill of Hedley, Karen Kachler of Groom, Betty Krinna of Groom, Joanne Lindsay

of Hedley, Kristi Webb Sanders of Claude, Jonetta Dunn of Lefort, Lenora Wiesberg of Groom, LaMone Springer of Hedley, and Kelly Pepper of Claude.

Others from the district who received honorable mention were Bob Ann Whitchet of Claude, Janet Mank of Claude, Summa Kootling of Groom, D.D. Humes of Lefort, Anna Lewis of Lefort, and Brenda Whittington of Lefort.

OPINIONS

VIEWS EXPRESSED ARE THE EDITOR'S,
UNLESS OTHERWISE NOTED.....

IF YOU HAVE AN OPINION ON ANY CURRENT
SUBJECT, WE WELCOME YOUR SIGNED LETTERS..

MUSEUM STORY INACCURATE ?

By Lisa Patman

A recent feature story in the Pampa Daily News has had citizens of McLean up in arms concerning the Alanreed-McLean Area Museum.

While the overall content of the story was one of encouragement and praise of the museum, there were some rather unpleasant inaccuracies concerning our community. The words of Mrs. Fayette Bell Barton, who has long been associated with the museum, were apparently taken out of context, if not outright misquoted.

Mrs. Barton was quoted

as saying "We should have brought Lefors into it instead of Alanreed. We would have gotten a lot more from Lefors." This is not the idea Mrs. Barton was trying to get across. What Mrs. Barton did was to voice her regret that Lefors was not included in the original plan, for while the community of Lefors may be awash with historical data, the small town of Alanreed can certainly take pride in its contribution to history, and its hard work at collecting items for the museum.

The fact that the reporter zeroed in on an obvious misunderstanding of Mrs. Barton's intent reveals the lengths to which he must have been reaching to fill space.

As for economical problems, there is no doubt that the museum is struggling. And the fact is, it does exist through the

philanthropy of individuals and occasional county donations, but it is also true that the City of McLean has made many donations to the museum.

As is true with many other government bodies, the city government has found itself rather stretched, money-wise, unable to share its funds with organizations in town. We should take pride in the fact that our city has been able to keep its head above water, and we should support our town with donations, whenever possible, to needy organizations in our community.

Instead of letting ourselves be incensed by the casual observations of outsiders, let us all give a little of ourselves by donating our time and money to worthy organizations. And let us all show our appreciation to those devoted citizens who have already done so much for the town



Eddy Melin, director of the Panhandle Regional Health Systems, was the guest speaker at the dedication of the Thomas Nursing Home Sunday. (Staff Photo)



Billy Thomas, director of the Thomas Nursing Home in McLean, explains some of the features of the newly opened facility. (Staff Photo)



The Consumer Alert

by Mark White
Attorney General

AUSTIN—You could be costing yourself money in the long run, if the lowest price is all you look for when making a major purchase, say our Consumer Protection and Antitrust Division attorneys.

The lowest price tag doesn't always mean the lowest overall cost. In fact, the purchase price is only one thing to consider when making a major product selection, they note.

Our attorneys have received some consumer complaints from persons who say they were sold a "lemon" that's costing them more in repairs and maintenance than they expected. What sometimes is the case, though, is that the consumer failed to take into consideration normal maintenance costs, operating costs, and typical repairs to expect.

A buying technique called "life cycle costing" has been developed by consumer researchers to weigh these and other factors consumers should consider when making purchasing decisions. Life cycle costing takes into consideration the total cost of owning a product, and can result in substantial savings over the life of a product, even if that product is more expensive in the beginning.

Life cycle costing helps you determine which product will be more costly to run, and with escalating utility costs and gasoline costs, that can be a major consumer expense.

To determine the total life cycle cost of a product, our lawyers say you should weigh these factors: (1) the price of the product; (2) the installation charge, if there is one; (3) the operating cost of the product. If you're buying an appliance such as an air conditioner, look for the energy efficiency ratio, or

EER, and ask the dealer what average operating costs run. With cars, multiply the Environmental Protection Agency's average miles per gallon figures for your car, or the figures supplied by the car manufacturer, by the number of miles you expect to drive the car.

You should also consider: (4) anticipated repair costs. To do this, you must evaluate what the product warranty will and will not cover, then compare warranties on various brands for coverage. You should also consult consumer rating publications to determine reliability of a product after its warranty period is over; (5) how many years you expect to own the product; and (6) how much you plan to use the product.

Of course, you may have to make trade-offs when using life cycle costing. If you have high utility rates, you likely will be more interested in operating costs of an appliance than in repair costs or initial price. If you work and can't take time off to meet a repairman frequently, then perhaps reliability is more important to you than product life or installation cost. Or, if you have several major purchases to make at one time, you may feel that more weight must be given to purchase price.

Life cycle costing can help you buy a product that's the most efficient and economical for your needs. For more information, or to obtain assistance with a consumer complaint, contact the Attorney General's Consumer Protection and Antitrust Division in Austin, Houston, Dallas, San Antonio, El Paso, Lubbock, or McAllen. Or contact your district or county attorney.

"Civilization is a limitless multiplication of unnecessary necessities."

"A part of kindness consists in loving people more than they deserve."

SBA Loan Deadline Extended

(Washington, D.C.)—Congressman Jack Hightower

announced that the Small Business Administration has extended the sign-up period for 1978 Disaster Loans from the March 6, 1979 deadline to April 6, 1979 for economic injury. Counties declared disaster areas for 1979 under the Small Business Administration's Disaster Loan Program are eligible.

Congressman Hightower had requested the extension because of the extremely bad weather this winter has prevented many producers from getting crops harvested.

"While I appreciate the extension being granted, the announcement could have been made a week or so earlier because it was clear producers would not know what their losses were by the March 6 deadline. Farmers now will have extra time to evaluate their 1978 crop to see if they are eligible for the loans," commented Hightower.

Tax Law Changes May Mean Refund

Amarillo, Texas—The new residential energy credits, change in capital gains treatment and the one-shot sale of residence provision are major changes in the tax laws which can mean a larger refund for some taxpayers. While the Internal Revenue Service has simplified instructions and streamlined both 1040 forms, the agency realizes that some questions may remain. To help taxpayers in meeting the April 15th deadline, IRS provides free taxpayer assistance in a number of ways.

In Amarillo, tax payers may stop in the IRS Office located at 205 E. Fifth Street, Room 119, Monday through Friday, 8:00 a.m. - 4:30 p.m., for forms and answers to their tax questions. Some taxpayers may prefer to take advantage of the IRS telephone assistance by dialing 372-3666.

IRS also co-sponsors the Volunteer Income Tax Assistance (VITA) program. Under the VITA program, community volunteers are trained in basic income tax preparation, these volunteers then provide one-on-one assistance in neighborhood locations to low-income, elderly and disadvantaged taxpayers. Assistance under the VITA program will be available on the following schedule: The following centers are open without an appointment:

Pampa Senior Citizens, 500 W. Francis, Pampa, Texas: Every Tuesday and Thursday - 10:00 p.m. through 5:00 p.m.

Senior Citizens Association, 1301 N. Tyler, Amarillo, Texas: Every Monday through Friday - 10:00 a.m. - 2:00 p.m.

Kidney Foundation Campaign Begins March 18

Carol Allison today announced that the Gift of Life Campaign will be held March 18 through 31 to distribute educational material and organ donor information and receive contributions for the Kidney Foundation of the Texas Panhandle.

Mrs. Allison stated that 14 million Americans suffer from kidney disease and 54,000 people die each year from kidney and kidney related diseases despite major advances in medical science. At present, over 200 persons have kidney failure and must sustain life by the use of a kidney machine in West Texas.

Much can be done to treat kidney patients through drugs, diet, therapy and the artificial kidney machine, but the hope of life for thousands is a chance for a transplant of a healthy kidney. Over 4,000 people in Texas



STATE CAPITAL HIGHLIGHTS

By Lyndell Williams

TEXAS PRESS ASSOCIATION

AUSTIN—What Virginia Stacey, president of the 125,000-member Texas State Teachers Association, had to say this week after studying Gov. Bill Clements' budget proposal stopped many Texans in their tracks.

If Clements' plan were followed, Stacey predicted Texas "would have poverty and chaos in a school system which is already underfinanced."

Last year, Texas ranked 31st in teacher pay. Texas educators fell \$1,713 below the national average in salaries. The Texas Education Agency estimates that teachers in 1978-79 will receive an average salary of \$12,975, ranking them even further down the scale, 33rd among the states.

Such numbers alarmed Stacey and the teachers she represents. The TSTA president urged her colleagues to look ahead and see what economic hardships might be in store for them, but Stacey also warned parents to consider what the consequences might be to the future of education in the state if present salary practices continued.

The governor eliminated the 5.1 percent pay increase for teachers recommended by the Legislative Budget Board. All state employees would be the beneficiaries of a 5.1 percent boost in pay, including teachers, if Clements' ideas are followed. But teachers would not receive the 5.1 percent hike on top of 3.2-4.9 percent raises they will already get under existing laws.

Sen. Pete Snellson's TSTA-backed school finance bill would give teachers a 15 percent increase in pay over the next two years. Stacey left the impression that teachers would take no prisoners in their struggle over higher wages. "TSTA intends to fight with all its strength," she declared.

School Finance
Inseparable from the issue of teacher pay raises and school financing, is the question of how the Legislature will implement the constitutional amendment on tax relief.

The House Ways and Means Committee slaved through the week over legislation to put the amendment into effect. Rep. Bob Davis of Irving, chairing the committee, said there is an "outside possibility" a bill would be agreed on soon. The committee has already missed one self-imposed deadline.

Davis described the committee's complicated and difficult work "as kind of like unraveling string. You think you're getting to the end of the ball and all of a sudden it gets larger instead of smaller."

Making an about face from earlier in the week, the committee agreed to extend a \$10,000 homestead exemption to all disabled and elderly regardless of annual earnings. Earlier, the committee had tentatively agreed

to restrict the exemption to the handicapped and elderly with yearly incomes of \$7,500 or lower.

The remaining question is how the state will repay local school districts for revenues that will be lost when the homestead write-offs go into effect. Most members of the House Ways and Means Committee appear to favor a program that would reimburse in the first year of the state's two year budget all of a district's lost revenues. The second year, a school district would be penalized 10-15 percent of actual revenue losses if property was not appraised at market value.

The School Tax Assessment Practices Board says at present the average appraisal in the state is approximately 66 percent of market value. Traditionally, Texas has raised taxes by increasing assessment ratios while estimated market values of property were kept low. Under such practices, richer school districts have been able to maintain lower taxing ratios than poorer districts.

The Texas Research League—an organization financed by major corporations in Texas—warned that Clements' plan to refund \$900 million to local school districts to make up for lost dollars due to the tax relief amendment, might set off a crisis over state revenues in 1981. "There is rarely such a thing as 'property tax relief,'" the TRL warned. "A better term would be 'property tax replacement.'" With local taxes being reduced because of the tax relief amendment approved by voters last November and inflation running unchecked at

10-12 percent a month, local school districts in need of dollars would have nowhere to turn in the future but to the state pay window. Local taxes might go unchanged, but state taxes would have to be increased to meet the revenue demands of the Texas educational system.

Short Shorts

If you are in the process of trying to figure out the political, personal and party reasons for one presidential primary bill over another, stop for a moment. You may be able to erase one piece of legislation from your reading list. Thirteen senators have written a letter saying they are against Sen. Jack Ogg's bill that would separate the presidential primary and state primaries. Lt. Gov. Bill Hobby and speaker of the House Bill Clayton both backed the legislation. In this case, 13 is their unlucky number because senate rules require a two-thirds vote to even consider a bill.

Consumers beware. The siege has begun. In committee hearings this week, bills were considered that would weaken the stiff penalty section of the Consumer Protection Act. And the Senate Economic Development Committee reviewed seven measures that would make it more difficult for the consumer to sue and sue successfully over faulty products.

In testimony before House and Senate committees, businessmen (represented by car dealers and realtors) characterized themselves as victims of tough consumer laws. But other witnesses pointed out that amendments to the law provided protection for the businessman who knowingly or unknowingly violates a consumer's rights, admits it and is willing to make restitution.



THE FIRST ARMY UNIFORM WAS ESTABLISHED BY ORDER OF THE CONFIDENTIAL ARMY IN 1779. THE UNIFORM WAS BLUE, RED, WHITE BUFF AND SCARLET. THESE UNIFORMS WERE USED FOR PROTECTION.

MEMORIES

Continued From Page 1
berg or Smith you are invited to Shamrock for the 1979 festival.

The celebration originated in 1938, when the late Glenn Truax talked the town into the event after the senior play for that year had been canceled.



Prepared by the American Society of Chartered Life Underwriters.

Q. Will my beneficiary have to pay legal fees and other costs to collect on my life insurance?

A. Ordinarily it isn't necessary to hire a lawyer or pay anyone a fee to collect on a life insurance policy. Your agent or insurance company will be glad to tell you how your beneficiary can make a claim.

The McLean News
USPS 336-260

Linda Haynes
Owner, Editor and Publisher
Lisa Patman, Associate Editor
Carol Allison, Business Manager
210 N. Main P.O. Box H

Published each Thursday at McLean, Gray County, Texas.
Second class postage paid at McLean, Texas 79057.
Subscription rates: \$5.00 per year in Gray County
Outside Gray County \$9.00
Open retail advertising rate: \$1.15
National advertising rate: \$1.64 (806) 779-2447

MCLEAN, TEXAS
POPULATION 1183 (1970 census)

★ TEXAS PRESS
MEMBER 1979 ASSOCIATION

Facts & Fancies

The record for the highest price ever paid for a glass object at an auction was set at Sotheby's in London on July 13, 1976. The glass piece, an Archaic Greek Persian bowl, measuring six and three-quarter inches in diameter, was sold for \$115,940.

COMMUNITY CORNER



The Alanreed Community Improvement League has been working to clean up some of the vacant lots in Alanreed. This bulldozer is working on a lot near the center of the community. (Staff Photo)

NEWS OF HEALTH

Life-Saver: An Ostomy

This year more than 100,000 Americans will have an ostomy—a life-saving operation in which a section of the intestine or urinary system is removed. A permanent opening in the body is created, through which body wastes are diverted into a small, external, fully-enclosed pouch.

Following recuperation from ostomy surgery, the life expectancy of an ostomate can be equal to that of any other healthy person, and the operation need not impose restrictions on his lifestyle.

Surprisingly, such procedures have been per-

formed since the early 1700's. Today, through advances in medical techniques and products, thousands of ostomates do just about everything they did before the operation—jog, swim, climb mountains, work, travel, become parents.

Following an ostomy—or any major operation—a period of physical and psychological readjustment is usually necessary. In general, ostomates usually complete this adjustment relatively quickly—perhaps in three or four months—and return to the mainstream of life.

"Life is a jigsaw puzzle with most of the pieces missing." Anonymous



Annie Eudey proudly shows her hand-pieced pattern bedspread with 9,390 pieces. The 150 year-old-pattern known by Annie as "Around The World" was shown to her by her mother-in-law, Molly Eudey. (Staff Photo)

FIRST UNITED METHODIST CHURCH in McLEAN



Sunday School 9:45 a.m.
Worship 10:55 a.m.
UMYF 7:00 p.m.
Evening 6:00 p.m.

As you give love,
You will have love.

YOUR MUSEUM NEEDS HELP!



A DONATION WILL MEAN
NEW LIFE FOR THE MUSEUM,
AN ITEMIZED DEDUCTION FOR YOU,
AND PLEASURE FOR MANY.

SEND YOUR DONATIONS TO
THE ALANREED-McLEAN MUSEUM
BOX 334
McLEAN, TEXAS 79057

Brownies Plan March Bake Sale

The McLean Brownie Scouts are planning a bake sale Mar. 24 from 9 a.m. to 5 p.m. at Simpsons Grocery, Puckett's Grocery, and Wil-Mart Convenience Store.

All proceeds from the bake sale will be given to the Young-At-Heart club building fund.

Reynolds, Eck Score Points At Irish Relays

Dudley Reynolds won the 440 yard dash in the junior varsity division Saturday at the Irish Track Meet in Shamrock, and Tom Eck placed sixth in the mile to score McLean's only points in the meet.

Only five members of the Tiger track team were able to make the trip Saturday, but Coach Jack Dorsett said that he expects a better showing in future track meets.

Baptist Women Meet For Luncheon Honoring Mrs. Abbott

The Baptist Women met at Fellowship hall March 5 for a salad luncheon honoring Mrs. Oma Abbott who was visiting from Borger. Those present were Annie Reeves, Jane Simpson, Naomi McCarty, Louise Dickinson, Pauline Miller, Bea Lester, Lillie Mae Williams, Evelyn Hunt,

Stella Gibson, Elisabeth Kunkel, Essie Glenn, Levia Smith, Jennie Watson, Loree Barker, Juanita Smith, Olene Brown, Rella Ayers, Sofronia Pettit, Wanda Sharp, Susie Trout, and Vela Young. A mission study, "Dare Ask", followed the meeting.

Pioneer Study Club Views Norman Rockwell Film

The Pioneer Study Club met Mar. 1 at the Lovett Library in McLean to view a film on the life and work of Norman Rockwell.

The film was followed by a discussion by club members of some of Rockwell's art. An arrangement of his art was displayed.

President Katy Graham

conducted the business meeting.

Clara Hupp presented the program and served refreshments to Fayetteville Barton, Margaret Coleman, Mary Dwyer, Mary Lou Glass, Katy Graham, Ruth Magee, Judy Orrick, Irene Pagan, Mary Emma Woods, and Martha Parker.

Scout Rally Announced For March 15 At Cafeteria

Boys interested in joining Cub Scouts or Boy Scouts will be able to join the McLean division of that organization next Thursday, March 15, it was announced today.

The rally, to be held at 7 p.m. in the McLean grade school cafeteria, will provide boys who have not yet been involved in scouting, as well as those boys who have been in scouts this past year, to enroll for the new season, which is now starting. Boys 8-11 are eligible for Cub

Scouts, while older boys 11-18 will enroll in the Boy Scout program. Parents need to accompany their children, as parental permission is required.

Boys who enroll in the scouting program at this time will be eligible for various summer programs, such as outings and camps at Camp MK Brown.

Anyone interested in the Explorer Scout program, open to boys and girls ages 14-21, is urged to attend the meeting.

Ghostriders Win First In Shamrock Tournament

The Ghostriders of McLean beat the favored Jokers of Samnorwood at Shamrock last weekend to take first place in the tournament. The McLean men scored 15-5, 8-15, 15-4 to beat the Samnorwood team.

McLean's Saxy Dogs won consolation at the Briscoe tournament last weekend. In women's competition, the D.S.'s from McLean defeated Lowe and Sons from Shamrock two games straight to capture third place in the tourney.

COMMUNITY CALENDAR

Mar. 8-10 - FBLA state convention
Mar. 9-10 - Area FHA convention
Mar. 13 - TSTA meeting in McLean
Mar. 14 - Band concert and Sight Reading Contest in Canyon
Mar. 16 - Lefors Track Meet (girls) - St. Pat's celebration in Shamrock begins
Mar. 17, 18 - McLean High School Rodeo
Mar. 19 - NO SCHOOL FOR STUDENTS - Inservice for teachers



LEATRICE VINCENT

Vincent, Ferguson Will Marry May 18

Mr. and Mrs. Edward Vincent of Lefors announce the engagement of their daughter, Leatrice Vincent, to Bruce Wayne Ferguson of Clarendon.

The bride-elect is a sophomore at Clarendon

Junior College. Her fiancé is the son of Mr. and Mrs. Eugene Ferguson of Turkey. He is a graduate of Texas Tech University and is employed by ASCS. The couple plans a May 18 wedding.



The first stewardess was Miss Ellen Church, a registered nurse, who welcomed 11 passengers aboard a flight from Oakland, Calif., to Cheyenne, Wyo. in 1930.



Tres Hess, Shane Coleman, Sam Bomar and Jimmy Don Patton.



BACK ROW: Donnie Allen, Clint Herndon, Tanya Cummins, Shawn Crockett, Angela Glass, Carla Skipper, and Terry Lee. FRONT ROW: Dollie Haynes, Deanna Sprinkles, Karen Williams, Wendi Smith, and Tres Hess. (Staff Photo)

TEACHERS ASSOCIATION TO MEET TUESDAY

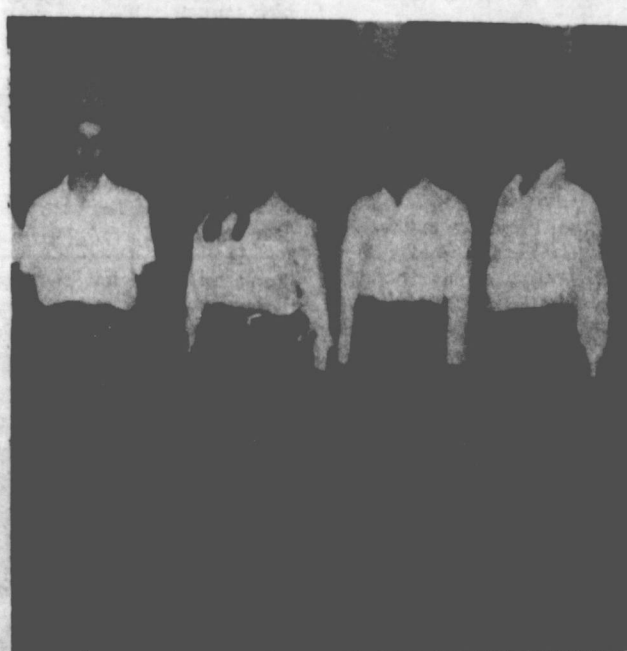
The McLean-Lefors chapter of the Texas State Teachers Association will meet Tuesday night at 7 p.m. in the grade school cafeteria for a regular business session.

Mrs. Jacque Riley is president of the local chapter.

IMPORTANT NEWS FOR BACKACHE SUFFERERS! MOMENTUM® Tablets are 50% stronger than Doan's.

Before you take Doan's Pills for muscular backache, remember this: MOMENTUM Tablets are 50% stronger than Doan's. That means MOMENTUM gives you 50% more pain reliever per dose to relieve backache.

To reduce pain, soothe inflammation so muscles loosen—you can move more freely in minutes! There's no stronger backache medication you can buy without a prescription than MOMENTUM Tablets. Take only as directed.



Rob Bomar, Davey Ridgway, Tony Hambricht, and Ronnie Tidwell. (Staff Photo)

33rd ANNUAL ST. PATRICK'S CELEBRATION

MARCH 16, 17, & 18 Shamrock, Texas

Pre-St. Patrick's Celebration

BANQUET

Friday Night National Guard Armory 7:30

Guest Speaker

Humorist DOC BLAKLEY

DANCE

BILL MACK and the MIDNIGHT COWBOYS DANCE---ARMORY TEEN DANCE Saturday Night Jaycees' Gym

CARNIVAL 15 rides----15 concessions

+2-day Carnival+Beard Contest+Parade+ Old Settler Reunion+2-day Fiddlers Contest+Miss Irish Rose Contest+2-day Steer Roping+2-day Domino Tournament

Elementary Music Group Entertains Lions

Mrs. Bobbi Stalls elementary music group presented a program of western songs for the regular meeting of the Lions.

Club Monday night at the Casper Smith building. The group was dressed in western costume, and sang several songs and

medleys about the old west. In regular business, Lion Don Jim Allison and the group discussed the All-Sports banquet to be held later in the spring.

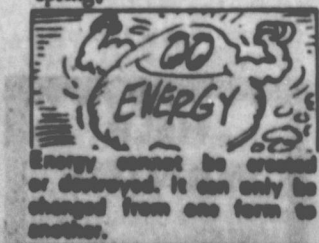
In an ancient custom in Somerset, whichever warrior could hit a gold coin with an arrow could be king for one day.

SHUGART COUPON WILLIAMS APPLIANCE

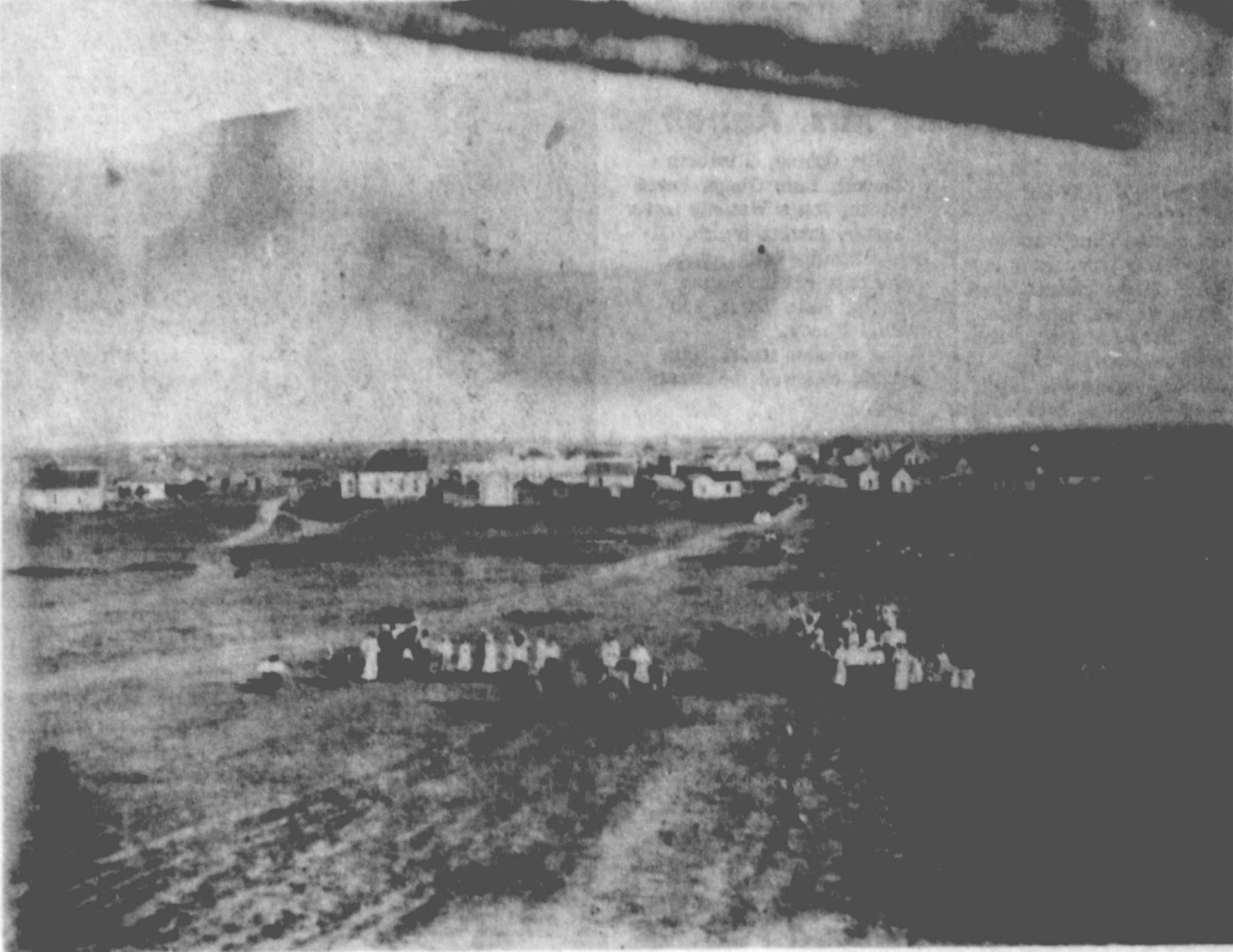
Wed. MARCH 14



9 WALLET SIZE COLOR PORTRAITS 99¢ Extra charge for GROUPS



The Di-Gel Difference



This picture from the files of A.J. Christian is labeled on the back "Saturday Afternoon in McLean." We don't know the date of the picture, or the location of the photographer. (Photo Courtesy of the Alanreed-McLean Museum.)

Baseball Program Begins Organizing

Baseball enthusiasts met Monday night to organize McLean's Little League program. Wendell Ridgway, president of the area Little League program announced that seven teams will participate in this district. Communities involved will be McLean, Allison, Wheeler, Lefors, Briscoe, and Kelton. Ridgway will be assisted by Roy McMullen, Danny Rice, and Tom Eck. There will be one team, the Cubs, involved in Little League action. Coaching McLean's Babe Ruth team will be Cecil Reynolds, assisted by Charles Wynn, Wesley Swann, Bob McDowell, and Babe Ruth League President George Eck. McLean's PeeWee team, the Kittens, will be coached this year by Bobbi Brown. Assisting will be Jake Hess, Sam Haynes, and Thacker Haynes.

Baseball action is scheduled to begin early in May. Ridgway stated that another meeting concerning baseball will be next Tuesday, March 13, at 7 p.m. in the grade school cafeteria. This meeting will be to make arrangements for men's and women's league, to avoid conflicts with Little League game scheduling and care of the field will be discussed. Ridgway urged that all interested persons attend.

World Championship Domino Tournament Set March 14, 15

Shamrock will hold its first annual St. Patrick's Celebration World's Championship Domino Tournament March 14 and 15. Singles Champion Frank Embry of Lela and the doubles team champs, Bud Lambert and T.B. Blake, have announced their intentions to defend their titles. The two-day tournament, starting each evening at 6 p.m., will feature singles and doubles competition with double eliminations in both divisions. The tournament will be on the showroom floor of Grand Slam Chevrolet, Oldsmobile and Buick at 211 West Highway 66 in Shamrock. The entry fee of \$10 per person will qualify play-

See ST. PATRICK'S, Page 6

McLean Briefs

Beth and Bryan Smith-erman were in Houston last week for the Houston Junior Livestock Show. Bryan exhibited in the Duroc Barrows, and Beth participated in steer exhibition. They were accompanied by their parents, Mr. and Mrs. Tony Smitherman.

Mr. and Mrs. Oba Kunkel, Mrs. Mertie Schaffer of Groom, and Mrs. Jack Hicks of Amarillo attended the funeral of their aunt Mrs. Mollie Brown in Decatur Saturday.

Insurance agent S.A. Cousins came to the rescue of one of his clients Tuesday, when he looked out his office door and saw a pickup on fire.

Cousins grabbed a pan of water and extinguished the blaze on John M. Haynes pickup before the McLean Fire Department arrived.

Mrs. Colleen Stewart won the colored television given away in a drawing at Puckett's Grocery last week.

Mrs. Eva Peabody is back home in McLean after spending the winter with her daughter, Mrs. Imogene Longino, in Dallas.

Carol Allison hosted a going-away party for Kathy Carter Friday night at her home. The guests cooked shish-kabobs over a hibachi, and presented Mrs. Carter and her daughter Kristina with gifts. Attending were Mrs. Carter and Kristina, Mrs. Allison, Cynthia Simmons, Linda Haynes, Tammy Carter, Joy Brown, Lisa Patman, Jan Johnson, and Sharon Haynes.

Mrs. Miro Pagan and Mrs. Minnie Fulbright went to San Angelo last weekend to visit Mr. and Mrs. Harris Brinson and family and Mr. and Mrs. Cass Archer and family.

Pvt. Vernon W. Miller, whose wife, Cathy, lives in McLean, recently completed a Chaparral crewman course at Fort Bliss. Miller's parents, Mr. and Mrs. Dudley V. Miller, live in Wheeler.

Mr. and Mrs. E. J. Windom Sr. returned from Phoenix, Ariz., recently, where they attended a family reunion of the Hotchkiss family. Mrs. Windom's family, Mrs. Stella Gibson, who has been visiting in Los Angeles, Calif., for the last several months returned to McLean with them.

Mr. and Mrs. Wayne Carter and Kristina moved this week to Odessa where Carter will be employed by the Misco Corporation. Mrs. Carter was an employee of The McLean News.

Mr. and Mrs. E. J. Windom, Jr. visited their children this weekend. They visited Mr. and Mrs. Pat Windom in Salida, Mr. and Mrs. E. J. Windom and family and Mrs. Mrs. Clyde Windom and family in Dallas.

Jarrell Russell was in Houston last week to participate in a rodeo which ran in conjunction with the Houston Junior Livestock Show.

Carl Dwyer is in Phoenix, Ariz. this week with his brother Archie Dwyer, who is to have open-heart surgery.

Mr. and Mrs. Bill Francis and children of Amarillo were in McLean Sunday for the opening of the Thomas Nursing Home.

Mr. and Mrs. Lyndon Crella of Wellington, former residents of McLean, attended the open house of the Thomas Nursing Home Sunday.

Queens Finish Regular Season With Win

The Hutcherson Flying Queens of Wayland Baptist College finished their regular season on a high note Friday, smothering Texas A & M 103-57 at Plainview.

Wayland led 54-33 at the half and became even more dominating after the intermission, scoring the first 18 points to fatten its bulge to 72-33.

The win over the Aggie Ladies was the third time this season the Queens have reached the century mark.

Jill Rankin of Phillips paced the winners with 35 points, followed by Valerie Goodwin of Knowles, Okla., with 19. Sheri Haynes of McLean added 4. Haynes, Goodwin, Trina Bryant of Valley View, and Jerianne John of Argonia, Kan., all seniors, played their last home game as Flying Queens.

Wayland, ranked 12th nationally, raised its record to 20-3 going into the Region IV AIAW tournament this week at Tulsa. After finishing third at the state tourney Feb. 22-24, WBC was scheduled to face McNeese (La.) State Wednesday (March 7) on the Oral Roberts University campus.

A victory over McNeese probably would have sent the Queens into the second round today (Thursday) against talented LSU. Wayland hoped to return to the national tournament in which it finished fourth last year.

Some used to say piercing a time causes love pangs in one's beloved.

10 YEARS AGO - E. M. Bailey, Editor.

Mike Long, a 4-H member won reserve grand champion honors in the steer exhibition at the Top O' Texas Livestock show in Pampa. Mike showed a hereford calf. He is the son of Mr. and Mrs. Rex Long.

McLean Volunteer Fireman took delivery of a new fire truck recently. The truck is being paid for with money firemen earned on county fires and local projects and through contributions...

McLean Future Business Leaders of America placed first for the second year in a row with their exhibit in that contest at the State Convention in Dallas. Gary Ellison is head of the Exhibit Committee, and Mary Tom Riley is sponsor of the McLean group...

20 YEARS AGO - Charles Cullin, Editor

Mrs. Jim Stevens was honored with a birthday dinner at the home of her brother, Ray McCabe, in Amarillo Sunday, Feb. 22.

Mrs. Stevens and son Jimmy, and several members of the family from Pampa and Amarillo were present.

Rev. J. R. Lawson read the vows which united in marriage Miss Geraldine McPherson and Ronnie D. Smith, on Tuesday 24, at the Kellerville Baptist Church.

A big open house Friday night complete with three band concerts will cap off the observance of Public Schools Week here this week.

The fifth grade, sixth grade and high school bands under the baton of Bruce Cook will give concerts in the high school auditorium.

It is to be the climax of the March 2-6 Public Schools Week.

30 YEARS AGO - Lester Campbell, Editor

The McLean High School girls basketball team advanced to the quarter-finals in the state high school tournament Wednesday night when they downed the West Columbia high team by a margin of six points. The score was 34 to 28. The information was telephoned to Roger Powers by Lavetta Gunn. The girls will meet Seagoville in the quarter-finals tonight at 9 o'clock. A victory tonight would assure the local team of at least a fourth place in the tournament.

The team members were accompanied by Coach and Mrs. Don Leach. Girls making the trip are Bonnie Willis, Dorothy Gudeg, Minnie Lively, Lavetta Gunn, Effie Lou Carpenter, Gloria Stewart, Marnae Windom, Patsy Jones, Gerry Florey, Ella Herndon, Pat Lowary, Darlene Shaddid, Sue Young, and Dot Grigsby.

James Cooke, son of Mrs. Vita Cooke, and Chester Goughlight, son of Mr. and Mrs. Frank Goughlight, were two of 300 students enrolled in Texas Tech, Lubbock, to be placed on the honor roll for the fall semester. It has been learned here.

The baseball season for McLean High School and the three other teams of District 2-A will get underway April 8, it was announced this week. Playing with McLean will be Shamrock, Wellington, and Memphis. Each two teams will meet in double round-robin games, and a play-off tournament will probably be held early in May.

The Pioneer Study Club met Thursday of last week in the home of Mrs. Jim Back, with Mrs. W.E. Bogan as program leader.

Mrs. C.J. Magee talked on "Comfort and Beauty in the Home." Mrs. June Woods discussed "Different Types of Furniture," and Mrs. J.D. Coleman spoke on "Conveniences That Count."

Present were Mesdames Bogan, J.D. Coleman, Jesse O. Coleman, Logan Cummings, Bill Day, H.W. Finley, John Fulmer, C.R. Griffith, J.B. Hembree, Forrest Hupp, W.S. Lenta, Magee, Roger Powers, Earl Stubblefield, Bob Thomas, Bill Webb, and Woods.

Mrs. W.W. Shaddid was a guest at the meeting.

40 YEARS AGO - T. A. Landers, Editor

According to Rev. S.R. Jones, minister, preaching services are held each Sunday evening at the Liberty school house, beginning at 7:30. Sunday school is held at 10:30 a.m.

J. B. Waldrop, member of the McLean FFA, took the grand championships in both calf and hog divisions of the 8th annual livestock show held here last week.

Among the list of forty-nine cadets at the Kemper Military School at Boonsville, Mo., now on an eastern educational tour sponsored by the school is Cadet T.J. Coffee, Jr., of McLean.

Only a few people in Gray County have bought car licenses, according to the collector's office. New licenses must be on cars by the first of April, and only a few more days remain which to secure the license plates.

J.D. Back of McLean, who is attending John Tarleton College at Stephenville, was recently elected community chairman in the junior class organization of that school.

50 YEARS AGO - T.A. Landers, Editor.

Dr. H. M. Coleman has installed a big violet ray machine that produces artificial sunlight.

A feature of the artificial rays is said to be that only a few minutes of treatment with the light is equal to many hours of sunlight.

Mrs. L. V. Lonsdale entertained the younger social set Saturday evening with a party. At a late hour dainty refreshments were served to about 20 guests.

The high school band will give a free concert on main street Saturday at 2 p.m.

A concert was planned for last Saturday, but Director Davidson says they will play without fail the coming Saturday.

The following pupils in the grammar school made straight A cards for the past six weeks: B First--Audry Wilson, A First--Class May Hale, Thelma Joe Gray, Velma Lucille Lester, Clyde Carpenter, Low Second--Jeff Coffee,

R., Herbert Green, Paul Scott, Richard Simmons, Louella Cobb, Dorothy Simer, Ruth Berry. High Second: Claude McGowan Jr., Jesse Dean Cobb, Shirley Johnston, Donald Hall, Paul Walker, Lyda Switzer. Low Third: Joyce Crockett, Drucilla Kunkel, Marietta Young, Hummel Cupell, High Third: Dewitt Alexander, Lorene Babbitt, Frankie Mae Bell. Low Fourth: Marie Landers, High Fourth: Maurine Montgomery, Ave Swafford, Eva Swafford, Geraldine Hall, Seventh: June Turner, Piano: Sybil Graham, Margaret Hess, Ruth Hess, Nora Lee Morgan, Lola Ruth Stanfield, Joe Billie Bogan, Bobbie Nell Davidson.

A committee consisting of W.S. White, Sam Hodges and Witz Springer was appointed by the Lion's Club at Tuesday's luncheon to ask the business men of McLean to cooperate in refraining from parking cars in the four business blocks of Main and First streets.

60 YEARS AGO - Mrs. L. Moody, Editor.

West Texas State Normal College wishes to announce that the summer quarter will begin June 5, and continue to August 15. A copy of the summer catalogue will be sent to anyone desiring it.

Miss Nona Cousins has accepted a position in the Post Office. She takes the place of Miss Alma Watkins who has resigned.

Burrett Kinard, A.A. Sing, Enoch Bentley, Dewitt Burke and Vol Latson went to Shamrock to the show Saturday night.

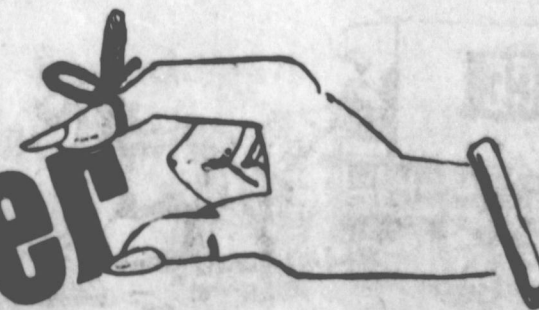
J. B. Paschall traded 320 acres of land near Lefors for 160 acres east of McLean the first of the week.

Reefers Egg Tonic at W.J. Keasler Produce House...Guaranteed to make hens lay.

DENTURE WEARERS

A major advancement CUSHION GRIP DENTURE ADHESIVE one application holds comfortably up to 4 days

it pays to remember



Are you getting full value out of the energy you're using? If not, Southwestern Public Service has a list to help you check your home... and your energy-use habits... for ways to help you get more for your energy dollar. Most of the suggestions are simple things... like changing filters, turning off the TV when no one is watching, checking gaskets about refrigerator & freezer doors for leaks, running the dishwasher only when you have a full load. These hints can add up to big savings on your electric bill. Get in the habit of being energy wise. Check your list... then check your electric bill.

See your Southwestern Public Service Manager today for more hints that can save you energy & money.



HELP WANTED
NEED
★ CASHIER WILL DO SOME STOCKING ★
★ ASSISTANT MANAGER ★
T&M TRUCK STOP
I-40 & Paken Rd.

MONEY STILL DOESN'T GROW ON TREES.
LET YOUR SAVINGS GROW AT THE
American National Bank in McLean

MARY HENLEY
announces the
REOPENING
of her
BEAUTY SHOP
WEDNESDAY, MARCH 14, 1979
407 E. Railroad phone 779-2501

McLEAN ATLAS JIM KILLHAM
Plumbing & Heating Co. OFF. 779-2822
Box 444 McLean, Texas **Licensed Plumbing**
Work Guaranteed

Apache Ladies Aim For Nationals

Tyler Junior College's Apache Ladies basketball team won the Texas Eastern Conference title, the Region XIV title, and are aiming for the national title.

The number three-ranked Apache Ladies downed number six-ranked Temple Junior College 83-72 in the finals of the Region XIV tournament Feb. 24 in front of 1500 fans. The Apache Ladies, coached by Herb Richardson, will advance into the National Tournament Mar. 12-17 at Overland Park, Kan., with a 29-2 season record.

Melinda Hunt, a freshman at Tyler and a former McLean Tigerette standout, saw some action in the tournament games.

Leading the tribe women in scoring is Bonnie Buchanan, a sophomore from May, who is the nation's fifth leading scorer, averaging 25 points per game. She was named most valuable player in the regional tournament.

In the Kitchen by LINDA HAYNES

If your mouth is still burning from last week's chili, try these two delicious fruit dishes.

FROZEN FRUIT SALAD - Smitty Webb

Mash 5 large ripe bananas.

Drain number 2 can of crushed pineapple. Add to bananas. Add 1/2 pint sour cream, 4 tsp. lemon juice, 1/2 C. sugar, 1 large container cool whip, 1 C. coarsely chopped pecans.

Whip all well with mixer. Pour into large bowl. Sprinkle with coconut. Freeze.

Thaw about 15 minutes

before serving.

CARROT AMBROSIA

4 C. shredded carrots
1/4 C. lemon juice
1 C. chopped orange sections
1 (3 1/2 oz.) can coconut
1 1/2 C. miniature marshmallows
3 T. honey
1/2 C. Sour Cream
1/4 C. Mayonnaise (do not substitute)

Combine honey, sour cream, mayonnaise. Pour over other ingredients. Toss well and serve.



Some used to say that putting one's ear next to a lion's ear would cure deafness.

"Few know how to be old." La Rochefoucauld



Wilbur Wilson, Charlene Barker, and Pat Dusham look at the photograph of the Thomas Nursing Home opening Sunday. (Staff Photo)

LINES by LEM O'RICKK



Carter, Begin, and Sadat
Keep boilin' the mid-eastern pot
We hope their recipe
Will taste good to all three
And peace will prevail in that spot.



Mrs. Gladys Brooks, Mrs. Jean Orrick, granddaughters of A. B. Woods, and Mrs. Ollie Hommel, daughter of A. B. Woods, came to the open house of the Thomas Nursing Home Sunday. The estate of A. B. Woods donated the land on which the nursing home is built. (Staff Photo)

McLean High School Rodeo Set For March

Three performances are scheduled for the annual McLean High School Rodeo in the Felton Webb arena north of McLean Mar. 17 and 18. Performances will begin at 1 p.m. and 7 p.m. Mar. 17, and 1 p.m. Mar. 18.

The annual event, sponsored by the McLean High School Rodeo Club, is approved by the Tri-County High School Rodeo Association, and rules of this organization will be followed.

Twenty saddles for all-around cowboy and cowgirl, and buckles for belt, armband, and third place in each event will be awarded.

Event include barrel racing, team riding, steer roping, goat roping, and goat racing.

The entry fee to the rodeo is \$1.00. Admission will be free. Free food, courtesy of Tri-County High School, and cash prizes to the winners.

The rodeo is a benefit for the McLean High School Rodeo Club. All proceeds will go to the club.

NOBODY WANTS TO SEE AN INSURANCE AGENT... UNTIL THERE'S TROUBLE.



THAT'S WHEN YOU NEED OUR "FOLLOW-THROUGH CREW."

If you ever want to file a claim against one of our policies, you can depend on us to help you obtain a fast, fair settlement.

That's because we do not work for any insurance company... we work only for you.

Jane Simpson Agency
McLean, Texas
THE INSURANCE STORE

PRICES HIGHER THAN A KITE?

WE BRING 'EM DOWN

MEXICO LONG SLICERS LB. CUCUMBERS 25¢	CALIFORNIA CELERY STALK 39¢
RADISHES 2 BAGS FOR 29¢	U.S. NO. 1 RUSSETT 10 LB. BAG POTATOES 99¢
100% TEA INSTANT 3 OZ. JAR NESTEA \$1.89	SHURFINE IN WATER TUNA FLAT CAN 69¢
MORTON FROZEN CHICKEN POT PIE 8 OZ. 3 for \$1	LIPTONS 48'S TEA BAGS \$1.29
SHURFRESH FROZEN ORANGE JUICE 6 OZ. CAN 2 for 79¢	BUTTERBALL TURKEYS LB. 89¢
LINDSAY PITTED RIPE MED. OLIVES 300 CAN 89¢	USDA GROUND BEEF LB. \$1.29
SHURFRESH OLEO 2 LBS. 79¢	GOOCH SLAB SLICED BACON LB. \$1.39
AQUA NET 10 OZ. HAIRSPRAY 99¢	CREST TOOTHPASTE 5 OZ. 89¢
SHURFINE GLAZED 14 OZ. DONUTS 69¢	SHURFINE CINNAMON 9 1/2 OZ. CAN ROLLS 59¢
	SYLVANIA 25, 40, 60, 75, and 100 WATT EIGHT BULBS 2 PACK 79¢

SHURFRESH BUTTERMILK 79¢ 1/2 GAL.

SHURFRESH 8 OZ. SOUR CREAM 39¢

SHURFRESH 12 OZ. COTTAGE CHEESE 69¢

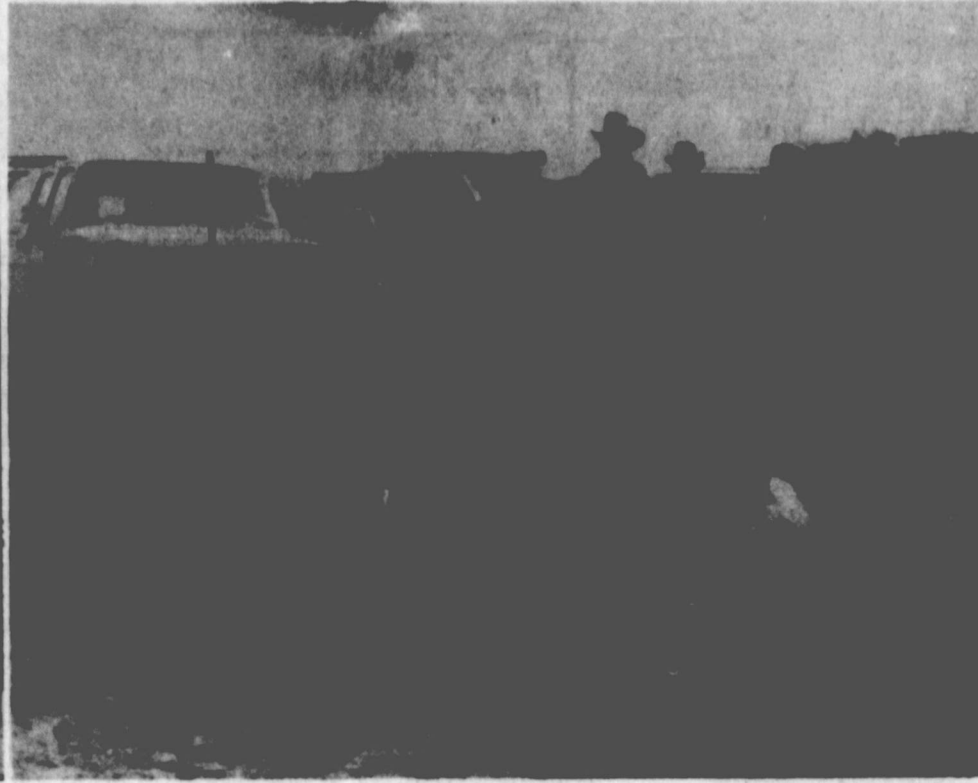
Tendercrust Bread and Bakery Products SPECIALS GOOD MARCH 9 & 10

SIMPSON'S
LOWEST EVERYDAY FOOD PRICES
MARKET

SHURFRESH MILK FOR GOODNESS SAKE



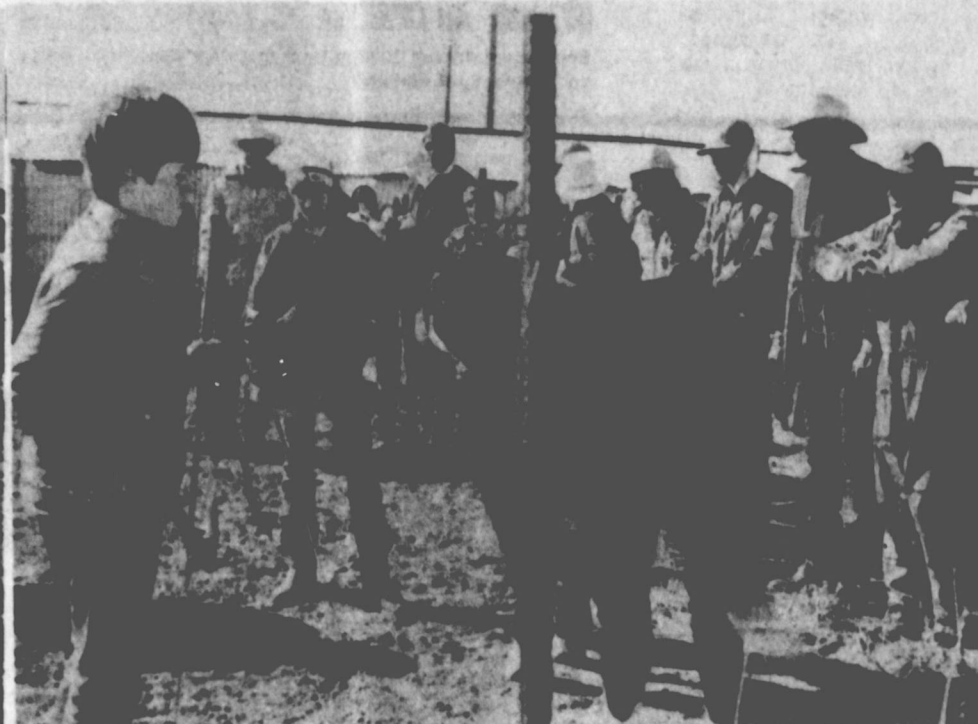
Todd Allison and Jem Ann Rice position their steers at the McLean Stock Show Saturday. Miss Rice's steer was the reserve champion. (Staff Photo)



Lee Ann Tate, who won grand champion with her pig, and Terry Todd, who won reserve champion, show their pigs as FFA sponsor Jerrell Russell looks on at Saturday's McLean Stock Show. (Staff Photo)



Joe Mercer tires to make his steer stand in the right position during the McLean Stock Show Saturday. (Staff Photo)



Mark Morris positions his calf for the judge during the McLean Stock Show Saturday. (Staff Photo)



Joe Mercer grooms his calf in preparation for the McLean Stock Show Saturday. (Staff Photo)

Top O' Texas Stock Show Set For March 10-14

Plans are complete for the annual Top O' Texas Stock Show and Sale to be held in Pampa on Mar. 10-14 at the show barns in Recreation Park according to Jim Greene, Chairman of the Agriculture and Livestock Committee of the Chamber of Commerce, and Don Vance, president of the Top O' Texas Hereford Breeders Association. Activity will get underway on Saturday, Mar. 10, at 1 p.m., with the Gray County Junior Show, sponsored by the Pampa Noon Lions Club with Joe Wheelley as show superintendent.

Sunday noon is the deadline for weighing in of all livestock for the Top O' Texas Regional Show and Sale. One hundred and three steers are entered and three hundred twenty barrows.

Monday will be devoted to the judging of all Junior Livestock Classes. Dr. John McNeil with the State Extension Service in Amarillo will judge the steers beginning at 8:30 a.m.

"The absent have a ringing in the ears when they are talked about." Pliny the Elder

News from your County Agricultural Agent

By Joe Van Zandt

ARMY CUTWORMS IN SOME WHEAT:

Infestations of 10-15 per linear foot of row were observed in a wheat field in north Hutchinson County and 4-5 per linear foot of row were observed in western Gray County and central Canon County.

Wheat producers need to check wheat fields, particularly any fields that seem to be declining in condition as these cutworms could be the cause.

This cutworm can cause major damage to small grains and alfalfa. It is a pale greenish-gray to brown worm with the back pale striped and finely spotted with white and brown. They overwinter as larvae in the soil or under trash in the field. The army cutworm may be active at temperatures only slightly above freezing which causes a problem with control since most insecticides will not be very effective as such low temperatures. The cutworms are most active at night and hide under clods and trash during the day. They can be expected to damage wheat through April. Infestations of 4-5 per square foot warrant control especially in wheat that is not well rooted and tillered. Higher infestations can be tolerated in wheat that is well rooted and tillered.

The following insecticides are labeled for army cutworm control: Endrin (R) except you cannot graze treated wheat; Toxaphene except treated forage cannot be fed to dairy animals or animals being finished for slaughter; Parathion has a 15 day waiting period and Methyl Parathion also has a 15 day waiting period after application and before grazing.

Applying 2,4-D at about half a pound per acre when the broadleaf weeds are in a one-to-two inch rosette stage gives effective control.

Making the application at the beginning of a warming period when the temperature is over 55 degrees F. helps to obtain quicker effective control. Spraying after the wheat has started to joint or elongate can cause deformed plants and yield losses.

Sometimes kochia and Russian thistle appear after the wheat has reached the jointing stage. A chemical known as MCPA causes less damage to jointing wheat than 2,4-D and may be used to control weeds with less risk of yield loss.

Fence rows are the main source of weed seeds, most of the weed problems occur near the edge of the field. It may be necessary to spray only a few swaths around the field instead of the entire field.

Kochia and careless weed sometimes invade thin stands of wheat after spring rains or irrigation. To prevent these weeds from causing serious harvest problems, the field should be sprayed promptly with 2,4-D when the wheat reaches the stiff dough stage.

In fields cropped continuously to wheat, and especially when stubble mulch or sweep tillage is used, grassy weeds may become a problem. There are no chemicals available that can effectively control weeds such as

CONTROL WEEDS IN WINTER WHEAT NOW:

As the weather begins to warm and wheat growth starts this spring, check your fields for the presence of weeds.

Winter annual weeds, mainly tansy and treacle mustard, pepper weed, false flax and kochia, are capable of making very rapid growth. Because of their competitive nature, these weeds rob wheat of nutrients and moisture needed for vegetative growth and subsequent grain production.

Avoid the possibility of crop injury and reduced grain yield, producers need to check to see that the wheat plants are well tillered before applying a herbicide.

Lovert Memorial Library Notes

BACKSTAIRS AT THE WHITE HOUSE - By Gwen Bagni and Paul Dubov

If you missed the television series of the same name, you'll surely want to read this book.

"Backstairs At The White House" is the story of two generations of White House servants who served under eight Presidents.

The story begins with the term of William Howard Taft and ends with Dwight Eisenhower. But the main action is centered around two White House maids, Maggie Rogers, and her daughter, Lillian Rogers Parks.

Maggie Rogers became a maid at the Taft White House to support her polio-crippled daughter Lillian, and son Emmett. Eventually, "Little Lillian" also became a maid, after proving she could do the work despite having to walk with a crutch.

As their stories unfold with heartbreak and humor, the reader becomes eyewitness to some of the most dramatic and intimate

moments in American history.

Both this book and the television mini-series were inspired by "My Thirty Years Backstairs at the White House," by Lillian Rogers Parks and journalist Frances Spatz Leighton.

"Backstairs At The White House" is available at Lovett Memorial Library.

Fashion FORECASTS

WHAT TO EXPECT

The big news for Fall at the American Designers Showings this year was in fabrics and accessories. Belts and hats are the hottest accessories, and are being used with every look, from casual to elegant.

In fabrics the look is soft, soft, soft. Fabrics are luxurious—silks, jerseys, cashmeres, buttery soft leathers and suedes. Texture is also important in the sporty looks, with tweeds and woolsens playing a big part. One of the most exciting new fabrics seen at the showings this season was Belleseime, a soft, simulated antelope suede from Klopman Mills. Many designers are using Belleseime in place of suede in everything from slouchy blouses to softly detailed dresses and the new, slimmer skirts and pants. Belleseime also looked terrific in the classical designed coats and suits.

As designers such as Cathy Hardwick, Richard Assafly and Adolfo have discovered, Belleseime is the sensible alternative to natural antelope suede. It is as soft and drapable as the real thing, but is dry-cleanable and machine washable and comes in 16 luscious fashion shades. This fall, the most fashion conscious women will be wearing it.

ST. PATRICK'S

Continued From Page 4

ers for both singles and doubles with contestants selecting their own doubles partners.

The entry deadline is Monday, March 12, and entry fee should be mailed to Leroy Jarvis, % Grand Slam, Shamrock, Texas 79079, members of the Domino Tournament committee.

Trophies will be presented to winners prior to the Miss Irish Rose Coronation at National Guard Armory beginning at 3 p.m. March 17.

CROSSWORD

ACROSS	DOWN
1. Satiates	1. Pant
2. Nonrigid airship (colloq.)	2. Apollo's mother
3. Employed	3. Employed
4. Digit	4. Digit
5. Prolific	5. Prolific
6. Roulette bet	6. Roulette bet
7. A Latvian	7. A Latvian
8. River flowing to the Elbe	8. River flowing to the Elbe
9. People of Milan	9. People of Milan
10. Makes ready	10. Makes ready
11. Son of Noah	11. Son of Noah
12. Disorder	12. Disorder
13. Roman gravestone	13. Roman gravestone
14. Seed	14. Seed
15. Vessel	15. Vessel
16. Inclination of inquiry	16. Inclination of inquiry
17. Drainpipe bend	17. Drainpipe bend
18. Inland	18. Inland
19. Sodium (sym.)	19. Sodium (sym.)
20. Remedy	20. Remedy
21. Moth	21. Moth
22. Herb of carrot family	22. Herb of carrot family
23. Green vegetable (var.)	23. Green vegetable (var.)
24. Mollusk	24. Mollusk
25. Reheated	25. Reheated
26. Puff up	26. Puff up
27. Biblical name (poss.)	27. Biblical name (poss.)
28. Mother	28. Mother
29. Role	29. Role
30. Wraps, as a corpse	30. Wraps, as a corpse
31. Agitate	31. Agitate
32. By oneself	32. By oneself
33. Potato (dial.)	33. Potato (dial.)
34. Silhouette supports	34. Silhouette supports
35. Spander	35. Spander

SUBSCRIBE TO

The McLean News

1 year \$8.00
6 months 4.25

Outside Gray County: 1 year \$9.00
6 months 4.75

You can subscribe by mail by completing the form below and mailing with check or money order to:

THE McLEAN NEWS
P.O. BOX 11
MCLEAN, TEXAS 77057

Name _____
Address _____
City _____ State _____
Zip Code _____

Powerful anti-itch drug you can buy without an Rx!

Stop itching fast of external vaginal, rectal, and other skin conditions. Doctors find even severe itching can be treated with a special drug. You can now get this anti-itch drug ingredient with no prescription in BICOZENE. Use only as directed. The medically proven cream for itching.

BICOZENE

Smith's Tax Service
West of Wil-Mart
Casper Smith Bldg.
Saturdays 9-5

Wed. MARCH 14

9 99
KING SIZE
WALLET
CREATIVE
COLOR
PORTRAITS
FOR ONLY

Kodak paper. For a Good Look at the Times of Your Life.



Extra Charge for GROUPS

SHUGART COLOR PHOTOS

WILLIAMS APPLIANCE
218 N. MAIN

Classified Ads

CLASSIFIED AD INFORMATION
 Reader Ads 8¢ per word
 (Minimum Charge-\$1.50)
 Display Classified - \$1.50 per
 column inch. Run - \$1.30
 Card of Thanks - \$2

All ads cash, unless cus-
 tomer has an established ac-
 count with The McLean News.
 Deadline for Want Ads -
 Noon - Tuesday, PHONE:
 779-2447

The McLean News cannot
 verify the financial potential
 of these advertisements.
 Readers are advised to ap-
 proach any "business oppor-
 tunity" with reasonable cau-
 tion.

For Sale

MOTEL FOR SALE - To
 be moved or torn down.
 Contact B. T. Watt in Mc-
 Lean or Call 779-2563 or
 779-2739, 9-tfc.

PET FOOD

100% INEDIBLE BEEF
 Perfect for hunting or
 working dogs. Packed
 in convenient five pound
 tubes @ 25¢ lb. deliv-
 ered. El Grande Pet Food,
 779-2972 10-tfc.

TRAILER SPACE for rent.
 \$30 per month. Equipped
 with water, gas, electricity.
 409 N. Pine. 779-2846.
 9-4p

FOR SALE: 73 PLYMOUTH
 Duster. Air conditioned,
 6 cycle. Tommy Gipson
 779-2862 or 779-2960.
 10-1p

HOUSE FOR SALE - 6 rooms.
 Central air, storm cellar,
 fenced-in yard, 511 W.
 3rd. Call 779-2570, 9-tfc.

QUALITY UPHOLSTERING
 CALL 779-2992. Jones
 Upholstery. 9-tfc

FOR SALE - USED WASH-
 ER and dishwasher. (lat-
 ter needs little work).
 Call 779-2168, 9-tfc.

FOR SALE: 1-1968 Pon-
 tiac 4-Door Car. 1-1973
 half ton Chevrolet Pickup
 with fiberglass shell. Call
 779-2707. 9-2p

FRIDAY BEGINNER Tole
 Painting Lessons. \$2.50
 per lesson. 9-2c.

FURNISHED APARTMENT
 FOR rent to three work-
 ing men. By the week. Call
 after 6 p.m. 779-2205,
 700 Rowe St. 7-tfc

FOR SALE: Nice 3 bed-
 room brick house on Wal-
 dren St., large house
 with upstairs. Two car
 garage, plenty of storage
 space on W. 2nd St. Two
 bedrooms, extra nice in-
 side. Large loan could be
 assumed. Boyd Meador
 Real Estate Broker. 9-2c.

PENNINGTON'S
 779-2261 or 779-2835
 1976 FORD PICKUP 1/2
 ton heavy duty, automa-
 tic, loaded, extra clean,
 c.b. & tape.
 1974 CHEVY PICKUP 1/2
 ton, heavy duty, automa-
 tic, new motor, loaded,
 extra clean.
 1972 FORD PICKUP 1/2
 ton, loaded, automatic.
 CARS
 1979 BUICK REGAL - All
 electric, 2 door, tape
 deck.
 1975 CHEVY MALIBU
 Extra clean, air, auto-
 matic, 4 door.
 1972 CHEVY MALIBU
 New motor, new trans-
 mission, clean, 4 door.
 GOOD TRANSPORTATION
 CARS
 1970 OLDSMOBILE DEL-
 TA 88
 1968 CHEVY IMPALA
 1969 LINCOLN CONTI-
 NENTAL

PIANO TUNING AND Re-
 pair by professional piano
 technician. Call evenings
 Don Taylor 779-2506, 9-2c.

Wanted

WANTED: SOMEONE TO
 do yard work. Someone
 willing to work. Apply
 313 North Main. 10-tfc

WANTED - ROOFING -
 Call Coy Smith. 779-3137.
 9-tfc

LOST: A POINTER bird-
 dog - liver spotted and
 a black and white spotted
 bird dog. Call Stacy
 Howard 779-2510 4-tfc

THE THOMAS NURSING
 HOME NEEDS a good
 piano; if you have one that
 you would sell at a reason-
 able price or donate con-
 tact Billy Thomas at
 779-2469. 4-tfc.

Business

YOU ARE INVITED TO
 See a film on Loomix Feed
 Products, at the American
 National Bank Hospitality
 room Mar. 16 at 7:30 p.m.
 9 - 3p

CUSTOM FLOWING AND
 seeding. Call 779-2381
 days; 779-2941 nights. 3-tfc

25¢ CAR WASH Now open
 at Carvers Fina Station
 West of town. 9-4c.

THURSDAY WILL BE
 Regular painting day for
 anyone interested.
 Bring your paints and
 spend the day! No charge.
 Calico Arts & Crafts. 9-2c.

Miscellaneous

GUESS WHO SPILLED
 a whole pail of water
 in the cafeteria?.....10-1p.

PUPPIES, GERMAN/AUS-
 TRALIAN Shepherd Mix.
 Free to good home. 779-
 2834. 10-1p.

Notices

The McLean Masonic Lodge
 regular meeting is the 2nd
 Thursday at 7:30. Practice
 nights are first and third
 Tuesday at 7:30 p.m. 42-tfc

CONTRACTORS' NOTICE

OF TEXAS HIGHWAY
CONSTRUCTION
 Sealed proposals for con-
 structing 5.156 miles of
 Fabric Underseal & ACP
 From Wheeler C/L To
 L.I. MI. West of McLean
 on Highway No. US 66,
 covered by CSB 275-11-41
 in Gray County, will be
 received at the State De-
 partment of Highways
 and Public Transportation,
 Austin, until 9:00 A.M.,
 March 15, 1979, and then
 publicly opened and read.
 Plans and specifications
 including minimum wage
 rates as provided by law
 are available at the office
 of Thomas R. Kelley,
 Resident Engineer, Pampa,
 Texas, and State Depart-
 ment of Highways and
 Public Transportation,
 Austin.
 Usual rights reserved.
 9-2c.

Cards Of Thanks

I would like to thank
 the Hospital Staff and
 Doctors at McLean Hospi-
 tal for their care and
 kindness during my re-
 cent stay. I sincerely
 appreciate everything.
 Annie Eudey

News from Alameda

Mrs. Nell Fulbright made a
 trip to Hereford Monday.

Work has begun on clean-
 ing up the old F.R. McCrack-
 en place. Our sincerest
 thanks to the county employ-
 ees for their help and the use
 of the heavy equipment.

Mr. and Mrs. W.H. Davis
 were in Pampa on Monday
 to visit Mr. Davis's sister,
 both of whom are ill.

Mrs. Robert Bruce was in
 Pampa on business Monday.

The Carl Bakers had daughter
 Sandra's son with them Sun-
 day at First Baptist Church.

Visiting the Bill Crisp over
 the weekend were Mrs. Crisp
 sister and husband, Mr. and
 Mrs. Henry Loder of Lubbock.

The Alameda Community
 Improvement Project met
 Mar. 3 in the school cafet-
 erium. The meeting started
 with a covered dish supper.

The business session was
 presided over by Chairman
 Robert Bruce. Heads of com-
 mittees were appointed to give
 reports at the judging tour
 April 19. Plans for the con-
 test were discussed, as well
 as plans to ask the county to
 fix a dumping ground for the
 community. It was discussed
 that people were dumping
 trash at various spots around
 Alameda, which does not have
 a dump ground. Ranchers
 have reported that blowing
 papers and plastic bags have
 become a threat to nearby
 cattle. The next meeting
 will be the first Saturday
 evening in April.

Visiting Mrs. Jewel Warner
 Sunday were Mr. and Mrs.
 Howard McClelland, Mr. and
 Mrs. George Parr and sons
 of Amarillo, Mr. and Mrs.
 J.D. Williamson of Washington,
 and Nora Descoe.

Polly Harrison spent the
 weekend in Amarillo with
 the Velton Cummings.

Mr. and Mrs. Bill Crisp
 made a trip to Lockney last
 week to return their grand-
 son Chad to his home after a
 visit here.

Mr. and Mrs. Robert Bruce
 were in Amarillo Saturday.

Betty Finley was hospital-
 ized in McLean this week.

Johnny and Scott Vaneys
 of Lubbock visited the F.M.



Mrs. Leta Mae Hess and Mrs. Pat Barnett, director of nursing at the Thomas Nursing Home, view the new facility Sunday at the open house. (Staff Photo)



Mrs. Beatrice Thomas of the Thomas Nursing Home and Mayor Sam Haynes discuss the program at the open house of the Thomas Nursing Home Sunday. (Staff Photo)

LOOSE MARBLES

BY LISA PATMAN

Gibsons last week.

The foundation has been run
 for the new garage of Emmet
 Allen on the site of the old
 Terbush house.

The Alameda Homemakers
 club met Feb. 28 in the home
 of Sue Crisp. Roll call was
 answered by "How I Greet
 People At The Door." Sophia
 Hutchinson was recognized
 as the new secretary and plans
 for the stock show were dis-
 cussed. Members work this
 Saturday and are to bring one
 10-inch pie or two 8-inch
 pies. The program on "Home
 Accessories" was presented by
 Elaine Houston, county exten-
 sion agent.

Cake, coffee, and punch
 were served by the hostess to
 Anita Bruce, Lena Carter, L.
 Lucy Goldston, Nell Keese,
 Polly Harrison, Mary Davis,
 Sophia Hutchinson, Sherri
 Long, Sue Crisp, Elaine
 Houston, and Brett Long.

The next meeting, on breads
 will be in the home of Mary
 Davis. It will be a covered
 dish luncheon at 1 p.m.
 Members will bring their
 favorite breads along with
 the recipe for each one.

Polly Harrison flew to
 Michigan this week to attend
 funeral services for her grand-
 daughter. Mrs. Harrison's
 daughter Faye from El Paso
 planned to accompany her
 mother back East.

School Menu

MARCH 9
 Frito Pie
 Salad
 Ranch Style Beans
 Chocolate Pudding

MARCH 12
 Hamburgers
 Lettuce & Tomato
 Pickle & onion
 French Fries
 Peanut Butter Chewies

MARCH 13
 Fish
 French Fries
 Cole Slaw
 Bread
 Brownies

MARCH 14
 Pinto Beans
 Spinach
 French Fries
 Corn Bread Muffins
 Butter

MARCH 15
 Bar B Q Weiner
 Avogadro Potatoes
 English Peas
 Bread
 Jello Salad

Pullman cars got their
 name from their designer,
 George Pullman.

For a good while now I
 have been noticing that I
 am unable to comprehend,
 much less keep up with the
 modernization of America.
 I can deal with modern
 conveniences all right. I
 can tolerate, even adore,
 things like electric dishwash-
 ers, electric vacuums, and
 flush toilets.
 And understanding the need
 for automation is not one of
 my problems. I'm glad it
 doesn't take two years to
 make a car, or half an hour
 to bend a piece of wire into
 the shape of a bobby pin.
 And I'm certainly happy that
 I don't have to spend hours
 over a hot stove just to pro-
 duce a jar of grape jelly.
 I guess what I really object
 to is plastic. It was bad en-
 ough when those beautiful
 wooden and metal toys were
 replaced with plastic replicas
 that have the sturdiness of a
 used facial tissue. Now toy
 manufacturers are pushing
 some kind of plastic nuisance
 called slime which as far as
 I can tell has the usefulness of
 a two-legged dog. There is
 another related product called
 slime with worms that
 cannot be described in polite
 company.

The thing that got me started
 on this whole tirade against
 plastic was the sight of a
 broken automobile the other
 day. Yes, I do mean broken.
 Not wrecked, bumped, dent-
 ed, crushed, or any of those
 terms we used to use when we
 came upon a fender-bender.
 This car was broken. Its
 little rear end had large
 chunks of whatever material
 Detroit has deemed suitable
 for car rear ends, torn out of
 it. How embarrassing. Cars
 have enough trouble keeping
 their self-respect, with the
 silly names and reduced sizes
 they are burdened with.
 Whatever happened to that
 good old coupe that you
 could back into a telephone
 pole and hear a nice, loud,
 satisfying crunch?

I'm sure that if you tried
 that in a plastic car all you'd
 get would be a little sticky
 pop with maybe a couple of
 pieces as the pieces fell to
 the ground.
 Even then you might have
 the satisfaction of having a
 nice dent as a badge of cou-
 rage, but no-o-o-o, not
 with this new stuff. All you
 have is a large jagged hole
 that you could hide all your
 overpaid notions in. That
 car looks like you would if
 one of your front teeth fell
 out... sort of and end be-
 inged.

I know that manufacturers
 are doing this so that one
 will be lighter and therefore
 not use as much gasoline,
 but I certainly don't feel as
 safe in a plastic model as I
 do in one of the oldie-but-
 goodies. Feels kind of like
 using Saran Wrap for a bullet-
 proof vest.
 I may, of course, be over-
 reacting (one of my strong
 points is overreacting). I
 might still be around griping
 about it a hundred years from
 now. By that time all my
 vital organs might be replaced
 with plastic ones. (If that is
 the case, I think my family
 hopes my brain will the first
 thing done). If not, one of
 my great-grandchildren
 will probably be writing a
 strange newspaper column say-
 ing "They just don't make
 things like they used to. Re-
 member when cars were made
 out of good old sturdy
 plastic....."

Birthdays

MARCH 8
 Lester Bailey
 Joe Bidwell
 Mrs. Guy Beasley
 Patricia Middleton
 Mrs. Bill Kingston, Jr.
 Ann Windom

MARCH 9
 Mary Frances Hill
 Melvin Simpson

MARCH 10
 None

MARCH 11
 Stanley Eugene Simpson
 Barbara Richards
 Bunch Carter
 Dennis Wayne Jones

MARCH 12
 Teresa Ann Mounce

MARCH 13
 Mrs. Raymond McKeynolds
 Edward Simpson

MARCH 14
 Wayne Woods
 Dawn Lee

MARCH 15
 Mrs. Gene Henley
 Brad Dalton
 Lynn Gail Richardson

Hospital Report

DISMISSED LATE FEB. 27

Dwight Smith
 Romaine Carmen, Oklahoma
 City

IN THE HOSPITAL THIS
WEEK:
 Vera Bach
 R.E. Shottwell
 Nola Gelp
 Gladys Hill
 Ida Hansen
 D.P. Steyer
 Chiles Mahan
 May Post

The McLean News BUSINESS DIRECTORY

McLean Hardware
 Complete
 hardware line
 -Dishes-Paint-
 Tools-Gifts
779-2591

Shamrock Auto Supply
 Lawnmowers, Delco Batteries,
 Shock Absorbers
 312 N. MAIN 256-2129
 SHAMROCK, TEXAS

THIS SPACE
 RESERVED FOR
 YOU!!

Parson's Rexall Drug
Rexall
 24-Hour
 Prescription Service
 Shower Gifts
 Cosmetics

Purina SUP-R-LIX
The ONLY
Liquid Feed
With 5% Fat
For ENERGY
 WE DELIVER
BENTLEY'S FERTILIZER
 779-2209

PENNINGTON
 Garage and Car
 Sales
 113 Commerce
 McLean
 779-2535 779-2261

SCOTT'S THE LAWN PEOPLE
Bentley's Fertilizer
 779-2209

THE DONUT SHOP
 Doughnuts, Cookies, Cakes,
 Pies, Breads.
779-2212

Johnnie F. Mertel
Boot Shop
 Tony Lama, Texas.

Acme, Justin
Leather Goods
Shoe Repair
 phone 779-2161

Brannon's
Decorator & Supplies
 CUSTOM DRAPERIES, ROSE
 GIFTS, CANDLES, SILVER,
 STATIONARY, COOKWARE
 218 N. Main Shamrock, Tex.
 256-3652

National Auto Salvage
 665-3222 or 665-3962
 1 1/2 miles west of Pampa
 on highway 60
 large selection of used auto parts
 We appreciate your business

Pennington's
 "Complete Ranch Outfitters"
 Where Your Search Ends
 669-3161
 Pampa, Tex.

Scotts Lawn & Garden
 Fertilizer
 "It's Guaranteed"
Bentley's Fertilizer
 779-2209

RIDGWAY CONSTRUCTION CO.
 Remodeling; Cabinets;
 Repairs; Painting;
 Room Additions.
 PHONE 779-2618

J.R. GLASS OIL CO.
 217 W. 1st
779-2181

Blakemore
 FRESH
 PROTEIN FED CATFISH
 "Dressed While You Wait"
BLAKEMORE MOTOR CO. BUILDING
 Phone 255-3287
 400 North Main Shamrock, Texas 79079

BARKER REDI-MIX
 READY-MIX CONCRETE.
 BACK-HOE SERVICE
 PM. 779-2703 OR 779-2869

LAMB FLOWER SHOP
 779-2613

DON MILLER
RADIATOR SERVICE
 "IS OUR BUSINESS"
 NOT A SIDE LINE
 • New & rebuilt Radiators
 • Gas Tanks & Motors
 Replaced
 376-6666
 612 S. JEFFERSON
 AMARILLO, TEXAS

Safemark
Tires & Batteries
BENTLEY'S FERTILIZER
 779-2209

DOZER WORK
 MOTOR GRADER WORK
 Ponds-Terraces-Fine Gravel
 Feed Roads-Landscaping
BRITT HATHAWAY
 779-2383

Foshee's TEXACO
 Your full-service station
 Earnest & Maurine Foshee
 Owners
 779-2621

THE CATTLEMAN'S FEED SERVICE
LOOMIX
 Since 1905
 Liquid Feed Supplement
 • Natural Protein
 • Highest Energy
 • Consumption Control
 • Fully Palatable
 • No Dred Salts
 779-2209
 163 Nelson
 256-5550

DON MILLER
RADIATOR SERVICE
 "IS OUR BUSINESS"
 NOT A SIDE LINE
 • New & rebuilt Radiators
 • Gas Tanks & Motors
 Replaced
 376-6666
 612 S. JEFFERSON
 AMARILLO, TEXAS

Working for You

OUR LOWER PRICES FOR FOOD POLICY!

TALL CAN

MILNOT 2 for 69c

3 OZ. BOX

JELLO 4 for 89c

DEL MONTE OR SHURFINE

FRUIT COCKTAIL 2 for \$1

WOLF BRAND

CHILI 15 OZ. CAN 83c

OLD FAVORITE

PEACHES 2 1/2 CAN 59c

POST 40 %

BRAN FLAKES 16 OZ. BOX 85c

COFFEE MATE 16 OZ. JAR \$2.19

SHURFINE

15 OZ. CAN

PEAR HALVES 2 for 87c

NATURE'S BEST

300 CAN

PINTO BEANS 3 for 89c

RANCH STYLE

BEANS 3 OZ. CAN 3 for 89c

WELCH SUNSHAKE 40 OZ. BOTTLE

ORANGE DRINK 2 for \$1

SPAM 12 OZ. CAN \$1.23

CARNATION

TUNA 79c

MILE HIGH 303 CAN

GREEN BEANS 4 for \$1

LIPTONS TEA BAG 48 COUNT \$1.19

SOFT

PARKAY 1 LB. 69c



CRISCO

3 LB. CAN

\$1.79



SUGAR

10 LB. BAG

\$2.29

YOU MAY WIN A

1979 RED FORD PINTO



OR A

19" RCA COLORT.V.



REGISTER NOW!

FRESH PRODUCE

UTILITY

POTATOES 20 LB. \$1.45



TOMATOES 4 LBS. \$1

SWEET

POTATOES 3 LBS. \$1



BROCCOLI SPEARS

SHURFINE

10 OZ. BOX

2 for 89c

GOLD MEDAL

FLOUR 5 LB. BAG 85c

WELCH

GRAPE JUICE 24 OZ BOTTLE 79c

PRESERVES 89c

CAMPBELL CHICKEN NODDLE

SOUP 4 for 89c

SUNSHINE

CRACKERS 1 LB. BOX 59c

KEEFER

FUDGE STRIPS 11 OZ. PKG. 89c

SHURFINE

OLEO 1 LB. QTRS. 2 for 89c

FOOD KING

FISH STICKS 2 for \$1

SHURFINE 10 OZ. BOX

CAULIFLOWER 2 for 89c

SHURFINE

BRUSSEL SPROUTS 10 OZ. BOX 2 for 89c

SHURFINE 10 OZ.

GREEN BEANS 3 for \$1

MEAT

CHOICE TENDER

12 OZ. RODEO

FRANKS 75c

RANCH N RAIL

BACON 2 LB. PKG. \$1.99

KORN KING

BACON 2 LB. \$2.49



Puckett's

SPECIALS GOOD MARCH 8, 9, & 10

