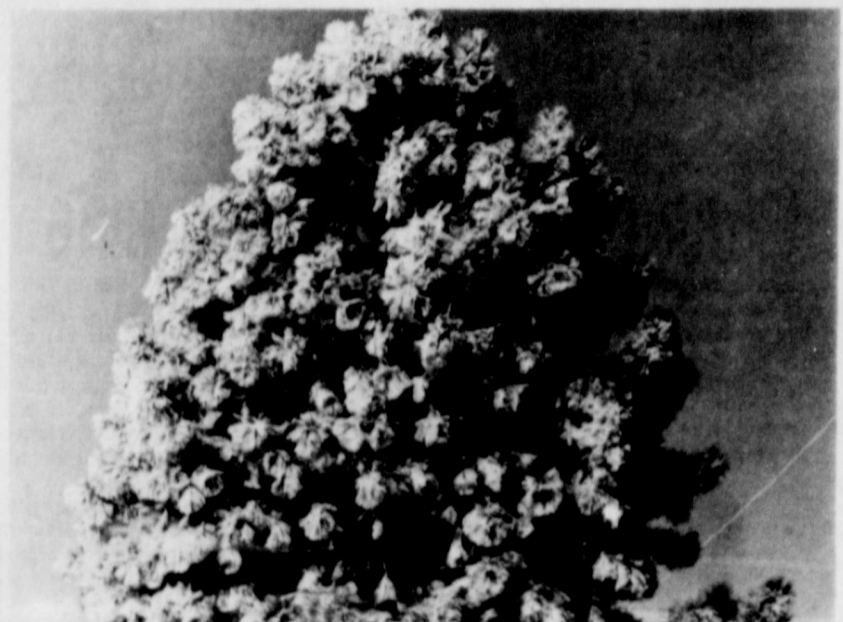


John C. Haynes  
McLean, Texas 79057



### Blab... More Winter Weather

Mother Nature had temper tantrums this week as she besieged McLean with snow, ice, sleet, and fog. Strong winds and freezing temperatures kept the children inside, unable to brave the weather even for a sled ride. (Photos by Lisa Patman)

# The McLean News

Serving McLean and the Area Since 1903

VOLUME 76 McLEAN, GRAY COUNTY, TEXAS THURSDAY, FEBRUARY 1, 1979 PRICE 20¢

from the  
distaff side  
by Linda Haynes

This issue marks my first anniversary with The McLean News. The past year has been one of the most enjoyable, exciting, frustrating, and challenging years I have spent.

As I look back at 52 issues of the paper that I have helped with, I feel proud of some of our accomplishments, and somewhat embarrassed by some of the goofs that I have made.

The staff of the News can never thank all the fine people of McLean and our other subscribers for the many words of encouragement and constructive criticism.

Each week brings a new challenge in this job. I'm always amazed when we meet each deadline, or surmount some of the very real crises we have faced.

Our goal is to make each issue more informative and more helpful to our readers. So keep giving us suggestions for improvement.

###  
A new section in The McLean News is the Opinion Page which you will find on page 2. An early day editor of the News said that a newspaper without editorials is like a meal without potatoes, so we decided to try an editorial page.

My plan for this page, however, is for it to be more than a forum for my opinions. I hope that our readers will feel free to comment on any editorial (pro or con), and to write letters on any subject that they feel strongly about.

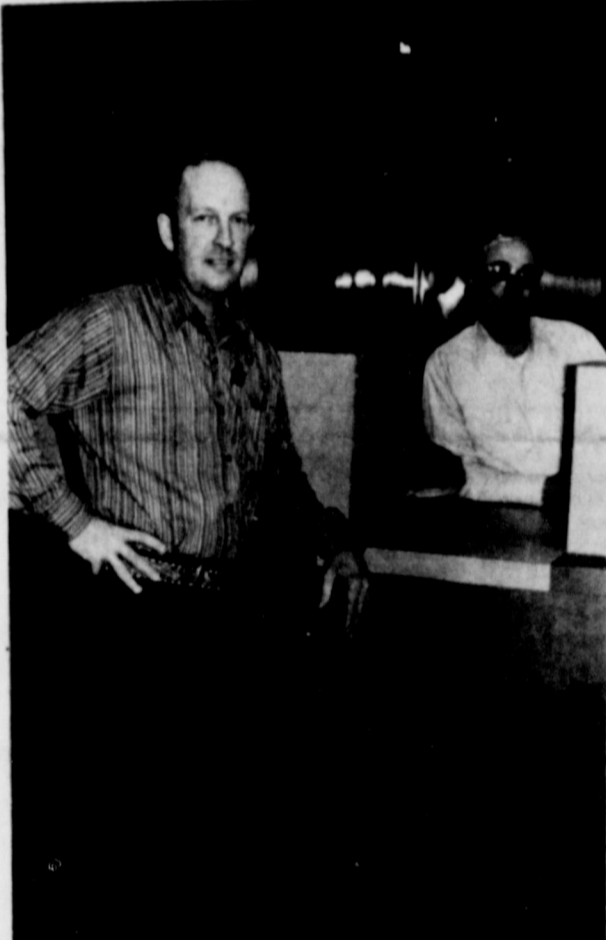
We ask only that you sign your name (we will withhold your name if you request), and that you make no libelous statements about any group or individual.

We reserve the right to correct spelling, and edit for clarity. So if you're steamed up about something, write us. We'll air your views, and, who knows, something good might come from the publication of different viewpoints.

###  
Several years ago, a friend gave me a business card with the following inscription on the back:

CEVILLE, DERDAGO  
TAUSON BUSSES INERO;  
NOJO DOSER TRUXX,  
VOTS INUM? SUMMIS  
KAUS, SUMMIS DUX.

See DISTAFF, Page 6



LEFT, Jim Allison, American National Bank president, and Roger McCracken, ANB vice-president, are surveying the new bank headquarters. Employees began moving into the renovated area last week, but Allison said the remodeling will not be completed until the end of February. RIGHT, this customer seems to be admiring the shiny new facilities of the Citizens Bank in McLean in 1907. The men in the picture are unidentified, but the president of the bank in 1909 was D.N. Massey; cashier, William Abernathy; vice-president, J.L. Crabtree; and assistant cashier, A.L. Rippey. (Left photo by Linda Haynes; right photo, courtesy of Alareed McLean Museum)

## Basketball Teams Drop Four District Games

In the battle of the Tigers Jan. 23 at Groom, the McLean teams came out on the short end of the score in both games.

The Groom Tigerettes, paced by standout Connie Crowell with 18 points, easily outdistanced the slow-starting Tigerettes from McLean.

The McLean group scored only 7 points in the first period of play, and although they picked up accuracy in the second half, they were unable to catch Groom. The final score was 55-36.

Pacing the McLean girls was Joy Rhine with 11 points and Judy Trew with 10.

The Groom Tigers outdistanced the McLean team 24-10 in the first quarter, and went into the dressing room at half-time with a comfortable 21 point lead. The game ended with Groom on top 61-37.

Highscorer for the McLean Tigers was Randy Suggs with 16 points.

The McLean teams traveled to Hedley Friday night, and lost both games on that trip.

Neither team was able to put many points on the board in the first quarter of the girls game, with Hedley leading 6-2 when the buzzer sounded, but in the second quarter, the Hedley girls hit 18 points, and led 24-6 at half-time. The game ended 46-34.

Joy Rhine was again top-scorer with 12 points.

In the boys game at Hedley, the first quarter was

again slow with only 32 points scored by both teams. The Tigers were behind by 4, when the buzzer ended the first quarter, and they fell behind 48-22 at the end of the half.

McLean was unable to score any points in the third quarter, and only 17 in the fourth quarter and the game ended 73-39.

Tommy Eck was high-point with 18 points. Randy Suggs had 13.

All four games were district games.

## Commissioners Meeting Today

The Gray County Commissioners' Court is scheduled to meet today (Thursday) in the county courtroom at the courthouse in Pampa.

Items on the agenda in addition to regular business for the county include a discussion of the fire contract with the City of Lefors, a presentation by Hospital Affiliates, Inc., and a discussion of rental procedures for the community barn.

## Young-At-Heart Receiving Donations

Donations to the Young-At-Heart building fund have been coming in at a rapid clip this week, according to the Bertha See YOUNG, Page 4

## Tolleson, Moore Given Top MHS Honors

Voting was completed Jan. 24 with several McLean students coming out on top as the popular choices for representing the McLean student body.

Chosen Mr. and Miss MHS were David Tolleson and Kelly Moore.

## MHS Honor Roll Announced

Honor Roll at the McLean High School for the third six weeks was announced last week by Principal Ron Cummings. These students are:

SENIORS (ALL A's) Jeanette Brown, Sherry Glass, LaDonna Keeton, (A's & B's) Kara Daniela, Tommy Eck, Steve Ellison, Rachel Glenn, Joe Creed Lamb, Diane McAnear, Kelly Moore, Sherry Swamer, Jamie Trew, Barbara Fourier

JUNIORS (All A's) Brad Melton, Joy Rhine, Ann Skipper, Beth Smitherman, (A's & B's) Elaine Bentley, Dick Bode, Sally Haynes, Phyllis Marsh, Tammy McLain, Trudy Stewart, Randy Suggs, Jill Trew, Judy Trew, Allen Turpen.

SOPHOMORES (All A's) Barbara Adams, Jamie Glass, (A's & B's) Rhonda Woods, Jo Ann Durham, Mike McCowen.

FRESHMEN (All A's) Rene Connors, Cindy Glass, Terri Glass, (A's & B's) Melissa Billingsley, April Bryant, Donna McAnear, Dudley Reynolds, Billy Skipper, Leslie Skipper, Theron Stubbs, Brenda Wilson.

son and Kelly Moore. Runners-up for that honor were Diane McAnear and Steve Ellison.

Taking top honors for most school spirit were Diane McAnear and Tom Eck, with Sherry Glass and Steve Ellison as runners-up.

Senior class ballots cast named Rachel Glenn and Tom Eck as most popular; Chuck Pierce as most handsome; Rob-in Smith as most beautiful; Joe Creed Lamb, most courteous; Joel Kingston, wittiest; with Steve Ellison and Jeanette Brown chosen as most likely to succeed.

The junior class chose Ann Skipper and Dick Bode as most popular; Joe Mercer, most handsome; Judy Trew, most beautiful; Tammy McLain, most courteous; and Joy Rhine, wittiest.

Elected from the sophomore class were Rhonda Woods and Mark Morris, most popular; Rosanna Eck, most beautiful; Bill Hambricht, most handsome; Jamie Glass, most courteous; and David Day, wittiest.

Representing the freshmen are Leslie Skipper and Bick Horn, most popular; Susie Billingsley, most beautiful; Spooky Smith, most handsome; Brenda Wilson, most courteous; and Bill Skipper, wittiest.

Selections are determined by an annual balloting of the student body.

## Doug Groves Injured In Fire At Gulf Plant

Doug Groves, 57, received first and second degree burns on his face as the result of a flash fire at the Gulf (formerly Kewanee) water station and tank battery Sunday.

The water station is located on the Haynes ranch, north of McLean. Groves and Walter Jackson of Lefors were draining alcohol and drip gas out of some lines at the station when the flash fire occurred.

Groves said that the fire probably ignited from some hot coals in a nearby stove.

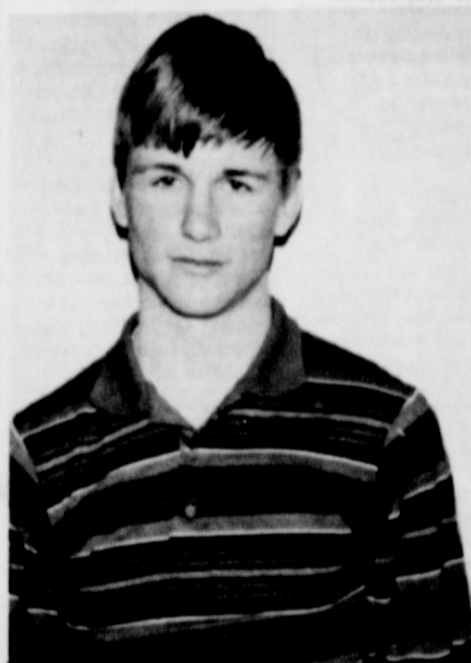
Employees of the company had been infusing gas lines with alcohol for several days to prevent

freezing. The flash fire ignited some drip gas and damaged an engine and compressor in the building.

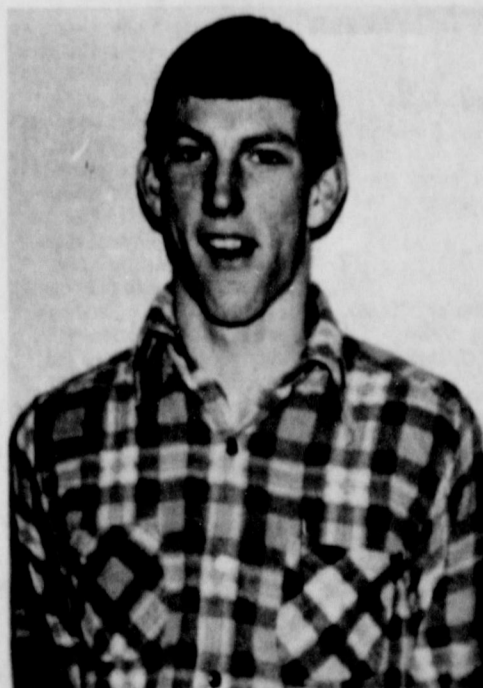
Groves, a 32-year employee with the company, was caught between the fire and the door, and was forced to run through the flames to get outside.

Groves and Jackson used fire extinguishers to extinguish the blaze before trucks from the McLean Volunteer Fire Department arrived.

Saturday morning, a heater-treater belonging to the same company caught fire, but the blaze was extinguished before any major damage occurred.



MR. MHS - DAVID TOLLESON MISS MHS - KELLY MOORE



MOST SPIRITED - TOM ECK AND DIANE McANEAR

# OPINIONS

VIEWS EXPRESSED ARE THE EDITOR'S, UNLESS OTHERWISE NOTED.....

IF YOU HAVE AN OPINION ON ANY CURRENT SUBJECT, WE WELCOME YOUR SIGNED LETTERS..

## BIG BROTHER IS STILL LISTENING

(Editor's Note: The following editorial appeared in THE CANADIAN RECORD. Written by Ben Ezzell, the editor, it sums up better than I could, how I felt when I received the same news release he mentions.)

other day inviting taxpayers to contact the IRS office about tax problems. The two pages were accompanied by a brief note on another sheet of paper, which advised editors that "The following standard paragraph was omitted from the enclosed release to preserve brevity. You may wish to include it, however, if you feel your readers should be reminded of the occasional monitoring."

To preserve brevity, we're printing the warning and omitting the two-page "news release" which was inconsequential. But we do think you should be forewarned that Big Brother may be listening when you call in about tax matters, even if He isn't taking notes.

## PETS HAVE RIGHTS, TOO

By Carol Allison

Sometimes I find it difficult to have a very definite opinion. Most of the time, my sense of fairness concerning people's rights get in the way. However, I have a very definite feeling and opinion about abandoned and homeless animals.

It is a common sight when traveling to see scraggly, lean, half-starved animals - cats, kittens, dogs, - wandering along the highways.

My most recent encounter was on the road to Pampa. I passed a small, four-month-old puppy, obviously abandoned and starved.

I passed it by - in the foolish hope that he was on his way home.

I knew he was lost, and coming home, I couldn't help searching for him out of the corner of my eye.

And soon I spotted him. He had traveled about five miles from the first place I had seen him. He was exhausted, cold, and lying in tall grass, with a wind and snow storm menacing from the north.

Well, I took him home. I named him "Hitch-Hiker", and my husband who has grown accustomed to my bringing home strays named him "Visitor", hoping that he wouldn't be staying long.

My son named him "George" and the dog settled in on our front porch, absolutely the most devoted animal I've ever seen.

I made several calls to all the people I knew in the vicinity. Everyone said they had all the strays they could handle.

Eventually I found him a good home in the country. Someone left that dog on the highway, thinking that a stranger would find him and take him in. Don't leave your unwanted pets on the highway or at the dump to starve for weeks. It may save your conscience but it is usually a sure and cruel death for the animal.

If you have an unwanted pet, you have four alternatives. Take them to your local vet for a humane death, destroy them yourself (not by suffocation, please).

find them a good home, or take them to the Amarillo Animal Shelter for (hopefully) adoption, free of charge.

Domestic animals are a wonderful companion, but they are a responsibility. People should recognize and assume this responsibility.

If you have a pet, have the dog or cat spayed, a simple and inexpensive procedure.

Be aware. This quote by George Orwell is good to remember. "All animals are equal, but some animals are more equal than others."

However, the majority of the women who play basketball do so because they love the sport. There are not enough scholarships to fund the women who are now playing, much less for recruitment.

I do not believe the argument that women's sports will not draw crowds. I think colleges like Wayland Baptist and Delta State University have proven that if the women's program is adequately funded and publicized, it can be as profitable as men's sports.

What draws crowds are WINNERS, but you cannot have a winning team without adequate funding. WT has also had an outstanding tennis and golf and track program, but for men only. Women should certainly be allowed to compete in these sports.

I hope that the state legislators will not wait until a suit is brought to decide to play fair, and allocate funds on a 50-50 basis for athletics.

of all of the outstanding stock of TUCO Inc., a Southwestern subsidiary. The purchase price will be in excess of \$30 million. Conclusion of the sale is conditioned upon negoti-

ation of certain additional contracts and on final approval of the respective Boards of Directors.

TUCO, formed in 1974, and a TUCO subsidiary, supply natural gas, fuel oil and coal to several of Southwestern's power stations. They have built, or acquired, approximately 500 miles of gas pipeline through which purchased gas is gathered and they own two gas processing plants in which the gas is processed and then transported to Southwestern's power stations for use as fuel. Gas delivery amounts to about 55,000 MCF/day. Natural gas liquid production is about 104,000 gallons per day. The liquids are sold in the liquid fuel products market. TUCO also supplies the coal burned at Southwestern's recently constructed Harrington Station near Amarillo, Texas. Current coal use is about 8,000 tons per day for the first two Harrington units. About 130,000,000 tons will be used over the useful life of all three units at Harrington Station. TUCO purchases coal from mines located in Wyoming. TUCO will

## TEC Says More Worked During 1978

A strengthening Texas economy saw more people at work during 1978 than in the previous year. The Texas Employment Commission, in its annual report, says that the Texas labor force passed six million in four months of the year, and that actual employment rose more than 4 per cent.

The bottom line is a 5.1 per cent jobless rate for the state, one of the lower ones in the nation and well under the 5.8 per cent national jobless ratio. At fiscal year-end, about 6,041,200 people among Texas' 13 million were either working, or were between jobs looking for work--5.7 million of the former and over 300,000 of the latter, the Commission estimates.

Efforts to place people in jobs, a basic function of the Commission, were successful in that 480,916 job placements were posted, an increase of 4.3 per cent over 1977. Non-farm job placements showed the largest increase. Agricultural placements were down 5 per cent.

The Commission continued to emphasize services to employers, and to applicants, receiving more than 728,000 job openings from employers, and making 1,653,800 referrals to those openings.

On an annual basis, the Texas economy showed steady improvement in its unemployment rate, which was at 5.8 per cent in 1976, dropped to 5.4 in 1977, then went to the year-end 5.1. Nonagricultural wage and salary employment gained 4.9 per cent over the year, led by manufacturing with 950,200 at the end of the fiscal year. Increases in non-electrical machinery, electric and electronic equipment, and transportation equipment led the durable goods, while printing and publishing was the bright performer among nondurable goods.

Nonmanufacturing employment was on the rise, featuring increases in mining and government. Agricultural employment continued to decline, hitting 210,300 at the end of the year.

The "average" production worker in Texas manufacturing was earning \$5.95 per hour for a 40.8 hour week in August of 1978, an average weekly wage of \$242.76. A year earlier, it was \$5.41, 41.1 and \$222.35.

## CAPITAL CORNER

The United States Census Bureau, based on the latest census, has placed the center of population of the United States at 5.3 miles east-southeast of the Mascoutah City Hall in St. Clair County, Ill.

## HIGHTOWER WASHINGTON HIGHLIGHTS

From Congressman Jack Hightower

WASHINGTON, D.C.—The President tried to address the principle concerns facing our nation in his State of the Union Address, Congressman Jack Hightower said after returning from the joint session of Congress.

"In his message the President spoke of balancing the budget, controlling inflation, keeping employment high and providing a national defense second to none."

"These are the principle issues that we will be facing during this session of the Congress."

"He also referred to legislation that will be coming before the Congress in the area of hospital cost containment and health care."

"There were some major issues that were noticeable by their absence. Little verbiage was given to energy and the reference to improved farm income would be hard for most farmers in our area to accept, just because we have had record farm exports, does not mean that we should back away from efforts to expand in this area."

The fact the President claimed that net farm income is up 25% just shows how low it was last year. Our problems of inflation, the expanding bureaucracy, and deficit spending were not created in a day, and neither can we make them go away in a day.

## Fewer Texans Out Of Work

1978 was also a signal year for unemployment insurance developments. Fewer people filed claims for the regular state jobless benefits--almost 40,000 fewer than 1977, and so benefits paid out dropped by \$7 million plus, to \$140.8 million.

Payroll tax payments by 236,224 employers into the Texas Unemployment Compensation Fund, which finances jobless benefits, brought the fund balance to \$333,784,000, high enough to trigger a tax rate reduction for some employers not already paying the minimum rate in 1979.

About 71 per cent of the experience-rated employers of the state are already paying the minimum tax rate of 1/10 of one per cent.

A recession-era Federal unemployment benefit program, Special Unemployment Assistance, was terminated by Federal legislation June 30, 1978.

## STATE CAPITAL HIGHLIGHTS

By Lyndell Williams TEXAS PRESS ASSOCIATION

AUSTIN—New Gov. Bill Clements asked the legislature to strengthen the governor's powers substantially to deal with growth of the government and bureaucracy.

Clements, in the "first chapter" of his messages to lawmakers, asked for budget supervision authority and gubernatorial power to remove state agency members "for stated reasons" and with Senate consent.

Highlights of the new Republican governor's recommendations included: —A repeat of his call for a \$1 billion tax reduction.

—Power for the governor to appoint chairmen of state boards and commissions "from time to time."

—A freeze on state hiring and an "attrition policy" to reduce the number of state employees by 25,000 over four years.

—Initiative and referendum powers for citizens to pass or veto laws.

## Capitol Comments

Governor Clements made the traditional State of the State Address to a joint session of the 60th legislature today.

There were no real big surprises in his talk but a few new items I haven't heard him mention before. One of his lead statements was: "no one can deny the role of the legislative branch of Texas government in making our state the envy of the entire nation," we were happy he recognized this fact.

The second item Governor Clements made that is worthy of mention is the following, "The sunset law passed during the last session of the legislature was a major step. It was major not only in terms of how it can be used to eliminate useless state agencies, but also in the sense that it was a recognition of the fact that our government has been drifting away from accountability."

A special committee made up of 4 Senators and 4 Representatives did a bang up job on reviewing agencies affected by the Sunset Legislation over the last several months. They did an in-depth study of some 26, mainly State Regulatory Agencies, over the past several months. I was highly pleased that a new standing committee was formed in the House of Representatives called Government Organization. I was also happy that Speaker Bill Clayton appointed me to this committee which will be looking at some 176 separate agencies over the next few years. The special Sunset Committee recommended that 6 agencies be abolished and drastic changes be made in the structure of the others.

The Governor also called for a constitutional amendment that would give the Governor budget execution powers to carry out the will of the Legislature. Many students of Texas Government have recommended this change for years. Texas Government is presently run by the Legislature going into session every two years to approve a budget for the various state agencies and then turn the agencies loose to run themselves without answering to anyone.

The Governor called on the Legislature to develop a plan for a single appraisal office within each county. In my opinion, this won't get off the ground. We need to devote our attention to the new types of taxation to replace the ad valorem tax as it affects schools instead of more sternly applying an unfair type of tax.

The Governor will get part of his program but will fail on many of the things he is calling for. Should you want to contact me at Austin, please call 512-476-3883 or write to me at P.O. Box 2910, Austin, Texas 78769.

McLEAN, TEXAS POPULATION 1183 (1970 census)

TEXAS PRESS MEMBER 1979 ASSOCIATION

Southwestern Public Service Company

Southwestern Public Service Company

QUALITIES In Sound Little Known Facts

Little Known Facts

With the flowering of the theory that talk and music help plants flourish, it is not exactly a surprise that there's a Funny Forum album out called "Vegetation Conversation: Music and Thoughts for Things in Pots."

# COMMUNITY CORNER

## Rives, Litvin Vows Read Jan. 13

Diann Kay Rives of Gaithersburg, Maryland, and David Anthony Litvin of Washington, D.C., exchanged wedding vows Jan.

13 at 2 p.m. in First Baptist Church in Gaithersburg.

Miss Rives is the daughter of Mr. and Mrs. Wayne W. Rives of Gaithersburg, and the granddaughter of Mrs. Vera Back of McLean and J.A. Rives of Borger.

Officiant at the ceremony was Chaplain James H. Rankin.

Given in marriage by her mother and father, the bride wore a high-necked white Quiana gown featuring bishop sleeves, a fitted bodice, and a fitted headband. The chapel length was highlighted by a finger-tip chiffon veil falling from a braided headband.

She carried a single long-stem pink rose.

Matron of honor was Mrs. Judith A. Rives, sister-in-law of the bride, of Germantown, Maryland, Maid

of honor was Miss Forest Litvin, sister of the groom, of Columbia, Maryland.

Best man was Frank E. Brauer of Bowie, Maryland. Ushers were Samuel Messinger of Potomac, Maryland and Jim E. Rives of Gaithersburg, brother of the bride.

A reception was held at the Gaithersburg Community Center.

The couple went to Saint Croix, Virgin Islands, on their wedding trip.

They will make their home in Georgetown, Washington, D.C.

The bride is a graduate of the University of Maryland and is employed by the Department of Energy in Washington, D.C.

The groom received a degree in metallurgical engineering at Drexel and a law degree from George Washington University.

## McLean Volleyball Group Formed

The McLean Volleyball Association met to organize for the year Sunday afternoon at the McLean High School gymnasium.

Melvin Simpson was elected president and Cheryl Smith was elected treasurer.

Approximately 30 members paid their dues for the year.

The group has set the McLean Volleyball Tournament for Feb. 15, 16, and 17. At least 15 teams will participate.

The group also plans to sponsor a mixed team tournament in April.

## Five Attend Pampa Workshop

Mrs. Edna Merrell, Mrs. Mary Dwyer, Jake Heas II, Mr. and Mrs. Sam Haynes attended the Pampa District Council on Ministries Workshop at First United Methodist Church in Pampa Sunday afternoon.

Dr. Emmett Smith, former vice-president of West Texas State, conducted the workshop on goal setting.

## Lefors Group Meets With Therapist

Beta Chi Conclave of Kappa Kappa Iota met Monday evening in the Lefors High School Library for their regular meeting. The program was presented by Mrs. Bennie Lynch, Lefors kindergarten teacher, who is also speech therapist for the Lefors Public School.

She informed the group that any impediment which creates poor communication or embarrasses either the speaker or the listener is considered a speech defect.

Also, speech is extremely important because it is very closely tied with "self concept." Several materials were displayed and Mrs. Lynch explained to the group what the job of a speech therapist entails.

The next meeting will be at the Flame Room of Pioneer Natural Gas Company in Pampa.

Refreshments were served by Pat Youngblood and Fern Bull from a beautifully appointed table, laid with silver, crystal and candles on a floral cloth atop a floor length fringed white cloth.

In attendance were president Jo An Fenno, Donna Collins, Rebecca Stroud, Ardelle Briggs, Lela Harris, Marie Julian, Margaret Parsons, Marsha Shuman, Norma Lantz and the hostesses.

## Auxiliary Needs Dues For Insurance

Mary Groves, treasurer of the VFW Auxiliary of Johnny Windom Post # 8565, announced last week that she has received information from general headquarters that members must have their dues paid by Feb. 1 to be covered by the group cancer insurance.

Delinquent members who wish to be included must pay their dues now, Mrs. Groves said.

People once believed that if their palms itched they would receive money.

Admiration has been called the cream of human kindness.

## Powerful anti-itch drug you can buy without an Rx!

Stop itching fast of external vaginal, rectal, and other skin conditions. Doctors find even severe itching can be treated with a special drug. You can now get this anti-itch drug ingredient with no prescription in BiCOZENE\* Use only as directed. The medicinally proven cream for itching.

Visiting in the Sam Haynes home last weekend were Mr. and Mrs. Rick Evans, Chris and Jack, and Mr. and Mrs. Bruce Pack, Courtney and Ryan, all of Lubbock; and Scott Raines of Stillwater, Okla.



JIM ALLISON, CARL DWYER, PERRY HOAG, DARREL SEHORN, AND JANE SIMPSON

## McLean Featured On KGRO Radio Program

Darrel Sehorn and Perry Hoag of KGRO radio in Pampa came to McLean Tuesday to tape a program on McLean. The program, sponsored by several McLean businesses, featured a round table discussion

with Carl Dwyer, superintendent of schools; Jim Allison, president of American National Bank; Sam Haynes, mayor of McLean; Jane Simpson, owner of the Jane Simpson Insurance

Agency; and Linda Haynes, owner of The McLean News. The program was aired yesterday.

The group discussed several of the positive features of the progress of McLean.

## McLean Briefs

Mrs. Corinne Trimble and Dorris Windom went to Dallas to the clothing market last week.

Mr. and Mrs. Amos Page, of Wimberly, former residents of McLean, visited Mrs. Martha Aldridge in McLean last week. Mr. and Mrs. Page and Mr. and Mrs. James Page went to Austin recently to see Sheri Haynes play with the Wayland Baptist Flying Queens.

Mr. and Mrs. Thacker Haynes hosted a birthday party for Sam Haynes Saturday night at their ranch home.

Guests attending the party presented Haynes with stories, clippings, and poems about his past.

One group, dressed as 1920s flappers, sang a song written especially for the guest by his brother John M. Haynes.

Guests attending the party were David Haynes, Mr. and Mrs. Ted Simmons, Mr. and Mrs. Ed Patman, Mr. and Mrs. Ted Davis, Mr. and Mrs. Mike Johnson, Mr. and Mrs. George Eck, Mr. and Mrs. David Crockett, Carl Dwyer, Mr. and Mrs. Sam Haynes, and Sally Haynes.

IN THE HOSPITAL THIS WEEK:

Betty Finley, Doug Groves, Dick Henley, Flora Humphreys, Maude Nail, Antonio Ruiz, Herbert Calix-Silva, Elizabeth Wilson.

that helping to keep the rate from rising as much as it might is careful government regulation of the trucking industry, protecting jobs and helping the many family-owned trucking businesses stay in business.

that our unemployment rate is nearly eight percent of the work force and almost twice what it was in 1965.

## Hospital Report

DISMISSED SINCE JAN. 17:

Lucy Skipper, Lorene Brown, John Biggers, Lester Callis, Lavina Callis, Darlene Roberts, Bobby Orrick, Alice Dickinson, Terry Todd, Eva Dean Baker.

IN THE HOSPITAL THIS WEEK:

Betty Finley, Doug Groves, Dick Henley, Flora Humphreys, Maude Nail, Antonio Ruiz, Herbert Calix-Silva, Elizabeth Wilson.

that helping to keep the rate from rising as much as it might is careful government regulation of the trucking industry, protecting jobs and helping the many family-owned trucking businesses stay in business.

that our unemployment rate is nearly eight percent of the work force and almost twice what it was in 1965.

## In the Kitchen BY LINDA HAYNES

Is there such a thing as a new way to fix vegetables? If your family is tired of a can of corn, try these recipes.

**BROWNED POTATOES**  
In a heavy skillet over medium heat, melt 1/4 C. butter, stir in 1/4 C. dried bread crumbs, 1 tsp. salt, and 1/2 tsp. sugar;

**Dr. M. V. Cobb CHIROPRACTOR**  
Specializing in the examination and treatment of spinal and nervous disorders  
256-2133  
310 South Main Shamrock, Texas

add 2 - 16 oz. cans whole white potatoes, drained. Cook, shaking skillet occasionally to coat potatoes evenly with crumbs.

**SOUTHERN VEGETABLE MEDLEY**  
4 oz. salt port  
1 C. water  
8 oz. pkg. frozen sliced okra  
2 C. frozen corn  
1/2 C. chopped onion  
1 tsp. beef bouillon granules  
1 - 2 tsp. chili powder  
4 med. tomatoes peeled and cut up.

Rinse salt port. In skillet cook pork until crispy. Add water, okra, corn, onions, bouillon, chili powder. Cover and simmer 20 minutes. Add tomatoes and simmer 10 minutes more.

**NOBODY WANTS TO SEE AN INSURANCE AGENT UNTIL THERE'S TROUBLE.**



THAT'S WHEN YOU NEED OUR FOLLOW-THROUGH CREW.

If you ever need to file a claim against one of our policies, you can depend on us to help you obtain a fast, fair settlement.

That's because we do not work for any insurance company... we work only for you.

**Jane Simpson Agency**

McLean, Texas 779-2451  
THE INSURANCE STORE

## Carol Allison To Serve As Chairman

Mrs. Carol Allison has been appointed to serve as chairman of the 1979 Gift of Life Campaign, the fund drive beginning March 18 for the Kidney Foundation of the Texas Panhandle. The announcement was made this week by Jack B. Weinberger, president of the health organization.

Mrs. Allison will head the appeal to raise funds to support the agency's work in the prevention, treat-

ment and cure of kidney disease.

The kidney foundation hopes to raise funds from business and industry, civic, professional and community organizations, and individuals through house-to-house solicitation.

In addition to coordinating all facets of the campaign, Mrs. Allison announced that volunteers will be recruited to assist the organization in the fund drive.



Never store lettuce next to apples, plums, pears, avocados, tomatoes or melons. These give off ethylene gas which can spot the lettuce.

# Clean Out Sale

## Quality Clothing



**MENS SUITS**  
Ratner  
Johnny Carson  
Curlee  
Don Richards  
REGULAR \$120-\$222  
now \$40-\$154.95

**MENS SLACKS**  
22.50  
\$22.50-\$43  
NOW \$15 - \$28.67

**MENS LONG SLEEVE SPORT SHIRTS** 1/2 PRICE

**WESTERN HATS**  
Regular \$25-\$65  
NOW \$15-\$39

**SPORT COATS**  
\$39  
one group - \$10

**LEATHERS AND SIMULATED LEATHER**  
60% off

**JOHN'S**

in Clarendon

**ULTIMATE SUEDE SPORTS COATS**  
Regular \$165  
NOW \$120

**MENS TURTLENECK SHIRTS**  
Regular \$12  
NOW \$4.99

**SHOES AND BOOTS** 1/3 off

**MENS SWEATERS** 60% off

**LADIES**

**PURSES, BLOUSES, SCARVES, JEWELRY** 1/3 off

One group of **JUMPSUITS, BLOUSES, PANTS, SHIRTS AND JACKETS** \$5 each

**DRESSES** 60% off

**PANTS AND PANT SUITS** 60% off

**LADY DENIMS** 20-50% off



MONEY STILL DOESN'T GROW ON TREES.

LET YOUR SAVINGS GROW AT THE **American National Bank in McLean**



\*\*\*  
McLEAN CATTLE  
COMPANY, INC.

\*\*\*  
PUCKETT'S  
GROCERY

\*\*\*  
WIL-MART

\*\*\*  
BOYD MEADOR  
REAL ESTATE

\*\*\*  
COWBOY  
DRIVE IN

\*\*\*  
AMERICAN  
NATIONAL BANK  
IN McLEAN

\*\*\*  
TERRY'S

APPLIANCES

\*\*\*  
LAMB'S

FLOWER SHOP

\*\*\*  
CITY OF  
McLEAN

\*\*\*  
WINDOM'S  
AUTO SUPPLY

\*\*\*  
PARSON'S DRUG

\*\*\*  
MULLANAX'S  
MENS WEAR

\*\*\*  
JOE'S  
SHAMROCK

\*\*\*  
THE  
POT POURRI  
SHOP

CAREY DON, CHERYL,  
STACIE AND DONNIE

\*\*\*  
TEXACO SUPPLY

CUSTER AND RUTH LOWARY

\*\*\*

ODELL'S

CHEVRON

\*\*\*  
DIXIE  
RESTAURANT

\*\*\*  
SIMPSON'S  
MARKET

\*\*\*  
McDONALD'S  
GARAGE

\*\*\*  
BARKER'S

REDI-MIX

\*\*\*  
BENTLEY'S  
FERTILIZER

\*\*\*  
JOHNNIE F. MERTEL  
BOOT SHOP

COLLEEN AND JOHNNIE F. MERTEL

\*\*\*  
JOHN M. HAYNES

RANCH

\*\*\*  
WILLIAMS  
APPLIANCES

\*\*\*  
HAMBRIGHT'S  
BUILDING SUPPLY

\*\*\*  
JANE SIMPSON  
AGENCY

\*\*\*  
STEWART'S  
TEXACO

\*\*\*  
HAYNES  
TRIANGLE RANCH

\*\*\*  
McLEAN

HARDWARE

\*\*\*  
THE  
McLEAN NEWS

\*\*\*  
ALBERTA'S  
HAIR FASHIONS

\*\*\*  
CASH OIL CO.  
DISTRIBUTOR OF  
SHAMROCK GASOLINE

\*\*\*  
MORGAN'S  
LAUNDRY

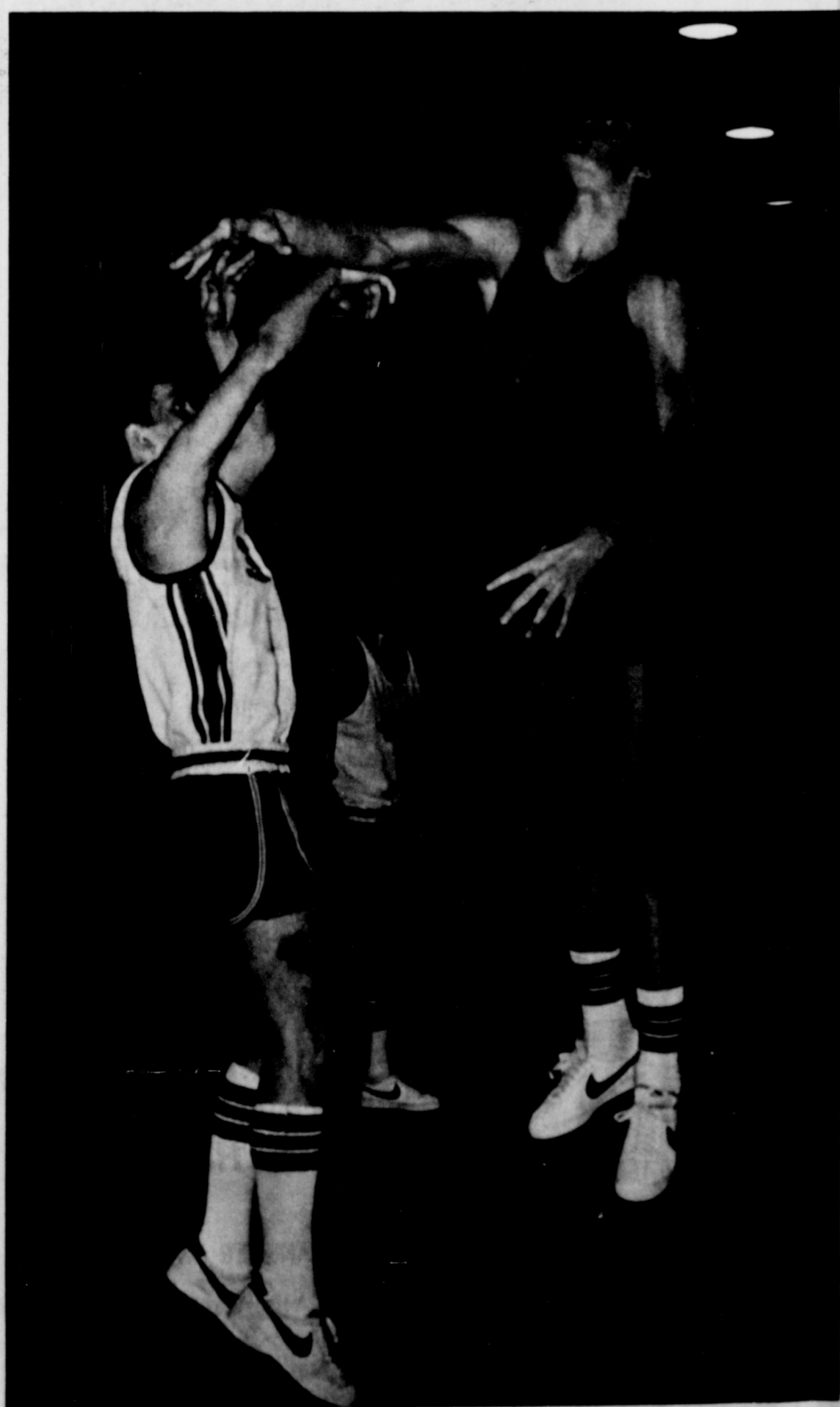
\*\*\*  
CURRY'S  
PROCESSING

\*\*\*  
J.R. GLASS  
OIL CO.

\*\*\*  
DOCTOR HEREFORD  
THE HESSES

\*\*\*  
CORINNE'S  
STYLE SHOP

↑  
↑ These McLean Businesses Urge You To Support The McLean Basketball Teams ↑



## WATCH FOR THESE GAMES

TIGERS AND TIGERETTES

FEB. 2 LEFORS THERE

FEB. 6 CLAUDE THERE

CUBS AND CUBETTES

FEB. 1 SHAMROCK THERE

FEB. 1 LEFORS HERE

FEB. 5 MIAMI THERE







**News from your County Agricultural Agent**

By Joe Van Zandt

**NEW LONG-RANGE PROGRAM COMPLETED:**

A Long-Range Program about Gray County has been developed and published according to Raymond Maddox of Pampa, chairman of the County Program Building Committee.

"The document, developed by committee members, contains a detailed description and analysis of the county situation, points out problems and program areas of concern and provides long-range objectives for the continued growth and development of economic and social conditions of importance to county citizens," Maddox said.

Maddox urges all interested individuals and groups to become familiar with the Long-Range Program and to support the Gray County Program Building Committee in helping achieve the long-range objectives. The document will serve as the blueprint for the program building committee in developing annual educational programs through the local office of the Texas Agricultural Extension Service.

The County Program Building Committee is composed of fourteen county citizens who work closely with the County Extension Agents to develop and carry out educational programs needed in the county, according to Elaine Houston and Joe Van Zandt, County Extension Agents. Besides the chairman, committee officers include: Robert Sailor, Vice-Chairman-Pampa and Janice Carter, Secretary-Pampa. Houston and Van Zandt said the contributions of county citizens through the program building committee "are vital to an effective Extension program. All members of the county committee are listed in the Long-Range County Program."

In developing the Long-Range Program, seven program area committees of the County Program Building Committee helped complete the study of the County situation. These committees are: Family Living, Aging, Livestock, Crops, 4-H and Youth, Horticulture, and Community Resource Development. The committees gathered and analyzed background information and noted changes and trends in order to identify major problems and opportunities and to establish long-range objectives. Additionally, the Program Building Committee appointed special study groups that collected information which related to all aspects of county program needs.

about your county and the Extension program, you will find the Long-Range Program informative and a valuable reference. Contact your county Extension Agents about obtaining a copy by either calling 869-7429, or coming by the Extension Office in the Courthouse Annex.

The booklet contains information and data on such things as history of the county, population, major sources of income, family living, youth agriculture, natural resources, labor force, job opportunities, public services, and facilities available. There is probably no other single reference that contains such a broad description of our county and its people.

**RANGE AND PASTURE MEETING:**

A Range and Pasture meeting will be held Thursday, February 1, at 7:00 p.m. in the County Courthouse Annex meeting room, Pampa, Texas.

The program will cover range management to include grazing systems, brush control and weed control. There will be ample time for questions about how to apply some of the new management techniques in your operation and increase beef production efficiency.

The discussion will be presented by Dr. Tommy Welch and Dr. Bob Ragsdale, who are Extension Range and Brush Control Specialist.

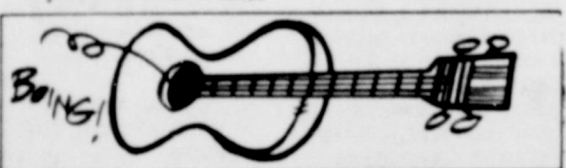
**SUNFLOWER - SOYBEAN - COTTON MEETING:**

A crop production meeting will be held Tuesday, February 6 at 7:00 p.m. in the Courthouse Annex meeting room, Pampa, Texas.

Dr. Frank Petr, Area Extension Agronomist, will lead the discussion on sunflower and soybean production practices. Also farmers having specific questions about cotton production practices will have the opportunity to get them answered. Several farmers, including the Gray County Crops Program Building committee, have asked that information on production practices for these crops be presented at a meeting.

**VEE VACCINATION REQUIREMENT CHANGES:**

Effective January 2, 1979, the Texas Animal Health Commission has repealed the rule requiring evidence of vaccination for VEE of horses originating in Texas. The requirements for horses entering the State of Texas from other states remains the same: all entering the state must have proof of vaccination including the date and identification of the animal.



The average guitar string can be played for 40 hours before breaking.

**Kiddies-Can-Do-It**



THE letters look as if they too had fallen down the hill and were broken to pieces. You can repair them and make them look like new letters. All that you need to do is take your pencil and add a line to each letter and the letters will then again be complete.

Six and a half million tons of rock had to be moved to build the Great Pyramid of Cheops. The work was done without the use of machinery of any kind—not even the wheel!

**Information Institute Gives Safety Tips To Homeowners**

Jack Frost and friends-- snow and sleet--are expected to keep home owners inside the home a good deal during the winter ahead.

This spare time will give home owners the opportunity to take some simple precautions against home accidents, personal injuries and property damage, says the Insurance Information Institute (I.I.I.).

The Institute suggests home owners add these simple precautions to their list of things-to-do during winter:

--Clean out closets and attics, removing old rags, papers, mattresses and other odds and ends that

present fire and safety hazards.

--Tightly cap all combustible materials and store them in cool, high places, out of children's reach. Warn family members never to use gasoline, benzene, or other flammable materials inside your home during the winter months. Improper ventilation could result in an explosion or fire.

--Remove all clutter from steps to prevent falls.

--Safety check and cover

er outside plugs and electrical units.

--Check gutters to make sure no objects are blocking entrances. Otherwise, snow and/or water could back-up and ruin the roof and walls of your home.

--Keep all outside walkways and steps clear of snow and ice.

--Take a personal inventory of all household goods and personal effects and photograph each room. Store inventory list outside the home in a safe deposit box.

The Institute also suggests that home owners visit their local police

station and borrow an identification pen to mark their social security number or name on valuables to deter burglars. The pens can also be purchased in most hardware or department stores for a modest amount.

In Texas, the Institute represents various insurance organizations interested in loss prevention, including the Texas Insurance Advisory Association and the Fire Prevention and Engineering Bureau of Texas.

**The Di-Gel Difference**  
Anti-Gas medicine  
Di-Gel adds to its soothing Antacids.

**The Anti-Gas Antacid.**

**SHARON HAYNES, CPA**  
HAS MOVED TO THE  
AMERICAN NATIONAL BANK  
OFFICE BUILDING,  
OFFICE NO. A.  
OFFICE HOURS: MONDAY - FRIDAY  
9:00 - 5:00,  
EVENINGS AND SATURDAYS  
BY APPOINTMENT 779-2459.

**FIRST UNITED METHODIST CHURCH**  
in McLEAN

Sunday School 9:45 a.m.  
Worship 10:55 a.m.  
UMYF 7:00 p.m.  
Evening 6:00 p.m.

As you give love,  
You will have love.

<b>CRISCO</b> 3 lb. Can \$1.89	<b>BEANS</b> RANCH STYLE 300 Can 3 for 89c
<b>BISQUICK</b> 40 oz. pkg. \$1.19	
<b>FLOUR</b> 5 lb. Bag 89c	
<b>RAISINS</b> 15 oz. Box \$1.89	<b>AVOCADOS</b> 4 for \$1
<b>COCONUT</b> 14 oz. pkg \$1.35	<b>CARROTS</b> 2 for 59c
<b>MACARONI &amp; CHEESE</b> BOX 89c	<b>ONIONS</b> lb. 19c
<b>APPLE BUTTER</b> 28 oz. Jar 59c	<b>BACON</b> 2 lb. pkg. \$2.59
<b>COFFEE</b> 10 oz. Jar \$3.80	<b>GO Gunn-Ho</b> FOR 1000 EXTRA GUNN BROS. STAMPS. Easy Way to Fill Books Fast!
<b>CRACKERS</b> KEEBLER ZESTA lb. Box 69c	
<b>VEGETABLE OIL</b> SHURFINE 38 oz. \$1.79	
<b>SAKE</b> SHURFINE 2 lbs. 79c	
<b>SHURFINE MILK FOR GOODNESS SAKE</b>	<b>SIMPSON'S</b> LOWEST EVERYDAY FOOD PRICES MARKET
	<b>Tendercrust Bread and Bakery Products SPECIALS GOOD FEB. 2 and 3, 1979</b>