

McLEAN CELEBRATION



OVER 500 PEOPLE ate barbecue at the city park Saturday afternoon during Homecoming festivities. [Photo by Linda Haynes]

Teresa Woods Named Queen

Teresa Woods, daughter of Dr. and Mrs. David Woods, was chosen the 1979 McLean Rodeo Queen Friday afternoon. Miss Woods, who will be a freshman at McLean High School, was picked in judging at the Felton Webb Rodeo arena. She was introduced at each performance of the McLean 66 Roundup Rodeo.

LETTERS TO THE EDITOR

To the person responsible for mowing the right-of-way on the county line road east of McLean:

When I took my daily walk this morning I noticed, to my dismay, that when you mowed down those hundreds of ugly old wild flowers, you missed one spot by the El Paso plant because there's a deep ditch there and the mower couldn't get to them.

Might I suggest that you come out in person, cross the ditch, climb up the bank and cut them by hand. I'll even loan you a pair of cuticle scissors. Because they really need to be destroyed. They're blocking the view of some beautiful trash and a lovely, rusty, barbed wire fence. Besides that, they're holding down that great sand that forms such pretty dunes and builds up on our window sills when the wind blows.

Very sincerely,

Elsie Curry
Box 694
McLean, Texas

Saint's Rost Rodeo Set For July 4, 6, 7

For a real old-fashioned Fourth of July with genuine atmosphere enjoy Saint's Rost Rodeo in Clarendon, July 4th, 6th and 7th.

Three performances of the rodeo will be held with the first performance to be held on Wednesday, July 4th at 8:30 p.m. The other two will be Friday, July 6th at 7:30 p.m. and the final performance will be Saturday, July 7th, at 8:30 p.m.

Books for all rodeo events will be open one day only June 29, from 9 a.m. until 4 p.m. All entry fees must be paid for by cash only. Money sent by Western Union should be sent to Clarendon Rodeo, Childress, Western Union. All fees must be paid by 5 p.m. June 30th. NO EXCEPTIONS! Phone 806-874-2539.

For the kids rodeo events there will be a wild calf race and calf scramble each night. A drawing for Free Beef will be held at each rodeo performance also.

The annual western parade will be held at 2 p.m. on the Fourth of July with entries from across the area as well as local floats and horseback riders.

The Old Settlers Reunion and Fiddlers Contest are places to visit with long time friends and to enjoy toe-tapping music. Old Settlers will gather at 10:30 a.m. and last until noon. A cash purse will go to the winner of the Fiddlers Contest, to be held at 3 p.m.

One of the highlights of the day is the barbecue with serving to begin at 11 a.m. Al Morrach Shrine Club sponsors the barbecue and proceeds from the sale of tickets at \$3.00 per plate will go to benefit the Crippled Children's Hospital. Tickets may be purchased from any Shriner, the Farmers State Bank or Henson's.

Another event which brings



THESE FIDDLERS ALSO served as judges for the Old Fiddlers contest in the City part Saturday afternoon. [Photo by Lisa Patman]

CLASS MEETINGS

CLASS MEETING 1928-29

The classes of 1928 and 1929 met in the home of John B. and Winnifred Rice Sunday afternoon with special guests, class sponsor Carmen Ulm Mitchell and her husband W.M. Mitchell of Grand Rapids, Mich., attending.

Class members from the Class of 1928 attending were John B. Rice, S.A. Cousins, LaEuna Holloway Caldwell of Amarillo, and Francis Noel Kennedy.

Members of the class of 1929 attending were Winnifred Howard Rice, Johnie Villa Haynes Rodgers of Amarillo, Zella Mae Lankford Brown,

Noah Cunningham of Rockport, and Dorothy Cousins Patterson. Guests were Mrs. Noah Cunningham (Letha Roth Class of 1930), Gladys Smith (Class of 1925) and Mrs. Isabel Cousins.

CLASS MEETING - 64,65,66

The members of the classes of 1964,1965, and 1966 met in the City park Saturday afternoon at 2:30 p.m. for a brief reunion.

Attending from the class of 64 were Mike Johnson of McLean; Larry Williams of Denver, Colo.; Joe B. Taylor of Hereford; Barbara Simpson Coleman of Twitty; and Larry Pat Andrews of Oregon.

Attending from the class of

65 were Rusty Simmons of Denver, Colo.; Linda Tindall Williams of Denver, Colo.; Gary Turner of Oton; Jan Bailey Johnson, Linda Smith Littlefield, Johnnie Carpenter, all of McLean; Harry Tate of Littleton, Colo.; Elaine Baker Taylor of Hereford; Sue Green Stewart of Amarillo; Ann Terry of Amarillo; Marilyn Crisp; Ronnie Hunt of Washington; and class sponsor, Linda Haynes of McLean.

Attending from the class of 66 was Joe Magee of McLean. CLASS MEETINGS - 40's

Members of the classes of 1947,48, and 49 attended reunions at the senior citizens building Saturday and the Sam Haynes home Sunday.

Those attending the reunion Sunday were Mr. and Mrs. Roy Lowe, Mrs. JoAnn Howard Miller, Oma Bell Schmedell and her husband, and Sue Davis Simmons.

EXES
Continued From Page 1
Several classes held class meeting Saturday afternoon, and others met Sunday afternoon.

Activities for the ex-students were concluded at a dance Saturday night at the McLean Country Club with the Tre Harmon, directed by Delbert Trew, providing the music.



COACH GARRISON RUSH introduces some of the members of his football team from the 1930's during activities at the City park Saturday afternoon. Former Tigers pictured are Merle "Horse-collar" Norman, Vernon "Dusty" King, F. Jake Hess, and Hershel "Puff" McCarty. [Photo by Mike Haynes]



SHERRY GLASS READS her theme which won first place in the "My Home Town" contest, during activities at the City park Saturday afternoon. [Photo by Mike Haynes]



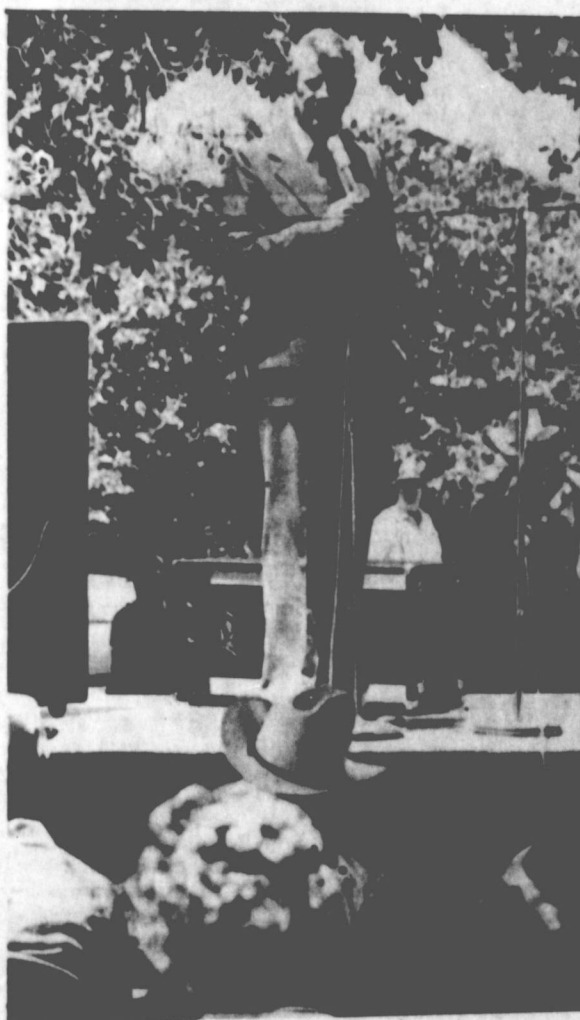
GEORGE TERRY WORKS to set the speaker system just right during the ceremonies at the city park Saturday afternoon. [Photo by Mike Haynes]



BONNIE BRASS, IDA HESS, and Linda Haynes sang three songs for the Homecoming crowd at the city park Saturday afternoon. [Photo by Mike Haynes]



JOHNNY HAYNES AND Don Taylor played the accompaniment for "Grandma's Feather Bed" Saturday afternoon at the City park. [Photo by Mike Haynes]



U.S. REP. JACK Hightower speaks to the Homecoming crowd Saturday afternoon. [Photo by Mike Haynes]



"HOW LONG DO YOU THINK YOU CAN GET AWAY WITH THIS?"

people of all ages regardless of socio-economic levels, race, color, sex, religion or national origin.

PESTICIDE CERTIFICATION:
I run across farmers who have not received their private applicator certification for restricted use pesticides. Farm operators need to come by the county extension office and obtain the necessary booklet and application form. You send the application in to the Texas Department of Agriculture. It takes a few weeks to get your certification. Therefore, you need to do this before you are actually going to seed the certification number to buy a restricted pesticide. It is not difficult and I encourage you to do this real soon.

MULCHING VEGETABLES PAYS BIG DIVIDENDS:
What miracle material prevents weed growth, conserves soil moisture, keeps soil at the right temperature, adds organic matter to soil, prevents the splashing of soil onto plants and fruit, and eliminates hoe fatigue? Mulch is this miracle material.

Mulching is a very important part of vegetable garden culture in our arid climate. Mulching makes vegetable gardening a more pleasant and productive endeavor by reducing the labor required to control weeds while increasing the yield and quality of your vegetables and enhancing the appearance of your garden. The best mulch material is clean wheat straw. There will be a good supply available around wheat harvest time. Wheat farmers often bale wheat straw for use later on. A four-to-six inch layer of straw will prevent weed growth.

Most home gardeners have a continuous supply of grass clippings during the growing season. Apply a three-inch layer of freshly cut clippings on the soil surface around direct seeded vegetables soon after they germinate and around tomatoes, peppers, okra and squash after the soil temperature reaches 70 degrees Fahrenheit (21 degrees Centigrade). Additional layers of clippings should be applied as the season progresses. Coarse leaves, collected the previous fall and composted through the winter, make a good mulch. Tree bark mulch gives the garden a neat appearance, but it is a relatively expensive form of mulch. Black plastic film, spread out on the soil surface with the film edges well anchored in early spring warms the soil in early spring and favors the early growth of the warm season vegetables: tomatoes, peppers, cucumbers, squash, melons and okra. The plastic must be removed at the end of the season. In the small home garden, organic mulches and black plastic mulch are more effective weed killers than chemical weed killers. Chemical weed killers are quite specific as to the weeds controlled and vegetables spared. There is no single chemical that can be used safely in a garden with many kinds of vegetables. The methods and timing of application for chemical weed killers are very precise. There is no room for error with chemical herbicides which are best used only by commercial vegetable growers. Your mulched vegetable garden will amaze you with its productivity, beauty and economy.

News from your County Agricultural Agent

By Job Van Zandt

GRASSHOPPERS:

As we write this news article, Gray County range operators are attempting to sign-up considerable acreage for a cost-share grasshopper spray program. Gray County also has a lot of areas with grasshoppers that will not be in any spray program. Producers and homeowners with grasshoppers will need to take care of your own grasshopper problem areas now. The sooner you spray heavily infested areas, the better success of control will be.

Look for signs of infestations along roadsides and wood patches and fence rows bordering cultivated fields. Many of the grasshoppers that damage new crops and gardens hatch in these life areas. Early treatment of these areas before the young hoppers move from their hatching will greatly reduce the amount of acreage that might otherwise require treatment later.

In some situations, crops and

gardens will need to be treated to prevent extensive damage. Baits applied to field margins have long been a means of grasshopper control. The following insecticides are approved for most crops, gardens and rangeland: Sovin, Diazinon and Malathion. In addition, Toraphos is approved for most crops and Pecanac and Dibrom are approved for grasshopper control in rangeland. Be sure and check label directions. If you have questions about grasshopper control, contact the Gray County Extension Office - 669-7429.

References to commercial products or trade names is made with the understanding that no discrimination is intended and no endorsement by the Texas Agricultural Extension Service of the Texas A&M University System is implied.

SICK PLANT CLINIC:

A clinic to diagnose sick plants, soil or insect problems will be held Tuesday, June 26th in the Courthouse Annex meeting Room, Pampa, Texas. The

The McLean News
USPS 336-260

LINDA HAYNES
EDITOR AND PUBLISHER
LISA PATMAN ASSOCIATE EDITOR
CAROL ALLISON BUSINESS MANAGER
201 N. Main P.O. Box H

Published each Thursday at McLean, Gray County, Texas
Second class postage paid at McLean, Texas 79057
Subscription rates: \$8 per year in Gray County
Outside Gray County \$9 per year
Open retail advertising rate: \$1.15
National advertising rate: \$1.64 (806) 779-2447

McLEAN TEXAS
POPULATION 1183 (1970 census)

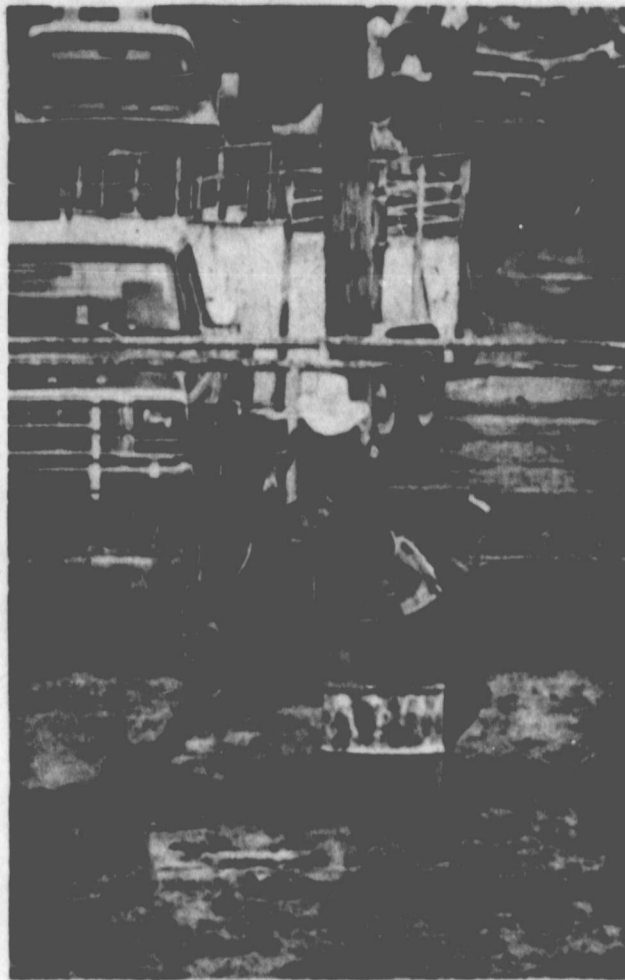
★ TEXAS PRESS
MEMBER 1979 ASSOCIATION



GREG GABEL OF the Gray County 4-H posted the colors at the McLean 66 Rodeo and Roundup last weekend. [Photo by Lisa Patman]



DEB CROCKETT OF the Gray County 4-H posts the Texas flag during the grand entry at the McLean 66 Roundup Rodeo last weekend. [Photo by Lisa Patman]



THIS YOUNG LADY turns a tight corner during the barrel race Friday night at the McLean 66 Roundup Rodeo. [Photo by Lisa Patman]

Site Of County's First Post Office To Be Marked

An official Texas historical marker will be erected at the site of Gray County's first post office early in July. Dedication ceremonies commemorating Eldridge Post Office will be held at 2:00 p.m. Saturday, June 30, at White Deer Land Museum, 116 S. Cuyler, in Pampa, when the marker will be unveiled and later installed in its permanent location. The unveiling will be done by Joe Shelton, a member of Gray County Historical Commission, and whose father, Charles E. Shelton, served as Gray County's second postmaster at the Eldridge Post Office in 1887-88. Location of the marker will be near its original site, on FM 291, 9 1/4 miles southeast of Lefors and 4 1/4 miles north of Alanreed. The Texas highway department will install the marker, which is made of cast aluminum with Swedish steel effect, measures 18 by 28 inches and is

sponsored by Gray County Historical Commission, according to Mrs. Fred Thompson, chairman of the commission.

The marking of local historic sites and landmarks is part of the Texas Historical Commission's program of preservation activities. These include archeological investigations, history museum consultation, and administering the National Historic Preservation Act in Texas. As of 1976 the historical commission had erected more than 7,200 official markers.

The name and location of the present marker will appear in the next edition of the Guide To Official Texas Historical Markers in order to stimulate tourist travel in this area, to arouse interest in historical tours, and to acquaint the people of this locale with their unique heritage.

The public is invited to attend the dedication program scheduled for June 30th.

T-Ballers Continue Winning Streak

The McLean T-Ball team defeated Lefors Monday night 22-2 at the local diamond. Quinton Brown led the Kitten hitting attack with three home runs, and Sid Brass, Dusty Joiner, Kyle Woods and Tony Hambricht played excellent defensive games for the home team. McLean's final home game of the season will be Thursday night at Wheeler against the

Wheeler #1 team.

A victory against Wheeler Thursday will preserve an undefeated season for the Kittens and give them outright championship of the league.

Powerful anti-itch drug you can buy without an Rx!

Stop itching fast of external vaginal, rectal, and other skin conditions. Doctors find even severe itching can be treated with a special drug. You can now get this anti-itch drug ingredient with no prescription in BICOZENE®. Use only as directed. The medically proven cream for itching.

The scientific chemical industry was born with the work of James Keir, who in 1780 developed a process for the commercial manufacture of caustic soda from waste sulphates.

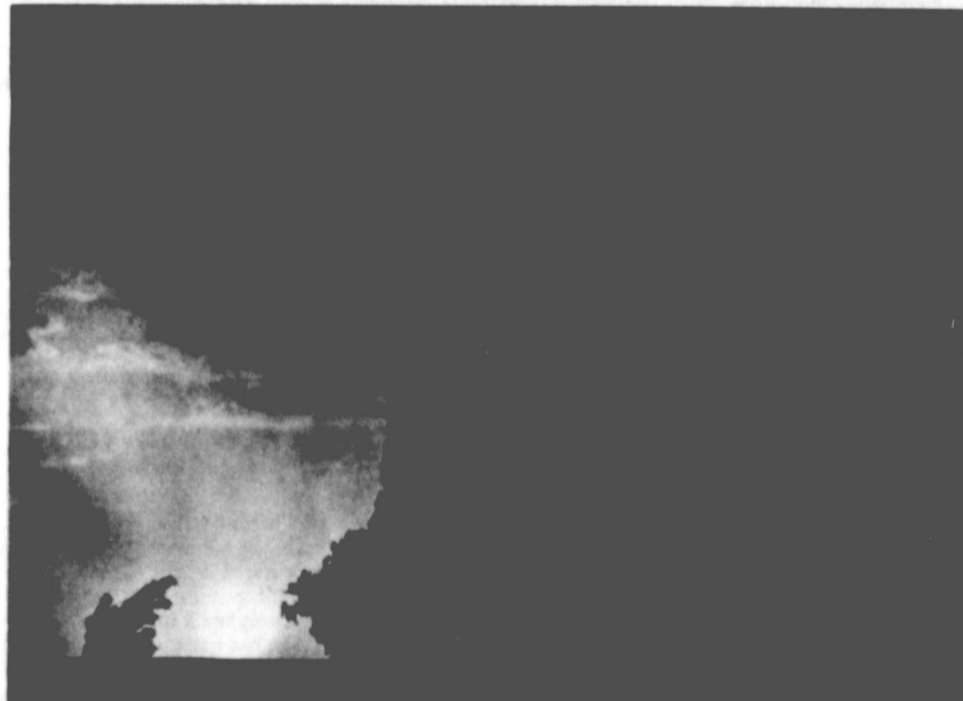
FOR A LEADING CANCER INSURANCE:

LIFE TIME RENEWABLE
PAYS DIRECTLY TO YOU
PAYS IN ADDITION TO
OTHER INSURANCE

CALL JERRY CORBIN
779-2002



THESE RIDERS GOT a good start at the McLean Ranch Horse Race Saturday afternoon near McLean. [Photo by Lisa Patman]



RAIN CLOUDS THREATENED the final performance of the McLean 66 Roundup Rodeo Saturday night, but failed to materialize. [Photo by Lisa Patman]

Tigers Defeat Wheeler, Miami

The McLean Babe Ruth league Tigers travelled to Wheeler last week and defeated the Wheeler lads 11-9.

Dudley Reynolds allowed only two hits and contributed some timely hitting in the victory. A number of Wheeler's runs were the result of walks.



Water covers about three-fourths of the earth's surface.

The Tigers scored 5 runs in the final inning, and Wheeler came up short in their last inning rally.

Friday night the local lads won a double-header from Miami, with Randall Wynn and Robert Sprinkles emerging as the winning pitchers.

Information has it that the Tigers are as yet undefeated and are leading the league with only doubleheader with Wheeler and a single game with Lefors remaining on the schedule.

A 13 year-old all star tournament will be held during the first week of July in Pampa.

The 13-14-15 year old all-star tournament will be held the following week in Pampa.

Safemark
Tires & Batteries
Sweeps & Discs
BENTLEY'S FERTILIZER
779-2209

With the beginning of radio, Americans have been charmed by the continuing sagas of make-believe lives. From "Stella Dallas", "Young Widder Brown", "Ma Perkins", and "Just Plain Bill", to the present "As The World Turns", "General Hospital", "Days Of Our Lives", and "The Guiding Light", audiences have waited from one episode to the next to enjoy the excitement of other people's lives.

And while I have, from time to time, found myself captivated by the antics of Monicas, Adams, and countless Bills and Bobs, I am constantly surprised by the unreal plots the shows' writers come up with.

For instance, have you ever known a real-life situation in which a woman gave birth to her husband's brother's son, divorced the husband, contracted amnesia, left her child with shifty-eyed strangers, was in a horrible accident in which her face was so badly burned that she had to resort to plastic surgery, wandered into a foreign land, was captured by gypsies, escaped and eventually became a nun, left her nunnery to marry a man who turned out to be her original husband, gave birth to her husband's brother's son....

No? Well, tune in folks, because you can get it all on the tube.

In your average run-of-the-mill soap opera, a single character can find himself mutilated, married, adulterated, divorced, remarried, adulterated, redivorced, amnesia'd, fatally diseased, miraculously cured, falsely accused, wounded, cheated, embezzled, stabbed, shot, garroted, and eventually murdered....and that's just for starters.

In a soap opera nobody is fat, ugly, sloppy, constipated, heartbroken by psoriasis, eaten up with ringworm, or plagued by hangnails, dandruff, or bad breath.

(An occasional kidnap victim may have his hair slightly

mussed, and if he has been in captivity for over a month his shirt may become a bit wrinkled, but for the most part the families seem to be spotlessly clean and well groomed even in the middle of a fight scene.)

And although the characters commit the most disgraceful deeds, cheerfully murdering their lovers, marrying their priests, and telling ghastly lies about their only remaining friends, they never swear, tell jokes, have gas, go to the bathroom, run out of bread or milk, spill catsup on their shirts, scratch, belch, or wiggle.

If Dear Meg is forced into a life of shame, living in something referred to as a "squalid apartment", the place is spotlessly clean and has been decorated by the staff of "House Beautiful."

Further proof of the unreality of these programs is that none of the characters has either owned or seen a television set, toilet, dirty diaper, cluttered living room, washing machine, dying Philodendron, spotted drinking glasses, jellied doorknobs, unmatched dishes, molding food in the refrigerator, or dirty handprints on the woodwork.

But the most positive clue to the fact that these plots are about as far removed from reality as one can get is this.....None of the characters on the show ever watch soap operas!

Nearly three billion pounds of soap are produced yearly in the United States.

The French Connection

The glamorous French cradlephone has been reborn in America, where it's known as Antique Gold®. Its carved gold-colored figures and rich ivory trim make it the last word in period-style decor.

And, because it's genuine Bell, you know you're getting top quality. You never have to worry about repairs, either, because the Bell System retains ownership of your phone's working components and repairs them without additional charge anytime there's a problem.

Make your French Connection at your nearest PhoneCenter Store, where you can also choose from a variety of other colorful and attractive styles. Or call your local Southwestern Bell business office. Choose a phone that's genuinely you and genuine Bell.

The Antique Gold. \$24 a month for five months or a one-time charge of \$120. Prices do not include taxes or, if applicable, installation and recurring charges. If necessary, hearing aid adapters are available from your telephone company.

Registered trademark of American Telecommunications Corporation.

THE CHOICE IS YOURS. BE CHOOSY.

FENCING

CHAIN LINK-WOOD

RESIDENTIAL-COMMERCIAL-INDUSTRIAL

FREE ESTIMATES CALL COLLECT

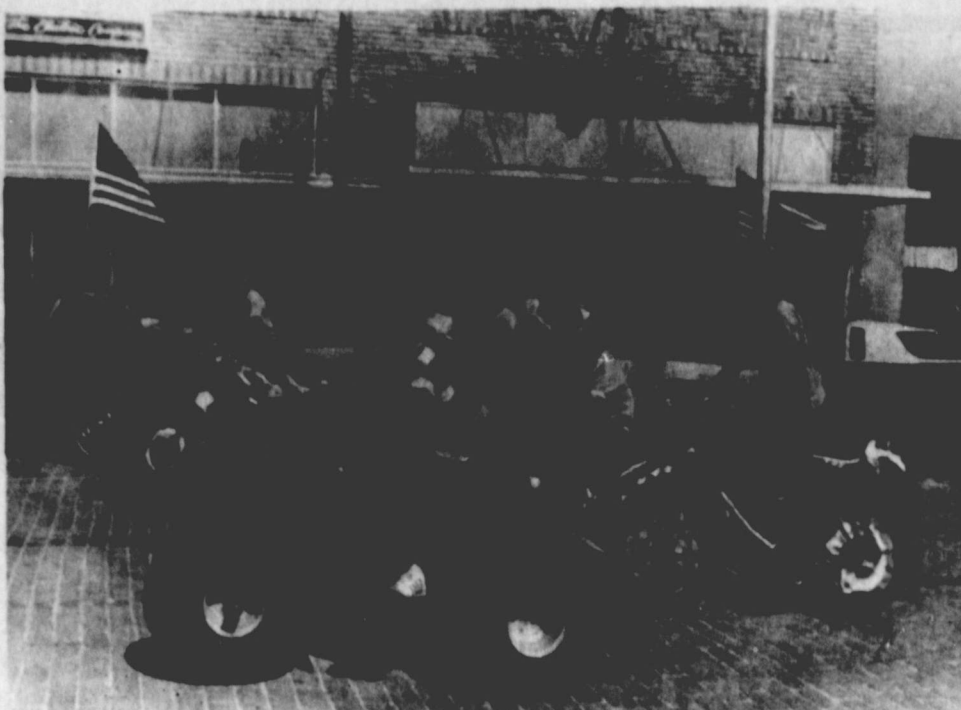
GUARANTEE BUILDERS & SUPPLY

716 S. CUYLER PAMPA, TEXAS 669-3286

W
2
E
C
I
W
t
v
b
N
8
th
ca
Pal
Sec
Out
Op
Nat



THE AMERICAN FLAG and the Texas flag led off the McLean 66 Roundup Rodeo parade Saturday morning. [Photo by Linda Haynes]



THESE YOUNGSTERS ON their three-wheeled scooters and bicycles add a colorful note to the McLean 66 Roundup Parade Saturday morning. [Photo by Linda Haynes]



THIS FLOAT SPONSORED by the Security State Bank in Hedley won first prize in the McLean parade Saturday morning. [Photo by Linda Haynes]



SOME McLEAN YOUNGSTERS drive a pony cart in the McLean 66 Roundup Rodeo parade Saturday morning. [Photo by Linda Haynes]

"He who doesn't think too much of himself is much more than he thinks." Goethe
 "Those who know their minds do not necessarily know their hearts." La Rochefoucauld
 "With a woman first thoughts are best, with a man, second thoughts." Italian Proverb
 "Republics come to an end by luxurious habits; monarchies by poverty." Montesquieu



In 15th century India, some people mixed amber with food as a medicine.

Shortening
CRISCO
 3 lb. can  \$1.99

Kingsford Charcoal
BRIQUETS 10 lb. Bag \$1.89

Shurfresh Spread
CHEESE 2 lb. \$1.99

GLADIOLA Yellow or White
CORN BREAD MIX
 Pouch
2 for 39c

Gold Medal
FLOUR 5 lb. Bag **89c**

Borden's Round Carton
ICE CREAM 1/2 gal. \$1.49

Kraft Spread
CHEESE WHIZ 16 oz. \$1.59

Sweetened
KOOL-AID 10 Qt. Can  \$1.79

Eagle Brand
MILK can **79c**

COMET Long Grain Wild
RICE
 6 oz. Box **89c**

Clorox
BLEACH
 gallon **89c**

Shurfresh
OLEO
 2 lbs. **89c**

Meats
 U.S.D.A. Choice
GROUND BEEF lb. \$1.39

U.S.D.A. Choice Boneless
CHUCK ROAST lb. \$1.79

Vegetables
 California
NECTARINES lb. 55c

California Red
ONIONS lb. 25c

U.S. #1 Long White
POTATOES 10 lb. Bag \$1.19

Tendercrust Bread
 and
 Bakery Products
 Specials Good
 June 21, 22, & 23

SIMPSON'S
 LOWEST EVERYDAY
 FOOD PRICES
MARKET

SHURFRESH
 MILK
 FOR
 GOODNESS
 SAKE



LEARN TO READ YOUR ELECTRIC METER AND SAVE!!!

It will let you determine how many kilowatt hours you use in a given period of time — an hour, a day, a month or a year. That's how electricity is measured — by kilowatt hours (kwh) used.

Your residential electric meter will have either 4 or 5 dials.

Electric meters are easily read from right to left as you look at the meter. If the pointer on a dial is between two numbers, write down the smaller number. When the pointer is directly on a number such as one (1) (see center dial above) then read it as 1. If the pointer on this next dial immediately to the right has passed zero (0), however, read it as zero (0) if the pointer on that dial to the right has not reached zero.

The date above read from left to right: 9-3-1-1-5. If, however, the pointer on the second dial from the right above was between 9 and zero then the center dial would read as a zero.

Now let's read the same meter 24 hours later.

The later reading is 9-3-1-2-5. Subtracting the first reading, 93115, from the new reading of 93138 — the answer is 23. That you would have used 23 kilowatt hours in the 24 hour period. Each kwh costs approximately five cents.

When you learn to read your electric meter, you will be able to see where your energy dollars go. Then learn to use energy wisely & save!

SPS

Baby Ruth & Butterfinger
CANDY BARS
4 for 95c

Del Monte 303 can
PEAS 2 for 73c

64 oz. NO RETURN BOTTLES
COCA COLA 89c

Lipton's
TEA BAGS 100 count \$2.39

Borden's 64 oz bottle
ORANGE DRINK 59c

Borden's
WHIPPING CREAM 2 for 69c

Shurfine 8 oz. can
TOMATO SAUCE 4 for 89c

Sunshine Fig Bar
COOKIES 16 oz. 89c
Reg. 2.89

24 oz. BOTTLE
LISTERINE \$1.49

Borden's 1/2 gal.
BUTTERMILK 88c

Corn King 2 lbs.
BACON \$2.49

Kraft singles
CHEESE 12 oz. \$1.59

Mr. Turkey
HAM lb. \$1.89

 **CRISCO**
3 lb. CAN \$1.98

Nestea
INSTANT TEA


3 oz. jar
\$1.89 

CHICKEN OF THE SEA
TUNA 79c



Libby's
CORNER BEEF HASH

 89c

Gold Medal
FLOUR 5 lb. bag 79c 

DINNERS



Patio Mexican Dinner 12 oz.
Patio Fiesta Dinner 12 oz.
Patio Beef Enchilada Dinner 13 oz.
Patio Combination Dinner 11 oz.

69c each

Ore Ida
TATOR TOTS

 2 lb. pkg. 79c

Del Monte 303 can
CORN

Shurfine 303 can
APPLESAUCE

Libby's Blue Lake cut 303 can
GREEN BEANS

Del Monte 303 can
SPINACH

3 FOR \$1

Van Camp's 300 can
PORK and BEANS 3 for 89c

Frito Lay Ruffles Potato
CHIPS Reg. 89c 59c

Kraft Jet Puffed
MARSHMALLOWS 1 lb. 49c

Med. Shurfresh or Tyson
EGGS 59c

SPAM 12 oz. can \$1.19

Everfresh 14 oz.
DOUGHNUTS 79c

PRODUCE

California
PEACHES lb. 49c

No. 2 long white
POTATOES 10 lb. bag 89c

California Red
ONIONS lb. 29c

CARROTS 2 - 1 lb. bags 39c

CANTALOUPE each 69c



Puckett's

Specials Good June 21st - 23rd

