

Growth Of Eldorado Schools Has Been Very Rapid

Since the establishment of schools in Eldorado in 1897, only thirty-seven years ago, the school system here has grown from a small one-roomed, one-teacher school with an enrollment of seven pupils, to a fifteen-teacher system with an approximate enrollment of four hundred pupils, fifteen school rooms, and twenty-five and one-half credits of affiliation.

The school began as a one-teacher affair back in 1897. The building was a one-roomed, wooden structure, standing where the J. N. Davis Service Station now stands. E. E. Striklen was teacher. By the end of the term, the school had grown to an enrollment of approximately forty.

There were no other distinctive developments in the school system until 1902. The wooden building was moved to a site only a few paces from the site of the present building. C. A. Stone was superintendent in 1902. He was assisted by Miss Lee Fields. In 1903, an additional room was built. Lewis Wardlaw, who is now well known lawyer, was superintendent. One of the teachers in 1903 was Mrs. J. E. Tisdale who is now a well known resident of Eldorado. In 1904 the school had grown to an enrollment of approximately 100, employing three teachers. Mr. J. A. Thomas, a prominent attorney at San Angelo until his death recently, was superintendent of the schools in 1904.

Additional rooms were added in 1905 and 1906, bringing the total rooms to five. J. B. Smith, now in the insurance business in San Angelo, was superintendent from 1906-16.

In 1909 a beautiful brick building (upper right) was erected at the cost of \$20,000. The records of 1910-1916 have been lost.

In 1916, C. A. Stone was superintendent and the school had an enrollment of 263. By 1922 the school had gained 13 credits of affiliation and had an enrollment of 331, fourteen of whom were graduates. There were thirteen teachers in the school system.

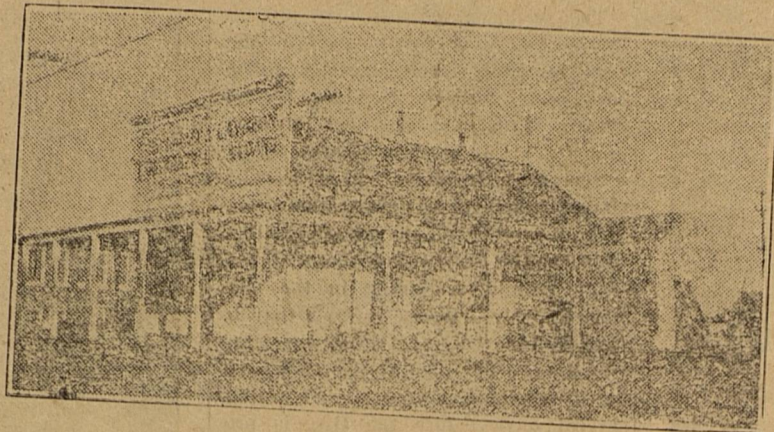
In 1925 the building was remodeled and added to make the present beautiful (though inadequate in size) building (lower). The value of the building is \$75,000. It contains 15 rooms and a nice auditorium. The school now has 25 1/2 affiliated courses. R. D. Holt has been superintendent since 1927 and the enrollment of the school is now approximately 400.

It is interesting to note that the growth of the school has been constant and continual since 1902. During the years 1902-1906, a room a year was added to the school, and since the school began its rapid growth in 1902, it has averaged better than a new room every two years.

If the school bond carries tomorrow the total number of class rooms will be brought to 23. The new building is to have eight class rooms and an auditorium and gymnasium.

With the construction of the new building, the Eldorado schools will be given better than an outside chance continue its remarkable growth. Several impractical courses will be dropped from the curriculum next year and the more worthwhile vocational courses will be added, provided adequate room will be obtained by the passing of the bond issue Saturday. Those subjects to be dropped are Trigonometry, 3rd year Spanish, and public speaking. These are elective courses and are very infrequently demanded. The school board now plans to add six vocational courses: three in agriculture and three in home economics.

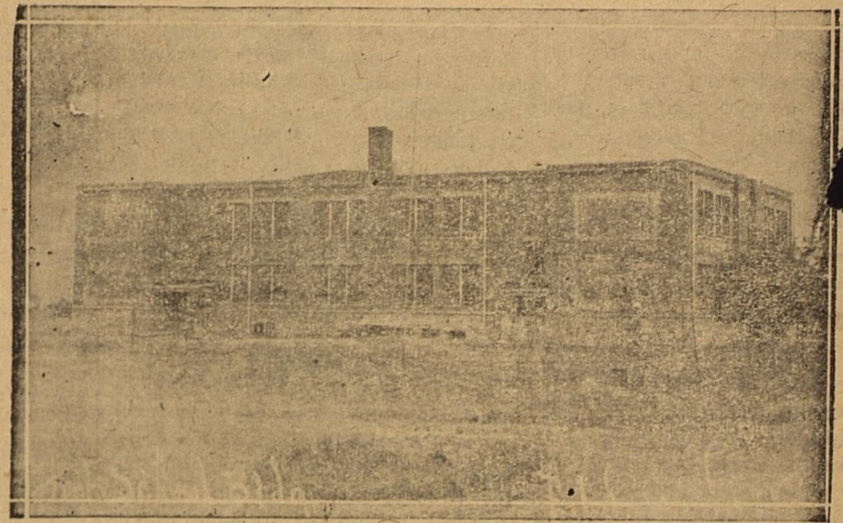
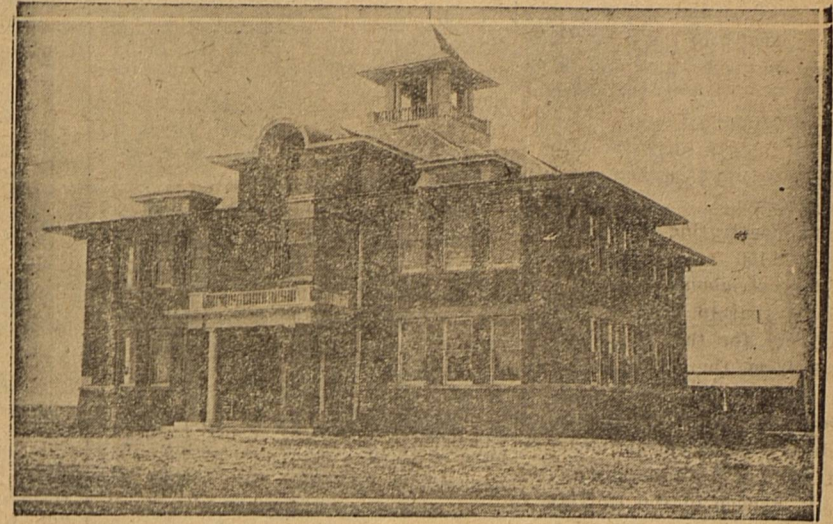
Our schools are our pride; we can't go back on them now. They are continually growing better and we must give them the chance that they deserve to become the ideal foundation



These scenes are pictures of the progress of the Eldorado school system. The picture in the upper left corner is Eldorado's first school building as it now looks. The building has been moved from its original location, and overhauled, but its general appearance is much the same as it originally was. In times past, the original school building has been used for a church, county clerk's office, pool hall, saloon, general office, and whatnot; but to Eldorado's first school children, it still remains a beloved edifice of learning, and to Eldorado in general, it is still an interesting landmark. The building now stands near the city reservoir.

The upper right is the building of 1909. It is an emblem of Eldorado's progressiveness in educational lines. The building in the upper right proved too small to meet the needs

of a growing little city and a well planned, modernly equipped building has taken its place. The present building (lower left) was constructed in 1925, another milestone in the development of a fine school system here. This building, though it is in good condition, is also inadequate for the present needs of our growing school system. The new building which is being planned will provide a grammar school separate from the high school. It is to have eight rooms and a sorely needed combination gymnasium and auditorium. It is hoped that every citizen will express himself as being in favor of the school bond issue tomorrow and that there will not be a dissenting vote. Wouldn't that be history in educational progress—never made anywhere else in the world?



of a firmer and more substantial civilization of tomorrow.

(Acknowledgement: We are greatly indebted to Superintendent R. D. Holt and his History of Schleicher county for information concerning the school history.)

INTERESTING SIDELIGHTS ON THE HISTORY OF THE ELDORADO SCHOOLS

First Graduating Class

The first graduating class of the Eldorado Public schools consisted of four girls and one boy. They were Alvis Bearce, Lula Womack, Pearl Bailey, Minnie Strother, and Clifford Womack. The exercises were held in the Baptist church with Reverend Earls as speaker of the occasion. This class finished the tenth grade. The year was 1907.

Builders of 1909

Members of the board which built the school of 1909 were M. B. McKnight, president; J. B. Christian, secretary; F. L. Cozzens; W. B. Shilman; C. H. Murphy; C. C. West; T. L. Benson. P. A. Williams was contractor and Waller, Shaw and Field were architects.

Builders of 1925

Members of the board which built the building of 1925 were George Williams, president; T. P. Robinson, secretary; A. J. Atkins; F. M. Bradley; Tom R. Henderson; R. P. Hinyard, and W. Dean Swift. Swartz and Hamberlin were architects; and Carter and Hall were contractors.

Builders of 1934

Members of the board which is endeavoring to build the new building are B. E. Moore, president; L. L. Baker, secretary; Jess Koy; J. H. Lusdecke; W. B. Nicks; E. M. Reynolds; and Will Steward. R. D. Holt, our present superintendent, is also hard at the job.

WHY ADDITIONAL ROOM IS NEEDED

1. Crowded conditions.
2. No room for vocational courses which are the backbone of present-day education.
3. Adequate room is necessary for high standards of work.
4. Clean, sanitary, artistic school homes mean higher ideals for the youth of the community.
5. The construction work would provide labor for our unemployed.
6. Eldorado needs a separate building for grammar school and high school in order to do better work.
7. Eldorado is only high school in this section which does not have gym.
8. The school district is in good shape financially because of the economical program of our present board and superintendent; the district can afford to furnish adequate room for its school children.
9. A new building will allow two additional teachers who can be obtained for the district for the price of one teacher since the federal and state government furnish one of every two vocational teachers.
10. Good schools enhance the value of property and induce people to move

into the community.
11. Schools must be maintained in order to strengthen civilization and lessen crime.

Stomach Gas

One dose of ADLERIKA quickly relieves gas bloating, cleans out BOTH upper and lower bowels, allows you to eat and sleep good. Quick, thorough action yet gentle and entirely safe.

ADLERIKA

RITZ

Sandwich Shop

Plate Lunch 35c

(With drink and dessert)

ANNOUNCEMENTS

We are authorized to announce the following persons for office subject to the action of the Democratic Primary July 8th, 1934.

For County Treasurer.
MRS. MABEL PARKER.
MRS. ELLEN E. CLOUD.
MRS. MATTIE COZZENS.

For County Sheriff, Tax-Assessor and Collector
O. E. CONNER.
J. H. LUEDECKE.

For District and County Clerk.
W. N. RAMSAY.
J. F. ISAACS.

For County Judge.
F. M. BRADLEY
H. W. FINLEY.

For District Attorney.
GLENN R. LEWIS
MILTON HEATH

For Commissioner Precinct 1.
HENRY SPECK.
JOHN WILLIAMS.

For Commissioner Precinct 4.
W. J. WARREN.
HENRY MITTEL
ELDRED B. ROACH

For State Senator 25th District.
PENROSE B. METCALFE
San Angelo, Texas.
E. M. DAVIS
Brownwood, Texas.

For Congress, 21st District
CULBERSON DEAL,
San Angelo, Texas.
E. E. (Pat) MURPHY,
San Angelo, Texas
CARL RUNGE,
Mason, Texas.
CHAS. L. SOUTH
Coleman, Texas.

For Justice of the Peace, Prec. 1
C. C. DOTY

For Commissioner Precinct 3
PAT MARTIN.

"SELL A TELEPHONE NEXT DOOR"



"MRS. MOOCH really needs a telephone. Why! she uses mine five or six times a day! I hate to say so to her, but it's getting to be a nuisance to us now!"

San Angelo Telephone Company

L. M. BARNES TRUCK LINE

Daily Service, San Angelo, Eldorado, and Sonora. Connections to all points. Nothing to sell but Service.

Borrow From A Friend

AT NEW LOW RATES OF INTERESTS BRING ANY LAND FINANCE PROBLEM TO

TED B. BROWN

11 Years In Angelo
307 San Angelo National Bank Building

THAT

GODD GULF GASOLINE

WASHING and GREASING EXPERT TIRE SERVICE

AT

The Eldorado Service Station

PHONE 75

Humble SERVICE Station

BEN L. ISAACS, Prop.

I handle Firestone Batteries, Tires and Tubes. We recharge batteries.

PHONE 43



Draughon's Business College

SAN ANTONIO, TEXAS

More than forty years of Honest Business Dealings won Draughon's Business College in San Antonio un-
tioned supremacy in Business Education. The proof of their popularity is in their steady increase in enrollment, and the exceptionally high standard of study found in the class rooms. Draughon's Business Administration and Secretarial courses have won the consideration every thinking student.

Draughon's have a plan whereby worthy boys and girls from out of town may earn room and board while attending school.

Call or write Draughon's Business College in San Antonio spelled D - R - A - U - G - H - O - N - S. If interested, return today.

NAME _____
ADDRESS _____

McCARROLL'S

Red Cedar Floor Sweep

CASH SERVICE STATION

PHONE 183

J. N. DAVIS

Complete Warehouse Service

IN CONNECTION WITH

Wool-Mohair-Supplies

Wool Bags — Fleece Twine — Sewing Twine
Branding Paint — Fly Repellant — Screw
Worm Killer — Salt

ELDORADO WOOL CO.

LET'S BACK OUR SCHOOL!



Above is a drawing of the proposed school building which will be decided upon in tomorrow's bond issue. The building will have eight badly needed class rooms and a badly needed combination gymnasium and auditorium. The new building will be used as a grammar school. It is to cost about \$45,000. Let's make it a unanimous proposition. Everybody vote tomorrow for the bond issue. We would like to put Eldorado on the map in the educational field with a 200-1 vote for the bond issue.

WE ARE FOR THE SCHOOL

Gulf Service Station
J. N. Davis
R. C. Morgan
W. H. Graves
Jno. R. Jones
W. Ray Jones
Wm. Cameron & co. Inc.
Legs McAngus
W. E. McAngus
E. M. Willis
Leslie Baker
Conn Isaacs
T. F. Kinnamon
Van McCormick
Bell Sample
Hoover Drug Store
Lewis Stockton
A. T. Wright
Ben L. Isaacs

Hamburger Bill
O. E. Conner
Ruth Espy
Joab Campbell
Bill Davis
Eva Beauty Shop
Long Variety Store
Ritz Sandwich Shop
Harris Rounds
Pete Parker
J. C. Carr
R. A. Evans
F. M. Bradley
C. Snell
Mabel Howell
Mrs. Josephine Sheffield
Grace Roberts
West Texas Lumber co.
F. W. Carr

Chesney Boot Shop
Sample Dairy
M. E. Doyle
Annice Putman
H T. Finley
The Ratliff Store
John Copeland
Bryant McCutcheon
E. W. Brooks
San Angelo Telephone Co.
Melvin Harris
E. H. Sweatt Saddle Shop
W. C. Doyle
L. B. McClary
Victoria Jones
Texas Service Station
L. T. Barber

