



# Halloween Carnival 6:00-8:00 Memorial Building



# The Eldorado Success

50 cents

"The World's Only Newspaper Dedicated to the Citizens of Schleicher County and Eldorado!"

Volume 90 #44

Eldorado, Texas... "Down-Home Living at the Top of the Divide!"

October 31, 1991

## 6th Annual Game Dinner

Saturday, November 2nd

The Eldorado Game Association's 6th Annual Game Dinner is set for Saturday, November 2nd at 6:30 p.m. in the Ag Barn.

Gary Smith will be the MC for the night. The guest speaker will be Dale Robins, with the Texas A&M Research Center in San Angelo.

The contests for this year are: Longest Spike - winner

receives a Rifle Scope; Doe Drawing - winner receives a Rifle scope; Spike Buck Drawing - winner receives Binoculars; Longest turkey Beard - winner receives Binoculars. You may register at Shot's or McCormick's Exxon.

The Wildlife Management Award will be presented for the 4th year. The recipient for this award is

selected by the Eldorado Divide Soil and Water Conservation District. The Eldorado Game Association and the Eldorado Divide Soil and Water Conservation District present the awards which are donated by the First National Bank of Eldorado.

Numerous door prizes will be drawn for, including Guns, Feeders, coolers, etc., so makes plans to attend now!

## Rodeo Team Finishes Fall Season

Wins Team Trophy



1991-92 High School Rodeo Team

The Eldorado High School Rodeo team finished the fall season winning the Team Trophy in Rankin.

The results of this Rodeo are as follows:

### Saturday, October 12

Cy Griffin - 1st-Calf Roping; Traci Paxton - 9th-Barrels; Mondee Nelson - 1st-Cutting, 3rd-Barrels, 2nd-Poles; Crissi McCormick - 34d-Cutting, 6th-Goat Tying, 4th-Poles; Stoney Hariman - 2nd-

Saddle Bronc; Rusty Criswell - 3rd-Saddle Bronc; Lindsey Johnson - 10th-Goat Tying, 4th-Break-Away; Jodie Hooten - 7th-Break-Away; Mandy Belk - 9th-Goat Tying; Isis Pina also participated.

### Sunday, October 13

Mandy Belk - 10th-Goat Tying, 7th-Pole Bending; Jodie Hooten - 10th-Barrels; Lindsey Johnson - 9th-Goat Tying; Rusty Criswell - 1st-Saddle Bronc; Jamey Belk - 1st-

Team Roping; Stoney Hariman - 2nd-Saddle Bronc; Crissi McCormick - 1st-Pole Bending, 2nd-Break-Away, 1st-Goat Tying, Tied 2nd-Cutting; Cy Griffin - 4th-Calf Roping, 4th-Steer Wrestling, 1st-Team Roping; Mondee Nelson - Tied 2nd-Cutting, 9th-Pole Bending, 1st-Barrels.

The Spring Rodeos will start on March 13-14 for six rodeos in Crane, Odessa, Andrews, Del Rio, Sonora and San Angelo.

## Eagle Band Marches on to District

by Mary Nolan

The Eldorado Eagle Band was selected Saturday in District Contest to advance to U.I.L. Regional Contest. The Mighty Eagle Band received a Division One, or Superior rating, from all three judges in Class AA.

This Saturday, November 2, the Eagle band will perform at the Regional Band Contest in Abilene. The contest will be held at Shotwell Stadium in Abilene. The Class AA Bands will begin performing at 1:15

p.m. Eldorado will perform at 2:20 p.m. and the results will be announced at 3:35 p.m. An admission fee of \$2.00 will be charged at the gate.

A special Thank You goes out to the Fire Department, the Sheriff's Office, the parents, and all the people who welcomed the band home Saturday night after District Contest. Your support means so much to the band, the band directors, and the Bandaide Booster Club.

## Congratulations Cross Country Boys & Girls On To Regionals!

Story next week

## Pre-Game Pep Rally

The Varsity Cheerleaders want to invite all of the Eagle fans to join them in a Pre-Game Pep Rally at the Football Field Parking Lot at 7:00 p.m. Friday night.

The Cheerleaders, FHA, Student Council, and Booster Club will be providing refreshments for everyone.

We encourage everyone to attend, and to decorate their car to show their Eagle Pride.

## New Water Tower Under Construction



Eldoradoans look on as Father McCarty and Mayor Nikolauk break ground for the new water tower.

A brief ground-breaking ceremony was held Tuesday morning at the site of the new Eldorado watertower.

Father Jerry McCarty offered a prayer for the tower and he and Mayor John Nikolauk presided in the ground-breaking.

Several local citizens attended, including pastors from the Presbyterian and United

Methodist Churches and members of the City Council.

The project is being made possible by a 1989 grant from the Texas Community Development Program.

One general contractor and four sub-contractors are presently working on the project. In addition to the tower itself, a fire plug is being added to serve that section of town.

The Texas Department

of Health had stated that our current 50,000 water tank was not adequate. This new tank will also have a 50,000 gallon capacity.

The tank will be located on the corner of Cottonwood and Pasco de Vaca on a lot that the City purchased from the Catholic Church.

The tank will be lit and will have the emblem of an Eagle on it.

## Eagles Defeat Buffaloes 40-0

### VARSITY

In a 40-0 shutout, the Eldorado Eagles defeated the Forsan Buffaloes. The game was played in Forsan on Friday, October, 25.

A number of Eagle players had an outstanding game. Cy Griffin made a run for a 20 yard touchdown. Jason Whitten an Farley Dakan were responsible for touchdown plays. Jason's TD was an 8 yard play and Farley's was for 7 yards.

Jorge Arispe made a two yard touchdown play. Reagan bounds ran one 50 yards for a touchdown and Michael Gomez carried home a 13 yard TD.

A fine interception was made by Jamie Belk. Joel Martinez recovered a fumble to help in this Eagle victory.

The team played very strong defensively. According to Coach Doug Kuhlmann, Josh Blair, Rudy Saldivar, Homer Minor, Jamie Sanchez, Jamey Belk, Matt Lloyd and Travis Sallee all deserve special recognition.

Said Kuhlmann, "We played a fundamentally sound game. This puts us in the right frame of mind for our upcoming game against Wall. The Wall game is a do or die situation as far as play-off possibilities are concerned."

The Current Eagle record is 6-1-1, with a district record of 3-1-1.

The Wall team has demonstrated a lot of speed during this season. The Eagles have a strong defense. The game Friday night should be an interesting contest.

### JUNIOR VARSITY

The J.V. Eagles lost to Sonora 2-0 in a contest played here last Thursday night.

The game was a defensive struggle with neither team able to generate much offense.

The only score was a safety in the second quarter, when Quarterback Travis Whitten was tackled in the end-zone.

Defensive stand-outs were Cornerback Landon Neal, Linebacker Cody McCravey and

Defensive Tackle Carlos Estrada.

Strong offensive plays were made by Landon Neal and Travis Whitten. According to Coach Michalewicz, Travis had a very good game at quarterback for it being his first start in that position this year.

Although the Eagles had a couple of very good offensive drives, they were unable to put points on the board.

Said Coach Paul Michalewicz, "I was very proud of our defensive efforts. We are still making mistakes on both sides of the ball, but our intensity and aggressiveness have improved."

The J.V. record stands at 4-4. Their next game is against Wall in Wall tonight at 7:00.

### EIGHTH GRADE

The eighth grade boys football team played Sonora, there, last Thursday night. The final score was Sonora 26, Eldorado 20.

Said Coach Rick Continued on page 3

## Health Fair Results

The results from the Annual Health Fair are at the Hospital. The abnormal results have been mailed, but the normal results are still in the lab. If you do not receive your results in the mail, but wish to have a copy, you may pick-up them up in the lab Monday-Friday from 9:00 a.m.-5:00 p.m.

# Editor's Journal

## TOP OF THE DIVIDE

by Thomas Giovannitti

I know it is Halloween but I want to talk about our national pastime. Many years ago, about 23 to be exact, I read an article in the Des Moines Register about baseball.

In that article the author, whose name I no longer can recall, wrote that he liked baseball because it so mirrored life.

In baseball if you get a hit a third of the time you are considered one of the best. In life it is much the same. Also, an outfielder has to spend a great majority of his time paying attention to events among the other players and still be alert for those one or two fly balls that come his way. This recent

world series points out yet again how baseball reflects life.

The Atlanta Braves had really captured the hearts of most Americans, except for a few die hard Minnesota Twins fans. Americans love the underdog, and, although the Twins also came from last place, they don't have an owner who owns a national television station. Ted Turner had made us watch the hapless Braves through many a losing season but this year proved to be different. The Braves started strong, wavered a little in the middle, and then held on in thrilling finish for the National League West title. They beat out none other than the vaunted

Dodgers. (Tommy Lasorda probably went back to eating fattening foods.)

After overcoming Los Angeles (they should still be in Brooklyn), the Braves had to be brave and take on the Pittsburgh Pirates, a team that had clinched the east nearly by all star break. Atlanta not only beat the Pirates but took the last two games from them in Three Rivers Stadium, the Pirates own park. Now came the world series against a powerful Minnesota team. After falling behind two games to none they rallied and beat the Twins three straight in Atlanta's Fulton County Stadium, a wonderfully prosaic

name for a big league ball park, and only had to get one more in the Twins' Super Dome. Well, as you all know they could not pull it off. Their pitchers did fairly well, but not quite well enough. Their hitting actually improved but, not enough to overcome the Twins or that raucous stadium.

Isn't that just like life? To do so well, to try as hard as you can, and then to not quite win it all. On the other hand, it is just like life that people admire the effort, see the honor that attends loss as well as triumph, and that there is reward if in our trying we have given others hope. The Atlanta Braves have done that and renewed another baseball fan.

## Gary Smith's



Laugh and Live

If you can't annoy someone, there is little point in writing.

-- Kingsley Amis

Many years ago, I found a poem about how people have the power to mold children. I never found out who wrote it, but it has a message that is just as essential today as it was when I first read it.

I took a piece of plastic clay And idly fashioned it one day, And as my fingers pressed it still, It moved and yielded to my will. I came again when days were past - The bit of clay was hard at last; The form I gave it, it still bore, But I could change that form no more. I took a piece of living clay And gently formed it day by day, And moulded with my power and art A young child's soft and yielding heart. I came again when years were gone - It was a man I looked upon; He still that early impress wore, But I could change him nevermore.

\*Till The Next Time...

MAY GOD BLESS!

### SUBSCRIPTION FORM THE ELDORADO SUCCESS

Date: \_\_\_\_\_  
 Name: \_\_\_\_\_  
 Mailing Address: \_\_\_\_\_  
 City, State, Zip: \_\_\_\_\_  
**Price Schedule:**  
 In Schleicher County \$20.00/YEAR  
 Senior Citizen \$18.00/YEAR  
 Out of Schleicher County \$25.00/YEAR  
 Senior Citizen \$22.50/YEAR  
 Send Check or Money Order to:  
 The Eldorado Success  
 Box 1115  
 Eldorado, Tx. 76936  
 (915) 853-3125

## Hear and Their

by SHERRY LUX

**4-H FOOD SHOW**  
 The Schleicher County 4-H Food Show is November 4th. Plan to attend!  
**MEN'S COMMUNITY BIBLE STUDY**  
 A Men's Community Bible Study is being held each Monday at 12:00 p.m. at the Eagle Dairy Mart. All interested men are invited to attend. They are currently studying the Gospel of Mark.  
**HAPPY BIRTHDAY**  
 October 31  
 Carlos Estrada, J.R. Arispe  
 November 1  
 Amy Newton, Lanis Mikeska

November 2  
 Michael Ramirez, T.J. Rodriguez  
 November 3  
 Cameron Paulson, Danielle Guadarrama, Jimmy Martin  
 November 4  
 Red Griffin  
 November 5  
 Danell McCormack, Sarah Yates, Bobby Dale Phillips, Trey Morrison  
 November 6  
 Frank Edmiston  
**HAPPY ANNIVERSARY**  
 November 4th  
 Charlie & Cathy Niblett

## Health News

by Dr. Rico Forlano

As we age, the vertebrae in our spine lose their smooth shape; the spinal muscles lose their elasticity, weaken, harden and the discs shrink. The aging process causes the spinal column to become distorted, losing its flexibility and strength. This puts stress on the spinal nervous system, which is the lifeline of the body.

The discs are the bodies shock absorbers between the vertebrae in the spine. By the age of 40, 80% of males and 76% of females exhibit moderate disc degeneration. Spinal degenera-

tion causes the disc degeneration. Spinal degeneration happens with age, but it is not a "normal" part of aging. People who have accidents, falls, and athletic injuries are more likely to suffer from disc and spinal degeneration.

Chiropractic spinal manipulation can decrease the speed at which this degeneration occurs. If you have had an accident or some type of injury you should have a spinal evaluation when you are younger, before the degeneration causes symptoms of pain and stiffness.

TEXAS AGRICULTURAL EXTENSION SERVICE

## County Agents Report

### Pricklypear Control

Pricklypear continues to increase on rangeland and cause problems for livestock, particularly sheep and goats. Using hand labor to grub is effective but becoming more and more unpopular because of labor cost and desirable alternatives. Aerial spraying with Grazon PC at 1 quart (1/2 pound acid equivalent) per acre can be done any time of the year; best results have been obtained with late summer through fall applications. One pint per acre can be effective on the High Plains where no brush overstory is present.

Becoming more popular in the Edwards Plateau is prescribed burning in winter followed by reduced rates of Grazon PC as an aerial spray in late spring. Use 1/2 pint when the burn browns most pricklypear pads with less than 10 percent of the pads

green two weeks after the burn. Use 1 pint when more than 10 percent of the pads green. Prescribed burning alone usually does not achieve the long-term control most people are after.

For small areas and scattered clumps of pricklypear, good results have been obtained using backpack hand sprayers, ground rigs or electric sprayers on four-wheelers or ATVs. A mixture of 1 1/2 ounces of Grazon PC per gallon of water plus 1/2 teaspoon of surfactant is effective. Use of a blue dye (HI-Lite) has been useful to mark the treated clumps, which will add 10 to 15 percent to your herbicide cost.

Children's Christmas Card Project

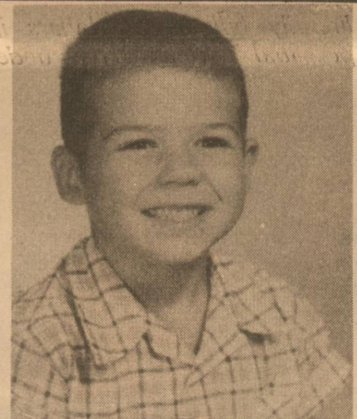


Making futures brighter!

FREE BROCHURE  
 1-800-231-1580  
 M. D. ANDERSON CANCER CENTER  
 Volunteer supported

Happy 40th Dad

Coon, Lizard, & Piggy



## Community Calendar

October-November 1991

October 31 <b>Halloween</b> 4:00pm 7th, 8th & J.V. vs. Wall - There 6:00pm Halloween Carnival - Mem. Build. 6-8	304/61 <b>THURSDAY</b> 311/54	November 7 School Pictures 9:30am Fellowship Bible Study - F.B.C. 6:30pm J.V. vs. Stanton - There 6:30pm Duplicate Bridge 7:30pm American Legion - Mem. Build. Legion Room
November 1 Last Day for Elementary Book Fair 3:25pm High School Pep Rally - H. S. Gym 7:00pm Pre-Game Pep Rally - Football Field 8:00pm Varsity vs. Wall - Here (District Game)	305/60 <b>FRIDAY</b> 312/53	November 8 End of 2nd Six Weeks 3:25pm High School Pep Rally - H.S. Gym 8:00pm Varsity vs. Stanton - Here (District Game)
November 2 2:20pm EHS Band Competes in Regional Contest - Abilene 6:30pm Eldorado Game Association Dinner	306/59 <b>SATURDAY</b> 313/52	November 9 Regional Cross Country - Lubbock
November 3	307/58 <b>SUNDAY</b> 314/51	November 10
November 4 12:00pm Men's Community Bible Study - Dairy Mart 7:00pm A.A. - Mem. Build.	308/57 <b>MONDAY</b> 315/50	November 11 Veterans Day 9:00am County Commissioners 12:00pm Men's Community Bible Study - Dairy Mart 6:30pm Art League Meeting - Lions Club Room, Mem. Build. 7:00pm A.A. - Mem. Build. 7:00pm Beta Sigma Phi-Mem. Build. 7:00pm 3rd & 4th Grade Veterans Program - H.S. Aud.
November 5 <b>Election Day</b> 10:00am Comm. Action Rep. - Sr. Center 1:00pm Eld. Min. Alliance - Presb. Manse 7:00pm E.V.F.D. - Fire Hall	309/56 <b>TUESDAY</b> 316/49	November 12 10:00am Comm. Action Rep. - Sr. Center 7:00pm E.V.F.D. - Fire Hall 7:00pm Booster Club Meeting - Field House
November 6 ● NM 12:00pm Lion's Club - Mem. Build.	310/55 <b>WEDNESDAY</b> 317/48	November 13 Report Cards Distributed 9:30am Library Board Meeting 12:00pm Lion's Club - Mem. Build. 1:00pm Elementary Awards Assembly - Elem. Gym

If you would like to add your event, please call 853-3125.

## WASTED YOUTH.



ONLY YOU CAN PREVENT FOREST FIRES.  
 Ad A Public Service of the USDA Forest Service and your State Forester.

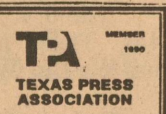
## The Eldorado Success

USPS 342-470  
 Box 1115  
 Phone 915-853-3125

Published each Thursday  
 Eldorado, Tx. 76936

Gary C. Smith, Sr.  
 Publisher

Cathy Smith  
 Managing Editor



Subscription Prices  
 In Schleicher County -- \$20.00 per year  
 Senior Citizen -- \$18.00 per year  
 Out of Schleicher County -- \$25.00 per year  
 Senior Citizen -- \$22.50 per year  
 Second class postage paid at Eldorado, Texas 76936. POSTMASTER: Send address changes to The Eldorado Success, Box 1115, Eldorado, Texas 76936.  
 THE ELDORADO SUCCESS is an independent newspaper, published in Eldorado, Texas by PRIME MINISTER PUBLISHING COMPANY, P.O. Box 1115, Eldorado, Texas.  
 THE ELDORADO SUCCESS cannot be held responsible for erroneous information provided by sources other than it's staff. Should this publication make an erroneous statement a retraction will follow as soon as the Editor is notified of such an error.  
 Member 1990  
 West Texas Press Association  
 Copyright 1990.  
 Prime Minister Publishing

## Fuessel Paints Christmas Ball For Governor's Mansion



**Whitney Fuessel**

by Rene Calcote

Local art student Whitney Fuessel painted the Schleicher County Museum on a four inch plastic ball supplied by Friends of the Governor's Mansion. This ball will hang on the Governor's Mansion Christmas tree during the 1991-92 holiday season, representing a truly fine example of local art. Whitney is a student in Bill Wells Art 4 Class at Eldorado High School. She has completed a varied art collection, including pencil, pen and ink, pastel, water color, tempera, and others since her

freshman art class. Whitney plans to attend Texas Tech after graduation next spring, majoring in architecture. She is the daughter of Rick and Jan Fuessel and has one younger sister, Lindsey.

Both artist and County Historical Commission Chairman, Rene Calcote, will be invited to attend a reception at the Governor's Mansion in December to see the mansion decorated for Christmas. Each special and unique ornament from every Texas County will be hanging on the Christmas tree.

## Twentieth Century Club Flea Market

The Annual Twentieth Century Club Flea Market will be held at the Reagan County Community Center in the County Park in Big Lake, Texas, on Tuesday, November 12, 1991, from 9:00 a.m. to 5:00 p.m. This market features Christmas gift and decoration ideas, ceramics, needlework, paintings, potted plants, home-

baked goods for your freezer, and many other arts and crafts items. Door prizes will be awarded throughout the day. For booth space, call Harriet Berlin, 884-3462. Proceeds from the booth rental are used for a scholarship for a deserving Senior Reagan County High School student.

## Water Board Faces New Challenges

The Plateau Underground Water Conservation & Supply District has been in existence for many years. While the District was not actively visible to the general public, it has served to protect and preserve our water supply.

Today, the District faces new challenges concerning our water supply and the regulations thereof. By now, you are aware of the problems facing the Edwards Aquifer which supplies San Antonio. That problem has now become OUR problem. In the Livestock Weekly an article describing the Sierra Club's suit against the federal government mentions the fact that underground water rights as we know them today will be involved. Substantial changes in the water laws could be affected through this suit.

AUSTIN - The State of Texas, acting on behalf of the Texas Parks and Wildlife Department and Texas Water Commission, has surprised some observers by siding with the Sierra Club in a federal lawsuit that could give the government control of groundwater that currently belongs to landowners.

At issue specifically is pumpage from the Edwards Aquifer, which supplies the city of San Antonio along with several other area municipalities and numerous industrial and agricultural users. The Sierra Club suit, citing the federal Endangered Species Act, demands control over Edwards pumping to protect a handful of officially "threatened" or "endangered" fish, reptiles and plants thought to be dependent upon spring flow.

Control of the Edwards, however, would necessitate overruling longstanding state law which grants landowners the "right to capture" of groundwater under their property. That, in turn, would mean devaluation of virtually all Texas land, reducing tax rolls and raising the specter of literally billions of dollars in potential "takings" claims under both the state and federal constitutions.

The Fifth Amendment of the U.S. Constitution and Article One, Section 17 of the Texas Constitution both prohibit "taking" of private property without compensation. In addition, Texas law specifically requires that "such compensation shall be first made or secured by a deposit of money: before taking can proceed."

State officials have been maneuvering for several years to gain control over groundwater, and are currently said to be half-century old statute long held unconstitutional but now up for reappraisal by State Attorney General Dan Morales.

In what may be a related note, the Water Commission has drafted regulations requiring water well repairers to report the locations of all wells they work on. Critics of that rule charge that its true purpose may be to create a statewide inventory of water wells for the Commission in the event it achieves the regulatory authority it seeks.

The Sierra Club case is scheduled to go to court December 23 before federal Judge Lucius Bunton at Midland.

This problem coupled with the recent news of the situation facing the area around Valentine versus the city of El Paso brings to the front the critical issues that rural communities are or will be facing throughout the state concerning water quantity and quality.

The Plateau Underground Water Conservation & Supply District is working diligently to try to stay current on these issues. We want to be voice for the people of Schleicher County to serve your local needs on water quality and quantity.

If we may be of assistance, you may contact the district at 853-2121.

## SCMC Bake Sale

The Schleicher County Medical Center will be having a bake sale Wednesday, November 6th in front of Glidden Foods.

The facility is trying to raise enough money to purchase a Camcorder to be used by all departments.

The Nursing Home will film their residents in daily activities as well as special occasions. A library of tapes will be started for each year, and will

be available to the families of the residents to purchase.

The hospital will use the Camcorder for filming inservices.

There are endless ideas and possibilities for use of the Camcorder.

The employees have volunteered to bake items to be sold for this fund raiser. Please help support the Schleicher County Medical Center!

## SCISD Board Holds Special Meeting

A special meeting of the Board of Trustees of Schleicher County Independent School District was held on October 28, 1991, at 7:30 A.M. in the Administration Building.

Board members accepted U.S. Tech's low bid of \$43,960.65 for 37 386 BX computers.

The meeting was adjourned at 7:55 A.M.

## Eagles

Continued from page 1

Singleton, "The guys played harder for 4 quarters in this game than they have all year. The whole team should be credited for the way they played. With a break or two, the game could have just as easily been the other way around."

Sonora was the first to score, but Jose Chavez scored to bring the game to 8-0. Codybill Whitten caught a pass from Wayne Jenkins to score again for the Eagles. Randy Adame ran back a kickoff and Johnny Arispe made the point after touchdown to bring the Eagles to within 6 points of Sonora.

The eighth graders play in Wall against Wall tonight.

This team won against Wall here earlier in the season. This should prove to be an interesting game tonight.

### SEVENTH GRADE BOYS

On October, 24 the seventh grade boys played Sonora in Sonora. The final score was 28-6 in favor of Sonora.

Sonora used four long runs to beat the young Eagles.

The touchdown for the seventh grade came on a run by J.B. Barker. Good blocking by Ricky Gibson and Richard Spears allowed this play.

The last Jr. High Football games of our season will be played at Wall tonight.

### 24 HOUR ANSWERING SERVICE

#### CLARK'S ANSWERING SERVICE

Box 293  
124 Village Lane Eldorado, Tx. 76936  
853-3116 853-3349

Full/Part Time Service

Radio & Alarm Service Available

"Answering the Telephone for Eldorado"

**Forlano Chiropractic Family Health Center**  
Office Hours Monday-Friday by appointment  
418 Hwy. 277 S. Eldorado.....853-3331  
Dr. Rico J. Forlano

**Eldorado Wool Company**  
Phone  
853-2772 - Office  
853-2820 - Feedstore

THE POWER OF INTELLIGENT ENGINEERING PLUS THE POWER OF INTELLIGENT BUYING

Oldsmobile Proudly Announces A Special Interest Rate on the 1992 Delta 88 of 2.9% for any Period Up to 48 Months. A Very Intelligent Move - Don't You Think?

Let Us Help You Make An Intelligent Move

**Atkisson**  
CHEVROLET - OLDSMOBILE  
BUICK - PONTIAC  
SONORA, TEXAS  
1-800-289-6066

30 Color Photos  
\$10.99  
1-10x13 (Wall Photo) 99¢ Deposit  
1- 8x10 10.00 Due at Pick up (plus tax)  
2- 5x7  
2- 3x5  
16-King Size Wallets  
8-Regular Size Wallets

AT  
**PUNKIN'S FASHIONS**  
3 West Gillis  
Saturday, October 9th  
9:00 a.m. - 3:00 p.m.

WE USE KODAK PAPER  
**Shugart's inc.**  
Group charge 99¢ per person  
We use **Kodak PAPER** for a Good Look  
FOR CREATIVE COLOR PORTRAITS

ATTENTION HUNTERS

Deer Processing and Storage

**ELDORADO DEER PROCESSING**  
853-2894  
502 S. Divide  
( Hwy. 277 South)

## Deer Season Opens

Deer season opens November 2 across much of Texas, and landowners find themselves facing potential liability for hunters' safety.

"According to current law, landowner's liability depends on the amount charged for entry," says attorney Judon Fambrough, author of *The Texas Deer Lease*.

"Landowners owe a recreational guest (hunter) no greater degree of care than is owed a trespasser if there is no charge for entry, or if the charge does not exceed twice the amount of the ad valorem taxes imposed on the hunting premises," says Fambrough, who is also senior lecturer with the Real Estate Center at Texas A&M University.

Regarding trespassers, the landowner is liable for grossly negligent activities or for acts done with malicious intent or in bad faith.

If the landowner charges more than twice the amount of ad valorem taxes, the landowner has a duty to inspect the property and remedy any unsafe conditions. Alternatively, the landowner must warn the hunters of any unsafe conditions revealed by the inspection.

Landowners may limit liability by not charging a fee, or by keeping the charge to no more than twice the amount of ad valorem taxes.

Otherwise, landowners may reduce liability by:

- \*routinely inspecting property and making the conditions safe or

- \*routinely inspecting property and warning hunters of unsafe conditions.

Another method is to

use a signed waiver from the hunter releasing the landowner from liability. The hunter must realize what rights are being given up and must grant the waiver willingly and intentionally.

Insurance will not reduce the landowner's liability but will provide a source of funds. The landowner may either purchase a policy or require that the hunters purchase and assign one to the landowner.

Recently revised and expanded, *The Texas Deer Lease* lists issues affecting hunters and landowners. New sections cover compliance with state hunting regulations and describe hunter and landowner responsibilities in more detail. The 12-page report, which includes a sample waiver form, is available for \$1 in Texas and \$2 out of state from the Real Estate Center, Texas A&M University, College Station, Texas 77843-2115. Request publication NR-570.

For a sample copy of the waiver form only, send a stamped self-addressed envelope to the Real Estate Center at the above address.

The Real Estate Center celebrates its 20th anniversary this year. It was created in 1971 by the Texas Legislature to meet the needs of many audiences, including the real estate industry, instructors, researchers and the general public. The Center's comprehensive program of research and education yields publications, audiovisuals and computer software distributed widely under the slogan "Solutions Through Research."

## Deer Population Survey

Wildlife personnel with the Texas Parks and Wildlife Department recently completed annual deer population surveys here in Schleicher County. The resulting population estimate, 86 deer per 1,000 acres or about 69,000 deer county wide, represents an increase from last year's estimate.

This year in Schleicher County the deer season opens on Saturday, November 2, and runs through Sunday, January 5. The bag limit is the same as last year - 4 deer, no more than 2 antlered bucks.

Most Schleicher County landowners are already aware that, as has been the case for several years now, doe permits or special doe tags will not be issued nor required to harvest antlerless deer here in the Edwards Plateau. Hunters will need only the appropriate tag off of their hunting license, and landowner permission, to bag doe or antlerless deer in Schleicher and the other "either-sex" counties this year.

After reviewing the results of the recent deer population surveys, local wildlife personnel are recommending that Schleicher County

landowners located in the northwestern portion of the county try for a harvest of 1 doe or antlerless deer for every 300 acres and 1 buck for every 500 acres. Those landowners in the southern and eastern portion of the county should try for a harvest of 1 doe for every 125 acres and 1 buck for every 250 acres. The recommended rates result from the need to better balance the sex ratio observed in the herd and from a desire to produce a healthier deer population that is properly matched to the existing supply of deer foods in the county.

These general harvest rates are based on county averages and may not be completely suitable for each individual ranch in the county. Landowners interested in closely managing their local deer herd need to conduct their own on-site fall population surveys, with resulting harvest recommendations that meet their specific management objectives.

For more information, please contact Texas Parks and Wildlife Department Wildlife Technician Mary Humphrey in Sonora at 387-2818.

## Unemployment Statistics

There is at least one way to see this month's unemployment statistics in a positive light, Commissioner Mary Scott Nabers said as the Texas Employment Commission released the new statewide jobless rates today. "You simply compare the current 6.4 percent unemployment rate with the 1986, 1987 or 1988 rates," Nabers concluded.

"I feel pretty grim about our situation when compare this month's statistics with last year's 6.2 percent, and even two years ago when we registered 6.3 percent. That data paints a flat, stagnant economic picture. But, when we consider the 9.1 percent jobless rate of 1986 or the 8.5 percent rate of 1987, or even the 7.1 percent rate of 1988, I begin to feel somewhat better," Nabers said.

**SEPTEMBER JOBLESS RATES**  
 1986 9.1%  
 1987 8.5%  
 1988 7.1%

1989 6.3%  
 1990 6.2%  
 1991 6.4%

"Actually," Nabers continued, "Texas is considered average when compared to all other states. The national average unemployment rate is exactly 6.4 percent."

The monthly rate is up slightly from last month, but that is expected as a result of coming out of the peak summer period of employment. Every major industry sector recorded downturns in September, except government. That increase reflects a growth in school-related personnel.

Eleven of the Metropolitan Statistical Areas (MSAs) in Texas followed the statewide pattern in unemployment, with rates up

Continued on page 5

## Observe Halloween In Spirit Of Safety

October 31 is Halloween, and most of the "spooks" you see on the streets will just be kids in disguise. But real dangers lurk behind this fall celebration. Texas Safety Association offers these tips for kids and adults, which will help insure a fun, safe holiday for everyone.

**CHILDREN:** If you go trick-or-treating, stick to neighborhoods you know. Stay on sidewalks; or, if there are no sidewalks, walk close to the curb on the left side of the street, facing traffic. Look left, right, and left again before crossing the street. Even witches and ghosts can be hurt by passing cars!

Never go inside a stranger's house, and don't eat ANY treats until they've been inspected by a grownup.

**PARENTS:** Keep safety in mind when planning Halloween costumes. Use light-colored, flame-retardant fabrics, adding retroreflective tape to make the child more visible to motorists. Avoid clumsy, ill-fitting shoes or costumes that drag on the ground, because they may cause a child to trip and fall. Masks can impair vision and breathing. Use non-toxic makeup instead.

Feed trick-or-treaters before they go, so that they'll be less tempted to snack on treats

before they get them home. Young children should be accompanied by an adult. Set a curfew for older kids, and give them change for emergency phone calls. Children under 12 should have their name, address, and phone number attached inside their costume, but not where it can be easily seen by passers-by.

If you don't know the people in your neighborhood, check community calendars for school- or church-sponsored events, or plan a costume party in your own home. Young goblins are always safer in supervised groups.

**GENERAL PUBLIC:** If you're putting out goodies for visiting spooks, turn on your porch light. Don't put lighted jack-o-lanterns too close to the front door: the flame may ignite someone's costume. Don't leave garden tools, hoses, or sprinklers where kids will trip over them in the dark.

If you have to drive on Halloween night, use extra caution, especially in residential areas. Watch for "invisible" spooks in non-reflective clothing. Be prepared for children to dart into the street from anywhere, especially from between parked cars. If you're on your way to an adult costume party, it's a good idea to remove your mask while driving.

## Christmas Craft Bazaar

The More the Merrier Christmas Craft Bazaar is set for Saturday, November 16th from 9:00 a.m. to 5:00 p.m. in the Sonora Ford Co. Showroom, 115 North Concho Avenue.

Booth spaces will be \$15.00. Deadline for entry is

November 10th. Each booth will need to bring their own tables and chairs. You may set your crafts up the night before. If you have any questions, please call Chandra at 915-387-2858.

We hope everyone can attend!



**MILTON E. FITTS**  
853-2129

**FITTS CONSTRUCTION CO.**  
COMMERCIAL - RESIDENTIAL  
BOX 871 \* ELDORADO, TEXAS 76936

## Doyle Family Reunion Held

by Bessie Clifton

Cliff and Bessie Clifton hosted the Doyle Family Reunion on Saturday and Sunday, October 26th and 27th.

Those present were Jim and Nancy Doyle of Eldorado, Jimmy Dan and Janette Doyle and Children, Michael D. Ryan, April and Michael A., Michael and Julia Doyle and Cassie, all from San Angelo, Burnell and Bill Etheredge of Dallas, Jackie and Billy Don Humpton, Kacy and Darren of Lubbock, Jerry and Hearice Doyle, Joanana and David Roberts and Keegan of Port Lavaca, Texas, Will B. Doyle of Waco.

Barbecue and salmon steaks, pinto beans, cowboy stew, salads and desserts were

served on Saturday.

Sunday morning the family breakfast was served of ham, eggs, sausage, bacon, toast, cinnamon rolls, coffee and juice.

The family was entertained by Jerry and Mimmy Dan Doyle, who played their guitars and singing.

It was a special weekend for everyone.

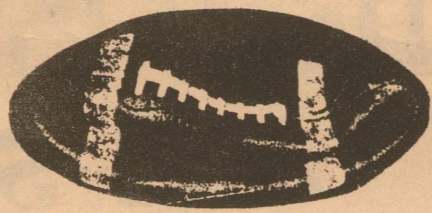
(915) 853-2314

**JERRY'S T.V. SERVICE**  
SYLVANIA TELEVISIONS - SATELLITE TV. SYSTEMS

**JERRY J. JONES**  
OWNER

214 S. MAIN STREET  
ELDORADO, TX. 76936

Has someone  
let the air  
out of  
your  
game ball?



It doesn't make much sense to start a football game with a ball that is deflated.

You can have the best teams - an enthusiastic crowd - and a stadium filled to capacity - but you can't start the game without the familiar "pigskin."

It doesn't make much sense either to get into a financial venture with a bank that won't stay with you.

These days, it's easy for someone to "let the air, out of your ideas." But it doesn't have to be that way.

At THE FIRST NATIONAL BANK OF ELDORADO, we won't "promise you the moon." But we will make a commitment to consider your situation on an individual level.

At THE FIRST NATIONAL BANK OF ELDORADO, we want to help you reach your financial goals. After all, we're in this game to win.

A great bank in a great place.

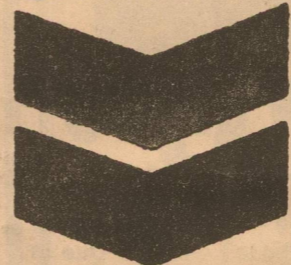
## First National Bank

Main Number  
853-2561

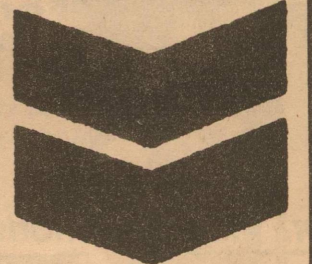
of Eldorado  
Member FDIC

Bookkeeping  
853-2582

**Chevron**



**Chevron**



**WINTERIZE  
YOUR CAR**

**\$5.99 With Fill-up\***

OR

**Antifreeze**

**\$3.00 With Fill-up\***

with Fill-up at

**ELDORADO CHEVRON**

\* (8 gallon minimum)  
Some trucks may be excluded

# Summary Of Proposed Constitutional Amendments

For the November 5, 1991, Election  
John Hannah, Jr., Secretary of State

This November, Texans will have the opportunity to vote on 13 proposed amendments to the Texas Constitution. To help you make informed decisions on these propositions, we present the following summaries of the proposed amendments. Below you will find the proposition as it will appear on the ballot followed by a brief description of the effect the proposition will have if it is passed.

**Proposition 1:**

"The constitutional amendment allowing home-rule cities with a population of 5,000 or less to amend their charters by popular vote."

**Summary:** A home-rule city is a city that is able to govern itself, generally through the actions of a city council or commission. To become a home-rule city, a city must have a population of at least 5,000, it must hold an election to become a home-rule city, and the measure must pass by a majority vote. Once a city becomes a home-rule city, it may adopt a charter, and this charter may be amended through an election every two years. However, under current law, if the population of a home-rule city falls below 5,000, the city is no longer allowed to amend its charter. If passed, this amendment would allow home-rule cities whose populations have fallen below 5,000 to continue to amend their charters through elections.

**Proposition 2:**

"The constitutional amendment mandating the repayment to the Department of Transportation of monies expended to assist the Texas Turnpike Authority in the construction, maintenance, and operation of turnpikes, toll roads, and toll bridges."

**Summary:** If passed, this amendment will allow the legislature to authorize the Texas Department of Transportation to spend money on turnpikes, toll roads, or toll bridges of the Texas Turnpike Authority. The Department of Transportation may use any available money that it has for this purpose. However, if the Department of Transportation uses money from the state highway fund, this money must be replaced by money collected by the Texas Turnpike Authority from tolls and turnpike revenue. Currently, the state is not allowed to use any public money to build or maintain toll roads or turnpikes.

**Proposition 3:**

"The constitutional amendment to authorize the legislature to further implement and enhance the administration of the veterans' housing assistance and land programs and to expand the investment authority of the Veterans' Land Board."

**Summary:** If passed, this amendment would ease the restrictions on how the Veterans' Land Board can invest money from the Veterans' Land Fund and the Veterans' Housing Assistance Fund. The board may invest any money that is not to be used for the payment of principal and interest on bonds, the purchase of lands, or the payment of expenses. In addition, the board is no longer limited to investing this money in bonds or securities of the federal government.

**Proposition 4:**

"The constitutional amendment authorizing the issuance of up to \$1.1 billion in general obligation bonds for acquiring, constructing, or equipping new prisons or other punishment facilities to confine criminals, mental health and mental retardation institutions, and youth corrections institutions, for major repair or renovation of existing facilities of the institutions, and for the acquisition of, major repair to, or renovation of other facilities for use as state prisons or other punishment facilities."

**Summary:** If passed, this amendment will allow the state to issue up to \$1.1 billion in general obligation bonds. The money from selling these bonds will be used to acquire, construct, or equip new prisons and substance abuse facilities, mental health and mental retardation institutions, and youth corrections institutions. This money will also be used to repair and renovate existing facilities. The bonds and interest on the bonds will be paid from the first money coming into the state treasury that is not set aside by the state constitution for other purposes.

Note: A general obligation bond is a bond that is repaid from the State's general revenue fund. Most of the money in this fund comes from state taxes and fees.

**Proposition 5:**

"The constitutional amendment authorizing the exemption for ad valorem taxes of certain property in an enterprise zone."

**Summary:** This amendment deals with property owned by an individual or organization that does business in an enterprise zone. If passed, this amendment would allow a county, a junior college district, or a municipality to exempt certain personal property from ad valorem taxation. To be exempt from this tax, the following conditions must be met: (1) the property must be acquired or brought into the state in an enterprise zone to be forwarded outside the state; (2) the property must be assembled, stored, repaired, maintained, manufactured, processed, or fabricated in the enterprise zone; (3) the property must be transported outside the state within 175 days after being acquired or brought into an enterprise zone; and (4) the person who acquired or brought the property into an enterprise zone is in a qualified business.

The purpose of this amendment is to encourage economic development in enterprise zones. Because some personal property will not be taxed, it will be less costly to operate a business in an enterprise zone.

Notes: An ad valorem tax is a tax imposed on the value of property. An enterprise zone is an area that has substantial poverty, unemployment, and economic distress. A qualified business is a business that is actively engaged in a new business in the enterprise zone or is expanding a business that is already active in the enterprise zone. "Enterprise zones" and "qualified businesses" are designated by the Texas Department of Commerce.

**Proposition 6:**

"The constitutional amendment creating the Texas Ethics Commission and authorizing the commission to recommend the salary for members of the legislature and the lieutenant governor, subject to voter approval, and to set the per diem for those officials, subject to a limit."

**Summary:** If passed, this amendment will create a Texas Ethics Commission that is established by the Texas Constitution. The commission will consist of eight appointed members. These members will be selected by the Governor, the Lieutenant Governor, and the Speaker of the House from lists of names submitted by legislators from each major political party. This commission can recommend the salary of the members of the legislature. It can also recommend that the salary of the Speaker of the House and the Lieutenant Governor be higher than the salary of the other members. If the commission recommends a change in salary, the voters of the state will be able to accept or reject the salary change at the next general election for state and county officers. If the voters approve the recommended salary, the salary will take effect on January 1st of the next odd-numbered year. If the voters reject the salary, the salaries would remain the same. In addition, the commission can set the per diem of the members of the legislature and of the Lieutenant Governor. This per diem could be raised or lowered every two years, as necessary. The commission will also have other powers and duties as provided by Senate Bill 1, 72nd Legislature, Regular Session (the ethics bill). Finally, this amendment provides that an increase in the Lieutenant Governor's salary will not disqualify a legislator from becoming Lieutenant Governor.

If this amendment does not pass, there will still be a Texas Ethics Commission that is established by statute. This commission could not set the per diem of the members of the legislature.

Note: A commission that is established by the Texas Constitution can only be repealed by the voters. A commission that is created by statute can be repealed by the legislature.

**Proposition 7:**

"The constitutional amendment to allow the board of trustees of a statewide public retirement system to invest the funds of the system in a manner that the board considers prudent."

**Summary:** If passed, this amendment will change the way in which the board of trustees of each statewide public retirement system can invest the system's funds. Currently, a board can only invest its retirement funds in securities (stocks, bonds, etc.). However, if this amendment passes, a board may invest its retirement funds in any way that it thinks is prudent.

**Proposition 8:**

"The constitutional amendment authorizing the voters of this state to consider state debt questions in the form of ballot propositions that must clearly describe the amounts, purposes, and sources of payment of the debt only after approval of the propositions by a two-thirds vote of each house of the legislature."

**Summary:** This amendment deals with the way that voters will vote on legislative action that would create a debt for the State. Currently, all propositions that create state debt must be approved by two-thirds of each house of the legislature and by a majority of voters during a constitutional amendment election. When these propositions are passed, they actually become part of the state constitution.

If passed, this proposition would still require propositions that create debt to be approved by a two-thirds vote of the legislature and a majority of the voters. However, when these propositions are passed, they will not become part of the state constitution. Instead, they will be enacted by statute. In addition, when the proposition is placed on the ballot, it must clearly describe the purpose of the debt, the cost of the debt, and how the debt will be repaid. The amount of the debt in the proposition can not be exceeded or renewed unless the proposition says that the debt can be exceeded or renewed.

Note: Creating a debt for the State means spending money that the State does not currently have. Selling bonds is one way that State debt is created.

**Proposition 9:**

"The constitutional amendment authorizing the commissioner of the General Land Office to issue patents for certain public free school fund land held in good faith under color of title for at least 50 years."

**Summary:** This amendment deals with lands that are technically owned by the state of Texas. In some cases, people have purchased or acquired this land from someone other than the State. While the State still technically owns this land, some people who purchased or acquired the land did not know that the land was owned by the state. From the time that these people purchased or acquired this land, they have believed that they are the legal owners.

If passed, this amendment will allow the Land Commissioner to give the legal title for this land (called public free school fund land) to certain people. A person is entitled to receive a legal title to this land if: (1) the land is surveyed public free school land; (2) the person could not gain the land's title under previous law; (3) when the person acquired the land, he or she did not know that the land was legally owned by the state and has believed that he or she has owned the land since January 1, 1941; (4) the person has a recorded deed on file in the county courthouse and has claimed the land for at least 50 years as of January 1, 1991; and (5) all taxes on the land, including any interest and penalties for late tax payments, have been paid for at least 50 years.

Note: Public free school fund land is owned by the State. Any revenue that this land generates (through sale, rent, etc.) is placed in the Permanent School Fund.

**Proposition 10:**

"The constitutional amendment authorizing the legislature to exempt from ad valorem taxes certain property of a nonprofit corporation that supplies water or provides wastewater service."

**Summary:** This amendment deals with property owned by a nonprofit corporation that supplies water or provides wastewater services. If passed, this amendment will allow the legislature to exempt property that is owned by these corporations from ad valorem taxes. In order for this property to be exempted, the nonprofit corporation must meet the following conditions: (1) the corporation's bylaws must say that, if the corporation stops operating, any leftover assets must be transferred to an organization that provides water supply, wastewater service, or both; (2) the leftover assets must be property that can be used for water supply and wastewater services.

Note: An ad valorem tax is a tax imposed on the value of property.

**Proposition 11:**

"The constitutional amendment authorizing a state lottery."

**Summary:** If passed, this amendment will allow the State to operate lotteries. The State would also be able to contract with other organizations that would operate lotteries on the State's behalf.

**Proposition 12:**

"The constitutional amendment to increase from 20 percent to 50 percent the percentage of Texas water development bonds previously authorized by Texas voters that may be issued for economically distressed areas."

**Summary:** This amendment deals with reallocating a percentage of the \$500 million of Texas water development bonds that were approved by Texas voters in 1989. These bonds were to be issued to fund water supply, water quality, and flood control projects. Currently, the board is limited to issuing 20% of the \$500 million (or \$100 million) of these bonds to provide water and wastewater facilities to economically distressed areas of the state. If passed, this amendment will allow the board to issue up to 50% of the \$500 million (or \$250 million) of these bonds for this purpose.

**Proposition 13:**

"The constitutional amendment providing for the issuance of general obligation bonds not to exceed \$300,000,000 to continue existing programs to provide educational loans to students, with repayments of student loans applied toward retirement of the bonds."

**Summary:** If passed, this amendment will allow the Texas Higher Education Coordinating Board to issue up to \$300 million in general obligation bonds. The money from selling these bonds will be used to finance educational loans to students. In the past, all bonds in this program have been retired through repayments from student borrowers, not the taxpayer.

## Jr. High Cross Country

The Eldorado Junior High competed in the 6-AA District Cross Country meet at Stanton Monday, October 28th.

Eldorado Girls placed second in the meet, finishing 5 points behind Wall. Wall had 28 points, Eldorado-33, and Stanton-68. Individual honors included Amy Massey-2nd, Mitzi Lux-3rd, Tara Hunley-8th, Michelle Mora-9th, Alisha Wink-11th, and Ysenia Castillija-16th.

Eight grade boys were second with 29 points, Ozona was 1st with 26 points.

Individual honors were: Randy Adame-3rd, Johnny Joe Arispel-4th, Codybill Whitten-5th, Stuart Lux-7th, Brandon Dresner-10th, Cody Andrews-11th, Rocky Meador-13th, Buddy Ray-15th, Caleb Estrada-17th.

7th grade boys competed and won 1st place. Team members were: Fonzie Covarrubiaz, Arisdell Hernandez, Daniel Martinez, Auden Gonzales, Manuel Vasquez.

Congratulations to a good group of kids with a terrific season finish!

## Unemployment Statistics

Continued from page 4

slightly between August and September. Five areas remained the same, and the other 11 areas registered moderate decreases. A comparison with September 1990 rates showed 12 areas had current rates which were higher than those recorded a year earlier, 13 that were lower, and two that remained the same.

The lowest September unemployment rates were Bryon College Station's 3.6 percent

rate, Austin's 4.7 percent rate, Amarillo's 4.8 percent rate, Victoria's 4.9 percent rate, Lubbock's and Midland's rates of 5.4 percent, and Brazoria and San Angelo's rates of 5.5 percent.

The statistics for Schleicher County are as follows: Civilian Labor Force - 1,536; Employed - 1,461; Unemployed - 75; Unemployment Rate - 4.9%.

## ELDORADO GAME ASSOCIATION

Invites You

Saturday, November 2nd

6:30 p.m. - Ag Barn

Guest Speaker - Dale Rollins

Texas A&M Extension Biologist  
**ANNUAL GAME DINNER**

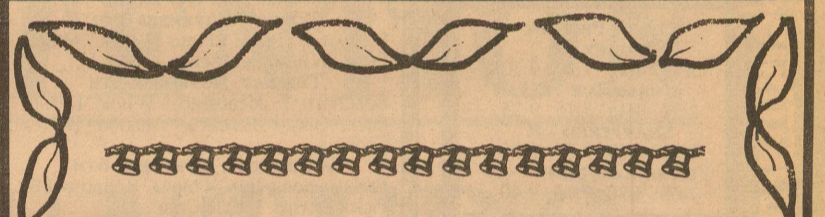
Barbecue Plate - \$5.00

PRIZES TO WIN!!!

Guns, Coolers, Feeders, etc.

Drawing Tickets - \$1

**WELCOME HUNTERS**



## "HOLIDAZE"

presented by

Art From The Heart

Lubbock, Texas

\*\*\*\*\*

Marylue Thompson  
and  
Carla Olson

Cordially Invite You To Come By  
And See Our Collection Of Holiday  
and Gift Items Including:

*Hand Painted China, China  
Jewelry, Decorated Clothing,  
Decorative Wood Items,  
Holiday Decor, Hand  
Crafted Wooden Pens  
and Quality Gift Wrap.*

\*\*\*\*\*

Saturday, November 2  
Noon to 6:00 p.m.

in the home of  
Mrs. Ed Meador

112 Elm Street

Refreshments and Door Prizes



## WORKING CLEARANCE

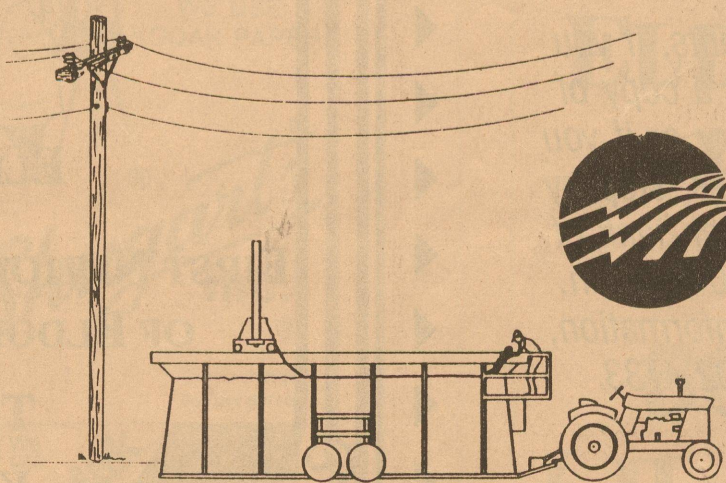
Maintaining the proper clearance from a high-voltage electric line is not just a good safety practice, it's the law. In Texas, any contractor, corporation or individual not affiliated with the utility must follow these guidelines:

- No person will perform any activity within six feet of overhead lines.
- No person will operate or use any tool, equipment, machinery or material where it is possible that these devices will come within six feet of overhead lines.
- No person will operate any equipment, such as derricks, cranes, power shovels, hayloaders, pile drivers, hoisting equipment or similar devices, within ten feet of overhead lines.

When work must be performed within these clearances, the organization or individual responsible must contact the utility and make arrangements to ensure safe clearances.

Violations of these provisions of the law can result in fines, confinement in jail or liability to the utility for damages and all liability incurred.

\*State of Texas Civil Statute, Article 1436-C

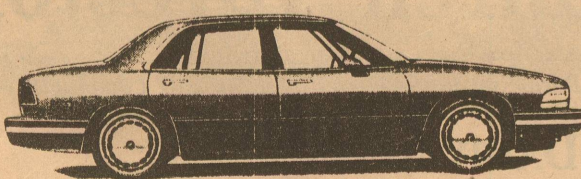


Southwest Texas Electric Coop., Inc  
(915) 853-2544  
(915) 853-2546 (24 hr.)

## JUST ANNOUNCED!!!

2.9% Financing For Up  
to 48 Months

On the Car that has become a  
Symbol of Quality in America



1992 Buick LeSabre

American Quality has never looked better!  
And now GMAC has made it even better  
with 2.9% financing for up to 48 months.

Discover Buick  
The New Symbol for Quality In America.



1-800-289-6066

## Halloween Safety Tips

Every year at this time, America's children and their parents give considerable thought to Halloween costumes and other activities surrounding the annual October 31 observance. The nation's family doctors also give considerable thought to Halloween Safety. This week they are encouraging families to follow a checklist which can help to ensure a safe and happy Halloween. The checklist was prepared by the American Academy of Family Physicians (AAFP), the national association of family doctors, in conjunction with the National Patient Education Library at Trinity Lutheran Hospital Family Practice Residency in Kansas City.

### 1. COSTUMES

- \* wear flame-retardant materials
- \* avoid billowy costumes
- \* wear white or light-colored costumes or use reflective materials
- \* avoid wigs (they can burst into flames)
- \* encourage make-up rather than masks
- \* avoid oversized shoes
- \* use cardboard for props such as magic wands and swords
- \* carry a flashlight
- \* avoid jack-o-lanterns illuminated by candles
- \* avoid dogs (even your own dog may be frightened by a costume)

### 2. WALKERS

- \* walk on the sidewalks or grass
- \* if you must walk on the street, walk on the left side facing traffic
- \* cross the street only from corners or at crosswalks-never dart between vehicles
- \* observe all traffic signals
- \* look both ways before crossing the street and watch for cars turning at intersections or into driveways

### 3. TRICK-OR-TREAT DO'S AND DON'TS

- \* parents should set rules such as boundaries and curfew and enforce them
- \* young children should be accompanied by a parent or a responsible adult
- \* older children not accompanied by parents or

adults should travel with friends

- \* stay in your own neighborhood and go only to homes of family or friends
- \* go only to homes that are well lit

- \* do not go inside a home or building to accept treats
- \* have parents check treats before eating (do not eat any treats before they are examined)

- \* some hospitals will x-ray treats (contact local hospitals to see if they provide this service)

- \* have a parent or other adult cut all fruit and candy into sections

### 4. DRIVERS/HOMEOWNERS

- \* clean your windshield and headlights before driving
- \* be alert for children darting into the street (be prepared to give trick-or-treaters the right of way)
- \* park your car in the driveway or in the garage to prevent vandalism
- \* keep pets indoors
- \* keep your home illuminated
- \* be sure walkways and stairs are free of obstructions
- \* don't leave lighted pumpkins in an area where a child's costume could be ignited
- \* greet trick-or-treaters at the door (do not encourage them to come inside)
- \* wrap treats that are loose or homemade
- \* Halloween comes once a year (discourage trick-or-treaters who come before or after the actual date)

## Kent's Automotive

Parts and Service

Phone 853-2733  
Eldorado, Tx. 76936

## SCISD To Receive TVRO

expansion is proceeding with the two-hundred-plus TVRO installations.

The TVROs are but part of the overall telecommunications capabilities-expansion. A new Texas Education Agency sponsored network, T-STAR, will begin operations in early 1992 to deliver limited state provided programming to schools. However, the Texas schools are expected to mainly use their newly acquired TVROs to access extant and future distance learning, inservice and supplemental instructional television from the variety of U.S. satellites and service providers nationwide.

The TVRO equipment which is being installed in Texas districts and in 20 Regional Education Service Centers will be dual band, remotely controlled, 100 channel

programmable and include video cassette record, audio talk-back, VideoCipher 11 Plus descrambler and computer control capabilities. The \$1.8 million dollar award for most of the equipment and its installation was made to United Satellite Systems of St. Hilaire, Minnesota. Telecommunications engineering and planning services were contracted with CyberLink Corporation of CyberLink, Colorado.

The Texas Education Agency plans to Edward additional TVROs for 400 sites in 1993 CyberLink another 400 in 1994. Installation of a planned VSAT, Very Small Aperture Terminal, digital network which would complement TVRO network services and expand other digital services to schools, has been delayed pending other state

government activities. The addition of VSATs in 1992 and beyond, particularly in small and geographically isolated schools, would expand school access to a variety of current and future digital data telecommunications services to which they are typically denied by virtue of traditional telecommunications costs, configurations and lack of broadband capabilities.

Texas Education Agency is providing the enclosed list of the initial TVRO award recipients so that public and private service providers may contact schools about services which might be of use in the school academic, administrative, library, health, maintenance and transportation programs.

The Schleicher County Schools will be one of the recipients.

Cogratulations  
Eagle Band  
GOOD LUCK!

## Orchard Grown Pecans For Sale

John Edward & Rita Meador

We now do "Custom Cracking"  
Call for more information.

853-3135 or 853-2955

## Casa Arispe Fine Mexican Dining



Open 7 Days a Week  
8 a.m. to 10 p.m.

### School Lunch Menu

#### LUNCH

All lunches served with Bread Milk and Butter

MONDAY, NOVEMBER 4TH

Pepperoni Pizza, Pinto Beans, Mixed Fruit, White Cake/Icing.

TUESDAY, NOVEMBER 5TH

Spaghetti & Meatsauce, Whole Kernel Corn, Sliced Peaches, Almond Butter Cookies.

WEDNESDAY, NOVEMBER 6TH

Barbecue-on-a-Bun, Potato Rounds, Dill Pickle Strips, Apple Crisp.

THURSDAY, NOVEMBER 7TH

Steak Nuggets/Gravy, Creamed Potatoes, English Peas, Strawberry Jello.

FRIDAY, NOVEMBER 8TH

Sandwiches-Tuna, Chicken Salad, Ham Salad, Pimento Cheese & Peanut Butter, Cheese Strips, Potato Chips, Pork & Beans, Chilled Fruit/Topping.

#### BREAKFAST

1/2 pint of milk is offered with each breakfast.

MONDAY, NOVEMBER 4TH

Peaches, Pancakes/Syrup

TUESDAY, NOVEMBER 5TH

Grape Juice, Cheese Toast

WEDNESDAY, NOVEMBER 6TH

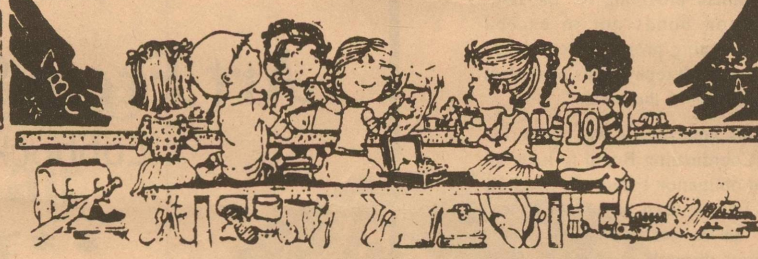
Prunes, Buttered Rice-Toast

THURSDAY, NOVEMBER 7TH

Apple Juice, Cinnamon Toast, Hash Browns.

FRIDAY, NOVEMBER 8TH

Fruit, Choice of Cereal, Toast.



**SUNSET 4**  
1066 Sunset Mall 944-3390

**OTHER PEOPLES**  
MONEY - R  
2:15 4:25 7:20 9:30

**CURLY SUE - PG**  
2:30 4:45 7:15 9:25

**SHATTERED - R**  
2:20 4:20 7:30 9:35

**FRANKIE & JOHNNY - R**  
2:00 4:30 7:10 9:40

**SOUTHWEST 7**  
3590 Knickerbocker 949-9984

**NECESSARY**  
ROUGHNESS - PG13  
2:00 4:20 7:10 9:30

**RICOCHEIT - R**  
2:10 4:20 7:20 9:40

**THE DOCTOR - PG13**  
1:45 4:15 7:15 9:45

**THE FISHER KING - PG13**  
2:00 4:40 7:15 9:50

**THE PEOPLE UNDER THE STAIRS - R**  
2:00 4:10 7:20 9:30

**PARADISE - PG13**  
1:50 4:00 7:15 9:40

**BOYZ-N-HOOD - R**  
2:15 4:30 7:20 9:40

Check Directory Daily  
Times Subject To Change  
No \$4.00 VIP's \*No Passes



Weeping may tarry  
for the night, but joy comes  
with the morning.  
Psalm 30:5 (RSV)

### Our Lady of Guadalupe Catholic Church

820 N. Divide  
Pastor - Father Jerry McCarthy

### Church of Christ

Mertzon Hwy.  
Pastor - David Templeton

### Templo Getsemani

Menard Hwy - behind Post Office  
Pastor - Ezuvigen Diaz

### St. Luke Baptist Church

105 E. Denny  
Pastor - Henry C. Green

### Agape Assembly of God

Corner of Warner & Hackberry  
Pastor - Ken Otwell

### Antioch Baptist Church

West Callender  
Pastor - Billy Daniels

### First Baptist Church

109 W. Gillis  
Pastor - Chris Graham

### First Presbyterian Church

7 N. Cottonwood  
Pastor - Hawley Wolfe

### Primitive Baptist Church

W. Ave. & Carson St.  
Pastor - Raymond Kirkpatrick

### First United Methodist Church

102 15 N. Divide  
Pastor - Paul Lynn

## Eldorado Church Directory

This ad is sponsored by these Eldorado Businesses in the interest of a Stronger Community.

EAGLE DAIRY MART

MCCORMICK'S EXXON

ELDORADO WOOL COMPANY

FIRST NATIONAL BANK  
OF ELDORADO

SOUTHWEST TEXAS  
ELECTRIC CO-OP, INC.

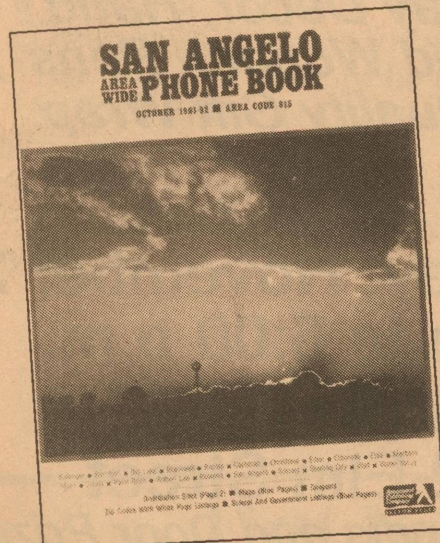
THE ELDORADO SUCCESS  
KERBOW FUNERAL HOME

STAR STOP

# Thanks for your help!

## Schleicher County 4-H Young Riders

We appreciate your help in the delivery of the new  
San Angelo Area-Wide Phone Book.



Eldorado residents, if you did not receive a copy of the new directory or if you need extra copies, stop by the First National Bank of Eldorado at 100 S. Main. For additional information, call 1-800-592-4733.

We may not be the only phone book in the Concho Valley,  
but we're the only one you need!



**HOUSE FOR SALE**  
4 bedroom, 3 bath, ceiling fans, fireplace, central air, new carpet. Spacious yard with fruit trees and fenced in back yard. Close to school. Reasonably priced. Call 387-2297 or 853-3005.

**NOTICE:** Buy or sell Art, Cookbooks, American, Russian, Asian, World War I & II, Photography, Poetry, Language, Religious, Metaphysical, Children, First Edition, Texana, etc. books. Ye Ole Fantastique Book Shoppe, 1218 W. Beauregard, San Angelo.

**NOTICE:** Mary Kay Cosmetics. Graduation, birthday, anniversary gifts. Martha Spinks. Old Mertzon Road. Phone 853-3415 after 4 p.m.

**ATTENTION:** Defensive Driving will be offered on Saturday, Nov. 23th, and Monday and Tuesday, Nov. 18th & 19th. Call 853-2777 for more information.

**FOR SALE**  
3-Bedroom Stucco house. 1-bath, kitchen with separate dining room, large utility room, fenced front and back yard, central heat/air, carpet and storage building. Call Paul or Kymm Nixon at 853-2176. (Leave message if no answer) tfn-(5-6-91)-b

**\$194.62 Buys**  
Totally Remodeled Doublewide. New Carpet and Drapes, Fresh Paint, Appliances Included. 10% Down, 11.50 APR, 180 Months, Delivered and Set. Homes of America, Odessa, 915-550-4033. Se Habla Espanol.

**2-(10-24-91)-b**  
**GARAGE SALE**  
Corner of Murchison & Hackleberry, 8-3, Saturday, November 2nd. Please, no sales before 8:00 a.m. 1-(10-31-91)-b

**WANT ADS**

**2 BEDROOM**  
Only \$6995.00. Excellent Condition. All Appliances, Storm Windows, Central Air. Homes of America, Odessa 915-550-4033.

2-(10-24-91)-b  
16x80  
Only \$15,900.00. Two left in stock. Homes of America 915-550-9539.

2-(10-24-91)-b  
**HOME CARE ATTENDANT Needed Immediately.** Part-time position that requires light housekeeping and assistance with personal care. To be considered for employment call 1-800-580-4475. Ask for Angie. Girling Healthcare Inc. E.O.E.

2-(10-31-91)-b  
**THANK YOU**  
We are grateful for all the cards, calls, chores, food and especially the visits during the time Rudy was ill. You realize how much you need your family, your church, your neighbors, and friends. So we offer our heartfelt thanks to all of you. Sincerely,  
Shine and Rudy Spigarelli

**FOR SALE**  
88 Honda Civic, 4-door, Fully electric - loaded. Call 853-2852. 1-(10-31-91)-b

**FOR RENT OR LEASE**  
3-Bedroom/2-Bath. Carport & Mature Pecan Trees. Call 853-2753. Available November 1st. 4b-(10-17-91)-b

**FIREWOOD FOR SALE**  
Mesquite-\$60/cord; Oakwood-\$80/cord. Only 2 cords left of each. \$15.00 extra for delivery; \$10.00 extra for stacking. Call 853-2356 between 9:00 a.m. and 7:00 p.m. 1-(10-31-91)-p

**ATTENTION CRAFTERS**  
Those interested in participating in Christmas n More, November 23rd and 24th, please contact Pat Gentry 853-2837. 2-(10-31-91)-b

**FOR SALE**  
New Necchi Sewing Machine w/Case. Call 853-2459. 1-(10-31-91)-b

**WORK NEEDED**  
I will do house cleaning, ironing, and sewing. Call 853-2234 - if no answer, leave message. 4-(10-31-91)-b

**LOST**  
Schnauzer dog lost on McIntosh Road. Has Collar. Call Victoria Sutherland at 853-3112. 1-(10-31-91)-b

**FUZZY GREY KITTENS**  
Mother registered Silver-Shaded Persian; Father - handsome stranger. Call Pam White at 853-2658. 1-(10-31-91)-b

**CRAFT NOOK**  
Corner of Divide & Lewis (Hwy. 277 S.). Handcrafted Treasures. Monday-Friday 9:30-6:00; Saturday 9:30-1:00.

**HOUSE FOR SALE**  
3-bedroom, 2-bath, large newly remodeled home on 5 prime lots. Fenced back yard. Must see to appreciate - reasonably priced. Call 853-3142. tfn-(8-22-91)-b

**PUBLIC NOTICE**

**PUBLIC NOTICE**

STATE OF TEXAS )  
COUNTY OF GAINES )

NOTICE is hereby given that a Special Commissioners Court hearing will be held on the 4th day of November, 1991, at 9:00 a.m. in the County Court at the Schleicher County Courthouse in Eldorado, Texas, at which time the governing body shall receive and consider written bids submitted for leasing the following described lands owned and belonging to said County for oil, gas and other minerals and Notice of such intent is hereby given.

1. Labor 3, League 286, Schleicher County School Land Survey, containing 177.12 acres, in Gaines County, Texas.

All applications must be in writing and be submitted and received by the Commissioners Court on or before the 4th day of November, 1991 at 9:00 a.m.

WITNESS OUR HANDS this the 14th day of October, 1991.

John Griffin  
County Judge  
Schleicher County, Texas

County Clerk  
Schleicher County, Texas  
BY: Helen Blakeway  
3-(10-17-91)-b

MARY KAY.

Lisa A. Meador  
Independent Beauty Consultant  
209 E. Brooks Ave.  
Eldorado, Texas 76936  
(915) 853-3612

**THE STATE OF TEXAS**

To HELEN KAYE CROCHET, devise, interested in the ESTATE OF ADA BELLE TAYLOR, deceased, CHARLES KELLOGG. Applicant has filed in the County court of Schleicher County, an application for the Probate of the last Will and Testament of said ADA BELLE TAYLOR, Deceased, said will filed with said application for Muniment of Title only.

The file number of such application and the Probate Docket number being No. 1393, and the style of the case begun by such application is: ESTATE OF ADA BELLE TAYLOR, deceased.

HELEN KAYE CROCHET IS CITED TO APPEAR in the County Court of Schleicher County, Texas, in the Courthouse thereof at or before 10 o'clock a.m. on the first Monday after ten days after service is perfected by this publication which is the 4TH day of NOVEMBER, 1991, to contest said application is she desires to do so, by filing opposition in writing.

If this Citation is not served within 90 days after the

**LET OUR SUCCESS GO TO YOUR HEAD!**

Call today for an appointment!  
Call Charlotte's Hair Shop  
9 West Gillis  
853-3084 or 853-3725

Benton Abstract & Title Co.  
106 W. Murchison Avenue  
853-2631 or 853-2153  
Debbie Ballew - Manager  
Established 1916  
Providing all your abstract and title needs

date of its issuance, it shall be returned unserved.  
Issued this the 24th day of OCTOBER 1991.

The officer executing this Citation shall publish the copy of this Citation in the newspaper of general circulation one time in the County in which this proceeding is pending and return the original copy of this Citation to the Clerk stating in a written return thereon the time and place of publication by the publisher or his editor.

Given under my hand and the seal of said Court, at office in Eldorado, Texas, this the 17th day of October, A.D., 1991.

HELEN BLAKEWAY, CLERK  
COUNTY CLERK SCHLEICHER COUNTY, TEXAS  
BY: Mary Doran  
DEPUTY CLERK

**FOR SALE**  
3-bedroom, 1 1/2 bath large fenced back yard. Built in sprinkler system. New roof and remodeled. \$28,000. Call Philip Meyer at 853-3700 after 5:00 p.m. tfnb-(9-12-91)-b

**FOR SALE**  
Large corner lot-- 4 bedroom, two bath, 600 ft new addition, large trees, fenced back yard, garage with large storage room attached. Call 853-2678.

**THE BEST FOR LESS**  
Redken and Matrix Products Let  
Rene or Amy  
Meet all your hair needs.  
Rene's Beauty Shop  
853-2747  
Walk-ins Welcome

**BERNARD RUST D.D.S**

901 S. E. Crockett Sonora, Texas

**GENERAL DENTISTRY**

New Patients & Emergencies Welcome  
\* Insurance Accepted \*

Call Rae Ann for an appointment - 387-2659

Mon.-Thur. 8:00-5:00 Fri. 8:00-12:00



**THE OLD COBBLER**

MOBILE BOOT & SHOE REPAIR

Will Be Open Monday  
November 4th

in Glidden Food's Parking Lot - Hwy. 277 S.

Mittel Insurance

presents....

**Eldorado Spotlight**



Victor Belman

This week we Spotlight Victor Belman, Jr. Victor is the son of Victor and Sylvia Belman. He has one sister, Christie Jo.

Victor is 16 years old, and is a Junior at Eldorado High School. He is a member of the Eagle Band, and T.A.F.E. (Texas Association of Future Educators).

He enjoys listening to music and being with his friends.

Mittel Insurance Agency  
"For Your Insurance Needs"  
853-2576

Enter the Big Buck Contest NOW!  
- Before Deer Season Starts -

**CONGRATULATIONS**

to the

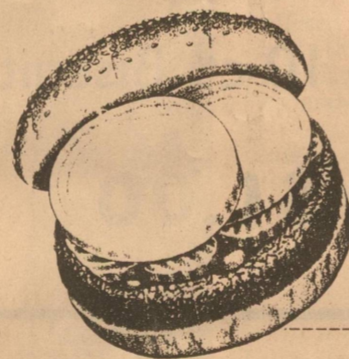
**ELDORADO EAGLE**

**HIGH SCHOOL BAND**

*Good Luck Saturday in Abilene!*

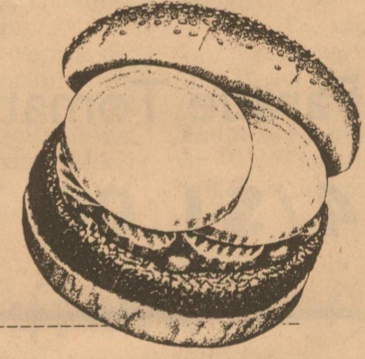
**TUESDAY & WEDNESDAY**

**HAMBURGERS**



**99c**

All Day Long



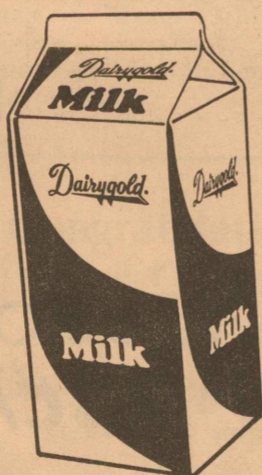
**HEY EAGLES!**

We're Behind You

Win OR Lose,

*But It's A Lot More Fun Winning!*

**BEAT WALL!**



Gandy's  
MILK  
1/2 Gallon  
Homo or Low Fat  
**\$1.09**

Gandy's  
ASST. POPCYCLES  
& FUDGE BARS  
6 Count Box  
**79c**



**SHOT'S #3**

853-2775

**OPEN 24 hrs.**

301 S. Divide






# Glidden Foods

We Accept Food Stamps

Store Hours:  
Mon.-Sat. 9:00 a.m.-7:30 p.m.  
Closed Sunday

Prices Effective Oct. 31-Nov. 6

<p>5 Qt. Gandy Bucket Ice Cream</p> <p><b>\$3.69</b></p> 	<p>5 lb. Parade Sugar</p>  <p><b>\$1.89</b></p>	<p>89 oz Ultra Dash (42 Loads)</p> <p><b>\$4.99</b></p>
<p>12 Pack Coke or 7up</p>  <p><b>\$2.99</b></p>	<p><b>Fall Into Savings</b></p>	<p>2 LITER COKE OR 7UP</p>  <p><b>99c</b></p>
<p>16 oz. Parade Corn</p> <p><b>2/\$1.00</b></p>	<p><b>Congratulations!!!</b> Band, Football Team, Cross Country</p>	<p>16 oz. Parade Tomatoes</p> <p><b>2/\$1.00</b></p>
<p>1 1/2 lb. Wrights Peppered Bacon</p> <p><b>\$2.99</b></p>	<p>2 lb. Casserole Pintos</p> <p><b>79c</b></p>	<p>Qt. Best Maid Hamburger Dill Pickles</p> <p><b>\$1.39</b></p>
<p>8 oz. Parade Tomato Sauce</p> <p><b>4/\$1.00</b></p>	<p>Parade 10 ct. Biscuits</p> <p><b>4/\$1.00</b></p>	<p>8 oz. Parade Cream Cheese</p> <p><b>99c</b></p>
<p>Gallon Parade Bleach</p> <p><b>99c</b></p>	<p>16 oz. Parade Sweet Peas</p> <p><b>2/\$1.00</b></p>	<p>1 lb. Better Valu Fish Sticks</p> <p><b>\$1.49</b></p>

**MEAT**

**PRODUCE**

1 lb. Owen Sausage <b>\$2.19</b>	Boneless Arm Roast <b>\$1.79/lb</b>
T-Bone Steak <b>\$3.49/lb</b>	Boneless Sirloin <b>\$2.99/lb</b>
Wrights Market Sliced Bacon <b>\$1.59/lb</b>	

10 lb. Bag Potatoes <b>\$1.19</b>	
Yellow Onions <b>23c/lb</b>	Green Cabbage <b>29c/lb</b>
New Crop Yams <b>49c/lb</b>	1 lb. Cello Carrots <b>4/\$1.00</b>