

Baze Bookbinding
514 W. 7th St.
Amarillo, Tx. 79101
3

Scrimmage - Thursday, August 23rd Varsity vs. Brady - 6:00 p.m. (there)

The Eldorado Success

50 cents

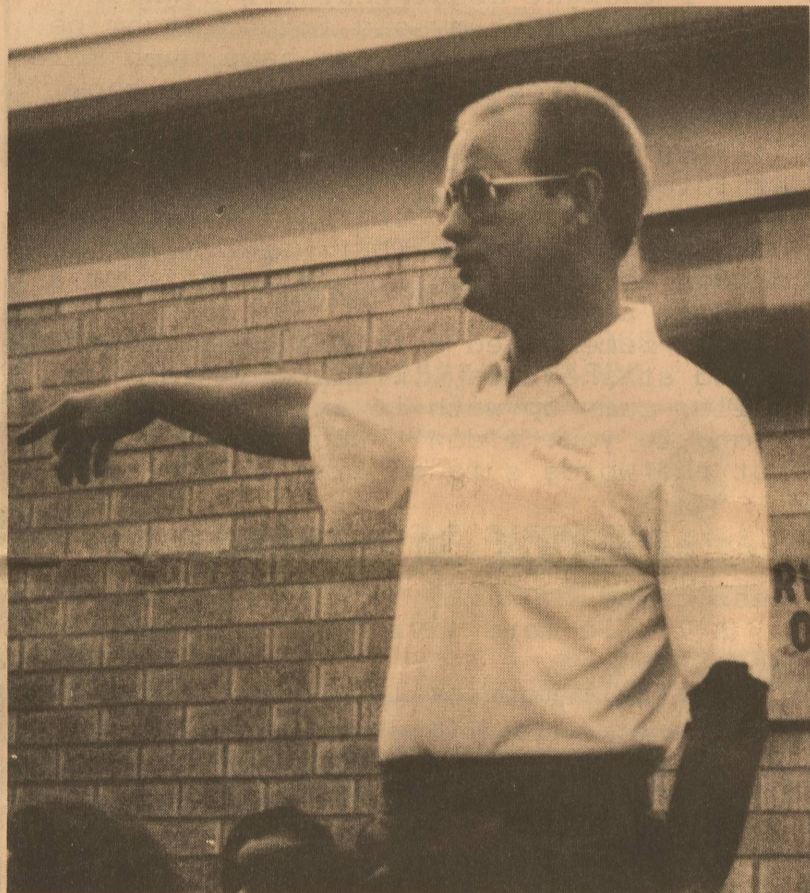
"The World's Only Newspaper Dedicated to the Citizens of Schleicher County and Eldorado!"

Volume 90 #34

Eldorado, Texas... "Down-Home Living at the Top of the Divide!"

August 22, 1991

Booster Club Sponsors "Meet The Eagles"



Coach Harvey Wink is pictured above introducing the E.H.S. Cross Country teams for 1991.

Assembly of God Church Completes New Sanctuary

Rev. and Mrs. Ken Otwell and the congregation of Agape Assembly of God Church at 502 E. Warner invite you to celebrate with them in the completion of their new sanctuary.

Agape Assembly of God in Eldorado began meeting in the Julie Moorman School of Dance building in June of 1984 with Rev. Dave and Laquita Stephens serving as pastors. A few months later the small congregation moved to a cafe building on Hwy. 277. In December of 1984, Rev. Ken and Norma Otwell accepted the pastorate and moved their family to Eldorado. In June of 1985 the growing congregation was able to rent the church building at 502 E. Warner, which they purchased two years later. In September of 1989 more sanctuary space was needed and so two Sunday School rooms were taken out and the building

remodeled. The congregation continued to grow and in October of 1990 it was decided to build a new sanctuary which would seat 200. And now in August of 1991 that building is complete.

Dedication Sunday is August 25, 1991. Services will be at 10:30 and 2:00. Dr. Danny Alexander, a professor at Southwestern Assemblies of God College in Waxahachie, Texas, will be ministering in music and preaching during the 10:30 service. Rev. Derwood Dubose, the Assistant Superintendent of the North Texas District Council of the Assemblies of God, will be ministering in the 2:00 dedication service. We are expecting a great day as we dedicate this new facility to the Lord and we invite everyone to come and join us. Nursery facilities will be provided for both services.

On Friday, August 16, a large crowd of Eagle supporters gathered in front of the EHS gymnasium. The purpose of this gathering was to meet and encourage the high school athletes of the 1991-92 school year.

Introductions of the student athletes were made by Coaches Doug Kuhlman and Harvey Wink. High School Math teacher and cheerleader sponsor Shelly Speck introduced

the cheerleaders and the mascot.

The event, sponsored by the EHS Booster club, provided an opportunity for citizens to get to know these fine young students.

Ice cream and cookies were served by the Booster Club. The first football scrimmage will be held this Thursday in Brady.

The Success will publish rosters of the various teams during the year.

Jim Blum Hired As New Hospital Administrator

A two year agreement has been signed by the hospital board and a new administrator, Jim Blum. Jim has a master's degree in health care administration and 11 years experience in administration of hospitals, nursing homes, home health agencies and other health care delivery systems.

He and his wife, Patty, have two children, ages 5 and 4. They will be moving here from Rochester, Minnesota. Jim says there are four reasons for leaving Minnesota: January, February, March and state income taxes. He also has family and friends who have moved to

Texas. Jim is expected to begin his new duties in Schleicher County on September 3.

Some might wonder how the hospital district found someone so far away. Steve Goode contacted the Texas Health Care Association and from them obtained a list of administrators who were interested in relocation in Texas. Jim had placed his name on this list with the T.H.C.A., so he received a copy of the form letter which Steve sent out.

Be sure to give a Texas welcome to Jim Blum and his family.

SCISD Board Of Trustees Meet

The regular meeting of the Board of Trustees of Schleicher County Independent School District was held on August 12, 1991, at 6:00 P.M. in the Administration Building.

Ray Ballew discussed with the board the waiving of tax liability for the Housing Authority. He also informed the board that the certified appraised tax value for the 1991 tax year is \$188,876,852.

Dr. Blair informed the board that SCISD has been awarded a grant for approximately \$18,000 to participate in a statewide pilot project for PEIMS (Public Education Information Management System). The grant will be used for equipment purchases, salaries, and costs incidental to the project.

Judy Blair brought board members up-to-date on the sixteen various plans developed in 1990-91 to meet the

annual legal requirements of the state.

Dr. Blair also shared with board members School Finance Update No. 9 from the state and the latest update on board training credits. He asked members to check their board credits for accuracy.

Dr. Blair also informed board members that SCISD has been awarded a TV Receiving Equipment Grant which includes a satellite dish and receiving equipment. It will be installed in the fall.

In action items, following a discussion of the court ruling on the constitutionality of county education districts, board members approved SCISD's participation in the CED.

After a lengthy discussion with representatives of Great West Life Insurance Co. concerning the approximately 36% increase in

the costs of employee group health coverage, members voted to table the discussion until further information could be obtained.

Other action included the approval of Gandy's bid for milk products for the school year, the certifying of CED election results, the approval of the financial report for the month of July and the budget amendments presented, and the adoption of the Texas Association of School Boards Policy Update 40.

After adopting a resolution to waive any tax liability for the Housing

Authority, according to provisions of federal law, board members went into executive session. When the meeting resumed in regular session, no action was taken; however, members agreed to recess the meeting and to reconvene at 7:30 A.M. August 16th by which time they would have obtained further information concerning financing.

The meeting resumed at 7:37 A.M. August 16th with all members present.

Members approved the salary schedule for 1991-92. The meeting was adjourned at 8:30 A.M.

ASU Registration

Registration for the 1991 Fall Semester at Angelo State University begins Thursday, August 29, and runs through Friday, August 30, at the Robert and Nona Carr Education-Fine Arts Building.

Disabled students will register Wednesday, August 28, from 2 p.m. to 3 p.m. in the Registrar's Office (AJ 101).

Upperclassmen, graduate students, and evening school students will register on Thursday, August 29, from 8:30 a.m. to 5 p.m. based on their Social Security numbers. The order is as follows for upperclassmen:

Student registration employees will register at 8:30 a.m. Seniors (90 or more hours), 00-19, at 9:30 a.m.; 20-39, 10 a.m.; 40-59, 10:30 a.m.; 60-79, 11 a.m.; and 80-99, 11:30 a.m. (Lunch break from 12 noon to 1 p.m.).

Juniors (60-89 hours) and all active duty personnel at Goodfellow Air Force Base, 00-19 at 1 p.m.; 20-39, 1:30 p.m.; 40-59, 2 p.m.; 60-79, 2:30 p.m.; and 80-99, 3 p.m.

Sophomores (30-59 hours), 00-14, at 3:30 p.m.; 15-28, at 4 p.m.; and 29-43, 4:30 p.m.

Graduate and evening school students, 00-32, 6 p.m.; 33-66, 6:30 p.m.; and 67-99, 7 p.m.

Friday's order of registration, for freshmen and the remaining sophomore students, is as follows:

Sophomores (30-59 hours), 44-57, 8 a.m.; 58-72, 8:30 a.m.; 73-86, 9 a.m.; and 87-99, 9:30 a.m.

Freshmen (less than 30 hours), 00-07 at 10 a.m.; 08-16, 10:30 a.m.; 17-24, 11 a.m.; and 25-33, 11:30 a.m. (Lunch break from 12 noon to 1 p.m.)

Also, 34-41, 1 p.m.; 42-50, 1:30 p.m.; 51-58, 2 p.m.; 59-67, 2:30 p.m.; 68-75, 3 p.m.; 76-84, 3:30 p.m.; 85-92, 4 p.m.; and 93-99, 4:30 p.m.

Residence halls will open for occupancy for the 1991 Fall Semester on Wednesday, August 28 at 8 a.m.

Senior students expecting to complete their degree requirements by December, 1991, should apply for graduation during registration. Final date to apply for graduation is Friday, September 20.

Final exams for the 1991 Fall Semester are December 16-20.

Blood Drive

The Eldorado community blood drive with the United Blood Services is scheduled from 2:00 p.m. to 6:00 p.m., Wednesday, August 28 at the Memorial Building.

"The demand for blood is constant, even in the summer months," said Gary Karschner, Community Relations Representative of United Blood Services. "It's important that people remember to take a few minutes out of their busy schedules to donate regularly during June, July, and August

to help maintain a safe and adequate supply of blood products."

United Blood Services is this area's nonprofit community blood provider. The organization collects blood from volunteer donors, then tests, processes and distributes it to many area hospitals.

Those who would like to make an appointment for the Eldorado community blood drive may call Sherry Lux at 853-2164.

Gas Plant Repairs

On August 27, 1991 at 2:00 p.m., the City will be closing down the gas plant for repairs. These repairs should take about one hour to complete. If you are going to be away from home, you should probably cut your gas off.

The City crew will help re-light any heaters or stoves after repairs are completed, but we would appreciate anyone who can light their own utilities.

Thank You,
Jack Dean
City Superintendent

Jack Hext Memorial Golf Tournament

2-Man Select Shot
August 24th & 25th

\$90.00 per team
\$10.00 Mulligans/team
Cash Prizes

Tee times: 8:30 and 1:30
Meal - 6:30 Saturday

Booster Club Meeting

There will be a Booster Club meeting on Tuesday, August 27th at 7:00 p.m. in the Field House.

All Booster Club members and anyone wishing to join the Booster Club are invited to attend.

Editor's Journal

TOP OF THE DIVIDE

by Thomas Giovannitti

by Thomas Giovannitti

For the information of the readers I have gone back to the title of the original column I wrote for the Success. I like it better than the other one and it matches the signs at the northern and southern entrances to town.

Be that as it may, I really want to write about a phenomenon that Nicolas pointed out to me just the other day. You see, we have a baby

visiting with us and Nicolas noticed that babies bring out the "Nerd" in everyone.

He mentioned how grown adults who are otherwise relatively reserved in speech will be reduced to babbling and speaking made-up words to a baby. These same people will make faces at babies that they would never let cross their visage when in the company of other adults or even older children.

Nicolas was amazed

see that he also fell under the spell of this infant. He found himself trying to meet the child's every need even when the only expression the baby had was to cry no matter what she wanted.

I don't know for sure but it may be a baby's innocence that makes them so attractive, or maybe their helplessness. Infants, unless really emotionally scarred, show affection openly, and easily become close

to any person willing to extend their arms, pick them up, or feed them.

Of course the world soon teaches them to be less open and outgoing and they soon learn to more adequately communicate their needs with spoken language. Once these two events become commonplace they begin to lose whatever it is that makes us go gaga!

Gary Smith's



Laugh and Live

The years teach much which the days never know. Ralph Waldo Emerson

Recently, someone said something to me that really hit home. He said, "You know Gary, Life is about 10% what you make it and about 90% how you take it."

I thought about that for a while and decided that my old friend might be right. If he is right, we have much more control over our emotions than we know.

As I sat down to write this article, I thought, "Now what do my readers need? What can I write that will be of significance? What words might I dredge up that might touch a heart or a mind or a soul?"

I remembered a little clipping that I had stashed away. I searched for a while, came up with it and pass it now along to you. I don't know who wrote it, but the words sure do ring true.

THE WORLD'S GREATEST NEED
A little more kindness and a little less greed.
A little more giving and a little less need.
A little more smile and a little less frown.
A little less kicking a man when he's down.
A little more "we" and a little less "I".
A little more laughs and a little less cry.
A little more flowers on the pathway of life
And fewer on graves at the end of our strife.

Maybe, if we had a little more of some things and a little less of others, we might be a little happier.

I remember a little girl's prayer. At the time I heard it, I thought it was cute. The more I think about it, the more I perceive that it may contain what we need.

Dear God,
Before I finish, I want you to take care of mommy, take care of daddy, take care of my sister and my brother and please, God, take care of yourself, because if you don't we're all sunk. Amen!

Till The Next Time...

MAY GOD BLESS!

SUBSCRIPTION FORM THE ELDORADO SUCCESS

Date: _____
Name: _____
Mailing Address: _____
City, State, Zip: _____
Price Schedule:
In Schleicher County \$20.00/YEAR
Senior Citizen \$18.00/YEAR
Out of Schleicher County \$25.00/YEAR
Senior Citizen \$22.50/YEAR
Send Check or Money Order to:
The Eldorado Success
Box 1115
Eldorado, Tx. 76936
(915) 853-3125

Our Sympathy

EDGAR HANSON NIXON

Edgar Hanson Nixon, 85, died July 16, 1991 at his home. He was married to Juanita Daniels September 30, 1933. She preceded him in death on April 12, 1984. He was preceded in death by one daughter, Connie Lou, two sisters, Mary Nixon Roberts and Lola Nixon Lang, and three brothers, Robert J. Nixon, Lee Nixon, and Lafayette Nixon.

July 18th services were held in the Eldorado Primitive Baptist Church where he was a member and deacon, with burial in Eldorado Cemetery. Elder Simms and Elder Kirkpatrick were in charge of the service.

Hanson was born April 9, 1906 and was a stock farmer and a welder.

Survivors include two sons, E.H., Jr. of Eldorado and Charles Austin of Bastrop, Tx. and two daughters, Wilma Fae LaCombe and Linda Merle Walters of Mertzon; fourteen grandchildren and six great-grand children; two brothers, Lester Paul of Eldorado, and Farris Glen of Del Rio; four sisters, Edith Henshaw of San Angelo, Emma Fuller, and Myrtle McMullan of Eldorado, and Wilma Patrick of Sonora.

Pall-bearers were grandsons Archie, Gene, Mickey, Shane, and Eric Nixon and Royce and Casey High.

FAYE FLOYD MACE

Faye Floyd Mace, 81, died July 26, 1991, after a lengthy illness. She was a resident of Eldorado, Texas, since 1940.

Services were held Sunday, July 28, 1991 at the First Baptist Church with Dr. Chris Graham officiating. Burial followed in the Eldorado Cemetery under the direction of Kerbow Funeral Home.

Mrs. Mace was born in Comanche on December 12, 1909. She was a loving mother and homemaker.

She is survived by her husband of 59 years, Joe Heron "Skeet" Mace; two daughters

and sons-in-law, Iretta and Al Stanford of Midland, Paula and Mike Moeller of Austin; five grandchildren, Faye Phillips of Haynesville, La., Jim Stanford of Wichita, Kan., Mike Stanford of Midland, Paul Stanford of Dallas, Cullen Moeller of Austin; and five great-grandchildren, Brian and Cara Phillips of Haynesville, Brady and Tracy Stanford of Midland, and Sarah Stanford of Midland.

Other family members are sisters, Mildred Hoggard of Headley, Geneva Maddox of Claude, Ellen Wade of Panhandle; and a brother, B.V. Floyd of Borger.

Grandsons served as casket bearers.

Letter To The Editor

To The People Of Eldorado,
There are so many people we should thank as we leave town. Thank you to the nursing home residents who gave me the paperweight as a going away present. Thank you to the Mertzon Highway Church of Christ who gave us a going away party and a "dollar salad." Thank you to the employees of the Schleicher County Medical

Center and the Auxiliary who gave me an "appreciation tea" and a desk pen set as a going away present. Thank you to the board members who encouraged me through the rough times. Thank you to the tax payers who voted with your pocket books when the hospital needed you. While rural hospitals across the state are in danger, this one made it largely because you

supported it with your wallets. Thank you to the doctors and employees who cooperated with the changes that had to be made, to make it work. Thanks to the friendly press, Gary Smith, who has printed whatever news I submitted about the hospital, so that you could be informed of what we were doing. Also thanks to the members of the PTA who helped get it going.

Thanks to the Lions club who made me feel welcome and a part of the community. Finally, thanks to the people who helped us unload when we got there and to those who helped us load up when we left. And my apologies to anyone I may have failed to mention. Good luck to you all, carry on!

Steve Goode

Hear and Their

by SHERRY LUX

WELCOME HOME RAY

Ray and Betty Romero were cruising about the other day in the big city of Eldorado. It is so nice to see these two out and about, again. As the saying goes "You can't keep a good man down" holds true in this case, too.

BOOSTER CLUB

The Eldorado Booster Club held a Meet The Eagles ice cream supper Friday, August 16th. There were quite a few fans out to meet the team members for Varsity and J. V. football, Cross Country, and the Cheerleaders. The Eagles will scrimmage Brady at Brady on Thursday at 6:00 p.m.

SCNH BARBECUE

The Schleicher County Nursing Home will hold their annual family barbecue Saturday, September 14. Each year it takes between 20-25 briskets to serve this meal. Steve Nelson and Felipe Pina have been invited back to barbecue after such an enjoyable feast last year. If you have a brisket in the freezer or if you would like to donate money, contact Tonya Meyer, activity director of S.C.N.H. These donations need to be in by September 1. Mrs. Meyer stated that several of the residents' families have already made some donations but there

is never enough. There are approximately 250 people to attend. Residents, families, hospital and nursing home employees, the auxiliary volunteers, and directors are invited every year.

Blood Drive

Letters have gone out to local churches about the Blood Drive next Wednesday, August 28th. Donate between

2:00 p.m. and 6:00 p.m. at the Memorial Building. Thanks to the faithful donors, you can really appreciate your impact on the lives you help save. If you did not receive a letter, please contact my office 853-3068 or home 853-2164 for more details. The logo for the posters is "STAMP OUT CHICKENS" Be there, donate.

EDMISTON'S HOSPITALIZED

Charlene and Orval Edmiston are both recovering. Charlene is at home with a broken leg, and Orval is in Shannon Hospital after a heart attack.

If you know of anyone else who needs cheering up, let me know and they will be recognized also.

SCHOOL ENROLLMENT

School has begun and did everyone look spiffy this

Continued on page 3

Community Calendar

August-September 1991

August 22	234/131	THURSDAY	241/124	August 29
6:00pm Varsity Scrimmage - Brady - There				6:30pm Duplicate Bridge
6:30pm Duplicate Bridge				
August 23	235/130	FRIDAY	242/123	August 30
				6:00pm Varsity Scrimmage - Central J.V. - There
August 24	236/129	SATURDAY	243/122	August 31
August 25	237/128	SUNDAY	244/121	September 1
FM			LQ	
August 26	238/127	MONDAY	245/120	September 2
7:00am Beta Sigma Phi-Mem. Build.				
7:00pm A.A. - Mem. Build.				
August 27	239/126	TUESDAY	246/119	September 3
7:00pm E.V.F.D. - Fire Hall				
7:00pm Booster Club Meeting - Field House				
August 28	240/125	WEDNESDAY	247/118	September 4
12:00pm Lion's Club - Memorial Building Club Room				
2:00pm Blood Drive - Mem. Building 2:00-6:00 p.m.				

The Eldorado Success

USPS 342-470
Box 1115
Phone 915-853-3125

Published each Thursday
Eldorado, Tx. 76936

Gary C. Smith, Sr.
Publisher

Cathy Smith
Managing Editor

Subscription Prices
In Schleicher County - \$20.00 per year
Senior Citizen - \$18.00 per year
Out of Schleicher County - \$25.00 per year
Senior Citizen - \$22.50 per year

Second class postage paid at
Eldorado, Texas 76936 POSTMASTER: Send address changes to The Eldorado Success, Box 1115, Eldorado, Texas 76936.

THE ELDORADO SUCCESS is an independent newspaper, published in Eldorado, Texas by PRIME MINISTER PUBLISHING COMPANY, P.O. Box 1115, Eldorado, Texas.

THE ELDORADO SUCCESS cannot be held responsible for erroneous information provided by sources other than its staff. Should this publication make an erroneous statement a retraction will follow as soon as the Editor is notified of such an error.

Member 1990
West Texas Press Association
Copyright 1990.
Prime Minister Publishing

TEXAS AGRICULTURAL EXTENSION SERVICE

County Agent's Report

With warmer, humid spring weather at hand, livestock producers and owners of household pets should check their animals frequently for wounds and possible worm infestations.

Fly populations normally increase during this season. Blowflies and other species become more active. They deposit their eggs that form young larvae along such damp areas as animal wounds.

Although the United States and Mexico have both been declared free of the screwworm -- a costly insect pest that feeds on warm-blooded animals including humans -- constant vigilance must be practiced to remain free of the problem.

"This became very apparent in December of 1989, when a U. S. soldier who was injured in Panama and infested

with screwworms there, returned to a San Antonio hospital with larvae still in the wound," said Dr. Cliff Hoelscher, Extension service entomologist. Medical diagnosis proved it was a screwworm case.

The soldier was treated and dismissed from the hospital. "The problem was that some of the larvae -- not sent for official identification to an accredited laboratory -- was discarded with other hospital medical trash, later compacted and dumped at an area landfill," Hoelscher said.

To head off a possible outbreak of screwworms around San Antonio, the Joint U.S.-Mexico Screwworm Eradication Commission sent a number of plane loads of sterile screwworm flies to treat the entire South Texas area, the entomologist explained.

Although there is no

known threat of re-infestation at present, owners of livestock and pets should check their animals frequently for infested wounds.

If worms are found in wounds, representative samples of about 10 worms each should be collected and sent in a container of alcohol or formaldehyde to an accredited laboratory, such as the federal identification lab at Mission, for positive identification. Mailing kits are available from county Extension Service offices or the Mission lab.

The address for the Screwworm Identification Lab is: USDA-APHIS Veterinary Services

Attention: Dr. Obie Oliver
Screwworm Identification Lab
Box 969
Mission, Texas, 78572.

Hear & Their

Continued from page 2

past Monday morning. According to the Superintendent's Office, enrollment was 755 - Elementary-309, Middle School-230, and High School-216.

GOLF TOURNAMENT

The Jack Hex Memorial 2-Man Select Shot Golf Tournament will be held this weekend, August 24th and 25th. For more information contact Mabel Freitag, Ronnie

Sauer, Mickey Rathbone, or Gary Warnock.

AUGUST BIRTHDAYS

19th-Justin Paxton; 20th-Brent Moore; 21st-Edward Garcia; 22nd-Amy Henderson, and Rebecca Rodriguez; 23rd-Charlotte Crain; 24th-Buster Lamb, Cassandra Farris, Jesus Chavez, Stevie Valero, and Tara Whitten; 25th-Jody Jones; 26th-J. Lynn Barajas, and Monica N. Estrada; 27th-Jody York, John

Meador, Leah Wolfe, Roxanne Martinez, and Tiffany Case; 28th-Elpidio Torres, Sr.

HAPPY ANNIVERSARY

August 28th
Red and Debbie Griffin

TENNIS TOURNAMENT

The results of the Tennis Tournament that was held this past weekend will be listed in next week's issue of The Eldorado Success. There was still one match left to be played.

NOTICE TO SCHLEICHER CONTY TAXPAYERS

Under the proposal of tax increase by the Schleicher County Hospital District for 1991, proposed tax rates will remain at a total of .4650/\$100 value for the district. This increase over the 1991 effective tax rate only. Taxes on individual properties will not increase unless your taxable value of your property has increased since 1990. You should have received a notice of the increase in value from the Schleicher County Appraisal District in May 1991.

BOARD OF DIRECTORS SCHLEICHER COUNTY HOSPITAL DISTRICT

NOTICE OF PUBLIC HEARING ON TAX INCREASE

The Schleicher County Hospital District will hold a public hearing on a proposal to increase total tax revenues from properties on the tax roll in 1990 by 5.85 percent. Your individual taxes may increase at a greater or lesser rate, or even decrease, depending on the change in the taxable value of your property in relating to the change in taxable value of all other property.

The public hearing will be held on August 29, 1991 at 7:00 p.m. at Schleicher County Medical Center.

FOR the proposal: C.R. Sproul, William Edmiston, Jerry Jones, Bobbie Sanders and De Lux

AGAINST the proposal:

PRESENT and not voting:

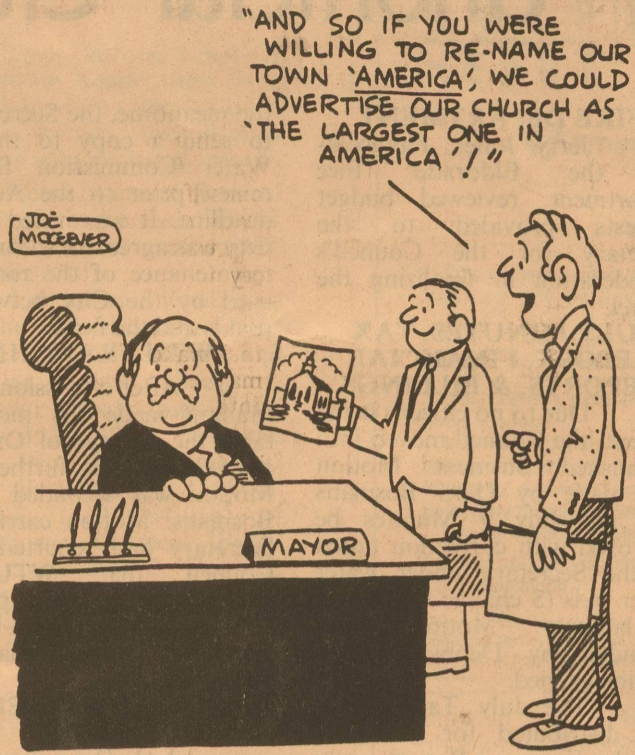
ABSENT: Raymond Mittel, George Gower

The statement above shows the percentage increase the proposed rate represents over the .4393 tax rate that the unit published on August 22, 1991. The following table compares taxes on an average home in this taxing unit last year to taxes proposed on the average home this year. Again, your individual taxes may be higher or lower, depending on the taxable value of your property.

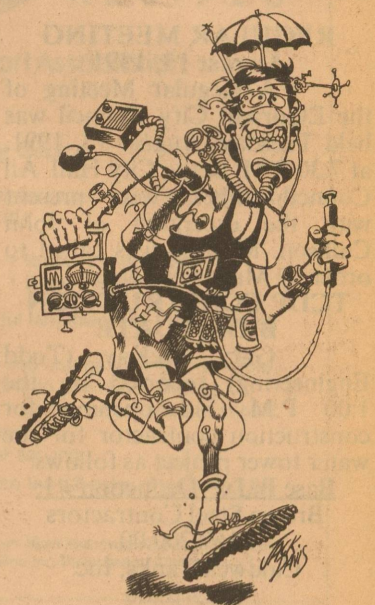
	Last Year	This Year
Average home value	\$18,163	\$18,163
General exemptions available (amount available on the average home, not including senior citizen's or disabled person's exemptions)	-0-	-0-
Average taxable value	\$18,163	\$18,163
Tax rate	\$0.465/\$100	0.465 (proposed)
Tax	84.46	84.46 (proposed)

Under this proposal taxes on the average home would not change by \$ -0- or -0- percent compared with last year's taxes.

Comparing tax rates without adjusting for changes in property value, the tax rate would not change by \$ -0- per \$100 of taxable value or -0- percent compared to last year's tax rate. These tax rate figures are not adjusted for changes in the taxable value of property.



CANCER PARANOIA?



CALL 1-800-ACS-2345
WE'LL EASE YOUR MIND.

Notice of Effective Tax Rate (for use by most taxing units)

1991 Property Tax Rates in Schleicher County Hospital District

This notice concerns 1991 property tax rates for Schleicher County Hospital District. It presents information about three tax rates. Last year's tax rate is the actual rate the taxing unit used to determine property taxes last year. This year's effective tax rate would impose the same total taxes as last year if you compare properties taxed in both years. This year's rollback tax rate is the highest tax rate the taxing unit can set before taxpayers can start tax rollback procedures. In each case these rates are found by dividing the total amount of taxes by the tax base (the total value of taxable property) with adjustments as required by state law. The rates are given per \$100 of property value.

Last year's tax rate:	
Last year's operating taxes	\$ 869,314.39
Last year's debt taxes	\$
Last year's total taxes	\$ 869,314.39
Last year's tax base	\$ 186,949,332
Last year's total tax rate	\$ 0.4650 /\$100

This year's effective tax rate:	
Last year's adjusted taxes (after subtracting taxes on lost property)	\$ 869,314.39
÷ This year's adjusted tax base (after subtracting value of new property)	\$ 197,897,570
= This year's effective tax rate	\$ 0.4393 /\$100

(In the first year a city or county collects the additional sales tax it must insert the following lines unless it made its first adjustment last year)

— Sales tax adjustment rate	\$ /\$100
= Effective tax rate	\$ /\$100

× 1.03 = maximum rate unless unit publishes notices and holds hearing	\$ 0.4524 /\$100
---	------------------

This year's rollback tax rate:	
Last year's adjusted operating taxes (after subtracting taxes on lost property)	\$ 869,314.39
÷ This year's adjusted tax base	\$ 197,897,570
= This year's effective operating rate (for school district (or zero)	\$ 0.4393 /\$100

× 1.08 (or add \$.08 for schools) = this year's maximum operating rate	\$ 0.4744 /\$100
+ This year's debt rate	\$ /\$100

(A school district must insert the following lines)	
= This year's rollback rate before adjustment	\$ /\$100
+ Rate to recoup lost revenue	\$ /\$100
= Adjusted rollback rate	\$ /\$100

= This year's rollback rate	\$ /\$100
-----------------------------	-----------

(A city or county that collects the additional sales tax (including one that collects the tax for the first time this year) must insert the following lines)	
— Sales tax adjustment rate	\$ /\$100
= Rollback tax rate	\$ /\$100

SCHEDULE A: Unencumbered Fund Balances

The following balances will probably be left in the unit's property tax accounts at the end of the current fiscal year. These balances are not encumbered by a corresponding debt obligation.

Type of Property Tax Fund	Balance

SCHEDULE B: 1991 Debt Service

The unit plans to pay the following amounts for long-term debts that are secured by property taxes. These amounts will be paid from property tax revenues (or additional sales tax revenues, if applicable).

Description of Debt	Principal or Contract Payment to be Paid	Interest to be Paid	Other Amounts to be Paid	Total Payment
Total required for 1991 debt service			-0-	
- Amount (if any) paid from funds listed in Schedule A			-0-	
- Excess collections last year			-0-	
= Total to be paid from taxes in 1991			-0-	
+ Amount added in anticipation that the unit will collect only ___% of its taxes in 1991			-0-	
= Total Debt Service Levy			-0-	

SCHEDULE C: Expected Revenue from Additional Sales Tax

(For counties and cities with additional 1/2 cent sales tax)

In calculating its effective and rollback tax rates, the unit estimated that it will receive \$ _____ in additional sales and use tax revenues.

This notice contains a summary of actual effective and rollback tax rate calculations. You can inspect a copy of the full calculations at _____

Name of person preparing this notice _____ Dorothy H. Evans

Title _____ County Tax Assessor-Collector

Date prepared _____ August 20, 1991

Unofficial City Council Minutes

REGULAR MEETING

August 13, 1991

A Regular Meeting of the Eldorado City Council was held Tuesday, August 13, 1991, at 7:30 P.M. at the City Hall. All Councilmembers were present with the exception of John Callison. Meeting was called to order by Mayor Nikolauk.

TCDD CONSTRUCTION BID/UPDATE
Gary McKay (Todd Engineering) reported on the 1:00 P.M. bid opening for construction contractor for the water tower project as follows:
Base Bid w/ Deduction #1:
Brown Steel Contractors \$167,200.00
Caldwell Tanks, Inc. 171,410.00
Phoenix Fabricators 175,630.00

Mr. McKay recommended that the Council accept Brown Steel Contractors' (Newnan, GA) bid of \$167,200.00. Motion to accept the bid was made by Randy Mankin and seconded by Jeri Whitten. Motion carried. Mr. McKay stated that plans were to add two valves to the project with an additional cost of \$500.00 to allow for the deleted altitude valve at a future date. Pre-construction conference was proposed for mid-September as schedules of contractor, Traylor and Todd permit.

Mr. McKay reported that the Urgent Need project engineering plans (wastewater plant repairs) had been forwarded to the Texas Water Commission for approval approximately one week earlier and that approval should be forthcoming to allow for bidding.

THORP'S LAUN-DRY

Tim Thorp and Randy Wuest of Thorp's Laun-Dry of Sonora met with the Council about decision to switch to another uniform service. He reviewed his agreement with the Council from 1984 and offered alternate plans for the Council's consideration. After discussion, Mr. Dean stated that he would contact Uni-First (Texas Industrial Services) salesman about the terms of the new contract with a further report to be made available to the Council at the next meeting. No Council action was taken.

PRO TEX

James Timms representing Pro Tex, Inc. met with the Council to discuss his company's proposal to treat the wastewater plant. He reported on his firm's tests of samples and outlined costs and procedure to introduce chemicals to counter algae and sulfite problems. (Cost for 10 week program: \$2232.00 Est.) No Council action was taken.

MEDINA PRODUCTS

Matt Brown representing Medina Products followed up on earlier meeting with the Council to present his firm's proposal to treat the wastewater plant. Estimated cost for initial treatment was \$4394.30. The Council discussed the Heussner Co., the Medina and the Pro Tex proposals, product reliability, guarantees and costs involved. No Council action was taken; however, Mr. Dean was asked to contact the Texas Rural Water Association for guidance.

FIRE DEPARTMENT

Jerry Jones, representing the Eldorado Fire Department, reviewed budget requests provided to the Secretary for the Council's consideration in finalizing the budget.

JULY MINUTES, TAX REPORT, FINANCIAL REPORTS, & BILLINGS

Due to no citizens being present, the Council moved into Unfinished Business. Motion was made by Dora Bosmans that the July 9 Minutes be approved with correction noted by the Secretary under water tower bids (\$ change due to re-tabulation). Motion was seconded by Debbie Ballew. Motion carried.

The July Tax Report and the Financial Reports were distributed for initialing and distributed for July. The Secretary recommended the passage of Amendment #5 to transfer funds within the Budget to make anticipated expenses. Motion was made by Randy Mankin and seconded by Jeri Whitten that Amendment #5 to the 1990-91 Budget be approved. Motion carried.

Jeri Whitten made motion that the billings be approved. Motion was seconded by Dora Bosmans. Motion carried. The Secretary reported a proposed change in Aged Listing which will more clearly outline outstanding billings and would alleviate need to initial each bill separately should the Council desire to do so.

UPDATE - LOT/BUILDING CLEANUP

Due to Roger Powell's absence to follow-up on investigation of procedures allowing for lot and building cleanup due to "health and safety" violations, the Secretary reported on Ordinances received from Floydada, McCamey and Sonora, in addition to the Robert Lee ordinance. She reported that each were very similar in nature and enforcement. No further action was taken by the Council.

CHRISTIAN WORKING AGREEMENT

The final draft of the Working Agreement between the Joe Christian family and the City of Eldorado for disposal of wastewater from the sewer treatment plant was reviewed. The draft had been coordinated with George Finley, the Christian's attorney, and had been signed by the Christian family. Tom Giovannitti had reviewed the document for the City. After discussion, motion was made by Randy Mankin and seconded by Debbie Ballew that the Agreement be executed by the City and recorded when the inventory had been verified and attached. Motion carried. In

the meantime, the Secretary was to send a copy to the Texas Water Commission for their review prior to the August 20 deadline. It was noted that the City was agreeable to continuing maintenance of the road being used by the City between the ponds and the fields.

WTU FRANCHISE

After discussion, Randy Mankin made the motion to table the passage of Ordinance #101-91 pending further study. Motion was seconded by Dora Bosmans. Motion carried. The Secretary had reported to the Council that WTU was agreeable to a reduced period of 20 years rather than the 40 years as stated in the initial WTU proposal.

SUPERINTENDENT'S REPORT

Jack Dean reported on very slow progress made to cut rock to provide sewer service for Tony Nix at Lot 9, Block 4U, Christian Addition (reference June 11 Minutes). Mr. Dean presented an estimate of expense from Trio Specialties to make the sewer cut. Other alternatives were discussed. Afterwards, Randy Mankin made the motion that the City make an offer to refund Mr. Nix' water, gas and sewer tap fees with an explanation that the City was unable to provide sewer service in the near future due to budgetary limits. Motion was seconded by Jeri Whitten. Motion carried.

Concerning the gas system, Mr. Dean reported that the two faulty valves at the gas plant would be installed on August 27th beginning at 2:00 P.M. The replacement of the valves will necessitate shutting down the plant. Notices have been prepared for the newspaper and will be placed on the bottom of the utility bills being sent out August 20.

Various miscellaneous accounts receivable due to damages to City property by companies and individuals were reviewed with follow-up and coordination by City personnel to attempt collection.

Mr. Dean reported that SW Main Street topping had been completed and that Nance Street would be completed shortly. Plans include moving on to Carson, the City/County street between the Old Merton Road and Murchison, and East Dorris. The City's maintenance of the teachers' parking lot (previously part of N. Oak St.) was discussed.

Concerning the landfill, Mr. Dean reported problems with the loader and that he had re-calculated use of the landfill - both past and present. City crews are in the process of closing old pit areas and re-locating black top soil. After

referencing existing WTU easement through the landfill, Mr. Dean requested the Council's consideration to seeking variance to Permit #349 from the Texas Department of Health (ref. \$325,138 Solid Waste Management) to reduce size of electrical right-of-way requirement.

RESOLUTION - HUD LETTER OF WAIVER

After brief discussion, motion was made by Dora Bosmans and seconded by Randy Mankin that Council approve Resolution authorizing the Mayor to execute a Letter of Waiver for payments in lieu of taxes for Housing Authority properties. Motion carried. Previous letter expired 1-1-90.

UTILITY ACCOUNTS RECEIVABLE WRITE-OFFS

The Secretary requested

the Council's consideration to removal from active collection efforts \$934.22 (representing 14 closed utility accounts). The \$934.22 is 0.15% of total utility billings (\$640,510.84) over the previous 12-month period. Motion was made by Randy Mankin and seconded by Debbie Ballew that the write-offs be allowed. Motion carried. The Secretary reported that her office had collected 5 previously written-off accounts totalling \$224.51 during the past 11 months.

FOLLOW-UPS

The Secretary reported that she had checked with Blue Cross/Blue Shield - about possibility of providing group coverage for additional personnel; however, restrictions to the contract allow only employees working in excess of 30 hours per week to be eligible.

Concerning legislation which passed both the House and Senate but was vetoed by the Governor, the threshold for seeking sealed competitive bids will remain at \$5000; therefore, the Minutes will reflect the Council's acknowledgment of the restriction.

1991-92 BUDGET

The Secretary distributed copies of a proposed 1991-92 Budget. Councilmembers reviewed each item and following discussion, the Secretary was instructed to prepare a final draft for the Council's next meeting. Public hearing on the proposed budget was set for Wednesday, August 28, at 7:30 P.M.

An analysis of Utility Revenues vs. Expenses by category was distributed to the Councilmembers for their study

Continued on page 5

Notice of Effective Tax Rate (for use by most taxing units)

1991 Property Tax Rates in Schleicher County ISD

This notice concerns 1991 property tax rates for Schleicher Co ISD. It presents information about three tax rates. Last year's tax rate is the actual rate the taxing unit used to determine property taxes last year. This year's effective tax rate would impose the same total taxes as last year if you compare properties taxed in both years. This year's rollback tax rate is the highest tax rate the taxing unit can set before taxpayers can start tax rollback procedures. In each case these rates are found by dividing the total amount of taxes by the tax base (the total value of taxable property) with adjustments as required by state law. The rates are given per \$100 of property value.

Last year's tax rate:	\$ 1,605,845
Last year's operating taxes	\$ 425,071
Last year's debt taxes	\$ 2,030,916
Last year's total taxes	\$ 1,787,661
Last year's tax base	\$ 178,761,852
Last year's total tax rate	\$ 1.1393 /\$100

This year's effective tax rate:	\$ 2,017,207
Last year's adjusted taxes (after subtracting taxes on lost property)	\$ 188,462,364
This year's adjusted tax base (after subtracting value of new property)	\$ 178,761,852
This year's effective tax rate	\$ 1.0703 /\$100

(In the first year a city or county collects the additional sales tax it must insert the following lines unless it made its first adjustment last year.)

Sales tax adjustment rate	\$ Not Applicable /\$100
Effective tax rate	\$ N/A /\$100
1.03 = maximum rate unless unit publishes notices and holds hearing	\$ 1.1024 /\$100

This year's rollback tax rate:

Last year's adjusted operating taxes (after subtracting taxes on lost property)	\$ 1,583,584
This year's adjusted tax base	\$ 188,462,364
This year's effective operating rate	\$ 0.8402 /\$100
.72 for school district (or zero)	\$ (0.7200)
1.08 (or add .08 for schools) = this year's maximum operating rate	\$ 0.2002 /\$100
This year's debt rate	\$ 0.2318 /\$100

(A school district must insert the following lines)

This year's rollback rate before adjustment	\$ 0.4320 /\$100
Rate to recoup lost revenue	\$ - /\$100
Adjusted rollback rate	\$ 0.4320 /\$100
This year's rollback rate	\$ 0.4320 /\$100

(A city or county that collects the additional sales tax (including one that collects the tax for the first time this year) must insert the following lines.)

Sales tax adjustment rate	\$ Not Applicable /\$100
Rollback tax rate	\$ N/A /\$100

SCHEDULE A: Unencumbered Fund Balances

The following balances will probably be left in the unit's property tax accounts at the end of the fiscal year. These balances are not encumbered by a corresponding debt obligation.

Type of Property Tax Fund	Balance
Maintenance and Operation	\$1,191,822.00
Interest and Sinking	\$ 3,573.00

SCHEDULE B: 1991 Debt Service

The unit plans to pay the following amounts for long-term debts that are secured by property taxes. These amounts will be paid from property tax revenues (or additional sales tax revenues, if applicable).

Description of Debt	Principal or Contract Payment to be Paid	Interest to be Paid	Other Amounts to be Paid	Total Payment
1985 General Obligation	\$325,000.00	\$99,462.50	\$400.00	\$424,862.50
Total required for 1991 debt service		\$424,862.50		
- Amount (if any) paid from funds listed in Schedule A		-0-		
- Excess collections last year		-0-		
= Total to be paid from taxes in 1991		424,862.50		
+ Amount added in anticipation that the unit will collect only .97% of its taxes in 1991		13,140.00		
= Total Debt Service Levy		\$438,002.50		

SCHEDULE C: Expected Revenue from Additional Sales Tax

(For counties and cities with additional 1/2 cent sales tax)

Not Applicable

In calculating its effective and rollback tax rates, the unit estimated that it will receive \$ _____ in additional sales and use tax revenues.

This notice contains a summary of actual effective and rollback tax rate calculations. You can inspect a copy of the full calculations at the Appraisal District office.

Name of person preparing this notice Ray L Ballew
Title Chief Appraiser
Date prepared August 20, 1991

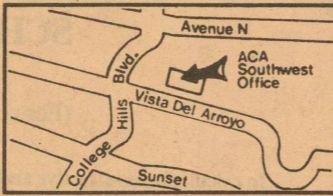
ANGELO CLINIC ASSOCIATION AND OUR FAMILY PRACTICE DEPARTMENT ANNOUNCE THE ADDITION OF VIKI F. THOMA, M.D.



Peter Chang, M.D., Hardy Morgan, M.D. and Jerry Schulze, M.D. are pleased to welcome Dr. Thoma, specializing in Family Practice, to our Southwest Office.

Family Practice is the medical specialty that focuses on the family as a whole in the diagnosis and treatment of disease, while also emphasizing psychological, social, and preventive health education.

Dr. Thoma, an Eldorado native, received her Bachelor of Science in 1983 from Angelo State University and Doctor of Medicine in 1988 from Texas Tech University Health Science Center where she also completed her residency.



ANGELO CLINIC ASSOCIATION
3016 Vista Del Arroyo • 944-3997 • Southwest
120 East Beauregard • 658-1511 • Downtown

"Welcome to Angelo Clinic"

UNITED ARTISTS

\$2.50 PER PERSON
SHOWS BEFORE 6:00

SUNSET 4

1066 SUNSET MALL 944-3390

DAVIDSON & MARLBORO - R

2:30 4:40 7:20 9:35
MYSTERY DATE - PG13
2:10 4:15 7:10 9:15
DOC HOLLYWOOD - PG13
2:00 4:20 7:15 9:30
HOT SHOTS - PG13
2:20 4:30 7:30 9:45

SOUTHWEST 7

3590 KNICKERBOCKER RD 949-9984

POINT BREAK - R

4:20 9:20
ROBIN HOOD - PG13
2:00 4:40 7:10 9:50
TERMINATOR 2 - R
2:00 4:30 7:00 9:55
CITY SLICKERS - PG13
2:20 4:40 7:30 9:45
REGARDING HENRY - PG
2:10 4:20 7:20 9:40
PURE LUCK - PG
2:10 7:10
DOUBLE IMPACT - R
2:15 4:30 7:20 9:40
BINGO - PG
2:15 4:15 7:15 9:15

HELP YOUR HEART RECIPES

American Heart Association

Angel Food Cake

This cake is anything but devilish! It's a light, flavorful alternative that the whole family will enjoy.

- 1 cup sifted cake flour
- 1 1/4 cups sugar
- 1 1/4 cups (10 to 12) egg whites, room temperature
- 1 tsp. cream of tartar
- 1/2 tsp. vanilla
- 1/2 tsp. almond extract

Preheat oven to 350° F. In 2 medium bowls, sift flour and 1/2 cup sugar together 3 times. In a large mixing bowl, beat egg whites until foamy. Add cream of tartar, vanilla and almond extract. Continue beating until soft, moist, glossy peaks form. Gradually add remaining sugar and continue beating at high speed until volume increases and stiff peaks form. By hand, gently fold in sifted flour-sugar mixture only until all flour is moistened.

Pour into 9-inch tube pan. Cut through batter carefully with a thin spatula to break up large air pockets. Bake 40 to 45 minutes. Remove from oven and invert pan for 1 1/2 hours or until cold. Remove cake from pan before storing. Makes 12 servings.

This Help Your Heart Recipe is from the American Heart Association Low-Salt Cookbook. Copyright 1990 by the American Heart Association Inc. Published by Times Books (a division of Random House Inc.), New York.

Angel Food Cake Nutritional Analysis per Serving

119	Calories	0 mg	Cholesterol
3 g	Protein	27 g	Carbohydrates
0 g	Total Fat	4 mg	Calcium
0 g	Saturated Fat	52 mg	Potassium
0 g	Polysaturated Fat	56 mg	Sodium
0 g	Monounsaturated Fat		

Good Neighbor Club Meets

by *Ola Ruth Barbee*
The Goodneighbor Club met at the Agricultural Building on Monday, August 19th. The club members canned hot and sweet relish. Plans were made for the year book.

The next meeting will be held at Ola Ruth Barbee's house on Monday, September 16th.

Those attending the August meeting were: Mary Gausemeier, Ola Ruth Barbee, Bobbie Killebrew, Marguerite Gillaspay, and Nancy Lester.

City

Continued from page 4

concerning adjustments to water, sewer, gas or sanitation rates. No action was taken by the Council at the present time.

With no further business, meeting adjourned at 12:50 A.M.

Germania Insurance



Covering Texas since 1896.
Property insurance
"Where to call" Agents

Sherry Lux
853-3068

CONCRETE CONTRACTOR

Form Setting & Ditching Service
30 Years Experience
Free Estimates

W.R. Simmons

(915) 658-8959



Keep darkness away from your home and business...install a Guard-Lite from WTU.

Our neighborhoods and businesses have changed. They're more subject to crime, theft and vandalism. But you can help protect your property from dusk till dawn with a Guard-Lite.

For one low monthly fee, WTU will provide free normal installation, maintenance, bulb replacement and electricity for your Guard-Lite. Remember, the electricity used by your Guard-Lite is included in your rental fee.

WEST TEXAS UTILITIES COMPANY

An Equal Opportunity Employer



WTU

A Member of The Central and South West System

For more information on leasing a Guard-Lite, call WTU.

Health News

by *Rico J. Forlano*

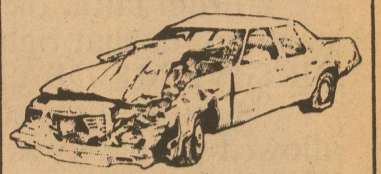
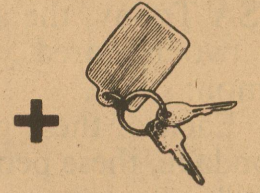
Once a person gets low back pain it is usually a problem for life because it is like the weak link in a chain. Lower back exercises can lessen the chance of this happening. The low back exercises should not be done in the initial period of pain, but after the pain goes away. The exercises should be done twice daily (when awakening and before going to bed). It is especially important to do the low back exercises even on the days when there is increased emotional stress. The low back exercises should include relaxation and limbering exercises, because most people with chronic low back pain have tight low back muscles. This tightness may tug and overly stretch a tendon or muscle when bending or turning the lower

back.

Once the initial pain is gone, and proper exercises were done, further preventative steps can be taken by participating in selective recreation sports. Swimming is usually the best sport for people with lower back pain because it is a non-weight bearing exercise. Bicycle riding is also good, as long as the seat is adjusted so the lower back is in slight flexion. Jogging and tennis may be tolerated, but are not advised. Horseback riding, weight lifting, golf, and bowling should be avoided right after a problem with lower back pain.

For treatment of lower back pain and information on the proper exercises to do after a problem with low back pain, see your Chiropractic Physician.

DRINKING AND DRIVING CAN ADD UP.



PLEASE AVOID DWI DURING THE NEW YEAR

TEXAS DEPARTMENT OF PUBLIC SAFETY

Notice of Effective Tax Rate (for use by counties)

1991 Property Tax Rates in SCHLEICHER COUNTY

This notice concerns 1991 property tax rates for Schleicher County. It presents information about three tax rates. Last year's tax rate is the actual rate the taxing unit used to determine property taxes last year. This year's effective tax rate would impose the same total taxes as last year if you compare properties taxed in both years. This year's rollback tax rate is the highest tax rate the taxing unit can set before taxpayers can start tax rollback procedures. In each case these rates are found by dividing the total amount of taxes by the tax base (the total value of taxable property) with adjustments as required by state law. The rates are given per \$100 of property value.

	General Fund	Farm to Market/ Flood Control Fund	Special Road/Bridge Fund
Last year's tax rate:			
Last year's operating taxes	\$ 932,107.18	\$ 76,343.45	\$ 85,783.57
Last year's debt taxes	\$	\$	\$
Last year's total taxes	\$ 932,107.18	\$ 76,343.45	\$ 85,783.57
Last year's tax base	\$ 185,678,722	\$ 183,960,120	\$ 185,678,722
Last year's total tax rate	\$ 0.5020 /\$100	\$ 0.0415 /\$100	\$ 0.0462 /\$100
This year's effective tax rate:			
Last year's adjusted taxes (after subtracting taxes on lost property)	\$ 932,107.18	\$ 76,343.45	\$ 85,783.57
÷ This year's adjusted tax base (after subtracting value of new property)	\$ 197,134,210	\$ 195,484,520	\$ 197,134,210
= This year's effective tax rate for each fund	\$ 0.4728 /\$100	\$ 0.0390 /\$100	\$ 0.0435 /\$100
Total effective tax rate	\$ 0.5553 /\$100		

(In the first year a county collects the additional sales tax it must insert the following lines unless it made its first adjustment last year.)

- Sales tax adjustment rate	\$ /\$100
= Effective tax rate	\$ /\$100
× 1.03 = maximum rate unless unit publishes notices and holds hearing	\$ 0.5719

	General Fund	Farm to Market/ Flood Control Fund	Special Road/Bridge Fund
This year's rollback tax rate:			
Last year's adjusted operating taxes (after subtracting taxes on lost property)	\$ 932,107.18	\$ 76,343.45	\$ 85,783.57
÷ This year's adjusted tax base	\$ 197,134,210	\$ 195,484,520	\$ 197,134,210
= This year's effective operating rate	\$ 0.4728 /\$100	\$ 0.0390 /\$100	\$ 0.0435 /\$100
× 1.08 = this year's maximum operating rate	\$ 0.5106 /\$100	\$ 0.0421 /\$100	\$ 0.0470 /\$100
+ This year's debt rate	\$ 0.0437 /\$100	\$ 0 /\$100	\$ 0 /\$100
= This year's rollback rate for each fund	\$ 0.5543 /\$100	\$ 0.0421 /\$100	\$ 0.0470 /\$100
This year's rollback rate	\$ 0.6434 /\$100		

(A county that collects the additional sales tax (including one that collects the tax for the first time this year) must insert the following lines.)

- Sales tax adjustment rate	\$ 0.0301 /\$100
= Rollback tax rate	\$ 0.6133 /\$100

SCHEDULE A: Unencumbered Fund Balances

The following balances will probably be left in the unit's property tax accounts at the end of the current fiscal year. These balances are not encumbered by a corresponding debt obligation.

Type of Property Tax Fund	Balance

SCHEDULE B: 1991 Debt Service

The unit plans to pay the following amounts for long-term debts that are secured by property taxes. These amounts will be paid from property tax revenues (or additional sales tax revenues, if applicable).

Description of Debt	Principal or Contract Payment to be Paid	Interest to be Paid	Other Amounts to be Paid	Total Payment
Law Enforcement Center	\$60,000.00	\$23,615.00		\$83,615.00
Total required for 1991 debt service			\$83,615.00	
- Amount (if any) paid from funds listed in Schedule A				
- Excess collections last year				
= Total to be paid from taxes in 1991			\$83,615.00	
+ Amount added in anticipation that the unit will collect only % of its taxes in 1991				
= Total Debt Service Levy				

SCHEDULE C: Expected Revenue from Additional Sales Tax

(For counties and cities with additional 1/2 cent sales tax)

In calculating its effective and rollback tax rates, the unit estimated that it will receive \$ 59,463.40 in additional sales and use tax revenues.

This notice contains a summary of actual effective and rollback tax rate calculations. You can inspect a copy of the full calculations at County Courthouse Tax Office

Name of person preparing this notice Dorothy M. Evans
Title County Tax Assessor-Collector
Date prepared August 20, 1991

Sleeping through the Dream

by Gary Smith

We beat the odds. We made it. We survived. America celebrated her 215th birthday this year. Our Democracy has survived two World Wars and a host of other wars including a war with brother against brother. We survived.

When I say we beat the odds, it is because, according to an article in USA Today, the average life of the world's greatest civilizations has been two hundred years. All of these nations had certain things in common:

Each of these great nations started as a people of bondage. While in bondage, these people gained faith...faith in a higher good- faith in the "right."

From faith, the people moved to courage. They found courage to stand up for that right. They uttered words like, "GIVE ME LIBERTY OR GIVE ME DEATH." Through that courage, they gained liberty.

Liberty allowed people to think and do for themselves. Liberty allowed people to work for themselves. To create or find the abundant life.

After the people gained abundance, they became selfish. Self interest ruled the day. Old thoughts like "Looking Out for #1" and "If you don't look out for yourself nobody will" were the bywords of the day. Each of these great civilizations had a "ME" generation.

This selfishness was not enough for people and soon they became apathetic. Nothing seemed to matter too much any more. I can just hear them saying, "So Councilman Harvey is dishonest. So, what else is new? All politicians are crooked anyway"...or "Why bother voting? My vote doesn't matter."...or "Why should I try to do any better? I can make more money staying home than I can going to work."...or "The government will give me more money not to grow anything. Why should I bother planting."

These apathetic people became dependent on the government. Large numbers of the people were supported entirely by the government. More and more became dependent daily.

You know the rest of the story. The people were dragged from dependency back into bondage.

If we have learned anything at all, it is that history has a way of repeating itself. Must we suffer the same fate as other great World Empires or will we be able to control our collective destinies? If you have read this far, then I believe there is still hope. If there are but a few who will put principle over price, then America still has a Dream.

At this very moment, the people of the U.S.S.R. are fighting gallantly for their independence from a cruel and repressive government. They are congregating in the streets. "Liberty or Death" may not be what they are saying, but it's what they are living. They are feeling the chords of liberty ringing in their hearts and souls. Once a person embraces the concept of freedom and democracy, then that person becomes one of democracy's offspring. We and the Soviet people have become, by the very nature of liberty, brothers and sisters of freedom. And we, across the waves, can do very little to help these children of democracy. But, that's O.K. Because once these people have tasted FREEDOM their wills will not be denied.

Perhaps there is one thing that we can do to help insure that freedom will have a chance throughout the world. WE CAN EXAMINE OURSELVES. We can see that we the voters have discovered that we can vote ourselves into a state of governmental dependence. We can see that we now vote into office, not the patriots and not the statesmen, but those who promise to keep the checks coming in.

Our Cold War enemies are fighting their way out of a dictatorial government. Let us pray to Almighty God that we don't sleep ourselves into one.

Senior Ambassadors

The Senior Ambassadors of the First Baptist Church of Eldorado met the 19th for their regular monthly meeting. The meeting was called to order by vice-president B.F. Blaylock and watermelon was served by Mary Etta Stricklan to 21, including 3 visitors, Pat Fultz, and Ester and Walter

Jones, from San Angelo. Mrs. Fultz and Mrs. Jones are sisters of Bobbie Sanders. Minutes were read by Dana Owens and Leon Stricklan led in prayer. The Senior Ambassador's will be known by a shorter name, SAMS, in our "everyday" talk. Mabel read "the Medical Terms

for a layman." Everyone planning to go on the Fall Tour to the Smokies turned in their first payment. There were 26 who signed up for the Trip scheduled for October 24-November 2. The Blaylock's led in playing "Scattergory," and meeting was dismissed by Ruth Davis.

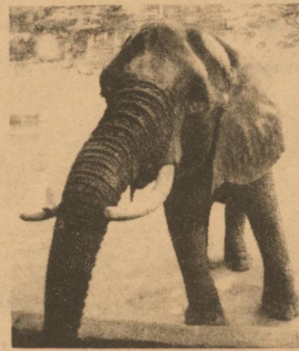
It's A Boy!!!

Keith and Ca-Tina Whiddon are proud to announce the birth of their son Christopher Keith born August 7, at 9:25 a.m. at Shannon Medical Center. Christopher was welcomed home by grandparents Dorothy Clark and Mr. and Mrs. Brett Dacy and great-grandparents Mr. and Mrs. Hugh Killebrew and Nancy Terry all of Eldorado. Christopher weighed 8 pounds and 12 1/2 ounces and was 20 1/2 inches long.

Senior Citizen Update

All the senior citizens at the Schleicher County Senior Citizen Center, and other senior citizens throughout the community, would like to express their appreciation to Southwest Texas Electric Co-op for the Bar-B-Que plates donated to the senior citizens of

Eldorado. We would also like to thank Dairy Mart and Glidden Foods for their participation. Approximately 85 dinner plates were distributed to the elderly through out the community. May the Lord Bless you and multiply all your needs!



Kent's Automotive

Parts and Service

Phone 853-2733
Eldorado, Tx. 76936

Casa Arispe

Fine Mexican Dining



Open 7 Days a Week
8 a.m. to 10 p.m.



The Lord will give strength unto his people; the Lord will bless his people with peace.

Psalm 29:11

Our Lady of Guadalupe Catholic Church

820 N. Divide
Pastor - Father Jerry McCarthy

Church of Christ

Mertzon Hwy.
Pastor - David Templeton

Templo Getsemani

Menard Hwy - behind Post Office
Pastor - Ezuviqen Diaz

St. Luke Baptist Church

105 E. Denny
Pastor - Henry C. Green

Agape Assembly of God

Corner of Warner & Hackberry
Pastor - Ken Otwell

Antioch Baptist Church

West Callender
Pastor - Billy Daniels

First Baptist Church

109 W. Gillis
Pastor - Chris Graham

First Presbyterian Church

7 N. Cottonwood
Pastor - Hawley Wolfe

Primitive Baptist Church

W. Ave. & Carson St.
Pastor - Raymond Kirkpatrick

First United Methodist Church

102 15 N. Divide
Pastor - Paul Lynn

Eldorado Church Directory

This ad is sponsored by these Eldorado Businesses in the interest of a Stronger Community.

EAGLE DAIRY MART

MCCORMICK'S EXXON

ELDORADO WOOL COMPANY

FIRST NATIONAL BANK OF ELDORADO

SOUTHWEST TEXAS ELECTRIC CO-OP, INC.

THE ELDORADO SUCCESS

KERBOW FUNERAL HOME

STAR STOP

Checking Accounts

C.D. Accounts

Savings Accounts

Loans

Times have changed and banks have changed. Today, we offer all kinds of special accounts to meet the financial needs of people in our home town. It all comes down to just two things that everyone needs though, a safe place to keep your money and a place to borrow a little extra when you need it. Come by and tell us what we can do for you.

A great bank in a great place.

First National Bank

Main Number
853-2561

of Eldorado
Member FDIC

Bookkeeping
853-2582

Oatmeal Festival

What started out about fourteen years ago as an effort to put the tiny town of Oatmeal, Texas back on the map, has grown into a full fledged, bona fide Texas festival. Ken (Oat-iorne) Odiorne originated the idea and was instrumental in the creation of the Oatmeal Festival Association. This group is in charge of all the activities in Bertram on Saturday. Proceeds have been used for local student scholarships as well as building a pavilion in the Bertram Park.

This year's goal is to add a roof to the structure so that it may become a "pavilion" instead of a "concrete slab."

Another group of folks, the Oatmeal Community Association takes charge of the activities held at the Oatmeal school building.

Apparently, this annual event and its activities, held 40 miles northwest of Austin, caused mapmakers to take a second look at the metropolis of Oatmeal. With a questionable population of 400 citizens, Oatmeal was put back on the map of Texas in 1982.

Each year, the citizens gather together to celebrate. Predicting that this year's festival will be the best ever, Ken Odiorne, Chief Oat Master, describes the festival as "the best little small town festival in Texas."

Since 3 Minute Brand Oats is the key sponsor of the Oatmeal Festival activities, everything begins at "3 Minutes" past the hour. On Friday, August 30th, at 5:03 p.m. the Oatmeal Festival officially begins with a barbecued beef supper at the Oatmeal school building, followed by entertainment on an open-air stage.

in Bertram. Beginning at 9:03 am, entries will be accepted in the Oatmeal Cook-Off.

The "grasshopper parade" for kids begins at 10:03 am, followed by the grand parade at 10:33 am. Just to make sure everyone gets a little bit flaky, the "Oatmeal Air force" flies over the folks and drops over 333 pounds of dry oat flakes during the parade.

Various games and contests will be held in the afternoon, including a washer pitch contest, an oatmeal eating contest, oatmeal tube stacking, egg toss and overripe cantaloupe toss and the ever famous cow chip kick-off. In addition to the "adult" games, the oatmeal festival is known far and wide for their kids games such as the oatmeal sand box, sack races, the gold fish dip and the calf chip kick-off.

Saturday, at 3:33 p.m. the World's Largest Oatmeal Cake will be served. Bakers will bake and build the oatmeal cake throughout Saturday's activities so that festival attendees can watch this sticky proposition in progress. The cake will have at least 333 cups of 3 Minute Brand's pan toasted oats in the

recipe and will stand 33 layers tall. It will be iced and decorated to look like a 3 Minute brand oat tube.

Food booths including barbecued cabrito and fajitas will be available. In addition, there will be arts and crafts booths, a doll and teddy bear show, featuring both antique dolls and teddy bears in exhibition with prizes awarded for the oldest, prettiest and most loved.

Square dancers and doggers will be on hand to exhibit their dancing skills beginning at 5:03 p.m., followed by an open-air dance at the "soon to be pavilion" in Bertram Park.

The Fourteenth Annual Shin Oak Ridge Festival,

Intergalactic Oatmeal Cook-Off and Bertram Acceleration Days, better known as the Oatmeal Festival, honors the citizens' ancestors who ventured into the Caliche Hills of Central Texas to establish their homes. (Thank heaven, they shortened the name of their festival!)

For more information about the festival contact: Nina Swan-Kohler, Swan-Kohler and Associates, 1613 Vinewood, N.E. Cedar Rapids, Iowa 52402, (319) 393-4358, Mercedes Dolan, Product Manager, 3 Minute Brand Oats, 1515 H. Ave. N.E., (319) 364-9161, or Ken Odiorne, Oatmeal "Bowl" of Directors, Rt. 2, Box 22, Bertram, Texas 78605, (512) 355-2542.



Two newspapers that began their careers as penny papers were the New York Times and the Baltimore Sun.

Even the safest form of energy must be used carefully

Every year people of all ages are killed or seriously injured in accidents involving electricity.

Here are some tips to keep you and your family safe:

- Never use damaged electrical cords or run cords under rugs.
- Keep all electrical cords out of the reach of children and be sure to plug any unused electric outlets with safety caps.

- When using extension cords, be sure they are in good repair and properly sized for the job. And, use them only temporarily.
- Remember that electricity and water are a dangerous combination. Keep radios, hair dryers, and anything else electrical away from sinks, showers, tubs, and pools.

Electricity is our safest form of energy — but even the safest must be used carefully.

Southwest Texas Electric Coop., Inc
(915) 853-2544
(915) 853-2546 (24 hr.)

HELP YOUR HEART RECIPES

American Heart Association

Strawberry Sauce

This topping is great over plain, low-fat yogurt, ice milk or angel food cake. And the children will love it!

- | | |
|-------------------------------|----------------------|
| 1 lb. fresh strawberries | 1 tbsp. orange juice |
| 1 tbsp. acceptable* margarine | 1 tbsp. sugar |

Wash berries, remove stems and cut lengthwise so that slices are heart shaped.

In a non-stick pan heat margarine and orange juice over medium setting. Add strawberries and cook for 2 to 3 minutes, stirring frequently. Add sugar and cook for 2 minutes longer. Mixture should be slightly thickened. Serve immediately.

Serves 4, approximately 1/4 cup per serving.

* Select margarines that have no more than 2 gms. of saturated fat per tablespoon.

This Help Your Heart Recipe is from the American Heart Association Low-Salt Cookbook. Copyright 1990 by the American Heart Association Inc. Published by Times Books (a division of Random House Inc.), New York.

Strawberry Sauce Nutritional Analysis per Serving

73 Calories	0 mg Cholesterol
1 g Protein	11 g Carbohydrates
3 g Total Fat	17 mg Calcium
1 g Saturated Fat	197 mg Potassium
1 g Polyunsaturated Fat	2 mg Sodium
1 g Monounsaturated Fat	

School Lunch Menu

LUNCH
All lunches served with Bread, Milk and Butter.

MONDAY, AUGUST 26TH
Cowboy Beans, Tater Tots, Dill Pickle Strips, Cornbread, White Cake/Icing.

Tuesday, August 27th
Fish Nuggets, Macaroni & Cheese, Black-eyed Peas, Applesauce, Chocolate Cake/Chocolate Icing.

WEDNESDAY, AUGUST 28TH
Spaghetti & Meatsauce, Whole Kernel Corn, Pineapple Chunks, Peanut Butter Cookies.

THURSDAY, AUGUST 29TH
Pork Choppettes & Gravy, Creamed Potatoes, English Peas, Apple Pie.

FRIDAY, AUGUST 30TH
Hamburgers, Potato Chips, Lettuce, Tomatoes, Pickles & Onions, Banana Pudding.

BREAKFAST
1/2 pint of milk is offered with each breakfast.
Breakfast the 1st two weeks of school will consist of Fruit, Cereal, and Toast.

NEW SHIPMENT OF USED FORD PROGRAM CARS

OVER 40 OF THESE UNITS IN STOCK - WE HAVE A TOTAL OF OVER 130 USED CARS IN STOCK.

**J B F
i a o
m s r
s d**

**J B F
i a o
m s r
s d**

Two Locations to Choose from:

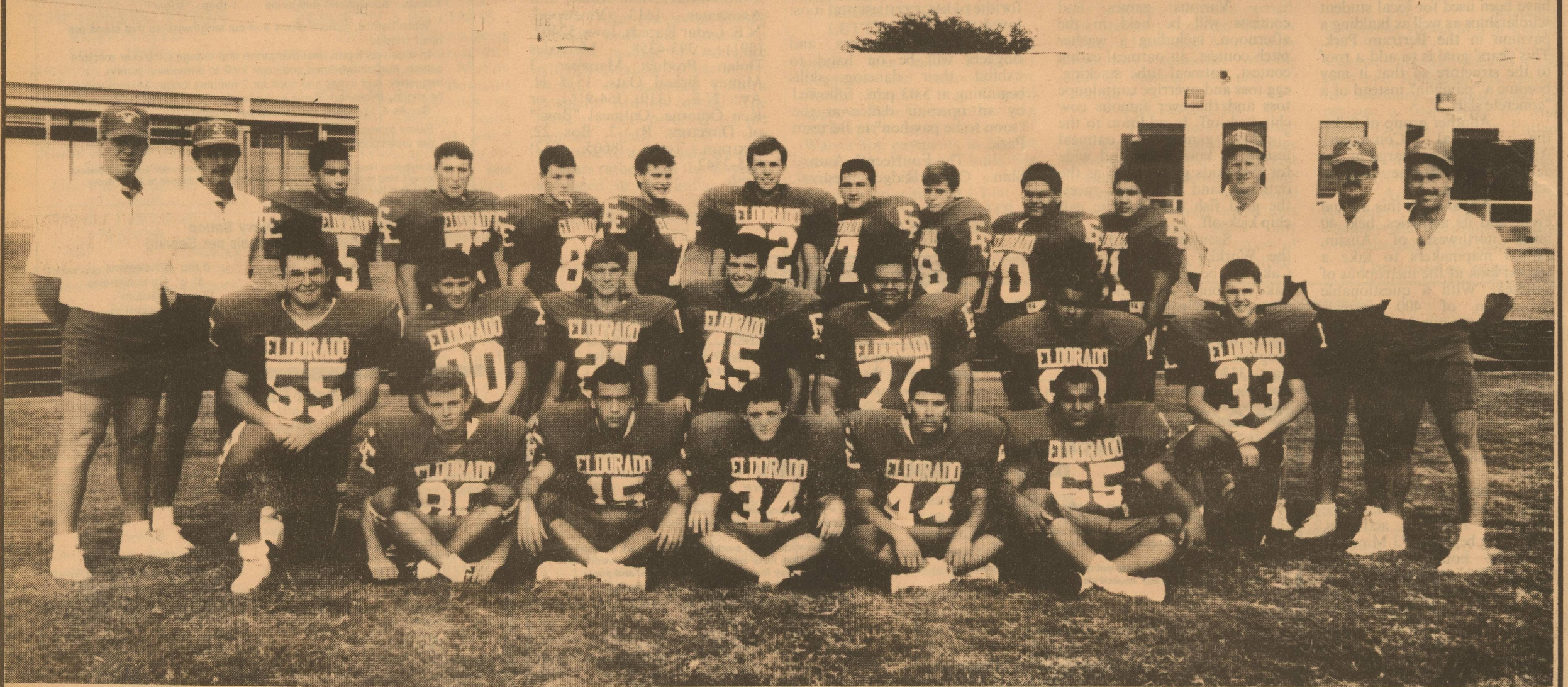
Jim Bass Ford

**2323 N. Bryant
658-8826**

**2901 Sherwood
949-4621**

We will be closed Saturday, August 24th, and will be open Sunday, August 25th from 1:00 p.m. until 6:00 p.m.

1991 Eldorado Varsity Eagles



Go Eagles!

This Page is Sponsored by

Griffin Fuels

.....
Griffin Propane Co.

can save you money!

●●● Our Propane prices are lower than others.

●●● We furnish tanks.

●●● We install Propane systems for houses and businesses.

Call or come by Griffin Propane NOW!!!
Phone: Eldorado - 853-2616 or 853-2880
Eden - 869-4621
Menard - 396-4598
or Toll Free: 1-800-242-3606

●●● We have two persons that have been certified to install Propane Systems on almost all vehicles (especially Pickup Trucks).

●●● We lease or we offer rental/purchase on vehicle propane systems.

HOUSE FOR SALE
4 bedroom, 3 bath, ceiling fans, fireplace, central air, new carpet. Spacious yard with fruit trees and fenced in back yard. Close to school. Reasonably priced. Call 387-2297 or 853-3005.

NOTICE: Buy or sell Art, Cookbooks, American, Russian, Asian, World War I & II, Photography, Poetry, Language, Religious, Metaphysical, Children, First Edition, Texana, etc. books. Ye Ole Fantastique Book Shoppe, 1218 W. Beauregard, San Angelo.

GARAGE SALE
Saturday, August 24, 8:30. Corner Field and Plum. Toys, tools, clothes, plants, lots of misc. Everything Must Go!
1-(8-22-91)-b

FOR RENT
2-bedroom house in Orient Heights - 110 Lee Street. Privacy fence, large pecan trees. For more information, call 853-2852.

1-(8-22-91)-b
THANK YOU
We wish to thank the Eldorado Ambulance Service, Sheriff's Department, and Hospital Emergency Staff for their promptness and excellence after Travis' accident. Their professional and courteous service was greatly appreciated. Fortunately, Travis is home and fully recovered.
Family of Travis Ray
Mr. and Mrs. Daniel Ray
Mr. and Mrs. Tommy Ray

LET OUR SUCCESS GO TO YOUR HEAD!
Call today for an appointment!
Call Charlotte's Hair Shop
9 West Gillis
853-3084 or 853-3725

ATTENTION:
Defensive Driving will be offered on Saturday, Aug. 10th, and Monday and Tuesday, Aug. 12th & 13th. Call 853-2777 for more information.

WANTED: Truck driver to operate transport or kill truck. Good driving record necessary. All applications accepted in person at Niblett's Oilfield Service, Hwy. 277 S., Eldorado. 853-2680 or 853-3005.

FOR SALE
3-Bedroom Stucco house. 1-bath, kitchen with separate dining room, large utility room, fenced front and back yard, central heat/air, carpet and storage building. Call Paul or Kymm Nixon at 853-2176. (Leave message if no answer)

HOUSE FOR SALE
4-bedroom/2-bath w/upstairs, on 2 lots. Utility room, double carport, storage building, fence, central air/heat, sundeck, storm shelter. 853-3368.

tfnb-(5-13-91)-b
SPEARS HOMES OF KERRVILLE
15th Anniversary Sale. Celebrating our 15th year, same ownership, same location. All lot models and special order Fuqua, Schult and Fleetwood Homes on sale at guaranteed lowest prices. Phone 1-800-580-3003.

FREE
Registered Cocker Spanial - female (spayed); Vet's house dog terrier - male.

HOUSE FOR SALE
4-bedroom/2-bath w/upstairs, on 2 lots. Utility room, double carport, storage building, fence, central air/heat, sundeck, storm shelter. 853-3368.
tfnb-(5-13-91)-b

WANT ADS

NOTICE: Mary Kay Cosmetics. Graduation, birthday, anniversary gifts. Martha Spinks. Old Mertzton Road. Phone 853-3415 after 4 p.m.

FOR SALE
Have real nice box springs and mattress set. Asking \$100.00. Call me at 853-3281 and ask for Charles or come by at Luis Lozano resident at 113 San Antonio St.

1-(8-15-91)-b
FOR SALE
3-bedroom, 2-bath. Large, newly remodeled home on 5 prime lots. Fenced back yard. Must see to appreciate - reasonably priced. Call 853-3142.

tfn-(8-15-91)-b
NEW 16x80
Shingle roof, upgrade carpet, storm windows, refrigerated air, lots of built ins, only \$241.00 per month. 11% APR, 10% down, 240 months. Call Homes of America, Odessa 915-363-0881.
2-(8-15-91)-b

HOUSE FOR SALE
Large 3-bedroom/2-bath house on 5 acres. 15 miles out on Big Lake Hwy. Barn, Water Well, Trees. Call (915) 836-4452.
9b-(7-2-91)-p

\$3995.00 BUYS NICE
2-bedroom home. Call Odessa 915-550-4033. Se Habla Espanol.

2-(8-15-91)-b
FOR SALE
2 lots and home - \$6,000.00. Call (915) 465-4654.

1-(8-22-91)-p
CAKE DECORATING
Let me make a birthday special with a personalized cake. Call Kim-et Nelson at 853-3136.

1-(8-22-91)-p
FOR SALE
2-year old registered Polypay Buck. Have papers. &75.00. Call 853-2243.

1-(8-22-91)-b
GARAGE SALE
9:00 Saturday, August 24th. 105 Cedarwood. Furniture, clothes, lots of miscellaneous.
1-(8-22-91)-b

MARY KAY.
Lisa A. Meador
Independent Beauty Consultant
209 E. Brooks Ave.
Eldorado, Texas 76936
(915) 853-3612

PUBLIC NOTICE

PUBLIC NOTICE
THE CONCHO VALLEY COUNCIL OF GOVERNMENTS AREA AGENCY ON AGING is soliciting proposals for bids for Homemaker II services to be provided for the elderly population in Kimble, Menard, Schleicher and Sutton counties. The successful bidder must meet the requirements put forth by the Texas Department on Aging to include staff supervision by a R.N. Packets including instructions can be obtained at the following address.

LINKS-Options for Independent Living
401 B Main Street
Junction, Texas 76846
2-(8-22-91)-b

Benton Abstract & Title Co.
106 W. Murchison Avenue
853-2631.
Established 1916.
Providing all your abstract and title needs.

THE BEST FOR LESS
Redken and Matrix Products
Let
Rene or Amy
Meet all your hair needs.
Rene's Beauty Shop
853-2747
Walk-ins Welcome

Forlano Chiropractic Family Health Center
Dr. Rico J. Forlano
Whiplash, Sports Injuries, Muscle Pain, Joint Pain, Etc.
Office Hours Monday-Friday by appointment
Call for Saturday and after hour appointments
418 Hwy. 277 S. Eldorado.....853-3331


The Eldorado Success
204 S.W. Main Street
Eldorado 853-3125
CLASSIFIED AD RATES
All Classified Ads (up to 35 words).....\$5.00
(10c/word thereafter)
Boxed Classified Ads.....\$7.00
Card of Thanks.....\$5.00
Deadline of placement or cancellation of Classified Ads 5 p.m. Tuesday

Tire Service Oil & Wash Jobs
Quick Tire & Automotive
24 Hour Service
Quintin Killebrew
310 S. Main Eldorado, Tx. 76936
Phone Numbers:
Shop: 853-3413 Nite: 853-2842
Mobile: 853-2527-30221909

(915) 853-2314
JERRY'S T.V. SERVICE
SYLVANIA TELEVISIONS - SATELLITE T.V. SYSTEMS
JERRY J. JONES
214 S. MAIN STREET
ELDORADO, TX. 76936

BERNARD RUST D.D.S
901 S. E. Crockett Sonora, Texas
GENERAL DENTISTRY
New Patients & Emergencies Welcome
* Insurance Accepted *
Call Rae Ann for an appointment - 387-2659
Mon.-Thur. 8:00-5:00 Fri. 8:00-12:00

Mittel Insurance presents...
Eldorado Spotlight



STEVE WILLIAMS

This week our spotlight shines a beam on Steve Williams. Steve is a local farmer, living in the Reynolds community. He is married to Ilse. They have two children, Ty, 12 and Tana, 8. Steve's hobbies include farming, farming and farming. He farms for a living, for fun and for recreation. He also spends time going to various community service meetings. Any time that he has left is spent with his family. Says wife, Ilse, "His greatest accomplishment is putting up with me for the past 18 years."

Mittel Insurance Agency
"For Your Insurance Needs"
853-2576

Eldorado Wool Company
Phone
853-2772 - Office
853-2820 - Feedstore

BACK TO SCHOOL SPECTACULAR

<p>BUY ONE GET ONE FREE</p> <p>Kraft MIRACLE WHIP 32 oz. Jar \$1.99</p>	<p>Parade APPLE JUICE 32 oz. Bottle 99c</p> <p>BUY ONE GET ONE FREE</p>	<p>BUY ONE GET ONE FREE</p> <p>Kraft BAR-B-QUE SAUCE Assorted Flavors 18 oz. Bottle 99c</p>
---	---	---

ATTENTION STUDENTS!!!

BURRITOS 2/\$1.00 **\$1.99 HAMBURGER FRIES** **CORN DOGS 2/\$1.00**
16 OZ. FOUNTAIN DRINK

Beginning Monday, August 26 students may register for free weekly lunch. Drawing will be held at 1:00 p.m. each Friday.

<p>Parade PIZZA'S 8 oz. Sausage, Hamburger Pepparoni, Combination 3/\$1.00</p>	<p>Friday Special HAMBURGERS All Day Long 99c</p>	<p>FRIED CHICKEN 12 Piece Box \$7.99</p>
--	---	--

SHOTS #3
853-2775 OPEN 24 hrs. 301 S. Divide



Glidden Foods

Store Hours:
Monday-Saturday 9:00 a.m. - 7:30 p.m.

We Accept
Food Stamps
Closed Sunday

<p>Best Maid Hamburger Dill Pickles \$1.39</p>	<p>12 oz. Gooch German Sausage \$1.99</p>	<p>Q&Q Vermicelli 4/\$1.00</p>
<p>2 Liter Pepsi 99c</p> 	<p>Prices Effective August 22-28</p>	<p>2 Liter Dr. Pepper 99c</p> 

HURRY
for these Special Savings!



6 Pac Can
Dr. Pepper
or Pepsi



\$1.39

4 Roll Charmin **89c**



Parade Medium Eggs **59c**

2 lb. Box
Parade Cheese Spread **59c**
(use like Velveta)



Jumbo Bounty Towels **59c**



Meat

Boneless Sirloin \$2.99/lb	Wright's Market Sliced Bacon \$1.59/lb
Beef Brisket \$1.19/lb	Boneless Arm Roast \$1.79/lb
Boneless Chuck Roast \$1.69/lb	


Produce

California Nectarines 59c/lb	Potatoes 5 lb. Bag 99c
Watermelon Red or Yellow \$2.49 each	Lettuce 49c each
Yams New Crop 49c/lb	

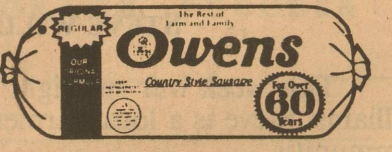
Qt. Parade Ketchup **69c**



6 1/2 oz. Parade Potato Chips **99c**



1 lb. Owens Sausage **\$2.19**



Gallon Parade Bleach **99c**



16 oz. Parade Can Corn **2/\$1.00**



16 oz. Can Better Valu Tomatoes **2/89c**