

Happy 95th Birthday, Dud!

The Eldorado

35 cents

Success

A Positive Forecast

"Serving West Texas Since 1901"

A Good News Review

Volume 89 #30

The Eldorado Success

July 26, 1990

Emergency Farm Loan Applications Being Accepted

Applications for emergency farm loans for losses caused by severe storms, flooding and tornadoes are being accepted at the Farmers Home Administration (FmHA) office located in Eden, Texas.

Schleicher County is one of 18 in Texas recently named by Secretary of Agriculture Clayton Yeutter as eligible for loans to cover part of actual production losses resulting from the severe storms, flooding and tornadoes.

Ben Rucker, FmHA County Supervisor, said farmers may be eligible for loans for up to 80 percent of their actual losses or the operating loan needed to continue in business or \$500,000, whichever is less. For farmers unable to obtain credit from private commercial lenders, the interest rate is 4.5 percent.

"As a general rule, a farmer must have suffered at least a 30 percent loss of production to be eligible for an FmHA emergency loan," Mr. Rucker said. Farmers parti-

cipating in the PIK or Federal Crop Insurance programs will have to figure in proceeds from those programs in determining their loss.

"Applications for loans under this emergency designation will be accepted until 2/15/91, but farmers should apply as soon as possible. Delays in applying could create backlogs in processing and possibly over into the new farming season," Mr. Rucker said.

FmHA is a credit agency of the U.S. Department of Agriculture. It is authorized to provide disaster emergency loans to recognized farmers who work at and rely on farming for a substantial part of their living. Eligibility is extended to individual farmers who are U.S. citizens and to farming partnerships, corporations or cooperatives in which U.S. citizens hold a majority interest.

The FmHA office in Eden, Texas is open from 8:00 a.m. to 5:00 p.m., Monday through Friday.

S.S. Rep Sets August Visit

Garland Gregg, representative for the San Angelo Social Security Office, has scheduled his August visit to Eldorado. He will be at the Community Center on Thursday, August 16th, between 1:30 p.m. and 2:30 p.m.

Anyone who wants to file a claim for benefits, get information, or transact other business with the Social Security Administration may contact him at this time.

**Thank You,
Jeff Leggett
Aerial Spraying!**

Jeff sprayed the Golf Course, County Park, Rodeo Arena, Lake South of Town and the Cotton Gin for misquitos.

Thank you for the misquito control in these areas around town.

**"Yesterday is a cancelled
check;
tomorrow is a promissory
note;
today is the only cash
you have—
so spend it wisely."**

Notice of Special Meeting

NOTICE OF SPECIAL COUNCIL MEETING

Notice is hereby given of a SPECIAL MEETING of the Eldorado City Council which was held Tuesday, July 24, 1990, at 7:30 p.m. at the City Hall, at which meeting the following items of business will be conducted:

- AGENDA**
1. Call to Order;
 2. Meet With Any Citizens Present;
 3. Meet With Adam Hernandez/Michael Edmiston with Texas Department of Health Solid Waste Division Regarding Landfill;
 4. Update of Wastewater Plant, Including Rainfall

Damages, Irrigation Permit, Christian Land Negotiations;

5. Consideration of Proposed Ordinance #102-90 Establishing Records Management Program;

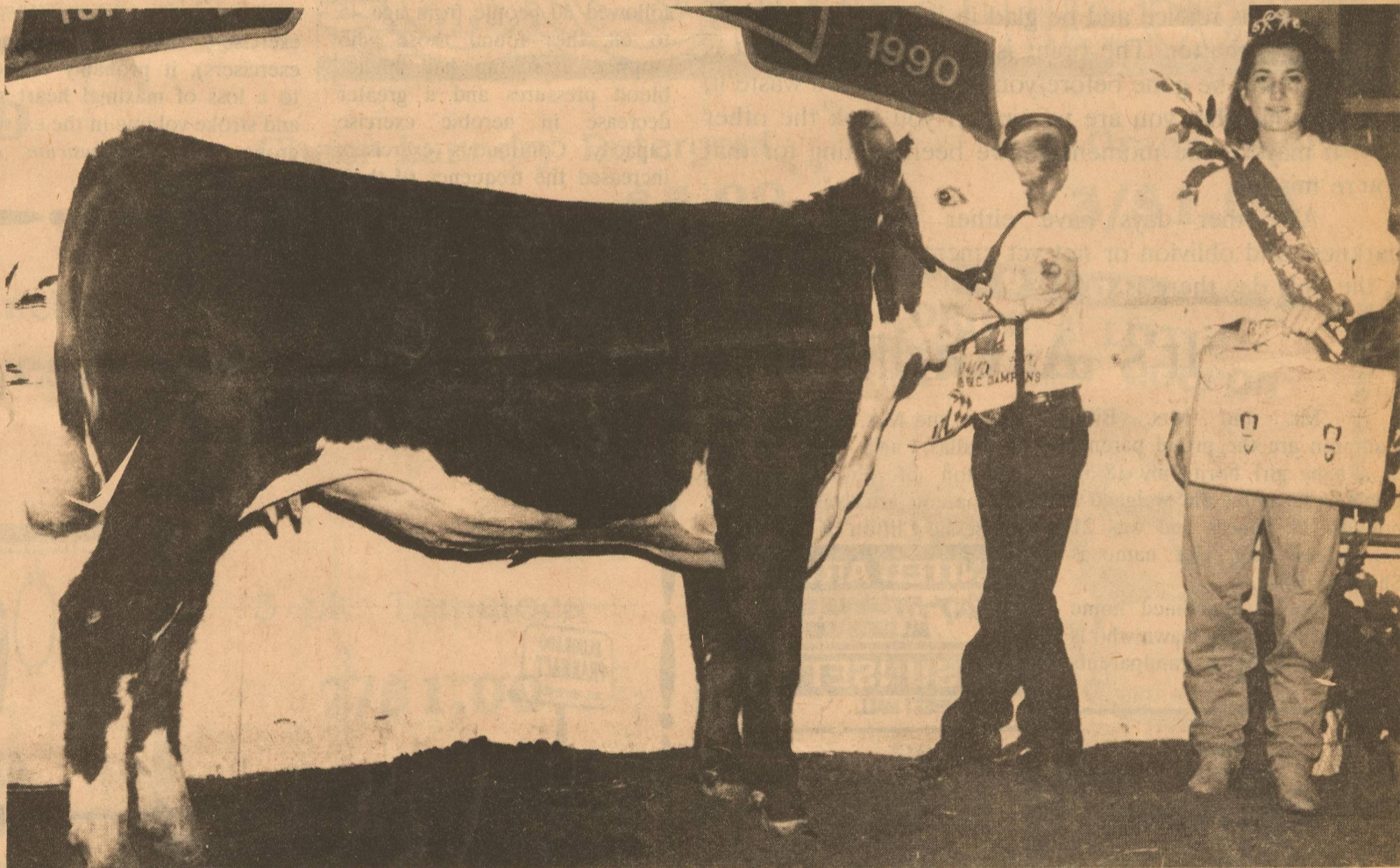
6. Discussion of Landfill, Including New Pits, New Hours per TDH;

7. Approval of Billings Received Since Last Meeting;

8. Discussion of Budget for 1990-92;

9. Adjournment.
I certify that the above Notice of Special Meeting was posted on the front door of the City Hall at 5:00 p.m. on Friday, July 20, 1990.

Carolyn Mayo
City Secretary



The blue ribbon in the junior yearling heifer class at the Texas Junior Hereford Classic was shown by Jack Kyle Pullen, Rockwall. RCR L1 Dominette 9004, sired by CL 1 Domino 0005, was bred by Rocking Chair Ranch, Ft. McKavett. More than 500 people attended the show held in conjunction with the Texas Junior Hereford Association Field Day at the West Texas Fairgrounds in Abilene. This year's hosts were West Texas, Rolling Plains, National Anxiety 4th and Concho Hereford Associations. Lucinda Pullen, 1989-90 Texas Hereford Queen, Rockwall, is also pictured. (Photo by American Hereford Association)

Attention

August 8th and 9th have been set for boys and girls athletic physicals. All boys should report on August 8th, while all girls should report on August 9th. Boys and girls should be at the field house film room by 9:00 a.m. on their physical date.

Every Eldorado middle and high school athlete must be present on the physical dates. All

incoming 7th and 9th graders and any person answering 'yes' on the medical history form will be given a physical at that time.

The school district will pay for the physicals on August 8th and 9th. Any physical given on another date must be approved by the Athletic Director and is subject to payment by your parent or guardian.

Success Deadlines

All news items, advertisements, and inserts to be run in the newspaper are due in the Success office by 5 p.m. on Monday of the week they are to be published. Any item received after the deadline will be taken as time and space permit.

The Editor's Journal

Life Among The Fishes

By Thomas Giovannitti

I really hope that there are not too many people at home watching "Oprah" or "Donahue" or "Geraldo" or any of the popular daytime talk shows. It is not so much that they seem to appeal to peoples most prurient interest, but they also cover topics not really very important to life on the planet as we know it.

Maybe the advertise-

ments are what is misleading (Since I only get to see the Ads), but the topics on the Oprah Winfrey show are always something that effect only about eleven people, or is so private and personal that I can't imagine how Oprah can get anyone to talk openly on national television about such an intimate subject.

She has shows about people who married their sister,

or carry donuts in their purse. These people talk about how they ran off with their Father-in-law or have a compulsion to cut out lingerie adds and paste them on the kitchen walls.

I can never be quite sure that these people are for real or actors and actresses given scripts. Even that might not be so bad, but then there are folks in the studio audience who happen to have the same fetish or obsession

and pose questions to the panel of necrophobics on the stage. Some of the topics discussed in full view of a television audience border on the criminal and some are merely totally irrelevant to the lives of normal people.

Well, I hope these subjects are irrelevant for most of us. If most of the people watching have these same problems, then this country may be in more trouble than the failure of a few S&L's.

Our Sympathy

Willie Mac Roberts, 84, of Brady and formerly of McCamey, died July 20, 1990, in Angelo Community Hospital.

She was born Oct. 26, 1905, in Menard. She was preceded in death by her husband, Clyde Cecil Roberts, in 1956; a brother, Louis Latham McMurtrey; a sister, Mabel

Stewart; two sons, C.C. Jr. and Willie Clyde Roberts; and a daughter, Doris Faye Roberts.

Survivors are her daughters and sons-in-law, Bettie Bullion Watson of Odessa, Mamie and Charlie Pannell of Lewisville and Clara and Red Stromquist of Brady; and a daughter-in-law, Barrilyn Roberts

of Hobbs, N.M.; a son and daughter-in-law, Delbert and Opal Roberts of Junction; one nephew and wife, Everett and Cecelia Stewart of Junction. Also 14 grandchildren and 19 great-grandchildren.

She was a member of the Church of Christ since 1939.

Funeral services were

held at 10:00 a.m. Monday in the chapel of Colonial Funeral Home with minister Weems Dykes of Eastland officiating. Graveside services were at 3:00 p.m. in Eldorado.

Pallbearers were grandsons.

Arrangements were made by Colonial Funeral Home, 1001 S. Elm, Brady.

Chamber Pride Committee

The Chamber Pride Committee commends First National Bank and West Texas Utilities for their beautifully kept building and lawns. You are a

source of pride for Eldorado and we appreciate you.

The recently formed committee works under the sponsorship of the Chamber of Commerce. Our purpose is to

organize efforts to clean, paint and otherwise improve our town and highways. This will take all of us, but we feel our community can do what other communities have done - ONLY BETTER!!! We have many hard working and talented people. We have those who are creative, those who are leaders and motivators, those who have a green thumb and those who have equipment and tools needed for certain jobs.

An example of what we can do is the property which was Parker Foods. You can already

see results and this week the wall that remained is to be painted. Go by and see it!

Any cash donations would be greatly appreciated, or if you would like to help work or furnish equipment, we can certainly use you. Donations can be mailed to the Chamber Pride Committee, Box 716, or contact Jackie Napier, Lucy Page, Pat Sykes or Jo Ann Sproul.

Let's make Eldorado look like "The City of Gold" - let it shine with cleanliness and beauty!

Today

It is a moment of light surrounded on all sides by darkness and oblivion. In the entire history of the universe, let alone in your own history, there has never been another just like it and there will never be another just like it again. It is the point to which all your yesterdays have been leading since the hour of your birth. It is the point from which all your tomorrows will proceed until the hour of your death. If you were aware of how precious it is, you could hardly live through it. Unless you are aware of how precious it is, you can hardly be said to be living at all.

"This is the day the Lord hath mad," says the 118th Psalm. "Let us rejoice and be glad in it." Or weep and be sad for that matter. The point is to see it for what it is because it will be gone before you know it. If you waste it, it is your life that you are wasting. If you look the other way, it may be the moment you've been waiting for that you're missing.

All other days have either disappeared into darkness and oblivion or not yet emerged from it. Today is the only day there is.

It's A Girl!!!

Mr. and Mrs. Billy Hampton are the proud parents of a baby girl born July 18 in Lubbock Hospital. She weighed 9 pounds, 11 ounces and was 21 3/4 inches long. Her name is Shannon Elise.

She is welcomed home by one sister, Kasey Dawn who is 17 months old. Her grandparents

are Mr. and Mrs. B.J. Etheredge of Dallas, and Mrs. Bonnie Hampton of Houston. Great grandparents are Lois Etheredge and Bessie Clifton of Eldorado.

An Apple A Day

by Lee R. (Smokey) Taylor, R.Ph.

Aerobic Exercise Limits Aging Process: When researchers at San Diego State University followed 30 people from age 45 to 68, they found those who stopped exercising had higher blood pressures and a greater decrease in aerobic exercise capacity. Continuous exercisers increased the frequency of their

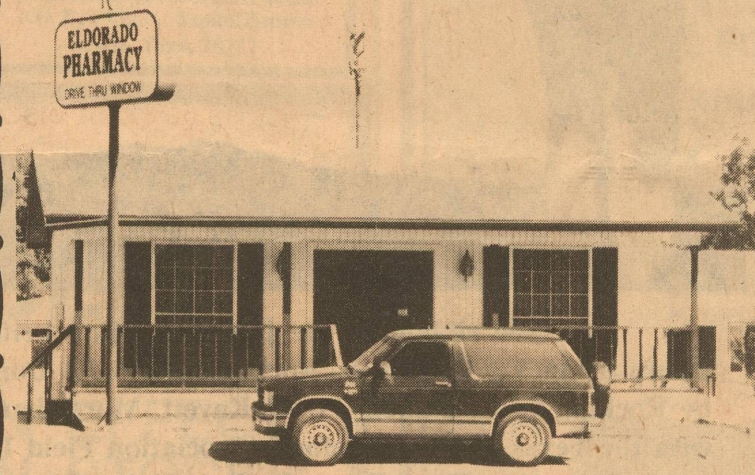
exercise over the study period, although total energy expenditure remained relatively constant.

While both groups lost aerobic exercise capacity (13% in exercisers and 41% in non-exercisers), it probably was due to a loss of maximal heart rate and stroke volume in the exercise group. --The Physician and Sportsmedicine

Mittel Insurance

presents...

Eldorado Spotlight



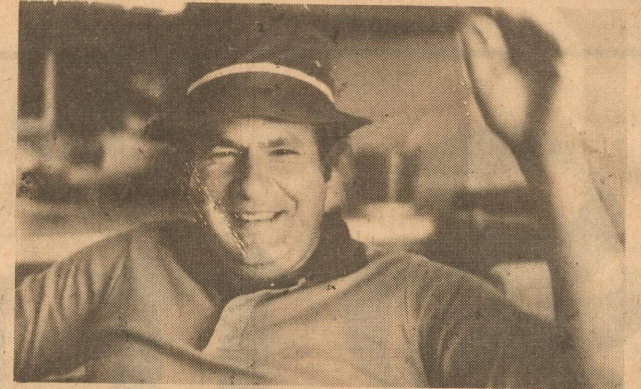
ELDORADO PHARMACY

We are proud of "Eldorado Pharmacy." Thanks to Smokey Taylor for the way he maintains this very special corner!

Mittel Insurance Agency
"For Your Insurance Needs"
853-2576

Laugh and Live

by Gary Smith



Friends Georgia Mae and Tonya both sent me this snip. Thought you might enjoy it.

"Remember, old folks are worth a fortune, with silver in their hair, gold in their teeth, stones in their kidneys, lead in their feet and gas in their stomachs. I have become a littl eolder since I saw you last and a few changes have come into my life since then. Frankly, I have become quite a frivolous old gal. I am seeing five gentlemen everyday.

As soon as I wake up Will Power helps me get out of bed. Then I go to see Johnny, then Charlie Horse comes along and he takes a lot of my time and attention. When he leaves, Arthur Ritis shows up and stays the rest of the day. He doesn't like to stay in one place very long, so he takes me from joint to joint. After such a busy day, I'm really tired and glad to go to bed with Ben Gay! What a life!

P.S. The preacher came to call the other day. He said at my age I should be thinking about the hereafter. I told him, oh, I do, all the time. No matterwhere I am in the parlor, in the kitchen or down in the basement, I ask myself, "What am I here after?"

'Til the next time...

MAY GOD BLESS.

SUBSCRIPTION FORM

THE ELDORADO SUCCESS

Date: _____
Name: _____
Mailing Address: _____
City, State, Zip: _____
Telephone Number: _____

Price Schedule:	
In Schleicher County	\$15.00/YEAR
Senior Citizen	\$13.00/YEAR
Out of Schleicher County	\$18.00/YEAR
Senior Citizen	\$16.00/YEAR

Send Check or Money Order to:

The Eldorado Success
Box 1115
Eldorado, Tx. 76936
(915) 853-3125

The Eldorado Success

USPS 342-470
Box 1115
Phone 915-853-3125

Published each Thursday
Eldorado, Tx. 76936

Gary C. Smith, Sr.
Publisher
Cathy Smith
Managing Editor
Debbie Edmiston
Editor



Subscription Prices
In Schleicher County -- \$15.00 per year
Senior Citizen -- \$13.00 per year
Out of Schleicher County -- \$18.00 per year
Senior Citizen -- \$16.00 per year
Second class postage paid at Eldorado, Texas 76936. POSTMASTER: Send address changes to The Eldorado Success, Box 1115, Eldorado, Texas 76936.

THE ELDORADO SUCCESS is an independent newspaper, published in Eldorado, Texas by PRIME MINISTER PUBLISHING COMPANY, P.O. Box 1115, Eldorado, Texas. THE ELDORADO SUCCESS cannot be held responsible for erroneous information provided by sources other than its staff. Should this publication make an erroneous statement a retraction will follow as soon as the Editor is notified of such an error.

Member 1990
West Texas Press Association
Copyright 1990...
Prime Minister Publishing

UNITED ARTISTS
KAY-FY LARGAIN TUESDAYS
ALL SEATS \$3.00
SUNSET 4
1066 SUNSET MALL 844-3390

Navy Seals - R
2:15 4:45 7:15 9:50
Days of Thunder - PG13
1:45 4:10 7:30 9:45
Total Recall - R
2:00 4:20 7:40 9:55
Quick Change - R
2:00 4:00 7:20 9:20

SOUTHWEST 7
3590 KICKAPOO BOCKER RD 849-998

Presumed Innocent - R
2:00 4:30 7:15 9:50
Ghost - PG13
1:30 4:10 7:20 9:55
Problem Child - PG
1:00 3:00 5:00 7:20 9:30
Another 48 Hours - R
7:15 9:30
Jetson's, The Movie - G
12:45 2:30 4:30
Die Hard 2 - R
1:45 4:15 7:30 9:55
The Adventures of Ford Fairlane - R
7:30 9:40
Pretty Woman - R
2:15 4:45 7:15 9:45
The Freshman - PG
1:15 4:20 7:30 9:30

The Famous Whiskey Rebellion

One of the most famous tax protests in American history occurred in 1794 in western Pennsylvania when an organized group of farmers rebelled against a federal excise tax on alcohol. This protest - known as the Whiskey Rebellion - began when local farmers fought a federal tax, enacted in 1791, that required distillers to pay a tax on every gallon of liquor produced and sold. The farmers were poor and relied almost solely on the sale of whiskey in order to make a living. Their protest was a result of the threat to their livelihood by the government.

The tax had an especially negative impact on people living on the frontier. In the 1790's, the frontier was almost totally isolated from settled areas along the Atlantic coast. For the most part, only the roughest of trails - mainly Indian trails - connected the frontier with the Eastern

seaboard. Consequently, frontier farmers had trouble transporting corn, their most important crop, to markets in the settled areas. Farmers overcame this problem by converting the corn to whiskey, which was easier to transport. They simply loaded jugs and kegs of whiskey onto the backs of mules and drove the mules eastward toward the markets.

Whiskey then became the major source of cash for the frontier farmers. For many of the farmers, taxing whiskey was worse than taxing food. So when the government tried to implement the tax on liquor, the farmers in western Pennsylvania rebelled to protect what little they had.

Federal marshals tried to enforce the law, but armed groups of farmers drove them away. The governor of Pennsylvania initially refused to call in the militia. However, Alexander

Hamilton, who was secretary of the U.S. treasury, urged President George Washington to call upon the militia to help end the uprising. Hamilton actually seeking an opportunity to demonstrate federal power. President Washington ordered 13,000 troops into the area. The militia succeeded in restoring order without a battle. Twenty farmers were brought to trial for their participation in the uprising. The court acquitted all but two, who were later pardoned by the president. Although the excise tax on alcohol was not repealed, other taxes on imported luxury goods were enacted to ease the burden on farmers.

Social Security Tax Rates Change For Self-Employed

Self-employed people will find significant changes in computing their 1990 Social Security taxes, Franklin H. Upp, Social Security manager in San Angelo said. Both the Social Security tax rate and the formula used to compute the taxes changed this year.

The 1990 tax rate for self-employed people is 15.3 percent, up from 1989's 15.02 percent rate. In 1989, a 2 percent credit reduced the effective tax rate to 13.02 percent.

Beginning with the 1990 tax year, the credit has been replaced by two new deductions which reduce the tax liability for the self-employed. The new deductions are designed to treat the self-employed in much the same manner as employers and em-

ployees are treated for tax purposes. For many self-employed people, the result will be lower taxes than in previous years.

Internal Revenue Service Publication 505, Tax Withholdings and Estimated Tax, provides detailed information on the change in computing 1990 self-employment Social Security taxes. Contact the Internal Revenue Service for copies of this publication.

Additional information is available from Social Security, Upp said. Call 1-800-234-SSA (1-800-234-5772) and ask for Fact Sheet No. 4, If You're Self-Employed. The San Angelo Social Security Office is located at 2214 Sherwood Way, and the telephone number is 949-4608.

LARADA METALS CO.

Let Us Help You Recycle!
WE'RE COMING TO ELDORADO...

to pay you cash on the spot for Aluminum Cans, Car Batteries, Brass, Copper, Aluminum, plus other non-ferrous scrap metals.

WHEN?

TUESDAY, JULY 31 8 A.M. UNTIL 1 P.M.

WHERE?

WEST SIDE OF THE COURTHOUSE

HERE IS A PARTIAL LIST OF WHAT WE BUY
ALUMINUM: Cans, Irrigation Pipe, Radiators, Windows, Doors, Screens, Sheeting, Coils, Fans, Engine Parts, Wire, Pots, Pans, Tubing, Etc... COPPER: Radiators, Wire, Pipe, Tubing, Sheeting, Flashing, Etc... BRASS: Pipe, Valves, Plumbing Parts, Shell Casings, Radiators, Etc... STAINLESS STEEL, LEAD, ETC...

CORNER HWY. 277 SOUTH & TEMPLIN ROAD
SAN ANGELO, TEXAS

(915) 658-8502 1-800-234-6781



"ON YOUR WAY DOWN, HARRY, WOULD YOU MIND TAKING THE GARBAGE?"

(915) 853-2314

JERRY'S T.V. SERVICE

SYLVANIA TELEVISIONS - SATELLITE TV. SYSTEMS

JERRY J. JONES
OWNER

214 S. MAIN STREET
ELDORADO, TX. 76936

Kent's Automotive

Parts and Service

Phone 853-2733
Eldorado, Tx. 76936

THORP'S LAUN-DRY

LAUNDRY & CLEANERS

LINEN SUPPLY - UNIFORMS - DUST CONTROL
SONORA - OZONA - ELDORADO

SONORA - OZONA - ELDORADO
Since 1948

214 S. Main Eldorado, Texas
853-2900

VACATION TIME FOR THE MEMBER AND THE METER



any co-op members enjoy well-deserved vacations during the summer. And your electric meter should be able to enjoy a little slower pace while you are away. All it takes is a little effort.

- Turn off your electric water heater.
- If practical, empty and unplug your refrigerator.
- Unplug TVs, VCRs, clock radios, and other small appliances.
- Turn the air conditioner off. Ask a neighbor to "babysit" pets and plants so they do not suffer from the higher than normal temperatures in your home.
- Close draperies to reduce solar heat build-up.

- If you leave lights on, use a timer.
- Read your meter just before you leave and immediately upon your return to know exactly how effective your efforts were.

You probably can't give your meter a complete vacation while you are away, but a little thought and planning can ease your meter's burden and your electric bill.

An energy-saving vacation message from Your Home-Owned Electric Cooperative

Southwest Texas Electric Cooperative
Phone 853-2544 24 hr 853-2546

Schleicher Co. Range Ram "Supermarket" Sale

Rambouillets, Debouillets, Suffolks and Suffolk-Hamp cross rams will be consigned to the 3rd Annual Ram Sale in Eldorado on August 4 at the show barn beginning at 10:00 a.m. until 2:00 p.m.

Dr. Frank Craddock, Extension Sheep and Goat Specialist out of Uvalde, sifted all rams before they were fertility tested on July 24. Frank's sifting aided in improving the sale rams quality and soundness.

Lambs to four tooth rams will be offered for sale. These rams have been selected from top producing flocks in Schleicher County.

1990 is a buyer's market; hence, this is an excellent time to upgrade your ram battery and make a giant step toward that more profitable lamb and wool that we all would like to produce.

Consignors for this sale are: Betty Sue McAlpine, Kirk Jones, Ron Rathbone, Jerry

Swift, Mike Lloyd, James Powell Ranch, Ray Lewis Ballew, Steve Sykes, C.E. Renfro, Pat Jackson, Matt Brown and Jimmy Martin.

Raul Ruiz, sheep shearing artist, will have his art on display during the sale. Come see this fine art work.

Saturday, August 4, Show Barn, Eldorado, Texas.

ANSWERS: (1) placed cater-corner (2) fool around (3) money (4) strike with a hand (5) singer (6) something remarkable (7) nitroglycerine (8) ball hit between in- and outfield (9) ballfield altercation (10) gullible person (11) cheap and gaudy (12) pep (13) poor boxer (14) musical gathering (15) off the beaten track (16) swindle (17) head (18)

sailor (19) jail (20) complain (21) financial backer (22) large amount.

SCORING: 18-22 correct: You copped the bacon on this one! 13-17: While you didn't hit the big time, you gave it your best shot! 12 or less: This quiz was your Waterloo. Hit the books at your local library.



Go for the GOLD and win with results in the classifieds



FIXED RATE LOAN PLAN

Long-term Rural Real Estate and Rural Residence Loans

Fixed Rate for First 15 Years

10% Bank Closed Loan Fee of 2.0% | 10.20% Bank Closed Loan Fee of 1.0%

LIMITED FUNDS AVAILABLE AT THESE RATES

- NEW PURCHASES ONLY
- LONG-TERM LOANS FULLY AMORTIZED
- ASSUMABLE
- NO PREPAYMENT PENALTY
- RATE CONVERSIONS AVAILABLE AT END OF FIXED RATE PERIOD
- OTHER LOAN PLANS AVAILABLE

FEDERAL Offices Located Throughout the State

LAND BANK ASSOCIATIONS IN TEXAS



Jack B. Smith Jr.
President

Federal Land Bank Association of Sonora
217 E. Main Street
P.O. Box 397
Sonora, Texas 76950
915/367-2777

*Annual percentage rates are 10.00% to 10.18% depending on length of contract. Variable rates are subject to change.



DID THE RAIN MAKE YOU HERE'S SOMETHING THAT WILL MAKE YOU TOO!

OLDSMOBILES

DELTA 88 ROYALE
STOCK #L0226
19,102.00 MSRP
-1,500.00 GM REBATE
-2,032.00 HAIL DISCOUNT
-1,685.00 OUR DISCOUNT

13,885.00 +TT&L - YOUR PRICE

DELTA 88 ROYALE
STOCK #L0269
19,102.00 MSRP
-1,500.00 GM REBATE
-2,000.00 OUR DISCOUNT

15,602.00 +TT&L - YOUR PRICE

DELTA 88 ROYALE BROUGHAM
STOCK #L0242
20,174.00 MSRP
-1,500.00 GM REBATE
-1,700.00 OUR DISCOUNT

16,974.00 +TT&L - YOUR PRICE

*ALL REBATES ASSIGNED TO DEALER OR ASK ABOUT LOW INTEREST FINANCING IN LIEU OF REBATE.

CHEVROLETS

2-10 4 DR. BLAZER
STOCK #C0206
19,656.00 MSRP
-1,000.00 GM REBATE
-1,700.00 OUR DISCOUNT
-1,561.00 HAIL DISCOUNT

15,395.00 +TT&L - YOUR PRICE

S10 EXT. CAB F/U
STOCK #C0167
11,293.00 MSRP
-1,000.00 GM REBATE

10,293.00 +TT&L - YOUR PRICE

1/2 TON REG. CAB SILVERADO
STOCK #C0255
16,555.00 MSRP
- 600.00 GM REBATE
-1,480.00 OUR DISCOUNT

14,475.00 +TT&L - YOUR PRICE



JACK JOHNSON

11-10 and Golf Course Rd., Sonora, Texas

1-800-289-6066

JERRY KEMP

Notice

The Schleicher County Summer Blood Drive is scheduled for August 14, 1990 from 12:00 noon until 6:00 p.m.

This is a special drive because a member of our community, George Abernathy, is in the hospital and has had to receive several units of blood. Mr. Abernathy and his wife, Billie Ruth, ranch in Schleicher County.

If you can, go to the United Blood Services in San

The Schleicher County Historical Society is interested in adding a display and collection of Hispanic History in Schleicher County to the local museum.

In order to accomplish this project, the society needs

Angelo to donate, the address is 224 E. Harris, or donate on August 14th.

If you know of someone else that can be helped with donor blood, call Sherry Lux at 853-3068 or 853-2164. We will make a special effort to pull together as a community to help our friends in need.

REMEMBER! You cannot contract AIDS or any other infectious diseases by donating blood.

Hispanic pioneer families history, photos, and collectable historic items for a Museum display.

All interested families are invited to attend a planning meeting July 29 at 2 p.m. at the Mesuem.

Definition Of A Real Man

by R. Nelson Valentine

- One who has self-confidence but does not show it.
 - One who can be courteous in the face of discourtesy.
 - One who keeps his word, his temper, and his friends.
 - One who wins respect by being respectable and respectful.
 - One who has a steady eye, a steady nerve, a steady tongue and steady habits.
 - One who is silent when he has nothing to say.
 - One who is calm when he judges and humble when he misjudges.
- That defines a real man and a gentleman and by these standards my father is indeed a "Real Man."

Fort McKavett State Park Adds New Service

Fort McKavett State Historical Park has recently added another aspect to their interpretive services. This summer, on Saturdays and Sundays, employee Ed Quiroz will be uniformed as an Infantry private and will give interpretive information on some of the uniform and equipment items used by frontier soldiers during the Indian Wars period. Ed will alternate the uniforms and equipment of both the 1869 and 1875 time periods and will be sta-

tioned in the park's Visitors Center, which is located in the restored hospital completed back in 1870.

Fort McKavett State Historical Park, an 1850's to 1880's frontier Army post, is located in Menard County, 17 miles west of Menard on Highway 190, then south 6 miles on Ranch Road 364. The park is open from 8:00 a.m. to 5:00 p.m. daily, except closed on Christmas Day. Admission to the park is free. For further information, call 915/396-2358.

21st Annual Eldorado Open Rodeo

The 21st Annual Eldorado Open Rodeo will be held on August 10-11.

A new event has been added to this year's rodeo which is called steer saddling. This event consists of a three man team that can be formed by any clubs, organizations, ranches or individuals. There will be six steers turned loose in the arena with a numbered rope on each steer. Each team will have a numbered steer they will have to

saddle and ride across a line. The entry fee will be \$45.00 per team. All monies will be paid back, except for stock charge. There will be a six team limit per night.

For more information, please call Kirk Jones at 853-2312 or Dan Halbert at 853-2815 or 853-2173.

Also, any girl wishing to run for rodeo queen, please contact Jeff or Mary Leggett at 853-3093.

Test your knowledge of American Slang. Answers are on page 3.

1. CATAWAMPUS:
cat money
garden bug
catercorner
wildcat

2. TO LOLLYGAG
fool around
eat a lollypop
be attentive
eat a vegetable

3. JACK:
lamplighter
money
rare gift
food

4. TO PASTE:
hold with clamps
caress with a hand
strike with a hand
attach with pins

5. THRUSH:
car muffler
lookout
singer
secretary

6. HUMDINGER:
long-beaked bird
something remarkable
rotary engine
foretells bad luck

7. SOUP:
nitroglycerine
kerosene
diluted paint
pancake batter

8. TEXAS LEAGUER:
player traded by Cowboys

ball intercepted behind goal
ball hit between in- and outfield
ball player in Lone Star Division

9. RHUBARB:
insincere praise
goalie's snack
ballfield altercation
fisherman's hook

10. PIGEON:
gullible person
someone who tells secrets
singer in feathered hat
smallest of litter

11. RINKY DINK:
ice skater
cheap and gaudy
ragtime piano
circular lapel pin

12. SPIZZERICTUM:
excellence
laziness
pep
indifference

13. PALOOKA:
rocket launcher
Slavic coach
poor boxer
champion runner

14. HOOTENANNY:
goat imitating owl
musical gathering
state fair exhibit
farmyard food

15. JERKWATER:
coolant from trucks
riverside town
whitewater canoeist's stroke
off the beaten track

16. TO HORNSWOGGLE:
swindle
place on neckerchief
trim steer
ride a bull

17. NOODLE:
head
gut
neck
knee

18. TAR:
soldier
marine
sailor
airman

19. CLINK:
jail

cave
niche
hole

20. TO BEEF:
chew
mumble
praise
complain

21. ANGEL:
financial backer
graceful dancer
severest critic
prison warden

22. SLEW:
just enough
large amount
river bend
turnaround

Does Advertising Work?
You're reading this!

Germania Insurance



Covering Texas since 1896.
Property insurance
"Where to call"
Agents

Sherry Lux
853-3068

Horseshoeing
Bud Arendt
Experienced Reliable
853-2337
Leave Message

THE GE 800 TRUNKING NETWORK

The ONLY Mobile Telephone that Has Coverage in:
* San Angelo * Sterling City
* Robert Lee * Big Lake
* Mertzon * Eldorado
* Ozona * Sonora

AND Over 100 Other Locations!

WESTERN COMMUNICATION SERVICE



320 W. 26th St. (915) 658-6515

Hayloft

Hwy. 277
800 N. Divide
Eldorado, Tx. 76936

853-2943
Gloria Swift

McCormick's

Exxon

Friendly Service
Clean Facilities
Caring About Eldorado



101 S. Divide
Eldorado, Texas
Phone---853-3407



Opening in Eldorado

Opening July 31st

Auto * Fire Homeowners
Life * Trucks Renters * Crime
Commercial Condominiums
Boats * RV's Mobile Homes
Worker's Comp * Farm and Ranch

Package Policies for: Non-Smokers and Drivers between 25 and 69 years of age.
Discounts for: Accident-free Drivers * Good Students * Multiple Cars.
A wide choice of deductibles to fit your specific need and budget.
All policies can be combined in on monthly payment.

Randy Upham Insurance
853-3168 387-2465
South Main (Across from feed store) Hwy. 277 N.
Eldorado, Tx. Sonora, Tx.
Tues. & Thurs. 9-5

IT'S NEVER TOO LATE

For a little peace of mind.

Old or young ... It's no trick ... your future will be bright and worry free with an insured savings deposit with us. We'd be happy to open your account today ... for worry free tomorrows.

We're Your Full Service Bank .. Count On Us!

First National Bank
of Eldorado
102 SW Main / Member FDIC

1990 Summer Baseball Leagues



ORIOLES - Bottom Row (l-r): Tanna Williams, Jesse Guadarrama, J.B. Garcia, Angela Warren, Hector Adame; Middle Row (l-r): Matthew Kuykendall, Johnny Herrera, Kenneth Kuykendall, Darren Thornhurst, John Ray Espinosa, Isaac Saldivar; Top Row (l-r): Coaches Fidel Herrera, Jesse Guadarrama, Fidel Herrera, Jr., Rudy Saldivar.



WARRIORS - Bottom Row (l-r): Lance Belman, Benji Gonzalez, Sean Gonzalez, Chris Martinez, Tanner Haynes, Rojelio Rodriguez, Jr., Andrea Robles, Johnny Lee Arispé; Middle Row (l-r): Jennah Richters, Blake Leggett, Aubrey Gonzalez, Frankie Estrada, Susie Rojas, Matt Curtis, Gary Hanusch; Top Row (l-r): Coaches Oscar Martinez, Mike Haynes, Danny Curtis.



PANTHERS - Bottom Row (l-r): Raymond Ray Barajas, Ryan Adame; Second Row (l-r): Coach Teresa Baker, Lupe Salazar, Gentry Newman, Joseph Wade, Jason Pace, Pascual Esparza, Mark Heckler; Third Row (l-r): Aaron Fuentes, Stacy Nicholson, Maria Hernandez, Jimmy Aguilar, Jr., Ismael Sanchez, Albert Fuentes, Will Whitten; Top Row (l-r): Coaches Ken Newman, Jimmy Aguilar, Oscar Sanchez.



LIZARDS - Bottom Row (l-r): David Doran, Jess Martin, Scott Homer, Samantha Smith; Middle Row (l-r): Thomas Ballew, Rocky Robles, Casey Kidd, Christina Prater, Ricky Bosman, Jason; Top Row (l-r): Coaches Mario Robles, Norman Smith, James Mack Holley, Kurtis Homer.



TIGERS - Bottom Row (l-r): Blaine Ferguson, Jamie Robles, Amy Massey; Middle Row (l-r): Juan Sanchez, Javy Robles, Jeremy Clark, James Lloyd, Aaron Turbeville, Rocky Meador, Charlie Warnock; Top Row (l-r): Coach Daniel Robledo, Jason Clark, Brandon Dressner, Tyler Robledo, Stewart Chalmers, Coach Metro Belman.




WHITE SOX - Bottom Row (l-r): Bobby Newton, Leroy Fuentes, Casey Snelson, C.J. Rodriguez, Victor Pina, Jason Richters, Ricky Gibson; Top Row (l-r): Coach Steve Nelson, Leon Fuente., Jose Rocha, Jason Corbell, Krystal Nelson, Kyle Hunter, Jason Behrens, Coach Steve Snelson.



RED SOX - Bottom Row (l-r): J.B. Barker, Stoney Harris; Middle Row (l-r): Audan Gonzalez, Russell Clark, Garrett Bounds, Cody Andrews; Top Row (l-r): Coach Bobby Andrews, Randy Spears, Raymond Holsey, Caleb Estrada, Casey Willis, Raymond Spears, Coach Johnny Bounds.



COUGARS - Bottom Row (l-r): Victor Saldivar, Brandon Leggett, Jason Jones, Beau Sallee, Aaron Sanchez; Middle Row (l-r): Clint Sykes, Wade Dakan, Larry Sanchez, Ty Williams, James Jones, Cory Reeves; Top Row (l-r): Coaches Kevin Gearlds, Al Estep, Derek Engdahl.



Smokey Taylor
of
Eldorado
Pharmacy
is
Your Hometown Druggist

Eldorado Pharmacy
Lee R. (Smokey) Taylor, R.Ph.
853-2064 or 853-3130

NOW ACCEPTING BLUE CROSS/BLUE SHIELD CARDS NOW ACCEPTING PCS CARDS

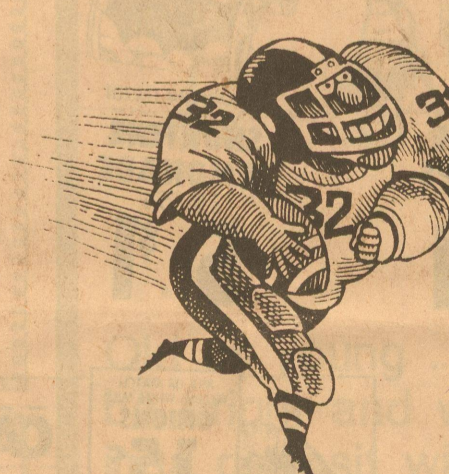
VARSITY

DATE	OPPONENT	TIME	PLACE
Aug. 24	Scrimmage - Brady	TBA	Here
Aug. 31	Scrimmage - Central J.V.	TBA	TBA
Sept. 7	Eden	8:00	There
Sept. 14	Menard	8:00	Here
Sept. 21	Irion County **	8:00	Here
Sept. 28	McCamey *	8:00	Here
Oct. 5	Ozona *	8:00	There
Oct. 12	Iraan *	8:00	Here
Oct. 19	Coahoma *	8:00	There
Oct. 26	Forsan *	8:00	Here
Nov. 2	Wall *	8:00	There
Nov. 9	Stanton *	8:00	There

* - District ** - Homecoming

JUNIOR VARSITY & MIDDLE SCHOOL

DATE	OPPONENT	7TH	8TH	J.V.	PLACE
Sept. 6	Eden			6:30	Here
Sept. 13	Scrimmage - Brady				
Sept. 20	Eden	5:00	6:30	6:30	There
Sept. 27	McCamey			6:30	There
	McCamey	5:00	6:30		Here
Oct. 4	Ozona			6:30	Here
	Ozona	5:00	6:30		There
Oct. 11	Iraan			6:30	There
	Iraan	5:00	6:30		Here
Oct. 18	Coahoma			6:30	Here
	Wall	5:00	6:30		There
Oct. 25	Sonora			6:30	There
	Sonora	5:00	6:30		Here
Nov. 1	Wall	4:00	5:30	7:00	Here
Nov. 8	Stanton			6:30	Here



Sponsored by these Merchants

Eagle Dairy Mart

First National Bank of Eldorado

Star Stop

Southwest Texas Electric Co-op, Inc.

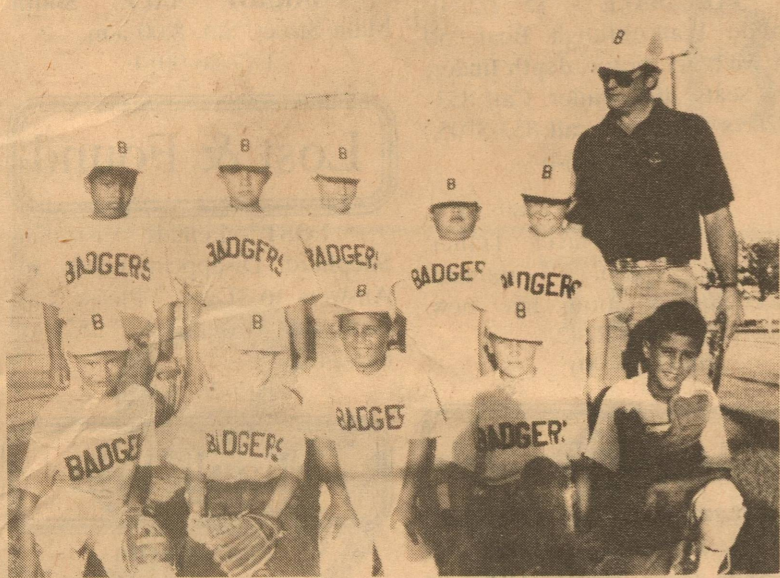
Eldorado Wool Co.

Hayloft

**Lantana Winery
George Gower**

McCormick's Exxon

1990 Minor League Teams



BADGERS - Bottom Row (l-r): Steven Vallerio, Chris O'Conner, Ricky Huichapa, Cory Lloyd, Rocky Huichapa; Top Row (l-r): Louis Santellano, Jessie Sanchez, Tony Savage, Patrick Fuentes, Wayne Barker, Coach Marvin Clark.



ASTROS - Bottom Row (l-r): Shawn Wiseman, William Robledo, Daniel Sanchez, Michael Mayo; Top Row (l-r): Chris Barajas, Lance Mitchell, Tony Martinez, Adrian Chalambanga, Coach Larry Mitchell.



RANGERS - Bottom Row (l-r): Raymon Adame, Joe Martinez, Louis Martinez, Anthony Pina, Casey O'Daniel, Kelli Hubble; Middle Row (l-r): Mack Holley, Gary Gibson, Cole Pina, Cary Gibson, LaTasha Newton, Ashley Finley; Top Row (l-r): Coaches Felipe Pina, Donnie Newton, James Mack Holley.

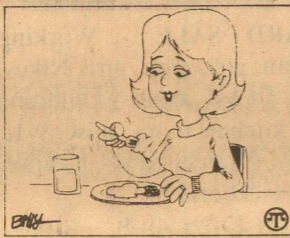
spotlight on health

Avoiding Excess Cholesterol Read Your Labels

You can reduce your intake of cholesterol, many diet and health experts report, if you take the time to read product labels. By choosing foods made with cottonseed oil, for example, you're picking a product with no added cholesterol because cottonseed oil has no cholesterol.

Here are some helpful suggestions on how to avoid both saturated fat and cholesterol in your diet.

- Look out for highly saturated oils. They'll be listed on ingredient labels.
- Select leaner cuts of meat and trim skin and excess fat.
- Use low-fat dairy products.
- Check labels for polyunsaturated and saturated fat information. Try to use products with at least a two-to-one polyunsaturated to saturated ratio. Cottonseed oil comes by such a ratio naturally.



If you need to reduce your cholesterol level, remember vegetable oils, such as cottonseed oil, have no cholesterol while bringing out flavor in foods.

Remember, too, that for spreads, go easy on butter and use margarine and mayonnaise made from healthful domestic oils, such as cottonseed oil, because these are high in polyunsaturates.

For more information about vegetable oils, send a stamped, self-addressed envelope to National Cottonseed Products Association, Dept. A, P.O. Box 12023, Memphis, TN 38182.



RATTLERS - Bottom Row (l-r): Derrick Stevenson, Whit Cosper, Joe David Barrera, Kikki Rojas; Top Row (l-r): Juan Montalvo, Larry Nicholson, Andrew Sauer, Chad Williams, Scott Stewart, Joseph Wink, Donnie Yoakum.

Eldorado Wool Company

Phone

853-2772 - Office
853-2820 - Feedstore

THE GE 800 TRUNKING NETWORK

The ONLY Mobile Telephone that Has Coverage in:

- * San Angelo
- * Robert Lee
- * Mertzon
- * Ozona
- * Sterling City
- * Big Lake
- * Eldorado
- * Sonora

AND Over 100 Other Locations!

WESTERN COMMUNICATION SERVICE



320 W. 26th St. (915) 658-6515

Food Center

Sonora, Texas

Lean Market Ground Beef (Family Pack)

3 lb pkg or more **\$1.39**

Chuck Roast
\$1.19

French Bread
2 loaves/\$1.00



Cheer Laundry Detergent
\$2.00 OFF LABEL \$5.99

IGA Green Beans
3/\$1.00

Our Deli makes Hot & Cold Sandwiches to your order.

Please drop by and check out our variety!

3 pk. Tomatoes
2/\$1.00

Fresh Lettuce
2 heads/\$1.00

COUPON
DRIVE A LITTLE
SAVE A LOT COUPON

US #1 RUSSET
POTATOES
ONE 15 LB. BAG
FREE

WITH THIS COUPON
Coupon good July 26-August 1
Redeem at Food Center - Sonora, Tx.
Limit 1 Coupon Per Family

IGA HOMETOWN PROUD



You're Always a Winner!

When You Advertise In The Classifieds

Real Estate

PRICE REDUCED - House for sale - by owner. Glendale addition. 3 bedroom, 1 1/2 bath, fenced yard on 2 lots. CH/CA. Nice family setting. Call after 5 p.m. 853-2936 or 884-2432.

HOUSE FOR SALE - 4 bedroom, 3 bath, ceiling fans, fireplace, central air, new carpet. Spacious yard with fruit trees and fenced in back yard. Close to school. Reasonably priced. Call 387-2297 or 853-3005.

NOTICE: Attention Mobile Home Buyers! Guaranteed lowest prices! Come see our huge selection of Schult and Fuqua Homes now on display! **SPEARS HOMES OF KERRVILLE** - 1-800-580-3003.

BRICK HOME WITH CARPORT - 3 or 4 bedrooms, 2 baths, 2 living areas, brick fireplace, 1 1/2 lots, garden fruit trees, close to school. Call 853-3311.

ATTRACTIVE BEGINNER home. 2 BR in Eldorado. Located across from car wash at 604 Old Sonora Rd. Small down payment, financing available with approved credit. Call Ray Smith or A.W. Bishop at Sonora National Bank 387-2593.

ONLY \$119.72 A MONTH! 14x70 2 bedroom, 2 bath. Based on 10% down, 14 1/2 APR for 84 months. Midway Homes of Boerne. Call 1-800-955-1033.

AN AMERICAN TRADITION - KIT Homes, after over 45 years, is liquidating lot models. Free ceiling fan. Midway Homes of Boerne. Open Sunday from 1-6. 1-800-955-1033.

LOWEST OVERHEAD IN TEXAS - Big savings on 5th wheels and travel trailers. New and used. Free sway bar. Open Sunday 1-6. Midway RV of Boerne. 1-800-955-1033.

99.00 Down - New Coleman popups. Several models. Special financing. Midway RV's of Boerne. Open Sunday from 1-6. Call 1-800-749-1033.

HOUSE FOR SALE: 4 bedrooms, 2 baths 3 lots all fenced, patio, storage shed. Call 853-2603 for information.

Public Notice

NOTICE OF APPLICATION FOR FLUID INJECTION WELL PERMIT
GBG Operating Corporation, 409 Hamilton Building,

Wichita Falls, Tx. has applied to the Railroad Commission of Texas for a permit to inject fluid into a formation which is producing oil or gas. Applicant proposes to inject fluid into the lower canyon sand, JM Tredwell

(RRCID 05914), well #7. The proposed injection well is located 7.5 miles North West of Ft. McKavett in the North Ft. McKavett (lower strawn) field in Schleicher County. Fluid will be injected into strata in the sub-surface depth interval from 4167 to 4178 feet.

LEGAL AUTHORITY: Chapter 27 of the Texas Water Code, as amended, Title 3 of the National Resource Code, as amended, and the State Wide Rules of Oil and Gas Division of the Railroad Commission of Texas.

Request for public hearing from persons who can show they are adversely affected, a request for further information concerning any aspect of the application should be submitted in writing, within 15 days of publication, to: The Underground Injector Control Section, Oil and Gas Division Railroad Commission of Texas, Drawer 12967, Capital Station, Austin, Tx. 78711 (Telephone - (512) 445-1373).

For Lease

FOR LEASE - Chevron station for lease. New paint. Lots of potential. Call 853-2616 or 853-2880.

Automobiles

88 Mercury Topaz - 4 dr. Lt. Gray w/Gray Cloth, 30689 - 4 Cyl., A/T, A/C, AM/FM Cass., Tilt Wheel, Reclining Seat Backs. **\$6995.00**

88 Olds Royale - 19,000 miles. Loaded - auto, tilt, cruise, AM/FM Cassette, chrome strips, luggage rack. **\$12,950.00**

Buick Century Limited - 4 dr. Blue w/Blue Cloth, V6, A/T, A/C, Tilt, Cruise, AM/FM Cassette, Power Windows, Locks & Seats. 62327 miles. **\$4995.00**

84 Chevrolet 3/4 Ton P/U - Gray/Black w/ Red Cloth. Silverado, 454 Engine, A/T, A/C, Tilt, Cruise, AM/FM Cassette. 66,000 miles. **\$5950.00**

85 GMC S15 - 4wd, Auto, Tilt, Cruise, AM/FM Cassette, H/R. Grill chrome guard. **\$6995.00**



IH-10 and Golf Course Rd. Sonora, Texas (915)387-2529

CLASSIFIEDS

Notice

BECOME A PARALEGAL. Nationally Accredited. Attorney Instructed, Home Study, Established 1976. Financial Aid. FREE Catalog. 1-800-2555. Southern Career Institute, Drawer 2158, Boca Raton, Florida 33427.

SPECIAL - Now through August 7 - Eldorado Green Satin Ball Jackets with lining. Reg. \$39.99 - NOW \$29.99. Come by and place your order. (Jackets will be here by Sept. 1) \$10.00 deposit required. Punkin's Fashions, 11 West Gillis, 853-3824

Services

ATTENTION - Defensive Driving offered monthly in Eldorado. Call 853-2777 for more information.

Custom Farming Wanted: Good equipment and will do good job. Dependable and reasonable. Call 853-3365.

NOTICE - Mary Kay Cosmetics. Graduation, birthday, anniversary gifts. Martha Spinks. Old Mertzson Road. Phone 853-3415 after 4 p.m.

MR. INSURANCE 1225 S. Bryant San Angelo - 655-6702 All lines of insurance, including all classes of oil field.

NOTICE: Let me decorate your cakes. Just bring a picture or idea. No wedding cakes. Call 853-3136 after 5 p.m. Kim-et Nelson.

WATKINS PRODUCTS - Vanilla, Pepper, Salve, etc. Call your Watkins dealer, Kathy Smith 853-2046.

NOTICE - Buy or sell Art, cookbooks, American, Russian, Asian, World War I & II, photography, poetry, language, religious, metaphysical, children first edition, Texana, etc. Ye Ole Fantastique Book Shoppe, 1218 W. Beauregard, San Angelo. tfn-(3-1-90)-b

"Put hair in its place!" Let Us Perm It!
Call Charlotte's Hair Shop 9 West Gillis 853-3084 or 853-3725

water

Conserve it Preserve it

TEXAS WATER DEVELOPMENT BOARD P.O. Box 13231, Capitol Station Austin, Texas 78711

NOTICE - For all your sharpening needs - scissors, hand tools, saws, knife and etc. - come by 306 East Field Street or call 853-2602 or see J.N. Evett. 2-(7-19-90)-p

TRIANGLE H TIRE SERVICE

Tire service, tire sales, oil changes, wash jobs, fix flats. Open from 7:30 a.m. - 6:00 p.m. Monday-Saturday. Call 853-2659. 24 hour road service - 853-2931. Located on the corner of Lewis and Hwy 277 S.

For Sale

PIANO FOR SALE - wanted responsible party to take on small monthly payments. See locally. Trade-in accepted, credit manager 1-800-233-8663.

FOR SALE - Riding lawn mower and trailer. J.N. Evett. 306 East Field Street. 853-2602. 2-(7-19-90)-p

FOR SALE - 1982 Starcraft pop-up camper. Sleeps 6 people. Call 853-2584 or 853-2627. 2-(7-19-90)-p

FOR SALE - Side by side refrigerator w/ ice maker. 21 cu. ft. \$75.00. Call 853-2394. tfn-(7-19-90)-b

FOR SALE: Barrilium copper super stix tour classic irons. 3-Pitching wedge. Like New. \$165. Call 853-3125 or 853-2633.

tfn-(6-21-90)-nc

Sand Castles Won't Last! REAL ESTATE WILL!
Check Our Listings Today

FOR SALE - 15 1/2 ft. Ebtide Walk-through Boat. 50 hp. Mercury motor, depth finder, new seats, dilly trailer. Call 853-2820 or after 5:00 call 853-3705. 1-(7-26-90)-b

FOR SALE - 1989 24 ft. Prowler Lynx Travel Trailer. Microwave, stereo, TV antenna. Excellent condition, like new. 853-3125 or 853-2242. tfn-(7-26-90)

Help Wanted

NOTICE - Schleicher County Medical Center has an opening for a cook/helper. Apply in person to Marion Simmons, Food Service Supervisor. 1-(7-26-90)-b

HELP WANTED: Handyman needed for 1 to 3 area complexes. Apply at Eldorado Place Apartments. 853-3033. 4 (6 28 90) b

Garage Sales

YARD SALE - Working ceiling fan, girls coat, girls Nikes, dresses, boys coat, childrens clothes, kitchen items, misc. 9-12 Saturday. (Cancelled if it rains) 108 N. Hackberry. 1-(7-26-90)-b

GARAGE SALE - Lots of Household Items. Thursday & Friday 8:30-4:30. 205 North East Street. 1-(7-26-90)-b

GARAGE SALE: South Main Street. Sat. 8:00 a.m. - 2 1-(7-26-90)-b

Lost & Found

LOST - Female Australian Shepherd. Disappeared July 16. Answers to "Daisy." Please Call Raymond Mittel at 853-2576 or 853-2472. 1-(7-26-90)-b

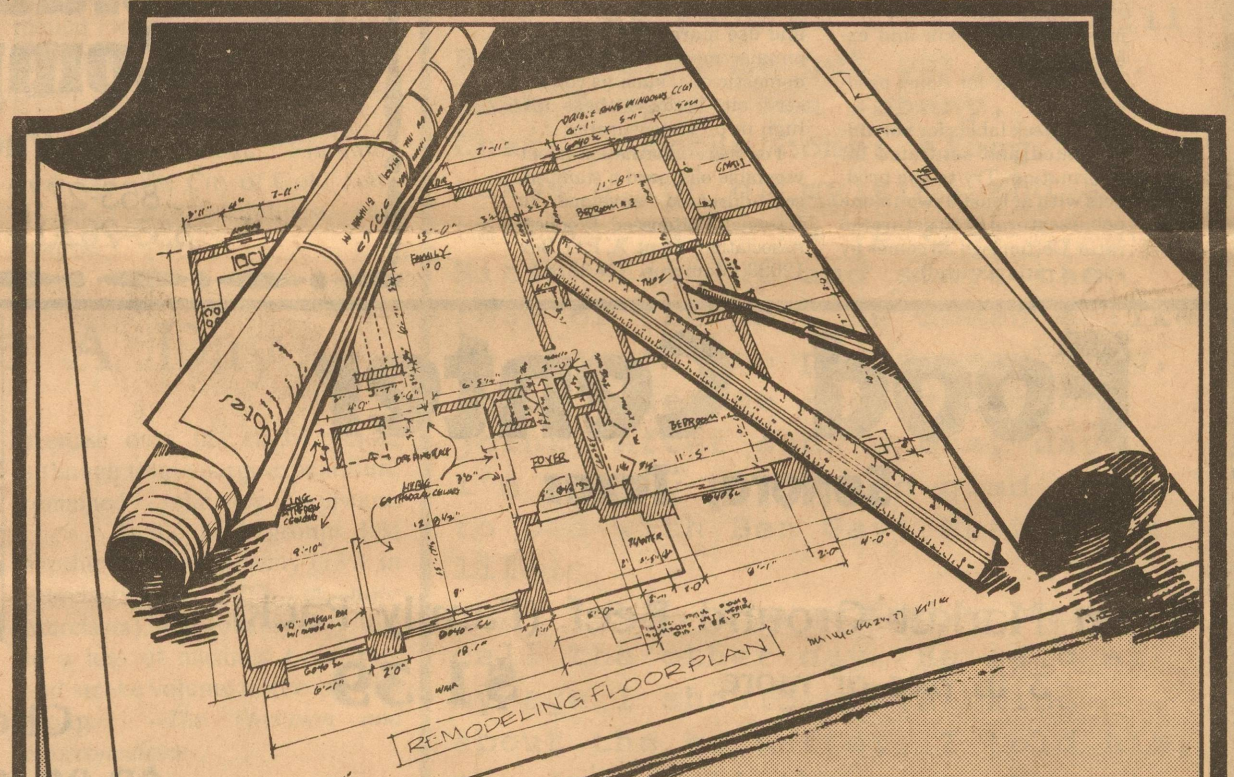
Thank You

THANK YOU
To the staff, residents, and extended families of the Schleicher County Medical Center, we wish to express our thanks and gratitude for the loving care and thoughtfulness given to Marie Spigarelli during her stay here. Her family will be forever grateful.

Sincerely,
Rudy and Shine Spigarelli
THANK YOU

I want to thank everyone who did anything in any way for me while I was in the hospital and since my return home. The telephone calls meant so much; the cards and their words were so beautiful; the food was delicious; the array of flowers were just beautiful; and every prayer that was said for me was very much appreciated. Your visits are always welcome, so come on by.

Much Love,
Ada Belle Taylor

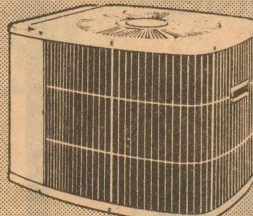


Making plans for remodeling?

Then design your plans with energy efficiency in mind.

Energy saving features can be built right into your home when you follow WTU's Energy Saving Plan. Features like:

- EXTRA INSULATION in the walls and attic.
- DOUBLE PANE WINDOWS or single pane plus storm windows to help reduce heat transfer.
- PROPER VENTILATION of unconditioned air space in the attic to help prevent summer heat build-up and stop moisture accumulation in the winter.



HIGH EFFICIENCY HEATING AND COOLING EQUIPMENT - like an all season electric heat pump, that cools in the summer and heats in the winter. And as a WTU customer, you can receive \$500 when your home meets the requirements of the Energy Saving Plan.

WEST TEXAS UTILITIES COMPANY



Before remodeling be sure to ask about WTU's Energy Saving Plan.

MUST MAKE ROOM FOR 1991 MODELS

CLOSEOUT PRICES NOW IN EFFECT ON EVERY 1990 MODEL IN STOCK

Visit Our Showroom

Sonora  **FORD** Sales

115 NW Concho Ave. See: Leslie Gray 387-2549