

# The Eldorado SUCCESS

Baze Bookbinding  
514 W. 7th St.  
Amarillo, Tx. 79101  
3

A Positive Forecast

"Serving West Texas Since 1901"

A Good News Review

Volume 89 #31

The Eldorado Success

August 2, 1990

## Going For Gold!

"We're going for gold" and we'll be there by "E Day!" Eldorado means "The City of Gold" in Spanish, and for years old timers laughingly referred to Eldorado as that mystic city! "We're going for gold" means we will make Eldorado look more like such a city by planting hundreds of yellow or gold flowers all over town. These flowers will be a source of beauty and unification and will symbolize the term "gold." Flowers planted this week or next should be in full bloom by "E Day," which is September 15.

**YOU CAN HELP!!!!** WE NEED ALL OF YOU!!!! You can purchase and plant, plant for someone who is unable to do yard work, adopt another's yard, volunteer to prepare flower beds prior to planting, volunteer to water weekly, volunteer to weed and maintain or any number of things. WE NEED students, senior citizens, housewives, business people, working people - all of you, young and old!

Although "E DAY" marks the target date for our plants to be in bloom, it is also a day of beginning for many things and a day of ending for others! It is a day which will change forever our image of Eldorado. It is a day to make people stop and take notice of this little town on the Edwards Plateau!!!! **NEXT WEEK WE WILL HAVE MORE EXCITING DETAILS OF WHAT ELSE "E DAY" INVOLVES! IT WILL TAKE ALL OF US! LET'S GO FOR GOLD!**

**THANK YOU TO:** Foxworth-Galbraith for giving us the paint at cost; Ronnie Sauer and Albert Torres for painting the wall on the "Parker Foods" lot; and Isabella McCutchen, Jean Danford, Gene McCalla, Ronnie Sauer, Jackie Napier and her son for helping The Chamber Pride Committee clean and enhance the little lot across from Super S. Thank YOU, Mrs. Finnigan, for letting us use your property for the good of the community. We appreciate all of you.

## Historical Society Held Special Meeting

The Schleicher County Historical Society held a meeting on July 29 to recognize the historical contribution of our hispanic population.

Mario J. Cruz of Austin was the guest speaker.

Rene Calcote opened the meeting. Ethel Etheredge reviewed the agenda, with museum rules, legal procedures

and recommendations being covered.

Those attending were: Dora Bosmans, Delia Pina, Mario and Maria Cruz of Austin, Ruth Harper, Bell Neff, Willie Blanch Johnson, Ola Mac McDonald, Ethel Etheredge, Ola Ruth Barbee, Reyes Robledo and Reverend Lorenzo Silvas.

Refreshments of punch and cookies were served.

## Schleicher County Days Celebration

August 10 & 11, 1990  
Courthouse Lawn  
Eldorado, Texas

### Friday August 10

5:30 p.m. - Rodeo Parade

8:00 p.m. - 1st Performance Of Open Rodeo

Lester Meier, Producer - To Enter Call 512-997-4558

Dance After Rodeo To Dedra LaBarge & Cattle Ax Of Christoval

### Saturday August 11

7:45 - Registration For 2-mile FUN RUN & WALK in front of First National Bank

8:00 - FUN RUN & WALK begins

8:30 - Setup booths

10:00 - Dominoes & 42 tournaments begin - \$5.00 per team entry fee

10:30 Mens Horseshoes - \$5.00 per team entry fee

Women's Washers - \$10.00 per team entry fee

Children's Tortillia Toss - \$1.00 entry fee

11:00 - Recognition of Schleicher County Pioneer Family representatives

11:30 - Little Mr. & Miss Schleicher County Contest - Ages 3-5. No entry fee

12:00 - Flag ceremony

12:15 - Children's Greased Watermelon Roll - \$1.00 entry fee

1:00 - Women's Horseshoes - \$5.00 per team entry fee

Men's Washers - \$10.00 per team entry fee

2:00 - Karate demonstration

2:30 - Relay obstacle course Teams of 4 - \$1.00 per person entry fee

3:30 - Egg Toss - \$1.00 per person entry fee

4:30 - Wet Tug Of War Teams of 4 - \$1.00 per person entry fee

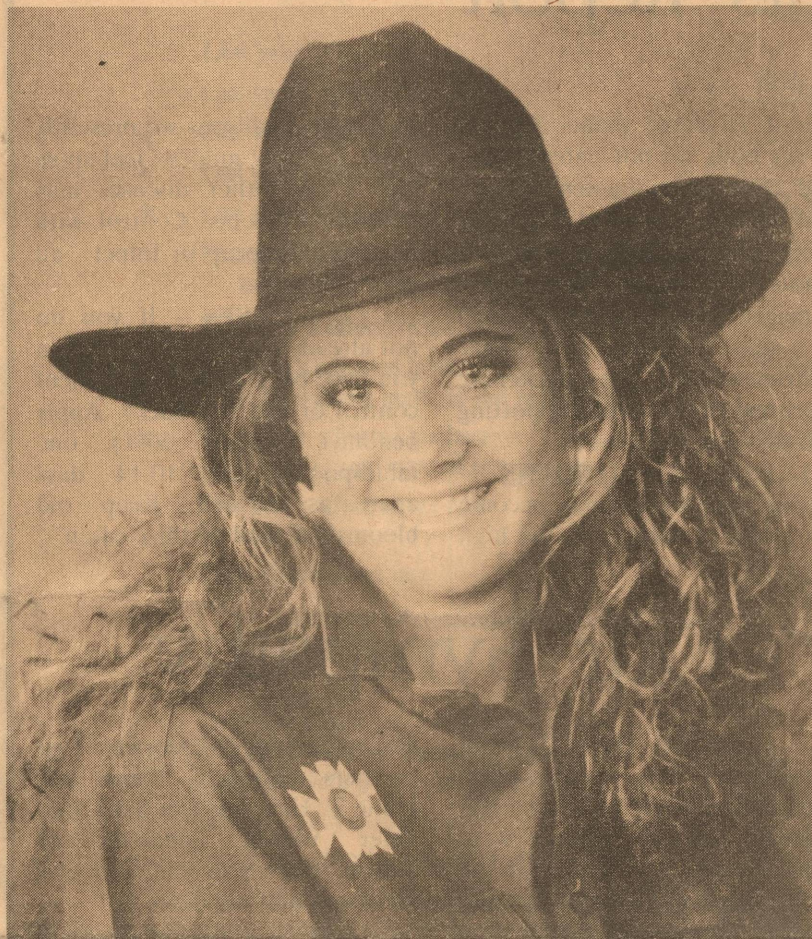
8:00 p.m. - Second performance of Open Rodeo

Dance - After Rodeo to Dedra LaBarge & Cattle Ax

Trophies and medals to winners. Cash prizes for washer pitching contest. FOOD BOOTHS, ARTS & CRAFT BOOTHS, JAIL & BAIL, CAR WASH



## McCormick Nominated For "Miss AJRA"



Crissi McCormick

Crissi McCormick, 16 year old daughter of Phil and Abbie McCormick is one of six girls nominated for "Miss AJRA". "Miss AJRA" (American Jr. Rodeo Association) for 1991 will be crowned on Friday night in Snyder, Texas during the AJRA Finals which are held from August 13 through August 18, 1990 at the Scurry County Coliseum in Snyder. Crissi has also been nominated for a student event director in the AJRA. The events are barrels, poles, goat tying, breakaway roping and team roping. Selection will be based on membership voting prior to the finals. Crissi has also qualified in all events, being in the top four in barrels.

The national sponsors of the AJRA National Finals Rodeo and Telecast for 1990 are: Wrangler, Wall's Industries, Phillips 66, Barq's Root Beer and Smokie Mountain Chew. Top rodeo professionals and celebrities will be at the AJRA Finals. Bob Tallman will be the rodeo announcer for the 10th consecutive year. Co-announcer will be Phil Gardenhire. Rodeo clowns and bullfighters are Rick Chatman, Leon Coffee and Snuffy Chancellor. Pam Minick will be commentator for the AJRA telecast on Saturday night.

Johnny Nix & Sons from Dilly and Tommy Owens from Rankin are the stock producers for this year.

## Local 4-H Members Participated In District Fashion Revue

Ten Schleicher County 4-H Members participated in the District 4-H Fashion Revue held in San Angelo on July 26. More than 100 4-Hers from our District took part in this event. To compete at the District Level each contestant had to win at their county show. Participating in the Junior Division were Ginger Reynolds, Kimberly Beach and Tiffany Case. Intermediate entries were Tamra Robledo, Jennifer Lively, Christy Rodriguez, Amber Hamilton and Lindsay Johnson. Senior entries were Consuelo Chavez and Amy Hamilton. All contestants were awarded ribbons from West Texas Utilities. All of the entries from this county were also eligible for the special cotton competition.

Twenty four 4-H members competed in the county

Fashion Revue held on June 15. Sewing leaders for 1990 included: Dixie Belk, Mary McGinnes, Sue Glidden, Lois Lively, Sherry Johnson, Stacy Dunlap, Irene Reynolds, Charlene Edmiston, Angelo Case, Geneva Wade, Maureen Hodges and Geraldyn Beach.

Three overall division winners at the District Show came from Schleicher County. These were: Tamra Robledo, second overall in Intermediate Sportswear; Kimberly Beach, second overall in Junior Sportswear and Lindsay Johnson, first overall in the Intermediate Buying Division. They received special rosettes from West Texas Utilities for their efforts. A large crowd from Eldorado was on hand for the style show that followed the garment judging.

## Annual Ozona Lions Club Youth Rodeo

Ozona will host the 34th Annual Ozona Lions Club Youth Rodeo on Friday, August 3 and Saturday, August 4. The rodeo will be held at the fair grounds arena on the east edge of Ozona.

The rodeo festivities will kick off with a parade through downtown Ozona at 5:00 p.m. Friday. A hamburger supper will follow at 5:30 p.m. and the grand entrance in the arena at 6:00 p.m.

Arts and crafts will be set up Saturday morning near the arena. The rodeo country arts and crafts will be open all day Saturday.

Saturday at 5:00 p.m. the Lions Club cooks will begin serving their delicious beef bar-b-que. The Saturday night performance

of the rodeo will begin with the grand entrance at 6:00 p.m.

Don Petron and his band from San Antonio will begin playing good ole country dance music at 9:00 p.m. until 1:00 a.m. They are well known as a good dance band.

Ropers from all over west Texas will gather Sunday morning at Ozona's fair grounds area. The Annual J. Miller Calf Roping will begin early and end late. Many of the best area ropers are expected to attend. The roping will round out the active weekend in Ozona.

General information about the activities in Ozona may be obtained from the Ozona Chamber of Commerce at 915/392-3066.

## 4th Annual Karl Kinney Kothmann and Chubby Pearl Memorial Team Roping

There were 436 teams that participated in the 4th Annual Karl Kinney Kothmann and Chubby Pearl Memorial Team Roping on July 28, 1990 at the Rayburn Arena west of Menard.

The high money header and heeler buckles were won by Walt Harris of San Angelo and Eddie Rudasill of Rocksprings. The buckles were donated by Menard National Bank and Kothmann Commission Company. The cattle were donated by Betty and Herman Rayburn. Brooks Walker furnished chute help and advertising.

Money was paid on the first go-around and on the average.

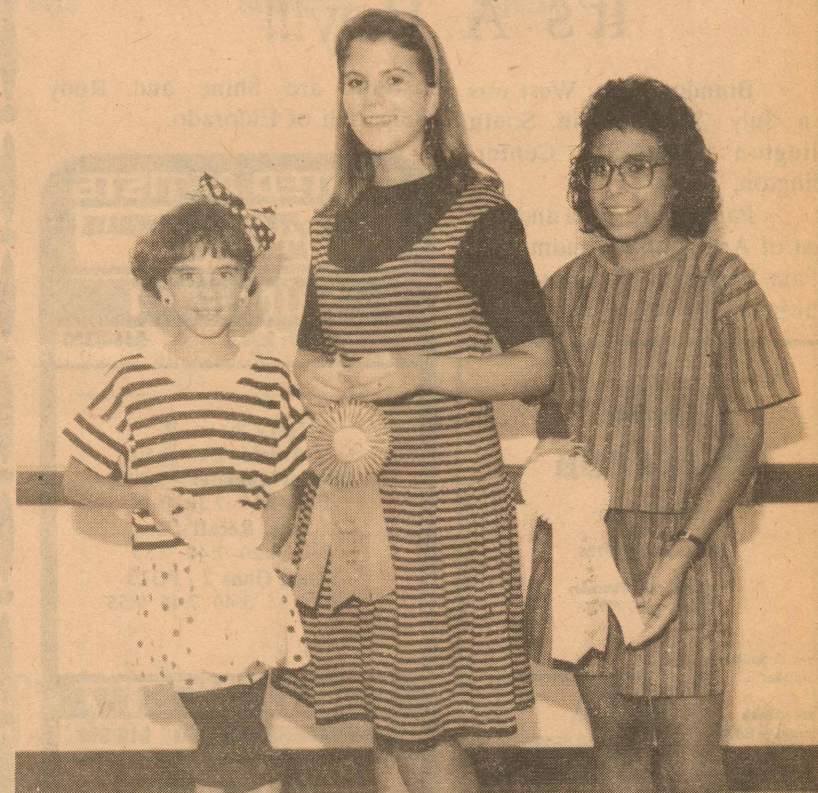
### WINNERS OF 1ST GO:

1. Walt Harris & Bob Bruce, San Angelo;  
2. Shelly Granzin, Miles and

Eddie Rudasill, Rocksprings;  
3. Rick Hendley, Rocksprings and Earnest Burrus, Mountain Home;  
4. Shelly Granzin, Miles and Rusty Adams, Big Lake.

### WINNERS OF AVERAGE:

1. Kade Kothmann, Cherry Springs and James Lawrence, Fredericksburg;  
2. Cedarberry Baker, Sonora and Abe Caruthers, Sonora;  
3. Stanley Klaerner, Fredericksburg, and Eddie Rudasill, Rocksprings;  
4. Walt Harris, San Angelo and Eddie Rudasill, Rocksprings;  
5. Shawn Adams, Big Lake and Red Guzman, Tennyson;  
6. Walt Harris and Joey Campbell, San Angelo;  
7. Herman Rayburn, Menard and Gary Granzin, Miles;  
8. Shelly Granzin, Miles and Joe Inskip, Midland.



(L-R) Kimberly Beach, Lindsay Johnson and Tamra Robledo.

## Athletic Physicals Grades 7-12

Girls-August 8th, 9:00 a.m.  
Boys-August 9th, 9:00 a.m.

Field House  
Call 853-3125  
For More Information



# The Editor's Journal

## Life Among The Fishes

by Thomas Giovannitti

Nicolas and I were in our last grocery store the other day and it came to our mind that supermarkets are run pretty much the same all over. It matters not whether in a small town or a big city, there are a few truisms about grocery stores that hold true everywhere.

For instance, the specials are always things that you don't need, with the exception of chicken leg quarters, which are always on sale. (I wonder what happens to the rest of the

chicken? - That is another story!) Another thing about grocery stores is the stuff they place near the check out counter. It is always gum, candy, batteries, and those national newspapers that no one I've ever met reads.

Last but not least is the people who populate the back of grocery stores waiting to be called to the front to check. Whenever there is a little rush on the check out lines the chief clerk will call on the mike for someone to come to the front to help check. It is always by name that the person from the back is

called. What I don't know is if there is an endless supply of people back in the back or one person who quickly changes name tags to fit the name called? It may be some way of testing the ability of their employees, by calling a random name and waiting to see if the girl in the back comes forward with the correct name tag.

The other thing I can't figure out about this is why the people have to be in the back. Why not have them hang around the check out counters ready to open another lane when needed?

Actually, the fact they are not up front where they are going to be needed indicates to me that maybe there really is only one person back there in the back.

Next week we might consider why there is a "produce man" in every grocery store but not a "paper product man"? Is it because that is too long of a title? Is it because the produce has been around longer than the paper products? These and other very important and intriguing questions may be posed for you next week. Then again, they may not!

## Laugh and Live

by Gary Smith



Wife and I took a little vacation. Went to the City-- Dallas--Big D. Went over to the Six Flags Amusement Park. Now for the few of you who have never been to Six Flags, let me explain. This is a place where you can buy a \$3.00 hot dog for lunch and then be given 47 different ways to throw it up. They have machines that will shake you right side up. They have machines that will shake you upside down. They have machines that will shake you sideways. They have machines that will throw water in your face. They have machines that will take you up high and drop you slow. They have machines that will take you up high and drop you fast. All of these machines are designed to make you do what a baby does when you shake him over your head right after he has eaten. THIS IS EXCITING STUFF. These machines will give you a thrill!

But-- the thrill you will get on these machines pales beside the other thrills that Dallas offers. It costs Twenty Dollars to get thrilled and scared half to death at the Six Flags. Hello--Dallas drivers will do it to you for free. They are a friendly lot too. They wave at just about everybody. But, they wave a little different than we do out here in West Texas--they don't use as many fingers. Strange but true.

'Til the next time...

MAY GOD BLESS.

## County Agents Report

**Publishers Note:** We would like to welcome Jerry Swift, County Extension Agent, as one of our regular columnists. We hope that the information that Jerry provides will be of interest to many of our readers.

by Jerry Swift, County Extension Agent - Schleicher County

**RAM SELECTION** - Ram producers of Schleicher County are holding the Third Annual "Supermarket" Range Ram Sale, Saturday, August 4, 10:00 a.m. to 2:00 p.m. at the show barn in Eldorado.

The quality of the rams are excellent. This is the only sale in the U.S. that all the rams have been fertility and

epididymitis tested. These rams were also sifted by Frank Craddock, Extension Sheep and Goat Specialist.

**COTTON** - Excellent rains have changed the cotton growing situation in Schleicher County in the past few weeks. Insects will all become more of a problem than we had in June, but at least the moisture conditions are improved.

**COTTON RANK GROWTH** - Growth on the main stem is usually limited by the developing boll load. As the bolls set on the plant, boll growth requires a greater amount of nutrients from the leaves, reducing the supply of nutrients available for shoot growth. When this occurs, the plant reaches

cutout. However, plants that fail to set bolls do not enter cutout and continue main-stem growth and develop into what is termed "bull" plants. These tall robust plants are often infertile or insect damaged and channel nutrients to stalk instead of bolls. Nutrients feed the thickening meristem in the stalk, supporting cell division and growth.

**LAWNS & GARDENS** - Insects and fungus may become more of a problem with the high

moisture conditions we presently have. Powdery mildew, leaf spots and a few other diseases may become problems. Control with benomyl, dimocap or folpet - all good fungicides.

**ROSES** - If you do not already have black spot, then you have been doing an excellent control or are very lucky. Apply benomyl (benlate 50%), one tablespoon/gallon, 10-14 days apart as needed. Keep old blooms cut, and fertilize often.

## Our Sympathy

Mildred Hayes Sessom, age 62, of San Marcus, died Wednesday, July 25 in San Marcus. Funeral services were held at 10:00 a.m. Friday at the First Baptist Church in San Marcus. Interment was at 4:00 p.m. at Lawn Haven Cemetery in San Angelo.

She is survived by a son and daughter in law, Steve and

Eva Jo Sessom of Eldorado. Two brothers, Hilton F. Hayes and Hillie T. Hayes of San Saba, one sister Wanda Lancaster of Austin, three grandchildren and six nieces and nephews.

Memorials may be made to the Mildred Sessom Memorial Fund, SWT Development Foundation, c/o Alumni House SWTSU, San Marcus, Texas 78666.

## Bible Times Extravaganza

August 8th and 9th will be very special evenings at the Mertzon Highway Church of Christ in Eldorado. These are the days of our first Bible Times Extravaganza!

This event will be Bible History portrayed as it would have been lived in the first century, A.D. See events from the Book of Acts take place in the setting of a first century village marketplace. Learn about first century money and see the lame man healed by Peter and John. He would have been among the class known as beggars. Meet Saul of Tarsus and see him converted on the way to Damascus. Observe the conver-

sion of an Ethiopian government official as he rides along in his chariot reading from Isaiah the Prophet.

Other activities will be that of making a pottery lamp similar to what most common people of that time would have used. Taste samples of first century food. Make some coins to give to the beggar and to buy the food.

The times for this event will be 5:30 - 9:00 p.m. on the evening of August 8th and 9th. To enroll call 853-2124. This will be "living Bible history" for two nights in Eldorado for children from K-5. Parents are invited to come Thursday evening from 8:00-9:00 p.m.

## An Apple A Day

by Lee R. (Smokey) Taylor, R.Ph.

Therapy for Asthma: Partly because of the increasing numbers of deaths due to asthma and partly because of a growing understanding of the disease, scientists are now advocating the

use of anti-inflammatory drugs, including corticosteroids, which are completely different from anabolic steroids and much less likely to cause systemic side effects than injectable versions.

--American Health

### Mittel Insurance

presents...

### Eldorado Spotlight



This sign is the best thing Eldorado has ever had! Thank you, Mias Amigas, The Leon Group and The Chamber of Commerce. Cindy McGinnes and other Chamber members maintain it and WE APPRECIATE IT!!!

Mittel Insurance Agency  
"For Your Insurance Needs"  
853-2576

## It's A Boy!!!

Brandon Coby West was born July 24, 1990 in South Arlington Medical Center, Arlington, Texas.

Parents are Toya and Jeff West of Arlington. Grandmother is Pam Spigarelli of Shreveport, Louisiana. Proud great grand-

parents are Shine and Rudy Spigarelli of Eldorado.

**UNITED ARTISTS**  
KAY-TV BARGAIN TUESDAYS  
ALL SEATS \$2.00

**SUNSET 4**  
1066 SUNSET MALL 844-3390

Navy Seals - R  
2:15 4:45 7:15 9:50  
Days of Thunder - PG13  
1:45 4:10 7:30 9:45  
Total Recall - R  
2:00 4:20 7:40 9:55  
Young Guns 2 - PG13  
1:30 3:35 5:40 7:45 9:55

**SOUTHWEST 7**  
1590 KNICKERBOCKER RD 948-998

Presumed Innocent - R  
2:00 4:30 7:15 9:50  
Ghost - PG13  
1:30 4:10 7:20 9:55  
Problem Child - PG  
1:00 3:00 5:00 7:20 9:30  
Another 48 Hours - R  
7:15 9:30  
Jetson's, The Movie - G  
12:45 2:30 4:30  
Die Hard 2 - R  
1:45 4:15 7:30 9:55  
The Adventures of Ford Fairlane - R  
7:30 9:40  
Pretty Woman - R  
2:15 4:45 7:15 9:45  
The Freshman - PG  
1:15 4:20 7:30 9:30

**SUBSCRIPTION FORM**

THE ELDORADO SUCCESS

Date: \_\_\_\_\_

Name: \_\_\_\_\_

Mailing Address: \_\_\_\_\_

City, State, Zip: \_\_\_\_\_

Telephone Number: \_\_\_\_\_

Price Schedule:

In Schleicher County	\$15.00/YEAR _____
Senior Citizen	\$13.00/YEAR _____
Out of Schleicher County	\$18.00/YEAR _____
Senior Citizen	\$16.00/YEAR _____

Send Check or Money Order to:

The Eldorado Success  
Box 1115  
Eldorado, Tx. 76936  
(915) 853-3125

The Eldorado Success

USPS 342-470  
Box 1115  
Phone 915-853-3125

Published each Thursday  
Eldorado, Tx. 76936

Gary C. Smith, Sr.  
Publisher

Cathy Smith  
Managing Editor

Debbie Edmiston  
Editor

Subscription Prices  
In Schleicher County--\$15.00 per year  
Senior Citizens--\$13.00 per year  
Out of Schleicher County--\$18.00 per year  
Senior Citizen--\$16.00 per year

Second class postage paid at  
Eldorado, Texas 76936. POSTMASTER: Send address changes to The Eldorado Success, Box 1115, Eldorado, Texas 76936.

THE ELDORADO SUCCESS is an independent newspaper, published in Eldorado, Texas by PRIME MINISTER PUBLISHING COMPANY, P.O. Box 1115, Eldorado, Texas.

THE ELDORADO SUCCESS cannot be held responsible for erroneous information provided by sources other than its staff. Should this publication make an erroneous statement a retraction will follow as soon as the Editor is notified of such an error.

Member 1990  
West Texas Press Association  
Copyright 1990...  
Prime Minister Publishing



## Hamilton Attends Leadership Retreat



Amy Hamilton

Amy Hamilton of Eldorado was among 15 District 7 Council Officers and Standing Committee Members attending a leadership retreat here July 26-27.

The two day event at the Christ the King Retreat Center involved a number of resource people who provided training in

a variety of leadership skills. Marsha Stabel, San Angelo based Extension 4-H and Youth Development Specialist, said the program placed particular emphasis on using young people to provide much of the training.

"Since this was a retreat designed for the District's newly elected 4-H officers and committee members, we wanted other young leaders to share their experiences and perhaps lend some inspiration to the days' activities," said Stabel. "We made arrangements for an Ambassador Team from Texas Tech University to work with the group to prepare them for leadership in the District during the coming year."

During the training, the youths were divided into three separate standing committees for the upcoming year. The three committees, Outreach/Extension, Public Relations and Training, correlate with Extension District 7's Strategic Planning Task Force. The task force serves as a guidepost for determining the

direction taken by the District's 4-H Program over the next four years. It is made up of County Extension Agents in the District. District 7, also called the West Central District, is comprised of 17 counties which boast a total 4-H enrollment of over 15,000.

Ara Voyles Burns of Midland became the bride of Alva Lee Harris Friday at the Holiday Inn with Reuben Stanley of Mertz Church of Christ officiating.

The bride is the daughter of Mr. and Mrs. Willie Voyles of

Paint Rock. The bridegroom is the son of Mr. and Mrs. Orland Harris of Eldorado.

The couple's attendants were the bride's children, Sheree Burns and Dean Burns, both of Robert Lee, and the bridegroom's children, Kirby Harris of Fort Worth, Scott

Harris and Melanie Harris.

Mrs. Harris is manager of The River Bank in Paint Rock, and her husband is a senior Border Patrol agent in San Angelo.

After the wedding trip to San Antonio, the newlyweds will live in San Angelo.

## Big Lake Tennis Association

The Big Lake Tennis Association is having their Fifth Annual Tournament on August 11th and 12th.

There will be trophies for 1st, 2nd, 3rd and consolation. The fee is \$5.00 and one can of

tennis balls per event.

We will have all men's and women's events, plus mixed doubles. Our junior events are for 11-15 year olds and an under 10 year old division.

For more information, call Mary Tatum at 884-2259 or Reggie Aguilar at 884-2026.

## Pre-Kindergarten Registration

Registration for the 1990-91 class of Pre-Kindergarten will be held on Tuesday, August 7 at 9:00 A.M. Parents are asked to bring their children born on or before September 1, 1986 to the 4 year old classroom (portable building) beside the elementary building.

Parents must also bring their child's birth certificate, immunization record, social security card, and a recent parent's proof of income.

A test will be given to the child at this time.

### Hayloft

Hwy. 277  
800 N. Divide  
Eldorado, Tx. 76936

**853-2943**  
Gloria Swift

(915) 853-2314

## JERRY'S T.V. SERVICE

SYLVANIA TELEVISIONS - SATELLITE T.V. SYSTEMS

JERRY J. JONES  
OWNER

214 S. MAIN STREET  
ELDORADO, TX. 76936

## THORP'S

### LAUN-DRY

LAUNDRY & CLEANERS

LINEN SUPPLY - UNIFORMS - DUST CONTROL  
SONORA - OZONA - ELDORADO

**SONORA - OZONA - ELDORADO**  
Since 1948

214 S. Main      Eldorado, Texas  
**853-2900**

# Rx

Smokey Taylor  
of  
**Eldorado  
Pharmacy**  
is  
**Your Hometown Druggist**

**Eldorado Pharmacy**  
Lee R. (Smokey) Taylor, R.Ph.  
853-2064 or 853-3130

NOW ACCEPTING BLUE  
CROSS/BLUE SHIELD CARDS

NOW ACCEPTING  
PCS CARDS

## Wedding Announcement

### 1990 Property Tax Rates in Schleicher County

This notice concerns 1990 property tax rates for Schleicher County. It presents information about three tax rates. Last year's tax rate is the actual rate the taxing unit used to determine property taxes last year. This year's effective tax rate would impose the same total taxes as last year if you compare properties taxed in both years. This year's rollback tax rate is the highest tax rate the taxing unit can set before taxpayers can start tax rollback procedures. In each case these rates are found by dividing the total amount of taxes by the tax base (the total value of taxable property) with adjustments as required by state law. The rates are given per \$100 of property value.

	General Fund	Farm to Market/ Flood Control Fund	Special Road/ Bridge Fund
<b>Last year's tax rate:</b>			
Last year's operating taxes	\$ 894,968.70	\$ 81,472.52	\$ 85,724.97
+ Last year's debt taxes	\$	\$	\$
= Last year's total taxes	\$ 894,968.70	\$ 81,472.51	\$ 85,724.97
÷ Last year's tax base	\$ 171,357,218	\$ 184,486,692	\$ 171,357,218
= Last year's total tax rate	\$ 0.5220 /\$100	\$ 0.0480 /\$100	\$ 0.0500 /\$100
<b>This year's effective tax rate:</b>			
Last year's adjusted taxes (after subtracting taxes on lost property)	\$ 894,968.70	\$ 81,472.52	\$ 85,724.97
÷ This year's adjusted tax base (after subtracting value of new property)	\$ 185,648,360	\$ 184,020,050	\$ 185,648,360
= This year's effective tax rate for each fund	\$ 0.4821 /\$100	\$ 0.0443 /\$100	\$ 0.0462 /\$100
Total effective tax rate	\$ 0.5726 /\$100		
× 1.03 = maximum rate unless unit publishes notices and holds hearing	\$ 0.5897		
<b>This year's rollback tax rate:</b>			
Last year's adjusted operating taxes (after subtracting taxes on lost property)	\$ 894,968.70	\$ 81,472.52	\$ 85,724.97
÷ This year's adjusted tax base	\$ 185,648,360	\$ 184,020,050	\$ 185,648,360
= This year's effective operating rate	\$ 0.4821 /\$100	\$ 0.0443 /\$100	\$ 0.0462 /\$100
× 1.08 = this year's maximum operating rate	\$ 0.5207 /\$100	\$ 0.0478 /\$100	\$ 0.0499 /\$100
+ This year's debt rate	\$ 0.0455 /\$100	\$ - /\$100	\$ - /\$100
= This year's rollback rate for each fund	\$ 0.5662 /\$100	\$ 0.0478 /\$100	\$ 0.0499 /\$100
This year's rollback rate	\$ 0.6639 /\$100		

(A county that collects the additional sales tax (including one that collects the tax for the first time this year) must insert the following lines:)

- Sales tax adjustment rate	\$ 0.0129 /\$100
= Rollback tax rate	\$ 0.6510 /\$100

### SCHEDULE A: Unencumbered Fund Balances

The following balances will probably be left in the unit's property tax accounts at the end of the fiscal year. These balances are not encumbered by a corresponding debt obligation.

Type of Property Tax Fund	Balance

### SCHEDULE B: 1990 Debt Service

The unit plans to pay the following amounts for long-term debts that are secured by property taxes. These amounts will be paid from property tax revenues (or additional sales tax revenues, if applicable).

Description of Debt	Principal or Contract Payment to be Paid	Interest to be Paid	Other Amounts to be Paid	Total Payment
Law Enforcement Center	\$55,000.00	\$27,927.50		\$82,927.50
Total required for 1990 debt service				82,927.50
- Amount (if any) paid from funds listed in Schedule A				
- Excess collections last year				
= Total to be paid from taxes in 1990				82,927.50
+ Amount added in anticipation that the unit will collect only ____% of its taxes in 1990				
= Total Debt Service Levy				

### SCHEDULE C: Expected Revenue from Additional Sales Tax

(For counties and cities with additional 1/2 cent sales tax)

In calculating its effective and rollback tax rates, the unit estimated that it will receive \$ 21,927.50 in additional sales and use tax revenues.

This notice contains a summary of actual effective and rollback tax rate calculations. You can inspect a copy of the full calculations at County Courthouse tax office.

Name of person preparing this notice Dorothy M. Evans

Title County Tax Assessor-Collector

Date prepared July 30, 1990



# Unofficial City Council Minutes

Continued from Page 6  
until the next meeting when all Councilmembers would be in attendance.

**LANDFILL:**  
The Council discussed information received from the TDH and the Secretary was instructed to visit with Peggy Garner at Rankin about status of the coalition's efforts to obtain variances in low population density areas. Also, she was asked to contact the Council of Governments regarding grant application procedures as discussed by Michael Edmiston as well as write a letter for the Mayor's signature requesting a meeting between City and County officials of the surrounding communities to discuss regional landfill possibilities.

Mr. Dean reported on the new hours required by the TDH at the Landfill effective 6-30-90. A notice was published by the newspaper as well as on the bottom of the 7-15-90 billings just mailed. The Health Department requires that the landfill not exceed 7:00 A.M. - 3:00 P.M. on Saturdays and be closed on Sunday. Discussion was held concerning possibility of installing a sign leaving the City Limits telling the public the new hours and/or letting them know when the Landfill is closed.

Bids for digging of new pit were not available but will be obtained by the 8/7 meeting of the Council.

Council.

**BILLS:**  
Billings received since the last meeting of the City Council were circulated and approved in motion by Barbara Jackson and second by Dora Bosmans. Motion carried. Motion included approval to billings received with the exception of request by Eagle's Point for \$1,500.00. \$1,000.00 was approved for expenditure.

**1990-91 BUDGET AND OTHER BUSINESS:**  
Solution to the truck route problem near Paseo de Vaca will be further investigated prior to the next meeting of the Council. The Secretary reported that Dr. Carlo was transferring his drug testing to Enviro Tech Labs on a consultant basis. Further information has been requested from Enviro Tech regarding pricing, DOT regulations, etc.

The Secretary reported she had requested release of CDBG Funds (1982) remaining in escrow in the amount of \$3,245.57 for possible use on the 1987 Amended project. Further word should be coming from HUD on this matter.

The Secretary requested that \$1,243.92 of utility account balances be written off for accounting purposes only. Further efforts will be made to recover them with \$494.42

recovered thus far this fiscal year of written off accounts from previous years. Motion was made by John Nicolauk the write-offs be authorized, with second by Barbara Jackson. Motion carried. This \$1,243.92 represents .2% of total billings (\$613,531.30) for the past 12-month period.

Survey form has been mailed to nearby communities requesting rate schedules for utilities and associated services. A report will be prepared for the Council's study by the next meeting, as well as a revenue vs. expenditure study YTD to evaluate current utility rates and

landfill expenses. Projections based on the past 10-months' revenues and expenditures for the Utility and General Funds were reviewed by the Council with further discussion scheduled for the next meetings. Budget hearing was set for August 21, 1990. Law

enforcement options will be studied in the meantime. Mr. Dean reported he would be spraying for mosquitoes for the next few evenings. With no further business, meeting adjourned at 12:45 A.M. Carolyn Mayo City Secretary

## 1990 Property Tax Rates in the City of Eldorado

This notice concerns 1990 property tax rates for the City of Eldorado. It presents information about three tax rates. Last year's tax rate is the actual rate the taxing unit used to determine property taxes last year. This year's effective tax rate would impose the same total taxes as last year if you compare properties taxed in both years. This year's rollback tax rate is the highest tax rate the taxing unit can set before taxpayers can start tax rollback procedures. In each case these rates are found by dividing the total amount of taxes by the tax base (the total value of taxable property) with adjustments as required by state law. The rates are given per \$100 of property value.

<b>Last year's tax rate:</b>	
Last year's operating taxes	\$ 90,629
+ Last year's debt taxes	\$ 60,999
= Last year's total taxes	\$ 151,628
÷ Last year's tax base	\$21,344,120
= Last year's total tax rate	\$ 0.7104 /\$100
<b>This year's effective tax rate:</b>	
Last year's adjusted taxes (after subtracting taxes on lost property)	\$ 151,597
÷ This year's adjusted tax base (after subtracting value of new property)	\$21,135,170
= This year's effective tax rate	\$ 0.7172 /\$100

(In the first year a city or county collects the additional sales tax it must insert the following lines unless it made its first adjustment last year.)

- Sales tax adjustment rate	\$ _____ /\$100
= Effective tax rate NOT APPLICABLE	\$ _____ /\$100
× 1.03 = maximum rate unless unit publishes notices and holds hearing	\$ 0.7387 /\$100

<b>This year's rollback tax rate:</b>	
Last year's adjusted operating taxes (after subtracting taxes on lost property)	\$ 90,608
÷ This year's adjusted tax base	\$21,135,170
= This year's effective operating rate	\$ 0.4287 /\$100
× 1.08 = this year's maximum operating rate	\$ 0.4629 /\$100
+ This year's debt rate	\$ 0.2987 /\$100

(A school district must insert the following lines) NOT APPLICABLE	
= This year's rollback rate before adjustment	\$ _____ /\$100
+ Rate to recoup lost state funds	\$ _____ /\$100
= A. Adjusted rollback rate	\$ _____ /\$100
B. Rate that would result in maximum state funds	\$ _____ /\$100
Rollback Rate (greater of A or B)	\$ _____ /\$100
= This year's rollback rate	\$ 0.7616 /\$100

(A city or county that collects the additional sales tax (including one that collects the tax for the first time this year) must insert the following lines:)	
- Sales tax adjustment rate	\$ _____ /\$100
= Rollback tax rate NOT APPLICABLE	\$ _____ /\$100

## SCHEDULE A: Unencumbered Fund Balances

The following balances will probably be left in the unit's property tax accounts at the end of the fiscal year. These balances are not encumbered by a corresponding debt obligation.

Type of Property Tax Fund	Balance
General Fund	-0-
Gas I & S Fund	-0-
Sewer I & S Fund	\$217

## SCHEDULE B: 1990 Debt Service

The unit plans to pay the following amounts for long-term debts that are secured by property taxes. These amounts will be paid from property tax revenues (or additional sales tax revenues, if applicable).

Description of Debt	Principal or Contract Payment to be Paid	Interest to be Paid	Other Amounts to be Paid	Total Payment
1982 Certification of Obligation	\$20,000	\$ 4,805	-	\$24,805
1983 General Obligation	5,000	30,751	-	35,751
Total required for 1990 debt service			60,556	
- Amount (if any) paid from funds listed in Schedule A			-0-	
- Excess collections last year			17	
= Total to be paid from taxes in 1990			60,539	
+ Amount added in anticipation that the unit will collect only 95% of its taxes in 1990			3,186	
= Total Debt Service Levy			63,725	

## SCHEDULE C: Expected Revenue from Additional Sales Tax

(For counties and cities with additional 1/2 cent sales tax)

NOT APPLICABLE

In calculating its effective and rollback tax rates, the unit estimated that it will receive \$\_\_\_\_\_ in additional sales and use tax revenues.

This notice contains a summary of actual effective and rollback tax rate calculations. You can inspect a copy of the full calculations at the Schleicher County Appraisal District.

Name of person preparing this notice Ray L Ballew  
Title Chief Appraiser  
Date prepared July 25, 1990


### Douthit Stationed In Fort Hood

Army Spec. Tracy B. Douthit has arrived for duty at Fort Hood, Texas. Douthit is a military police specialist. He is the son of Shirley L. and James A. Douthit of Christoval, Texas. The specialist is a 1986 graduate of Christoval High School.

**Germania Insurance**  
  
Covering Texas since 1896.  
Property insurance  
"Where to call" Agents  
**Sherry Lux**  
853-3068

**Steve M. Sessom, D.D.S.**  
Restorative Dentistry and Orthodontics  
Thursdays & Fridays  
8:00 a.m.-5:00 p.m.  
1101 Avenue I, Box 1002, Ozona, Tx. 76913  
Phone: (915) 392-2757 (Ozona) 853-2534 (Eldorado)

**Eldorado Wool Company**  
Phone  
853-2772 - Office  
853-2820 - Feedstore

**McCormick's Exxon**  
Friendly Service  
Clean Facilities  
Caring About Eldorado  
101 S. Divide  
Eldorado, Texas  
Phone--853-3407  




### Third Annual Llano Gun, Knife and Indian Artifact Show

The Third Annual Llano Gun, Knife and Indian Artifact Show will be held at the American Legion Hall on Bessemer Street in Llano, Texas. The event will take place on August 18 and 19 from 9:00 a.m. to 6:00 p.m.

The exhibitors will display guns, knives, coins and Indian artifacts on approximately 60 trade tables.

Admission is \$2.00 per adult; children under 12 are admitted free, if accompanied by an adult. A food concession will be available.

The show is sponsored by Llano Guns, and for additional information, you may contact Llano Guns, 911 Bessemer, Llano, Texas 78643 - (915) 247-5227.

### OES Update

Isabella McCutcheon, Elton and Mary McGinnes attended the rally honoring Mrs. Debbie Karschner, District Five, Grand Chapter of Texas in Robert Lee on July 29, 1990. The rally was hosted by friends of District Five, Sections One and Two. Eldorado Chapter #140 is in District Five, Section Two.

Approximately 150 guests enjoyed the good fellowship, good food and good entertainment. The entertainment was provided by Julie Ann Carpenter, 12 year old fiddler, who plays with The Smokey Mountain Boys.

### Merry Makers Meet

Jessie Sudduth hosted the Merry Makers 42 Club on Thursday, July 26 in the Old Main Street Cafe.

Those present were: Gladys Faull, Opal Parks, Bessie Clifton, Virginia Griffin, Lillian Mikeska, Estelle Baker, Opal Faull, Gladys Gunn, Irene Sudduth, Pearl Enochs and Margaret McGrath.

The hostess served sandwiches, chips, peach cobbler, coffee and tea.

Ada Bell Taylor will host the party on August 9th.

### Chamber To Sponsor Tennis Tournament

The Schleicher County Chamber in Eldorado will be sponsoring a tennis tournament on August 17, 18 & 19. The events include:

- Boys and Girls Singles - Ages 10, 12, 14, 16 and 18;
- Boys and Girls Doubles - Ages 12, 14 and 16;
- Mens and Womens Doubles - Ages 17 through adult;
- Mixed Doubles - Ages 14 and under, and 15 through adult.

The entry fee is \$8.00 per event, per person. Call the Schleicher County Chamber of Commerce at 853-3109, Cindy McGinnes at 853-2149 or Stacy

Jones at 853-2312. The entry deadline is August 13 at 10:00 p.m.

### Horseshoeing Bud Arendt

Experienced Reliable

853-2337 Leave Message

### Local 4-H Leaders Honored

Three outstanding adult 4-H leaders from Schleicher County were honored at the annual Adult Leader Luncheon held in San Angelo on July 10. Debbie Joy, Glenda Nix and Marilyn Whitten were recognized for the work they have done with the local 4-H program. This

event is sponsored by the Electric Cooperatives in this area, including the Southwest Texas Electric Coop. The 4-H program appreciates the support of the Electric Cooperatives and is lucky to have leaders like the ones that were honored at this affair!



(L-R) Debbie Joy, Glenda Nix and Marilyn Whitten.

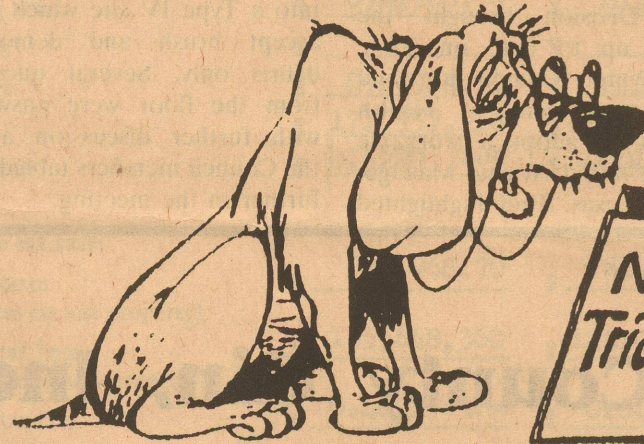
### Way-Off Broadway

The Way Off Broadway Players ask anyone interested in participating in our fall production to meet at the theatre Monday, August 6th at 7:30. If you are interested but are unable to attend this meeting, please call Jo Ann Sproul at 853-3411 or leave word at C.R. Sproul's office, 853-3343.

This particular production calls for five males, seven females and 1 girl 9-12

years old. We have some interesting and "fun" plays for future productions and hope to involve many of you. We also need people for various other jobs and feel we have other talented people out there. We want you and hope to see you August 6th.

### IT'S NEVER TOO LATE



For a little peace of mind.

Old or young ... It's no trick ... your future will be bright and worry free with an insured savings deposit with us. We'd be happy to open your account today ... for worry free tomorrows.

We're Your Full Service Bank .. Count On Us!

### First National Bank

of Eldorado  
102 SW Main / Member FDIC

### BIBLE TIMES EXTRAVAGANZA

AUGUST 8-9  
5:30-9:00 P.M.

Mertzon Hwy.  
Church of Christ  
Eldorado, Tx.

SEE WHAT LIFE WAS LIKE IN FIRST CENTURY PALESTINE!

See the lame man healed  
See an Ethiopian official converted  
Witness the conversion of Saul of Tar  
Make a first century oil lamp.



### SCISD Offers Free/Reduced-Price Meals

The Schleicher County Independent School serves nutritious meals every day. Students in grades K-3 may buy lunch for \$1.00; grades 4-6 for \$1.10; grades 7-12 for \$1.20 and adult visitors for \$3.45. Students may buy breakfast for 50 cents and adults for 75 cents. Children from households that meet Federal income guidelines are eligible for free meals or reduced price meals at 40 cents for lunch and 25 cents for breakfast. To apply for free or reduced-price meals, complete an application, sign it and return it to the school.

**FOOD STAMP/AFDC HOUSEHOLDS:** If you currently receive Food Stamps or "Aid to Families with Dependent Children" for your child, you only have to list your child's name and food stamp or AFDC number, print your name, and sign the application. Since you have already given income information to the welfare office, the school can confirm your eligibility.

**ALL OTHER HOUSEHOLDS:** If your household income is at or below the level shown on the enclosed scale, your child is eligible for either free or reduced-price meals. To apply for meal benefits, you must provide the following information and sign the application: (1) list the names of everyone who lives

in your household. Include parents, grandparents, all children, other relatives and unrelated people who live in your household, (2) list the social security number of each adult, age 21 or older. If an adult does not have a social security number, print "none", (3) list total monthly income and amount of income (BEFORE deductions for taxes, social security, etc.) each person received last month and where it is from, such as wages, retirement or welfare. If you have a household member for whom last month's income was higher or lower than usual, list the person's expected average monthly income.

**VERIFICATION:** The information on the application may be checked by school officials at any time during the school year.

**REPORTING CHANGES:** If you list income information and your child is approved for meal benefits, you must tell the school when your household income increases by \$50 or more per month (\$600 per year) or when your household size decreases. If you list a food stamp case number or AFDC number, you must tell the school when you no longer receive food stamps or AFDC for your child.

**FOSTER CHILD:** Your foster child may be eligible for meal benefits. If you wish to apply for meal benefits for a foster child, contact the school for help with the application.

**NONDISCRIMINATION:** Children who receive free or reduced-price meal benefits are treated the same as children who pay for meals. In the operation of child feeding programs, no child will be discriminated against because of race, sex, color, national origin, age or handicap. If you believe you have been discriminated against, write immediately to the Secretary of Agriculture, Washington, D.C. 20250.

**FAIR HEARING:** If you do not agree with the school's decision on your application or the result of veri-

fication, you may wish to discuss it with the school. You also have the right to a fair hearing. This can be done by calling or writing the following official:

Larry Blair, Superintendent  
Schleicher County I.S.D.  
Eldorado, Texas 76936  
Phone: (915) 853-2514

**CONFIDENTIALITY:** The information you provide will be treated confidentially and will be used only for eligibility determination and verification of data.

**REAPPLICATION:** You may apply for benefits any time during the school year. If you are not eligible now, but need to apply later in the year, please fill out an application at that time.

Family Size	Annual:		Monthly:		Weekly:	
	Free	Reduced-Price	Free	Reduced-Price	Free	Reduced-Price
1	\$ 8,164	\$11,618	\$ 681	\$ 969	\$157	\$224
2	10,946	15,577	913	1,299	211	300
3	13,728	19,536	1,144	1,628	264	376
4	16,510	23,495	1,376	1,958	318	452
5	19,292	27,454	1,608	2,288	371	528
6	22,074	31,413	1,840	2,618	425	605
7	24,856	35,372	2,072	2,948	478	681
8	27,638	39,331	2,304	3,278	532	757
Each Additional Family Member:						
	\$ 2,782	\$ 3,959	\$ 232	\$ 330	\$ 54	\$ 77

Sponsored by these Merchants

Eagle Dairy Mart

First National Bank of Eldorado

Star Stop

Southwest Texas Electric Co-op, Inc.

Eldorado Wool Co.

Hayloft

Lantana Winery  
George Gower

McCormick's Exxon



# Unofficial City Council Minutes

A special meeting of the Eldorado City Council was held Tuesday, July 24, 1990, at 7:30 p.m. at the City Hall with all council members in attendance with the exception of John Callison and Debbie Ballew. Meeting was called to order by Mayor Preston.

**CITIZENS PRESENT:**

Bill Hodges met with the Council to request purchase, by the City, Handicapped Parking signs. After discussion, motion was made by John Nikolauk and seconded by Barbara Jackson the City purchase 10-12 signs for businesses requesting them. Motion carried.

Mr. Hodges also informed the Council the Main Street Business Association was working with the Chamber of Commerce to beautify the business district.

Concerning recycling, Mr. Hodges expressed concern recycling had not been pursued in Eldorado. Mayor Preston appointed Mr. Hodges to investigate and develop a plan

for Eldorado, and to get back with the Council in the near future with such a plan.

George Arispe met with the Council to present suggestion the Council charge \$1/month/residence and \$20/month/business to offset Nightwatch service expenses. A volunteer Nightwatch Program was discussed. Jim Glidden also expressed need for Nightwatch service, and he suggested a tax hike to cover the necessary expenses. Several options were discussed with no decision made by the Council at the present time.

**TEXAS DEPARTMENT OF HEALTH - SOLID WASTE:**

Tom Grimshaw, Adam Hernandez, and Michael Edmiston with the Texas Department of Health Solid Waste Division brought the Council up to date on EPA, Texas Water Commission and Texas Department of Health activities to adopt a workable plan for Solid Waste Management in Texas. They highlighted

on increased fees charged to offset reduced funding for the State agencies, recycling, acceptable disposal of tires, pending EPA legislation and its direct, but uncertain effect on the local landfill operation, and options available for the Eldorado landfill. They advised the Council to take immediate action to explore possibilities and to make the landfill ready for immediate closing if the EPA rules are passed without an adequate grace period to close to avoid the many costly measures being proposed. They reviewed proposed operating procedures, including ground well monitoring, daily cover, liner, and 24-hour access control. They advised the Council to check into transferring household waste and converting the present landfill into a Type IV site which could accept brush and demolition debris only. Several questions from the floor were answered, with further discussion among the Council members tabled until further in the meeting.

Karen and James Mack Holley met with the Council to request correction of ongoing drainage problem in front of their residence in Block 1, South Heights Addition. Possible corrective measures were discussed.

Representatives of the Volunteer Fire Department (James Mack Holley, Richard Harris, Jerry Jones, Norman Smith) met with the Council to present budget request for \$12,125.00 for the 1990-91 fiscal year. After discussion, they were advised the Council would consider their request later in the meeting during budget discussion.

**WASTEWATER PLANT**

**UPDATE:**

Jack Dean reported Caroline Herbert with the Texas A&M Extension Service had completed her review of the

wastewater system situation and had made several recommendations for its operation and correction of problems. Bob Mitchell with the EPA had also monitored Ms. Herbert's services to the City. Ms. Herbert will be attempting to work with the Texas Rural Water Association to jointly propose corrective measures. It was reported that Jack Dean, Steven Santellano and Carolyn Mayo had attended the 20-hr. Wastewater Class taught by Ms. Herbert on the evenings of July 16-19 with 15 total attending from surrounding communities. The class is necessary for TWC employee certification.

Mr. Dean reported there were problems with infiltration at lift stations and manholes during the recent heavy rains and those problems would be corrected to

help alleviate some of the problems at the plant. David Todd has requested to be on the agenda for August 7 so he may make recommendations to the Council to correct other problems at the plant, and possibly some news on the Urgent Need Grant will be received by that date so work can begin as soon as possible to make corrections as needed to bring the plant back into compliance with the TWC. No further information was available regarding the Christian farmland/pastureland negotiations. The Irrigation Permit Amendment is in preparation stage at Todd Engineering.

**RECORDS MANAGEMENT PROGRAM:**

Action on proposed Ordinance #102-90 was tabled

Continued on Page 4

## Schleicher County Gin, Inc.

Now Accepting Prepayments For Bulk Cotton Seed & Regular Bookings

Contact Chris Mathis  
853-2881      853-3077      657-4968

## Year End Clearance Sale

1990 Tempo GL 4 Dr Auto Trans.

Stock #90-018

MFSR \$11,651.00  
Rebate -\$700.00  
Sonora  
Ford Disc. -\$1,023.00  
Hail Disc. -\$1,500.00

Your Price - \$8,428.00 + TT&L

1990 Mustang LX Hatchback

Stock #90-016

MFSR \$11,375.00  
Rebate -\$1,000.00  
Sonora  
Ford Disc. -\$913.50  
Hail Disc. -\$1,000.00

Your Price - \$8,461.50 +TT&L

1990 LTD Crown Vic. LX 4 Dr

Stock #90-053

MFSR \$19,898.00  
Rebate -\$1,000.00  
Sonora  
Ford Disc. -\$2,533.00  
Hail Disc. -\$2,000.00

Your Price - \$14,365.00 +TT&L

ALL 1990 PICKUPS  
PRICED AT  
CLOSE-OUT PRICES

Sonora  FORD Sales

115 NW Concho Ave. See: Leslie Gray 387-2549

## Food Center

Sonora, Texas

Bakery Fresh Baked French Bread

2 loaves/\$1.00

Fresh Baked Mini Cinnamon Rolls

12/\$1.00

Hot or Cold Deli Sandwiches w/Bag of Chips & 16oz. Coke

\$2.49

5 lb. Bag Potatoes

BUY ONE GET ONE FREE

Bananas

4 lbs/\$1.00

Holley Farms USDA Grade 'A' Whole Fryers

69c/lb

Farmland Hickory Smoked Sliced Bacon

\$1.69/1 lb. pkg.

Smoked White Turkey

\$2.99/lb



HOMETOWN PROUD



TEMPORARY PRICE REDUCTION TPR...



Greater savings for smart shoppers like you! From time to time our manufacturers will reduce the price of their products...and we pass these savings on to you through this special program.

As these allowances become available, we will reduce our everyday low prices even more. These items are identified by special tags in our store and become...TPR

More items are added each week to help you save on your total grocery bill.

Look for these special SHELF TAGS AND SAVE!!! Picture this another way, that we're helping you save more...EVERYDAY!

COUPON  
DRIVE A LITTLE  
SAVE A LOT COUPON



2 SIX PACKS  
COKE - PEPSI  
DR. PEPPER  
**FREE**  
WITH THIS COUPON

Coupon Good August 2-8  
Redeem at Food Center - Sonora, Tx.  
Limit 1 Coupon Per Family





## SCISD Offers Vocational Programs

Schleicher County Independent School District offers vocational programs in vocational agriculture and homemaking. Admission to these programs is based on availability and completion of prerequisite courses.

It is the policy of Schleicher County Independent School District not to discriminate on the basis of race, color, national origin, sex, or handicap in its vocational programs, services, or activities as required by Title VI of the Civil Rights Act of 1964, as amended, Title IX of

the Education Amendments of 1972, and Section 504 of the Rehabilitation Act of 1973, as amended.

Schleicher County Independent School District will take steps to assure that lack of English language skills will not be a barrier to admission and participation in all educational and vocational programs.

For information about your rights or grievance procedures, contact the Title IX Section 504 Coordinator, Chris McCravey, at Eldorado High School, 853-2549.

## EHS Cheerleaders Host Mini-Camp

A Mini Camp, sponsored by the Eldorado High School Varsity Cheerleaders, will be held for young girls in grades K-8th. The camp will be on August 13th-14th from 9:30 a.m. until 12:00 p.m. at the Community Park.

The cheerleaders will be teaching the girls an assortment of material in four different classes. These classes will be Mascot, Cheers, Chants and Jumps.

Favors will be given, and the girls who attend will have a chance to perform at one of the high school pep rallies.

Parents are invited to attend on the last day to view their children's performance.

Registration will begin at 9:30 a.m. the first morning and a \$10.00 fee will be charged. To pre-register, call Angie McGregor at 853-3626 or D'Ann Kuhlmann at 853-3010.

### Kent's Automotive

Parts and Service

Phone 853-2733  
Eldorado, Tx. 76936

## Garage Sales

**GARAGE SALE:** Saturday, August 4, 8 a.m. - 2 p.m. Clothes, tools, bathroom fixtures, furniture, toys, etc. 720 Lee Avenue.

1-(8-2-90)-b  
**GARAGE SALE:** Piddler's Porch - Outside. 405 S. Divide. August 3, 9 a.m. - ? Books, clothes, caps, lots of odds &

## CLASSIFIEDS

ends. Three families.  
1-(8-2-90)-p

## Notice

**BECOME A PARALEGAL,** Nationally Accredited, Attorney Instructed, Home Study, Estab-

lished 1976, Financial Aid, FREE Catalog. 1-800-2555, Southern Career Institute, Drawer 2158, Boca Raton, Florida 33427.  
2-(7-26-90)-p

**SPECIAL -** Now through August 7 - Eldorado Green Satin Ball Jackets with lining. Reg.

\$39.99 - NOW \$29.99. Come by and place your order. (Jackets will be here by Sept. 1) \$10.00 deposit required. Punkin's Fashions, 11 West Gillis, 853-3824

2-(7-19-90)-b

**NOTICE:** Pick up your copy of "Peril at Pumpnickel Pass" for just \$10.00 at M.L.'s Beauty Salon. Tues.-Fri. 9:00-5:00. For additional information please call 853-2879.

2-(8-2-90)-p

### 1990 Property Tax Rates in Schleicher County Hospital District

This notice concerns 1990 property tax rates for Hospital District. It presents information about three tax rates. Last year's tax rate is the actual rate the taxing unit used to determine property taxes last year. This year's effective tax rate would impose the same total taxes as last year if you compare properties taxed in both years. This year's rollback tax rate is the highest tax rate the taxing unit can set before taxpayers can start tax rollback procedures. In each case these rates are found by dividing the total amount of taxes by the tax base (the total value of taxable property) with adjustments as required by state law. The rates are given per \$100 of property value.

	General Fund	Farm to Market/ Flood Control Fund	Special Road/ Bridge Fund
<b>Last year's tax rate:</b>			
Last year's operating taxes	\$ 804,385.03	\$ _____	\$ _____
+ Last year's debt taxes	\$ _____	\$ _____	\$ _____
= Last year's total taxes	\$ _____	\$ _____	\$ _____
÷ Last year's tax base	\$ 172,986,028	\$ _____	\$ _____
= Last year's total tax rate	\$ 0.4650 /\$100	\$ _____ /\$100	\$ _____ /\$100
<b>This year's effective tax rate:</b>			
Last year's adjusted taxes (after subtracting taxes on lost property)	\$ 804,385.03	\$ _____	\$ _____
÷ This year's adjusted tax base (after subtracting value of new property)	\$ 186,603,680	\$ _____	\$ _____
= This year's effective tax rate for each fund	\$ 0.4311 /\$100	\$ _____ /\$100	\$ _____ /\$100
Total effective tax rate	\$ 0.4311 /\$100		
× 1.03 = maximum rate unless unit publishes notices and holds hearing	\$ 0.4440		
<b>This year's rollback tax rate:</b>			
Last year's adjusted operating taxes (after subtracting taxes on lost property)	\$ 804,385.03	\$ _____	\$ _____
÷ This year's adjusted tax base	\$ 186,603,680	\$ _____	\$ _____
= This year's effective operating rate	\$ 0.4311 /\$100	\$ _____ /\$100	\$ _____ /\$100
× 1.08 = this year's maximum operating rate	\$ 0.4656 /\$100	\$ _____ /\$100	\$ _____ /\$100
+ This year's debt rate	\$ _____ /\$100	\$ _____ /\$100	\$ _____ /\$100
= This year's rollback rate for each fund	\$ _____ /\$100	\$ _____ /\$100	\$ _____ /\$100
This year's rollback rate	\$ 0.4656 /\$100		

### SCHEDULE A: Unencumbered Fund Balances

The following balances will probably be left in the unit's property tax accounts at the end of the fiscal year. These balances are not encumbered by a corresponding debt obligation.

Type of Property Tax Fund	Balance

### SCHEDULE B: 1990 Debt Service

The unit plans to pay the following amounts for long-term debts that are secured by property taxes. These amounts will be paid from property tax revenues (or additional sales tax revenues, if applicable).

Description of Debt	Principal or Contract Payment to be Paid	Interest to be Paid	Other Amounts to be Paid	Total Payment
Total required for 1990 debt service			-0-	
- Amount (if any) paid from funds listed in Schedule A			-0-	
- Excess collections last year			-0-	
= Total to be paid from taxes in 1990			-0-	
+ Amount added in anticipation that the unit will collect only _____% of its taxes in 1990			-0-	
= Total Debt Service Levy			-0-	

### SCHEDULE C: Expected Revenue from Additional Sales Tax

(For counties and cities with additional 1/2 cent sales tax)

In calculating its effective and rollback tax rates, the unit estimated that it will receive \$ \_\_\_\_\_ in additional sales and use tax revenues.

This notice contains a summary of actual effective and rollback tax rate calculations. You can inspect a copy of the full calculations at County courthouse tax office

Name of person preparing this notice Dorothy M. Evans

Title County Tax Assessor-Collector

Date prepared July 30, 1990

## Sears Catalog Store

Hours: 9-5 (open during lunch)  
(After hours by appointment)

Order Early For  
Back To School

205 NE Main  
Sonora, Tx.  
387-3886

All Display Merchandise  
Available For Sale

Clara James  
Owner



## Let Us Take Care Of All Your Insurance Needs!

Randy Upham Insurance

853-3168

South Main  
(Across from feed store)  
Eldorado, Tx.  
Tues. & Thurs. 9-5

387-2465  
Hwy. 277 N.  
Sonora, Tx.

All policies can be combined in on monthly payment.



## VACATION TIME FOR THE MEMBER AND THE METER

any co-op members enjoy well-deserved vacations during the summer. And your electric meter should be able to enjoy a little slower pace while you are away. All it takes is a little effort.

- Turn off your electric water heater.
- If paractical, empty and unplug your refrigerator.
- Unplug TV's, VCR's, clock radios, and other small appliances.
- Turn the air conditioner off. Ask a neighbor to "babysit" pets and plants so they not have to suffer from the higher than normal temperatures in your home.

- Close draperies to reduce solar heat build-up.
- If you leave lights on, use a timer.
- Read your meter just before you leave and immediately upon your return to know exactly how effective your efforts were.

You probably can't give your meter a complete vacation while you are away, but a little thought and planning can ease your meter's burden and your electric bill.

An energy-saving vacation message from Your Home-Owned Electric Cooperative

## Southwest Texas Electric Cooperative

Phone  
853-2544

24 hr  
853-2546



**You're Always a Winner!**

When You Advertise In The Classifieds

**Thank You**

**THANK YOU**  
Thank you to the Eldorado Beautification Committee on their hard work. The lot across from the Eagle Dairy Mart looks very nice.  
Schleicher County Chamber of Commerce  
1-(8-2-90)-b

**THANK YOU**  
A special thanks to Albert Torres for painting the wall on the Parker Lot.  
Schleicher County Chamber of Commerce  
1-(8-2-90)-b

**For Lease**

**FOR LEASE** - Chevron station for lease. New paint Lots of potential. Call 853-2616 or 853-2880.  
1-(7-19-90)-b

**Services**

**NOTICE** - Buy or sell Art, cookbooks, American, Russian, Asian, World War I & II, photography, poetry, language, religious, metaphysical, children first edition, Texana, etc. Ye Ole Fantastique Book Shoppe, 1218 W. Beaugard, San Angelo.  
tfn-(3-1-90)-b

**WATKINS PRODUCTS** - Vanilla, Pepper, Salve, etc. Call your Watkins dealer, Kathy Smith 853-2046.  
tfn-(4-26-90)-b

**NOTICE** - Mary Kay Cosmetics. Graduation, birthday, anniversary gifts. Martha Spinks. Old Mertzon Road. Phone 853-3415 after 4 p.m.  
tfn-(3-8-90)-b

**ATTENTION** - Defensive Driving offered monthly in Eldorado. Call 853-2777 for more information.  
tfn-(3-8-90)-b

**NOTICE:** Let me decorate your cakes. Just bring a picture or idea. No wedding cakes. Call 853-3136 after 5 p.m. Kim-et Nelson.

**ATTENTION**  
Custom Farming Wanted: Good equipment and will do good job. Dependable and reasonable. Call 853-3365.  
tfn-(6-28-90)-b

**MR. INSURANCE**  
1225 S. Bryant  
San Angelo - 655-6702  
All lines of insurance, including all classes of oil field.  
4-(4-26-90)-b

**"Put hair in its place!"**  
Let Us Perm It!  
Call **Charlotte's Hair Shop**  
9 West Gillis  
853-3084 or 853-3725

**Help Wanted**

**HELP WANTED:** Main Street Cafe. 853-2408.  
tfn-(8-2-90)-b

**Real Estate**

**HOUSE FOR SALE:** 4 bedrooms, 2 baths 3 lots all fenced, patio, storage shed. Call 853-2603 for information.  
4-(8-2-90)-b

**NOTICE:** Attention Mobile Home Buyers! Guaranteed lowest prices! Come see our huge selection of Schult and Fuqua Homes now on display! SPEARS HOMES OF KERRVILLE - 1-800-580-3003.  
8-(6-14-90)-p

**PRICE REDUCED** - House for sale - by owner. Glendale addition. 3 bedroom, 1 1/2 bath, fenced yard on 2 lots. CH/CA. Nice family setting. Call after 5 p.m. 853-2936 or 884-2432.  
tfn-(5-10-90)-b

**HOUSE FOR SALE** - 4 bedroom, 3 bath, ceiling fans, fireplace, central air, new carpet. Spacious yard with fruit trees and fenced in back yard. Close to school. Reasonably priced. Call 387-2297 or 853-3005.  
tfn-(3-1-90)-b

**BRICK HOME WITH CARPORT** - 3 or 4 bedrooms, 2 baths, 2 living areas, brick fireplace, 1 1/2 lots, garden fruit trees, close to school. Call 853-3311.

**ATTRACTIVE BEGINNER** home. 2 BR in Eldorado. Located across from car wash at 604 Old Sonora Rd. Small down payment, financing available with approved credit. Call Ray Smith or A.W. Bishop at Sonora National Bank 387-2593.  
tfn-(4-26-90)-b

**ONLY \$119.72 A MONTH!** 14x70 2 bedroom, 2 bath. Based on 10% down, 14 1/2 APR for 84 months. Midway Homes of Boerne. Call 1-800-955-1033  
4-(7-19-90)-b

**AN AMERICAN TRADITION** - KIT Homes, after over 45 years, is liquidating lot models. Free ceiling fan. Midway Homes of Boerne. Open Sunday from 1-6. 1-800-955-1033  
4-(7-19-90)-b

**LOWEST OVERHEAD IN TEXAS** - Big savings on 5th wheels and travel trailers. New and used. Free sway bar. Open Sunday 1-6. Midway RV of Boerne. 1-800-955-1033  
4-(7-19-90)-b

**99.00 Down** - New Coleman popups. Several models. Special financing. Midway RV's of Boerne. Open Sunday from 1-6. Call 1-800-749-1033

**CLASSIFIEDS**

**Public Notice**

**PUBLIC NOTICE**  
The Schleicher County I.S.D. will conduct its annual Budget Hearing on August 13, 1990 at 6:00 p.m. in the

**For Sale**

Administration Building located at 205 Fields in Eldorado, Texas.  
1-(8-2-90)-b

**FOR SALE:** Used Cornet. \$200.00. 853-3709.

**Sand Castles Won't Last! REAL ESTATE WILL!**  
Check Our Listings Today

**PIANO FOR SALE** - wanted responsible party to take on small monthly payments. See locally. Trade-in accepted, credit manager 1-800-233-8663.

**FOR SALE:** Antique Pump Organ. Can be seen at Piddler's Porch. 405 S. Divide. Tues.-Fri. 10 a.m.-5 p.m.  
1-(8-2-90)-p

**FOR SALE** - 1989 24 ft. Prowler Lynx Travel Trailer.

Fully Equipped. Includes microwave, stereo, TV antenna, sway bar. Excellent condition, like new. 853-3125 or 853-2242.  
tfn-(7-26-90)

**RV FOR SALE:** 1983 Terry Travel Trailer - 26 ft. Fully equipped, new awning, Sway bar. Real Nice. 853-2747.  
1-(8-2-90)-b

Continued on Page 7

**1990 Property Tax Rates in the Schleicher Co ISD**

This notice concerns 1990 property tax rates for the Schleicher Co ISD. It presents information about three tax rates. Last year's tax rate is the actual rate the taxing unit used to determine property taxes last year. This year's effective tax rate would impose the same total taxes as last year if you compare properties taxed in both years. This year's rollback tax rate is the highest tax rate the taxing unit can set before taxpayers can start tax rollback procedures. In each case these rates are found by dividing the total amount of taxes by the tax base (the total value of taxable property) with adjustments as required by state law. The rates are given per \$100 of property value.

<b>Last year's tax rate:</b>	\$ 1,701,928
+ Last year's operating taxes	\$ 269,037
= Last year's total taxes	\$ 1,970,965
÷ Last year's tax base	\$ 164,772,188
= Last year's total tax rate	\$ 1.20 /\$100
<b>This year's effective tax rate:</b>	\$ 1,960,429
Last year's adjusted taxes (after subtracting taxes on lost property)	\$ 177,230,902
÷ This year's adjusted tax base (after subtracting value of new property)	\$ 1.1061 /\$100

(In the first year a city or county collects the additional sales tax it must insert the following lines unless it made its first adjustment last year.)

- Sales tax adjustment rate	\$ /\$100
= Effective tax rate	NOT APPLICABLE \$ /\$100

x 1.03 = maximum rate unless unit publishes notices and holds hearing \$ 1.1393 /\$100

<b>This year's rollback tax rate:</b>	
Last year's adjusted operating taxes (after subtracting taxes on lost property)	\$ 1,692,667
÷ This year's adjusted tax base	\$ 177,230,902
= This year's effective operating rate	\$ 0.9551 /\$100
x 1.08 = this year's maximum operating rate	\$ 1.0315 /\$100
+ This year's debt rate	\$ 0.2385 /\$100

(A school district must insert the following lines)

= This year's rollback rate before adjustment	\$ 1.2700 /\$100
+ Rate to recoup lost state funds	\$ 0.0064 /\$100
= A. Adjusted rollback rate	\$ 1.2764 /\$100
B. Rate that would result in maximum state funds	\$ 0.8628 /\$100
Rollback Rate (greater of A or B)	\$ 1.2764 /\$100

= This year's rollback rate \$ 1.2764 /\$100

(A city or county that collects the additional sales tax (including one that collects the tax for the first time this year) must insert the following lines.)

- Sales tax adjustment rate	\$ /\$100
= Rollback tax rate	NOT APPLICABLE \$ /\$100

**SCHEDULE A: Unencumbered Fund Balances**

The following balances will probably be left in the unit's property tax accounts at the end of the fiscal year. These balances are not encumbered by a corresponding debt obligation.

Type of Property Tax Fund	Balance
Maintenance & Operation	\$1,000,000
Interest & Sinking	-0-

**SCHEDULE B: 1990 Debt Service**

The unit plans to pay the following amounts for long-term debts that are secured by property taxes. These amounts will be paid from property tax revenues (or additional sales tax revenues, if applicable).

Description of Debt	Principal or Contract Payment to be Paid	Interest to be Paid	Other Amounts to be Paid	Total Payment
1985 General Obligation	\$300,000	\$122,587.50	-	\$422,587.50

Total required for 1990 debt service	422,587.50
- Amount (if any) paid from funds listed in Schedule A	-0-
- Excess collections last year	7,362.00
= Total to be paid from taxes in 1990	415,225.50
+ Amount added in anticipation that the unit will collect only 98% of its taxes in 1990	8,474.00
= Total Debt Service Levy	423,699.50

**SCHEDULE C: Expected Revenue from Additional Sales Tax**

(For counties and cities with additional 1/2 cent sales tax)

NOT APPLICABLE

In calculating its effective and rollback tax rates, the unit estimated that it will receive \$\_\_\_\_\_ in additional sales and use tax revenues.

This notice contains a summary of actual effective and rollback tax rate calculations. You can inspect a copy of the full calculations at the Schleicher County Appraisal District.

Name of person preparing this notice Ray L. Ballew  
Title Chief Appraiser  
Date prepared July 25, 1990

**Work with the Best.**



The Western Company, a major international oilfield services company, has immediate opportunities for the following positions at their facility located in Eldorado, Texas.

**BULK PLANT OPERATORS**

Qualified candidates will be on call 24-hours a day. Training is provided. Oilfield related experience a plus.

**EXPERIENCED MECHANICS**

Qualified candidates will be able to perform minor repairs on Detroit Diesel engines. Hydraulic/pneumatics systems experience a plus.

The Western Company offers an excellent benefits package. Those interested should apply in person between 8am - 6pm at:

The Western Company  
Highway 277 South  
Eldorado, Texas 76936

An Equal Opportunity Employer

We support a drug-free work environment.

