

"Some People Grin and Bear It,

Others Smile and Change It!"

Baze Bookbinding
514 W. 7th St.
Amarillo, Tx. 79101
3

The Eldorado

35 cents

Success

A Positive Forecast

"Serving West Texas Since 1901"

A Good News Review

Volume 88 #48

Eldorado, Texas

November 30, 1989

Varsity Basketball Teams In Full Swing

Eldorado Vs. Sonora

Despite the first half of the Eldorado vs. Sonora Varsity Boys basketball game being "the worst performance Eldorado has ever had," (according to Coach Greg Cleveland), the Eagles managed to make a tremendous comeback to win 51-46.

During half-time, Coach Cleveland told the boys not to try to make up the whole difference at one time. He said, "if we cut the lead in half during the 3rd quarter, then we can pull it off."

Sonora started the third quarter with a lead of 18 points, but came out on the court unsure as compared to the confidence

they showed during the first half.

The best thing Coach Cleveland could say about this game was, "The boys showed character and courage by coming from that far behind to end up winning the game. Too many times athletes are not given credit for being winners. These boys proved that is what they are!"

Eldorado Vs. Lake View

"Last spring when I scheduled this game, I wanted the best competition I could get for the kids," stated Coach Cleveland. Lake View is not a 4A powerhouse, but they are a chore to play. Coach Cleveland said, "I knew if we kept our discipline and kept together that we could win. Lake View is not very team-oriented."

"The boys played the finest basketball during the first half since I have been here. Our defense was great. We didn't allow any second shots.

"During the second half the referees let the game get a little more physical. Lake View played with more intensity, but they didn't adjust well to the change. Eldorado fell behind, but showed character by raising the level of play and playing excellent defense. We got the ball to the right people, who then put it in the hoop. We were very fortunate to get good production from the inside people. The perimeter people are taking shape very well."

"The best compliment I can give the team is they are playing very unselfishly, and if they continue to improve on their goal

(each day to leave the court with some sort of improvement), then the sky's the limit!"

Coach Cleveland concluded by saying "The crowd was great and gave the boys a lift. They were like their 6th man and really helped them to win."

The Varsity boys play Iraan at 4:00 on Saturday, December 2 in a Sonora Tournament. They really need their fans to support them!

Eldorado Vs. Sonora

The Eldorado Varsity Girls played Sonora on Tuesday, November 21, to give the Broncos a loss on their home court, 50-44.

Coach Bobby Helmers said, "Everyone played well and contributed to the win. Lots of Hustle paid off."

Helmets went on to say they are looking forward to their next game.

Katy Hardy led in scoring with 16 points. Other girls scoring were: K. Agüero, nine points; C. Martinez, eight points; C. Sauer, five points; T. Gonzales, four points; C. McCormick, four points; A. Henderson, two points and G. Sterling, two points.

Rabbit Club To Sponsor Turkey Shoot

The Eldorado Rabbit Club is sponsoring a Turkey Shoot on December 16. It will be held at De Lux's pit two and one-half to three miles out from Western on FM Road 2129.

There will be various classes and age groups to compete in.

For more information, call 853-3116 in Eldorado or 392-2471 in Ozona.

Chamber To Sponsor Lighting Contest

The Schleicher County Chamber of Commerce will be sponsoring a Christmas Lighting Contest to be held in December.

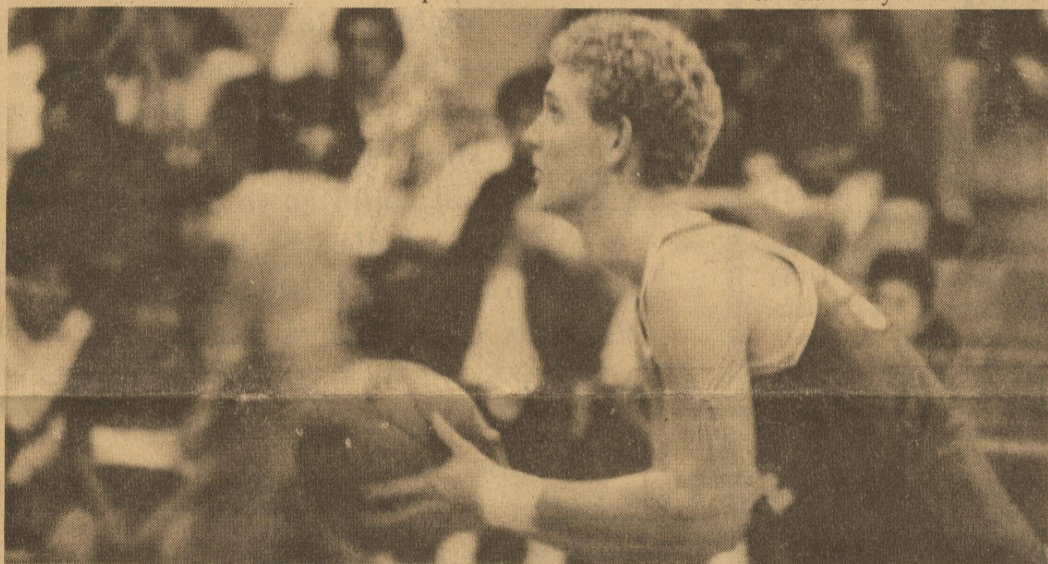
Cash prizes will be given for first, second and third. Everyone living in the city will be judged. If you live in the country and would like your house included in the judging, call the chamber office between 9:30 and 12 Noon.

Let's Light up Eldorado for Christmas!

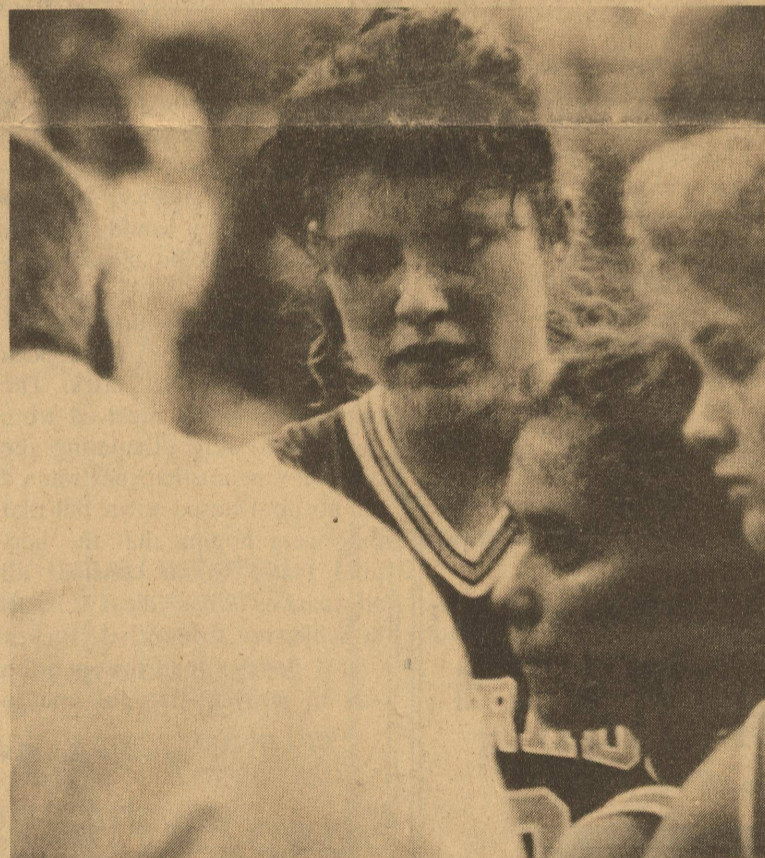
PTA Meeting Scheduled

There will be a meeting of the PTA on Thursday, December 7 at 7:30 p.m. in the elementary school library.

All interested citizens are encouraged to attend.



Michael Kotsch looks to the hoop as he prepares to take a shot during the Sonora basketball game last week.



Ginger Sterling, Carolina Gonzales and Carrie Sauer listen closely to Coach Helmers's instructions at last week's Sonora game.

Mary Robinson To Give Book Review

Benefit For Bodie Gilstrap

On Sunday, December 3, at 2 p.m., the two chapters of Beta Sigma Phi of Eldorado will be sponsoring a book review by Mary Robinson, "Home Spun Tales From America's Favorite Story Tellers". It will be held in the Memorial Building located on the east side of the courthouse square.

The review is being held to raise funds to help the Bodie Gilstrap family. Bodie is the 16 year old son of Carolyn and Jimmy Gilstrap of Eldorado. On July 29 of this past year, Bodie was injured in a pickup accident

on his way to work. As a result, he is paralyzed from the neck down and has not regained any feeling at this time.

He has been on a respirator until recently and now has a diaphragm-type strap which helps him to breathe. At night, he returns to an iron lung.

Bodie was moved to the Dallas Rehab Institute on August 14. The expenses have been insurmountable. His parents have been by his side since the beginning, therefore, neither of them have been able to work since the accident. The people and students

of Eldorado have had several fund raisers, however, there is still a long way to go.

It has been learned that Bodie will be getting a new wheelchair. It is known as a Sip and Puff chair and the user will be able to motivate by using his breath through a tube inserted in his mouth. Different types of puffs and sips will command the movement of the chair. This is a great breakthrough, but all new ideas cost money. The approximate cost of such a wheelchair is \$42,000.

"We realize our sorority cannot possibly hope to ever raise this type of money, but we think whatever we raise will be greatly appreciated by the Gilstrap family," sorority member Kim-et Nelson commented.

The cost of the book review will be strictly by donation, but the listener will reap the rewards twice fold. Not only will you be helping a fellow human being, but you will hear one of the best book reviews of your life.

Members of Beta Sigma Phi invite everyone from all the surrounding areas to come join them for refreshments and hear this extraordinary presentation.

If anyone has any questions concerning the Bodie Gilstrap Fund, please call the First National Bank of Eldorado at 853-2561.

If there are any questions concerning the book review, please call Kim-et Nelson at 853-2681 and at 853-3136 after 5 p.m.



Steven Saldivar, pictured above, son of Mr. and Mrs. Cande Saldivar, was selected last Thursday to the second All Conference team in the Texas Intercollegiate Athletic Association. Steven has played football at Sul Ross State University as an offensive lineman for the past four years. The All Conference teams were picked by the TIAA coaches last Monday in Brownwood.

Petition Presented To Medical Center

By Steve Goode

On November 22, a petition for a rollback election was presented to the Schleicher County Hospital District. The board of directors have 20 days (until December 12) to rule on the validity of the petition.

Assuming the petition is valid, a rollback election will be scheduled. This election must be

from 30 to 90 days after December 12 (from January 11 to March 12).

It is the right of the voters to say yes or no to the tax rollback. Look for a series of articles in the Success which will be provided to help the voters in making an informed decision before going to the polls.

Hey Kids!

Santa's making his list for Christmas.

Sit down now and write your letter to Santa

to let him know what you want for Christmas.

Mail your letter to: **Santa Clause**
North Pole 00001
c/o The Eldorado Success
Box 1115
Eldorado, Tx. 76936



The Editor's Journal

Editor's Clips

By Mary Jenkins

I have been working at the Success for almost five years now. My first job was at a bank, then I worked for an automobile insurance financing company. At each place of business there were certain rules that the employees were to follow.

Most of these rules were the same as each place -- be on time, don't fool around when there is work to be done, do your job right, don't talk on the phone too much for personal reasons, and always remember who the boss is!

Here is another list of modern work rules I came across:

1. Leave of Absence (for an operation). We are no longer allowing this practice. We wish to discourage any thoughts that you may not need all of whatever you have, and you should not consider having something removed. We hired you as you are, and to have anything removed would certainly make you less than we bargained for.

2. Death (other than your own). This is no excuse. If you can arrange for funeral services

to be held late in the afternoon, however, we can let you off an hour early, provided all your work is up to date.

3. Death (your own). This will be accepted as an excuse, but we would like at least two weeks' notice, since we feel it is your duty to teach someone else your job.

4. Also, entirely too much time is being spent in the wash-room. In the future, you will follow the practice of going in alphabetical order. For instance,

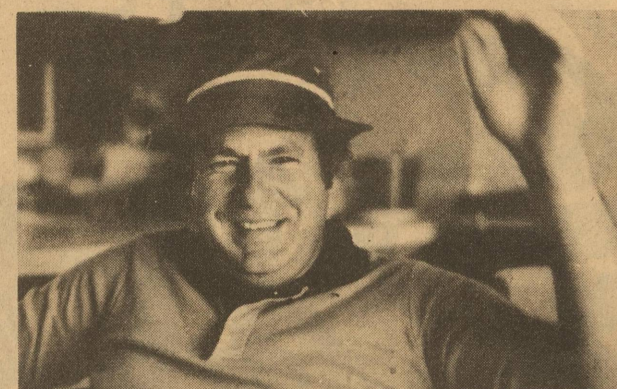
those whose surnames begin with "A" will be allowed to go from 9 to 9:05 a.m. and so on. If you are unable to go at your appointed time, it will be necessary to wait until the next day when your time comes around again.

It hasn't been quite that rigid at any of my jobs -- yet! Sometimes we find that it isn't easy to follow the rules set down for us. But without them, where would we be?

Think about it!

Laugh and Live

by Gary Smith



The simplest truths

are the greatest --

the same is true for

men and women.



'Bout have it figured out that if people would like to have more tourists visit their town, it might help if they would change their town's name.

Those people who are heavy drinkers might go to Coca, Colo.

How about a honeymoon retreat for newlyweds -- Misteran, Miss.

If you wanted a surprise vacation you could go to Wait, N.C.

Those people who like to suffer could go to the Tri-City area -- Sales, Property and Income, Texas.

How about a place for people who really like music -- Oompa, Pa.

Folks who need to lose weight could go to Metra, Cal.

Religious folk could go to Praise, Ala. or Noahs, Ark.

People with weak stomachs could go to Squee, Mich.

Folks who couldn't make up their minds where to go could go to Either, Or.

Maybe, there could be a special vacation land for hypochondriacs in Deathly, Ill.

Actually, after reading over this little writing, I'm not feeling too well myself. Worried that folk will send me nasty letters about dumb articles.

Well, that's O.K. Just send your cards and letters to--

Gary Smith
Poison, Penn.

Letters To The Editor

Dear Editor:

I was recently informed that a petition was being circulated in town about calling for a roll-back election on the Hospital District's tax increase. I'll be the first to say that I didn't appreciate the tax increase, but let me also say that I'd hate to see this hospital closed down because of a shortage of operating capital.

I understand that the hospital has a sizable debt and that was the reason for the tax increase.

I can empathize with the management of the hospital as the Director of Nurses in another small rural hospital. I know the various problems of operating a small facility and trying to keep financially sound.

I believe that if we have a roll-back election, that the voters had better do some real soul-searching. They need to determine whether or not they want a hospital, because if the hospital is closed, it will be extremely difficult to ever get it re-opened.

A rural hospital provides a nice, homey atmosphere for our friends and family to be treated, if it's not necessary to go to a big medical center. People having cardiac problems, severe burns, and other critical conditions can be stabilized prior to being moved to the big medical centers.

Please think about these things when and if the petition comes to a vote.

Sincerely,
W. Guy Crippin, Jr.

An Apple A Day

By Smokey Taylor

"But Doc I was feeling better!" -- Too often this is the comment a doctor hears from a patient visiting him a second time when the patient quit taking the prescribed antibiotic too soon.

Whenever doctors prescribe antibiotics for us, we definitely need to take all the medicine the way they prescribed. Even though the symptoms of the infection have subsided, there are still many of the causative organisms present. These organisms have been exposed to the antibiotic but not killed. They, thereby, come back attacking the patient with a vengeance because they

have a resistance to the antibiotic (and related drugs) they are now "familiar" with.

New antibiotics are having to be invented constantly to try to cope with the problem of resistant organisms. Whenever one of these new drugs comes out, we all pay (and I mean that literally). The cost of research and development is very expensive when it comes to creating pharmaceuticals.

I know it's a nuisance having to take medicine when you don't "feel" sick, but it's something that will help all of us in the long run.

An Editorial

By Gary Smith

The Schleicher County Hospital has had financial difficulties for a good while. Presently, it seems to be in a state of fiscal recovery. Opinions about the hospital vary greatly. There are those who want to see the hospital stay open at any cost, there are those who would like to see expenses at the hospital cut back, there are some who would like to see alternative medical facilities and others who would like for the hospital to be closed altogether.

Recently a petition was circulated calling for a rollback election of hospital taxes. The impression that I received from those who were circulating the petition was not that they wanted the hospital closed down, but that they were hoping that the hospital board would consider all alternatives for medical services in Schleicher County.

I believe that this petition was in no way harmful and in

fact, has already served its purpose.

Personally, I hope and pray that we are able to keep our hospital open. The doctors and staff of this hospital have saved many lives and have added to the overall betterment of our community. We have a good facility of which we can be proud. The present hospital board is diligently working to eliminate problems of the past.

If there is a rollback election, the voice of the people of Schleicher County will be heard.

It is my opinion that the majority of our citizens will vote not to rollback taxes, but even if the hospital tax levy is reduced, I do not believe that this will cause the hospital to close immediately. It would, however, return the hospital to a position of financial strain. Perhaps we would be wise to give the hospital board and the new hospital administration a chance to salvage one of our community's needed institutions.

The Eldorado Success
USPS 342-470
Box 1115
Phone 915-853-3125

Published each Thursday
Eldorado, Tx. 76936

Gary C. Smith, Sr.
Publisher

Cathy Smith
Managing Editor

Mary Jenkins
Editor in Chief

TEXAS PRESS ASSOCIATION

Subscription Prices:
In Schleicher County -- \$15.00 per year
Senior Citizen -- \$13.00 per year
Out of Schleicher County -- \$18.00 per year
Senior Citizen -- \$16.00 per year

Second class postage paid at Eldorado, Texas 76936. POSTMASTER: Send address changes to The Eldorado Success, Box 1115, Eldorado, Texas 76936.

THE ELDORADO SUCCESS is an independent newspaper, published in Eldorado, Texas by PRIME MINISTER PUBLISHING COMPANY, P.O. Box 1115, Eldorado, Texas.

THE ELDORADO SUCCESS cannot be held responsible for erroneous information provided by sources other than its staff. Should this publication make an erroneous statement a retraction will follow as soon as the Editor is notified of such an error.

Member 1989
West Texas Press Association
Copyright 1989,
Prime Minister Publishing

Dear Gary, Kathy and Mary,

On behalf of the Eldorado Eagle Band, we wish to express our sincere thanks and appreciation for the great support you and the paper have given us. It means a lot to have the support of our community and businesses.

We do appreciate the fine coverage you have always afforded the Eagle Band.

Most sincerely,
Mike Marsh
Manuel San Luis
Directors

Mittel Insurance presents... Eagle Spotlight



HUNTER PRESTON

This week we spotlight Hunter Preston, son of Richard and Jill Preston.

Hunter is an eighth grader at Eldorado Middle School. He plays football, basketball, runs track, participates in UIL literary events and is an honor student. He is president of middle school student council.

Enter

"Big Buck"
Contest

853-2576

Shop Early -- Shop Eldorado

Eldorado Place Apartments

Located on Menard Hwy. 190
in Eldorado

Rent now starts at \$188

1 & 2 Bedrooms

- * Energy Efficient Apartments
- * Central Heat & Air
- * Handicap Units Available

853-3033



Equal Housing Opportunity



Professional Management

"Come Live With Us."

SUBSCRIPTION FORM

THE SUCCESS

Date: _____

Name: _____

Mailing Address: _____

City, State, Zip: _____

Telephone Number: _____

Price Schedule:

In Schleicher County	\$15.00/YEAR
Senior Citizen	\$13.00/YEAR
Out of Schleicher County	\$18.00/YEAR
Senior Citizen	\$16.00/YEAR

Send Check or Money Order to:

The Success
Box 1115
Eldorado, Tx. 76936
(915) 853-3125

Symphony & Chorale To Present Christmas Concert In Ozona

The Crockett County Historical Society has announced that the Midland-Odesa Symphony and Chorale will bring their Pops Orchestra and Pops Chorale to Ozona December 15 to perform a Christmas concert in the high school auditorium at 7 p.m.

Pre-concert tickets are priced at \$5 for adults and \$3.50 for students. Cost of tickets at the door will be \$6 for adults and \$4 for children.

Tickets are on sale at Crockett County Museum, Ozona National Bank, Crockett County

National Bank, The Ozona Stockman, The Teacher Store, Ozona Chamber of Commerce, Margie's Beauty Shop, Small Fashions, and are available locally at the Eldorado Success.

This concert is made possible by a grant from the Meadows Foundation established by Algor H. Meadows, as an independent oilman, and his wife, Virginia, in 1948, and sponsoring citizens of Ozona.

To learn how you may become a sponsor, call Crockett County Museum at 392-2837.

The Meadows Foundation was created to benefit the people of Texas and is one of the largest private foundations in the state and is among the 20 largest in the nation. More than 1200 institutions in health, education, arts and culture, social service and civic endeavors throughout Texas have received grants from the Meadows Foundation since it was created. The Meadows Outreach Series, concerts by the Midland-Odesa Symphony and Chorale in six West Texas communities, is funded by a grant from The Meadows Foundation and provides for up to 60 percent of the costs of these performances.

Conducted by new Maestro Don Th. Jaeger, the Midland-Odesa Symphony and Chorale is celebrating its 27th consecutive year of service to its local audiences. The Pops Orchestra, comprised of 55-60 professional musicians, is accompanied by the Pops Chorale, drawn from the 100 member Symphony Chorale, directed by Robert E. Hunt.

Forlano Participates In Symposium

Dr. Albert J. Forlano, R.Ph., Ph.D., was a participant at the 10th International Symposium on Drugs Affecting Lipid Metabolism held at the Westin Galleria in Houston on November 8-11. The symposium was attended by participants from countries all over the world.

The program was co-sponsored by Baylor College of Medi-

cine, The Methodist Hospital in Houston, the Fondazione Giovanni Lorenzini Medical Foundation and the Institute for Pharmaceutical Sciences in Milan, Italy; the International Atherosclerosis Society and the American Heart Association, Council on Arteriosclerosis.

The symposium, chaired by

Dr. Antonio Gotto, Jr., chairman of the Department of Medicine at Baylor College of Medicine, and Dr. Rudolfo Paoletti, president of the Fondazione Giovanni Lorenzini, focused on the status of control of atherosclerosis and lipids as well as new developments in factors affecting the risk for coronary heart disease.

One of the highlights of the program was the featured USA/USSR Tele-conference on Lipids, Atherosclerosis and Coronary Heart Disease Prevention. Coronary heart disease management was discussed along with the basic research on atherosclerosis (past, present and future), the National Cholesterol Education Program in the U.S., and current approaches to therapy.

The tele-conference provided an opportunity for the speakers and program participants to have a productive interchange of scientific and medical philosophies.

Dr. Forlano is actively involved in medical lecturing with particular emphasis on the prevention of major chronic diseases.

Sudduths Enjoy Holiday With Family

Thanksgiving visitors with W.W. (Smiley) and Jewell Sudduth were their children, Ollie and wife Jean and son Todd from Bluffton; Rozanna and Ronnie Sauer of Eldorado and their children Tracy Ford and daughter Holly of Kerrville and Ron Sauer of San Angelo; Billy (Rabbit) Sudduth and wife Toni and children Dest and Ridge Ann of Marfa; Michael Sudduth and wife Sheila and daughters Aimee, Ashley and Alyssa of Dexter, New Mexico.

Also present were Smiley's sister Wenonah Sockwell of Houston and her sons, Spencer of College Station and Steven of Austin; Ronnie's cousin John

Cartright of Austin; and Aunt Jessie Sudduth of Eldorado.

The only one missing was Allen Sudduth, son of Mike and Sheila, who is away at college in Phoenix, Arizona, and is to graduate December 15.

Even if you're on the right track, you'll get run over if you just sit there. --Will Rogers

Poetry Contest Deadline December 31

December 31 is the deadline for entering the American Poetry Association's contest. Entry is free and everyone is welcome to enter.

The Grand Prize is \$1,000 and the first prize \$500. In total 152 poets will win cash and publication prizes worth \$11,000.

"Unknown poets are just the ones we are looking for," said Robert Nelson, publisher for the association. "That's why I urge everyone who writes poetry to enter this contest."

Poets may enter the contest by sending up to six poems, each no more than 20 lines, name and

address on each page, to American Poetry Association, Dept. CT-88, 250-A Potrero St., P.O. Box 1803, Santa Cruz, Ca. 95061. Entries should be mailed by December 31. A new contest starts January 1.

Each poem is also considered for publication in the "American Poetry Anthology", a leading collection of today's poems.

During eight years of sponsorship the American Poetry Association has run 34 contests and awarded \$165,000 in prizes to 3,100 winning poets.

Tamale Sale Planned

Templo Getsemani Church, located on the Menard Highway behind the Post Office in Eldorado, will be taking orders for a Tamale Sale. Deadline for ordering your tamales is Tuesday, December 12. Price for the tamales is \$4 per dozen.

To place your order, call Rosa at 853-2039 or Nimpha at 853-2071. You may pick up your order on December 16 at the church from 8 a.m. to 5 p.m.

One minute of keeping your mouth shut is worth an hour's explanation.

(915) 853-2314

JERRY'S T.V. SERVICE
SYLVANIA TELEVISIONS - SATELLITE T.V. SYSTEMS

JERRY J. JONES
Owner

214 S. MAIN STREET
ELDORADO, TEXAS 76936

Good Neighbors Meet

The Good Neighbor Extension Club met in the home of Margaurite Gillaspay recently. Those attending were Ruth Baker, Eleanor Powell, Ruby Hight, Bobbie Killbrew, Ola Ruth Barbee, Mary Gausemier, Pat Gausemier from Concord, California, and Patty Mickey from Houston.

It was reported that commodity foods would be distributed Wednesday, November 22 at 10 a.m.

The annual Christmas luncheon will be held at Nancy Lester's home on December 6.

Ms. Lester presented the program on Christmas decorations.

Refreshments of pumpkin pie and punch were served by the hostess.

SA Genealogical Society To Meet

The San Angelo Genealogical and Historical Society will meet Tuesday, December 5 at 7:30 p.m. in the Fellowship Hall of the Church of Christ at 901 N. Main. The annual Christmas party will be held at this time.

If possible, those attending are asked to take some "samples" of their favorite Christmas goodies for all to share at refreshment time.

Visitors are always welcome.



KENT'S
AUTOMOTIVE
PARTS AND SERVICE
Phone 853-2733
Eldorado, Texas 76936

ATTENTION
Drivers between the ages of 50-65 with clean driving records. Are your auto premiums too high? Meador-Peters can now offer some of the lowest rates in the insurance industry. It will pay you to call or come by our agency before you renew your auto insurance, if you wish to save premium dollars.

Meador-Peters Insurance Agency
5 North Divide
853-2681

Independent Insurance Agent.

McCormick's
Exxon
Friendly Service
Clean Facilities
Caring About Eldorado

EXXON 101 S. Divide Eldorado, Texas Phone---853-3407 **EXXON**

West Texas Liquid Feed
Norris Sauer - Pro-Lix Dealer
Ph. 853-3051 - Eldorado, Tx.

Before you send your dollars packing...

Invest In Our Community!

By shopping Eldorado, your dollars work for our local economy. At First National Bank, dollars can work hard -- here at home -- for you!

First National Bank
of Eldorado Member FDIC

Peer Review Organizations Help Medicare Patients

The Federal Government has enlisted the aid of health-care professionals to oversee the hospital treatment given Medicare patients. In general, Peer Review Organizations (PRO's), which are composed of health professionals, are responsible for seeing that each Medicare patient receives the hospital care that is medically indicated in the particular case.

The PRO also makes certain that the care is provided in the appropriate setting, e.g., hospital, outpatient clinic, or other, and that whatever care is provided meets a generally accepted level of

quality.

PRO's are also responsible for investigating patient complaints. For example, a person may believe that he or she was improperly refused admission to a hospital or was made to leave the hospital too soon. Complaints about the quality of care a patient receives may also be directed to the PRO; however, the issue should first be brought to the attention of the patient's own physician or to a representative of the hospital.

A patient who has been denied admission to a hospital and

who disagrees with the decision may request a reconsideration. The request must be submitted in writing within 60 days of the denial. It may be submitted directly to the PRO or through the local Social Security office.

A hospitalized patient who is informed that he or she must either leave the hospital or begin paying for the care may also request a PRO review. The request should be made as soon as possible by either the patient or a family member after receipt of the notice.

Local Church Welcomes New Minister



DAVID TEMPLETON

Mertzon Highway Church of Christ is proud to introduce their new minister to Eldorado. David Templeton has just moved here from Gonzales to begin his new ministry.

Templeton has 18 years experience including two years as an instructor in a preacher training program. He received his B.A. in Bible from Lubbock Christian University and his M.A. in Bible from Abilene Christian University.

Templeton and wife Gann (Jan) have two girls, Laurie age 11 and Lucie age nine.

'Seniors' On The Go

A memorial was made to the Meals on Wheels program in memory of Justin McCartney and Velma Bunt by Anita Jones.

The Meals program wishes Alta Lane, meals recipient, a "Happy Birthday!"

Poster Service Urges Prepare Packages Properly

The Christmas season is close upon us, and the Postal Service will begin to receive an increased number of parcels. With the increase, the number of customers who fail to prepare their packages properly will also increase. This causes delay as well as damage to packages and postal equipment. Here are some packaging tips that may help ensure that your package reaches its destination safely.

First, select the proper container. The selection of a container usually depends on the physical characteristics of the item or items you mail. The container should be large enough to hold the contents plus adequate cushioning to prevent damage, but not so large as to permit shifting or jiggling of the contents.

Fiberboard containers are generally strong enough to ship material of average weight and size. Paperboard boxes, similar to suit boxes, are acceptable for easy and average loads up to 10 pounds. Metal stayed paperboard boxes are acceptable for easy and average loads up to 20 pounds. Liquids should be sent in leak-proof interior and exterior containers. Powders should be packaged in sift-proof containers.

Second, the parcels must have sufficient cushion. There are many different types of suitable cushioning materials available, including polystyrene, shredded or rolled newspaper, "bubble" plastic, and fiberboard inserts. When several items are packaged in a container, they should be separated from each other and protected from outside forces.

Even single items packed alone should be cushioned for safety.

Third, it is preferred that wrapping paper be omitted if the box itself is an adequate shipping container. However, wrapping paper equivalent to the strength of the average large grocery bag may be used if required. Filament-reinforced tape should be used for the closure and reinforcement of parcels whenever possible. Although twine and cord are permitted, it is preferred that they not be used. They tend to catch and bind in mail processing equipment.

And finally, your parcel should be clearly marked with the address, including ZIP or ZIP+4 code, of both sender and receiver. The writing should be indelible ink or typed on a label and be easily readable.

It is a good idea to place a list of the contents plus the name and address of both the sender and the recipient inside the package. This will help in the delivery

of the parcel in the event that the outside address becomes illegible.

Also, place special markings outside the parcels to alert Postal Service employees to the nature of the contents. Items containing breakables should be marked "Fragile" in three places -- above the address, below the postage and on the reverse side. If it contains food that may decay, mark "Perishable" in the same locations. Items with photographs or similar items should be marked "Do Not Bend", but only if you have protected the items with a stiffening material such as fiberboard. It cannot be assumed that the marking in itself will ensure that no damage occurs.

The Post Office window clerk has a set of rubber stamps indicating special markings and will apply them to your parcel on request.

Make sure your package reaches its destination safely. Prepare packages properly.

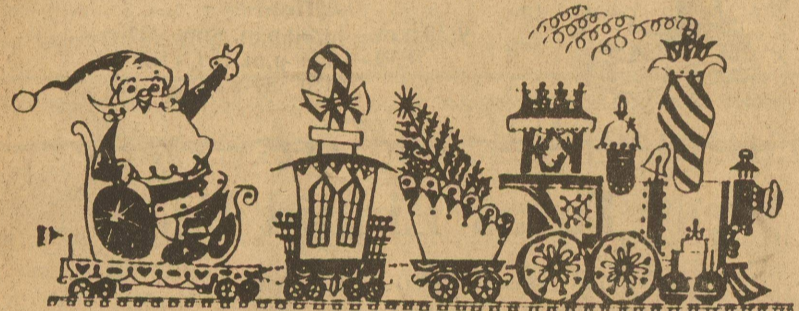


THORP'S LAUN-DRY

Laundry & Cleaners
Linen Supply - Uniforms - Dust Control

SONORA - OZONA - ELDORADO
SINCE 1948

214 S. Main Eldorado, Texas
853-2900



KERBOW'S "Little Outdoors"

Fishing • Hunting
• Camping Equipment

BRUCE KERBOW

214 NE Main Sonora, Texas 76950
(915) 387-5500 (915) 387-2240

Kerbow Inc.
your authorized

Radio Shack
Dealer

Downtown Sonora

Go for the **GOLD** and win with results in the classifieds

UNITED ARTISTS
Katy FM Bargain Tuesdays
ALL SEATS \$3.00

SUNSET 4
1066 SUNSET MALL 444-3390

Dad - PG
2:20 4:45 7:40 9:55
Steel Magnolias - PG
2:00 4:20 7:30 9:45
Harlem Nights - R
2:10 4:40 7:20 9:35
Look Who's Talking - PG13
2:30 4:30 7:15 9:15

SOUTHWEST 7
3590 KIVICKERBOCKER RD 949-998

The Bear - PG
1:30 3:30 7:30 9:30
Prancer - G
1:30 4:00 7:15 9:20
National Lampoon's Christmas Vacation - PG13
2:30 4:45 7:15 9:20
Back To The Future II - PG
2:00 4:30 7:20 9:45
All Dogs Go To Heaven - G
1:45 3:45 7:00 9:00
Beverly Hills Brats - PG13
2:15 4:15 7:40
Dance To Win - R
9:40
Old Gringo - R
2:10 4:40 7:30 9:45

Shop Wilson
Buick - GMC - Mercedes
for Fast, Friendly,
Dependable Service!



Wilson Buick-GMC-Mercedes
1909 W. Beauregard Ave.
San Angelo, Texas 76903
915-655-9171

GOING OUT OF BUSINESS SALE AT BAKER JEWELERS - IN OZONA

Just In Time For Christmas Buying!
EVERYTHING MUST GO AT BIG SAVINGS
UP TO 60% OFF



Diamonds
Rings • Necklaces
Bracelets • Pendants
Earrings

Silver Holloware
Sets of Stainless
Steel Flatware

Watches
Featuring
Pulsar

Pottery & China
Sets
In Service For 8

Watch Bands
Wide Assortment
Men's & Women's

Brass Gifts
Large
Selection

Charms
Gold & Silver
Engraving makes
them special

**Many Other
Gifts
For Weddings
& Birthdays**

1008
Ave. E.

(915)
392-2361

4-H Members Attend District Food Show

Twelve Schleicher County 4-H members participated in the District 4-H Food Show held in San Angelo on Saturday, November 18.

Those who participated were: Renee Edmiston, Stoney

Harris, Makenzie McCravey, Andrew Sauer, Lindsey Johnson, Cody Andrews, Misty Williams, Lindsey Fuessel, Rachel Edmiston, Whitney Fuessel, Jana Sterling and Crissi McCormick.

The judges were extremely

complimentary of the high quality of the food entered and the knowledge of the contestants. Lindsay Johnson won second high individual in the Intermediate Division.



Winners of the Intermediate Division of the 4-H District Food Show are pictured: 1-r, Donna Drake, first, Rannels County; Lindsey Johnson, second, Schleicher County, daughter of Mr. and Mrs. Bob Johnson; and Michele McCravey, third, Taylor County, granddaughter of Mr. and Mrs. Billy McCravey.

Teacher Of The Week

Teacher of the Week honors go to Nancy Doyle, who teaches second grade at Eldorado Elementary School. She is married to Jimmy Doyle. She has two stepsons, Mikel and Jimmy Dan, and five step grandchildren.

Nancy graduated from Odessa High School and then attended Odessa Junior College. She received her Bachelor of Science degree from Sul Ross State University.

Her hobbies and special interests include reading, listening to George Strait and flying and traveling with her husband in their plane. She also enjoys photography.

When asked to comment on her teaching career, she said, "When you receive a special hug or smile from one of your students, you know it is all worth it."



NANCY DOYLE

Shop Early --
Shop Eldorado

Support Your Local Hospital
Like Your Life Depends On It!
EOW-(10-12-89)-b



"Live your life each day as you would climb a mountain.

An occasional glance toward the summit keeps the goal in mind, but many beautiful scenes are to be observed from each new vantage point.

Climb slowly, steadily, enjoying each passing moment; and the view from the summit will serve as a fitting climax for the journey."

--Harold V. Melchert

Eldorado Wool Company

Phone
853-2820 Feedstore
853-2772 Office

Grand Opening
Saturday, Dec. 2, 10 a.m.

Punkins
Ladies Apparel
7 West Gillis
Mon.-Sat. 10-6
Kid Clothing
Treasure's & Such
10 West Gillis
Hours: Tue.-Fri. 10-5:30
Sat. 10-3

School Menu

Monday December 4
Breakfast -- Peaches, Pancakes with Syrup, Ham Slice.

Lunch -- Hamburger Pizza, Whole Kernel Corn, Pear Halves, Iced Cupcakes.

Tuesday December 5
Breakfast -- Pineapple Tidbits, Breakfast Cookies (2).

Lunch -- Frito Pie, Pinto Beans, Lettuce and Tomato Salad, Cornbread, Chocolate Pudding.

Wednesday December 6
Breakfast -- Grape Juice, Hot Biscuits, Bacon, Jelly, Peanut Butter.

Lunch -- Beef Stew with Vegetables, Grilled Cheese Sandwiches, Lime Jello, Chocolate Chip Cookies.

Thursday December 7
Breakfast -- Prunes, Buttered Rice, Toast.

Lunch -- Chicken Fillets and Gravy, Creamed Potatoes, Broc-

coli with Cheese Sauce, Apricot Cobbler.

Friday December 8
Breakfast -- Apple Juice, Cinnamon Rolls, Cheese Stick.

Lunch -- Submarine Sandwiches (Bologna), Potato Chips, Lettuce, Tomatoes, Pickles, Onions, Pineapple Pudding.

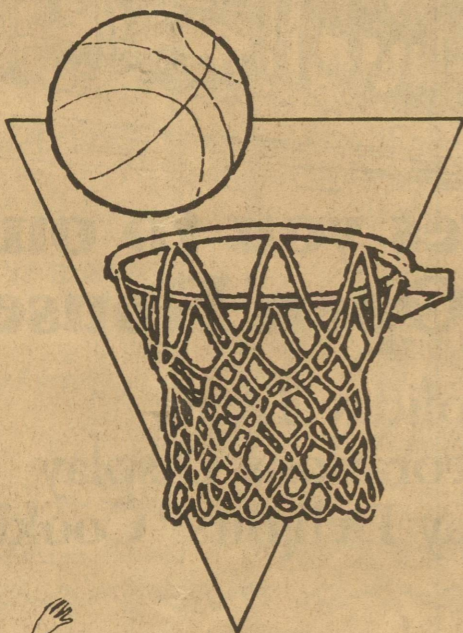
TIRED OF THE MAIL-ORDER PRESCRIPTION HASSLE??
TIRED OF THE HASSLE OF DRIVING TO SAN ANGELO TO SAVE MONEY OF PRESCRIPTION PURCHASES??
WELL..... HAVE I GOT A SOLUTION FOR YOU!!!!
JUST CALL US AT 853-2064 FOR A FREE NO-QUESTIONS-ASKED PRICE QUOTE ON YOUR PRESCRIPTION. JUST BE SURE TO TELL US THE DRUG NAME ALONG WITH THE STRENGTH & QUANTITY.
ALSO, BE SURE TO LET US KNOW IF YOU'RE AGE 60 OR OLDER, IF SO, YOU'LL GET AN EXTRA 10% DISCOUNT.
YES...YOU'LL BE HAPPY YOU CALLED...BECAUSE NOW, WITH OUR EVERYDAY COMPETITIVE PRICES, YOU CAN JOIN THE MANY OTHER SCHLEICHER COUNTY AND AREA RESIDENTS THAT ENJOY CONVENIENT AT-HOME PRESCRIPTION PURCHASING ALONG WITH PROFESSIONAL SERVICE ELDORADO PHARMACY PROVIDES.

Rx Eldorado Pharmacy Rx
TRADE AT HASSLE-FREE ELDORADO PHARMACY!!!
WE'RE THE HASSLE BUSTERS!!!

Does Advertising Work?

(You're reading this!)

Eagle Scoreboard



NOV. 30 - DEC. 2	@ SONORA TOURN.	T. B. A.			VB
NOV. 30 - DEC. 2	@ BIG LAKE TOURN.	T. B. A.			VG
DEC. 5	@ BALLINGER	5:00 P.M.	JVB & G		VB & G
DEC. 7-9	@ IRAAN TOURN.	T. B. A.			VB & G
DEC. 12	BALLINGER	5:00 P.M.	JVB & G		VB & G
DEC. 15	SONORA	5:00 P.M.	JVB & G		VB & G
DEC. 19	@ GARDEN CITY	5:00 P.M.	JVB		VB & G
JAN. 2	ALPINE	6:00 P.M.	JVG		VB
JAN. 4-6	@ BRONTE TOURN.	T. B. A.			VB & G
JAN. 9	@ *MCCAMEY	5:00 P.M.	JVB & G		VB & G
JAN. 12	*BIG LAKE	5:00 P.M.	JVB & G		VB & G
JAN. 16	*FORSAN	6:00 P.M.			VB & G
JAN. 19	@ *OZONA	5:00 P.M.	JVB & G		VB & G
JAN. 23	@ *STANTON	5:00 P.M.	JVB & G		VB & G
JAN. 26	*MCCAMEY	5:00 P.M.	JVB & G		VB & G
JAN. 30	@ *BIG LAKE	5:00 P.M.	JVB & G		VB & G
FEB. 2	@ *FORSAN	5:00 P.M.	JVB & G		VB & G
FEB. 6	*OZONA	5:00 P.M.	JVB & G		VB & G
FEB. 9	*STANTON	5:00 P.M.	JVB & G		VB & G

@ Denotes Out-Of-Town Games

* Denotes District Games

Sponsored by these Merchants

Southwest Texas Electric Co-op Inc.

Lynn Meador Real Estate

First National Bank

Hayloft

McCormick Exxon

Lantana Winery
George Gower

Meador-Peters Agency

Eldorado Wool Co.

We Support the Eagles!!!

A Touch Of History

By Rene Calcote

John H. Luedecke was only 16 years old when he moved to Schleicher County with his mother and two brothers in 1907.

In 1909 John married Lizzie Smith from Irion County. The couple was married in the home of Judge J.A. Whitten in Eldorado.

John and Lizzie had eight children. The first son, born October 1, 1910, was Alvin Roubal Luedecke. Alvin R. was destined to become one of Schleicher County's most famous citizens!

John was a stock farmer and Alvin grew up on the farm, a member of a large family. Alvin had one brother, John Herbert, Jr., and six sisters, Elta Mae, Sammie, Thelia Rae, Corene, Edna Christine and Alma Ruth. Three of these sisters still live in Schleicher County with their family -- Thelia Mayo, Corene Draper and Alma Corbell.

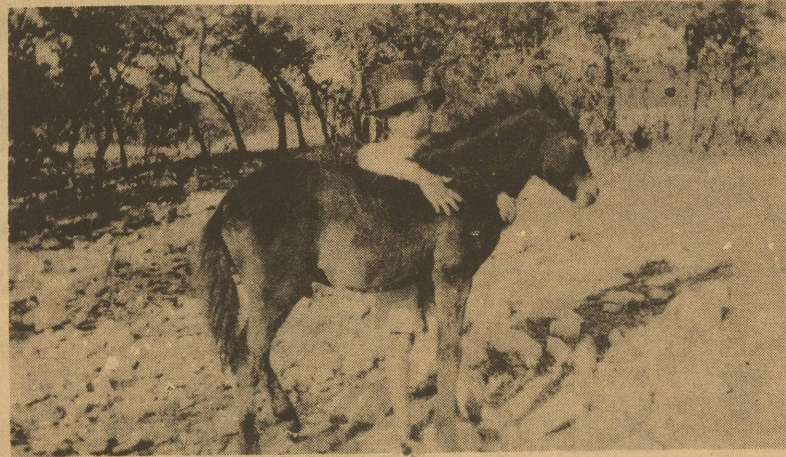
Growing up on a stock farm, Alvin learned many things. He learned about family and ranching, and hard work, but he also learned about good times. He related some of his fondest memories were of his childhood days on the farm.

Alvin especially remembered his sixth birthday when his dad came home leading a shetland pony. He learned to ride very young and enjoyed it very much. This pony, Trivic, remained with the family eight years. She had a

colt, Rex, that lived 33 years with the Luedecke family. Alvin especially remembered Rex, as he kicked out his two front baby teeth.

Other memories were of cattle drives to Irion County, herding the cattle to rail point. He helped his dad and sometimes camped overnight.

At a very young age, Alvin developed traits of being industrious, determined and a hard worker. He nearly always had



Pictured here is Alvin Luedecke at age six with his pony.

employment other than helping his father on the stock farm. When Alvin was nine years old, he rose early during the winter months, started two home fires, went to town to start morning fires in Bush Garage and the barber shop. He then swept the garage and barber shop, and shined shoes until school time.

Alvin began his education at Bailey Ranch Rural School in a small one-room building, and graduated in 1928 from Eldorado High School.

He was able to attend Texas A&M after graduation, even though, economically, it was very difficult. In 1932, he received a degree of Bachelor of Science in Chemical Engineering.

After advanced training as a flying cadet in the military ser-

vice, Lieutenant Luedecke graduated a pilot in 1934. In 1935, Lieutenant Luedecke married Gussie Lee Calhoun from Grapeland. Gussie traveled with her husband on all of his assignments, except in war time. Three children were born to this union: Jan Lee, Alvin R. and Miram Adair.

During the latter part of World War II, Brig. Gen. Alvin R. Luedecke played an important part in achieving the unquestionable supremacy which the allied forces held over the Japanese airmen in the India-Burma Theater. Gen. Luedecke was promoted to the commission of Brig. Gen when he was only 33 years old. He holds the distinction of being one of the youngest Generals in World War II.

Luedecke and his wife Isabelle are at home in Bryan. They also keep a full-time apartment in Eldorado where they spend a lot of time with family and friends.

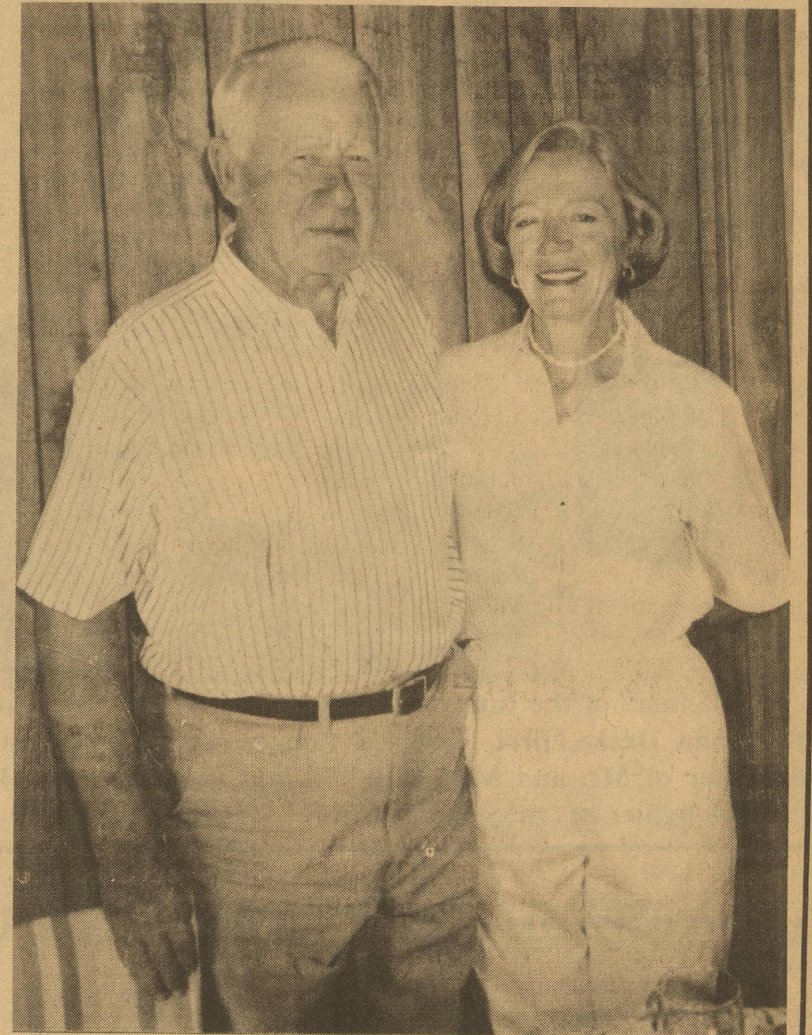
Gen. Luedecke's military decorations include: The Distinguished Service Medal; The Legion of Merit with one Oak Leaf Cluster; the Bronze Star; the Order of Boyaca (Govrn. of Columbia); the Commander of the British Empire; the Order of Cloud and Banner (China); and the Order of Chain Yuan (Chinese Air Force).

Plans had been made by a central committee months before July 4. The members of the committee were Ernest Hill, Tiny Godwin, Jimmy West, Joe Andrews, Don McCormick, Joe Christian, Carroll Ratliff, Gus Love, Russell Hearnar and W.T. Whitten.

Gen. Luedecke retired from the Air Force in November, 1958 and was named Gen. Manager of the Atomic Energy Commission. He was watchdog on the Ranger 7 project as cameras were launched on the moon.

Luedecke also served as Associate Dean of Engineering at A&M in 1968 and acting president in 1970, after the death of his long-time friend Gen. Earl Rudder, president of A&M.

In full retirement, Gen.



MR. AND MRS. ALVIN LEUDECKE

Texas Ag Youth Announce Manhunt

Nearly 50,000 youth interested in preserving a long-term future in agriculture will launch one of the state's largest manhunts on December 2. The effort is all a part of the big campaign now underway within Texas's 1,200 communities to recruit former FFA members and vocational agriculture students.

The recruitment exercise is being hailed as a glorious opportunity for local FFA chapter members to find a many former students as possible. The statewide extravaganza is being staged in a two-fold effort to: (1) seek donations to the newly-formed

"Endowment for Excellence Fund" and (2) solidify a groundswell of support for the preservation of agri-sciences understanding and teaching within the states' public school system.

The statewide manhunt is being orchestrated by the Texas FFA Foundation, a Texas chartered non-profit service organization dedicated to providing needed assistance to schools, administrators, teachers and students in the teaching of agri-sciences and technology in high schools across the state.

Although December 2 is being touted as the big day, pledges

and donations will be a strong motivation of the Texas FFA Foundation for the ensuing year.

Funds generated will be invested in a trust and only the interest will be used to support Texas high school agri-sciences activities and FFA leadership training. Anyone interested in donating to the Endowment for Excellence Fund should contact Charlie Scruggs, Fund Drive Chairman, at 512-472-0727, 614 East 12th Street, Austin, Texas 78701 or your local agri-sciences instructor.



FOR SALE:
1982 OLDS TORONADO
Fully loaded...
SOLD
Classifieds
Get Results

STEVE WHITTEN TRADING POST INSURANCE "FAIR AND FRIENDLY"

- Serious Illness
- Medicare Supplement
- Nursing Home Ins.
- Life - Accident (Child - Senior Citizen)
- Disability Income

SOUTH MAIN 853-3137
Steve Whitten Carolyn Whitten
Mon-Fri 9 a.m.- 4 p.m.

Christmas for Bodie

Raffle for 19" Sylvania Color T.V. w/ Remote Control

Tickets - \$2.00 each

All proceeds go to Bodie Gilstrap

Drawing to be held on December 20

Tickets available at The Eldorado Success and the Eagle Dairy Mart

Holiday Delights 1989

WTU Invites you to our Christmas Open House!

FREE Holiday Treats
Christmas Decorations Display
FREE 1989 "Holiday Delights" Cookbook

Date: December 4, 1989

Time: 10:00 a.m. to 3:00 p.m.

Place: WTU Office

WEST TEXAS UTILITIES COMPANY
An Equal Opportunity Employer **WTU**
A Member of The Central and South West System

Bureaucrats Not Meant To Be Baby-sitters

By Congressman Lamar Smith

There are few things so onerous to parents as the thought of having their child's care regulated and restricted by the federal government.

Congress considered child care proposals earlier this year that would virtually set up a new government bureaucracy for the day care business. According to the letters I've received from the 21st District, this is exactly what people do not want.

The issue has lost momentum for 1989, but action on child care is certain early next year.

There is no doubt about the need for child care. 66 percent of mothers 18 to 44 work. More than half of those have children less than a year old.

We must take a hard look at how we plan to meet family needs while keeping some reins on the federal budget. Government subsidized child care will do

neither. As the issue is taken up in 1990, I'll be keeping four principles in mind.

First, parents are the best decision-makers when it comes to their children. Legislation should allow parents to exercise their discretion in making child care choices.

Second, federal policy should not discriminate against families in which one parent works at home to care for their children.

Third, federal policy should increase, not decrease, the range of choices available to parents. Government interference and spending does not guarantee proper care or efficient use of funds.

Fourth, any child care proposal should target those families most in need. The problem for most low income families is simply lack of resources for day care,

not a shortage of centers.

All Americans have seen an incredible growth in their tax burden. In 1950, the median income family of four paid just two percent of its income to the government in taxes. Today, this same family pays 24 percent.

Child care problems will not be solved by more taxes to support a government-run program that could cost in excess of \$22 billion over five years.

Why not turn financial resources back to parents and let them choose where and how their children will be cared for?

Changes in the Earned Income Tax Credit (EITC) will give parents the freedom of choice in child care. This tax relief program already exists to provide refundable tax credits to low-income families.

Proposals this year included expanding the EITC for low-income parents and targeting credits to families with children under four.

This kind of solution leaves parents free to choose from a variety of day care options, does not discriminate against those families who want to have one parent at home and targets those families most in need.

A tax relief, not a tax burden, should greet parents looking at child care. As the issue comes up again, one fact must be made perfectly clear: Bureaucrats should not be baby-sitters.

Are You An Independent Contractor Or An Employee?

Are you an independent contractor or are you an employee, asked Franklin H. Upp, Social Security manager in San Angelo. Many companies and workers appear to be confused about this question.

One of the main concerns is the payment of Social Security FICA tax, Upp said. By classifying workers as independent contractors rather than regular employees, companies pay no FICA

tax on those workers' earnings. Independent contractors must pay their own FICA tax and the rate is higher -- this year 13.2 percent versus 7.51 percent.

When questions arise, the Internal Revenue Service (IRS) determines whether a worker is an employee or an independent contractor.

There are 20 criteria which can establish if the person is an employee, Upp said. Some of the main criteria include:

1. Other people have the right to tell you when, where or how you work.

2. The company trains you.
3. The company sets your work hours.

4. You work on the employer's premises.

5. You are paid by the hour, week or month.

6. You have a continuing relationship with the company.

7. The company can fire you without violating a contract.

Workers who have questions about their status as employees or independent contractors can call IRS at 1-800-424-1040. For Social Security questions, call toll free 1-800-234-5772.

Transportation Van Now Has Lift

A reminder that the Public Transportation Van travels to Sonora on Wednesdays from 9:30 to 11:30 a.m.; to San Angelo on Thursdays; and locally everyday except Thursday from 1:30 to 3:30 p.m.

The Van now has a lift available for anyone who is in a wheelchair and needs to travel to the doctor or anywhere else.

For reservations, call 853-3177 or 853-2878.

Local Church To Sell Barbecue

Mission Nueva Vida will be selling barbecue plates for a church benefit on Sunday, December 3. Price per plate is \$4 or three for \$10.

The church is located across from Casa Arispe. Plates may be picked up from 12 p.m. to 2 p.m.

Icy Weather Could Pose Threat To LP-Gas Users

With the arrival of the winter heating season, Texas homeowners who fuel furnaces and appliances with liquefied petroleum gas should double-check to make sure the regulator on their LP-gas tank is properly installed and protected from snow and ice, say safety officials of the Railroad Commission's Liquefied Petroleum Gas Division.

If the regulator vent ices over, high-pressure gas can be released directly to home appliances. A normal 3/4-inch blue flame on an appliance could suddenly shoot up, becoming a dangerous torch. Over the past few winters, several home and business fires have been caused by such regulator freeze-ups, officials say.

Regulators on many home

tanks are located under a protective metal dome on the top of the tank, shielding them from weather and insects. Homeowners with tanks where the circular regulator has been installed outside the dome cover should check to make sure that the regulator vent is pointing down toward the ground, away from the weather.

If homeowners are concerned about whether or not their regulator is properly installed, they should contact the local LP-gas dealer that fills or services the tank.

LP-gas, more commonly known as propane or butane, is used as a residential and commercial fuel in areas where natural gas utility service is not available.

Exchange Program Seeks Field Staff

The American Institute For Foreign Study Scholarship Foundation is looking for Local Coordinators to supervise foreign students in communities throughout the country. High school students from Spain, Japan, Brazil and other countries around the globe will be living with host families across the state on a program coordinated and supervised by the nonprofit organization.

The Local Coordinator position provides an opportunity for flexible, part time work. Responsibilities include finding and selecting host families, serving as a liaison to schools, civic groups and local press, and organizing activities for host families and students during the program year. Training and support are provided by the national office and at regional meetings.

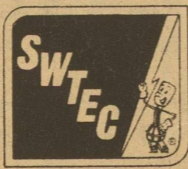
Local Coordinators receive financial compensation for every student placed and supervised, an opportunity to earn points for European travel, and the satisfaction of supporting a community-based movement to increase cross cultural understanding.

Anyone interested in becoming an AIFS Local Coordinator and setting up an exchange program in his or her community should call Lisa Brown at (800) 322-4678.

HIRE SOME HELP

Do it the easy way - advertise in classifieds. A classified ad is the surest way to reach good prospects. Call us today to place an effective classified ad.

Call 853-3125



Not with your hair dryer, power tools, the radio, toaster or any appliance you might use in your kitchen, bathroom, laundry room or workshed.

We often take electricity for granted, and it's easy to forget that water and electricity must never mix.

Southwest Texas Electric Co-op

853-2544

Please Don't Go Near The Water.



So don't use appliances when you're in the bathtub or shower, or let an electric cord trail near the kitchen sink or anywhere in the laundry room or garage where water might collect.

Look around you. Make sure it's safe to go near the water. Just a few seconds of caution can make a big difference.

GRANDDADDY'S

Toys & Hobbies



- * Science & Educational Toys
 - * Radio Control Models
 - * Games & Puzzles
 - * Kites & Trains
 - * Stuffed Animals & Dolls
- (By Steiff, Dakin, Gund, Madam Alexander, Sasha, Gotz, Zapf & others!)

College Hills Blvd. - Park 2400
San Angelo - 944-3336

Christmas Hours:
Mon.-Sat. 9:30-8:00
Sun. 12:30-5:30

Imprints, Etc.

405 S. Divide

Inside Piddler's Porch

10:00-5:00 p.m. Mon.-Sat.

T-Shirts
Sweats
Caps & Much, Much More

"When you hire people who are smarter than you are, you prove you are smarter than they are."
--R.H. Grant

Hayloft

HWY. 277
800 N. DIVIDE
ELDORADO, TEXAS 76936

853-2943

GLORIA SWIFT

Makin' a list and checkin' it twice...

- Don't drink and drive
- Wear safety belt
- Use child restraints
- Don't speed
- Have a Safe Happy Holiday

We'll know who's been naughty or nice...

A message from the Texas Department of Public Safety

Orchard Grown Pecans For Sale

John Edward & Rita Meador

We now do "Custom Cracking"
Call for more information

853-3135 or 853-2955

DEER FEST '89!

An Evening of Food and Fun
with
\$ Thousands in Guns and other Door Prizes! \$

Friday, December 8, 1989
6:30 p.m.
Crockett County
Civic Center

Admission - \$5.00
Tickets Available
Chamber Office, Board Members, At the Door

Sponsored by
THE OZONA CHAMBER OF COMMERCE

Tall Carnation Can-Milk
2/99c

Duncan Hines Assort. Cake Mixes
89c

1 lb. Parkay Oleo 1/4's
49c

Glidden Foods
Open Mon.-Sat.
9 a.m.-6 p.m.
Food Stamps Accepted

PILGRIM'S PRIDE
Family Pac Leg Quarters
39c/lb

6 Pac Can Coke or 7Up
\$1.49

Lettuce 3/heads
\$1.00

Prices Effective 11/30 - 12/6

Beef Liver - 99c/lb
Bananas - 3 lbs/\$1.00
Parade Biscuits - 4/\$1.00
Yellow Onions - 4 lbs/\$1.00
15 oz. Austex Beef Stew - 79c
Boneless Arm Roast - \$1.79/lb
Boneless Chuck Roast - \$1.69/lb
California Navel Oranges - 49c/lb
22 oz. Faultless Spray Starch - 99c
1/2 Gallon Gandy's Ice Cream - \$1.99

Fancy Red Delicious Apples 3 lbs
\$1.00

10 oz. Santitas Corn Chips
99c

13 oz. Can Parade Coffee
\$1.49

Owens Sausage
\$1.89

Home Laundry Dash
\$4.99

Public Notice

PUBLIC NOTICE
For the safety of our community and to protect our public investments, the City seeks your assistance:

(1) The City must be notified 48 hours prior to digging within the City Limits to avoid damages to buried City or utility lines.

(2) Persons knowing of gas leaks, damages to water or gas meters, or damages to other public facilities should report the information to the City of Eldorado at 853-2691 or the Sheriff's Office after hours at 853-2737. If requested, the identity of the reporting person can and will be held confidential.

Carolyn Mayo - City Secretary
Jack Dean,
Utilities Superintendent
1-(11-30-89)-b

NOTICE OF PUBLIC HEARINGS
The City Council of the City of Eldorado has called for two Public Hearings for Tuesday, December 12, 1989, as follows:

Hearing #1: 7:30 p.m. - Hearing on Proposed Ordinance #105-89 regulating parking at the following locations:

No Parking on the North side of W. Fields Avenue between the hours of 7:00 a.m. and 4:00 p.m. on School Days

Loading Zone Only next to curb with 10 minute time limit on the South Side of W. Fields Avenue between the hours of 7:00 a.m. and 4:00 p.m. on School Days with no double parking permitted

Loading Zone Only designated with No Parking in One-Way Drive in Block 2, O.T., adjacent to Grades 2-4 Wing between Divide St. (Hwy. 277) and N. Oak St. between the hours of 7:00 a.m. and 4:00 P.M. on School Days

No Parking permitted in front of the ISD Gym in the 200 Block of N. West St. between the hours of 7:00 a.m. and 4:00 p.m. on School Days

Said Ordinance #105-89 designated locations for Pedestrian Crosswalks at the above locations.

Hearing #2: 8:00 p.m. - Hearing on Proposed Ordinance #106-89 prohibiting through truck traffic in excess of 17,000# gross wt. on City Streets and

designating truck routes and regulations.

Both hearings will be held at the City Hall, and citizens are invited to provide oral or written comment during said hearings.

Carolyn Mayo,
City Secretary
2-(11-30-89)-b

Services

NOTICE: Buy or sell - Art, cookbooks, American, Russian, Asian, World War I & II, Photography, Poetry, Language, Religious, Metaphysical, Children 1st edition, Texana. *Ye Old Fantastique Book Shoppe*, 1218 W. Beaugard.

NOTICE: Let me decorate your cakes. Just bring a picture or idea. No wedding cakes. Call 853-3136 after 5 p.m. Kim-et Nelson.
1-(10-26-89)-b

NOTICE
Mary Kay Cosmetics. Graduation, birthday, anniversary gifts. Martha Spinks, 701 Lee Street, Phone 853-3415 after 4 p.m.

ATTENTION: Does your T.V. need repairs? Ramon Avila can do the job! He can be reached on Mon.-Fri. from 9:00-5:00 at the Courthouse, and at 406 Field St. on Sat. & Sun.

NOTICE: Defensive Driving offered weekly in this area. Call 853-2777.

Wanted

WANTED: Television Enterprises is now inviting applications for a cable television installer to work in Sonora. Please call for an application toll free by dialing 0 and asking for Enterprise 67540 or 387-3344. Television Enterprises, 206 E. Main, Sonora, Texas 76950. Equal opportunity employer.
tfn-(11-16-89)-b

Kings of the Range Bull Sale II

Monday, Dec. 4 • 12:30 p.m.
Producers Livestock Auction • San Angelo
Selling 115 Range-Ready Bulls
(75 Red Brangus & 40 Herefords)
Plus 75 Commercial Heifers

Pied Piper Farms

P. O. Box 309 ~ Hamlin ~ (915) 576-3684
David Moore— (915) 576-2205

CLASSIFIEDS

JOB OPPORTUNITY - The ASCS office is currently taking applications for employment. The position is for an indefinite period of time. Persons having recent office work experience and computer skills will be given special consideration. Contact the ASCS Office at 308 N. West St. or call 853-2838. Applications will be taken through December 6, 1989.

Real Estate

FOR SALE: 20 acres. Deer, turkey, trees, brush, north of Eldorado. \$650 down \$117.20 per month. Owner financed. Call 3-W Investments 1-800-292-7420. Open 7 days 8 to 8.
4-(11-22-89)-b

HOUSE FOR SALE: 4 bedroom, 3 bath, ceiling fans, fire place, central air and new carpet. Spacious yard with fruit trees and fenced in back yard. Close to school. Reasonably priced. Call 387-2297 or 853-3005.
1-(10-12-89)-b

HOUSE FOR SALE: Freshly remodeled 2 BR house in Eldorado, located at 604 Old Sonora Rd. (across from car wash). Call Ray Smith or A.W. Bishop at Sutton County National Bank 387-2593.
tfn-(11-30-89)-b

Got the Frizzies? Charlotte can help!
Call Charlotte's Hair Shop
9 West Gillis
853-3084 or 853-3725

FOR SALE: Mobile home, 1980 Chateau Nuway, 3 bedrooms, 2 baths, step-up kitchen and dining area. Central heat and air. \$8,500 Phone 387-5274, Sonora.
5-(11-2-89)-p

FOR SALE: 4 bedroom, 2 bath mobile home, payments of \$178 monthly includes 2 year warranty, 1 year insurance with down payment of \$1,590. 12.75% APR 180 months. A-1 Mobile Homes, 4750 Andrews Highway, Odessa 915-332-0881.
2-(11-19-89)-b

FOR SALE BY OWNER: 2 BR, 1 Bath home on 5 acres with trees, storage building, 60 GPM well, underground irrigation lines, drip lines, fenced. Call 853-2327 evenings.
2-(11-30-89)-p

For Sale

For Sale: Baby Grand Piano, King Size Bedroom Suite nad 6 ft. Christmas Tree. Call 853-3178 or 853-2049.

PIANO FOR SALE: Wanted responsible party to assume small monthly payments on piano. See locally. Call Credit Manager at 1-800-233-8663.

1987 Pontiac Grand Am 2 Dr. Coupe. Tilt, Cruise and Cassette - One Owner. **\$6995.00**

1986 Chevrolet 3/4 Ton Crew Cab Silverado, AT, 350 V8, Loaded - One Owner. **\$7495.00**

1984 Chevrolet S10 Extended Cab P/U 4 Wheel Drive, V6, Air, Power Steering & Brakes - Manual Shift. **\$5295.00**

New 89 and 90's Chevrolet Extended Cab Pickups. Suburbans, Wind Damaged - Discounts up to \$3000.00. Call for Details.

Daily rentals available by the day or by the week. AA Rental - phone 387-2529.

Cecil Atkission
CHEVROLET • OLDSMOBILE
BUICK • PONTIAC
SONORA, TEXAS

IH-10 and Golf Course Rd.
Sonora, Texas
(915) 387-2529

Free

FREE: To good homes, kittens. Call 853-2219.
1-(11-30-89)-b

Notice

NOTICE: Will the person I loaned my battery charger to please return it. Thank you. Butch Santellano.
1-(11-30-89)-p

TAMALE SALE: Templo Getsemani will take orders for tamales from now until December 12. Price is \$4 per dozen. They may be picked up at the church on December 16 from 8 a.m. to 5 p.m. The church is located on the Menard Highway behind the Post Office. Call Rosa, 853-2039 or Nimpha, 853-2071 to place your order.
1-(11-30-89)-nc

BARBECUE PLATE SALE: Mission Nueva Vida will be selling barbecue plates on Sunday, December 3 from 12 p.m. to 2 p.m. \$4 a plate or 3 for \$10. Church is located across from Casa Arispe.
1-(11-30-89)-nc

CHRISTMAS OPEN HOUSE
November 26 - December 2, Sunday 1 to 5 p.m., Monday through Saturday, 10 a.m. to 5 p.m. Super Santa Celebration Drawing, Piddler's Porch and Imprints, Etc.

Garage Sales

GARAGE SALE: 3 families. Some furniture, lamps, dishes. Adult and children clothing. Men's western clothing, boots, etc. Lots of misc. items. Friday and Saturday, December 1 and 2, 400 E. Field St. inside mobile home. Sale starts at 7:30 a.m.
1-(11-30-89)-p

BELOW PRIME

ON LAND BANK FARM & RANCH LOANS

RURAL REAL ESTATE LOAN INFORMATION

SECURITY	TYPE	STATE RATE	COMMENTS	INTEREST PAID ON FUNDS HELD	ANNUAL PERCENTAGE RATE	EFFECTIVE INTEREST RATE*	TERM OF YEARS
Farm and Ranch							
Purchase Money Loans	FIXED	9.95%	RATE FIXED FOR 10 YEARS	9.95%**	10.15%	10.78%	10 - 40
Farm and Ranch	VARIABLE	10.25%	CAN CONVERT TO FIXED	10.25%	10.38%	11.01%	5 - 40
	FIXED	10.10%	RATE FIXED FOR 1 YEARS	10.10%**	10.33%	10.98%	5 - 40
	FIXED	10.20%	RATE FIXED FOR 5 YEARS	10.20%**	10.36%	11.00%	5 - 40
	FIXED	10.25%	RATE FIXED FOR 10 YEARS	10.25%**	10.38%	11.01%	10 - 40

RESIDENTIAL LOAN INFORMATION

SECURITY	TYPE	STATE RATE	COMMENTS	INTEREST PAID ON FUNDS HELD	ANNUAL PERCENTAGE RATE	EFFECTIVE INTEREST RATE*	TERM OF YEARS
Residential							
Purchase Money Loans	FIXED	10.20%	RATE FIXED FOR 10 YEARS	10.20%**	10.40%	11.05%	10 - 25
Residential	VARIABLE	10.50%	CAN CONVERT TO FIXED	10.50%	10.63%	11.29%	5 - 25
	FIXED	10.35%	RATE FIXED FOR 1 YEARS	10.35%**	10.59%	11.24%	5 - 25
	FIXED	10.45%	RATE FIXED FOR 5 YEARS	10.45%**	10.61%	11.27%	5 - 25
	FIXED	10.50%	RATE FIXED FOR 10 YEARS	10.50%**	10.63%	11.29%	10 - 25

*Shows effect of stock requirement and origination fees.
**Rate may be lower dependent upon amount placed in fund.

FIXED RATE LOAN PLANS

LIMITED FUNDS AVAILABLE AT THESE RATES

- LONG-TERM LOANS FULLY AMORTIZED
- ASSUMABLE
- VARIABLE RATE CAN CONVERT TO FIXED AT CLOSING
- RATE CONVERSIONS AVAILABLE AT END OF FIXED RATE PERIOD
- EXISTING LOANS AVAILABLE FOR CONVERSION
- FUNDS HELD ACCOUNTS AVAILABLE
- BANK CLOSED LOAN FEE OF 1.0%
- FIXED RATES REPRISED WEEKLY

FEDERAL LAND BANK ASSOCIATIONS OF TEXAS

Offices Located Throughout the State

FEDERAL LAND BANK ASSOCIATION OF SONORA
P. O. BOX 397, SONORA, TEXAS 76950 (915) 387-2777
JACK B. SMITH, JR., PRESIDENT

ALL RATES AND FEES ARE SUBJECT TO CHANGE WITHOUT NOTICE.