

# SUCCESS

A Positive Forecast "Serving West Texas Since 1901" A Good News Review

Volume 88 #34

Eldorado, Texas

August 31, 1989

## Migratory Game Bird Hunting Season Begins Friday

Dove hunting season kicks off this weekend. Migratory game birds may be taken only during the open seasons specified in either the Early Season or Late Season Digests. If no season is given for a species, the season is closed.

The daily bag limit is the maximum number of birds as specified for each species which may be taken during the legal shooting hours of any one day.

The possession limit is the maximum number of birds that can be taken legally in two days. For the first day of any season the possession limit is the daily bag limit.

No person shall possess more than one daily bag limit of freshly killed birds while in the field or while returning from the field to one's hunting camp, automobile, or temporary lodging facility.

One fully feathered wing must remain attached to dressed birds while being transported between the place taken and the permanent residence of the possessor or between the place taken and a commercial processing facility. This regulation does not apply

to doves in the North and Central Zones.

Any freshly killed birds given to another person that places the receiver in possession of birds in excess of the daily bag or possession limit, except at a residence of the person giving or receiving the bird, must have tag attached signed by the hunter who killed the birds stating his address, total number of bird of each species and the date killed. Birds being transported by another person for the hunter or left for cleaning, storage, shipment or taxidermy services must also be tagged in the same manner.

In order to hunt migratory birds, your shotgun must not be larger than 10 gauge, fired from the shoulder and incapable of holding more than three shells (shotguns capable of holding more than three shells must be plugged with a one-piece filler which is incapable of removal without disassembling the gun, so the gun's total capacity does not exceed three shells), and longbows and arrows, falconry, dogs, artificial decoys and mammal or mouth-operated bird calls are allowed.

Baiting and hunting over a baited area are unlawful. Any area that has been baited is considered to be a baited area for 10 days following the complete removal of all bait materials. Standing crops or fields containing shocked grain or grain scattered by normal agricultural activities are not considered baited areas.

### MOURNING DOVES

Mourning Dove season in the North Zone begins September 1 and continues through November 9, in that area north of a line beginning at Fort Hancock, then east along IH 10 to IH 20, then east along IH 20 to Fort Worth, then east along IH 30 to the Texas-Arkansas state line.

The Central Zone begins September 1 and continues through October 30, and January 6, through January 15, 1990, in that area between the North Zone and the South Zone.

The South Zone begins September 20 and continues through November 18, (November 14 in the special White-Winged Dove Area) and January 6 through January 15, 1990, in that area south

of a line beginning at Fort Hancock, then east along IH 10 to Van Horn, east along U.S. 90 to San Antonio, and then east along IH 10 to the Texas-Louisiana state line.

Shooting hours are one-half hour before sunrise to sunset. The daily bag limit is 12 mourning, white-winged, and white-tipped (white-fronted) doves in the aggregate to include not more than two whitewings and two whitetips; possession limit is twice the daily bag limit.

### WHITE-WINGED DOVES

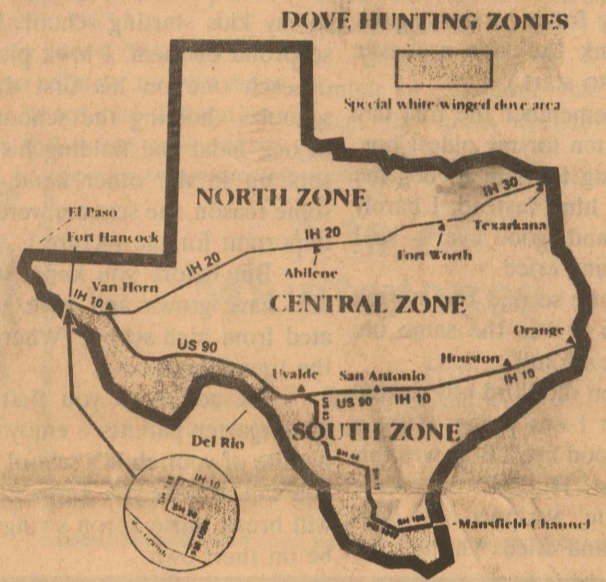
Special White-Winged Dove area hunting dates are September 2, 3, 9 and 10. The area is southwest of a line beginning at Fort Hancock, then east along IH 10 to Van Horn, southeast along U.S. 90 to Uvalde, south and east along U.S. 83 and State Highway 44 to Freer, then south along State Highway 16 to Hebbornville, then south and east along FM 1017 to Linn, and then east along State Highway 186 to Port Mansfield, and east along the Mansfield Channel to the Gulf of Mexico.

Shooting hours for the white-

winged dove are noon to sunset. Daily bag limit: South and east of International Bridge and U.S. 277 Spur at Del Rio, 10 white-winged, mourning and white-tipped doves in the aggregate to include not more than five mourning doves and two whitetips; possession limit is twice the daily bag limit. North and west of International Bridge and U.S. 277 Spur at Del Rio,

limit is 10 white-winged, mourning and white-tipped doves in the aggregate to include not more than two whitetips, possession limit is twice the daily bag limit.

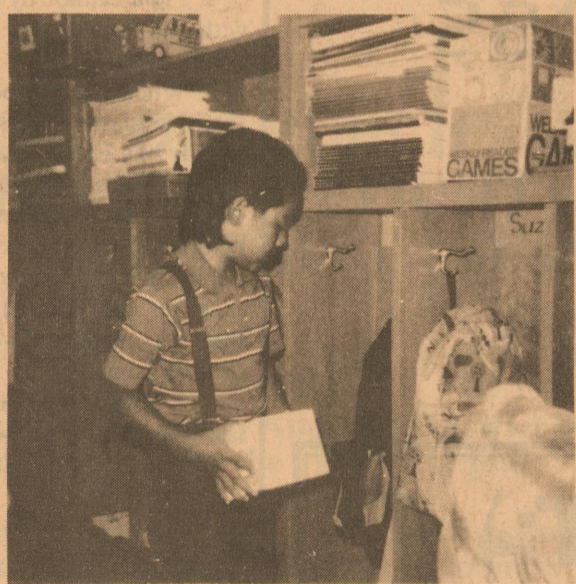
You must have a valid 1989-90 hunting license for the mourning dove season opener. You must have a valid \$6 white-winged dove stamp in your possession in order to take whitewings in any area.



This first-time kindergartner anxiously awaits her first day of school as she listens to her teacher explain the rules.



Not quite ready to be on his own in kindergarten, Tanner Haynes watches as Mom says good-bye.



First grade student Alvaro Rojas knows the ropes and puts his things away in his locker.

## County Officials Adopt New Budget

The Schleicher County Commissioner's Court met in regular session Monday, August 28. The main item on the agenda was the setting of the budget for 1990, which was approved.

In other action, the court will put out a notice for bids on diesel. They appointed Ronnie Norris and Richard Harris as Co-Fire Marshalls.

The effective tax rate was discussed and set at .62 per \$100 evaluation.

The commissioners canvassed the election held Tuesday, August 22, which was a local option election for the sale of beer and wine in Precinct two, with only Precinct 2 voting.

The option passed with a meager 11 percent voter turnout. There were eight absentee votes, and 66 votes cast at the polls. The tally was 49 for the option and 25 against.

## DPS Reminds Motorists Of Safe Driving For Labor Day Weekend

The traffic death count for the Labor Day weekend could go as high as 34 persons, the Department of Public Safety has estimated.

"This may scare you, but you need to know that as many as 34 people could die in traffic accidents in Texas this Labor Day weekend," DPS Director Col. Joe Milner said.

In 1988, 30 persons died in traffic accidents during the 78-hour

Labor Day period. Two critically-injured persons died later, for a total of 32 fatalities. This year's Labor Day period also is 78 hours, beginning at 6 p.m. Friday, September 1, and continuing through midnight, Monday, September 4.

"The Department of Public Safety will be doing everything it can to ensure you have a safe holiday, but we need your help," Col. Milner said. "Please, don't drink and drive, stay within the

speed limit, and wear your safety belt."

Last year, 21 persons died in DWI or speed-related accidents during the Labor Day period. That amounts to 66 percent of all the deaths. Also last year, of the 23 persons killed as occupants of cars, trucks or buses, 18 -- or 78 percent -- had not been wearing safety belts.

"We believe safety awareness does make a difference," Col. Milner said. "So far, no traffic fatality has been reported anywhere in Texas for June 13. If this holds up, it will be the first time since 1977 we have had a day with no traffic deaths in Texas. Let's make it happen again this Labor Day."

During the Labor Day period, all available DPS Troopers will be patrolling the state's roadways. Periodic reports on the number of traffic fatalities will be issued to remind motorists of the need for safe driving.

## End Of Summer Insanity

Dan Willeke, freshman at Angelo State University, and Cole Turner, junior at Eldorado High School, celebrate the end of summer by frolicking in Dan's portable swimming pool.

The four foot green plastic pool is easily transported in the

back of Dan's pickup. If drained first, the pool could even be carried in the trunk of a car.

Dan is proud of this possession and has thoroughly enjoyed using it while waiting for school to start.



Willeke and Turner relax in style.

## Boosters To Meet

On Tuesday, September 5, at 7:00 p.m., the Booster Club will hold a meeting in the field house classroom. This meeting is open to all members and all persons interested in joining.

## Friday Scrimmage

There will be a J.V. and Varsity scrimmage against Rock-springs on Friday, September 1 at 6:00 p.m. The Booster Club will be selling homemade ice cream. Come support your team!!!

### Weather Watch .... by Pat Joiner

High	August 21-27, 1989	Low
92	Monday	73
94	Tuesday	77
95	Wednesday	64
88	Thursday	69
94	Friday	69
94	Saturday	69
95	Sunday	70

This Weeks Rainfall: 0.00  
Total Rain 1989: 12.31



# The Editor's Journal

## Life Among The Fishes

By Thomas Giovannitti

I am not so sure how the conversation got started, but Nicolas and I got to talking about animal crackers the other day and we both arrived at the same conclusion. Animal crackers aren't really crackers at all but are cookies. They're nothing more than a sugar wafer shaped like an animal.

Actually the cheap ones aren't even shaped like any animals found on this planet, and they are usually broken anyway. Most kids only want the ones that come in the box that looks like a circus wagon-cage.

I am not sure why parents buy them except maybe to keep the little one quiet as he/she rides around in the grocery cart. Without a drink a few of those dry cookies will dry up in a kid's mouth and he won't be able to speak for hours.

Another cracker that isn't a

cracker is graham crackers. Graham crackers are too sweet to be crackers. No one (at least that I know) ever spreads anything on a graham cracker, except maybe peanut butter.

Grahams are for dunking in milk as everyone knows. Of course, the real trick in dunking graham crackers in milk is to hold the cracker long enough that it becomes very soft but not so soft that it falls off into the cup of milk. Another challenge is to hold as little of the cracker as possible so only that part between your fingers doesn't get wet. I am pretty sure there are some deep philosophical lessons to be learned while dunking grahams but that I'll leave to you.

Saltines and Ritz are probably the only true crackers. Even townhouse cookies aren't true crackers since their manufacturer felt they needed a buttery flavor so people would not mistake them

for oval Ritz.

Ritz are the best I think because anything can be spread on a Ritz. I don't know if there is a generic Ritz, but there shouldn't be. Some things in this great land of ours shouldn't be tampered with, and a good cracker upon which a man can spread cheese or peanut butter or a slice of sausage or even liverwurst, is one of them. The trouble with saltines is they are too flimsy and can't really

hold anything substantial like Philadelphia cream cheese or crunchy peanut butter.

I am sure that whenever the recipe for the Ritz cracker becomes available we'll see cheap imitations but they'll never hold up to really tough toppings.

Townhouse tried and failed so I am pretty sure that any company that makes animal crackers that don't look like animals won't be able to make a real rich Ritz.

## An Apple A Day

By Smokey Taylor

Itchy feeling: It's school time again which probably means that there will be another head/body lice outbreak among the younger students. One of the most common dreads a parent has is detecting those terrible little crawling "things" on his or her child. Sure ... it's an unpleasant experience (it's even unpleasant to read about), but lice infestation is a problem that can be easily corrected. Every year millions of Americans have lice. They continue to invade our nation's households, infesting rich and poor alike.

Head lice are small insects that live on the body. Head lice are usually on the scalp or the hair shaft close to the scalp. This is also where they most often lay their eggs which are difficult to remove. Head lice are spread by close contact with an infested person or contact with objects such as combs, brushes, clothing, hats, towels, blankets and furniture.

Head and body lice are difficult to see ... with the most common symptom being itching. Over-the-counter pediculicides such as Rid, A-200 Pyrinate and R&C

shampoo usually take care of the problem with one application. Other measures need to be taken though, in case your or yours fall "victim", to prevent re-infestation. They are:

1. Wash all clothes and linens that have been used by the infested person during the last month in hot water (130 degrees F.). Dry Clean non washable items.
  2. Scrub toilet seats and vacuum rugs and upholstery frequently.
  3. Examine all family members for three weeks. If any are infested, treat with a pediculicide shampoo.
  4. Wash combs, brushes, etc., in hot water (130 degrees F.) for ten minutes.
  5. Spray all items that can't be washed or dry cleaned with a lice control insecticide, available at your pharmacy.
- I think another good idea is to inform the teacher if you detect any head or body lice. This way all parents can be put on notice to be watching and/or treating the problem. Otherwise, it will be just an ongoing problem for everybody.

## The Way We See It

By Lola Squyres

"You cannot fly like an eagle with the wings of a wren." Wm. Hudson

When young people spend their formative years in a community like Eldorado, they become "Eagles". In addition to the obvious, their achievements are recognized and they know they are important to many of us. When they get old enough to fly free, they become wrens -- a tiny part of a very big world.

I talked with a young lady last week who is one of the eagle's

that is turning into a wren, temporarily that is. She wants to go to college, to grow up, to become independent but at the same time she wants to stay where she is, an 'eagle'. She knows, at times, it will be hard; it will be scary. "Buck up, you're an eagle" is something my daughter told herself when the going got tough for her. I'm sure she was told that many times as a student at EHS and found it encouraging.

Go. Do. See. Be. If you have been an 'Eagle' once, you can be one again.

## Letter To The Editor

The family of Katy Griffin wants to thank everyone in Eldorado, who expressed love and concern during our ordeal.

We appreciate the article explaining our situation and the many visits to the hospital by Gary Smith. Anyone from Eldorado surely knows how important our children have been in our lives.

We appreciate all comments, but still feel that we were put through unnecessary suffering and grief by the hospital staff and doctors in San Angelo as well as the Welfare Department.

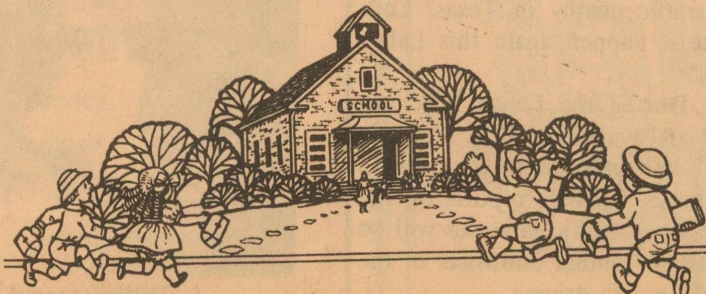
Jane Mullich has seen many horrors, we are sure. We, too, want all children protected from such terrible lives. We also saw the grief and fears our children suffered, as well as the heartbreak of seeing their baby suffer. The hospital staff and

doctor repeatedly refused to consider the possibility of a disease until the second fracture had occurred in the hospital. Then and only then did they diagnose her disorder, despite symptoms of blue sclera and easily fractured bones.

We have no answers or solutions as to prevent things like this from happening to other innocent parents. But, no one should be presumed guilty until all other possibilities have been explored. We understand that many innocent families are accused of child abuse each year and this is also tragic. It creates doubts, fears and problems even within the strongest families.

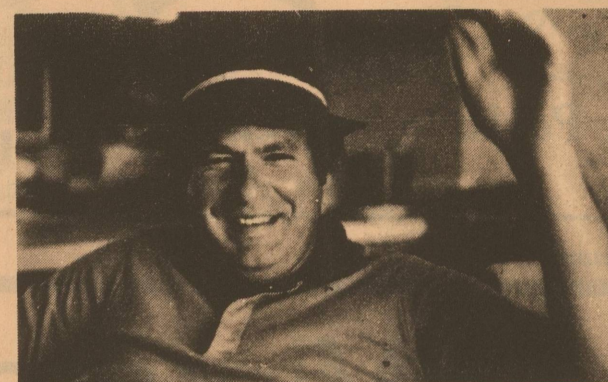
Again, we appreciate your article, Gary, and feel the townspeople, as well as our kids had a right to have the true story told.

Many thanks,  
Dan and Judy Griffin



## Laugh and Live

by Gary Smith



How did the guy who invented cottage cheese know when he was finished?



Each week we work with thousands of words. Try as I may I don't always manage to get all of them right. I have found that different people have different meanings for different words. Here are just a few of my favorite definitions.

ANT: A small insect always working but still finds time to go on picnics.

BABYSITTER: Someone you pay to watch your television and eat your food.

BACHELOR: Footloose and fiance' free.

BOSS: The one who is early when your late and who is late when you are early.

BOY: A noise with dirt on it.

TOUPEE: Top secret.

ULCER: Something you get when you mountain climb over mole hills.

SUNBURN: Getting what you basked for.

RADICAL: A person whose opinion is different from ours.

LIFE INSURANCE: The thing that keeps you poor all your life so you can die rich.

FLASHLIGHT: A case to carry dead batteries in.

SWEATER: What a child must wear when his mother is cold.

And one of my all time favorites:

VACATION: A time when people find out where to stay away from next year.

Seems like everyone I know has at least one favorite Daffynition. If you have one that you would like to share, send it on to me--

Gary Smith  
P. O. Box 1115  
Eldorado, Texas 76936.

Can't ever tell, might even print it for you.

Until next time -- May God Bless.

## Eldorado Success

USPS 342-470  
Box 1115  
Phone 915-853-3125

Published each Thursday  
Eldorado, Tx. 76936

Gary C. Smith  
Publisher

Mary Jenkins  
Editor in Chief

Cathy Smith  
Managing Editor



### Subscription Prices

In Schleicher County -- \$15.00 per year  
Senior Citizen -- \$13.00 per year  
Out of Schleicher County -- \$18.00  
Senior Citizen -- \$16.00 per year

Second class postage paid at Eldorado, Texas 76936. POSTMASTER: Send address changes to The Success, Box 1115, Eldorado, Texas 76936.

THE SUCCESS is an independent newspaper, published in Eldorado, Texas by PRIME MINISTER PUBLISHING COMPANY.

THE SUCCESS cannot be held responsible for erroneous information provided by sources other than it's staff. Should this publication make an erroneous statement, a retraction will follow as soon as the Editor is notified of such an error.

Member 1989  
West Texas Press Assn.

Copyright 1989...  
Prime Minister Publishing

### SUBSCRIPTION FORM THE SUCCESS

Date: \_\_\_\_\_

Name: \_\_\_\_\_

Mailing Address: \_\_\_\_\_

City, State, Zip: \_\_\_\_\_

Telephone Number: \_\_\_\_\_

Price Schedule:

In Schleicher County	\$15.00/YEAR
Senior Citizen	\$13.00/YEAR
Out of Schleicher County	\$18.00/YEAR
Senior Citizen	\$16.00/YEAR

Send Check or Money Order to:

The Success  
Box 1115  
Eldorado, Tx. 76936  
(915) 853-3125



## Local Club To Sponsor Rabbit Exhibition

The Eldorado Rabbit Club will sponsor an American Rabbit Breeders Association nationally sanctioned rabbit exhibition on September 30, at the 4-H Barn, Hwy. 277 in Eldorado. The rabbit competition will begin at 8:30 a.m. and continue throughout most of the day with an expected entry of approximately 200 to 250 animals. Visitors are welcome and there is no admission charge. There will be many rabbits of different breeds and ages for sale along with rabbit

related equipment.

The A.R.B.A. recognizes over 40 breeds of rabbits and eight breeds of cavies. Rabbits and cavies are exhibited in various sizes, shapes, colors, ear lengths, ear carriages, fur and wool structures. The size of some of the various recognized breeds of rabbits range from two and one half (2 1/2) to 16 pounds mature weights and ear lengths will vary from two inches to 24 inches. These are extremely beautiful

animals and a sight to behold.

Rabbits have a variety of uses. These uses vary from an excellent source of edible protein, durable wool, beautiful fur, lovable pets, and as an excellent "hobby" animal. There are hundreds of organized rabbit clubs that sponsor approximately two thousand rabbit shows across the country each year.

Rabbitry sizes vary from the single pet animal to the very large commercial rabbitry that has several hundred does. The most popular rabbitry is from two to 20 does that utilize small buildings, garages or outdoor hutches to produce young for their own personal use, to supplement the family income, or exhibition.

For more information concerning the above show, please contact: Debbie Clark, Box 293, Eldorado, Texas 76936, phone 915-853-3116.

## Texas Farm Credit Posts Solid Gains In Second Quarter

The Farm Credit Bank of Texas earned \$7.5 million in the second quarter of 1989, a \$6.6 million improvement over the same quarter a year ago. Donald R. Rogge, the bank's chief executive officer, said earnings were from operations, investments and a reduction in loan loss reserves.

During the first half of 1989, the Texas District had \$15 million in net income compared to \$44.8 million during the same period in 1988. Rogge said the 1988 mid-year figure included \$35.5 million in funds that had been marked for financial aid to other Farm Credit districts. These funds were returned to the bank by the Agricultural Credit Act of 1987.

"Compared to 1988, we are well ahead of last year," Rogge said. "Without return of the \$35 million, our net gain would have been \$9.3 million in 1988 compared to this year's \$15 million."

The bank provides funds to 44 Federal Land Bank Associa-

tions (FLBAs), 20 Production Credit Associations (PCAs) and five other financing institutions (OFIs) which supply about one-third of Texas' agricultural credit. On February 10, 1989 the bank also bought approximately \$1 billion in long-term mortgage loans in Alabama, Louisiana and Mississippi and was awarded the charter to make new mortgage loans in these three states.

The bank and associations have \$3.7 billion in loans outstanding and \$537 million in net worth. Assets totaled \$5.1 billion at June 30, 1989, an increase of \$1 billion since year-end 1988.

Nationwide the Farm Credit System reported a net gain of \$159 million in the second quarter of 1989 compared to a \$170 million net income for the same period last year. System earnings as of June 30 were \$317 million in 1989 compared to a net income of \$336 million for the first six months of 1988.

## Gramm Announces Transit Funding

Upon completion of the application process, the Concho Valley Council of Governments in San Angelo is expected to receive \$172,170 from the State of Texas for transportation operations, U.S. Senator Phil Gramm of Texas has announced.

The money will be provided by the Urban Mass Transportation Administration, an agency of the U.S. Department of Transportation.

The UMTA funds will be used to provide non-operating and operating assistance for a comprehensive rural transportation system. Capital items include communication equipment.

"This assistance is part of UMTA's block grant program, which allows local officials respon-

sible for transit programs to tailor the federal funding they receive to fit the needs of local citizens," Gramm said.

UMTA was established in 1968 and operates a variety of grant and loan programs to assist communities in creating and operating local transportation programs.

The agency also offers a range of research, development and other technical assistance programs, including providing funding for managerial and technical training.

## 'Seniors' On The Go

The Ninth Annual Senior Citizens Retreat will be held on October 9, 10 and 11 at H.E. Butt Foundation Camp, 13 miles north of Leaky.

This event is sponsored by the Concho Valley Council of Governments and the Tri County Nutrition Project for the elderly of the region.

The registration fee is \$35. Reservations and payment must be made by September 22. Any Senior Citizen in Eldorado interested in joining this camping trip, call 853-3177 for more information.

The Meals on Wheels program would like to thank all the volunteers who helped make the meals program a success during the summer. A special thanks to Dick Preston, we'll miss you!



Enchanted Rock, a bald granite mountain covering 640 acres and stretching 1,824 feet high, is known as Texas' noisiest mountain. Located in northeastern Gillespie County, Indians credited the mountain with having a spirit and offered sacrifices. Weird, creaking, groaning noises emanate from this mountain, especially at night. Geologists logically explain the sound is caused by contractions of the stone during cool evenings after the daytime heat.

## Odds 'N' Ends

### W.H. Clifton Honored On Birthday

W.H. (Clif) Clifton was honored with a birthday dinner Saturday, August 26 in the home of his sister, Mrs. Margaret Brunson of Bronte. Food was prepared by each family present. The birthday cake was baked and decorated by Mrs. Jerry Doyle.

Among those present were: C.W. Clifton and family from Crockett, Mrs. Jimmy Williams and Ann of San Angelo, Mrs. Alice Webb of San Angelo, Mrs. Thelma Evans and Arlie King of Rock Port, Jimmy and Nancy Brunson of Junction, Karey and Terry Evans of Austin, Margaret Brunson and Julia and Geneva Mimick of Bronte, Clif and Bessie Clifton and Jimmy and Nancy Doyle of Eldorado.

Others attending were: J.D. Doyle and Mike Doyle and families of San Angelo, Burnell and Bill Etheredge of Dallas, Billy and Jackie Hampton and baby of Lubbock, Jerry and Heavia Doyle of Port Lavaca, David and Jonana Robert of Plain View.

Clifton received many presents and cards from his family and friends.

grandchildren. Everyone enjoyed sharing the surprise with her and getting to wish her happy birthday.

Those present to help celebrate were: Estelle Baker, Bessie Clifton, Virginia Griffin, Lillian Mikeska, Louise Logan, Wilma Logan, Zelma Henderson, Jake Spencer, Louise Radle and Shirley Overstreet.

Marla Wathall served the refreshments of coffee, tea, chicken salad and cheese cake.

Church of Christ at 901 North Main.

Sue Bramhall, District Clerk, will be the speaker for the evening, and the subject of the program will be "District Court Records".

A beginner's genealogical class will be held before the regular meeting at 6:45 p.m.

Visitors are always welcome.

### Sara Duke Promoted

Sara Y. Duke, daughter of Armandina and Oscar J. Duke of Christoval, has been promoted in the U.S. Army to the rank of specialist.

Duke is an administrative specialist with the 51st Maintenance Battalion in West Germany.

The soldier is a 1987 graduate of Christoval High School.



One golf course in Africa includes in its ground rules a free drop for a ball that lands in a hippo footprint.

### Shannon Harber Fund Established

An account has been established at the First National Bank of Eldorado in memory of Shannon Harber. A plaque will be purchased and be permanently placed in the high school gym.

Anyone wishing to donate towards the plaque can contact Hyman Sauer at the bank.

### SA Genealogical Society To Meet

The San Angelo Genealogical and Historical Society will meet Tuesday, September 5, at 7:30 p.m. in the Fellowship Hall of the

### Merry Makers Meet

The Merry Makers "42" Club gathered together for a game of 42 at 302 Hill Street. Louise Radle and Jake Spencer were the special guests for the afternoon.

Lillian Mikeska was honored with flowers and balloons from her



**GEORGE H. GOWER**  
Eldorado Lantana Winery

---

Gower Pumping Service  
BOX 655  
ELDORADO, TX 76936  
915-853-3183/2539

TIRE OF THE MAIL-ORDER PRESCRIPTION HASSLE??  
TIRE OF THE HASSLE OF DRIVING TO SAN ANGELO TO SAVE MONEY OF PRESCRIPTION PURCHASES??

WELL..... HAVE I GOT A SOLUTION FOR YOU!!.....

JUST CALL US AT 853-2064 FOR A FREE NO-QUESTIONS-ASKED PRICE QUOTE ON YOUR PRESCRIPTION. JUST BE SURE TO TELL US THE DRUG NAME ALONG WITH THE STRENGTH & QUANTITY.

ALSO, BE SURE TO LET US KNOW IF YOU'RE AGE 60 OR OLDER, IF SO, YOU'LL GET AN EXTRA 10% DISCOUNT.

YES.... YOU'LL BE HAPPY YOU CALLED...BECAUSE NOW, WITH OUR EVERYDAY COMPETITIVE PRICES, YOU CAN JOIN THE MANY OTHER SCHLEICHER COUNTY AND AREA RESIDENTS THAT ENJOY CONVENIENT AT-HOME PRESCRIPTION PURCHASING ALONG WITH PROFESSIONAL SERVICE ELDORADO PHARMACY PROVIDES.

**Rx**
TRADE AT HASSLE-FREE ELDORADO PHARMACY!!!  
WE'RE THE HASSLE BUSTERS!!!
**Rx**

**IMPORTANT:**  
Please learn  
American  
Red Cross  
Infant-Child  
CPR

Ad Council  
American Red Cross

★  
You are invited to Worship & Study with

**Warner Ave. Church of Christ**  
(North of Courthouse)

Sunday Bible Study... 9:30 a.m.  
Sunday Worship Service... 10:30 a.m.  
Sunday Worship Service ...6:00 p.m.  
Wednesday Bible Study & Worship 7 p.m.

853-3418  
Office a.m.

**IT'S NEVER TOO LATE**

For a little peace of mind.

Old or young ... It's no trick ... your future will be bright and worry free with an insured savings deposit with us. We'd be happy to open your account today ... for worry free tomorrows.

**McCormick's**

**Exxon**

Friendly Service  
Clean Facilities  
Caring About Eldorado

101 S. Divide  
Eldorado, Texas  
Phone---853-3407

We're Your Full Service Bank ..  
Count On Us!

**First National Bank**

of Eldorado  
102 SW Main /

Member FDIC



## Smith Made Honorary Rodeo Clown

Local pastor/publisher, Gary Smith had a close encounter with a bull named Satan's Choice at this year's Eldorado Open Rodeo. Professional rodeo clown, J.R. Robertson of Weatherford, decided that the unintended bull fight of Friday night was worthy of recognition. J.R. bestowed the title of Honorary Rodeo Clown to Rev. Smith. Smith was then presented a pair of baggy pants and a clown wig.

J.R. has been working rodeos since he was 12 years old. For the last 27 years he has entertained people at rodeos throughout the United States. In April of 1988, J.R., whose real name is Jacky Robertson, was doing a Levi's blue jean commercial in Ft. Worth. During the filming of the commercial, the bull, Psycho, a crossbred bull from Louisiana, hooked J.R.'s left arm, tearing out

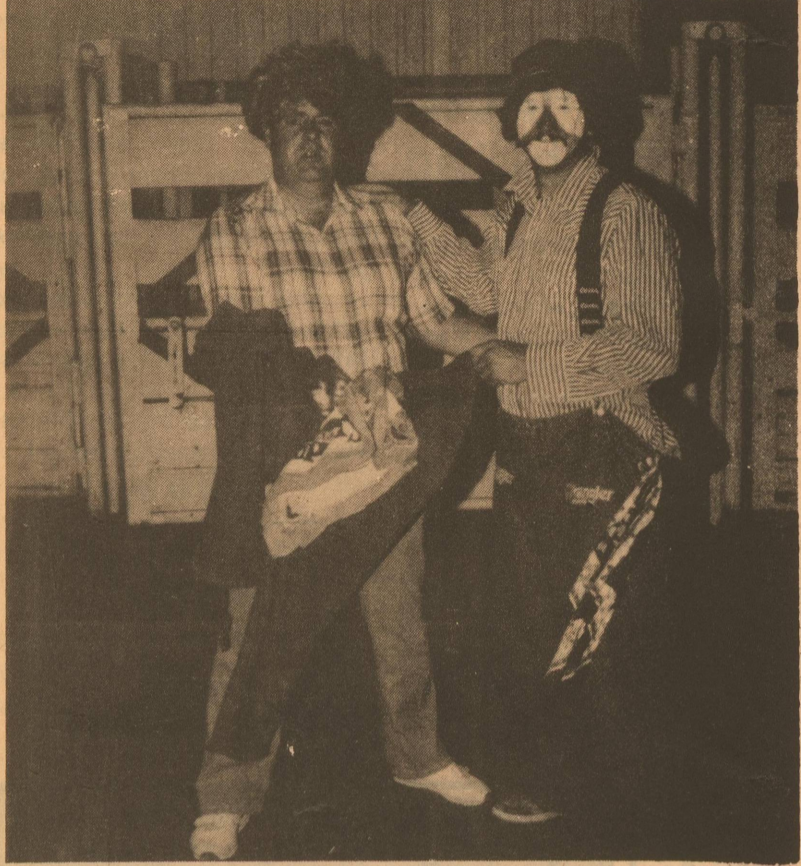
the biceps and ripping the ligaments to his fingers. His ankle and leg were also broken during this encounter. After an extensive stay in the hospital, he returned to rodeoing and clowning. Just 80 days later, he performed (while still in a cast) at the National High School Finals in Ft. Worth at the Ft. Worth Stockyards.

Gary, who has been doing funny man clowning for many years, was elated by this honor and award. Known around the country as the Prime Minister of Laughter, Gary has entertained organizations and church groups throughout the United States.

Smith said, "This was by far the most exciting and thrilling clowning I have ever participated in. I don't know if these guys are crazy or just plain good, but I know one thing-- they have a lot of guts."

Said Robertson, "If there was ever a bull that was out to hook somebody, this one was out to hook Smith. 'Satan's Choice' was definitely out to get the preacher."

"Although he is not a professional," Robertson continued, "Gary's working of this bull deserves recognition. He handled it like a pro. The most important thing about fighting a bull is coming out in one piece and this man did just that."



J.R. (Jacky Robertson) presents clown wig and baggy pants to Gary Smith.



Go Eagles! Varsity Cheerleaders demonstrate their talents to some "future" cheerleaders during last week's mini training camp held in Eldorado.

## Cheerleaders Hold Mini Camp

The Eldorado High School Varsity Cheerleaders held a mini camp for girls ages five through 12 last Tuesday and Thursday, August 22 and 23, with 20 girls attending.

The young girls learned chants, cheers, jumps and stunts for being a mascot.

The \$10 registration fee will be used by the varsity cheerleaders to buy cheerleading supplies. It is hoped that this will be an annual event.



In 1890, a St. Louis physician ground up peanuts and produced a product that would revolutionize sandwich making and become the hit of the lunch box set. It was peanut butter.

## Rodeo Club Starts Season With A Bang

By Kim-et Nelson

Eldorado High School Rodeo Club started the year off in Del Rio Saturday, August 26 and Sunday, August 27.

Representing Eldorado this year are Shane Criswell, Crissi McCormick, Cy Griffin, Mondee Nelson, Brent Moore. New mem-

bers are Jamie Belk, Justin Paxton, Traci Paxton and Stoni Harriman.

Placing in Saturday's rodeo was: Crissi McCormick, ninth in barrels, first in goat tying, and fifth in pole bending; Cy Griffin, fifth in calf tiedown; Traci Paxton, 10th in barrels and seventh in goat tying; Mondee Nelson, ninth in goat tying, second in pole bending and second in cutting; and Jamie Belk and Cy Griffin, eighth in team roping.

Sunday's placings were: Jamie Belk and Cy Griffin, third in team roping; Crissi McCormick, fourth in pole bending, seventh in goat tying, third in breakaway roping and seventh in barrels; Mondee

Nelson, seventh in pole bending, first in goat tying and second in cutting; Traci Paxton, second in goat tying and ninth in barrels; Cy Griffin, seventh in calf tiedown; and Shane Criswell, first in saddle bronc riding.

We have a real good troop of kids this year and hope everyone will support us by coming to the next rodeo in Big Lake, September 9, at 7 p.m., or Sunday, September 10, at 11 a.m. Other rodeos will be Rankin on Sep-tember 16 and 17 and Coahoma September 23 and 24. Eldorado will host the High School Rodeo Association Region II on October 7 and 8.

## School Menu

Monday September 4

Breakfast -- Applesauce, Blueberry Muffins.

Lunch -- Beef and Bean Burritos, Pinto Beans, Lettuce and Tomato Salad, Cheese Strips, Chocolate-Peanut Clusters.

Tuesday September 5

Breakfast -- Tomato Juice, Breakfast Pizza.

Lunch -- Spaghetti and Meatsauce, Whole Kernel Corn, Pineapple Slices, Peanut Butter Cookies.

Wednesday September 6

Breakfast -- Orange Juice, Hot Biscuits, Ham, Jelly.

Lunch -- Hot Dogs with Chili, Corn Chips, Pork and Beans, Stuffed Celery with Peanut Butter, Rice Krispies Cookies.

Thursday September 7

Breakfast -- Stewed Prunes, Buttered Rice, Toast.

Lunch -- Fish Nuggets, Macaroni and Cheese, English Peas, Applesauce, Orange Cake with Icing.

Friday September 8

Breakfast -- Grape Juice, Eggs, Toast, Jelly.

Lunch -- Hamburgers, Potato Chips, Lettuce, Tomatoes, Pickles, Banana Pudding.

## Tee Time

By Juanita Taylor

Forty teams played in the Hext Memorial Golf Tournament held this past weekend, August 26 and 27, in Eldorado.

Winners in the Championship Flight were: Causey and Harvey, first; Steve Whitten and Bob Whitten, second; and Jost and Jost, third.

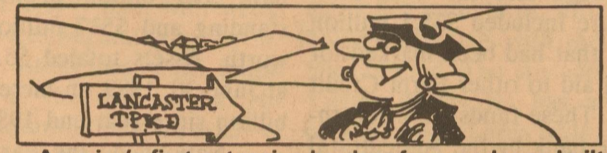
First Flight winners were: Burleson and Burleson, first; Poage and Tucker, second; and Ronnie Sauer and Mike Nikolauk, third.

Second Flight winners were: Bill Frietag and Glen Nix, first; John Callison and W.G. Crippin, second; and Preston Dudley and Bill Purser, third.

Third Flight winners were: John Pitts and Staulzenberger, first; Price and Joy, second; and Delbert Taylor and Raymond Wilson, third.

Remember this Sunday is play day so come out and join in the fun.

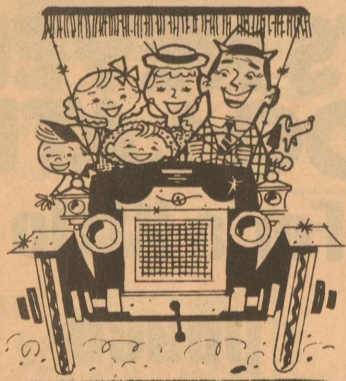
Happy Golfing!



America's first extensive hard-surface road was built in Pennsylvania. Completed in 1795, it was known as the Lancaster Turnpike and ran 62 miles.

## West Texas Liquid Feed

Norris Sauer - Pro-Lix Dealer  
Ph. 853-3051 - Eldorado, Tx.



**UNITED ARTISTS**  
KIXY-TV BARGAIN TUESDAYS  
ALL SEATS \$3.00  
**SUNSET 4**  
1066 SUNSET MALL • 944-3390

Batman - PG13  
1:15 4:00 7:15 9:55  
Wired - R  
2:15 4:30 7:15 9:30  
When Harry Met Sally - R  
1:15 3:20 5:20 7:30 9:35  
The Abyss - PG13  
1:00 4:15 7:15 10:00

**SOUTHWEST 7**  
3590 KUMICKBOCKER RD 949-9984

Casualties of War - R  
2:00 4:30 7:10 9:45  
Parenthood - PG  
1:45 4:20 7:15 9:50  
Uncle Buck - PG  
2:00 4:15 7:30 9:45  
Indiana Jones III - PG13  
1:45 7:20  
Star Trek 5 - PG13  
4:20 9:50  
Nightmare 5 - R  
2:00 4:00 7:30 9:30  
Lethal Weapon 2 - R  
2:10 4:30 7:20 9:50  
Heart of Dixie - PG  
2:15 4:15 7:10 9:30

### VARSITY FOOTBALL SCHEDULE 1989-90

DATE	OPPONENT	TIME	PLACE
Aug. 25	Scrimmage - Brady	TBA	There
Sept. 1	Scrimmage - Rocksprings	TBA	Here
Sept. 8	Eden	8:00	Here
Sept. 15	Iraan	8:00	There
Sept. 22	Sonora	8:00	There
Sept. 29	Mason	8:00	There
Oct. 6**	Junction	8:00	Here
Oct. 13*	Reagan Co.	8:00	There
Oct. 20*	Ozona	8:00	Here
Oct. 27*	Forsan	8:00	There
Nov. 3*	Wall	8:00	Here
Nov. 10*	Winters	8:00	Here

\*\* Denotes Homecoming  
\* Denotes District

### JUNIOR VARSITY & MIDDLE SCHOOL FOOTBALL SCHEDULE 1989-90

DATE	OPPONENT	7th	8th	J.V.	PLACE
Sept. 8	OPEN				
Sept. 14	Iraan Iraan	5:00	6:30	6:00	There Here
Sept. 21					
Sept. 28	Mason	5:00	6:00	7:30	Here
Oct. 5	Junction	5:00	6:00	7:30	There
Oct. 12	Reagan Co. Reagan Co.	5:00	6:30	6:30	There Here
Oct. 19	Rankin		5:30		Here
Oct. 26	Ozona Ozona	5:00	6:30	6:00	There Here
Nov. 2	Wall Wall	5:00	6:00	6:00	Here There
Nov. 9	Winters Winters	5:00	6:30	6:00	There Here



## Sponsored by these Merchants

First National Bank

Lynn Meador Real Estate

Hayloft

Southwest Texas Electric Co-op Inc.

McCormick Exxon

Lantana Winery George Gower

Meador-Peters Agency

Eldorado Wool Co.



# New Law Provides Penalty For Possessing Milk Cases

Those colorful milk cases used by dairies to deliver milk to stores and restaurants are handy containers. They are great to store things in the garage or truck. College students love them for shelving in dormitories or apartments.

But using them or even possessing them is now illegal and can mean a big fine when convicted.

Governor Bill Clements signed legislation on June 14, which becomes effective on September 1, stating that any person who is illegally in possession of a milk case or cases shall, upon conviction, be sentenced to pay a fine not exceeding \$300 for each case. This fine also applies to removing the name of the dairy from the case.

However, there is a "grace period" of 60 days ... that runs to November 1 ... to permit those who have cases in their possession to return them **WITHOUT PENALTY**. That means cases may be returned to stores that sell the milk from the dairy named on the case, or to the dairy plant itself, without any fine. After November

1, legal action will be taken.

Why was this law passed? "The case loss in Texas and across the nation is "tremendous," according to Glenn Brown, President of the Dairy Products Institute of Texas. The State of Texas had a loss last year amounting to over 7 million dollars. This not only affects the dairies but ultimately raises the price of milk to consumers. The industry regrets that this action had to be taken," said the dairy spokesman, "but the costs are prohibitive and keep increasing year after year."

This same legislation also provides an identical penalty for the illegal use of grocery shopping carts, bread trays, laundry carts and egg baskets. These industries also lose large numbers of this expensive equipment which is also reflected in prices to the consumer. The 60 day grace period also applies to the return of these items.

"College students are big violators," the dairy spokesman added, "as they use them for shelves and supports in their dor-

mitories and apartments. People who drive trucks for business or pleasure keep supplies in these cases. They are also seen at marinas, open air markets and in countless other locations. In the past, cases have not only been used but also sold at flea markets. These will be checked after the grace period and punitive action will be taken."

## Daughter Honors Dad With Poem

**EDITOR'S NOTE:** The following was written by Yvonne Kerr of Eldorado and submitted to the Success for publication.

In this little City of Eldorado  
There lives a carpenter man,  
And most everyone always says,  
"If you want it built right, Fred Logan can!"  
Many a house he has built,  
Remodeled more than a few,  
Oh yes, he even built the swimming pool, too!

But, this little house,  
So tall and so straight,  
With its' little tin roof,  
And a lock that is safe.  
People have been asking,  
"What could it be?"  
He just slyly replies,  
With a grin on his face,  
And a smile in his eyes,  
"Open the door and see".  
Yes, it's the cutest little Out House  
That there ever could be!

To Mary David Coupe's east ranch it has gone,  
To take its' place out in the countryside,  
And there it will stand for years,  
Just stand-in all of its pride.  
Most men in this little city  
Call this man "Freddy",  
But, I just call this man Daddy.  
--By Yvonne Kerr

# Rabies Outbreak Underscores Need For Vaccinations

The Texas Department of Health (TDH) regularly reminds the Texas public about the importance that pet owners make sure their animals receive annual vaccinations against rabies, as required by law.

This year, especially in South Texas, dog owners should heed the advice. An unusually large outbreak of canine rabies, found mostly in dogs and in wild coyotes, has totaled about 40 rabies cases in the Hidalgo-Starr County area since September of last year.

Although no human cases have been reported, "domestic dogs have been the most frequent carriers in this outbreak. The potential of a person being infected by the family pet has always been there," according to Dr. Foy V. McCasland, chief of the TDH Bureau of Veterinary Public Health in Austin.

McCasland explained that, of the three basic strains of rabies most common in Texas, the canine strain is potentially the most dangerous to humans, since people are more likely to be exposed by a dog than by most other animals.

Although another strain of rabies occurs more frequently in Texas, it is usually found among

skunks in the wild. "Any strain of rabies is dangerous to humans and other animals, but some animals are more susceptible to particular strains," Dr. McCasland said.

McCasland said that an unusual feature of the canine rabies outbreak in South Texas is that the link between many of the infected dogs appears to be the infected coyotes. Coyotes are not notorious carriers of the strain, although almost any wild mammal can be infected.

Dr. McCasland expressly warns against adopting a wild animal as a pet. There is no approved rabies vaccine for wild species.

"People should be especially careful not to handle wild animals showing abnormal behaviors, such as not being afraid of people. Such behavior is not natural, and is a good clue that the animal could be sick, possibly with rabies," he said.

If a person is bitten by a wild animal, it is important that the animal be tested at a TDH lab for rabies.

In 1988, TDH laboratories in Austin, Houston, San Antonio and El Paso diagnosed 434 cases of rabies among the 10,498 specimens

they examined. Of those 434 infected animals, there were: 266 skunks, 57 bats, 30 cats, 21 dogs, 20 foxes, 14 cattle, nine horse, six coyotes, four raccoons, three goats, a deer, a ringtail, a bobcat and a sheep.

"Any animal bite should be taken seriously," Dr. McCasland said. If the animal is a dog or cat, it should be isolated and observed for ten days. Dogs and cats cannot transmit rabies for more than ten days before they show symptoms of the disease. All bites should be reported to the local health authority, which will assist with animals. The wound should be cleaned with soap and water, and a physician should be contacted about treatment.



# Texas Historical Commission Offers Grants To History Museums

The Texas Historical Commission announces that grant funds are available to history museums for the preservation, conservation, and interpretation of collections.

Beginning November 1, 1989, and ending August 31, 1990, the funds will be available for special projects including, but not limited to, developing conservation methods, obtaining technical assistance, training staff, developing educational programs, and acquiring archival supplies.

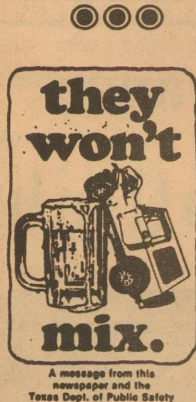
Applications may be submitted for up to 50 percent of a project's cost, provided that the request does not exceed \$1,000. Museums must provide the remaining 50 percent of the cost either in matching funds or a

combination of funds and in-kind services. In-kind services may not exceed one-half of a museum's contribution. The THC will give favorable consideration to applicants that indicate strong community support by raising funds at the local level.

Grant applications are due by 5 p.m., October 13, 1989. Five copies of the application must be submitted. For more information, contact Kit Neumann, grants administrator, County Historical Commission and Museum Services Department, THC, P.O. Box 12276, Austin, Texas 78711, 512/463-6100.



"Well-timed silence hath more eloquence than speech."  
--M.T. Tupper



**Eldorado Wool Company**  
Eldorado, Texas  
PHONE NUMBERS:  
Feed Department 853-2820  
Office & Warehouse 853-2772

**Horse-shoeing**  
**Bud Arendt**  
Experienced  
Reliable  
853-2337  
Leave Message



**Pat's Hair Salon**  
Your full-service salon  
**Pat Lloyd** Owner/Stylist  
**Melinda Hunley** Stylist & Nail Tech  
Offering  
Manicures, Pedicures, Hair Removal with Hot Wax, Lash & Brow Dye  
**COUPON COUPON COUPON**  
**\$2.00 off Boys Haircuts**  
Middle School & High School ask for Melinda  
Open 9 to 5  
Monday - Friday  
Walk-ins Welcome  
**Pat's Hair Salon**  
211 S.W. Main  
Eldorado, Tx.  
853-3608

CIAL SPECIAL SPECIAL SPECIAL SPECIAL SPECIAL  
**6 Pac Can Dr. Pepper**  
**99c**  
w/ \$10.00 purchase limit 1  
**Jim's Thriftway** thereafter \$1.39  
505 S. E. Crocket Sonora, Texas no limit  
SPECIAL SPECIAL SPECIAL SPECIAL SPECIAL SPEC

**NOTICE OF VOTE ON TAX RATE**  
The Schleicher County Hospital District conducted a public hearing on a proposal to increase your property taxes by 21.60 percent on August 28, 1989 at 7:00 p.m.  
A public meeting to vote on tax rate will be held on September 11, 1989 at 7:00 p.m. at the Schleicher County Medical Center dining room.



# Anorexia And Bulimia --

## New Treatment, New Hope

"Imagine for a moment that you have an excessive preoccupation with your weight. Throughout each day you constantly worry about your 'ideal' weight and shape. Yet, you routinely find yourself eating massive quantities of food even though you are not really hungry. Afterwards, feeling worried and guilty about the possibility of weight gain, you purge your system through self-induced vomiting. Eventually, you might even graduate to laxative abuse or self-imposed starvation. Unfortunately, for many young women this tragic pattern is not just an imaginary scenario."

### Anorexia and Bulimia

Anorexia nervosa and bulimia nervosa are two types of eating disorders that are shrouded by mystery, fear and anxiety. If ignored both of these eating disorders can be fatal.

According to Dr. Patrick Hughes, an eating disorder specialist and Medical Director of the Psychiatric Intensive Care Unit at Scott and White and Assistant Professor at the Texas A&M University College of Medicine in Temple, new treatments for both disorders are being used successfully at Scott and White.

Anorexia nervosa and bulimia nervosa are defined and diagnosed differently, Dr. Hughes explained, but, "they are probably different expressions of one basic illness."

Anorexia nervosa is described as self-induced weight loss and pathological pursuit of thinness. "These are people who have a feeling of severe anxiety about eating and simply refrain from doing so," Dr. Hughes said. "They also use purging behaviors, such as self-induced vomiting or laxative abuse, to lose weight."

Bulimia nervosa on the other hand, involves people of reason-

ably normal weights who eat "out of control" or binge and then purge themselves using laxatives or self-induced vomiting.

Both eating disorders occur approximately 20 times more frequently in women than in men, Dr. Hughes said.

### The Symptoms

Symptoms of both illnesses include an excessive preoccupation with weight or weight loss and a desperate attempt to attain a perceived "ideal" weight and shape. Purging may be prominent in either illness.

"Parents should be aware of their children's attitude," Dr. Hughes said. "If they get up in the morning and go to bed at night with a serious preoccupation with food or weight control, they may have a problem."

This attitude may lead a person to engage in dangerous behaviors, Dr. Hughes said. "Not only self-induced vomiting and abuse of oral laxatives as mentioned before, but also ingestion of Ipecac to induce vomiting, excessive exercising to burn up calories, and extended periods of refusing to eat are common."

### Causes

The precise cause of both anorexia nervosa and bulimia nervosa has not been established, but one or more factors must be present for either of these illnesses to develop.

First, the person has to deeply accept and believe that striving for perfection is ultimately important, while also deeply believing that expression of feelings, especially anger, is a bad or undesirable behavior, says Dr. Hughes.

Second, most of these people believe they are not in control of their lives and feel they can't be successful without some dependence on their families. They have

strong doubts about their own capabilities to succeed or even survive as independent adults. And they frequently have received mixed encouragement and discouragement from their parents regarding growing up and establishing their own identity.

Lastly, many physicians believe there is a genetic factor associated to eating disorders which may be linked to mood problems. This factor plays a major role in the success of the new treatment of these patients with antidepressant medications.

### Treatments

"Up until five years ago doctors were baffled as to effective treatment for eating disorders," says Dr. Hughes.

"Now we have an effective treatment program that includes antidepressant drugs in conjunction with group psychotherapy with other eating disorder patients, self-relaxation training and dietary instruction in re-learning and practicing normal, healthy eating," he added.

In 1984, antidepressant drugs were first used by Dr. Harrison Pope, a psychiatrist at Massachusetts General Hospital. Dr. Pope prescribed the antidepressant imipramine for patients with eating disorders and saw 80 percent of them improve their condition.

Dr. Hughes, while completing his residency training at the Mayo Clinic, prescribed desipramine, another form of imipramine, which also received positive results along with minimal side effects.

### Awareness

The most important fact to keep in mind about treatment is that we know how to effectively and rapidly help patients recover from either of these illnesses, Dr. Hughes said, especially if they enter the treatment before they are physically ill.

"Therefore, early recognition by loving friends and family members can make a difference in the amount of pain and suffering experienced by a person who has an eating disorder," Dr. Hughes said.

# Texas Legislature Lets Three Tax Measures Expire

State Comptroller Bob Bullock said Friday that Texans will pay \$523 million less in state taxes during the next biennium since the 71st Texas Legislature let three temporary state tax measures expire.

"Our economy has recovered

## August Marks Anniversary For SS Drive

In August, the Social Security Administration marks the first anniversary of its most successful drive to inform members of the public about their Social Security coverage, Franklin H. Upp, Social Security manager in San Angelo, announced.

The Personal Earnings and Benefit Estimate Statement (PEBES) was introduced to the public on August 4, 1988. Since then, almost 4.5 million people have sent for and received their PEBES. Reactions have been overwhelmingly positive, Upp said. "Why didn't they do this years ago?" is a commonly heard remark.

PEBES offers a year-by-year breakdown of posted earnings and the estimated FICA taxes paid. It also shows estimates for disability, survivors, and retirement benefits at ages 62, full retirement age (currently 65), and 70.

PEBES request forms are available by calling the toll-free number 1-800-937-2000 or writing to: Consumer Information Center, Department 55, Pueblo, Colorado 81009 and ask for form SSA-7004, Upp said.

The San Angelo Social Security Office is located at 2214 Sherwood Way. The telephone number is 949-4608.

to the point that the Legislature didn't have to extend these taxes to bring in revenue to pay the state's bills. And frankly, I believe that most taxpayers needed the break," Bullock said.

One of the temporary measures, a yearly \$110 professional occupation fee, will expire on August 31, according to Bullock. The fee is paid by professionals such as attorneys, veterinarians, doctors, engineers and architects.

A temporary increase in the state's franchise tax rate is set to expire in 1990, when the tax rate will drop from \$6.70 per \$1,000 taxable capital and surplus back to \$5.25 per \$1,000 taxable capital and surplus. The minimum franchise tax paid by corporations will also return to \$68 a year from the temporary minimum rate of \$150 per year.

A temporary 20 percent insurance surtax, which was added to the insurance occupation tax, expired at the end of 1988, Bullock said. Insurance companies in Texas pay the tax yearly based on their gross premium receipts. The tax rate varies, depending on how much of the company's premium receipts are invested back into Texas.

Bullock said these temporary tax increases brought in \$584 million during the 1988-89 biennial revenue period and would have contributed an additional \$523 million during the 1990-91 biennium.

The Legislature approved the temporary revenue measures in 1987 in an attempt to help Texas meet its budget during the state's financial collapse in the mid-1980's.

## Agape Church To Host Victory Life Crusade

The Agape Assembly of God Church at 502 East Warner in Eldorado will host a Victory Life Crusade Sunday through Wednesday, September 3-6, with Evangelist Dwayne Stone of Jenks, Oklahoma. Sunday services will be at 11 a.m. and 7 p.m. with week-night services beginning at 7 p.m.

Rev. Stone began his pulpit ministry at the age of 14. His formal education includes study at Northwest Nazarene College and Central Bible College. He is the founder and president of Victory Ministries and is in much demand as a missionary evangelist.

His missionary work has taken him to several foreign countries. In the past year he and his team have built two churches

in Honduras and Jamaica, a Bible School in Ecuador and held crusades in Mexico, Jamaica and Honduras.

Recently, Stone has been ministering in the United States. He has preached in churches of many denominations, although he holds credentials with the Assemblies of God. The crusade team of Victory Ministries has also held several city and area wide crusades with churches from many denominations participating.

Pastor Ken Otwell and the members of Agape Assembly of God Church are looking forward to the revival meeting. Everyone is invited to join them for these special services.



Members of the KLST Television team pose after the recently held lunch at which the team addressed citizens of Eldorado.

(915) 853-2314



The palm tree gets its name from the type of palm that has blades that fan out, resembling the palm and fingers of a hand.

JERRY'S T.V. SERVICE  
SYLVANIA TELEVISIONS - SATELLITE T.V. SYSTEMS

JERRY J. JONES  
Owner

214 S. MAIN STREET  
ELDORADO, TEXAS 76936

# SWTEC

"Member Owned"

"The Co-op"

Proudly Serving  
West Texas

853-2544 office hours  
853-2546 24 hrs.

**Dixie Doodle Drive In**  
601 S. Main 853-3624  
11 a.m. to 11 p.m. Daily

**A Real Texas Hamburger - \$1.85**  
w/cheese - \$2.05 w/double meat - \$2.60  
w/bacon - \$2.20 w/chili - \$2.15  
Jalepeno Burger - \$2.00 Mushroom  
Burger - \$2.20 Guacamole Burger - \$2.20  
Avacodo Burger - \$2.15 Pizza Burger - \$2.55  
Pattie Melt - \$2.50 Chili Size - \$3.95  
Grilled Onion - \$1.90

Welcome all phone-in orders!

**BELOW PRIME RATES**  
ON LAND BANK FARM & RANCH LOANS

RURAL REAL ESTATE LOAN INFORMATION

SECURITY	TYPE	STATED RATE	COMMENTS	INTEREST PAID ON FUNDS HELD	ANNUAL PERCENTAGE RATE	EFFECTIVE INTEREST RATE*	TERM OF YEARS
Farm and Ranch	FIXED	9.95%	RATE FIXED FOR 10 YEARS	9.95%**	10.15%	10.48%	10-40
Purchase Money Loans	FIXED	10.25%	CAN CONVERT TO FIXED	10.25%	10.38%	10.70%	5-40
Farm and Ranch	FIXED	11.00%	RATE FIXED FOR 5 YEARS	11.00%**	11.20%	11.58%	5-40
	FIXED	11.10%	RATE FIXED FOR 10 YEARS	11.10%**	11.10%	11.68%	10-40

RESIDENTIAL LOAN INFORMATION

SECURITY	TYPE	STATED RATE	COMMENTS	INTEREST PAID ON FUNDS HELD	ANNUAL PERCENTAGE RATE	EFFECTIVE INTEREST RATE*	TERM OF YEARS
Residential	FIXED	10.20%	RATE FIXED FOR 10 YEARS	10.20%**	10.40%	10.74%	10-25
Purchase Money Loans	FIXED	10.50%	CAN CONVERT TO FIXED	10.50%	10.61%	11.05%	5-25
Residential	FIXED	11.25%	RATE FIXED FOR 5 YEARS	11.25%**	11.35%	11.94%	5-25
	FIXED	11.35%	RATE FIXED FOR 10 YEARS	11.35%**	11.35%	11.95%	10-25

\*does effect of stock requirement and origination fees  
\*\* rate may be lower dependent upon amount placed in fund.

**FIXED RATE LOAN PLANS**  
LIMITED FUNDS AVAILABLE AT THESE RATES

- LONG-TERM LOANS FULLY AMORTIZED
- ASSUMABLE
- VARIABLE RATE CAN CONVERT TO FIXED AT CLOSING
- RATE CONVERSIONS AVAILABLE AT END OF FIXED RATE PERIOD
- EXISTING LOANS AVAILABLE FOR CONVERSION
- FUNDS HELD ACCOUNTS AVAILABLE
- BANK CLOSED LOAN FEE OF 1.00%
- FIXED RATES REPRICED WEEKLY

**FEDERAL LAND BANK ASSOCIATIONS OF TEXAS** Offices Located Throughout the State

Jack B. Smith Jr. President  
217 E. Main Street  
P.O. Box 397  
Sonora, Texas 76950  
915/387-2777

**THORP'S LAUN-DRY**  
Laundry & Cleaners  
Linen Supply - Uniforms - Dust Control  
SONORA - OZONA - ELDORADO  
SINCE 1948  
214 S. Main Eldorado, Texas  
853-2900

Mittel Insurance presents...  
**Eagle Spotlight**

ERIN MEADOR

We spotlight Erin Meador this week. She is the daughter of Christy and Lynn Meador. She has two brothers, Chris and Stan.

Erin is in the sixth grade at Eldorado Middle School. She loves to swim, ride her bike, and cook. She is in the 4-H club, likes to sew and plays drums in the band.

Mittel Insurance Agency  
"For Your Insurance Needs"  
Phone: 853-2576



# A Touch Of History

By Rene Calcote

Traveling back in time, to the beginning of the educational history of Schleicher County, one might find pioneers with great courage moving to a new unsettled land. It was about 100 years ago, and the first little school is built in the newly established town of Verand.

Families moved to Verand in search of permanent homes, settlers carrying all their belongings on covered wagons, herding their stock.

The next advancement in educational history finds the citizens moving the one room school from Verand to Eldorado, across the prairie, loaded on wheels and pulled by horses. The year was 1895.

1909 found a new two story brick school building being built in Eldorado. The county had progressed, and schools are established in various rural locations throughout

the county. They are: Middle Valley, Mayer, Adams, Lofton, Cliff, Bailey Ranch, Kaffir, Reynolds and Alexander. These schools are abreast of the times, and offer a curriculum required by the State Department of Education.

The era of rural schools fades away by the year 1948, all the common school districts are annexed to Eldorado -- thus being Schleicher County Independent School District.

1948 to 1950 finds Eldorado in a huge building program. The total value of the school property built is \$1,954,987.00.

Enrollment of 625 students is assessed in 1978. The economy is good, the Schleicher County ISD is based on oil and gas production, farming, ranching and small businesses. A large number of parents have college degrees and expect their children to go to college;

therefore, Schleicher County Public Schools maintain a strong college preparatory curriculum.

Middle school is added to SCISD in 1985-86 to accommodate the increase in enrollment. Today SCISD offers a superior foundation in education to each willing student. Credit goes to the school board and administration, who govern; the teachers who educate; the employees who maintain; and most of all the taxpayers, who make all this possible.

The future greatness of America lies in the education of the young people of today receive.



## Hance Calls For DOE Hearing In Texas

Texas Railroad Commission Chairman Kent Hance today called on the U.S. Department of Energy to schedule a public hearing in Texas as part of its effort to develop a national energy policy.

"No review of our nation's energy picture will be complete unless it includes input from the thousands of independent oil and gas producers and royalty owners in Texas," said Hance.

"For decades, these Texans have been the backbone of our nation's oil and gas industry," he said. "They deserve a voice in the development of this critical national energy policy."

"Their keen insight and understanding of the oil and gas industry will prove invaluable to the U.S. Department of Energy and its efforts."

U.S. Energy Secretary James Watkins scheduled four regional public hearings after being instructed to develop a national



"The man who wins may have been counted out several times, but he didn't hear the referee."

--H.E. Jansen

### KENT'S

#### AUTOMOTIVE

#### PARTS AND SERVICE

Phone 853-2733

712 North Divide  
Eldorado, Texas 76936

### Need insurance?

Then give me a ring. I'm your neighborhood Farmers Insurance Group Agent and I may provide the coverage you need in Auto, Life, Fire or Commercial insurance - and maybe save your money too. Let me tell you about the discounts available - for non-smokers, good students, for drivers between 25 and 69 years of age. And for your convenience you can take care of most all your insurance with Farmers in just one monthly payment.

Randy Upham  
Insurance Agency  
405 277 North  
Sonora, Tx.  
387-2465



# TSTA Gives Mattox A-Plus

The Texas State Teachers Association gave Attorney General Jim Mattox an "A-plus" grade for his formal legal opinion giving the State Board of Education the green light to give Texas teachers "a little breathing room" before imposing yet another set of new and tougher requirements for attaining level three status of the state's career ladder merit pay system.

State Education Commissioner William N. Kirby and the State Board asked for the Attorney General's opinion after legislative

leaders, including Lt. Gov. Bill Hobby and Speaker Gib Lewis, asked the SBOE to implement the new teacher career ladder standards immediately for the 1989-90 school year instead of in 1990-91 as actually stated in the law, House Bill 2566, as enacted.

In his opinion, Mattox agrees with TSTA attorneys that the new level three standards are to be implemented in September 1990.

SBOE is expected to act on the implementation of the career ladder legislation at its next meeting September 8-9 in Austin.

TSTA President Olivia "Ollie" Besteiro stated, "We want to applaud Attorney General Mattox for issuing this important opinion. Because another organization has already filed a lawsuit on the same issue, Mr. Mattox could have taken the easy way out and remained silent."

"His ruling is welcomed by this state's teachers. We have just concluded a round of 16 meetings with teacher leaders around Texas and based on their feelings I guarantee that the immediate and unwarranted imposition of another new set of career ladder standards -- without advance warning -- would result in the most severe teacher morale crisis since Texas educators were forced to prove their literacy in 1985."

Besteiro added, "We now will redouble our efforts to persuade the State Board of Education members to follow the advice they

sought from the Attorney General. To do otherwise would be to sentence the new school year to the gloomiest beginning in recent memory."

The TSTA President explained that while Mattox still had the SBOE's request for a formal legal opinion under consideration, the rival Association of Texas Professional Educators filed a lawsuit seeking the 1990-91 implementation. Normally, the Attorney General does not issue pre-trial opinions on matters that are the subject of pending litigation, though both Commission Kirby and TSTA asked him to make an exception in this case.

Level three is the highest career ladder level Texas teachers can attain. Level four, the top rung, has yet to be implemented.

Besteiro said, "I cannot overemphasize the critical importance of delaying the implementation of these new standards in order to give teachers at least a year to become acquainted with them and to prepare to meet them."

"The short history of the career ladder, which was originally intended to reward teachers for their excellence, has been riddled with unfairness and countless mid-course corrections. Local school districts have consistently changed the rules in order to limit the number of 'excellent' teachers to match the funds available," said the TSTA president.

The only person who should be happy being down and out is an astronaut.



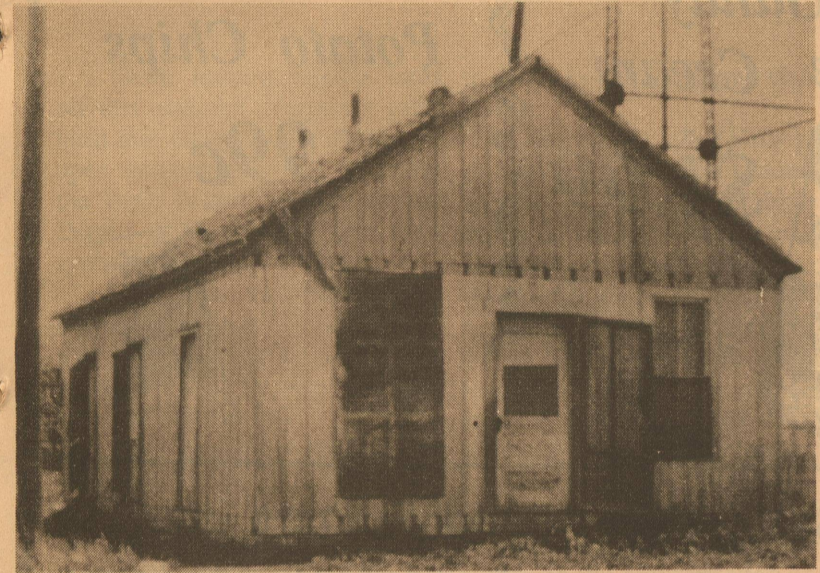
Dallas, Texas was named after George Mifflin Dallas. Who was he? Vice-president of the United States in 1845.



## A to Z Maintenance

Remodeling House Repairs  
Painting - Interior/Exterior  
sheetrock Work

Brian Holsey  
853-2603



Shown here is the first school building in Eldorado.



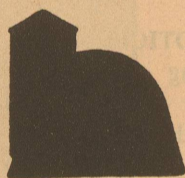
Pictured above is the 1909 Eldorado school building.

"Blessed are they who have the gift of making friends, for it is one of God's best gifts.

It involves many things, but above all, the power of going out of one's self, and appreciating whatever is noble and loving in another."

--Thomas Hughes

### Hayloft



HWY. 277  
800 N. DIVIDE  
ELDORADO, TEXAS 76936

853-2943

GLORIA SWIFT

### LOST YOUR JOB? WE CAN HELP.

1-800-433-1-800

TEXAS NEEDS YOU BACK ON THE JOB.

Texas Department of Commerce  
Work Force Development Division  
P.O. Box 12728  
Austin, Texas 78711

## Craven Tire Service

McCormick Exxon  
Hercules by Cooper

- 7.50R16 PNEUMANT 12 ply Hwy \$90.00
- 7.00/15 6 ply Hwy. \$52.32
- 7.00/15 6 ply Trac. \$56.48
- 7.50/16 8 ply Hwy. \$62.72
- 7.50/16 8 ply Trac. \$66.88
- LT 235/85R16 10 ply hwy. \$89.80
- LT 235/85R16 10 ply OTD \$103.18
- LT 235/75R15 6 ply Terra Trac RWL \$85.40
- 27/850 R14 6 ply Terra Trac RWL \$75.00
- 27/950/16.5 8 ply Hercumile \$72.46 Bias
- 30/950R15 6 ply Terra Trac RWL \$86.44
- 40,000 mile Steel Belted Radials W/s
- P19575R14--- \$40.80
- P20575R14--- \$41.84
- P21575R14---\$43.92
- P20575R15--- \$42.88
- P21575R15 --- \$44.96
- P22575R15 --- \$46.00
- P23575R15 --- \$48.08

Allow 24 hrs. for Delivery  
Bridgestone Also Available

## NOTICE OF PUBLIC HEARING ON SCHLEICHER COUNTY APPRAISAL DISTRICT BUDGET

The Schleicher County Appraisal District will hold a public hearing on a proposed budget for the 1990 fiscal year.

The public hearing will be held on Tuesday, September 12, 1989 at 7:00 p.m. in the Commissioner's Courtroom in the County Courthouse.

A summary of the appraisal district budget follows:  
The total amount of the proposed budget is \$96,810.00.

- Employee Salaries & Benefits - \$47,460.00
- Operating Expense - \$6,575.00
- Contracted Services - \$42,775.00

The total amount of increase over the current year's budget is \$1,825.00.

The number of employees compensated under the proposed budget will be two.

The number of employees compensated under the current budget is two.

The appraisal district is supported solely by payments from the local taxing units served by the appraisal district.

If approved by the appraisal district board of directors at the public hearing, this proposed budget will take effect automatically unless disapproved by the governing bodies of the county, school districts, cities, and towns served by the appraisal district.

A copy of the proposed budget is available for public inspection in the office of each of those governing bodies. The proposed budget may also be viewed at the appraisal district office.



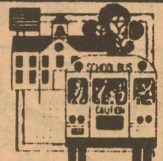
<p><b>Boneless Chuck Roast</b> <b>\$1.59</b></p>	<p><b>16 oz. Van Camp Pork &amp; Beans</b> <b>3/99c</b></p> 	<p>6 Pac Can Coke or 7Up-----\$1.79 8 oz. Gandy Sour Cream-----59c 1/2 Gallon Gandy Buttermilk-----\$1.19 12 oz. Spam-----\$1.79 Jumbo Bounty Towels-----89c 20 oz. Kelloggs Sugar Frosted Flakes--\$2.39 10 oz. Parade Cheese Longhorn or Colby--\$1.39</p>	<p><b>12 oz. Citrus Hill Orange Juice</b> <b>79c</b></p> 	<p><b>Boneless Sirloin</b> <b>\$2.79</b></p>	
		<p><b>Lettuce</b> <b>2/\$1.00</b></p>	<p><b>Texas Watermelons</b> <b>\$2.49</b></p>		
<p><b>Owen</b> <b>1 lb. Sausage</b> <b>\$1.59</b></p> 	<p><b>3 Liter Coke or 7Up</b> <b>89c</b></p> 	<p><b>10 lb. Bag Potatoes</b> <b>\$1.99</b></p> <p><b>Boneless Arm Roast--\$1.69/lb</b></p>	<p><b>1/2 Gallon Gandy Ice Cream</b> <b>\$1.99</b></p> 	<p><b>Lays Potato Chips</b> <b>99c</b></p> 	
		<p><b>1 lb. Cello Carrots-----4 pkg/\$1.00</b></p>			

Prices Effective Aug. 31 - Sept. 6

**Glidden Foods** Open Monday-Saturday 9 a.m.-6 p.m. Food Stamps Accepted



**School Bells Mean School Bills!**  
Get Extra Cash With A Classified Ad



**Want Ads**

**GARAGE SALE**  
\*\*\*\*\*  
\*\*\*\*\*  
GARAGE SALE: 4 families, Friday, September 1, 208 E. Live Oak. 8 a.m. til ? Baby furniture, baby items, clothes, furniture. 1-(8-31-89)-b  
GARAGE SALE  
4 Families - September 1, 208 East Live Oak. 8 a.m. til ? Baby furniture, clothes, furniture, baby items. 1-(8-31-89)-b

**PUBLIC NOTICE**  
\*\*\*\*\*  
\*\*\*\*\*  
PUBLI NOTICE  
Notice is hereby given of the availability of the Annual Budget, which wa approved by the Commissioners' Court for the year 1990, for public viewing in the County Clerk's office during business hours each week day in the Courthouse, Eldorado, Texas. Helen Blakeway, County Clerk  
PUBLI NOTICE  
Notice is hereby given of the availability of the Annual Budget, which was approved by the Commissioners' Court for the year 1990, for public viewing in the County Clerk's office during business hours each week day in the Courthouse, Eldorado, Texas. Helen Blakeway County Clerk 1-(8-31-89)-b


**WANTED**  
\*\*\*\*\*  
\*\*\*\*\*  
WANTED: Instructors. Space available for small craft classes. Contact Kymm Nixon at Piddler's Porch, 853-3237. 3-(8-31-89)-b  
\*\*\*\*\*  
FOR SALE  
\*\*\*\*\*  
\*\*\*\*\*  
FOR SALE: Home for sale. Small 3 bedroom, 1 bath on 2 lots near school. Selling completely furnished \$12,500 Call 853-2115 for appointment. 2-(8-24-89)-b  
T-Shirts SALE  
T-Shirts, T-Shirts, T-Shirts. Hundreds of T-Shirts, all sizes \$1.00 each. Piddler's Porch, Front Porch Sale, Friday, September 1 only. 10 a.m. to 5 p.m. 1-(8-31-89)-b

**FOR SALE:** Home with 4 bedrooms, 1 upstairs, on 2 lots. 2 baths, utility room, double carport, sun deck, central air and heat, vinyl siding. \$59,500. Call 853-3368. 4-(8-10-89)-b  
\*\*\*\*\*  
**NOTICE**  
\*\*\*\*\*  
\*\*\*\*\*  
**NOTICE:** Buy or sell - Art, cookbooks, American, Russian, Asian, World War I & II, Photography, Poetry, Language, Religious, Metaphysical, Children 1st edition, Texana. *Ye Ole Fantastique Book Shoppe*. 1218 W. Beauregard. 1-(8-31-89)-b

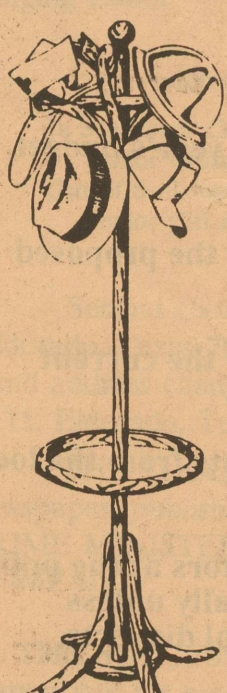
**NOTICE**  
Mary Kay Cosmetics. Graduation, birthday, anniversary gifts. Martha Spinks, 701 Lee Street. 853-3415 after 4 p.m. tfn-(7-20-89)-b  
**NOTICE:** Let me decorate your cakes. Just bring a picture or idea. 3 day notice please. No wedding cakes. 853-3136, after 5 p.m. Kim-et Nelson. 1-(8-31-89)-b  
**LOST:** Orange male bobtail cat. Has on light blue collar. Reward. Call 853-3602. 1-(8-31-89)-p  
**NOTICE:** For all your plumbing repairs, call Tommy Hunley. After 5 p.m. and on weekends 853-3705. 1-(8-31-89)-b  
**NOTICE:** Defensive Driving offered weekly in this area. Call 853-2777. tfn-(6-1-89)-b

**L.V.N. NEEDED**  
Schleicher County Medical Center Nursing Home needs an L.V.N. Full time 3-11 shift, work on 4 days off 2. Part time 11-7 shift, work 2-3 nights/week. Starting salary \$7.75 per hour. Contact Rita Reeves, R.N. 853-2049 or Steve Goode 853-2507. 8-(8-3-89)-b  
**NOTICE**  
Porcelain Doll Class  
By Jean Kuykendall  
Call or come by Piddler's Porch for details 853-3237 2-(8-31-89)-b

**Back to School**



**We salute the working men and women of Texas!**



**Have a safe Labor Day!**

Mothers Against Drunk Driving  
Texas Department of Public Safety

**BUCKLE UP TEXAS**



Texas Quality. Texas Proud. **TEXAS TIDBITS** brought to you by Maryland Club 100% Pure Coffee

The town of Milford, situated in southwestern Ellis County, was named for a crossing on Mill Creek. Located in a fertile cotton producing area, the town had seven churches, two gins, and 30 businesses in the 1940's. Its population has remained stable since then and is boasted about in its clever town slogan: "The Home of 700 friendly people and three or four old grouches."

**B&D Pest Control**  
Professional Service  
Quality Guaranteed  
**George Gower 853-2539**  
Ph. (915) 949-3447 San Angelo, Texas

**How to clear the clutter and make extra cash.**



Garage Sale ads pay by turning your "junk" into another's "treasure".

Do what hundreds of other people do every time they give their home a thorough cleaning ... advertise in the Classified's Garage Sale column. Call and place your ad today ...

**853-3125**

**The Success**

**1987 Chrysler 5th Ave.**  
Gold with cloth interior. Loaded with all the extras. One owner. 16,000 miles. Like new. \$10,995.00

**1984 Chevrolet Camaro Berlenitta**  
305 V8, automatic, tilt, cruise, cassette, one owner, 40,000 miles. Was \$5995.00. Reduced to \$5495.00.

**1985 Olds. 98 Regency Brougham**  
4 dr. sedan. White with blue cloth interior. Still in factory warranty. Only 16,000 miles. Call for more details.

**1986 Chrysler LeBaron**  
4 dr. sedan, automatic, power and air. Good economical transportation. \$5895.00

Save \$1000.00 on year end close outs on all Chevrolet, Oldsmobiles, Buicks and Pontiacs.

GMAC Financing Available

**Atkision**  
CHEVROLET OLDSMOBILE BUICK PONTIAC SONORA, TEXAS

11-10 and Golf Course Rd. Sonora, Texas (915)387-2529