



Varsity EAGLETtes -- Making up the Eldorado High School varsity girls basketball squad this year are [standing, l-r] Sue Dean, Beva Martinez, Norma Martinez, Lupe Montalvo, Amy Turner, Amy Kotsch, Charissa Halbert, Ashley Johnson, and Coach Cindy Polley. Managers are [l-r] Cynthia Mendez, Kelly Squyres and Kim Scott. [EHS Annual Staff Photo]

## Nancy Lester tabbed

Nancy Lester will head the Schleicher County Chamber of Commerce in 1988. She was elected chamber president at a meeting of the new board of directors Monday.

Raymond Mittel was selected vice president, with Jo Ward being re-elected secretary-treasurer. Cindy McGinnes is chamber manager.

Other members of the chamber board this year are Jo Ed Hill, Abbie McCormick, George Gower, Jim Martin, Steve Williams and Jim Glidden.

The new chamber board voted to continue meeting on the first and third Mondays of each month at Eagle Dairy Mart.

Following the election of officers the board discussed several ongoing chamber projects and adjourned.

### EVERYONE URGED TO PARTICIPATE

## SCISD conducting new Program

The Schleicher County Independent School District needs to do a comprehensive assessment in order to maintain its accreditation through the Texas Education Agency and the State Board of Education.

This means that a thorough evaluation of the educational programs of the Schleicher County I.S.D., the courses offered, the present level of implementation and the resulting outcomes will be done.

The information collected will then be related to the educational goals of the district and a long

range plan of action will be defined that will help to attain the aspired goals.

Persons wanting to take part in the survey should pick one up at the United States Post Office in Eldorado.

Parents, non-parents and persons of all ethnic groups are invited to participate. Even current students will fill out the evaluations.

The assessments should be completed and turned in at the United States Post Office in Eldorado by February 17.

The Schleicher County I.S.D.

will utilize materials developed by the National Study of School Evaluation for this purpose and thus the initial task is to identify the educational goals that the district wants to implement and which ones will become part of its program. The identification of educational goals will enable the Administrative Staff conducting the evaluation to develop a set of basic principles of education that will become the philosophical framework from which concrete educational objectives can be developed for the district.

In order to identify the

educational goals that are supported by the Eldorado Community (Board members, teachers, parents and students), the Administrative Staff decided to conduct a needs assessment of educational goals based on work done by the Schleicher County I.S.D. staff. Therefore, the purpose of the Needs Assessment are basically four:

1. Identify the educational goals that are supported the educational community of the Schleicher County I.S.D.
2. Provide the School Board with a set of educational goals

that will enable them to design and write the philosophical educational principals that represent the framework under which all programs will be designed, developed and implemented.

3. Provide a date base that will give specificity and orientation for the long range planning and development of Schleicher County I.S.D. program.

4. Prioritize the educational goals so that more crucial goals will be planned first. This prioritization is deemed to be necessary because resources (time, monies, personnel, facilities, etc.) do not allow for the accomplishment of all the major purposes and goals that the district might find important.

## t.b.

BY T.B. NEILL

### HE RETURNETH.....

The vision came back Sunday night, unfolding as if by magic from the dashboard of the Bronco and this time he was wearing a Washington Redskins jersey.

"Tish, tish, tish, t.b. you should have known the Redskins would beat the Broncos. The 'Skins have the best coach in the National Football League," he said.

"Wal, I don't know about that, but it's a shame it wasn't even a good game to watch," this columnist insisted, trying a subtle change of subject.

"Neill, even your wife said the Redskins would win and she should know--she is one," the vision continued, obviously not about to let yours truly off the proverbial hook.

"That doesn't mean anything. She doesn't hardly know the difference between a pigskin and porkskin. She was just rooting for the Redskins 'cause she has all that Choctaw Indian blood in her. I didn't have the heart to tell her that there isn't a single 'redskin' on the Redskins.

"Had I told her that more Texans play for the University of Oklahoma that Okies do we would really have started something," the publisher pointed out.

"Do you visions know how the game will turn out before it is played or not?" we continued.

"We find out from Jimmy the Greek, and since he isn't on the tube anymore we're in trouble. What did he get fired for Mr. Publisher?"

"Wal, he made some racist remarks and CBS canned him," we answered.

"Against Redskins?" the vision queried.

"No, against blacks," we answered again, getting a tad impatient with the vision who is supposed to be all-knowing and instead has to be brought up to date on current events by this mere mortal.

"I did hear about Dan Rather and George Bush," the vision said. "Old George ain't quite the wimp a lot of people thought he was and Rather was out of line."

See t.b. Page 3.

## Voter registration up

### LARGE TURNOUT FOR PRIMARY POSSIBLE

There may be only one contested local race on the March 8 Democratic Primary ballot in Schleicher County, but that race has created some major interest, according to county officials.

County Tax Assessor Collector Dorothy Evans reported Wednesday that some 200 new voters have already registered, pointing to what she hopes will be a good turnout for the March vote.

"But you never know. A lot of times people register and then don't vote. But this year could be different--we've never had a local race to generate this kind of

interest," Mrs. Evans said.

Schleicher County now has over 1,600 registered voters, a mark the veteran tax assessor-collector thinks is better than average for a county of about 3,000 folks.

"I would think that would be a very good percentage," she added.

Deadline for registering to vote in the primary will be midnight, March 7. "Anything coming in the mail and post-marked before then will be alright," Mrs. Evans pointed out.

Absentee voting begins Feb-

ruary 17 and runs through March 4. Persons who think they will be out of town on March 8 can go to the Schleicher County Clerk's office to cast an absentee ballot.

Those voting absentee should remember to take their voter registration card.

Anyone out of town can write the clerk's office at Box 580 for an application for absentee ballot.

The race creating the voter interest in Schleicher County is apparently the two-man battle to see who will replace retiring Sheriff Orval Edmiston.

Ronnie Norris, chief deputy,

and Ruben Flores, also a deputy, are both on the ballot to succeed Edmiston. The sheriff, who has held the office for 31 years, has indicated to the commissioners court that he will resign following the primary to make way for the new sheriff.

No Republicans announced for the sheriff's slot, so the winner of the March 8 primary will have no opposition in November.

The Democrats have a crowded field seeking the White House, but no clear cut favorite has emerged in Schleicher County.

### SEE NEW MRI UNIT

## Local students tour SA hospital

Mrs. Martha Spinks' Creative and Productive Thinking class took a tour of Shannon Hospital's Diagnostic Center recently. Shannon Hospital is the only hospital in the region to have a MRI (Magnetic Resonance Imaging) for diagnosing brain tumors, brain concussions, disk distraction and many other complicated problems.

The new MRI Unit is especially exciting to have in the area because certain diagnosis can be made faster, with less pain and

much more accurately.

It is a giant magnet that aligns the hydrogen molecules in the body of the patient and then radiograph pictures are taken. A computer is used to separate the pictures into whatever form the doctor needs and clear pictures of any part of the body come out. The use of computers in both machines was of special interest to students and parents.

Along with the academic benefits, Shannon Hospital invited the students to eat in the

hospital cafeteria. "It was wonderful!" a spokesman said.

Some of the comments made by the students included:

Caty McGregor -- "We learned a lot and many of our questions were answered. They were very kind to us."

Lindsay Johnson -- "Our guide, Cindy Akers, was very complete in answering our many questions and allowed us to have a good time."

Shanna Edmiston -- "I learned a lot and would like to go

again."

Pepper Nix -- "If I had to go to the hospital I would go to Shannon. The food was great."

Farley Dakan -- "It was nice of them to take time out to teach us about the MRI and CT scanner. It was all very interesting and the food was great."

Reagan Bounds -- "I liked the MRI unit. The food was great."

Mindy McClung -- "My questions were answered and the answers were very interesting. I learned a lot too."

Cari Green -- "I enjoyed visiting the hospital CT and MRI unit and the food was good."

Leslie Hunter -- "It was fun and I learned a lot."

Stewart Chalmers -- "I had a good time and wish we could go back and see some more. Dr. Williams and Dr. Snyder and Mrs. Akers explained a bunch."

Alexis Williams -- "I liked seeing everything. I liked eating lunch there."

Matt McCormick -- "It was very interesting and I liked seeing everything."

# Eldorado students win big

At a recent UIL Practice Meet the Eldorado students under the direction of Harvey Wink had an outstanding day. The competition involved schools from

Bronte, Sterling City, Veribest, Eden, Mertzon, Christoval, Eldorado and Wall.

The Calculator Application Contest was almost completely dominated by Eldorado. Matt Williams won the event with Tara Holley finishing second. Lolly Barrera was fourth. Estella Sandate was fifth, and Jana Sterling was eighth.

The Number Sense Contest was represented with Lolly Barrera finishing fourth and Rachel Edmiston tenth.

The Science Contest was divided into seventh and eighth

grade divisions. In the seventh grade Matt Williams finished third and Lee Ann Lamb finished tenth. In the eighth grade division Estella Sandate finished fourth, Rachel Edmiston finished sixth, Jennifer Williams took seventh, and Lolly Barrera eighth.

Coach Wink was very proud of these students in their first competition. "They were a little nervous before the meet, but performed well. This was a small meet and the students got a real confidence builder for the larger meets coming up," he added.

## STATE TREASURER SAYS

### Bank closings do not cost Texans

Texas State Treasurer Ann W. Richards reported this week that taxpayers "Didn't lose one red cent" from the 50 bank failures in Texas last year, even though those banks held almost \$15 million in state funds.

"I am pleased to report to the people of Texas that their money is fully accounted for and is safe, even though our collateral system was tested as never before in recent history," Treasurer Richards said.

State law requires that all state funds invested by the State Treasury be fully collateralized at all times. This means a bank must put up collateral with the State Treasury before the bank can have state deposits.

For example, if a bank has \$500,000 in state deposits, the State Treasury requires \$100,000 in federal deposit insurance and \$400,000 in collateral before it released the deposit to the bank.

This collateral is usually in the form of municipal bonds and US government securities.

Should that bank fail, the State Treasury, which has actual possession of the bank's collateral, simply converts that collateral into cash.

This collateral is checked each day by Treasury staff to make sure all 1,700 state depositories have sufficient collateral to cover their state deposits.

"This system was called upon 40 times in 1987 and passed the test each time," Richards said.

"Unfortunately, bank failures have almost become a way of life in the last few years and experts say there may be as many bank failures in 1988 as last year," Treasurer Richards said. "The fact that the Treasury staff has kept on top of the situation is testimony that our system works."

In total, 40 of the 50 state banks that filed in 1987 held \$14.8 million in state funds.

Richards said she also wanted to remind Texans that their personal money is safe in Texas financial institutions with federal insurance coverage as long as their total deposits at any single institution do not exceed \$100,000.



THIS BEAUTIFUL ice sculpture accentuated Harris Custom Catering's table at last week's "Taste of Eldorado". It was created by Jackie and Becky Harris. [Photo by Jackie Harris]



**Don't Get Benched  
By A Careless Driver**  
Buckle Up  
On the Way to the Game

For Abstracts or  
Title Policies See  
**Benton Abstract  
& Title Co.**  
111 South Main  
Eldorado  
853-2631

## Success

USPS 342-470  
Box 790  
Phone 915-853-3631

Published each Thursday  
Eldorado, Tx. 76936

Terry B. Neill  
Publisher-Editor

Mary Jenkins  
General Manager

Sharon Fitts  
Advertising Compositor

Second class postage paid at  
Eldorado, Texas 76936.  
POSTMASTER: Send address  
changes to Eldorado  
Success, Box 790, Eldorado,  
Texas 76936.

Any erroneous reflection  
upon the character or standing  
of any person or firm  
appearing in these columns  
will be gladly and promptly  
corrected upon calling the  
attention of the management  
to the article in question.

Member 1987  
West Texas Press Assn.

MEMBER  
1988  
**TA**  
TEXAS PRESS  
ASSOCIATION

## McCormick's SERVICE Station Full Service

Oil Change 13.99

Car Wash  
13.00

Gasoline & Diesel  
Phone : 853-3407



## FIXED RATE LOAN PLAN

9.95%\*  
RURAL REAL ESTATE

10.2%\*  
RURAL RESIDENTIAL

LIMITED FUNDS AVAILABLE AT THESE RATES

We are strongly committed to real estate lending in Texas.

- NEW PURCHASES ONLY
- 10-YEAR FIXED RATE converts to variable thereafter
- ONE POINT ORIGINATION FEE
- LONG-TERM LOANS
- ASSUMABLE

FEDERAL  
LAND BANK  
OF TEXAS



\*Annual percentage rates range from 10.18% to 10.41% depending on length of contract; after fixed rate period, variable rates are subject to change.

## Highflying Fun for Everyone

Tickle your Valentine

with a great gift from

## Cathy's

- ★ Roses
- ★ Green Plants
- ★ Flowering Plants
- ★ Jewelry

Place order by Feb.8 & receive  
one FREE 5 x7 photo  
of your sweetheart



You'll Find BIG SAVINGS  
THROUGHOUT THE STORE!

# PERRYS

Now is the Time to Buy  
with Every Item in the  
STORE REDUCED

# STOCK REDUCTION SALE

We at Perrys would like to thank the people of Eldorado for your patronage to our business, and to show our appreciation we are taking 20% off everything in our store for one full week. That one full week starting Monday February 1 thru Saturday February 6. This is our way to say thanks Eldorado for being so nice to us.

Remember when you shop Perrys you keep your money in Texas.

Texas owned, Texas operated, by Texans for Texans and proud of it.

TOYS!

BEAUTY AIDS!

FABRIC! NOTIONS!

HARDWARE ITEMS!

GLASSWARE! WINDOW SHADES!

GIFT ITEMS!

SHOP EARLY TO GET THE BEST BARGAINS...

# 20% OFF MARKED PRICE



**JV BASKETBALLERS** -- Making up the Eldorado High School junior varsity girls basketball team this year are [back row, l-r] managers Tracy Rich-

ards and Frances Goodman; Lupe Ramirez, Cynthia Arispe, Amy Henderson, Kim Daniels, Jennifer Reeves, Tina Dacy,

Katie Hardy, Carrie Sauer, Stacy Jones, Coach Frankie Hardy and Melaina O'Connor, manager. On the bottom row are [l-r] Angela

Rebuck, Carolina Gonzales, Joy Green, Adriana Martinez, Dena Lloyd and Louann Crowder. [EHS Annual Staff Photo]

Continued from Page 1.



"Wal, whatever. To what do we owe the pleasure of this visit, your learned one?"  
 "Oh, nothing really special. Just wanted to see how things were going and see what football team you were rooting for in the Super Bowl. Should have known it would be the Broncos!"  
 "Say, Neill, where do you think it would look best on this jersey to put 'No. 1' in big white letters?"  
 Realizing that the vision was about to choke on his own gloat, we pointed out one fact. "There's one thing about it, you had better enjoy it this year because someone will knock

them off next year. Might even be the Dallas Cowboys."  
 "Man, are you dreaming? The Dallas Cowboys? Man, you must be cracking up!" the vision added, starting to fade from sight.  
 "Wal, I do talk to visions," we concluded.  
**HABITS CHANGING?**  
 Have you noticed a significant change in your bowel or bladder habits? According to the American Cancer Society, it could be a warning of cancer. Be safe, not sorry. Call your physician if you detect a change.

FOR SUCCESS IN RETAIL BUSINESS

## Customer relations important

"Word of mouth" often can "make" or "break" a retail business. "Research indicates that a dissatisfied customer typically tells about 10 other people, and most retailers, especially in smaller towns, can not afford to lose that much business.

"The key to a successful retail business is customer satisfaction," says Dr. Don Stebbins.

"Recent surveys show that it's not unusual for consumers in small towns to spend more than half of their income in larger cities," notes Stebbins, a community development specialist with the Texas Agricultural Extension Service, The Texas A&M University System.

"To a large extent, higher prices are not the problem. If necessary, most consumers are

willing to pay slightly higher prices and support local merchants if they are satisfied in other ways."

That means excellent customer relations—a low cost, effective way for merchants to keep present customers and gain new ones.

"Good 'word of mouth' advertising is the cheapest and best advertising that a merchant can get," emphasizes the specialist. "More merchants need to do a better job and make sure that satisfied customers are spreading the word."

Good customer relations include asking questions to understand customer needs. "Many times customers need assistance in selecting the correct model, size or quality of some product," points out Stebbins. "It's important to know enough about the product to help the customer make the best choice."

A sincere smile on the face of a courteous, well groomed salesperson who is giving a customer full attention can make a favorable impression. On the other hand, an indifferent attitude by

the sales person can easily send a customer to a competitor.

Even the best managed store will occasionally have a dissatisfied customer, notes the specialist.

Stebbins advises community business leaders to take the initiative in encouraging and assisting merchants to adopt improved customer relations procedures.

Community development specialists with the Texas Agricultural Extension Service offer training in customer relations. Interested merchants can contact their local county Extension agent to arrange a training program.

### NOTICE TO AT&T CUSTOMERS

The Public Utility Commission of Texas has initiated a proceeding to consider the following: whether any long distance telephone company that does not provide local telephone service has the ability to control prices in Texas; the status of long distance competition; and the effect of competition on the public interest. In this proceeding AT&T will be seeking the right to compete in Texas on an equal basis with other long distance companies.

This matter has been assigned Docket No. 7790 and hearings have been set to begin May 31, 1988. Persons who wish to intervene or otherwise participate in these proceedings should notify the PUC as soon as possible. A request to intervene, participate, or for further information should be mailed to the Public Utility Commission of Texas, 7800 Shoal Creek Boulevard, Suite 400N, Austin, Texas, 78757, or by calling the PUC Public Information Office at (512) 458-0223 or (512) 458-0227 or (512) 458-0221 for teletypewriter for the deaf.



### WINDOW CONDENSATION

The condensation that forms inside windows in the winter is usually just a nuisance, but can be a sign of a larger problem with humidity. Foggy or wet windows inside your home shows that the temperature of those surfaces has dropped below the dew point temperature at which water vapor in the air will condense on surfaces. Condensation may not be damaging to your home if it is temporary and vaporizes as the surface warms during the day. But moisture which lingers on the surface and eventually pools on the window frame could damage the frame, especially if it's wood.

## The Plateau Co.

Fire & Smoke detection is a very important part of home safety.

Call us for :

- ★ SMOKE & FIRE ALARM INSTALLATION AND SERVICE
- ★ DITCH DIGGING AND LINE LAYING
- ★ WELDING REPAIR OR FABRICATION
- ★ PLUMBING

Phone 853-2984 Daytime 853-2408 after 5 p.m.

# Your Energy Dollars Could Be Going Up In Smoke!

Fireplaces are built to draw. Even when there's no fire, this massive column is drawing air from inside your home — air you have paid to heat.

Closing the damper in your fireplace when it's not in use keeps winter heat from escaping up your chimney. This reduces the natural draft created by warm air inside the house as it rises. It also prevents any down drafts.

A glass fireplace cover can also help save you energy and money by decreasing the amount of inside air going up the chimney. When selecting glass door covers check for the following: air tightness, glass thickness (3/16" to 1/4"), frame strength, frame insulation and be sure they are heat tempered.



### WEST TEXAS UTILITIES COMPANY

An Equal Opportunity Employer



A Member of The Central and South West System

Serving you with dependable electrical energy from the Red River to the Rio Grande.

## EMS logs six runs

The Schleicher County Emergency Medical Service had six runs in January:

January 5, 9:30 a.m. -

medical patient transported to SCMC.

January 13, 9:45 a.m. - medical patient transferred from SCMC to St. John's.

January 16, 11:40 a.m. - medical patient transferred from SCMC to St. John's.

January 18, 1:00 p.m. - medical patient transferred from SCMC to Shannon.

January 27, 8:21 a.m. - medical patient transported to SCMC.

January 27, 9:55 a.m. - medical patient transferred from SCMC to St. John's.

## -top of the divide-

BY THOMAS GIOVANNITTI

Maxine has been after me to write about time. It is also about time I did, write about time. You see there are twenty-four time zones that the world uses to keep track of time. Most time, official time, is calculated from "Greenwich mean time" and, I am sure that in most metropolitan areas there are places where you can find out the "exact time" if you needed to know.

All this came about because when we first moved here Maxine attempted to find out what time it was. When we lived in San Angelo there was a number you called and the recording told you what time it was. Or, if you wanted to, you could tune in the cable channel with the weather and there would be what I assumed was the correct time.

Anyway Maxine, since we did not have and still don't have cable, called to ask the operator

what the time number was for Eldorado. The operator told her there was no such thing. Maxine then asked her for the Angelo number which the operator indicated you could not call from out of town. I guess this is to keep out-of-towners from calling collect. Anyway, she then asked the operator if she would call time then tell Maxine what time it was. The operator said they could not do that nor could she give the time that she had by looking at her watch or the clock on the wall. Maxine never did find out what time it was so she estimated from what her watch showed and my watch showed and arbitrarily set all the electric clocks in our Eldorado home.

Now my Dad was and still is, I imagine, a real stickler for punctuality. He was always getting us to somewhere and home again early. On Sundays when he used to take us to six

o'clock a.m. Mass he would have us there by five-thirty. He also had a very keen sense that time kept going on even if you didn't. Some people don't have this quality. Some people think that getting your coat on, getting in the car, rounding up all the children, and starting the car take no time at all. I am not going to name names here but you may know some one just like that.

Why is it that your children, especially the small ones, never have to go to the bathroom until just before you are about to leave to somewhere? There is also this game that is played in families for more than two people, that when it is time to go somewhere you go and call one of the children, he comes out, and the children whom you thought were waiting at the door have gone off into some other room, so you go back to get them, and while you are retrieving them the first child you had to get has gone back in his room. That may be a little hard to follow but I bet you have had the same thing happen to you. The only time all of them show up ready to go is when, to avoid the chase situation you plan ahead and start rounding them up about a half hour ahead. Of course, as soon as they all see it is half an hour early they scatter like chaff in the wind.

## Rabbit Club forming

On January 31, a group of 19 people met to discuss starting a Rabbit Club in Eldorado. The meeting was held at Janet Hunley's home at 3 p.m. Sunday afternoon.

Brenda Collins of B&B Rabbits spoke to the group of parents and children. She demonstrated proper handling and care of the rabbits.

She also spoke on what to look for in choosing a healthy rabbit for a pet or for showing. Mrs. Collins also commented on general care and diet of rabbits, nutritional value of the meat, rabbit disease and markets for rabbits.

Mrs. Collins gave advice on starting a club and encouraged all present to participate in this endeavor. Another meeting was set for Sunday, February 14 at 3 p.m.

The meeting will be held at Janet Hunley's residence, 308 West Fields.

Anyone who is interested is encouraged to attend. For more information, you may call 853-3116 or 853-2228.

**B&E**  
Body Shop  
Now Open  
Olive & Mary Sts.  
Eldorado, Texas  
853-3166

Vote for  
**RONNIE NORRIS**  
Schleicher County Sheriff,  
March 8 Democratic Primary  
Pol. Adv. pd. for by Ronnie Norris Campaign,  
Tom Enochs, Treasurer.

# Go Eagles Go!!!



### Basketball Schedule

| ELDORADO HIGH SCHOOL BASKETBALL SCHEDULE |                    |       |      |      |       |    |     |                                       |                   |       |      |       |       |       |       |
|--|--------------------|-------|------|------|-------|----|-----|---------------------------------------|-------------------|-------|------|-------|-------|-------|-------|
| DATE                                     | OPPONENT           | PLACE | TIME | VB   | JVB   | VC | JVC | DATE                                  | OPPONENT          | PLACE | TIME | 7th B | 8th B | 7th G | 8th G |
| 1987 - 88                                |                    |       |      |      |       |    |     |                                       |                   |       |      |       |       |       |       |
| Nov. 17                                  | Wall               | There | 4:00 | X    | X     | X  | X   | Dec. 1                                | Wall              | Here  | 5:00 | X     |       |       |       |
| 20                                       | Mertzson           | Here  | 4:00 | X    | X     | X  | X   | 7                                     | Sonora            | There | 5:00 |       | X     | X     |       |
| 24                                       | Ballinger          | Here  | 4:30 | X    | X     | X  | X   | 8                                     | Mertzson          | There | 5:00 |       |       | X     |       |
| Dec. 1                                   | Wall               | Here  | 5:00 | X    | X     |    |     | 14                                    | Iraan             | There | 5:30 | X     |       |       |       |
| 1  | San Angelo         | There | 5:00 |      |       | X  | X   | Jan. 4                                | Mertzson          | Here  | 6:30 | X     |       |       |       |
| 3, 4, 5                                  | Irion Co. Tourn.   | There | TBA  | X    |       |    |     | 8                                     | McCamey           | Here  | 5:00 | X     |       |       |       |
| 3, 4, 5                                  | Reagan Co. Tourn.  | There | TBA  |      | X     |    |     | 14                                    | Reagan Co.        | Here  | 6:30 | X     |       |       |       |
| 8  | Mertzson           | There | 5:00 | X    | X     |    |     | 14                                    | Reagan Co.        | There | 6:30 |       | X     |       |       |
| 8  | Iraan              | Here  | 5:00 |      | X     | X  |     | 16                                    | Reagan Co. Tourn. | There | TBA  | X     | X     |       |       |
| 10, 11, 12                               | Iraan Tourn.       | There | TBA  | X    | X     |    |     | 18                                    | Mertzson          | There | 6:30 | X     |       |       |       |
| 15                                       | Bronte             | There | 6:30 | X    | X     |    |     | 21                                    | Ozona             | Here  | 6:30 |       |       | X     |       |
| 15                                       | Ozona              | There | 5:00 |      |       | X  | X   | 23                                    | Eagle Tourn.      | Here  | TBA  | X     |       |       |       |
| 18                                       | Stanton            | Here  | 5:00 | X    | X     | X  |     | 25                                    | Sonora            | Here  | 5:00 |       |       | X     |       |
| 28 - 30                                  | Eagle Tourn.       | Here  | TBA  | X    | X     |    |     | Feb. 1                                | Reagan Co.        | There | 6:30 | X     |       |       |       |
| Jan. 5                                   | Rankin             | There | 5:00 | X    | X     | X  |     | 1                                     | Reagan Co.        | Here  | 6:30 |       | X     |       |       |
| 8  | McCamey            | Here  | 5:00 | X    | X     | X  |     | 8                                     | Iraan             | Here  | 7:30 | X     |       |       |       |
| 11                                       | Reagan Co.         | There | 5:00 | X    | X     | X  | X   | 12                                    | Iraan             | Here  | 5:00 | X     |       |       |       |
| 15                                       | Forsan             | There | 5:00 | X    | X     | X  | X   | 16                                    | Ozona             | There | 5:00 | X     |       |       |       |
| 19                                       | Iraan              | There | 5:00 | X    | X     | X  | X   | ELDORADO JR. HIGH BASKETBALL SCHEDULE |                   |       |      |       |       |       |       |
| 22                                       | Ozona              | Here  | 6:30 | X    | X     | X  | X   | Nov. 19                               | Wall              | There | 5:00 |       |       | X     | X     |
| 23                                       | Eagle JV Tourn.    | There | 5:00 | X    | X     | X  | X   | Nov. 19                               | Wall              | Here  | 5:00 | X     | X     |       |       |
| 26                                       | Stanton            | There | 5:00 | X    | X     | X  | X   | Nov. 30                               | Mertzson          | Here  | 5:00 | X     | X     | X     | X     |
| 28 - 30                                  | Mertzson JV Tourn. | There | TBA  |      | X     | X  | X   | Dec. 4-5                              | Ozona Tourn.      | There | TBA  | X     |       | X     |       |
| 29                                       | Rankin             | Here  | 6:30 | X    | X     |    |     | Dec. 10                               | Wall              | There | 5:00 | X     | X     |       |       |
| Feb. 2                                   | McCamey            | There | 5:00 | X    | X     | X  | X   | Dec. 10                               | Wall              | Here  | 5:00 |       |       | X     | X     |
| 5  | Reagan Co.         | Here  | 5:00 | X    | X     | X  | X   | Dec. 14                               | Menard            | Here  | 4:00 | X     | X     | X     | X     |
| Feb. 9                                   | Forsan             | Here  | 5:00 | X    | X     | X  | X   | Jan. 4                                | Mertzson          | There | 5:00 | X     | X     | X     | X     |
| 12                                       | Iraan              | Here  | 5:00 | X    | X     |    |     | Jan. 14                               | Sonora            | Here  | 5:00 | X     | X     |       |       |
| 16                                       | Ozona              | There | 5:00 | X    | X     |    |     | 15 & 16                               | Eldorado Tourn.   | Here  | TBA  | X     | X     | X     | X     |
| ELDORADO 9th GRADE BASKETBALL SCHEDULE   |                    |       |      |      |       |    |     |                                       |                   |       |      |       |       |       |       |
| 1987-88                                  |                    |       |      |      |       |    |     |                                       |                   |       |      |       |       |       |       |
| DATE                                     | OPPONENT           | PLACE | TIME | BOYS | GIRLS |    |     |                                       |                   |       |      |       |       |       |       |
| Nov. 19                                  | Wall               | Here  | 5:00 | X    |       |    |     |                                       |                   |       |      |       |       |       |       |

## '42' Club meets here

The Merry Makers 42 Club met in the Arispe No. 2 cafe Thursday, January 28.

Mrs. Opal Parks was hostess. Those present were Lillian Mikeska, Jewell Van Dusen, Virginia Griffin, Jessie Sudduth, Zelma Henderson, Louise Logan, Bessie Clifton and Opal Parks. Guests were Ada Bell Taylor, Evelyn Wimer, Florence Hinton and Weona Isaacs.

Refreshments of coconut pie and coffee was served by the hostess.

### COULD BE A SIGN

Watch out for obvious changes in a wart or mole. They can mean skin cancer.

## -school menu

### Monday February 8

Breakfast -- Applesauce, Bran Muffins.

Lunch -- Fiestadas, Whole Kernel Corn, Pear Halves, Yellow Cake with Icing.

### Tuesday February 9

Breakfast -- Grape Juice, Buttered Rice, Toast.

Lunch -- Beef and Cheese Enchiladas, Pinto Beans, Lettuce and Tomato Salad, Cornbread, Coconut Pudding.

### Wednesday February 10

Breakfast -- Orange Juice, Hot Biscuits, Bacon, Jelly.

Lunch -- Beef Stew with Vegetables, Grilled Cheese Sandwiches, Lime Jello, Cowboy Cookies.

### Thursday February 11

Breakfast -- Apple Juice, Cinnamon Toast.

Lunch -- Steak Nuggets and Gravy, Creamed Potatoes, Broccoli with Cheese Sauce, Cherry Cobbler.

**Business Hours**  
8:30 a.m. to 6:30 p.m.  
Mon.-Sat.Phone 853-3018  
402 East Street

**Bertha's Glamourama Creative Salon**  
Bertha Rebeck  
Stylist/Owner  
Kelly Sparks  
Co-Stylist

**Valentine Special**  
February 8 - 13  
Perm \$20

|                         |                        |                    |
|-------------------------|------------------------|--------------------|
| Jerry's T.V.            | First National Bank    | Shot's             |
| Meyer Grocery           |                        | Casa Arispe No. 2  |
| The Top                 | Kent's Automotive      |                    |
| Lynn Meador Real Estate | McCalla's              | Hayloft            |
| Down Home Diner         | Glidden's Food         | Mc Cormick's Exxon |
| Casa Arispe No. 1       | Harris Custom Catering | Clark's Gulf       |

**WE WILL NOT BE UNDER SOLD**

Regular Unleaded  
**92.9 95.9**

**Lowest Gas Prices In Eldorado**  
**Meyers Grocery**  
Formerly Sofge's

AT SCHLEICHER COUNTY MUSEUM

# Ruth Baker honored

The ninetieth birthday of Miss Ruth Baker was the special occasion celebrated at the Schleicher County Museum Monday, February 1. About 50 members and guests greeted Miss Ruth, as she entered, singing "Happy Birthday." The refreshment table was beautifully decorated in red and white, to accent February, the Valentine month.

A money tree, in full bloom, served as center piece for the table and a long white banner draped the front containing a birthday greeting.

The Historical Society honored Miss Ruth on this special date as a tribute to her devoted service and work in our community.

The Historical Society was organized December 6, 1962. Miss Ruth was a charter member and served as an officer many of the years since. The Schleicher

County Museum opened June 26, 1976. Ruth was also instrumental in this event.

The Baker family moved to Schleicher County September 16, 1906. Ruth attended school in the Kaffir Community and Eldorado. She attended North Texas State. She came home to be a school teacher and her love of education has been evident all through her life. She taught school for four years and was librarian for 26 more years. Ruth was also Schleicher County librarian from 1944 until 1970.

Anyone passing Miss Ruth's house will probably see her working in her yard. She loves the outdoors and is a firm believer in physical fitness.

Miss Ruth is active in the First Christian Church. The Good Neighbor Home Demonstration Club, as well as in the Historical Society and Mias Amigas.

A lot of changes have occurred during her lifetime in our community. She saw the first cars, paved roads, railroad, and air planes in Schleicher County. She also welcomed the first water-works system, electric company, telephone office, fire department, and hospital. When Ruth was a little girl it took two days to get to San Angelo--now it takes less than an hour! Through all these changes she has kept a cheerful outlook and a pioneer spirit.

"Happy Birthday Miss Ruth!"

**CHANGING CAREGIVERS AND CHILDREN'S STRESS--**Imagine going to work one morning and discovering that you have a new boss. Then imagine that you got a new boss every few weeks or months. You'd probably find the adjustments required by these working conditions to be quite stressful. Yet parents may not realize their young children experience this same kind of stress when caregivers are constantly changing. Figures show that child-care workers have the highest rates of turnover of all occupations. In some day care centers, children may be cared for by a revolving supply of child care workers. When parents move children from one daycare center, family daycare home, neighborhood babysitter or relative to another, the child has to adjust to new people and new surroundings. Some children are better at adjusting to changing circumstances than others. However, sleep disruptions, changes in eating habits, regression in toileting, clinging and being more demanding may be signs of stress in any child.



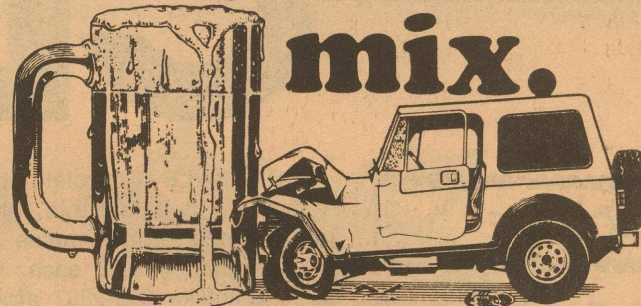
CELEBRATING MIAS and several of her friends. Mrs. Amigas several years ago were Baker celebrated her 90th birthday recently. [Contributed photo]

## -V.F.W. memorials

**MEMORIALS**  
In memory of L.E. "COON" HOLLAND by Allen J. "Jack" and Florence Hinton.

**COPING WITH OVERSPENDING--**If you are facing a stack of bills from the holidays that you cannot pay, one of the worst things you can do is delay action. You will be far better off to make efforts immediately to work out a payment plan with the creditor. Two of the most important factors to creditors is that they be paid regularly and on time. Write a letter to the creditor as soon as possible and offer a monthly amount of payment that you know you can handle. The final decision will be up to the creditor.

## they won't mix.



'Tone-up with Tammye'

Exercise Classes

Tuesdays and Wednesdays 5:15-6:00 p.m.

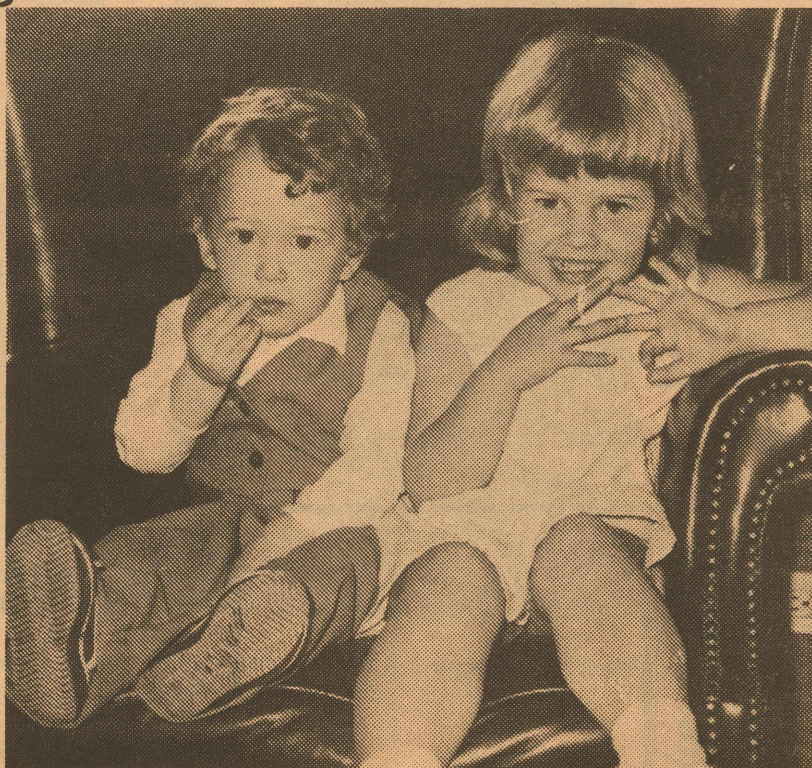
Thursdays 1:15 - 2:00 p.m.

The old Eagle Point Bldg. starts Feb. 16, 1988

\$5.00/week ★ Bonus for you

for more information : Call Tammye

853-3153 Between 8:30 & 5:00



**Complete This Picture of Security with One of Our Insured Savings Plans**

They're your pride and joy! Don't you want to make things a bit easier for them when the time comes?

**First National Bank of Eldorado**  
Since 1907



**Supplemental Health for Senior Citizens**  
LIFE HEALTH



Fire & Casualty Lines

Mittel Insurance Agency

P.O. Box 1136  
Eldorado, Texas 76936  
915-853-2576



**Make Safety Belts Part of Your Routine**

**Handy 24-Hour Service**  
For  
**Griffin Oil's Card Lock System Gas Prices**

|            |          |        |
|------------|----------|--------|
| Regular    | Unleaded | Diesel |
| .93        | .96      | .69    |
| Per Gallon |          |        |

**30-Day Credit**

Apply for a card today!

**Oil - Tires - Batteries - Filters**

**Eldorado Gulf**

'Your Full Service, Service Station'

**Open 7 Days A Week**

**6:30 til 8:00**

**New Prices**

|         |          |             |        |
|---------|----------|-------------|--------|
| Regular | Unleaded | S. Unleaded | Diesel |
| 1.049   | 1.069    | 1.109       | 1.079  |

**Grease Jobs - Oil Changes**

**Wash & Wax Jobs**

Phone No. 853-2939

# CLASSIFIED

## NOTICE

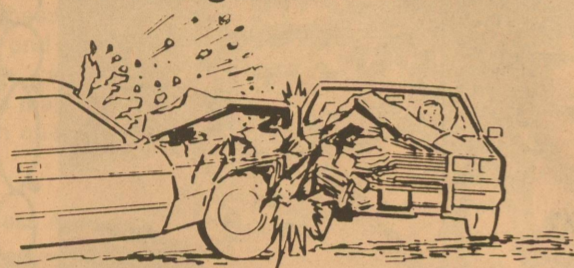
**NOTICE--Mary Kay Cosmetics and Jewelry. Graduation, birthday, anniversary gifts. Martha Spinka. Old Merton Road. 853-3415 after 4 p.m. [tfn-12/3/87-cg]**

## FOR SALE

**FOR SALE--Complete black and white and color dark room. Also 1974 Volkswagen. Call 853-2978. (2X-1/28/88-cg)**

**FOR SALE--Six-year old registered sorrell stallion. Thoroughbred horse. (Racing background) Asking \$750. If interested come by 208 East Street. (4X-1/28d/88-pd)**

## Introducing the Number One Killer of Young Americans



**Improve Your Odds. Wear Your Safety Belt.**

Texas Coalition for Safety Belts

|   |  |
|---|--|
| <p><b>Henderson Water Well</b><br/>Windmill and pump repair<br/>853-3280<br/>Eldorado</p>                           |  |
| <p><b>Tex-Insulation</b><br/>Commercial Residential<br/>Free Estimates<br/>Farris Nixon 853-2996</p>                | <p><b>Thorp's Dry Cleaners</b><br/>Uniform Rental<br/>Dust Control<br/>mops and mats<br/>214 S. Main Eldorado<br/>853-2900</p> |
|   |  |
| <p><b>Kerbow Funeral Home</b><br/>853-3043 387-2266</p>   |  |
| <p><b>GPSI Gower Pumping Service, Inc.</b><br/>Oilwell Contract Pumping<br/>Box 655 Eldorado, Tx 76936 853-2539</p> |  |
|   |  |

**FOR SALE--Chocolate Labradors, eight weeks old, shots and wormed. Three males and two females. \$25.00 each. Call Lanis Mikeska 853-2327 after 4 p.m. (1X-2/4/88-cg)**

**FOR SALE--10 acre tract outside city limits of Eldorado. All city utilities, some improvements, with small down payment owner will finance. For information call 853-3103. (tfn-1/28/88-cg)**

**FOR SALE--1974 Chevrolet pickup, customized. Big tires and mag wheels, racing carb. and headers, packs, shift kit, Siamese twin propane tanks, am-fm cassette with eight track and c.b. radio. Needs work on interior, motor and transmission like new. Call T.B. Neill at 853-3631 or 863-2029. (tfn-1/28/88-no cg)**

**FOR SALE--1986 Dodge Caravan. Must sell. Price negotiable. Call 853-3022 or 853-3157. (tfn-1/28/88-cg)**

**HOUSE FOR SALE--Own for less than renting. Two bedroom, one bath. Call 915-853-2561. (4X-1/28/88-cg)**

## THANK YOU

**THANK YOU**  
We are so grateful for the prayers, encouragement, concern, the helpful deeds, and all the numerous kindnesses shown to Louise during her illness. We hold the memory of this town's compassion in our hearts.  
Mrs. Allen Kuykendall  
Jean Kuykendall Henderson  
David Kuykendall  
(1X-2/4/88-pd)

UT M. D. Anderson Hospital  
**Cancer Information Service**  
1-800-4-CANCER

**THANKS**  
I think this was the most fun birthday I have ever had! Thanks to my children, grandchildren, and friends. One would not want to live without friends and neighbors. Surely you have made this day joyful and special to me. The cards are beautiful and the fellowship too precious to describe. Thanks, and I love you.  
Dixie  
(1X-2/4/88-pd)

## PUBLIC NOTICE

### NOTICE TO CONTRACTORS PROPOSED TEXAS HIGHWAY MAINTANANCE WORK

Sealed proposals for contract mowing in various counties will be received at the State Department of Highways and Public Transportation; San Angelo, Texas, on the date and time indicated below; and then publicly opened and read.  
February 25, 1988, 10:00 a.m.  
Contract #078XXM 1002 Coke Co.  
Contract #078XXM 1006 Runnels Co.  
Contract #078XXM 1007 Sterling/Glasscock Co.  
February 25, 1988, 10:30 a.m.  
Contract #078XXM 1008 Tom Green Co.

Contract #078XXM 1003 Crockett Co.  
Contract #078XXM 1009 Irion/Reagan Co.  
February 25, 1988, 11:00 a.m.  
Contract #078XXM 1005 Menard Co.  
Contract #078XXM 1004 Edwards/Real Co.  
Contract #078XXM 1010 Interstate 10 (Kimble, Sutton, Crockett)

Plans, specifications and proposals are available at the office of Daniel W. Gower, District Maintenance Engineer, San Angelo, Texas. Prebidder Conference for all contracts will be held at the State Department of Highways and Public Transportation, San Angelo, Texas on February 16, 1988 at 10:00 a.m. Usual Rights Reserved.  
(2X-2/4/88-cg)

### REQUEST FOR BIDS ON TEXAS HIGHWAY CONSTRUCTION

Sealed proposals for constructing 255.368 miles of seal coat on US 90, US 83, IH 10, RM 2398, LP 466, RM 1312, US 277, US 377, SH 55, RM 674, SH 163, US 190, RM 337, RM 335, RM 693, RM 334, FM 189, RM 2083, RM 2523 and RM 3348 in Val Verde, Real, Crockett, Edwards, Schleicher and Kinney Counties covered by CPM 23-1-56, CPM

36-3-22, CPM 36-5-25, CPM 140-11-30, CPM 140-13-10, CPM 140-14-3-, CPM 140-16-3, CPM 141-1-34, CPM 141-1-35, CPM 141-11-1, CPM 141-13-2, CPM 160-4-18, CPM 160-5-34, CPM 201-2-11, CPM 201-4-18, CPM 234-2-19, CPM 235-3-23, CPM 375-6-15, CPM 412-3-24, CPM 412-4-20, CPM 558-11-12, CPM 558-12-14, CPM 792-1-18, CPM 830-2-14, CPM 830-3-9, CPM 876-1-10, CPM 876-2-24, CPM 962-2-10, CPM 1280-3-7, CPM 1280-4-7, CPM 1592-1-8, CPM 2279-2-14 and CPM 2752-2-3 will be received at the State Department of Highways and Public Transportation, Austin, until 1:00 p.m., February 9, 1988, and then publicly opened and read.

Plans and specifications including minimum wage rates as provided by Law are available for inspection at the office of Robert C. Parker Resident Engineer, Del Rio, Texas, and at the State Department of Highways and Public Transportation, Austin, Texas. Bidding proposals are to be requested from the Construction Division, D.C. Greer State Highway Building, 11th and Brazos Streets, Austin, Texas 78701. Plans are available through commercial printers in Austin, Texas, at the expense of the bidder.  
Usual rights reserved.  
(2X-1/28/88-cg)

## Blind program approved for SC

The West Texas Lighthouse for the Blind in San Angelo, has received funding from Concho Valley Council of Governments (Title III Funds) to provide services to visually impaired and blind persons over 60 years of age in 13 counties, including Schleicher County.

Don Starr, Independent Living Program Coordinator at the Lighthouse, has been visiting referrals in Eldorado, to assess needs and to initiate needed services. Services will be provided to persons in their homes, nursing homes, hospitals or at the Senior Citizens Center. Training and supplies will be

provided, without cost, to the participants in the program in the areas of personal management, home management and communication skills. Specialized training such as braille will be offered.

Special aids and supplies will be large print telephone dials, bold line paper, braille paper, slates, stylus, asbestos oven mitts, splatter guards, low vision or braille timers, low vision playing cards, special designed checkers and games and other items to help in developing leisure time activities and white canes for mobility.  
Starr is retired from the Air

Force and graduated from Angelo State University in 1985 with a bachelor of science degree in psychology. He began working at the Lighthouse four years ago as a volunteer, then worked in the Rehabilitation Department as a Vocational Evaluator-Trainer until June of 1986 when he developed the Independent Living Program at the Lighthouse in San Angelo.

His program at the Lighthouse includes a Work Activity Center in which severely disabled and/or elderly blind persons work two hours a day and have classes in music, arts and crafts and recreational activities.

His eldest participant in the program is 93 years old.

The goal of this program is assist visually impaired elderly persons to learn the skills that would enable them to remain in their homes and to enhance the independent living skills and socialization skills of those in nursing homes.

Counties that can receive services through this program are Reagan, Crockett, Sterling, Coke, Tom Green, Irion, Schleicher, Sutton, Concho, McCulloch, Menard, Mason and Kimble. Any person desiring more information about this program is invited to contact Starr at the Lighthouse at 915-653-4231.

# Success

"A Strong Voice For Eldorado, Schleicher County!"

# CLASSIFIEDS

reach almost

# 3,000 Schleicher Countians

Phone yours today to 853-3631