

PAVE PAWS celebration needs everyone's assistance

Rick Sterling, spokesman for the Finance Task Force stated Tuesday that their fund raising efforts were short of the estimated goal. The PAVE PAWS Steering Committee is extremely thankful for the donations

that have been made but, the amount of money received through donations is the determining factor on how extensive the welcoming celebration during the Ground Breaking ceremony for PAVE PAWS Southwest, October 30th. It will be

beneficial to all commercial concerns as well as the general populace of Schleicher County. Any monetary donation will be appreciated and can be placed by contacting the Eldorado National Bank.

SCHLEICHER COUNTY LEADER

(U.S.P.S.) 342-470 Eight Pages October 18, 1984 25 cents Eldorado, Tex.



The Opening ceremonies of the District Board Meeting of Woman's Clubs included the pledge of allegiance.



Schleicher County may not have too many pumpkins but can bet your bottom dollar that if we did, they would be of astronomical size in relationship to this home-grown Jack Elder sweet potato. The 11 lb. potato, held by Shanna Edmiston, can surely replace the traditional Halloween pumpkin pie as a marker for the Halloween season which is upon us.

Woman's Club hosts meeting

The Heart of Texas District Federation of Women's Clubs Fall Board Meeting and Workshop was held in the Memorial Building in Eldorado Oct. 13, 1984 with the Woman's Club of Eldorado as hostess.

The hostess club sponsored a Good Morning Coffee as guests arrived for registration at 8:00 a.m. The theme "Education Builds for a Solid Future" was used throughout

the day. As each guest arrived and registered she was given a name tag with a little red school house on it. Tables were decorated with miniature school houses, cutouts of children holding hands around apples and miniature children made of suckers were used as favors.

Opening ceremonies began at 9:30 with District President, Mrs. Arnold Schneeman, presiding. Invocation was given by Rev. Rusty

Kwast, pastor of Mertzon St. Church of Christ. Boy Scouts, Rudy Sanchez and Mike Jenkins, brought in the U.S. Flag and the Texas Flag. Pledge to the U.S. Flag was given followed by singing of America. Texas, Our Texas was sung following salute to the Texas flag.

Schleicher co. Sheriff, Orval Edmiston welcomed the guests and assured them that we were always happy to have this type of meeting in

our small town. Response was given by First Vice President, Mrs. Manuel Mackey of Blanket.

During the business meeting there were recommendations from the Executive Board and reports from officers. Workshops were held by the different departments with District Chairmen leading. They returned to general meeting for reports.

At 12:30 a salad luncheon was served by the hostess club. Mrs. John P. Ward of Aspermont, past District President of Heart of Texas and Mesquite District and a retired teacher was the guest speaker. She gave a very inspiring message on Education - Value and Rewards. Special music was provided by the District Chorus under the direction of Mrs. Wilson Bryan.

Preceding the general meeting Mr. and Mrs. T. J. Bailey were hosts to a supper given in their home "The Red Barn", Friday night for the Executive Board. After supper the board held their meeting in order to have an Executive Report to give to the main meeting on Saturday.

The Woman's Club would like to thank the following merchants for their contributions to the door prizes: Western Auto, Perry's, Parker Foods, Hext Foods, Foxworth-Galbraith, Rene's Beauty Shop, Cathy's, Woolen Mill, Klassic Kutt - Kathy Doty, McCalla's and the Hospital Gift Shop, First National Bank for pens, The Leader for pads and Southwest Texas Electric Co-op for the use of the P.A. system.

Halloween Carnival at Eagles' Point

All of you ghosts, witches and goblins are invited to this year's annual Halloween Carnival at the Eagles' Point on Wednesday, October 31st. During the regular meeting of the Adult Council of Eagles' Point Tuesday night, it was decided that the night's activities would begin with a parade of all costumed "spooks" at 6:00 p.m. from the bank parking lot down Main St. to the Eagles' Point. All ages are invited to enter the parade in their scariest costume. Judging will be held at Eagles' Point following the parade.

After the the costume judging, the Halloween Carnival will be officially open until 10:00 p.m. There will be all sorts of games and activity booths, a Spook House and a full concession trailer. Any club, organization, church or individual interested in operating a booth at the Carnival can contact Marlene Mitchell at 853-2091. Mrs. Mitchell stated that there are still choice booth locations available but they are going fast, so anyone interested should contact Mrs. Mitchell soon.

A Masquerade Party will be held for the center's members and guests at Eagles' Point Saturday night, October 27th from 8:00 - 9:00 p.m. with a dance following from 9:00 - 1:00 a.m. featuring "Middle Man DJ" from San Angelo.

Prizes will be awarded for the best costumes.

Local dignitaries to take tour

Mr. Elton McGinnes, manager of Southwest Texas Electric Co-op and Eldorado Mayor Bob Lester have been invited on Goodfellow Air Force Base's Civic Leader's Tour of Air Force Installations at Valparaiso, Florida and Tampa, Florida.

The two Eldorado civic leaders will leave Goodfellow AFB, Thursday October 18th at 9:00 a.m. and will depart from Mathis Field at 9:45 a.m. on an Air Force C-130 and will arrive at Eglin AFB at 12:30 p.m.

After a tour of both facilities Thursday and Friday the tour will return to San Angelo on Friday October 19th at 4:35 p.m. After their arrival back in San Angelo they will be feted with a small reception.

Council holds meeting

The City Council of Eldorado met Tuesday evening October 9, 1984. The meeting first concerned itself with the progress report presented by Ray Longoria with Freese & Nichols on the C.D.B.G. and bond projects. The items discussed included cover material specifications on the Christian Addition job and the pay estimates from Pine Tree Utilities and Anglin Construction, blasting on the treatment plant

job and the bypass piping on the treatment plant job. Longoria recommended that the estimates be paid with the exception of Pine Tree Utilities, who needs to supply an updated estimated construction schedule due to their request for an extension.

Correspondence was reviewed from the PAVE PAWS Finance Task Force in which the city was asked to help in some way with the ground breaking ceremonies on October 30th. Legally the city cannot financially aid in such functions which would fall under Chamber of Commerce activities.

The council approved the request of Secretary Mayo that Hal Whitten be paid on an hourly basis for his assistance to Superintendent Long and for mileage to be paid to Tommy Roach for picking up a transmission in San Angelo.

A new motor for the city's flat wheel roller was approved for purchase at an approximate cost of \$1800 with the city installing it.

In other business, monthly bill we approved by the council for payment.

City sales tax not up to par yet

"So far this year, these payments are running better than 16 percent ahead of last year, and most Texas cities can expect even bigger checks for the rest of 1984", stated Bob Bullock, State Comptroller concerning the \$58.2 million sent to the 990 cities that levy the one percent local sales tax.

It will be December before the checks will reflect the first increases from new goods and services taxed for the first time beginning October 2nd.

Eldorado's share of the money came to \$3,104.21. Last year for the same period it was \$3,153.63. But that still leaves us with a -24.57% from last year. This year's total to date is \$42,884.60 while a year ago it was \$56,855.84.

Sonora is coming up somewhat with their check tallying \$13,580.75. Last year it was \$11,273.74. They are still showing a decrease of 4.86% with a yearly total for 1984 of \$176,762.39. Last year's total to date was \$185,798.82.

Menard is setting steady with an increase of 4.84% over last year's total to date (\$31,774.53) with this latest check of \$2549.99. This brings their yearly total for 1984 to \$33,312.76.

Irion County continues to prosper with 39.07% increase over this time last year. Their check for this period was \$4722.24 which brings the 1984 total to \$45,360.07. Last year's check for the same period amounted to only \$2637.17 for a to-date total of \$32,617.73.

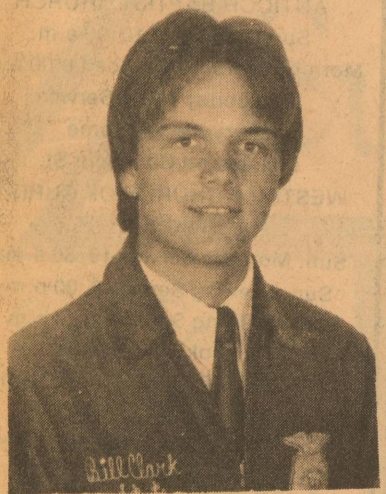


Rocking Chair Ranch, Ft. McKavett, Tex. was the exhibitor of the first-place early spring yearling bull in competition at the Tulsa State Fair Register of Merit Hereford Show. The winning bull, MSJ Slammer 111 Z3, is owned with Schatte Herefords, Giddings, Texas. There were 127 head in the strong competition.

Loeffler to host county rally

Congressman Tom Loeffler has scheduled a November 3rd campaign rally for Schleicher County. The Congressman has planned a salute to muster support for the Republican executive ticket to be held in the Memorial Building beginning at noon Saturday.

The tribute to Reagan and Bush will be accompanied with a fren Barbeque and all the trimmings feed. The entire population of Schleicher County is cordially invited by the Congressman to attend this function.



Clark honored

Bill Clark, State Vice President from Area II Association of Future Farmers of America was among 10 Future Farmer youths honored at the Rural Youth Awards Banquet held in conjunction with the Texas State Fair at Dallas on October 5th.

Gene Stallings, assistant football coach for the Dallas Cowboys was the keynote speaker.

The Future Homemakers of American were also represented by their 10 state officers. The State 4-H Council was honored as well as the entire state officer team of the FFA.

Loeffler earns award from small business group

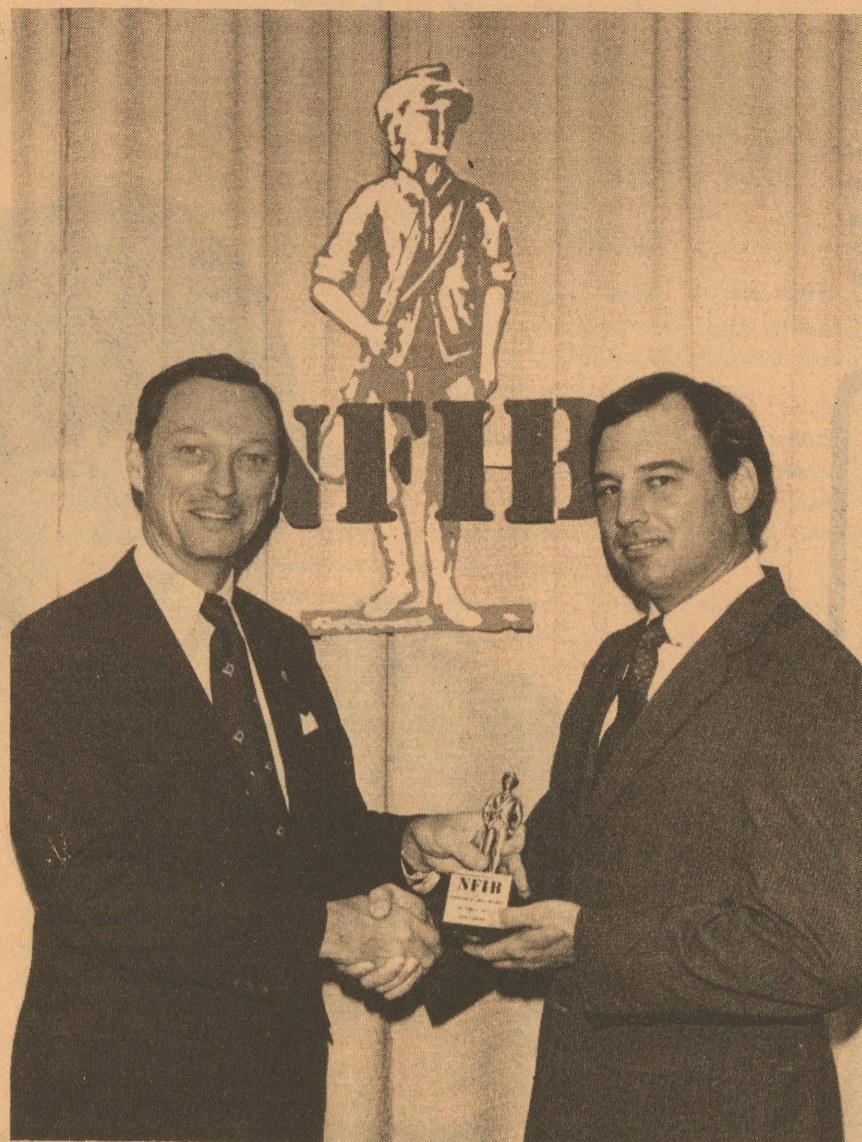
Rep. Tom Loeffler, has earned the "Guardian of Small Business" Award from the National Federation of Independent Business (NFIB) for his outstanding voting record on small-business issues.

The nation's largest small-business group presented him with the award because he voted in support of positions voiced by the majority of NFIB members 89 percent of the time.

On announcing the award, NFIB President John Sloan said, "The voting record of Rep. Loeffler throughout this Congress demonstrates that he is responsive to the needs of his state, because small businesses create the majority of new jobs and, if left to flourish, will continue to be the driving force behind this country's resurgent economic growth."

House members were rated in 18 recorded votes during this session of Congress. Issues ranged from cutting the federal deficit to controlling payroll taxes to giving small firms a chance to compete for government contracts. Members of Congress who failed to vote on at least 70 percent of the issues counted in the ratings were not eligible for the award.

NFIB is a non-profit, non-partisan organization representing 41,163 small business owners in Texas and more than a half-million independent businesses across the country.



John Sloan, (left) president of the National Federation of Independent Business, presents the "Guardian of Small Business" award to Rep. Tom Loeffler (R-TX).

Ratliff Democratic co-ordinator

The Mondale/Ferraro campaign in Texas is based on a neighbor-to-neighbor, grass-roots effort. The key to success is our community involvement. The state Mondale/Ferraro headquarters is proud to announce the County Coordinator for your area:

Tom Ratliff 915-853-2860 or 915-853-2636.

The coordinator is in charge of the Mondale/Ferraro organization in your area. This job includes voter registration, persuading voters to support the Democratic ticket, providing campaign materials, setting up phone banks and getting Mondale/Ferraro supporters to the polls on election day.

Family Shelter needs volunteers

The Family Shelter is looking for volunteers. If you are interested in helping victims of domestic violence, call 655-5774.

Amity of San Angelo

Furniture Stripping
Furniture Refinishing & Repair
Custom Upholstery

307 N. Oakes 658-1725

Big Lake to host Caliente Classic

The Big Lake Chili Cook-off Association in conjunction with Valley Distributing Company will be sponsoring the Fifth Annual "CALIENTE CLASSIC" Chili Cook-off on Saturday, October 20, 1984, at the Reagan County Park in Big Lake, Texas.

The "CALIENTE CLASSIC" IS A CASI sanctioned event with points going toward the 1985 CASI World Championship Chili Cook-off at Terlingua. The entry fee is \$30.00 per team with a six member team limit.

The day will begin with the Caliente Classic Run, sponsored by the Big Lake Chamber of Commerce. Other games scheduled throughout the day include horseshoes, wash-

ers, three-legged race, obstacle course, lemon roll, 42 domino tournament, and a stick horse race for children. New to this year's schedule will be a staged performance called "Shoot Out at C.C. Corral".

The Big Lake Chili Cook-off Association is a non-profit organization, and all proceeds from the cook-off and dance will be disbursed to Reagan County citizens suffering from catastrophic diseases.

For more information or to obtain entry forms for the cook-off, please contact The Big Lake Chili Cook-off Association, P.O. Box 986, Big Lake.

Truth Shall Live

11 Peter 3-9 — The Lord is not slack concerning his promise, as some men count slackness, but is long suffering to us—ward, but is willing that any should perish, but that all should come to repentance.

10 but the day of the Lord will come as a thief in the night, in the which the heavens shall pass away with a great noise, and the elements shall melt with fervent heat, the earth also and the works that are therein shall be burned up.

11 Seeing then that all these things shall be dissolved, what manner of persons ought ye to be in all holy conversation and godliness.

12 Looking for and hasting unto the coming of the day of God, wherein the heavens being on fire shall be dissolved, and the elements shall melt with fervent heat.

13 Nevertheless we according to his promise, look for new heavens and a new earth, wherein dwelleth righteousness.

14 Wherefore, beloved, seeing that ye look for such things, be diligent that ye may be found of him in peace, without spot, and blameless.

You want to go to heaven? Well the Holy Ghost will help you get there, in fact without it there is no other power to take you up. St. John 3-5 Except a man be born of water and of the spirit, he cannot enter into the Kingdom of God.

Mark 3-29 But he that shall blaspheme against the Holy Ghost hath never forgiveness, but is in danger of eternal damnation.

You preachers and people that are telling people that talking in tongues is not for us today you are in danger of damnation. Talking in tongues is the utterance of the spirit.

You have read enough of the writings that I am expecting something great to happen. The convictions are up on the people so just come on to church — don't try to soothe your conviction by turning to P.T.L. or Jimmie on T.V. Non-denominational are these trinity Pentecostals.

You can be so mixed up in what to do when Jesus deals with your heart, but just come on to church. Get down to these altars and repent and talk to Jesus until you receive the Holy Ghost. You're not going to speak in tongues until you get right. One reason people say tongues is not for us is because they're not planning to get right, they're bound by the devils of hell. It is just Sis. Ford, Jason, and I in the church at the present, but Sis. Ford and I will pray for you and with you until you are filled with the Holy Ghost and teach you of meat that you know not of.

A few weeks ago I was praying Lord our church is small, show me or tell me how to serve you in what ever way. He spoke in tongues and interpretation and told me to tear down satan's Kingdom that is deceiving the people. False doctrine is what is deceiving the people. Preachers, I'm not going behind your back — you read this when every body else reads it and you can come and repent when the rest does and take the Name of Jesus and receive the Holy Ghost.

I am spending much time praying for the people of this town. I have just about called every body's name to Jesus. I will call the rest as I pray.

If you want a blessing you can't contain, just pay for one of these writings. Send your donations to Box 115

Rev. Walter L. Ford

PAID ADVERTISEMENT

Congressman Tom Loeffler invites you to join him as his guest in a Schleicher County Salute to



President Ronald Reagan and Vice President George Bush

Noon - Saturday November 3, 1984 Memorial Building

Complimentary Barbeque and Trimmings

Paid for by Loeffler Campaign '84 Committee

**COME
WORSHIP
WITH
US**

FIRST UNITED METHODIST CHURCH
Rev. Fred Brown
Hwy. 277
across from courthouse
853-2721 853-3030
Church School 9:50 a.m.
Morning Worship 10:50 a.m.
Youth Fellowship 7:00 p.m. Wed.
Youth Adult Study 7:30

IGLESIA GETHSEMANE ASEMBLEA DE DIOS
Rev. Nick Robledo
Menard Hwy.
Sunday School 9:45
Morning Worship 11:00
Evening Services 5:00
Wed. Prayer Services 7:00
Friday Services 7:00

CHURCH OF JESUS CHRIST OF LATTER DAY SAINTS
Bishop: Keith Knepp
San Angelo 949-6894
2817 Christoval Rd.
Priesthood 9:00 a.m.
Primary 9:00 a.m.
Relief Society 9:00 a.m.
Sunday School 10:00 a.m.
Sacrament Meeting 11:00 a.m.

CHURCH OF CHRIST
Rusty Kwast, Minister
Mertzon Hwy.
Sunday Services
Bible Class 10:00 a.m.
Assembly-11:00 a.m. & 6:00 p.m.
Wednesday Services
Ladies Bible Class 10:00 a.m.
Bible Class 8:00 p.m.

PRIMERA IGLESIA BAUTISTA
Rev. Raul Tirado, Pastor
El Paso and Concho St.
Sunday School 9:45 a.m.
Morning Worship 11:00 a.m.
Training Union 6-7 p.m.
Evening Worship 7-8 p.m.
Sunbeams Wed. 3 p.m.
Prayer Service 7 p.m.

FIRST BAPTIST CHURCH
Rev. Clive Johnston
853-2406 (res.) Oak & Gillis
Sunday School 9:45 a.m.
Morning Worship 11:00 a.m.
Adult Evening Bible Study
Worship 7:00 p.m. Wed.
Prayer Service 7:30 p.m.

Southwest Texas Electric Co-op, Inc.

Eldorado

Butler Supply Company

Eldorado

El Dorado Restaurant

Eldorado

R & H Well Service

Eldorado

Western Company

Eldorado

Sonic Drive-In

Sonora

Trey Trucking

Eldorado

Food Center

Sonora

FIRST CHRISTIAN CHURCH
Dale Lipsett, Minister
Sunday School 9:45 a.m.
Morning Service 11:00 a.m.
Evening Service 7:00 p.m.
Wed. Bible Study 7:00 p.m.
853-3101

UNITED PENECONSTAL CHURCH
Rev. Walter Ford
Hackberry St.
Sunday School 10:00 a.m.
Worship Service 11:00 a.m.
Sun. Evening Service 7:00 p.m.
Wed. Evening Service 7:30 p.m.

FIFTH BAPTIST CHURCH
West and Carson
Elder Duane McCarty Pastor
Services each 2nd & 4th Sunday
10:30 a.m. and 2:30 p.m.
Also on Sat. night before 2nd Sun.
Meeting at 7:00 p.m.

ST. MARY'S EPISCOPAL CHURCH
Rev. Lea Roy Aldwell
Pelt St. & McWhorter Ave.
Sonora, Tx. 387-2617

Sunday Morning Worship
and Holy Communion
ANTIOCH BAPTIST CHURCH
Sunday School 10:00 a.m.

Morning Worship Service 11:00 a.m.
No Sunday Night Service
Everyone Welcome
Located on Callender St.

WESTSIDE CHURCH OF CHRIST
Hwy. 277

Sun. Morning Service 10:30 a.m.
Sun. Evening Service 6:00 p.m.
Wed. Evening Service 7:30 p.m.

Mike Sokoff, Minister
FIRST PRESBYTERIAN CHURCH
Rev. Ronald J. Sutto

7 N. Cottonwood
Sunday School 10:00 a.m.
Fellowship Time 10:30 a.m.
Morning Worship 11:00 a.m.

OUR LADY OF GUADALUPE CATHOLIC CHURCH
Father Bernard L. Gully
853-2663

Wed. 7:00 p.m.
Fri. 7:00 p.m.
Sun. 8:30 a.m.
AGAPE ASSEMBLY OF GOD
Hwy. 277

Sunday School 10:00 A.M.
Morning Service 11:00 A.M.
Evening Service 6:00 P.M.
Wednesday Bible Study 7:00 P.M.
Rev. Dave Stephens, Pastor

Hill's Jewelry

OFFERS ENTIRE STOCK

\$500,000⁰⁰

10th ANNIVERSARY

SALE

Savings Up To 60%

On Fine Diamonds, Charms
14 Kt. Gold Chains, Gifts

LAY-A-WAY NOW FOR CHRISTMAS

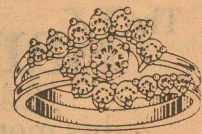
Save Up To 60% On Diamonds



Ladies' 1 Carat
Diamond Solitaire
Ring

Reg. \$4,200.00

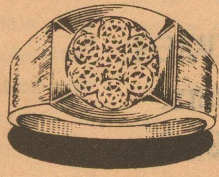
\$1,995



Ladies' Diamond
Wedding Set

Reg. \$1200.00

\$599



Gents 1 Carat
7 Diamond Ring

Reg. \$1800.00

\$899



Ladies' 7 Diamond
Cluster Ring

Reg. \$110.00

\$49⁹⁵



Ladies 1 Carat
Total Weight
Diamond Waterfall

Reg. \$1500.00

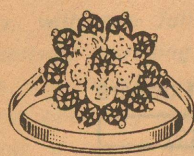
\$749



Ladies 1/2 Carat
Diamond Solitaire
Ring

Reg. \$1,800.00

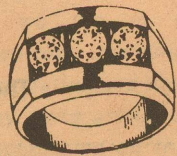
\$899



Ladies
Ruby - Diamond
Ring

Reg. \$260.00

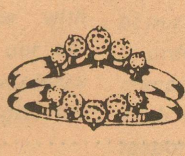
\$129



Gents 1/4 T.W. Carat
3 Diamond
Band

Reg. \$675.00

\$299



Ladies 1/2 Carat
Total Weight
Diamond
Ring Guard

Reg. \$1000.00

\$499



Diamond Earrings

Mounted In 14 Kt. Gold Mountings

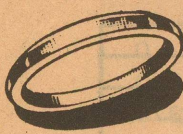
.02 Carat Total Weight	Reg. \$40.00	\$19.95
.10 Carat Total Weight	Reg. \$180.00	\$89.95
.20 Carat Total Weight	Reg. \$300.00	\$149.95
.25 Carat Total Weight	Reg. \$360.00	\$179.95
.50 Carat Total Weight	Reg. 1000.00	\$499.95



Diamond Pendants

Mounted In 14 Kt. Gold with a 14 Kt. Gold Chain

.02 Carat	Reg. \$84.00	\$39.95
.10 Carat	Reg. \$200.00	\$99.95
.20 Carat	Reg. \$400.00	\$189.95
.25 Carat	Reg. \$600.00	\$299.95
.50 Carat	Reg. \$1800.00	\$899.95



**14 Kt. Gold Plain
Wedding Bands**



2mm Reg. \$65.00 \$19.95



4mm Reg. \$150.00 \$69.95



6mm Reg. \$195.00 \$89.95

Special
Special

14 Kt. Gold Heavy Weight Beads

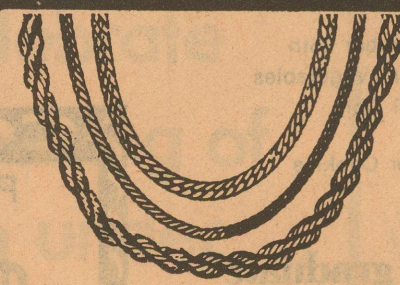
3mm	Reg. 80c	39^c
4mm	Reg. \$1.90	89^c
5mm	Reg. \$3.20	\$1.59
6mm	Reg. \$3.80	\$1.89
7mm	Reg. \$5.00	\$1.99
8mm	Reg. \$8.00	\$3.99

14 Kt. Gold Starter Set

A 7mm Gold Bead on an 18" 14 Kt. Gold Chain

Regular \$40.00

\$19.88



14 Kt. Gold Chains

Up To **60% Off**

14 Kt. Gold Serpentine Chains

7" Bracelet	Reg. \$39.95	\$19.99
16" Chain	Reg. \$89.95	\$42.99
18" Chain	Reg. \$99.95	\$47.99
20" Chain	Reg. \$110.95	\$53.99

14 Kt. Gold Herringbone Chains

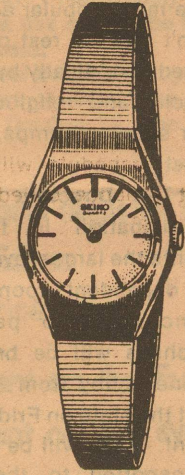
7" Bracelet	Reg. \$59.95	\$27.99
16" Chain	Reg. \$129.95	\$63.99
18" Chain	Reg. \$139.95	\$69.99
20" Chain	Reg. \$159.95	\$79.99
24" Chain	Reg. \$189.95	\$94.99
30" Chain	Reg. \$239.95	\$117.99

14 Kt. Gold Solid Rope Chain

7" Bracelet	Reg. \$159.95	\$79.99
8" Bracelet	Reg. \$185.95	\$89.99
16" Chain	Reg. \$355.95	\$176.99
18" Chain	Reg. \$399.95	\$199.99
20" Chain	Reg. \$450.95	\$219.99
24" Chain	Reg. \$535.95	\$259.99
30" Chain	Reg. \$675.95	\$329.99

Complete Stock Of

Watches



SEIKO PULSAR & CITIZENS

UP TO **60% OFF**

Gold Dipped Leaves

Regular \$2.00

99^c



Cultured Pearl

5 1/2mm to 6mm Pearls

16" Strand	Reg. \$400.00	\$199.00
18" Strand	Reg. \$550.00	\$249.00
24" Strand	Reg. \$750.00	\$349.00

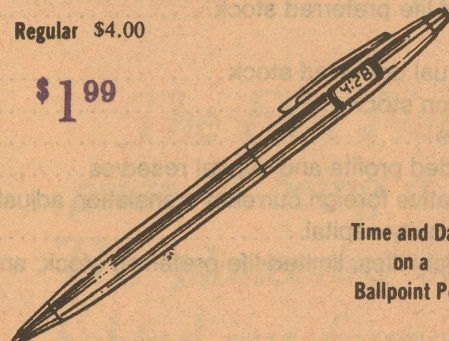
6 1/2mm to 7mm Pearls

18" Strand	Reg. \$980.00	\$489.00
------------	---------------	----------

Time Pens

Regular \$4.00

\$1.99



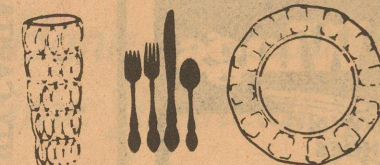
Time and Date on a Ballpoint Pen

Royal Daulton & Pickard

SAVE

UP TO **60% OFF**

Silver & Hollow Wear



Register for Grand Prize to be given away
Last day of sale!

Each time you come in register for a 25 inch color television set to be given away.

VERSATILE & ATTRACTIVE!



Fossil Glass Imitation Pearl Genuine Stones Mother of Pearl Gold & Silver Plate Clasps

COMPARE AT \$5.00 **\$1.99**

TWISTER STRANDS

Lay-a-way now for Christmas

Hill's Jewelry



204 N.E. Main

Sonora

Woman's Club holds meeting

The Woman's Club met October 9th in the home of Mrs. L. V. Newport with sixteen members and one guest present.

The meeting was called to order by the President, Mrs. Stigler, and minutes of the last meeting were read and approved.

Mrs. Van Dusen gave a prayer. The group was led in the pledge and salute to the flag by Mrs. Deal.

It was noted that very few flags are being flown in town, hence it was agreed to buy several and try to stimulate more interest in displaying the flag especially on national holidays.

Mrs. Williams reported that a book entitled "Ladies of the Club" had been given to the library from the club in memory of Mrs. Hext.

The theme for the day's program was Take Time To Think - Your Privilege and Duty. Program leader, Mrs. Mittel, noted that the general election was imminent and urged members to vote and to remind others to vote. She introduced Mrs. White who gave a brief report on the National Democratic Convention held in San Francisco in July. This report was prepared by Mrs. Tom Ratliff who had attended the convention.

A Parliamentary Review on Committees was given by Mrs. Van Dusen.

After the meeting adjourned with the club collect refreshments were served by the hostess, Mrs. Newport, Mrs. Johnson and Mrs. McDonald.

Operation Orphans

The Board of Directors of Operation Orphans has selected four dates for doe hunts during the forthcoming whitetail deer season. They are the following Saturdays: November 24th, December 1st, 8th, and 15th. The first hunt on November 24th will be an all girls' hunt while the December dates will be all boys' hunts. An "Exotic Hunt" will be held on January 26, 1985.

This will be the 24th year of this program. To date, we have 7,868 orphans with a total game harvest of 6,767. It all began when the late Gene Ashby, a State Game Warden, realized that the Hill Country, primarily Mason and Llano Counties, had an excessive deer population and the necessity for removing a large number of antlerless deer. He approached some local ranchers with the idea of allowing orphans to harvest antlerless deer. They like the idea and Operation Orphans came into being. Housing the young hunters was a problem, so another idea was born. With backing from sportsmen's club throughout Texas, and other concerned individuals, a 320 acre tract of land on the North band of the Llano River in Mason County was purchased from a generous land owner at a fraction of its market value. Through donations, a 42 foot by 86 foot bunkhouse capable of housing 100 boys was built. A 50 foot by 100 foot

School Menu

October 22nd
Baked Ham
Boiled Lima Beans
Candied Carrots
Spiced Apple Rings
Marble Cake/Chocolate Icing

Tuesday October 23rd
Beef Tacos with Cheese
Pinto Beans
Lettuce & Tomato Salad
Cornbread
Chocolate Pudding

Wednesday October 24th
Sandwiches - Tuna, Chicken Salad, Ham Salad, Pimento Cheese & Peanut Butter
French Fries
Pork & Beans
Apple Crisp

Thursday October 25th
Turkey-Pot-Pie/Vegetables
Whole Kernel Corn
Applesauce
Peanut Butter Cookies

Friday October 26th
Breakfast
Fried Chicken & Gravy
Creamed Potatoes
Buttered Spinach
Carrot, Pineapple, Raisin Salad
Harvest Cake/Icing

Monday October 22nd
Peaches
Pancakes-Syrup

Pineapple Juice
Hot Biscuits-Bacon-Gravy
Wednesday October 24th
Pears
Toast-Eggs-Jelly

Thursday October 25th
Grape Juice
Hot Oatmeal-Toast
Friday October 26th
Banana
Choice of Cereal

Locals graduate

Three Eldorado students at Angelo State University were among 242 students to receive degrees during summer commencement and the University.

Mary Eileen Pace Field received a Bachelor of Business Administration Degree with a major in Marketing, Laura L. Gentry received a Bachelor of Science Degree with a major in Medical Technology, and Betty Lou Robinson received a Master of Arts in Teaching Degree with a major in Elementary Education.

kitchen and dining room as well as another bunkhouse and recreation hall and counselors quarters were soon added. The camp is managed by Operation Orphans, is today a beautiful facility capable of housing and feeding 200 youngsters.

Though the annual deer hunts are the most popular activity, the camp isn't idle the rest of the year. It is used periodically by other non-profit social and religious organizations for summer camps, etc. at nominal cost.

The Directors hope to make participation in the forthcoming hunts the largest ever. However, this is dependent upon the number of ranchers who participate. The orphans will be brought to Camp Gene Ashby from homes throughout the state on Friday preceding the hunt. They will be housed, fed and transported to the host ranches before daylight the following morning by guides from various Texas sporting clubs and other interested individuals. For the second successive year the Texas Parks and Wildlife has agreed to provide extra doe permits for the participating ranches.

Mike Dail, President of the Federal Land Bank Association of Mason is 1984 Hunt Chairman. All interested land owners are encouraged to contact him at 915-347-6653.

FFA elects officers

The Eldorado Chapter of FFA held a meeting October 15th in order to elect it's officers for the year.

Officers for the year are: President - Sonny Dean; Vice President - Mathew Dahlberg; Sentinel - Brent

Thackerson; Secretary - Wendi Dunagan; Reporter - Tommy Prendergast; Treasurer - Trey Walker and Advisor - Fred Igo.

Wendi Dunagan was also elected as Eldorado's FFA Sweetheart at the same meeting.

Microwave course offered

Darolyn Moore, W.T.U. home economist, will present a program on microwave cooking at 7:00 p.m. on Monday, Oct. 22, at the high school homemaking room. She will be covering basic microwave techniques, microwave meals & new ideas in microwaving. There is no charge for the program. For more information, call the county extension office. (853-2312)

Red Wings

RED WING SHOES

McCalla's Dept. Store

You've earned your Wings!

The Karate Kid

★★★★ (HIGHEST RATING)
ONE OF THE YEAR'S BEST MOVIES.

—Roger Ebert, CHICAGO SUN-TIMES

THE FEEL-GOOD MOVIE OF THE SUMMER.

—Joel Siegel, GOOD MORNING AMERICA



The Karate Kid
It's time for his moment of truth.

PG-13 (Original Soundtrack Album Available On Cassettes, Records and Tapes)

COUPON

Present this coupon and receive

\$1.00 OFF

regular admission price.
at The Ritz Theatre.

SHOWTIMES:
Fri-Thurs.
7:30 p.m.-9:45 p.m.
Sat.-Sun. Matinees
1:30 p.m.-3:45 p.m.
(1:30 showing all seats \$2.00.)

Showing in Sonora at
Ritz Theatre

REPORT OF CONDITION

Consolidating domestic and foreign subsidiaries of the

First National Bank of Eldorado

Name of Bank City

In the state of Texas, at the close of business on Sept 30, 1984 published in response to call made by Comptroller of the Currency, under title 12, United States Code, Section 161. Charter Number 8575 Comptroller of the Currency 11 District

Statement of Resources and Liabilities

		Thousands of dollars
ASSETS	Cash and balances due from depository institutions	1,470
	Noninterest-bearing balances and currency and coin	0
	Interest-bearing balances	13,497
	Securities	425
	Federal funds sold and securities purchased under agreements to resell in domestic offices of the bank and of its Edge and Agreement subsidiaries, and in IBFs	13,305
	Loans and lease financing receivables:	
	Loans and leases, net of unearned income	140
	LESS: Allowance for loan and lease losses	13,165
	LESS: Allocated transfer risk reserve	13,165
	Loans and leases, net of unearned income, allowance, and reserve	0
	Assets held in trading accounts	983
	Premises and fixed assets (including capitalized leases)	18
	Other real estate owned	0
	Investments in unconsolidated subsidiaries and associated companies	0
	Customers' liability to this bank on acceptances outstanding	0
Intangible assets	1,006	
Other assets	30,564	
Total assets	30,564	
LIABILITIES	Deposits:	
	In domestic offices:	
	Noninterest-bearing	5,412
	Interest-bearing	20,574
	In foreign offices, Edge and Agreement subsidiaries, and IBFs	0
	Noninterest-bearing	0
	Interest-bearing	0
	Federal funds purchased and securities sold under agreements to repurchase in domestic offices of the bank and of its Edge and Agreement subsidiaries, and in IBFs	0
	Demand notes issued to the U.S. Treasury	0
	Other borrowed money	0
	Mortgage indebtedness and obligations under capitalized leases	0
	Bank's liability on acceptances executed and outstanding	0
Notes and debentures subordinated to deposits	0	
Other liabilities	620	
Total liabilities	26,606	
Limited-life preferred stock	0	
EQUITY CAPITAL	Perpetual preferred stock	0
	Common stock	150
	Surplus	375
	Undivided profits and capital reserves	3,433
	Cumulative foreign currency translation adjustments	0
	Total equity capital	3,958
Total liabilities, limited-life preferred stock, and equity capital	30,564	

We, the undersigned directors, attest to the correctness of this statement of resources and liabilities. We declare that it has been examined by us, and to the best of our knowledge and belief has been prepared in accordance with the instructions and is true and correct.

Directors

I, Frances Peters Name
Cashier Title

of the above-named bank do hereby declare that this Report of Condition is true and correct to the best of my knowledge and belief.

Signature
 Oct. 10, 1984
 Date

The Travelers III

can make all your travel arrangements
anywhere in the world.

CALL 387-2586

Or come by Hwy. 277 North Sonora

Letter to the Editor

Dear Editor,

In light of the article that appeared October 4, 1984, in the San Angelo Standard Times, I feel it is time to speak out on the subject of Medicare's termination of its Provider Agreement with Schleicher County Medical Center. It is a great injustice to all the residents of this county, that we will be without a hospital, due to the *incompetence of the Administrator* and the past and present hospital board members. For years, this administrator has run the Medical Center "in the red" with little regard to the fact that it is only our tax dollars that has kept the doors open. It seems to me that if something does not work, you solve the problem or go for a new solution.

We stand to lose a lot if our hospital closes. 1) What will happen to our elderly loved ones in the Nursing Home? Without payment from Medicare, the majority of them won't be able to afford to stay there. The nurses and aids won't be there to take care of them - they won't have a job! The doctor certainly can't stay here without a hospital to

put his patients in. 2) The community, as a whole, depends on the hospital. It gives us a sense of security, knowing we have a very capable doctor, staff and hospital, in case they are ever needed. Having a good functional hospital for our own use in emergency situations, is quite an asset. I imagine this had some affect on the decision of the government to have PAVE PAWS located in this area. I also think it will have a lot to do with whether those who are employed by PAVE PAWS will decide to live here in fine little town and raise their families here.

Please don't sit on your hands, thinking somebody else will take care of this lousy situation - we don't have time to waste. Contact the board members (that we are guilty of electing) and let them know this situation can no longer be tolerated. We want quick, decisive action and anything less is inexcusable. December 20th is the day our Medical Center dies.

A Concerned Tax-Paying Citizen
(Name Withheld Upon Request)

Reply

The *Leader* contacted President of the Board of Trustees of Schleicher County Medical Center, Dr. William Edmiston, DVM, and his response to this letter is as follows:

This is a letter to inform the citizens of Schleicher County about the present state of affairs of the Schleicher County Medical Center.

The hospital has faced a changing set of circumstances and a series of problems since I have been on the Board of Directors. Several years ago, the new clinic addition to the hospital was built without voting a bond issue for new construction. At the time, the hospital was operating at a break-even level economically, with two full time physicians actively pursuing their practice here. The decision to build the clinic with operating capital at the time was a sound financial decision. Shortly thereafter, our doctor situation changed. First, one physician moved away; then the other established physician decided to take a deserved leave of absence and pursue another area of professional interest. This left the hospital in the unfortunate condition of being without an established medical practice at a time when we needed a high level of use in order for the clinic to be economically feasible.

Then the hospital faced the challenge of assisting a physician establish a practice here and also to attempt to locate and recruit additional physicians to utilize our facility. The community's acceptance and use of a local physician is the key to the economic bottom line to our medical facility. A large proportion of our expenses are fixed, being such items as cost of physical plant, utilities, salaries, and maintenance which vary very little according to patient load. As a result, unless we have a medical staff here that the public has confidence in the hospital will have financial difficulties. In April of 1984, we were very fortunate as a hospital and community to have Dr.

B.R. Respass establish his practice here. Dr. Respass has excellent professional credentials and is developing a reputation as a competent and caring physician. The hospital has had a good patient load and because its services are being utilized, is starting to improve financially.

Presently the biggest challenge facing the hospital is Medicare accreditation. A notice appeared in the October 4, 1984 Standard Times stating Medicare funding will be terminated December 20, 1984. What this notice did not state is that we have an inspection scheduled in early December which will determine if we are in compliance with Medicare and thus retain our accreditation and funding. Now please pay close attention while I give the background on this notice.

In April of 1984 an inspection team from the State Health Department was here on a routine Medicare inspection. At that time the hospital was cited first because a physician had not been available within 15 to 20 minutes at all times. This was a legitimate complaint, but one that has been remedied by Dr. Respass and relief physicians. Secondly, we were cited because the patients diet kitchen and a utility room shared a common entrance from the hall. Now, bear in mind the rooms had been approved prior to construction of the hospital by the state and had been constructed as approved, then had passed inspections in the approved state since construction in 1967. This inspector demanded the rooms be separated which we did at a remodeling cost of \$5000. There were also some pharmacy paperwork and nursing staff paperwork deficiencies which have since been corrected.

Because the hospital was found deficient in April, we were re-inspected on August 1, 1984. During this inspection two complaints were brought out by the examiners. First, on two instances a physician was

not available within 15 to 20 minutes. The first instance was when Dr. Respass was in surgery 18 steps from the emergency room. The "emergency" was of a non-critical nature and waited until Dr. Respass completed his surgery. The second instance was while Dr. Respass was in the process of moving here and winding down his practice in Junction. He was in radio contact with the nurses here, but the patient went home rather than wait 30 minutes. These are the only times from April until August that the records show a physician was not available within 15 to 20 minutes.

The second complaints concerned dispensing medication in the Emergency Room by telephone orders. On 3 instances, patients whom a physician had seen during regular office hours either that day or the day previous came to the hospital needing additional medication. The physician prescribed medication over the telephone and it was administered by nurses. This is an accepted and established legal medical practice but was unacceptable to Medicare representatives interpretation. A call to the TMA's attorneys brought to light the fact that this practice is being discouraged and is no longer approved as of September 1984. [This survey was on August 1, 1984]. Due to these noncompliances we were informed August 15, 1984, we would be reinspected in the near future. The above deficiencies have been addressed by two actions. First, to ensure that a physician is always on call, Dr. Respass or a relief physician are paid to be on call every week-end. As a result, our emergency room costs are increased and require a \$57.50 payment by each patient. Secondly, Smokey Taylor has been placed in complete control of our hospital dispensing pharmacy in order to have it as professionally managed and controlled as possible. Both of these actions are in direct response to Medicare's increasing demands.

On September 23, 1984, I read in the San Angelo Standard Times [article by Nurse & Robinson] that Schleicher County Medical Center had lost its Medicare funding. On September 24th the hospital was notified that instead of the promised reinspection, our Medicare funding was to be terminated on October 20, 1984. Thru prompt reply to the Medicare authorities in Dallas and Austin and by action of Congressman Tom Loeffler in Washington, D.C. an extension of funding until December 20, 1984 was obtained and the reinspection was scheduled for early December. At present the hospital has corrected all non-compliance with Medicare and is ready for our inspection. We have frequent conversations with the inspectors and are progressing with their requests.

Why then was the notice pub-

lished in the Standard Times? Medicare is attempting to cut costs anyway possible. They would like to centralize all Medicare treatment to the major metropolitan areas and by this decrease in availability of care decrease expenses. I feel they are going to great lengths to cut off our Medicare funding by finding us at fault, and failing that, will publish

misleading notices, not stating incorrect facts, just leaving out a few pertinent ones, to mislead the public that something is amiss at our hospital and scare them into abandoning our hospital and doctor.

Please don't be misled by this attempt to shake your confidence in our Medical Center. We still provide quality health care for our com-

munity and will continue to do so. Be assured that the Hospital Board has and will leave no stone unturned to maintain our Medicare accreditation. This letter was written to set forth the facts to allow our citizens to make up their own minds. Thank you for your attention.

Professionally yours,
William Edmiston

Pat Walker's cordially invites you to help celebrate the Re-Opening of the salon under new ownership & management



D'ann Walker of Eldorado tells of her personal experience with Pat Walker's



I started going to Pat Walker's to get a suntan on the Eurotan unit. I work 8 to 5 so it didn't leave me any time to get out in the sun. Within the first week, I got my base tan and have been going a couple of times a week to maintain it. I was then able to take advantage of the Symmetricon units. As I began to use them I lost the unwanted inches in areas that I wanted, in a very relaxing way. I can testify that in the weeks that I have been going to Pat Walker's, the individual counseling received from Rosemary and Edna has made it a fun learning experience. I have learned a lot about food, and the way it effects your body. I really enjoy going to Pat Walker's! They treat you like one of the family and it's great for ones self esteem. You feel better about yourself when you look good!! Be sure to attend the Re-Opening of Pat Walker's Friday, October 26. See you there.

Thank you Pat Walker's
D'ann

Come by Fri., Oct. 26, all day long and register for the free gifts & visit with Rosemary and Edna. Lots of Door prizes & Surprises

drawing will be held at 6 p.m.

- one week treatment on the Eurotan
- one week treatment on the symmetricon unit
- manicure ● pedicure
- gift certificates from local merchants
- set tips & sculptured nails ● and much much more

Hwy 277 N.

Pat Walker's

387-3874

First National Bank of Eldorado

The First National Bank of Eldorado takes pride in being a long time financial institution. The pioneering strength and progressive spirit behind our founding organization is still very much with us today.

Because we're an independent bank, all decisions are made here at home, not at some distant location. We want to serve you the best way we can because we want you to grow.

Member FDIC

Ph. 853-2561

100 S. Main

TEXAS PRESS ASSOCIATION

MEMBER 1984

Schleicher County Leader
U.S.P.S. 342-470
Published Every Thursday
P.O. Box 790
210 Main St.
Eldorado, Texas 76936
Finis C. Bratcher
Owner-Publisher

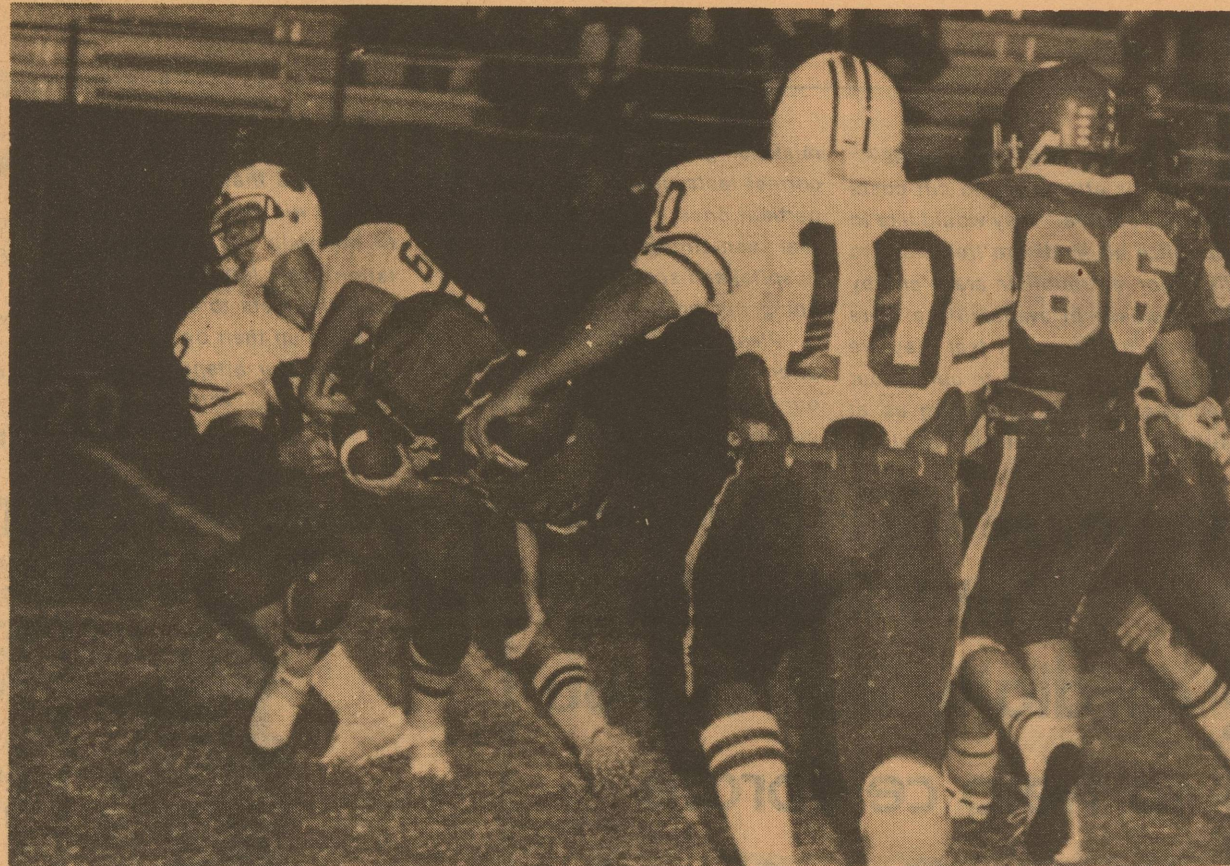
Second class postage paid at Eldorado, Tex. 76936. POSTMASTER: Send address changes to Schleicher County Leader, Box 790, Eldorado, Tex. 76936.

Any erroneous reflection upon the character or standing of any person or firm appearing in these columns will be gladly and promptly corrected upon calling the attention of the management to the article in question. Attention Advertisers: It is the Leader's policy that all ads are proofed before publishing, any error not brought to our attention at that time, will be a matter for correction on the Leader's behalf.

Start at \$595.00
SATellite SHOPPE

Store Hours 1-5:30, 10-6 Sat.
1906 S. Bridge

Ph. 597-7601
Brady, Texas



Eagles stomp Stanton 8 - 0

The Eagles' victory in far off Stanton Friday night of 8 - 0, can be attributed to an ever effective Eldorado defense and nature, in that strong winds held an obviously air-born Buffalo team pointless.

The ground gaining effects against Stanton's heavy-duty line worked effectively earning the Eagles' 12 first downs to Stanton's four. A total of 163 yards earned by rushing was racked up by the Eagles with junior Mike Moore plowing out 67 yards earning him the title of leading rusher of the game. Moore was responsible in setting up Eldorado's only touchdown which came at the hands of James Harlin who zipped over the necessary five yards on a sweep with 3:04 remaining on the first quarter clock. The extra point attempt was fruit-

less. The Eagles again hit the scoreboard well into the fourth quarter when John R. Griffin scored with a safety on the Buffalos' 2 yard line.

Tailback Jay O'Harrow's injuries which benched him early in the first quarter was the subject of such a minute nature that he should be back in full swing against the Reagan County Owls. But the coaching staff is experiencing what they refer to as the "punies" of 24 players scheduled to practice Monday, eighteen were present.

Coach Mitchel anticipates the Eagles will meet the Owls here Friday in one of the more critical games of the district in that an Eagle victory can nearly guarantee a tie for district championship. Coach Richters stated that Reagan County

was in the driver's seat and their momentum was at full tilt. The amount of support mustered by the Eagles in front of a hometown crowd Friday could well be a determining factor for the Eagles' shot at the championship.

Ask the Land Bank about...

money to buy land or improve your farm.

Farmers today are looking at ways to increase their productivity...buying or improving land...building or remodeling facilities.

Whatever way you choose to grow, the Federal Land Bank can provide long-term credit to help.

So when you're looking to buy or build, stop in and talk to the long-term farm credit specialist at your Federal Land Bank Association.



217 NE Main
Sonora, Texas
76950

Public Notice

Southwestern Bell Telephone Company, in accordance with an order from the Public Utility Commission of Texas, hereby gives notice it has filed a tariff to reduce the monthly rates for the Switched Access portion of the company's intraLATA Foreign Exchange (FX) Service offering that was implemented starting June 1, 1984. Simultaneously, the LATA-wide toll-free calling scope, also started June 1, would be discontinued and the calling scope would return to that in effect prior to June 1. The Commission has assigned this matter Docket Number 5891.

The net effect of the tariff will be a monthly decrease in total billing of approximately \$700,000 until November 1, 1984. After that time the net effect on the company's revenue is estimated to be negligible.

Persons who wish to intervene or otherwise participate in these proceedings should notify the Commission as soon as possible. A request to intervene, participate or for further information should be mailed to the Public Utility Commission of Texas, 7800 Shoal Creek Boulevard, Suite 400N, Austin, Texas 78757. Further information may also be obtained by calling the Public Utility Commission Consumer Affairs Division at (512) 458-0223 or (512) 458-0227, or (512) 458-0221 teletypewriter for the deaf.



Aviso Público

En conformidad con una orden de la Comisión de Servicios Públicos de Texas, se anuncia mediante el presente aviso público que Southwestern Bell Telephone ha presentado una tarifa con el objeto de reducir las cuotas mensuales que se han cobrado desde el 1 de junio de 1984, por la porción de la tarifa para acceso a la red central necesaria con el uso del Servicio de Zona Exterior (Foreign Exchange (FX) Service).

Simultáneamente, el servicio de llamadas de larga distancia sin cobro dentro del área de servicio que también se efectuó el 1 de junio de 1984, se discontinuará, y el campo de llamadas será al igual que antes del 1 de junio de 1984. Se ha registrado la nueva tarifa bajo el Docket 5891.

El efecto real de la nueva tarifa se verá en la reducción del costo total de facturas de aproximadamente \$700,000 hasta el 1 de noviembre de 1984. Se calcula que después de esta fecha el efecto real para nuestra empresa será despreciable.

Los usuarios de Southwestern Bell Telephone Company que estén interesados en participar en esta reunión, o que requieran mayor información, deben dirigirse por escrito a: Public Utility Commission of Texas, 7800 Shoal Creek Blvd., Suite 400N, Austin, Texas 78757. También se puede obtener información adicional llamando a Public Utility Commission Consumer Affairs Division al 512/458-0223, al 512/458-0227, o al 512/458-0221 si requiere teletipo (aparato para personas con impedimentos de audición).

The Secret's Out!

WE'VE LOST A COMBINED TOTAL OF OVER 65 lbs.

AND 31 Measureable inches OF Ugly Fat IN ONLY 9 weeks

AND WE FEEL SUPER! THESE PRODUCTS ARE 100% NATURAL CONTAIN NO HARMFUL CHEMICALS OR DRUGS REQUIRE NO WARNING LABELS

YOUR SATISFACTION IS COMPLETELY GUARANTEED!

Interested?

Call Pat or Dianna Ragsdale 853-2777

Ron Sauer puts the binders on a Buffalo Friday night at Stanton in a game which had strong defensive

Klassic Kutt

FAMILY HAIR CARE CENTER

Located next to the City Park
KATHY S. DOTY 853-3606
Closed Saturdays

Before Winter ★ Special ★

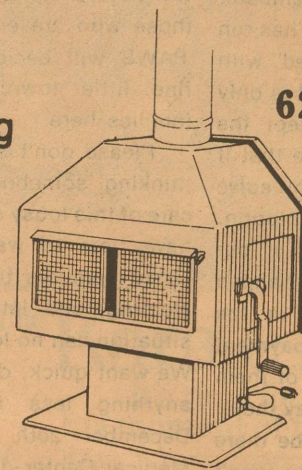
Glass Front Forced Fan Heating

62% Efficient

Reg. Total.....\$951

Save.....\$252

Total Package Now.....\$699



5' Triple Wall Flue Package & 6' Black Pipe Included

HOUSE OF FIREPLACES

1121 S. Chadbourne

(915)653-3140

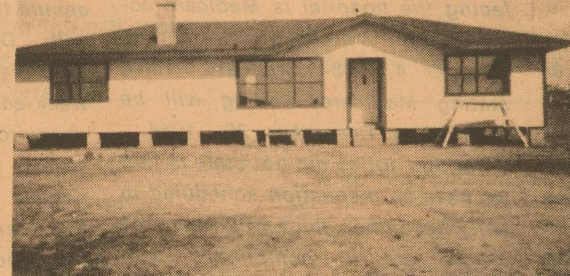
We Have

The Affordable Alternative Home

For You

SALE PRICE INCLUDES:

- * Moving
- * Foundation
- * Central Heat & Air
- * Water & Plumbing Hookups
- * Septic Tanks
- * Ash Cabinets



1456 sq. ft., 3 bedroom, 2 bath, ft. rock fireplace, vaulted ceilings, super size master bedroom

FREE DELIVERY WITHIN 100 MILES

FHA-VA-CONVENTIONAL / 30 YEAR FINANCING



Starting At \$29⁰⁰ per sq. ft.

ANGELO READI-BUILT

Located at 2602 North Bryant

Mon. Dedi Starkey 653-7128

Mon-Fri 9-5 Saturday 11-5

GERMANIA FARM MUTUAL INSURANCE

Sherry Lux Eldorado

Bobby Phillips of Eldorado Instrument and Control can help with all your oil and gas well needs.

853-2164 Box 613



Tex-Sun Insulation

Free Estimates Commercial Residential

Farris Nixon 853-2996

Frontier Petroleum Services

Well servicing and water hauling, 24 hour service, pump trucks. Eldorado

853-2331 853-2331

BUTLER SUPPLY

"Your complete oil field store."

East St.

Insurance Fire-Auto-Windstorm Casualty

Call Tom Ratliff 853-2636

C.H. Poynor Construction Co.

Complete Roustabout Service Britt Poynor

Eldorado 853-3064

Thorp's Dry Cleaners and Laundry

Uniform rental - Dust control mops and mats

212 S. Main 853-2900

Schleicher County Abstract Company

Abstracts and Title insurance for all properties in Eldorado and Schleicher County

853-2685 5 North Divide

HENDERSON

Water Well Windmill and Pump Repair

Phone 853-3280

Complete Oilfield Service R & H Well Service Trey Trucks

Division of Norton Well Service

853-2186 Eldorado

Kerbow Funeral Home

Serving Eldorado & Sonora

Phone 853-2636 or 387-2266

Eldorado Instrument & Control Co.

INSTRUMENTS-GAUGES-METERS

Controls for oil and gas industry. Industrial plants sales and service on oilfield and industrial instruments.

24 Hour Service

Home 853-2624 Office 853-2506



Eldorado Eagles Football

Date	Opponent	Place	Time		J.V.
			7th	8th	
Sept. 13	Iraan	Here	4:00	5:15	7:00
20	Wall	There	4:40	5:45	7:30
27	Menard	Here	5:00	6:15	8:00
Oct. 4	Ozona	There	5:00	6:15	
6	Ozona	There			11:00 - Sat
11	Sonora	There	5:00	6:15	8:00
18	Reagan County	There	4:40	5:45	7:30
25	Wall	Here	4:30	5:45	7:30
Nov. 1	McCamey	There	4:00	5:15	7:00

Date	Opponent	Place	Time
Sept. 7	Rankin	Here	8:00
14	Iraan	There	8:00
21	Sonora	Here	8:00
28	Menard	There	8:00
Oct. 5 **	Ozona	Here	8:00
12 *	Stanton	There	7:30
19 *	Big Lake	Here	7:30
26 *	Wall	There	7:30
Nov. 2 *	McCamey	Here	7:30
9 *	Greenwood	There	7:30

** Homecoming
* District (8AA)

Join these
merchants
in

Supporting the Eagles



Food Center Sonora	Southwest Texas Electric Co-op "Owned by those we serve"	McCalla's Dept. Store Eldorado	Hext Foods Granvil Hext, Owner Eldorado	Klassic Kutt Kathy Doty, owner Family Hair Care Center	Handy Mart Groceries, gas and beer Hwy. 277 N. Eldorado
Adobe Mini Mart Eldorado	C.H. Poynor Construction Eldorado	The Leader Serving Schleicher County	Lynn Meador & Co. Real Estate Eldorado	Western Company Well Service Division	Perrys Eldorado
Jerry's TV "Your Satellite Center" Eldorado	First National Bank Since 1907 Member FDIC	Joe Max's Exxon Full, Friendly Service	Top Package Store Eldorado	Robles Tires and Auto Service Eldorado	Eldorado Wool Co. Eldorado
All Auto Service Center Patton's Gulf Eldorado	L. R. Hanusch Water Well Service	B&H Maintenance and Construction Eldorado	Thorp's Dry Cleaners & Laundry Eldorado	Kwik Thrift Open 24 hours Eldorado	Kent's Automotive Eldorado

Classified

For Sale

FOR SALE: Trailer house 1974 model on 2 lots. \$25,000. Call 853-3147. 42-p

FOR SALE: 1/2 Pit & 1/2 dog 7 week old puppies. \$20 each. Also, new hospital bed w/mattress and rails, crank-style and convalescent walker. 42-p

FOR SALE: 1980 Hammond Fun Machine organ. Plays melody and rhythm, easy to learn. Priced right. 853-3169. 41-42-c

GRAIN FED BEEF - 1/2 beef or whole. Billy Williams 853-2492. 40-tfc-c

HERBAL PRODUCTS WILL change your life! Lose up to 29 lbs. per month and feel great. All natural and 100% guaranteed. Kathy Pashilk 853-3103 after 5. 39,40,41,42,43-c

Public Notice

Notice is hereby given of the availability of Revenue Sharing use report and the Annual Budget, which were approved by the Commissioners' Court for the year 1985, for public viewing in the County Clerk's office during business hours each week day in the Courthouse, Eldorado, Texas.

Helen Blakeway, County Clerk
Schleicher County, Texas
42-c

Sealed bids will be received at the office of the County Clerk in the Courthouse at Eldorado, Texas until 10:00 a.m. October 22, 1984, at which time such bids will be opened by the Commissioners' Court, meeting in the County Courtroom for the following:

New pump house, pressure pump with 80 gallon pressure tank, electrical and plumbing repair at the Cemetery.
TO BE BID AS ONE UNIT

Specifications are available at the County Clerk's office.

The Commissioners' Court reserves the right to waive all formalities and accept the bid deemed by the Court to be in the best interest of Schleicher County, whether or not this be low, as well as the right to reject any and all bids submitted.

Helen Blakeway, County Clerk
Drawer 580, Eldorado, 76936
42-c

Notice of the adjudication of all claims of water rights in the Pecos and Devils Rivers Watershed of the Rio Grande Basin, and in the Closed Basin:

Notice of the requirement for the filing of sworn water right claims under Section 11.307, Texas Water Code; and

Notice of the commencement of hearings on all water rights claims

Notice is given pursuant to Section 11.306, Texas Water Code, and Commission Rule 31 TAC 275.12 (c) that all claims of water rights in the Pecos and Devils Rivers Watershed of the Rio Grande Basin, and in the Closed Basin, will be adjudicated pursuant to Section 11.301, et seq., Texas Water Code, and Commission Order of September 25, 1984.

The Pecos and Devils Rivers Watershed consists of: the Pecos River and its tributaries from the Texas-New Mexico state line to its confluence with the Rio Grande, excluding Barrilla Draw Watershed, but including all use of water under Permit No. 1217, as amended, of the Red Bluff Water Power Control District; and, the Devils River and its tributaries from their headwaters to the river's confluence with the Rio Grande.

The Closed Basin consists of that portion of the basin located within the State of Texas.

On or before December 27, 1984, all persons claiming a right to divert state water, except for domestic and livestock purposes, in the Pecos and Devils Rivers Watershed, and in the Closed Basin, shall file with the Texas Department of Water Resources a sworn claim in accordance with Section 11.307, Texas Water Code, setting forth the following: the name and post office address of the claimant; the location and nature of the right claimed, including a description of any permit or certified filing under which the claim is made; the purpose of use; a description of works and irrigated land; and, all other information necessary to show the nature and extent of the claim.

Instructions and forms for the filing of water rights under Section 11.307, Texas Water Code, may be obtained without cost from the Texas Department of Water Resources, P.O. Box 13087, Austin, Texas 78711, or from the Department's district office at 204A West 5th Street, Odessa, Texas 79761. Use of the Department forms is not mandatory.

Copies of the Department's investigation report, together with aerial photographs in the report's appendix, will become available on December 31, 1984 for inspection in the offices of the Texas Department of Water Resources in the Stephen F. Austin State Office Building, 1700 North Congress Avenue, Austin, Texas, and in the Department's district office at 204A West 5th Street, Odessa, Texas 79761.

Notice is further given pursuant to Section 11.308, Texas Water Code, and Commission Rule 31 TAC 275.12 (e), of the commencement of hearings to receive evidence on all claims of water rights filed or asserted in accordance with Section 11.307, Texas Water Code, in the Pecos and Devils Rivers Watershed of the Rio Grande Basin, and in the Closed Basin.

At 8:30 a.m. on Monday, January 7, 1985, at the Large Community Hall in Rooney Park, Sanderson Highway, Fort Stockton, Texas, the Texas Water Commission, through a hearings examiner, will convene and commence public hearings in accordance with Commission rules. The hearing on January 7, 1985 will be to establish jurisdiction and to explain the adjudication process and procedure to be followed at the individual evidentiary hearings. Individual hearings to receive evidence substantiating claims will continue thereafter at the times and places provided by docket notice which will be sent to each claimant. The evidence received at the hearings will form the basis for the Commission's determination of all claims of water rights in the described adjudication area. Failure to appear and present evidence will jeopardize the right to divert and use

water asserted in the claims. Signed this 26th day of September, 1984.

SCHLEICHER COUNTY I.S. D. is taking applications for a Maintenance Foreman. Application and job description may be obtained by contacting Guy Whitaker at the school or call 853-2514. 41, 42-c

Real Estate

FOR SALE: 2 bedroom, brick home. Fireplace, fenced yard, large storage area. 810 N. Divide. \$38,000. Call 853-3156 after 5:00. 29-tfc-c

FOR SALE: NEW 1984 large 14 x 80 3 bedroom 2 bath mobile home. Hardboard siding, furnished, less than \$1000 down. Financing available. Call collect 658-2711. 22-tfc-c

FOR SALE: 3 bedroom, 2 bath home. Kitchen & dining room with pantry, screened in back porch. All carpeted. Two lots, \$29,500. Call 853-2641. 42-43-p

HOUSE FOR SALE: 3 bdrm, 2 bath, dining room, utility/laundry, outside storage, central heat-air, built-in stove, fenced yard. 215 Dixie. 853-3103. 42,43,44,45-c

Lynn Meador and Company

NEAR SCHOOL
2 BR - 1 Bath, detached garage with efficiency apartment.

2 LOTS
With mobile home hookup, secluded area, large 2 car garage with storage.

3 BR - 1 BATH
Home recently remodeled, two lots, carport.

LOVELY STUCCO
3 Bedroom on corner lot. Owners have moved and must sell. Central heat, recently remodeled.

ON BLUEBONNET
Price reduced, 3 bedroom, 2 bath, carpeted, central heat and air, dishwasher.

IN EDGEFIELD
Town lots and acreage with owner financing.

IN CHRISTOVAL
4 BR 2 Bath, rustic ranch house with all metal pens and barns. Five acres of land included near Christoval.

IN SONORA
2 Bedroom, 2 bath condominium with fireplace, central heat/air, double carport with storage.

Office 853-2808
E.C. (Pete) Peters 853-2843
Jo Ward 853-2339
Lynn Meador 853-2353

5 N. Divide
Eldorado, Texas 76936

Real Estate

FOR SALE: 3 bedroom, 2 bath - large den with fireplace - fenced back yard - near school. Walter Powell, Jr. 853-3310. 13-tfc-c

FOR SALE: New 1984 mobile home. Two bedroom, one bath, hardboard siding, furnished. Less than \$650 down. Financing available. Call collect 658-2711. 22-tfc-c

FOR SALE

469 Acres 20 miles southeast of Eldorado. Excellent hunting. Some minerals.

FOR SALE

320 acre stock farm 8 miles west on 190. Two bedroom house and other improvements. Pavement, 1/2 minerals.

Martin Lee Associates, Inc.
(915)655-6989 days
(915)853-2220 evenings. 39-tfc-c

FOR SALE: 3 bedroom house on Hwy. 277 with 5 acres good well, fruit trees. Call 853-2660. Owner finance. 35-tfc-c

FOR SALE: 4 bed., 3 bath home NEAR SCHOOL, plenty of storage with fenced in back yard. \$59,000, call 853-2177. 40,41,42,43-p

FOR SALE: 14' x 76' 1981 (3 1/2 years paid for) 3 bedroom, 2 bath mobile home. New carpet in living room, major appliances, located on lot for rent. Just \$500 down and take up payments of \$317. VA approved. Call after 6 p.m. 853-3007. 42 - 48-p

FOR SALE: Residential lots in Juniper Acres located on old Merton Hwy. adjacent to Sunset Acres. For more information call J&R Properties 853-3345 or 512-896-7016. 30-35-p, 36-tfc-c

Garage Sales

FOUR FAMILY GARAGE SALE: Sat. & Sun. Furniture, guns, tools, typewriter, overhead doors, much more. 1/2 mile south of Christoval on Hwy. 277. 42-c

Help Wanted

GOVERNMENT JOBS - Thousands of vacancies must be filled immediately. \$17,634 to \$50,112. Call 716-882-2900, Ext. 32214. 41,42-p

COLOR ANALYSIS: Get in on the Ground Floor with America's Premier Color Service Company. Earn \$100-200 a day or more in your own Fashion and Glamour Business! Call Janelle Doyel (713) 580-1352 for complete training information. 41,42-p

Free
FREE: 3 small, adorable puppies, six weeks old. Very good with children. 853-2394 after 4 p.m. 42-p

Business Services

\$25.00 REWARD for any sewing machine I can't repair. \$9.95 to clean, oil and adjust tension. The Sewing Machine Man, call 853-2851. 37-tfc-c

BEGINNERS TOLE PAINTING Classes starting October 22nd 12:30 - 2:30 p.m. and October 24th 7 p.m. Call 853-2903. 41-42-p

INTERESTED in taking piano or organ lessons? If so, call Leroy Moore at 365-3702 before 8 a.m. or after 6 p.m. in Ballinger. 26 years teaching experience. Has classes in Sonora als. Mr. Moore will start classes in Eldorado if enough persons are interested. 41-tfc-c

Texas Veterans
Mikeska Acres has 10 acre tracts.
State pre appraised for you at \$2,000 per acre.
With only \$1,000 down plus closing costs, the State of Texas will assist you in acquiring up to \$20,000 worth of land With interest rates at 9 1/4 % your monthly payments are only about \$158 per month.
Mikeska Acres is located 2 miles west of Eldorado on highway 190. For more details call 944-9369
Owner-Agent

McCrea Masonry
4601 ARDEN RD.
SAN ANGELO, TEXAS 76901
915-944-0566

**WOOD STOVES
FIREPLACE INSERTS**
Cut Your Heating Costs This Winter!!
FIREPLACE TOOLS & SCREENS

50% OFF

Introducing The Hottest Technology in today's WOODSTOVES.



Revenue Sharing Handicapped Regulations

This notice is published pursuant to the requirements of Section 51.55 of the Revenue Sharing Regulations, as published in the Federal Register on October 17, 1983. Section 51.55 prohibits discrimination against qualified individuals because of their handicapped status.

Schleicher County advised the public, employees and job applicants that it does not discriminate on the basis of handicapped status in admission or access to, or treatment or employment in, its' programs and activities.

Schleicher County has designated the following as the contact to coordinate efforts to comply with this requirement. Inquiries should be directed to:

Johnny Griffin
Schleicher Co. Judge
P.O. Box 536
Eldorado, Texas 76936
Phone: 853-2766
Hours: 9 to 5

CUSTOM FARMING
plowing, planting, combining, cotton stripping, hay baling, etc.

Also would like to rent or lease farm or pasture land.

Craig Griffin 853-3323 853-2998

Eldorado Road Service
Maintainer-Loader-Dump Truck
Caliche, Top Soil & Sand
Fully Insured Ph. (915)853-3310

Walter Powell, Jr. Norris Sauer Steve Williams

At Chaparral the (sale) only starts the deal; the years of good service completes it. We will insure that all your vehicles will have only the most professional of all car care.

CHAPARRAL
CHEV-BUICK-PONT-OLDS

1-10 at Golf Course Rd. Sonora



Thanks for caring

First National Bank of Eldorado

Since 1907 Member FDIC Eldorado, Texas Main St. 853-2561

Southwest Texas Electric Co-op

"Owned by those we serve" Eldorado, Texas 853-2544

Bert Bruton

Aerial Spraying 853-2304 or 397-2236

Eldorado Road Service

Walter Powell, Jr. Norris Sauer Steve Williams 853-3310

Griffin Oil and Chemical Co.

Dan Griffin, owner 853-2880 387-2339 853-2339 (24 hours)

Jeff Leggett

Bulldozing & Aerial Spraying Box 301, Christoval, Texas 896-2216

K.H. & F. Fence

Harrel James, Fencing Contractor Box 855, Mertzon, Texas 76941 835-4661

Twin Mountain Supply

Your complete fence headquarters Box 2240 Sar. Argelo, Texas 76902 944-8661

Whitehurst Seed and Feed

3409 South Chadbourne Sar. Argelo, Texas 655-9547

Schleicher County ASCS

Schleicher County Extension Service

Schleicher County Leader

Texas Agriculture Extension Service

Texas Parks and Wildlife

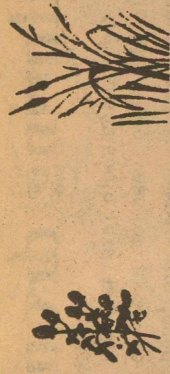
The District Board of Directors wishes to acknowledge the above businesses and friends for their interest and support in helping the District carry

out it's work for not only this year but in the years past and the years to come.

You all have made the District's job easier with your earnest support and we THANK YOU!



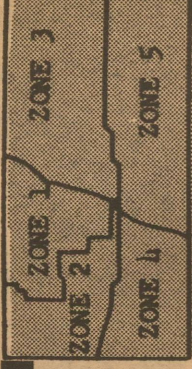
1984
Annual Report
U.S. Mail Bulk Permit 11



Eldorado-Divide

Soil and Water Conservation District

Zone 1 Ross Whitten Zone 2 David Lloyd Zone 3 Charles Ray Pfluger Zone 4 De Lux Zone 5 Johnny Griffin



Board applauds cooperators efforts

The Eldorado-Divide SWCD Board of Directors is pleased to present to you the 1984 annual report. This report will inform you of the district's activities and progress made to improve soil and water conservation in 1984. The directors are proud of efforts in soil and water conservation made by producers in

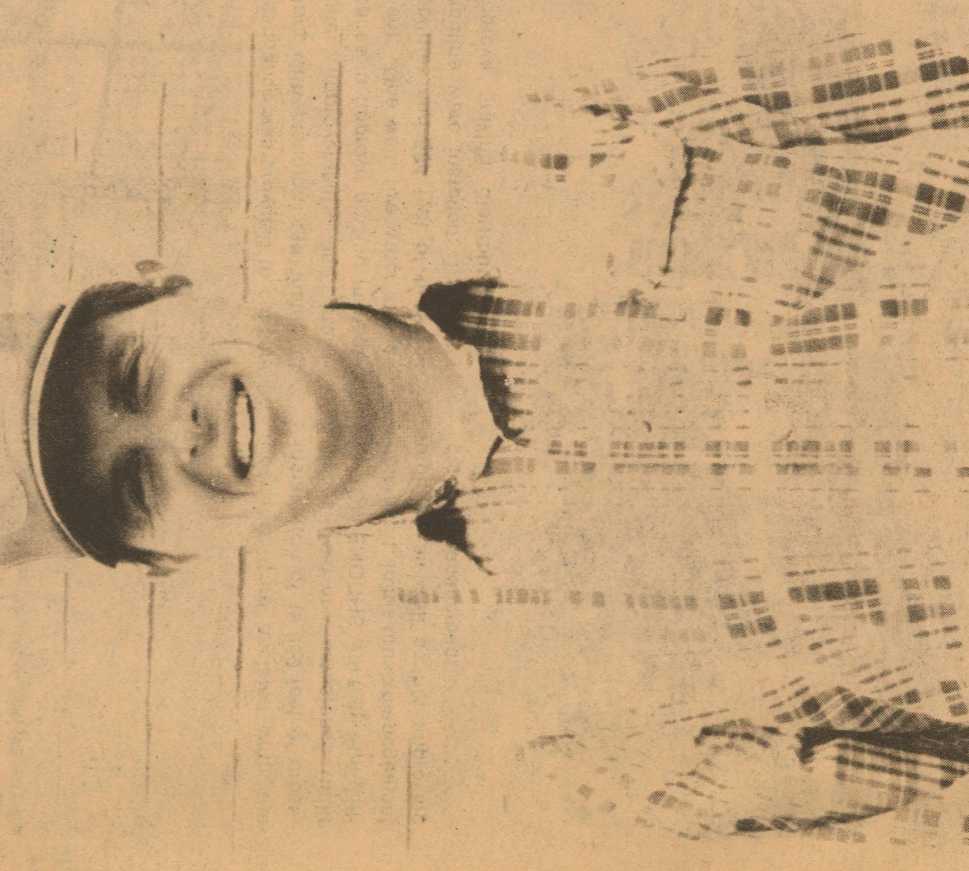
Schleicher County this year. Rangeland and cropland production was very low this year due to lack of rainfall for the third consecutive year. Despite these conditions the farmers and ranchers are making serious efforts in protecting and conserving our natural resources.



Election-tour held by District October 5th

The district election and range tour was held on October 5. A welcomed rain canceled part of the tour scheduled for the FRED CASE ranch. However, those interested were able to travel to the PHILIP PRING ranch north of Eldorado. CHARLES RAY PFLUGER is presently leasing this ranch. In February 1983, a prescribed burn was carried out on part of the ranch. The following April, Dr. JAKE LANDERS, TAES, located some small plots on which to analyze the effects of three different rates of picloram and one rate of Tordon 10K pellets. The rates used were 4 ounces, 2 ounces, 1/4 ounce per acre

of picloram and 1 pound per acre of Tordon 10K pellets. Participants on the tour were able to see that there was 95% plus root kill of pricklypear on the 2 ounce and 4 ounce plots. Very little difference could be seen between the two plots. The cost of picloram for the 2 ounce rate was \$3.36 per acre. These results indicate that the use of prescribed burning combined with a low rate of picloram could provide excellent control of prickly pear at a more reasonable cost per acre. Dr. Jake Landers discusses the effectiveness of prescribed burning followed by use of chemicals to control pricklypear.



The board wishes to recognize ROSS WHITTEN for his outstanding service in promoting soil and conservation to Schleicher County. Ross served as a director from 1980 to 1984. Ross was active in the district's educational youth pro-

gram. He hosted the annual conservation education field day for sixth grade students and assisted with annual range contests. The directors thank Ross for his leadership and support of district activities while serving on the board.



Wildlife reduction urged during drought periods

Central and south Texas is going into the third year of a severe drought and landowners are faced with decisions of how to manage their wildlife species.

Wildlife, especially large mammals like white-tailed deer, should be managed with the same principles applied to domestic livestock. When forage gets short, landowners reduce their domestic livestock numbers. Deer should be treated the same as domestic livestock, their numbers should be reduced. The only feasible way to reduce deer numbers is to harvest them by hunting.

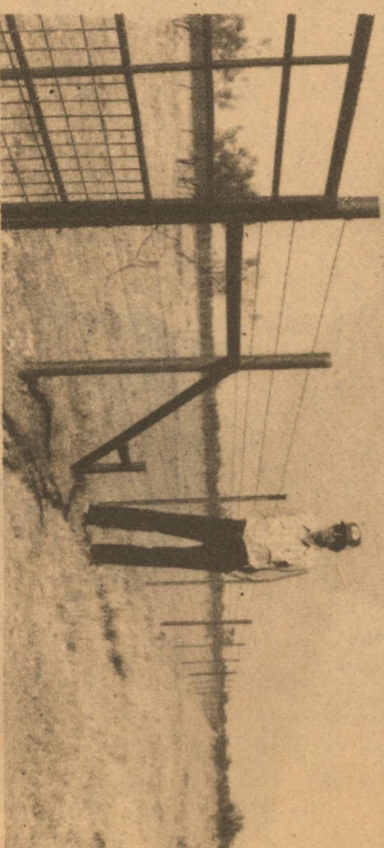
A heavy harvest of deer early in the hunting season is desirable and necessary for several reasons. First, the deer will be in the best body condition early in the season and suitable for the dinner table. Second, deer harvested early will reduce the foraging pressure on the range plants, providing forage for the winter months. Third, an early heavy harvest of a deer herd will reduce the severity of an impending die-off due to malnutrition.

Landowners that stop hunting or curtail the harvest of deer during severe droughts increase the percentage of die-offs due to starvation and malnutrition. During droughts the best policy is "Business as Usual" as far as deer hunting is concerned.

Turkey and quail population are affected by reduced reproduction during droughts. Hot and dry conditions during breeding seasons will severely restrict the reproduction of ground nesting birds, however, even small remnant populations have the ability to bounce back with excellent reproduction when conditions become favorable during a breeding season.

Supplemental feeding of wildlife on a large scale is not feasible from an economic standpoint. Also, wildlife will not adapt quickly to supplemental feeds during emergency periods.

While heavy harvests early in the hunting season will not preclude a die-off later in the winter, it will reduce the severity of a die-off and provide a better carry over to the next spring.

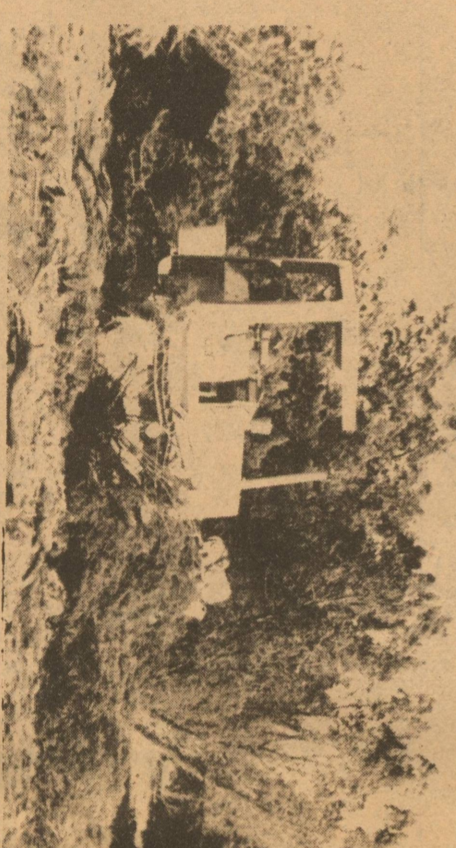


Assistance was provided to cooperators with planning and installing water improvements and cross-fences to improve grazing management. One well, five water storage facilities and 694 feet of livestock pipeline were installed. To further improve grazing distribution, co-

operators were assisted with the installation of 19,859 feet of cross-fences. Two new crossfences built by TOM ENOCHS will help him with deerment, in his brush management program as well as his improving grazing management.

The District assisted with the application of the following practices and program development:

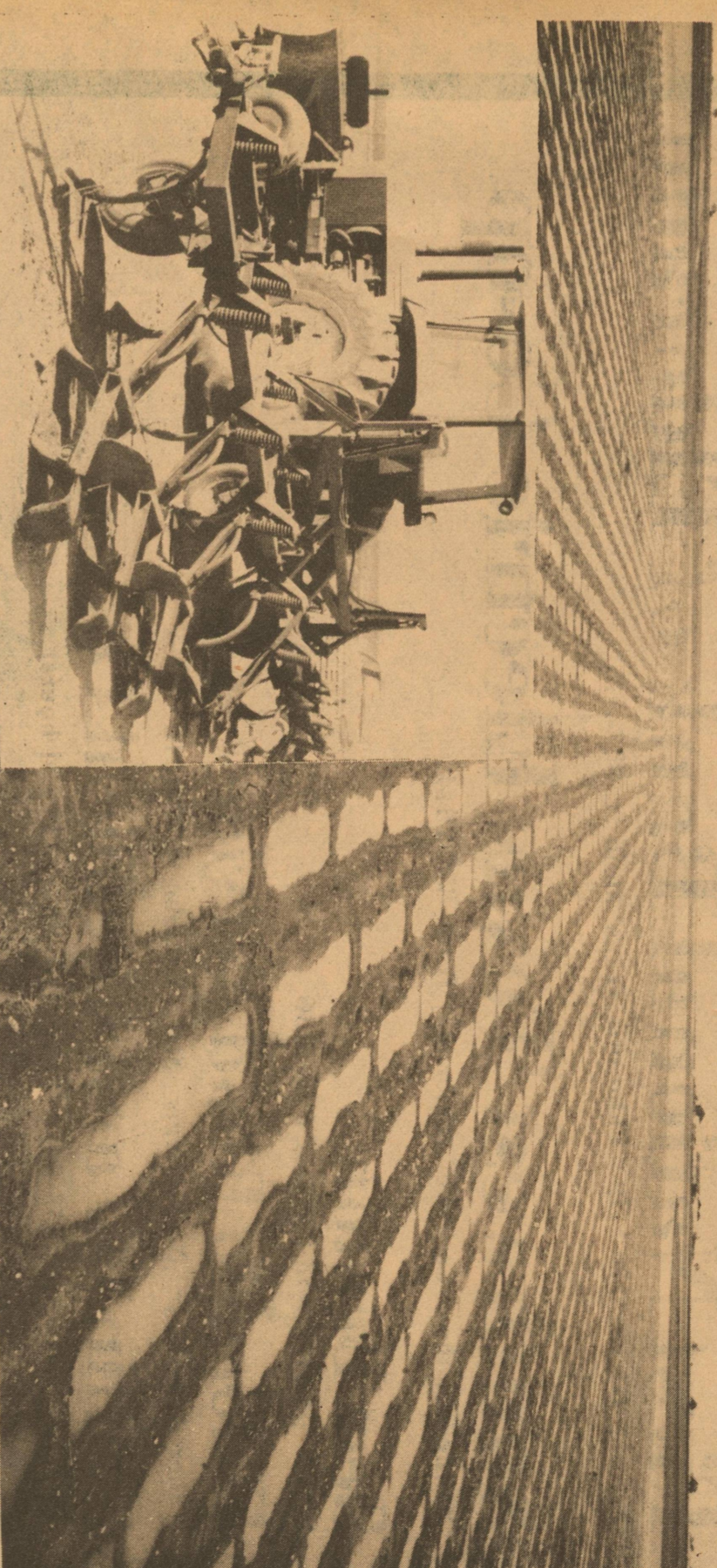
Brush Management	2,105 acres
Range Seeding	1,012 acres
Terraces	26,570 feet
Fences	19,859 feet
Water Storage Facilities	4
Wells	1
Livestock Pipelines	494 feet
Conservation Cropping System	28,000 acres
Crop Residue Management	10,000 acres
Proper Grazing Use	300,000 acres
Deferred Grazing	30,000 acres
Planned Grazing Systems	53,973 acres



The district provided assistance to cooperators in treating brush problems on 2105 acres. Due to the unavailability of 2,4-5-T, very little aerial spraying was done. Treedozing

cedar and mesquite and treating pricklypear by grubbing or chemical spraying were the main treatments applied. Cooperators were assisted with seeding grass mixtures on 1012 acres of the areas treedoized.

Furrow diking conserves water — ups production



Inset photo

Local Schleicher County farmers are using furrow diking to improve water conservation for increased crop production. An estimated 2500 acres were furrow diked this year.

Drought is the number one cause of poor crop yields in Texas, but now farmers can do something about it, thanks to agricultural research efforts.

A new technique called furrow diking can significantly improve the soil's storage of water and thereby lessen drought effects.

Furrow diking is the mechanical placement of mounds of soil at intervals across the furrow to form small basins. These basins trap rainfall so that it can be absorbed into the soil rather than running off, explains Dr. Ed Colburn, agronomist in soil management with the Texas Agricultural Extension Service, Texas A&M University System.

We salute the

Eldorado-Divide SWCD

and say "Thank You"

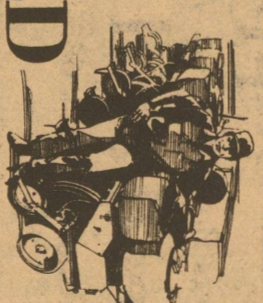
for a better life through conservation

Alderman - Cave Milling and Grain

754-4546

319 W. Dale

Winters



Maintaining water infiltration and storage in the soil is critical in areas where rains fall "hard and heavy" for short periods of time, he adds.

A two-year research project at Vernon by Dr. C.J. Gerard, soil physicist with the Texas Agricultural Experiment Station, has shown that furrow diking can significantly increase yields for cotton and grain sorghum.

Gerard put 6 to 8 inch dikes in furrows at 6-foot intervals using a tractor-mounted diker. This was done in January of each year of the project. Prior to diking the furrows, the land was chiseled to a depth of 14 to 16 inches.

Over the two years, grain sorghum yields more than doubled -- a 108 percent increase -- as a result of furrow diking every furrow, while diking alternate furrows boosted yields by an average of 56 percent.

Furrow diking also increased cotton yields but not as sharply. Diking every furrow increased cotton yields 34 percent over two years, while alternate furrow diking produced a 22 percent yield increase.

Poisonous plants - rancher's enemy

Poisonous plants on rangelands in West Texas cause significant economic losses to ranchers. They are a severe handicap to the sheep and goat industry in the state and it has been estimated that they cause more dollar loss in cattle than any disease. Losses occur not only through direct death of livestock, but also through loss of production due to weakness, abortion, etc.

The recent rains have certainly been a welcome relief to drought-stressed farms and ranches in Schleicher County. Along with the benefits they bring, however, rains that follow extended dry periods are often accompanied by a new problem for the rancher and stock farmer - poisonous plants.

A number of potentially poisonous plants can be found in almost any Schleicher County pasture at any given time; however, a number of factors determine whether or not they become a real problem.

Experience by ranchers and research have shown that grazing abuse on rangelands is the most significant cause of death losses from poisonous plants. With few exceptions, poisonous plants are invader species or those that increase with heavy grazing use. Generally, animals do not graze them by choice and are rarely poisoned when they have an abundance of good forage. Most losses from poisonous plants are caused when animals are hungry due to poor forage conditions brought about by overgrazing.

Even under good range management, some poisonous plants may become abundant in response to drought or other unusual weather conditions. Ranchers in Schleicher County are well aware of the poisoning problems caused by the increase of bitterweed following past

droughts. They expect similar problems when the current drought ends, particularly if a wet fall and winter follows a dry spring and summer. Some poisonous plants are taken at times regardless of range condition or availability of good forage plants. Such instances are due to any of a variety of reasons,

some apparently known only to the animals themselves.

Although many plants growing in Schleicher County could be poisonous to livestock under certain conditions, only a relative few have caused or have the potential to cause significant poisoning problems in livestock in the county.

District helps farmers to fight erosion of croplands

The district provided assistance through the SCS to farmers in reducing erosion on 7238 acres of cropland. Ranchers were assisted in reducing erosion on 148,824 acres of rangeland. Soil erosion due to water runoff is a major problem in the county. The type of clayey soils and slopes that occur in the county

contribute greatly to the probability of erosion. If vegetative cover is not adequate on the soil surface, erosion will occur from wind and water. Permeability of these clayey soils is very slow and water needs to be held on the surface longer to allow it time to soak in.

The chart below indicates acres

	Below T	Less Than Equals T	Above 2T
Cropland	27,800	9,439	1500
Pastureland	300	0	0
Rangeland	212,430	193,531	383,960
Urban	4,375	0	0
Other	4,668	0	0

SCS records show that Schleicher County farmers and ranchers they assisted this year saved 186,511 tons of soil. Farmers applying good conservation prac-

tices saved 7962 tons on 7238 acres or 1.1 tons per acre. Ranchers with good rangeland management saved 178,549 tons on 148,824 acres of 1.2 tons per acre.

As most of our rangeland soils are shallow, it is very important that we hold all the soil in its place. Forage reduction will be significantly reduced when we continue to lose our top soil. Everyone knows it Takes Soil To Grow Plants.

"It Takes 800 Years To Make One Inch of Soil
It Takes One Rain Storm or Wind Storm To Lose It"

Save the Soil

CARE



Makes Conservation Work

CHAPARRAL

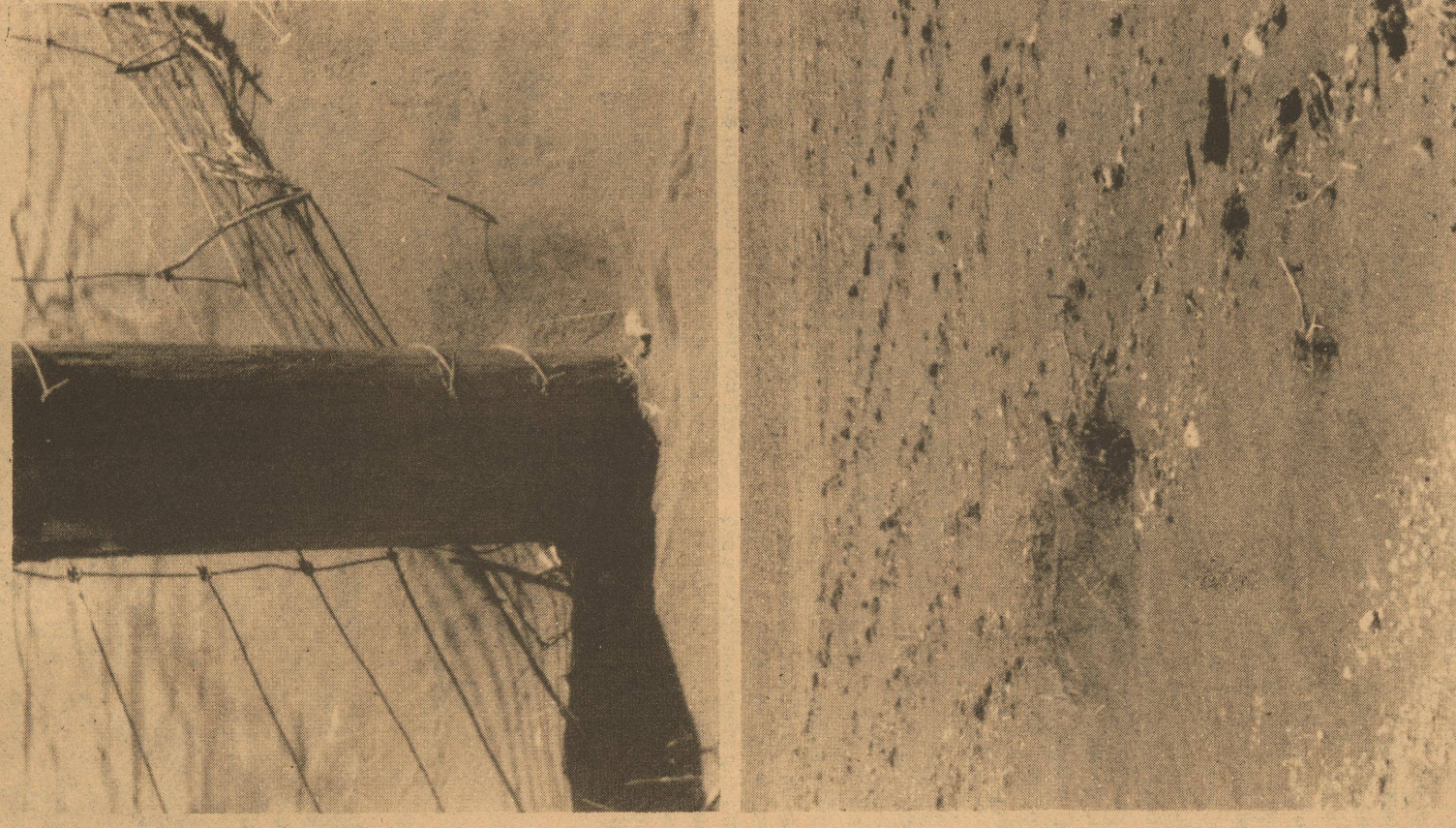
CHEV-BUICK-PONT-OLDS

Sonora

387-2529

Schleicher County

Wind Erosion



Eldorado-Divide Soil & Water Conservation District
FINANCIAL REPORT
for the year ended August 31, 1984

Revenue	State Fund	Trust Fund
FEDERAL GRANTS		
STATE GRANTS	2780.00	1360.00
CONTRIBUTIONS		
INTEREST EARNED		420.00
DISTRICT ACTIVITIES		1780.00
TOTAL REVENUE	<u>2780.00</u>	<u>1780.00</u>

Expenditures		
GENERAL ADMINISTRATION	50.00	1702.00
PROMOTIONAL ACTIVITIES	538.00	
EMPLOYEE SALARIES	1890.00	
STAFF BENEFITS	204.00	
FIXED ASSETS		
REPAIRS AND MAINTENANCE	2682.00	1702.00
TOTAL EXPENDITURES	<u>2682.00</u>	<u>1702.00</u>

FUND BALANCES 9-1-83	1817.00	1890.00
FUND BALANCES 8-31-84	<u>1915.00</u>	<u>1968.00</u>

Published in compliance with Section 1, Chapter 410, Acts of the 55th Legislature, Regular Session, 1957, as amended.

Conserve the land — Everything depends on it!

Carl J. Cahill, Inc.



- Brush Control
- Road Construction and Maintenance
- Rock Construction - Pits and Locations
- Commercial Building Sites



387-2524

Sonora



Lloyd experimenting with drip irrigation

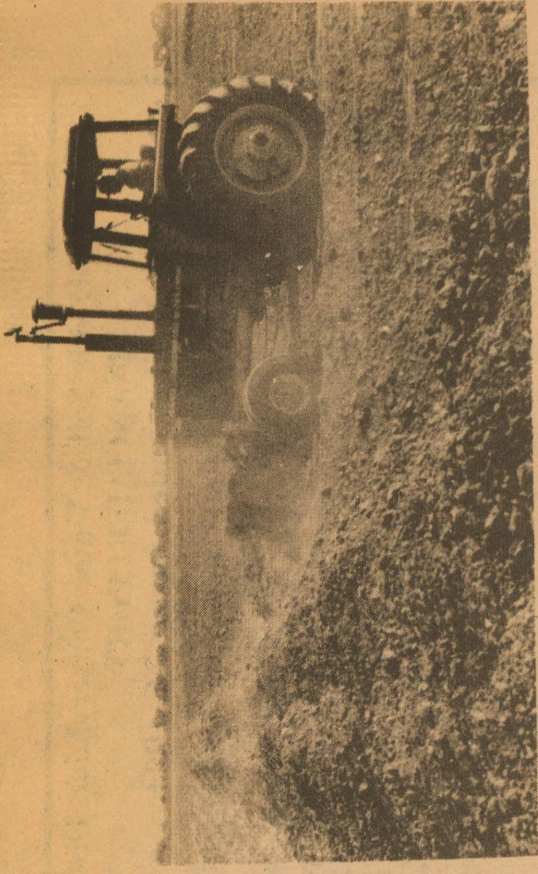
District cooperater EARL LLOYD is looking to double or triple his cotton production this year. This past spring Mr. Lloyd installed a surface irrigation drip system on 27 acres with the cooperation of the Texas Agriculture Extension Service and the Soil Conservation Service.

Reducing livestock sometimes necessary

Schleicher County had another year of low rainfall during our growing season. Areas with rainfall adding up to as little as 3 to 4 inches from March to October occurred in the county. Many ranchers removed all livestock. Some ranchers operating with multiple classes of livestock reduced to one or two classes. As it happens many times, trying to hold on to livestock numbers until it rains has caused much of the rangeland to be overgrazed. It's hard to sell livestock when prices are low or when many years have been spent in developing a good breeding herd. However, it also takes pastures longer to recover back to the carrying capacity before the drought, the more they are overused. Some do not get back to the same carrying capacity as they are not

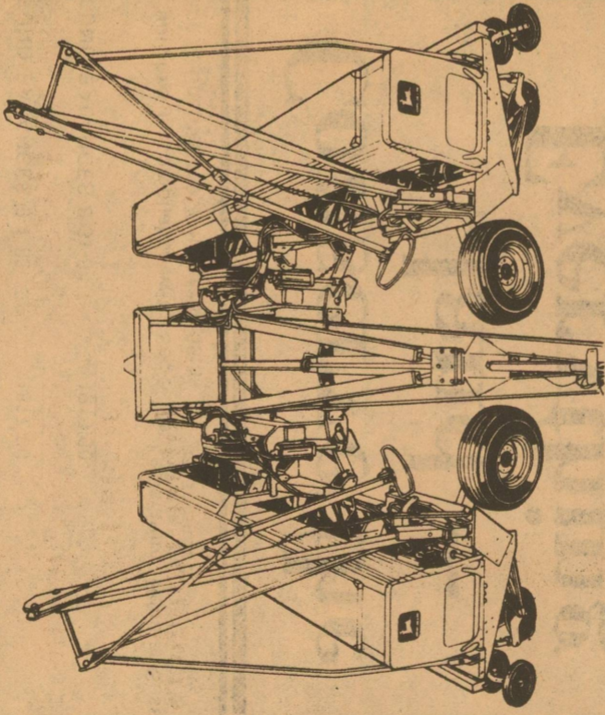
Mr. Lloyd is one of four(4) men in Texas to experiment with this system on cotton. Mr. Lloyd says he has learned a lot this year and still has a lot to learn about this system. Mr. Lloyd expects to harvest between 2 and 3 bales of cotton per acre on the 27 acres this year.

given a chance to recover. Often times livestock are increased back to the original carrying capacity the next good growing season. It has been shown that fluctuations in forage production usually lag from 1 to 3 years behind fluctuations in annual rainfall. This indicates that pastures under good management may need 1 to 3 years to recover from drought. Holding on too long or increasing stock numbers too quickly could result in permanently lowering carrying capacity and decreasing livestock performance. If we added in the cost of the reduced forage production with the lowered livestock production and feed cost, we might make different decisions. Ranchers not interested in improving their grass production will always have more problems than others in droughts.



WAYNE MIKESKA is currently year. By controlling runoff, these terrace systems on his farm. The district assisted cooperators in constructing 26,570 feet of terraces this

FOLD FOR EASY TRANSPORT



Seed 30 feet wide with this 2-drill/folding hitch combo Match two 15-foot John Deere hitch drills to this 530 Transport Hitch, and you're set to seed 30 feet wide every field pass.

And, at field's end, just touch a remote hydraulic outlet control lever and the 2-drill unit folds to a 15½-foot transport width.

See us for a recommendation on the attachments and options necessary to custom-tailor these drills to your soils.

We'll be glad to show you the advantages of this new member of John Deere's precision drill team.



Porter Henderson Implement Co.
U.S. Highway 67 North
San Angelo, Texas
Phone: (915) 653-4541

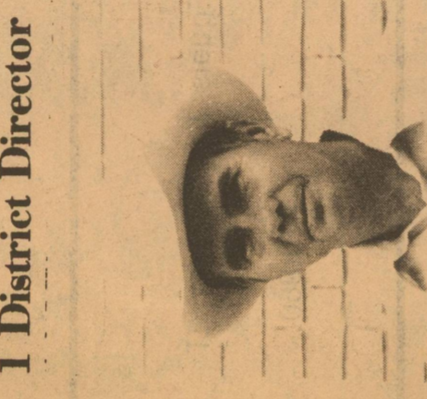
Mertz proves conservation is worthwhile

Longtime rancher, Mort Mertz has proven that good conservation measures are worth the time and effort. Mertz began ranching in Schleicher County in 1961 and as a result of his diligent conservation measures he has improved grazing management and water distribution on his land.

Mertz now has a good cover of grass and a healthy plant community through the dry years like those experienced recently.

He believes that the better condition he leaves his land will help the next generation of ranchers to have a better start.

Hausenfluck new, Zone 1 District Director



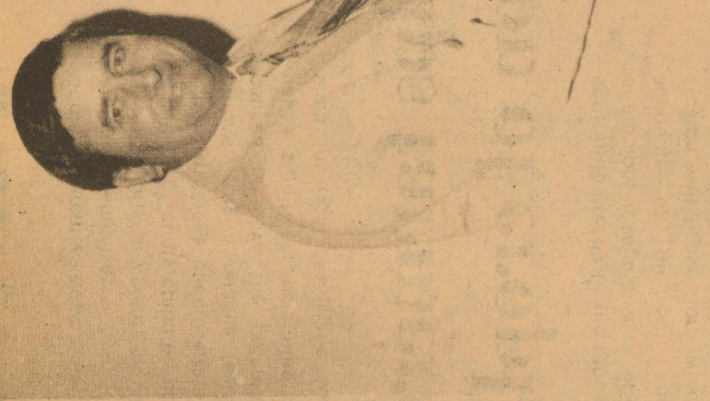
BILLY HAUSENFLUCK was elected October 5th to be the District Director for the Eldorado-Divide SWCD from Zone 1 in Schleicher County.

Hausenfluck has been involved in the ranching and farming industry for 25 years and currently operates 1640 acres.

The new director will replace outgoing director, Ross Whitten.

SCS encourages conservation education

The district feels very strongly about the importance of conservation education. It contributes annually to the state information program. Locally, the district sponsors a poster and essay contest, range judging contest and conservation education field day. Conservation booklets and films are provided for use in the local school. District funds have been set aside to sponsor a student to attend the annual range camp in Junction. The district also sponsors an education exhibit at the local stock show and co-sponsors an exhibit displayed at the San Angelo Livestock Show.



David Meador plans for future ranchers

The District would like to extend its thanks to DAVID MEADOR for his part of district educational activities. David has provided areas for holding the annual 4-H and FFA range contest and the annual conservation education field day.

This year he has located an area on his ranch to be used entirely for these purposes. He has spent much time collecting plants indigenous to West Texas and has traveled to Colorado and New Mexico for these plants. He started this project in April and thus far has 56 varieties of grass and plants. To maintain this area he waters approximately 4 hours a day.

David's interest in helping the next generation of ranchers to understand the vital importance of good grazing management is to be highly commended.

