

PAVE PAWS

Blaylock site selected

At 2:00 p.m. Tuesday, August 2, 1983 the Department of the Air Force and Pentagon authorized Goodfellow, AFB, Texas to release to the news media that the Schleicher County site had been selected for the Southwest Pave Paws phased array warning system radar.

The precise location for Pave Paws will be on the Blaylock ranch approximately 6 miles north of the township of Eldorado. Col. Charles Powell 3480th Technical Training Wing Commander stated that between 100 - 110 acres of the ranch land would be utilized in the site and that \$420,000 had been set aside for the purchase or lease of the needed property.

The estimated total budget for the project will fall in the category of \$100-\$110 million which will be funded from the fiscal year of '84 through the defense budget. Col. Powell esti-

mated that land acquisition phase should be complete in the month of October with the first visible starting of the project slated sometime in March. He went on to say that by the first of the year the general contractor Raytheon should be present at the site. Several local contractors have made their desires known to be subcontractors on the project. No information was given on sub-contract bidding procedures.

During the press meeting it was learned that the Southeast Pave Paws to be located in Georgia was scheduled to be on line in 1986 a year before the on line date of the Southwest Pave Paws even though construction had not yet began Col. Powell did state that the projects of constructing the Pave Paws units were running about a year in advance of their completion date. The entire system is projected to be completed

by the year of 1987 with 3 years in construction phase. Hypothetically the Southwest Pave Paws could be on line as early as 1986.

PAVE PAWS, a phased array warning system radar, is an Air Force developed detection and early warning system designed to warn against a sea-launched ballistic missile (SLBM) attack on the continental United States. The Strategic Air Command has resource management responsibility for PAVE PAWS locations while the North American Aerospace Defense Command (NORAD) has operational control.

A high priority addition to the nation's deterrent posture, PAVE PAWS primary purpose is reporting the detection and warning of an SLBM attack, including the potential numbers and probable destination of missiles, to NORAD, SAC and the National Command Authorities.

Additionally, PAVE PAWS provides information on the location and velocity of earth-orbiting satellites to NORAD.

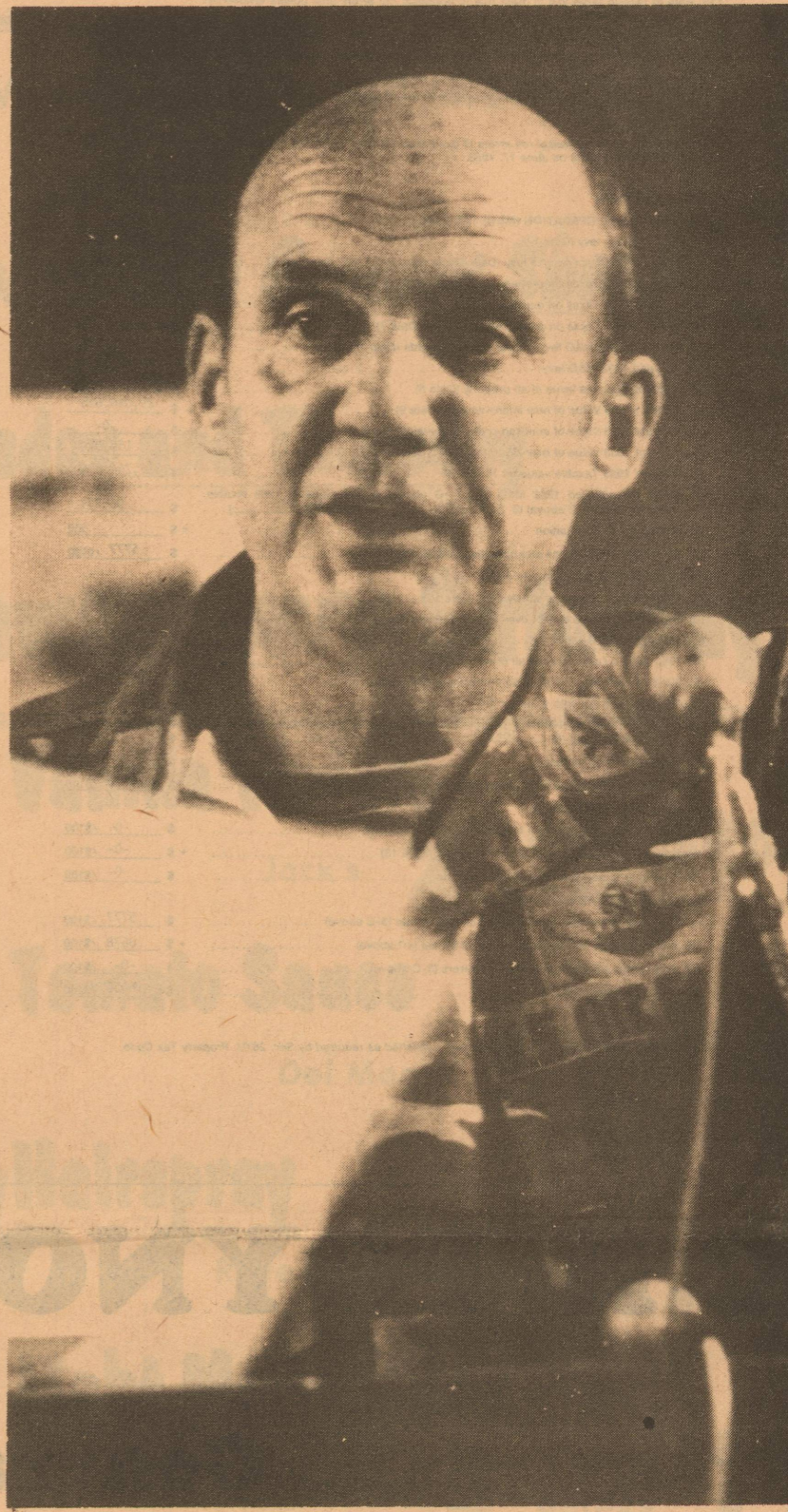
The ten-story, 105 feet high, radar system is located on both U.S. coasts -- at Otis ANGB, Mass., and Beale AFB, Calif. Two additional locations for the warning system are proposed -- a southeastern site at Robins AFB, Ga., and a southwestern site located near Goodfellow AFB, Texas. The two proposed sites should be operational by 1987.

The main difference between PAVE PAWS and conventional radar is that PAVE PAWS is steered electronically. The phased array radar, incorporates nearly 3,600 small, active antenna elements coordinated by two Control Data Corporation Cyber series computers. One computer is on-line at all times, the second computer will automatically take control if the first one fails. The computers feed energy to the antenna units in precise, controlled patterns, allowing the radar to detect objects at very high speeds since no mechanical parts limit the speed of the radar sweep. The PAVE PAWS radar can electronically change its point of focus in milliseconds, while the conventional disc-shaped radar may take up to a minute to mechanically swing from one area to another.

Systems automation in PAVE PAWS enables it to automatically detect, track and predict the impact point of a missile. Its computers are programmed to steer the beam, store and display information received, and analyze post-mission information.

The PAVE PAWS main building is shaped roughly like a pyramid with a triangular base 105 feet on each side. The two radiating faces, each containing approximately 1,800 active antenna elements, are tilted back 20 degrees from the vertical. PAVE PAWS radar beams reach outward for approximately 3,000 nautical miles in a 240-degree sweep. At this range, it can detect an object the size of a small automobile.

The sophisticated solid state radar system was developed by Air Force Systems Command's Electronic Systems Division, Hanscom AFB, Mass. The prime contractor is Raytheon.



Col. Charlie Powell

SCHLEICHER COUNTY LEADER

[U.S.P.S.] 342-470 Six Pages August 4, 1983 25 cents Eldorado, Tex.

Elementary

School registration begins August 15 - 19

Registration of all elementary students (including kindergarten) will be held August 15 - 19, 1983, 8:00 a.m. - 12:00; 1:00 p.m. - 4:00. Parents of all school children in grades K - 6 are requested to call the

school office, 853-2770 during these days to enroll their children for the 1983-84 school year. Those students not enrolled by Wednesday, August 24 will have to report to the office on the first day of school before being

assigned to rooms. Any student who has not attended school in Eldorado before should report to the office rather than calling. New kindergarten and first grade students must bring copies of their birth certificate and immunization record.

Schleicher County Day Coming August 13th

Rodeo

Alright, all you cowgirls and cowboys, get your riggin' out cause the Schleicher County Rodeo Association will host the 14th Annual Eldorado Open Rodeo August 12 - 13 at 8:00 p.m. each evening at the arena.

Lester Meier of Fredericksburg is this year's stock producer. Howard Stevenson of Boerne will serve as this year's clown. The announcer will be Jim Curtis of Pearland. The judges for the rodeo will be Dale Welgehausen of Fredericksburg and Jack Myers also of Fredericksburg. The bullfighter will be Danny Bell of Fredericksburg.

Six events will be scheduled each evening: bareback bronc riding, saddle bronc riding, calf roping, steer wrestling, team roping, bull riding and girls barrel racing.

The winners in each event will take home a \$600 Skyline Trophy buckle.

Anyone wishing to enter the rodeo can contact Lester Meier at 512-997-4558. The books open at August 10th at 9:00 a.m. and will close at 2:00 p.m. the same day.

The rodeo will also see the crowning of the Rodeo Queen Saturday night. Queen contestants for this year are Kim-Thackerson, Charlotte Mobley and Janie Murph.

Tickets for the annual shindig are \$3.50 in advance and can be purchased from the queen contestants and \$4.00 at the gate.

Exciting Saturday events

Schleicher County Day is coming August 13th. Mark the date on your calendar to enjoy all the fun and activities.

The parade will kick-off the activities Friday afternoon.

Saturday's events will include games to be played throughout the day which include: 42 and dominoe tournaments, horseshoe and washer toss and wet tug of war.

Activity booths will also be in operation. These will include: pony rides, dunkin' booths, pinatas, clown face painting, picture takers, boy scout demonstrations and possibly a mechanical bull.

A food booth will offer BBQ, corn dogs, tamales, nachoes, burritos, baked goods, desserts, snow cones, cokes and tea.

On the stage throughout the day will be square dancers, karate demonstrations and Group de Amistad dancers.

For further information or pre-registration call Candy Richards 853-3246.

Little Mister and Miss contest

There's something for everyone of every age at this year's Schleicher County Day to be held August 13th.

The Little Mister and Miss Schleicher County Contest will be held at 12 noon at the courthouse.

There is no pre-registration required and boys and girls ages 2 thru 5 are invited to enter.

The entrants will be judged solely on personality. All entries must be on the stage on the square by 11:50 a.m.

Fun Run

A Fun Run will be one of the many activities to participate in during Schleicher County Day. The two mile run will leave the courthouse lawn at 9:00 a.m. Saturday morning August 13th. There will be a men's and women's division with 1st and 2nd places earning medals. The age divisions are 12 and under; 13 thru 20; 21 thru 30; 31 thru 40; 41 thru 50; and 50 and over.

There will be a \$3.00 entry fee for the run.

Area runners and "evening track walkers and runners" are urged to enter.

For further information call Jo Helen Kotch 853-2756 or Candy Richards 853-3246.

SWTCo-op gets loan

Southwest Texas Co-op was notified that the Department of Agriculture had approved a Rural Electrification Administration Loan in the amount of \$5,148,000.00.

The long awaited loan will be used to finance service to 1200 additional consumers, finance 389 miles of distribution lines and to finance system improvements at the sub-station facilities.

Air Force notification

Goodfellow, Air Force Base, Texas. U.S. Air Force announced Tuesday that it will locate Southwest Pave Paws Phased Array Warning System Radar on the Blaylock Ranch in Schleicher County.

The Air Force chose the site after evaluating detailed operational, resource and environmental studies and views expressed at public meetings held in Eldorado and San Angelo.

The Southwest Pave Paws will provide radar coverage over a broad ocean area south of the United States and give tactical warning and attack assessment of sea launched ballistic missiles launched against the continental U.S. Pave Paws also will track the position and velocity of earth orbiting satellites.

Construction of Southwest Pave Paws is scheduled to begin in 1984 and the system will be operational by 1987.



Bill Clark of Eldorado wins Santa Fe FFA Award...Santa Fe Railway gave 17 scholarship and achievement

awards totaling \$4,000 to Texas FFA youths at their recent annual convention in San Antonio. Mike Benya, Santa Fe Manager - sales & service,

Dallas, presents achievement awards to Bill Clark, left of Eldorado, and Geoff Cooper of Brownfield.

SCHOOL DISTRICT: Schleicher County I.S.D.

NOTICE OF CALCULATION OF EFFECTIVE TAX RATE AND PUBLICATION OF ESTIMATED UNENCUMBERED FUND BALANCES

I, Ray L. Ballwey, Assessor/Collector for Schleicher County I.S.D. in accordance with the provisions of Sec. 28.04, Property Tax Code, have calculated the tax rate which may not be exceeded by more than three percent by the governing body of the Schleicher Co. I.S.D. without holding a public hearing as required by the code. That rate is as follows: \$0.6455 per \$100 of value. The estimated unencumbered fund balance for Maintenance & Operation fund: \$ 78,152. The estimated unencumbered fund balance for Interest & Sinking fund: \$ 24,650.

Ray L. Ballwey
July 29, 1983

CALCULATIONS USED TO DETERMINE EFFECTIVE TAX RATE

| I. DATA | |
|---|----------------|
| 1. 1982 Total tax levy from the 1982 tax roll | \$ 1,447,714 |
| 2. 1982 Tax rate (\$ 0.50 M&O and \$ 0.07 I&S) | \$ 0.50 /\$100 |
| 3. 1982 Debt service (I&S) levy | \$ 175,173 |
| 4. 1982 Maintenance and operation (M&O) levy | \$ 1,272,541 |
| 5. 1982 M&O taxes on property in territory that has ceased to be a part of the unit in 1983 | \$ 29,000 |
| 6. 1982 M&O taxes on property becoming exempt in 1983 | \$ -0- |
| 7. 1982 M&O taxes on taxable value lost because property is appraised at less than market value in 1983 | \$ 5,544 |
| 8. 1983 Total taxable value of all property | \$ 243,423,390 |
| 9. 1983 Taxable value of new improvements added since Jan. 1, 1982 | \$ 29,020,620 |
| 10. 1983 Taxable value of property annexed since Jan. 1, 1982 | \$ -0- |
| 11. 1983 Tax levy needed to satisfy debt service (I&S) | \$ 165,000 |
| *12. Rate to raise 1982 tax levy due to appraisal roll errors (rate that should have been less rate that was levied) (\$ /\$100 - \$ /\$100) | \$ -0- /\$100 |
| *13. Rate to recoup taxes lost in 1982 due to appraisal roll errors (lost dollars divided by the difference of 1983 taxable values minus 1983 over-65 homesteads taxable value) (\$ - \$) | \$ -0- /\$100 |
| 14. 1983 Taxable value of over-65 homesteads with frozen taxes | \$ 157,970 |
| 15. Frozen M&O levy of over-65 homesteads with frozen taxes | \$ 333 |
| 16. Frozen I&S levy of over-65 homesteads with frozen taxes | \$ 46 |

* Steps necessary for appraisal roll errors (if more than 1% of total appraisal roll, effective for taxing units on June 17, 1983).

II. CALCULATION

| MAINTENANCE AND OPERATION (M&O) TAX RATE | |
|---|-----------------|
| 1. (A) 1982 Total tax levy (Data 1) | \$ 1,447,714 |
| (B) Subtract 1982 Debt service levy (Data 3) | \$ -175,173 |
| (C) Subtract 1982 Taxes on property no longer in unit (Data 5) | \$ -29,000 |
| (D) Subtract 1982 Taxes on exemptions (Data 6) | \$ -5,544 |
| (E) Subtract 1982 Taxes on productivity valuation (Data 7) | \$ -333 |
| (F) Subtract frozen M&O levy of over-65 homesteads (Data 15) | \$ -333 |
| (G) Adjusted 1982 M&O levy | \$ 1,237,664 |
| 2. (A) 1983 Total taxable value of all property (Data 8) | \$ 243,423,390 |
| (B) Subtract 1983 Value of new improvements (Data 9) | \$ -29,020,620 |
| (C) Subtract 1983 Value of annexed property (Data 10) | \$ -0- |
| (D) Subtract 1983 Value of over-65 homesteads (Data 14) | \$ -157,970 |
| (E) Adjusted 1983 Taxable value for M&O | \$ 214,244,800 |
| 3. (A) Divide the adjusted 1982 M&O levy (1-G above) by the adjusted 1983 taxable value for M&O (2-E above) (\$ 1,237,664 / \$ 214,244,800) | \$.005777 |
| (B) Multiply by \$100 valuation | \$.5777 /\$100 |
| (C) Calculated maintenance and operation (M&O) rate for 1983 | \$.5777 /\$100 |
| INTEREST AND SINKING (I&S) TAX RATE | |
| 4. (A) 1983 I&S levy needed to satisfy debt (Data 11) | \$ 165,000 |
| (B) Subtract frozen I&S levy of over-65 homesteads (Data 16) | \$ -46 |
| (C) Adjusted 1983 I&S levy | \$ 164,954 |
| (D) 1983 Total taxable value of all property (Data 8) | \$ 243,423,390 |
| (E) Subtract 1983 Value of over-65 homesteads (Data 14) | \$ -157,970 |
| (F) Adjusted 1983 Taxable value for I&S | \$ 243,265,420 |
| (G) Divide the adjusted 1983 I&S levy (4-C above) by the adjusted 1983 taxable value for I&S (F above) (\$ 164,954 / \$ 243,265,420) | \$.000678 |
| (H) Multiply by \$100 valuation | \$.0678 /\$100 |
| (I) Calculated interest and sinking rate (I&S) for 1983 | \$.0678 /\$100 |
| APPRAISAL ROLL ERROR RATE | |
| 5. (A) Rate to raise 1982 levy due to appraisal errors (Data 12) | \$ -0- /\$100 |
| (B) Add rate to recoup taxes lost due to errors (Data 13) | \$ -0- /\$100 |
| (C) Total rate to adjust for appraisal roll errors | \$ -0- /\$100 |
| TOTAL EFFECTIVE TAX RATE FOR 1983 | |
| 6. (A) Calculated maintenance and operation (M&O) rate (3-C above) | \$.5777 /\$100 |
| (B) Add calculated interest and sinking (I&S) rate (4-I above) | \$.0678 /\$100 |
| (C) Add rate to adjust for appraisal roll errors (5-C above) | \$ -0- /\$100 |
| (D) Calculated 1983 Effective Tax Rate | \$.6455 /\$100 |

1983 Effective Tax Rate is the tax rate published as required by Sec. 28.04, Property Tax Code.



Cash-Harlin to take vows

Julie Cash will become the bride of Jeff Harlin August 20, 1983 in a ceremony at the First Methodist Church in Eldorado. Parents of the bride to be are Mrs. Mickey Rath-

bone of Eldorado and Mr. Norm Cash of Birmingham, Michigan. The parents of the groom to be are Mrs. William Chandler and Mr. Bill Harlin of Big Springs. Julie is a 1983 graduate

of Eldorado High School and is employed at the 1st National Bank of Eldorado. Jeff is a 1983 graduate of Eldorado High School and plans to enroll in T.S.T. in Waco this fall.

OAKWOOD MOBILE HOMES
Introduces the
"Land Home Package"

Now you can own the home and property of your dreams and finance both in one "Land Home Package". 14 1/2% Interest with 25 year financing makes owning your own Oakwood Mobile Home and the Land with it a "dream come true". You can include any land or Mobile Home improvements in this package, like a water well, septic tank, fence, patio, or storage building.

Call Mike Clark for more details at:
OAKWOOD MOBILE HOMES
4422 N. Chadbourne, San Angelo
658-8569

Take advantage of the tremendous savings going on now at our "August Sizzler Sale".

Pull on workin' comfort...
...AND STEEL TOE PROTECTION, TOO!

Pecos comfort with Class 30 Steel Toe protection. This 12" full-grain, oil-tanned Veiva Retan boot features a lightweight, supple, tough, slip and oil-resistant blown Urethane sole and heel.

SIZES 6-14/A-EEE*
*Not all sizes in all widths.

2221
You've earned your Wings!
Red Wings RED WING SHOES
McCalla's Dept. Store

WEST TEXAS SERVICE DEPARTMENT
for FORD, LINCOLN-MERCURY & CHRYSLER DODGE PRODUCTS

| | |
|--|---|
| <p>SAVE GAS MINOR TUNE UP</p> <p>4 CYL. \$39.95 6 CYL. \$43.95 8 CYL. \$49.95</p> <p>THIS INCLUDES: NEW SPARK PLUGS, AND LUBRICATE ALL CARB LINKAGE, SET TIMING AND LABOR. ALL FORD, LINCOLN-MERCURY & CHRYSLER DODGE PRODUCTS.</p> | <p>TRANSMISSION SERVICE PROTECT YOUR TRANSMISSION</p> <p>\$35.95</p> <p>THIS INCLUDES: ADJUST BANDS INSTALL NEW FILTER & GASKET, FLUID & LABOR. ALL FORD, LINCOLN-MERCURY & CHRYSLER DODGE PRODUCTS.</p> |
| <p>DRIVE SAFE FRONT END ALIGNMENT</p> <p>\$17.95</p> <p>THIS INCLUDES SET & ADJUST TOE IN CASTER & CAMBER INSPECT ALL FRONT SUSPENSION LUBE FRONT SUSPENSION & LABOR. ALL FORD, LINCOLN-MERCURY & CHRYSLER DODGE PRODUCTS.</p> | <p>AIR CONDITIONING SERVICE</p> <p>\$15.95</p> <p>THIS INCLUDES: ADD 1 CAN FREON, TEST FOR LEAKS CHECK BELTS & ELECTRIC PARTS & LABOR. ALL FORD, LINCOLN-MERCURY & CHRYSLER DODGE PRODUCTS.</p> |

FREE BRAKE CHECK BE SAFE LET US INSPECT YOUR BRAKES FREE

FREE LUBRICATION WITH EACH OIL & FILTER CHANGE \$14.95

FACTORY TRAINED DIESEL MECHANICS TO SERVICE ALL MAKES OF VEHICLES NOW AVAILABLE.

ALL SERVICE WORK GUARANTEED 90 DAYS.

JERRY FREDERICK
Lincoln-Mercury-Dodge
ANY SERVICE PROBLEMS - SEE BILL EWING, SERVICE MANAGER

212 EAST BEAUREGARD SAN ANGELO, TX. 658-1581

C.H. POYNOR CONSTRUCTION CO.

General Oil Field Construction
Big Lake Eldorado
884-2454 853-3064
Britt Poynor Mgr.

Winners of:
League play in Sonora with a record of 10 - 0....
End of season tournament....
3rd. Place trophy in Iraan, State qualifying meet....



Players:
TOP-
Jim Bob Edmiston, George Ann Edmiston, Linda Thrash, Margie Logan, Nancy Jenkins, Linda Holsey, Toya Maddy, Tommy Haslett.

BOTTOM-
Lupe Montalvo, Kim Payne, Tammy Pratt, Jill Freeman, Teresa Baker, Davina Vannet.

Competing in State tournament in San Angelo this weekend.

Party news

Mrs. Jake Spencer hosted the 42 Party, Thursday in the Dairy Mart Club room.

served.

Those present were: Annie Speck, Opal Parks, Louise Logan, Lillian Mikeska, Lois Etheredge,

Virginia Griffin, Weona Isaacs, Ada Bell Taylor, Natalie Stockton, Viola Finningan, Etta Ruth Danneheim and the hostesses.

Bake sale

The Flag and Rifle Corps of the Eldorado High School Band will sponsor a Bake Sale August 13th in conjunction with Schleicher County Day. The sale will be located on the courthouse lawn and pies, cookies, cakes, bread, jelly rolls, brownies, divinity and cobbler will be on sale from 9:00 a.m. til 5:00 p.m.

All proceeds from the Bake Sale will go toward the band fund and for a trip to Nashville for the Flad and Rifle Corp in April.

Anyone wishing to place advance orders may call: Jo Parker 853-2022; Anna Aguilar 853-2722; Sandy Hutcherson 853-3175 or Debbie Sutto 853-2098.

Sheriff's Blotter

- 10:43 p.m. 7-24-83 Fight
- 11:26 p.m. 7-25-83 Loud Party
- 6:30 p.m. 7-26-83 Close patrol
- 9:20 p.m. 7-26-83 Loose livestock
- 8:26 a.m. 7-27-83 Loose livestock
- 8:22 a.m. 7-27-83 Loose livestock
- 4:18 p.m. 7-27-83 Loose livestock
- 11:10 a.m. 7-28-83 Loose livestock
- 7:40 p.m. 7-27-83 Loose livestock
- 8:03 p.m. 7-27-83 Burglary and criminal mischief
- 7:22 p.m. 7-28-83 Loose livestock
- 10:00 p.m. 7-28-83 Family fight
- 10:03 a.m. 7-29-83 Welfare concern
- 8:40 a.m. 7-30-83 Wreck
- 7:13 p.m. 7-30-83 Lost or stolen keys
- 9:05 p.m. 7-31-83 Suspicious woman
- 10:28 p.m. 7-31-83 Fight
- 10:20 a.m. 8-1-83 Vandalism

Personal

Bessie Doyle has been visiting in Coahoma, Tx. with her son Jerry and his family. She returned home recently.

Will B. Doyle is here visiting with Bessie Doyle and Jimmy Doyle. He is Bessie's grandson.

Shop The

Ad-Visor



Adame-Gourley wed

Rebecca Adame, daughter of Mr. and Mrs. Jesus Adame, became the bride of Patrick Gourley of San Angelo Saturday afternoon in the sanctuary of the First Baptist Church.

The church was decorated with candelabra entwined with greenery, white bows and white votive candles with baskets of white Glads on each side of the altar.

Bridesmaids and their escorts were: Rosana Adame and Jessie Fuentes, Cindy Gerber and Todd Swift, Rachael Fava and Mark Cuevas, Sylvia Arispe and Martin Ramirez, Mary Grace Arebalo and Arthur Adame, Rosemary Adame and Isabela Rangel.

Maid of Honor was Rita Adame, sister of the bride. Best man was Frank Galindo of San Angelo.

Rebecca is a graduate of Eldorado High School. She worked as an aide in the nursing home and is presently working in Beall's Department Store in the Mall in San Angelo.

Mr. and Mrs. David Gourley of Longview, Washington. He is employed by West Texas Utilities in San Angelo.

The ceremony was performed by Rev. Clive Johnston, pastor of the First Baptist Church. Along with the regular service they used the Lazo which was used to join the couple in marriage - the union of matrimony. Then the Jarras was used which represented the money which the couple will share. Mrs. Maxine Locklin of Sonora was soloist and Mrs. Evelyn Stigler was the organist.

A reception was held in the Memorial Building after the ceremony.

Out of town guests were Mr. and Mrs. David Gourley of Longview, Washington, Mr. and Mrs. William Snekvik, their son and daughter of San Angelo, Mr. and Mrs. Eldon Weatherman of San Angelo, Mr. and Mrs. Julio Ramirez and family, Mrs. Sofia Montez and daughters from Houston.

Let Us Frame Your Mona Lisa



Frames On Sale 25% Off

We can find the right frame for anything you have. Custom and ready-made frames are all on sale 25 percent off through Aug. 13. Don't miss these bargains!

Nook & Cranny
1306 W. Beau.
San Angelo, TX.
653-1281

\$199⁵³

per month

Yes! You can OWN, not rent, a 3 bedroom, 2 bath home that is fully furnished, has cathedral ceilings and a ceiling fan for \$199.53 per month and \$1595 down. If this seems unbelievable to you, come see us this weekend!

APR 15% - \$199.53 per month for 15 years; total of payments \$35,915.40; deferred payment price \$37,510.40



DISCOUNT HOMES of San Angelo, Inc.

2502 N. Bryant Blvd.
652-3760 658-3344
Open Sundays 1-5

| | | | | | |
|---|---|---|---|--|--|
| FIRST BAPTIST CHURCH Rev. Clive Johnston 853-2406 (res.) Oak and Gillis Sunday School 9:45 a.m. Morning Worship 11:00 a.m. Adult Evening Bible Study Worship 7:00 p.m. Wed. Prayer Service 7:30 p.m. | FIRST CHRISTIAN CHURCH Dale Lipsitt, Minister Sunday School 9:45 a.m. Morning Service 11:00 a.m. Evening Service 7:00 p.m. Wed. Bible Study 7:00 p.m. 853-3101 | UNITED PENECCOSTAL CHURCH Rev. Walter Ford Hackberry St. Sunday School 10 a.m. Worship Serv. 11 a.m. Sun. Eve Serv. 7 p.m. Wed. Eve Serv. 7:30 p.m. | ANTIOCH BAPTIST CHURCH Sunday School-10 a.m. Morning Worship Service 11 a.m. No Sunday Night Service Everyone Welcome Located on Callender St. | ST. MARY'S EPISCOPAL CHURCH Rev. Lea Roy Aldwell Pelt St. & McWhorter Ave. Sonora, Tx. 387-2617 Sunday Morning Worship and Holy Communion | WESTSIDE CHURCH OF CHRIST Hwy. 277 Sun. Morn. Serv. 10:30 a.m. Sun. Eve Serv. 6:00 p.m. Wed. Eve Serv. 7:30 p.m. Mike Sokoff, Minister |
| CHURCH OF CHRIST Rusty Kwast, Minister Mertzson Hwy. Sunday Services Bible Class-10 a.m. Assembly-11 a.m. & 6 p.m. Wednesday Bible Class 7:30 p.m. Ladies Bible Class Thurs.-10 a.m. 853-2124 | FIRST PRESBYTERIAN CHURCH Rev. Ronald J. Sutto 7 N. Cottonwood Sunday School 10:00 a.m. Fellowship Time 10:30 a.m. Morning Worship 11:00 a.m. | CHURCH OF JESUS CHRIST OF LATTER DAY SAINTS Bishop: Keith Knepp San Angelo 949-6894 2817 Christoval Rd. Priesthood 9:00 a.m. Primary 9:00 a.m. Relief Society 9:00 a.m. Sunday School 10:00 a.m. Sacrament meeting 11 a.m. | FIRST UNITED METHODIST CHURCH Rev. Fred Brown Hwy. 277 across from courthouse 853-2721 853-3030 Church School 9:50 a.m. Morn. Worship 10:50 a.m. Youth Fellowship 7:00 p.m. Wednesday Youth Adult Study 7:30 | PRIMITIVE BAPTIST CHURCH West and Carson Elder Duane McCarty Pastor Services each 2nd and 4th Sunday at 10:30 a.m. and 2:30 p.m. Also on Saturday night before 2nd Sunday Meeting at 7:00 p.m. | PRIMERA IGLESIA BAUTISTA Rev. E.L. Flores, Pastor El Paso and Concho St. Sunday School 9:45 a.m. Morn. Worship 11:00 a.m. Training Union 6-7 p.m. Evening Worship 7-8 p.m. Sunbeams Wed. 3 p.m. Prayer Service 7 p.m. |

OUR LADY OF GUADALUPE CATHOLIC CHURCH
 Father Bernard L. Guly
 853-2663
 Wed. 7:00 p.m.
 Friday 7:00 p.m.
 Sunday 8:30 a.m.

Attend the Church of your Choice



El Dorado Restaurant
 Steaks, Seafood, & Mexican Foods
 Catering Service Available
 853-2818

Food Center
 Herbert & Lois Fields, Owners
 Les Robertson, Manager
 Sonora, Texas 387-3438

Commercial Restaurant
 "Where Friends Meet To Eat"
 B Glasscock & Plum
 Sonora, Texas

Butler Supply Company
 Day 853-2503 Night 853-2004
 East St. Eldorado, Texas

Southwest Texas Electric Co-op, Inc.
 "OWNED BY THOSE WE SERVE"
 853-2544 853-2546

R & H Well Service
 Complete Oilfield Service
 853-2003 Eldorado, Texas

Sonic
 Hwy. 277 Nc Sonora, Texas

Western Company
 Pacesetters in Oil & Gas Industry
 Eldorado, Texas

Trey Trucking
 All Kinds of Oilfield Trucking
 853-2186

Savings....

- SAVING for a car?
- SAVING for college?
- SAVING for a home?
- SAVING for a rainy day?

We at First National Bank can meet your individual Savings needs.

First National Bank of Eldorado

"Serving Eldorado and Schleicher County since 1907"

Member FDIC

MEMBER 1983 TEXAS PRESS ASSOCIATION

Schleicher County Leader
 U.S.P.S. 342-470
 Published Every Thursday
 P.O. Box 790
 210 Main St.
 Eldorado, Texas 76936
 Finis C. Bratcher
 Owner-Publisher

Second class postage paid at Eldorado, Tex. 76936. POSTMASTER: Send address changes to Schleicher County Leader, Box 790, Eldorado, Tex. 76936.

Any erroneous reflection upon the character or standing of any person or firm appearing in these columns will be gladly and promptly corrected upon calling the attention of the management to the article in question.

Attention Advertisers: It is the Leader's policy that all ads are proofed before publishing, any error not brought to our attention at that time, will not be a matter for correction on the Leader's behalf.

MODEL HOME SALE! STOCK LIQUIDATION OF ENERGY EFFICIENT HOMES PRESENTLY ON LOT

- 1,056 Sq. Ft. 3-Bedroom, 1 1/2 Bath
- 1,232 Sq. Ft. 2-Bedroom, 2 Bath
- 1,400 Sq. Ft. 3-Bedroom, 1 1/2 Bath
- 1,412 Sq. Ft. 3-Bedroom, 1 1/2 Bath
- 1,456 Sq. Ft. 3-Bedroom, 1 1/2 Bath
- 1,568 Sq. Ft. 3-Bedroom, 1 1/2 Bath
- 1,664 Sq. Ft. 3-Bedroom, 2 Bath
- 1,792 Sq. Ft. 3-Bedroom, 2 Bath

THESE HOMES ARE READY FOR YOUR INSPECTION AND FREE DELIVERY WITHIN 100 MILES OF SAN ANGELO.

CONVENTIONAL - FHA - VA
 30 YEAR FINANCING

MOST MODELS CONTAIN CATHEDRAL CEILING, FIREPLACE, FHA QUALITY CARPETS AND APPLIANCES.

READI-BILT HOMES

1700 NORTH PARK DRIVE SAN ANGELO
 653-6963
 OPEN MON-FRI 8AM-5PM
 SAT 8AM-12PM



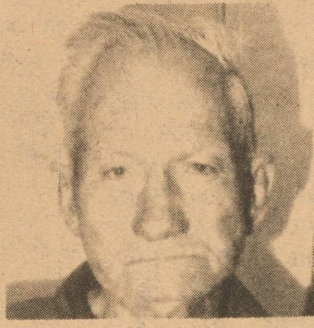
The Leader Asks Does Eldorado have a water problem?



Leona McCoy: Yes, spurting, bad taste, milky color. The water must be low in the tank.



Jose Arbalo: Yes, water pressure is bad.



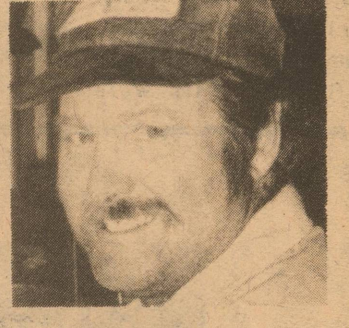
Ed Hicks: No, we have all we need.



Toby Harris: Yes, there is a problem, air in the water.



Ethel Doran: Yes, it has a very bad water problem, there is no water hardly at all in the evening.



Roger Christy: Yes, lots of air in the water.

Community News

By Evelyn Stigler

Mrs. Ruth Harper's two nephews, Mr. and Mrs. Jay Morehouse and daughter Poppy, from South Lake, Texas and Mr. and Mrs. Jeff Morehouse and daughter Katy from Vienna, Va., have been here visiting the past week. They also visited in the Ed Meador and the P.S. Dudley home. They went from here to

points of interest in San Marcos, New Braunfels, San Antonio and Padre Island.

The P.S. Dudley's were honored with a birthday dinner in the home of the Ed Meador's Sunday. Family members were present along with Mrs. Ruth Harper as a guest.

ustine, which is the oldest city in the United States. There they saw the first school building that was ever built in the U.S.

Jack, Carolyn and son, Leland spent most of their vacation in Colorado. Part of the time was spent in Estes Park. They spent two days in Rocky Mountain Park where they hiked up a two mile mountain and back. They spent some time in Denver and on the return trip they stopped in Historic Santa Fe, N.M. They enjoyed Colorado so much that they made reservations for their vacation next year.

the town is in one huge building: The post office, the grocery, an antique shop, an electrical shop and two apartments. It is a very unique place.

A number of people from First Baptist Church attended the Baptist Encampment at Piasano, near Alpine last week. There was bible study each day, some of the young people helped in Day Camp, some sang in the choir, and all participated in recreation.

Dr. Bailey Stone of First Baptist Church, Odessa and Dr. Naylor, President Emeritus of Southwestern Seminary, Fort Worth, were the speakers for the week. There were two services each day. The Missionary speaker was Joe Poole.

There were eighteen young people who attended with Jimmy Belk and Sharon Brown as sponsors. Many adults attended also. The Robinsons, Blaylocks, Johnstons, Davises, Har-dys, Fuessels, Sterlings,

McKinneys were some who attended.

Herman and Deann Walker, Michelle and Trey spent their vacation in the Davis Mountains seeing the Forts and McDonald Observatory and then on to Ruidosa in the mountains where it was cool. They came back by Paisano and left Michelle and Trey to attend the encampment.

On Wednesday of this week Mrs. Ruth Hext had some family members as guests in her home. One family, Mr. and Mrs. Don Tewart and children, came from near San Francisco, Calif. A brother's wife, Mrs. Tom Turner and her daughter, Molly from Goldwaite,

Theo Adams, a nephew and niece, Lois Dillard, from Dallas. Mrs. Ella Curry from the nursing home got to visit with them. They all brought food and enjoyed eating and reminiscing.

The Jack Etheredges and the Leon Stricklands recently spent four days in Branson, Missouri. They went to a place that was similar to the Grand Ole Opry where they heard

Country and Western groups, family groups, Japanese fiddlers and a group called The Bald Knobbers. It was a musical good time.

The second Senior Citizens Game Time was held Thursday afternoon with thirty people present. If you enjoy dominoes, 42, 84, 88 or bridge come play with us. You might have fun too.

HELP WANTED

Mechanic needed with experience and knowledge of Ford and Chrysler transmissions. Please contact Bill Ewing, Service Mgr.

**JERRY FREDERICK
LINCOLN MERCURY**

212 East Bouregard San Angelo
658-1581

The Plant Store and Flower Shop

1001 Crockett

387-5321

New Shipments
★ **CLAY POTS**
Best for Planting - Indoors and Out
★ **HOUSE PLANTS**
Ferns-Hanging
Baskets-Plants in
A Large Variety

Area dogs are threatened by a highly contagious virus that attacks the intestinal tract and white blood cells, warns the Texas Veterinary Medical Association.

Called canine parvovirus infection, the disease is spread by contact with the fecal waste from infected dogs. All dogs are susceptible to the disease, with deaths more common in puppies less than 5 months old. First signs of illness include frequent vomiting, diarrhea, lethargy, and loss of appetite. Prompt veterinary care is essential if these signs are

observed.

"Our real concern is combating the rapid dehydration caused by severe vomiting and diarrhea, replacing lost white blood cells, and sometimes using antibiotic therapy to prevent secondary infections," said Dr. Edmiston of the association.

Vaccines are available to protect dogs against canine parvovirus infection. Veterinarians can advise owners about these vaccines, their duration of immunity, and a schedule for inoculations.

Control measures include disposal of fecal waste, proper cleaning, and disinfecting of areas where dogs are housed. The disease poses no threat to humans or other types of animals.

For information, send a self-addressed, stamped envelope to the American Veterinary Medical Association, 930 North Meacham Road, Schaumburg, Ill., 60196, and ask for the free brochure, "What You Should Know About Canine Parvovirus Disease," or consult your area veterinarian.

Sherwood Oaks Dental Center

3810 SHERWOOD WAY

SAN ANGELO, TEXAS

**SAME DAY DENTURE SERVICE AVAILABLE
QUALITY DENTAL CARE
THAT YOU CAN AFFORD!**

| | |
|------------------------------------|------------------------------------|
| UPPER AND LOWER CUSTOM . . . \$200 | UPPER AND LOWER DELUXE . . . \$300 |
| SINGLE DENTURE . . . \$125 | CAST PARTIALS . . . \$195 |
| PLASTIC PARTIALS . . . \$35 & UP | SOFT LINE . . . \$ 50 |
| RELINES . . . \$35 PER DENTURE | PERAIRS . . . \$12 & UP |

**CROWN & BRIDGE, SINGLE UNITS \$195
CROWN & BRIDGE, MULTI UNITS \$175 PER UNIT**

**COMPLETE FAMILY DENTISTRY
L.D. KOEN, D.D.S.**

CALL FOR APPOINTMENT

30-DAY FREE
ADJUSTMENTS
ON DENTURES

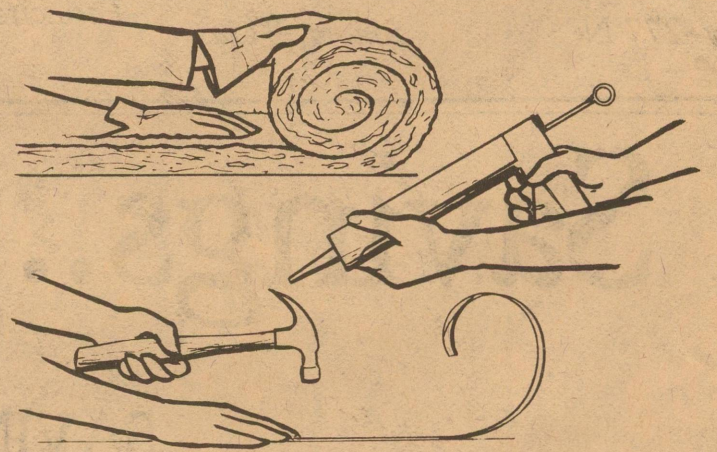
IN SAN ANGELO
949-1732

CALL AND
COMPARE
FOR OUR
LOW PRICES

OUTSIDE SAN ANGELO
800-592-4752

FREE RELINE
WITH IMMEDIATE
DENTURES
WITH 90 DAYS

Use Your ENERGY To Save Electrical Energy On Air Conditioning This Summer...



By using some of your energy you can save electrical energy. Simply by adding insulation, caulking around windows and doors, and adding weatherstripping you can help to keep the cool air in your home. Stopping cooling loss will help your home to operate more efficiently. Also, consider installing an Energy Efficient Heat Pump Cooling and Heating System in your home. If you want more information call your WTU Local Office.

HOW A TYPICAL HOME LOSES AIR CONDITIONING . . .

| | |
|---|-----|
| THROUGH CRACKS IN WALLS AROUND DOORS, WINDOWS, ETC. | 23% |
| WINDOWS AND DOORS | 31% |
| WALLS | 26% |
| CEILING AND ROOF | 11% |
| LIGHTS, APPLIANCES AND FAMILY | 9% |

WEST TEXAS UTILITIES COMPANY



A Member of The Central and South West System

Ask about E. S. P. (Energy Saving Plan) it can Save you Money!

Tedford Jewelry's August Clearance

SALE

Wed. Aug. 3rd through
Sat. Aug. 6th

We're making room for our Fall shipments

Sale Merchandise is
20% to 80% off

Select groups of Fine Jewelry-Dinnerware-Crystal
Placemats- Giftware

Values throughout the Store

Any fine Jewelry not on sale may be purchased at 10% off

Sale purchases under \$25 - cash only

Purchases over \$25 - may be charged on 30-day account

Major purchases - ask us about deferred payment plan

**TEDFORD
JEWELRY**

Downtown Sonora

387-3839

Long-term credit to buy or improve land.

Federal Land Bank

Close to the land and the people who work it



FLBA of Sonora
217 NE Main
Sonora, Texas



Pork Chops
Family Pack
\$1.69
Lb.

Prices Effective Wed. Aug 3 thru Tues. Aug. 9

Pork Chops
Center Cut **\$1.99**
Lb.

Pork Steak
Shoulder Cut **\$1.59**
Lb.

Pork Chops
Center Cut Rib **\$1.89**
Lb.

Ground Chuck
U.S.D.A. Beef **\$1.39**
Lb.

Pork Spare Ribs
3 Lbs. and Under **\$1.89**
Lb.

Ground Round
U.S.D.A. Beef **\$1.69**
Lb.

Pork Roast
Boston Butt **\$1.49**
Lb.

Cooked Ham
Oscar Mayer 6 Oz. Pkg. **\$1.69**

Effective August 1 We Discontinued S&H Green Stamps
and now
Hershel's is putting the Fun back into Grocery Shopping

with
• **DOUBLE Coupons Tuesday and Thursday**
and
Register for FREE Groceries to be given away every Saturday

• Lower Prices

Flour Gladiola All Purpose 5 Lb. Bag **99¢**

Citrus Orange Drink Rich-N-Ready 1 Gal. **99¢**

Ranch Style Beans Great with Bar-B-Q 3 15 Oz. Cans **\$1.00**

Bar-B-Que Sauce Kraft 18 Oz. Bottle **79¢**

Cheese Whiz Kraft Plain, Pimiento or Jalapeno 8 Oz. Jar **99¢**

Dishwasher Detergent Parade 35 Oz. Box **89¢**

Crackers Keebler Club 1 Lb. Box **\$1.09**



Coke, Tab, 7 Up, Diet Coke, Barq's Root Beer or Sunkist Orange 2 Liter Bottles **99¢**

Mayonnaise Kraft Quart Jar **\$1.49**

Halfmoon Cheese Kraft 10 Oz. Pkg. **\$1.39**

Vanilla Wafers Jack's 2 9 Oz. Cello Bags **\$1.00**

Tomato Sauce Del Monte 5 8 Oz. Cans **\$1.00**

Hairspray Rave 7 Oz. Aerosol Can **\$1.49**

Light Moisturizer Pond's 3 2 1/4 Oz. Bottles **\$1.00**

Q-Tip Swabs Pkg. of 240 **\$1.49**

Toilet Tissue Nice & Soft 6 Roll Pkg. **\$1.49**

Toothpaste Aim 4.6 Oz. Tube **\$1.09**

Hershel's FOODWAY
Locally Owned and Operated
387-3708
We Accept USDA Food Stamps

Yellow or White Onions 5/\$1.00 Lb.

Texas **Cucumbers** each 5/\$1.00

Texas **Potatoes** All Purpose, 10 Lb. bags **\$1.29**

Thompson Seedless White Grapes **89¢** Lb.

Tomatoes Large Slicers **29¢** Lb.

Hass **Avocados** Large Size Each **39¢**



Lettuce Solid Heads **45¢** Each

CLASSIFIED

★ SUPER 8 ★
Aluminum Dish



Complete Satellite System
AS LOW AS
\$85
per month

Come See For Yourself
"Satisfaction Guaranteed"
We service what we sell...and others too!

TEXSAN 
TEXAS SATELLITE ANTENNA SYSTEMS • 1324 W. BEAUREGARD
SAN ANGELO, TEXAS 76901 • (915) 655-9090
•Weatherford •Sonora

1/2 Tons  **3/4 Tons**

1 Tons

Good Selection of Work Trucks.
Ranch trucks,
Oil field Trucks.

CHAPARRAL MOTORS
387-2529
I-10 at Golf Course Rd.

★ Buick
★ Pontiac
★ Chevrolet
★ Oldsmobile

Real Estate

FOR SALE: By owner, 3 bdrm, 2 bath home in Glendale Addition. Large living area, dining room, utility room, sunny kitchen w/built-in range. Central heat 9 air, fenced yard, storage building. 853-3103. 30-33-p

FOR SALE: Country living in this roomy 2 bdr; 2 bath home. Den and fireplace. On 1 acre 12 miles west of town. Priced right. Johnny Childress Real Est. 392-3634. 16-tfc-c

FOR SALE: Three tracts of land. 30 acre tract on McIntosh Road, 10 acre tract just off McIntosh road, 9.64 acre tract just off McIntosh road. Call 915-853-2795. 28, tfc-c

FOR SALE: Two acre tract, water, gas, electricity available. For more information, call 853-3254 or 3287. 14-tfc-c

FOR SALE: 4 Bedroom, 3 bath home with sun room-appliances built in. 2285 sq.ft. Big back yard with good fence. also has shop in back. 4 pecan trees and good shade trees. Call 915-853-2795. 28-tfc-c

FOR SALE: Country living at its best. 4 bdr home for sale, 1 bath, 10 acres. Carport and chainlink fenced yard. Ideal environment for raising a family. 4 miles west on Big Lake Hwy. 853-3330. 23-tfc-c

FOR SALE: **REDUCED PRICE.** Large rock home with approximately 10 acres. 1 mile south of

Mobile Homes

FOR SALE: 18½ by 7 Mobile home. One bedroom, 1 bath. Call Maion Tousseint, 853-2735. 28-p-tfc-c

FOR SALE: 14 x 70 mobile home. For appointment call 853-2279 or 853-3121. 31-32-p

FOR SALE: 1958 Melody mobile home. 1 bed. 1 bath, 55 x 10. \$1000. Call 853-3055. 31-32-p

FOR SALE: Mobile home 14x72 3 bdr. 1½ bath. \$8500. 853-2704. 31-tfc-c

Eldorado on Hwy. 277. Martin Lee Associates, Inc. 655-6989. Local representative - George Abernathy. 853-2220. 17-tfc-c

FOR SALE: 4 bdr. home on 10 acres. Carport, chain link fence, fruit and pecan trees. 4 miles west on Big Lake Hwy. 853-2704. 26-tfc-c

FOR SALE
Lynn Meador & Company
Real Estate
853-2808

NEW TO MARKET - 3 bedroom 1½ bath, over 1600 sq. ft. Large den. Fenced yard with fruit trees. Large kitchen/dining area. Owners have moved and anxious to sell.

GLENDALE ADDITION - Extra nice 3 bedroom, 2 bath, well kept home. Nice yard. Mid \$40's. 31-c

Yard Sales
GARAGE SALE: Sat. Aug. 6 at 508 N. Poplar 9 a.m. to 5 p.m. Swag light, small evaporative coolers, clothes, shoes, linens, bunk beds, misc. 31-p

GARAGE SALE: Fri. 9 - ? Corner of Lovie and Old Sonora Rd. Brown and white trailer. Curtis Clark residence. 31-p

GARAGE SALE: Fri. & Sat. 9 - ? Blue jeans, mattress and box springs, bed spreads and curtains. Honeysuckle last house on right. Jacky Willis. 31-c

Business Services

INSECT CONTROL: *Trichogramma Wasps* Parasitic wasps against bollworm eggs, delivered direct from our Insectory in Texas. 25 years experience. Call 512-773-0149 or 512-757-1468. 28-33-c

EXCELLENT INCOME: For part time home assembly work, for information call 504-641-8003 ext. 8231. 28, 30, 32, 34-p

CUSTOM HAY BAILING: 60 cents per bail. Virgil Smith, Menard, Texas. 396-4760. 20-33-p

For Sale

FOR SALE: 1955 slick two door, hard top Chevy. 4 speed, Black tufted interior. Complete restoration done right. Priced to sell. Call 853-2280. 28-?

FOR SALE: 6 row front mount John Deere Cultivator. New cylinders, new hoses, new sweeps. \$1000. 853-3239

Misc.
FORT MCKAVITT Historical site will have 6 labor positions open from the month of August to September 1983. Salaries \$3.35 per hour. All interested persons should call 915-396-2358 for more information. Must be 16 years of age. 31-c

WILL BREAK HORSES: Satisfaction guaranteed. Also have horses for sale. Call 853-3276 leave name and number. 31-c

ADORABLE PUPPIES: To give away. male & female. All colors. 101 Bluebonnet. 853-2817. 31-p

FOUND: 1 bowling ball in vicinity of North East Ave. in Eldorado. Call 853-2875 and describe and pay for this ad. 31-c

WANTED: Dependable, loving woman to care for 1 year old child of teacher. If interested please call Brenda Barton. 853-2119. 31-c

WANTED: Individual will buy minerals, producing royalties, working interest and producing wells. 915-682-6191 or P.O. Box 11193, Midland, Tex. 79702 31-38-p

For Rent

FOR RENT: 3 bdr, 1 bath, duplex, w/range & vent hood. \$350 per month plus deposit. Call 853-2045 21-tfc

APARTMENT FOR RENT: 2 bedroom unfurnished with stove, refrigerator, and dishwasher. \$290.00 plus \$150. deposit. Call after 6 p.m. 853-2339. 31-p

FOR SALE: 1974 Cherokee Cruiser PA-28-140; 2879 TT; Narco Com 11A; Narco Nav; Narco AT 50A xponder August annual; \$12,500 firm. Call 853-3191. 1-tfc-nc

FOR SALE: 2 year old John Deere 1610 chisel plow, like new. \$3000. 853-3239

FOR SALE: Couch, alto saxophone and tenor saxophone. John Pitts. 853-2961. 30-31-p

FOR SALE: Child's saddle \$50. 853-3191. 1-tfc-nc

FOR SALE: Bushmaster crossbow without string. Make offer. 853-3191. 1-tfc-nc

FOR SALE: Trombone \$35. Call 853-2155 after 5. 31-p

FOR SALE: 1975 crew cab pick-up. \$1200. 853-3246. 31-c

FOR SALE: Clarinet \$325. New, will take \$175. Used one school year. Call 853-2831 after 5 p.m. 31-tfc-c

FOR SALE: Angus herd bulls. Call 853-2279. 31-32p

FOR SALE: Older model Maytag automatic washer, completely overhauled, A-1 condition. \$65.00. AND nearly new Maytag electronic control gas dryer, cost \$375.00. Will take \$175.00. 110 E. Brook Ave. 853-2987. 31-31-p

FOR SALE: Fishing red wigglers. Boxed. Elmer Garlitz, 101 Bluebonnet 853-2817. 31-p

FOR SALE: 1981 Suzuki 550 loaded actual adult miles 1500. \$1450.00 firm. Charlie Hemphill 853-3354. 31-p

Public Notice

PUBLIC NOTICE
Schleicher County Independent School District offers vocational programs in Agriculture and Home-making. Admission to these programs is open to all students enrolled in Schleicher County High School.

It is the policy of Schleicher County Independent School District not to discriminate on the basis of sex, handicap, race, color, and national origin in its educational and vocational programs, activities, or employment as required by Title IX, Section 504 and Title VI.

Schleicher County Independent School District will take steps to assure that lack of English language skills will not be a barrier to admission and participation in all educational and vocational programs.

For information about your rights or grievance procedures, contact the Title IX Coordinator, Dana Owens, at 205 Fields, Eldorado, Texas, 915-853-2514. 31-c

supplies, a written notification will be required. Schleicher County I.S.D. is exempt from Federal Excise Tax, our Tax Exemption No. A313977. Prices are to reflect this discount.

All bids must be returned to the Superintendent's office by 4:00 p.m. August 8, 1983. All bids must be addressed to Guy Whitaker, Superintendent of Schools, P.O. Box W, Eldorado, Texas 76936.

A bid on No-Lead will be received, however, we do not have a storage tank and your bid would be at your service station or key locks system. 31-c

PUBLIC NOTICE
The Schleicher County I.S.D. will conduct its annual Budget Hearing on August 8, 1983 at 7:00 p.m. in the Administration Bldg. located at 205 Fields in Eldorado, Texas. 31-c

PUBLIC NOTICE
The Schleicher County I.S.D. would like to extend an invitation to bid on the gasoline supply for the 1983-84 school year. We have a 6000 gallon tank on school property and will use approximately 25,000 gallons of regular grade. Prices are to be quoted in cents per gallon on regular in the event of a price increase from your

CECIL WESTERMAN WANTS TO BE YOUR PHARMACIST!
Daily deliveries to Eldorado. 4:30 to 6:00 p.m. Monday thru Friday. Call 387-2541 Sonora or 853-2226 Eldorado

WESTERMAN DRUG SONORA

WESTERMAN DRUG SONORA

WESTERMAN DRUG SONORA

WESTERMAN DRUG SONORA

WESTERMAN DRUG SONORA

WESTERMAN DRUG SONORA

WESTERMAN DRUG SONORA

WESTERMAN DRUG SONORA

WESTERMAN DRUG SONORA

WESTERMAN DRUG SONORA

WESTERMAN DRUG SONORA

WESTERMAN DRUG SONORA

WESTERMAN DRUG SONORA

WESTERMAN DRUG SONORA

WESTERMAN DRUG SONORA

WESTERMAN DRUG SONORA

WESTERMAN DRUG SONORA

To Place Your Ad
Call: 853-2547


Kerbow Funeral Home
SERVING ELDORADO AND SONORA
Phone 853-2636 or 387-2266

HENDERSON
Water Well
Windmill
and Pump Repair
Phone 853-3280

BUTLER SUPPLY
"Your complete oil field store."
East St.

Devils River Pawn Shop
Guns, Ammunition,
Pawn Loans
105 Crockett Sonora 387-3255


HERNANDEZ WELDING
Build & Repair Trailers,
Cattle Guards, Chutes.
UBALDO HERNANDEZ
915-853-3201



Curtis Andrews has all the answers to those perplexing insurance questions you might have. Check with Curtis at Ratliff Insurance today.

FITTS - MILLER BUILDING
Custom Storage Buildings
Made To Your Order
PHONE 853-2129

Insurance
Fire-Auto-Windstorm-Casualty
Call Tom Ratliff 853-2636

Patton Exxon 
•Wash
•Lube
•Grease
We Now have Ice
10 lb. bag 75¢
Complete Service Work

GERMANIA FARM MUTUAL Insurance
MRS. SHERRY LUX
REPRESENTATIVE OF LOCAL CHAPTER #272
BOX 613 ELDORADO, TX 76936 915-853-2164

S&T Roustabouts
General Oilfield Construction
•Roustabout gangs
•Leasework & cleanup
•Backhoe & winch trucks
•Floats-trailers
•Tank battery hookups
•Maintenance pickup
Fully Insured
Call 853-2706 or 853-3079

Brenda's House of Ceramics
has moved to town
106 Chandler 853-3111
9 a.m. to 6 p.m.
Mon. thru Fri.

ELDORADO INSTRUMENT and CONTROL CO.
INSTRUMENTS-GAUGES-METERS
CONTROLS FOR OIL AND GAS INDUSTRY. INDUSTRIAL PLANTS SALES AND SERVICE ON OILFIELD AND INDUSTRIAL INSTRUMENTS AND CONTROL.
24 HOUR SERVICE
Office 853-2506 Home 853-2624

NL Well Service
Eldorado
Well servicing and water hauling, 24 hour service, pump trucks.
853-2331 853-2351

Thorp's Dry Cleaners and Laundry
Uniform rental - Dust control mops and mats
212 S. Main 853-2900

MANY PLANS TO CHOOSE FROM
BEAUTIFUL ENERGY EFFICIENT READI-BILT MOVABLE HOMES TOWN & COUNTRY HOMEBUILDERS
2920 NORTH BRYANT SAN ANGELO, TX.

1856 sq. FT. 3 BEDROOM ROCK FIREPLACE SKYLIGHTS CATHEDRAL CEILING WITH FAN ASH CABINETS WITH RAISED PANEL DOORS "ASH" CERAMIC TILE BATH RANGE & DISHWASHER, HEATING & COOLING ENERGY EFFICIENT.

1604 sq. FT. 3 BEDROOM ROCK FIREPLACE, CATHEDRAL CEILING, KITCHEN CABINETS RAISED PANEL DOORS "ASH" CERAMIC TILE BATH RANGE & DISHWASHER, HEATING & COOLING.

PRICE INCLUDES
• MOVING
• FOUNDATION
• SEPTIC TANK
• HOOK UPS

LOANS AVAILABLE VA-FHA-CONV.

FOR SALE 12x24 OFFICE BUILDING

CUSTOM BUILT TO MEET YOUR NEEDS