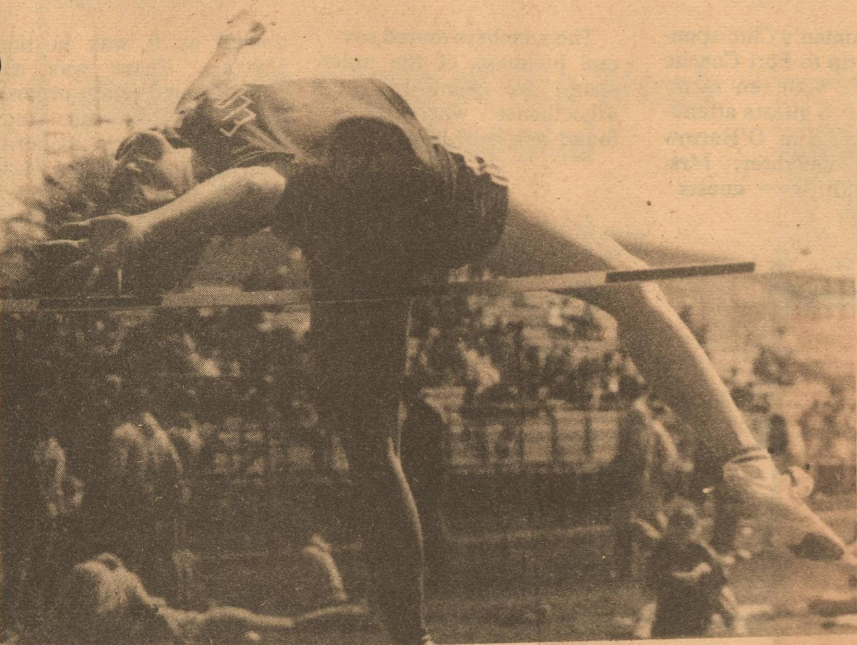


UP AND OVER--Lori Patton and John Paul Joiner show their talents in the hurdles and the high jump during the annual Plateau Relays held here last week. The 1,000 area students who attended the meet came prepared for rainy and cold weather the country had experienced the week before. But fortunately, the rain quit falling and the meet was held in pretty, even though cool, weather.



## City's Growth Results In Local Housing Shortage

**EDITOR'S NOTE--This is the third and last of a three part series about the growth of Eldorado during the last decade. The series about has concentrated in the growth of businesses, increase of construction projects and the problem of housing.**

During the last November 1980 election several Eastern and Northern states lost representatives in Washington D.C. due to the loss of population. Where did these people go and why? Because of factory shut-downs and loss of jobs. To find work these people began migrating to the Sunbelt, mainly Nevada, Arizona, Florida, Colorado, New Mexico and Texas.

Texas population has increased 27.1 percent since 1970 and Eldorado has seen its share of it in the last few years because of the work in the oil field.

True, because of population growth, Eldorado's economy grows and new businesses are added. But the growth has caused one major problem for Eldorado--housing.

In 1956 the last housing project was built, known as Sunset Acres. In the last two years several new homes have been built and all the remaining lots are taken.

With only two motels and no apartment complexes, the solution to part of the problem has been mobile

homes. In the last few years several mobile home parks have been built and several are in the process of being built at the present time. Mobile homes have been moved onto vacant lots and some have been placed on lots with existing homes.

Or January 1, 1980 there were approximately 150 mobile homes in Eldorado. During the year 35 more were registered at the city hall. In January of this year seven were registered and seven were also registered in February. This makes approximately 200 mobile homes in Eldorado at the present time, with more expected in the coming year.

Land for these mobile homes is becoming scarce.

Because of soaring interest rates in 1980, people with land canceled their building plans until the rates were lower. This was one of the worst periods in the building industry in the United States in decades. New housing starts were down 28.9 percent from 1979. Housing starts dropped 22 percent in March of last year, the biggest monthly decline in 20 years, and continuing through May. A decline in interest rates in late spring brought renewed activity to the industry, and housing starts increased each month throughout the summer. It was predicted in October that increased mortgage

interest rates in the fall would result in a housing industry decline for the rest of the year. This prediction was correct and continues. But all is not lost. Bormex Construction Company is currently building two houses in Eldorado with plans to build several more with in the year. Prices for these houses start at a moderate \$30,000 and are built to suit the individual and the market demands.

With new arrivals in the city almost every day, Jo Ed Hill, president of the First National Bank of Eldorado, agrees the housing situation is one of the biggest problems Eldorado has. With new residents outnumbering houses, apartments, and mobile home spaces, almost no land for sale, and the high cost of building, Hill said he doesn't see a quick solution to this problem, but feels Eldorado will eventually rise to meet the demand.

Gerald O'Leary, president of Bormex Construction Company, says a building boom has started in Eldorado and as long as there is a demand, it will continue.

With the residents of Schleicher County and Eldorado working together, taking one step at a time these problems can be overcome in time, making Eldorado one of the best places to live and work in West Texas!

interest rates in the fall would result in a housing industry decline for the rest of the year. This prediction was correct and continues.

But all is not lost. Bormex Construction Company is currently building two houses in Eldorado with plans to build several more with in the year. Prices for these houses start at a moderate \$30,000 and are built to suit the individual and the market demands.

With new arrivals in the city almost every day, Jo Ed Hill, president of the First National Bank of Eldorado, agrees the housing situation is one of the biggest problems Eldorado has. With new residents outnumbering houses, apartments, and mobile home spaces, almost no land for sale, and the high cost of building, Hill said he doesn't see a quick solution to this problem, but feels Eldorado will eventually rise to meet the demand.

Gerald O'Leary, president of Bormex Construction Company, says a building boom has started in Eldorado and as long as there is a demand, it will continue.

With the residents of Schleicher County and Eldorado working together, taking one step at a time these problems can be overcome in time, making Eldorado one of the best places to live and work in West Texas!

# Schleicher County

25¢

# LEADER

Vol. V

Eldorado, Texas (76936)

Thursday March 19, 1981

## Track Stars Break Plateau Records

Track meets are exciting, especially when several of the old records are broken, as they were during the annual Plateau Relays held here last weekend. As the skies cleared and the temperatures rose to make the day enjoyable for the 1,000 plus high school tracksters, several stars took over to set new records, especially in the girls division.

Lynn Ward of Llano set two new records, one in the triple jump with a distance of 35 feet, eight inches and one in the long jump with a 17 feet, six inch stretch. Ballinger's C. Shaw threw a shot put 40 feet and 3 3/4 inches to set a new record. Miss Patterson of Mason jumped five feet, five inches to break the old high jump record. In the 400 meter relay event, Junction's team of Hill, Sloan, Adams and Templeton set a new record of 52.51. The 1600 relay team from Llano, Williams, Ward, Aycock and Healy ran a time of 4.13.92 for a new record.

In the boys division, Junction's Davis vaulted 13 feet, six inches to set a new record in that event, and Ballinger's Stubblefield threw the shot put 55 feet, five 3/4 inches for a new record. In the high jump Menard's McHorse jumped six feet, four inches for a new mark.

Ozona won the boys division with 105 1/2 points, followed by Brady with 84 and Llano with 62. Ballinger had 44; Menard, 41; Reagon County 31; Eldorado, 26; Mason, 26; McCamey, 23; Junction, 22; Robert Lee, 16 1/2; Sonora, 13; Wall, 12; San Saba, 2 1/2 Early, 1.

Llano easily took the girls division with 122 points. Junction took second with 88, and Eldorado was third with 65. Sonora was fourth, 56; Mason, fifth, 52; Ballinger, sixth, 44; Wall seventh; Brady, eighth; Robert Lee, ninth; Menard, tenth; Christoval, 11; San Saba, 12.

Eldorado's junior varsity boys passed everyone else with 13 points, followed by Brady with 86 points and Llano with 72. Other places went to Christoval and Wall tying for fourth with 46 points. Sonora and Ozona tying for fifth, Junction, seventh; San Saba, eighth; Robert Lee, ninth; Reagon County, tenth; Ballinger, eleventh, and Early, twelfth place.

### Girls Division

Shot Put--C. Shaw, Ballinger (new record), first; D. Rott, Brady, second; Beesley, Llano, third.

Discus--Jackson, San Saba, first; Ledbetter, Menard, second; Tammy Landis, Eldorado, third.

Triple jump--L. Ward, Llano, first, (new record); Friess, Sonora, second; Robledo, Sonora, third.

High jump--Patterson, Mason, first (new record); Linda Gentry,

High jump--Patterson, Mason, first (new record); Field, Junction, second; Piel, Ballinger, third.

400 meter relay--Hill, Sloan, Adams, Templeton, Junction, first; (new record); Noriega, Robledo, Friess, Crites, Sonora, second; Lipsey, Patterson, Roman, Biershwale, Mason, third.

100 meter hurdles--Keeling, Brady, first; Field, Junction, second; Evans, Sonora, third.

3200 meter run--Schwartz, Junction, first; Munoz, Robert Lee, second; Donop, Llano, third.

800 meter run--Fruid, Ballinger first; Healy, Llano, second; Andrew, Junction, third.

200 Meter dash--Ward, Llano, first; Sloan, Junction, second; Valdez, Menard, third.

100 meter dash--G. Powell, Wall, first; Powell, Wall, second; Ramon, Mason, third.

800 meter relay--Walling, Gentry, Marlow, Guano, Eldorado, first;

Williams, Ward, Aycock, Healy, Llano, second; Evans, Noriega, Robledo, Friess, Sonora, third.

1600 meter run--Long, Llano, first; Munoz Robert Lee, second; Woehl, Wall, third.

1600 meter relay--Williams, Ward, Aycock, Healy, Llano, first (new record); Marlowe, Gentry, Walling, Guano, Eldorado, second; Swartz, Adams, Field, Andrews, Junction, third.

### Boys Varsity Division

Davis, Junction, first (new record); Parks, Robert Lee, second; Hutto, Llano, third.

Discus--Mieller, Llano, first; Stubblefield, Ballinger, second; Baker, Reagon County, third.

Long jump--Woodward, Reagon County; Villiant, Brady, second; Detiege, Brady, third.

Shot put--Stubblefield, Ballinger, first (new record); Sexton, Ballinger, second; Baker, Reagon County, third.

High jump--McHorse, Menard, first (new record); Eppler, Mason, second; McElister, Ballinger, third.

100 meter dash--Kothmann, Menard, first; Terry, McCamey, second; Jordon, Mason, third.

400 meter relay--Valliant, Reno, Peterson, Detiege, Brady, first; Flores, Payne, Borrego, Ozona, second; Sefcik, Jindjosa, Day, Thierwes, Wall, third.

3200 meter--Garza, Ozona, first; Walker, McCamey, second; Thompson, Ozona, third.

110 meter high hurdles--Mund, Llano, first; Buckner, Ozona, second; Joiner, Eldorado, third.

800 meter--Nixon, Brady, first;

Nojar, Llano, second; Martinez, Ozona, third.

400 meter dash--Payne, Ozona, first; Peterson, Brady, second; Manley, Ballinger, third.

300 intermediate hurdles--Hurley, Junction, first; Kelly, Llano, second; Fierro, Ozona, third.

200 meter dash--Kothmann, Menard, first; Reno, Brady, second; Munley, Ballinger, third.

1600 meter run--Garza, Ozona, first; Bradshaw, Mason, second; Ham, Reagon County, third.

1600 meter run--Garza, Ozona, first; Bradshaw, Mason, second; Ham, Reagon County, third.

1600 relay--Valliant, Nixon, Reno, Peterson, Brady, first; Hernandez Payne, Fierro, Martinez, Ozona, second; Thomas, Griffith, Martinez, Joiner, Eldorado, third.

200 meter dash--Kothman, Menard, first; Reno, Brady, second; Munley, Ballinger, third.

### JV Boys Division

100 meter dash--Travioli, Christoval, first; Borrego, Ozona, second; Robertson, San Saba, third.

400 meter dash--Bumgardner, Eldorado, first; Ussery, Eldorado, second; Cathey, Eldorado, third.

100 meter high hurdles--Travioli, Christoval, first; Niblett, Eldorado, second; Bradshaw, Brady, third.

400 meter relay--Wall, first; Brady, second; Niblett, Cathey, Woodward, Harlin, Eldorado, third.

3200 meter run--Tarpely, Junction, first; Mitchell, Wall, second; Palmer, Robert Lee, third.

continued page 3

## Local Schools Hosts Minister's Program

Jim Post, a noted minister, educator, lecturer, former police officer and army chaplain, will present a program on drug abuse for students and parents Tuesday, March 23.

Post is currently chaplain at Kansas State Prison and has made over 2,000 speaking engagements before schools and colleges plus lectures before civic and church groups, convention and other meetings.

He has worked in prisons for the past 25 years and for the past 15 years has been making speaking engagements.

Post will be working with students in large groups as well as in small seminars during the day. Two of the meetings will be for students in

grades seven through nine and for grades four through six.

He will speak to high school students as well and after school hours, meet with parents of students who are interested in drug abuse.

Post speaks about the bewildering problems of today's youth, the rise in juvenile delinquency, the increase of drug abuse, the need of prison reform, the breakup of today's family and the church's failure to reach the people. He is quoted as saying his quest is the "redirection before incarceration" and the resulting damage of criminal association.

Interested parents should contact the high school principal's office to get a time and place to meet the speaker.

## Biplane Is Reminder Of Days Gone By

If you didn't know better, you'd think Snoopy was in the air over Eldorado, looking for the Red Barron last weekend. But the biplane seen landing and taking off from the Eldorado airport was in fact a 1936 Navy trainer plane going back and forth to an air show in Harlingen from San Angelo.

Playing the part of "Snoopy" was Lt. Col. Nick Nikolauk who lives in Eldorado and is stationed at Goodfellow Air Force Base in San Angelo. He is one of the few pilots who is able to still fly old planes of this sort.

Nikolauk was found at the airport Monday morning preparing to take the plane back to San Angelo where it kept by its owners, Day Aircraft Refinishers.

The plane is difficult to handle on the ground, he said and proved his point by getting help from two other persons to push the plane out of a

hanger and onto the runway.

The colorful plane is a step back into the old days as it is restored to its original condition. It was originally built by a Navy factory in 1936 and used as a trainer plane. After its retirement it was sold to a civilian and used as a crop duster. The San Angelo firm then bought it and refinished it. It is only one of the two of its kind being flown in the world today.

Instead of being made out of metal, the wings of the plane are made of muslin, disguised under the colorful bright paint.

As he prepared for his flight back to San Angelo, Nikolauk said the plane was hard to get off the ground, and hard to land, but easy to navigate in the air. "Originally it cruised at 85 miles an hour," he said, "but we adjusted it little and now it will go 100 miles an hour.

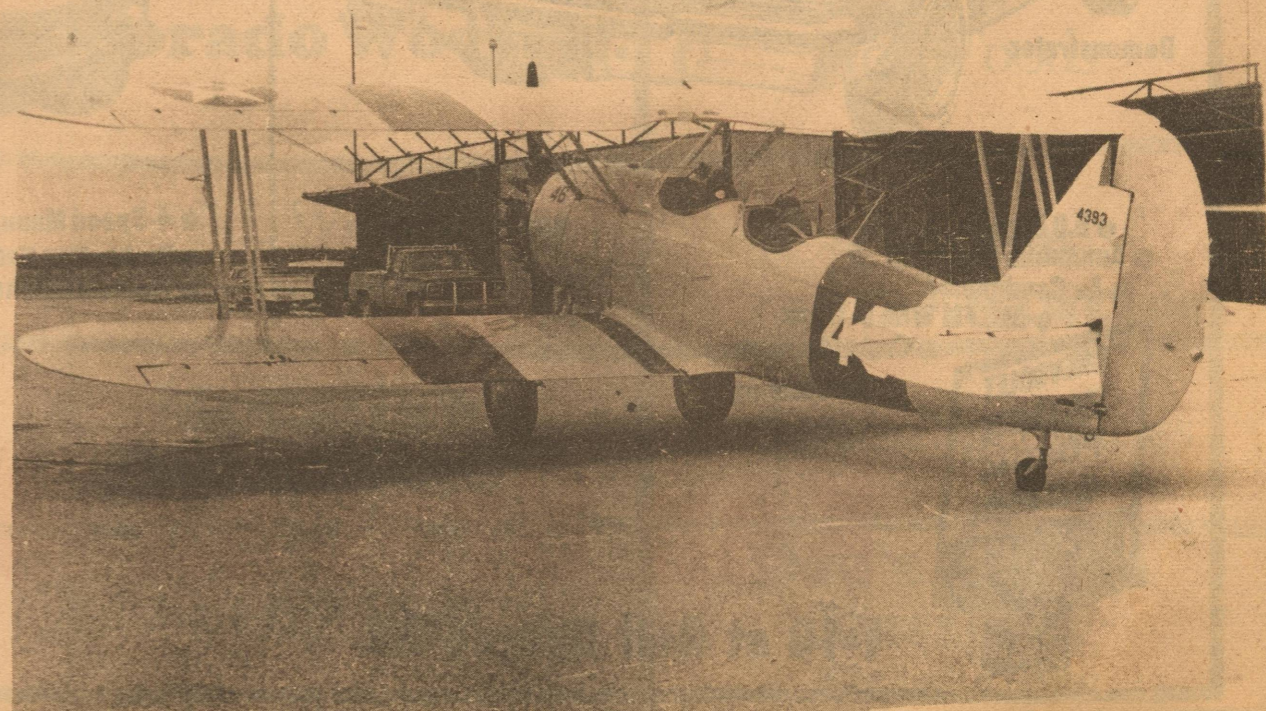
And if you can land this plane, you can probably land any plane made."

The plane is very loud when it is started up, but those who have flown in it say the noise seems to disappear when you are in the air. It is also very smooth.

Flying with Nikolauk on his way back to San Angelo was his mother-in-law, Alpha Blaylock who loves to fly almost as much as Nikolauk. She has flown with the pilot many times, "in fact as much as I can," she says.

As the two climbed into the small plane, they donned heavy jackets, goggles and earphones, which have just recently been reworked so that passengers and pilots can communicate.

As they took off, their jackets flapping in the breeze, you could really visualize the barnstormers of the 1930's and really felt as though you had taken a step back into time.



Nikolauk (in back) and Navy Biplane



**TRASH TRINKETS AND TREASURE**  
**Day of Collection Only**  
**Monday March 23 No Sale**  
**10:00 a.m. to 4:00 p.m.**  
**March 24 Sale**  
**will be from**  
**10:00 a.m. to 4:00 p.m.**

### In Those Days

**FIVE YEARS AGO--**Funeral services were held for Floyd Deaton, Joe Griffin, and Lois Green.  
 Martha Lee Meador gave a book review for members of Beta Sigma Phi sorority.  
 Baby boys were born to Mr. and Mrs. Hubert Hight and Mr. and Mrs. Tim Terry.  
**TWELVE YEARS AGO--**The Plateau Relays were cancelled because of bad weather.  
 Mr. and Mrs. Elton McGinnes and Mr. and Mrs. L.E. Lloyd attended the national Rural Electric Cooperative Association annual meeting.  
 Mrs. T.P. Robinson was to review the book "Christy" during a meeting of the Woman's Club.  
 Louise Logan was selling Beauty Counselor products.  
 Over 1,000 people attended a wrestling match sponsored by the Jaycees.  
 Eldorado experienced three days of fog and drizzle.  
 James Williams attended the director's meeting of the Federal Land Bank in Houston.  
**35 YEARS AGO--**A fast moving sandstorm turned over a barn on the E.H. Sweatt place in the Bailey Ranch Community.  
 Rehired to teach in the Eldorado schools were Oma Ford, Lucille Rumsey, Earline McFall, Mrs. Bill McWhorter, Jewel Shelton, B.J. Stewart, Annie Herbert, Mrs. Kenneth Cheek, Ina Mae Lightsey, Corrine Robinson, Mrs. Ruth Prince, Bennie Watson and Thelma Ellington.  
 Earl Parker was constructing a building to sell a full line of Kaiser and Fraser cars, as well as tractors and farm implements.  
 Services were held in Uvalde for Bobbie Joe Spurgers, 17, a former resident of Eldorado.



**ON THE LAST STRETCH--**Four West Texas girls push their hardest to be the first across the finish line during the Eldorado junior track meet last Friday. Many junior high tracksters participated in the meet to win honors for the seventh and eighth grade boys and seventh and eighth grade girls. The top honors were split among almost all of the schools attending.

**HEADQUARTERS BARBER STYLE SHOP**  
 Marga Smith-Barber/Stylist

Specializing in the latest hair styles for men and women, men and boys regular hair cuts, shaves and beard trims, perms and frost

Open Monday through Friday 9-6 a.m.  
 Saturday and after 6 p.m., by appointment only

201 E. Field 853-3048

### BSP Holds Meeting

Donations to "Friends of Library", Beta Sigma Phi Endowment and Loan funds, and the sorority's state project were voted for when Xi Xi Chi met on Monday.  
 It was noted that all senior students of Eldorado High School are urged to write a letter of application for the sorority's \$200 scholarship and get it to service chairwoman, Nelva Martin. The scholarship is based on need and worthiness of the student and is aimed at helping an average student further his or her education at a trade school or college.

**XiXi Chi's 1980-81 program** book titled "History of Schleicher County" was written by Sherry Martin. These programs have proven to be both informative and interesting. Most of the programs are taken from the Schleicher County History book. Monday night's program on "Cultural Development in Schleicher County" was given by Mary Nolen and Vicki Duhon.  
 Hostesses were Glenda Harris and Sarah Yates. Upcoming events for March are a bowling party and a pledge ceremony.

## Woman's Club Hosts Field Trip To San Angelo

The members toured several buildings of the museum, we went to the schoolhouse where they found a school being conducted as it was in the 1890's. There was an old-fashioned pump organ, school bell, benches and tables. The only modern item was a chalk board with an arithmetic problem on it. Students from the local San Angelo schools take turns attending the school and dress in the period costumes complete with long skirts, white blouses, and high topped button shoes. Their lunches were fixed in old fashioned pails.  
 Ruth Harper, a Woman's Club member, found a room in Quarters 8 where her sister, Ruby, was born. After their tour, the members met at the Giddens on East Concho for dinner. Mrs. Alice Bankston, district president, joined them for lunch.  
 The tour of the fort was part of the club's intention to carry out a Texas Heritage program.

## Corrections

Last week the Leader left out a paragraph in the article on the candidates running for office in the city.  
 Ruby (Cookie) Hefferman, candidate for city council, is a housewife and a lifetime resident of Texas. She has lived in Eldorado for five years.  
 The Leader would like to apologize to Mrs. Hefferman for the mistake.

## Calendar

Today, March 19--Social Security representative, 1:30-2:30 p.m. courthouse.  
 Friday, March 20--State comptroller representative, courthouse  
 Monday, March 23--County commissioners, 9 a.m., courthouse  
 Tuesday, March 24--Drug program at school; Trash, Trinkets, Treasures sale, 9-4, Memorial Building.  
 Wednesday, March 25--Public health clinic, 9-4, Memorial Building.  
 Saturday, March 28--Eldorado Golf Club Tournament

## Jeffrey Bar-B-Que

**Now Opening**  
**Fri. Mar. 20**

Home of the famous Bethel Burger

8 10 Main on the left going toward Sonora

We Appreciate You!

## Schleicher County Leader

Published Weekly on Thursdays  
 Second Class Postage Paid at Eldorado, Texas  
 Phone 853-2032 P.O. Box 782, Eldorado Texas  
 Any erroneous reflection upon the character or standing of any person or firm appearing in this publication will be gladly and promptly corrected upon the calling the attention of the management to the article in question.

**N'LL EDMISTON...EDITOR**  
**SHIRLEY OVERSTREET...ADVERTISING MANAGER**

Display advertising open rate is \$1.56 per column inch. Classified rate is 10 cents per word, per insertion, \$2.00 minimum charge. Classified display is \$2.00 per column inch.

Notices of entertainment, where admission is charged, notices of events of a fund-raising nature, cards of thanks, resolutions of respect, submitted poetry, and all such matters NOT NEWS will be for at the normal advertising earned rates. Volume and frequency rates are available upon written request to the publisher or advertising sales manager.  
 Yearly subscription rate is \$7.50 in county and 8.50 outside Schleicher County.

**you name it! we've got it!**

★ Chevrolets ★ Pontiacs ★ Oldsmobiles ★ Buicks

All at Bargain Prices! Local Bank or GMAC Financing

**Last Chance -After This There Are No More!**  
 NO. 0128

**1980 CAPRICE**  
 From Chevrolet

- 4-barrel V8 Engine
- All Power
- Air Conditioned
- Tilt Steering
- Radio
- 8-Track
- Automatic Shift

Reg. \$10,065.84  
 our Price **\$7,755**

Brand New Full Factory Warranty

**1981 OLDSMOBILE CUTLASS SUPREME COUPE!**  
 in lovely Sauterne Gold Metallic

- 4-Seasons Air Conditioner
- Delco GM AM/FM Radio
- Automatic Shift
- Cruise Control
- Tilt Steering Wheel
- Sport Side Moldings
- Many other Luxurious Appointments

Reg. \$8,695  
 Less Rebate 700  
**\$7,995**

Demonstrator No. H-1128

**1981 CAPRICE "Classic"**  
 NO. A1202

- 5.0 Litre V8 Engine
- Automatic Shift
- Air Conditioned
- AM/FM With 8-Track
- Cruise Control
- Tilt Steering

Reg. \$10,412.59  
**\$9251**

Demonstrator

**Famous Chevy "Luv"**

- 4-Speed Manual Shift
- Pushbutton Radio
- Fleetside Pickup Box

Reg \$6692.39  
**OUR PRICE \$6,095**

CHEVROLET  
 BUICK  
 PONTIAC  
 OLDSMOBILE  
 KEN BRADEN

**Ken Braden Motors**  
 I-10 at Golf Course Rd. 387-2529



# Council Discusses Items

General Telephone Company service problems, water, gas and sewer guidelines, a building code for Eldorado, and city street signs were among the topics discussed during the Eldorado City Council meeting Tuesday, March 10.

The guests during the meeting were General Telephone representatives, Doyle Smith, Bill Drew and Jim Simmons, local representative. They answered questions from the council and reviewed the service problems in Eldorado.

The council discussed drafting

## Retired Teacher Burned

The home of Mrs. Mattie Royster, 83, 106 W. Callender, was heavily damaged by fire and smoke early last Friday morning.

The Eldorado Fire Department answered the fire call at approximately 12:01 a.m. When they arrived at the house, Mrs. Royster had been pulled out of the burning house by an unidentified person and taken to Schleicher County Medical Center by Deputy Sheriff Barry Hale. She received burns to her face and hands. After being admitted to the hospital, Mrs. Royster had a heart attack and was placed on a heart monitor. As of Monday she was in stable condition.

The volunteer firefighters fought approximately one and one half hours before extinguishing the blaze.

The living room of the house was gutted and the rest of the house was heavily damaged by smoke. The cause of the fire was undetermined.

Mrs. Royster is a retired school teacher and taught the second grade in around Eldorado for many years; before her retirement. She has one son, Donald J. Royster, who lives in Atec, New Mexico.

guidelines for water, gas, and sewer.

The guidelines will state that the city will furnish the pipe and lift pump with the customer providing all the digging of ditches and pipe laying. The guidelines will be drafted and presented at the next meeting.

A building code for the city of Eldorado was discussed. It was suggested that it be added to the building permit form that the city would not furnish inspectors but an inspector will be recommended at the homeowners discretion. No action was taken at this time.

Trash pickup at the new Public Housing project was discussed. The contractors are to remove the trash units to the alley and the city agreed to pay the expenses not to exceed \$725 estimate. The council also agreed to pay for the completion of the paving on Cottonwood and Gillis streets, adjacent to the housing project.

Because of several calls to the city hall about oil and gas drilling within

the city limits, the city secretary is to contact the railroad commission a-

bout enforcement of spacing from residential sites and the procedures needed to be taken should the city desire to pursue an ordinance to prohibit drilling within the city limits. No other action was taken at this time.

A city sign replacement program was discussed and the Council asked that it be studied for future Revenue Sharing funds.

The council discussed the policies and the disbursement of pension funds for firemen. Representatives from the Firemen's Pension Board will be invited to a future council meeting to discuss the application for state monies to increase pension payment to retired firemen and widows.

The city bills were approved for payment.

The next city council meeting will be Tuesday evening April 7 at 7:30 p.m. in the City Hall.

# Trash, Trinkets, Treasure Sale Set

Members of the Eldorado Woman's Club will be busy next Monday gathering things for their "TRASH, TRINKETS AND TREASURES" sale on Tuesday. Monday will be a collection day with members going around town to get anything that will sell in their sale.

Anyone wishing to donate items should call Mrs. J.T. Ratliff at 853-2860, Mrs. Archie Mittel at 853-2232, Mrs. John Robinson at 853-2721 or Mrs. James Page at 853-2897.

Some of the members will be on hand at the Memorial Building all day Monday to take donations.

The sale will be from 10 a.m. to 4 p.m. Tuesday in

the Memorial Building. Proceeds will be used to help furnish the new clinic facilities.

The sale will include anything and everything

that can be sold including dishes, glassware, pots, frozen casseroles, jewelry, linens, novelty items, appliances, clothing, shoes and pot plants.

## Absentee Voting Has Begun

Absentee voting for the April 4 election for Eldorado mayor, two city councilmen, three school board members, three hospital board members and three water district members began Monday March 16 and

will end March 31.

Absentee voting for the mayor and city councilmen can be done at the Eldorado City Hall with absentee judge, Carolyn Mayo during office hours or by mail. Those wishing to vote by

absentee ballot for the school board, hospital board, and water district may do so with absentee

judge, Helen Bebee in the county clerk's office during office hours or by mail.

## Plateau Relay Pg. 1

Long jump--Travioli, Christoval, first; La Fuente, Brady, second; Huston, Wall, third.

Pole Vault--Edmiston, Eldorado, second; Woodward, Eldorado, third.

Shot put--Meland, Llano, first; McMillian, Brady, second; Slone, Brady, third.

Discus--Milam, Llano, first; Bauer, Llano, second; Sanchez, Ozona, third.

High jump--Travioli, Christoval, first; Niblett, Eldorado, second; Sorenson, Sonora, third.

400 meter dash--Cathery, Eldorado, first; Cain, Brady, second; Grener, Reagan County, third.

300 intermediate hurdles--Bradshaw, Brady, first; William, Llano, second; Travioli, Christoval, third.

200 meter dash--Harlin, Eldorado, first; La Fuente, Brady, second; Landis, Eldorado, third.

1600 meter run--Harpley, Junction, first; Ussery, Eldorado, second; Rogers, Llano, third.

1600 relay--Woodward, Cathey, enson, Olocek, Whitehead, Gonzales, Sonora, second; Borrega, Borrega, Delgado, Southern, Ozona, third.

Helping the Eldorado Eaglettes with their points were Linda Gentry, fifth, triple jump; Becky Ragsdale, Laura Lozano, Lori Patton and Linda Gentry, fifth in the 400 meter relay; Sherri Walling, fourth, 200 meter dash, Teresa Marlow, fifth, 200 meter dash, and Lillia Martinez, fifth in the 200 meter dash.

In the boys division, Eagles John Paul Joiner was fourth in the 200 intermediate hurdles, and Tommy Martinez was fifth in the 200 meter dash.

Junior varsity Eagles Gene Edmiston was fifth in the 100 meter dash, and fourth in the long jump. Chris Woodward was fifth in the 400 meter dash, to help his team win the first place trophy.

# Rotating Crops In Your Garden Important

**EDITOR'S NOTE--** This is the fourth of a 13-part series about gardening in Eldorado. Provided by Extension agent Jerry Swift and Nancy Lester, it will run weekly in the Leader.

Each spring, we get several inquiries on what's causing bean seedlings to die suddenly. This is a common problem in all areas of the county and is brought about by a group of soil-borne fungi.

These fungi are present in soil throughout the year but are especially damaging during a cool, wet spring. Once the condition begins to appear, there is little that can be done to correct the problem. However, there are several steps that should be taken to reduce losses from damping-off where there is disease has become a prob-

lem. "Rotation" is one of the most important steps to preventing losses from this disease. Never follow vegetables from one group with another vegetable from the same group. Vegetables from the same group have similar diseases which build up in the soil and increase losses each year.

Following is a grouping of plants based on their soil-borne diseases.

Group A--Watermelon, cucumber, squash, cantaloupe, honey dew melon, pumpkin. Group B--Cabbage, cauliflower, brussels sprouts, turnip, mustard, radish, collards, lettuce, swiss chard, spinach.

Group C--Pepper, tomato, potato, eggplant, okra. Group D--Carrots, sweet potatoes, beets. Group E--Sweet corn, onions, garlic, shallots. Group F--

Beans, peas, cowpeas.

"Know the soil temperature" at which the vegetable you are planting grows best and do not plant before the temperature is reached. Here are some optimum soil temperatures for seed germination.

Beans - 86-95F, Cucumbers - 86-95F, Lettuce - 77-86F, Okra - 95-F, Spinach - 77F.

This is a partial list of vegetables and temperatures at which they germinate best. As a gardener, you should know at what temperature ranges seed will germinate and grow the most rapidly. The less time spent as seedlings, the less plants will suffer from seedling disease.

As seedlings develop into more mature plants, they also develop a resistance to organism involved in seedling disease.

"Seed quality" is important because high quality seeds will grow out of the seedling stage faster if all other factors favor seedling growth.

"Use of Vapam fungicide" will reduce losses due to seedling disease, but this practice is expensive and recommended only as a side benefit from nematode control. Captan is a fungicide that can be used on select vegetables. When using Captan refer to the label for vegetables on which it can be used and the rate per 100 feet of row.

## Mrs. Gardanier Turns 90

Mrs. Delia Gardanier was honored recently by her granddaughter Mr. and Mrs. Herman Walker, and her son and his wife, Mr. and Mrs. Granvil Hext and the Walder children on her 90th birthday. With many members of the family attending, a dinner was served and then the guest of honor was presented a pink and green money tree. A birthday cake was then served to the guests.

Attending were Lucille and Guy Edwards of Odessa, Marlin and Wanda Hohn and Dale Hahn, Shelia Halfman of San Angelo, Mrs. Doris Hext, Mr. and Mrs. Ricky Hext and Drew, Mrs. John Hext and John Jr., Mr. and Mrs. Ben Hext of Eldorado.

Rewrite your hair's history with

**UniPerm**  
Precision Perming Center



Get THE HAIRSTYLE YOU WANT. AND KEEP IT.

Consult

(Salon Name) for the perfect hairstyle to complement your features, complement your lifestyle.

Then ask for a UniPerm® Wave—the perfect perm to help you maintain your new style month after month.

Call **Johnnie's Beauty Shop**

(Salon Name) at 853-2883 (Phone) and make an appointment for a UniPerm Wave today!

Johnnie Harris

Salon Name 500 Field Ave.

Address Eldorado Tx. 76956

City State Zip

Long-term credit to buy or improve land.

The Land Bank

Close to the land and the people who work it

LOCAL ASSOCIATION IMPRINT



**Country Store is having a garage sale Mar. 20 - 21 - 22 in the Community Bld. 3 doors down from Country Store in Christoval**

When in San Angelo Shop at

**Lois Smart Shop Ladies Apparel Jr. sizes 5-15 Misses 6-18 Your business will be appreciated 511 Glenna (off Arden Rd.)**

Owner & Mgr. Lois Lord

949-6414



Visa "SPRING SALE" Master Charge

<b>40lb. Potting Soil</b> Reg. \$3.99 Now <b>\$2.69</b> ★ While Supply Last! ★ No Limit	<b>UNBLEACHED MUSLIN</b> Now Reg. \$1.19yd. <b>88¢yd.</b>
<b>ORGANIC PEAT MOSS 40lb. Bag</b> Reg. \$2.99 Now <b>\$1.88</b>	<b>FLAT FOLD BLUE DENIM MATERIAL</b> Reg. \$2.49yd. Now <b>\$1.19yd.</b>
<b>PINE BARK MULCH 3 cubic foot</b> Reg. \$3.49 Now <b>\$2.50</b>	<b>60" ON THE BOLT GABARDINE MATERIAL</b> Reg. \$3.99yd. Now <b>\$2.77yd.</b>
<b>ALL FRUIT TREES—Including Peach - Apple Pecan</b> Prices To \$12.99 Now <b>1/3 Off</b> While Supply Last!	<b>TROPICAL BLENDS Flat Fold</b> Reg. \$1.99yd. Now <b>99¢yd.</b>
<b>COMPOSTED 40lb. SHEEP MANURE</b> Reg. \$1.99 Now <b>\$1.77</b>	<b>SAYELLE OR ODYESSY YARN</b> Reg. \$1.29 Now <b>99¢yd.</b>
<b>40lb. Bag TOP SOIL</b> Reg. \$1.99 Now <b>\$1.77</b>	<div style="border: 1px solid black; padding: 5px; text-align: center;"> <b>COUPON</b>  <b>STP REG OIL FILTERS</b> STP                      Reg. \$2.77 Now <b>\$1.99</b>                      Limit 1 with coupon                      CLIP N' SAVE                 </div>
<b>ALL "LIVE" HANGING BASKETS</b> Reg. \$6.99 Now <b>\$5.88</b> "Only During Sale Period"	<div style="border: 1px solid black; padding: 5px; text-align: center;"> <b>COUPON</b>  <b>AMALIE 10W-40 Motor Oil</b> AMALIE                      Reg. \$1.29 Now <b>79¢</b>                      Limit 6 with coupon                      CLIP N' SAVE                 </div>
<b>Gladiolas Bulbs</b> Reg. 25¢ Now Just <b>6 For \$1</b>	<div style="border: 1px solid black; padding: 5px; text-align: center;"> <b>COUPON</b>  <b>STP OIL TREATMENT</b>                      Reg. \$1.88 Now <b>\$1.09</b>                      Limit 1 with coupon                      CLIP N' SAVE                 </div>
<b>Folding Lawn Chairs Valve of \$9.95</b> Now <b>\$6.88</b>	<div style="border: 1px solid black; padding: 5px; text-align: center;"> <b>COUPON</b>  <b>PERRYS</b>                      HWY 277 North Sonora                 </div>
<b>GARDEN HOSE 50 ft. Only \$3.29</b> 1/2 in.	<b>PLASTIC WEB FOLDING CHAISE LOUNGE</b> Only <b>\$10.88</b>
<b>MATERIALS</b>	<b>GINGHAM CHECK MATERIAL</b> Reg. \$1.99yd. Now <b>\$1.47yd.</b>



# Four Schools Split Honors At Eagle Track Meet

**HELP WANTED**  
Urgently Needed- 50 people in this area to do sewing in their home. Good income. All ages accepted. Send \$3.00 (refundable) for pattern and instructions. **CORBIN SEWING CENTER** Arts and Crafts Dept. 200 N. Main Corbin, Ky. 40701

The honors in Eldorado's junior high school track meet last Friday were split among four different schools, Sanderson, Wall, Menard and Sonora. Sanderson took the seventh grade girls division with 68

points, followed by Sonora, second; Big Lake and Ozona, tied for third; Eldorado fourth; Ballinger, fifth and Junction and Wall, tied for sixth.

Sonora's seventh grade boys won their division with 97 points, with Ozona getting second with 57 points; McCamey, and Big Lake, tied for third; Junction, fourth; and Eldorado, fifth.

The eighth grade girls division was won by the Wall Hawkettes with 78 points. Other places went to Junction, second; Ballinger, third; Eldorado, fourth; Rankin, fifth; Sonora, sixth.

With 88 points, Menard claimed the eighth grade boys' trophy. Sonora was second with 80 points; Big Lake, third; Eldorado, fourth; Ozona, fifth and Ballinger, sixth.

Individual places are as follows:  
**Seventh grade girls**  
400 meter relay--Sanderson, first; Ozona, second; Big Lake, third.  
600 meter dash--Ballinger, first; Eldorado, (George Gonzales), second and Ozona, third.

100 meter low hurdles--Sonora, first; Sanderson, second; Sonora, third; Eldorado (G. Gonzales), fourth.  
100 meter dash--Sanderson, first; Junction, second; Ozona, third; Eldorado (P. Ussery), sixth.

300 meter dash--Sonora, first; Big Lake, second; Ballinger, third.  
800 meter relay--Sanderson, first; Eldorado (Patsy Ussery, Anna Aguilar, Eloisa Hill, Luz Martinez), second; Wall, third.

200 meter dash--Big Lake, first; Ballinger, second; Sanderson, third.  
1200 meter run--Ozona, first; Sonora, second; Big Lake, third.

1200 meter relay--Ozona, first; Sonora, second; Big Lake, third.  
100 meter dash--Eldorado (J. Willoughby), first; Sonora, second; Wall, third.

300 meter dash--Wall, first; Ballinger, second; Eldorado (R. Robinson), third; Eldorado (R. Adame), fourth.  
800 meter relay--Wall, first; Junction, second; Ballinger, third.

200 Meter Dash-- Wall, first; Ballinger, second; Big Lake, third.  
1200 meter run-- McCamey, first; Junction, second; Junction, third; Eldorado (Della Heffernan), fifth.

1200 meter relay--Ballinger, first; Rankin, second; Junction, third.  
**Seventh Grade Boys**  
400 meter relay--Sonora, first; McCamey, second; Big Lake, third; Eldorado (J. Turville, J. O'Harrow, M. Dahlberg, M. Belman), fourth.

600 meter dash--Ozona, first; Sonora, second; Menard, third.  
100 meter intermediate hurdles--Junction, first; Ozona, second; Sonora, third.

100 meter dash--McCamey, first; Junction, second; Eldorado (J. Turville), third.  
300 meter dash--Ozona, first; Sonora, second; Sonora, third.  
210 meter low hurdles--Eldorado (M. Belman), first; Wall, second; Junction, third.

**Come One Come All**  
**Independant Cattleman Association**  
**Of Sutton County**  
**4th Annual Beef BarB-Que**  
**Dinner**  
**Sonora 4-H Center**  
**Friday, March 20,** **6:00 p.m.**

Tickets are \$5:00 plate  
Extra chances \$1:00 ea.

**Gott Cooler** **Prizes** **Many other**  
**8-1/2 Beefs** **Winchester94 Trapper Rifle** **Door Prizes**

## Being Mascot Is Fun

by Bradley J. Thomas  
When was the mascot idea first introduced to EHS? Senior Lynna Sauer said, "The mascot began when Coach Mike Williamson was in the hospital in San Antonio."  
Lynna was this year's Eagle mascot. Previous mascots were Sandra Wilke in 79 and Mary Kay White in 78. Before the alternate cheerleader became the mascot, a few of the local women put on the "bird suit" for pep rallies. The duties of the mascot

include dressing up for pep rallies and games. Lynna said she did not regret being the mascot. "Being the mascot was fun but there were some problems involved. It's hard to be so closely associated with the cheerleaders, yet not be one."

Asked about the large eagle head she had to wear with her suit, Lynna replied, "It was hot and bulky, but it did go well with the suit. She said that she prefers this year's suit to the one worn by Sandra and Mary Kay.

Mini-Spanish Lesson # 9  
The House La Casa

English	Spanish	Pronunciation
house	la casa	la kah-sah
door	la puerta	la poo-air-tah
the kitchen	la cocina	la koh-see-nah
bed-room	la recámara	la ray-kam-mahrah
bath-room	cuarto de baño	koo-ah-toh day bahn-yp
living-room	la sala	la sah-lah
dining room	el comedor	el koh-meh-dor
window	la ventana	la venn-tohn-nah
den	cuarto de recreo	koo-ah-toh day ray-cray-oh

## School Menus

- |  |  |
|--|--|
| <b>Monday March 23rd</b><br>Beef & Bean Burritos<br>Spanish Rice<br>Lettuce & Tomato Salad<br>Cheese Strips<br>Chocolate-Peanut Clusters | <b>Friday April 3rd</b><br>Sandwiches-Tuna<br>Chicken Salad, Ham Salad,<br>Pimento Cheese & Peanut Butter<br>French Fries<br>Pork & Beans<br>Ice Cream |
| <b>Tuesday March 24th</b><br>Spaghetti & Meatsauce<br>Cream Style Corn<br>Pear Halves<br>Cowboy Cookies                                  | <b>Wednesday March 25th</b><br>Hamburgers<br>Potato Chips<br>Lettuce, Tomatoes, Pickles<br>Cheese Slices<br>Banana Pudding                             |
| <b>Thursday March 26th</b><br>Roast Beef & Gravy<br>Creamed Potatoes<br>English Peas<br>Strawberry Jello<br>Blackberry Cobbler           | <b>Friday March 27th</b><br>Corn Dogs<br>Potato Rounds<br>Applesauce<br>Rice Krispie Cookies<br>Sugar Cookies  |
| <b>Thursday April 2nd</b><br>Turkey & Dressing   | <b>Friday March 27th</b><br>Pears<br>Doughnuts   |

## Caring About Others

"Blessed are those who hunger and thirst for righteousness, for they shall be satisfied."  
Matthew 5:6

What does it mean to hunger and thirst for righteousness? The Pharisees continually sought after a portion of righteousness. As they looked for ways to prove their personal devotion to God, some totally ignored that aspect of morality which is concerned with our relationship to others. Both are important.

It is important for you and me to be concerned about our personal morality. It is equally important that we be as concerned about the welfare of others. One of the ways we can express our love and devotion and dedication to God, is to lovingly care about the needs of others.

In 1978, a Jewish man who had been hidden from the Nazis during World War II by a Polish family, returned to Poland to say thank you. He took gifts to the family; the family responded with a meal of Polish ham. The man's response was, "They never understood what kosher meant, but they were the picture of decency."

When you think about your relationship to God and to humankind, what you do for others reveals more of what you believe than what you say.

### Our Church Feature Is Sponsored By The Following Merchants Who Urge You To Attend The Church Of Your Choice This Week!

### CHURCH DIRECTORY

- |  |   |  |
|--|---|--|
| <b>CHURCH OF JESUS CHRIST OF LATTER DAY SAINTS</b><br>Bishop: Bryan Galloway<br>San Angelo 658-4797<br>2817 Christoval Rd.<br>Joe Moran-Ozona-392-3453<br>Girl Scout Building Corner of Water & Pecan in Sonora<br>Sunday School 10 a.m.<br>Priesthood 10 a.m.<br>Relief Society 10 a.m.<br>Sacrament Meeting 11 a.m.<br>Visitors Welcome<br>2nd & 4th Sundays Sonora<br>1st & 3rd Sundays San Angelo. | <b>OUR LADY OF GAUDALUPE CHURCH</b><br>Rev. Mark J. Woodruff<br>Pastor 853-2663<br>Saturday 7:00 p.m.<br>Sunday 8:00 a.m. (Spanish)<br>9:30 a.m. (English)  | <b>FIRST CHRISTIAN CHURCH</b><br>Dale Lipsitt, Minister<br>Sunday School 10:15 a.m.<br>Worship 11:00 a.m.<br>Wed. Bible Study 7:00 p.m.<br>853-2247  |
| <b>ST. MARY'S EPISCOPAL CHURCH</b><br>Rev. Lea Roy Aldwell<br>Pelt St. & McWhorter Ave.<br>387-2617 (Sonora, Tex.)<br>Sunday Morning Worship and Holy Communion  | <b>WESTSIDE CHURCH OF CHRIST</b><br>HWY. 277<br>Sun. Morn. Serv. 10:30 a.m.<br>Sun. Eve. Serv. 6:00 p.m.<br>Wed. Eve. Serv. 7:30 p.m.   | <b>UNITED PENTECOSTAL CHURCH</b><br>Rev. Walter Ford<br>Hackberry St.<br>Sunday School 10:00 a.m.<br>Worship Service 11:00 a.m.<br>Sun. Eve. Serv. 7:00 p.m.<br>Wed. Eve. Serv. 7:30 p.m.  |
| <b>FIRST PRESBYTERIAN CHURCH</b><br>Rev. Ronald J. Sutto<br>7 N. Cottonwood<br>Sunday School 9:45 a.m.<br>Morning Worship 11 a.m.<br>Fellowship Time 10:30 a.m.<br>Visitors Welcome  | <b>PRIMITIVE BAPTIST CHURCH</b><br>Menard Hwy<br>Elder Freddy Boen, Pastor<br>Services each 2nd & 4th Sunday at 10:30 a.m. and 2:30 p.m.<br>Also on Saturday night Before 2 and 4th Sun. Meeting at 7:00 p.m.   | <b>ROCK CHURCH OF CHRIST</b><br>Dale Huff, Evangelist<br>708 Lee St.<br>Sunday Bible Class 10 a.m.<br>Worship Service 11 a.m.<br>Evening Worship 6 p.m.<br>Wed. Bible Class 7:30 p.m.  |
| <b>FIRST BAPTIST CHURCH</b><br>Oak and Gillis<br>Sunday School 9:45 a.m.<br>Morning Worship 11 a.m.<br>Adult Evening Bible Study<br>Worship 7:00 p.m.<br>Wed. Prayer Service 7:30  | <b>PRIMERA IGLESIA BAUTISTA</b><br>Rev. E.L. Flores, Pastor<br>El Paso and Concho St.<br>Sunday School 9:45 a.m.<br>Morn. Worship 11:00 a.m.<br>6-7 p.m. Training Union<br>7-8 p.m. Evening Worship<br>Wed. 3 p.m. Sunbeams<br>7 p.m. Prayer Services | <b>FIRST UNITED METHODIST CHURCH</b><br>Rev. John A. Robinson<br>Hiway 277 across from Courthouse<br>853-2721<br>Church School 9:50 a.m.<br>Morn. Worship 10:50 a.m.<br>Youth Fellowship 7:00 p.m.<br>Wednesday Adult Study 7:30<br>All are welcome. |

## Butler Supply Co., Inc.

East Street 853-2503  
**Your Complete Oilfield Store**  
Trico Insert Pumps

HINDERLITER	WELLHEADS
ALL SIZES TANKS	DEMCO
STEEL & FIBERGLASS	PFOTO
SEPERATORS	THORNHILL CRAVER
HEATERS & PRODUCTION UNITS	OLMAN HEATH
	WHEATLEY

Night Phone 853-2804

"Let's see now, you stopped at a beer joint and these three illegal deer and two illegal wetbacks crawled under these sacks!"

<b>WESTERMAN DRUG</b> Cecil Westerman Would Like To Be Your Pharmacist 853-2226	<b>SOUTHWEST TEXAS ELECTRIC CO-OP, INC.</b> Owned by Those We Serve Eldorado, Texas 853-2544	<b>Holley House</b> "For the Unique and Creative" Eldorado, Texas 853-2763
<b>EL DORADO RESTAURANT</b> Steaks-Seafood & Mexican Foods Catering Service Available 853-2818	<b>TREY TRUCKING</b> All Kinds Of Oilfield Trucking Eldorado, Texas 853-2186	<b>SONIC DRIVE-INN OF SONORA</b> Hwy. 277 North Sonora, Texas 387-5292
<b>BUTLER SUPPLY COMPANY</b> Oilman's Friend East St. Eldorado, Texas Day 853-2503 Night 853-2004	<b>COMMERCIAL RESTAURANT</b> Where Friends Meet To Eat Glascock & Plum Sonora, Texas 387-9928	<b>THE WESTERN COMPANY</b> Pacesetters in the Oil & Gas Industry Eldorado, Texas
<b>FOOD CENTER</b> Herbert & Lois Fields, Owners Les Robertson Manager Sonora, Texas 387-3438	<b>R &amp; H WELL SERVICE, INC.</b> Complete Oilfield Service Eldorado, Texas 853-2003	<b>Schleicher County Leader</b> Interested persons may submit original church features anytime. 853-2032



# Spring

# 81

# Sports

## Track

## Tennis

## Golf

### EAGLE DAIRY MART

853-2125

John Callison-Owner

Eagle of the Week

Eaglette of the Week



Brad Thomas

**Eagle of the Week Special**

**2- Burritos**

**\$1.15**



Silva Gauna

No Substitutes



**VARSITY GIRLS TRACK TEAM**-- Top row, left to right, Lori Whitaker, Lori Patton, Gina Patton, Linda Gentry, Theresa Marlow, Vikki Cavaness, Tammy Landis, Danette Dunagan, Kim Payne, Jo Anne Rodriguez, Middle Row, Coach Larry Mitchel, Laura Lozano, Stephanie Thomas, Sherri Walling, Jill Pitts, Kamie Hunter, Charlotte Mobley, Diana Harris, Maribel Gonzales, Sarah Day, Bottom row, Jeanne Redwine, Becky Ragsdale, Silva Gauna, Margaret Turner, Julie Cash, Shelly Squyres

## School Events

Mar.20-21 Ozona Tennis Tournament


Mar. 20 Sonora Track Meet Boys - Girls -J.V. Boys

Mar. 21 Sonora Jr. High Track

Mar. 26 8 th grade Dance

Mar. 27 Sonora Tennis Tournament Boys Golf at Menard

Mar. 27 - 28 Ozona Jr. High Track Meet San Angelo Track Meet Boys

Kent's Automotive	<b>First National Bank Of Eldorado</b>	Meador Land Company	<b>Butler Supply Co. Inc.</b>
<b>Northern Natural Gas</b>	L.R. Hanusch Water Well Drilling & Service	<b>Eldorado Instrument and Controls Co.</b>	Willhoit Exxon Station
Kwik Pantry	<b>Southwest Texas Electric Co-op</b>	Whitten's Liquid Feed	<b>Trey Trucks</b>
<b>CH Poynor Construction Co.</b>	Jerry's TV Service	<b>Eldorado Wool Co.</b>	Hext Foods
Food Center Sonora	 <b>Quadra Corp. 853-3004</b>	NL Well Service Co.	<b>Duncan Texaco Station</b>
<b>Meador-Peters Insurance Agency</b>	<i>holley house</i> For the Unique & Creative	<b>McCalla's Dept. Store</b>	Sutton Specialties
Jack Halbert Sr. Butane, Propane & LPG	<b>R &amp; H Well Service Inc.</b>	Adobe Mini Mart	<b>Dee's Floral Designs</b> Big Lake Hwy



# Classified Ads

## Business & Service Directory

**C H Poyner Const. Co.**

General Oilfield Construction

24 Hour Call 884-2454 Big Lake  
Call 853-3064 Eldorado

## NL WELL SERVICE

Well Servicing-Water Hauling

-Pump trucks 24 Hour Service

Eldorado 853-2351 Sonora 387-3509

## INSURANCE

Fire, Windstorm, Auto and Casualty

Call TOM RATLIFF 853-2636

## Tex-Sun Insulation

Residential - Commercial

Free Estimates

Farris Nixon 853-2996

## J.B. Beason

Remodeling

Paint Contractor

Painting Dry Wall Acoustic

John or Pam 853-2428 or 853-2258

## KERBOW FUNERAL HOME

Serving Eldorado & Sonora

Call 853-2636 or 387-2266 in Sonora

## Whitten Liquid Feed

Nutrene & Godbold Feeds 853-2944

Steve Whitten, Manager - Res. 853-2879

## DRY CLEANERS LAUNDRY

UNIFORM RENTAL  
DUST CONTROL

MOPS MATS

THORP'S

212 S Main 853-2900

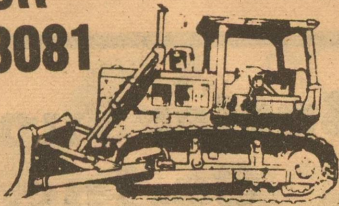
## Leggett Construction

Brush Control

-Tanks Pits

24 Hour Oil Field Service

Jeff Leggett  
915-853-3081



## Specializing In

Instruments, Gauges, Meters & Controls  
For Oil & Gas Industry and Industrial  
Plants Sales & Service on Oilfield and  
Industrial Instruments & Control

Eldorado Instrument & Control Co. 24 Hour

Office 853-2506 Home 853-2624 Eldorado, Texas Service

## Henderson Waterwell

Windmill and Pump Repair

Sam Henderson, Jr.

853-2447



## Boswell Concrete

Sidewalks  
Patios  
Driveways  
Flowerbeds  
Curbs  
etc.

Sonora 387-3666

## For Sale

1979 GMC Custom Van Call after 5:00p.m. 853-2672

1975 Volkswagon Dasher. Good condition. Call 853-2077.

219atfnc  
36; white colorie Gas Range very good condition, also, 17 cu. ft. White Frigidaire Refrigerator. Priced to sell. Call 853-2859 after 4:30p.m.

50x150 ft Butler building. Overhead cranes. 20 ft underhook. Office and living quarters. Central air and heat. Plumbed for compressed air system and LP gas heating. 400 amp and 3 phase. Approximately two acres fenced in Sonora, Texas. \$150,000.00 firm. Call Mark Crider at 800-242-3017.

25mtfnc  
Two lots for sale in South Height Edition. Reasonably priced. Lynn Meador Real Estate-853-2688.

Riding Lawn Mower -10 horsepower, Sears. Call: Jon Calcoete 853-2747

Bed, Mattress, Springs and Dresser \$75.00 Whirlpool washer \$25.00 Need small repair---Call 853-2960

Antique Green Bedroom Suite. Compact Vacuum Cleaner. 853-2358.

For Sale or Rent or will consider giving away---one Father-in-law. For more information contact Sharon Storie 853-2588. P.S. New owner must keep plenty of mustard on hand.

'78 Dodge Pickup- 150 S.E. U-8-318 Automatic, Power Steering, Power Brakes, Cruise Control AM/FM Radio, Digital clock, Bucket Seats, Air Conditioner, Short Wide Bed. Camper Shell. \$3500.00 853-3193

## Real Estate

For Sale by owner. Brick three bedroom, two bath, two car carport, fireplace, kitchen builtins, beamed ceiling and earthtones. \$30,000 equity, assume loan at 12 1/2 percent. Payments \$430. 853-2331 days and 853-3143 nights and weekends.

## Lost

Lost: one black poodle with one white foot. Lost on the southwest side of Eldorado. Call Wilma Logan at 853-2027. Reward.

## For Lease

Dump Truck for Lease Call 853-2880 or 853-2616

## Garage Sale

Moving Sale: ten and five speed bikes, TV antennae rollaway bed, two power plants, and lots more. Saturday 9-5, 105 North Street.

Lots of fancy glass dishes, salad plates, desert bowls, relish dishes, water pitchers, spoon holders, candles, flower rings, silverplate flatware, icebuckets, Avon collectables, china plates, pots, a little bit of everything. Sat. March 21, 9 to 5. Home of W.W. Bill Williams 105 North West Ave.

## Zerox Copies

10c A COPY  
MEADOR - PETERS  
AGENCY

**VW DATSUN**  
**O&D IMPORTS**  
653-2941 San Angelo

## Public Notice

Order for Directors Election The State of Texas County of Schleicher.

On this the 10 day of March, 1981, the Board of Directors of Plateau Undergroud Water Conservation & Supply District convened in Regular session open to the public with the following members present, to-wit: Earl Lloyd, Chairman; Mort Mertz, Ray W. Willoughby, Jr., and the following absent: Steve Sykes, constituting a quorum, and among other proceedings had by said Board of Directors was the following:

Whereas on the 4 day of April, 1981, there will be elected 3 directors for this district;

Whereas this Board by order dated the 2 day of December, 1980, established the procedure for candidates who desire to file for said election;

THEREFORE, BE IT ORDERED BY THE BOARD OF DIRECTORS OF PLATEAU UNDERGROUN WATER CONSERVATION & SUPPLY DISTRICT

That an election be held in said district on the 4 day of April, 1981, for the purpose of electing 3 directors to the Board of Directors of said District;

That said election shall be held at the following place Firehall in said District, and the following named persons are hereby appointed officers for said election: Earl Lloyd, Chairman, Board of Directors of the Plateau Undergroud Water Conservation and Supply District

That the polls at each of the above designated polling places shall on election day be open from 7:00 o'clock a.m. to 7:00 o'clock p.m.

Helen Bebee is hereby appointed Clerk for absentee voting, and Maria Tobias are hereby appointed Deputy Clerks for absentee voting. The absentee voting for the above designated election shall be held at County Clerk's Office within the boundaries of the above named district and said place of absentee voting shall remain open for at least eight hours on each day for absentee voting which is not a Saturday, a Sunday, or an official State holiday beginning on the 20th day and continuing through the 4th day preceding the date of said election. Said place of voting shall remain open between the hours of 8:00 a.m. and 5:00p.m. on each day for said absentee voting. The above described place for absentee voting is also the absentee clerk's mailing address to which ballot applications and ballots voted by mail may be sent.

The following named persons have duly filed as candidates for said election in accordance with the above mentioned order for election procedure in Directors Election passed by this Board, and their names shall be placed on the ballot for said election in accordance with a drawing held by the Secretary of this Board in the following order:

Mort Mertz, Director at Large; Ray W. Willoughby, Jr. Director, Precinct 1; Earl Loyd, Director, Precinct 4.

Notice of said election shall be given by publication of a copy of this order one time in a newspaper of general circulation published in the county in which the district is located, or if none is published in said county, in the nearest county thereto; the date of said publication being not more than 25 days nor less than 10 days before the date of the

election. Immediately after said election has been held, the officers holding the same shall make returns of the result thereof in triplicate, one being retained by the Presiding Judge, one delivered to the President of this Board, and one delivered to the Secretary. The ballot box and other election records and supplies shall be delivered to the Secretary at the office of the District and be preserved as provided by law in said office.

It is further found and determined the notice of the date, place and subject of this meeting was posted in accordance with the terms and provisions of Art. 6252-17 at least 72 hours preceding the scheduled time of this meeting and that the terms and provisions of said Article 6252-17 have been complied with and copies of said postings and return shall be attached to this order and become a part thereof.

The above order being read, it was moved and seconded that same do pass. Thereupon, the question being called for, the following members of the Board voted AYE: Earl Lloyd, Ray W. Willoughby, Jr. and Mort Mertz, and the following voted NO: None.

PASSED AND ADOPTED this the 10 day of March, 1981.

/s/ Earl Loyd Chairman, Board of Directors of the Plateau Undergroud Water Conservation and Supply District

ATTEST: Ray W. Willoughby, Jr. Acting Secretary

Orden de Eleccion de Directores El Estado De Texas Condado De Schleicher.

En este dia 10 de Marzo de 1981, la Junta Directiva del Plateau Undergroud Water Conservation & Supply District se convocó en reunion Regular, abierta al publico con los siguientes miembros presentes, a saber:

Earl Loyd, President, Mort Mertz, Ray W. Willoughby, Jr., y los siguientes ausentes: Steve Sykes, constituyendo un quorum, y entre otras actas tomadas por dicha Junta Directiva se encontro la siguiente:

En vista de que en este dia 4 de Abril, de 1981, seran elegidos 3 directores para este distrito;

En vista de que esta Junta por orden fechada el 2 dia de Diciembre, de 1980, establece el procedimiento para los candidatos que deseen registrarse para dichas elecciones;

POR LO TANTO, SE ORDENA POR LA JUNTA DIRECTIVA DE PLATEAU UNDERGROUN WATER CONSERVATION AND SUPPLY DISTRICT

Que se lleve a cabo una eleccion en dicho distrito el 4 dia de Abril de 1981, con el proposito de elegir 3 directores a la Junta Directiva de dicho Distrito;

Que dicha eleccion se lleve a cabo en los siguientes lugares Firehall en dicho Distrito, y que las siguientes personas son nombradas oficiales para dicha eleccion.

1. Para el Precinto todos Electoral; en el Edificio Firehall en Eldorado, Texas, dentro del mismo Distrito con como Juez Presidente, Billie Porter.

Los sitios de votacion en cada uno de los lugares arriba designados se mantendran abiertos el dia de eleccion de las 7:00a.m. a las 7:00p.m.

Helen Bebee es nombrado Secretario para la votacion en Ausencia, y Maria Tobias son nombrados Secretarios Delegados para la Votacion en Ausencia. La Votacion en Ausencia para la eleccion arriba citada se llevara a cabo en County Clerk's Office dentro de los limites del mencionado distrito y dicho lugar de votacion en ausencia permanecera abierto por lo menos ocho horas diarias para la votacion en ausencia no siendo sabado o domingo o dia festivo oficial del Estado, principiando 20 dias antes de la fecha de la eleccion, y continuando hasta el cuarto dia anterior a la fecha de dicha eleccion. Dicho lugar de votacion permanecera abierto entre las horas de 8:00a.m. y 5:00p.m. en cada dia de la votacion en ausencia. El lugar arriba descrito para la votacion en ausencia es tambien la direccion postal del secretario para la votacion en ausencia a la cual podran enviarse las aplicaciones para boletas electorales tanto como boletas con votos enviadas por correo.

Las personas nombradas abajo se han registrado debidamente como candidatos para dicha eleccion de acuerdo con la orden arriba mencionada para procedimiento de eleccion en la Eleccion de Directores aprobada por esta Junta, y sus nombres apareceran en la boleta para dicha eleccion y de acuerdo con un sorteo que se llevo a cabo por el Secretario de esta Junta en la siguiente orden:

En vista de que en este dia 4 de Abril, de 1981, seran elegidos 3 directores para este distrito;

En vista de que esta Junta por orden fechada el 2 dia de Diciembre, de 1980, establece el procedimiento para los candidatos que deseen registrarse para dichas elecciones;

POR LO TANTO, SE ORDENA POR LA JUNTA DIRECTIVA DE PLATEAU UNDERGROUN WATER CONSERVATION AND SUPPLY DISTRICT

Que se lleve a cabo una eleccion en dicho distrito el 4 dia de Abril de 1981, con el proposito de elegir 3 directores a la Junta Directiva de dicho Distrito;

Que dicha eleccion se lleve a cabo en los siguientes lugares Firehall en dicho Distrito, y que las siguientes personas son nombradas oficiales para dicha eleccion.

1. Para el Precinto todos Electoral; en el Edificio Firehall en Eldorado, Texas, dentro del mismo Distrito con como Juez Presidente, Billie Porter.

Los sitios de votacion en cada uno de los lugares arriba designados se mantendran abiertos el dia de eleccion de las 7:00a.m. a las 7:00p.m.

Helen Bebee es nombrado Secretario para la votacion en Ausencia, y Maria Tobias son nombrados Secretarios Delegados para la Votacion en Ausencia. La Votacion en Ausencia para la eleccion arriba citada se llevara a cabo en County Clerk's Office dentro de los limites del mencionado distrito y dicho lugar de votacion en ausencia permanecera abierto por lo menos ocho horas diarias para la votacion en ausencia no siendo sabado o domingo o dia festivo oficial del Estado, principiando 20 dias antes de la fecha de la eleccion, y continuando hasta el cuarto dia anterior a la fecha de dicha eleccion. Dicho lugar de votacion permanecera abierto entre las horas de 8:00a.m. y 5:00p.m. en cada dia de la votacion en ausencia. El lugar arriba descrito para la votacion en ausencia es tambien la direccion postal del secretario para la votacion en ausencia a la cual podran enviarse las aplicaciones para boletas electorales tanto como boletas con votos enviadas por correo.

Las personas nombradas abajo se han registrado debidamente como candidatos para dicha eleccion de acuerdo con la orden arriba mencionada para procedimiento de eleccion en la Eleccion de Directores aprobada por esta Junta, y sus nombres apareceran en la boleta para dicha eleccion y de acuerdo con un sorteo que se llevo a cabo por el Secretario de esta Junta en la siguiente orden:

En vista de que en este dia 4 de Abril, de 1981, seran elegidos 3 directores para este distrito;

En vista de que esta Junta por orden fechada el 2 dia de Diciembre, de 1980, establece el procedimiento para los candidatos que deseen registrarse para dichas elecciones;

POR LO TANTO, SE ORDENA POR LA JUNTA DIRECTIVA DE PLATEAU UNDERGROUN WATER CONSERVATION AND SUPPLY DISTRICT

Mort Mertz, Director en General, Ray W. Willoughby, Jr. Director Precinct 1, Earl Lloyd, Director Precinct 4.

Aviso de dicha eleccion se hara por medio de publicacion de una copia de esta orden una vez en un periodico de circulacion general publicado en el condado en que se encuentra este distrito, o si no se publica ninguno en dicho condado, en el condado mas cercano; la fecha de dicha publicacion siendo no mas de 25 dias ni menos de 10 dias antes de la fecha de la eleccion. Inmediatamente despues de que se haya hecho dicha eleccion, los oficiales a cargo de la misma deberan reportar los resultados de la misma en

triplicado, una copia la debera guardar el Juez Directivo, una copia sera entregada al Presidente de esta Junta, y una copia sera entregada al Secretario. La caja para boletas y los

demas documentos y materiales electorales seran entregadas al Secretario en las oficinas del Distrito para estar conservadas como estipula la ley en dicha oficina.

Ademas se ha encontrado y determinado que un aviso

de esta fecha, lugar y asunto de esta junta fue fijado de acuerdo con los terminos y condiciones del Articulo 6252-17 por lo menos 72 horas anteriores a la hora designada para esta junta, y que los terminos y condiciones de dicho Articulo 6252-17 han sido conformados y que copias de dichos avisos y las pruebas seran anexadas a esta orden y formaran parte de la misma.

Habiendose dada lectura a la orden arriba mencionada, se hizo la mocion y fue secundada para ser aprobada. Despues, al llamado sobre esta pregunta, los siguientes miembros de la Junta votaron afirmativamente:

Earl Lloyd, Ray W. Willoughby, Jr., Mort Mertz, y los siguientes votaron negativamente: no.

PASADA, APROBADA Y ADOPTADA este 10 dia de Marzo de 1981.

/s/ Earl Lloyd Presidente, Junta Directiva del Distrito Plateau Undergroud Water Conservation and Supply District

CERTIFICA: Ray W. Willoughby, Jr. Secretario

V.F.W. Post in Sonora If interested come to Sonora at 7:00 pm. Monday 4/H Build.

Men's Hair Styling Rene's Beauty Shop 853-2747

PIANO IN STORAGE  
Beautiful spinet-console stored locally. Reported like new. Responsible party can take at big saving on low payment balance. Write Joplin Piano, Inc., Joplin, Missouri 64801.

Prissy Paxton Income Tax Service  
14W. Gillis 853-2650  
9 to 5 Mon.-Fri.

Income Tax Service Frankie Schrier 904 Main 853-2582

# SALE ENDS SATURDAY IT'S THE LAST DAY TO

## Get Money Back From Ford!

★ GRANADAS ★ FAIRMONTS ★ THUNDERBIRDS  
COME TO SONORA FORD SALES TODAY!

If you've been waiting for the right deals and you've been looking for the right cars. If there's ever been a right time, it's all happening at Ford...right now. Get a check Direct From Ford-use it on your down payment!



10% off sticker price

\$600 REBATE ★ Fairmonts

\$700 REBATE ★ Granadas ★ Thunderbirds

One of Ford's Biggest Dealer Cash Incentives!

Ford has announced special cash incentives to its dealers. This makes it possible for your Ford Dealer to save you hundreds of dollars on any new 1981 Fairmont, Thunderbird or Granada. Choose from 19 models. Just see your Ford Dealer. But act now, you must order before March 1st, or take delivery by March 21st.

Texans are Big on

# Sonora Ford Sales

Downtown Sonora Odis Smart, Owner Office 387-3910-Res. 387-2306

Mobile-Home-Repairs  
Parts-Supplies-Service  
Electrical-Plumbing  
Air Conditioning-Heating  
Additions-Carports-Patio Covers  
Mobile Home Moving  
We do it all "right"

MUSTANG MOBILE HOMES  
Sales & Service  
Ph. 653-4651 or 653-8235  
2610 N. Chadbourne San Angelo

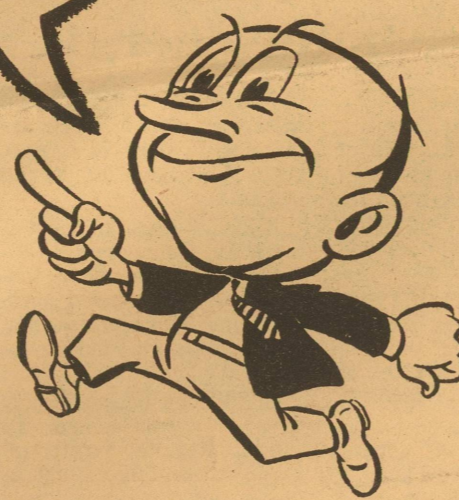


**KINGSBERRY HOMES**

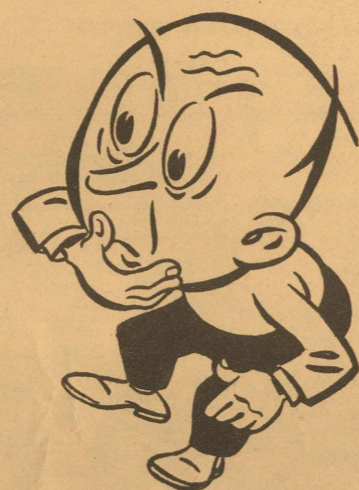
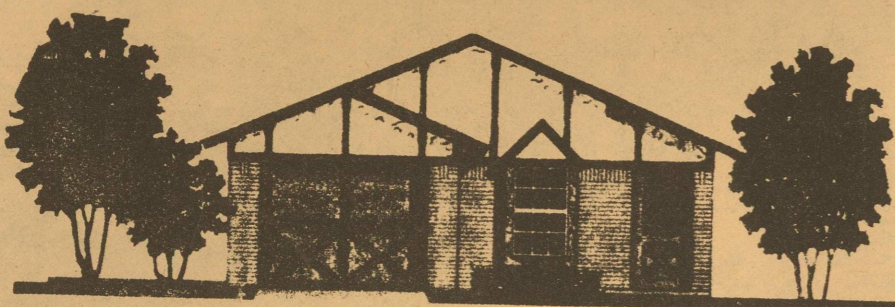


Would you believe anyone could build and complete a house in 30 days?

Only it's a Kingsberry House Built By Bormex Const.



Quality Homes  
Reasonable Prices  
Built on Your Choice  
of Lots.



300 or 400 Plans Available



For More Information Call  
853-2645 or 853-2680



# SPRING

# HOME IMPROVEMENT



1981 Spring Home Improvement First Edition

Leader



## When making that lifetime investment . . . Helpful suggestions for choosing a new roof wisely

Buying a new roof is a king-sized headache for most homeowners, since it is not the kind of product most people buy every day. As a result, it arouses far more anxiety than even the purchase of the family car.

The following suggestions will help overcome a lot of this anxiety by familiarizing the potential owner of a new roof with some basic facts about roofing so he can make a wise decision and end up with a good investment as well as a good-looking roof.

### Asphalt most popular

More than 85 percent of the houses in the U.S.A. have asphalt shingle roofs and this is the type of roof that the vast majority of homeowners will buy again.

The reason is simple: asphalt shingles combine good looks, safety and a reasonable price to a far greater degree than other currently available building materials.

First, a homeowner must be alert about when it is time to buy a new roof. If the house is 15 or more years old, look for some of the following symptoms of an ailing roof: broken, cracked, curled, warped, or missing shingles, bare shingles, with granules in the drains and gutters, where they have been deposited by rain, and so on.

### Call a professional

If any of these symptoms are becoming evident, it is certainly time to call in a professional roofer for a consultation.

Damage in a roof is not always easily apparent. Sometimes the only clue will be a leak in the attic or one of the upstairs bedrooms.

In any case, a professional roofer will be able to locate the source of the damage and to assess the need for either minor repairs or a completely new roof.

### Repair the old

Sometimes the deck beneath the roof may be damaged by excessive moisture and will need to be replaced or repaired before the shingles are applied.

Shingles are available in standard types, which offer a 15 year warranty, or premium types, which carry a 25 year limited warranty.

Basically, both types of shingles will provide the same protection against rain, sleet, hail, snow, wind, fire, etc.

### Premium offers more

Why choose the premium over the standard type of shingle? The premium type, in addition to its extended life span, has a special design and

pattern which make it especially pleasing to the eye and architecturally acceptable because of its random tab appearance.

For example, GAF Timberline shingles, which are the top-of-the-line products made by America's largest manufacturer of asphalt shingles, are found in homes both large and small, mansions as well as basic tract houses, and always lend a look of distinction and quality to the house as no ordinary standard type of shingle can.



PROVIDING A LOOK OF DISTINCTION AND QUALITY as no ordinary shingles can, GAF Timberline shingles are available in a choice of six distinctive color blends.

And, because of its extended life, Timberline costs no more in the long run than the standard type of shingle.

### Color in asphalt

According to many surveys, color is the basic factor in the choice of a new roof. Here, asphalt shingles have far more to offer than cedar, tile or any other roofing materials.

Asphalt shingles are available in a practically unlimited variety

of colors and blends, permitting the homeowner to select whatever color he needs to tie in with his siding, the architecture of his home, the surrounding environment, etc.

Timberline shingles, for example, are available in a choice of six popular color blends: charcoal, cedar, heather, redwood, slate and weathered wood.

These truly modern color blends enable the homeowner to achieve the desirable appearance of lived-in luxury and being a natural part of the surrounding environment which is so pleasing to current standards of taste.

### "Self-sealing"

Modern asphalt shingles are also distinguished by "self-sealing." This means that the back of the shingle is provided with a special thermoplastic sealing agent which is activated by the

sun after the roof has been installed.

This sealing material actually fuses the shingles together to form, in effect, a one-piece roof.

Choose colors for your roof in the following way. Darker colors will help to reduce the

impression of height and lend a feeling of warmth and cosiness to the house.

### Light siding

Lighter colors will make the house look taller. If your siding is light, a dark roof will give the house a dramatic accent.

Never use more than three colors for roof, siding and trim. Before buying your new roof, check around the neighborhood for good-looking new roofs and find out who did the job.

Talk to two or three qualified roofers and ask for estimates based on the same specifications. A professional roofer will be happy to supply references and answer your questions.

### Once in a lifetime

Consider the fact that buying a new roof is done only once or twice in a lifetime. It is definitely worth doing right.

When buying a roof, always look for the reputation of the man who is doing the installation as well as the manufacturer whose shingles will be put on your roof, since your warranty is only as good as the manufacturer who makes the shingles.

If you shop as carefully for your roof as you do for your car, you will undoubtedly choose your new roof wisely and well.



**YEARNING FOR A COMPLETE DINING ROOM with a country feeling but limited in space? Designers from Liberty Furniture Company plan this dining corner for maximum stretch in a traditional way. Vertically-striped paper gives the illusion of added height and a painted dado adds architectural detail. Draperies are tied back low again for an increased sense of height. They are sensibly combined with matchstick blinds. The oak-finished furniture in a warm medium brown is scaled to fit. The table is 42" x 42" x 54" with a twelve-inch leaf. The farmhouse chairs, only \$60 each, pull readily into the living room for extra seating. Note the placement of the china closet in the living room. It has glass shelves and built-in lighting so that it can display a favorite collection as well as provide storage space.**

## Tax credit is incentive to conserve home energy

If a home improvement project related to energy conservation is included in your list of things to do this spring, don't forget to take a tax credit for it next spring, advises the National Home Improvement Council.

The Energy Act of 1978, scheduled to remain in effect until January 1, 1986, provides a tax credit of up to \$300 for home remodeling designed to conserve energy.

NHIC points out that this is a tax credit, not a deduction. In other words, if your completed tax form shows you owe the Federal government \$305 in taxes and you are eligible for the \$300 credit, you wind up owing Uncle Sam \$5.

The tax credit applies to such energy conservation items as insulation, caulking, weatherstripping, and storm windows and doors, as well as a variety of other items. Even the cost of labor for installation is included.

How does it work? At the end

of the calendar year, add up all the energy-saving purchases that qualify and take as a tax credit 15 percent of the total, up to \$300.

Although the initial cost of the energy-saving items qualifies under the tax credit, the subsequent cost of installing them the following winter does not: re-installing storm windows, for example.

Nor does the tax credit apply to any energy-saving items the Internal Revenue Service regards as decorative, such as drapes, siding or carpets.

NHIC suggests the best way to determine whether the home improvement project you have in mind qualifies for the tax credit is to contact your local IRS office or consult your accountant.

In any case, remember that to qualify for the tax credit in April, the installation of the energy-saving items must be completed prior to the end of the previous calendar year.

### All-purpose room



A ONCE-UNUSED ATTIC can be turned into a happy ha: for entertaining and inspiring conversation—or just for a private hideaway. Handsome James David consumer-assembled furnishings and accessories keep the cost down while they keep the look of luxury up. Tuxedo-style seating, upholstered in wide-wale rust corduroy, gives a plush look with an abundance of cushiony pillows. Rust colored strips placed over wall-to-wall grey add dramatic impact. The use of one color, with white accents on a background of grey, creates a particularly sophisticated atmosphere. A three-dimensional theme is expressed in the paired graphics in luminated white-on-white cut-paper from James David's "Visuals" collection. All the furniture, including the upholstery, tables, lamps and etagères, come in a box and can be quickly put together without special tools, from prepackaged components.

## Addition of fireplace makes dream home affordable reality

Ask a group of homeowners what additions they would make to their houses to make them the homes of their dreams.

The answers might be—a new kitchen, location on a spring-fed lake and a fireplace.

Of these dreams, adding a fireplace is not only the most economical but can be the quickest and the easiest.

When Jim and Jane Peters purchased their spacious, new three bedroom house in Wisconsin Rapids, Wis., they were pleased to find it within their price range but knew it lacked some features about which they had dreamed.

The Peters' had both lived in older homes with lots of architectural details and handcrafted finishings that made the houses very special.

Their new modern ranch, by contrast, seemed somewhat stark and undefined. The long living room in relation to the

attached dining area "appeared to float," according to Mrs. Peters.

With the room's straight lines, there were no architectural points of interest to define the room and to give it the warmth and charm they enjoyed.

They both wanted a fireplace and this would be a perfect focal point for the room.

Working with a contractor, Jim and Jane were told that a fireplace, prefabricated by Preway, Inc., could be installed simply by building surrounding framework, installing a Preway chimney system through the ceiling and roof, and finishing the framework shell as they chose.

Since the room was also used for entertainment, the contractor suggested building shelving to house their stereo and television beside the fireplace to create a total "entertainment

center." Choosing a Preway Custom built-in fireplace, Jim and Jane found that installation was easy enough for them to install the fireplace and chimney.

They asked the contractor to do the decorative finishing of the installation.

The Preway Custom built-in comes completely preassembled. The unit features a built-in heat circulation system to work

as a supplementary room heat source.

Enamel housing, plus porcelain side walls and firebrick back inside firebox are all included in the sturdy unit.

A complete triple-wall chimney system is available. Both fireplace and chimney system are U.L. listed.

For added energy savings, the Peters' chose Preway bi-fold glass doors, an option for their

unit. As the fire can burn with the doors closed, the Peters' found their fire burned more efficiently, while the doors added a decorative touch.

Working with their contractor, Jim and Jane designed the finished installation to complement their home's decor.

Characteristic butternut wood paneling and shelves, coupled with a rugged weathered stone front, created a warm and interesting focal point for their room.

With the fireplace and entertainment center complete, the couple found their "new" living room to be a room both they and their guests do not want to leave.



## FOR A SMALL MONTHLY CHARGE, SHE COULD'VE ANSWERED IT BY THE DRYER.

Every time Barbara Phillips' phone rings, it's long distance—the distance from her to her phone, that is.

If you spend a lot of time running to the phone, maybe you're in the running for an extension phone. For much less than you'd expect, you can start reaching for your

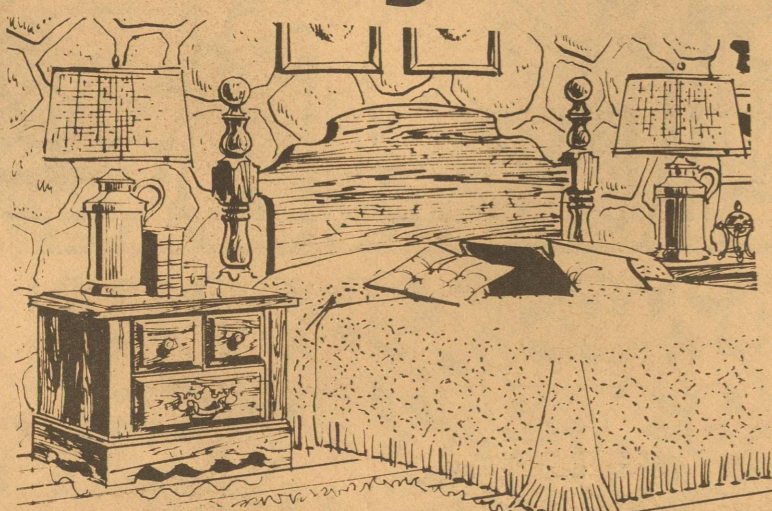
phone. Whether you're stuck in the laundry room, glued to the TV or deep in sleep.

What's more, you know you've got a phone that's as reliable as the phone company. So the next time you run to the phone, call your General Telephone business office. And make it the last time.

**GTE EXTENSION PHONES**

Tough Calling available in most areas

# Spring Home Brighteners



Dress up your bedroom with new curtains, bedspreads, pillows etc.

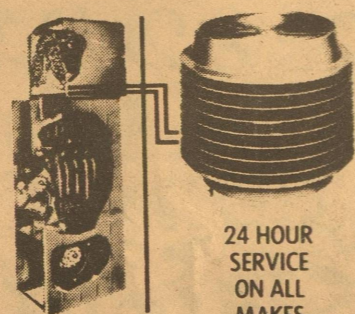
We stock curtain rods, shades, drapery hooks, artificial flowers, novelty straw decorations.

**Mc Callas Dept. Store**  
Downtown Eldorado

## "More People Enjoy Carrier Air Conditioning Than Any Other Kind



**Sales and Service Residential - Commercial Industrial Heating & Air Conditioning Equipment**



24 HOUR SERVICE ON ALL MAKES

"SERVING THIS AREA SINCE 1936"

**Day or Night 653-6881**

**Western Air Conditioning Inc.**

606 So. Chadbourne San Angelo



## 1980 wallcovering designs

New wallcovering styles and colors emerging in the '80s will be coordinated and luxurious—whether inspired by classic traditional or "high tech" furnishing with its industrial influence—according to a recent design survey conducted by the Wallcovering Information Bureau.

Design and color directions of new wallcoverings are in step with the movement toward greater sophistication in home furnishings.

Trends in wallcovering designs forecast by designers for this decade include a heavy emphasis on mini prints and orientals, and a renewed focus on traditional patterns.

Mini prints, smaller scale prints and geometrics have grown in popularity with the move toward smaller homes, apartments and condominiums.

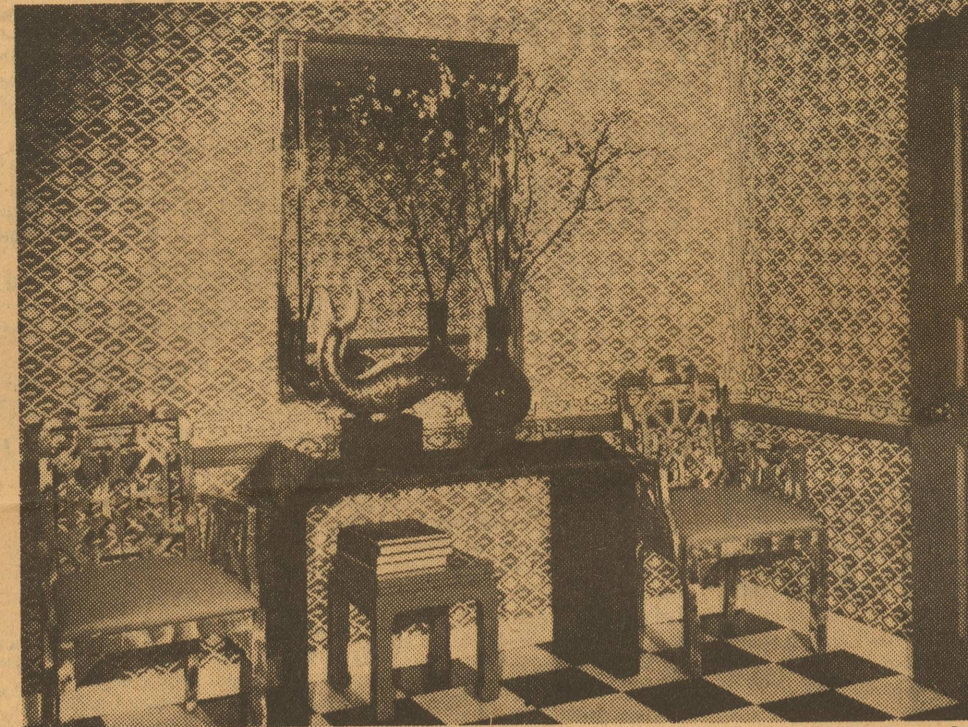
Wallcovering colors are becoming clearer, cleaner—more colorful and less grey—than in recent years, observes Wallace Michael, Director of Design for the General Tire & Rubber Company. Rose, sapphire blue, apple green and red, as an accent color, are examples he cites.

Among other important colors mentioned by designers are plum, dark rose, raisin, purple, desert tan, foliage blue and green.

### Design directions

Oriental designs are gaining favor as a result of increased trade with China, many designers comment.

"Oriental wallcoverings offer a fresh look, much different



**WALLCOVERING IMPACT**—This striking entrance hall incorporates design trends in wallcoverings for the 1980s, with the use of a small-scale geometric pattern and an overall oriental feeling. The chinoiserie design of the wallcovering complements the hall's Chinese inspired furnishings. A touch of elegance is added by the border, used to frame the wallcovering into panels above the dado. The wallcovering patterns are "Ming and Border from the Mural Collection by Thibaut. Tips on decorating, selecting and installing wallcoverings are available in the booklet, "All You Need To Know About Wallcoverings." Send 50¢ to Wallcovering Information Bureau, Dept. S80, 66 Morris Avenue, Springfield, NJ, 07081.

from the European influence we have experienced in the past few years," explains Ron Rohner, Executive Vice President of the Kassel Corp.

There is also a strong focus on traditional patterns, ranging from small prints to large, elegant designs.

One industry stylist, Herbert

R. Euler of York Wallcovering, notes that, "consumers expect and accept time-tested traditional patterns. They are often less willing to experiment during an economic slump."

Other designers explain the strength of traditional wallcovering designs as part of an overall return to classic ele-

gance in home furnishings.

### Clear and rich colors

In color, blues are strong with trends toward navy or midnight blue, in combination with rust or burgundy, the designers observe.

Dark, bright blue is also popular, with accents of tan, sand

beige or peach. The return of soft, but clear, turquoise and aqua is also seen.

"Earthy wallcoverings, with a little more richness and vibrancy, will continue in their popularity," states Leila Serio, design director for R. E. Thibaut Wallcoverings.

Neutrals are still present, designers indicate, with chocolate brown at one end of the spectrum, ranging to beige, bisque and bone.

Dusty pastels and soft, light colors are favored by designers for traditional and documentary type wallcoverings.

### Decorating

Coordination is the key to using wallcoverings today with "all areas of home furnishings influencing each other," comments Peter Herrmann, Design Director for Imperial Wallcoverings.

Compatibility with existing furnishings, both in design and color treatment, is important in selecting wallcoverings, designers advise.

Wallcovering collections offer a wide choice of patterns—many with companion fabrics—in color combinations that can serve as the basis for an entire decorating scheme. One designer calls this the "instant decorating" aspect of wallcoverings.



## Check home's exterior during spring cleaning

"In the spring a young man's fancy . . ." Unless he's a homeowner. Then, chances are his thoughts turn heavily towards spring cleaning.

But spring cleaning shouldn't be confined to the indoors. It's also the ideal season for sprucing up a home and its surroundings.

A good place to start is with a thorough check of the home's exterior.

Such an inspection ought to include the condition of windows and doors, their ease of operation and weatherstripping, basement walls, siding, trim, gutters, downspouts and the general condition of the roof.

Gutters, downspouts and the roof surface, no matter what the season, should be kept clear of fallen leaves, twigs, broken branches or other litter so that water can drain freely and not back up.

Tree branches, climbing plants or vines should be trimmed to prevent scuffing of the roof surface.

Don't go up on the roof to check its condition. It's dangerous and could damage the shingles.

Inspect it from the ground using field glasses. Look for cracked, curled or missing shingles.

If the roof is fairly new and

has suffered slight damage from a storm or falling objects, chances are it can be repaired easily.

Damaged or missing shingles can be replaced and any leaks around flashing points patched.

All roofs have to be replaced eventually, however. If the roof is badly worn because of years of weathering, it will have to be replaced.

A roof of standard shingles 15 years or older is probably due for reroofing. Before going ahead, call in a professional roofer to conduct a thorough on-the-roof inspection.

Reroofing procedures differ with the type of material used. Asphalt shingles, for example, can often be applied directly over the old roofing material, eliminating the cost and time involved in removing the old material.

The professional you hire to inspect your roof can tell you whether this can be done. He's also a good source of information on the use of color and dimension in roofing.

Another source of information is a 20-page roofing guide, which can be obtained for 35 cents from the Asphalt Roofing Manufacturers Association (ARMA), Box 3248, Grand Central Station, New York, NY 10017.



**THIS HANDSOME BOW WINDOW** is an example of how to get views and natural daylight without sacrificing energy conservation. The Perma-Shield casements by Andersen Corporation have preservative-treated wood core sash and frame sheathed in rigid vinyl and double-pane insulating glass to conserve energy.

## Energy 'grabbers' call for a conservation drive

If you're a homeowner, a word of caution—the "grabbers" are out to get you; energy grabbers that is.

Every home has them. Besides wasting your home's valuable energy, they're continually snatching at something even more personal—your wallet.

To prevent the grabbers from getting the upper hand, take charge and conduct an energy conservation drive at home.

An efficient heating and cooling system, adequate insulation and energy-saving appliances will, of course, help.

Savings can also be realized with windows that are designed to conserve energy.

Even after a house is fully insulated, a considerable amount of the remaining heat loss can be saved by the proper selection of windows.

The key is simple. Andersen Corporation, a leading manufacturer of windows and gliding doors, advises homeowners to

select windows that offer built-in energy conservation features.

Since wood is a natural insulator, its use in the sash and frame of windows serves to reduce conducted heat loss considerably.

Andersen's Perma-Shield windows and gliding doors have a preservative-treated wood core sash and frame that is sheathed in low-maintenance vinyl.

As the largest part of the window, the glass is also an important factor. Double-pane insulating glass or separate storm sash should be used to reduce heat loss and heat gain.

Standard in Perma-Shield, double-pane insulating glass eliminates the inconvenience of a separate storm sash while providing equal thermal protection.

Factory-applied vinyl weatherstripping, which is twice as weathertight as industry standards for allowable air infiltration, assures snug closure.

## Durable solid vinyl makes house siding better than ever

For decades, people have beautified the exterior of their homes with one addition: new siding.

Siding has been vastly improved over the years, from yesterday's asphalt through steel and aluminum to today's sophisticated vinyl, so now it has even more to offer homeowners.

Aluminum and steel siding presented some problems. They eventually needed to be repainted because their finishes can be scratched and dented. They also magnified outside sounds, such as rain or hail.

Siding manufacturers improved them with tough acrylic finishes, but the same basic problems remained.

Then came solid vinyl siding. Today, many homeowners consider this the best siding around because of its super durability that gives years of beauty with little maintenance.

### Exclusive compound

Duranyl, a vinyl compound developed by Mastic Corporation, is used exclusively for the manufacture of T-lok Solid Vinyl Siding. It can be cleaned with a sponge and soapy water and will look new indefinitely.

Because it is solid color clear through, scratches won't show, and it never needs painting.

Airborne pollutants and salt air will not harm T-lok, and it won't dent or rust like metal. Vinyl also makes a home safer because it will not attract lightning or conduct electricity.

Mastic Corporation, a subsidiary of Bethlehem Steel, backs its T-lok Solid Vinyl Siding with

a 40-year limited warranty.

The benefits of solid vinyl siding affect a home inside as well as out. Vinyl does not conduct heat or cold, so it keeps a home more comfortable. And it is quiet, diminishing the sounds of hail or rain.

Of course, the quality and appearance of vinyl siding a homeowner chooses will be greatly enhanced if the siding is properly installed.

### Shop around

Installing vinyl siding is a job for professionals. Mastic suggests that homeowners who are thinking of hiring a siding contractor get several bids and investigate each contractor's reputation.

They should be sure all workmen are well-trained and in-

sured. Homeowners should also take a look at other installations done by the contractors.

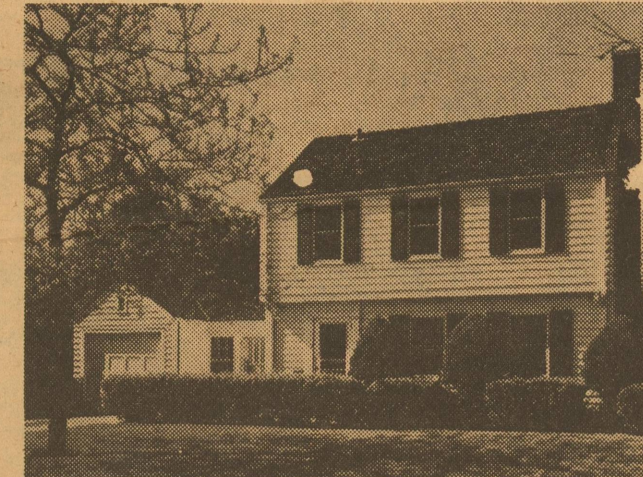
Finally, homeowners should read the siding product warranty to make certain it is transferable if they sell the home.

### Get siding approved

They should make sure that the siding they buy has the approval of all important building codes.

These include the Building Officials Conference of America, Inc. (BOCA), International Conference of Building Officials (ICBO), and the Southern Building Code Congress (SBCC).

For more information about solid vinyl siding, write to: Mastic Corporation, 131 S. Taylor St., South Bend, IN 46624.



**REMODELING** with Mastic T-lok Solid Vinyl Siding means an early retirement for homeowners from exterior painting and scraping chores with the reward of a beautiful home nearly maintenance free.

## Home value vs. owners' income

The median value of single-family homes rose faster than the owners' income in the years between 1970 and 1975, reports a joint HUD-Census Bureau report.

The study says the median

value of single-family homes rose 59 percent to \$27,200 in 1974, from \$17,100 in 1970.

In the same period, median homeowner incomes rose 32 percent to \$12,800, from \$9,700.

**LIGHT BULBS**

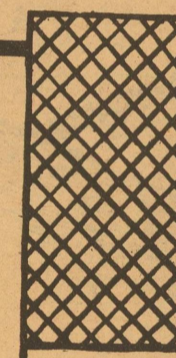


Pkg. of 2 for  
**64¢**  
100-75-60 Watt

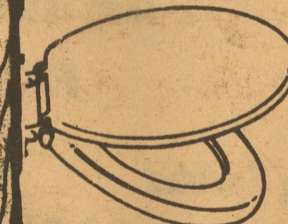


**OAK WHISKEY BARREL**  
**\$73<sup>88</sup>** EACH

**TRELLIS**  
4 x 8  
**\$7<sup>99</sup>**



**MAYFAIR**  
**COMMODOE SEAT**



**\$5<sup>88</sup>**  
WHITE ONLY



**MFI**  
**GRADE A**  
**COMMODOE**  
**\$47<sup>95</sup>**

SEAT NOT INCLUDED

**"Our Good Quality" LATEX HOUSE PAINT**



SALE PRICE  
**\$5<sup>49</sup>** EA.

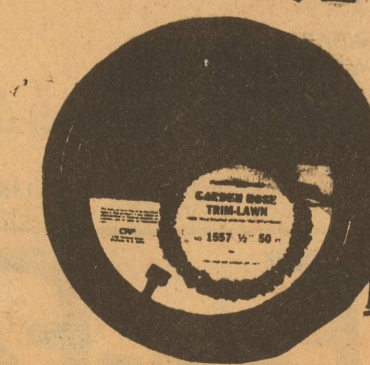
**EXTERIOR SIDING HEADQUARTERS**  
4 x 8 SHEETS  
" ON CENTER  
SMOOTH



**\$10<sup>99</sup>**  
Sheet

Let us show you how you can add blue to your home . . . make more livable . . . and save money, too!

**5/8" x 50' NYLON REINFORCED HOSE**  
**OUTSTANDING VALUE**  
**FOR ONLY \$8<sup>97</sup>**



**3315 Sherwood Way**  
**K Mart Plaza**

**San Angelo**

**944-4581**



## Air conditioner upkeep for peak energy efficiency

Heading the spring maintenance list of any home owner should be a thorough check of the air-conditioning system to achieve maximum energy efficiency, according to Dave Moore, Vice President—Customer Services at Amana Refrigeration, Inc.

"A thorough cleaning and lubrication will add extra years to the life of your air conditioning equipment and save you money on electrical bills by allowing the unit to operate more efficiently," Moore said.

He suggested several simple do-it-yourself maintenance items before starting a room air conditioner after winter:

- Clean or replace the air filter.
- Clean the evaporator and condenser coils. If possible, remove the unit from the window and clean the exposed condenser coil with a vacuum or a stiff brush, being careful not to damage the coil's fins.
- Check the fan motor. Even for "permanently" lubricated models a few drops of oil will improve efficiency. SAE 20 non-detergent motor oil is best.
- Touch-up paint on chips and rust spots and a coat of car wax on the outer cabinet will reduce weathering.
- When re-installing window room air units removed during the cooler months:
- Make sure rodents and bugs have not gotten inside.

- Tip the unit slightly to the outside so water will drain toward the condenser coil.

- Check electrical circuits to make sure additional loads haven't been added during the winter that would lower power available to the unit.

On central air conditioning systems:

- Clean or change the air filter.

- Adjust the blower fan to cooling speeds if it was changed for the heating season. The fan motor may also need lubrication. Use the same SAE 20 non-detergent motor oil.

- Clean the outdoor coil by washing with a hose.

- A coat of car wax will help preserve the appearance of the outdoor unit.

Moore pointed out that most local Amana V.I.P. Service representatives offer a spring start-up service for a nominal fee.

They will check the refrigerant charge, electrical connections and thermostat to make sure your unit will be running as efficiently as possible, saving you valuable energy dollars.

He also provided the following tips for better operating efficiency in the cooling season for all systems—room units or central cooling:

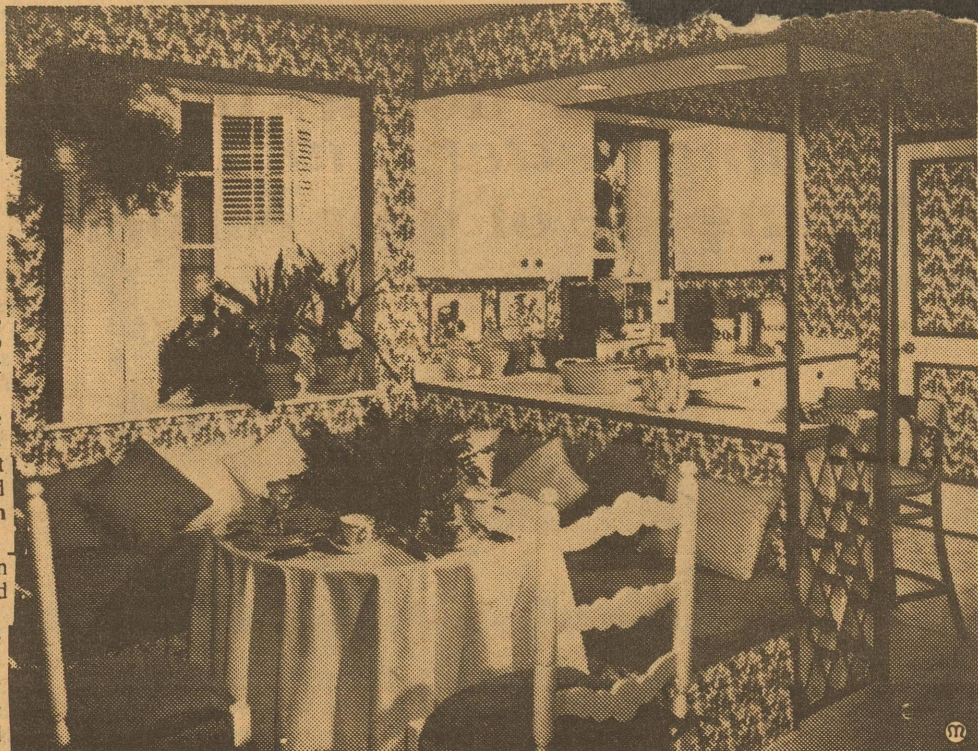
- Draw the shades on windows exposed to the sun in the morning or afternoon to reduce the sun's heating effect.

- Keep doors and windows closed as much as possible to keep hot air, humidity and dust outside.

- For peak efficiency, set the thermostat at the desired temperature and leave it. Frequent adjustment wastes energy and causes unnecessary wear on equipment.

- Use the kitchen exhaust fan to remove heat, humidity and odors when cooking.

- If practical, schedule the use of heat producing appliances during the cool early mornings or late evenings. By washing and drying clothes and cooking during these cooler periods, you can reduce the air conditioning load.



GIVE YOUR KITCHEN A SPRINGTIME LIFT with "Flair Squares," in a bright, cheerful strawberry design. This prepastored wallcovering comes in one-foot squares for easy application.

## It's always springtime in a bright strawberry kitchen

A kitchen should be a cheerful place in which to work and eat, with bright colors, good lighting and plenty of imaginative detail.

Yet the ordinary kitchen can be hard to decorate, because of limited scraps of wall space—over the windows, under the cabinets, around the doors. Such spaces are almost impossible to cover with roll wall-covering.

Designer Shirley Regendahl

solves the space problem with "Flair Squares," Du Pont's exciting new prepastored wall-covering offered in convenient, flexible one-foot squares.

She chooses a joyous strawberry pattern, with the bright

berries, leaves and blossoms against a white background. "Flair Squares" are wonderfully easy to apply. Simply fill the sink with water, soak each square for 30 to 60 seconds, and slide into place on the wall.

a kitchen eating area is a must. The strawberry design is carried over into the eating area, and the banquet cushions repeat the wallcovering colors.

These one-foot "Flair Squares" are ideal for kitchens, since they are finished with a washable coating.

And, if a new look is desired in a few years, they can be stripped off, and the new squares in different design can be added.

"Flair Squares" are available in the home center sections of major discount and hardware chains. Start your spring decorating project in the kitchen, with colorful, versatile "Flair Squares."

Individual squares may be cut to fit around the cabinets, the wall phone, the switch plates, and the door panels. A colorful pattern such as this needs lots of white to set it off. Here the cabinets, counter tops, shutters and floor are white. Bright red outlines structural details such as the window frames, the edges of the counters, the door frame and the wine rack.

With today's casual lifestyle,

## SPRING SPECIALS

### SPRING BULBS

GLADIOLAS 2.00 doz.  
DALYAS 2.45 ea.  
ELEPHANT EARS 1.20 ea.  
CALADIUMS 5.64 doz.

### PEGAN TREES 10% OFF

CHOCTAW, MOHAWK, KIOWA, WILHITA, CHEROKEE, MAHAN, WESTERN SCHLEY, BURKETT

### 10" HANGING BASKET 7.99



### SHADE TREES

Weeping Willows 7.99 Reg. 11.99  
American Elm 9.99 Reg. 13.99  
Redbuds 9.99 Reg. 11.99  
Sycamores 2.49 Reg. 4.99  
Balsam Poplar 11.99 Reg. 14.99  
Golden Rain Tree

### SHRUBS 2.99

ENGLISH IVY 1 gal. Reg. up to \$4.50  
GREEN PITTSPORUM  
WAX LEAF  
PFITZER JUNIPER

### FRUIT TREES 3 for 20.99

FREE MEXICAN TUBEROSE one per family please

### Flowering Shrubs \$4.99

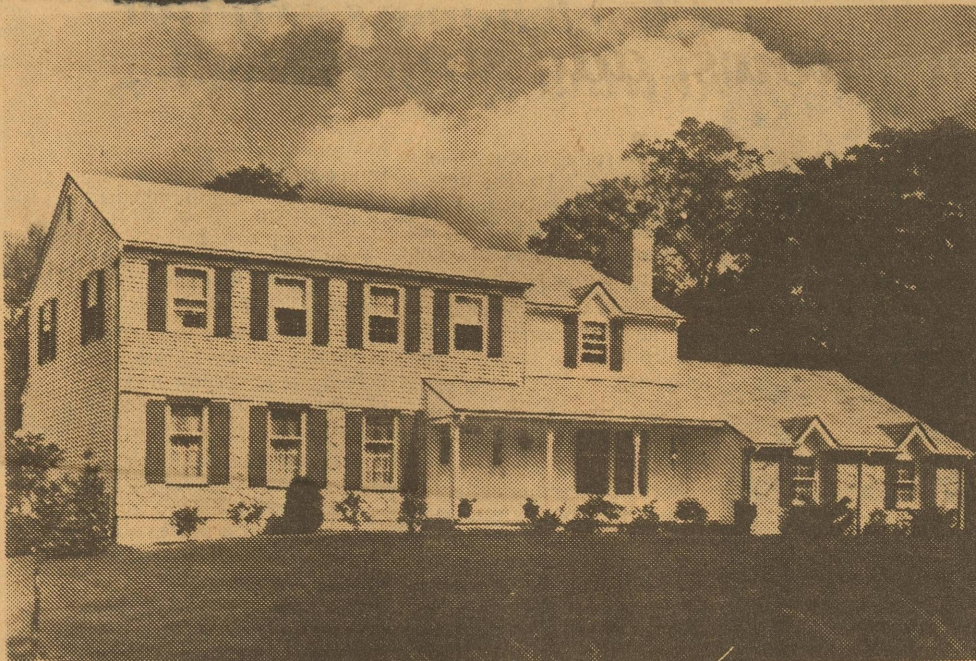
Persian Lilac Reg. \$6.50

Forsythia \$2.99 ea. Reg. \$4.50  
Scarlet Quince



Olive's NURSERY AND GIFT CENTER 3402 SHERWOOD WAY 948-3766

OPEN SUNDAY 1-5



THE OWNER OF THIS HOME HATES PAINT. But you'd never know it from the way his house looks. That's because he installed the new space-age product, solid vinyl siding from CertainTeed Corporation, the virtually maintenance-free siding material that keeps its just-painted look so long that it carries a 40-year pro-rated warranty. (In Cal., only a 15-year pro-rated warranty is available.) It's especially designed for people who spend so much time at the golf course or tennis club, that they just don't have time to repaint.

## Solid vinyl siding can take the sting out of spring

Now that winter has run its course and we've seen the last of the white stuff for a while, it's time to get out-of-doors where everything's fresh—the air, the flowers but, alas, not the paint.

It may have been comfy inside the house, looking at snowflakes gathering on the lawn, but the exterior of your home had to stand right up to the cold north wind and several months of outright abuse.

Now's the time to pay your dues, with the scrapin', chip-pin' and repaintin' blues.

### Springtime coat

That siding of yours which was at the mercy of the elements all winter probably needs a new coat or two—and that's going to take a lot of your time and/or money.

But, it doesn't have to be that way every spring. You can declare your homeowner's rights by adding solid vinyl siding to the outside of your home. It makes painting *passé*.

The reason is that solid vinyl siding is made with the color molded clear through the product, in contrast to other types of home siding such as wood or aluminum, which are only coated.

### Maintenance-free

As a result, vinyl siding will not peel, blister or show scratches. In a word, it's virtually maintenance-free so, once it's installed, you can put away your paintbrush forever.

One of the leading manufacturers of solid vinyl siding,

CertainTeed Corporation, is so sure that its vinyl siding will take on the rigors of your local environment, that it offers a 40-year pro-rated warranty on its product. (In Cal., only a 15-year pro-rated warranty is available.) And their siding carries the Good Housekeeping Seal of Approval as well.

But, the durability and vir-

tual freedom from maintenance of solid vinyl siding are only half the story.

One of the most exciting things about the product is its beauty. Solid vinyl siding is available in a glorious range of decorator colors; CertainTeed, for example, offers nine.

In addition, there are a number of special effects that can be created. Horizontal and vertical panels are available in various sizes.

And, you can also get vinyl soffit and fascia systems, various types of trim, shutters, etc.—all perfectly color-coordinated. If desired, you can even purchase replacement window profiles to complete the ensemble of the well-dressed house.

### Beautify neighborhood

So, when you come out of your winter cocoon, be a butterfly! Brighten up your neighborhood with the good looks of solid vinyl siding. It takes the sting out of spring and the hate out of paint.

### LOCKING THE BARN NO LONGER WORKS

"He couldn't hit the side of a barn with . . . ?"

Whatever the answer, it apparently isn't as important these days as the side of the barn itself.



Because the weathered look in siding has become chic among the home remodeling set, barn siding is at a premium.

In Pennsylvania recently, some enterprising thieves made off with an 80-foot long side of a hundred-year-old barn.

## New improvements in modern dishwashers

The time inevitably comes when even your old built-in dishwasher has scrubbed its last dish and pumped its last ounce of water over its last utensil.

### A change is near

So with a replacement in order, you're going to find that a great many improvements have been made in the ten or more years since your last purchase; improvements that are going to please your eyes and your ears . . . and make after-dinner clean-up even easier.

Let's start with appearance. Design improvements from Hotpoint, for example, include interchangeable door panels on many models that give you a choice of five fresh colors to match almost any kitchen decor: Snow, Harvest Wheat, Coffee, Fresh Avocado and the great warm tone, Almond.

### New and old

These colors mix well with older appliance colors so they won't make your present colored appliances obsolete.

There also are special kits available for some models that will let you put in an Onyx black glass door panel, or quarter-inch wood paneling to match your cabinets.

Available now, but not a few years back, is the Power Scrub® cycle that is designed to remove dried-on and baked-on food from pots, pans and casseroles with brushless washing action.

### Time-saving feature

And the Soft-Food disposer in Hotpoint dishwashers eliminates the need for pre-rinsing or scraping, except for bones and hard scraps, of all items to be washed.

### Lower utility rates

Two models offer as many as 13 cycles, including the special Energy-Saver Dry cycle that can help reduce your electricity bill.

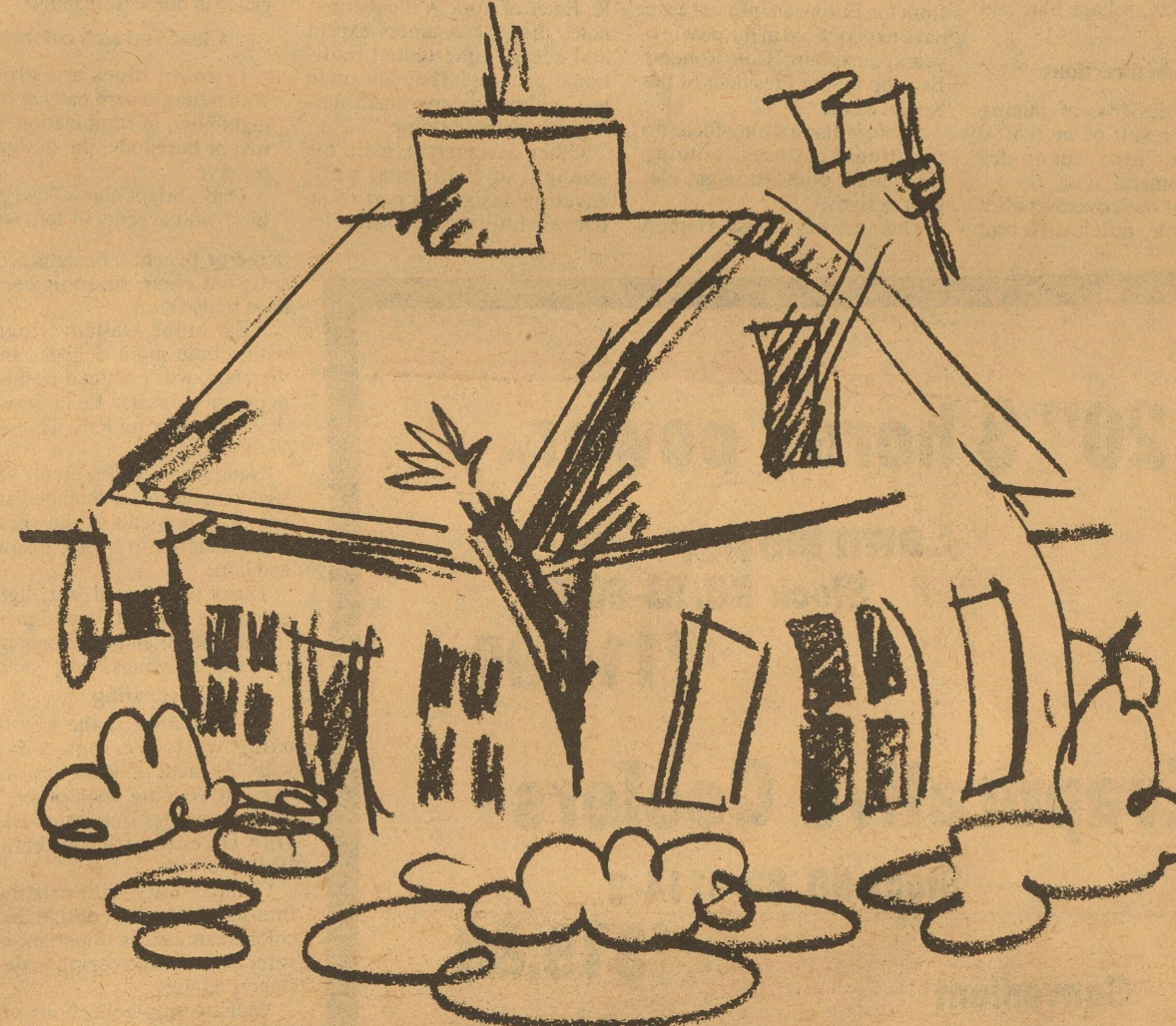
You may miss your old, faithful servant, but probably not for long after you've experienced the technological improvements and appearance in its replacement.

### DO-IT-YOURSELF CUTS COSTS

It's possible to save from 10 to 15 percent on the cost of home remodeling by doing some of the work yourself.

Up-to-date building products, such as Andersen's Perma-Shield windows and gliding doors, enable many a competent do-it-yourselfer to handle the carpentry.

## EASE THE SQUEEZE...



## WITH A HOME IMPROVEMENT LOAN

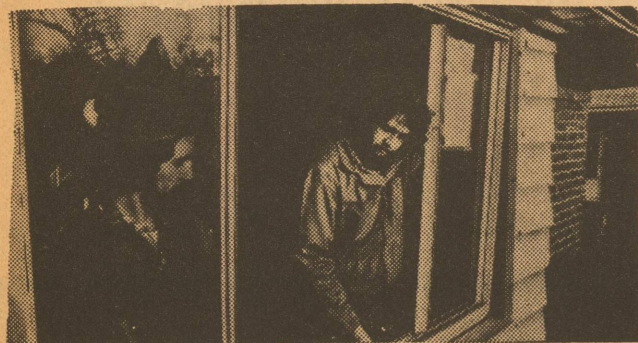
We'll come in, in a pinch, to give you more financial room to improve! Our low-cost home improvement loans let you make those improvements when you're ready...and repay in a way that gives your budget more leeway the rest of the year. Get the facts!

The First National Bank of Eldorado



"Serving the complete Banking Needs of Eldorado and Schleicher County Since 1907"





SAVE HEAT by replacing old, worn-out windows with pre-finished, aluminum-framed, thermalized ones such as this triple-slider being set into repaired window frames. Other aluminum replacements can be fitted to any size or shape window.

Prepare for next winter . . .

## Replace old windows, add storm sash to save fuel

Don't let warm weather lure you into forgetting that ill-fitting and drafty old windows can rob you of precious heat next winter unless you replace or repair them.

If they are not snug and do not provide good insulation, you should consider remodeling with efficient, modern replacement windows; if they can be sealed effectively against leaks and drafts, shop for storm windows instead.

Either way, you can reduce heat loss through your windows substantially, be more comfortable, and help to reduce your fuel bills.

To achieve maximum savings next winter, order storms early so you have them when the cold weather arrives.

### Popular storms

Aluminum-framed replacement windows are still the most popular because they are efficient, require little maintenance and blend into any style of architecture.

Although rigid and strong, these windows are lightweight and easy to handle, and the metal won't shrink, swell or rot.

The most efficient kind with a single opening sash are thermalized aluminum windows because they reduce heat conduction throughout the entire window and insulate as well as wood or vinyl.

Improved weatherstripping is used in the component parts of most windows, along with double or triple glazing (two or three sheets of glass separated by dead air spaces). Savings in energy alone can help offset their initial expense.

For instance, if you owned an average size house with 250 square feet of old single-pane windows in Manchester, Vt., you might have saved up to \$260 in your heating bills last year, when oil was 85¢ a gallon, by installing double-glazed replacement windows with a thermal break.

### Across the country

In Gary, Ind., savings could have reached \$225 for the year, and even in warmer Lexington, Ky., your fuel oil might have cost approximately \$160 less.

If you heated with electricity, savings could have been three times higher, with gas about a quarter less.

Aluminum replacements can be fitted to any size or shape window—picture, bay, double and single-hung windows, vertical and horizontal sliders, tilt-

out windows which make cleaning especially easy, and doors of all kinds.

### Decorative finishes

Baked-on or anodized finishes in a wide selection of colors let you match or blend the window frames with your decorating scheme. These colors remain clear and bright through years of service.

Because they come as complete pre-assembled units with aluminum frame, glass, weatherstripping and trim, aluminum-framed replacement windows usually can be installed within a day's time by a qualified installer.

If your budget won't allow for the entire job this year, have the replacement windows installed gradually, doing the coolest rooms first.

Remember, too, that Uncle Sam allows you a 15 percent

credit, up to a maximum of \$300, on your income tax for home improvements that help to conserve energy.

Where windows do not need replacing, storm windows can be equally effective in reducing heat loss, providing your prime windows are in good condition and can be caulked and weatherstripped properly.

Because of reduced heat loss and resultant increased fuel savings, you can usually realize a return on this type of investment in three to five years.

### Double protection

A storm window provides a second window over the original glass, and almost all of them today have aluminum frames and self-storing screens.

Just as with a good replacement window, a storm window helps to keep the cold outside and the heat inside in winter, and the reverse in summer.

Most popular and efficient are multitrack, low maintenance units which come in standard sizes or can be custom-cut to fit any size or shape opening, including bay and picture windows and patio doors.

The frames can be oriented in mill, baked-on or anodized finishes in several different colors.

Installed over single-glazed windows, these aluminum storm units create double-glazed thermalized windows they create a triple-glazed unit which gives maximum protection for particularly cold areas and further reduces fuel use.

Whether you're shopping for replacement or storm windows,

don't buy the first window you see. Compare the quality of the various styles being offered.

Check to assure that the joints in the frames are neat and strong, and remember that the heavier the aluminum frame and general construction, the stronger and more durable the window.

Weatherstripping should be thick and properly placed, and the glass should be flat and free of iridescence.

Make sure, too, that the window you choose has the AAMA (Architectural Aluminum Manufacturers Association) Certification label.

This label will assure you that the window has passed tough tests for air infiltration, wind load and restrictions on heat conductance approved by the American National Standards Institute.

### Improve original windows

No matter how good the storm window you buy, however, it will not give you maximum performance unless your prime windows are airtight. Your storm window installer will usually caulk around the frame before putting the new units in place.

It's wise to choose your remodeling contractor as carefully as you choose the windows, for it is his installation expertise that will enable you to realize the best results from any kind of window improvement.

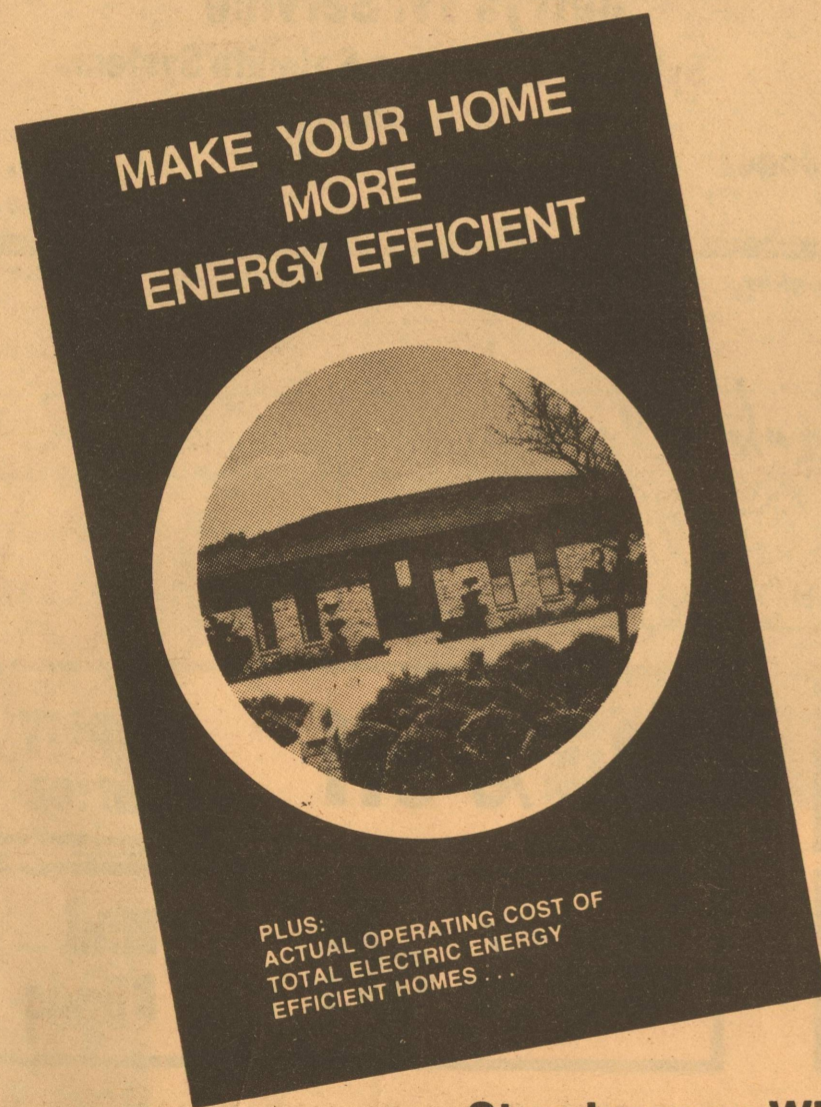
You can secure more information about both types of windows by writing for free booklets to Dept AW-6, the Aluminum Window Information Bureau, 250 West 57th St., New York, NY 10019.

### WINDOWS ON THE WORLD

Wood patio doors with large glass areas serve as windows on the world. They also offer practical benefits such as double-pane insulating glass to reduce heat loss and assure year-round comfort.

## FREE ENERGY CONSERVATION GUIDE!

To help you make your home more Energy Efficient . . . . .



Stop by your WTU local office today, and pick up your FREE copy of "Make your Home More Energy Efficient" you'll be glad you did . . . . .

WEST TEXAS UTILITIES COMPANY



A Member of The Central and South West System

## Stretch your dollars by stretching life of your carpet

Spring. Nothing shows up the wear and tear of winter wear in a room like the first flood of spring sunlight.

Walls can be painted and draperies cleaned. But what about spotty faded carpet?

Here are a few budget saving tips from the makers of Lysol® Products, on how to refurbish instead of replace and stretch the shrinking budget dollar.

Even the wall-to-wall carpet should be viewed as a piece of furniture, that can be moved and changed and even remodeled.

A cleaning alone may restore your carpet's luster. If so, treat yourself by having it done by an expert carpet cleaner who will give special attention to each spot individually.

### For that deep dirt

The hot water extraction method is one very good way to get out deeply imbedded grime. Here, water and detergents are pressure-sprayed into the carpet, and then the special vacuum machine sucks up the embedded dirt, along with the cleaning water.

In many parts of the country, these machines may be rented from supermarkets and hardware stores, and you can do it yourself.

### Wide range of colors

If the carpet is faded as well as spotted, this problem too has a solution. It is now possible to have carpets dyed right in the home.

Unless your carpet is already a dark color, you'll be surprised at the number of color possibilities available to you.

Gold is a popular color throughout the country. It has intensity, and yet a gold carpet can be dyed any number of colors from tangerine to scarlet, green or brown.

A tangerine color carpet might be what your room needs to give it a sparkling new spring lift.

Carpets of wool, nylon and cotton take new color combinations very well. Acrylics and polyesters, however, can usually only be tinted a deeper



ONCE YOU HAVE CLEANED, DYED OR RECUT your rug, use "Love My Carpet"™ from the makers of Lysol Products, for that finishing touch. Sprinkle on carpet as you vacuum. When you have finished, odors from mustiness, smokers and pets will be gone, and your room will be filled with a clean fresh scent.

### shade of the same color.

Wall-to-wall carpet, when dyed outside the home, may shrink. How much depends on the fiber content and the care it is given while being dyed.

If your carpet, shows signs of wear in trafficked areas you may want to exchange it with carpet in another room where the line of traffic is different.

### The professional touch

If this requires cutting or seaming, there are many methods. It's an easy job for a professional carpet layer who can make almost invisible seams.

Edge-worn carpets can also be cut down and bound to make stunning area rugs.

Once you have cleaned, dyed or recut your rug, it's time for the finishing touch. The makers of Lysol® Products have developed "Love My Carpet"™, a rug and room deodorizer.

### Carpets collect odors

After a while all carpets begin to collect odors from the air. The ones that people complain about most are from pets, smoke and mustiness.

All you do is sprinkle "Love My Carpet"™ lightly on your dry carpet and then vacuum. When you're done, all of those odors, including the winter mustiness, will be gone, while your room is filled with a clean fresh scent. A nice way to start the new spring season.

**Air Dynamics Inc.**  
**Lennox - Heating & Cooling**  
**As you want it**  
**Sales**  
**Service - Maintenance**  
**Residential & Commercial**

607 S. Oakes San Angelo

655-2515

## BUILDERS SERVICE CO

"West Texas Lumber Supermarket"  
890 W...14th 653-6961

We Buy Direct & Haul | Direct - You Save Direct

## STORM DOORS

Combination Aluminum 2'8" or 3'0" Left or Right Hinge.  
Operate tilt out for easy clean panel.  
Fully weatherstripped. Complete with all hardware.

\$47.88

## WINDOWS

Croft Series 20 Screen Extra M/F

3030

\$23.38

3040

\$27.54

3050

\$30.49

## Ceiling Tile

Thermo-Styrene

1202

\$14.44<sup>box</sup>

Classic

1205

\$14.44<sup>box</sup>

Shadow

## PANELING

White-Gold & Mist Surfer

\$5.99

Ancient Ash

\$6.99

Highland Birch

\$9.95

## FLOORING

Vinyl 12' patterns from

\$2.99<sup>sq. yd.</sup>

## FENCING

Spruce 1x4-6' Gothic Point

\$.59<sup>ea.</sup>

All Sales Final and Limited  
To Stock On Hand





**A PLANNING DESK IN THE KITCHEN?** It's handy to have, and you can easily plan it into a kitchen remodeling, as Margot Gunther, ASID, did in this kitchen with Yorktowne's handsome "Chapelle" cabinetry in solid oak with a light wheat finish. She installed the desk in a run of base cabinets with 17-inch wall cabinets above to accommodate a corkboard for recipes and daily reminders. Laminate counter is sky blue, picking a color from the vinyl wallcovering.

### Certified cabinets take kitchen abuse in stride

An efficient way to save steps in the kitchen is with adequate storage and counter space. This usually means kitchen cabinets. To assure good performance as well as good looks, look for the certification seal of the

National Kitchen Cabinet Association when shopping for cabinets. The seal indicates the cabinets have been tested to withstand the hard use and abuse common to kitchens.

## Decorating ideas for easy living

Whether it's a cottage or a condominium, a summer or weekend getaway place is everyone's dream—but sometimes it looks far from dreamy when you move in, or when you reopen for the season.

However, to make a second home bright and inviting, you don't have to hire a decorator or spend a mint; in fact, you shouldn't.

#### "Found furniture"

For the most relaxing surroundings, try a cheerful assortment of "found furniture" and make your outlay where it counts most, toward easy up and functional living.

In the lakeside living/dining area shown here, a sturdy second-hand oak table teams up companionably with a set of former patio chairs.

The owner's major investment—roomy unpainted cabinets—have been finished in white, gold and sunny yellow, with the same tones used on walls and chairs for a unified look.

#### Staying ship-shape

The colors are echoed underfoot in the no-wax Congoleum Highlight cushioned vinyl.

This brick-design flooring can cope with watery walk-in traffic from family fishermen and boaters, usually wipes clean in a wink, and still comes up shining.

What's more, you can put in the flooring yourself, at a big savings. For under \$120, you can get enough of this Congoleum "Town and Country" design to cover a 9-by-12 foot room, and you can install it over for sunbathing.

Because it comes in 12-foot widths, such flooring can cover almost any room with one piece, eliminating any need for seaming.

And, if desired, it can be "loose-laid," because it's designed to lie flat and stay put without adhesion.

To get a new full-color booklet with dozens of ideas on doing your own decorating, write for "Creative Ideas in Flooring," Consumer Department M, Congoleum Corporation, 195 Belgrove Drive, Kearny, NJ 07032. (Enclose 50¢ for postage and handling.)



**THE GIFT OF TIME**—To savor a leisurely sunset and have a holiday from chores, design your vacation home for easy living, as in this carefree cottage scene. The furniture's a friendly mix of durable favorites, and the no-wax Congoleum Highlight vinyl floor can take the traffic from dock and beach in its stride.

## Decorating ideas for a bath that's beautiful and practical

A bathroom that is both practical and beautiful is an asset to any home. With a touch of your imagination and a little help from plumbing experts, remodeling your bath can make it into a showplace of color and convenience.

Kohler Co., a leading plumbingware manufacturer, suggests making the best use of the space available in and around your present bathroom.

#### Some useful ideas

Additional space can be borrowed from an unused bedroom or closet or, if possible, the bath can spill out into a private garden.

His-and-her lavatories with shampoo sprays afford elbow room while washing, and put an end to morning traffic jams.

If the toilet is compartmental-

ized, more than one member of the family can use the bathroom with privacy.

And, everyone in the family will appreciate the addition of a bidet for personal cleanliness.

#### Adding color

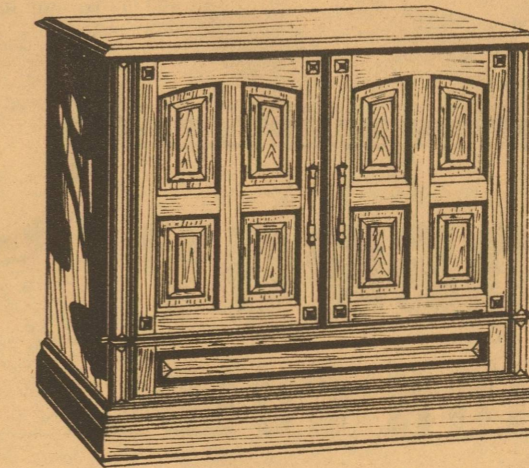
All of the alterations and additions can be brought together by a coordinated color scheme. Gentle earthtones such as

parchment or green, bold yellow or brown accents, and stunning grey or black neutrals are color suggestions for a striking bath.

Finally, faucets in chrome or 24 carat gold finishes add the crowning touch to your newly decorated bathroom.



**A SHOWPLACE OF COLOR AND CONVENIENCE** is the result when you remodel your bath, with some ideas from Kohler Co. and a little imagination.



A fine addition to your home...the Sylvania Superset and the craftsmanship of fine furniture. Sylvania Designer Editions feature giant 25" diagonal color picture, 100% solid-state chassis, GT-Matic™ self-adjusting color system and exquisitely crafted cabinets. Also available in remote control series.

Only **\$779.95**

Sylvania Console Supersets are available in many furniture styles. There's one just for you.

**Jerrys TV. Service**  
Sylvania Televisions-Satellite Systems  
(915) 853-2314

Jerry J. Jones  
Owner

214 S. Main Street  
Eldorado, Texas 76936

# IT'S SPRING

Decorate With  
House Plants  
and  
Silk Flower Arrangements

From  
Cathy's

HWY. 277  
Eldorado  
853-2645



# RE

## Southwest Texas

## Electric Cooperative

### Owned By Those It Serves

## Eldorado

## Bill Clark Interiors

RESIDENTIAL AND COMMERCIAL  
2832 A&M AVE. 915/949-4175  
SAN ANGELO, TEXAS 76901

**25% off** Upholstery  
Fabrics

**25% off** Drapery  
Fabrics

**25% off** Woven  
Woods

**25% off** Mini  
Blinds

No Charge For Out-of-Town Appointments or Installations

### All Shown By Appointments

- Cornices
- Free Estimate in Your Home

- Evening and Sunday
- Custom Drapries
- Upholstery
- Woven Woods

- Custom Bedspreads
- Decorator Pillows
- Custom Decorator Shades
- Stock Bedspreads