

# EHS Homecoming Slated Friday At McGamey Game

A variety of activities have been scheduled for this year's Eldorado High School Homecoming. The Eagles will play host to the McGamey Badgers.

Homecoming Queen Candidates have been named for this year, they are Kara Homer, daughter of Mr. and Mrs. Kenith Homer, Sandra Willeke, daughter of Mr. and Mrs. A.E. Willeke, and Mia Kuikko, a foreign exchange student presently staying with the Duwain Sauer family. Coronation of the Homecoming Queen will take place during

halftime festivities Friday night. Homecoming Duchesses were also selected; they are Missy White, daughter of Mr. and Mrs. H.G. (Buddy) White, Margie Logan, daughter of Mrs. Wilma Logan, and Lori Whitaker, daughter of Mr. and Mrs. Guy Whitaker.

All interested parties should meet at the high school Thursday evening at 7:30 p.m. for a snake dance which will end up on the courthouse square for an Eagle pep rally.

The annual Homecoming dance will also be held Friday night following the game.

## Lions Plan Sale Of Goods Made By The Blind

The Eldorado Lions Club will conduct an all out drive on October 8, 1980 to sell quality blind-made products to residents and local businesses. The articles are all manufactured by blind workers in the Lighthouses for the Blind which are located throughout the state of Texas. The Lion's Club earnings from this sale will be used for various local projects as well as the Crippled Children's Camp of Kerrville, Texas. The membership of the Lions Club

will be organized to supply friends and neighbors with this quality merchandise. Every item sold at this drive will help some blind person to help himself.

Residents and businesses of Eldorado helped to make last year's sale successful and the Lions are confident that this will be the case this year. The merchandise will be located on the side of the bank and at the parking lot of the post office.

# Schleicher County LEADER

25¢



Vol. V No. 36

Eldorado, Texas (76936)

Thursday, October 2, 1980

## Wallis Commended By NMSP

The principal, Richard McCarson of Eldorado, announced today that Mark Wallis is being commended for his outstanding performance in the twenty-sixth annual (1981) National Merit Scholarship Program. A letter of commendation from the school and National Merit Scholarship Corporation, which conducts the competition, is to be presented.

More than one million students entered the 1981 Merit Program by taking the PSAT/NMSQT in 1979. About 33,000 of these students throughout the United States will

receive a commendation for outstanding test performance. Commended students rank below the level required for Merit Program Semifinalists—the only participants who will continue in the 1981 competition for Merit Scholarships. Nonetheless, commended students have shown exceptional academic promise by scoring among the top five percent of Merit Program participants.

An officer of the corporation stated that "to be designated a commended student in the Merit Program is an

attainment deserving to public recognition. The continued educational and personal development of such students will benefit the entire nation."

Commended students who requested it have been referred as worthy candidates to admissions and financial aid officers at two higher education institutions of their choice. It is hoped that the referral service and Merit Program recognition will result in assistant for these commended students as they pursue their educational goals.



Mark Wallis

## No Animal Laws Exist Youngster Attacked By Dog

A young child of Eldorado was mauled and severely injured last Wednesday evening in the yard of his home when he was attacked by a stray dog.

Eddie Fimbres, three-years-old,

received treatment at Schleicher County Medical Center from multiple lacerations to his head and face. He is the son of Mr. and Mrs. Danny Fimbres.

A nearby neighbor was able to pull

the enraged dog away from the victim, but not before he had incurred enough damage for 26 stitches in 7 cuts. The mother also pointed out "that the dog was only on him ten seconds."

This was an accident that could have possibly been avoided if each of us inside the city limits would respond to our pets better. We have no leash law; as a matter of fact, every since this city was founded only one city ordinance has been passed to encourage pet owners to better care for their pets.

The ordinance was passed in an emergency session of City Council when Mayor J.C. Ratliff called for passage of an ordinance to combat the outbreak of rabies in the area on January 2, 1952.

Last weeks victim was very lucky in that the dog was not rabid. The Leader learned Monday that rabies tests conducted in Austin proved inconclusive.

Stray dogs have always been a problem to residents of the city as well as to stockmen whose lands lay just outside of the city limits. I have heard many such ranchers complain of sheep losses to the many loose dogs that roam our city streets.

If your one who has always wanted to have something done about this problem, I hope that maybe this very event may inspire you to take some action.



Eddie Fimbres

## Eldorado-Divide SWCD Schedules Director Election

The Eldorado-Divide Soil and Water Conservation District will hold an election for a position on the Board of Directors on October 4th. A director for Zone 2 will be elected for a five year term.

Ross Whitten, one of the five directors on the Board, said the election will be held following a barbeque at the Memorial Building at 7:30 PM October 4th.

"We'll elect a director for Zone 2 which includes the Reynolds Community. Steve Williams has been serving in this position for the past 5 years," Whitten said.

"Only landowners in this zone are eligible to vote-but all farmers and ranchers in the area are welcome and

encouraged to come." Ross continued.

The Board of Directors is responsible for soil and water conservation in Schleicher County much like the school board is responsible for education.

"Being local ranchers and farmers, the directors of the conservation district recognize land management problems that many people aren't aware of. We then organize the best qualified people we can find to help solve these problems," Whitten explained.

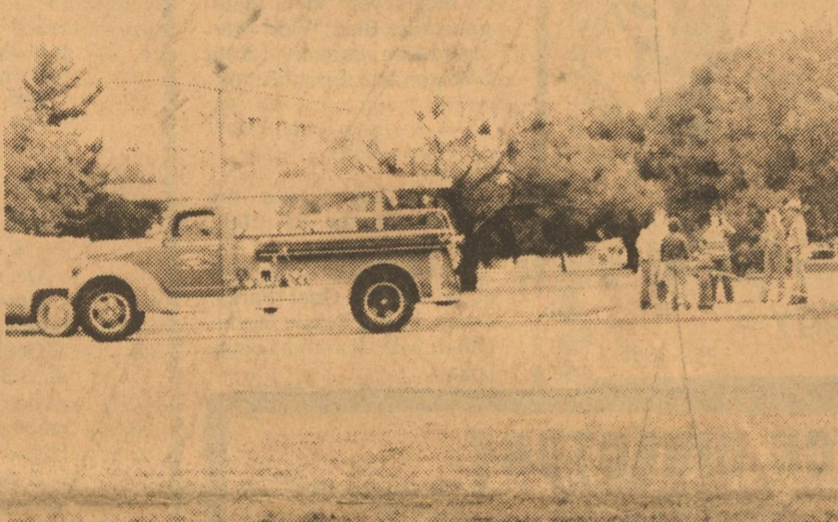
"The Board also keeps informed of activities in government and works to protect the interests of agriculture in Schleicher County," Ross said.

## Census Bureau Shows 23% Increase In Schleicher County

Believe it or not the bureaucrats in Washington finally released the final counting figures in the 1980 census for Schleicher County!

Since 1970, county population has increased 23 percent, from 2,277 1970 residents to the 1980 figures of 2,795. An increase of 17 percent was seen in the number of housing units in the county, a rise from 1035 in

at present. Inside the city limits, population has increased 41 percent since the last census count. The 1980 tabulation stands at 2,043 residents as opposed to 1,446 in 1970. There are currently 773 housing units inside the city compared with 598 in the previous census year, an increase of 29 percent.



Member of the Eldorado Volunteer Fire Department practice for events to be held at the Fifth Annual Fall Convention of the Hill Country Fireman's Association this weekend in Sonora.

## Firemen Head To Annual Convention

Approximately 700 people are expected in Sonora this weekend as Sonora hosts the 50th Annual Fall Convention of the Hill Country Firemen's Association.

Firemen representing Ballinger, Bangs, Big Lake, Bronte, Brownwood, Coleman, Eden, Eldorado, Eola, Junction, Mason, Menard, Miles, Ozona, Rowena, San Angelo, Santa Anna, Sterling City, Wall and Winters will join the hosting group from Sonora in a wide range of activities during the three-day event.

Registration will begin Friday at 10 a.m. followed by a golf tournament at 1 p.m. Tournament trophies will be awarded during a hamburger supper at 7 p.m., followed by a dance for the firemen and friends from 8 p.m. til midnight.

Saturday's activities begin with registration at 8 a.m. and a business meeting from 9-11 a.m. A ladies luncheon will start at 11 a.m. and a program on fire prevention by Charles Killingsworth, Arlington fire marshal, will run from 12:30-2 p.m.

Races, including ladies pumper, men's pumper, three man, three ladies, one man, ladies polo and men's polo will begin at 3 p.m. Supper begins at 7 p.m. with a dance scheduled from 9 p.m. til 1 a.m.

Sunday's schedule includes worship services at 10 a.m. and a historical review at 10:45 a.m. One door prize in excess of \$200 will be awarded on Friday and Saturday.

Streets will be blocked off Saturday for the races from Pecan to Chestnut and Crockett to Concho, but the public is cordially invited to watch.

## From City Hall

By Carolyn Mayo, City Secretary

We have had several calls this week about various problems from overgrown shrubbery blocking views of intersections to persons continuing to burn their trash. These two are both serious.

Among the calls were complaints about dogs running loose in our City, especially since the attack on a local child on the 24th. Should the rabies tests on the dog come back positive, severe measures will be taken immediately to rid our City of loose, untaged dogs. Is it more cruel to tie up your dog or restrict him to your yard, than to allow him to become exposed to poison, traffic, rabies or mange?

We have also received several calls about the meter deposits we are required to keep on water and gas meters. This is part of the Utility Ordinance passed by the City Council many years ago-it is not new although strict enforcement may be new. The City's auditors have brought this to our attention before, and they are scheduled to make their annual required audit soon. Because the money is held in trust, accurate records must be maintained. We understand that many of the missing deposits should have been obtained long ago or their record may have been missing for many years. We ask your cooperation in correcting any errors in our records or obtaining the necessary deposits for those lacking them. Rates effective at the

time services began will be used because the amounts have changed many times over the years.

Also, we have received calls about delinquent services to persons with delinquent accounts. Again, this is not a new policy and no exceptions are allowed by the Ordinance enacted years ago which is available for your inspection. Any comments regarding the Ordinance should be directed to the City Council not to employees of the City who are asked to enforce the Ordinance as a part of their job. We are aware that our City has several elderly persons whose gas and electric bills are paid by the Community Services Administration. This government program, however, does not pay for water, sewer or trash services. Also, the amount of delinquency is not a determining factor as to which person's account is terminated.

It has happened again- oil has been pumped into or accidentally entered the sewer system. Oil entering the system virtually renders the system useless and causes much damage. Anyone having information about the source of this oil should contact Mr. Whitten immediately so it can be prevented.

Just a reminder again to our local pilots...the Air Force fly-overs will begin October 6 and continue through October 10. Be aware!

Please let us know anything you have a question about. We will attempt to answer it in our column.

## West Texas Utilities Requests General Rate Increase

West Texas Utilities Company has filed application for a general rate increase, Leroy Reeves, local manager announced.

The official filing was made Tuesday, September 30, with incorporated towns for retail customers within their jurisdiction and with the Public Utility Commission of Texas for an increase to customers outside incor-

The official filing was made Tuesday, September 30, with incorporated towns for retail customers within their jurisdiction and with the Public Utility Commission of Texas for an increase to customers outside incor-

The proposed rates would produce an increase in total revenue of \$12,729,619. This amounts to 8.27 per cent based on revenues of \$153,914,156 for the test period ending this past June 30.

The company requested that the new rates become effective November 4.

One of the basic reasons for the increase was cited as inflation. "The cost of providing electric service continues to increase more rapidly than revenue," the manager said.

This rate adjustment would be only the second general retail rate increase in the company's entire

history, which goes back more than 50 years. The other increase was in 1973 and amounted to about six per cent across the board.

"We've managed to make that six per cent go a long way," the WTU manager said, noting that every other utility company in the state, and probably in the nation, has had at least one increase since then and most of them have had several.

Several reasons were given as to how WTU has been able to manage without a rate increase during the past several years of double-digit inflation. Chief among these was the timing of WTU's power plant construction. Its newest and largest station was completed in the mid-1970's and provided generation re-

serves sufficient not only to last for several years but to allow profitable energy sales to other companies.

The Company also cited its reputation as a conservative company with firm control of its expenditures.

However, the WTU manager said, the company can no longer absorb the effects of inflation without risking a dangerous decline in its financial condition. Of necessity, the company is entering into a multi-year construction program which will include a new coal-fired power plant and several high voltage transmission line projects.

The proposed rates were based on detailed analyses of each customer rate class, including studies of their

energy usage patterns, the investment required to serve them, and the cost of operation applicable to those customers.

The Company's rate structure, which now has over 125 rates for many types and classes, would be reduced to less than 30 rates. The effect of the increase on the different customer classes would vary according to present relative rates of return from each class.

For example, the typical residential electric bill would increase by about 10 per cent.

Although customers bills have risen substantially in the past few years, the increases have been the result of more usage and higher fuel

costs. The average residential customer's electric usage in the WTU system increased from 6,262 kilowatt-hours in 1972 to 8,270 kilowatt-hours this past year.

The cost of fuel has risen from 23 cents per million BTU in 1972 to \$1.96 this past summer. Generally, this fuel cost is the only increased expense that has been shared by the customer under WTU's recent rate schedule.

The city has several options in responding to WTU's rate request. It may approve the increase, deny the increase, or suspend the rates for a certain period of time. The city also has the option of denying the request and ceding future jurisdiction to the Public Utility Commission.

# Smith Makes Eldorado Stop

Incumbent Robert O. (Bob) Smith visited with members of the Schleicher County community last Friday. Smith is currently serving as judge on the state Court of Civil Appeals, District 3.

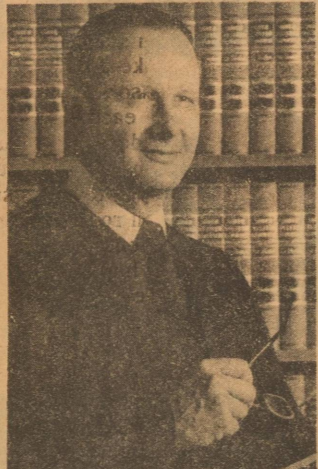
District 3 Court of Civil Appeals spans a 24 county area ranging from Travis to Sterling counties. There are 14 district courts in the state.

In an interview with Smith Friday evening, Smith was quick to point out the necessity for adopting the amendment in general election on November 4, which would enable criminal cases to be heard in the court he now presides over.

"There is a backlog of

about two years of criminal cases currently in the district criminal appeals docket. Because I have had extensive trial and appellate experience in both civil and criminal cases, I feel that I am more qualified than my opponent."

Other qualifications for Smith include service as the Travis County District Attorney General on three different occasions by three different Attorney Generals, and appointment as the Austin City District Attorney. He is currently serving in the position held by special appointment by Governor Bill Clements for the retirement of Associate Justice Trueman O'Quinn.



Hon. Robert O. (Bob) Smith

# Joy To Head Eldorado Campaign

The average life expectancy for a woman in this year will be approximately 72 years of age. She is born with Cystic Fibrosis this year has only a 19 percent chance of living past the age of 19.

The annual "Breath of Life" Campaign is now being conducted by the local chapter of the Cystic Fibrosis Foundation.

## Locklin Honored

David Locklin a resident of Schleicher County Medical Center Nursing Home was honored Friday in Sonora for 50 years service in the Masonic Lodge.

Lemon Pie and punch was served for refreshments. This is a big honor for Dave and we congratulate him.

## Girl Scouts To Meet

The local Girl Scout Association will hold an Adult Leaders meeting Monday, October 6, from 3-5 p.m. in the Memorial Building Clubroom. For more information you may contact Becky Sterling at 853-2932.

Debbie Joy is the social chairperson. She and her local assistants began the campaign Monday, September 29, and will continue through Monday, October 6.

Contributions to the campaign, support vital

## Diabetics Assn. To Meet

The American Diabetes Association meets Tuesday October 7, 1980, at 7:30 p.m. in the Texas Room, First City National Bank, San Angelo.

Leslie Mayrand, M.S., R.N., and professor of education, A.S.U., will speak on psychological aspects of diabetes.

## Mittel to

## Head Auxiliary

Mrs. Gladys Mittel reported to us this week that she would like a notice or news item put in the paper that she is now in charge of the Hospital Aux. Memorials.

Anyone wishing to make a memorial to the hospital may do so by calling 853-2232 or by writing Mrs. Arch Mittel, Box 731, Eldorado, Texas 76936.

Cystic Fibrosis research, care and public education programs. "Time is running out for our children with C.F.," states Mrs. Joy, "and you can help buy some time for these individuals by contributing generously to the 'Breath of Life' Campaign."

The average yearly health care bill for an individual under the age of 19 is \$200, for a youngster with C.F., the average yearly health care costs \$10,000.

## 4-H Awards Programs Set

The Schleicher County 4-H Club will hold its annual awards program on Tuesday, October 7, at 7:30 p.m. in the Memorial Building.

This year's program will not include the traditional covered dish dinner; rather, the awards will be presented at 7:30 and a square dance will follow from 8-10. Joel Wilson will do the callin'.

-ps-

Jewel Van Dusen was the hostess for the 42 Club, Thursday, Aug. 25 in her home.

Those present were Jake Spencer, Lillian Mikeska, Etta Ruth Dannheim, Virginia Griffin, Annie Speck. Guests were Viola Finnigan, Ailie Blair, Vida Mercer, Mary Palmer, Natilitt Stockton and Erma Fuller.

-ps-

Louise Logan was the hostess for the 84 Club, Tuesday.

Those present were Virginia Griffin, Opal Parks, Annie Speck, Bessie Doyle, Lillian Mikeska and Louise Logan.

# Galan Honored By Family

On September 27, the home of Mr. and Mrs. Galan, 4023 Merced Drive, San Angelo, Texas, Mercedes J. Pena, a long time resident of Eldorado was honored on her 83 birthday with a surprise party and family reunion. Present at the gathering were all of her children: Mrs. Rosey Mendeke, Uvalde; Mr. Bob Pena, Eldorado; Mrs. Pauline Estrada, San Diego, Calif.; Mrs. Jo Mathews, San Antonio, not present were Chris Pena from Jackson and Paul Pena, Jr. Eldorado. Grandchildren present were: Major August Mendeke, Sr., Ret. USAF, Santa Clara, Cal., Mr. and Mrs. Frank Mendeke and

children, San Antonio, Mr. and Mrs. Arturo Mauraidda and children, San Antonio, Mr. and Mrs. Arturo Mauraidda and children, Del Rio, Ms. Ginni Bailey, Dallas, Mr. and Mrs. Raul Hidalgo, and children, Mr. and Mrs. Norris Garcia, San Antonio, Mr. and Mrs. Art Estrada and son, San Angelo, Abby Galan, San Angelo, Mr. and Mrs. Bob Grey San Angelo, Charles Mendeke, Uvalde. Many friends and other relatives were present. A sit down barbecue dinner, refreshments and special music were part of the evenings entertainment. Many great-grandchildren were present also. Hostess, Mrs. Galan is also a daughter.

# Williford To Head Bike-a-thon

Rev. Don Williford, Chairman for the Eldorado St. Jude Children's research Hospital Wheels for Life Bik-a-thon, today announced the names of key volunteers for the October 11 event.

Rider recruitment and follow-up.. Dick Richey Prizes..Rick Sterling Route and check point.. Guy Whittaker

Refreshment..Dana Owens Publicity..Ron Sutto Our committee people are giving their time and talent to help in the fight against cancer and other catastrophic childhood diseases, Williford said. Riders can pick up their sponsor/registration forms at the principal's office in the elementary school.

# Calendar of Events

Oct. 2, Thursday: Jaycees, 7:30 p.m., Clubhouse; adult probation officer, courthouse, 10:30-11:30 and 1-4:45

Oct. 3, Friday: square dance, 8 p.m., Memorial Building

p.m., Memorial Building; EHS Homecoming-Eldorado vs. McCamey, 8 p.m., Eagle Stadium

Oct. 4, Saturday: 50th Annual Hill Country Firemen's Assn. Convention, Sonora

Oct. 5, Sunday: Sunday Devotional, 3:30 p.m., Nursing Home

Oct. 6, Monday: Alcoholics Anonymous 8 p.m., Memorial Building; Historical Society, 3 p.m., Museum; Girl Scout adult leaders, 3-5 p.m., Memorial Building clubroom

Oct. 7, Tuesday: Firemen, 7 p.m., Firehall; City Council, 7:30 p.m., City Hall; Booster Club, 7:30 p.m., New Adm. Bldg.

Oct. 8, Wednesday: Lions Club, noon luncheon, Eldorado Restaurant; Food Stamp rep., driver licenses office of Memorial Building

*Personalized Christmas Cards and Stationery*

Send the finest holiday greetings this year on personalized Christmas cards and stationery by Stylart.

Come in and see our complete selection, including the new color photo Christmas cards.

**Photo Ranch**

Hwy. 277S. 387-5388

**Schleicher County Leader**

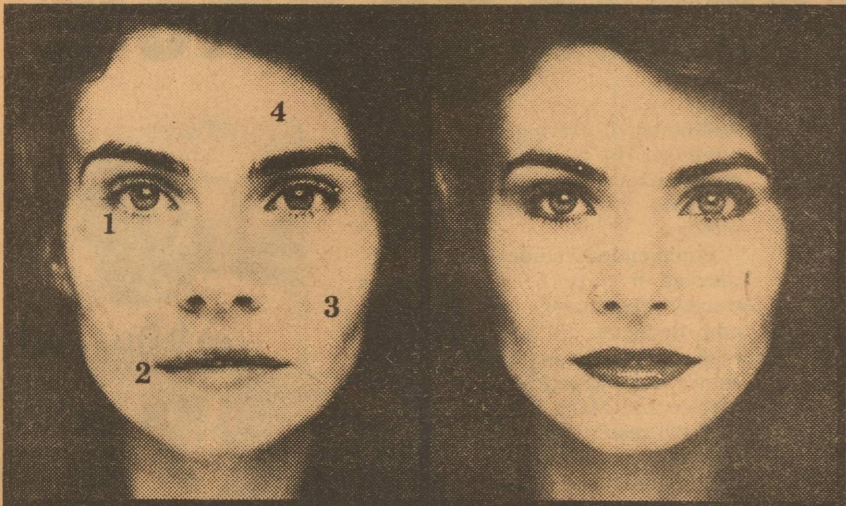
Published Weekly on Thursdays  
Second Class Postage Paid at Eldorado, Texas  
Phone 853-2032 P.O. Box 782, Eldorado Texas  
Any erroneous reflection upon the character or standing of any person or firm appearing in this publication will be gladly and promptly corrected upon the calling the attention of the management to the article in question.

JYM TRIMBLE.....EDITOR  
SHIRLEY OVERSTREET..ADVERTISING MANAGER  
Display advertising open rate is \$1.41 per column inch. Classified rate is 10 cents per word, per insertion, \$2.00 minimum charge. Classified display is \$2.00 per column inch.

Notices of entertainment, where admission is charged, notices of events of a fund-raising nature, cards of thanks, resolutions of respect, submitted poetry, and all such matters NOT NEWS will be for at the normal advertising earned rates. Volume and frequency rates are available upon written request to the publisher or advertising sales manager.  
Yearly subscription is \$6.00 in county, \$6.50 out of county, and \$7.50 out of State.

**MEMBER 1980**  
**TEXAS PRESS ASSOCIATION**

## Learn how to make up your face...free.



Today, Merle Norman invites you to learn the design and colors of your own beautiful face. Our trained Beauty Advisors will teach you how to: 1 Open your eyes with color. 2 Shape your lips softly. 3 Contour your face. 4 Create a whole new climate for your skin. Merle Norman has one of the most

beautifully programmed makeup and skincare collections in the world. Come to Merle Norman for your free makeover. Today.

**MERLE NORMAN**  
The Place for the Custom Face™  
Studio address and telephone

## Carol's Merle Norman Cosmetics & Accessories

405 Hwy 277N Suite A 387-2036

*Autumn Attractions for Homecoming*

Our great new sweaters are a sure way to take the chill out of Fall... See them along with a host of other favorites.

Attracting you at **Peggy's** 853-3085

## CHURCH DIRECTORY

**CHURCH OF JESUS CHRIST OF LATTER DAY SAINTS**  
Bishop Ray Hendershot San Angelo 949-1853  
Joe Moran-Ozona-392-3453  
Girl Scout Building Corner of Water&Pecan in Sonora  
Sunday School 10 a.m.  
Priesthood 10 a.m.  
Relief Society 10 a.m.  
Sacrament Meeting 11 a.m.  
Visitors Welcome

**ST. MARY'S EPISCOPAL CHURCH**  
Rev. Lea Roy Aldwell  
Pelt St.&McWhorter Ave.  
387-2617 (Sonora, Tex.)  
Sunday Morning Worship and Holy Communion

**FIRST PRESBYTERIAN CHURCH**  
Rev. Ronald J. Sutto  
7 N. Cottonwood  
Sunday School 9:45 a.m.  
Morning Worship 11 a.m.  
Fellowship Time 10:30 a.m.  
Visitors Welcome

**FIRST BAPTIST CHURCH**  
Oak and Gillis  
Sunday School 9:45 a.m.  
Morning Worship 11 a.m.  
Adult Evening Bible Study 7:00 p.m.  
Wed. Prayer Service 7:30

**OUR LADY OF GAUDALUPE CHURCH**  
Rev. Mark J. Woodruff  
Pastor 853-2663  
Saturday 7:00p.m.  
Sunday 8:00a.m. (Spanish)  
9:30a.m. (English)

**WESTSIDE CHURCH OF CHRIST**  
HWY. 277  
Sun. Morn. Serv. 10:30a.m.  
Sun. Eve. Serv. 6:00p.m.  
Wed. Eve. Serv. 7:30p.m.

**PRIMITIVE BAPTIST CHURCH**  
Menard Hwy.  
Elder Freddy Boen, Pastor  
Service each 2nd Sunday at 10:30 a.m. and 2:30 p.m.  
4th Sunday at 6 p.m.  
Congregational Singing 1/2 hour before preaching

**PRIMERA IGLESIA BAUTISTA**  
Rev. E.L. Flores, Pastor  
El Paso and Concho St.  
Sunday School 9:45 a.m.  
Morn. Worship 11:00 a.m.  
6-7 p.m. Training Union  
7-8 p.m. Evening Worship  
Wed. 3 p.m. Sunbeams  
7 p.m. Prayer Services

**FIRST CHRISTIAN CHURCH**  
Dale Lipssett, Minister  
Sunday School 10:15 a.m.  
Worship 11:00 a.m.  
Wed. Bible Study 7:00 p.m.  
853-2247

**UNITED PENTECOSTAL CHURCH**  
Rev. Walter Ford  
Hackberry St.  
Sunday School 10:00 a.m.  
Worship Service 11:00 a.m.  
Sun. Eve. Serv. 7:00 p.m.  
Wed. Eve. Serv. 7:30 p.m.

**ROCK CHURCH OF CHRIST**  
Dale Huff, Evangelist  
708 Lee St.  
Sunday Bible Class 10 a.m.  
Worship Service 11 a.m.  
Evening Worship 6 p.m.  
Wed. Bible Class 7:30 p.m.

**FIRST UNITED METHODIST CHURCH**  
Rev. John A. Robinson  
Hiway 277 across from Courthouse  
853-2721 853-3010  
Church School 9:50 a.m.  
Morn. Worship 10:50 a.m.  
Youth Fellowship 7:00 p.m.  
Wednesday  
Young Adult Study 7:30

**The Dividing of the Church Age**

Just as the Jordan River was the dividing line between the wilderness and the Promised Land, Jesus Christ was the separation between the Old and the New Testament, or between the law and the Church Age. The twelve stones in the bottom of the Jordan River were a type of the twelve apostles which he chose to carry out his work.

The Israelites come to a new home, a place of freedom and nest. They came to ready built homes, cities, orchards and vineyards. All they had to do was just claim them when we receive the Spirit of God in our lives, all we must do is claim the precious promises in His Word. No longer did they eat of the manna, which was merely to preserve life. Now they were given meat, corn for strength to do exploits and fight the battles of the Lord.

After the conquest of their idols. No man can Canaan, the battles at Jeri-serve two masters. Many cho Ai, and those against times when people come to the Amorites, Canaanites, God they ask, "Must I give etc. The land was allotted to this or that up? generally the twelve tribes, after the referring to some worldly wars were over, Joshua saw custom or pleasure of society that the people were declining. We must be willing to ing toward idolatry, so now believe that He is better he called them to a solemn than the world and be ready assembly at Shechem. Heto part with a few of the reviewed all the blessing of pleasures and spoils of the God and then brought them world for the sake of eternal to a decision. Joshua choselife.

for himself "as for me and my house, we will serve the Lord" He knew that he could not choose for them. Every man must make his own decisions for time and eternity. Others may persuade you, but cannot decide for you. Others can pray for you but they cannot work out your destiny, for the choice is yours and min.

"Choose you this day whom you will serve." The people choose Jehovah as their God, but still Joshua reminded them what it meant. They must change their lives and abandon

Rev. Walter Ford



**Our Church Feature Is Sponsored**

**By The Following Merchants Who Urge You To Attend The Church Of Your Choice This Week!**

<b>WESTERMAN DRUG</b> Cecil Westerman Would Like To Be Your Pharmacist 853-2226	<b>SOUTHWEST TEXAS ELECTRIC CO-OP, INC.</b> Owned by Those We Serve Eldorado, Texas 853-2544	<b>Holley House</b> "For the Unique and Creative" Eldorado, Texas 853-2763
<b>EL DORADO RESTAURANT</b> Steaks-Seafood & Mexican Foods Catering Service Available 853-2818	<b>TREY TRUCKING</b> All Kinds Of Oilfield Trucking Eldorado, Texas 853-2186	<b>HERSHEL'S FOODWAY OF SONORA</b>
<b>BUTLER SUPPLY COMPANY</b> Oilman's Friend East St. Eldorado, Texas Day 853-2503 Night 853-2004	<b>COMMERCIAL RESTAURANT</b> Where Friends Meet To Eat Glascock & Plum Sonora, Texas. 387-9928	<b>SONIC DRIVE-INN OF SONORA</b> Hwy. 277 North Sonora, Texas 387-5292
<b>FOOD CENTER</b> Harbert & Lois Fields, Owners Les Robertson, Manager Sonora, Texas 387-3438	<b>R &amp; H WELL SERVICE, INC.</b> Complete Oilfield Service Eldorado, Texas 853-2003	<b>THE WESTERN COMPANY</b> Pacesetters in the Oil & Gas Industry Eldorado, Texas
		<b>ROCKING J FEED COMPANY</b> 801 Glascock Sonora, Texas 387-3620

## Dietzel-Cawley Exchange Vows

Cynthia Kay Dietzel of Victoria and John Ben Cawley of Eldorado pledged double ring wedding vows Saturday at 7 p.m. in Martin Luther Lutheran Church and were united in marriage. The Rev. David Henske solemnized the couple's wedding pledges.

The bride is the daughter of Mr. and Mrs. Glenn Dietzel of Victoria. The groom is the son of Mr. and Mrs. J.F. Cawley of Eldorado.

Mrs. Noma Dietzel, grandmother of the bride, played the traditional wedding procession and recessional. Hermann Gruenberg played "Theme from Romeo and Juliet," "Theme from Love Story," "Annie's Song" and "Ave Maria." Carol Groll, soloist, sang "You'll Never Walk Alone," "The Wedding Song" and "The Lord's Prayer."

Given in marriage by her father, the bride wore a formal designer ante-bellum wedding gown fashioned of white organza and imported lace. The fitted bodice held a modified V-neckline, overlaid with lace, and full bishop sleeves, traced with lace appliques. Lace also adorned the fitted, sheer cuffs. The full sheer skirt fell in four graduated, lace-trimmed tiers and swept into a chapel length train.

Miss Dietzel wore a diamond pendant, a gift from her great-aunt, and a matching chain necklace and bracelet, gifts from the groom. She carried a lace fan, accented with Rubrum lilies and trails of English ivy and lace.

The bride wore a sheer white picture hat, overlaid with lace on the brim and trimmed with satin ribbon. The hat caught double flowing panels of bridal illusion.

Mrs. Mike Lemke of Victoria attended as matron of honor. The maid of honor was Tammy Farek of Victoria. Bridesmaids included Mrs. Ronnie Kubenka and Sue Ohrt, both of Victoria; Mrs. Tommy Lee of Fort Worth and Veronica Styer of Bay City.

Jimmy Grace Crawford of Eldorado, niece of the groom, and Jason Lemke of Victoria, cousin of the bride, attended the couple as flower girl and ring bearer.

The attendants wore formal gowns fashioned of frosted burgundy polyester. The gowns were styled with scooped necklines, spaghetti straps and Empire waistlines. Each of the gowns was highlighted by a matching chiffon cape.

The attendants wore clusters of mauve silk orchids and pink peach blossoms in their hair and each carried a burgundy candle in a violet glass holder. The arrangements were accented with Rubrum lilies, glamelias and trails of ribbon and greenery.

The mother of the bride chose a formal designer gown fashioned of Daphne rose silk Qiana. The gown was styled with a softly draped blouson bodice, a V-neckline, bracelet length sleeves and a slim skirt. A corsage of bridal pink roses and burgundy carnations completed her attire.

The groom's mother selected a formal gown fashioned of French rose crepe. The gown featured a fitted bodice, long sleeves, an Empire waistline and a flared skirt. The cuffs and neckline of the gown were jeweled. Mrs. Cawley wore a corsage of bridal pink roses and burgundy carnations.

Jimmy Cawley of Eldorado served his brother as best man. Groomsman included Dee A. Rickman of Colorado City, Tom Lewis of College Station, George Rombaugh of Louisiana, Gary Grover of Crawford and Mark Thornton of Houston.

Ushers included Allen Dietzel, brother of the bride; Bill Cawley, brother of the groom; Joe Fuller of College Station and George Ward of College Station.

A reception was hosted at the church following the wedding. Members of the house party included Mrs. Lloyd Farek, Mrs. Dennis Dietzel, Mrs. Ken Lemke, Mrs. Freddy Williams, Mrs. Alvin Zeila, Virginia Garrett, Gretchen Ledwig, Theresa Styer, Cathy Farek, Carrie English and Donna Vanek, all of Victoria, and Mrs. William Denman of Dallas.

Robin Dietzel and Ginger Farek, both of Victoria, presided over the bride's book.

The couple will honeymoon in Colorado in December. Miss Dietzel's going away ensemble was a cream polyester suit. The jacket featured a cowl collar and was accented with black piping. A black silk blouse and a corsage of burgundy silk mums completed her attire.

The couple will reside in Bryan.

The rehearsal dinner was hosted by the parents of the groom at Totah's.

The bride, a 1974 graduate of Stroman High School, where she was a member of the drill team, Anchor Club, Future

Homemakers of America, National Honor Society, JETS and Science Club, will be a 1981 graduate of Texas A&M University, where she is a member of the Saddle and Sirlon Club and the Dance Arts Society.

The groom, a 1977 graduate of Eldorado High School, where he was a member of the student council, National Honor Society and football and track teams, will be a 1981 graduate of Texas A&M, where he is a member of the Saddle and Sirlon Club, the Pro-Vet Society and the Rodeo Team.

Out of town guests included Mrs. William F. Denman of Dallas, Mr. and Mrs. J.T. Cawley of El Paso, Mr. and Mrs. Steve Skinner of Austin, Mrs. Sally Crawford of Alpine, Mr. and Mrs. C.T. Ramsey and Charlie Ramsey of El Paso, Mr. and Mrs. Jim Thornton of Houston, Mr. and Mrs. Gary Ramsey of Houston, Mr. and Mrs. Erich Ramsey of Waco, Mrs. Cecil Morris of Gonzales, Mr. and Mrs. Earl Erickson of Pasadena and Miss Coranne Young of Corpus Christi.



Mrs. John Ben Cawley

## Logan-Poynor Wed

The First Methodist Church of Eldorado was the setting for the Saturday wedding of Teresa Logan Butler and Robert Britt Poynor. The Reverend John Robinson officiated the double ring ceremony.

The bride is the daughter of Mrs. Wilma Logan of Eldorado and the bridegroom's parents are Mr. and Mrs. Johnny Poynor of Comanche.

Mrs. Georgeanne Edmiston of Eldorado was the matron of honor.

Best man was Jesse Poynor of Eldorado and ring bearer was Matt Loyd. Ushers for the wedding were Steve Whitten of Eldorado and Bobby Subia of Big Lake.

The bride is a graduate of Eldorado High School and

the bridegroom is a graduate of Reagan County High School in Big Lake.

After a wedding trip to Lake Tahoe, Nevada the couple will make their home in Eldorado.

but it's true... New! La Maur Insta-Perm™ processes on contact to give you the most natural, liveliest perm you've ever had!

LA MAUR  
Insta-Perm™



Instant processing means we can give you expert, professional results every time. La Maur Insta-Perm is so gentle that it leaves hair in a marvelous condition. Full of springy, lively curls that are manageable and easy to style. It defies everything you have ever seen in a permanent wave. Even more amazing, the condition of the hair after perming is left in better condition than with an ordinary perm. Prove it to yourself. Call now for your appointment. Only \$30.00 HairCut Included

Johnnie Harris Beauty Salon  
500 Fields Ave  
Tues. thru Fri. Sat.  
by Appt. only

## Williford To Chair Bike-A-Thon

Bike-a-thon chairman Rev. Don Williford asks all Eldorado residents to participate in the St. Jude Children's Research Hospital's "Wheels-for-life" Bike-a-thon, to be held Saturday, October 11, 1980.

Volunteer workers and riders are needed for the Bike-a-thon to raise funds for the world famous research center and its battle against childhood cancer and other catastrophic childhood diseases.

Williford said his year's ride is being dedicated to Terry, a leukemia patient at St. Jude. "By riding for Terry, we'll really be helping all stricken children since research is the only way these illnesses can be conquered," Williford added. "We're looking for people who will contribute some of their time and energy to help children live. We really need bike-

riders, since they are the ones who can make this bike-a-thon successful."

In the bike-a-thon, riders enlist sponsors who donate a sum for each mile completed. Riders who raise \$25 will receive a St. Jude T-shirt, while those raising over \$75 will receive a backpack commented Williford. "We also have prizes for other riders." Sponsor forms are available at the Elementary school principal's office in Eldorado.

## Birth Announcements

### Nixon

On September 22, a daughter was born to Reuben and Lynell Nixon. The little girl weighed 8 pounds and 7 ounces. She was named Jennifer Whister. Jennifer was born in the Lillian M. Hudspeth Memorial Hospital in Sonora.

The grandparents are Lester and Leoto Nixon and David and Donna Vannett. She had one great-grandmother to welcome her home also, Mrs. Blanche Barr of Eldorado.

### Holsey

On Wednesday, September 24, a little girl name Holly Leann was born to Zack and Lynn Holsey. She weighed 5 pounds and 15 ounces and was 18 1/2 inches long.

Grandparents are Mr. and Mrs. Dale Cavaness and Mr. and Mrs. W.W. Holsey of Eldorado. Her great-grandmother is Mrs. Aline Hall of Marble Falls, Tx.

# GO TEAM GO

## New Game Room Now Open to the Public

### Best Buy

### Kick-off

## Holsum Snack Cake 3 for \$1.00

## \$1.99



### Six Pack Cans

## Six Pack Special \$2.39 Light or Regular

## gal. \$1.99

# ADOBE MINI-MART

Hwy.277

853-2775

PERSONALIZED GIFTS AND CARDS

Brighten up your Christmas giving with attractive personalized gifts and cards by Stylart.

For more details come in and see our fine selection for yourself.  
Photo Ranch  
Hwy. 277S. 387-5388

## Dee's Floral Design

Honor the Eagles on Homecoming This Year

With A Special Design

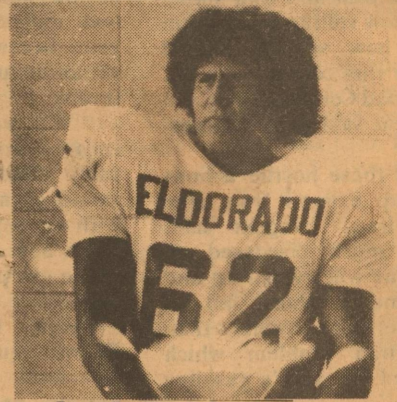
Mum 10% Discount to Students and Faculty

853-2152

1/2 Mile on Big Lake Hwy.



**Rojelio Adame Sr., Tackle**



**Joel Robledo Sr., Guard**

## Support The Eagles

Jr, Varsity, 7th & 8th Grade Schedule

Slym Gym  
"Lean too Factory"  
412 North Street 853-2058

**Kwick Thrift Grocery Store**

Hwy. 277 Eldorado

**Big John's Welding**  
All Kinds of Oil Field Welding  
24 Hour Service-Anywhere-Anytime  
853-2953 853-2091

**L.R. Hanusch Water Well Drilling**  
Submersible Pumps and Repairs  
Eldorado 853-2686

Steve Whitten, Manager  
Res.853-2879 or Office 853-2944

**Whitten's Liquid Feed**

**holley house**  
For The Unique and Creative  
Hwy.277 853-2763

**C. H. Poynor Const. Co.**  
General Oilfield Const.  
Big Lake 884-2454  
Eldorado 853-3064

**Meme's Grocery Store**  
For All Your Grocery Needs  
302 N. San Saba

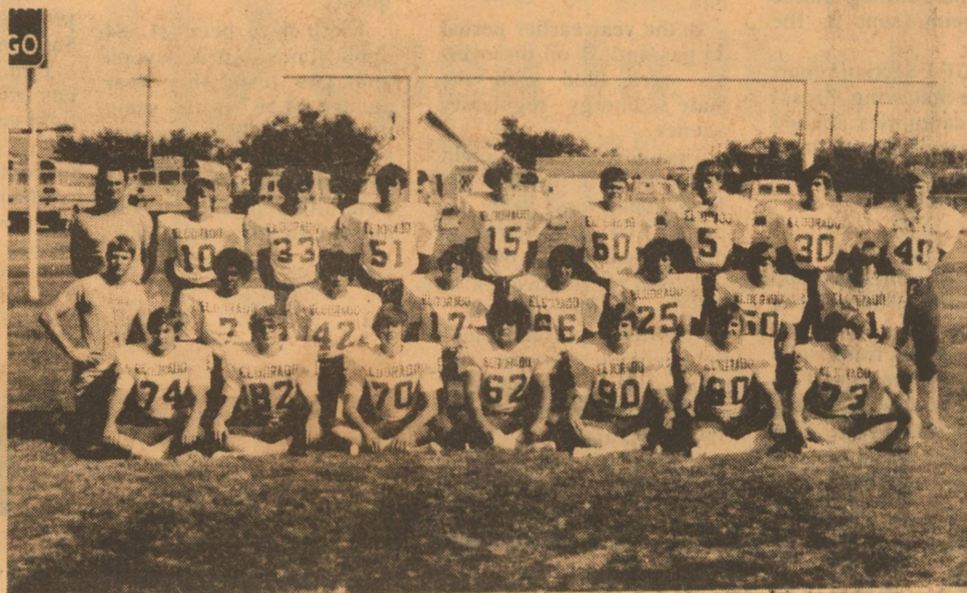
**B & H Maintenance & Construction**  
Welding-Fabrication, Backhoe work, Ditching  
PipeLine & Plant Construction  
853-2595 Day or Night

**McCalla's Dept. Store**  
Downtown Eldorado

**Adobe Mini Mart**  
Open Every Day  
Groceries-Gas-Ice-Hunting & Fishing Supplies  
301 S. Divide Eldorado

**Meador Land Co.**  
853-2688 Eldorado, Texas

October 2	OPEN	
October 9	Mason	Mason
October 16	Ozona	Eldorado
October 23	Menard	Menard
October 30	Big Lake	Eldorado
November 6	Junction	Junction
November 13	Wall	Wall



**WE'RE ALL ROOTING FOR OUR TEAM**

## 1980 SCHEDULE

Oct.3	McCamey Here	8:00 (Homecoming)
Oct.10	Mason Here	7:30
Oct.17	Ozona There	7:30
Oct.24	Menard Here	7:30
Oct.31	Big Lake There	7:30
Nov.7	Junction Here	7:30
Nov.14	Wall There	7:30

**Homecoming 1980**

**Willhoit Texaco**  
Hwy.277  
853-2939 Eldorado

**Butler Supply Co., Inc.**  
Your Complete Oilfield Supply Store  
Eldorado 915-853-2503

**Kiddie Korner Day Care Center**  
Family Rate Available  
853-3029

**Eldorado Wool Company**  
Wool-Mohair-Feed-Grain  
Bonded Warehouse-Farm & Ranch Supplies  
Eldorado 853-2820

**Food Center**  
For All Your Grocery Needs  
Sonora, Texas

**Faull Const.**  
General Dirt Contracting  
915-853-2052 or 915-853-3045

**Hext Food**  
Granvil & Mary Hext  
Eldorado

**C.C. Lease Service Co.**  
Well Servicing-Water Hauling-Pump Trucks  
24 Hour Service  
Eldorado 853-2351 Sonora 387-3509

**Helen's Hair Fashion**  
For The Latest Hair Styles In Town  
East Street  
Helen Fay-Owner



**Dee's Floral Design**  
Dora Mankin "Designer"  
No Set Working Hours  
Big Lake Hwy. 853-2152

**Schleicher County Leader**

**Kent's Automotive**  
853-2733 Eldorado, Texas

**Sofge's**  
Cramer & Mary Sofge, Owners  
Groceries-Motel-Camper Hookups-Self Serve Gas

**Northern Natural Gas**

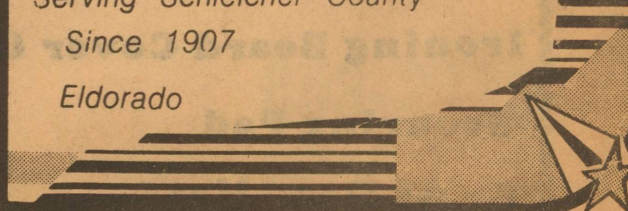
**Eldorado Instrument & Control Co.**  
208 S. Divide-Eldorado  
915-853-2506

**Meador Land Co.**  
853-2688 Eldorado, Texas

**Jerry's T.V. Service**  
Serving Your Area Since 1965  
Jerry Jones-Owner  
214 Main 853-2314

**Quadra Corp.**  
Frac Tank Service, Steaming, and Vacuum Truck  
915-853-3004

**First National Bank of Eldorado**  
Serving Schleicher County Since 1907  
Eldorado



## Nugent Foresees Energy Shortfalls

The current hostility between Iran and Iraq shows just how volatile an oil drum just how volatile an oil drum this country sits on, Railroad Commissioner Jim Nugent said here Wednesday.

"If these hostile actions dry up exports from Iran and Iraq," Nugent said, "the much discussed oil surplus will evaporate and become a short fall of greater dimensions than the Iran problem which caused last year's gasoline lines."

"All of the talk about abundant supplies has been based on the critical assumption that there would be no major supply interruptions," the Commissioner continues. "The outbreak of these hostilities shows just how fragile that assumption is." Nugent said crude oil production in the non-Communist world is running 1 million-1.5 million barrels per day (mbod) ahead of demand. Exports from Iran and Iraq total approximately 4 million barrels per day. A complete shut-off of exports would leave a world-wide crude oil short-fall of some 2.5 million barrels per day. The short-fall which produced last year's gasoline lines was approximately 2 million barrels per day.

Nugent said the impact of the shortfall would be less immediate than last year, because U.S. oil inventories are at very high levels. "We wouldn't feel it immediately," Nugent said, "but the shortfall would eventually catch up with us, deplete the inventories and cause shortages at the gas pump and at the boiler face."

Recent Department of Energy figures place crude oil stocks at 389 million barrels, and experts estimate that spot shortages would occur when the level falls below 300 million barrels. Approximately 13 million barrels are processed by refineries each day. "This episode, thousands of miles away, reminds us that America's energy fate still rests in the hands of others who are not always our friends," Nugent said.

Nugent said that Texas and the rest of the country must move forward with an aggressive plan of energy production for short term and an equally aggressive plan of developing energy alternatives for the mid and long terms.

"We must produce what we can, conserve where we can, and develop the new energy technologies as soon as we can," Nugent said.

## Petroleum Journal

Austin, Tex., Sept. 23. The Railroad Commission's Natural Gas Policy Act Section today reported that as of Sept. 12 Texas oil and gas operators have filed 27,113 applications for determinations of new gas well production categories under the federal Natural Gas Policy Act of 1978.

The Commission initiated the well classification program in December 1978 pursuant to NGPA mandate and guidelines set forth by the Federal Energy Regulatory Commission. Under the federal rules and corresponding RCC Policies, the section is responsible for processing applications filed by operators requesting gas well determinations under one of the different producing categories of the NGPA.

Operator applications are reviewed through section statistical checklists and are brought before the Commission for action.

Through Sept. 12, the Commission has approved 16,649 applications for the requested NGPA producing categories, according to the section report. Seven applications have been denied.

A total of 16,105 of the applications have been tran applications have been transmitted to the FERC. The federal agency has the power to reverse or remand applications acted on and transmitted by the RRC. Another 279 applications are in microfilming status before being sent to the FERC.

The NGPA Section report gives the following breakdown of categories applied for by operators and those finally approved by the Commission.

1) 11,023 applications for determinations under NGPA Section 108 for stripper well natural gas from wells producing an average of no more than 60,000 cubic feet per production day. The Commission has approved 7,886 of the applications.

2) 11,858 applications for determinations under Section 103--new onshore production wells drilled after Feb. 19, 1977. The RRC has approved 7,267.

3) 2,595 applications for Section 102 (c)(1)(C)--wells drilled in new onshore reservoirs. A total of 1,111 have been approved.

4) 1,020 applications for determinations under Section 102 (c) (1)(B)--gas from wells meeting distance requirements from other wells. A total of 334 of the applications have been approved.

5) 115 applications for determinations under Section 107--high cost gas wells drilled after Feb. 19, 1977 and completed at a depth below 15,000 feet. Fifty-one of the Section 107 applications have been approved by the Commission.

6) 133 applications for Section 107 (C)(5)--gas from formations described as tight sands. No formations described as tight sands have yet been designated tight sands by the FERC. None of these applications can be approved until such a designation is made.

-ps-

Texas operators reported 75 gas and 30 oil discoveries during the September 1-15, 1980, period, the Railroad Commission's Oil & Gas Division announced today.

In the year-earlier period 33 gas and 31 oil discoveries were filed with the state's energy regulatory agency.

Through the first eight and one-half months of 1980, operators have reported 1,041 gas and 516 oil discoveries, against 865 gas and 346 oil discoveries in the year-earlier period. Successful exploratory and field completions in the eight and one-half months of 1980 total 8,568 oil and 3,972 gas, against 5,700 oil and 3,962 gas completions in the same period last year.

Gas discoveries in the first half of September included 21 in deep South Texas, 18 in the Refugio area, nine in West Central Texas, eight in Southeast Texas, five each in East Texas and the Panhandle area, four in East Central Texas, three in the San Antonio area and one each in North Texas and the San Angelo area.

Oil discoveries included eight in West Central Texas, five in Refugio area, three each in Southeast Texas and the San Antonio and Lubbock area, two each in deep South Texas, North Texas and the San Angelo area one each in East Texas and the Midland area.

-ps-

In the Sept. 1-15 period, operators reported 153 exploratory and field tests wound up as dry holes.

New applications for permits to drill oil and gas tests totaled 1,569 in the first half of September compared with 946 in the same period of 1979.

Applications to drill, deepen, plugback and for service wells in the Sept. 1-15 period amounted to 1,696 against 1,049 a year earlier. Operators filed 313 amended applications to drill. A year earlier they submitted 177 amended requests.

There have been 21,584 applications to drill new oil and gas tests this year against 14,587 in the same period of 1979. Applications to drill, deepen, plugback and for service wells so far this year total 24,068, against 16,903 a year ago.

-ps-

The Railroad Commission Sept. 15 recommended the designation of the Canyon Sand in six Southwest Texas counties as a tight gas formation from which production could qualify for incentive pricing under the federal Natural Gas Policy Act of 1978.

Determination of a tight formation is by the Federal Energy Regulatory Commission, but an appropriate state agency--the Railroad Commission in Texas--must recommend such action by the FERC.

The action during the weekly conference on Oil and Gas Division matters involves the Canyon formation underlying Terrell, Crockett, Schleicher and Sutton Counties in the division's District 7C, and Val Verde and Edwards Counties in District 1.

According to the recommendation approved by Chairman John Poerner and Commissioner Mack Wallace, the Canyon formation ranges in thickness from 485 to 1,475 feet across the six-county sector with the top of the formation encountered at average depths of 6,180 feet on the north side of the area to 2,675 feet on the south. Commissioner James E. (Jim) Nugent was not present.

Non-associated gas is produced from the Canyon Sand in the area.

Under the federal act, gas from FERC-designated tight gas sands can be sold at a price that is 200 percent of the going rate for production from new onshore wells as incentive to explore for and develop gas from formations that are difficult to produce.

The Railroad Commission

## District 9-AA Opens Play

As the Eagles square off against the McCamey Badgers Friday night in a non-conference clash, the other six members of the district will open their bids against each other for the conference crown.

For the first time in a long while there are no undefeated teams entering district play, for the most part, Menard and Mason hold the best records with a 2-2 split.

Menard lost their game last week in the final minutes of the first half when Burnet connected on a field goal to lead the Bulldogs past the Yellowjackets 3-0. Menard, Menard will play host to the Reagan County Owls, 1-3, who are coming off of a disappointing loss to the Stanton Buffaloes, on a 19-0 tally.

Mason will host the Wall Hawks, 1-3, after an arousing 20-14 victory over the Brady Bulldogs last week. Wall lost their clash with the Abilene Wylie on a 12-6y tabulation.

In the final tilt of the week, Ozona will host the winless pre-season favorite, Junction, 0-3-1 on the season. Ozona was virtually destroyed by the Alpine Bucks, 32-0, while Junction salvaged a tie with Center Point on an 8-8 score.

Around the District these are my choices for this week's winners: Eldorado 28, McCamey 24, Mason 20, Wall 18, Junction 20, Ozona 0, Reagan County 16, Menard 8.

Other area contests: Sonora 28, Llano 6, Rankin 14, Iraan 0, Robert Lee 30, Irion County 6, Angelo State 24, East Central State of Oklahoma 0, Texas Tech 21, Texas A&M 14.

Houston 14, Baylor 10, Texas 35, Rice 0, Arkansas 28, TCU 0, SMU 21, Tulane 6, Houston 24, Seattle 17, Dallas 17, New York Giants 10.

sion held a public hearing on May 20 for the purpose of obtaining information on proposed tight formations in the state. On July 7, the Commission recommended the designation of the Cotton Valley Sandstone, Bossier Shale and Cotton Valley Lime formations as tight formations. They are found in 48 Northeast Texas counties.

The federal agency has not acted on the recommendation involving these formations.

Pertinent sections of the federal gas act contain three guide lines for qualification as tight sands:

1) Estimated average in-situ gas permeability through the pay section must be 0.1 millidarcies or less. Permeability is measure of resistance by rock to the movement of fluids through it. Fired house brick has 1,500 times the permeability of rock meeting this guideline.

2) Stabilized production rates of gas at ground atmosphere and without stimulation indicate that a well tapping a tight sand is a low-yield producer.

3) The yield of a well producing from a tight formation is no more than five barrels of oil per day.

## Production Index Drops

The Texas industrial production index edged down in June at a 0.8-percent seasonally adjusted annual rate. The small decline resulted as a drop in manufacturing output barely offset a sharp increase in mining output.

The decline in factory output centered in the durable goods industries where the only gain in production was posted by the transportation equipment industry. The increase in output in non-durable goods manufactur-

ing was smaller than that for durable goods manufacturing, as food, textiles, petroleum refining, and printing and publishing boosted production in that sector.

All major components of the mining sector, with the exception of petroleum, registered gains in output.

Reflecting the drop in factory output, the manufacturing capacity utilization index edged down in June to 101.8 percent of 1972 base.

# Lion's Club Annual Broom And Mop Sale

Wednesday October 8, 1980

All items are manufactured by Texas Blind Workmen in a Texas Lighthouse.

All Proceeds will be used to support local projects and The Crippled Children's Camp at Kerrville, Texas.

The Caravan Truck will be located at the south side of the bank, with goods also on display at the post office parking lot.

Businesses will be canvassed.

HERE'S WHAT WE ARE SELLING....

BUY ALL YOU CAN!!!

Rubber Mats

House Broom

Lawn Rake

Scrubber

Poly Sweep Broom

Rayon House Mop

cotton House Mop

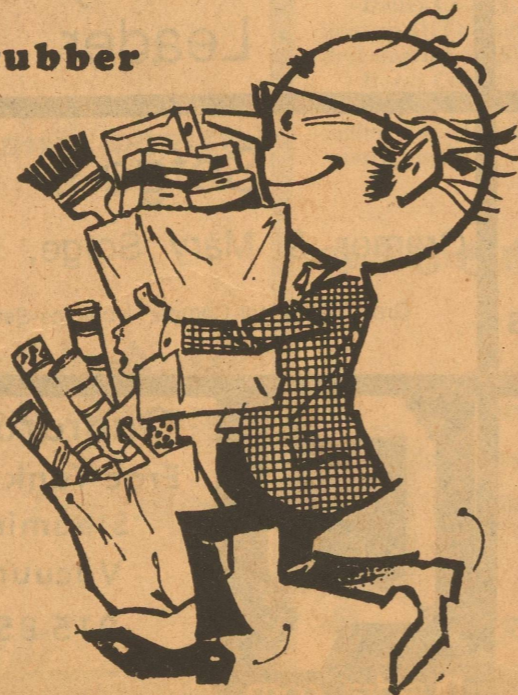
Garage Brush

Tampico Floor Brush

Ironing Board Cover & Pad

Scouring Pad

Grass Door Mats



The September issue of World Oil Magazine provides the information for today's Energy Report. Early this year the New York Times reported that the U.S. Geological Survey had discovered five huge undersea basins off Alaska. The story was picked up by the Association Press and distributed worldwide. Well, the "scoop" by the New York Times has been known by the petroleum industry since 1974, and part of the area since 1965. It's just another example of the sloppy reporting, without corrections, the industry is being dealt from both the printed and electronic new media.

The second part of our report also comes from World Oil's September issue. The editorial points out that the Democrat Platform contains support of taxpayer funded abortions, welfare, homosexual right, a 12 billion dollar jobs program, socialized medicine, arms limitation, phasing out nuclear power, support of the Windfall Profit Tax, and repeal of the Right to Work Law. World Oil says many of the stands previously mentioned appeared, or were implied, in the 1932 platform of the Socialist Labor Party. One study by a Columbia University Professor concluded that almost every stand of that 1932 platform is now law.

In other words, the most effective U.S. Political Party in the last fifty years--The Socialist Party. No wonder private enterprise, including the domestic independent petroleum industry, is getting creamed!

The rig count in the Permian Basin last week was 329. One year ago it was 284.

The 13 members of the Organization of Petroleum Exporting Countries opened its meeting in Vienna on September 15th. The two main interests were the price of oil and the amount of daily production. Saudi Arabia is OPEC's largest producer and the biggest supplier of oil to the United States.

The Saudi Oil Minister said his country will not increase the price of their oil or reduce production until a compromise is work-

ed out. The Saudi's want the top price of OPEC oil reduced before they will raise theirs and before they cut production. Most people believe Saudi Arabia will raise its prices \$2 to \$4 a barrel and cut production from 9.5 to 8.5 million barrels of oil a day.

The EPA mileage ratings came out and foreign cars make up the top ten. VW Rabbit Diesel was number one, followed by Toyota Starlet and a 5-speed Rabbit Diesel. Chevrolet Chevette and Ford's new Escort and Mercury Lynx were the highest rated domestic cars.

And, the drilling fever continues. The OIL AND GAS JOURNAL is predicting 60,000 wells and 284 million feet will be drilled in 1980 and that would be the most active year in history. The forecast for 1981 is even better. The last four week period averaged 3,060 over last year and that's up 35% over last

year. Oil imports are down almost 33% from this date year ago.

The Permian Basin rig count for last week was 388, one year ago it was 279.

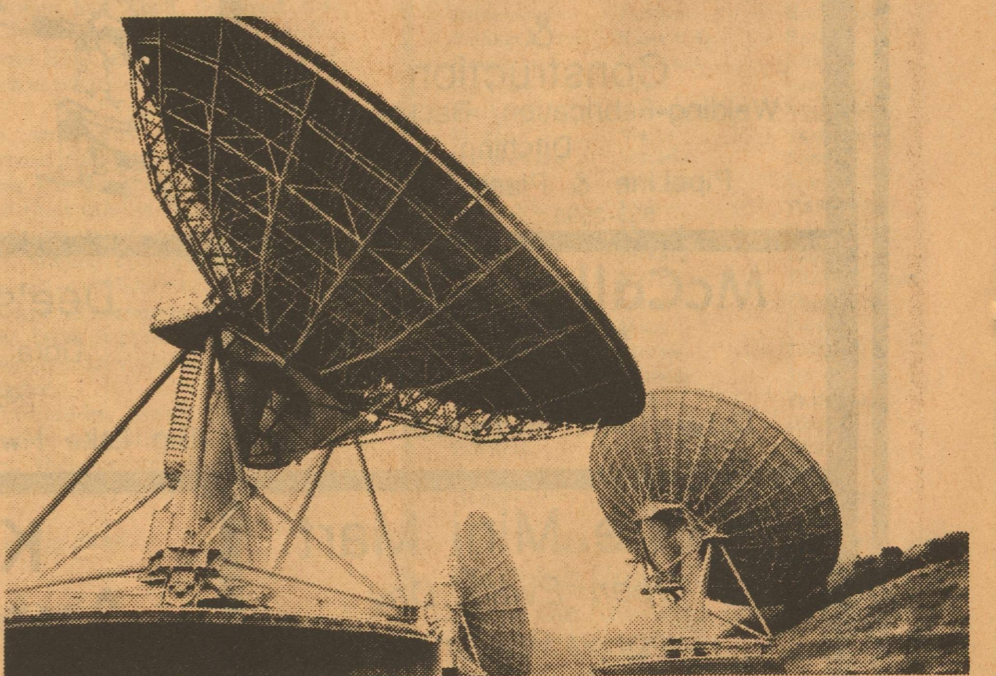
## PBPA Notes

### SWABBING

Well Kick Off  
Swab Testing  
Load Recovery

## CHEYENNE SERVICE CO.

DAVID BISHOP 884-2682  
Big Lake, Texas



## Who goes out of this world for you?

We do... General Telephone.

This is one of our earth stations. It beams 18,000 phone calls a clip to a satellite hovering more than 20,000 miles above the equator. It gathers in the same number of calls, and sends them out over our regular telephone network.

It's part of the incredibly complex system that's just about the world's most efficient communications system.

And it has reliability built in, whether

it's an earth station talking to outer space, or a cute little phone built like Mickey Mouse. Because we realize how important it is to keep you in touch with your world. We spend hundreds of millions of dollars every year, making sure that when you pick up your phone... It works.

We keep you talking.



## ASU To Offer Course On Windmills

Sept. 25 -- The second short course on water-pumping windmills will be offered at ASU's Management, Instruction and Research Center October 20-24.

The week-long session is open to ranchers and farmers who use the windmill as a source of energy. Program sponsor is the Division of Adult and Continuing Education.

Participants will have the opportunity to overhaul a working windmill and develop skills necessary to practice preventive maintenance on windmills.

Enrollment will be limited and interested persons are encouraged to sign up as soon as possible. The ACE office is located in the Houston Hart University Center, and the Mailing address is ACE, P.O. Box

11022, ASU Station, San Angelo, Texas 76909.

Registration is \$125 per person which includes lunch daily, materials and supplies.

Course instructor will be Stan Anderson, windmill specialist for the Wind Baron Corp., in Scottsdale, Ariz. Other windmill manufacturers and distributors have been invited to attend the sessions.

According to Don Hale, ACE director, the course content also will include windmill history, selection, service and overhaul, downhole equipment, manufacturers and water production. Participants are encouraged to bring windmill motors or parts needing repair.

More information is available by calling 915/942-2339.

## TSGRA Notes

We've stomped and we've hollered and we've argued and pointed out and just plain pointed, but nothing's really done much good. Now we're going about it the "civilized" way--by suing.

By "we," we mean the sheep industry as a whole, though the suit is being brought by the Wyoming Farm Bureau, the American Farm Bureau Federation and several individual sheep producers -- some of whom may actually be former sheep producers.

And the suit -- if you haven't guessed by now -- is to force the federal government to accept its legal responsibility for predator control. There's even a provision demanding that the government fork over damages for past failures to control predation, topped off by the very real claim that the government's failure to control predation has and continues to violate the Fifth Amendment rights of sheep producers.

Principal defendant in the suit is Interior Secretary Cecil Andrus--or his successor--and lawmen served papers on Andrus recently when he stepped off a plane in Cheyenne. That, by the way, is where the suit was filed, not in some D.C. court where coyotes are considered the puppy dog's cute country cousin.

Basically, the suit reiterates the Animal Damage Control Act of 1931, which "authorized and directed" first the Agriculture Secretary and later the Interior Secretary to control predators. That law is still very much in effect, though you wouldn't know it from the way the government has avoided obeying it the last few administrations.

In fact, Andrus and other

Interior brass have piously stated that the law no longer means what it says because "times have changed." What they neglect to add is that the law itself hasn't changed, that it still orders them to use the "best methods" available to control predators, regardless what they or the environmentalists pulling their strings happen to think about it.

Nowhere in the 1931 law does it say that unelected bureaucrats may obey or ignore that mandate as the whim strikes them, or that growing public ignorance of the real world can automatically invalidate the law 40 or 50 years after it's passed.

And that's precisely what's happened. The law's still there, it's just being openly flaunted. How, you might ask, could such a thing go on in a "representative" government? Simple. Because no one has ever tested this particular violation in the courts -- no one has ever gone to court to force the government boys to live up to their own law, and until it's done, they won't.

So now it's being done, and we're tickled pink.

Oh, yes, the Fifth Amendment. One provision of that basic Bill of Rights guarantee says that the government can't come in and steal (when the government does it, it's called "confiscation") private property without going through the legal motions of condemnation and then compensating the property owner for his loss. The suit holds that the government, effect, is "confiscating" livestock for the use of its protected predator. No one bothers to condemn the livestock, and no one has ever paid for it, they just take it.

## Cattlemen Still Fail To Profit

Recent high calf prices in the 80-to-90 cents-a-pound range are delighting cattlemen, but they're not making too many trips to the bank. Why? Because with rapidly increasing production costs, they're barely breaking even.

"While current calf prices are up substantially over the 1975-78 period, producers are not recording big profits," emphasizes Dr. Ed Uvacek, Livestock marketing economist with the Texas Agricultural Extension Service, Texas A&M University System.

He points out that pro-

duction costs have increased steadily in recent years, as shown by a recent U.S. Department of Agriculture report on cow-calf operation costs and returns.

According to the report, 1978 production costs per cow totaled \$295.25. Those costs then jumped to \$371.73 per cow in 1979, and projections for 1980 show production cost at \$420.64 per cow. Costs in terms of actual pounds of feeder calves sold are even more startling since every cow does not have a calf, some calves are held over until

they are yearlings before being sold, and other factors such as high death losses. For 1978 the cost per feeder calf sold was \$67.32 per hundredweight (cwt). The comparable 1979 figure was \$75.67 per cwt, and the estimate is \$86.75 per cwt for 1980.

"These figures show that the cost of producing a feeder calf has increased 12 percent from 1978 to 1979 and is expected to rise another 15 percent this year," points out Uvacek.

This USDA report shows that production costs vary widely according to various

regions, with costs higher in the north central states and lower across the Great Plains. It also points out that herd size is another major factor in determining production costs. As the number of brood cows in the herd increases over 300, costs decrease substantially.

Uvacek says, "Texas cattlemen probably have costs slightly lower than these national averages, but not much. Current price levels, therefore, while encouraging are still not too profitable."

## National 4-H Week "Expanding Horizons"

Seeking new knowledge and skills to become better citizens and leaders--that's the challenge extended to all youth by the theme of this year's National 4-H Week, "Expanding Horizons." The weeklong observance is set for Oct. 5-10.

More than five million youth between the ages of 9 and 19 are currently enrolled in 4-H throughout the United States, Puerto Rico, Guam and the Virgin Islands. Texas boasts a 4-H enrollment of some 140,000 boys and girls.

"4-H is the nation's largest out-of-school educational youth organization," points out Dr. John T. Pelham, state 4-H and youth leader with the Texas Agricultural Extension Service, the parent organization of 4-H in Texas.

"4-H continues to offer unique learning experiences for youth through its time-tested 'learning-by-doing' approach," says Pelham. "4-H'ers become

involved in a variety of practical, real-life activities that range from agriculture and clothing to health and wood science. Programs vary according to youth needs and community resources."

The theme, "Expanding Horizons," challenges all 4-H members to seek new knowledge, acquire life skills and build on personal strengths. Members are encouraged to strengthen their citizenship and leadership abilities and to assume positive roles in a free democratic society, notes the 4-H leader.

"The 4-H program involves youth from all social and economic backgrounds and gives them an opportunity to key in on such vital issues as energy conservation, better human nutri-

### Rocking Chair

### Exhibits Winner

The Rocking Chair Ranch of Eldorado and Fort McKavett took top honors at the New Mexico State Fair held recently, in the junior bull calves class of RCR LI Advance 1081.

There were 126 head of Herefords shown in extremely strong competition, with Ira Lee of Angell, Texas, exhibiting the grand champion.

tion, wise use of natural resources and combating inflation. In addition, 4-H helps youth gain knowledge and skills for their future careers," adds Pelham.

While 4-H is still a mainstay with rural youth, participation of urban youth has tripled in the past 10 years. Today, 23 percent of all 4-H members nationwide live in suburbs or cities of more than 50,000 population. Nineteen percent live on farms, 40 percent live in small towns, and 18 percent live in towns and cities of 10,000 to 50,000 population.

The 4-H program garners much of its support from a legion of volunteer leaders who give unselfishly of their time and resources to help youth grow and develop, points out Pelham. More than a half million volunteer leaders across the nation play a key role in the total 4-H program; al-

most 22,000 of these are in Texas.

Texas boasts a total of 1,973 organized 4-H clubs and 886 special interests clubs. The largest group of Texas 4-H'ers live in towns under 10,000 population--43,244. The next largest group is in cities over 50,000 population--39,104--while 29,018 live on farms and ranches and 21,866 live in towns and cities between 10,000 and 50,000 population. Organized television groups include 7,459 members.

What are the most popular project areas among Texas 4-H members? Foods and nutrition leads the top 10 by a large margin with an enrollment of 37,860. Second, is electric with 13,017, followed by clothing, 10,390; horse, 9,751; creative arts, 9,442; safety, 8,422; swine, 8,083; beef, 7,914; and sheep, 7,626.

### To Whom It May Concern:

We have a Hereford Bull which has been on the Howard Derrick ranch for some time.

If the owner will identify the animal and pay the feed cost and ect. he may take charge of the animal.

Otherwise the Bull will be sold after Oct. 9, 1980. For any information

contact the Sheriff's office in Eldorado, Texas.

## CRCC Continues

Abilene--As time draws near for the opening bid at the first phase of the Cattleman's Round-Up for Crippled Children, trucks and trailers roll into Abilene, delivering livestock from the Panhandle, the Rio Grande Valley and the Big Bend.

Buyers who gather at Abilene Livestock Auction at 1 p.m. Monday will have a large selection of registered animals and stockers and feeders to choose from. Even the pledges that come in the mail at WTRC daily don't give a complete picture of the livestock to be sold, because some stockmen will bring in their donations on the day of the sale.

Proceeds from this and the five subsequent sales will benefit the West Texas Rehabilitation Center, which treats handicapped children and adults in Abi-

lene, San Angelo and Snyder. Goal is to add \$200,000 to the Rehab's \$2.6 million budget.

Jim Alexander, CRCC general chairman, expressed his appreciation to the area chairmen who have worked long and hard to obtain pledges for the sale.

"People always come through to help the Rehab," Alexander said. He expects lively bidding on Monday afternoon.

In San Angelo, co-chairman Jim Franklin had similar words of gratitude for the stockmen of West Texas. As the number of handicapped people receiving treatment in San Angelo has increased, so has the support from that area.

Even as the bidding takes place on Monday, preparations are underway for the horse sale to take place Saturday, October 4, also at Abilene Livestock Auction.

## Texas Tops In Agriculture

Texas has moved into the Number 2 spot in the nation in agriculture, Commissioner Reagan V. Brown has announced.

Producers brought in nearly \$10 billion for farm commodities in 1979.

"We have been Number 3 for several years now, and I believe that in the near future we will be Number 1," Brown said.

California with \$12.5 billion is the top ranking state. Texas took the second ranking from Iowa, which dropped \$400 million below Texas last year.

Cash receipts for livestock reached \$6,092 billion in Texas in 1979. "Higher

prices for cattle and hogs helped boost Texas in the national rankings," Brown said.

Receipts for crops rose \$1.1 billion over 1978 with a total of \$3.879 billion. The increase was mainly from cotton and sorghum sales.

The total for cash receipts in 1978 was \$7,868,816,000.

Texas is still ranked Number 3 in exports among all the states. "These figures are based on fiscal year totals and do not reflect the big shipments of grain and other foreign sales that were made the latter part of 1979," he said.

exports from Texas reached \$2,047,400,000 in fiscal 1979.

"Commodity boards in the state have been promoting their products with foreign buyers and demand has been increased as a result.

"Texas is recognized worldwide for its food and fiber production. The Texas Department of Agriculture's TAP (Texas Agricultural Products) program is considered one of the finest marketing efforts in the world. We intend to capitalize on the advantages Texas has in foreign and domestic market," Brown said.

## The First National Bank of Eldorado

"Serving the complete Banking Needs of Eldorado and Schleicher County Since 1907"



"One thing 'bout baling wire, if it breaks you don't have to send off for parts."

If your car or truck is getting old and needs replacing, baling wire won't solve your problem. But a low interest auto loan from First National Bank will give you a new car that will run efficiently.

DRIVE-UP BANKING

FDIC

**Butler Supply Co., Inc.**  
 East Street 853-2503  
**Your Complete Oilfield Store**  
 Trico Insert Pumps  
 HINDFRITER WELLHEADS  
 ALL SIZES TANKS DEMCO  
 STEEL & FIBERGLASS PROTO  
 SEPERATORS THORNHILL CRAVER  
 HEATERS & PRODUCTION UNITS OLMAN HEATH  
 WHEATLEY  
 Night Phone 853-2004

"Wul, that flu shot I gave you last week worked... you have the flu!"

**SHE LIVES. DON'T MOVE. DON'T BREATHE. THERE'S NOWHERE TO RUN. SHE WILL FIND YOU.**

**PROPHECY**  
 The monster movie

PARAMOUNT PICTURES PRESENTS A JOHN FRANKENHEIMER FILM A ROBERT L. ROSEN PRODUCTION "PROPHECY" STARRING TALA SHIRI, ROBERT FORWORTH, ARMANDO ASSANTE, RICHARD DYSART AND VICTORIA RICHMOND. MUSIC BY LEONARD ROSELMAN. WRITTEN BY DAVID SELZER. PRODUCED BY ROBERT L. ROSEN. DIRECTED BY JOHN FRANKENHEIMER. "PROPHECY" A PARAMOUNT PICTURE. (READ THE BALKANINE BOOK) PG PARENTAL GUIDANCE SUGGESTED (P) (Some Material May Be Inappropriate for Children Under 10) © 1979 Paramount Pictures Corporation. All Rights Reserved.

COMING OCTOBER 3  
**HBO** CHANNEL 5  
 Call Today Ent 67540, Eldorado  
 387-3344, Sonora

# -Obituaries-

## Arispe

Gilbert E. Arispe, 21, of Eldorado, died in Shannon West Texas Memorial Hospital in San Angelo at 11:05 a.m. Sunday from injuries sustained in an automobile accident.

Funeral services were held Tuesday evening in Our Lady of Guadalupe Catholic Church in Eldorado with burial following in Eldorado Cemetery.

Arispe was born October 10, 1958, in Sonora and attended Eldorado High School. He was an office worker and a welder.

He is the son of Mr. and Mrs. Jose Arispe of Eldorado.

He is survived by his parents; a brother, Joe Arispe, Eldorado; a sister, Violeta Rojas, Eldorado; a niece and nephew.

Pallbearers for Arispe were Raymond Salidavar, Robert Adame, Tony Martinez, Samario Salidavar, Ramiro Dabalos, and Jesus Garcia. Serving as honorary pallbearers were George Arispe, Ben Cruz, Roy Romero, and Raymond Espinosa.

## Copeland

Services for Linda Ruth Copeland, 47, of 210 E. 23rd were held Friday in Johnson's Funeral Home chapel with Rev. Neal Brillhart of Baptist Temple officiating. Burial will be in Fairmount Cemetery.

Mrs. Copeland died at 1:15 a.m. Thursday in Wilford Hall in San Antonio.

She was born Oct. 1 1932, in Marshall. She was married to Arthur Copeland Sept. 27, 1950, in Texar-

kana, Ark. She had lived in San Angelo 13 years.

Survivors include three daughters, Linda M. Virtue, Traci D. Copeland and T-9-C Brooks, all of San Angelo; two sons, Butch M. Copeland of Eldorado and Ronnie L. Copeland of San Angelo; her mother, Vera McPhail of Jefferson; a sister, Jerri Peterson of Jefferson; and four grandchildren.

# Classified Ads

### Business Opportunities

Specializing in State Liquidation. Also, buy, sell or broker your fine antiques and jewelry. This Ole House, 112 E. College, San Angelo, Texas. 653-3096 or 949-8628 911htfc

All steel convertibles available at factory direct prices. Immediate delivery. Examples of over stock prices: 40x60 \$5996.00 50x80 \$8989.00 50x90 \$9874.00; 50x150 \$13,783.00 Big doors included. Limited supply of stainless straight walls also available. Dealership inquiries welcome. Call Gordon too-free (800) 525-9926.

Addressers wanted immediately! Work at home. No experience necessary excellent pay. Write National Service, 9041 mansfield Suit 2004, Shreveport, La. 71118

### Homes For Sale

Home in Eldorado. 3 bedroom, 2 bath. Fenced back yard. 10 1/2 ft. X 16 1/2 ft. storage building. Call 512-293-3935. 911h4c

### Card of Thanks

I sincerely appreciate all the acts of gratitude and kindness expressed to members of my family and myself during my fathers illness. Words can not express our heart felt thanks to each one for your prayers, visits, cards, flowers and kind words of sympathy. God Bless all of you. Calvin Henderson

### Help Wanted

Wanted. A couple of days a week and full time while on vacation to deliver Standard Times papers. 853-2113.

### For Sale

Hand-beaded Christmas Stockings for sale. Call after 4 p.m. 853-2388.

For Sale Maytag Gas Dryer. Good Condition. 853-2733 After 6 p.m. call 853-2832.

### Mobile Homes

For Sale; 2-bedroom, 1 1/2 bath mobile home, corner lot paved streets, underpinned, carport, storeroom, chain link fence. By appointment only. 853-2081.

### Garage Sales

Misc. Sale--10 Mills St. Friday and Saturday, October 3 and 4.

### Public Notice

If you drink that's your business. If you want to stop that's our business. Persons interested in joining an alcoholics anonymous group in Eldorado are asked to come to the Memorial Building every Monday night at 8:00 p.m. for a meeting. 9-25-c-tfn-c

I will not be responsible for any debts other than my own. Jucy Dacy.

I will not be responsible for any debts other than made by myself, as of 9-26-80 Richard Dacy.

### STATE OF TEXAS

TO: Adam Gauna Greetings YOU ARE HEREBY COMMANDED to appear and answer before the Honorable District Court 51st Judicial District, Schleicher County, Texas, at the Court house of said county in Eldorado, Texas, at or before 10 o'clock a.m. of the Monday next after the expiration of 20 days from the date of this petition of Sofia Gauna Petitioner, filed in said Court on the 29 day of September, against Adam Gauna, Respondant, and the said suit being number 1600 on the docket of said Court, and entitled "In the Matter of Sofia Gauna and Adam Gauna, the nature of which suit is a request to Divorce

The Court has authority in this suit to enter any judgment or decree dissolving the marriage and providing for the division of property which will be binding on you.

Issued and given under my hand and seal of said Court at Eldorado, Texas, this 29 day of September 1980.

Helen Bebee Clerk of the District Court of Schleicher County, Texas

### LEGAL NOTICE

NOTICE TO BIDDERS Sealed bids, addressed to the commissioners' Court of Schleicher County, Texas, will be received at the office of the county Judge of said County in the courthouse at Eldorado, Texas, until 10:00 A.M. October 13, 1980, at which time such bids will be opened and considered by said Court, meeting in the Commissioners' Courtroom in the Courthouse, Eldorado Texas, for the furnishing of the following new equipment, to-wit: One (1) new 1980 or 1981 Model Two (2) Ton Truck or larger Cab and chassis, Minimum engine 360 cu. in. V8. Specifications for the above may be obtained from the County Judge of said county at P.O. box 536, Eldorado, Texas 76936.

The Commissioners' Court of Schleicher County reserves the right to waive all formalities and accept or reject any or all bids. The bid deemed by the court to be in the best interest of Schleicher County may be accepted whether or not such bid be low. Helen Bebee, County Clerk Schleicher County, Texas

### CITATION

BY PUBLICATION TO: JOSEPH CRAWFORD MULHALL, his unknown heirs, is deceased, his unknown spouse, if any, the unknown heirs of any deceased spouse, Defendants in the hereinafter styled and numbered cause. You and each of you are hereby commanded to appear before the District Court of Schleicher county, Texas, 51st Judicial District to be held at the Courthouse of said County in the City of Eldorado, Schleicher County, Texas, at or before 10:00 a.m. on the first Monday after expiration of forty-two (42) days from the date of issuance hereof; that is to say, on or before 10:00 a.m. on Monday, the 17 day of November, 1980, and answer the petition of Robert B. Coleman, aka Robert Coleman in Cause No. 1599, styled Robert B. Coleman, aka Robert B. Coleman VS. Joseph Crawford Mulhall, his unknown heirs, if deceased, his unknown surviving spouse, if any, and the unknown heirs of any deceased spouse, in which Robert B. Coleman, aka Robert Coleman is Plaintiff and the parties herein named as Defendants are Defendants, which petition was filed in said Court on the 29 day of September, 1980, and the nature of such suit is as follows:

Plaintiff seeks the appointment of a receiver of the interest owned or claimed by each of the respective Defendants in the oil, gas and minerals in the following tract of land situated in Irion County, Texas: All of Survey 1195, Tyler Tap Co. Survey, containing 640 acre more or less.

with authority to execute and deliver oil, gas and mineral leases covering said minerals owned by or claimed by said Defendants upon such terms and conditions as the Court may prescribe, all as authorized by and in accordance with the provisions of Article 2320(b), Tex. Civ. Stat. Ann., as amended.

If this citation is not served within ninety (90) days after date of its issuance it shall be returned unserved.

WITNESS Mrs. Helen Bebee, Clerk of the District Court of Schleicher County, Texas.

Given under my hand and seal of said Court at office in the City of Eldorado, this the 29 day of September, 1980.

Helen Bebee Mrs. Helen Bebee, Clerk of the District Court of Schleicher County, Texas

XEROX COPIES Letter Size-.15 a copy Legal Size-.20 a copy Meador-Peters Agency



## School Lunch Menu

<b>Monday, Oct. 6th</b> Beef & Bean Burritos Spanish Rice Cheese Strips Lettuce & Tomato Salad Chocolate Peanut Clusters	<b>Friday, Oct. 10</b> Barbecue on a bun French Fries Ranch Style Beans Rice Krispie Cookies Breakfast
<b>Tuesday, Oct. 7</b> Turkey-Pot-Pie/Vegetable Whole Kernel Corn Applesauce Peanut Butter Cookies	<b>Monday, Oct. 6</b> Peaches Pancakes-syrup Tuesday, Oct. 7 Orange Juice Hot Biscuits-Sausage-Jelly
<b>Wednesday, Oct. 8</b> Hot Dogs with Chili Corn Chips Pork & Beans Stuffed Celery (Peanut Butter) Chocolate Pudding	<b>Wednesday, Oct. 8</b> Grape Juice Buttered Rice-Toast Thursday, Oct. 9 Apple Juice Cinnamon Toast Friday, Oct. 10 Banana Choice of Cereal
<b>Thursday, Oct. 9</b> Chicken Fried Steak & Gravy Creamed Potatoes Green Beans Strawberry Jello Apple Pie	

## Faull Construction



General Dirt Contracting  
Dirt and caliche Hauling

P.O. Box 1829

Eldorado, Texas

915-853-2052 or 915-853-3045

### Business & Service Directory

#### C H Poynor Const. Co.

General Oilfield Construction

24 Hour Call 884-2454 Big Lake

Call 853-3064 Eldorado

#### House Painter

House Painting Inside and Out Blown

or Acoustic Ceilings

Felipe "Tito" Vargas

Sonora 387-3205

#### CC Lease Service Co., Inc.

Well Servicing-Water Hauling

-Pump trucks 24 Hour Service

Eldorado 853-2351 Sonora 387-3509

#### INSURANCE

Fire, Windstorm, Auto and Casualty

Call TOM RATLIFF 853-2636

#### Tex-Sun Insulation

Residential - Commercial

Free Estimates

Farris Nixon 853-2996

#### J.B. Beason

Paint Contractor

Painting Dry Wall Acoustic

John or Pam (853-2258)

#### KERBOW FUNERAL HOME

Serving Eldorado & Sonora

Call 853-2636 or 387-2266 in Sonora

#### Whitten Liquid Feed

Nutrene & Godbold Feeds 853-2944

Steve Whitten, Manager Res: 853-2879

#### THORP'S LAUN-DRY

Your Complete Fabric Care Center

Laundry & Dry Cleaning

Uniform Rental Linen Service

We rent "Dust Control"

Mops & Rugs

For Home Pick-up on

Mon. & Thurs.

Call 387-2666 in Sonora

#### Sofges

Hunting-Fishing-Trapping

Licenses

Cramer & Mary Sofge

### Friday October 10

9 99¢

KING SIZE WALLET CREATIVE COLOR PORTRAITS FOR ONLY

Kodak paper. For a Good Look at the Times of Your Life.



Extra Charge for GROUPS NO LIMIT

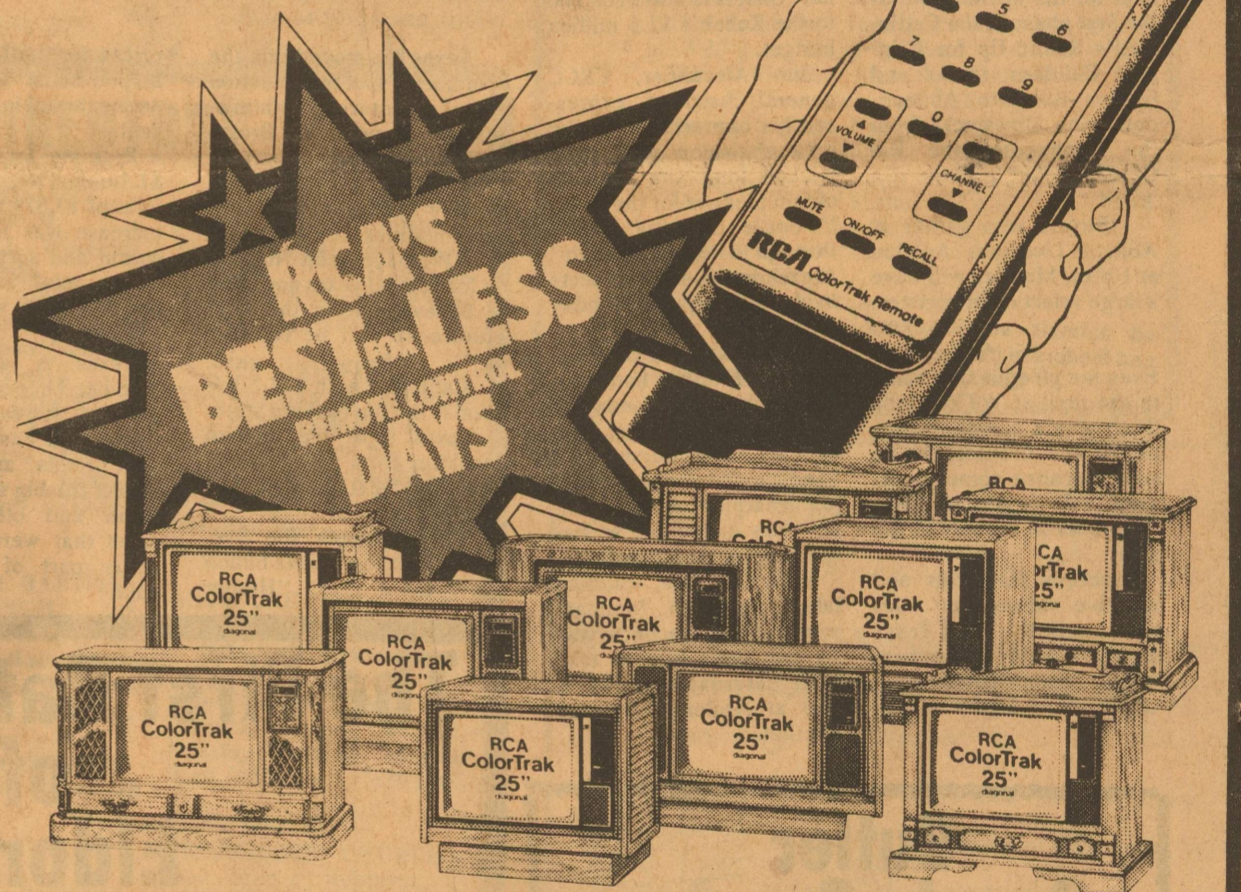
WE USE KODAK PAPER

GET PICTURES MADE BY GRANDPA GRANDMA DAD MOM AND ALL THE LITTLE ONES AT THESE SAME LOW PRICES!

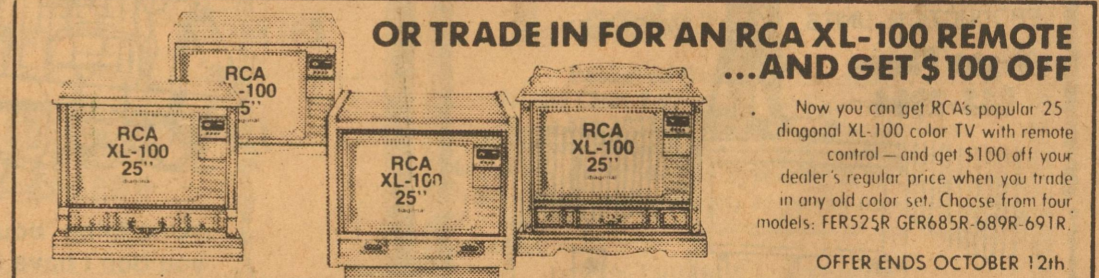
ASK About Our 8 x 10 OFFER

Shugart's inc. COLOR PHOTOS Western Auto 201 Divide

### HURRY...OFFER EXPIRES OCTOBER 12th



TRADE IN YOUR OLD COLOR TV AND GET RCA'S BEST-EVER REMOTE CONTROL COLORTRAK FOR \$120 LESS! RCA



OR TRADE IN FOR AN RCA XL-100 REMOTE ...AND GET \$100 OFF

Now you can get RCA's popular 25" diagonal XL-100 color TV with remote control—and get \$100 off your dealer's regular price when you trade in any old color set. Choose from four models: FER525R GER685R 689R 691R.

OFFER ENDS OCTOBER 12th

\$50 TRADE-IN ALLOWANCE ON 1981 RCA 25" DIAGONAL MANUAL COLOR TV'S TOO

Available At These Local Dealers

#### The Gunter Co.

643 S. Chadbourne 655-6791

#### Kuntz

TV AND APPLIANCES Southwest 2635N. Bryant Blvd. 949-8557 655-7101

#### Bratton's APPLIANCE MARTS

222 S. Oakes 653-8811 The Village 949 2891

#### Accurate Sound COLOR TV AND STEREO CENTER

2.S. Fillmore 949-6163