

Filing Deadlines Are Set For Local Elections

Filing dates for the April 4 election of Eldorado city council, mayor, Schleicher County school board, and water district have been announced. Carolyn Mayo, city secretary, began taking applications February 3 for two city councilmen and mayor positions. The deadline date for filing is March 4. Councilmen whose terms are expiring are W.E. "Billy" McCravy and Wayne McGinnes, who completed the term of Frank Williams. The incumbent mayor is Jimmy Doyle.

To qualify for the two-year term of councilman a person must live in the Eldorado city limits for six months or more and one year or more for mayor, who also serves a two-year term.

All applications must be made at City Hall with Mrs. Mayo.

Mrs. Ruby 'Cookie' Heffernan has filed to run for councilman.

County residents will be voting on three Schleicher County School Board positions during the election. Terms of Dr. J.B. Brame, Richard Kent, and Frankie Hardy will expire

this year. Filing date for the positions began February 3 and will end March 4. Those interested may apply at the school superintendent's office in the new administration building, during office hours, 8 a.m. to 4 p.m.

Those interested in filing for the school board must be a state resident for one year or more, a county resident for six months or more and 18 years old or older. The terms are for three years.

Absentee voting will be held in the county clerk's office in the courthouse March 16-31.

No one has filed at press time. Filing began February 3 for the water district, also. Terms expiring this year are the director-at-large, director for precinct one and director for precinct four. Those interested in running for these positions may file with Helen Bebee, county clerk until March 4.

The director-at-large is a six-year term and the precinct directors are four-year terms. There are no special requirements for the positions, just

an interest in conserving the water in the area.

Mort Mertz is presently the director for precinct one is Ray W. Willoughby, Jr., who was appointed to fill a vacancy; precinct two director is Robert W. Page; Steve Sykes is precinct three director; director for precinct four is Earl Lloyd.

At press time no one has filed for the positions.

Filing dates for the hospital board election, also to be held April 4, have not been announced.



VALENTINE SWEETHEARTS--Rebecca Adame, employee at the Schleicher County Nursing Home, crowns Maria Hernandez who was chosen Valentine Queen at the home. Watching on is Zeral Holland who was chosen Valentine King. Miss Adame was chosen employee sweetheart by the patients. The three were

honored during a Valentine party held in the home Wednesday afternoon and hosted by the hospital auxiliary. Runnersup in the contest were Richard Cheatham and Lillian Crosby. Additional pictures are on page 3.

Willoughby Named To Tax Board

Ray Willoughby, Jr. was selected by the Schleicher County Appraisal District board of directors to replace Bob Bradley during the meeting January 30.

During the meeting the board of directors, Billy Williams, chairman; Floyd Butler, secretary; Ruben Minor, Mike Moore, and Willoughby, authorized the purchase of a typewriter and other office equipment for the appraisal district office, located on the third floor of the courthouse.

It was agreed by the board to pay Ray Lewis Ballew \$500 for past services rendered and set his salary as chief appraiser at \$1750 a month. They agreed to pay mileage of 22 cents a mile with the recipient providing the vehicle and gas.

The board chose a group health plan with the Texas Association of Assessors Office and discussed payment to Thomas Y. Pickett and Company, Inc.

Phillip McCormick will begin re-appraisal of property in the next two weeks, starting with the city. McCormick estimates it will take approximately 30 days to re-appraise the entire city limits. The rural area will then be appraised.

In the next two weeks Ballew will be mailing residential homestead exception and agriculture use evaluation forms along with a letter explaining the forms and the appraisal district office to all county residents. The forms are to be returned to Ballew's office by May 31. There will be only one rendition form mailed for this year.

After all the county property has been re-appraised the property owner will be notified by mail of the new appraisal value compared to the old value.

The board is still in the process of hiring a secretary for the appraisal office.

County Court Accepts Appliance, Office Bids

Schleicher County Commissioners accepted Kuntz Appliance of San Angelo bid of \$3299 for kitchen appliances for the new law enforcement center during their regular meeting Monday. There will be a minimal installation charge, also.

Bids were accepted from Allen Young Office Machines for two Remington typewriters and Halcomb Blanton, P & M Office Supplies, and Office Products of San Angelo for office furniture and filing cabinets for the center.

Clay Burlison, county roads superintendent, met with the court to discuss the purchase of a new steam cleaner for the county barn. The commissioners are calling for

bids on steam cleaners for March 9 at 10 a.m.

The commissioners discussed the purchase of a push lawn mower for the cemetery and a commercial riding lawn mower for the courthouse. Bids will be called for March 9 at 9 a.m.

It was agreed by the court to accept bids for one new dump truck March 9 at 11 a.m.

Templeton Construction Company of San Angelo received the job of re-doing the courthouse sidewalks with a bid of approximately \$8600 dollars.

Next commissioners meeting will be Monday, February 23 at 9 a.m.

Eldorado Jamboree Adds New Feature To Monthly Meetings

The Eldorado Jamboree Committee has begun a new feature to local jamborees, held the second Saturday of each month to promote attendance at the monthly events. They have begun to name a musician of the month.

They will be naming a musician of the month before each jamboree. The first honoree is B.L. Kendrick of San Angelo.

Kendrick, whose wife accompanies him often on the piano, was born March 22, 1910 in Eastland County. At the age of 14, he began to play the violin. He and his father, who played the guitar, began playing for country dances.

The family moved to Cisco in 1924 and continued to entertain at various

home style musicals and dances. He became interested in the "new"

music about 1926. Becoming familiar with saxophones and clarinets, he laid aside his fiddle to play tunes like "Five Feet Two" and the "Charleston," instead of "Ragtime Anne" and "Soldier's Joy."

In 1932, he was playing saxophones and clarinet with Blackie Simmons and His Blue Jackets over radio station KRLD in Dallas. After a season with the band, he returned home and persuaded his father and two brothers to organize their own radio band. They got a job playing on station KNEL in Brady. They then played for a station in Pecos and Kendrick became musical director.

The family band became the Skyrockets and in a few short years

recorded many songs and tunes for RCA Victor and Decca Records.

Boy Scouts Going Strong

Eldorado has had a strong Boy Scout program for many years, from the Cub Scouts through the Webelos and upper levels, adult leadership is excellent. Yet the young men are encouraged to experience leadership themselves by helping each other as they earn badges and achieve common goals.

Eldorado Boy Scouts are outdoor oriented in the "high adventure" activities. Among these are overnight and weekend campouts, summer camps and the annual national jamboree.

The boys grow in maturity and citizenship through the challenges of the program which the adults are responsible for providing. These leaders and many parents have contributed their time unselfishly to make Boy Scouts responsible citizens of tomorrow.

Present Boy Scout leaders are Lynn Meador, scout master; Herman Walker, assistant scout master; David Doran, junior assistant scout master and Clint Bumgardner, senior patrol leader.

Rev. Ron Sutto is leader of the large and active group of Webelos Scouts which are boys in the age group above Cubs.

Johnny Griffin is the coordinator for Cub Scouts with dedicated leaders over each age group.

The local scouts are observing Boy Scout Week this week in conjunction with boy scouts all over the nation. They will have their local Blue and Gold Banquet Feb. 28 in the Memorial Building.



LIBRARY WORKSHOP--Ada Howard, coordinator for the Big Country Library System in Abilene, explains yearly reports to representatives of several area libraries. They are from left to right, Mrs. Howard,

Madge Weatherby of Big Lake, Don Nelson and Evelyn Nelson of Eden, Sandra Cooper of Sonora and Maudie Bassinger, assistant librarian in Eldorado.

Library Workshop Held Here

An area library workshop was hosted by the Eldorado Library Board last Thursday at the Memorial building. During the meeting, two representatives of the Big Country Library System in Abilene met with librarians from five area towns to discuss preparing annual reports.

Ada Howard, coordinator for the library system and Beatrice Grant explained to nine attending persons how to obtain the necessary information for the reports and how to fill them out.

Representing area libraries were Sandra Cooper and Lois Duncan of Sonora, Evelyn and Don Nelson of Eden, Eda Wueming of Mertzon, Madge Weatherby of Reagan County and Ruth Baker, Gladys Gunn and Maudie Bassinger of Eldorado.

They were treated to a salad luncheon by board members Florence Williams, Grace White, W.R. Bearce, Nelve Martin, Dale Preston, Ruth Baker, Jewel Hodges, Rev. Ron Sutto, Georgeann Edmiston and Mrs. Bassinger.

Public libraries are by law required to submit annual reports on the condition of the library, its operation and financial and book statements.

This was one of five meetings the two Abilene women were conducting to meet librarians in the Big Country area to help them fill out their reports. The information from the reports will be used to compile two

manuals and a directory.

Mrs. Howard praised the Eldorado library saying "it has made a great deal of progress in the past year and Eldorado is lucky to have an interested and energetic person as Mrs. Gunn as its librarian."

She noted that Mrs. Gunn has several sources of research in the local library and was in contact with the Big Country library system to get additional information research date when needed.

The Big Country library System is

funded by an annual contract between the city of Abilene and the Texas State Library to provide better services and resources for everyone. There are 40 libraries in 32 counties served by the system.

By being members of the system, the local library can borrow books, films, filmstrips and other resources.

The system also helps the local library with professional and technical assistance with budgeting, book selection, cataloging and other details of library work.

Association Plans New Office Here

The Heart of Texas Savings and Loan Association announced this week that plans have been finalized

Specializing in home loans, the association reported assets in 1980 as \$38,682,505.02. In a newsletter to stockholders and customers, the association

In a newsletter to stockholders and customers, the association reported total assets at \$38,682,505. It also reported that savings in the company grew from \$17.7 million to \$32.5 million or an increase of 84 percent over 1979.

for the construction of a new branch office building where the old Gulf Service Station is now.

The announcement was made by John Sellman, who said the old station would be cleared and a new modern brick building would be built, with construction to be completed in about three months.

The association's home office is located in San Saba with branch offices in Ballinger, Robert Lee, Sonora, Big Lake, Onion Creek and Oak Hill (both close to Austin), San Angelo and Winter.

**Prissy Paxton
Income Tax Service**
14W. Gillis
853-2650
9 to 5 Mon.-Fri.

Poetry Contest Set

A \$1,000 grand prize will be awarded in the Special Poetry Competition sponsored by World of Poetry, a quarterly newsletter for poets.

Poems of all styles and on any subject are eligible to compete for the grand prize of for 49 other cash or merchandise awards, total-

ing over \$10,000.00. Says Contest Chairman, Joseph Mellon, "We are encouraging poetic talent of every kind, and expect our contest to produce exciting discoveries."

Rules and official entry forms are available from the World of Poetry, 2431 Stockton, Dept. N, Sacramento, California 95817.



ELDORADO CUB SCOUTS--These are members of Cub Scout Den 1. On the front row are David Nolen, Michael Heffernan, Shane Church and Scotty Schrier. On the back row are Ronnie Sutto, Ward Evans, Jay Cruz, Jeffery Patton, Michael Kotsch and Jesse Barajas.

**Bean Supper,
Bingo Set**

The Eldorado chapter of Beta Sigma Phi is hosting a bean supper and bingo Feb. 18 in the Memorial Building. The supper which is \$1.50 for all you can eat is at 6:30 p.m. Bingo begins at 7:30 p.m. A blackout game will be played for a black and white television.

**Bass Club
Will Meet**

The Good Times Bass Club will have its first meeting February 17, 7 p.m. at the Eldorado Restaurant meeting room. All interested people are urged to attend.

*Mini*Mini-Spanish Lesson VII*
Household Items
By Paul Peña

<u>English</u>	<u>Spanish</u>	<u>Pronunciation</u>
table	la mesa	may-suh
chair	la silla	see-yuh
bed	la cama	koh-moh
pillow	la almohada	ah-no-ah-dah
mattress	el colchon	koh-l-choh
sheets	las sabanas	seh-b-ah-nahs
blanket	la frazada	fruh-ah-dah
the lamp	la lampara	lah-ah-pah-rah
the television	la televisora	tel-ah-vee-sorh-ah
the clock	el reloj	ray-loh

Match the Spanish word to the English word....

<u>English</u>	<u>Spanish</u>
person	problema
music	calma or calma
problem	persona
calm	musica
classe	class

Match the Spanish ending 'ad words to the English ending 'y words....

<u>English</u>	<u>Spanish</u>
conversation	informacion
emotion	emocion
information	conversacion
disposition	

Match the Spanish ending 'ad words to the English ending 'y words....

<u>English</u>	<u>Spanish</u>
city	formalidad
society	oportunidad
popularity	ciudad
formality	sociedad
opportunity	calidad
quality	popularidad

**Girl Scouts
Make Phone Lists**

At their meeting last week, 14 of the members of Brownie troop 71 made emergency telephone number lists to keep near their home phones. They also discussed and practiced giving the information that would be needed in case of an emergency such as who, what, and where.

The 14 members of Brownie troop 72 did excellent work on their project last Tuesday. Each of these third graders made a sewing kit with a vinyl case and all the equipment necessary for replacing a button, snap, or to do a little mending.

Eldorado Troop 150 met at the Memorial Building Sunday, January 25. At 1 pm, ten scouts and leaders Ilse Williams, and Sherry Lux left Eldorado to go skating in San Angelo. Those attending the party were Amy Henderson, Amy Evans, Katie Hardy, Dena

Lloyd, Staci Dockal, Ermelinda Rodriguez, Lisa Romero, Renee Hatten, Teresa Lux and Mina Fimbres.

Wednesday, at the regular meeting, Mia Kuikko of Finland visited the troop and gave the program. She made a chocolate almond cream cake from her native country's recipe book and gave a short description of her country and her favorite activities. Later, Ilse Williams assisted Mia in teaching the girls the song, "Are You Sleeping" in Finnish and told the troop about the Finnish gnomes.

Girl Scout Junior troop 225 was honored by two guests at their meeting last week. Carolyn Bland, a former Girl Scout leader and camp counselor taught some songs and Mrs. Walter Donaldson also visited. She demonstrated how to macrame and discussed macrame projects the



ELDORADO WEBELOS--These are members of Webeles Den 1. On the front row are Skeeter Robinson and Jon Bumgardner. On the back row are Rev. Ron Sutto, leader, Carter Edmlston, Trey Preston and Marco Sandante. Not pictured are Richard Adame, Cody Engdahl, Donny Fuentes, and Stan Meador and assistant leader Christy Meador.

CHURCH DIRECTORY

- CHURCH OF JESUS CHRIST OF LATTER DAY SAINTS**
Bishop: Bryan Galloway
San Angelo 658-4797
2817 Christoval Rd.
Joe Moran-Ozona-392-3453
Girl Scout Building Corner of Water&Pecan in Sonora
Sunday School 10 a.m.
Priesthood 10 a.m.
Relief Society 10 a.m.
Sacrament Meeting 11 a.m.
Visitors Welcome
2nd & 4th Sundays Sonora
1st & 3rd Sundays San Angelo.
- OUR LADY OF GAUDALUPE CHURCH**
Rev. Mark J. Woodruff
Pastor 853-2663
Saturday 7:00p.m.
Sunday 8:00a.m. (Spanish)
9:30a.m. (English)
- FIRST CHRISTIAN CHURCH**
Dale Lipsett, Minister
Sunday School 10:15 a.m.
Worship 11:00 a.m.
Wed. Bible Study 7:00 p.m.
853-2247
- WESTSIDE CHURCH OF CHRIST**
HWY. 277
Sun.Morn.Serv. 10:30a.m.
Sun.Eve.Serv. 6:00p.m.
Wed. Eve. Serv. 7:30p.m.
- PRIMITIVE BAPTIST CHURCH**
Menard Hwy
Elder Freddy Boen, Pastor
Services each 2nd & 4th Sunday at 10:30a.m. and 2:30p.m.
Also on Saturday night Before 2 and 4th Sun. Meeting at 7:00p.m.
- ST. MARY'S EPISCOPAL CHURCH**
Rev. Lea Roy Aldwell
Pelt St.&McWhorter Ave.
387-2617 (Sonora, Tex.)
Sunday Morning Worship and Holy Communion
- FIRST PRESBYTERIAN CHURCH**
Rev. Ronald J. Sutto
7 N. Cottonwood.
Sunday School 9:45 a.m.
Morning Worship 11 a.m.
Fellowship Time 10:30 a.m.
Visitors Welcome
- FIRST BAPTIST CHURCH**
Oak and Gillis
Sunday School 9:45 a.m.
Morning Worship 11 a.m.
Adult Evening Bible Study 7:00 p.m.
Wed. Prayer Service 7:30
- PRIMERA IGLESIA BAUTISTA**
Rev. E.L. Flores, Pastor
El Paso and Concho St.
Sunday School 9:45 a.m.
Morn. Worship 11:00 a.m.
6-7 p.m. Training Union
7-8 p.m. Evening Worship
Wed. 3 p.m. Sunbeams
7 p.m. Prayer Services
- ROCK CHURCH OF CHRIST**
Dale Huff, Evangelist
708 Lee St.
Sunday Bible Class 10 a.m.
Worship Service 11 a.m.
Evening Worship 6 p.m.
Wed. Bible Class 7:30 p.m.
- FIRST UNITED METHODIST CHURCH**
Rev. John A. Robinson
Hwy 277 across from Courthouse
853-2721 853-3010
Church School 9:50 a.m.
Morn. Worship 10:50 a.m.
Youth Fellowship 7:00 p.m.
Wednesday 7:30
All are welcome.

Love Is Top Of List

by Rev. Don Williford

The driving concern in every pastor's heart must be that of leading Christians to grow. There are many areas of growth, as the front page of our newsletter indicates. There is, however, one area of growth which is at the top of the list because it has a direct bearing on growth in other areas. This important area of growth which is at the top of the list because it has a direct bearing on growth in other areas. This important area of growth is love.

The apostle John is often referred to as the loving disciple, and not without just cause. Listen again to his words. "Beloved, let us love one another for love is

of God; and every one that loveth is born of God, and knoweth God. He that loveth not knoweth not God; for God is love." I John 4:7-8. This passage expresses the fundamental place of love in the Christian's life. If our lives are growing in love, then we will be growing in ministry, service, faithfulness, stewardship, etc. Love is the basic evidence that one is a Christian. It is a ready sign of Christ's work in our lives.

Let us all make a very special effort to express Christ-like love in every situation. Let us bear witness to Christ rather than destroy that witness. Let us make every word or act one of love. Let us think before we speak or act.

**Our Church Feature Is Sponsored
By The Following Merchants
Who Urge You To
Attend The Church Of Your Choice This Week!**

WESTERMAN DRUG Cecil Westerman Would Like To Be Your Pharmacist 853-2226	SOUTHWEST TEXAS ELECTRIC CO-OP, INC. Owned by Those We Serve Eldorado, Texas 853-2544
EL DORADO RESTAURANT Steaks-Seafood & Mexican Foods Catering Service Available 853-2818	TREY TRUCKING All Kinds Of Oilfield Trucking Eldorado, Texas 853-2186
BUTLER SUPPLY COMPANY Oilman's Friend East St. Eldorado, Texas Day 853-2503 Night 853-2004	COMMERCIAL RESTAURANT Where Friends Meet To Eat Glasscock & Plum Sonora, Texas 387-9928
FOOD CENTER Herbert & Lois Fields, Owners Les Robertson Manager Sonora, Texas 387-3438	R & H WELL SERVICE, INC. Complete Oilfield Service Eldorado, Texas 853-2003

Holley House
"For the Unique and Creative"
Eldorado, Texas 853-2763

HERSHEL'S FOODWAY OF SONORA

SONIC DRIVE-INN OF SONORA
Hwy. 277 North
Sonora, Texas 387-5292

THE WESTERN COMPANY
Pacesetters in the Oil & Gas Industry
Eldorado, Texas

Schleicher County Leader
Interested persons may submit original church features anytime. 853-2032

POLE BARN
COMMERCIAL AND FARM BUILDINGS
DAVIS CONSTRUCTION CO.
Buildings — Pole Buildings — Warehouses
Boat Storage — Barns
Phone (512) 441-1577-Austin, Texas

Schleicher County Leader
Published Weekly on Thursdays
Second Class Postage Paid at Eldorado, Texas
Phone 853-2032 P.O. Box 782, Eldorado Texas
Any erroneous reflection upon the character or standing of any person or firm appearing in this publication will be gladly and promptly corrected upon the calling the attention of the management to the article in question.
NELL EDMISTON.....EDITOR
SHIRLEY OVERSTREET...ADVERTISING MANAGER
Display advertising open rate is \$1.41 per column inch. Classified rate is 10 cents per word, per insertion, \$2.00 minimum charge. Classified display is \$2.00 per column inch.
Notices of entertainment, where admission is charged, notices of events of a fund-raising nature, cards of thanks, resolutions of respect, submitted poetry, and all such matters NOT NEWS will be for at the normal advertising earned rates. Volume and frequency rates are available upon written request to the publisher or advertising sales manager.
Yearly subscription rate is \$7.50 in county and 8.50 outside Schleicher County.

TEXAS PRESS ASSOCIATION
MEMBER 1980



Lillian Crosby



Richard Cheatham

Valentine's Party Scheduled For Senior Citizens

Schleicher County Home Demonstration Clubs, under the direction of county extension agent, Nancy Lester, are giving a Senior Citizens Valentines

Party February 13 at 2 p.m. in the Memorial Building.

Planned for the occasion are puzzles, games and a funny skit.

Mary's Gifts

Silk Flowers-Gifts
Crafts

R & H Trailer Park

853-2597

A Gift of Health

We offer modern gymnasium, exercise equipment and techniques for your recreation and good health

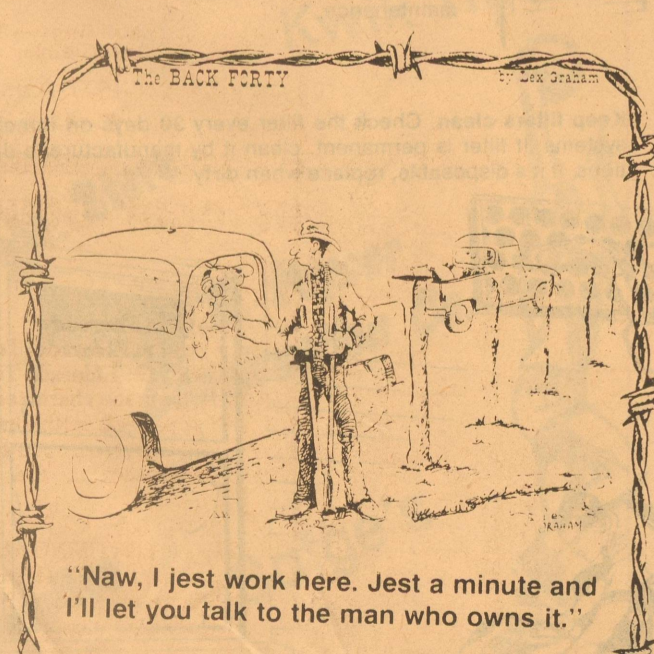


Shym Gym Club

412N St. 853-2058

The First National Bank of Eldorado

"Serving the complete Banking Needs of Eldorado and Schleicher County Since 1907"



"Naw, I jest work here. Jest a minute and I'll let you talk to the man who owns it."

We have given orders to our personnel to give you the very best possible service when you come in to open a checking account with us. You'll like our way of doing business.

DRIVE-UP BANKING **FDIC**

In Those Days

Five Years Ago--Carrie Blakeway celebrated her 90th birthday.

Pete Peters was in a San Angelo hospital where he had blood transfusions for stomach ulcers.

Rev. Keith Wyatt was to be head of the Cystic Fibrosis drive.

A former Eldorado resident, Mrs. Roy Williamson died after suffering a stroke in Fort Worth.

12 Years Ago--Tom Carroll had surgery in Andrews.

J.C. Whiteley was in a Brady hospital.

Chamber of Commerce banquet was set for Feb. 28 with the Jaycees installing their officers.

Miss Lillian Kroeger was pictured as the first hospital administrator of the new Schleicher County Medical Center. Open house for the new center was being planned.

Members of the hospital board were Don McCormick, Pete Peters, J.P. Enochs, T.R. Spence, A.G. McCormack, Fred Gunstead and Ronnie Mittel.

A story was printed in the Eldorado Success honoring Mrs. Sybil Kinser, a LVN, who helped many people who were sick here when there was no doctor to call in case of an emergency.

35 Years Ago--Brigadier Gen. Alvin R. Luedcke, former Eldorado resident, was one of four American officers decorated by the Chinese government.

Southwest Texas Electric Cooperative was energizing two lines of electricity on a nine-mile strip northeast of the city. Customers were Roy Davidson, W.F. Meador, T.W. Johnson,

J.L. McElroy, Robert Milligan and Mrs. Joe Tisdale.

Mr. and Mrs. Carroll White were moving to the former John Bates ranch, which they had recently purchased.

Arthur Mund Jr. walked off with most of the honors at the annual 4-H livestock show held here.

A formal opening for the Frozen Foods Company of Eldorado, owned by Jack Hext and John B. Stribling was being announced.

Women Win In Bridge

Jo Nell Johnson, Sonora and Helen Bebee won first place in Duplicate Bridge last week. Second place winners were Mary Lois Brown, San Angelo and Anne Parker, Ozona.

Sammy Espy and Ethel Olson; Lottie Puckett and Fred Adkins, Sonora, tied for third.

Fourth place winners were Evelyn Wimer and Bernice Sweatt.

Auxiliary Hosts Party, Plans Sale

The Hospital Auxiliary hosted a valentine party for residents of the Schleicher County Nursing home Wednesday afternoon in the center's dining room. Crowned king and queen were Maria Hernandez and Zeral Holland. Rebecca Adame was chosen employee sweetheart by the nursing home residents.

Runners up were Lillian Crosby and Richard Cheatham.

Final plans for the party were made during a meeting of the auxiliary Jan. 5. Also during the meeting,

the members planned a patio sale for March 23-24 in the Memorial Building. Anyone who has anything they would like to give away or donate to the sale

may do so by bringing them to the Memorial Building on March 23. Any donations will be greatly appreciated.

Mary Barrow, a representative of the American

Cancer Society, presented a program on work being conducted by the society. She explained about available materials and how self tests can be made to help determine signs of cancer.

Baptist Memorials Are Given

Memorials given to the First Baptist Church recently include those for:

Mae Mercer-- Mr. and Mrs. Robert McWhorter.

Wayne Estes--Mr. and Mrs. Earl Yates, Mr. and Mrs. Wendel Briggs, Mrs. Edgar Spencer.

Frank Barton--Mr. and Mrs. Earl Yates, Mr. and Mrs. Ben Hext.

Boyce Estes--Mr. and Mrs. Robert McWhorter, Mrs. Roy Davidson, Mrs. Edgar Spencer, Mr. and Mrs. Ben Hext.

Mrs. Vaughtie Callison--Dorcas S.S. Class, Mr. and Mrs. Leon Stricklan, Mr. and Mrs. Bill Williams, Mrs. Roy Davidson, Mrs. Edgar Spencer, Mr. and Mrs. Ben Hext.

Vernon Carroll--Mr. and Mrs. Robert McWhorter, Mr. and Mrs. J. H. Mace, Mr. and Mrs. Bill Williams, Mrs. Roy Davidson, Mrs. Edgar Spencer, Mr. and Mrs. George Williams.

H.A. Belk--D.T. Yates, Mr. and Mrs. Weldon Davis, Mr. and Mrs. J.H. Mace, Mrs. Roy Davidson, Mrs. Edgar Spencer, Mrs. Charles Wimer, Mr. and Mrs. Ronnie Mittel.

Fred Riley--Mr. and Mrs. Ronnie Mittel.

We wish to welcome everybody to the opening of our store Saturday, Feb. 14th.

We will be offering Hot Tamales daily and Bar-B-Q on weekends plus Homemade Burritos every day of the week.

Also we will be offering Eldorado a much needed service which is a Coin-Op Laundramat. Business hours for the Laundramat will be the same as the store's from 6a.m. to 12p.m. daily.

*Your Business will be appreciated
Bautista's Grocery No.2
Rudy & Vicky Bautista Owners
and Caroline Zamaron, employee*

It's  Be My

Valentine's Day

Diamond Rings

Necklaces

Bracelets

Canister Sets

Ice Buckets

Watches

Gold Pocket Knives

Baskets



Gift Certificates

Rings

Fenton Glassware

Place Mats

China

Pottery

Cake Deco Supplies

Bar Sets

Hearts & Flowers Bouquet.
Valentine's Day is Saturday, February 14.

A beautiful bouquet created especially for the day. Call or visit us soon.



You'll be sure to capture the heart of your special valentine.

There will be Plenty of Roses.

Cathy's

Hwy 277  Eldorado

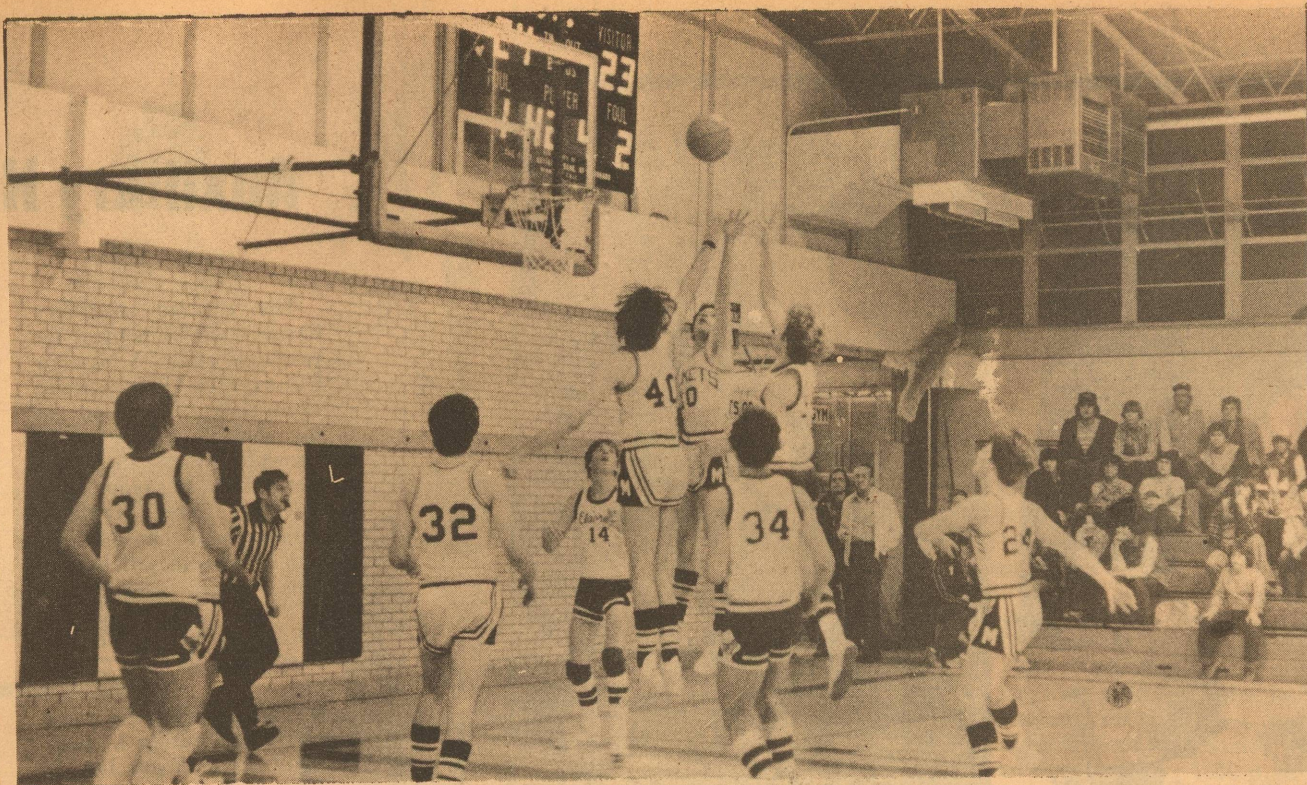
**Gifts for
Valentines Day
Baskets**

Bake Ware (Pottery)

We also do custom Framing

holley house

Hwy 277 853-2763

GOOD BLOCK--Two Menard Yellowjackets block a shot from an Eldorado player when they tangled with the Eagles last week. Their efforts, however, were not

good enough, as the Eagles trounced them 46-40. (Photo by Matthew Nixon)

School Menu

Breakfast
1/2 pt. Milk With Each Breakfast.
Monday Feb. 16th
Peaches Pancakes-Syrup
Tuesday Feb. 17th
Apricot Halves
Buttered Rice-Toast
Wednesday Feb. 18th
Orange Juice
Hot Biscuits-Sausage-Jelly
Thursday Feb. 19th
Apple Juice
Cinnamon Toast
Friday Feb. 20th
Pears
Doughnuts

All Lunches Served With Hot Rolls, Milk & Butter.

Lunch
Monday Feb. 16th
Meat & Macaroni Casserole
Golden Hominy
Miced Green
Diced Beets
White Cake/Icing
Tuesday Feb. 17th
Barbecued Franks
Pinto Beans
Potato Salad
Dill Pickle Strips
Apple Pie

Wednesday Feb. 18th
Turkey-A-La-King
Whole Kernel Corn
Peach Halves
Chocolate Chip Cookies
Thursday Feb. 19th
Fried Chicken & Gravy
Creamed Potatoes
English Peas
Orange Congealed Salad
Harvest Cake/Icing
Friday Feb. 20th
Sloppy Joes
French Fries
Fruit Cup
Rice Krispie Cookies

*Remember
your Valentine
on Valentines Day*

*With
Silk Flowers
From*

Dee's Floral Design

Dora Mankin - Designer
No Set Working Hours
mile on Big Lake Hwy. 853-2152



School News

by EHS Students

By Sherri Walling
Sophomore Mitzi Mittel led the EHS team by placing second in last week's UIL practice meet in McCamey.
Mitzi received a silver medal for calculator applications. Jennie Day and Brad Thomas placed fourth in newswriting and headlines, respectively. Mark Wallis placed fifth in science.
Other entries were Beckie Simmons, Lori Patton and Sandy Willeke, typing; Mitzi Mittel and

Brad Thomas, science; Mark Wallis, calculator; Margaret Turner, calculator, and science; Stephanie Thomas, number sense; Julie Belman and Melissa Layman, spelling; Jennie Day, features; Sherri Walling, newswriting; Beckie Simmons and Sandy Willeke, editorials; and Lori Patton and Sandy Willeke, ready writing.

Practice meets are held by several schools in the area to help students get ready for district competition in the various events.

Varsity Boys Triumph Twice

The varsity Eagles flew high last week to first scalp Ozona 59-49 and slap Menard 46-40. Mike Griffith, who was named Eagle of the week, lead the scoring in the Ozona game with 23 points. Following him in points were Wesley Wilson with 17 points, Keith McCormack with 12, Greg Davidson with six and Brad Thomas with one.

In the battle against Menard, McCormack lead the scoring with 14 points, followed by Wilson with ten, Griffith with nine, Davidson with nine and Eddie Montalvo with four.

The junior varsity also came out on top winning against Menard 25-18 and against Ozona 44-29.

In the Ozona game, Jeff Harlin was the top scorer with 13 points. Danny Pina contributed 11 points, Craig Griffin had six and Floyd Fay, Ashley Niblett and Jamie Woodward scored two points each.
Griffin lead the JV Eagles in the game against Menard with 11 points, followed by Harlin with six, Lamar Hardee with four and Fay with four.

IT'S CLASS-ICS
Slacks JS Shirts
Blazers Separates



Peggy's

Hwy 277

853-3085

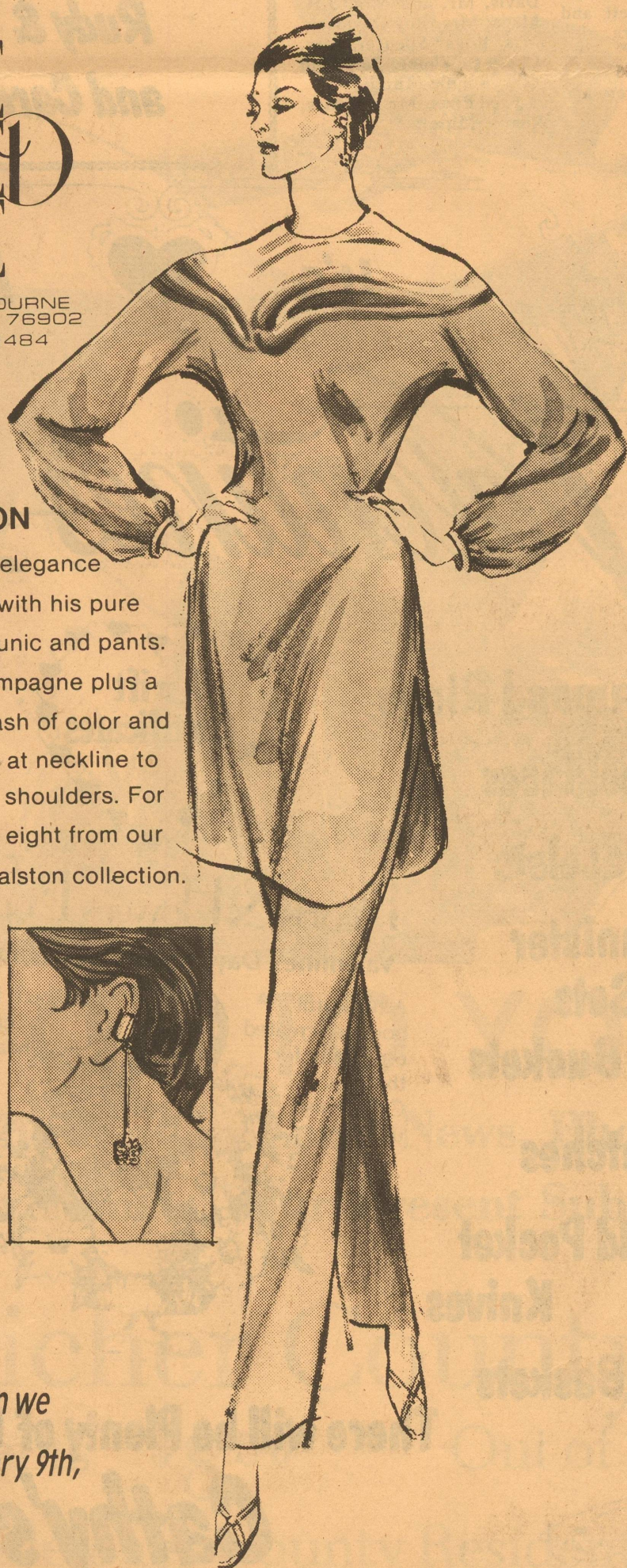
GPA Sets Meeting

The regular quarterly meeting of the Gas Processors Association, Permian Basin Chapter, will be held February 12, in Ft. Stockton, Texas. Meeting place will be the new Exhibition Hall at the Airport on the Pecos Highway.

There will be a golf match during the day, followed by a social hour from 6 p.m. until 7 p.m.

THE GILDED CAGE

118 SOUTH CHADBOURNE
SAN ANGELO, TEXAS 76902
PHONE 915 653-1484



HALSTON

creates understated elegance for spring with his pure silk tunic and pants. Pale champagne plus a flash of color and white at neckline to the shoulders. For size eight from our Halston collection.

MAGGIE GRAHAM'S

gold ear cuff with delicate butterfly pendant adds just the right compliment for any occasion.

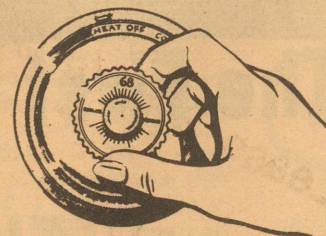


Do visit us when we open on February 9th, in San Angelo!

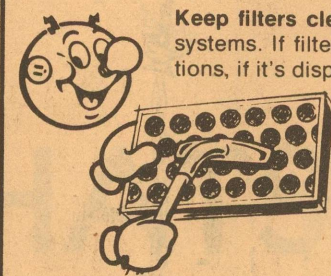
Energy Saving tips on Electric Heating.



Check your thermostat setting. Recommended temperature setting for winter heating is 68°. Remember, the lower you set the thermostat in the winter the lower your energy cost.



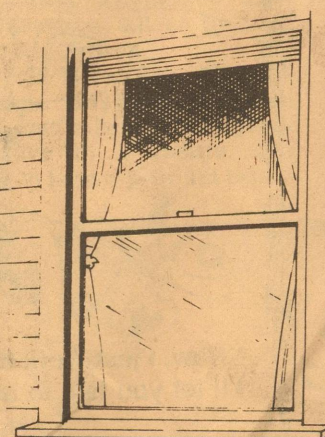
Have your heating system checked regularly! Proper servicing is good preventive maintenance.



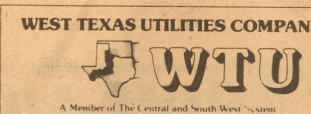
Keep filters clean. Check the filter every 30 days on forced-air systems. If filter is permanent, clean it by manufacturer's directions, if it's disposable, replace when dirty.



Have your home properly insulated! Adequate home insulation keeps the warmth in, cuts energy use... can pay for itself by lowering heating (and cooling) costs.



Use the warmth of the sunshine! On sunny days open the drapes. The sun shining through the glass will supply additional heat at no cost.



Remember, Reddy Supplies the Energy, only you can use it wisely!

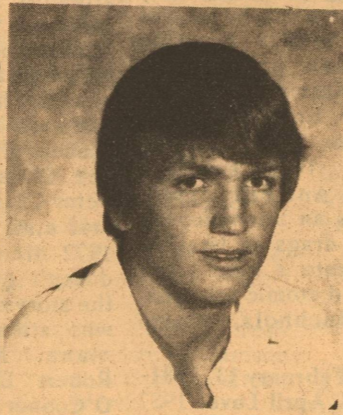
- BETTY HANSON • MARIAN MAGED • SERGE NANCEL • HANAE MORI • RON LEAL • LEAMOND DEAN
- MISS O • POSH • HALSTON SPORT • KOOS VAN DEN AKKER • TRIGERE SPORT • FIORUCCI
- MICHAEL VOLLBRACHT • CHRISTIAN RUPERT • THAI LINE • HANSONI • LES MUST DE CARTIER • HOLLY'S HARP • J.L. SPORT BY KASPER
- PAULINE TRIGERE • CACHAREL • JOAN LESLIE BY KASPER • ADRI • BILL TICE • GIORGIO SANT'ANGELO SPORT • ADELE SIMPSON
- WILLI WEAR • HERMAN GEIST • MAGGY LONDON • BLASSPORT • DON SAYRES • ONE MORE • P.J. WALSH • JUDY HORNBY • CHRISTIAN DIOR SPORT
- GEOFREY BEENE • BEENE BAG • ABE SCHRADER • HALSTON • RICHARD ASSATLY • CIAO LTD. • MARISA CHRISTINA • NAT KAPLAN • LOUIS FERRAUD
- BILL ATKINSON • ANNE KLEIN • ULTIMATE KNIT • JERRY SILVERMAN • MOLLIE PARNIS STUDIO
- PANASIA • OSCAR DE LA RENTA • ALBERT CAPRARO • FRANK MASANDREA • GIORGIO SANT'ANGELO

ELDORADO EAGLES & EAGLETES 1980-81 Basketball



EAGLE DAIRY MART

Eagle Of 853-2125 Eaglette Of
The Week John Callison-Owner The Week



Mike Griffith

**Boiled
Shrimp**
French Fries
Hush Puppies
\$1.95
Plus Tax



Kara Homer

All You Can Eat!

No Substitutes

Friday Only

DATE	OPPONENT	PLACE	TIME	TEAMS					
				BOYS			GIRLS		
				V.	J.V.	FR.	V.	J.V.	FR.
Nov 15	Sonora	There	5:00				x	x	x
Nov 18	Rankin	Here	6:30				x	x	
Nov 21	Sonora	Here	5:00		SCRIMMAGE			x	x
Nov 25	Rankin	There	5:00	x	x		x		
Dec 2	Iraan	There	5:00	x			x	x	
Dec 4-6	Sonora Tourney						x		
Dec 5	Brady	There	5:00	x	x	x			
Dec 9	Wall	Here	6:00				x	x	
Dec 9	Ozona	There	5:30		x	x			
Dec 11-13	Ozona Tourney			x					
Dec 11-13	Iraan Tourney						x		
Dec 16	Junction	There	6:00				x	x	
Dec 16	Ozona	Here	5:30		x	x			
Jan 6	Ozona	Here	4:00	x	x		x	x	
Jan 8-10	Eldorado Tourney						x		
Jan 9	Sonora	There	5:00	x	x	x			
Jan 13	Menard	There	5:00	x			x	x	
Jan 16	Reagan Co.	There	4:00	x	x		x	x	
Jan 20	Mason	Here	5:00	x	x		x		
Jan 22-24	Eldorado J.V. Tourney								x
Jan 27	Wall	There	4:00	x	x		x	x	
Jan 30	Junction	Here	4:00	x	x		x	x	
Feb 3	Ozona	There	5:00	x	x		x	x	
Feb 6	Menard	Here	5:00	x	x		x		
Feb 10	Reagan Co.	Here	4:00	x	x		x	x	
Feb 13	Mason	There	5:00	x			x		
Feb 20	Wall	Here	6:00	x	x				
Feb 24	Junction	There	6:00	x	x				

**Meador-Peters
Insurance
Agency**

Faull Const.

C.C. Lease Service Co.

Butler Supply Co., Inc.

McCalla's Dept. Store

C.H. Poyner
Construction Co.

Kwik Thrift

Kent's Automotive

Sofge's

Quadra Corp.
853-3004

Jack Halbert, Jr.
Butane, Propane & LPG

Eldorado Wool Co.

R & H Well Service, Inc.

Jerry's T.V. Service

L.R. Hanusch Water Well
Drilling & Service

Southwest Texas
Electric Co-op

**Northern
Natural
Gas**

holley house

For The Unique and Creative

Adobe Mini Mart
Whitten's
Liquid Feed

Eldorado Instrument and
Controls Co.

MEADOR Land Company

Food Center
Stores

First National Bank
of Eldorado

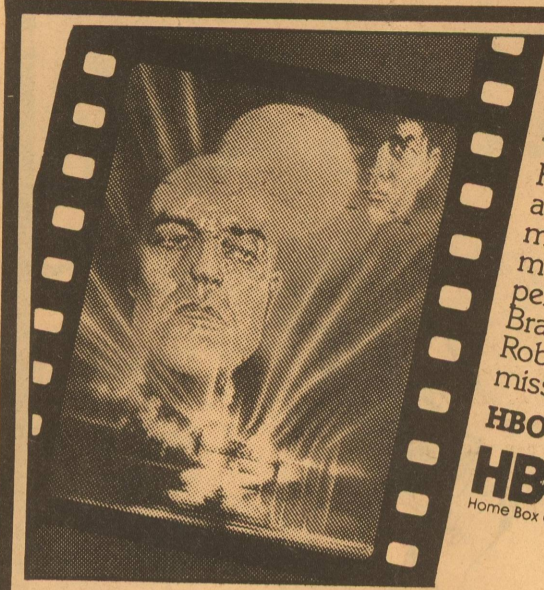


QUEEN FOR A DAY-Sarah Yates was crowned Valentine Queen during a salad luncheon and meeting of the XI Xi Chi chapter of Beta Sigma Phi sorority Monday night. Mrs Yates has been a member of the local sorority for two years and was voted Valentine Queen by all the members. This is an annual tradition for the chapter's members.

Bridal Selections for

Joy Corbell &
Forest Henderson

McCalla's
Downtown Eldorado



**NEXT WEEK ON HBO:
Apocalypse Now**

Francis Ford Coppola's award-winning Vietnam War masterpiece—uncut and commercial-free. With acclaimed performances by Marlon Brando, Martin Sheen and Robert Duval. A not-to-be-missed movie event.

HBO People Don't Miss Out.



Television Enterprises, Inc.

387-3344 or Ent. 67540

Food Program Is Planned

Schleicher County extension agent, Nancy Lester, will present a program on "Money-Saving Food Ideas" Thursday, February 19 at 2 p.m. in the Memorial Building auditorium.

The topics Nancy will be discussing are: buying meat according to the number of servings per pound; price comparison of various forms of food-frozen, fresh, canned, dried, shopping for specials, using store and generic brands when quality is comparable, using only the quality needed, using food extenders, making your own mixes and not wasting anything.

The program is open to anyone who is interested and would like to attend.

WTBS Movie Schedule

Thurs., February 12, 1981

9:00 a.m. **A Certain Smile.** 1958 romance drama. A young French girl gets a lesson in life and love from a handsome young man and a wealthy, middle aged gentleman-about-town. Rossano Brazzi, Joan Fontaine, Bradford Dillman.

12:00 Noon **The Desert Rats.** 1953 adventure drama. An excellent war film about a hard-driving English captain in command of an Australian division, who forces the desperate men to hold a key outpost against the North African blitzkrieg of World War II. Kirk Morris, Rosalba Neri.

10:45 **North to Alaska.** 1960 adventure comedy. A young prospector leaves for Seattle, promising his partner to bring back his fiancée. When he discovers that his friend's girl has already married another, he returns to Nome with a beautiful consolation prize. John Wayne, Stewart Granger, Capucine, Ernie Kovacs.

1:20 a.m. **That Man in Istanbul.** 1966 suspense comedy. An FBI agent, posing as an unemployed stripper, drags an Istanbul playboy into a hunt for a kidnapped atomic scientist. Horst Buchholz, Mario Adorf.

Friday, February 13, 1981
9:00 a.m. **April Love.** 1957

musical romance. A young man arrives on a farm in Kentucky and is immediately up to his blue jeans in romance and song. Pat Boone, Shirley Jones.

12:00 Noon **Return to Paradise.** 1953 romance drama. A man who lives on a South Sea island falls in love with a native girl. Gary Cooper, Roberta Haynes.

10:45 p.m. **The Comedy of Terrors.** 1963 horror comedy. A tiptoeing mortician who is in arrears on his rent takes it upon himself to 'create' his own customers. However, he meets with interference from his landlord, his wife, his henchmen and his senile father-in-law. Vincent Price, Peter Lorre, Boris Karloff.

12:40 a.m. **Scream and Scream Again.** 1970 sci-fi horror. A mad doctor attempts to create the 'perfect' human through multiple organ transplants. He keeps a 'bank' of people alive in a hospital to furnish parts as he needs them. Vincent Price, Christopher Lee, Christopher Matthews Peter Cushing.

Sat., February 14, 1981

7:30 a.m. **7th Cavalry.** 1956 western. A good plot and fast action as a cavalry unit returns to the scene of Custer's last stand, and a captain in Custer's unit is accused of cowardice. Randolph Scott, Barbara Hale.

11:00 a.m. **The Tingler.** 1959 horror. When a deaf mute is found frightened to death, a doctor is able to isolate the Tingler, an evil force which he believes exists in humans. Vincent Price, Judith Evelyn, Betsy Palmer, Neville Brand.

1:00 p.m. **Fury of Achilles.** 1962 spectacular. Achilles refuses to join Ulysses and Agamemnon when the Trojans attack the Greek encampment, but later leads them in a thrilling epic battle. Jacques Bergerac, Gordon Mitchell.

7:00 p.m. **The Bedford Incident.** 1965 drama. An American destroyer on patrol in the North Atlantic comes in direct contact with a submarine of a foreign power and finds itself in the center of a fateful controversy. Richard Widmark, Sidney Poitier, Martin Balsam.

12:30 a.m. **Foreign Intrigue** 1956 adventure mystery. A press agent discovers the mysterious past of a rich employer after his death. He finds intrigue, murder and romance. Robert Mitchum, Genevieve Page, Ingrid Tulean, Frederick O'Brady.

ed director and a brassy publicist. Betty Hutton, Victor Mature, June Havoc, William Demarest.

7:00 p.m. **Back Street.** 1961 drama. The lifelong love affair between a woman and a married man who are content to stay in the background and keep the situation a secret. Susan Hayward, Vera Miles, John Gavin.

10:45 p.m. **Come Fill the Cup.** 1951 drama. A newspaper man loses his job and his girl because of his drinking habit. He meets an ex-alcoholic who helps him back up the ladder of success. James Cagney, Phyllis Thaxter, Gig Young Raymond Massey.

1:15 a.m. **The Ugly American.** 1963 drama. The failure of a new American Ambassador to a Southern Asian country to understand differences in policy leads to personal and political disaster. Marlon Brando Eiji Okada, Arthur Hill.

Tuesday, February 17, 1981
9:00 a.m. **All the Way Home.** 1963 drama. Tennessee, 1915: A father suddenly killed in an accident, but life goes on. Most of the film is seen through the eyes of a boy, from his first bewilderment to the final realization about life and death. Jean Simmons, Robert Preston.

12:00 Noon **The Fuller Brush Girl.** 1950 comedy. A switchboard operator gets fired and becomes a Fuller Brush girl, which get her hilariously involved with a gang of smugglers. Lucille Ball, Eddie Albert.

7:00 p.m. **The Bravados.** 1958 biographical drama. The story of Diana Barrymore, daughter of the world renowned John Barrymore, who inherited fame, fortune and heart-drama. Based on the book by Diana Barrymore and Gerold Frank. Dorothy Malone, Errol Flynn, Efram Zimbalist, Jr., Martin Milner.

12:35 a.m. **Tempest.** 1959 adventure drama. 18th Century Russia: A soldier is transferred to a remote outpost, where he rescues a half-frozen traveler. Later, the rescued man, leading the rebel army, proclaims himself Czar. Van Heflin, Silvana Mangano, Viveca Lindfors, Agnes Moorehead.

3:05 a.m. **Lola.** 1971 drama. The story of a marriage between a 16 year-old girl and a 38 year-old American writer that doesn't work out due to lack of communication and meddling families. Charles Bronson, Susan George, Trevor Howard, Honor Blackman.

7:00 p.m. **Charlotte's Web.** 1972 musical cartoon. A beautiful spider helps a runt pig avoid the slaughterhouse, with the aid of a greedy rat and a stuttering goose. Voices of Debbie Reynolds, Paul Lynde, Henry Gibson and Agnes Moorehead.

1:30 a.m. **One Sunday Afternoon.** 1948 musical comedy. A dentist in the 1890's is jilted by a gold-digger, but eventually marries her friend. Dennis Morgan, Janis Paige, Don DeFore, Dorothy Malone.

1:25 a.m. **The Time The Place and The Girl.** 1946 musical comedy. A singer and a band leader try to open a night club with the help of a millionaire's money. Good musical comedy, Dennis Morgan, Jack Carson, Janis Paige.

Monday, February 16, 1981
9:00 a.m. **My Six Loves.** 1963 comedy. A Broadway musical star arrives at her country home and finds six abandoned children living on the property. She manages to get custody of the kids, and suddenly her life begins to change. Debbie Reynolds, Cliff Robertson, Eileen Heckart, David Jansen.

12:00 Noon **Red, Hot and Blue.** 1949 musical drama. A loud-talking girl, eager to move up in theatre, gets help from a poor but talent-

1981 SUBSCRIPTION OFFER!

CALL
853-2032



HOLD ON TO YOUR HATS!

For The Best In Local News, Photos and Features

Subscribe or Renew Your Present Subscription Now To The

Schleicher County Leader

Texas Residents \$8.50 Out of State Residents \$9.50

Schleicher County Residents
\$7.50

Sixty two or Older \$6.00 per year

EAT!



Variety of Foods
GIANT SIZE
SALAD
BAR

Be the Chef With Our
"Bottomless Salad Bowl"

Buffet

Everyday

11:30-2:00

Casa
Arispe

Valentine
Special

Uniperm

\$22.50

*Johnnie's Beauty
Shop*

853-2983
500 Field Ave.

(New Phone No.)
853-2007
Eldorado

**Jim Simpson
Rites Held**

Graveside funeral services were held Feb. 3 for a former Eldorado resident, James Alexander "Jim" Simpson, age 70. The Rev. Robert Elkins officiated. Burial was in Brownwood. Mr. Simpson died Jan. 30. He was born Dec. 27, 1910 and was married Lizzie Mae Jeffrey. They lived in Eldorado several years before moving to Brownwood. She died in April of 1979. He is survived by a niece, Mrs. Sarah of Eldorado and a nephew, E.H. Sweatt, Jr. of Guthrie.

**Sarah Boyer
Born Feb. 8**

Mr. and Mrs. Danny Ray Boyer of Irvin are the parents of an eight pound, ten ounce baby girl, named Sarah Laverne, born Feb. 8. The new baby has a six year old sister, Shannon Louise. Grandparents are Mr. and Mrs. Ray Boyer of Eldorado and Mr. and Mrs. R.E. Turnbow of Christoval.



NEW LIFE MEDAL-Mrs. Lloyd Whitehead of the Rocking Chair Ranch close to Fort McKavett, presents a bronze statue to Arlo Janssen of Ellsworth, Kansas, owner of the first place late spring yearling heifer in the record-setting Hereford show in Denver, Colo., recently. Jo Heldt, of Cambria, Wisc., Hereford Queen, presents the ribbon to the winner. Bronzes were one of the special attractions of the show, which celebrated the 100th anniversary of the American Western Stock Show. They were created by noted sculptor Jay Contway of Montana and were donated by leading Hereford ranches from across the nation.

Upland Cotton Growers Are Eligible For Protection

Mike Moore, Chairperson of the Schleicher County Agricultural Stabilization and Conservation committee, said upland cotton growers will not have to set aside or divert acreages or comply with normal crop acreage requirements to be eligible for target price protection and price support loans on their 1981 crop. According to the Secretary of Agriculture, there is no need for acreage restrictions in 1981 because extremely poor growing conditions reduced 1980 production. The reduced 1980 crop, coupled with relatively strong demand for cotton, could result in a carry over next fall of around 2.6 million bales. With no set aside or NCA restrictions, ASCS is encouraging cotton growers to plant only their best cropland to prevent soil erosion which occurs when fragile lands are put into crop production. Other program provisions include a seed cotton loan program and a 14,021,538 acre national program acreage. Moore said the target price for 1981 upland cotton will be announced when final yield and cost estimates are available. However, it is likely to range between 68.5 and 75.7 cents per pound. The target price provides income protection to cotton farmers and serves as a base to determine deficiency payments," the ASCS official said. If the national average market price for 1981 upland cotton falls below the target price, cotton growers will receive deficiency payments. Further program details may be obtained from the county ASCS office.

Further program details may be obtained from the county ASCS office.

**FFA Members
Show Animals**

Several members of the local chapter of Future Farmers of America will be participating in the San Antonio livestock show this week and next week. Those showing lambs will be Lynna Sauer, Mia Kuikko, Melissa Sauer, Mitiz Mittel, James Cathey, Kirk Griffin, Pam Dunham, Terry White, Wendi Dunagan, Danette Dunagan, Steve Minor and Ricky Cathey. Showing barrows will be Kelly Griffin, Tracy Sauer, Bill Clark, Mike Wilks, Craig Griffin and John Paul Joiner. Parents attending the show will be Mr. and Mrs. Duwain Sauer, Mr. and Mrs. Lynn Griffin, Mr. and Mrs. Ronnie Mittel, Dan Dunagan, Mr. and Mrs. Dan Griffin. Lambs will be weighed today, shown Saturday and sold Sunday. Barrows will be weighed Tuesday, and judged Wednesday and sold Friday.

**CWO Sets
New Schedule**

The Catholic Women's Organization met Feb. 4 in the Parish Hall. Members discussed a Passover Supper, summer picnic and Vacation Bible School. Rev. Mark Woodruff announced plans for a newsletter. Members also saw a film "Promise" after the business meeting. Annie Arispe, vice president, presided over the meeting. Kim-et Nelson read the minutes and Carmella Reidy gave the treasurer's report. The next meeting will be at noon March 4 in the church rectory.



**HANDICAPPED CHILDREN -
Hearing And Vision Impaired Also**

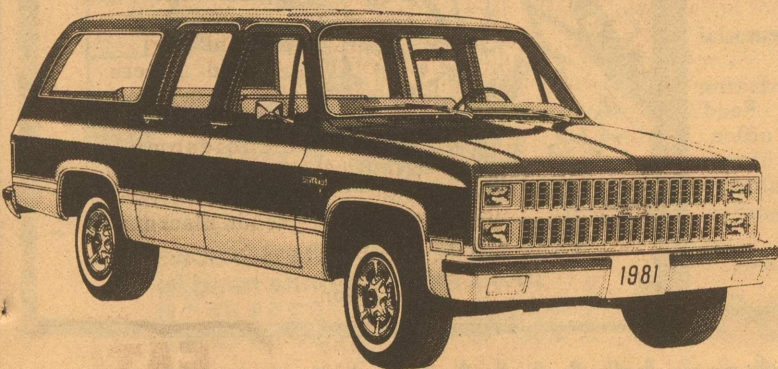
We know they're out there. Please help us find and serve them. If they are receiving services that are not appropriate, we can do something about that, too.

We can help handicapped children between the ages of 3 and 21 and hearing and vision impaired children from birth to 22. Anyone - teacher, doctor, neighbor, friend or concerned person can refer a child to us, anonymously if they so wish. We have helped many children already and can help many more with your help.

**Child
Find/Serve**

Call Collect -(915) 653-7333

**CHEVROLET TRUCKS
An Important Step Ahead!
See and Drive America's Most Advanced Light Trucks
12-MONTH OR 12,000-MILE LIMITED WARRANTY**

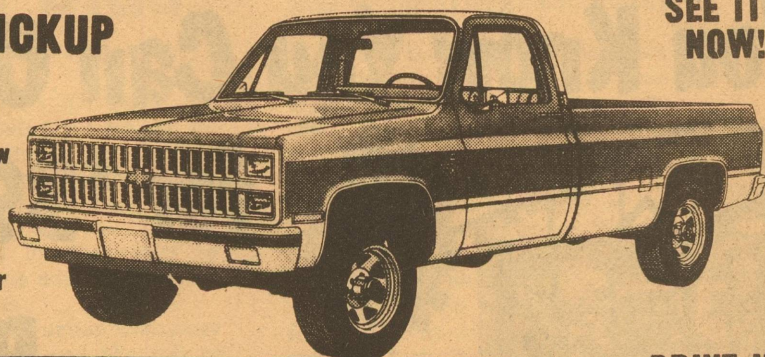


CHEVROLET 1/2 -TON SUBURBAN

- 5.7 Litre V8
- Automatic Shift
- Power Tailgate Window
- Power Steering
- Front and Rear Air Conditioning
- One-Way Glass
- 3-Passenger Rear Seat
- Automatic Speed Control
- 40-Gallon Fuel Tank
- One Way Glass

DIESEL CHEVROLET FLEETSIDE PICKUP

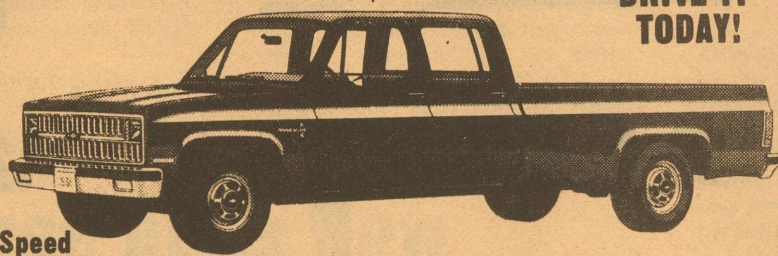
- 5.7 Litre Diesel V8
- Automatic Shift
- Power Steering
- Power Brakes
- AM/FM with 8 Track
- Tinted Glass
- Tilt Steering Wheel
- Sliding Rear Window
- Aux. Fuel Tank
- Auto Speed Control
- Dark Chestnut Color
- Air Conditioned



SEE IT NOW!

CHEVROLET CREW CAB FLETSIDE

- 5.7 Litre V8
- Power Steering
- Air Conditioned
- AM Radio
- Auxiliary Fuel Tank
- Tilt Steering Wheel
- Sliding Rear Window
- 3.73 Rear Axle Ratio
- Engine Oil Cooler
- Cargo Lamp
- Auto Speed w/ Resume Speed



DRIVE IT TODAY!

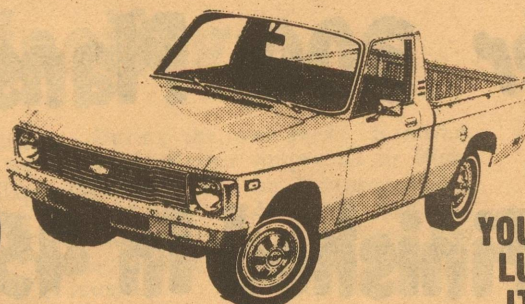
FAMOUS CHEVY "LUV"!

Famous for dependability, drivability, economy and looks!

- 4-Speed Manual Shift
- Air Conditioned
- Long Wheelbase
- AM Radio
- 3.73 Axle Ratio

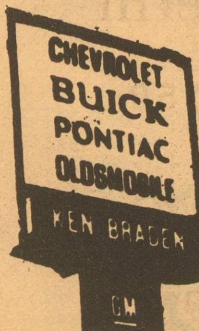
LIST PRICE \$6,518.45

OUR PRICE **\$6,095**



YOU'LL LUV IT!

Convenient Budget Terms on all these beauties



Ken Braden Motors

I-10 at Golf Course Rd.

387-2529

FEBRUARY'S SPECIALS

Deran 14oz-Boxed VALENTINE CHOCOLATES
Reg. \$7⁸⁸
NOW JUST \$6⁹⁹

All Fall Purses Remaining In Stock
Values to \$9⁹⁵
NOW \$2 Each JUST HURRY!

Flat Fold Blue Denim Material
Reg \$2⁴⁹ yard
NOW \$1⁶⁹ Yard

100% Polyester Double Knit Crepe Stitch
Reg \$2⁹⁹
NOW \$1⁹⁹ Yard

One Rack Winter Clothing
Values to \$8⁹⁹
Now 75% OFF Original Price

Gladiolus Bulbs
Reg. 25¢ each
NOW 5/\$1

4 to 5' Papershell Pecan Trees
Values to \$12⁹⁹
NOW ONLY \$9⁸⁸ While They Last

PERRYS
HWY 277 North Sonora

Classified Ads

Business & Service Directory

C H Poyner Const. Co.

General Oilfield Construction

24 Hour Call 884-2454 Big Lake
Call 853-3064 Eldorado

NL WELL SERVICE

Well Servicing-Water Hauling

-Pump trucks 24 Hour Service

Eldorado 853-2351 Sonora 387-3509

INSURANCE

Fire, Windstorm, Auto and Casualty

Call TOM RATLIFF 853-2636

Tex-Sun Insulation

Residential - Commercial

Free Estimates

Farris Nixon 853-2996

J.B. Beason

Remodeling

Paint Contractor

Painting Dry Wall Acoustic

John or Pam 853-2428 or 853-2258

KERBOW FUNERAL HOME

Serving Eldorado & Sonora

Call 853-2636 or 387-2266 in Sonora

Whitten Liquid Feed

Nutrene & Godbold Feeds 853-2944

Steve Whitten, Manager Res: 853-2879

DRY CLEANERS LAUNDRY

UNIFORM RENTAL
DUST CONTROL

MOPS MATS

THORP'S

212 S Main 853-2900

Leggett Construction

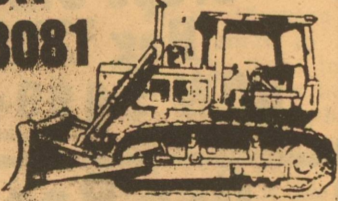
Brush Control

-Tanks Pits

24 Hour Oil Field Service

Jeff Leggett

915-853-3081



Specializing In

Instruments, Gauges, Meters & Controls
For Oil & Gas Industry and Industrial
Plants Sales & Service on Oilfield and
Industrial Instruments & Control

Eldorado Instrument & Control Co. 24 Hour

Office 853-2506 Home 853-2624 Eldorado, Texas Service

The Land Bank

Long-term farm real estate loans are available for much more than just buying land.

See us:



Federal Land Bank Association of Sonora
A.E. Prugel, Manager
915-387-2777
Sonora, Texas 76950

Henderson Waterwell

Windmill and Pump Repair

Sam Henderson, Jr.

853-2447



Public Notice

Notice
Notice is hereby given that a hearing will be held on the 25 day of February, 1981 at 9:00 a.m. in the County Court at the County Courthouse of the above named County in Eldorado, Texas on the application of the hereinafter named owner for a license to sell beer at retail at a location not heretofore licensed. The substance of said application is as follows:

1. Type of license or permit Wine and Beer
2. Exact location of business 211 North divide
3. Name of owner or owners Rudy Bautista
4. Assumed or trade name Bautistas Grocery Store

Any person shall be permitted to contest the facts stated in said application and the applicant's right to secure said license or permit upon giving security for costs as provided by law. Witness my hand this the 9 day of February 1981

Helen Bebee
County Clerk
Schleicher County, Texas
by Maria Tobias, deputy

Public Notice

Statement Of Intent To Change Rates

General Telephone Company of the Southwest, in accordance with the Rules of the Public Utility Commission of Texas, hereby gives notice of the Company's intent to implement a new schedule of rates in Texas effective February 27, 1981.

The proposed changes in rates will affect all customer classes and are designed to increase the Company's gross annual revenue derived from local service by 23%.

A complete set of revised rate schedules has been filed with the Public Utility Commission at Austin, Texas, and is available for public inspection in each of the Company's Business Offices in the State of Texas. A summary of the Company's rate filing has also been sent to the Mayor's Office of each affected municipality.

GTE
GENERAL TELEPHONE

For Sale

50x150 ft Butler building. Overhead cranes. 20 ft underhook. Office and living quarters. Central air and heat. Plumbed for compressed air system and LP gas heating. 400 amp and 3 phase. Approximately two acres fenced in Sonora, Texas. \$150,000.00 firm. Call Mark Crider at 800-242-3017.

25mtfnc

Real Estate

Large 3 bedroom, 2 bath home, large lot, fruit and pecan trees, lawn, ideal location for appointment call 853-3112 after 4 p.m.

Lost

Lost black Labrador wearing orange collar in Christoval. Reward after 5 p.m. call 896-2492.

212ctc

Mobile Homes

For Sale--14x70' three bedroom two bath Centurion mobile home. About 1 1/2 years old, excellent condition. Contact 944-3324 anytime after 4:30 p.m.

Card Of Thanks

We wish to thank all our friends and neighbors for the prayers, cards, food, flowers during the loss of our loved one. May God bless each one of you.

The family W.C. Parks Jr.
Mrs. John S Williams & family
Mrs. R.J. Alexander & family
Mrs. Raymond Rust & family
Mrs. Lois Powell & family
Mrs. Willard Humphrey

Zerex Copies

10c A COPY

MEADOR - PETERS AGENCY



653-2941 San Angelo

Calendar

Today, Feb. 12--United States Department of Agriculture Farmers Home Administration, 1:30-3 p.m., courthouse.

Friday, Feb. 13--State comptroller representative, 9-10:30 a.m.; Party for senior citizens, 2 p.m., Memorial Building.

Saturday, Feb. 14--Jamboree, 7:30 p.m., Memorial Building.

Wednesday, Feb. 18--Probation officer, visiting hours 8 a.m.-noon and 1-4 p.m. courthouse; Food stamp representative, 9-5, drivers license office, Memorial Building; Sorority bean supper and bingo, supper at 6:30 bingo at 7:30 p.m., Memorial Building.

Thursday, Feb. 19--Social Security representative, 1:30-2:30 p.m., courthouse.

Monday, Feb. 23--County Commissioners Court, 9 a.m., courthouse.

Income Tax Service

904 Main
853-2582

Check Our Prices

Schleicher County Leader Office Supplies

R.L.S. Services

Income Tax Service

R.L. Scroggins

Home Phone 853-2465

After 5:30p.m.

Butler Supply Co., Inc.

East Street

853-2503

Your Complete Oilfield Store

Trico Insert Pumps

HINDERLITER WELLHEADS
ALL SIZES TANKS DEMCO
STEEL & FIBERGLASS PHOTO
SEPERATORS THORNHILL CRAVER
HEATERS & PRODUCTION UNITS OLMAN HEATH
WHEATLEY

Night Phone 853-2004

COW POKES By Ace Reid

RODEO



"I'm drinkin' to yore health cowboy — looks like yer gonna need it!"

Did You Know You Can Own A House

for \$39950.00 and up

Plus Lot

3 Bedroom

2 Bath

Over 300 Plans To Choose From

Finished In 45 to 60 Days

For More Information Call

853-2645 or 853-2622

KINGSBERRY HOMES

