

# Eldorado Success

Schleicher County's Only Newspaper

—Offering The Best Advertising Medium—

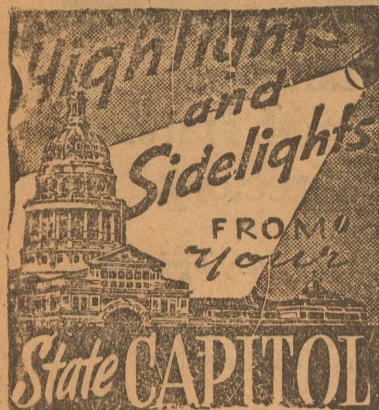
—Est. 1901, This County's Oldest Business Enterprise

75TH YEAR

ELDORADO—SCHLEICHER COUNTY, TEXAS (76936)

Thursday, December 16, 1976

Number 51



by Lyndell Williams  
Texas Press Association

Austin, Tex.—The U. S. Secretary of Interior is pressing Gov. Dolph Briscoe to take a stand in a hot controversy between water and wildlife interests.

The issue: replacing wildlife habitat destroyed by the waters of major new reservoirs.

Secretary Kent Frizzell wants the governor to explain his opinions on "mitigation"—steps which should be taken to reduce destruction effective of reservoir building on habitat—at the 11,000-acre Palmetto Bend project near Edna.

At the same time, the National Wildlife Federation is pushing Briscoe to provide \$3 million in local and state money to purchase 3,700 acres for wildlife management in the reservoir area.

Briscoe has supported federal action to speed Limestone and Choke Canyon reservoir projects without specifying steps to reduce harmful effects on wildlife habitat.

Although Frizzell's question pertains specifically to Palmetto Bend, the governor's answer, in effect, will spell out his position on the broad issue.

#### Campaigns Costly

A handful of statewide races cost candidates about \$2 million this year.

Most of the money went into U. S. Senate and Railroad Commission races. U. S. Sen. Lloyd Bentsen, in his successful reelection campaign, reported spending \$623,492 and raising \$650,856 in contributions. The unsuccessful Republican Senate candidate, U. S. Rep. Alan Steelman of Dallas received \$646,024 and spent \$627,223.

Railroad Commissioner-Elect Jon P. Newton of Beville reported contributions of \$581,395 and expenditures of \$548,768. The GOP commission candidate, Walter Wendlandt of Austin, reported spending only \$19,398 and receiving \$19,131 in contributions.

#### Short Shorts ...

Texas colleges and universities received \$166.6 million for research from state and federal sources, a 13.8% increase.

Railroad Commission Chairman Ben Ramsey recently underwent minor surgery.

New state sales and use tax permits are being mailed to 290,931 Texas retailers by the comptroller.

House Speaker Clayton said what to do with a \$3 billion increase in revenues may be the top priority decision for the legislature next month.

Gas production in Texas during September totaled 609.4 billion cubic feet, a slight decline from a year ago.

Veteran Railroad Commission Chief Engineer Arthur H. Barbeck will retire December 31.

Gov. Briscoe, who once boasted he could think of enough Texans to fill Jimmy Carter's cabinet, has recommended Vermont Gov. Tom Salmon for Federal Energy Administration chief.

#### S. S. Man Here Today

Peter Gonzales, social security representative for the San Angelo Social Security office, has scheduled his December visit to Eldorado. He will be at the County Courthouse on Thursday, December 16th from 10:00 a.m. to 12:00 noon. Anyone who wants to file a claim for benefits, get information, or transact other business with the Social Security Administration may contact him at this time. Persons who are unable to meet with him are encouraged to call the office in San Angelo.

Social Security and Supplemental Security Income recipients should report changes of address to Social Security and their Post Office immediately.

#### Post Script

##### Our First Christmas Issue

This is the first of our two Christmas Greeting issues of The Success. The companion issue will be printed and delivered to readers next week. They are dated December 16th and 23rd.

The local public-spirited merchants have once again bought advertising space to greet you, the public, for Christmas and New Year's.

We have made effort to contact everyone for a Greeting Ad, but in case you are overlooked, there is still time for individuals to buy advertising space in the Dec. 23 issue of The Success. You are welcome to come in and look over our ad layouts; these are priced \$2.00 up. This is an easy way to greet your local friends instead of the more costly Christmas cards sent by mail.

Also, a subscription to The Success makes a nice Christmas gift for that out-of-town relative who likes to keep up with local happenings.

Call The Success office at 853-2600 and we will be glad to serve your needs.

—ps—

With our subscribers: Clifton L. Clark reports moving from Tahoka, Texas, to 4612 Orchard Lane, Odessa, Texas 79761.

Robert and Tanya Chapman have moved from Wyoming to 328 E. 6th St., Socorro, New Mexico 87801.

—ps—

**A Texas Sesquicentennial in 1986?** A recent issue of the Dallas Morning News reported that that city is already making plans to hold a World's Fair 10 years hence. The following excerpt is herewith given.

Plans already are in the works to hold a 150th anniversary celebration in Dallas that would be as large as the Texas Centennial in 1936, Mayor Robert Folsom said.

Although the sesquicentennial of Texas independence is almost 10 years away, Folsom said extensive planning and enabling legislation will be required for the exposition.

"It would seem that the State Fair of Texas would be the natural place for the anniversary to be held," the Dallas mayor said. "But the people involved want to begin early to make certain this site is selected."

Dallas leaders scored a major victory in the early 1930's when they bid for the exposition and fair to observe the state's 100th anniversary.

Most of the buildings on the fairgrounds today were constructed as part of the Texas Centennial and reflect the art deco architectural designs for that period.

It is anticipated that designation of the State Fair of Texas as the site for the sesquicentennial would bring another wave of construction on the grounds.

However, Folsom stressed it would be some time before any actual concepts for the exposition are presented to state officials.

The Dallas mayor said he doubts if the plans will even be considered by the Texas legislators during their next session in 1977.

—ps—

If the event is held in 1986, it will be the third World's Fair held in the Southwest.

In 1936, the Texas Centennial was held in Dallas.

A generation later, the financially ill-fated HemisFair '68 was held in San Antonio. That city is continuing to convert the site of HemisFair into a civic center.

—ps—

#### PARTY SET AT COURT HOUSE

This coming Thursday, Dec. 23rd, the Court House officials and employees will have their Christmas party and tree.

#### FIREMEN CALLED LAST WEEK

The local firemen were called out at about 1:30 last Friday morning to the Gin, where a bale of cotton was on fire. It was quickly controlled.

#### OPEN HOUSE AT MUSEUM

An open house is set for this Sunday, Dec. 19th, at 1:00 p.m. at the Museum, and the public is invited to attend. Also there will be a membership drive at this time for membership for the 1977 year.

Membership dues will be \$2.50 per person.



#### Santa Claus To Assist Legionnaires In Distributing Candy Bags Dec. 22

The annual Christmas party put on by the Bev McCormick Post of The American Legion for county children will be held Wednesday afternoon, Dec. 22nd, in the elementary gym. James Head, Commander, reports arrangements are complete. This party will get under way at about 1:30 following the room parties. Youngsters, aged pre-school through 12, are invited. School will turn out at 2:30 for the Christmas and New Year's holidays.

Santa Claus will assist the Legionnaires in distributing the several hundred bags of candy. This event was financed by the Basketball Schedule placard earlier in the Fall.

#### 4-H Christmas Party To Be Held Monday

The Schleicher County 4-H Christmas Party will be held Monday, December 20, at 7:00 p.m. in the Memorial Building.

Joel Wilson of West Texas Utilities in Abilene will be here for the party. All 4-H'ers and their guests are invited.

#### Presbyterian Notes

The date for the Sunday School Christmas Program has been set as Monday evening, December 20, at 5:30 p.m. Everyone is invited. Bring finger food for a snack supper. A visit from Santa Claus is expected. Supt. Kerry Joy will preside.

The Women's Circle met Monday in the home of Mrs. Paul Page, Sr. Mrs. James L. Powell was moderator of the Bible study.

Mrs. Gordon Garlington returned early last week from West Virginia where she attended funeral services for her sister.

Sunday, Dec. 26, will be Christian Student Sunday.

#### School Parties Held

The High School and Jr. High Christmas parties were held Monday night.

The High School party was held at the Memorial Building and Jimmy Bosmans and Jill Yates were presented as Mr. and Miss E.H.S.

At the Jr. High party held at the school, Mike Griffith and Cissy Cavanaugh were presented as 8th Grade favorites, and Bobby Hurley and Shelly Cavanaugh were favorites of the 7th Grade.

#### Son For McGinnesses

Mr. and Mrs. Wayne McGinness announce the birth of a son Dec. 14th at 12:52 a.m. in the Schleicher County Medical Center. The young man weighed 7 lbs. 10 oz. and has been named Eric Ryan. He is their first child.

Grandparents are Mr. and Mrs. Elton McGinness of Eldorado and Mrs. Peggy Cloud of San Angelo and Mr. Charles R. Cloud of San Angelo.

Great grandparents are Mr. and Mrs. J. H. Wilson of Briggs, Texas. The new baby's father is local postmaster.

#### Annual 4-H Food Show Held Sunday

The Schleicher County 4-H Food Show was held Sunday, December 12, in the Memorial Building.

Fifty 4-H'ers participated in the show.

The Grand Champion Winner of the Sub-Junior Division in the show was Wendi Dunagan. Reserve Champion went to Kelly Squyres. Honorable Mention Awards were won by Belinda Turner and Michelle Pent. Blue ribbon winners in the sub-junior division were: Jennifer Patton, Tina Dacy, Heather Wilkerson, Jeff Patton and De Ann Minica. Red ribbon winners in the sub-junior division were: Devonna Coates, Jill Hicks, Regina Minica, Joanne Kessler, Ashley Johnson and Becky Schrier.

Jill Pitts won Grand Champion in the Junior Division of the Food Show. Lori Patton was awarded reserve champion. Honorable Mention ribbons were won by Sandra Miner and Lou Ann Turner. Blue ribbon winners in the junior division were: Dana Coates, Becky Ragsdale, Deanna Yocham, Melissa Burleson, Kara Homer, Shanna

Swift, Vikki Cavanaugh, Shelly Squyres, Rachelle Williams, Margaret Turner, Sherri Walling, Sherry Powell, Lynna Sauer, Jeanne Redwine, Mitzi Mittel, Danette Dunagan, Lisa McWilliams, Gina Patton and Cindy Hausenfluck. Red ribbon winners were: Tracy Sauer, Shanna Burleson, Melissa Sauer, Diana Harris, Joan Schrier, Julie Cash and Jamie Hicks.

The Grand Champion Award of the Senior Division was won by Judy Pitts. Reserve champion was won by Cynthia Schooley. Honorable mention awards went to Joy Corbell and Patti Hausenfluck.

The District 4-H Food Show will be held in Fredericksburg on February 19, 1977. Schleicher county will be represented by these juniors: Jill Pitts, snacks and beverages; Lori Patton, main dish; Sandra Miner, breads and desserts; and Lou Ann Turner, side dish.

Senior representatives will be: Judy Pitts, breads and desserts; Cynthia Schooley, main dish; Joy Corbell, side dish; and Patti Hausenfluck, snacks and beverages.

#### Cotton Still Slow With 641 Bales Monday

At 4:00 p.m. Monday, the bale total stood at 641 at Mikeka Gin; there were about two dozen cotton trailers parked on the gin yard waiting to be unloaded.

At about that time, the rains were setting in and were expected to cause further delay in the cotton coming in.

#### Half Inch Of Moisture

A cloudy, moist cold front came to this area late Monday, dumping the first measurable rainfall in some weeks. Eldorado had about half an inch of moisture.

By Tuesday morning, skies were clear with promise of a warming and drying trend.

#### School Turns Out December 22nd

Less than a week of school remains before the Christmas and New Year's holidays.

School will be dismissed at 2:30 p.m. on Wednesday, Dec. 22nd.

That same afternoon, the room parties will be held in the elementary school followed by the Legion party.

#### MASON HOSPITAL WAS TO BE DISCUSSED MONDAY

A special called meeting of all donors to the Mason Memorial Hospital will be held Monday, December 13 at 7:00 p.m. in the Mason National Bank Community Room.

The hospital board of directors urges all donors to attend this important meeting.

Due to the financial situation of the hospital the main topic will be, "Do you want the hospital to remain open and if so, how?" —Maon County News, Dec. 9.

#### News Of The Sick

Mrs. Bertha Oglesby is a patient in the Eldorado hospital.

Mrs. Jim O'Harrow returned recently from a stay in the hospital.

Mr. Hollis McCormick has been in the hospital and is now at home recuperating from the mumps.

#### FINAL PRE-HOLIDAY MEETING OF LIONS CLUB HELD

The Eldorado Lions held their final pre-holiday meeting on Wednesday, Dec. 15th, with Walter Wallis presiding. The program consisted of selections by the elementary choral group.

A gift was presented to Fred and Flora Riley, long time cooks.

The Lions Club will not meet the coming two Wednesdays and their next meeting will be Jan. 5.

#### NURSING HOME NOTES

Our home was saddened last week by the death of one of our dear residents, Mrs. Charles Young.

She had been here only a few days but some of us here had known her for years, as she had lived in Eldorado for about 20 years.

Everyone who knew her loved her.

When she knew of someone who was sick or in need of help she went to them to give assistance and she did so much for others. Eldorado will miss her.

We extend our deepest sympathy to her family.

We had a few visitors last week as follows: Lois Tyler of San Antonio who visited Mae Mercer. Nora Poe of San Angelo who is a sister of Mrs. Mercer's, and Savannah Kelly of San Angelo also visited Mae Mercer. Jamie and Manuel Long were Mae Mercer's visitors. John Ray Barker, grandson of R. L. Ballew, who lives in San Angelo, visited Beulah Harris. Sherwood and Ann Barker visited Mrs. Charles Young.

We all love to have company and it means so much, especially to the ones in the home who can't get out and go somewhere occasionally.

So, stop, and and give a few minutes of your time, and come visit one of our residents. You will be glad you did.

It is beginning to look like Christmas here since a pretty tree has been set up in the dining room. It is decorated beautifully.

I believe most of us here are doing as well as usual. —LaVita Brooks, rep., Beulah Harris, rep.

#### Funeral Held For Mrs. Young Sunday

Mrs. Charles (Marie) Young, 71, died at about 4:00 a.m. Friday in the local Nursing Home.

Services were held at 2:00 p.m. Sunday in First Christian Church here with graveside services at 10:00 a.m. Tuesday in Resthaven Memorial Gardens in Oklahoma City. Local arrangements were handled by Kerbow Funeral Home.

Roy Thorp of San Angelo officiated.

Pall bearers were Clay Porter, Bill Gentry, Bob Oglesby, Andy Nixon, and Edgar Sauer, all of Eldorado, and Sherwood Barker of San Angelo.

She was born Aug. 3, 1905 in Industry, Kan. She was married to Charles Young Nov. 17, 1927 in Emporia, Kan. She had lived in Eldorado 20 years and was a member of First Christian Church.

Survivor include her husband; a son, Buford C. Young of Worland, Wyo.; three sisters, Mrs. Ray Cocklin of Oklahoma City, Mrs. Ken Stout of Hulbert, Okla. and Mrs. Les Gruwel of Lakewood, Calif.; three brothers, Kenneth Zumbrunn of Bonner Springs, Kan., Leo Zumbrunn of Emporia, Kan. and Alfred Zumbrunn of Hartford, Kan.; two grandchildren and a great-grandchild.

#### Marilynn Joiner Dies

Funeral services were held Wednesday in San Angelo for Mrs. Marilyn McClendon Joiner, 77, who died Sunday in the Clinic-Hospital.

She was born April 29, 1899 in Evans and was married to Grover C. Joiner March 2, 1918 in Henderson county. They lived in Eldorado 20 years and had lived in San Angelo three months.

Survivors include a son, Ben Joiner of San Angelo; a brother, Richard McClendon of Roanoke, Ala.; a sister, Mrs. Frances Hall of Weslaco and three grandchildren.

#### Second Swine Flu Immunization Clinic Set

The second Swine Flu Immunization Clinic is set Thursday, Dec. 16th, from 4:00-6:00 p.m., at the Memorial Building. It is important that everyone who has not received their immunization be present.

Of special note is that all of those who received the first shot and are between ages 18-24 years must receive a second injection to insure complete immunization.

People over 24 years of age need one immunization only. If there are any questions concerning these immunizations please call the clinic at 853-2549.

#### Three Return From All Region Band

Mr. McDonald and three members of "That Going Band from Eagle Land" attended the All-Region VII Band try-outs Friday and Saturday in Ballinger.

Jim Bob Byrd placed third chair on the clarinet and will be going to All-Area in January. Willie Day placed fourth chair on the trombone, and Lisa Smith placed eighth chair on the flute and first alternate on piccolo. Mr. McDonald served as judge for the trombone section.

A concert held in Ballinger High School auditorium Saturday night was conducted by James Larson, Tarleton State University band director.

Jim Bob, Willie, and Lisa, who received awards for their participation, wish to thank Mr. Mac for the time and help he gave to each of them. —Lisa Smith.

#### Programs At School

During the coming week before start of the Christmas holidays, the following programs are being held: Thursday, Dec. 16th: Southern Assembly at 10:10.

Friday, Dec. 17th: Choral program at 1:00.

Tuesday, Dec. 21st: Assembly program at 1:00.

#### The Neighborhood Center

will have its annual Christmas Party for the underprivileged children Monday, December 20, at 5:00 p.m. The party will be for children up to 10 years of age.



to our many  
friends  
**Ruth & S. D.  
Harper**



Wishing you  
the

**MERRIEST  
CHRISTMAS**

Ever!

**N. A. GREEN**  
Plumbing

**The Neighborhood  
Center**

is now taking any used toys which your children have outgrown. The toys will be repaired and will be given away at the Christmas Party which will be held December 20, 1976. Please take your toys to 400 Dorris Ave. (across from Helen Fay's Beauty Shop.)

TYPEWRITER RIBBONS, for Royal, Underwood, and Remington—available at the Success.

RECEIPT BOOKS: Small and large ones on sale at The Success office.



**WONDERLAND . . .** Christmas is a very special season for children. All the toys, displays that appear in store windows seem to reflect the happiness of the childhood years. Take your child to see the wonders of Christmas wherever they are to be found in the community. You will enjoy sharing the joys that are part of the season.

**Our Christmas Customs  
LIVELY STORIES OF CHRISTMAS**

Christmas, the commemoration of the Holy Birth, has long been considered a lively holiday and a celebration of the joy of life.

You can add to the liveliness of your Christmas celebration by bringing a little life into your home and the homes of your friends. It's a natural thing to do at this season, with lovely, living plants and trees.

You can prolong the holiday cheer in your own home by getting living Christmas tree you can replant in the New Year.

Select a tree with a sturdy root ball, and keep it moist and cool in a shallow container away from heat outlets and fireplaces.

After the holidays, plant it as soon as the ground can be dug. You can get some planting tips from a nursery garden center or from the American Association of Nurserymen. Next year, you'll be able to enjoy decorating two Christmas trees, one inside, one out.

To enliven your Christmas giving, there are plants to fit almost everyone on your list. For homeowners, try giving ornamental or

shade trees, or charming shrubs and bushes. Match plants to personalities—there are flowering house



**A LITTLE GREENERY** can go a long way toward enlivening the holidays.

plants; delicate, exotic ferns; businesslike broad-leaved plants and hardy cacti, among many others.

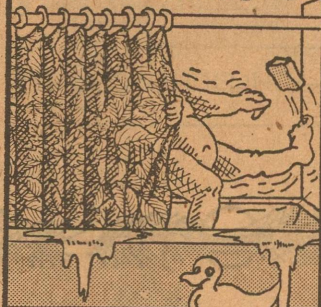
For a child, a Christmas plant can be a learning experience. He can get to know more about nature: how plants grow, what makes them green and what they can do for us; and at the same time he can learn about the responsibility of caring for a living thing.

What's more, you don't have to part with a lot of your long green to make it a lively green Christmas for your family and friends.

The Earl of Sandwich, inventor of the sandwich in 1744, said that sandwiches should be eaten with "a civilized swallow and not a barbarous bolt."

**SAFETY SAMPLER**

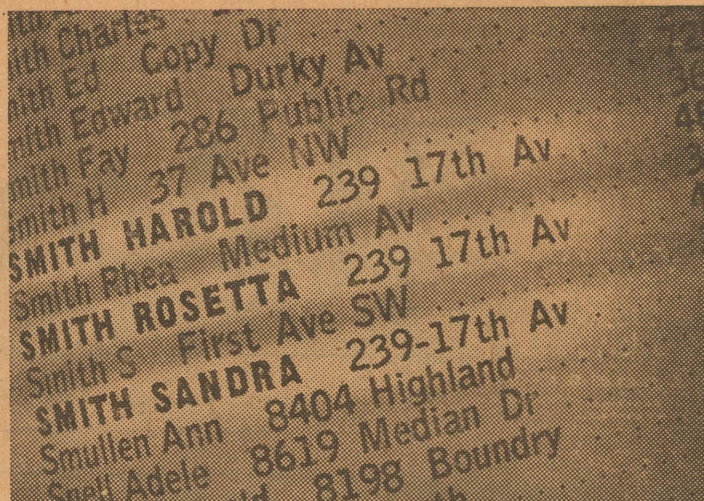
Last year, more than **100,000** serious accidents occurred in or around bathtubs



Make your tub as slip resistant as possible

Never touch electrical appliances while in the tub

for further information about bathtub safety, write: U.S. Consumer Product Safety Commission Washington, D.C. 20207 or call toll-free 800-638-2666 Maryland residents only call 800-492-2937



It's time your family stopped being just "Smith Harold" in the telephone directory.

The new edition of your telephone directory is going to press soon.

If you have only a single listing, a lot of people are going to have trouble looking up other members of your family.

Certainly, your wife deserves her own listing. And giving a teen-ager a place in the directory is a nice way of saying "You're growing up."

To add or change a listing just call our business office. They can tell you how little extra an additional listing will cost.

It's as easy as picking up the phone.



GENERAL TELEPHONE

**2nd Flu Vaccination  
Day Set Dec. 16th**

The Texas Department of Health Resources has scheduled another Swine Influenza Immunization Clinic in Schleicher county. The immunization will be free of charge and all persons age 18 and above are eligible. Clinic hours will be from 4:00 to 6:00 p.m. only, December 16 at the Memorial Building.

All persons between the ages of 18 and 24 who received the vaccine in our first clinic must have a second injection to be fully immunized. Persons over 24 need one injection only.

Schleicher county has had the greatest percentage of persons immunized against the Swine Flu Virus than any county in Region 4. This can be attributed to the good health attitude of the citizens and the extensive work done by the volunteers at our first clinic.

**Westerman Drug Of Eldorado**

wishes y'all a good holiday season. We are prepared to serve your medical needs when you need to have your prescription filled. We are also happy to attend your cosmetic and sundry needs. If you don't need anything come in to say hello. This would make us both happy.

**Christmas Gifts**  
for Christmas Giving

We have a full line of Christmas gifts for men, women and children. We also have a full line of fresh boxed candy. Men, we have lots of new perfumes and dusting powder for the women in your life.

Westerman Drug, Eldorado

Eldorado Success Want Ads Get Results ! !

**January Clearance In December**

Just In Time For Christmas

All Junior Fall Merchandise: 1/3 Off

Special Rack Misses: 1/3 and 1/2 Off

—GIFT WRAPPED FREE—

Gift Certificates

Lay-Away Plan

BankAmericard

Master Charge

Will Be Handling Shoes This Coming Spring. Register Your Shoe Size and Brand Names. Discount on First Pair

**Fashions By Lela**

Lela Hamner, Mgr. & Owner

949-2219

113 N. Harrison (behind Skaggs) San Angelo

**KEY ELECTRIC**

OIL FIELD

COMMERCIAL

RESIDENTIAL

PHONE  
853-2045

If No Answer  
853-9929

ELDORADO, TEXAS



from

**The Western Co.**

**School Menus**

Wed., Dec. 15: Spaghetti and meatsauce, whole kernel corn, sliced peaches, sugar cookies.

Thursday, Dec. 16: Turkey and dressing, giblet gravy, green beans, fruit cup, sweet potato pie.

Friday, Dec. 17: Hot dogs with/without chili, french fries, stuffed celery (cheese), rice krispie cookies.

Monday, Dec. 20: Fish sticks, blackeyed peas, macaroni and cheese, cole slaw, banana pudding.

Tuesday, Dec. 21: Beef tacos with cheese, pinto beans, lettuce and tomato salad, cornbread, white cake with white icing.

Wed., Dec. 22: Sandwiches—tuna, chicken salad, ham salad, pimento cheese, peanut butter; potato chips, pork & beans, ice cream.

Dec. 23-Jan. 3: Christmas & New Year's Holidays.



**To Eldorado T-V Cable Customers:**

**NEW TELEPHONE NUMBER FOR  
ELDORADO T-V CUSTOMERS**

Effective Nov. 30th  
24-Hour Answering Service:  
**Dial 0 And Ask for Enterprise 67540**  
Call the above number for any other  
business you may have about Cable T-V.

Please send your monthly payments to:  
**Television Enterprises, Inc.**  
P.O. Box 491  
Eldorado, Texas 76936

**B & G FEED**

Feed, mineral salt, livestock hauling, hay hauling. Pasture and liquid feed. Will be delivered or can be picked up.

Feeders will be furnished.

Eldorado salesman: **Sam Carrell, 853-2219**

**GEORGE SCHWIENING**

800 Glasscock, Sonora, Texas

Office Phone ----- 387-3620

Res. Phone ----- 387-2063

**ELDORADO SUCCESS Want Ads Get Results!**

**New 2 and 3 Bedroom Homes—**

From 1,000 to 1700 square feet of floor space, built under city inspections. 1½ or 2 full baths with ceramic tile showers and dressing tables. Large kitchen-family room combinations. Lots of cabinets and snack bar. Built-in dishwasher and range with hood. Utility rooms or areas. All gas or all electric. Central heating. Fully carpeted with window drapes installed. Completely finished and delivered to any place in West Texas.

Can also brick all or part if desired and include refrigerated air all as an extra. We invite you to come and look at what we have to offer. We have been in this business for over 20 years and guarantee satisfaction.

Call **Craig Hardegree at Burley Lumber Co.**  
San Angelo, Texas 655-3127

**Robert Massie Co.**

Furniture — Carpet

**WEST TEXAS' LARGEST  
HOME FURNISHING STORE**

Whether yours is a small or a large budget, whether your need is one room, A houseful or one piece, Our management and our experienced sales personnel are anxious to serve you according to your wishes.

**MAKE OUR STORE YOUR HEADQUARTERS  
WHEN SHOPPING IN SAN ANGELO**

12-14 E. Twohig Telephone 655-6721

Phone 2619 for Complete Line of  
Exxon Products. Farm and Ranch  
Butane. All Business Appreciated.

**Eldorado - Divide Petroleum Co.**

Exxon Products — Raymon Mobley & Employees

**LONELY TRAVELER**  
By M.D. BENNETT

The bus station was crowded with lonely Christmas travelers. They were easily separated from the small groups of people who had come to the station to welcome someone home. The greeter, were animated, full of conversation. Most of the travelers were tired and weary. Some read listlessly. Others rested their heads on shoulders or against the high, curved back of a bench.

Billy Halliday wasn't waiting for a bus, or for anybody. He had arrived two hours earlier, before word came that snow in the mountains had brought service almost to a standstill. Buses were late, some of them had turned back to Junction City and to other spots. It was the worst Christmas storm in history.

The big snow had put a kink in Billy's plans. Rather, perhaps, it had made it difficult for him to make up his mind about where he was going to spend this Christmas Eve.

He had stepped on the bus at Junction City with the idea that he could be taking a bus ride because he had nothing else to do. Once he got here, if he wanted to do so, he could step on another bus and go back to his hotel at Junction City.

Now, the buses were running late or not at all. It had been ten years but, if he hung around much longer, someone would recognize him. He was fortunate that no one had before now. He had seen Susie Johnson and had turned the other way. Bill Brown had walked by and he had turned his back. Once spotted, he couldn't do anything but go through with it.

**Announcement**

And then the word came over the public address system. No more buses until snow plows clear the roads. That could be hours. Billy Halliday walked out the side door and turned his steps toward Elm Street. Cars went by, but no one looked his way. He was just another soldier home on Christmas leave.

Everything looked the same, he thought, even in the darkness. Mrs. Cable still kept her entire house lit up. Old Man Dabney still had lights on every tree in his spacious yard. And there was Ann's house, set back away from the street, the lights of a Christmas tree blinking through the huge picture window.

He was remembering ten years ago. Ten years ago tonight, he had walked down this same street, toward the bus station, one small suitcase in his hand.

That was the night he thought he had said goodbye to Hillvale forever. Nobody, not even his parents, seemed to care about him or his ideas. They didn't like his beard, his clothes. They had kicked him out of school. Most of his friends, even Ann, had shunned him. She would have taken him back — on her terms, but he hadn't liked the terms.

**Decision**

He had walked out that Christmas Eve, telling only his parents that he was leaving. He thought he owed them that much. He remembered how his mother had pleaded, had tried to make him see things her way.

He remembered how dad, having long given up trying to change him, had only grasped his hand and wished him luck.

That had been all of it, except for the one letter. He had written from New York to tell them he was all right. One letter had arrived before he changed his address and decided to make the break clean. He still carried it in his shirt pocket.

"Dear Son:

I don't know where we went wrong or, perhaps, more truthfully, why things went wrong for the three of us. I know you had to go. You have our love, always. Your mother says she will burn a candle each Christmas until you return. She thinks one day you will come back to us. I hope that she is right.

Your dad."

He stopped now before the house. Lights were on here and there — the livingroom, the kitchen and upstairs. His room. There was a light in his room. Had they thrown all of his old stuff away and used the room for something else? Maybe they no longer lived here. Maybe...

But, there it was, in the hall window, burning faintly. He came slowly up the walk. He stopped on the porch and carefully lit a cigarette. There wasn't much of the candle left. It would barely last through the night. He wondered if there had been only one candle.

He could hear the soft strains of Christmas music coming from upstairs, from his old room. Could it be the same, he wondered. Mom had always told him that he would "wear it out" if he played it every hour of the day.

He tried the door handle. It was open. He had thought, now they were older, they would at least lock their door at night.

Impulsively, he picked up the candle. The saucer in which it rested was warm to the touch, but he hardly noticed.

Halfway up the stairs, he realized he had failed to shut the door. "Don, I do believe the wind has blown the door open. Please go and shut it. It might blow out my candle." The voice caused him to pause, off-balance, one foot reaching upward.

"You and your candle. I think that candle has probably burned itself out by now. But, I'll humor you."

**Meeting**

There he was at the top of the stairs. He hadn't changed much. A little more gray in the hair, perhaps. He looked at Billy and a smile turned at the corners of his mouth. But, he didn't say a word. He just motioned for Billy to come up the stairway and stepped away from the door. But not so soon Billy didn't see the glimmer of a tear in his eye.

She was sitting before a Christmas tree in the corner, adjusting lights here and there.

"Mom, I have your candle here, I..."

In that first moment of recognition, he thought he saw the brightness of a thousand holiday lights in her eyes.

"Billy..." It was all she could say, but nothing else needed to be said.

He crossed the room, reaching down to tenderly take her by the hand and raise her upward, feeling as he did her arms crushing about him.

"Billy... Billy."

And then dad was there, too, pounding him on the shoulders. "Look at you, will you. Look at him, mom. Just take a good look at that son of yours."

**Discovery**

Finally, they set him free. His eyes took in the familiar things about the room. Nothing was changed. Except for the Christmas tree, the room was as he had always known it. No, there was one other thing. There, in his favorite chair in the corner sat a very pretty girl.

"Ann?"

"Yes, Billy. It's me. Just paying my annual Christmas visit to your folks. I do it every year."

"Every year on Christmas Eve," mom said. "We play a little game, as if you were here, as it used to be."

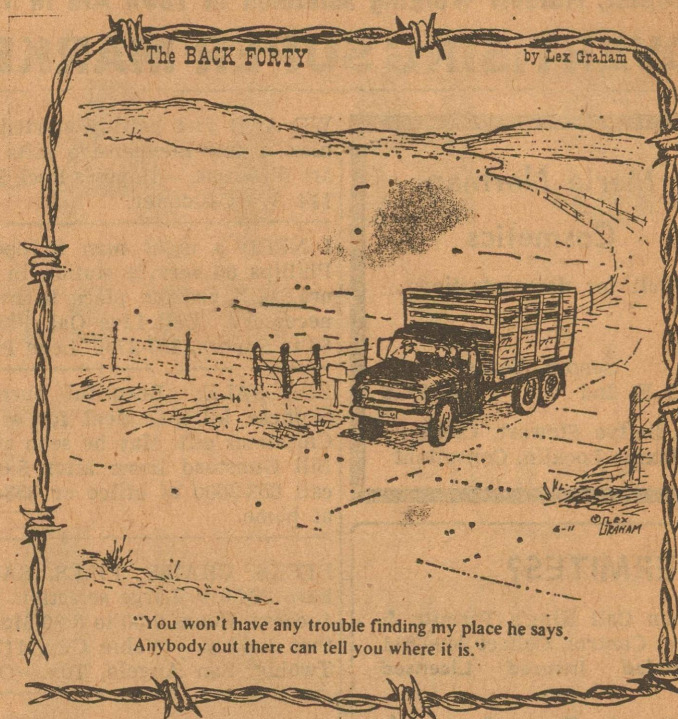
"I'm here," Billy said, not knowing what else to say.

Dad reached down and picked up a Christmas gift from beneath the tree. "You're here, so you get to open the first present. This one is for you, from Ann."

Billy hesitated. The gift was proffered again. "Open it, son, we have a Christmas to celebrate. Later, we'll talk. Now, we'll have our Christmas."

Billy tore the wrappings away. "O.K.," he said with a jaunty air. "Now, let us have our Christmas."

As he sent the ribbons and paper flying here and there, Billy Halliday felt ten years younger. He wondered if he had ever been away at all. He was aware suddenly of the blinking lights on the Christmas tree — on and off, on and off. It made him think, for some reason, that life is stop-and-go, with warning lights at points where decisions were to be made. He wondered about Ann, about what life had brought to her in the last ten years. He wondered if the buses were running on schedule again. He thought that, at least for this moment, he was completely happy. He was no longer a Lonely Christmas Traveler.



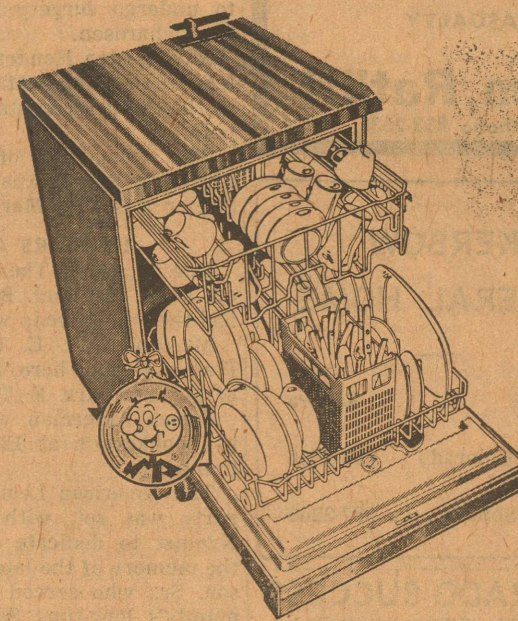
If you seem to be lost when you want to finance a new car or truck, see us first. We can direct you to a low cost loan with no trouble.



**The First National Bank**

Of Eldorado

**Proper  
Energy  
Management  
Can Save You Money!**



*Helpful Tips  
For your Dishwasher*

- ★ A dishwasher will usually hold a whole day's dishes. It takes as much hot water and energy to wash one dish as it does a full load. Stack your dishes out of sight in your dishwasher and wait until you have a full load to turn it on.
- ★ Use only detergents manufactured specifically for dishwashers. A wetting agent helps prevent water spots on glasses and silverware.
- ★ Clean the filter screen often. A clogged filter can reduce the efficiency of your dishwasher.

Pick up your FREE copy of  
"ENERGY CONSERVATION"  
Booklet from



Home Environment Division of General Motors.

**WEST TEXAS UTILITIES COMPANY**

An Equal Opportunity Employer



**WTU**

A Member of The Central and South West System

### Cheapest, Hardest Working Salesmen In Town Are In The ADVERTISING SUPER MARKET

**Merle Norman**  
Cosmetics  
Call for demonstrations  
Sonora, Texas  
511 E. 2nd 387-2216  
Bettye Stewart, Clerk  
Maxine Locklin, Consultant

**TERMITES?**  
Then Call King's Termite & Pest Control, Collect 949-8611  
Bonded Insured Licensed

**King's Pest Control Service**  
2820 W. Ave. N.  
San Angelo, Texas  
Johnny J. King, Mgr.  
(to 28\*)

**ROOFING**  
ALL TYPES  
ROOF REPAIR  
and Quality Roofs  
KENT ELLIOTT ROOFING  
Phone 655-2800  
San Angelo, Texas

**Western-Bilt**  
They're Western-Bilt  
They're Guaranteed  
Free Pick Up and Del.  
Phone 853-2956

**INSURANCE**  
FIRE  
WINDSTORM  
HAIL; AUTO; LIFE  
CASUALTY  
Tom Ratliff  
Phone 853-2636

**KERBOW FUNERAL HOME**  
Eldorado Sonora  
Phones, Eldorado 853-2636  
Or Call Sonora 387-2266

**ELDORADO SUCCESS**  
PUBLISHED EVERY THURSDAY  
At Eldorado, Texas 76986  
Fred Gunstead... Editor-Publisher  
Bill Gunstead... Associate Editor

**Subscription Rates**  
1 Year In Schleicher County \$5.00  
1 Year, Elsewhere \$6.00

Entered as Second Class Matter at the post office at Eldorado, Texas, under the Act of March 3, 1887.

Any erroneous reflection upon the character, standing or reputation of any person or corporation which may appear in the columns of The Success, will be gladly corrected upon same being brought to the attention of the publisher.

Notice of entertainments where a charge of admission is made, obituaries, cards of thanks, resolutions of respect, and all matters not news will be charged for at the regular rates.

Announcements of revivals for churches are considered advertising and charged for at regular advertising rates.

Unsolicited poetry charged for at regular advertising rates.

Pictures — Unsolicited pictures for publication charged for at engraver's rates.

Front page advertising announcements to be charged for at a rate equal to three times the regular rate.



### Community Calendar

Dec. 16, Thursday. Social Security man at Court House, 10:00 a.m. to 12:00 noon.  
Dec. 16, Thursday. Merry Makers 42 Club meets with Mrs. Jake Spencer for Christmas party.  
Dec. 16, Thursday. Swine Flu Immunization Clinic, 4:00 to 6:00 p.m. at Memorial Building.  
Dec. 16, Thursday. Ozona A&B basketball boys here for games starting at 6:30 p.m.  
Dec. 16-17-18. A&B basketball girls to Iraan tourney.  
Dec. 19, Sunday. Hosp. Auxiliary party for Nursing Home patients, 3:30 p.m., at Med. Center.  
Dec. 19, Sunday. Open House at 1:00 p.m. at the Museum.  
Dec. 20, Monday. Party at Neighborhood Center for underprivileged children, 5:00 p.m.  
Dec. 20, Monday. 4-H Christmas Party, 7:00 p.m., Memorial Bldg.  
Dec. 20, Monday. School faculty Christmas party.  
Dec. 21, Tuesday. Cage teams to Wall. A&B girls, A&B boys, 4:00.  
Dec. 22, Wednesday. School dismisses 2:30 p.m. for Christmas and New Year's holidays.  
Jan. 3, Monday. School resumes following the holidays.  
Jan. 5, Wednesday. Lions Club meets 12:05, Memorial Building.

WE SHELL pecans at Sonora, on halves or by the pound. —387-2294 Fred Adkins. Oc

### Again it is time to think about Christmas

and those special gifts for those special persons on your list. At Brown Furniture Co. in Ozona, we specialize in giftware that will please your particular taste and needs. Come over to Ozona at Brown Furniture Co. and select your gifts. Have a cup of coffee and we'll wrap your selections at no extra charge. Make Christmas shopping a pleasure this year by coming over to Brown Furniture Co. in Ozona for your gifts this year. Dec

### No. 1078

**ESTATE OF ALFRED JACKSON STEVENS**  
AN INCOMPETENT PERSON IN THE COUNTY COURT OF SCHLEICHER COUNTY, TEXAS

NOTICE OF APPLICATION TO MAKE OIL, GAS AND MINERAL LEASE

TO ALL PERSONS INTERESTED IN THE ABOVE WARD OR HIS ESTATE:

You are notified that I have, on the 8th day of December, 1976, filed with the County Clerk of Schleicher County, Texas, an application, under oath, for authority to make, enter into and execute an oil, gas and mineral lease for the exploration, development and production of oil, gas and other minerals on, in and under the following described land: An undivided one-half (1/2) mineral interest in the following described land in Schleicher County, Texas, to-wit:

All of Survey No. 195, Block A, HE&WT RR. CO. Survey, Abstract No. 460, Certificate No. 100, containing 640 acres of land.

That the Honorable Judge of the County Court of Schleicher County, Texas, on the 8th day of December, 1976, duly entered his order designating the 20th day of December, 1976, at 10:00 A. M. in the County Court Room in the Court House of such County as the time and place when and where such application would be heard and that such application will be heard at such time and place.

Alta Stevens Cain, Guardian of the person and estate of Alfred Jackson Stevens, a person of unsound mind. ltc  
(Filed Dec. 8, 1976)



If two drinking glasses are stuck, one inside the other, fill the inner glass with cold water and the outer with hot. They will come apart easily and unbroken.



The Purple Heart medal was originated by George Washington in 1782. Only three or four were awarded during the American Revolution.

**CLASSIFIED ADVERTISING RATES**  
First Insertion.....4c word  
Additional Insertions.....2c word  
Minimum \$1.50 Each Insertion  
Cash In Advance  
\$2.00 Minimum On All Small Ads  
Taken On Phone Or By Mail

### Oil News

### Discoveries In County

Gulf Oil Corp. No. 1 State "TB", Schleicher county Ellenburger gas discovery, 2 3/8 miles south of the two-well University 53 (Ellenburger and Canyon gas) field, but separated by a 7,925-foot Ellenburger failure, and 26 miles northwest of Eldorado, was finalized for a calculated, absolute open flow of 5.9 million cubic feet of dry gas daily.

Production was through perforations at 7,800-832 feet, which had been acidized with 5,750 gallons.

Scheduled to 8,500 feet, it was drilled to 7,850 feet. Drillstem tests were not released.

Location (amended) is 660 feet from the south and 1,991 feet from the west lines of 3-54-University.

The failure, Gulf Oil No. 1 State "TJ" 23-53, outpost to Ellenburger production in the University 53 field, 660 feet from the north and 1,980 feet from the west lines of 23-53-University, was abandoned, after testing through Ellenburger perforations at 7,860-862 feet.

**Wildcat Set**  
Mitchell Energy Corp., Houston, will drill the No. 1-7 Powell, an 8,400-foot wildcat in southwest Schleicher county, 16 1/2 miles southwest of Eldorado, 1 1/4 miles north-northwest of the firm's No. 1-13 Powell, active wildcat, but separated by the depleted two-well John Rae (Pennsylvanian oil) field.

Location is 660 feet from the north and west lines of 7-GC&SF. The No. 1-13 Powell, in 13-2-GC&SF, went "tight" when drilling reached 8,345 feet on an 8,600-foot contract.

The John Rae field produced at 7,428 feet.

**Outpost Set**  
Cabot Corp., Pampa, will drill the No. 1-C Whitten 3/4 mile north of production in the Eldorado (Canyon gas) field, but separated by depleted producers, and 5.4 miles northwest of Eldorado.

Location, exception to Rule No. 37, is 2,320 feet from the south and 1,320 feet from the west lines of 26-LL-TCRR. Contract depth is 6,500 feet.

### Meeting Set This Week

The Plateau Underground Water & Supply District District had a meeting set for Wednesday, Dec. 15th, at 7:00 p.m. in the County Court room.

LETTER & LEGAL rag bond paper is for sale in ream boxes at The Eldorado Success.

RECEIPT BOOKS: Small and large ones on sale at The Success office.

### Remember Advertisers: Our Readers are Paid-In-Advance Subscribers To The Success That Covers The County And In Addition each week we sell over 100 copies at 15c each at several newsstands

### The Consumer Alert

### Be Cautious When Christmas Shopping

(By John L. Hill, Attorney General) Austin, Tex.—If you're among the many Texans who haven't finished Christmas shopping yet, you may be close to panic as you battle the crowds in stores and shopping centers to hunt for something "just right" at a reasonable price.

Our Consumer Protection Division attorneys say "panic buying" almost always results in later dissatisfaction—either with the product or with the price you had to pay for it.

It's still not too late to get organized, though. You may find that a few simple precautions can help to prevent mistakes that could cause you to start off the New Year in a department store exchange line. Or what's even worse in line for an emergency loan to pay off debts.

The first and foremost step, say our attorneys, is to make a realistic decision about how much you can spend on remaining Christmas gifts. You should arrive at a total for all gifts and holiday expenses that is compatible with your budget — DON'T MAKE FINANCIAL COMMITMENTS YOU CANNOT MEET!

This means that if you charge purchases at several stores with extended payment plans, you must be able to meet the minimum required payments at each store, PLUS be able to meet your other monthly bills.

Next, make a list of everyone you need to shop for and allocate a certain amount to spend that will keep you within your budget. This will make shopping easier, since you can eliminate any gifts over that amount. Stick to your list when you shop; however, if you can't find an item or if you spot a good bargain on another, be flexible and take advantage of it. Just be sure it IS a bargain.

If it's on sale, it may be marked "not returnable" or there may be a notice that "all sales are final." Even if an item isn't on sale, though, you should check the store's return policy before buying something that may need to be exchanged or returned later. Stores are not legally required to refund money, exchange merchandise, or accept returned goods for credit unless the item is defective or not as represented.

If you find your gift list exceeds your funds, you may want to try cutting back a bit. Some families or groups of friends draw names for Christmas. Or you might like to make some simple gifts, if not too pressed for time. Talented cooks often give homemade holiday foods and special baked goods. This is a nice gesture, but if you're trying to save money, you should figure up the cost of ingredients. Quite often, that delicious fruitcake may end up costing more (and taking much more time!) than a "store-bought" gift.

Our attorneys also suggest that you ask yourself some searching questions before setting out on a last-minute shopping spree. Your answers could spell the difference between a Christmas you'll enjoy remembering and one you'll try hard to forget.

—Is this a gift someone really needs or can use?  
—Am I paying more than I can afford for a gift because someone "expects it"?  
—Am I sacrificing quality for quantity in my buying?  
—Will I end up paying double for a gift that I have charged when all the carrying charges are added?  
—Will it take me until next-Christmas to pay for this one?  
—Will my Christmas spending mean my family and I have to do without some necessities during the New Year?

### Methodist Notes

The Young Couples Class had a get-together Wednesday evening of this week at the Lynn Meador home.

The Dorcas Circle had their Christmas party Monday at Rose Brannan's home.

The Advent coin folders are to be turned in at the services on Sunday, December 26th.

### Progressive Dinner For Youth Set For Monday

The young people of First Baptist Church will have their Christmas progressive dinner on Monday, December 20th. Appetizers will be served at 6:00 p.m. at the home of Jon Calcoate. The dress will be semiformal and tickets may be purchased from Mary Kay White, Lynn Whitaker or Ronnie Hall.

### Hope Lutheran Church

in Sonora will have the following services this Sunday, Dec. 19th:  
10:00 a.m. Bible and Sunday School.  
11:00 a.m. Joint Children's Christmas Service. Rev. A. B. Wagner.  
12:15 p.m. Parish Christmas dinner.

### First Baptist Notes

The Rev. Gene Stark announces that a Church Family Night and Christmas Dinner and Celebration will be held this Sunday, December 19th, starting at 6:00 p.m. in the Fellowship Hall.

Rev. Stark stated, "The Turkey and Dressing will be furnished. You are to bring a salad, dessert, or a vegetable. Come enjoy the fellowship."

Following the dinner, the Children's Night at Christmas will get under way at 7:00 p.m. in the Church Sanctuary.

On Christmas Eve, December 24 at 6:30 p.m., the Candlelight Celebration Lord's Supper will be held.



By Underwriters Laboratories Inc. Nancy Rusin Public Information Office Artificial Christmas Trees

Your Home Town, USA—A home fire this evening resulted in a substantial loss of property. Fortunately—no injuries occurred. However, this situation happens many times, and could have been prevented.

Upon investigation, it was found that a gift-wrapped package was accidentally ignited. The flames from the present then set the tree aflame, turning it into a flaming torch.

It was noted that the artificial tree was not a UL Classified tree. This Classification Mark means that the tree has been tested, and has met specified requirements for fire resistance.

The testing procedures make provisions for the presents under the tree. They are represented by one-pound of shredded newsprint, which is spread in a 24-inch diameter circle around the base of the tree. The newspaper is then ignited, and allowed to burn until consumed. If the tree does begin to flame, it may not produce flames that extend beyond two feet above the tree top, may not spread laterally from the path of the igniting fire, and may not produce melted plastic parts which continue to flame after falling.

In order to double check the results, the tree is subjected to the testing procedure two more times, and must not fall during the series.

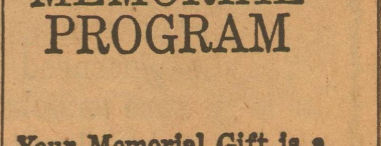
UL does not Classify metal (aluminum) trees. There is a possibility that the tree will become "live" if a frayed or ungrounded set of lights is used to decorate it. UL suggests using only ornaments on an aluminum tree, and perhaps a colored spotlight directed towards the tree.

—CHEAPEST, hardest-working salesmen in town; That's Success Want Ads.

### MEMORIAL PROGRAM

Your Memorial Gift is a fitting tribute to a loved one. This remembrance helps support the research, education and service programs of the American Cancer Society.

Memorial gift funds may be sent to your local Unit of the Society.



We have the appropriate cards to send to the family and to the donor, and will send your check to the American Cancer Society in Austin.

HELEN CARLMAN Memorial Chmn. Schleicher County

Two programs on "Fine Arts" were presented by Fayla Cheatham and Betty Hanusch. Linda Ingle was hostess for the evening. —Rep.

**HISTORICAL SOCIETY**

By JANNETTE WILKERSON

Merry Christmas at the West Home. (Mora Lee West)

The glad tidings of the Christmas Season always meant a lot of excitement and planning for the Charlie West family consisting of the mother, Dad and 10 children. A happier group you could not find.

About three weeks before Christmas, plans started developing. First, the decorations had to be made. It was unheard of for their tree to be decorated with bought decorations. Santa could not eat them, and he just might be hungry when he came down the chimney. In later years when the family moved into their new home, there being no chimney, there was always a member of the family who remembered to set Santa a glass of milk near the door where he would likely enter, so that he would never leave hungry. This gift was usually suggested by one of the older children and one of the little ones gave it to Santa. The child was always eager to check the next morning to see if Santa drank his milk. In case someone forgot there was always the excuse that Santa used the other door.

Everyone was filled with excitement when some member of the family finally found the tree for the happy occasion. Sometimes it took several days to find the right size cedar tree. A purchased tree would have not seemed right for all the beautiful home made decorations. As soon as the tree was in place in the living room, plans began to take shape for the Tree Trimming Party, a real fun time for all the children, grandchildren and in-laws to get together to start making the decorations. Also this was the time for names to be drawn. Each gave a gift to the name drawn. The adults had their pot to draw from and the little ones theirs. Such secrecy! So much "giggling." A five dollar limit was placed on each adult gift and three dollars on the children's gift. One would be surprised today to know what lovely gifts could be purchased with that amount.

As soon as the crowd had gathered, the fun began. Some would pop popcorn for the children to string. Also cranberries had to be strung. Yards of each so that the string would go completely around the large tree. Marshmallows were put on strings and candy cane candy was hung on the branches. Silver stars were made by cutting stars from cardboard and covering them with foil. Some were colored with crayolas. So much pride as each child wanted his to look the best. Next came the gingerbread men. Dozens of them were made. All were decorated with buttons of raisins down their coats and also raisin eyes and noses. So much laughter! As each man would be a little different. Some would have a short arm, a long leg or maybe the head would be tilted too far. Some would turn out fat and some skinny. The men would all be hung on the tree. Some even had names of someone the children thought they resembled.

The Tree Trimming Party over, everyone anxiously awaited Christmas Eve. A real dress up affair for all. Gifts exchanged and the Christmas Eve party over all required to their abode for the night, so they would be ready to return for the big feast the next day. The children were always up bright and early to see what Santa had left in the stockings. After dinner, having no T-V's and few radios, the families enjoyed each other.

Christmas being over, there was still one more party, the Undressing of The Christmas Tree party. Around New Year's day a party for all was held. At that time the decorations were very carefully removed from the tree. All edible decorations were divided among the children. It did not seem to matter if they had hung on the tree for at least three weeks. The tree was then taken out of the house and everyone helped to clean up the room.

Memories! Oh sweet memories! May the families today carry thru their lives the sweet memories of Christmas, shared with each other as did the C. C. West family.

**25-Year Service Award**

The Atlantic Richfield Company offices in Midland report that a 25 year Service Award Presentation was made by Mr. N. F. Gullledge, Sr., District Production Supervisor, Crane-Eldorado on Thursday, December 2, at the office in Eldorado to George W. Hester of Ozona, gangpusher.

Afterward, Hester was taken to lunch by Mr. Gullledge. Also present at the time of presentation were W. M. Anderson, Foreman; Vernon L. Gibson, Foreman; W. R. Howell, Material Expeditor and J. P. Ragsdale, Clerk.

Hester went to work for Sinclair Oil & Gas Co. on Sept. 4, 1951, as a Roustabout in the Ozona Sub District. He transferred to Crane Sub-District and worked as a Relief Pumper at Midkiff for two years, Crane for two years and at Royalty for one year before transferring back to Ozona. Hester pumped at the University 66-67-68 Unit lease, was later Roustabout-Pumper at Eldorado and most recently was promoted to Gang Pusher in the Crane Sub-District and is reporting for work at Eldorado.

**Cantata Well Received**

"Love Transcending," the Christmas cantata by John W. Peterson, was presented by the Community Choir Sunday night to a near capacity crowd in the First Baptist Church and was well received by all who attended.

Directed by Mrs. Bob McWhorter, the cantata had Mrs. Jame Page as organist, Mrs. Joe Christian as pianist, and Rev. Gene Stark as narrator.

The choir members were: Sopranos: Jan Crippin, Ruth Davis, Sally Head, Louise Kuykendall, Becky Moore, Helen Page, Frances Peters, Ethel Pope, Betty Richardson, Margaret Rountree, Susan Stark.

Tenors: Joe Christian, Weldon Davis, Lynn Meador, D. T. Yates. Altos: Mabel Blaylock, Charlene Gunstead, Debbie Joy, Gail Robinson, Mary Robinson, Corine Whitten, Marcy Willis.

Basses: Bill Gunstead, Pat Ragsdale, T. P. Robinson, Gene Stark.

**Duplicate Bridge**

Winners last week: Helen Blakeway and Jack Beebe, 1st; Lottie Puckett and Fred Adkins, Sonora, 2nd; Margaret Frost and Pete Finley, 3rd; Melissa O'Harrow and Frankie Williams, 4th; Ethel Olson, Sonora, and Mabel Freitag, 5th.



A VERY  
**Merry Christmas**

To Our Many Friends And Customers In The Eldorado Area

BIKES FOR ALL AGES  
BY SCHWINN, VISTA, & VOLKSCYCLE  
Still Time To Select One For Christmas!

**Concho Valley Bike Shop**

And Lawn Mower Center  
2015 Austin, San Angelo, Tex. 915-655-7373  
TOM WATSON BROOK A. BAKER

**BARGAINS FOR CHRISTMAS**

SEE The Bowl Games In 25-Inch Color This Year

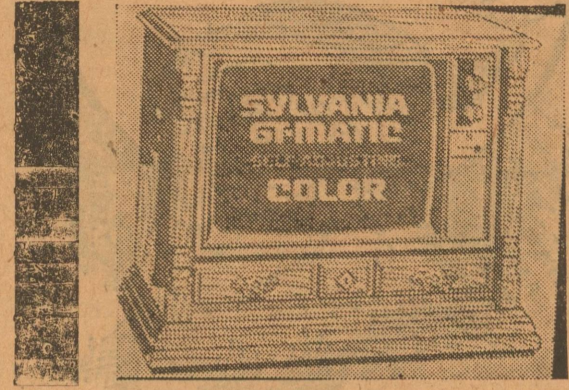
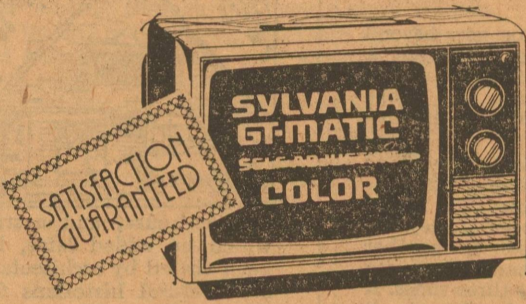
HURRY!

HURRY!!

HURRY!!!



Sylvania GT-Matic Color—Early Amer. Styling  
Reg. \$779.95 Now \$699.95 25"  
CL5273K Only 1 Left



Sylvania GT-Matic Color—Spanish Styling  
25-inch diagonal  
Reg. \$749.95 NOW \$629.95  
CL5246 Only 2 Left

Only 2 left 19-inch diagonal CX5161W  
Reg. \$449.95 NOW \$375.00

Black & White Bonanza, 12-in. diagonal  
Reg. \$126 NOW \$106.95 12"  
MW6044YL Only 1 Left



**Jerry's TV Service**

We Wish You A Color-ful Christmas!  
ELDORADO, TEXAS PHONE: 853-2314

**MINISTERS WERE COMPOSERS OF NUMEROUS CAROLS**

Some of the most revered Christmas carols were composed by minister, says researcher Sally Hopkins of Hallmark.

O Little Town of Bethlehem was written by Episcopal minister Phillips Brooks as a poem in 1868; Louis Redner composed the music. Another Episcopal minister, John Henry Hopkins Jr., wrote the words and music for We Three Kings of Orient Are in 1863.

**UNITED PENTECOSTAL CHURCH** of which Walter Ford is pastor, will conduct the services this Sunday afternoon, Dec. 19th, at the Nursing Home here in Eldorado.

—SUCCESS Want Ads Get Results!

**The Country Parson**

Question: Does it really make any difference what we believe as long as we are sincere?

Answer: One can be sincere in what he believes and practices and still be wrong. It is possible to be sincerely wrong! Sincerity does not change error to truth or make false doctrines to be God's Will! If a person takes poison, sincerely thinking that the poison is medicine, does his sincerity change the fact that he has taken poison? Does his sincerity change the danger to benefit? Does it alter the consequences of what he did in all sincerity?

Seeming right does not make it so! In Proverbs 14:12 we read: There is a way that seemeth right

unto man, but the end thereof are the ways of death.

Here is a man that thinks that his way is right, but all his sincerity does not change the fact that he is headed for destruction.

Saul persecuted the church in all sincerity and with a clear conscience, thinking all the while that he was acting rightly and doing God's will in killing Christians! Did his sincerity change the fact that he was a persecutor of God's people? Did his clear conscience change his blasphemy to worship? Did the fact that he thought himself to be right make his right? He was opposing God while thinking he was doing God's will.

Jesus said in Matthew 7:21, Not everyone who says to me Lord Lord will enter the kingdom of heaven; but he who does the will of my Father who is in heaven. Their

sincerity was not the determining factor; their obedience was! Sincerity is no substitute for obedience. Thinking that you are doing God's will is not a substitute for doing God's will. In order to see heaven one must be sincere and do God's will too. Jesus said that truth makes men free (John 8:32), not sincerity! When a lie is believed and obeyed in all sincerity, it is still a lie!

One must not only be sincere. One must be sincerely right in order to be saved!

If you have a question about the Bible, send it to: The Country Parson, P.O. Box 91, Eldorado, Tex 76936.

TYPEWRITER RIBBONS, for Royal, Underwood, and Remington available at the Success.

READ BOTH  
★ YOUR HOMETOWN NEWSPAPER  
★ THE DALLAS MORNING NEWS  
COMPLETE NEWS COVERAGE  
→ LOCAL • NATIONAL  
STATE • WORLDWIDE  
SUBSCRIBE TO TEXAS' FIRST METROPOLITAN NEWSPAPER  
ONLY \$3.50 A MONTH  
**The Dallas Morning News**  
Contact Your Local Dallas News Distributor  
Or Fill Out And Mail This Handy Coupon

Circulation Department

The Dallas Morning News  
Communications Center  
Dallas, Texas 75222

Please start my subscription to The Dallas Morning News at once. I understand that the price is \$3.50 a month.

Name \_\_\_\_\_  
Address \_\_\_\_\_ Phone \_\_\_\_\_  
City/State/Zip \_\_\_\_\_



COME IN AND SEE US ABOUT A FIREPLACE FOR YOUR CHRISTMAS ENJOYMENT

We Also Carry A Complete Line Of Fireplace Accessories

**THE HOUSE OF FIREPLACES**

512 Caddo — San Angelo, Texas 76901  
653-3140 Benny & Debbi Nichols

# CHRISTMAS



Not in the sense of custom only, but with a genuine appreciation of our pleasant association during the past year We extend to You our best wishes for A Merry Christmas,

## Kent Elliott Roofing

HAS DONE THE MAJORITY OF THE ROOFS IN ELDORADO

All Work Guaranteed

655-2800

San Angelo, Texas

### SAFETY PASSAGES

By Underwriters Laboratories Inc. Harlan Teller Public Information Office Factory Built Fireplaces

Want the atmosphere and warmth of a fireplace without the expense of having a mason come in and build one? Or, do you have a fireplace, but no adequate chimney to go with it?

Many people have found the answer to these questions by purchasing factory built fireplaces and chimneys. They are relatively low in cost, easy to install, and if carrying the label of a nationally recognized testing laboratory, have been evaluated for safety.

Underwriters Laboratories' fireplace testing program, begun in the mid 1950's, has experienced more widespread use as the popularity of factory built fireplaces has increased.

These units are divided into two types: fireplaces and fireplace stoves. Fireplaces are designed for mounting into or against a wall, or in a corner. Therefore, UL engineers install the fireplace, complete with chimney, in a plywood enclosure. Then, a series of tests are run to make sure that the unit will not overheat surrounding combustible materials or emit poisonous gas and smoke during its normal operation.

The evaluation goes beyond normal situations, however. A "flash fire" is induced, during which the flames and smoke must not escape from the fire-box area.

A factory built fireplace must also be strong. The fire-box and chimney are loaded with weight to see if they can stand the stress. In another test, a 20-lb. sandbag is swung at the chimney three times. If the chimney breaks up, it fails the test. The same applies when it is subjected to a pulling force.

Certain types of weather can obviously have an adverse effect on the strength of the chimney. Wind and rain tests are conducted to check out this possibility. Heavy winds can damage the chimney assembly, while water seeping into the fireplace can cause it to burn improperly.

Free standing factory built units, or "fireplace stoves", are scrutinized through a comparable test program. In addition, the unit is tipped in different directions to determine its stability.

### Hospital Auxiliary Sets Party For Dec. 19

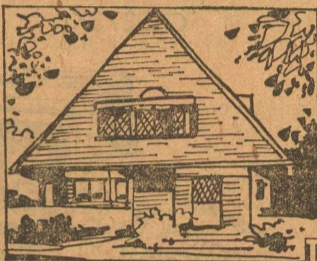
A Christmas party was planned for the Nursing Home patients on Dec. 19th at 3:30. Friends and relatives of the patients are invited. Mrs. James Page will have charge of the music. Mrs. Rance McDonald and Mrs. Bessie Doyle were appointed to buy gifts for the ones in the Nursing Home. The Young Homemakers Home Demonstration Club will put up the Christmas tree and do the decorating.

### AMERICA'S HERITAGE

HOME OF FAMOUS ARCHITECT PRESERVED

Though many Americans believe Frank Lloyd Wright was our greatest architect, few are aware that one of the most architecturally and historically important buildings he ever designed was his own first house.

It was at his house in Oak Park, Illinois, that Wright worked out many of his most powerful ideas. Using his home as a model, he evolved many elements of his early modern style, later to be called the Prairie Style.



The house, and a studio which he added later, have been visited by architects and architectural historians from all over the world.

Now, the buildings are being restored by the Frank Lloyd Wright Home and Studio Foundation, which will keep them open for the public and to provide a research center for students of Wright's work.

Preservation of the home and studio for all Americans resulted from a cooperative venture between the foundation and the National Trust for Historic Preservation, which owns the property.

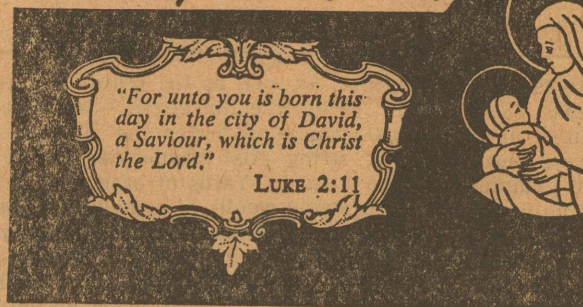
This typifies just one of the ways that the National Trust is working to help make preservation happen all across the country today. For more information about historic preservation, write the National Trust, 740-748 Jackson Place, N.W., Washington, D.C. 20006.

"The hen is an egg's way of producing another egg." Samuel Butler



The Purple Heart medal was originated by George Washington in 1782. Only three or four were awarded during the American Revolution.

### A MERRY CHRISTMAS



### YATES CLEANERS

D. T. Yates

## SEASON'S GREETINGS

### TOBOSA ENTERPRISES

Nutrena And Godbold Feeds

Steve Whitten—853-2944

### HAPPY HOLIDAYS



JACK HALBERT, Jr.

Mobil Distributor & Butane

## Christmas Blessings...



This month of December marks our Fifth Anniversary operating the Texaco service station. We thank you for your patronage during that time and pledge our best efforts in the future. Keep coming here!

Closed Christmas Day

## MITTEL TEXACO

Gail and Peggy Mittel and daughters

and Employees

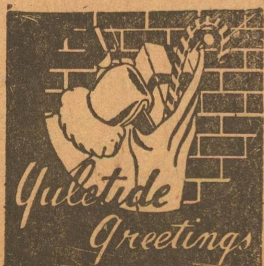
Best Wishes for a

Happy Holiday

GILBERT LOWE REPAIR SHOP

### Box Tops Sought

The Schleicher County Elementary School is collecting box tops from Post cereals for athletic equipment. Save your Post cereals Box Tops and send them to school with your child where they will be processed by volunteers. If you do not have a child in elementary school bring your box tops to either Hext Foods or Parker Foods and they will turn them in to the schools. Some valuable premiums ranging from basketballs to playground equipment are available and they are FREE to our school, so let's not let our young athletes down.



Robert K. Bradley Geologist



AND WE WISH FOR EVERYONE

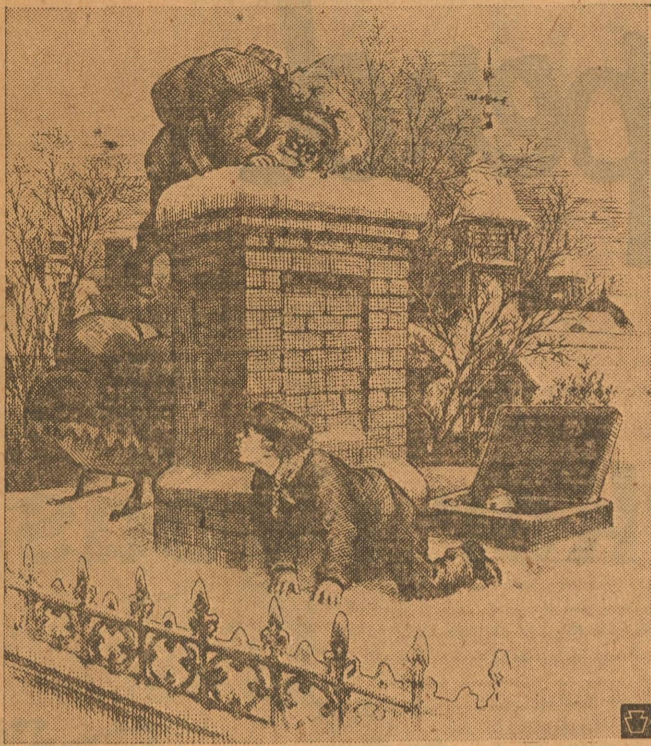
A PROSPEROUS YEAR IN 1977

## ELDORADO WOOL CO.

Your Purina Dealer

### An American Christmas

By Nancy Rusin  
UL's Public Information Office



Courtesy of the Henry Ford Museum  
Dearborn, MI

Although America is commonly regarded as a melting pot, many American traditions and customs have a distinct ethnic and regional flavor. A look at our Christmas traditions is proof of this distinctiveness.

In the days of the Puritans, a person greeting a passerby with the salutation, "Merry Christmas", was awarded a five dollar fine for his gesture. These settlers were bound by a law passed in 1659 prohibiting the celebration of Christmas. In fact, this ban continued until the 1800's, when the Episcopal Sunday Schools in New England began observing the holiday. Around this time, the early Irish immigrants, settling in Boston, transplanted their custom of placing a lighted candle in the window. This act symbolically lights the way for the Christ child.

French settlers in the Southern portions of the United States ushered in the holiday by the use of fireworks, firearms, and anything else that would make loud noises. This custom is still observed in some rural communities.

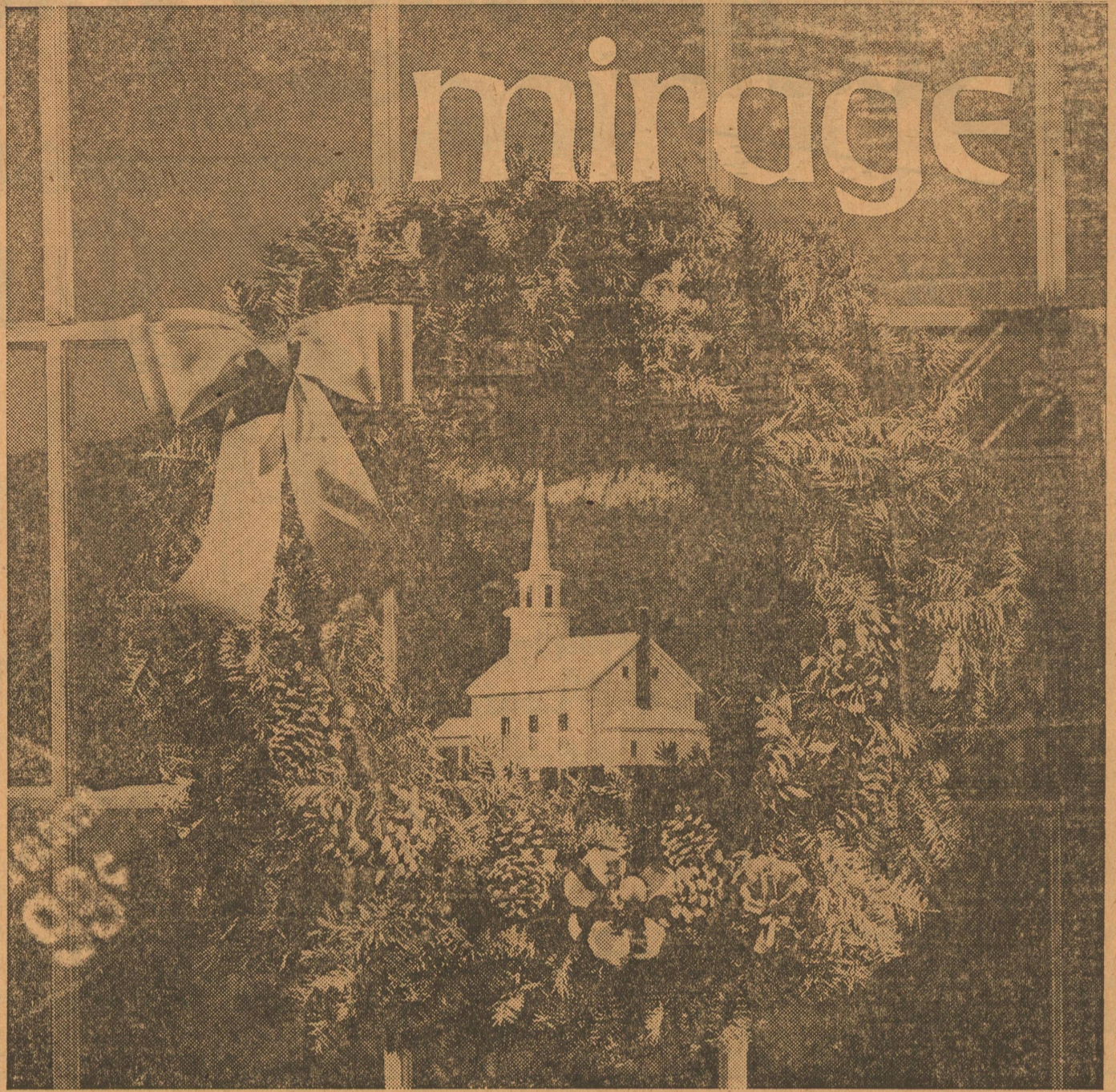
The preparation of large meals, a main part of Christmas on a Southern plantation, is now a universally honored custom. Traditional dinners of turkey, ham, or goose, garnished with desserts of pies, cakes, and cookies, are still gastronomical delights. If you had been part of George Washington's circle of family and friends, you would have been treated to Martha Washington's Christmas cake, which, among other ingredients, called for the use of 40 eggs!

Ironically, the Christmas tree, today a pivotal yuletide tradition, was brought to this country by enemy forces during the American Revolution. Hessian soldiers, paid adversaries of the colonists, introduced this custom.

The German immigrants brought with them the beautiful tradition of the lighted Christmas tree. It is said that the first lighted tree was a contribution made by Martin Luther, who, after taking a walk in a neat-by forest before Christmas, placed candles on an evergreen to recapture the stars he saw shining through the branches of the trees.

Decorations for Christmas trees in the early Republic were usually candles, and ornaments fashioned from bits and pieces of materials found in the home. Brightly colored paper chains, walnuts, and popcorn strings were popular additions to the tree.

In the 20th century, candles were gradually replaced by electric light strings. Underwriters Laboratories, an electrical testing organization gaining momentum at the time, recognized this trend. In the early 1920's UL introduced a Christmas light testing program designed to reduce the possibility of fire or shock.



We had put the last bauble on the tree and hung the children's stockings by the mantel. We had even remembered our newly acquired kitten. Her catnip mouse was adorned with a red ribbon and a small gold bell.

Then suddenly I found myself staring at the wreath in the window. In the center of it, I could see the white church I'd gone to as a child. More often than not at Christmas there was snow on the ground when we went to the services, crisp and crunchy beneath our feet.

I blinked . . . and, when I looked again, the church was gone. But memory's message still remained. I turned to my husband. "There's something else to do," I told him, "if tomorrow is really to be Christmas."

Copyright 1976 Keister Advertising Service, Strasburg, Virginia  
Scriptures selected by The American Bible Society

	Sunday Micah 5:2-4	Monday Jeremiah 33:14-21	Tuesday Malachi 3:1-5	Wednesday John 1:1-14	Thursday Luke 1:26-38	Friday Luke 1:46-55	Saturday Luke 1:67-79
--	--------------------------	--------------------------------	-----------------------------	-----------------------------	-----------------------------	---------------------------	-----------------------------

### Eldorado Churches Welcome You

- |  |   |
|--|---|
| <p><b>First Presbyterian Church</b><br/>7 North Cottonwood</p> <p>Gordon F. Garlington, Jr. . . . Pastor<br/>Sunday School . . . . . 9:45 A. M.<br/>Morning Worship . . . . . 11:00 A. M.<br/>Union Youth Fellowship 6:00 P. M.<br/>Joint Methodist &amp; Presbyterian<br/>Evening Service 7:00 P. M.</p> <p><b>West Side Church Of Christ</b><br/>Divide Street</p> <p>Morning Service . . . . . 10:30 A. M.<br/>Evening Service . . . . . 6:00 P. M.<br/>Wed. Evening Service . . . . . 8:00 P. M.</p> <p><b>First Baptist Church</b><br/>Gene Stark . . . . . Pastor<br/>W. Gillis Ave.</p> <p>Sunday School . . . . . 9:45 A. M.<br/>Morning Worship . . . . . 11:00 A. M.<br/>Union Youth Fel. . . . . 6:00 P. M.<br/>Church Training . . . . . 6:00 P. M.<br/>Evening Worship . . . . . 7:00 P. M.<br/>Sunday Evening Choir<br/>Practice . . . . . 7:45 P. M.<br/>Wed. Prayer Service . . . . . 8:00 P. M.</p> <p><b>First Christian Church</b><br/>Dean W. Brigham . . . . . Pastor<br/>Sunday School . . . . . 9:45 A. M.<br/>Church Service . . . . . 10:30 A. M.</p> <p><b>First United Methodist Church</b><br/>Keith Wyatt . . . . . Pastor<br/>109 N. Divide</p> <p>Sunday School . . . . . 10:00 A. M.<br/>Morning Worship . . . . . 11:00 A. M.<br/>Union Youth Fel. . . . . 6:00 P. M.<br/>Joint Methodist &amp; Presbyterian<br/>Evening Service 7:00 P. M.<br/>Wednesday Evening Choir<br/>Practice . . . . . 8:00 P. M.</p> <p><b>United Pentecostal Church</b><br/>Warner and Hackberry</p> <p>Walter L. Ford, Pastor<br/>Sunday School . . . . . 10:00 A. M.<br/>Morning Worship . . . . . 11:00 A. M.<br/>Evening Worship . . . . . 7:00 P. M.<br/>Services on Wednesday evenings<br/>at 7:00.</p> | <p><b>Church Of Christ—Mertzon Hwy.</b><br/>B. C. Coates, Jr., Minister</p> <p>Classes . . . . . 10:00 A. M.<br/>Morning Worship . . . . . 11:00 A. M.<br/>Evening Worship . . . . . 6:00 P. M.<br/>Wednesday Meeting . . . . . 7:30 P. M.<br/>Dinner on the ground Each<br/>First Sunday</p> <p><b>Gethsemane Assembly of God Mis.</b><br/>Nick Robledo, Pastor<br/>Sunday School . . . . . 10:00 A. M.<br/>Worship Service Friday, 7:30 P. M.</p> <p><b>Antioch Baptist Church</b><br/>Billy Daniels, Pastor<br/>Callender &amp; Mulberry</p> <p>Sunday School . . . . . 10:00 A. M.<br/>Morning Worship . . . . . 11:00 A. M.</p> <p><b>First Baptist Mission</b><br/>Rev. E. L. Flores</p> <p>Sunday School . . . . . 10:00 A. M.<br/>Preaching Service . . . . . 11:00 A. M.<br/>Evening Service . . . . . 6:00 P. M.<br/>Wednesday Prayer Service . . . . . 7:30</p> <p><b>St. Luke Missionary Bapt. Church</b><br/>East Street<br/>Rev. Charlie May, Pastor<br/>Sunday School . . . . . 9:45 A. M.<br/>Worship Service on First and<br/>Third Sundays of each month at<br/>11:00 A. M. and 4:00 P. M.</p> <p><b>Our Lady Of Guadalupe Catholic</b><br/>Highway 277 North<br/>Masses: Saturday night at 7:00 in<br/>English; Sunday morning at 8:00<br/>in Spanish.</p> <p><b>St. Mary's Episcopal Church</b><br/>McWhorter Ave. and Pelt Street<br/>The Rev. Lea Roy Aldwell, Rector<br/>Sunday Morning Worship: 10:00</p> <p><b>Primitive Baptist Church</b><br/>Menard Highway<br/>Hugh Montgomery, Pastor</p> <p>Service each 2nd Sunday at 10:30<br/>a.m. and 2:00 p.m. Also on Satur-<br/>day evening before at 7:00 p.m.<br/>Congregational Singing.</p> |
|--|---|

These religious messages are sponsored by the following interested Schleicher business firms:

**KWIK THRIFT GROCERY - 7:00 to 11:00**

Groceries—Magazines—Gasoline

**ANNA'S INN — PHONE 853-2143**

Juanita Arisppe

**SOUTHWEST TEXAS ELECTRIC CO-OP.**

Inc. — Owned By Those It Serves

**KENT'S AUTOMOTIVE & GARAGE**

Phone 853-2733—No. Angelo Hwy.

**EL DORADO RESTAURANT**

Jerroll Sanders — Ph. 853-2818

**JERRY'S RADIO & T-V SERVICE**

Jerry Jones — Phone 853-2314

**CECIL WESTERMAN DRUG STORE**

Phone 853-2226

**THIS ADV. SPACE FOR SALE**

Phone The Success: 853-2600

**SCHRIER'S GULF STATION**

Charles Schrier—Phone 853-2111

**LUM DAVIS FINA SERVICE**

Lum & Fuddie, Zane & Jan, & Employees

**THIS CHRISTMAS**

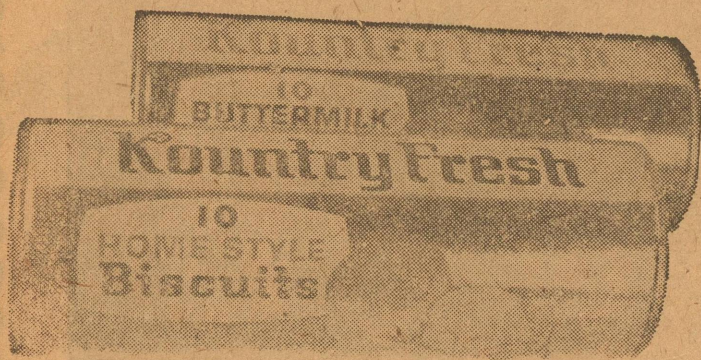
**Save** while you spend

With **S.N.** Green Stamps you're SURE to get exactly what you want—when you want it



**Parker Foods,**

Inc.



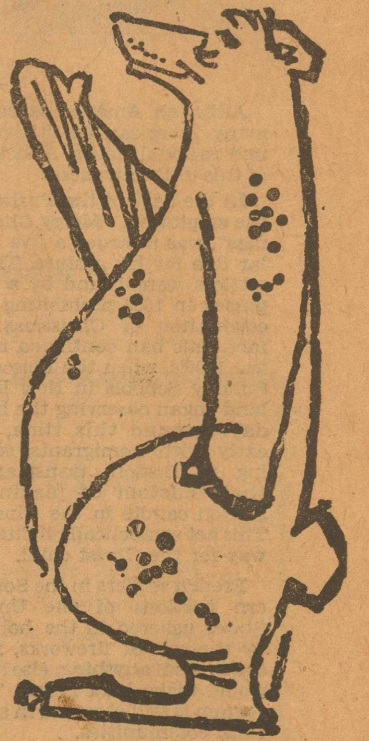
**Kountry Fresh BISCUITS**  
SWEET OR BUTTERMILK  
10 Count Cans, Each **10**

PET RITZ DEEP DISH 2 COUNT  
**Pie Shells . 59¢**

SARA LEE PECAN 12 OUNCE  
**Coffee Cake 1.19**

KOLD COUNTRY 32-OZ. BAG  
**TATER ROUNDS 79¢**

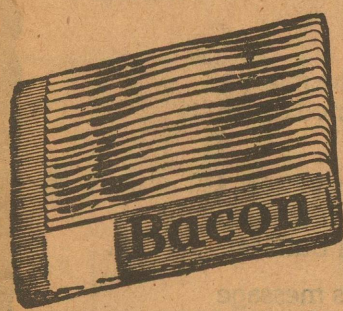
MORTON'S 24 OUNCE  
**MINCE PIES . 79¢**



DIAMOND—SOLID POUNDS POUND  
**Margarine 3 FOR \$1**

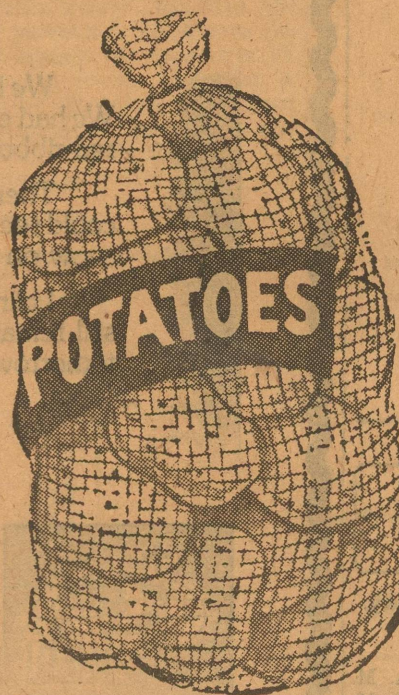


PILLSBURY SLICE & BAKE EACH  
**Cookies Assorted Kinds 89¢**



FARMLAND—VACUUM PACK POUND  
**BACON 1.19**

KOUNTRY FRESH 9½ OUNCE  
**Cinnamon Rolls 49¢**



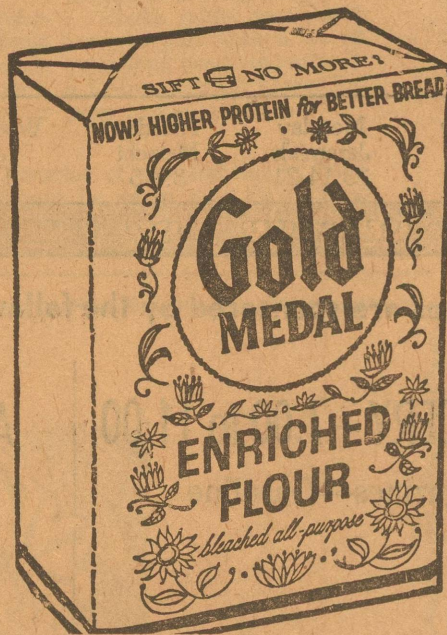
RUSSET 10-LB. BAG  
**Potatoes . 79¢**

RED DELICIOUS 3-LB. BAG  
**APPLES . 89¢**

LONG GREEN POUND  
**Cucumbers . 29¢**

KIMBELL'S 17-OUNCE CAN  
**Golden Corn . 4 FOR \$1**

GOLD MEDAL—LIMIT ONE 5-LB. BAG  
**FLOUR 69¢**



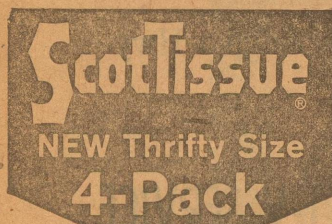
NESTLE—ALL FLAVORS 12 OUNCE  
**Cookie Mix 89¢**

KOUNTRY FRESH LIGHT 32 OUNCE  
**Corn Syrup 89¢**

DUNCAN HINES BLUEBERRY 13 OUNCE  
**Muffin Mix 79¢**

Hunt's Yellow Cling PEACHES Sliced Or Halves 29 Ounce Can **49c**

Thrifty Maid PEARS Halves 29 Ounce Can **49c**



BATHROOM TISSUE 4 ROLL PACK  
**Scott's Tissue 69¢**



FOR DISHES 22 OUNCE BOTTLE  
**Liquid Joy 79¢**

SNO BOWL 28 OUNCE BOTTLE  
**Cleaner 79¢**

ALL VEGETABLE 3-LB. CAN  
**CRISCO 1.39**  
With \$5.00 PURCHASE EXCLUDING CIGARETTES



KIMBELL'S 14-OUNCE BAG  
**SNO-FLAKE COCONUT 79c**

GLADIOLA 6¼-OUNCE POUCH MRS. ALISON'S—Assorted Flavors 6-OZ. BAG  
**PANCAKE MIX . 19c COOKIES . 3 for \$1**

**SPECIALS Good Thursday, Friday & Saturday**

December 16th, 17th, & 18th