













**News & Advertising Copy Deadlines:**

MONDAY of Each Week: Please turn in contributed columns, club reports for preceding week end, society and personal news, etc.

TUESDAY Morning: More General News.

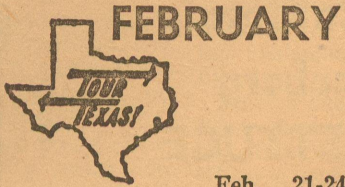
TUESDAY Afternoon, Late: Only news items of real significance such as deaths can be accepted.

IN GENERAL: Please Turn in News and Ad Copy As Early In The Week As Possible.

**THE ELDORADO SUCCESS**

PRINTING—ADVERTISING—NEWS

—SINCE 1901



**FEBRUARY**

The following events, selected by the Texas Tourist Development Agency, are but a few of the many excellent recreational opportunities offered by communities across the state. A more complete listing of Texas events may be obtained free of charge by writing TTDA, Box 12008, Austin 78711.

**Feb. 2-10** Southwestern International Livestock Show & Rodeo, El Paso. Stock show starts Feb. 2 in the El Paso Coliseum while the championship rodeo runs Feb. 5-10 with nightly performances. For information write Southwestern International Livestock Show & Rodeo, El Paso County Coliseum, El Paso, Tex. 79905.

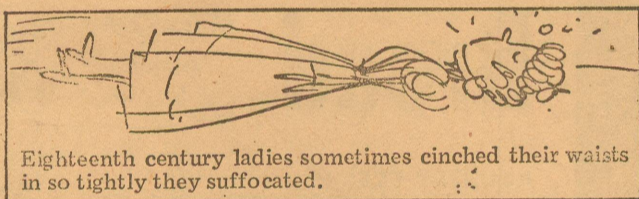
**Feb. 8-17** The 25th Annual Livestock Exposition & Rodeo, San Antonio. Held in the Joe Freeman Coliseum this event drew 330,000 last year. Over 8,000 head of livestock will be exhibited. For information write the San Antonio Livestock Exposition, Box 1746, San Antonio, Tex. 78296.

**Feb. 20-23** Bell County Junior Fair & Livestock Show, Temple. In its fifth year, this event in the Bell County Agriculture Barns is expecting an attendance of about 2,000.

**Feb. 21-24** Charro Days, Brownsville. In its 37th year, this pre-Lenten costume festival features fun and frolic. There is a full schedule of entertainment and activity. For full details write Charro Days Fiesta, Box 1904, Brownsville, Tex. 78520.

**Feb. 22-24** The 77th George Washington's Birthday Celebration, Laredo. One of the largest and most famous international fiestas, this 24-hour per day event pulsates in Laredo and Nuevo Laredo across the Rio Grande. Noche Mexicana, a three-hour spectacular featuring Mexico's top entertainment talent, followed by an all-night public dance, highlights the celebration. For more information write the Laredo Chamber of Commerce, Box 790, Laredo, Tex. 78040.

**Feb. 25-28** South Texas Wolf Hunters' Open Bench Show, Derby Run & Running Dog Bench Show, Karnes City. This event, which began near San Antonio in 1922 is still going strong. From 200-300 hounds are expected to participate in the show and hunting on the Wagner Ranch 20 miles north of Karnes City on State Highway 80. There is no charge for watching.

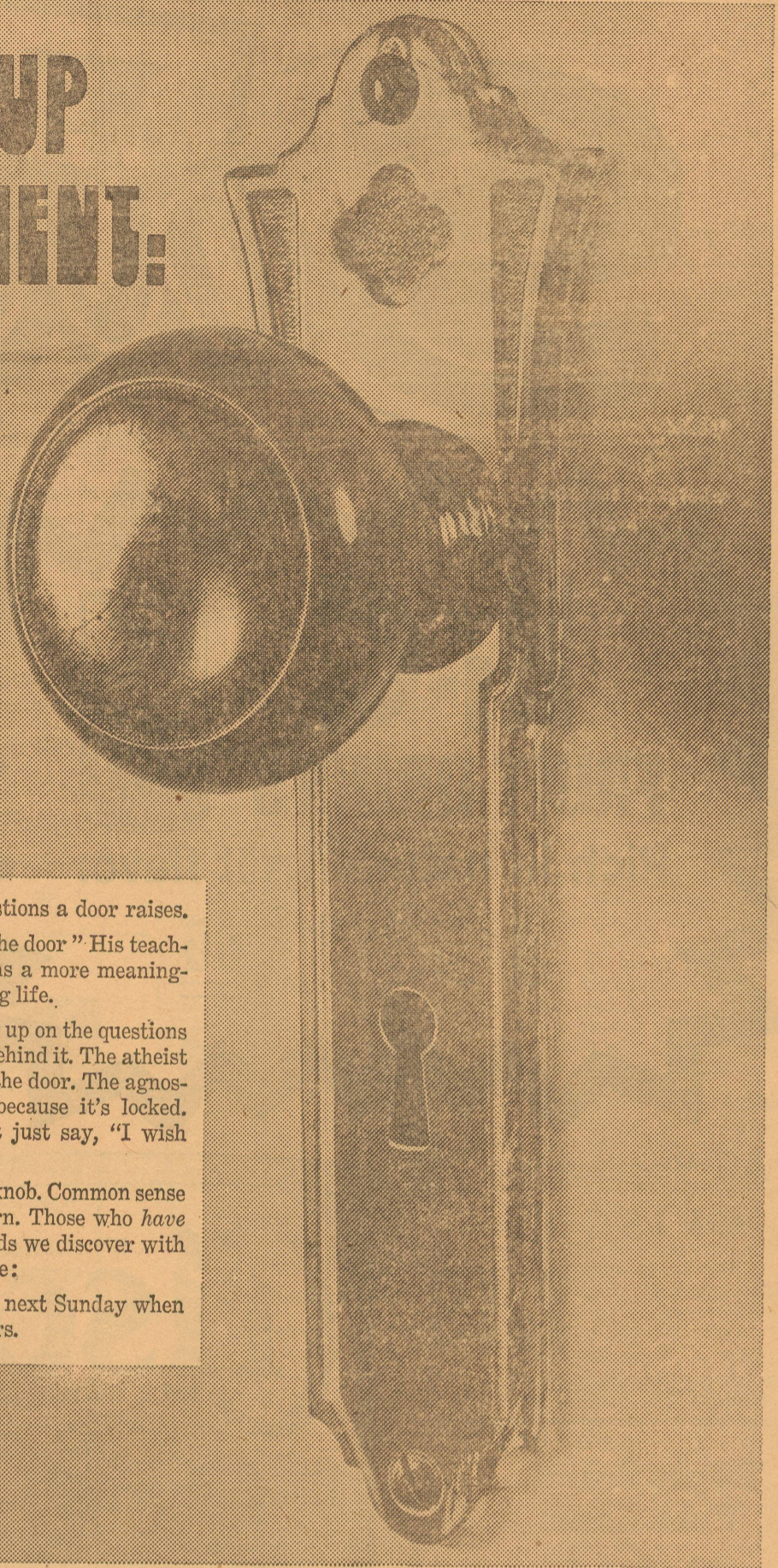


**Eldorado Churches Welcome You**

- First Presbyterian Church**  
7 North Cottonwood  
Gordon F. Garlington, Jr., Pastor  
Sunday School 9:45 A. M.  
Morning Worship 11:00 A. M.  
Union Youth Fellowship 6:00 P. M.  
Joint Methodist & Presbyterian Evening Service 7:00 P. M.
- West Side Church Of Christ**  
Divide Street  
Morning Service 10:30 A. M.  
Evening Service 6:00 P. M.  
Wed. Evening Service 8:00 P. M.
- First Baptist Church**  
Kenneth W. Vaughan, Pastor  
W. Gillis Ave.  
Sunday School 9:45 A. M.  
Morning Worship 11:00 A. M.  
Union Youth Fel. 6:00 P. M.  
Church Training 6:00 P. M.  
Evening Worship 7:00 P. M.  
Sunday Evening Choir Practice 7:45 P. M.  
Wed. Prayer Service 8:00 P. M.
- First Christian Church**  
Allen Hurt, Layman  
Sunday School 9:45 A. M.  
Morning Worship 10:45 A. M.
- First United Methodist Church**  
Fred S. Cox, Pastor  
109 N. Divide  
Sunday School 9:45 A. M.  
Morning Worship 10:45 A. M.  
Union Youth Fel. 6:00 P. M.  
Joint Methodist & Presbyterian Evening Service 7:00 P. M.  
Wednesday Evening Choir Practice 8:00 P. M.
- United Pentecostal Church**  
Warner and Hackberry  
Walter L. Ford, Pastor  
Sunday School 10:00 A. M.  
Morning Worship 11:00 A. M.  
Evening Worship 7:00 P. M.  
Services on Tuesday and Thursday evenings at 7:30.
- Church Of Christ—Mertzson Hwy.**  
Clarence Ware, Minister  
Classes 10:00 A. M.  
Morning Worship 11:00 A. M.  
Evening Worship 6:00 P. M.  
Wednesday Service 7:30 P. M.  
Dinner on the Ground Each First Sunday
- Gethsemane Assembly of God Mis.**  
Nick Robledo, Pastor  
Sunday School 10:00 A. M.  
Worship Service Friday, 7:30 P. M.
- Antioch Baptist Church**  
Billy Daniels, Pastor  
Callender & Mulberry  
Sunday School 10:00 A. M.  
Morning Worship 11:00 A. M.
- First Baptist Mexican Mission**  
El Paso St. & Concho Ave.  
Sunday School 10:00 A. M.  
Sunday Services 11:00 A. M.  
Sunda Night Services 7:00 P. M.  
Wednesday Services 7:30 P. M.
- St. Luke Missionary Eapt. Church**  
East Street  
Rev. Willie Jones, Pastor  
Sunday School 9:45 A. M.  
Worship Service on First and Third Sundays of each month at 11:00 A. M. and 4:00 P. M.
- Our Lady Of Guadalupe Catholic**  
Highway 277 North  
New time for Sunday Mass is 9:00 a.m.  
Wednesday Mass 7:30.
- St. Mary's Episcopal Church**  
McWhorter Ave. and Pelt Street  
The Rev. Lea Roy Aldwell, Rector  
Sunday Morning Worship: 10:00
- Primitive Baptist Church**  
Menard Highway  
Elder Carl Watson, Pastor  
Service each 2nd Sunday at 11:00 a.m. and 2:00 p.m. Congregational singing half hour before preaching.

**HANG-UP DEPARTMENT:**

**WHAT'S BEYOND IT?  
IS IT LOCKED?**



Sure, these are the questions a door raises. Jesus once said, "I am the door" His teachings have opened for millions a more meaningful, purposeful and satisfying life. Yet people still get hung up on the questions of a locked door and what's behind it. The atheist says there's nothing beyond the door. The agnostic says we'll never know because it's locked. And the spiritually-hesitant just say, "I wish I knew..." Sheer logic says try the knob. Common sense says grasp it firmly and turn. Those who *have* say it's amazing what rewards we discover with one twist of human initiative: It's like going to church next Sunday when you haven't been there in years.

Copyright 1974 Keister Advertising Service, Inc., Strasburg, Virginia

Scriptures Selected By The American Bible Society

	Sunday	Monday	Tuesday	Wednesday	Thursday	Friday	Saturday
	John	I Corinthians	Isaiah	John	John	Isaiah	Nehemiah
	1:29-34	6:13-20	62:1-5	1:35-42	2:1-12	8:23 • 9:3	8:2-10

These religious messages are sponsored by the following interested Schleicher business firms:

**FOREMOST — FINEST DAIRY PRODUCTS**

Elmer Garlitz—Indep. Distributor

**THE ELDORADO SUCCESS**

Printing—Advertising—News

**SOUTHWEST TEXAS ELECTRIC CO-OP.**

Inc. — Owned By Those It Serves

**ELDORADO INSTRUMENT & CONTROLS**

Bobby Phillips—Phone 2506 Or 2624

**EL DORADO RESTAURANT**

Jerroll Sanders — Prop.

**JERRY'S RADIO & T-V SERVICE**

Jerry Jones — Phone 2314

**THIS ADV. SPACE FOR SALE**

Call The Success: 2600

**ENGDAHL'S GARAGE**

Located In Hill Bldg. — S. C. Engdahl

**KENT'S AUTOMOTIVE & GARAGE**

Phone 2733—No. Angelo Hwy.

**DIVIDE CABLE CORPORATION**

Selma Dickson—Eldorado & Sonora

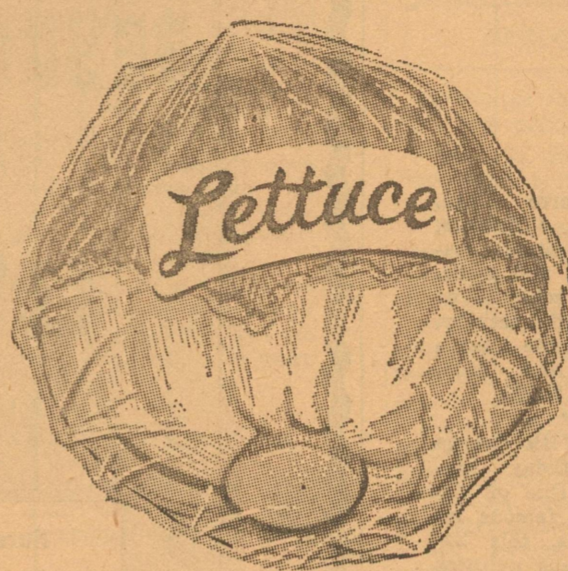
**CONCHO VALLEY FARMS**

F. R. Butler & Son—Phone 2858

# FOOD Savings



**Hi-C®**  
**FRUIT DRINKS**  
Rich in natural fruit flavor  
3 46-Oz. Cans **\$1.00**



California Iceberg LETTUCE Lb. **19<sup>c</sup>**

Texas Cello CARROTS 1-Lb. Bag **19<sup>c</sup>**

NEW CROP Yellow Onions **19<sup>c</sup>**

POUND



TEXAS — RUBY RED Grapefruit **25<sup>c</sup>**

POUND

All Vegetable **CRISCO**  
3-Lb. Can **1.19**  
—Limit One—



Sugar Barrel Pure Cane **SUGAR**  
5-Lb. Bag **59<sup>c</sup>**  
With \$5.00 Purchase Excluding Cigarettes  
—LIMIT ONE—



MARYLAND CLUB — Limit One 1-LB. CAN **Coffee 89<sup>c</sup>**

KOUNTRY FRESH 1½ LOAF **Bread 39<sup>c</sup>**

KOUNTRY FRESH 10 OUNCE **Potato Chips 49<sup>c</sup>**

KOUNTRY FRESH 1-LB. TUB **Margarine 49<sup>c</sup>**



KIMBELL'S QUART **Salad Dressing 59<sup>c</sup>**

KIMBELL'S SMOOTH 18 OUNCE **Peanut Butter 69<sup>c</sup>**

KIMBELL'S Regular Or Iodized 26 OUNCE **Evaporated Salt 10<sup>c</sup>**

DEL MONTE 46 OUNCE **Pineapple Juice 39<sup>c</sup>**



VAN CAMP'S NO. ½ CAN **Tuna 49<sup>c</sup>**

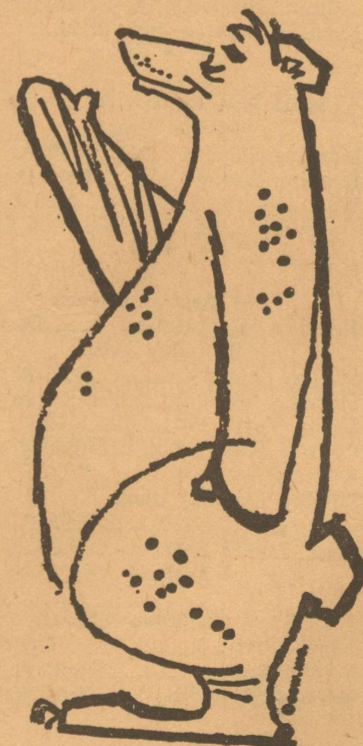
KIMBELL'S 10½ OUNCE **Tomato Soup 12<sup>c</sup>**

TROPHY SLICED 10 OUNCE **Strawberries 3 FOR \$1**

EL CHICO — BEEF EACH **Enchilada Dinner 59<sup>c</sup>**

GORTON'S 16 OUNCE **Perch Fillets 99<sup>c</sup>**

DAISY DELL HALF GALLON **Mellorine 39<sup>c</sup>**



SPECIALS Good Thursday, Friday & Saturday

**Parker Foods, Inc.**

**We give S.N. GREEN STAMPS**

Kim	JELLO
DOG FOOD	All Flavors
10 Tall Cans <b>\$1</b>	2 6-Oz. Boxes <b>49<sup>c</sup></b>