



**Rx**

**Fountain Time At . . .**  
**ELDORADO DRUG**

- Cosmetics
- Perfumes
- Costume Jewelry
- Drug Supplies
- Magazines
- Electrical Gifts
- King's Chocolates
- Cameras
- Suntan Lotions
- Greeting Cards
- Stock Remedies

Where Friends meet for cool, refreshing fountain drinks and ice cream treats!

**Eldorado DRUG**  
For Your Health's Sake  
ELDON CALK, R. PH., Owner  
Eldorado TEXAS  
853-2633

**Local Marine Has New Duty Assignment**  
Iwakuni (FHTNC)—Marine Pvt. Albert R. Martinez, son of Mrs. Raquel Martinez of Eldorado, Tex., has reported for duty at the U. S. Marine Corps Air Station here.

**Social Security To Keep Up With Living Costs**

Social Security payments will keep pace with the American standard of living for the next 50 years, according to J. M. Talbot, social security manager. "A recent change in the law made social security inflation-proof," Mr. Talbot said. "Increases in benefits are tied directly to increases in the cost of living. Each year, beginning in 1974, living costs will be compared with those of the year before. If living costs have increased 3% or more and a general social security benefit has not been enacted, benefits will be increased by the same percentage of the following January." The first automatic increase in benefits could be for January, 1975.

**Are you renting land . . . when you should be renting money?**

There are many good reasons why it takes some land of your own to be sure of a future in agriculture. You're always welcome to drop by our office and talk over the advantages of taking out a long-term mortgage on farm or ranch property. Right now could be the best time for you to start using borrowed money to buy land . . . instead of using your own money to rent or lease.

**Federal Land Bank Association Of Sonora**  
A. E. Prugel, Mgr.  
Telephone 387-2777

**IT'S A NEW LAND BANK**

**Dramatic Advances For Safer Highways**

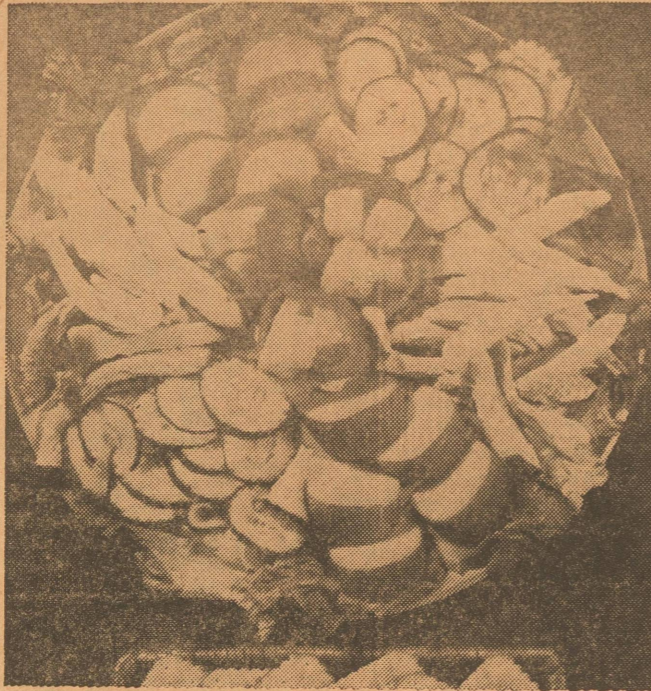
Austin, Tex.—"Why doesn't someone do something about highway accidents?" The simple answer: Someone is. Many someones are doing many things about making highways safer. Take the Texas Highway Department, for example. There are three main factors in highway safety—the driver, the vehicle and the road. The Highway Department can't do much about the first two, but making highways safer is right down their alley. Unfortunately, the current problem is not so much knowing what to do as it is having the money with which to do it. Still, there are

**Duplicate Bridge Winners For June 28th:**

Winners last week— Winnie Jackson and Sue Barber, San Angelo, 1st; Sarah Hall and Elnora Love, 2nd; Melissa O'Harrow and Flora Hubble, 3rd.

some dramatic advances toward safer highways that are saving lives daily along Texas highways. The best place to see what the Highway Department is doing is to look at the results of the Department's research program. The Highway Department has been involved in seeking better materials, techniques and designs for highways almost since its beginning.

**BUFFET SALAD FOR MANY OCCASIONS**



When women's groups get together for luncheon these days they are likely to be more concerned with social problems than social affairs, and their taste in food is also more down to earth. The knowing hostess is aware that all the guests are watching what they eat and some may be seriously dieting. This buffet salad suits many such occasions perfectly as each guest can choose what she wishes without apology. It can also be adjusted to groups of any size by simply making two or more platters, as there is no complicated recipe involved. Mounds of lightly marinated chicken, wilted cucumbers, and wedges of cheese with DROMEDARY Whole Pimiento Pods filled with pineapple cubes for a piquant accent make this a pleasing contrast of flavors and a light satisfying meal. Served with tender, crisp ESCORT Crackers, what could be simpler and more to today's taste?

**LUNCHEON CHICKEN SALAD**

- 1 (8-ounce) can pineapple chunks in pineapple juice
- 2 cucumbers
- 1/2 teaspoon salt
- 1 (0.6-ounce) envelope old fashion French salad dressing mix
- 2/3 cup salad oil
- 1/4 cup white vinegar
- 3 cups julienne strips, cooked chicken
- 1 (7-ounce) jar DROMEDARY Pimientos, Whole Pods, drained
- 1 (10-ounce) Gouda cheese
- 1 head Boston lettuce or 2 bunches leaf lettuce
- 3 tablespoons sesame seeds, toasted
- ESCORT Crackers

Drain pineapple, saving juice. Chill pineapple chunks. Score cucumbers and slice very thinly into a bowl, sprinkling layers with salt. Place another bowl on cucumbers and let stand at room temperature 30 minutes. Prepare salad dressing mix according to package directions with oil and vinegar, and 2 tablespoons pineapple juice in place of water called for. Place chicken and pimiento pods in separate bowls. Drain cucumbers. Pour 1/3 cup salad dressing over chicken, and 2 tablespoons over each of cucumber and pimientos. Toss to coat well with dressing, then chill. Let cheese stand at room temperature 1 hour before serving. To serve: Line a large platter with lettuce. Slice cheese and arrange in groups with drained chicken and cucumbers over lettuce. Drain pineapple chunks again. Add sesame seeds and toss. Fill drained pimiento pods with pineapple and set in center of platter. Serve with ESCORT Crackers. Makes 6 (about 1 1/4 cups) servings.

**Ken Braden Motor Co**  
SERVING SONORA AND ELDORADO

A COMPLETE SALES AND SERVICE DEALERSHIP  
Representing CHEVROLET - OLDSMOBILE  
PONTIAC AND BUICK & CHEV. PICKUPS

Contact James Williams Car Market, Eldorado, Ph. 853-2611  
or Braden Motor Company, Sonora, Texas... Phone 387-2529  
YOUR BUSINESS WILL BE APPRECIATED

By 1954, the search for solutions had become so large that a full-time research section was organized in the Department's Highway Design Division. The section oversees Texas highway research by the Department and agencies such as the Texas Transportation Institute at Texas A&M University and the Center for Highway Research at the University of Texas, in cooperation with the Federal Highway Administration.

The list of highway safety advances is impressive. Some, like the breakaway sign support, originated in the Texas Highway Department itself. Others were refined and adapted to the special needs of the highway user in Texas.

Some safety advances are obvious.

Take lane widths. In Texas, the standard lane width for a multi-lane highway is 12 feet. It is 13 feet for a two-lane highway. That's an extra margin for safety.

That's not all. Almost two decades ago, Texas highway engineers decided that the shoulders also should be paved. That provides the motorist an area where he can get out of the main lanes of traffic in any weather.

It also helps eliminate "drop-offs" often encountered at the edge of the pavement where shoulders are not paved. In an emergency, the shoulder provides the driver that much more recovery room. And, there is another plus, the paved shoulder helps keep moisture from under the pavement. And water in the road base causes pot holes in the pavement.

The next logical step is what engineers call crown width structures. That simply means that bridges are built wide enough to include both the main lanes and the shoulder areas.

But concern for safety does not end at the shoulder's edge. Texas Highway research has pointed the way toward flatter slopes for roadside ditches and the elimination of potential hazards within 30 feet

Phone 2619 for Complete Line of Exxon Products. Farm and Ranch Butane. All Business Appreciated.  
**Eldorado-Divide Petroleum Co.**  
Exxon Products — Raymon Moble & Employees

**YOUR WANT AD. IN THE ADVERTISING SUPER MARKET OF THE SUCCESS SHOUTS YOUR MESSAGE TO OUR READERS AND THE COST IS JUST A WHISPER**

from the edge of the highway.

Some things, like highway signs, cannot be removed. In that case, they are designed to break away on impact. At other potential hazards which cannot be moved, guardrails or attenuating devices are installed to protect drivers and passengers.

The ultimate in highway design for safety is the multi-lane divided highway. A wide median separates opposing streams of traffic, all but eliminating the danger of head-on collisions. And the median adds extra recovery space for the driver should his vehicle leave the roadway.

But it is not always possible to provide a wide median. In that case, new median barrier designs have been developed to prevent vehicles from crossing into the other lanes.

A new concrete median barrier on new Texas highways not only prevents crossing into the opposing lanes but helps slow a straying vehicle and redirects it onto the roadway.

Like other major safety improvements, this design was exhaustively tested before it made its appearance on new Texas highways. In actual tests, the barrier worked even though the test vehicle was a

50,000 pound truck.

This is all well and good for new highways. But Texas has some 12,000 miles of primary US- and State-numbered highways which are old, obsolete and potentially dangerous. Many of these highways are crying for reconstruction now. All of them will have to be rebuilt by 1990 for the safety and convenience of the public.

The problem is money. Assured and continuous sources of finance are necessary to provide highway improvements on an efficient and logical basis.

Holdbacks of highway user taxes paid into the Federal Highway Trust Fund and inaction of Congress in passing Federal-aid Highway Act have slowed highway development almost to a standstill in Texas and across the nation.

Schemes to divert money collected in taxes associated with the operation of motor vehicles further threaten a comprehensive, coordinated program of modernization.

To provide the highways Texas will need by 1990, highway work should be moving forward at the rate of \$1.2 billion worth of work a year. This year the highway program in Texas will be about \$500 million short of that figure.

**The Litter Getter Says . . .**

**PREVENT ROADSIDE FIRES**

TEXAS HIGHWAY DEPARTMENT

**Schleicher County Quarterly Statement**

QUARTER ENDED JUNE 30, 1973

BY A. G. McCORMACK, COUNTY TREASURER

FUND	BALANCE APRIL 1, 1973	TOTAL RECEIVED	TOTAL DISBURSED	CASH BALANCE JUNE 30, 1973
Jury	1,093.73	57.85	823.77	327.81
Road & Bridge	38,382.53	28,940.31	4,905.29	62,417.55
Road & Bridge Special	8,537.27	642.88	8,990.72	189.43
Farm - Market Road	42,877.95	1,229.70	5,446.02	38,661.63
Lateral Road	38.99	-----	-----	38.99
General	54,871.33	3,394.82	14,798.57	43,467.58
Permaent Improvement	4,305.60	85.70	1,314.00	3,077.30
Officers Salary	15,719.36	5,578.67	17,300.24	3,997.79
Law Library	104.67	60.00	28.00	136.67
Social Security	9,171.25	-----	4,050.52	5,120.73
Revenue Sharing	439.67	12,525.00	12,000.00	964.67
Totals	175,542.35	52,514.93	69,657.13	158,400.15
				52,800.00
				211,299.15

Certificate of Deposit owned by Schleicher County ----- 52,800.00  
Total Cash & Securities ----- 211,299.15

# Kent's Automotive

712 N. Divide Phone 853-2733

COMPLETE AUTO REPAIR

NAME BRAND PARTS

Including

DELCO, MOTORCRAFT & AC

SAFETY INSPECTION STATION

## San Antonio Festival Plans Are Continuing

San Antonio, the fiesta city, takes on an international look when the University of Texas at San Antonio Institute of Texan Cultures stages the grand-daddy of all celebrations, the second annual Texas Folklife Festival, September 6-9.

The colorful spectacular will offer a smorgasbord of 15 area festivals from various regions of the state, according to O. T. Baker, festival manager.

The Texas Folklife Festival, to be held on the Institute's 13½-acre HemisFair site, is designed to tell how Texans traditionally have fun. It will feature fun events and activities that range from champion watermelon seed spitters to Indian stick ball demonstrations; from toe-tappin' German Oompah bands to sand-castle-building contests with Galveston beauty queens.

Many area festivals will offer a broad range of food selections.

The French-Alsations of Castroville, representing the Castroville St. Louis Day Celebration, will make their initial appearance at the Texas Folklife Festival serving genuine French cuisine. Charles L. Suehs and Dr. Woodrow W. Sharp, Castroville, are co-chairmen.

The Chilympiad Festival, San Marcos, will host a display of the ingredients for making chili and will serve "Bowls of Red" under the watchful eye of food chairman Jim Hearne.

San Antonio Conservation Society newly-elected general chairman Mrs. James N. Castleberry confirms the huge, gaily-decorated "Mexican Market" representing the "Night In Old San Antonio" will tempt visitors with a dozen traditional Mexican dishes including tamales, quesadillos and bunuelos. Co-chairman Mrs. William H. Parish will arrange demonstrations of making cascarnes, pinatas and paper bouquets in the "Mexican Market."

The Yamboree Festival, Gilmer, will bring back Professor of Possumology, "Spot" Baird and his first assistant, Richard Potter, to amaze visitors with their sweeping command of 'possum and 'tater lore. Yamboree president W. G. Beisch has appointed Mmes. Temple B. Ingram and Jack F. Baird, co-chairmen. Yamboree champion pie bakers will again demonstrate how the tasty delicacy, yam pie, is made and over 200 pies and custards will be offered for sale.

### TO CONDUCT SERVICE

The service this Sunday afternoon, July 15th, at the Nursing Home, will be under direction of the West Side Church of Christ.

The Wurstfest, New Braunfels, will serve German sausage-or-pastick and sauerkraut, according to president Milton T. Kaderli. Entertainment chairman Ed Kadleck announces that the Wurstfest will bring a "lederhosen" costumed adult German Oompah Band and two costumed singing groups: the Kinderchoir (children's choir of 3- to 12-year-olds) and the Engelkinder (Angel Choir consisting of six teenage girls).

The art of preparing favorite German foods will be demonstrated by German women from Comfort, Boerne, Kendallia, Welfare and Sisterdale, representing the Kendall County Fair Auxiliary. Chairman Mrs. Alice Gersfers, Boerne, declared they would also hold quilting bees.

The San Antonio Creek Festival chairman Luke Postolos describes their program as preparation of Greek food and folk dancing groups from Houston and San Antonio.

The Fort Griffin Fandangle, Albany, will operate the Cattle Drive Corral featuring hardy cowboy fare served from authentic range wagons borrowed from ranches in the state. The menu will consist of beef briskets barbecued over open pits; son-of-a-gun stew, and sour-dough biscuits baked over a campfire. Tom Perini, Buffalo Gap, will be in charge of the range cooks. Clifford Teinert, Albany program chairman, reports that musical groups from the historic Ft. Griffin Fandangle pageant will also perform.

The Easter Fires Pageant, Fredericksburg, will be representing Sept. 9th by the Fredericksburg Brass Bunny Band, according to chairman Mrs. Jyrus Cox. Tom C. Rhodes will direct the band composed of outstanding musicians selected from the Fredericksburg High School.

The Shrimp Festival, Galveston, will hold sand-castle-building contests on the Institute's "Galveston Beach," conducted by Miss Ya Ya Ibarra and other Galveston beauty queens.

The winner of the "Championship Spit-Off '73" at the June Luling Watermelon Thump will appear in special watermelon seed spitting contests Sept. 6th. Defending champion is Tino Esquivel, San Antonio disc jockey, whose record at the 1972 festival was 36 feet, one inch.

Chairman Henry Joe Henke, Jr., announces that the State Domino Tournament, Hallettsville, will again operate domino games and has expanded its participation to represent the entire Czech community of Hallettsville. They will add Czech food, music, singing and dancing to the state festival's attractions.

Representing Texas' only Indian reservation tribes, the Tiguas of Ysleta del Sur, El Paso, and the Alabama-Coushattas from Livingston, will introduce visitors to unique foods, tribal singing and dancing, and demonstrations of Indian stick ball games and arts and crafts.

Manager Baker, with a wry grin, comments: "and this is just the beginning — the Texas Folklife Festival is where it's all going to happen, Sept. 6-9."

### Poultry Prices

College Station, Tex.—Whether the chicken or the egg gets a price rise first, they're money savers, one authority said this week.

"Poultry products are still good values economically but are being pushed upward by pressures from rising production costs plus increasing demand for available supplies," Mrs. Gwendolyne Clyatt reported.

The consumer marketing information specialist, Texas Agricultural Extension Service, Texas A&M University System, cited spiraling feed costs as one reason for general retail price increases on poultry.

She listed more demand for poultry—with the rising cost of other meats—as another.

"Egg supplies are generally down because of laying flock reductions.

"Producers for the past several months have trimmed flocks because of low profit margins over the past two years.

"At 75 cents a dozen, large-size eggs cost about 50 cents a pound, which is still a good value considering the amount of high-quality protein protein and other nutrition they contain compared with other foods."

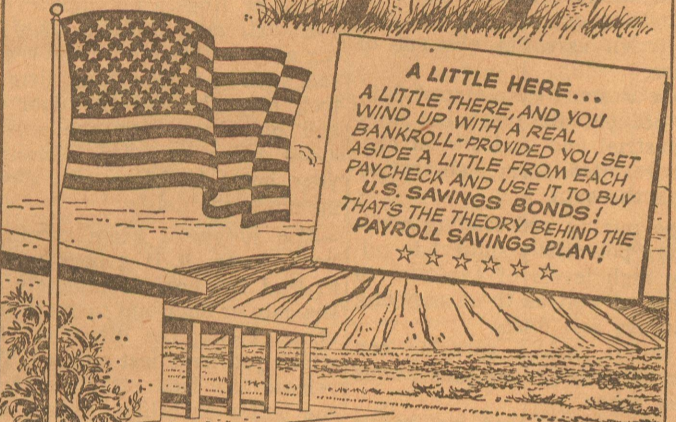
Turning to fryer chicken and turkey prices, Mrs. Clyatt added that they're reflecting "the same general pressures as the rest of the poultry industry.

"Grade A fryers at 49 cents a pound are still values on today's food front," she said.

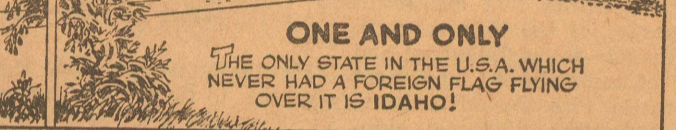
## THAT'S A FACT



**WOOLING HIS NEST!**  
TO LINE ITS NEST, THE STARLING WILL PLUCK WOOL FROM A SHEEP!



**A LITTLE HERE...**  
A LITTLE THERE, AND YOU WIND UP WITH A REAL BANKROLL—PROVIDED YOU SET ASIDE A LITTLE FROM EACH PAYCHECK AND USE IT TO BUY U.S. SAVINGS BONDS! THAT'S THE THEORY BEHIND THE PAYROLL SAVINGS PLAN!  
☆☆☆☆



**ONE AND ONLY**  
THE ONLY STATE IN THE U.S.A. WHICH NEVER HAD A FOREIGN FLAG FLYING OVER IT IS IDAHO!

Large and Small Receipt Books For Sale At The Success

# Gospel Meeting

STARTS SUNDAY MORNING, JULY 22  
AND CONTINUES THROUGH SUNDAY  
JULY 29

Meetings Begin At 8:00 O'Clock Each Night

## VIRGIL SCOTT

Of Eldorado, Arkansas

WILL CONDUCT THE GOSPEL MEETING

Dinner At Memorial Building Both Sundays

At 12:00 Noon

# WEST SIDE Church Of Christ

Eldorado, Texas

EVERYONE CORDIALLY INVITED



## Blarney Castle

IN COUNTY CORK, IRELAND, IT IS THE SITE OF THE BLARNEY STONE WHICH REPUTEDLY ENDOWS THOSE WHO KISS IT WITH A GLIB TONGUE!

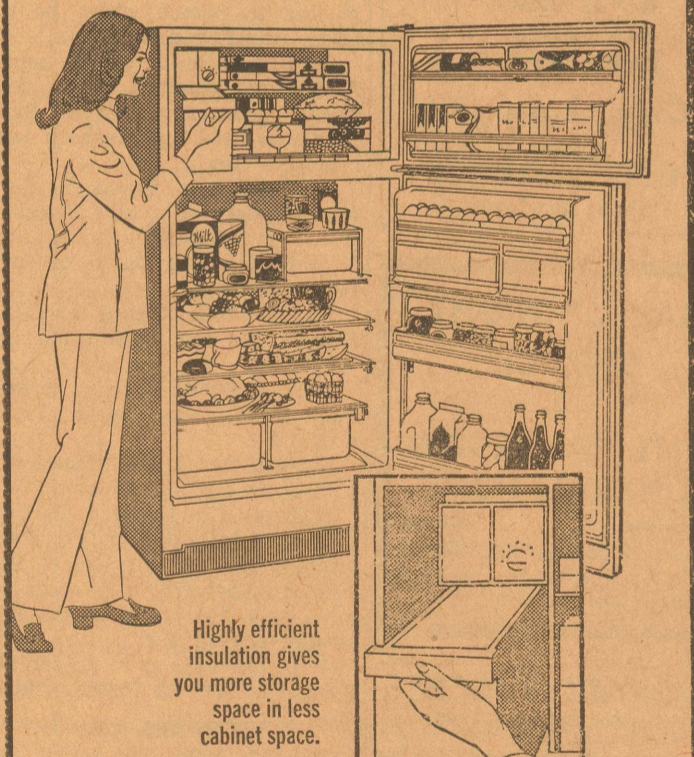
Me mother-in-law was the first one there!

Our bank wishes everybody "The luck of the Irish" on St. Patrick's Day.

THE FIRST NATIONAL BANK  
Of Eldorado

## THE COLD ONES—

### Frigidaire refrigerator-freezers



Highly efficient insulation gives you more storage space in less cabinet space.

**ALWAYS PLENTY OF ICE ON HAND**  
Automatic ice-maker fills, freezes and releases cubes into server automatically. Cube Level Control can be set to make ice enough for a couple or a crowd!

**BUY FRIGIDAIRE AT WEST TEXAS UTILITIES**  
— on Reddy Credit\*, if you wish

**\*Ask for details.**  
And ask for your free "conserve and save" Reddy Tips book, too.

**West Texas Utilities Company**  
An Equal Opportunity Employer

CARDBOARD for sale at Success.



**County Extension Agent's Column**  
By MRS. DIANE LUBE

**Beware Of Suntan Lotion Stains**

Suntan lotions often stain swimwear and clothing, so handle them with care. For instance, they react with protein fibers such as wool and silk, leaving permanent stains.

Certain synthetic fibers, on the other hand, have an affinity for oily or greasy stains. Because of this, they absorb and hold suntan lotions.

These—and other fabrics—may stain permanently unless laundered promptly and properly.

For best results, hand wash swimsuits after each wearing—using warm water and mild detergent. Examine edges exposed to large amounts of suntan lotion, and if necessary, scrub them.

If a stain remains after regular washing, test the fabric for possible use of a dry cleaning solvent. If found safe, sponge or spray stain with solvent and launder.

For stains on synthetics, use a commercial spray-before-washing spot remover. These aerosol spray products—basically grease-solvent—are ideal for washable, colorfast fabrics.

Launder treated garments as soon as possible after spraying.

However, if a fabric can't be treated with solvent, pretreat it with a concentrated solution of detergent, then launder.

To get maximum life from swimwear, treat it with care.

**Consumer Complaints**

Consumers have the right to complain—and to expect adjustments—on purchases that fall short.

They also have the responsibility of making justified complaints—not those stemming from consumer negligence or abuse.

Consumers can follow several guidelines to insure better products

and services.

Make a habit of keeping receipts, hangtags, warranties, and care labels in one convenient place so they're available if needed for merchandise returns.

Before buying, read instructions carefully concerning use, storage, washing, oiling and other general care for a preview on what to expect from the product. After buying, follow instructions.

This may eliminate the need to return merchandise.

When returning merchandise avoid making returns near closing time or during rush hours. If leaving an item for repairs—or if a refund will be mailed to you—be sure to get a receipt for the item.

In making a complaint be calm and courteous. Be friendly, but firm, and don't be sarcastic or abusive.

Let the facts speak for themselves. State the facts clearly—where and when the product was purchased, its model number (if any), brand name, price and what is wrong with it.

Try to explain what went wrong, when and how the defect appeared.

If telephoning complaint, ask name of person receiving complaint. If writing a letter, include your name, address, zip code and telephone number on all correspondence and keep carbon copies.

Company addresses appear in "Poor's Register of Corporations, Directors and Executives" or "Moody's Industrial Manual" in most libraries.

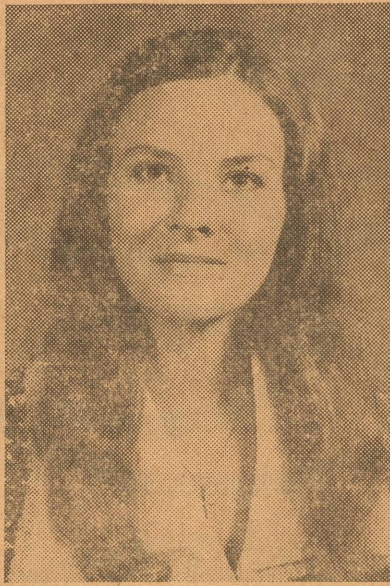
If a company doesn't respond to a first letter within two or three weeks, send a second letter.

If there is still no response, refer the matter to Consumer Protection Lawyers in the nearest regional office of the state attorney general.

Contact: John Richards, County Office Bldg., 806 Broadway, Lubbock, Texas 79401. Or call him at 806-747-5238.

CARDBOARD for sale at Success.

**Miss Schooley To Marry Walter Ray, Jr.**



**LORRETTA SCHOOLEY**  
to be married in August

Mr. and Mrs. Joseph Clifford Schooley have announced the engagement of their daughter, Miss Loretta Gay Schooley, to Walter Lee Ray Jr., son of Mr. and Mrs. Walter Lee Ray of Ft. Sumner, N. M., formerly of San Angelo.

Eldorado Church of Christ will be setting for their August 18th wedding.

A graduate of Eldorado High School, Miss Schooley is a sophomore at Angelo State University.

Her fiancé is a graduate of Central Valley High School in Spokane, Wash., and Texas A&M University.

**Miss Parks Engaged To Mr. Weaver**



**LETHA ANN PARKS**

Mr. and Mrs. Ward Covington Parks Jr., have announced the engagement of their daughter, Miss Letha Ann Parks, to Michael Foy Weaver, son of Mr. and Mrs. Walter W. Weaver of San Angelo.

Eldorado Church of Christ will be setting for their wedding on July 28th.

Miss Parks is a graduate of Eldorado High School, and attended San Angelo Business College. She is now employed at Western Communication Service Co. in San Angelo.

Her fiancé attended Central High, J.C.T.I., and A.S.U. He is now employed at Mercer Boot Co.

**Barrows Back From Studies In Europe**

Robert L. Barrows, son of Mr. and Mrs. John L. Barrows of San Angelo, has returned from Vienna, Austria, where he studied European history the spring semester at the University of Vienna.

His mother is the former Jonnie Lee Dickens of Eldorado.

Barrows, who will be a senior history major at Austin College this fall, was among a group of collegians participating in the Institute of European studies program.

While abroad, he spent some time in Budapest, Hungary and in Italy at Florence and Rome. On the return trip, he spent several days in England.

Barrows is a 1970 graduate of San Angelo Central High School.

Miss Fern Porrett returned home Thursday night after spending a week visiting relatives and friends in Fort Worth, San Angelo, Del Rio and Uvalde. She reported having a wonderful time while gone.

Mr. and Mrs. Lonnie Boyd have returned from a visit with their daughter Set and Mrs. Steve Huffmaster at K. I. Sawyer Air Force Base at Marquette, Michigan.

**Commercial Restaurant Operator Buried, Sonora**

Jose Santos Lopez, 54, died Monday morning in Schleicher County Medical Center here in Eldorado. Services were held Tuesday at 5:00 p.m. in Primera Baptist church with burial in Sonora cemetery directed by Ratliff-Kerbow Funeral Home.

He was born Nov. 2, 1918 in Mexico. He was married to Vicente Sanchez May 1, 1949 in Sonora. He was an Army veteran of World War II and was awarded the Purple Heart medal. He operated the Commercial Restaurant in Sonora for 27 years.

Survivors include his wife; a daughter, Mrs. Diana Oren of Merced, Calif.; two sons, Lemuel Lopez and Jose Lopez, both of Austin; and three grandchildren.

Mrs. Wilma Logan and daughter spent the weekend at Uvalde visiting the Harold Lloyd family and to bring Benny Logan home after he spent a week there.

C. L. Martin Jr. of El Paso, who has been visiting his sister Mrs. M. Martin at San Angelo, was in the Success office this week, accompanied by Mrs. Kinser.

**Miss Ray's Engagement Announced To Arch Nixon For August Wedding**



**MISS KIMRA LYN RAY**

bride-elect of Arch Edgar Nixon

Mr. and Mrs. W. O. Ray of Eldorado have announced the engagement of their daughter, Miss Kimra Lyn Ray, to Arch Edgar Nixon.

The parents of the prospective bridegroom are Mr. and Mrs. E. H. Nixon of Eldorado.

The wedding date is set for August 4th in the First Methodist Church.

Miss Ray and her fiancé are graduates of Eldorado High School and attendants of Sul Ross University at Alpine.

**BRIDAL GIFT SELECTIONS:**

For Kim Ray—bride-elect of Arch Nixon  
Shower set for July 21st

For Toye Hoppe—bride-elect of Walter Speck  
Shower Set for July 14th

**WESTERN AUTO**

**ASSOCIATE STORE**

Eldorado, Texas

Buddy White, Prop.

Phone 853-2251

**Be Cautious Before Signing Contracts**

(by John L. Hill, Attorney General)

Austin, Tex.—The phrase, "Sign your name on the dotted line," can sound quite inviting after you've waited for credit approval on a loan or time purchase.

That may be the flattering sign that you're a "good credit risk." But it is not wise to rush into any contract.

If you read any installment contract carefully, you should find a statement in bold type, cautioning: "Notice to Buyer—Do not sign this agreement before you read it, or if it contains blank spaces." The statement also puts you on notice that you are entitled to a copy of the agreement.

In order to meet state and federal requirements on credit agreements, the contract must tell you the difference between cash price and credit price, less down payment and/or trade-in; list any additional charges, such as credit insurance premiums, and spell out the total number of payments to be made by you, as well as the amount of each monthly or weekly payment due.

If you already have insurance which would cover your note amount or the secured property if anything happened to you, or if you have an insurance agent with whom you would prefer to deal, let the creditor know. He cannot require you to buy the policy he may offer.

Be certain the agreement contains the name, as well as the address, of the lender or creditor; the correct date on which you made the note, and the date of final payment. And, if the creditor is taking a lien or other security on your property, make sure that that detail is included in the contract.

If you are negotiating a home improvement, ask to see the "certificate of satisfaction" which the seller must furnish you. But heed the warning that you should not sign the certificate of satisfaction until the work has been completed, and until you know that you are satisfied with it.

That may seem like a lot of detail. But it is not complicated.

Just remember to read carefully every section leading to a space for your signature. And be certain you understand it to your own satisfaction.

Most merchants or lending insti-

tuition officials will be more than happy to answer any questions. In fact, some are exceedingly scrupulous about not allowing you to sign until they believe there is no room for misunderstanding.

Take advantage of the occasion to review the obligation you're accepting. Now that it is all there in black and white do you honestly believe that the amount and the frequency of payments will not work too much of a hardship on the family budget?

Sometimes, my Consumer Protection Division investigators have looked into complaints of overcharge, only to discover that the interest and payment plans were legal, but hasty consumers had not noticed what a strain the obligation would be until they started paying it out.

If you do have any complaints or questions concerning credit contract rights, do not hesitate to contact a local consumer protection enforcement agency, or the Attorney General's Consumer Protection Division in Austin, Houston, San Antonio, El Paso or Lubbock.

**State Livestock Losses To Predator Animals**

State Tabulation Survey of Livestock Losses to Predator Animals Conducted by County Program Building Committee.

I. Total number of predators reporting no losses to predators: 7,636

II. Total number of producers contacted: 35,940

III. Total number of responses received: 13,686

IV. Total number of losses to predators:

A. Head of sheep or goats lost to coyotes: 66,778

B. Head of calves lost to coyotes: 6,179

C. Head of sheep, goats, or calves lost to other predators: 44,011

D. Anticipated number of animals you would have raised if you had not quit the business:

Total number of sheep: 144,537

Total number of goats: 136,646

E. Methods of controlling predators in 1972:

Shooting: 10,289

Trapping: 7,366

Snares: 1,856

Other: 3,291

V. Total losses from other than predators:

Sheep: 30,332

Goats: 17,954

Calves: 3,557

**NEW BEAUTY SHOP PRICES**

**Effective July 15**

Shampoo and Set \$3.75

Hair Cut \$3.25

Permanent Wave \$15 and up

Permanent Color \$9.00

6 Week Color \$8.50

Frosting (toner included) \$25.00

Bleach (toner included) \$20.00

Manicure \$2.50

Lash and Brow \$2.75

Rinses 50c & 75c ReComb \$2.00

Complete Comb-Out \$3.00

Long Hair \$1.00 extra. Hair long enough to pin up considered long hair.

Your Continued Patronage Appreciated

**FAY'S BEAUTY SALON**

**LENA'S BEAUTY SALON**

**RENE'S BEAUTY SALON**

**TOOTER'S BEAUTY SALON**

Call No. 486 Charter No. 8575 Nat. Bank Region No. 11

**REPORT OF CONDITION, CONSOLIDATING DOMESTIC SUBSIDIARIES, OF THE**  
**The First National Bank**  
**OF ELDORADO**

In The State Of Texas, At The Close of Business on June 30, 1973  
Published In Response To Call Made By Comptroller of the Currency,  
Under Title 12, United States Code, Section 161.

ASSETS	
Cash and due from banks (incl. \$ None unposted debits)	827,466.93
U. S. Treasury securities	1,398,114.84
Obligations of States and political subdivisions	1,885,437.83
Other securities (including \$13,500.00 corporate stock)	13,500.00
Federal funds sold and securities purchased under agreement to resell	950,000.00
Loans	3,103,115.20
Bank premises, furniture and fixtures, and other assets representing bank premises	33,000.00
Other assets including \$ None direct lease financing	4,478.75
<b>TOTAL ASSETS</b>	<b>8,215,113.55</b>

LIABILITIES	
Demand deposits of individuals, partnerships, and corporations	3,122,149.55
Time and savings deposits of individuals, partnerships, and corporations	3,416,808.59
Deposits of United States Government	22,956.49
Deposits of States and political subdivisions	522,709.95
Certified and officers' checks, etc.	44,493.69
<b>TOTAL DEPOSITS</b>	<b>7,129,118.27</b>
(a) Total demand deposits	3,474,515.16
(b) Total time and savings deposits	3,654,603.11
Other liabilities	62,689.84
<b>TOTAL LIABILITIES</b>	<b>7,191,808.11</b>

RESERVES ON LOANS AND SECURITIES	
Reserve for bad debt losses on loans (set up pursuant to IRS rulings)	51,649.90
<b>TOTAL RESERVES ON LOANS AND SECURITIES</b>	<b>51,649.90</b>

CAPITAL ACCOUNTS	
Equity capital-total	971,655.54
Common Stock-total par value	75,000.00
No. shares authorized	7,500
No. shares outstanding	7,500
Surplus	375,000.00
Undivided profits	493,783.82
Reserve for contingencies and other capital reserves	27,366.72
<b>TOTAL CAPITAL ACCOUNTS</b>	<b>971,655.54</b>

**TOTAL LIABILITIES, RES. & CAPITAL ACCOUNTS** 8,215,113.55

MEMORANDA	
Average of total deposits for the 15 calendar days ending with call date	7,156,849.50
Average of total loans for the 15 calendar days ending with call date	3,136,119.90

I, Raymond D. Hall, Cashier, of the above-named bank do hereby declare that this report of condition is true and correct to the best of my knowledge and belief.

Raymond D. Hall

We, the undersigned directors attest the correctness of this report of condition and declare that it has been examined by us and to the best of our knowledge and belief is true and correct.

Leslie L. Baker  
Jo Ed Hill  
Paul Page

Directors

**News & Advertising Copy Deadlines:**

**MONDAY** of Each Week: Please turn in contributed columns, club reports for preceding week end, society and personal news, etc.

**TUESDAY Morning:** More General News.

**TUESDAY Afternoon, Late:** Only news items of real significance such as deaths can be accepted.

**IN GENERAL:** Please Turn in News and Ad Copy As Early In The Week As Possible.

**THE ELDORADO SUCCESS**

PRINTING—ADVERTISING—NEWS —SINCE 1901

**JULY**



show, pet parade and beauty contest (12); water activities and square dance (13); "Over 50" golf tourney (13-14); parade, antique car show, hay-loft party and dance (14); and all-day singing with dinner on the grounds (15)

July 14-15, 21-22, 28-29. Horse Races, La Bahia Downs, Goliad. Ten or more races each day starting at 8 p.m. on Saturdays and 1 p.m. on Sundays. Ten-horse gate running 220-660 yard distances. Covered grandstand seats 3,000. On the 14th, a special event will be the Miss La Bahia Downs Beauty contest, a highly regarded preliminary for the Miss World contest. In the last two years, winners of this competition have gone on to win two Miss Texas and one Miss USA title. Admission, \$2, reserved \$2.50, Box \$3.

The following events, selected by the Texas Tourist Development Agency, are but a few of the many excellent recreational opportunities offered by communities across the state. A more complete listing of Texas events may be obtained free of charge by writing TTDA, Box 12908, Austin 78711.

July 2, 3, 4 Texas Cowboy Reunion, Stamford. Billed as the world's largest amateur rodeo, this event, in its 43rd year, was founded on the principle that the working cowboy should have a rodeo all his own. There are no rodeo professionals—just 200-300 cowboys trying to win a new saddle or a pair of spurs. In addition to the rodeo, there is square dancing nightly, the American Quarter Horse Show and chuck wagon meals. Rodeo tickets are \$2.50-\$3 for adults and \$1.25 for children.

July 2-4 Ragtime Festival Kerrville. Ragtime pianists will compete for the Texas championship and \$100 prize money. Two of the judges, ragtime pianist Knocky Parker and stride piano star Dick Wellstood, will also play at each concert. Kerrville Auditorium, 8 p.m. Admission \$3.50.

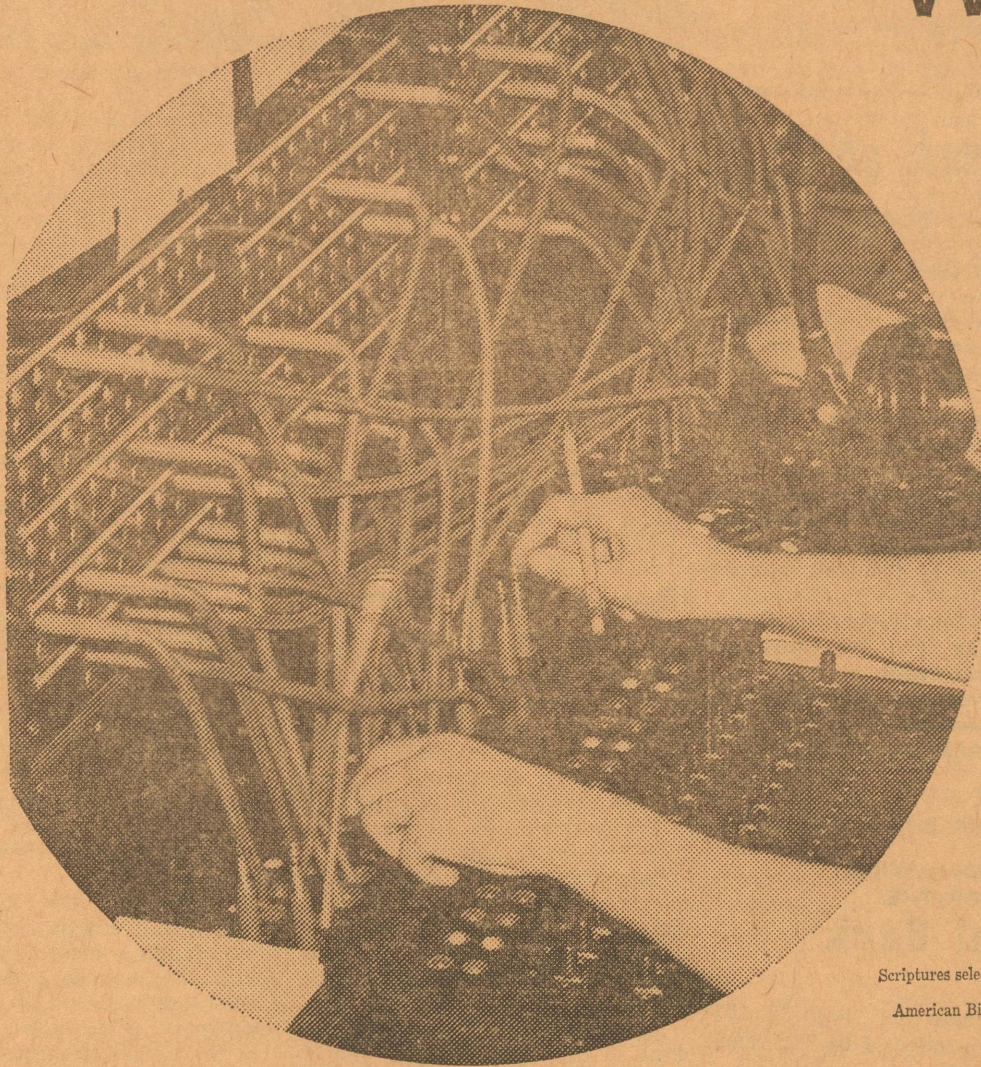
July 12-15 Spring Ho Festival & Centennial, Lampasas. Schedule includes arts and crafts show and historical tours (12-15); open horse

July 20-22 Lunar Landing Festival, Houston. Commemorating July 20, 1969, when man first stepped on the moon, this event, in its second year, promises to be a major Houston event. A beauty contest to select "Miss Moon Maiden", and dancing to the music of various ethnic bands are a part of the full schedule. For complete information write Greater Houston Convention & Visitors Council, 1006 Main Street, Houston 77002.

July 28-29 Texas Water Ski Championships, Austin. Two-day, all-day competition in slalom, tricks and jumps. Approximately 120 will compete in this event at Festival Beach on Town Lake. Admission is an Aqua Festival "Skipper pin" or \$1.



**TANGLED WIRES**



Sunday  
Acts  
28:16-31

Monday  
Genesis  
1:1  
II Peter  
3:5-14

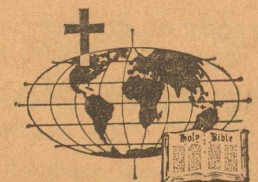
Tuesday  
Exodus  
19:5-6  
I Peter  
2:9

Wednesday  
Romans  
1:3-5, 18-32

Thursday  
Romans  
3:9-26

Friday  
John  
1:29-34  
II Corinthians  
5:21

Saturday  
II Peter  
1:19-21  
Hebrews  
2:1-4



Scriptures selected by the American Bible Society

Looks like a jumbled mass of wires, doesn't it? But to experienced fingers, each line has a meaning, and by plugging the right cord in the right place, a miracle in communication is established.

Much in life seems hopelessly jumbled. Yet so many of our problems can be solved if we cut through the maze of our personal "tangled wires" and get to the heart of the matter. To do this, we need to know what is essential and what is non-essential. We need a sense of values.

In this complicated age, it is hard to simplify things. It is difficult to grasp and understand those basic precepts which have always endured and which will serve us in the years to come.

Go to the church of your choice next Sunday. Listen with open ears, mind, and heart. It may mark the beginning of a new, uncluttered channel of communication for you.

Copyright 1973 Keister Advertising Service, Inc., Strasburg, Virginia

**Eldorado Churches Welcome You**

**First Presbyterian Church**  
7 North Cottonwood  
Gordon F. Garlington, Jr., Pastor  
Sunday School 9:45 A. M.  
Morning Worship 11:00 A. M.  
Union Youth Fellowship 6:00 P. M.  
Joint Methodist & Presbyterian  
Evening Service 7:00 P. M.

**West Side Church Of Christ**  
Divide Street  
Morning Service 10:30 A. M.  
Evening Service 6:00 P. M.  
Wed. Evening Service 8:00 P. M.

**First Assembly Of God Church**  
Menard Highway  
Robert Sherman, Pastor  
Sunday School 9:45 A. M.  
Morning Worship 11:00 A. M.  
Evening Worship 7:30 P. M.  
Wed. Bible Study 7:30 P. M.

**First Baptist Church**  
Kenneth W. Vaughan, Pastor  
W. Gillis Ave.  
Sunday School 9:45 A. M.  
Morning Worship 11:00 A. M.  
Union Youth Fel. 6:00 P. M.  
Church Training 6:00 P. M.  
Evening Worship 7:00 P. M.  
Sunday Evening Choir  
Practice 7:45 P. M.  
Wed. Prayer Service 8:00 P. M.

**First Christian Church**  
Allen Hurt, Layman  
Sunday School 9:45 A. M.  
Morning Worship 10:45 A. M.

**First United Methodist Church**  
Fred S. Cox, Pastor  
109 N. Divide  
Sunday School 9:45 A. M.  
Sunday Mass 10:45 A. M.  
Union Youth Fel. 6:00 P. M.  
Joint Methodist & Presbyterian  
Evening Service 7:00 P. M.  
Wednesday Evening Choir  
Practice 8:00 P. M.

**United Pentecostal Church**  
Warner and Hackberry  
Walter L. Ford, Pastor  
Sunday School 10:00 A. M.  
Morning Worship 11:00 A. M.  
Evening Worship 7:00 P. M.  
Services on Tuesday and Thursday evenings at 7:30.

**Church Of Christ—Mertzon Hwy.**  
Clarence Ware, Minister  
Classes 10:00 A. M.  
Morning Worship 11:00 A. M.  
Evening Worship 6:00 P. M.  
Wednesday Service 7:30 P. M.  
Dinner on the Ground Each First Sunday

**Gethsemane Assembly of God Mis.**  
Nick Robledo, Pastor  
Sunday School 10:00 A. M.  
Worship Service Friday, 7:30 P. M.

**Antioch Baptist Church**  
Billy Daniels, Pastor  
Callender & Mulberry  
Sunday School 10:00 A. M.  
Morning Worship 11:00 A. M.

**First Baptist Mexican Mission**  
El Paso St. & Concho Ave.  
Sunday School 10:00 A. M.  
Sunday Services 11:00 A. M.  
Sunda Night Services 7:00 P. M.  
Wednesday Services 7:30 P. M.

**St. Luke Missionary Bapt. Church**  
East Street  
Rev. Willie Jones, Pastor  
Sunday School 9:45 A. M.  
Worship Service on First and Third Sundays of each month at 11:00 A. M. and 4:00 P. M.

**Our Lady Of Guadalupe Catholic**  
Highway 277 North  
Fr. Richard Gagnon, Priest  
Sunday Mass 10:00 A. M.  
Wednesday Services 8:30 P. M.

**St. Mary's Episcopal Church**  
McWhorter Ave. and Pelt Street  
The Rev. Lea Roy Aldwell, Rector  
Sunday Morning Worship: 10:00

**Primitive Baptist Church**  
Menard Highway  
Elder Carl Watson, Pastor  
Service each 2nd Sunday at 11:00 a.m. and 2:00 p.m. Congregational singing half hour before preaching.

These religious messages are sponsored by the following interested Schleicher business firms:

**FOREMOST - FINEST DAIRY PRODUCTS**

Elmer Garlitz—Indep. Distributor

**SOUTHWEST TEXAS ELECTRIC CO-OP.**

Inc. — Owned By Those It Serves

**EL DORADO RESTAURANT**

Jerrold Sanders — Prop.

**THIS ADV. SPACE FOR SALE**

Call The Success: 2600

**KENT'S AUTOMOTIVE & GARAGE**

Phone 2733—No. Angelo Hwy.

**THE ELDORADO SUCCESS**

Printing—Advertising—News

**GRIFFIN SERVICE COMPANY**

Derl Griffin

**JERRY'S RADIO & T-V SERVICE**

Jerry Jones — Phone 2314

**ENGDAHL'S GARAGE**

Located On Sonora Hwy.—S. C. Engdahl

**DIVIDE CABLE CORPORATION**

Selma Dickson—Eldorado & Sonora

# FIVE ERRORS

No. 1

A MAN—

Struck a match to see  
if the gasoline tank of  
his automobile was empty . . .  
IT WASN'T

No. 2

A MAN—

Patted a strange bulldog  
on the head to see if it  
was affectionate . . .  
IT WASN'T

No. 3

A MAN—

Speeded up to see if he  
could beat a train to  
the crossing . . .  
HE COULDN'T

No. 4

A MAN—

Tried to repair a high  
tension electric line  
with his bare hands . . .  
HE COULDN'T

No. 5

A MAN—

Cut out advertising  
to see if he could  
save money . . .  
HE DIDN'T

## The Eldorado Success

Phone 853-2600

Texas' Newest University  
to be  
School Of The Future  
When Completed



Library facilities on the south campus are equipped with the latest multi-media instruction devices, such as tape recorders and slide and motion picture projectors for self-paced instruction.

Texas' newest university is sprouting from the West Texas plains at Odessa with what its administrators describe as the most revolutionary program in higher education today.

If the experts are right, Yale, Stanford, Harvard, Rice and the rest will be studying the ultra-modern campus of The University of Texas System that opens its doors this fall as The University of Texas of the Permian Basin.

Texas-Permian is the first two-year, upper-class university in Texas designed for junior, senior and graduate students. It is accepting all credits with a minimum grade of C from all accredited colleges. But killing the credit transfer hassle isn't enough. The university is challenging students to transfer in as members of the pioneer class.

A look at the completed South Campus facilities indicates that "innovation" is more than an idea. The hardware is there, and so are the faculty, Ph.D.'s drawn from throughout the United States because of their particular expertise and their desire to crash out of the aged classroom lecture technique. This faculty is composed of talented people with years of teaching experience at the best universities in America.

Their boss is U.T. Permian's president Bill Amstead, an Austin native with his doctorate from The University of Texas. At 51, Amstead looks just as natural behind his desk in suit and tie as he does tramping coatless about the construction sites under a hard hat, chomping a cigar and transmitting a "Ten-Four" over the walkie talkie in his hand.

"Socrates has been dead more than 2,000 years, and academia is still hung up on his methods," says Amstead. "Business and the military have run away from us in techniques of learning. You'll find some of what we're doing here on other

campuses all over the country. But these attempts are isolated, some in classes or in only one department. Or else they've gone overboard for one technique or idea, and made it some kind of panacea.

"Here we're developing a campus-wide learning management system, based on individualized learning. We have modular classrooms, where professors can give students one-on-one instruction, and students can progress at their own pace."

Another innovation Amstead cites is multi-media training, or use of slide and film projectors, tape recorders and closed circuit television.

"Each professor will virtually tailor each course to the individual," says Amstead. "The instructor will plan the course by starting at graduation day, so to speak, and determining what the student should know, be able to do. Then he'll work backward and develop course segments."

"He'll use whatever devices that will best advance the student — self-paced instruction, multi-media or even classroom lecture methods."

"We'll have mobile units designed as roving laboratories with live-in facilities to travel anywhere in the country."

Amstead said the roving classrooms will consist of 13 custom-built vans designed for a specific function, such as science laboratory, classroom-study hall, bubble-top art studio and dormitory. The units will be kept on the move for fossil hunting, life science study, on-location art classes and even snow skiing trips.

"It's part of our philosophy of removing students from the classroom and placing them in real-life conditions," said Amstead.

Amstead says about one fourth of the classes beginning this September will utilize self-paced instruction. "That per-

centage will increase as we move along, to where there is less and less lecture."

Texas-Permian professors are being trained in a systems approach to learning management. A computerized faculty activity analysis system has been designed to provide each professor with feedback on learning results, so he can modify and improve on innovative techniques.

"Nothing that is implemented will be experimental, and yet we'll experiment with whatever we implement," Amstead said. "All these techniques have been proven elsewhere — on other campuses and in business and the military. They'll give the student more freedom. For example, in self-paced learning courses, students won't have to attend conventional classes. They'll be tested on a course segment when they say they're ready for it. Laboratories will be open all the time for whatever students require. If they can 'quiz out' successfully in half the allotted time, they'll have the course wrapped up. If they need more time, they'll get it."

"Financing should be no problem to the student," said Amstead. "We have many sources of help, including scholarships, grants, loans and part-time employment. Just let us know."

The main campus under concrete-mold construction even now looks like an *avant garde* institution where something mind-boggling is under way. Amstead is proud as punch of it.

"We looked at 19 other modern campuses, including the U.S. Air Force Academy at Colorado Springs. And this design incorporates the best features and concepts to date."

The \$14 million main campus has three levels, each with an acre of modular classroom space, built 22 feet above the ground on a man-made mesa. The ground level will contain

above-ground utilities, which eliminated the cost of digging into Permian Basin rock. Vehicular traffic and parking facilities will be on the ground, with pedestrian traffic concentrated on the second level. One will be able to walk outside but under cover to every building in no more than six minutes.

The East Texan, South Texan and out-of-stater who attends Texas-Permian will be in for a shock or two besides those encountered in the "classroom." The university is pointing at New Mexico ski slopes, a mere four-hour drive from Odessa, and a nine-hole golf course — soon to be 18 — on the 558-acre campus. The school will have the largest Olympic swimming pool of its kind in the country, which it will need if enrollment predictions click. Amstead expects 3,500 students by the third year, about 6,500 in five years and 10,000 by 1990.

Odessa's Shakespeare Globe Theatre will be one of the university's drama workshops. The theatre has been described by *The New York Times* and history experts as the world's most authentic replica of the London theatre made famous by Shakespeare. The theatre is directed by Charles David McCally, widely recognized Shakespearean actor and director.

Considering the preferences of today's contemporary student, Texas-Permian will have no dormitories, except for the mobile study units. Students will live near the campus in apartments and homes. "This way they'll be part of the main life stream of the community," says Amstead. "When they are graduated from here — whether their degree is in chemistry, math, engineering, aviation management, law enforcement management, creative writing or what have you — they won't be coming out of an idealistic ivory tower. They'll be on the ground and running."

RUSSIAN BLACK BREAD FOR GOOD HOSPITALITY

Russian Black Bread and salt are the edible symbols of Ukrainian hospitality. The hostess presents the Russian Black Bread and salt to her guests which means welcome, with good will. The guests are expected to cut a slice of bread, dip it in the salt and eat it. Therefore guests are welcome to share the food of the house no matter how rich or poor the home might be.

This bread can be made with the Rapidmix technique. It requires the mixing of the liquid ingredients with some of the dry ingredients and the yeast. This quickly activates the yeast and permits baking within several hours.

RUSSIAN BLACK BREAD

- (Makes 2 Round Loaves)
- 4 Cups Unsifted Rye Flour
  - 3 Cups Unsifted White Flour
  - 1 Teaspoon Sugar
  - 2 Teaspoons Salt
  - 2 Cups Whole Bran Cereal
  - 2 Tablespoons Caraway Seed, Crushed
  - 2 Teaspoons Chase & Sanborn Instant Coffee
  - 2 Teaspoons Onion Powder
  - 1/2 Teaspoon Fennel Seed, Crushed
  - 2 Packages Fleischmann's Active Dry Yeast
  - 2 1/2 Cups Water
  - 1/4 Cup Vinegar
  - 1/4 Cup Dark Molasses
  - 1 Square (1-Ounce) Unsweetened Chocolate
  - 1/4 Cup (1/2 Stick) Fleischmann's Margarine
  - 1 Teaspoon Cornstarch
  - 1/2 Cup Cold Water

Combine rye and white flours. In a large bowl thoroughly mix 2 1/2 cups flour mixture, sugar, salt, cereal, caraway seed, Chase and Sanborn Coffee, onion powder, fennel seed, and undissolved Fleischmann's Active Dry Yeast.

Combine 2 1/2 cups water, vinegar, molasses, chocolate



For Russian hospitality serve Black Russian Bread and salt. To make each slice of bread delicious mix the rye and white flour with Fleischmann's Yeast and the other dry ingredients.

and Fleischmann's Margarine in a saucepan. Heat over low heat until liquids are very warm (120°-130°F). Margarine and chocolate do not need to melt. Gradually add to dry ingredients and beat 2 minutes at medium speed of electric mixer, scraping bowl occasionally. Add 1/2 cup flour mixture. Beat at high speed 2 minutes, scraping bowl occasionally. Stir in enough additional flour mixture to make a soft dough. Turn out onto lightly floured board. Cover; let rest 15 minutes. Then knead until smooth and elastic, about 10 to 15 minutes. (dough may be sticky). Place in greased bowl, turning to grease top. Cover; let rise in warm place, free from draft, until doubled in bulk, about 1 hour.

Punch dough down; turn out onto lightly floured board. Divide in half. Shape each half into a ball about 5 inches in diameter. Place each ball in the center of a greased 8-inch round cake pan. Cover; let rise in warm place, free from draft, until doubled in bulk, about 1 hour.

Bake at 350°F. 45 to 50 minutes, or until done. Meanwhile, combine cornstarch and cold water. Cook over medium heat, stirring constantly, until mixture starts to boil; continue to cook, stirring constantly, 1 minute. As soon as bread is baked, brush cornstarch mixture over top of loaves. Return bread to oven and bake 2 to 3 minutes longer, or until glaze is set. Remove from pans and cool on wire racks.

Put A Feather In Your Cap

Can you serve a nutritious, protein-rich recipe at a comparatively low cost?

The National Macaroni Manufacturers Assn. took up that challenge and found that a homemaker could prepare a meatless protein-rich entree for an average cost of from 55 cents to 69 cents per person.

According to Robert M. Green, executive secretary of NMMA, the association's home economics test kitchens developed three one-dish recipes, Tuna-Noodle Bake, One-Pot Spaghetti and Fish, and Macaroni and Tuna Chowder, each of which serves four persons.

Ingredients for each recipe were purchased by association representatives in three different grocery supermarkets — one in New York, one in Chicago and the third in Los Angeles. Cost of the recipes varied from \$2.15 to \$2.92 for the exact amount of the ingredients necessary to complete the particular recipe, Green said.

In place of meat, protein-rich fish, cheese and milk were used to supplement the macaroni protein in these recipes.

Historically, macaroni products have been regarded as budget-stretchers since they can make a little meat go a long way, Green said. Macaroni recipes can also utilize the less costly types of meat.

Here are the recipes with approximate cost of servings:

ONE POT FISH AND SPAGHETTI

- (Makes 4 main dish servings)
- 3 tablespoons butter or margarine
  - 1/2 cup chopped onion
  - 1/2 teaspoon pepper
  - 2 cans (10-3/4 ounces each) cream of tomato soup, undiluted
  - 2 1/2 cups water
  - 8 ounces uncooked spaghetti, broken in half
  - 1 pound frozen fish filets, thawed and cut into 2-inch pieces\*
  - 3/4 cup sliced celery
  - 1 jar (5 ounces) sharp pasteurized process cheese spread
  - 3 tablespoons chopped parsley

Melt butter in 4-quart pot; stir in onion and saute until golden. Add pepper, soup and water; bring to a boil. Gradually add uncooked spaghetti so that liquid continues to boil. Cover and simmer 10 minutes, stirring occasionally. Stir in fish and celery. Cover and simmer 5 minutes more, stirring occasionally.

When spaghetti is tender stir in cheese spread until melted. Turn mixture into a serving dish; sprinkle with parsley and serve immediately. \*Thaw fish just before cooking. Approximate cost per serving: \$ .55



Many macaroni plants are working around the clock these days to keep people like Marla Sue Silins supplied with spaghetti and other macaroni products.

HEARTY MACARONI AND TUNA CHOWDER

(Makes 4 generous servings)

- 1/2 cup chopped onion
- 3 tablespoons butter or margarine
- 3 cups water
- 1 teaspoon salt
- 1/4 teaspoon pepper
- 2 cups elbow macaroni (8 ounces) uncooked
- 1/2 pound sharp Cheddar cheese, grated
- 2 cans (7 ounces each) tuna, drained
- 2 1/2 cups milk

In a 3-quart pot, saute onion in butter until crisp-tender. Add water and seasoning; bring to a boil. Add macaroni gradually, so that water continues to boil. Cover; reduce heat and simmer until macaroni is tender, about 10 to 12 minutes. Stir frequently. Remove from heat; add cheese and stir until melted. Flake tuna; add tuna and milk to pot. Heat but do not boil. If desired add additional milk. Serve immediately.

Approximate cost per serving: \$ .62

TUNA-NOODLE SUPPER

(Makes 4 servings)

- 3 small onions, sliced
- 2 tablespoons butter or margarine
- 1 can (20 ounces) pineapple chunks, in unsweetened juice
- 2 cans (13-3/4 ounces each) chicken broth, undiluted
- 2 teaspoons lemon juice
- 8 ounces uncooked med. egg noodles (about 4 cups)
- 1 medium green pepper, cut in strips
- 2 cans (7 ounces each) tuna, well drained
- 1/2 cup cold water
- 2 teaspoons cornstarch
- 1/4 cup chopped parsley

In large 4-quart pot, saute onions in butter until golden brown. Add pineapple juice (drained from pineapple), chicken broth and lemon juice; bring to a boil. Gradually add uncooked noodles so that liquid continues to boil. Reduce heat, cover and simmer for 5 minutes. Add pineapple and green pepper. Cover and simmer 5 minutes.

Break tuna into chunks. Blend water and cornstarch. Stir tuna and cornstarch mixture into pot. Stir constantly and gently for about 2 minutes or until mixture is thickened. Stir in parsley. Serve immediately.

Approximate cost per serving: \$ .69

A pair of silk stockings produced in 14th century France sold for the equivalent of \$3.86—2 1/4 times a laborer's annual wage.