



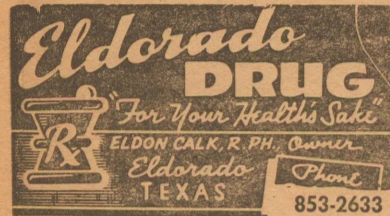
WISHING YOU WELL

The best wish we can make for you, our customer, is that you will never have to have a prescription filled. Unfortunately, however, the chances are good that sooner or later you will need medical attention which will require a corrective prescription.

When that happens, we will be ready immediately to supply exactly what your doctor orders. Our stocks of modern, effective pharmaceuticals are maintained in abundant, fresh supply to take care of your needs.

We wish you (to be) well!

We can help you when you are not. That is the main reason why we are here.



Headed For A Showdown

All sorts of predictions have been made concerning the decade of the 1970's. Most of them have one thing in common. They foresee growth. Nineteen hundred and seventy, however, may turn out to be a year that will be looked back upon mainly as a period in which broad economic planning by government and the managed economy began their final approach to a day of reckoning as inflation maintained its steady course.

Nineteen hundred and seventy was a year in which it became obvious to more people than ever before that government spending and government deficits are the root of high and rising prices. It was also the year in which a great many people began to doubt the ability of government to manage its own affairs, much less manage the economy and control federal spending programs. It was the year in which there was both recession and inflation—a condition for which the party in power will no doubt be blamed but, as time goes on, could become chronic, regardless of political labels. No matter where an observer turned, whether in the field of money, transportation, agriculture, housing or economics, the failure of centralized planning became painfully apparent in 1970. And the failure has not been overlooked by various studies and reports. There is now every indication that as we move further into the 70's, crises in money management will be recurring as will the generally chaotic conditions that are part and parcel of inflation. With each crisis, the chances are good that repressive improvisation of one kind or another will be brought to bear to cover up past failures of government planning.

In his outstanding book, "Legacy of Freedom," Mr. George Charles Roche III, after summing up the failure of government as a planner and regulator in a number of areas, including urban renewal, transportation and agriculture, has written, "We are told of the efficiency of planning; and every failure of the planners is immediately defended as 'due to insufficient authority to deal properly with the problem.' Yet it would be hard to envision a situation in which more monopolistic control could be in the hands of the planners than in the case of the United States Post Office. The Post Office has been a classic demonstration of the failure of government as a manager and planner. Even in the area of poverty, where government planning—and spending—have had wide support, the record is typical. A report of the Committee for Economic Development has concluded that not only will urban poverty be a fact of life for many years to come, but that nearly 50% of those living below the poverty "line" cannot be saved without further new government spending programs—and more government planning.

And so as we enter in the second year of the 70's, the ancient conflict between statism, freedom and the individual seems to be headed toward a crucial showdown. The recession-inflation phenomenon of 1970 could carry a greater portent for the future than possibly any other event during the year. It irrevocably brought recognition of the failure of government as a planner and manager a step closer, or a year closer. —From the Industrial News Review.

THE 123-DAY VOTER REGISTRATION PERIOD ENDS JANUARY 31!

IF YOU DON'T REGISTER YOU CAN NOT VOTE!

IT'S FREE! AT YOUR TAX ASSESSOR'S OFFICE!



COUNTY AGENT'S COLUMN

by Ting Godwin

Schleicher County Agricultural Agent

Cash income to farmers and ranchers in Schleicher County should be more than \$5.4 million by the end of 1976.

This will mean an increase of more than \$1,626,000 from 1968-69 figures, with beef cattle contributing a large part of the gain. The projections are based upon the studies of the Texas Agricultural Extension Service and are part of the "3.76 in 76" program, a statewide project to increase Texas agricultural cash receipts by more than one billion dollars.

Total cash receipts from all agricultural enterprises in Schleicher county are presently about \$3.8 million dollars exclusive of ASCS payments. The most important ones are beef, cattle, sheep and wool and mohair. They are expected to account for about 78% of the 1976 projected totals.

The County will be aided in its production efforts by the Edwards Plateau Economic Program. Extension specialists will hold conferences in the Edwards Plateau area economic program. Extension specialists will hold conferences in the area regularly to discuss improved production.

The projections are based upon the county program building committee, after separate predictions were made by Extension specialists.

Schleicher County producers will have access to production information and techniques that can help spell success for the Texas goal of "3.76 billions in 76."

Few persons have good enough sight to see their own faults.

The removal of dead, dying, or unwanted trees from your property is much easier to do during the winter months. Tree service companies can usually give fast attention to orders at this time of the year and if you are a do-it-yourself gardener, chances are good you have more time for the job. Soil conditions and plant growth

habits also favor tree removal during the winter months. Since most deciduous trees are now without leaves, the debris can be removed with less damage to lawns and nearby shrubbery.

The removal of a large tree is a job for the expert tree man. Unless you have the proper tools and skills for handling the job, it is better to contact a local tree service man who is trained in tree removal work. An improperly felled tree can cause untold damage to your home or to a neighbor's property.

It never pays to plant a bigger garden than your wife can weed.

Agricultural quarantine inspectors intercepted more than 47,000 plant pests and diseases at U. S. border ports of entry during 1970, reports the U. S. Department of Agriculture.

This is an average of 129 pests or diseases per day. They were found in passenger baggage, ship and airplane stores, mail and cargo. The quarantine inspectors are part of the USDA's Agricultural Research Service.

Some of the most dangerous pests, fruit flies, continued to be a major problem; and increased about one-fourth during 1970. However, this increase reflects a rise in quarantine inspection activities.

The stopping of the inbound agricultural pests included some of the world's most destructive insects and diseases, capable of causing millions of dollars damage to U. S. crops, gardens, forests and ornamentals.

The U. S. Department of Agriculture cooperated with the Department of Defense in preclearing military cargoes and carriers from Vietnam for pest-free entry into the United States.

The recipe for a good speech includes some shortening.

Consumer Products Can Cause Injuries

What are your chances of being injured in an accident involving some consumer product this year?

If you are a male between the ages of 5 and 24, working or playing at home with some consumer product between 3:00 and 9:00 p.m. on a Saturday or Sunday, you probably should take greater care to avoid potential accidents. That could be one of the lessons learned from the 1970 Product Safety Report issued by the U. S. Department of Health, Education, and Welfare. The report is designed to furnish information concerning the types and severity of injuries, with particular emphasis on identification of consumer products usually involved or associated with those injuries.

The products most frequently involved in injuries are, in descending order: bicycles, nails, kitchen knives, tables, beds, playground equipment, chairs, snow skis, non-prescription drugs, glass bottles, metal containers, ladders, power saws, prescription drugs, & drinking glasses. Also mentioned but in less frequent numbers, are: clothes dryers, washers, stoves and ovens, power lawn mowers, and chain saws.

According to statistics, almost one-half of the injured persons are under 15 years of age. And nearly 60% of them are males. Almost 70% of the accidents are reported to have occurred in or around the home.

J. M. Doughty, Jr., a Texas Health Department official, says those figures should not be viewed as reflecting all the consumer products accidents occurring across the country last year. They are, however, good indicators as to the type of products involved, who is involved, and when and where they occur.

Almost 50% of the injuries reported occurred between noon and 6:00 p.m., and more than one-third occurred between 6:00 p.m. and midnight. Each day of the week ranked almost equal in the number of accidents occurring on that particular day, although Saturday and Sundays showed a slight increase.

Governmental actions to protect the health and safety of the public will only be successful if the public itself becomes informed of these potential dangers from common consumer products.

WE ARE PLEASED TO ANNOUNCE THAT

Wes Naylor

IS NOW ON THE JOB AS NEW MECHANIC

So now we are even better equipped to take care of your auto, truck, and tractor repairs. Also irrigation engines. Radiator work done right.

Electric Welding

ENGDAHL'S GARAGE

S. C. Engdahl

We honor BankAmericard and all major oil company credit cards.

If the recent cold weather showed you need a new battery or more anti-freeze, let us take care of it for you.

LUM DAVIS FINA STATION
On Sonora Hwy. Phone 2872

Public Notice!

January 30 is the last day to get voter registration

Everyone Must Register In Order to Vote This Includes Over 60

OUR OFFICE will be open this Saturday, Jan. 30th, from 9:00 a.m. to 5:00 p.m. to issue last-minute voter registration certificates.

NOTE TO UNDER 21: Registration certificates will be issued to all applicants 18, 19, and 20 years of age, and to those persons who are not yet 18, but will be 18 before March 1, 1972. However, you will be entitled to vote in Federal Elections only and your Voter Certificates will be so marked.

You must be registered in order to vote for school trustees, city aldermen, hospital directors, and any other special elections that may be called.

VOTER REGISTRATION CERTIFICATES ARE FREE ! !

ORVAL N. EDMISTON

Sheriff, Tax Assessor and Collector

Gail Mittel

GENERAL DOZER WORK

Tree Grubbing Terraces

Tank Building

Conservation Work

BOX 561 ELDORADO, TEXAS

PHONE 853-2488

Special Stamp To Honor Gen. MacArthur

Brownwood, Tex. (Spl.)—Collectors of rare items in the mid-Texas area may be interested in a special offer which is being made possible through Howard Payne College's Douglas MacArthur Academy of Freedom.

The offer involves 1st-day, Brownwood cancellations on special Academy of Freedom mailing envelopes which have been printed in connection with the issuance of a new postage stamp bearing the head of the late General Douglas MacArthur.

The 6-cent stamps, which will be sent from the U. S. Post Office Department to post offices all over the nation on Wednesday, have been printed as commemorative keepsakes to help observe the 91st birthday anniversary on Tuesday of the late general.

The stamps will be issued amid first-day ceremonies Tuesday in Norfolk, Va., site of the MacArthur Memorial Foundation and of General MacArthur's burial place.

The MacArthur Foundation will issue the stamps a day ahead of other spots across the nation.

The MacArthur Foundation will issue the stamps a day ahead of other spots across the nation.

According to U. S. Postmaster General Winton M. Blount, the new MacArthur stamp is being issued because of overwhelming demand for such a stamp since the late general's death in 1964.

The stamp itself is vertical and has been printed on a Giori press in colors of red, blue and black. It was designed by Paul Calle of Stamford, Conn.

The portrait of MacArthur shown on the stamp is based on a Wide-World photo taken in 1944 aboard a Flying Fortress, while the general was conducting an inspection mission over New Guinea.

ENROLLED AT LCC

Kathy Carlman, daughter of Mr. and Mrs. E. L. Carlman of Eldorado, has enrolled for the spring semester at Lubbock Christian College.

Kathy is a 1967 graduate of Eldorado High School and is a senior Elementary Education major.

Lubbock Christian College is a small, private, senior college offering BA and BS degrees in 16 majors.

CARDBOARD 10c & 20c at Success

Fat Texas Oysters Are Plentiful This Winter

Austin, Tex.—The Texas oyster harvest is off and running and fresh oysters are in excellent supply, according to Parks and Wildlife Department biologists and industry spokesmen. It is also reported that they are extremely plump and juicy this year due to favorable water conditions in the various oyster-producing bay systems.

The winter months have always been the best time to purchase fresh oysters. This is because water temperatures are cold, and the oysters have prepared themselves for winter by gaining weight. Later in spring, when water temperatures rise above 75 degrees Fahrenheit, oysters begin to spawn, and stress from this activity causes them to lose much of their winter fat.

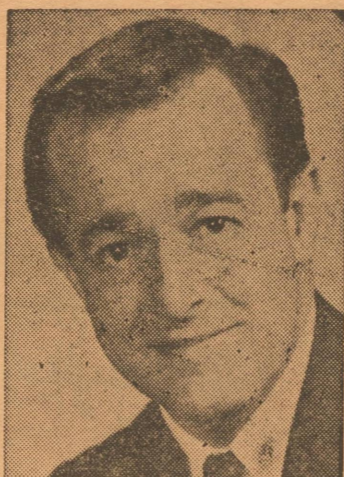
Oyster-on-the-half-shell fanciers are reminded that they can eat Texas oysters with complete confidence, since dealers are required to meet strict quality and sanitation requirements imposed by the State Department of Health. Oysters can legally be taken only from those waters certified to be clean and free from harmful contaminants. Shucking plants are inspected regularly, and each plant is issued a certification number which must be affixed to every container of marketable oysters from that plant. This number is the consumer's final assurance of wholesomeness.

To judge for yourself just how wholesome fresh Texas oysters are this winter, try them soon on the half-shell, or in your favorite recipe for oyster stew. If you're having guests, you can make believers of them all with the following recipe called:

Angels On Horseback
 1 12 oz. jar fresh oysters
 2 tablespoons chopped parsley
 ½ teaspoon salt
 ½ teaspoon paprika
 ½ teaspoon pepper
 10 slices bacon, cut in thirds.
 Drain oysters and sprinkle with parsley and seasonings. Wrap bacon strip around each oyster and secure with toothpick. Place oysters on broiler pan and broil about 4 inches from heat for 8 to 10 minutes. Turn carefully and broil 4 to 5 minutes longer or until d'bacon is crisp. Makes approximately 30 hors d'oeuvres.

TYPEWRITER RIBBONS, for Royal, Underwood, and Remington—available at the Success.

Doran Named To Rules Committee



HILARY DORAN

Austin, Texas.—Texas House Speaker Gus F. Mutscher last week named State Representative Hilary B. Doran, Jr., of Del Rio as Vice Chairman of the House Rules Committee. He was a member of this committee during the 61st Legislature.

Mutscher also re-named Doran a member of the Committees on Appropriations, Livestock, and Congressional and Legislative Districts. The Del Rio Representative will serve as a member of the Elections Committee.

"Representative Doran's four years of legislative service and experience will greatly add to the effectiveness of the committees on which he serves," Mutscher said.

"The appointment of Representative Doran as Vice Chairman of this vital Committee on Rules is an acknowledgement of his important role in the Texas House," Mutscher added.

The 11-member Committee has jurisdiction over Rules of the House of Representatives, the joint rules of the House and the Senate and in general all procedures for expediting the business of the House in an orderly and efficient manner.

Mrs. F. M. Bradley, Mrs. Robert F. Frost, and Mrs. R. L. Ballew accompanied Mrs. J. H. Francks of San Angelo and Mrs. R. L. Pearce of Fife to Raymondville, Texas, for a weekend visit with R. K. Finlay and his family and other relatives. Mr. Finlay is a brother of Mrs. Bradley and Mrs. Pearce.

Marketing Tips

College Station, Tex.—To get the most from your food dollar, follow these marketing tips, suggests Gwendolyne Clyatt, Extension consumer marketing specialist.

Vegetable supplies are adequate, but weather could alter the supply overnight. Green cabbage, turnips, russet and red potatoes, rutabagas, yellow onions, carrots, celery and cooking greens are economical choices.

Apples, grapefruit, Navel and juice oranges are in ample supply with their prices unchanged and attractive. Look for No. 88 and No. 113 size oranges. Tangelos and tangerines are decreasing in supply, while Temple oranges are in heavier supply. Shop for 5-pound bags of grapefruit, and look for fresh strawberries now on the market.

Using cottage cheese is an excellent way to provide good nutrition on a small food budget. The cheese combines well with plentiful citrus fruits, especially grapefruit and oranges in salads.

You can also stretch your food dollars by using dry and canned milk along with fresh milk. Dry and canned milk make good hot chocolate and cocoa.

Prices of frying chickens may vary from store to store, but the poultry items remain one of the best protein values. The lowest price per pound is on the whole bird, which you can cut the way you like then save the remainder.

An assortment of pork cuts, both fresh and smoked, are featured in many markets. Good values will be found on Boston butt roasts, shoulder steaks, fresh picnic roasts, center rib chops and smoked picnics.

The most thrifty buys in beef include chuck roasts and steaks, round steak, ground beef, stew meat and brisket.

Tax Man Sam Sez:

Taxpayers who earn a salary and wages have a problem that they must solve before filing their income tax return for 1970. Each employer is required to furnish all of his employees a Form W-2 by February 1. Most employers make a vigorous effort to comply with the law. However, many employers can't find the ex-employee. If you haven't told the "Hard Work Manufacturing Company" where to find you and you have moved three times since you quit or they fired you last May, you need to notify the good Hard Work folks where to send your W-2. It won't do any good to file your tax return without all of your W-2's. IRS won't process it so all you can do is make sure you get all your W-2's.

Youth Need Guidance When Given A Gun

Austin, Tex.—Youngsters sporting new guns after Christmastime need more instruction than just how to load and fire them.

Texas Parks and Wildlife Department officials remind Texans that even the smallest single-shot .22 can be a deadly weapon, so parents who give firearms to youngsters should be sure they are familiar with safe gun handling.

A formal firearms handling course would be appropriate; where this is not possible, some individual instruction from an experienced shooter might fill the bill.

Also, the younger fry shouldn't be allowed to use guns except when accompanied by a responsible adult. Guns and ammunition should be locked up when not in use.

Another reminder to week end plinkers of all ages: only four species of birds remain on the "unprotected" list. They are the English sparrow, raven, starling and crow.

A new gun can be a source of pride and continuing pleasure for the young sportsman if he tempers its use with an awareness for gun safety.

75th Diamond Jubilee Fat Stock Show Starts Jan. 29 In Fort Worth

Ft. Worth, Tex.—Preliminary totals indicate a record entry list for the 75th Diamond Jubilee Anniversary of the Southwestern Exposition and Fat Stock Show, Jan. 29 through Feb. 7.

Officials have processed 11,709 livestock entries, beating the 1970 record of 11,241 entries. These totals do not include an estimated 100 entries in the "show up" children's horse classes.

"The record turnout is heartening," said Stock Show President and Manager W. R. Watt in announcing the tabulation. "The increase indicates good acceptance of our show and reflects a healthy trend in the livestock industry."

The Stock Show opens a 10-day run Friday on Amon Carter Square. Open livestock show entries are up by 43, from 4,140 head in 1970 to 4,173 this year.

A substantial gain of 481 head

Our New Telephone Number Is

853-2331

PLEASE PUT THIS NUMBER DOWN AND USE IT WHEN YOU WISH TO CALL US For Those Good Phillips 66 Products and Services

Meador Oil Co.

So. Main Street Mack McAngus, Mgr.

in the junior livestock show continued the trend of recent years. This year's figures indicate 3,117 head, up from 2,636 in 1970.

"This continuing upward trend of young exhibitors pleases us a great deal," Watt said. "It speaks well for the future of the livestock business to have so many youngsters preparing for positions of leadership."

Junior barrow show entries attracted 1,100 to lead the Junior Show.

Horse Show entries total 1,606, up from 1,541 a year ago. Again, the Quarter Horse division leads

the list with 697 entries.

Almost 800 entries are registered for the special commercial Hereford heifer show and sale, helping the total entries to pass the record. Polled Hereford classes registered the greatest number of open cattle entries with 299.

In the poultry, rabbit and pigeon division entries overall posted a decline of 45. Ahead were pigeons with 973 and standard chickens with 315. Rabbits totaled 385 and bantams 1,140.

Sheep and lamb entries include 965 in the Junior Show and 771 in the Open Show.

You need an electric portable room heater for:

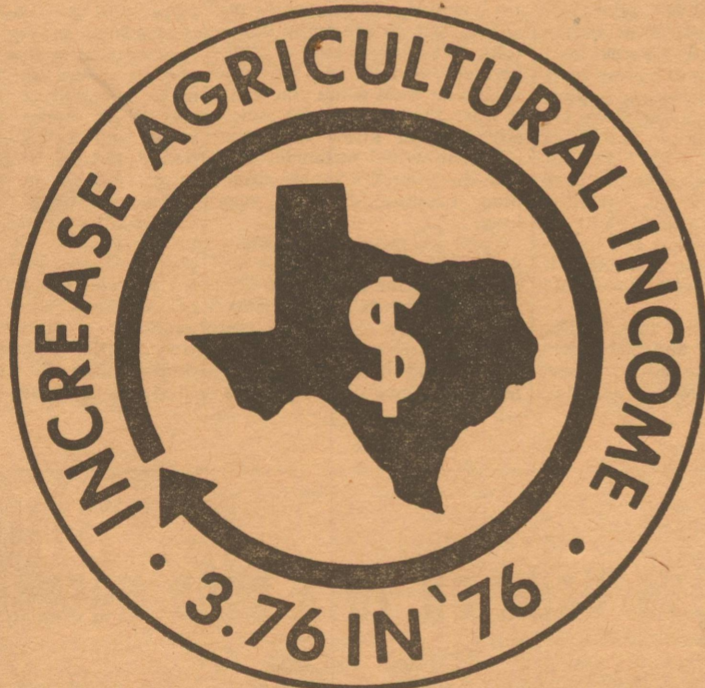
COLD SPOTS IN...
 Home — Garage — Hobby Room
 Den — Kitchen — Bath — Bedroom.
 Available at your electric appliance dealer or WTU.

Small — Medium — Large
 Choice of colors & prices

Portable room heaters come in large enough sizes to heat an entire room. Portable electric fireplaces are truly attractive, wonderfully cozy and efficient.

Solve the cold-spots—electrically!

West Texas Utilities Company
 Equal Opportunity Employer
 an investor owned company



This is "3.76 in '76 Week" in Texas.

What does "3.76 in '76" mean? It means a billion dollar increase in agricultural income by 1076.

Initiated by the Texas Agricultural Extension Service, the program aims for achieving the full potential of the Agricultural Industry in Texas.

In proclaiming this week as "3.76 in '76 Week" Governor Preston Smith asks all citizens to join in this observance and to dedicate their efforts to the achievement of "3.76 in '76."

THE FIRST NATIONAL BANK

ELDORADO, TEXAS

**FOR
PROMPT
JOB
PRINTING**

**CALL
THE SUCCESS**

No Need For Advertising?

- Preachers don't preach just once a year even though people are against sin.
- Teachers review lessons. They know that children do forget and often have to be told more than once.
- Highway patrolmen drive up and down the highways, and caution drivers although motorists know the law and should obey.
- Mail order firms continue to send out catalogues.
- Not all of us know what is sold in stores in the home town, and we need to be invited continually to trade in your place of business.
- The Notre Dame cathedral has stood for centuries, but still they ring the bell every day.
- If you're one of those who believe in continuous and profitable advertising, you'll want to use the columns of the . . .

Eldorado Success

Phone 2600

MANAGER'S SALE

337FSIV '69-'70 Form 27



KIM DOG FOOD

12 Tall Cans \$1

LIMIT 12 CANS

OUR DARLING CORN

303 Can 19¢

POP RITE POP CORN

2 Lb. Bag 33¢

VAN CAMP PORK & BEANS

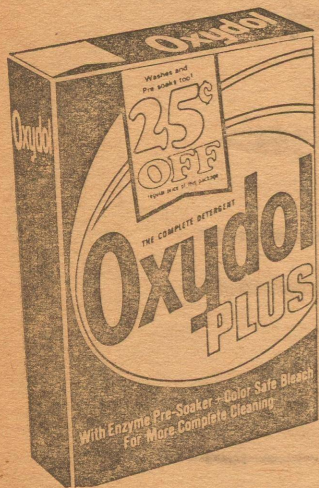
300 Can 29¢

Introductory Special! Now collect STAINLESS FLATWARE by Oneida, LTD. when you buy ENZYME DUZ DETERGENT

45 oz. GIANT SIZE ONLY 69¢

Oxydol PLUS

The complete detergent with enzymes and bleach!



SPECIAL PRICE 5 lb. 4 oz. KING SIZE ONLY

99¢

LIMIT ONE



Cascade

69¢

Giant Box

RUSSET

POTATOES

10-Lb. Bag 49¢

YELLOW ONIONS

Pound 9¢

Texas Ruby Red GRAPEFRUIT

Pound 10¢



PURE VEGETABLE

CRISCO

WITH \$5.00 PURCHASE

3 LB. CAN

79¢

BIG TOP

PEANUT BUTTER

18-Oz. Jar

59¢



WHOLE SUN

ORANGE JUICE

6-Oz. Can

19¢

Duncan Hines Cake Mix

2 for 79¢



and WE'LL HELP BUY YOUR ICE CREAM!

Look For This SPECIAL OFFER On Our Duncan Hines Cake Mix Display



GLADIOLA

Enriched - Bleached

All Purpose

FLOUR 49¢

5 Lb. Bag

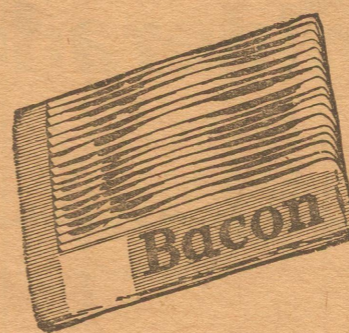
KIMBELL'S

COFFEE

1 Lb. Can

79¢

the meat with the Blue Ribbon Quality



GOOCH — BLUE RIBBON

BACON

POUND

59¢

GOOCH — COUNTRY STYLE

SAUSAGE

2 LB. BAG

98¢

GOOCH

HOT LINK SAUSAGE

POUND

49¢

FIELD'S LARGE

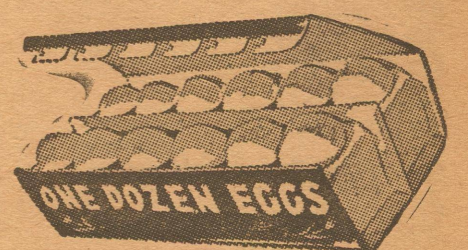
CAGE EGGS 59¢

DOZEN

PRICE'S PIMENTO

SPREAD 98¢

14-OZ.



MEAD'S — FROZEN

2 DOZ. PACK

Parker House Rolls 29¢

Parker Foods, Inc.