



WISHING YOU WELL

The best wish we can make for you, our customer, is that you will never have to have a prescription filled.

When that happens, we will be ready immediately to supply exactly what your doctor orders.

We wish you (to be) well!

We can help you when you are not. That is the main reason why we are here.

Eldorado DRUG logo with address: Eldorado, Texas, 853-2633.

Musician To Perform At 10:15 Next Tuesday Morning



TEENAGE WONDER — The remarkable musical talent displayed by Attila Galamb as a child prodigy attains new heights today as the versatile youth performs on his broad spectrum of instruments ranging from guitar to Melodica and accordion.

Attila Galamb, whose tour of U. S. school audiences brings him to the Schleicher High School in Eldorado on Tuesday, March 23, is a teenage boy who has been thrilling school children, their teachers and parents throughout America with his musical genius.

Born in Hungary, he soon showed extraordinary aptitude for music study. He was only two when he learned to play the drums by listening outside the door during one of his father's classes. Today he plays drums, clarinet, saxophone, accordion, piano, tarogato, organ, guitar and harmonica with equal ease and especially enjoys his newest instrument, the Hohner Melodica.

Attila has appeared on the "Ed Sullivan Show" on TV, at Radio City Music Hall, at the Hollywood Palladium and Hollywood Bowl, and with the Los Angeles Symphony Orchestra. He has traveled and played throughout most of the United States, always keeping up with his school work, in which he is something of a prodigy as well. He pursues his education with college correspondence work, having graduated from high school at age 10 1/2.

- Mrs. Hurd's Angle Biscuits: 1 pkg. dry yeast, 1/4 cup warm water, 2 cups flour, 1 teaspoon baking powder, 2 teaspoons sugar, 1/2 tsp. baking soda, 1 tsp. salt, 3 tablespoons shortening, 1/2 cup buttermilk.

Method—Put yeast in warm water. Sift dry ingredients together. Put shortening into mixture. Add yeast and buttermilk. Store in refrigerator until needed. Pinch off amount needed and make into biscuits. Let rise a short time before baking. Bake in a hot oven.

21 Million Tourists Visited Texas Last Year

Austin, Tex.—Out-of-state and foreign visitors to Texas totaled 21,116,000 persons during 1970, and they spent \$1,469,115,000 according to figures just released by the Texas Highway Department in the annual Texas Visitor Industry Report.

The remainder were first-time visitors. As in the past, the overwhelming majority enjoyed their visit. Favorable responses totaled more than 90%. Texas highways ranked first in compliments, followed by friendly Texans, Highway Department tourist bureaus, and the variety of attractions throughout the state.

According to the survey, Houston was the most popular metropolitan destination during 1970, followed closely by Dallas, El Paso, San Antonio, and a host of other Texas cities with significant visitor appeal.

Supplementing the questionnaires, "the Highway Department conducted 339 visual traffic counts throughout the year. The counts, most of them for 24-hour periods, tabulated incoming out-of-state traffic on Interstate, U. S. and State Highways around the entire perimeter of Texas.

TREE CARE advertisement: Spraying — Feeding — Pruning. BY THE JOB OR BY THE YEAR. Ask About Our Annual Pecan Tree Care. Saunders Spraying Service. Box 393, Sonora. CALL 387-2480 COLLECT, FOR A. W. SAUNDERS.

COUNTY AGENT'S COLUMN by Tiny Godwin, Schleicher County Agricultural Agent. Includes a small portrait of the agent.

A usable, functional and pleasing to look at home landscaping is within the reach of most homeowners.

Here are suggestions for reducing maintenance and at the same time improving the usability and attractiveness of yards.

Use areas should be separated and uncluttered with plantings. Open, organized space within each area results in more usable and easier to care for yard.

Careful selection of turfgrass varieties, tree and shrub species can also reduce maintenance requirements.

Difficulty in growing plants often results from poor surface or internal water drainage. Improved slopes can solve the poor surface drainage problem.

Persons interested in obtaining more information on home landscaping and related subjects are invited to visit the county Extension office.

Personality can open door; but only character can keep them open. There are many reasons why a litterbag should be in every automobile and be used.

The litterbag has a cosmetic effect by helping prevent blots on the beautiful face of Texas and Schleicher county.

The annual expenditure for keeping trash off the shoulders and right-of-ways of Texas highways is a considerable item and involves machinery as well as trucks and a lot of people.

Programs are now under way throughout the state to beautify highways, communities and entire cities and everyone can help.

A litterbag is a simple and inexpensive thing but properly and continuously used, it could have a very desirable effect upon the appearance and well being of our

county, state and nation. You must lose a fly to catch a trout.

Soil tests are a requirement for cost sharing practices under the recently announced Rural Environmental Assistance Program (REAP) administered locally by the ASCS.

First obtain instructions for collecting samples and boxes from the county agent's office, the ASCS county office or other sources in the county.

Study the sampling instructions or discuss with the county agent or some one familiar with soil sample taking before going to the field.

The history of cropping, fertilization, should be included on the information sheet sent along with the samples. Be as specific about crops to be grown, potential yields and how forage will be used as is possible.

If the soil test results are to be used in connection with REAP practices, be sure to put the ASCS Farm Number in the upper right hand corner of the information sheet.

You can't coast up hill.

Sheep Field Day Set April 1 At Sonora

College Station, Tex.—Sheep management during drought periods and control of predatory animals will highlight the Sheep Field Day scheduled for April 1 at Sonora.

The meeting will draw sheep raisers and industry people from throughout West Texas to learn of the latest research and practical techniques in sheep management.

The program starts at 9:30 a.m. with results of performance tests on rams, followed by an appraisal of meatiness in sheep by Dr. Frank Orts of Austin, president of the Texas Sheep and Goat Raisers Association, will report on that organization's activities.

Happiness

Happiness is losing an argument to your wife only to find out later she was really wrong, after all. Happiness is finding out your high-school sweetheart looks 20 years older, too.

MEMORIAL PROGRAM

Your Memorial Gift is a fitting tribute to a loved one. This remembrance helps support the research, education and service programs of the American Cancer Society.

AMERICAN CANCER SOCIETY

We have the appropriate cards to send to the family and to the donor, and will send your check to the American Cancer Society in Austin. HELEN CARLMAN, Memorial Chmn., Schleicher County

Robert Massie Co.

Furniture — Carpet

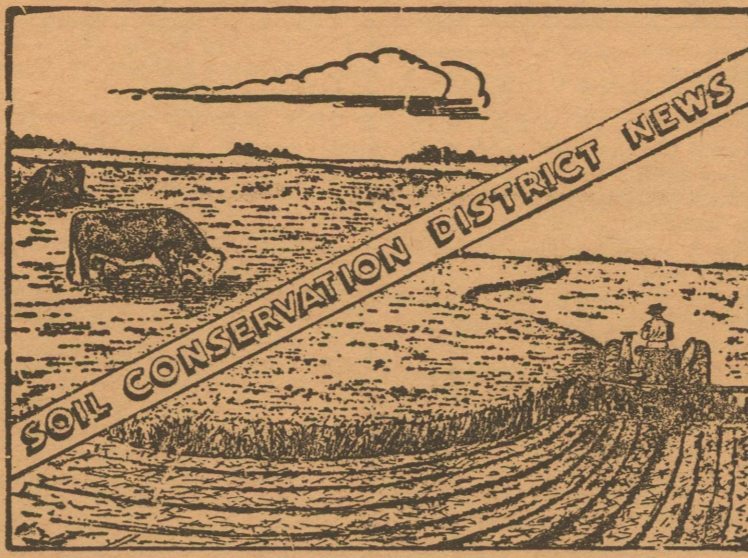
WEST TEXAS' LARGEST HOME FURNISHING STORE

Whether yours is a small or a large budget, whether your need is one room, A houseful or one piece, Our management and our experienced sales personnel are anxious to serve you according to your wishes.

MAKE OUR STORE YOUR HEADQUARTERS WHEN SHOPPING IN SAN ANGELO

12-14 E. Twohig

Telephone 655-6721



Walter C. Pope, III	Chairman
Voy Lee Butts	Vice-Chairman
George Humphrey	Secretary
Otis Deal	Member
Clay F. Atkins	Member

Country Green For City Living

The beauty and utility of plants is one of the topics being stressed during National Lawn and Garden Week March 20-26.

Bill Rountree, district conservationist for Soil Conservation Service at Eldorado said the event is being sponsored by the U. S. Department of Agriculture and the national officers of garden clubs. Lawn and garden trade groups are also behind the effort.

This year's theme "Country Green for City Living" stresses the special values of rural plants which enhance outdoor beauty and improve the environment for rural and urban residents.

"Conservation farmers who plant grasses on depleted rangeland or idle cropland in the Eldorado-Divide district area do a lot for outdoor beauty," Bill said. "In fact, sound soil and water conservation on the landscape is the key to a beautiful countryside. Any well managed grassland or farmland adds to the country green concept."

Rountree said Soil Conservation Service officials are using the occasion to invite the public to visit the SCS plant materials center at Knox City. Hundreds of plant selections are being evaluated at the center to try to find improved strains that will solve several conservation problems. He said the best time to see the plants is in late summer when most are in bloom or producing seed.

"Several new grass strains are now in use across the country because of our plant materials work," he said. "Some of the ones being used in Texas include King Ranch bluestem; Grenville switchgrass; El Reno, Uvalde and Vaughn sideoatgrass; and Selection 75 Klein-

grass." The kleingrass selection was released two years ago and has proved so popular that more than a million dollar's worth of seed was planted last year in Texas.

Plant selections from this area sent to the plant center includes Green Sprangleton and Englemann-daisy.

"However, some of the most fascinating work under way at Knox City is our work with plants for wildlife," Bill said. "Since wildlife and livestock co-exist in the same land, they use many of the same plants. We are trying to select plants valuable to livestock and wildlife which can be grown profitably for seed."

He said that his office gets questions nearly every week from people wanting to know what plants to include in grass plantings that will have special value for wildlife. Unfortunately, the number of plants he can recommend for seeding is limited. It's not because there is a shortage of plants that wildlife like—the problem is buying seed for these plants.

Rountree explained that 53 selections of forbs and shrubs thought to have value for wildlife are being evaluated at Knox City. This is in addition to more than 400 strains of grasses, many of which are also useful to wildlife, which are being grown. Several legumes are also being evaluated.

He pointed out that many forbs (broad leaved, herbaceous plants) are not only good wildlife food but are equally useful to cattle, horses, sheep and goats. If ways can be developed to grow these plants profitably for seed production, it will make it more feasible to plant them.

Selections from two such forbs—englemann-daisy and Maximilian sunflower—have shown up especially well at Knox City, he said.

Englemann-daisy is especially desirable as a wildlife food because it is a cool season plant. A selection made in the Texas Hill Country has done so well that it is now being grown for seed increase at Knox City. Field plantings at several Texas locations will be made this year.

"Another plant we have admired a long time is Maximilian sunflower," the district conservationist said. "We call this forb a climax plant, meaning it was present in the natural environment when the grasslands were settled. It is so well liked by deer and livestock that it's hard to find except in well managed pastures. If given a chance, it thrives in mixtures with other choice plants and produces a lot of forage."

The plant is native to a wide section of the state, it is a warm season perennial, and it spreads from both seed and rhizomes.

Bill named three other forbs that are showing up favorably at Knox City: bushsunflower, western indigo and halfshrub sundrop.

Legumes being evaluated include trailing wildbean, prairieclover and least snoutbean. Work with legumes is aimed at finding selections that can be grown commercially for seed so they can be used in range seeding mixtures.

Shrubs or woody plants being grown at the center include selections of wild plum, littleleaf lead-tree, pistache, sawtooth oak, Texas kidney-wood, little flowered peach-bush, russianolive and black walnut. If ways can be developed so commercial seed producers can grow these profitably, they have great promise for use in grass plantings, wildlife travel lanes, border plantings, beautification and other uses.

Seed or rootstock are collected from promising plants, then are grown and evaluated at Knox City, Rountree explained. Those that show the most promise for solving certain problems are grown for seed increase. They are then grown under field conditions on farms and ranches of soil and water conservation district co-operators. Selections that prove they can solve a specific problem while being superior to other strains available are then released by conservation districts to commercial seed growers. These producers then grow seed and sell it to the public.

Past Records Of Plateau Relays

120 Yd. H. H., 15.0, Joe McMullen, Ozona, 1960;

180 Yd. L. H., 20.0, Geo. Brannins, Mason, 1962;

330 Yd. I. H., 41.0, Sam McLarty, Ballinger, 1968;

100 Yd. Dash, 9.6, David Green, Richland Springs, 1958;

220 Yd. Dash, 20.9, David Green, Richland Springs, 1958;

220 yd. (curve), 22.2, Dan Steakley, Colorado City, 1968.

440 Yd. Dash, 50.7, Jerry Awalt, Winters, 1966;

880 Yd. Dash, 2:00.7, Mike Moseley, Coahoma, 1966;

Mile Run, 4:36.7, Johnny Ramirez, Rankin, 1959;

440 Yd. Relay, 44.2, Colorado City, 1968;

880 Yd. Relay, 1:33.7, Bradford, Pullen, Wilkinson, Wood, of Menard, 1964;

Mile Relay, 3:28.1, Williams, Gibson, Oglesby, Mosley, of Coahoma, 1966;

High Jump, 6' 1/2", John Smith, McCamey, 1965;

Broad Jump, 21' 9", Jones, Stanton, 1968;

Pole Vault, 12' 8", Gerald Penny, Crane, 1965;

Shot Put, 58' 10", Johnny Mayo, Eldorado, 1968;

Discus, 169' 10", Gary Sutton, Ozona, 1967.

The 9.6 time in the 100 yd. dash by David Green of Richland Springs set in 1958 is the oldest record on the books for the Plateau Relays.

Keefer And Bradford Wedding Held Thursday

Mrs. Kathy Keefer became the bride of Ralph Bradford in a ceremony last Thursday in the First Baptist Church in Christoval. Rev. Mortan officiated.

Parents of the bride are Mr. and Mrs. Ray Doyle.

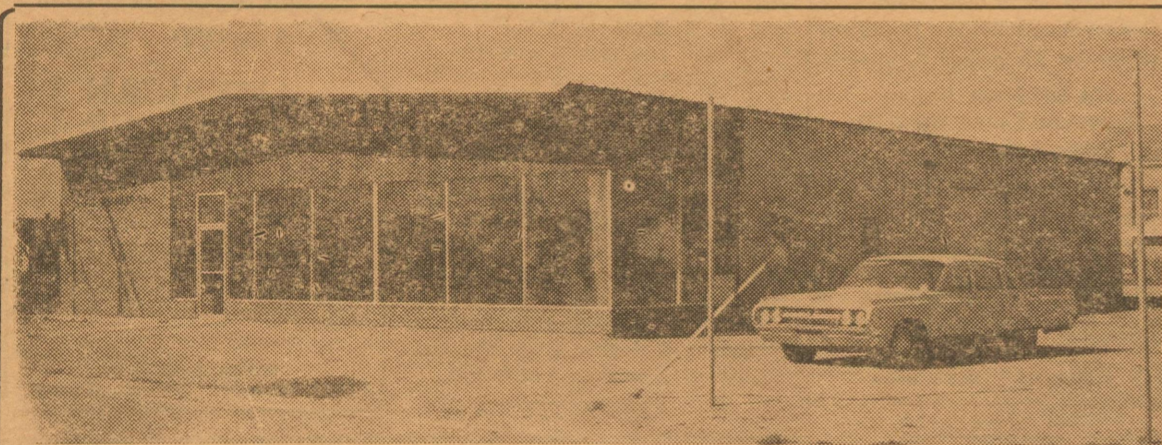
The bridegroom is the son of Mr. and Mrs. A. R. Bradford, also of Christoval. The young couple will make their home in Christoval also.

Those from Eldorado attending the wedding were: Mrs. Ruby Damon, Mrs. Uria Kensey, and Mrs. Bessie Doyle.

Miss Finklea Home From Shannon Hospital

Miss Roberta Finklea, sister of Mrs. J. H. Emmons, returned Friday, March 12th, from the Shannon hospital after emergency surgery on February 25th, and is recovering nicely.

Mrs. Emmons spent most of the time in San Angelo with Miss Finklea.



WATCH THIS LOCATION. In the near future we will move to new, larger quarters on the Sonora highway and will then be able to serve your shopping needs even better. In the meantime take advantage of these SALE VALUES:

8 Track Stereo Tapes, reduced to \$5.79

L. P. Stereo Records, now just \$3.79

ALL CORNING WARE reduced 10%

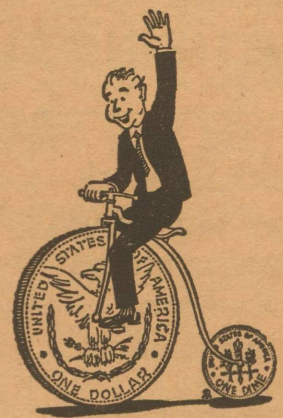
Electrim Skillet, J2420, List \$15.79, now \$11.88

Cast Iron Skillet \$1.59

16 Oz. Claw Hammer 4H6120 99c

Western Auto Associate Store

YOUR PERSONAL SERVICE BANK



You can get more mileage out of your money when you use low-rate bank credit

First National's aim is to help you arrange your credit transactions so they will meet your needs without any undue burden.

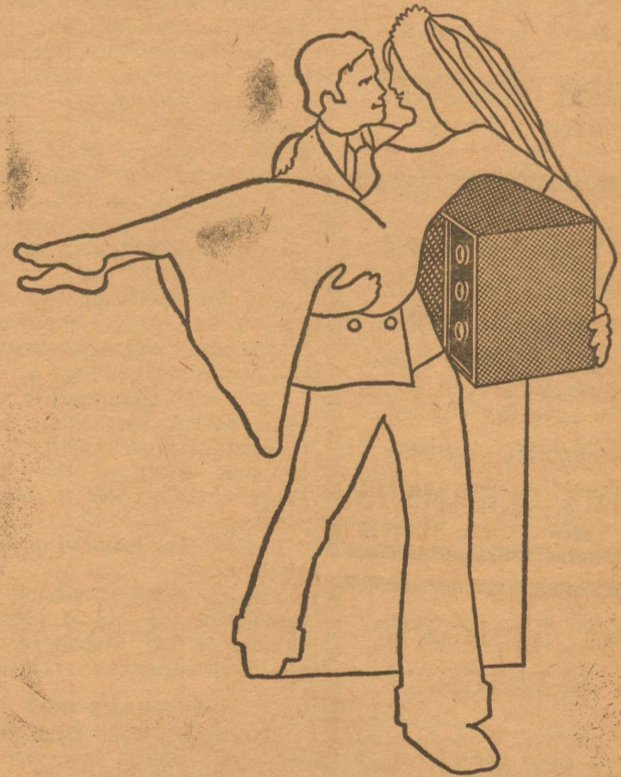
DRIVE-IN BANKING

Our convenient drive-in windows make your trips to the bank a pleasure, with no parking or waiting problems involved.

The First National Bank

Eldorado, Texas

YOUR FRIENDLY SERVICE BANK



Just Air-ied Electrically

(REDDY) for those cool moments to remember... an electric room air conditioner.

Fast installation instant cooling.

See your local appliance dealer or WTU.

FREE WIRING

Normal 220 volt wiring to WTU residential customers who buy a 1 horse-power or larger electric room air conditioner from a local dealer or WTU.



Live the carefree way with Famous Frigidaire Electric Appliances

See them at WTU

West Texas Utilities Company

Equal Opportunity Employer

an investor owned company

**FOR
PROMPT
JOB
PRINTING**

**CALL
THE SUCCESS**

DENMARK HAS IT!



If Shakespeare were alive and writing today, he'd be hard-pressed to find a "melancholy Dane."

The young and young-at-heart will find Denmark the land of "it," that special "something" for everyone who delights in the more sprightly varieties of vacationing fare.

Outdoor lovers, for example, will enjoy camping at some of Denmark's many delightful camping grounds. Or, they might take advantage of Denmark's more than 90 Youth Hostels, offering bicyclists, hikers and even motorists an ideal way of seeing this remarkably beautiful land close up.

Bikes, scooters and cars, incidentally, can be rented with comparable economy all over Denmark.

Those who prefer water to land travel can become Viking skippers on rented rowboats, relaxing on the historic old canals of Copenhagen's Fredriksberg Garden. Or they can

revert to passenger status on the overnight steamers from Copenhagen to the vacation island of Bornholm in the Baltic. The cabins are comfortable and guitar playing is not discouraged on deck. For convenience, motorboat tours of Copenhagen itself are available just steps away from that city's main shopping street.

Romanticists visiting Denmark can find no better way to share their views than on a charming, old country horse-carriage ride through the Deerpark of Klampenborg, just north of Copenhagen. Pragmatists, on the other hand, will discover that Copenhagen can be seen most frugally from one of its streetcars with tickets valid for one hour.

And, of course, fun-lovers can shake or frug at the Student's Club on Copenhagen's Hans Christian Andersen Boulevard. That's where special dances are arranged for young visitors from all over the world.

If you'd like to learn more about the land that has "it," drop a line to the Danish National Tourist Office, Scandinavia House, 505 Fifth Avenue, New York, N.Y. 10017. Nobody knows more about "it" than they do.

FOOT TACTICS



EAST IS WEST, THOUGH JAPANESE BOYS ARE LOYAL TO THE TRADITIONAL SPORT OF WRESTLING AND WORK HARD TO PERFECT THEIR SKILLS IN JUDO, THEY ALSO PLAY WESTERN GAMES SUCH AS FOOTBALL, BASEBALL AND BASKETBALL.



WEST IS EAST, AMERICAN YOUNGSTERS AGED 9 TO ADULT ARE NOW ENJOYING AN EXCITING NEW MILTON BRADLEY GAME BASED ON AN ORIGINAL COMPETITION CALLED KARATE CHOP. TWO OPPONENTS SQUARE AWAY, ONE HOLDS THE KARATE CHOPPING BLOCK, THE OTHER TRIES TO BREAK THE BRICK. HIT OR MISS, IT'S LOADS OF HARMLESS FUN.

School Menus

(All meals served with buttered rolls and milk.)

Thursday, March 18: Enchilada casserole, pinto beans, carrot & cabbage & apple salad, fruit cobbler.

Friday, March 19: Tuna croquettes, macaroni & cheese, mixed greens, peach halves, cookies.

Monday, March 22: Baked ham, sweet potato casserole, blackeyed peas, lettuce & pineapple & cheese salad, canned fruit.

Tuesday, March 23: Chicken fried steak & gravy, creamed potatoes, English peas, waldorf salad, chocolate pudding.

Wed., March 24: Hamburgers, lettuce & tomato slices, five bean salad, potato chips, fruit cobbler.

Thursday, March 25: Barbecued beef roast, potato salad, pinto beans, carrot & pineapple & raisin salad, rice krispie cookie.

Friday, March 26: Spaghetti and meat sauce, green beans, tossed green salad, brownies.

Real Estate Transactions

James Williams Real Estate reports the following recent transactions:

J. D. Redwine bought the L. C. Higgins place on the Angelo highway. The house and four acres are located on the north edge of town and the Redwine family will move to the place in the near future.

Delta Bledsoe bought a 630-acre section from Mrs. Carl Mathews of Potwin, Kansas.

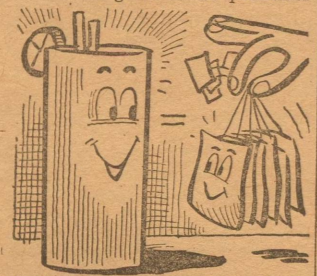
NEW STYLES: TWO FOR THE ROAD



"Of models and throttles" may well summarize the 1971 theme of the new outfits for the girls who work for Hertz Rent A Car. An array of "style-it-yourself" fashions provides a new wardrobe for each girl. At right, the number one style of the current season—pants suits—is included in the uniform styles of the No. 1 car rental company.

ANOTHER SEASON, ANOTHER REASON FOR ICED TEA

Iced tea, instant or regular, is a tea-rific refresher all year long. In a class (and glass) by itself after strenuous winter sports such as skiing, ice skating and tobogganing, a refreshing glass of iced tea in a heated home is a great thirst-quencher



that perks up sports enthusiasts who know how to cool it.

Bound to get any disposition off the skids, here are some hints from experts on how to make perfect tea that is nice on ice!

- 1. Use your teapot. 2. Bring fresh, cold tap water to a full boil. 3. For four glasses of iced tea, use six teabags, or 6 teaspoons loose tea. 4. Pour boiling water over tea. 5. Brew by the clock... 3 to 5 minutes. Want to make two quarts,

about ten servings? Try this easy, fool-proof saucepan method. Bring one quart of freshly drawn cold water to a full boil in a saucepan. Remove from heat and immediately add 1/3 measuring cup of loose tea or 15 teabags. Stir, cover and let stand for five minutes. Stir again and strain into pitcher holding an additional quart of freshly drawn cold water. Pour into ice-filled glasses and serve with lemon and sugar or sweetener.

Keep tea at room temperature until ready to serve. Refrigeration may cause tea to



turn cloudy. But if it should "cloud," restore its amber-clear color by adding a little boiling water.

Nowadays you can have a pitcherful of iced tea in seconds—using instant tea or

the flavored, sweetened ice tea mixes. There's no need to wait for tea to brew because the powders dissolve instantly in water—hot or cold. You can vary the strength by varying the amount of powder or mix. Check directions on the pack-



age or jar, as the amount to use may vary for different products. In general, follow these proportions: For instant tea by the glass, use one rounded teaspoon for each glass of cold water. For a pitcherful, use two rounded tablespoons for each quart of freshly drawn cold water.

So, whether you want to have a winning winter, or put spring in your spring, iced tea is the drink—it's pleasin' any season.

On a passenger mile basis, jet aircraft, including the SST, are the cleanest means of transportation—except for the small sailboat, rowboat, canoe, bicycle, and possibly a clean and careful small boy on a coaster wagon.

American industry is developing another instrument to increase the safety of air travel. The Space Division of Chrysler Corporation will build and test a system consisting of two shoe-box size units (one at each end of a runway) that will send and receive a laser beam that will detect and report wind gusts across the runway.

On Wednesday, December 16, 1970, Pioneer 6 completed its fifth year in solar orbit. It has covered 3,300,000,000 miles and has filled 7300 miles of analog data tape since its launch in 1965. Now the National Aeronautics and Space Administration believes that the satellite, which had a planned life of six months, can serve as a reference point by which manned spaceflight network stations can locate themselves precisely on earth. This is possible, reports the authoritative Aerospace Daily, because although the spacecraft has not made an orientation maneuver since 1966 it acts as a small planet completely subject to solar system gravity. Because its radio signal can be tracked precisely it serves as an exact reference for planet orbits and masses and relativity measurements.

Three volcanic eruptions alone have injected more particulate matter into the atmosphere than all of man's activity. Late in the last century the volcano Krakatoa erupted and put an estimated one cubic mile of sea water and other material into the stratosphere. For a year a lot of the world had green sunsets, but there was no measurable health, climatic or ecological ill effects.

A world-wide total of 1600 transoceanic SST flights a day would put about as much water into the stratosphere as a single large thunderstorm,

and there are 3000 to 6000 such storms around the world every day. The lightning associated with one good thunderstorm will put into the atmosphere more nitrogen oxides (the red polluters) than a fleet of SST transport aircraft in its lifetime.

What can a major airport mean to a community? The annual payroll for Washington National Airport near the nation's capital is \$78 million. Some \$54 million of this goes to residents of the state of Virginia. As Federal Aviation Administrator John H. Shaffer points out, the 11,000-employee Westinghouse Aerospace Center was located adjacent to Friendship International Airport outside of Baltimore, Md., essentially because the airport is there.

Since August 1970 the two Concorde prototypes (British/French supersonic transport aircraft) have gone into their fourth testing phase which has taken the two aircraft from the Mach 1.5 range up into speeds of Mach 2 (twice the speed of sound). The only precedents for large aircraft flying above the speed of sound were the U. S. B-58 and B-70 bombers.

Assuming a healthy overall economy, forecasters are projecting a civil aviation growth rate of almost 10% a year through the 70s, with revenue passenger miles topping 575 billion a year by the end of this decade—about two and a half times more than at present.

The radiation at 60 to 65,000 feet where the SST will fly generally is about the same as it is in New York City at ground level. Radiation dosage is a product of level of dosage multiplied by time of exposure. Therefore, the passengers on a 2.5-hour transatlantic SST flight probably would absorb less radiation than the passenger would during a 6.75-hour flight on the jets of today.

While defense spending in constant dollars has been reduced by more than \$17 billion

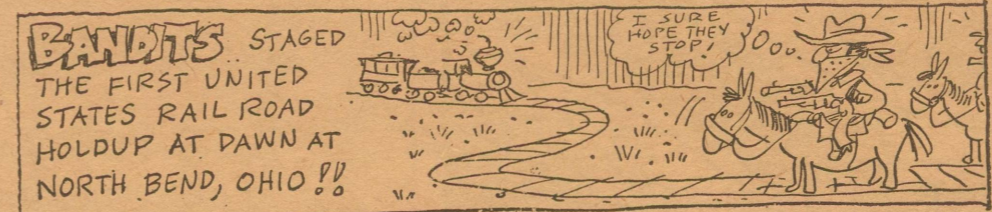
during the last three years, non-defense spending for federal programs has increased by more than \$18 billion in terms of constant purchasing power.

There is no question that we must become more jealous of maintaining and improving our environment; but it seems to me that a cleaner world can best be achieved by advancing technology, rather than retreating from it. If the SST presents a danger of a new ice age or of a fundamental alteration in weather patterns—claims which are unsubstantiated and often clearly contradictory—then would it not be best for America to be involved in researching the possibilities? After all, the U. S. government, which presumably speaks for all of us, would surely deny final approval to anything (such as the Super Sonic Transport) that would be detrimental and would go into world councils to stop such a threat. But we can only go armed with facts, not guesses.—Hon. Clarence J. Brown, Congressman from Ohio.

The French manufacturer of a new twin-engine, short range air transport designed to carry 130 to 150 passengers over route lengths up to 950 miles has turned to the United States for engines to power the plane. It will have JT8D jet engines produced by United Aircraft.

The International Air Transport Association reports that the total fleet strength of its member companies at the end of 1969 was 3,999 aircraft, up 2.4% over 1968. The jet fleet increased 14% from 2,471 to 2,818 while turboprop aircraft fell 13% to 560 and piston engine aircraft decreased 21% to 604.

A U. S.-French combine has developed a giant energy-absorbing net to prevent end-of-runway airliner crashes by any commercial air transport. Now in final testing at Edwards AFB, Calif., the system, according to its developers, could be available at airports within a year at a cost of \$500,000 to \$800,000.



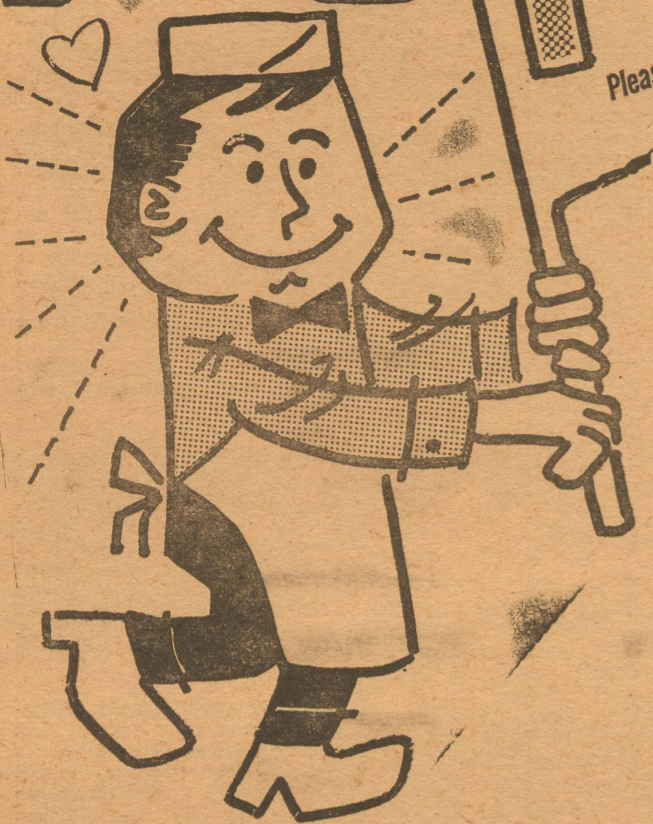
No Need For Advertising?

- Preachers don't preach just once a year even though people are against sin.
—Teachers review lessons. They know that children do forget and often have to be told more than once.
—Highway patrolmen drive up and down the highways, and caution drivers although motorists know the law and should obey.
—Mail order firms continue to send out catalogues.
—Not all of us know what is sold in stores in the home town, and we need to be invited continually to trade in your place of business.
—The Notre Dame cathedral has stood for centuries, but still they ring the bell every day.
—If you're one of those who believe in continuous and profitable advertising, you'll want to use the columns of the

Eldorado Success

Phone 2600

IT'S P.T.C. WEEK



LIPTON
INSTANT TEA
Big 3 Oz. Jar..... **99c**

Kountry Fresh
BISCUITS
10-Count Can..... **8c**

DIAMOND
PURE SHORTENING
3 Lb. Can..... **59c**

Ken-L-Ration
DOG FOOD
6 Pack Carton..... **99c**



CHUCK WAGON
Chili
NO. 2 CAN **59c**

FIRE SIDE
Saltines
1 LB. BOX **19c**

KIMBELL'S
Tomato Soup
NO. 1 CAN **10c**



KIMBELL'S
Fruit Cocktail
NO. 303 CAN **25c**

TEXSUN
Grapefruit Juice
46-OZ. CAN **39c**

KIMBELL'S
Tomato Juice
46-OZ. CAN **39c**



Limit One) 5 LB. BAG **49c**

IMPERIAL
Pure Cane Sugar
5 LB. BAG **49c**



GIANT BOTTLE **49c**



Your Choice GIANT BOX **79c**

BIG SUPPLY!
BIG SAVINGS!
Safe Low-Suds **DASH**
20 lb. HOME LAUNDRY SIZE ONLY **4.49**

GIANT BOX **CASCADE**
79c

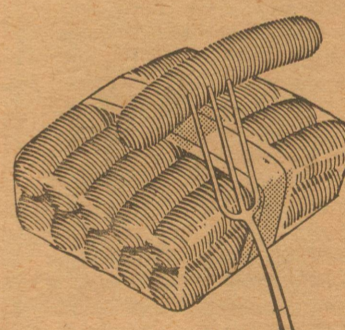
the meat with the Blue Ribbon Quality

GOOCH — BLUE RIBBON **Bacon** POUND **59c**

OLDE VIRGINIA **Sausage** 2-LB. BAG **1.29**

GOOCH — ALL MEAT **Franks** 12-OZ. PKG. **49c**

GOOCH **Hot Links** POUND **49c**



Gooch **Hickory Smoked HAMS**

Whole **59c**
Shank **49c**
Butt **59c**

DAISY DELL MELLORINE
Assorted 3 Half Gallons **\$1**

SANDY LAND YAMS
Pound..... **12c**

More fun gifts for you in Ideabook '71

We have your free copy. Get yours today.

PARKER FOODS