

# Bailey County Journal

"The Community of Opportunity -- Where Water Makes the Difference"

Published every Sunday at Muleshoe, Texas 79347

VOL. 45 NO. 9

8 PAGES

MULESHOE PUBLISHING COMPANY, INC.

Sunday February 26, 1967

## around muleshoe with the journal staff

Bids on Highway 84 was let late Friday as having won first place in the Kerr Construction, Lubbock. No further information was available at press time.

Prentice Griffiths, listed in the Journal, as having won first place in the Poland China division of the Junior Livestock show, also won first place in the Class 1 Hampshire barrow show.

A caravan of pickups and boats left Wednesday night for Old Mexico where eleven men are to spend ten days fishing. Going were Kenneth Nesbitt, Don Harmon, Billy Bell, Bill Darnell, Vernon Puckett, Aurbery Heathington, Gene Caldwell, Delbert Watson, Chuck Stallins, Bill Warner and Louis Wayne Shafer.

Services for G. E. Smith, Oley, brother-in-law of Mrs. Arnold Morris were held there Wednesday, February 22. He was also the uncle of Mrs. M.F. Blackburn.

The Rev. J. Frank Peery will start a special training session at the First Methodist Church Saturday, March 4. The meeting will be in the Chapel from 10 a.m. to 11 a.m. Parents of children are asked to attend the first meeting.

Other training sessions will follow on March 11 and 18. This program of training is for children attending Sunday School and church, but are not members of the church.

Mr. and Mrs. Bennie Porter and daughters have moved to Lubbock.

Beginning Sunday, March 5, the Downtown Mens Bible Class will meet at the Chapel of the Chimes at 104 E. Ave. F. The Chapel is a new addition to the Singleton Funeral Home.

Jean Haskins, daughter of Mr. and Mrs. George Haskins is guest organist at the First Christian Church today.



HIGH AWARD -- Mike Jones receives the highest award given in Cubbing, the Arrow Award. The presentation is being made here by past Cubmaster Jim Shafer.



PAST CUBMASTERS -- Irvin St Clair and Jim Shafer, two of the earliest Muleshoe Cubmasters participated in the program at Thursday's Blue and Gold Banquet. St. Clair gave a talk to the Cubs.

## Scouts Stage Banquet

The Annual Cub Scout Blue and Gold Awards banquet was held Thursday, 8 p.m. in Muleshoe high school cafeteria.

Log cabins made by the cubs created the Scouting setting for the banquet tables and the blue and gold centerpieces highlighted the head table.

Guest speaker was Jim Mangum, Littlefield, a representative of Travelers Life Insurance. Mangum told the more than 200 Cubs and parents attending the importance of scouting, the foundation it gave young boys and the help the parents could give the boys at this early age which would carry through to adult life.

Irvin St. Clair, earliest Muleshoe Cubmaster attending, spoke to the boys concerning the importance of abiding by the Cub Promise and in so doing, being a good Scout and good citizens in later years. St. Clair stressed the importance of having fun in the proper manner and learning to live.

Other Cubmasters recognized were Richard Puckett, (unable to attend) Jim Shafer and B. E. Berres.

Den mothers were presented certificates of appreciation for their work in Cub Scouting. There were Mrs. Silas Short, Mrs. Owen Jones, Mrs. H. E. Reeder, Mrs. W. H. Parker, Mrs. John Pena, Mrs. John Gunter, Mrs. D. T. Garth, Mrs. Richard Puckett, and Mrs. Pat Watson.

Jim Shafer, past Cubmaster, presented Mike Jones with the highest award in Cubbing, the Arrow Award.

Frank McComish made the

presentations of service pins, gold and silver arrow points and denner's bars.

Cubs of Den One and their awards were: Eugene Reeder, two silver, wolf, and bear; Tom Ladd, a one year pin and bear badge; Larry Puckett, one year pin, one gold and three silver arrow and the Denner bar; Dan Ellis, one year pin, assistant denner bar and wolf badge and Robin Gonzales a one year pin.

Mrs. W. H. Reeder is den mother.

See SOUTS on Page 5

## Jaycees Launch International Relations Projects

The Muleshoe Jaycees are conducting an International Relations project called "Alliance with Peru." This project is to help the people of a less fortunate standard of living to better themselves by hard work and their own initiative.

These people have not taken money hand-outs but want the opportunity to build for themselves.

One of their greatest needs is for hand implements such as hoes, shovels and rakes. These courageous people farm for their living and these much needed implements will give them the means to improve their farming methods.

The Texas Jaycees have arranged to have these implements freighted over-land to Houston and shipped from there to Peru at no cost. The Muleshoe Jaycees are asking the local people to join them in the worthy cause and to donate a shovel, hoe or rake. These are tools that are taken

See JAYCEES on Page 5

## Rules Outlined For County Spelling Bee

Rules for the Bailey County Spelling Bee remain unchanged this year as does the rules set forth for the regional Spelling Bee to be held April 29.

The Bailey County Spelling Bee will be held at 2 p.m. in the Muleshoe high school auditorium. Students from all schools in the county will participate.

Any pupil is eligible who has not passed beyond the eighth grade at the time of the Bee in his or her school, except that no pupil who will become 16 years of age on or before the date of the National Bee, shall be eligible. The date of the National Bee is June 5.

Preliminary competition may be conducted either in writing or orally or both, or classroom champions may be designated on the basis of daily grades. However, the Bailey County and Regional Bee will be conducted orally. The National Bee will also be oral.

In competition, contestants may pronounce words before spelling them, or not at all.

A contestant may request that a word be re-pronounced, defined or used in a sentence. The pronouncer shall grant the request until the officials agree that the word has been made reasonably clear to the contestant. Judges may disqualify any contestant who ignores a request to start spelling.

Having started to spell a word a contestant shall be given no opportunity to change letters once pronounced. A speller having started to spell a word may retrace, provided letters and their sequence are not changed in the re-tracing.

If no definition of a homonym is given, the correct spelling of either word shall be accepted as correct. When a speller is given the definition of a homonym he must spell the word defined.

When a speller fails to spell a word correctly, he or she must drop out of the contest, and another word shall be given to the next contestant in line. The elimination procedure changes when the contestants reduced to two. At that point, as soon as one contestant, in the opinion of the judges, misspells a word the other contestant immediately shall be given an opportunity to spell that same word. If the second contestant spells that word correctly, PLUS the next word on the pronouncer's list, then the second contestant shall be declared the champion.

If one of the last two spellers misses the other, See BEE on Page 5

## Ambassadors Add Members

The Muleshoe Ambassadors Club, the newly formed membership and goodwill organization of the Muleshoe Chamber of Commerce has added more new members to the chamber in its second week of operation.

Vic Benedict's newest member is L. B.'s cafe, with Roger Albertson signing up Ben Franklin and Retail Merchants, Harvey Bass brought in Cecil Davis and Robert Hooten gained the Muleshoe Garden Center. Of the 300 points required to earn the balzer and title of Muleshoe Ambassador, Benedict has 190, M. D. Gunstream 125, Hooten 105, Bass 60, Albertson 116, Frank Ellis 25.

Seven other chamber members have received Ambassador information and will be attempting to earn the Red Blazer and title of Muleshoe Ambassador.

See TEMPERATURES on Page 5

## United Fund Near \$200. Under Goal

The Muleshoe Area United Fund has just spent \$3,495, for the Bailey County Junior Livestock Show which benefited numerous boys and girls. The United Fund Campaign is designed to be a "united effort" of all the people in the Muleshoe area to reach a goal for the 13 agencies.

Goal for the 1966-67 campaign is \$13,931, and is currently about \$200. below this goal.

"Since the Bailey County Junior Livestock Show receives the largest portion of the budget, we as officials of the campaign ask that the people in the rural district make an all-out effort to help reach this goal."

Most of the cards are tabulated for in city work toward the goal while rural areas are not completed.

This is the fourth such campaign and for the three previous campaigns, the goal has been reached and exceeded.

"If you have not paid or pledged your support of the United Fund, please mail your contribution to the Muleshoe Area United Fund, Muleshoe State Bank, 304 Main, Muleshoe." Kenneth Henry publicity chairman said.

## Teachers Attend Conference

Byron Hardgrove, high school social studies teacher, Mrs. Jack Beddingfield, junior high social studies teacher, and Mrs. John Watson, Curriculum Director attended a Social Studies Conference Tuesday afternoon at Texas Tech, Lubbock.

Mrs. Lois Garver and Miss Roberta Rathel from the Texas Education Agency, Austin conducted the conference and explored with the participants some vital issues concerning social studies programs, grades 1-12. Mrs. Garver pointed out that the progress in Teaching social studies had been status quo for 30 years and it is time to revolutionize this curriculum area. Some of the trends in the New Social Studies are: (1) Multi-media approach (2) Critical analysis vs. actual recall (3) Broad survey courses vs. intensive study in fewer areas (4) Social Sciences (geography, history, economics, anthropology) connected disciplines (interdisciplinary). Each local district is asked to complete an opinionnaire to report reactions to

See TEACHERS on Page 5

## Experts Explain Nematode Damage, Infestation

Representatives of Dow Chemical Company held a meeting at L.B.'s Cafe Thursday for the benefit of farmers, chemical dealer and distributors to explain the population explosion and control of Nematodes.

Nematodes are costing the farmer upward to one-half million dollars or an average of \$60, per acre on crop production annually on cotton, cucum-

bers, tomatoes and other crops. Once nematodes get at the cotton, yields go down, the experts said, and can be effectively controlled with Fumazone 86 or 70 E.

On the dollars and cents basis, the returns on investments of the Nematode killer is averaging \$4 to \$8, per acre. Rotation of crops does not eliminate the infestation and nematodes are adaptable and

will continue to multiply and are considered to create more crop damage in Bailey County than Johnson Grass and bind weeds and is explained as the principle limiting factor to cotton production.

John W. Weseloh, showed slides and explained the nematode explosion and the result a lack of control. Weseloh is the field representative for Dow Chemical, Dallas.

Other Dow representatives who were here for the meeting were Joseph L. Bever, Michigan; James Fischer, Lubbock and Mike Mecke, Lubbock.

## Chamber Gets Financial Boost

Many people support the Muleshoe Chamber of Commerce in many ways and in various amounts, money wise, in dues investments.

But there are always those special few who see the need for a better equipped and more effective local Chamber. During the last two days (Feb. 23 and 24) several of the members of the Muleshoe Chamber of Commerce felt it was their civic duty to give their chamber an added financial boost to insure its effectiveness and operations.

The Chamber is grateful as should the entire Muleshoe community be to the following firms and individuals for their extra support of our Chamber. Making these extra investments were:

Spencer Beavers \$5.00, First National Bank \$100.00, West Plains Hospital \$100.00, Whitt and Watts Imp. \$50.00, Pool Insurance Agency \$25.00, Western Auto \$20.00, Cobbs \$25.00, Muleshoe Motors \$50.00, and Muleshoe State Bank, \$100.00.



NEWMATODE STUDY -- Farmers, chemical dealers and distributors attended a meeting to hear Dow Chemical experts explain the population explosion and control of crop damage nematodes. Shown (l to r) Red Blackburn, Buddy Clackman, Dow Chemical specialist John W. Weseloh, Joe King, Jacques Baker and Chief Jones.

## Dedication Set

Dedications services of the Chapel of the Chimos of Singleton Funeral Home, Inc. will be held today at 3 p.m. The dedicatory service will be given with a Melody of Chimes, Mrs. Elbert Hamilton will present the organ prelude and the opening prayer will be given by the Rev. Troy Walker, pastor of Trinity Baptist Church.

Rev. J. W. Farmer, Assembly of God Church, will read the scripture followed by Walter Buice singing "How Great Thou Art."

The welcome will be given by Frank Ellis, manager, vice-president, C. V. Singleton, president of Singleton Funeral Homes, Inc., and John Blackwell, Homes, Inc., and John Blackwell, minister of the Church of Christ will offer the prayer of dedication.

Assisting with the hospitalities will be Mrs. Robert Hooten, Mrs. Horace Edwards and Mrs. Ralph Douglas.

The Funeral Home open house began at 2 p.m. Saturday and will be open for the public to tour between 2 and 5 p.m. today. Mrs. Pat Patterson and Mrs. John Blackwell assisted with serving courtesies Saturday.

## TEMPERATURES

R. J. KLUMP  
OFFICIAL WEATHERMAN

Feb. 22	43	19
Feb. 23	54	34
Feb. 24	55	22
Feb. 25	44	13



BAPTIST FELLOWSHIP -- Men of the Downtown Mens Bible Class attended Hamburger supper and fellowship hour Thursday evening at Cox Drive In Theater. Pictured at the supper serving line are Howard Cox, Claude Riley, Morgan Locker and Ray Griffiths.

### Jo Anne Bray Gives Program On Lighting

Jo Ann Bray, Bailey County REA gave the program on "Home Lighting" at Tuesday's meeting of the Midway Variety Club. The women met at 2 p.m. in the home of Mrs. Mildred Redwine. Mrs. Bray also showed films of lighting the yard and flower garden. Roll call was answered by naming the favorite flower. Mrs. Audrey Mason showed several of her aprons she had finished. Present for the meeting were Mrs. Jewel White, Mrs. Dortha Brown, Mrs. Irene Watkins, Mrs. Eva Lee Cawthron, Mrs. Arlene Chitwood, Mrs. Audrey Mason, Mrs. Mildred Redwine and the guest, Mrs. Bray. Refreshments of coffee and cherry cheese cake was served.

Next meeting for the club will be March 7 in the home of Mrs. Bertha Hardage. The club hopes to have Mrs. Head and a few members of the Belview Hobby Club from Clovis will show crafts and the members from each club exchange ideas.

### Book Review Will Be Given At Church

All surrounding churches are invited to attend a book review on the home mission study book entitled, "Forest Trails Tour-Jungle", at the First Baptist Church's dining hall Tuesday beginning at 10 a.m. This will be a salad luncheon and drinks will be furnished by the members of the First Baptist W.M.U. A nursery will be provided. The book will be given by Mrs. Eugene Griffin and Mrs. Alex Williams. The review will conclude at 2 p.m.

# Society News

PAT JOHNSON--SOCIETY EDITOR

Phone-272-4536



### Girls Chosen For Area FHA Offices

Cheryl Ramage was chosen Area Officer candidate at Monday's meeting of the Lazbuddie Future Homemakers of America. The girls met in the Home-making Department of the Lazbuddie High School with their president, Cheryl Ramage, in charge of the business meeting. The theme of the meeting was "Morale of Today." Other girls chosen to area

were Jill Mimms, voting delegate, and Vickie Broyles, girl of the month. Terry Parham, Cynthia Walls, Timmy Foster, Buster Steinbock, Marilyn Barnes and Leatrice Gallman made up a panel discussion and Connie Harlan moderated. Voting problems were discussed by members and questions were answered by FHA members.

### Homemaking Tips

FROM THE OFFICE OF HOME DEMONSTRATION AGENT

Robin Taylor

Lucille Harp was crowned queen of the Jenny TOPS organization at Thursday's meeting in the Bailey County Electric Co-op meeting room. The women met at 7 p.m. Countesses named were Myrtle Wells and Mabel Wolfe. Lauranette Mason presided over the meeting in which the pledge and fellowship songs were observed. Twenty-one members answered roll call and 1 visitor, Mrs. George Crane, was present from Lazbuddie. June Vinson read the minutes of the chapter and members drew TOPS pals' names. Members voted to order napkins pertaining to religion. They will be ordered and sold by the members to help send a delegate to the state convention in April. Thursday night was dues night and each member was asked to bring a piece of fruit for the monthly queen's basket. Members sang the good-night song before dismissing to meet Thursday in the Community room of the Bailey County Electric at 7 p.m.

Primitive prints are the biggest fashion trend in the spring cotton fabric line-up. Textile designers are emphasizing the bright, hot colors and original native designs of primitive tribes in both the Old and New Worlds. For instance, the multi-colored geometric symbols showing up in many spring cottons are borrowed from the art of the ancient Aztecs of Mexico -- or the Inca Indians of South America. These primitive designs look most authentic on homespun and other rough-weave cottons. As to the prints inspired by Africa's native fabrics. Africana cottons popular in sports wear for spring '67. Inspired by authentic tribal prints, the cottons have the look of genuine hand-blocked fabrics. They blaze with strong earth colors, shadings of red, brown, yellow, and green etched

in exotic designs on sturdy, washable cottons. African prints appear most often on the more coarsely woven cottons, but primitive print fabrics range from terry cloth to cotton satin. Colorful Africana cottons as showing up in both piece goods and ready-to-wear fashions. They're especially popular for caftans, long flowing robes worn as beach cover-ups and at-home gowns. The robes are copied after those worn for centuries by desert tribesmen in North Africa and the Middle East.

### AAUW Hears Roy Bass

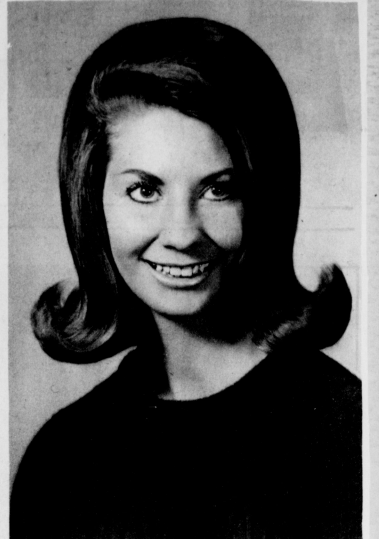
Muleshoe Branch of American Association of University Women had Roy Bass as their guest speaker Tuesday night in the library of the Mary De Shazo Elementary School.

Mrs. Ed Johnson introduced Roy Bass, stating that he was a graduate of Baylor University and Baylor Law School and is currently serving as a member of Baylor University Board of Trustees. He has practiced law in Lubbock since 1940. He was instructor of government and business law in Texas Tech for 10 years. He has served on the city of Lubbock Planning Board. He is a member of the local, state, and national bar association and a member of Kiwanis Club in Lubbock. He has been approved and qualified to serve on the state and national supreme courts.

Roy Bass discussed "What Makes a Case and the Citizen's Roll." The three characteristics that make a good citizen and witness in court are having courage, being consistent, and being concerned. The president, Mrs. John Watson recognized the two outstanding young women nominated by the local branch Mrs. Willie Mc Alpin and Mrs. Janis Phillips.

Magann Lamb will be the branch representative at the AAUW Legislative Day in Austin March 1.

The hostesses Mrs. Mary Maddox, Mrs. Addie Mae Spence, and Mrs. Mable Wolfe served refreshments to guests; Mrs. Janis Phillips, Roy Bass and Eric Smith and the following members: Mrs. Willie Mc Alpin, Magann Lamb, Mrs. R. E. Everett, Mrs. Albert Eggers, Mrs. Hattie Boling, Mrs. Lena Hawkins, Mrs. J. Fox, Mrs. Wilson Witherspoon, Mrs. Robert Hooten, Mrs. Jack Beddingfield, Mrs. Joe Costen, Mrs. Lamoyne Lane, Mrs. Eric Smith, M. Ed. Johnson, and Mrs. John Watson.



Veta Allison Yarberry's Studio  
...plans May wedding

### Veta Allison, John Skogland Plan May 27 Ceremony

Mr. and Mrs. Harold Lamar Allison announce the engagement and approaching marriage of their daughter, Veta Sue, to John Edmund Skogland, Jr., son of Dr. and Mrs. John Edmund Skogland, Sr., Houston.

the First Methodist Church, Muleshoe, with the Rev. J. Frank Peery officiating.

### Society Urges Writings of Family History

Miss Allison is a junior at the University of Texas at El Paso where she is majoring in elementary education and minoring in music. She is president of the Student Education Association and was a candidate for Miss Texas Western in 1966. She is a Muleshoe High School graduate where she was a member of the band, FTA, secretary of FHA, secretary of her senior class, and senior class favorite.

Members of the Historical Society are trying to get families in the Muleshoe area to write a family history on their early days in Muleshoe. Cecil Davis has contacted some 72 families concerning the project and with some results. The society met at 1:30 p.m. Monday in the community room of the First National Bank building.

Mr. Skogland is a senior at the University of Texas at El Paso where he will be a candidate for a bachelor's degree in economics in August. He is a graduate of Memorial High School in Spring Branch where he lettered in swimming for four years.

Davis has recently spoken to the Study Club and the Jaycees on the development of the Historical Society and will speak soon to the Rotarians, Lions and the Chamber of Commerce.

The couple plan a May 27 wedding to be solemnized in

Members present at the meeting were Mr. and Mrs. Cecil Davis, M. H. Laney, Mrs. Cecil Cole, Mrs. Horace Blackburn and a new member, W. B. Harlan.

### Don't Drown House Plants

Probably more home plant failures are caused by improper watering techniques than any other factor, according to Everett Janne, landscape horticulturist with Texas A & M University. This is especially true during the winter months when plant growth is very slow because of the low light intensities. We frequently get impatient and apply additional water and fertilizer to make the plant grow large and healthy, says Janne. Actually, during periods of low light intensity the plant is producing very little food and as a consequence can-

not grow rapidly. The worst thing to do is to over-water during periods of slow growth. Plant roots must have air as well as water. If the soil is saturated with water, little or no oxygen can reach the roots. This results in loss of the small feeder roots and eventually the death of the plant. Never water plants by rule of thumb, says Janne. Once the soil is thoroughly moistened, wait then only when they need it. In watering houseplants, supply sufficient water so that it runs through the potting soil into the saucer below. Always discard the excess water from the saucer. This prevents the accumulation of soluble salts in the potting soil.

With a little experience, you can determine the moisture content of the soil from its color and feel. Plants in a cold room need less water than those in a warm, dry atmosphere. Flowering plants with much foliage require more water than those without blooms or with very little foliage.

If your house plants are not growing properly, it is probably due to low light intensity rather than the lack of water or fertilizer.

### Social Calendar

**MONDAY**  
Noon - Jaycees meet at L.B.'s  
3 p.m. - Electric Board Meeting at the Bailey County Electric Cooperative meeting room  
6 p.m. - Chamber of Commerce meeting in the meeting room at L.B.'s Cafe  
7 p.m. - Dale Carnegie meeting in the meeting room of the First National Bank building.  
7:30 p.m. - Jaycees meet in the community room of the Muleshoe State Bank building.

**TUESDAY**  
1 p.m. - Tuesday Bridge Club meets in the Bailey County Electric meeting room  
8 p.m. - Muleshoe Rebekahs meet in Odd Fellow Hall.

**WEDNESDAY**  
10 a.m. - Bobby Ellis has an Avon meeting in the community room of the First National Bank building.  
10 a.m. - Muleshoe Art Association meets in the community room of the Muleshoe State Bank building.

**THURSDAY**  
Noon - Friendship Club has a luncheon at L.B.'s Cafe  
4 p.m. - Wedding shower in the First National Bank room for Linda Swint  
7 p.m. - Jenny TOPS meet in the meeting room of the Bailey County Electric Cooperative  
7:30 - Muleshoe 4-H Club meets in the community room of the Bailey County Electric Cooperative  
8 p.m. - Muleshoe Odd Fellows meet in Odd Fellow Hall

**SATURDAY**  
7:30 - M. H. Horace Hutton's Bridge Club meets in the community room of the Muleshoe State Bank building.

**THIS WEEK'S KEY VALUE**

**NYLON HEAD SCARFS**  
29x29-Inch Size  
Protect your hair from wind or rain! Colors to mix or match with every outfit! 29-in. square.

**3/90c**  
Reg. 49c ea.

**BEN FRANKLIN**  
128 Main F Muleshoe

# INCREASE YOUR PROFITS

# GROW CORN this YEAR

# SEE TEXAS SESAME FOR DETAILS TODAY

**Hi, World!**

Household Tip

When cleaning stone areas such as marble or slate vanity tops, don't leave a deposit of cleaner or any damp cloth or sponge on the surface. Porous stone is easily stained and difficult to restore to good appearance.

CONGRATULATIONS TO Mr. and Mrs. Danny Sullivan on the birth of a baby boy born in the Green Memorial Hospital at 7:30 p.m. Feb. 23 and weighed 8-3.

**STATEMENT OF CONDITION of PERPETUAL AND IRREVOCABLE Funds In Trust As Of December 31, 1966**

**Bailey County Memorial Park, Inc.**

CASH (SAVINGS)	\$868.63
CORPORATE STOCKS	\$18,478.87
REAL ESTATE MORTGAGES	\$2,400.00
<b>TOTAL</b>	<b>\$21,747.50</b>

I hereby certify that the foregoing statement is true and correct to the best of my knowledge and belief.

(signed) C.V. Singleton, President





Mrs. Roy Wrinkle  
... remits pie recipe

### Mrs. Roy Wrinkle Gives Magic Chocolate Pie Recipe

Mrs. Roy Wrinkle, 322 West ave., G, has a delicious recipe for chocolate pie which is quick and easy for a working woman and housewife.

Mrs. Wrinkle is the mother of 3 children, Cynthia, age 13 Sharon, 10 and Gary age 9. The Wrinkles attend the First Baptist Church and Mrs. Wrinkle is fifth grade representative at Mary DeShazo Elementary School and does the bookkeeping for her husband's business. Her hobbies are playing bridge and sewing. Following is her recipe for "Magic Chocolate Pie":

1 baked 8 inch pie shell, cooled  
1 & 1/3 cup Eagle Brand Sweetened Condensed Milk  
2 squares (2 oz) unsweetened chocolate  
1/4 teaspoon salt  
1/2 cup hot water  
1/2 teaspoon vanilla  
1/2 cup heavy cream

**METHOD:**  
In top of double boiler, put Eagle Brand Sweetened milk, chocolate and salt. Heat over rapidly boiling water, stirring constantly, until mixture is very thick.

Gradually stir in water, keeping mixture smooth. Continue cooking, stirring often, from heat and stir in vanilla. Pour into pie shell and cool at room temperature about 1 1/2 hours. Refrigerate at least 3 hours. Just before serving, garnish with whipping cream. This will make 1-8 inch pie and will serve 5 or 6.

**HOUSEHOLD TIP**  
The correct size socks are just as important as the correct size shoe, say clothing specialists. They should fit loosely around the toes. The correct

### Mrs. Arnn Gives Council Meeting Report

Mrs. J. G. Arnn reported on the recent meeting of the legislative community council of which she was a representative of the Muleshoe Study Club at the club's meeting Thursday.

Mrs. Horace Blackburn spoke on "Public Affairs, Must Become Private Affairs" and "Home, The Key To National Defense." Mrs. Blackburn presented the program in the absence of Mrs. T. R. White and Mrs. O. N. Jennings.

Orders are now being taken from Mrs. Rufus Gilbreath and Mrs. R. O. Gregory for greeting cards, gift wraps, notes and personal stationery. Anyone interested may call either of the women and give their order.

The 4 p.m. meeting was held in the home of Mrs. J. Frank Peery who was assisted by her daughter, Patsy. The hostesses served refreshments to those attending preceding the meeting.

Mrs. Cecil Cole presided over the meeting and Mrs. G. L. Splawn read the minutes. Mrs. E. M. Pruitt led the club in reciting their club collect and roll call was answered by "Why Americans Must Vote."

Present for the meeting were Mrs. Arnn, Mrs. S. L. Benefield, Mrs. Blackburn, Mrs. Cole, Mrs. Joe Costen, Mrs. W. H. Elrod, Mrs. John Farley, Mrs. Gilbreath, Mrs. Pruitt, Mrs. G. L. Splawn, Mrs. Effie Bray, Mrs. Gregory, and the hostess, Mrs. Peery and her daughter, Patsy.

Next meeting for the club members will be in the home of Mrs. J. G. Arnn March 9 at 4 p.m. The Algonquin Study Club members will be guests and Mrs. Jack Beddingfield and members of the Junior High Social Studies, will give the program.

### SCHOOL MENUS

MULESHOE SCHOOLS

Feb. 27 - March 2

**MONDAY**  
Milk, juicy burgers, lettuce and tomato salad, pickles, French fries, catsup, buns and peach cobbler.

**TUESDAY**  
Milk, chili, pinto beans, cabbage and apple salad, crackers, corn bread and jello fruit salad.

**WEDNESDAY**  
Milk, corn bread, mustard, vegetable beef soup, crackers, peanut butter with honey, cinnamon rolls and apricot halves.

**THURSDAY**  
Milk, fried chicken, stuffed celery, green beans, creamed potatoes, white bread and harvest prune cake.

**FRIDAY**  
NO SCHOOL

### Mrs. Smith Will Present Art Program

Mrs. Leon Smith, Sr. will be in charge of the program and will review the life of Van Gogh at the Wednesday meeting of the Muleshoe Art Association. The women will meet in the community room of the Muleshoe State Bank at 9:30 a.m.

During the business meeting following the program final plans will be made for the April area art show to be held in Muleshoe.

### Baptists Plan Youth Retreat

Plans are in the making for a pre-revival youth retreat for the youth of the First Baptist Church of Muleshoe to be held March 3 at the Plains Assembly grounds at Floydada. The retreat will be held in the cabin of the Plainview First Baptist Church cabin.

Invitations will be extended to all youth division workers to be sponsors of the all-night retreat which is to be held in preparation for the revival to be held at the First Baptist Church March 19.

Plans are for two seminars, a talent show, and a devotional message from the pastor, Rev. Don Murray. A home style meal will be served.

A visiting youth worker as a guest speaker will be announced later.

#### Cooking Tip

When you are rolling out rich cookie dough, you may find it helpful to turn over the dough frequently during the rolling-out process. And be sure to use a pastry cloth and stockinet-covered rolling pin that have had flour rubbed into them.



**BUFFET LINE** - Cub Scouts attending the Blue and Gold Awards banquet Thursday night are shown as they pass down the buffet table. The Cubs furnished hot dogs for the meal while mothers brought the remainder of the meal.

### Mrs. Andrews Has Birthday Celebration

Mrs. W. T. Andrews was honored with a birthday luncheon at L. B.'s Cafe Friday. She is a member of the "coffee club," a group of 6 women who meet for coffee each morning.

She was presented gifts and enjoyed the happy birthday wishes of her friends.

Present for the party were Mrs. Mae Bushice, Mrs. Ray Griffiths, Mrs. Lola Bryant, Mrs. Bert Mathis and the honoree, Mrs. Andrews.

### Mrs. Edwards Shows Hats To Members

Claudine Embry introduced Mrs. R. N. Edwards who gave an interesting demonstration on hat making and showed some lively hats she had made at the Pleasant Valley Social Club's meeting Thursday. The Club met at 7:30 p.m. in the Pleasant Valley Community building with Florine Flatt and Claudine Embry as hostesses.

Juanita Galyon, president, presided over a brief business meeting in which plans were made for a dinner to be served at a later date.

Refreshments of cookies, cold drinks and coffee were served to members: Jean Allison, Mae Parker, Ida Collins, Florine Flatt, Claudine Embry, Juanita Galyon, Gaynell Pitts, Eula Calhoun, Ruth Holt, Judy Cox and 2 guests, Bess Edwards and Bonnie Haberer.

Members will meet for their next meeting March 9 at 7:30 p.m. in the community building to clean the building.



**BANQUET SPEAKER** - Jim Mangum, standing, was guest speaker at the Cub Scout Blue and Gold banquet Thursday night.

**SEAT COVER SPECIAL**  
Heavy Duty Vynal  
Reg. \$39.95  
Now **\$34.95** Tailored To Fit!

Truck Seats  
Reg. \$19.50  
Now **\$17.50**

**Muleshoe Cover Shop**  
American Blvd. Ph. 272-3586

### HOSPITAL BRIEFS

WEST PLAINS

ADMISSIONS

Orval Troutman, Mrs. Orval Troutman, Fernando Rosas, Mrs. Charles Farmer, Mrs. Bill Johnson, Wiley Harper, Mrs. Lula Smith and Lisa Estelle Bennett in the nursery and now weighs 2-7.

DISMISSALS

Adolph Ebeling, Clinton Rogers, Jr., John Gammitt, transferred to Lubbock, Earl Wayne Pugh, Mrs. Nellie Norwood (transferred to Nursing Home), Mrs. Bill Johnson, Mrs. John Holmes, Mrs. Julian Dominguez, T. B. Wheeler and Henry Ham. GREEN MEMORIAL

ADMISSIONS

B. L. Adrian, Mrs. Paul Poyner, Mrs. Juanita Busby, J. L. Taylor, Lyne Barrett, Calvin Benton, Sherry Hobbs and Mrs. Danny Sullivan.

DISMISSALS

Mrs. Viola Goatman, Manuel Girtierrez.

### Conference Held At Lazbuddie

Monthly Associational Workers Conference for Baptist Churches was held at Lazbuddie Baptist Church, Monday night, Feb. 20. Muleshoe First Baptist Church had four of their five choirs participating in the events with several solos. Those participating were the primary, junior, youth and adult choirs and Patricia Grogan and Karen Hamilton entered in piano solos. Beverly Anderson and Debbie Schuster entered in voice solos. Outcome of the events will be given at a later date.

The next worker's conference is at Springlake Baptist Church on March 20.

### Sorority Has Box Supper

Members of the Epsilon Sigma Alpha Sorority entertained their husbands Tuesday night with a box supper in the home of Mr. and Mrs. Ernest Martin. Hostesses for the night were Joy Tibbets and Marlene Martin, co-hostesses.

Boxes were auctioned by Buck Johnson and the most outstanding box was Carol Johnson's. Following the auction, 8 couples enjoyed playing bridge. Next meeting for the sorority will be March 7 in the home of Laura Seales.

### 15 Years Ago

A school in instructions for the Rainbow Girls of this district was held in the Masonic Hall at Plainview Saturday. Girls attending from Muleshoe were Bobby Collins, Ginger Gaede, Paula Province, Jean Gammons, Elizabeth Farley, Darla Myers, Bettie Collins, Barbara Hinkson and Charlene Greaf. Advisory board members attending were Mrs. Lavonne Hinkson, Mrs. Margaret Epps, Mrs. Mary Farley and Mrs. Ada Thompson, Mother Advisor, Elizabeth Farley and Barbara Hinkson received certificates at the school.

Jean Montgomery, Muleshoe High School Speech Class member, gave a declamation entitled, "Your Chance", at the Womens Society of Christian Service meeting held Feb. 11. The meeting was held in the home of Mrs. I. W. Willman.

Mr. and Mrs. Ralph Black announce the marriage of their daughter, Katherine Black, to Staff Sgt. James M. McCain. The couple were married in Fortales Feb. 2.

The Muleshoe Rebekah Lodge will have Friendship Night March 7 for all 18 Lodges of the district. The Lodge will have a Canasta party.

Mrs. Alton Cherry was honored with a coffee in the home of Mrs. J. M. Forbes Monday. Hostesses were Mrs. Thurman White, Mrs. Clyde Holt, Mrs. Odell Logan, Mrs. M. E. Finley and Mrs. Milton Forbes.

Ralph Mardis has been named West Texas Gas Company Local Manager in Muleshoe.

An iron lung for use in emergencies anywhere in the county will be ordered at once thanks to the balancing contribution made Monday by the commissioners court of Bailey County.

The Progressive Homes Club will meet at 2:30 p.m. in the home of Mrs. L. O. Norwood, 808 W. 7th, Thursday. All members are urged to attend the meeting.

Look Young...  
Look Fashion...  
Look At **MARGARET'S**

**FOR FAMOUS BRAND SPRING FASHIONS.**

Margaret is shown modeling a Sue Storm Original with matching handbag

**SPORTSWEAR By: Lou Ette**  
Phyllis Sportswear And Suits  
JUNIOR AND PETITE SIZES 3-13

**COLLEGIAN**  
**KNITIQUE**  
**MONIQUE**


'Use our Lay-Away now for Easter'

LET MARGARET WOOLEY OR RUTH BEAVER ASSIST YOU.

**Margaret's Apparel**

216 PRINCE ST. CLOVIS, N.M. PHONE 763-9224

## WELCOME TO MULESHOE



**Carroll Rogers**

Carroll Rogers, new owner and manager of the local Ben Franklin Store, is a newcomer to Muleshoe. He formerly lived in Lubbock and was supervisor of Ben Franklin stores in Lubbock, Hereford and Muleshoe. Rogers is moving to the Country Club Addition on Hickory Ave. next week with his wife, Muriel, and six daughters: Debbie, 15, Daphne, 13, Vicki, 10, Karen, 8, Felicia, 5 and Toni Marie, 3. They attend the Baptist Church. The following firms extend a cordial welcome to the Rogers:

<b>CASHWAY</b> GROCERY 402 Main Phone 272-4244	<b>DAMRON DRUG CO.</b> REXALL 308 Main Phone 272-4210
<b>JAMES B. GLAZE</b> Insurance - Real Estate Loans	<b>MULESHOE STATE</b> BANK Member FDIC

**MULE SHOE MOTOR CO.**  
"At The Crossroads"



Editorials

Nixon Ahead Again

The most recent Gallup Poll shows Richard Nixon has pulled ahead of all other potential 1968 G.O.P. Presidential nominees.

Thus it appears that some of the momentum following Romney's November election victory in Michigan has been consumed by time and that the efforts of Nixon men in recent weeks and months have paid dividends.

The question still arises among Nixon supporters about the timing or peaking of a campaign for the nomination. Some feel that all has not yet been heard from Governor Nelson Rockefeller of New York, Governor Ronald Reagan of California and Senator Charles Percy of Illinois.

But the latest public opinion poll is greatly encouraging to Nixon and is significant. Nixon has retained his favorite son role among the party pros all along, even when his public opinion ratings slipped, but the latter are important to delegates at convention time, for delegates naturally want to nominate a man who can win.

And if Nixon enters the 1968 Republican convention the favorite in the public opinion polls, he is quite likely to be nominated to take on President Johnson in 1968 the election.

Maxims a Poor Diet

GUEST EDITORIAL

The turmoil in China is regarded with hope by many, with fear by others. There is hope the inner turmoil will sway the monster from its collision course with the Western world.

Adding to the world's confusion are the difficulties of accurate coverage of the current upheaval. What little news comes out is frequently discolored by the jargon common to Communist internal discussions.

Sometimes the picture as we get it is that of a nightmarish Punch and Judy show, put on by cunning Fu Manchu types who plot nothing but evil for the West.

But, let us not regard this upheaval as a struggle for men's minds alone. One observer, who has spent many years learning to read the winds and whispers from China, puts it in another elementary light.

He reports Maoists seek greater toil and deprivation for China's hordes, with the blind idea of harnessing those hordes to unrelenting labor toward the "great power" goal.

In his view, Maoist restrictions on farmers are killing their desire to increase production of foods, primarily grains, that are desperately short even now.

He reports Maoists seek greater toil and deprivation for China's hordes, with the blind idea of harnessing those hordes to unrelenting labor toward the "great power" goal.

Even more heretical for communists is the anti-Maoist idea that perhaps the farmer might get some land on which to raise things for himself. This idea even expands into a proposal that old-fashioned supply and demand be permitted to return.

Implicit in the anti-Maoist pressure is slackening of industrial expansion most of the West fears is aimed solely at war.

So while the internal strife is a battle for men's minds involving adherence to, or deviation from, pure Marxism, it is not solely that.

It also involves bellies. ---Fort Worth Star Telegram---

WASHINGTON NOTES

TRUCE VIOLATIONS

During the four-day cease-fire in Vietnam, the United States has presented a \$650-million program for federal funds to provide more and better health and educational opportunities for the youth of America.

FUNDS FOR YOUTH

President Johnson has presented a \$650-million program for federal funds to provide more and better health and educational opportunities for the youth of America.

RISK ON BOMBING

In a news conference broadcast during the four-day cease-fire in Vietnam, Secretary of State Dean Rusk placed a pessimistic note on prospects for any immediate peace talks.

BILL FOR VIET VETS

The Senate has passed a bill granting veterans of the Vietnam war period benefits identical to those provided for soldiers serving in earlier conflicts.

ON SPACE TREATY

President Johnson has asked the Senate for ratification of the Outer Space Treaty. The United States, the Soviet Union, Great Britain, and almost 60 other nations already have signed the treaty to preserve outer space for peaceful uses.

ON HIGHER TAXES

President Johnson's economic advisers have defended their predictions of a continued advance of the economy through 1967. The President has asked for a 6 per cent surcharge on corporate and most income taxes to reduce the budget deficit.

NO PEACE MOVE

The President Johnson has offered to stop the bombing of North Vietnam if Hanoi takes any move to justify such a move. This move caused concern among military officers for fear the President may end the aids for something less significant.

PLANS FOR '68 ELECTION

The Johnson Administration is mapping plans for the 1968 election which includes states where former Alabama Governor George C. Wallace may cause them concern. Much emphasis is on states where the President is regarded as politically unpopular.

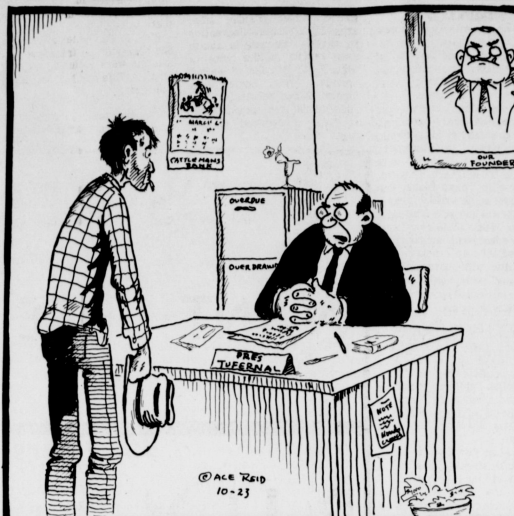
SURVEY ON CROPS

In a final survey for 1966, the Agriculture Department has estimated corn for grain production at 4,103,322 bushels and wheat at 1,310,642,000 bushels. Both crops were grown under a department stabilization program.

ON VIETNAM LOSSES

Senator Richard Russell, chairman of the Armed Services Committee, has charged that there has been "great deteriorations" in the guarding of U.S. airfields and ammunition dumps in Vietnam.

COW POKES



"Jake, after serious study of your loan application, I'm gonna recommend you to my competition!"

STATE CAPITAL Highlights AND Sidelights by Wern Sanford

AUSTIN, Tex.--Texans may be a lot closer than they think to paying city sales taxes.

If they approve, an extra one per cent will be added to the two per cent state sales tax on covered items but not automobiles in the city. State comptroller will collect total three per cent tax, turning a third over to the city hall.

Citizens get to feeling over-laxed, they can get up a petition and call another election to throw out local sales taxation.

MONEY BILLS PASS, FAIL Gov. John Connally's emergency appropriations request, which included \$5,500,000 for the state's exhibit at San Antonio's HemisFair '68, won final passage and was signed into law after weathering a Senate filibuster.

A few days later, the House refused 116 to 29 to suspend its rules to permit consideration of the Senate's \$15,000 interim pay raise bill for state employees.

INDUSTRIAL BONDS Texas is losing ground in the industrial-expansion race among the states, so say Rep. Bill Clayton of Springlake and Sen. Charles Wilson of Lubbock.

Thus the two have introduced bills in their respective chambers calling for a Constitutional Amendment to authorize a municipal revenue bond program, wherein cities can issue bonds to build facilities for hiring new industry. Bonds would be retired by lease revenue paid to the cities.

BAILEY COUNTY JOURNAL, Established March 10, 1923. Published weekly, except on legal holidays. Price: 10¢ per copy.

Guns Get Blame

"Law-enforcement officers should know where each gun is and who owns it," declared the President's Crime Commission.

The panel proposed laws requiring the registration of not only handguns, but also rifles and shotguns. It advocated a federal law regulating the mail-order sale of rifles and banning interstate traffic in handguns.

The National Rifle Association and other organizations have often warned that the antigun forces have as their goal the disarmament of the citizenry. The proposals of the President's commission give added weight to the previous warnings.

Despite the fact that the right to bear arms is guaranteed to Americans by the Constitution, the standard liberal panacea for violence at home as well as abroad has been disarmament.

Disarmament schemes have been tried on both local and international levels--and failed. The law-abiding citizens try to obey the rules, give up their weapons and rely on the assumption that others will do likewise.

Can anyone actually believe that criminals are going to register the weapons of their trade? New York has the strictest laws against weapons in the U. S. There has been no more effective in preventing crime in New York than the U. S. warships in the 1920's was effective in preventing World War II.

By Ace Reid

Dear Amy

My husband, Jerry, and I have been married for 3 months. He is a very nice person but he has a bad habit that annoys me.

My husband, Jerry, and I have been married for 3 months. He is a very nice person but he has a bad habit that annoys me. He is a very nice person but he has a bad habit that annoys me.

THE GROOM HAS YET TO BLOOM!

Dear Amy: My husband, Jerry, and I have been married for 3 months. He is a very nice person but he has a bad habit that annoys me.

Dear Amy: My husband, Jerry, and I have been married for 3 months. He is a very nice person but he has a bad habit that annoys me.

Dear Amy: My husband, Jerry, and I have been married for 3 months. He is a very nice person but he has a bad habit that annoys me.

Dear Amy: My husband, Jerry, and I have been married for 3 months. He is a very nice person but he has a bad habit that annoys me.

Dear Amy: My husband, Jerry, and I have been married for 3 months. He is a very nice person but he has a bad habit that annoys me.

Dear Amy: My husband, Jerry, and I have been married for 3 months. He is a very nice person but he has a bad habit that annoys me.

Dear Amy: My husband, Jerry, and I have been married for 3 months. He is a very nice person but he has a bad habit that annoys me.

Dear Amy: My husband, Jerry, and I have been married for 3 months. He is a very nice person but he has a bad habit that annoys me.

Dear Amy: My husband, Jerry, and I have been married for 3 months. He is a very nice person but he has a bad habit that annoys me.

Dear Editor:

A story printed in the October 20 issue of the Muleshoe Journal created interest as far away as California. A former resident writes:

Dear Editor: In the October 20, 1966 issue of your paper, there was an article about the proposed museum at the former headquarters of the Muleshoe Ranch.

Dear Editor: In the October 20, 1966 issue of your paper, there was an article about the proposed museum at the former headquarters of the Muleshoe Ranch.

Dear Editor: In the October 20, 1966 issue of your paper, there was an article about the proposed museum at the former headquarters of the Muleshoe Ranch.

Dear Editor: In the October 20, 1966 issue of your paper, there was an article about the proposed museum at the former headquarters of the Muleshoe Ranch.

Dear Editor: In the October 20, 1966 issue of your paper, there was an article about the proposed museum at the former headquarters of the Muleshoe Ranch.

Dear Editor: In the October 20, 1966 issue of your paper, there was an article about the proposed museum at the former headquarters of the Muleshoe Ranch.

Dear Editor: In the October 20, 1966 issue of your paper, there was an article about the proposed museum at the former headquarters of the Muleshoe Ranch.

Dear Editor: In the October 20, 1966 issue of your paper, there was an article about the proposed museum at the former headquarters of the Muleshoe Ranch.

Dear Editor: In the October 20, 1966 issue of your paper, there was an article about the proposed museum at the former headquarters of the Muleshoe Ranch.

Dear Editor: In the October 20, 1966 issue of your paper, there was an article about the proposed museum at the former headquarters of the Muleshoe Ranch.



The Lonely Heart

B.C. COINS FOUND - A shepherd boy found an earthen pot containing 50 silver coins.

JAIPUR, India (AP) - A shepherd boy found an earthen pot containing 50 silver coins.

JAIPUR, India (AP) - A shepherd boy found an earthen pot containing 50 silver coins.

JAIPUR, India (AP) - A shepherd boy found an earthen pot containing 50 silver coins.





MUTUAL INTERSTA — Doctors have more than one mutual interest. In this case it is airplanes and new sailplanes. Both men hold pilots license and began training in the two-place sailplane at Muleshoe Flying Service Friday. They are (l to r) Dr. Guy Kirkred and Dr. Jerry Stirman, both of Plainview and Morgan Locker, instructor.

## Farm Conference May Be Public Relations Effort

By Ovid A. Martin.

WASHINGTON - Observers are speculating that the Johnson administration may be seeking a public relations jump on critics of farm policies by summoning national agricultural leaders to a conference here Monday.

This conference was called by Secretary of Agriculture Orville L. Freeman to discuss problems facing farmers in the what he called a new era marked by elimination of surpluses and the development of demands for more food. But significantly, Freeman said farmers now have, in the framework of administration sponsored farm programs, "the tools that enable us to adjust (production and supplies) to the laws of supply and demand."

## Bee...

Continued from Page 1

After spelling the error misspelled the new word submitted to him, then the misspelled new word shall be referred to the first speller. If the first speller then succeeds in correcting the error and correctly spells the next word on the pronouncer's list, then he shall be declared champion.

If both spellers misspell the same word, both shall continue in the contest and the one who first misspelled the word shall be given a new word to spell. The contest shall continue in this manner until a winner is declared by this elimination procedure.

Webster's Third International Dictionary shall serve as the final authority for the spelling of words.

A student is eligible to win the regional bee sponsored by the Lubbock Avalanche Journal a second time, but after winning twice, shall not be eligible to compete again for the regional championship. This rule carries the provision that a student winning the national spelling championship would not be eligible to compete again in the Spelling Bees. The 1966 regional championship in Lubbock was won by Miss Sonya Gilliam.

The judges are in complete control of the Bee. Their decisions shall be final on all questions. Any question relating to the spelling of a word must be referred to the judges immediately. No protests can be entertained after the contest has ended.

Judges are to be Robert Hooten, Muleshoe Motor Company, John Shelton of Muleshoe State Bank and Robert Alford, First National Bank, Promoter will be Fred Johnson, Director of the Bailey County Bee will be Doris Kinser, Muleshoe Journal.

This is the 15th annual Spelling Bee sponsored by the Journal. County Champions are asked to register for the Avalanche Journal Spelling Bee at O. L. Slaton Junior High School Auditorium in Lubbock at 9:30 be prepared to begin spelling at 10 a.m.

## Glenn Parrotts Visits Mother

by Evelyn M. Scott

Mr. and Mrs. Glenn D. Parrott and son, Daniel, of Baton Rouge, La., visited last week with his mother, Mrs. Chris Farmer and family.

Mr. and Mrs. Elmer Lewis and family of Olton visited Sunday in the home of her parents, Mr. and Mrs. J. T. Henderson.

Mr. and Mrs. Louis Fields and family were in Paducah, Saturday to attend the funeral services of his uncle, Ernest Fields.

Mrs. Joe West underwent surgery last week in a Lubbock hospital.

Marilyn Beth Wiseman has returned home after undergoing a tonsillectomy in a Littlefield hospital.

Mr. and Mrs. Dean Wiseman of Dimmitt visited Sunday in the home of his parents, Mr. and Mrs. Brent Wiseman. Also guests in the Wiseman home were other children including Mr. and Mrs. J. D. Bernaby and family of Littlefield; Mr. and Mrs. Weldon Wiseman of Sudan.

Mrs. Lee Roy Ellis was confined last week to a hospital in Littlefield.

Mr. and Mrs. R. D. Nix spent Sunday night in the home of Mr. and Mrs. John in Texline.

Mrs. J. W. Douglas has been ill and confined to a hospital in Littlefield.

Mrs. V. D. Coker of Earth visited Monday in the home of her daughter Mrs. Bill Nix and family.

Mrs. Weaver Barnett has been ill and confined to hospital in Littlefield.

Mr. and Mrs. R.E. Scott and Randy were luncheon guests Sunday in the home of their daughter and husband, Mr. and Mrs. Charles Heffington in L.

Mrs. Joe Burt Markham was ill last week and confined to the hospital in Amberst.

Mr. and Mrs. Audrey West and Larissa were in Lubbock Monday for Larissa to receive a check-up.

Mr. and Mrs. Joe Rone re-

turned home Friday after attending a Ginners Convention in Austin. Enroute to Austin they visited in the home of Mrs. F. C. Broyles of Walnut Springs. Mrs. Boyles is a former Sudan resident. Enroute home they stopped over at Lake Brownwood for two days.

Mr. and Mrs. Edward Fisher family have moved to the Coleman Terrell farm to make their home.

Mrs. C. A. Daniel of Graham has been visiting friends in Sudan this week including Mr. and Mrs. T. Fife and Mr. and Mrs. Joe Rone.

Mr. and Mrs. T. Fife have returned home after visiting

last week in the home of their son and family, Mr. and Mrs. Aubrey Fife in Junction. While gone they also visited her sister and family, Mr. and Mrs. Arthur Sheppard, and her brother and family, Mr. and Mrs. Aubrey Newman.

Mr. and Mrs. Jack Van Ness have moved to the Harlon Reese farm. The Reeses have moved to Muleshoe to make their home.

Mr. and Mrs. Keith Glover visited Sunday in the home of her parents, Mr. and Mrs. Bill Gage in Littlefield.

Visiting last week in the home of Mrs. Ola Baccus were her sisters, Mrs. Mack McClain of Sweetwater and Mrs. Minta Sharp of Cordell, Okl. Mrs. McClain returned home Sunday; Mrs. Sharp is remaining for an extended visit.

# IF IT'S RESULTS YOU WANT...USE A WANT AD

## BUY

ACCORDION,  
BUTTER AND EGG ROUTE,  
CARPETS,  
CATERPILLAR BULLDOZER,  
FOOD FREEZER,  
FUR COAT,  
ROOMING HOUSE,  
RESTAURANT EQUIPMENT,

LIVING ROOM SET,  
GOOD USED CAR,  
ELECTRIC MOTOR,  
SPINET PIANO,  
RIDING HORSE,  
POWER SAW,  
USED LUMBER,  
PARAKEET,

TULIP BULBS,  
SOFA-BED,  
OIL HEATER,  
SHOTGUN,  
TOP-SOIL,  
PAINT,  
WASHER,  
ANYTHING AND EVERYTHING!

## SELL

WESTERN SADDLE,  
CASH REGISTER,  
OUTBOARD MOTOR,  
MEAT COUNTER,  
SEWING MACHINE,  
KINDLING WOOD,  
FACTORY SITE,  
SUMMER COTTAGE,  
DELICATESSEN STORE,

APARTMENT BUILDING,  
RAGS AND PAPER,  
FILING CABINET,  
OFFICE SUPPLIES,  
REFRIGERATOR,  
BEDROOM SET,  
GOLF CLUBS,  
AUTOMOBILE,  
RESTAURANT,

APPAREL,  
TOPCOATS,  
BINOCULARS,  
JEWELRY,  
TOOLS,  
SHOES,  
FARM,  
DESK.

## RENT

FACTORY BUILDING,  
OFFICE OR DESK ROOM,  
STORE AND FLAT  
FURNISHED ROOM,  
MACHINE SHOP,  
AUTOMOBILE SHOWROOM,

TYPEWRITER,  
ADDING MACHINE,  
APARTMENT,  
HOME,  
ALMOST ANYTHING.

## HIRE

HEATING AND PIPING ENGINEER,  
CLEANING WOMAN,  
NIGHT WATCHMAN,  
ADVERTISING MANAGER,  
INVESTIGATOR,  
MACHINIST,

SALESMAN,  
MILLWRIGHT,  
STENOGRAPHER,  
EXECUTIVE,  
ANY KIND OF HELP.

## TRADE

CITY LOT FOR AUTOMOBILE,  
SEWING MACHINE FOR OUTBOARD MOTOR  
GARAGE FOR LAKE LOT,  
BICYCLE FOR SHOTGUN,  
BOAT OR TRAILER FOR FOOD FREEZER,  
ALL KINDS OF OPPORTUNITIES.

## DO IT NOW

### FOR READERS

Today, as in the past, the Muleshoe & Bailey County Journals are serving the people of the West Plains area. Such a great volume provides an outstanding variety of want ad selections. Read the MULESHOE & BAILEY COUNTY want ads to fill daily needs!

### FOR USERS

It's a brilliant spotlight to focus reader attention on your offerings. The MULESHOE & BAILEY COUNTY JOURNAL'S readership in Muleshoe homes provide your want ad service to you that assures greatest results at lowest cost.

Super Service for fast, low-cost results the want ad way!

## MULESHOE & BAILEY COUNTY JOURNALS

BOX 449 PHONE 272-4536

acquainted with the forces in agriculture believes there is a chance of reaching a general agreement on future policies. Thus, most observers say, the only result of the conference is likely to provide is a freshly clarified lineup among the farm organizations and leaders on the issue of the federal role in agriculture. SUCH A LINEUP can be expected to show, on a numerical basis, that those farm organizations siding with the administration far outweigh those opposing.

**TAX MAN SAM SEZ**

Businessmen can find most of the answers to their income tax return problems in Internal Revenue's "Tax Guide for Small Business." The 1967 edition costs 50¢ and is available at any Internal Revenue Service office. It explains in simple language the tax consequences of buying, operating, selling or otherwise disposing of a business. The check list on what federal taxes you may owe and what date they are due can help you keep your tax business operating smoothly.

**Scouts...**

Continued from Page 1  
silver on Wolf gadge. Mrs. John Gunter is den mother. Boyd McCamish and Earl Ladd III were eligible for the Arrow award, which will be presented them at a later date. Entertainment was provided by Rev. Walter Buice in a comedy routine and Leasel Richardson and The Folksingers.

Invocation was given by L. B. Hall and the benediction pronounced by Jim Shafer. Those attending offered a moment of silent prayer for a former Cub Scout, Mike Duncan and his father, Kenneth Duncan who are in Methodist Hospital, Lubbock, as a result of a pickup turnover last Saturday.

**Teachers...**

Continued from Page 1  
for granted, but to these people they are of the greatest importance. The Jaycees have said that any kind of implement will be sent, whether the donor would give a new or used one. Anyone willing to take part in this project can take their gift by Bob Stoval Printing, 109 Ave. B., or phone 272-3373. The project will be picked up on Friday, March 3 so the Jaycees are asking that if you wish to contribute, please get the implements in no later than Friday, March 3 rd, at which time the local Jaycees will take them to Amarillo to the Area I Convention from where they will start their journey to the people of Peru, compliments of the citizens of Muleshoe, Texas and the Muleshoe Jaycees.

Two stanzas of the Jaycees Creed says that "We believe that the brotherhood of men transcends the sovereignty of nations and that service to humanity is the best work of life." As free Americans the Jaycees are asking that everyone help to improve the brotherhood of man by being of service to humanity.

**HOW DOES YOUR INCOME TAX MEASURE UP**

Let BLOCK help you chop it down to size! We'll put ourselves in your shoes—and do your tax returns at 1/2 the cost of our own. Our service is quick, convenient and inexpensive. Try us for size!

**COMPLETE RETURNS \$5 UP**

**LIFE**

**MR. BLOCK Co.**  
America's Largest Tax Service with Over 1500 Offices.  
**125 W AMERICAN BLVD.**  
**MULESHOE, TEXAS**



Douglas Self



Tommy Phelps

## Trinity Baptist Church Revival Starts Monday

Trinity Baptist Church will hold a revival beginning Monday February 27 and concluding March 5.

Evangelist will be Rev. Tommy Phelps and Douglas Self will direct the song services.

Morning services will be held at 10 a.m. and evening services at 7:30.

Worth while attending the Seminary.

He was pastor of the Temple Baptist Church in Hereford for 14 months at the Temple Baptist Church in Hereford for 14 months at the Temple Baptist Church in Hereford and resigned January 8 to enter full time evangelism.

Douglas Self is music director of the Lazzbuddie Baptist Church. He is presently president of the Student body at Wayland Baptist College and president of the Music Fraternity. He served as vice-president of the Council of Religious Organizations last year and spent the summer of 1965 in Torreon, Mexico as a B. S. U. missionary.

The Rev. Troy Walker, pastor of Trinity Baptist Church invites the general public to attend these services and hear this dynamic evangelist.

## Herd Estimate Jolts Cattlemen

by James E. Vance

The beef cattle industry got a jolt by the Agriculture Department's newest estimate of the nation's cow herd.

Instead of declining in proportions estimated by forecasters, and hoped for by cattlemen, the reduction was four tenths of one percent, or negligible.

That meant the higher prices for cattle associated with a smaller supply might be out the window. Expanding population and an over-all demand for beef could relieve some of the sting.

What really maybe gave ranchers a bigger jolt was that the number of cows two years ago and older (those that produce calves) actually increased. The count Jan. 1, 1966 was 34,433,000 compared to 34,592,000 at the beginning of 1967.

THE ESTIMATES WERE based on the number of slaughter-cases inspected which led to because indications of lower numbers. It didn't work that way.

Nationwide there were 108,862,000 the year before. There were 109 million at the beginning of 1965.

Texas ranchers actually increased their 2-year-old-and-older female beef cattle by 2 percent (5,251,000 Jan. 1, 1967) and 1-to-2-year-olds by 3 percent.

However, nationwide the increase in those kind of cattle supply potentially nearer effective demand the beef industry at the first of 1966 was 10,757, just how well the consumer re-100, and 10,546,000 Jan. 1, 1966, guards beef.

McMillan, executive vice-president of the American National Cattlemen's Association, said "leveling off in beef cattle numbers should bring a downward adjustment in beef supplies later in the year. This decline is expected to set off an advance in prices of both cattle and beef."

## International Grain Sorghum Conference Scheduled

"The Changing World of Grain Sorghum" is the theme of the 5th International Grain Sorghum Research and Utilization Conference to be held March 2-3 at the Holiday Inn West in Amarillo.

"It is now widely recognized that grain sorghums are basic to the economy of the High Plains, and are becoming increasingly important nationally and world wide," Elbert Harp of Abernathy said.

Harp is president of the Grain Sorghum Producers Association, sponsors of the conference.

Harp said the conference is designed to provide a meeting place for an "across-the-board" exchange of information on research and development which may lead to wider use of grain sorghum.

Keynoting the conference will be Dr. K.S. Sundara Rajan, India's executive director of the International Bank for Reconstruction and Development and an economic minister at the country's embassy in Washington, D.C. Dr. Rajan's topic will be "The Changing Economic and Social World."

Harp pointed out that "Dr. Rajan has had considerable experience in international negotiations and finance taken part in a number of conferences with various governments."

The meeting's second speaker, Edwin A. Jaenke, associate administrator with the Agricultural Stabilization and Conservation Service, Washington, D.C., will discuss "The Changing United States Public Farm Policy."

"Every farmer should be at the conference to hear Jaenke's speech," Harp said. "It will be one of the most important of the general speeches given March 2."

The potential for food use of grain sorghum is gaining in importance world wide, the GSFA President said, and Dr. O. Gerrish, head of the food science section, Midwest Research Institute, Kansas City, Mo., will discuss this topic.

"Dr. Gerrish's laboratory is credited with developing Metracal and with putting the hard candy shell on M&M peanuts and candies," Harp said. The researcher is now engaged in developing food uses for grain sorghum in close liaison with Grain Sorghum Producers Association.

Another of the general topic speeches should interest feed-

lot operators throughout the High Plains, Harp believes.

Dr. O. Burr Ross, Oklahoma State University's vice-president for agricultural sciences, will discuss "The Changing Trend in Livestock Feeding," "the Abernathy farmer added.

Climaxing the first day's activities will be an awards dinner in the Holiday Inn West ballroom. Four awards will be given to men who have contributed to grain sorghum research and understanding over the years.

The March 3 session is designed for the technician, the researcher. Topics are technical and include the latest research being conducted in the development and uses of grain sorghum.

The final speech of the two-day meeting, during which more than 250 research and development people from 25 states and several foreign countries are expected to attend, will be given by Dr. S.M. Kennedy, Vice President for Academic Affairs at Texas Technological College, Lubbock.

His topic will be "Potential for Changing the World of Sorghum through the International Center for Arid and Semi-arid Land Studies."

There is no fee or registration cost in connection with the conference. Tickets for the awards dinner will be sold on an individual basis and will be available at the time of registration.



SAILPLANE SOLO — Gene Minter, Plainview commercial pilot, has just crawled out of the one-place sailplane at Muleshoe Flying Service on his third trip aloft after soloing in the craft Thursday. He is working on his instructor's rating in sailplanes. He already holds about all the ratings in aviation and is an instructor at Miller Flying Service, Plainview.

## Services Held For Littlefield Man

Funeral services were held Saturday, 2 p.m. in the Littlefield First Methodist Church for L. T. Green, 84, prominent rancher and for area educator who was found dead in his ranch near Littlefield Thursday night following an apparent heart attack.

Green was the father of the late Dr. L. T. Green, founder of Green Memorial Hospital and well-known physician here.

Officiating was the Rev. Wallace Kirby, pastor. Burial was in Littlefield Memorial Park under direction of Hammons Funeral Home.

Green had served as school superintendent at Paducah, Ky.

Survivors include his wife, Eula; a son, Dr. Marion Green of Clovis; seven grandchildren, and five great-grandchildren.

Funeralbearers were Houston Hoover, H. O. Bingham, Van Clark, Luther Wood, B. D. Gardner Sr., and Harry Wood.

Grandchildren include Butch, L. T. Green, Joan and Marilyn, children of the late Dr. L. T. Green and Mrs. Green, 219 West Ave. J, and Dr. Bill Green, Dallas; Jim, New York and Bob of Albuquerque and 6 great grandchildren.

For State Farm Insurance, See

F. L. NEWTON  
Littlefield, Texas

Representing The World's Largest Writer Of Auto And Homeowners Insurance.

State Farm Insurance Companies / Home Office: Bloomington, Ill.

## TELEVISION SCHEDULE FOR THE MULESHOE AREA

<p><b>WESTERN DRUG</b></p> <p>Prescriptions Drugs &amp; Supplies</p> <p>for all your Veterinarian needs</p> <p>Fountain Service</p>	<p><b>WIEDEBUSH &amp; CHILDERS</b></p> <p>VEHICLES ARE 2-WAY RADIO EQUIPPED To Assure You of Prompt Service in</p> <p><b>BUTANE PROPANE MOTOR OIL AMALIE FRAM OIL FILTERS DIAL</b></p> <p>272-4218</p> <p>Muleshoe Clovis Highway</p> <p>We Deliver Anywhere</p>	<p><b>MONDAY EVENING</b></p> <p>6:00 - News 6:15 - Weather 6:25 - Sports 6:30 - Money 7:00 - Jeannie 7:30 - Branded 8:00 - Road West 9:00 - Run for Life 10:00 - News 10:15 - Weather 10:25 - Sports 10:30 - Tonight 12:00 - Sign Off</p> <p><b>TUESDAY EVENING</b></p> <p>6:30 Movie 6:40 - News 10:00 - News 10:15 - Weather 10:25 - Sports 10:30 - Tonight 12:00 - Sign Off</p> <p><b>WEDNESDAY EVE.</b></p> <p>6:00 - News 6:15 - Weather 6:25 - Sports 6:30 - Virginia 8:00 - Bob Hope 9:00 - I Spy 9:00 - News 9:15 - Weather 9:25 - Sports 10:30 - Tonight 2:00 - Sign Off</p>	<p><b>MONDAY EVENING</b></p> <p>6:30 - Iron Horse 7:30 - Rat Patrol 8:00 - Peyton Place 8:30 - Peyton Place 9:00 - Big Valley 10:30 - News-Wea. 10:30 - Movie</p> <p><b>TUESDAY EVENING</b></p> <p>6:30 - Combat 7:30 - Invaders 8:30 - Peyton Place 9:00 - Fugitive 10:00 - News - Wea. 10:30 - Movie</p> <p><b>WEDNESDAY EVE.</b></p> <p>6:30 - Batman 7:00 - Monroes 8:00 - Movie 10:00 - News - Wea. 10:30 - Movie</p>	<p><b>MONDAY EVENING</b></p> <p>6:30 - Gilligan's Is. 7:00 - Terrific 7:30 - Red Skelton 8:00 - A. Griffin 8:30 - Family Affair 9:00 - Tell The Truth 9:30 - Secret 10:00 - News 10:15 - Weather 10:25 - Background 10:30 - Golden Spread 10:55 - News 11:00 - Big Flicker</p> <p><b>TUESDAY EVENING</b></p> <p>6:30 - Dakari 7:30 - Red Skelton 8:30 - P. Junction 9:00 - CBS Report 10:00 - News 10:15 - Weather 10:25 - Background 10:30 - Golden Spread 10:55 - News 11:00 - Big Flicker</p> <p><b>WEDNESDAY EVE.</b></p> <p>6:30 - In Space 7:30 - Hillbillies 8:00 - G. Acres 8:30 - Gomer Pyle 9:00 - Danny Kaye 10:00 - News 10:15 - Weather 10:25 - Background 10:30 - Big Flicker 10:55 - News 11:00 - Big Flicker</p>	<p><b>MONDAY EVENING</b></p> <p>6:30 - Pincocchio 7:30 - Lacey 8:00 - Andy G. 8:30 - Family Affair 9:00 - Mr. &amp; Mrs. 10:00 - News-Wea. 10:30 - Combat 11:30 - Overland Trail</p> <p><b>TUESDAY EVENING</b></p> <p>6:30 - Dakari 7:30 - Red Skelton 8:30 - P. Junction 9:00 - Rat Patrol 9:30 - Felony Squad 10:00 - News 10:30 - The Songman 11:30 - Riverboat</p>	<p><b>MONDAY EVENING</b></p> <p>6:30 - Huntley-B. 6:00 - News 6:30 - Lacey 7:00 - Ice Capades 7:30 - Ice Capades 8:00 - Road West 9:30 - Run For 10:00 - 10-0 report 10:30 - Tonight</p> <p><b>TUESDAY EVENING</b></p> <p>6:30 - Huntley-B. 6:00 - News 6:30 - U.N.C.L.E. 8:30 - P. Junction 7:30 - Occasion, Wife 8:00 - Movie 10:00 - News 10:30 - Tonight</p> <p><b>WEDNESDAY EVE.</b></p> <p>6:00 - News 6:30 - Virginia 8:00 - Bob Hope 9:00 - Golden Award 10:30 - Tonight</p> <p><b>WEDNESDAY EVE.</b></p> <p>6:30 - Lost in Space 7:30 - Hillbillies 8:00 - G. Acres 8:30 - Gomer Pyle 9:00 - Bewitched 9:30 - Love on 10:00 - News 10:30 - Wild Wild 11:30 - Cimmaron Ct.</p>
---	--	---	--	--	--	--

## BUSINESS SERVICES DIRECTORY

THE MONEY YOU SPEND AT HOME STAYS AT HOME!

FOR FHA, GI and FARM LOANS AND THE BEST INSURANCE SEE POOL INSURANCE CO.

Phone 272-4531  
W. M. Pool Jr.

Muleshoe  
Lee R. Pool

Save Money On Auto Parts!  
**BOVELL MOTOR SUPPLY**  
107 E. Ave. B - Dial 272-4288  
MRS. W. T. BOVELL, Owner

**SINGLETON FUNERAL HOME**  
24 HOUR AMBULANCE SERVICE  
PHONE 272-4574 MULESHOE

**W. O. CASEY**  
GENERAL INSURANCE  
Let Our Complete Coverage Take Care of All Your Insurance Problems

Muleshoe State Bank Bldg. Ph. 272-4571

**NEWSPAPERS**

MAKE A BIG DIFFERENCE IN PEOPLE'S LIVES

**BERRY ELECTRIC CO.**  
ELECTRIC WIRING and REPAIRS  
REFRIGERATION SERVICE  
104 E. AVE. B  
Phone 272-3375

**VULCANIZING FLATS - ANY SIZE**

**SEPTIC TANKS & CESSPOOL SERVICE**  
DRILLED - REPAIRED - INSTALLED

Cesspool - Pier Holes  
Beat Pits - Storm Cellars  
We Drill Up to 9 Ft. in Diameter  
& 45 Ft. Deep  
Concrete Covers & Turnkey  
Jobs Available

**WILSON DRILLING CO.**  
Dial 272-4180  
NIGHT PHONE 272-3148  
CLOVIS HWY. MULESHOE

SAY YES TO THE MARCH OF DIMES

THE MARCH OF DIMES  
THE NATIONAL FOUNDATION

**Johnson-Pool Tire Co.** MULESHOE Ph. 272-4594



# TRADE CLASSIFIED SECTIONS BUY ADS PLEASE

## WANT ADS PH. 272-4536

**CLASSIFIED RATES**  
 First insertion, per word - 6¢  
 Second and additional insertions - 4¢  
 Minimum charge - 55¢  
 Card of Thanks - \$1.00  
 Double rate for blind ads  
 Classified Display - .85¢ per col inch  
 95¢ col. inch for reverses

**DEADLINES FOR INSERTION**  
 Thursday's Muleshoe Journal - 4 p.m. Monday  
 Sunday's Bailey County Journal - 4 p.m. Thursday

The Journals reserve the right to classify, revise, or reject any classified ad.

Check advertisement and report any error immediately. Journals are not responsible for error after ad has already run once.

### 1. PERSONALS

AVON, Phone 3510, 1-46-tfc

for rent, 15 ft. campsr. By day or week. Call 272-3163, 1-35a-tfc

WANTED 300 people to hear Tommy Philips (Nature Boy), ex-wrestler for 1 1/2 hrs. Monday night Feb. 27, 1967, 7:30 p.m. Trinity Baptist Church, Muleshoe, Tex. 1-6t-6tc

Sewing Wanted - 272-3164, 1-8t-3tc

### 6. ROOMS FOR RENT

Bedroom for rent, 410 West 2nd. Rosie McKillip, 6-41t-tfc

FOR SALE: Brick three bedroom, 2 baths, carpeted, throughout, 2 car garage, 1,497 Sq. feet. Built-ins. George Sultemire, Phone 272-4086 or 272-3183 office. 9-3t-tfc

### 3. HELP WANTED

Part time sales person wanted. Call 965-2731 before 6 p.m. 3-9s-2tc

Beautician needed. Call 272-3448, 3-16t-tfc

WANTED: LVN for 3 to 11 shift. Apply Mrs. Glen Singletary, Community Hospital Oilton. 3-7s-tfc

### 4. HOUSES FOR RENT

For Rent: 2 bedroom house newly decorated. Call 272-3524 or see F. H. Davis 903 W. 2nd. 4-4t-tfc

FOR RENT: 2 bedroom house newly decorated. Call 272-3038 or see Mrs. Jack Lenderson at 1818 West Ave. D. 4-26s-tfc

### 5. APTS. FOR RENT

THREE room furnished apt. or rent. Call or see Mrs. Jack Lenderson 272-3038. 5-32t-tfc

FOR RENT: 1 and 2 bedroom apt. Furnished or unfurnished. 3 bedroom house. Call D.L. Morrison Jr., 4886 or 3421 5-31s-tfc

3 room unfurnished apt. See Spencer Beavers at Post Office. 5-10t-tfc

For rent small furnished apt. Bills paid Layne apt. 524 S. 1st PHONE 4496. -6t-tfc

**FURNISHED APARTMENTS**  
 Trailer Space. Briscoe Apartments. Phone 272-3465 5-28t-tfc

### 9. AUTOS FOR SALE

For Sale: 62 Chevrolet Station Wagon. V8 Air and Powerglide, White-Good Condition. George Sultemire, Call 272-4086 or 272-3193. 9-6t-tfc

FOR RENT: 2 bedroom Apartment. Newly decorated. Call 272-4021 Owen Powell, 1610 W. Ave. B. 5-9s-2tc

### 12. HOUSEHOLD GOODS

FOR SALE: Good used aluminum pipe, 4" 6" 8" 7 1/2" and the well known extruded aluminum pipe in all sizes. We buy used aluminum pipe. Before you trade, see State Line Irrigation in Littlefield, Phone 385-4487. 10-3s-tfc

### 13. FARM FOR LEASE

FOR SALE OR TRADE: My equity in 2 bedroom home, Carport, furnace heat, Located at 305 Birch. If interested contact C. J. Tiller 946-2627. 11-6t-tfc

FOR SALE: 290 acres good Farmer County land, 2 wells, 3 bedroom house 75 1/2 acres cotton, 600 lbs. acreage. Grain Storage 163 acres, 86 bushels. Price \$400, per acre. Possession. See this before you buy. Can get large loan. Exclusive listing. Cross Real Estate, Box 661, Muleshoe, 511 South St. St. 8-3t-tfc

### 15. MISCELLANEOUS

"Bargain" 144 acres of land, Lamb County, 52 acres cotton, 85 acres feed, 1-10 and 1-8 inch wells, Asbestos underground line, \$290,000 per acre. Gene Brown, Earth, Texas, Bus. 257-3951, Res. 257-3871 8-3t-tfc

By Owner: 160 acres 10 inch water, 13 miles west of Muleshoe, 28 1/2 down - 6% interest. W. L. Strickland, Box 616 Lockney, Texas, nite call YU 3-2405. 8-8t-tfc

445 A, irrigated land for rent, with sale of equipment. Phone 272-4596 between 8 a.m. and 6 p.m. 8-8t-2tc

Two unit, adult burial plot in Garden 1, Lots 1-2, Block 75, Bailey County Memorial Park. Write or call Bill Rutherford, Hamilton, Texas. Phone 386-5448. 8-8t-tfc

FOR SALE: Owner leaving town, 3 bedroom, 1 3/4 bath, fireplace, nice fenced backyard. Equity and take up payments on 6% loan. A sacrifice at \$16,450. 00, 1909 W. Ave F. Call 925-3463. 8-8t-2tc

FOR SALE OR TRADE: 3 bedroom, one bath, carpeted, one large lot. Call D. L. Morrison Jr., 4886 or 3421 8-8t-tfc

FOR SALE or trade for farm equipment, ect. 3 bedroom carpeted, drapes, double garage. See before 8 a.m. or after 9 p.m. at 810 W. 6th Geo. Mullins. 8-7s-2tp

### 11. FARM EQUIPMENT

Farm Equipment for Sale. Cash for used tractors and implements, Norwood Implement - 1209 South Main 10-51t-tfc

USED MACHINERY  
 1400-5"x40" Skid Sprinkler line 220-Setting 10" Western Pump 170-Setting 8" Western Pump 6" High Pressure Booster pump MF 30 Butane Tractor MF 85 Butane Tractor 14' John Deere Tandem 4 Sec. Spike Tooth Harrow 4 Row Crustabuster 1440770 H.P. Gear Drive 1 1/2" 50 H.P. Gear Drive 220 9"x38" Gated Pipe SNEED SUPPLY 410 No. First Phone 262-3426 10-8t-tfc

### 12. HOUSEHOLD GOODS

FOR SALE OR TRADE: My equity in 2 bedroom home, Carport, furnace heat, Located at 305 Birch. If interested contact C. J. Tiller 946-2627. 11-6t-tfc

### 13. FARM FOR LEASE

FOR LEASE: 160 A, irrigated land 75 A. Cotton. Phone 272-3191 13-52s-ttc

180 A. farm for lease. For information phone 946-2413. - Needmore exchange. 13-8t-2tp

### 15. MISCELLANEOUS

Pinking shears and scissors sharpened by factory Method. Call Harvey Bass Appliance 272-3030 15-6s-tfc

For Sale: Hospital bed and wheel chair. Call 965-2988. 15-8s-4TFC

FROM wall to wall, no soil at all, on carpets cleaned with Blue Lustre. Rent electric shampooer \$1. Sam's Auto Store 222 Main St., Muleshoe, Texas. 8-7s-1tc

## Bula Baptist GA's Hold Social At Pastor's Home

These boys are all sixth graders. They meet every Saturday and practice most all day.

Mr. and Mrs. Lee Holcamp of Littlefield visited Sunday afternoon with their daughter and family the Richard Blacks.

Mr. and Mrs. Ray Cloud and children of Morton visited Sunday evening with the John Crockett.

Mrs. Leo Buschner spoke Tuesday morning to the Epocha WMJ Ladies on her experiences of doing church work in the Great Lakes area.

Mr. and Mrs. W. R. Adams visited over the weekend in Plainview with his sister and husband the Sam Moore's.

Guests of Mr. and Mrs. Ewell Battles over the weekend were her brother and wife, Mr. and Mrs. Raymond Estes of Hollis, Okla.

Mr. and Mrs. Allen Williams and daughter Melissa are visitors a few days with their parents the C. A. Williams before moving to Tucson, Arizona to make their home.

Mrs. L. L. Kileen, of Corpus Christi visited from Friday thru Monday with her sister Mr. and Mrs. V. C. Weaver and other relatives.

Mr. and Mrs. Robert Gauer and children, moved from our community Wednesday to Turkey, Tex. Where he will pastor the Baptist church there. Mrs. Gauer has been the science teacher in our school for the past two school years.

Mrs. C. C. Young and son Donnie of Denver City spent Sunday with her parents the C. A. Williams. She was accompanied by a friend Mrs. John Powell and daughter Debbie.

Mr. and Mrs. James Collins and daughter Daria were weekend guests of her parents the W. L. Clawson's. They live in Amarillo.

The Junior class sponsored an enchilada supper Monday evening in the school lunch room. Approximately two hundred dollars were netted from the supper. This will be used to pay the expenses of the annual Junior-Senior banquet.

Terry Blake and J. D. Row-

## Small Oysters For Cubans

MIAMI (AP) - Cubans like small oysters. Exiles here found only big ones until enterprising Pedro M. Martinez located a supply source in Maryland's Chesapeake Bay area.

"Out there the oysters are so big that people throw away the little ones," Martinez reported. "So it arrange for the rejects."

As a result, exiles are eating something similar to "ostiones de Saigua" (oysters from Saigua, Cuba, a midsize species), to which they were accustomed at home.

"They put them in a glass with lime juice, ketchup and hot sauce. No fork needed. Just drink them down."

## Abortion Bill Before Texas Senate Introduced Today

AUSTIN--A bill which would permit abortions under certain specified conditions was introduced today in the Texas Senate. Sen. George Parkhouse of Dallas, who introduced the legislation, stated that "the proposed legislation contains strict limitations which will permit a therapeutic abortion only after specific requirements are satisfied by the patient seeking such an operation."

Under current law, written in 1925, an abortion is legal only if it is necessary to save the mother's life.

"It is time," Parkhouse said, "that we consider the health of the mother and not life alone and recognize the right of an infant to be born in good health, as well as provide relief to unfortunate victims of rape or incest."

Under the proposed legislation, an abortion would be permitted under the following circumstances:

- 1) Where there is a condition which endangers the life of the mother and the pregnancy must be terminated in order to preserve her life.
- 2) Where the woman has become pregnant as result of for-sure of youths 15 to 18 1/2 years old in the St. Paul Minneapolis area.
- 3) Where there is a substantial risk that the continuation of the pregnancy would gravely impair the physical or mental health of the mother, or
- 4) Where there is a substantial risk that the child will be born with a grave physical or mental defect.

The bill introduced by Parkhouse also lists a number of general requirements that must be met in all cases in which an abortion is sought. These include the written consent to the operation by the patient or, if she is a minor, consent by her guardian or custodial parent. A physician licensed by the Texas State Board of Medical Examiners must perform the operation in a hospital approved by the Texas State Department of Health.

A hospital abortion committee is called for in the bill, and the abortion must be approved by a majority of the five physicians on the committee. The committee members must all be members of the hospital staff. Two physicians must submit a written request to the committee, stating the reasons which necessitate the abortion. One of the physicians must be a specialist in the field of the condition stated as medical reason for the abortion, but neither of the physicians may be on the hospital committee.

## What's Deductible

Dallas -- Union dues, employment agency fees, alimony, and certain other expenses may be included among itemized deductions on Federal tax returns, said Ellis Campbell, Jr., District Director of Internal Revenue for northern Texas.

Also deductible are ordinary and necessary expenses in connection with the production or collection of taxable income and the management of property held for the production of taxable income. This includes a box for taxable securities, investment counsel fees, income tax counsel and assistance fees, custodian fees, clerical help, appraisal fees, establishing amount of casualty loss, etc.

Divorced or legally separated taxpayers making periodic payments of alimony or separate maintenance under a decree of divorce or separate maintenance, or under a written separation agreement entered into after August 16, 1954, or under a decree for support entered after March 1, 1954, may deduct such payments.

A partial list of additional items of expense which are considered personal and therefore not deductible are: travel to and from work; losses from sale of personal residence, family auto, etc.; home repairs and insurance; attorney fees for preparation of a will; safe deposits; box for personal effects; fines and tax penalties.

Documents 5109 and 5110 which furnish more detailed information on this subject, may be obtained by dropping a post card to the District Director, Internal Revenue Service, 1600 Patterson Street, Dallas, Texas.

## WHAT IS YOUR OPINION OF MULESHOE?

THE FOLLOWING IS A LIST OF PROBLEM AREAS THAT ARE SOMETIMES FOUND IN OTHER COMMUNITIES. PLEASE CHECK THOSE THAT YOU REGARD AS PROBLEMS IN YOUR COMMUNITY.

<input type="checkbox"/> Community Leadership	<input type="checkbox"/> School Facilities
<input type="checkbox"/> Community Spirit	<input type="checkbox"/> Pay for Teachers
<input type="checkbox"/> Public Interest in Local Politics	<input type="checkbox"/> Quality of Instruction
<input type="checkbox"/> Pride in up-keep of Houses and Lawns	<input type="checkbox"/> Attractiveness of Downtown Business
<input type="checkbox"/> Attractiveness of Approaches to Community	<input type="checkbox"/> Service in Local Stores and Shops
<input type="checkbox"/> Welcome to Newcomers	<input type="checkbox"/> Stock in Local Stores
<input type="checkbox"/> Local Ordinances or Laws	<input type="checkbox"/> Attitude of Businessmen
<input type="checkbox"/> Police Protection	<input type="checkbox"/> Parking Facilities
<input type="checkbox"/> Fire Protection	<input type="checkbox"/> Job Opportunities
<input type="checkbox"/> Pay for Policemen & Firemen	<input type="checkbox"/> Good Productive Labor
<input type="checkbox"/> County Law Enforcement	<input type="checkbox"/> Opportunity for Young People
<input type="checkbox"/> City Parks	<input type="checkbox"/> Wage Rate in Local Industry
<input type="checkbox"/> Street Lighting	<input type="checkbox"/> Hotel and Motel Facilities
<input type="checkbox"/> Traffic Control	<input type="checkbox"/> Eating Establishments
<input type="checkbox"/> Garbage Collection	<input type="checkbox"/> Transportation Services and Facilities
<input type="checkbox"/> Street Maintenance	<input type="checkbox"/> Commercial Services for Business Growth
<input type="checkbox"/> Water Supply	<input type="checkbox"/> Hospital Facilities
<input type="checkbox"/> Recreational Facilities	<input type="checkbox"/> Local Taxes
<input type="checkbox"/> Cultural Activities	<input type="checkbox"/> Other _____
<input type="checkbox"/> Library Facilities	
<input type="checkbox"/> News Media	

**OCCUPATION:** \_\_\_\_\_

Please check applicable items, clip and mail to the Industrial Economics Research Division, Box 105 FE, College Station, Texas. No signature is required. The answers you give will be considered in the over-all evaluation of Muleshoe's Industrial Potential.



**DOUBLE WEDNESDAY**  
with a \$2.50  
Purchase or More

# See More **Save More..** at Piggly Wiggly

Tremendous values in every department!

**'Money Saving' FOOD TIPS:**  
MORE MILEAGE FOR CHEESE  
Your cheese money will go further if you will grate the cheese, while firm and fresh, and store it in your freezer! It won't dry out or get moldy. You can use as much as you wish without thawing.  
Submitted by Mrs. Hazel Dowell, 1814 Willow St., Grand Prairie, Texas  
Piggly Wiggly will pay you \$5.00 for accepted Food Tips that save money. Send your Food Tips to:  
**FOOD TIPS**  
PIGGLY WIGGLY STORES  
BOX 1130 Amarillo, Texas



Kraft's, Salad Dressing

**MIRACLE WHIP** Quart Jar **49¢**

**GRAPE JELLY** Welch's, or Welchade 20-Ounce Jar **43¢**

**COFFEE** Folger's, All Grinds 3-Pound Can **\$1.99**

**TOILET TISSUE** Delsey, White or Assorted Colors 4-Roll Package **39¢**

**MARGARINE** Miracle Whipped 1-Pound Package **35¢**

C & H, Holly, or Imperial Pure Cane and Beet **SUGAR** 5-Pound Bag **44¢**

**BUTTER** BonneBelle, Sweet Cream AA 1-Pound **79¢**

**VELVEETA** Kraft's, Cheese Spread 2-Pound Loaf **98¢**

**ALUMINUM FOIL** Kaiser 25-Foot Roll **25¢**



**DINNER ROLLS** Swift 8-Ounce Can **29¢**

**ROUND STEAK** U.S.D.A. Choice, Heavy Aged Beef Pound **75¢**

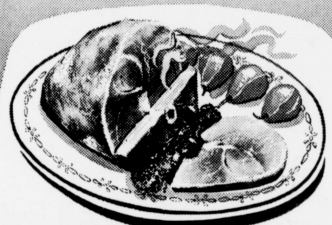
**PORK HOCKS** Meaty, Cook with Beans Pound **33¢**

**STEAKS** Rib Eye, Boneless, U.S.D.A. Choice, Heavy Beef Pound **\$1.89**

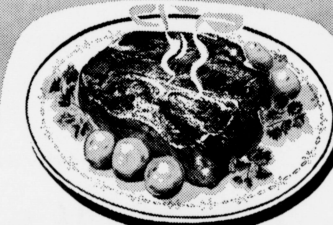
**SANDWICH STEAKS** Boneless Pound **\$1.39**

**T-BONE STEAK**

U.S.D.A. Choice, Heavy Aged Beef Pound **88¢**



**SMOKED HAM** Shank Portion, Rodeo Fully Cooked, Dry Cure or Pinkney's Sun Ray Pound **39¢**



**CHUCK ROAST** U.S.D.A. Choice, Heavy Aged Beef, Blade Cuts Pound **45¢**

**GROUND CHUCK** Extra Lean, Dated for Freshness Pound **59¢**

**BOILING BEEF** Shank Bone Cuts U.S.D.A. Choice Pound **49¢**

**SHORT RIBS** of Beef, U.S.D.A. Choice, Fine for Braising Pound **19¢**

**NECK BONES** Fresh Pork Lean-N-Meaty Pound **19¢**

**SIRLOIN STEAK**

U.S.D.A. Choice, Heavy Aged Beef Pound **79¢**

**ICE CREAM** Borden's Half-Gallon Square Carton **49¢**

**COFFEE** Golden West, All Grinds 1-Pound Can **59¢**

Frozen Selections for Your Freezer!

**ENCHILADAS** Patio, Beef 1 1/2-Pound Package **59¢**

**DINNERS** Banquet, Mexican or Beef Enchilada Plate **43¢**

**BUTTER BEANS** Libby 5 10-Ounce Packages **\$1.00**

**CAULIFLOWER** Libby 4 10-Ounce Packages **\$1.00**

**SHOESTRING POTATOES** S & K 20-Ounce Bag **19¢**

**CUT CORN** Silverdale 2 10-Ounce Packages **35¢**

**ORANGE JUICE** Libby 5 8-Ounce Packages **\$1.00**

**Store Manager's Special!**  
Ideal **EGGS** \$1  
Grade A Medium 3 Dozen

**CHEER** Detergent, Heavy Duty, 59¢

**FRUIT PIES** Johnston, Green Apple or Pineapple 34-Ounce Pie **69¢**

**BLEACH** Clorox, Liquid in Plastic Half-Gallon **33¢**

**TOOTH PASTE** Pepsodent, 1 1/2 Oz Off Label, Reg. 79¢ Value King Size Tube **57¢**

**DEODORANT** Arid Roll On, 8 1/2 Oz Off Label Regular 98¢ Value **69¢**

**HAIR SPRAY** Nesle, Regular or Soft, Reg. 89¢ Value 13-Ounce Can **49¢**

**VITAMINS** Chocks, Regular 100-Count Bottle \$3.29 Value **\$2.19**

**MARGARINE** Kraft's, Corn Oil 1-Pound Package **43¢**

**BISCUITS** Pillsbury, Sweetmilk 3 9-Ounce Cans **27¢**

**BLACK PEPPER** Arrow, Ground 4-Ounce Can **33¢**

**MELLORINE** All Brands Half-Gallon **39¢**

**Health and Beauty Buy of the Week!**  
**LISTERINE**  
Regular 69¢ 7-Ounce Bottle **49¢**

Garden-Fresh Fruits and Vegetables!

**BANANAS** Golden, Ripe Chiquitas Pound **5¢**

**TEXAS CARROTS** Cello Package Pound **10¢**

**GREEN ONIONS** Garden Fresh Large Bunch **10¢**

**RED RADISHES** Fancy California Large Bunch **10¢**

**GRAPEFRUIT** Ruby Red, Texas Pound **10¢**

**Houseware Buy of the Week!**  
**DUST PAN**  
Amber, Light Plastic, Heavy Duty, Regular 19¢ Retail **9¢**

These Prices Good February 27 - March 1 at your Piggly Wiggly in \_\_\_\_\_ Muleshoe \_\_\_\_\_  
We Reserve the Right to Limit Quantities.

**SHORTENING** Jewel 3 Lb. Tin **59¢**

**PINTO BEANS** 4 Lb. Bag **49¢**

**FLOUR** Sunlight 5-Pound Bag **39¢**

**GRAPE FRUIT ORANGE JUICE** Texsun 46 Oz. **39¢**

**COCA-COLA OR DR. PEPPER** 6 Bottle Cat. **39¢**

