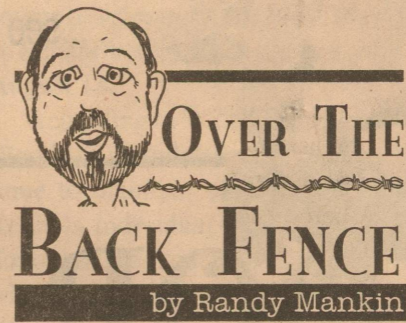


The high cost of raising children ...it's worth every penny



This week I overheard a stressed out mother discussing the high cost of raising kids in today's world. She had just taken her little urchins to the mall for some back-to-school shopping and was wondering aloud where she would get the money to pay next month's rent.

I read somewhere that it costs, on average, \$160,140 to raise a child to adulthood these days, not including college tuition. No doubt, the aforementioned mother would agree with that figure. Still, I believe it is a bargain...especially when you considers all the value you receive in return.

First of all you receive naming rights...first, last and middle. But that's just the start. Each subsequent day you get to see little

glimpses of God.

Then there are the giggles under the covers at night and sticky hands to hold during endless discussions about rocks, ants, clouds and warm cookies.

You will always have a partner for blowing bubbles, flying kites and reading about fascinating characters like Pooh Bear and Tigger and Piglet.

There will be someone near at hand to laugh yourself silly with no matter what the boss said or how your stocks performed that day. For a mere \$160,140, you never have to grow up...or, at least, you get to grow up all over again.

You get to be a hero just for retrieving a Frisbee off the garage roof, taking the training wheels off the bike, removing a splinter, filling the wading pool, coaxing a wad of gum out of bangs.

You get a front row seat to history to witness the first step, first word, first tooth, first date, and first time behind the wheel.

You get to be immortal. You get another branch added to your family tree, and if you're lucky, a long list of limbs in your obituary called grandchildren.

You get an education in psychology, nursing, criminal justice,

communications, and childhood development that no college can match.

You have the joy of watching Saturday morning cartoons, going to Disney movies, and wishing on stars. You get to finger-paint, carve pumpkins, play hide-and-seek, catch lightning bugs, and never stop believing in Santa Claus. You can frame rainbows, hearts, and flowers under refrigerator magnets and spray painted noodle wreaths for Christmas, hand prints set in clay for Mother's Day, and cards with backward letters for Father's Day.

You get to have it all! The power to heal a boo-boo, scare away the monsters under the bed, patch a broken heart, chaperone a slumber-party, ground them forever, and love them without limits.

All in all, I think it's a pretty good deal. For only \$160,140 you get all these things and more. And, you get to pay for it all on the installment plan. A mere \$8,896.66 a year, \$741.38 a month, or \$171.08 a week, \$24.44 per day...just over a dollar an hour.

What else would you do with the money? Spend it on a fine home? It would seem awfully empty without children.

I suppose you could buy a fancy car. But, without piano recitals, little league games or parent-teacher conferences to attend, where would you ever drive it?

No, kids aren't cheap. They are, in fact, downright expensive. But like the old saying goes, you get what you pay for. Hey, in this day and age, that's a pretty good deal!

Transportation group studies alternate truck route

AUSTIN — As debate continues on whether Mexican trucks should be allowed on interior highways, the Texas Transportation Institute is quietly studying another way to move freight: A 400-mile tunnel from Laredo to Dallas.

With truck traffic related to the North American Free Trade Agreement growing by 11 percent each year, the work under way in College Station is not as far-fetched as it might seem.

The idea is outlined in an article the transportation study group published last fall in its journal, Texas Transportation Researcher.

Here's the concept: Move freight on electric-powered, pallet-carrying vehicles through an underground concrete tube 2 meters in diameter.



No humans would be involved in the transportation process, except for operating the system from above and at either end.

"We are aiming specifically to alleviate the impact—pollution, road damage, accidents, congestion—of increased NAFTA truck traffic on Texas highways," said Steve Roop, director of the institute's Rail Research Center.

Roop said the system could move the equivalent of a tractor-trailer load on one railroad-like vehicle at about the same speed trucks can legally travel on highways.

The effective life of such a system, Roop said, would be 50 to 100 years.

Assuming such a route followed a straight line, a ruler laid between Dallas and Laredo on the Texas Department of Transportation's highway map shows it would cut through the Hill Country.

Even though the institute believes such a system would be efficient once built, it would be expensive. And given the resistance that killed the high-speed rail proposal, a tunnel across Texas doubtless would be controversial as well.

"It took 25 years to get the interstate highway system in place, so a large, integrated freight system would certainly take decades," Roop said in the article.

Oyster harvest up

Texas' oyster catch last year was the largest in a decade, according to statistics compiled by the National Marine Fisheries Service and the Texas Parks and Wildlife Department.

The state's long coastline netted harvesters 6.1 million pounds of oysters during the season, which runs from Nov. 1 to April 30.

Value of that catch is estimated

at \$14 million.

The Texas oyster harvest was only 2.9 million pounds in 1991.

Some Texas trivia

Everyone knows the state flower is the bluebonnet and that the state tree is the pecan, but do you know what the state shrub is?

It's not mesquite, which technically is a tree. It's not purple sage or mountain laurel. It's crape myrtle.

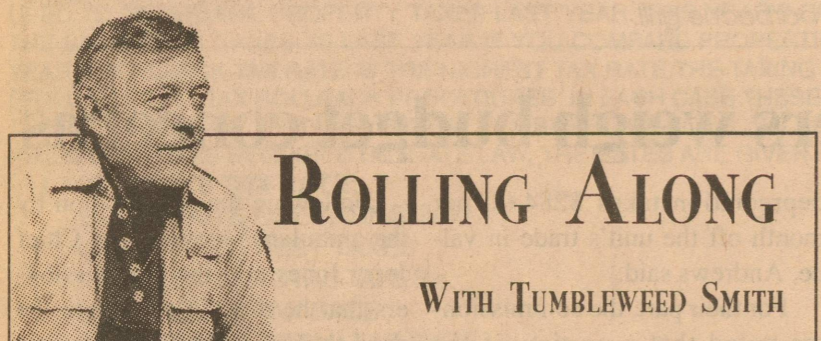
The Texas A&M University Research and Extension Center in Dallas has been studying the plant and the city of McKinney has undertaken a project to plant 50,000 crape myrtles in public areas and medians over the next decade.

Don't Mess With Texas

These four famous words, the unofficial slogan of Texas, previously only had been available on bumper stickers and plastic vehicle trash bags.

Now, however, for \$25 in addition to your vehicle registration fee, you can buy "Don't Mess with Texas" custom license plates.

The slogan has been around since 1985, specialty license plates since 1965.



Four Days On The Road In East Texas

On the way to East Texas I stopped in DeLeon and visited with Wallace Cook, a man who spends most of his time collecting jokes. In Comanche I listened to Patti O'Donnell tell me how she had a dream that she owned a gift shop in an old house. She actually found a house that looked exactly like the one in the dream. She bought it and opened a gift shop in it.

In Moody, I visited with a beer can collector and poet and heard about the cotton gin festival coming up in September. In Crockett I met Vince Patrick who gets up at 3:30 in the morning at his home in Oakwood, drives to Crockett and does a morning radio gig at KIVY, then goes back to Oakwood to take care of his deer ranch. In Oakland, Dale Shroyer gave me some background on the community where he lives. I interviewed Joanne Warner, a Cajun woman who loves Cajun food and music.

Jerry Gentry has a unique business in the Davy Crockett National Forest. He offers the Ribeye Trail Ride which includes a 2 hour horseback ride, a candlelight ribeye dinner and a log cabin for the night, all for \$60 per person. Jerry House is a minister in Crockett who also owns a general store in the tiny village of Leona. He cooks barbeque on Saturday nights at the store, then hightails it back to Crockett to fill the pulpit Sunday morning.

Dennis Ivey of Crockett told me

how me used to play in bands around the state and wrote a song that is popular around Christmas time. He got into music by hearing tunes on the juke box in his mother's cafe in the Madison county town of Midway. Suzanne Conway told me about working as a saw filer at a sawmill. She lives at Stubblefield, the gateway to Nogales Prairie and Brownlee Hill. Tim Culp brought me up to date on Crockett's world champion fiddlers contest. At Alto I learned about how ropes were sold in hardware stores long ago.

In Jacksonville, Robert Nichols told me about hunting big game in Africa. At Rusk I interviewed Mike Hall, an Elvis impersonator. TJ Hunter of Lone Oak is a helicopter mechanic now working in Bogota, Columbia keeping the helicopters working in the war against drugs. I interviewed Max Schochler of Rusk, a day lily expert and Marion Lindsey of Alto, whose family has been in the fur business for generations. Between Alto and Rusk I met Tom and Jan Townsend, who raise miniature horses and cows and provide military vehicles and equipment to movie companies. Some of their stuff is in the movie Pearl Harbor.

My last interview on this trip was with Darell Massey, an inmate at a state prison in Rusk. He is behind bars for DWI. He has an exceptional talent in art and has done murals in the Cherokee county court house.

Steve M. Sessom, D.D.S.
General Dentistry

Hwy. 277 N. 304 Ave. D
Eldorado, TX Ozona, TX 76943
(915) 853-2534 (915) 392-2575

THE ELDORADO SUCCESS

Publisher and Editor: Randy Mankin
Office Manager and Classifieds: Kathy Mankin
Advertising and Circulation: Lori Stricklan
Local Reporter: Pat Ragsdale
Sports Reporter: David Hill

The Eldorado Success is published weekly at 204 SW Main Street in Eldorado, Texas by Masked Rider Publishing, Inc. Subscriptions are \$20 per year in Schleicher County and \$25 per year elsewhere in the United States. Periodical class postage paid at Eldorado, Texas 76936. POSTMASTER: Send address changes to THE ELDORADO SUCCESS, P.O. Box 1115, Eldorado, Texas 76936-1115. Notices of entertainment where admission is charged, cards of thanks, resolutions of respect and all material not news, will be charged at regular advertising rates. Advertisements, Classified Ads and Cards of Thanks are payable in advance unless the customer has an established account. A finance charge of 1.5% per month will be assessed to customers with balances over 30 days old. Any erroneous reflection upon the character or reputation of any person or firm will be promptly corrected when brought to the attention of the management.

The Eldorado Success is not responsible for copy omissions, typographical errors or any other unintentional errors that may occur other than to make a correction in the next issue. The Eldorado Success reserves the right to cancel any advertisement at any time.

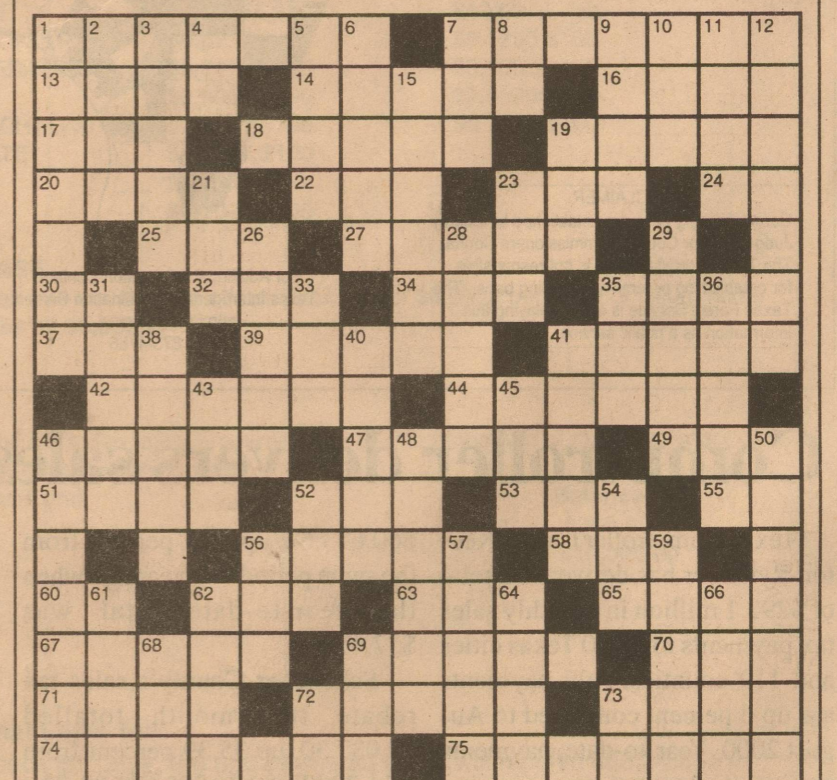
Letters to the Editor will be considered for publication only if they are signed and are accompanied with a day and night phone number for verification purposes. Anonymous letters will not be published.

THE ELDORADO SUCCESS
© Copyright 2001 MASKED RIDER PUBLISHING, INC.
Office: (915) 853-3125 Fax: (915) 853-3378
E-Mail: success@myeldorado.net
USPS 342-470
website: www.myeldorado.net

MEMBER 2001
TEXAS PRESS ASSOCIATION
AWARD WINNER

CROSSWORD PUZZLE

| | | |
|---|---|--|
| ACROSS | fertility | 19 Oval office nickname |
| 1 747 departure | 52 Function | 21 Dustup |
| 7 Inhabitant of Bhutan | 53 Auricle | 23 Goddess of fate |
| 13 Goods or money obtained illegally | 55 Helium, periodically | 26 Moss genus |
| 14 A metrical unit with unstressed-stressed syllables | 56 Primp | 28 Far beyond the norm |
| 16 15th day of March | 58 Wrestling ring floor | 29 Oscine bird |
| 17 Fodder | 60 That is to say | 31 Gumbos |
| 18 Commonly encountered | 62 Merriment | 33 Tibetan ox |
| 19 Nonpareil | 63 High arching return of a tennis volley | 35 Wheel pivot point |
| 20 Jewish calendar month | 65 Whimper | 36 Polecat |
| 22 Explosive (abbr.) | 67 Chaparral brush | 38 Abominable snowmen |
| 23 Small four-stringed Hawaiian guitar | 69 Of or relating to punishment | 40 Discontinue |
| 24 Erie's state | 70 Magnetic resonance imaging for short | 41 At right angles to the length of a ship |
| 25 Antelope of south-east Africa | 71 Unwritten | 43 Motorcoach |
| 27 Sky-blue | 72 Parade | 45 Hotshot |
| 30 In the direction of | 73 Information that has become public | 46 Number by which a dividend is divided |
| 32 Sardonic | 74 Fugitive | 48 Exotic dancer |
| 34 Stale | 75 Engraving | 50 Distinguishing |
| 35 High fidelity sound system | | 52 Vase |
| 37 Firmament | DOWN | 54 Roman warship |
| 39 Racing sailboat | 1 Jerseys | 56 Public house |
| 41 Containing or derived from gold | 2 Distant in space or time | 57 Time being |
| 42 Chew out | 3 Inuit canoe | 59 Pacing |
| 44 Groove joint in cabinetry | 4 For example (abbr.) | 61 Very light brown |
| 46 An item of data | 5 Clenched hand | 62 Sub-Saharan language |
| 47 Quickly | 6 Animal collection | 64 Basic unit of money in Thailand |
| 49 Halloween's mo. | 7 42 gal. makes one of these | 66 Passeriform bird |
| 51 Egyptian goddess of | 8 Howdy | 68 Campaigned |
| | 9 Lunar time period | 69 Remuneration |
| | 10 Fruit drink | 72 Informal term for mother |
| | 11 Type of 9D | 73 Golly |
| | 12 Muslim | |
| | 15 Unleavened bread | |



This crossword puzzle is sponsored each week by:

Kerbow Funeral Home

"Established in 1943"

Family owned and operated

- Monuments 853-3043
- Pre-Need Burial Insurance 387-2266

OBITUARIES

Samuel Albert "Bull" McGinty

DILLEY — Samuel Albert "Bull" McGinty passed away on Monday, August 13th, 2001, from complications of cancer. Funeral services are planned for 11:00 a.m. today in the First Baptist Church of Dilley. Interment will follow in Divot Cemetery.

He was born in Ozona on April 27, 1913 to Thomas Jefferson McGinty and Ruth Currie McGinty. After his parents divorced in 1918, Albert and his sister Margret moved to Eldorado with their mother, where she worked for the local telephone company.

On July 15, 1919, Mrs. McGinty married George Williams of Eldorado. The family made their home on a ranch just south of town. Mr. Williams had four children from a previous marriage. Another child, George Williams, Jr. was born to the couple on August 9, 1920. In 1922, twins were born, Robert Harry Williams and Roberta Helen Williams. Another daughter, Beula Mae Williams was born in 1924.

Albert and his brothers and sisters grew up sharing the work around the ranch and in the home. Albert became George Williams' "right-hand man" helping to break farmland for the plow and working alongside the hired help.

Albert grew to be a rather large, 180+ pounds, well-developed high school boy. He was a noted football player that many will recall as "Bull McGinty." With the help of

a football scholarship to Texas Tech, plus the encouragement and financial assistance of Mr. George Williams and many jobs on campus, Albert earned a college degree in the late 1930s.

"Bull" McGinty was often referred to as the closest thing Texas Tech had to an "All-American" during his days playing fullback for the Red Raiders. More importantly, however, he was a fine Christian man.

Albert and his wife, Merle, raised four children, two boys and two girls and they, too, are witnesses to the Lord.

Albert joined the Texas Border Patrol where he served throughout WWII. Soon after the war he became associated with the San Antonio School system where he rose to become a principal in the Harlandale School District. He enjoyed that occupation until his retirement in the late 1960s.

After retiring, he and his wife moved to their property in Frio County, northwest of Dilley on FM 117, near the community of Divot.

Albert is survived by his wife Merle of Dilley; for children, Melinda McGinty, Diana Schick and husband Michael, Samuel A. McGinty, Jr. and wife Connie, Thomas Matthew McGinty and wife Deborah; and nine grandchildren.

The family suggests memorial donations be made to Gideons International.

Ola Ruth Barbee



to Eldorado. She returned to Big Spring 3 weeks ago.

She was a Presbyterian and active in church work. She was a volunteer for Meals on Wheels and a member of the Historical Societies of Big Spring and Schleicher County. Mrs. Barbee also was a 50 year member of the Texas Extension Homemaker Club. Locally she served as the reporter for the Good Neighbor Club, submitting monthly news articles about club activities. She enjoyed participating in district and state events.

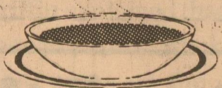
Survivors include two daughters, Peggy Cottongame of Big Spring and Patsy Santisteban of San Landro, California; 6 grandchildren; 15 great grandchildren and 2 great-great grandchildren.

The family suggests memorials to the American Heart Association, 3525 Andrews Hwy. Suite 111, Midland, Texas 79703.

Fund opened at FNB to benefit Orand

The Carol Orand Cancer Fund had been established at First National Bank of Eldorado. Carol Orand was diagnosed with Liver Cancer recently. The fund is intended to help offset expenses related to her treatment. Donations may be made at First National Bank. However, those wishing to make tax deductible donations may do so by giving to the Community Baptist Church Benevolence Fund.

Meals for Friends Menu



Monday, August 20

King Ranch Chicken, Steamed Broccoli, Dinner Roll, Carrot Salad, Oatmeal Cookies, Milk

Tuesday, August 21

Roast Beef Sandwich, Baked French Fries, Lettuce Leaf, Tomato Slices, Bread, Pea Salad, Peach Halves, Milk

Wednesday, August 22

Chicken Fried Steak w/ Gravy, Buttered Peas, Spinach, Cornbread, Sunshine Fruit Cup, Milk

Thursday, August 23

Chicken Fajita Salad w/Cheese, Tomato Wedges and Lettuce, Macaroni Salad, Crackers, Cherry Perfection, Pumpkin Pie, Milk

Friday, August 24

Hamburger on a Bun, Whole Baby Carrots, Lettuce, Tomato, Onion, Seafoam Salad, Fresh Grapes, Milk

Concerts at Fort Concho keep in touch with western tradition

Saturday night beginning at 7:30 p.m. Fort Concho in San Angelo will present the third show in its summer series of campfire concerts.

"The last show when off without a hitch," stated Roger "Wrangler" Banks. "Based on the audience's comments after the show, number of emails and telephone calls we have had this month, the audiences really seem to like our efforts. Most have stated it's nice to be able to take the whole family out for an evening of entertainment that doesn't cost you an arm and leg and you don't have to worry about the content."

It has always been a tradition for westerners to entertain themselves with music and that tradition continues every third Saturday in San Angelo with artists performing music similar to what you might have heard on the Chisholm Trail. You might also hear songs that were performed by your favorite silver screen cowboy heroes like Roy Rogers, Gene Autry, or Rex Allen. The shows music, poetry and stories blend a bit of western history a pinch of the romantic west.

The western concerts are normally held in the courtyard or in one of the historic buildings within the Fort Concho compound. This month the featured entertainers will be Western Music Association artists Jim Wilson and San Angelos' own cowboy balladeer duo, The Pardes.

Jim Wilson is an Austin native who was raised in San Antonio. For nearly 30 years, he served as a Peace Officer in Denton and Crockett Counties. In 1988, he was elected Sheriff of Crockett County.

ty and served in that capacity until his retirement from law enforcement in 1996.

Wilson began playing music while he attended Texas Christian University. However, his earliest musical recollections were of his father singing the old cowboy songs, such as "Leaving Cheyenne" and "Streets of Laredo." With the emergence of contemporary cowboy music, he naturally returned to those musical roots.

Since his teens, Jim Wilson has rodeoed, team roped, and worked on area ranches, whenever time permitted. "Since those days, I've always tried to keep at least one good horse and make a hand at cowboy chores," Wilson says. Jim Wilson currently does his riding, writing and guitar picking at his place on Spring Creek near Mertzon, Texas.

Some 10 years ago, he began to supplement his law enforcement income by writing articles for various gun magazines. He is currently a full-time writer, serving on the staff of *Shooting Times*. Wilson is well recognized for his monthly column "Gunsmoke" that regularly features historic western events and in his spare time, he is working on his first western novel.

Two San Angelo residents, Roger Banks and Hayden Whittington make up the Pardes. They have been producing and performing at the campfire concerts for two years. They recently released their first CD titled "Strictly Western."

For more information about the monthly concert, call 915-949-6870.

WEST TEXAS INDUSTRIAL ENGINES, INC.
 KOMATSU HEAVY EQUIPMENT RENTALS
 DOZERS • LOADERS • BACKHOES • EXCAVATORS
 Daily • Weekly • Monthly
 915-659-1555
 1002 W. 19th SAN ANGELO TEXAS
 In conjunction with CONTINENTAL EQUIPMENT COMPANY, L.P.

THE COMPUTER DOCTOR
 Hometown Service for PC's and PC Clones
 Custom Built Computers
 Hard Drive Backups
 Joe Christian
 Eldorado, Texas
 853-2667
 We make housecalls!

Texaco Star Stop
 303 N. Divide
Gandy's Milk 279 1 gallon
Dr Pepper Products 1 Liter 99¢
 \$1.69 3 Liter
 12 pack cans \$3.49
Cheetos® or Doritos® GRAB BAG 50¢
Gandy's Icecream Cup 50¢
 853-3474
 Deli Hours 5am to 10pm
 Store hours 5:00 am to 12:00 midnight — EVERYDAY!

Pizza Pro
 Hours: 11-2 & 5-10
 853-2504
SPECIAL
 Buy 2 Personal Size 1-Topping Pan Pizza and get 3rd FREE
 HOURS: 11 a.m. to 2 p.m.

BIRTHDAY LIST

AUGUST

16th Kim-et Nelson, Leon Fuentes, Michael Ballew, Ray David Buitron Jr., Kristina Prater, Rocky Robles, Kristina Fritz, Jay Blaylock, Koda Lozano, Dana Ledbetter, McKenzie Mc Angus, M'Lissa McKinney Schoening, J.B. Garcia, Hallie Schwiening
 17th Lisa Brown, Frankie Short, Rick Singleton, Leigh Ann Neal, Milti Lux, Earl Yates, Shirley Joiner, Mike Sproul, Marty Joe Powell, Nikkita Herrera
 18th Kimberly Williams, Weldon Jenkins, Lana Jones, Shine Spigarelli, Elida J. Estrada, Charlie Niblett, Ray David Buitron Jr., Hugh Lindsey
 19th Jonathan Belman, Michael Hill, Will Kessler, Justin Paxton, Trey Walker, Jerry Richards
 20th Brent Moore, Craig Gutierrez, D.J. Criswell, Keith Corley
 21st Hal Porter, Juan Carlos Escobar
 22nd Johnny Lozano, Rebecca Rodriguez, Milton Fitts, Amy Henderson, Winona Isaacs, Linda Creel, Colleen Swatzell, Sonia Covarrubiaz

ANNIVERSARIES

AUGUST

16th John & Thelia Mayo, Debbie & Kerry Joy, Norris & Sharon Sauer
 17th Robbin & Glyn Hutto, Wayne & Sharon McCarty, Richard & Carolina Mendez
 18th Bessie & W.H. Clifton
 20th Herman & Deanne Walker

Now Doing Weddings Only!
 Free Consultation
 Call for appointment.
FLORAL DESIGNS
 by Liz Anderson
 Call 915-853-2659
 Corner of 201 S. Oak & Gillis

Getting Married?

CALL VICTORIA RICHARDSON IN SONORA, TX!!!
 915-387-5280

Save yourself the hassle of looking for wedding, bridesmaids, flower girls, mother of the bride, quinceañera, first communion dresses!

SIZES 1-30!

Shop smartly, & enjoy the convenience of local alterations/fittings!

Call Victoria today! 915-387-5280 or victoria@sonora.net



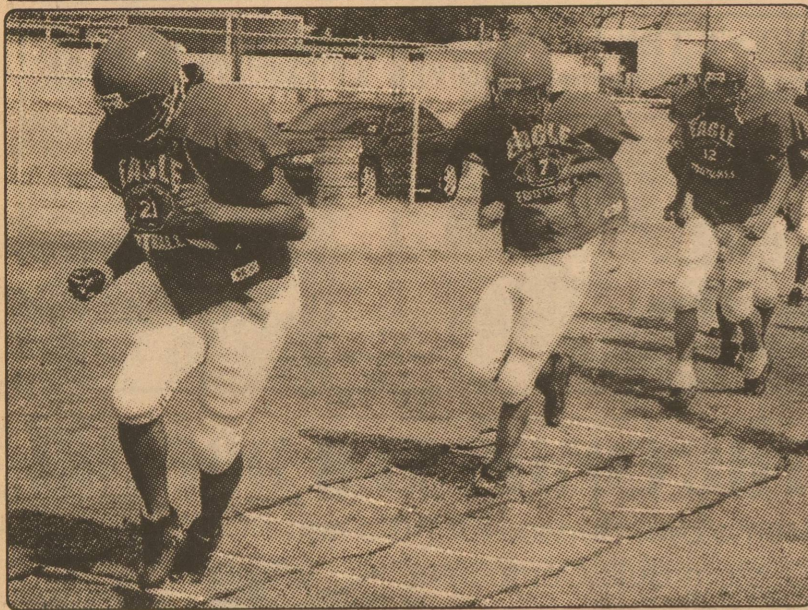
It's Back-to-School time for Eldorado's education professionals



Eldorado Middle School Special Education Aide Sylvia Belman won \$92.43 during SCISD's annual staff orientation. That's when she guessed nearest the amount contained in a piggy bank donated by First National bank of Eldorado. Personal Banker Stacy Haynes presented the piggy bank and the money on behalf of FNB.

FIRST NATIONAL BANK OF ELDORADO

Main 853-2561 • TeleBank 853-2567
 TeleTime 853-2569 • Member FDIC



High steppin' — Eagles varsity players went through another day of drills Tuesday as they prepare for their first action of the season in a scrimmage against Stanton this Saturday. The contest will be held in Big Lake.

Eagles scrimmage Stanton Saturday in Big Lake

by David E. Hill

The 2001-02 Eldorado Eagles will finally get to pick on someone else this week as they travel to Big Lake on Saturday to scrimmage the Stanton Buffalos. The Eagles have been banging their heads against classmates for the last week and are ready to see someone in another uniform.

The scrimmage will begin at 9:30 am in at Owl Stadium in Big Lake with the J.V. Eagles taking the field first. The Varsity should begin around 10:15 am and the scrimmage should be complete by 11:45.

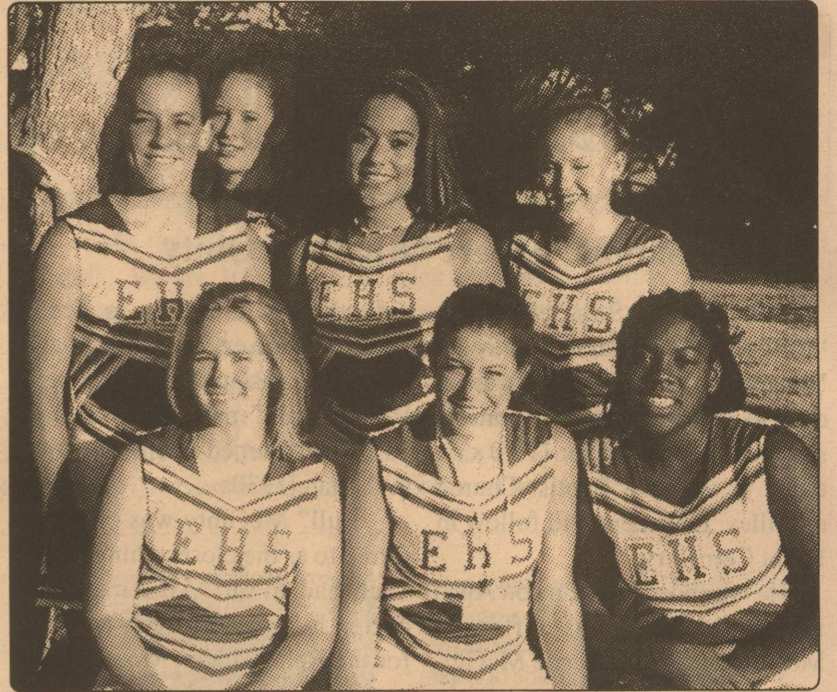
Coach McCormack said of the upcoming scrimmage, "this is an excellent opportunity for us to continue to evaluate our personnel. Scrimmages give us the ability to measure how far we have come and what we need to work on pri-

or to opening of the regular season. Final scores are not important in this scenario."

Practices have continued in full pads during the afternoons at the Eagle practice field and McCormack indicates he is pleased with what has been happening, "we continue to improve each day. The terminology and schemes on offense are different so we have been doing a lot of teaching in addition to the basic drills. I know the kid's are looking forward to hitting somebody else on Saturday."

Everyone is encouraged to make the trip to Big Lake on Saturday and support both the Varsity and J.V. squads.

Watch next week's Success for a preview of the upcoming season and what the "experts" predict will unfold over the next 16 weeks of the season.



EHS Varsity Cheerleaders this year are (Front L-R) Courtney Brown, Courtney Sauer, Christina Redish (Back L-R) Tabitha Lloyd, Mascot Amanda Wanareck, Elibeth Montalvo and Mitzi Sessom.

EHS cheerleaders claim top honors at UCA camp

The EHS cheerleading squad brought home a number of honors from the Universal Cheerleading Association camp held at Angelo State University recently.

For the second year in a row, Tabitha Lloyd was named as one of the camp All-Stars. Together the girls won a Superior Squad rating, received the Blue Superior Squad rating every day and earned the Spirit Stick each night of the camp.

At the end of the camp, the girls brought home the Overall Superior Squad Trophy. Cheerleading Sponsor Chris McCravey was also honored as the Superior Coach of the camp.

In all, more than 30 squads participated in the camp from schools such as Sundown, Fredericksburg and Wall.

Each year the EHS cheerleaders take part in the camp in order

to gain experience and confidence with their existing routines, pick-up new ideas and learn new routines. This year the varsity cheerleaders are: Courtney Brown, Tabitha Lloyd, Elibeth Montalvo, Christina Redish, Courtney Sauer, Mitzi Sessom and Mascot Amanda Wanareck.

School Menu



Milk & Bread Offered
Menus Subject To Change
Cafeteria Line

Monday, August 20
Spaghetti and Meat Sauce, Whole Kernel Corn, Sliced Peaches, Garlic Toast, Chocolate Pudding/Topping

Tuesday, August 21
Taco Salad w/Cheese, Shredded Lettuce and Tomato, Diced Pears, Iced Cupcakes

Wednesday, August 22
Chicken Nuggets w/Gravy, Creamed Potatoes, Mixed Fruit, Dinner Roll, Orange Jello

Thursday, August 23
Pepperoni Pizza, French Fries, Lettuce & Tomato Salad, Yellow Cake w/Icing

Friday, August 24
Cheeseburger, Tater Roundabouts, Lettuce, Tomato and Pickle, Apple Slices

Breakfast
½ pt. Milk & 4oz Juice Offered with each breakfast

Monday, August 20
Pancakes/Syrup, Peaches
Tuesday, August 21
Cream of Wheat, Toast/Jelly, Apple Juice

Wednesday, August 22
Breakfast Pizza, Orange Juice
Thursday, August 23
Cheese Stick, Donuts, Pears

Friday, August 24
Cinnamon Roll, Apple Juice
Fast Food Line

Monday, August 20
Grilled Cheese Sandwich, Breaded Fried Okra, Corn Chips, Chocolate Pudding/Topping

Tuesday, August 21
Chili Crisпитos/Cheese Sauce, Tater Roundabouts, Diced Pears, Iced Cupcakes

Wednesday, August 22
Burrito, Tater Roundabouts, Crushed Pineapple, Orange Jello/Topping

Thursday, August 23
Chef's Salad, Crackers (8), Mixed Fruit, Yellow Cake/Icing

Friday, August 24
Cheeseburger, Tater Roundabouts, Lettuce, Tomato and Pickles, Fresh Apple

2001 Eldorado Eagles Varsity Football Schedule

| Date | Time | Opponent | Place | Score |
|---------------|------------|---------------------|----------|-------|
| Sat. Aug. 18 | 10:30 a.m. | Stanton (Scrimmage) | Big Lake | |
| Thur. Aug. 23 | 6:30 p.m. | Rankin (Scrimmage) | There | |
| Aug. 31 | 8:00 p.m. | Christoval | Here | |
| Sept. 7 | 7:30 p.m. | Bangs | There | |
| Sept. 14 | 8:00 p.m. | Menard | Here | |
| Sept. 21 | 7:30 p.m. | Blanco | Here | |
| Sept. 28 | | Open | | |
| Oct. 5 | 8:00 p.m. | Rocksprings | Here | |
| Oct. 12 | 7:30 p.m. | Mason | There | |
| Oct. 19 | 7:30 p.m. | Junction | Here | |
| Oct. 26 | 7:30 p.m. | Wall | There | |
| Nov. 2 | 7:30 p.m. | Grape Creek | Here | |
| Nov. 9 | 7:30 p.m. | Sonora | There | |

2001 Eldorado Eagles Jr. Varsity Football Schedule

| Date | Time | Opponent | Place | Score |
|---------------|-----------|---------------------|----------|-------|
| Sat. Aug. 18 | 9:30 a.m. | Stanton (Scrimmage) | Big Lake | |
| Thur. Aug. 23 | 5:30 p.m. | Rankin (Scrimmage) | There | |
| Aug. 30 | 6:30 p.m. | Christoval | There | |
| Sept. 6 | 6:30 p.m. | Bangs | Here | |
| Sept. 13 | 6:30 p.m. | Menard | There | |
| Sept. 20 | 6:30 p.m. | Ozona | Here | |
| Sept. 28 | | Open | | |
| Oct. 4 | 6:30 p.m. | Rocksprings | There | |
| Oct. 11 | 6:30 p.m. | Mason | Here | |
| Oct. 18 | 6:30 p.m. | Junction | There | |
| Oct. 25 | 6:30 p.m. | Wall | Here | |
| Nov. 1 | 6:30 p.m. | Grape Creek | There | |
| Nov. 8 | 6:30 p.m. | Sonora | Here | |

It's time to purchase Eagles Football season tickets

Football season tickets for 2001 will be sold at the Eldorado High School office beginning Monday, August 20, 2001 at 9 a.m.

Season tickets for 2001 will be \$6.00 per seat for six (6) home games. Each season tickets will be \$36.00. No individual games sales will be made. Other ticket prices are General Admission: adults \$5.00; school age children \$3.00; under school age children free.

Listed below are the dates for

home games:

August 31, Eagles vs. Christoval 8 p.m.; September 14, Eagles vs. Menard 8 p.m.; September 21, Eagles vs. Blanco 7:30 p.m.; October 5, Eagles vs. Rocksprings, 8 p.m. Homecoming; October 19, Eagles vs. Junction, 7:30 p.m.; November 2, Eagles vs. Grape Creek, 7:30 p.m.

For more information, please call Abbie McCormick at Eldorado High School at 853-2549 ext. 321.

4-H Shooting Sports program gets underway on Sunday

by Scott Edmonson
County Extension Agent - Ag

After lots of planning and preparations, the 4-H shooting sports project is kicking things off on Sunday, August 19, 2001 at 2:00 p.m. in the Schleicher County Memorial Building. This meeting will be the safety training course and all 4-Hers who want to participate in shooting sports will be required to participate in the training regardless of prior experience.

This is open to all 4-Hers and even if you have not been in 4-H and would like to participate, all you have to do is sign up. And,

parents, we encourage you to come and get involved.

During this meeting, we will go over the rules for participating in the project and also cover safety. If you have any questions, feel free to contact Scott Edmonson or Susan Lloyd @ 657-3430. We look forward to seeing everyone there.

Business Cards
Self-Inking Stamps
on sale at
THE SUCCESS

Videos & More
GO EAGLES!
Mon. - Thur. 3-9 p.m.
Fri. 3-10 p.m. • Sat. 12-10 p.m.
800 N. Divide
853-1224

NOS Niblett's Oilfield Services, Inc.
PUMP TRUCKS, TRANSPORT SERVICES, VACUUM TRUCKS, ACID TANKS, FRAC TANKS, EQUIPMENT HAULING
Hwy. 277 S.
P.O. Box 910
Eldorado, Texas 76936
(915) 853-2521

We're Behind You All The Way, Eagles!
Crowder Services, Inc.
Rt. 1 Box 70A • Eldorado, Texas 76936
(915) 853-2852
A Petroleum Industry Construction Company
In Field Valve Lubrication Service

Proudly Supporting The Eagles!!!
John E. Meador Construction
General Oil Field Construction
Complete Roustabout Service Fully Insured
• Pumping Service & Radio Equipped
• Backhoe • Welding 24-Hour Service
• Sandblasting & Painting Phone: (915) 853-3135
• Polyethylene or Steel

RYE SUPPLY COMPANY, INC.
General Oilfield Supplies • Pump Repairs
GO EAGLES!
216 South Divide Ph: (915) 853-4060
Eldorado, TX 76936 Fax: (915) 853-1411

PIZZA PRO
Mighty Eagle Fan of the Week
Who will be the Mighty Eagle Fan of the Week? Watch this space next week and find out. Who knows, it may be you! If you are chosen as Pizza Pro's Mighty Eagle Fan of the Week, cut out the ad, bring it by Pizza Pro and say, "I'm the Mighty Eagle Fan of the Week!" and receive a free pizza!

D L Automotive
We're Backing The Mighty Eldorado Eagles!
We're Backing The Eldorado Lady Eagles!
109 W. U.S. Hwy. 190
Eldorado, Texas 76936
853-2629

B. J.'s Garage & Wrecker Service
Proud Supporter of the Eagles and Lady Eagles!
853-4080
216 S. Main
Eldorado, Texas 76936

Eldorado.net
Eldorado online all the time!
www.myeldorado.net

PREMIERE CINEMA CORP
NOW ACCEPTING CREDIT CARDS
\$3.00 BARGAIN MATINEES BEFORE SIX
\$3.00 BARGAIN TUESDAYS (*RESTRICTED)
SOUTHWEST 7
949-9985 3598 Knickerbocker Rd.
Saturday and Sunday
• American Outlaw (DTS) (PG-13) 1:00 3:15 5:25 7:40 9:50
The Others (DTS) (PG-13) 12:10 2:35 5:00 7:30 9:55
Jurassic Park 3 (PG-13) 12:50 3:10 5:30 7:50 10:15
The Fast and the Furious (PG-13) 12:20 2:45 5:10 7:45:10:10
Dr. Doolittle 2 (PG) 12:30 2:40 4:50 7:00 9:15
Atlantis (PG) 12:45 3:00 5:15 7:25 9:35
Shrek (PG) 12:40 2:50 5:05 7:10 9:20
Times good for the week of 8/17-8/23 only!
Friday/Monday through Tuesday
• American Outlaw (DTS) (PG-13) 5:25 7:40 9:50
The Others (DTS) (PG-13) 5:00 7:30 9:55
Jurassic Park 3 (PG-13) 5:30 7:50 10:15
The Fast and the Furious (PG-13) 5:10 7:45:10:10
Dr. Doolittle 2 (PG) 4:50 7:00 9:15
Atlantis (PG) 5:15 7:25 9:35
Shrek (PG) 5:05 7:10 9:20
* No Passes or Discounts

MANNY'S GROCERY
(915) 853-4406
Eldorado, Texas
GO EAGLES!
700 E. Murchison Ave.

HANOVER COMPRESSION
A HANOVER COMPANY™
Eldorado Division
902 East Street
(915) 853-2502
From The Wellhead Through The Pipeline...Hanover People Perform.

School appears no closer to adopting a redistricting plan

by Kathy Mankin

The SCISD board of trustees met Monday night for the second time in less than a month to consider a redistricting plan. And, for the second time in less than a month, the question seemed to be, "Who cares?"

With only three citizens in attendance to discuss the plan, the board grappled with the question of how to realign its 7 single-member districts to match the population numbers generated by the 2000 Census.

Thelma Bosmans, Marie Barrera and Victor Belman, Sr., were the only members of the public to attend the meeting. Frustrations quickly bubbled to the surface when Belman spoke in opposition to the redistricting plan proposed by the school board. The plan, which would create 5 single-member districts and 2 at-large districts, had been discussed at last month's meeting. At that time, the trustees believed they had reached a consensus supporting the 5-2 plan.

But, when the plan was introduced Monday evening by school attorney Sarah Leon, Belman advised the trustees that he had spoken with a law firm and had received advice that he should oppose the 5-2 plan. Belman declined to name the law firm when asked to do so by Marie Barrera.

Attorney Leon explained that the 5-2 plan would carve out 2 single-member districts that were predominately Hispanic. SMD#1 would be 57 percent Hispanic while SMD#2 would be 67 percent, Leon said.

At that point Thelma Bosmans advised the trustees that she favored the 5-2 plan. She noted that while previous plans have not been perfect, she believed the 5-2 plan

would allow the community to move forward without dwelling on past failures.

Board President Phil McCormick stated the school board is not necessarily pushing a particular plan over any other. "We just want a plan that the whole community can live with," McCormick said.

In May 1993 the first ever elections were held under the current single-member district system. That year, Phil McCormick, Chris McCravy, Berta Nicholson, Ilse Williams, Tip Finley, Eddie Albin and Scott McGregor were elected under the new system. Berta Nicholson, who represents a Hispanic majority district, has served since the 1993 realignment.

A second Hispanic trustee has been difficult to maintain, however. For a brief time, Felipe Pina served on the board but chose not to seek reelection. Ruby Minor was elected but later resigned her seat after moving out of her district.

With the board taking no action on a proposed redistricting plan, trustees appear to be headed back to the drawing board. They are the only governing body in Schleicher County still working on redistricting. Schleicher County and the City of Eldorado both approved new plans last month.

Another public meeting is tentatively slated for September 10, so that community members may express their opinions before the board of trustees cast their votes for a final redistricting plan.

Time is short, trustees need to adopt a plan as soon as possible so that the plan may be submitted to the U.S. Department of Justice for its approval. Time must also be allowed for a possible court challenges which may or may not render the entire process invalid.

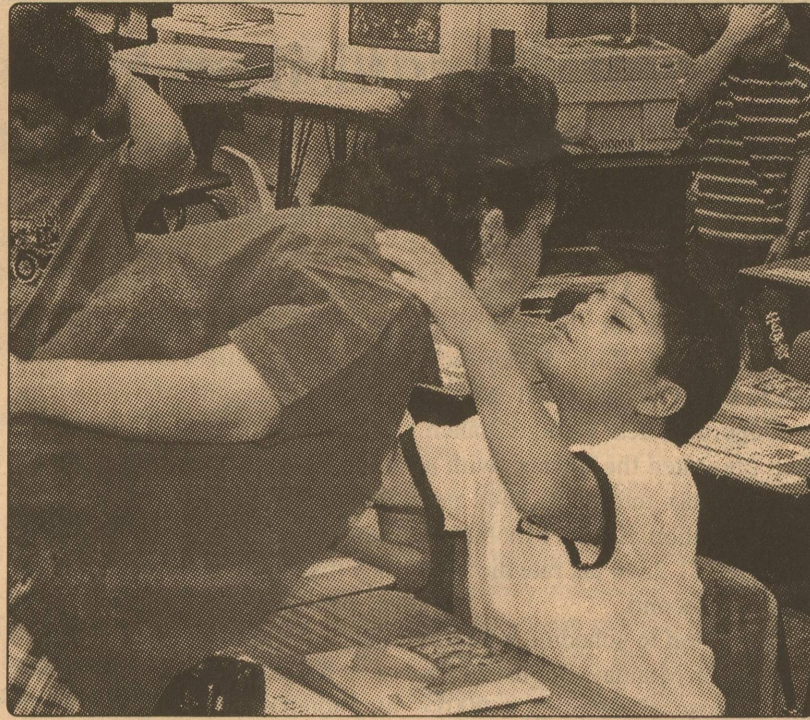


PHOTO BY KATHY MANKIN
First day of school kiss — 1st Grader Rudy Montez kissed his mom Marci goodbye last Friday as the first day of school began at Eldorado Elementary.

Tri-County Tourism Coalition is changing its name

The Tri-County Tourism Coalition, a group dedicated to expanding tourism opportunities in Schleicher, Sutton and Crockett Counties, is changing its name to South West Texas Tourism Partnership (SWTTP).

The original coalition was formed in the fall of 2000 as part of a regional project to look at economic adjustment strategies for the Texas Sheep and Goat Industry and the communities dependent upon the industry. Sutton, Crockett and Schleicher counties were selected as a pilot counties to explore economic adjustment strategies for communities. Common agricultural interests don't follow county lines so when interested individuals in these three counties were brought together they were joined by folks from Christoval.

After much discussion this

group decided that tourism had good economic possibilities and the Coalition was born. The Coalition's diverse membership included (but was not limited to) ranch and attraction owners, bed and breakfast and motel operators, Chamber of Commerce representatives, retailers and restaurant managers, all interested in working together to determine ways to maximize the economic impact of tourism on our area. In January of 2001 this group participated in an all-day motor coach "Discovery Tour" of a fascinating array of sites and services in the three-county-plus-Christoval area. Several places visited were unknown to many participants until this tour.

In June of 2001 SWTTP met in Sonora for a planning retreat focused on expanding tourism in the SWTTP area. Participants discussed goals and objectives and worked on strategies for meeting these goals. Several of the strategies developed during the meeting in Sonora will be implemented in the next few months.

Anyone interested in participating in this project or receiving more information about the South West Texas Tourism Partnership may contact Vickie J. Williams, Chamber of Commerce Secretary, at 915-853-3109.

County begins consideration of budget issues

CONTINUED FROM PAGE 1

lion. That's up from \$174.6 million to \$195.3 million.

Judge Griffin distributed a "Tax Rate Comparison" worksheet that listed revenue the county could expect to receive at various tax rates. For example, in fiscal year 2001, a tax rate of 65.92¢ brought in approximately \$1,078,035.00 to county coffers. According to the worksheet, a tax rate of 55.18¢ in 2002 would net the county roughly the same amount of money. The worksheet went on to list the amount of revenue could expect to receive from successively higher tax rates.

As the commissioners looked ahead to next year, they discussed several proposed projects. Bill Clark expressed his view that the infrastructure of the county is deteriorating and several items need repair and/or upgrading. Judge Griffin replied that in order to address the problem the commissioners must decide between raising taxes and fees or cutting county services.

Griffin explained that the county's newest dump truck has over 400,000 miles on the odometer. Then, he warned the commissioners, "Get ready, we're going to have to build an annex."

The judge was referring to a recent notice the commissioners had received from County Attorney Marian Overstreet that the Schleicher County Courthouse does not meet requirements of the Americans With Disabilities Act. Current sentiment seems to be that the easiest and least expensive way to comply with the act is to construct a courthouse annex.

Tax Appraisal District manager Ray Ballew reported to the commissioners that since 1985, revenues to the county had increased by only \$200,000.00, an average of 2 percent per year. Ballew noted that amount is far below the

amount of inflation during the same time period. Taxable values in the county are higher now than at anytime since 1991, Ballew said.

In other business, the commissioners approved a request from County Clerk Peggy Williams to enter into a contract with the Attorney General John Cornyn's office for reimbursement for services related to collection of child support payments. A bond was approved for Kevin Herbert, new deputy at the Sheriff's Department. And, the accounting firm of Jones, Hay, Marschall & McKinney was appointed as county auditors.

A request to nominate a member of the Region F Water Plan-

ning District board of directors was referred to the Plateau Underground Water District. Then, a motion by Bill Clark for the county to fund dues to the Ports-to-Plains Coalition died for lack of a second.

Next, an inter-local agreement with Kerr County for mental health services was approved. And, repairs to the air conditioning system at the library/county agent's offices in the amount of \$1,097.00 was approved.

The court recessed at 11:45 a.m. with all items on the agenda having been addressed. The men reconvened at 1:00 p.m. to receive other budget requests and to discuss budget concerns.

Got Tupperware?

For more information on how you can buy or sell Tupperware, please call Shannon at **853-4006**



HUDSON LIVESTOCK SUPPLEMENTS
INCORPORATED

- ✓ All Natural Protein, No Urea
- ✓ Easy to Feed/ Less Labor
- ✓ No Salt or Fillers
- ✓ Enhanced Condition Storage
- ✓ Improved Reproduction
- ✓ Heavier Weaning Weights

Matt Brown
853-2496 or 650-6235

SureFed
Now handling a full line of SureFed Feeds

Featuring **N-Timidator®** THE ORIGINAL
Goat Feed and Supplement and still the best!

Friday is deadline to order sheep and goat validation tags

by Scott Edmonson

County Extension Agent, Ag.

It's that time of year again! It's time to place orders for the state validation tags for sheep and goat projects.

Therefore, all 4-Hers and/or FFA chapter members who are planning on showing a lamb or goat need to call the Schleicher County Extension office by Friday, August 17, 2001 and turn in your request for tags.

This is very important for those individuals who are planning on

participating in any of the major livestock shows. If you do not have a state validation, you will not be allowed to show. Also, please estimate as close as possible the numbers of tags you will need.

Sheep and goat validation will occur on Saturday, October 13 and on Saturday, October 27 from 9:00 a.m. til 12:00 noon at the county showbarn. You will need to make arrangement to attend one of those days. If you have any questions, call the Extension office at 853-2132.



Eldorado.net
Online...All the Time!
www.myeldorado.net

First United Methodist Church
Eldorado, Texas

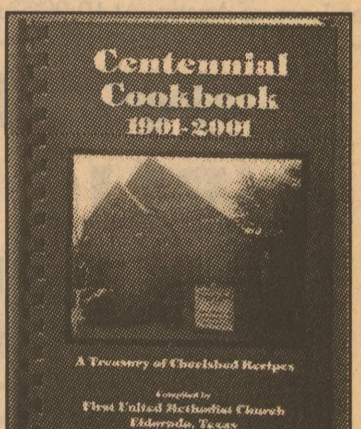
Centennial Cookbook

1901-2001

A Treasury of Cherished Recipes

\$15⁰⁰ each

Contact: Cathy Niblett
915/853-2645 or the church office at 915/853-3241.





Home Owned EST. 1910 Home Operated
10 E. Gillis • Eldorado Texas
(915) 853-2730

NOW CARRYING A FULL LINE OF FRIGIDAIRE APPLIANCES



- Washers & Dryers •
- Electric & Gas Ranges •
- Microwave Ovens •
- Refrigerators •
- Upright & Chest Freezers

WE ACCEPT ALL MAJOR MAJOR CARDS






FINANCING AVAILABLE!
WITH APPROVED CREDIT

We're trying hard to serve you better!

Schleicher County Medical Center is an "in network" health care provider for most major health care plans. If your insurance company does not list SCMC as an "in network" provider, or if you are unsure about your insurance company's network status, just call 853-2507. We want to be your health care provider!

For Your Convenience SCMC now accepts



Caring People In the Business of Caring for You

Schleicher County Medical Center

400 West Murchison ~ Eldorado, Texas

24-Hour Phone: 853-2507

Clinic and Emergency Room physicians are independent contractors and are not employees of Schleicher County Medical Center

School board meets, discusses Capital Acquisition Plan

by Kathy Mankin

Representatives from two health insurance providers, Ashmore Insurance Agency and Shannon Medical Center's Legacy Plan, were on hand for Monday night's meeting of the Schleicher County I.S.D. board of trustees. The two agents submitted proposals for employee health insurance coverage to the board. The trustees took no formal action on the topic, however, they are set to take up the matter again at a meeting on August 20.

Present for the meeting were trustees Steve Sessom, Jo Helen Kotsch, Phil McCormick, Eddie Albin, Kurtis Homer and Berta Nicholson. Trustee Sam Whitten, Jr. was absent.

At 8:30 p.m. the board went behind closed doors for an executive session to discuss the legalities of a proposed Capital Acquisition Plan with their attorney Sarah Leon of Austin. At 10:00 p.m.

the group emerged into open session to discuss the matter. Chief Appraiser Ray Ballew of the Schleicher County Tax Appraisal District questioned the board concerning the practice of using the CAP plan to incur debt.

Last year the board used the CAP plan to purchase buses, computers and other property. The money was borrowed from the CAP fund established by the Texas Association of School Boards and paid back with tax revenue. Ballew explained that the district had applied the loan payment to the Maintenance & Operation (M&O) side of the budget instead of the Interest & Sinking (I&S) side. Ballew noted that when debt on I&S items is retired, the money drops out of the district's tax rate. However, when debt is retired on the M&O side, the tax rate does not automatically drop back down.

After discussing the matter at length, a motion to proceed with a

second CAP program was offered by Eddie Albin and seconded by Berta Nicholson. The motion failed on a 3-3 vote with Kurtis Homer joining Albin and Nicholson in voting for the measure. Steve Sessom, Phil McCormick and Jo Helen Kotsch voted against.

Superintendent George Blanch then presented the trustees with a proposed tax rate of \$1.3344 per \$100 valuation. Kotsch's motion to adopt the \$1.3344 tax rate died for lack of a second.

A motion to schedule a public meeting on Monday, August 29 for the purpose of adopting a 2001-2002 budget, passed unanimously.

Next, it was announced that Su Scott, High School Keyboarding and Accounting teacher has of-

fered her resignation, effective January 1, 2002. The board voted to accept the resignation.

Discussion of new bus routes for "hazardous areas" focused on the neighborhood near the intersection of East Street and U.S. Hwy 190 and the neighborhood near the intersection of U.S. Hwy 277 and Rudd Road (County Road 300.) It was noted that since students in these areas must cross busy streets, they may be served by school buses, even though they live within 2 miles of school, the limit normally set for school bus service. It was also noted that funding for the service, in the amount of \$6,900.00 is available through the Texas Education Agency. The board then voted to designate the two areas as "hazardous areas" and apply for the funding from TEA.

In other business the trustees approved a student transfer for the child of a district employee.

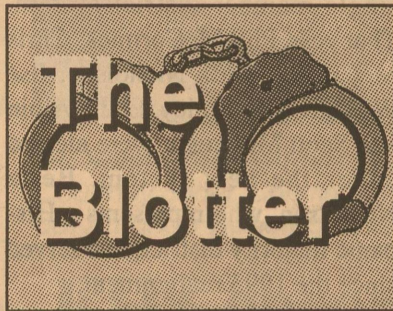
Eagle Booster Club News

by Bill Hodges

As an update on our Digital Video Camera Project, we would like to note that, as of August 14th, 2001, we are 30 percent of the way to raising the funds to compete our first project of the year. So far, donations have been received from First National Bank of Eldorado, B.J. Services, Shannon Wilkerson family, Phil

McCormick and Niblett's Oilfield Services.

The Booster Club invites everyone to join in supporting Eagles athletics. Remember, at 6:00 p.m. on Mondays following Friday night games (not including scrimmages) the Booster Club will meet in the Field House classroom to view game films. Come on by!



The Blotter is a summary of the previous week's activity at the Schleicher County Sheriff's Dept. For practical reasons of time and space, The Blotter does not include every call made to the Sheriff's office, nor does it include routine security checks, minor traffic stops or routine patrols. Incidents of major impact will be reported separately. Subjects reported to have been arrested are presumed innocent until proven guilty in a court of law.

ARRESTS

August 8 • Martin, Brandon Wayne, male age 25, was committed to serve time by SC Judge.

August 9 • Reisner, Theresa Gail, female age 29, arrested by Tom Green County, charge Motion To Revoke, Possession of Controlled Substance. Released to Tom Green County.

August 11 • London, Jeffrey Scott, male age 25, arrested by SC Officer, charge Possession of Control Substance. Released on a \$1,000 Surety Bond.

REPORTS

August 8 • 12:19 a.m. Complainant reported an ex-girlfriend will not stop calling his house.

• 9:45 a.m. Complainant on Keny Street reported neighbors three year old child was out on their bike at approximately 1:30 a.m., and had knocked on complainants door. Officer responded to call and spoke with parents of child.

• 9:20 a.m. Complainant reported a controlled burn that will be attended by Volunteer Fire Department.

• 10:00 a.m. Complainant reported that there were minors drinking alcoholic beverages on property belonging to their grandmother. Subject wanted officers to watch the area.

• 5:50 p.m. Complainant reported a vehicle in the roadway on Lee Avenue. Officer responded.

• 6:00 p.m. Complainant reported

a water leak on North Divide. City employee contacted.

August 9 • 10:43 p.m. Parent requested to speak with an officer about their son.

August 11 • 8:36 a.m. Complainant on North Divide requested an ambulance to pickup a woman who had back pain. Officer responded.

• 9:00 a.m. Complainant on McIntosh Hwy. reported finding a white dog with brown spots that is friendly and has tags.

• 8:00 a.m. Complainant on County Road 414 reported a controlled burn to the Sheriff Office and Fire Chief.

• 12:14 p.m. Complainant reported a possible fire at Sheriff Office Field Operations. Fire Units responded.

• 5:01 p.m. Complainant on Fields Street reported that a family member had knocked over their gas meter. City notified.

• 5:04 p.m. Complainant reported a house on fire on Olive Street. Officers, Volunteer Fire Department and EMS.

• 9:12 p.m. Complainant reported that grass was on fire on Olive Street. Fire Department and officer responded.

August 12 • 6:55 p.m. Complainant on E. Dorris asked to speak with an officer about something they found in their mailbox. Officer responded.

• 9:41 p.m. Complainant traveling South on Hwy. 277 North reported a possible drunk driver in a white 2 door car. Car had passed through Eldorado. Information passed on to Sonora Sheriff Office.

• 10:15 p.m. Complainant at apartments requested to speak with an officer. Officer responded.

August 13 • 12:00 a.m. Complainant requested to speak with an officer about damage to their vehicle at work place. Officer responded and complainant reported that they did not want to file criminal charges.

5:40 p.m. Tom Green Sheriff Office reported a white Ford pickup driving recklessly traveling South on Hwy. 277 North. Officer responded and vehicle was located.

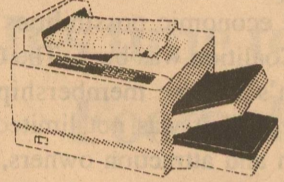
9:41 p.m. Complainant on Hwy. 190 West reported a grass fire about 25 miles out. Volunteer Fire Department responded.

NOTICE OF PUBLIC MEETING TO DISCUSS SCHLEICHER COUNTY ISD 2001-2002 BUDGET

Schleicher County ISD will hold a public meeting at 6:00 P.M., August 29, 2001 in the High School Library. The purpose of this meeting is to discuss the school district's 2001-2002 budget that will be adopted. Public participation in the discussion is invited.

Printer Service Company

801 B Knickerbocker Rd.
915/657-2077
San Angelo, Tx. 76904



We will be in the Sonora, Eldorado and Ozona area on Friday.

Maintenance, repair and consumables for computer printers.

Kent's Automotive

712 N. Divide
CarQuest Batteries



as low
\$39.95

853-2733

Solution to puzzle on Page 2

TAKEOFF BHUTANI
SWAG I AMBI IDES
HAY USUAL IDEAL
IYAR TNT UKE PA
R KOB AZURE VM
TO WRY OLD HIFI
SKY YACHT AURIC
REBUKE RABBIT
DATUM APACE OCT
ISIS USE EAR HE
V S PREEN MAT L
IE FUN LOB MEWL
SCRUB PENAL MRI
ORAL MARCH OPEN
RUNAWAY ETCHING

Second Hand Rose Consignment

We're At Capacity
Please no more clothing until 9/1/01
Please call before bringing in clothing

Hwy 277 South
Open 10-6 pm
Mon-Sat. 853-3736

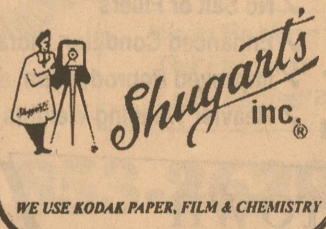
DUCKWALL
301 DEVIDE
ELDORADO, TX

THURSDAY
AUG 30

PHOTO HOURS
9:30-6

\$12.99

- 1 - 10X13 plus tax due at pick-up
- 1 - 8X10 \$1.99 sitting fee
- 2 - 5X7s per person
- 2 - 3X5s
- 16 King Size Wallets
- 8 Regular Size Wallets



my
Eldorado.net
www.myeldorado.net

TAX RETURN SPECIAL

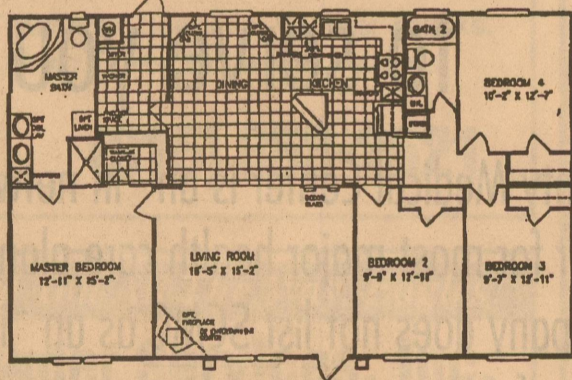
America's Choice Homes and Land

FREE!!
WASHER
DRYER
"HURRY"
AUGUST ONLY

3705 N. Bryant · San Angelo, TX. 76903
653-0058 or 1-877-653-0058

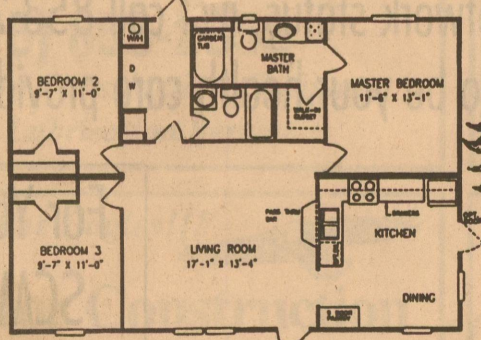
OPEN
7 DAYS
A WEEK

4 BR 2 BA over 1600 sq. ft.



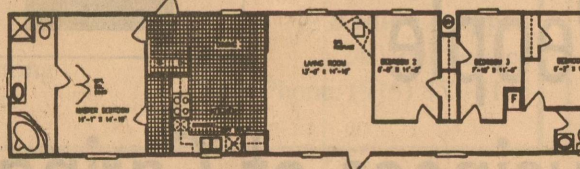
\$385* per mo.
or
\$536* per mo.
With Land

3 BR 2 BA over 1100 sq. ft.



\$316* per mo.
or
\$467* per mo.
With Land

4 BR 2 BA over 1200 sq. ft.



\$268* per mo.
or
\$419* per mo.
With Land

All Homes Include:
Total Electric
Delivery
Set Up
Detachable Hitch
A/C (Large 4 Ton)
Skirting

Appliance Pkg. Includes:
Free Washer/Dryer
Dishwasher
Refrigerator
Range
Ceiling Fan
Microwave

Limited Options:
• Storm Door
• Large Garden Tub
• Walk-in Closet
• 100" Vaulted Ceilings
• Emergency Water shut off in kitchen & bath
• And Much More!

Se Habla Español

\$2000 Gift Certificate
\$2000 Gift Certificate

When You Purchase Your New Silver Creek Home

Directions: North on Bryant (US 87) past 29th St. light

OPEN 7 DAYS
A WEEK

*10% Down, 9.50% APR SW, 8.5% APR D.W. 360 mos. W.A.C.

Did you take Fen-Phen?

If you took Pondimin, Phentermine (Fastin, Adipex) or Redux and you have heart problems, valve leakage, murmurs, regurgitation, or PPH, then call us to discuss your legal rights for damages against the manufacturers and your eligibility for echocardiographic testing.

DAVID P. WILLIS - WILLIS LAW FIRM

3333 One Houston Center Houston, Texas 77010
BOARD CERTIFIED PERSONAL INJURY TRIAL LAWYER
Texas Board of Legal Specialization
1 (800) 468-4878 or 1 (800) 883-9858

Mr. Willis is likely to associate with other attorneys in the handling of this matter

We are in Eldorado every Tuesday & Friday morning for your

Dry Cleaning and Laundry Service

Call Eldorado

THORP'S

LAUN-DRY

853-2900

Join our Eldorado customers!
Customer satisfaction guaranteed.

NOTICE OF PUBLIC MEETING

PROPOSED BUDGET
FOR CITY OF ELDORADO

Notice is hereby given of a public hearing on the proposed budget for the City of Eldorado for Fiscal Year beginning 9/1/01 and ending 8/31/02. Hearing is set for Monday, August 27, 2001, at 6:00 PM at the City Hall.

Interested citizens are encouraged to give oral or written comment or ask questions at said hearing. A copy of the proposed budget and work figures are available for public review between the hours of 8AM and 5PM.

WEST TEXAS CLASSIFIED AD NETWORK™



CLASSIFIED ADS

- ✦ EL DORADO
- ✦ SONORA
- ✦ OZONA
- ✦ BIG LAKE

Place your non-commercial classified ad in the Eldorado Success, Devil's River News, Ozona Stockman and the Big Lake Wildcat for one low, low price. Call today for details!

853-3125

REMINDER

Registration for Howard College Fall Courses at SCISD Will be at the Administration Office on August 17 From 8 AM-4PM For more information, call Mary Doran at 853-2514, ext. 226

Attention:

REGISTERED BRAND RENEWAL

In accordance with Article 144.044 of the Agriculture Code "Recording" on Thursday August 30, 2001, the Clerk's office will begin the process of renewals of your brands. You will have until Thursday February, 2002 to renew your registration. On Friday March 1, 2002, all brands that have not been renewed will become "void" on March 1, 2002, in accordance with the agriculture Code.

The recording fee will be \$11.00 per brand per location. Additional locations filed at the initial filing will be \$5.00 per location. **Example; c on left hip would be \$11.00. C on left hip, left rib, left shoulder, and left thigh, all filed at the same time would be \$26.00.**

If you also have brands registered in other counties in the State of Texas it will be necessary for you to contact the office of the County Clerk of that County and renew your registration there also.

If you have any questions regarding this matter you may contact your local Clerk's office or call Peggy Williams at (915) 853-2833.

NOTICE TO CONTRACTORS OF PROPOSED TEXAS HIGHWAY IMPROVEMENT CONTRACTS

Sealed proposals for highway improvement contracts will be received by the Texas Department of Transportation (TxDOT) until the date (s) shown below, and then publicly read.

CONSTRUCTION/MAINTENANCE CONTRACT (S)

District: San Angelo

Contract 0907-00-051 for UPGRADE PERMANENT SIGNING in TOM GREEN County, etc will be opened on September 06, 2001 at 1:00 p.m. at the State Office.

Plans and specifications are available for inspection, along with bidding proposals, and applications for the TxDOT Prequalified Contractor's list, at the applicable State and / or District Offices listed below. Bidders must submit prequalification information to TxDOT at least 10 days prior to the bid date to be eligible to bid on a project. Prequalification materials may contract (s) are available from TxDOT's website at www.dot.state.tx.us and from reproduction companies at the expense of the contractor.

NPO: 4291

State Office

Construction Division
200 E. Riverside Dr.
Austin, Texas 78704
Phone: 512-416-2540

District Office (s)

San Angelo District
District Engineer
4502 Knickerbocker Rd
San Angelo, Texas 76904
Phone: 915-944-1501

Minimum wage rates are set out in bidding documents and the rates will be part of the contract. TxDOT ensures that bidders will not be discriminated against on the grounds of race, color, sex, or national origin. 33-34b

Employment

NOTICE OF JOB OPENING
The City of Eldorado is accepting applications for a full-time position in the Public Works Department. Applicants must be High School graduates and hold a valid Commercial Driver's License. Salary shall be commensurate with experience and ability. The Benefits Package includes Group Health Insurance and retirement benefits. The City of Eldorado is an Equal Opportunity Employer. Application forms may be obtained and returned to the City Hall during regular office hours. 31-35b

Miscellaneous

FOR SALE: New 7' x 24' Goose-neck Trailer, pulled 7 or 8 times. Like New. Cover Top; White; Call Anytime 915-374-6772. 33p

WANT TO BUY

RAM SKULLS, HORNS, DEER HORNS, GOATS SKULLS HORN. Also Bull Heads. Call anytime. 915-853-1545. 33p

12 x 50 Mobile Home as is...where is Best Offer over \$1,500.00 853-2408. 33b

FOR SALE: Dune Buggy. Excellent motor and body. Clay Childress-392-4009 after 6 p.m.p

FOR SALE: 3' x 6' Larson storm door, forest green with brass accents/beveled glass. Call 392-3028 \$150.00.

Ruidoso Cabin-Nightly or weekly rental. 3 Bedrooms. 2 Bath. Call Don Harmon at 1-800-822-7654. Ask for "Aces Up."

Services

METAL CONSTRUCTION
CARPORT, PENS,
BUILDINGS, YARD FENCES
450-3858

Reagan Bownds
32-35b

Real Estate

ELDORADO-FOR SALE BY OWNER: MOBILE HOME 16 X 80 3BR, 2BR; 12 X 24 WORK SHOP; 2 FENCED ACRES; 4 ADDITIONAL PASTURE ACRES; COUNTY LAND; CITY WATER; 121 WHEAT AVE.-SANCTUARY; (915) 853-2038 HOME; (210) 823-6827 CELL; \$48,000 OBO. 30-33b

ELDORADO - 702 OLD SONORA RD: Brand new 3/BR, 3/B doublewide home, 2000 sq. ft. plus, large spacious rooms, custom carpet, security system, vinyl siding, large landscaped corner lot. You can't buy a new doublewide this size and lots for this price. \$76,500. Call Lynn Meador Real Estate at 915-853-2808 or come by 5 N. Divide or Jo Ward, Agent at 853-2339. 33b

ELDORADO- ACREAGE: 1084 acres NW part of Schleicher County. Deep soil divide, open county with good grazing potential. No minerals. Two water wells, pens and shed. Highway frontage on FM 1828. Price reduced to \$318/ac. Call Lynn Meador Real Estate at 915-853-2808 or come by 5 N. Divide or Jo Ward, Agent at 853-2339. 33b

ELDORADO-House For Sale: 3/BR, 2/BA Home; Hardwood Floors, Central H/A, Fenced Yard and Carport; 217 Bluebonnet. \$50,000. Call for appointment 853-2693. 27-35b

ELDORADO-609 MURCHISON STREET: Price Reduced!!! 3/BR-2/BA, doublewide home. In excellent condition. Large living area and den with two-sided fireplace. Spacious kitchen. Large master bedroom/bath. Utility room. Over 1900 sq. ft. \$49,900. Call Lynn Meador Real Estate at 915-853-2808 or come by 5 N. Divide or Jo Ward, Agent at 853-2339. 33b

Employment

DRIVERS WANTED

Must have current Class A CDL and a good driving record. Experience driving transports, vacuum trucks, operating pump trucks & winch truck.

- Competitive salary
- Major medical & life insurance
- Simple IRA retirement program
- Days off schedule
- Paid Vacation & holidays
- Monthly performance & safety bonuses.

Please apply in person Niblett's Oilfield Service, Inc. Hwy. 277 South, Eldorado. No phone calls please. 9tfn

PUBLIC NOTICE

Schleicher County ISD is seeking applications for (1) Route Bus Driver and (1) Full-Time Maintenance Position Applications are available at the SCISD Administration Office, 205 Fields, Eldorado, Texas. Phone 915-853-2514, ext. 221 SCISD is an equal opportunity employer. 32-33b

Schleicher County

Medical Center is taking applications for **RN** position in the hospital. Paid vacation, holidays, personal days, insurance, retirement, mileage payment.

Contact: Berta Nicholson RN, DON at 915-853-2507.

GARAGE SALES, YARD SALES & ESTATE SALES

ELDORADO Bunk Bed (full and twin combo), Cannon Copier, 2 Recliners, Antique Coffee Table, Loveseat, Antique Dressing Table, Mirror and Bench, 6 Upholstered Dining Chairs, New Computer, Monitor & Printer \$785, Flexbed (elevates, massages), Maple Drop Leaf Table, 2 Dining Room Tables, Triple Dresser and Nightstand, Wooden Dining Chairs, Metal Filing Cabinet. NEW ARRIVALS WEEKLEY. SECOND HAND ROSE FURNITURE ANNEX. Highway 277, Eldorado.

Card of Thanks

Schleicher Co. Medical Center would like to thank the Community for helping with door prize for Staff Appreciation Day. The following are: Casa Arispe Restaurant, Cactus Cafe, Video's & More, Dairy Mart, S.C.M.C. Hospital Auxiliary, Cathy Florist, Shots, Duckwalls Variety Store, Dillard's, Schleicher Co. EMS, Eldorado Woolen Mill, Super S. Food Store, West Texas Lumber & Trading Post, Bertha's Glamourama, Petals & Potpourri.

The Eldorado Volunteer Fire Department would like to thank the following donors for their generous donations: Daryl and Jill Zaskoda, Jeffrey H. Morehouse, Elida Vasquez, Helen Fay, Herman Walker Const., Hensel Matthews Jr., Mr. and Mrs. Joe Ed Hill, D.D. Griffin, Frankie B. Hardy, Raymond and Carolyn Mittel, Charlotte Autrey, Mr. and Mrs. E.C. Pettors, George and Jean Sultemeier, Glyn and Robbin Hutto, Lula M. Joiner, James and Sherry Belk, Frank Bond, Kerry and Debbie Joy, Alex and Cecilia Guerrero, B. Anderson Estate, Ronnie Mittel, Jan and Fred Van Shoubrouek, Bruce and Monta Parker, Bar H. Brangus, Celeste Prugel and Susan Henke, Jack and Donna Steward, Steve and Kim-et Nelson, Wally and Barbara Nichols, Curtis Stockton, Maggie Middleton, Mr. and Mrs. Gene Jones.

Call 915-853-2808

214 BLUEBONNET DR.

Real nice 3/BR-3 1/2 home. this home has been remodeled and maintained-you can just move in and start living. Carpet, new central air/heat, large lot w/fenced yard. Quality property with lots of room. \$82,000.

216 BLUEBONNET DR.

Comfortable 3/BR-2BA Brick Home. Cent. Air/Heat, Spacious Kitchen & Den, Utility Room, Enclosed Porch, Carpet, Fenced Yard, Large Corner Lot, Good Condition and ready for new owner to move in. \$63,000.

202 DIXIE DRIVE

Attractive 3/BR-1B Home. Livingroom, Den, Central Air/Heat, Shop w/lots of storage. Fenced yard & Gazebo. \$45,000.

Lynn Meador Real Estate
5 N. Divide Lynn Meador, Broker • Jo Ward, Agent/ 915-853-2339

TEXAS STATEWIDE CLASSIFIED ADVERTISING NETWORK



TexSCAN Week of August 12, 2001

ADOPTION

Note: It is illegal to be paid for anything beyond medical and legal expenses in Texas adoption.

STAY AT HOME Mom, loving Dad and a secure future await your baby. Expenses paid. Please call Bridget and John @ 1-877-777-6584.

THE LITTLE THINGS! We look forward to the everyday life of being parents. Our family can't wait for a new baby in the family. Call Bonnie and Jim, 1-800-967-2762.

BUSINESS OPPORTUNITY

A+ M&M MARS/NESTLE. Established vending route. Will sell by 8/27/01. Under \$9K minimum investment required. Excellent monthly profit potential. Finance available/good credit. 1-800-637-7444.

HOTTEST PRODUCTS IN America. Make money now. Distribute from your hometown. No experience necessary. \$130.00 investment. We show you how. Call Bill, 1-210-697-2150.

DRIVERS WANTED

A CAREER OPPORTUNITY. Earn 40K year + benefits. CDL training in 18 days. Lifetime job placement assistance. Financing, housing, transportation available. Long Hour Driver Training, 1-866-367-9933.

SBIG MONEYS - N.T.S. Placement Company needs drivers. Inexperienced up to \$600. Experienced up to \$1000. Pay up to 42cpm. Paid training, if you qualify. 1-888-781-8556. Tractor Trailer Training.

DRIVERS: ALLIED VAN Lines has openings in electronics and trade shows. Class A CDL with one year OTR experience. Tractor purchase available. Call 1-800-634-2200, Dept. ATXS.

DRIVER - COVENANT TRANSPORT now offering per diem pay for experienced teams, solos and trainers. O/O - Solos/Teams 83 cents plus fuel surcharge. No CDL? No problem. We school, no money down. Licensed by SBPCE. School located in Stuttgart, AR. Call 1-888-MORE-PAY (1-888-667-3729).

DRIVER - FFE TRANSPORTATION is now hiring experienced drivers for its growing fleet. Start up to 29 cpm w/one year experience with pay increases every six months up to 42 cpm. Call 1-800-569-9230.

DRIVERS-FRIDAYS ARE Paydays! One hour approval. Home at your request. Tractors set at 70mph. Benefits, bonuses. OTR, Class "A" required. Continental Trucking, Start now. 1-800-727-4374.

DRIVERS - IN FOR the long haul. CFI now hiring company driver, solos & teams. Company drivers start at 32 cents per mile. For more information, call 1-800-CFI-DRIVE.

DRIVER-OWNER OPERATORS - up to \$1.55 per loaded mile. Tractor, cargo van and 18-24 ft. straight truck owners needed. Call Panther II Transportation today. 1-800-640-7055.

NOTICE: While most advertisers are reputable, we cannot guarantee products or services advertised. We urge readers to use caution and when in doubt, contact the Texas Attorney General at 1-800-621-0508 or the Federal Trade Commission at 1-877-FTC-HELP. The FTC web site is www.ftc.gov/bizop

Call this newspaper to advertise statewide and regionally or call 512-477-6755

Eldorado Spotlight



This week the Eldorado Spotlight shines on Christie Jo Belman, Jessi Calcote and Toni Martin. When the Spotlight camera caught up with the girls they were dispensing water during the Eagles football team workouts. The team has nicknamed the girls the "Foxy Water Ladies."

"Call us for your insurance needs."

Mittel Insurance
853-2576

or come by our office at 119 SW Main Street ~ Eldorado

It's time again for those 4-H livestock projects

by Scott Edmonson
County Extension Agent - Ag

Yes, it's that time of year to be thinking about those 4-H livestock projects and getting them on feed. Validation time is just around the corner and we need to be making preparations. If you are interested in obtaining a livestock project and

need some help locating one, please give me a call and I will be happy to help you out. Or, if you just have some questions about feeding a livestock project, I'll be glad to answer any questions that you might have. For more information drop by the Extension office or give us a call at 853-2132.

Sheep and Goat reproduction workshop set for August 23

by Scott Edmonson
County Extension Agent - Ag

A Sheep and Goat Reproduction Workshop will be held Thursday, August 23rd, 2001 at the Angelo State University MIR Center. The workshop will begin at 9:00 a.m. and should conclude by 3:00 p.m.

The workshop is sponsored by the Texas Cooperative Extension and Angelo State University. Some of the speakers for the workshop

will include Dr. Frank Craddock, Extension Sheep and Goat Specialist; Dr. Michael Salisbury, Angelo State University; and Dr. Shaun Ramsey, Texas A&M University.

Topics that will be on the program include Nutrition, Reproductive Tract Anatomy, Estrus Synchronization, Semen Collection & Handling, Artificial Insemination, and Embryo Transfer.

The workshop is designed for sheep and goat producers interested in utilizing modern techniques to produce high quality livestock.

Individuals interested in participating in the workshop should contact the Tom Green County Extension Office by the registration deadline, Tuesday, August 21st, 2001. The registration fee is \$20.00 per person.

Local youth returns from Triple Crown World Series

submitted by Vikki Cathey

Local youth Rance Cathey returns from the Triple Crown World Series. The Triple Crown was played in Steamboat Springs, Colorado.

We would like to start by saying Rance had a lot of help getting to this point of his young life by many people in this town. To all the people who helped coach him, to all the people who have cheered for him and all the people who helped sponsor him thank you.

Rance has been playing on the San Angelo Colts 10 yr. old team for two years. Coach Victor Gutierrez home town boy heard about Rance's pitching and came and watched him. We weren't real sure what he thought at first because the only thing Rance could throw was real hard and real fast. We knew that he needed to have a change up and slow ball and he had neither. In fact to see him throw a slow ball was real dangerous for who ever was catching him, but Coach Victor saw past that and signed him up on the spot.

That day changed Rance's life and our as laid back parents. Now our theme song should be "On the road again". For all the little brothers who never get to

bat, but always have to pitch to big brother look what it can do for you.

The first year was more learning than anything for all these boys. The rules are all so different than what we play here you can lead off which meant Rance had to learn to do that and as a pitcher he had to learn to pick them off on base. He also learned how to throw a change up and finally a slow ball.

The things these coaches did for these kids are wonderful. The colts placed 6th in state. They played many games that made it possible to get to the World Series in Colorado.

There were 34 teams from all over the U.S. in their division. The goal they set for themselves was to do well in pool-play because they are such a new team. They went on to the finals which were single elimination. They lost this game 6-4 it was really close. The errors seemed to get the better of them.

It was real nice to see they were still proud of themselves after the loss. They understood what they have accomplished. A special thanks to Niblett's and Multi-Chem. They support our youth and make things like this possible.

West Texas Rehab promotes Brown to Vice President

San Angeloan Ellen Brown has been named vice president of resource development for West Texas Rehabilitation Center, effective August 13.

According to WTRC President Woody Gilliland, Brown will continue to maintain close ties with Rehab's individual and business donors in the Concho Valley, but will also take on corporate responsibilities for implementing new strategies to enhance the organization's non-treatment revenues.

A 20-year employee of Rehab, Brown has served as director of donor relations for the Concho Valley for the past 12 years and has been instrumental in initiating major fund-raising events in the San Angelo area.

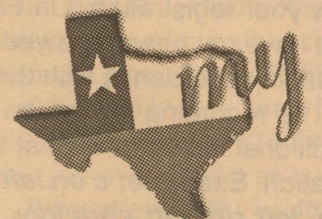
"After 12 months as president of Rehab, I recognize opportunities for the organization to capitalize on Ellen's planning abilities and writing skills, as well as her insights about Rehab history, fund-raising philosophy and donor relations," Gilliland added. "She will be a great asset to our management team."

"I am equally pleased to announce that Eva Horton, who has been a member of the WTRC San Angelo staff for eight years, has agreed to serve as interim director of the donor Relations Department," Gilliland announced. "Eva

will do an excellent job of guiding fund-raising programs in San Angelo."

A native of Ballinger and a journalism graduate of North Texas State University, Brown is a former writer for the San Angelo Standard - Times and regional planner for Concho Valley Council of Governments. She is married to Stephen Brown, retired City Manager for the City of San Angelo.

Brown currently serves on the board of directors of San Angelo Chamber of Commerce, the advisory council for the Better Business Bureau and the board of directors for the San Angelo Area Non-Profit Center. She is an elder in the First Presbyterian Church and a member of the Association of Fund-Raising Professionals. She and her husband were named Citizens of the Year for San Angelo in 1997.



Eldorado.net

www.myeldorado.net

NOTICE

Would the person who borrowed the 4-H Club's Livestock trailer please return it or contact County Agent Scott Edmonson at: 853-2132

Rezulin/Diabetes Drug Users

REZULIN has been linked to liver dysfunction and other health problems in numerous individuals. It was taken off the market 3-21-00 by its manufacturer, Parke-Davis, a division of Warner-Lambert. You or someone you love may be affected. If you wish to know your legal rights with regard to medical problems associated with the use of REZULIN, please contact our offices for a free legal consultation.

THE EMERSON FIRM

Attorneys at Law
2600 S. Gessner, Suite 800, Houston, Texas (332) 723-8850
Email: jpe@emersonfirm.com

* Licensed by the Supreme Court of Texas. Not certified by the Texas Board of Legal Specialization. We often work in conjunction with another law firm on clients' cases.

HEALTH BENEFITS

for the ENTIRE FAMILY

only \$70 per month!

- FLAT RATE - GUARANTEED ACCEPTANCE
- SELF-EMPLOYED OR NOT! - NO INCREASE!
- DEEP MEDICAL DISCOUNTS ON DOCTOR, DENTAL, CHIROPRACTIC, EMERGENCY ROOM, HOSPITAL CONFINEMENT, VISION, RX & MORE!



(NO Deductible!)

Call 1-888-369-1739

You May Be An Oil & Gas Royalty Millionaire.

| \$ Per Mo. | Cash Value |
|------------|-------------|
| 2K = | \$100,000 |
| 5K = | \$250,000 |
| 10K = | \$500,000 |
| 20K = | \$1 Million |

We purchase quality Overriding Royalty Interest (ORRI) and Royalty Interest (RI) properties from individuals and estates.

Call 214-742-0800

Or visit RoyaltyInvestor.com and submit e-summary

Quick action on quality property.

2001 PROPERTY TAX RATES IN CITY OF ELDORADO

THIS NOTICE CONCERNS 2001 PROPERTY TAX RATES FOR THE CITY OF ELDORADO. IT PRESENTS INFORMATION ABOUT THREE TAX RATES. LAST YEAR'S TAX RATE IS THE ACTUAL RATE THE TAXING UNIT USED TO DETERMINE PROPERTY TAXES LAST YEAR. THIS YEAR'S EFFECTIVE RATE WOULD IMPOSE THE SAME TOTAL TAXES AS LAST YEAR IF YOU COMPARE PROPERTIES TAXED IN BOTH YEARS. THIS YEAR'S ROLLBACK TAX RATE IS THE HIGHEST TAX RATE THE TAXING UNIT CAN SET BEFORE TAXPAYER'S CAN START TAX ROLLBACK PROCEDURES. IN EACH CASE THESE RATES ARE FOUND BY DIVIDING THE TOTAL AMOUNT OF TAXES BY THE TAX BASE (THE TOTAL VALUE OF TAXABLE PROPERTY) WITH ADJUSTMENTS AS REQUIRED BY STATE LAW, THE RATES ARE GIVEN PER \$100 OF PROPERTY VALUE.

LAST YEAR'S TAX RATE:

| | |
|----------------------------|-----------------------|
| LAST YEAR'S OPERATING TAX | \$127,329.67 |
| LAST YEAR'S DEBT TAXES | \$ 71,281.96 |
| LAST YEAR'S TOTAL TAXES | \$198,611.63 |
| LAST YEAR'S TAX BASE | \$22,641,550 |
| LAST YEAR'S TOTAL TAX RATE | \$0.8772/\$100 |

THIS YEAR'S EFFECTIVE TAX RATE:

| | |
|---|-----------------------|
| LAST YEAR'S ADJUSTED TAXES (AFTER SUBTRACTING TAXES ON LOST PROPERTY) / THIS YEAR'S ADJUSTED TAX BASE (AFTER SUBTRACTING VALUE OF NEW PROPERTY) | \$198,534.04 |
| = THIS YEAR'S EFFECTIVE TAX RATE | \$0.8963/\$100 |

THIS YEAR'S ROLLBACK TAX RATE:

| | |
|--|-----------------------|
| LAST YEAR'S ADJUSTED OPERATING TAXES (AFTER SUBTRACTING TAXES ON LOST PROPERTY AND ADJUSTING FOR TRANSFERRED FUNCTION) / THIS YEAR'S ADJUSTED TAX BASE | \$127,286.30 |
| = THIS YEAR'S EFFECTIVE OPERATING RATE | \$0.5746/\$100 |
| X 1.08 = THIS YEAR'S MAXIMUM OPERATING RATE | \$0.6205/\$100 |
| + THIS YEAR'S DEBT RATE | \$0.3559/\$100 |
| = THIS YEAR'S ROLLBACK RATE | \$0.9764/\$100 |

Statement of Increase/Decrease

If the City of Eldorado adopts a 2001 tax rate equal to the effective rate of **\$0.8963** per \$100 of value, the total levy for the City of Eldorado would **increase** compared to the 2000 tax levy by **\$1,784.00**.

Schedule A

Unencumbered Fund Balances

The following estimated balances will be left in the unit's property tax accounts at the end of the fiscal year. These balances are not encumbered by a corresponding debt obligation

| Type of Property Tax Fund | Balance |
|---------------------------|-------------|
| Maintenance & Operating | \$16,981.00 |
| Interest & Sinking (I&S) | -0- |

Schedule B

2001 Debt Service

The unit plans to pay the following amounts for long-term debts that are secured by property taxes. These amounts will be paid from property tax revenues (or additional sales tax revenues, if applicable).

| Description of Debt | Principal or Contract Payment to be Paid from Property Taxes | Interest to be Paid From Property Taxes | Other Amounts to be Paid | Total Payment |
|---|--|---|--------------------------|---------------|
| 1994 Certificate of Obligation | \$ 8,750.00 | \$ 5,375.00 | \$-0- | \$ 14,125.00 |
| 1999 Tax Anticipation Notes | \$50,000.00 | \$12,250.00 | \$-0- | \$ 62,250.00 |
| Total required for 2001 debt service | | | \$76,375.00 | |
| - Amount (if any) paid from funds listed in Schedule A | | | \$-0- | |
| - Amount (if any) paid from other resources | | | \$-0- | |
| - Excess collections last year | | | \$-0- | |
| = Total to be paid from taxes in 2001 | | | \$76,375.00 | |
| + Amount added in anticipation that the unit will collect only 97% of its taxes in 2001 | | | \$ 2,291.00 | |
| = Total Debt Levy | | | \$78,666.00 | |

This notice contains a summary of actual effective and rollback tax rates' calculations. you can inspect a copy of the full calculations at The Schleicher County Appraisal District or The City Hall.

Name of person preparing this notice Ray L. Ballew.

Title Chief Appraiser

Date prepared 8-13-01

2001 PROPERTY TAX RATES IN SCHLEICHER CO. GENERAL

THIS NOTICE CONCERNS 2001 PROPERTY TAX RATES FOR SCHLEICHER CO. GENERAL. IT PRESENTS INFORMATION ABOUT THREE TAX RATES. LAST YEAR'S TAX RATE IS THE ACTUAL RATE THE TAXING UNIT USED TO DETERMINE PROPERTY TAXES LAST YEAR. THIS YEAR'S EFFECTIVE RATE WOULD IMPOSE THE SAME TOTAL TAXES AS LAST YEAR IF YOU COMPARE PROPERTIES TAXED IN BOTH YEARS. THIS YEAR'S ROLLBACK TAX RATE IS THE HIGHEST TAX RATE THE TAXING UNIT CAN SET BEFORE TAXPAYER'S CAN START TAX ROLLBACK PROCEDURES. IN EACH CASE THESE RATES ARE FOUND BY DIVIDING THE TOTAL AMOUNT OF TAXES BY THE TAX BASE (THE TOTAL VALUE OF TAXABLE PROPERTY) WITH ADJUSTMENTS AS REQUIRED BY STATE LAW. THE RATES ARE GIVEN PER \$100 OF PROPERTY VALUE.

LAST YEAR'S TAX RATE:

| | General Fund | Farm/Market Fund |
|-----------------------------|-----------------|------------------|
| LAST YEAR'S OPERATING TAXES | \$1,111,374.00 | \$242,606.00 |
| LAST YEAR'S DEBT TAXES | \$ 0.00 | \$ 0.00 |
| LAST YEAR'S TOTAL TAXES | \$1,111,374.00 | \$242,606.00 |
| LAST YEAR'S TAX BASE | \$168,594,078 | \$167,312,988 |
| LAST YEAR'S TOTAL TAX RATE | \$ 0.6592/\$100 | \$.1450/\$100 |

THIS YEAR'S EFFECTIVE TAX RATE:

| | | |
|---|-----------------------|-----------------------|
| LAST YEAR'S ADJUSTED TAXES (AFTER SUBTRACTING TAXES ON LOST PROPERTY) / THIS YEAR'S ADJUSTED TAX BASE (AFTER SUBTRACTING VALUE OF NEW PROPERTY) | \$1,110,385.77 | \$242,288.35 |
| = THIS YEAR'S EFFECTIVE TAX RATE | \$0.5715/\$100 | \$0.1255/\$100 |
| Total Effective Tax Rate | \$0.6970/\$100 | |

THIS YEAR'S ROLLBACK TAX RATE:

| | | |
|--|----------------|--------------|
| LAST YEAR'S ADJUSTED OPERATING TAXES (AFTER SUBTRACTING TAXES ON LOST PROPERTY AND INCLUDING TAXES FOR STATE CRIMINAL JUSTICE MANDATE) | \$1,110,385.77 | \$242,288.35 |
|--|----------------|--------------|

| | | |
|---|-----------------------|----------------|
| / THIS YEAR'S ADJUSTED TAX BASE | \$194,265,200 | \$192,974,790 |
| = THIS YEAR'S EFFECTIVE OPERATING RATE | \$0.5715/\$100 | \$0.1255/\$100 |
| X 1.08 = THIS YEAR'S MAXIMUM OPERATING RATE | \$0.6172/\$100 | \$0.1355/\$100 |
| + THIS YEAR'S DEBT RATE | \$0.0000/\$100 | \$0.0000/\$100 |
| = THIS YEAR'S ROLLBACK RATE FOR EACH FUND | \$0.6172/\$100 | \$0.1355/\$100 |
| THIS YEAR'S TOTAL ROLLBACK RATE | \$0.7527/\$100 | |
| - SALES TAX ADJUSTMENT RATE | \$0.0436/\$100 | |
| = ROLL BACK TAX RATE | \$0.7091/\$100 | |

STATEMENT OF INCREASE/DECREASE

If Schleicher County adopts a 2001 tax rate equal to the effective tax rate of **\$0.6970** per \$100 of value, taxes would **increase** compared to 2000 taxes by **\$5,863.27**

Schedule A

Unencumbered Fund Balances

The following estimated balances will be left in the unit's property tax accounts at the end of the fiscal year. These balances are not encumbered by a corresponding debt obligation

| Type of Property Tax Fund | Balance |
|---------------------------|--------------|
| General Fund | \$360,000.00 |
| Farm/Market | \$10,000.00 |

Schedule B

2001 Debt Service NONE

Schedule C

Expected Revenue from Additional Sales Tax

In calculating the effective and rollback tax rates, the unit estimated that it will receive **\$85,249.59** in additional sales and use tax revenues. For County: The county has excluded any amount that is or will be distributed for economic development grants from this amount of expected sales tax revenue.

This notice contains a summary of actual effective and rollback tax rates' calculations. You can inspect a copy of the full calculations at County Judge Office or County Tax Office

Name of person preparing this notice Lou Ann Turner

Title Tax Assessor-Collector

Date prepared 8-14-01