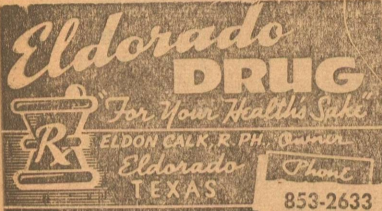




THIS LABEL TELLS ME THIS PRESCRIPTION WAS FILLED PRECISELY. IT SAYS...

Eldorado Drug



Good Neighbor H. D. Has Meeting Recently

"Meal Time Can Be Magic" was the program, when The Good Neighbor Home Demonstration club met Sept. 5th at 2:30 p.m. with Mrs. E. H. Dannheim. Eight members and Mrs. Kreklow were present. The club voted to keep the same officers for the year of 1969. They are: Mrs. E. H. Dannheim, pres.; Mrs. Aaron Steward, vice pres.; Mrs. W. C. Parks, sec-treas.; Mrs.

Bethel Jeffrey, council delegate. Mrs. Kreklow showed slides on Meal Time Can Be Magic, and gave the members a short course in human relations, by asking: Do you know the most important six words, the most important five, the most important four, the most important three, the most important two, and the most important one? They are: I admit I made a mistake. You did a good job. What is your opinion? If you please. Thank you, We. It was stated that Mrs. W. C. Parks and Mrs. Bethel Jeffrey are delegates to the THDA state meeting to be held in McAllen Sept. 18, 19 and 20. Refreshments were served. —Rep.

First Duplicate Bridge Session Held Saturday

The 1st Duplicate Bridge session was held last Saturday night with 40 people attending. There were 10 tables. East-west winners were: Mr. and Mrs. Bob Bradley, 1st; Mr. and Mrs. Tom Ratliff, 2nd; and Mr. and Mrs. Jimmy West, 3rd. North-south winners were: El-nora Love and Sarah Hill, 1st; Mary Davis Coupe and Mrs. Luke Thompson, 2nd; and Mr. and Mrs. Joe M. Christian, 3rd. There will be another session of Duplicate Bridge Sept. 21st at the Memorial Building.

6 Colors

MIMEOGRAPH PAPER

In ream pkgs. for churches, offices and other quantity users.

Letter size Mimeo in white, green, pink, blue, canary and goldenrod.

Legal size Mimeo in white, pink and canary.

The ELDORADO SUCCESS

Home Demonstration Agent's Column
By MRS. VIDA KREKLOW

4-H Club girls come up with some very fine recipes as they enter the various contests over the state and this year's crop was no exception.

The 1968 state food show, held at Texas A&M University in 1968 produced the following blue ribbon winners. I think you and your family will agree with the judges that these recipes deserve a first place rating anywhere at any time...

Rainbow Garden Salad

- Orange Layer:**
1 3-oz. pkg. orange flavor gelatin
1 cup boiling water
3/4 cup pineapple juice
2 tablespoons lemon juice
1 1/2 cup shredded carrots.
- Green Layer:**
1 3-oz. pkg. lime flavor gelatin
1 cup boiling water
3/4 cup pineapple juice
2 tablespoons lemon juice
1 1/2 cup grated cabbage.
- Red Layer:**
2 teaspoons unflavored gelatin
1/2 cup cold water
1 3-oz. pkg. lemon flavor gelatin
1/2 teaspoon salt
1 cup boiling water
2 tablespoons beet juice
2 tablespoons vinegar
1 cup minced cooked beets
1 tablespoon horseradish

Prepare each layer separately. For orange layer, dissolve orange flavor gelatin in boiling water. Add pineapple and lemon juice, chill until sirupy. Fold in finely shredded carrots.

To prepare green layer, dissolve lime flavor gelatin in boiling water. Add pineapple and lemon juice and chill until sirupy. Fold in grated cabbage.

To make red layer, soften unflavored gelatin in cold water. Dissolve lemon flavor gelatin and salt in boiling water; immediately stir in unflavored gelatin mixture. Add beet juice and vinegar; chill until sirupy. Fold in diced or minced beets and horseradish.

Layer gelatins (orange, green, then red) in 9 x 5 x 3 inch loaf pan. Allow each layer to set before adding second or third layer. Chill until firm. To unmold set pan in warm water about five seconds; loosen around beef layer to turn out on platter. Garnish. Yields 10 servings. —By Connie Mitchell, Palo Pinto co., District 4.

Western Hash

- 1 cup chopped onion
2 tablespoons shortening
1 1/2 lbs. ground beef
1 cup chopped green pepper
2 teaspoons salt
1/4 teaspoon pepper
1 tablespoon chili powder
1/3 cup uncooked rice
1 no. 303 can whole kernal corn
1 8-oz. can tomato sauce
1/2 cup water.

Saute onions in shortening in an electric skillet. Add beef and cook until brown. Stir in green pepper, salt, pepper, chili powder and rice. Push this mixture to side of pan and place well-drained corn in the center of mixture. Mix tomato sauce and water; pour over meat mixture. Add a few chopped green peppers over all. Turn to low heat and continue to cook until thoroughly heated, about 20 minutes. Yields 6 servings. —By Rita Nell Davis, Tom Green co., District 7.

Have you tried an oatmeal pie yet? Once you have I believe that you will try another. An oatmeal pie is something like a pecan pie only oatmeal is used instead of pecans or other nuts. You might like to try this pie since we are in between season for pecans; too late for last year's, too early for this year's.

Oat Meal Pie

- 2 eggs
3/4 cup sugar
3/4 cup dark corn syrup
1/2 tablespoons all purpose flour
1/4 cup butter or margarine, melted
1 teaspoon vanilla
3/4 cup oats (uncooked—quick or old fashioned)
1/3 cup flaked or shredded coconut.
- Beat eggs until foamy. Gradually add sugar; beat until thick. Stir in remaining ingredients; blend well. Pour into unbaked pie shell. Bake in preheated moderate oven (350 F.) about 45 minutes or until center of pie is firm. May be served with whipped cream when cool.

OHLENBURG RETIRES

Albert L. Ohlenburg, 4206 Waverly, Odessa, Texas, mechanical foreman for Humble Pipe Line Co. at Odessa, retired from the company September 1 with over 41 years of service.

Friends and associates of the Odessa District honored Mr. Ohlenburg at a retirement barbecue in Floyd Gwinn Park in Odessa just prior to retirement. Among the some 100 guests present were his sons, John, of Muleshoe, Texas, and Edward of Lubbock, Texas.

SALES PADS for sale at the Success office.

TRUST YOUR SIGHT UNDER THIS LIGHT

This is a **BETTER LIGHT BETTER SIGHT BUREAU STUDY LAMP**

"LUMILON II"
THE BACK-TO-SCHOOL LIGHT THAT MAKES SENSE!
NEW DISCOVERY FOR EYE-EASE LIGHTING

1. No shadows
2. No glare at any angle
3. Diffused lighting
4. 7-ft. cord for easy mobility
5. Better light, better sight Bureau approved

BACK-TO-SCHOOL SALE
USE YOUR "REDDY CREDIT"

\$1148 (PLUS TAX)
(Lamp & bulb)

\$148 DOWN (PLUS TAX)

Only **\$250** per month
ADDED ONTO YOUR REGULAR SERVICE STATEMENT
NO INTEREST—NO CARRYING CHARGE

AN INVESTOR OWNED ELECTRIC COMPANY
WEST TEXAS UTILITIES Company
Equal Opportunity Employer

Learn the secrets of beer cookery

Find out how to make delicious everyday dishes with beer—such as beer meat loaf, beer chicken, beer sausages and beer cake. And then there are such gourmet treats as rarebits and Carbondades Flamandes.

Beer cookery is as traditional as yesterday... as modern as tomorrow. Beer adds a real flavor treat.

Send in this coupon for our pamphlet of free recipes on cooking with beer.



I'm interested in recipes for cooking with beer. Send me my free pamphlet.

Name _____
Street _____
City _____
State _____ Zip _____

UNITED STATES BREWERS ASSOCIATION, INC.
905 International Life Bldg., Austin, Texas 78701

STATE FAIR OF TEXAS
OCT. 5-20 DALLAS

FUNNER... THAN EVER BEFORE!

You are invited... to see Jose Ferrer in "Man of La Mancha"... the Royal Canadian Mounted Police "Musical Ride"... "Up with People" with 175 youthful performers... Cotton Bowl Football... The Cowbills... in concert... Deep River Fire and Drum Corps... "Pops" Concerts... Fountasia... a concert of dancing watercolor... Colossal Free Circus... Mark Wilson's "Cinillusion"... the New Generation Singers... The Pearl Thing, starring Jesse Lopez... Mobil Sky Revue... 200 acres of FUN and your GREATEST entertainment value on earth!

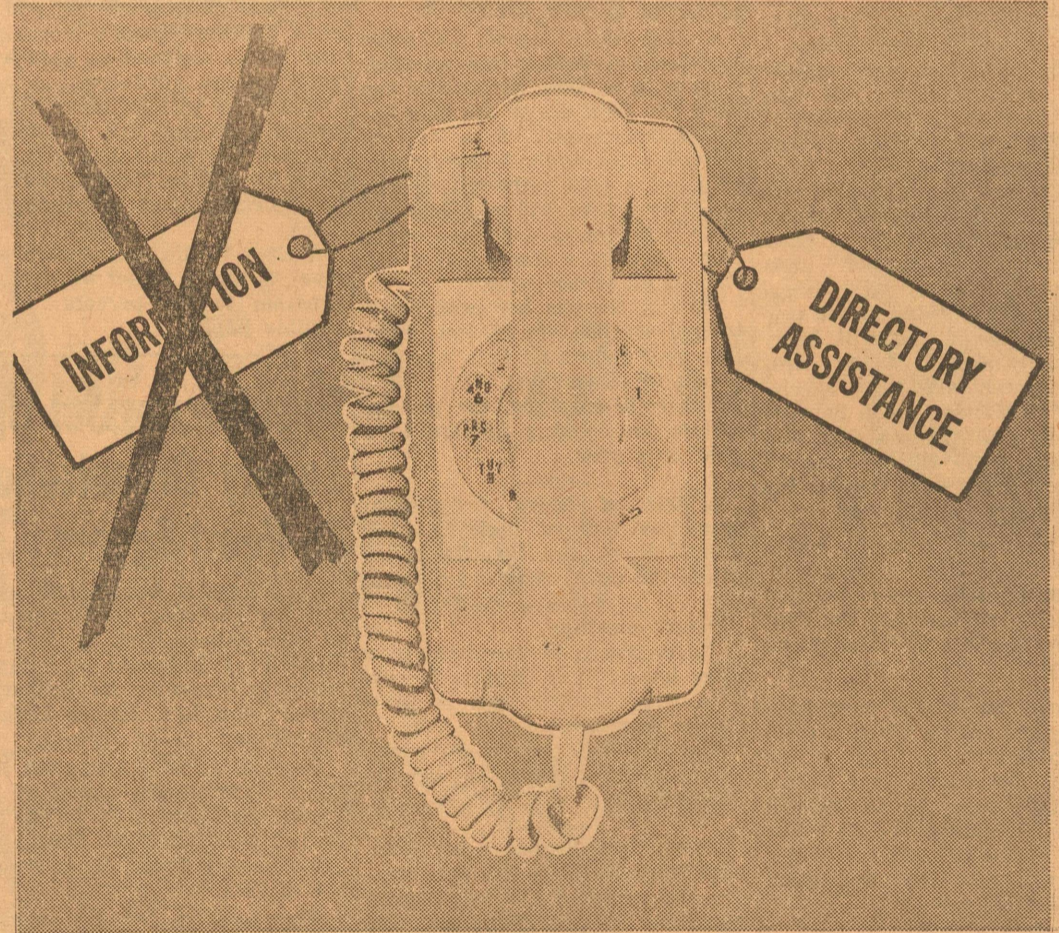
START PLANNING YOUR STATE FAIR TRIP NOW!

CLIP AND MAIL FOR FREE COLORFUL LITERATURE ON EVENTS AND ATTRACTIONS!

FOLDER STATE FAIR OF TEXAS P. O. BOX 26010 DALLAS, TEXAS 75226
Please send your FREE colorful 1968 literature to:

NAME _____
ADDRESS _____
CITY _____ STATE _____ ZIP _____

Want to make a call but can't find the number in your directory?



Our directory Assistance operator can help you

Directory Assistance operator? Probably, you've been saying "Information." But the new name is "Directory Assistance." This operator gives you a number when you are unable to find it in the directory. For even more help, she will tell you if the number is in your directory, so you can underscore it for quick future use. Or, if it is a new number, you can write it on the directory provided for that purpose. These simple steps speed up your telephone service.

GENERAL TELEPHONE



A Member of the GT&E Family of Companies

New Service Set By General Telephone

Customers who call "Information" are being provided a new service by General Telephone Company of the Southwest. In fact, the name of the service has been changed from "Information" to "Directory Assistance", according to an announcement by Jack Goss, Division Manager for the company. "The new name better describes the function," he said.

The new service, he explained, is to advise customers if the number they are requesting is listed in the current telephone directory. And, if the number is not in the current directory, the directory assistance operator will so inform the customer by saying, "That is a new listing; if you care to make a note of it, the number is ____." It is felt this phrase will save customers the trouble of looking in the directory for a new number not listed and give them an opportunity to make note of the number.

Operators in San Angelo handle directory assistance calls for local numbers in Ballinger, Barnhart, Big Lake, Bradshaw, Bronte, Carlsbad, Christoval, Crews, Eden, Eldorado, Eola, Mertzon, Miles, Norton, Ozona, Paint Rock, Robert Lee, Rowena, Sonora, Sterling City, Talpa, Water Valley, Wingate, and Winters.

"The new name for the service along with the new procedure for giving the customer the desired telephone number, has been tested in several other General Telephone

exchanges with very favorable results," said Mr. Goss, "and customer reaction has been good."

School Menus

Monday, Sept. 16: Meat sauce over spaghetti, green beans, mushroom sauce, tossed green salad, buttered rolls, milk, canned fruit.

Tuesday, Sept. 17: Pork chops, canned sweet potatoes, blackeyed peas, congealed lime jello (pine-apple, celery), buttered rolls, milk, white cake, chocolate icing.

Wed., Sept. 18: Hamburgers, lettuce & tomato slices, diced onions, hash browned potatoes, milk, fresh fruit cup, brownies.

Thursday, Sept. 19: Barbeued beef, potato salad, pinto beans, cucumber-onion slices, hot rolls, milk, pecan squares.

Friday, Sept. 20: Fish filets, macaroni & tomatoes, boiled lima beans, tossed green salad, buttered rolls, milk, ice cream cups.

Kay Sanders Honored

A lingerie shower was held honoring Kay Sanders in the home of Mrs. James Page last week.

Hostesses were Billie Gavl Blaylock, Mertha Sue Page, and Susan Hill. The bride's chosen colors of shades of pink were carried out in the floral arrangements and table appointments. Pink punch was served with dessert to those who called.

About 20 guests attended from Eldorado and San Angelo.

Miss Sanders will be married here in the Baptist church in November.



COUNTY AGENT'S COLUMN

by Ting Godwin

Schleicher County Agricultural Agent

The screwworm situation in West Texas is gradually worsening and has resulted in major discussion on livestock problems in the Big Bend and Pecos areas as witnessed by the meetings of cattle raisers' associations.

Additional 39 cases of screwworms were reported Friday in the Big Bend and Pecos region.

Owners of livestock in the county are asked to check closely for wounds; treat the wounds; spray and use all preventive measures possible to help reduce infestations of the screwworm pest.

It has been approximately three weeks since a sample has been sent into the laboratory at Mission, Texas for positive identification.

The ranchmen must know the kinds of plants growing on the range, their forage value, when to utilize them properly with the right kind of livestock and at the proper season.

Grass is our basic heritage. It affords protection from floods, guards our cities' water supplies, furnishes our great cereal crops, and supplies forage for livestock and wildlife.

Knowing range grasses, like knowing livestock, is the founda-

tion of the ranching business. A ranchman in the grass business, and livestock and wildlife are his salable by-products.

The kind and amount of vegetation determines the kind and number of livestock that can be grazed for most efficient and greatest economic returns.

Certain pasture grasses are indicators like signs on a highway. They show whether your range is going up-hill or down, or if the way ahead will be crooked or straight.

Good, palatable grass is the cheapest feed that can be grown. Good management can only mean more money in your pocket.

For more information on how you can learn more about pasture grasses, call for publication B-132, Know Your Grasses, at my office.

Happiness: That's when you find your eyeglasses soon enough so that you still remember what you wanted them for.

Are you planning a patio for your outdoor living area? If so, give careful consideration as to the type of surface you will use.

For active usage, a patio surface should require little maintenance,

be durable and permanent in nature, and pleasing in appearance. If used primarily for organized games, dancing and the like, the surface should be smooth and hard. Concrete or terrazzo surfaces are excellent for this purpose. For more informal gatherings, a less smooth surface can be very adequate.

If you build your own patio, one of the easiest surfaces to construct is to use paving brick on a sand base. If a concrete surface is preferred, it is suggested that you use a three or four foot redwood grid system built of one-inch or two-inch lumber. This will allow you

to pour and finish the concrete surface, one square at a time.

One of the most attractive patio surfaces is the exposed aggregate finish. It adds color and texture, retains the durability and permanence, yet does away with the cold, drab look of plain concrete. Exposed aggregate patio surfaces are best constructed by an experienced concrete contractor.

Sad facts of vacation life: Most resort spots don't feature the same gals that were in the ads.

Losses from handling are stealing profits from the Texas Live-

stock industry.

These losses include killed, crippled, and bruised animals, transit shrinkage and loss of bloom.

Reduction of shipping handling losses can be achieved by avoiding the use of clubs, whips, and other bruise-causing persuaders. Use canvas slappers, and use them sparingly. Eliminate protruding nails, bolts and broken boards in trucks, pens, and chutes. Remove stumps, posts, and machinery that will cause bruises in feedlots and in corral areas.

Haulers should bed the truck properly. Also, have trucking equipment in good order. Loading

should be done slowly and carefully as rough handling is an expensive way to speed up loading and unloading.

Protecting animals from bad weather, providing proper ventilation and frequent checking of the load are all good practices that may help reduce losses.

By keeping these suggestions in mind, shippers can reduce their handling losses and this will, in turn, insure an increase in livestock profits.

Just about the time a woman thinks her work is done, she becomes a grandmother.

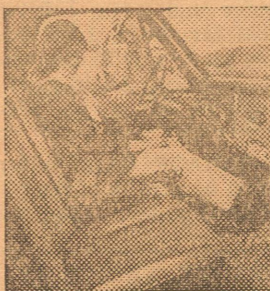
Here! New '69 CHEVROLET TRUCKS!

Now there are even more reasons why Chevrolet is more truck.

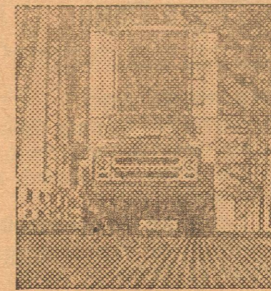


MORE STYLE
Here's the bold new look in pickups—Chevrolet's handsome new hood profile, new aluminum grille, new interior trim colors! You get a cab and Fleetside pickup box that are double wail, double strong. America's most popular pickup is more truck than ever for '69!

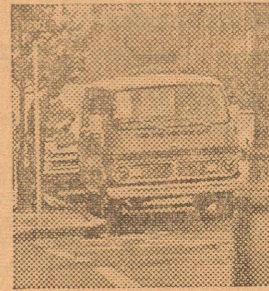
MORE LENGTH
New '69 Fleetside pickups provide cargo boxes up to 8½ ft. long—haul bigger payloads or king-sized camper bodies! For work or play, you get the riding smoothness of work-proved Independent Front Suspension, the economy of Chevy truck power. Plus easier handling.



MORE COMFORT
Now, more comfortable seats are designed with molded foam. Thick insulation hushes road noise. Bump leveling coil springs at all four wheels on most models smooth the way. More comfort!



MORE POWER
New workpower! A spirited new 350-cu.-in. V8 is standard in medium-duty V8 models. Order it for pickups, too! And there's big V8 power in heavy-weights. Chevrolet gives you plenty of workpower!



MORE VAN FOR THE MONEY
Low-cost Chevy-Van delivers loads of economy with big Sixes or work-whipping V8. Nimble maneuverability in traffic makes light of big loads. Now available with 3-speed Turbo Hydra-Matic.

At your Chevrolet dealer's now.

More trucks are Chevrolets because Chevrolet is more truck!

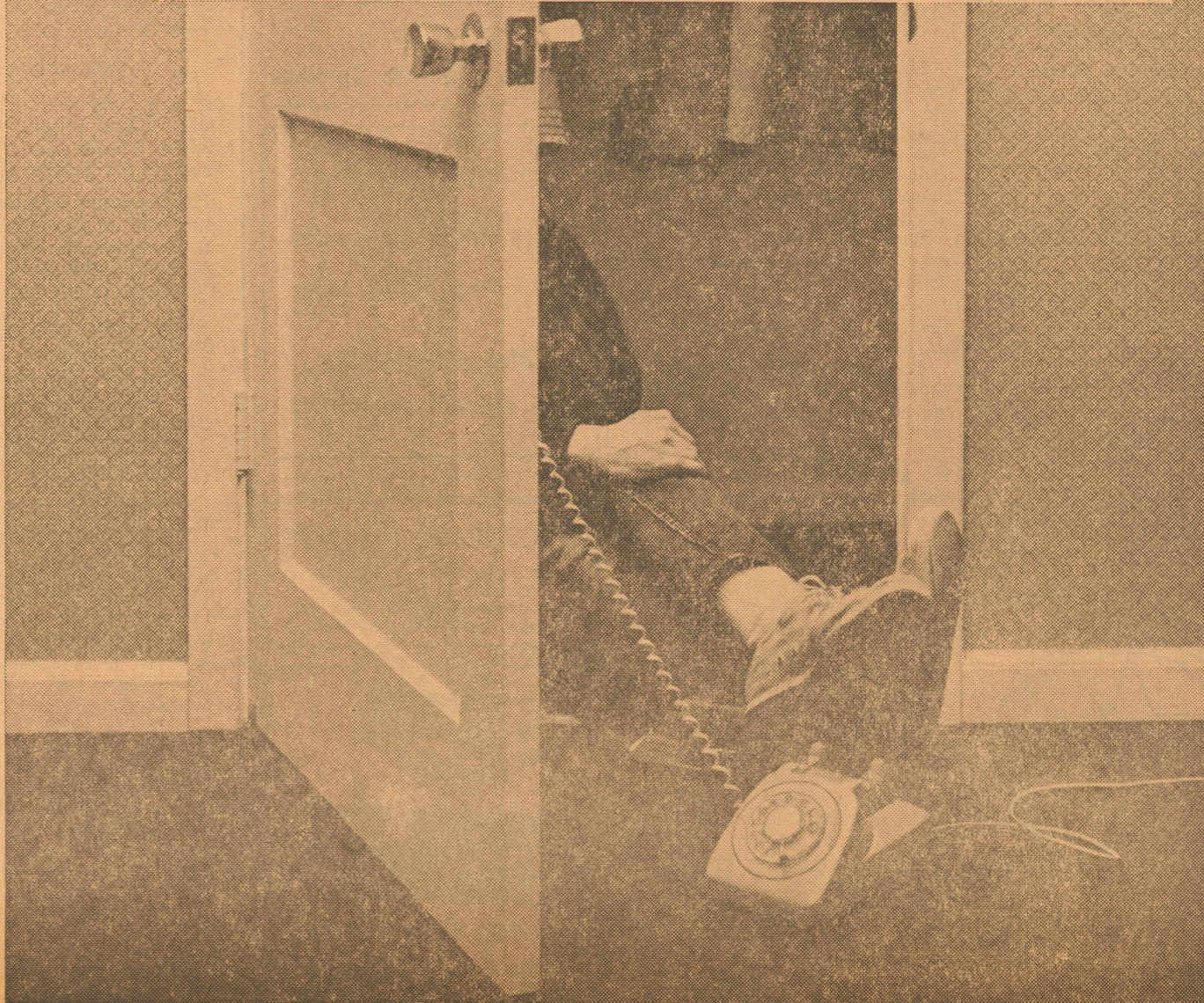


A kid's got a right to some privacy too.

If your kid's been hiding out lately when he gets on the phone, take the hint. There are probably some things he'd rather discuss without an audience around. And he's entitled. After all, asking a girl out at his age is hard enough. But when the whole family's listening in, a guy could freeze. Help loosen young Don Juan's tongue. Call

your General Telephone business office and get him an extension phone. Then he can have his tête-à-têtes without feeling self-conscious. When a kid feels you don't want to listen in on all his private conversations, he's more apt to tell you about them. An extension phone gives him that choice.

Extension phones by General Telephone.



We promote community growth by helping to finance individual growth

First National loans have helped many people to better their personal fortunes and build our community.

BUSINESS LOANS

We can give prompt loan service to any sound business enterprise in this area needing funds for inventory, improved equipment or interim operating expenses.

The First National Bank

Eldorado, Texas

YOUR FULL SERVICE BANK

Cheapest, Hardest Working Salesmen In Town Are in the ADVERTISING SUPER MARKET

For your Repairs on TV's RADIOS WASHERS SMALL APPLIANCES AND REFRIGERATORS Phone 853-2810 call BOYER ELECTRIC

FOR PROMPT Ambulance Service CALL 2582 Oxygen Equipped -Flight Service Available- At Your Call, 24 Hrs a Day R. V. SHEPPARD

INSURANCE FIRE WINDSTORM HAIL; AUTO; LIFE CASUALTY Car Loans Tom Ratliff Phone 853-2636

OUR DRY CLEANING DEPARTMENT is now in FULL SWING Bring in those dirty clothes NOW you have been saving back to have dry cleaned. Mothproofing Available YATES CLEANERS Doug Yates Ph. 853-2900

Motor Tune-Ups All Makes GENERATOR and STARTER REPAIRS GENERAL AUTOMOTIVE WORK Lawn Mower Repairs All Work Guaranteed Lowe's Repair Shop Gilbert Lowe

DAY OR NIGHT SERVICE RATLIFF-KERBOW FUNERAL HOME Eldorado Sonora Phones, Eldorado -- 853-2636 If No Answer, Dial -- 853-2860 Or call (Toll) Sonora-- 21871

ELDORADO SUCCESS PUBLISHED EVERY THURSDAY At Eldorado, Texas 76936 Fred Gunstead...Editor-Publisher Bill Gunstead...Associate Editor Subscription Rates 1 Year, in Schleicher County \$3.00 1 Year, Elsewhere...\$4.00

TEXAS PRESS ASSOCIATION MEM 1968 WEST TEXAS PRESS ASSOCIATION

ATTENTION college & high school students. Have for sale Royal Standard typewriter, excellent condition \$45. See Jim Harris or call 853-2526.

FOR RENT - 2 furnished houses. Both two-bedrooms. -Mrs. Marvin McDonald, phone 853-2888.

CARD OF THANKS We want to thank all our Eldorado friends for their comfort and assistance in the recent tragic death and funeral of our brother, Floyd, in Big Lake.

SEED OATS for sale, \$1.25 bushel. See Bob Faught or call 853-2402. (Au 22-29 Sep 5-12*)

ONE of the finer things of life—Blue Lustre carpet and upholstery cleaner. Rent electric shampooer \$1. Foxworth-Galbraith Lumber Co., Eldorado, Texas.

ONE YEAR AGO Sept. 14, 1967—The County Commissioners set Oct. 7th for a "wet" election, upon being presented a petition calling for it.

FIVE YEARS AGO Sept. 12, 1963—Leigh W. Clark, assistant secretary and assistant treasurer of Standard Oil Co. of Texas, was to address a Lions Club ladies night.

12 YEARS AGO Sept. 13, 1956—Funeral services were held for Mrs. John Rae, 84, mother of Mrs. Elizabeth Powell.

35 YEARS AGO Sept. 15, 1933—Leslie Galbreath and J. C. Crosby announced they would run a Cold Drink and Cafe Combined at the Red Top Filling Station five miles north of Eldorado.

ELDERADO LODGE No. 800 - A. F. & A. M. Stated meeting 2nd Thursday in each month, at 7:00 p. m. from Oct. 1 to April 1, and at 8:00 from April 1 to October 1.

Community Calendar

Sept. 12, Thursday. Masonic Lodge meets. Sept. 13, Friday. Eagle football team meets Bronte here, 8:00 p.m. Sept. 14, Saturday. Eagle "B" football boys to Iran. Sept. 16, Monday. Pre-School For Five-Year-Olds to begin.

THESE FOR SALE: John Deere 70, John Deere G, John Deere 8-16 grain drill, 4-row tool bar with double row planter; 4-row cultivator and 2-row cultivator, 4-row tool bar; 4-disc John Deere breaking plow; two 10-disc one way with grain boxes. All in good condition.

GARAGE SALE advertisements must be paid in advance. No phone orders, please. -Success.

BEAUTY COUNSELOR - Be a teacher of fashion and sensible skin care. Managerial position open. Write Mrs. Maxine Strouf, Div. Mgr., Beauty Counselor, Box 1376, Del Rio, Texas 78840. (tfe)

WOULD LIKE TO BUY several hundred head of mixed feeder steers and young cows 400 to 600 lbs. Call Morris Books, San Angelo 949-3425 week ends only, or write Box 3463, San Angelo. (to Sep 19*)

MUST SELL Leaving Town Saturday: Pink Frigidaire clothes dryer, electric, excellent condition...\$35 5-piece dinette set, brown and gold, good condition...\$10 2-bedroom house for rent, per month...\$35 See at 305 East Hill

CARD OF THANKS We wish to express our sincere thanks for your many kindnesses while I was hospitalized in San Angelo. Your prayers, cards, visits, and flowers were deeply appreciated. May God bless you all.

SHEPPARD AND DANNHEIM Used Cars ELDORADO, TEXAS 76936 R. V. Sheppard Sam Dannheim

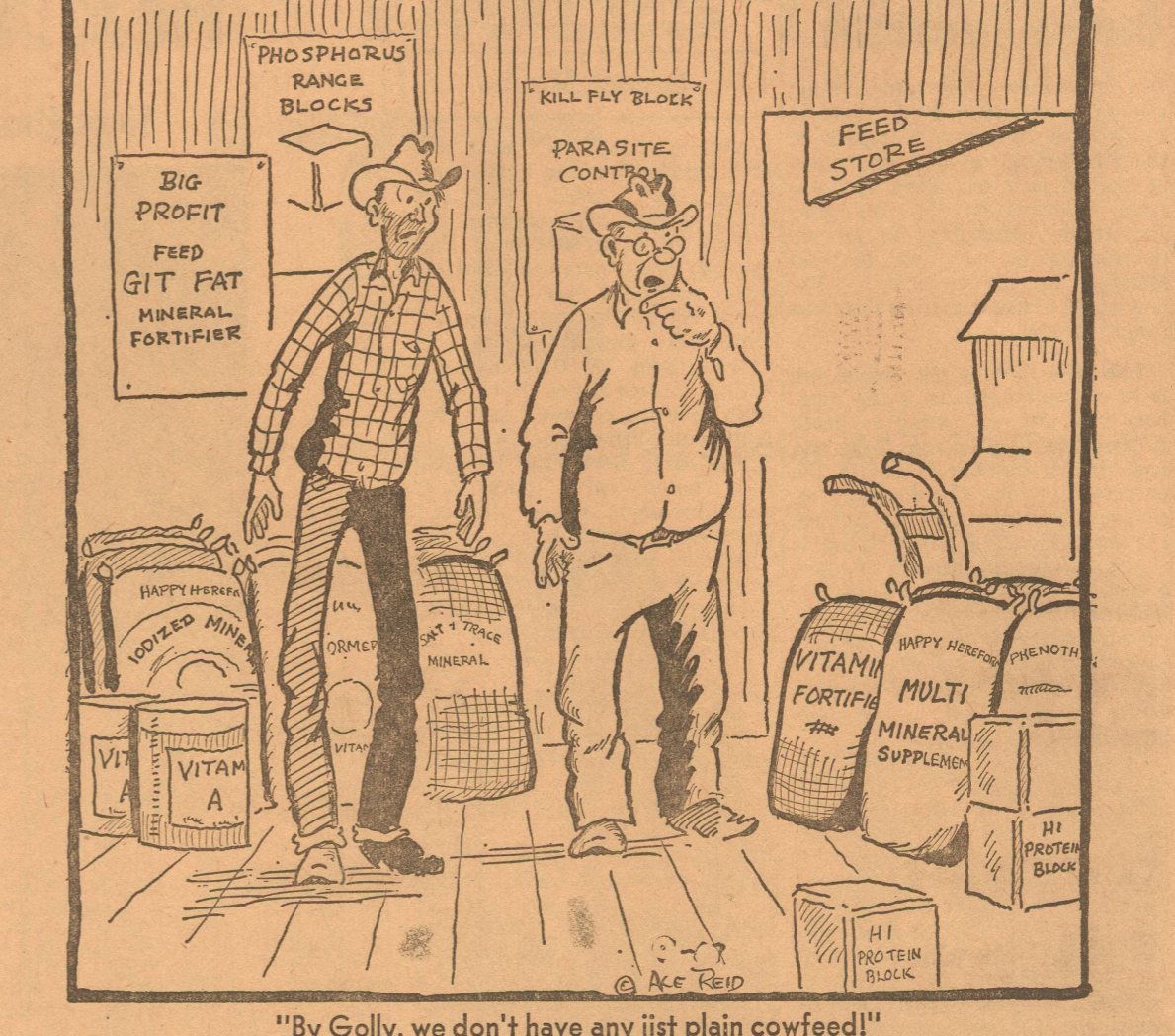
COMPLETE AIR CONDITIONING AND Refrigeration Service * AUTOMOTIVE * HOME * COMMERCIAL TOPLIFFE Gas & Electric Service

MYERS PUMPS Check with me for complete line. I also do contract wiring Blake's Electric B. L. Blakeway Ph. 853-2775

CLASSIFIED ADVERTISING RATES First Insertion...4c word Additional Insertions...2c word Minimum 50c Each Insertion Cash In Advance \$1.00 Minimum On All Small Ads Taken On Phone Or By Mail

Western-Bilt If They're Western-Bilt They're Guaranteed Free Pick Up and Del. In Eldorado Phone 853-2801

COW POKES By Ace Reid



"By Golly, we don't have any jist plain cowfeed!"

NOTICE TO BIDDERS FOR SALE TWO (2) USED MOTOR GRADERS Sealed bids addressed to the Commissioners Court of Schleicher County, Texas will be received in the office of the County Auditor of said County in Courthouse, Eldorado, Texas until 9:00 A. M. September 23, 1968, at which time bids will be opened and considered by said Court, meeting in Commissioners Courtroom in Eldorado, Texas for the sale of one or both of the following equipment:

CONTRACTORS' NOTICE OF TEXAS HIGHWAY CONSTRUCTION Sealed proposals for constructing 11.651 miles of gr., str., base & surf. From 13.7 Miles SW of Eldorado, Southwest To US 290, 15 Miles West of Sonora on Highway No. FM 2129, covered by A 2226-1-6 & 2226-2-1 in Schleicher & Sutton County, will be received at the Highway Department, Austin, until 9:00 A.M., Sept. 25, 1968, and then publicly opened and read.

THESE FOR SALE: Chrome breakfast set, Formica top table and 4 chairs. Twin bed, springs and Western built innerspring mattress. 1965 Mercury Monterey 4-door sedan. See or call Mrs. Charles Wimer, 853-2947.

FOR SALE A 2.81 acre tract of land; said land is located in Schleicher County about 1/2 mile south from Eldorado, Texas.

Being a 350' x 350' tract of land out of the central part of Survey 50, Abst. 805, Cert. 27, Blk. A, H.E. & W. T. RR Co. Schleicher County, Texas. Mail sealed bids by September 20, 1968 to: General Telephone Company of the Southwest P. O. Box 1013 Brownwood, Texas 76801 Attention: Tom Kennedy Area Engineer

TWO-BEDROOM HOUSE for sale. Reasonable terms arranged. 201 W. Bluebonnet Drive. Call Eldorado 853-2990 or write Box 622, Rankin, Texas 79778, for further information. (Sep 12-19)

GARAGE SALE - Thursday and Friday at 603 N. Divide, San Angelo highway. Trikes, bikes (24" girls), gas range, some furniture, and baby, children and adult clothes. Lots of misc. 1*

Used Car Bargains 64 Chevrolet pickup, big 6 motor, 4 speed Cattle racks, new motor, low mileage \$945 64 Ford pickup, Fordomatic mud grips rear, for \$795 62 Ford 4 dr., v8, standard trans, clean \$525 57 Mercury 4 dr., good old car \$175 Opinions are easy to come by when you don't have to make decisions. James Williams Car Market Phone 853-2611 Eldorado, Texas

Our WASHINGTON Letter By Congressman O. C. FISHER

Although everyone is interested in the Presidential race, one thing that many members of Congress dread, as an aftermath of the contest this year, is the prospect of the appearance of an undetermined number of rubber stamp Congressmen in the House next year.

than one or two terms. There's little of that however, in Texas, where as a general rule the voters abhor rubber stampism and coattail runners. They remember that such people have plagued this country off and on for 35 years.

Voter Registration Time Is Past In Texas In a laudable effort to "get out the vote" in the upcoming General Election, some commentators on TV mention now and then to be sure to "register to vote now" if you want to vote for Nixon or Humphrey or Wallace.

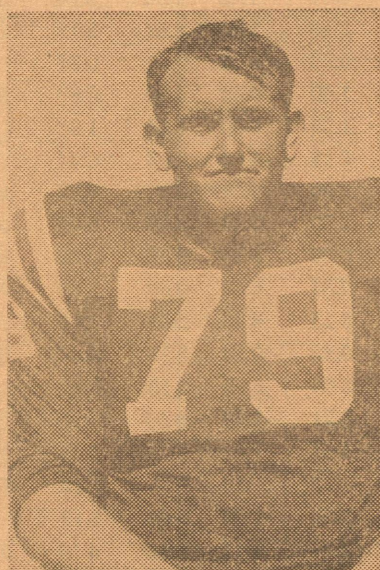
WITH OUR SUBSCRIBERS: Gerald Hertgraves' new address is 2933 Cumberland Drive in San Angelo. Leslie Woullard recently renewed and gave new address as 1602 Campus Court, Abilene, Texas 79601. He will be on the Abilene Christian College faculty this coming year.

WE'RE LOOKING TO THE 1968 EAGLES TO BEAT BRONTE

HERE — THIS FRIDAY NIGHT — GAME KICK-OFF TIME: 8:00 P.M. — Let's Back The Eagles ALL THE WAY!



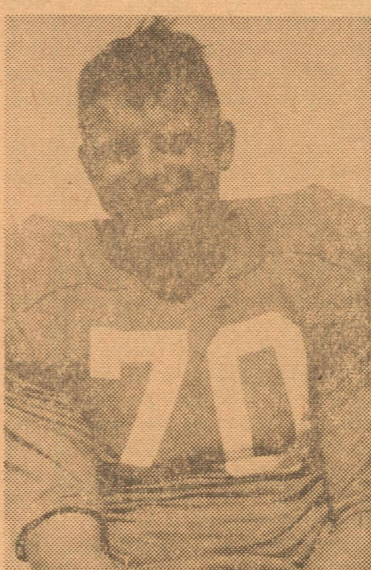
89—MIKE OLSON
Left End



Left Tackle
79—JIMMY MCGINNES



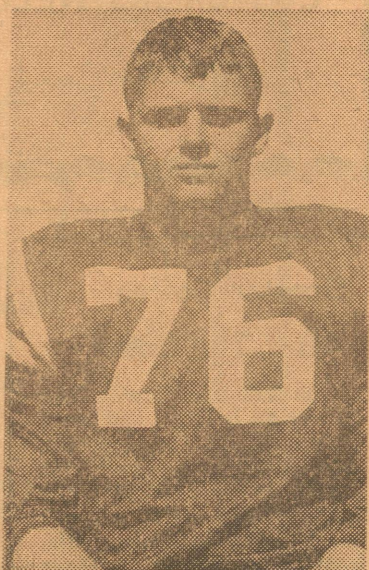
65—ALBERT TORRES
Left Guard



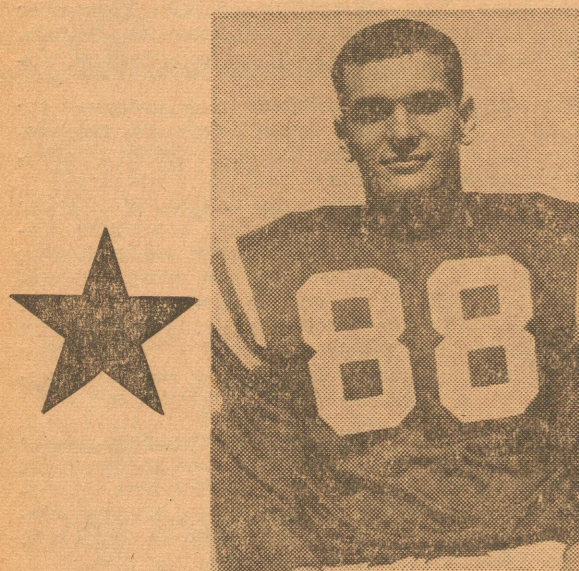
70—WALTER SPECK
Center



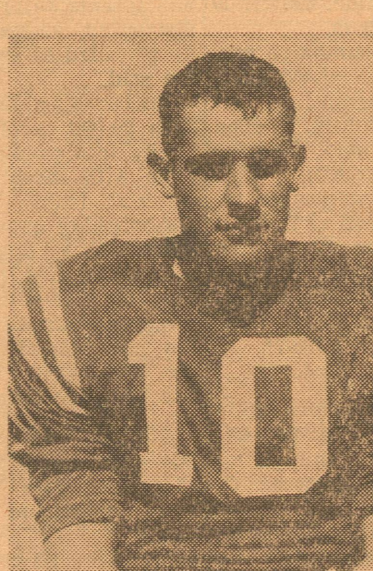
68—BOB SYKES
Right Guard



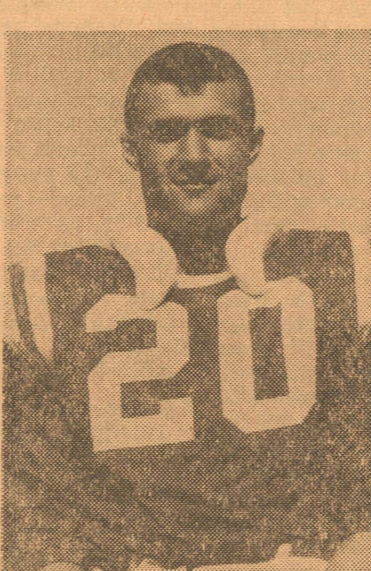
76—ROSS WHITTEN
Right Tackle



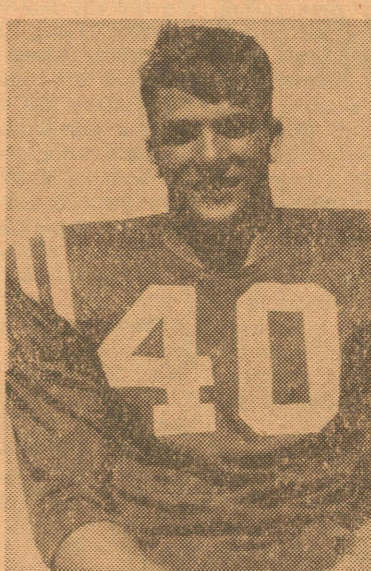
88—PAUL PAGE
Right End



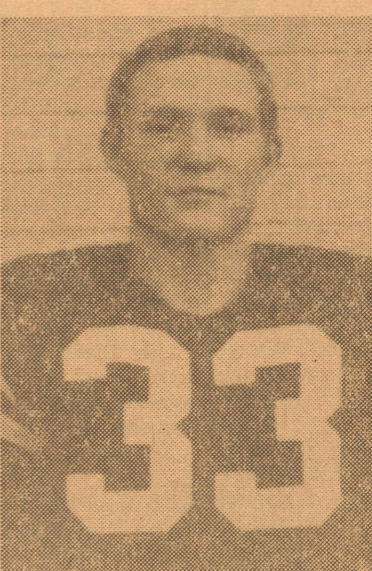
10—BOB PAGE
Quarterback



20—JAMES LARRY DAVIS
Left Halfback



40—WAYNE DOYLE
Right Halfback



33—PINKIE DEMPSEY
Fullback

The Following Fans Are Boosting The Eldorado Eagles 100% And Are Also Entitled To Your Good Will & Support

SOUTHWEST TEXAS ELECTRIC CO-OP.
Inc.—Owned By Those It Serves

WESTERN AUTO Associate STORE
Buddy White—Prop.

ELDORADO DRUG
For Your Health's Sake

ETHEREDGE TEXACO
Jack Etheredge

ELDORADO VARIETY
Gene and Vernell McCalla

R. L. MOBLEY
ENCO Products

CITY OF ELDORADO
Water and Gas Departments

ENGDAHL'S GARAGE
S. C. Engdahl

ROBERT (Bob) PAGE
Oil Properties

HEXT FOODS
Granvil Hext and Jack Hext

THE RED TOP PACKAGE
Mr. and Mrs. Glynn Edmondson

JOHN STIGLER — JEWELRY
Mr. and Mrs. John Stigler and Family

JACK HALBERT, JR.
Butane—Mobil Consignee

EAGLE CHEVROLET - OLDS
Jim Thornton — Paul Page

LUM DAVIS FINA SERVICE
Firestone Tires & Goodyear

FOXWORTH - GALBRAITH LUMBER CO.
Eldorado, Texas

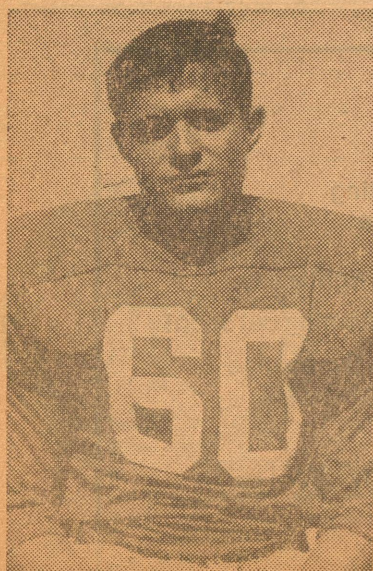
MEADOR - PETERS AGENCY
E. C. Peters — Ed Meador

NIXON WELDING & CONSTRUCTION
Mr. and Mrs. Andy Nixon

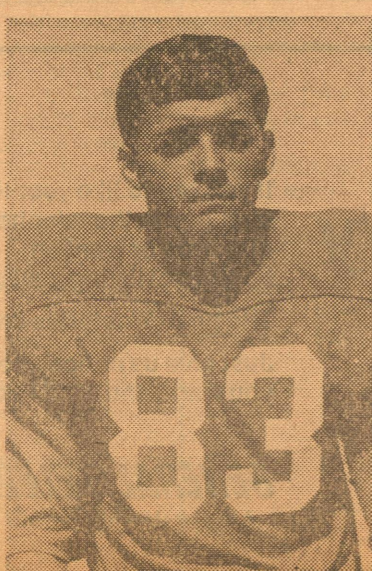
ELDORADO WOOL COMPANY
Your Purina Dealer

THE RATLIFF STORE
Dry Goods

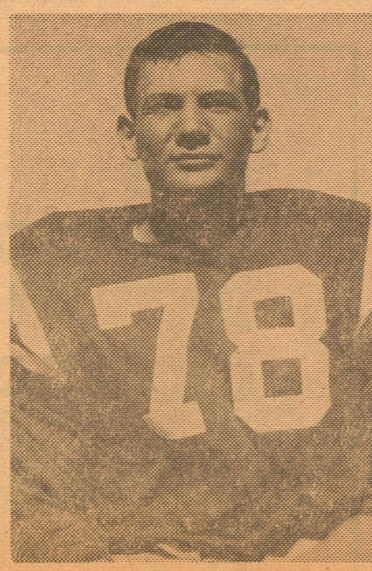
WILLIAMS FINA STATION
George Williams



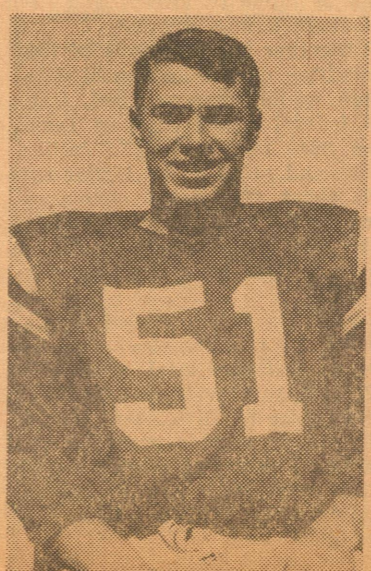
60—DOBIE LIVELY



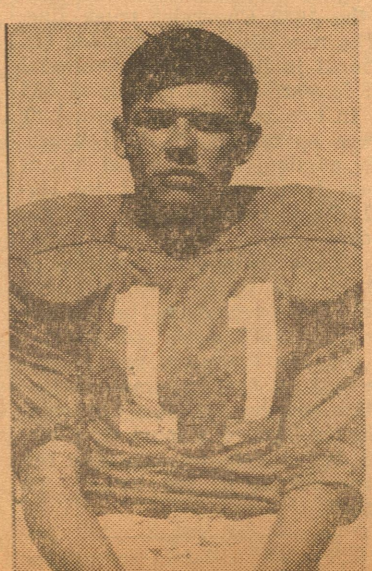
83—CHARLES ADAMS



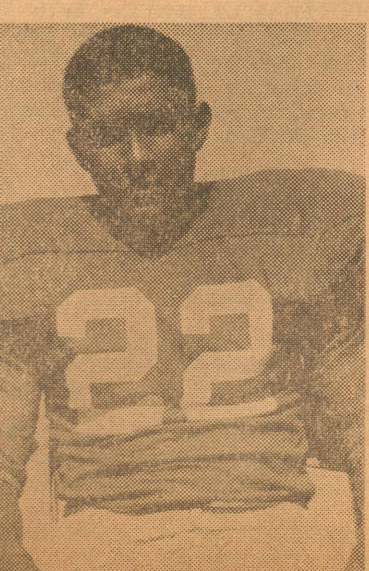
78—ROY JONES



51—JIMBO OVERSTREET



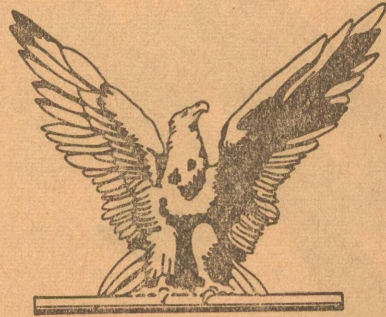
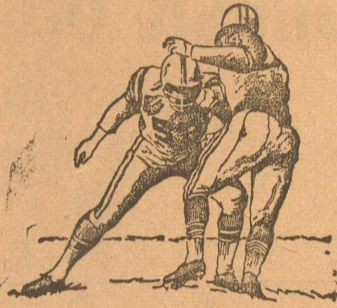
11—JIM MARTIN



22—VICTOR BELMAN



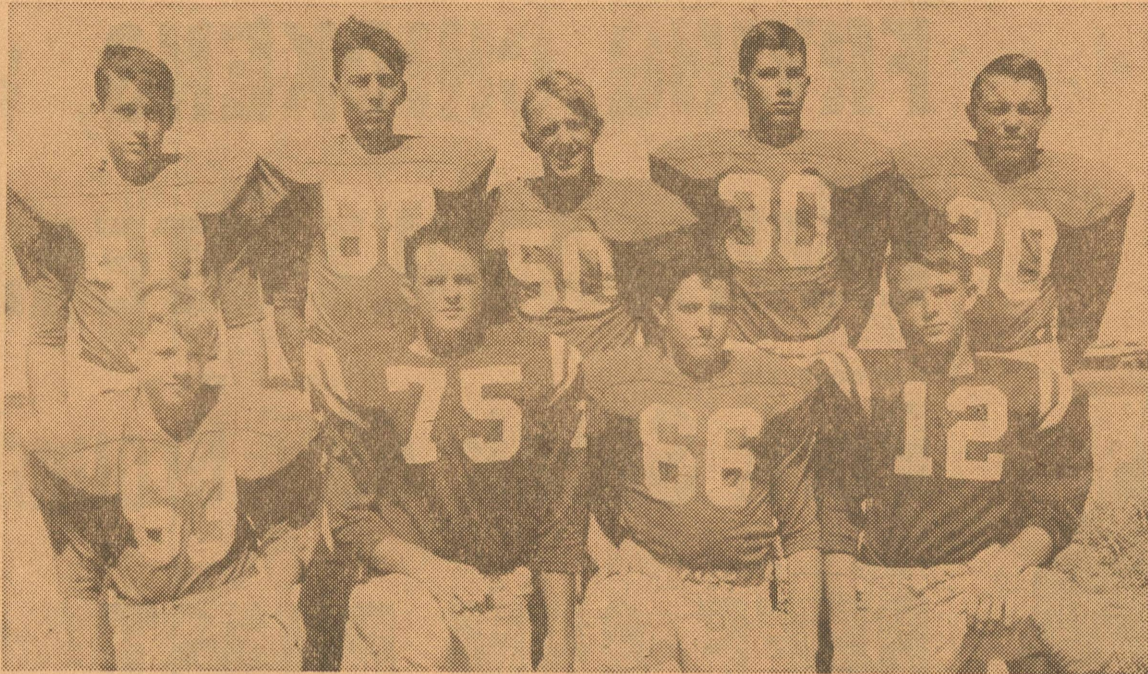
SHERWOOD BARKER
Eagle Football Team Coach



ELDORADO EAGLES 1968 FOOTBALL SCHEDULE

Sept. 13	Bronte	Here, 8:00 p.m.
Sept. 20	Ozona	There, 8:00 p.m.
Sept. 27	Robert Lee	Here, 8:00 p.m.
Oct. 4	Iraan	Here, 8:00 p.m.
Oct. 11	Wall	There, 8:00 p.m.
*Oct. 18	Mason	Here, 8:00 p.m.
*Oct. 25	Eden	There, 8:00 p.m.
*Nov. 1	Junction	There, 7:30 p.m.
*Nov. 8	Sonora	Here, 7:30 p.m.
*Nov. 15	Menard	There, 7:30 p.m.

* District Games



FIRST YEAR EAGLES: Left to right on the front row are: Willie Manning, Gary Cave, Randy Collins, and Archie Nixon. On back row are Gary Danford, William Tampeke, Robert Hibbitts, Billy Hubble, and Ricky Griffin.

Robert Massie Co.

Decorators — Home Furnishers

SUPPLYING THE BEST IN HOME FURNISHINGS
IN WHATEVER PRICE LEVEL . . . MAKING THEM
AVAILABLE AT MODEST COST . . . AND HELPING
CUSTOMERS GET THE MOST OUT OF THE SPACE IN
THEIR HOME IS OUR FULL-TIME BUSINESS.

A COURTEOUS SALES STAFF AND AN ACCREDITED
DECORATOR ARE ON HAND TO HELP YOU WITH
YOUR HOME FURNISHING QUESTIONS.

OUR DECORATING STUDIO SPECIALIZES IN:

- Custom Draperies
- Wallpaper
- Accessories
- Floor Coverings
- Bedspreads

12-14 EAST TWOHIG TELEPHONE 655-6721
SAN ANGELO, TEXAS

Eagles Hold Their Final Scrimmage At San Saba Last Friday

The Eldorado Eagles had studied hard the week of September 2-8; and they did somewhat better when they took their diagnostic test against the San Saba Armadillos last Friday night. In fact the younger division of the Eagle squad outscored the youthful Armadillos by some four to one; but the senior Armadillos maintained their tutorial status by a one-to-nothing lesson.

In the first period scrimmage Bob Whitten, Dobbie Lively, and Mike Dempsey provided Ricky Griffin some starting room and Griffin ran 64 yards for one practice score. With the same down-front help, Griffin earned gains of 8 yards three times, one six-yarder, and one each three and five-yarder.

Archie Nixon received some down front assistance from Charles Adams and John Danford in one play series only and racked up 43 yards to score again.

Victor Belman with good encouragement from Gary Cave, John Danford, and Billy Dock Hubble picked up a total of 48 yards and another practice score.

Bob Whitten staged a spectacular bit of larceny when he came in from his defensive linebacker position, took the ball away from an astonished Armadillo, and absconded for 35 yards and another score.

The youthful Eagles threw no passes. Jim Martin did well as an offensive quarterback.

But the next session was a tougher deal. However, Halfback James Larry Davis was able to carry for 45 yards against the best resistance the Armadillos could offer. Davis required 13 tries and had Bob Sykes and Pinkie Dempsey's sympathy and active help in his efforts. Keith Williams tabbed 22 yards of progress in three carries with

Mike Olson and Ross Whitten admonishing would-be tackler to give Williams room to run.

Quarterback Bob Page made better grades this time with his passing attempts, completing four of 12 tries for 43 yards. One was to Wayne Doyle for 4 yards; one to James L. Davis for 6; one to Mike Olson for 8; and one to Paul Page for 25 yards. Bob Sykes, Albert Torres, Jim Robledo, and Ross Whitten vetoed Armadillo efforts to overwhelm Page and were successful all but one time when JB Page was downed for a loss.

Joel Muzquiz did not take part in much of the recitation since Eldorado coaches are nursing his injured ribs along for full recovery.

Sam Oglesby demonstrated considerable progress with his defensive efforts.

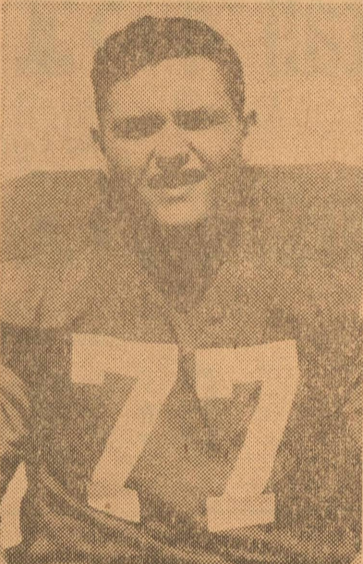
Coach Sherwood Barker said in summary of the scrimmage that the interior front line efforts were creditable and that the secondary did a fair job, breaking under pressure in one or two spots. He said that the Eagles need much work in their weakest game area: that of pass defense. He concluded that along with more study of the fundamental skills of blocking and tackling, the Eagles needed to get in a much more determined and competitive frame of mind; i. e., in other words, get pretty hard-nosed about things.

Statistics in the San Saba practice session saw the Eagles earn 147 yards on the ground and 43 by air. Interesting fact is that San Saba passed 40 times and completed six. They ground out their only score on their running attack.

560 Enrolled

As of Monday morning, there were 560 students enrolled in the local schools.

There were 310 in grades 1 to 6, and 250 in grades 7 through 12, according to School Supt. C. T. Humphries, and the two principals: Walter Wallis, elementary, and Guy Whitaker, high school.



77—JOHN DANFORD



66—JIMMY ROBLEDO



60—MIKE DEMPSEY



30—MICKEY CLARK

YATES CLEANERS

Doug Yates

LEE'S DRIVE-IN

Lee Halbert—Phone 2661

DAVIDSON HARDWARE

Bud Davidson — Mrs. Sadie Davidson

ELDORADO FLOWER & GIFT

Mrs. O. L. Woodward

GRIFFIN GULF SERVICE

Dan Griffin

MCCORMICK'S DRIVE-IN GROCERY

And Station — Hollis and Bee McCormick

MIKESKA GIN

Your Business Appreciated

EL DORADO HARDWARE CO.

Phone 853-2727

JAVA JUNCTION CAFE

Mrs. Betty Hanusch & Employees

EL DORADO WOOLEN MILLS, INC.

Finest In Wool & Mohair Products

ROSE'S BEAUTY SHOP

Mrs. Rose Doyle

JERRY'S RADIO & T-V SERVICE

Jerry Jones — Phone 2314

JERRE'S DRIVE-IN

The Holleys — Phone 2649

L. R. HANUSCH

Water Well Drilling & Service

BARGAINS

30-Gal. Water Heater
10-Year Warranty . . . \$43.98

White Commode Seats . . . \$2.40

36" x 1 x 20 Poultry Netting
150' Roll . . . \$8.75

No. 57 Hol-Dem Electric Fence
Control . . . \$19.75

3-8" x 4' Elect. Fence Post, ea. . 15c

4" Fiber Pipe for
Sewer Line, per C . . . \$23.50

FOXWORTH-GALBRAITH LUMBER CO.

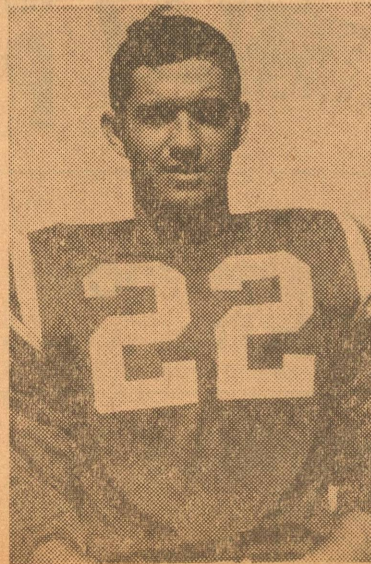
PHONE NO. 853-2744 ELDORADO, TEXAS
GROWING WITH THE SOUTHWEST SINCE 1901



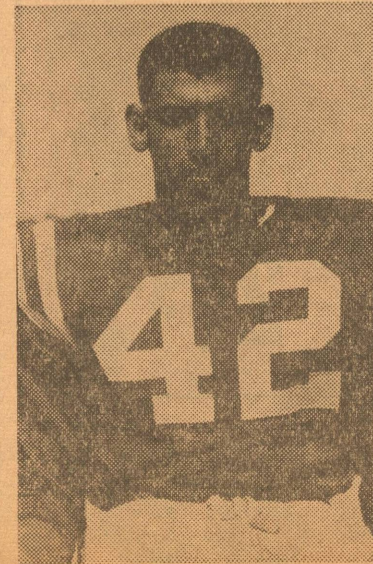
80—WILLIAM EDMISTON



50—SAM OGLESBY



22—KEITH WILLIAMS



42—JOE MUZQUIZ

Food Savings

PARKER FOODS INC.
 EVERYDAY SAVINGS AND S & H GREEN STAMPS
 —
 DOUBLE STAMPS WEDNESDAY



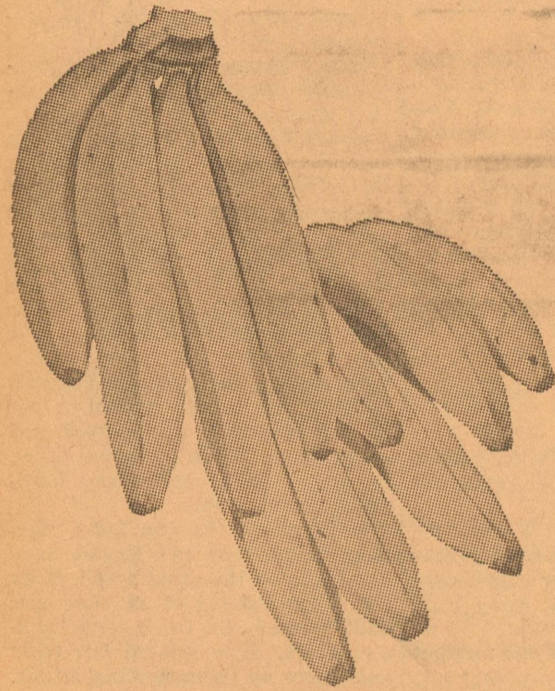
USDA GRADE 'A' **FRYING CHICKENS, whole** **29¢** POUND

THRIFTY **LEAN FAMILY STEAK** **59¢** POUND

SEMI BONELESS POUND FRESH **Pork Steak 59¢** | **Ground Chuck 69¢** POUND

TASTY — BABY **BEEF ARM ROAST** **69¢** POUND

Garden Fresh Produce



FLAME TOKAY GRAPES

POUND **19¢**

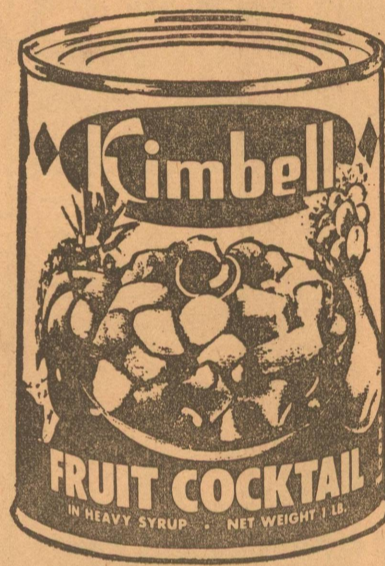
SOUTH AMERICAN BANANAS

2 Lbs 29¢

DELICIOUS Apples **19¢** POUND

Yams 15¢ POUND

TEXAS NO. 1 **YELLOW ONIONS 7¢** POUND



KIMBELL'S **Fruit Cocktail 4 FOR \$1** 303 CAN

KIMBELL'S CUT **Green Beans 6 FOR \$1** 303 CAN

DIAMOND **Tomatoes 6 FOR \$1** 303 CAN

KIMBELL'S — ALL PURPOSE **Big K Flour 39¢** 5 LB. BAG

KIM **Dog Food 12 FOR \$1** TALL CAN

KIMBELL'S **Evaporated Milk 6 FOR \$1** TALL CAN



Frozen Food Specials



Patio **Mexican Dinner 2 FOR \$1** 1 Lb. Carton

— Beef, Chicken, Tuna, Turkey, Macaroni & Cheese **Morton's Pot Pies 5 FOR \$1** 8-OZ. PKG.

Sea Star Fish Stix 4 FOR \$1 8-OZ. PKG.

ORA IDA **Ora Ida Tater Tots 2 FOR \$1** 2 LB. BOX

KEEBLER COOKIES 2 PACKAGES 89¢
 PECAN SANDIES
 CHOCOLATE DROP



Crisco Oil . . . 49¢ 24-OZ. BOTTLE

Van Camp Tuna 5 FOR \$1 NO. 1/2 CAN

KIM **Luncheon Meat 49¢** 12-OZ. CAN

VAN CAMPS **Pork & Beans 6 FOR \$1** 300 CAN

TASTY **CHEESE FOOD 69¢** 2 Lb. Box

PRIDE CRACKERS 23¢ 1 Lb. Box

KIMBELL'S **SALT 9¢** 26-Oz. Box

SCOTT TISSUE 29¢ BIG ROLL 2 For