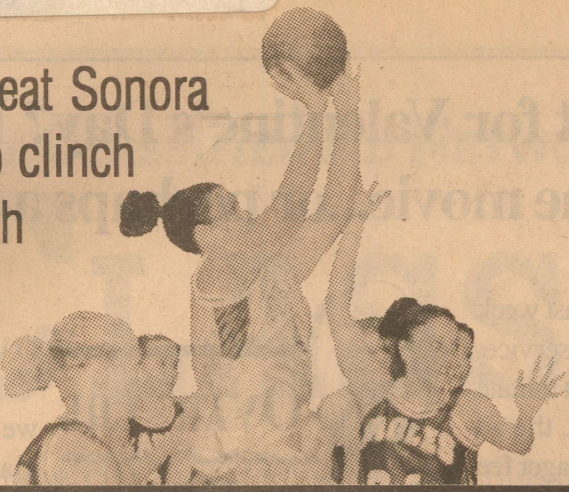


Lady Eagles beat Sonora in OT to clinch Playoff berth

...see Page 4
for details



Eldorado Success

100th Year on Top of the Divide



ELDORADO SUCCESS

© Copyright 2001, Masked Rider Publishing, Inc.

e-mail: eldoradosuccess@bigfoot.com

U.S.P.S. # 342-470

SINGLE
ISSUE PRICE
STILL ONLY
50¢

VOLUME 100, ISSUE 6

"The Voice of Eldorado and Schleicher County Since 1901"

FEBRUARY 8, 2001

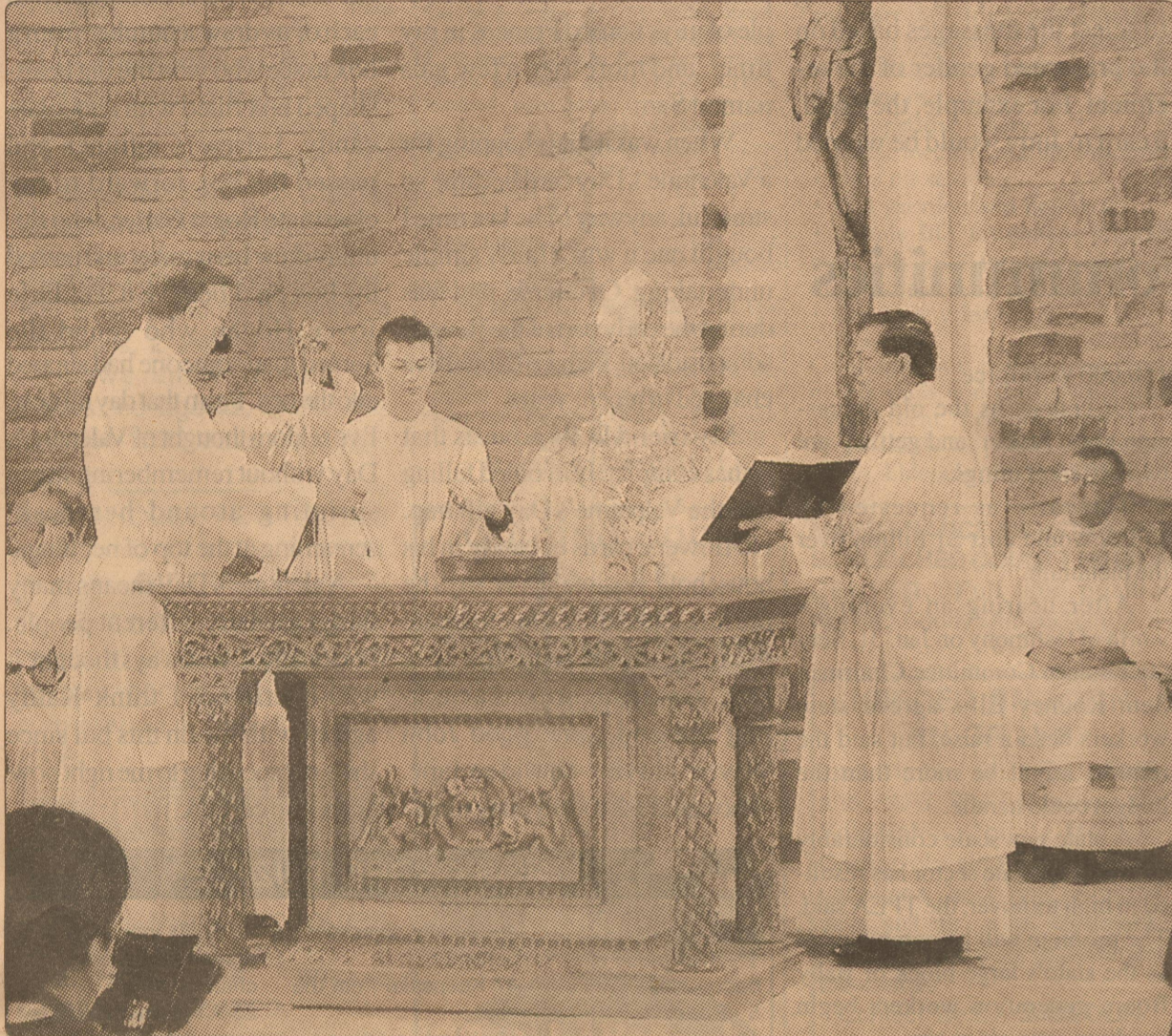


photo by Lori Stricklan

Dedicating a new monastery — Bishop Michael Pfeifer of the San Angelo Diocese presided over the "incensation of the Altar and the Church" during the dedication service at Our Lady of Grace Monastery last Saturday. Assisting were Deacon Ray Smith (at left) and Deacon Jerry Trevino (at right). Our Lady of Grace Monastery is located in the northeast portion of Schleicher County on land donated by Pierce and Deana Holt.

Hundreds turn out for dedication service at Our Lady of Grace Monastery

Carmelite sisters cloistered now that construction is complete

It's a long way from Wahpeton, South Dakota to Schleicher County. For Sister Mary Grace, prioress of Our Lady of Grace Monastery, the journey covered roughly 1,200 miles in distance and more than eleven years in time as she and a group of Carmelite nuns moved from South Dakota to a temporary home in San Angelo, and finally to their new monastery in the northeastern part of Schleicher County.

The journey brought Sister Mary Grace into contact with hundreds of kind people. People who gave willingly of their time, talents and money to make possible the construction of Our Lady of Grace Monastery. On Saturday, February 3, 2001, many of those people made

the trip to the new monastery for its dedication.

Bishop Michael Pfeifer of the San Angelo Diocese was on hand, as were numerous other dignitaries, including Eldorado Mayor John Nikolauk and San Angelo Mayor Johnny Fender. In all more than a thousand people traveled to the remote monastery from all over the Concho Valley. What they saw was a beautiful facility, its architecture inspired by the old Spanish and Mexican Missions in Texas and New Mexico. The chapel, where the two-and-a-half hour dedication service was held, is the central feature of the facility around which the monastery's other buildings are constructed. During the service, the building was

dedicated to God as its altar and walls were anointed with oil and fragrant incense wafted through the sanctuary.

Recognized for their contributions to the monastery were Deana and Pierce Holt, who donated the land for the facility, and Frances Mertz, who until her death in an auto accident two weeks ago, worked to raise money for the nuns and their new home.

Sister Mary Grace offered her thanks to numerous volunteers, including many from Eldorado, who contributed their time and talents to the project. "This dedication is a tribute to all their help," she said. "It's a privilege to be in on the groundwork of a future we cannot

CONTINUED ON PAGE 6

Skyrocketing gas prices boost local economy, hurt City gas customers

Customers of the City of Eldorado's gas system have been hit hard in recent months by natural gas prices that jumped from \$5.00 per thousand cubic feet (mcf) in June, 2000, to \$12.00 per mcf in January, 2001. While futures markets are predicting gas prices will decline somewhat during the coming summer months, there appears to be little near term relief on the horizon.

"For the most part our customers understand that the city is at the mercy of the gas market," said City Administrator Randy Mankin. "But they are frustrated and many of them are having a hard time paying their bills."

The City of Eldorado, one of the few municipalities in the region to operate its own gas system, purchases natural gas from Conoco. The company has a pipeline which passes along the eastern edge of the city limits. Gas from that pipeline is sold to the city under a purchase agreement which dates back to 1987, long before Conoco owned the pipeline.

"The purchase agreement ties the city's cost to the gas spot market," Mankin said. "And, right now that market has gone out of sight." Mankin noted that he has been in contact with representatives of Conoco this week in hopes of obtaining a better price for the city. While there have been no concrete developments, talks with the company are continuing.

What's bad for city gas customers, however, is having a positive impact on the local economy. The oil & gas service industry is booming and that translates into jobs for local workers. The higher price of natural gas will also have a positive impact on Schleicher County's tax base. County-wide taxing entities such as Schleicher County I.S.D., the Schleicher County Hospital District and Schleicher County itself should see the values of

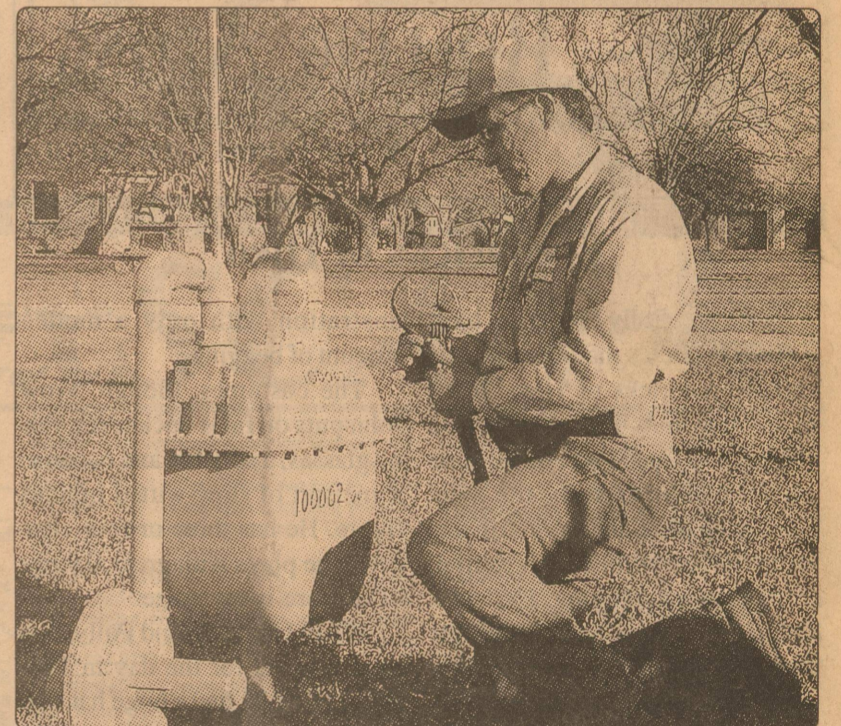


photo by Kathy Mankin

Looking for leaks — Gas system operator David Mejia inspected a gas meter on the courthouse square Tuesday. Prompted by skyrocketing gas prices, the city is currently surveying its distribution system trying to identify and repair faulty meters while locating and repairing leaks.

oil & gas properties rise in the next appraisal. Ray Ballew, Chief Appraiser of the Schleicher County Appraisal District notes that the oil and gas portion of the county-wide tax base should see a "significant increase". Ballew notes that on average oil is up \$10 per barrel and gas has tripled in price.

None of that helps city gas customers, however. And, the city cannot artificially lower gas rates and hope to make up the difference on an increased tax levy since the city's tax base includes little if any oil and gas properties.

In December, 2000 the city paid Conoco \$10.61 per mcf while billing its customers \$12.00. "Normally the city charges \$1.90 per mcf to cover our overhead and passes through the cost of the gas to our customers," stated Mankin. "But in recent months the prices have been so high that we've held back on the \$1.90. I'm not sure

how much longer the city can afford to do that."

Local gas customers aren't the only ones complaining about the high prices. Consumers statewide are feeling the pinch. On Tuesday the three commissioners on the Texas Railroad Commission, the agency which oversees the oil and gas industry, voted unanimously to study the problem. One commissioner, Tony Garza commented after the vote, "With consumers' facing some of the highest natural gas bills in recent memory, there's an urgent need to offer answers and solutions that deal with the problem over both the short and long term."

In the meantime city officials are urging local gas customers to conserve by turning thermostats down and not heating vacant buildings or unoccupied portions of a home. Gas water heaters can also be turned to a lower setting.

SCISD's "Rural School and Community Trust" program receives Getty Foundation grant

The Rural School and Community Trust (Annenberg Grant) received a planning grant from the Getty Foundation to develop a national rural arts education program. Cherie McCollough, director of the Rural School and Community Trust grant in Schleicher County received word from RSCT national headquarters that volunteers were needed from rural trust sites in order to begin implementation of the rural arts

program, which will ultimately fund arts programs in rural areas.

Esther Bunton will be accompanying Eldorado High School student Maria Hernandez to Phoenix Arizona in late February. The planning process will be a three step process: the first is a series of regional meetings at which participants will identify and develop ideas for what rural schools/communities need and want in the arts.

This is the stage where Esther and Maria will be representing Schleicher County with their information and ideas.

The second step is a national meeting at which the ideas from the regional meetings will be further developed and the structure of the implementation grant proposal will be developed. The proposal will then be sent to various foundations for support.



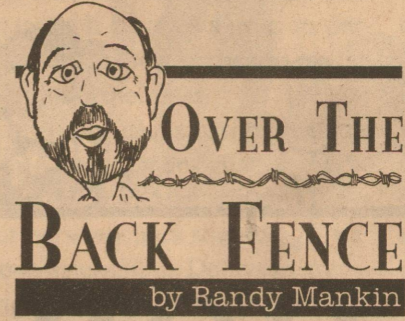
photo by Kathy Mankin

Upside down Rodeo — Two Midland men survived last Thursday after their 1995 Isuzu Rodeo overturned 12 miles west of Eldorado on US 190. The driver, George Scott, 20, received only bumps and bruises. His passenger, Angel Chavez, 18, was taken by EMS ambulance to Schleicher County Medical Center where he was treated and released. The driver reported that he and Chavez had been taking yearbook photos at Eldorado High School earlier in the day and were enroute back to Midland. Upon discovering that they had left a wallet behind in their motel room, the men were returning to Eldorado when a deer ran out in front of their vehicle, resulting in the wreck.



Need a gift for Valentine's Day? How about a John Wayne movie...or perhaps a horned toad?

I saw a television ad last week for an internet valentine service. No more shopping for last minute Valentine's Day cards, the ad promised, when for a meager fee (only \$14.95) the company would send up to 25 Valentine's Day cards via e-mail, thereby relieving the shopper of the unwanted stress. And, believe it or not, the buyer would be allowed to customize the message on each and every card. However, if that sounded like too much trouble, the company was willing to select the messages based on the presumed gender of the recipient. For example, they said, a card to Judy would be worded



in such a way as to appeal to a woman while a card addressed to John would be geared toward a male's tastes.

It occurred to me that this might be a risky procedure, especially since I've known a couple of guys named Frances in my time...and more than a few gals named Sam.

When was it that shopping for a Valentine's Day card became so stressful, anyway? The last time I bought one it was a fairly simple undertaking. Of course, that was during the early part of the Reagan administration. Perhaps things have changed in recent years.

My friend D.W. advises that he has completely avoided falling into the Valentine's Day gift trap. No flowers, cards or candy in his household, nosiree! D.W. says he prefers spending an intimate evening alone with his true love...just a dimly lit room, a crackling fire and some good John Wayne movies on video tape. Who could ask for anything more?

I must admit that I admire D.W.'s style, if not his intelligence.

Way back in grade school, as we called it then, the boys in my class all thought the teachers were trying to brainwash us concerning the subject of Valentine's Day. They would hold parties and encourage the students to exchange cards. And, they would pass out those little heart-shaped candies with the messages printed on top.

At the end of one such party, our teacher, Mrs. Lumpkin, had each of us draw a number from a box to see who won the big heart-shaped box filled with chocolate candy. I drew a number and passed the box forward to my classmate Roger Carter, who dutifully drew his number and passed the box on. I believe it was little Joyce Hogan who found the horned toad someone had slipped into the box. From that day till now, I've seldom thought of Valentine's Day without remembering Joyce sprinting around her desk, screaming at the top of her lungs.

Valentine's Day means many things to many different people. Personally, I've always thought it was overrated. I think Kathy agrees with me on this but since she's not speaking to me right now, I can't be certain.

Museums bring tourist dollars to Texas communities

AUSTIN—Museums are an economic asset to any community. In addition to reminding Texans of their heritage, they generate tourist dollars.

The Former Texas Rangers Association, which has a small museum adjacent to the Witte Museum in San Antonio, is working to raise money for a larger historical center in Kerrville.

Since plans to build the museum were announced in early November, the association's fund-raising foundation has been working to acquire enough money to buy land and build the museum.

"We have a contract signed on a 10-acre tract on I-10 in Kerrville," foundation president Joe Davis

State Capital Highlights

by Mike Cox



said. "We have applications in to two foundations and have picked up some substantial donations toward our goal."

A retired Ranger, Davis has his sights set on raising \$5 million to build the Kerrville facility and create an endowment for acquisition of archival material and artifacts.

Davis says the former Rangers association, whose roots trace to an organization created in 1897, is not trying to compete with the Tex-

as Ranger Hall of Fame and Museum in Waco.

"We've been around a long time and we've got to expand," he said. "Our association and the museum in Waco both have more items than we can display as it is. There's plenty of room in Texas for both museums."

The Waco museum, operated by the city, also has expansion plans—\$15 million worth. Though the museum is actively looking for non-governmental funding, the city council there is considering seeking a part of the needed money from the Legislature.

TP&W books available online

Texans who live in communities without a bookstore now have a new way to buy books about the outdoors.

The Texas Parks and Wildlife Press, a part of the state agency charged with protecting the state's game, fish and many of its historic and scenic attractions, has set up an online bookstore.

Now available through www.tpwpress.com is the "Official Guide to Texas State Parks", the "Official Guide to Texas Wildlife Management Areas" and the "Learn About series of children's books."

Subscriptions to Texas Parks and Wildlife Magazine also are available online.

State employee raise sought

The Texas Public Employees Association has asked for an 8.25 percent pay hike for the state's

150,000 workforce.

Of course, as the old expression goes, "askin' and gettin'" are two different things.

The raise as requested by TPEA would cost \$1 billion over the biennium.

After hearing an evening's worth of testimony on Jan. 31, Senate Finance Committee Chairman Sen. Rodney Ellis agreed state workers need a raise, but said the request might be more than the budget could handle.

A state pay scale considerably below the private sector has resulted in high turnover, the TPEA said. The problem will be compounded as the state's large block of Baby Boom generation workers begin reaching retirement age.

Water contract approved

The Lower Colorado River Authority board, as expected, has approved the water project feasibility study reported in last week's column.

At least a decade away, the project would provide 150,000 acre-feet of water a year for San Antonio. Rice farmers also would benefit from the deal.

Statewide Classifieds

— A Texas-size Bargain — Place your Classified Advertisement *Statewide* or in *Regions of the Lone Star State* to better target your potential sales!

Get Statewide Results!



ROLLING ALONG

WITH TUMBLEWEED SMITH

Fredericks of Hico

John and Polly Frederick have a place in Hico's main tourist area called Fredericks of Hico. It's a place that has Texas gifts, old sweaty hats, metal art and all sorts of stuff. John is from the steel country up north and worked in that industry for awhile, but settled down to blacksmithing. He had a blacksmith shop near Tyler for years and traveled around the country demonstrating his art at different places.

One weekend while he had set up shop near Glen Rose, he and his wife Polly meandered over to the little village of Hico. They flipped out over the place. They not only liked it. They wanted to move there. They inquired around and found one building for sale. It was the only one in the tourist area that was vacant. And it had, would you believe, a blacksmith shop in back. In addition, it had living quarters upstairs. John expressed an interest in buying it. The next week someone went to his blacksmith shop near Tyler and offered to buy it. Is this Kismet or what?

So John and Polly moved to Hico, set up housekeeping upstairs over the shop and hung out an open for business sign. The store sells branding irons and other items John makes from iron, like pot hooks, branding irons and fireplace sets. But the real attraction is the colorful costumes and outrageous behavior of the couple.

John used to skate with the Ice Capades and sometimes he puts on roller skates and moves around the store and blacksmith shop on eight tiny wheels. He also taught tap dancing and will give you a dem-

onstration with only a modest amount of begging.

The costumes, though. Wow. John puts on false buck teeth, funny glasses, a silly hat and becomes some sort of slow-witted military figure. He has three or four characters he plays with great alacrity. "The store is my stage."

When I met him and Polly, they were dressed for the day in 1890 clothing. Polly had a huge hat with duck feathers, carried a parasol, wore a long dress with a bustle, all frilled up with lace and shiny ribbon. John was wearing what looked like a frontier outfit: high riding boots, cavalry pants, a billowy shirt, a sash and a black hat with a Tom Mix crease.

They both dress up in costumes every day. "You don't see stuff like this in a mall," says Polly. No, you sure don't. "Our costumes add a dimension more in the character of the old west," says John. "They give you that feel and flavor." Polly says people brighten up when they come in. "You can tell by the look on their faces that they're surprised to see us dressed this way."

Polly makes the hats she wears. "Sometimes ten minutes before the store opens, I decide I need a new hat to complete the outfit I'm wearing, so I just make one. I can make one better and faster when I'm pressured."

Some of her hats have colorful pheasant or turkey feathers. John and Polly love people. "And if visitors to the store don't buy anything, I don't care," says John. "We love to entertain and perform for them. We were meant to be here and we're loving it."

CROSSWORD PUZZLE

ACROSS	46 Morally objectionable behavior	21 Suffix indicating a resemblance or characteristic
1 Thick piece of bacon	47 Keepsake from the past	23 A federally chartered savings bank (abbr.)
5 Pedestal	49 Wood sorrel	25 Wild llama
10 Swedish shag rugs	50 End prematurely	26 Communion table
14 Intangible halo surrounding a person or thing	51 Joint lubricant	27 Microbar
15 Pair of equal and opposite charges	54 Fertilized cells	28 Helpfulness
16 Alleviate	58 Interminable	29 Musical notation
17 Genus of the Gliridae	63 Old in Glasgow	32 Less common
18 Unbrace	64 Wing feathers	33 Higher up
19 Breastplate	66 White-tailed sea eagle	34 Reddish brown
20 Non-modern	67 On the protected side of an island	35 Pursue prey with stealth
22 Feather palm fibers	68 Up and out of bed	37 Cardiac cycle record
24 Poseidon, for example	69 Dream	38 Type of lupus (abbr.)
26 Cause to feel self-conscious	70 Woody perennial grass with hollow stems	44 Type of surface with good traction
30 Cause friction	71 A sudden forceful flow	45 Ripple
31 Military leadership	72 Nile vipers	48 Central Standard Time (abbr.)
36 Cleanse with soap and water	DOWN	50 Defective
37 Internet postal notes	1 Powdery palm starch	52 Twelvemonths
39 Assist or encourage	2 Quieten	53 Asinine
40 Very sad; especially involving grief, death or destruction	3 Desiccated	54 Language of northern Nigeria
41 Satellite of Jupiter	4 Leaf tube	55 Christmastide
42 16th letter of the Hebrew alphabet	5 Sea foam	56 Great merriment
43 Eats away at	6 Phonograph component	57 Over-drugged
	7 Elevation (abbr.)	59 Mythical queen of Sparta
	8 Capital of Kenya	60 Drifts off course
	9 Be frightened of	61 Center a football
	10 Submerged coral ridge	62 Southeast by south (abbr.)
	11 Directional antenna	65 Our country (abbr.)
	12 Large continent	
	13 Dried hemp leaves	

This week's solution is on Page 6

1	2	3	4	5	6	7	8	9	10	11	12	13		
14				15					16					
17				18					19					
20				21			22		23					
			24			25								
26	27	28	29			30			31	32	33	34	35	
36						37			38		39			
40									41					
42						43	44		45			46		
47						48	49				50			
						51	52				53			
54	55	56	57						58		59	60	61	62
63									64	65			66	
67									68				69	
70									71				72	

This crossword puzzle is sponsored each week by:

Kerbow Funeral Home

"Established in 1943"

Family owned and operated

- Monuments 853-3043
- Pre-Need Burial Insurance 387-2266

THE ELDORADO SUCCESS

Publisher and Editor: Randy Mankin
Office Manager and Classifieds: Kathy Mankin
Advertising and Circulation: Lori Stricklan
Local Reporter: Pat Ragsdale
Sports Reporter: David Hill

The Eldorado Success is published weekly at 204 SW Main Street in Eldorado, Texas by Masked Rider Publishing, Inc. Subscriptions are \$20 per year in Schleicher County and \$25 per year elsewhere in the United States. Periodical class postage paid at Eldorado, Texas 76936. POSTMASTER: Send address changes to THE ELDORADO SUCCESS, P.O. Box 1115, Eldorado, Texas 76936-1115. Notices of entertainment where admission is charged, cards of thanks, resolutions of respect and all material not news, will be charged at regular advertising rates. Advertisements, Classified Ads and Cards of Thanks are payable in advance unless the customer has an established account. A finance charge of 1.5% per month will be assessed to customers with balances over 30 days old. Any erroneous reflection upon the character or reputation of any person or firm will be promptly corrected when brought to the attention of the management.

The Eldorado Success is not responsible for copy omissions, typographical errors or any other unintentional errors that may occur other than to make a correction in the next issue. The Eldorado Success reserves the right to cancel any advertisement at any time.

Letters to the Editor will be considered for publication only if they are signed and are accompanied with a day and night phone number for verification purposes. Anonymous letters will not be published.

THE ELDORADO SUCCESS
© Copyright 2001 MASKED RIDER PUBLISHING, INC.
Office: (915) 853-3125 Fax: (915) 853-3378
E-Mail: eldoradosuccess@bigfoot.com
USPS 342-470

TEXAS PRESS ASSOCIATION
AWARD WINNER
2000

MEMBER 2001
TEXAS PRESS ASSOCIATION

Sul Ross releases Dean's List

Donnie Dean Criswell, a 2000 graduate of Eldorado High School, was named to Sul Ross State University's fall semester Dean's List. Criswell, who had a grade point average of 3.417, was among 264 students receiving the honor.

Undergraduate students enrolled for 12 or more semester hours, who maintain an average of 3.3 or higher on a 4.0 scale are eligible for the university's Dean's List. Graduate hours are not included in the computations.

Local students participate in McCamey U.I.L. Meet

A U.I.L. academic practice meet was held in McCamey on Saturday, February 3rd. Nineteen schools participated with each student competing at their grade level. Eldorado High School students placing in the contest included: Josh Trejo-5th Place Number Sense, 5th Place Math; Dest Sud-

duth-4th Place, Science; 6th Calculator; Lori Loomis-3rd Science; Travis Joiner-5th Place Calculator; BreeAnne Davis-2nd Place Spelling; Brittany Key-5th Place Literary Criticism.

Sponsors attending the meet were Mrs. Thomas, Mrs. Rutherford, Mrs. Baker and Mr. Jay.



Nelva and Jim Martin

Martins celebrate 50th

On February 3rd, 1951, Nelva June Bolt wed Charley Jim Martin in the First United Methodist Church Parsonage in Eldorado, Texas. On Saturday afternoon February 3, 2001 their family gathered at the ranch to celebrate this momentous occasion with 2 young goats cooked for 2 well-loved "old goats."

Nelva and Jim have two chil-

dren, Jimmy Martin and wife Sherry of Ft. McKavett and Jenny Sue Trainer and husband Mitch of Sonora. They have six grandchildren and four great grandchildren.

Jim is retired from Southwest Texas Electric Coop and Nelva is a wonderful homemaker. They are very active members of many community services and of the First United Methodist Church.



Dena Jai Lloyd and Rob Lovick

Lloyd/Lovick engaged

Mr. and Mrs. David Lloyd are pleased to announce the engagement and approaching marriage of their daughter Miss Dena Jai Lloyd

to Mr. Rob Lovick son of John and Marcy Lovick and Randy and Cynthia Davis. The couple will marry on Saturday, March 3, 2001 at the First Baptist Church of Eldorado.

Look Who's 2 Cute!

HAPPY BIRTHDAY ANGEL
From Daddy, Mama, Erica, Ram, Jr. & especially from Granny

MONUMENTS & PRE-NEED FUNERAL PLANS
CALL **JOHN WILSON**
KERBOW FUNERAL HOME
853-3043

Getting Married?
CALL VICTORIA RICHARDSON IN SONORA, TX!!!
915-387-5280

Save yourself the hassle of looking for wedding, bridesmaids, flower girls, mother of the bride, quinceañera, and first communion dresses!

Shop smartly, & enjoy the convenience of local alterations/fittings!

Stop by to see the array of dresses for Prom and other special occasions!

Call Victoria today! 915-387-5280 or victoria@sonoratrix.net

- BIRTHDAY LIST**
- FEBRUARY 8th Candi Homer, Enrique Rocha, Haley Higgins, Ana Iglesias, Breanne Davis
 - 9th Cy Griffin, Felix Ramos, Reyes Sanchez
 - 10th Shannan Wideman, Guillermo Zuniga, Nancy McCray
 - 11th Nancy Jenkins
 - 12th Rick Stricklan, Denese Capps, Denese Crowder, Casey Triplet, Joe King, Donna Whitten
 - 13th Austin Whitten, Jazmine Ford, Kathy Faull, Leo Rodriguez, Christine Romero, Casey Akins
 - 14th George Draper, David Olivan, Cody Engdahl, Marcos Hernandez, Torey Griggs, Chase Storie
- ANNIVERSARY LIST**
- FEBRUARY 9th Keith & Mary Nolen, Jim & Jerre Holley
 - 13th Julian & Lesa Martinez, Kermit & Janet Overton
 - 14th Elena & Manuel Pina, Raymond & Mary Spears

FLORAL DESIGNS
by Liz Anderson

201 S. Oak
Corner of S. Oak and Gillis
Phone 915/853-2659

SAFE DEPOSIT BOXES

Safeguard Your Valuables Against Loss by Fire, Theft or Misplacement

Different sizes available at nominal cost

FIRST NATIONAL BANK OF ELDORADO

Main 853-2561
TeleBank 853-2567
TeleTime 853-2569
Member FDIC

Jerry's TV

Are you tired of lousy Cable TV reception?
Call us Today!

DSS DIRECTV

(915) 853-2314
214 SW Main
Eldorado, Texas

Way Off Broadway Players Present

"The Star Spangled Girl"
by Neil Simon

A wonderfully funny comedy for the whole family!
It will lift your spirits!

Performances
Friday, February 23rd, 2001 at 8:00 p.m.
Saturday, February 24th, 2001 at 3:00 p.m.
Call 853-2062 weekdays or 853-3411 weekends for tickets.

Ticket Prices- Adults \$8.50, Children \$6.00
Special Pre-Show Entertainment

DUCKWALL'S instore special
now thru February 14th

10% OFF ALL GIFT BASKETS

FREE LOCAL DELIVERY OF GIFT BASKETS & BALLOONS ON FEBRUARY 14TH!

DUCKWALL'S
HOMETOWN VARIETY STORE

Valentine's Day Savings

PRICES EFFECTIVE THRU WED. FEB. 14TH

1.99
Reg. 2.49 & 2.69

Valentine Bagged Candy.
• Miniatures, Snickers, Hershey's or Reese's, 13 oz.
• Hugs, Kisses Or Kisses W/ Almonds, 12 or 13 oz.
• M&M's Plain Or Peanut, 1 lb.
• M&M's Mini Boxes, 9.5 oz.

2/\$3 Reg. 1.99 To 2.29

Boxed Valentine Cards.
Non-mailable envelopes included. 30-40 count. Some with treat sacks.

\$1 EVERYDAY LOW PRICE

- Elmer's Comic Hearts, 3 oz.
- Luv Pops, 6 oz.
- Elmer's Red Wrap Heart, 3 oz.

20% OFF
Sale 2.99 To 7.99
Reg. 2.99 To 9.99
Valentine Plush Or Bean Bag.
PUSH IN MUG OR PUSH IN BAG NOT INCLUDED

5.99 Reg. 7.99 Swags Or Garlands.
Give your home a new look.
• Reg. 9.99 Swags Or Garlands6.99

77¢ Reg. 99¢ Flowering Decorator Bushes.
• Reg. 2.99 Bushes1.99

3.99 Reg. 5.99
Crinkle Rose Decorator Bush with Filler. Give a rose bouquet that will last.

Daily: Mon-Fri 9AM-7PM
Sunday: 12:30 PM-5:30PM

101 WEST MILLS AVE.
ELDORADO, TX



MANNY'S GROCERY
(915) 853-4406
Eldorado, Texas
GO EAGLES!

700 E. Murchison Ave.



Halbert LPG
"Please buy Some Propane"
Proud Eagles Supporter

456 South U.S. Hwy. 190
Eldorado, Texas 76936 **853-2815**

NOS Niblett's Oilfield Services, Inc.
PUMP TRUCKS, TRANSPORT SERVICES, VACUUM TRUCKS, ACID TANKS, FRAC TANKS, EQUIPMENT HAULING

Hwy. 277 S.
P.O. Box 910
Eldorado, Texas 76936 **(915) 853-2521**

Proudly Supporting The Eagles!!!

John E. Meador Construction
General Oil Field Construction

Complete Roustabout Service
• Pumping Service
• Backhoe • Welding
• Sandblasting & Painting
• Polyethylene or Steel

Fully Insured & Radio Equipped
24-Hour Service
Phone: (915) 853-3135

RYE SUPPLY COMPANY, INC.

General Oilfield Supplies • Pump Repairs

GO EAGLES!

216 South Divide
Eldorado, TX 76936 Ph: (915) 853-4060
Fax: (915) 853-1411

D L Automotive

We're Backing The Mighty Eldorado Eagles!
We're Backing The Eldorado Lady Eagles!

109 W. U.S. Hwy. 190
Eldorado, Texas 76936 **853-2629**

SOAR HIGH EAGLES!

L.R. Hanusch
Water Well Drilling & Service
Pumps & Windmill Repair
(915) 853-2686

Why does the early bird always get the worm? Because, he reads the

THE ELDORADO SUCCESS
"The Voice of Eldorado and Schleicher County Since 1901"

It Doesn't Get Any Better Than This...
"Priority Checking"

No Minimum Balance
No Transaction Limit
FREE "CU Easy" Internet home banking
FREE "MasterMoney" debit card
FREE Savings Overdraft Protection
Loan Overdraft Protection (with approval)
FREE audio response 24 hours a day
175 FREE checks per year
\$10,000 Accidental Death Insurance
Discount Long Distance Calling Card
Eckerd's Discount Pharmacy Card
Direct Deposit
FREE Automatic Transfers

Monthly Statement
Temporary Checks for instant access
FREE Notary Public
Vision One Discount Card
No Fee Traveler's Cheques - no fee
Credit Card Protection
Discount Travel Service
Rent-A-Car Discount
Lost Key Return
Household Inventory Record
Discount Floral Service
\$7.00 Monthly Service Charge

(An increased monthly service charge can increase the amount of Accidental Death Insurance:
\$8.00 - \$20,000 coverage \$10.00 - \$30,000 family coverage)

1st Community Credit Union
202 SW Main - Eldorado 853-2538
3505 Wildewood * Goodfellow AFB * 620 W 29th 653-1465 or 800/749-1465

Lady Eagles win 2 of 3 to earn playoff berth

Post-season play assured with 47-45 OT win over Sonora

by David E. Hill

The Eldorado Lady Eagles clinched the final play off spot in District 2-2A Tuesday with a 47-45 overtime win over Lady Broncos in Sonora. It was a great win for the Lady Eagles in front of a packed house and a huge crowd in Eldorado green and white. Coach Leslie Gooch called the win, "A great team victory."

The Lady Eagles came out in the first quarter and took a 9-8 lead in a defensive battle. EHS then extended the lead at the intermission by outscoring Sonora by 5 in the second period to give the Lady Eagles a 24-18 lead at the half.

Sonora began to chip away at EHS's lead in the third period, outscoring the Lady Eagles 14-11. Eldorado clung to a 35-32 lead going into the fourth quarter. Sonora 9 points in the final eight minutes while Eldorado could only manage 6. The Lady Eagles had the last shot but could not convert, thus, Sonora forced the game into OT.

The two teams traded buckets in the overtime, then Eldorado came up with a couple of crucial rebounds and came away with the two point 47 to 45 overtime win.

Stacy Nicholson led the scorers with 19. Christina Redish had 10, Tabitha Lloyd had 6, Megan Poynor made 5 and Mitzi Sessom scored 4. Gentry Newman and Leigh Ann Neal each had 2. Newman's two points came at a very crucial run in the overtime period. In addition to her 19 points, Nicholson had 9 rebounds. Redish and Sessom each had 4 steals and Sessom had 4 assists well.

"Stacy really had a big night offensively and on the boards," Coach Gooch said after the game. "Christina, Tabitha, Megan, and Mitzi all had a very good ball game at both ends of the floor."

The Lady Eagles will play either Ozona or Reagan County next Monday or Tuesday. The game could be played in San Angelo,

CONTINUED ON PAGE 6



Overpowering — Stacy Nicholson put this shot up over three Grape Creek defenders last week as the Lady Eagles won 52-46

Eagles playoff hopes dim a bit after losses to Wall, Sonora

by David E. Hill

The Eldorado Eagles took the Wall Hawks to the final seconds last week before losing 57-55 in regulation.

The Eagles came out strong and led the Hawks at the end of the first 16-12. Eldorado then had another strong eight minutes of offense in the second and extended their lead to 33-27. EHS again outscored the Hawks in the third, taking a 50-41 lead into the final quarter. As with the previous two district losses, the Eagles wish they could have stopped right there. At one time the EHS had a 14-point lead, however, Wall outscored the Eagles 15-5 in the final stanza for the 57-55 win. The Eagles had an opportunity to win the ball game as they had the final possession with 20+ seconds left in the game, but could not convert in the end.

William Robledo led all Eagle scorers in the game with 19, Johnny Herrera had 14, Benji

Gonzales had 10, Ramon Barajas had 6, Jason Brock had 4, and Joey Bullard had 2. The Eagles had 11 three pointers in the contest.

"We had a strong 3 quarters, but just couldn't get it in the hole in the end," Coach Alan Gillespie said after the game. "This was a tough loss."

EHS 77 - Grape Creek 68
Two nights later the Eagles hosted the Grape Creek Eagles hand pulled out a 77-68 come-

CONTINUED ON PAGE 6

HOOP SCORES

J.V. Girls

District Game January 16, 2001

Eldorado 06-04-09-10=29
Grape Creek 05-11-08-15=34
Kasey Boyson 3, Hannah Robledo 4, Courtney Whitten 6, Clara Herrera 8, Mikinzie Holley 5, Jennifer Bybee 3.
District Record: 1 Win, 3 Losses.

District Game January 19, 2001

Eldorado 20-07-12-02=41
Sonora 06-08-06-09=29
Kasey Boyson 8, Heather Homer 2, Hannah Robledo 2, Courtney Whitten 8, Clara Herrera 12, Mikinzie Holley 7, Jennifer Bybee 2
District Record: 2 Wins, 3 Losses.

District Game January 23, 2001

Eldorado 08-09-11-12=40
Mason 05-09-06-10=30
Kasey Boyson 2, Hannah Robledo 8, Courtney Whitten 9, Clara Herrera 9, Mikinzie Holley 2, Lacy Ragsdale 2, Jennifer Bybee 8.
District Record: 3 Wins, 3 Losses.

District Game January 26, 2001

Eldorado 05-09-12-05=31
Junction 03-10-00-00=23
Kasey Boyson 1, Stephanie Luna 1, Hannah Robledo 2, Courtney Whitten 3, Lacy Ragsdale 4, Clara Herrera 16, Jennifer Bybee 4. Clara Herrera 12 rebounds; Jennifer Bybee 13 rebounds.
District Record: 4 Wins, 3 Losses.

District Game January 30, 2001

Eldorado 02-04-07-04=17
Wall 14-13-05-10=38
Heather Homer 2, Hannah Robledo 4, Courtney Whitten 2, Clara Herrera 5, Mikinzie Holley 2, Lacy Ragsdale 2.
District Record: 4 Wins, 4 Losses.

J.V. Girls

February 2, 2001

Eldorado 05-19-11-01=36
GrapeCreek 06-05-13-11=35
Kasey Boysaw 4, Hannah Robledo 13, Clara Herrera 13, Mikinzie Holley 2, Teresa Barajas 2, Jennifer Bybee 2.
District Record: 5 Wins, 4 Losses.

J.V. BOYS

District Game January 16, 2001

Eldorado 13-23-12-13=61
GrapeCreek 14-14-16-10=54
Trey Chavez 6, Mike Adame 4, Bobby Phillips 10, Ray David Buitron 6, Quisto Gonzalez 11, Phillip Martinez 10, Leonel Medrano 5, Jordan Fay 2, J.L. Mankin 7.
3 Point Goals: Bobby Phillips (1).
District Record: Wins (2), Losses (0).

District Game January 19, 2001

Eldorado 06-02-08-10=26
Sonora 05-13-15-17=50
Trey Chavez 2, Mike Adame 2, Bobby Phillips 3, Phillip Martinez 7, Leonel Medrano 2, Jordan Fay 9, Ray David Buitron 1.
3 Point Goals: Phillip Martinez (1).
District Record: Wins (2), Losses (1).

THE ELDORADO SUCCESS
853-3125
ELDORADO'S HOMETOWN NEWSPAPER

Mighty Eagle Fan of the Week

PIZZA PRO

This week the Mighty Eagle Fan of the week is **Leo Rodriguez**. If you are chosen as **Pizza Pro's Mighty Eagle Fan of the Week**, cut out the ad, bring it by **Pizza Pro** and say, "I'm the Mighty Eagle Fan of the Week!" and receive a free pizza on us!

Redeem before Feb. 15, 2001



B.J.'s Garage & Wrecker Service

Proud Supporter of the Eagles and Lady Eagles!

853-4080 216 S. Main
Eldorado, Texas 76936

HANOVER COMPRESSION
A HANOVER COMPANY™

Eldorado Division
902 East Street
(915) 853-2502

From The Wellhead Through The Pipeline...Hanover People Perform.

School Lunch Menu

Milk & Bread Offered
Menus Subject To Change
Cafeteria Line

Monday, February 12
Sausage and Cheese Pizza, Whole Kernel Corn, Crushed Pineapple, Cherry Crunch Cake

Tuesday, February 13
Soft Tacos, Refried Beans, Lettuce and Tomato Salad, Crushed Pineapple, Cherry Crunch Cake

Wednesday, February 14
Chicken Fajitas/Tortillas, Tossed Salad, Peach Halves, Valentine Cake

Thursday, February 15
Steak Fingers/Gravy, Creamed Potatoes, Early June Peas, Cherry Cobbler

Friday, February 16
Ham and Cheese Sandwiches, French Fries, Lettuce, Tomatoes, Pickle, Fresh Apples

Breakfast
½ pt. Milk & 4oz Juice Offered with each breakfast

Monday, February 12
Orange Juice, Sausage Patties, Biscuits/Jelly

Tuesday, February 13
Grape Juice, Hot Oatmeal, Toast/Jelly

Wednesday, February 14
Sliced Peaches, Waffles/Syrup

Thursday, February 15
Pineapple Chunks, Cheese Toast

Friday, February 16
Apple Sauce, Blueberry Muffins, Choice of Cereal

Fast Food Line

Monday, February 12
Cheeseburgers, French Fries, Lettuce, Tomatoes, Pickles, Apple Sauce Cake/Icing

Tuesday, February 13
Fish Sandwiches/Cheese, French Fries, Lettuce/Tartar Sauce, Cherry Crunch Cake

Wednesday, February 14
Sausage and Cheese Pizza, Tossed Salad, Mixed Fruit, Valentine Cake

Thursday February 15
Corn Dogs, Tater Roundabouts, Mixed Fruit, Cherry Cobbler

Friday, February 16
Ham and Cheese Sandwiches, French Fries, Lettuce, Tomatoes, Pickles, Fresh Apples

Golf Play Day

by Mabel Freitag

It was a great day on the Golf Course this past Sunday, February 4th. We had 33 adults and 1 youth, Clay Whitten. Everyone enjoyed the afternoon, although the wind was a "little cool."

1st Place Score 55; Ross Whitten, Sam Henderson, Gordon Emmons and C.R. Sproul

2nd Place Score 56; Moses Hill, Clay Whitten, Gordon Jones and

Jim Kosub

3rd Place Score 57; Melissa O'Harrow, Bob Wanoreck, Keith Nolen and Jim Childress

Couples Valentine Tournament this Saturday, Feb 10th, Tee time 1:00 p.m. All of you young couples get out on the course!

Weather permitting, our next Play Day will be Sunday, March 4th. Happy Golfing

Woolen Mill's 60 anniversary celebration taking shape

The Eldorado Woolen Mill will be celebrating its 60th anniversary on Saturday, February 24, 2001. Currently, festivities are planned on the lot adjacent to the Mill at 407 South Main in Eldorado. In the event of rain, the celebration will be moved to the Memorial Building in the courthouse square.

Current plans are for a parade, beginning at 9:30 a.m. on Main Street, followed immediately by a Texas Fiber Style Show.

State Representative Rob Junell will be the featured speaker for the day, however, other digni-

taries will be in attendance.

Lunch will be served at noon featuring Texas raised beef, goat and lamb. Lunch tickets are \$8.50 at the door but may be purchased in advance for only \$7.

An auction will follow the noon meal. Special edition Woolen Mill blankets will be auctioned away to benefit the Eldorado Woolen Mill Foundation's "Raise the Roof Fund" which seeks to preserve the mill by raising money to repair the structure's roof. Other prizes being auctioned include weekend hotel stays, gifts and clothing.



photo by Kathy Mankin

The third time is a charm for EHS Senior and All-State French Horn player BreeAnne Davis. Davis 1st in Area competition at Robinson High School in Waco on January 6, 2001. The win earned her a spot on the All-State Band for the third straight year. In the Waco contest, where Davis represented Region 7, she earned 1st Chair honors from among 20 contestants from 5 different regions. Davis will be joining the state's other top musicians on Saturday, February 10, 2001 at the All-State Band concert in the Scottish Rite Auditorium in San Antonio. BreeAnne Davis is the daughter of David and Tammy Davis of Eldorado.

Meals for Friends Menu



- Monday, February 5**
Spanish Meatballs, Rice, Green Beans, Hot Rolls, Sliced Tomatoes, Pineapple Rings, Milk
- Tuesday February 6**
Beef Burrito, Pinto Beans, Spinach, Coleslaw, Gelatin w/ Pears, Milk
- Wednesday February 7**
Oven Br. Pork Chops, Noodles, Carrots, Bread, Tossed Salad, Apple Sauce, Milk
- Thursday February 8**
Salisbury Steak, Baked Beans, Mustard Greens, Peaches, Bread, Milk
- Friday February 9**
Chicken Supreme, Herbed New Potatoes, Broccoli, Hot Rolls, Green Salad, Cherry Cobbler, Milk

Looky there at all that hair!



Happy 50th Rick

WARNING: PHONE SCAM!

Sheriff urges caution when accepting collect calls

At least 15 Schleicher County citizens have been victimized so far in a telephone scam involving international long distance charges. According to Schleicher County Sheriff David Doran, most of the calls have involved a unknown Hispanic male who placed collect phone calls to the victims. The caller reportedly identified himself only as "Jose" and claimed to be an acquaintance or a relative of the victim. Once the collect phone call was accepted, the caller made idle conversation and attempted to keep the victim on the line as long as possible, all the while piling up huge long distance charges.

In a variation of the scam, the caller told victims that they had won a prize or that he needed to

deliver a package. The caller kept the victim on the line by asking for detailed directions.

"Once one of these collect calls is accepted, the caller does everything he can to keep the victim on the line," stated Sheriff Doran.

The sheriff urged the public to be cautious when accepting collect calls. "If you don't know the party that is calling, don't accept it," Doran said. "And if an operator asks you to accept an international collect call, be very wary."

The Sheriff asks that anyone who believes they have received such a call please report it to his office at 853-2737. Also, he seeks help in alerting elderly citizens of our community to the threat.

Bakers R Us

210 E. Duncan Mertzon, TX

Valentine Day Remember Your Love Ones



with a Chocolate Bouquet, Cookie Bouquet, Box of Mixed Home Made Candies, Cake, Cookies or Cup Cakes. You'll be surprise at our prices!

Call Now!

632-2904

Ask us and we will bake it! WE DELIVER TO ELDERADO (\$2.00 PER DELIVERY)

Weekly newspapers are this country's best advertising value. To guarantee that you're getting the most bang

for your advertising dollar. Call the Success TODAY! 853-3125

PREMIERE CINEMA CORP
NOW ACCEPTING CREDIT CARDS
\$3.00 BARGAIN MATINEES BEFORE SIX
\$3.00 BARGAIN TUESDAYS (+ RESTRICTED)

SOUTHWEST 7
949-9985 3598 Knickerbocker Rd.
Saturday and Sunday Times

- Save The Last Dance DTS (PG-13)
2:10 4:45 7:20 9:50
- Saving Silverman (PG-13) 2:30 4:50 7:30 9:45
- Thirteen Days (PG-13) 2:00 5:00 8:00
- Miss Congeniality (PG-13) 1:45 4:20 7:10 9:40
- Chocolat (PG-13) 1:30 4:15 6:55 9:35
- All The Petty Horses (PG-13) 1:40 4:10 6:50 9:20
- 102 Dalmatian (G) 2:00 4:30 7:00 9:15

Times good for the week of 2/08 thru 2/15 only!

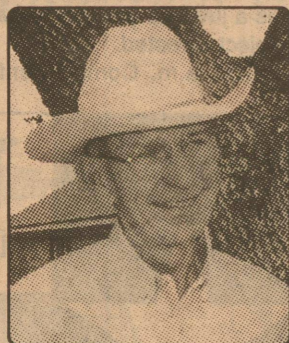
Friday/Monday through Thursday showtimes

- Save The Last Dance DTS (PG-13)
4:45 7:20 9:50
- Saving Silverman (PG-13) 4:50 7:30 9:45
- Thirteen Days (PG-13) 5:00 8:00
- Miss Congeniality (PG-13) 4:20 7:10 9:40
- Chocolat (PG-13) 4:15 6:55 9:35
- All The Pretty Horses (PG-13) 4:10 6:50 9:20
- 102 Dalmatian (G) 4:30 7:00 9:15

• No Passes or Discounts

Ronnie Mittel Investments/Insurance

Eldorado, Texas (915) 853-3833



Ronnie Mittel

- INSURANCE**
 - Life Insurance
 - Health Insurance
 - Medicare Supplement
 - Long Term Care
 - Home Health Care
 - Final Expense
- INVESTMENTS**
 - IRA'S
 - Annuities
 - Mutual Funds
 - Pension Rollovers

Retirement and Estate Planning

Securities offered through Registered Representatives of Walnut Street Securities (WSS). Ronnie Mittel Investments/Insurance is not affiliated with WSS, Inc.

25% Off All Valentine Items

Linda's Craft N Clutter
805 SW Main ~ 853-1668

New Merchandise Returned From Market Just In Time For Valentine's Day

WEST TEXAS LUMBER TRADING POST
Home Owned EST. 1910 Home Operated
10 E. Gillis • Eldorado Texas
(915) 853-2730

BACK FROM MARKET
ORNAMENTAL WINDMILLS POTTERY

NEW MERCHANDISE ARRIVING DAILY

Texaco Star Stop

303 N. Divide

Fritos® or Cheetos® grab bag.....2 for \$1
Mix or Match SMALL BEAN DIP 50¢

Dr Pepper® 12 Pack \$3²⁹

Gandy's gallon milk only \$2⁷⁹

Check Out In Store Specials

853-3474

Deli Hours 5am to 10pm

Store hours 5:00 am to 12:00 midnight — EVERYDAY!

Pizza Pro

LUNCH SPECIAL Personal Size 1-Topping Pan Pizza 11 a.m. to 2 p.m. only \$1.49

Watch for Pizza Pro door hangers for money saving coupons

Pizza Pro

Hours: 11-2 & 5-10

853-2504

"Don't give your horse the spur till you know which way you're going."

Jan Burns wasn't born in the saddle, but she got there as quick as she could. She's been riding since she was four and has won over a hundred buckles in barrel racing.

Jan counts on co-op power for her home as well as her saddle and tack shop. Jan belongs to a Smart Choice cooperative. Smart Choice is a coalition of West Texas cooperatives committed to making the right decision on electric deregulation.

The goal of deregulation is to bring the benefits of retail competition to the power industry. But so far, in states such as California and Pennsylvania, reality has fallen short of the promise, often bringing higher rates and even power shortages. The Texas Legislature gives cooperatives an opportunity to wait and see how deregulation will affect Texans. We intend to take advantage of that time to be sure deregulation is right for our member-owners. Before we ride off, we're going to be sure where we're headed.

Texas electric cooperatives have been providing power to Texans since 1937. As co-ops, we are non-profit and member-owned. To learn more about deregulation visit us at our web site, or call your local Smart Choice electric cooperative.



the smart choice.

Your Smart Choice Electric Cooperatives.

- Big Country Electric Cooperative, Inc.
- Coleman County Electric Cooperative, Inc.
- Comanche Electric Cooperative, Inc.
- Concho Valley Electric Cooperative, Inc.
- Rio Grande Electric Cooperative, Inc.
- Southwest Texas Electric Cooperative, Inc.
- Swisher Electric Cooperative, Inc.

www.smartchoicecoops.com

Lady Eagles win out to clinch playoff berth

CONTINUED FROM PAGE 4

however, no firm location or date had been set at press time.

The win over Sonora was set up by two other crucial district games. First, the Lady Eagles lost to Wall 53-20 on Tuesday, January 30 in Wall. The Lady Eagles then defeated Grape Creek 52-46 in Eagle Gym.

EHS 20 - Wall 53

In loss to Wall, the Lady Eagles were facing the No. 2 ranked team in the state. EHS just could not get anything going offensively and could not stop the Lady Hawks on defense.

The first quarter saw the Lady Eagles playing strong on the defen-

sive end of the court. EHS was within one after the quarter 10-9. However, in the second, Wall pulled away and took a 25-11 lead at intermission. The Lady Eagles had a good third as held WHS to 8 making the score 33-16 and the end of three. The final quarter again saw EHS struggle as they managed only 4 points to Wall's 20. The game ended with the final score of 53-20.

Just 5 Lady Eagles scored as Stacy Nicholson led all scorers with 10, Christina Redish and Mitzi Sessom had 3, and Tabitha Lloyd and Martha Lively had 2.

Coach Gooch said after the game, "This was a tough night. Playing a team of this caliber in their place, everything had to go our way, and it didn't."

EHS 52 - Grape Creek 46

Two nights later, the Lady Eagles defeated Grape Creek 52-46. The girls played a strong game on both ends despite being in foul trouble in the final quarter.

EHS played a very strong first quarter and came out with a 9 point margin leading GCHS 14-5. Both teams fared well offensively in the

second with Eldorado taking a 30-22 point lead into the half. As good as they were in the second, both teams struggled in the third as Eldorado outscored Grape Creek 6-5 in the quarter taking a 36-27 lead into the final eight minutes. The final quarter saw the Lady Eagles scoring 16 to Grape Creek's 19 EHS came away with the 52-46 win. The last 4 minutes of the contest saw several players from both teams foul out. The Lady Eagles bench stepped up and got the win.

In the contest, Christina Redish led all EHS scorers with 17, Leigh Ann Neal and Stacy Nicholson had 8, Tabitha Lloyd had 7, and Gentry Newman and Mitzi Sessom had 6. Sessom had 4 assists as well. Redish had 10 boards while Nicholson had 8.

After the game, Coach Gooch said, "This one came down to the end, we came out strong but they really gave us a run in the end. Christina had a strong offensive night for us and Stacy and Tabitha had good games offensively and defensively."

Congratulations to the Lady Eagles and Coach Leslie Gooch and assistant Coach Ginger Cooper on qualifying for the playoffs.



J.V. BOYS

District Game January 23, 2001

Eldorado 09-13-06-15=43
Mason 13-10-07-08=38
Bobby Phillips 6, Ray David Buitron 3, Quisto Gonzales 16, Juan Munoz 2, Phillip Martinez 6, Leonal Medrano 2, Max Bartschies 2, Trey Chavez 4, J.L. Mankin 2. 3 Point Goals(0). District Record: Wins (3), Losses (1).

District Game January 26, 2001

Eldorado 13-12-15-10=50
Junction 02-10-20-08=40
Mike Adame 5, Bobby Phillips 5,5 Ray David Buitron 8, Quisto Gonzalez 6, Phillip Martinez 6, Jordan Fay 3, Max Bartschies 1, Trey Chavez 8, J.L. Mankin 8. 3 Point Goals: Mike Adame (1), Bobby Phillips (1), Phillip Martinez (2), Trey Chavez (1). District Record: Wins (4), Losses (1).

District Game January 30, 2001

Eldorado 16-02-13-11=42
Wall 08-14-09-14=50
Bobby Phillips 11, Quisto Gonzalez 5, Phillip Martinez 9, Leonal Medrano 3, Jordan Fay 3, J.L. Mankin 2, Trey Chavez 7. 3 Point Goals: Bobby Phillips (3), Phillip Martinez (1), Trey Chavez (2). District Record: Wins(4) Losses (2).

District Game February 2, 2001

Eldorado 23-20-14-10=67
Grape Creek 08-16-09-16=49
Mike Adame 2, Bobby Phillips 12, Trey Chavez 5, Quisto Gonzalez 15, Juan Munoz 2, Phillip Martinez 13, Leonal Medrano 6, Jordan Fay 2, J. L. Mankin 10. 3 Point Goals: Bobby Phillips (1), Trey Chavez (1). District Record: Wins (5), Losses (2).

Eagles boys basketball

CONTINUED FROM PAGE 4

from-pehnd win. After a sluggish first quarter of play, the EHS trailed 23-16. Things didn't get any better in the second as Grape Creek extended their lead taking a 43-32 margin into the half. Grape Creek probably wishes the ball game would have been over at the half. In the third, Eldorado applied full court pressure on both ends of the floor and outscored Grape Creek by 21 for a 61-51 lead. Grape Creek only managed to cut into the EHS lead by one in the fourth thanks to Eldorado going 10-24 from the free throw line in the quarter to make the final score 77-68 in favor of Eldorado.

Seven Eagles scored on the night as Joey Bullard had 22, Johnny Herrera 15, William Robledo 13, Jeff Stafford and Benji Gonzales 8 each, Jason Brock with 7, and Ramon Barajas 2. Bullard had 11 rebounds while Robledo, Gonzales, and Stafford each had 6.

Coach Gillespie commented after the game, "We really played a sloppy first half, but the third quarter was the difference as our defense stepped up and got us the win."

EHS 68 - Sonora 75

On Tuesday night of this week

the Eagles dropped a crucial contest in loop play to Sonora. The Eagles lost 75-68 in a game that had serious implications for post season play. Had the Eagles won they would have been in control. Now, however, they must have help to reach the playoffs.

Eldorado started the game and went down early only to fight back to trail 24-19 at the end of the first stanza. The Eagles fell back another three points at the intermission making the score 43-35. The third quarter has always been the strong quarter for EHS, however, on Tuesday, the Eagles fell another three points down to trail 49-48 going into the final 8 minutes. Eldorado outscored Sonora 20-14 in the fourth, however, that still left them 7 short for the game. Sonora won 75-68.

William Robledo and Joey Bullard led all EHS scorers with 19, Johnny Herrera had 8, and Ramon Barajas and Tony Fay each hit for 7. Three other Eagles players scored in the game.

"This was a tough loss," Coach Alan Gillespie said following the game. "Sonora's second chance shots under the basket were the difference."

Eldorado will host Mason tomorrow night in Eagle Gym.

Solution to puzzle on Page 2

S	L	A	B	S	T	A	N	D	R	Y	A	S
A	U	R	A	P	O	L	A	R	E	A	S	E
G	L	I	S	U	N	T	I	E	E	G	I	S
O	L	D	T	I	M	E	R	A	F	F	I	A
S	E	A	G	O	D	S						
A	B	A	S	H	R	U	B	B	R	A	S	S
L	A	V	E	E	M	A	I	L	A	B	E	T
T	R	A	G	I	C	N	E	U	R	O	P	A
A	Y	I	N	G	N	A	W	S	E	V	I	L
R	E	L	T	C	O	C	A	B	R	E	A	K
S												
Z	Y	G	O	T	E	S	E	N	D	L	E	S
A	U	L	D	A	L	U	L	A	E	R	N	E
A	L	E	E	R	I	S	E	N	D	R	A	B
R	E	E	D	S	P	A	T	E	A	S	P	S

- ✓ All Natural Protein, No Urea
- ✓ Easy to Feed/ Less Labor
- ✓ No Salt or Fillers
- ✓ Enhanced Condition Storage
- ✓ Improved Reproduction
- ✓ Heavier Weaning Weights

HUDSON LIVESTOCK SUPPLE- INCORPORATED

Matt Brown
853-2496 or 650-6235

SureFed
Now handling a full line of SureFed Feeds

Featuring N-Timidator® THE ORIGINAL Goat Feed and Supplement and still the best!

Valentine Dance
Saturday, Feb. 10, 2001
for
4th, 5th, 6th Grades ONLY
Memorial Building
Time: 7:00 PM • 9:00 PM
D.J. Music
Refreshments
Admissions \$2.00 Each
Sponsored by:
Beta Sigma Phi Sorority

Dedication service at Our Lady of Grace Monastery

CONTINUED FROM PAGE 1

see. We build in faith, not knowing really what God is going to do with it. It's all in His hands."

Following the service, a meal was provided for all in attendance by the Knights of Columbus. Guided tours were also conducted.

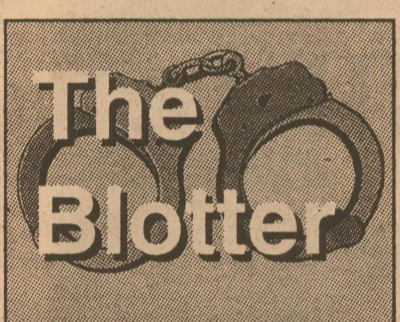
Now that construction is almost complete the sisters, who have been very involved in the work, will be cloistered and will not be available to visit with the public. Two nuns will be available, however, during visiting hours to accept gifts and food items through a window. The beautiful chapel will be open to the public for Mass at 7:30 a.m. Monday, Wednesday, Friday and Saturday and 5 p.m. on Thursday and Sunday. Regular visiting hours are from 9:30 to 11:30 a.m. and 2:30 to 4 p.m. daily.

To reach the new monastery from Eldorado, take U.S. Highway 190 17 miles east and turn left on F.M. 2084 (Toe Nail Trail). Go north approximately 10 miles and turn right on Rudd Road. Go 4.2 miles down Rudd Road until you see monastery signs. Turn right and follow the signs.

NOTICE

Due to a death in the family, Eldorado Pharmacy will be closed Friday, February 9, 2001. Thank you, for your patronage over the years and your understanding during our time of loss.

Eldorado Pharmacy
17 S. Divide
Eldorado, Texas 76936
853-2064



The Blotter is a summary of the previous week's activity at the Schleicher County Sheriff's Dept. For practical reasons of time and space, The Blotter does not include every call made to the Sheriff's office, nor does it include routine security checks, minor traffic stops or routine patrols. Incidents of major impact will be reported separately. Subjects reported to have been arrested are presumed innocent until proven guilty in a court of law.

ARRESTS

February 1 • Rocha, Enrique J., male age 18, arrested by SC Officer, charge Burglary of a Building. Released on \$1,000 PR Bond.

February 3 • Sanchez, Bonifacio, male age 29, hold for Irion County, charge Public Intoxication. Released on Citation.

Ortiz, Augustine, male age 32, hold for Irion County, charge Driving While Intoxicated (2nd Offense) & Driving While License Suspended. Released on \$2,000 and \$1,000 Bonds.

February 4 • Echavarría, Pete, male age 35, hold for Irion County, charge Driving While Intoxicated (1st Offense). Released on \$500.00 Surety Bond.

Gutierrez, Victor Manuel, male age 36, arrested by SC Officer, charge 1995 JP Warrants (Speeding, Failure To Appear, No Liability). Paid fines \$337.00 and 2 days credit \$200.

REPORTS

January 30 • 6:38 p.m. Complainant requested to speak with an officer about collect phone calls the family have been receiving. Officer responded.

• 7:45 p.m. Complainant requested an officer to their neighbor's residence. Officer responded and complainant advised someone was knocking on their door. Officer unable to locate.

January 31 • 7:11 p.m. Complainant requested to speak to an officer about a collect call they had received. Officer responded.

• 10:20 p.m. Complainant requested to speak with an officer about an harassing phone call their mother had received.

February 1 • 12:27 a.m. Officer reported 2 Hispanic males at the High School Gym, officer in pursuit. 1 subject is a juvenile (identity known) and 1 subject arrested.

• 5:37 a.m. Complainant on S.

Main reported loud music coming from residence. Complainant requested that an officer speak to the subject, to keep this noise down.

• 4:24 p.m. Complainant requested an ambulance for a lady who had fallen and possibly broken hip.

• 9:25 p.m. Complainant called and stated that a vehicle had pulled up outside of their residence and had turn off its headlights. Subject alone with child. Officer responded to call and reported that everything was OK.

February 2 • 1:00 a.m. Complainant requested an officer regarding damage to their vehicle. Officers responded.

February 3 • 8:15 p.m. Complainant radio dispatch and stated that there was a vehicle broken down. Owner of vehicle requested wrecker service by name.

February 4 • 10:16 a.m.. Complainant called and advised that there was a 3 year old boy at their house with no shoes or pants on. Complainant believes the little boy belongs to neighbor and cannot get anyone to answer door. Officer responded.

• 2:10 p.m. Complainant reported 4 missing baby goats. Officer responded.

• 2:30 p.m. Complainant reported a purple colored tractor trailer truck that had run them off the road. DPS Trooper responded.

• 8:00 p.m. Complainant reported that there were goats on FM 915. Possible owner contacted.

• 10:51 p.m. Complainant requested an officer to do a welfare check on their husband and 2 children. Subject stated they had been unable to get in contact with them.

February 5 • 12:45 a.m. Complainant reported that their son had hit a deer 3 miles East on Hwy. 190. Officer responded.

• 8:55 a.m. Complainant reported a lost checkbook. Cover will be dark blue.

• 9:15 a.m. Complainant requested to speak to an officer about a collect phone call they had received. Person calling stated that they were a relative and that the complainant would be getting a package from Mexico.

• 3:17 p.m. Complainant requested an ambulance for their mother who was not responding well. EMS and Officer responded.

• 3:53 p.m. Complainant requested to speak with an officer about an unwanted subject from their residence. Officer responded.

• 4:11 p.m. Hospital requested an ambulance for a basic transfer.

• 12:05 p.m. Complainant reported two suspicious persons at the bank. Officer responded to call and all was OK.

More than just a Nursing Home
Schleicher County Nursing Home

When the time comes that you or one of your loved ones require more care than family and friends can provide, consider the advantages offered by Schleicher County Nursing Home. Unlike some distant facility in a far off town, we're right here in Eldorado. You know us and we know you...and we know how to provide the specialized care you need.

Recognized for our commitment to long term care, Schleicher County Nursing Home attracts residents from throughout the area. Our staff of trained and dedicated professionals understand that each resident is an individual with unique needs. Unlike larger facilities, Schleicher County Nursing Home doesn't take a "cookie cutter" approach to delivery of care.

Many factors contribute to the choice of a long term care facility. Proximity to loved ones, planned activities and a homelike atmosphere are but three of the reasons many have chosen Schleicher County Nursing Home as their home away from home. We appreciate the trust that so many of our neighbors have placed in us. We work hard every day to make certain that trust is deserved.

Please feel free to call or come by. We'll be happy to visit with you about the long term care options at Schleicher County Nursing Home. We'll take as much time as necessary to answer all your questions. After all, we're more than a nursing home...we're your neighbor and we want you to feel comfortable and understand all your alternatives.

Caring People
In the Business of Caring for You

Schleicher County Medical Center
400 West Murchison ~ Eldorado, Texas 24-Hour Phone: 853-2507

Texas 2x2
Display Advertising Network

Reach more than a half million Texas consumers with affordable 2x2 advertisements.

Call: THE ELDERADO SUCCESS
for details
853-3125

Local 4-Hers compete at Ft. Worth Stock Show

by Scott Edmonson, CEA-Ag
During the recent Southwest Exposition and Livestock Show in Fort Worth, Schleicher County 4-Hers exhibited their meat goat and swine projects.

On January 19, 2001, Bryce and Briley Leggett exhibited their meat goats. The competition was tough and they did a

super job. On February 1-2, 4-Hers Marcus Hinojosa, Mark Bybee, Mason Baker and Gary Hanusch exhibited their swine projects at Fort Worth. Mark Bybee placed 11th with his Chester White barrow.

We will be heading to San Antonio next week and then on to Houston and San Angelo.

FSA accepting emergency loan applications

Applications for emergency farm/ranch loans for damages and losses caused by drought and excessive heat that occurred from January 1, 2000 and continuing, are being accepted at the Farm Service Agency (FSA) office located in San Angelo, FSA Farm Loan Manager, Fred J. Greenway said today.

Irion, McCulloch, Menard, Schleicher, Sutton, Tom Green, Upton, Concho, Crockett, Reagan and Runnels are some of the counties in Texas recently named by the Secretary of Agriculture Dan Glickman eligible for loans to cover part of actual production losses resulting from drought and excessive heat that occurred from January 1, 2000, and continuing.

Fred J. Greenway said farmers/ranchers may be eligible for loans of up to 80 percent of their actual losses or the operating loan needed to continue in business, whichever is less. For farmers/ranchers unable to obtain credit from private commercial lenders, the interest rate is 3.75 percent.

"As a general rule, a farmer/rancher must have suffered at least a 30 percent loss of production or a qualifying physical loss to be eligible for an FSA emergency loan," Fred J. Greenway said.

Farmers/ranchers participating in the Federal Crop Insurance program will have to figure in proceeds from those programs in determining their loss.

"Applications for loans under this emergency designation will be accepted until August 20, 2001, but farmers/ranchers should apply as soon as possible. Delays in applying could create backlogs in processing and possibly over into the new farming season" Greenway said.

FSA is a credit agency of the

U.S. Department of Agriculture. It is authorized to provide disaster emergency loans to recognized farmers/ranchers who work at and rely on farming/ranching for a substantial part of their living. Eligibility is extended to individual farmers/ranchers who are U.S. citizens and to farming/ranching partnerships, corporations or cooperatives in which U.S. Citizens hold a majority interest.

The FSA office in San Angelo is open from 8 a.m. to 5 p.m. Monday through Friday.

ExpressWay, STS

DRIVER FLATBED SOUTHWEST REGION
60" Sleepers 460 hp trucks.
Average \$875/week. Guarantee \$800/week.
\$1,000 Sign-On. \$1,250 Bonus/Quarter.
\$1,000 Safety Bonus/year.
Layover Day. Benefits. Home every week.
ExpressWay STS
Call toll free at:
1-866-274-3695, Dean x216

DRIVER FLATBED OWNER-OPERATORS
Save on Fuel Costs!
Run less miles for more pay.
11 Western states.
Home every week.
ExpressWay STS
Call toll free at:
1-866-274-3695, Dean x216

At last...real, long-term relief for misery of your PSORIASIS!

You've heard every claim to relieve your Psoriasis. But no medication will help if it doesn't penetrate your outer skin. Let us tell you, **FREE**, how **YOU** can stop that miserable itching and flaking. Learn how you can get fast, safe, effective relief that *really works or your money back!* Call for Free information. No hard sell, courteous counselors, well-informed on skin problems.

Toll Free - 1 (877) 425-8227

Second Hand Rose Consignment

Great Selection of Formal/Evening Wear and Winter Clothing

Hwy 277 South
Open 10-6 pm
Mon-Sat. 853.3736

174 Cypress St.
915-672-6657

THE ABILENE BOOKSTORE

FREE
Autograph Party Thurs. Feb. 8

Award-winning author
ELMER KELTON

Order by phone or on online at abilenebookstore.com

Kent's Automotive

712 N. Divide
CarQuest Batteries

as low
\$39.95

853-2733

THE ELDERADO SUCCESS

call 853-3125 to place an ad or subscribe

W.T. Rehab Center plans annual Art Show

Ninety-six artists and artisans will display more than 260 works in various mediums at the Second Annual Stribling Art Extravaganza February 23-25 at historic Fort Concho in San Angelo. The event benefits West Texas Rehabilitation

Center. Beverly and Ben Stribling are underwriting the show and sale which showcases the artistic talent of current and former residents of San Angelo and the Concho Valley. Assisting with a portion of

the event cost is PaineWebber. Displayed works will range from oils, acrylics and watercolors to bronzes, ceramics and wood - all of which will be for sale.

The event will be held in Fort Concho's Commissary and Quartermaster buildings.

Hours are 1-7 p.m., Friday, February 23; 10 a.m. to 6 p.m., Saturday, February 24 and 1-4 p.m., Sunday, February 25. Admission is free.

"We're very pleased with the response from local and area artists which virtually is doubled from last year," said WTRC President/CEO Woody Gilliland. "We're equally proud to provide and opportunity for the public to see the tremendous amount of artistic talent in the region and, at the same time, provide an avenue of support for West Texas Rehab Center."

More event information is available by calling the Center at 223-6300.



courtesy photo

Stock trailer for the Masonic School — Students at the Masonic Home and School in Ft. Worth are shown here with a stock trailer donated by to their new FFA chapter by Fred Ellis of Ft. McKavett. The gift was made possible by the Eldorado and Ft. McKavett Masonic Lodges. The trailer was delivered by Extension Agent Scott Edmonson during his trip to the Ft. Worth stock show last week. The students will be restoring the trailer to like-new condition and will use it with their upcoming chapter projects.

4-H Club News is featured regularly in

THE SUCCESS

Classic Digital Cable.

The entertainment keeps getting bigger!

- More Special Interest Channels
- More Premium Channels
- More Pay-Per-View Channels

- Digital Music
- On-Screen Navigator
- Parental Control Option

Call now to order Classic Digital Cable through our "Classic Dish" and get:

- Installation for just \$24.95
- One low price, guaranteed through January 2002
- No long-term contract to sign

Call toll-free:

1-888-202-5660

Offer expires 2/28/01. Not valid in conjunction with any other offers. Some services not available in some areas. Other restrictions may apply. Digital terminal required to receive Digital Cable.

THANKS FOR SUPPORTING THE 2001 SCHLEICHER COUNTY LIVESTOCK, FOOD & PROJECT SHOW

Angelo Pellets Mary Sue Arledge Bar G Feeds Jim Bass Ford Bill's Man Shop Dr. & Mrs. Jim Brame Mike Brenner, Inc. C. Bradley Graphics Wiley & Ester Bunton Bruton "Easy Pull" Trailers B. & W. Trailer Co. Monty & Cindy Bybee Case Ranch Dick Compton Crowder Services, Inc. Denis Ranch Mr. & Mrs. Jimmy Doyle Duke Energy Eagle Specialities Joe Max & Marty Edmiston Orval & Charlene Edmiston Eldorado Animal Clinic Scott & Maela Edmonson Eldorado Lions Club Eldorado Success Fisher Lease Co. First National Bank of Eldorado First National Bank of Sonora First National Bank of Mertzon 1st Community Federal Credit Union Mr. & Mrs. Rico Forlano Mr. & Mrs. Bill Frietag Mr. & Mrs. Rick Fuessel Tom & Branda Gray Grider Trucking Co., Inc. Cy & Kim Griffin Mr. & Mrs. Kirk Griffin Mr. & Mrs. Lynn Griffin Gary & Princess Gruben Halbert LPG Gary & Donna Hanusch Pam Meador Hengst Glynn & Robin Hutto Jerry's T.V. Service Bob & Sherry Johnson Mitch & Stacy Jurecek Kent's Automotive Kothmann Feed & Country Store Kerbow Inc. Mr. & Mrs. John Kotsch Mike & Becky Lux Sherry Lux - Lux Agency Mr. & Mrs. Johnny Mayo, Jr. Gene McCalla Lynn Meador Real Estate Michael & Trina Mertz Mid West Feed Yards	Lanis & Lynna Mikeska Ronnie & Sharon Mittel Mittel Insurance Agency Mr. Insurance, Inc. Ford Oglesby Ranch Palmer Feed & Supply, Inc. Penfield Auto Electric Mr. & Mrs. C.R. Pfluger Johnny & Claire Powell Richard & Jill Preston Producers Livestock Auction Production Plus Pumping Service Randall Motors Regal Oil, Inc. Rye Supply Hyman & Gina Sauer Schleicher County EMS Mr. & Mrs. Clifford Schooley, Sr. Sonora Wool & Mohair Cliff & Donna Schooley Southwest Texas Federal Land Bank Rick & Becky Sterling Sutton County Steakhouse Southwestern Livestock Mineral Co. Devils River Inn Jerry & Gloria Swift Southwest Texas Electric Coop. Teaff Oil Company Texas State Bank Mr. & Mrs. Clyde Thackerson Three Crosses Ranch Toliver Brothers Wayford D. Tyler, Jr. Jack & Louann Turner West Texas Utilities Herman Walker Construction Co. Gus & Vita Willeke Ray & Jeri Willoughby West Texas Steel & Supply West Texas Vet Clinic Ashley's Western Wear Damien & Gerylne Beach B.C. Operating Co. Matt & Christy Brown Concho Valley Implement R.Q. Boothe & Assoc. John Ben & Cindy Cawley Louis Dreyfus Natural Gas Lester Dahlberg D & L Automotive W.F. & Francis Edmiston Eldorado Wool Co. Eldorado Woolen Mill Eldorado Lodge #890 Gene Edmiston William & Darlene Edmiston	Edmiston Electric Griffin Fuels Dan Griffin Mr. & Mrs. Johnny Griffin Clint & Kris Griffin Sam & Karen Henderson Billy & Leann Higgins Bobby & Sandra Helmers Ivey Motor Co. I-10 Auto Ranch Wayne & Shirley Joiner Kerry & Debbie Joy Bob & Nancy Lester Los Cabollas Vet Clinic Lake Garden Processing Menard Animal Clinic Mr. Boots Doyle & Faye Morgan John Ed & Rita Meador X-Bar Ranch Jim Martin Jimmy Martin Ranch Mertzon True Value Hardware Mike & Becky Moore N&K Ranches Niblett's Oilfield Services Outback Burger Barn Sidney & Melonie Reynolds Porter Henderson Implement Co. Myrl Sudduth Sun West Industries Bill & Toni Sudduth C.R. & Joann Sproul Corey Stephens Schleicher County Rodeo Assn. Super S Foods Sonora Animal Hospital Mrs. Phil Swatzell State Farm Ins. Smokey Taylor Schleicher County Abstract Co. Tom's Tire World Thorps Laundry Velton Taylor Mitchell Toyota West Texas Wool & Mohair Ross Whitten Ranch Bob & Jan Wanoreck West Texas Lumber & Feed Steve Whitten Zesch & Pickett Insurance Steve Nelson Felipe Pina David & Blanche Charboneau Blairs Western Wear Schleicher County ISD Schleicher County Commissioners Court
--	---	---

DEVELOPING TOMORROW'S LEADERS THROUGH OUR YOUTH OF TODAY